

Data Path : Z:\svoasrv\HPCHEM1\BNA_P\Data\BP123021\
 Data File : BP008617.D
 Acq On : 30 Dec 2021 20:27
 Operator : CG/JU
 Sample : M5244-19
 Misc :
 ALS Vial : 6 Sample Multiplier: 1

Instrument :
 BNA_P
 ClientSampleId :
 CONC-6D

Quant Time: Dec 31 08:14:51 2021
 Quant Method : Z:\svoasrv\HPCHEM1\BNA_P\Methods\8270E-BP122821.M
 Quant Title : ASP BNA STANDARDS FOR 5 POINT CALIBRATION
 QLast Update : Thu Dec 30 08:44:33 2021
 Response via : Initial Calibration

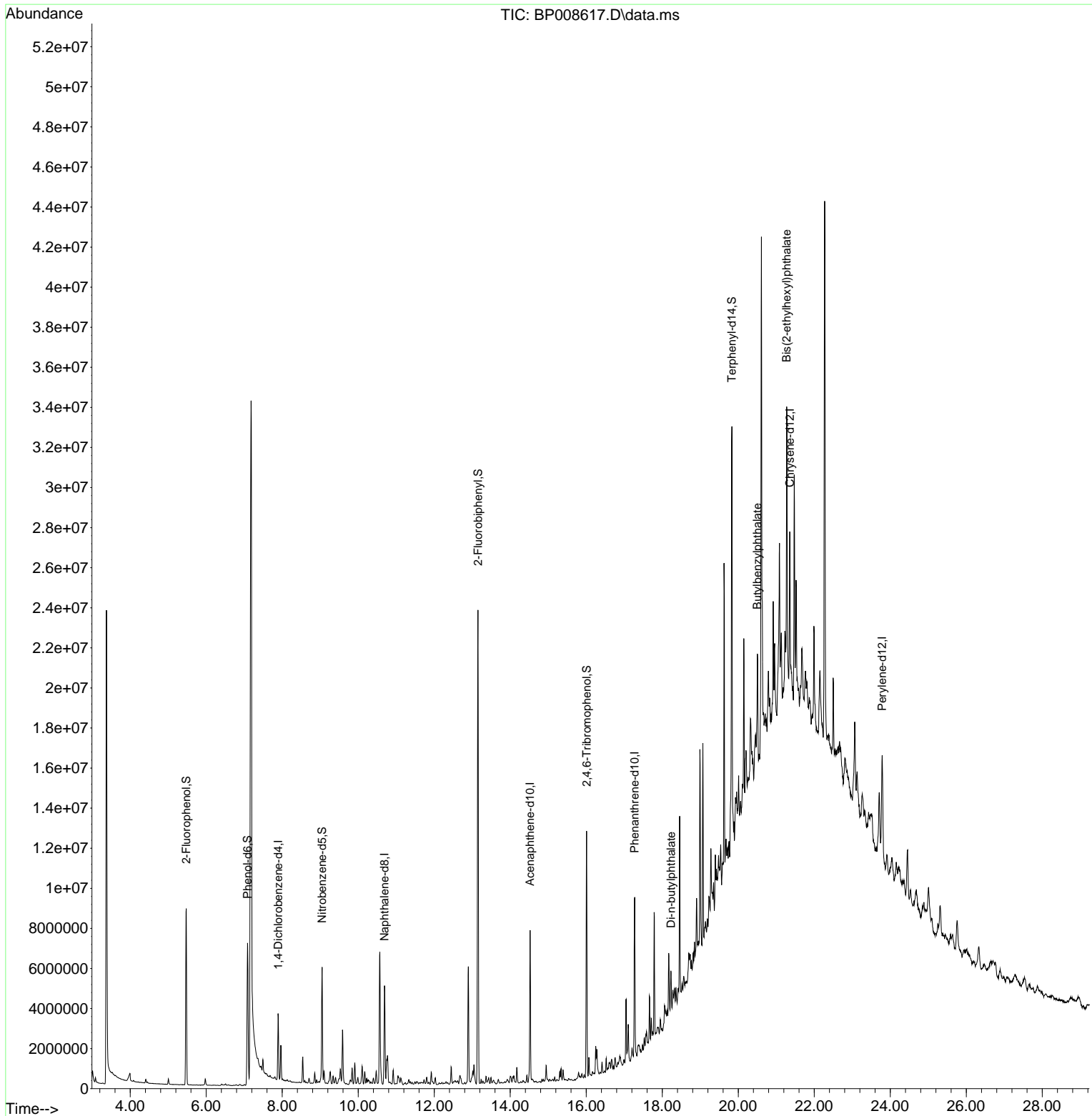
Compound	R.T.	QIon	Response	Conc	Units	Dev(Min)	
Internal Standards							
1) 1,4-Dichlorobenzene-d4	7.893	152	1035884	20.000	ng	0.00	
21) Naphthalene-d8	10.693	136	4126696	20.000	ng	0.00	
39) Acenaphthene-d10	14.522	164	2809632	20.000	ng	0.00	
64) Phenanthrene-d10	17.275	188	5415387	20.000	ng	0.00	
76) Chrysene-d12	21.357	240	3986431	20.000	ng	0.00	
86) Perylene-d12	23.786	264	4072570	20.000	ng	0.00	
System Monitoring Compounds							
5) 2-Fluorophenol	5.475	112	4543886	80.065	ng	0.00	
7) Phenol-d6	7.087	99	5960122	75.450	ng	0.03	
23) Nitrobenzene-d5	9.052	82	3495394	50.388	ng	0.00	
42) 2,4,6-Tribromophenol	16.010	330	2847262	74.902	ng	0.00	
45) 2-Fluorobiphenyl	13.151	172	9500151	48.989	ng	0.00	
79) Terphenyl-d14	19.833	244	11444412	58.616	ng	0.00	
Target Compounds							Qvalue
74) Di-n-butylphthalate	18.233	149	1304323	4.270	ng		99
80) Butylbenzylphthalate	20.504	149	1373282	13.276	ng		97
84) Bis(2-ethylhexyl)phtha...	21.274	149	6762474	43.278	ng		99

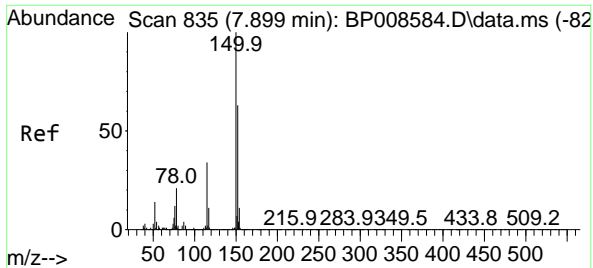
(#) = qualifier out of range (m) = manual integration (+) = signals summed

Data Path : Z:\svoasrv\HPCHEM1\BNA_P\Data\BP123021\
 Data File : BP008617.D
 Acq On : 30 Dec 2021 20:27
 Operator : CG/JU
 Sample : M5244-19
 Misc :
 ALS Vial : 6 Sample Multiplier: 1

Instrument :
 BNA_P
 ClientSampleId :
 CONC-6D

Quant Time: Dec 31 08:14:51 2021
 Quant Method : Z:\svoasrv\HPCHEM1\BNA_P\Methods\8270E-BP122821.M
 Quant Title : ASP BNA STANDARDS FOR 5 POINT CALIBRATION
 QLast Update : Thu Dec 30 08:44:33 2021
 Response via : Initial Calibration

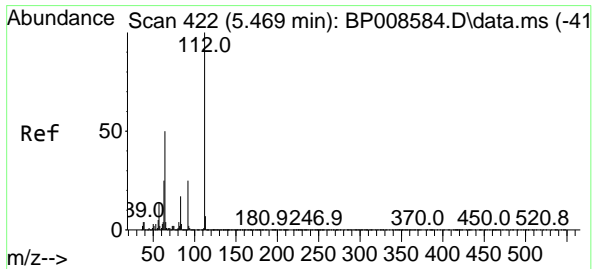
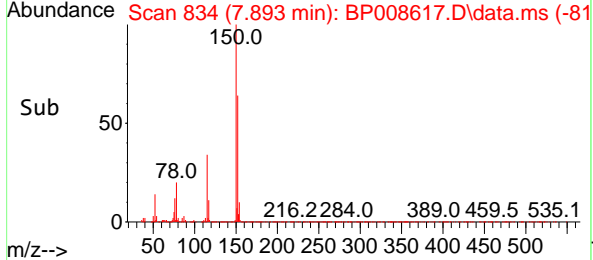
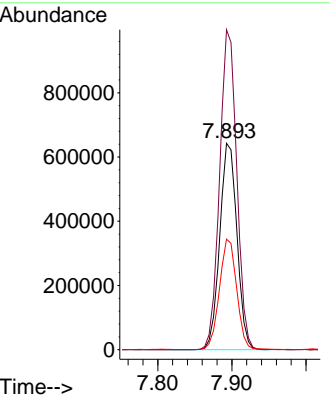
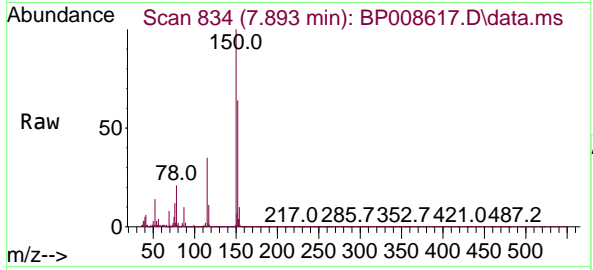




#1
 1,4-Dichlorobenzene-d4
 Concen: 20.000 ng
 RT: 7.893 min Scan# 81
 Delta R.T. -0.006 min
 Lab File: BP008617.D
 Acq: 30 Dec 2021 20:27

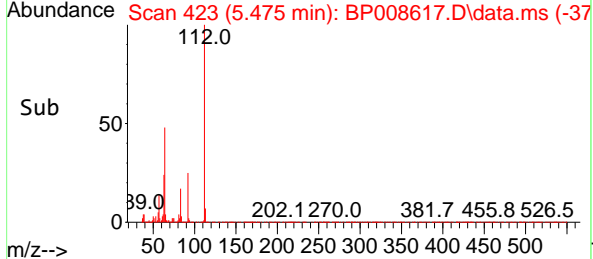
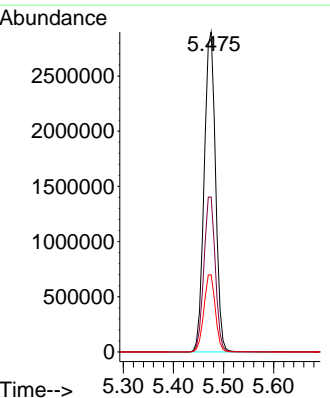
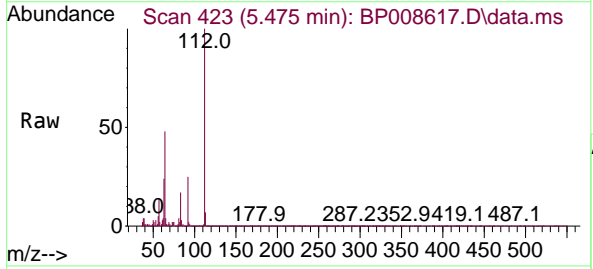
Instrument :
 BNA_P
 ClientSampleId :
 CONC-6D

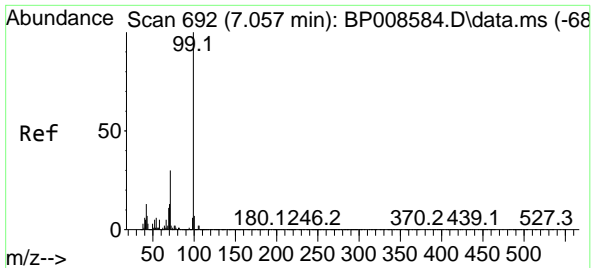
Tgt Ion:152 Resp: 1035884
 Ion Ratio Lower Upper
 152 100
 150 155.1 127.0 190.6
 115 53.6 43.7 65.5



#5
 2-Fluorophenol
 Concen: 80.065 ng
 RT: 5.475 min Scan# 423
 Delta R.T. 0.006 min
 Lab File: BP008617.D
 Acq: 30 Dec 2021 20:27

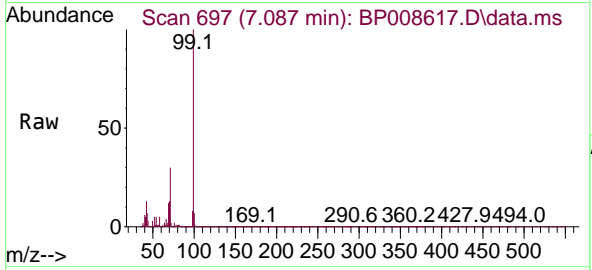
Tgt Ion:112 Resp: 4543886
 Ion Ratio Lower Upper
 112 100
 64 48.5 39.7 59.5
 63 24.1 20.0 30.0





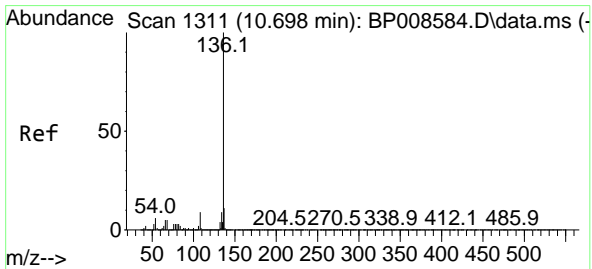
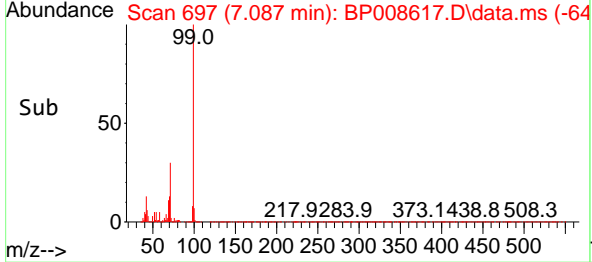
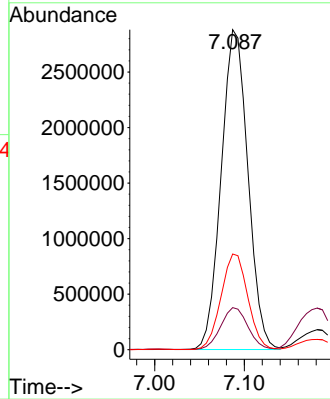
#7
Phenol-d6
Concen: 75.450 ng
RT: 7.087 min Scan# 692
Delta R.T. 0.029 min
Lab File: BP008617.D
Acq: 30 Dec 2021 20:27

Instrument :
BNA_P
ClientSampleId :
CONC-6D

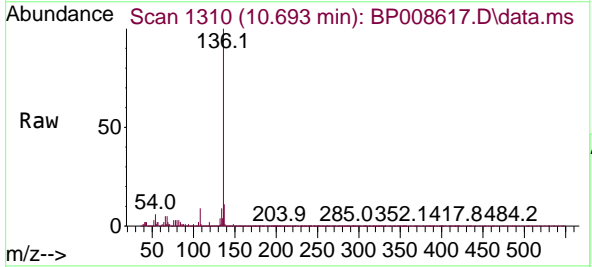


Tgt Ion: 99 Resp: 5960122

Ion	Ratio	Lower	Upper
99	100		
42	13.1	10.8	16.2
71	29.9	23.8	35.6

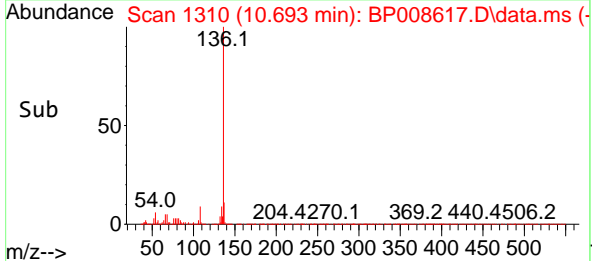
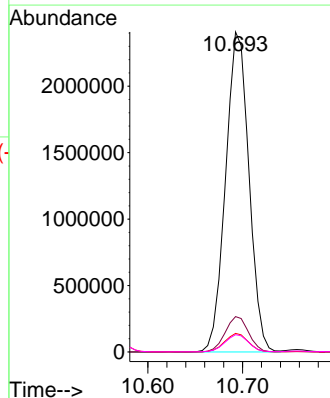


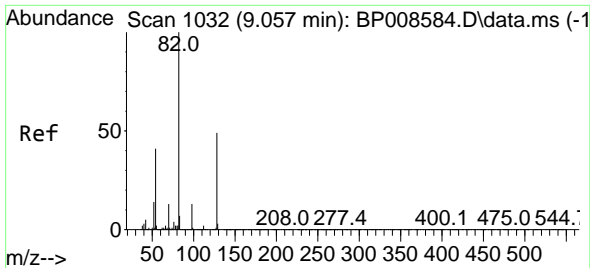
#21
Naphthalene-d8
Concen: 20.000 ng
RT: 10.693 min Scan# 1310
Delta R.T. -0.006 min
Lab File: BP008617.D
Acq: 30 Dec 2021 20:27



Tgt Ion: 136 Resp: 4126696

Ion	Ratio	Lower	Upper
136	100		
137	11.0	9.0	13.4
54	5.8	4.9	7.3
68	5.4	4.3	6.5



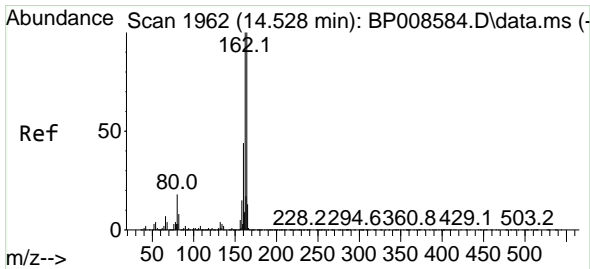
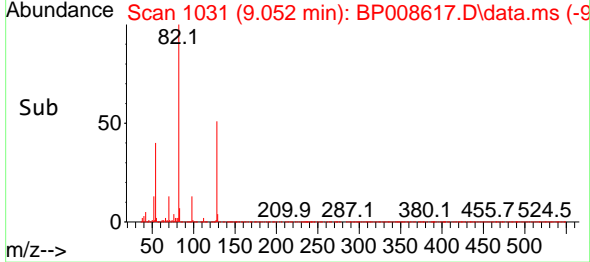
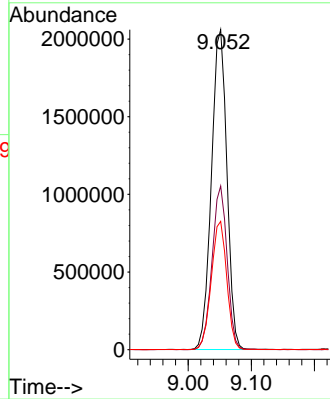
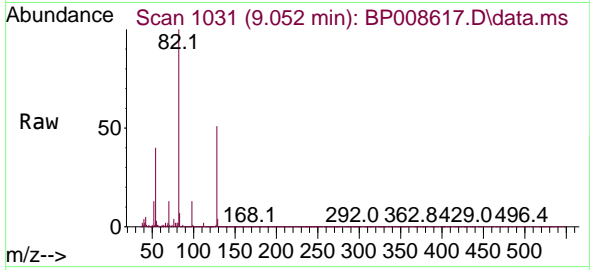


#23
 Nitrobenzene-d5
 Concen: 50.388 ng
 RT: 9.052 min Scan# 1031
 Delta R.T. -0.006 min
 Lab File: BP008617.D
 Acq: 30 Dec 2021 20:27

Instrument :
 BNA_P
 ClientSampleId :
 CONC-6D

Tgt Ion: 82 Resp: 3495394

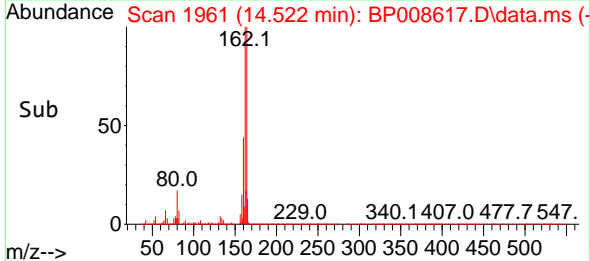
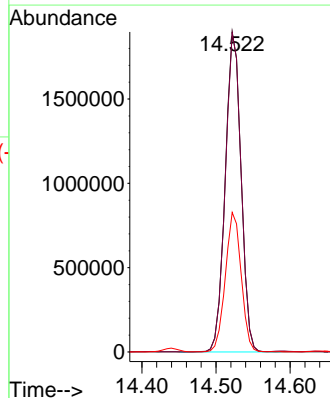
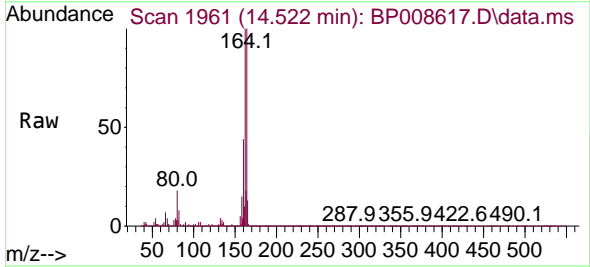
Ion	Ratio	Lower	Upper
82	100		
128	51.1	39.4	59.2
54	40.1	32.6	48.8

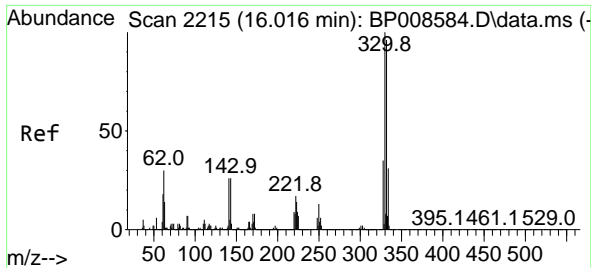


#39
 Acenaphthene-d10
 Concen: 20.000 ng
 RT: 14.522 min Scan# 1961
 Delta R.T. -0.006 min
 Lab File: BP008617.D
 Acq: 30 Dec 2021 20:27

Tgt Ion: 164 Resp: 2809632

Ion	Ratio	Lower	Upper
164	100		
162	99.7	79.9	119.9
160	43.6	35.5	53.3

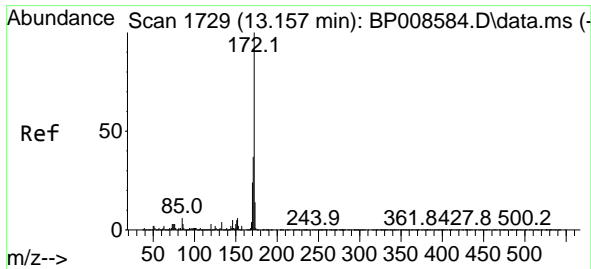
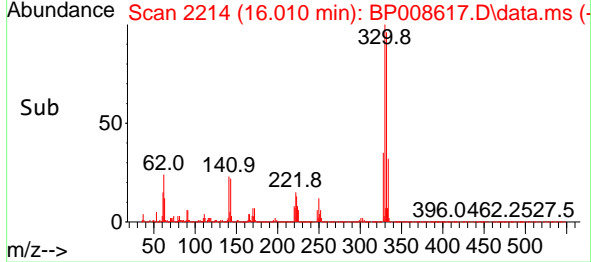
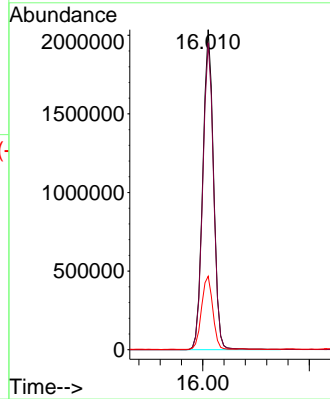
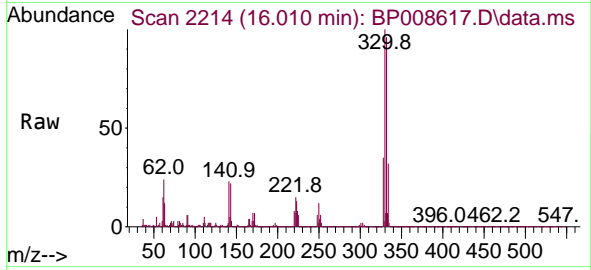




#42
 2,4,6-Tribromophenol
 Concen: 74.902 ng
 RT: 16.010 min Scan# 21
 Delta R.T. -0.006 min
 Lab File: BP008617.D
 Acq: 30 Dec 2021 20:27

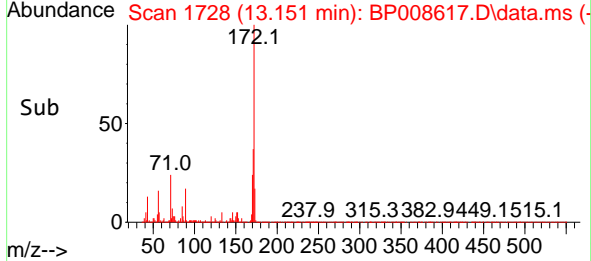
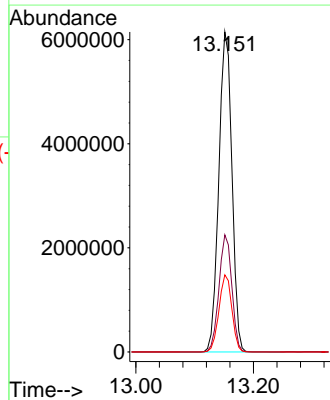
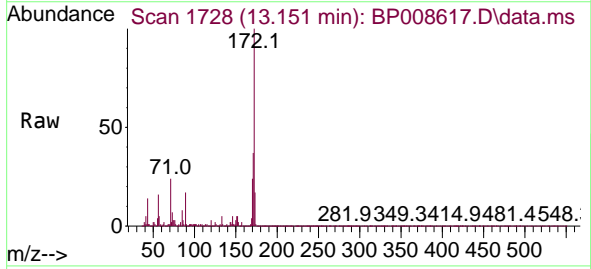
Instrument :
 BNA_P
 ClientSampleId :
 CONC-6D

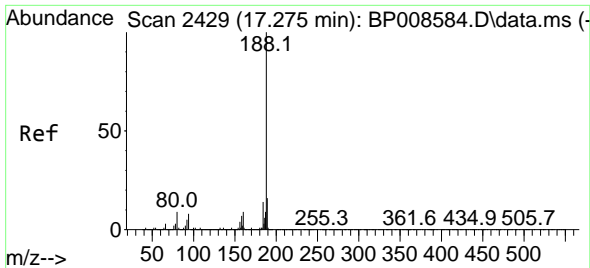
Tgt Ion:330 Resp: 2847262
 Ion Ratio Lower Upper
 330 100
 332 96.5 77.0 115.4
 141 23.7 21.3 31.9



#45
 2-Fluorobiphenyl
 Concen: 48.989 ng
 RT: 13.151 min Scan# 1728
 Delta R.T. -0.006 min
 Lab File: BP008617.D
 Acq: 30 Dec 2021 20:27

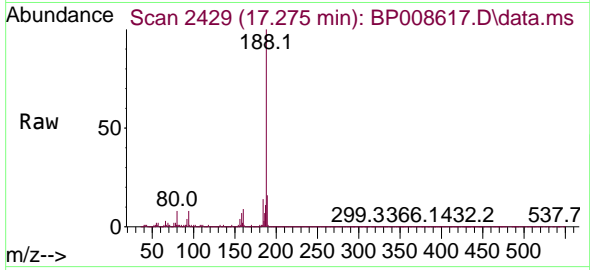
Tgt Ion:172 Resp: 9500151
 Ion Ratio Lower Upper
 172 100
 171 36.6 29.3 43.9
 170 24.1 19.5 29.3





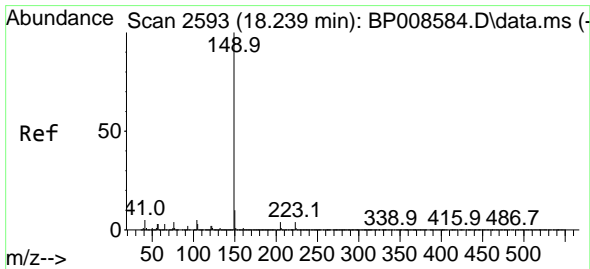
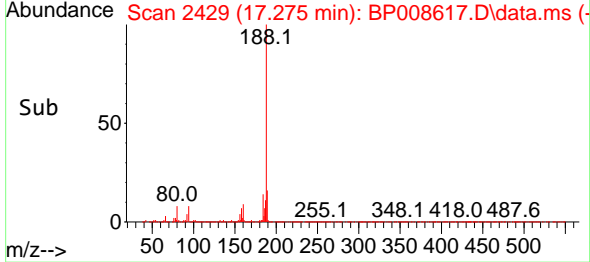
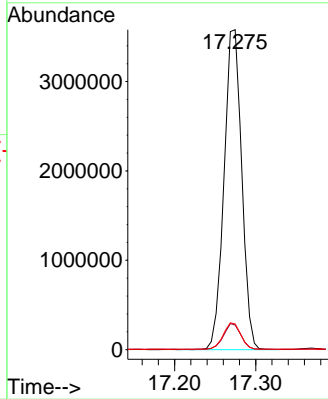
#64
 Phenanthrene-d10
 Concen: 20.000 ng
 RT: 17.275 min Scan# 2429
 Delta R.T. -0.000 min
 Lab File: BP008617.D
 Acq: 30 Dec 2021 20:27

Instrument :
 BNA_P
 ClientSampleId :
 CONC-6D

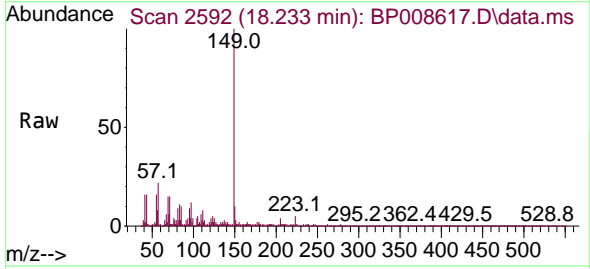


Tgt Ion:188 Resp: 5415387

Ion	Ratio	Lower	Upper
188	100		
94	7.7	6.8	10.2
80	8.1	7.2	10.8

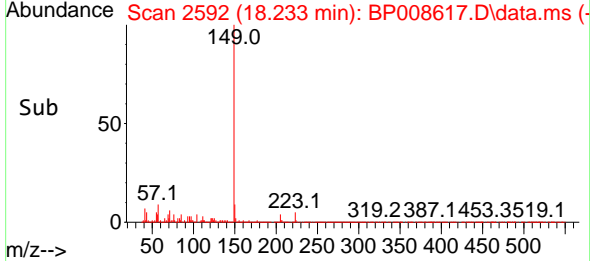
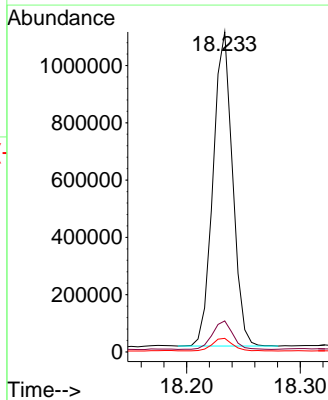


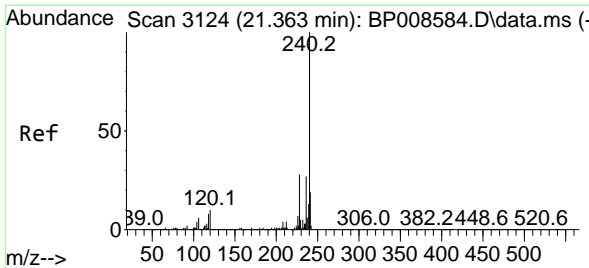
#74
 Di-n-butylphthalate
 Concen: 4.270 ng
 RT: 18.233 min Scan# 2592
 Delta R.T. -0.006 min
 Lab File: BP008617.D
 Acq: 30 Dec 2021 20:27



Tgt Ion:149 Resp: 1304323

Ion	Ratio	Lower	Upper
149	100		
150	9.7	7.9	11.9
104	4.2	3.7	5.5



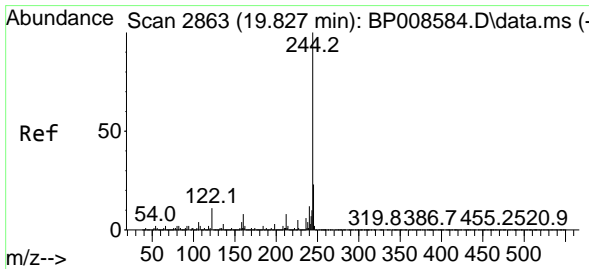
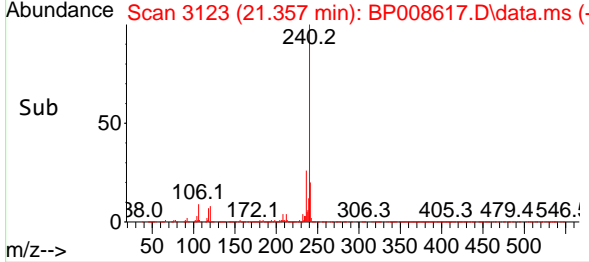
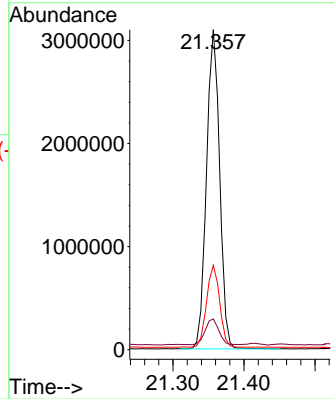
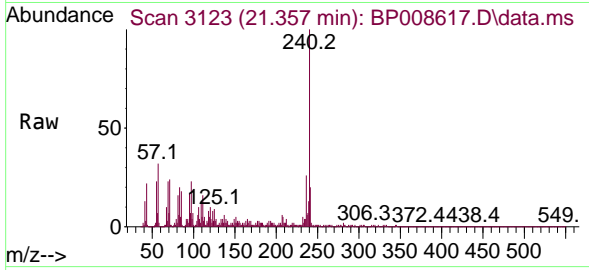


#76
 Chrysene-d12
 Concen: 20.000 ng
 RT: 21.357 min Scan# 31
 Delta R.T. -0.006 min
 Lab File: BP008617.D
 Acq: 30 Dec 2021 20:27

Instrument :
 BNA_P
 ClientSampleId :
 CONC-6D

Tgt Ion:240 Resp: 3986431

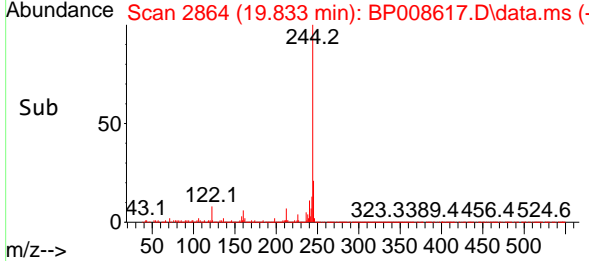
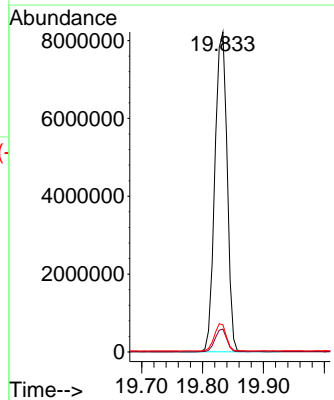
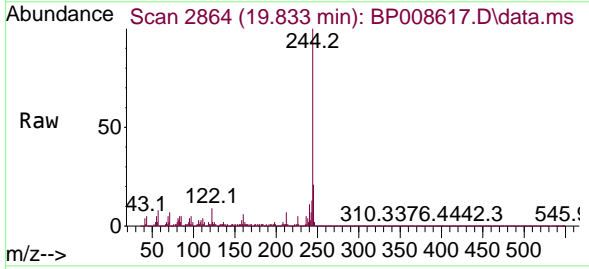
Ion	Ratio	Lower	Upper
240	100		
120	9.6	7.7	11.5
236	26.3	21.2	31.8

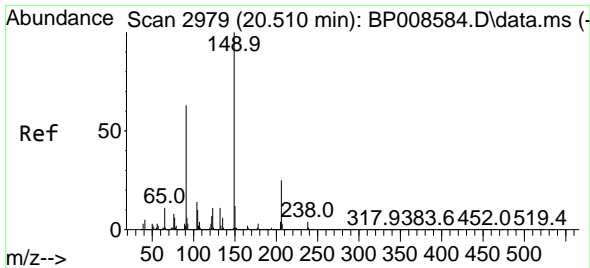


#79
 Terphenyl-d14
 Concen: 58.616 ng
 RT: 19.833 min Scan# 2864
 Delta R.T. 0.006 min
 Lab File: BP008617.D
 Acq: 30 Dec 2021 20:27

Tgt Ion:244 Resp:11444412

Ion	Ratio	Lower	Upper
244	100		
212	7.2	6.5	9.7
122	8.5	9.2	13.8#



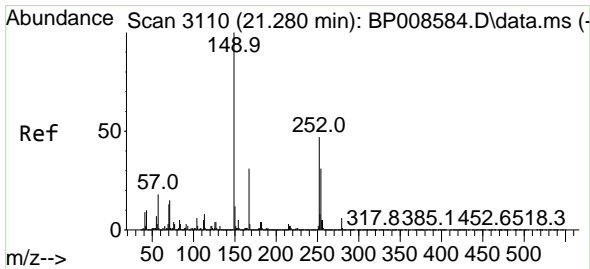
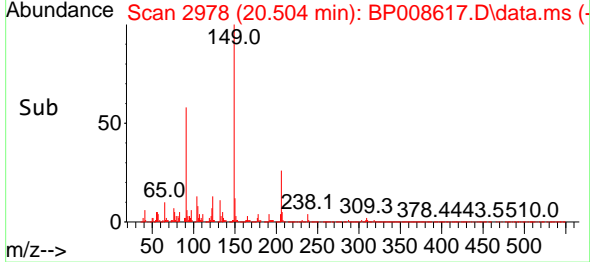
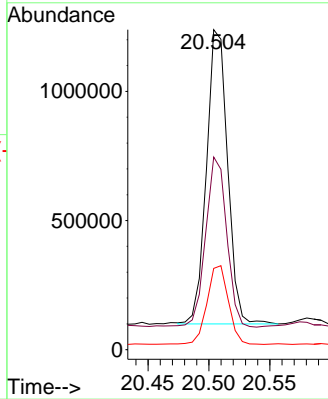
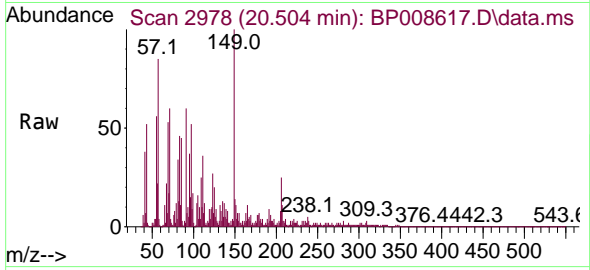


#80
 Butylbenzylphthalate
 Concen: 13.276 ng
 RT: 20.504 min Scan# 21
 Delta R.T. -0.006 min
 Lab File: BP008617.D
 Acq: 30 Dec 2021 20:27

Instrument :
 BNA_P
 ClientSampleId :
 CONC-6D

Tgt Ion:149 Resp: 1373282

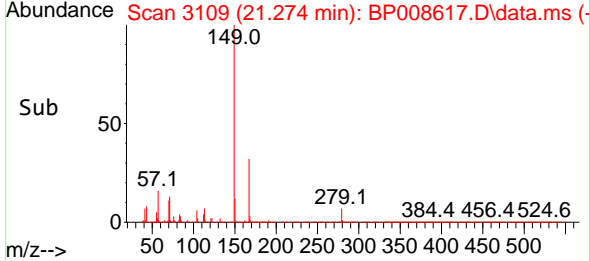
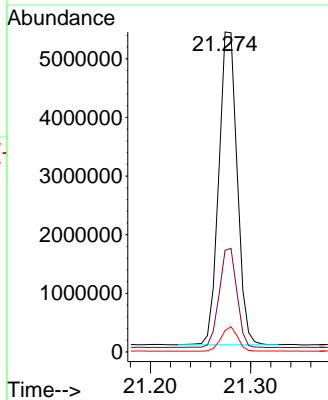
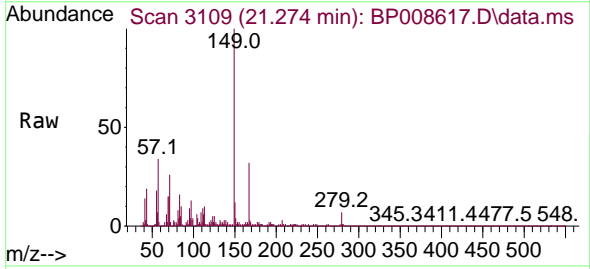
Ion	Ratio	Lower	Upper
149	100		
91	60.2	50.6	76.0
206	25.4	19.7	29.5

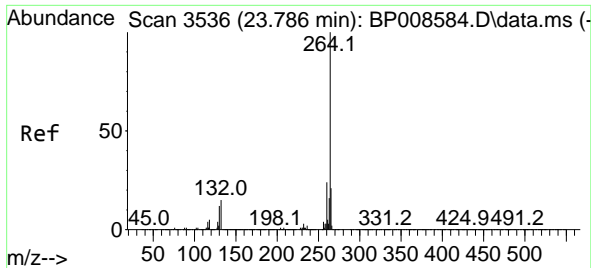


#84
 Bis(2-ethylhexyl)phthalate
 Concen: 43.278 ng
 RT: 21.274 min Scan# 3109
 Delta R.T. -0.006 min
 Lab File: BP008617.D
 Acq: 30 Dec 2021 20:27

Tgt Ion:149 Resp: 6762474

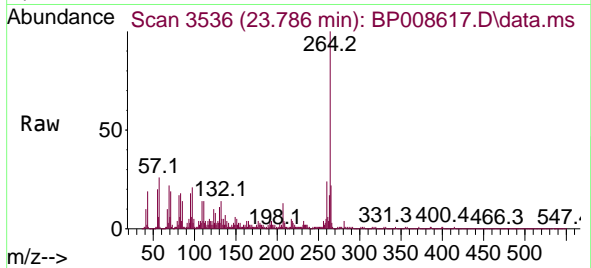
Ion	Ratio	Lower	Upper
149	100		
167	31.8	25.0	37.4
279	6.7	4.8	7.2





#86
 Perylene-d12
 Concen: 20.000 ng
 RT: 23.786 min Scan# 31
 Delta R.T. 0.000 min
 Lab File: BP008617.D
 Acq: 30 Dec 2021 20:27

Instrument :
 BNA_P
 ClientSampleId :
 CONC-6D



Tgt Ion:264 Resp: 4072570
 Ion Ratio Lower Upper
 264 100
 260 24.4 19.1 28.7
 265 22.3 17.1 25.7

