

Data Path : Z:\svoasrv\HPCHEM1\BNA\_P\Data\BP020122\  
 Data File : BP008985.D  
 Acq On : 01 Feb 2022 14:17  
 Operator : CG/JU  
 Sample : N1303-05RE  
 Misc :  
 ALS Vial : 8 Sample Multiplier: 1

Instrument :  
 BNA\_P  
 ClientSampleId :  
 CC-7RE

Manual Integrations  
 APPROVED

Reviewed By : Christian Giraldo 02/02/2022  
 Supervised By : Jagrut Upadhyay 02/02/2022

Quant Time: Feb 01 15:31:02 2022  
 Quant Method : Z:\svoasrv\HPCHEM1\BNA\_P\Methods\8270E-BP011422.M  
 Quant Title : ASP BNA STANDARDS FOR 5 POINT CALIBRATION  
 QLast Update : Tue Feb 01 04:16:03 2022  
 Response via : Initial Calibration

Compound	R.T.	QIon	Response	Conc	Units	Dev(Min)	
Internal Standards							
1) 1,4-Dichlorobenzene-d4	7.828	152	223428	20.000	ng	0.00	
21) Naphthalene-d8	10.628	136	880179	20.000	ng	0.00	
39) Acenaphthene-d10	14.463	164	594500	20.000	ng	-0.01	
64) Phenanthrene-d10	17.222	188	1200715	20.000	ng	-0.01	
76) Chrysene-d12	21.316	240	1163755	20.000	ng	-0.01	
86) Perylene-d12	23.727	264	1238990	20.000	ng	-0.01	
System Monitoring Compounds							
5) 2-Fluorophenol	5.422	112	33358	2.309	ng	0.00	
7) Phenol-d6	7.010	99	586516	33.523	ng	0.00	
23) Nitrobenzene-d5	8.987	82	1164545	75.116	ng	-0.01	
42) 2,4,6-Tribromophenol	15.969	330	1972	0.228	ng	0.00	
45) 2-Fluorobiphenyl	13.087	172	3001444	66.579	ng	-0.01	
79) Terphenyl-d14	19.786	244	4240966	61.512	ng	-0.01	
Target Compounds							
31) Naphthalene	10.675	128	2779257	58.136	ng		99
37) 2-Methylnaphthalene	12.287	142	384516	11.003	ng		97
38) 1-Methylnaphthalene	12.504	142	220638	6.878	ng		98
52) Acenaphthene	14.528	154	123765	3.703	ng		98
55) Dibenzofuran	14.869	168	162067	2.976	ng		96
58) Fluorene	15.516	166	201891	4.694	ng		99
71) Phenanthrene	17.263	178	2118104	31.331	ng		99
72) Anthracene	17.357	178	397398	5.860	ng		100
73) Carbazole	17.633	167	183353	3.144	ng		99
75) Fluoranthene	19.239	202	2263251	30.105	ng		96
78) Pyrene	19.586	202	2122207	26.135	ng		98
81) Benzo(a)anthracene	21.298	228	1258003	16.068	ng		99
83) Chrysene	21.351	228	1252238	16.499	ng		98
84) Bis(2-ethylhexyl)phtha...	21.221	149	218768	4.326	ng		95
87) Indeno(1,2,3-cd)pyrene	26.227	276	742781	7.275	ng		# 94
88) Benzo(b)fluoranthene	22.992	252	1574979	19.035	ng		98
89) Benzo(k)fluoranthene	23.033	252	558348m	6.971	ng		
90) Benzo(a)pyrene	23.615	252	1053651	13.193	ng		98
91) Dibenzo(a,h)anthracene	26.233	278	228621	2.633	ng		94
92) Benzo(g,h,i)perylene	26.998	276	726071	8.566	ng		98

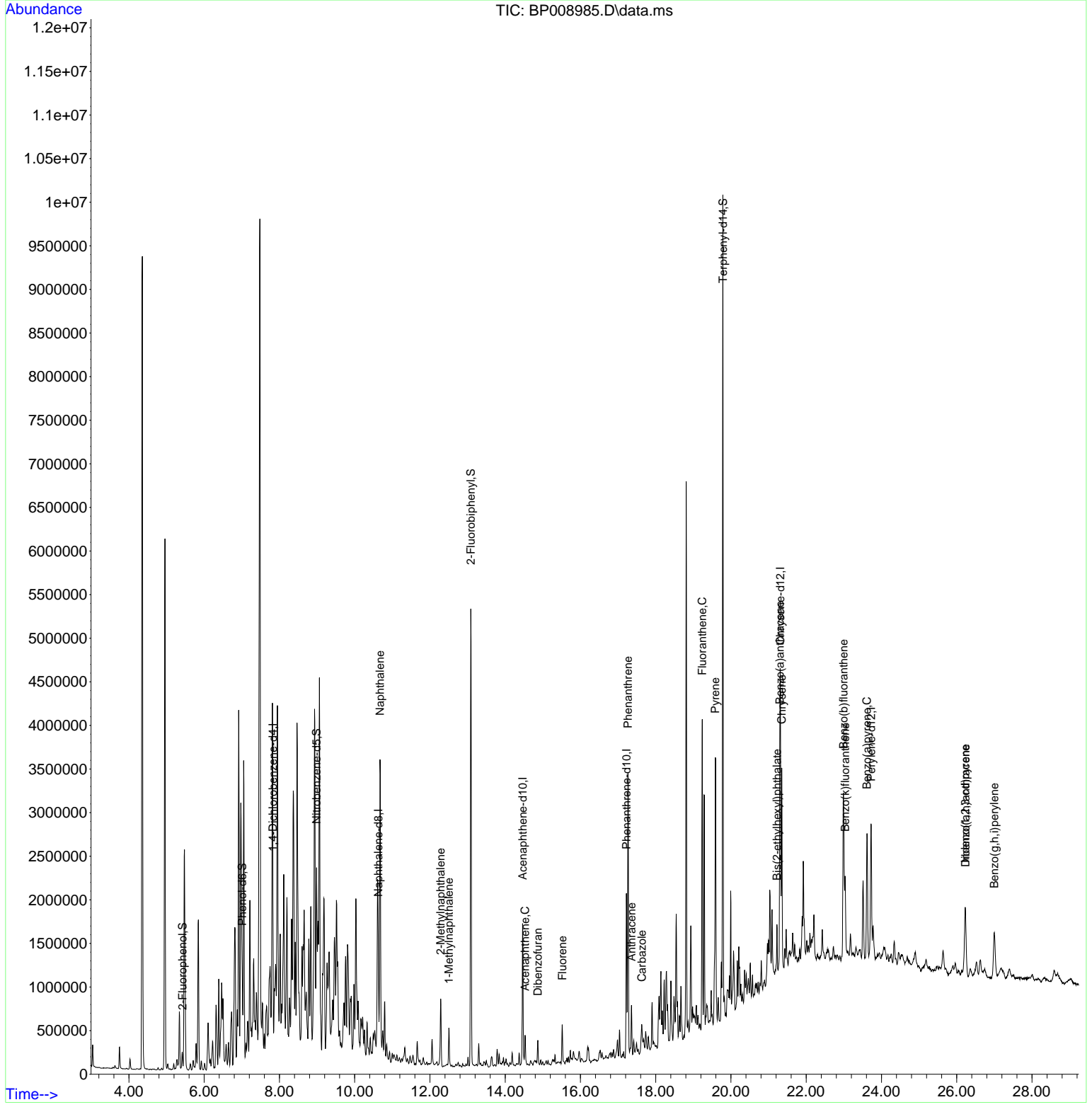
(#) = qualifier out of range (m) = manual integration (+) = signals summed

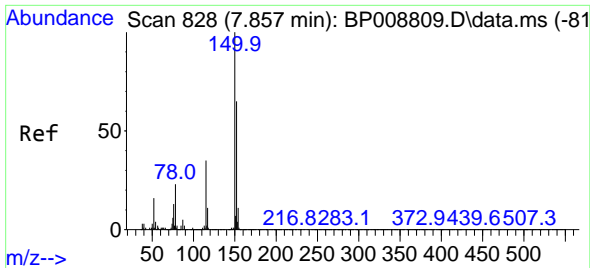
Data Path : Z:\svoasrv\HPCHEM1\BNA\_P\Data\BP020122\  
 Data File : BP008985.D  
 Acq On : 01 Feb 2022 14:17  
 Operator : CG/JU  
 Sample : N1303-05RE  
 Misc :  
 ALS Vial : 8 Sample Multiplier: 1

**Instrument :**  
 BNA\_P  
**ClientSampleId :**  
 CC-7RE

Quant Time: Feb 01 15:31:02 2022  
 Quant Method : Z:\svoasrv\HPCHEM1\BNA\_P\Methods\8270E-BP011422.M  
 Quant Title : ASP BNA STANDARDS FOR 5 POINT CALIBRATION  
 QLast Update : Tue Feb 01 04:16:03 2022  
 Response via : Initial Calibration

**Manual Integrations**  
**APPROVED**  
 Reviewed By :Christian Giraldo 02/02/2022  
 Supervised By :Jagrut Upadhyay 02/02/2022





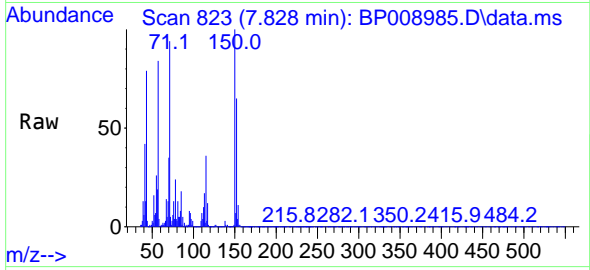
#1  
 1,4-Dichlorobenzene-d4  
 Concen: 20.000 ng  
 RT: 7.828 min Scan# 81  
 Delta R.T. -0.006 min  
 Lab File: BP008985.D  
 Acq: 01 Feb 2022 14:17

Instrument :

BNA\_P

ClientSampled :

CC-7RE

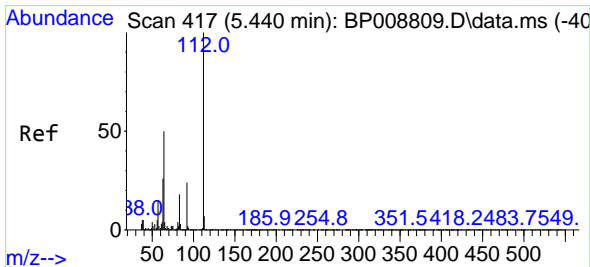
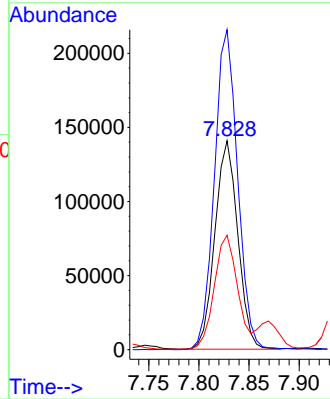
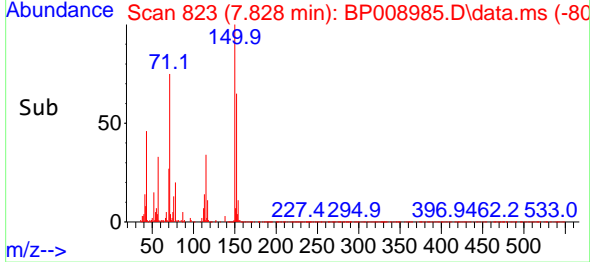


Tgt Ion:152 Resp: 223428  
 Ion Ratio Lower Upper  
 152 100  
 150 153.1 127.0 190.6  
 115 54.7 43.7 65.5

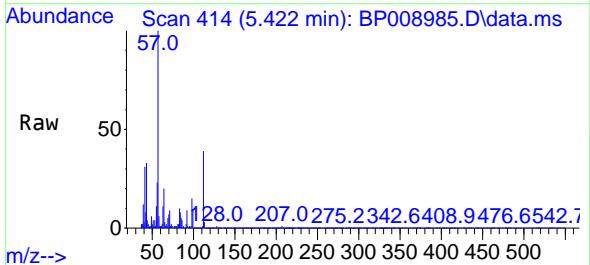
Manual Integrations

APPROVED

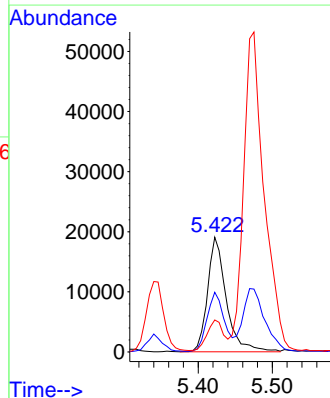
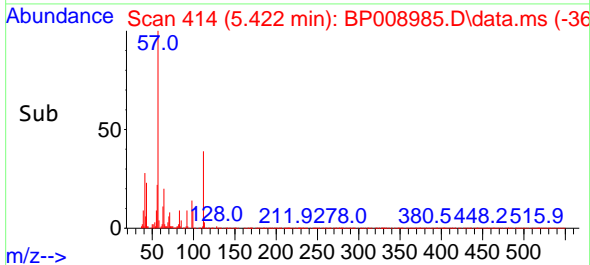
Reviewed By :Christian Giraldo 02/02/2022  
 Supervised By :Jagrut Upadhyay 02/02/2022

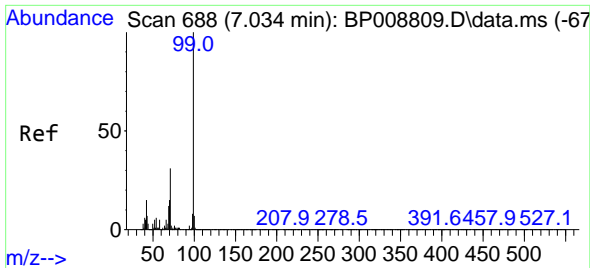


#5  
 2-Fluorophenol  
 Concen: 2.309 ng  
 RT: 5.422 min Scan# 414  
 Delta R.T. 0.000 min  
 Lab File: BP008985.D  
 Acq: 01 Feb 2022 14:17



Tgt Ion:112 Resp: 33358  
 Ion Ratio Lower Upper  
 112 100  
 64 52.0 39.7 59.5  
 63 27.9 20.0 30.0





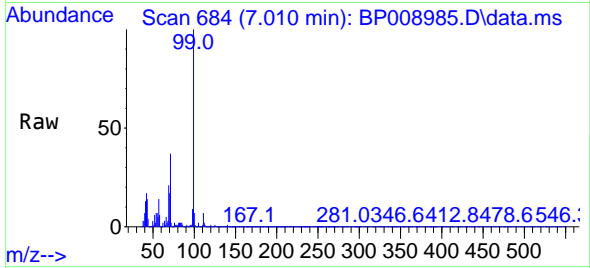
#7  
Phenol-d6  
Concen: 33.523 ng  
RT: 7.010 min Scan# 61  
Delta R.T. -0.006 min  
Lab File: BP008985.D  
Acq: 01 Feb 2022 14:17

Instrument :

BNA\_P

ClientSampleId :

CC-7RE

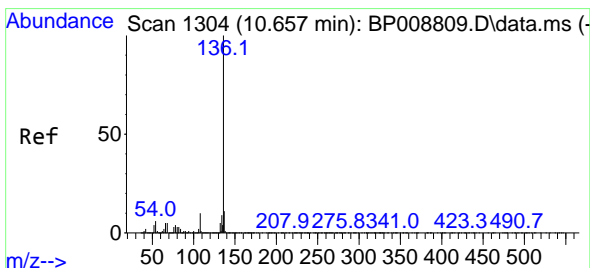
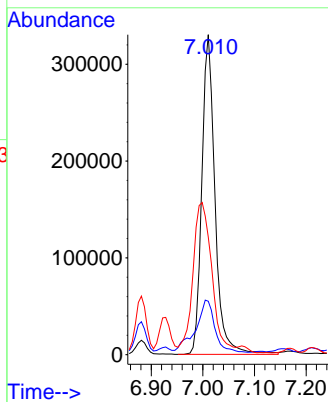
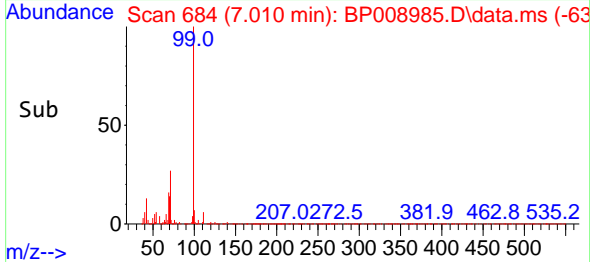


Tgt Ion: 99 Resp: 586510  
Ion Ratio Lower Upper  
99 100  
42 16.7 10.8 16.2  
71 36.8 23.8 35.6

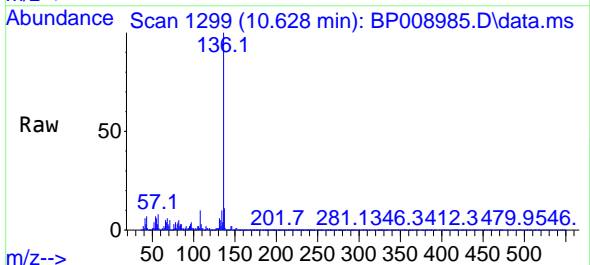
Manual Integrations

APPROVED

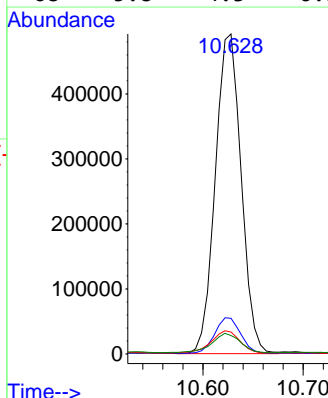
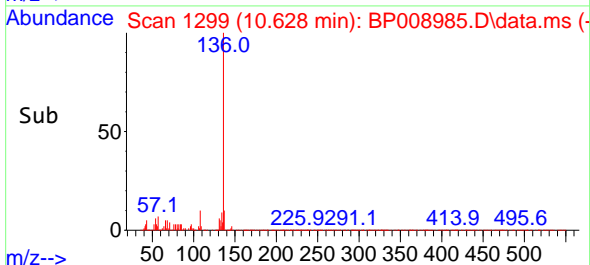
Reviewed By :Christian Giraldo 02/02/2022  
Supervised By :Jagrut Upadhyay 02/02/2022

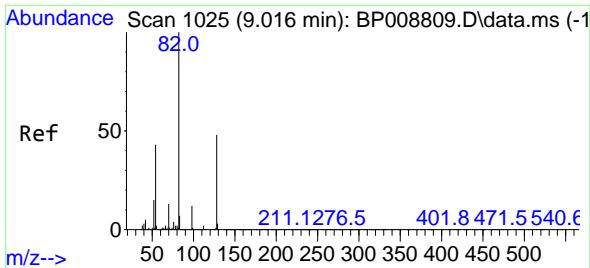


#21  
Naphthalene-d8  
Concen: 20.000 ng  
RT: 10.628 min Scan# 1299  
Delta R.T. -0.006 min  
Lab File: BP008985.D  
Acq: 01 Feb 2022 14:17



Tgt Ion:136 Resp: 880179  
Ion Ratio Lower Upper  
136 100  
137 11.2 9.0 13.4  
54 6.8 4.9 7.3  
68 5.8 4.3 6.5





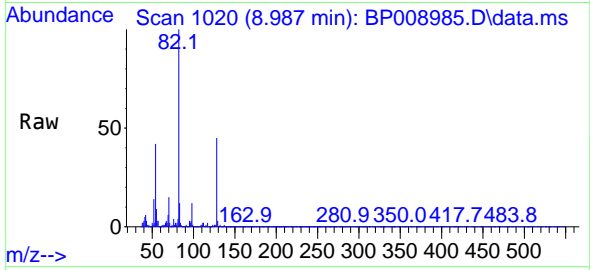
#23  
 Nitrobenzene-d5  
 Concen: 75.116 ng  
 RT: 8.987 min Scan# 10  
 Delta R.T. -0.012 min  
 Lab File: BP008985.D  
 Acq: 01 Feb 2022 14:17

Instrument :

BNA\_P

ClientSampleId :

CC-7RE

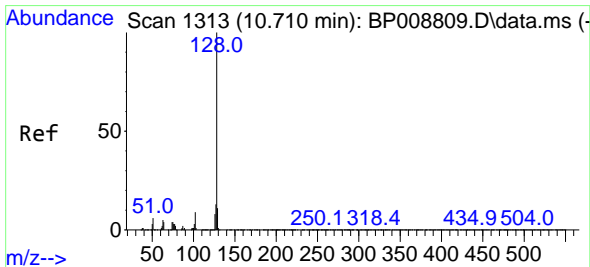
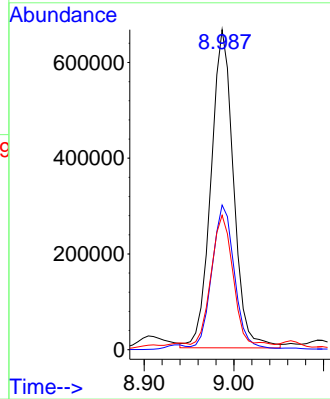
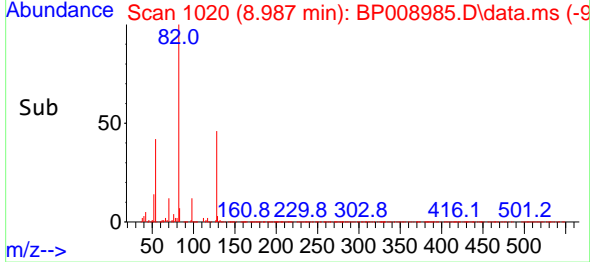


Tgt Ion: 82 Resp: 116454  
 Ion Ratio Lower Upper  
 82 100  
 128 45.2 39.4 59.2  
 54 42.0 32.6 48.8

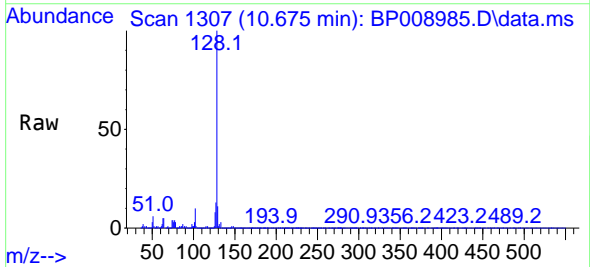
Manual Integrations

APPROVED

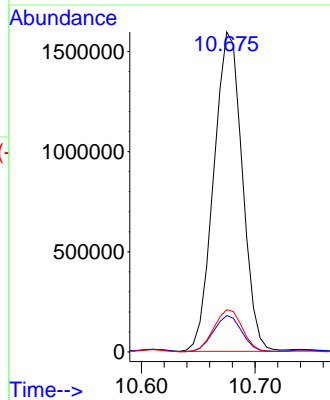
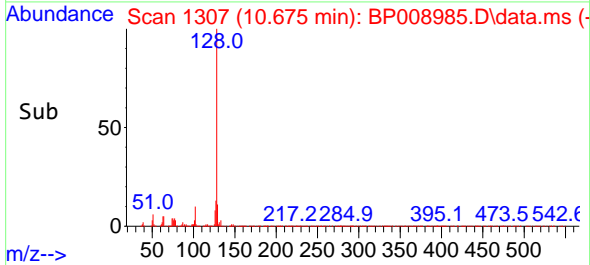
Reviewed By :Christian Giraldo 02/02/2022  
 Supervised By :Jagrut Upadhyay 02/02/2022

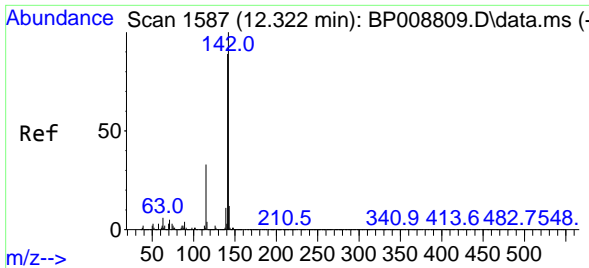


#31  
 Naphthalene  
 Concen: 58.136 ng  
 RT: 10.675 min Scan# 1307  
 Delta R.T. -0.012 min  
 Lab File: BP008985.D  
 Acq: 01 Feb 2022 14:17



Tgt Ion:128 Resp: 2779257  
 Ion Ratio Lower Upper  
 128 100  
 129 11.4 8.8 13.2  
 127 13.2 10.4 15.6





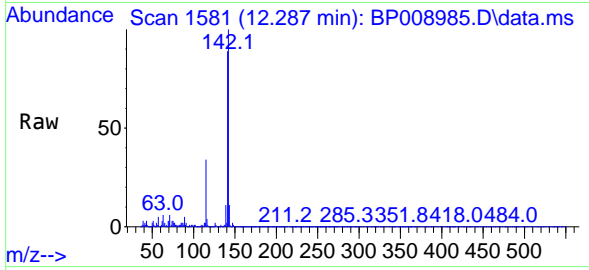
#37  
 2-Methylnaphthalene  
 Concen: 11.003 ng  
 RT: 12.287 min Scan# 11  
 Delta R.T. -0.012 min  
 Lab File: BP008985.D  
 Acq: 01 Feb 2022 14:17

Instrument :

BNA\_P

Client Sampled :

CC-7RE

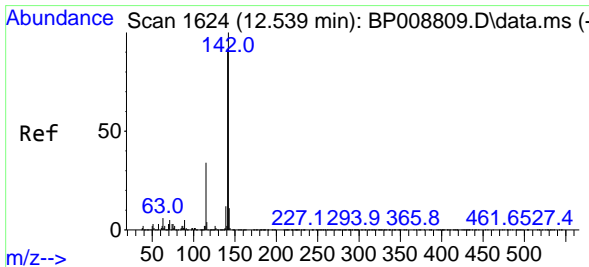
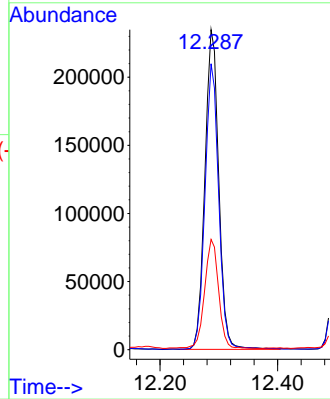
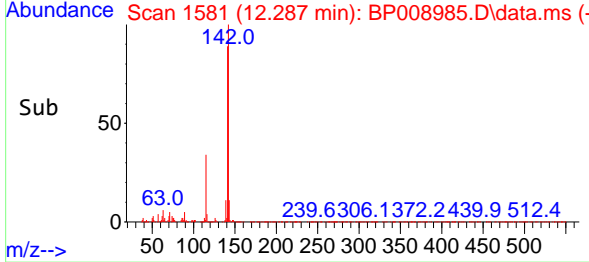


Tgt Ion:142 Resp: 384510  
 Ion Ratio Lower Upper  
 142 100  
 141 89.3 70.5 105.7  
 115 34.5 24.6 36.8

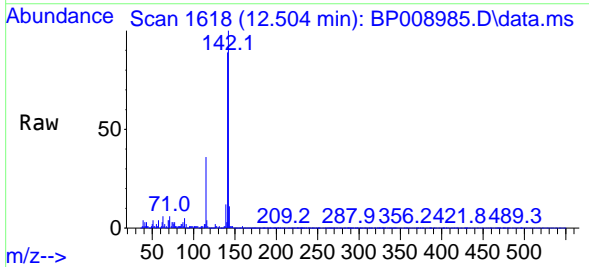
Manual Integrations

APPROVED

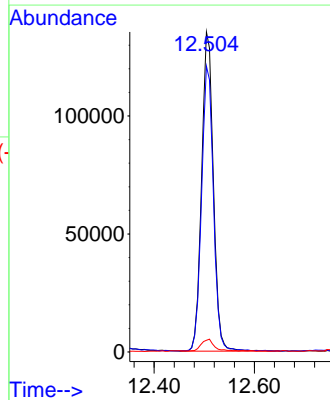
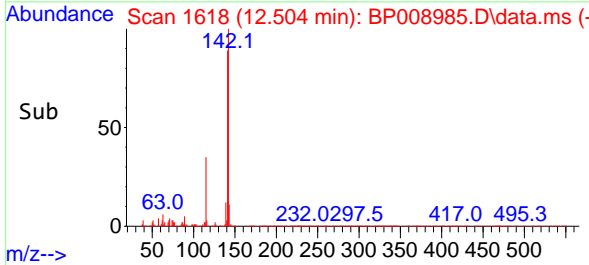
Reviewed By :Christian Giraldo 02/02/2022  
 Supervised By :Jagrut Upadhyay 02/02/2022

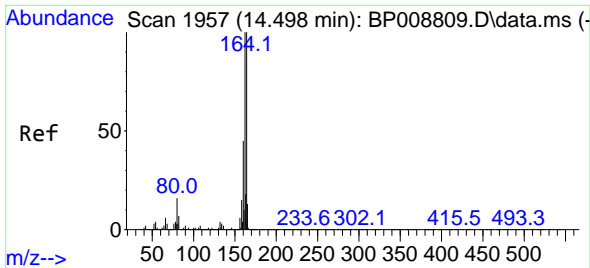


#38  
 1-Methylnaphthalene  
 Concen: 6.878 ng  
 RT: 12.504 min Scan# 1618  
 Delta R.T. -0.012 min  
 Lab File: BP008985.D  
 Acq: 01 Feb 2022 14:17



Tgt Ion:142 Resp: 220638  
 Ion Ratio Lower Upper  
 142 100  
 141 89.3 73.2 109.8  
 116 3.6 2.7 4.1





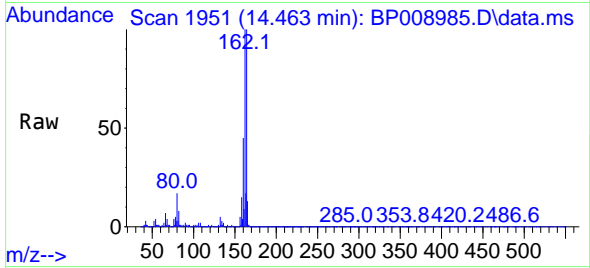
#39  
Acenaphthene-d10  
Concen: 20.000 ng  
RT: 14.463 min Scan# 1957  
Delta R.T. -0.012 min  
Lab File: BP008985.D  
Acq: 01 Feb 2022 14:17

Instrument :

BNA\_P

ClientSampleId :

CC-7RE

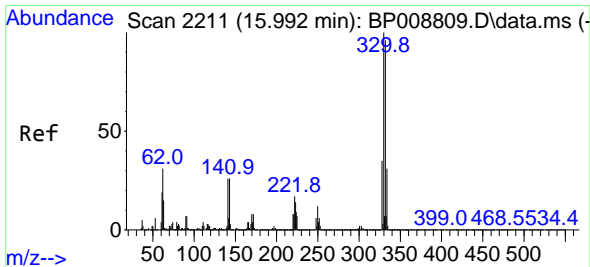
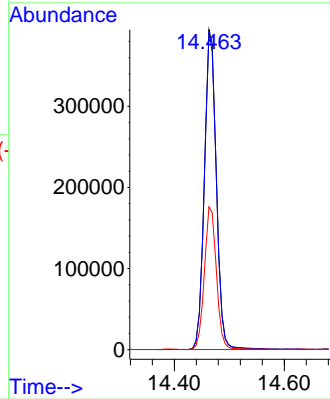
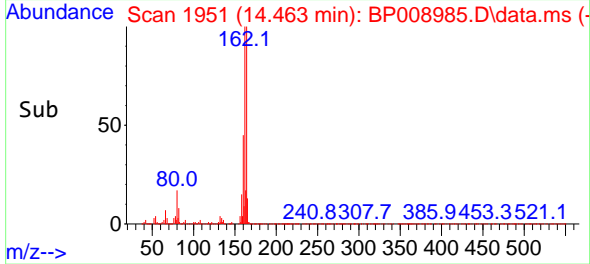


Tgt Ion:164 Resp: 594500  
Ion Ratio Lower Upper  
164 100  
162 99.5 79.9 119.9  
160 44.7 35.5 53.3

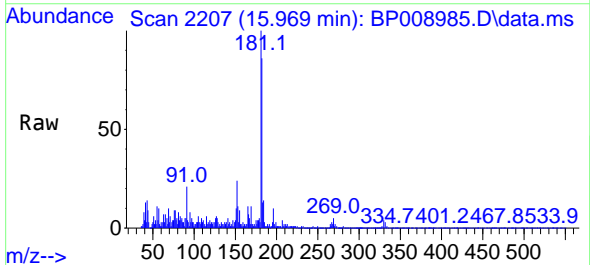
Manual Integrations

APPROVED

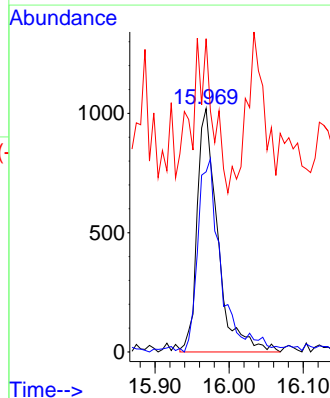
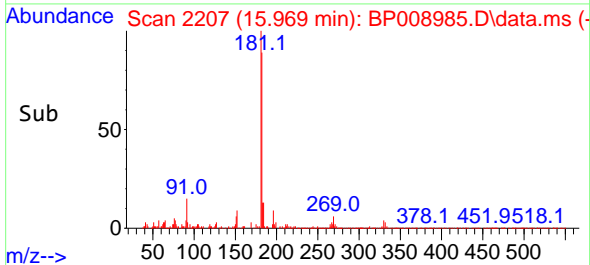
Reviewed By :Christian Giraldo 02/02/2022  
Supervised By :Jagrut Upadhyay 02/02/2022

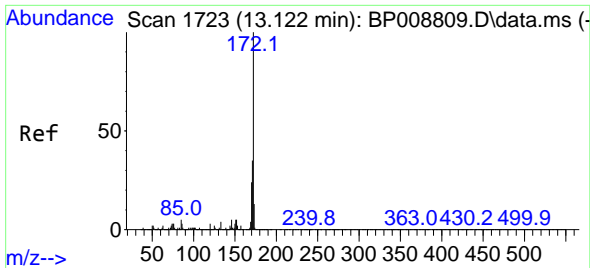


#42  
2,4,6-Tribromophenol  
Concen: 0.228 ng  
RT: 15.969 min Scan# 2207  
Delta R.T. -0.006 min  
Lab File: BP008985.D  
Acq: 01 Feb 2022 14:17



Tgt Ion:330 Resp: 1972  
Ion Ratio Lower Upper  
330 100  
332 81.9 77.0 115.4  
141 65.6 21.3 31.9#





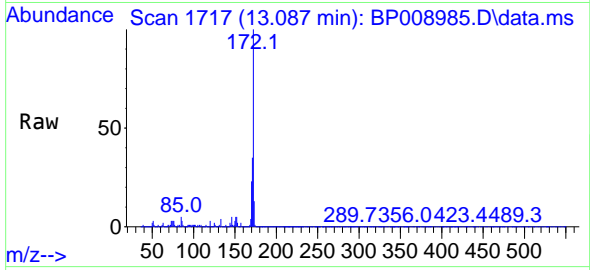
#45  
 2-Fluorobiphenyl  
 Concen: 66.579 ng  
 RT: 13.087 min Scan# 1717  
 Delta R.T. -0.012 min  
 Lab File: BP008985.D  
 Acq: 01 Feb 2022 14:17

Instrument :

BNA\_P

Client Sample Id :

CC-7RE

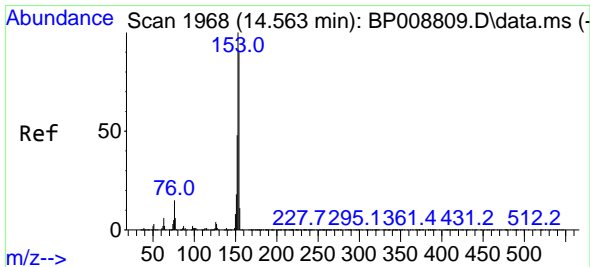
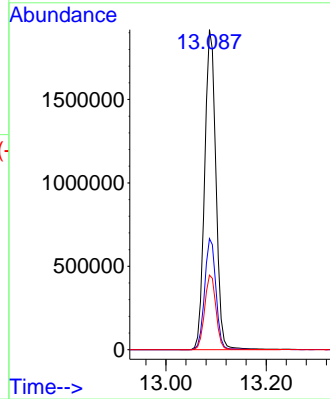
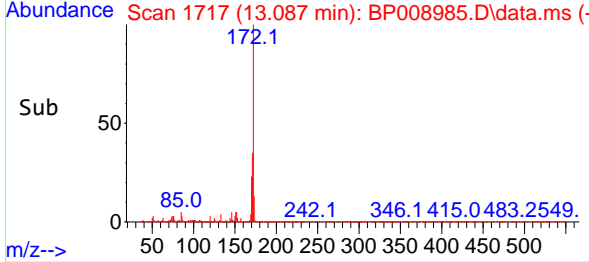


Tgt Ion:172 Resp: 300144  
 Ion Ratio Lower Upper  
 172 100  
 171 34.7 29.3 43.9  
 170 23.3 19.5 29.3

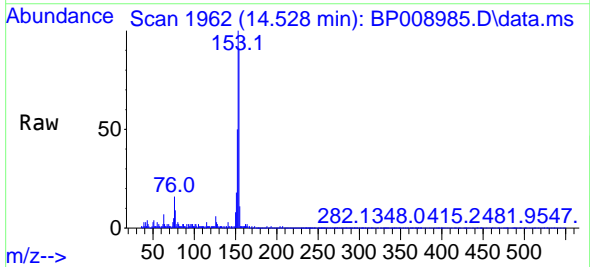
Manual Integrations

APPROVED

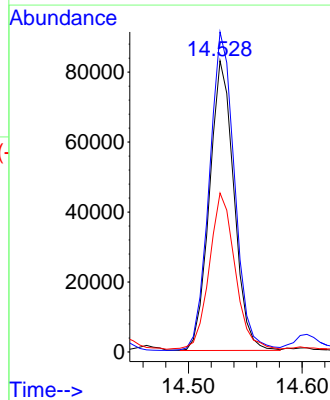
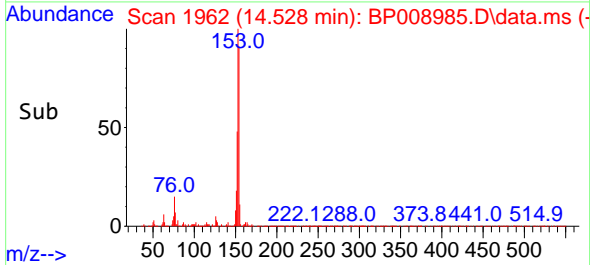
Reviewed By :Christian Giraldo 02/02/2022  
 Supervised By :Jagrut Upadhyay 02/02/2022



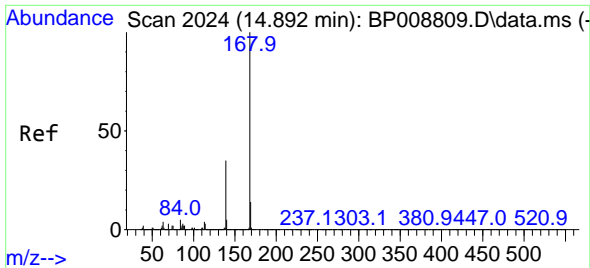
#52  
 Acenaphthene  
 Concen: 3.703 ng  
 RT: 14.528 min Scan# 1962  
 Delta R.T. -0.012 min  
 Lab File: BP008985.D  
 Acq: 01 Feb 2022 14:17



Tgt Ion:154 Resp: 123765  
 Ion Ratio Lower Upper  
 154 100  
 153 109.9 89.4 134.2  
 152 54.6 42.6 63.8







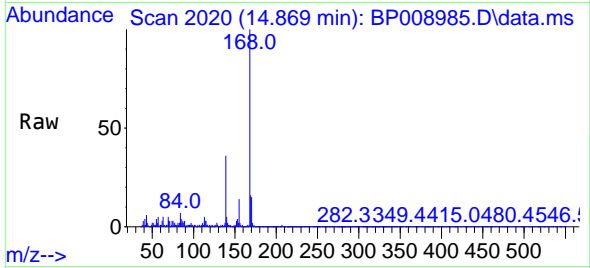
#55  
 Dibenzofuran  
 Concen: 2.976 ng  
 RT: 14.869 min Scan# 20  
 Delta R.T. -0.006 min  
 Lab File: BP008985.D  
 Acq: 01 Feb 2022 14:17

Instrument :

BNA\_P

Client SampleId :

CC-7RE

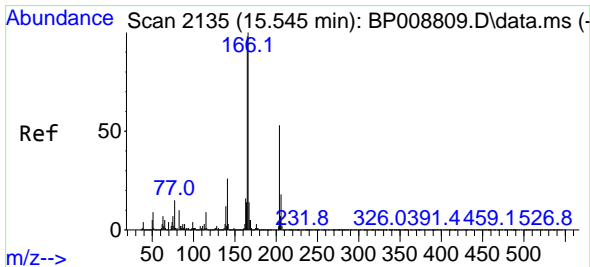
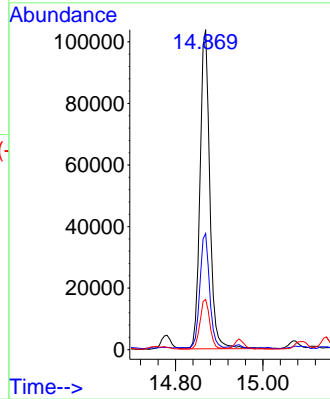
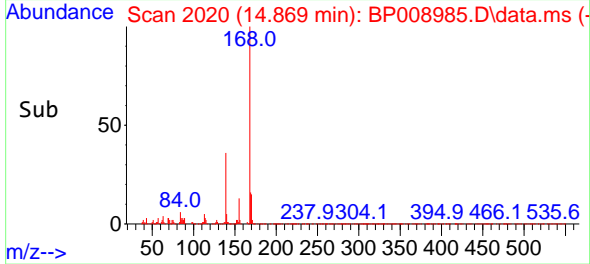


Tgt Ion:168 Resp: 16206  
 Ion Ratio Lower Upper  
 168 100  
 139 36.3 27.4 41.0  
 169 15.7 10.9 16.3

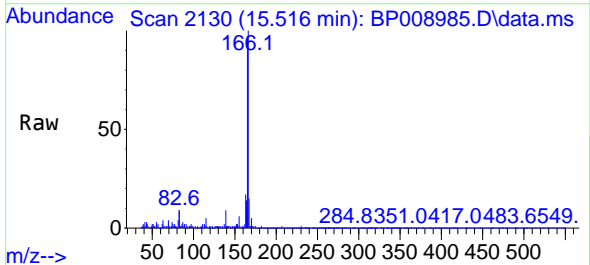
Manual Integrations

APPROVED

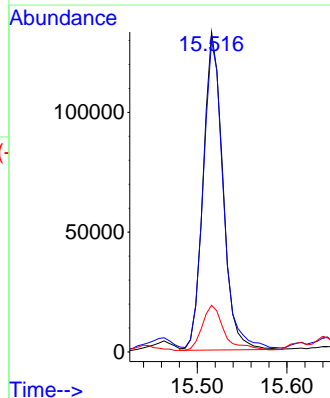
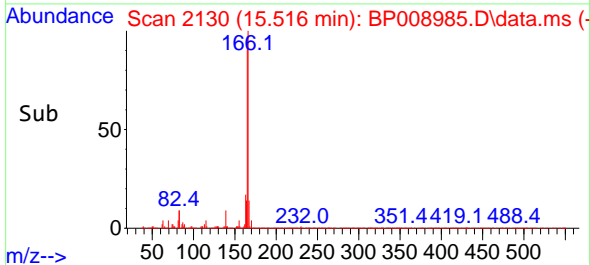
Reviewed By :Christian Giraldo 02/02/2022  
 Supervised By :Jagrut Upadhyay 02/02/2022

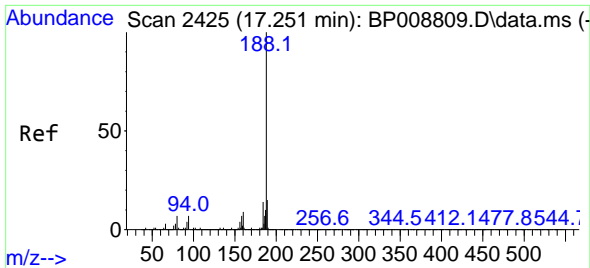


#58  
 Fluorene  
 Concen: 4.694 ng  
 RT: 15.516 min Scan# 2130  
 Delta R.T. -0.012 min  
 Lab File: BP008985.D  
 Acq: 01 Feb 2022 14:17



Tgt Ion:166 Resp: 201891  
 Ion Ratio Lower Upper  
 166 100  
 165 97.3 77.2 115.8  
 167 14.6 11.2 16.8





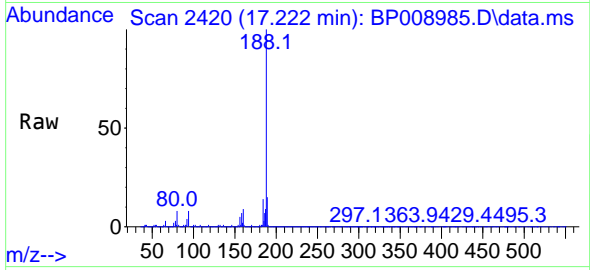
#64  
 Phenanthrene-d10  
 Concen: 20.000 ng  
 RT: 17.222 min Scan# 2425  
 Delta R.T. -0.012 min  
 Lab File: BP008985.D  
 Acq: 01 Feb 2022 14:17

Instrument :

BNA\_P

ClientSampleId :

CC-7RE

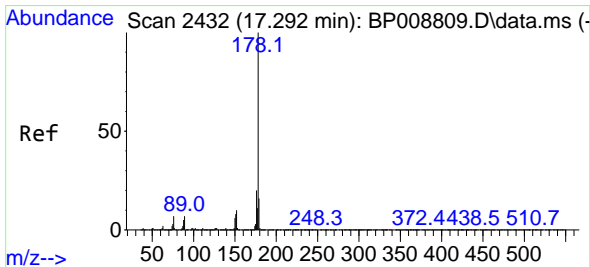
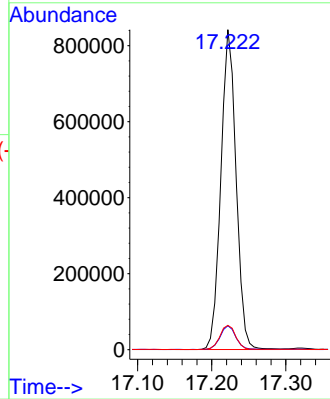
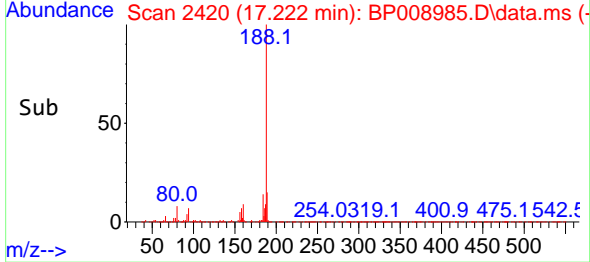


Tgt Ion:188 Resp: 1200711  
 Ion Ratio Lower Upper  
 188 100  
 94 7.5 6.8 10.2  
 80 7.6 7.2 10.8

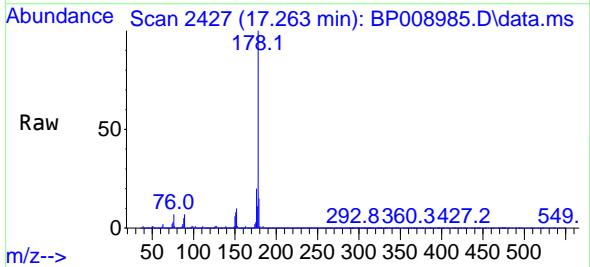
Manual Integrations

APPROVED

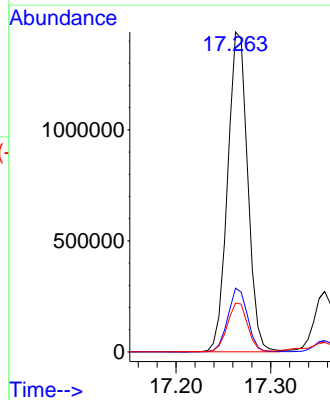
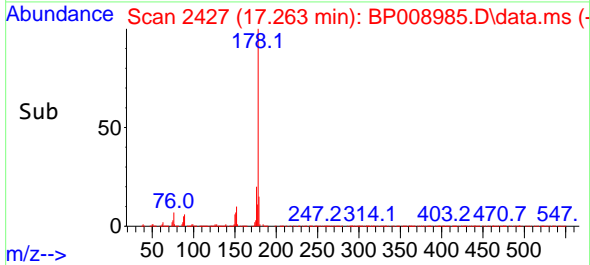
Reviewed By :Christian Giraldo 02/02/2022  
 Supervised By :Jagrut Upadhyay 02/02/2022

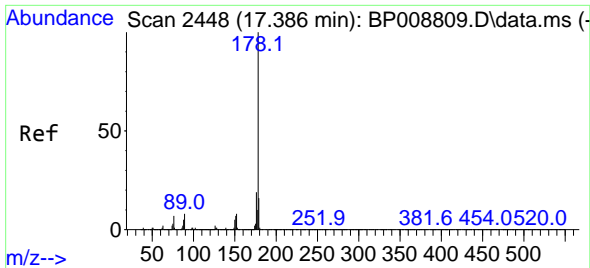


#71  
 Phenanthrene  
 Concen: 31.331 ng  
 RT: 17.263 min Scan# 2427  
 Delta R.T. -0.012 min  
 Lab File: BP008985.D  
 Acq: 01 Feb 2022 14:17



Tgt Ion:178 Resp: 2118104  
 Ion Ratio Lower Upper  
 178 100  
 176 20.0 16.0 24.0  
 179 15.3 13.0 19.4





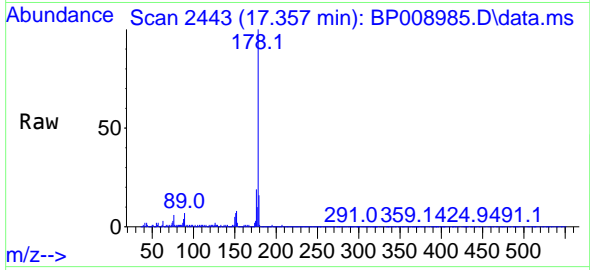
#72  
 Anthracene  
 Concen: 5.860 ng  
 RT: 17.357 min Scan# 2443  
 Delta R.T. -0.012 min  
 Lab File: BP008985.D  
 Acq: 01 Feb 2022 14:17

Instrument :

BNA\_P

Client Sample Id :

CC-7RE

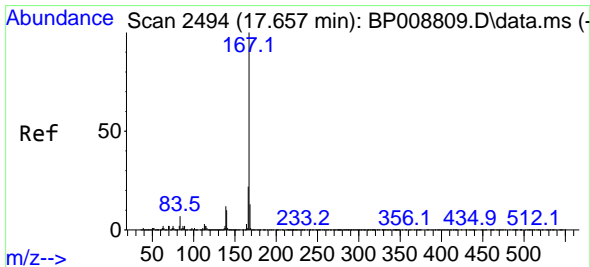
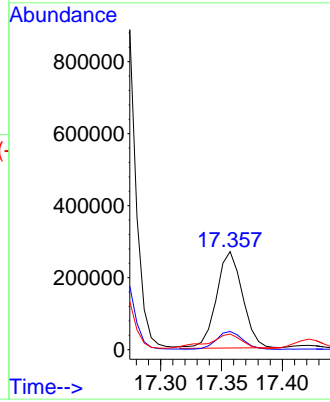
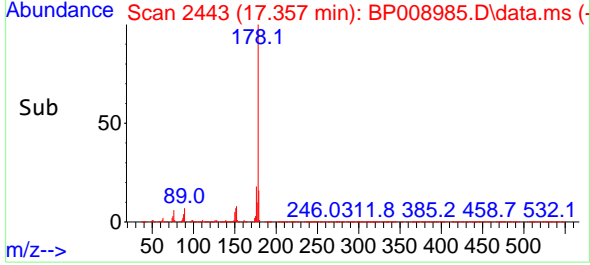


Tgt Ion: 178 Resp: 397398  
 Ion Ratio Lower Upper  
 178 100  
 176 18.6 15.1 22.7  
 179 16.0 12.8 19.2

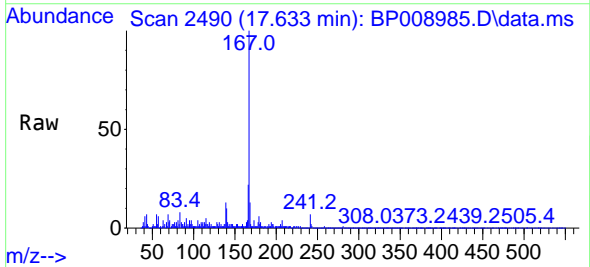
Manual Integrations

APPROVED

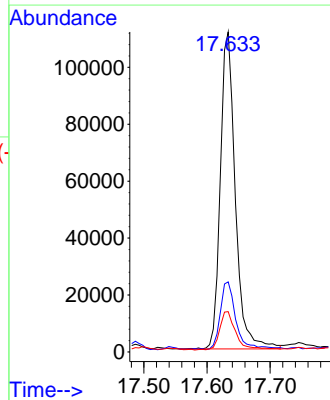
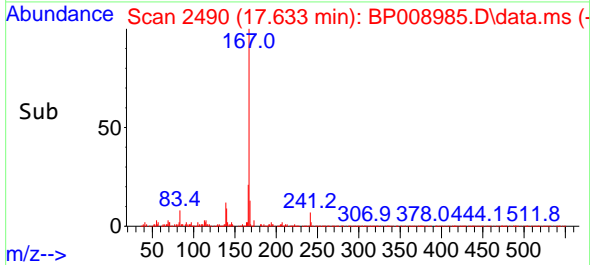
Reviewed By : Christian Giraldo 02/02/2022  
 Supervised By : Jagrut Upadhyay 02/02/2022

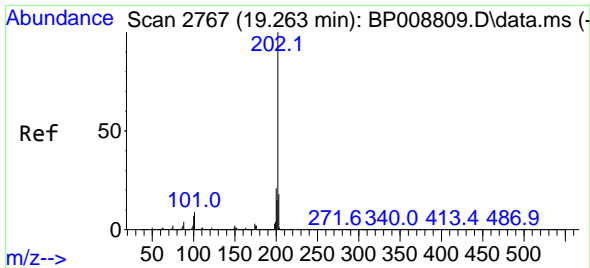


#73  
 Carbazole  
 Concen: 3.144 ng  
 RT: 17.633 min Scan# 2490  
 Delta R.T. -0.006 min  
 Lab File: BP008985.D  
 Acq: 01 Feb 2022 14:17



Tgt Ion: 167 Resp: 183353  
 Ion Ratio Lower Upper  
 167 100  
 166 21.9 17.7 26.5  
 139 12.6 9.8 14.6





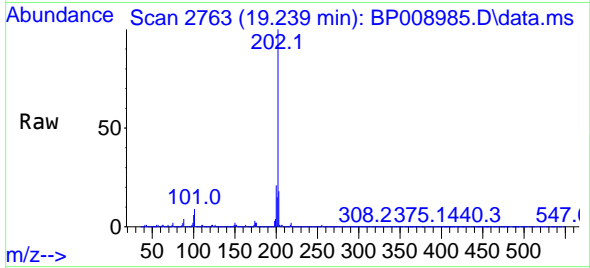
#75  
 Fluoranthene  
 Concen: 30.105 ng  
 RT: 19.239 min Scan# 2116  
 Delta R.T. -0.006 min  
 Lab File: BP008985.D  
 Acq: 01 Feb 2022 14:17

Instrument :

BNA\_P

Client Sampled :

CC-7RE

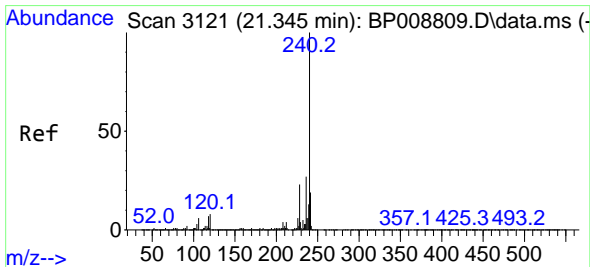
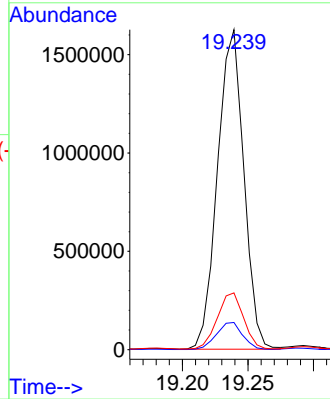
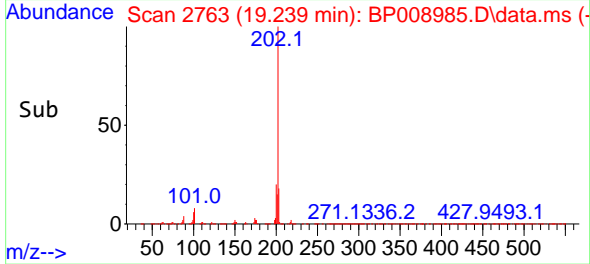


Tgt Ion:202 Resp: 226325  
 Ion Ratio Lower Upper  
 202 100  
 101 8.5 0.0 30.7  
 203 17.7 0.0 38.9

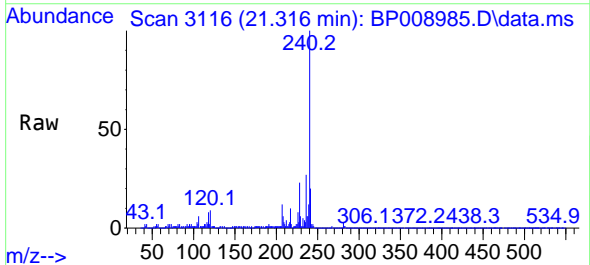
Manual Integrations

APPROVED

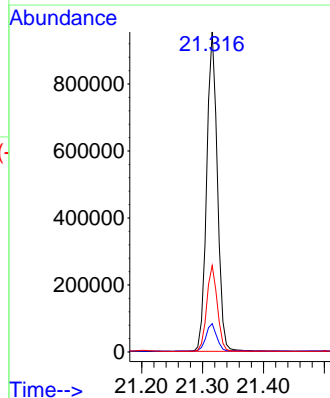
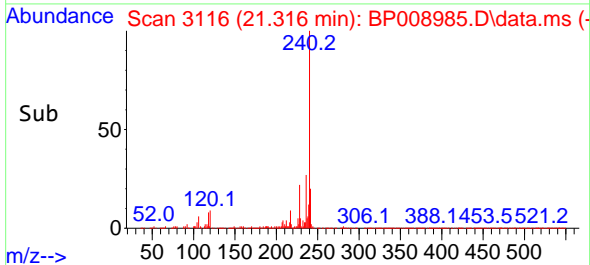
Reviewed By :Christian Giraldo 02/02/2022  
 Supervised By :Jagrut Upadhyay 02/02/2022

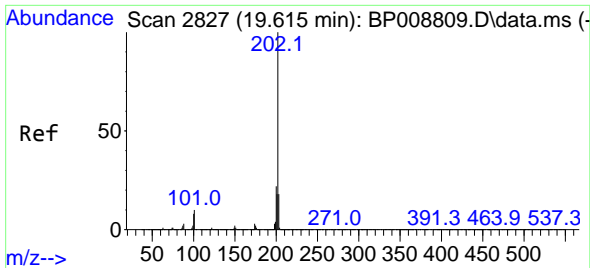


#76  
 Chrysene-d12  
 Concen: 20.000 ng  
 RT: 21.316 min Scan# 3116  
 Delta R.T. -0.012 min  
 Lab File: BP008985.D  
 Acq: 01 Feb 2022 14:17



Tgt Ion:240 Resp: 1163755  
 Ion Ratio Lower Upper  
 240 100  
 120 8.8 7.7 11.5  
 236 27.0 21.2 31.8





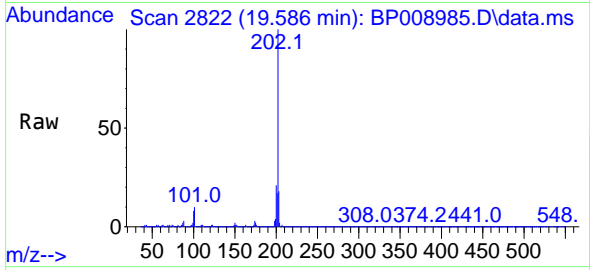
#78  
 Pyrene  
 Concen: 26.135 ng  
 RT: 19.586 min Scan# 2822  
 Delta R.T. -0.012 min  
 Lab File: BP008985.D  
 Acq: 01 Feb 2022 14:17

Instrument :

BNA\_P

ClientSampled :

CC-7RE

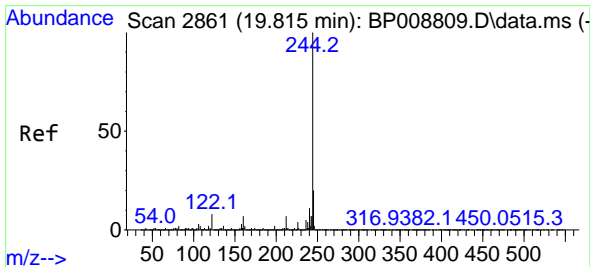
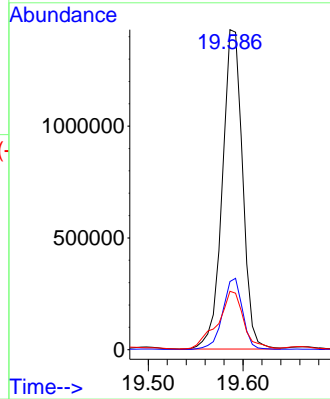
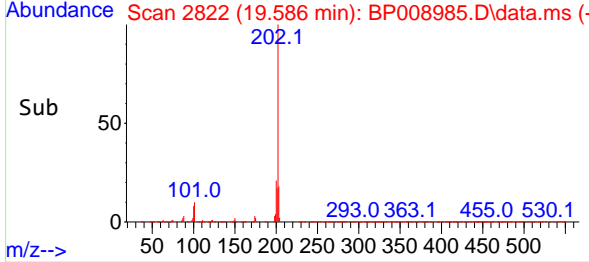


Tgt Ion: 202 Resp: 212220  
 Ion Ratio Lower Upper  
 202 100  
 200 21.3 18.0 27.0  
 203 18.3 15.0 22.6

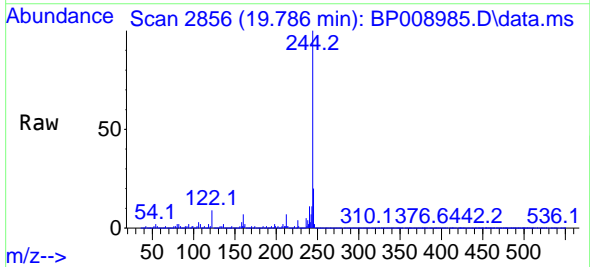
Manual Integrations

APPROVED

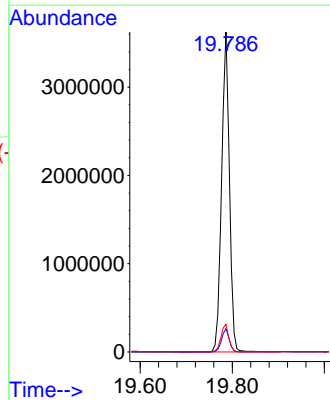
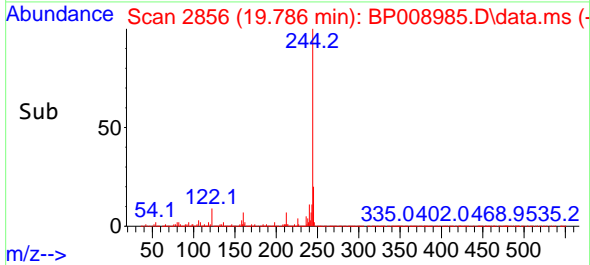
Reviewed By : Christian Giraldo 02/02/2022  
 Supervised By : Jagrut Upadhyay 02/02/2022

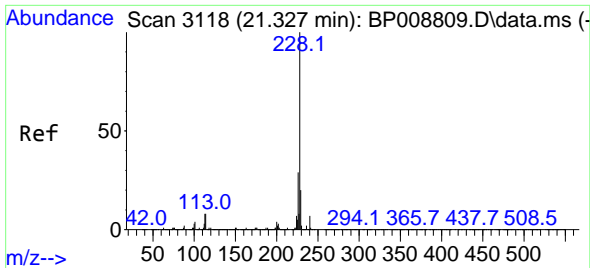


#79  
 Terphenyl-d14  
 Concen: 61.512 ng  
 RT: 19.786 min Scan# 2856  
 Delta R.T. -0.012 min  
 Lab File: BP008985.D  
 Acq: 01 Feb 2022 14:17



Tgt Ion: 244 Resp: 4240966  
 Ion Ratio Lower Upper  
 244 100  
 212 7.3 6.5 9.7  
 122 8.6 9.2 13.8#





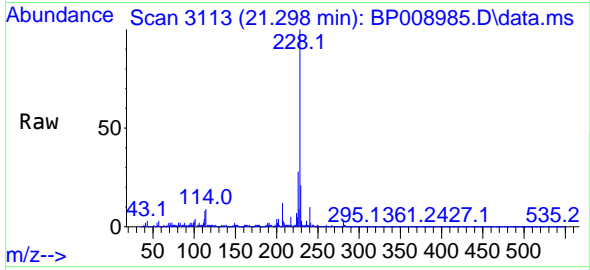
#81  
 Benzo(a)anthracene  
 Concen: 16.068 ng  
 RT: 21.298 min Scan# 3113  
 Delta R.T. -0.012 min  
 Lab File: BP008985.D  
 Acq: 01 Feb 2022 14:17

Instrument :

BNA\_P

Client Sampled :

CC-7RE

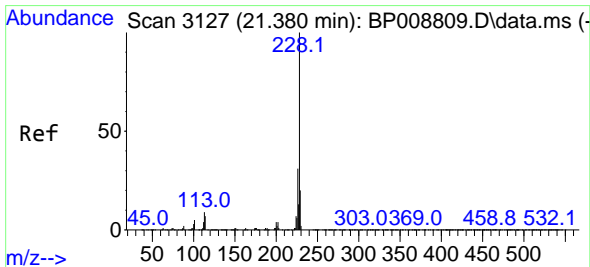
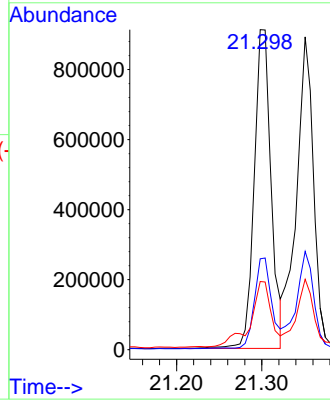
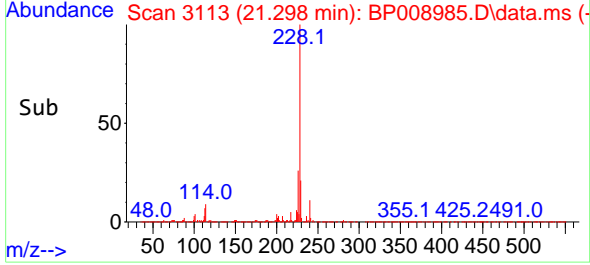


Tgt Ion:228 Resp: 125800  
 Ion Ratio Lower Upper  
 228 100  
 226 28.4 23.3 34.9  
 229 21.3 17.0 25.6

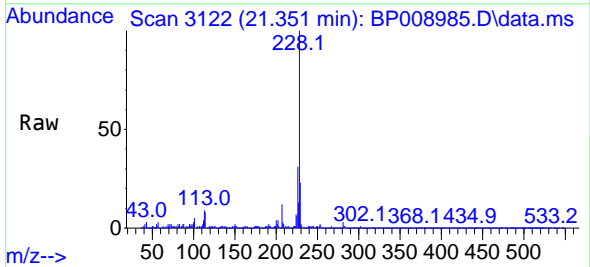
Manual Integrations

APPROVED

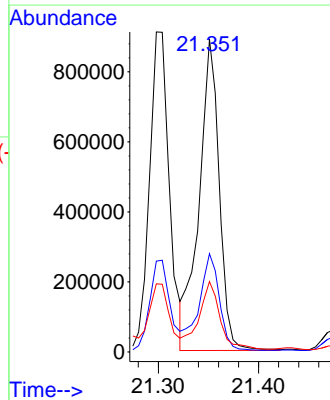
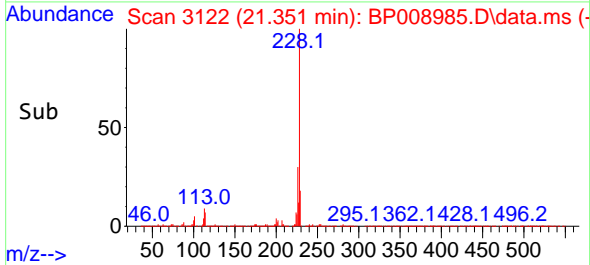
Reviewed By :Christian Giraldo 02/02/2022  
 Supervised By :Jagrut Upadhyay 02/02/2022

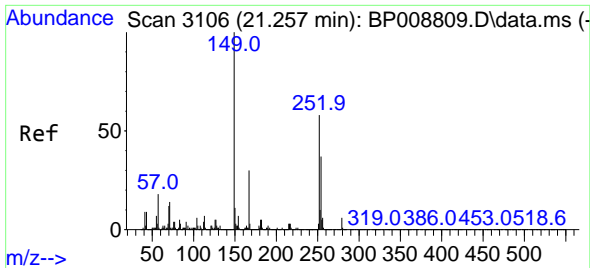


#83  
 Chrysene  
 Concen: 16.499 ng  
 RT: 21.351 min Scan# 3122  
 Delta R.T. -0.012 min  
 Lab File: BP008985.D  
 Acq: 01 Feb 2022 14:17



Tgt Ion:228 Resp: 1252238  
 Ion Ratio Lower Upper  
 228 100  
 226 31.4 26.0 39.0  
 229 22.5 16.9 25.3





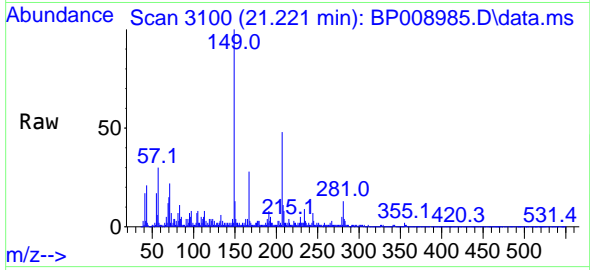
#84  
 Bis(2-ethylhexyl)phthalate  
 Concen: 4.326 ng  
 RT: 21.221 min Scan# 3106  
 Delta R.T. -0.018 min  
 Lab File: BP008985.D  
 Acq: 01 Feb 2022 14:17

Instrument :

BNA\_P

Client SampleID :

CC-7RE

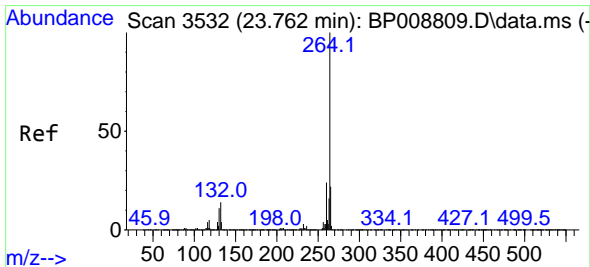
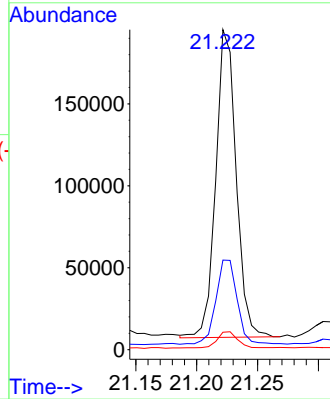
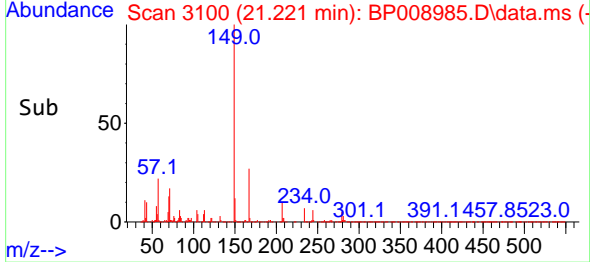


Tgt Ion:149 Resp: 218768  
 Ion Ratio Lower Upper  
 149 100  
 167 28.0 25.0 37.4  
 279 5.5 4.8 7.2

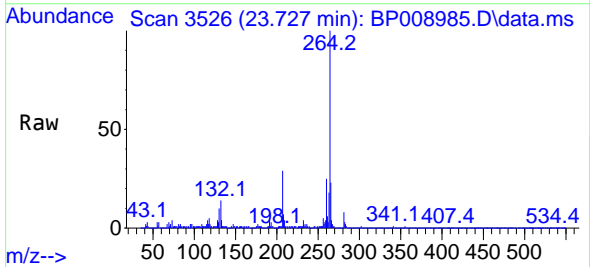
Manual Integrations

APPROVED

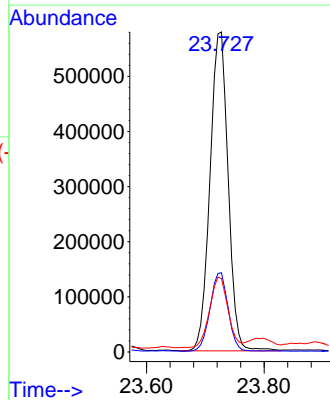
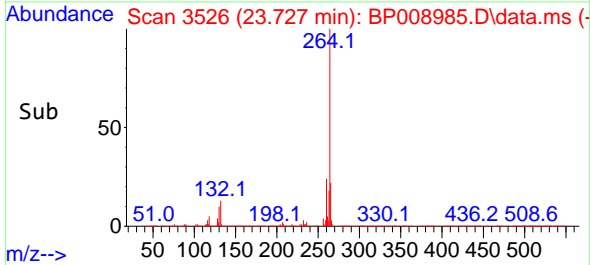
Reviewed By :Christian Giraldo 02/02/2022  
 Supervised By :Jagrut Upadhyay 02/02/2022

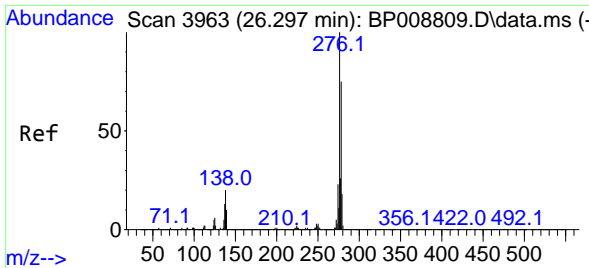


#86  
 Perylene-d12  
 Concen: 20.000 ng  
 RT: 23.727 min Scan# 3526  
 Delta R.T. -0.012 min  
 Lab File: BP008985.D  
 Acq: 01 Feb 2022 14:17



Tgt Ion:264 Resp: 1238990  
 Ion Ratio Lower Upper  
 264 100  
 260 24.8 19.1 28.7  
 265 23.0 17.1 25.7





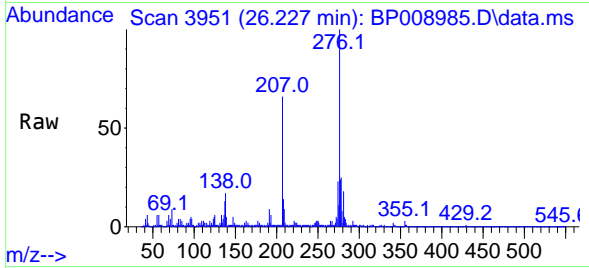
#87  
 Indeno(1,2,3-cd)pyrene  
 Concen: 7.275 ng  
 RT: 26.227 min Scan# 3401  
 Delta R.T. -0.035 min  
 Lab File: BP008985.D  
 Acq: 01 Feb 2022 14:17

Instrument :

BNA\_P

Client Sampled :

CC-7RE

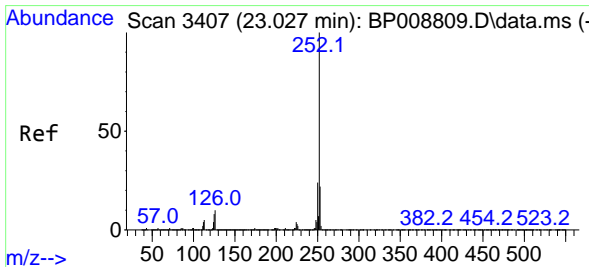
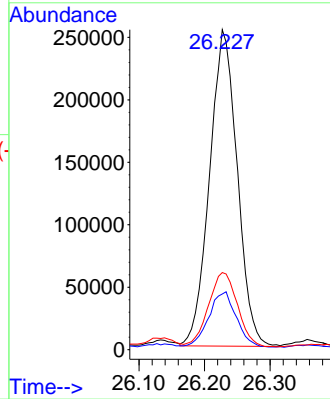
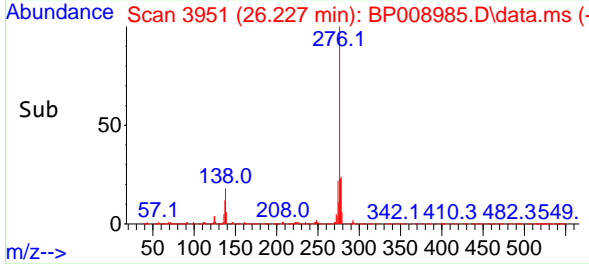


Tgt Ion: 276 Resp: 74278  
 Ion Ratio Lower Upper  
 276 100  
 138 17.4 17.8 26.6  
 277 24.7 20.4 30.6

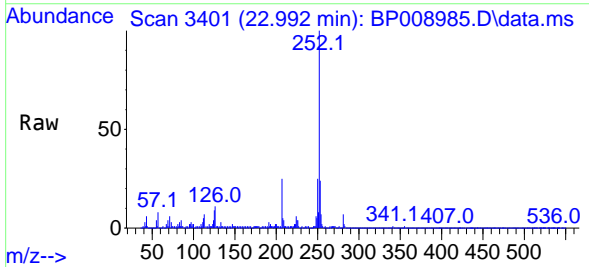
Manual Integrations

APPROVED

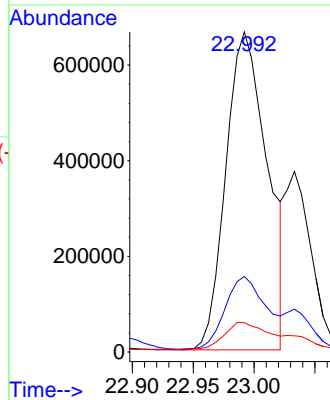
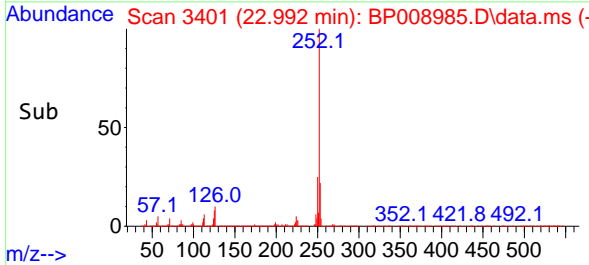
Reviewed By : Christian Giraldo 02/02/2022  
 Supervised By : Jagrut Upadhyay 02/02/2022



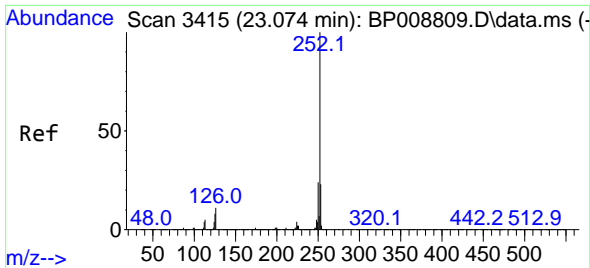
#88  
 Benzo(b)fluoranthene  
 Concen: 19.035 ng  
 RT: 22.992 min Scan# 3401  
 Delta R.T. -0.012 min  
 Lab File: BP008985.D  
 Acq: 01 Feb 2022 14:17



Tgt Ion: 252 Resp: 1574979  
 Ion Ratio Lower Upper  
 252 100  
 253 23.6 18.0 27.0  
 125 9.2 6.9 10.3

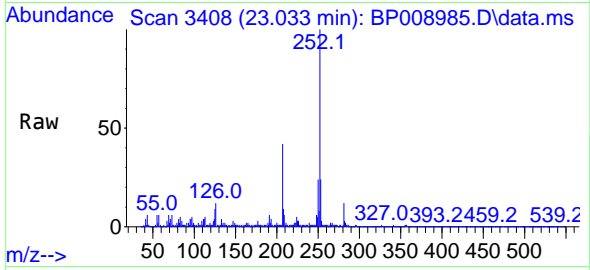






#89  
 Benzo(k)fluoranthene  
 Concen: 6.971 ng m  
 RT: 23.033 min Scan# 3415  
 Delta R.T. -0.018 min  
 Lab File: BP008985.D  
 Acq: 01 Feb 2022 14:17

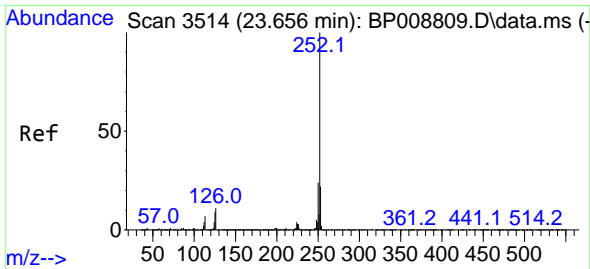
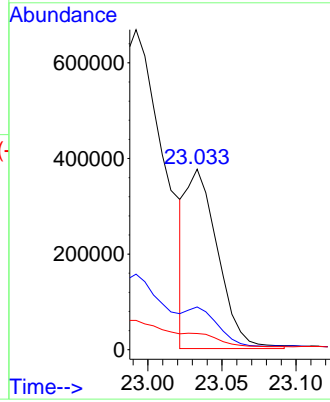
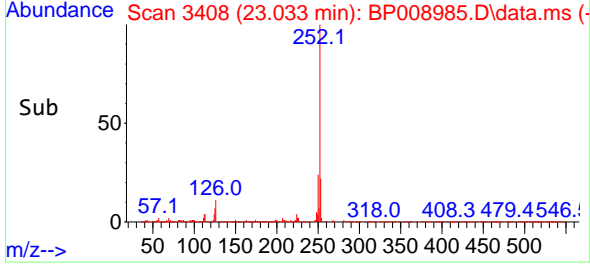
Instrument :  
 BNA\_P  
 ClientSampleId :  
 CC-7RE



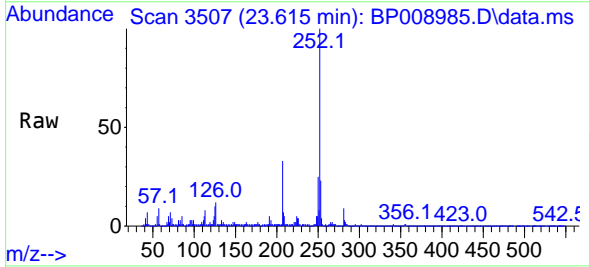
Tgt Ion:252 Resp: 55834  
 Ion Ratio Lower Upper  
 252 100  
 253 23.7 18.2 27.2  
 125 9.0 7.3 10.9

Manual Integrations  
 APPROVED

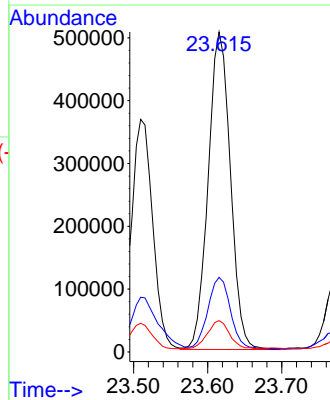
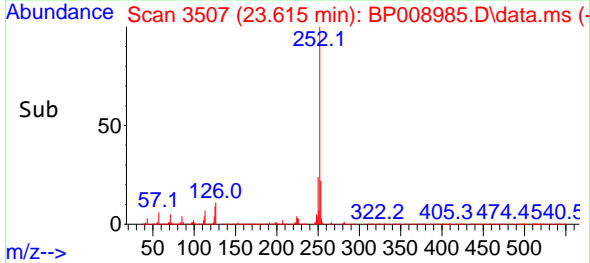
Reviewed By :Christian Giraldo 02/02/2022  
 Supervised By :Jagrut Upadhyay 02/02/2022

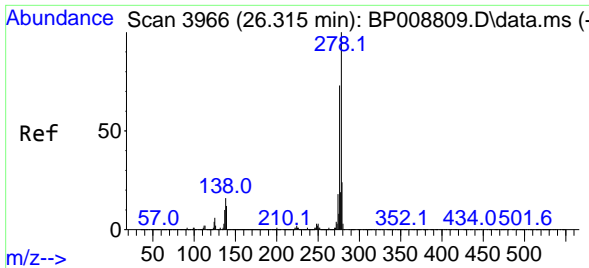


#90  
 Benzo(a)pyrene  
 Concen: 13.193 ng  
 RT: 23.615 min Scan# 3507  
 Delta R.T. -0.018 min  
 Lab File: BP008985.D  
 Acq: 01 Feb 2022 14:17



Tgt Ion:252 Resp: 1053651  
 Ion Ratio Lower Upper  
 252 100  
 253 23.3 17.8 26.8  
 125 9.8 7.8 11.6





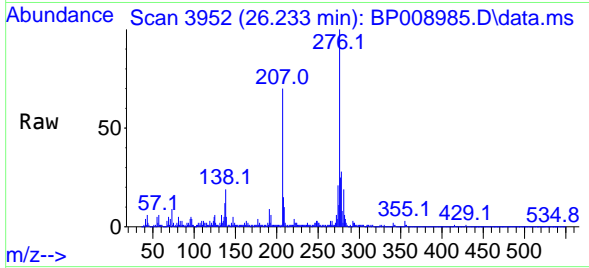
#91  
 Dibenzo(a,h)anthracene  
 Concen: 2.633 ng  
 RT: 26.233 min Scan# 3966  
 Delta R.T. -0.041 min  
 Lab File: BP008985.D  
 Acq: 01 Feb 2022 14:17

Instrument :

BNA\_P

Client Sampled :

CC-7RE

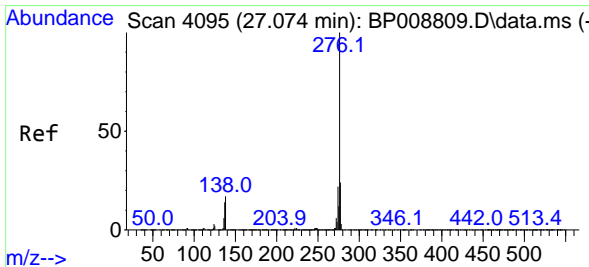
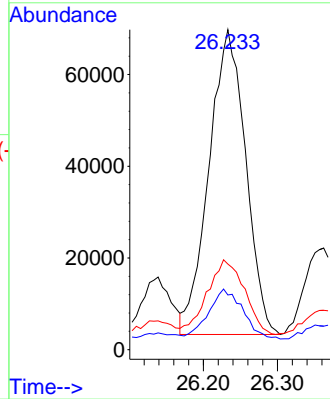
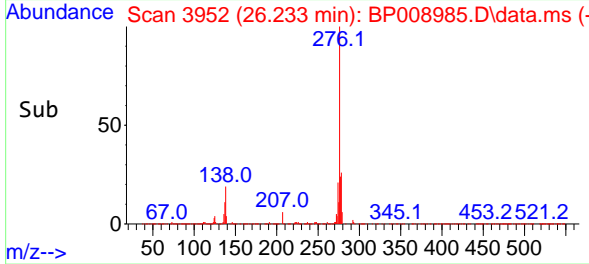


Tgt Ion: 278 Resp: 22862  
 Ion Ratio Lower Upper  
 278 100  
 139 17.1 11.5 17.3  
 279 26.7 19.1 28.7

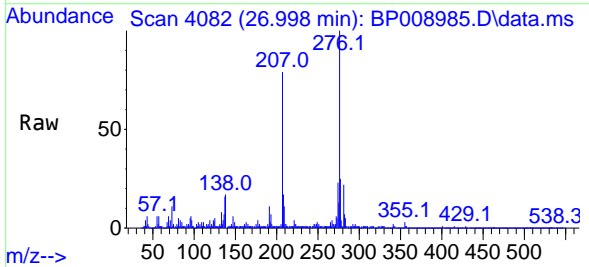
Manual Integrations

APPROVED

Reviewed By : Christian Giraldo 02/02/2022  
 Supervised By : Jagrut Upadhyay 02/02/2022



#92  
 Benzo(g,h,i)perylene  
 Concen: 8.566 ng  
 RT: 26.998 min Scan# 4082  
 Delta R.T. -0.035 min  
 Lab File: BP008985.D  
 Acq: 01 Feb 2022 14:17



Tgt Ion: 276 Resp: 726071  
 Ion Ratio Lower Upper  
 276 100  
 277 24.7 19.2 28.8  
 138 17.1 15.0 22.4

