

Data Path : Z:\svoasrv\HPCHEM1\BNA\_P\Data\BP020623\  
 Data File : BP013769.D  
 Acq On : 06 Feb 2023 10:33  
 Operator : CG/JU  
 Sample : PB150652BL  
 Misc :  
 ALS Vial : 3 Sample Multiplier: 1

Instrument :  
 BNA\_P  
 ClientSampleId :  
 SBLK652

Integration Parameters: LSCINT.P

Integrator: RTE  
 Smoothing : OFF Filtering: 5  
 Sampling : 1 Min Area: 0.1 % of largest Peak  
 Start Thrs: 0.2 Max Peaks: 100  
 Stop Thrs : 0 Peak Location: TOP

If leading or trailing edge < 100 prefer < Baseline drop else tangent >  
 Peak separation: 5

Method : Z:\svoasrv\HPCHEM1\BNA\_P\Methods\SFAM-EPA-BP020123.M  
 Title : SVOA CALIBRATION

Signal : TIC: BP013769.D\data.ms

peak #	R.T. min	first scan	max scan	last scan	PK TY	peak height	corr. area	corr. % max.	% of total
1	3.476	44	49	59	rBV	55992	81659	0.90%	0.108%
2	3.905	120	122	142	rBV	737342	1219653	13.43%	1.606%
3	4.246	176	180	184	rBV	14973	19305	0.21%	0.025%
4	7.269	687	694	711	rBV	936842	1548144	17.05%	2.039%
5	7.446	718	724	735	rBV	785415	1252460	13.79%	1.650%
6	7.652	752	759	775	rBV	914141	1494630	16.46%	1.969%
7	8.128	831	840	854	rBV	834433	1346911	14.83%	1.774%
8	8.828	950	959	975	rBV	1223750	2033032	22.39%	2.678%
9	9.299	1030	1039	1055	rBV	844296	1384207	15.24%	1.823%
10	10.028	1155	1163	1178	rBV	671173	1165016	12.83%	1.534%
11	10.563	1247	1254	1269	rBV	1251882	2154227	23.72%	2.837%
12	10.952	1313	1320	1330	rBV	1208818	2058953	22.67%	2.712%
13	11.087	1335	1343	1358	rBV	1275729	2207527	24.31%	2.907%
14	12.534	1582	1589	1594	rBV2	22499	43400	0.48%	0.057%
15	13.651	1772	1779	1785	rVB3	17711	29761	0.33%	0.039%
16	14.163	1857	1866	1879	rBV	2691440	3647784	40.17%	4.804%
17	14.457	1908	1916	1930	rBV	2937358	4358534	48.00%	5.740%
18	14.763	1958	1968	1981	rBV	2245129	3286819	36.19%	4.329%
19	14.946	1992	1999	2020	rBV	691115	1237305	13.63%	1.630%
20	15.751	2129	2136	2148	rBV	4071660	5900252	64.97%	7.771%
21	15.863	2148	2155	2168	rVV	668704	926235	10.20%	1.220%
22	15.993	2173	2177	2183	rVB	19120	29766	0.33%	0.039%
23	17.304	2397	2400	2409	rVB6	7162	12994	0.14%	0.017%
24	17.516	2429	2436	2446	rBV	3086342	4382762	48.26%	5.772%
25	17.616	2446	2453	2472	rVV2	4897896	6955153	76.59%	9.160%
26	19.410	2754	2758	2765	rBV	68750	92910	1.02%	0.122%
27	19.481	2766	2770	2778	rVB	59240	90831	1.00%	0.120%
28	19.834	2824	2830	2848	rBV	6835781	9081111	100.00%	11.960%
29	21.592	3124	3129	3143	rBV	3846274	5219178	57.47%	6.874%
30	23.992	3530	3537	3552	rVB2	3758117	7907947	87.08%	10.415%
31	24.163	3559	3566	3583	rVB	2148951	4757970	52.39%	6.267%

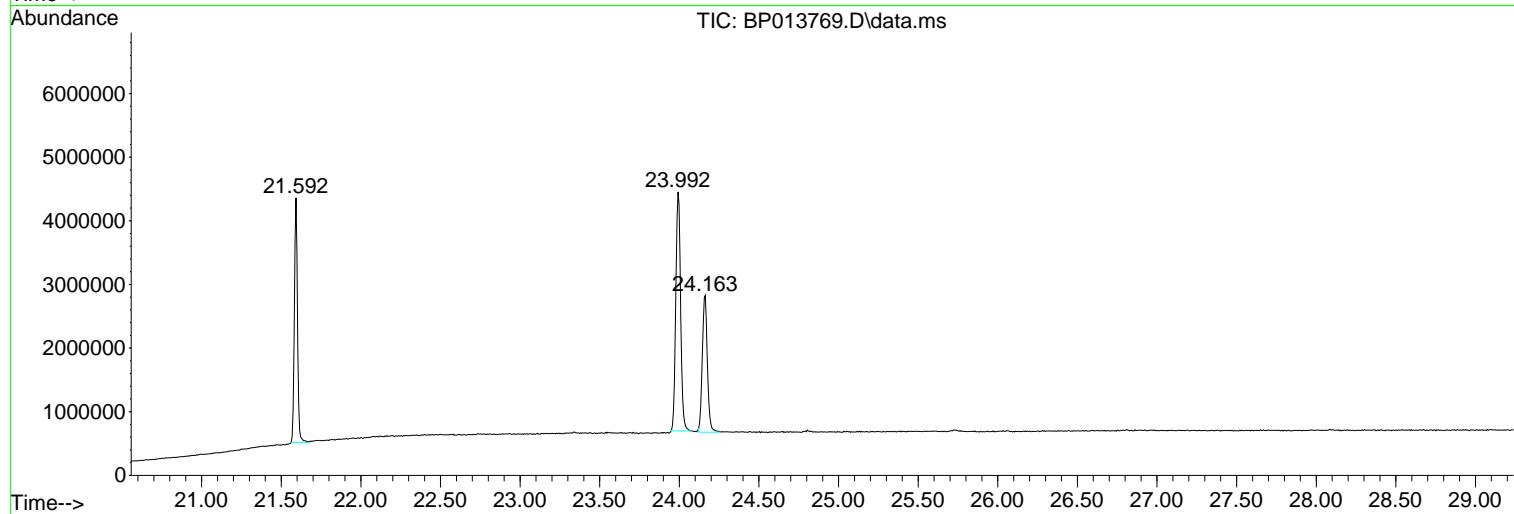
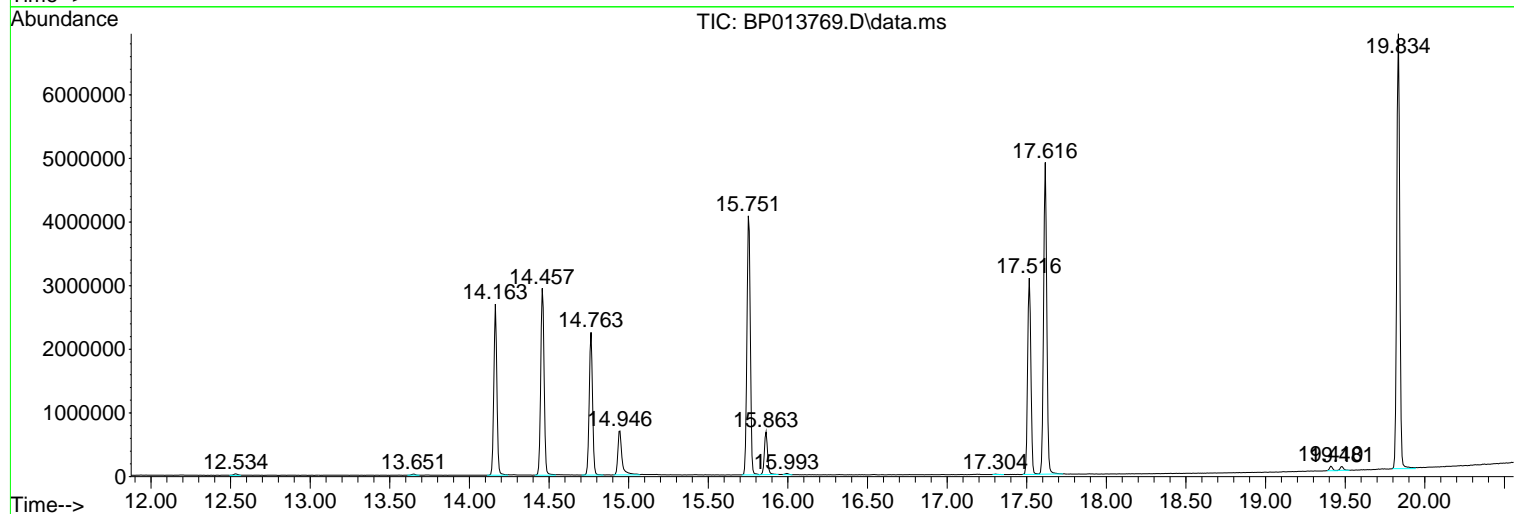
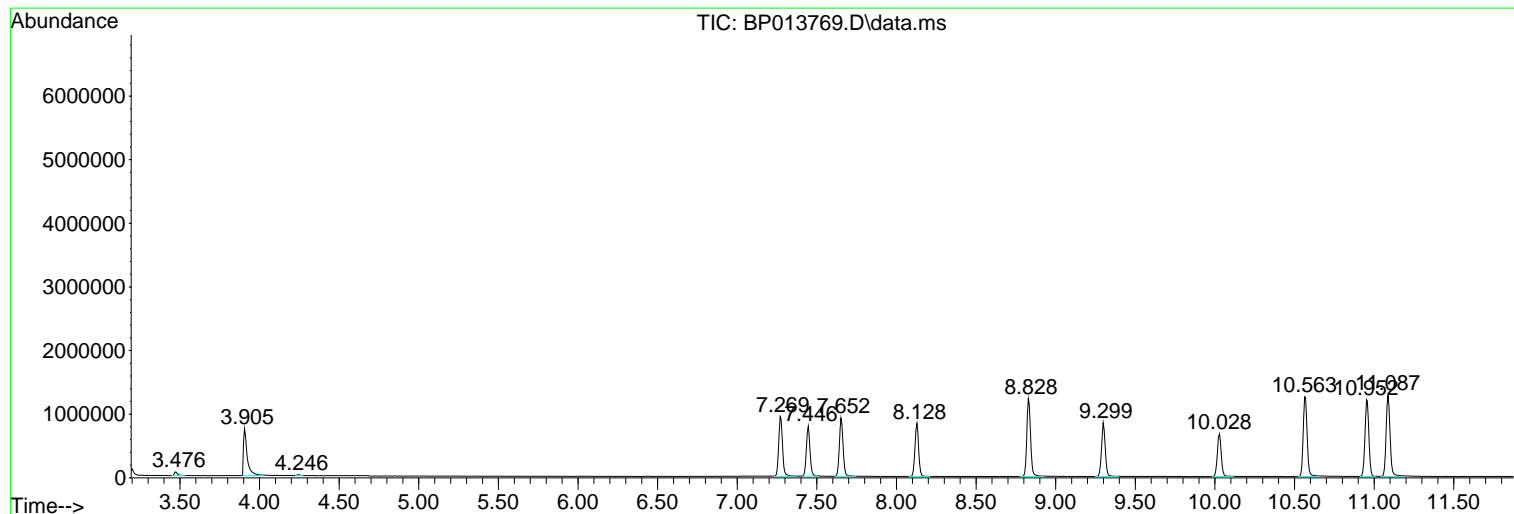
Sum of corrected areas: 75926436

Data Path : Z:\svoasrv\HPCHEM1\BNA\_P\Data\BP020623\  
Data File : BP013769.D  
Acq On : 06 Feb 2023 10:33  
Operator : CG/JU  
Sample : PB150652BL  
Misc :  
ALS Vial : 3 Sample Multiplier: 1

Instrument :  
BNA\_P  
ClientSampleId :  
SBLK652

Quant Method : Z:\svoasrv\HPCHEM1\BNA\_P\Methods\SFAM-EPA-BP020123.M  
Quant Title : SVOA CALIBRATION

TIC Library : C:\DATABASE\NIST20.L  
TIC Integration Parameters: LSCINT.P



Library Search Compound Report

Data Path : Z:\svoasrv\HPCHEM1\BNA\_P\Data\BP020623\  
Data File : BP013769.D  
Acq On : 06 Feb 2023 10:33  
Operator : CG/JU  
Sample : PB150652BL  
Misc :  
ALS Vial : 3 Sample Multiplier: 1

Instrument :  
BNA\_P  
ClientSampleId :  
SBLK652

Quant Method : Z:\svoasrv\HPCHEM1\BNA\_P\Methods\SFAM-EPA-BP020123.M  
Quant Title : SVOA CALIBRATION

TIC Library : C:\DATABASE\NIST20.L  
TIC Integration Parameters: LSCINT.P

No Library Search Compounds Detected

\*\*\*\*\*

Data Path : Z:\svoasrv\HPCHEM1\BNA\_P\Data\BP020623\  
Data File : BP013769.D  
Acq On : 06 Feb 2023 10:33  
Operator : CG/JU  
Sample : PB150652BL  
Misc :  
ALS Vial : 3 Sample Multiplier: 1

Instrument :  
BNA\_P  
ClientSampleId :  
SBLK652

Quant Method : Z:\svoasrv\HPCHEM1\BNA\_P\Methods\SFAM-EPA-BP020123.M  
Quant Title : SVOA CALIBRATION

TIC Library : C:\DATABASE\NIST20.L  
TIC Integration Parameters: LSCINT.P

TIC Top Hit name	RT	EstConc	Units	Response	#	RT	Resp	Conc
------------------	----	---------	-------	----------	---	----	------	------

-----