

Data Path : Z:\svoasrv\HPCHEM1\BNA_P\Data\BP022123\
 Data File : BP013862.D
 Acq On : 21 Feb 2023 12:03
 Operator : CG/JU
 Sample : 01378-03
 Misc : SFAM-MDL-SOIL-01
 ALS Vial : 6 Sample Multiplier: 1

Instrument :
 BNA_P
 ClientSampleId :
 MDL-SOIL-QT1-2023-01

Manual Integrations
 APPROVED

Reviewed By :Jagrut Upadhyay 02/22/2023
 Supervised By :mohammad ahmed 02/22/2023

Quant Time: Feb 22 01:51:03 2023
 Quant Method : Z:\svoasrv\HPCHEM1\BNA_P\Methods\SFAM-EPA-BP020723.M
 Quant Title : SVOA CALIBRATION
 QLast Update : Wed Feb 22 01:41:33 2023
 Response via : Initial Calibration

Compound	R.T.	QIon	Response	Conc	Units	Dev(Min)	
Internal Standards							
1) 1,4-Dichlorobenzene-d4	8.110	152	211441	20.000	ng/u1	0.00	
20) Naphthalene-d8	10.940	136	909650	20.000	ng/u1	0.00	
38) Acenaphthene-d10	14.751	164	622953	20.000	ng/u1	0.00	
64) Phenanthrene-d10	17.504	188	1429254	20.000	ng/u1	0.00	
79) Chrysene-d12	21.580	240	1330826	20.000	ng/u1	0.00	
88) Perylene-d12	24.139	264	1264457	20.000	ng/u1	0.01	
System Monitoring Compounds							
3) 1,4-Dioxane-d8	3.458	96	20368	3.993	ng/uL	0.00	
4) Pyridine-d5	3.893	84	175898	11.630	ng/u1	0.00	
7) Phenol-d5	7.257	99	325946	17.302	ng/u1	0.00	
9) Bis-(2-Chloroethyl)eth...	7.428	67	188931	17.114	ng/u1	0.00	
11) 2-Chlorophenol-d4	7.634	132	258572	18.645	ng/u1	0.00	
15) 4-Methylphenol-d8	8.816	113	269175	17.481	ng/u1	0.00	
21) Nitrobenzene-d5	9.287	128	128159	20.249	ng/u1	0.01	
24) 2-Nitrophenol-d4	10.010	143	150433	20.586	ng/u1	0.00	
28) 2,4-Dichlorophenol-d3	10.551	165	275222	18.481	ng/u1	0.00	
31) 4-Chloroaniline-d4	11.069	131	368566	17.460	ng/u1	0.00	
46) Dimethylphthalate-d6	14.151	166	893010	18.200	ng/u1	0.00	
49) Acenaphthylene-d8	14.445	160	972322	18.307	ng/u1	0.00	
54) 4-Nitrophenol-d4	14.933	143	144014	16.475	ng/u1	0.00	
60) Fluorene-d10	15.739	176	763495	18.269	ng/u1	0.00	
65) 4,6-Dinitro-2-methylph...	15.857	200	158202	18.042	ng/u1	0.00	
73) Anthracene-d10	17.604	188	1178387	18.031	ng/u1	0.00	
81) Pyrene-d10	19.821	212	1467118	19.440	ng/u1	0.00	
92) Benzo(a)pyrene-d12	23.968	264	1197438	18.900	ng/u1	0.00	
Target Compounds							
2) 1,4-Dioxane	3.493	88	7228m	1.320	ng/uL		Qvalue
5) Pyridine	3.916	79	50910	3.406	ng/u1		91
6) Benzaldehyde	7.246	77	40471	4.764	ng/u1		94
8) Phenol	7.281	94	77714	4.019	ng/u1		95
10) Bis(2-Chloroethyl)ether	7.522	93	63007	4.066	ng/u1		98
12) 2-Chlorophenol	7.669	128	61078	4.292	ng/u1		98
13) 2-Methylphenol	8.551	108	57895	3.922	ng/u1		99
14) 2,2'-oxybis(1-Chloropr...	8.646	45	67471	3.828	ng/u1		97
16) Acetophenone	8.946	105	101787	4.122	ng/u1		99
17) N-Nitroso-di-n-propyla...	8.922	70	49856	4.066	ng/u1#		97
18) 4-Methylphenol	8.881	108	64511	3.958	ng/u1		96
19) Hexachloroethane	9.204	117	26896	4.616	ng/u1		94
22) Nitrobenzene	9.328	77	73301	4.402	ng/u1		98
23) Isophorone	9.857	82	146394	4.167	ng/u1		99
25) 2-Nitrophenol	10.046	139	35782	4.518	ng/u1		98
26) 2,4-Dimethylphenol	10.093	107	67992	3.856	ng/u1		99
27) Bis(2-Chloroethoxy)met...	10.334	93	89661	4.226	ng/u1		97
29) 2,4-Dichlorophenol	10.581	162	62574	4.268	ng/u1		97
30) Naphthalene	10.987	128	208984	4.316	ng/u1		100
32) 4-Chloroaniline	11.098	127	85468	4.016	ng/u1		93
33) Hexachlorobutadiene	11.269	225	49982	4.840	ng/u1		97
34) Caprolactam	11.892	113	23465m	4.561	ng/u1		
35) 4-Chloro-3-methylphenol	12.204	107	68159	4.027	ng/u1		97
36) 2-Methylnaphthalene	12.587	142	143292	4.209	ng/u1		99

Data Path : Z:\svoasrv\HPCHEM1\BNA_P\Data\BP022123\
 Data File : BP013862.D
 Acq On : 21 Feb 2023 12:03
 Operator : CG/JU
 Sample : 01378-03
 Misc : SFAM-MDL-SOIL-01
 ALS Vial : 6 Sample Multiplier: 1

Instrument :
 BNA_P
 ClientSampleId :
 MDL-SOIL-QT1-2023-01

Manual Integrations
 APPROVED

Reviewed By :Jagrut Upadhyay 02/22/2023
 Supervised By :mohammad ahmed 02/22/2023

Quant Time: Feb 22 01:51:03 2023
 Quant Method : Z:\svoasrv\HPCHEM1\BNA_P\Methods\SFAM-EPA-BP020723.M
 Quant Title : SVOA CALIBRATION
 QLast Update : Wed Feb 22 01:41:33 2023
 Response via : Initial Calibration

Compound	R.T.	QIon	Response	Conc	Units	Dev(Min)
37) 1-Methylnaphthalene	12.804	142	133954	3.808	ng/ul	98
39) 1,2,4,5-Tetrachloroben...	12.951	216	91727	4.673	ng/ul	97
40) Hexachlorocyclopentadiene	12.928	237	56157	4.455	ng/ul	99
41) 2,4,6-Trichlorophenol	13.187	196	55718	4.325	ng/ul	96
42) 2,4,5-Trichlorophenol	13.257	196	59172	4.244	ng/ul	98
43) 1,1'-Biphenyl	13.586	154	203154	4.346	ng/ul	99
44) 2-Chloronaphthalene	13.628	162	158781	4.318	ng/ul	99
45) 2-Nitroaniline	13.834	65	36209	4.088	ng/ul	93
47) Dimethylphthalate	14.198	163	208664	4.288	ng/ul	99
48) 2,6-Dinitrotoluene	14.322	165	34886	4.103	ng/ul	96
50) Acenaphthylene	14.475	152	242280	4.229	ng/ul	99
51) 3-Nitroaniline	14.651	138	33614	3.999	ng/ul	95
52) Acenaphthene	14.816	153	170774	4.258	ng/ul	98
53) 2,4-Dinitrophenol	14.857	184	29900	4.931	ng/ul	96
55) 4-Nitrophenol	14.945	109	30780	4.013	ng/ul	93
56) Dibenzofuran	15.145	168	246526	4.288	ng/ul	99
57) 2,4-Dinitrotoluene	15.104	165	53602	4.229	ng/ul	93
58) 2,3,4,6-Tetrachlorophenol	15.369	232	56327	4.286	ng/ul#	99
59) Diethylphthalate	15.557	149	206722	4.230	ng/ul	98
61) Fluorene	15.798	166	202807	4.324	ng/ul	98
62) 4-Chlorophenyl-phenyle...	15.786	204	108529	4.450	ng/ul	99
63) 4-Nitroaniline	15.810	138	30848m	3.875	ng/ul	
66) 4,6-Dinitro-2-methylph...	15.869	198	44032	5.122	ng/ul#	94
67) N-Nitrosodiphenylamine	15.998	169	168448	4.336	ng/ul	99
68) 4-Bromophenyl-phenylether	16.686	248	69589	4.611	ng/ul	97
69) Hexachlorobenzene	16.804	284	83413	4.743	ng/ul	99
70) Atrazine	16.951	200	74104	4.770	ng/ul	97
71) Pentachlorophenol	17.151	266	54291	4.744	ng/ul	99
72) Phenanthrene	17.545	178	326237	4.313	ng/ul	100
74) Anthracene	17.639	178	318612	4.187	ng/ul	100
75) 1,2,3,4-Tetrachloroben...	13.551	216	83376	4.370	ng/uL	98
76) Pentachlorobenzene	15.069	250	84243	4.279	ng/ul	97
77) Carbazole	17.904	167	283166	4.225	ng/ul	98
78) Di-n-butylphthalate	18.433	149	341705	4.203	ng/ul	99
80) Fluoranthene	19.498	202	403747	4.673	ng/ul	97
82) Pyrene	19.851	202	419540	4.555	ng/ul#	94
83) Butylbenzylphthalate	20.704	149	143623	4.556	ng/ul	96
84) 3,3'-Dichlorobenzidine	21.486	252	113558	3.791	ng/ul	99
85) Benzo(a)anthracene	21.563	228	387029	4.256	ng/ul	99
86) Bis(2-ethylhexyl)phtha...	21.457	149	218799	4.532	ng/ul#	97
87) Chrysene	21.615	228	374370	4.364	ng/ul	98
89) Di-n-octyl phthalate	22.433	149	327361	3.762	ng/ul	100
90) Benzo(b)fluoranthene	23.345	252	370710	4.397	ng/ul	99
91) Benzo(k)fluoranthene	23.398	252	345953	4.136	ng/ul	96
93) Benzo(a)pyrene	24.021	252	312020	4.366	ng/ul	98
94) Indeno(1,2,3-cd)pyrene	26.833	276	369508	4.610	ng/ul#	94
95) Dibenzo(a,h)anthracene	26.845	278	307954	4.599	ng/ul	97
96) Benzo(g,h,i)perylene	27.656	276	300905	4.715	ng/ul	96

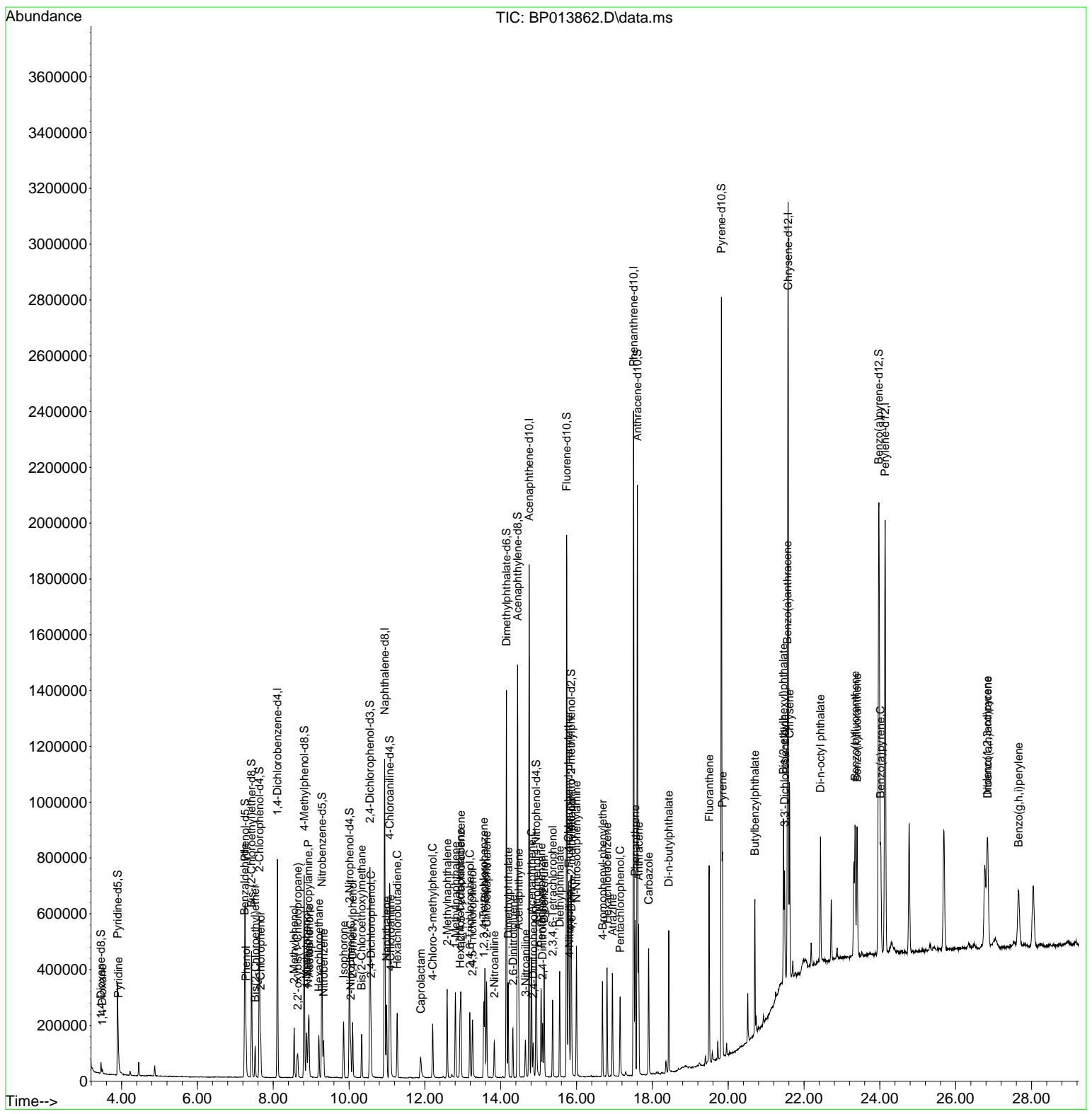
(#) = qualifier out of range (m) = manual integration (+) = signals summed

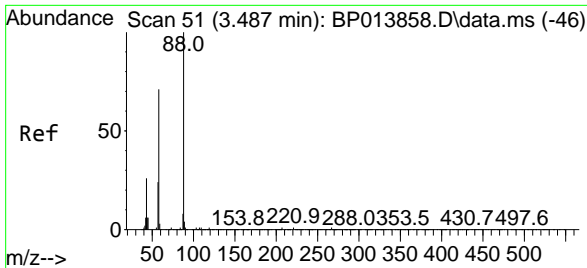
Data Path : Z:\svoasrv\HPCHEM1\BNA_P\Data\BP022123\
 Data File : BP013862.D
 Acq On : 21 Feb 2023 12:03
 Operator : CG/JU
 Sample : 01378-03
 Misc : SFAM-MDL-SOIL-01
 ALS Vial : 6 Sample Multiplier: 1

Instrument :
 BNA_P
ClientSampleId :
 MDL-SOIL-QT1-2023-01

Quant Time: Feb 22 01:51:03 2023
 Quant Method : Z:\svoasrv\HPCHEM1\BNA_P\Methods\SFAM-EPA-BP020723.M
 Quant Title : SVOA CALIBRATION
 QLast Update : Wed Feb 22 01:41:33 2023
 Response via : Initial Calibration

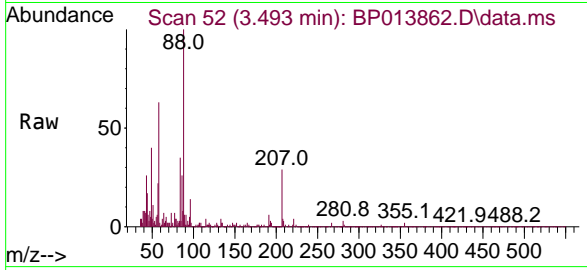
Manual Integrations
APPROVED
 Reviewed By :Jagrut Upadhyay 02/22/2023
 Supervised By :mohammad ahmed 02/22/2023





#2
 1,4-Dioxane
 Concen: 1.320 ng/uL m
 RT: 3.493 min Scan# 51
 Delta R.T. 0.006 min
 Lab File: BP013862.D
 Acq: 21 Feb 2023 12:03

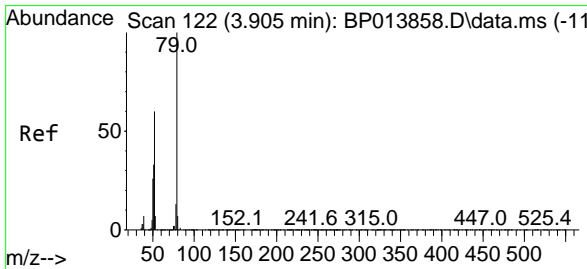
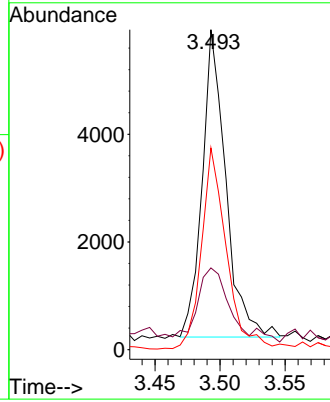
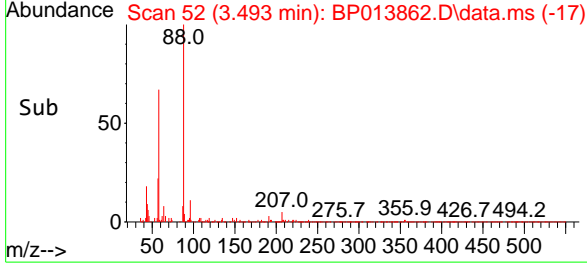
Instrument :
 BNA_P
 ClientSampleId :
 MDL-SOIL-QT1-2023-01



Tgt Ion: 88 Resp: 7228
 Ion Ratio Lower Upper
 88 100
 43 25.6 20.1 30.1
 58 63.0 53.0 79.6

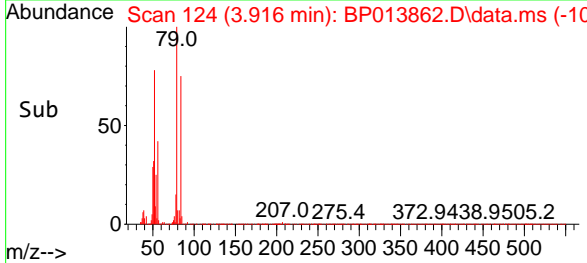
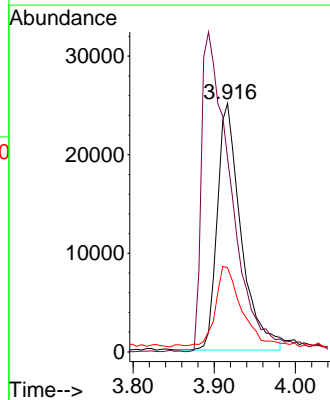
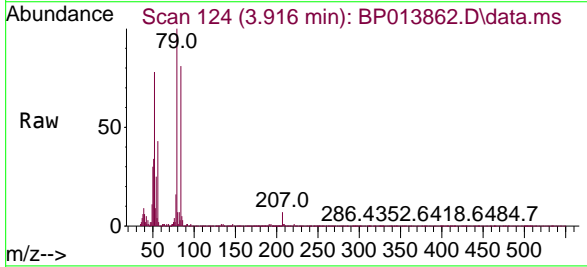
Manual Integrations
 APPROVED

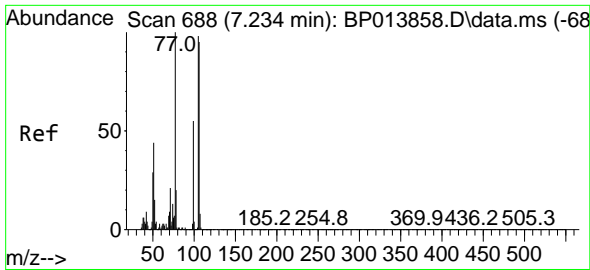
Reviewed By :Jagrut Upadhyay 02/22/2023
 Supervised By :mohammad ahmed 02/22/2023



#5
 Pyridine
 Concen: 3.406 ng/uL
 RT: 3.916 min Scan# 124
 Delta R.T. 0.012 min
 Lab File: BP013862.D
 Acq: 21 Feb 2023 12:03

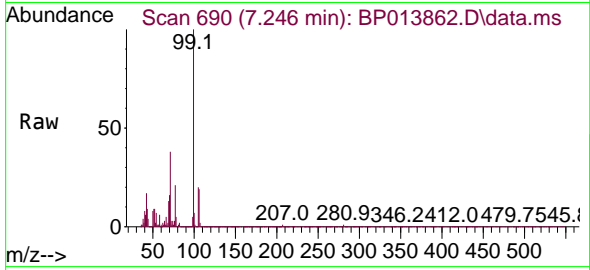
Tgt Ion: 79 Resp: 50910
 Ion Ratio Lower Upper
 79 100
 52 77.9 55.1 82.7
 51 33.8 25.7 38.5





#6
Benzaldehyde
Concen: 4.764 ng/u1
RT: 7.246 min Scan# 691
Delta R.T. 0.012 min
Lab File: BP013862.D
Acq: 21 Feb 2023 12:03

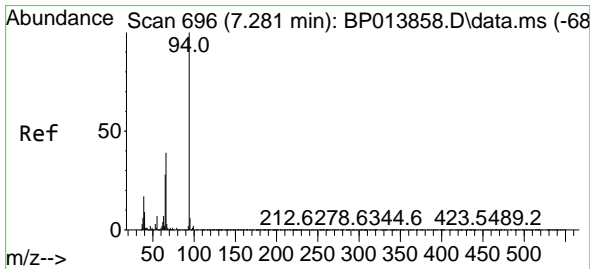
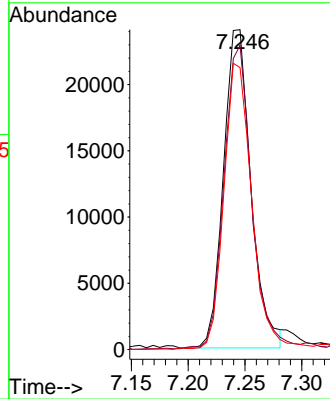
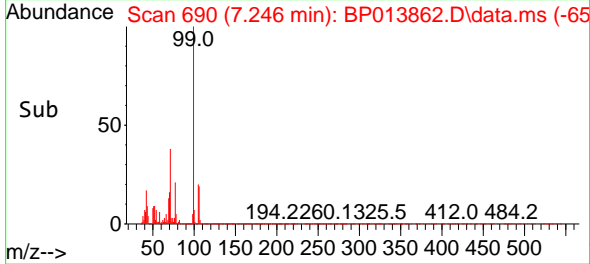
Instrument :
BNA_P
ClientSampleId :
MDL-SOIL-QT1-2023-01



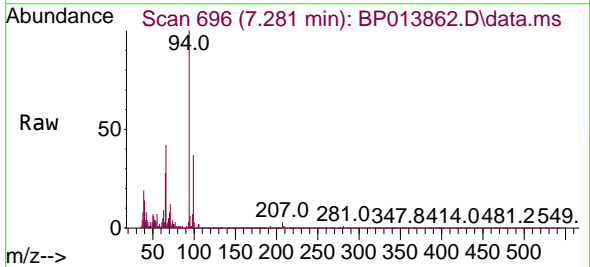
Tgt Ion: 77 Resp: 4047
Ion Ratio Lower Upper
77 100
105 95.1 79.5 119.3
106 88.1 76.5 114.7

Manual Integrations
APPROVED

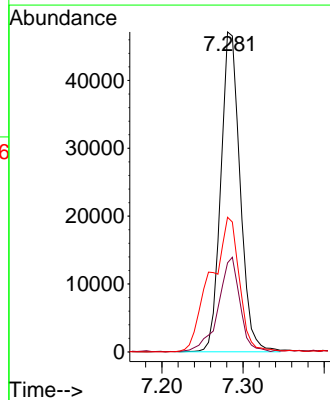
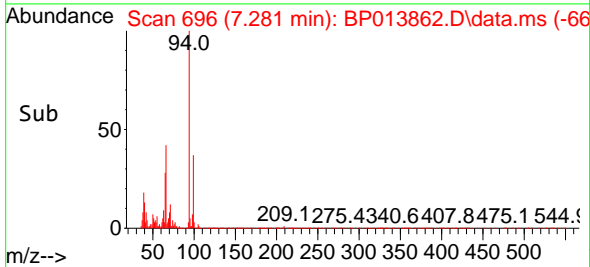
Reviewed By :Jagrut Upadhyay 02/22/2023
Supervised By :mohammad ahmed 02/22/2023

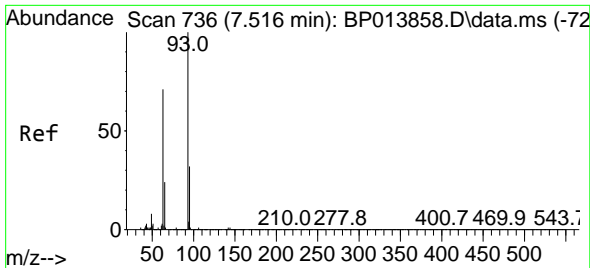


#8
Phenol
Concen: 4.019 ng/u1
RT: 7.281 min Scan# 696
Delta R.T. -0.000 min
Lab File: BP013862.D
Acq: 21 Feb 2023 12:03



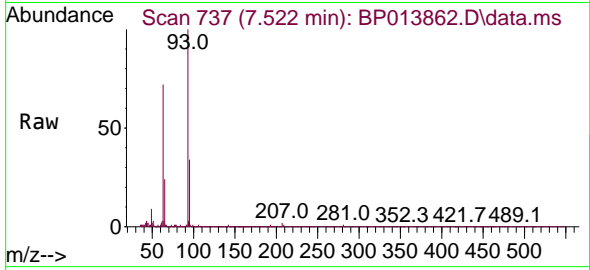
Tgt Ion: 94 Resp: 77714
Ion Ratio Lower Upper
94 100
65 27.8 22.2 33.4
66 42.1 29.6 44.4





#10
 Bis(2-Chloroethyl)ether
 Concen: 4.066 ng/u1
 RT: 7.522 min Scan# 737
 Delta R.T. 0.006 min
 Lab File: BP013862.D
 Acq: 21 Feb 2023 12:03

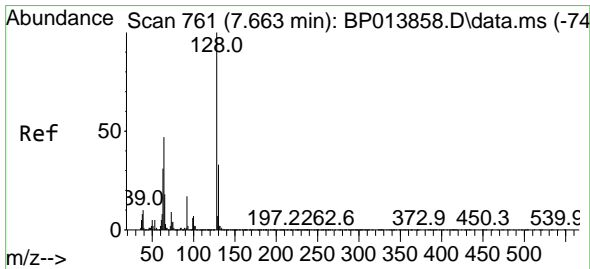
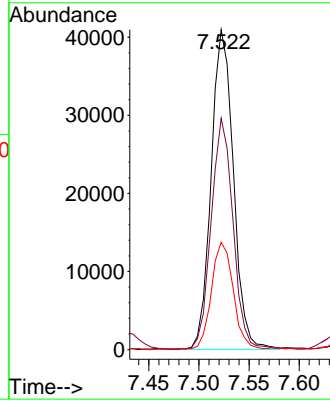
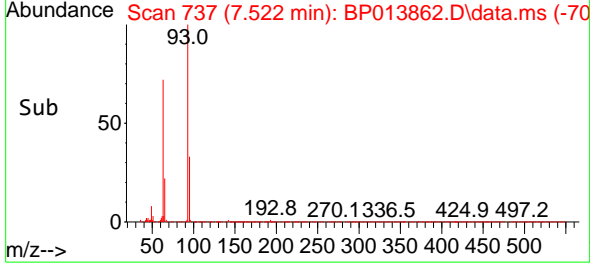
Instrument :
 BNA_P
 ClientSampleId :
 MDL-SOIL-QT1-2023-01



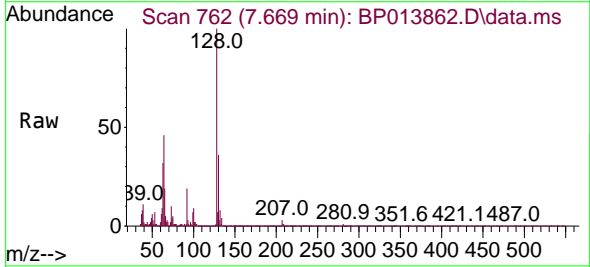
Tgt Ion: 93 Resp: 63007
 Ion Ratio Lower Upper
 93 100
 63 72.3 59.4 89.0
 95 33.5 25.8 38.8

Manual Integrations
 APPROVED

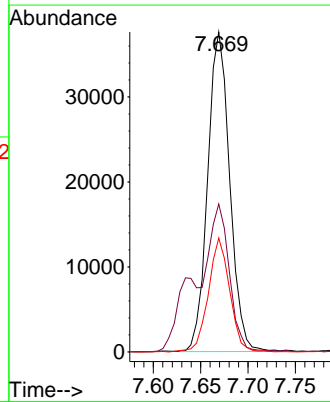
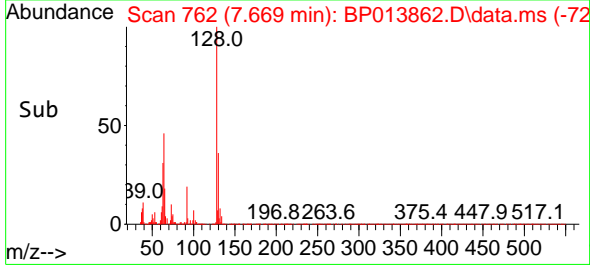
Reviewed By :Jagrut Upadhyay 02/22/2023
 Supervised By :mohammad ahmed 02/22/2023

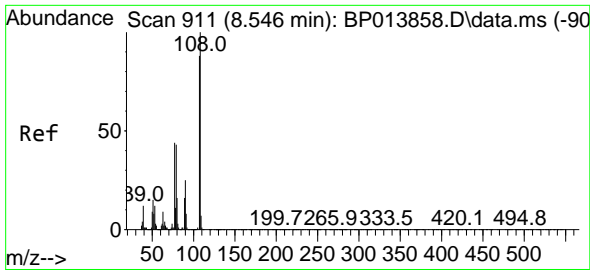


#12
 2-Chlorophenol
 Concen: 4.292 ng/u1
 RT: 7.669 min Scan# 762
 Delta R.T. 0.006 min
 Lab File: BP013862.D
 Acq: 21 Feb 2023 12:03



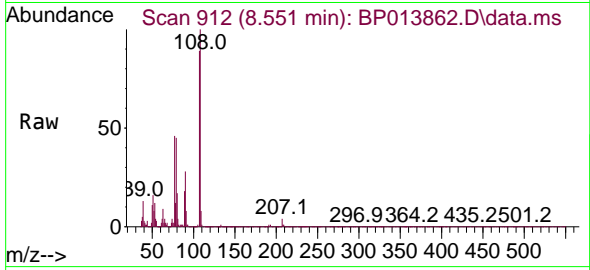
Tgt Ion:128 Resp: 61078
 Ion Ratio Lower Upper
 128 100
 64 46.2 37.3 55.9
 130 35.6 26.3 39.5





#13
 2-Methylphenol
 Concen: 3.922 ng/ul
 RT: 8.551 min Scan# 911
 Delta R.T. 0.006 min
 Lab File: BP013862.D
 Acq: 21 Feb 2023 12:03

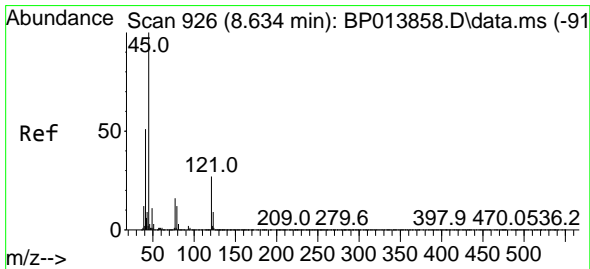
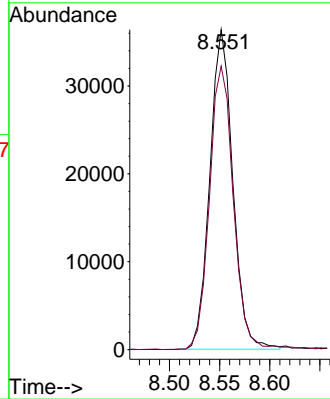
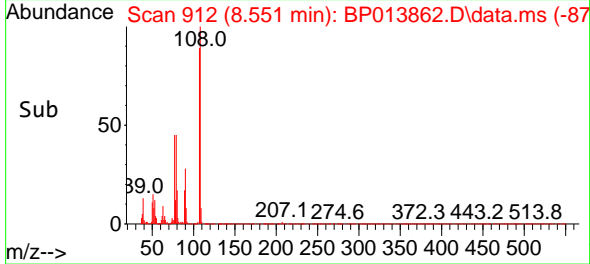
Instrument :
 BNA_P
 ClientSampleId :
 MDL-SOIL-QT1-2023-01



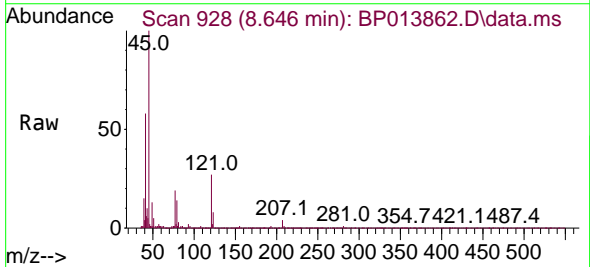
Tgt Ion: 108 Resp: 57895
 Ion Ratio Lower Upper
 108 100
 107 88.6 71.9 107.9

Manual Integrations
 APPROVED

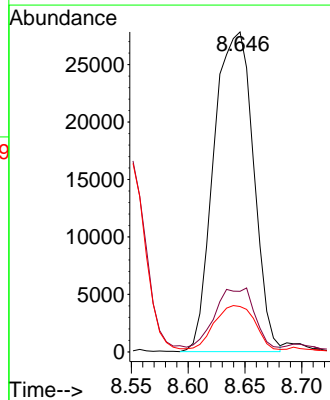
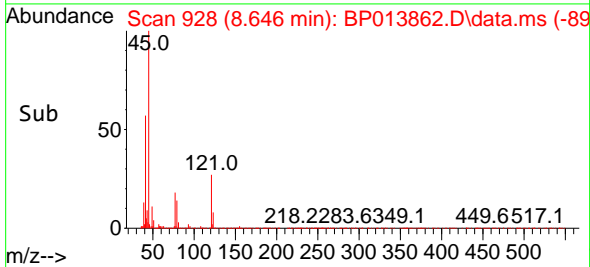
Reviewed By :Jagrut Upadhyay 02/22/2023
 Supervised By :mohammad ahmed 02/22/2023

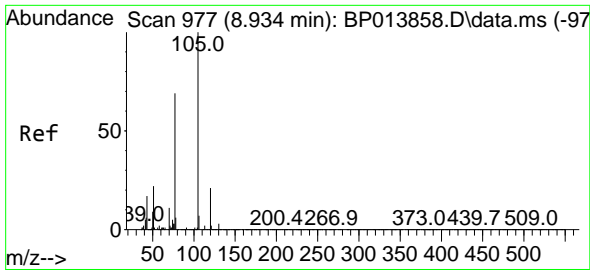


#14
 2,2'-oxybis(1-Chloropropane)
 Concen: 3.828 ng/ul
 RT: 8.646 min Scan# 928
 Delta R.T. 0.012 min
 Lab File: BP013862.D
 Acq: 21 Feb 2023 12:03



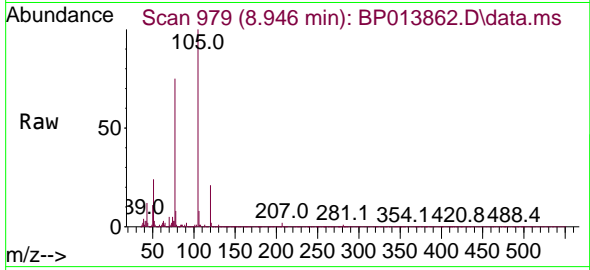
Tgt Ion: 45 Resp: 67471
 Ion Ratio Lower Upper
 45 100
 77 18.9 13.4 20.2
 79 14.2 11.0 16.4





#16
 Acetophenone
 Concen: 4.122 ng/ul
 RT: 8.946 min Scan# 91
 Delta R.T. 0.012 min
 Lab File: BP013862.D
 Acq: 21 Feb 2023 12:03

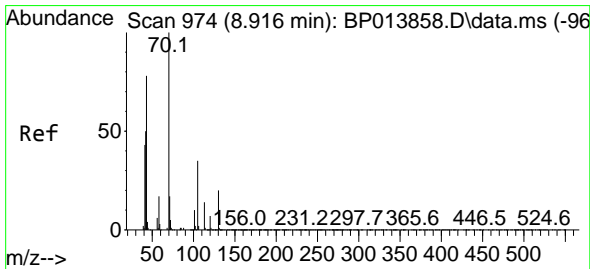
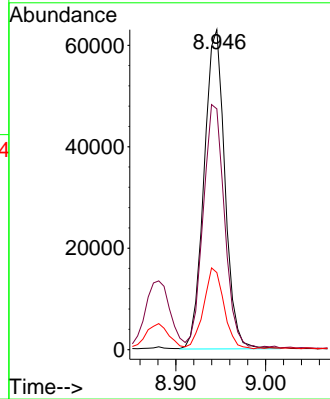
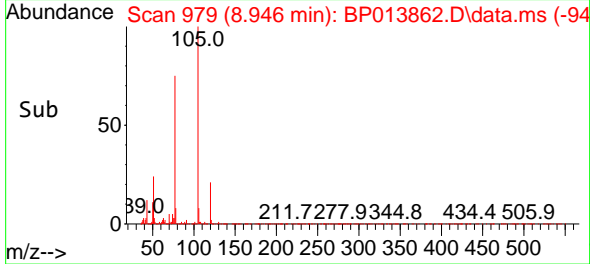
Instrument :
 BNA_P
 ClientSampleId :
 MDL-SOIL-QT1-2023-01



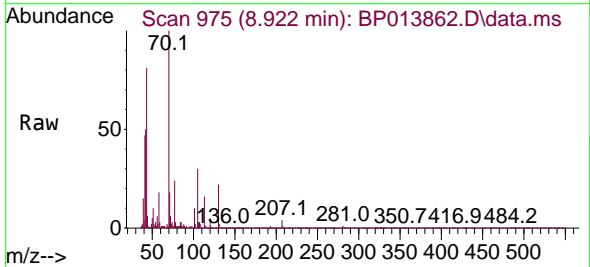
Tgt Ion: 105 Resp: 10178
 Ion Ratio Lower Upper
 105 100
 77 75.2 61.0 91.4
 51 24.1 19.6 29.4

Manual Integrations
 APPROVED

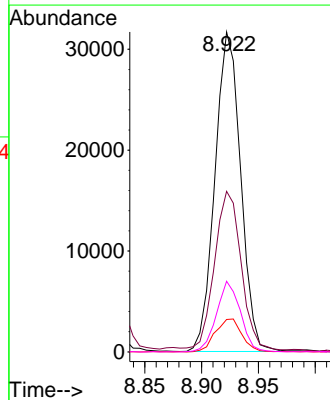
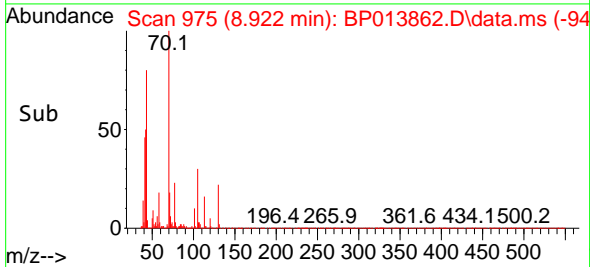
Reviewed By :Jagrut Upadhyay 02/22/2023
 Supervised By :mohammad ahmed 02/22/2023

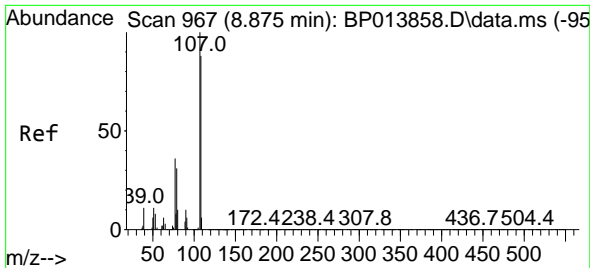


#17
 N-Nitroso-di-n-propylamine
 Concen: 4.066 ng/ul
 RT: 8.922 min Scan# 975
 Delta R.T. 0.006 min
 Lab File: BP013862.D
 Acq: 21 Feb 2023 12:03



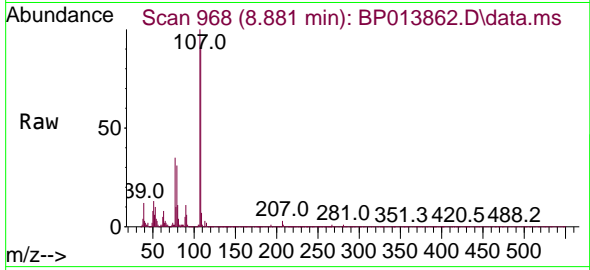
Tgt Ion: 70 Resp: 49856
 Ion Ratio Lower Upper
 70 100
 42 50.2 39.8 59.8
 101 10.1 7.4 11.2
 130 22.1 14.6 22.0#





#18
 4-Methylphenol
 Concen: 3.958 ng/ul
 RT: 8.881 min Scan# 90
 Delta R.T. 0.006 min
 Lab File: BP013862.D
 Acq: 21 Feb 2023 12:03

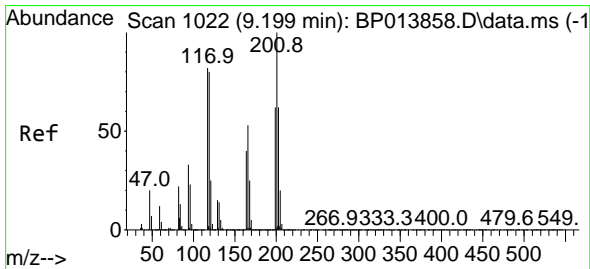
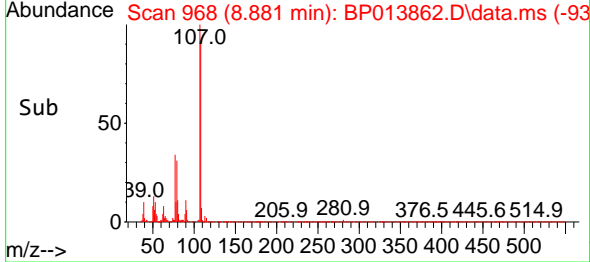
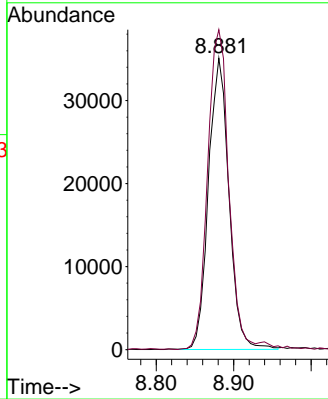
Instrument :
 BNA_P
 ClientSampleId :
 MDL-SOIL-QT1-2023-01



Tgt Ion:108 Resp: 6451
 Ion Ratio Lower Upper
 108 100
 107 109.8 90.9 136.3

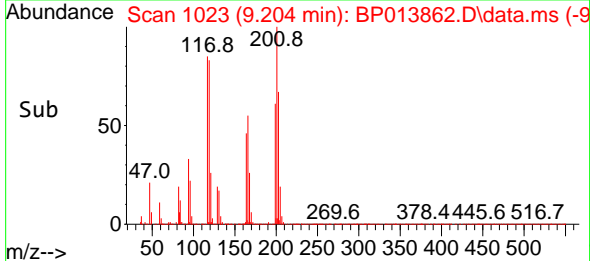
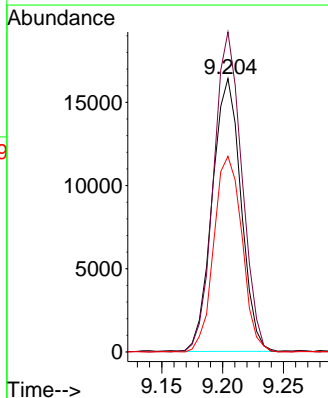
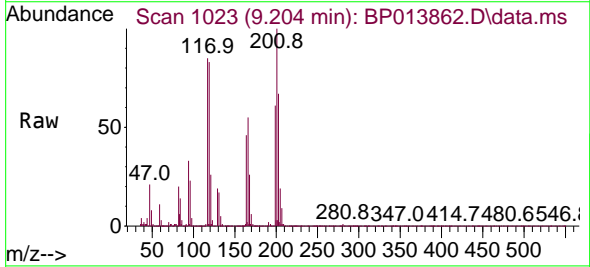
Manual Integrations
APPROVED

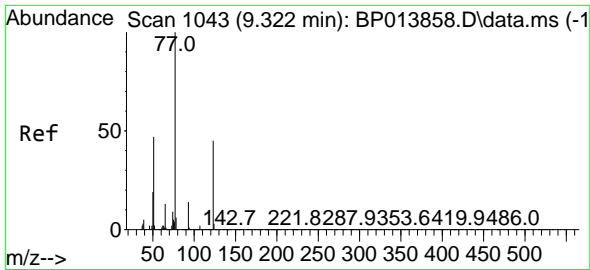
Reviewed By :Jagrut Upadhyay 02/22/2023
 Supervised By :mohammad ahmed 02/22/2023



#19
 Hexachloroethane
 Concen: 4.616 ng/ul
 RT: 9.204 min Scan# 1023
 Delta R.T. 0.006 min
 Lab File: BP013862.D
 Acq: 21 Feb 2023 12:03

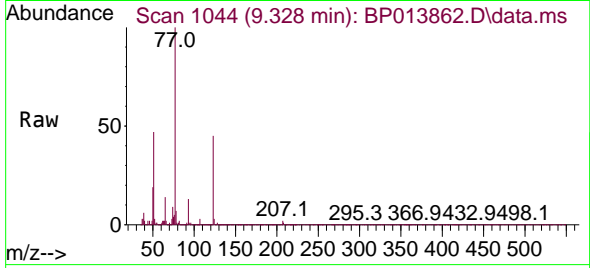
Tgt Ion:117 Resp: 26896
 Ion Ratio Lower Upper
 117 100
 201 117.0 86.6 129.8
 199 71.5 55.2 82.8





#22
 Nitrobenzene
 Concen: 4.402 ng/u1
 RT: 9.328 min Scan# 1043
 Delta R.T. 0.006 min
 Lab File: BP013862.D
 Acq: 21 Feb 2023 12:03

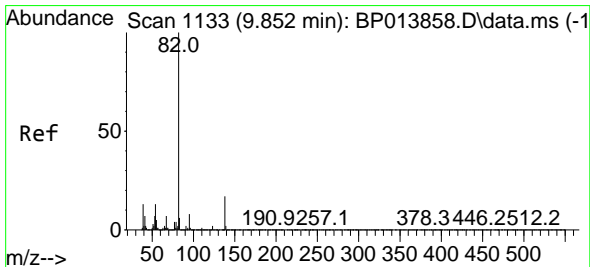
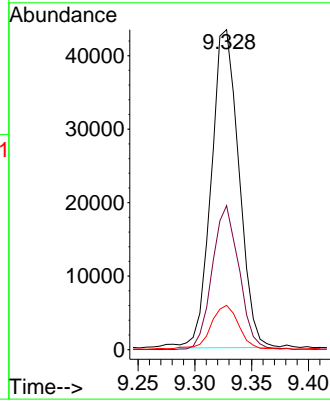
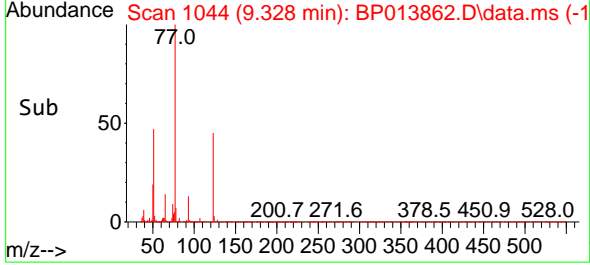
Instrument : BNA_P
 ClientSampleId : MDL-SOIL-QT1-2023-01



Tgt Ion: 77 Resp: 7330
 Ion Ratio Lower Upper
 77 100
 123 45.0 35.1 52.7
 65 13.8 10.6 16.0

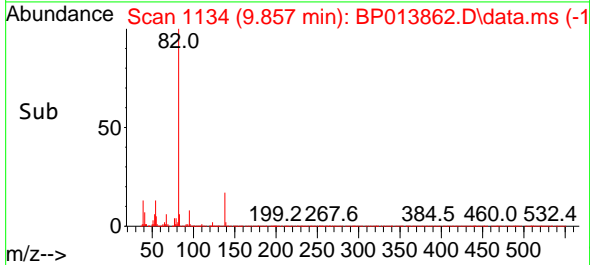
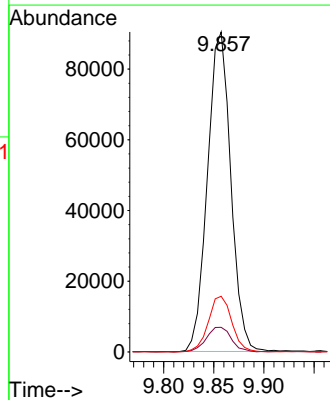
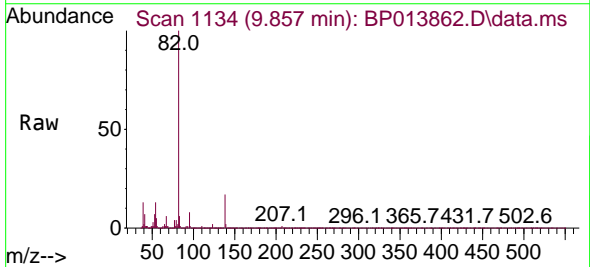
Manual Integrations
APPROVED

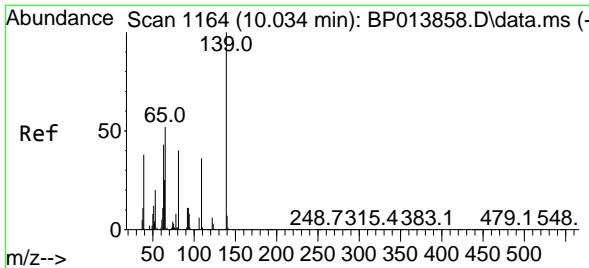
Reviewed By :Jagrut Upadhyay 02/22/2023
 Supervised By :mohammad ahmed 02/22/2023



#23
 Isophorone
 Concen: 4.167 ng/u1
 RT: 9.857 min Scan# 1134
 Delta R.T. 0.006 min
 Lab File: BP013862.D
 Acq: 21 Feb 2023 12:03

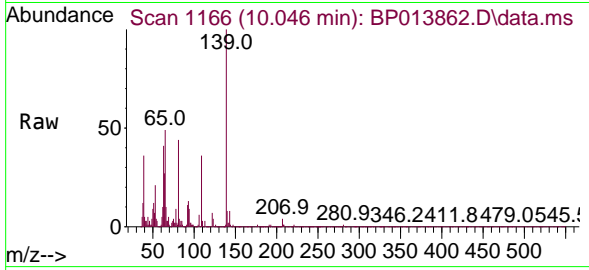
Tgt Ion: 82 Resp: 146394
 Ion Ratio Lower Upper
 82 100
 95 7.7 6.0 9.0
 138 17.4 13.7 20.5





#25
 2-Nitrophenol
 Concen: 4.518 ng/uI
 RT: 10.046 min Scan# 1166
 Delta R.T. 0.012 min
 Lab File: BP013862.D
 Acq: 21 Feb 2023 12:03

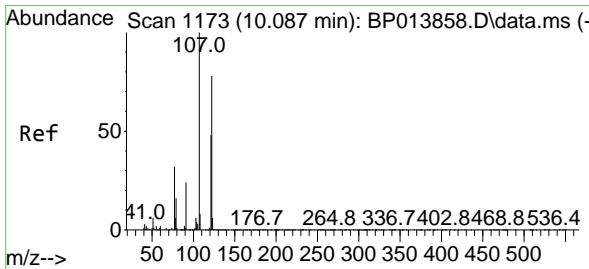
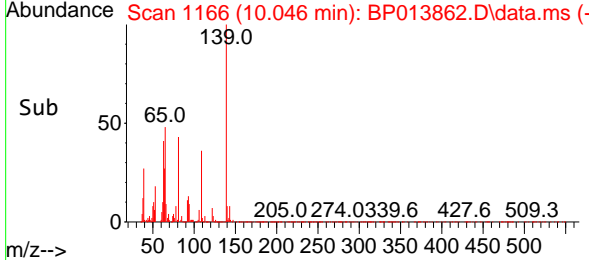
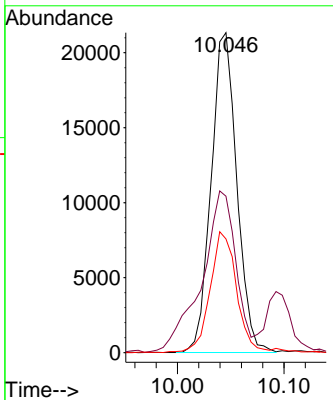
Instrument :
 BNA_P
ClientSampleId :
 MDL-SOIL-QT1-2023-01



Tgt Ion:139 Resp: 35782

Ion	Ratio	Lower	Upper
139	100		
65	48.9	39.9	59.9
109	35.5	27.4	41.0

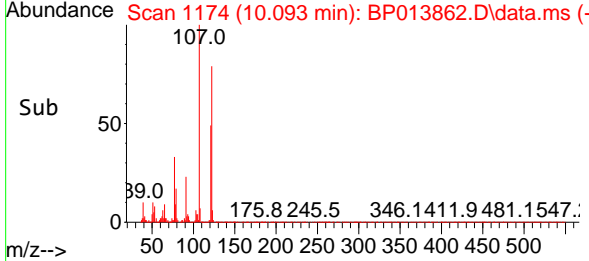
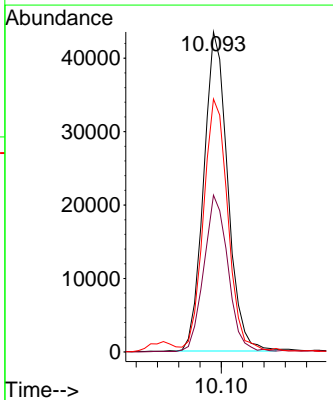
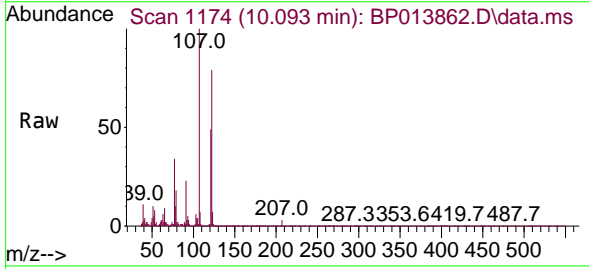
Manual Integrations
APPROVED
 Reviewed By :Jagrut Upadhyay 02/22/2023
 Supervised By :mohammad ahmed 02/22/2023

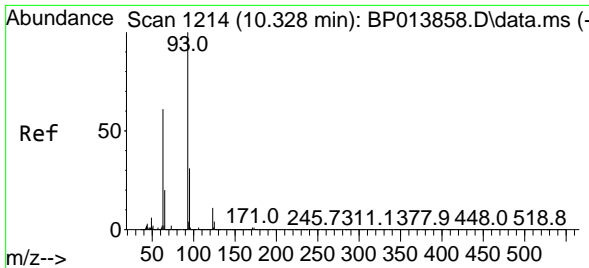


#26
 2,4-Dimethylphenol
 Concen: 3.856 ng/uI
 RT: 10.093 min Scan# 1174
 Delta R.T. 0.006 min
 Lab File: BP013862.D
 Acq: 21 Feb 2023 12:03

Tgt Ion:107 Resp: 67992

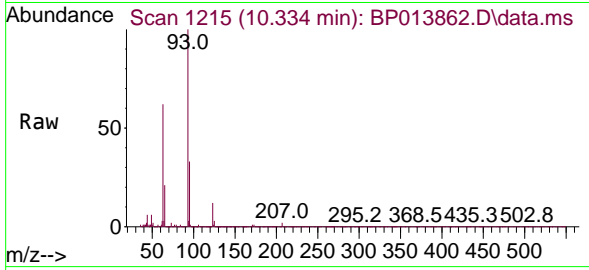
Ion	Ratio	Lower	Upper
107	100		
121	49.0	37.8	56.6
122	79.0	63.7	95.5





#27
 Bis(2-Chloroethoxy)methane
 Concen: 4.226 ng/ul
 RT: 10.334 min Scan# 1215
 Delta R.T. 0.006 min
 Lab File: BP013862.D
 Acq: 21 Feb 2023 12:03

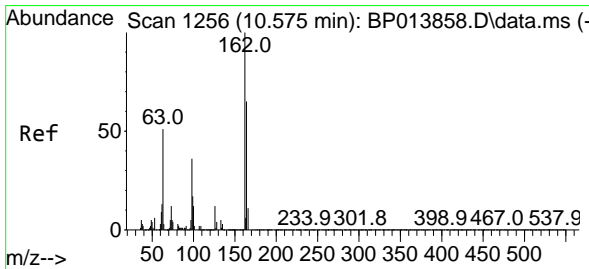
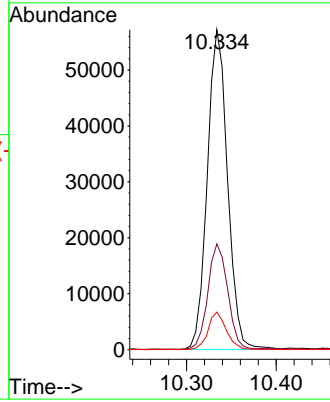
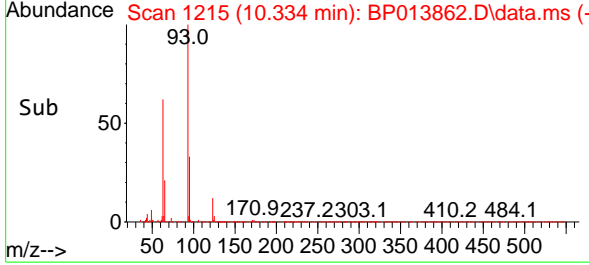
Instrument : BNA_P
 Client Sample Id : MDL-SOIL-QT1-2023-01



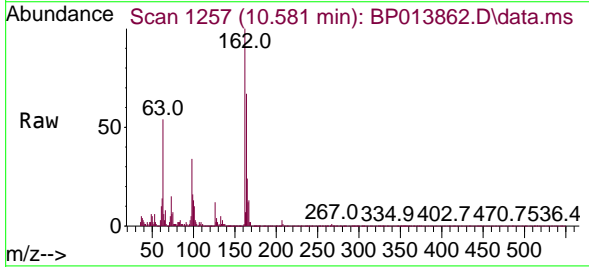
Tgt Ion: 93 Resp: 8966
 Ion Ratio Lower Upper
 93 100
 95 33.0 25.0 37.6
 123 11.7 8.2 12.4

Manual Integrations
 APPROVED

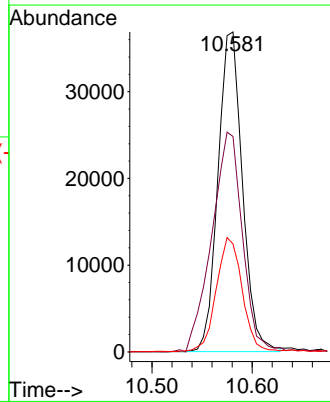
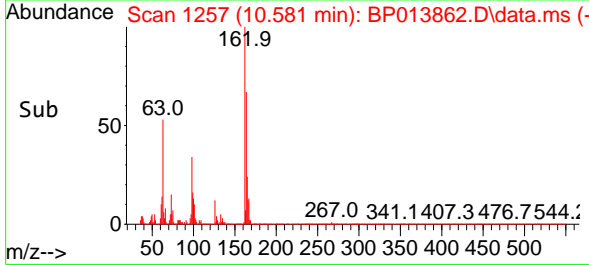
Reviewed By :Jagrut Upadhyay 02/22/2023
 Supervised By :mohammad ahmed 02/22/2023

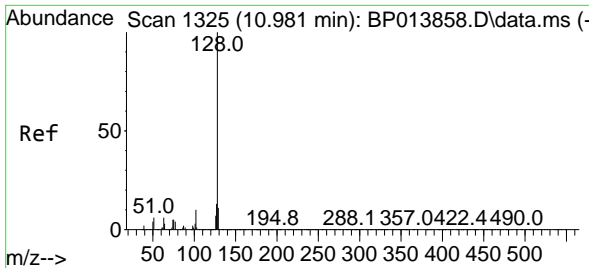


#29
 2,4-Dichlorophenol
 Concen: 4.268 ng/ul
 RT: 10.581 min Scan# 1257
 Delta R.T. 0.006 min
 Lab File: BP013862.D
 Acq: 21 Feb 2023 12:03



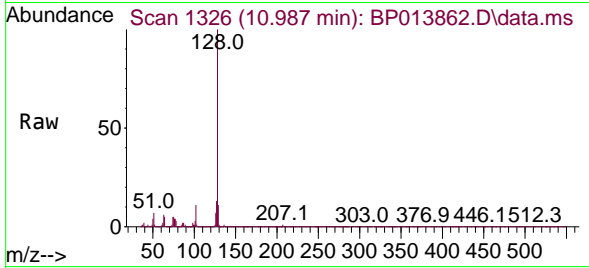
Tgt Ion:162 Resp: 62574
 Ion Ratio Lower Upper
 162 100
 164 67.3 51.4 77.2
 98 33.7 27.5 41.3





#30
 Naphthalene
 Concen: 4.316 ng/u1
 RT: 10.987 min Scan# 1326
 Delta R.T. 0.006 min
 Lab File: BP013862.D
 Acq: 21 Feb 2023 12:03

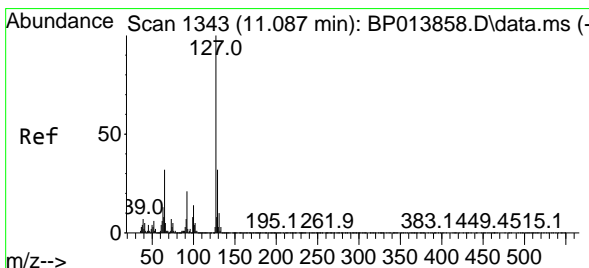
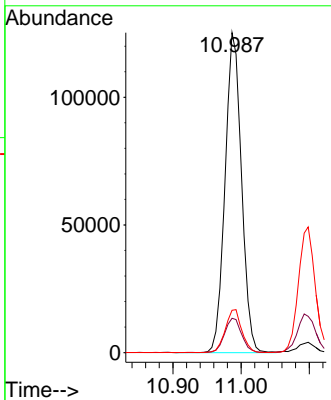
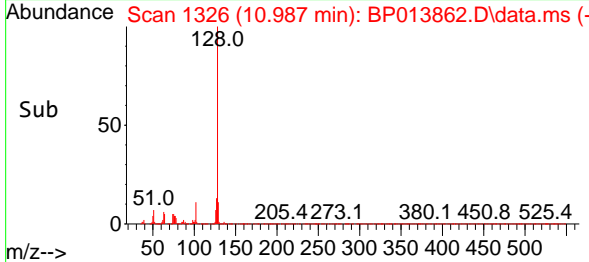
Instrument : BNA_P
 Client Sample Id : MDL-SOIL-QT1-2023-01



Tgt Ion:128 Resp: 208984
 Ion Ratio Lower Upper
 128 100
 129 10.7 8.6 12.8
 127 13.2 10.6 15.8

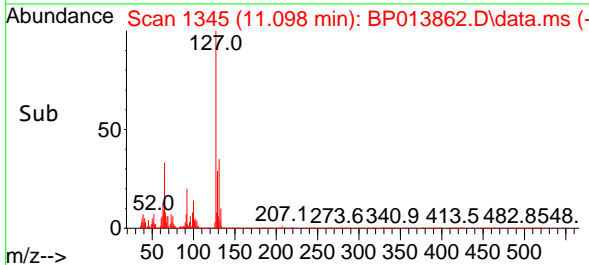
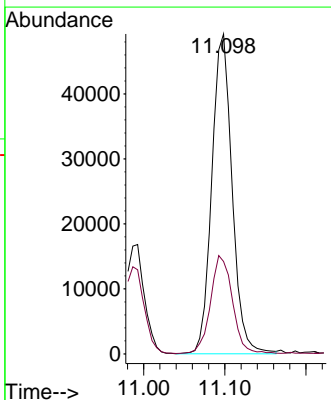
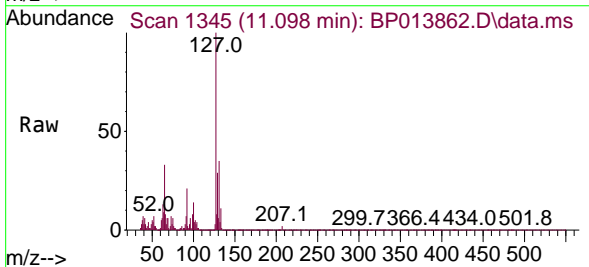
Manual Integrations
 APPROVED

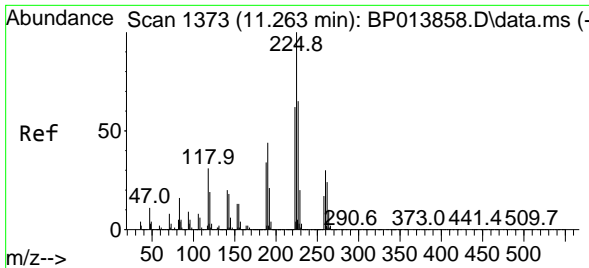
Reviewed By :Jagrut Upadhyay 02/22/2023
 Supervised By :mohammad ahmed 02/22/2023



#32
 4-Chloroaniline
 Concen: 4.016 ng/u1
 RT: 11.098 min Scan# 1345
 Delta R.T. 0.012 min
 Lab File: BP013862.D
 Acq: 21 Feb 2023 12:03

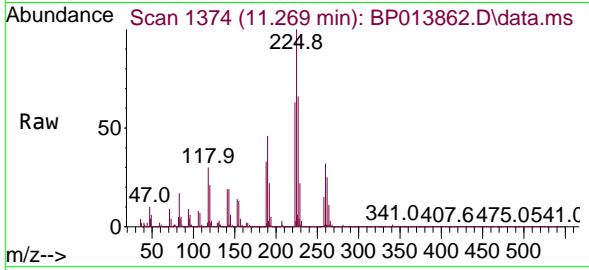
Tgt Ion:127 Resp: 85468
 Ion Ratio Lower Upper
 127 100
 129 28.9 26.2 39.4





#33
 Hexachlorobutadiene
 Concen: 4.840 ng/u1
 RT: 11.269 min Scan# 1373
 Delta R.T. 0.006 min
 Lab File: BP013862.D
 Acq: 21 Feb 2023 12:03

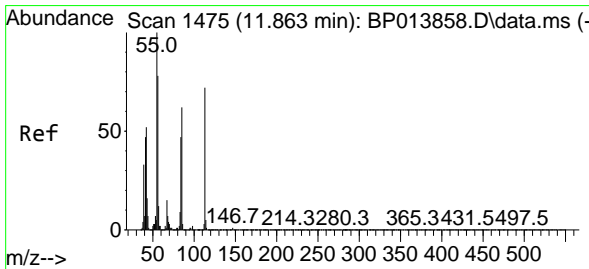
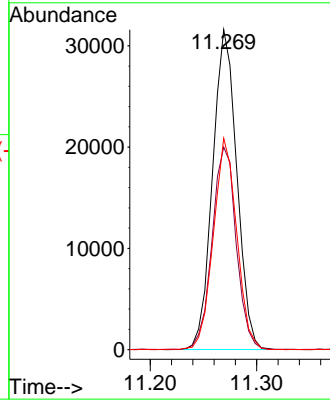
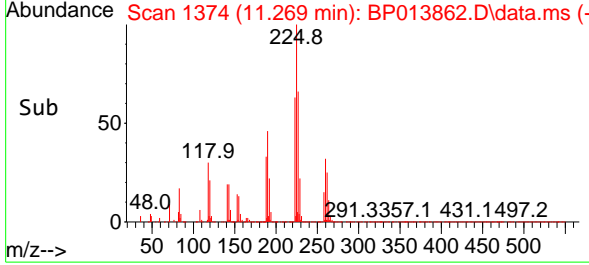
Instrument : BNA_P
 Client Sample Id : MDL-SOIL-QT1-2023-01



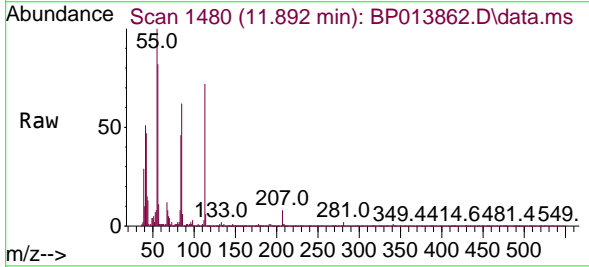
Tgt Ion: 225 Resp: 4998
 Ion Ratio Lower Upper
 225 100
 223 63.3 50.6 76.0
 227 66.0 49.0 73.4

Manual Integrations
APPROVED

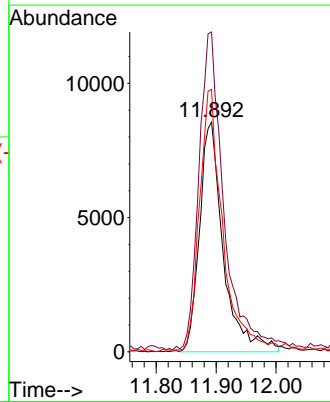
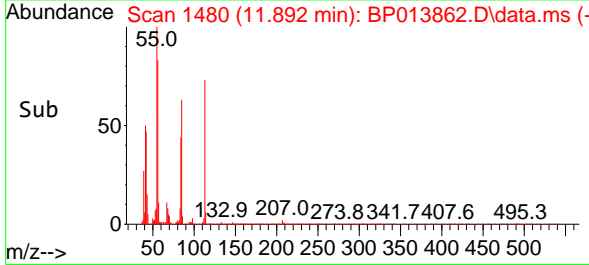
Reviewed By : Jagrut Upadhyay 02/22/2023
 Supervised By : mohammad ahmed 02/22/2023

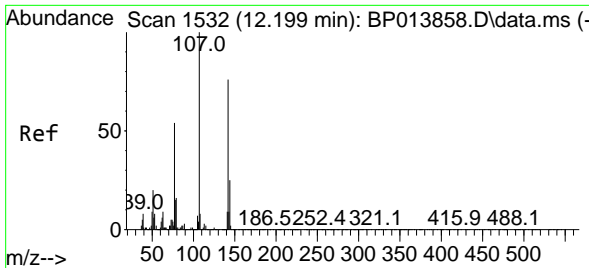


#34
 Caprolactam
 Concen: 4.561 ng/u1 m
 RT: 11.892 min Scan# 1480
 Delta R.T. 0.029 min
 Lab File: BP013862.D
 Acq: 21 Feb 2023 12:03



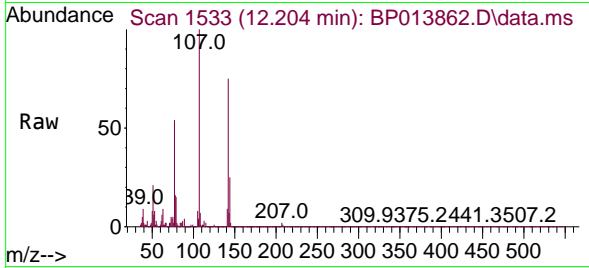
Tgt Ion: 113 Resp: 23465
 Ion Ratio Lower Upper
 113 100
 55 139.2 120.9 181.3
 56 114.2 93.8 140.8





#35
 4-Chloro-3-methylphenol
 Concen: 4.027 ng/ul
 RT: 12.204 min Scan# 1533
 Delta R.T. 0.006 min
 Lab File: BP013862.D
 Acq: 21 Feb 2023 12:03

Instrument : BNA_P
 ClientSampleId : MDL-SOIL-QT1-2023-01

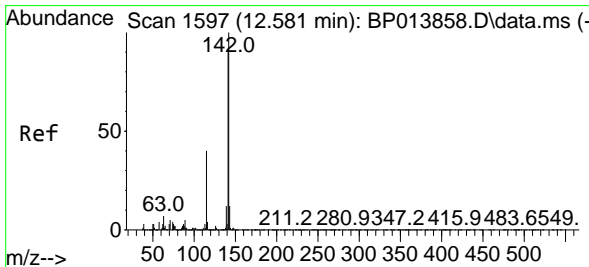
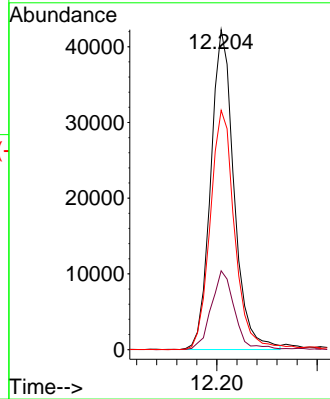
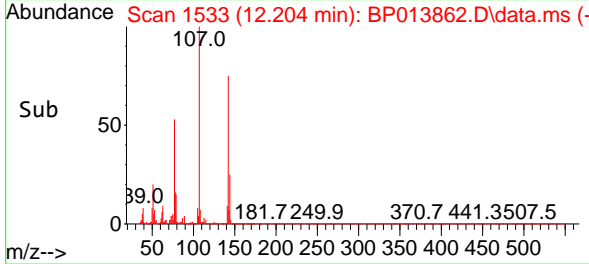


Tgt Ion:107 Resp: 68159

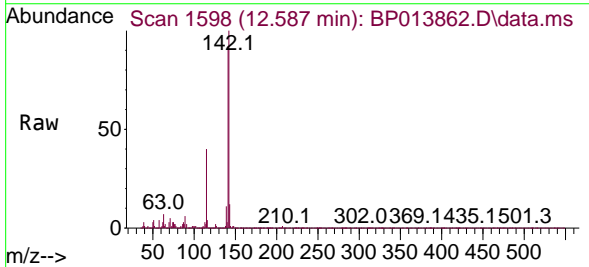
Ion	Ratio	Lower	Upper
107	100		
144	24.6	20.0	30.0
142	74.8	62.1	93.1

Manual Integrations
APPROVED

Reviewed By :Jagrut Upadhyay 02/22/2023
 Supervised By :mohammad ahmed 02/22/2023

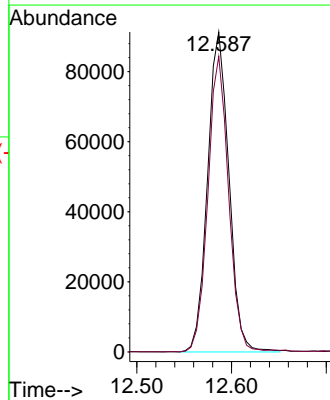
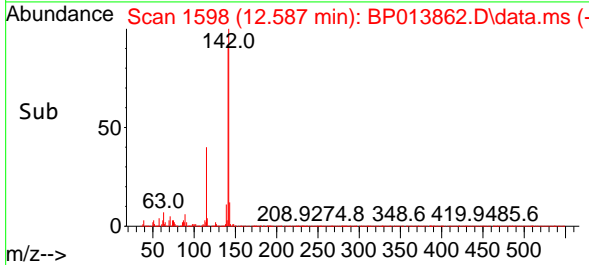


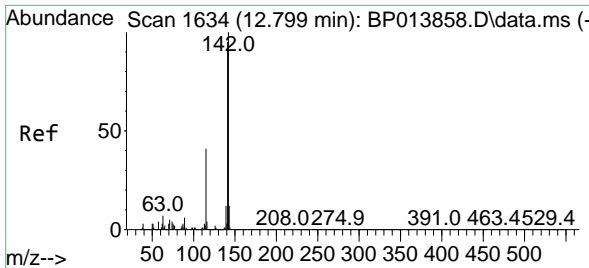
#36
 2-Methylnaphthalene
 Concen: 4.209 ng/ul
 RT: 12.587 min Scan# 1598
 Delta R.T. 0.006 min
 Lab File: BP013862.D
 Acq: 21 Feb 2023 12:03



Tgt Ion:142 Resp: 143292

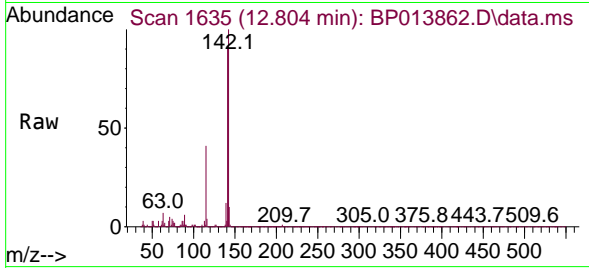
Ion	Ratio	Lower	Upper
142	100		
141	92.3	72.8	109.2





#37
 1-Methylnaphthalene
 Concen: 3.808 ng/ul
 RT: 12.804 min Scan# 1635
 Delta R.T. 0.006 min
 Lab File: BP013862.D
 Acq: 21 Feb 2023 12:03

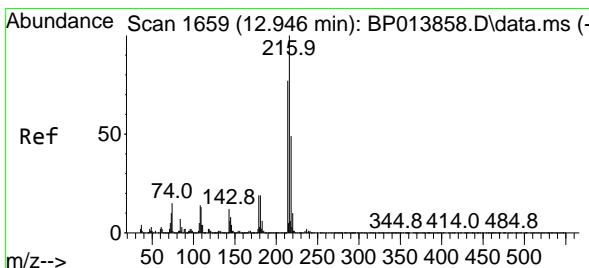
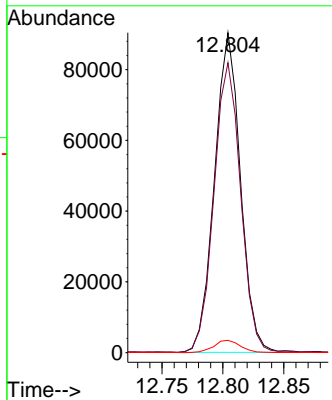
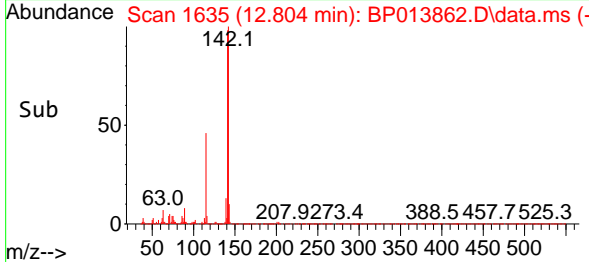
Instrument : BNA_P
 Client Sample Id : MDL-SOIL-QT1-2023-01



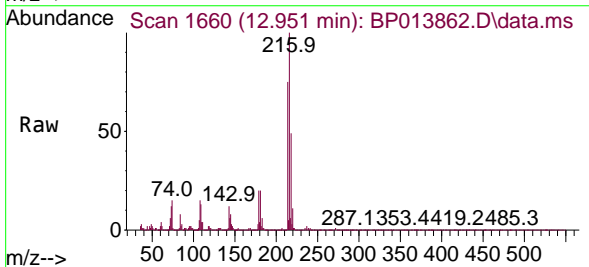
Tgt Ion:142 Resp: 133954
 Ion Ratio Lower Upper
 142 100
 141 90.6 74.2 111.2
 116 3.8 3.1 4.7

Manual Integrations
 APPROVED

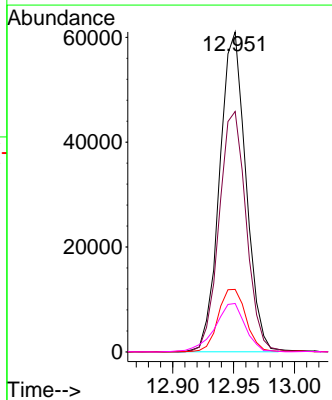
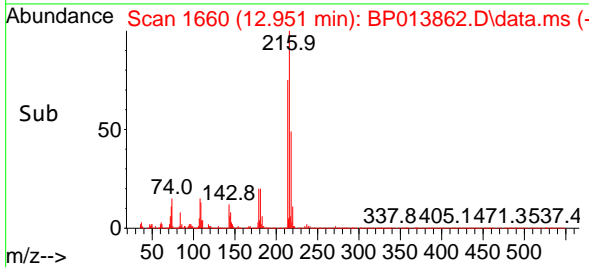
Reviewed By :Jagrut Upadhyay 02/22/2023
 Supervised By :mohammad ahmed 02/22/2023

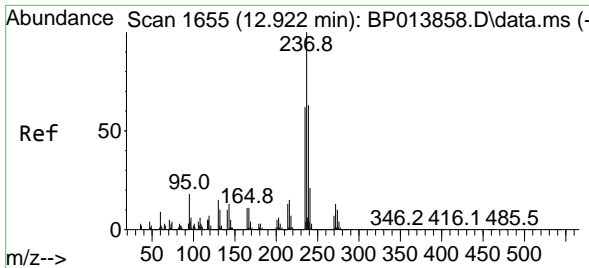


#39
 1,2,4,5-Tetrachlorobenzene
 Concen: 4.673 ng/ul
 RT: 12.951 min Scan# 1660
 Delta R.T. 0.006 min
 Lab File: BP013862.D
 Acq: 21 Feb 2023 12:03



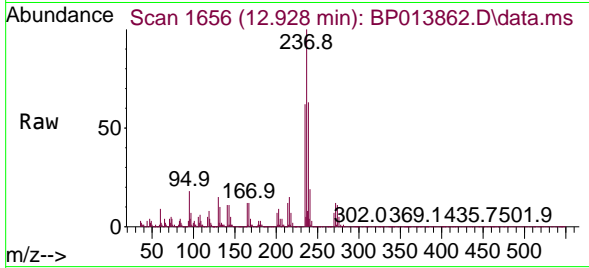
Tgt Ion:216 Resp: 91727
 Ion Ratio Lower Upper
 216 100
 214 75.1 62.6 93.8
 179 19.5 15.4 23.2
 108 15.1 12.7 19.1





#40
 Hexachlorocyclopentadiene
 Concen: 4.455 ng/u1
 RT: 12.928 min Scan# 1655
 Delta R.T. 0.006 min
 Lab File: BP013862.D
 Acq: 21 Feb 2023 12:03

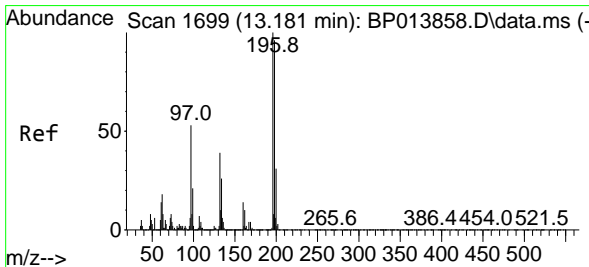
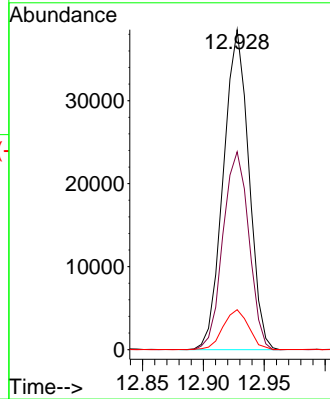
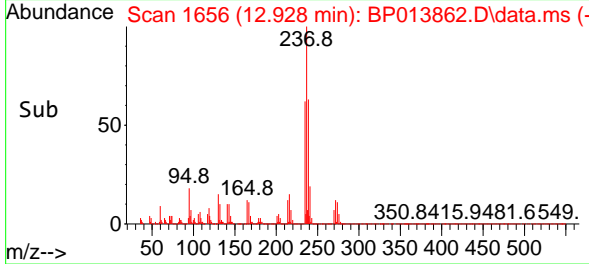
Instrument : BNA_P
 Client Sample Id : MDL-SOIL-QT1-2023-01



Tgt Ion: 237 Resp: 5615
 Ion Ratio Lower Upper
 237 100
 235 61.8 49.8 74.8
 272 12.5 10.1 15.1

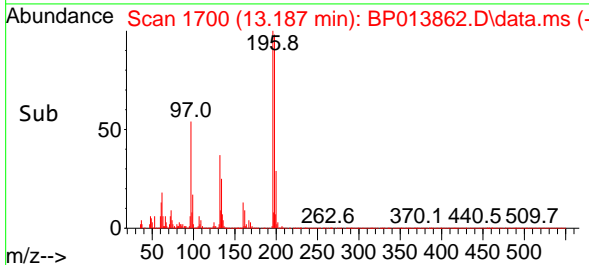
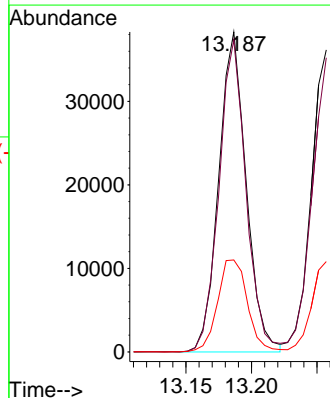
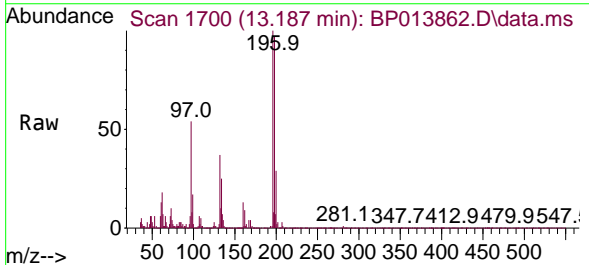
Manual Integrations
APPROVED

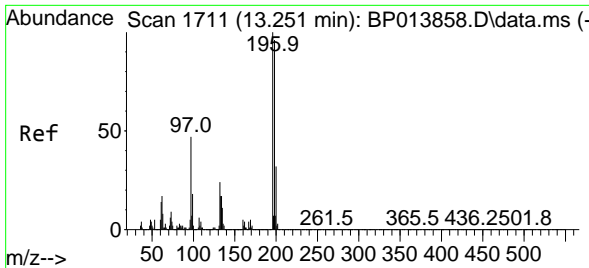
Reviewed By : Jagrut Upadhyay 02/22/2023
 Supervised By : mohammad ahmed 02/22/2023



#41
 2,4,6-Trichlorophenol
 Concen: 4.325 ng/u1
 RT: 13.187 min Scan# 1700
 Delta R.T. 0.006 min
 Lab File: BP013862.D
 Acq: 21 Feb 2023 12:03

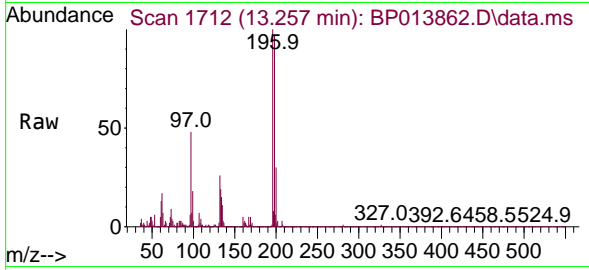
Tgt Ion: 196 Resp: 55718
 Ion Ratio Lower Upper
 196 100
 198 97.5 75.1 112.7
 200 28.7 24.3 36.5





#42
 2,4,5-Trichlorophenol
 Concen: 4.244 ng/ul
 RT: 13.257 min Scan# 1711
 Delta R.T. 0.006 min
 Lab File: BP013862.D
 Acq: 21 Feb 2023 12:03

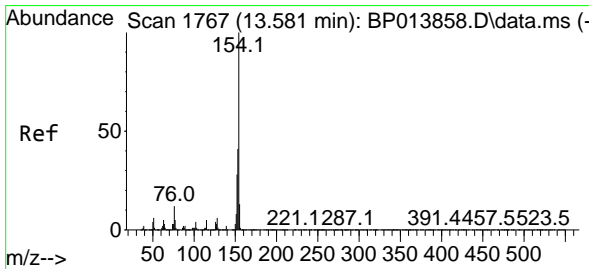
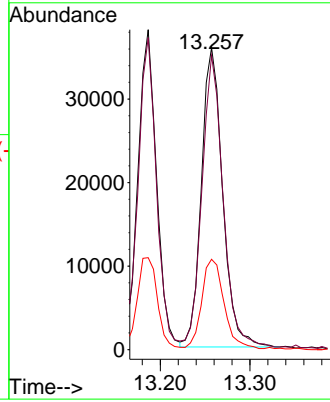
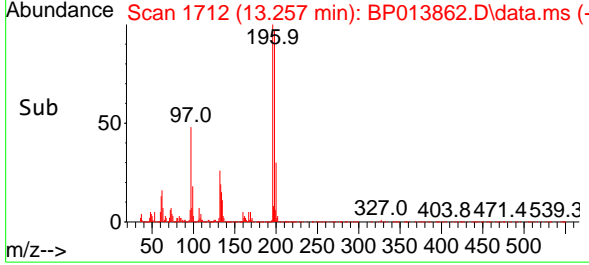
Instrument : BNA_P
 ClientSampleId : MDL-SOIL-QT1-2023-01



Tgt Ion:196 Resp: 59172
 Ion Ratio Lower Upper
 196 100
 198 97.4 77.0 115.4
 200 29.9 25.8 38.6

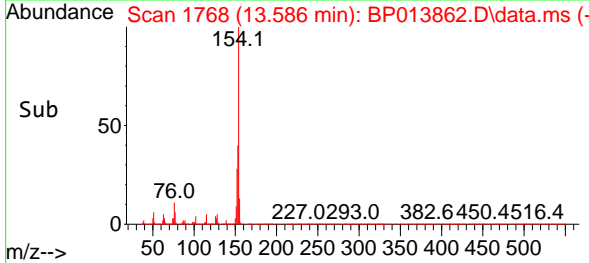
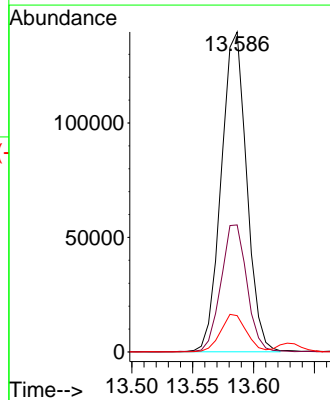
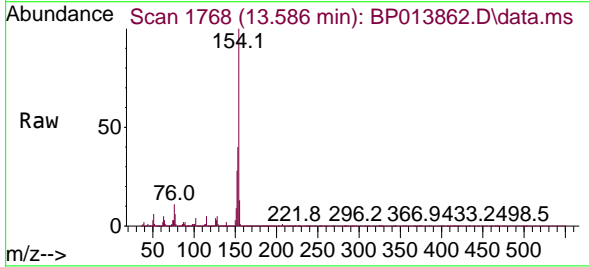
Manual Integrations
APPROVED

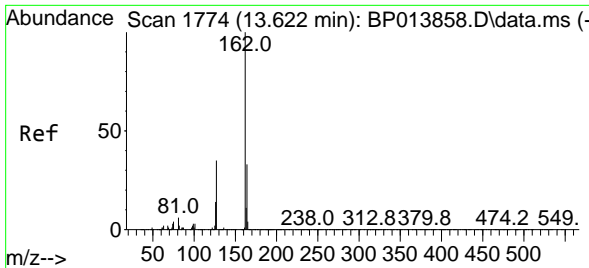
Reviewed By :Jagrut Upadhyay 02/22/2023
 Supervised By :mohammad ahmed 02/22/2023



#43
 1,1'-Biphenyl
 Concen: 4.346 ng/ul
 RT: 13.586 min Scan# 1768
 Delta R.T. 0.006 min
 Lab File: BP013862.D
 Acq: 21 Feb 2023 12:03

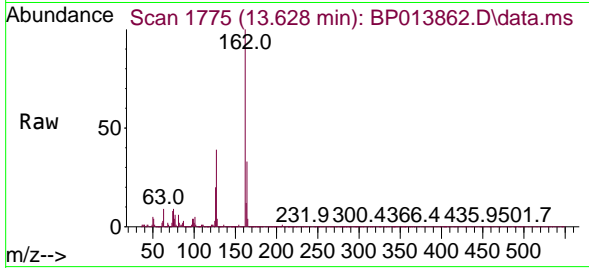
Tgt Ion:154 Resp: 203154
 Ion Ratio Lower Upper
 154 100
 153 39.7 31.9 47.9
 76 11.3 9.9 14.9





#44
 2-Chloronaphthalene
 Concen: 4.318 ng/ul
 RT: 13.628 min Scan# 1110
 Delta R.T. 0.006 min
 Lab File: BP013862.D
 Acq: 21 Feb 2023 12:03

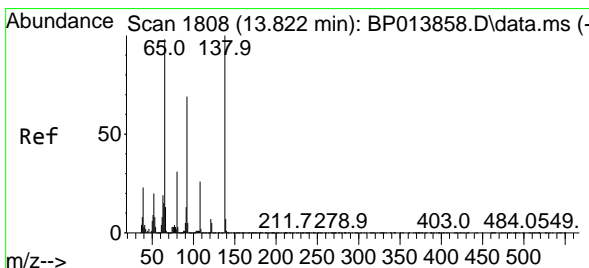
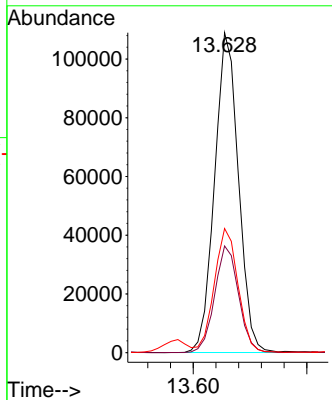
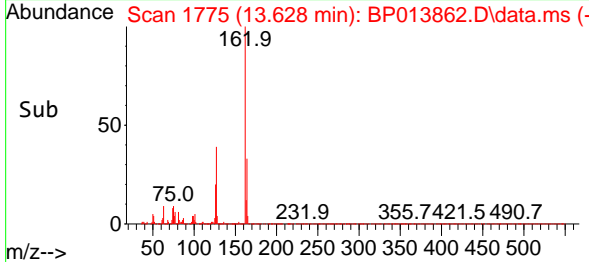
Instrument : BNA_P
 ClientSampleId : MDL-SOIL-QT1-2023-01



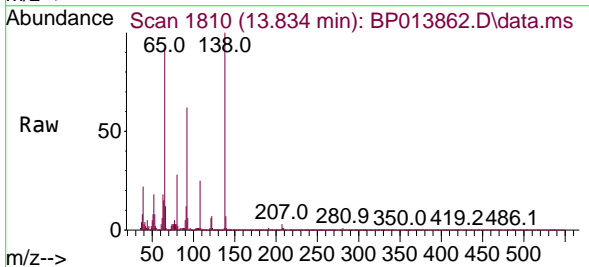
Tgt Ion: 162 Resp: 15878
 Ion Ratio Lower Upper
 162 100
 164 33.3 26.1 39.1
 127 38.8 31.1 46.7

Manual Integrations
 APPROVED

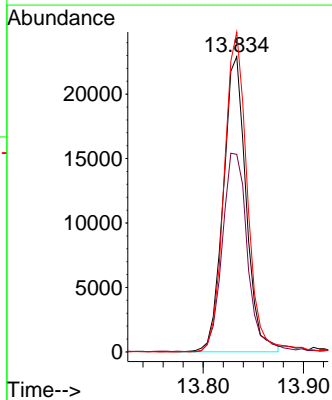
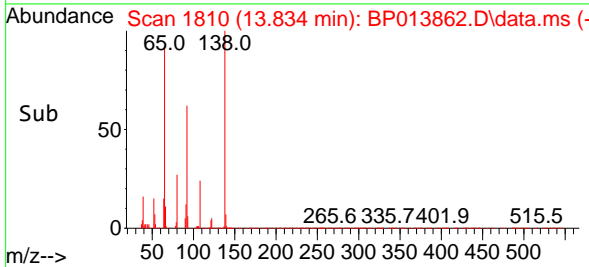
Reviewed By :Jagrut Upadhyay 02/22/2023
 Supervised By :mohammad ahmed 02/22/2023

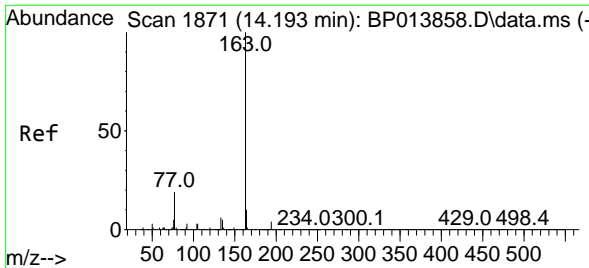


#45
 2-Nitroaniline
 Concen: 4.088 ng/ul
 RT: 13.834 min Scan# 1810
 Delta R.T. 0.012 min
 Lab File: BP013862.D
 Acq: 21 Feb 2023 12:03



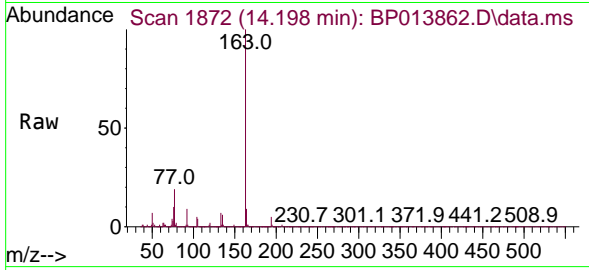
Tgt Ion: 65 Resp: 36209
 Ion Ratio Lower Upper
 65 100
 92 66.9 58.6 88.0
 138 108.3 81.2 121.8





#47
 Dimethylphthalate
 Concen: 4.288 ng/ul
 RT: 14.198 min Scan# 1872
 Delta R.T. 0.006 min
 Lab File: BP013862.D
 Acq: 21 Feb 2023 12:03

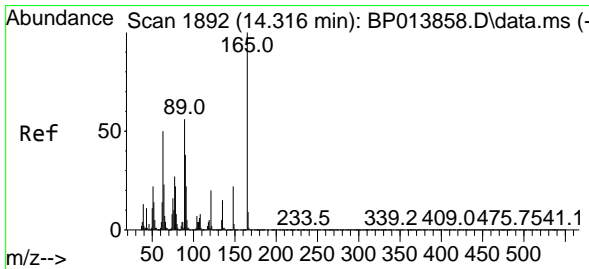
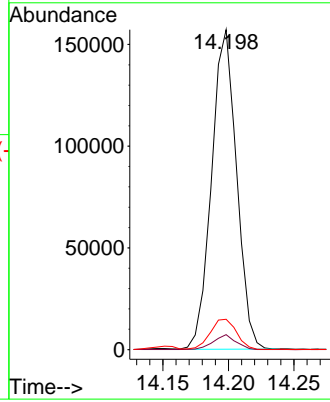
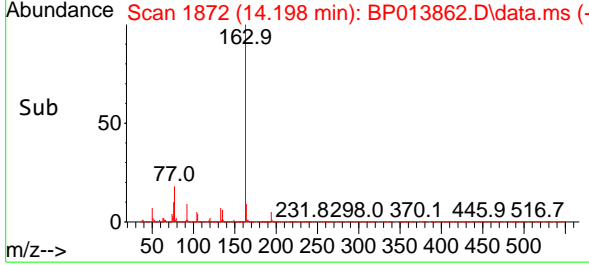
Instrument : BNA_P
 Client Sample Id : MDL-SOIL-QT1-2023-01



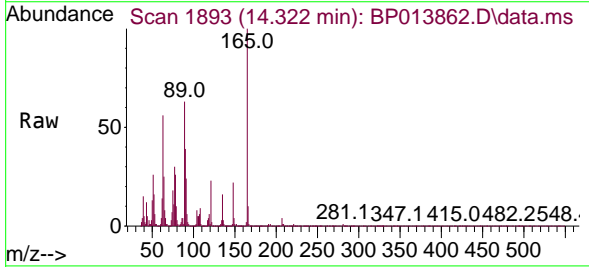
Tgt Ion:163 Resp: 208664
 Ion Ratio Lower Upper
 163 100
 194 4.7 3.4 5.2
 164 9.5 7.8 11.8

Manual Integrations
 APPROVED

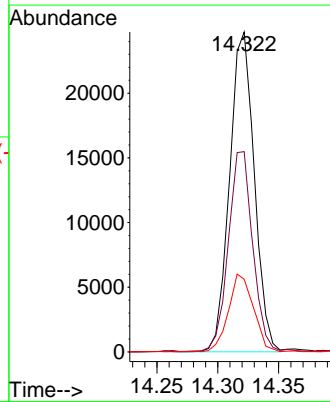
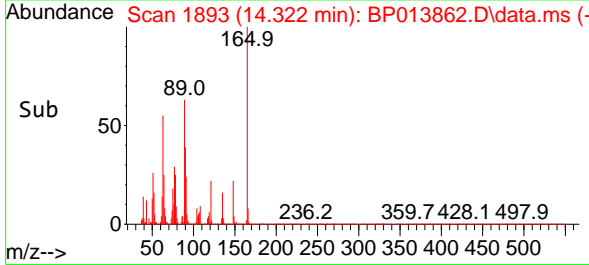
Reviewed By :Jagrut Upadhyay 02/22/2023
 Supervised By :mohammad ahmed 02/22/2023

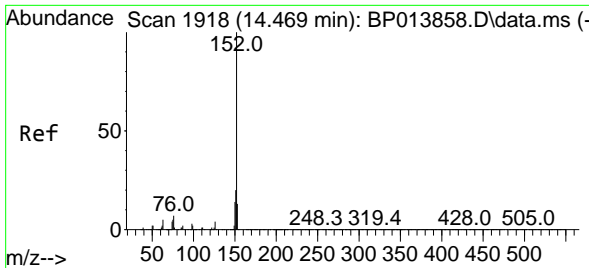


#48
 2,6-Dinitrotoluene
 Concen: 4.103 ng/ul
 RT: 14.322 min Scan# 1893
 Delta R.T. 0.006 min
 Lab File: BP013862.D
 Acq: 21 Feb 2023 12:03



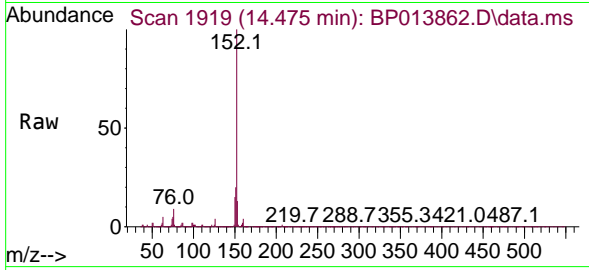
Tgt Ion:165 Resp: 34886
 Ion Ratio Lower Upper
 165 100
 89 62.6 47.5 71.3
 121 22.7 16.6 24.8





#50
 Acenaphthylene
 Concen: 4.229 ng/u1
 RT: 14.475 min Scan# 1918
 Delta R.T. 0.006 min
 Lab File: BP013862.D
 Acq: 21 Feb 2023 12:03

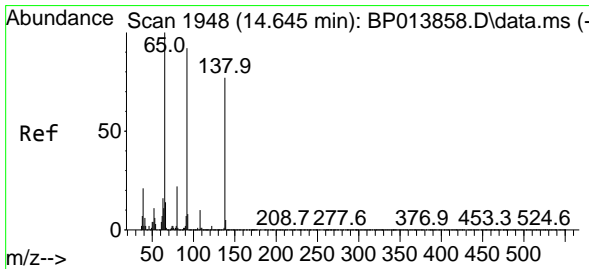
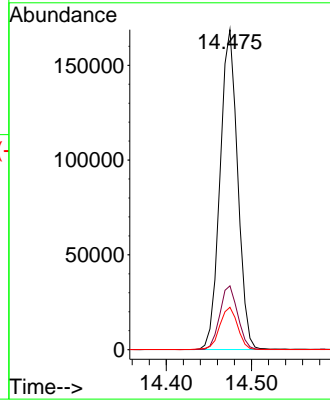
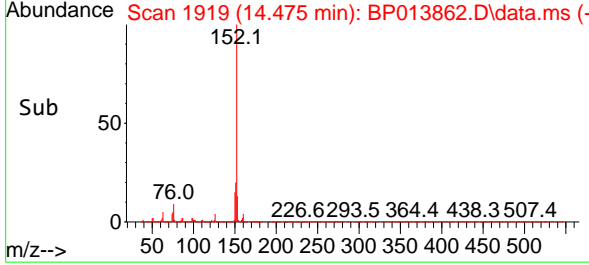
Instrument :
 BNA_P
 ClientSampleId :
 MDL-SOIL-QT1-2023-01



Tgt Ion:152 Resp: 242280
 Ion Ratio Lower Upper
 152 100
 151 19.9 15.8 23.6
 153 13.2 10.4 15.6

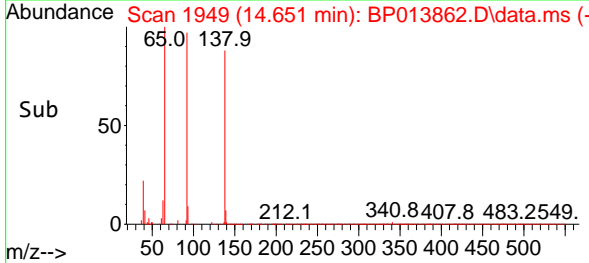
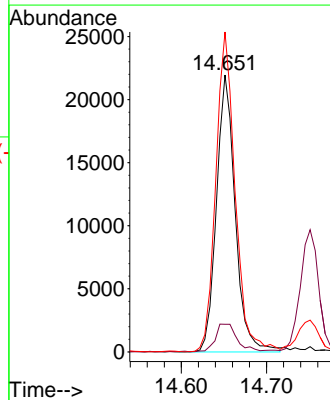
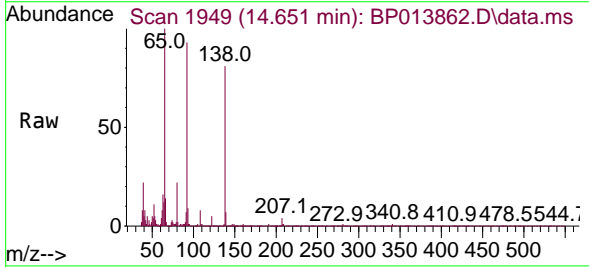
Manual Integrations
 APPROVED

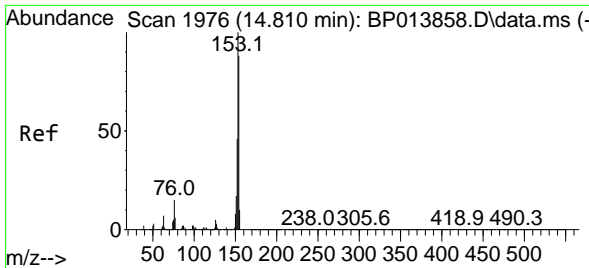
Reviewed By :Jagrut Upadhyay 02/22/2023
 Supervised By :mohammad ahmed 02/22/2023



#51
 3-Nitroaniline
 Concen: 3.999 ng/u1
 RT: 14.651 min Scan# 1949
 Delta R.T. 0.006 min
 Lab File: BP013862.D
 Acq: 21 Feb 2023 12:03

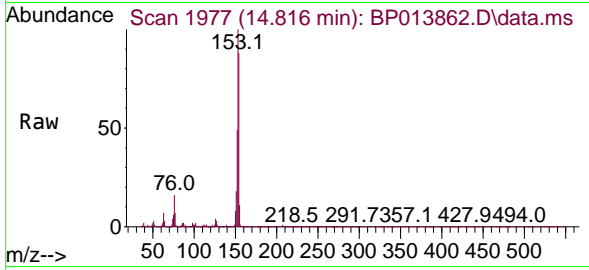
Tgt Ion:138 Resp: 33614
 Ion Ratio Lower Upper
 138 100
 108 10.0 9.4 14.2
 92 115.6 97.4 146.0





#52
 Acenaphthene
 Concen: 4.258 ng/u1
 RT: 14.816 min Scan# 1977
 Delta R.T. 0.006 min
 Lab File: BP013862.D
 Acq: 21 Feb 2023 12:03

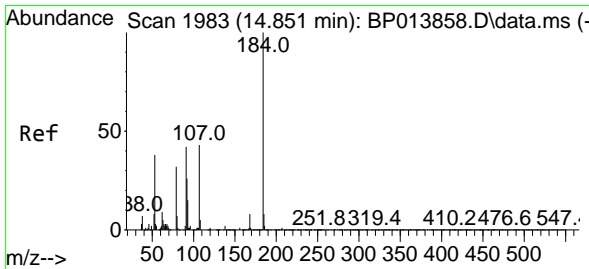
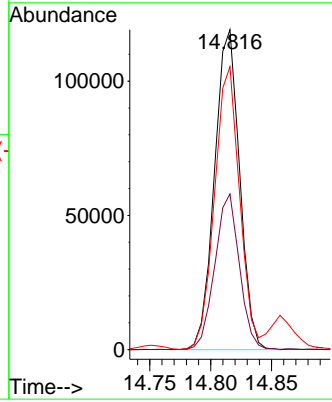
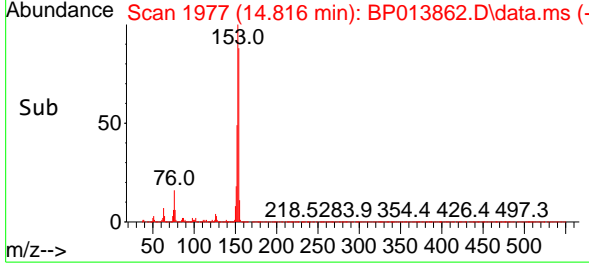
Instrument :
 BNA_P
 Client Sample Id :
 MDL-SOIL-QT1-2023-01



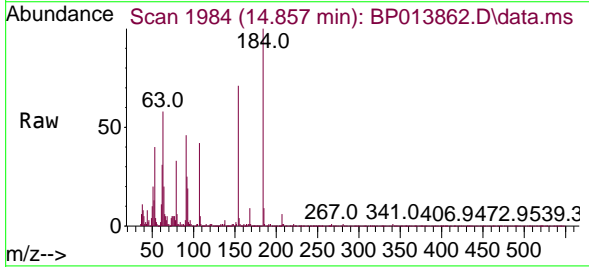
Tgt Ion:153 Resp: 170774
 Ion Ratio Lower Upper
 153 100
 152 48.7 37.4 56.0
 154 88.4 70.1 105.1

Manual Integrations
 APPROVED

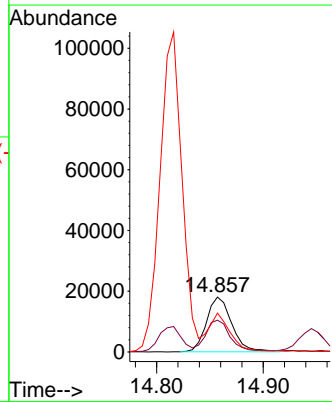
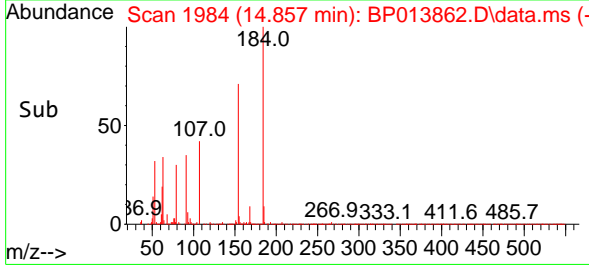
Reviewed By :Jagrut Upadhyay 02/22/2023
 Supervised By :mohammad ahmed 02/22/2023

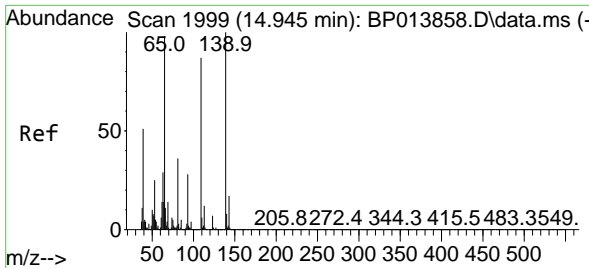


#53
 2,4-Dinitrophenol
 Concen: 4.931 ng/u1
 RT: 14.857 min Scan# 1984
 Delta R.T. 0.006 min
 Lab File: BP013862.D
 Acq: 21 Feb 2023 12:03



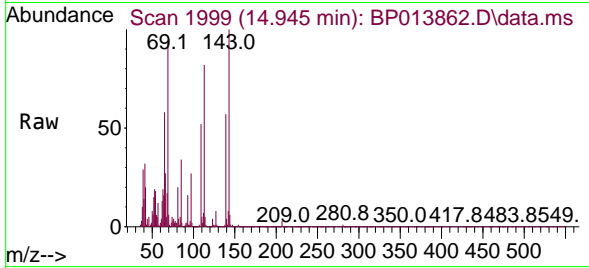
Tgt Ion:184 Resp: 29900
 Ion Ratio Lower Upper
 184 100
 63 58.0 49.5 74.3
 154 70.7 54.3 81.5





#55
 4-Nitrophenol
 Concen: 4.013 ng/uI
 RT: 14.945 min Scan# 1999
 Delta R.T. -0.000 min
 Lab File: BP013862.D
 Acq: 21 Feb 2023 12:03

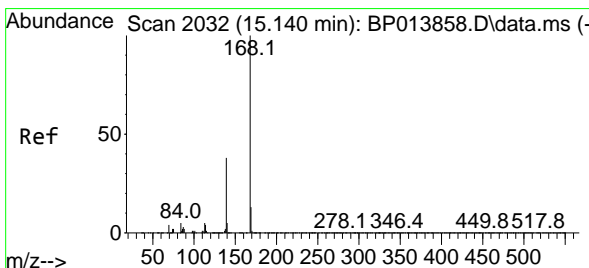
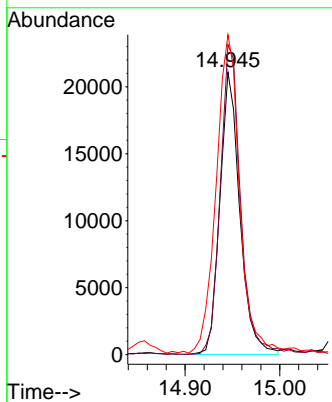
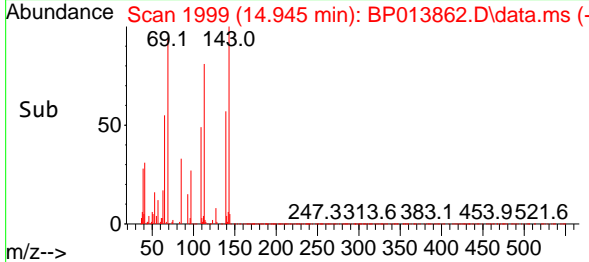
Instrument :
 BNA_P
 ClientSampleId :
 MDL-SOIL-QT1-2023-01



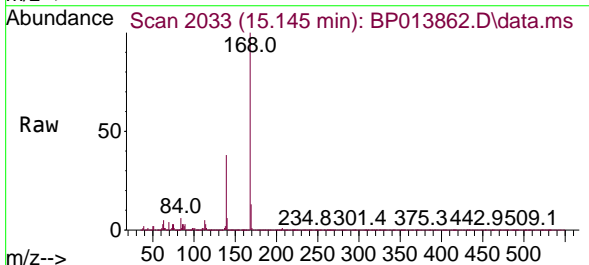
Tgt Ion:109 Resp: 30780
 Ion Ratio Lower Upper
 109 100
 139 109.8 96.0 144.0
 65 113.4 95.8 143.6

Manual Integrations
 APPROVED

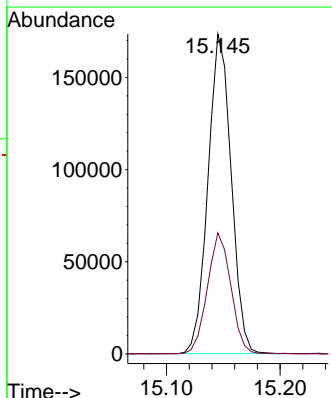
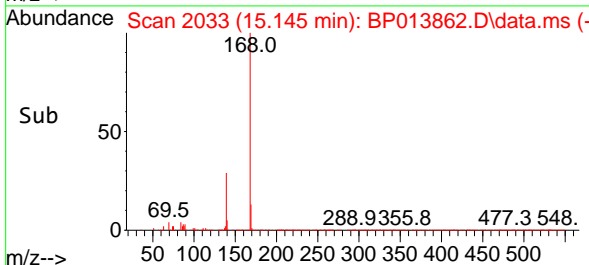
Reviewed By :Jagrut Upadhyay 02/22/2023
 Supervised By :mohammad ahmed 02/22/2023

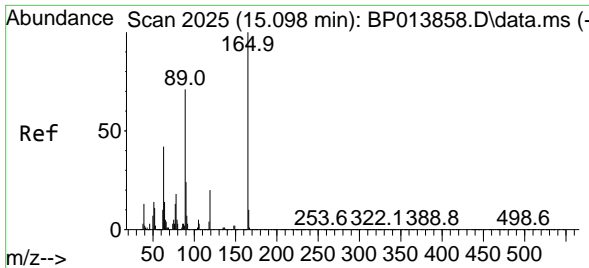


#56
 Dibenzofuran
 Concen: 4.288 ng/uI
 RT: 15.145 min Scan# 2033
 Delta R.T. 0.006 min
 Lab File: BP013862.D
 Acq: 21 Feb 2023 12:03



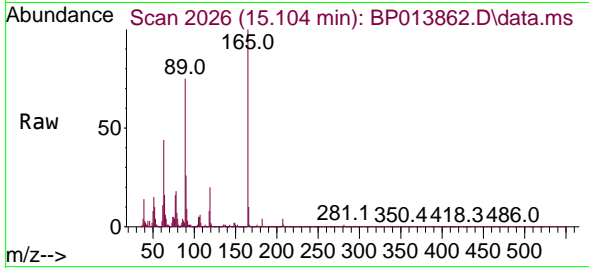
Tgt Ion:168 Resp: 246526
 Ion Ratio Lower Upper
 168 100
 139 37.8 29.6 44.4





#57
 2,4-Dinitrotoluene
 Concen: 4.229 ng/ul
 RT: 15.104 min Scan# 2025
 Delta R.T. 0.006 min
 Lab File: BP013862.D
 Acq: 21 Feb 2023 12:03

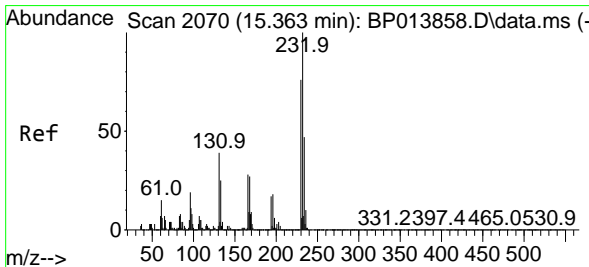
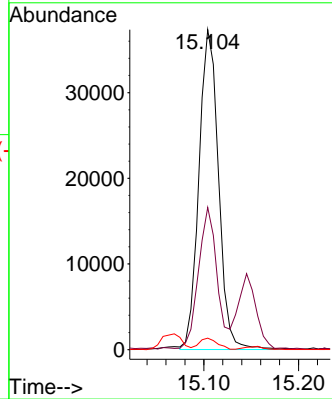
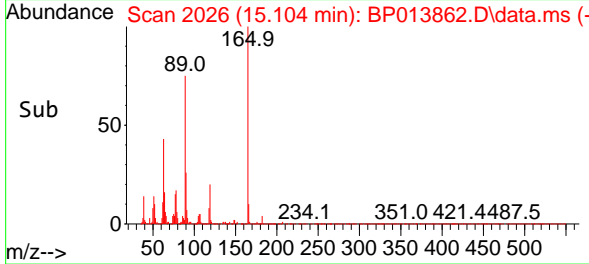
Instrument : BNA_P
 Client Sample Id : MDL-SOIL-QT1-2023-01



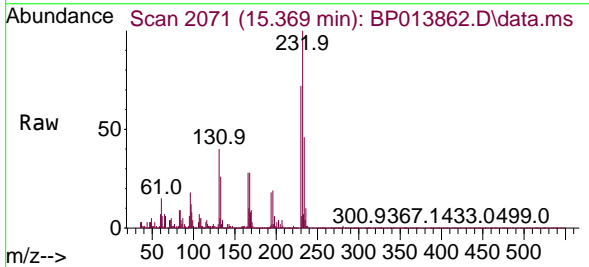
Tgt Ion:165 Resp: 53602
 Ion Ratio Lower Upper
 165 100
 63 44.4 32.0 48.0
 182 3.6 2.4 3.6

Manual Integrations
APPROVED

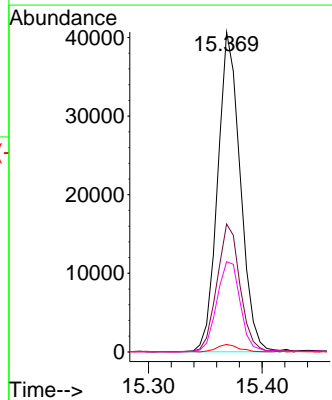
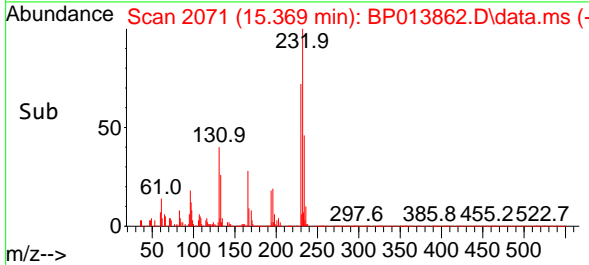
Reviewed By :Jagrut Upadhyay 02/22/2023
 Supervised By :mohammad ahmed 02/22/2023

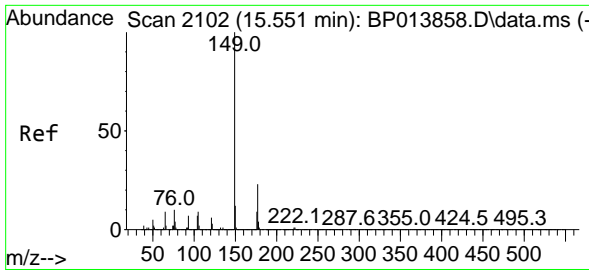


#58
 2,3,4,6-Tetrachlorophenol
 Concen: 4.286 ng/ul
 RT: 15.369 min Scan# 2071
 Delta R.T. 0.006 min
 Lab File: BP013862.D
 Acq: 21 Feb 2023 12:03



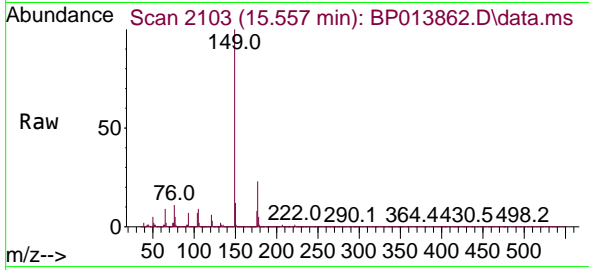
Tgt Ion:232 Resp: 56327
 Ion Ratio Lower Upper
 232 100
 131 40.0 33.0 49.6
 130 2.3 1.5 2.3#
 166 28.2 22.6 33.8





#59
 Diethylphthalate
 Concen: 4.230 ng/u1
 RT: 15.557 min Scan# 2103
 Delta R.T. 0.006 min
 Lab File: BP013862.D
 Acq: 21 Feb 2023 12:03

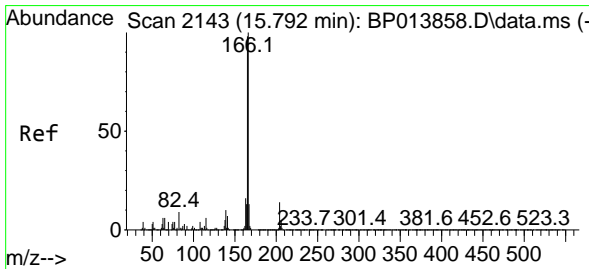
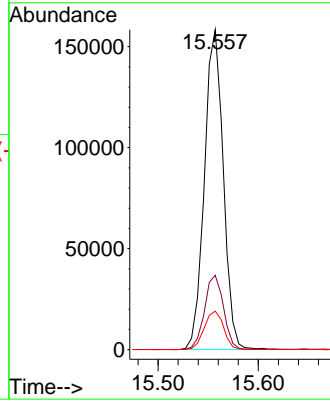
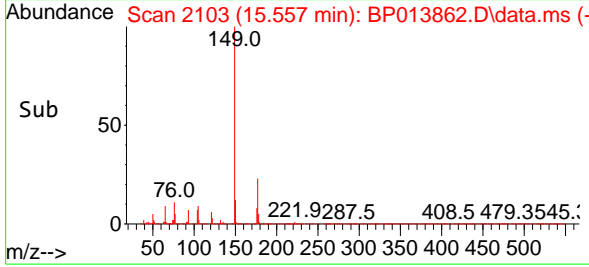
Instrument :
 BNA_P
 ClientSampleId :
 MDL-SOIL-QT1-2023-01



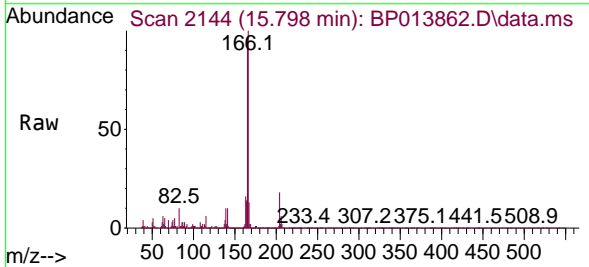
Tgt Ion:149 Resp: 206722
 Ion Ratio Lower Upper
 149 100
 177 23.2 17.8 26.8
 150 12.0 10.1 15.1

Manual Integrations
 APPROVED

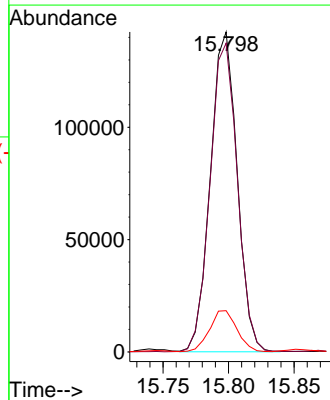
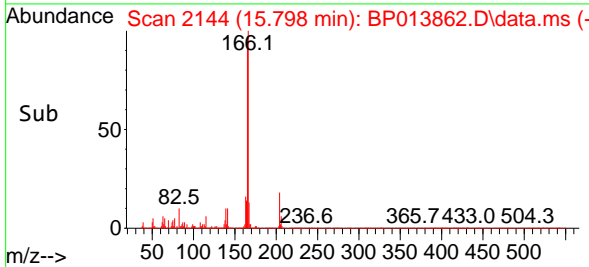
Reviewed By :Jagrut Upadhyay 02/22/2023
 Supervised By :mohammad ahmed 02/22/2023

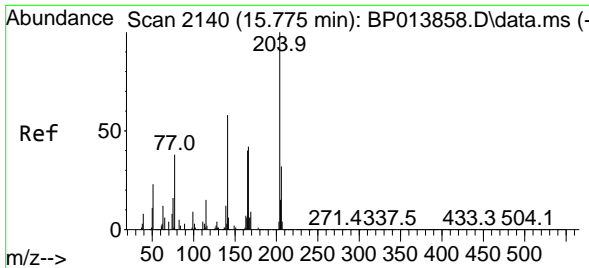


#61
 Fluorene
 Concen: 4.324 ng/u1
 RT: 15.798 min Scan# 2144
 Delta R.T. 0.006 min
 Lab File: BP013862.D
 Acq: 21 Feb 2023 12:03



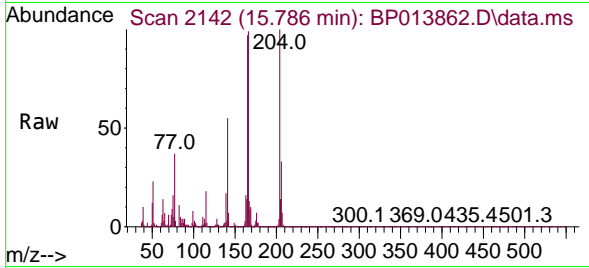
Tgt Ion:166 Resp: 202807
 Ion Ratio Lower Upper
 166 100
 165 96.5 79.1 118.7
 167 12.9 10.8 16.2





#62
 4-Chlorophenyl-phenylether
 Concen: 4.450 ng/ul
 RT: 15.786 min Scan# 2142
 Delta R.T. 0.012 min
 Lab File: BP013862.D
 Acq: 21 Feb 2023 12:03

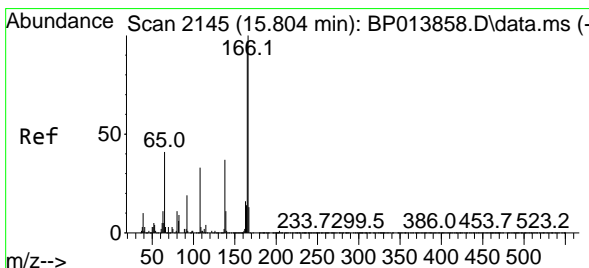
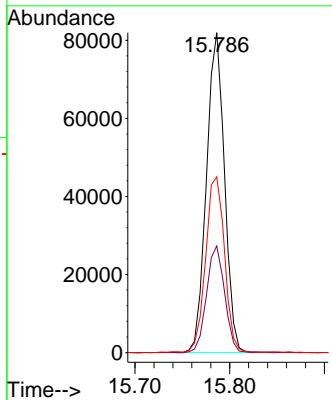
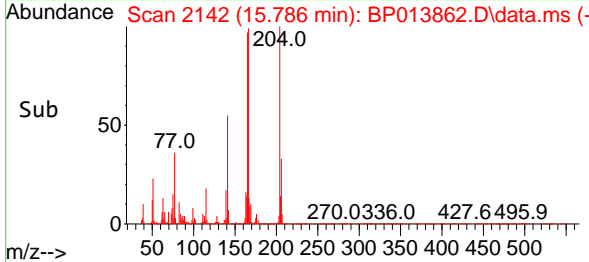
Instrument : BNA_P
 ClientSampleId : MDL-SOIL-QT1-2023-01



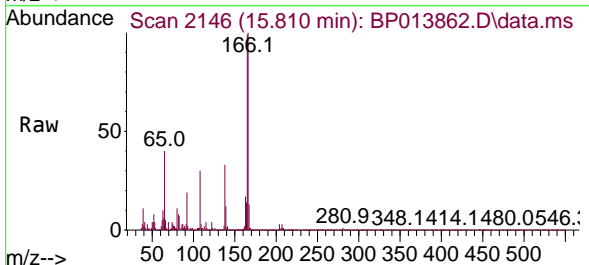
Tgt Ion:204 Resp: 108529
 Ion Ratio Lower Upper
 204 100
 206 33.3 26.7 40.1
 141 54.9 44.6 66.8

Manual Integrations
 APPROVED

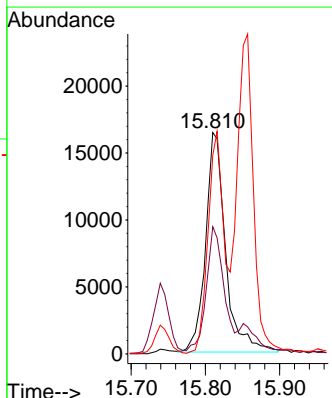
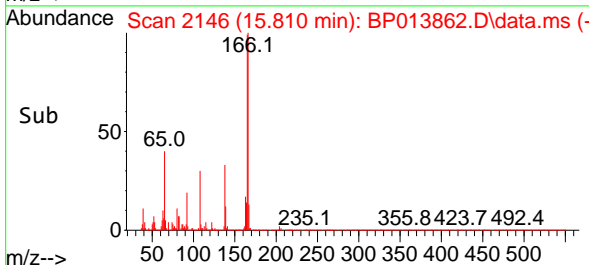
Reviewed By :Jagrut Upadhyay 02/22/2023
 Supervised By :mohammad ahmed 02/22/2023

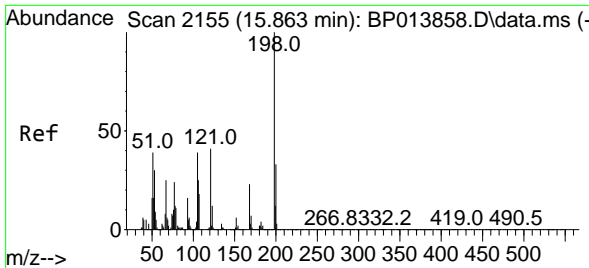


#63
 4-Nitroaniline
 Concen: 3.875 ng/ul m
 RT: 15.810 min Scan# 2146
 Delta R.T. 0.006 min
 Lab File: BP013862.D
 Acq: 21 Feb 2023 12:03



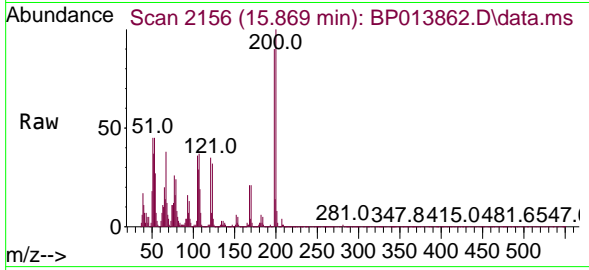
Tgt Ion:138 Resp: 30848
 Ion Ratio Lower Upper
 138 100
 92 57.4 43.8 65.8
 108 89.5 69.8 104.6





#66
 4,6-Dinitro-2-methylphenol
 Concen: 5.122 ng/ul
 RT: 15.869 min Scan# 2155
 Delta R.T. 0.006 min
 Lab File: BP013862.D
 Acq: 21 Feb 2023 12:03

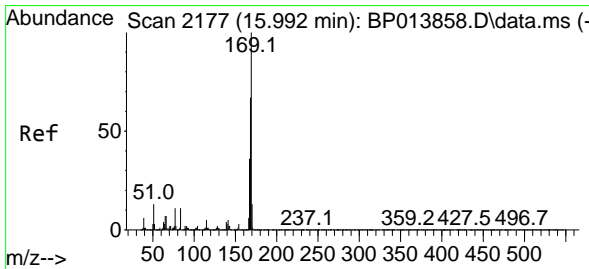
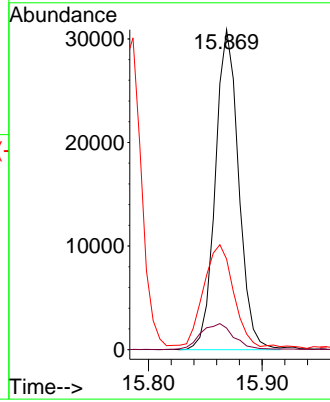
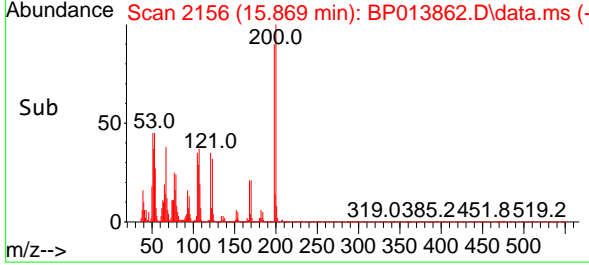
Instrument : BNA_P
 ClientSampleId : MDL-SOIL-QT1-2023-01



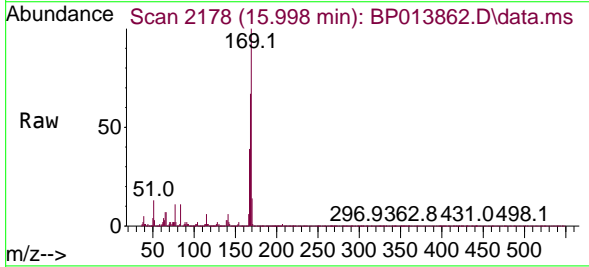
Tgt Ion:198 Resp: 44032
 Ion Ratio Lower Upper
 198 100
 182 6.7 4.1 6.1
 77 28.3 20.3 30.5

Manual Integrations
 APPROVED

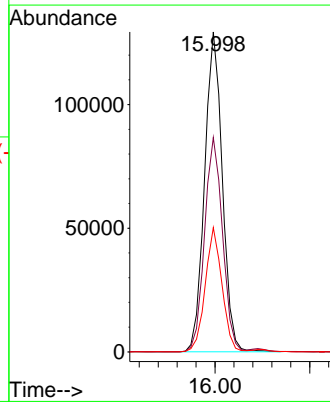
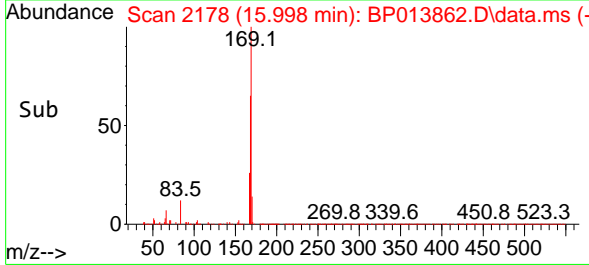
Reviewed By :Jagrut Upadhyay 02/22/2023
 Supervised By :mohammad ahmed 02/22/2023

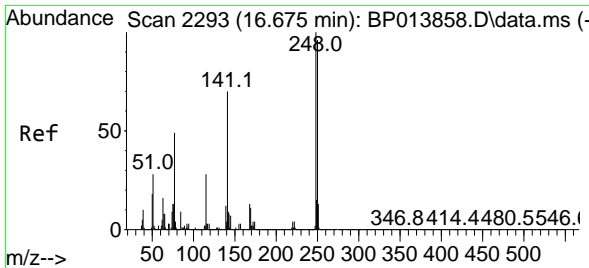


#67
 N-Nitrosodiphenylamine
 Concen: 4.336 ng/ul
 RT: 15.998 min Scan# 2178
 Delta R.T. 0.006 min
 Lab File: BP013862.D
 Acq: 21 Feb 2023 12:03



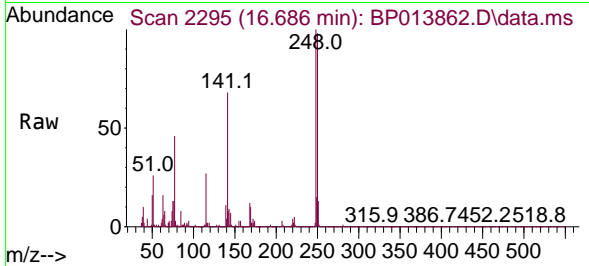
Tgt Ion:169 Resp: 168448
 Ion Ratio Lower Upper
 169 100
 168 67.0 53.5 80.3
 167 38.8 29.8 44.6





#68
 4-Bromophenyl-phenylether
 Concen: 4.611 ng/ul
 RT: 16.686 min Scan# 2115
 Delta R.T. 0.012 min
 Lab File: BP013862.D
 Acq: 21 Feb 2023 12:03

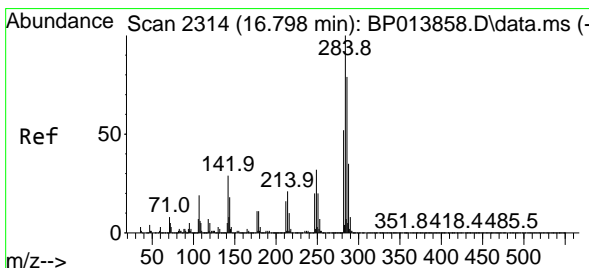
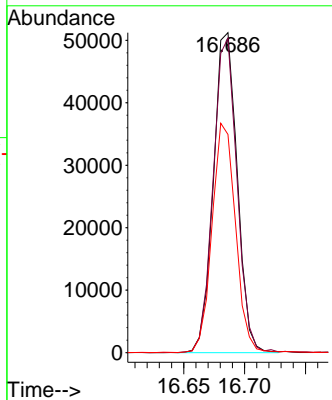
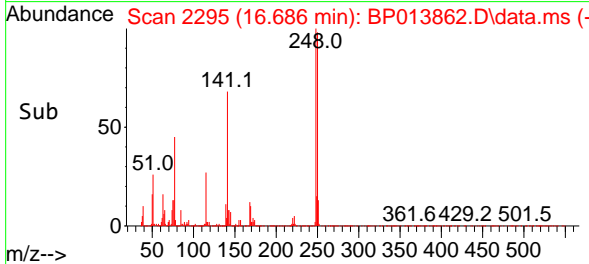
Instrument : BNA_P
 ClientSampleId : MDL-SOIL-QT1-2023-01



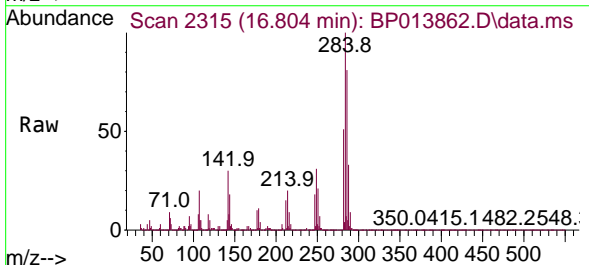
Tgt Ion:248 Resp: 69589
 Ion Ratio Lower Upper
 248 100
 250 98.3 76.0 114.0
 141 68.2 56.0 84.0

Manual Integrations
 APPROVED

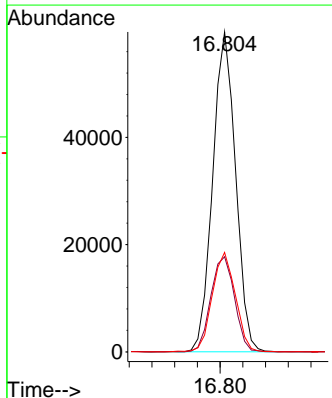
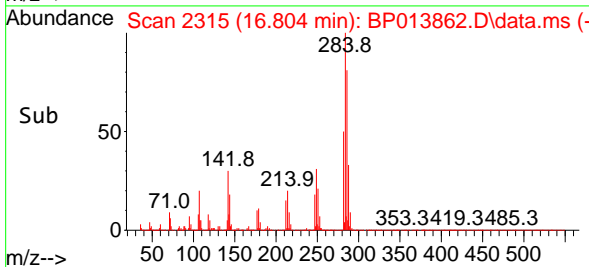
Reviewed By :Jagrut Upadhyay 02/22/2023
 Supervised By :mohammad ahmed 02/22/2023

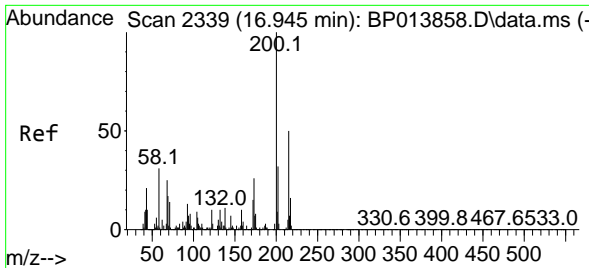


#69
 Hexachlorobenzene
 Concen: 4.743 ng/ul
 RT: 16.804 min Scan# 2315
 Delta R.T. 0.006 min
 Lab File: BP013862.D
 Acq: 21 Feb 2023 12:03



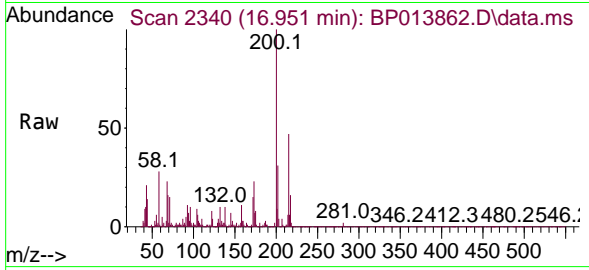
Tgt Ion:284 Resp: 83413
 Ion Ratio Lower Upper
 284 100
 142 29.7 25.0 37.4
 249 31.1 24.9 37.3





#70
 Atrazine
 Concen: 4.770 ng/ul
 RT: 16.951 min Scan# 2339
 Delta R.T. 0.006 min
 Lab File: BP013862.D
 Acq: 21 Feb 2023 12:03

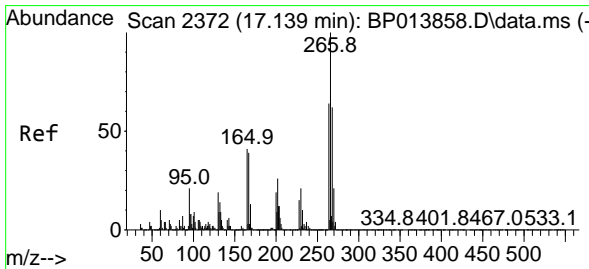
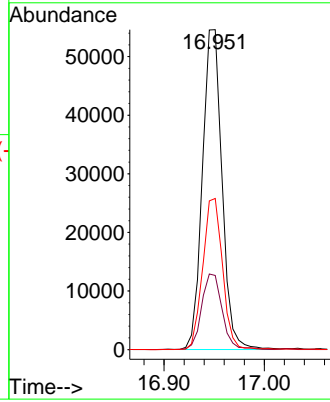
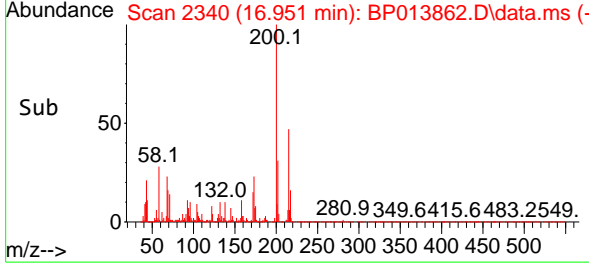
Instrument : BNA_P
 Client Sample Id : MDL-SOIL-QT1-2023-01



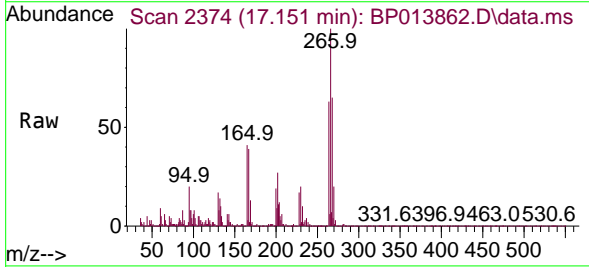
Tgt Ion: 200 Resp: 74104
 Ion Ratio Lower Upper
 200 100
 173 23.2 20.4 30.6
 215 47.2 39.3 58.9

Manual Integrations
 APPROVED

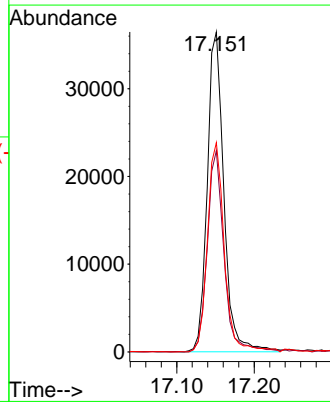
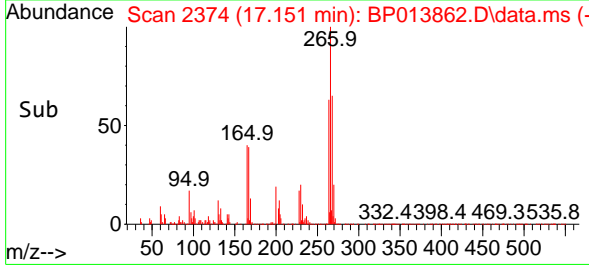
Reviewed By : Jagrut Upadhyay 02/22/2023
 Supervised By : mohammad ahmed 02/22/2023

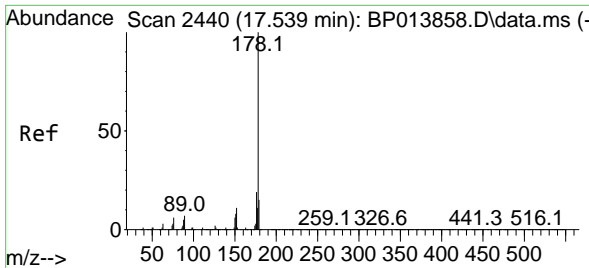


#71
 Pentachlorophenol
 Concen: 4.744 ng/ul
 RT: 17.151 min Scan# 2374
 Delta R.T. 0.012 min
 Lab File: BP013862.D
 Acq: 21 Feb 2023 12:03



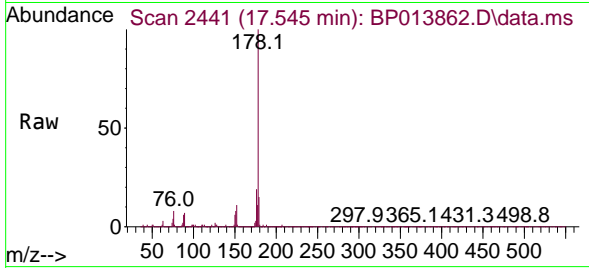
Tgt Ion: 266 Resp: 54291
 Ion Ratio Lower Upper
 266 100
 264 62.9 50.5 75.7
 268 65.4 51.0 76.6





#72
 Phenanthrene
 Concen: 4.313 ng/uI
 RT: 17.545 min Scan# 2441
 Delta R.T. 0.006 min
 Lab File: BP013862.D
 Acq: 21 Feb 2023 12:03

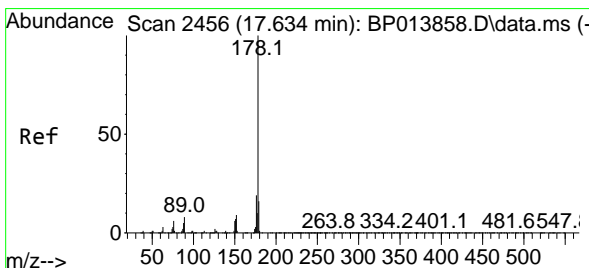
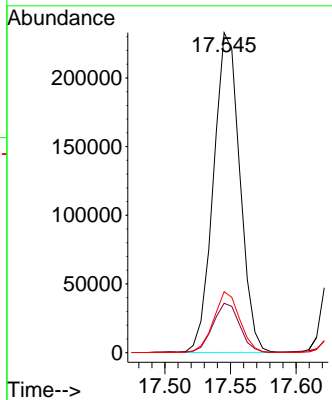
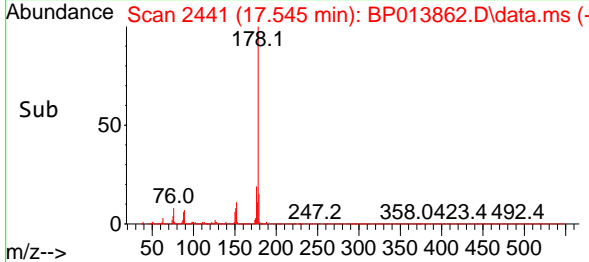
Instrument : BNA_P
 Client Sample Id : MDL-SOIL-QT1-2023-01



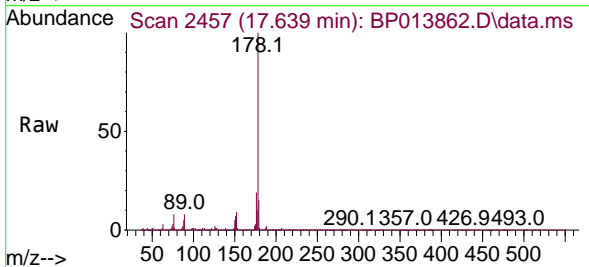
Tgt Ion:178 Resp: 32623
 Ion Ratio Lower Upper
 178 100
 179 15.4 12.2 18.2
 176 19.0 15.2 22.8

Manual Integrations
APPROVED

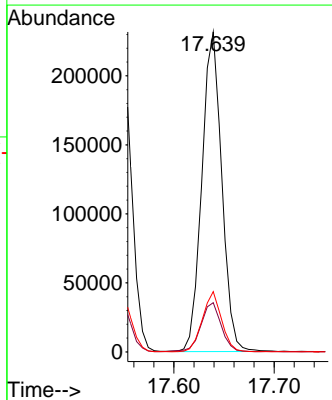
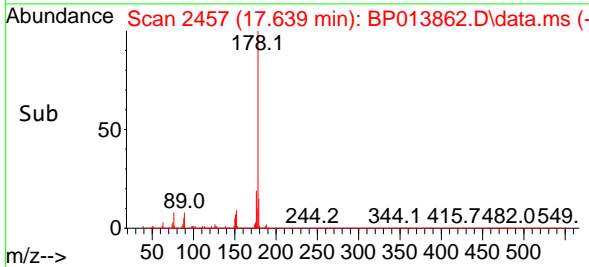
Reviewed By :Jagrut Upadhyay 02/22/2023
 Supervised By :mohammad ahmed 02/22/2023

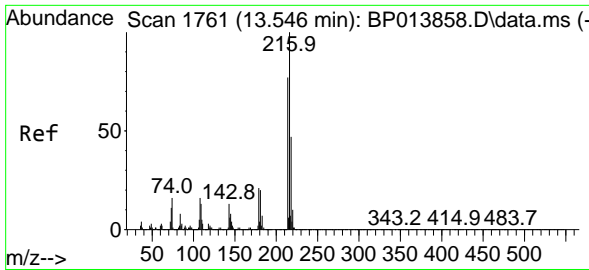


#74
 Anthracene
 Concen: 4.187 ng/uI
 RT: 17.639 min Scan# 2457
 Delta R.T. 0.006 min
 Lab File: BP013862.D
 Acq: 21 Feb 2023 12:03



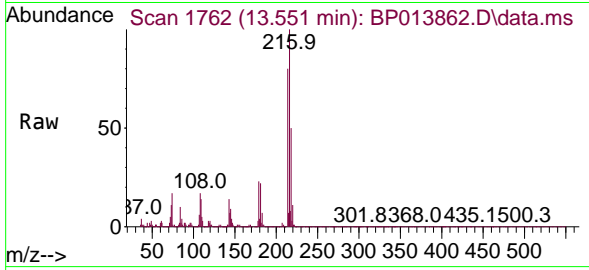
Tgt Ion:178 Resp: 318612
 Ion Ratio Lower Upper
 178 100
 179 15.4 12.2 18.4
 176 18.8 15.0 22.4





#75
 1,2,3,4-Tetrachlorobenzene
 Concen: 4.370 ng/uL
 RT: 13.551 min Scan# 111
 Delta R.T. 0.006 min
 Lab File: BP013862.D
 Acq: 21 Feb 2023 12:03

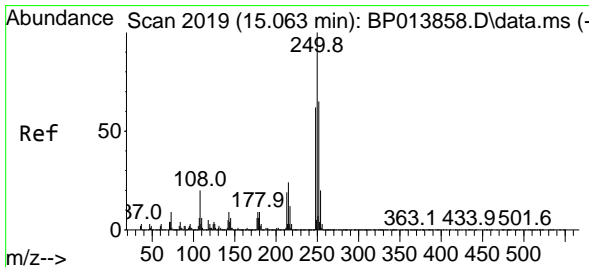
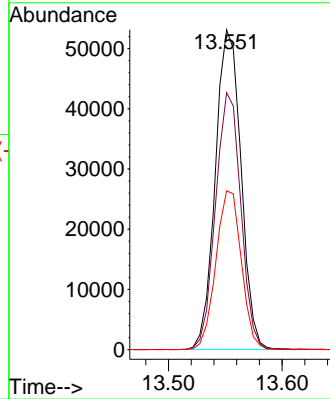
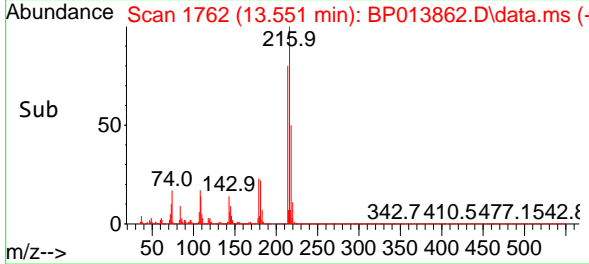
Instrument : BNA_P
 Client Sample Id : MDL-SOIL-QT1-2023-01



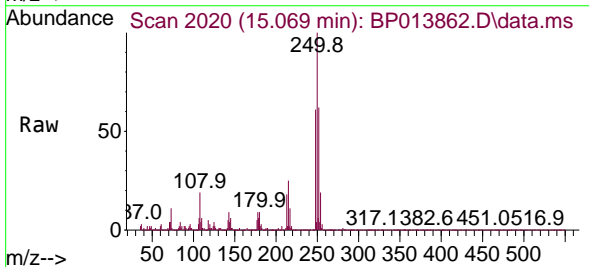
Tgt Ion: 216 Resp: 83376
 Ion Ratio Lower Upper
 216 100
 214 80.3 62.6 94.0
 218 49.6 39.0 58.4

Manual Integrations
APPROVED

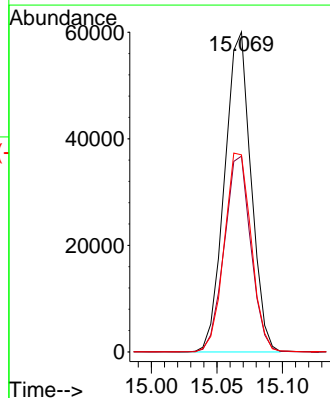
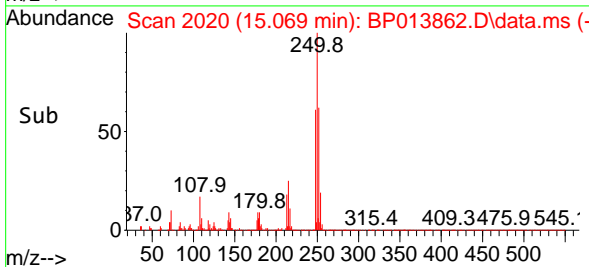
Reviewed By : Jagrut Upadhyay 02/22/2023
 Supervised By : mohammad ahmed 02/22/2023

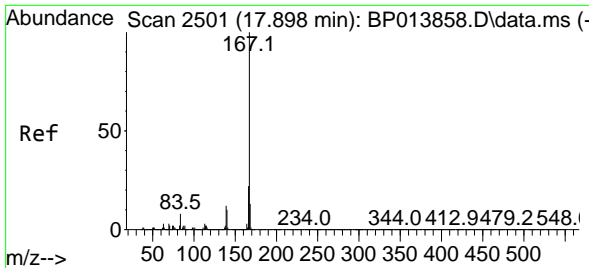


#76
 Pentachlorobenzene
 Concen: 4.279 ng/uL
 RT: 15.069 min Scan# 2020
 Delta R.T. 0.006 min
 Lab File: BP013862.D
 Acq: 21 Feb 2023 12:03



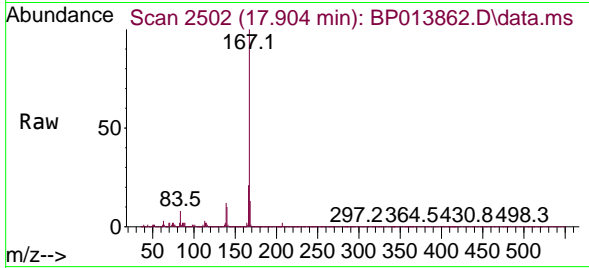
Tgt Ion: 250 Resp: 84243
 Ion Ratio Lower Upper
 250 100
 248 61.2 51.1 76.7
 252 61.6 51.0 76.6





#77
 Carbazole
 Concen: 4.225 ng/ul
 RT: 17.904 min Scan# 2501
 Delta R.T. 0.006 min
 Lab File: BP013862.D
 Acq: 21 Feb 2023 12:03

Instrument : BNA_P
 Client Sample Id : MDL-SOIL-QT1-2023-01

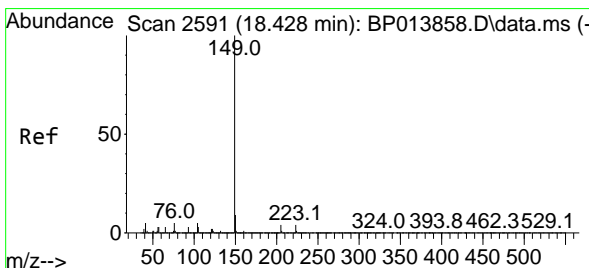
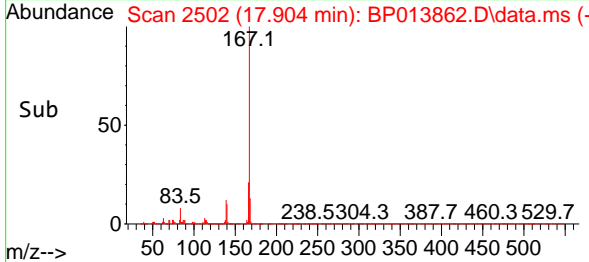
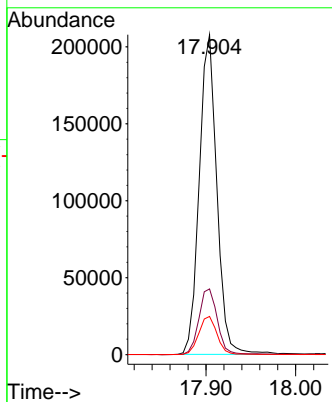


Tgt Ion:167 Resp: 283166

Ion	Ratio	Lower	Upper
167	100		
166	20.5	17.3	25.9
139	11.9	10.4	15.6

Manual Integrations
 APPROVED

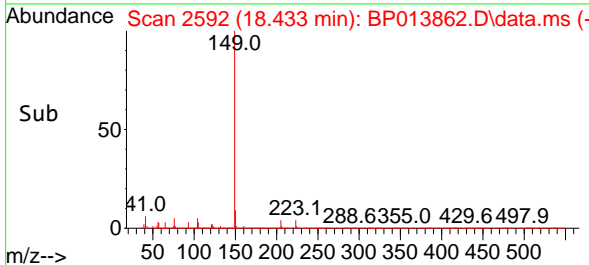
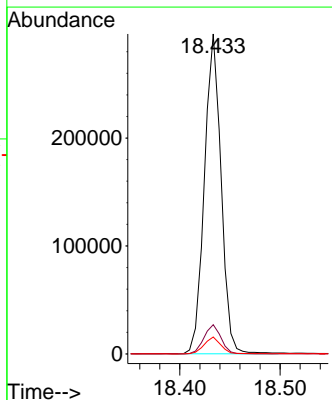
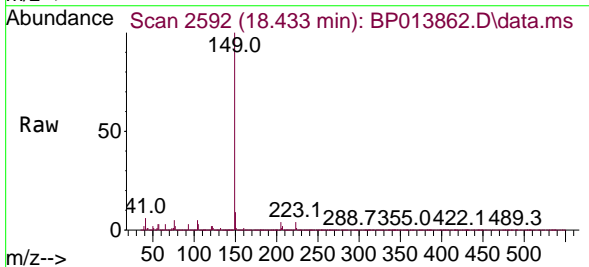
Reviewed By :Jagrut Upadhyay 02/22/2023
 Supervised By :mohammad ahmed 02/22/2023

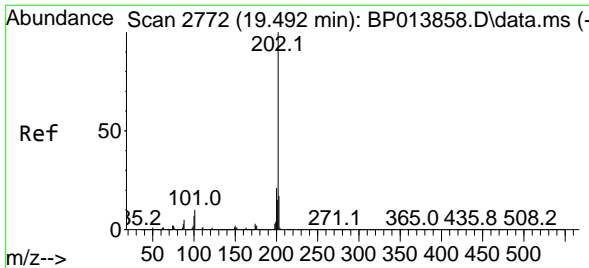


#78
 Di-n-butylphthalate
 Concen: 4.203 ng/ul
 RT: 18.433 min Scan# 2592
 Delta R.T. 0.006 min
 Lab File: BP013862.D
 Acq: 21 Feb 2023 12:03

Tgt Ion:149 Resp: 341705

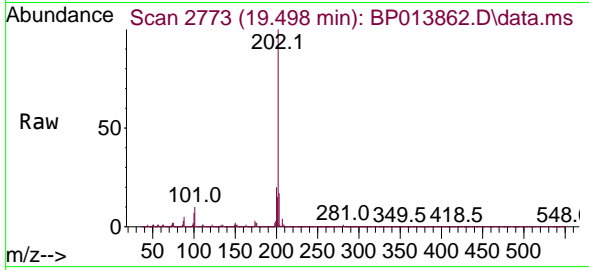
Ion	Ratio	Lower	Upper
149	100		
150	9.1	7.1	10.7
104	5.3	4.1	6.1





#80
 Fluoranthene
 Concen: 4.673 ng/u1
 RT: 19.498 min Scan# 21
 Delta R.T. 0.006 min
 Lab File: BP013862.D
 Acq: 21 Feb 2023 12:03

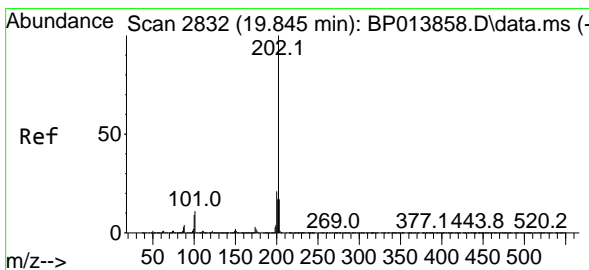
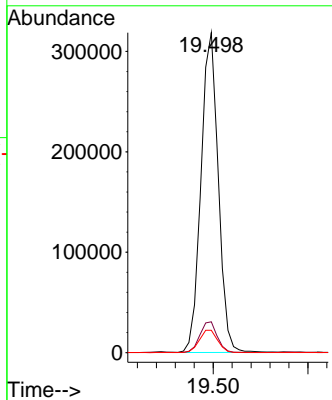
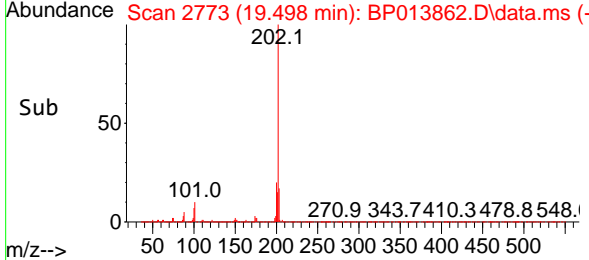
Instrument : BNA_P
 Client Sample Id : MDL-SOIL-QT1-2023-01



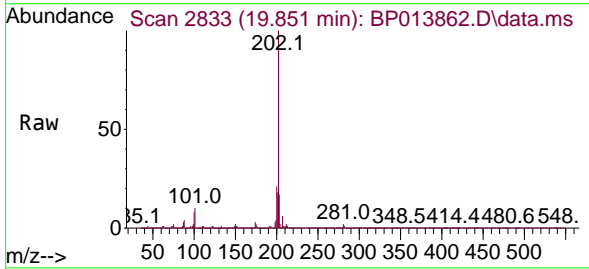
Tgt Ion: 202 Resp: 40374
 Ion Ratio Lower Upper
 202 100
 101 9.6 8.6 12.8
 100 7.0 6.3 9.5

Manual Integrations
 APPROVED

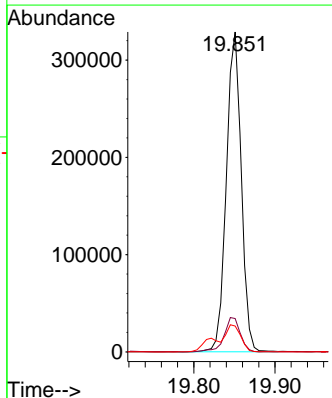
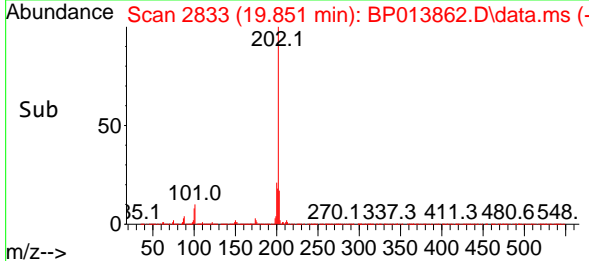
Reviewed By :Jagrut Upadhyay 02/22/2023
 Supervised By :mohammad ahmed 02/22/2023

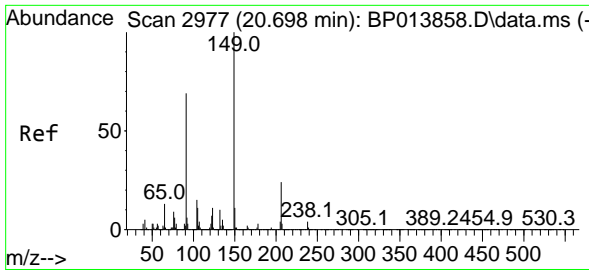


#82
 Pyrene
 Concen: 4.555 ng/u1
 RT: 19.851 min Scan# 2833
 Delta R.T. 0.006 min
 Lab File: BP013862.D
 Acq: 21 Feb 2023 12:03



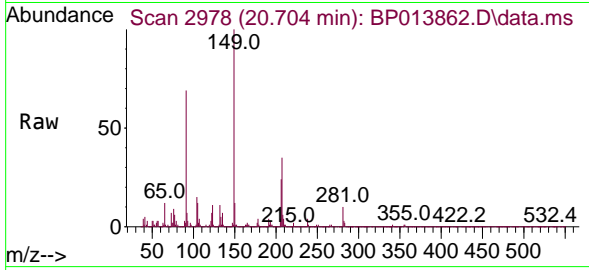
Tgt Ion: 202 Resp: 419540
 Ion Ratio Lower Upper
 202 100
 101 10.4 10.3 15.5
 100 8.1 8.5 12.7#





#83
 Butylbenzylphthalate
 Concen: 4.556 ng/uI
 RT: 20.704 min Scan# 2977
 Delta R.T. 0.006 min
 Lab File: BP013862.D
 Acq: 21 Feb 2023 12:03

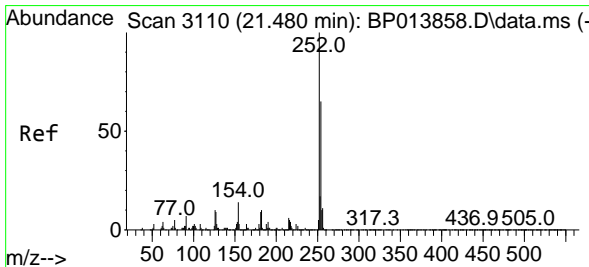
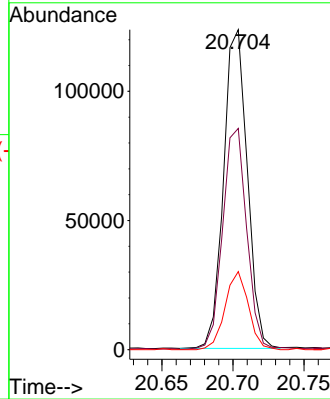
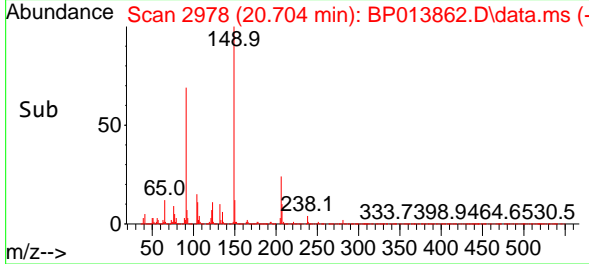
Instrument : BNA_P
 ClientSampleId : MDL-SOIL-QT1-2023-01



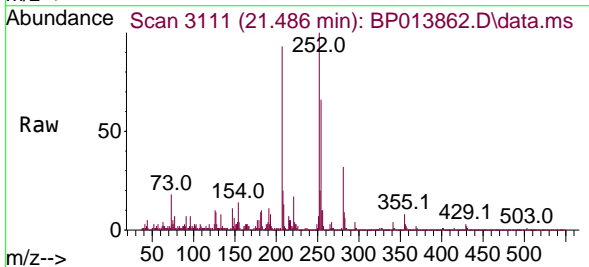
Tgt Ion:149 Resp: 143623
 Ion Ratio Lower Upper
 149 100
 91 69.1 57.7 86.5
 206 24.4 16.7 25.1

Manual Integrations
 APPROVED

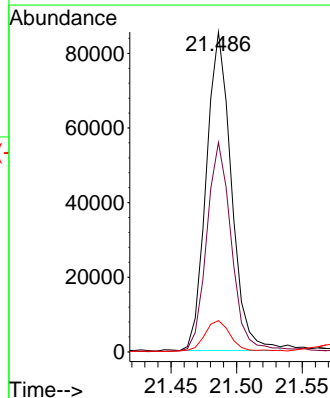
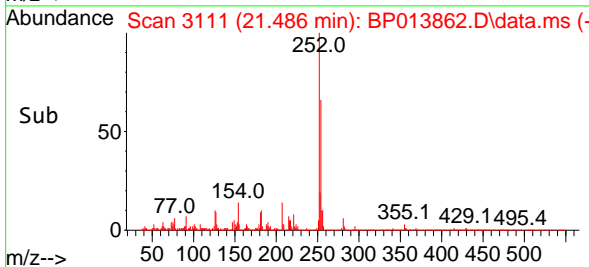
Reviewed By :Jagrut Upadhyay 02/22/2023
 Supervised By :mohammad ahmed 02/22/2023

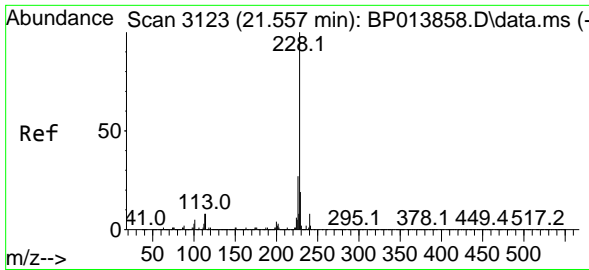


#84
 3,3'-Dichlorobenzidine
 Concen: 3.791 ng/uI
 RT: 21.486 min Scan# 3111
 Delta R.T. 0.006 min
 Lab File: BP013862.D
 Acq: 21 Feb 2023 12:03



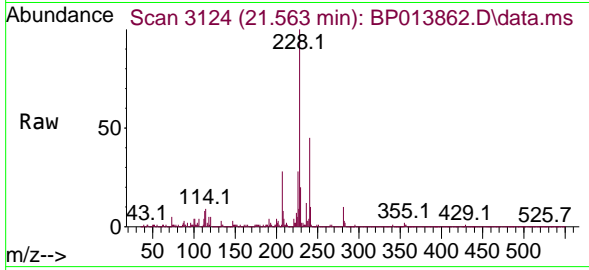
Tgt Ion:252 Resp: 113558
 Ion Ratio Lower Upper
 252 100
 254 65.5 51.8 77.6
 126 9.8 7.9 11.9





#85
 Benzo(a)anthracene
 Concen: 4.256 ng/uI
 RT: 21.563 min Scan# 3123
 Delta R.T. 0.006 min
 Lab File: BP013862.D
 Acq: 21 Feb 2023 12:03

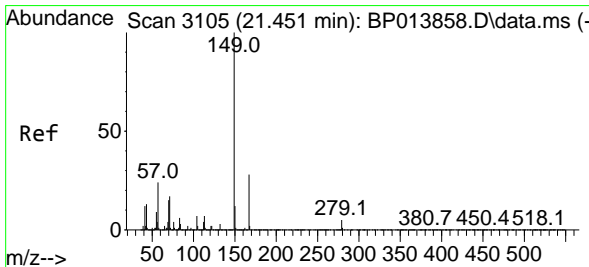
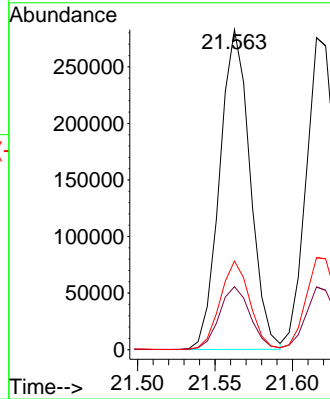
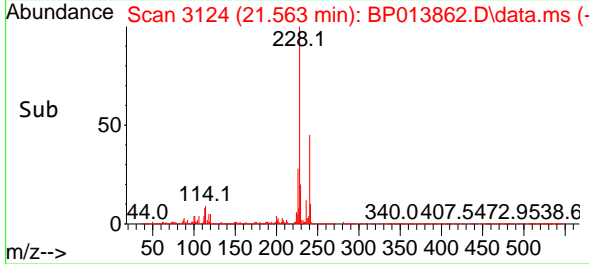
Instrument : BNA_P
 Client Sample Id : MDL-SOIL-QT1-2023-01



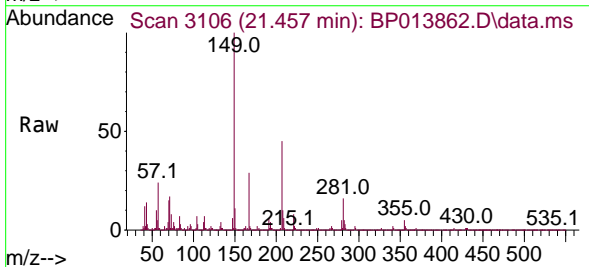
Tgt Ion: 228 Resp: 387029
 Ion Ratio Lower Upper
 228 100
 229 19.7 15.4 23.2
 226 27.7 21.8 32.6

Manual Integrations
 APPROVED

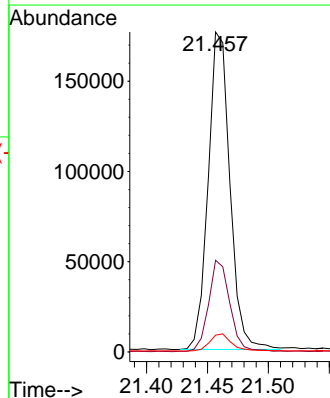
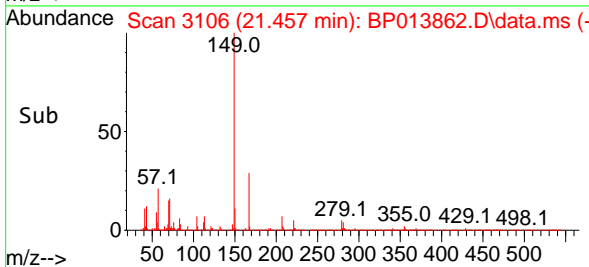
Reviewed By : Jagrut Upadhyay 02/22/2023
 Supervised By : mohammad ahmed 02/22/2023

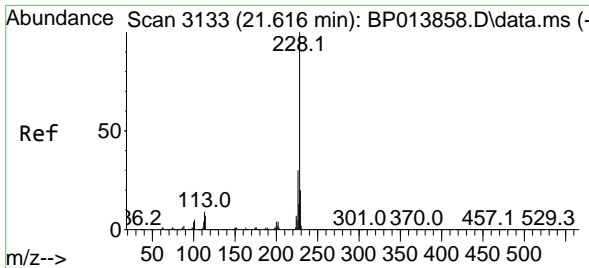


#86
 Bis(2-ethylhexyl)phthalate
 Concen: 4.532 ng/uI
 RT: 21.457 min Scan# 3106
 Delta R.T. 0.006 min
 Lab File: BP013862.D
 Acq: 21 Feb 2023 12:03



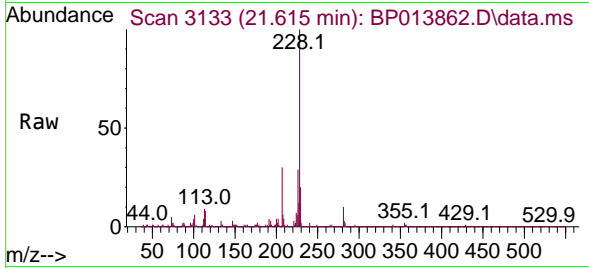
Tgt Ion: 149 Resp: 218799
 Ion Ratio Lower Upper
 149 100
 167 28.6 21.5 32.3
 279 5.2 3.2 4.8





#87
 Chrysene
 Concen: 4.364 ng/uI
 RT: 21.615 min Scan# 3133
 Delta R.T. -0.000 min
 Lab File: BP013862.D
 Acq: 21 Feb 2023 12:03

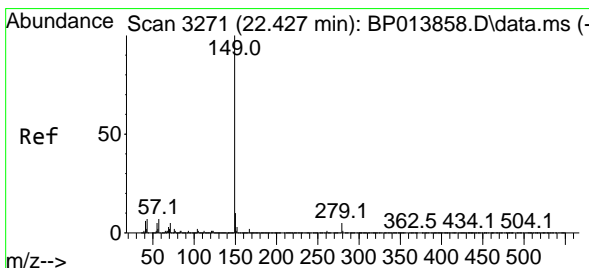
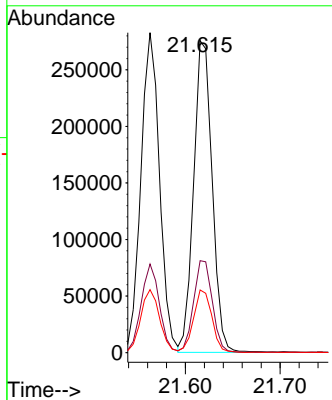
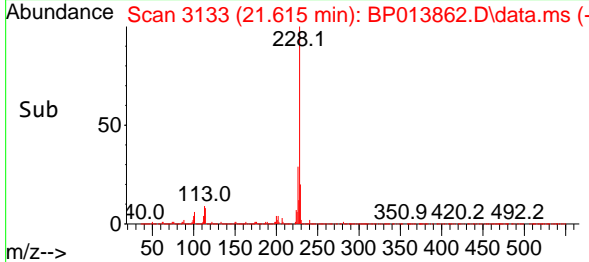
Instrument : BNA_P
 Client Sample Id : MDL-SOIL-QT1-2023-01



Tgt Ion: 228 Resp: 374370
 Ion Ratio Lower Upper
 228 100
 226 29.5 25.0 37.6
 229 20.1 16.4 24.6

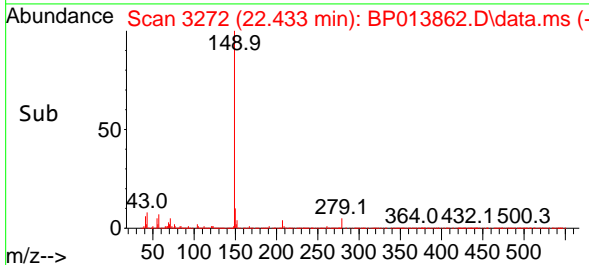
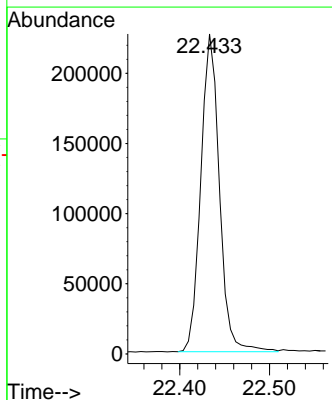
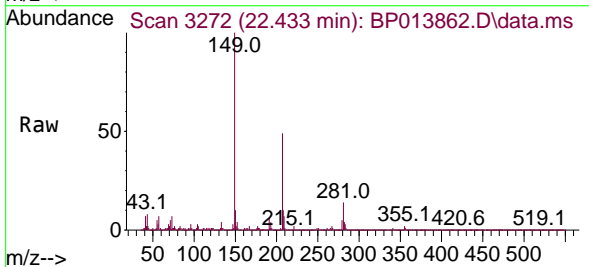
Manual Integrations
 APPROVED

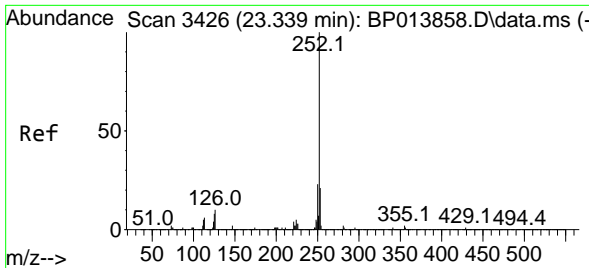
Reviewed By : Jagrut Upadhyay 02/22/2023
 Supervised By : mohammad ahmed 02/22/2023



#89
 Di-n-octyl phthalate
 Concen: 3.762 ng/uI
 RT: 22.433 min Scan# 3272
 Delta R.T. 0.006 min
 Lab File: BP013862.D
 Acq: 21 Feb 2023 12:03

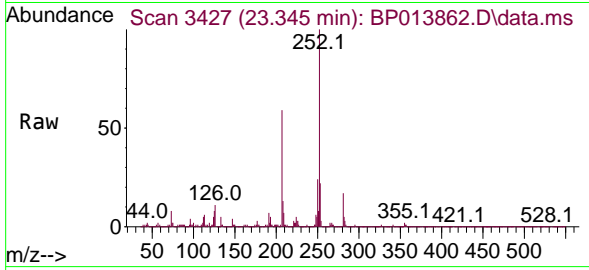
Tgt Ion: 149 Resp: 327361





#90
 Benzo(b)fluoranthene
 Concen: 4.397 ng/ul
 RT: 23.345 min Scan# 3426
 Delta R.T. 0.006 min
 Lab File: BP013862.D
 Acq: 21 Feb 2023 12:03

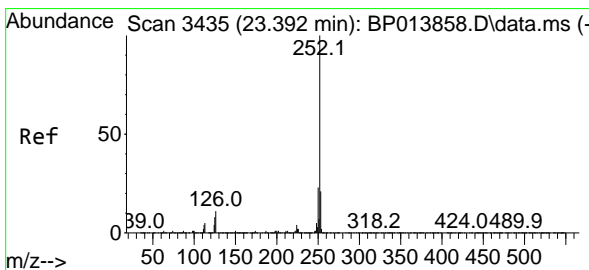
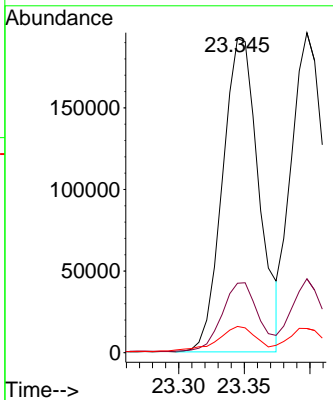
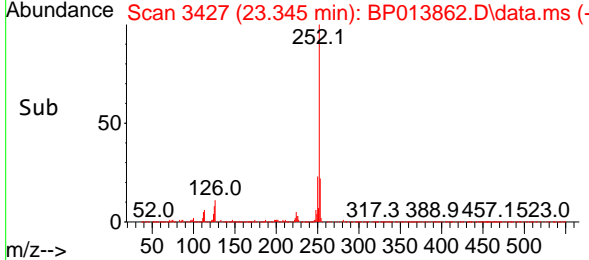
Instrument :
 BNA_P
ClientSampleId :
 MDL-SOIL-QT1-2023-01



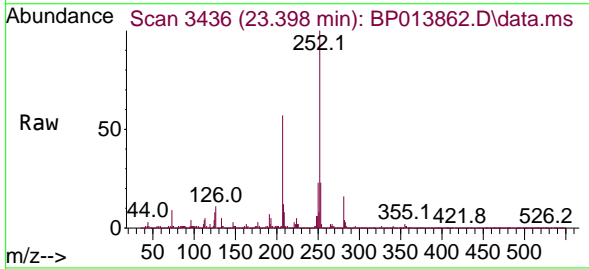
Tgt Ion:252 Resp: 370710
 Ion Ratio Lower Upper
 252 100
 253 22.1 17.5 26.3
 125 8.3 7.8 11.6

Manual Integrations
APPROVED

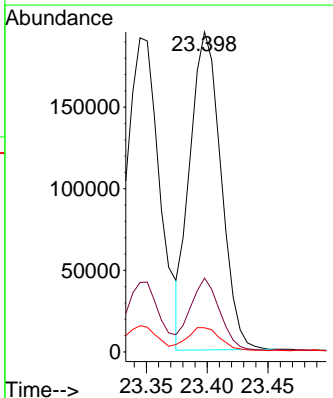
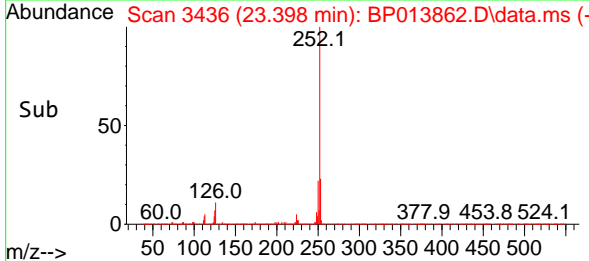
Reviewed By :Jagrut Upadhyay 02/22/2023
 Supervised By :mohammad ahmed 02/22/2023

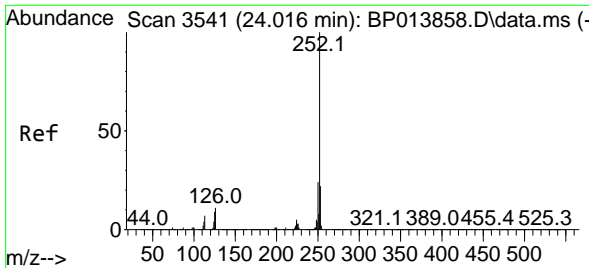


#91
 Benzo(k)fluoranthene
 Concen: 4.136 ng/ul
 RT: 23.398 min Scan# 3436
 Delta R.T. 0.006 min
 Lab File: BP013862.D
 Acq: 21 Feb 2023 12:03



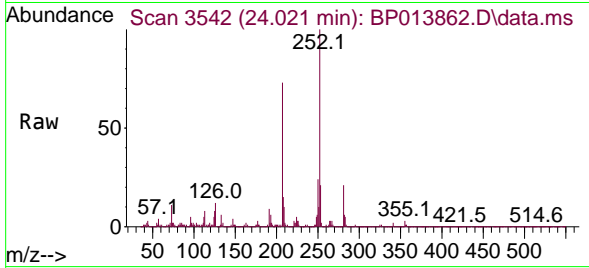
Tgt Ion:252 Resp: 345953
 Ion Ratio Lower Upper
 252 100
 253 23.1 17.1 25.7
 125 7.5 7.2 10.8





#93
 Benzo(a)pyrene
 Concen: 4.366 ng/u1
 RT: 24.021 min Scan# 31
 Delta R.T. 0.006 min
 Lab File: BP013862.D
 Acq: 21 Feb 2023 12:03

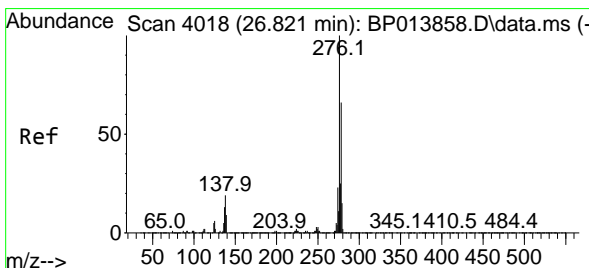
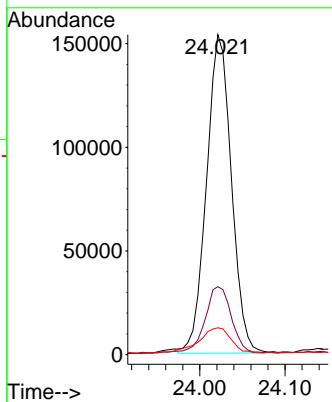
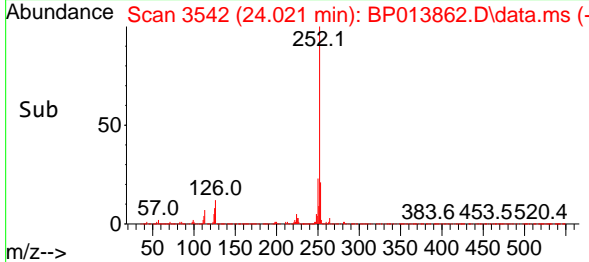
Instrument : BNA_P
 Client Sample Id : MDL-SOIL-QT1-2023-01



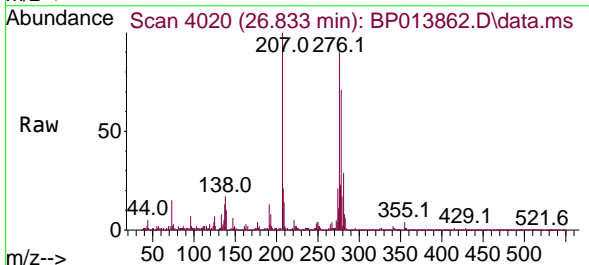
Tgt Ion: 252 Resp: 312020
 Ion Ratio Lower Upper
 252 100
 253 21.2 17.4 26.0
 125 8.4 8.2 12.2

Manual Integrations
APPROVED

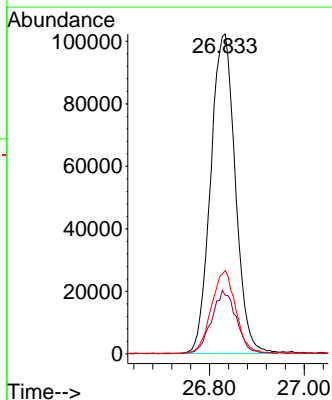
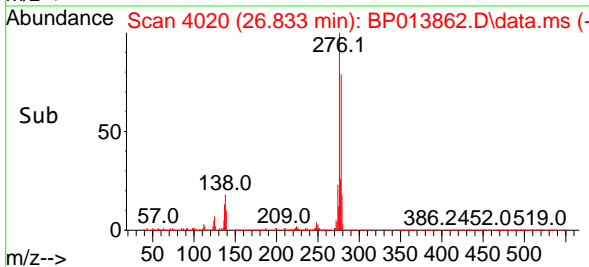
Reviewed By : Jagrut Upadhyay 02/22/2023
 Supervised By : mohammad ahmed 02/22/2023

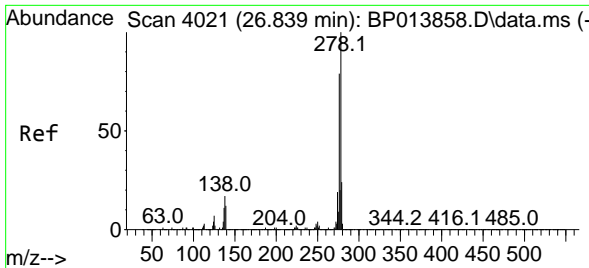


#94
 Indeno(1,2,3-cd)pyrene
 Concen: 4.610 ng/u1
 RT: 26.833 min Scan# 4020
 Delta R.T. 0.012 min
 Lab File: BP013862.D
 Acq: 21 Feb 2023 12:03



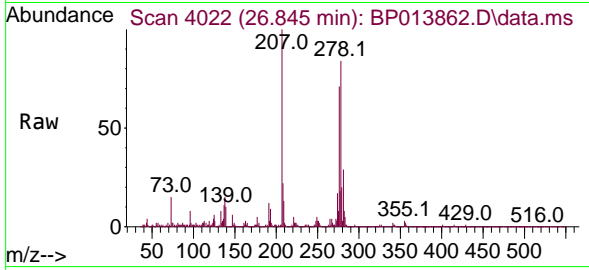
Tgt Ion: 276 Resp: 369508
 Ion Ratio Lower Upper
 276 100
 138 18.3 18.4 27.6#
 277 26.0 19.7 29.5





#95
 Dibenzo(a,h)anthracene
 Concen: 4.599 ng/ul
 RT: 26.845 min Scan# 4021
 Delta R.T. 0.006 min
 Lab File: BP013862.D
 Acq: 21 Feb 2023 12:03

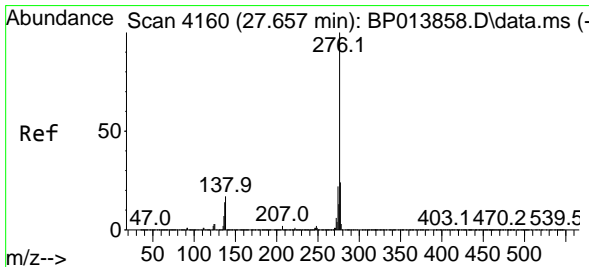
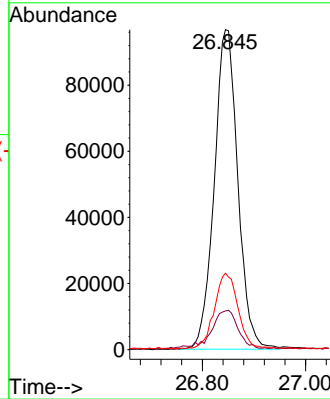
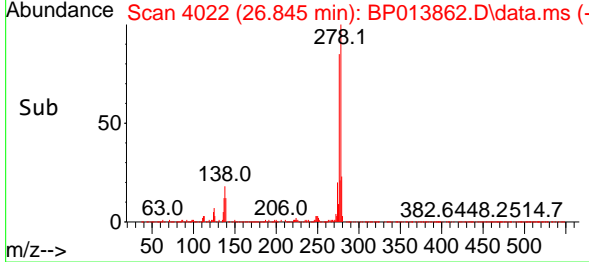
Instrument : BNA_P
 Client Sample Id : MDL-SOIL-QT1-2023-01



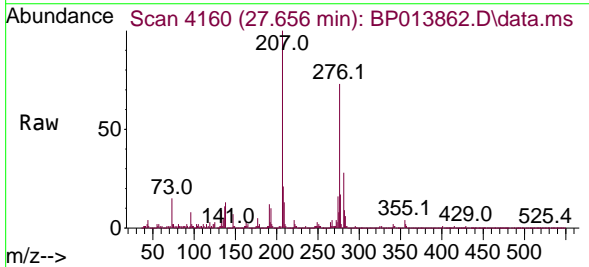
Tgt Ion: 278 Resp: 307954
 Ion Ratio Lower Upper
 278 100
 139 12.1 12.0 18.0
 279 23.9 18.9 28.3

Manual Integrations
APPROVED

Reviewed By : Jagrut Upadhyay 02/22/2023
 Supervised By : mohammad ahmed 02/22/2023



#96
 Benzo(g,h,i)perylene
 Concen: 4.715 ng/ul
 RT: 27.656 min Scan# 4160
 Delta R.T. -0.000 min
 Lab File: BP013862.D
 Acq: 21 Feb 2023 12:03



Tgt Ion: 276 Resp: 300905
 Ion Ratio Lower Upper
 276 100
 138 17.3 15.9 23.9
 277 22.5 19.0 28.6

