

Data Path : Z:\svoasrv\HPCHEM1\BNA_P\Data\BP030823\
 Data File : BP014003.D
 Acq On : 09 Mar 2023 10:57
 Operator : CG/JU
 Sample : 01713-11MS
 Misc :
 ALS Vial : 35 Sample Multiplier: 1

Instrument :
 BNA_P
 ClientSampleId :
 DBZZ0MS

Quant Time: Mar 10 00:16:23 2023
 Quant Method : Z:\svoasrv\HPCHEM1\BNA_P\Methods\SFAM-EPA-BP030723.M
 Quant Title : SVOA CALIBRATION
 QLast Update : Thu Mar 09 01:10:12 2023
 Response via : Initial Calibration

Compound	R.T.	QIon	Response	Conc	Units	Dev(Min)
Internal Standards						
1) 1,4-Dichlorobenzene-d4	8.081	152	123739	20.000	ng/ul	0.00
20) Naphthalene-d8	10.905	136	524556	20.000	ng/ul	0.00
38) Acenaphthene-d10	14.716	164	364753	20.000	ng/ul	0.00
64) Phenanthrene-d10	17.475	188	879099	20.000	ng/ul	0.00
79) Chrysene-d12	21.551	240	964416	20.000	ng/ul	0.00
88) Perylene-d12	24.086	264	980947	20.000	ng/ul	0.00
System Monitoring Compounds						
3) 1,4-Dioxane-d8	3.434	96	7870	2.403	ng/uL	0.00
4) Pyridine-d5	3.887	84	14541	1.604	ng/ul	0.02
7) Phenol-d5	7.228	99	142381	13.039	ng/ul	0.00
9) Bis-(2-Chloroethyl)eth...	7.399	67	87765	13.781	ng/ul	0.00
11) 2-Chlorophenol-d4	7.605	132	110915	13.332	ng/ul	0.00
15) 4-Methylphenol-d8	8.787	113	108014	12.110	ng/ul	0.00
21) Nitrobenzene-d5	9.252	128	55134	13.173	ng/ul	0.00
24) 2-Nitrophenol-d4	9.981	143	65860	13.145	ng/ul	0.00
28) 2,4-Dichlorophenol-d3	10.522	165	129945	13.784	ng/ul	0.00
31) 4-Chloroaniline-d4	11.040	131	136927	10.976	ng/ul	0.00
46) Dimethylphthalate-d6	14.116	166	448174	14.478	ng/ul	0.00
49) Acenaphthylene-d8	14.410	160	459430	14.010	ng/ul	0.00
54) 4-Nitrophenol-d4	14.910	143	74732	13.699	ng/ul	0.00
60) Fluorene-d10	15.710	176	379821	14.478	ng/ul	0.00
65) 4,6-Dinitro-2-methylph...	15.828	200	89522	13.474	ng/ul	0.00
73) Anthracene-d10	17.569	188	617637	14.473	ng/ul	0.00
81) Pyrene-d10	19.792	212	863801	16.240	ng/ul	0.00
92) Benzo(a)pyrene-d12	23.921	264	829968	15.906	ng/ul	0.00
Target Compounds						
2) 1,4-Dioxane	3.470	88	18448	5.218	ng/uL	90
5) Pyridine	3.905	79	25005	2.719	ng/ul	97
6) Benzaldehyde	7.211	77	105179	19.358	ng/ul	95
8) Phenol	7.258	94	174170	15.467	ng/ul	99
10) Bis(2-Chloroethyl)ether	7.493	93	133759	15.504	ng/ul	98
12) 2-Chlorophenol	7.640	128	127340	15.192	ng/ul	98
13) 2-Methylphenol	8.522	108	114822	13.712	ng/ul	97
14) 2,2'-oxybis(1-Chloropr...	8.611	45	152791	16.399	ng/ul	98
16) Acetophenone	8.910	105	246406	17.100	ng/ul	98
17) N-Nitroso-di-n-propyla...	8.887	70	117473	15.936	ng/ul	98
18) 4-Methylphenol	8.852	108	134003	14.549	ng/ul	98
19) Hexachloroethane	9.169	117	54643	14.884	ng/ul	95
22) Nitrobenzene	9.293	77	173627	15.508	ng/ul	98
23) Isophorone	9.822	82	324904	15.069	ng/ul	99
25) 2-Nitrophenol	10.010	139	77043	14.920	ng/ul	96
26) 2,4-Dimethylphenol	10.063	107	63128	5.585	ng/ul	98
27) Bis(2-Chloroethoxy)met...	10.305	93	191108	15.324	ng/ul	98
29) 2,4-Dichlorophenol	10.546	162	139229	14.972	ng/ul	99
30) Naphthalene	10.952	128	438110	15.210	ng/ul	100
32) 4-Chloroaniline	11.063	127	149894	11.940	ng/ul	98
33) Hexachlorobutadiene	11.234	225	106328	14.369	ng/ul	96
34) Caprolactam	11.846	113	47363	15.686	ng/ul	98
35) 4-Chloro-3-methylphenol	12.175	107	167060	15.536	ng/ul	95
36) 2-Methylnaphthalene	12.551	142	307873	15.238	ng/ul	100

Data Path : Z:\svoasrv\HPCHEM1\BNA_P\Data\BP030823\
 Data File : BP014003.D
 Acq On : 09 Mar 2023 10:57
 Operator : CG/JU
 Sample : 01713-11MS
 Misc :
 ALS Vial : 35 Sample Multiplier: 1

Instrument :
 BNA_P
 ClientSampleId :
 DBZZ0MS

Quant Time: Mar 10 00:16:23 2023
 Quant Method : Z:\svoasrv\HPCHEM1\BNA_P\Methods\SFAM-EPA-BP030723.M
 Quant Title : SVOA CALIBRATION
 QLast Update : Thu Mar 09 01:10:12 2023
 Response via : Initial Calibration

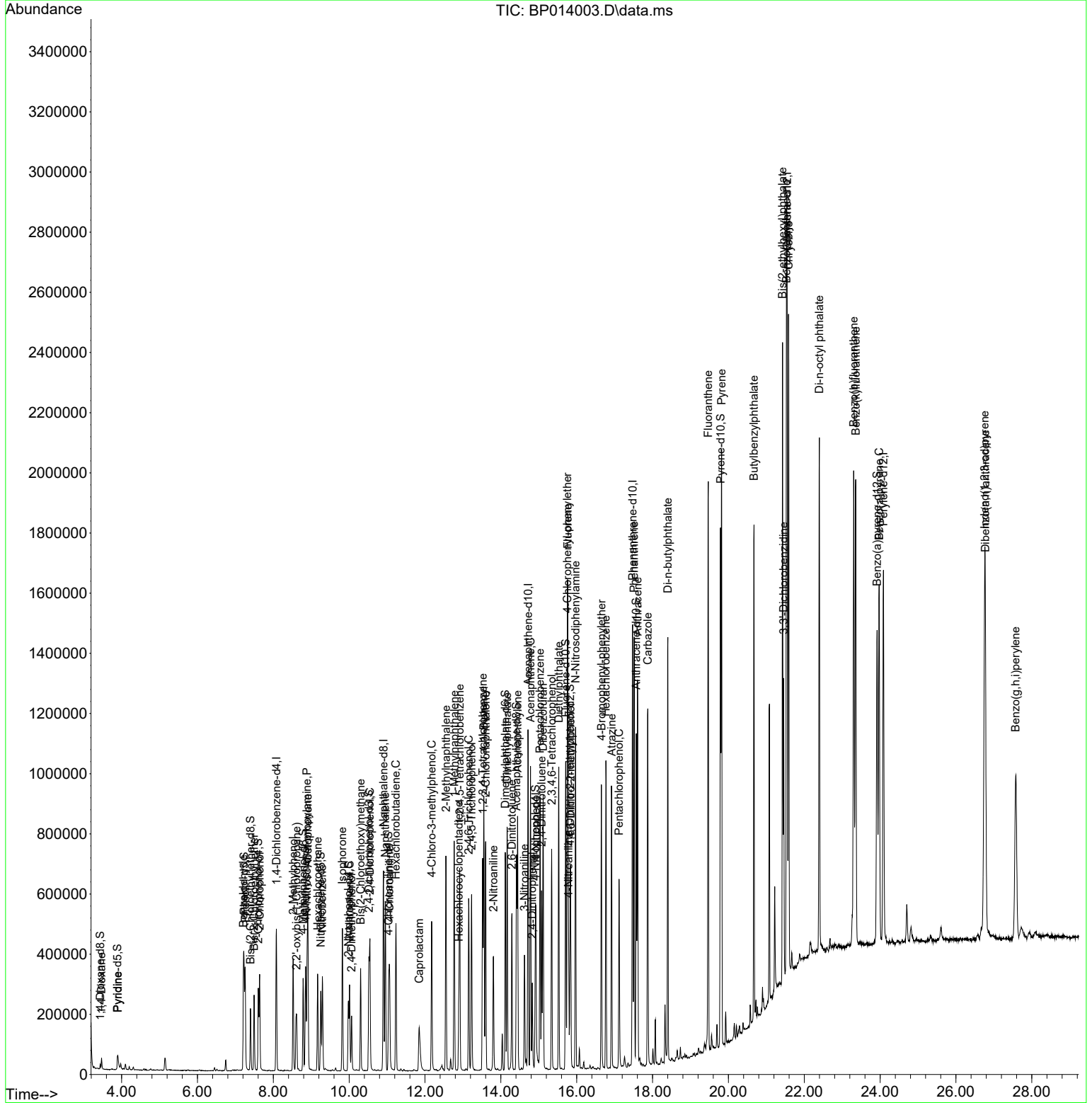
Compound	R.T.	QIon	Response	Conc	Units	Dev(Min)
37) 1-Methylnaphthalene	12.769	142	316634	15.592	ng/ul	100
39) 1,2,4,5-Tetrachloroben...	12.916	216	203550	15.432	ng/ul	99
40) Hexachlorocyclopentadiene	12.893	237	62472	6.614	ng/ul	98
41) 2,4,6-Trichlorophenol	13.151	196	130810	15.787	ng/ul	96
42) 2,4,5-Trichlorophenol	13.228	196	148943	16.379	ng/ul	96
43) 1,1'-Biphenyl	13.551	154	441640	15.727	ng/ul	100
44) 2-Chloronaphthalene	13.598	162	354136	15.878	ng/ul	97
45) 2-Nitroaniline	13.804	65	108823	16.497	ng/ul	97
47) Dimethylphthalate	14.169	163	490639	16.013	ng/ul	100
48) 2,6-Dinitrotoluene	14.293	165	98182	16.208	ng/ul	97
50) Acenaphthylene	14.440	152	537206	15.610	ng/ul	99
51) 3-Nitroaniline	14.622	138	86762	16.176	ng/ul	93
52) Acenaphthene	14.781	153	383641	15.946	ng/ul	99
53) 2,4-Dinitrophenol	14.828	184	63262	13.984	ng/ul	99
55) 4-Nitrophenol	14.922	109	97900	16.614	ng/ul	98
56) Dibenzofuran	15.116	168	555300	15.866	ng/ul	100
57) 2,4-Dinitrotoluene	15.075	165	151677	16.758	ng/ul	94
58) 2,3,4,6-Tetrachlorophenol	15.340	232	144517	16.612	ng/ul	100
59) Diethylphthalate	15.528	149	522074	16.799	ng/ul	99
61) Fluorene	15.763	166	467671	16.120	ng/ul	99
62) 4-Chlorophenyl-phenyle...	15.751	204	259047	16.177	ng/ul	99
63) 4-Nitroaniline	15.787	138	91868	16.663	ng/ul	99
66) 4,6-Dinitro-2-methylph...	15.840	198	101380	15.993	ng/ul	96
67) N-Nitrosodiphenylamine	15.969	169	411822	16.587	ng/ul	98
68) 4-Bromophenyl-phenylether	16.651	248	175421	16.506	ng/ul	98
69) Hexachlorobenzene	16.769	284	208044	16.612	ng/ul	94
70) Atrazine	16.922	200	177159	16.544	ng/ul	99
71) Pentachlorophenol	17.116	266	113619	13.880	ng/ul	97
72) Phenanthrene	17.516	178	834672	17.408	ng/ul	99
74) Anthracene	17.604	178	778445	16.012	ng/ul	100
75) 1,2,3,4-Tetrachloroben...	13.522	216	209987	15.564	ng/ul	99
76) Pentachlorobenzene	15.034	250	223059	15.916	ng/ul	99
77) Carbazole	17.875	167	741977	17.302	ng/ul	99
78) Di-n-butylphthalate	18.404	149	959957	17.912	ng/ul	100
80) Fluoranthene	19.469	202	1117352	18.430	ng/ul	100
82) Pyrene	19.822	202	1167841	18.465	ng/ul	99
83) Butylbenzylphthalate	20.675	149	461398	18.093	ng/ul	99
84) 3,3'-Dichlorobenzidine	21.457	252	286840	11.618	ng/ul	100
85) Benzo(a)anthracene	21.533	228	1237223	18.239	ng/ul	99
86) Bis(2-ethylhexyl)phtha...	21.427	149	707363	18.553	ng/ul	99
87) Chrysene	21.586	228	1173122	18.147	ng/ul	99
89) Di-n-octyl phthalate	22.398	149	1198063	19.356	ng/ul	100
90) Benzo(b)fluoranthene	23.304	252	1215059	18.589	ng/ul	99
91) Benzo(k)fluoranthene	23.357	252	1223560	19.631	ng/ul	99
93) Benzo(a)pyrene	23.974	252	1015138	17.855	ng/ul	99
94) Indeno(1,2,3-cd)pyrene	26.757	276	1152257	15.310	ng/ul	99
95) Dibenzo(a,h)anthracene	26.774	278	954525	15.259	ng/ul	98
96) Benzo(g,h,i)perylene	27.574	276	816770	13.577	ng/ul	100

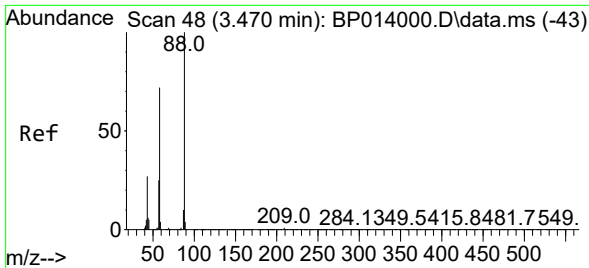
(#) = qualifier out of range (m) = manual integration (+) = signals summed

Data Path : Z:\svoasrv\HPCHEM1\BNA_P\Data\BP030823\
 Data File : BP014003.D
 Acq On : 09 Mar 2023 10:57
 Operator : CG/JU
 Sample : 01713-11MS
 Misc :
 ALS Vial : 35 Sample Multiplier: 1

Instrument :
 BNA_P
 ClientSampleId :
 DBZZ0MS

Quant Time: Mar 10 00:16:23 2023
 Quant Method : Z:\svoasrv\HPCHEM1\BNA_P\Methods\SFAM-EPA-BP030723.M
 Quant Title : SVOA CALIBRATION
 QLast Update : Thu Mar 09 01:10:12 2023
 Response via : Initial Calibration



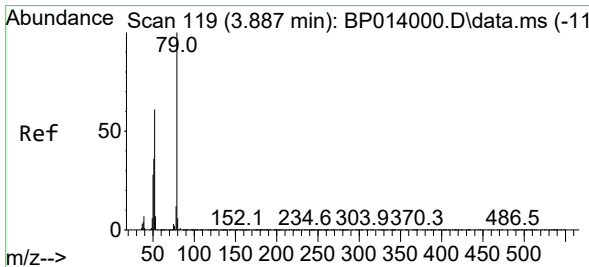
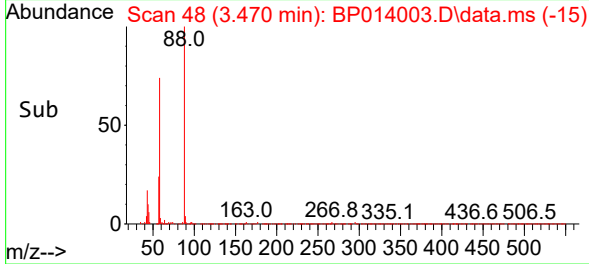
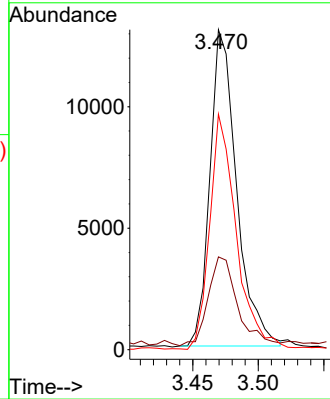
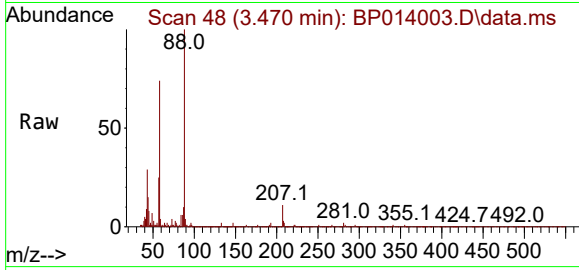


#2
 1,4-Dioxane
 Concen: 5.218 ng/uL
 RT: 3.470 min Scan# 41
 Delta R.T. -0.006 min
 Lab File: BP014003.D
 Acq: 09 Mar 2023 10:57

Instrument :
 BNA_P
 ClientSampleId :
 DBZZ0MS

Tgt Ion: 88 Resp: 18448

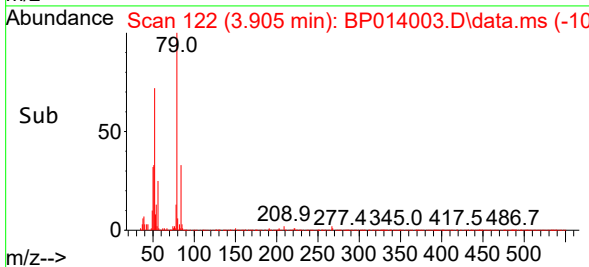
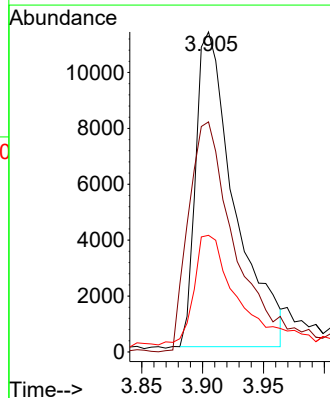
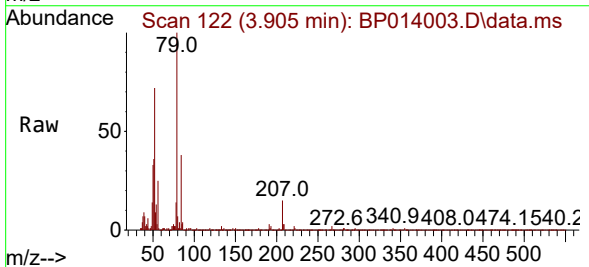
Ion	Ratio	Lower	Upper
88	100		
43	29.0	23.9	35.9
58	73.6	50.2	75.2

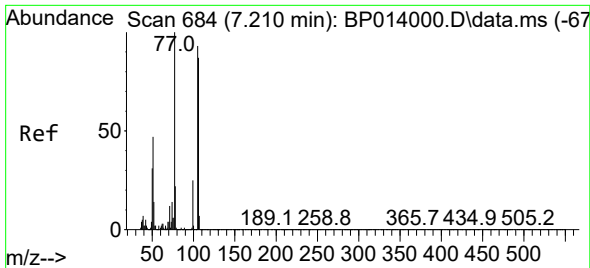


#5
 Pyridine
 Concen: 2.719 ng/uL
 RT: 3.905 min Scan# 122
 Delta R.T. 0.012 min
 Lab File: BP014003.D
 Acq: 09 Mar 2023 10:57

Tgt Ion: 79 Resp: 25005

Ion	Ratio	Lower	Upper
79	100		
52	71.9	55.1	82.7
51	36.4	28.9	43.3



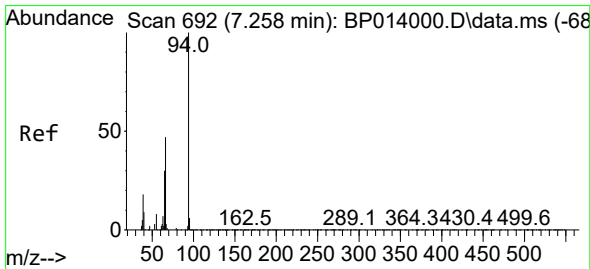
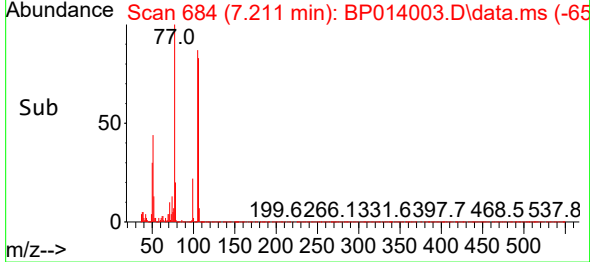
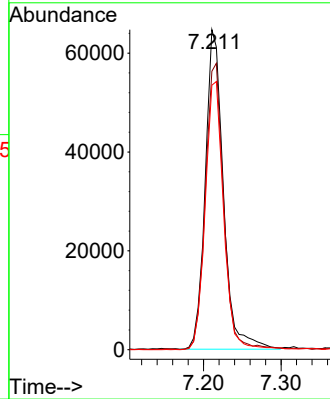
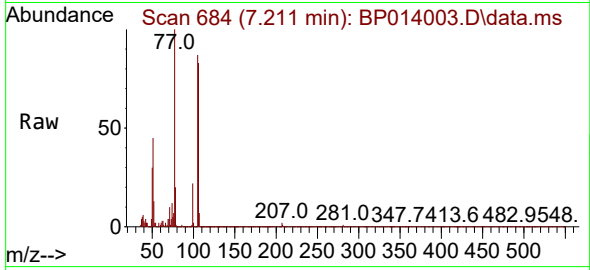


#6
Benzaldehyde
Concen: 19.358 ng/ul
RT: 7.211 min Scan# 684
Delta R.T. -0.006 min
Lab File: BP014003.D
Acq: 09 Mar 2023 10:57

Instrument : BNA_P
Client SampleId : DBZZ0MS

Tgt Ion: 77 Resp: 105179

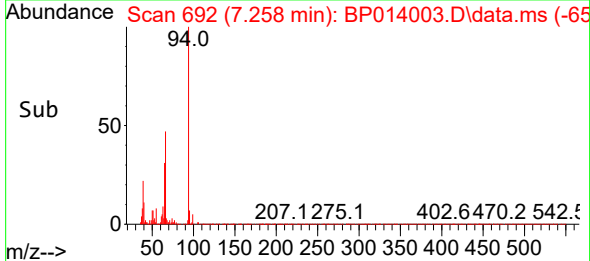
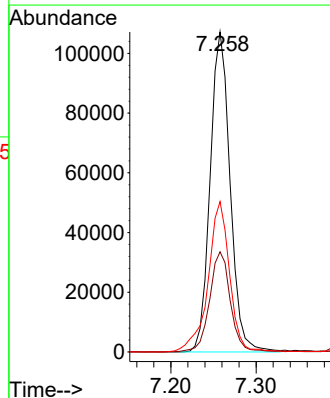
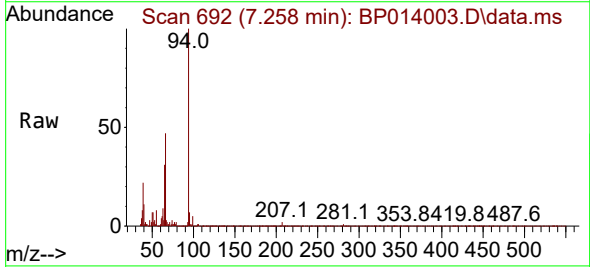
Ion	Ratio	Lower	Upper
77	100		
105	87.0	74.2	111.2
106	82.7	69.8	104.8

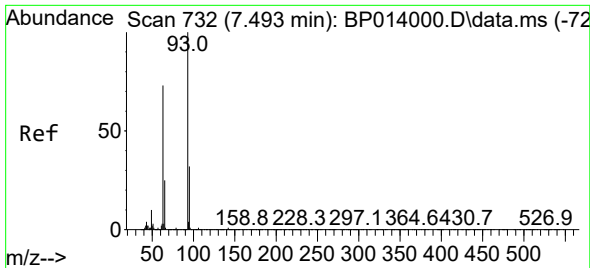


#8
Phenol
Concen: 15.467 ng/ul
RT: 7.258 min Scan# 692
Delta R.T. -0.006 min
Lab File: BP014003.D
Acq: 09 Mar 2023 10:57

Tgt Ion: 94 Resp: 174170

Ion	Ratio	Lower	Upper
94	100		
65	31.3	25.2	37.8
66	47.0	37.2	55.8



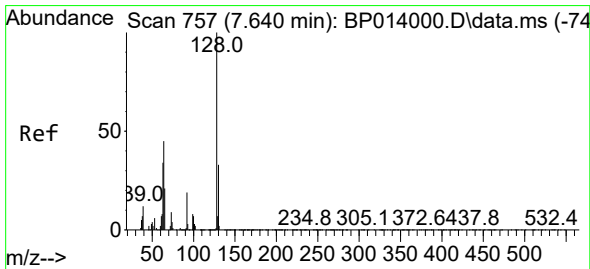
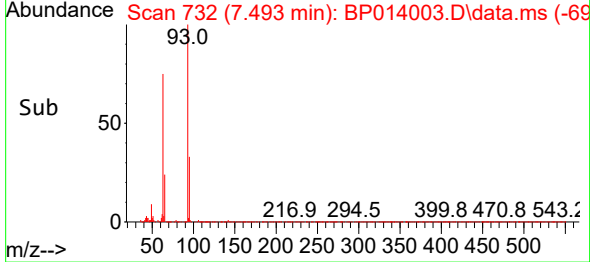
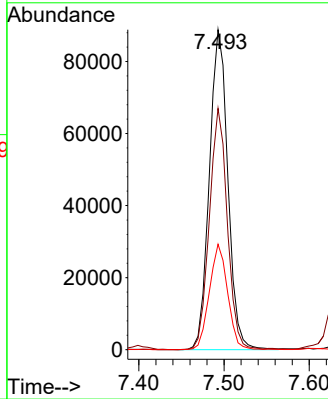
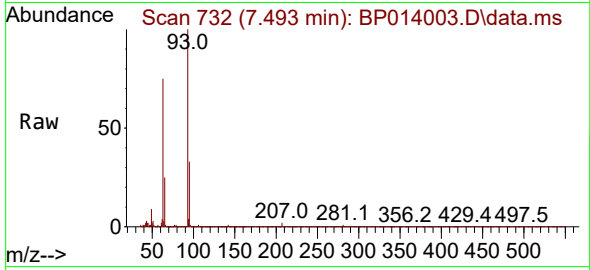


#10
 Bis(2-Chloroethyl)ether
 Concen: 15.504 ng/u1
 RT: 7.493 min Scan# 732
 Delta R.T. -0.006 min
 Lab File: BP014003.D
 Acq: 09 Mar 2023 10:57

Instrument :
 BNA_P
 ClientSampleId :
 DBZZ0MS

Tgt Ion: 93 Resp: 133759

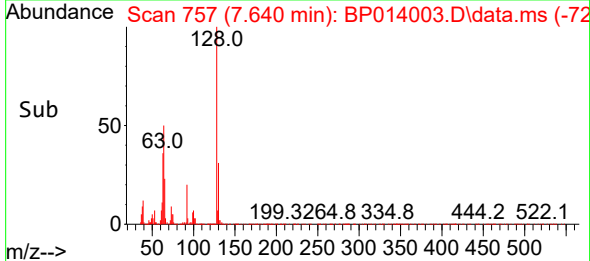
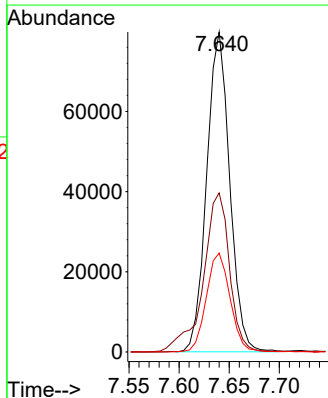
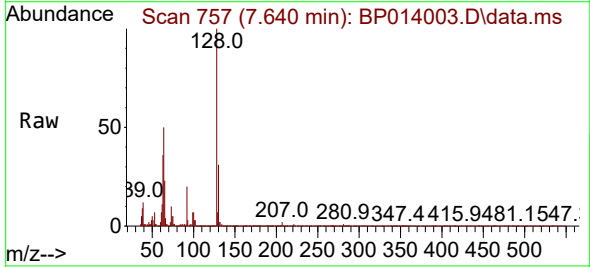
Ion	Ratio	Lower	Upper
93	100		
63	75.4	58.8	88.2
95	33.0	25.8	38.6

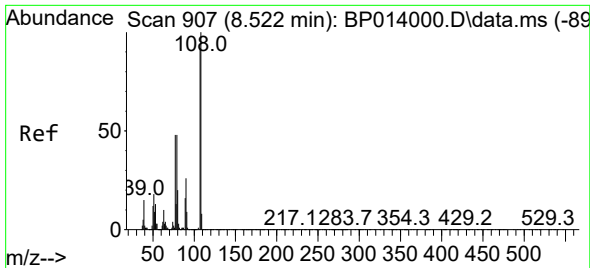


#12
 2-Chlorophenol
 Concen: 15.192 ng/u1
 RT: 7.640 min Scan# 757
 Delta R.T. -0.000 min
 Lab File: BP014003.D
 Acq: 09 Mar 2023 10:57

Tgt Ion: 128 Resp: 127340

Ion	Ratio	Lower	Upper
128	100		
64	49.7	38.3	57.5
130	30.9	25.7	38.5

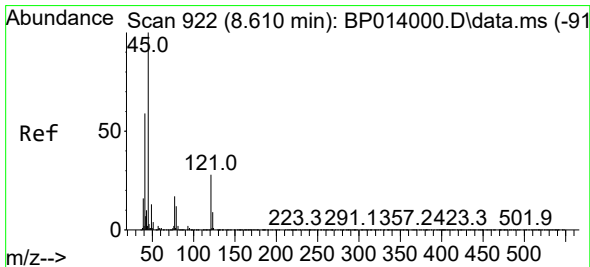
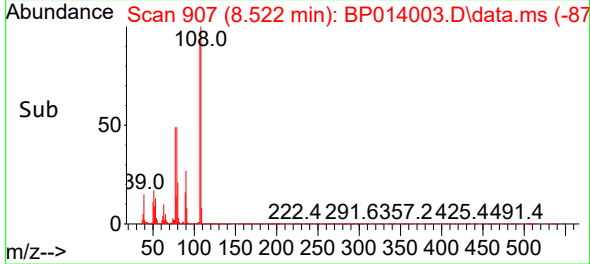
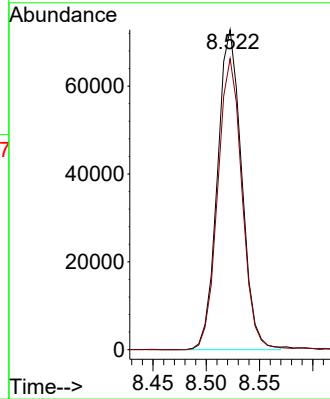
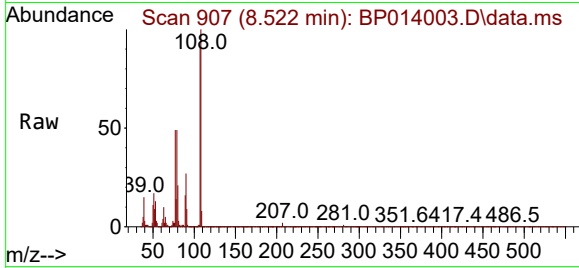




#13
 2-Methylphenol
 Concen: 13.712 ng/ul
 RT: 8.522 min Scan# 907
 Delta R.T. -0.000 min
 Lab File: BP014003.D
 Acq: 09 Mar 2023 10:57

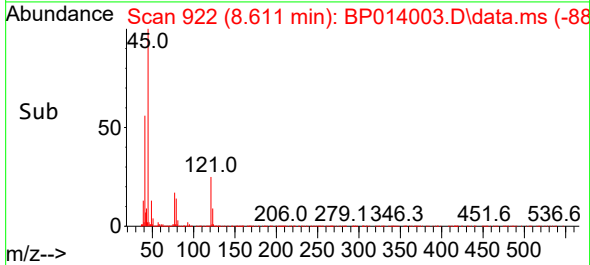
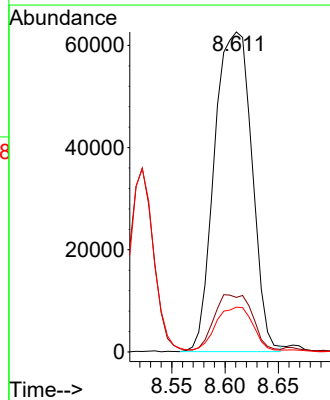
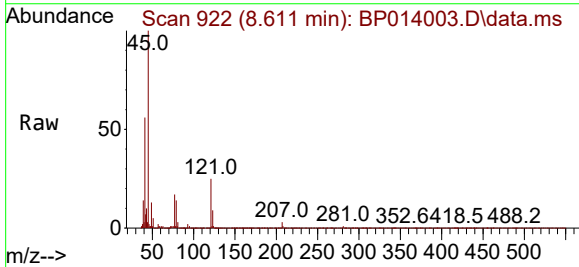
Instrument : BNA_P
 ClientSampleId : DBZZ0MS

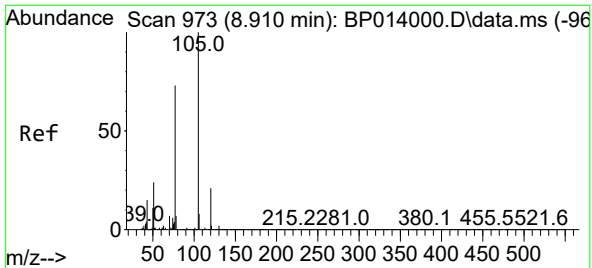
Tgt Ion: 108 Resp: 114822
 Ion Ratio Lower Upper
 108 100
 107 91.0 70.5 105.7



#14
 2,2'-oxybis(1-Chloropropane)
 Concen: 16.399 ng/ul
 RT: 8.611 min Scan# 922
 Delta R.T. -0.000 min
 Lab File: BP014003.D
 Acq: 09 Mar 2023 10:57

Tgt Ion: 45 Resp: 152791
 Ion Ratio Lower Upper
 45 100
 77 17.1 14.2 21.2
 79 14.0 10.6 15.8

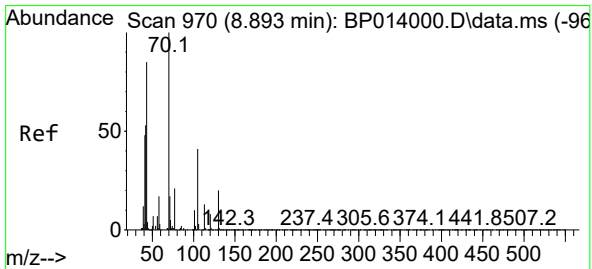
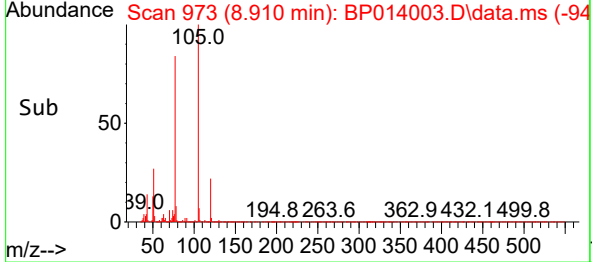
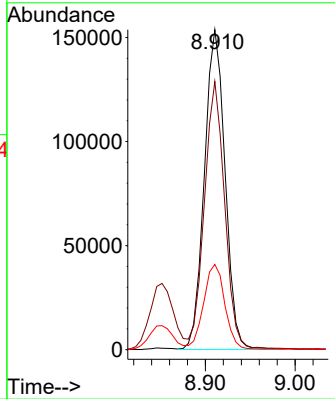
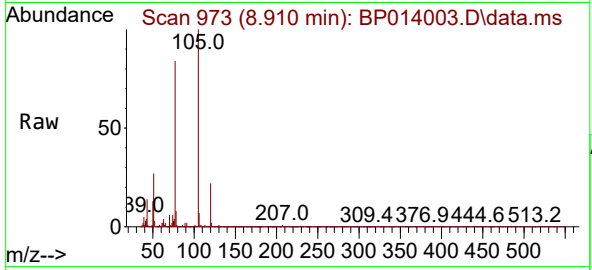




#16
 Acetophenone
 Concen: 17.100 ng/ul
 RT: 8.910 min Scan# 910
 Delta R.T. -0.006 min
 Lab File: BP014003.D
 Acq: 09 Mar 2023 10:57

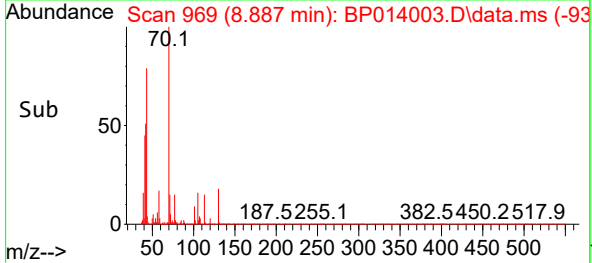
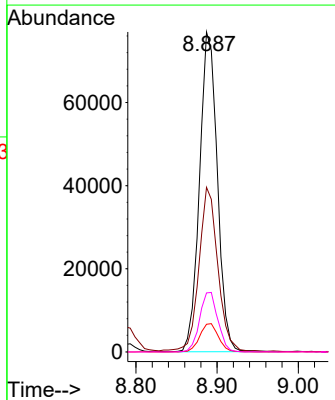
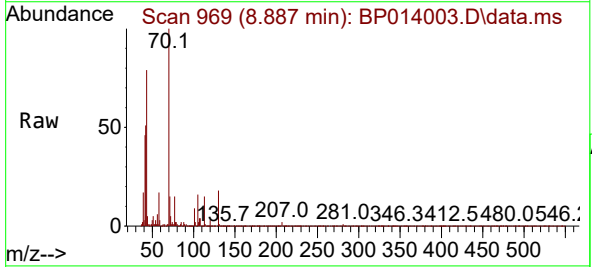
Instrument : BNA_P
 ClientSampleId : DBZZ0MS

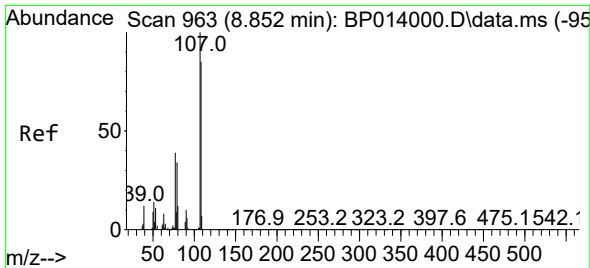
Tgt Ion	Ratio	Lower	Upper
105	100		
77	83.8	65.4	98.2
51	26.6	21.8	32.8



#17
 N-Nitroso-di-n-propylamine
 Concen: 15.936 ng/ul
 RT: 8.887 min Scan# 969
 Delta R.T. -0.012 min
 Lab File: BP014003.D
 Acq: 09 Mar 2023 10:57

Tgt Ion	Ratio	Lower	Upper
70	100		
42	51.5	40.9	61.3
101	8.6	7.9	11.9
130	18.5	16.6	25.0

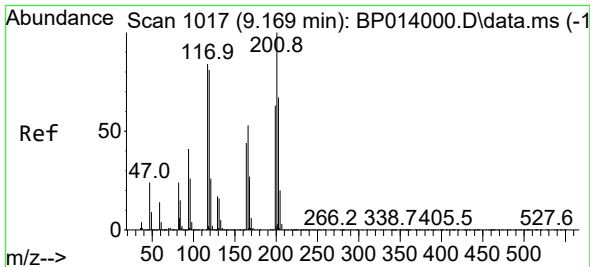
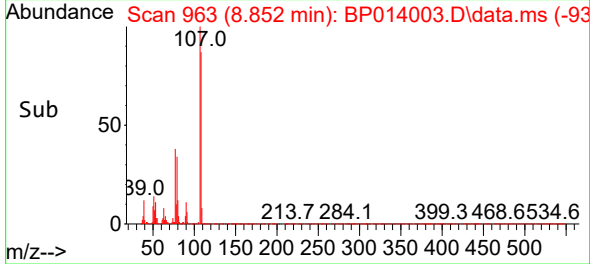
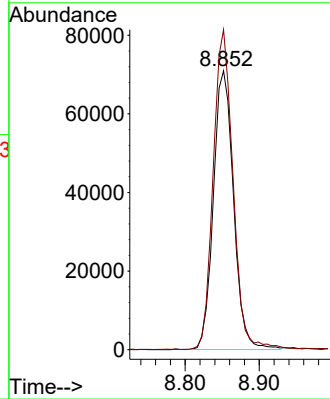
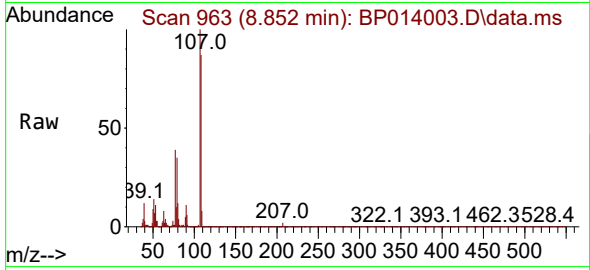




#18
 4-Methylphenol
 Concen: 14.549 ng/ul
 RT: 8.852 min Scan# 90
 Delta R.T. -0.006 min
 Lab File: BP014003.D
 Acq: 09 Mar 2023 10:57

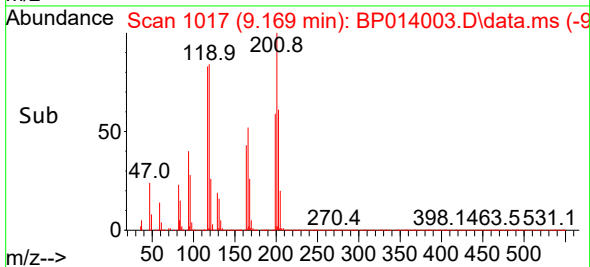
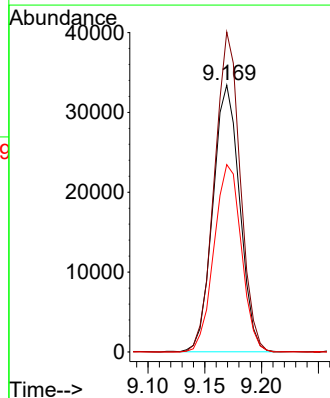
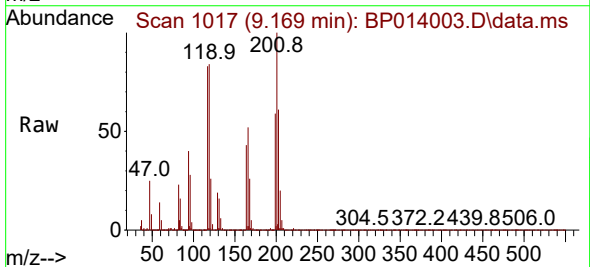
Instrument :
 BNA_P
 ClientSampleId :
 DBZZ0MS

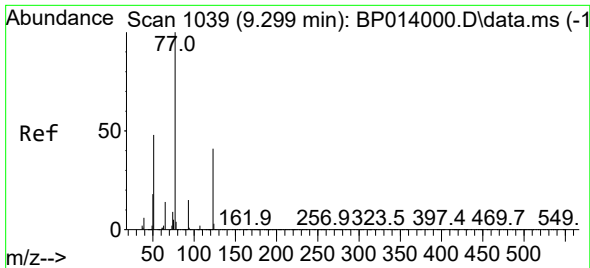
Tgt Ion:108 Resp: 134003
 Ion Ratio Lower Upper
 108 100
 107 114.8 89.8 134.6



#19
 Hexachloroethane
 Concen: 14.884 ng/ul
 RT: 9.169 min Scan# 1017
 Delta R.T. -0.006 min
 Lab File: BP014003.D
 Acq: 09 Mar 2023 10:57

Tgt Ion:117 Resp: 54643
 Ion Ratio Lower Upper
 117 100
 201 119.9 91.7 137.5
 199 70.2 59.1 88.7

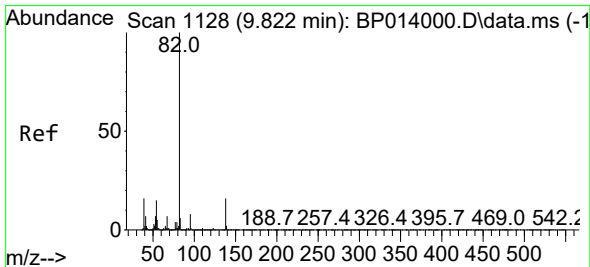
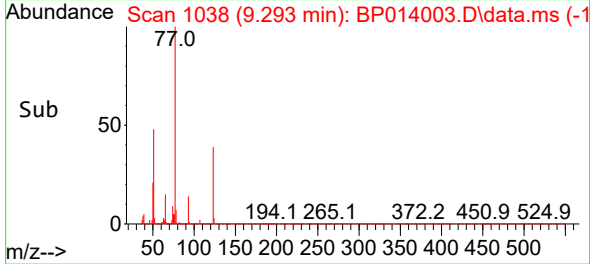
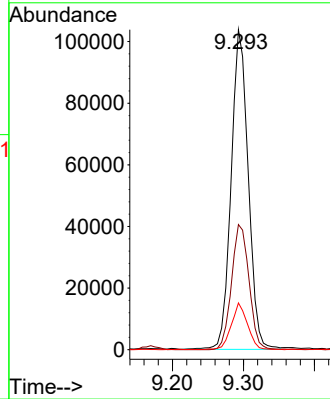
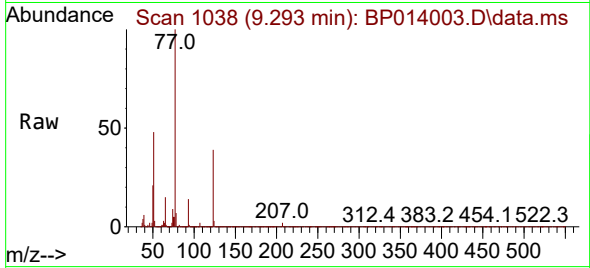




#22
 Nitrobenzene
 Concen: 15.508 ng/u1
 RT: 9.293 min Scan# 1039
 Delta R.T. -0.006 min
 Lab File: BP014003.D
 Acq: 09 Mar 2023 10:57

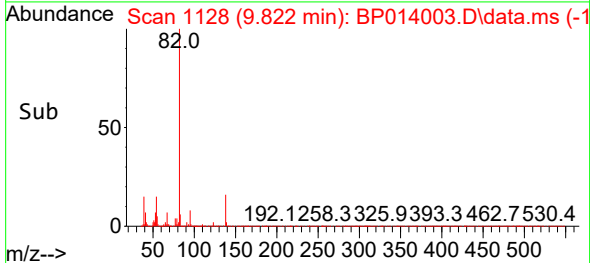
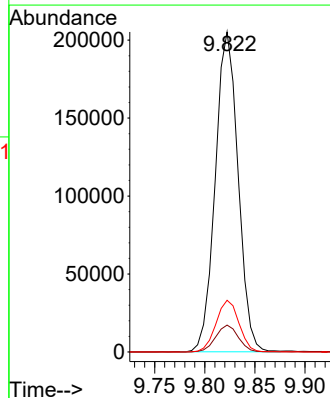
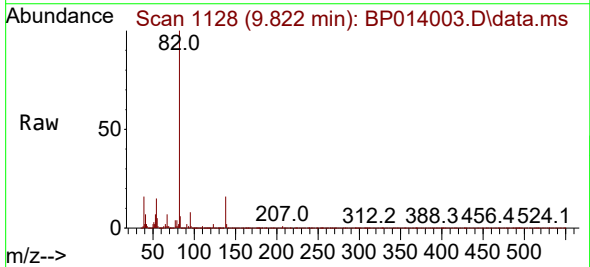
Instrument :
 BNA_P
 ClientSampleId :
 DBZZ0MS

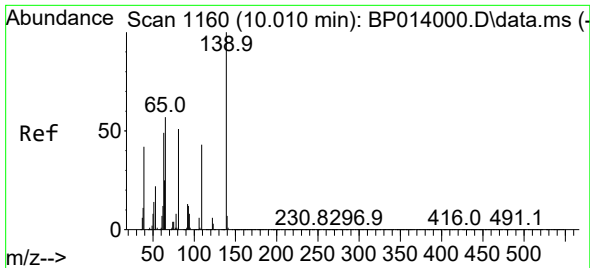
Tgt Ion: 77 Resp: 173627
 Ion Ratio Lower Upper
 77 100
 123 39.1 32.6 48.8
 65 14.6 11.2 16.8



#23
 Isophorone
 Concen: 15.069 ng/u1
 RT: 9.822 min Scan# 1128
 Delta R.T. -0.006 min
 Lab File: BP014003.D
 Acq: 09 Mar 2023 10:57

Tgt Ion: 82 Resp: 324904
 Ion Ratio Lower Upper
 82 100
 95 8.4 7.1 10.7
 138 16.2 13.3 19.9

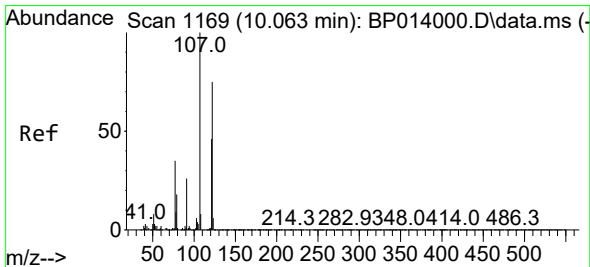
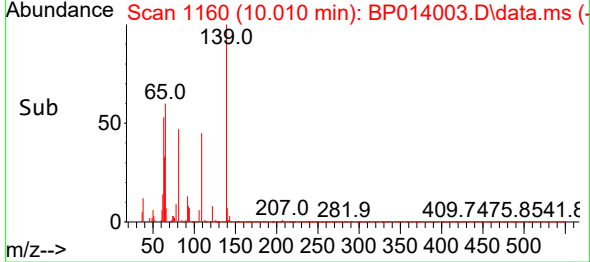
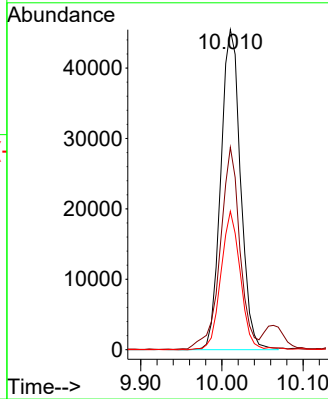
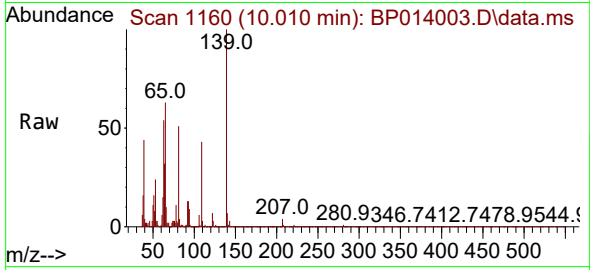




#25
 2-Nitrophenol
 Concen: 14.920 ng/ul
 RT: 10.010 min Scan# 1160
 Delta R.T. -0.006 min
 Lab File: BP014003.D
 Acq: 09 Mar 2023 10:57

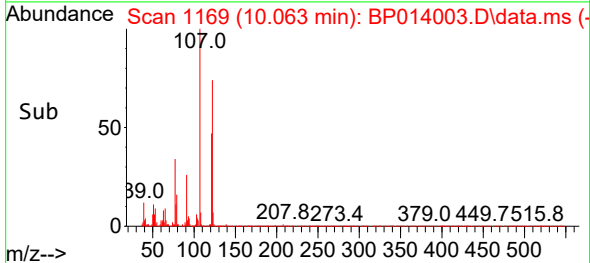
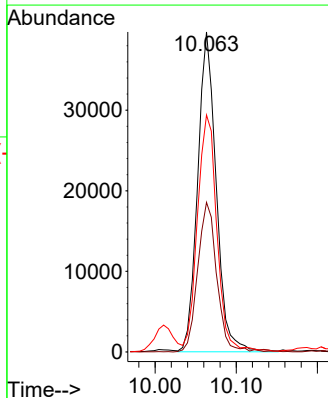
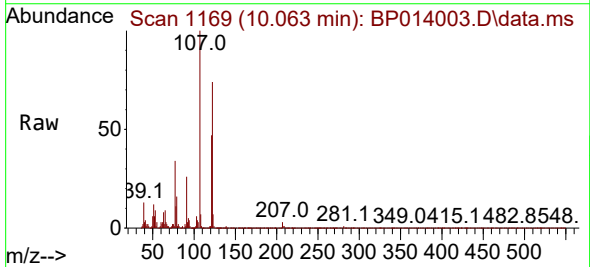
Instrument : BNA_P
 ClientSampleId : DBZZ0MS

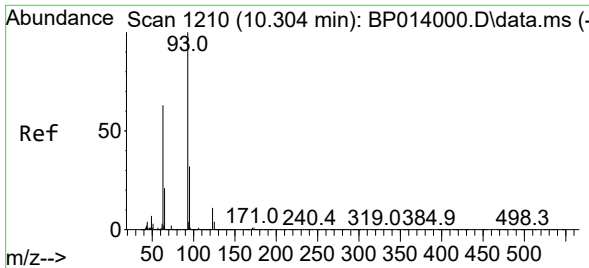
Tgt Ion	Resp	Lower	Upper
139	77043		
139	100		
65	63.2	46.6	70.0
109	43.3	34.5	51.7



#26
 2,4-Dimethylphenol
 Concen: 5.585 ng/ul
 RT: 10.063 min Scan# 1169
 Delta R.T. -0.006 min
 Lab File: BP014003.D
 Acq: 09 Mar 2023 10:57

Tgt Ion	Resp	Lower	Upper
107	63128		
107	100		
121	46.8	37.1	55.7
122	74.0	61.2	91.8



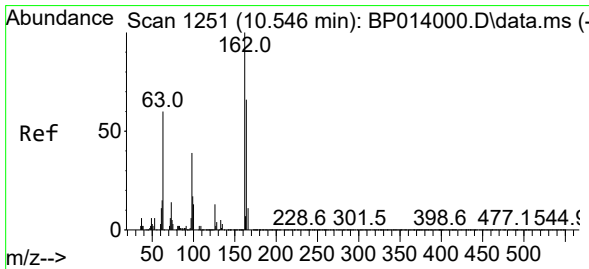
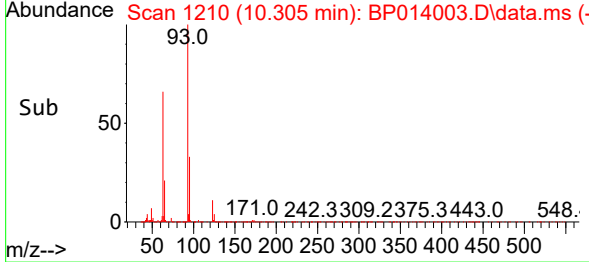
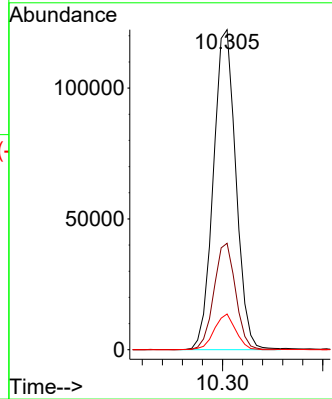
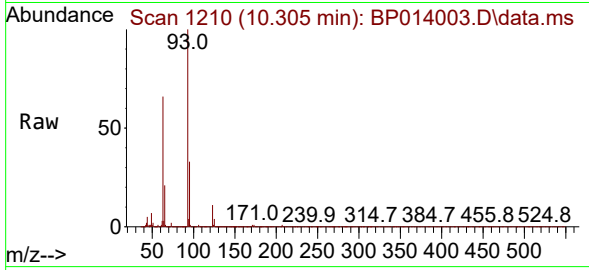


#27
 Bis(2-Chloroethoxy)methane
 Concen: 15.324 ng/ul
 RT: 10.305 min Scan# 11
 Delta R.T. -0.000 min
 Lab File: BP014003.D
 Acq: 09 Mar 2023 10:57

Instrument :
 BNA_P
 ClientSampleId :
 DBZZ0MS

Tgt Ion: 93 Resp: 191108

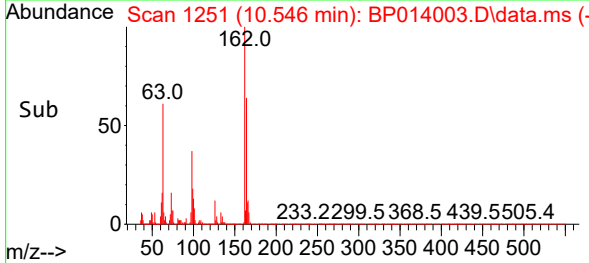
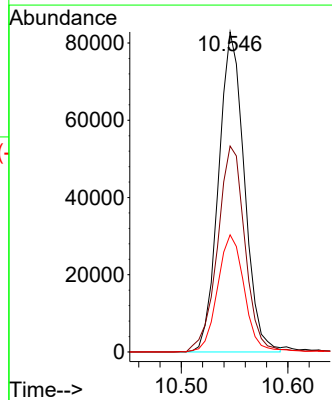
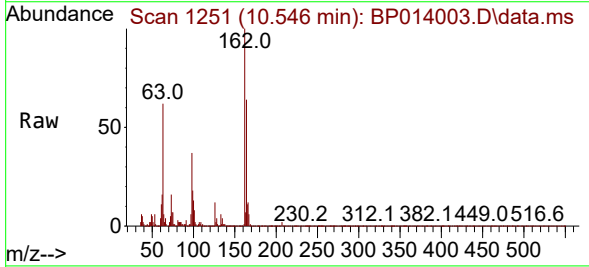
Ion	Ratio	Lower	Upper
93	100		
95	33.3	25.6	38.4
123	11.2	8.5	12.7

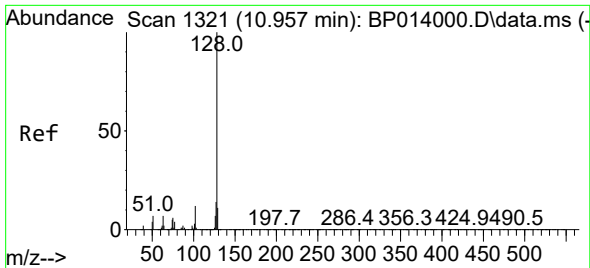


#29
 2,4-Dichlorophenol
 Concen: 14.972 ng/ul
 RT: 10.546 min Scan# 1251
 Delta R.T. -0.006 min
 Lab File: BP014003.D
 Acq: 09 Mar 2023 10:57

Tgt Ion: 162 Resp: 139229

Ion	Ratio	Lower	Upper
162	100		
164	64.4	52.0	78.0
98	36.6	29.1	43.7

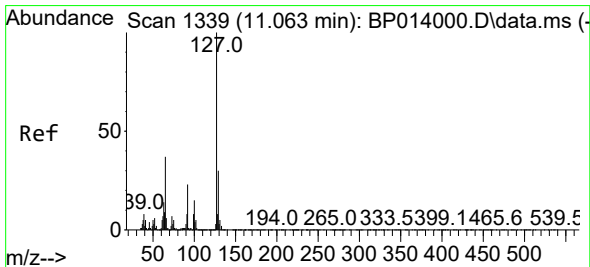
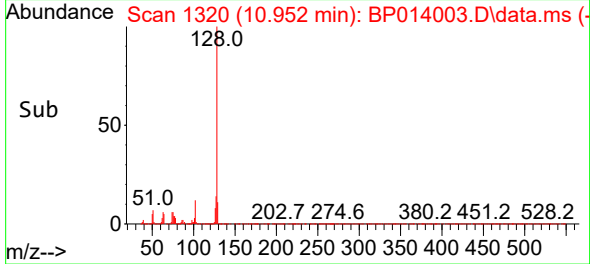
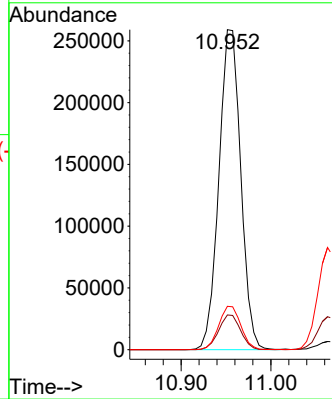
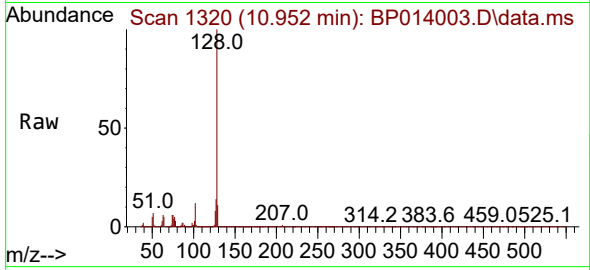




#30
 Naphthalene
 Concen: 15.210 ng/ul
 RT: 10.952 min Scan# 11
 Delta R.T. -0.006 min
 Lab File: BP014003.D
 Acq: 09 Mar 2023 10:57

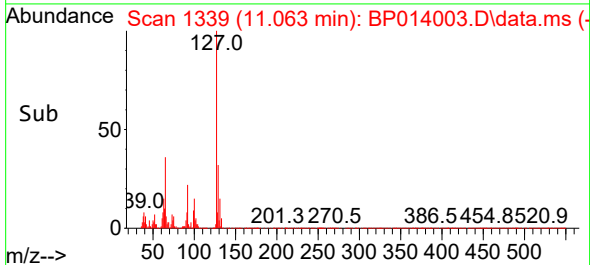
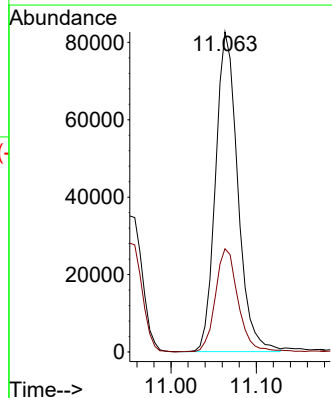
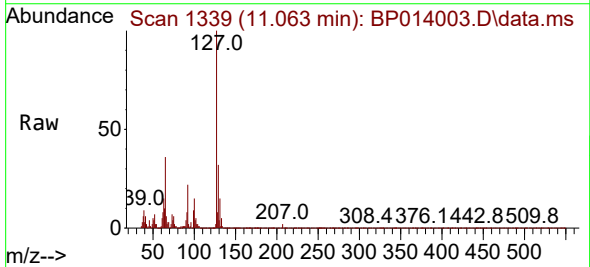
Instrument :
 BNA_P
 ClientSampleId :
 DBZZ0MS

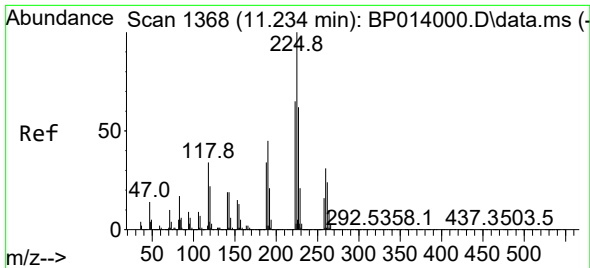
Tgt Ion:128 Resp: 438110
 Ion Ratio Lower Upper
 128 100
 129 10.9 8.5 12.7
 127 13.6 11.0 16.4



#32
 4-Chloroaniline
 Concen: 11.940 ng/ul
 RT: 11.063 min Scan# 1339
 Delta R.T. -0.006 min
 Lab File: BP014003.D
 Acq: 09 Mar 2023 10:57

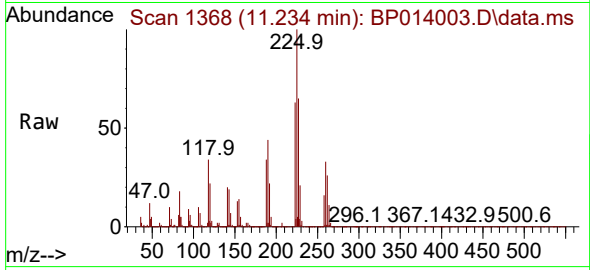
Tgt Ion:127 Resp: 149894
 Ion Ratio Lower Upper
 127 100
 129 32.2 24.9 37.3



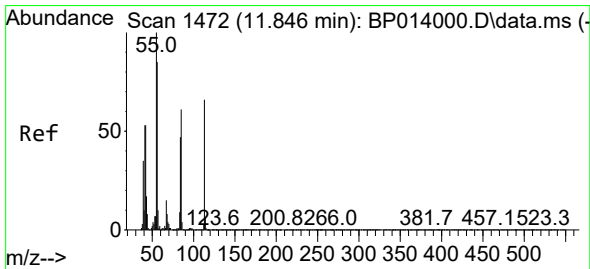
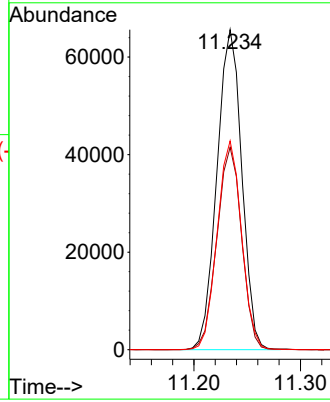
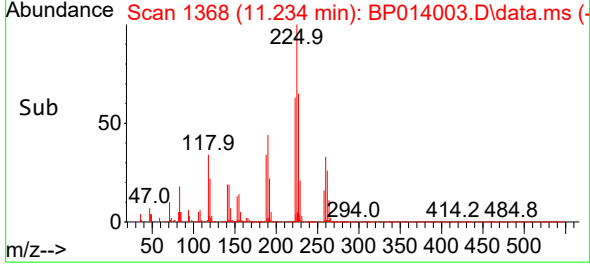


#33
 Hexachlorobutadiene
 Concen: 14.369 ng/ul
 RT: 11.234 min Scan# 11
 Delta R.T. -0.006 min
 Lab File: BP014003.D
 Acq: 09 Mar 2023 10:57

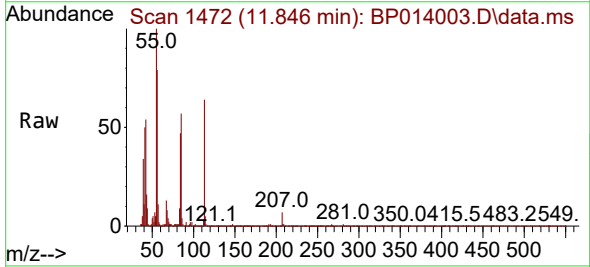
Instrument :
 BNA_P
 ClientSampleId :
 DBZZ0MS



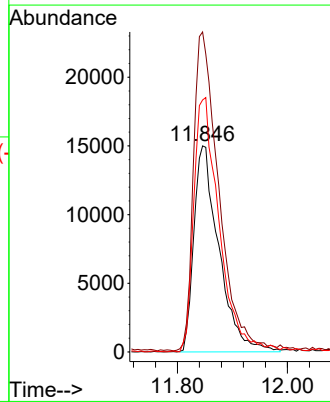
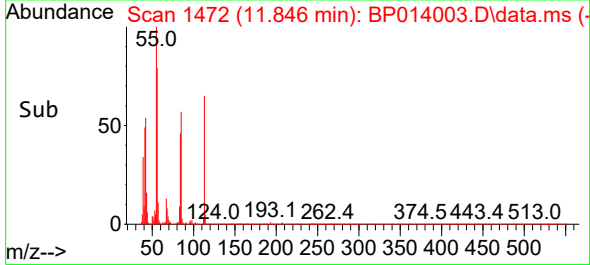
Tgt Ion:225 Resp: 106328
 Ion Ratio Lower Upper
 225 100
 223 63.3 48.0 72.0
 227 65.2 50.3 75.5

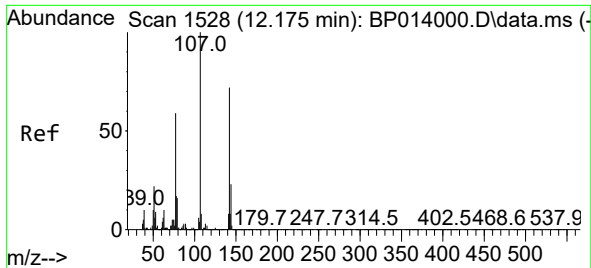


#34
 Caprolactam
 Concen: 15.686 ng/ul
 RT: 11.846 min Scan# 1472
 Delta R.T. -0.006 min
 Lab File: BP014003.D
 Acq: 09 Mar 2023 10:57



Tgt Ion:113 Resp: 47363
 Ion Ratio Lower Upper
 113 100
 55 155.3 124.0 186.0
 56 122.3 102.0 153.0

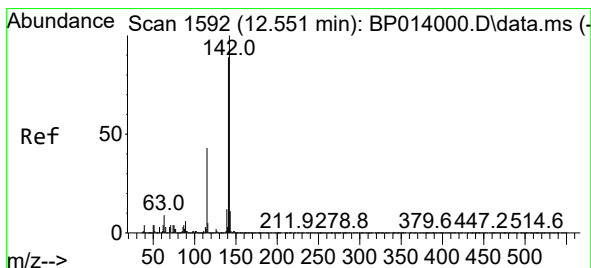
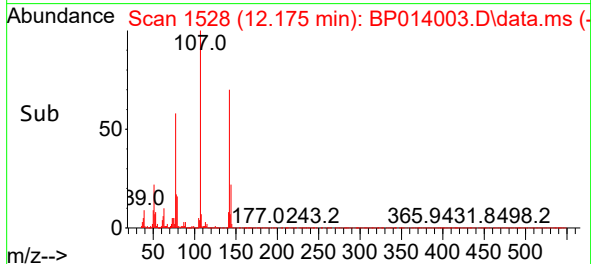
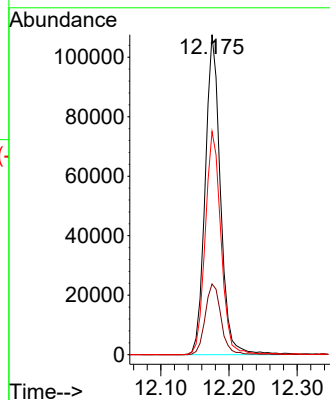
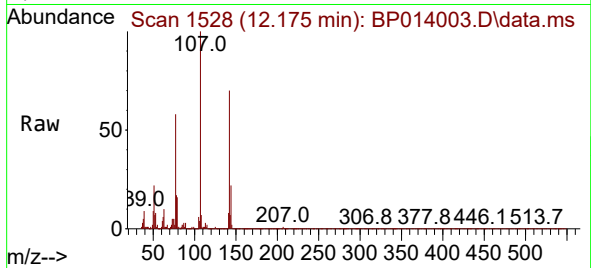




#35
 4-Chloro-3-methylphenol
 Concen: 15.536 ng/ul
 RT: 12.175 min Scan# 1528
 Delta R.T. -0.006 min
 Lab File: BP014003.D
 Acq: 09 Mar 2023 10:57

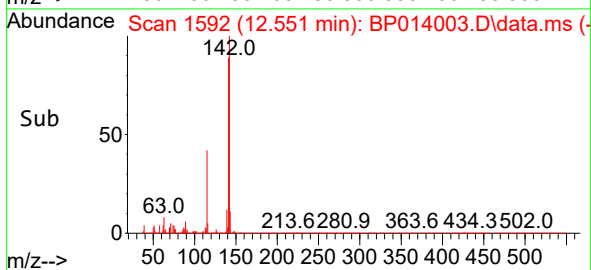
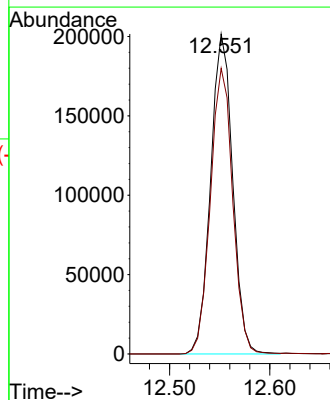
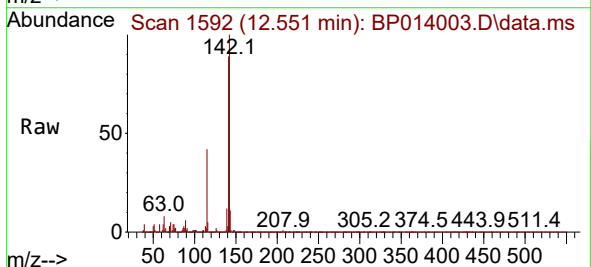
Instrument :
 BNA_P
 ClientSampleId :
 DBZZ0MS

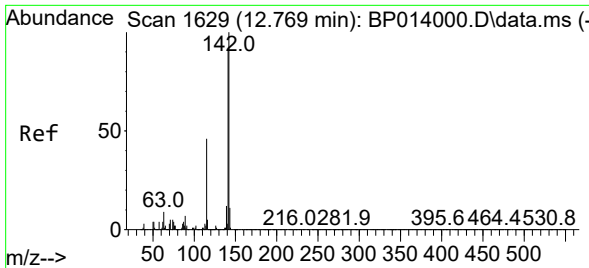
Tgt Ion:107 Resp: 167060
 Ion Ratio Lower Upper
 107 100
 144 22.1 19.4 29.0
 142 69.7 59.6 89.4



#36
 2-Methylnaphthalene
 Concen: 15.238 ng/ul
 RT: 12.551 min Scan# 1592
 Delta R.T. -0.006 min
 Lab File: BP014003.D
 Acq: 09 Mar 2023 10:57

Tgt Ion:142 Resp: 307873
 Ion Ratio Lower Upper
 142 100
 141 89.3 71.7 107.5

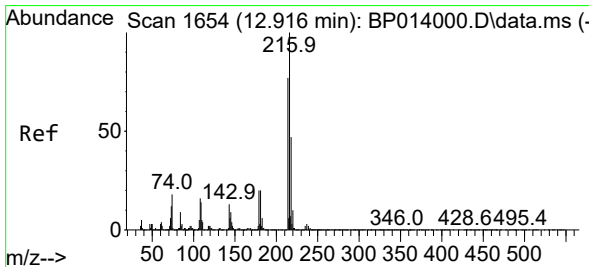
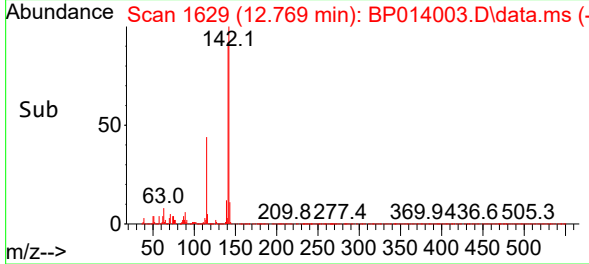
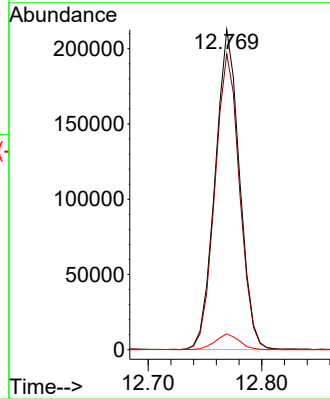
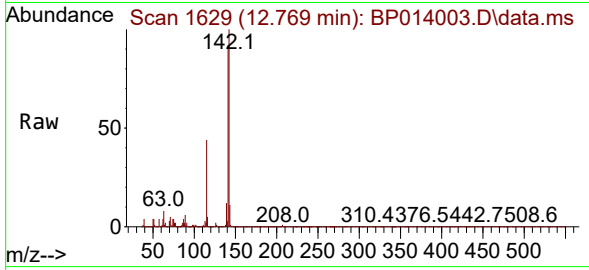




#37
1-Methylnaphthalene
Concen: 15.592 ng/ul
RT: 12.769 min Scan# 1629
Delta R.T. -0.006 min
Lab File: BP014003.D
Acq: 09 Mar 2023 10:57

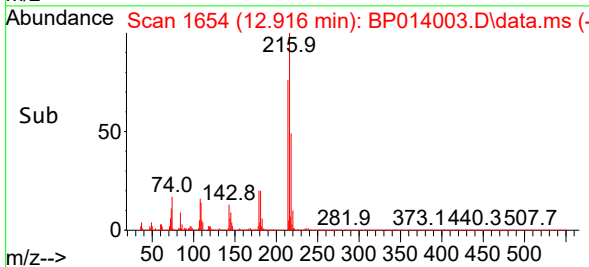
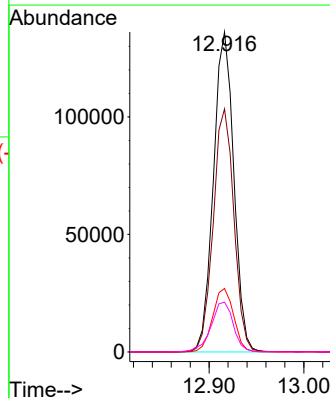
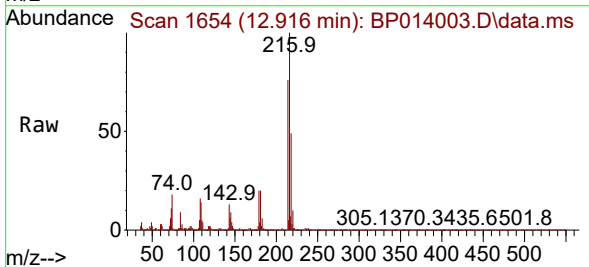
Instrument :
BNA_P
ClientSampleId :
DBZZ0MS

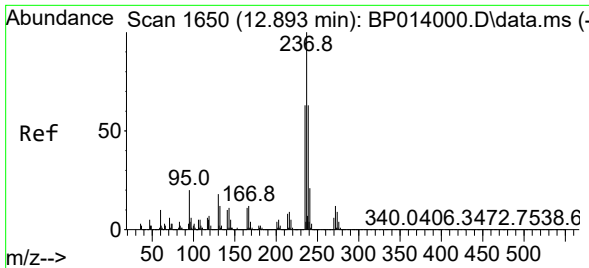
Tgt Ion:142 Resp: 316634
Ion Ratio Lower Upper
142 100
141 92.5 73.8 110.6
116 5.0 3.7 5.5



#39
1,2,4,5-Tetrachlorobenzene
Concen: 15.432 ng/ul
RT: 12.916 min Scan# 1654
Delta R.T. -0.006 min
Lab File: BP014003.D
Acq: 09 Mar 2023 10:57

Tgt Ion:216 Resp: 203550
Ion Ratio Lower Upper
216 100
214 75.9 61.7 92.5
179 19.9 16.2 24.4
108 15.6 13.2 19.8



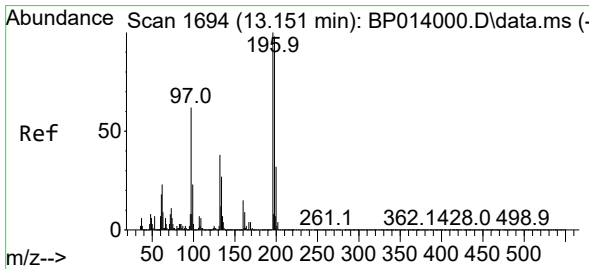
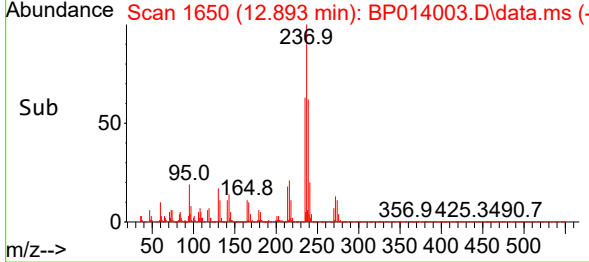
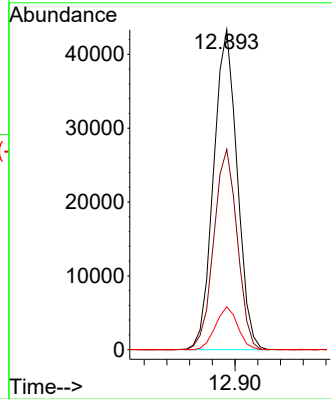
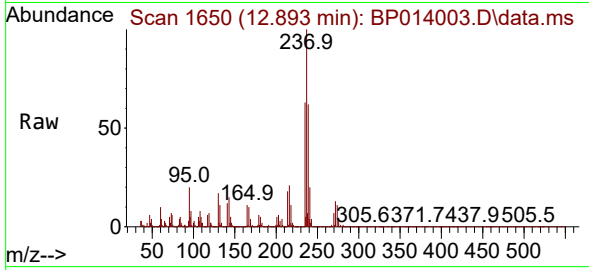


#40
 Hexachlorocyclopentadiene
 Concen: 6.614 ng/ul
 RT: 12.893 min Scan# 1650
 Delta R.T. -0.006 min
 Lab File: BP014003.D
 Acq: 09 Mar 2023 10:57

Instrument : BNA_P
 ClientSampleId : DBZZ0MS

Tgt Ion:237 Resp: 62472

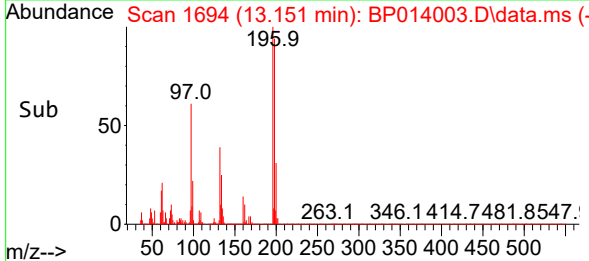
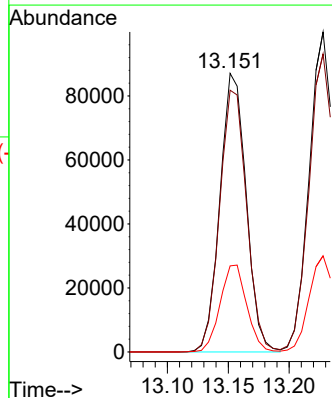
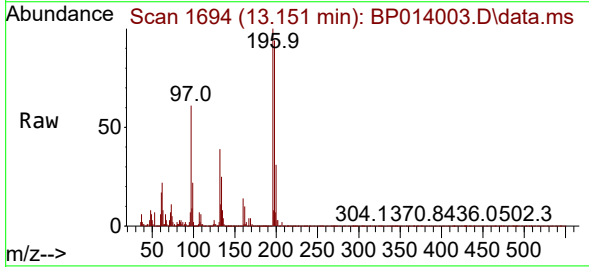
Ion	Ratio	Lower	Upper
237	100		
235	62.6	49.0	73.6
272	13.4	9.6	14.4

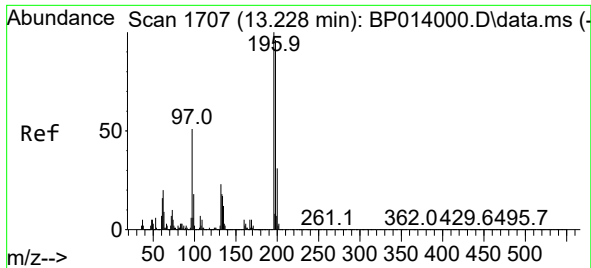


#41
 2,4,6-Trichlorophenol
 Concen: 15.787 ng/ul
 RT: 13.151 min Scan# 1694
 Delta R.T. -0.006 min
 Lab File: BP014003.D
 Acq: 09 Mar 2023 10:57

Tgt Ion:196 Resp: 130810

Ion	Ratio	Lower	Upper
196	100		
198	94.0	78.5	117.7
200	30.9	25.4	38.0



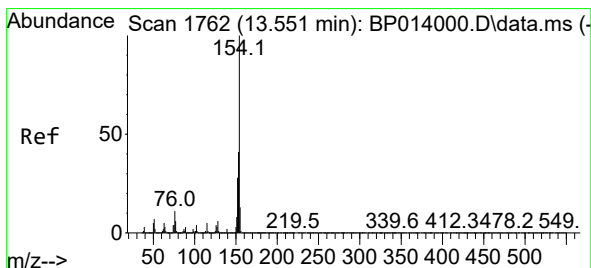
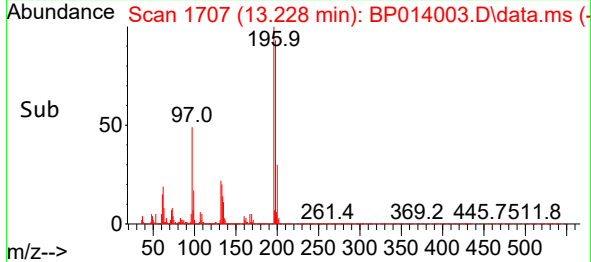
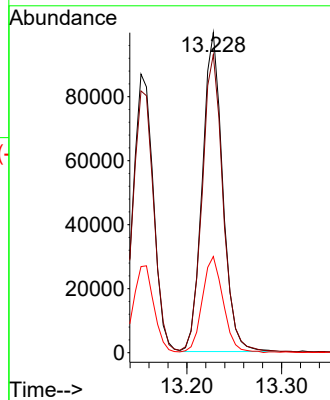
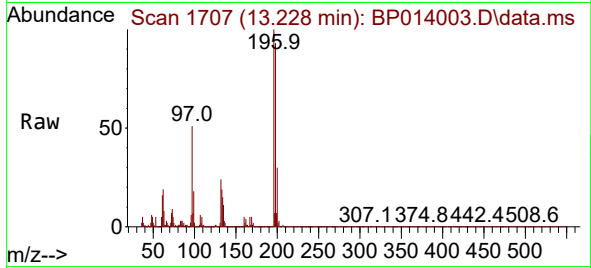


#42
 2,4,5-Trichlorophenol
 Concen: 16.379 ng/ul
 RT: 13.228 min Scan# 1707
 Delta R.T. -0.006 min
 Lab File: BP014003.D
 Acq: 09 Mar 2023 10:57

Instrument :
 BNA_P
 ClientSampleId :
 DBZZ0MS

Tgt Ion:196 Resp: 148943

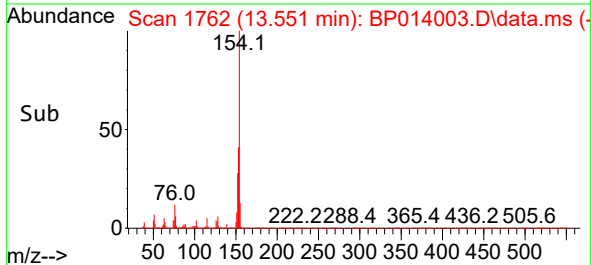
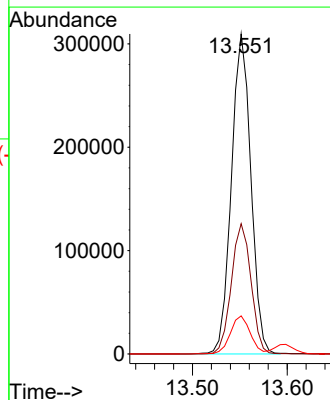
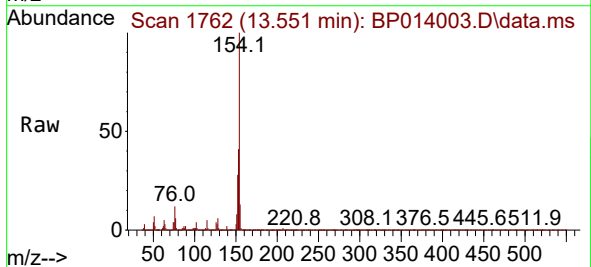
Ion	Ratio	Lower	Upper
196	100		
198	93.1	77.6	116.4
200	30.1	25.3	37.9

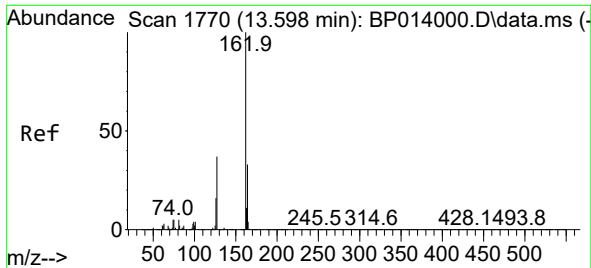


#43
 1,1'-Biphenyl
 Concen: 15.727 ng/ul
 RT: 13.551 min Scan# 1762
 Delta R.T. -0.006 min
 Lab File: BP014003.D
 Acq: 09 Mar 2023 10:57

Tgt Ion:154 Resp: 441640

Ion	Ratio	Lower	Upper
154	100		
153	40.7	32.6	49.0
76	11.9	9.4	14.0

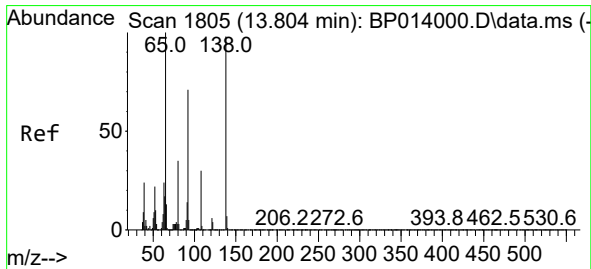
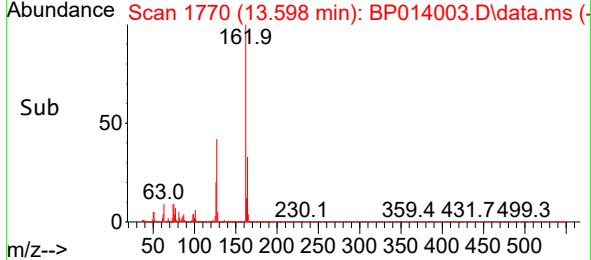
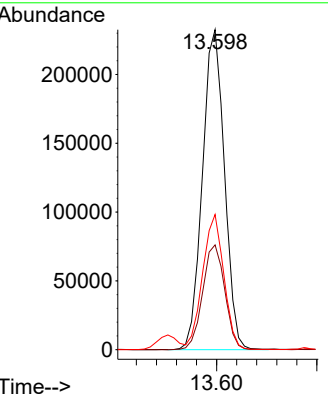
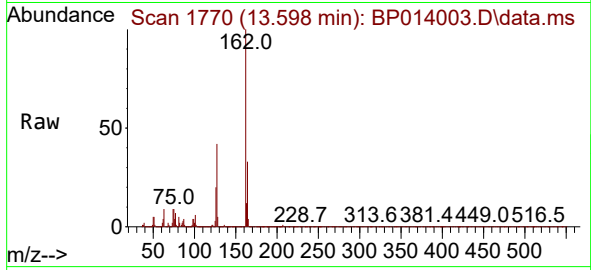




#44
 2-Chloronaphthalene
 Concen: 15.878 ng/ul
 RT: 13.598 min Scan# 1770
 Delta R.T. -0.006 min
 Lab File: BP014003.D
 Acq: 09 Mar 2023 10:57

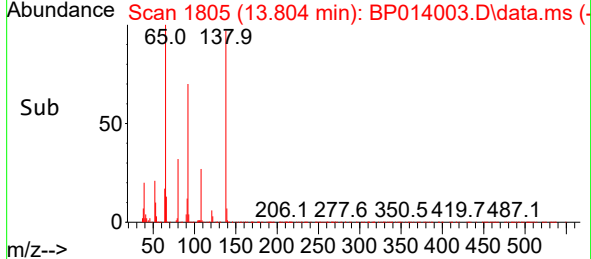
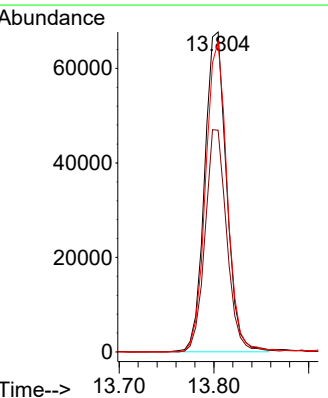
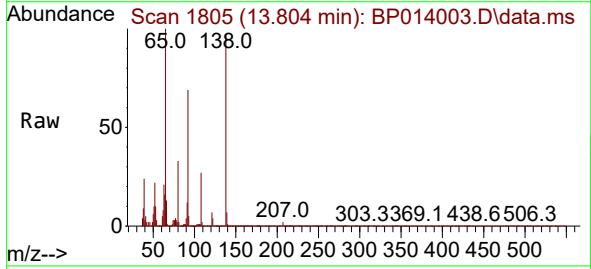
Instrument : BNA_P
 ClientSampleId : DBZZ0MS

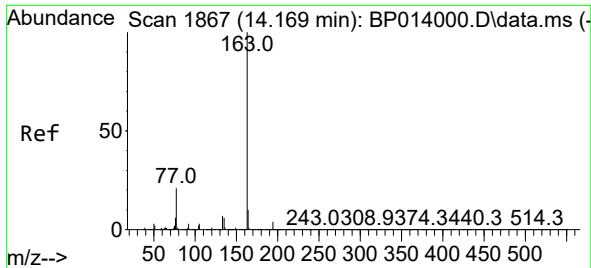
Tgt Ion	Resp	Lower	Upper
162	100		
164	32.8	26.0	39.0
127	42.2	31.3	46.9



#45
 2-Nitroaniline
 Concen: 16.497 ng/ul
 RT: 13.804 min Scan# 1805
 Delta R.T. -0.000 min
 Lab File: BP014003.D
 Acq: 09 Mar 2023 10:57

Tgt Ion	Resp	Lower	Upper
65	100		
92	69.3	56.3	84.5
138	96.9	81.4	122.2



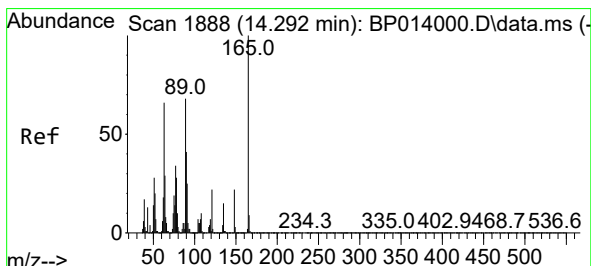
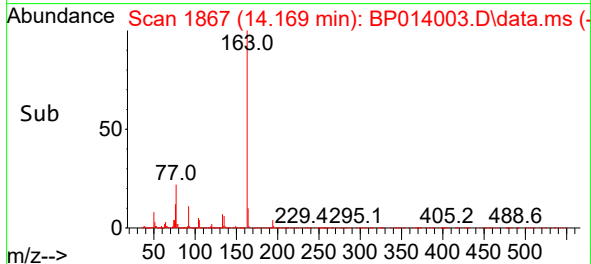
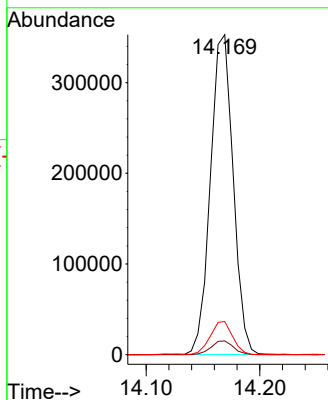
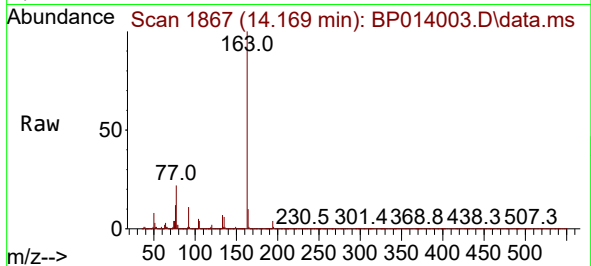


#47
 Dimethylphthalate
 Concen: 16.013 ng/ul
 RT: 14.169 min Scan# 1867
 Delta R.T. -0.000 min
 Lab File: BP014003.D
 Acq: 09 Mar 2023 10:57

Instrument :
 BNA_P
 ClientSampleId :
 DBZZ0MS

Tgt Ion:163 Resp: 490639

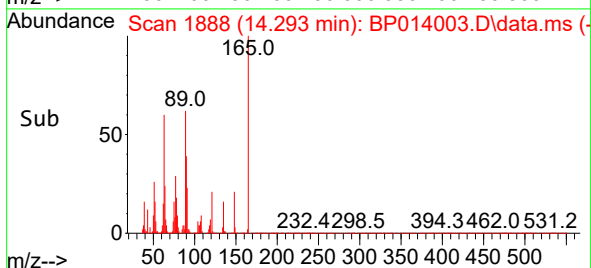
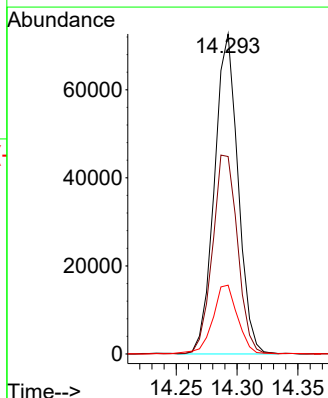
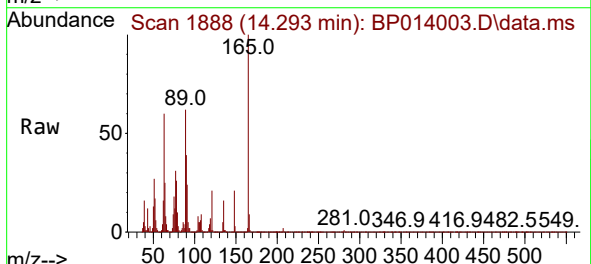
Ion	Ratio	Lower	Upper
163	100		
194	4.3	3.6	5.4
164	10.4	8.2	12.4

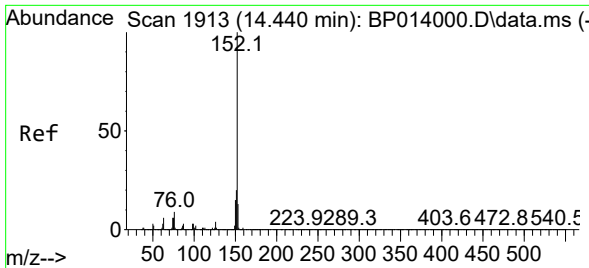


#48
 2,6-Dinitrotoluene
 Concen: 16.208 ng/ul
 RT: 14.293 min Scan# 1888
 Delta R.T. -0.006 min
 Lab File: BP014003.D
 Acq: 09 Mar 2023 10:57

Tgt Ion:165 Resp: 98182

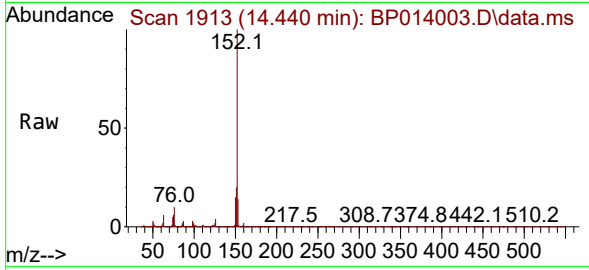
Ion	Ratio	Lower	Upper
165	100		
89	61.7	51.7	77.5
121	21.5	17.5	26.3



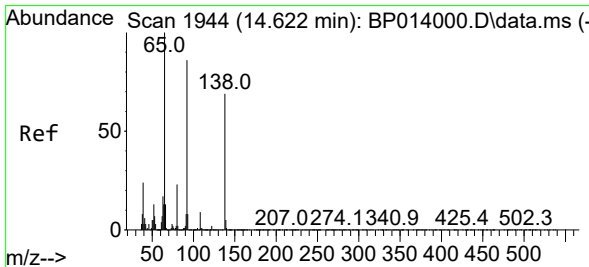
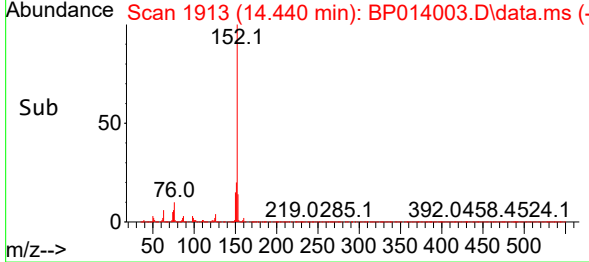
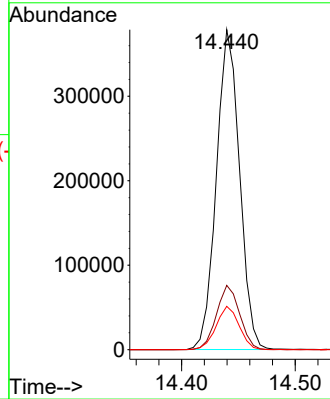


#50
 Acenaphthylene
 Concen: 15.610 ng/ul
 RT: 14.440 min Scan# 1913
 Delta R.T. -0.006 min
 Lab File: BP014003.D
 Acq: 09 Mar 2023 10:57

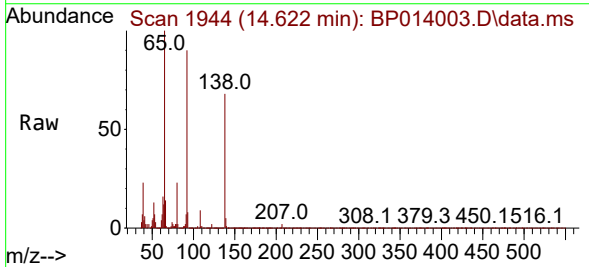
Instrument :
 BNA_P
 ClientSampleId :
 DBZZ0MS



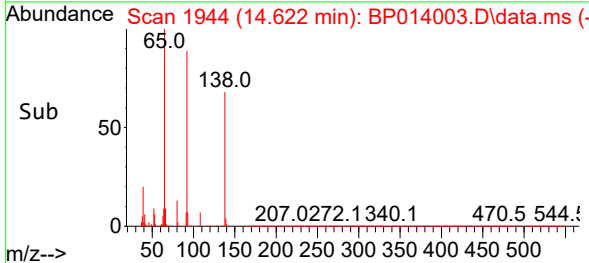
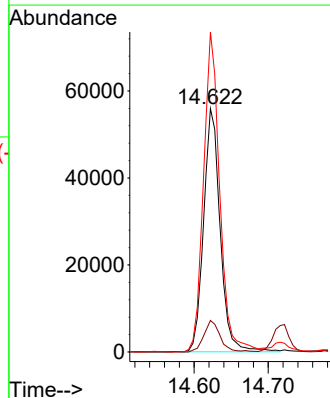
Tgt Ion:152 Resp: 537206
 Ion Ratio Lower Upper
 152 100
 151 20.1 16.2 24.2
 153 13.5 10.4 15.6

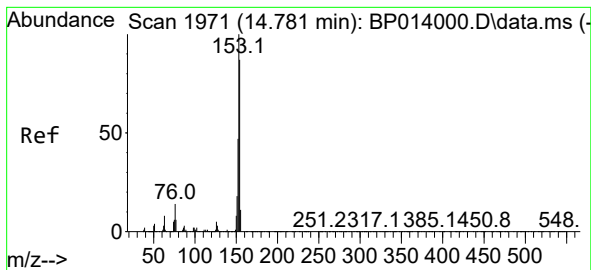


#51
 3-Nitroaniline
 Concen: 16.176 ng/ul
 RT: 14.622 min Scan# 1944
 Delta R.T. -0.006 min
 Lab File: BP014003.D
 Acq: 09 Mar 2023 10:57



Tgt Ion:138 Resp: 86762
 Ion Ratio Lower Upper
 138 100
 108 13.0 10.5 15.7
 92 131.5 98.5 147.7

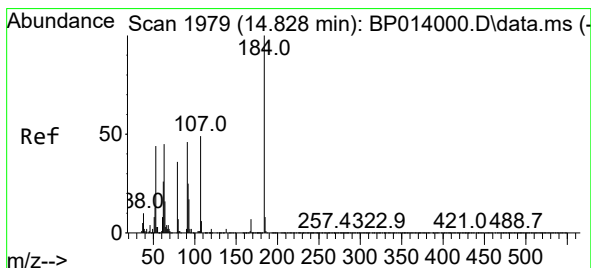
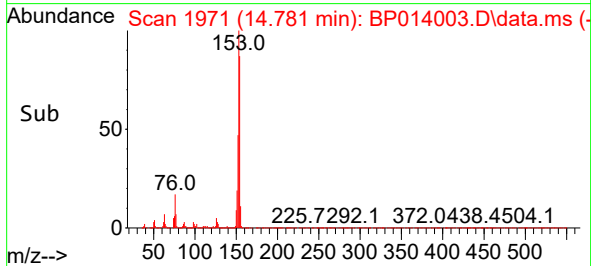
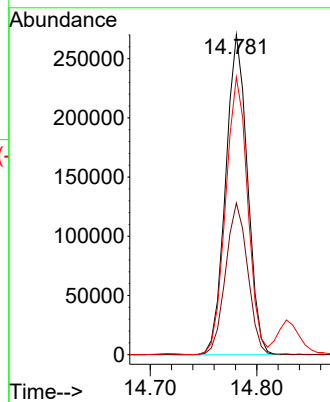
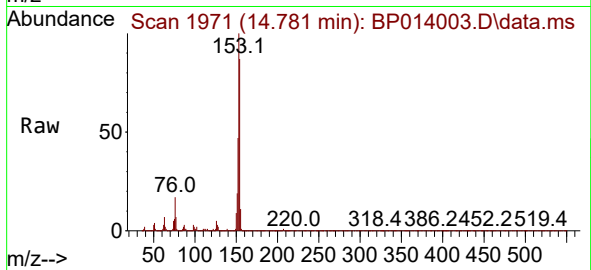




#52
 Acenaphthene
 Concen: 15.946 ng/ul
 RT: 14.781 min Scan# 1971
 Delta R.T. -0.006 min
 Lab File: BP014003.D
 Acq: 09 Mar 2023 10:57

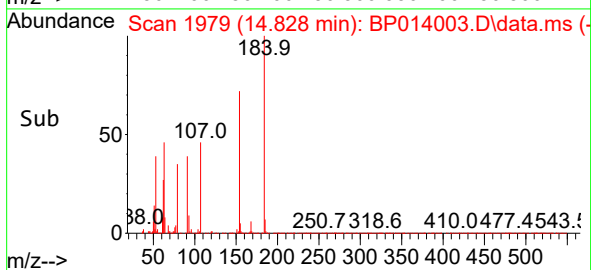
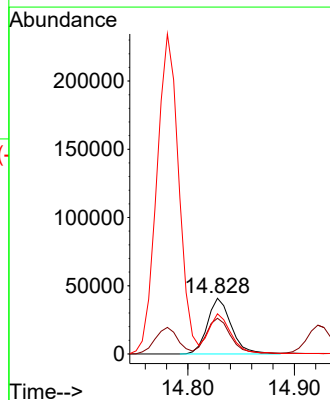
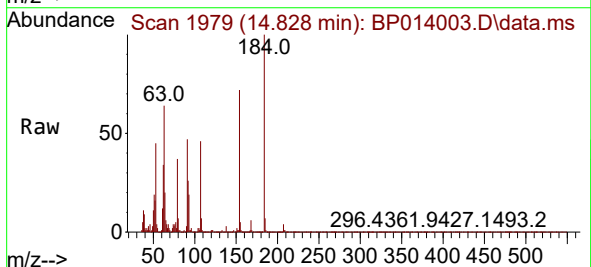
Instrument :
 BNA_P
 ClientSampleId :
 DBZZ0MS

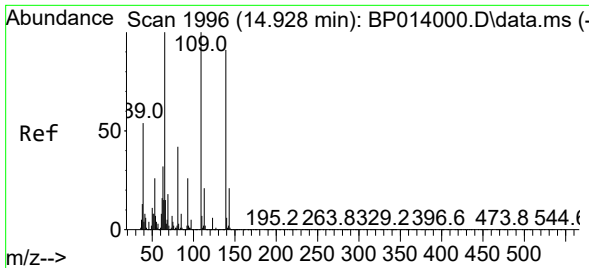
Tgt Ion:153 Resp: 383641
 Ion Ratio Lower Upper
 153 100
 152 47.4 37.7 56.5
 154 86.8 70.4 105.6



#53
 2,4-Dinitrophenol
 Concen: 13.984 ng/ul
 RT: 14.828 min Scan# 1979
 Delta R.T. -0.006 min
 Lab File: BP014003.D
 Acq: 09 Mar 2023 10:57

Tgt Ion:184 Resp: 63262
 Ion Ratio Lower Upper
 184 100
 63 64.2 51.9 77.9
 154 72.0 58.8 88.2

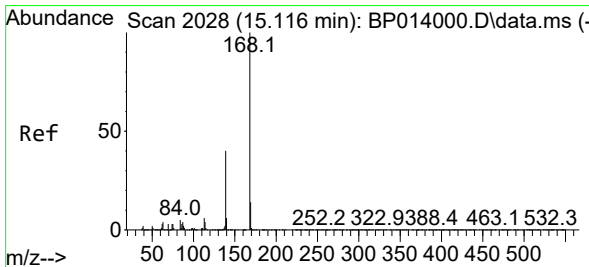
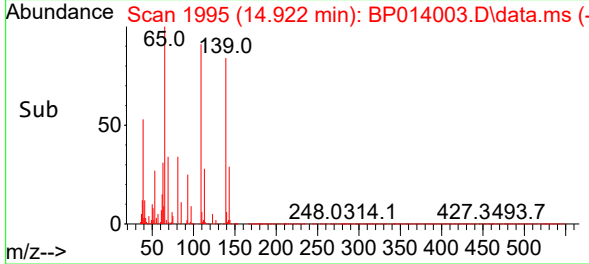
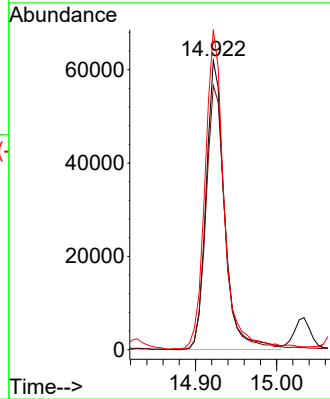
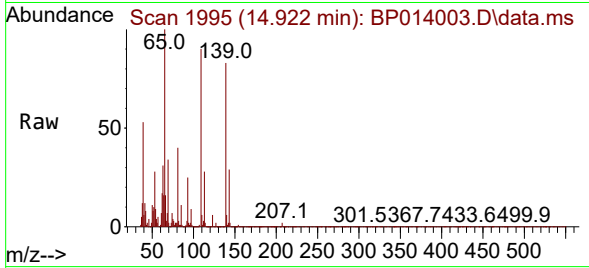




#55
 4-Nitrophenol
 Concen: 16.614 ng/ul
 RT: 14.922 min Scan# 1995
 Delta R.T. -0.006 min
 Lab File: BP014003.D
 Acq: 09 Mar 2023 10:57

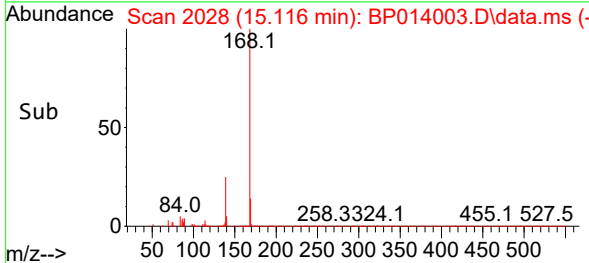
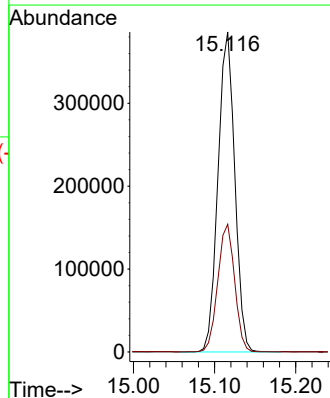
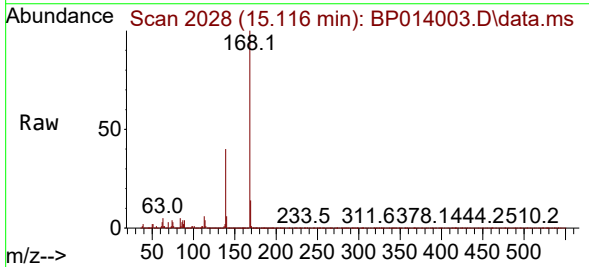
Instrument :
 BNA_P
 ClientSampleId :
 DBZZ0MS

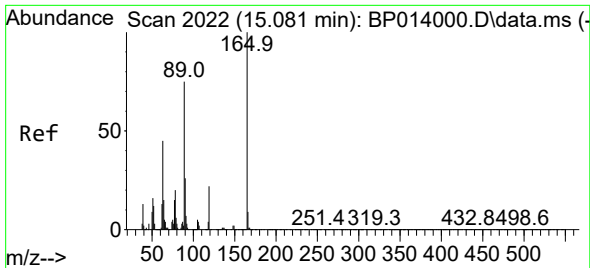
Tgt Ion	Resp	Ion Ratio	Lower	Upper
109	97900	100		
139	91.4	74.5	111.7	
65	110.7	86.6	130.0	



#56
 Dibenzofuran
 Concen: 15.866 ng/ul
 RT: 15.116 min Scan# 2028
 Delta R.T. -0.006 min
 Lab File: BP014003.D
 Acq: 09 Mar 2023 10:57

Tgt Ion	Resp	Ion Ratio	Lower	Upper
168	555300	100		
139	39.9	31.8	47.6	

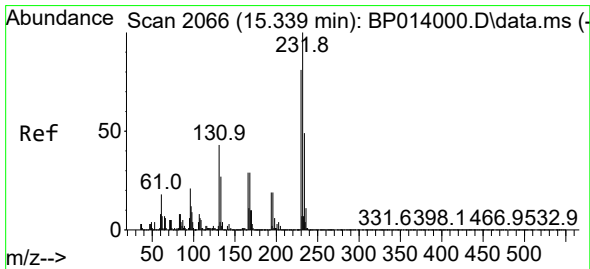
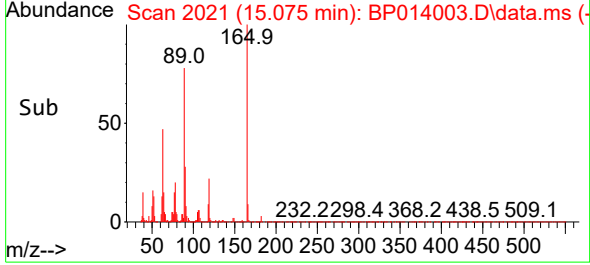
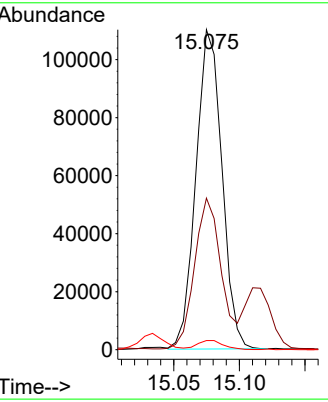
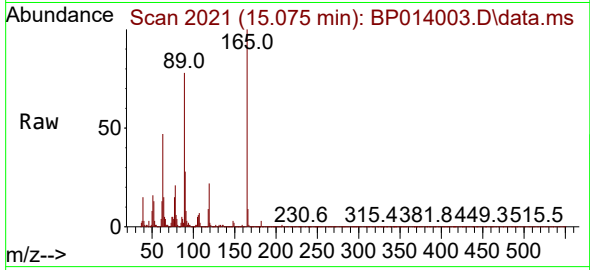




#57
 2,4-Dinitrotoluene
 Concen: 16.758 ng/ul
 RT: 15.075 min Scan# 2021
 Delta R.T. -0.006 min
 Lab File: BP014003.D
 Acq: 09 Mar 2023 10:57

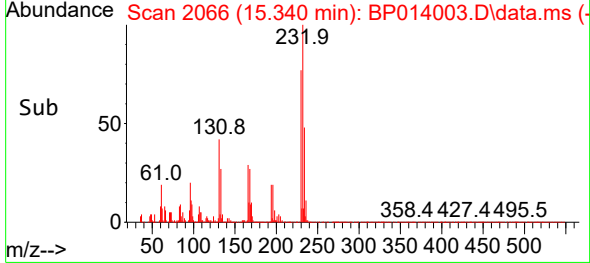
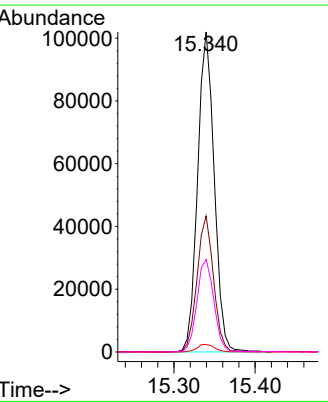
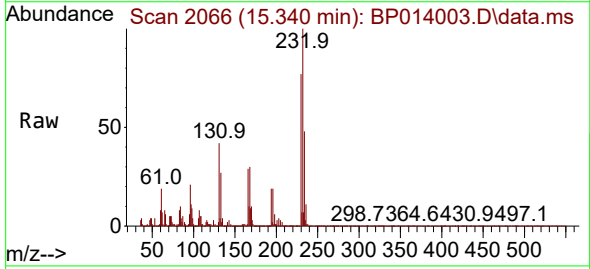
Instrument : BNA_P
 Client Sample Id : DBZZ0MS

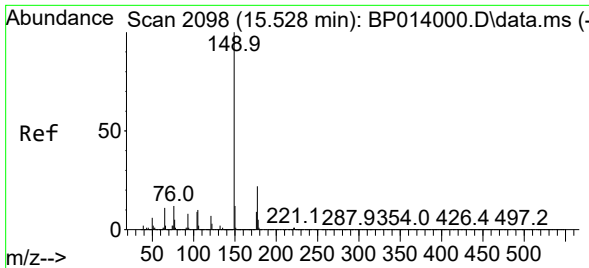
Tgt Ion	Resp	Lower	Upper
165	151677		
165	100		
63	47.3	34.6	52.0
182	2.8	2.2	3.2



#58
 2,3,4,6-Tetrachlorophenol
 Concen: 16.612 ng/ul
 RT: 15.340 min Scan# 2066
 Delta R.T. -0.006 min
 Lab File: BP014003.D
 Acq: 09 Mar 2023 10:57

Tgt Ion	Resp	Lower	Upper
232	144517		
232	100		
131	42.5	34.1	51.1
130	2.3	2.1	3.1
166	28.9	23.0	34.6

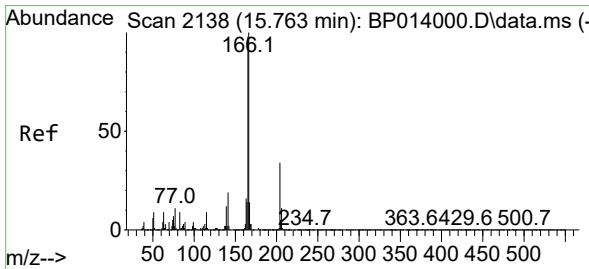
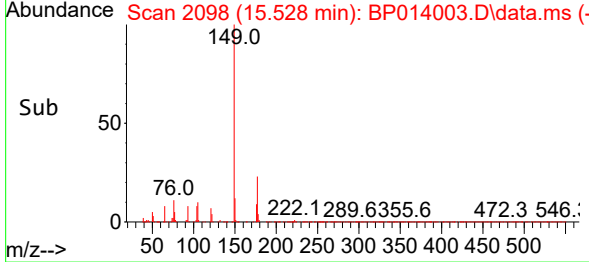
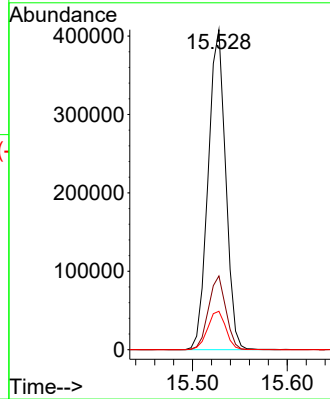
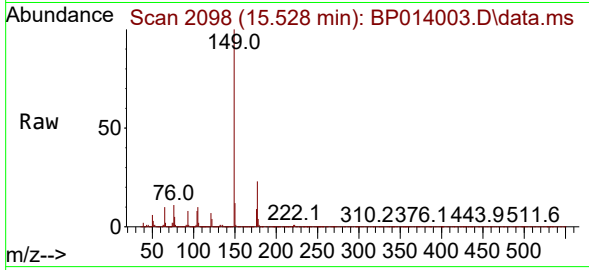




#59
 Diethylphthalate
 Concen: 16.799 ng/ul
 RT: 15.528 min Scan# 2098
 Delta R.T. -0.006 min
 Lab File: BP014003.D
 Acq: 09 Mar 2023 10:57

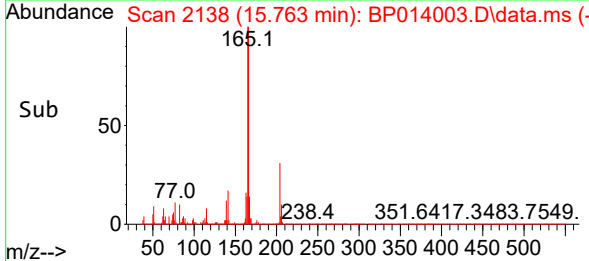
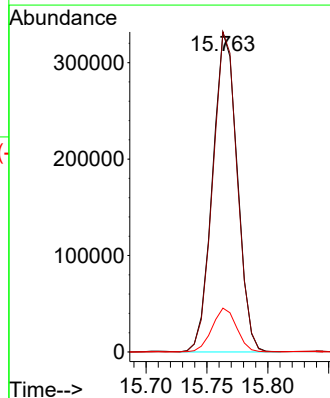
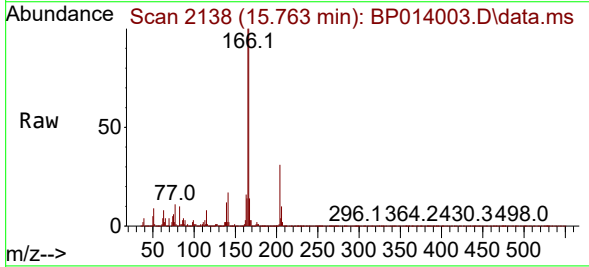
Instrument :
 BNA_P
 ClientSampleId :
 DBZZ0MS

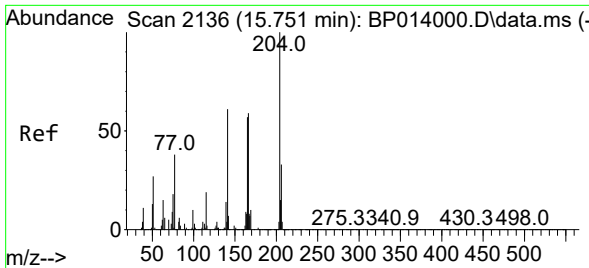
Tgt Ion:149 Resp: 522074
 Ion Ratio Lower Upper
 149 100
 177 23.0 18.2 27.2
 150 12.0 10.0 15.0



#61
 Fluorene
 Concen: 16.120 ng/ul
 RT: 15.763 min Scan# 2138
 Delta R.T. -0.006 min
 Lab File: BP014003.D
 Acq: 09 Mar 2023 10:57

Tgt Ion:166 Resp: 467671
 Ion Ratio Lower Upper
 166 100
 165 100.1 78.9 118.3
 167 13.7 11.0 16.6



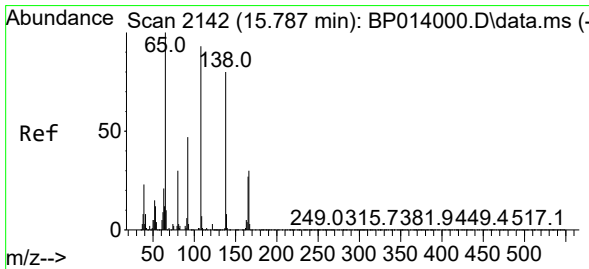
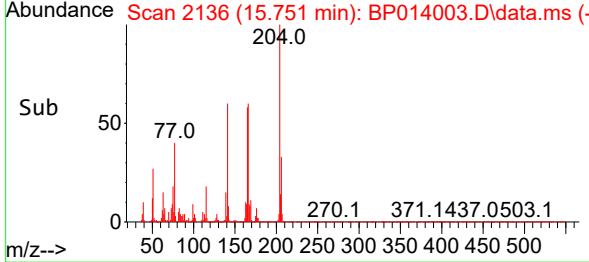
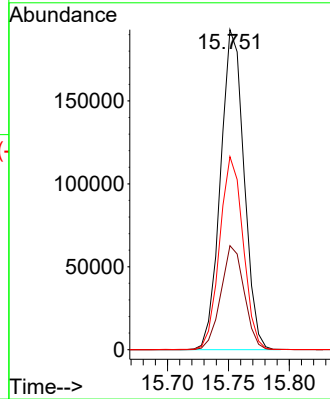
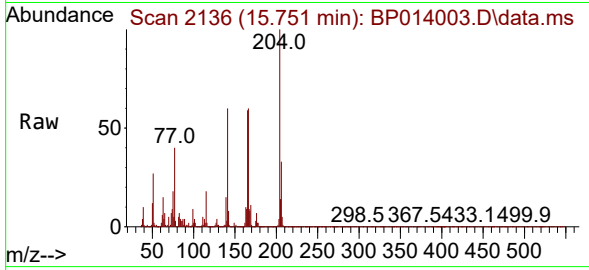


#62
 4-Chlorophenyl-phenylether
 Concen: 16.177 ng/ul
 RT: 15.751 min Scan# 2136
 Delta R.T. -0.006 min
 Lab File: BP014003.D
 Acq: 09 Mar 2023 10:57

Instrument :
 BNA_P
 ClientSampleId :
 DBZZ0MS

Tgt Ion: 204 Resp: 259047

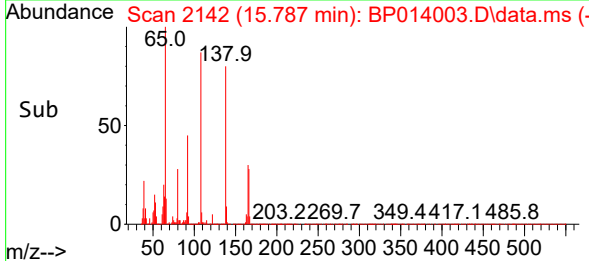
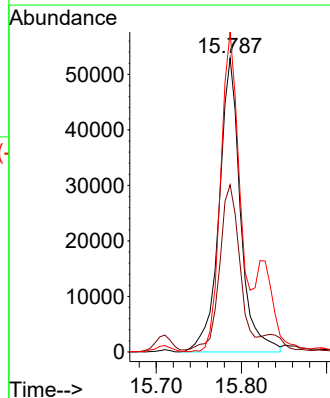
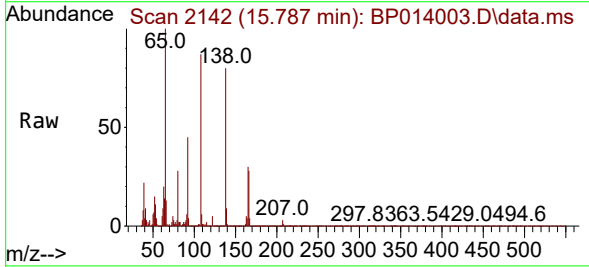
Ion	Ratio	Lower	Upper
204	100		
206	32.5	26.6	39.8
141	60.3	49.2	73.8

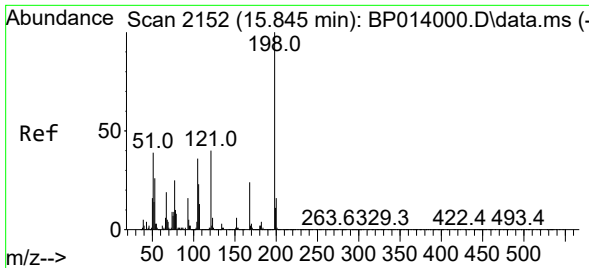


#63
 4-Nitroaniline
 Concen: 16.663 ng/ul
 RT: 15.787 min Scan# 2142
 Delta R.T. -0.006 min
 Lab File: BP014003.D
 Acq: 09 Mar 2023 10:57

Tgt Ion: 138 Resp: 91868

Ion	Ratio	Lower	Upper
138	100		
92	56.9	44.5	66.7
108	108.9	87.2	130.8



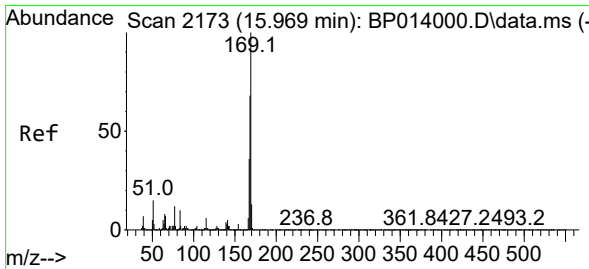
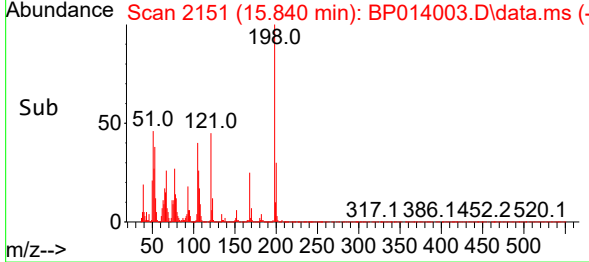
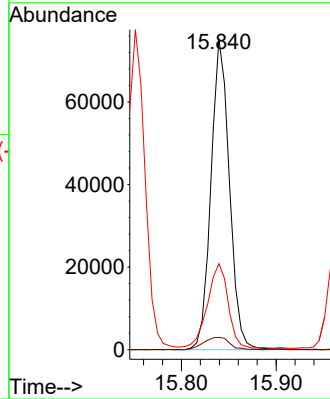
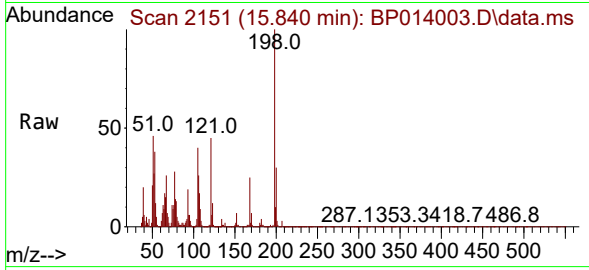


#66
 4,6-Dinitro-2-methylphenol
 Concen: 15.993 ng/ul
 RT: 15.840 min Scan# 2151
 Delta R.T. -0.006 min
 Lab File: BP014003.D
 Acq: 09 Mar 2023 10:57

Instrument :
 BNA_P
 ClientSampleId :
 DBZZ0MS

Tgt Ion:198 Resp: 101380

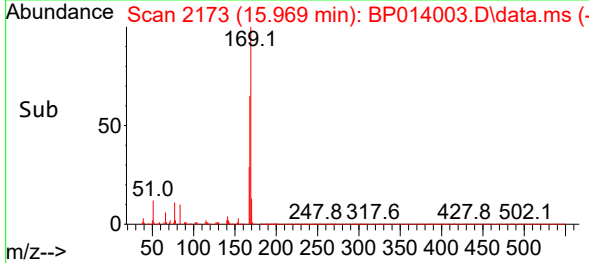
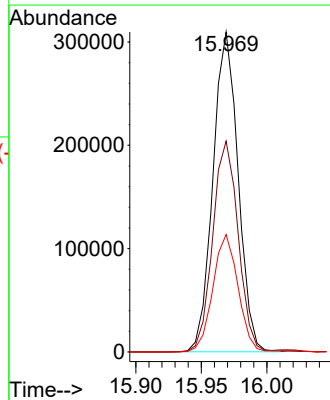
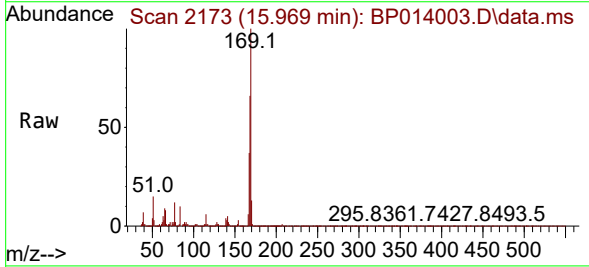
Ion	Ratio	Lower	Upper
198	100		
182	4.0	3.0	4.6
77	27.7	20.3	30.5

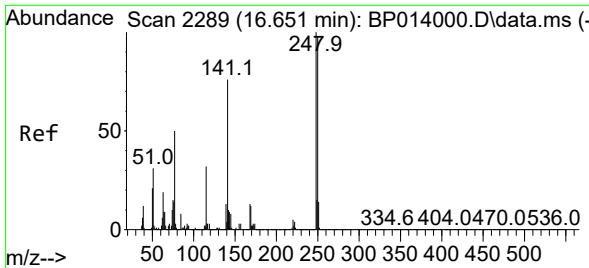


#67
 N-Nitrosodiphenylamine
 Concen: 16.587 ng/ul
 RT: 15.969 min Scan# 2173
 Delta R.T. -0.006 min
 Lab File: BP014003.D
 Acq: 09 Mar 2023 10:57

Tgt Ion:169 Resp: 411822

Ion	Ratio	Lower	Upper
169	100		
168	65.9	53.7	80.5
167	36.7	28.6	43.0



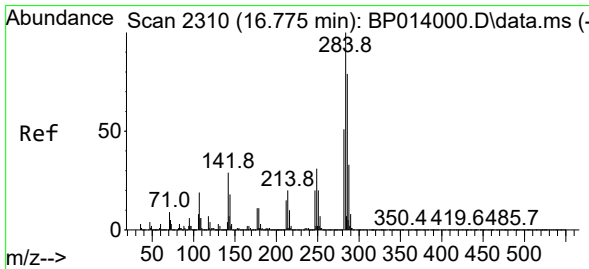
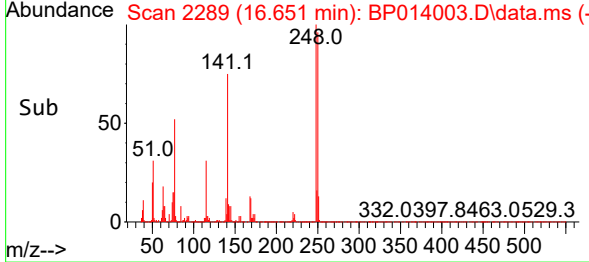
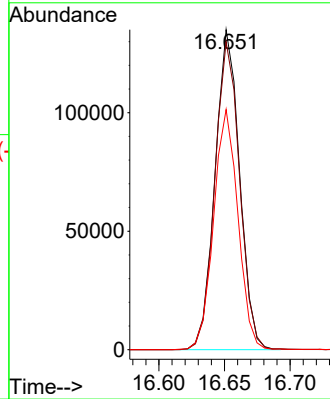
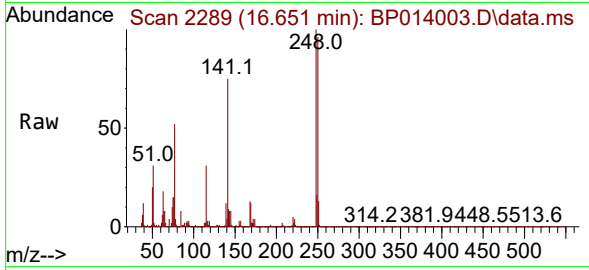


#68
 4-Bromophenyl-phenylether
 Concen: 16.506 ng/ul
 RT: 16.651 min Scan# 2109
 Delta R.T. -0.006 min
 Lab File: BP014003.D
 Acq: 09 Mar 2023 10:57

Instrument :
 BNA_P
 ClientSampleId :
 DBZZ0MS

Tgt Ion:248 Resp: 175421

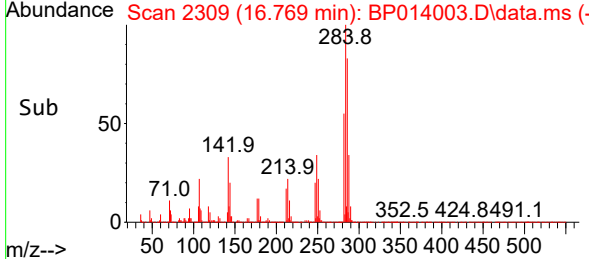
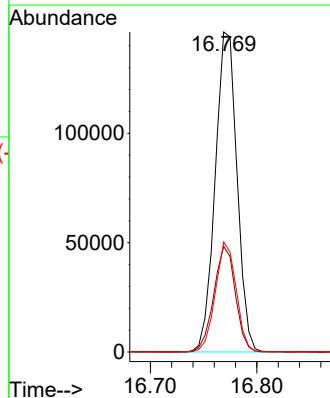
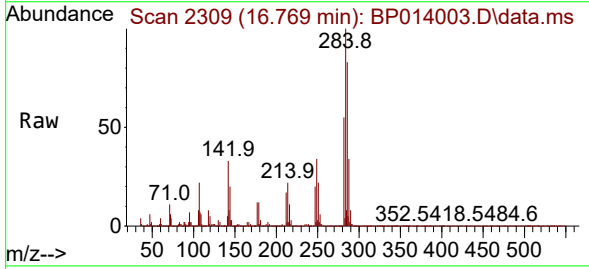
Ion	Ratio	Lower	Upper
248	100		
250	96.2	78.8	118.2
141	75.0	60.8	91.2

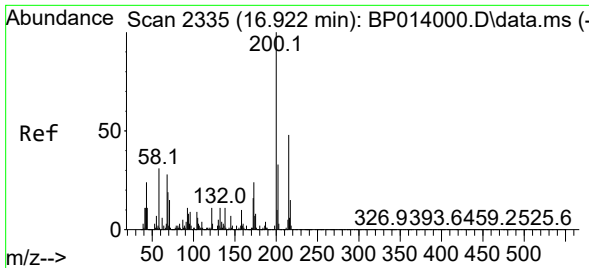


#69
 Hexachlorobenzene
 Concen: 16.612 ng/ul
 RT: 16.769 min Scan# 2309
 Delta R.T. -0.006 min
 Lab File: BP014003.D
 Acq: 09 Mar 2023 10:57

Tgt Ion:284 Resp: 208044

Ion	Ratio	Lower	Upper
284	100		
142	33.0	23.2	34.8
249	34.3	25.7	38.5



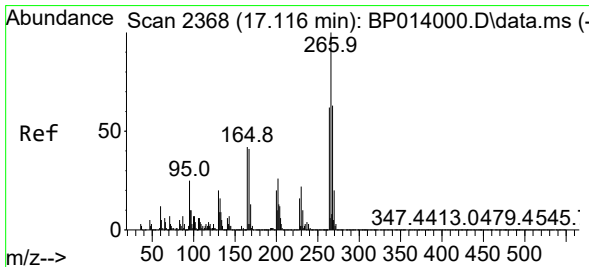
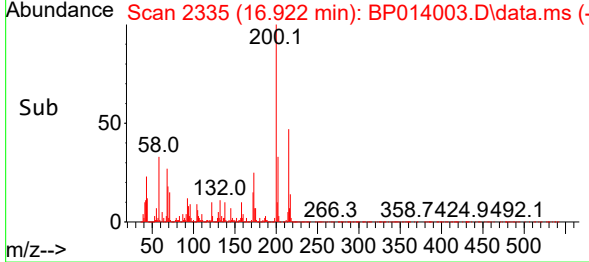
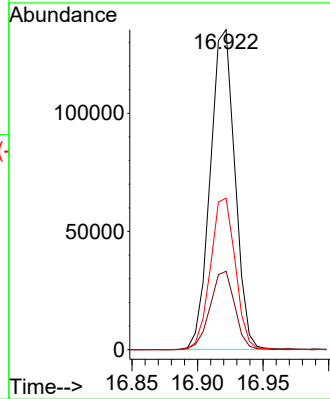
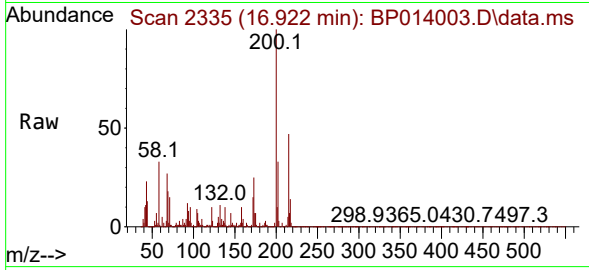


#70
 Atrazine
 Concen: 16.544 ng/uI
 RT: 16.922 min Scan# 21
 Delta R.T. -0.000 min
 Lab File: BP014003.D
 Acq: 09 Mar 2023 10:57

Instrument :
 BNA_P
 ClientSampleId :
 DBZZ0MS

Tgt Ion:200 Resp: 177159

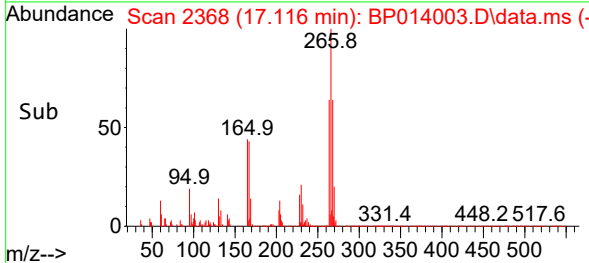
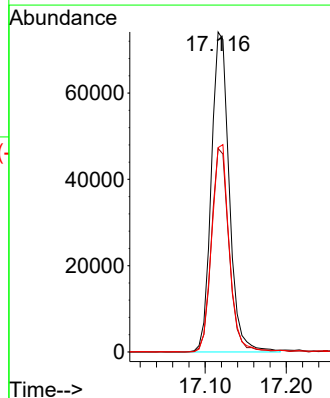
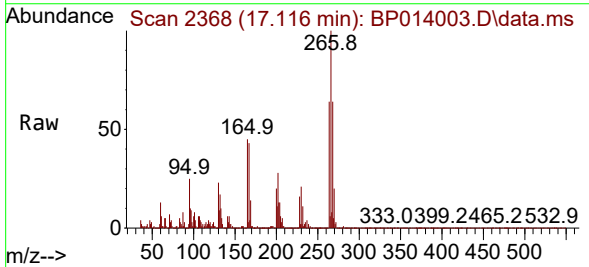
Ion	Ratio	Lower	Upper
200	100		
173	24.5	19.0	28.4
215	47.4	38.5	57.7

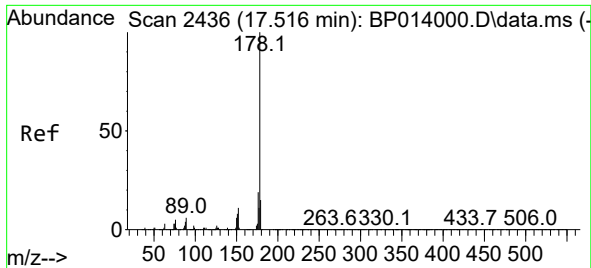


#71
 Pentachlorophenol
 Concen: 13.880 ng/uI
 RT: 17.116 min Scan# 2368
 Delta R.T. -0.006 min
 Lab File: BP014003.D
 Acq: 09 Mar 2023 10:57

Tgt Ion:266 Resp: 113619

Ion	Ratio	Lower	Upper
266	100		
264	63.6	48.4	72.6
268	63.9	50.4	75.6



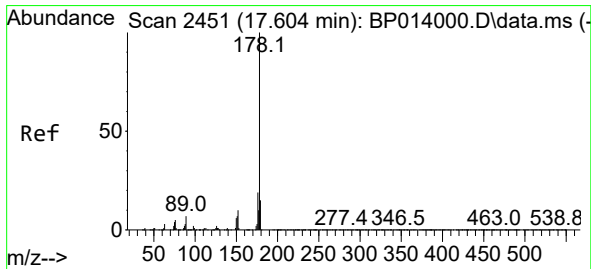
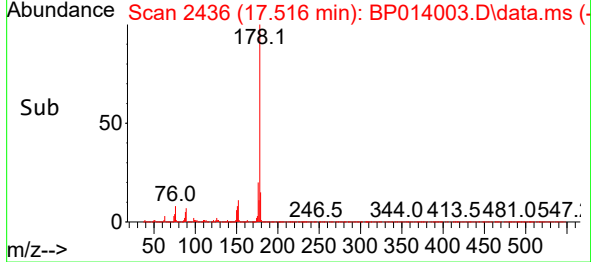
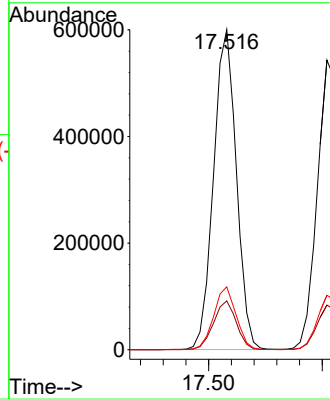
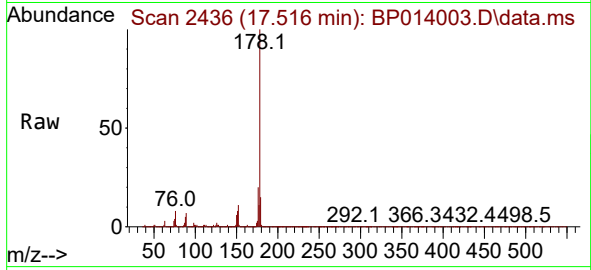


#72
 Phenanthrene
 Concen: 17.408 ng/uI
 RT: 17.516 min Scan# 2436
 Delta R.T. -0.006 min
 Lab File: BP014003.D
 Acq: 09 Mar 2023 10:57

Instrument :
 BNA_P
 ClientSampleId :
 DBZZ0MS

Tgt Ion:178 Resp: 834672

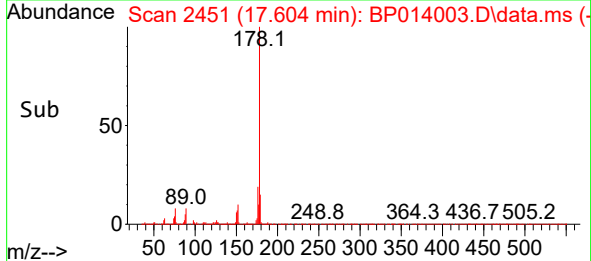
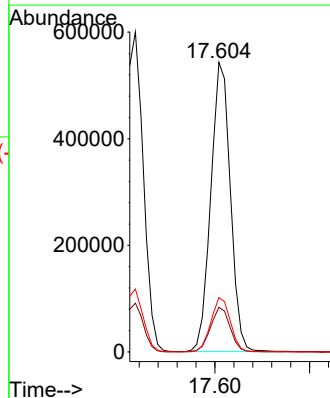
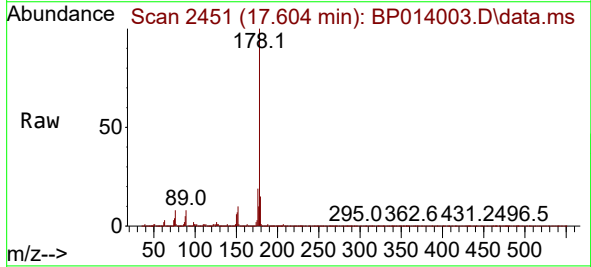
Ion	Ratio	Lower	Upper
178	100		
179	15.2	12.2	18.4
176	19.7	15.4	23.0

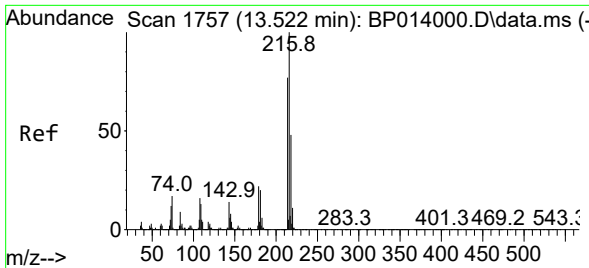


#74
 Anthracene
 Concen: 16.012 ng/uI
 RT: 17.604 min Scan# 2451
 Delta R.T. -0.006 min
 Lab File: BP014003.D
 Acq: 09 Mar 2023 10:57

Tgt Ion:178 Resp: 778445

Ion	Ratio	Lower	Upper
178	100		
179	15.4	12.5	18.7
176	18.8	15.1	22.7



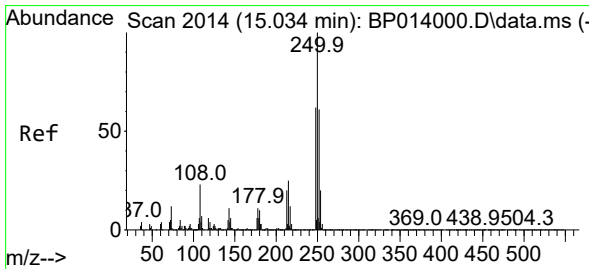
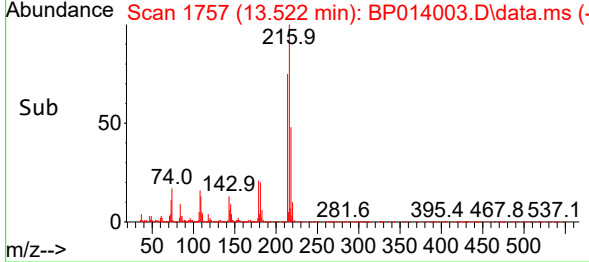
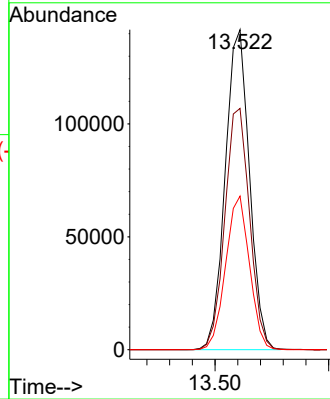
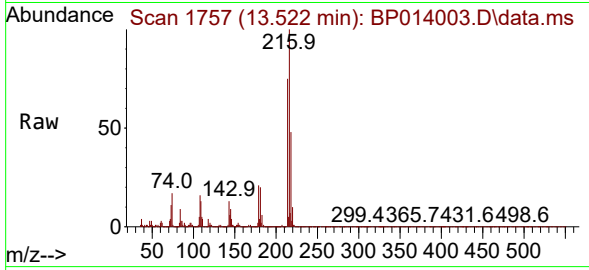


#75
 1,2,3,4-Tetrachlorobenzene
 Concen: 15.564 ng/uL
 RT: 13.522 min Scan# 1757
 Delta R.T. -0.000 min
 Lab File: BP014003.D
 Acq: 09 Mar 2023 10:57

Instrument : BNA_P
 ClientSampleId : DBZZ0MS

Tgt Ion: 216 Resp: 209987

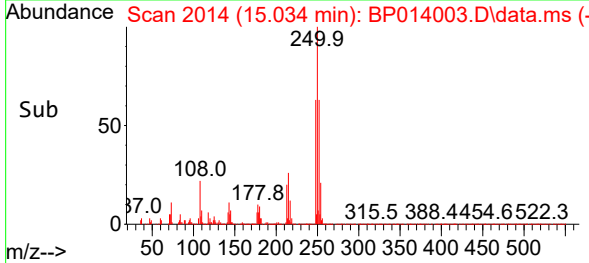
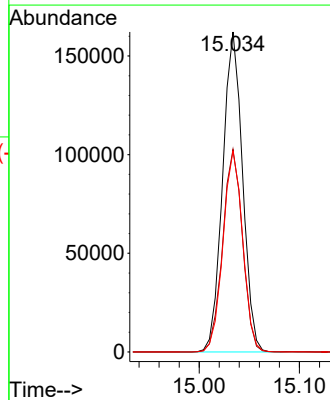
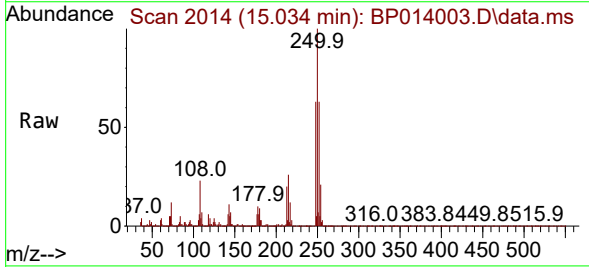
Ion	Ratio	Lower	Upper
216	100		
214	75.4	61.4	92.2
218	48.0	39.1	58.7

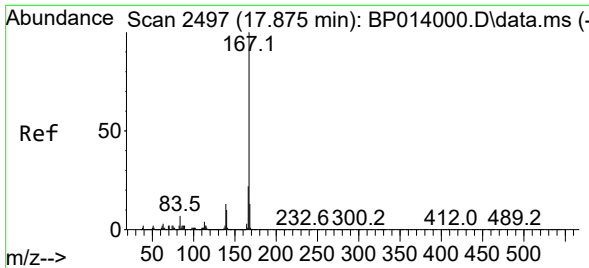


#76
 Pentachlorobenzene
 Concen: 15.916 ng/uL
 RT: 15.034 min Scan# 2014
 Delta R.T. -0.006 min
 Lab File: BP014003.D
 Acq: 09 Mar 2023 10:57

Tgt Ion: 250 Resp: 223059

Ion	Ratio	Lower	Upper
250	100		
248	63.3	51.0	76.4
252	62.8	50.8	76.2



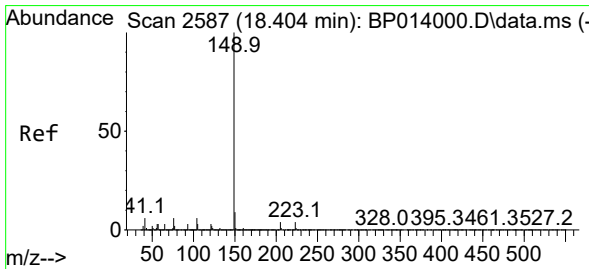
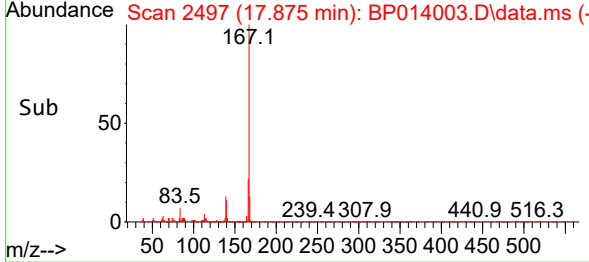
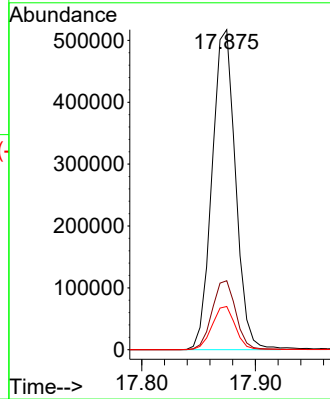
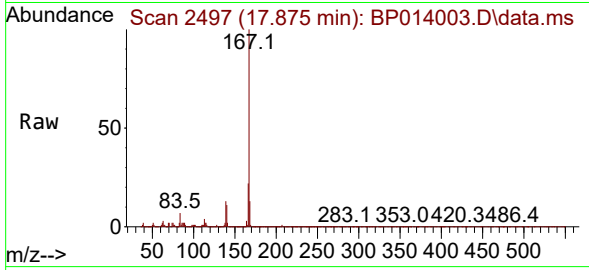


#77
 Carbazole
 Concen: 17.302 ng/uI
 RT: 17.875 min Scan# 2497
 Delta R.T. -0.000 min
 Lab File: BP014003.D
 Acq: 09 Mar 2023 10:57

Instrument :
 BNA_P
 ClientSampleId :
 DBZZ0MS

Tgt Ion:167 Resp: 741977

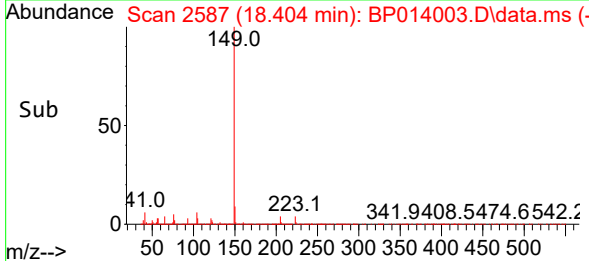
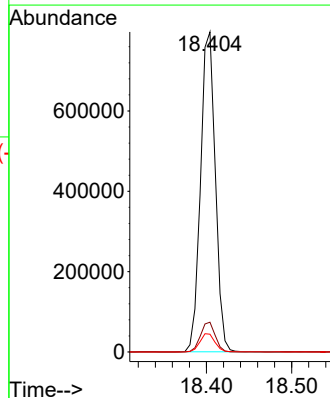
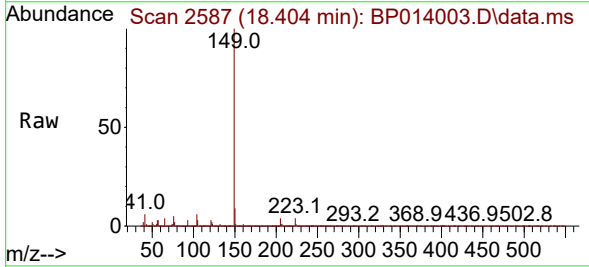
Ion	Ratio	Lower	Upper
167	100		
166	21.6	17.5	26.3
139	13.5	10.5	15.7

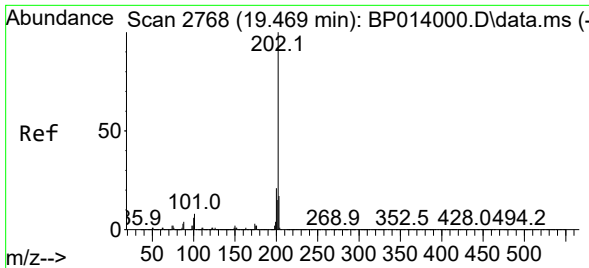


#78
 Di-n-butylphthalate
 Concen: 17.912 ng/uI
 RT: 18.404 min Scan# 2587
 Delta R.T. -0.000 min
 Lab File: BP014003.D
 Acq: 09 Mar 2023 10:57

Tgt Ion:149 Resp: 959957

Ion	Ratio	Lower	Upper
149	100		
150	9.3	7.4	11.2
104	5.6	4.6	6.8



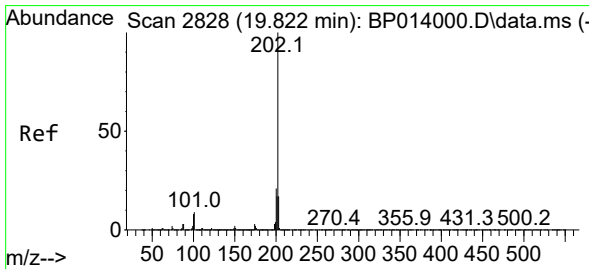
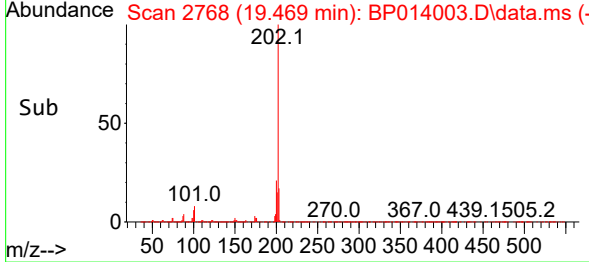
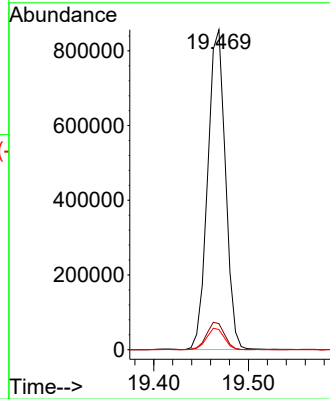
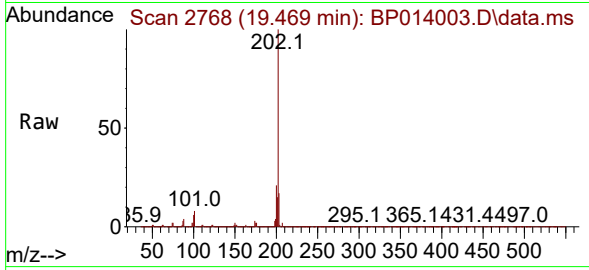


#80
 Fluoranthene
 Concen: 18.430 ng/uI
 RT: 19.469 min Scan# 2111
 Delta R.T. -0.000 min
 Lab File: BP014003.D
 Acq: 09 Mar 2023 10:57

Instrument :
 BNA_P
 ClientSampleId :
 DBZZ0MS

Tgt Ion:202 Resp: 1117352

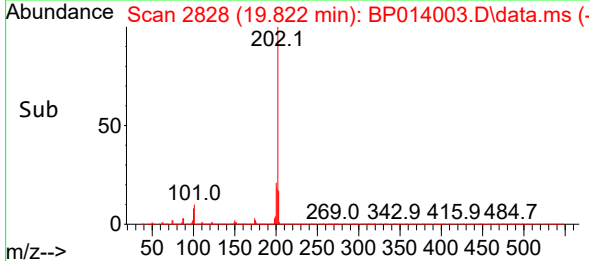
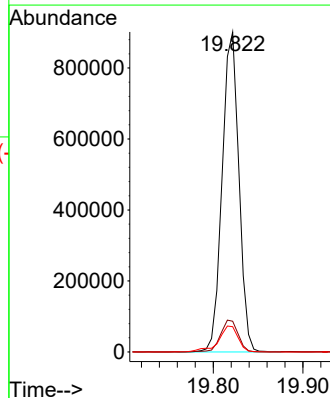
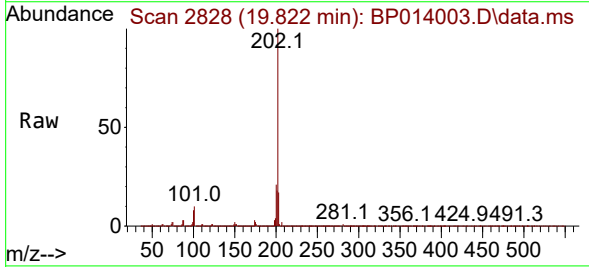
Ion	Ratio	Lower	Upper
202	100		
101	8.2	6.6	10.0
100	6.3	5.0	7.4

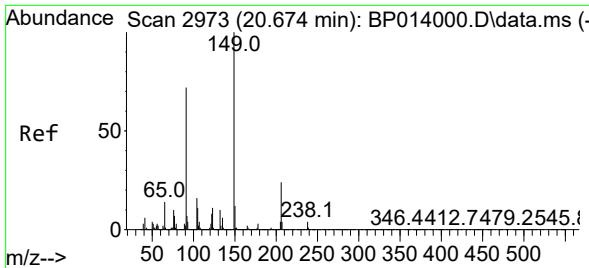


#82
 Pyrene
 Concen: 18.465 ng/uI
 RT: 19.822 min Scan# 2828
 Delta R.T. -0.006 min
 Lab File: BP014003.D
 Acq: 09 Mar 2023 10:57

Tgt Ion:202 Resp: 1167841

Ion	Ratio	Lower	Upper
202	100		
101	9.6	7.8	11.8
100	7.9	6.5	9.7

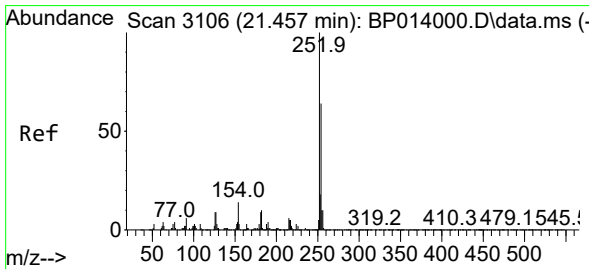
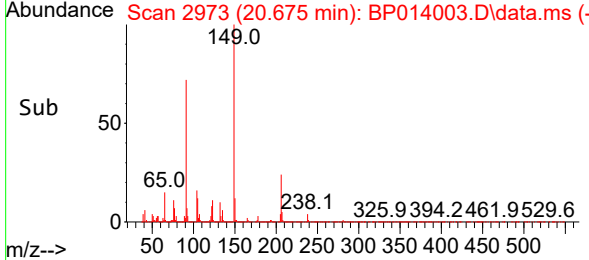
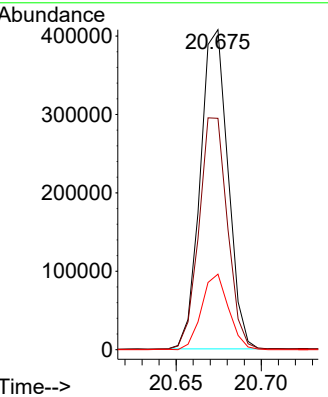
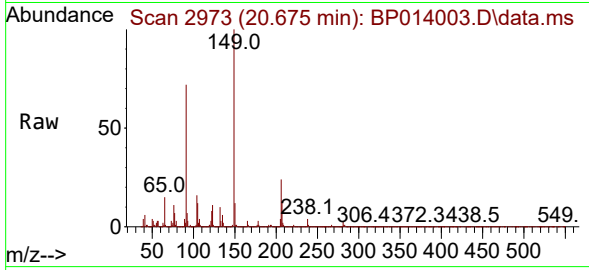




#83
 Butylbenzylphthalate
 Concen: 18.093 ng/ul
 RT: 20.675 min Scan# 2973
 Delta R.T. -0.000 min
 Lab File: BP014003.D
 Acq: 09 Mar 2023 10:57

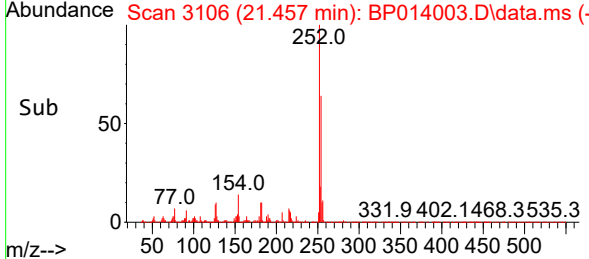
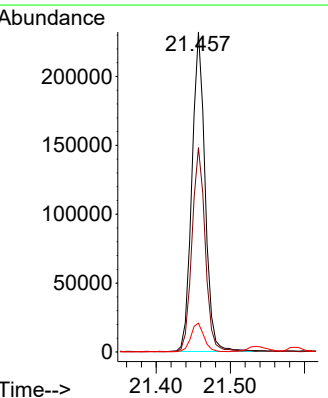
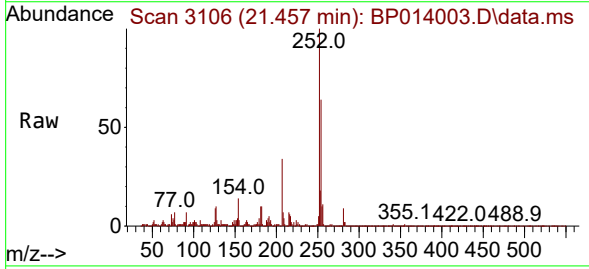
Instrument : BNA_P
 ClientSampleId : DBZZ0MS

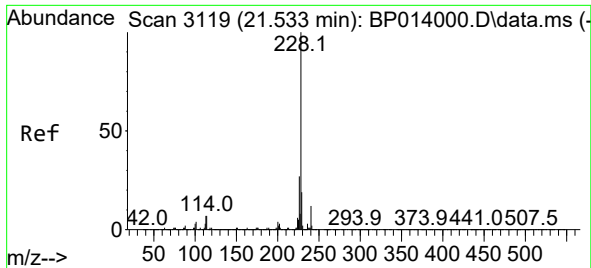
Tgt Ion	Resp	Lower	Upper
149	461398		
149	100		
91	72.3	57.9	86.9
206	23.6	17.9	26.9



#84
 3,3'-Dichlorobenzidine
 Concen: 11.618 ng/ul
 RT: 21.457 min Scan# 3106
 Delta R.T. -0.006 min
 Lab File: BP014003.D
 Acq: 09 Mar 2023 10:57

Tgt Ion	Resp	Lower	Upper
252	286840		
252	100		
254	63.9	51.3	76.9
126	9.0	6.9	10.3



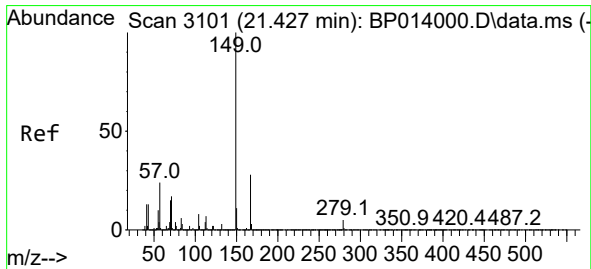
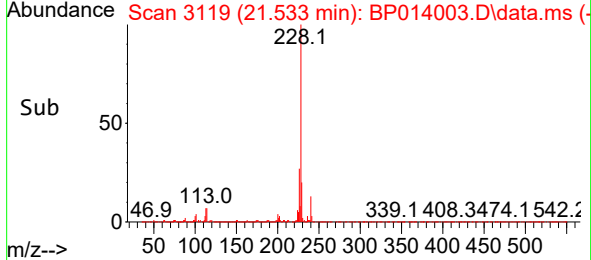
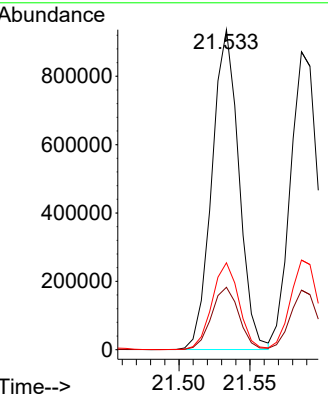
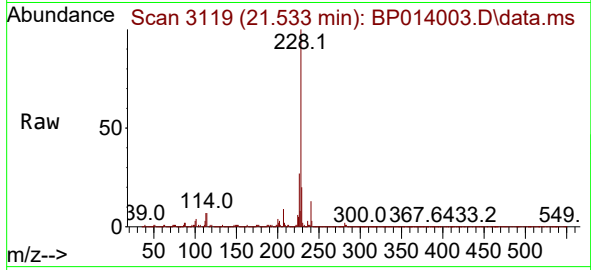


#85
 Benzo(a)anthracene
 Concen: 18.239 ng/ul
 RT: 21.533 min Scan# 3119
 Delta R.T. -0.006 min
 Lab File: BP014003.D
 Acq: 09 Mar 2023 10:57

Instrument :
 BNA_P
 ClientSampleId :
 DBZZ0MS

Tgt Ion:228 Resp: 1237223

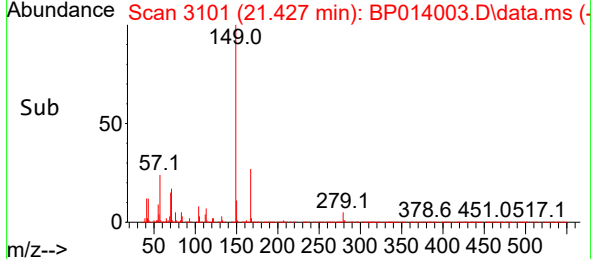
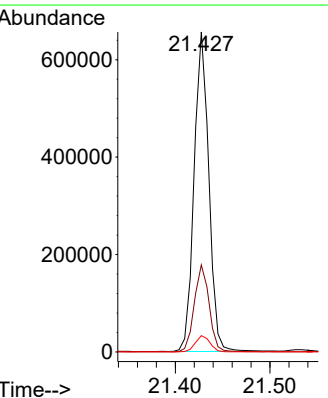
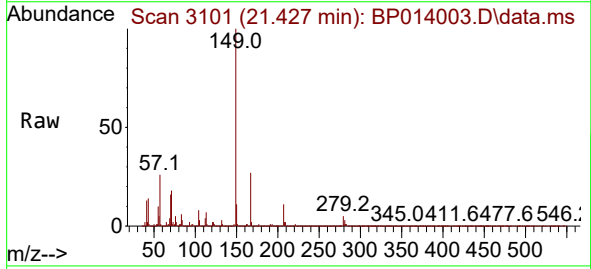
Ion	Ratio	Lower	Upper
228	100		
229	19.5	15.5	23.3
226	27.1	22.1	33.1

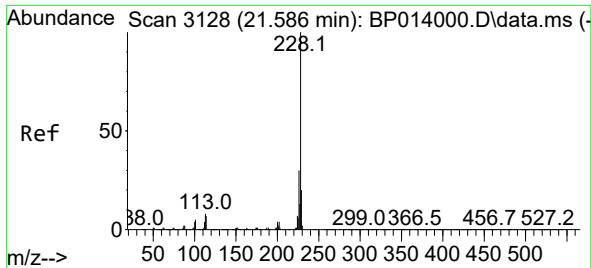


#86
 Bis(2-ethylhexyl)phthalate
 Concen: 18.553 ng/ul
 RT: 21.427 min Scan# 3101
 Delta R.T. -0.006 min
 Lab File: BP014003.D
 Acq: 09 Mar 2023 10:57

Tgt Ion:149 Resp: 707363

Ion	Ratio	Lower	Upper
149	100		
167	27.2	22.3	33.5
279	5.1	4.3	6.5



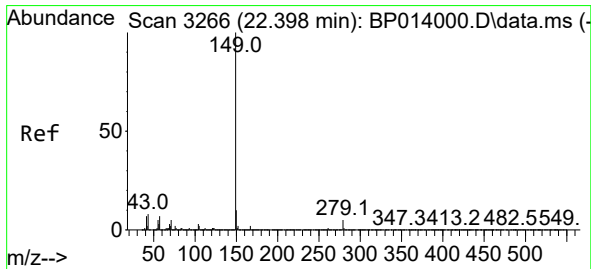
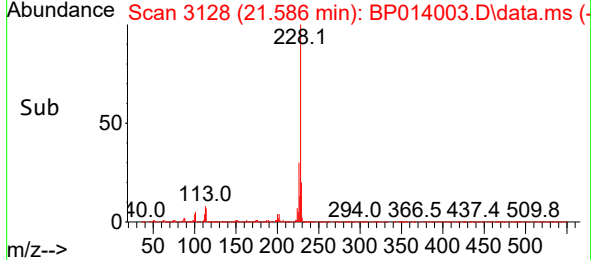
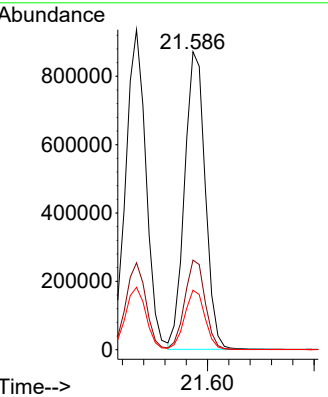
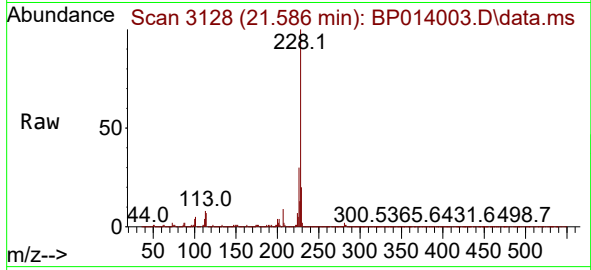


#87
 Chrysene
 Concen: 18.147 ng/ul
 RT: 21.586 min Scan# 31
 Delta R.T. -0.006 min
 Lab File: BP014003.D
 Acq: 09 Mar 2023 10:57

Instrument :
 BNA_P
 ClientSampleId :
 DBZZ0MS

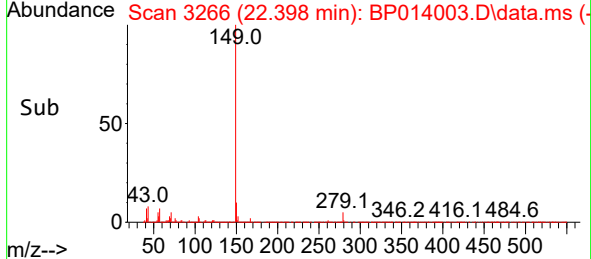
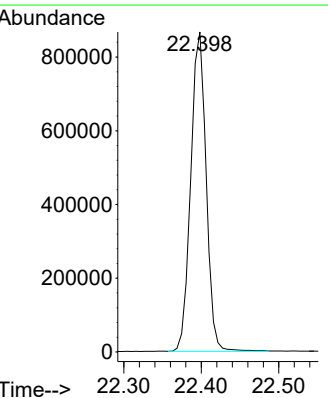
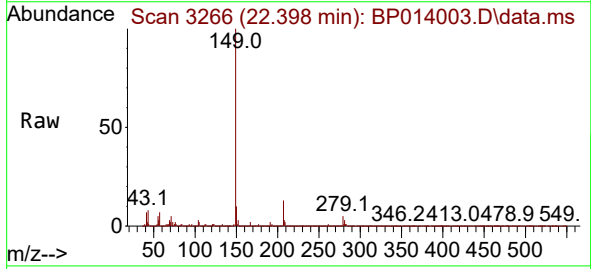
Tgt Ion:228 Resp: 1173122

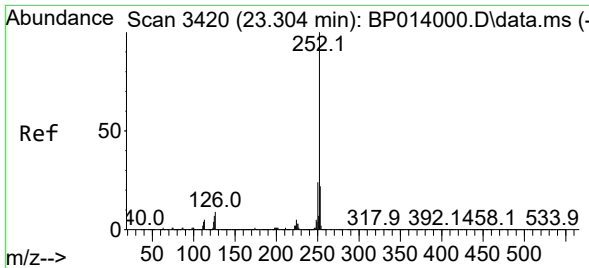
Ion	Ratio	Lower	Upper
228	100		
226	30.1	24.2	36.2
229	20.0	15.7	23.5



#89
 Di-n-octyl phthalate
 Concen: 19.356 ng/ul
 RT: 22.398 min Scan# 3266
 Delta R.T. -0.006 min
 Lab File: BP014003.D
 Acq: 09 Mar 2023 10:57

Tgt Ion:149 Resp: 1198063



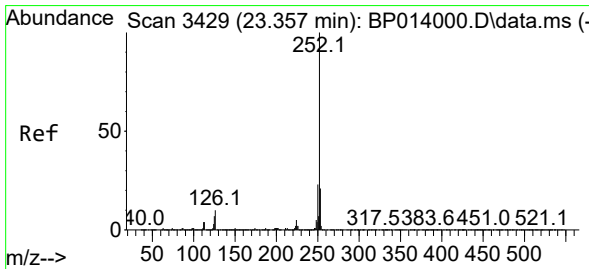
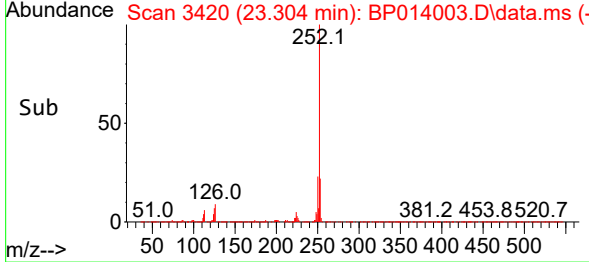
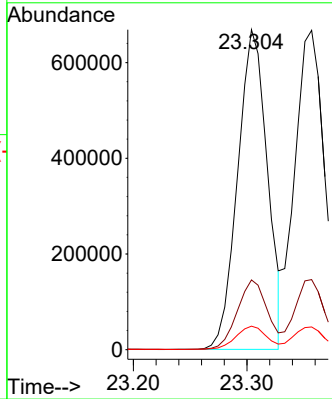
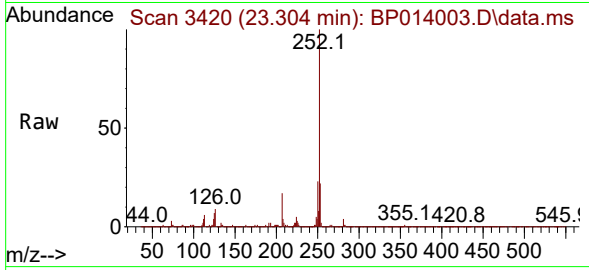


#90
 Benzo(b)fluoranthene
 Concen: 18.589 ng/ul
 RT: 23.304 min Scan# 3420
 Delta R.T. -0.012 min
 Lab File: BP014003.D
 Acq: 09 Mar 2023 10:57

Instrument : BNA_P
 ClientSampleId : DBZZ0MS

Tgt Ion:252 Resp: 1215059

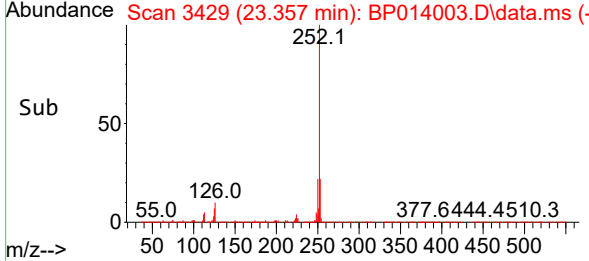
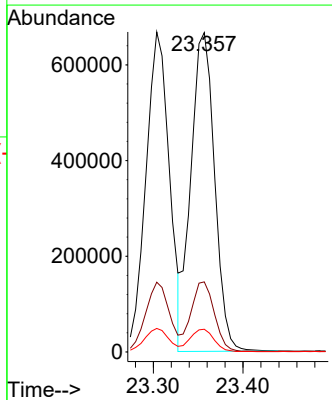
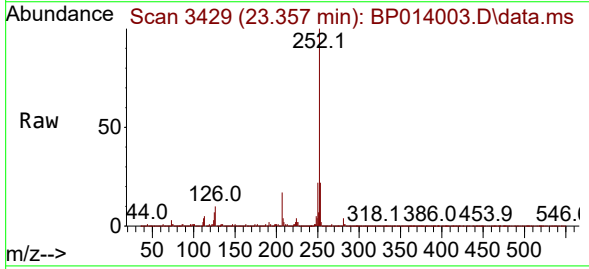
Ion	Ratio	Lower	Upper
252	100		
253	21.8	17.3	25.9
125	7.3	5.4	8.2

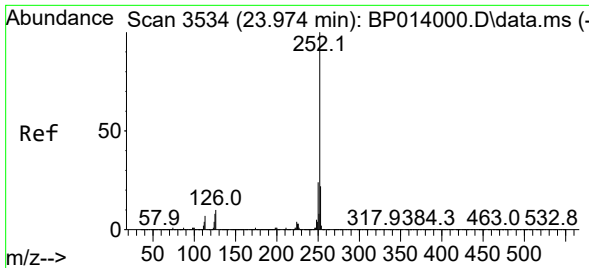


#91
 Benzo(k)fluoranthene
 Concen: 19.631 ng/ul
 RT: 23.357 min Scan# 3429
 Delta R.T. -0.006 min
 Lab File: BP014003.D
 Acq: 09 Mar 2023 10:57

Tgt Ion:252 Resp: 1223560

Ion	Ratio	Lower	Upper
252	100		
253	22.0	17.4	26.0
125	7.1	5.5	8.3



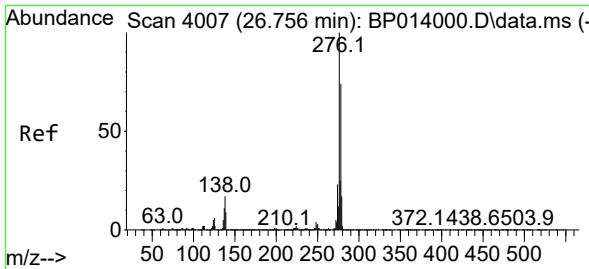
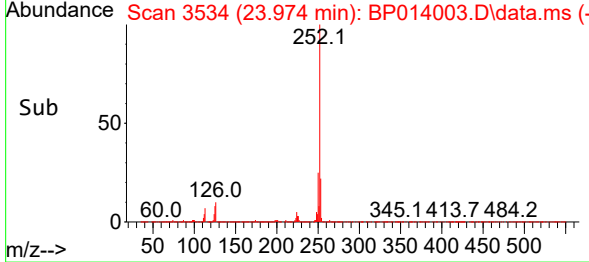
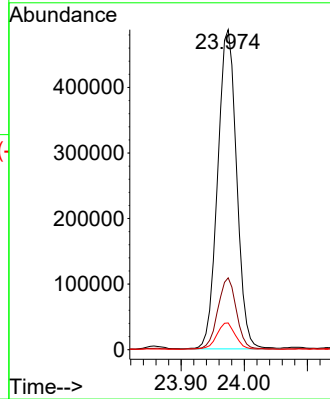
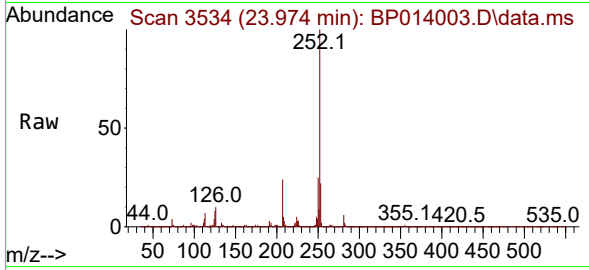


#93
 Benzo(a)pyrene
 Concen: 17.855 ng/ul
 RT: 23.974 min Scan# 31
 Delta R.T. -0.006 min
 Lab File: BP014003.D
 Acq: 09 Mar 2023 10:57

Instrument :
 BNA_P
 ClientSampleId :
 DBZZ0MS

Tgt Ion:252 Resp: 1015138

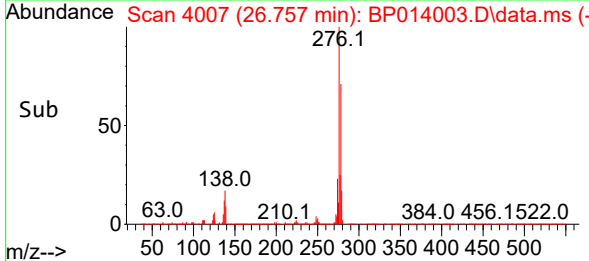
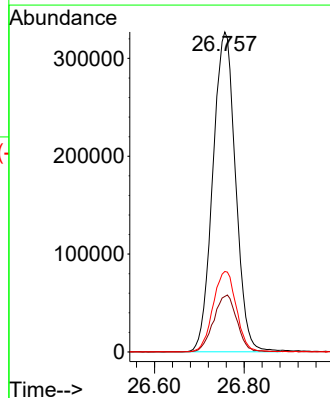
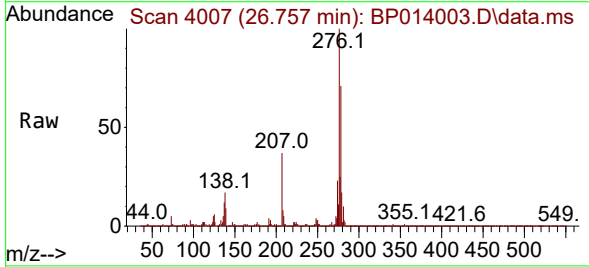
Ion	Ratio	Lower	Upper
252	100		
253	22.4	17.4	26.2
125	8.3	6.2	9.2

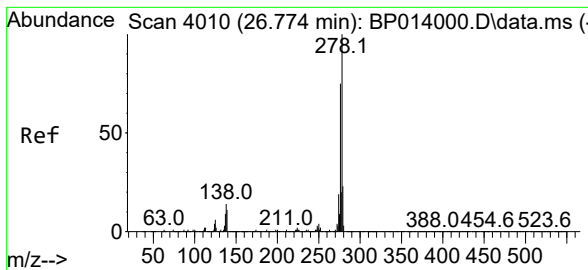


#94
 Indeno(1,2,3-cd)pyrene
 Concen: 15.310 ng/ul
 RT: 26.757 min Scan# 4007
 Delta R.T. -0.012 min
 Lab File: BP014003.D
 Acq: 09 Mar 2023 10:57

Tgt Ion:276 Resp: 1152257

Ion	Ratio	Lower	Upper
276	100		
138	17.3	13.1	19.7
277	25.2	20.2	30.2



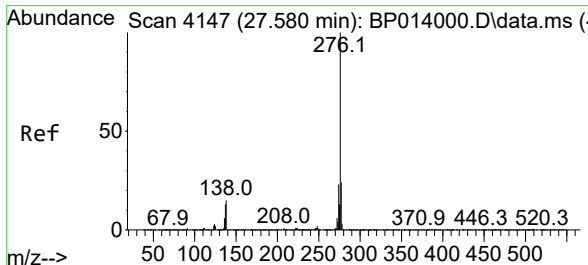
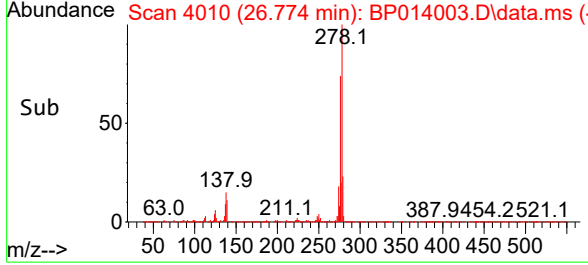
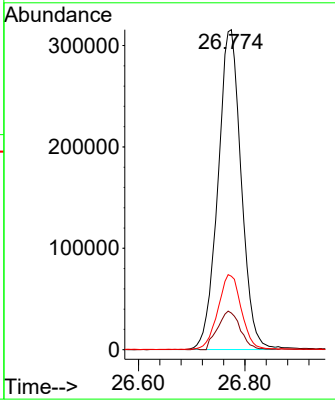
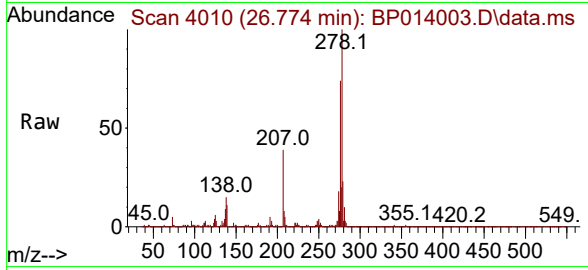


#95
 Dibenzo(a,h)anthracene
 Concen: 15.259 ng/ul
 RT: 26.774 min Scan# 4010
 Delta R.T. -0.012 min
 Lab File: BP014003.D
 Acq: 09 Mar 2023 10:57

Instrument : BNA_P
 ClientSampleId : DBZZ0MS

Tgt Ion: 278 Resp: 954525

Ion	Ratio	Lower	Upper
278	100		
139	11.5	8.7	13.1
279	23.0	19.0	28.4



#96
 Benzo(g,h,i)perylene
 Concen: 13.577 ng/ul
 RT: 27.574 min Scan# 4146
 Delta R.T. -0.024 min
 Lab File: BP014003.D
 Acq: 09 Mar 2023 10:57

Tgt Ion: 276 Resp: 816770

Ion	Ratio	Lower	Upper
276	100		
138	15.1	11.9	17.9
277	23.4	18.7	28.1

