

Data Path : Z:\svoasrv\HPCHEM1\BNA\_P\Data\BP032523\  
 Data File : BP014297.D  
 Acq On : 24 Mar 2023 20:06  
 Operator : CG/JU  
 Sample : PB151516BL  
 Misc :  
 ALS Vial : 4 Sample Multiplier: 1

Instrument :  
 BNA\_P  
 ClientSampleId :  
 PB151516BL

Integration Parameters: rteint.p  
 Integrator: RTE  
 Smoothing : ON Filtering: 5  
 Sampling : 1 Min Area: 3 % of largest Peak  
 Start Thrs: 0.2 Max Peaks: 100  
 Stop Thrs : 0 Peak Location: TOP

If leading or trailing edge < 100 prefer < Baseline drop else tangent >  
 Peak separation: 5

Method : Z:\svoasrv\HPCHEM1\BNA\_P\Methods\8270E-BP030623.M  
 Title : ASP BNA STANDARDS FOR 5 POINT CALIBRATION

Signal : TIC: BP014297.D\data.ms

peak #	R.T. min	first scan	max scan	last scan	PK TY	peak height	corr. area	corr. % max.	% of total
1	5.110	321	327	338	rBV	1750204	2469220	23.85%	4.332%
2	5.581	399	407	424	rBV	4542451	6532306	63.10%	11.459%
3	7.193	673	681	712	rBV	4056317	6732662	65.04%	11.811%
4	8.028	816	823	836	rBV	712761	1180948	11.41%	2.072%
5	9.210	1014	1024	1047	rBV	2547125	4315365	41.69%	7.570%
6	10.851	1294	1303	1320	rBV	851265	1562378	15.09%	2.741%
7	13.298	1711	1719	1736	rBV	6320959	9430882	91.10%	16.544%
8	14.675	1946	1953	1968	rBV	1326279	2022989	19.54%	3.549%
9	16.169	2200	2207	2229	rBV	4597509	7141059	68.98%	12.527%
10	17.433	2416	2422	2439	rBV	1490908	2269960	21.93%	3.982%
11	19.974	2849	2854	2863	rBV	9141523	10351857	100.00%	18.160%
12	21.515	3111	3116	3126	rBV	1155571	1727228	16.69%	3.030%
13	24.033	3539	3544	3556	rVB2	571689	1267132	12.24%	2.223%

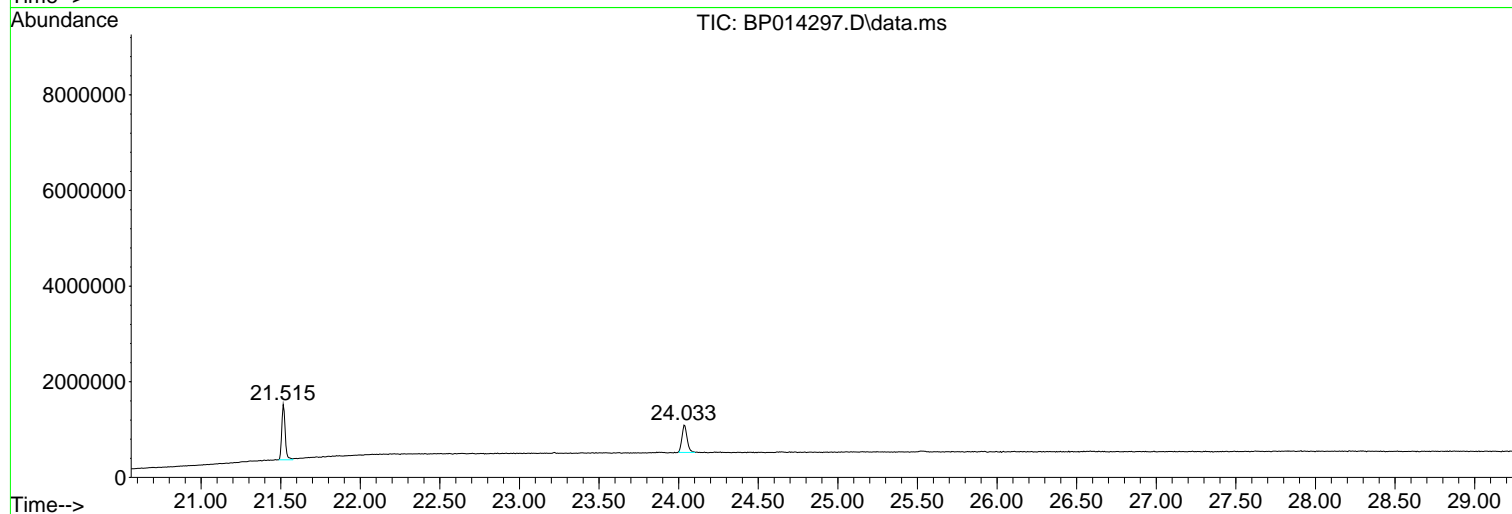
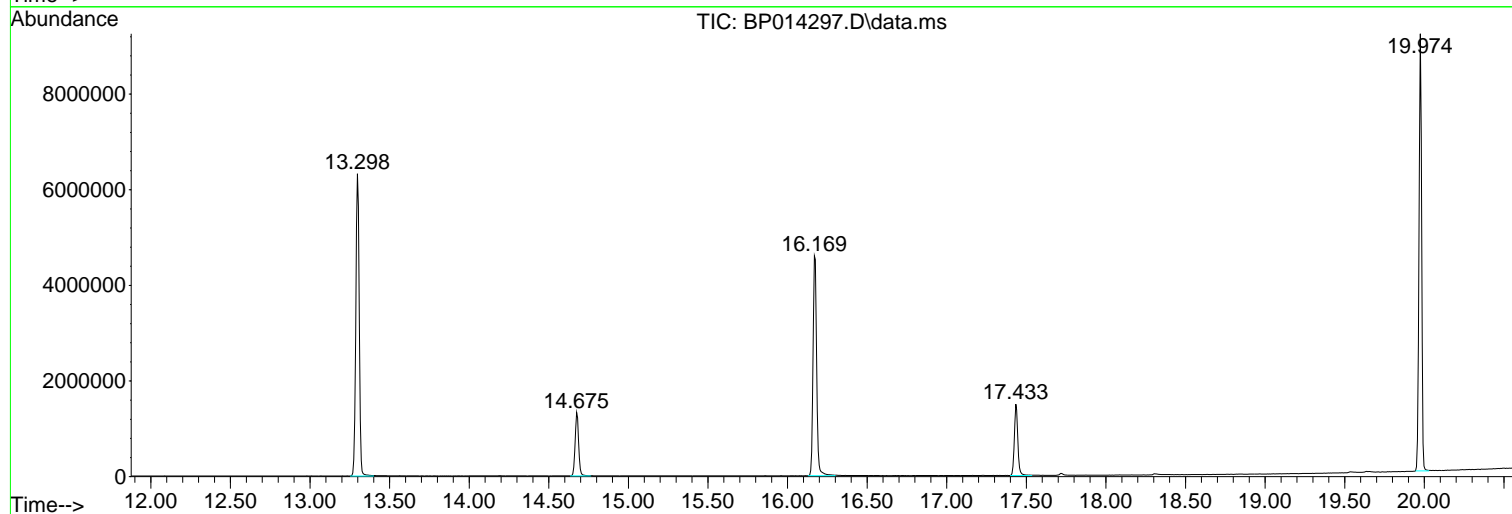
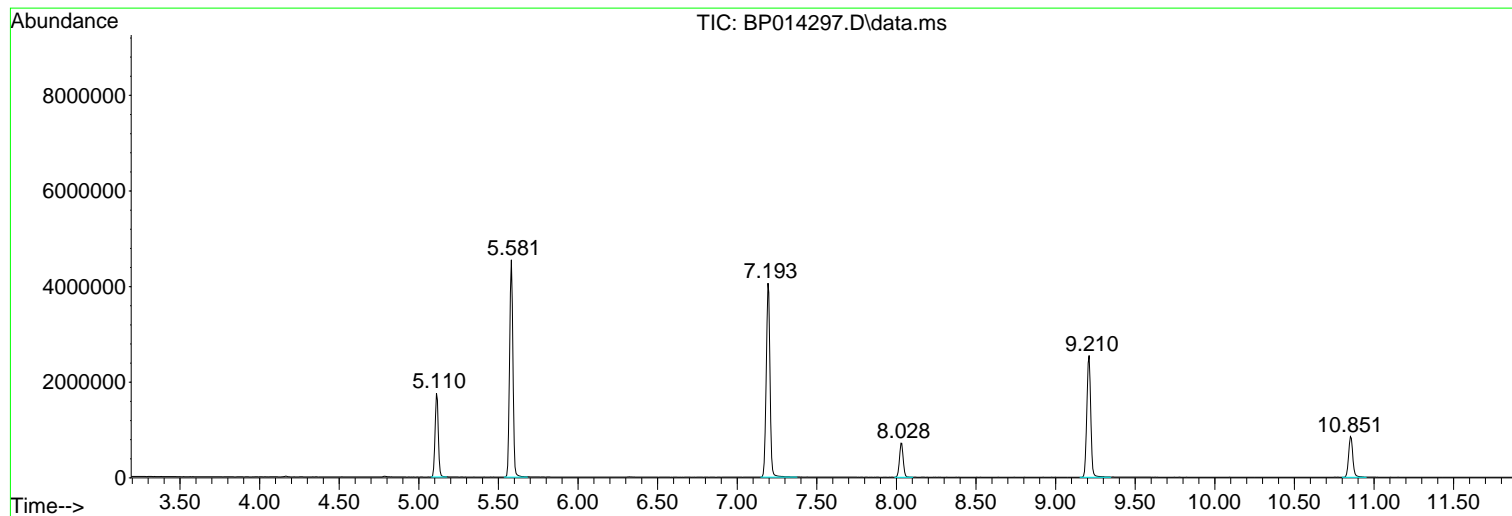
Sum of corrected areas: 57003986

Data Path : Z:\svoasrv\HPCHEM1\BNA\_P\Data\BP032523\  
Data File : BP014297.D  
Acq On : 24 Mar 2023 20:06  
Operator : CG/JU  
Sample : PB151516BL  
Misc :  
ALS Vial : 4 Sample Multiplier: 1

Instrument :  
BNA\_P  
ClientSampleId :  
PB151516BL

Quant Method : Z:\svoasrv\HPCHEM1\BNA\_P\Methods\8270E-BP030623.M  
Quant Title : ASP BNA STANDARDS FOR 5 POINT CALIBRATION

TIC Library : C:\Database\NIST20.L  
TIC Integration Parameters: LSCINT.P



Data Path : Z:\svoasrv\HPCHEM1\BNA\_P\Data\BP032523\  
 Data File : BP014297.D  
 Acq On : 24 Mar 2023 20:06  
 Operator : CG/JU  
 Sample : PB151516BL  
 Misc :  
 ALS Vial : 4 Sample Multiplier: 1

Instrument :  
 BNA\_P  
 ClientSampleId :  
 PB151516BL

Quant Method : Z:\svoasrv\HPCHEM1\BNA\_P\Methods\8270E-BP030623.M  
 Quant Title : ASP BNA STANDARDS FOR 5 POINT CALIBRATION

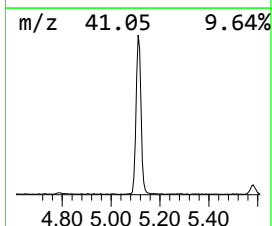
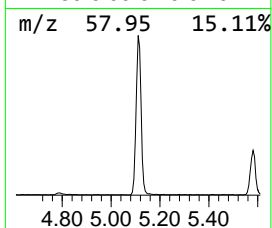
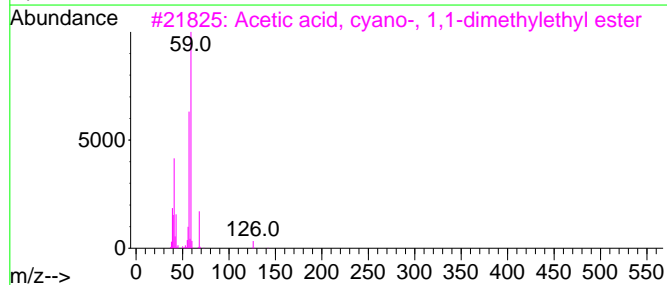
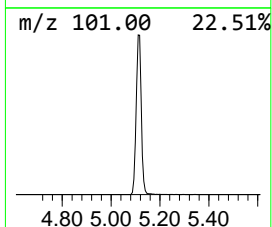
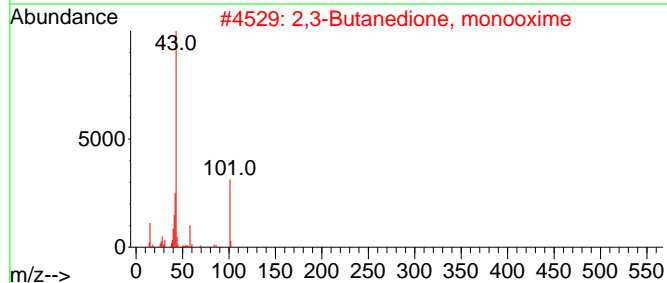
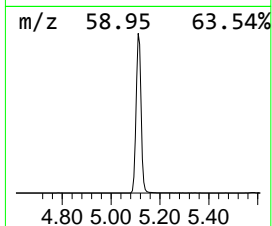
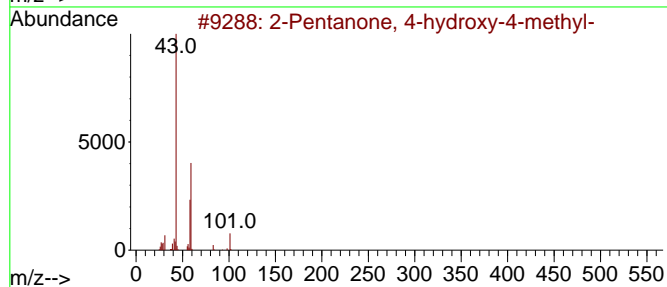
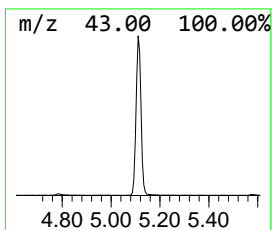
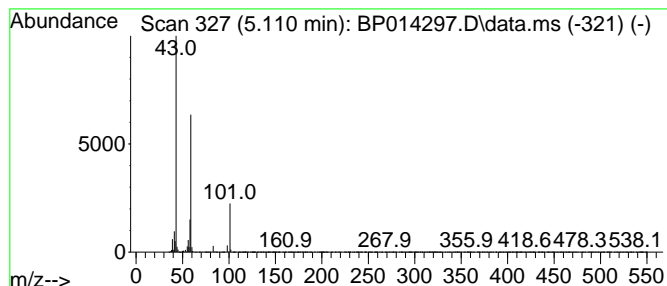
TIC Library : C:\Database\NIST20.L  
 TIC Integration Parameters: LSCINT.P

\*\*\*\*\*  
 Peak Number 1 2-Pentanone, 4-hydroxy-4-me... Concentration Rank 1

R.T.	EstConc	Area	Relative to ISTD	R.T.
5.110	41.82 ng	2469220	1,4-Dichlorobenzene-d4	8.034

Hit#	of 5	Tentative ID	MW	MolForm	CAS#	Qual
1		2-Pentanone, 4-hydroxy-4-methyl-	116	C6H12O2	000123-42-2	56
2		2,3-Butanedione, monooxime	101	C4H7NO2	000057-71-6	25
3		Acetic acid, cyano-, 1,1-dimethy...	141	C7H11NO2	001116-98-9	23
4		1-Propen-2-ol, acetate	100	C5H8O2	000108-22-5	10
5		Morpholine, 4-methyl-	101	C5H11NO	000109-02-4	9



Data Path : Z:\svoasrv\HPCHEM1\BNA\_P\Data\BP032523\  
Data File : BP014297.D  
Acq On : 24 Mar 2023 20:06  
Operator : CG/JU  
Sample : PB151516BL  
Misc :  
ALS Vial : 4 Sample Multiplier: 1

Instrument :  
BNA\_P  
ClientSampleId :  
PB151516BL

Quant Method : Z:\svoasrv\HPCHEM1\BNA\_P\Methods\8270E-BP030623.M  
Quant Title : ASP BNA STANDARDS FOR 5 POINT CALIBRATION

TIC Library : C:\Database\NIST0.L  
TIC Integration Parameters: LSCINT.P

TIC Top Hit name	RT	EstConc	Units	Response	--Internal Standard--			
					#	RT	Resp	Conc
2-Pentanone, 4-...	5.110	41.8	ng	2469220	1	8.034	1180950	20.0