

Data Path : Z:\svoasrv\HPCHEM1\BNA_P\Data\BP040521\
 Data File : BP005172.D
 Acq On : 05 Apr 2021 11:25
 Operator : CG/JU
 Sample : M1836-02
 Misc :
 ALS Vial : 4 Sample Multiplier: 1

Instrument :
 BNA_P
 ClientSampleId :
 B1-10-12

Quant Time: Apr 05 12:04:38 2021
 Quant Method : Z:\svoasrv\HPCHEM1\BNA_P\Methods\8270E-BP032321.M
 Quant Title : ASP BNA STANDARDS FOR 5 POINT CALIBRATION
 QLast Update : Thu Apr 01 12:23:57 2021
 Response via : Initial Calibration

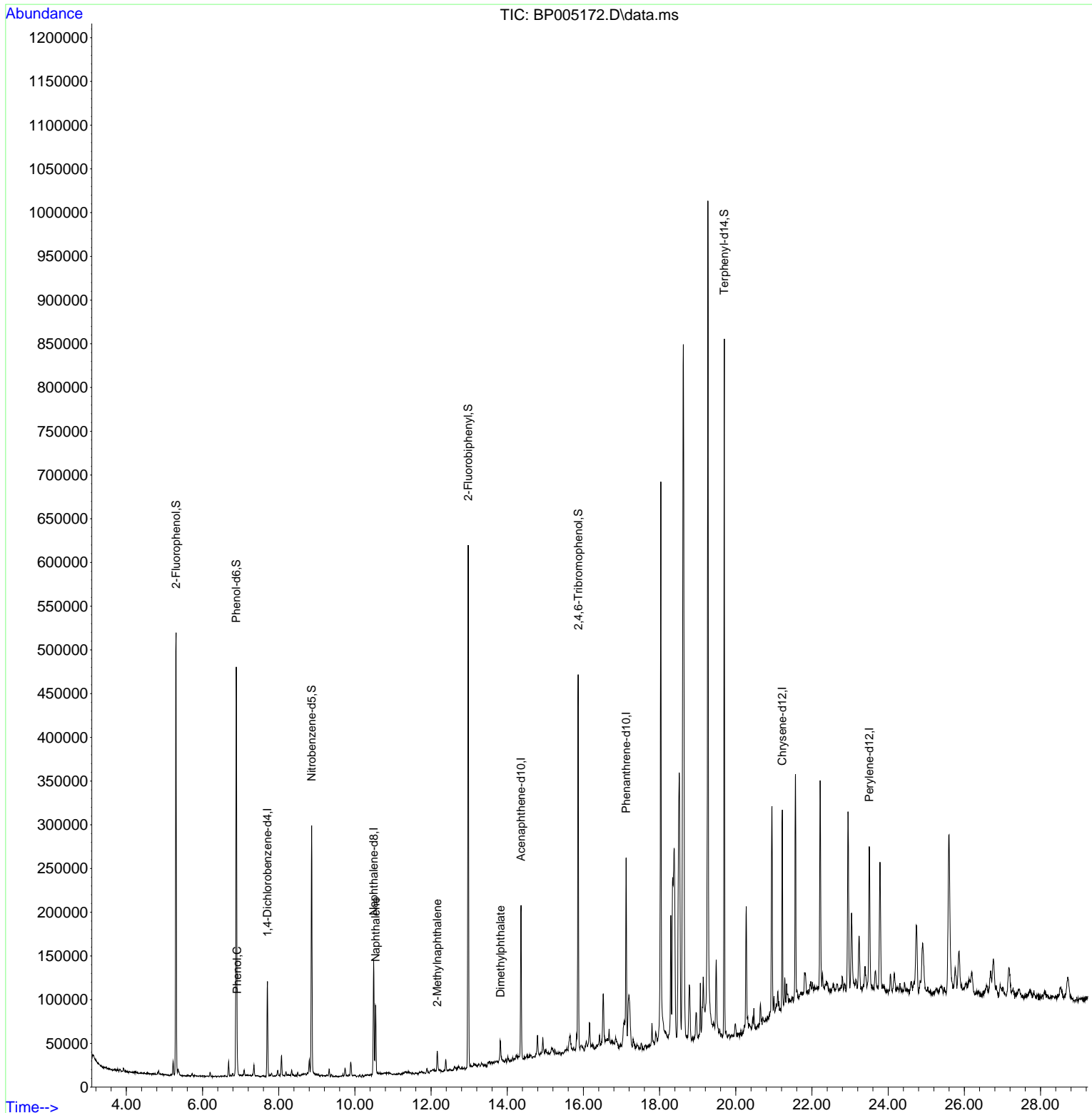
Compound	R.T.	QIon	Response	Conc	Units	Dev(Min)	
Internal Standards							
1) 1,4-Dichlorobenzene-d4	7.704	152	26927	20.00	ng	0.00	
21) Naphthalene-d8	10.493	136	99086	20.00	ng	# 0.00	
39) Acenaphthene-d10	14.363	164	57209	20.00	ng	0.00	
64) Phenanthrene-d10	17.122	188	114704	20.00	ng	# 0.00	
76) Chrysene-d12	21.221	240	101773	20.00	ng	0.00	
86) Perylene-d12	23.504	264	106024	20.00	ng	0.00	
System Monitoring Compounds							
5) 2-Fluorophenol	5.305	112	208664	119.26	ng	0.00	
7) Phenol-d6	6.887	99	266201	106.21	ng	0.00	
23) Nitrobenzene-d5	8.863	82	165463	71.65	ng	0.00	
42) 2,4,6-Tribromophenol	15.863	330	73964	99.23	ng	0.00	
45) 2-Fluorobiphenyl	12.975	172	289317	68.41	ng	0.00	
79) Terphenyl-d14	19.698	244	343387	61.42	ng	0.00	
Target Compounds							
10) Phenol	6.910	94	6465	2.52	ng	# 63	Qvalue
31) Naphthalene	10.546	128	59990	10.72	ng	98	
37) 2-Methylnaphthalene	12.163	142	9789	2.42	ng	94	
50) Dimethylphthalate	13.822	163	11810	2.68	ng	98	

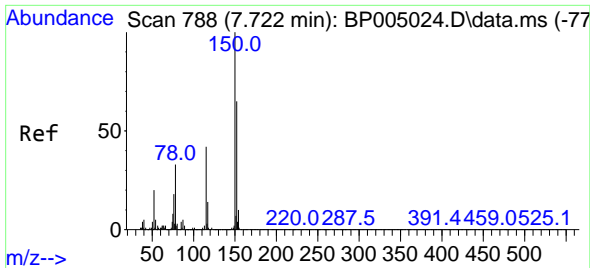
(#) = qualifier out of range (m) = manual integration (+) = signals summed

Data Path : Z:\svoasrv\HPCHEM1\BNA_P\Data\BP040521\
 Data File : BP005172.D
 Acq On : 05 Apr 2021 11:25
 Operator : CG/JU
 Sample : M1836-02
 Misc :
 ALS Vial : 4 Sample Multiplier: 1

Instrument :
 BNA_P
 ClientSampleId :
 B1-10-12

Quant Time: Apr 05 12:04:38 2021
 Quant Method : Z:\svoasrv\HPCHEM1\BNA_P\Methods\8270E-BP032321.M
 Quant Title : ASP BNA STANDARDS FOR 5 POINT CALIBRATION
 QLast Update : Thu Apr 01 12:23:57 2021
 Response via : Initial Calibration

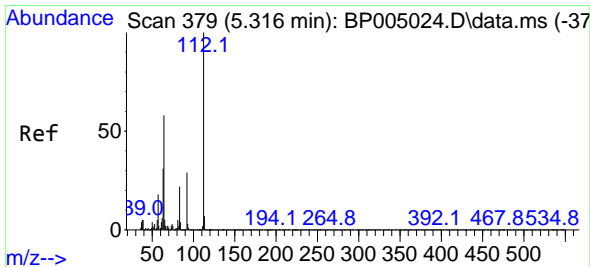
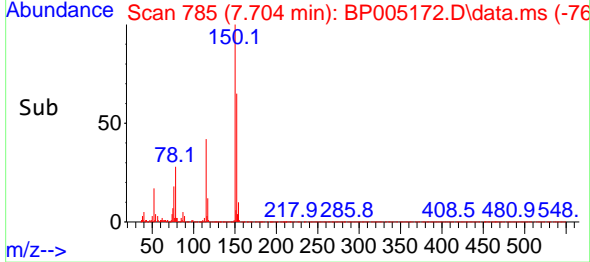
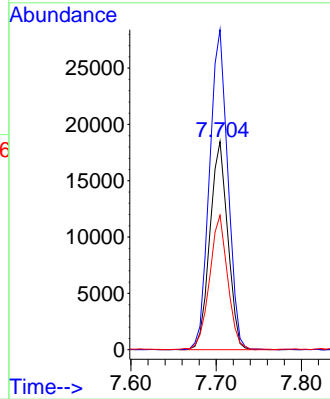
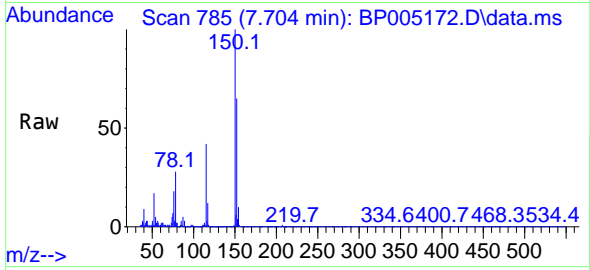




#1
 1,4-Dichlorobenzene-d4
 Concen: 20.00 ng
 RT: 7.704 min Scan# 785
 Delta R.T. -0.001 min
 Lab File: BP005172.D
 Acq: 05 Apr 2021 11:25

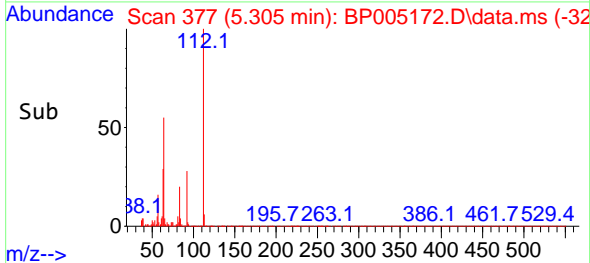
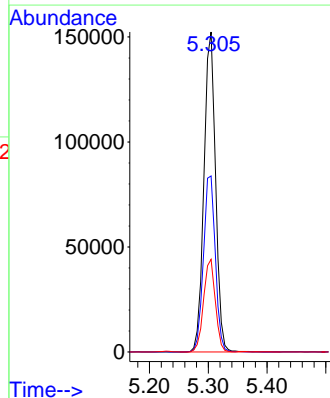
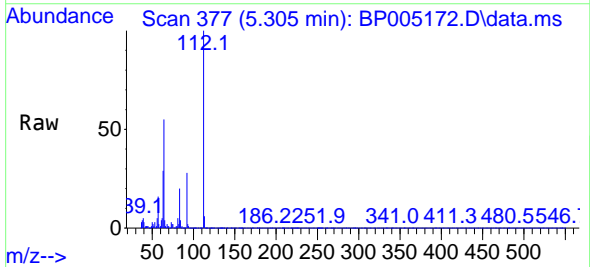
Instrument :
 BNA_P
 ClientSampled :
 B1-10-12

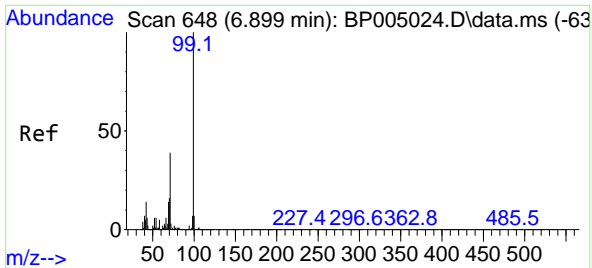
Tgt Ion:152 Resp: 26927
 Ion Ratio Lower Upper
 152 100
 150 153.8 123.8 185.6
 115 64.6 43.8 65.6



#5
 2-Fluorophenol
 Concen: 119.26 ng
 RT: 5.305 min Scan# 377
 Delta R.T. -0.000 min
 Lab File: BP005172.D
 Acq: 05 Apr 2021 11:25

Tgt Ion:112 Resp: 208664
 Ion Ratio Lower Upper
 112 100
 64 55.0 32.8 49.2#
 63 29.0 17.0 25.4#



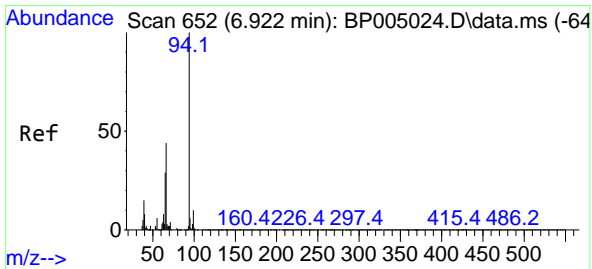
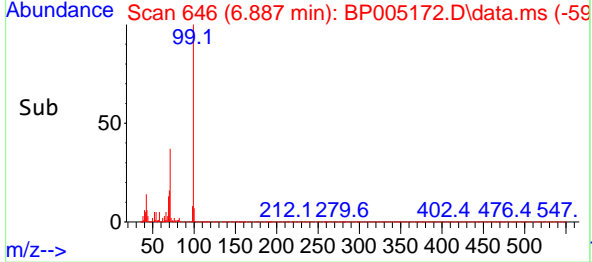
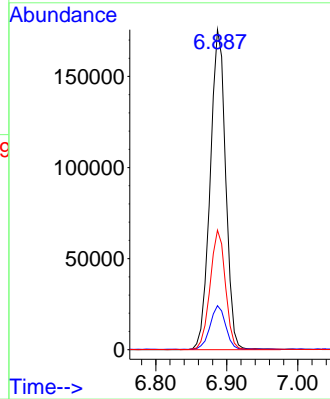
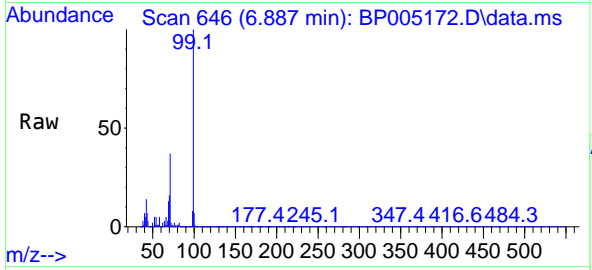


#7
Phenol-d6
Concen: 106.21 ng
RT: 6.887 min Scan# 646
Delta R.T. -0.000 min
Lab File: BP005172.D
Acq: 05 Apr 2021 11:25

Instrument :
BNA_P
ClientSampled :
B1-10-12

Tgt Ion: 99 Resp: 266201

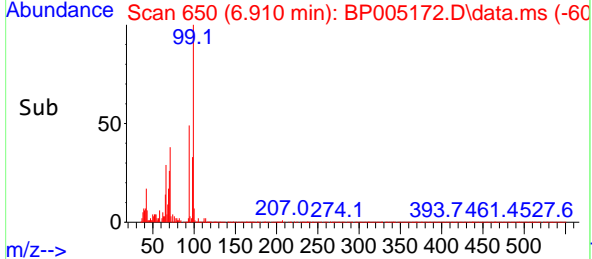
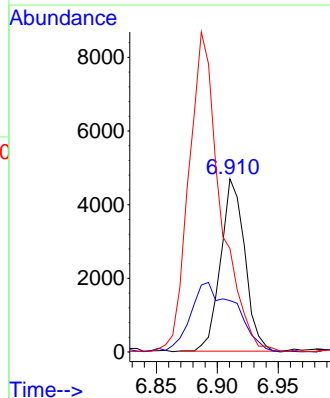
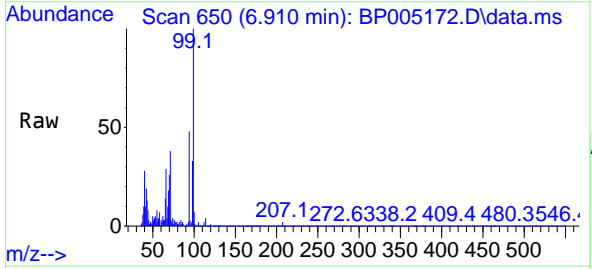
Ion	Ratio	Lower	Upper
99	100		
42	13.8	8.6	13.0#
71	37.4	23.4	35.2#

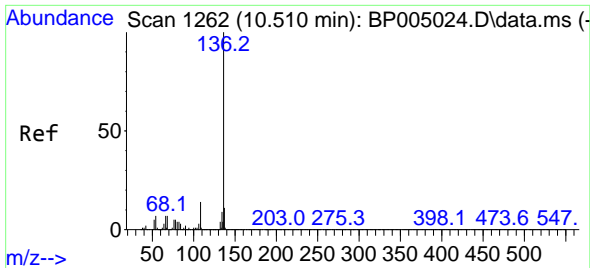


#10
Phenol
Concen: 2.52 ng
RT: 6.910 min Scan# 650
Delta R.T. -0.006 min
Lab File: BP005172.D
Acq: 05 Apr 2021 11:25

Tgt Ion: 94 Resp: 6465

Ion	Ratio	Lower	Upper
94	100		
65	29.7	2.3	42.3
66	59.8	10.9	50.9#



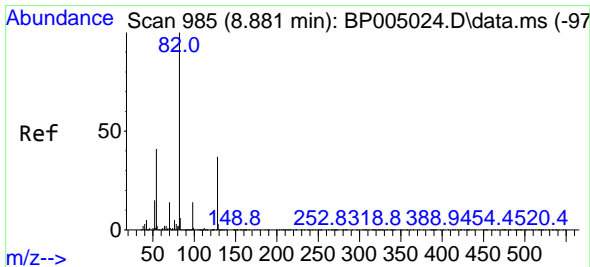
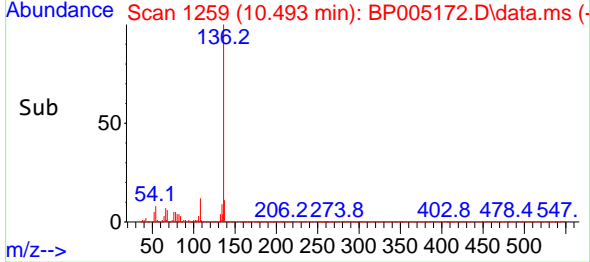
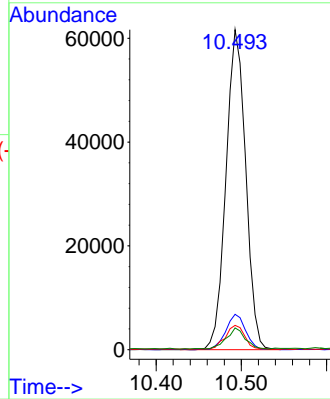
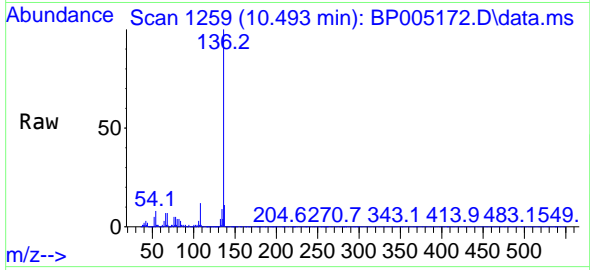


#21
 Naphthalene-d8
 Concen: 20.00 ng
 RT: 10.493 min Scan# 1259
 Delta R.T. -0.006 min
 Lab File: BP005172.D
 Acq: 05 Apr 2021 11:25

Instrument :
 BNA_P
 ClientSampled :
 B1-10-12

Tgt Ion:136 Resp: 99086

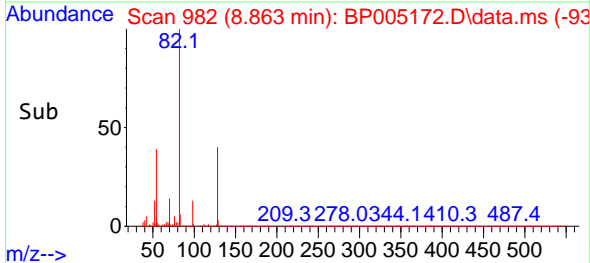
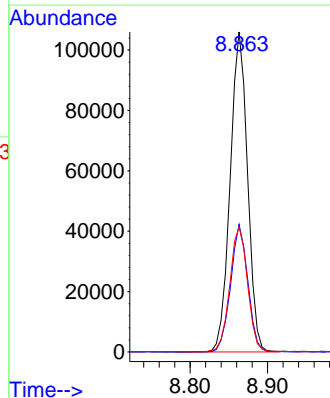
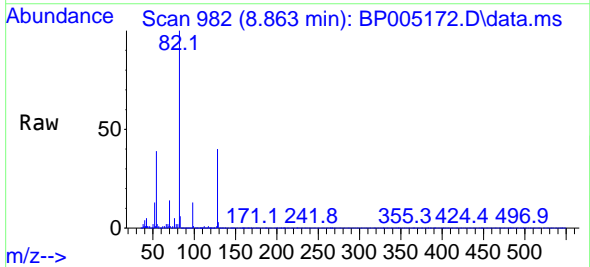
Ion	Ratio	Lower	Upper
136	100		
137	11.0	8.6	13.0
54	7.6	3.6	5.4#
68	6.8	3.3	4.9#

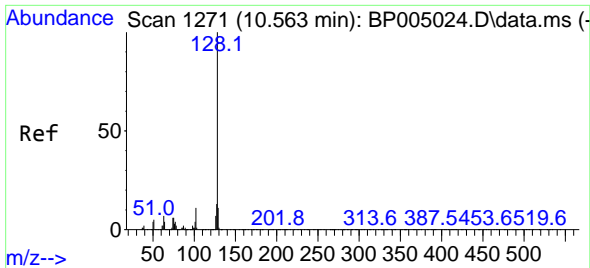


#23
 Nitrobenzene-d5
 Concen: 71.65 ng
 RT: 8.863 min Scan# 982
 Delta R.T. -0.006 min
 Lab File: BP005172.D
 Acq: 05 Apr 2021 11:25

Tgt Ion: 82 Resp: 165463

Ion	Ratio	Lower	Upper
82	100		
128	39.9	45.6	68.4#
54	39.0	30.1	45.1

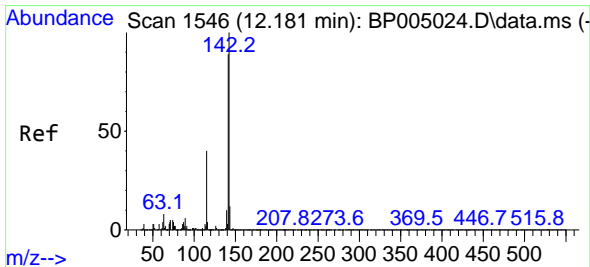
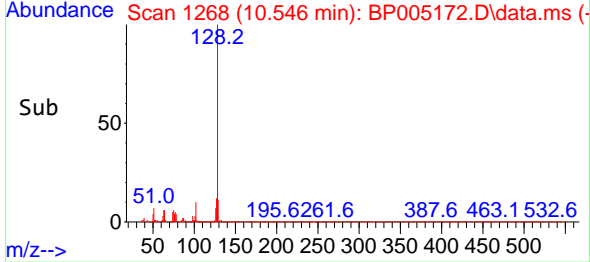
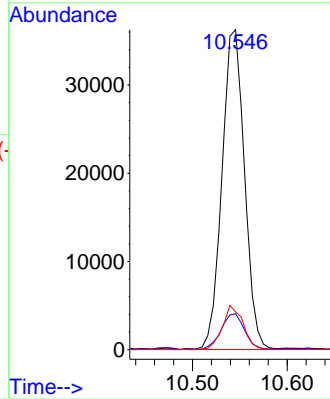
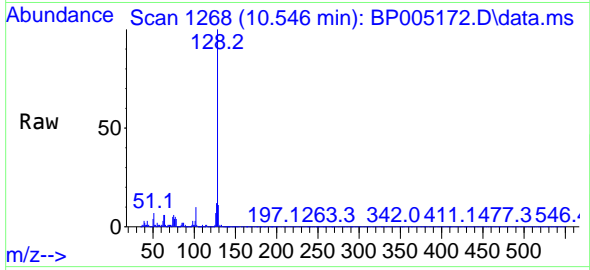




#31
Naphthalene
Concen: 10.72 ng
RT: 10.546 min Scan# 1268
Delta R.T. -0.006 min
Lab File: BP005172.D
Acq: 05 Apr 2021 11:25

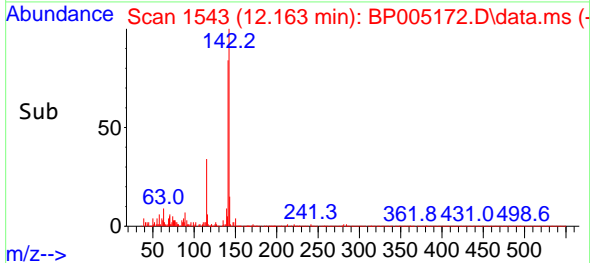
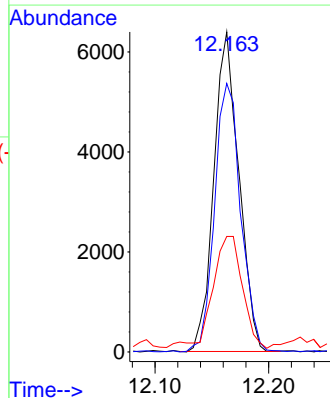
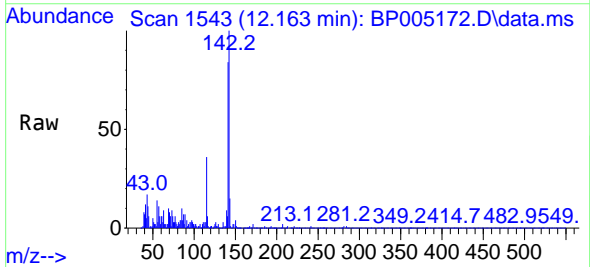
Instrument :
BNA_P
ClientSampled :
B1-10-12

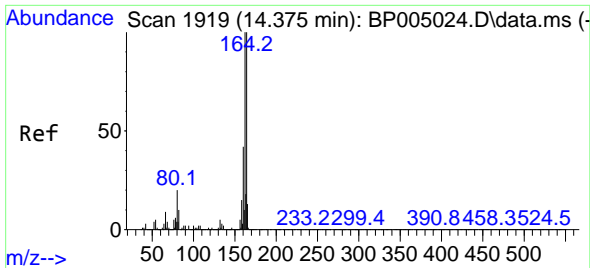
Tgt Ion:128 Resp: 59990
Ion Ratio Lower Upper
128 100
129 11.2 8.8 13.2
127 11.8 10.6 15.8



#37
2-Methylnaphthalene
Concen: 2.42 ng
RT: 12.163 min Scan# 1543
Delta R.T. -0.006 min
Lab File: BP005172.D
Acq: 05 Apr 2021 11:25

Tgt Ion:142 Resp: 9789
Ion Ratio Lower Upper
142 100
141 83.9 71.4 107.2
115 36.1 25.8 38.6

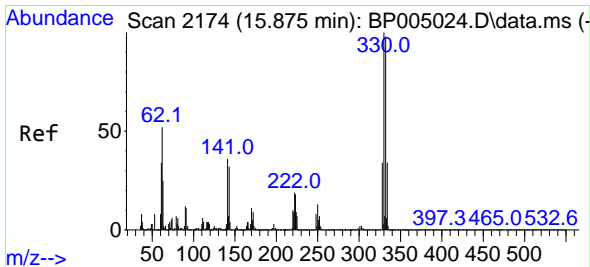
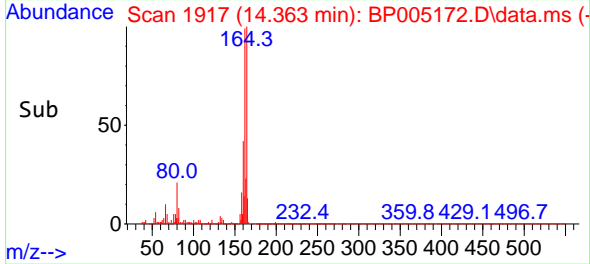
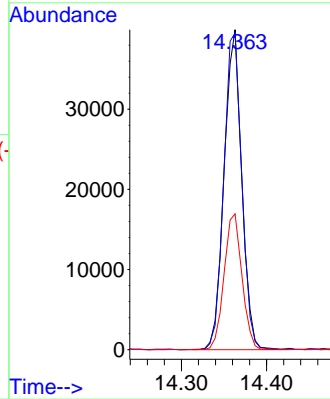
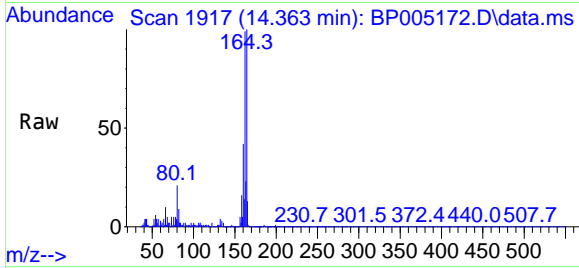




#39
Acenaphthene-d10
Concen: 20.00 ng
RT: 14.363 min Scan# 1917
Delta R.T. -0.000 min
Lab File: BP005172.D
Acq: 05 Apr 2021 11:25

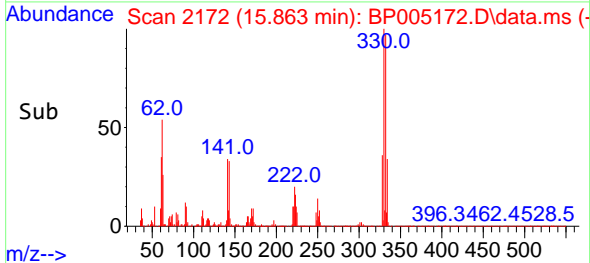
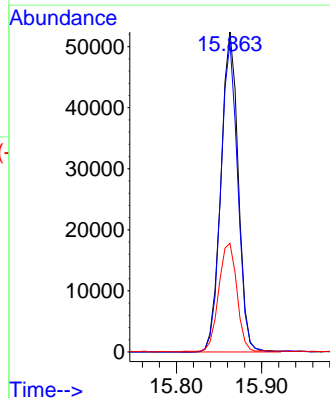
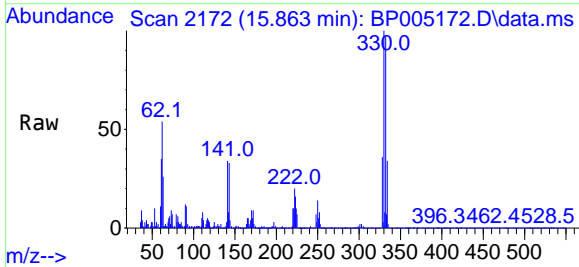
Instrument :
BNA_P
ClientSampled :
B1-10-12

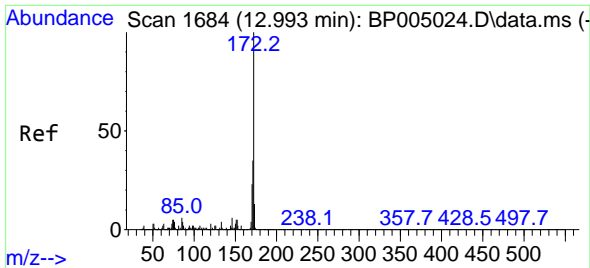
Tgt Ion:164 Resp: 57209
Ion Ratio Lower Upper
164 100
162 98.9 79.4 119.2
160 42.5 36.1 54.1



#42
2,4,6-Tribromophenol
Concen: 99.23 ng
RT: 15.863 min Scan# 2172
Delta R.T. -0.000 min
Lab File: BP005172.D
Acq: 05 Apr 2021 11:25

Tgt Ion:330 Resp: 73964
Ion Ratio Lower Upper
330 100
332 94.6 77.1 115.7
141 36.3 23.4 35.2#



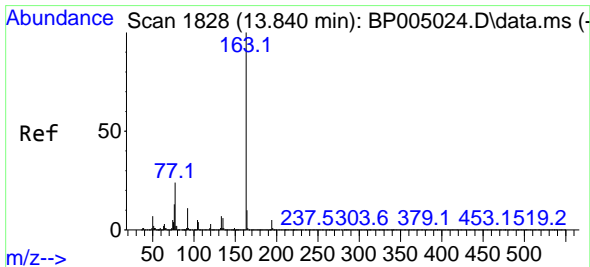
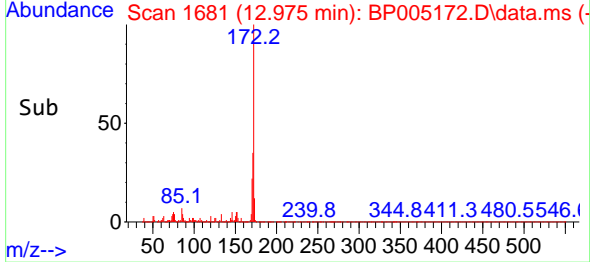
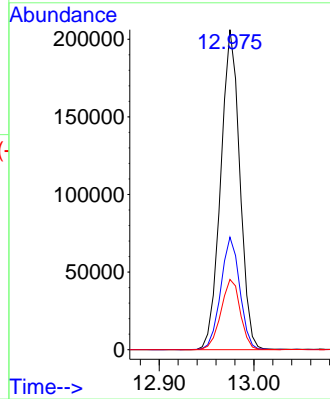
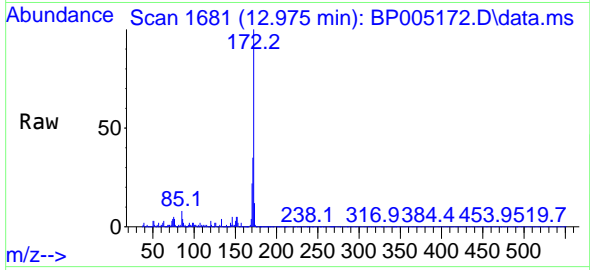


#45
 2-Fluorobiphenyl
 Concen: 68.41 ng
 RT: 12.975 min Scan# 1681
 Delta R.T. -0.006 min
 Lab File: BP005172.D
 Acq: 05 Apr 2021 11:25

Instrument :
 BNA_P
 ClientSampled :
 B1-10-12

Tgt Ion:172 Resp: 289317

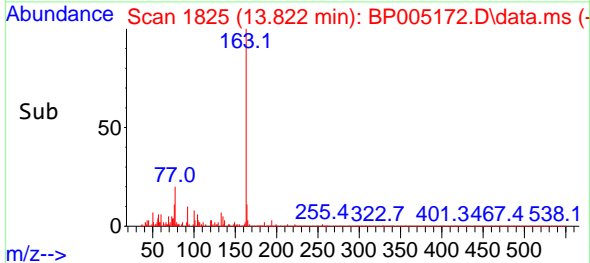
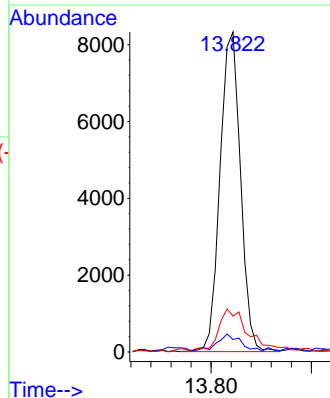
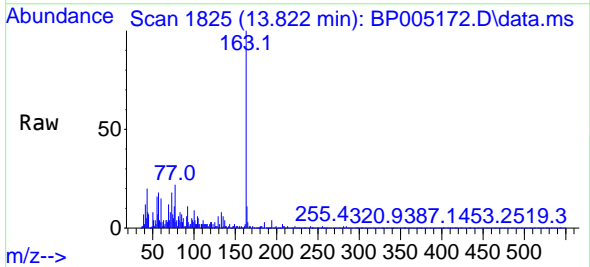
Ion	Ratio	Lower	Upper
172	100		
171	35.1	28.5	42.7
170	22.0	19.2	28.8

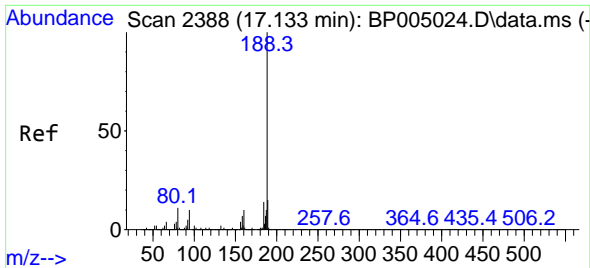


#50
 Dimethylphthalate
 Concen: 2.68 ng
 RT: 13.822 min Scan# 1825
 Delta R.T. -0.006 min
 Lab File: BP005172.D
 Acq: 05 Apr 2021 11:25

Tgt Ion:163 Resp: 11810

Ion	Ratio	Lower	Upper
163	100		
194	3.9	3.3	4.9
164	11.2	8.2	12.2



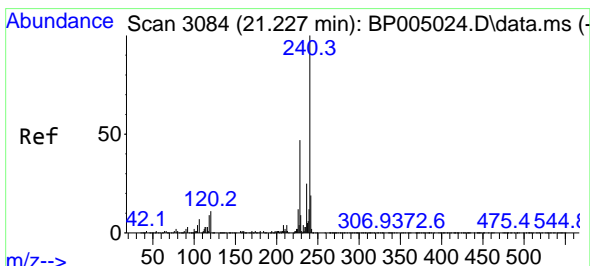
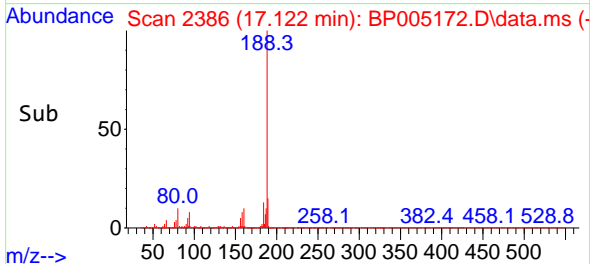
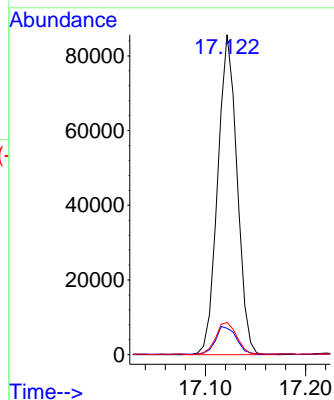
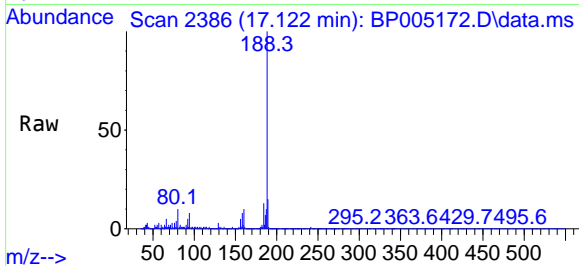


#64
 Phenanthrene-d10
 Concen: 20.00 ng
 RT: 17.122 min Scan# 2386
 Delta R.T. -0.006 min
 Lab File: BP005172.D
 Acq: 05 Apr 2021 11:25

Instrument :
 BNA_P
 ClientSampled :
 B1-10-12

Tgt Ion:188 Resp: 114704

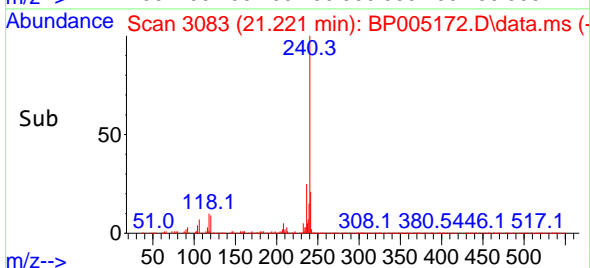
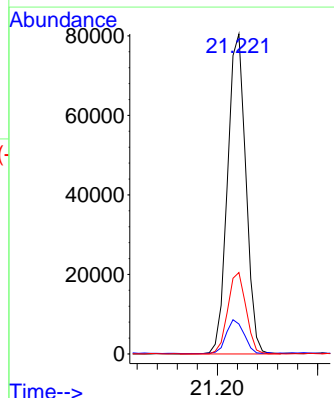
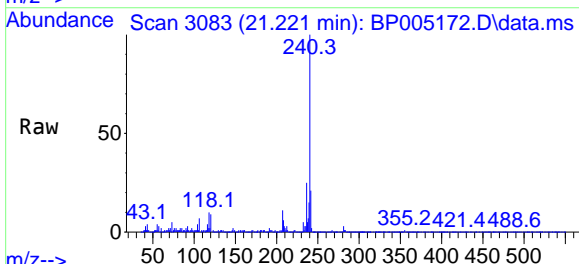
Ion	Ratio	Lower	Upper
188	100		
94	8.3	6.2	9.2
80	10.0	6.2	9.2#

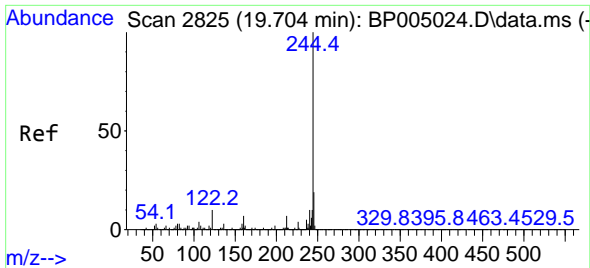


#76
 Chrysene-d12
 Concen: 20.00 ng
 RT: 21.221 min Scan# 3083
 Delta R.T. -0.006 min
 Lab File: BP005172.D
 Acq: 05 Apr 2021 11:25

Tgt Ion:240 Resp: 101773

Ion	Ratio	Lower	Upper
240	100		
120	9.4	7.8	11.6
236	25.5	20.8	31.2



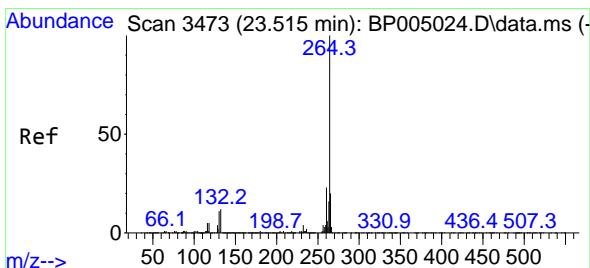
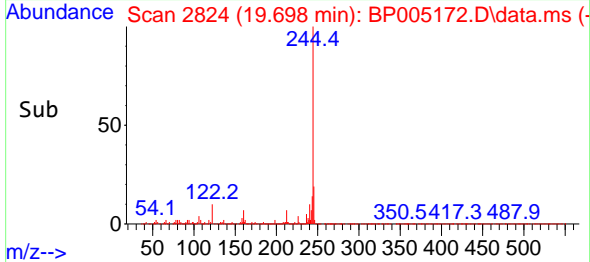
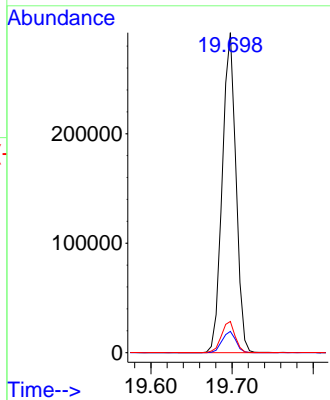
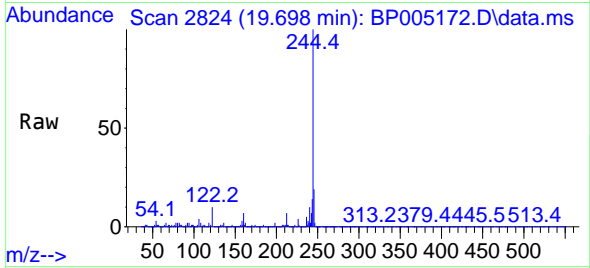


#79
 Terphenyl-d14
 Concen: 61.42 ng
 RT: 19.698 min Scan# 2824
 Delta R.T. -0.000 min
 Lab File: BP005172.D
 Acq: 05 Apr 2021 11:25

Instrument :
 BNA_P
 ClientSampled :
 B1-10-12

Tgt Ion:244 Resp: 343387

Ion	Ratio	Lower	Upper
244	100		
212	6.7	5.8	8.6
122	9.8	7.8	11.8



#86
 Perylene-d12
 Concen: 20.00 ng
 RT: 23.504 min Scan# 3471
 Delta R.T. -0.006 min
 Lab File: BP005172.D
 Acq: 05 Apr 2021 11:25

Tgt Ion:264 Resp: 106024

Ion	Ratio	Lower	Upper
264	100		
260	22.3	18.8	28.2
265	22.0	17.4	26.2

