

Data Path : Z:\svoasrv\HPCHEM1\BNA_P\Data\BP041621\
 Data File : BP005318.D
 Acq On : 16 Apr 2021 14:50
 Operator : CG/JU
 Sample : M2049-05
 Misc :
 ALS Vial : 10 Sample Multiplier: 1

Instrument :
 BNA_P
 ClientSampleId :
 SB-08-7.5-8.0-DUP

Integration Parameters: rteint.p
 Integrator: RTE
 Smoothing : ON Filtering: 5
 Sampling : 1 Min Area: 3 % of largest Peak
 Start Thrs: 0.2 Max Peaks: 100
 Stop Thrs : 0 Peak Location: TOP

If leading or trailing edge < 100 prefer < Baseline drop else tangent >
 Peak separation: 5

Method : Z:\svoasrv\HPCHEM1\BNA_P\Methods\8270E-BP041521.M
 Title : ASP BNA STANDARDS FOR 5 POINT CALIBRATION

Signal : TIC: BP005318.D\data.ms

peak #	R.T. min	first scan	max scan	last scan	PK TY	peak height	corr. area	corr. % max.	% of total
1	5.263	366	370	379	rVB	304698	443291	45.95%	9.219%
2	6.846	635	639	649	rVB	293432	456211	47.29%	9.488%
3	7.657	773	777	786	rVB	92456	150161	15.56%	3.123%
4	8.822	969	975	983	rVB	179196	280190	29.04%	5.827%
5	10.451	1246	1252	1259	rVB	66967	107334	11.12%	2.232%
6	12.939	1667	1675	1688	rBV	343495	455684	47.23%	9.477%
7	14.328	1903	1911	1920	rBV	124750	172726	17.90%	3.592%
8	15.828	2160	2166	2183	rBV	205979	303869	31.50%	6.320%
9	17.092	2374	2381	2389	rBV	151483	200840	20.82%	4.177%
10	17.992	2529	2534	2543	rBV2	14272	24157	2.50%	0.502%
11	19.498	2785	2790	2797	rVB2	16229	24197	2.51%	0.503%
12	19.669	2814	2819	2830	rBV	912722	964808	100.00%	20.065%
13	20.874	3019	3024	3026	rBV2	27067	42151	4.37%	0.877%
14	20.921	3026	3032	3037	rVV2	59949	135199	14.01%	2.812%
15	20.980	3037	3042	3050	rVV	167277	221746	22.98%	4.612%
16	21.104	3061	3063	3069	rVB6	13542	16108	1.67%	0.335%
17	21.192	3073	3078	3083	rBV	322675	396782	41.13%	8.252%
18	23.462	3458	3464	3475	rVB	227329	412946	42.80%	8.588%

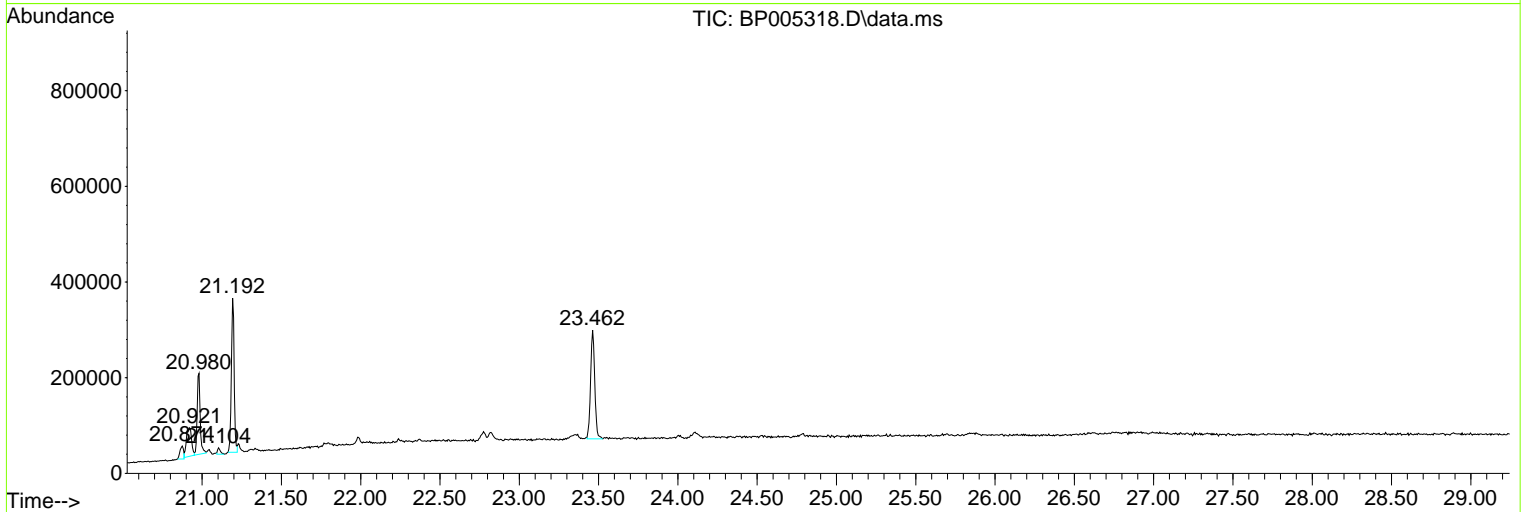
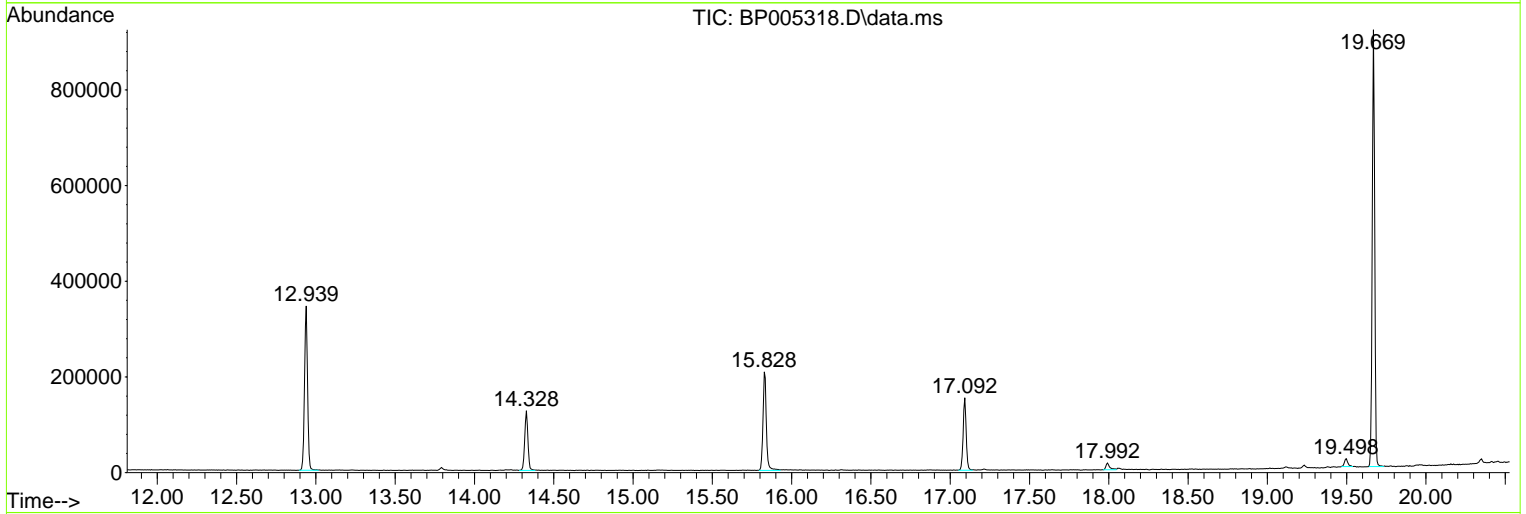
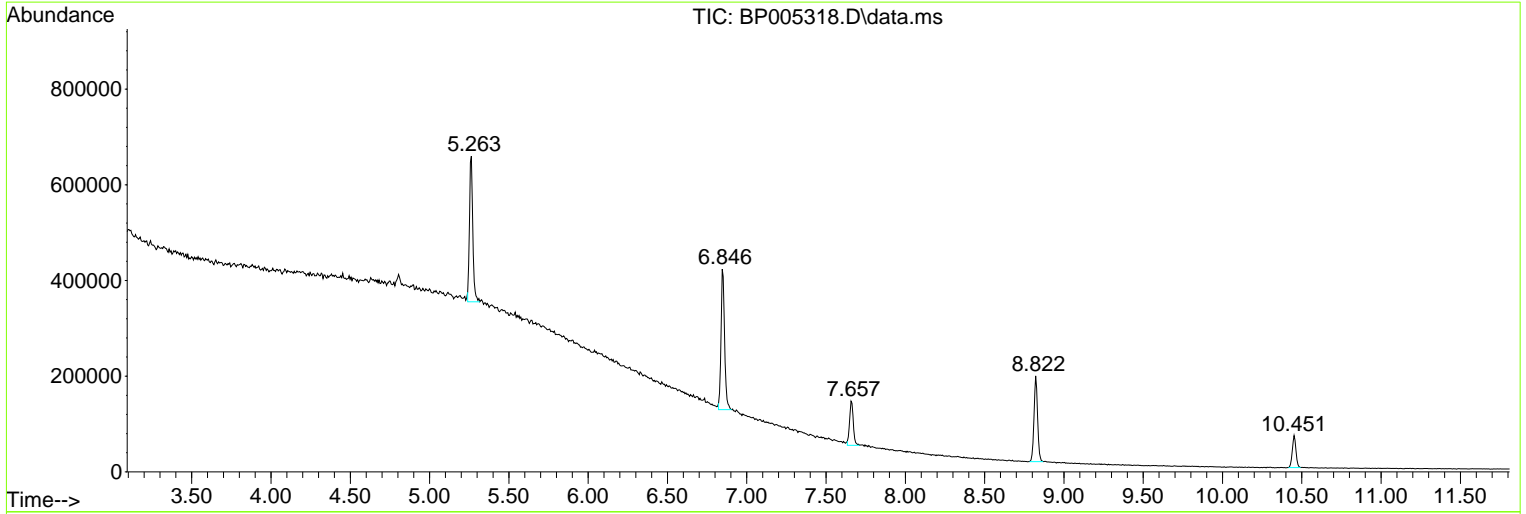
Sum of corrected areas: 4808400

Data Path : Z:\svoasrv\HPCHEM1\BNA_P\Data\BP041621\
 Data File : BP005318.D
 Acq On : 16 Apr 2021 14:50
 Operator : CG/JU
 Sample : M2049-05
 Misc :
 ALS Vial : 10 Sample Multiplier: 1

Instrument :
 BNA_P
 ClientSampleId :
 SB-08-7.5-8.0-DUP

Quant Method : Z:\svoasrv\HPCHEM1\BNA_P\Methods\8270E-BP041521.M
 Quant Title : ASP BNA STANDARDS FOR 5 POINT CALIBRATION

TIC Library : C:\DATABASE\NIST11.L
 TIC Integration Parameters: LSCINT.P



Data Path : Z:\svoasrv\HPCHEM1\BNA_P\Data\BP041621\
 Data File : BP005318.D
 Acq On : 16 Apr 2021 14:50
 Operator : CG/JU
 Sample : M2049-05
 Misc :
 ALS Vial : 10 Sample Multiplier: 1

Instrument :
 BNA_P
 ClientSampleId :
 SB-08-7.5-8.0-DUP

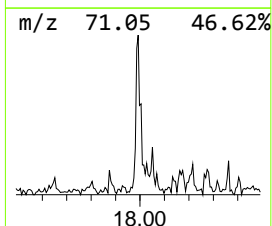
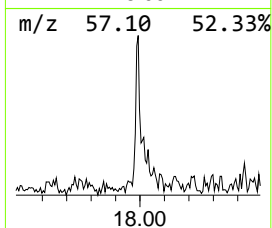
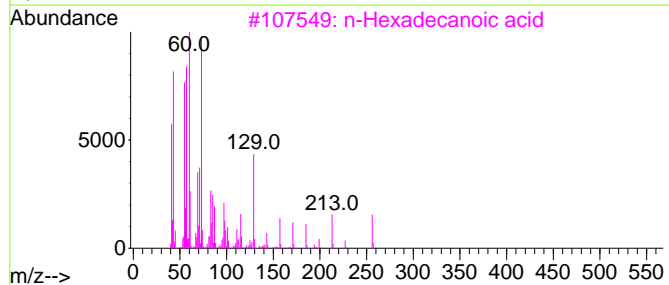
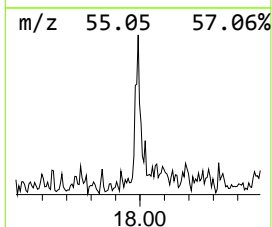
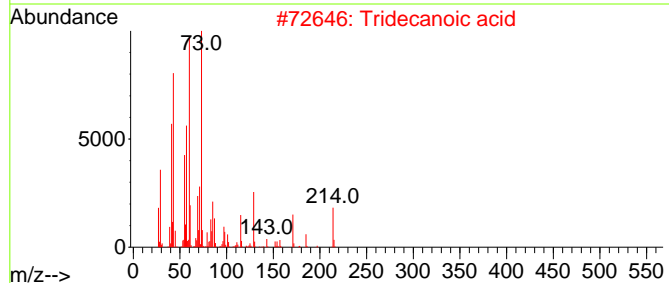
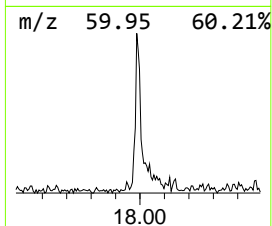
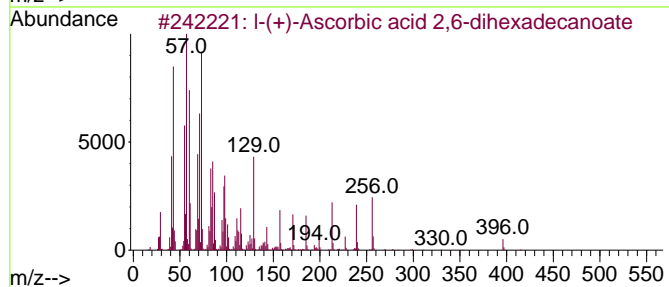
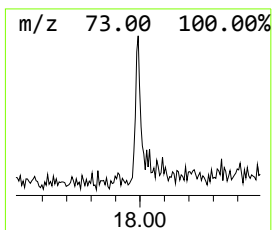
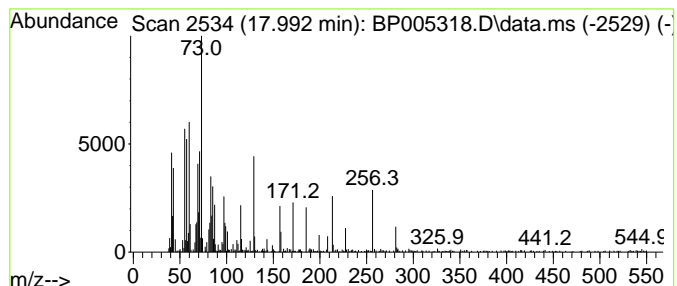
Quant Method : Z:\svoasrv\HPCHEM1\BNA_P\Methods\8270E-BP041521.M
 Quant Title : ASP BNA STANDARDS FOR 5 POINT CALIBRATION

TIC Library : C:\DATABASE\NIST11.L
 TIC Integration Parameters: LSCINT.P

 Peak Number 1 1-(+)-Ascorbic acid 2,6-dih... Concentration Rank 3

R.T.	EstConc	Area	Relative to ISTD	R.T.
17.992	2.41 ng	24157	Phenanthrene-d10	17.092

Hit#	of 5	Tentative ID	MW	MolForm	CAS#	Qual
1		1-(+)-Ascorbic acid 2,6-dihexade...	652	C38H68O8	028474-90-0	72
2		Tridecanoic acid	214	C13H26O2	000638-53-9	70
3		n-Hexadecanoic acid	256	C16H32O2	000057-10-3	49
4		Docosanoic acid	340	C22H44O2	000112-85-6	38
5		Tetradecanoic acid	228	C14H28O2	000544-63-8	37



Data Path : Z:\svoasrv\HPCHEM1\BNA_P\Data\BP041621\
 Data File : BP005318.D
 Acq On : 16 Apr 2021 14:50
 Operator : CG/JU
 Sample : M2049-05
 Misc :
 ALS Vial : 10 Sample Multiplier: 1

Instrument :
 BNA_P
 ClientSampleId :
 SB-08-7.5-8.0-DUP

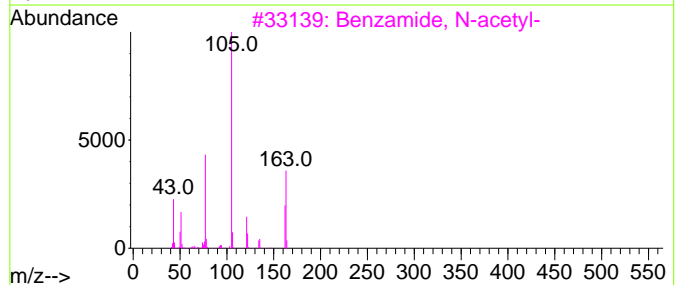
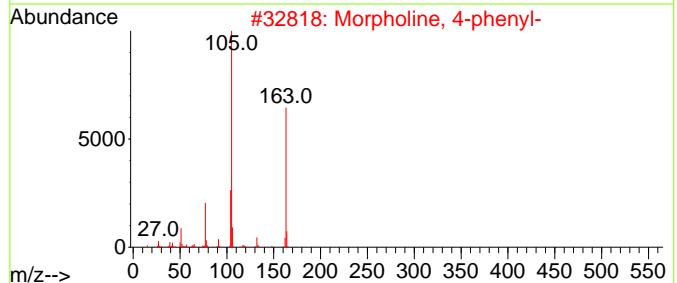
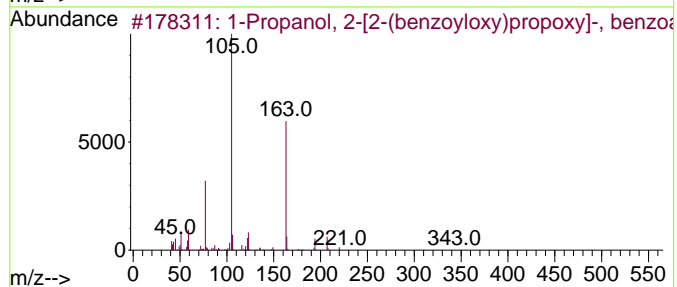
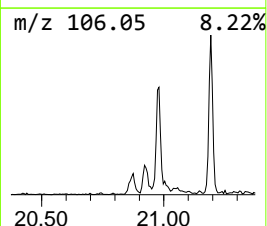
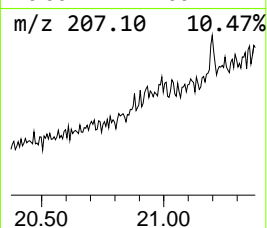
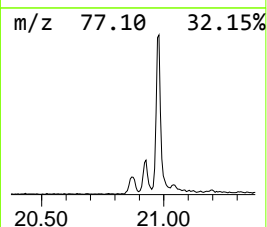
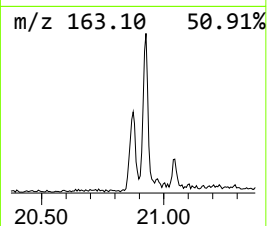
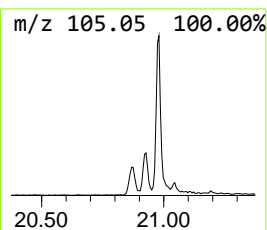
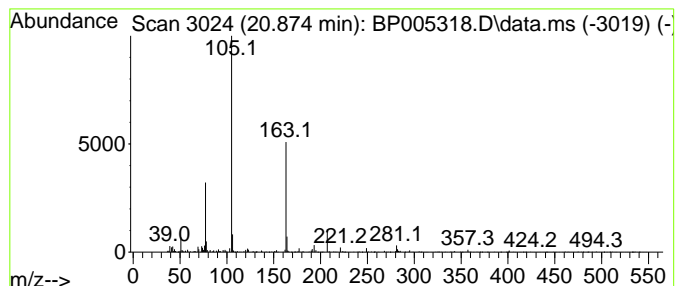
Quant Method : Z:\svoasrv\HPCHEM1\BNA_P\Methods\8270E-BP041521.M
 Quant Title : ASP BNA STANDARDS FOR 5 POINT CALIBRATION

TIC Library : C:\DATABASE\NIST11.L
 TIC Integration Parameters: LSCINT.P

 Peak Number 2 1-Propanol, 2-[2-(benzoylox... Concentration Rank 4

R.T.	EstConc	Area	Relative to ISTD	R.T.
20.874	2.12 ng	42151	Chrysene-d12	21.192

Hit#	of	5	Tentative ID	MW	MolForm	CAS#	Qual
1	1-Propanol, 2-[2-(benzoyloxy)pro...	342	C20H22O5	020109-39-1	56		
2	Morpholine, 4-phenyl-	163	C10H13NO	000092-53-5	45		
3	Benzamide, N-acetyl-	163	C9H9NO2	001575-95-7	43		
4	Benzenepropanamide, .alpha.-(ben...	284	C16H16N2O3	058690-81-6	40		
5	Glyoxylamide, N-phenyl-	163	C9H9NO2	032331-52-5	37		



Data Path : Z:\svoasrv\HPCHEM1\BNA_P\Data\BP041621\
 Data File : BP005318.D
 Acq On : 16 Apr 2021 14:50
 Operator : CG/JU
 Sample : M2049-05
 Misc :
 ALS Vial : 10 Sample Multiplier: 1

Instrument :
 BNA_P
 ClientSampleId :
 SB-08-7.5-8.0-DUP

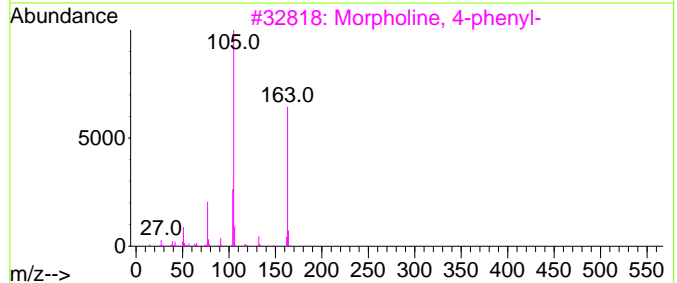
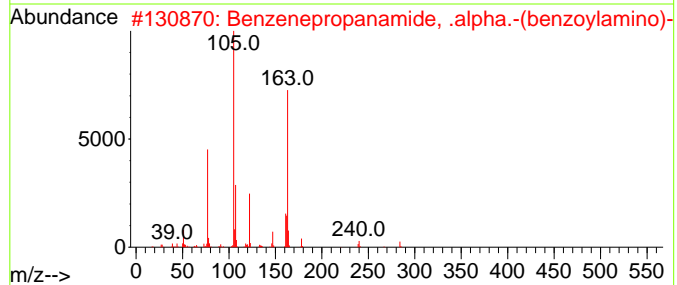
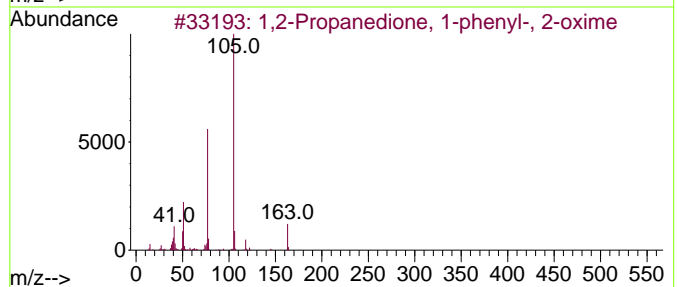
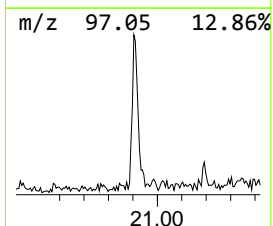
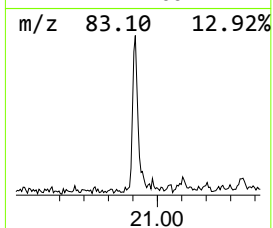
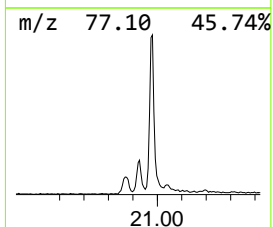
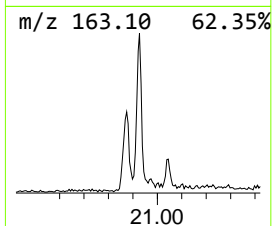
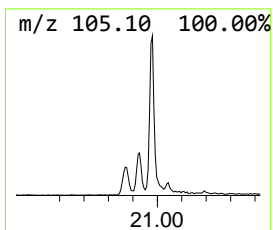
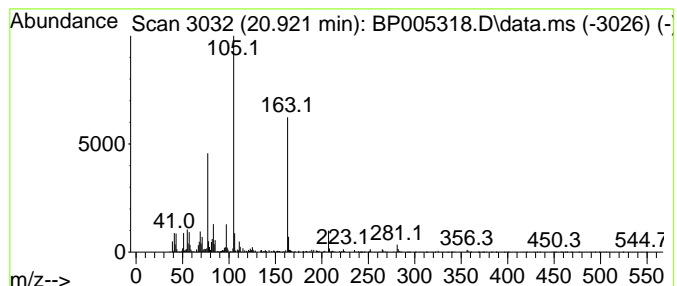
Quant Method : Z:\svoasrv\HPCHEM1\BNA_P\Methods\8270E-BP041521.M
 Quant Title : ASP BNA STANDARDS FOR 5 POINT CALIBRATION

TIC Library : C:\DATABASE\NIST11.L
 TIC Integration Parameters: LSCINT.P

 Peak Number 3 unknown20.921 Concentration Rank 2

R.T.	EstConc	Area	Relative to ISTD	R.T.
20.921	6.81 ng	135199	Chrysene-d12	21.192

Hit#	of 5	Tentative ID	MW	MolForm	CAS#	Qual
1		1,2-Propanedione, 1-phenyl-, 2-o...	163	C9H9NO2	000119-51-7	47
2		Benzenepropanamide, .alpha.-(ben...	284	C16H16N2O3	058690-81-6	45
3		Morpholine, 4-phenyl-	163	C10H13NO	000092-53-5	38
4		1-Propanol, 2-[2-(benzoyloxy)pro...	342	C20H22O5	020109-39-1	33
5		2-Benzoyl-3-isobutylidene-hexahy...	312	C18H20N2O3	1000287-59-0	32



Data Path : Z:\svoasrv\HPCHEM1\BNA_P\Data\BP041621\
 Data File : BP005318.D
 Acq On : 16 Apr 2021 14:50
 Operator : CG/JU
 Sample : M2049-05
 Misc :
 ALS Vial : 10 Sample Multiplier: 1

Instrument :
 BNA_P
 ClientSampleId :
 SB-08-7.5-8.0-DUP

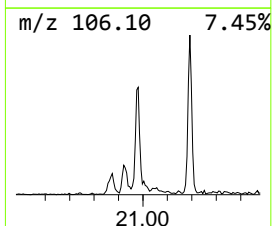
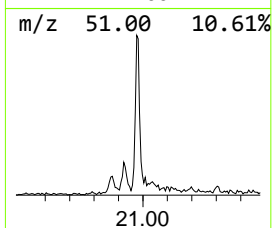
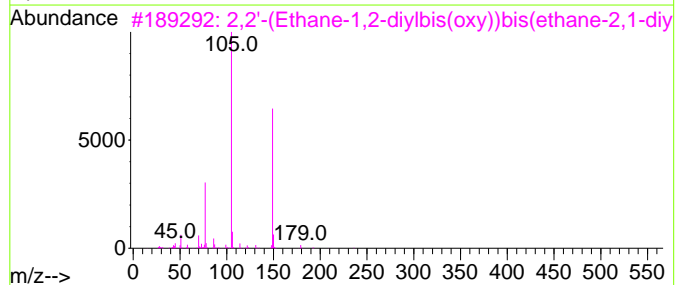
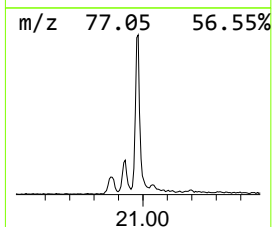
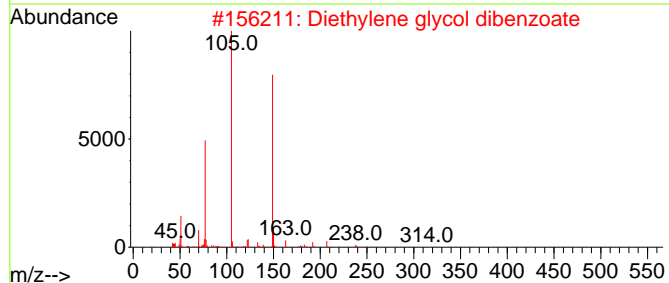
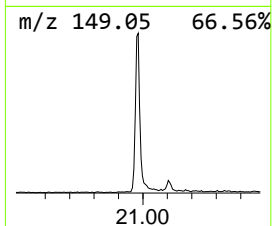
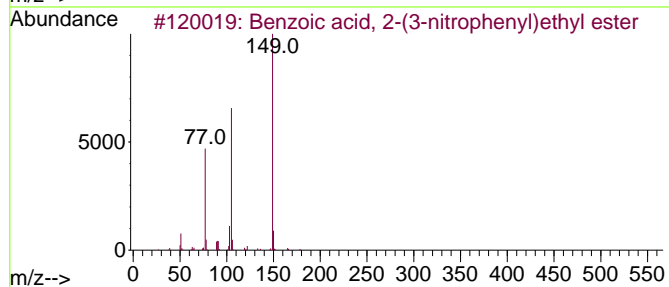
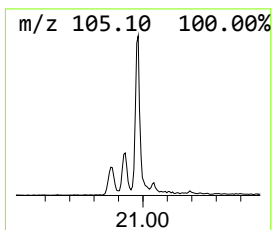
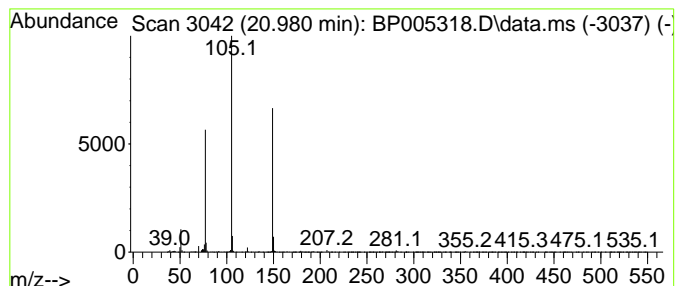
Quant Method : Z:\svoasrv\HPCHEM1\BNA_P\Methods\8270E-BP041521.M
 Quant Title : ASP BNA STANDARDS FOR 5 POINT CALIBRATION

TIC Library : C:\DATABASE\NIST11.L
 TIC Integration Parameters: LSCINT.P

 Peak Number 4 Benzoic acid, 2-(3-nitrophe... Concentration Rank 1

R.T.	EstConc	Area	Relative to ISTD	R.T.
20.980	11.18 ng	221746	Chrysene-d12	21.192

Hit#	of	5	Tentative ID	MW	MolForm	CAS#	Qual
1			Benzoic acid, 2-(3-nitrophenyl)e...	271	C15H13NO4	1000368-22-4	72
2			Diethylene glycol dibenzoate	314	C18H18O5	000120-55-8	64
3			2,2'-(Ethane-1,2-diylbis(oxy))bi...	358	C20H22O6	1000366-99-4	59
4			N-[2,2-Dichloro-1-(toluene-4-sul...	371	C16H15Cl2NO3S	136800-77-6	47
5			1,3,4-Oxadiazin-6-one, 5-isoprop...	216	C12H12N2O2	173973-78-9	47



Data Path : Z:\svoasrv\HPCHEM1\BNA_P\Data\BP041621\
Data File : BP005318.D
Acq On : 16 Apr 2021 14:50
Operator : CG/JU
Sample : M2049-05
Misc :
ALS Vial : 10 Sample Multiplier: 1

Instrument :
BNA_P
ClientSampleId :
SB-08-7.5-8.0-DUP

Quant Method : Z:\svoasrv\HPCHEM1\BNA_P\Methods\8270E-BP041521.M
Quant Title : ASP BNA STANDARDS FOR 5 POINT CALIBRATION

TIC Library : C:\DATABASE\NIST11.L
TIC Integration Parameters: LSCINT.P

TIC Top Hit name	RT	EstConc	Units	Response	--Internal Standard--			
					#	RT	Resp	Conc
1-(+)-Ascorbic ...	17.992	2.4	ng	24157	4	17.092	200840	20.0
1-Propanol, 2-[...]	20.874	2.1	ng	42151	5	21.192	396782	20.0
unknown20.921	20.921	6.8	ng	135199	5	21.192	396782	20.0
Benzoic acid, 2...	20.980	11.2	ng	221746	5	21.192	396782	20.0