

Data Path : Z:\svoasrv\HPCHEM1\BNA_P\Data\BP042221\
 Data File : BP005384.D
 Acq On : 22 Apr 2021 19:56
 Operator : CG/JU
 Sample : M2111-03 2X
 Misc :
 ALS Vial : 20 Sample Multiplier: 1

Instrument :
 BNA_P
 ClientSampled :
 S-3

Integration Parameters: rteint.p
 Integrator: RTE
 Smoothing : ON
 Sampling : 1
 Start Thrs : 0.2
 Stop Thrs : 0
 Filtering: 5
 Min Area: 3 % of largest Peak
 Max Peaks: 100
 Peak Location: TOP

If leading or trailing edge < 100 prefer < Baseline drop else tangent >
 Peak separation: 5

Method : Z:\svoasrv\HPCHEM1\BNA_P\Methods\8270E-BP042121.M
 Title : ASP BNA STANDARDS FOR 5 POINT CALIBRATION

Signal : TIC: BP005384.D\data.ms

peak #	R.T. min	first scan	max scan	last scan	PK TY	peak height	corr. area	corr. % max.	% of total
1	5.246	360	367	379	rBV	312487	446628	24.62%	2.453%
2	5.646	430	435	444	rBV4	10094	19763	1.09%	0.109%
3	6.834	630	637	649	rBV	281173	465100	25.64%	2.555%
4	7.304	712	717	728	rBV4	8704	19911	1.10%	0.109%
5	7.646	767	775	784	rBV	165186	260698	14.37%	1.432%
6	8.181	860	866	876	rBV2	10148	20754	1.14%	0.114%
7	8.804	964	972	980	rBV	171751	290075	15.99%	1.593%
8	10.434	1241	1249	1254	rBV	180150	309876	17.08%	1.702%
9	10.481	1254	1257	1263	rVB2	12086	21333	1.18%	0.117%
10	12.916	1664	1671	1680	rBV	373834	539025	29.71%	2.961%
11	13.198	1713	1719	1726	rBV3	20643	35314	1.95%	0.194%
12	13.763	1809	1815	1823	rVB4	45358	84771	4.67%	0.466%
13	14.028	1852	1860	1873	rBV	215070	347130	19.13%	1.907%
14	14.304	1900	1907	1913	rBV2	271818	398957	21.99%	2.192%
15	14.916	2006	2011	2017	rBV4	18183	37281	2.05%	0.205%
16	15.080	2034	2039	2046	rBV6	8102	18761	1.03%	0.103%
17	15.180	2050	2056	2063	rVB3	27301	50719	2.80%	0.279%
18	15.310	2073	2078	2083	rBV	16943	23380	1.29%	0.128%
19	15.380	2083	2090	2099	rVV5	17096	43583	2.40%	0.239%
20	15.575	2117	2123	2131	rBV4	16460	38907	2.14%	0.214%
21	15.704	2141	2145	2153	rVB4	12912	27877	1.54%	0.153%
22	15.810	2154	2163	2172	rBV	365489	547606	30.18%	3.008%
23	16.039	2196	2202	2209	rBV6	25548	56741	3.13%	0.312%
24	16.369	2252	2258	2264	rBV8	11778	31471	1.73%	0.173%
25	16.645	2301	2305	2311	rVB2	14769	21857	1.20%	0.120%
26	16.727	2316	2319	2325	rVB6	13184	20820	1.15%	0.114%
27	16.886	2341	2346	2352	rVB	26046	41497	2.29%	0.228%
28	17.069	2371	2377	2381	rBV	381500	515590	28.42%	2.832%
29	17.110	2381	2384	2391	rVV	154646	214837	11.84%	1.180%
30	17.204	2395	2400	2405	rVV	151537	208877	11.51%	1.147%
31	17.263	2406	2410	2416	rVB6	15923	31159	1.72%	0.171%
32	17.486	2444	2448	2452	rBV3	11061	18240	1.01%	0.100%
33	17.657	2473	2477	2484	rVB	28019	46000	2.54%	0.253%
34	17.792	2497	2500	2508	rVB2	16883	28332	1.56%	0.156%
35	17.945	2522	2526	2528	rBV	48005	66622	3.67%	0.366%
36	17.969	2528	2530	2532	rBV2	31408	36999	2.04%	0.203%

Data Path : Z:\svoasrv\HPCHEM1\BNA_P\Data\BP042221\
 Data File : BP005384.D
 Acq On : 22 Apr 2021 19:56
 Operator : CG/JU
 Sample : M2111-03 2X
 Misc :
 ALS Vial : 20 Sample Multiplier: 1

Instrument :
 BNA_P
 ClientSampled :
 S-3

Integration Parameters: rteint.p

Integrator: RTE
 Smoothing : ON Filtering: 5
 Sampling : 1 Min Area: 3 % of largest Peak
 Start Thrs: 0.2 Max Peaks: 100
 Stop Thrs : 0 Peak Location: TOP

If leading or trailing edge < 100 prefer < Baseline drop else tangent >
 Peak separation: 5

Method : Z:\svoasrv\HPCHEM1\BNA_P\Methods\8270E-BP042121.M
 Title : ASP BNA STANDARDS FOR 5 POINT CALIBRATION

37	18.069	2543	2547	2552	rVB	43080	57132	3.15%	0.314%
38	18.127	2552	2557	2562	rBV2	81408	164203	9.05%	0.902%
39	18.169	2562	2564	2571	rVB2	40823	53634	2.96%	0.295%
40	18.251	2574	2578	2581	rBV4	18139	24883	1.37%	0.137%
41	18.333	2588	2592	2595	rVB5	16205	22803	1.26%	0.125%
42	18.427	2606	2608	2613	rVB	34140	41738	2.30%	0.229%
43	18.480	2613	2617	2625	rVB3	34802	51214	2.82%	0.281%
44	18.639	2641	2644	2647	rBV2	15904	21568	1.19%	0.118%
45	18.721	2655	2658	2661	rVB2	20107	24206	1.33%	0.133%
46	18.757	2661	2664	2668	rVB3	23568	33447	1.84%	0.184%
47	18.833	2673	2677	2681	rBV2	76572	117423	6.47%	0.645%
48	18.927	2691	2693	2697	rVB2	28568	26474	1.46%	0.145%
49	18.980	2697	2702	2707	rBV4	47557	91167	5.03%	0.501%
50	19.092	2716	2721	2726	rBV	476171	598884	33.01%	3.290%
51	19.157	2729	2732	2735	rVB4	23317	27964	1.54%	0.154%
52	19.239	2743	2746	2751	rVB	110701	136325	7.51%	0.749%
53	19.333	2758	2762	2763	rBV2	33916	41470	2.29%	0.228%
54	19.357	2763	2766	2771	rVB	49720	63431	3.50%	0.348%
55	19.416	2773	2776	2777	rVV	48496	50969	2.81%	0.280%
56	19.451	2777	2782	2790	rVV	559136	794568	43.80%	4.365%
57	19.521	2790	2794	2800	rVV2	43542	69108	3.81%	0.380%
58	19.645	2810	2815	2819	rBV	751419	868265	47.86%	4.770%
59	19.768	2831	2836	2844	rBV3	80953	201480	11.11%	1.107%
60	19.927	2853	2863	2869	rBV2	140235	347079	19.13%	1.907%
61	19.998	2873	2875	2877	rBV3	22204	20467	1.13%	0.112%
62	20.027	2877	2880	2884	rVV	72142	88142	4.86%	0.484%
63	20.086	2886	2890	2896	rVB2	103037	142569	7.86%	0.783%
64	20.221	2910	2913	2917	rBV	98863	112759	6.22%	0.619%
65	20.268	2917	2921	2925	rVB	87737	107520	5.93%	0.591%
66	20.668	2985	2989	2995	rVB	76060	120959	6.67%	0.664%
67	20.827	3012	3016	3019	rBV2	104050	118430	6.53%	0.651%
68	20.863	3019	3022	3024	rBV	86357	95860	5.28%	0.527%
69	20.898	3024	3028	3032	rVB3	95737	176774	9.74%	0.971%
70	21.162	3068	3073	3078	rBV3	882869	1814239	100.00%	9.966%
71	21.210	3078	3081	3090	rVB	560999	718667	39.61%	3.948%
72	21.380	3107	3110	3118	rVB4	79984	119061	6.56%	0.654%
73	21.721	3165	3168	3172	rVB	143265	167873	9.25%	0.922%
74	21.915	3198	3201	3204	rBV2	93912	121364	6.69%	0.667%
75	22.015	3215	3218	3223	rVB3	98342	142563	7.86%	0.783%
76	22.757	3338	3344	3349	rBV	619576	1436051	79.15%	7.888%

Data Path : Z:\svoasrv\HPCHEM1\BNA_P\Data\BP042221\
Data File : BP005384.D
Acq On : 22 Apr 2021 19:56
Operator : CG/JU
Sample : M2111-03 2X
Misc :
ALS Vial : 20 Sample Multiplier: 1

Instrument :
BNA_P
ClientSampleId :
S-3

Integration Parameters: rteint.p
Integrator: RTE
Smoothing : ON Filtering: 5
Sampling : 1 Min Area: 3 % of largest Peak
Start Thrs: 0.2 Max Peaks: 100
Stop Thrs : 0 Peak Location: TOP

If leading or trailing edge < 100 prefer < Baseline drop else tangent >
Peak separation: 5

Method : Z:\svoasrv\HPCHEM1\BNA_P\Methods\8270E-BP042121.M
Title : ASP BNA STANDARDS FOR 5 POINT CALIBRATION

77	22.921	3369	3372	3378	rVB	156054	255217	14.07%	1.402%
78	23.239	3421	3426	3434	rVB	387654	693705	38.24%	3.811%
79	23.339	3437	3443	3449	rVB	588669	1048098	57.77%	5.757%
80	23.433	3454	3459	3464	rBV2	324839	586468	32.33%	3.222%
81	25.745	3846	3852	3864	rVB	287496	801655	44.19%	4.404%

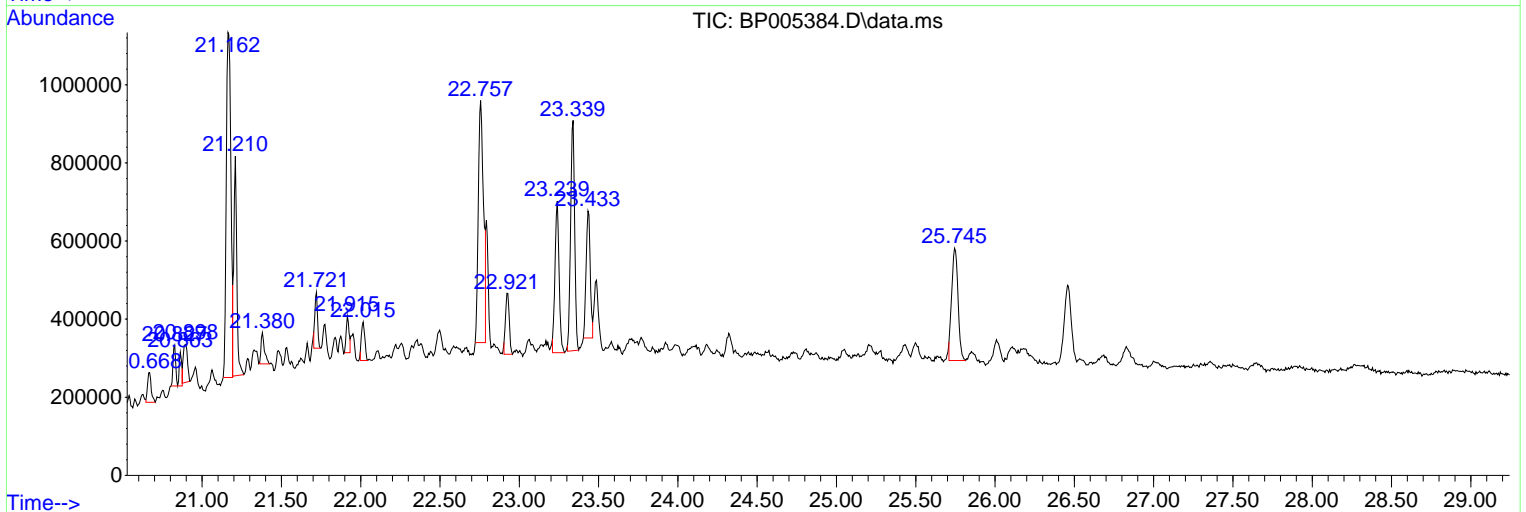
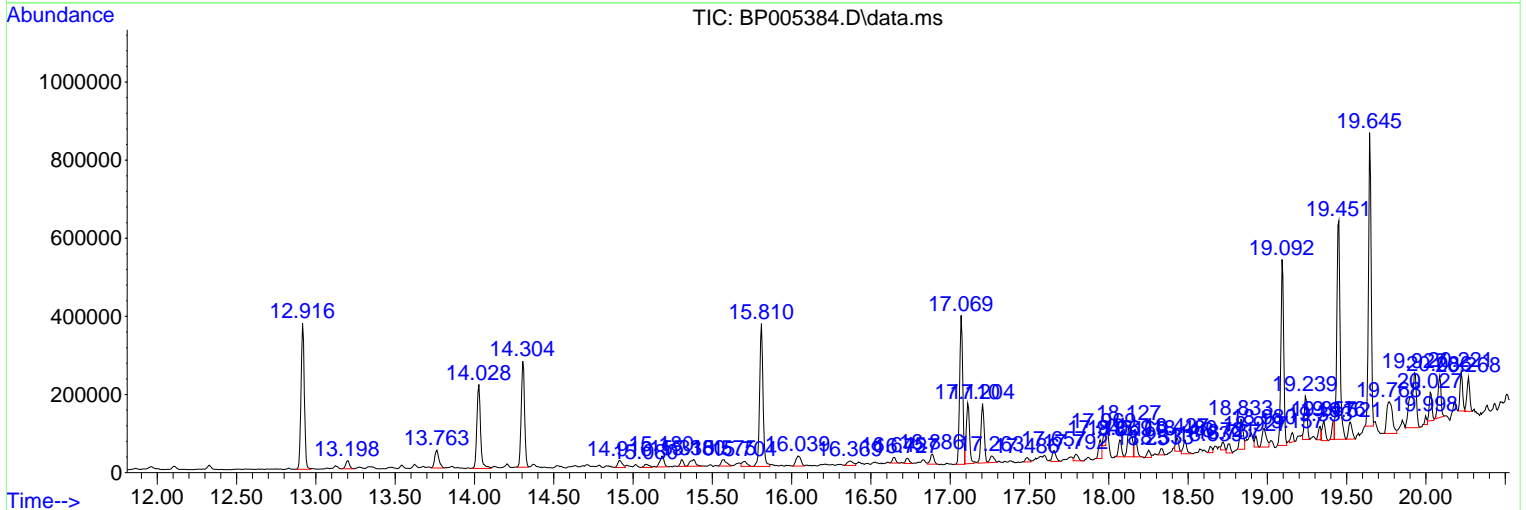
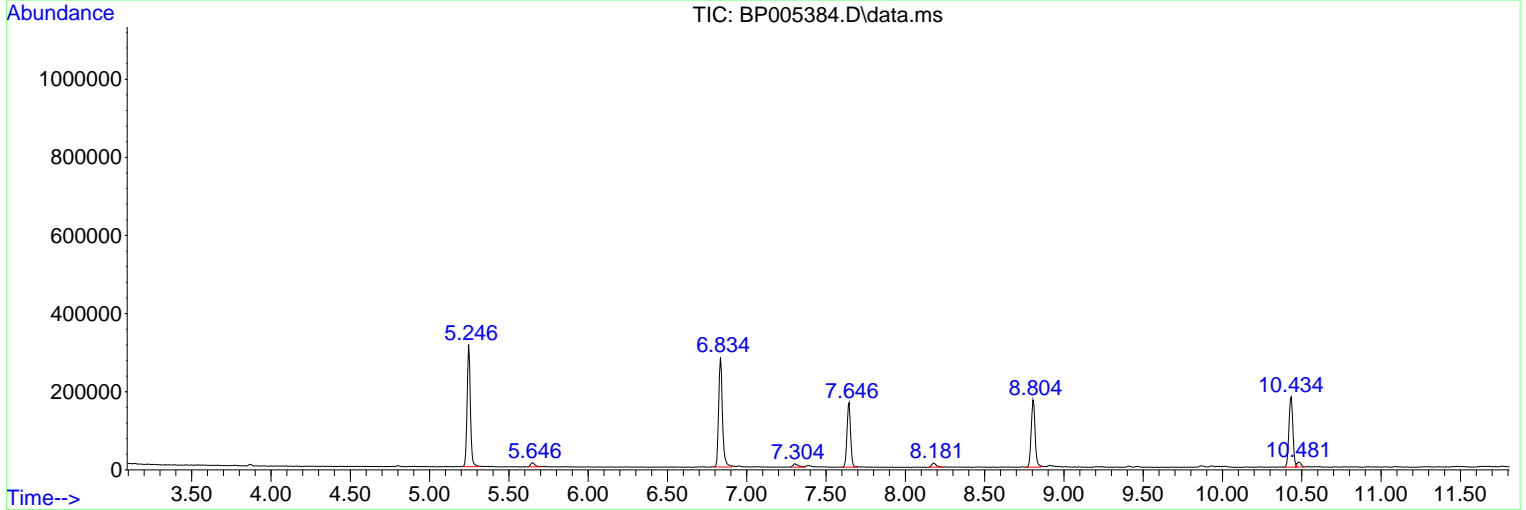
Sum of corrected areas: 18204367

Data Path : Z:\svoasrv\HPCHEM1\BNA_P\Data\BP042221\
Data File : BP005384.D
Acq On : 22 Apr 2021 19:56
Operator : CG/JU
Sample : M2111-03 2X
Misc :
ALS Vial : 20 Sample Multiplier: 1

Instrument :
BNA_P
Client Sampled :
S-3

Quant Method : Z:\svoasrv\HPCHEM1\BNA_P\Methods\8270E-BP042121.M
Quant Title : ASP BNA STANDARDS FOR 5 POINT CALIBRATION

TIC Library : C:\DATABASE\NIST11.L
TIC Integration Parameters: LSCINT.P



Data Path : Z:\svoasrv\HPCHEM1\BNA_P\Data\BP042221\
 Data File : BP005384.D
 Acq On : 22 Apr 2021 19:56
 Operator : CG/JU
 Sample : M2111-03 2X
 Misc :
 ALS Vial : 20 Sample Multiplier: 1

Instrument :
 BNA_P
 ClientSampled :
 S-3

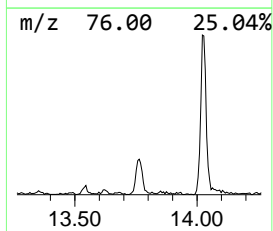
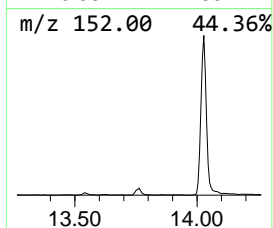
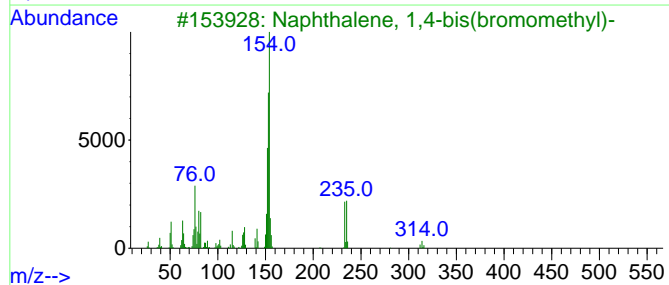
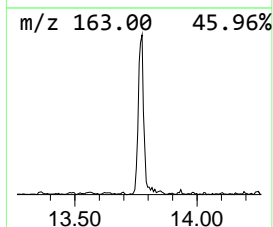
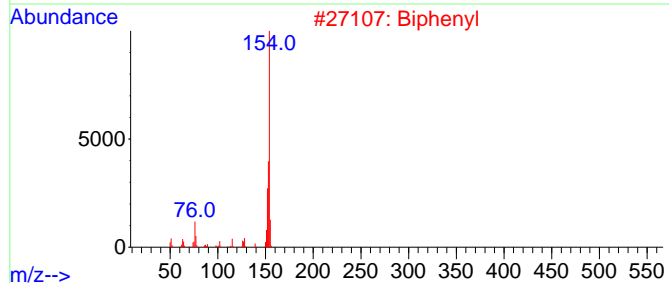
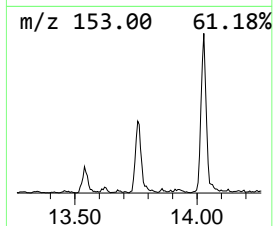
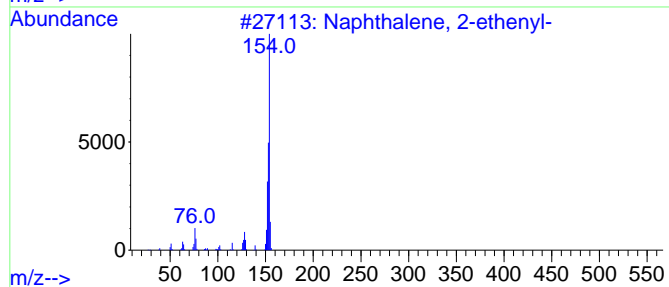
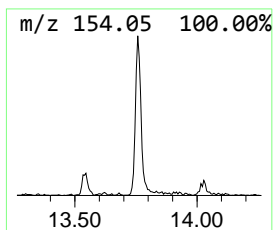
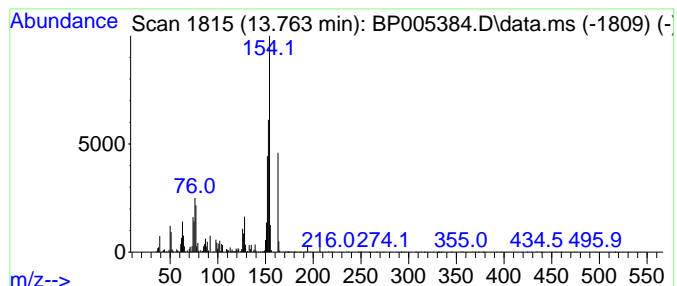
Quant Method : Z:\svoasrv\HPCHEM1\BNA_P\Methods\8270E-BP042121.M
 Quant Title : ASP BNA STANDARDS FOR 5 POINT CALIBRATION

TIC Library : C:\DATABASE\NIST11.L
 TIC Integration Parameters: LSCINT.P

 Peak Number 1 Naphthalene, 2-ethenyl- Concentration Rank 5

R.T.	EstConc	Area	Relative to ISTD	R.T.
13.763	4.25 ng	84771	Acenaphthene-d10	14.304

Hit#	of 5	Tentative ID	MW	MolForm	CAS#	Qual
1		Naphthalene, 2-ethenyl-	154	C12H10	000827-54-3	93
2		Biphenyl	154	C12H10	000092-52-4	83
3		Naphthalene, 1,4-bis(bromomethyl)-	312	C12H10Br2	058791-49-4	64
4		Acenaphthene	154	C12H10	000083-32-9	60
5		2-Quinolinecarbonitrile	154	C10H6N2	001436-43-7	43



Data Path : Z:\svoasrv\HPCHEM1\BNA_P\Data\BP042221\
 Data File : BP005384.D
 Acq On : 22 Apr 2021 19:56
 Operator : CG/JU
 Sample : M2111-03 2X
 Misc :
 ALS Vial : 20 Sample Multiplier: 1

Instrument :
 BNA_P
 ClientSampleId :
 S-3

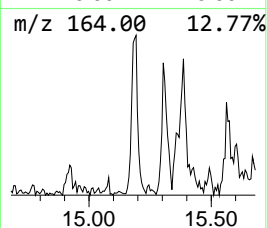
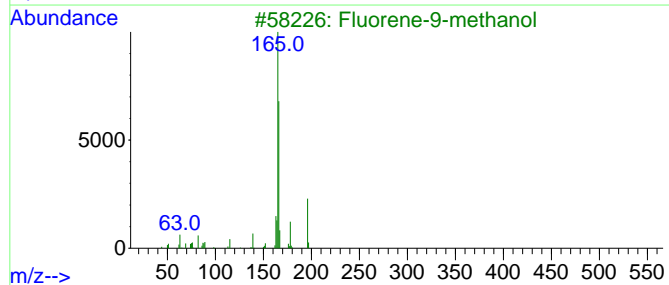
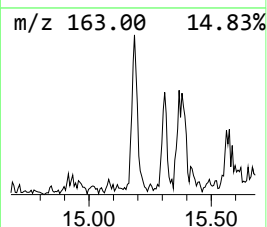
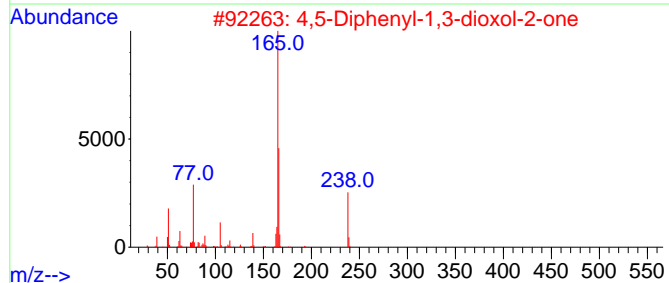
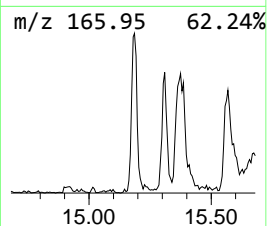
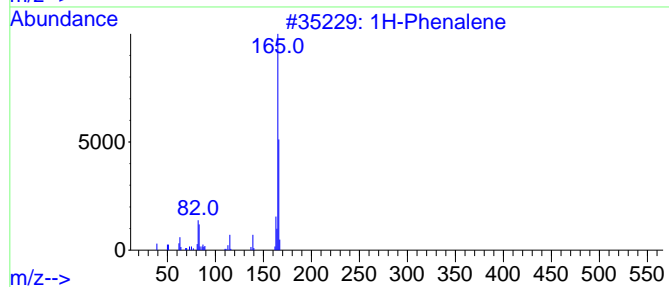
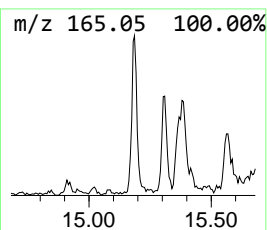
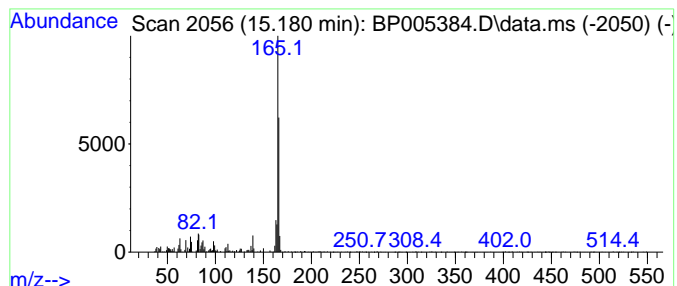
Quant Method : Z:\svoasrv\HPCHEM1\BNA_P\Methods\8270E-BP042121.M
 Quant Title : ASP BNA STANDARDS FOR 5 POINT CALIBRATION

TIC Library : C:\DATABASE\NIST11.L
 TIC Integration Parameters: LSCINT.P

 Peak Number 2 1H-Phenalene Concentration Rank 9

R.T.	EstConc	Area	Relative to ISTD	R.T.
15.180	2.54 ng	50719	Acenaphthene-d10	14.304

Hit#	of	5	Tentative ID	MW	MolForm	CAS#	Qual
1			1H-Phenalene	166	C13H10	000203-80-5	87
2			4,5-Diphenyl-1,3-dioxol-2-one	238	C15H10O3	021240-34-6	78
3			Fluorene-9-methanol	196	C14H12O	024324-17-2	78
4			Fluorene	166	C13H10	000086-73-7	64
5			Benzene, 1,1'-(diazomethylene)bis-	194	C13H10N2	000883-40-9	56



Data Path : Z:\svoasrv\HPCHEM1\BNA_P\Data\BP042221\
 Data File : BP005384.D
 Acq On : 22 Apr 2021 19:56
 Operator : CG/JU
 Sample : M2111-03 2X
 Misc :
 ALS Vial : 20 Sample Multiplier: 1

Instrument :
 BNA_P
 ClientSampleID :
 S-3

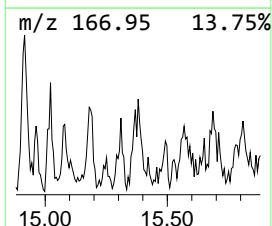
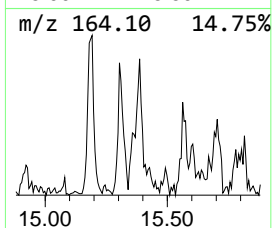
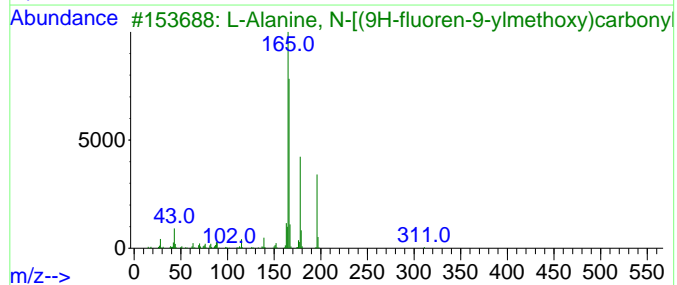
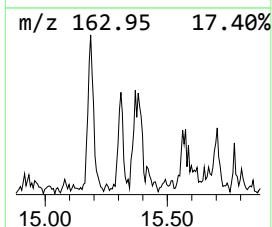
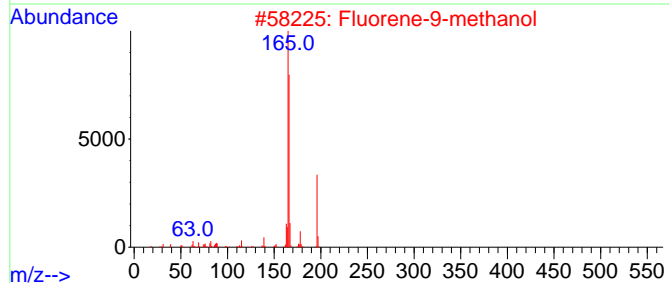
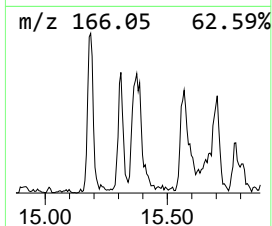
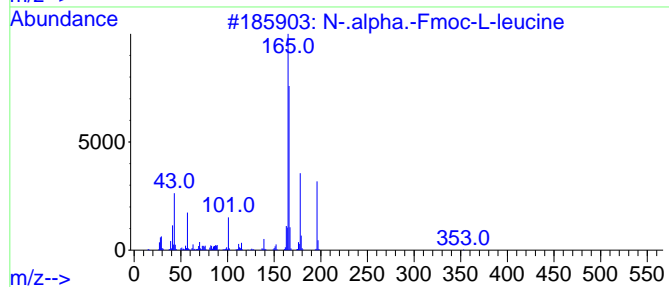
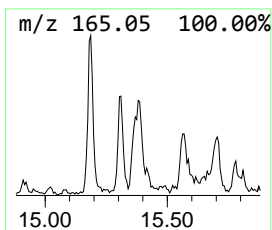
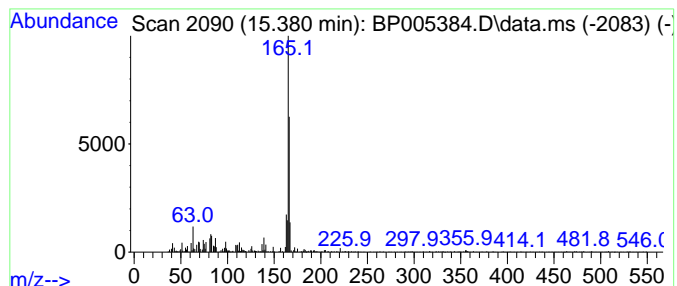
Quant Method : Z:\svoasrv\HPCHEM1\BNA_P\Methods\8270E-BP042121.M
 Quant Title : ASP BNA STANDARDS FOR 5 POINT CALIBRATION

TIC Library : C:\DATABASE\NIST11.L
 TIC Integration Parameters: LSCINT.P

 Peak Number 3 N-.alpha.-Fmoc-L-leucine Concentration Rank 12

R.T.	EstConc	Area	Relative to ISTD	R.T.
15.380	2.18 ng	43583	Acenaphthene-d10	14.304

Hit#	of	5	Tentative ID	MW	MolForm	CAS#	Qual
1			N-.alpha.-Fmoc-L-leucine	353	C21H23NO4	035661-60-0	86
2			Fluorene-9-methanol	196	C14H12O	024324-17-2	78
3			L-Alanine, N-[(9H-fluoren-9-ylme...	311	C18H17NO4	035661-39-3	64
4			1H-Phenylene	166	C13H10	000203-80-5	64
5			Benzaldehyde, 2,4-dihydroxy-3,6-...	166	C9H10O3	034883-14-2	59



Data Path : Z:\svoasrv\HPCHEM1\BNA_P\Data\BP042221\
 Data File : BP005384.D
 Acq On : 22 Apr 2021 19:56
 Operator : CG/JU
 Sample : M2111-03 2X
 Misc :
 ALS Vial : 20 Sample Multiplier: 1

Instrument :
 BNA_P
 ClientSampled :
 S-3

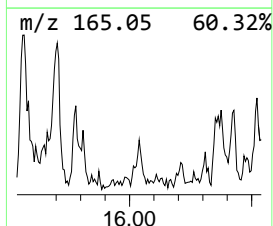
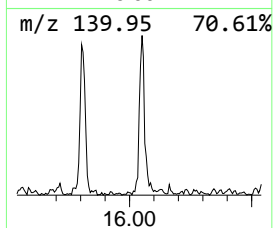
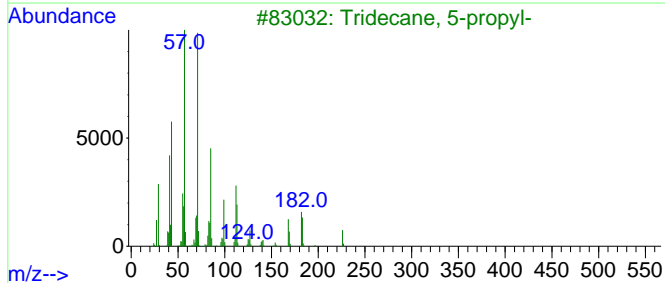
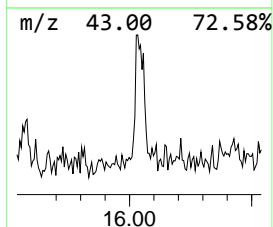
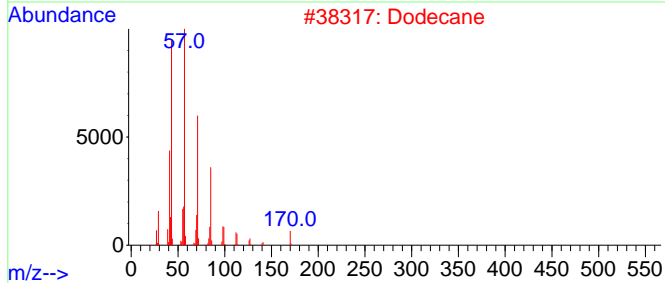
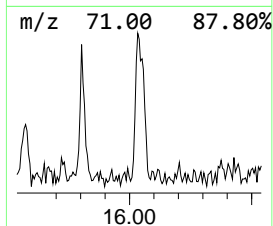
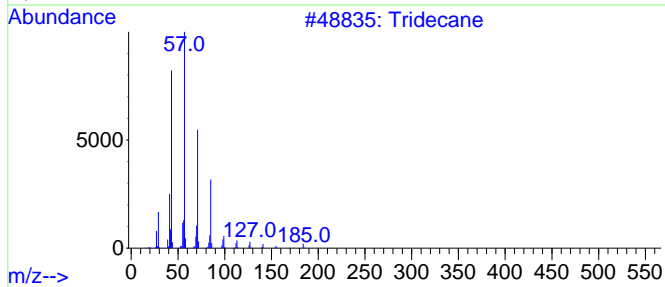
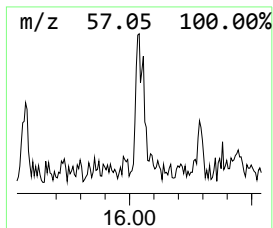
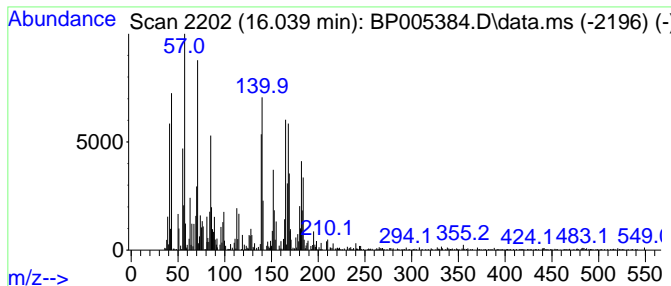
Quant Method : Z:\svoasrv\HPCHEM1\BNA_P\Methods\8270E-BP042121.M
 Quant Title : ASP BNA STANDARDS FOR 5 POINT CALIBRATION

TIC Library : C:\DATABASE\NIST11.L
 TIC Integration Parameters: LSCINT.P

 Peak Number 4 unknown16.039 Concentration Rank 11

R.T.	EstConc	Area	Relative to ISTD	R.T.
16.039	2.20 ng	56741	Phenanthrene-d10	17.069

Hit#	of 5	Tentative ID	MW	MolForm	CAS#	Qual
1		Tridecane	184	C13H28	000629-50-5	38
2		Dodecane	170	C12H26	000112-40-3	35
3		Tridecane, 5-propyl-	226	C16H34	055045-11-9	27
4		4-Octanone	128	C8H16O	000589-63-9	20
5		1(2H)-Acenaphthylenone	168	C12H8O	002235-15-6	18



Data Path : Z:\svoasrv\HPCHEM1\BNA_P\Data\BP042221\
 Data File : BP005384.D
 Acq On : 22 Apr 2021 19:56
 Operator : CG/JU
 Sample : M2111-03 2X
 Misc :
 ALS Vial : 20 Sample Multiplier: 1

Instrument :
 BNA_P
 ClientSampled :
 S-3

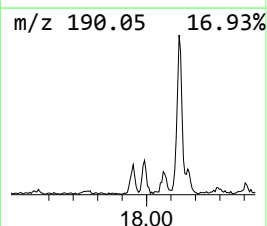
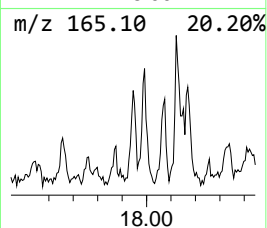
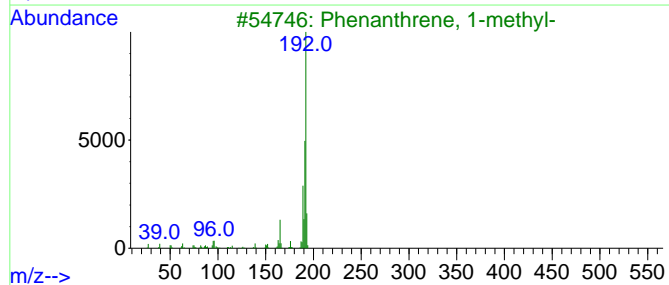
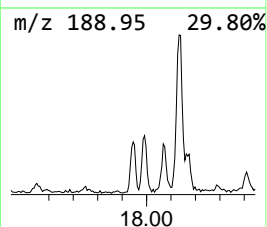
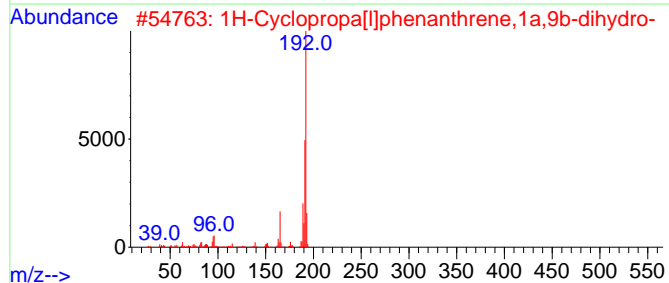
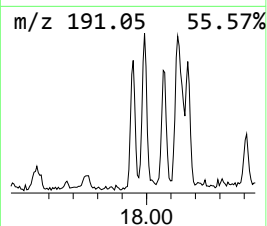
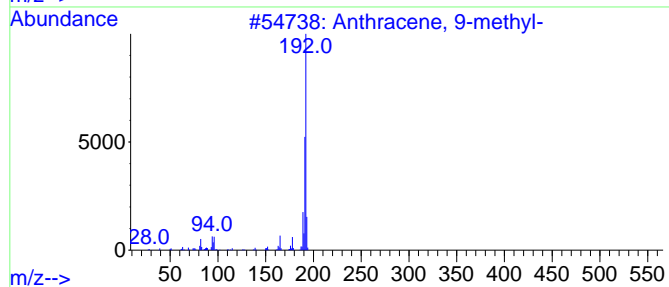
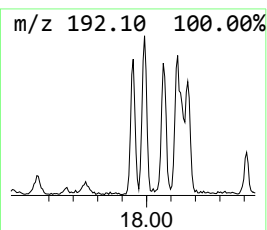
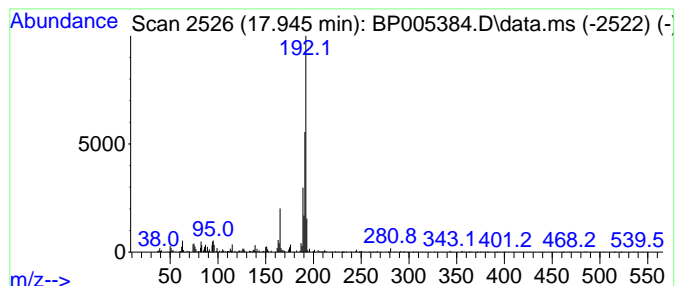
Quant Method : Z:\svoasrv\HPCHEM1\BNA_P\Methods\8270E-BP042121.M
 Quant Title : ASP BNA STANDARDS FOR 5 POINT CALIBRATION

TIC Library : C:\DATABASE\NIST11.L
 TIC Integration Parameters: LSCINT.P

 Peak Number 5 Anthracene, 9-methyl- Concentration Rank 8

R.T.	EstConc	Area	Relative to ISTD	R.T.
17.945	2.58 ng	66622	Phenanthrene-d10	17.069

Hit#	of	5	Tentative ID	MW	MolForm	CAS#	Qual
1			Anthracene, 9-methyl-	192	C15H12	000779-02-2	91
2			1H-Cyclopropa[1]phenanthrene,1a,...	192	C15H12	000949-41-7	91
3			Phenanthrene, 1-methyl-	192	C15H12	000832-69-9	90
4			Phenanthrene, 2-methyl-	192	C15H12	002531-84-2	90
5			Naphtho[1,2-b]norbornadiene	192	C15H12	1000210-14-8	90



Data Path : Z:\svoasrv\HPCHEM1\BNA_P\Data\BP042221\
 Data File : BP005384.D
 Acq On : 22 Apr 2021 19:56
 Operator : CG/JU
 Sample : M2111-03 2X
 Misc :
 ALS Vial : 20 Sample Multiplier: 1

Instrument :
 BNA_P
 ClientSampleId :
 S-3

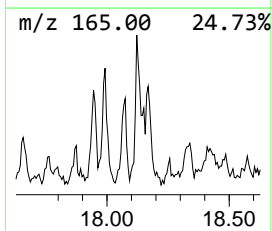
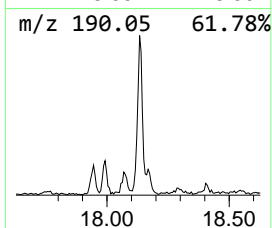
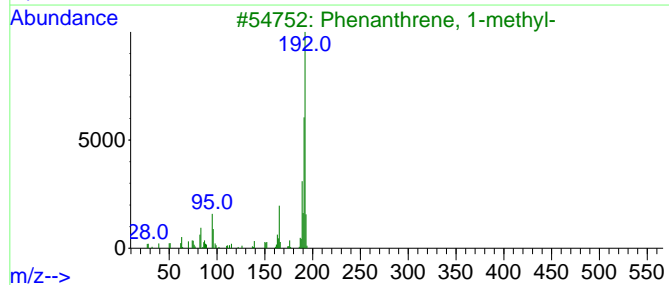
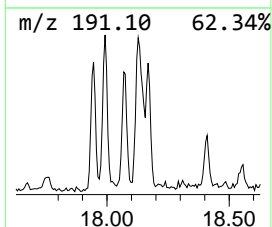
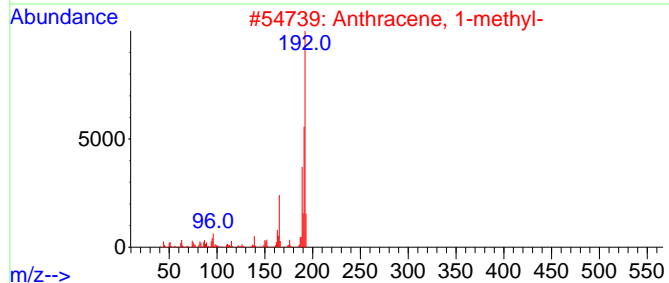
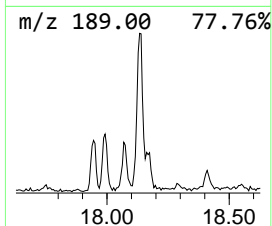
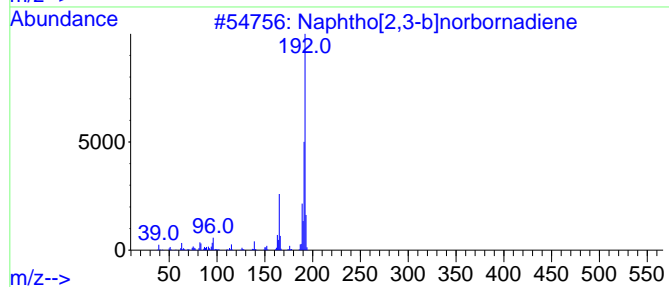
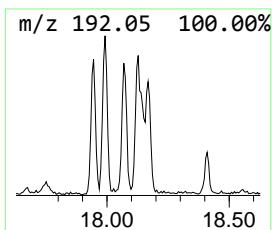
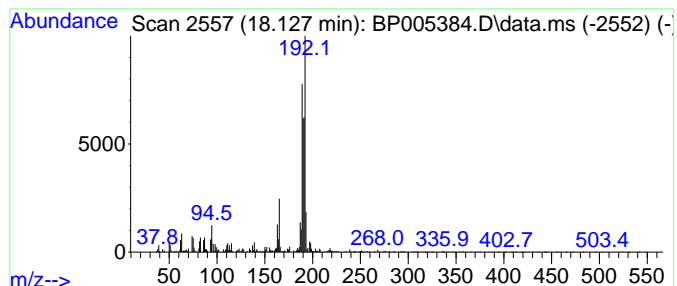
Quant Method : Z:\svoasrv\HPCHEM1\BNA_P\Methods\8270E-BP042121.M
 Quant Title : ASP BNA STANDARDS FOR 5 POINT CALIBRATION

TIC Library : C:\DATABASE\NIST11.L
 TIC Integration Parameters: LSCINT.P

 Peak Number 6 Naphtho[2,3-b]norbornadiene Concentration Rank 3

R.T.	EstConc	Area	Relative to ISTD	R.T.
18.127	6.37 ng	164203	Phenanthrene-d10	17.069

Hit#	of 5	Tentative ID	MW	MolForm	CAS#	Qual
1		Naphtho[2,3-b]norbornadiene	192	C15H12	107426-38-0	70
2		Anthracene, 1-methyl-	192	C15H12	000610-48-0	55
3		Phenanthrene, 1-methyl-	192	C15H12	000832-69-9	49
4		1a,9b-Dihydro-1H-cyclopropa[a]an...	192	C15H12	006109-24-6	49
5		1H-Indene, 2-phenyl-	192	C15H12	004505-48-0	46



Data Path : Z:\svoasrv\HPCHEM1\BNA_P\Data\BP042221\
 Data File : BP005384.D
 Acq On : 22 Apr 2021 19:56
 Operator : CG/JU
 Sample : M2111-03 2X
 Misc :
 ALS Vial : 20 Sample Multiplier: 1

Instrument :
 BNA_P
 ClientSampleId :
 S-3

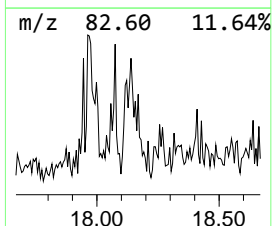
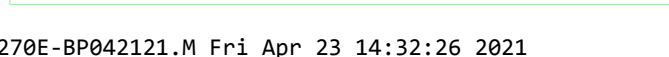
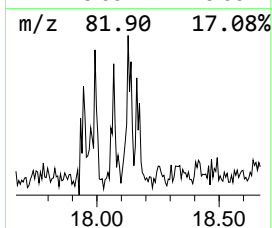
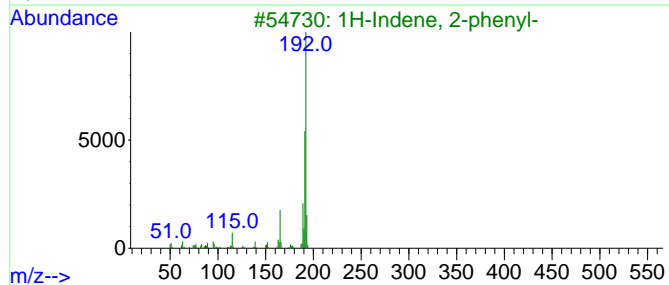
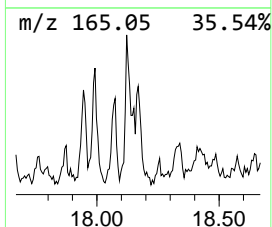
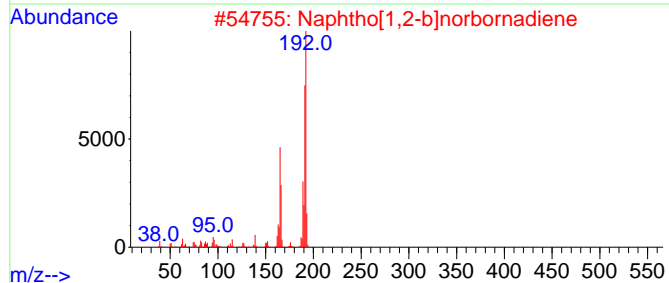
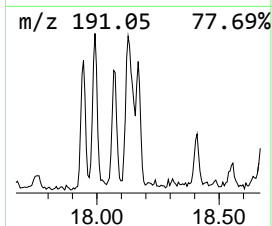
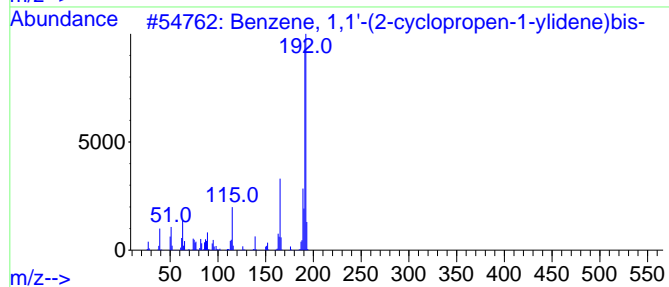
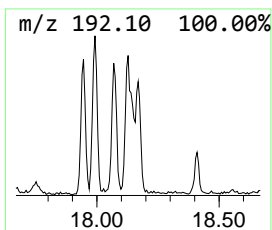
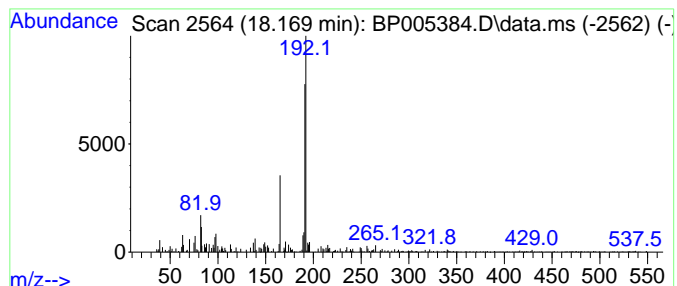
Quant Method : Z:\svoasrv\HPCHEM1\BNA_P\Methods\8270E-BP042121.M
 Quant Title : ASP BNA STANDARDS FOR 5 POINT CALIBRATION

TIC Library : C:\DATABASE\NIST11.L
 TIC Integration Parameters: LSCINT.P

 Peak Number 7 Benzene, 1,1'-(2-cycloprope... Concentration Rank 13

R.T.	EstConc	Area	Relative to ISTD	R.T.
18.169	2.08 ng	53634	Phenanthrene-d10	17.069

Hit#	of	5	Tentative ID	MW	MolForm	CAS#	Qual
1			Benzene, 1,1'-(2-cyclopropen-1-y...	192	C15H12	022825-21-4	86
2			Naphtho[1,2-b]norbornadiene	192	C15H12	1000210-14-8	86
3			1H-Indene, 2-phenyl-	192	C15H12	004505-48-0	83
4			5H-Dibenzo[a,d]cycloheptene	192	C15H12	000256-81-5	80
5			1a,9b-Dihydro-1H-cyclopropa[a]an...	192	C15H12	006109-24-6	78



Data Path : Z:\svoasrv\HPCHEM1\BNA_P\Data\BP042221\
 Data File : BP005384.D
 Acq On : 22 Apr 2021 19:56
 Operator : CG/JU
 Sample : M2111-03 2X
 Misc :
 ALS Vial : 20 Sample Multiplier: 1

Instrument :
 BNA_P
 ClientSampleId :
 S-3

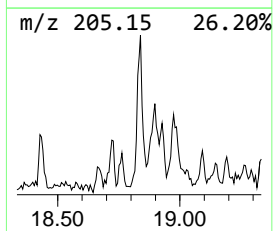
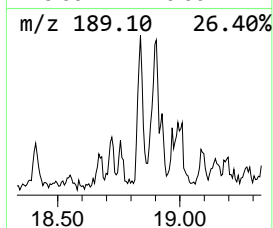
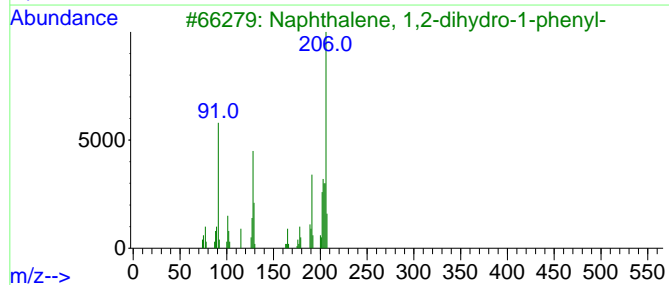
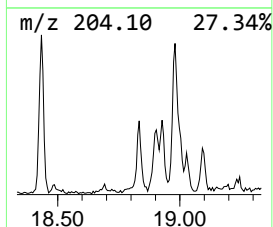
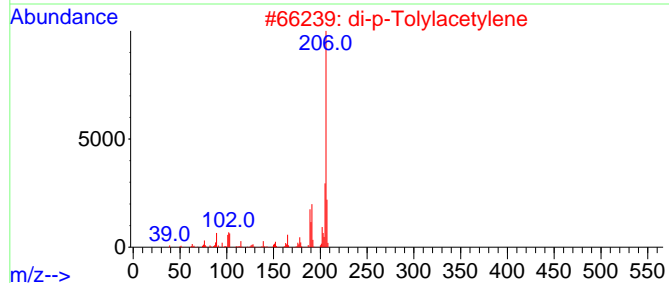
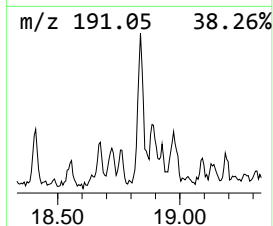
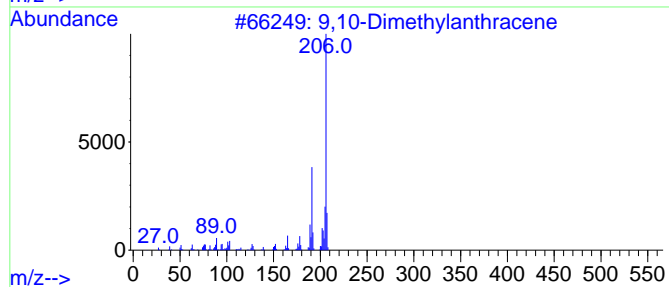
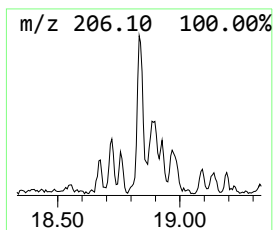
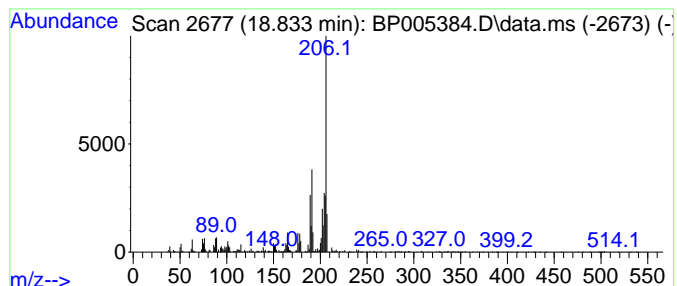
Quant Method : Z:\svoasrv\HPCHEM1\BNA_P\Methods\8270E-BP042121.M
 Quant Title : ASP BNA STANDARDS FOR 5 POINT CALIBRATION

TIC Library : C:\DATABASE\NIST11.L
 TIC Integration Parameters: LSCINT.P

 Peak Number 8 9,10-Dimethylantracene Concentration Rank 4

R.T.	EstConc	Area	Relative to ISTD	R.T.
18.833	4.55 ng	117423	Phenanthrene-d10	17.069

Hit#	of 5	Tentative ID	MW	MolForm	CAS#	Qual
1		9,10-Dimethylantracene	206	C16H14	000781-43-1	90
2		di-p-Tolylacetylene	206	C16H14	002789-88-0	81
3		Naphthalene, 1,2-dihydro-1-phenyl-	206	C16H14	016606-46-5	76
4		Phenanthrene, 2,3-dimethyl-	206	C16H14	003674-65-5	76
5		Phenanthrene, 3,6-dimethyl-	206	C16H14	001576-67-6	74



Data Path : Z:\svoasrv\HPCHEM1\BNA_P\Data\BP042221\
 Data File : BP005384.D
 Acq On : 22 Apr 2021 19:56
 Operator : CG/JU
 Sample : M2111-03 2X
 Misc :
 ALS Vial : 20 Sample Multiplier: 1

Instrument :
 BNA_P
 ClientSampleId :
 S-3

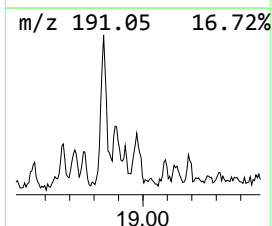
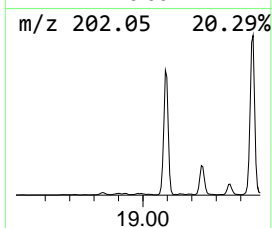
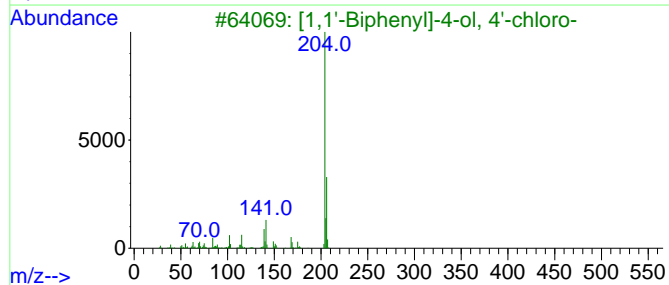
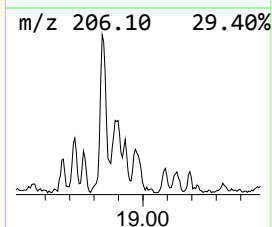
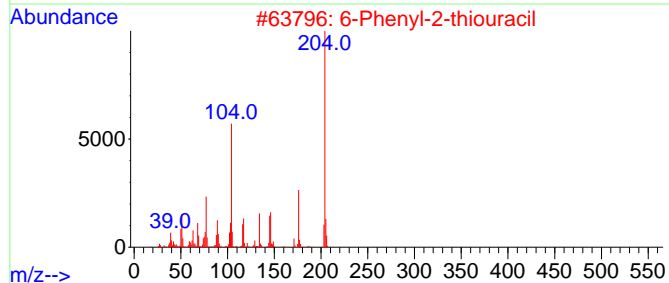
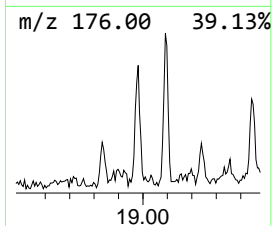
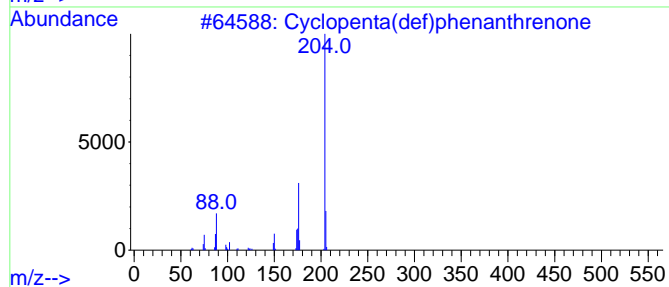
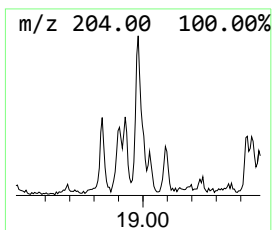
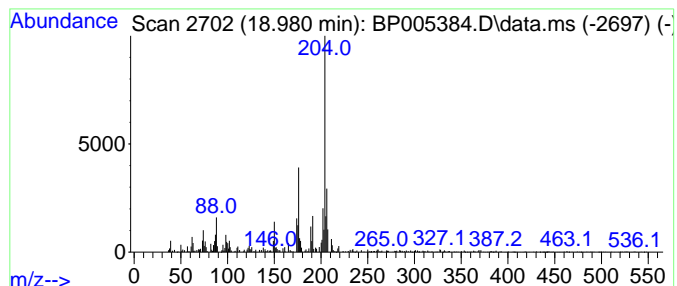
Quant Method : Z:\svoasrv\HPCHEM1\BNA_P\Methods\8270E-BP042121.M
 Quant Title : ASP BNA STANDARDS FOR 5 POINT CALIBRATION

TIC Library : C:\DATABASE\NIST11.L
 TIC Integration Parameters: LSCINT.P

 Peak Number 9 Cyclopenta(def)phenanthrenone Concentration Rank 7

R.T.	EstConc	Area	Relative to ISTD	R.T.
18.980	3.54 ng	91167	Phenanthrene-d10	17.069

Hit#	of	5	Tentative ID	MW	MolForm	CAS#	Qual
1			Cyclopenta(def)phenanthrenone	204	C15H8O	005737-13-3	91
2			6-Phenyl-2-thiouracil	204	C10H8N2OS	005590-94-3	50
3			[1,1'-Biphenyl]-4-ol, 4'-chloro-	204	C12H9ClO	028034-99-3	46
4			[1,1'-Biphenyl]-4,4'-dicarbonitrile	204	C14H8N2	001591-30-6	43
5			1,2,4,8-Tetramethylbicyclo[6.3.0...]	204	C15H24	137235-51-9	43



Data Path : Z:\svoasrv\HPCHEM1\BNA_P\Data\BP042221\
 Data File : BP005384.D
 Acq On : 22 Apr 2021 19:56
 Operator : CG/JU
 Sample : M2111-03 2X
 Misc :
 ALS Vial : 20 Sample Multiplier: 1

Instrument :
 BNA_P
 ClientSampleID :
 S-3

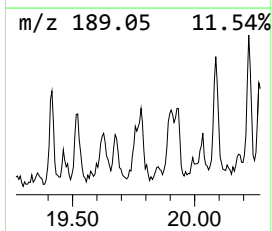
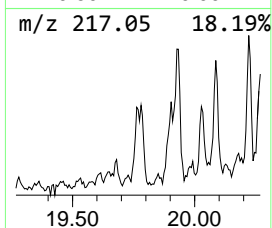
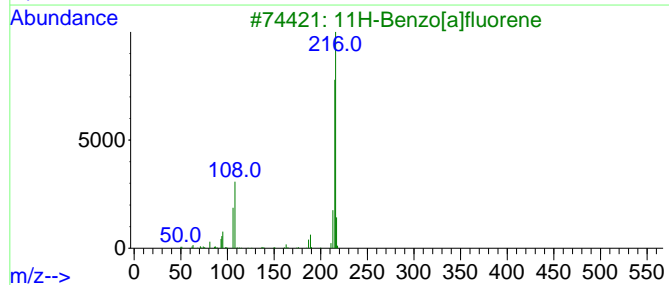
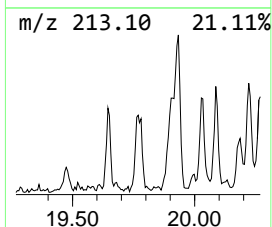
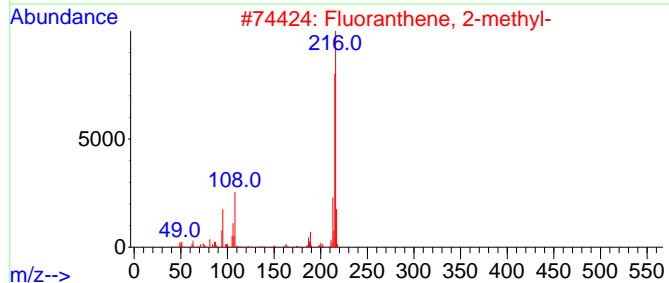
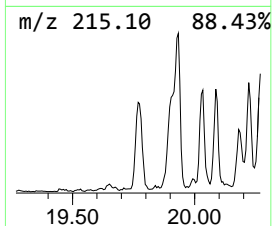
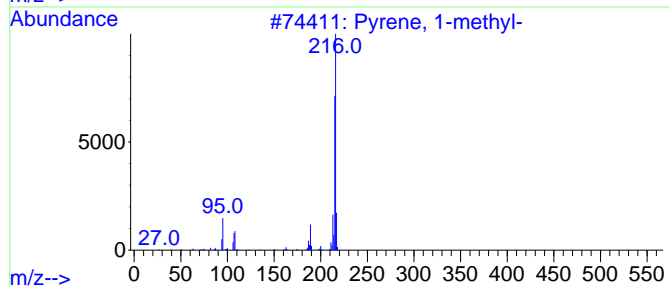
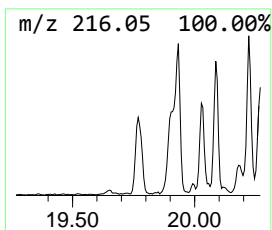
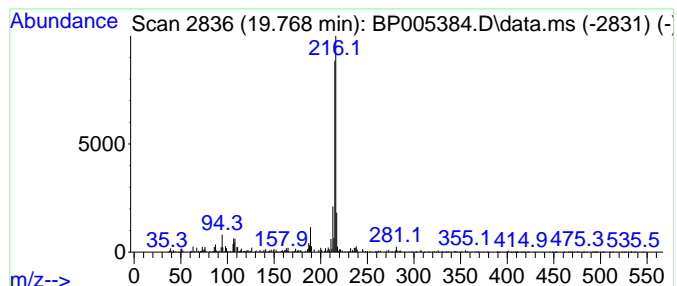
Quant Method : Z:\svoasrv\HPCHEM1\BNA_P\Methods\8270E-BP042121.M
 Quant Title : ASP BNA STANDARDS FOR 5 POINT CALIBRATION

TIC Library : C:\DATABASE\NIST11.L
 TIC Integration Parameters: LSCINT.P

 Peak Number 10 Pyrene, 1-methyl- Concentration Rank 10

R.T.	EstConc	Area	Relative to ISTD	R.T.
19.768	2.22 ng	201480	Chrysene-d12	21.174

Hit#	of 5	Tentative ID	MW	MolForm	CAS#	Qual
1		Pyrene, 1-methyl-	216	C17H12	002381-21-7	93
2		Fluoranthene, 2-methyl-	216	C17H12	033543-31-6	91
3		11H-Benzo[a]fluorene	216	C17H12	000238-84-6	90
4		Pyrene, 2-methyl-	216	C17H12	003442-78-2	89
5		11H-Benzo[b]fluorene	216	C17H12	000243-17-4	87



Data Path : Z:\svoasrv\HPCHEM1\BNA_P\Data\BP042221\
 Data File : BP005384.D
 Acq On : 22 Apr 2021 19:56
 Operator : CG/JU
 Sample : M2111-03 2X
 Misc :
 ALS Vial : 20 Sample Multiplier: 1

Instrument :
 BNA_P
 ClientSampled :
 S-3

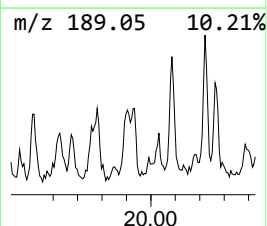
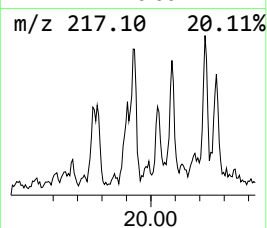
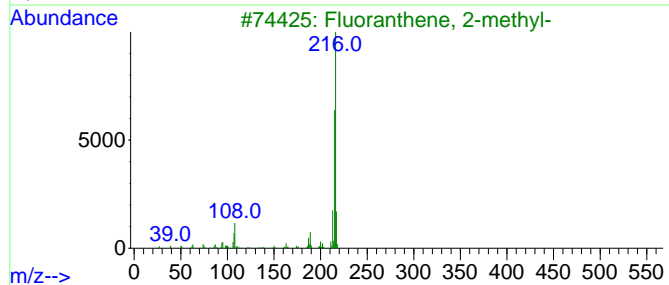
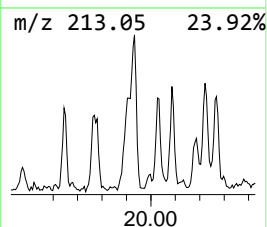
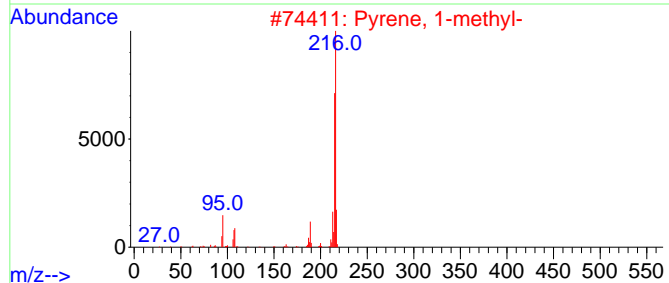
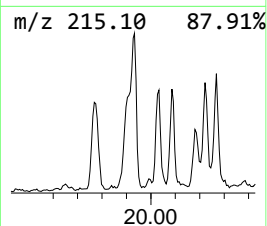
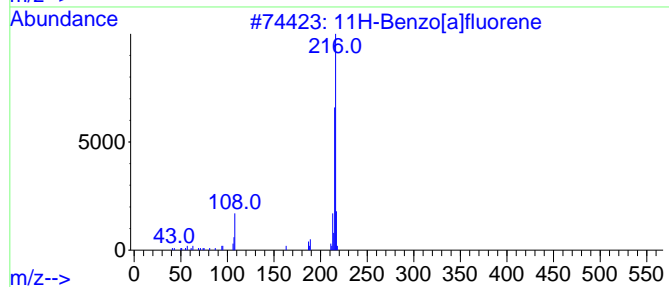
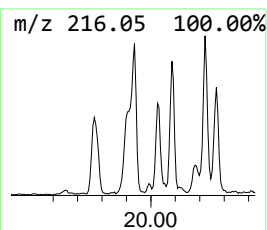
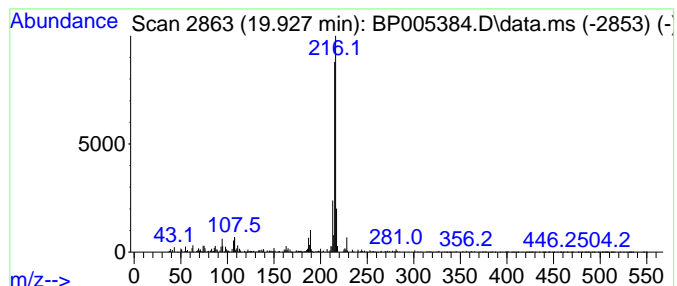
Quant Method : Z:\svoasrv\HPCHEM1\BNA_P\Methods\8270E-BP042121.M
 Quant Title : ASP BNA STANDARDS FOR 5 POINT CALIBRATION

TIC Library : C:\DATABASE\NIST11.L
 TIC Integration Parameters: LSCINT.P

 Peak Number 11 11H-Benzo[a]fluorene Concentration Rank 6

R.T.	EstConc	Area	Relative to ISTD	R.T.
19.927	3.83 ng	347079	Chrysene-d12	21.174

Hit#	of	5	Tentative ID	MW	MolForm	CAS#	Qual
1			11H-Benzo[a]fluorene	216	C17H12	000238-84-6	93
2			Pyrene, 1-methyl-	216	C17H12	002381-21-7	93
3			Fluoranthene, 2-methyl-	216	C17H12	033543-31-6	91
4			11H-Benzo[b]fluorene	216	C17H12	000243-17-4	90
5			1,3,5-Triazine-2,4,6-triamine, N...	216	C10H12N6	046731-79-7	64



Data Path : Z:\svoasrv\HPCHEM1\BNA_P\Data\BP042221\
 Data File : BP005384.D
 Acq On : 22 Apr 2021 19:56
 Operator : CG/JU
 Sample : M2111-03 2X
 Misc :
 ALS Vial : 20 Sample Multiplier: 1

Instrument :
 BNA_P
 ClientSampleId :
 S-3

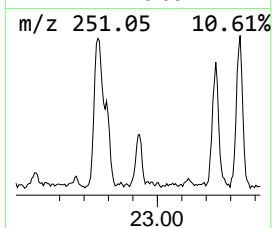
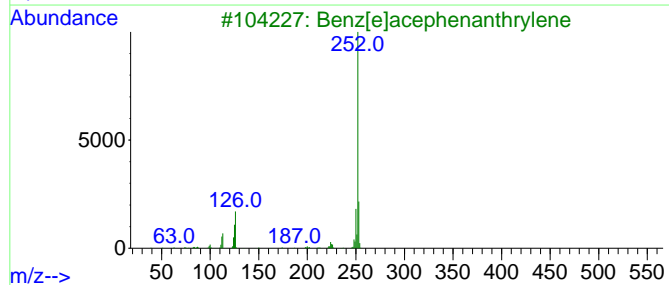
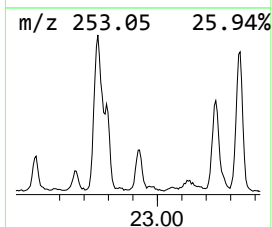
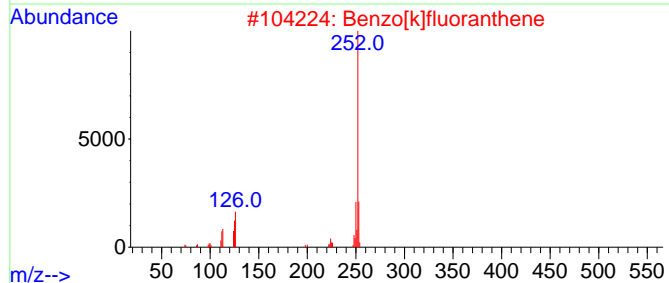
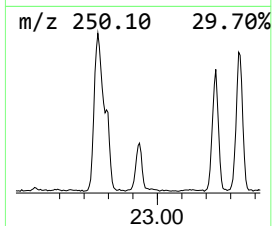
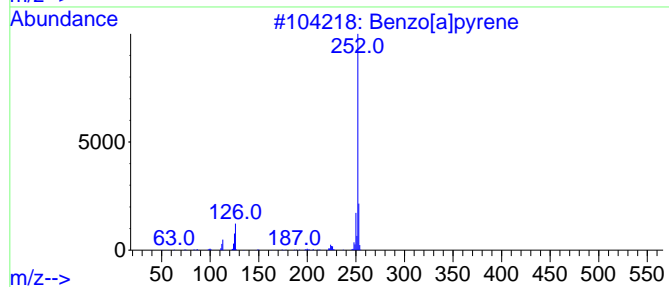
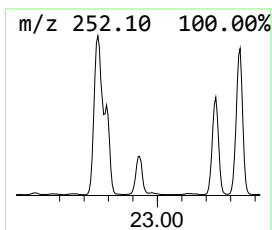
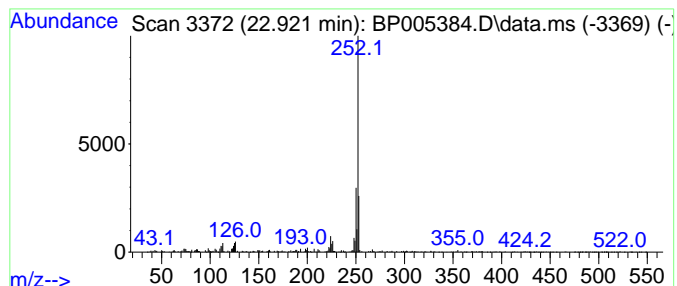
Quant Method : Z:\svoasrv\HPCHEM1\BNA_P\Methods\8270E-BP042121.M
 Quant Title : ASP BNA STANDARDS FOR 5 POINT CALIBRATION

TIC Library : C:\DATABASE\NIST11.L
 TIC Integration Parameters: LSCINT.P

 Peak Number 12 Perylene Concentration Rank 2

R.T.	EstConc	Area	Relative to ISTD	R.T.
22.921	8.70 ng	255217	Perylene-d12	23.433

Hit#	of 5	Tentative ID	MW	MolForm	CAS#	Qual
1		Benzo[a]pyrene	252	C20H12	000050-32-8	90
2		Benzo[k]fluoranthene	252	C20H12	000207-08-9	76
3		Benz[e]acephenanthrylene	252	C20H12	000205-99-2	74
4		Perylene	252	C20H12	000198-55-0	72
5		Benzo[j]fluoranthene	252	C20H12	000205-82-3	64



Data Path : Z:\svoasrv\HPCHEM1\BNA_P\Data\BP042221\
 Data File : BP005384.D
 Acq On : 22 Apr 2021 19:56
 Operator : CG/JU
 Sample : M2111-03 2X
 Misc :
 ALS Vial : 20 Sample Multiplier: 1

Instrument :
 BNA_P
 ClientSampleId :
 S-3

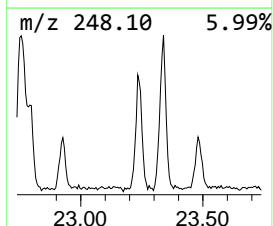
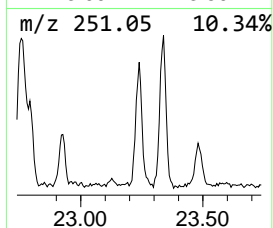
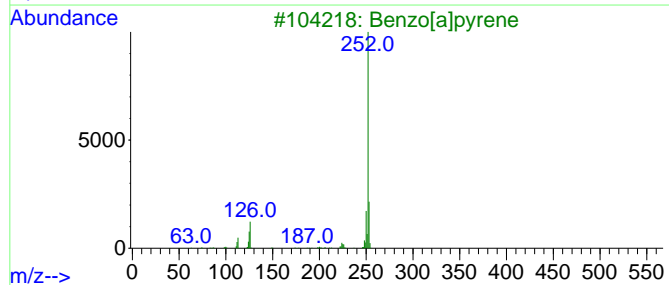
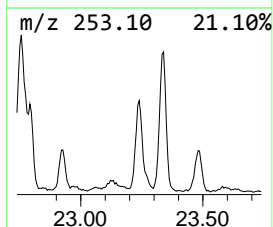
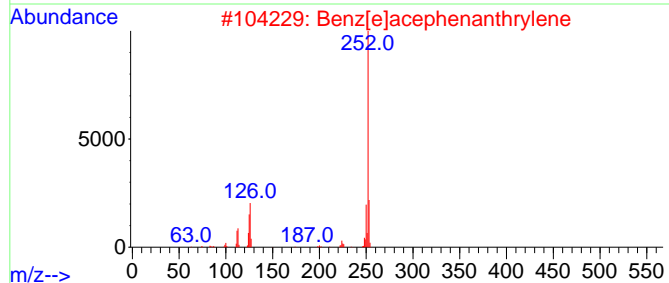
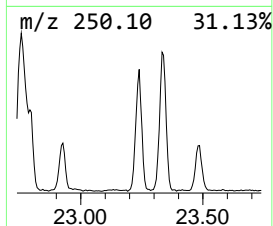
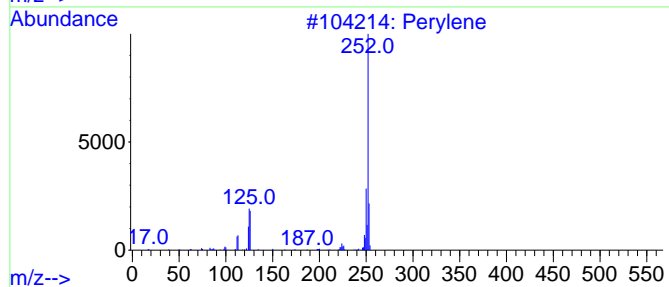
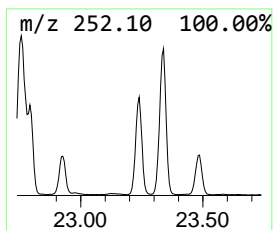
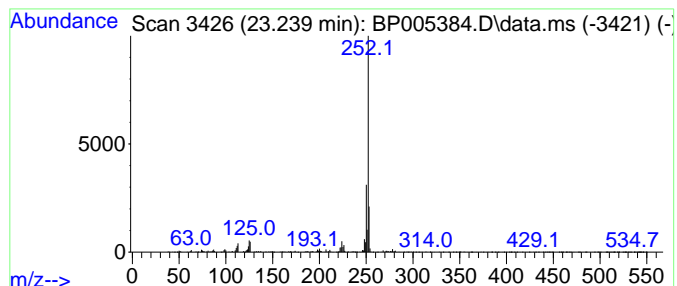
Quant Method : Z:\svoasrv\HPCHEM1\BNA_P\Methods\8270E-BP042121.M
 Quant Title : ASP BNA STANDARDS FOR 5 POINT CALIBRATION

TIC Library : C:\DATABASE\NIST11.L
 TIC Integration Parameters: LSCINT.P

 Peak Number 13 Benzo[e]pyrene Concentration Rank 1

R.T.	EstConc	Area	Relative to ISTD	R.T.
23.239	23.66 ng	693705	Perylene-d12	23.433

Hit#	of 5	Tentative ID	MW	MolForm	CAS#	Qual
1		Perylene	252	C20H12	000198-55-0	90
2		Benz[e]acephenanthrylene	252	C20H12	000205-99-2	81
3		Benzo[a]pyrene	252	C20H12	000050-32-8	81
4		Benzo[k]fluoranthene	252	C20H12	000207-08-9	81
5		Benzo[e]pyrene	252	C20H12	000192-97-2	81



Data Path : Z:\svoasrv\HPCHEM1\BNA_P\Data\BP042221\
 Data File : BP005384.D
 Acq On : 22 Apr 2021 19:56
 Operator : CG/JU
 Sample : M2111-03 2X
 Misc :
 ALS Vial : 20 Sample Multiplier: 1

Instrument :
 BNA_P
 ClientSampleId :
 S-3

Quant Method : Z:\svoasrv\HPCHEM1\BNA_P\Methods\8270E-BP042121.M
 Quant Title : ASP BNA STANDARDS FOR 5 POINT CALIBRATION

TIC Library : C:\DATABASE\NIST11.L
 TIC Integration Parameters: LSCINT.P

TIC Top Hit name	RT	EstConc	Units	Response	--Internal Standard--			
					#	RT	Resp	Conc
Naphthalene, 2-...	13.763	4.3	ng	84771	3	14.304	398957	20.0
1H-Phenalene	15.180	2.5	ng	50719	3	14.304	398957	20.0
N-.alpha.-Fmoc-...	15.380	2.2	ng	43583	3	14.304	398957	20.0
unknown16.039	16.039	2.2	ng	56741	4	17.069	515590	20.0
Anthracene, 9-m...	17.945	2.6	ng	66622	4	17.069	515590	20.0
Naphtho[2,3-b]n...	18.127	6.4	ng	164203	4	17.069	515590	20.0
Benzene, 1,1'-(...	18.169	2.1	ng	53634	4	17.069	515590	20.0
9,10-Dimethylan...	18.833	4.5	ng	117423	4	17.069	515590	20.0
Cyclopenta(def)...	18.980	3.5	ng	91167	4	17.069	515590	20.0
Pyrene, 1-methyl-	19.768	2.2	ng	201480	5	21.174	1814240	20.0
11H-Benzo[a]flu...	19.927	3.8	ng	347079	5	21.174	1814240	20.0
Perylene	22.921	8.7	ng	255217	6	23.433	586468	20.0
Benzo[e]pyrene	23.239	23.7	ng	693705	6	23.433	586468	20.0