

Data Path : Z:\svoasrv\HPCHEM1\BNA_P\Data\BP042623\
 Data File : BP014832.D
 Acq On : 26 Apr 2023 10:29
 Operator : CG/JU
 Sample : 02418-01
 Misc :
 ALS Vial : 4 Sample Multiplier: 1

Instrument :
 BNA_P
 ClientSampleId :
 EW8Y7

Integration Parameters: LSCINT.P

Integrator: RTE
 Smoothing : OFF Filtering: 5
 Sampling : 1 Min Area: 0.1 % of largest Peak
 Start Thrs: 0.2 Max Peaks: 100
 Stop Thrs : 0 Peak Location: TOP

If leading or trailing edge < 100 prefer < Baseline drop else tangent >
 Peak separation: 5

Method : Z:\svoasrv\HPCHEM1\BNA_P\Methods\SFAM-EPA-BP042523.MA.M
 Title : SVOA CALIBRATION

Signal : TIC: BP014832.D\data.ms

peak #	R.T. min	first scan	max scan	last scan	PK TY	peak height	corr. area	corr. % max.	% of total
1	4.058	108	114	122	rVV	193697	269047	1.33%	0.115%
2	7.334	664	671	681	rBV	760271	1248845	6.17%	0.534%
3	7.517	689	702	709	rBV	640873	1023666	5.06%	0.437%
4	7.722	730	737	747	rVV	751081	1153005	5.70%	0.493%
5	8.199	809	818	832	rVB	1127458	1802464	8.91%	0.770%
6	8.899	930	937	945	rBV	806953	1261919	6.24%	0.539%
7	9.028	953	959	968	rVB	318017	504809	2.49%	0.216%
8	9.369	1011	1017	1023	rVV	692442	1132049	5.59%	0.484%
9	10.099	1131	1141	1154	rBV	541990	900743	4.45%	0.385%
10	10.640	1226	1233	1242	rVB	997729	1588042	7.85%	0.679%
11	11.028	1287	1299	1305	rBV	1594540	2752311	13.60%	1.176%
12	11.163	1315	1322	1333	rBV	459741	820161	4.05%	0.350%
13	14.228	1835	1843	1849	rVV	1855320	2534107	12.52%	1.083%
14	14.334	1856	1861	1867	rVV	1237404	1829916	9.04%	0.782%
15	14.522	1887	1893	1909	rBV	2075759	3483632	17.21%	1.488%
16	14.828	1932	1945	1951	rBV	2575248	3794062	18.75%	1.621%
17	14.893	1951	1956	1963	rVB	510440	752154	3.72%	0.321%
18	14.998	1969	1974	1987	rVB	592902	876233	4.33%	0.374%
19	15.222	2006	2012	2019	rVB2	281476	429871	2.12%	0.184%
20	15.816	2104	2113	2118	rBV	2702735	3847695	19.01%	1.644%
21	15.869	2118	2122	2127	rVV2	422633	615510	3.04%	0.263%
22	15.922	2127	2131	2136	rVB	516744	668972	3.31%	0.286%
23	16.181	2168	2175	2182	rVB4	1039069	1504250	7.43%	0.643%
24	16.310	2189	2197	2205	rVB	149111	323638	1.60%	0.138%
25	16.545	2228	2237	2243	rVV2	242012	495059	2.45%	0.212%
26	17.228	2348	2353	2360	rVB	304403	441804	2.18%	0.189%
27	17.316	2361	2368	2374	rVV3	162362	397632	1.96%	0.170%
28	17.392	2377	2381	2387	rVB	294441	449043	2.22%	0.192%
29	17.581	2406	2413	2416	rBV	3023997	4462434	22.05%	1.907%
30	17.622	2416	2420	2425	rVV	6764725	9597718	47.42%	4.101%
31	17.675	2425	2429	2433	rVV	2866187	4380404	21.64%	1.872%
32	17.710	2433	2435	2440	rVV	1565917	1827693	9.03%	0.781%
33	17.969	2472	2479	2484	rBV2	679948	1039527	5.14%	0.444%
34	18.087	2496	2499	2505	rVV2	208457	289188	1.43%	0.124%
35	18.145	2505	2509	2517	rVB2	176377	294474	1.45%	0.126%
36	18.375	2542	2548	2553	rVV2	214554	383749	1.90%	0.164%

Data Path : Z:\svoasrv\HPCHEM1\BNA_P\Data\BP042623\
 Data File : BP014832.D
 Acq On : 26 Apr 2023 10:29
 Operator : CG/JU
 Sample : 02418-01
 Misc :
 ALS Vial : 4 Sample Multiplier: 1

Instrument :
 BNA_P
 ClientSampleId :
 EW8Y7

Integration Parameters: LSCINT.P

Integrator: RTE
 Smoothing : OFF Filtering: 5
 Sampling : 1 Min Area: 0.1 % of largest Peak
 Start Thrs: 0.2 Max Peaks: 100
 Stop Thrs : 0 Peak Location: TOP

If leading or trailing edge < 100 prefer < Baseline drop else tangent >
 Peak separation: 5

Method : Z:\svoasrv\HPCHEM1\BNA_P\Methods\SFAM-EPA-BP042523.MA.M
 Title : SVOA CALIBRATION

37	18.434	2553	2558	2562	rVV	1820618	2457596	12.14%	1.050%
38	18.475	2562	2565	2569	rVV	1243977	1870448	9.24%	0.799%
39	18.504	2569	2570	2574	rVV	480323	417605	2.06%	0.178%
40	18.557	2574	2579	2583	rVV	406844	576497	2.85%	0.246%
41	18.622	2583	2590	2593	rVV3	1728753	2898065	14.32%	1.238%
42	18.651	2593	2595	2601	rVB	684405	812971	4.02%	0.347%
43	18.716	2602	2606	2610	rBV2	224525	314575	1.55%	0.134%
44	18.910	2634	2639	2642	rVV	781880	1054527	5.21%	0.451%
45	18.945	2642	2645	2650	rVV	632503	848892	4.19%	0.363%
46	19.145	2675	2679	2683	rVB	257645	322299	1.59%	0.138%
47	19.310	2702	2707	2712	rBV2	590312	1001366	4.95%	0.428%
48	19.369	2712	2717	2719	rVV3	307110	547276	2.70%	0.234%
49	19.398	2719	2722	2726	rVV	531969	714934	3.53%	0.305%
50	19.445	2726	2730	2738	rVV2	725827	1398441	6.91%	0.598%
51	19.575	2743	2752	2757	rVV	13100568	20238834	100.00%	8.648%
52	19.622	2757	2760	2762	rVV	216778	277171	1.37%	0.118%
53	19.657	2762	2766	2771	rVV2	607284	875352	4.33%	0.374%
54	19.710	2771	2775	2778	rVV2	162593	264670	1.31%	0.113%
55	19.751	2778	2782	2785	rVV3	358242	525932	2.60%	0.225%
56	19.804	2785	2791	2800	rVV2	525759	1061016	5.24%	0.453%
57	19.892	2800	2806	2808	rVV3	5450620	8486418	41.93%	3.626%
58	19.922	2808	2811	2817	rVV	11875925	17139487	84.69%	7.323%
59	19.981	2817	2821	2827	rVB2	601318	836642	4.13%	0.357%
60	20.086	2834	2839	2844	rBV	721183	941090	4.65%	0.402%
61	20.151	2845	2850	2856	rVB	670477	975602	4.82%	0.417%
62	20.222	2857	2862	2864	rBV	786163	1255397	6.20%	0.536%
63	20.392	2887	2891	2896	rVB	1944433	2705235	13.37%	1.156%
64	20.492	2903	2908	2911	rBV	1236346	1576238	7.79%	0.673%
65	20.551	2911	2918	2921	rVV2	1082905	1878920	9.28%	0.803%
66	20.586	2921	2924	2927	rVV	528285	592007	2.93%	0.253%
67	20.622	2927	2930	2937	rVB4	229756	360241	1.78%	0.154%
68	20.686	2937	2941	2944	rBV	675343	881880	4.36%	0.377%
69	20.728	2945	2948	2952	rVB	606268	769157	3.80%	0.329%
70	20.933	2979	2983	2985	rBV3	161321	261305	1.29%	0.112%
71	21.081	3005	3008	3011	rBV3	168359	267346	1.32%	0.114%
72	21.122	3011	3015	3021	rVB	1050872	1427718	7.05%	0.610%
73	21.286	3036	3043	3046	rBV3	1371626	2246932	11.10%	0.960%
74	21.322	3046	3049	3053	rVV	1969973	2697267	13.33%	1.152%
75	21.369	3053	3057	3061	rVV2	1464644	2300121	11.36%	0.983%
76	21.416	3061	3065	3073	rVB2	1179993	1775837	8.77%	0.759%

Data Path : Z:\svoasrv\HPCHEM1\BNA_P\Data\BP042623\
 Data File : BP014832.D
 Acq On : 26 Apr 2023 10:29
 Operator : CG/JU
 Sample : 02418-01
 Misc :
 ALS Vial : 4 Sample Multiplier: 1

Instrument :
 BNA_P
 ClientSampleId :
 EW8Y7

Integration Parameters: LSCINT.P

Integrator: RTE
 Smoothing : OFF Filtering: 5
 Sampling : 1 Min Area: 0.1 % of largest Peak
 Start Thrs: 0.2 Max Peaks: 100
 Stop Thrs : 0 Peak Location: TOP

If leading or trailing edge < 100 prefer < Baseline drop else tangent >
 Peak separation: 5

Method : Z:\svoasrv\HPCHEM1\BNA_P\Methods\SFAM-EPA-BP042523.MA.M
 Title : SVOA CALIBRATION

77	21.533	3081	3085	3093	rVB3	513407	743287	3.67%	0.318%
78	21.639	3093	3103	3109	rBV2	8172339	16626500	82.15%	7.104%
79	21.692	3109	3112	3122	rVB	6362327	9423144	46.56%	4.026%
80	21.780	3124	3127	3130	rVV3	266986	322274	1.59%	0.138%
81	21.822	3130	3134	3140	rVV	1369362	1960130	9.68%	0.838%
82	21.880	3141	3144	3149	rVV3	392043	730965	3.61%	0.312%
83	21.933	3151	3153	3158	rVV	448903	555342	2.74%	0.237%
84	21.992	3159	3163	3169	rVB	899662	1320732	6.53%	0.564%
85	22.269	3202	3210	3216	rBV2	799002	1826413	9.02%	0.780%
86	22.322	3216	3219	3225	rVB	534839	785839	3.88%	0.336%
87	22.439	3236	3239	3243	rVB3	265064	356046	1.76%	0.152%
88	22.492	3244	3248	3251	rBV	475088	751842	3.71%	0.321%
89	22.598	3262	3266	3278	rVB3	443994	858596	4.24%	0.367%
90	22.822	3298	3304	3311	rBV6	518273	1211029	5.98%	0.517%
91	23.457	3402	3412	3418	rBV	4490653	14105187	69.69%	6.027%
92	23.651	3440	3445	3453	rVB	756163	1391846	6.88%	0.595%
93	23.810	3469	3472	3476	rBV4	140290	262602	1.30%	0.112%
94	24.027	3501	3509	3514	rBV	2458090	5664558	27.99%	2.420%
95	24.080	3514	3518	3522	rVV2	1290339	2646042	13.07%	1.131%
96	24.139	3522	3528	3537	rVB	3960721	8190982	40.47%	3.500%
97	24.257	3541	3548	3552	rVV	1352288	2991199	14.78%	1.278%
98	24.316	3553	3558	3567	rVB	1135537	2558303	12.64%	1.093%
99	27.010	4006	4016	4031	rVB2	1993897	6837376	33.78%	2.921%
100	27.863	4151	4161	4183	rVB	1260275	4892862	24.18%	2.091%

Sum of corrected areas: 234042229

Data Path : Z:\svoasrv\HPCHEM1\BNA_P\Data\BP042623\
 Data File : BP014832.D
 Acq On : 26 Apr 2023 10:29
 Operator : CG/JU
 Sample : 02418-01
 Misc :
 ALS Vial : 4 Sample Multiplier: 1

Instrument :
 BNA_P
 ClientSampleId :
 EW8Y7

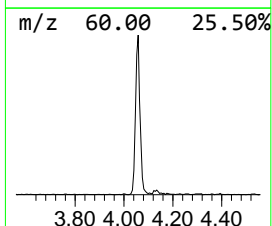
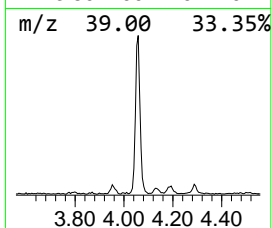
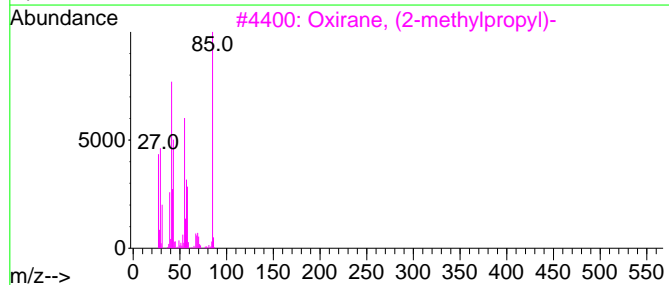
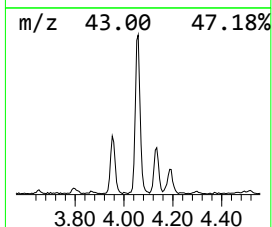
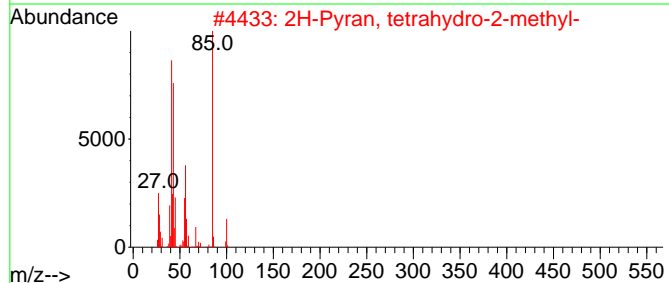
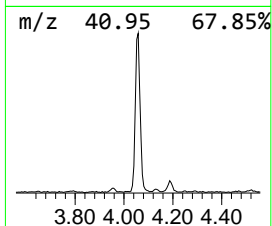
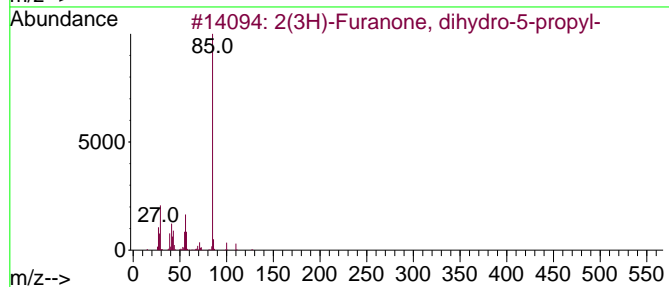
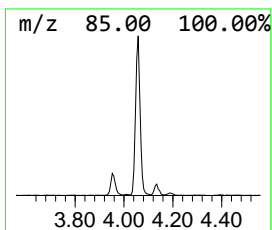
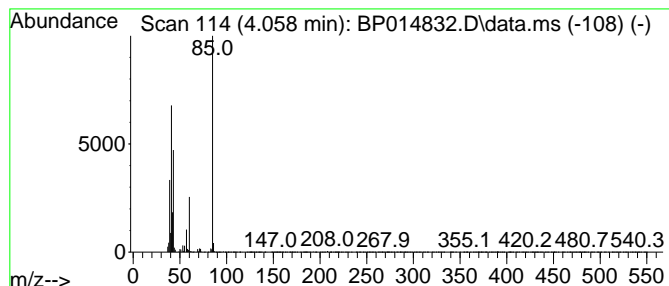
Quant Method : Z:\svoasrv\HPCHEM1\BNA_P\Methods\SFAM-EPA-BP042523.MA.M
 Quant Title : SVOA CALIBRATION

TIC Library : C:\DATABASE\NIST20.L
 TIC Integration Parameters: LSCINT.P

 Peak Number 1 unknown-01 Concentration Rank 16

R.T.	EstConc	Area	Relative to ISTD	R.T.
4.058	2.99 ng/ul	269047	1,4-Dichlorobenzene-d4	8.199

Hit#	of	5	Tentative ID	MW	MolForm	CAS#	Qual
1			2(3H)-Furanone, dihydro-5-propyl-	128	C7H12O2	000105-21-5	38
2			2H-Pyran, tetrahydro-2-methyl-	100	C6H12O	010141-72-7	38
3			Oxirane, (2-methylpropyl)-	100	C6H12O	023850-78-4	36
4			1-[(5-Bromothiophene-2-)sulfonyl]...	310	C8H11BrN2O2S2	725688-07-3	36
5			(S)-(-)-1-Amino-2-(methoxymethyl)...	130	C6H14N2O	059983-39-0	33



Data Path : Z:\svoasrv\HPCHEM1\BNA_P\Data\BP042623\
 Data File : BP014832.D
 Acq On : 26 Apr 2023 10:29
 Operator : CG/JU
 Sample : 02418-01
 Misc :
 ALS Vial : 4 Sample Multiplier: 1

Instrument :
 BNA_P
 ClientSampleId :
 EW8Y7

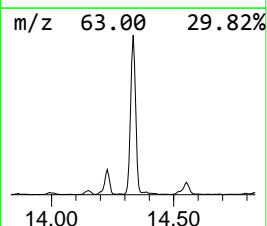
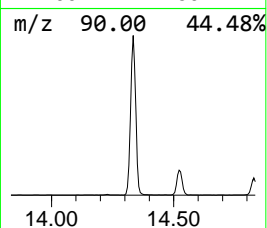
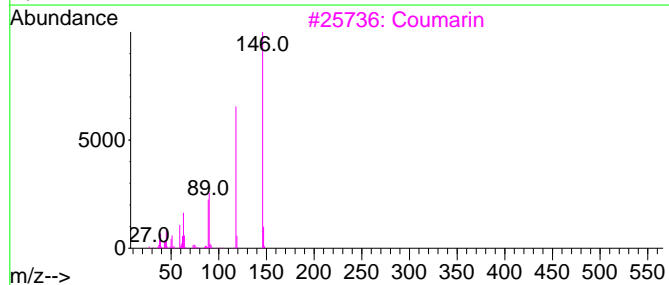
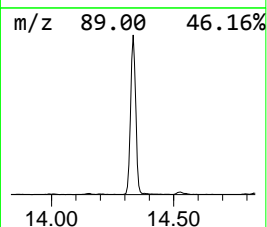
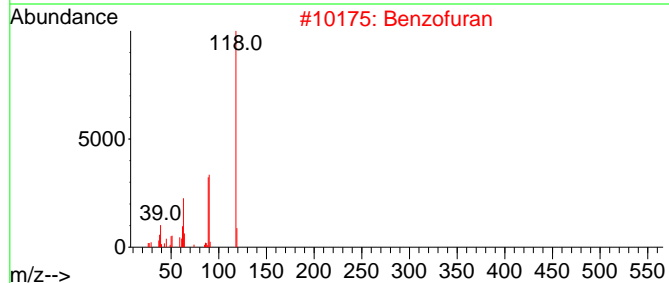
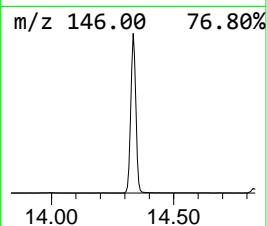
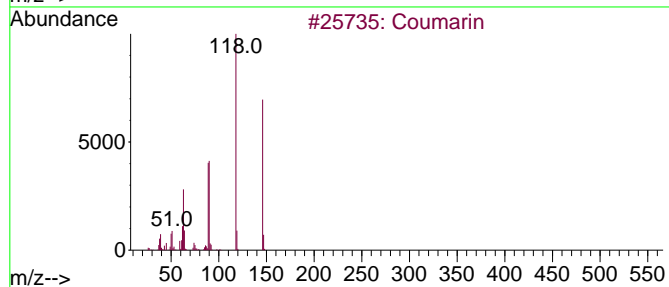
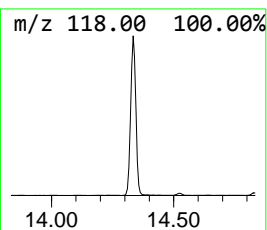
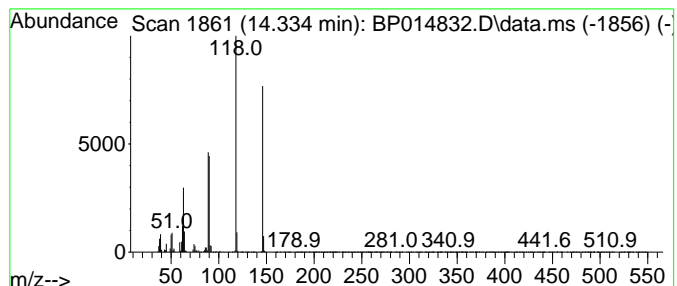
Quant Method : Z:\svoasrv\HPCHEM1\BNA_P\Methods\SFAM-EPA-BP042523.MA.M
 Quant Title : SVOA CALIBRATION

TIC Library : C:\DATABASE\NIST20.L
 TIC Integration Parameters: LSCINT.P

 Peak Number 2 Coumarin Concentration Rank 5

R.T.	EstConc	Area	Relative to ISTD	R.T.
14.334	9.65 ng/ul	1829920	Acenaphthene-d10	14.828

Hit#	of	Tentative ID	MW	MolForm	CAS#	Qual
1	5	Coumarin	146	C9H6O2	000091-64-5	98
2		Benzofuran	118	C8H6O	000271-89-6	96
3		Coumarin	146	C9H6O2	000091-64-5	94
4		Coumarin	146	C9H6O2	000091-64-5	94
5		Benzofuran	118	C8H6O	000271-89-6	93



Data Path : Z:\svoasrv\HPCHEM1\BNA_P\Data\BP042623\
 Data File : BP014832.D
 Acq On : 26 Apr 2023 10:29
 Operator : CG/JU
 Sample : 02418-01
 Misc :
 ALS Vial : 4 Sample Multiplier: 1

Instrument :
 BNA_P
 ClientSampleId :
 EW8Y7

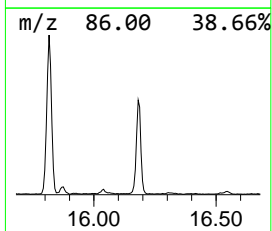
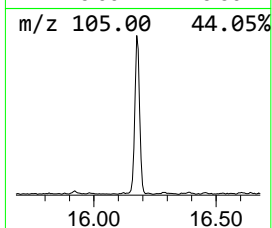
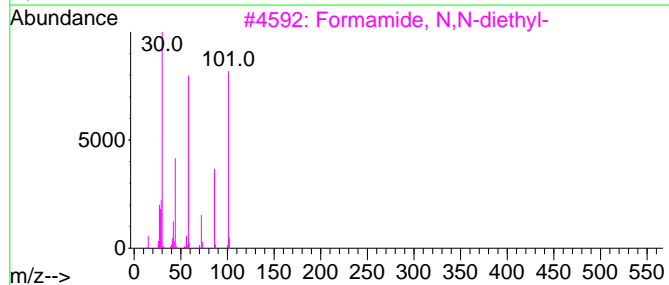
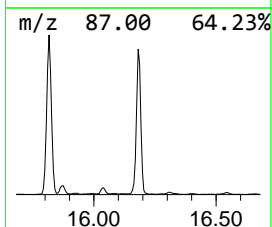
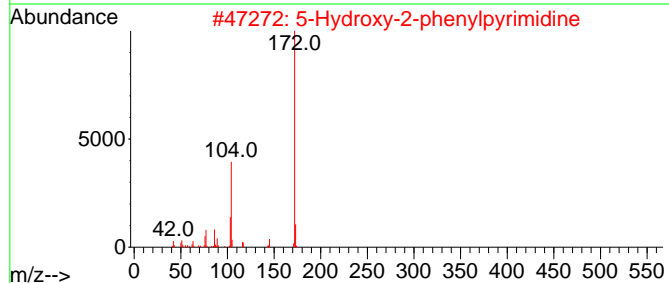
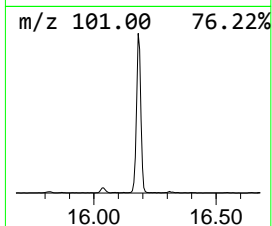
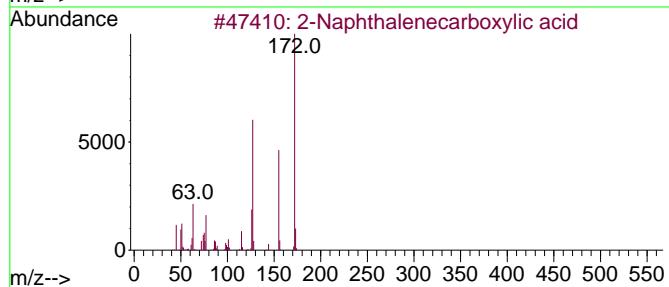
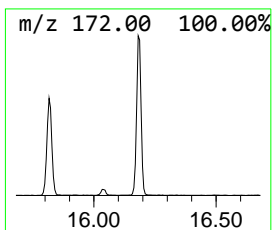
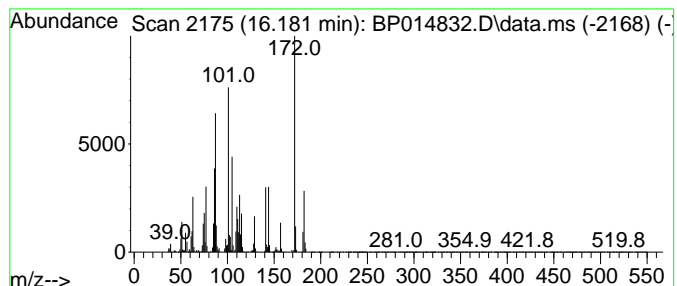
Quant Method : Z:\svoasrv\HPCHEM1\BNA_P\Methods\SFAM-EPA-BP042523.MA.M
 Quant Title : SVOA CALIBRATION

TIC Library : C:\DATABASE\NIST20.L
 TIC Integration Parameters: LSCINT.P

 Peak Number 3 unknown-02 Concentration Rank 7

R.T.	EstConc	Area	Relative to ISTD	R.T.
16.181	7.93 ng/ul	1504250	Acenaphthene-d10	14.828

Hit#	of	5	Tentative ID	MW	MolForm	CAS#	Qual
1			2-Naphthalenecarboxylic acid	172	C11H8O2	000093-09-4	25
2			5-Hydroxy-2-phenylpyrimidine	172	C10H8N2O	066739-85-3	22
3			Formamide, N,N-diethyl-	101	C5H11NO	000617-84-5	14
4			1-Norleucine, n-propoxycarbonyl-...	301	C16H31NO4	1000329-54-1	14
5			2-Decenoic acid, methyl ester	184	C11H20O2	002482-39-5	11



Data Path : Z:\svoasrv\HPCHEM1\BNA_P\Data\BP042623\
 Data File : BP014832.D
 Acq On : 26 Apr 2023 10:29
 Operator : CG/JU
 Sample : 02418-01
 Misc :
 ALS Vial : 4 Sample Multiplier: 1

Instrument :
 BNA_P
 ClientSampleId :
 EW8Y7

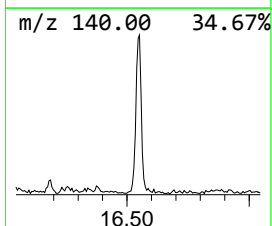
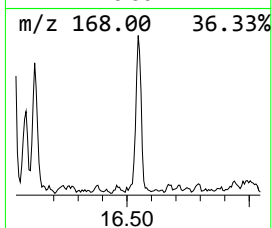
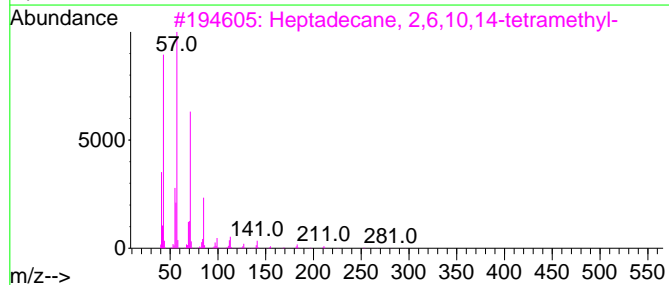
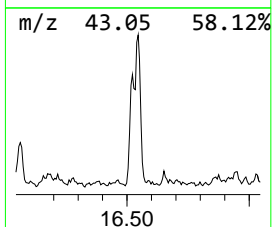
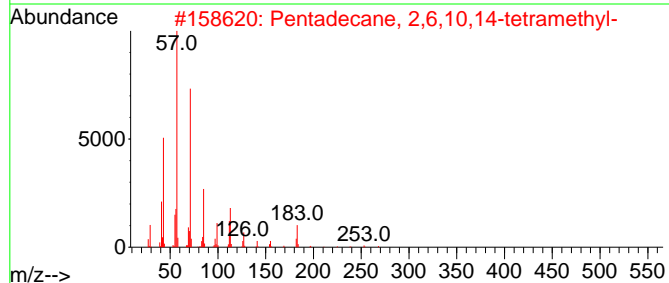
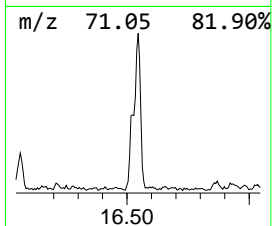
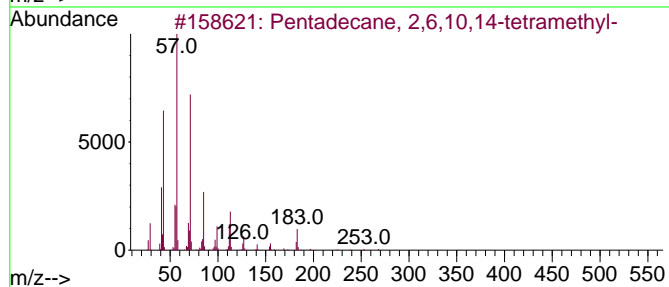
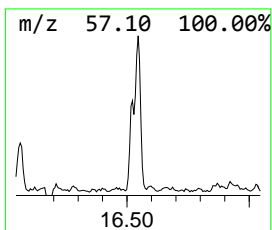
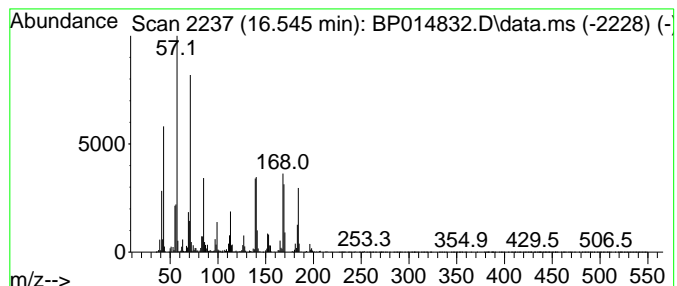
Quant Method : Z:\svoasrv\HPCHEM1\BNA_P\Methods\SFAM-EPA-BP042523.MA.M
 Quant Title : SVOA CALIBRATION

TIC Library : C:\DATABASE\NIST20.L
 TIC Integration Parameters: LSCINT.P

 Peak Number 4 (DEL) Alkane: Straight-Chai... Concentration Rank 23

R.T.	EstConc	Area	Relative to ISTD	R.T.
16.546	2.22 ng/ul	495059	Phenanthrene-d10	17.581

Hit#	of 5	Tentative ID	MW	MolForm	CAS#	Qual
1		Pentadecane, 2,6,10,14-tetramethyl-	268	C19H40	001921-70-6	45
2		Pentadecane, 2,6,10,14-tetramethyl-	268	C19H40	001921-70-6	43
3		Heptadecane, 2,6,10,14-tetramethyl-	296	C21H44	018344-37-1	43
4		Dodecane	170	C12H26	000112-40-3	41
5		Nonane, 3,7-dimethyl-	156	C11H24	017302-32-8	41



Data Path : Z:\svoasrv\HPCHEM1\BNA_P\Data\BP042623\
 Data File : BP014832.D
 Acq On : 26 Apr 2023 10:29
 Operator : CG/JU
 Sample : 02418-01
 Misc :
 ALS Vial : 4 Sample Multiplier: 1

Instrument :
 BNA_P
 ClientSampleId :
 EW8Y7

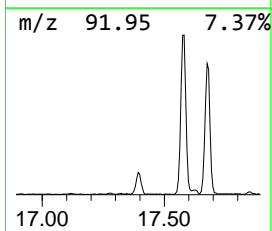
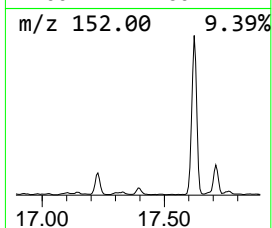
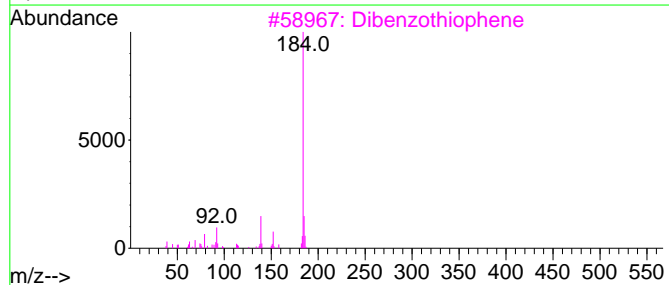
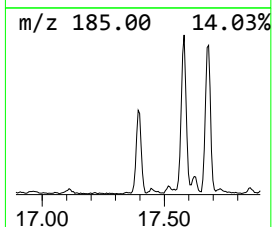
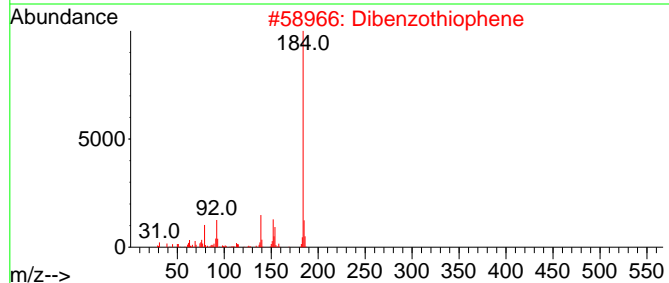
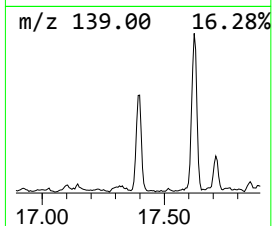
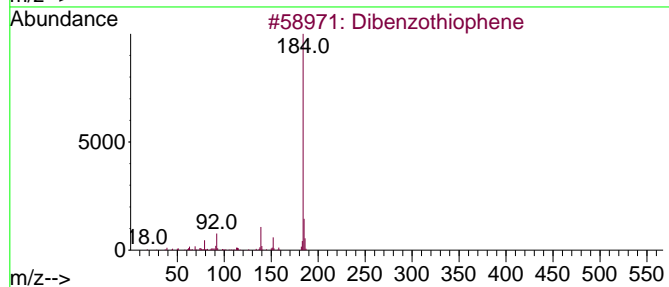
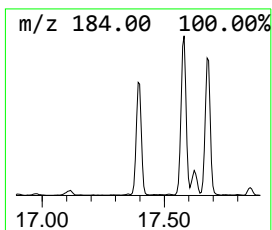
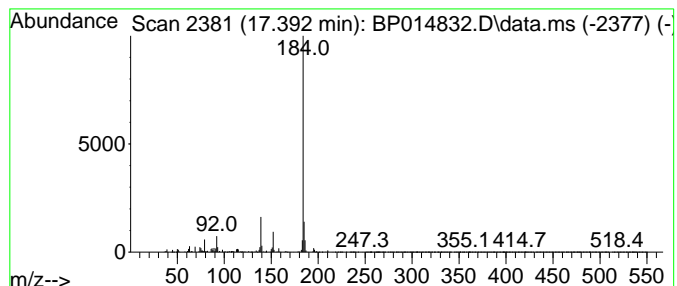
Quant Method : Z:\svoasrv\HPCHEM1\BNA_P\Methods\SFAM-EPA-BP042523.MA.M
 Quant Title : SVOA CALIBRATION

TIC Library : C:\DATABASE\NIST20.L
 TIC Integration Parameters: LSCINT.P

 Peak Number 5 Dibenzothiophene Concentration Rank 26

R.T.	EstConc	Area	Relative to ISTD	R.T.
17.392	2.01 ng/ul	449043	Phenanthrene-d10	17.581

Hit#	of	5	Tentative ID	MW	MolForm	CAS#	Qual
1			Dibenzothiophene	184	C12H8S	000132-65-0	95
2			Dibenzothiophene	184	C12H8S	000132-65-0	94
3			Dibenzothiophene	184	C12H8S	000132-65-0	94
4			Dibenzothiophene	184	C12H8S	000132-65-0	94
5			Dibenzothiophene	184	C12H8S	000132-65-0	94



Data Path : Z:\svoasrv\HPCHEM1\BNA_P\Data\BP042623\
 Data File : BP014832.D
 Acq On : 26 Apr 2023 10:29
 Operator : CG/JU
 Sample : 02418-01
 Misc :
 ALS Vial : 4 Sample Multiplier: 1

Instrument :
 BNA_P
 ClientSampleId :
 EW8Y7

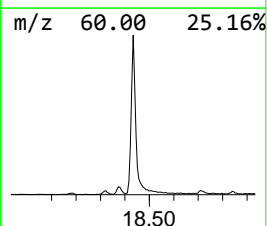
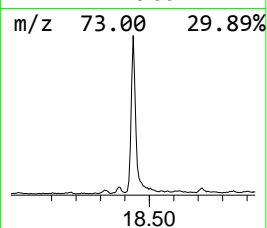
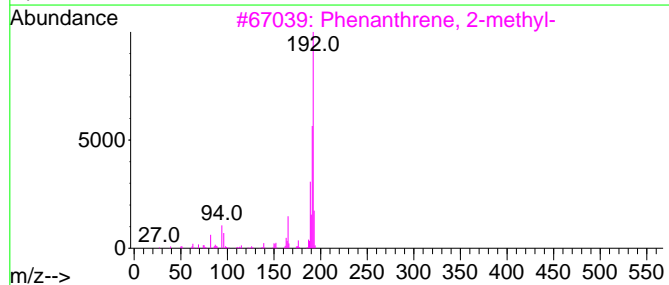
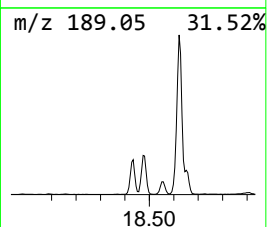
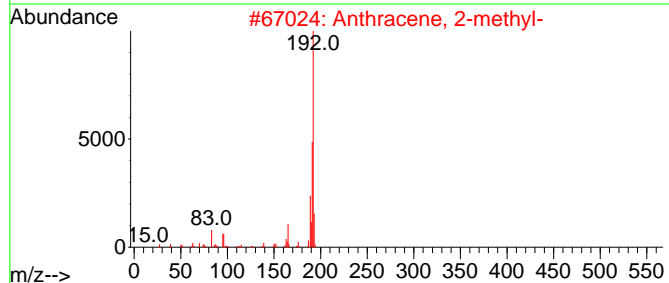
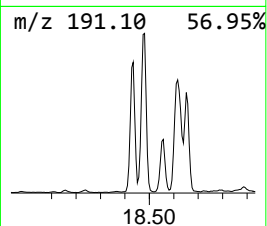
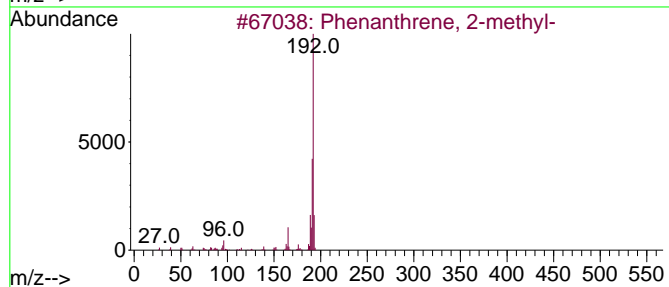
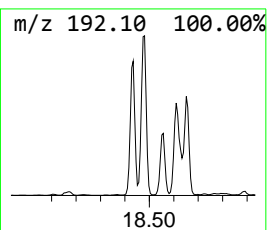
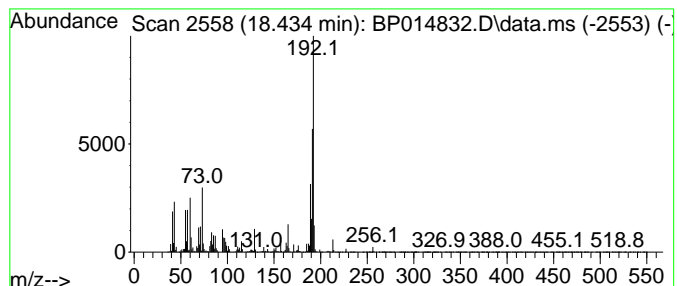
Quant Method : Z:\svoasrv\HPCHEM1\BNA_P\Methods\SFAM-EPA-BP042523.MA.M
 Quant Title : SVOA CALIBRATION

TIC Library : C:\DATABASE\NIST20.L
 TIC Integration Parameters: LSCINT.P

 Peak Number 6 Phenanthrene, 2-methyl- Concentration Rank 4

R.T.	EstConc	Area	Relative to ISTD	R.T.
18.434	11.01 ng/ul	2457600	Phenanthrene-d10	17.581

Hit#	of	5	Tentative ID	MW	MolForm	CAS#	Qual
1			Phenanthrene, 2-methyl-	192	C15H12	002531-84-2	95
2			Anthracene, 2-methyl-	192	C15H12	000613-12-7	93
3			Phenanthrene, 2-methyl-	192	C15H12	002531-84-2	91
4			1H-Indene, 2-phenyl-	192	C15H12	004505-48-0	91
5			1H-Cyclopropa[1]phenanthrene,1a,...	192	C15H12	000949-41-7	91



Data Path : Z:\svoasrv\HPCHEM1\BNA_P\Data\BP042623\
 Data File : BP014832.D
 Acq On : 26 Apr 2023 10:29
 Operator : CG/JU
 Sample : 02418-01
 Misc :
 ALS Vial : 4 Sample Multiplier: 1

Instrument :
 BNA_P
 ClientSampleId :
 EW8Y7

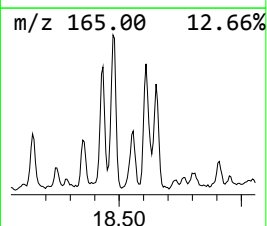
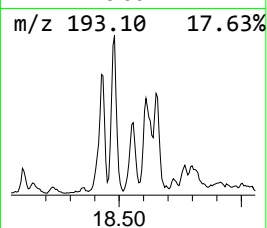
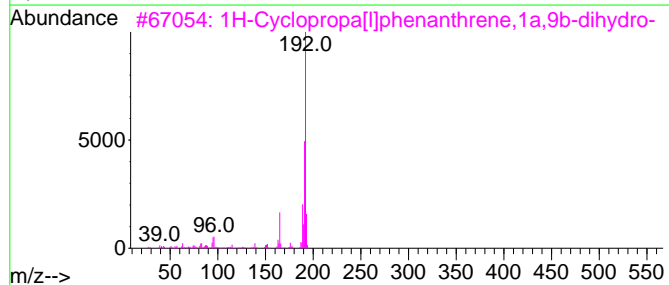
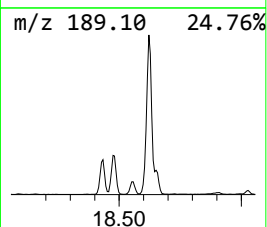
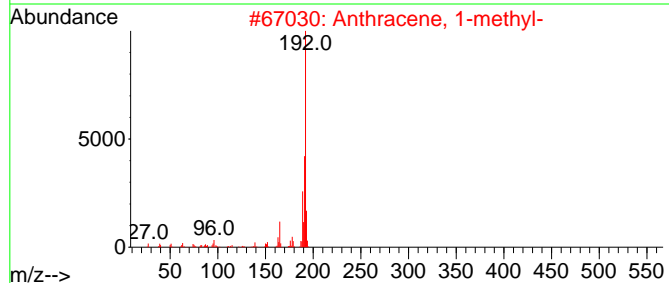
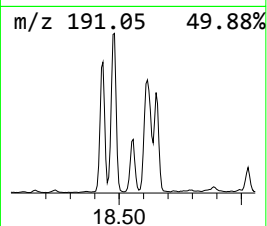
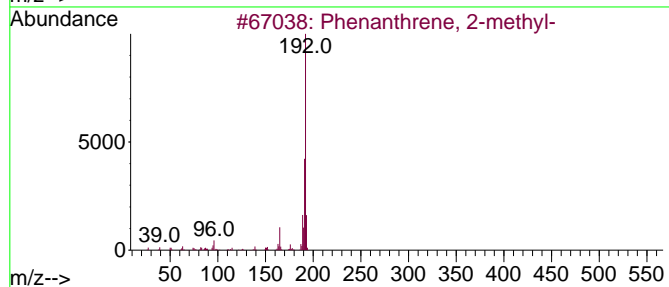
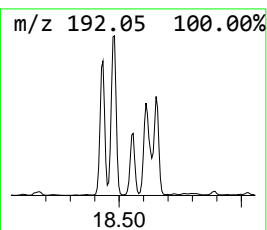
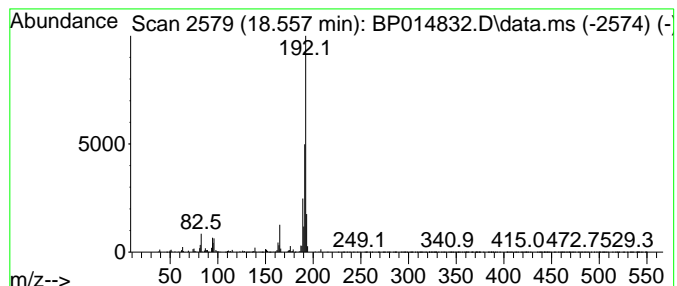
Quant Method : Z:\svoasrv\HPCHEM1\BNA_P\Methods\SFAM-EPA-BP042523.MA.M
 Quant Title : SVOA CALIBRATION

TIC Library : C:\DATABASE\NIST20.L
 TIC Integration Parameters: LSCINT.P

 Peak Number 7 Anthracene, 1-methyl- Concentration Rank 19

R.T.	EstConc	Area	Relative to ISTD	R.T.
18.557	2.58 ng/ul	576497	Phenanthrene-d10	17.581

Hit#	of	5	Tentative ID	MW	MolForm	CAS#	Qual
1			Phenanthrene, 2-methyl-	192	C15H12	002531-84-2	96
2			Anthracene, 1-methyl-	192	C15H12	000610-48-0	96
3			1H-Cyclopropa[1]phenanthrene,1a,...	192	C15H12	000949-41-7	95
4			Anthracene, 2-methyl-	192	C15H12	000613-12-7	94
5			Phenanthrene, 2-methyl-	192	C15H12	002531-84-2	94



Data Path : Z:\svoasrv\HPCHEM1\BNA_P\Data\BP042623\
 Data File : BP014832.D
 Acq On : 26 Apr 2023 10:29
 Operator : CG/JU
 Sample : 02418-01
 Misc :
 ALS Vial : 4 Sample Multiplier: 1

Instrument :
 BNA_P
 ClientSampleId :
 EW8Y7

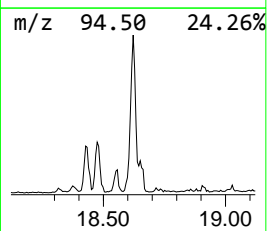
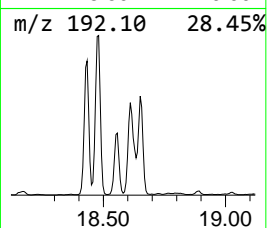
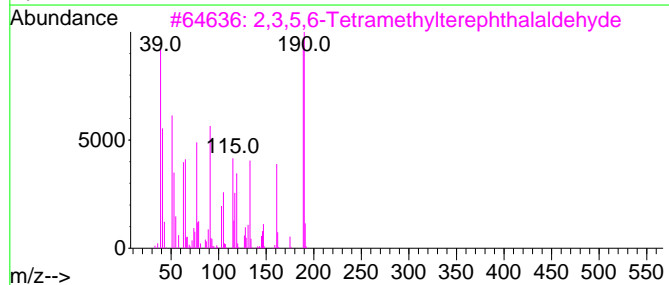
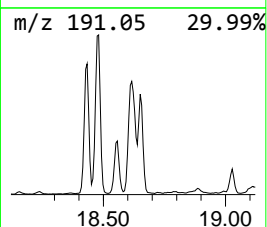
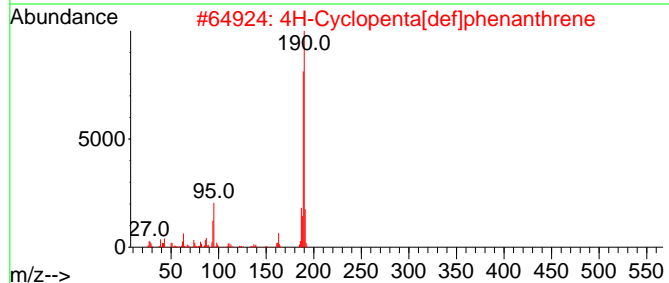
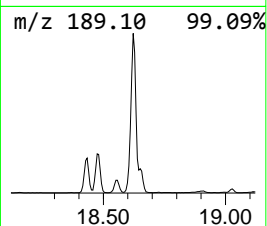
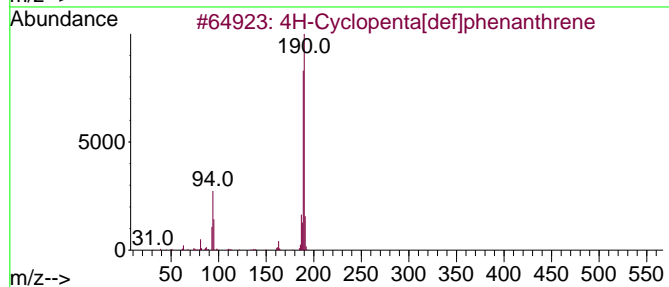
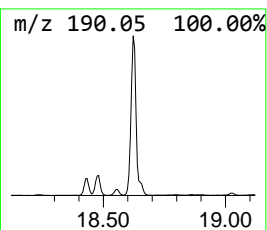
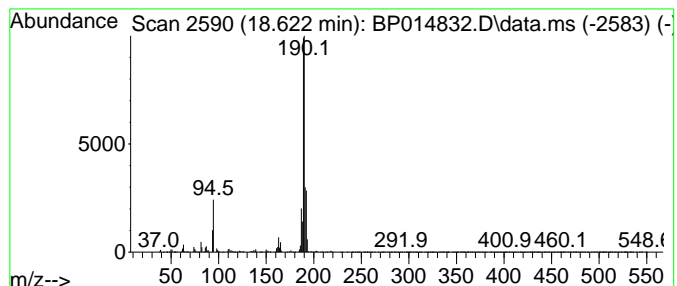
Quant Method : Z:\svoasrv\HPCHEM1\BNA_P\Methods\SFAM-EPA-BP042523.MA.M
 Quant Title : SVOA CALIBRATION

TIC Library : C:\DATABASE\NIST20.L
 TIC Integration Parameters: LSCINT.P

 Peak Number 8 4H-Cyclopenta[def]phenanthrene Concentration Rank 3

R.T.	EstConc	Area	Relative to ISTD	R.T.
18.622	12.99 ng/ul	2898070	Phenanthrene-d10	17.581

Hit#	of	5	Tentative ID	MW	MolForm	CAS#	Qual
1			4H-Cyclopenta[def]phenanthrene	190	C15H10	000203-64-5	95
2			4H-Cyclopenta[def]phenanthrene	190	C15H10	000203-64-5	62
3			2,3,5,6-Tetramethylterephthalald...	190	C12H14O2	007072-01-7	50
4			4H-Cyclopenta[def]phenanthrene	190	C15H10	000203-64-5	49
5			6H-Cyclobuta[jk]phenanthrene	190	C15H10	083469-43-6	45



Data Path : Z:\svoasrv\HPCHEM1\BNA_P\Data\BP042623\
 Data File : BP014832.D
 Acq On : 26 Apr 2023 10:29
 Operator : CG/JU
 Sample : 02418-01
 Misc :
 ALS Vial : 4 Sample Multiplier: 1

Instrument :
 BNA_P
 ClientSampleId :
 EW8Y7

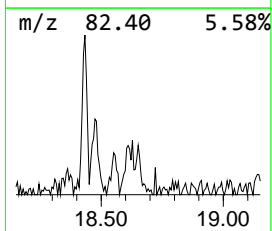
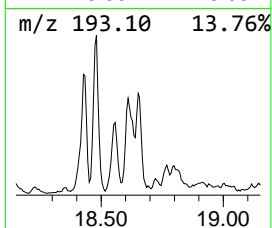
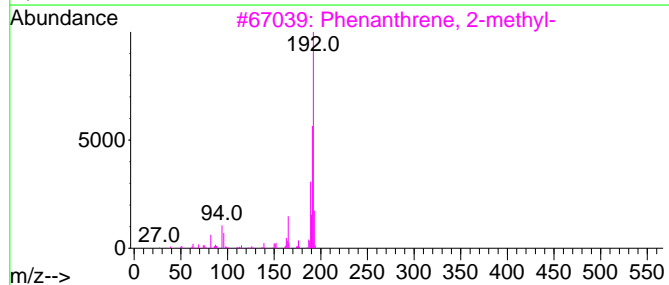
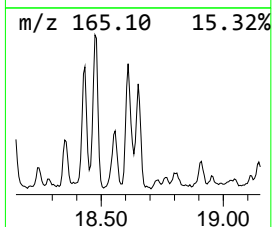
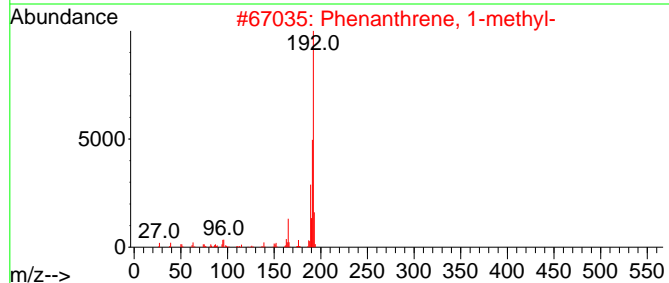
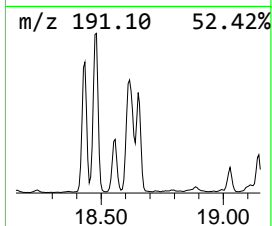
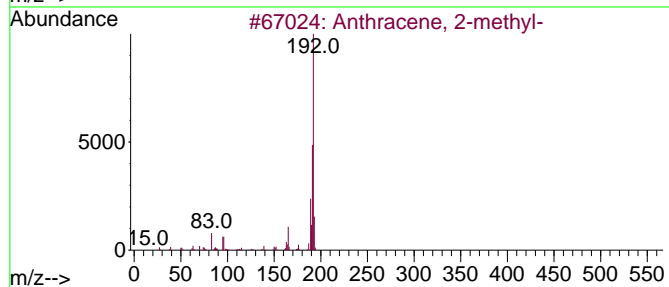
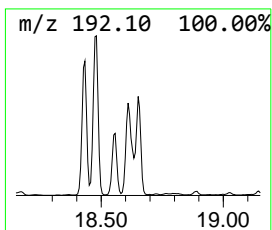
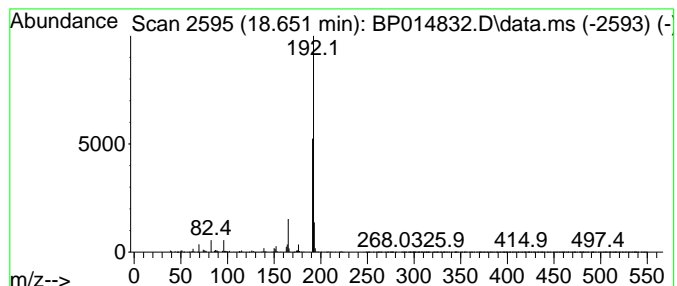
Quant Method : Z:\svoasrv\HPCHEM1\BNA_P\Methods\SFAM-EPA-BP042523.MA.M
 Quant Title : SVOA CALIBRATION

TIC Library : C:\DATABASE\NIST20.L
 TIC Integration Parameters: LSCINT.P

 Peak Number 9 Anthracene, 2-methyl- Concentration Rank 12

R.T.	EstConc	Area	Relative to ISTD	R.T.
18.651	3.64 ng/ul	812971	Phenanthrene-d10	17.581

Hit#	of 5	Tentative ID	MW	MolForm	CAS#	Qual
1		Anthracene, 2-methyl-	192	C15H12	000613-12-7	91
2		Phenanthrene, 1-methyl-	192	C15H12	000832-69-9	91
3		Phenanthrene, 2-methyl-	192	C15H12	002531-84-2	91
4		1H-Cyclopropa[1]phenanthrene,1a,...	192	C15H12	000949-41-7	91
5		Anthracene, 9-methyl-	192	C15H12	000779-02-2	91



Data Path : Z:\svoasrv\HPCHEM1\BNA_P\Data\BP042623\
 Data File : BP014832.D
 Acq On : 26 Apr 2023 10:29
 Operator : CG/JU
 Sample : 02418-01
 Misc :
 ALS Vial : 4 Sample Multiplier: 1

Instrument :
 BNA_P
 ClientSampleId :
 EW8Y7

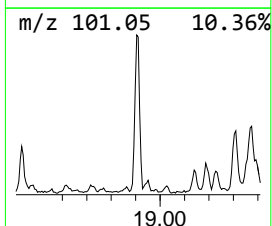
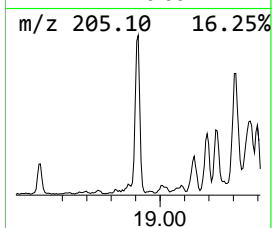
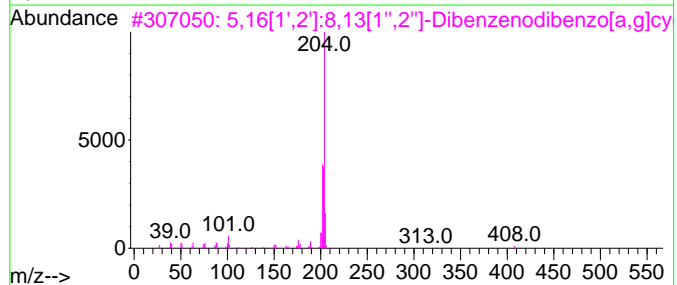
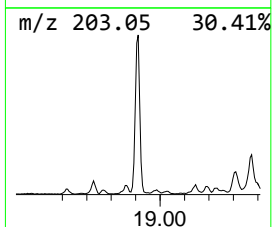
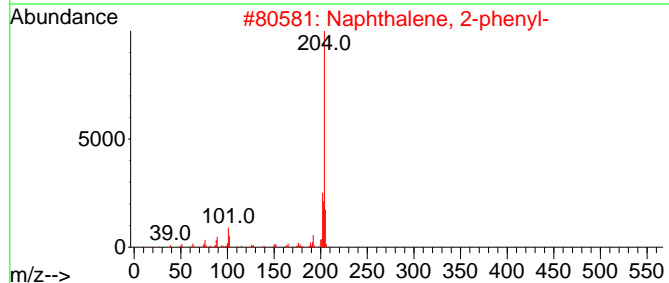
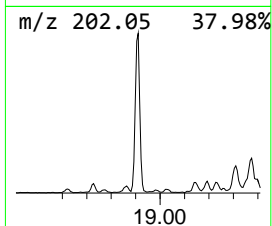
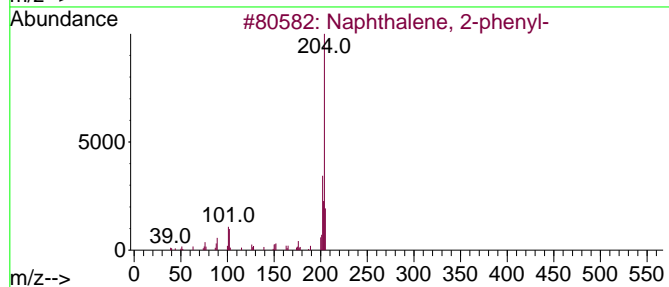
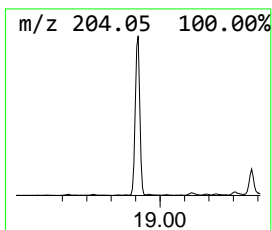
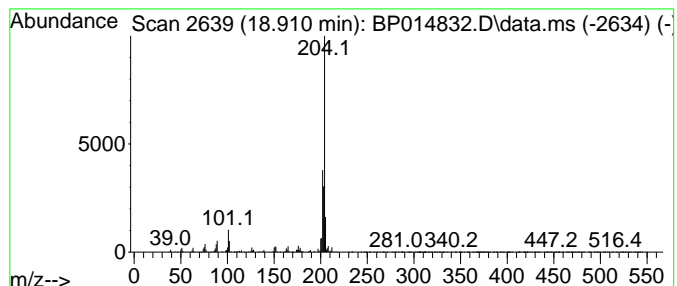
Quant Method : Z:\svoasrv\HPCHEM1\BNA_P\Methods\SFAM-EPA-BP042523.MA.M
 Quant Title : SVOA CALIBRATION

TIC Library : C:\DATABASE\NIST20.L
 TIC Integration Parameters: LSCINT.P

 Peak Number 10 Naphthalene, 2-phenyl- Concentration Rank 9

R.T.	EstConc	Area	Relative to ISTD	R.T.
18.910	4.73 ng/ul	1054530	Phenanthrene-d10	17.581

Hit#	of	5	Tentative ID	MW	MolForm	CAS#	Qual
1			Naphthalene, 2-phenyl-	204	C16H12	000612-94-2	89
2			Naphthalene, 2-phenyl-	204	C16H12	000612-94-2	89
3			5,16[1',2']:8,13[1'',2'']-Dibenz...	408	C32H24	005672-97-9	87
4			Naphthalene, 2-phenyl-	204	C16H12	000612-94-2	81
5			Naphthalene, 2-phenyl-	204	C16H12	000612-94-2	81



Data Path : Z:\svoasrv\HPCHEM1\BNA_P\Data\BP042623\
 Data File : BP014832.D
 Acq On : 26 Apr 2023 10:29
 Operator : CG/JU
 Sample : 02418-01
 Misc :
 ALS Vial : 4 Sample Multiplier: 1

Instrument :
 BNA_P
 ClientSampleId :
 EW8Y7

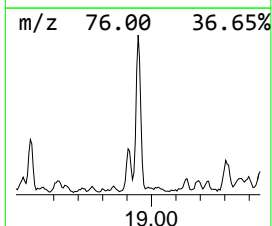
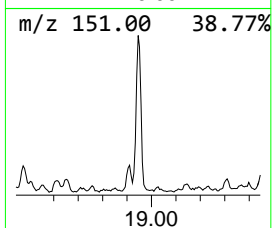
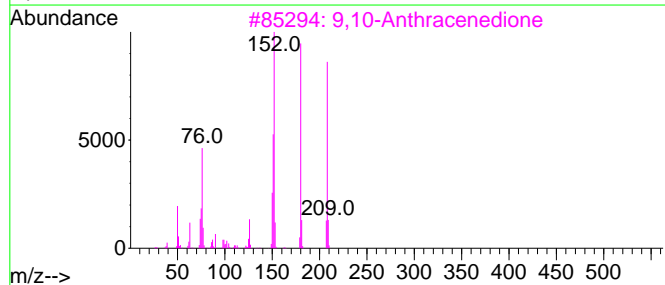
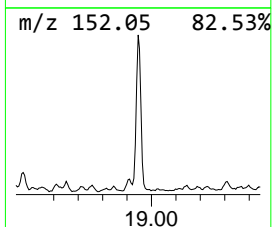
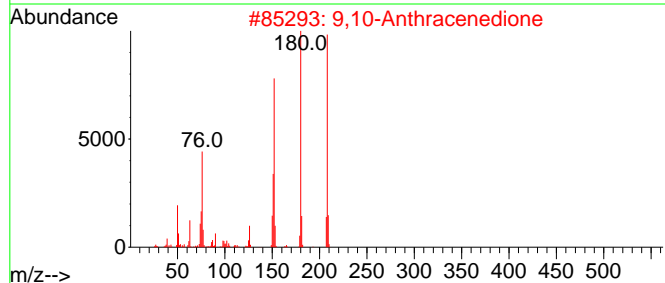
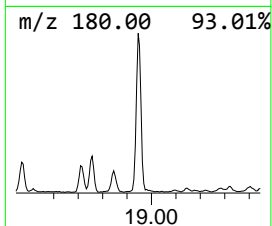
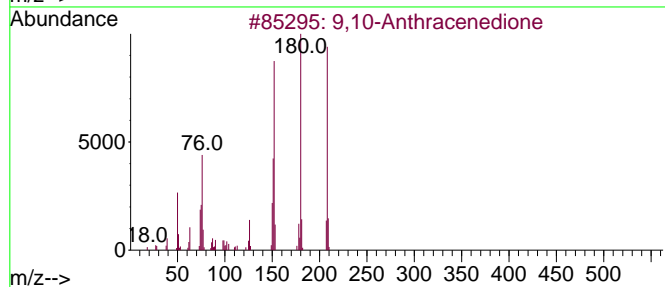
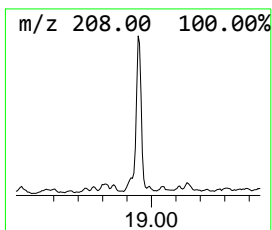
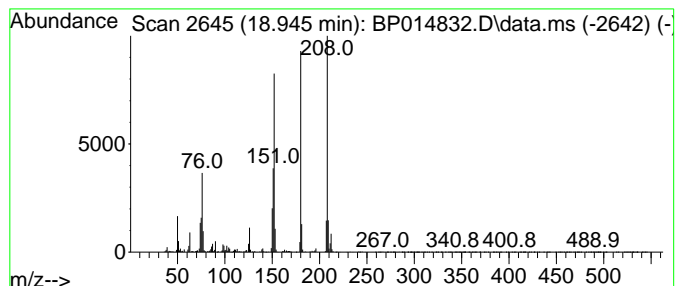
Quant Method : Z:\svoasrv\HPCHEM1\BNA_P\Methods\SFAM-EPA-BP042523.MA.M
 Quant Title : SVOA CALIBRATION

TIC Library : C:\DATABASE\NIST20.L
 TIC Integration Parameters: LSCINT.P

 Peak Number 11 9,10-Anthracenedione Concentration Rank 11

R.T.	EstConc	Area	Relative to ISTD	R.T.
18.945	3.80 ng/ul	848892	Phenanthrene-d10	17.581

Hit#	of	5	Tentative ID	MW	MolForm	CAS#	Qual
1			9,10-Anthracenedione	208	C14H8O2	000084-65-1	99
2			9,10-Anthracenedione	208	C14H8O2	000084-65-1	99
3			9,10-Anthracenedione	208	C14H8O2	000084-65-1	98
4			9H-Fluoren-9-one	180	C13H8O	000486-25-9	96
5			9,10-Anthracenedione	208	C14H8O2	000084-65-1	96



Data Path : Z:\svoasrv\HPCHEM1\BNA_P\Data\BP042623\
 Data File : BP014832.D
 Acq On : 26 Apr 2023 10:29
 Operator : CG/JU
 Sample : 02418-01
 Misc :
 ALS Vial : 4 Sample Multiplier: 1

Instrument :
 BNA_P
 ClientSampleId :
 EW8Y7

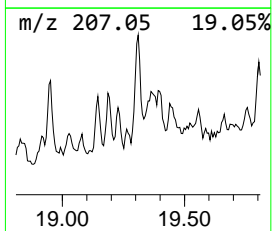
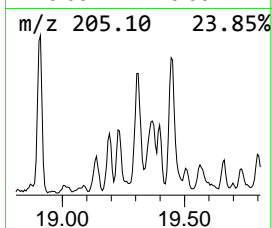
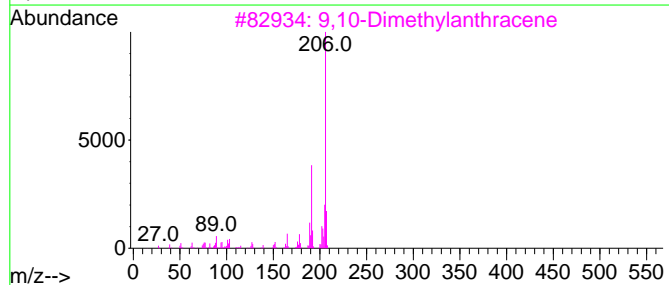
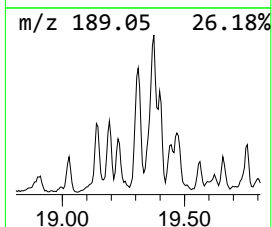
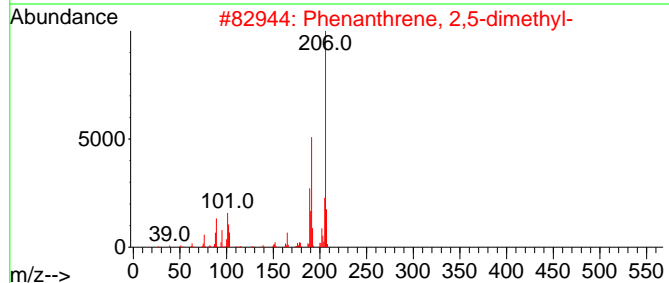
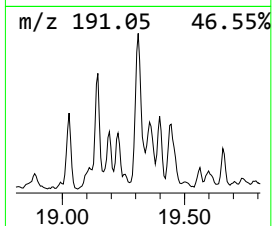
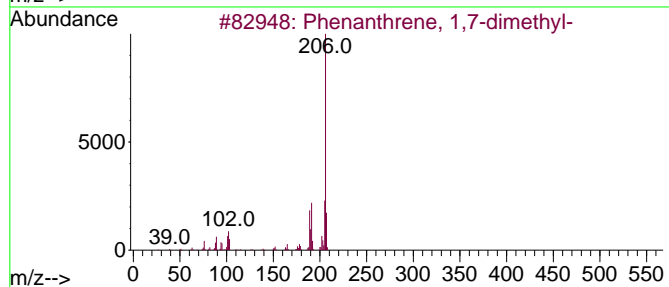
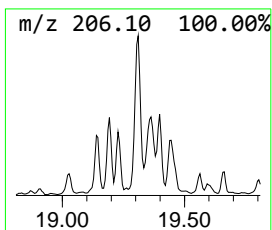
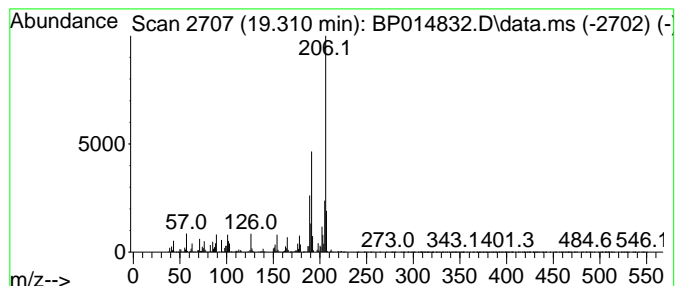
Quant Method : Z:\svoasrv\HPCHEM1\BNA_P\Methods\SFAM-EPA-BP042523.MA.M
 Quant Title : SVOA CALIBRATION

TIC Library : C:\DATABASE\NIST20.L
 TIC Integration Parameters: LSCINT.P

 Peak Number 12 Phenanthrene, 1,7-dimethyl- Concentration Rank 10

R.T.	EstConc	Area	Relative to ISTD	R.T.
19.310	4.49 ng/ul	1001370	Phenanthrene-d10	17.581

Hit#	of 5	Tentative ID	MW	MolForm	CAS#	Qual
1		Phenanthrene, 1,7-dimethyl-	206	C16H14	000483-87-4	93
2		Phenanthrene, 2,5-dimethyl-	206	C16H14	003674-66-6	93
3		9,10-Dimethylanthracene	206	C16H14	000781-43-1	91
4		Phenanthrene, 2,3-dimethyl-	206	C16H14	003674-65-5	87
5		Phenanthrene, 2,7-dimethyl-	206	C16H14	001576-69-8	86



Data Path : Z:\svoasrv\HPCHEM1\BNA_P\Data\BP042623\
 Data File : BP014832.D
 Acq On : 26 Apr 2023 10:29
 Operator : CG/JU
 Sample : 02418-01
 Misc :
 ALS Vial : 4 Sample Multiplier: 1

Instrument :
 BNA_P
 ClientSampleId :
 EW8Y7

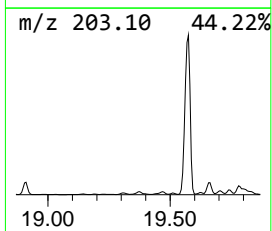
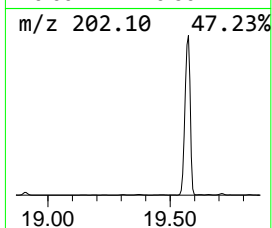
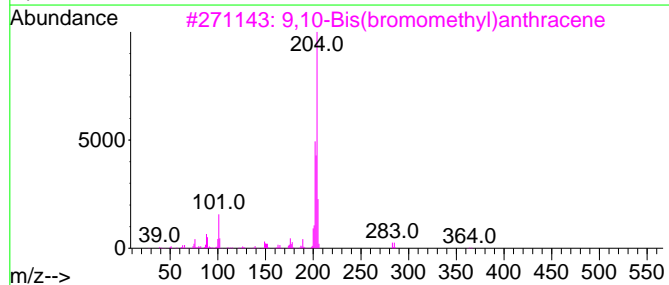
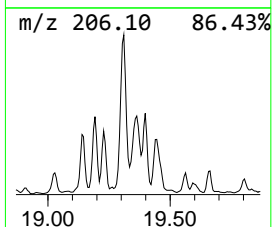
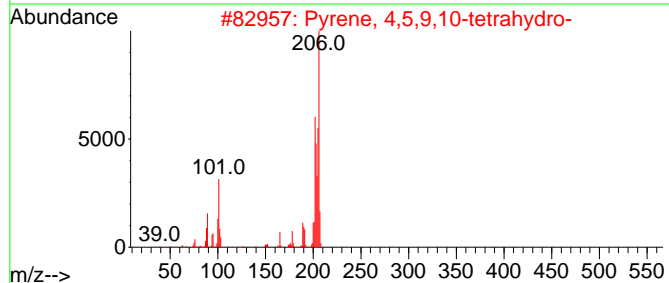
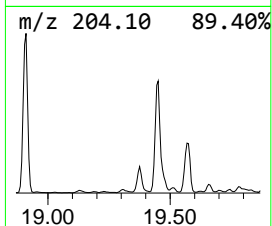
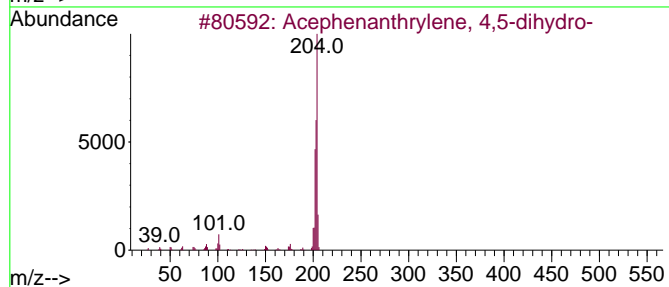
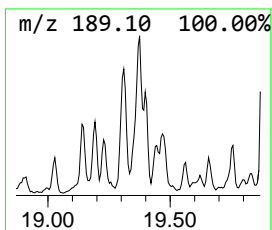
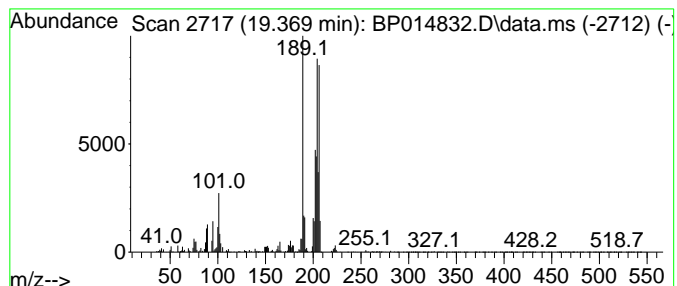
Quant Method : Z:\svoasrv\HPCHEM1\BNA_P\Methods\SFAM-EPA-BP042523.MA.M
 Quant Title : SVOA CALIBRATION

TIC Library : C:\DATABASE\NIST20.L
 TIC Integration Parameters: LSCINT.P

 Peak Number 13 Acephenanthrylene, 4,5-dihy... Concentration Rank 20

R.T.	EstConc	Area	Relative to ISTD	R.T.
19.369	2.45 ng/ul	547276	Phenanthrene-d10	17.581

Hit#	of	5	Tentative ID	MW	MolForm	CAS#	Qual
1			Acephenanthrylene, 4,5-dihydro-	204	C16H12	006232-48-0	55
2			Pyrene, 4,5,9,10-tetrahydro-	206	C16H14	000781-17-9	51
3			9,10-Bis(bromomethyl)anthracene	362	C16H12Br2	034373-96-1	46
4			2,3-Dimethoxy-5-aminocinnamitrile	204	C11H12N2O2	1000214-46-5	38
5			Pyrene, 4,5,9,10-tetrahydro-	206	C16H14	000781-17-9	38



Data Path : Z:\svoasrv\HPCHEM1\BNA_P\Data\BP042623\
 Data File : BP014832.D
 Acq On : 26 Apr 2023 10:29
 Operator : CG/JU
 Sample : 02418-01
 Misc :
 ALS Vial : 4 Sample Multiplier: 1

Instrument :
 BNA_P
 ClientSampleId :
 EW8Y7

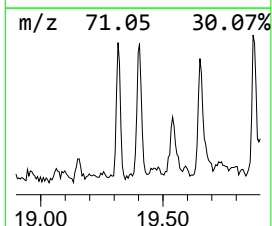
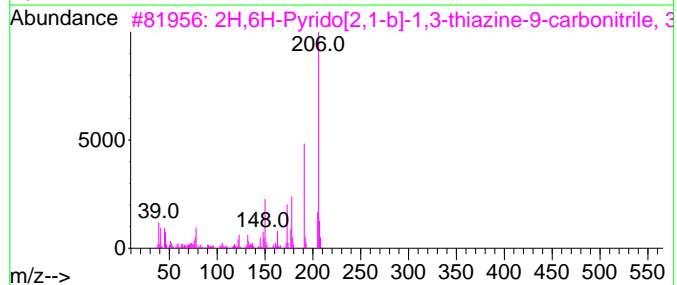
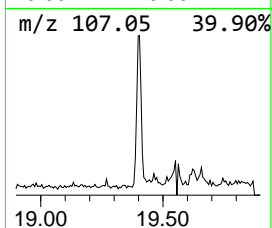
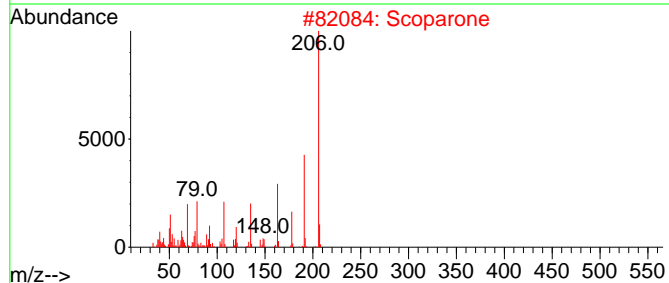
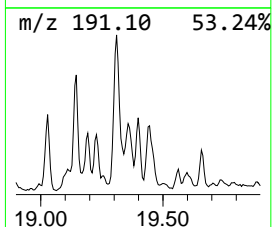
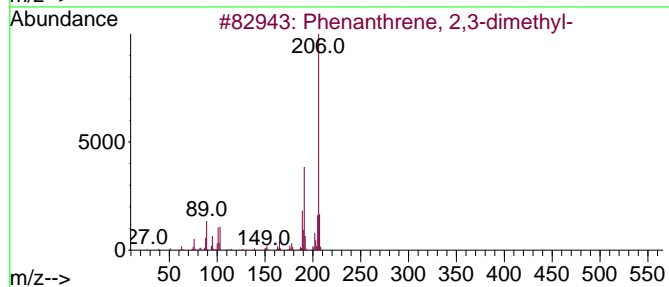
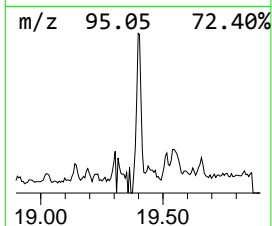
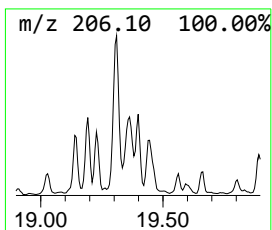
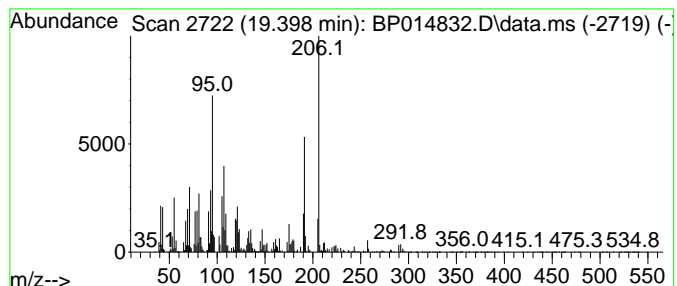
Quant Method : Z:\svoasrv\HPCHEM1\BNA_P\Methods\SFAM-EPA-BP042523.MA.M
 Quant Title : SVOA CALIBRATION

TIC Library : C:\DATABASE\NIST20.L
 TIC Integration Parameters: LSCINT.P

 Peak Number 14 unknown-03 Concentration Rank 15

R.T.	EstConc	Area	Relative to ISTD	R.T.
19.398	3.20 ng/ul	714934	Phenanthrene-d10	17.581

Hit#	of 5	Tentative ID	MW	MolForm	CAS#	Qual
1		Phenanthrene, 2,3-dimethyl-	206	C16H14	003674-65-5	47
2		Scoparone	206	C11H10O4	000120-08-1	47
3		2H,6H-Pyrido[2,1-b]-1,3-thiazine...	206	C10H10N2OS	1000277-29-6	46
4		1H-Indene, 2-methyl-3-phenyl-	206	C16H14	035099-60-6	46
5		Phenanthrene, 3,6-dimethyl-	206	C16H14	001576-67-6	43



Data Path : Z:\svoasrv\HPCHEM1\BNA_P\Data\BP042623\
 Data File : BP014832.D
 Acq On : 26 Apr 2023 10:29
 Operator : CG/JU
 Sample : 02418-01
 Misc :
 ALS Vial : 4 Sample Multiplier: 1

Instrument :
 BNA_P
 ClientSampleId :
 EW8Y7

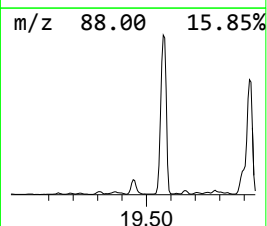
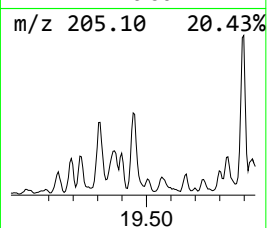
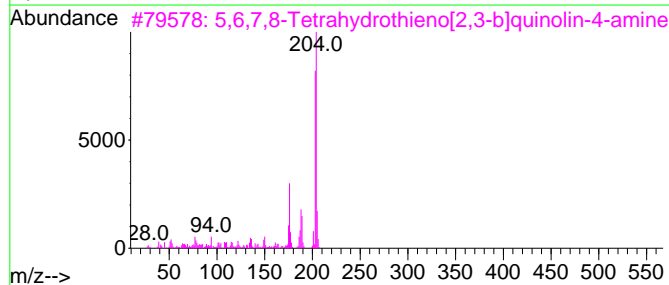
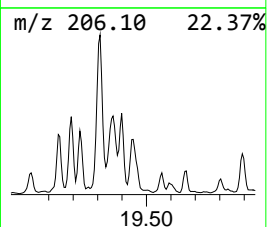
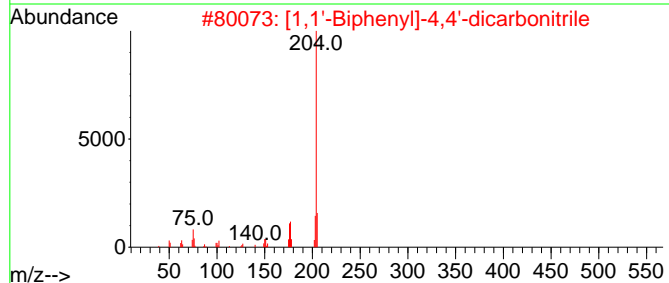
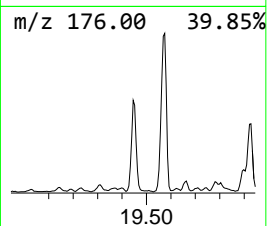
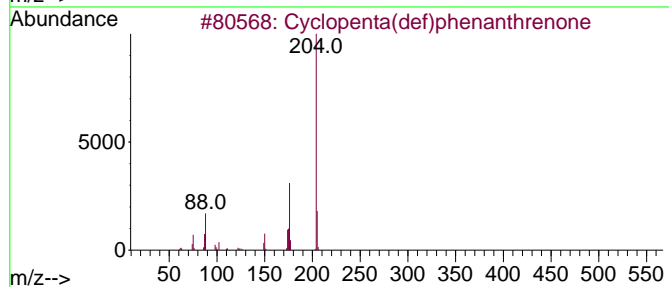
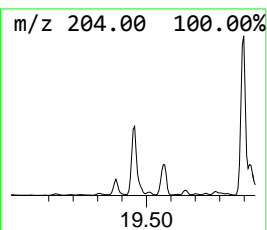
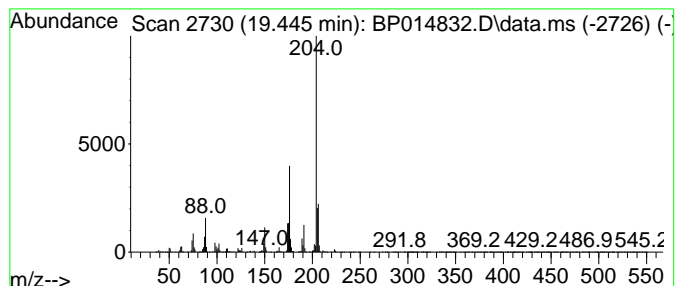
Quant Method : Z:\svoasrv\HPCHEM1\BNA_P\Methods\SFAM-EPA-BP042523.MA.M
 Quant Title : SVOA CALIBRATION

TIC Library : C:\DATABASE\NIST20.L
 TIC Integration Parameters: LSCINT.P

 Peak Number 15 Cyclopenta(def)phenanthrene Concentration Rank 8

R.T.	EstConc	Area	Relative to ISTD	R.T.
19.445	6.27 ng/ul	1398440	Phenanthrene-d10	17.581

Hit#	of	5	Tentative ID	MW	MolForm	CAS#	Qual
1			Cyclopenta(def)phenanthrene	204	C15H8O	005737-13-3	96
2			[1,1'-Biphenyl]-4,4'-dicarbonitrile	204	C14H8N2	001591-30-6	52
3			5,6,7,8-Tetrahydrothieno[2,3-b]q...	204	C11H12N2S	122914-50-5	50
4			Tricyclo[5.1.0.0(2,4)]octane, 5-...	247	C17H29N	1000063-59-3	47
5			[1,1'-Biphenyl]-2-ol, 5-chloro-	204	C12H9ClO	000607-12-5	43



Data Path : Z:\svoasrv\HPCHEM1\BNA_P\Data\BP042623\
 Data File : BP014832.D
 Acq On : 26 Apr 2023 10:29
 Operator : CG/JU
 Sample : 02418-01
 Misc :
 ALS Vial : 4 Sample Multiplier: 1

Instrument :
 BNA_P
 ClientSampleId :
 EW8Y7

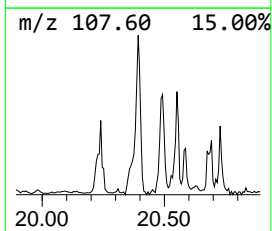
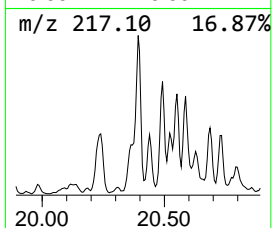
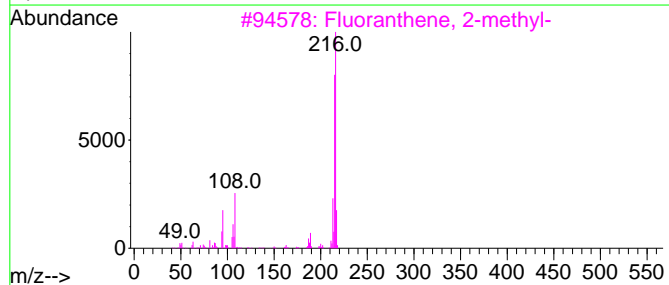
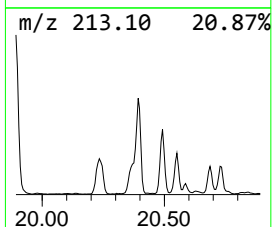
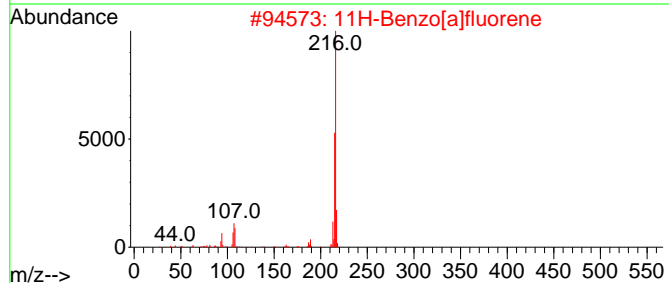
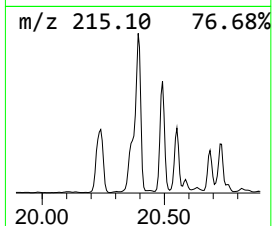
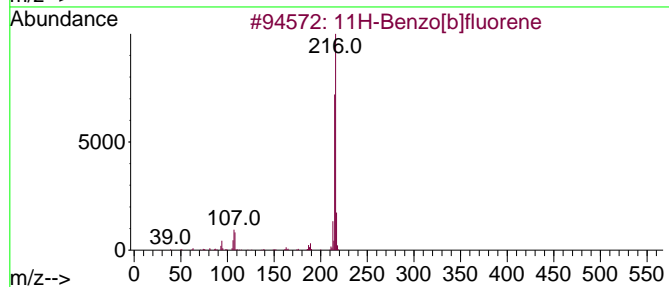
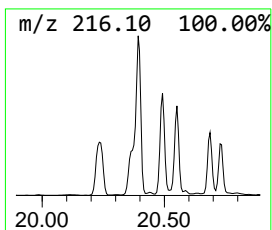
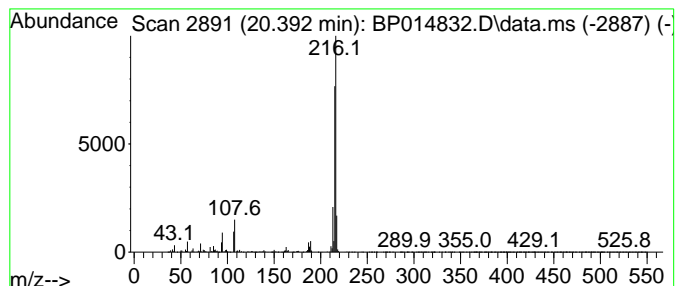
Quant Method : Z:\svoasrv\HPCHEM1\BNA_P\Methods\SFAM-EPA-BP042523.MA.M
 Quant Title : SVOA CALIBRATION

TIC Library : C:\DATABASE\NIST20.L
 TIC Integration Parameters: LSCINT.P

 Peak Number 16 11H-Benzo[b]fluorene Concentration Rank 13

R.T.	EstConc	Area	Relative to ISTD	R.T.
20.392	3.25 ng/ul	2705240	Chrysene-d12	21.657

Hit#	of	5	Tentative ID	MW	MolForm	CAS#	Qual
1			11H-Benzo[b]fluorene	216	C17H12	000243-17-4	95
2			11H-Benzo[a]fluorene	216	C17H12	000238-84-6	95
3			Fluoranthene, 2-methyl-	216	C17H12	033543-31-6	94
4			11H-Benzo[a]fluorene	216	C17H12	000238-84-6	91
5			Pyrene, 1-methyl-	216	C17H12	002381-21-7	87



Data Path : Z:\svoasrv\HPCHEM1\BNA_P\Data\BP042623\
 Data File : BP014832.D
 Acq On : 26 Apr 2023 10:29
 Operator : CG/JU
 Sample : 02418-01
 Misc :
 ALS Vial : 4 Sample Multiplier: 1

Instrument :
 BNA_P
 ClientSampleId :
 EW8Y7

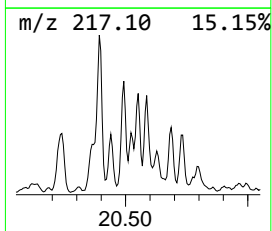
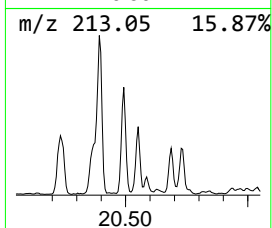
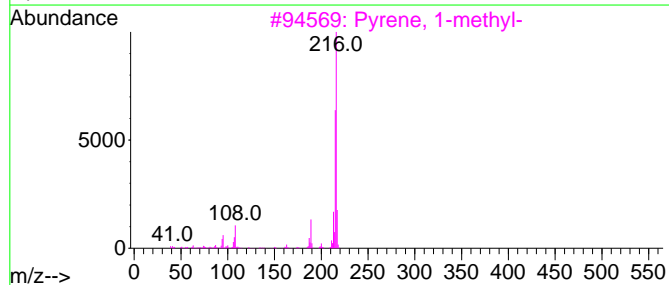
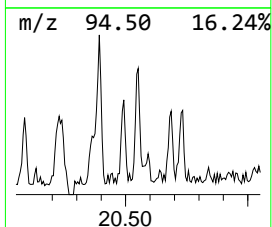
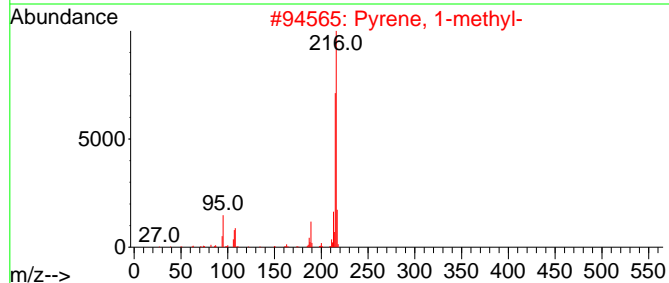
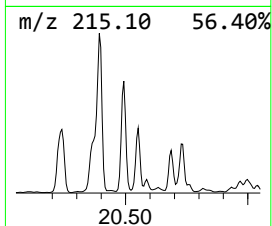
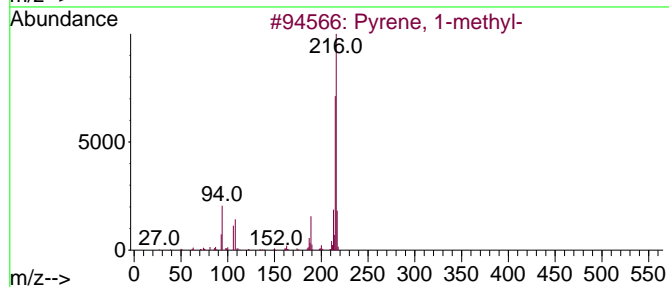
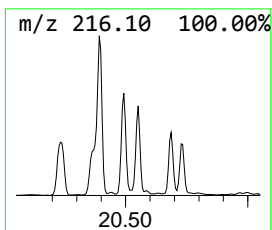
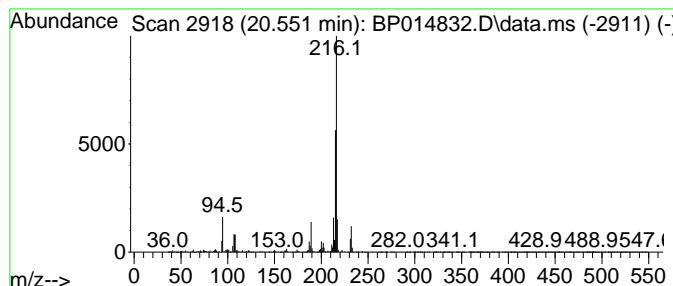
Quant Method : Z:\svoasrv\HPCHEM1\BNA_P\Methods\SFAM-EPA-BP042523.MA.M
 Quant Title : SVOA CALIBRATION

TIC Library : C:\DATABASE\NIST20.L
 TIC Integration Parameters: LSCINT.P

 Peak Number 17 Pyrene, 1-methyl- Concentration Rank 22

R.T.	EstConc	Area	Relative to ISTD	R.T.
20.551	2.26 ng/ul	1878920	Chrysene-d12	21.657

Hit#	of 5	Tentative ID	MW	MolForm	CAS#	Qual
1		Pyrene, 1-methyl-	216	C17H12	002381-21-7	97
2		Pyrene, 1-methyl-	216	C17H12	002381-21-7	96
3		Pyrene, 1-methyl-	216	C17H12	002381-21-7	94
4		Pyrene, 2-methyl-	216	C17H12	003442-78-2	94
5		11H-Benzo[a]fluorene	216	C17H12	000238-84-6	91



Data Path : Z:\svoasrv\HPCHEM1\BNA_P\Data\BP042623\
 Data File : BP014832.D
 Acq On : 26 Apr 2023 10:29
 Operator : CG/JU
 Sample : 02418-01
 Misc :
 ALS Vial : 4 Sample Multiplier: 1

Instrument :
 BNA_P
 ClientSampleId :
 EW8Y7

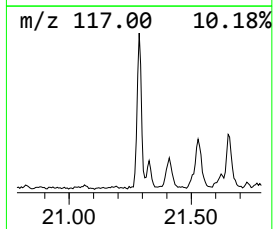
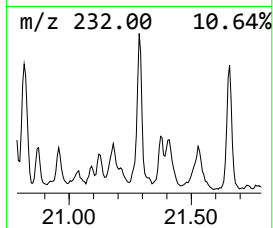
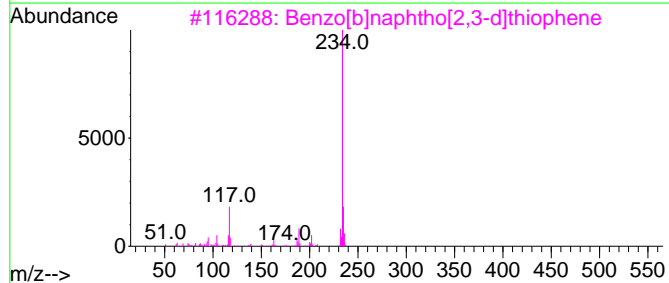
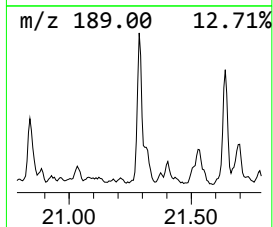
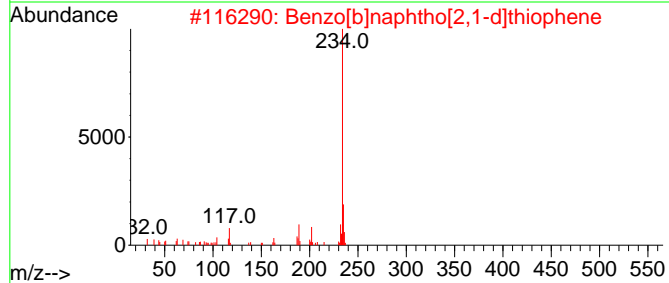
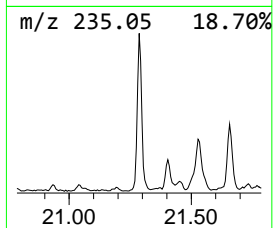
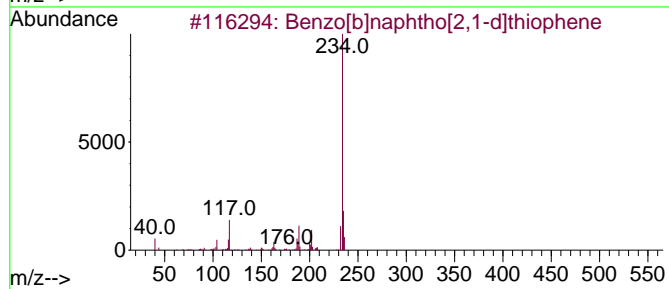
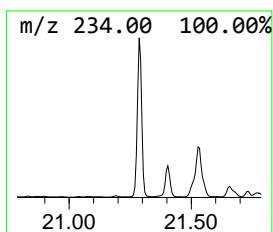
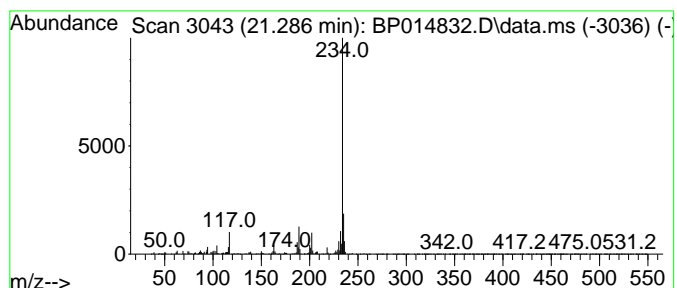
Quant Method : Z:\svoasrv\HPCHEM1\BNA_P\Methods\SFAM-EPA-BP042523.MA.M
 Quant Title : SVOA CALIBRATION

TIC Library : C:\DATABASE\NIST20.L
 TIC Integration Parameters: LSCINT.P

 Peak Number 18 Benzo[b]naphtho[2,1-d]thiop... Concentration Rank 18

R.T.	EstConc	Area	Relative to ISTD	R.T.
21.286	2.70 ng/ul	2246930	Chrysene-d12	21.657

Hit#	of	5	Tentative ID	MW	MolForm	CAS#	Qual
1			Benzo[b]naphtho[2,1-d]thiophene	234	C16H10S	000239-35-0	97
2			Benzo[b]naphtho[2,1-d]thiophene	234	C16H10S	000239-35-0	96
3			Benzo[b]naphtho[2,3-d]thiophene	234	C16H10S	000243-46-9	95
4			Benzo[b]naphtho[2,1-d]thiophene	234	C16H10S	000239-35-0	94
5			Benzo[b]naphtho[2,3-d]thiophene	234	C16H10S	000243-46-9	94



Data Path : Z:\svoasrv\HPCHEM1\BNA_P\Data\BP042623\
 Data File : BP014832.D
 Acq On : 26 Apr 2023 10:29
 Operator : CG/JU
 Sample : 02418-01
 Misc :
 ALS Vial : 4 Sample Multiplier: 1

Instrument :
 BNA_P
 ClientSampleId :
 EW8Y7

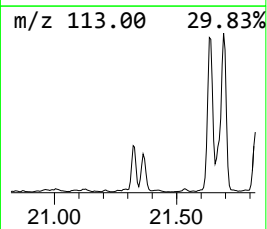
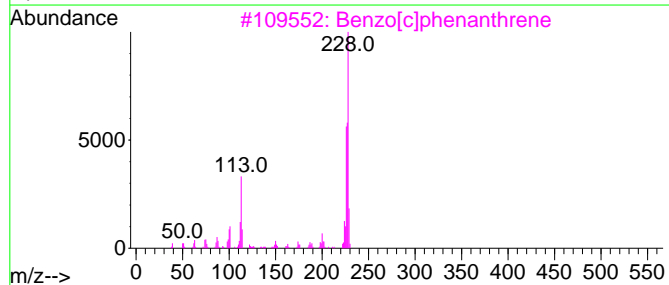
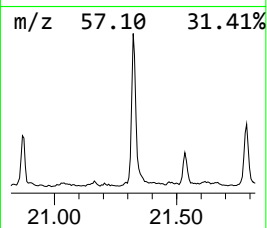
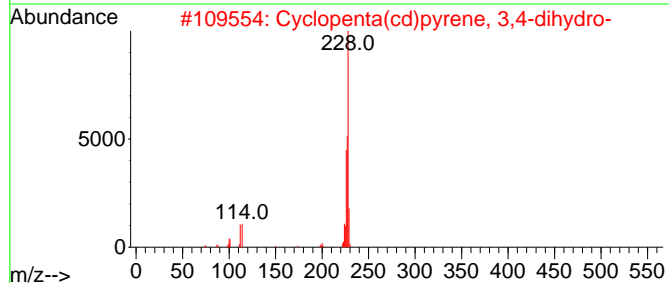
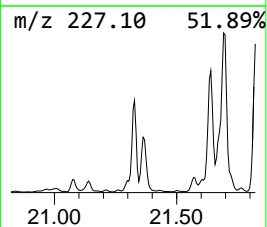
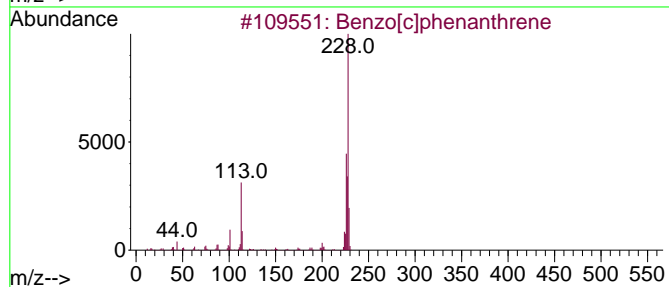
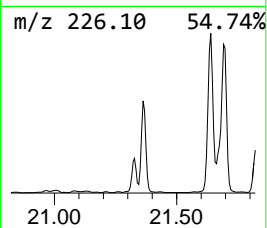
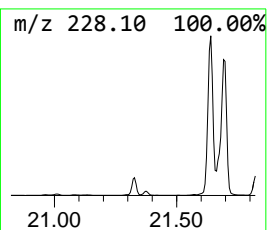
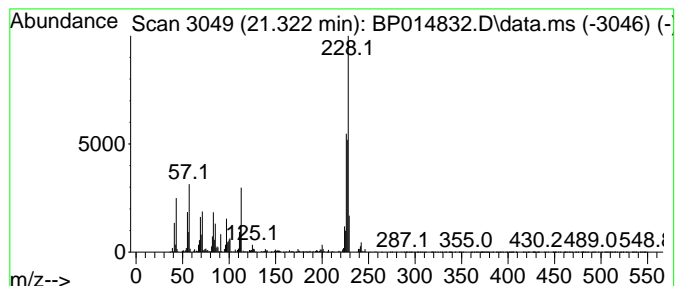
Quant Method : Z:\svoasrv\HPCHEM1\BNA_P\Methods\SFAM-EPA-BP042523.MA.M
 Quant Title : SVOA CALIBRATION

TIC Library : C:\DATABASE\NIST20.L
 TIC Integration Parameters: LSCINT.P

 Peak Number 19 Benzo[c]phenanthrene Concentration Rank 14

R.T.	EstConc	Area	Relative to ISTD	R.T.
21.322	3.24 ng/ul	2697270	Chrysene-d12	21.657

Hit#	of	5	Tentative ID	MW	MolForm	CAS#	Qual
1			Benzo[c]phenanthrene	228	C18H12	000195-19-7	60
2			Cyclopenta(cd)pyrene, 3,4-dihydro-	228	C18H12	025732-74-5	60
3			Benzo[c]phenanthrene	228	C18H12	000195-19-7	53
4			6-Bromo-3,4-dihydro-2(1H)-quinaz...	226	C8H7BrN2O	1246765-38-7	50
5			5-Bromo-1-chloro-2,4-difluoroben...	226	C6H2BrClF2	914636-89-8	50



Data Path : Z:\svoasrv\HPCHEM1\BNA_P\Data\BP042623\
 Data File : BP014832.D
 Acq On : 26 Apr 2023 10:29
 Operator : CG/JU
 Sample : 02418-01
 Misc :
 ALS Vial : 4 Sample Multiplier: 1

Instrument :
 BNA_P
 ClientSampleId :
 EW8Y7

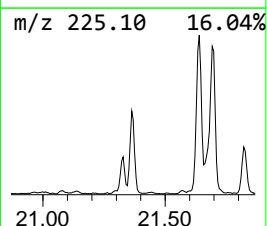
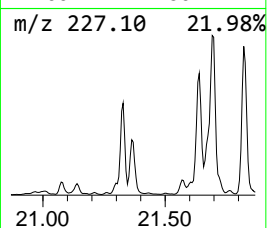
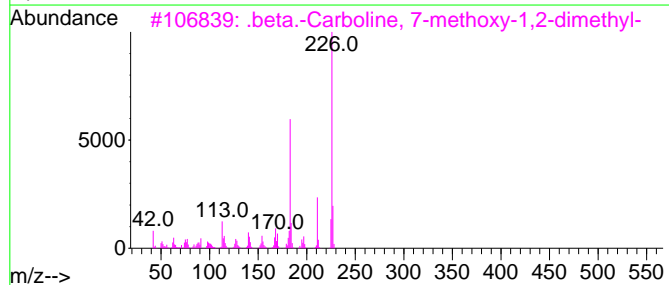
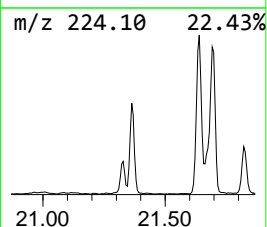
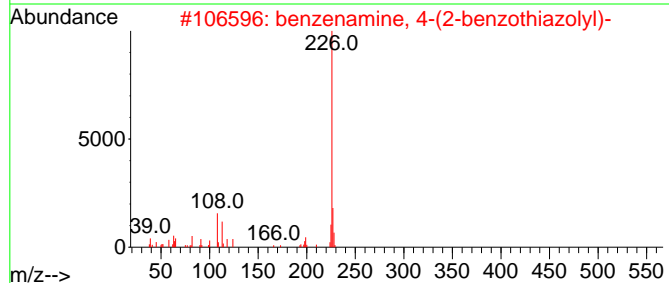
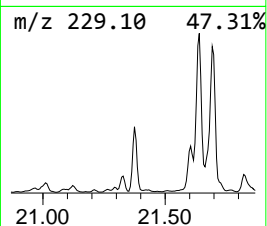
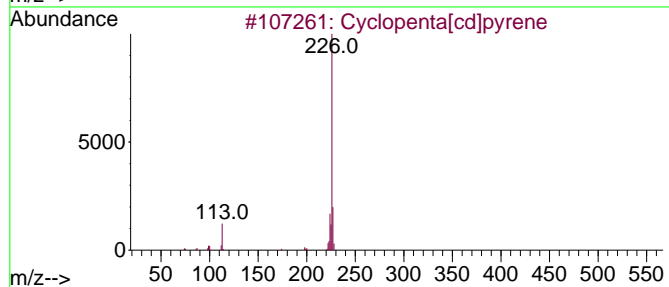
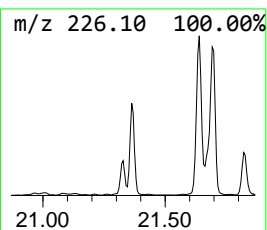
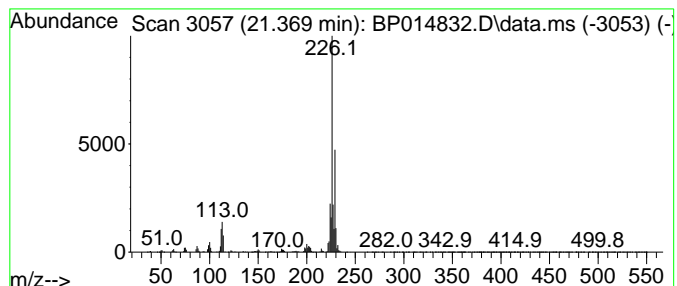
Quant Method : Z:\svoasrv\HPCHEM1\BNA_P\Methods\SFAM-EPA-BP042523.MA.M
 Quant Title : SVOA CALIBRATION

TIC Library : C:\DATABASE\NIST20.L
 TIC Integration Parameters: LSCINT.P

 Peak Number 20 Cyclopenta[cd]pyrene Concentration Rank 17

R.T.	EstConc	Area	Relative to ISTD	R.T.
21.369	2.77 ng/ul	2300120	Chrysene-d12	21.657

Hit#	of	5	Tentative ID	MW	MolForm	CAS#	Qual
1			Cyclopenta[cd]pyrene	226	C18H10	027208-37-3	60
2			benzenamine, 4-(2-benzothiazolyl)-	226	C13H10N2S	1000400-93-4	50
3			.beta.-Carboline, 7-methoxy-1,2-...	226	C14H14N2O	006519-18-2	49
4			9H-Thioxanthen-9-one, 2-methyl-	226	C14H10O5	015774-82-0	47
5			3-Hydroxy-4-methyl-6H-benzo[c]ch...	226	C14H10O3	076244-77-4	47



Data Path : Z:\svoasrv\HPCHEM1\BNA_P\Data\BP042623\
 Data File : BP014832.D
 Acq On : 26 Apr 2023 10:29
 Operator : CG/JU
 Sample : 02418-01
 Misc :
 ALS Vial : 4 Sample Multiplier: 1

Instrument :
 BNA_P
 ClientSampleId :
 EW8Y7

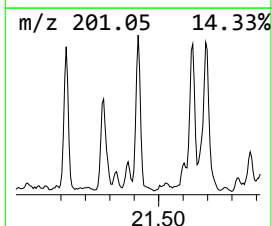
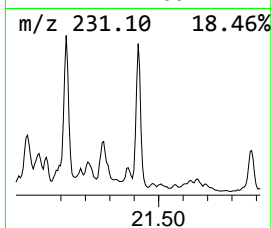
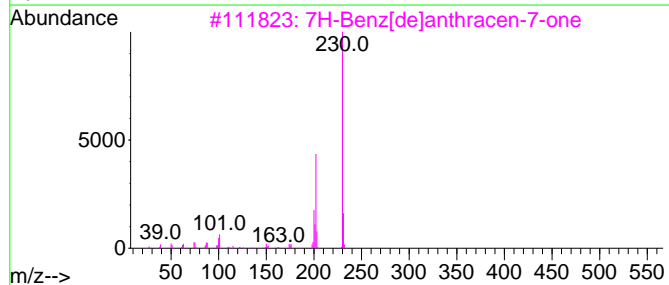
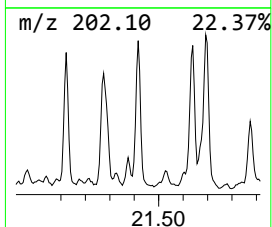
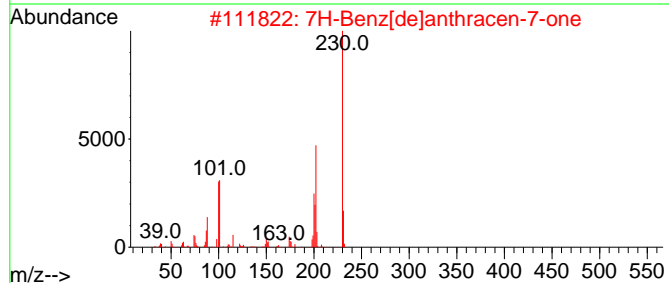
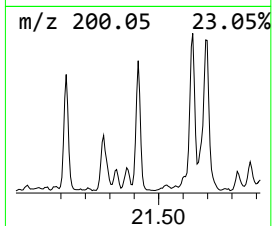
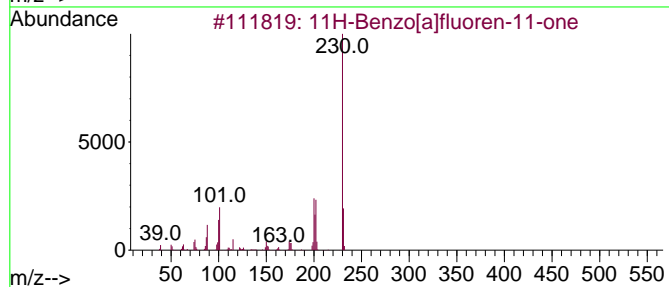
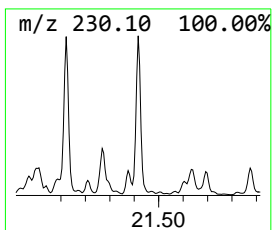
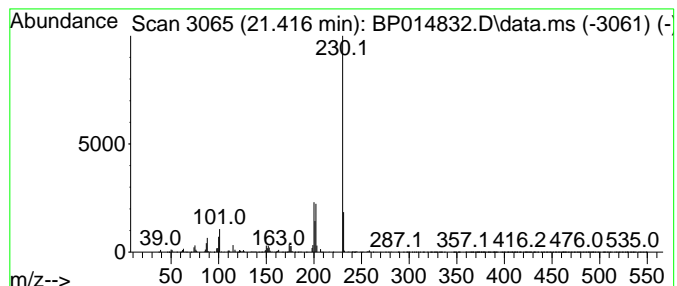
Quant Method : Z:\svoasrv\HPCHEM1\BNA_P\Methods\SFAM-EPA-BP042523.MA.M
 Quant Title : SVOA CALIBRATION

TIC Library : C:\DATABASE\NIST20.L
 TIC Integration Parameters: LSCINT.P

 Peak Number 21 11H-Benzo[a]fluoren-11-one Concentration Rank 25

R.T.	EstConc	Area	Relative to ISTD	R.T.
21.416	2.14 ng/ul	1775840	Chrysene-d12	21.657

Hit#	of	5	Tentative ID	MW	MolForm	CAS#	Qual
1			11H-Benzo[a]fluoren-11-one	230	C17H10O	000479-79-8	95
2			7H-Benz[de]anthracen-7-one	230	C17H10O	000082-05-3	90
3			7H-Benz[de]anthracen-7-one	230	C17H10O	000082-05-3	87
4			7H-Benz[de]anthracen-7-one	230	C17H10O	000082-05-3	74
5			1-Pyrenecarboxaldehyde	230	C17H10O	003029-19-4	72



Data Path : Z:\svoasrv\HPCHEM1\BNA_P\Data\BP042623\
 Data File : BP014832.D
 Acq On : 26 Apr 2023 10:29
 Operator : CG/JU
 Sample : 02418-01
 Misc :
 ALS Vial : 4 Sample Multiplier: 1

Instrument :
 BNA_P
 ClientSampleId :
 EW8Y7

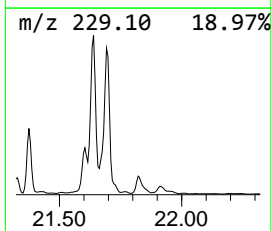
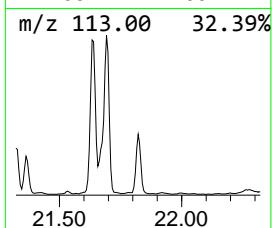
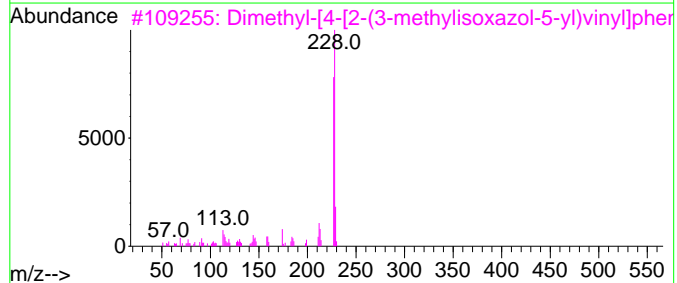
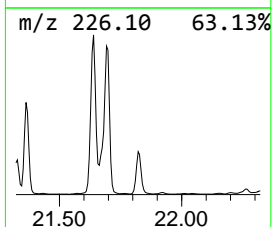
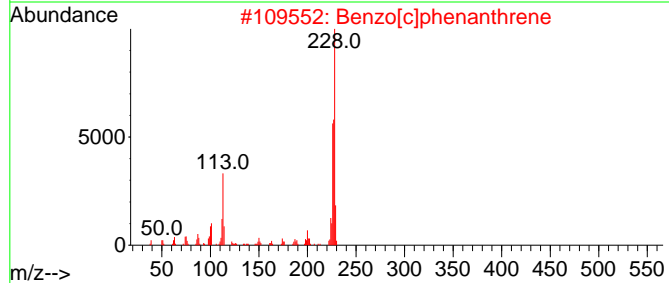
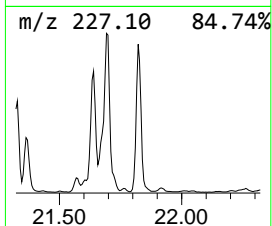
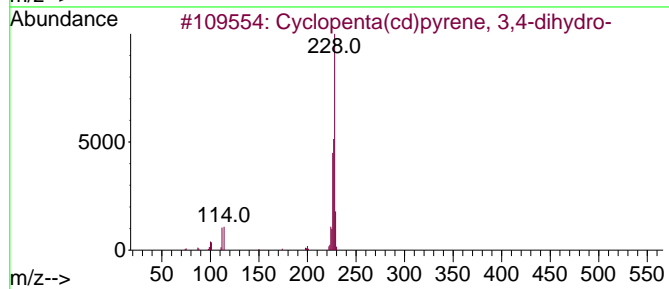
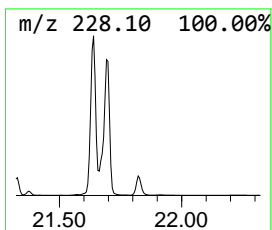
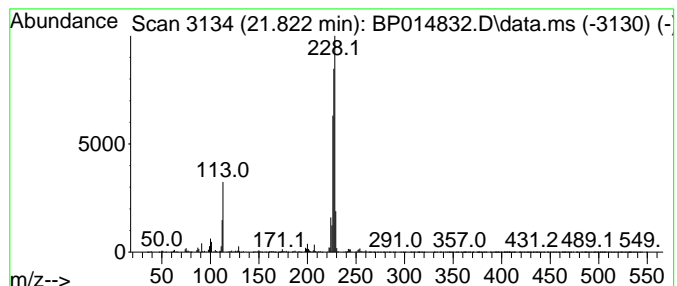
Quant Method : Z:\svoasrv\HPCHEM1\BNA_P\Methods\SFAM-EPA-BP042523.MA.M
 Quant Title : SVOA CALIBRATION

TIC Library : C:\DATABASE\NIST20.L
 TIC Integration Parameters: LSCINT.P

 Peak Number 22 Cyclopenta(cd)pyrene, 3,4-d... Concentration Rank 21

R.T.	EstConc	Area	Relative to ISTD	R.T.
21.822	2.36 ng/ul	1960130	Chrysene-d12	21.657

Hit#	of 5	Tentative ID	MW	MolForm	CAS#	Qual
1		Cyclopenta(cd)pyrene, 3,4-dihydro-	228	C18H12	025732-74-5	95
2		Benzo[c]phenanthrene	228	C18H12	000195-19-7	52
3		Dimethyl-[4-[2-(3-methylisoxazol...	228	C14H16N2O	1000306-39-6	50
4		Pyrazole-4-carboxaldehyde-, 3,5-...	228	C14H16N2O	1000272-54-8	50
5		Benzo[c]phenanthrene	228	C18H12	000195-19-7	50



Data Path : Z:\svoasrv\HPCHEM1\BNA_P\Data\BP042623\
 Data File : BP014832.D
 Acq On : 26 Apr 2023 10:29
 Operator : CG/JU
 Sample : 02418-01
 Misc :
 ALS Vial : 4 Sample Multiplier: 1

Instrument :
 BNA_P
 ClientSampleId :
 EW8Y7

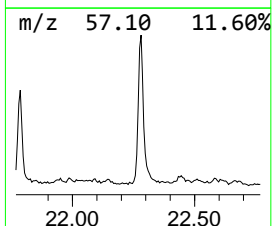
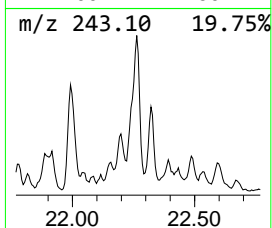
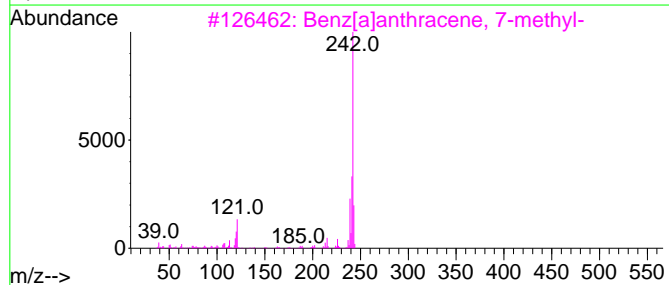
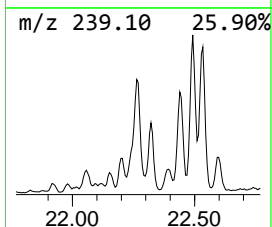
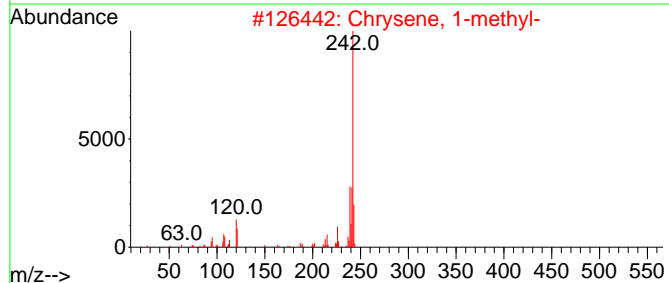
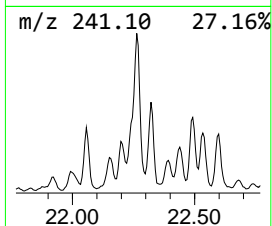
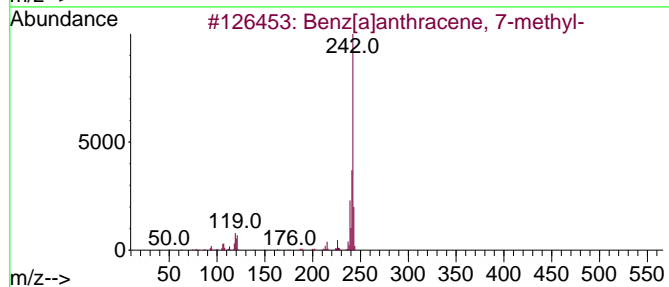
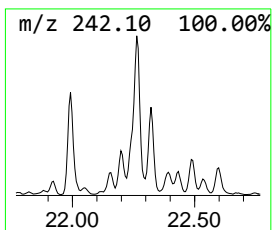
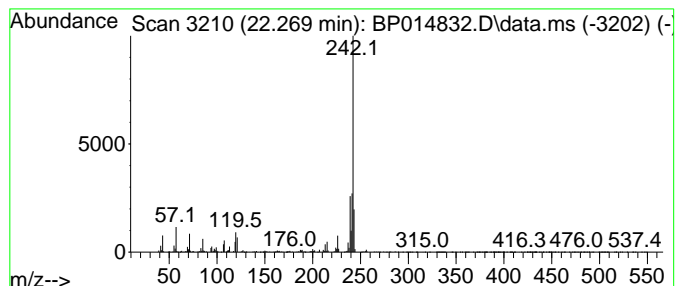
Quant Method : Z:\svoasrv\HPCHEM1\BNA_P\Methods\SFAM-EPA-BP042523.MA.M
 Quant Title : SVOA CALIBRATION

TIC Library : C:\DATABASE\NIST20.L
 TIC Integration Parameters: LSCINT.P

 Peak Number 23 Benz[a]anthracene, 7-methyl- Concentration Rank 24

R.T.	EstConc	Area	Relative to ISTD	R.T.
22.269	2.20 ng/ul	1826410	Chrysene-d12	21.657

Hit#	of	5	Tentative ID	MW	MolForm	CAS#	Qual
1			Benz[a]anthracene, 7-methyl-	242	C19H14	002541-69-7	94
2			Chrysene, 1-methyl-	242	C19H14	003351-28-8	93
3			Benz[a]anthracene, 7-methyl-	242	C19H14	002541-69-7	90
4			Benz[a]anthracene, 2-methyl-	242	C19H14	002498-76-2	89
5			Chrysene, 1-methyl-	242	C19H14	003351-28-8	83



Data Path : Z:\svoasrv\HPCHEM1\BNA_P\Data\BP042623\
 Data File : BP014832.D
 Acq On : 26 Apr 2023 10:29
 Operator : CG/JU
 Sample : 02418-01
 Misc :
 ALS Vial : 4 Sample Multiplier: 1

Instrument :
 BNA_P
 ClientSampleId :
 EW8Y7

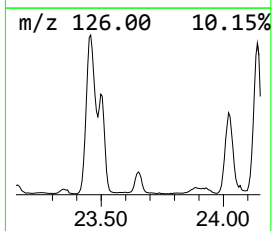
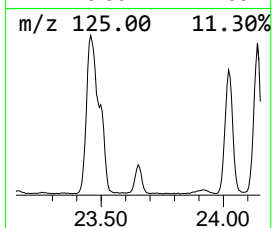
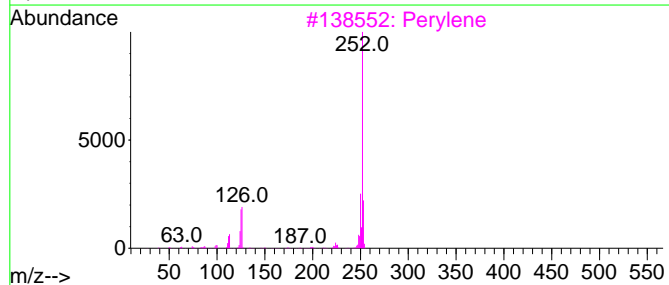
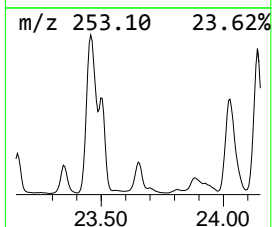
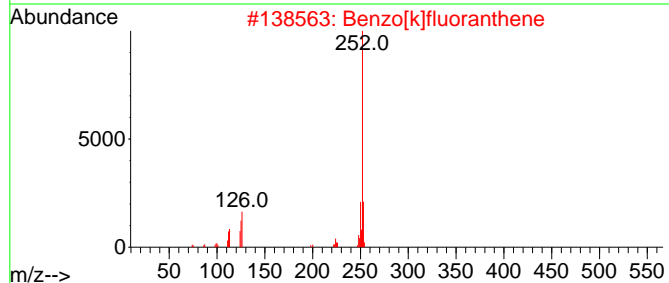
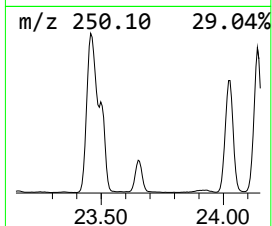
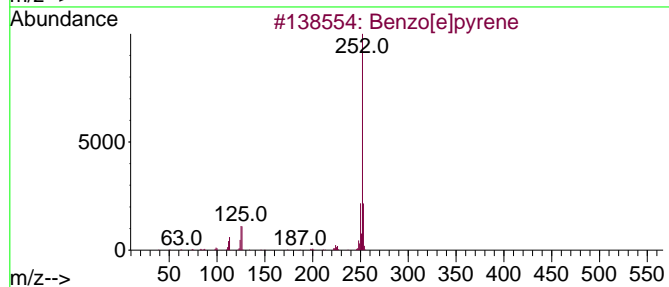
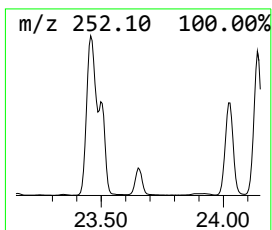
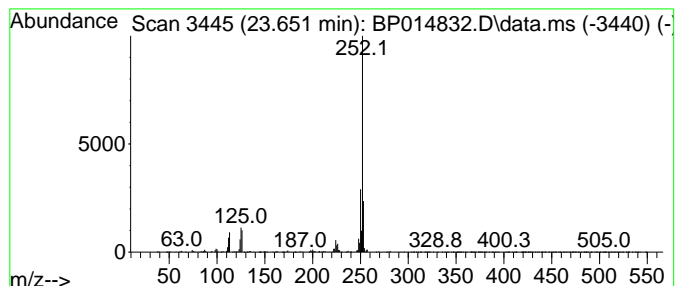
Quant Method : Z:\svoasrv\HPCHEM1\BNA_P\Methods\SFAM-EPA-BP042523.MA.M
 Quant Title : SVOA CALIBRATION

TIC Library : C:\DATABASE\NIST20.L
 TIC Integration Parameters: LSCINT.P

 Peak Number 24 Benzo[e]pyrene Concentration Rank 6

R.T.	EstConc	Area	Relative to ISTD	R.T.
23.651	9.31 ng/ul	1391850	Perylene-d12	24.251

Hit#	of 5	Tentative ID	MW	MolForm	CAS#	Qual
1		Benzo[e]pyrene	252	C20H12	000192-97-2	98
2		Benzo[k]fluoranthene	252	C20H12	000207-08-9	96
3		Perylene	252	C20H12	000198-55-0	95
4		Benzo[j]fluoranthene	252	C20H12	000205-82-3	93
5		Benzo[k]fluoranthene	252	C20H12	000207-08-9	91



Data Path : Z:\svoasrv\HPCHEM1\BNA_P\Data\BP042623\
 Data File : BP014832.D
 Acq On : 26 Apr 2023 10:29
 Operator : CG/JU
 Sample : 02418-01
 Misc :
 ALS Vial : 4 Sample Multiplier: 1

Instrument :
 BNA_P
 ClientSampleId :
 EW8Y7

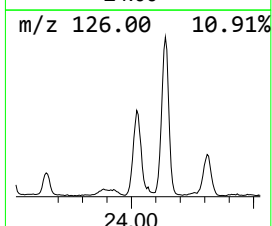
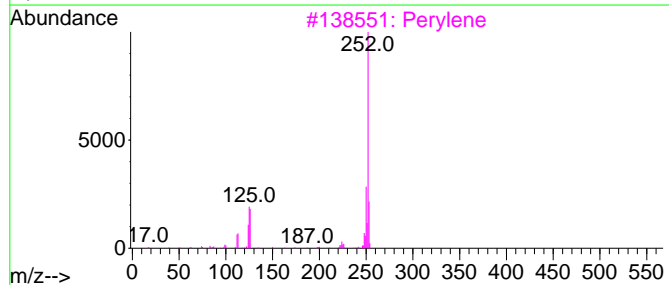
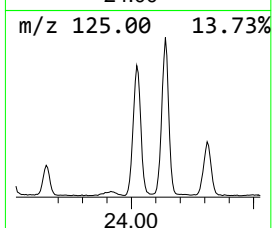
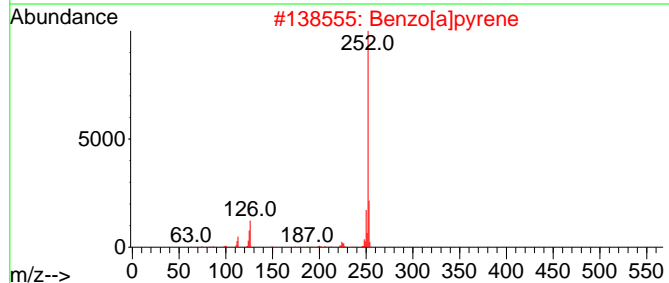
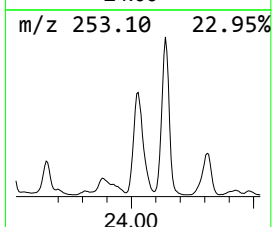
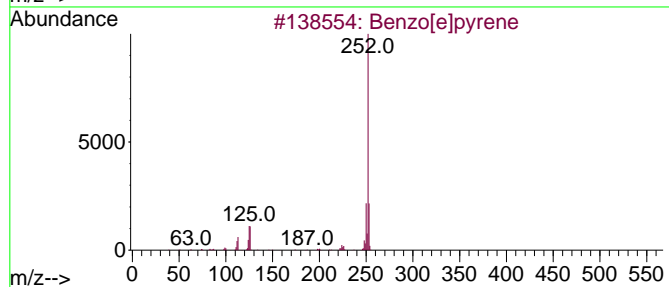
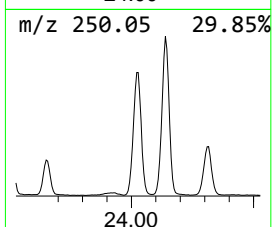
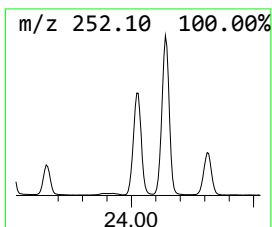
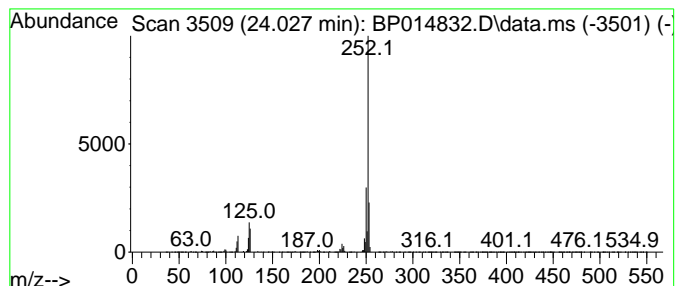
Quant Method : Z:\svoasrv\HPCHEM1\BNA_P\Methods\SFAM-EPA-BP042523.MA.M
 Quant Title : SVOA CALIBRATION

TIC Library : C:\DATABASE\NIST20.L
 TIC Integration Parameters: LSCINT.P

 Peak Number 25 Perylene Concentration Rank 1

R.T.	EstConc	Area	Relative to ISTD	R.T.
24.027	37.87 ng/ul	5664560	Perylene-d12	24.251

Hit#	of 5	Tentative ID	MW	MolForm	CAS#	Qual
1		Benzo[e]pyrene	252	C20H12	000192-97-2	99
2		Benzo[a]pyrene	252	C20H12	000050-32-8	97
3		Perylene	252	C20H12	000198-55-0	97
4		Benzo[k]fluoranthene	252	C20H12	000207-08-9	96
5		Benzo[k]fluoranthene	252	C20H12	000207-08-9	95



Data Path : Z:\svoasrv\HPCHEM1\BNA_P\Data\BP042623\
 Data File : BP014832.D
 Acq On : 26 Apr 2023 10:29
 Operator : CG/JU
 Sample : 02418-01
 Misc :
 ALS Vial : 4 Sample Multiplier: 1

Instrument :
 BNA_P
 ClientSampleId :
 EW8Y7

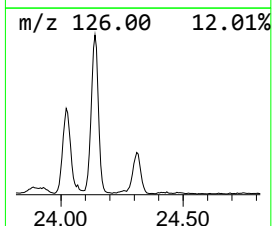
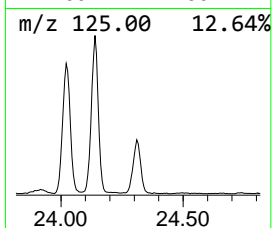
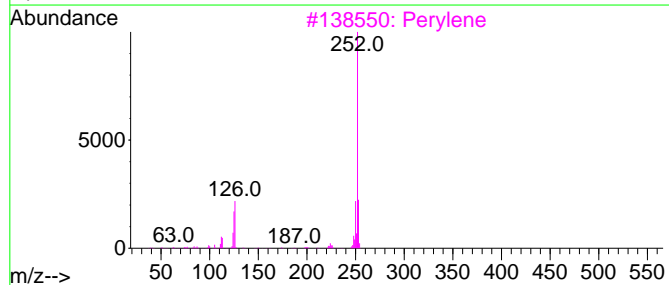
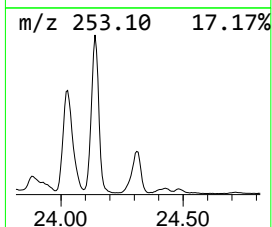
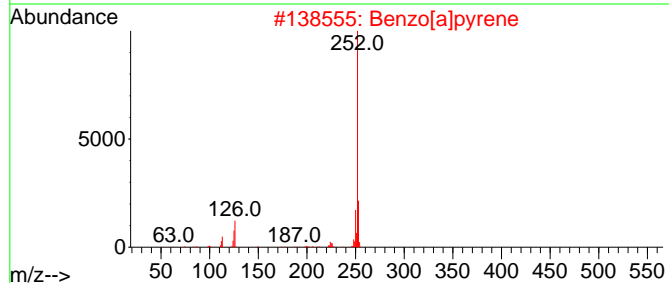
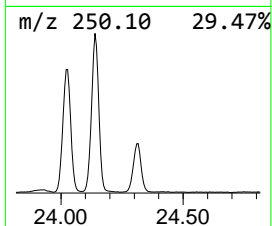
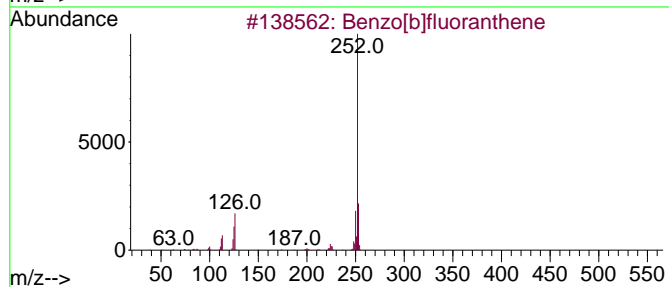
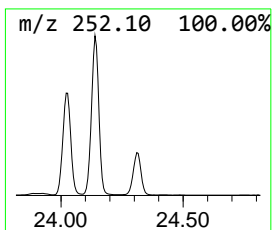
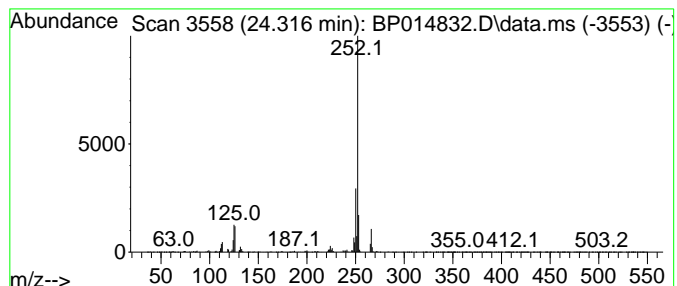
Quant Method : Z:\svoasrv\HPCHEM1\BNA_P\Methods\SFAM-EPA-BP042523.MA.M
 Quant Title : SVOA CALIBRATION

TIC Library : C:\DATABASE\NIST20.L
 TIC Integration Parameters: LSCINT.P

 Peak Number 26 unknown-04 Concentration Rank 2

R.T.	EstConc	Area	Relative to ISTD	R.T.
24.316	17.11 ng/ul	2558300	Perylene-d12	24.251

Hit#	of 5	Tentative ID	MW	MolForm	CAS#	Qual
1		Benzo[b]fluoranthene	252	C20H12	000205-99-2	93
2		Benzo[a]pyrene	252	C20H12	000050-32-8	92
3		Perylene	252	C20H12	000198-55-0	89
4		Perylene	252	C20H12	000198-55-0	89
5		Perylene	252	C20H12	000198-55-0	89



Data Path : Z:\svoasrv\HPCHEM1\BNA_P\Data\BP042623\
 Data File : BP014832.D
 Acq On : 26 Apr 2023 10:29
 Operator : CG/JU
 Sample : 02418-01
 Misc :
 ALS Vial : 4 Sample Multiplier: 1

Instrument :
 BNA_P
 ClientSampleId :
 EW8Y7

Quant Method : Z:\svoasrv\HPCHEM1\BNA_P\Methods\SFAM-EPA-BP042523.MA.M
 Quant Title : SVOA CALIBRATION

TIC Library : C:\DATABASE\NIST20.L
 TIC Integration Parameters: LSCINT.P

TIC Top Hit name	RT	EstConc	Units	Response	--Internal Standard--			
					#	RT	Resp	Conc
unknown-01	4.058	3.0	ng/ul	269047	1	8.199	1802460	20.0
Coumarin	14.334	9.7	ng/ul	1829920	3	14.828	3794060	20.0
unknown-02	16.181	7.9	ng/ul	1504250	3	14.828	3794060	20.0
(DEL) Alkane: S...	16.546	2.2	ng/ul	495059	4	17.581	4462430	20.0
Dibenzothiophene	17.392	2.0	ng/ul	449043	4	17.581	4462430	20.0
Phenanthrene, 2...	18.434	11.0	ng/ul	2457600	4	17.581	4462430	20.0
Anthracene, 1-m...	18.557	2.6	ng/ul	576497	4	17.581	4462430	20.0
4H-Cyclopenta[d...	18.622	13.0	ng/ul	2898070	4	17.581	4462430	20.0
Anthracene, 2-m...	18.651	3.6	ng/ul	812971	4	17.581	4462430	20.0
Naphthalene, 2-...	18.910	4.7	ng/ul	1054530	4	17.581	4462430	20.0
9,10-Anthracene...	18.945	3.8	ng/ul	848892	4	17.581	4462430	20.0
Phenanthrene, 1...	19.310	4.5	ng/ul	1001370	4	17.581	4462430	20.0
Acephenanthryle...	19.369	2.5	ng/ul	547276	4	17.581	4462430	20.0
unknown-03	19.398	3.2	ng/ul	714934	4	17.581	4462430	20.0
Cyclopenta(def)...	19.445	6.3	ng/ul	1398440	4	17.581	4462430	20.0
11H-Benzo[b]flu...	20.392	3.3	ng/ul	2705240	5	21.657	16626500	20.0
Pyrene, 1-methyl-	20.551	2.3	ng/ul	1878920	5	21.657	16626500	20.0
Benzo[b]naphtho...	21.286	2.7	ng/ul	2246930	5	21.657	16626500	20.0
Benzo[c]phenant...	21.322	3.2	ng/ul	2697270	5	21.657	16626500	20.0
Cyclopenta[cd]p...	21.369	2.8	ng/ul	2300120	5	21.657	16626500	20.0
11H-Benzo[a]flu...	21.416	2.1	ng/ul	1775840	5	21.657	16626500	20.0
Cyclopenta(cd)p...	21.822	2.4	ng/ul	1960130	5	21.657	16626500	20.0
Benz[a]anthrace...	22.269	2.2	ng/ul	1826410	5	21.657	16626500	20.0
Benzo[e]pyrene	23.651	9.3	ng/ul	1391850	6	24.251	2991200	20.0
Perylene	24.027	37.9	ng/ul	5664560	6	24.251	2991200	20.0
unknown-04	24.316	17.1	ng/ul	2558300	6	24.251	2991200	20.0