

Data Path : Z:\svoasrv\HPCHEM1\BNA_P\Data\BP050123\
 Data File : BP014908.D
 Acq On : 01 May 2023 11:11
 Operator : CG/JU
 Sample : PB152489BL
 Misc :
 ALS Vial : 3 Sample Multiplier: 1

Instrument :
 BNA_P
 ClientSampleId :
 SBLK489

Integration Parameters: LSCINT.P

Integrator: RTE
 Smoothing : OFF Filtering: 5
 Sampling : 1 Min Area: 0.1 % of largest Peak
 Start Thrs: 0.2 Max Peaks: 100
 Stop Thrs : 0 Peak Location: TOP

If leading or trailing edge < 100 prefer < Baseline drop else tangent >
 Peak separation: 5

Method : Z:\svoasrv\HPCHEM1\BNA_P\Methods\SFAM-EPA-BP042823.MA.M
 Title : SVOA CALIBRATION

Signal : TIC: BP014908.D\data.ms

peak #	R.T. min	first scan	max scan	last scan	PK TY	peak height	corr. area	corr. % max.	% of total
1	3.464	9	13	19	rVB	59939	75881	2.10%	0.186%
2	3.905	84	88	105	rBV	648418	980881	27.19%	2.401%
3	4.252	143	147	152	rBV	16591	24050	0.67%	0.059%
4	7.311	660	667	685	rVV	653538	1095071	30.35%	2.680%
5	7.487	691	697	710	rVB	646676	1003456	27.81%	2.456%
6	7.693	725	732	747	rBV	746026	1210644	33.56%	2.963%
7	8.175	806	814	829	rBV	722722	1244584	34.50%	3.046%
8	8.875	926	933	948	rBV	780909	1343684	37.25%	3.289%
9	9.346	1005	1013	1028	rBV	619098	1072129	29.72%	2.624%
10	10.081	1130	1138	1152	rBV	440814	786678	21.81%	1.925%
11	10.616	1221	1229	1249	rBV	756655	1333802	36.97%	3.264%
12	11.010	1287	1296	1309	rBV	991880	1704708	47.25%	4.172%
13	11.140	1311	1318	1336	rBV	648074	1256538	34.83%	3.075%
14	12.587	1559	1564	1571	rBV3	10389	21930	0.61%	0.054%
15	12.793	1595	1599	1606	rVB10	2100	4098	0.11%	0.010%
16	13.699	1749	1753	1761	rVB3	9404	16418	0.46%	0.040%
17	14.216	1834	1841	1857	rBV	1402888	1958874	54.30%	4.794%
18	14.510	1885	1891	1907	rBV	1543934	2453374	68.00%	6.005%
19	14.816	1936	1943	1960	rBV	1380244	2088782	57.90%	5.112%
20	14.993	1968	1973	1994	rBV	200234	452028	12.53%	1.106%
21	15.810	2105	2112	2125	rBV	1959465	2950742	81.79%	7.222%
22	15.916	2125	2130	2144	rVB	392873	609956	16.91%	1.493%
23	16.051	2150	2153	2162	rVB7	11954	21100	0.58%	0.052%
24	16.445	2216	2220	2223	rBV6	3947	5329	0.15%	0.013%
25	16.516	2230	2232	2236	rVB4	4476	4627	0.13%	0.011%
26	16.845	2283	2288	2291	rBV7	3160	5353	0.15%	0.013%
27	16.898	2294	2297	2302	rVV6	5431	6788	0.19%	0.017%
28	16.951	2304	2306	2311	rVB6	3353	3925	0.11%	0.010%
29	17.251	2355	2357	2361	rVB5	3728	3926	0.11%	0.010%
30	17.363	2374	2376	2380	rVB5	3374	4352	0.12%	0.011%
31	17.575	2405	2412	2423	rBV	1559898	2288251	63.43%	5.600%
32	17.675	2423	2429	2447	rVB	2076808	3113750	86.31%	7.621%
33	19.475	2731	2735	2738	rBV3	20755	28056	0.78%	0.069%
34	19.892	2800	2806	2825	rBV	2594642	3607638	100.00%	8.830%
35	21.657	3101	3106	3124	rBV2	1216362	2263388	62.74%	5.540%
36	24.098	3513	3521	3538	rBV2	1460070	3479607	96.45%	8.516%

Data Path : Z:\svoasrv\HPCHEM1\BNA_P\Data\BP050123\
Data File : BP014908.D
Acq On : 01 May 2023 11:11
Operator : CG/JU
Sample : PB152489BL
Misc :
ALS Vial : 3 Sample Multiplier: 1

Instrument :
BNA_P
ClientSampleId :
SBLK489

Integration Parameters: LSCINT.P
Integrator: RTE
Smoothing : OFF Filtering: 5
Sampling : 1 Min Area: 0.1 % of largest Peak
Start Thrs: 0.2 Max Peaks: 100
Stop Thrs : 0 Peak Location: TOP

If leading or trailing edge < 100 prefer < Baseline drop else tangent >
Peak separation: 5

Method : Z:\svoasrv\HPCHEM1\BNA_P\Methods\SFAM-EPA-BP042823.MA.M
Title : SVOA CALIBRATION

37 24.269 3543 3550 3562 rVB2 1012879 2334056 64.70% 5.713%

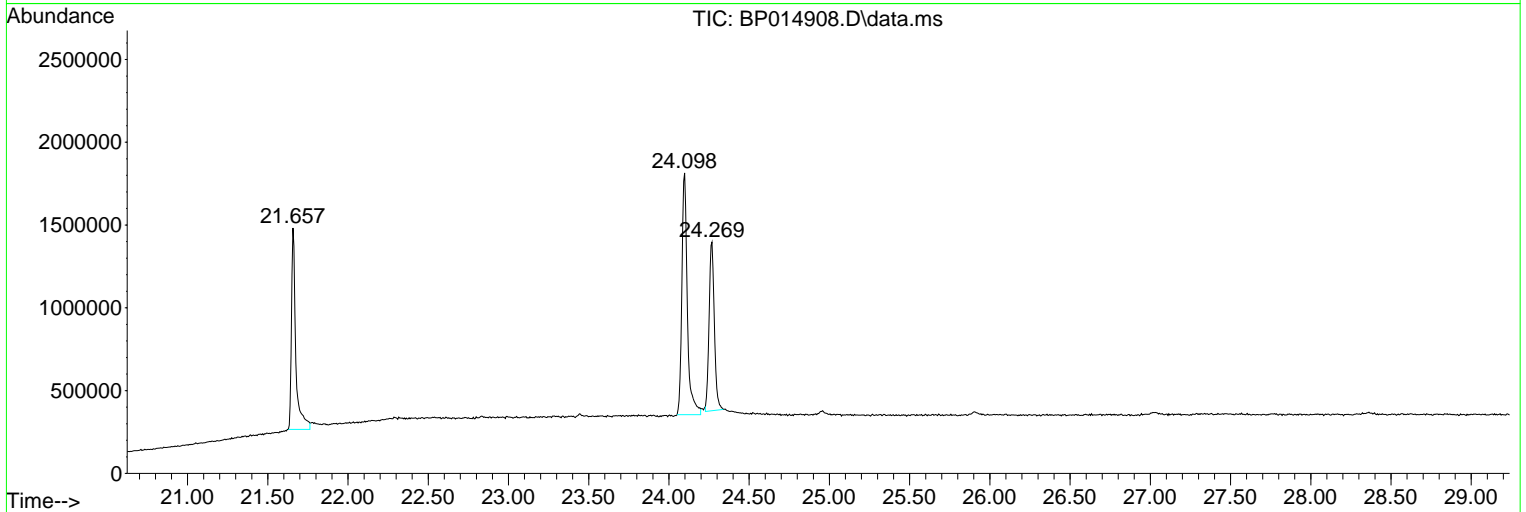
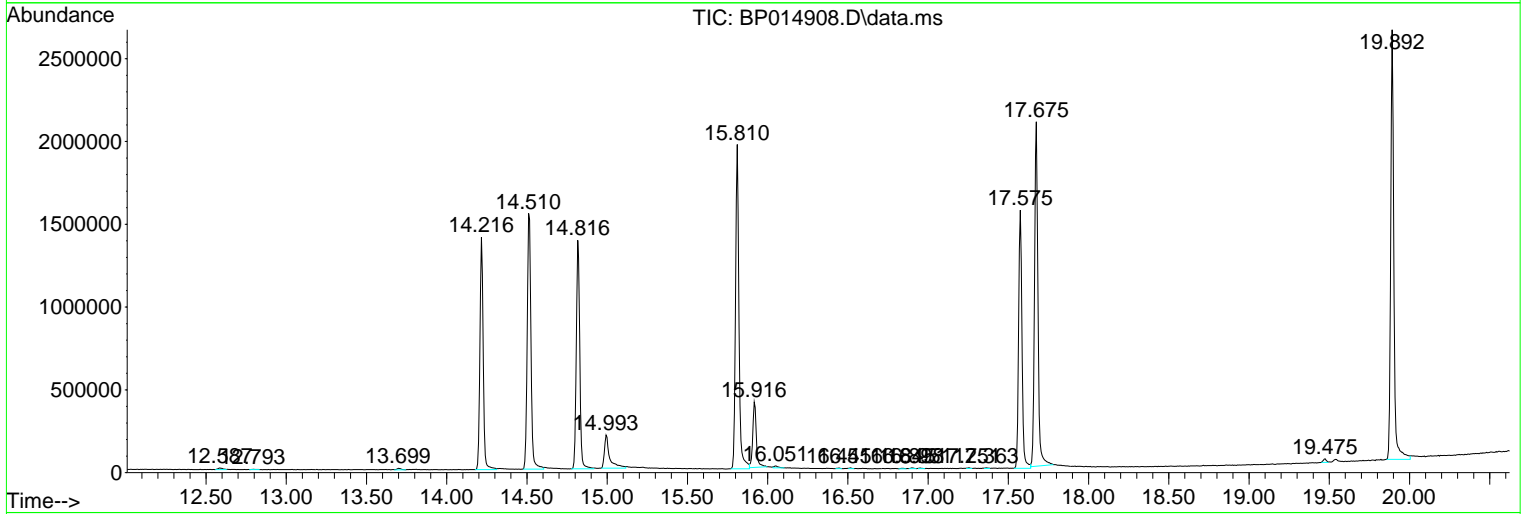
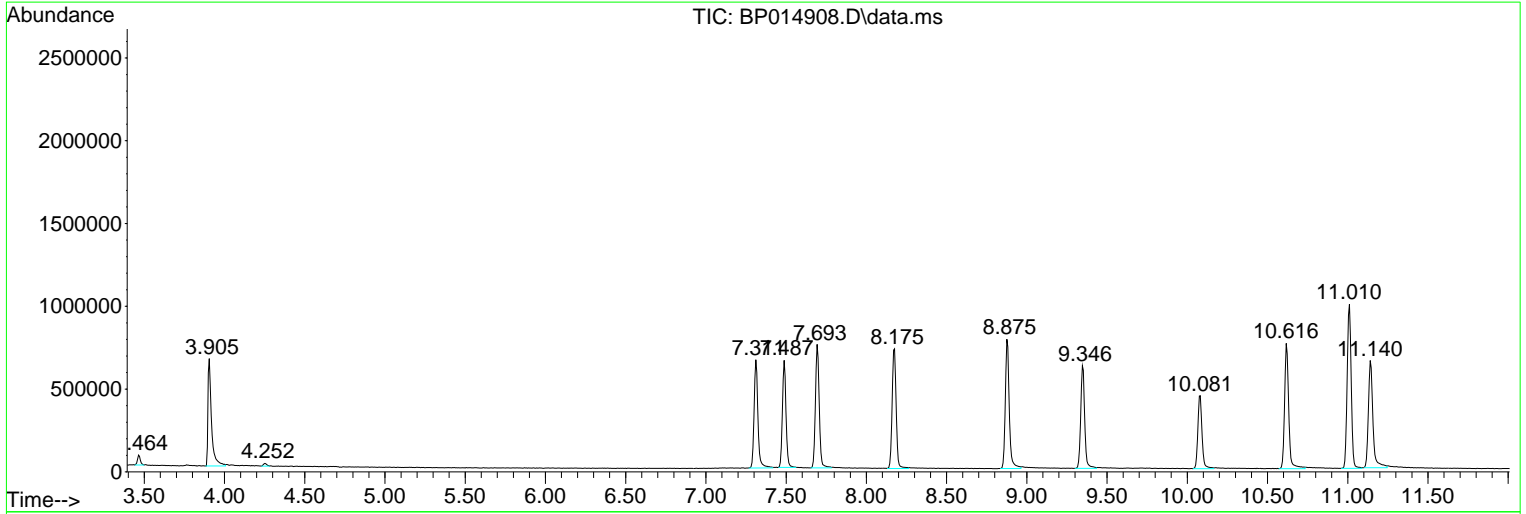
Sum of corrected areas: 40858454

Data Path : Z:\svoasrv\HPCHEM1\BNA_P\Data\BP050123\
 Data File : BP014908.D
 Acq On : 01 May 2023 11:11
 Operator : CG/JU
 Sample : PB152489BL
 Misc :
 ALS Vial : 3 Sample Multiplier: 1

Instrument :
 BNA_P
 ClientSampleId :
 SBLK489

Quant Method : Z:\svoasrv\HPCHEM1\BNA_P\Methods\SFAM-EPA-BP042823.MA.M
 Quant Title : SVOA CALIBRATION

TIC Library : C:\DATABASE\NIST20.L
 TIC Integration Parameters: LSCINT.P



Library Search Compound Report

Data Path : Z:\svoasrv\HPCHEM1\BNA_P\Data\BP050123\
Data File : BP014908.D
Acq On : 01 May 2023 11:11
Operator : CG/JU
Sample : PB152489BL
Misc :
ALS Vial : 3 Sample Multiplier: 1

Instrument :
BNA_P
ClientSampleId :
SBLK489

Quant Method : Z:\svoasrv\HPCHEM1\BNA_P\Methods\SFAM-EPA-BP042823.MA.M
Quant Title : SVOA CALIBRATION

TIC Library : C:\DATABASE\NIST20.L
TIC Integration Parameters: LSCINT.P

No Library Search Compounds Detected

Data Path : Z:\svoasrv\HPCHEM1\BNA_P\Data\BP050123\
Data File : BP014908.D
Acq On : 01 May 2023 11:11
Operator : CG/JU
Sample : PB152489BL
Misc :
ALS Vial : 3 Sample Multiplier: 1

Instrument :
BNA_P
ClientSampleId :
SBLK489

Quant Method : Z:\svoasrv\HPCHEM1\BNA_P\Methods\SFAM-EPA-BP042823.MA.M
Quant Title : SVOA CALIBRATION

TIC Library : C:\DATABASE\NIST0.L
TIC Integration Parameters: LSCINT.P

TIC Top Hit name	RT	EstConc	Units	Response	#	RT	Resp	Conc
------------------	----	---------	-------	----------	---	----	------	------
