

Data Path : Z:\svoasrv\HPCHEM1\BNA_P\Data\BP050123\
 Data File : BP014923.D
 Acq On : 01 May 2023 19:46
 Operator : CG/JU
 Sample : 02528-05DL 5X
 Misc :
 ALS Vial : 18 Sample Multiplier: 1

Instrument :
 BNA_P
 ClientSampleId :
 HOA37DL

Integration Parameters: LSCINT.P
 Integrator: RTE
 Smoothing : OFF Filtering: 5
 Sampling : 1 Min Area: 0.1 % of largest Peak
 Start Thrs: 0.2 Max Peaks: 100
 Stop Thrs : 0 Peak Location: TOP

If leading or trailing edge < 100 prefer < Baseline drop else tangent >
 Peak separation: 5

Method : Z:\svoasrv\HPCHEM1\BNA_P\Methods\SFAM-EPA-BP042823.MA.M
 Title : SVOA CALIBRATION

Signal : TIC: BP014923.D\data.ms

peak #	R.T. min	first scan	max scan	last scan	PK TY	peak height	corr. area	corr. % max.	% of total
1	3.434	3	8	16	rBV	542501	741508	6.40%	2.221%
2	3.499	16	19	30	rVB	196589	266215	2.30%	0.797%
3	3.934	91	93	99	rBV	20202	35276	0.30%	0.106%
4	4.252	143	147	152	rVB	32511	43152	0.37%	0.129%
5	4.805	234	241	261	rVB	7664510	11588910	100.00%	34.717%
6	7.311	657	667	679	rBV	27393	53204	0.46%	0.159%
7	7.487	690	697	705	rBV	156463	252167	2.18%	0.755%
8	7.693	725	732	741	rBV	130752	214052	1.85%	0.641%
9	8.058	787	794	802	rBV5	8824	15533	0.13%	0.047%
10	8.169	806	813	829	rBV	840603	1360787	11.74%	4.076%
11	8.528	870	874	880	rVB6	9213	16712	0.14%	0.050%
12	8.875	925	933	944	rBV2	76857	141980	1.23%	0.425%
13	9.346	1006	1013	1025	rBV	137029	246408	2.13%	0.738%
14	10.075	1130	1137	1144	rBV2	92707	163736	1.41%	0.491%
15	10.616	1222	1229	1240	rBV	166893	290576	2.51%	0.870%
16	11.005	1286	1295	1304	rBV	1103940	1895034	16.35%	5.677%
17	11.140	1311	1318	1334	rBV	111228	231450	2.00%	0.693%
18	13.699	1746	1753	1759	rBV2	28219	46019	0.40%	0.138%
19	14.216	1834	1841	1850	rBV	420156	604195	5.21%	1.810%
20	14.510	1880	1891	1902	rBV	450633	674652	5.82%	2.021%
21	14.816	1936	1943	1955	rBV	1668671	2405831	20.76%	7.207%
22	15.804	2103	2111	2124	rBV	583006	883301	7.62%	2.646%
23	15.916	2124	2130	2139	rVB	86878	141458	1.22%	0.424%
24	16.169	2168	2173	2183	rBV	23136	35781	0.31%	0.107%
25	16.740	2266	2270	2275	rBV5	8552	12988	0.11%	0.039%
26	16.875	2287	2293	2300	rBV4	6009	11766	0.10%	0.035%
27	17.569	2404	2411	2422	rBV	1824156	2623427	22.64%	7.859%
28	17.669	2422	2428	2446	rVB	613802	922612	7.96%	2.764%
29	18.510	2566	2571	2578	rBV2	35346	55698	0.48%	0.167%
30	19.886	2800	2805	2813	rBV	830615	1102417	9.51%	3.302%
31	21.651	3100	3105	3114	rBV	1770385	2583038	22.29%	7.738%
32	24.086	3513	3519	3526	rBV2	435797	941419	8.12%	2.820%
33	24.263	3542	3549	3560	rVB2	1293501	2780069	23.99%	8.328%

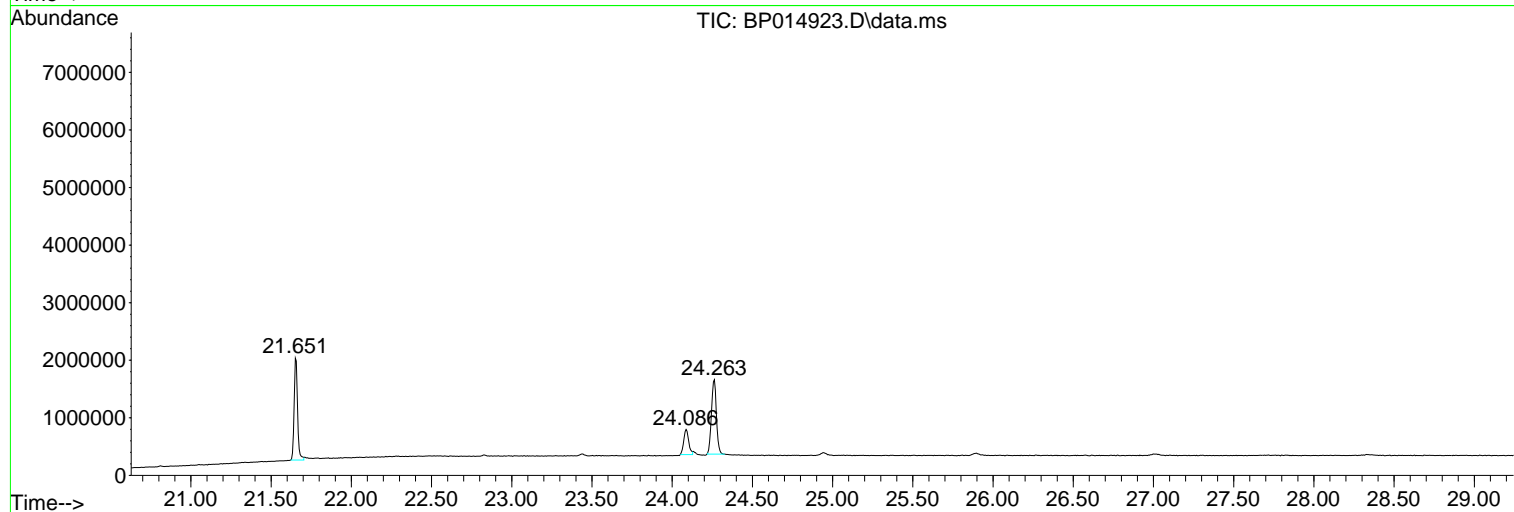
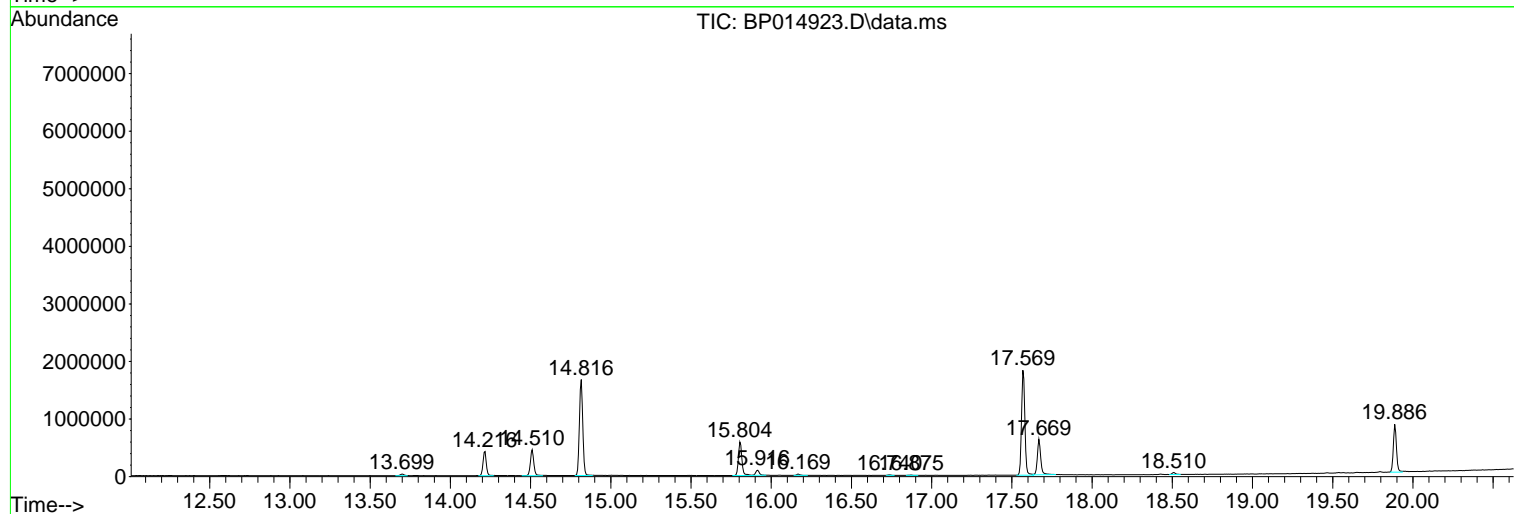
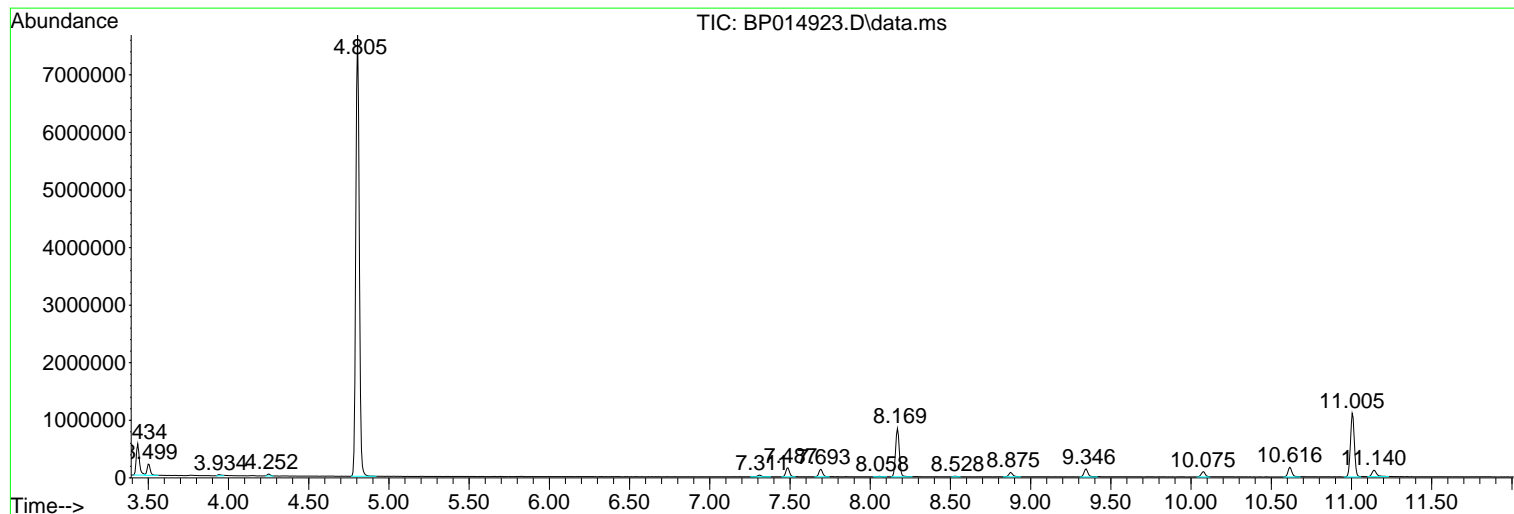
Sum of corrected areas: 33381371

Data Path : Z:\svoasrv\HPCHEM1\BNA_P\Data\BP050123\
Data File : BP014923.D
Acq On : 01 May 2023 19:46
Operator : CG/JU
Sample : 02528-05DL 5X
Misc :
ALS Vial : 18 Sample Multiplier: 1

Instrument :
BNA_P
ClientSampleId :
HOA37DL

Quant Method : Z:\svoasrv\HPCHEM1\BNA_P\Methods\SFAM-EPA-BP042823.MA.M
Quant Title : SVOA CALIBRATION

TIC Library : C:\DATABASE\NIST20.L
TIC Integration Parameters: LSCINT.P



Library Search Compound Report

Data Path : Z:\svoasrv\HPCHEM1\BNA_P\Data\BP050123\
Data File : BP014923.D
Acq On : 01 May 2023 19:46
Operator : CG/JU
Sample : 02528-05DL 5X
Misc :
ALS Vial : 18 Sample Multiplier: 1

Instrument :
BNA_P
ClientSampleId :
HOA37DL

Quant Method : Z:\svoasrv\HPCHEM1\BNA_P\Methods\SFAM-EPA-BP042823.MA.M
Quant Title : SVOA CALIBRATION

TIC Library : C:\DATABASE\NIST20.L
TIC Integration Parameters: LSCINT.P

No Library Search Compounds Detected

Data Path : Z:\svoasrv\HPCHEM1\BNA_P\Data\BP050123\
Data File : BP014923.D
Acq On : 01 May 2023 19:46
Operator : CG/JU
Sample : 02528-05DL 5X
Misc :
ALS Vial : 18 Sample Multiplier: 1

Instrument :
BNA_P
ClientSampleId :
HOA37DL

Quant Method : Z:\svoasrv\HPCHEM1\BNA_P\Methods\SFAM-EPA-BP042823.MA.M
Quant Title : SVOA CALIBRATION

TIC Library : C:\DATABASE\NIST0.L
TIC Integration Parameters: LSCINT.P

TIC Top Hit name	RT	EstConc	Units	Response	#	RT	Resp	Conc
------------------	----	---------	-------	----------	---	----	------	------
