

Data Path : Z:\svoasrv\HPCHEM1\BNA_P\Data\BP051822\
 Data File : BP010403.D
 Acq On : 18 May 2022 16:28
 Operator : CG/JU
 Sample : PB144853BS
 Misc :
 ALS Vial : 15 Sample Multiplier: 1

Instrument :
 BNA_P
 ClientSampleId :
 SLCS853

Manual Integrations
 APPROVED

Reviewed By :Jagrut Upadhyay 05/19/2022
 Supervised By :mohammad ahmed 05/19/2022

Quant Time: May 19 01:58:53 2022
 Quant Method : Z:\svoasrv\HPCHEM1\BNA_P\Methods\SFAM-EPA-BP051322.M
 Quant Title : SVOA CALIBRATION
 QLast Update : Fri May 13 15:04:31 2022
 Response via : Initial Calibration

Compound	R.T.	QIon	Response	Conc	Units	Dev(Min)
Internal Standards						
1) 1,4-Dichlorobenzene-d4	7.892	152	168581	20.000	ng/ul	0.00
20) Naphthalene-d8	10.698	136	747804	20.000	ng/ul	0.00
38) Acenaphthene-d10	14.527	164	501484	20.000	ng/ul	0.00
64) Phenanthrene-d10	17.280	188	1097042	20.000	ng/ul	# 0.00
79) Chrysene-d12	21.362	240	1061052	20.000	ng/ul	# 0.00
88) Perylene-d12	23.792	264	954095	20.000	ng/ul	0.00
System Monitoring Compounds						
3) 1,4-Dioxane-d8	3.346	96	23037m	5.825	ng/uL	0.00
4) Pyridine-d5	3.757	84	324307	28.879	ng/ul	0.00
7) Phenol-d5	7.063	99	484581	34.248	ng/ul	0.00
9) Bis-(2-Chloroethyl)eth...	7.222	67	312361	32.858	ng/ul	0.00
11) 2-Chlorophenol-d4	7.428	132	378102	34.922	ng/ul	0.00
15) 4-Methylphenol-d8	8.610	113	411499	34.221	ng/ul	0.00
21) Nitrobenzene-d5	9.051	128	195995	33.865	ng/ul	0.00
24) 2-Nitrophenol-d4	9.781	143	217057	35.389	ng/ul	0.00
28) 2,4-Dichlorophenol-d3	10.316	165	399612	34.457	ng/ul	0.00
31) 4-Chloroaniline-d4	10.833	131	542392	31.454	ng/ul	0.00
46) Dimethylphthalate-d6	13.939	166	1266956	34.290	ng/ul	0.00
49) Acenaphthylene-d8	14.222	160	1475346	34.618	ng/ul	0.00
54) 4-Nitrophenol-d4	14.727	143	223967m	34.056	ng/ul	0.00
60) Fluorene-d10	15.521	176	1084552	33.741	ng/ul	0.00
65) 4,6-Dinitro-2-methylph...	15.645	200	216671	33.771	ng/ul	0.00
73) Anthracene-d10	17.380	188	1688063	33.982	ng/ul	0.00
81) Pyrene-d10	19.609	212	2029305	36.013	ng/ul	0.00
92) Benzo(a)pyrene-d12	23.633	264	1679435	35.055	ng/ul	0.00
Target Compounds						
2) 1,4-Dioxane	3.375	88	46918	11.452	ng/uL#	18
5) Pyridine	3.775	79	343484	29.431	ng/ul#	35
6) Benzaldehyde	7.034	77	318565	42.589	ng/ul	94
8) Phenol	7.087	94	509837	33.400	ng/ul#	93
10) Bis(2-Chloroethyl)ether	7.316	93	393221	32.763	ng/ul#	75
12) 2-Chlorophenol	7.457	128	386310	34.178	ng/ul	96
13) 2-Methylphenol	8.339	108	386137	33.885	ng/ul	100
14) 2,2'-oxybis(1-Chloropr...	8.422	45	629733	32.194	ng/ul#	82
16) Acetophenone	8.722	105	624805	33.071	ng/ul#	79
17) N-Nitroso-di-n-propyla...	8.710	70	338394	33.467	ng/ul#	71
18) 4-Methylphenol	8.669	108	418931	33.264	ng/ul	93
19) Hexachloroethane	8.975	117	157727	32.086	ng/ul#	81
22) Nitrobenzene	9.098	77	492440	32.378	ng/ul#	84
23) Isophorone	9.628	82	942573	33.530	ng/ul#	98
25) 2-Nitrophenol	9.810	139	228591	33.943	ng/ul#	82
26) 2,4-Dimethylphenol	9.869	107	463507	31.719	ng/ul#	77
27) Bis(2-Chloroethoxy)met...	10.110	93	551553	32.952	ng/ul#	97
29) 2,4-Dichlorophenol	10.345	162	394539	33.274	ng/ul#	84
30) Naphthalene	10.745	128	1264701	32.379	ng/ul	97
32) 4-Chloroaniline	10.857	127	530992	31.028	ng/ul	97
33) Hexachlorobutadiene	11.039	225	270583	32.204	ng/ul	94
34) Caprolactam	11.633	113	143518m	34.683	ng/ul	
35) 4-Chloro-3-methylphenol	11.980	107	470422	33.914	ng/ul#	71
36) 2-Methylnaphthalene	12.357	142	892307	32.270	ng/ul	91

Data Path : Z:\svoasrv\HPCHEM1\BNA_P\Data\BP051822\
 Data File : BP010403.D
 Acq On : 18 May 2022 16:28
 Operator : CG/JU
 Sample : PB144853BS
 Misc :
 ALS Vial : 15 Sample Multiplier: 1

Instrument :
 BNA_P
ClientSampleId :
 SLCS853

Manual Integrations
APPROVED
 Reviewed By :Jagrut Upadhyay 05/19/2022
 Supervised By :mohammad ahmed 05/19/2022

Quant Time: May 19 01:58:53 2022
 Quant Method : Z:\svoasrv\HPCHEM1\BNA_P\Methods\SFAM-EPA-BP051322.M
 Quant Title : SVOA CALIBRATION
 QLast Update : Fri May 13 15:04:31 2022
 Response via : Initial Calibration

Compound	R.T.	QIon	Response	Conc	Units	Dev(Min)
37) 1-Methylnaphthalene	12.575	142	907491	32.504	ng/ul#	95
39) 1,2,4,5-Tetrachloroben...	12.727	216	504702	32.980	ng/ul	94
40) Hexachlorocyclopentadiene	12.710	237	256940	30.882	ng/ul	96
41) 2,4,6-Trichlorophenol	12.963	196	336385	35.263	ng/ul#	83
42) 2,4,5-Trichlorophenol	13.039	196	369291	34.671	ng/ul#	86
43) 1,1'-Biphenyl	13.363	154	1226664	33.325	ng/ul	94
44) 2-Chloronaphthalene	13.404	162	948996	33.380	ng/ul	94
45) 2-Nitroaniline	13.604	65	332536	35.540	ng/ul#	77
47) Dimethylphthalate	13.986	163	1235255	33.704	ng/ul#	92
48) 2,6-Dinitrotoluene	14.104	165	264008	35.337	ng/ul	93
50) Acenaphthylene	14.251	152	1549648	33.612	ng/ul	96
51) 3-Nitroaniline	14.433	138	257498	36.723	ng/ul#	79
52) Acenaphthene	14.592	153	1003337	33.360	ng/ul	97
53) 2,4-Dinitrophenol	14.639	184	130122	31.196	ng/ul#	75
55) 4-Nitrophenol	14.739	109	187681	32.095	ng/ul#	39
56) Dibenzofuran	14.927	168	1456426	33.043	ng/ul	99
57) 2,4-Dinitrotoluene	14.892	165	379277	35.265	ng/ul#	80
58) 2,3,4,6-Tetrachlorophenol	15.157	232	314362	34.322	ng/ul#	88
59) Diethylphthalate	15.351	149	1265242	33.833	ng/ul	93
61) Fluorene	15.580	166	1193046	33.099	ng/ul	92
62) 4-Chlorophenyl-phenyle...	15.569	204	617409	32.928	ng/ul	98
63) 4-Nitroaniline	15.598	138	267007	38.565	ng/ul#	76
66) 4,6-Dinitro-2-methylph...	15.657	198	213911	33.432	ng/ul#	87
67) N-Nitrosodiphenylamine	15.786	169	1046544	34.017	ng/ul	95
68) 4-Bromophenyl-phenylether	16.468	248	379508	33.590	ng/ul	95
69) Hexachlorobenzene	16.586	284	430836	33.152	ng/ul#	89
70) Atrazine	16.745	200	405017	32.862	ng/ul	91
71) Pentachlorophenol	16.933	266	265652	32.578	ng/ul#	85
72) Phenanthrene	17.321	178	1947715	33.268	ng/ul	98
74) Anthracene	17.415	178	1941430	33.055	ng/ul	98
75) 1,2,3,4-Tetrachloroben...	13.327	216	532343	31.930	ng/uL#	87
76) Pentachlorobenzene	14.851	250	503746	33.301	ng/uL	91
77) Carbazole	17.686	167	1744291	33.793	ng/ul#	96
78) Di-n-butylphthalate	18.233	149	2214802	35.230	ng/ul#	93
80) Fluoranthene	19.286	202	2361984	36.070	ng/ul	98
82) Pyrene	19.639	202	2389607	34.968	ng/ul	97
83) Butylbenzylphthalate	20.509	149	1033718	37.830	ng/ul#	81
84) 3,3'-Dichlorobenzidine	21.280	252	780821	36.614	ng/ul#	96
85) Benzo(a)anthracene	21.345	228	2260508	34.069	ng/ul	94
86) Bis(2-ethylhexyl)phtha...	21.274	149	1503494	37.495	ng/ul#	82
87) Chrysene	21.404	228	2216325	33.959	ng/ul	99
89) Di-n-octyl phthalate	22.203	149	2584821	36.114	ng/ul	100
90) Benzo(b)fluoranthene	23.050	252	2175478	34.209	ng/ul	100
91) Benzo(k)fluoranthene	23.098	252	2071688	34.277	ng/ul#	97
93) Benzo(a)pyrene	23.686	252	2001928	33.883	ng/ul#	99
94) Indeno(1,2,3-cd)pyrene	26.321	276	1892510	34.048	ng/ul#	93
95) Dibenzo(a,h)anthracene	26.339	278	1624895	33.690	ng/ul#	95
96) Benzo(g,h,i)perylene	27.097	276	1584953	34.149	ng/ul#	91

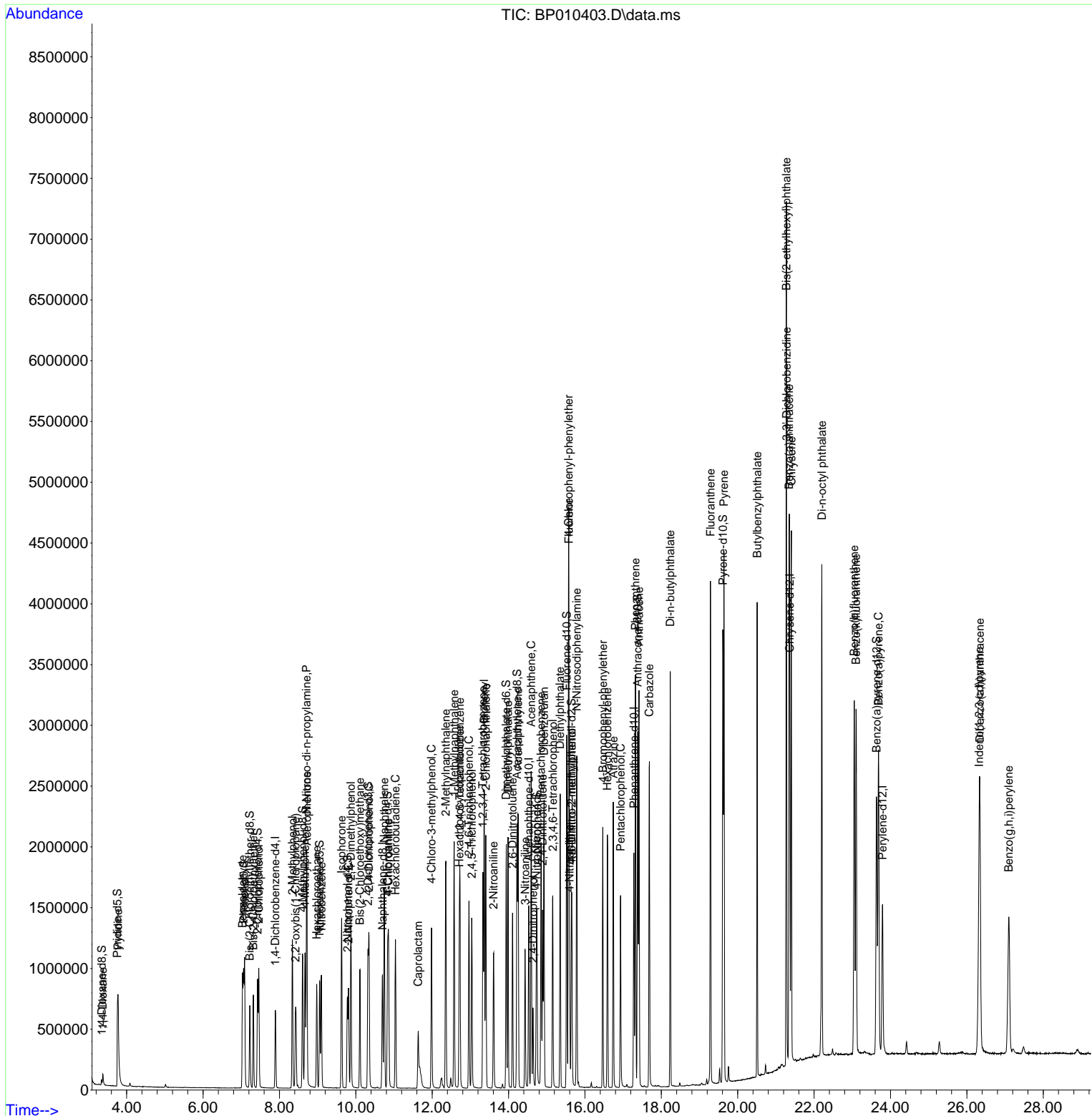
(#) = qualifier out of range (m) = manual integration (+) = signals summed

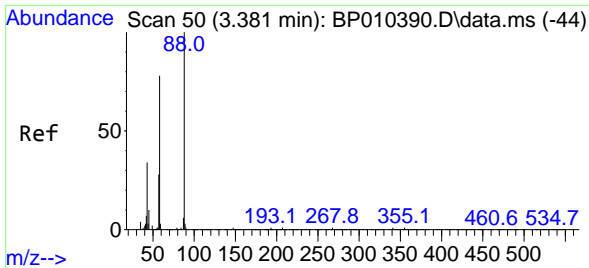
Data Path : Z:\svoasrv\HPCHEM1\BNA_P\Data\BP051822\
 Data File : BP010403.D
 Acq On : 18 May 2022 16:28
 Operator : CG/JU
 Sample : PB144853BS
 Misc :
 ALS Vial : 15 Sample Multiplier: 1

Instrument :
 BNA_P
ClientSampleId :
 SLCS853

Quant Time: May 19 01:58:53 2022
 Quant Method : Z:\svoasrv\HPCHEM1\BNA_P\Methods\SFAM-EPA-BP051322.M
 Quant Title : SVOA CALIBRATION
 QLast Update : Fri May 13 15:04:31 2022
 Response via : Initial Calibration

Manual Integrations
APPROVED
 Reviewed By :Jagrut Upadhyay 05/19/2022
 Supervised By :mohammad ahmed 05/19/2022





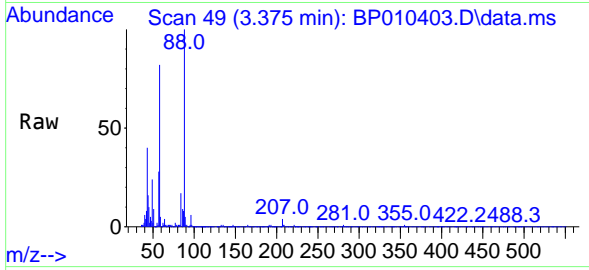
#2
 1,4-Dioxane
 Concen: 11.452 ng/uL
 RT: 3.375 min Scan# 49
 Delta R.T. -0.006 min
 Lab File: BP010403.D
 Acq: 18 May 2022 16:28

Instrument :

BNA_P

Client SampleId :

SLCS853



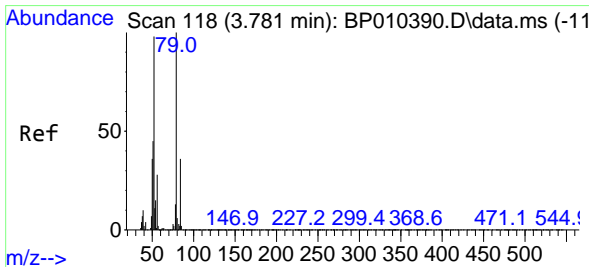
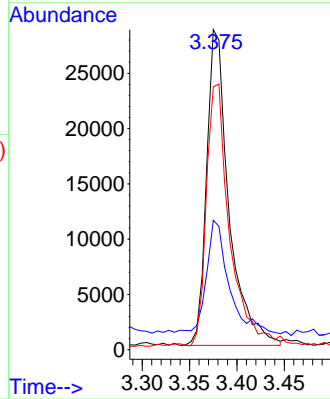
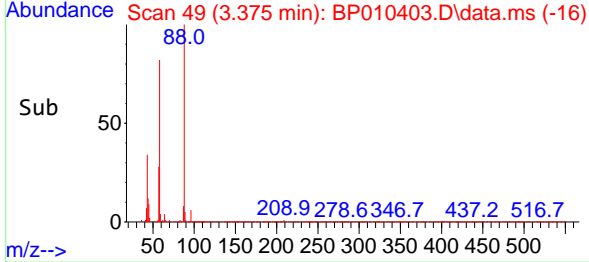
Tgt Ion: 88 Resp: 46918
 Ion Ratio Lower Upper
 88 100
 43 40.5 6.8 10.2
 58 82.1 28.4 42.6

Manual Integrations

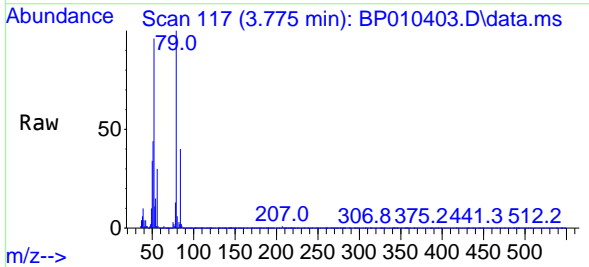
APPROVED

Reviewed By :Jagrut Upadhyay 05/19/2022

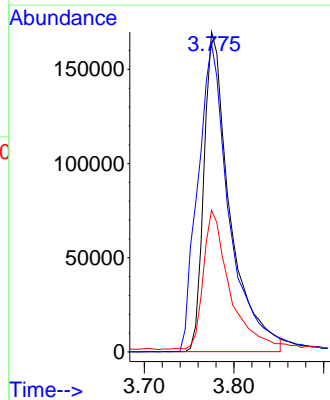
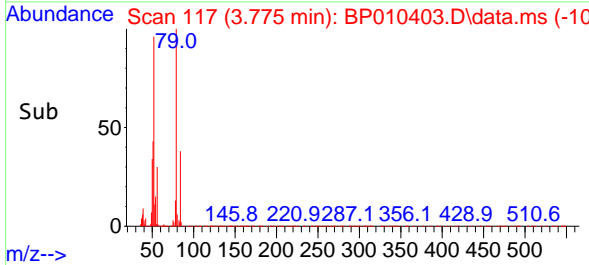
Supervised By :mohammad ahmed 05/19/2022

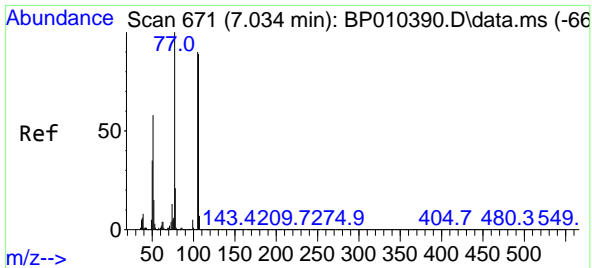


#5
 Pyridine
 Concen: 29.431 ng/uL
 RT: 3.775 min Scan# 117
 Delta R.T. -0.006 min
 Lab File: BP010403.D
 Acq: 18 May 2022 16:28



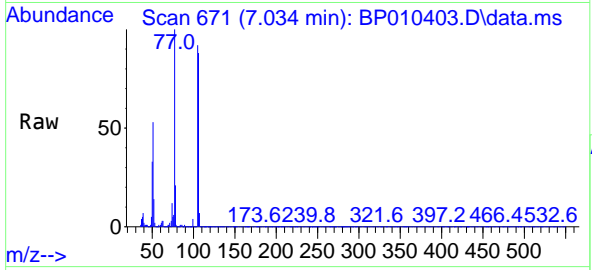
Tgt Ion: 79 Resp: 343484
 Ion Ratio Lower Upper
 79 100
 52 96.3 35.5 53.3#
 51 44.3 20.2 30.4#





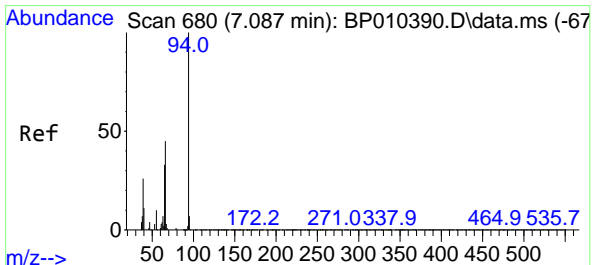
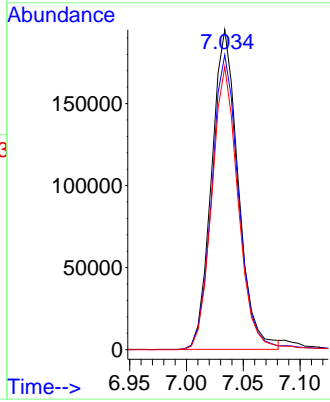
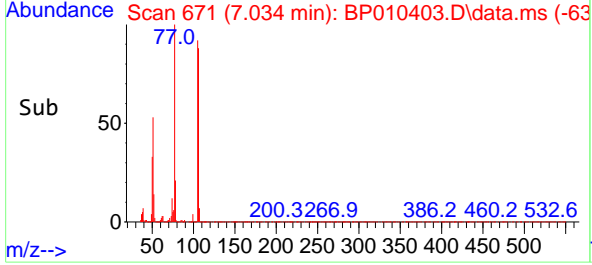
#6
Benzaldehyde
Concen: 42.589 ng/u1
RT: 7.034 min Scan# 61
Delta R.T. -0.006 min
Lab File: BP010403.D
Acq: 18 May 2022 16:28

Instrument : BNA_P
ClientSampleId : SLCS853

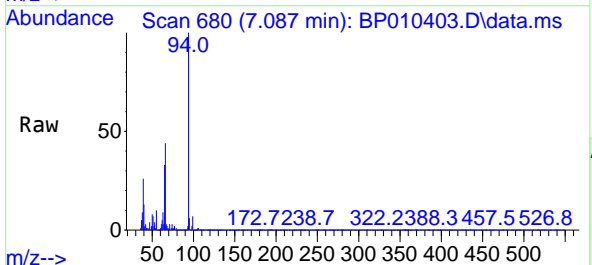


Tgt Ion: 77 Resp: 31856
Ion Ratio Lower Upper
77 100
105 92.1 77.0 115.4
106 88.4 77.0 115.4

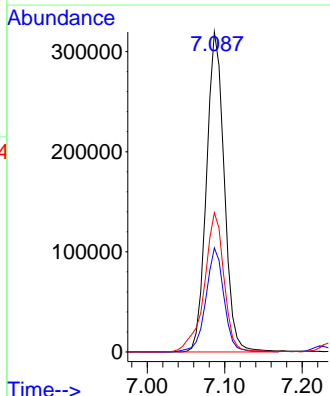
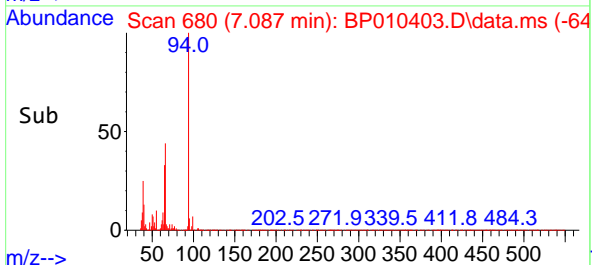
Manual Integrations
APPROVED
Reviewed By :Jagrut Upadhyay 05/19/2022
Supervised By :mohammad ahmed 05/19/2022

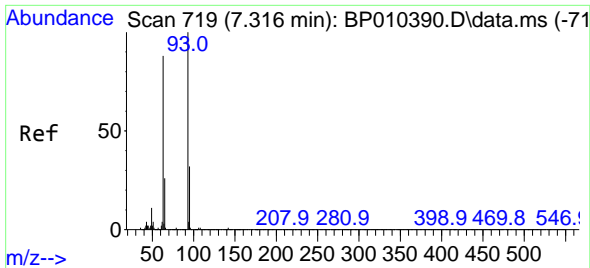


#8
Phenol
Concen: 33.400 ng/u1
RT: 7.087 min Scan# 680
Delta R.T. -0.006 min
Lab File: BP010403.D
Acq: 18 May 2022 16:28



Tgt Ion: 94 Resp: 509837
Ion Ratio Lower Upper
94 100
65 32.5 19.0 28.6#
66 43.5 34.6 51.8





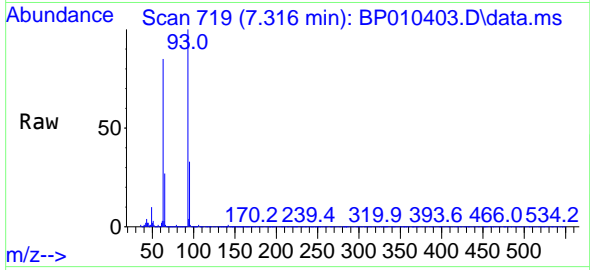
#10
 Bis(2-Chloroethyl)ether
 Concen: 32.763 ng/ul
 RT: 7.316 min Scan# 719
 Delta R.T. -0.006 min
 Lab File: BP010403.D
 Acq: 18 May 2022 16:28

Instrument :

BNA_P

Client SampleId :

SLCS853

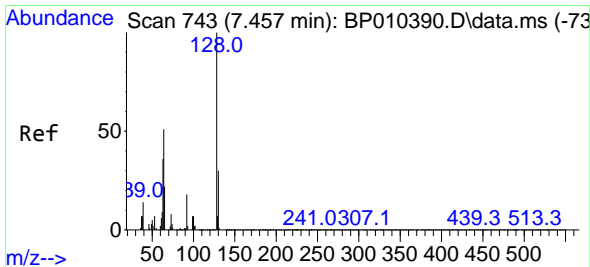
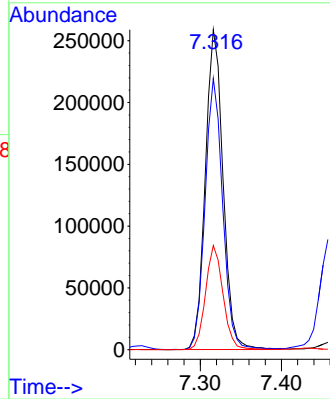
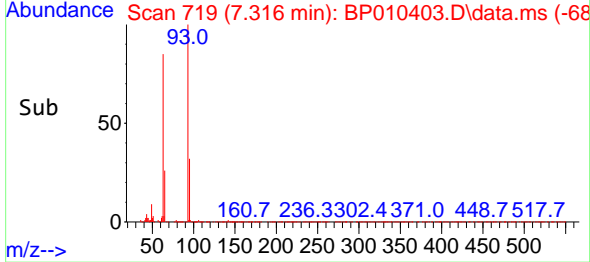


Tgt Ion: 93 Resp: 39322
 Ion Ratio Lower Upper
 93 100
 63 84.8 45.0 67.4
 95 32.5 26.3 39.5

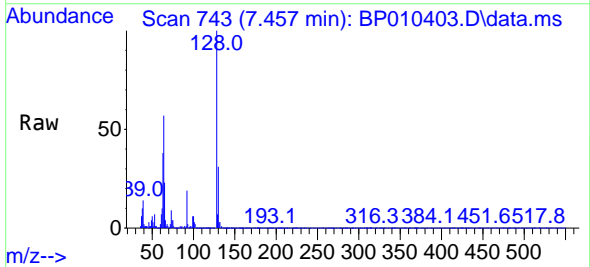
Manual Integrations

APPROVED

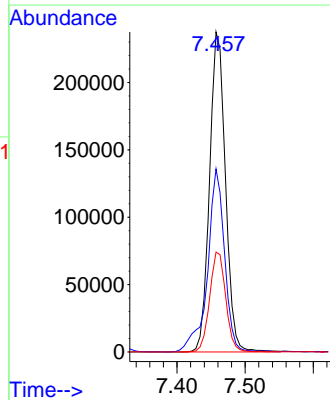
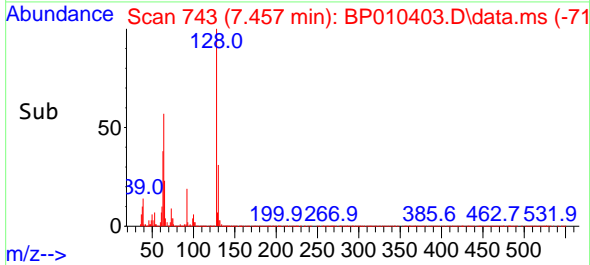
Reviewed By :Jagrut Upadhyay 05/19/2022
 Supervised By :mohammad ahmed 05/19/2022

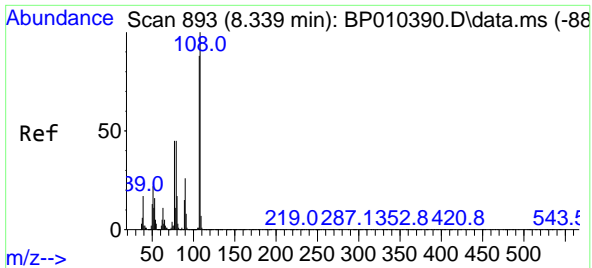


#12
 2-Chlorophenol
 Concen: 34.178 ng/ul
 RT: 7.457 min Scan# 743
 Delta R.T. -0.006 min
 Lab File: BP010403.D
 Acq: 18 May 2022 16:28



Tgt Ion:128 Resp: 386310
 Ion Ratio Lower Upper
 128 100
 64 57.2 45.3 67.9
 130 31.2 29.0 43.6





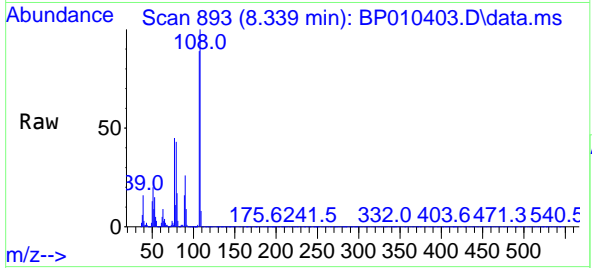
#13
 2-Methylphenol
 Concen: 33.885 ng/u1
 RT: 8.339 min Scan# 893
 Delta R.T. -0.006 min
 Lab File: BP010403.D
 Acq: 18 May 2022 16:28

Instrument :

BNA_P

Client Sample Id :

SLCS853

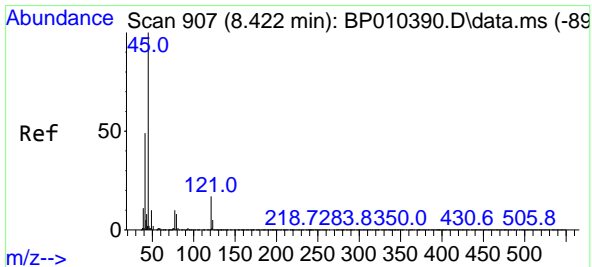
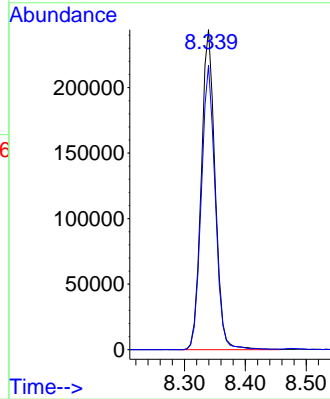
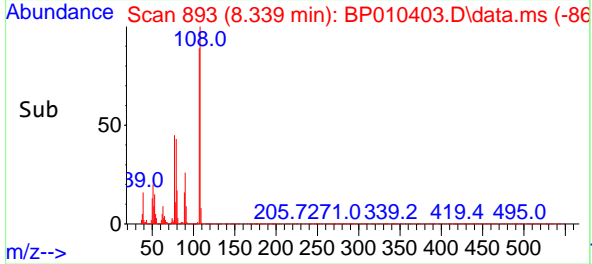


Tgt Ion: 108 Resp: 38613
 Ion Ratio Lower Upper
 108 100
 107 88.8 70.8 106.2

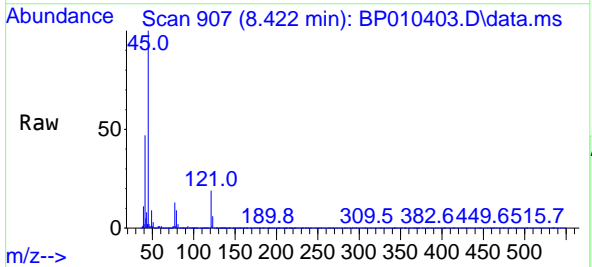
Manual Integrations

APPROVED

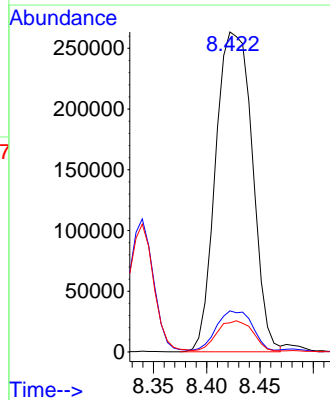
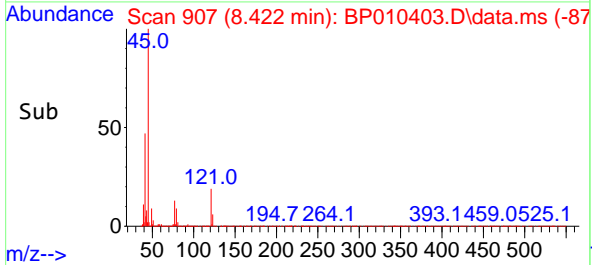
Reviewed By :Jagrut Upadhyay 05/19/2022
 Supervised By :mohammad ahmed 05/19/2022

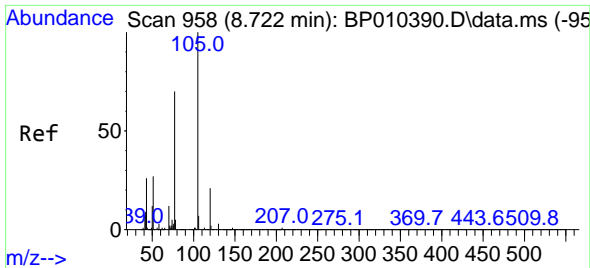


#14
 2,2'-oxybis(1-Chloropropane)
 Concen: 32.194 ng/u1
 RT: 8.422 min Scan# 907
 Delta R.T. -0.006 min
 Lab File: BP010403.D
 Acq: 18 May 2022 16:28



Tgt Ion: 45 Resp: 629733
 Ion Ratio Lower Upper
 45 100
 77 12.8 17.1 25.7#
 79 9.1 13.2 19.8#





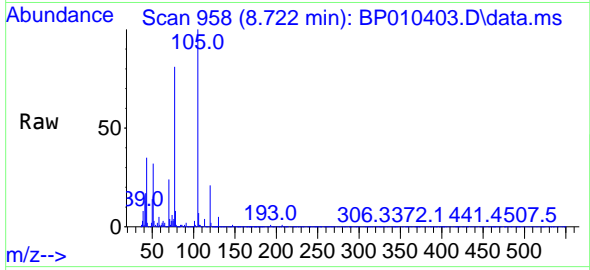
#16
 Acetophenone
 Concen: 33.071 ng/u1
 RT: 8.722 min Scan# 91
 Delta R.T. -0.000 min
 Lab File: BP010403.D
 Acq: 18 May 2022 16:28

Instrument :

BNA_P

ClientSampleId :

SLCS853

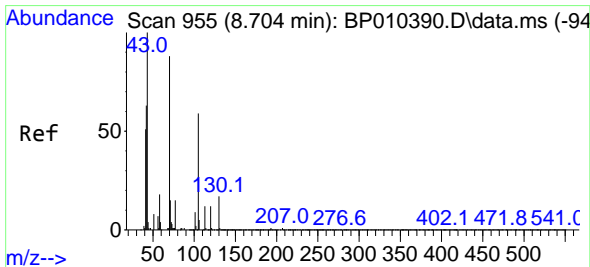
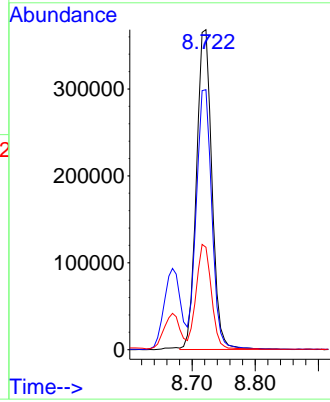
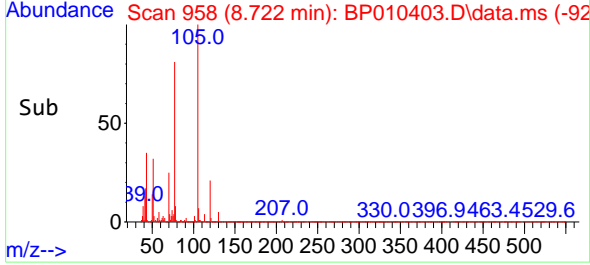


Tgt Ion: 105 Resp: 62480
 Ion Ratio Lower Upper
 105 100
 77 81.2 53.4 80.2
 51 32.0 13.8 20.8

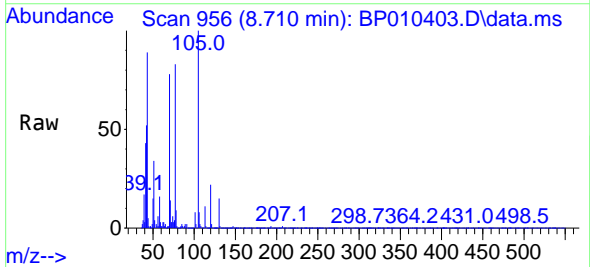
Manual Integrations

APPROVED

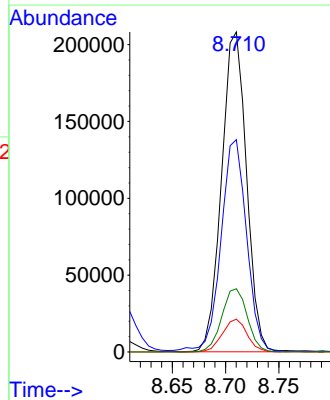
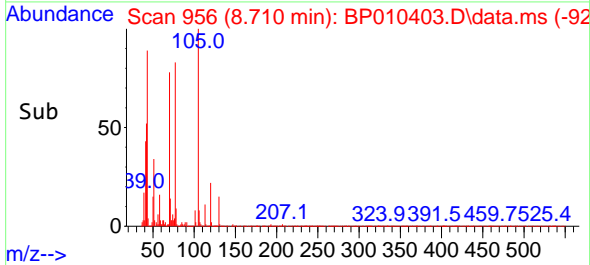
Reviewed By :Jagrut Upadhyay 05/19/2022
 Supervised By :mohammad ahmed 05/19/2022

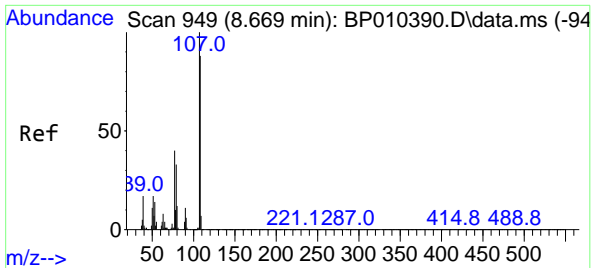


#17
 N-Nitroso-di-n-propylamine
 Concen: 33.467 ng/u1
 RT: 8.710 min Scan# 956
 Delta R.T. -0.000 min
 Lab File: BP010403.D
 Acq: 18 May 2022 16:28



Tgt Ion: 70 Resp: 338394
 Ion Ratio Lower Upper
 70 100
 42 66.3 31.8 47.8#
 101 10.2 15.6 23.4#
 130 19.8 13.7 20.5





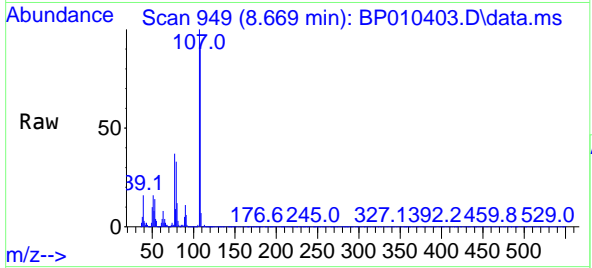
#18
 4-Methylphenol
 Concen: 33.264 ng/u1
 RT: 8.669 min Scan# 949
 Delta R.T. -0.000 min
 Lab File: BP010403.D
 Acq: 18 May 2022 16:28

Instrument :

BNA_P

Client SampleId :

SLCS853

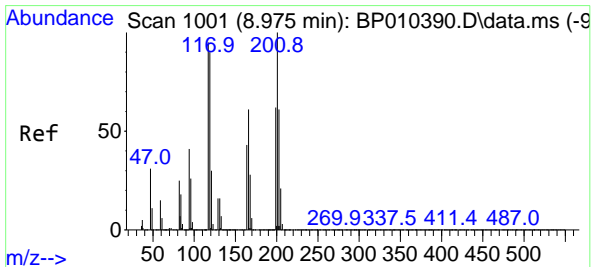
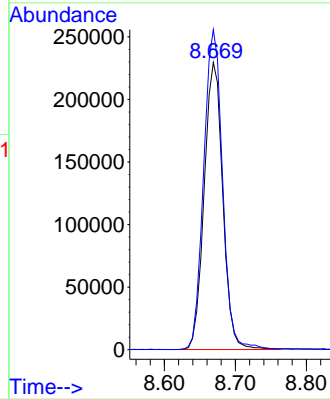
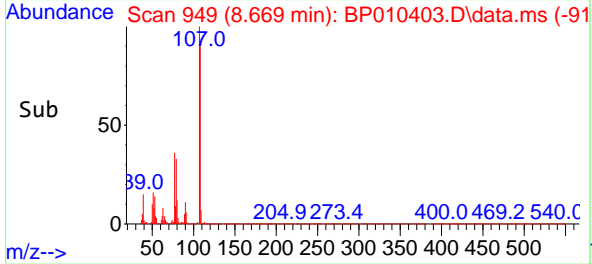


Tgt Ion:108 Resp: 41893
 Ion Ratio Lower Upper
 108 100
 107 111.4 83.6 125.4

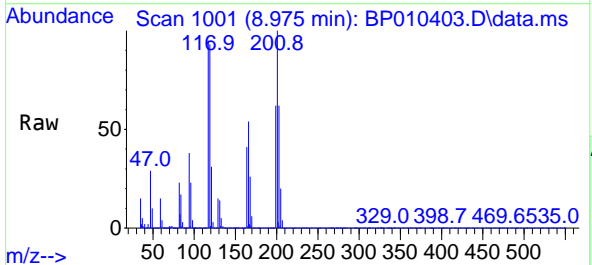
Manual Integrations

APPROVED

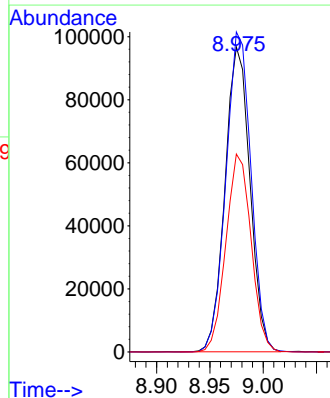
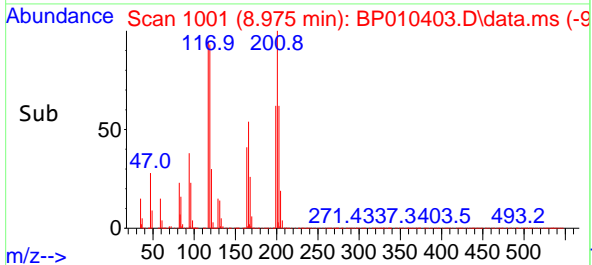
Reviewed By :Jagrut Upadhyay 05/19/2022
 Supervised By :mohammad ahmed 05/19/2022

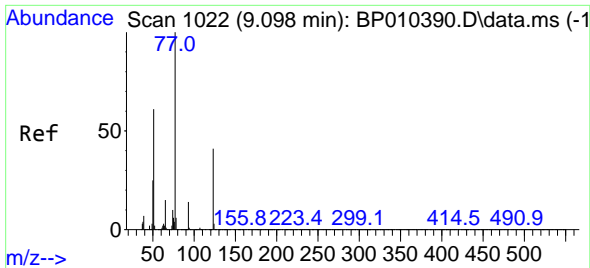


#19
 Hexachloroethane
 Concen: 32.086 ng/u1
 RT: 8.975 min Scan# 1001
 Delta R.T. -0.006 min
 Lab File: BP010403.D
 Acq: 18 May 2022 16:28



Tgt Ion:117 Resp: 157727
 Ion Ratio Lower Upper
 117 100
 201 104.9 106.5 159.7#
 199 64.9 59.0 88.6





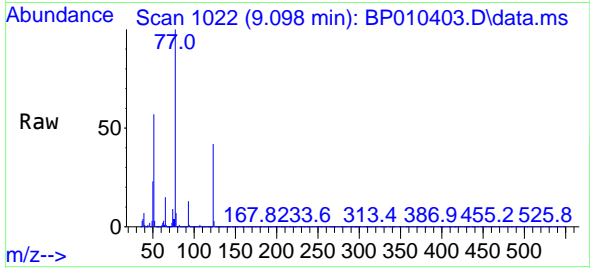
#22
 Nitrobenzene
 Concen: 32.378 ng/u1
 RT: 9.098 min Scan# 1022
 Delta R.T. -0.000 min
 Lab File: BP010403.D
 Acq: 18 May 2022 16:28

Instrument :

BNA_P

Client SampleId :

SLCS853

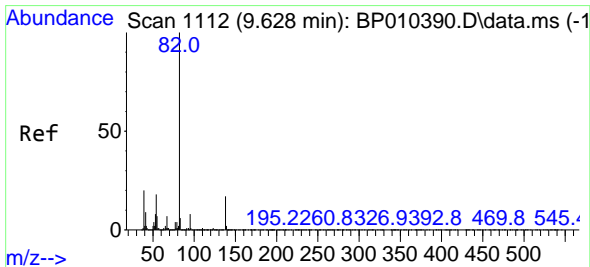
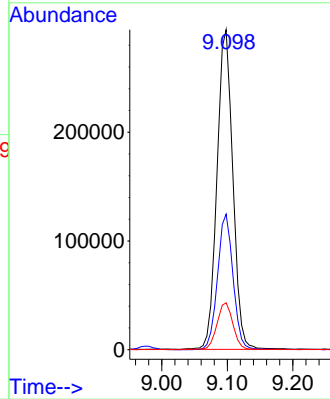
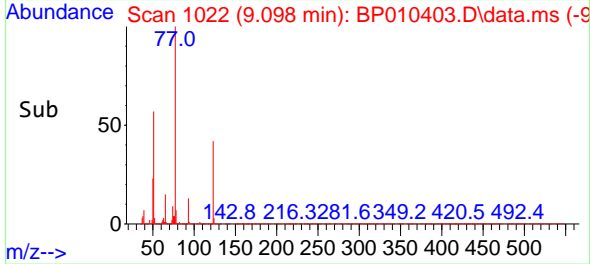


Tgt Ion: 77 Resp: 492440
 Ion Ratio Lower Upper
 77 100
 123 42.4 42.3 63.5
 65 14.6 5.8 8.8

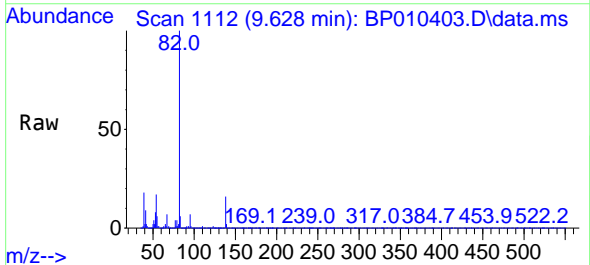
Manual Integrations

APPROVED

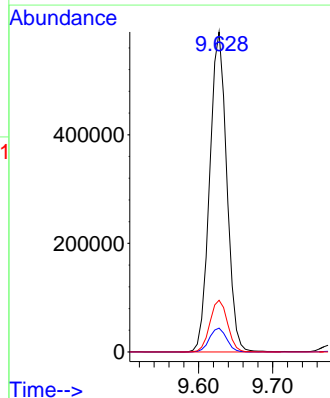
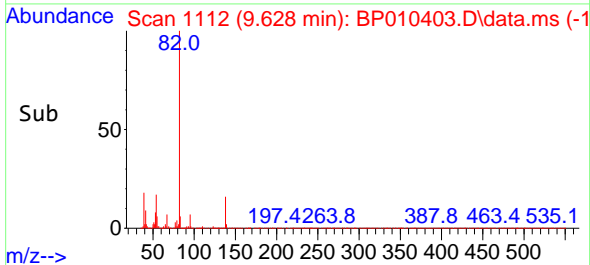
Reviewed By :Jagrut Upadhyay 05/19/2022
 Supervised By :mohammad ahmed 05/19/2022

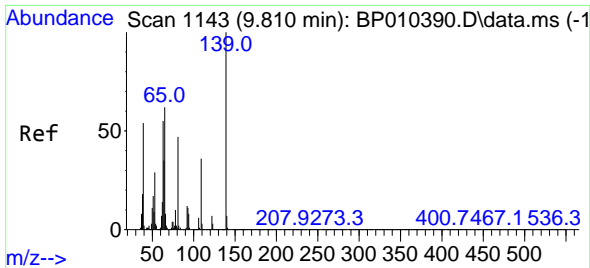


#23
 Isophorone
 Concen: 33.530 ng/u1
 RT: 9.628 min Scan# 1112
 Delta R.T. -0.000 min
 Lab File: BP010403.D
 Acq: 18 May 2022 16:28



Tgt Ion: 82 Resp: 942573
 Ion Ratio Lower Upper
 82 100
 95 7.5 7.8 11.8#
 138 16.2 12.9 19.3





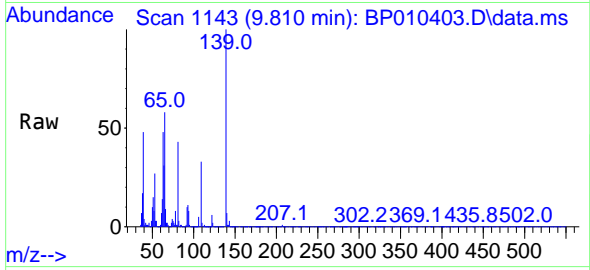
#25
 2-Nitrophenol
 Concen: 33.943 ng/u1
 RT: 9.810 min Scan# 1143
 Delta R.T. -0.006 min
 Lab File: BP010403.D
 Acq: 18 May 2022 16:28

Instrument :

BNA_P

ClientSampleId :

SLCS853

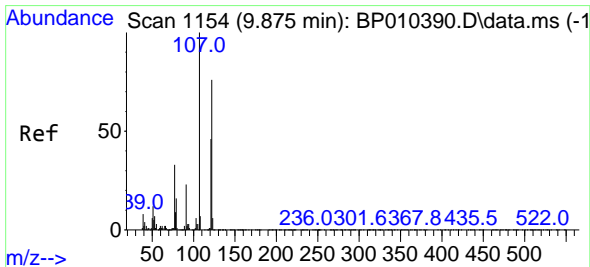
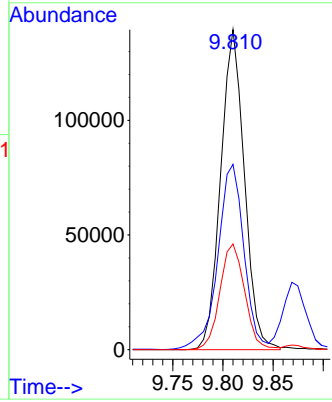
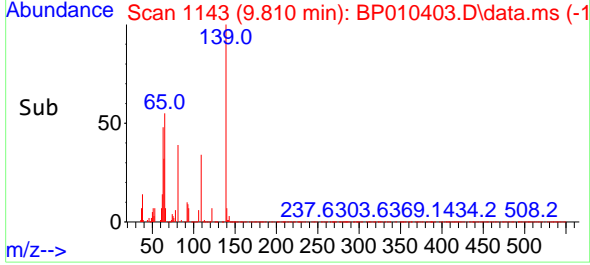


Tgt Ion:139 Resp: 22859
 Ion Ratio Lower Upper
 139 100
 65 57.9 49.4 74.2
 109 33.1 44.7 67.1

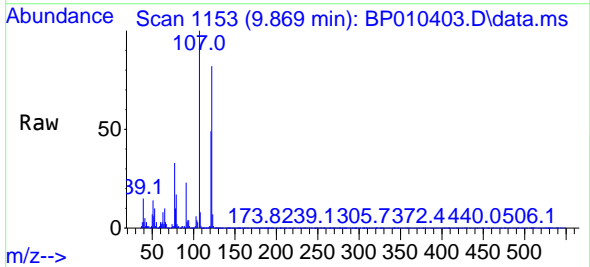
Manual Integrations

APPROVED

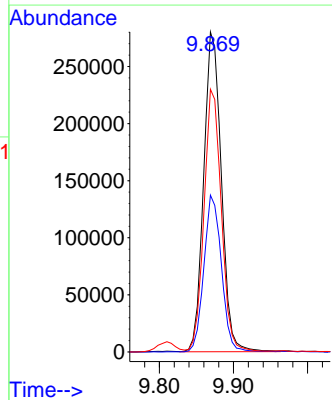
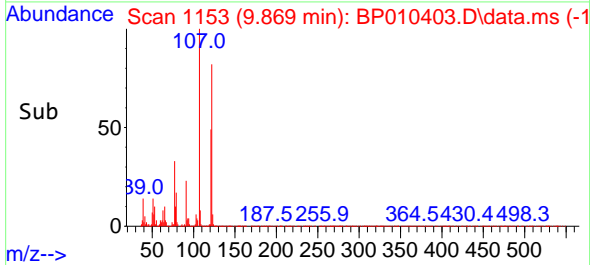
Reviewed By :Jagrut Upadhyay 05/19/2022
 Supervised By :mohammad ahmed 05/19/2022

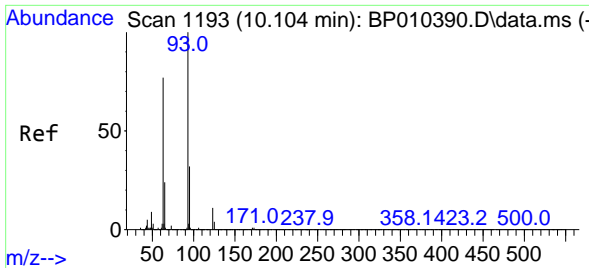


#26
 2,4-Dimethylphenol
 Concen: 31.719 ng/u1
 RT: 9.869 min Scan# 1153
 Delta R.T. -0.006 min
 Lab File: BP010403.D
 Acq: 18 May 2022 16:28



Tgt Ion:107 Resp: 463507
 Ion Ratio Lower Upper
 107 100
 121 49.0 34.1 51.1
 122 82.1 46.3 69.5#





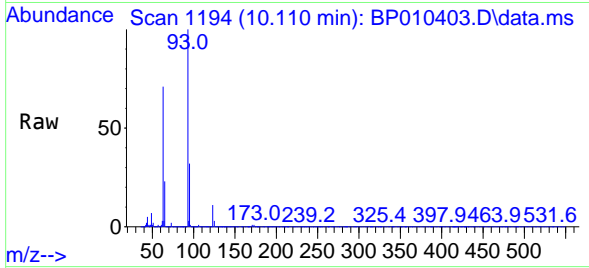
#27
 Bis(2-Chloroethoxy)methane
 Concen: 32.952 ng/ul
 RT: 10.110 min Scan# 1193
 Delta R.T. -0.000 min
 Lab File: BP010403.D
 Acq: 18 May 2022 16:28

Instrument :

BNA_P

ClientSampleId :

SLCS853

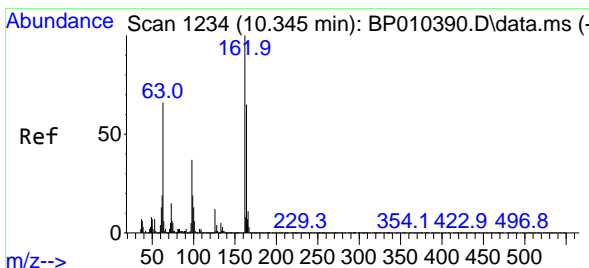
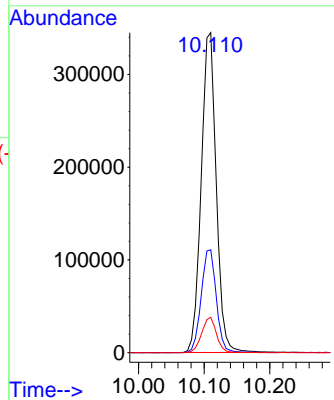
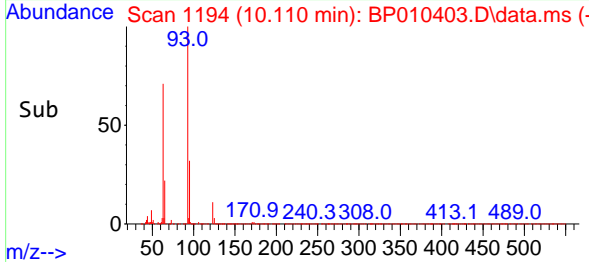


Tgt Ion: 93 Resp: 55155
 Ion Ratio Lower Upper
 93 100
 95 32.2 26.2 39.4
 123 11.1 6.2 9.4

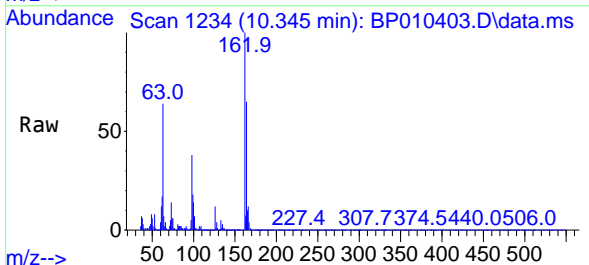
Manual Integrations

APPROVED

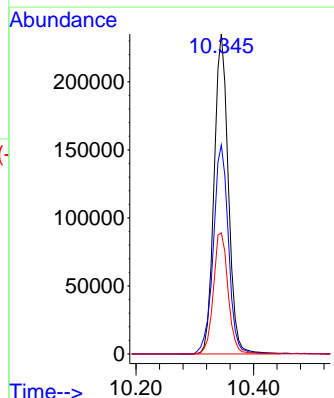
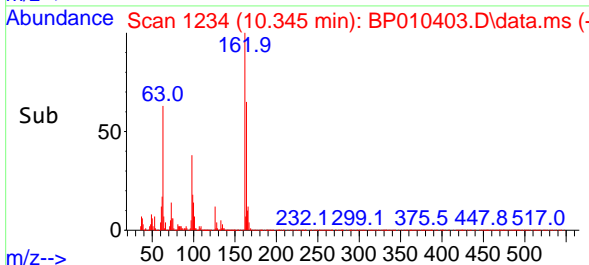
Reviewed By :Jagrut Upadhyay 05/19/2022
 Supervised By :mohammad ahmed 05/19/2022

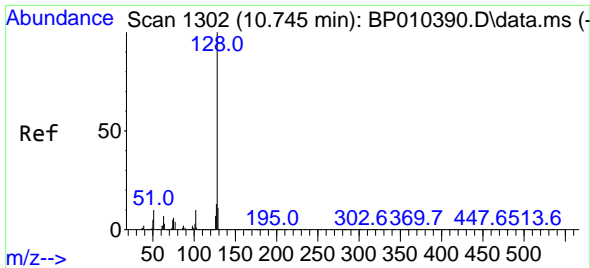


#29
 2,4-Dichlorophenol
 Concen: 33.274 ng/ul
 RT: 10.345 min Scan# 1234
 Delta R.T. -0.006 min
 Lab File: BP010403.D
 Acq: 18 May 2022 16:28



Tgt Ion:162 Resp: 394539
 Ion Ratio Lower Upper
 162 100
 164 65.3 37.0 55.6#
 98 37.8 31.0 46.6





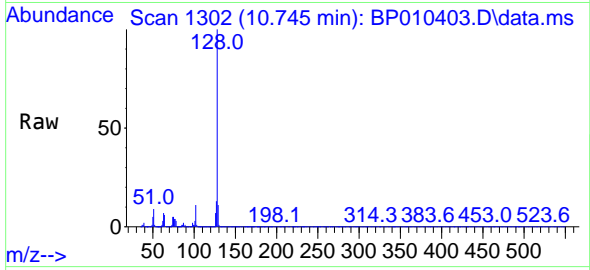
#30
 Naphthalene
 Concen: 32.379 ng/u1
 RT: 10.745 min Scan# 1302
 Delta R.T. -0.006 min
 Lab File: BP010403.D
 Acq: 18 May 2022 16:28

Instrument :

BNA_P

ClientSampleId :

SLCS853

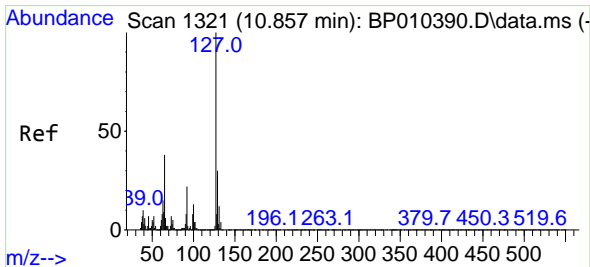
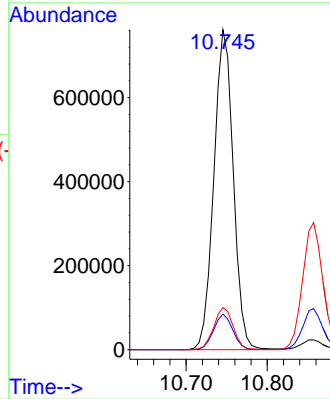
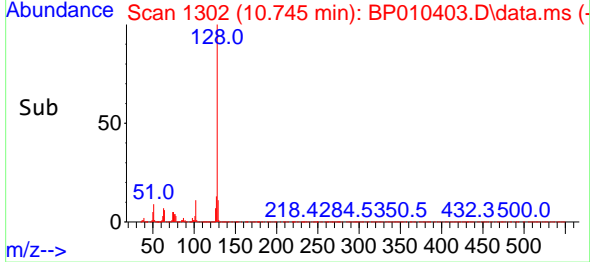


Tgt Ion:128 Resp: 126470
 Ion Ratio Lower Upper
 128 100
 129 11.1 8.6 13.0
 127 13.2 12.2 18.4

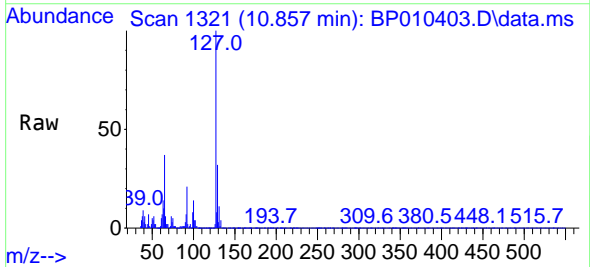
Manual Integrations

APPROVED

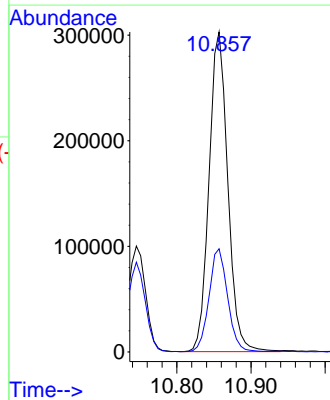
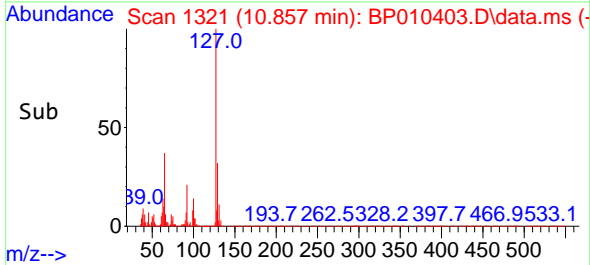
Reviewed By :Jagrut Upadhyay 05/19/2022
 Supervised By :mohammad ahmed 05/19/2022

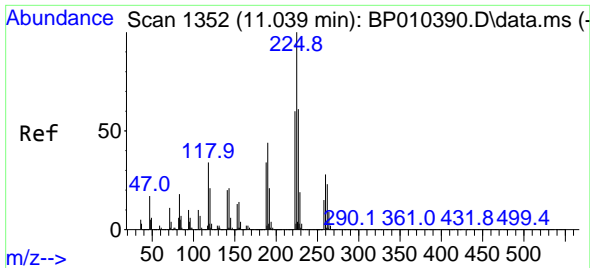


#32
 4-Chloroaniline
 Concen: 31.028 ng/u1
 RT: 10.857 min Scan# 1321
 Delta R.T. -0.006 min
 Lab File: BP010403.D
 Acq: 18 May 2022 16:28



Tgt Ion:127 Resp: 530992
 Ion Ratio Lower Upper
 127 100
 129 32.3 24.6 37.0





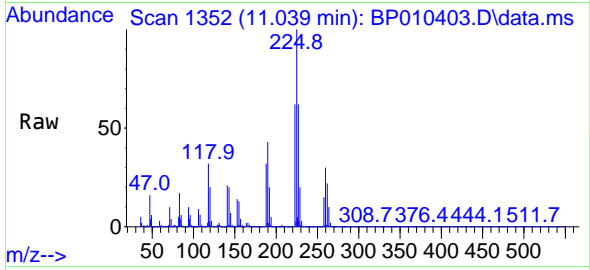
#33
 Hexachlorobutadiene
 Concen: 32.204 ng/u1
 RT: 11.039 min Scan# 11
 Delta R.T. -0.006 min
 Lab File: BP010403.D
 Acq: 18 May 2022 16:28

Instrument :

BNA_P

ClientSampleId :

SLCS853

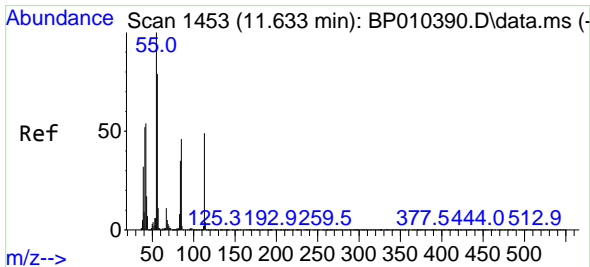
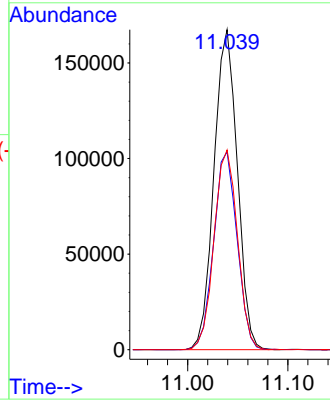
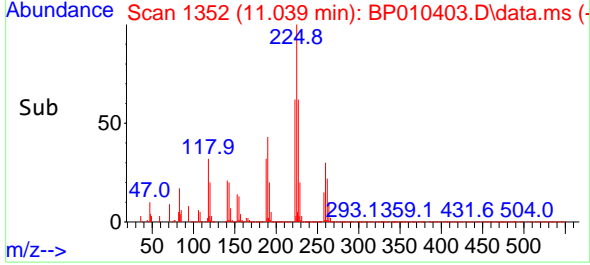


Tgt Ion:225 Resp: 27058
 Ion Ratio Lower Upper
 225 100
 223 61.9 53.4 80.0
 227 62.4 53.8 80.8

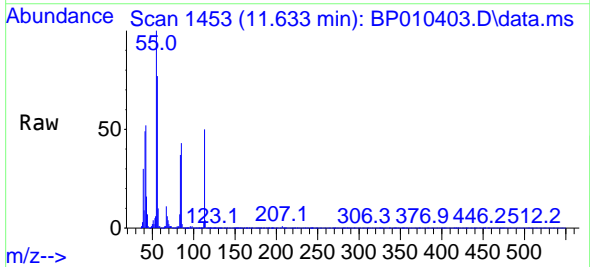
Manual Integrations

APPROVED

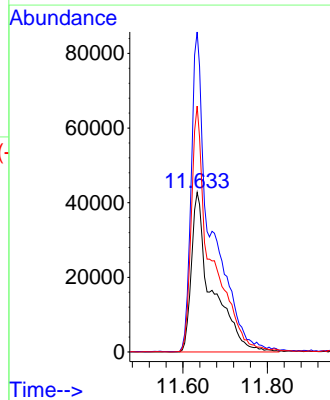
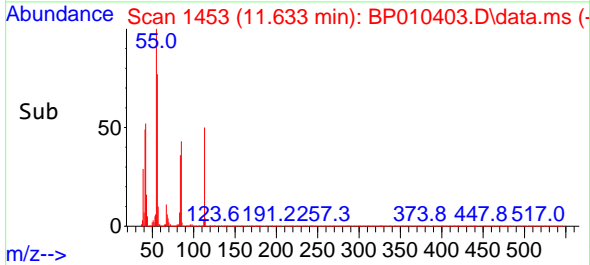
Reviewed By :Jagrut Upadhyay 05/19/2022
 Supervised By :mohammad ahmed 05/19/2022

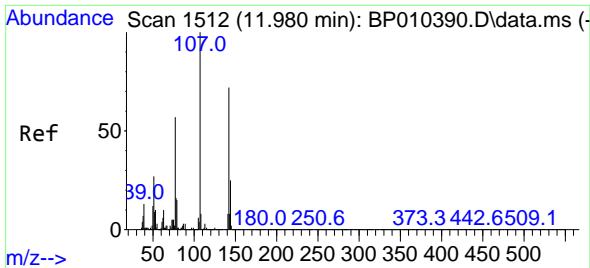


#34
 Caprolactam
 Concen: 34.683 ng/u1 m
 RT: 11.633 min Scan# 1453
 Delta R.T. -0.000 min
 Lab File: BP010403.D
 Acq: 18 May 2022 16:28



Tgt Ion:113 Resp: 143518
 Ion Ratio Lower Upper
 113 100
 55 200.7 58.2 87.2#
 56 154.3 68.6 103.0#





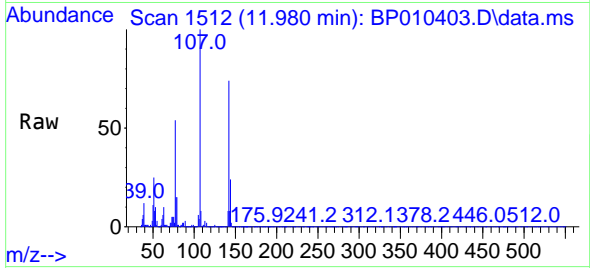
#35
 4-Chloro-3-methylphenol
 Concen: 33.914 ng/ul
 RT: 11.980 min Scan# 11
 Delta R.T. -0.006 min
 Lab File: BP010403.D
 Acq: 18 May 2022 16:28

Instrument :

BNA_P

ClientSampleId :

SLCS853

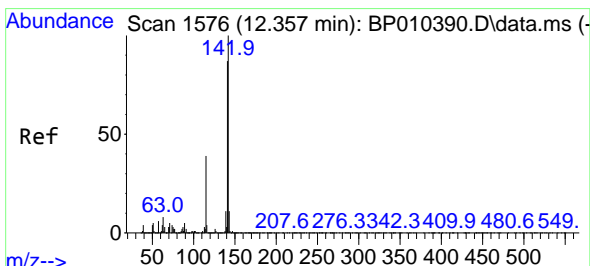
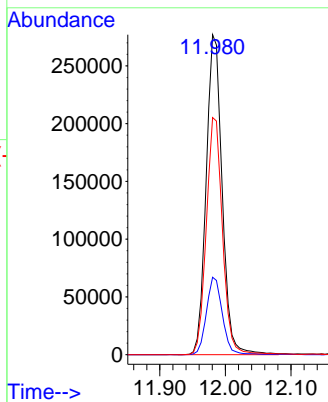
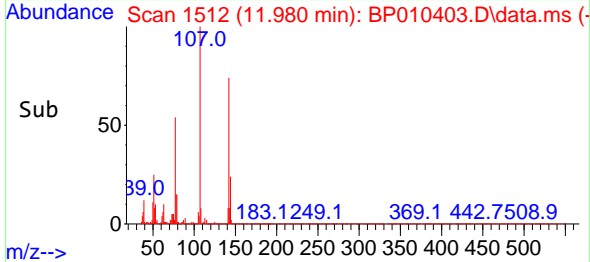


Tgt Ion:107 Resp: 47042
 Ion Ratio Lower Upper
 107 100
 144 24.2 15.8 23.8
 142 74.1 38.9 58.3

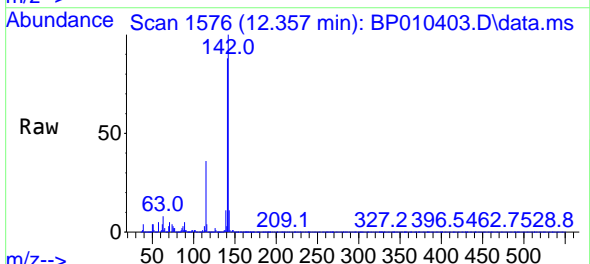
Manual Integrations

APPROVED

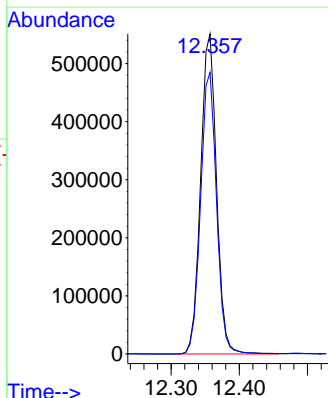
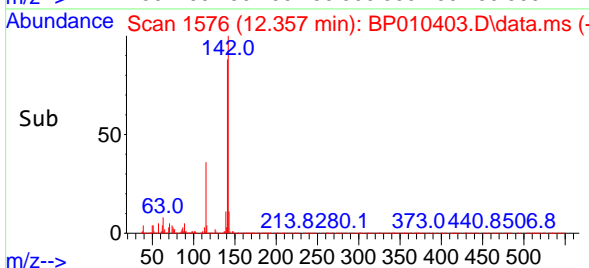
Reviewed By :Jagrut Upadhyay 05/19/2022
 Supervised By :mohammad ahmed 05/19/2022

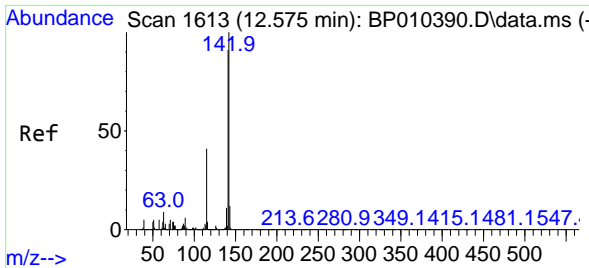


#36
 2-Methylnaphthalene
 Concen: 32.270 ng/ul
 RT: 12.357 min Scan# 1576
 Delta R.T. -0.006 min
 Lab File: BP010403.D
 Acq: 18 May 2022 16:28



Tgt Ion:142 Resp: 892307
 Ion Ratio Lower Upper
 142 100
 141 88.0 64.3 96.5





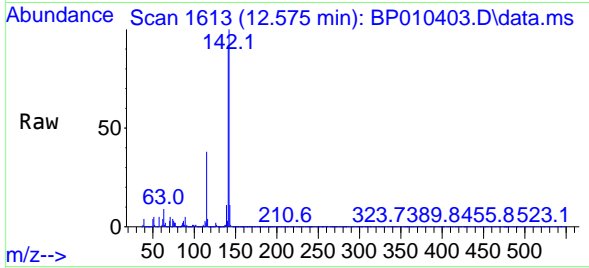
#37
 1-Methylnaphthalene
 Concen: 32.504 ng/u1
 RT: 12.575 min Scan# 1613
 Delta R.T. -0.006 min
 Lab File: BP010403.D
 Acq: 18 May 2022 16:28

Instrument :

BNA_P

ClientSampleId :

SLCS853

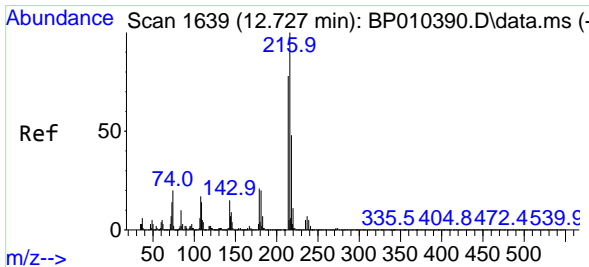
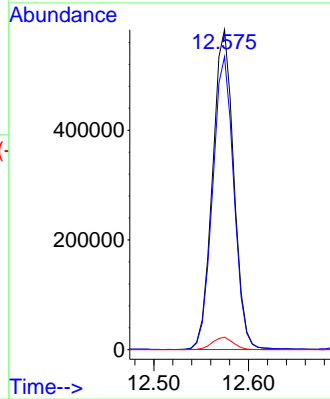
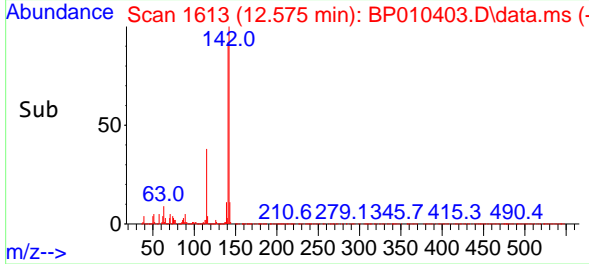


Tgt Ion:142 Resp: 90749
 Ion Ratio Lower Upper
 142 100
 141 91.5 69.8 104.8
 116 3.9 5.6 8.4

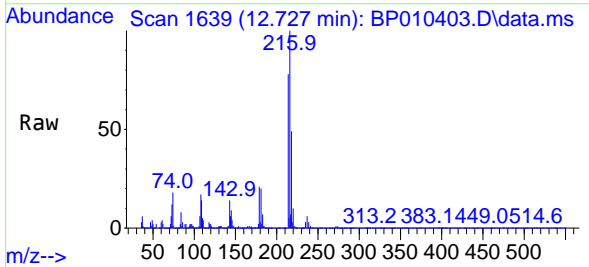
Manual Integrations

APPROVED

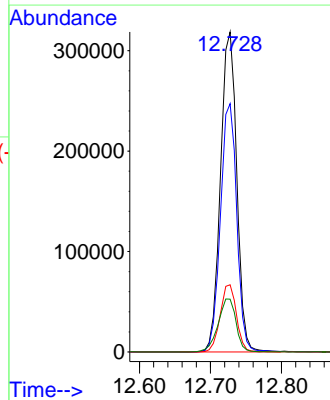
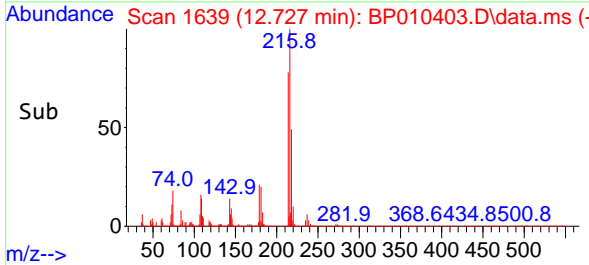
Reviewed By :Jagrut Upadhyay 05/19/2022
 Supervised By :mohammad ahmed 05/19/2022

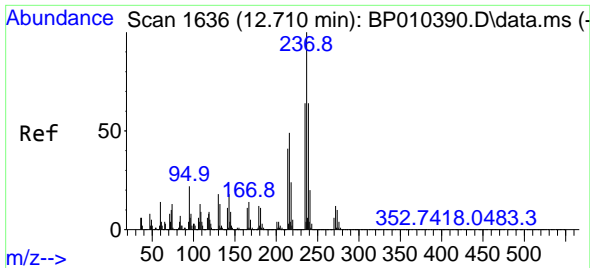


#39
 1,2,4,5-Tetrachlorobenzene
 Concen: 32.980 ng/u1
 RT: 12.727 min Scan# 1639
 Delta R.T. -0.006 min
 Lab File: BP010403.D
 Acq: 18 May 2022 16:28



Tgt Ion:216 Resp: 504702
 Ion Ratio Lower Upper
 216 100
 214 77.6 58.2 87.2
 179 21.0 14.2 21.2
 108 16.5 15.3 22.9





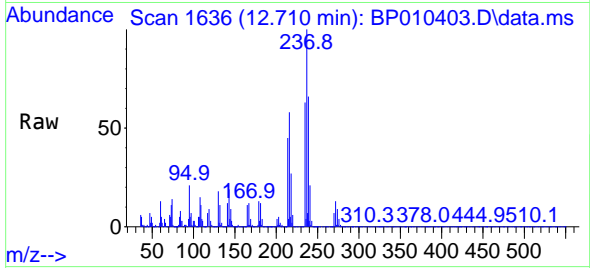
#40
 Hexachlorocyclopentadiene
 Concen: 30.882 ng/uI
 RT: 12.710 min Scan# 1636
 Delta R.T. -0.000 min
 Lab File: BP010403.D
 Acq: 18 May 2022 16:28

Instrument :

BNA_P

ClientSampleId :

SLCS853

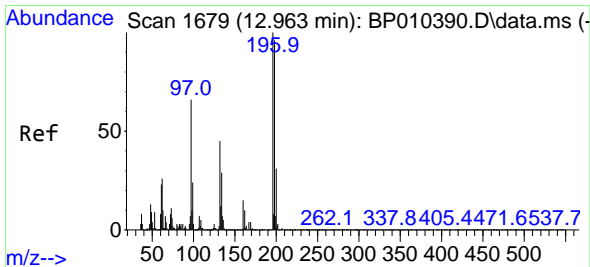
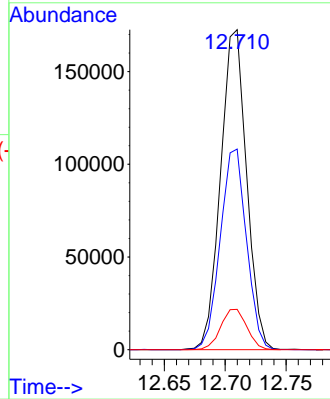
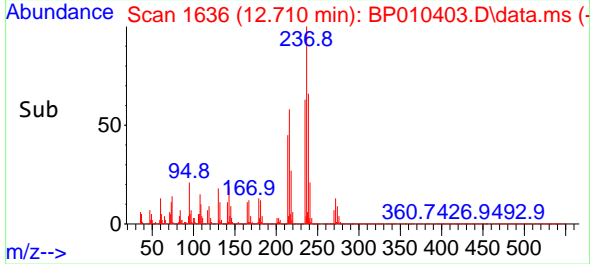


Tgt Ion:237 Resp: 256940
 Ion Ratio Lower Upper
 237 100
 235 62.7 53.2 79.8
 272 12.6 10.8 16.2

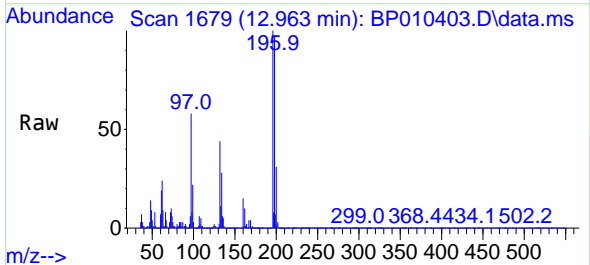
Manual Integrations

APPROVED

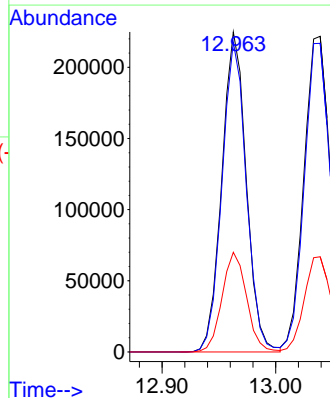
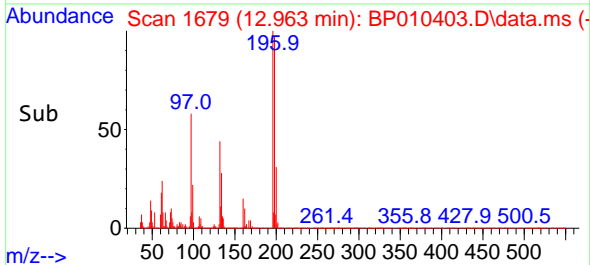
Reviewed By :Jagrut Upadhyay 05/19/2022
 Supervised By :mohammad ahmed 05/19/2022

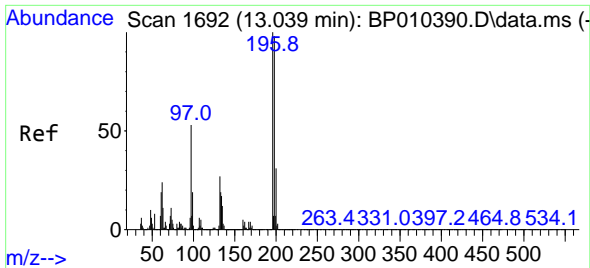


#41
 2,4,6-Trichlorophenol
 Concen: 35.263 ng/uI
 RT: 12.963 min Scan# 1679
 Delta R.T. -0.006 min
 Lab File: BP010403.D
 Acq: 18 May 2022 16:28



Tgt Ion:196 Resp: 336385
 Ion Ratio Lower Upper
 196 100
 198 96.8 64.1 96.1#
 200 31.1 19.9 29.9#





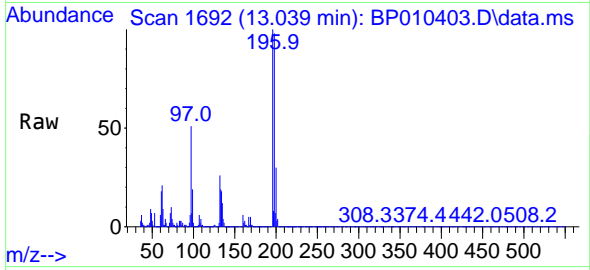
#42
 2,4,5-Trichlorophenol
 Concen: 34.671 ng/u1
 RT: 13.039 min Scan# 1692
 Delta R.T. -0.000 min
 Lab File: BP010403.D
 Acq: 18 May 2022 16:28

Instrument :

BNA_P

ClientSampleId :

SLCS853

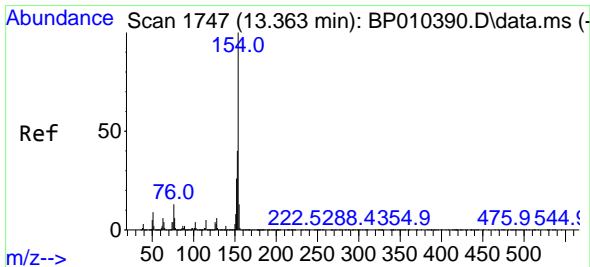
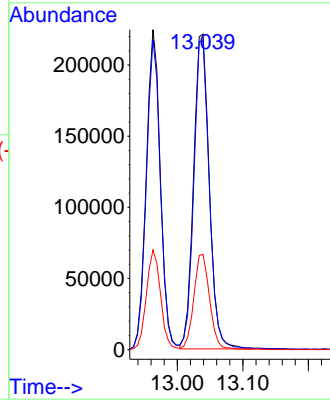
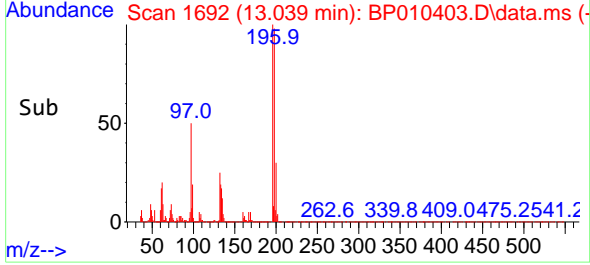


Tgt Ion:196 Resp: 36929
 Ion Ratio Lower Upper
 196 100
 198 97.8 68.6 103.0
 200 30.2 32.8 49.2

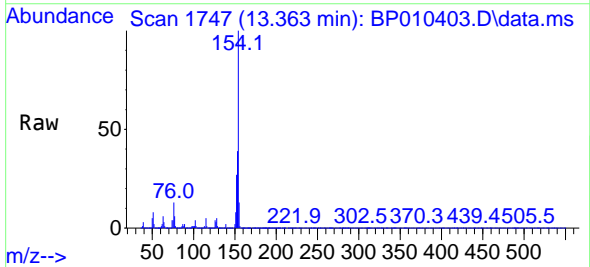
Manual Integrations

APPROVED

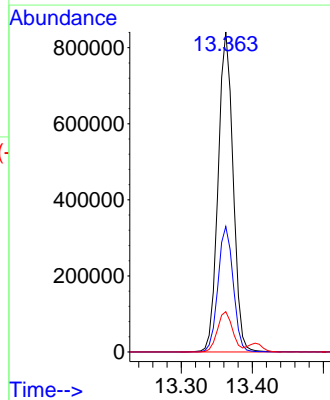
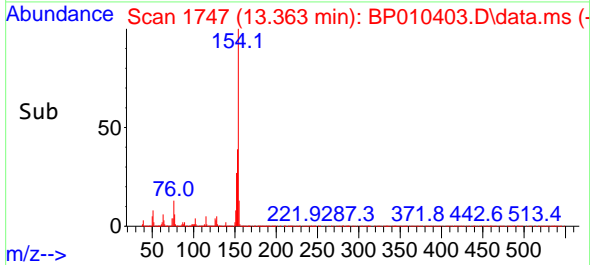
Reviewed By :Jagrut Upadhyay 05/19/2022
 Supervised By :mohammad ahmed 05/19/2022

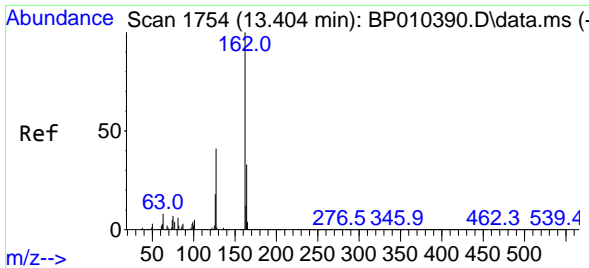


#43
 1,1'-Biphenyl
 Concen: 33.325 ng/u1
 RT: 13.363 min Scan# 1747
 Delta R.T. -0.006 min
 Lab File: BP010403.D
 Acq: 18 May 2022 16:28



Tgt Ion:154 Resp: 1226664
 Ion Ratio Lower Upper
 154 100
 153 39.2 28.6 43.0
 76 12.6 8.5 12.7





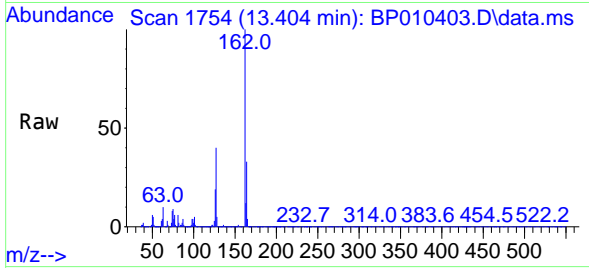
#44
 2-Chloronaphthalene
 Concen: 33.380 ng/u1
 RT: 13.404 min Scan# 1754
 Delta R.T. -0.006 min
 Lab File: BP010403.D
 Acq: 18 May 2022 16:28

Instrument :

BNA_P

ClientSampleId :

SLCS853

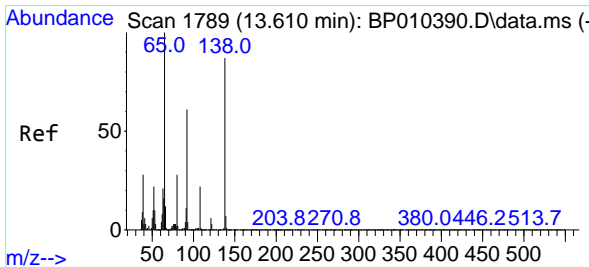
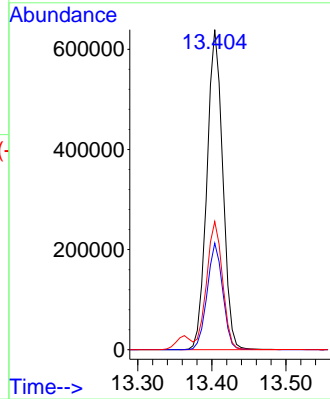
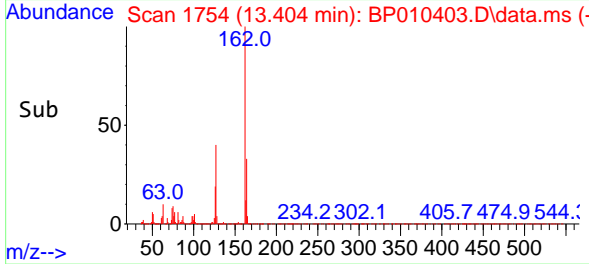


Tgt Ion:162 Resp: 948990
 Ion Ratio Lower Upper
 162 100
 164 33.3 27.5 41.3
 127 40.1 37.1 55.7

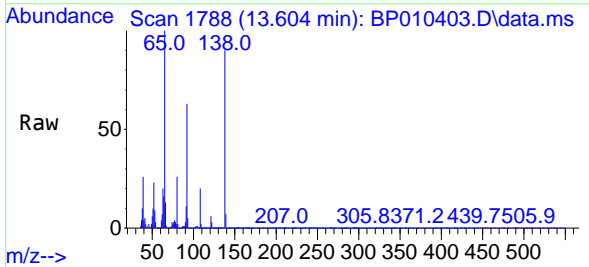
Manual Integrations

APPROVED

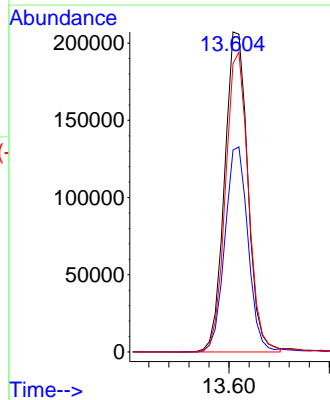
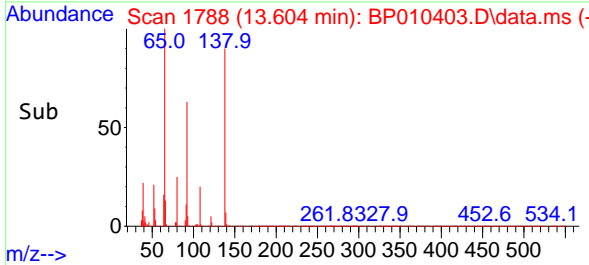
Reviewed By :Jagrut Upadhyay 05/19/2022
 Supervised By :mohammad ahmed 05/19/2022

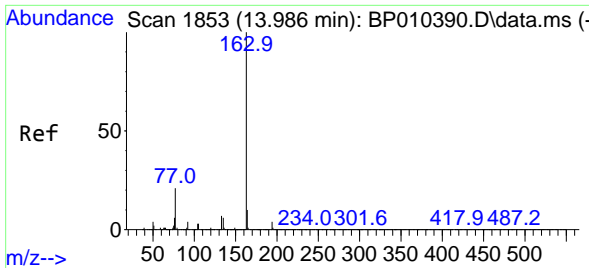


#45
 2-Nitroaniline
 Concen: 35.540 ng/u1
 RT: 13.604 min Scan# 1788
 Delta R.T. -0.006 min
 Lab File: BP010403.D
 Acq: 18 May 2022 16:28



Tgt Ion: 65 Resp: 332536
 Ion Ratio Lower Upper
 65 100
 92 63.1 77.9 116.9#
 138 90.1 81.5 122.3





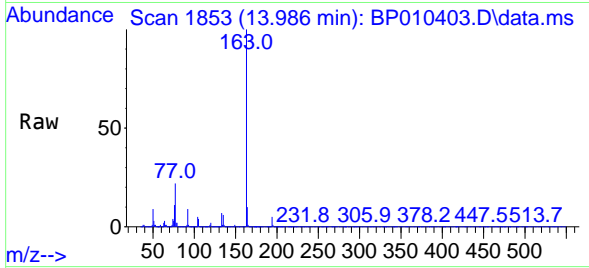
#47
 Dimethylphthalate
 Concen: 33.704 ng/u1
 RT: 13.986 min Scan# 1853
 Delta R.T. -0.000 min
 Lab File: BP010403.D
 Acq: 18 May 2022 16:28

Instrument :

BNA_P

ClientSampleId :

SLCS853

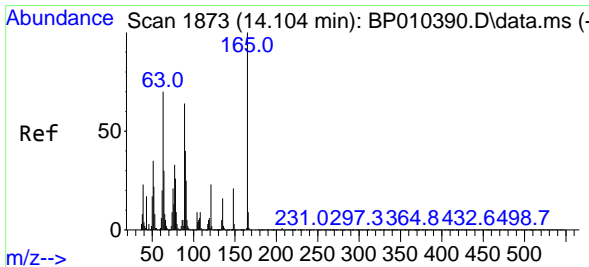
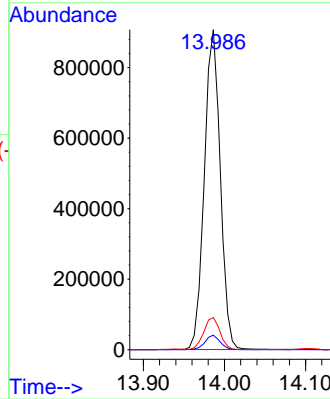
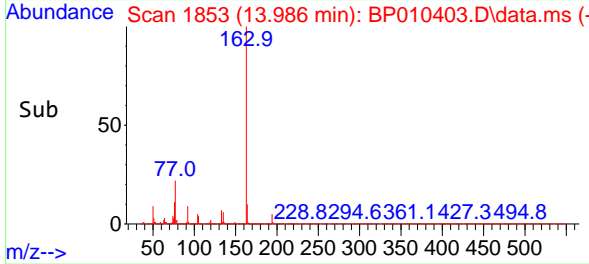


Tgt Ion:163 Resp: 123525
 Ion Ratio Lower Upper
 163 100
 194 4.5 4.1 6.1
 164 10.1 11.3 16.9

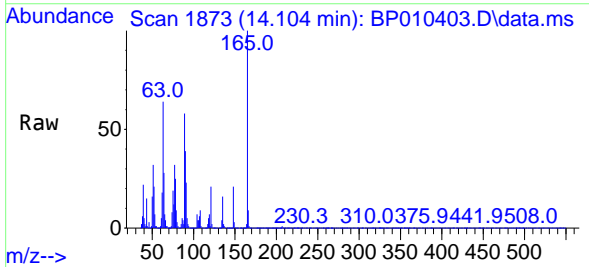
Manual Integrations

APPROVED

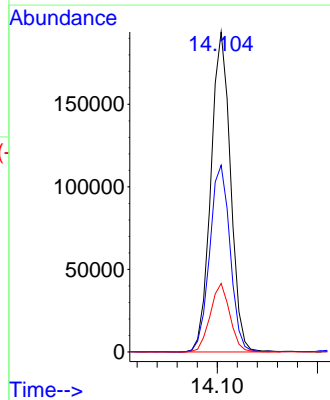
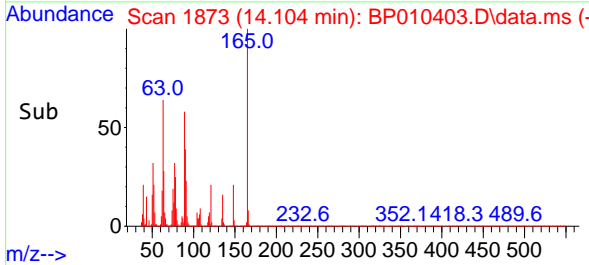
Reviewed By :Jagrut Upadhyay 05/19/2022
 Supervised By :mohammad ahmed 05/19/2022

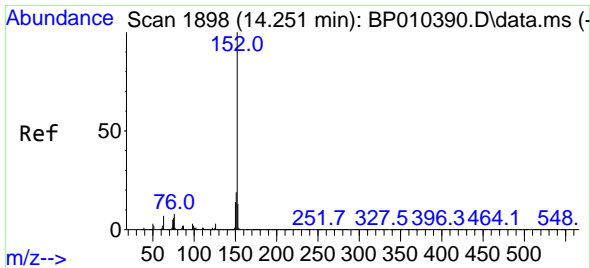


#48
 2,6-Dinitrotoluene
 Concen: 35.337 ng/u1
 RT: 14.104 min Scan# 1873
 Delta R.T. -0.000 min
 Lab File: BP010403.D
 Acq: 18 May 2022 16:28



Tgt Ion:165 Resp: 264008
 Ion Ratio Lower Upper
 165 100
 89 58.4 51.7 77.5
 121 21.4 18.3 27.5





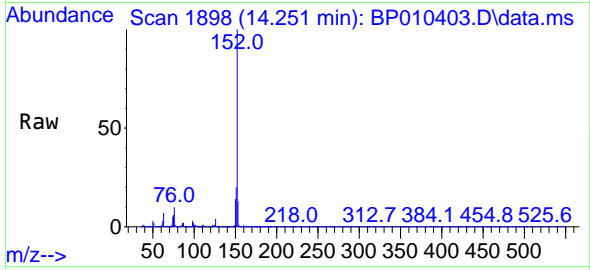
#50
 Acenaphthylene
 Concen: 33.612 ng/u1
 RT: 14.251 min Scan# 1898
 Delta R.T. -0.000 min
 Lab File: BP010403.D
 Acq: 18 May 2022 16:28

Instrument :

BNA_P

Client SampleId :

SLCS853

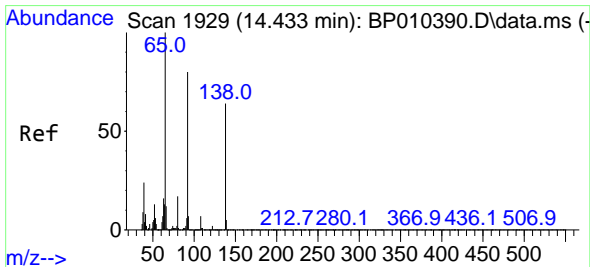
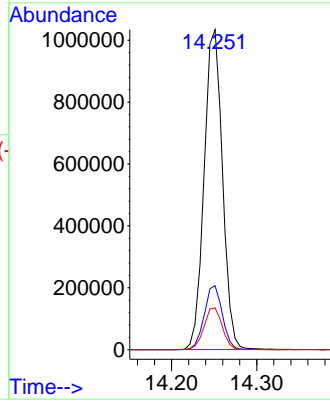
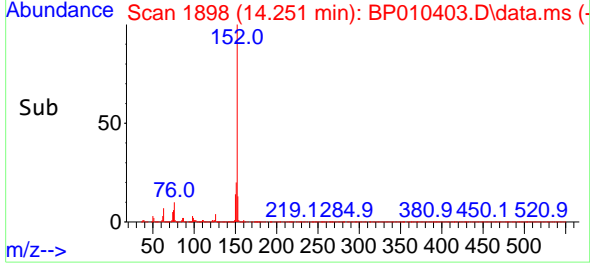


Tgt Ion:152 Resp: 154964
 Ion Ratio Lower Upper
 152 100
 151 20.0 18.3 27.5
 153 13.0 11.0 16.6

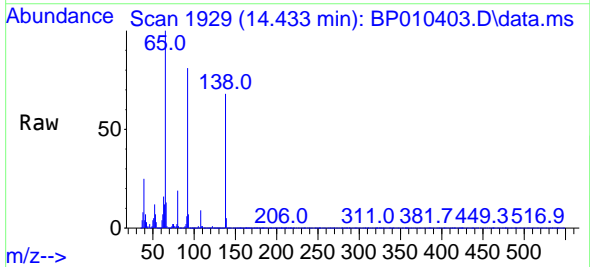
Manual Integrations

APPROVED

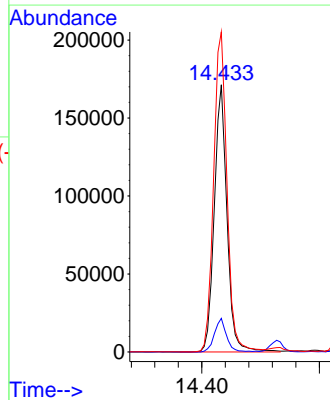
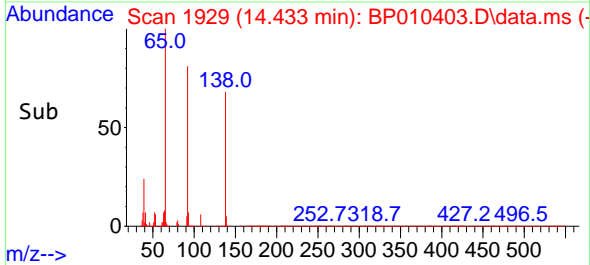
Reviewed By :Jagrut Upadhyay 05/19/2022
 Supervised By :mohammad ahmed 05/19/2022

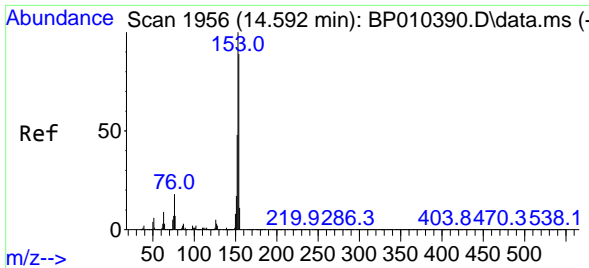


#51
 3-Nitroaniline
 Concen: 36.723 ng/u1
 RT: 14.433 min Scan# 1929
 Delta R.T. -0.000 min
 Lab File: BP010403.D
 Acq: 18 May 2022 16:28



Tgt Ion:138 Resp: 257498
 Ion Ratio Lower Upper
 138 100
 108 12.6 15.8 23.8#
 92 119.8 117.1 175.7





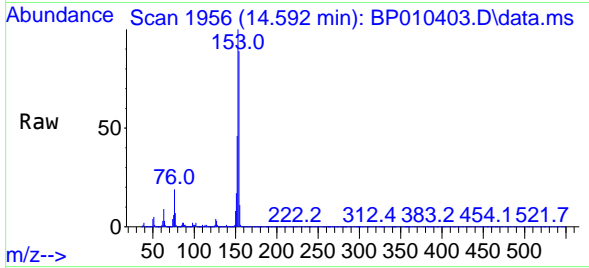
#52
 Acenaphthene
 Concen: 33.360 ng/u1
 RT: 14.592 min Scan# 1956
 Delta R.T. -0.006 min
 Lab File: BP010403.D
 Acq: 18 May 2022 16:28

Instrument :

BNA_P

ClientSampleId :

SLCS853

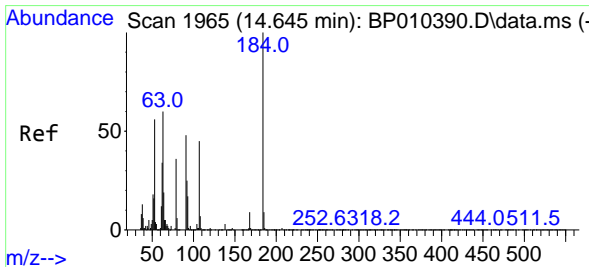
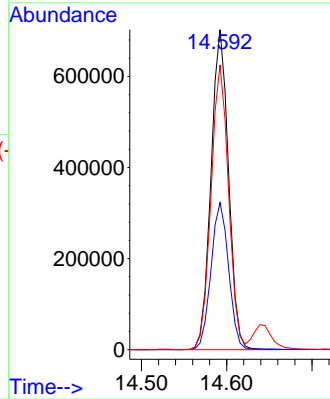
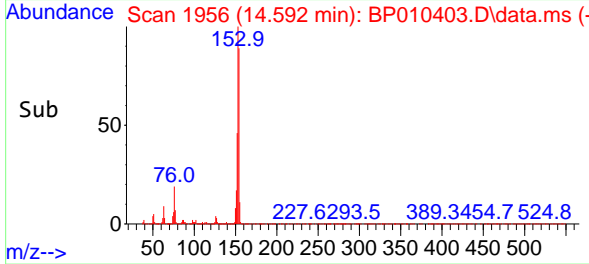


Tgt Ion:153 Resp: 100333
 Ion Ratio Lower Upper
 153 100
 152 46.0 34.3 51.5
 154 89.0 70.0 105.0

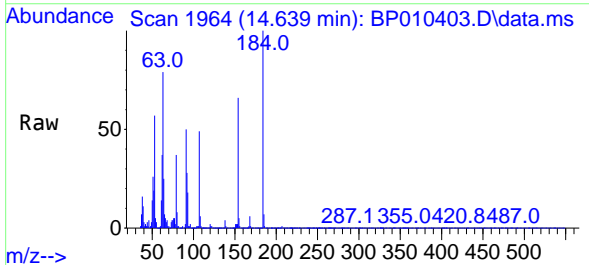
Manual Integrations

APPROVED

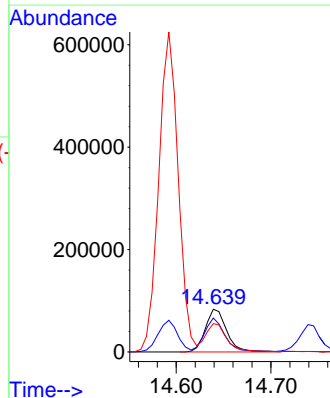
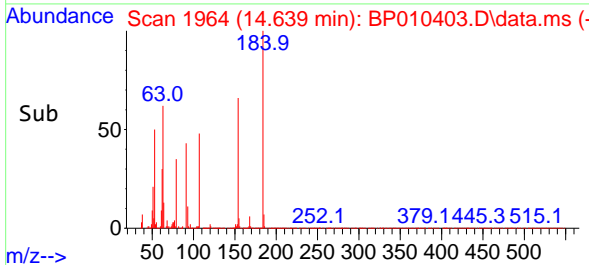
Reviewed By :Jagrut Upadhyay 05/19/2022
 Supervised By :mohammad ahmed 05/19/2022

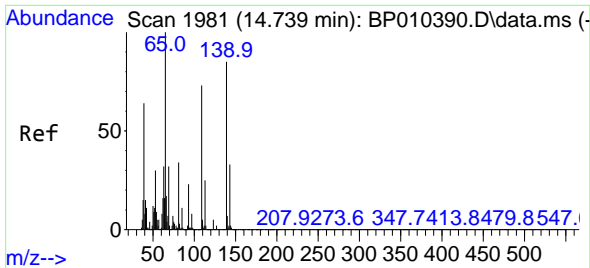


#53
 2,4-Dinitrophenol
 Concen: 31.196 ng/u1
 RT: 14.639 min Scan# 1964
 Delta R.T. -0.006 min
 Lab File: BP010403.D
 Acq: 18 May 2022 16:28



Tgt Ion:184 Resp: 130122
 Ion Ratio Lower Upper
 184 100
 63 79.2 34.6 52.0#
 154 66.1 57.7 86.5





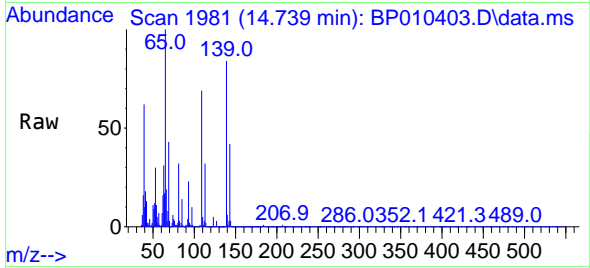
#55
 4-Nitrophenol
 Concen: 32.095 ng/u1
 RT: 14.739 min Scan# 1981
 Delta R.T. -0.000 min
 Lab File: BP010403.D
 Acq: 18 May 2022 16:28

Instrument :

BNA_P

ClientSampleId :

SLCS853

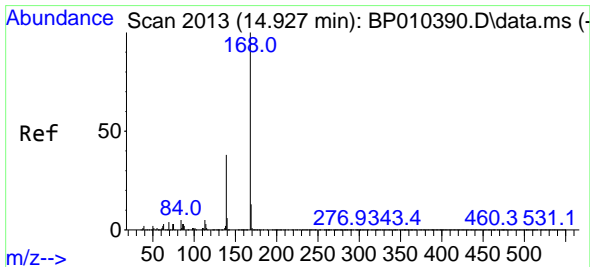
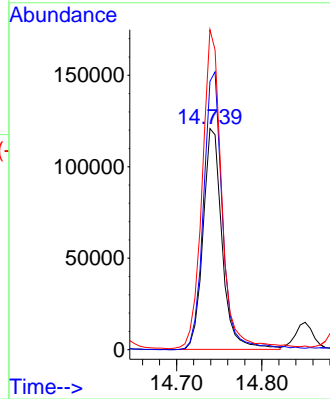
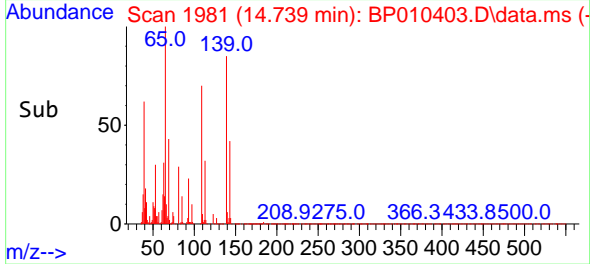


Tgt Ion:109 Resp: 18768
 Ion Ratio Lower Upper
 109 100
 139 121.3 61.4 92.2
 65 144.7 65.3 97.9

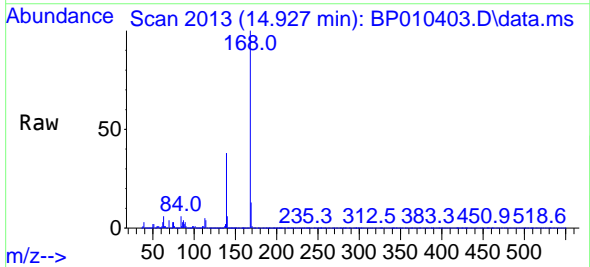
Manual Integrations

APPROVED

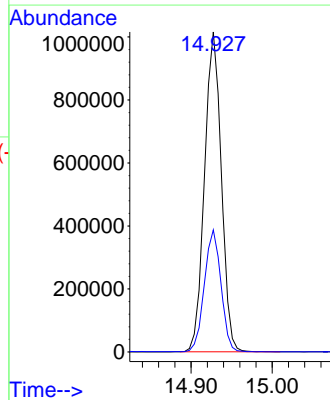
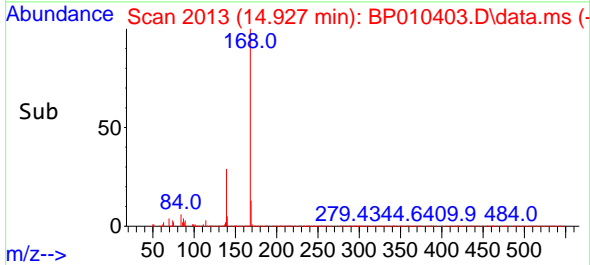
Reviewed By :Jagrut Upadhyay 05/19/2022
 Supervised By :mohammad ahmed 05/19/2022

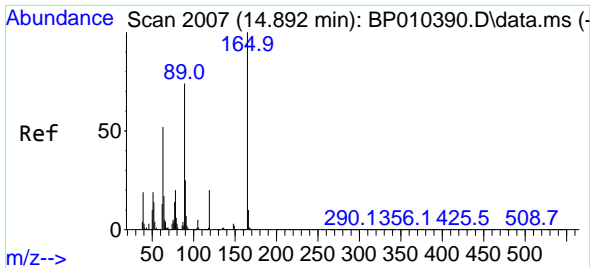


#56
 Dibenzofuran
 Concen: 33.043 ng/u1
 RT: 14.927 min Scan# 2013
 Delta R.T. -0.006 min
 Lab File: BP010403.D
 Acq: 18 May 2022 16:28



Tgt Ion:168 Resp: 1456426
 Ion Ratio Lower Upper
 168 100
 139 38.1 30.1 45.1





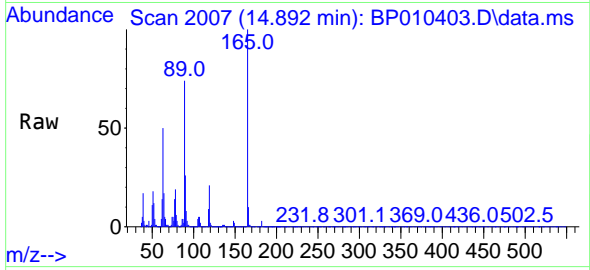
#57
 2,4-Dinitrotoluene
 Concen: 35.265 ng/ul
 RT: 14.892 min Scan# 2007
 Delta R.T. -0.000 min
 Lab File: BP010403.D
 Acq: 18 May 2022 16:28

Instrument :

BNA_P

ClientSampleId :

SLCS853

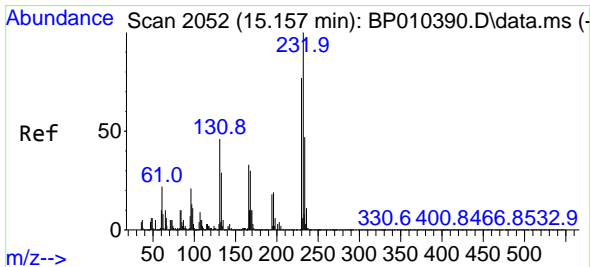
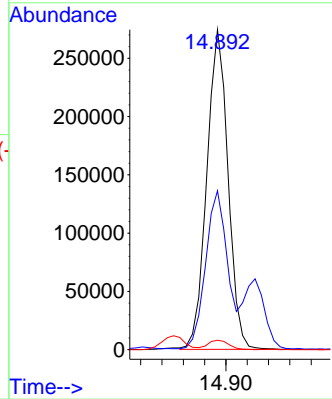
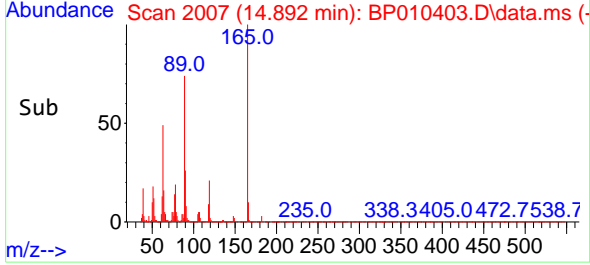


Tgt Ion:165 Resp: 379277
 Ion Ratio Lower Upper
 165 100
 63 49.7 29.5 44.3#
 182 2.9 2.8 4.2

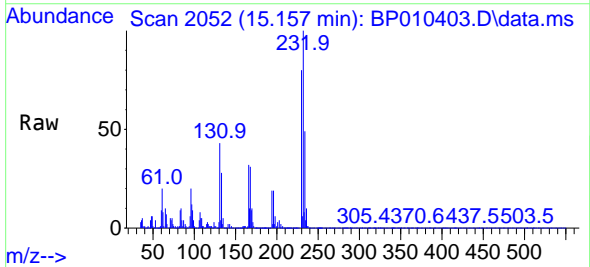
Manual Integrations

APPROVED

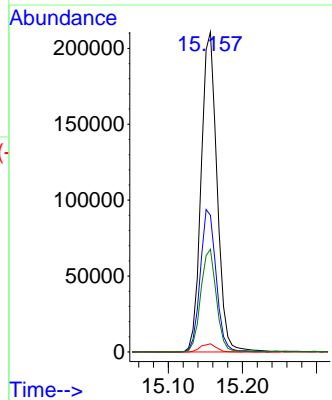
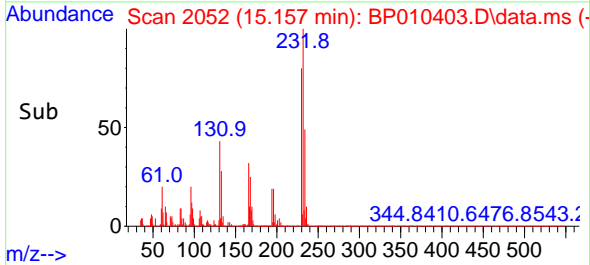
Reviewed By :Jagrut Upadhyay 05/19/2022
 Supervised By :mohammad ahmed 05/19/2022

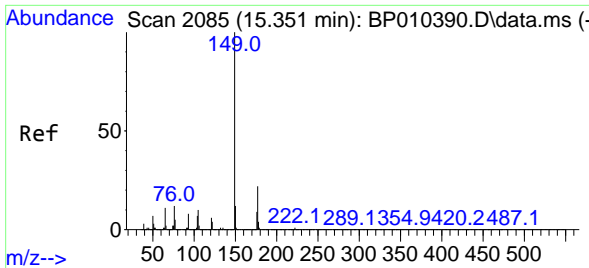


#58
 2,3,4,6-Tetrachlorophenol
 Concen: 34.322 ng/ul
 RT: 15.157 min Scan# 2052
 Delta R.T. -0.000 min
 Lab File: BP010403.D
 Acq: 18 May 2022 16:28



Tgt Ion:232 Resp: 314362
 Ion Ratio Lower Upper
 232 100
 131 42.7 25.4 38.2#
 130 2.5 4.2 6.2#
 166 32.1 28.1 42.1





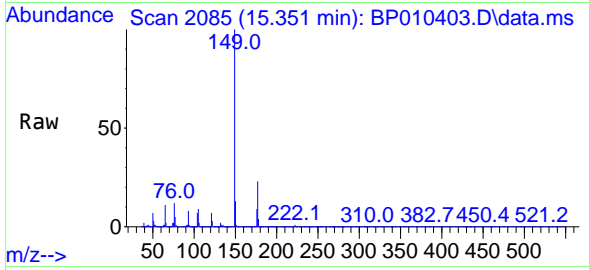
#59
 Diethylphthalate
 Concen: 33.833 ng/u1
 RT: 15.351 min Scan# 2085
 Delta R.T. -0.000 min
 Lab File: BP010403.D
 Acq: 18 May 2022 16:28

Instrument :

BNA_P

ClientSampleId :

SLCS853

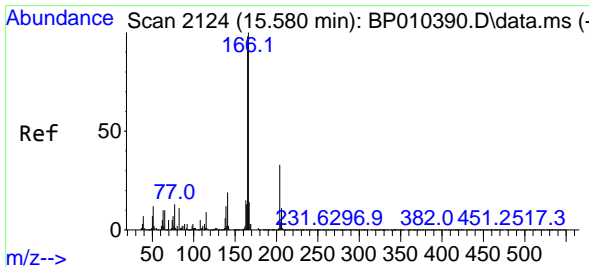
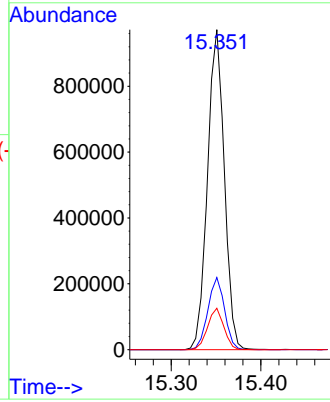
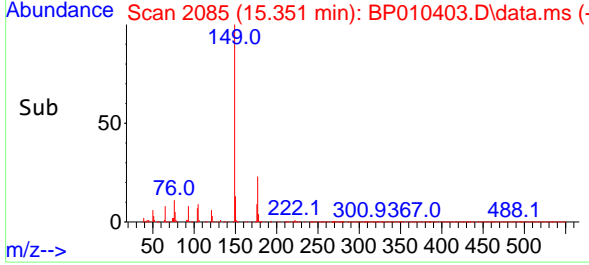


Tgt Ion:149 Resp: 126524
 Ion Ratio Lower Upper
 149 100
 177 22.5 22.0 33.0
 150 13.0 10.2 15.2

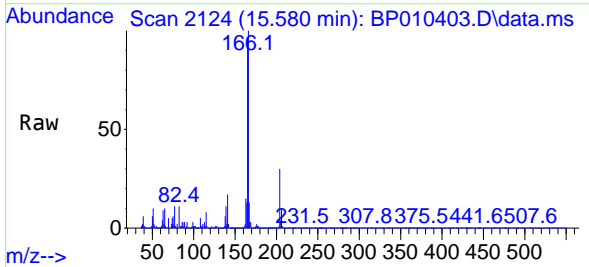
Manual Integrations

APPROVED

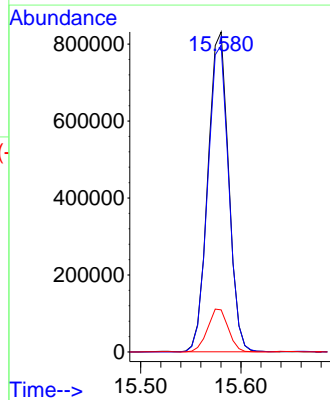
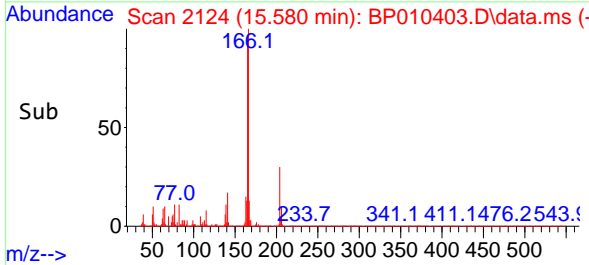
Reviewed By :Jagrut Upadhyay 05/19/2022
 Supervised By :mohammad ahmed 05/19/2022

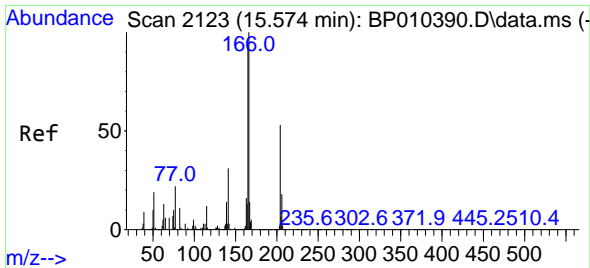


#61
 Fluorene
 Concen: 33.099 ng/u1
 RT: 15.580 min Scan# 2124
 Delta R.T. -0.000 min
 Lab File: BP010403.D
 Acq: 18 May 2022 16:28



Tgt Ion:166 Resp: 1193046
 Ion Ratio Lower Upper
 166 100
 165 95.9 70.3 105.5
 167 13.1 9.5 14.3





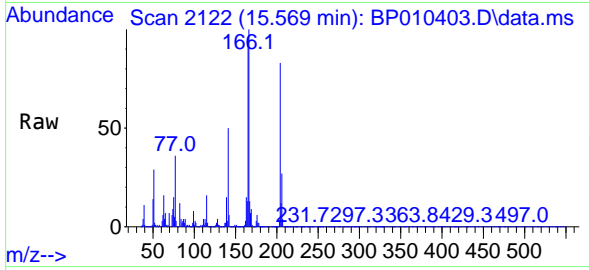
#62
 4-Chlorophenyl-phenylether
 Concen: 32.928 ng/ul
 RT: 15.569 min Scan# 2122
 Delta R.T. -0.006 min
 Lab File: BP010403.D
 Acq: 18 May 2022 16:28

Instrument :

BNA_P

Client Sample Id :

SLCS853

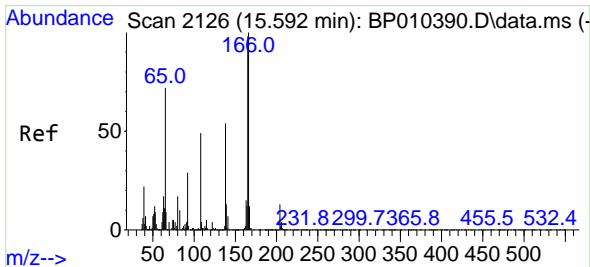
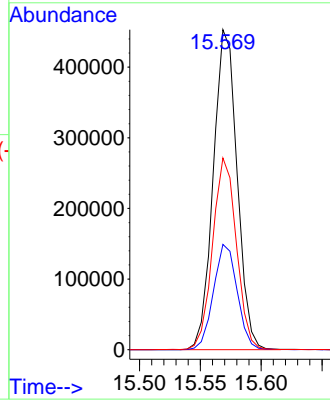
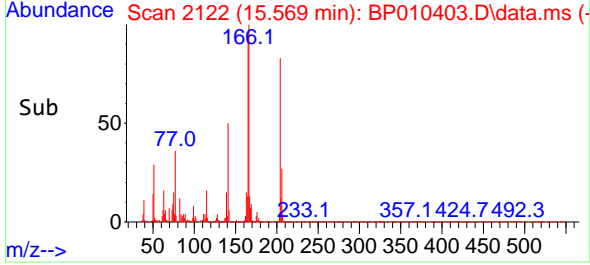


Tgt Ion: 204 Resp: 617409
 Ion Ratio Lower Upper
 204 100
 206 32.9 27.6 41.4
 141 59.9 46.6 69.8

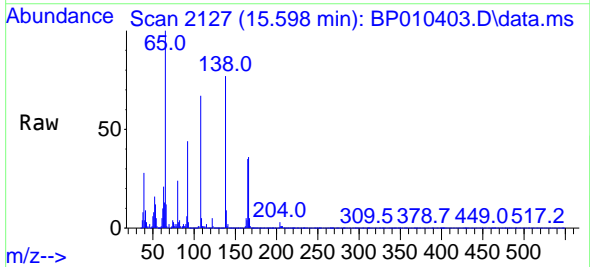
Manual Integrations

APPROVED

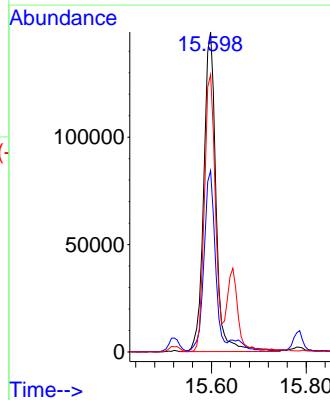
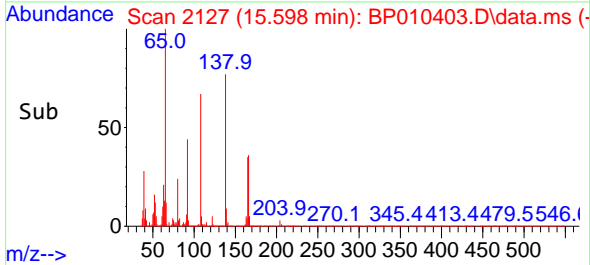
Reviewed By : Jagrut Upadhyay 05/19/2022
 Supervised By : mohammad ahmed 05/19/2022

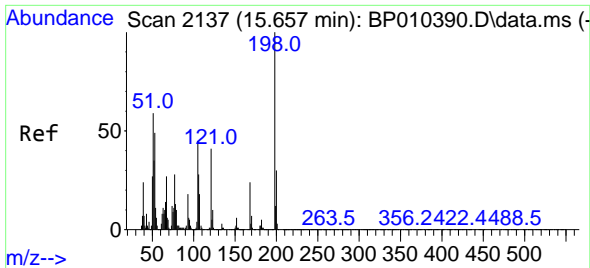


#63
 4-Nitroaniline
 Concen: 38.565 ng/ul
 RT: 15.598 min Scan# 2127
 Delta R.T. -0.000 min
 Lab File: BP010403.D
 Acq: 18 May 2022 16:28



Tgt Ion: 138 Resp: 267007
 Ion Ratio Lower Upper
 138 100
 92 56.6 41.6 62.4
 108 86.7 97.6 146.4#





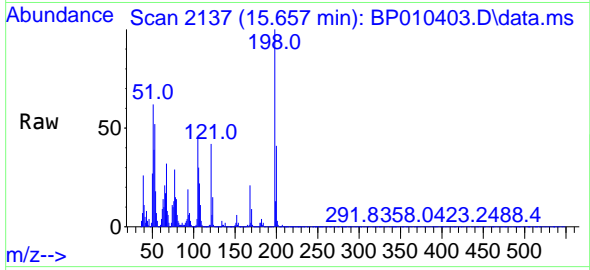
#66
 4,6-Dinitro-2-methylphenol
 Concen: 33.432 ng/ul
 RT: 15.657 min Scan# 2137
 Delta R.T. -0.006 min
 Lab File: BP010403.D
 Acq: 18 May 2022 16:28

Instrument :

BNA_P

ClientSampleId :

SLCS853

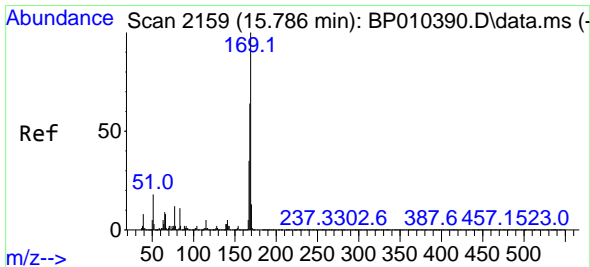
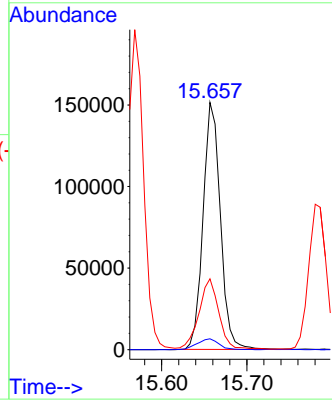
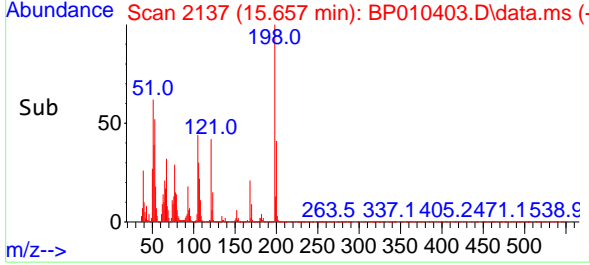


Tgt Ion:198 Resp: 21391
 Ion Ratio Lower Upper
 198 100
 182 4.4 6.0 9.0
 77 28.7 17.7 26.5

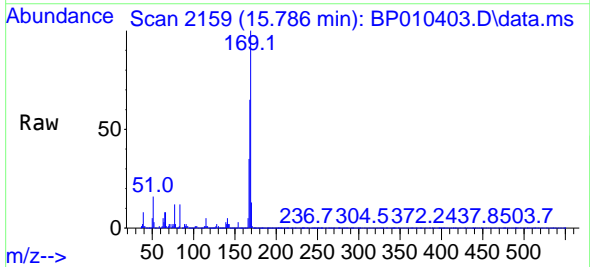
Manual Integrations

APPROVED

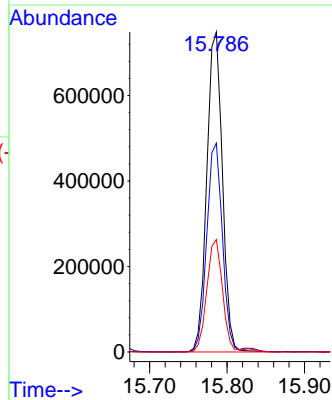
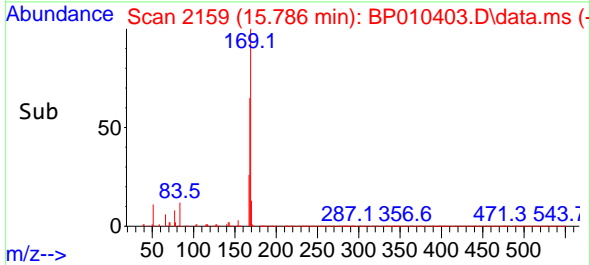
Reviewed By :Jagrut Upadhyay 05/19/2022
 Supervised By :mohammad ahmed 05/19/2022

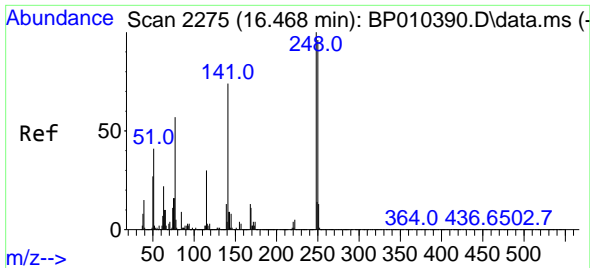


#67
 N-Nitrosodiphenylamine
 Concen: 34.017 ng/ul
 RT: 15.786 min Scan# 2159
 Delta R.T. -0.000 min
 Lab File: BP010403.D
 Acq: 18 May 2022 16:28



Tgt Ion:169 Resp: 1046544
 Ion Ratio Lower Upper
 169 100
 168 65.2 48.3 72.5
 167 35.2 29.6 44.4





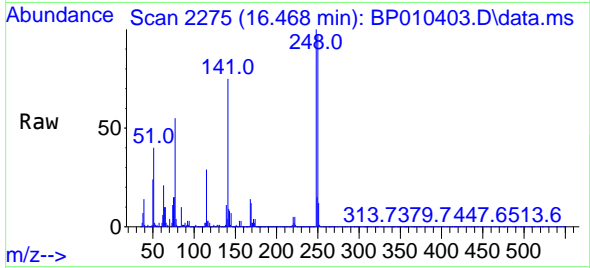
#68
 4-Bromophenyl-phenylether
 Concen: 33.590 ng/ul
 RT: 16.468 min Scan# 2275
 Delta R.T. -0.000 min
 Lab File: BP010403.D
 Acq: 18 May 2022 16:28

Instrument :

BNA_P

ClientSampleId :

SLCS853

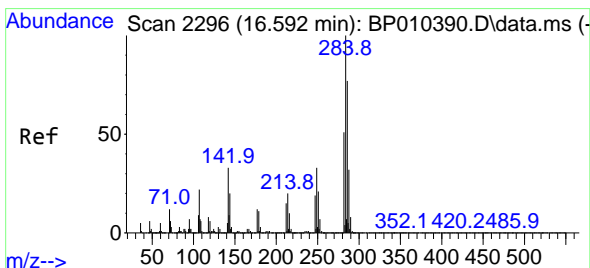
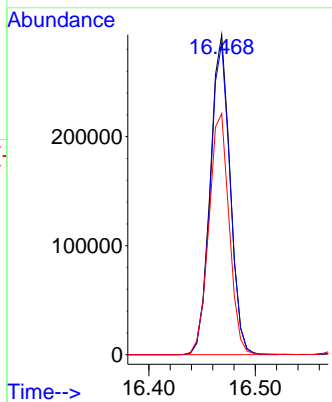
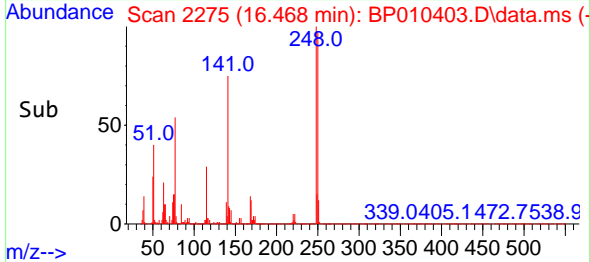


Tgt Ion:248 Resp: 379500
 Ion Ratio Lower Upper
 248 100
 250 97.3 79.4 119.0
 141 75.4 67.2 100.8

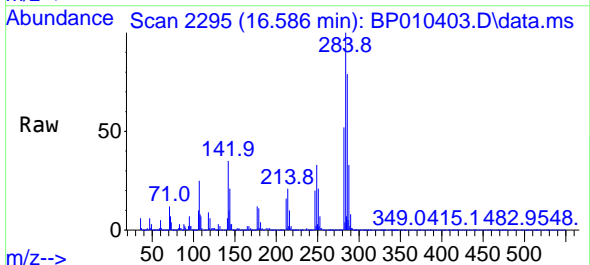
Manual Integrations

APPROVED

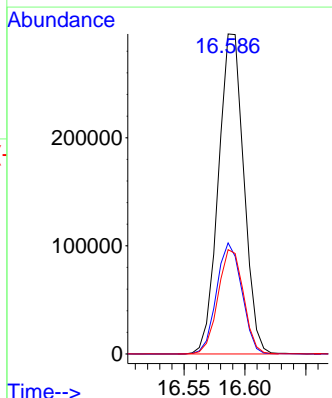
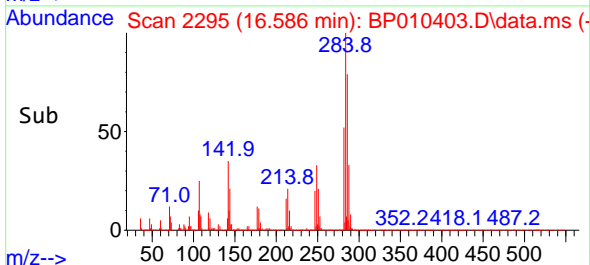
Reviewed By :Jagrut Upadhyay 05/19/2022
 Supervised By :mohammad ahmed 05/19/2022

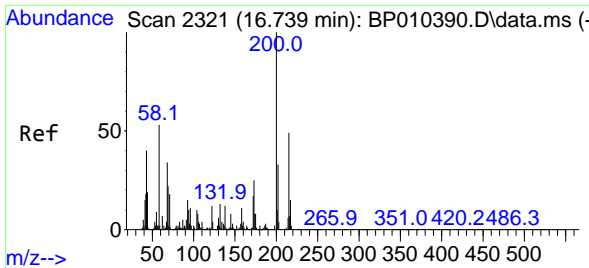


#69
 Hexachlorobenzene
 Concen: 33.152 ng/ul
 RT: 16.586 min Scan# 2295
 Delta R.T. -0.006 min
 Lab File: BP010403.D
 Acq: 18 May 2022 16:28



Tgt Ion:284 Resp: 430836
 Ion Ratio Lower Upper
 284 100
 142 34.7 19.2 28.8#
 249 32.6 27.4 41.2





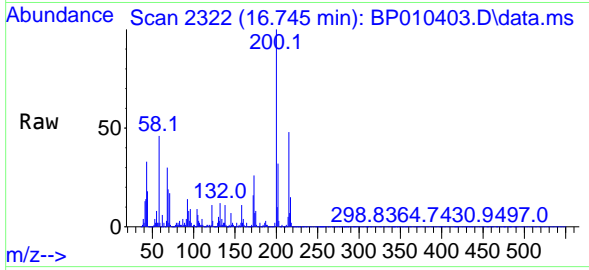
#70
 Atrazine
 Concen: 32.862 ng/u1
 RT: 16.745 min Scan# 21
 Delta R.T. -0.000 min
 Lab File: BP010403.D
 Acq: 18 May 2022 16:28

Instrument :

BNA_P

ClientSampleId :

SLCS853

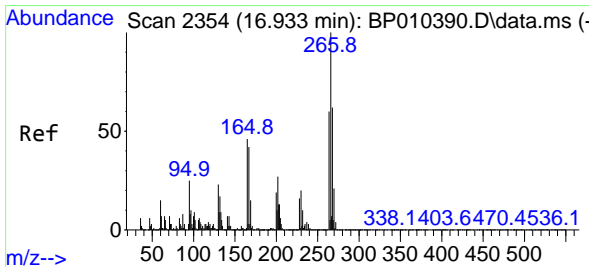
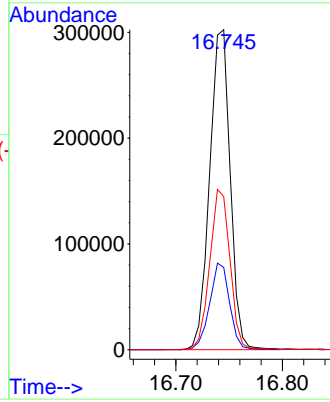
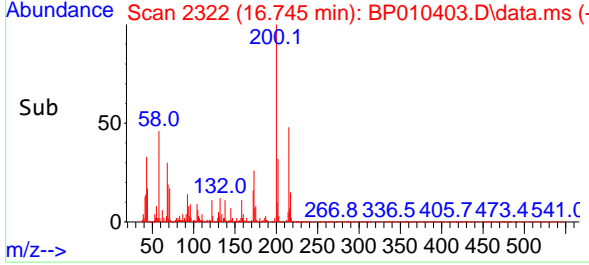


Tgt Ion:200 Resp: 40501
 Ion Ratio Lower Upper
 200 100
 173 25.7 19.2 28.8
 215 47.9 32.2 48.4

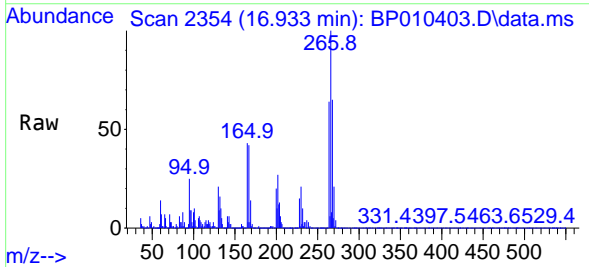
Manual Integrations

APPROVED

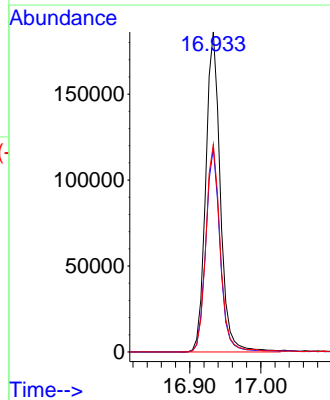
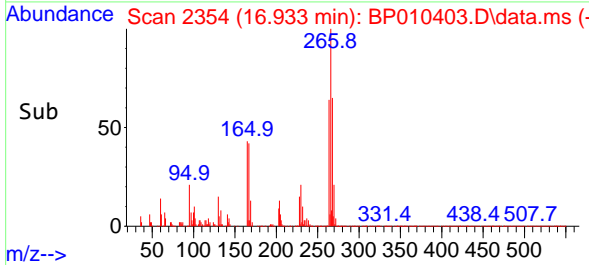
Reviewed By :Jagrut Upadhyay 05/19/2022
 Supervised By :mohammad ahmed 05/19/2022

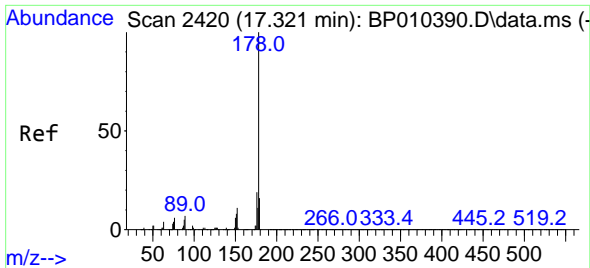


#71
 Pentachlorophenol
 Concen: 32.578 ng/u1
 RT: 16.933 min Scan# 2354
 Delta R.T. -0.000 min
 Lab File: BP010403.D
 Acq: 18 May 2022 16:28



Tgt Ion:266 Resp: 265652
 Ion Ratio Lower Upper
 266 100
 264 63.8 57.3 85.9
 268 64.9 65.7 98.5#





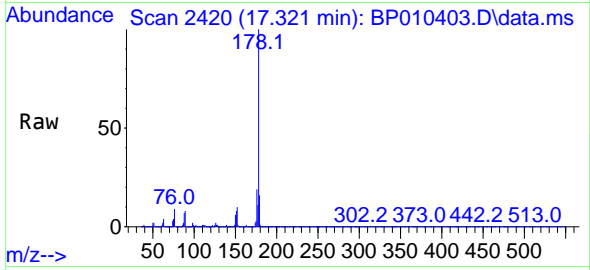
#72
 Phenanthrene
 Concen: 33.268 ng/u1
 RT: 17.321 min Scan# 2420
 Delta R.T. -0.006 min
 Lab File: BP010403.D
 Acq: 18 May 2022 16:28

Instrument :

BNA_P

ClientSampleId :

SLCS853

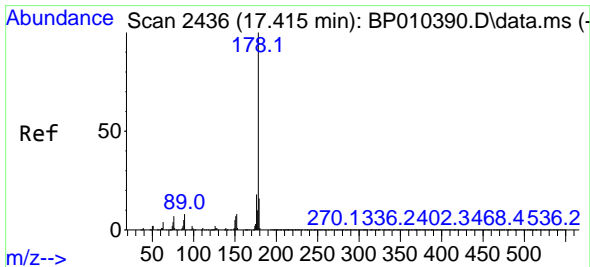
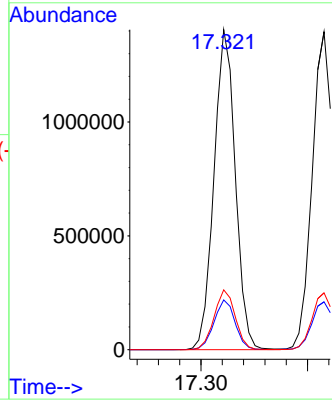
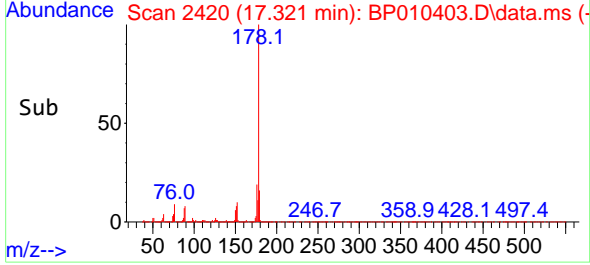


Tgt Ion:178 Resp: 1947711
 Ion Ratio Lower Upper
 178 100
 179 15.6 11.7 17.5
 176 18.7 14.5 21.7

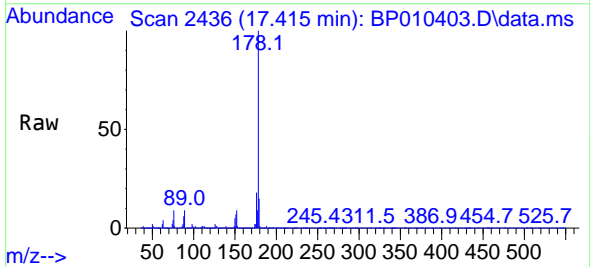
Manual Integrations

APPROVED

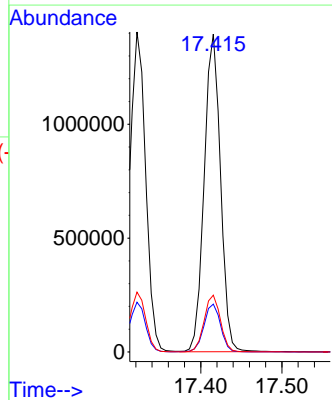
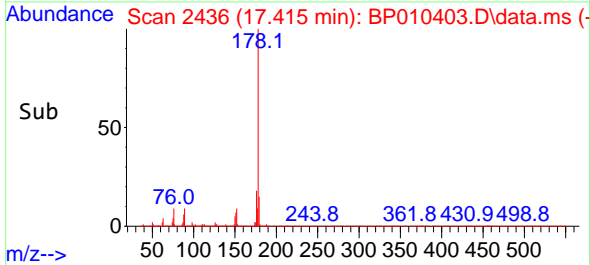
Reviewed By :Jagrut Upadhyay 05/19/2022
 Supervised By :mohammad ahmed 05/19/2022

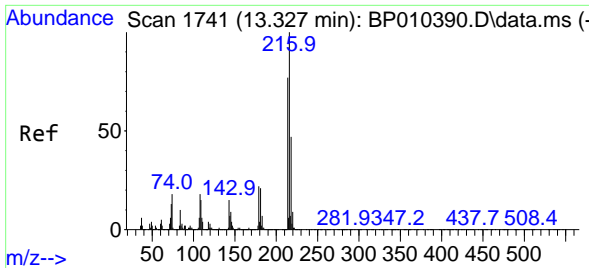


#74
 Anthracene
 Concen: 33.055 ng/u1
 RT: 17.415 min Scan# 2436
 Delta R.T. -0.000 min
 Lab File: BP010403.D
 Acq: 18 May 2022 16:28



Tgt Ion:178 Resp: 1941430
 Ion Ratio Lower Upper
 178 100
 179 15.1 12.3 18.5
 176 17.9 13.4 20.2





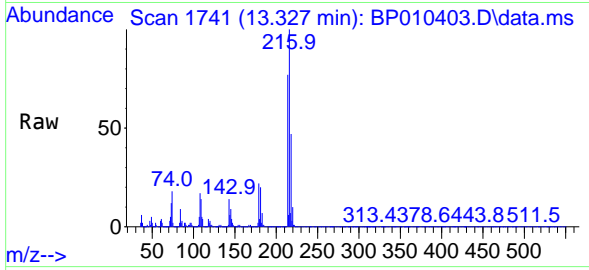
#75
 1,2,3,4-Tetrachlorobenzene
 Concen: 31.930 ng/uL
 RT: 13.327 min Scan# 1741
 Delta R.T. -0.006 min
 Lab File: BP010403.D
 Acq: 18 May 2022 16:28

Instrument :

BNA_P

Client Sample Id :

SLCS853

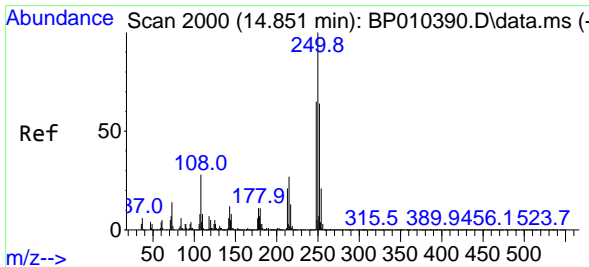
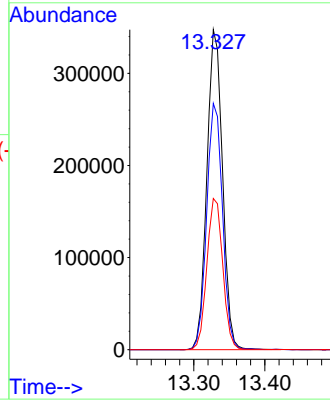
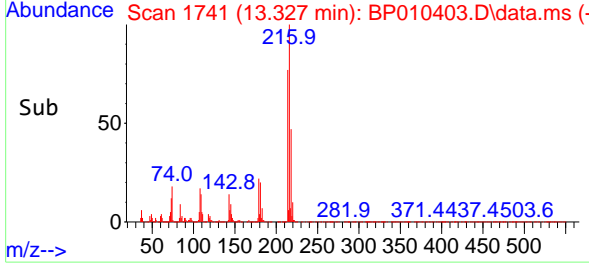


Tgt Ion: 216 Resp: 53234
 Ion Ratio Lower Upper
 216 100
 214 77.0 50.4 75.6
 218 47.2 35.2 52.8

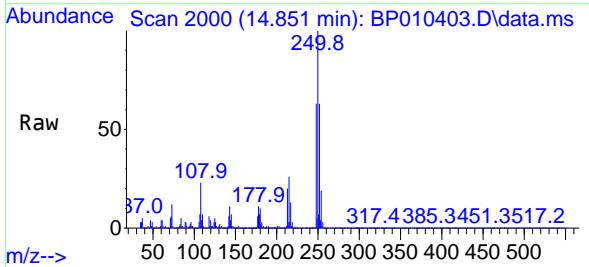
Manual Integrations

APPROVED

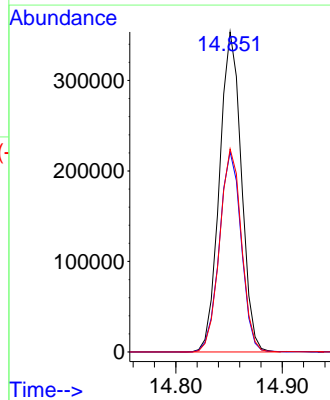
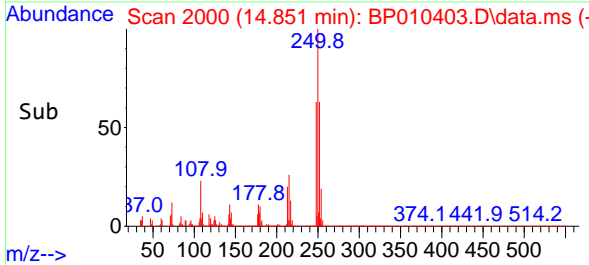
Reviewed By : Jagrut Upadhyay 05/19/2022
 Supervised By : mohammad ahmed 05/19/2022

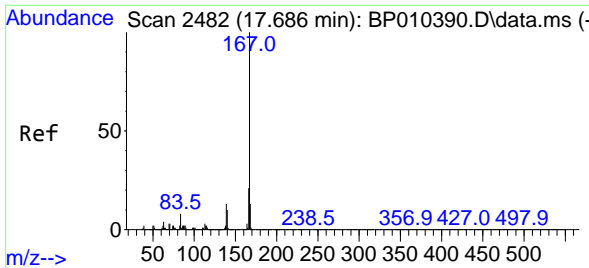


#76
 Pentachlorobenzene
 Concen: 33.301 ng/uL
 RT: 14.851 min Scan# 2000
 Delta R.T. -0.006 min
 Lab File: BP010403.D
 Acq: 18 May 2022 16:28



Tgt Ion: 250 Resp: 503746
 Ion Ratio Lower Upper
 250 100
 248 62.6 43.5 65.3
 252 63.5 46.5 69.7





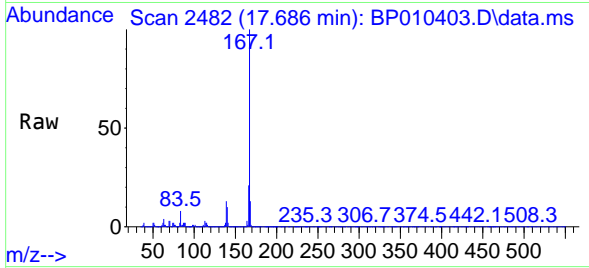
#77
 Carbazole
 Concen: 33.793 ng/u1
 RT: 17.686 min Scan# 2482
 Delta R.T. -0.000 min
 Lab File: BP010403.D
 Acq: 18 May 2022 16:28

Instrument :

BNA_P

Client SampleId :

SLCS853

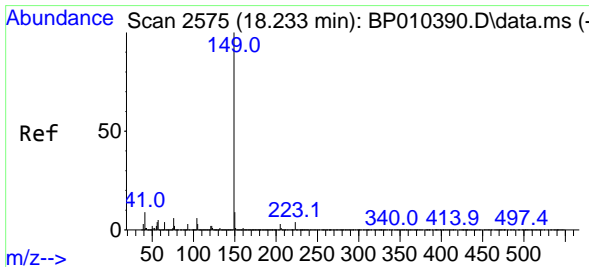
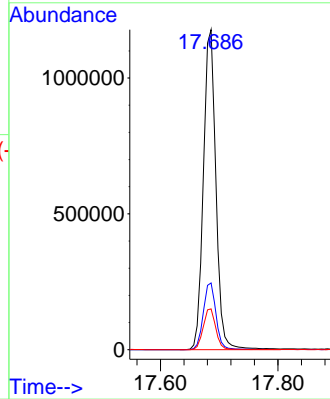
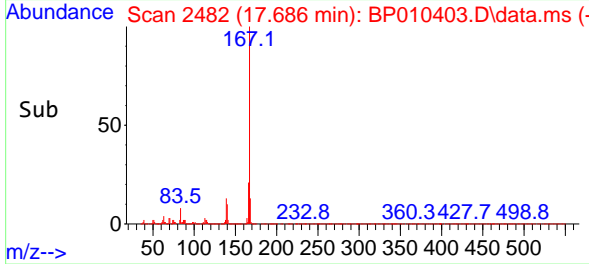


Tgt Ion:167 Resp: 174429
 Ion Ratio Lower Upper
 167 100
 166 20.8 15.8 23.8
 139 12.7 8.3 12.5

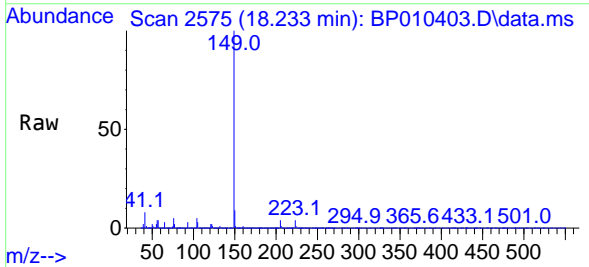
Manual Integrations

APPROVED

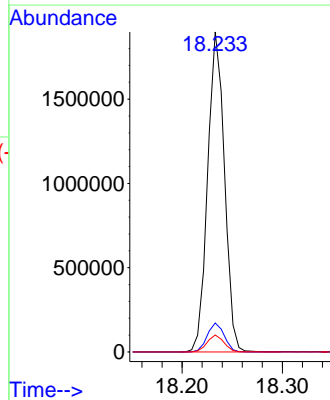
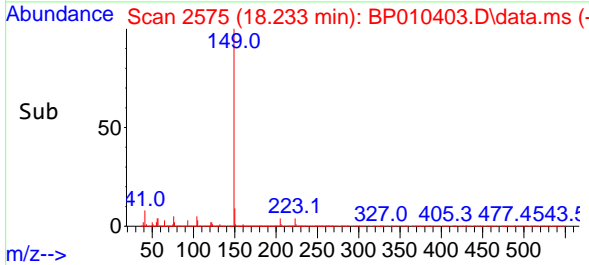
Reviewed By :Jagrut Upadhyay 05/19/2022
 Supervised By :mohammad ahmed 05/19/2022

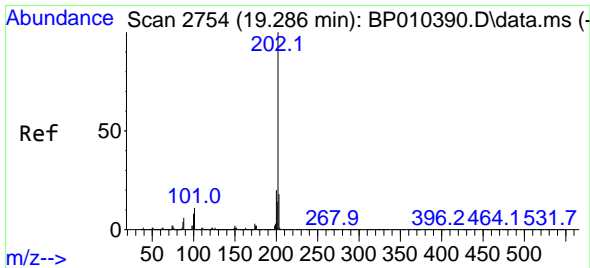


#78
 Di-n-butylphthalate
 Concen: 35.230 ng/u1
 RT: 18.233 min Scan# 2575
 Delta R.T. -0.006 min
 Lab File: BP010403.D
 Acq: 18 May 2022 16:28



Tgt Ion:149 Resp: 2214802
 Ion Ratio Lower Upper
 149 100
 150 9.1 9.6 14.4#
 104 5.3 6.2 9.4#





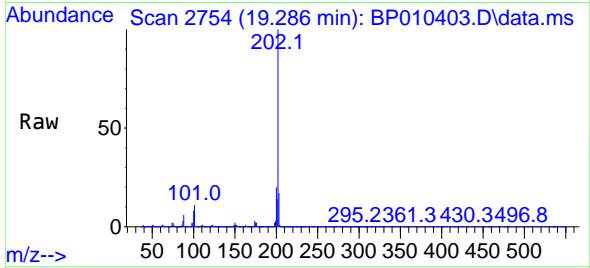
#80
 Fluoranthene
 Concen: 36.070 ng/u1
 RT: 19.286 min Scan# 21
 Delta R.T. -0.000 min
 Lab File: BP010403.D
 Acq: 18 May 2022 16:28

Instrument :

BNA_P

ClientSampleId :

SLCS853

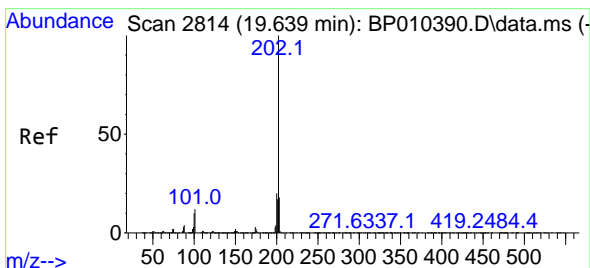
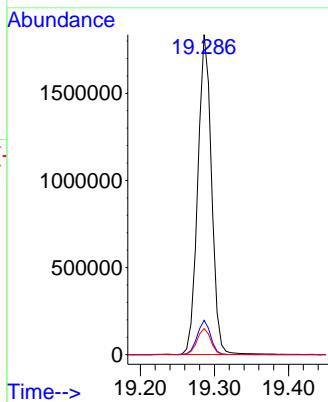
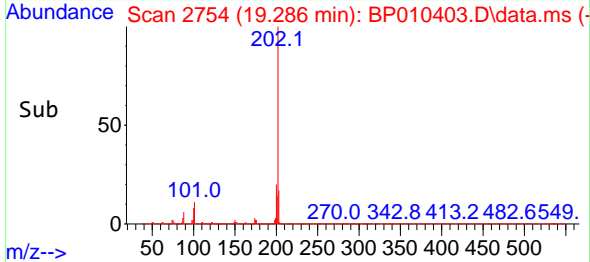


Tgt Ion:202 Resp: 2361984
 Ion Ratio Lower Upper
 202 100
 101 10.7 9.6 14.4
 100 8.1 6.3 9.5

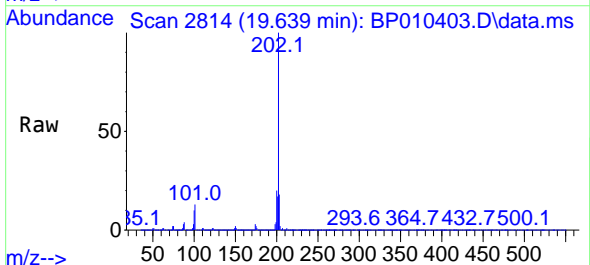
Manual Integrations

APPROVED

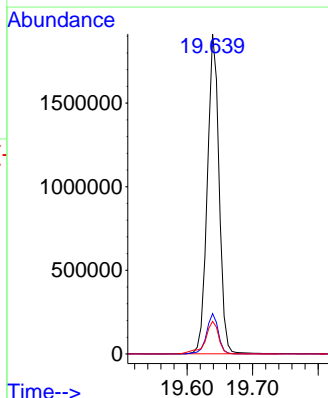
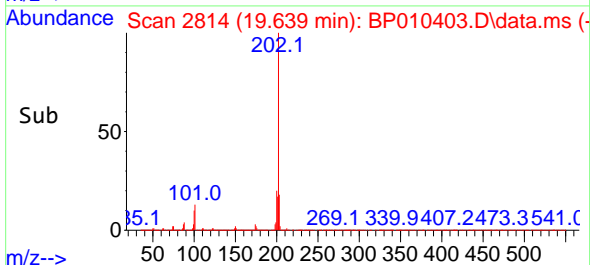
Reviewed By :Jagrut Upadhyay 05/19/2022
 Supervised By :mohammad ahmed 05/19/2022

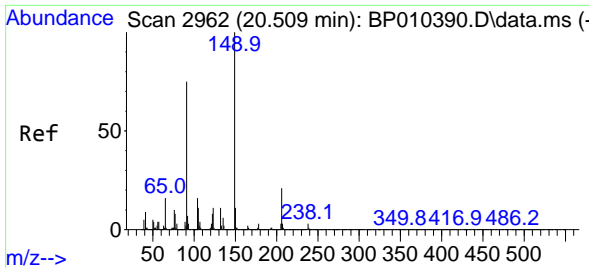


#82
 Pyrene
 Concen: 34.968 ng/u1
 RT: 19.639 min Scan# 2814
 Delta R.T. -0.000 min
 Lab File: BP010403.D
 Acq: 18 May 2022 16:28



Tgt Ion:202 Resp: 2389607
 Ion Ratio Lower Upper
 202 100
 101 12.6 10.6 15.8
 100 10.2 9.8 14.6





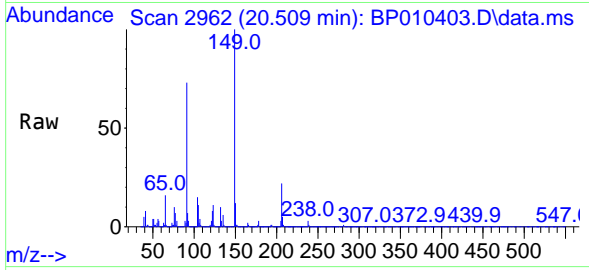
#83
 Butylbenzylphthalate
 Concen: 37.830 ng/u1
 RT: 20.509 min Scan# 2962
 Delta R.T. -0.000 min
 Lab File: BP010403.D
 Acq: 18 May 2022 16:28

Instrument :

BNA_P

ClientSampleId :

SLCS853

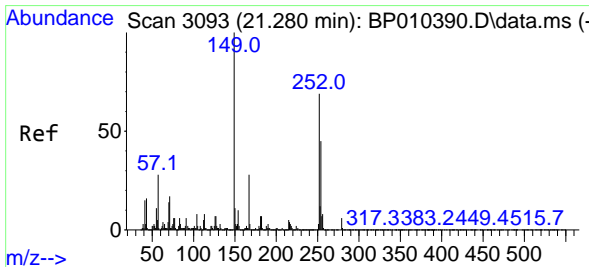
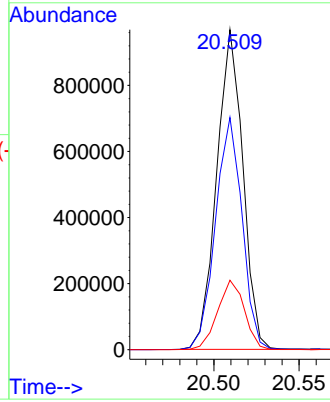
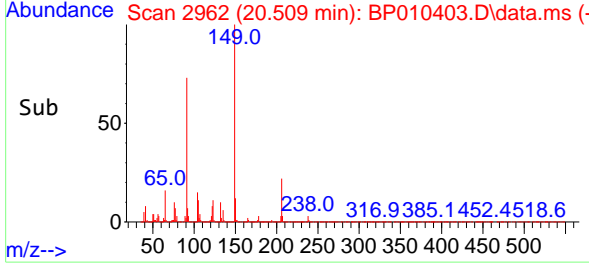


Tgt Ion:149 Resp: 1033718
 Ion Ratio Lower Upper
 149 100
 91 72.6 71.1 106.7
 206 21.7 28.8 43.2

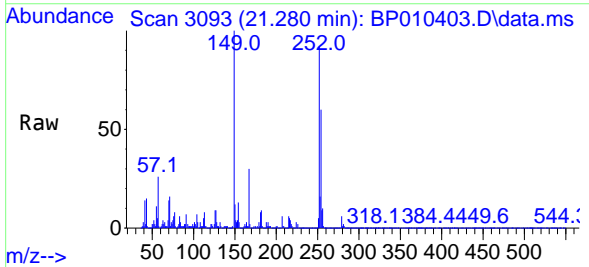
Manual Integrations

APPROVED

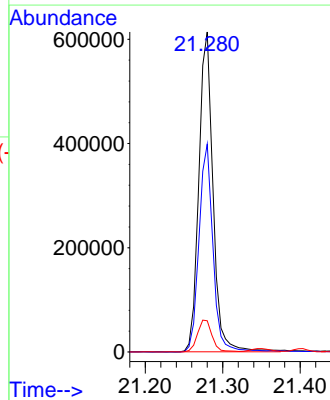
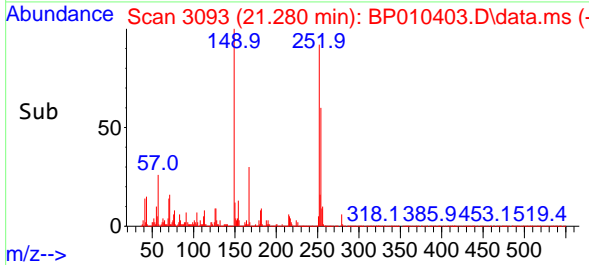
Reviewed By :Jagrut Upadhyay 05/19/2022
 Supervised By :mohammad ahmed 05/19/2022

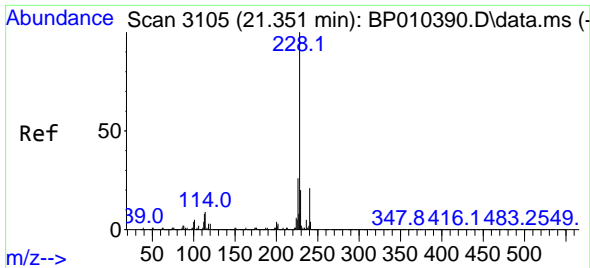


#84
 3,3'-Dichlorobenzidine
 Concen: 36.614 ng/u1
 RT: 21.280 min Scan# 3093
 Delta R.T. -0.000 min
 Lab File: BP010403.D
 Acq: 18 May 2022 16:28



Tgt Ion:252 Resp: 780821
 Ion Ratio Lower Upper
 252 100
 254 64.9 49.8 74.6
 126 9.8 4.3 6.5





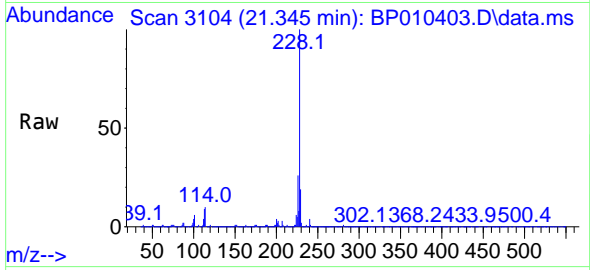
#85
 Benzo(a)anthracene
 Concen: 34.069 ng/u1
 RT: 21.345 min Scan# 3104
 Delta R.T. -0.000 min
 Lab File: BP010403.D
 Acq: 18 May 2022 16:28

Instrument :

BNA_P

ClientSampleId :

SLCS853

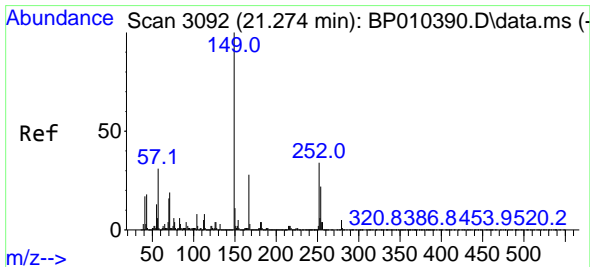
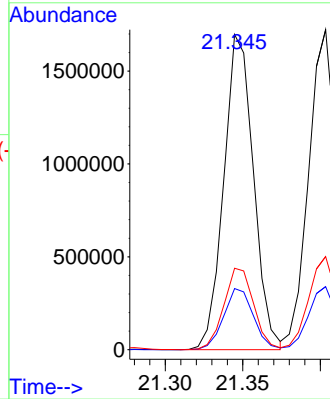
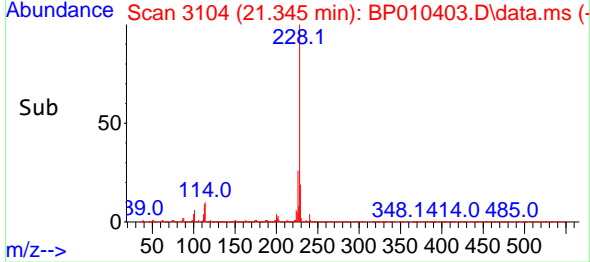


Tgt Ion:228 Resp: 2260500
 Ion Ratio Lower Upper
 228 100
 229 19.4 18.2 27.2
 226 25.9 22.8 34.2

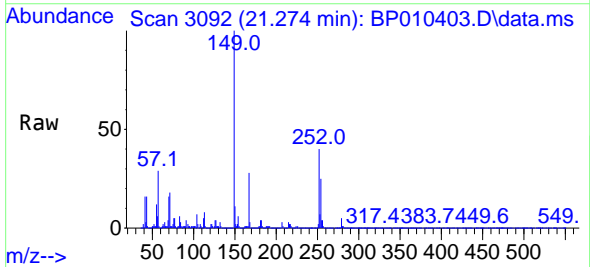
Manual Integrations

APPROVED

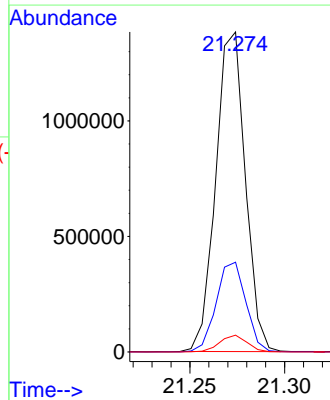
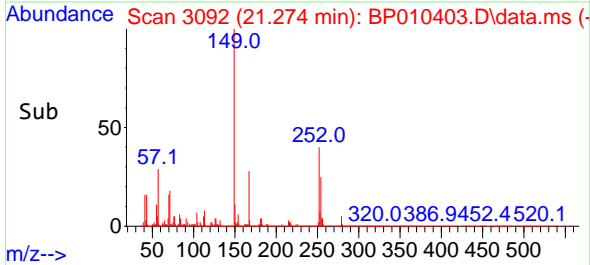
Reviewed By :Jagrut Upadhyay 05/19/2022
 Supervised By :mohammad ahmed 05/19/2022

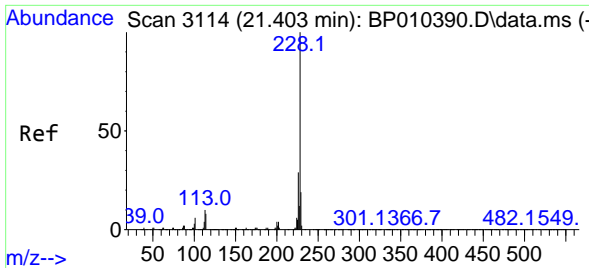


#86
 Bis(2-ethylhexyl)phthalate
 Concen: 37.495 ng/u1
 RT: 21.274 min Scan# 3092
 Delta R.T. 0.006 min
 Lab File: BP010403.D
 Acq: 18 May 2022 16:28



Tgt Ion:149 Resp: 1503494
 Ion Ratio Lower Upper
 149 100
 167 28.1 32.8 49.2#
 279 5.2 5.6 8.4#





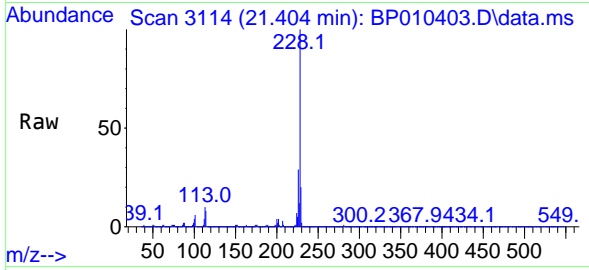
#87
 Chrysene
 Concen: 33.959 ng/u1
 RT: 21.404 min Scan# 3114
 Delta R.T. 0.006 min
 Lab File: BP010403.D
 Acq: 18 May 2022 16:28

Instrument :

BNA_P

ClientSampleId :

SLCS853

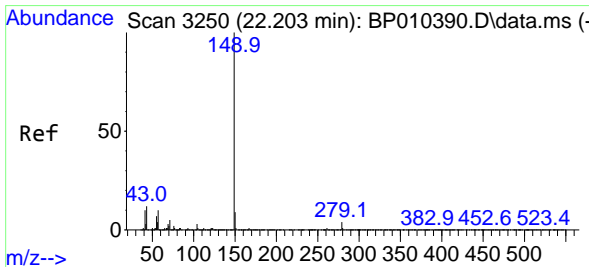
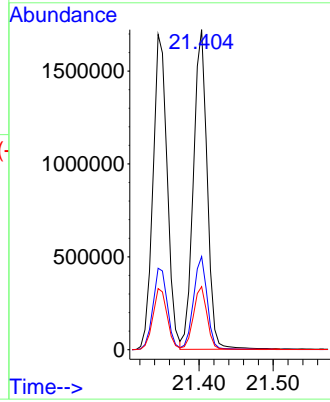
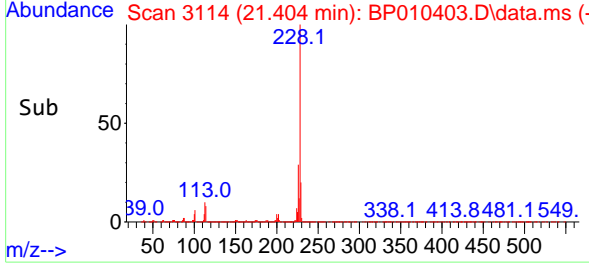


Tgt Ion:228 Resp: 221632
 Ion Ratio Lower Upper
 228 100
 226 29.1 22.7 34.1
 229 19.7 15.2 22.8

Manual Integrations

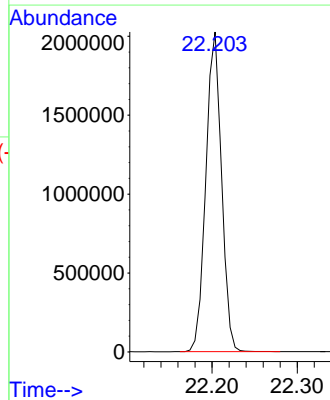
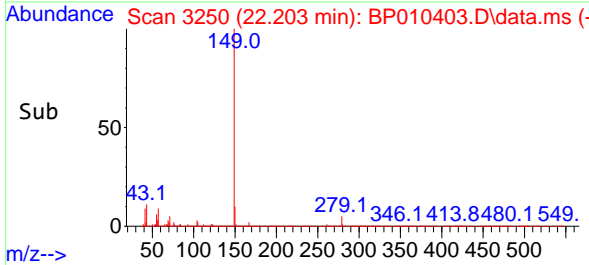
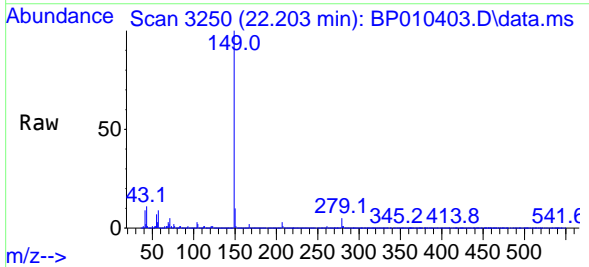
APPROVED

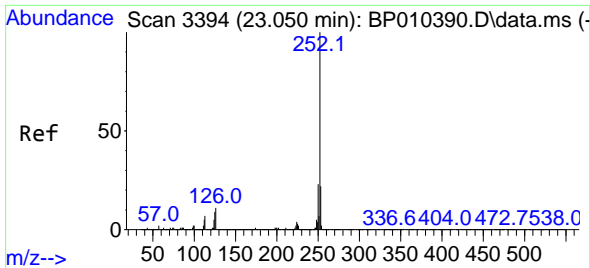
Reviewed By :Jagrut Upadhyay 05/19/2022
 Supervised By :mohammad ahmed 05/19/2022



#89
 Di-n-octyl phthalate
 Concen: 36.114 ng/u1
 RT: 22.203 min Scan# 3250
 Delta R.T. -0.000 min
 Lab File: BP010403.D
 Acq: 18 May 2022 16:28

Tgt Ion:149 Resp: 2584821





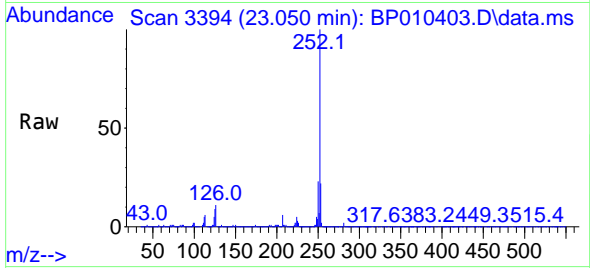
#90
 Benzo(b)fluoranthene
 Concen: 34.209 ng/u1
 RT: 23.050 min Scan# 31
 Delta R.T. -0.000 min
 Lab File: BP010403.D
 Acq: 18 May 2022 16:28

Instrument :

BNA_P

ClientSampleId :

SLCS853

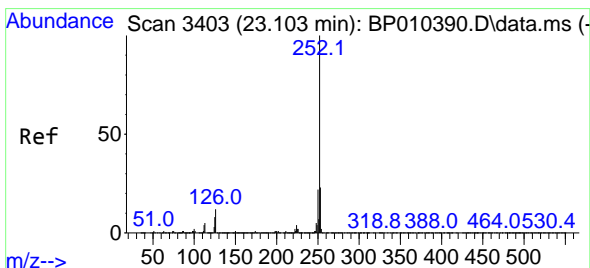
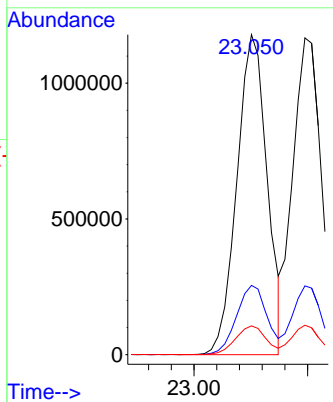
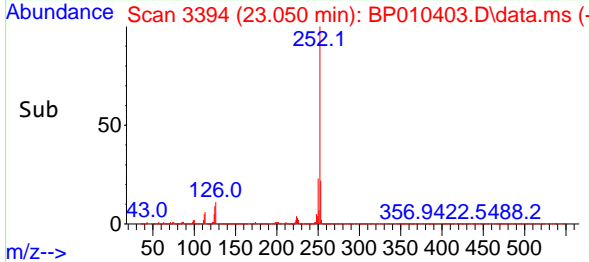


Tgt Ion:252 Resp: 2175478
 Ion Ratio Lower Upper
 252 100
 253 21.7 17.4 26.0
 125 9.0 7.3 10.9

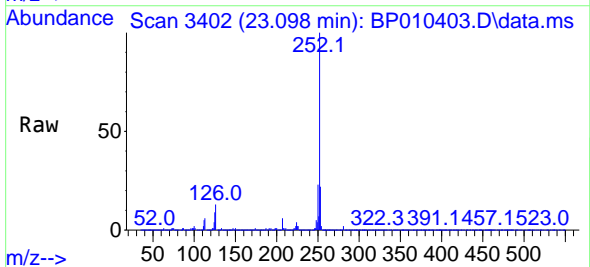
Manual Integrations

APPROVED

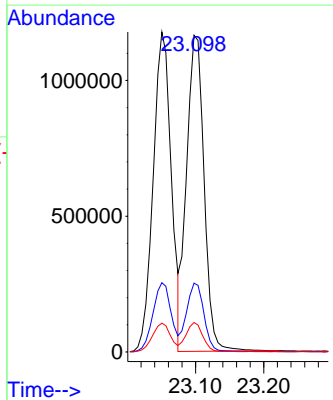
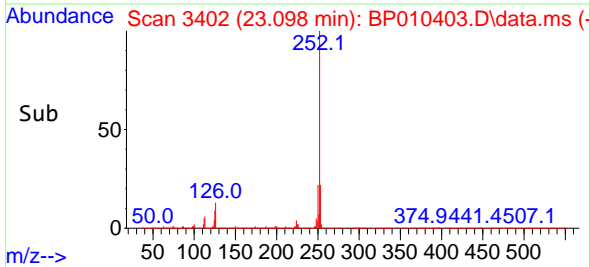
Reviewed By :Jagrut Upadhyay 05/19/2022
 Supervised By :mohammad ahmed 05/19/2022

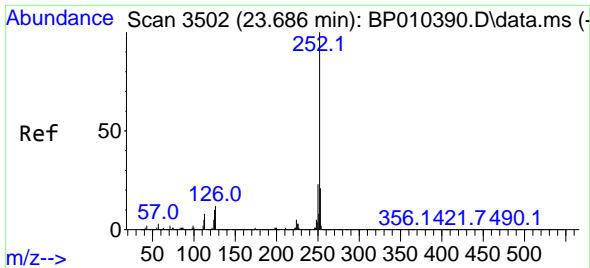


#91
 Benzo(k)fluoranthene
 Concen: 34.277 ng/u1
 RT: 23.098 min Scan# 3402
 Delta R.T. -0.000 min
 Lab File: BP010403.D
 Acq: 18 May 2022 16:28



Tgt Ion:252 Resp: 2071688
 Ion Ratio Lower Upper
 252 100
 253 21.7 17.9 26.9
 125 9.3 5.1 7.7#





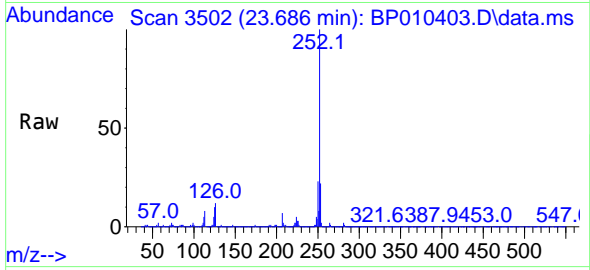
#93
 Benzo(a)pyrene
 Concen: 33.883 ng/u1
 RT: 23.686 min Scan# 3502
 Delta R.T. 0.006 min
 Lab File: BP010403.D
 Acq: 18 May 2022 16:28

Instrument :

BNA_P

Client SampleId :

SLCS853

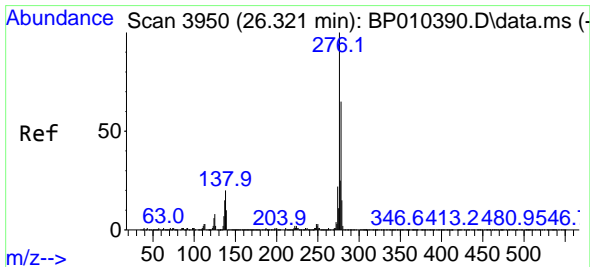
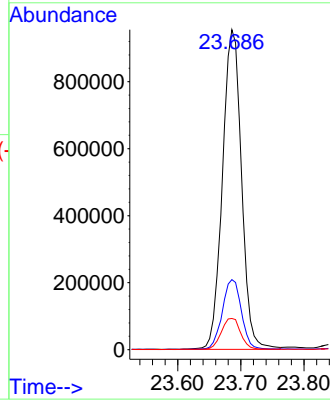
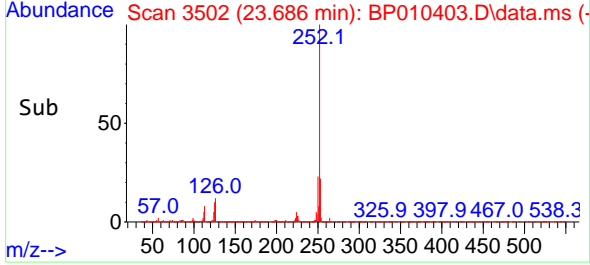


Tgt Ion:252 Resp: 2001928
 Ion Ratio Lower Upper
 252 100
 253 21.9 17.5 26.3
 125 9.7 6.4 9.6

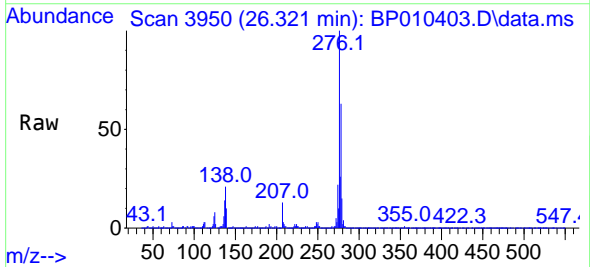
Manual Integrations

APPROVED

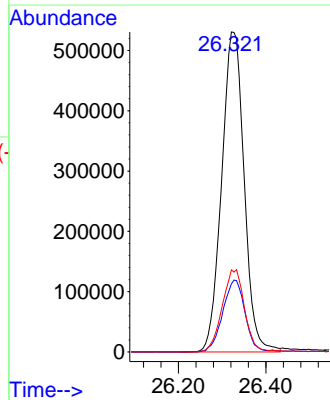
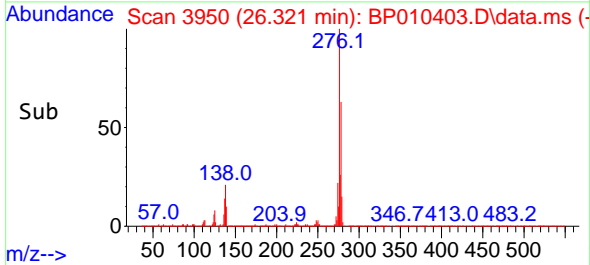
Reviewed By :Jagrut Upadhyay 05/19/2022
 Supervised By :mohammad ahmed 05/19/2022

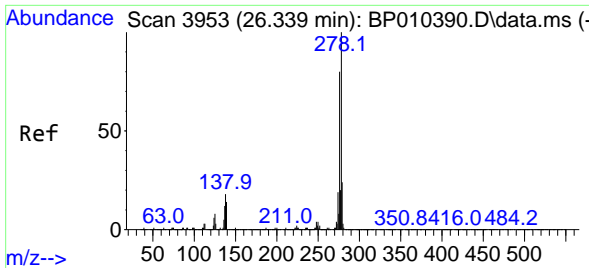


#94
 Indeno(1,2,3-cd)pyrene
 Concen: 34.048 ng/u1
 RT: 26.321 min Scan# 3950
 Delta R.T. -0.000 min
 Lab File: BP010403.D
 Acq: 18 May 2022 16:28



Tgt Ion:276 Resp: 1892510
 Ion Ratio Lower Upper
 276 100
 138 21.3 12.3 18.5#
 277 25.7 19.3 28.9





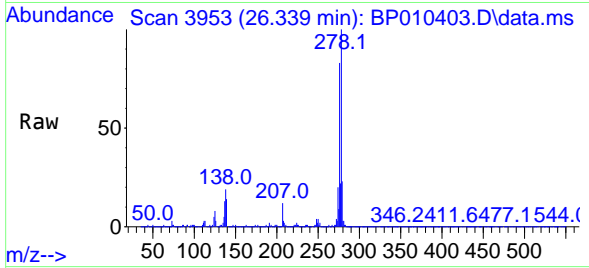
#95
 Dibenzo(a,h)anthracene
 Concen: 33.690 ng/ul
 RT: 26.339 min Scan# 3953
 Delta R.T. 0.006 min
 Lab File: BP010403.D
 Acq: 18 May 2022 16:28

Instrument :

BNA_P

ClientSampleId :

SLCS853

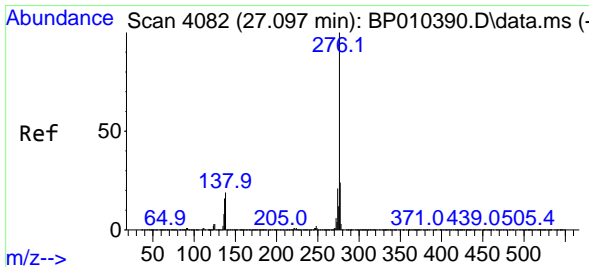
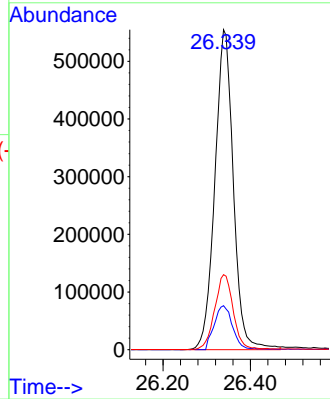
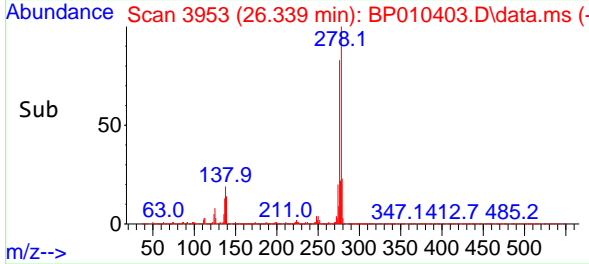


Tgt Ion:278 Resp: 162489
 Ion Ratio Lower Upper
 278 100
 139 13.7 6.6 10.0
 279 23.4 18.4 27.6

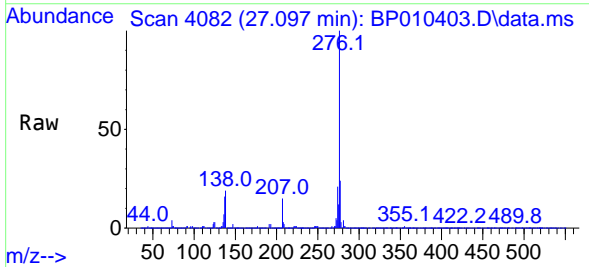
Manual Integrations

APPROVED

Reviewed By :Jagrut Upadhyay 05/19/2022
 Supervised By :mohammad ahmed 05/19/2022



#96
 Benzo(g,h,i)perylene
 Concen: 34.149 ng/ul
 RT: 27.097 min Scan# 4082
 Delta R.T. 0.006 min
 Lab File: BP010403.D
 Acq: 18 May 2022 16:28



Tgt Ion:276 Resp: 1584953
 Ion Ratio Lower Upper
 276 100
 138 18.6 11.6 17.4
 277 23.7 15.9 23.9

