

Data Path : Z:\svoasrv\HPCHEM1\BNA\_P\Data\BP060322\  
 Data File : BP010690.D  
 Acq On : 03 Jun 2022 13:41  
 Operator : CG/JU  
 Sample : N3139-02  
 Misc :  
 ALS Vial : 7 Sample Multiplier: 1

Instrument :  
 BNA\_P  
 ClientSampleId :  
 COMP-2

Quant Time: Jun 04 02:00:05 2022  
 Quant Method : Z:\svoasrv\HPCHEM1\BNA\_P\Methods\8270E-BP052822.M  
 Quant Title : ASP BNA STANDARDS FOR 5 POINT CALIBRATION  
 QLast Update : Sat Jun 04 01:56:43 2022  
 Response via : Initial Calibration

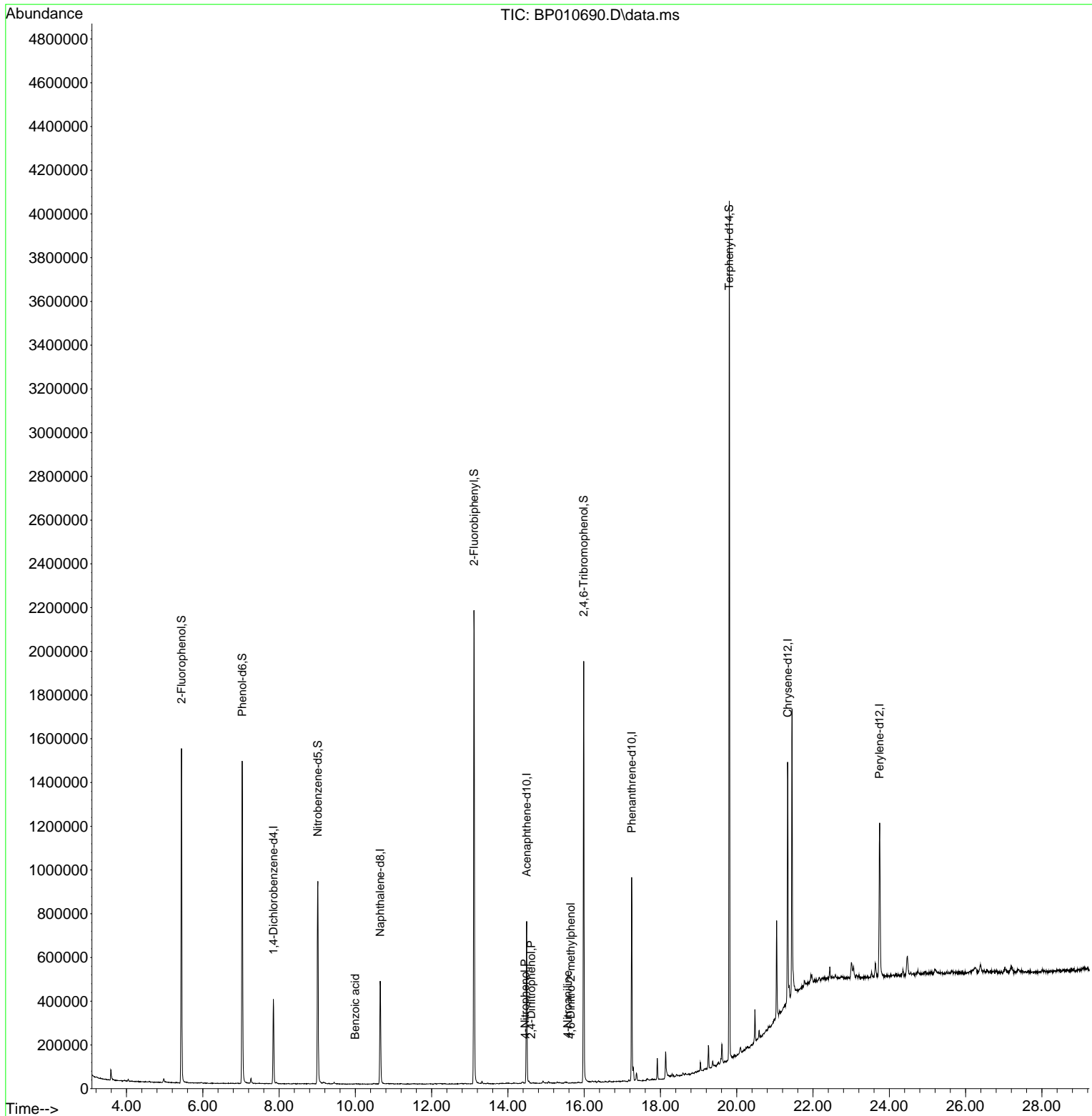
Compound	R.T.	QIon	Response	Conc	Units	Dev(Min)
Internal Standards						
1) 1,4-Dichlorobenzene-d4	7.852	152	98046	20.000	ng	0.00
21) Naphthalene-d8	10.652	136	389152	20.000	ng	0.00
39) Acenaphthene-d10	14.493	164	245533	20.000	ng	0.00
64) Phenanthrene-d10	17.245	188	530264	20.000	ng	0.00
76) Chrysene-d12	21.333	240	524411	20.000	ng	-0.01
86) Perylene-d12	23.745	264	556354	20.000	ng	-0.01
System Monitoring Compounds						
5) 2-Fluorophenol	5.440	112	573207	106.655	ng	0.00
7) Phenol-d6	7.034	99	782489	102.557	ng	0.00
23) Nitrobenzene-d5	9.016	82	530239	64.419	ng	0.00
42) 2,4,6-Tribromophenol	15.987	330	331565	119.297	ng	0.00
45) 2-Fluorobiphenyl	13.110	172	1095313	63.312	ng	0.00
79) Terphenyl-d14	19.804	244	1799138	64.441	ng	0.00
Target Compounds						
32) Benzoic acid	9.993	122	89	7.345	ng	# 10
54) 2,4-Dinitrophenol	14.610	184	10	6.650	ng	# 1
56) 4-Nitrophenol	14.451	139	32	3.607	ng	91
62) 4-Nitroaniline	15.563	138	97	2.157	ng	94
65) 4,6-Dinitro-2-methylph...	15.645	198	9	4.605	ng	# 1

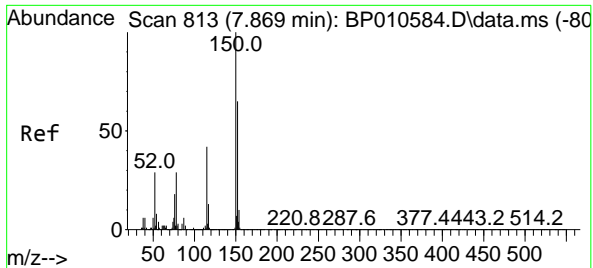
(#) = qualifier out of range (m) = manual integration (+) = signals summed

Data Path : Z:\svoasrv\HPCHEM1\BNA\_P\Data\BP060322\  
 Data File : BP010690.D  
 Acq On : 03 Jun 2022 13:41  
 Operator : CG/JU  
 Sample : N3139-02  
 Misc :  
 ALS Vial : 7 Sample Multiplier: 1

Instrument :  
 BNA\_P  
 ClientSampleId :  
 COMP-2

Quant Time: Jun 04 02:00:05 2022  
 Quant Method : Z:\svoasrv\HPCHEM1\BNA\_P\Methods\8270E-BP052822.M  
 Quant Title : ASP BNA STANDARDS FOR 5 POINT CALIBRATION  
 QLast Update : Sat Jun 04 01:56:43 2022  
 Response via : Initial Calibration

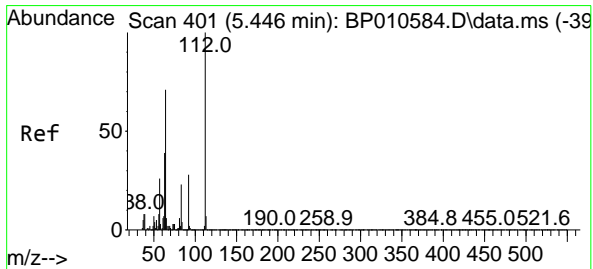
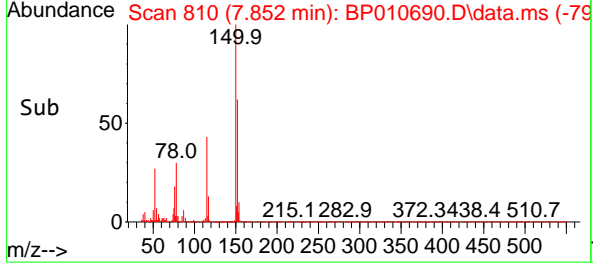
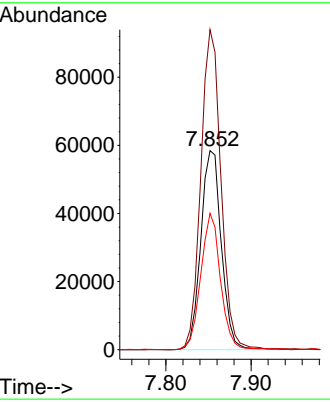
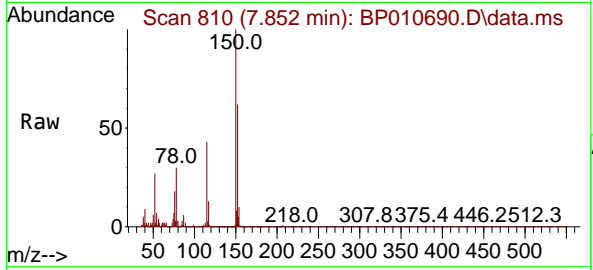




#1  
 1,4-Dichlorobenzene-d4  
 Concen: 20.000 ng  
 RT: 7.852 min Scan# 81  
 Delta R.T. -0.000 min  
 Lab File: BP010690.D  
 Acq: 03 Jun 2022 13:41

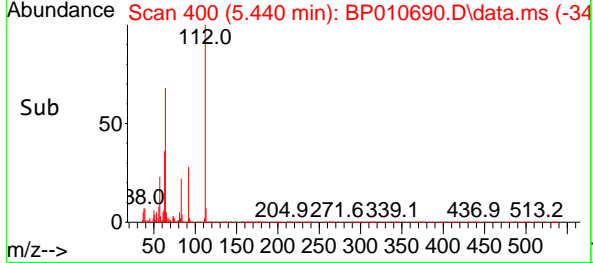
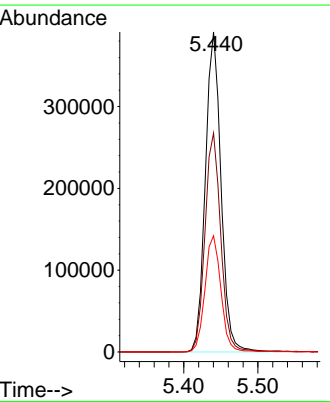
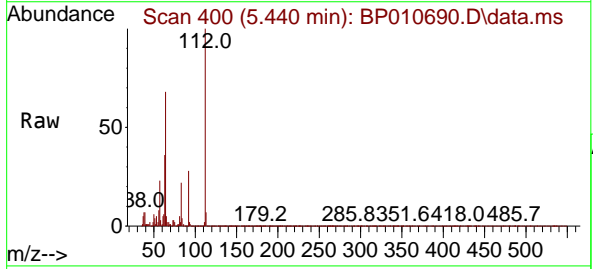
Instrument : BNA\_P  
 ClientSampleId : COMP-2

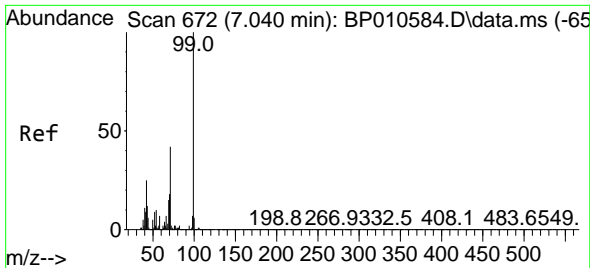
Tgt Ion	Resp	Lower	Upper
152	100		
150	160.7	123.4	185.2
115	68.4	51.3	76.9



#5  
 2-Fluorophenol  
 Concen: 106.655 ng  
 RT: 5.440 min Scan# 400  
 Delta R.T. 0.000 min  
 Lab File: BP010690.D  
 Acq: 03 Jun 2022 13:41

Tgt Ion	Resp	Lower	Upper
112	100		
64	68.4	56.9	85.3
63	36.3	31.2	46.8



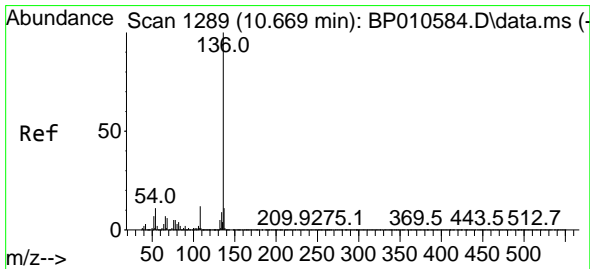
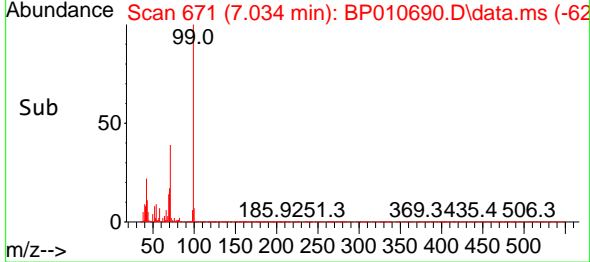
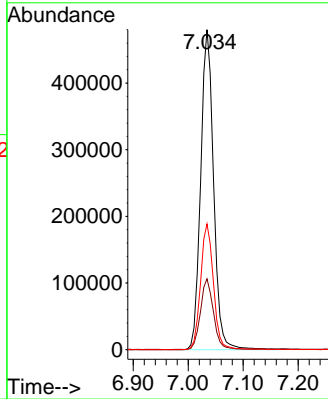
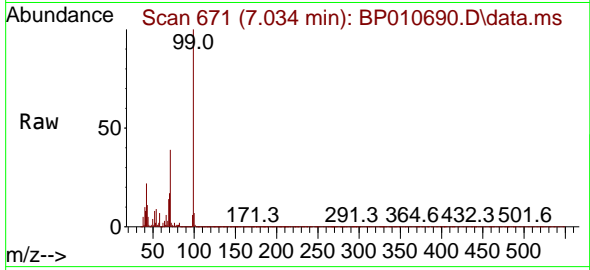


#7  
 Phenol-d6  
 Concen: 102.557 ng  
 RT: 7.034 min Scan# 61  
 Delta R.T. -0.006 min  
 Lab File: BP010690.D  
 Acq: 03 Jun 2022 13:41

Instrument :  
 BNA\_P  
 ClientSampleId :  
 COMP-2

Tgt Ion: 99 Resp: 782489

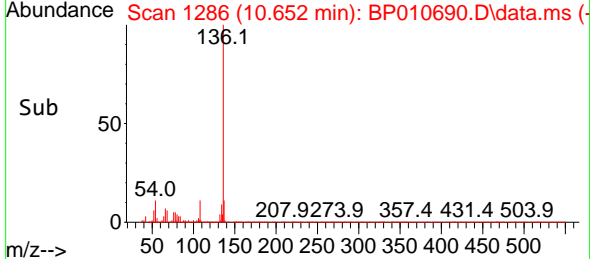
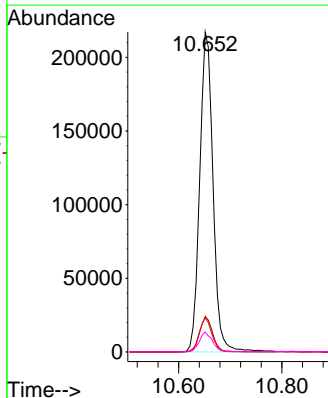
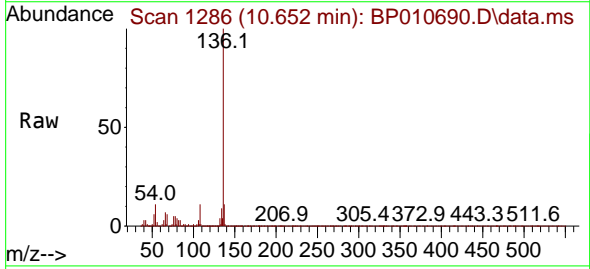
Ion	Ratio	Lower	Upper
99	100		
42	22.1	20.3	30.5
71	39.3	33.9	50.9

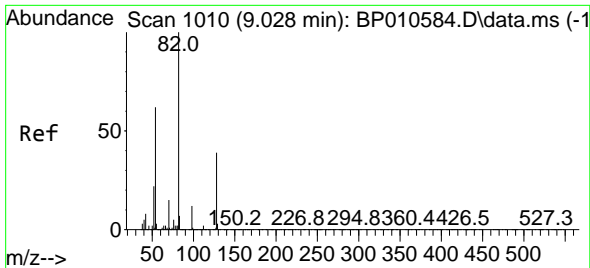


#21  
 Naphthalene-d8  
 Concen: 20.000 ng  
 RT: 10.652 min Scan# 1286  
 Delta R.T. -0.006 min  
 Lab File: BP010690.D  
 Acq: 03 Jun 2022 13:41

Tgt Ion: 136 Resp: 389152

Ion	Ratio	Lower	Upper
136	100		
137	11.1	9.0	13.4
54	10.6	8.7	13.1
68	6.3	4.8	7.2

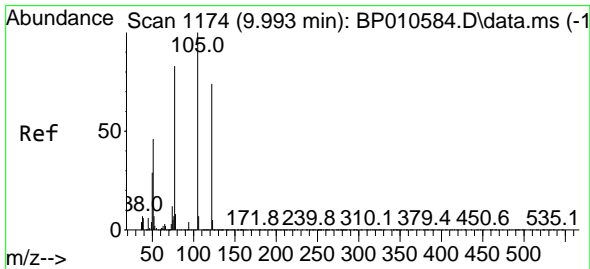
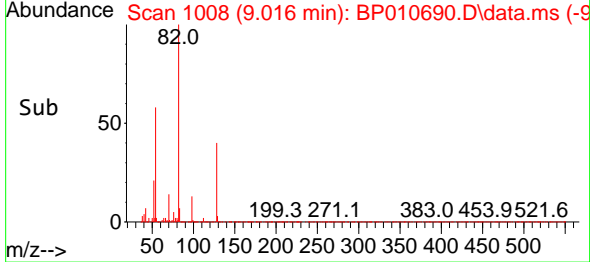
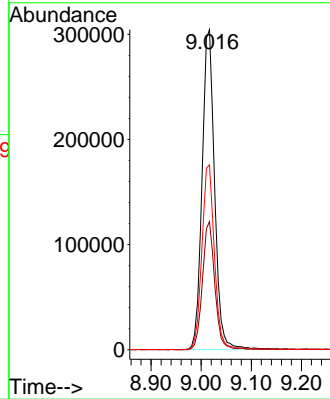
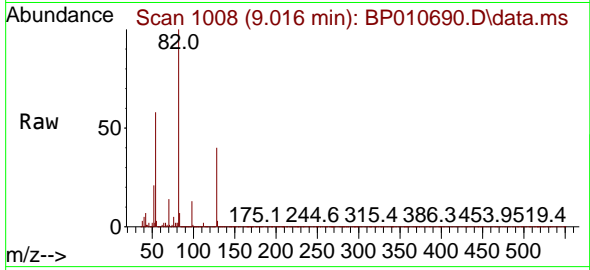




#23  
 Nitrobenzene-d5  
 Concen: 64.419 ng  
 RT: 9.016 min Scan# 1010  
 Delta R.T. -0.006 min  
 Lab File: BP010690.D  
 Acq: 03 Jun 2022 13:41

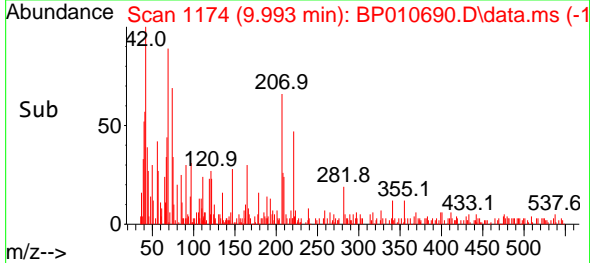
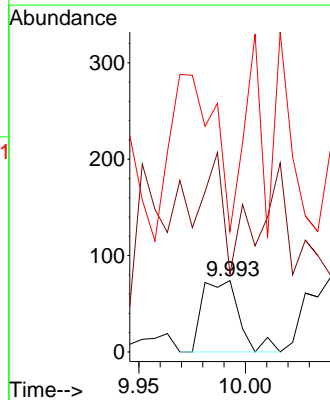
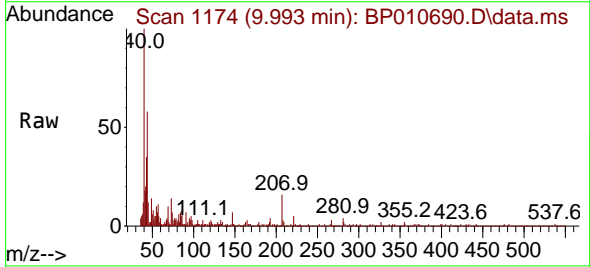
Instrument :  
 BNA\_P  
 ClientSampleId :  
 COMP-2

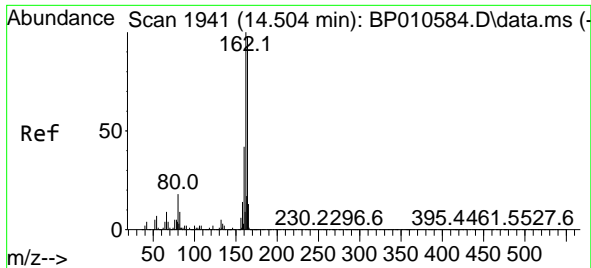
Tgt Ion: 82 Resp: 530239  
 Ion Ratio Lower Upper  
 82 100  
 128 40.0 31.3 46.9  
 54 57.8 49.8 74.8



#32  
 Benzoic acid  
 Concen: 7.345 ng  
 RT: 9.993 min Scan# 1174  
 Delta R.T. -0.029 min  
 Lab File: BP010690.D  
 Acq: 03 Jun 2022 13:41

Tgt Ion: 122 Resp: 89  
 Ion Ratio Lower Upper  
 122 100  
 105 109.5 112.6 152.6#  
 77 294.6 90.2 130.2#

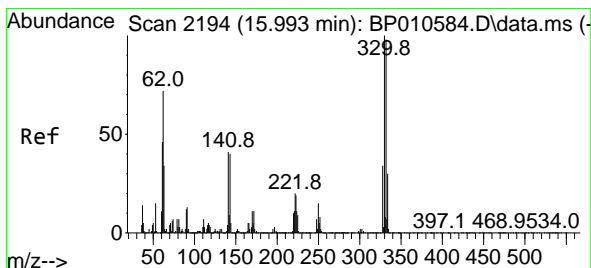
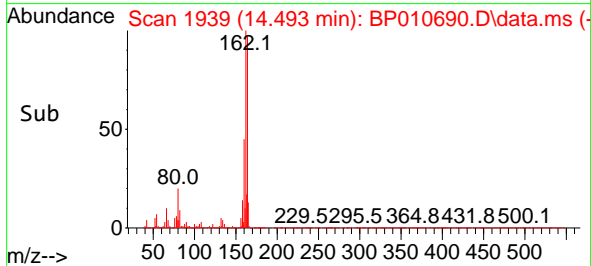
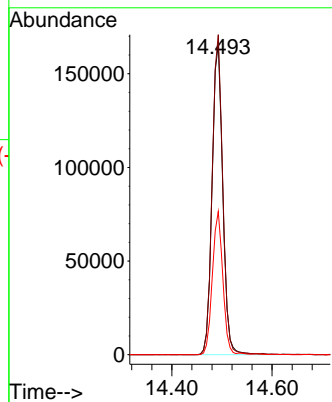
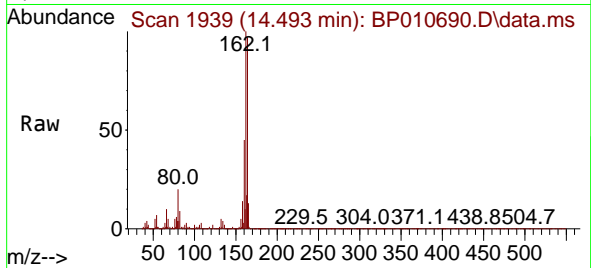




#39  
Acenaphthene-d10  
Concen: 20.000 ng  
RT: 14.493 min Scan# 1939  
Delta R.T. -0.006 min  
Lab File: BP010690.D  
Acq: 03 Jun 2022 13:41

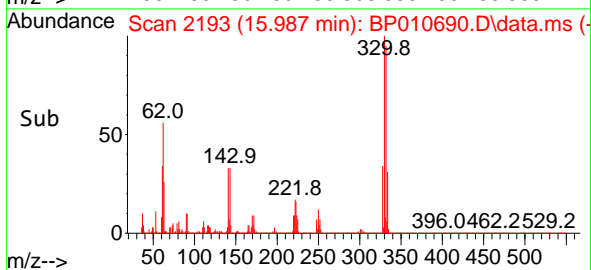
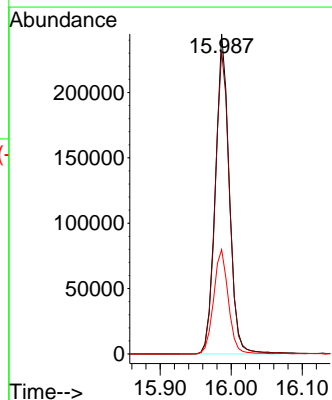
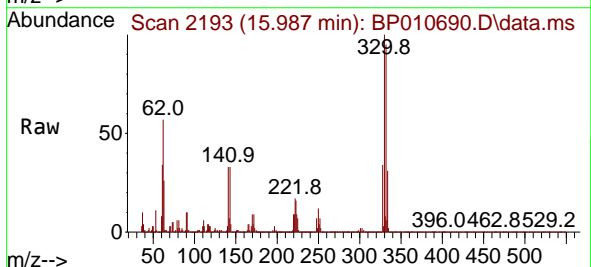
Instrument :  
BNA\_P  
ClientSampleId :  
COMP-2

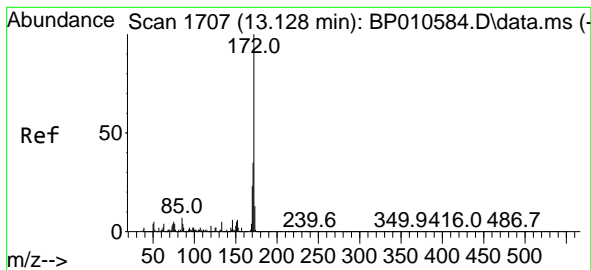
Tgt Ion:164 Resp: 245533  
Ion Ratio Lower Upper  
164 100  
162 103.2 81.9 122.9  
160 46.2 34.6 51.8



#42  
2,4,6-Tribromophenol  
Concen: 119.297 ng  
RT: 15.987 min Scan# 2193  
Delta R.T. -0.006 min  
Lab File: BP010690.D  
Acq: 03 Jun 2022 13:41

Tgt Ion:330 Resp: 331565  
Ion Ratio Lower Upper  
330 100  
332 97.8 78.1 117.1  
141 34.5 31.4 47.2



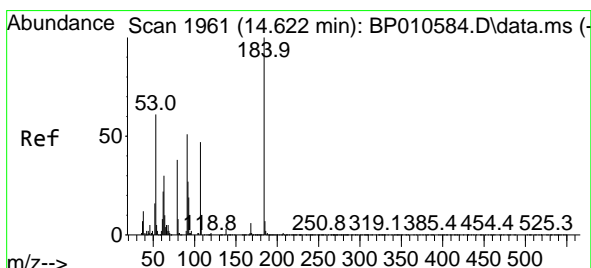
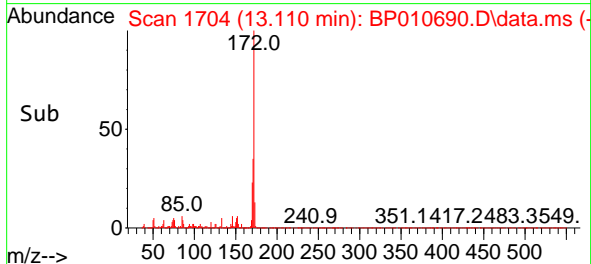
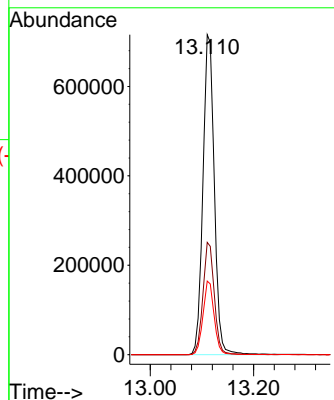
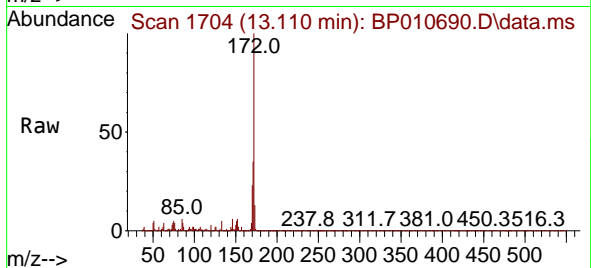


#45  
 2-Fluorobiphenyl  
 Concen: 63.312 ng  
 RT: 13.110 min Scan# 11  
 Delta R.T. -0.006 min  
 Lab File: BP010690.D  
 Acq: 03 Jun 2022 13:41

Instrument :  
 BNA\_P  
 ClientSampleId :  
 COMP-2

Tgt Ion:172 Resp: 1095313

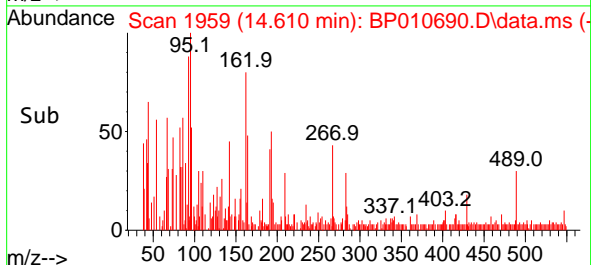
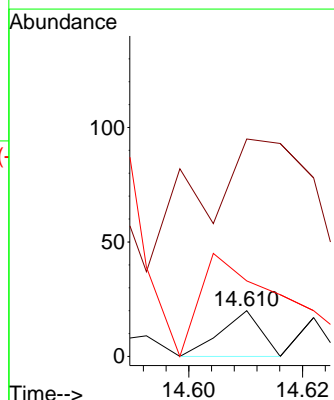
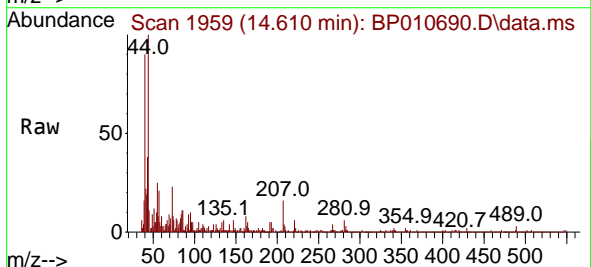
Ion	Ratio	Lower	Upper
172	100		
171	35.1	27.9	41.9
170	23.0	18.2	27.2

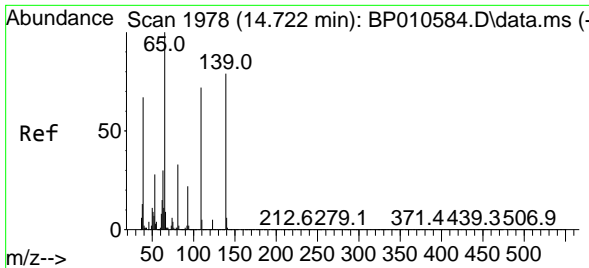


#54  
 2,4-Dinitrophenol  
 Concen: 6.650 ng  
 RT: 14.610 min Scan# 1959  
 Delta R.T. -0.012 min  
 Lab File: BP010690.D  
 Acq: 03 Jun 2022 13:41

Tgt Ion:184 Resp: 10

Ion	Ratio	Lower	Upper
184	100		
63	475.0	65.4	98.2#
154	165.0	55.4	83.2#

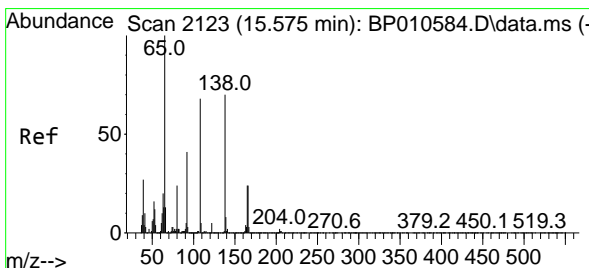
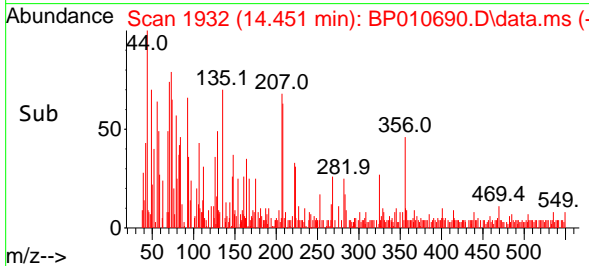
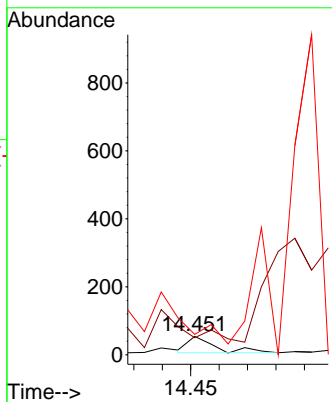
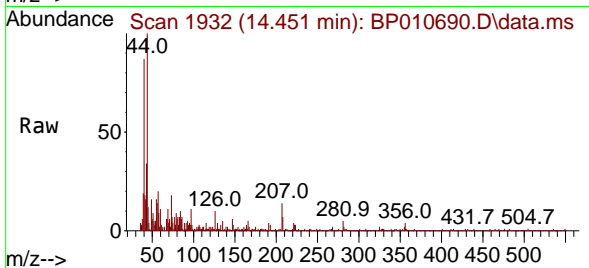




#56  
 4-Nitrophenol  
 Concen: 3.607 ng  
 RT: 14.451 min Scan# 11  
 Delta R.T. -0.288 min  
 Lab File: BP010690.D  
 Acq: 03 Jun 2022 13:41

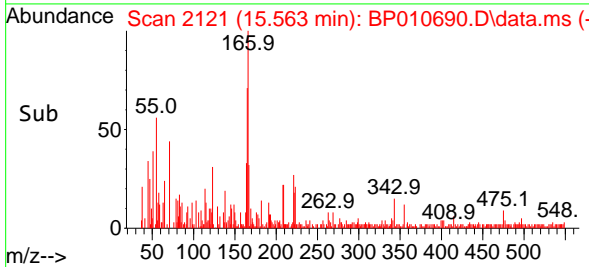
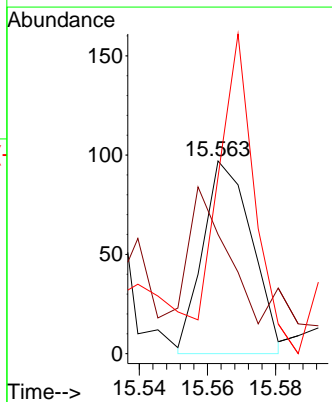
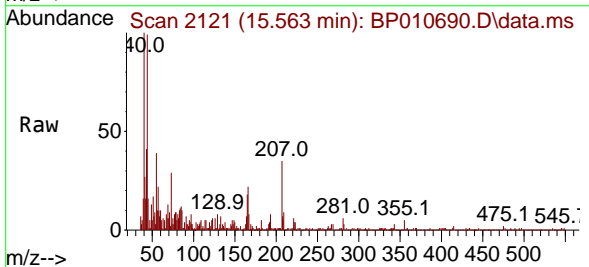
Instrument :  
 BNA\_P  
 ClientSampleId :  
 COMP-2

Tgt Ion	Resp	Lower	Upper
139	100		
109	92.6	70.6	110.6
65	111.1	106.6	146.6

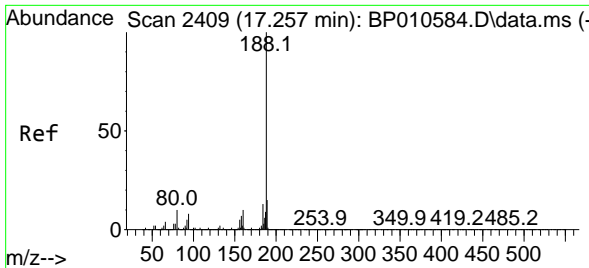


#62  
 4-Nitroaniline  
 Concen: 2.157 ng  
 RT: 15.563 min Scan# 2121  
 Delta R.T. -0.012 min  
 Lab File: BP010690.D  
 Acq: 03 Jun 2022 13:41

Tgt Ion	Resp	Lower	Upper
138	100		
92	61.9	38.0	78.0
108	91.8	77.6	117.6



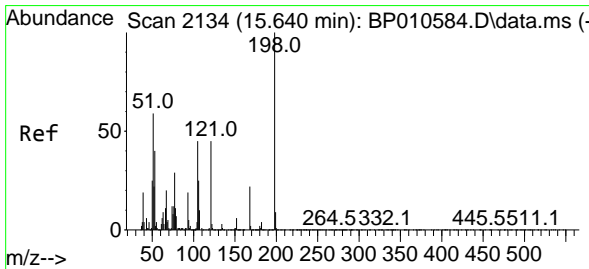
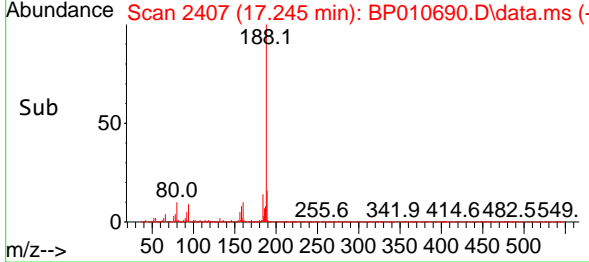
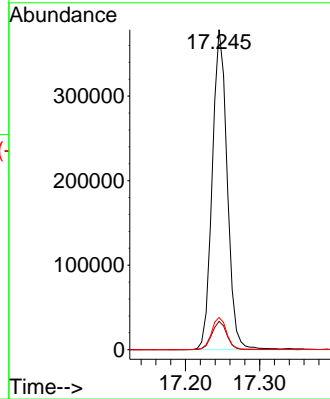
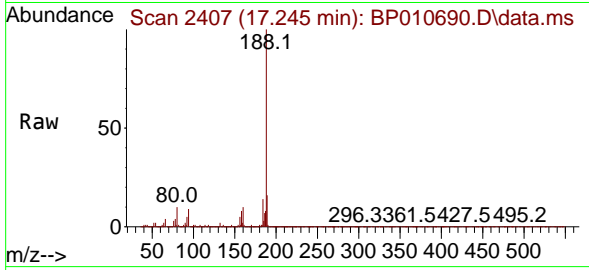




#64  
 Phenanthrene-d10  
 Concen: 20.000 ng  
 RT: 17.245 min Scan# 2409  
 Delta R.T. -0.006 min  
 Lab File: BP010690.D  
 Acq: 03 Jun 2022 13:41

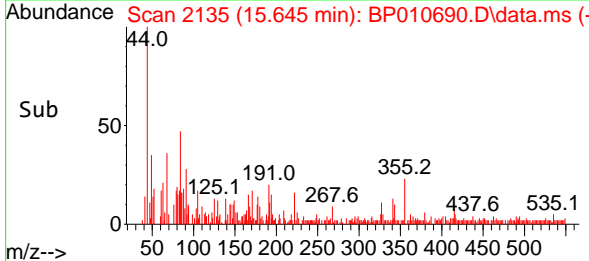
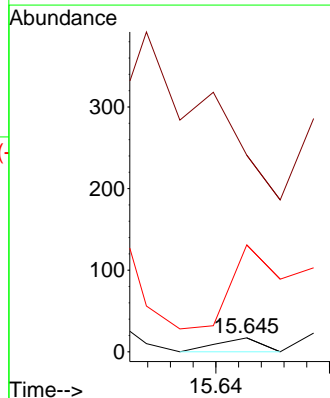
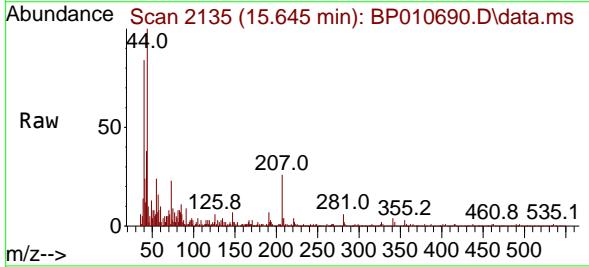
Instrument :  
 BNA\_P  
 ClientSampleId :  
 COMP-2

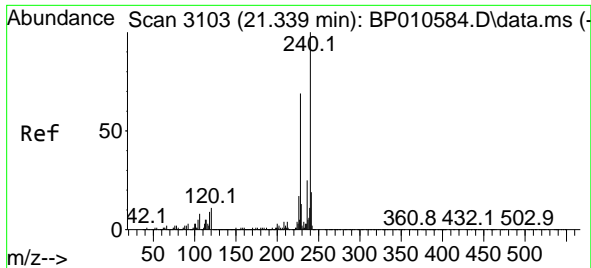
Tgt Ion	Resp	Lower	Upper
188	530264		
188	100		
94	8.9	6.6	10.0
80	10.0	8.0	12.0



#65  
 4,6-Dinitro-2-methylphenol  
 Concen: 4.605 ng  
 RT: 15.645 min Scan# 2135  
 Delta R.T. 0.006 min  
 Lab File: BP010690.D  
 Acq: 03 Jun 2022 13:41

Tgt Ion	Resp	Lower	Upper
198	9		
198	100		
51	1417.6	41.2	81.2#
105	770.6	25.3	65.3#



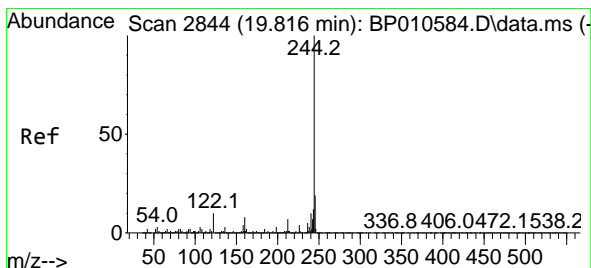
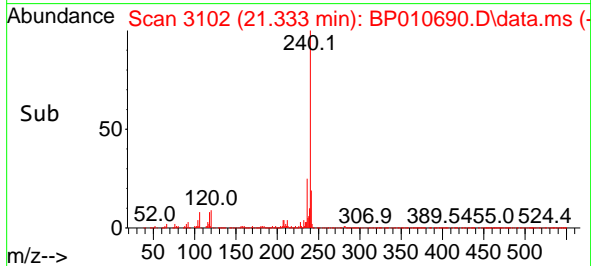
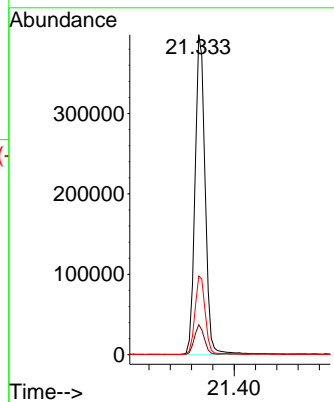
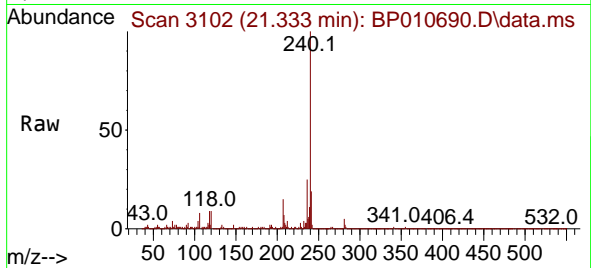


#76  
 Chrysene-d12  
 Concen: 20.000 ng  
 RT: 21.333 min Scan# 3102  
 Delta R.T. -0.012 min  
 Lab File: BP010690.D  
 Acq: 03 Jun 2022 13:41

Instrument :  
 BNA\_P  
 ClientSampleId :  
 COMP-2

Tgt Ion: 240 Resp: 524411

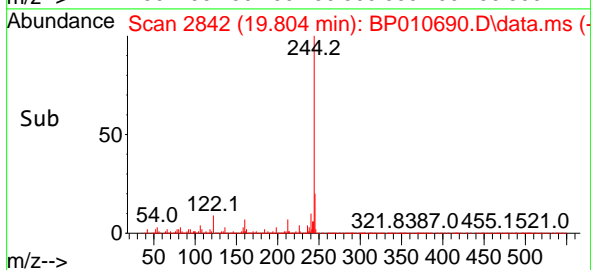
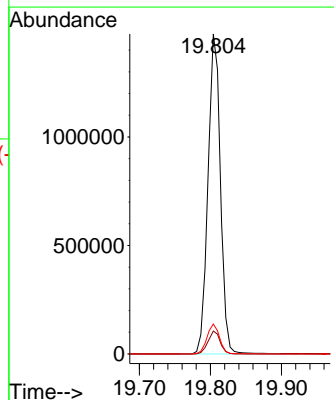
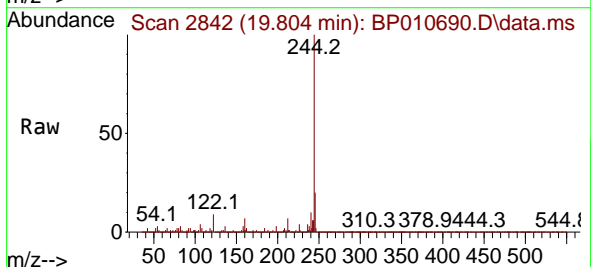
Ion	Ratio	Lower	Upper
240	100		
120	9.3	8.6	12.8
236	24.6	19.8	29.6

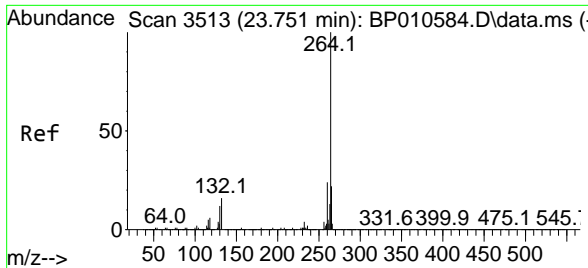


#79  
 Terphenyl-d14  
 Concen: 64.441 ng  
 RT: 19.804 min Scan# 2842  
 Delta R.T. -0.006 min  
 Lab File: BP010690.D  
 Acq: 03 Jun 2022 13:41

Tgt Ion: 244 Resp: 1799138

Ion	Ratio	Lower	Upper
244	100		
212	7.2	5.8	8.8
122	9.3	7.6	11.4





#86  
 Perylene-d12  
 Concen: 20.000 ng  
 RT: 23.745 min Scan# 31  
 Delta R.T. -0.012 min  
 Lab File: BP010690.D  
 Acq: 03 Jun 2022 13:41

Instrument :  
 BNA\_P  
 ClientSampleId :  
 COMP-2

Tgt Ion: 264 Resp: 556354

Ion	Ratio	Lower	Upper
264	100		
260	22.8	19.3	28.9
265	21.4	18.0	27.0

