

Data Path : Z:\svoasrv\HPCHEM1\BNA_P\Data\BP071524\
 Data File : BP020961.D
 Acq On : 15 Jul 2024 16:40
 Operator : MA/JU
 Sample : P3217-03
 Misc :
 ALS Vial : 8 Sample Multiplier: 1

Instrument :
 BNA_P
ClientSampleId :
 YDZC5

Manual Integrations
APPROVED
 Reviewed By :Yogesh Patel 07/16/2024
 Supervised By :mohammad ahmed 07/18/2024

Quant Time: Jul 15 23:16:28 2024
 Quant Method : Z:\svoasrv\HPCHEM1\BNA_P\Methods\SFAM-EPA-BP071024.MA.M
 Quant Title : SVOA CALIBRATION
 QLast Update : Mon Jul 15 12:22:22 2024
 Response via : Initial Calibration

Compound	R.T.	QIon	Response	Conc	Units	Dev(Min)
Internal Standards						
1) 1,4-Dichlorobenzene-d4	7.681	152	161301	20.000	ng/u1	0.00
20) Naphthalene-d8	10.446	136	609325	20.000	ng/u1	0.00
38) Acenaphthene-d10	14.322	164	439652	20.000	ng/u1	0.00
64) Phenanthrene-d10	17.122	188	808951	20.000	ng/u1	0.00
79) Chrysene-d12	21.569	240	872780	20.000	ng/u1	0.02
88) Perylene-d12	24.880	264	1100039	20.000	ng/u1	0.05
System Monitoring Compounds						
3) 1,4-Dioxane-d8	3.240	96	14940	4.215	ng/uL	0.00
4) Pyridine-d5	3.664	84	82614	8.051	ng/u1	0.01
7) Phenol-d5	6.893	99	141043	10.725	ng/u1	0.00
9) Bis-(2-Chloroethyl)eth...	7.028	67	103437	12.979	ng/u1	0.00
11) 2-Chlorophenol-d4	7.234	132	172653	15.935	ng/u1	0.00
15) 4-Methylphenol-d8	8.399	113	171610	15.712	ng/u1	0.00
21) Nitrobenzene-d5	8.834	128	64556	13.640	ng/u1	0.00
24) 2-Nitrophenol-d4	9.546	143	70455	13.007	ng/u1	0.00
28) 2,4-Dichlorophenol-d3	10.087	165	149674	15.281	ng/u1	0.00
31) 4-Chloroaniline-d4	10.599	131	101268	7.804	ng/u1	0.01
46) Dimethylphthalate-d6	13.716	166	406797	12.728	ng/u1	0.00
49) Acenaphthylene-d8	14.010	160	438781	12.227	ng/u1	0.00
54) 4-Nitrophenol-d4	14.592	143	64770	14.244	ng/u1	0.02
60) Fluorene-d10	15.322	176	345343	13.171	ng/u1	0.00
65) 4,6-Dinitro-2-methylph...	15.469	200	50699	10.358	ng/u1	0.00
73) Anthracene-d10	17.228	188	529411	14.735	ng/u1	0.00
81) Pyrene-d10	19.604	212	659338	12.219	ng/u1	0.00
92) Benzo(a)pyrene-d12	24.633	264	742994	13.695	ng/u1	0.03
Target Compounds						
13) 2-Methylphenol	8.134	108	210181	20.423	ng/u1	99
18) 4-Methylphenol	8.458	108	617506	56.009	ng/u1	91
26) 2,4-Dimethylphenol	9.646	107	441814m	39.659	ng/u1	
30) Naphthalene	10.499	128	654902	20.433	ng/u1	99
35) 4-Chloro-3-methylphenol	11.757	107	451960	43.073	ng/u1	98
36) 2-Methylnaphthalene	12.116	142	1388092	63.092	ng/u1	99
37) 1-Methylnaphthalene	12.328	142	936549	41.390	ng/u1	98
72) Phenanthrene	17.169	178	77050	1.836	ng/u1#	91

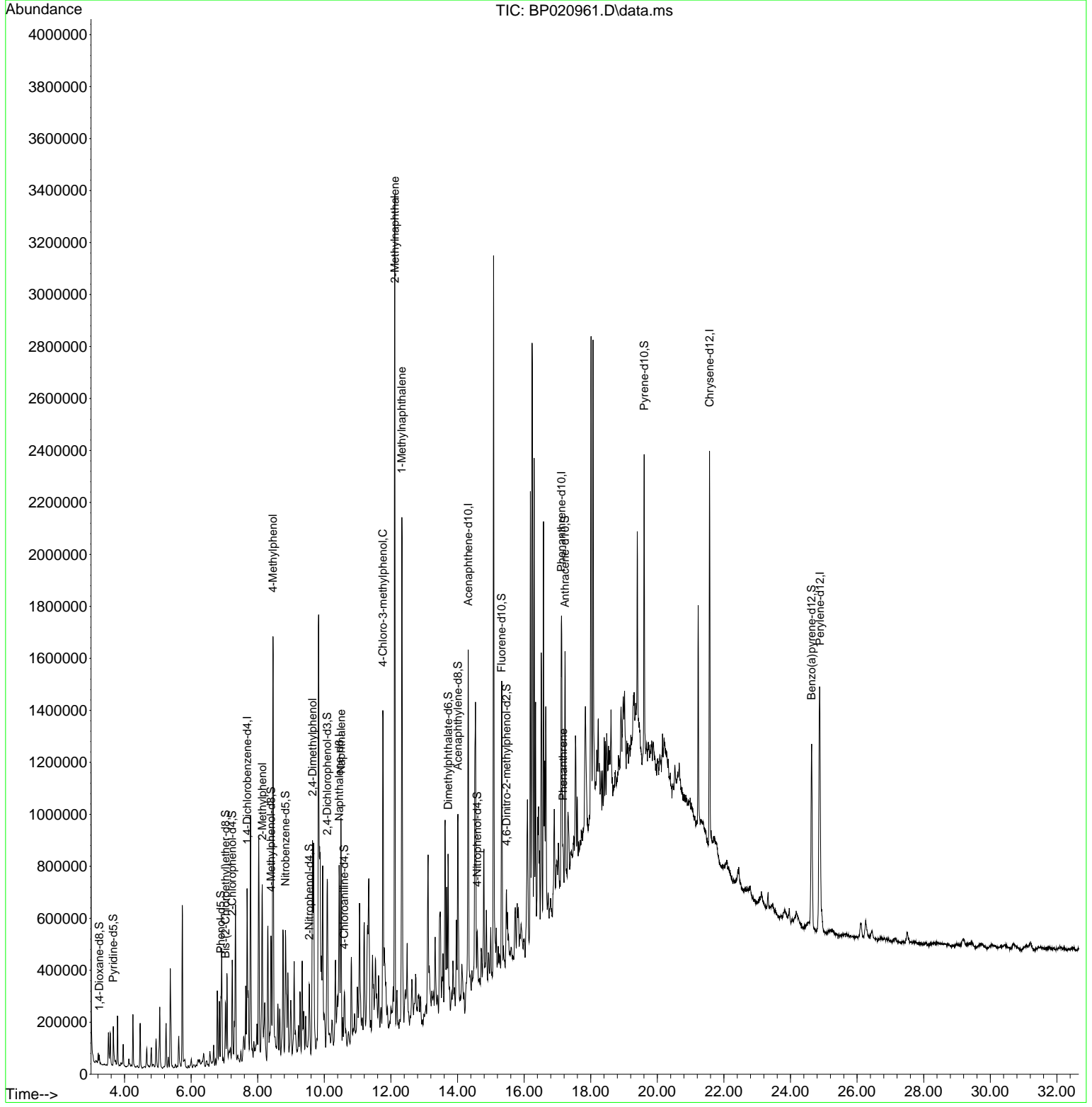
(#) = qualifier out of range (m) = manual integration (+) = signals summed

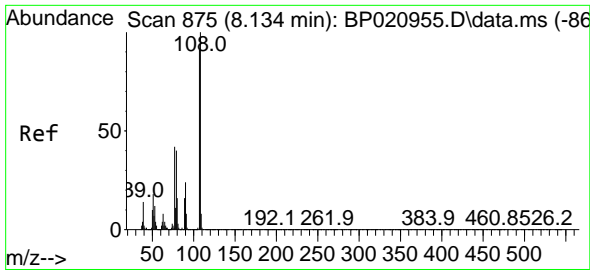
Data Path : Z:\svoasrv\HPCHEM1\BNA_P\Data\BP071524\
 Data File : BP020961.D
 Acq On : 15 Jul 2024 16:40
 Operator : MA/JU
 Sample : P3217-03
 Misc :
 ALS Vial : 8 Sample Multiplier: 1

Instrument :
 BNA_P
 ClientSampleId :
 YDZC5

Quant Time: Jul 15 23:16:28 2024
 Quant Method : Z:\svoasrv\HPCHEM1\BNA_P\Methods\SFAM-EPA-BP071024.MA.M
 Quant Title : SVOA CALIBRATION
 QLast Update : Mon Jul 15 12:22:22 2024
 Response via : Initial Calibration

Manual Integrations
APPROVED
 Reviewed By :Yogesh Patel 07/16/2024
 Supervised By :mohammad ahmed 07/18/2024





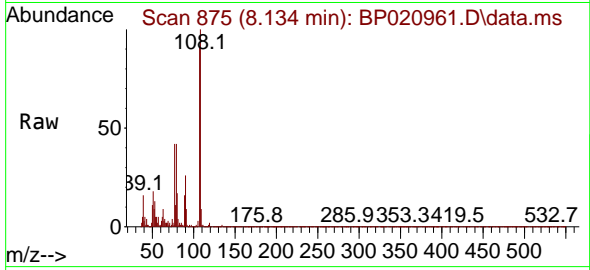
#13
 2-Methylphenol
 Concen: 20.423 ng/ul
 RT: 8.134 min Scan# 81
 Delta R.T. -0.000 min
 Lab File: BP020961.D
 Acq: 15 Jul 2024 16:40

Instrument :

BNA_P

ClientSampleId :

YDZC5



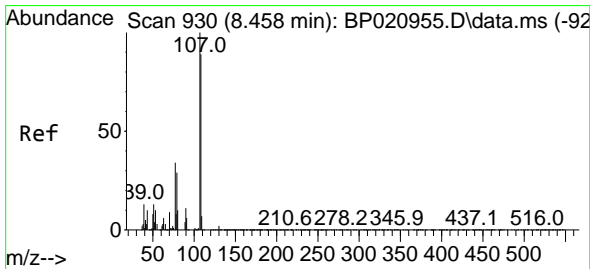
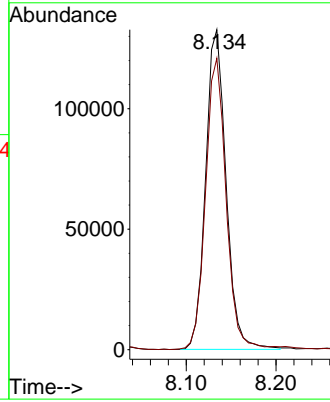
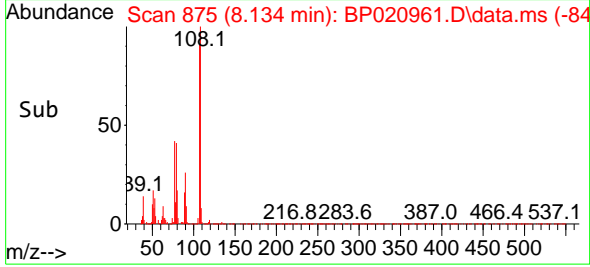
Tgt Ion:108 Resp: 21018
 Ion Ratio Lower Upper
 108 100
 107 91.0 73.8 110.8

Manual Integrations

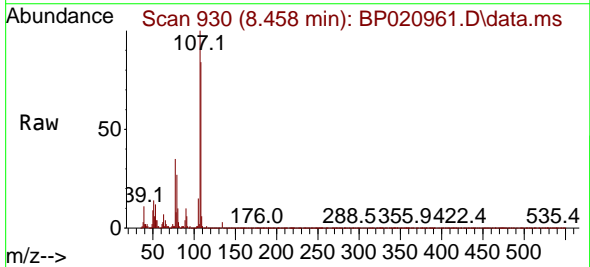
APPROVED

Reviewed By :Yogesh Patel 07/16/2024

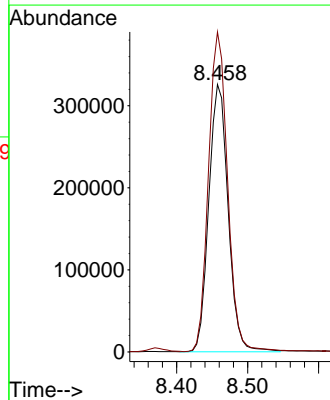
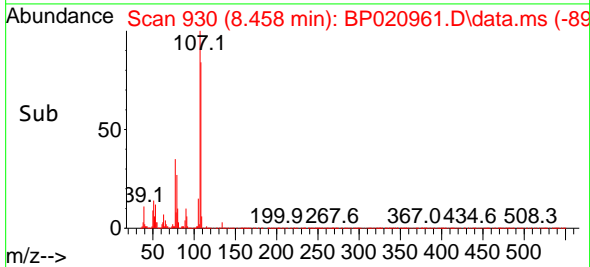
Supervised By :mohammad ahmed 07/18/2024

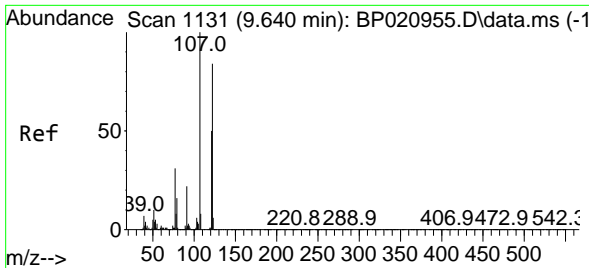


#18
 4-Methylphenol
 Concen: 56.009 ng/ul
 RT: 8.458 min Scan# 930
 Delta R.T. -0.000 min
 Lab File: BP020961.D
 Acq: 15 Jul 2024 16:40



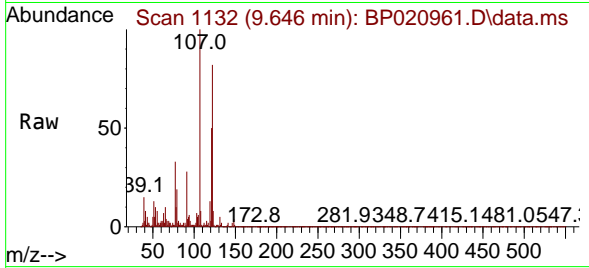
Tgt Ion:108 Resp: 617506
 Ion Ratio Lower Upper
 108 100
 107 119.6 87.8 131.8





#26
 2,4-Dimethylphenol
 Concen: 39.659 ng/ul m
 RT: 9.646 min Scan# 1131
 Delta R.T. 0.006 min
 Lab File: BP020961.D
 Acq: 15 Jul 2024 16:40

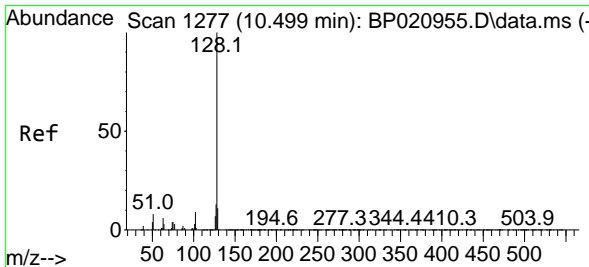
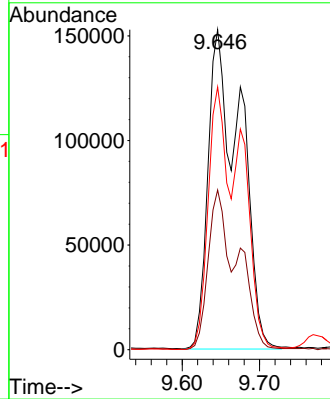
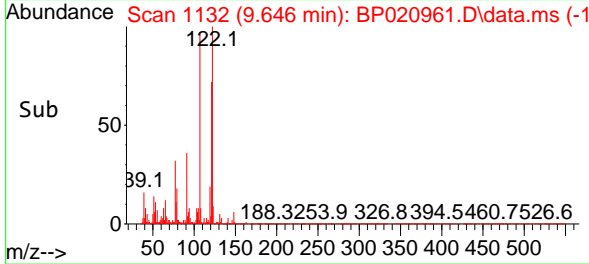
Instrument :
 BNA_P
 ClientSampleId :
 YDZC5



Tgt Ion:107 Resp: 441814
 Ion Ratio Lower Upper
 107 100
 121 49.9 39.6 59.4
 122 82.1 66.3 99.5

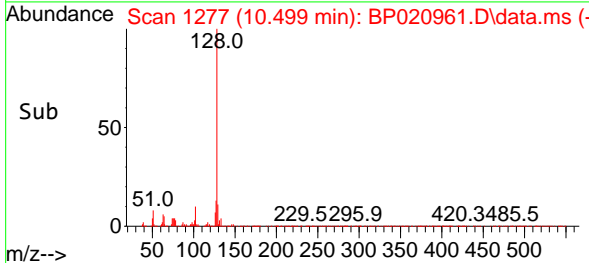
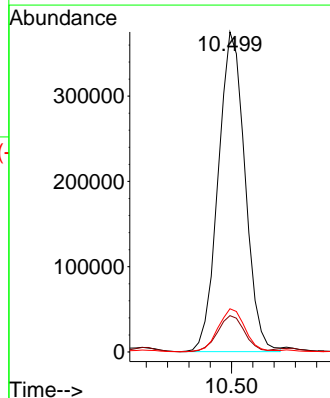
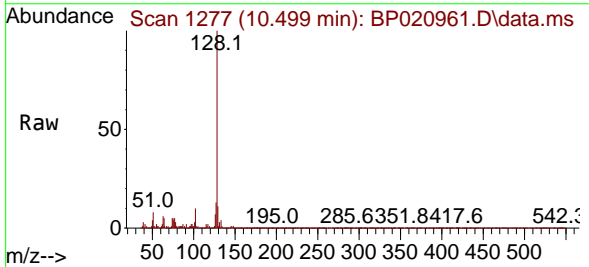
Manual Integrations
 APPROVED

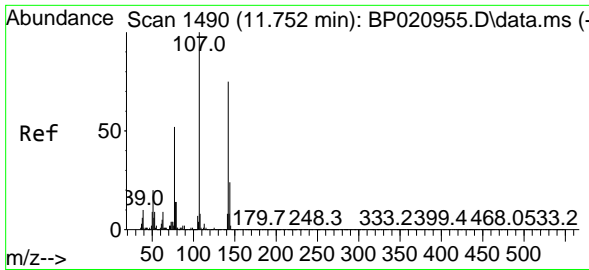
Reviewed By :Yogesh Patel 07/16/2024
 Supervised By :mohammad ahmed 07/18/2024



#30
 Naphthalene
 Concen: 20.433 ng/ul
 RT: 10.499 min Scan# 1277
 Delta R.T. -0.000 min
 Lab File: BP020961.D
 Acq: 15 Jul 2024 16:40

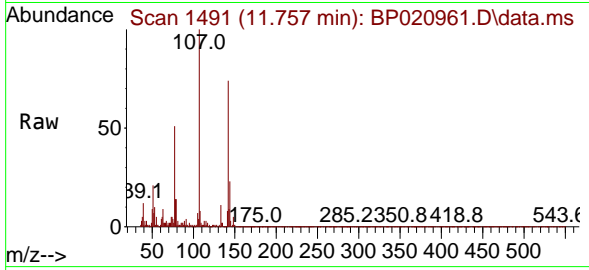
Tgt Ion:128 Resp: 654902
 Ion Ratio Lower Upper
 128 100
 129 11.4 8.6 13.0
 127 13.5 10.8 16.2





#35
 4-Chloro-3-methylphenol
 Concen: 43.073 ng/ul
 RT: 11.757 min Scan# 1490
 Delta R.T. 0.006 min
 Lab File: BP020961.D
 Acq: 15 Jul 2024 16:40

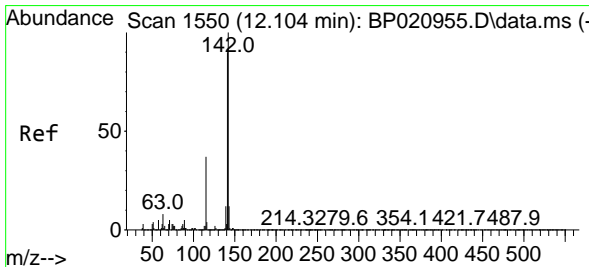
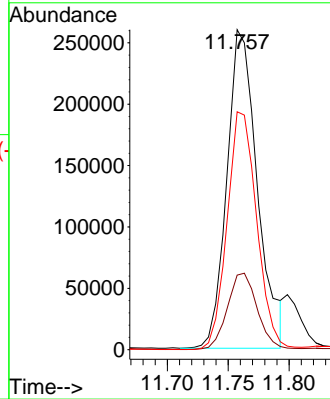
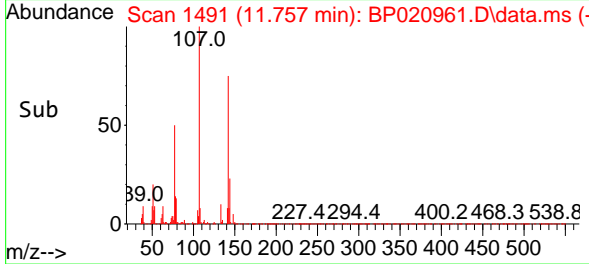
Instrument :
 BNA_P
 ClientSampleId :
 YDZC5



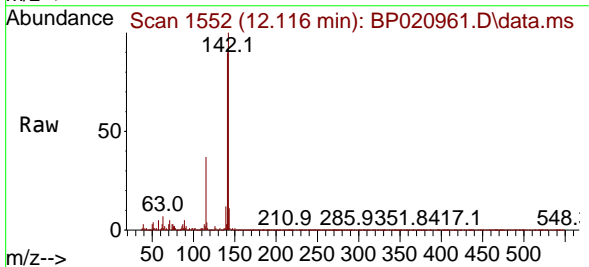
Tgt Ion:107 Resp: 451960
 Ion Ratio Lower Upper
 107 100
 144 23.3 19.3 28.9
 142 74.4 60.7 91.1

Manual Integrations
 APPROVED

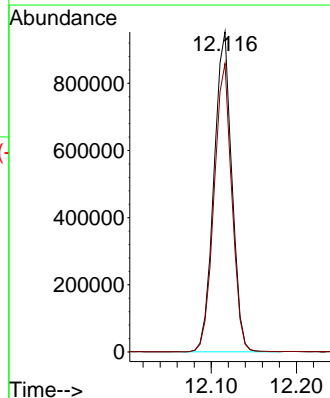
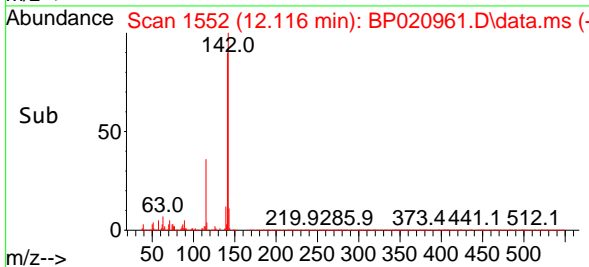
Reviewed By :Yogesh Patel 07/16/2024
 Supervised By :mohammad ahmed 07/18/2024

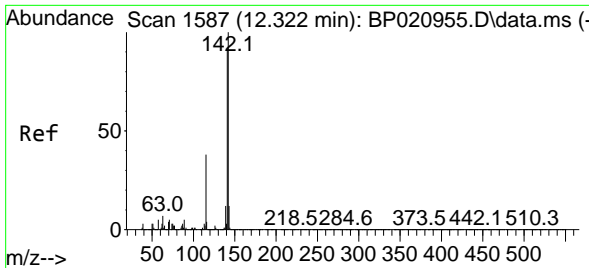


#36
 2-Methylnaphthalene
 Concen: 63.092 ng/ul
 RT: 12.116 min Scan# 1552
 Delta R.T. 0.012 min
 Lab File: BP020961.D
 Acq: 15 Jul 2024 16:40



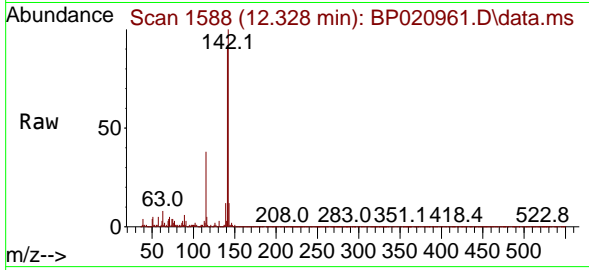
Tgt Ion:142 Resp: 1388092
 Ion Ratio Lower Upper
 142 100
 141 90.2 72.6 108.8





#37
 1-Methylnaphthalene
 Concen: 41.390 ng/ul
 RT: 12.328 min Scan# 11
 Delta R.T. 0.006 min
 Lab File: BP020961.D
 Acq: 15 Jul 2024 16:40

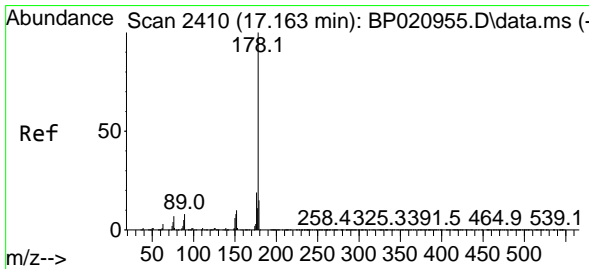
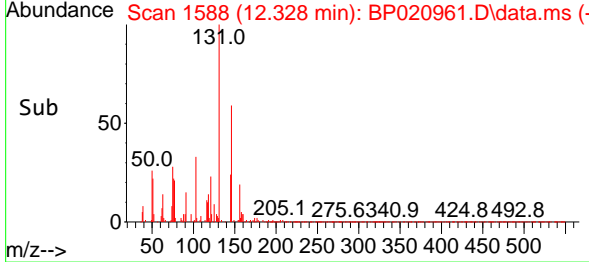
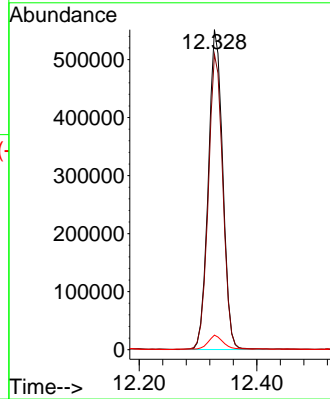
Instrument : BNA_P
 Client Sample Id : YDZC5



Tgt Ion:142 Resp: 936549

Ion	Ratio	Lower	Upper
142	100		
141	92.3	75.0	112.6
116	4.6	3.2	4.8

Manual Integrations
APPROVED
 Reviewed By :Yogesh Patel 07/16/2024
 Supervised By :mohammad ahmed 07/18/2024



#72
 Phenanthrene
 Concen: 1.836 ng/ul
 RT: 17.169 min Scan# 2411
 Delta R.T. 0.006 min
 Lab File: BP020961.D
 Acq: 15 Jul 2024 16:40

Tgt Ion:178 Resp: 77050

Ion	Ratio	Lower	Upper
178	100		
179	19.7	12.2	18.4#
176	22.5	15.0	22.4#

