

Data Path : Z:\svoasrv\HPCHEM1\BNA\_P\Data\BP071524\  
 Data File : BP020970.D  
 Acq On : 15 Jul 2024 23:15  
 Operator : MA/JU  
 Sample : P3100-16  
 Misc :  
 ALS Vial : 16 Sample Multiplier: 1

Instrument :  
 BNA\_P  
 ClientSampleId :  
 A4D07

Integration Parameters: LSCINT.P

Integrator: RTE  
 Smoothing : OFF Filtering: 5  
 Sampling : 1 Min Area: 0.1 % of largest Peak  
 Start Thrs: 0.2 Max Peaks: 100  
 Stop Thrs : 0 Peak Location: TOP

If leading or trailing edge < 100 prefer < Baseline drop else tangent >  
 Peak separation: 5

Method : Z:\svoasrv\HPCHEM1\BNA\_P\Methods\SFAM-EPA-BP071024.MA.M  
 Title : SVOA CALIBRATION

Signal : TIC: BP020970.D\data.ms

peak #	R.T. min	first scan	max scan	last scan	PK TY	peak height	corr. area	corr. % max.	% of total
1	3.246	40	44	51	rVB	36133	47794	0.67%	0.068%
2	3.528	89	92	107	rVB	53591	87582	1.22%	0.125%
3	3.758	128	131	140	rVB	33913	50022	0.70%	0.071%
4	4.481	248	254	258	rBV2	43908	72597	1.01%	0.104%
5	4.864	314	319	329	rBV	57925	101358	1.41%	0.145%
6	5.740	463	468	474	rVV3	17651	31650	0.44%	0.045%
7	5.828	474	483	490	rVB4	13859	35623	0.50%	0.051%
8	6.899	658	665	676	rBV	629878	1056346	14.72%	1.506%
9	7.046	684	690	696	rBV	557038	847546	11.81%	1.209%
10	7.240	716	723	731	rBV	700323	1144388	15.95%	1.632%
11	7.305	731	734	737	rVV2	23897	40888	0.57%	0.058%
12	7.340	738	740	754	rVB3	18720	36239	0.51%	0.052%
13	7.693	794	800	809	rVV	825188	1255894	17.50%	1.791%
14	8.410	915	922	933	rBV	664146	1287846	17.95%	1.837%
15	8.516	936	940	948	rVV5	15470	41759	0.58%	0.060%
16	8.852	989	997	1007	rBV	553373	1094024	15.25%	1.560%
17	8.999	1013	1022	1033	rVB	15095	49832	0.69%	0.071%
18	9.399	1077	1090	1103	rVB2	64847	121746	1.70%	0.174%
19	9.557	1105	1117	1126	rBV	454125	899387	12.53%	1.283%
20	10.099	1202	1209	1228	rBV	679565	1290514	17.99%	1.840%
21	10.410	1256	1262	1264	rBV	24088	39699	0.55%	0.057%
22	10.457	1264	1270	1275	rVV	981792	1688003	23.53%	2.407%
23	10.504	1275	1278	1287	rVB	37946	62557	0.87%	0.089%
24	10.610	1287	1296	1306	rBV	169171	397459	5.54%	0.567%
25	10.987	1354	1360	1366	rBV6	19141	40152	0.56%	0.057%
26	11.199	1390	1396	1405	rVV2	66671	162460	2.26%	0.232%
27	11.446	1428	1438	1443	rBV	37983	66207	0.92%	0.094%
28	11.851	1501	1507	1514	rBV	32675	57452	0.80%	0.082%
29	12.110	1546	1551	1557	rVB	40507	63460	0.88%	0.090%
30	12.340	1585	1590	1596	rBV	40980	66277	0.92%	0.095%
31	12.587	1627	1632	1639	rBV2	33335	53912	0.75%	0.077%
32	12.810	1664	1670	1676	rVV2	23811	47896	0.67%	0.068%
33	13.110	1715	1721	1728	rBV2	51286	89108	1.24%	0.127%
34	13.346	1754	1761	1768	rBV10	11742	31314	0.44%	0.045%
35	13.616	1801	1807	1812	rVV	45028	93049	1.30%	0.133%
36	13.710	1813	1823	1830	rVV	1025112	1734394	24.17%	2.473%

Data Path : Z:\svoasrv\HPCHEM1\BNA\_P\Data\BP071524\  
 Data File : BP020970.D  
 Acq On : 15 Jul 2024 23:15  
 Operator : MA/JU  
 Sample : P3100-16  
 Misc :  
 ALS Vial : 16 Sample Multiplier: 1

Instrument :  
 BNA\_P  
 ClientSampleId :  
 A4D07

Integration Parameters: LSCINT.P

Integrator: RTE  
 Smoothing : OFF Filtering: 5  
 Sampling : 1 Min Area: 0.1 % of largest Peak  
 Start Thrs: 0.2 Max Peaks: 100  
 Stop Thrs : 0 Peak Location: TOP

If leading or trailing edge < 100 prefer < Baseline drop else tangent >  
 Peak separation: 5

Method : Z:\svoasrv\HPCHEM1\BNA\_P\Methods\SFAM-EPA-BP071024.MA.M  
 Title : SVOA CALIBRATION

37	13.769	1830	1833	1838	rVB4	39967	57466	0.80%	0.082%
38	13.993	1865	1871	1887	rVB	1519666	2171882	30.27%	3.097%
39	14.193	1899	1905	1911	rBV	54714	79666	1.11%	0.114%
40	14.304	1914	1924	1930	rBV	1479638	2004967	27.94%	2.859%
41	14.528	1954	1962	1966	rBV3	63354	152488	2.13%	0.217%
42	14.581	1966	1971	1988	rVV	235419	624099	8.70%	0.890%
43	14.710	1988	1993	2002	rVV3	68903	184050	2.57%	0.262%
44	14.787	2003	2006	2013	rVB2	25197	41247	0.57%	0.059%
45	14.940	2026	2032	2038	rBV4	22583	45424	0.63%	0.065%
46	15.104	2054	2060	2064	rBV5	38840	80872	1.13%	0.115%
47	15.151	2064	2068	2075	rVB3	41263	74222	1.03%	0.106%
48	15.316	2089	2096	2103	rBV	1669481	2482668	34.60%	3.541%
49	15.469	2116	2122	2133	rBV	388511	627887	8.75%	0.895%
50	15.581	2136	2141	2146	rVB4	22166	44141	0.62%	0.063%
51	15.681	2152	2158	2164	rBV3	33910	74168	1.03%	0.106%
52	15.822	2179	2182	2190	rVB2	25055	49339	0.69%	0.070%
53	16.063	2215	2223	2230	rBV4	104619	275919	3.85%	0.393%
54	16.210	2243	2248	2253	rVV7	17805	39097	0.54%	0.056%
55	16.504	2295	2298	2305	rBV8	26009	49869	0.70%	0.071%
56	16.639	2316	2321	2325	rBV5	39061	64701	0.90%	0.092%
57	16.775	2339	2344	2348	rBV3	54589	86106	1.20%	0.123%
58	16.863	2351	2359	2363	rBV2	89063	139919	1.95%	0.200%
59	17.016	2381	2385	2392	rVB4	55001	104987	1.46%	0.150%
60	17.086	2393	2397	2398	rBV4	28635	34085	0.48%	0.049%
61	17.128	2398	2404	2407	rVV	1512778	2206925	30.76%	3.147%
62	17.163	2407	2410	2414	rVV	499711	661201	9.22%	0.943%
63	17.216	2414	2419	2429	rVB	1906302	2649042	36.92%	3.778%
64	17.298	2430	2433	2436	rBV4	27741	33151	0.46%	0.047%
65	17.398	2446	2450	2455	rBV6	29763	45778	0.64%	0.065%
66	17.557	2474	2477	2482	rVB2	31495	39520	0.55%	0.056%
67	17.628	2486	2489	2493	rVB	71094	75010	1.05%	0.107%
68	17.739	2502	2508	2512	rBV3	151581	254545	3.55%	0.363%
69	17.939	2539	2542	2547	rVB6	41609	62477	0.87%	0.089%
70	17.992	2547	2551	2553	rBV4	47411	60471	0.84%	0.086%
71	18.045	2553	2560	2564	rBV2	832077	1365658	19.03%	1.948%
72	18.222	2586	2590	2595	rBV2	213156	355781	4.96%	0.507%
73	18.269	2595	2598	2605	rVB2	98072	174903	2.44%	0.249%
74	18.351	2605	2612	2617	rBV2	140408	291581	4.06%	0.416%
75	18.522	2638	2641	2643	rBV2	36400	48998	0.68%	0.070%
76	18.551	2643	2646	2651	rVB2	64162	101631	1.42%	0.145%

Data Path : Z:\svoasrv\HPCHEM1\BNA\_P\Data\BP071524\  
 Data File : BP020970.D  
 Acq On : 15 Jul 2024 23:15  
 Operator : MA/JU  
 Sample : P3100-16  
 Misc :  
 ALS Vial : 16 Sample Multiplier: 1

Instrument :  
 BNA\_P  
 ClientSampleId :  
 A4D07

Integration Parameters: LSCINT.P

Integrator: RTE  
 Smoothing : OFF Filtering: 5  
 Sampling : 1 Min Area: 0.1 % of largest Peak  
 Start Thrs: 0.2 Max Peaks: 100  
 Stop Thrs : 0 Peak Location: TOP

If leading or trailing edge < 100 prefer < Baseline drop else tangent >  
 Peak separation: 5

Method : Z:\svoasrv\HPCHEM1\BNA\_P\Methods\SFAM-EPA-BP071024.MA.M  
 Title : SVOA CALIBRATION

77	18.604	2652	2655	2659	rBV	74737	110471	1.54%	0.158%
78	18.851	2695	2697	2701	rBV	37065	50339	0.70%	0.072%
79	18.980	2715	2719	2722	rBV	105730	143619	2.00%	0.205%
80	19.016	2722	2725	2732	rVV2	162578	304034	4.24%	0.434%
81	19.081	2733	2736	2739	rVV2	128637	178176	2.48%	0.254%
82	19.122	2740	2743	2751	rVB3	169609	306674	4.27%	0.437%
83	19.257	2758	2766	2774	rBV	1227573	2073296	28.90%	2.957%
84	19.392	2785	2789	2798	rBV3	427052	680023	9.48%	0.970%
85	19.604	2820	2825	2829	rBV	2008646	3194126	44.52%	4.555%
86	19.710	2840	2843	2849	rBV3	93848	140740	1.96%	0.201%
87	20.698	3008	3011	3015	rVB2	208646	232302	3.24%	0.331%
88	21.216	3095	3099	3110	rVB	1274469	1967213	27.42%	2.805%
89	21.557	3150	3157	3162	rBV2	1728983	3492415	48.67%	4.981%
90	21.604	3163	3165	3173	rVB	531443	758149	10.57%	1.081%
91	22.398	3296	3300	3302	rBV	545174	794948	11.08%	1.134%
92	22.433	3302	3306	3315	rVB	1331315	2357050	32.85%	3.361%
93	23.486	3481	3485	3495	rVB2	356304	723193	10.08%	1.031%
94	23.957	3558	3565	3571	rVB	1997034	4412780	61.50%	6.293%
95	24.027	3573	3577	3589	rVB2	581818	1477416	20.59%	2.107%
96	24.633	3674	3680	3688	rVB2	640986	1617956	22.55%	2.307%
97	24.851	3711	3717	3726	rBV	1022377	2438629	33.99%	3.478%
98	25.468	3815	3822	3830	rVB2	535625	1492156	20.80%	2.128%
99	26.092	3919	3928	3940	rVB	2259342	7175239	100.00%	10.233%
100	28.292	4298	4302	4316	rVB	555038	1698279	23.67%	2.422%

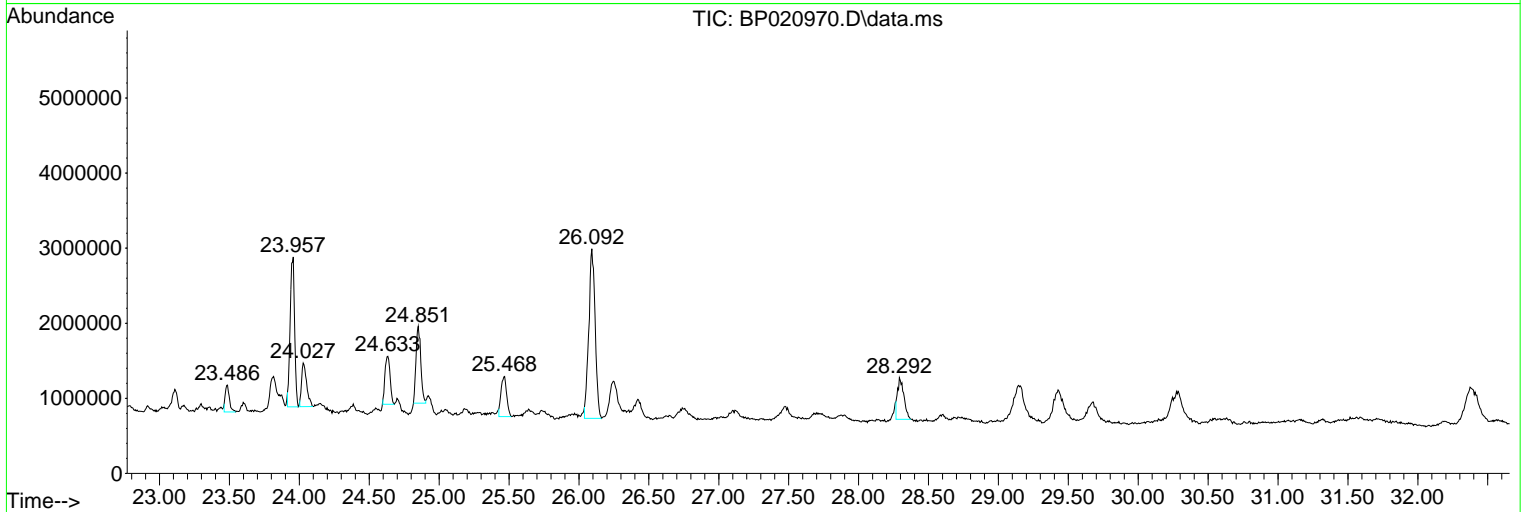
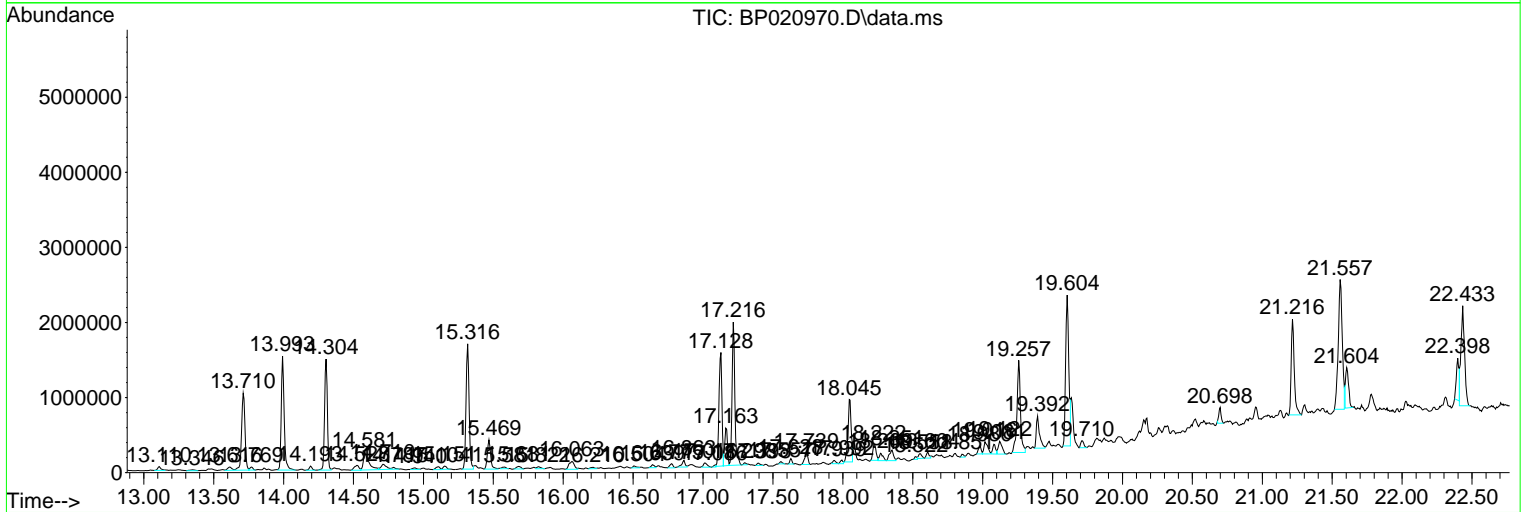
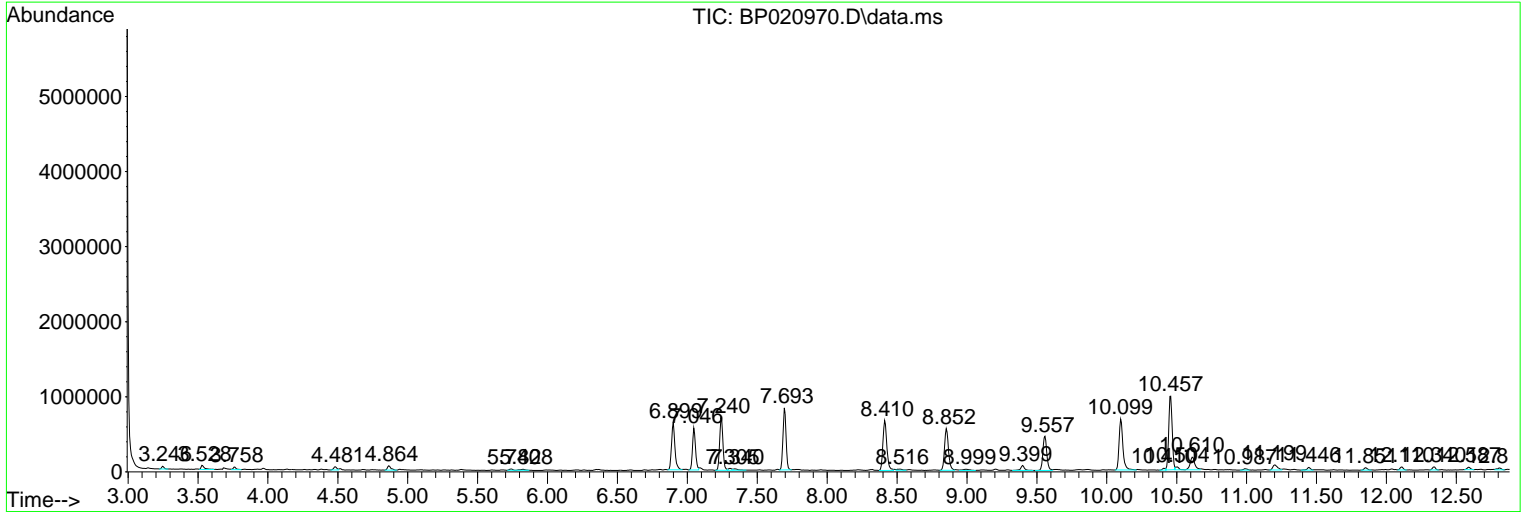
Sum of corrected areas: 70121598

Data Path : Z:\svoasrv\HPCHEM1\BNA\_P\Data\BP071524\  
 Data File : BP020970.D  
 Acq On : 15 Jul 2024 23:15  
 Operator : MA/JU  
 Sample : P3100-16  
 Misc :  
 ALS Vial : 16 Sample Multiplier: 1

**Instrument :**  
 BNA\_P  
**ClientSampleId :**  
 A4D07

Quant Method : Z:\svoasrv\HPCHEM1\BNA\_P\Methods\SFAM-EPA-BP071024.MA.M  
 Quant Title : SVOA CALIBRATION

TIC Library : C:\DATABASE\NIST20.L  
 TIC Integration Parameters: LSCINT.P



Data Path : Z:\svoasrv\HPCHEM1\BNA\_P\Data\BP071524\  
 Data File : BP020970.D  
 Acq On : 15 Jul 2024 23:15  
 Operator : MA/JU  
 Sample : P3100-16  
 Misc :  
 ALS Vial : 16 Sample Multiplier: 1

Instrument :  
 BNA\_P  
 ClientSampleId :  
 A4D07

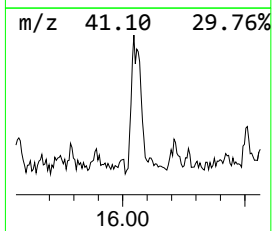
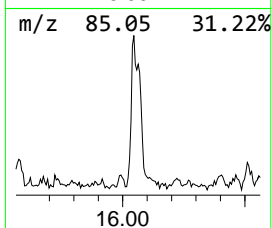
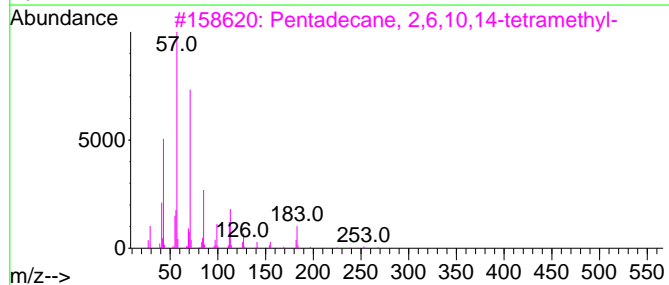
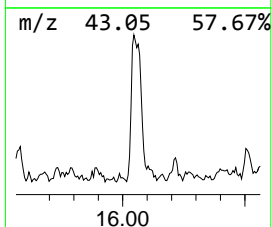
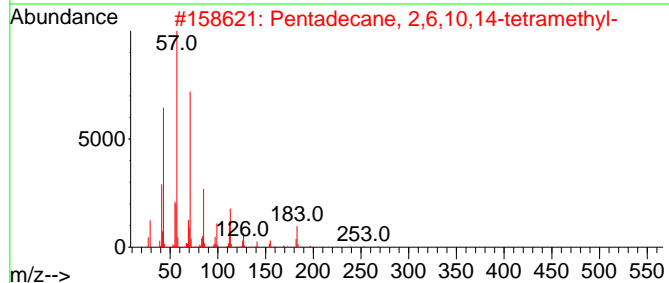
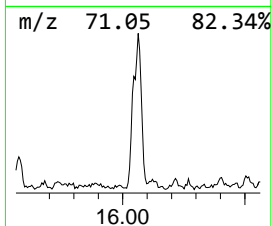
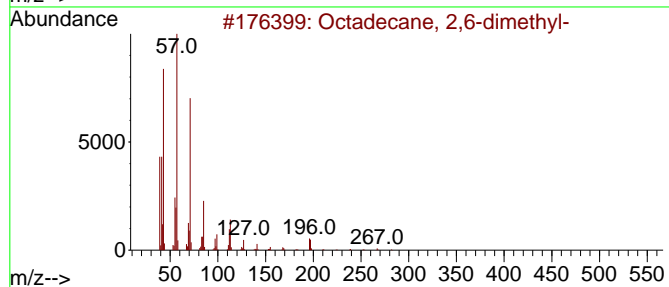
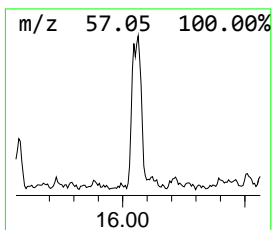
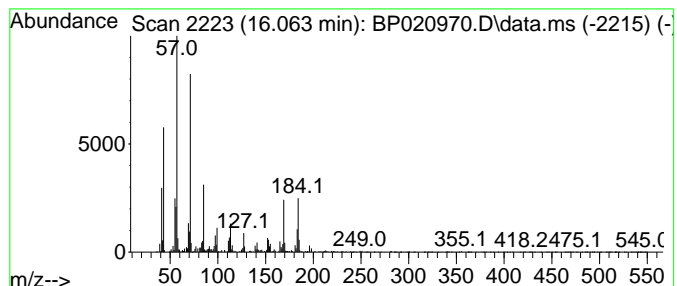
Quant Method : Z:\svoasrv\HPCHEM1\BNA\_P\Methods\SFAM-EPA-BP071024.MA.M  
 Quant Title : SVOA CALIBRATION

TIC Library : C:\DATABASE\NIST20.L  
 TIC Integration Parameters: LSCINT.P

\*\*\*\*\*  
 Peak Number 1 (DEL) Alkane: Straight-Chai... Concentration Rank 16

R.T.	EstConc	Area	Relative to ISTD	R.T.
16.063	2.50 ng/ul	275919	Phenanthrene-d10	17.128

Hit#	of 5	Tentative ID	MW	MolForm	CAS#	Qual
1		Octadecane, 2,6-dimethyl-	282	C20H42	075163-97-2	89
2		Pentadecane, 2,6,10,14-tetramethyl-	268	C19H40	001921-70-6	76
3		Pentadecane, 2,6,10,14-tetramethyl-	268	C19H40	001921-70-6	68
4		Octadecane, 4-methyl-	268	C19H40	010544-95-3	64
5		Hexadecane, 2,6,10,14-tetramethyl-	282	C20H42	000638-36-8	62



Data Path : Z:\svoasrv\HPCHEM1\BNA\_P\Data\BP071524\  
 Data File : BP020970.D  
 Acq On : 15 Jul 2024 23:15  
 Operator : MA/JU  
 Sample : P3100-16  
 Misc :  
 ALS Vial : 16 Sample Multiplier: 1

Instrument :  
 BNA\_P  
 ClientSampleId :  
 A4D07

Quant Method : Z:\svoasrv\HPCHEM1\BNA\_P\Methods\SFAM-EPA-BP071024.MA.M  
 Quant Title : SVOA CALIBRATION

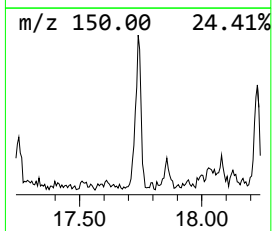
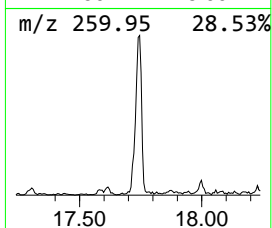
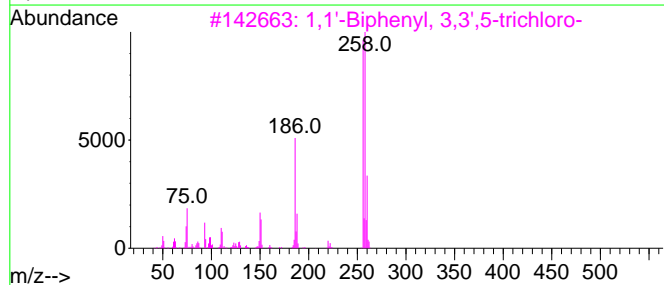
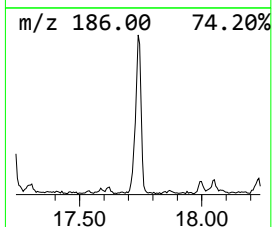
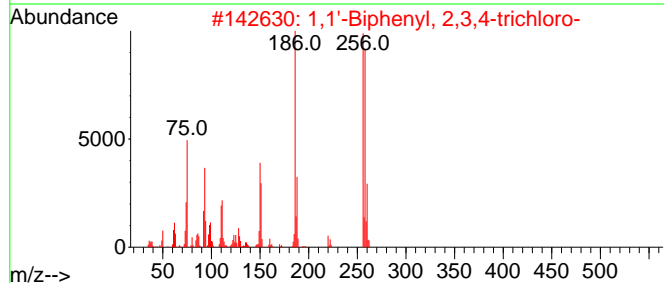
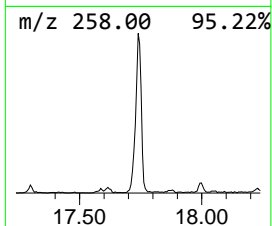
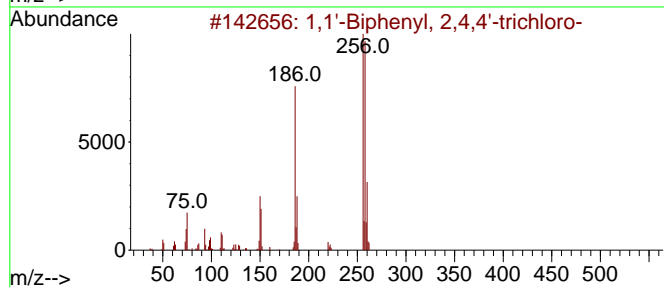
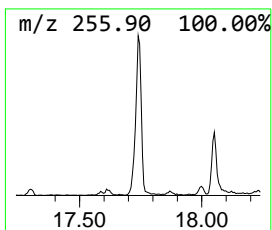
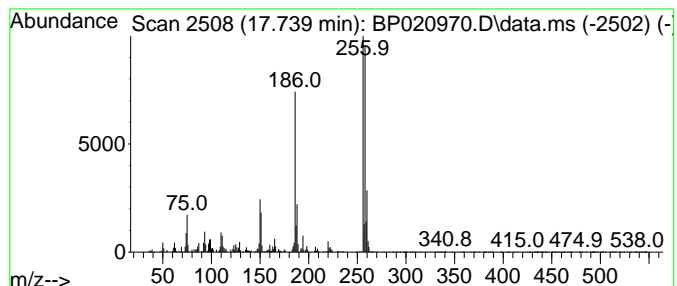
TIC Library : C:\DATABASE\NIST20.L  
 TIC Integration Parameters: LSCINT.P

\*\*\*\*\*  
 Peak Number 2 1,1'-Biphenyl, 2,4,4'-trich... Concentration Rank 17

R.T.	EstConc	Area	Relative to ISTD	R.T.
17.739	2.31 ng/ul	254545	Phenanthrene-d10	17.128

Hit#	of 5	Tentative ID	MW	MolForm	CAS#	Qual
1		1,1'-Biphenyl, 2,4,4'-trichloro-	256	C12H7Cl3	007012-37-5	99
2		1,1'-Biphenyl, 2,3,4-trichloro-	256	C12H7Cl3	055702-46-0	99
3		1,1'-Biphenyl, 3,3',5-trichloro-	256	C12H7Cl3	038444-87-0	99
4		1,1'-Biphenyl, 2,3,4'-Trichloro-	256	C12H7Cl3	038444-85-8	99
5		1,1'-Biphenyl, 2,3',4-trichloro-	256	C12H7Cl3	055712-37-3	99



Data Path : Z:\svoasrv\HPCHEM1\BNA\_P\Data\BP071524\  
 Data File : BP020970.D  
 Acq On : 15 Jul 2024 23:15  
 Operator : MA/JU  
 Sample : P3100-16  
 Misc :  
 ALS Vial : 16 Sample Multiplier: 1

Instrument :  
 BNA\_P  
 ClientSampleId :  
 A4D07

Quant Method : Z:\svoasrv\HPCHEM1\BNA\_P\Methods\SFAM-EPA-BP071024.MA.M  
 Quant Title : SVOA CALIBRATION

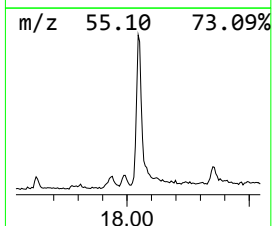
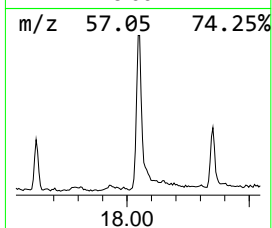
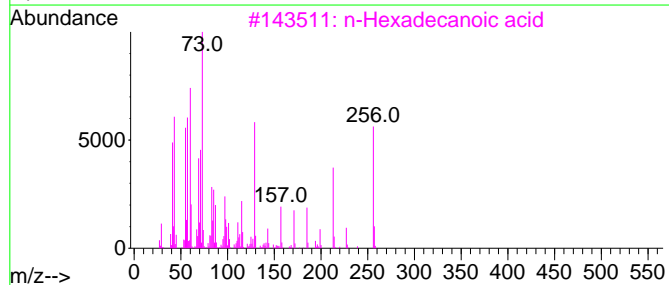
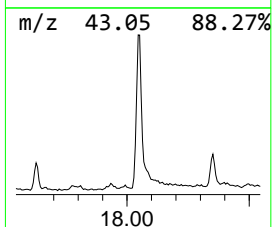
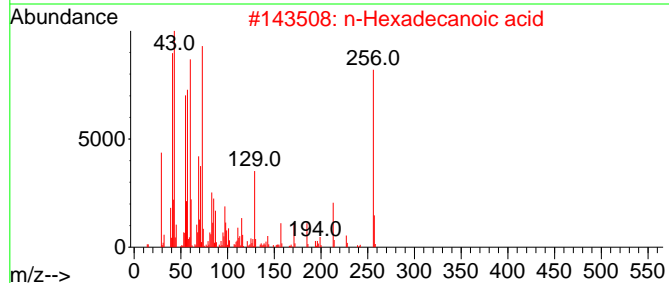
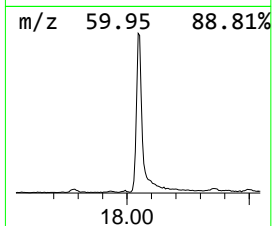
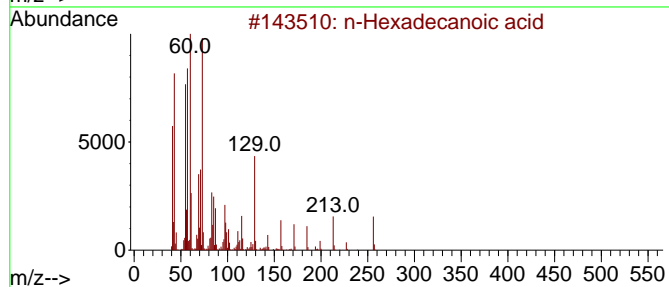
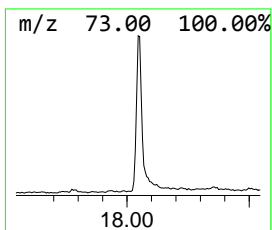
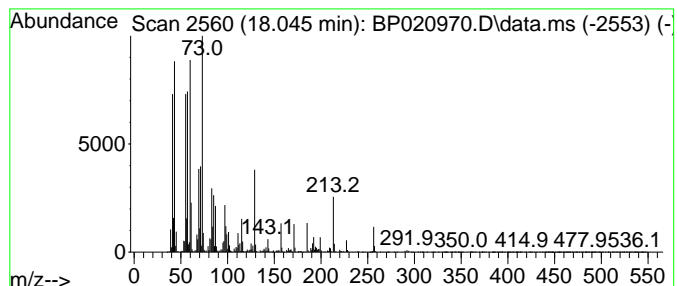
TIC Library : C:\DATABASE\NIST20.L  
 TIC Integration Parameters: LSCINT.P

\*\*\*\*\*  
 Peak Number 3 n-Hexadecanoic acid Concentration Rank 5

R.T.	EstConc	Area	Relative to ISTD	R.T.
18.045	12.38 ng/ul	1365660	Phenanthrene-d10	17.128

Hit#	of	Tentative ID	MW	MolForm	CAS#	Qual
1	5	n-Hexadecanoic acid	256	C16H32O2	000057-10-3	99
2		n-Hexadecanoic acid	256	C16H32O2	000057-10-3	99
3		n-Hexadecanoic acid	256	C16H32O2	000057-10-3	98
4		n-Hexadecanoic acid	256	C16H32O2	000057-10-3	98
5		Tridecanoic acid	214	C13H26O2	000638-53-9	95



Data Path : Z:\svoasrv\HPCHEM1\BNA\_P\Data\BP071524\  
 Data File : BP020970.D  
 Acq On : 15 Jul 2024 23:15  
 Operator : MA/JU  
 Sample : P3100-16  
 Misc :  
 ALS Vial : 16 Sample Multiplier: 1

Instrument :  
 BNA\_P  
 ClientSampleId :  
 A4D07

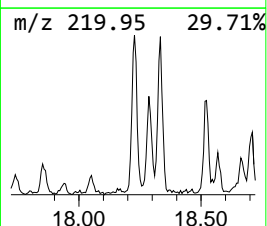
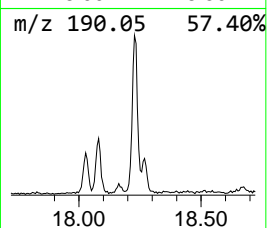
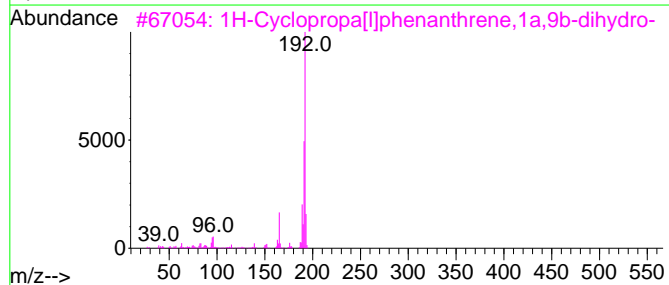
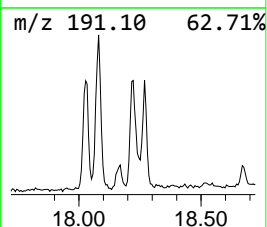
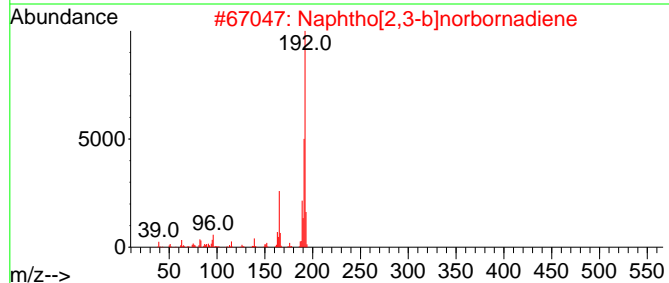
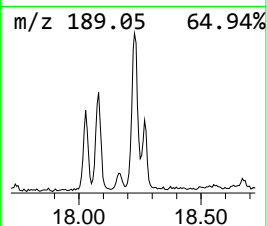
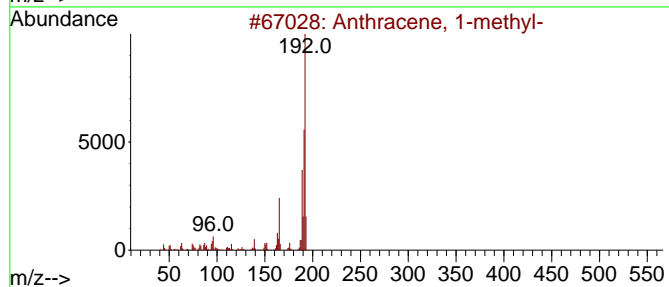
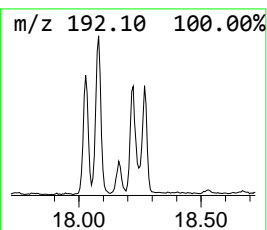
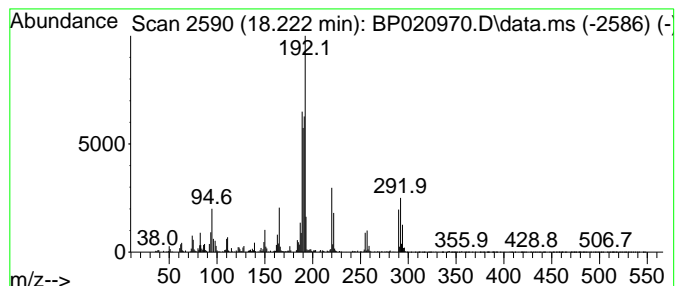
Quant Method : Z:\svoasrv\HPCHEM1\BNA\_P\Methods\SFAM-EPA-BP071024.MA.M  
 Quant Title : SVOA CALIBRATION

TIC Library : C:\DATABASE\NIST20.L  
 TIC Integration Parameters: LSCINT.P

\*\*\*\*\*  
 Peak Number 4 Anthracene, 1-methyl- Concentration Rank 12

R.T.	EstConc	Area	Relative to ISTD	R.T.
18.222	3.22 ng/ul	355781	Phenanthrene-d10	17.128

Hit#	of	5	Tentative ID	MW	MolForm	CAS#	Qual
1			Anthracene, 1-methyl-	192	C15H12	000610-48-0	60
2			Naphtho[2,3-b]norbornadiene	192	C15H12	107426-38-0	50
3			1H-Cyclopropa[1]phenanthrene,1a,...	192	C15H12	000949-41-7	50
4			Anthracene, 2-methyl-	192	C15H12	000613-12-7	46
5			1H-Indene, 2-phenyl-	192	C15H12	004505-48-0	45





Data Path : Z:\svoasrv\HPCHEM1\BNA\_P\Data\BP071524\  
 Data File : BP020970.D  
 Acq On : 15 Jul 2024 23:15  
 Operator : MA/JU  
 Sample : P3100-16  
 Misc :  
 ALS Vial : 16 Sample Multiplier: 1

Instrument :  
 BNA\_P  
 ClientSampleId :  
 A4D07

Quant Method : Z:\svoasrv\HPCHEM1\BNA\_P\Methods\SFAM-EPA-BP071024.MA.M  
 Quant Title : SVOA CALIBRATION

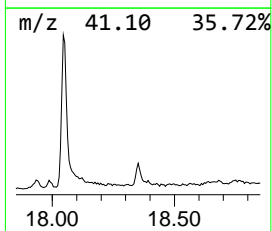
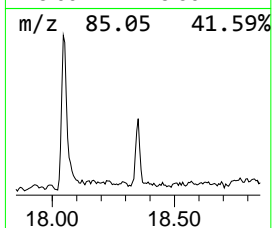
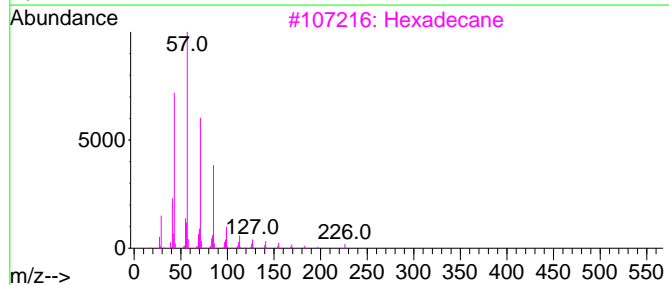
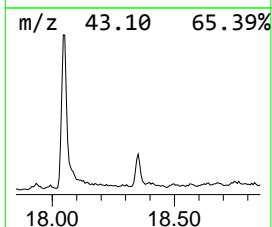
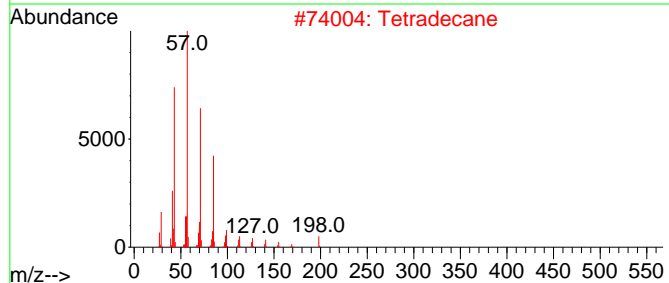
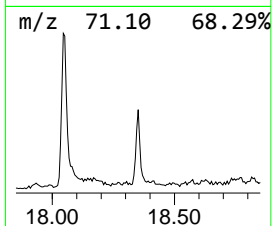
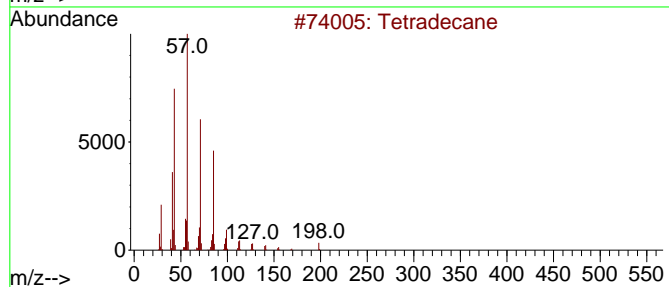
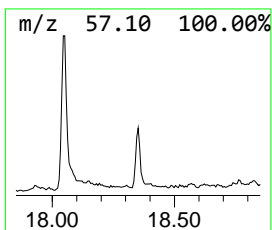
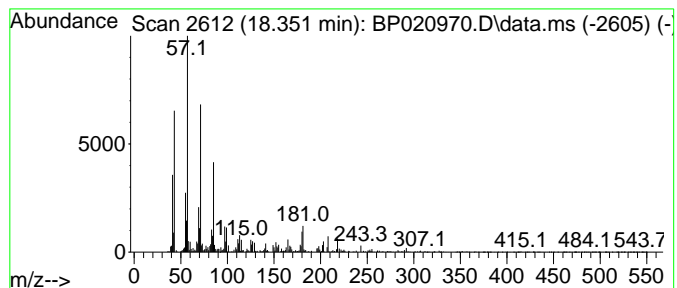
TIC Library : C:\DATABASE\NIST20.L  
 TIC Integration Parameters: LSCINT.P

\*\*\*\*\*  
 Peak Number 5 (DEL) Alkane: Straight-Chai... Concentration Rank 15

R.T.	EstConc	Area	Relative to ISTD	R.T.
18.351	2.64 ng/ul	291581	Phenanthrene-d10	17.128

Hit# of 5	Tentative ID	MW	MolForm	CAS#	Qual
1	Tetradecane	198	C14H30	000629-59-4	96
2	Tetradecane	198	C14H30	000629-59-4	94
3	Hexadecane	226	C16H34	000544-76-3	93
4	Heneicosane, 11-pentyl-	366	C26H54	014739-72-1	90
5	Octacosane	394	C28H58	000630-02-4	81



Data Path : Z:\svoasrv\HPCHEM1\BNA\_P\Data\BP071524\  
 Data File : BP020970.D  
 Acq On : 15 Jul 2024 23:15  
 Operator : MA/JU  
 Sample : P3100-16  
 Misc :  
 ALS Vial : 16 Sample Multiplier: 1

Instrument :  
 BNA\_P  
 ClientSampleId :  
 A4D07

Quant Method : Z:\svoasrv\HPCHEM1\BNA\_P\Methods\SFAM-EPA-BP071024.MA.M  
 Quant Title : SVOA CALIBRATION

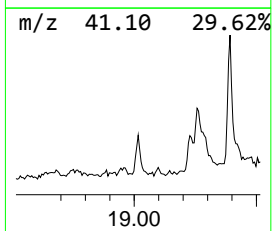
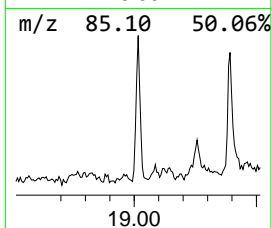
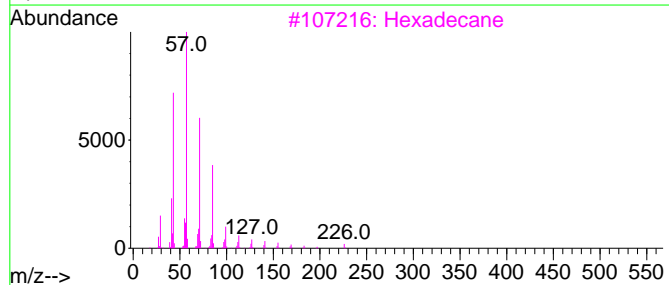
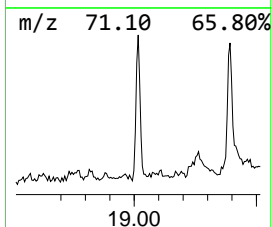
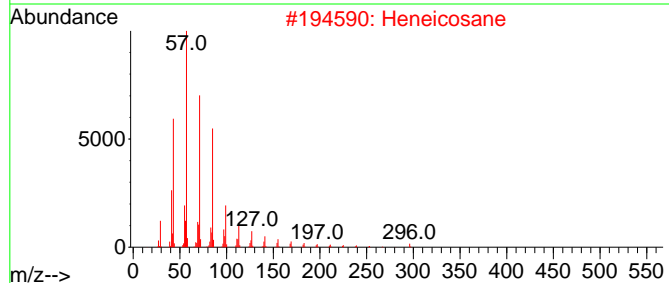
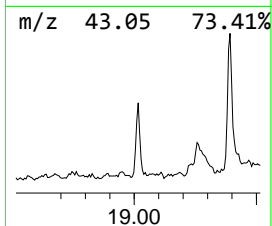
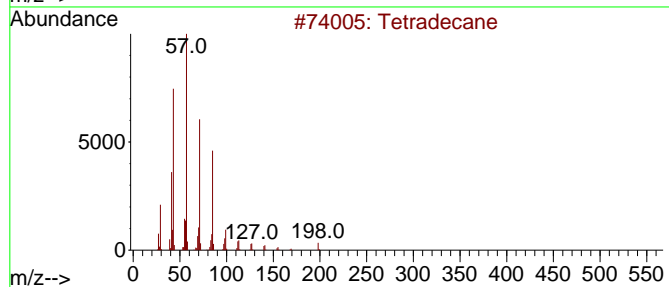
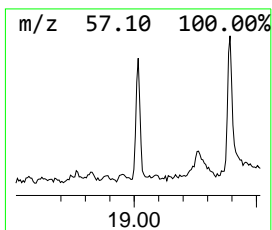
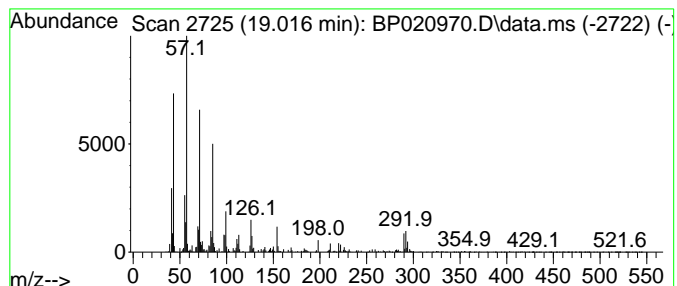
TIC Library : C:\DATABASE\NIST20.L  
 TIC Integration Parameters: LSCINT.P

\*\*\*\*\*  
 Peak Number 6 (DEL) Alkane: Straight-Chai... Concentration Rank 14

R.T.	EstConc	Area	Relative to ISTD	R.T.
19.016	2.76 ng/ul	304034	Phenanthrene-d10	17.128

Hit#	of 5	Tentative ID	MW	MolForm	CAS#	Qual
1		Tetradecane	198	C14H30	000629-59-4	95
2		Heneicosane	296	C21H44	000629-94-7	91
3		Hexadecane	226	C16H34	000544-76-3	91
4		Heneicosane	296	C21H44	000629-94-7	90
5		Tetradecane	198	C14H30	000629-59-4	90



Data Path : Z:\svoasrv\HPCHEM1\BNA\_P\Data\BP071524\  
 Data File : BP020970.D  
 Acq On : 15 Jul 2024 23:15  
 Operator : MA/JU  
 Sample : P3100-16  
 Misc :  
 ALS Vial : 16 Sample Multiplier: 1

Instrument :  
 BNA\_P  
 ClientSampleId :  
 A4D07

Quant Method : Z:\svoasrv\HPCHEM1\BNA\_P\Methods\SFAM-EPA-BP071024.MA.M  
 Quant Title : SVOA CALIBRATION

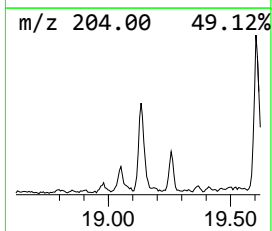
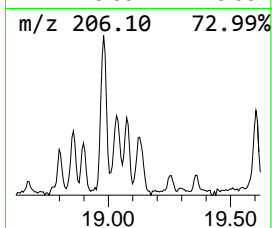
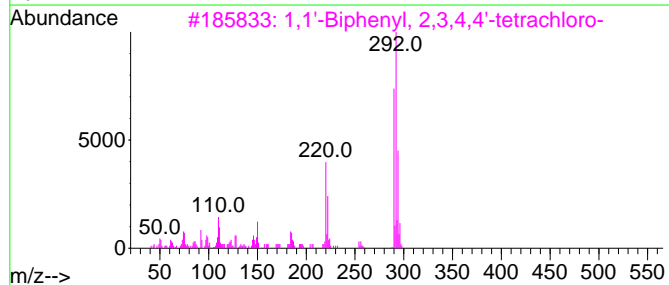
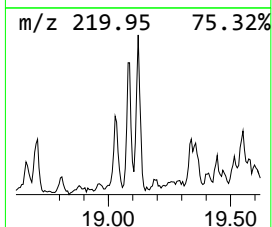
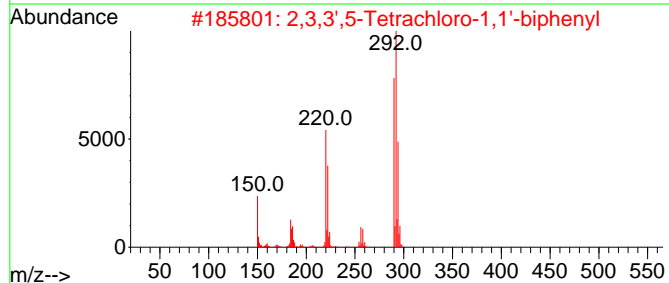
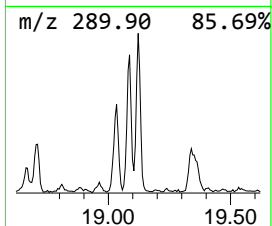
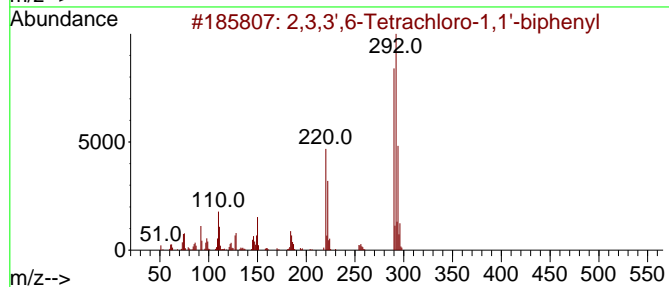
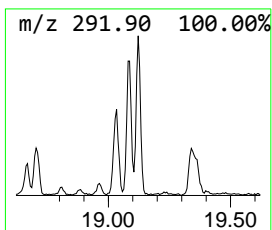
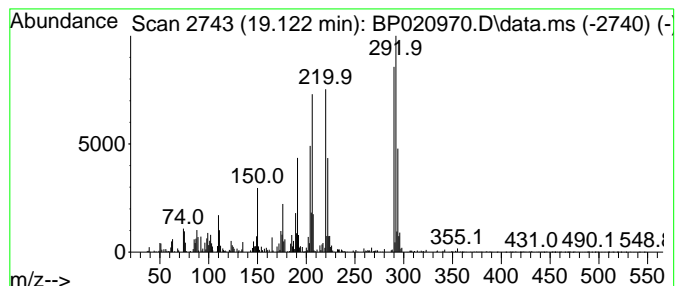
TIC Library : C:\DATABASE\NIST20.L  
 TIC Integration Parameters: LSCINT.P

\*\*\*\*\*  
 Peak Number 7 2,3,3',6-Tetrachloro-1,1'-b... Concentration Rank 13

R.T.	EstConc	Area	Relative to ISTD	R.T.
19.122	2.78 ng/ul	306674	Phenanthrene-d10	17.128

Hit#	of 5	Tentative ID	MW	MolForm	CAS#	Qual
1		2,3,3',6-Tetrachloro-1,1'-biphenyl	290	C12H6Cl4	074472-33-6	93
2		2,3,3',5-Tetrachloro-1,1'-biphenyl	290	C12H6Cl4	070424-67-8	90
3		1,1'-Biphenyl, 2,3,4,4'-tetrachl...	290	C12H6Cl4	033025-41-1	86
4		1,1'-Biphenyl, 2,3,4',6-tetrachl...	290	C12H6Cl4	052663-58-8	86
5		1,1'-Biphenyl, 2,3',4',6-tetrach...	290	C12H6Cl4	041464-46-4	86



Data Path : Z:\svoasrv\HPCHEM1\BNA\_P\Data\BP071524\  
 Data File : BP020970.D  
 Acq On : 15 Jul 2024 23:15  
 Operator : MA/JU  
 Sample : P3100-16  
 Misc :  
 ALS Vial : 16 Sample Multiplier: 1

Instrument :  
 BNA\_P  
 ClientSampleId :  
 A4D07

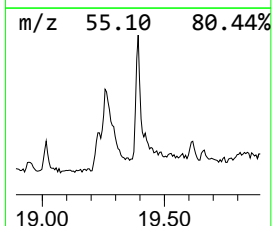
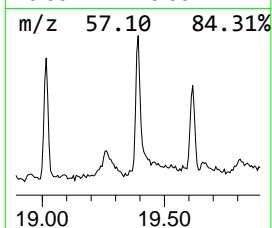
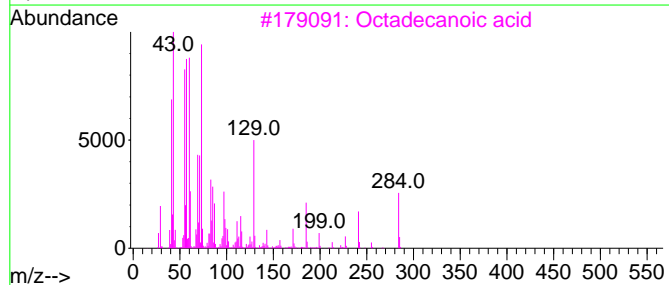
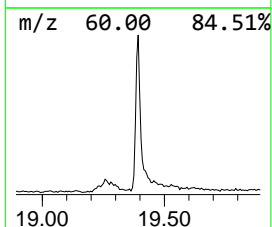
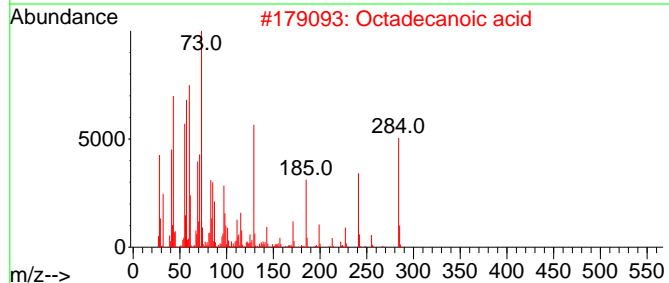
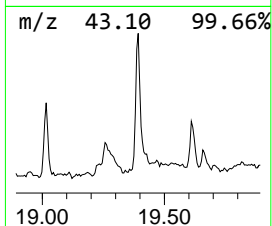
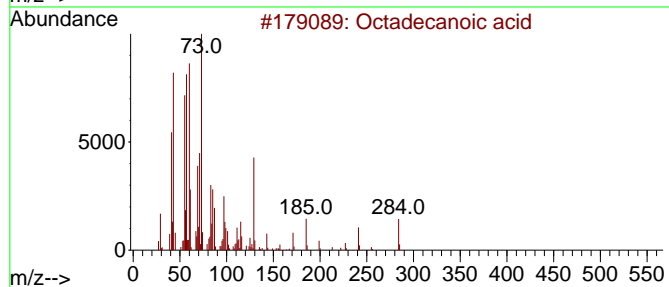
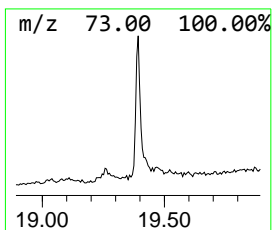
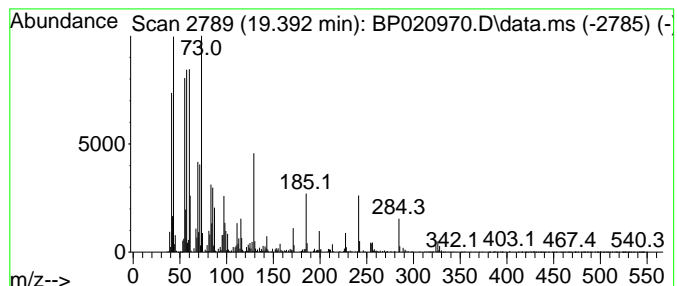
Quant Method : Z:\svoasrv\HPCHEM1\BNA\_P\Methods\SFAM-EPA-BP071024.MA.M  
 Quant Title : SVOA CALIBRATION

TIC Library : C:\DATABASE\NIST20.L  
 TIC Integration Parameters: LSCINT.P

\*\*\*\*\*  
 Peak Number 8 Octadecanoic acid Concentration Rank 11

R.T.	EstConc	Area	Relative to ISTD	R.T.
19.392	3.89 ng/ul	680023	Chrysene-d12	21.557

Hit#	of	5	Tentative ID	MW	MolForm	CAS#	Qual
1			Octadecanoic acid	284	C18H36O2	000057-11-4	99
2			Octadecanoic acid	284	C18H36O2	000057-11-4	99
3			Octadecanoic acid	284	C18H36O2	000057-11-4	99
4			Octadecanoic acid	284	C18H36O2	000057-11-4	93
5			n-Hexadecanoic acid	256	C16H32O2	000057-10-3	91



Data Path : Z:\svoasrv\HPCHEM1\BNA\_P\Data\BP071524\  
 Data File : BP020970.D  
 Acq On : 15 Jul 2024 23:15  
 Operator : MA/JU  
 Sample : P3100-16  
 Misc :  
 ALS Vial : 16 Sample Multiplier: 1

Instrument :  
 BNA\_P  
 ClientSampleId :  
 A4D07

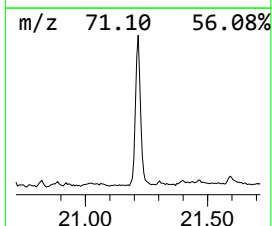
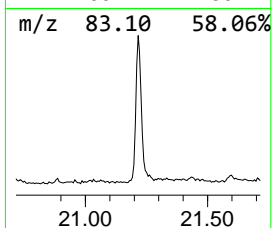
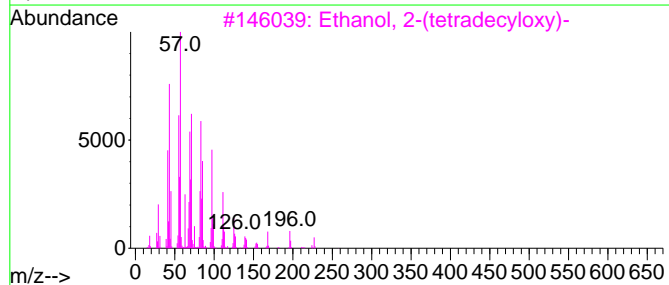
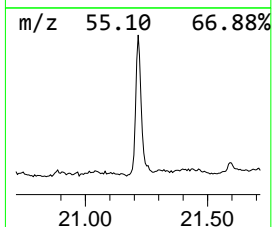
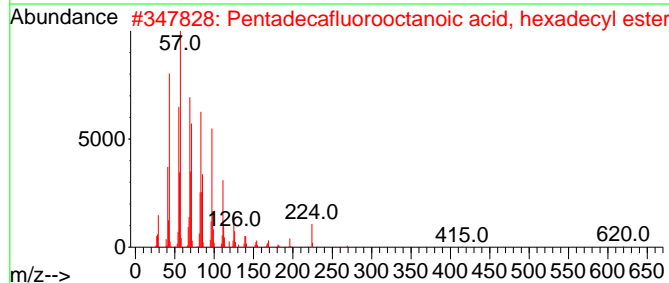
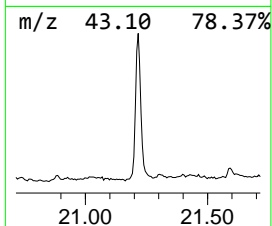
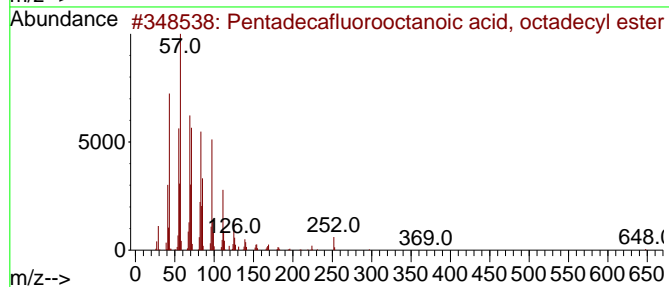
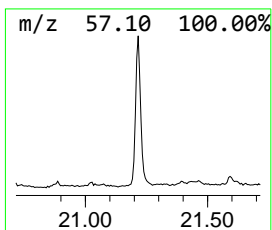
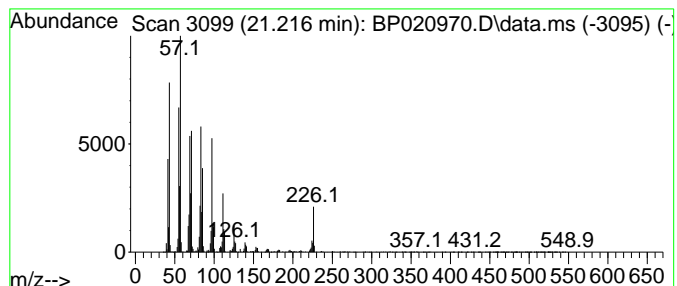
Quant Method : Z:\svoasrv\HPCHEM1\BNA\_P\Methods\SFAM-EPA-BP071024.MA.M  
 Quant Title : SVOA CALIBRATION

TIC Library : C:\DATABASE\NIST20.L  
 TIC Integration Parameters: LSCINT.P

\*\*\*\*\*  
 Peak Number 9 Pentadecafluorooctanoic aci... Concentration Rank 8

R.T.	EstConc	Area	Relative to ISTD	R.T.
21.216	11.27 ng/ul	1967210	Chrysene-d12	21.557

Hit#	of	5	Tentative ID	MW	MolForm	CAS#	Qual
1			Pentadecafluorooctanoic acid, oc...	666	C26H37F15O2	1000406-04-8	93
2			Pentadecafluorooctanoic acid, he...	638	C24H33F15O2	1000406-04-6	90
3			Ethanol, 2-(tetradecyloxy)-	258	C16H34O2	002136-70-1	87
4			Cyclohexadecane	224	C16H32	000295-65-8	86
5			Cyclotetradecane	196	C14H28	000295-17-0	72



Data Path : Z:\svoasrv\HPCHEM1\BNA\_P\Data\BP071524\  
 Data File : BP020970.D  
 Acq On : 15 Jul 2024 23:15  
 Operator : MA/JU  
 Sample : P3100-16  
 Misc :  
 ALS Vial : 16 Sample Multiplier: 1

Instrument :  
 BNA\_P  
 ClientSampleId :  
 A4D07

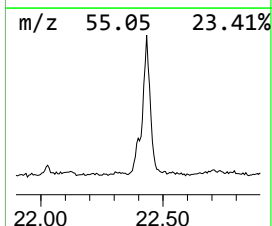
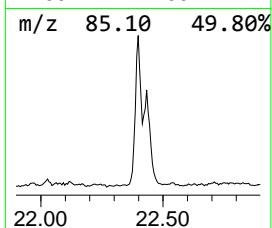
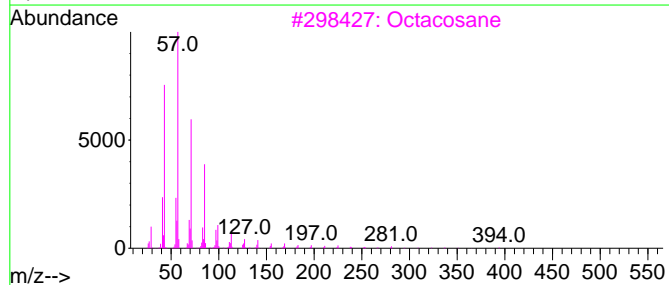
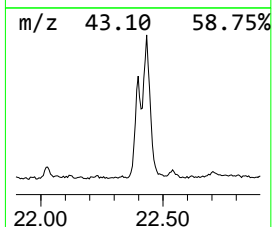
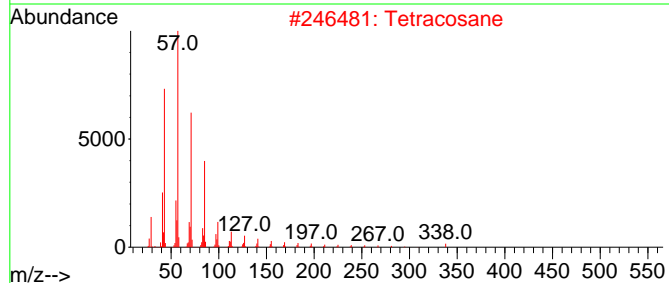
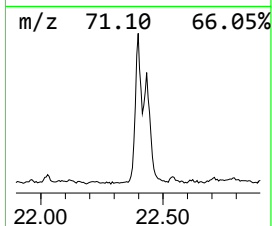
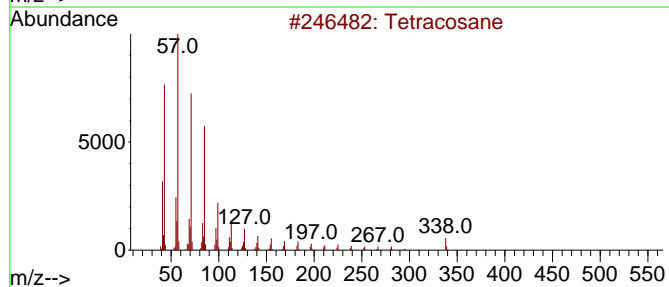
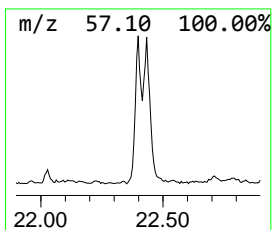
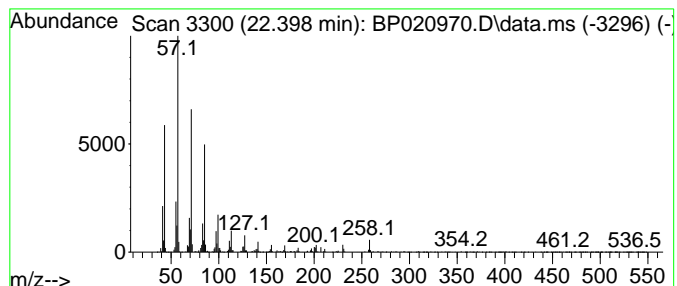
Quant Method : Z:\svoasrv\HPCHEM1\BNA\_P\Methods\SFAM-EPA-BP071024.MA.M  
 Quant Title : SVOA CALIBRATION

TIC Library : C:\DATABASE\NIST20.L  
 TIC Integration Parameters: LSCINT.P

\*\*\*\*\*  
 Peak Number 10 (DEL) Alkane: Straight-Chai... Concentration Rank 10

R.T.	EstConc	Area	Relative to ISTD	R.T.
22.398	4.55 ng/ul	794948	Chrysene-d12	21.557

Hit#	of 5	Tentative ID	MW	MolForm	CAS#	Qual
1		Tetracosane	338	C24H50	000646-31-1	96
2		Tetracosane	338	C24H50	000646-31-1	91
3		Octacosane	394	C28H58	000630-02-4	91
4		Docosane, 1-iodo-	436	C22H45I	1000406-31-9	91
5		Octacosane, 1-iodo-	520	C28H57I	1000406-32-2	91



Data Path : Z:\svoasrv\HPCHEM1\BNA\_P\Data\BP071524\  
 Data File : BP020970.D  
 Acq On : 15 Jul 2024 23:15  
 Operator : MA/JU  
 Sample : P3100-16  
 Misc :  
 ALS Vial : 16 Sample Multiplier: 1

Instrument :  
 BNA\_P  
 ClientSampleId :  
 A4D07

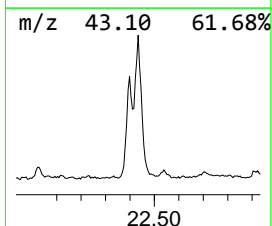
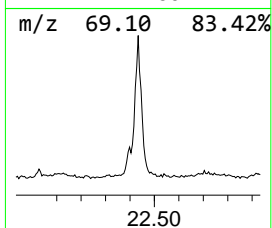
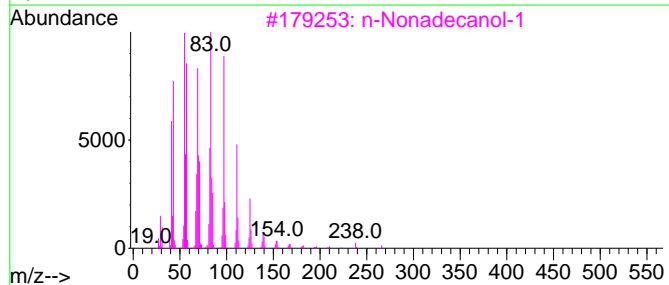
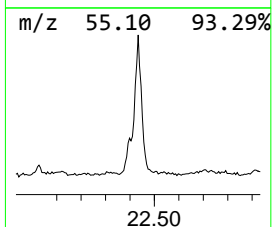
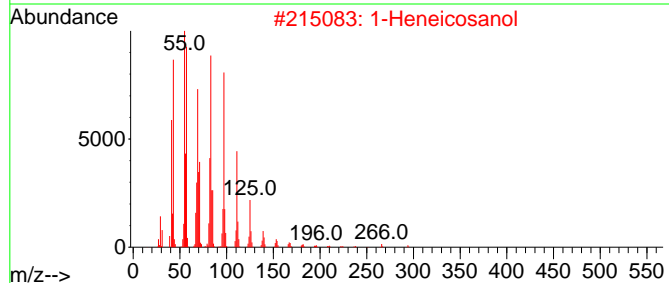
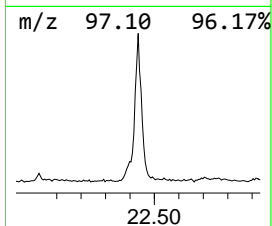
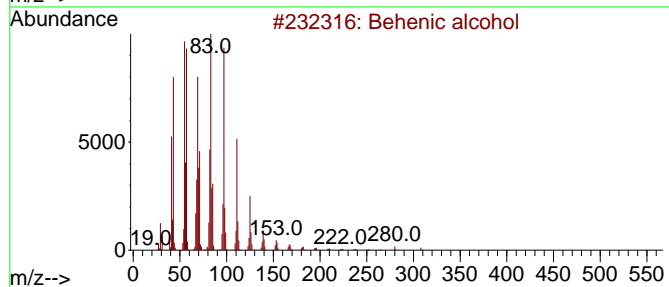
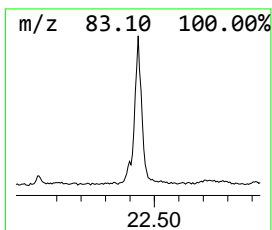
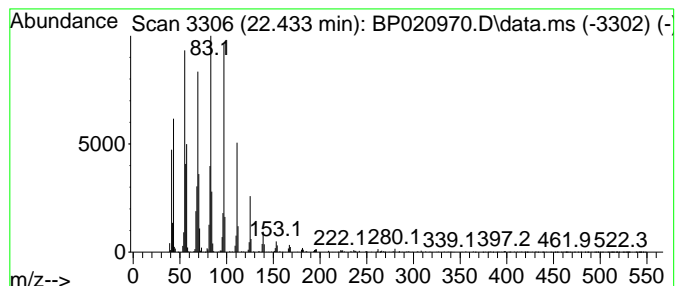
Quant Method : Z:\svoasrv\HPCHEM1\BNA\_P\Methods\SFAM-EPA-BP071024.MA.M  
 Quant Title : SVOA CALIBRATION

TIC Library : C:\DATABASE\NIST20.L  
 TIC Integration Parameters: LSCINT.P

\*\*\*\*\*  
 Peak Number 11 Behenic alcohol Concentration Rank 4

R.T.	EstConc	Area	Relative to ISTD	R.T.
22.433	13.50 ng/ul	2357050	Chrysene-d12	21.557

Hit#	of 5	Tentative ID	MW	MolForm	CAS#	Qual
1		Behenic alcohol	326	C22H46O	000661-19-8	94
2		1-Heneicosanol	312	C21H44O	015594-90-8	94
3		n-Nonadecanol-1	284	C19H40O	001454-84-8	90
4		1-Octadecanol	270	C18H38O	000112-92-5	58
5		Cyclooctane, 1,2-diethyl-	168	C12H24	023609-46-3	52



Data Path : Z:\svoasrv\HPCHEM1\BNA\_P\Data\BP071524\  
 Data File : BP020970.D  
 Acq On : 15 Jul 2024 23:15  
 Operator : MA/JU  
 Sample : P3100-16  
 Misc :  
 ALS Vial : 16 Sample Multiplier: 1

Instrument :  
 BNA\_P  
 ClientSampleId :  
 A4D07

Quant Method : Z:\svoasrv\HPCHEM1\BNA\_P\Methods\SFAM-EPA-BP071024.MA.M  
 Quant Title : SVOA CALIBRATION

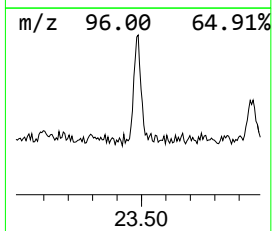
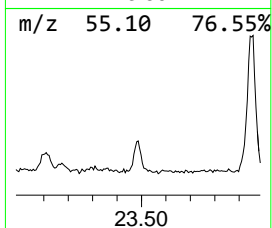
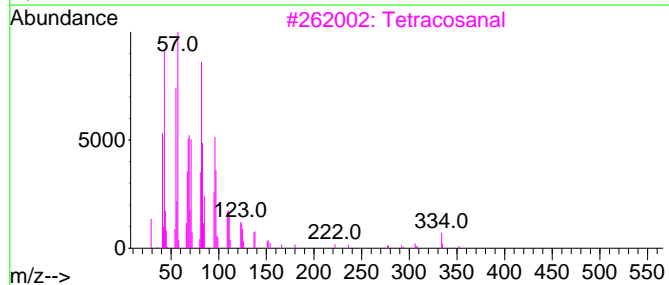
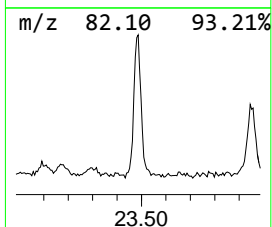
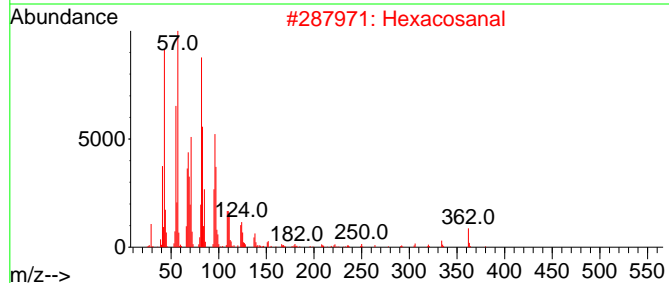
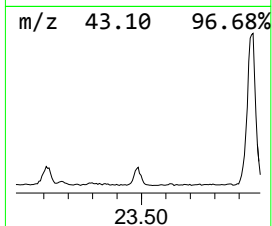
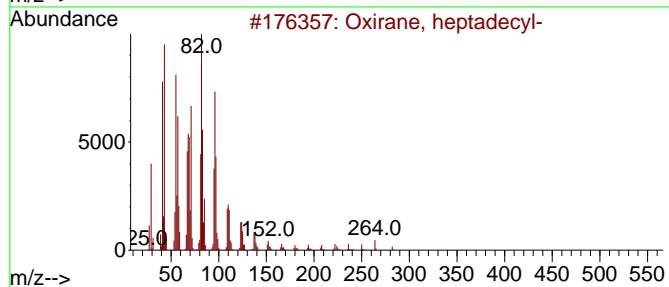
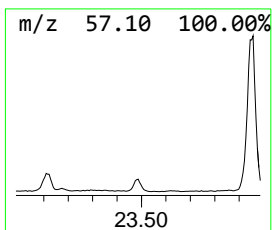
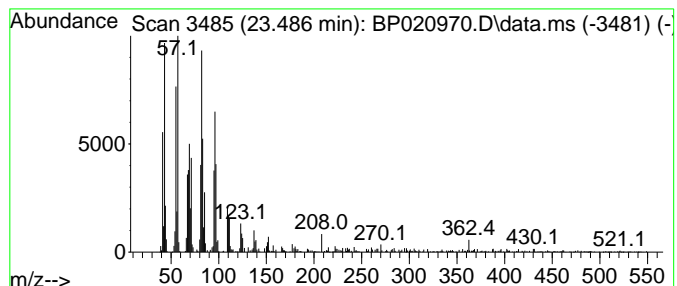
TIC Library : C:\DATABASE\NIST20.L  
 TIC Integration Parameters: LSCINT.P

\*\*\*\*\*  
 Peak Number 12 Oxirane, heptadecyl- Concentration Rank 9

R.T.	EstConc	Area	Relative to ISTD	R.T.
23.486	5.93 ng/ul	723193	Perylene-d12	24.851

Hit#	of	5	Tentative ID	MW	MolForm	CAS#	Qual
1			Oxirane, heptadecyl-	282	C19H38O	067860-04-2	95
2			Hexacosanal	380	C26H52O	026627-85-0	94
3			Tetracosanal	352	C24H48O	057866-08-7	94
4			Dotriacontanal	464	C32H64O	057878-00-9	91
5			Heptadecanal	254	C17H34O	1000376-70-0	91





Data Path : Z:\svoasrv\HPCHEM1\BNA\_P\Data\BP071524\  
 Data File : BP020970.D  
 Acq On : 15 Jul 2024 23:15  
 Operator : MA/JU  
 Sample : P3100-16  
 Misc :  
 ALS Vial : 16 Sample Multiplier: 1

Instrument :  
 BNA\_P  
 ClientSampleId :  
 A4D07

Quant Method : Z:\svoasrv\HPCHEM1\BNA\_P\Methods\SFAM-EPA-BP071024.MA.M  
 Quant Title : SVOA CALIBRATION

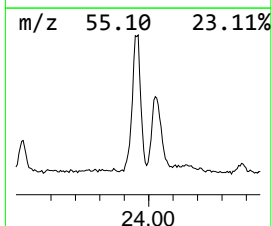
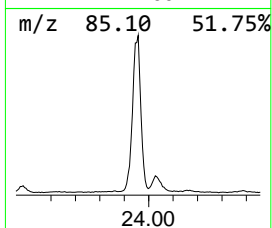
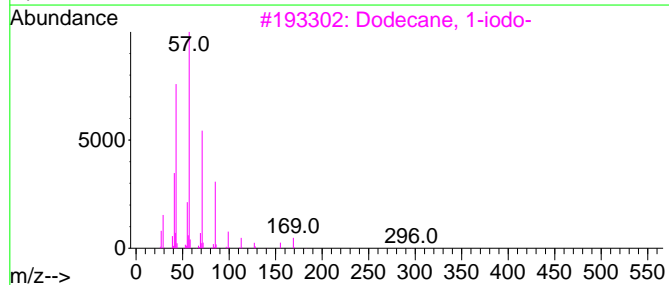
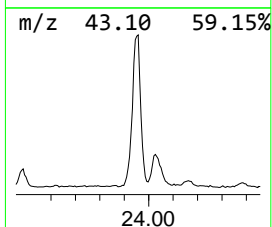
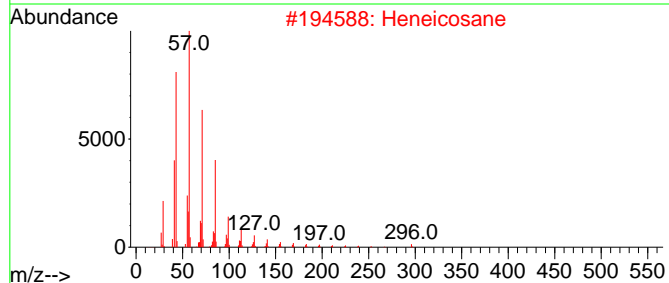
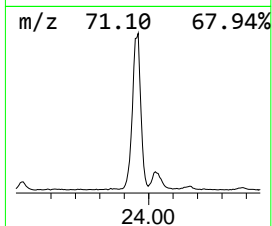
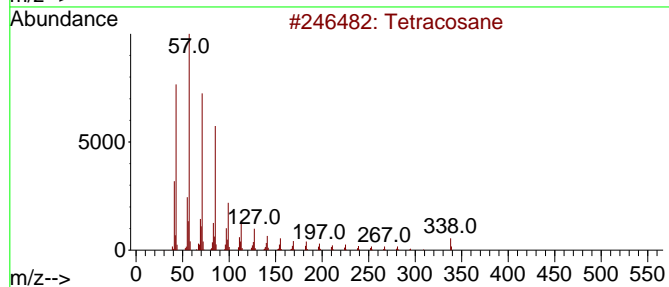
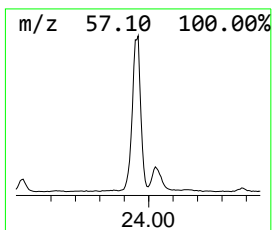
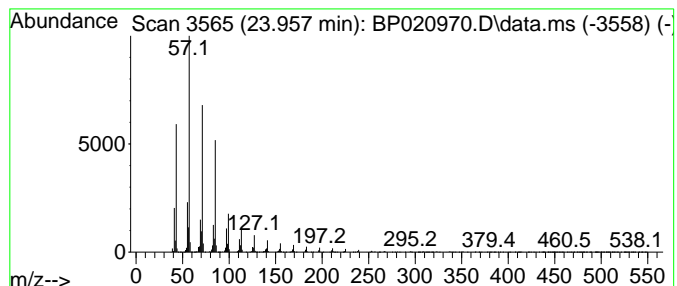
TIC Library : C:\DATABASE\NIST20.L  
 TIC Integration Parameters: LSCINT.P

\*\*\*\*\*  
 Peak Number 13 (DEL) Alkane: Straight-Chai... Concentration Rank 2

R.T.	EstConc	Area	Relative to ISTD	R.T.
23.957	36.19 ng/ul	4412780	Perylene-d12	24.851

Hit#	of 5	Tentative ID	MW	MolForm	CAS#	Qual
1		Tetracosane	338	C24H50	000646-31-1	97
2		Heneicosane	296	C21H44	000629-94-7	91
3		Dodecane, 1-iodo-	296	C12H25I	004292-19-7	91
4		Hexacosane	366	C26H54	000630-01-3	91
5		2-Bromo dodecane	248	C12H25Br	013187-99-0	91



Data Path : Z:\svoasrv\HPCHEM1\BNA\_P\Data\BP071524\  
 Data File : BP020970.D  
 Acq On : 15 Jul 2024 23:15  
 Operator : MA/JU  
 Sample : P3100-16  
 Misc :  
 ALS Vial : 16 Sample Multiplier: 1

Instrument :  
 BNA\_P  
 ClientSampleId :  
 A4D07

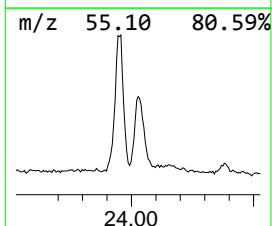
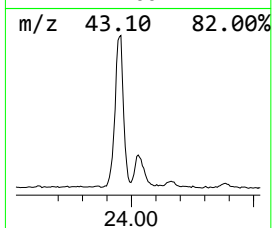
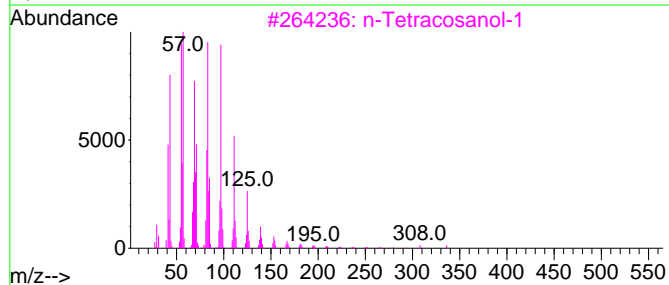
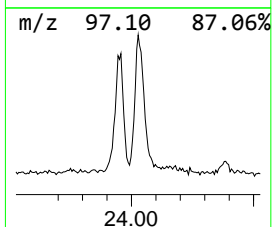
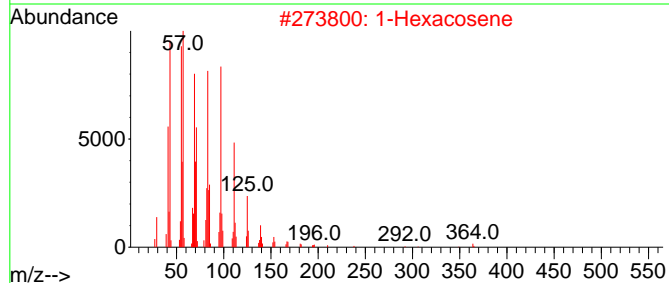
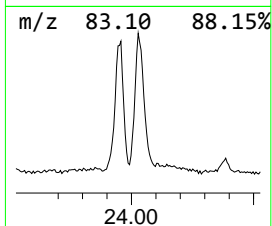
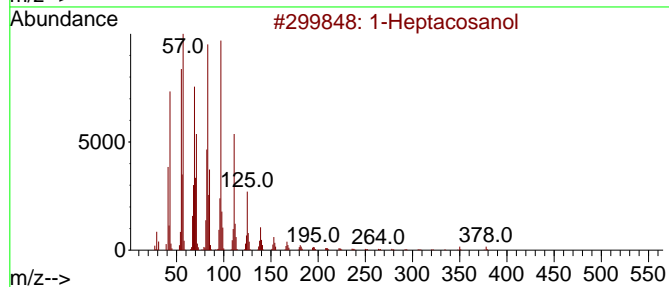
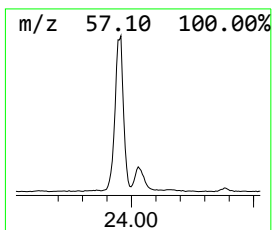
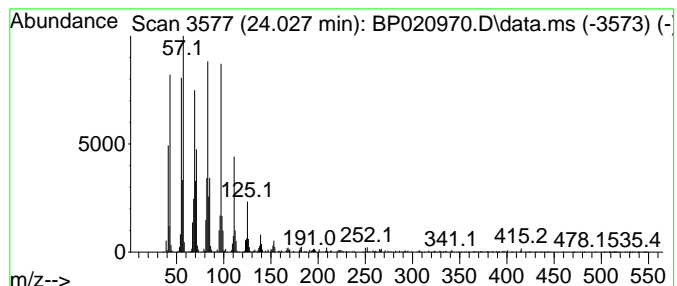
Quant Method : Z:\svoasrv\HPCHEM1\BNA\_P\Methods\SFAM-EPA-BP071024.MA.M  
 Quant Title : SVOA CALIBRATION

TIC Library : C:\DATABASE\NIST20.L  
 TIC Integration Parameters: LSCINT.P

\*\*\*\*\*  
 Peak Number 14 1-Heptacosanol Concentration Rank 7

R.T.	EstConc	Area	Relative to ISTD	R.T.
24.027	12.12 ng/ul	1477420	Perylene-d12	24.851

Hit#	of 5	Tentative ID	MW	MolForm	CAS#	Qual
1		1-Heptacosanol	396	C27H56O	002004-39-9	94
2		1-Hexacosene	364	C26H52	018835-33-1	94
3		n-Tetracosanol-1	354	C24H50O	000506-51-4	94
4		Heptacosyl acetate	438	C29H58O2	1000351-78-2	93
5		9-Nonadecene	266	C19H38	031035-07-1	93



Data Path : Z:\svoasrv\HPCHEM1\BNA\_P\Data\BP071524\  
 Data File : BP020970.D  
 Acq On : 15 Jul 2024 23:15  
 Operator : MA/JU  
 Sample : P3100-16  
 Misc :  
 ALS Vial : 16 Sample Multiplier: 1

Instrument :  
 BNA\_P  
 ClientSampleId :  
 A4D07

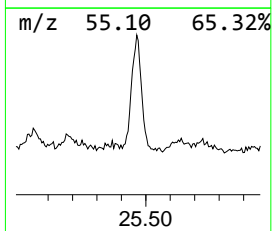
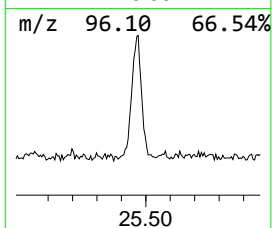
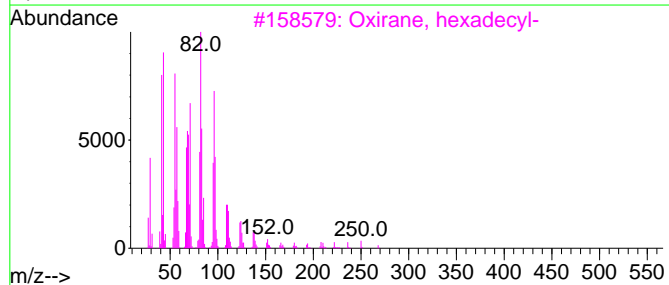
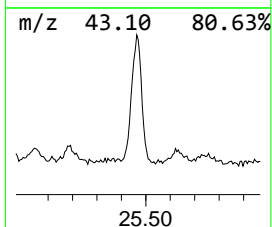
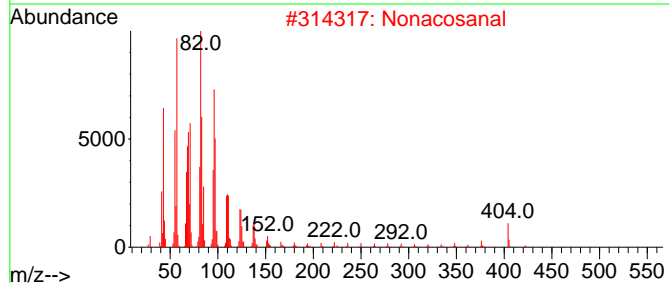
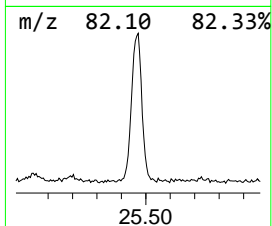
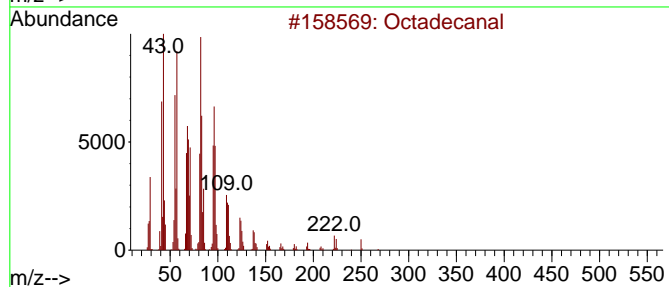
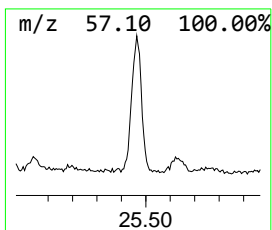
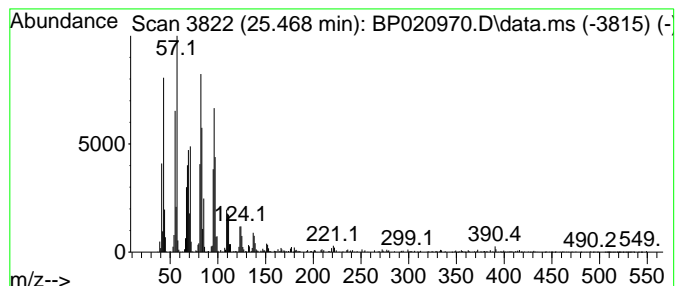
Quant Method : Z:\svoasrv\HPCHEM1\BNA\_P\Methods\SFAM-EPA-BP071024.MA.M  
 Quant Title : SVOA CALIBRATION

TIC Library : C:\DATABASE\NIST20.L  
 TIC Integration Parameters: LSCINT.P

\*\*\*\*\*  
 Peak Number 15 Octadecanal Concentration Rank 6

R.T.	EstConc	Area	Relative to ISTD	R.T.
25.468	12.24 ng/ul	1492160	Perylene-d12	24.851

Hit#	of	5	Tentative ID	MW	MolForm	CAS#	Qual
1			Octadecanal	268	C18H36O	000638-66-4	94
2			Nonacosanal	422	C29H58O	072934-04-4	93
3			Oxirane, hexadecyl-	268	C18H36O	007390-81-0	91
4			Oxirane, hexadecyl-	268	C18H36O	007390-81-0	91
5			Octacosanal	408	C28H56O	022725-64-0	90



Data Path : Z:\svoasrv\HPCHEM1\BNA\_P\Data\BP071524\  
 Data File : BP020970.D  
 Acq On : 15 Jul 2024 23:15  
 Operator : MA/JU  
 Sample : P3100-16  
 Misc :  
 ALS Vial : 16 Sample Multiplier: 1

Instrument :  
 BNA\_P  
 ClientSampleId :  
 A4D07

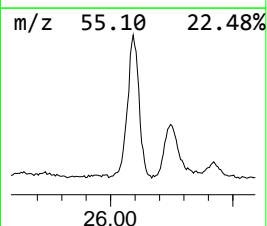
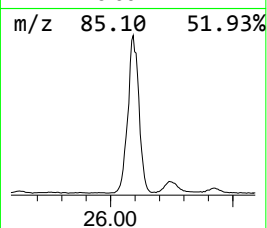
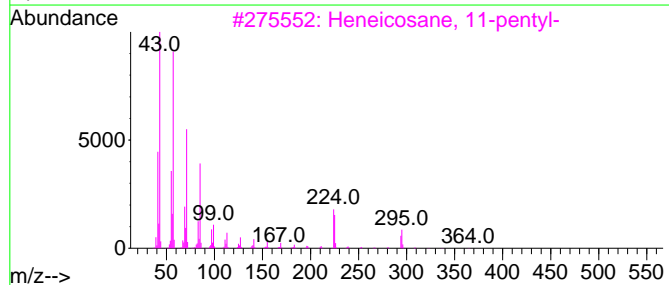
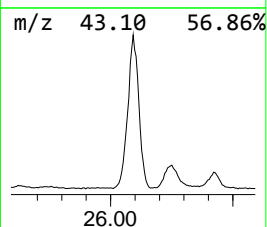
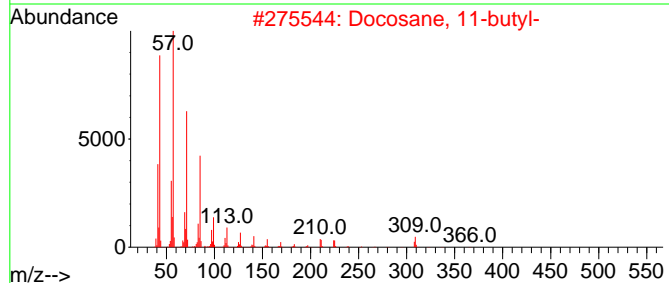
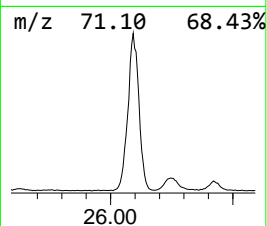
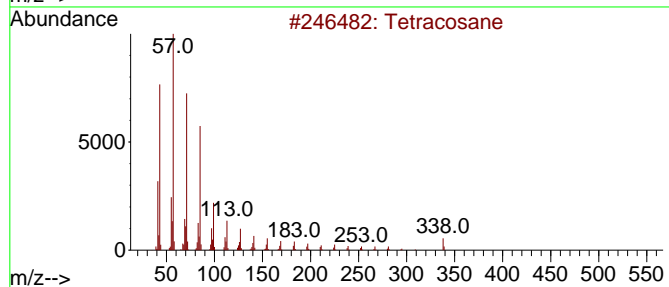
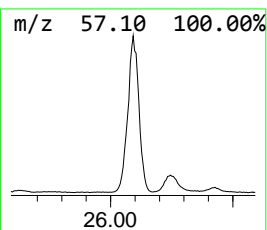
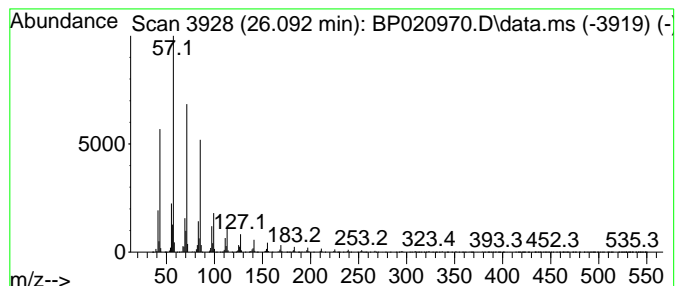
Quant Method : Z:\svoasrv\HPCHEM1\BNA\_P\Methods\SFAM-EPA-BP071024.MA.M  
 Quant Title : SVOA CALIBRATION

TIC Library : C:\DATABASE\NIST20.L  
 TIC Integration Parameters: LSCINT.P

\*\*\*\*\*  
 Peak Number 16 (DEL) Alkane: Straight-Chai... Concentration Rank 1

R.T.	EstConc	Area	Relative to ISTD	R.T.
26.092	58.85 ng/ul	7175240	Perylene-d12	24.851

Hit#	of 5	Tentative ID	MW	MolForm	CAS#	Qual
1		Tetracosane	338	C24H50	000646-31-1	98
2		Docosane, 11-butyl-	366	C26H54	013475-76-8	95
3		Heneicosane, 11-pentyl-	366	C26H54	014739-72-1	94
4		Pentadecane, 8-hexyl-	296	C21H44	013475-75-7	94
5		Eicosane, 10-methyl-	296	C21H44	054833-23-7	93



Data Path : Z:\svoasrv\HPCHEM1\BNA\_P\Data\BP071524\  
 Data File : BP020970.D  
 Acq On : 15 Jul 2024 23:15  
 Operator : MA/JU  
 Sample : P3100-16  
 Misc :  
 ALS Vial : 16 Sample Multiplier: 1

Instrument :  
 BNA\_P  
 ClientSampleId :  
 A4D07

Quant Method : Z:\svoasrv\HPCHEM1\BNA\_P\Methods\SFAM-EPA-BP071024.MA.M  
 Quant Title : SVOA CALIBRATION

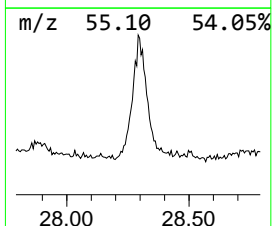
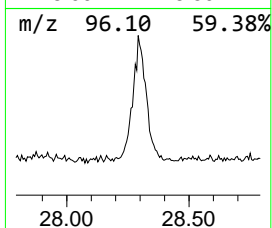
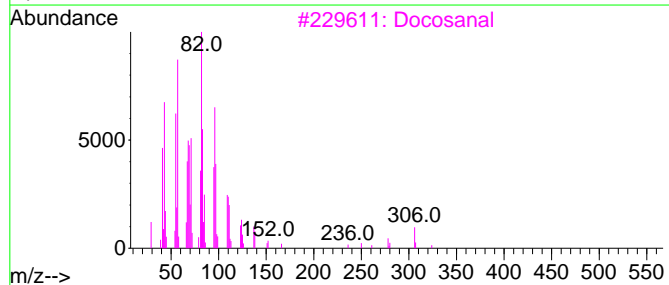
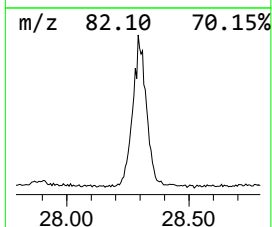
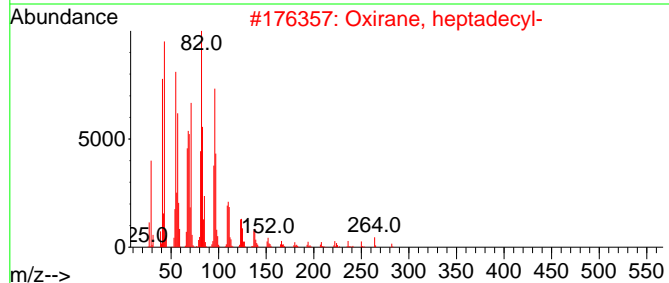
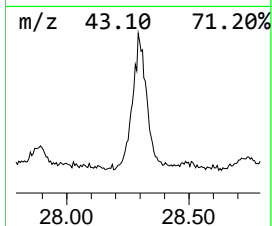
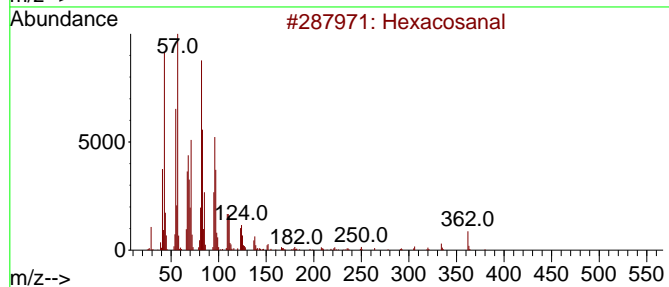
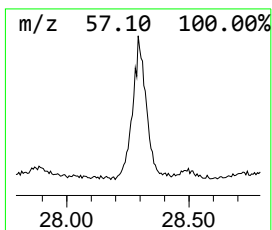
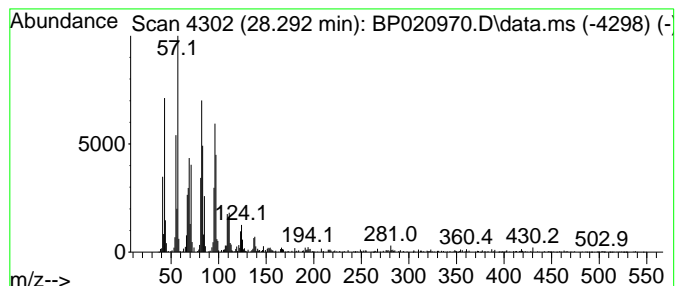
TIC Library : C:\DATABASE\NIST20.L  
 TIC Integration Parameters: LSCINT.P

\*\*\*\*\*  
 Peak Number 17 Hexacosanal Concentration Rank 3

R.T.	EstConc	Area	Relative to ISTD	R.T.
28.292	13.93 ng/ul	1698280	Perylene-d12	24.851

Hit#	of 5	Tentative ID	MW	MolForm	CAS#	Qual
1		Hexacosanal	380	C26H52O	026627-85-0	94
2		Oxirane, heptadecyl-	282	C19H38O	067860-04-2	93
3		Docosanal	324	C22H44O	057402-36-5	93
4		1,19-Eicosadiene	278	C20H38	014811-95-1	89
5		cis-7-Tetradecen-1-yl acetate	254	C16H30O2	016974-10-0	83



Data Path : Z:\svoasrv\HPCHEM1\BNA\_P\Data\BP071524\  
 Data File : BP020970.D  
 Acq On : 15 Jul 2024 23:15  
 Operator : MA/JU  
 Sample : P3100-16  
 Misc :  
 ALS Vial : 16 Sample Multiplier: 1

Instrument :  
 BNA\_P  
 ClientSampleId :  
 A4D07

Quant Method : Z:\svoasrv\HPCHEM1\BNA\_P\Methods\SFAM-EPA-BP071024.MA.M  
 Quant Title : SVOA CALIBRATION

TIC Library : C:\DATABASE\NIST0.L  
 TIC Integration Parameters: LSCINT.P

TIC Top Hit name	RT	EstConc	Units	Response	--Internal Standard--			
					#	RT	Resp	Conc
(DEL) Alkane: S...	16.063	2.5	ng/ul	275919	4	17.128	2206930	20.0
1,1'-Biphenyl, ...	17.739	2.3	ng/ul	254545	4	17.128	2206930	20.0
n-Hexadecanoic ...	18.045	12.4	ng/ul	1365660	4	17.128	2206930	20.0
Anthracene, 1-m...	18.222	3.2	ng/ul	355781	4	17.128	2206930	20.0
(DEL) Alkane: S...	18.351	2.6	ng/ul	291581	4	17.128	2206930	20.0
(DEL) Alkane: S...	19.016	2.8	ng/ul	304034	4	17.128	2206930	20.0
2,3,3',6-Tetrac...	19.122	2.8	ng/ul	306674	4	17.128	2206930	20.0
Octadecanoic acid	19.392	3.9	ng/ul	680023	5	21.557	3492420	20.0
Pentadecafluoro...	21.216	11.3	ng/ul	1967210	5	21.557	3492420	20.0
(DEL) Alkane: S...	22.398	4.5	ng/ul	794948	5	21.557	3492420	20.0
Behenic alcohol	22.433	13.5	ng/ul	2357050	5	21.557	3492420	20.0
Oxirane, heptad...	23.486	5.9	ng/ul	723193	6	24.851	2438630	20.0
(DEL) Alkane: S...	23.957	36.2	ng/ul	4412780	6	24.851	2438630	20.0
1-Heptacosanol	24.027	12.1	ng/ul	1477420	6	24.851	2438630	20.0
Octadecanal	25.468	12.2	ng/ul	1492160	6	24.851	2438630	20.0
(DEL) Alkane: S...	26.092	58.9	ng/ul	7175240	6	24.851	2438630	20.0
Hexacosanal	28.292	13.9	ng/ul	1698280	6	24.851	2438630	20.0