

Data Path : Z:\svoasrv\HPCHEM1\BNA_P\Data\BP080124\
 Data File : BP021318.D
 Acq On : 02 Aug 2024 12:29
 Operator : CG/JU
 Sample : PB162173BS
 Misc :
 ALS Vial : 28 Sample Multiplier: 1

Instrument :
 BNA_P
ClientSampleId :
 SLCS173

Manual Integrations
APPROVED
 Reviewed By :Yogesh Patel 08/03/2024
 Supervised By :mohammad ahmed 08/05/2024

Quant Time: Aug 02 23:35:43 2024
 Quant Method : Z:\svoasrv\HPCHEM1\BNA_P\Methods\SFAM-EPA-BP071024.MA.M
 Quant Title : SVOA CALIBRATION
 QLast Update : Mon Jul 29 12:46:18 2024
 Response via : Initial Calibration

Compound	R.T.	QIon	Response	Conc	Units	Dev(Min)	
Internal Standards							
1) 1,4-Dichlorobenzene-d4	7.616	152	155694	20.000	ng/ul	-0.02	
20) Naphthalene-d8	10.387	136	597809	20.000	ng/ul	0.00	
38) Acenaphthene-d10	14.263	164	391551	20.000	ng/ul	0.00	
64) Phenanthrene-d10	17.086	188	816306	20.000	ng/ul	0.00	
79) Chrysene-d12	21.533	240	933171	20.000	ng/ul	0.00	
88) Perylene-d12	24.827	264	1208253	20.000	ng/ul	0.00	
System Monitoring Compounds							
3) 1,4-Dioxane-d8	3.164	96	18068	5.281	ng/uL	-0.01	
4) Pyridine-d5	3.581	84	227256	22.943	ng/ul	-0.01	
7) Phenol-d5	6.834	99	317568	25.019	ng/ul	-0.01	
9) Bis-(2-Chloroethyl)eth...	6.969	67	174143	22.638	ng/ul	-0.01	
11) 2-Chlorophenol-d4	7.169	132	269783	25.796	ng/ul	-0.01	
15) 4-Methylphenol-d8	8.346	113	247168	23.445	ng/ul	-0.02	
21) Nitrobenzene-d5	8.775	128	125319	26.989	ng/ul	-0.02	
24) 2-Nitrophenol-d4	9.487	143	145160	27.314	ng/ul	-0.02	
28) 2,4-Dichlorophenol-d3	10.046	165	268359	27.926	ng/ul	0.00	
31) 4-Chloroaniline-d4	10.551	131	322020	25.295	ng/ul	0.00	
46) Dimethylphthalate-d6	13.675	166	772360	27.135	ng/ul	0.00	
49) Acenaphthylene-d8	13.951	160	869565	27.207	ng/ul	-0.01	
54) 4-Nitrophenol-d4	14.581	143	149564	36.931	ng/ul	0.00	
60) Fluorene-d10	15.281	176	662146	28.356	ng/ul	0.00	
65) 4,6-Dinitro-2-methylph...	15.457	200	141613	28.672	ng/ul	0.00	
73) Anthracene-d10	17.181	188	1020344	28.143	ng/ul	-0.01	
81) Pyrene-d10	19.575	212	1309528	22.698	ng/ul	0.00	
92) Benzo(a)pyrene-d12	24.604	264	1736180	29.135	ng/ul	0.00	
Target Compounds							
2) 1,4-Dioxane	3.199	88	34679	9.216	ng/uL	98	Qvalue
5) Pyridine	3.599	79	227595	22.277	ng/ul	97	
6) Benzaldehyde	6.799	77	178194m	27.846	ng/ul		
8) Phenol	6.863	94	323305	25.171	ng/ul	98	
10) Bis(2-Chloroethyl)ether	7.063	93	240360	22.653	ng/ul	96	
12) 2-Chlorophenol	7.199	128	268439	25.610	ng/ul	98	
13) 2-Methylphenol	8.087	108	239514	24.112	ng/ul	96	
14) 2,2'-oxybis(1-Chloropr...	8.128	45	305971	19.960	ng/ul#	92	
16) Acetophenone	8.446	105	385332	23.682	ng/ul	97	
17) N-Nitroso-di-n-propyla...	8.416	70	182683	21.428	ng/ul	95	
18) 4-Methylphenol	8.410	108	256982	24.148	ng/ul	98	
19) Hexachloroethane	8.663	117	111392	23.649	ng/ul	95	
22) Nitrobenzene	8.816	77	280642	25.231	ng/ul	97	
23) Isophorone	9.340	82	507045	22.930	ng/ul	99	
25) 2-Nitrophenol	9.522	139	150387	27.133	ng/ul	96	
26) 2,4-Dimethylphenol	9.593	107	209087	19.130	ng/ul	99	
27) Bis(2-Chloroethoxy)met...	9.804	93	308745	22.970	ng/ul	100	
29) 2,4-Dichlorophenol	10.069	162	258656	27.311	ng/ul	98	
30) Naphthalene	10.434	128	813842	25.881	ng/ul	99	
32) 4-Chloroaniline	10.575	127	286593	23.575	ng/ul	100	
33) Hexachlorobutadiene	10.698	225	191495	26.966	ng/ul	97	
34) Caprolactam	11.398	113	79726m	27.327	ng/ul		
35) 4-Chloro-3-methylphenol	11.734	107	274475	26.662	ng/ul	100	
36) 2-Methylnaphthalene	12.057	142	556392	25.777	ng/ul	97	

Data Path : Z:\svoasrv\HPCHEM1\BNA_P\Data\BP080124\
 Data File : BP021318.D
 Acq On : 02 Aug 2024 12:29
 Operator : CG/JU
 Sample : PB162173BS
 Misc :
 ALS Vial : 28 Sample Multiplier: 1

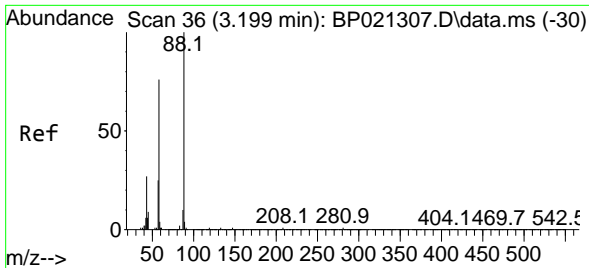
Instrument :
 BNA_P
ClientSampleId :
 SLCS173

Manual Integrations
APPROVED
 Reviewed By :Yogesh Patel 08/03/2024
 Supervised By :mohammad ahmed 08/05/2024

Quant Time: Aug 02 23:35:43 2024
 Quant Method : Z:\svoasrv\HPCHEM1\BNA_P\Methods\SFAM-EPA-BP071024.MA.M
 Quant Title : SVOA CALIBRATION
 QLast Update : Mon Jul 29 12:46:18 2024
 Response via : Initial Calibration

Compound	R.T.	QIon	Response	Conc	Units	Dev(Min)
37) 1-Methylnaphthalene	12.275	142	560291	25.238	ng/ul	99
39) 1,2,4,5-Tetrachloroben...	12.428	216	351644	27.654	ng/ul	96
40) Hexachlorocyclopentadiene	12.381	237	61735	9.281	ng/ul	100
41) 2,4,6-Trichlorophenol	12.693	196	198442	24.697	ng/ul	97
42) 2,4,5-Trichlorophenol	12.793	196	213915	25.163	ng/ul	99
43) 1,1'-Biphenyl	13.075	154	734150	25.656	ng/ul	99
44) 2-Chloronaphthalene	13.128	162	597718	26.165	ng/ul	99
45) 2-Nitroaniline	13.369	65	168260	26.635	ng/ul	96
47) Dimethylphthalate	13.716	163	744182	25.767	ng/ul	99
48) 2,6-Dinitrotoluene	13.869	165	155635	26.954	ng/ul	95
50) Acenaphthylene	13.987	152	930955	25.726	ng/ul	100
51) 3-Nitroaniline	14.222	138	151739	30.199	ng/ul	93
52) Acenaphthene	14.328	153	617377	25.705	ng/ul	98
53) 2,4-Dinitrophenol	14.469	184	76316	25.167	ng/ul	98
55) 4-Nitrophenol	14.581	109	97316m	29.541	ng/ul	
56) Dibenzofuran	14.669	168	886100	26.941	ng/ul	98
57) 2,4-Dinitrotoluene	14.681	165	230485	29.078	ng/ul	98
58) 2,3,4,6-Tetrachlorophenol	14.928	232	179189	24.614	ng/ul	92
59) Diethylphthalate	15.110	149	716666	24.830	ng/ul	99
61) Fluorene	15.334	166	718315	26.763	ng/ul	99
62) 4-Chlorophenyl-phenyle...	15.328	204	380784	26.146	ng/ul	95
63) 4-Nitroaniline	15.416	138	154007	37.011	ng/ul	95
66) 4,6-Dinitro-2-methylph...	15.469	198	144938	27.672	ng/ul	96
67) N-Nitrosodiphenylamine	15.557	169	618197	26.007	ng/ul	99
68) 4-Bromophenyl-phenylether	16.245	248	255501	26.704	ng/ul	98
69) Hexachlorobenzene	16.357	284	312052	28.444	ng/ul	96
70) Atrazine	16.545	200	102849	11.872	ng/ul	96
71) Pentachlorophenol	16.751	266	138127	23.182	ng/ul	98
72) Phenanthrene	17.128	178	1162191	27.445	ng/ul	99
74) Anthracene	17.222	178	1138969	26.383	ng/ul	99
75) 1,2,3,4-Tetrachloroben...	13.040	216	341739	26.156	ng/uL	99
76) Pentachlorobenzene	14.587	250	350218	26.976	ng/uL	99
77) Carbazole	17.522	167	1048602	29.713	ng/ul	99
78) Di-n-butylphthalate	18.080	149	1215431	24.963	ng/ul	100
80) Fluoranthene	19.227	202	1474630	21.165	ng/ul	98
82) Pyrene	19.604	202	1581200	22.302	ng/ul	97
83) Butylbenzylphthalate	20.545	149	605110	20.485	ng/ul	97
84) 3,3'-Dichlorobenzidine	21.445	252	629691	29.530	ng/ul	99
85) Benzo(a)anthracene	21.516	228	1758733	26.905	ng/ul	100
86) Bis(2-ethylhexyl)phtha...	21.421	149	850472	20.007	ng/ul	99
87) Chrysene	21.580	228	1669086	27.478	ng/ul	100
89) Di-n-octyl phthalate	22.663	149	1577437	19.763	ng/ul	100
90) Benzo(b)fluoranthene	23.786	252	2031735	27.709	ng/ul	98
91) Benzo(k)fluoranthene	23.851	252	1939908	26.511	ng/ul	98
93) Benzo(a)pyrene	24.662	252	1727290	24.929	ng/ul	99
94) Indeno(1,2,3-cd)pyrene	28.586	276	2532361	28.363	ng/ul	97
95) Dibenzo(a,h)anthracene	28.633	278	2061982	27.889	ng/ul	98
96) Benzo(g,h,i)perylene	29.750	276	1988251m	27.343	ng/ul	

(#) = qualifier out of range (m) = manual integration (+) = signals summed



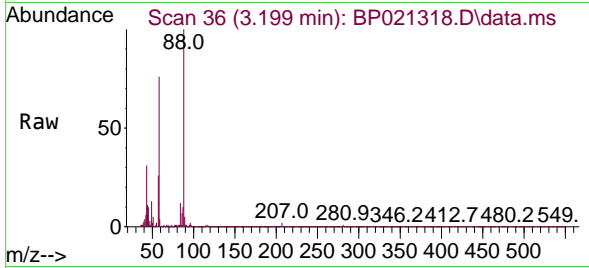
#2
 1,4-Dioxane
 Concen: 9.216 ng/uL
 RT: 3.199 min Scan# 30
 Delta R.T. -0.006 min
 Lab File: BP021318.D
 Acq: 02 Aug 2024 12:29

Instrument :

BNA_P

Client SampleId :

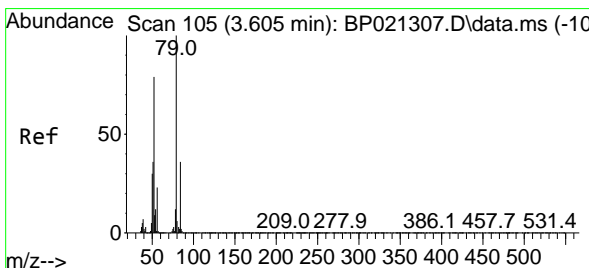
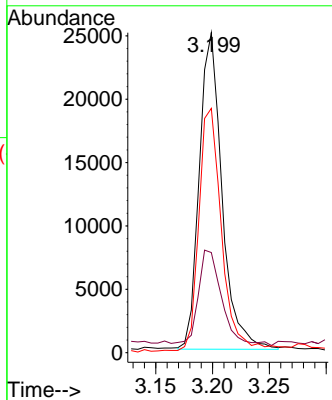
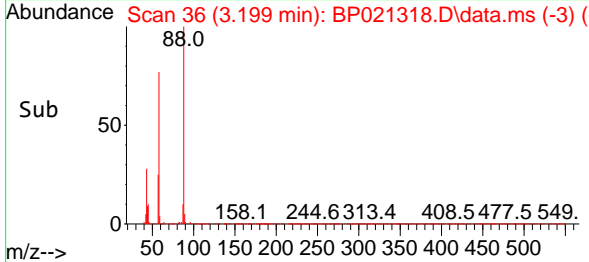
SLCS173



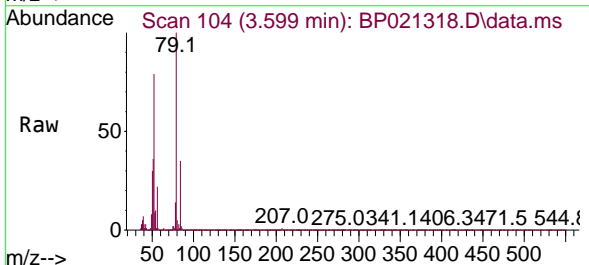
Tgt Ion: 88 Resp: 34679
 Ion Ratio Lower Upper
 88 100
 43 31.3 25.4 38.0
 58 76.3 59.2 88.8

Manual Integrations
 APPROVED

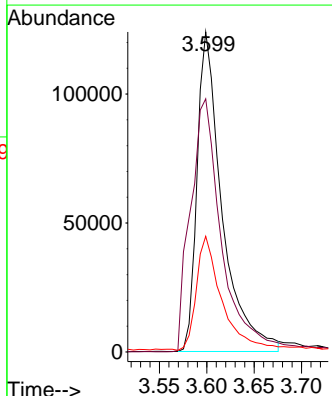
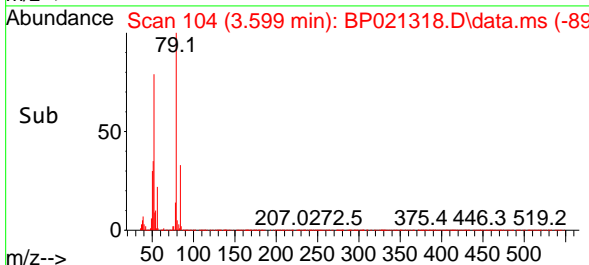
Reviewed By :Yogesh Patel 08/03/2024
 Supervised By :mohammad ahmed 08/05/2024

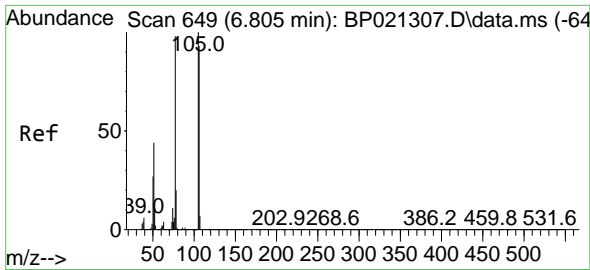


#5
 Pyridine
 Concen: 22.277 ng/uL
 RT: 3.599 min Scan# 104
 Delta R.T. -0.011 min
 Lab File: BP021318.D
 Acq: 02 Aug 2024 12:29



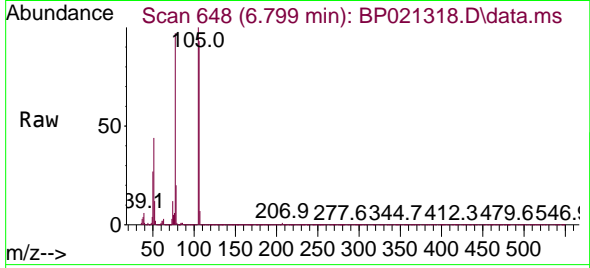
Tgt Ion: 79 Resp: 227595
 Ion Ratio Lower Upper
 79 100
 52 79.1 64.9 97.3
 51 36.2 30.5 45.7





#6
Benzaldehyde
Concen: 27.846 ng/ul m
RT: 6.799 min Scan# 648
Delta R.T. -0.006 min
Lab File: BP021318.D
Acq: 02 Aug 2024 12:29

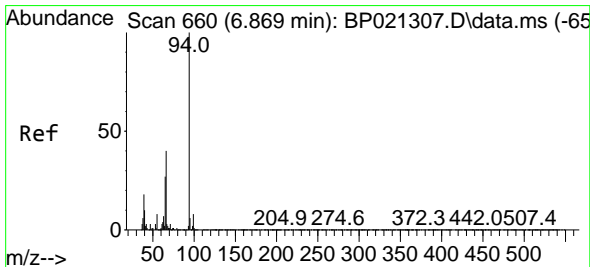
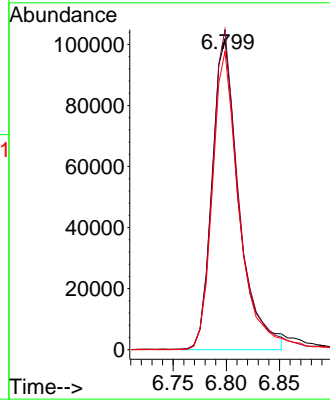
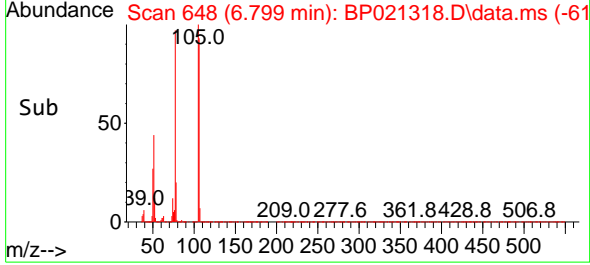
Instrument :
BNA_P
Client SampleId :
SLCS173



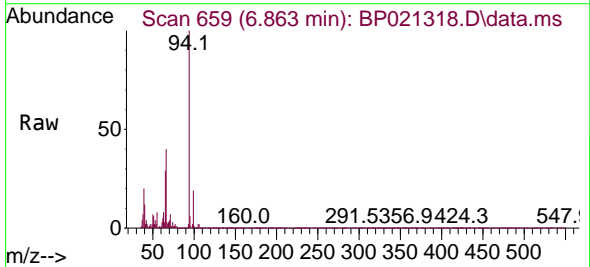
Tgt Ion: 77 Resp: 178194
Ion Ratio Lower Upper
77 100
105 103.1 79.3 118.9
106 96.1 74.6 112.0

Manual Integrations
APPROVED

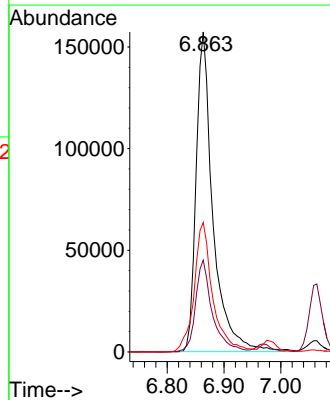
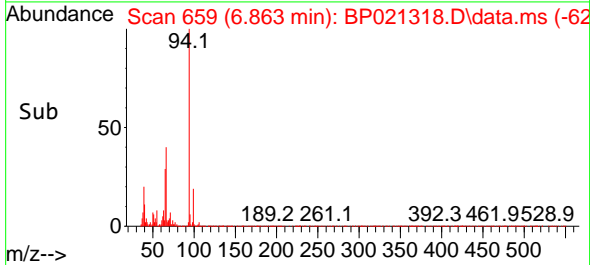
Reviewed By :Yogesh Patel 08/03/2024
Supervised By :mohammad ahmed 08/05/2024

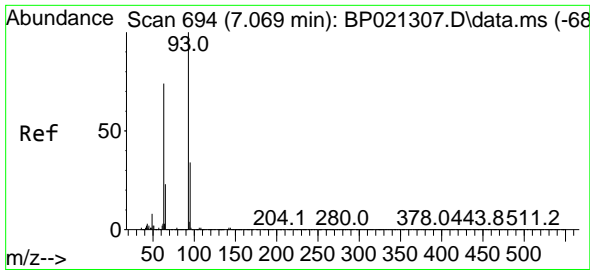


#8
Phenol
Concen: 25.171 ng/ul
RT: 6.863 min Scan# 659
Delta R.T. -0.011 min
Lab File: BP021318.D
Acq: 02 Aug 2024 12:29



Tgt Ion: 94 Resp: 323305
Ion Ratio Lower Upper
94 100
65 28.7 23.4 35.0
66 40.4 33.9 50.9





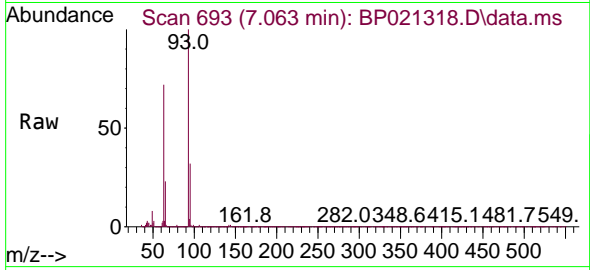
#10
 Bis(2-Chloroethyl)ether
 Concen: 22.653 ng/ul
 RT: 7.063 min Scan# 694
 Delta R.T. -0.011 min
 Lab File: BP021318.D
 Acq: 02 Aug 2024 12:29

Instrument :

BNA_P

ClientSampleId :

SLCS173



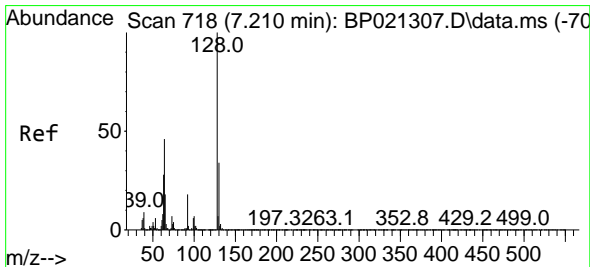
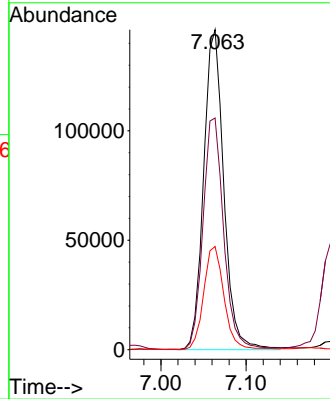
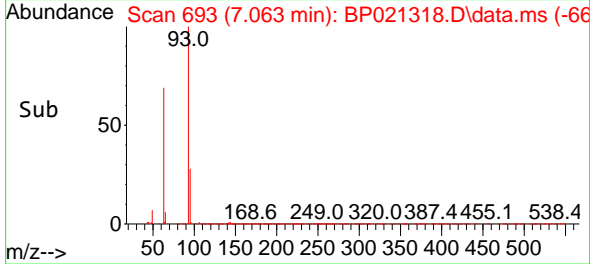
Tgt Ion: 93 Resp: 240360
 Ion Ratio Lower Upper
 93 100
 63 72.4 61.5 92.3
 95 32.3 25.1 37.7

Manual Integrations

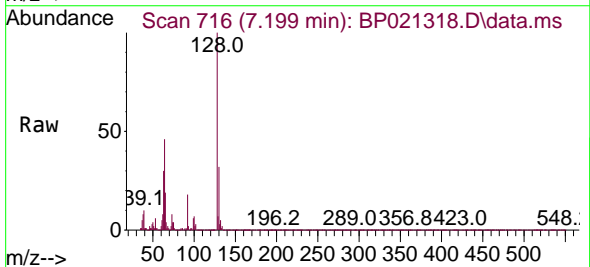
APPROVED

Reviewed By :Yogesh Patel 08/03/2024

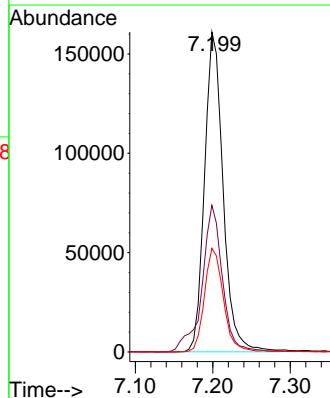
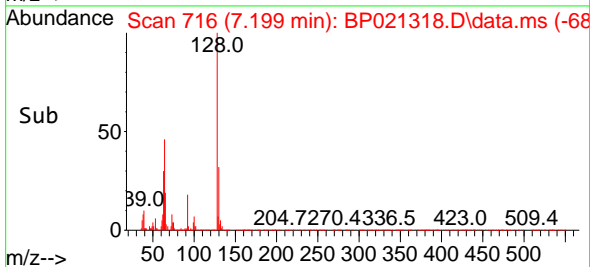
Supervised By :mohammad ahmed 08/05/2024

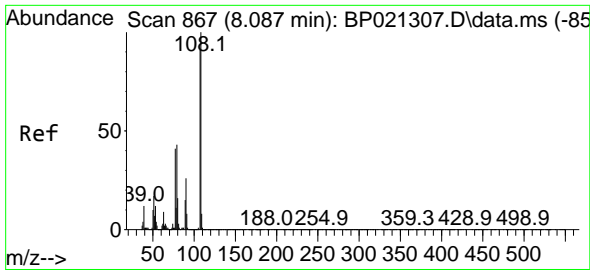


#12
 2-Chlorophenol
 Concen: 25.610 ng/ul
 RT: 7.199 min Scan# 716
 Delta R.T. -0.011 min
 Lab File: BP021318.D
 Acq: 02 Aug 2024 12:29



Tgt Ion:128 Resp: 268439
 Ion Ratio Lower Upper
 128 100
 64 45.8 37.9 56.9
 130 32.4 25.6 38.4





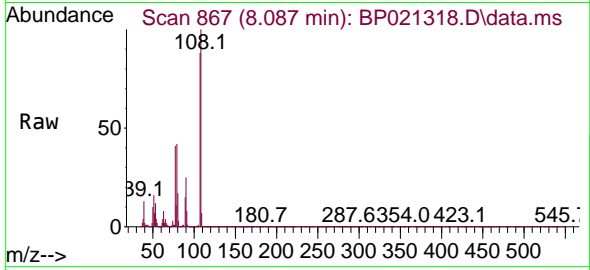
#13
 2-Methylphenol
 Concen: 24.112 ng/ul
 RT: 8.087 min Scan# 80
 Delta R.T. -0.011 min
 Lab File: BP021318.D
 Acq: 02 Aug 2024 12:29

Instrument :

BNA_P

ClientSampleId :

SLCS173



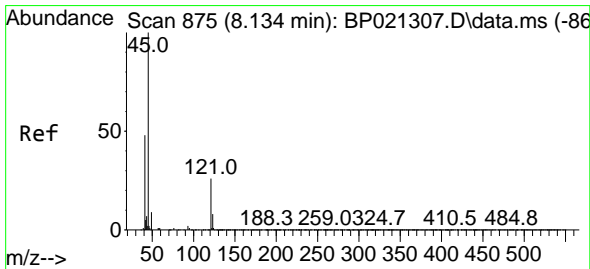
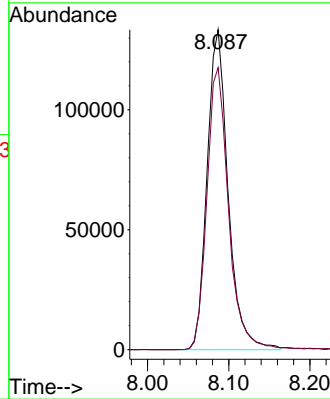
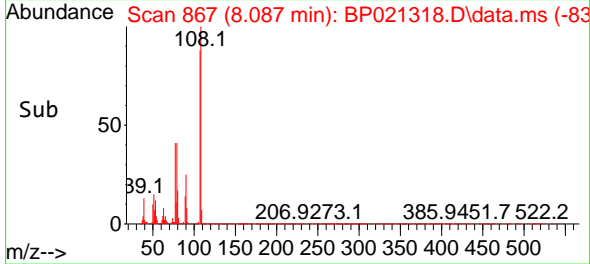
Tgt Ion:108 Resp: 239514
 Ion Ratio Lower Upper
 108 100
 107 88.2 73.8 110.8

Manual Integrations

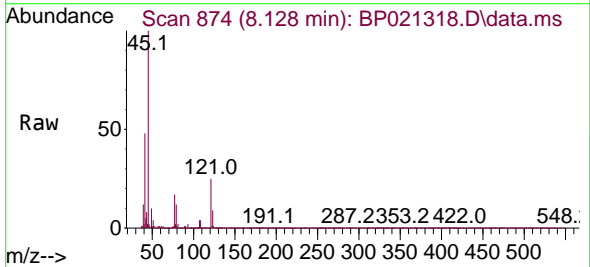
APPROVED

Reviewed By :Yogesh Patel 08/03/2024

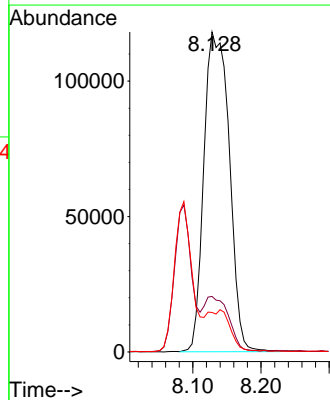
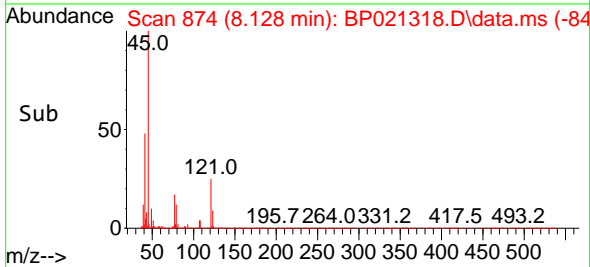
Supervised By :mohammad ahmed 08/05/2024

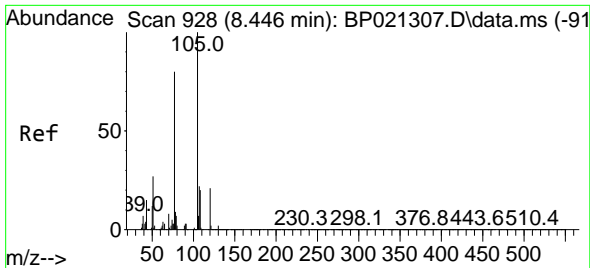


#14
 2,2'-oxybis(1-Chloropropane)
 Concen: 19.960 ng/ul
 RT: 8.128 min Scan# 874
 Delta R.T. -0.029 min
 Lab File: BP021318.D
 Acq: 02 Aug 2024 12:29



Tgt Ion: 45 Resp: 305971
 Ion Ratio Lower Upper
 45 100
 77 17.3 10.9 16.3#
 79 12.3 8.1 12.1#





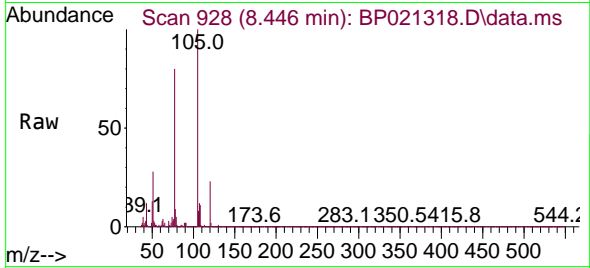
#16
 Acetophenone
 Concen: 23.682 ng/u1
 RT: 8.446 min Scan# 91
 Delta R.T. -0.011 min
 Lab File: BP021318.D
 Acq: 02 Aug 2024 12:29

Instrument :

BNA_P

ClientSampleId :

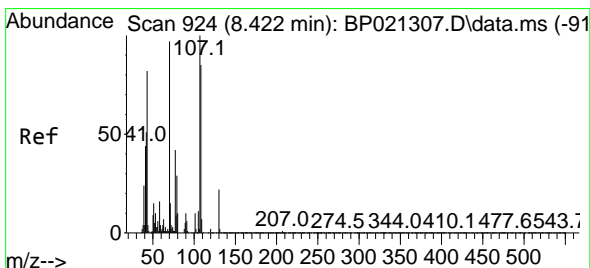
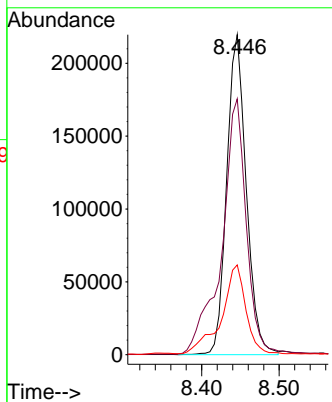
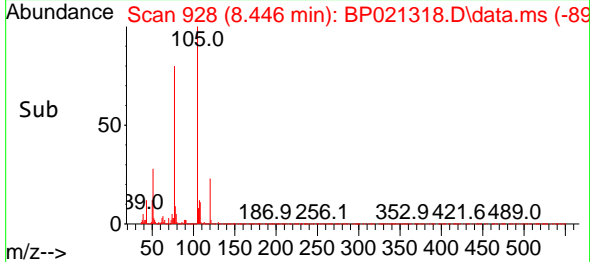
SLCS173



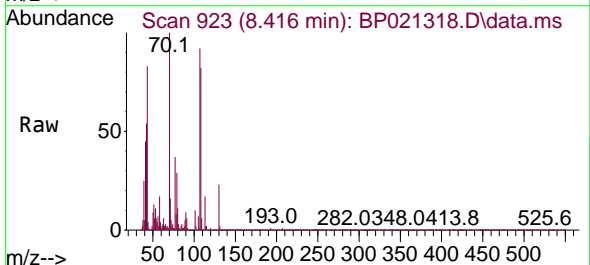
Tgt Ion:105 Resp: 38533
 Ion Ratio Lower Upper
 105 100
 77 80.0 61.8 92.8
 51 28.0 21.5 32.3

Manual Integrations
 APPROVED

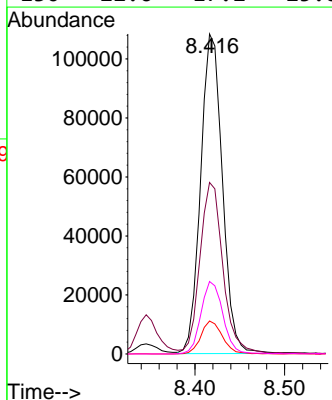
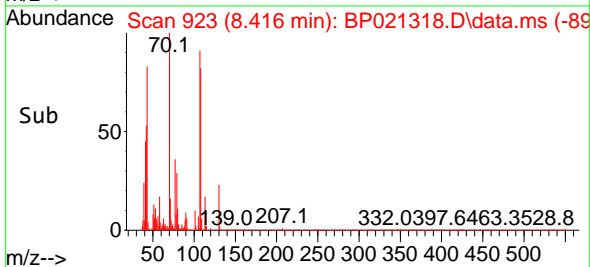
Reviewed By :Yogesh Patel 08/03/2024
 Supervised By :mohammad ahmed 08/05/2024

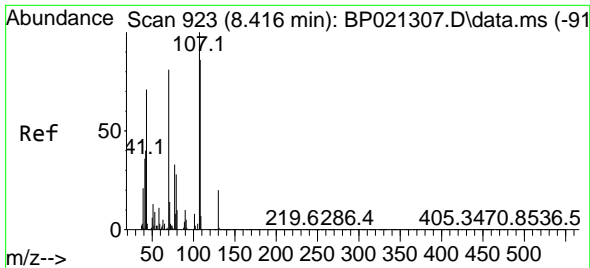


#17
 N-Nitroso-di-n-propylamine
 Concen: 21.428 ng/u1
 RT: 8.416 min Scan# 923
 Delta R.T. -0.017 min
 Lab File: BP021318.D
 Acq: 02 Aug 2024 12:29



Tgt Ion: 70 Resp: 182683
 Ion Ratio Lower Upper
 70 100
 42 53.6 46.6 69.8
 101 10.3 7.4 11.0
 130 22.6 17.2 25.8





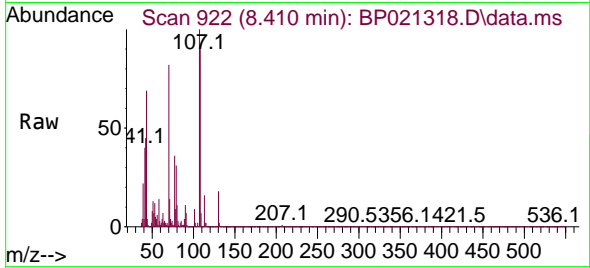
#18
 4-Methylphenol
 Concen: 24.148 ng/u1
 RT: 8.410 min Scan# 911
 Delta R.T. -0.017 min
 Lab File: BP021318.D
 Acq: 02 Aug 2024 12:29

Instrument :

BNA_P

Client SampleId :

SLCS173



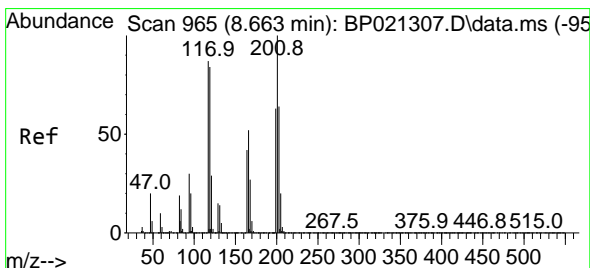
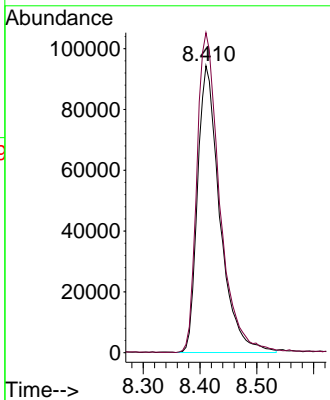
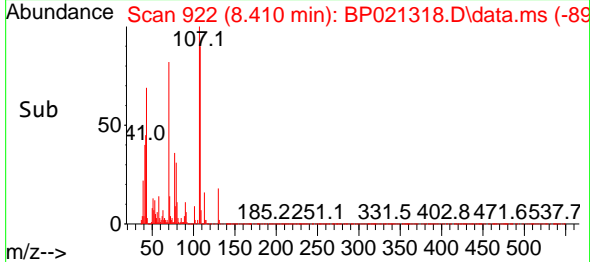
Tgt Ion:108 Resp: 25698
 Ion Ratio Lower Upper
 108 100
 107 111.5 87.8 131.8

Manual Integrations

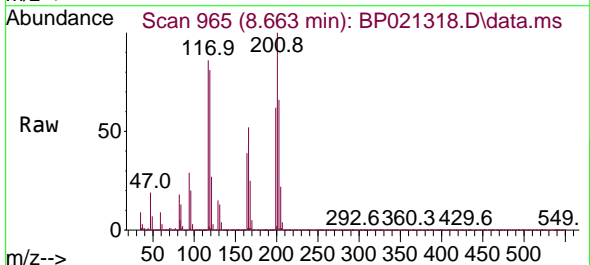
APPROVED

Reviewed By :Yogesh Patel 08/03/2024

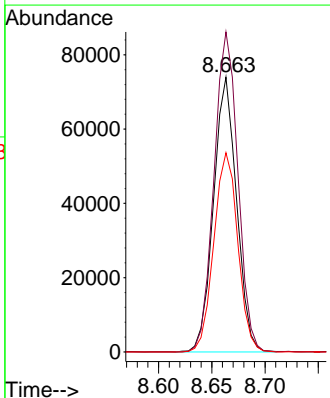
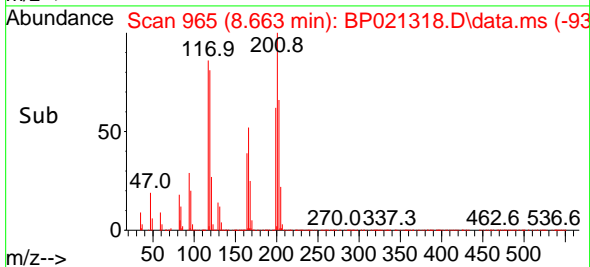
Supervised By :mohammad ahmed 08/05/2024

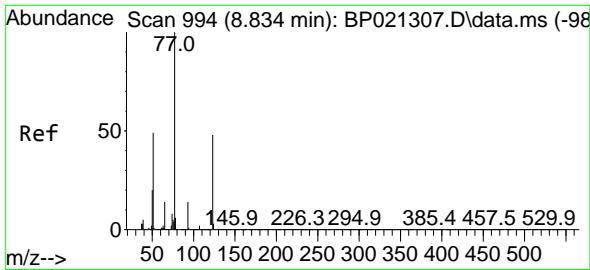


#19
 Hexachloroethane
 Concen: 23.649 ng/u1
 RT: 8.663 min Scan# 965
 Delta R.T. -0.011 min
 Lab File: BP021318.D
 Acq: 02 Aug 2024 12:29



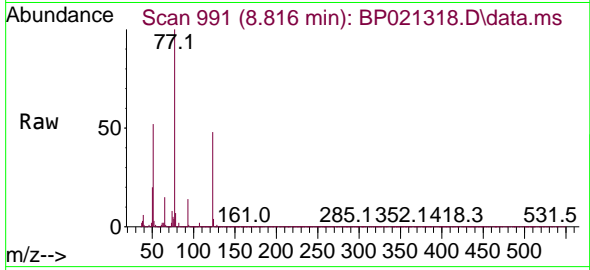
Tgt Ion:117 Resp: 111392
 Ion Ratio Lower Upper
 117 100
 201 116.5 88.2 132.2
 199 72.5 55.8 83.6





#22
 Nitrobenzene
 Concen: 25.231 ng/u1
 RT: 8.816 min Scan# 994
 Delta R.T. -0.023 min
 Lab File: BP021318.D
 Acq: 02 Aug 2024 12:29

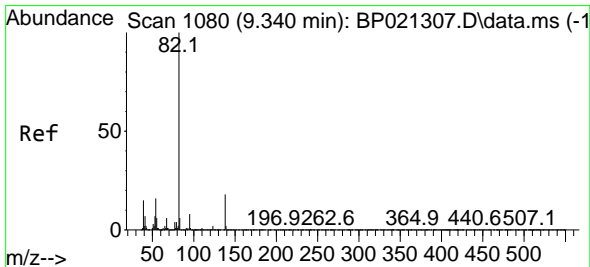
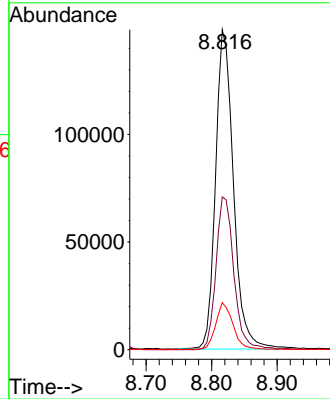
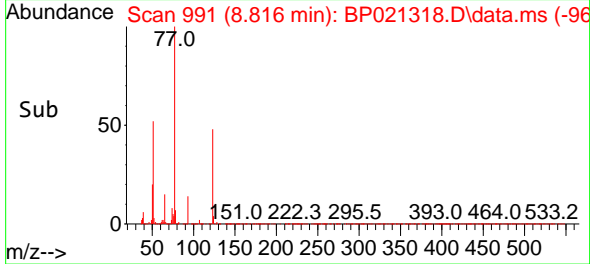
Instrument :
 BNA_P
 ClientSampleId :
 SLCS173



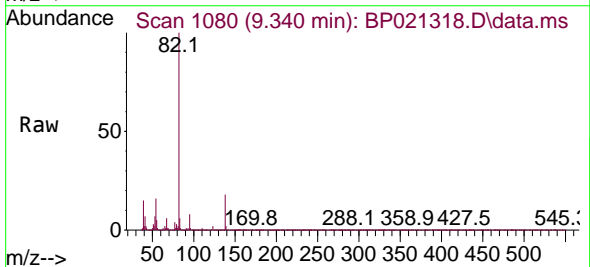
Tgt Ion: 77 Resp: 28064
 Ion Ratio Lower Upper
 77 100
 123 47.7 36.7 55.1
 65 14.7 11.1 16.7

Manual Integrations
 APPROVED

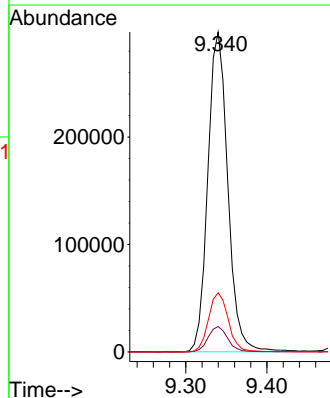
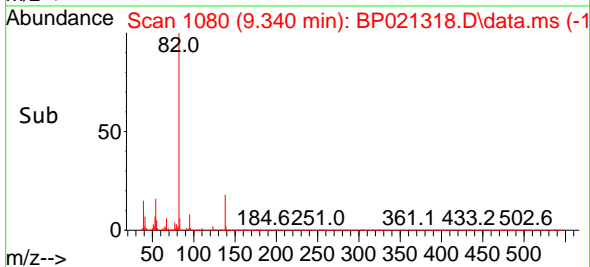
Reviewed By :Yogesh Patel 08/03/2024
 Supervised By :mohammad ahmed 08/05/2024

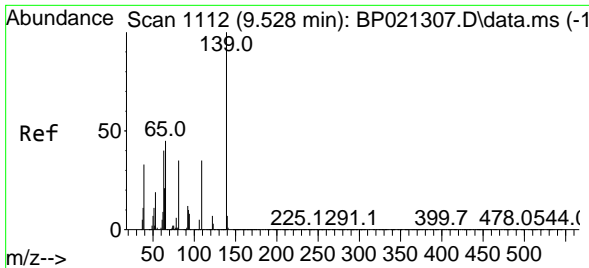


#23
 Isophorone
 Concen: 22.930 ng/u1
 RT: 9.340 min Scan# 1080
 Delta R.T. -0.006 min
 Lab File: BP021318.D
 Acq: 02 Aug 2024 12:29



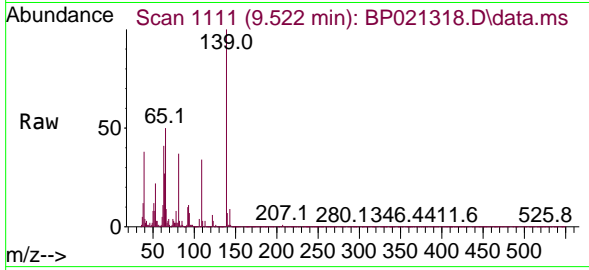
Tgt Ion: 82 Resp: 507045
 Ion Ratio Lower Upper
 82 100
 95 8.0 6.1 9.1
 138 18.5 14.4 21.6





#25
 2-Nitrophenol
 Concen: 27.133 ng/uI
 RT: 9.522 min Scan# 1111
 Delta R.T. -0.017 min
 Lab File: BP021318.D
 Acq: 02 Aug 2024 12:29

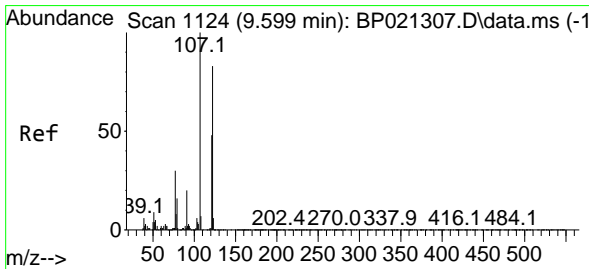
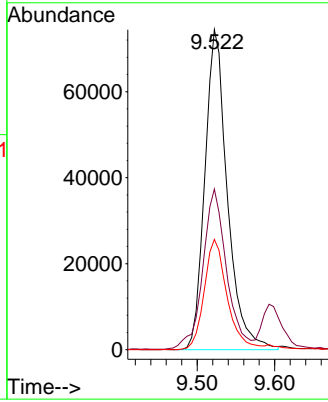
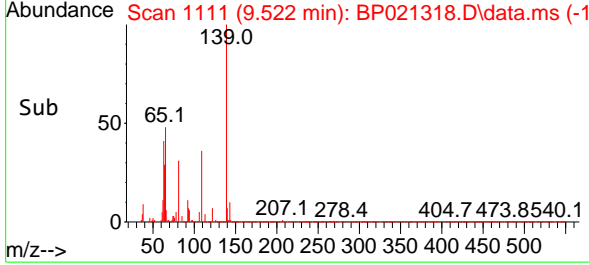
Instrument : BNA_P
 ClientSampleId : SLCS173



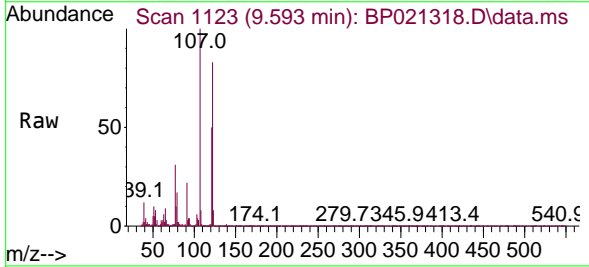
Tgt Ion:139 Resp: 15038
 Ion Ratio Lower Upper
 139 100
 65 50.2 42.9 64.3
 109 34.5 26.2 39.4

Manual Integrations
 APPROVED

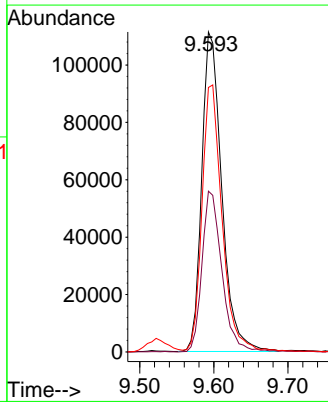
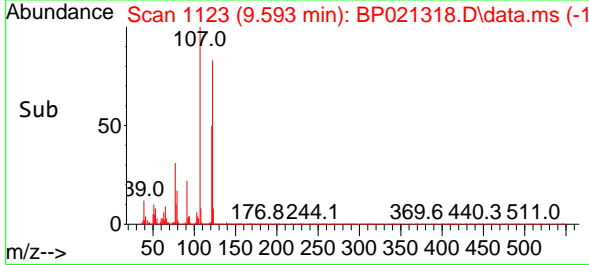
Reviewed By :Yogesh Patel 08/03/2024
 Supervised By :mohammad ahmed 08/05/2024

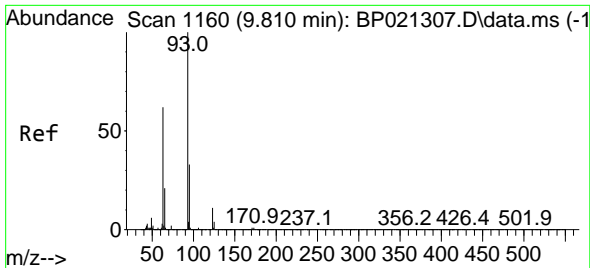


#26
 2,4-Dimethylphenol
 Concen: 19.130 ng/uI
 RT: 9.593 min Scan# 1123
 Delta R.T. -0.011 min
 Lab File: BP021318.D
 Acq: 02 Aug 2024 12:29



Tgt Ion:107 Resp: 209087
 Ion Ratio Lower Upper
 107 100
 121 50.3 39.6 59.4
 122 82.7 66.3 99.5





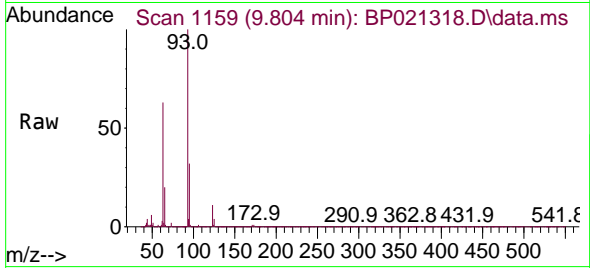
#27
 Bis(2-Chloroethoxy)methane
 Concen: 22.970 ng/ul
 RT: 9.804 min Scan# 1160
 Delta R.T. -0.017 min
 Lab File: BP021318.D
 Acq: 02 Aug 2024 12:29

Instrument :

BNA_P

ClientSampleId :

SLCS173



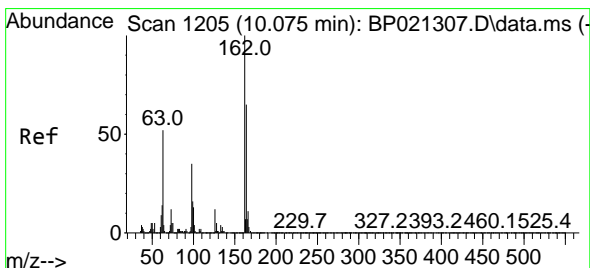
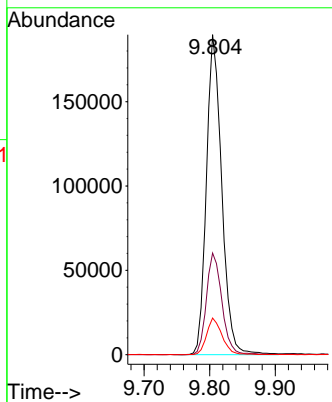
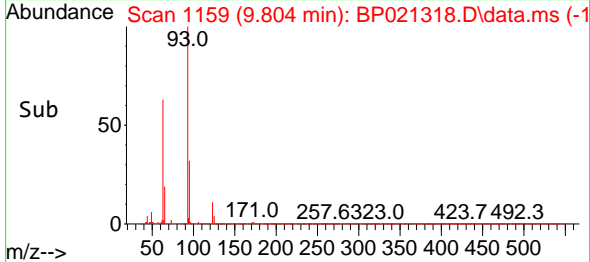
Tgt Ion: 93 Resp: 30874
 Ion Ratio Lower Upper
 93 100
 95 31.7 25.5 38.3
 123 11.5 9.0 13.4

Manual Integrations

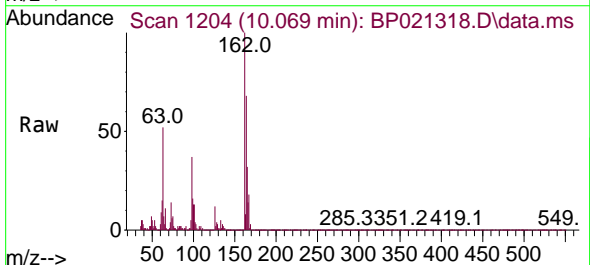
APPROVED

Reviewed By :Yogesh Patel 08/03/2024

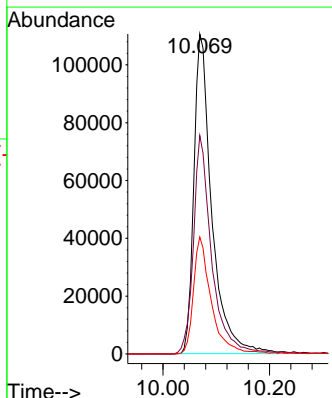
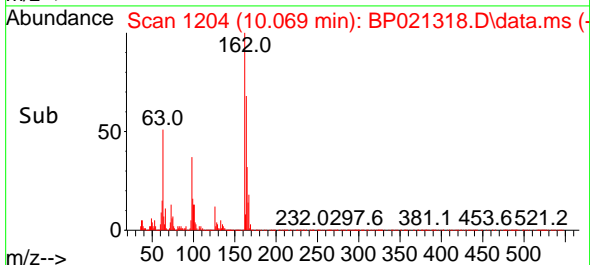
Supervised By :mohammad ahmed 08/05/2024

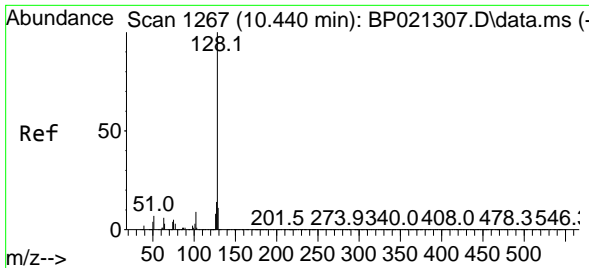


#29
 2,4-Dichlorophenol
 Concen: 27.311 ng/ul
 RT: 10.069 min Scan# 1204
 Delta R.T. -0.011 min
 Lab File: BP021318.D
 Acq: 02 Aug 2024 12:29



Tgt Ion:162 Resp: 258656
 Ion Ratio Lower Upper
 162 100
 164 68.3 53.3 79.9
 98 36.6 28.7 43.1





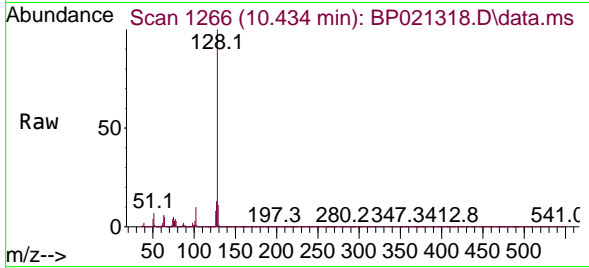
#30
 Naphthalene
 Concen: 25.881 ng/uI
 RT: 10.434 min Scan# 1266
 Delta R.T. -0.006 min
 Lab File: BP021318.D
 Acq: 02 Aug 2024 12:29

Instrument :

BNA_P

Client SampleId :

SLCS173



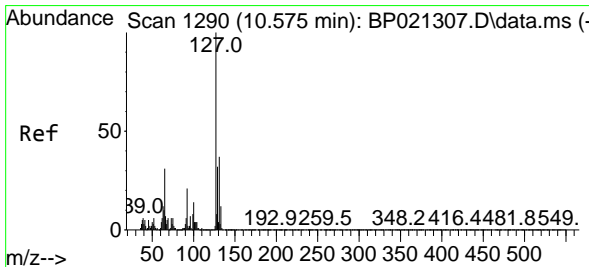
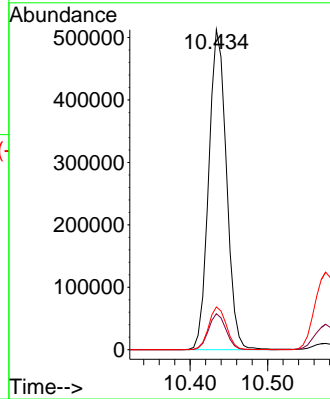
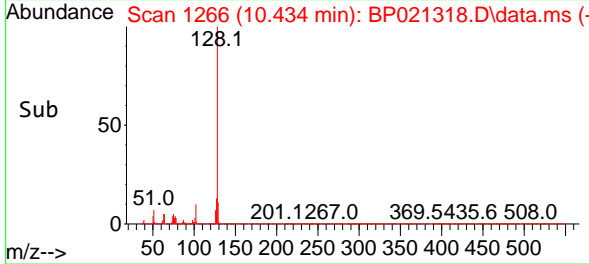
Tgt Ion:128 Resp: 81384
 Ion Ratio Lower Upper
 128 100
 129 11.3 8.6 13.0
 127 13.4 10.8 16.2

Manual Integrations

APPROVED

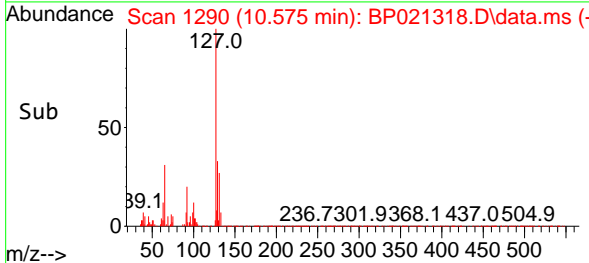
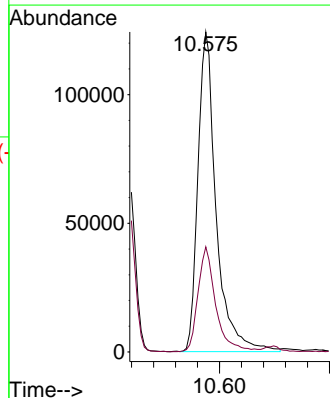
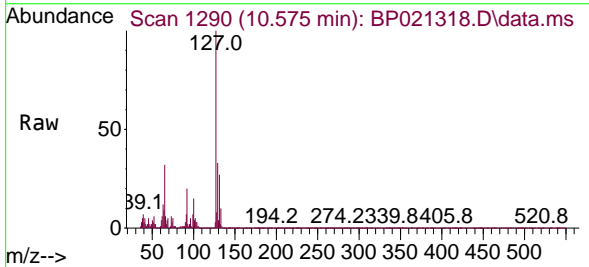
Reviewed By :Yogesh Patel 08/03/2024

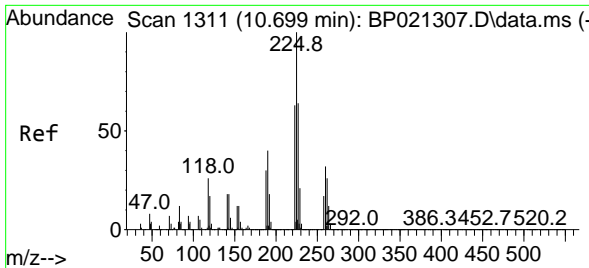
Supervised By :mohammad ahmed 08/05/2024



#32
 4-Chloroaniline
 Concen: 23.575 ng/uI
 RT: 10.575 min Scan# 1290
 Delta R.T. -0.011 min
 Lab File: BP021318.D
 Acq: 02 Aug 2024 12:29

Tgt Ion:127 Resp: 286593
 Ion Ratio Lower Upper
 127 100
 129 32.9 26.1 39.1





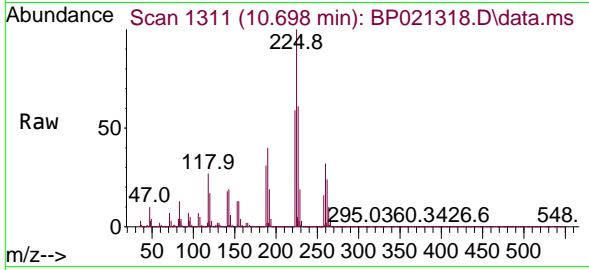
#33
 Hexachlorobutadiene
 Concen: 26.966 ng/u1
 RT: 10.698 min Scan# 1311
 Delta R.T. -0.011 min
 Lab File: BP021318.D
 Acq: 02 Aug 2024 12:29

Instrument :

BNA_P

ClientSampleId :

SLCS173



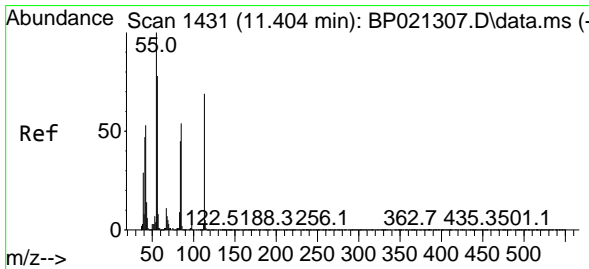
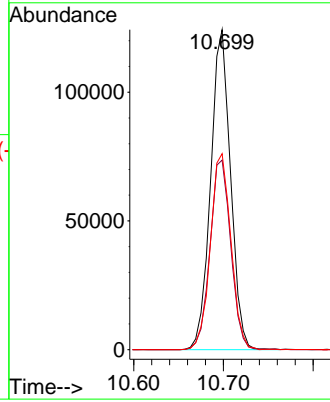
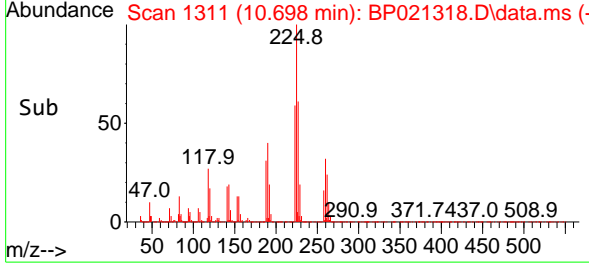
Tgt Ion:225 Resp: 19149
 Ion Ratio Lower Upper
 225 100
 223 59.3 50.2 75.2
 227 61.2 50.6 75.8

Manual Integrations

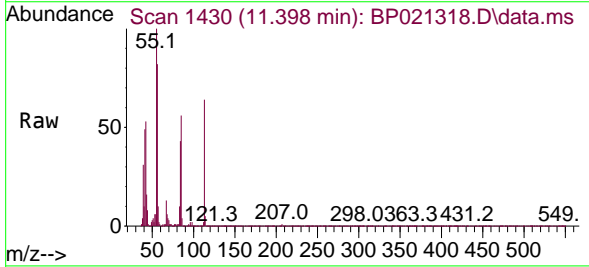
APPROVED

Reviewed By :Yogesh Patel 08/03/2024

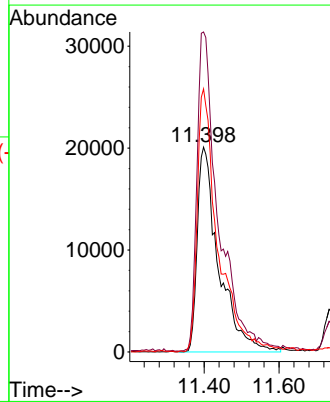
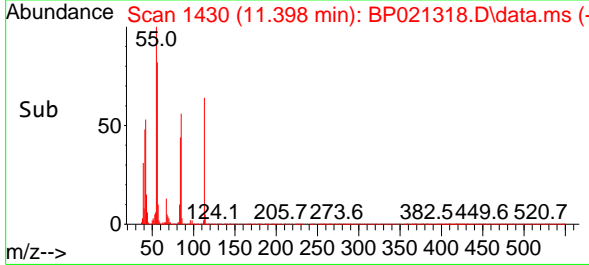
Supervised By :mohammad ahmed 08/05/2024

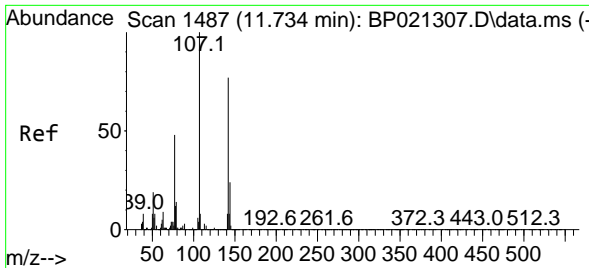


#34
 Caprolactam
 Concen: 27.327 ng/u1 m
 RT: 11.398 min Scan# 1430
 Delta R.T. -0.006 min
 Lab File: BP021318.D
 Acq: 02 Aug 2024 12:29



Tgt Ion:113 Resp: 79726
 Ion Ratio Lower Upper
 113 100
 55 156.2 140.2 210.4
 56 128.4 105.5 158.3





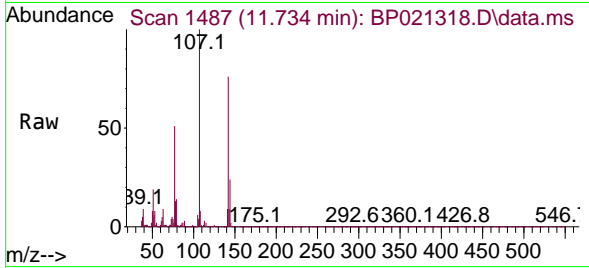
#35
 4-Chloro-3-methylphenol
 Concen: 26.662 ng/ul
 RT: 11.734 min Scan# 1487
 Delta R.T. -0.006 min
 Lab File: BP021318.D
 Acq: 02 Aug 2024 12:29

Instrument :

BNA_P

ClientSampleId :

SLCS173



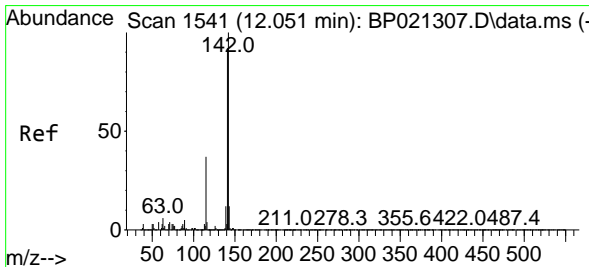
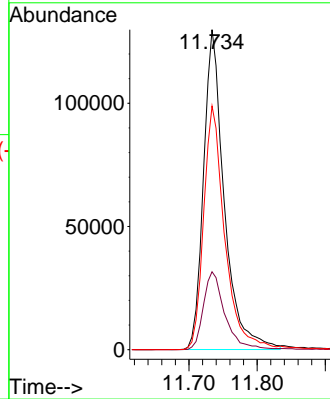
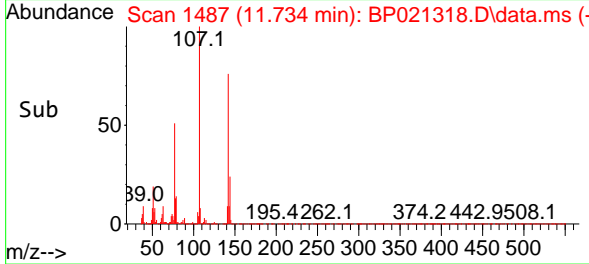
Tgt Ion:107 Resp: 27447
 Ion Ratio Lower Upper
 107 100
 144 24.3 19.3 28.9
 142 76.1 60.7 91.1

Manual Integrations

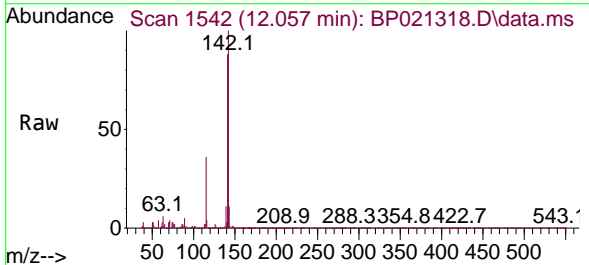
APPROVED

Reviewed By :Yogesh Patel 08/03/2024

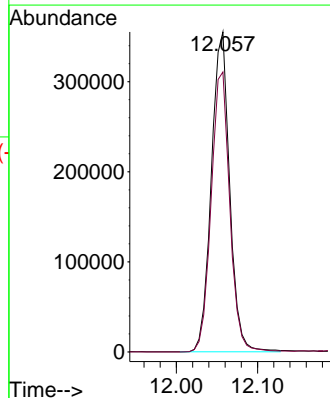
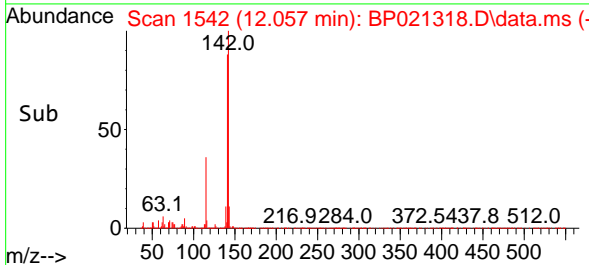
Supervised By :mohammad ahmed 08/05/2024

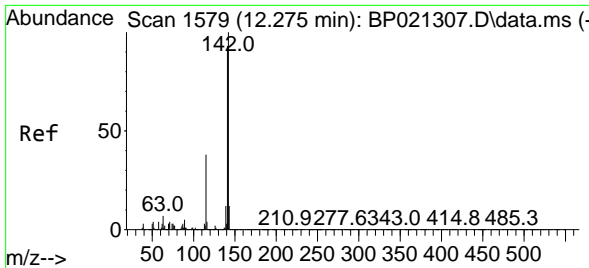


#36
 2-Methylnaphthalene
 Concen: 25.777 ng/ul
 RT: 12.057 min Scan# 1542
 Delta R.T. -0.011 min
 Lab File: BP021318.D
 Acq: 02 Aug 2024 12:29



Tgt Ion:142 Resp: 556392
 Ion Ratio Lower Upper
 142 100
 141 87.5 72.6 108.8





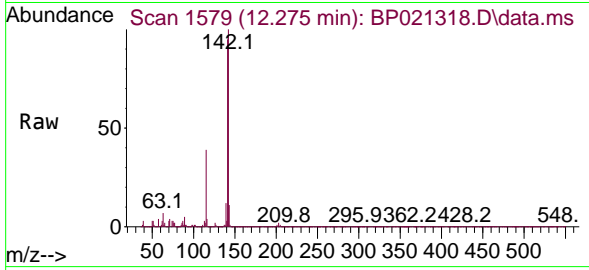
#37
 1-Methylnaphthalene
 Concen: 25.238 ng/ul
 RT: 12.275 min Scan# 11
 Delta R.T. -0.017 min
 Lab File: BP021318.D
 Acq: 02 Aug 2024 12:29

Instrument :

BNA_P

ClientSampleId :

SLCS173



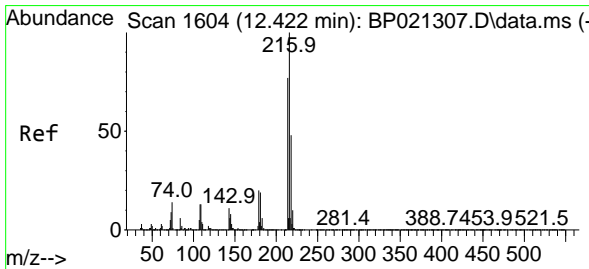
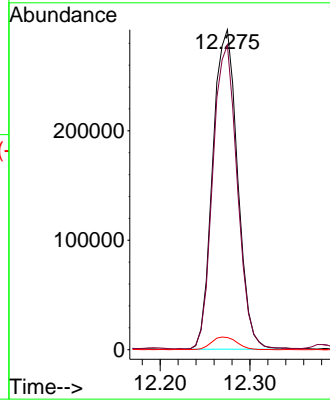
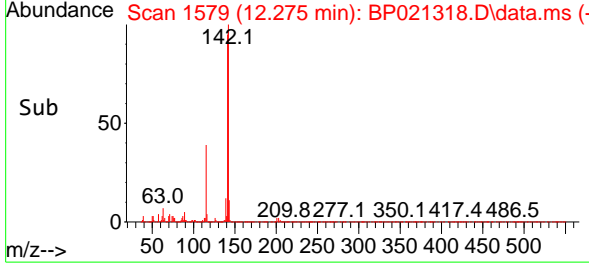
Tgt Ion:142 Resp: 56029
 Ion Ratio Lower Upper
 142 100
 141 95.2 75.0 112.6
 116 3.8 3.2 4.8

Manual Integrations

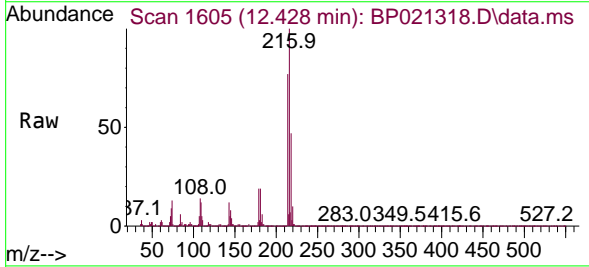
APPROVED

Reviewed By :Yogesh Patel 08/03/2024

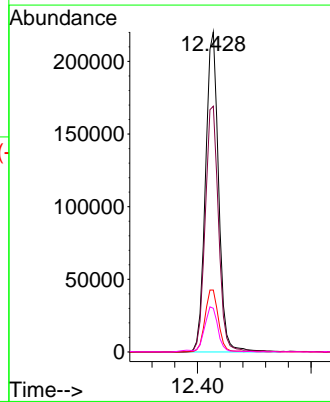
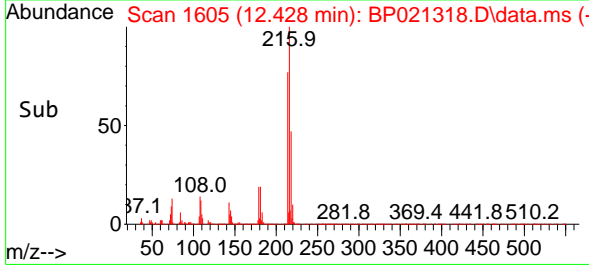
Supervised By :mohammad ahmed 08/05/2024

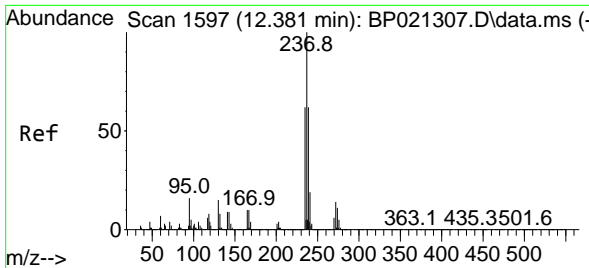


#39
 1,2,4,5-Tetrachlorobenzene
 Concen: 27.654 ng/ul
 RT: 12.428 min Scan# 1605
 Delta R.T. -0.011 min
 Lab File: BP021318.D
 Acq: 02 Aug 2024 12:29



Tgt Ion:216 Resp: 351644
 Ion Ratio Lower Upper
 216 100
 214 76.8 64.2 96.4
 179 19.3 16.6 24.8
 108 13.6 13.4 20.2





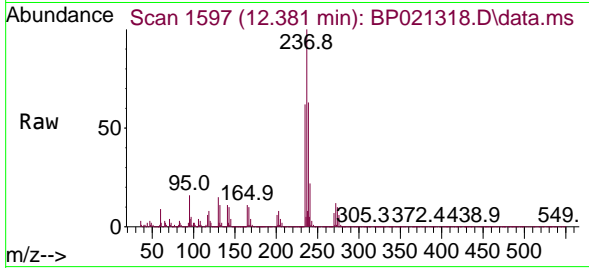
#40
 Hexachlorocyclopentadiene
 Concen: 9.281 ng/uI
 RT: 12.381 min Scan# 1597
 Delta R.T. -0.017 min
 Lab File: BP021318.D
 Acq: 02 Aug 2024 12:29

Instrument :

BNA_P

ClientSampleId :

SLCS173



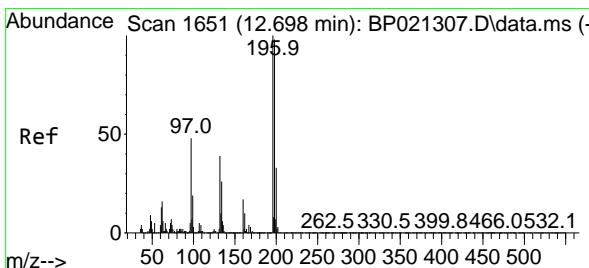
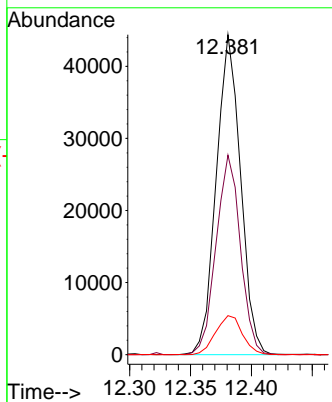
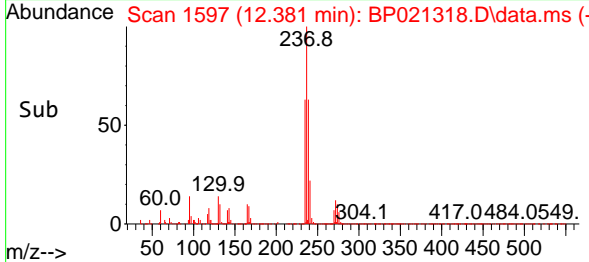
Tgt Ion:237 Resp: 61738
 Ion Ratio Lower Upper
 237 100
 235 62.3 49.7 74.5
 272 12.2 10.2 15.2

Manual Integrations

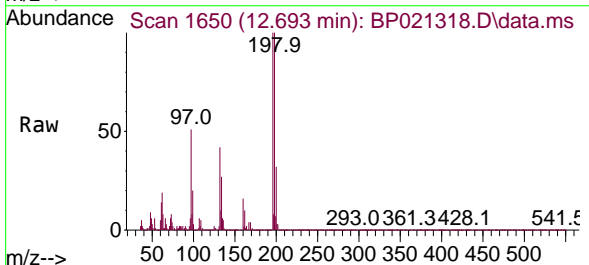
APPROVED

Reviewed By :Yogesh Patel 08/03/2024

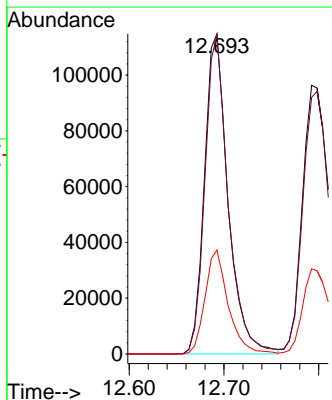
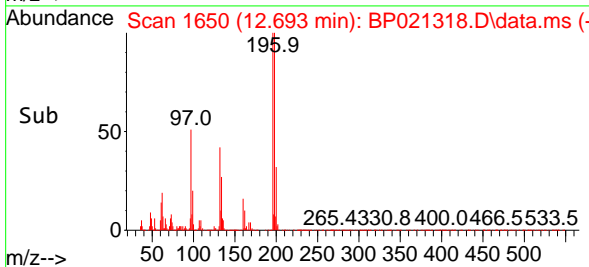
Supervised By :mohammad ahmed 08/05/2024

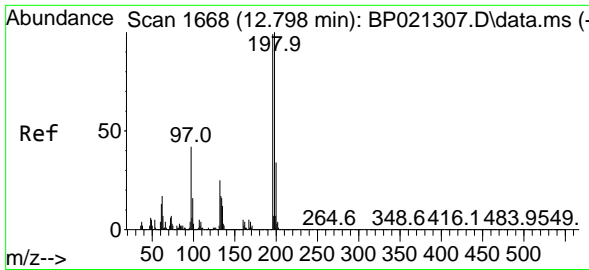


#41
 2,4,6-Trichlorophenol
 Concen: 24.697 ng/uI
 RT: 12.693 min Scan# 1650
 Delta R.T. -0.011 min
 Lab File: BP021318.D
 Acq: 02 Aug 2024 12:29



Tgt Ion:196 Resp: 198442
 Ion Ratio Lower Upper
 196 100
 198 99.7 76.6 115.0
 200 32.5 26.0 39.0





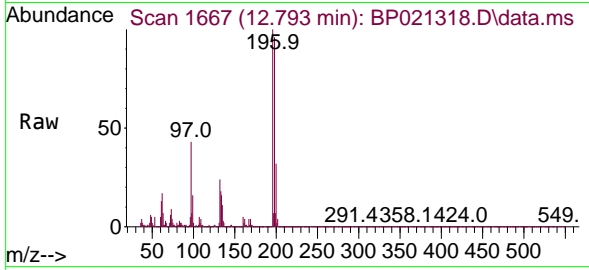
#42
 2,4,5-Trichlorophenol
 Concen: 25.163 ng/ul
 RT: 12.793 min Scan# 1667
 Delta R.T. -0.017 min
 Lab File: BP021318.D
 Acq: 02 Aug 2024 12:29

Instrument :

BNA_P

Client Sample Id :

SLCS173



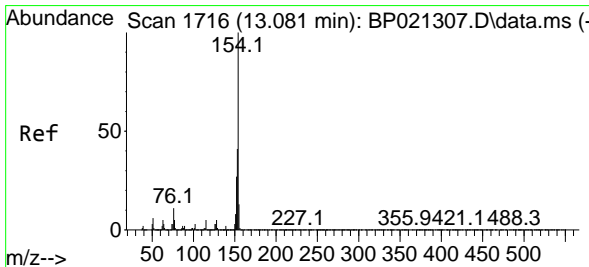
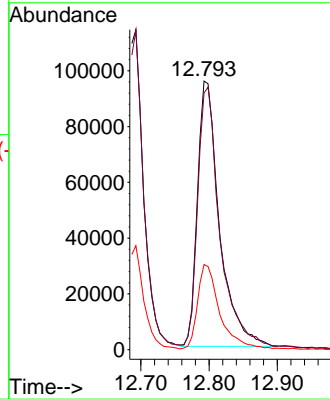
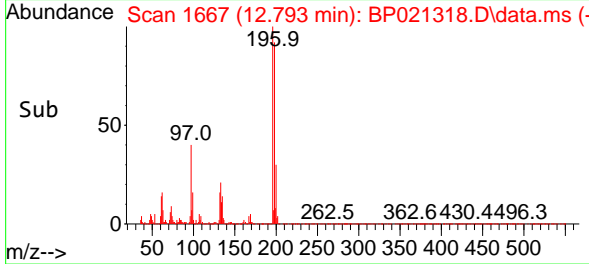
Tgt Ion:196 Resp: 21391
 Ion Ratio Lower Upper
 196 100
 198 95.5 77.1 115.7
 200 31.7 25.3 37.9

Manual Integrations

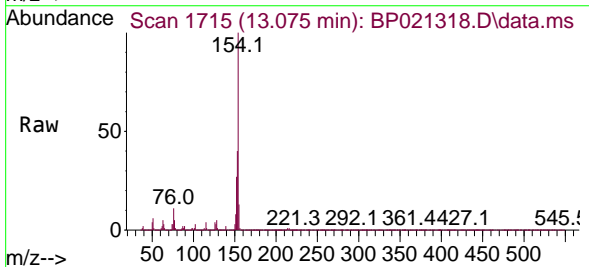
APPROVED

Reviewed By :Yogesh Patel 08/03/2024

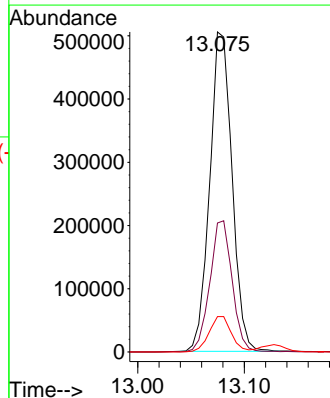
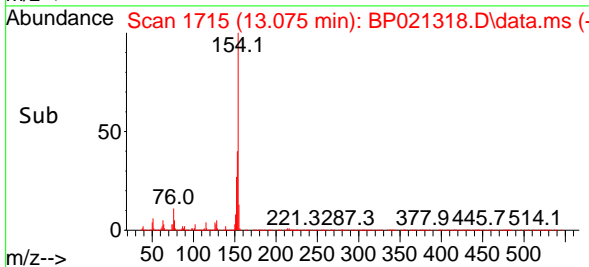
Supervised By :mohammad ahmed 08/05/2024

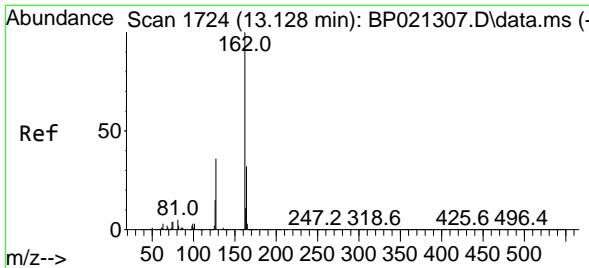


#43
 1,1'-Biphenyl
 Concen: 25.656 ng/ul
 RT: 13.075 min Scan# 1715
 Delta R.T. -0.011 min
 Lab File: BP021318.D
 Acq: 02 Aug 2024 12:29



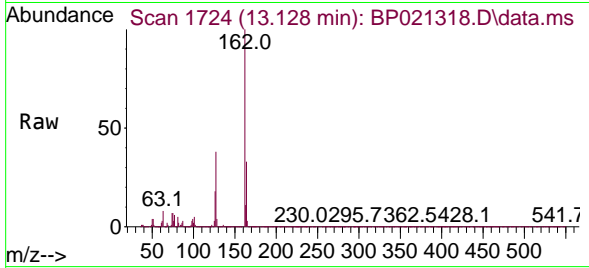
Tgt Ion:154 Resp: 734150
 Ion Ratio Lower Upper
 154 100
 153 40.3 32.7 49.1
 76 11.0 9.4 14.2





#44
 2-Chloronaphthalene
 Concen: 26.165 ng/ul
 RT: 13.128 min Scan# 1724
 Delta R.T. -0.011 min
 Lab File: BP021318.D
 Acq: 02 Aug 2024 12:29

Instrument : BNA_P
 ClientSampleId : SLCS173

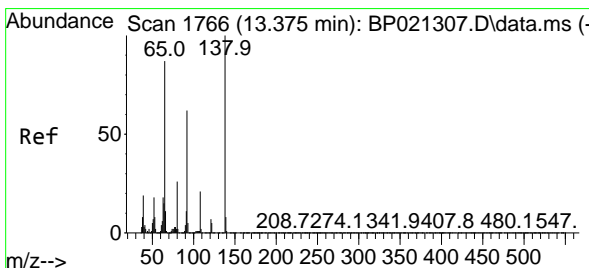
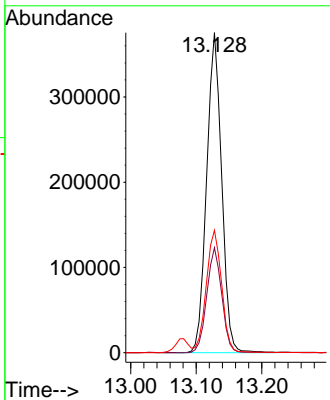
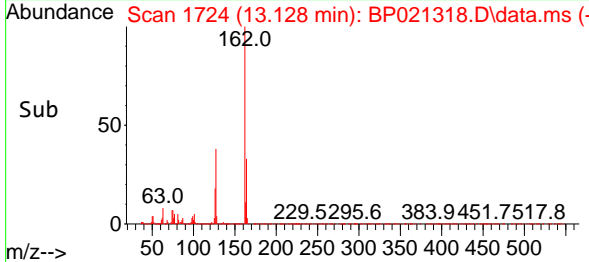


Tgt Ion:162 Resp: 597718

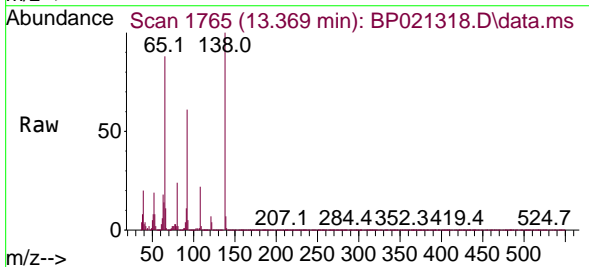
Ion	Ratio	Lower	Upper
162	100		
164	32.8	26.3	39.5
127	38.2	31.8	47.8

Manual Integrations
APPROVED

Reviewed By :Yogesh Patel 08/03/2024
 Supervised By :mohammad ahmed 08/05/2024

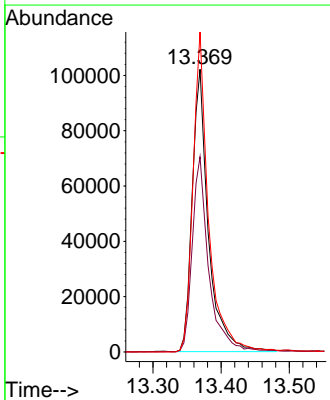
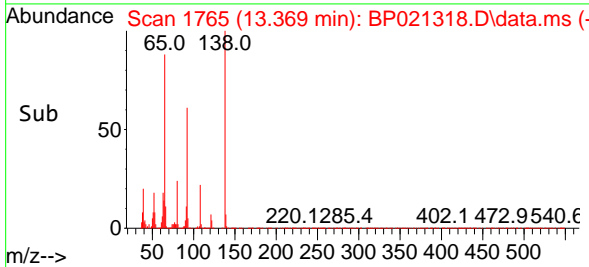


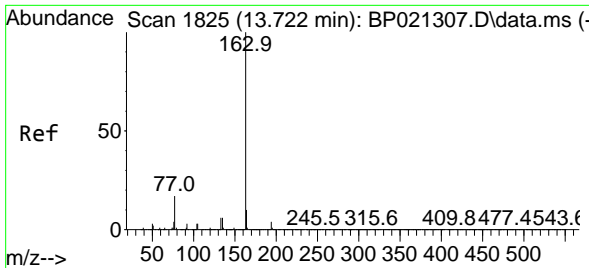
#45
 2-Nitroaniline
 Concen: 26.635 ng/ul
 RT: 13.369 min Scan# 1765
 Delta R.T. 0.000 min
 Lab File: BP021318.D
 Acq: 02 Aug 2024 12:29



Tgt Ion: 65 Resp: 168260

Ion	Ratio	Lower	Upper
65	100		
92	69.0	56.7	85.1
138	113.2	85.6	128.4





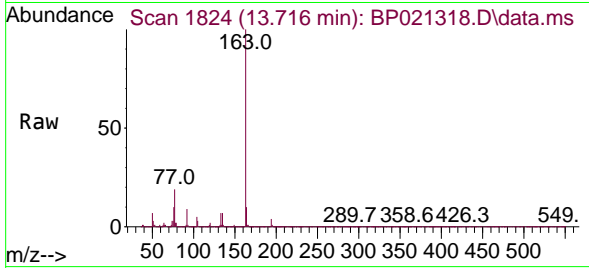
#47
 Dimethylphthalate
 Concen: 25.767 ng/ul
 RT: 13.716 min Scan# 1824
 Delta R.T. -0.017 min
 Lab File: BP021318.D
 Acq: 02 Aug 2024 12:29

Instrument :

BNA_P

Client SampleId :

SLCS173



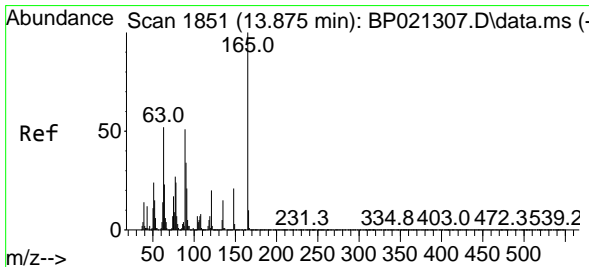
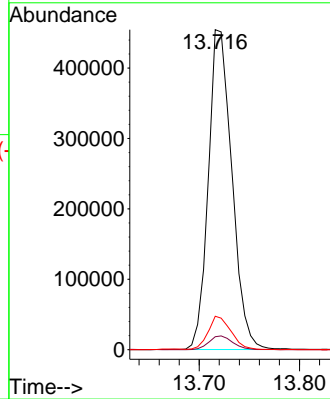
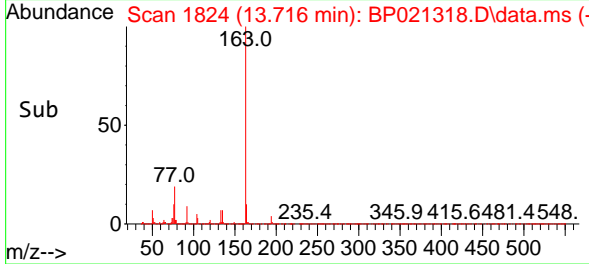
Tgt Ion:163 Resp: 74418
 Ion Ratio Lower Upper
 163 100
 194 4.1 3.4 5.0
 164 10.4 8.1 12.1

Manual Integrations

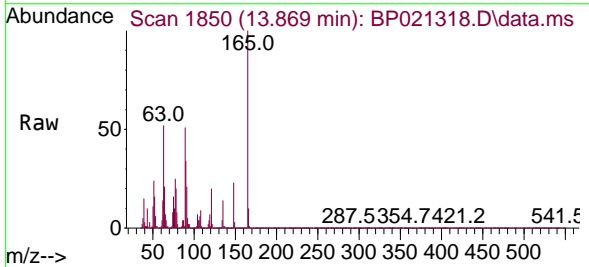
APPROVED

Reviewed By :Yogesh Patel 08/03/2024

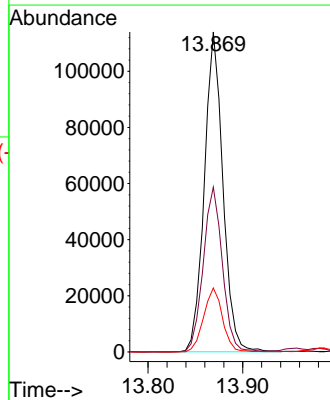
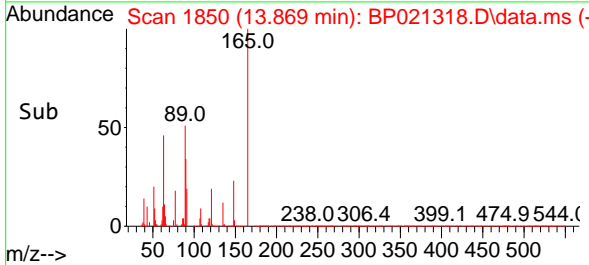
Supervised By :mohammad ahmed 08/05/2024

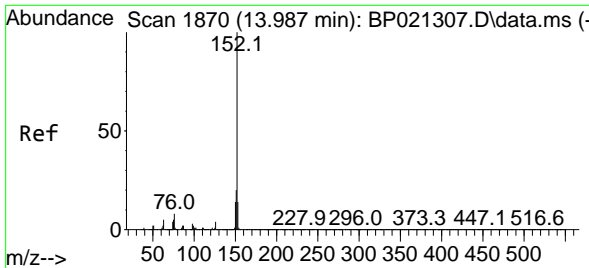


#48
 2,6-Dinitrotoluene
 Concen: 26.954 ng/ul
 RT: 13.869 min Scan# 1850
 Delta R.T. -0.006 min
 Lab File: BP021318.D
 Acq: 02 Aug 2024 12:29



Tgt Ion:165 Resp: 155635
 Ion Ratio Lower Upper
 165 100
 89 51.5 44.7 67.1
 121 20.0 16.5 24.7





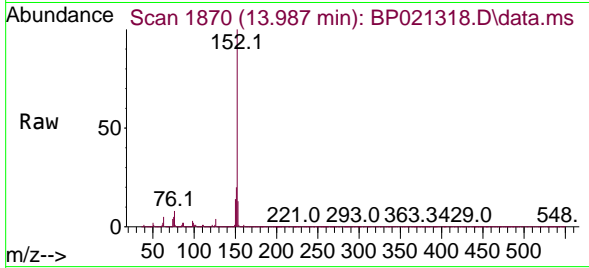
#50
 Acenaphthylene
 Concen: 25.726 ng/u1
 RT: 13.987 min Scan# 1870
 Delta R.T. -0.006 min
 Lab File: BP021318.D
 Acq: 02 Aug 2024 12:29

Instrument :

BNA_P

Client SampleId :

SLCS173



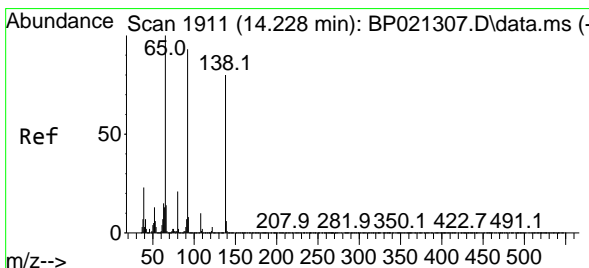
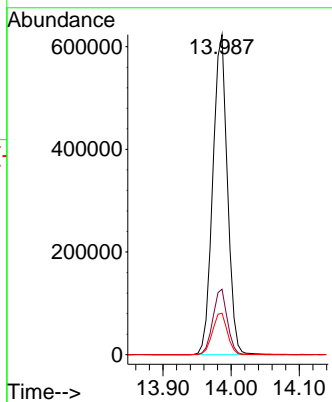
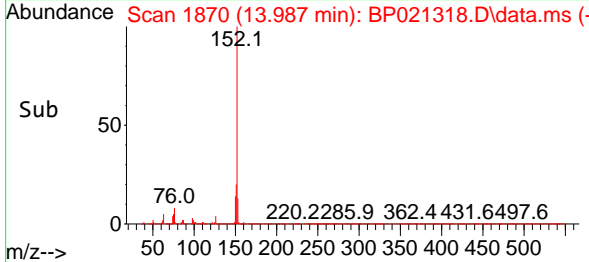
Tgt Ion:152 Resp: 93095
 Ion Ratio Lower Upper
 152 100
 151 20.4 16.2 24.2
 153 12.9 10.3 15.5

Manual Integrations

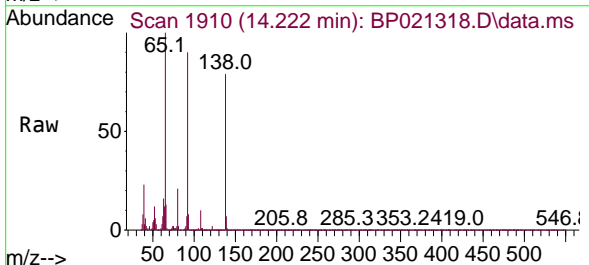
APPROVED

Reviewed By :Yogesh Patel 08/03/2024

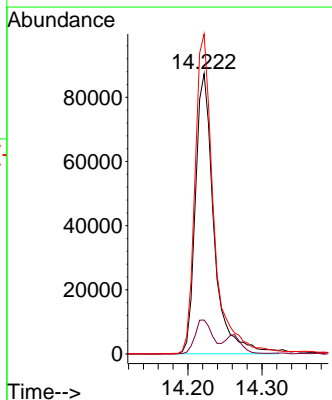
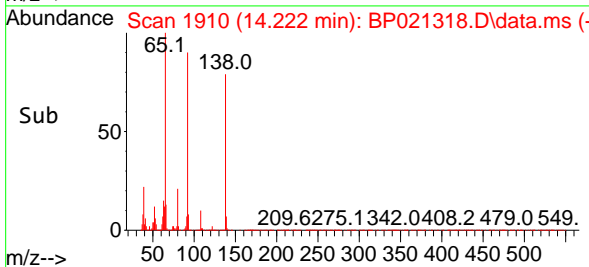
Supervised By :mohammad ahmed 08/05/2024

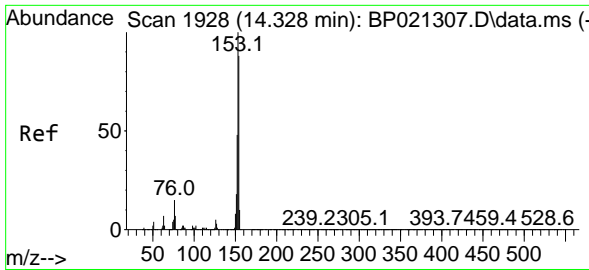


#51
 3-Nitroaniline
 Concen: 30.199 ng/u1
 RT: 14.222 min Scan# 1910
 Delta R.T. 0.000 min
 Lab File: BP021318.D
 Acq: 02 Aug 2024 12:29



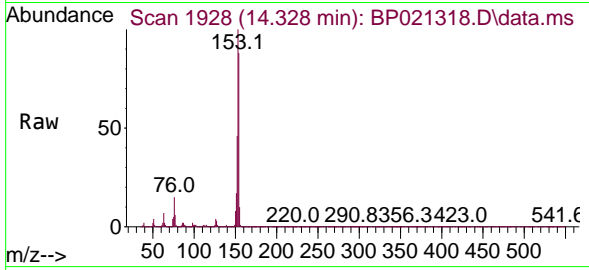
Tgt Ion:138 Resp: 151739
 Ion Ratio Lower Upper
 138 100
 108 12.1 9.8 14.8
 92 114.2 98.0 147.0





#52
 Acenaphthene
 Concen: 25.705 ng/uI
 RT: 14.328 min Scan# 1928
 Delta R.T. -0.011 min
 Lab File: BP021318.D
 Acq: 02 Aug 2024 12:29

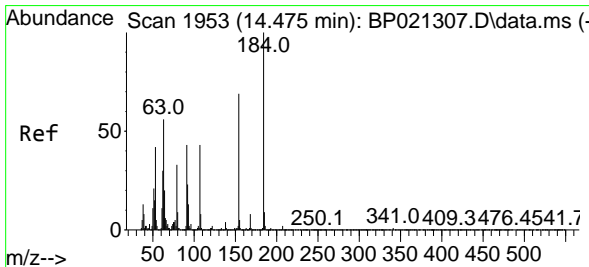
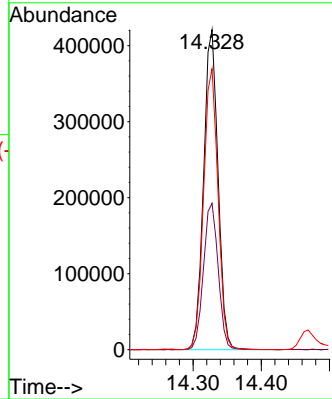
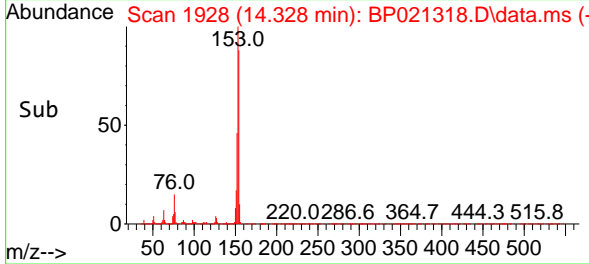
Instrument : BNA_P
 Client Sample Id : SLCS173



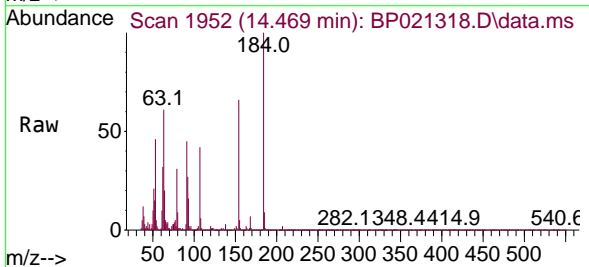
Tgt Ion:153 Resp: 61737
 Ion Ratio Lower Upper
 153 100
 152 45.8 37.8 56.6
 154 87.8 71.8 107.6

Manual Integrations
 APPROVED

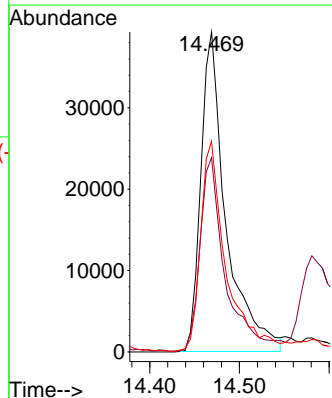
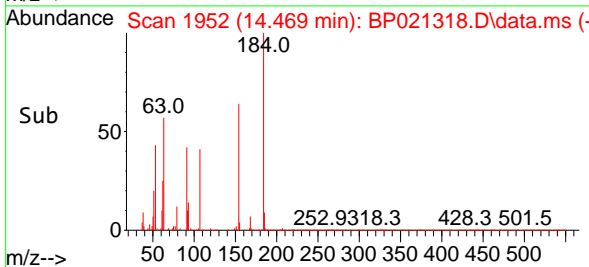
Reviewed By :Yogesh Patel 08/03/2024
 Supervised By :mohammad ahmed 08/05/2024

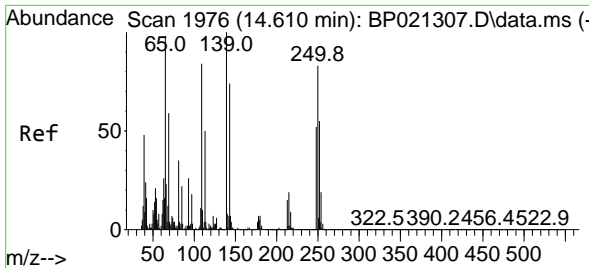


#53
 2,4-Dinitrophenol
 Concen: 25.167 ng/uI
 RT: 14.469 min Scan# 1952
 Delta R.T. 0.006 min
 Lab File: BP021318.D
 Acq: 02 Aug 2024 12:29



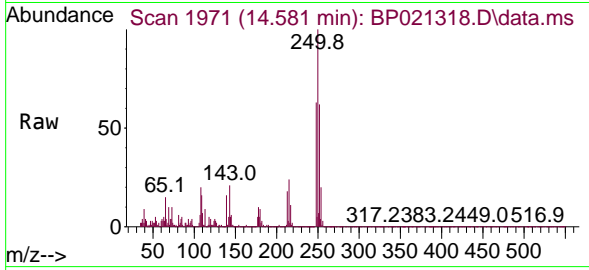
Tgt Ion:184 Resp: 76316
 Ion Ratio Lower Upper
 184 100
 63 60.7 50.3 75.5
 154 65.8 53.0 79.6





#55
 4-Nitrophenol
 Concen: 29.541 ng/ul m
 RT: 14.581 min Scan# 1976
 Delta R.T. -0.011 min
 Lab File: BP021318.D
 Acq: 02 Aug 2024 12:29

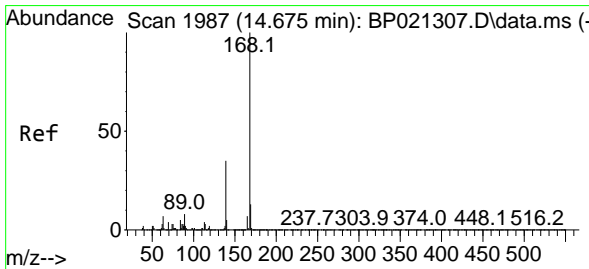
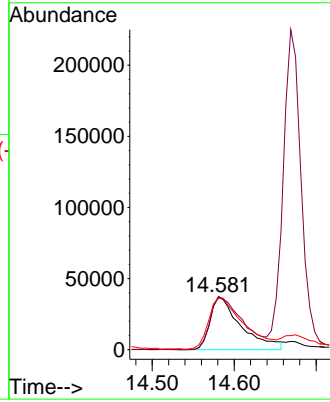
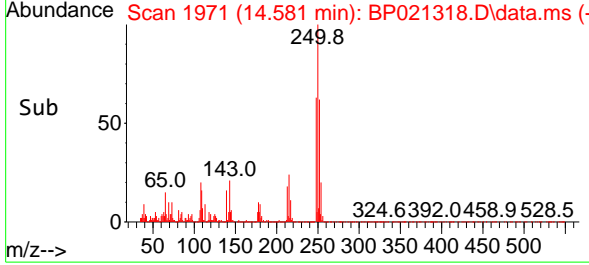
Instrument :
 BNA_P
 ClientSampleId :
 SLCS173



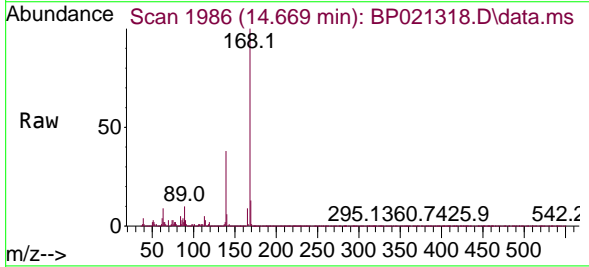
Tgt Ion:109 Resp: 97310
 Ion Ratio Lower Upper
 109 100
 139 101.5 98.0 147.0
 65 97.8 106.0 159.0

Manual Integrations
 APPROVED

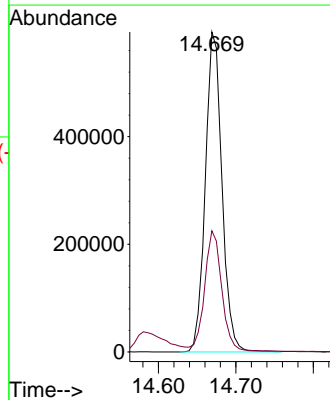
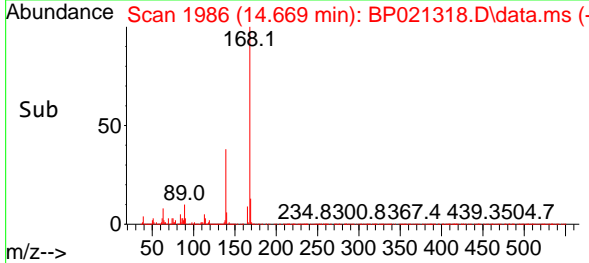
Reviewed By :Yogesh Patel 08/03/2024
 Supervised By :mohammad ahmed 08/05/2024

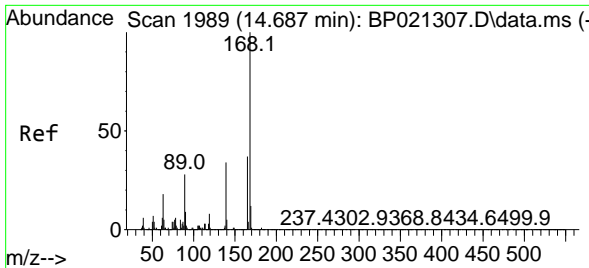


#56
 Dibenzofuran
 Concen: 26.941 ng/ul
 RT: 14.669 min Scan# 1986
 Delta R.T. -0.017 min
 Lab File: BP021318.D
 Acq: 02 Aug 2024 12:29



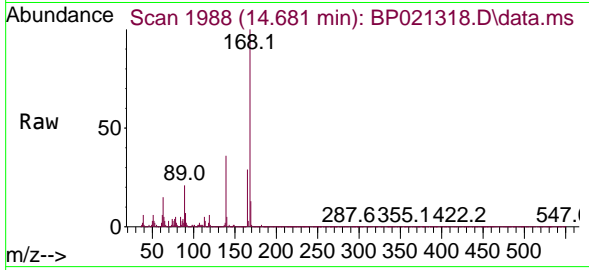
Tgt Ion:168 Resp: 886100
 Ion Ratio Lower Upper
 168 100
 139 37.9 31.1 46.7





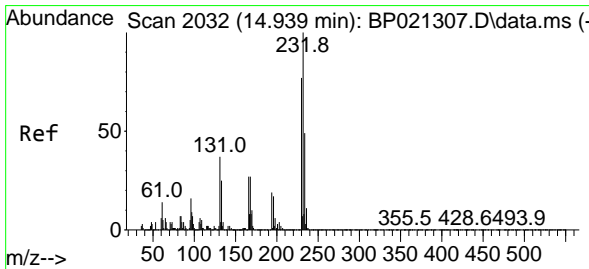
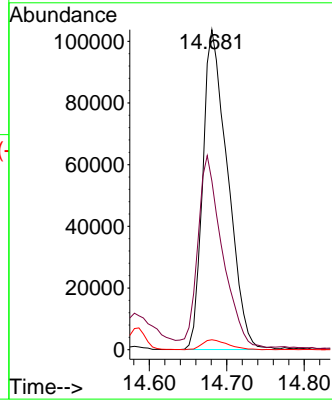
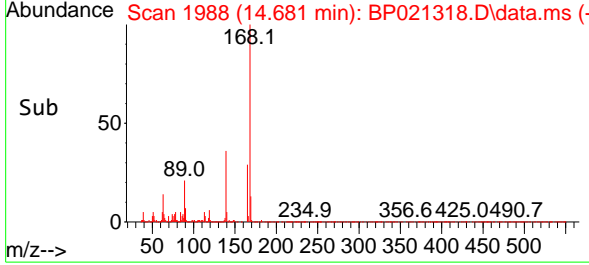
#57
 2,4-Dinitrotoluene
 Concen: 29.078 ng/ul
 RT: 14.681 min Scan# 1988
 Delta R.T. -0.017 min
 Lab File: BP021318.D
 Acq: 02 Aug 2024 12:29

Instrument : BNA_P
 Client Sample Id : SLCS173

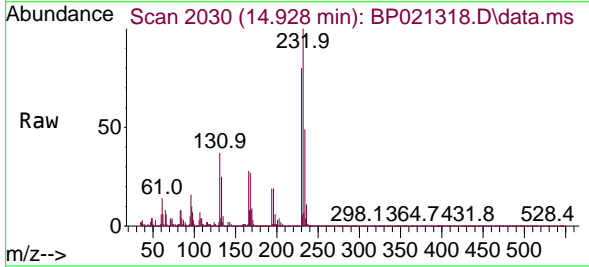


Tgt Ion:165 Resp: 23048
 Ion Ratio Lower Upper
 165 100
 63 52.7 41.0 61.4
 182 3.1 2.2 3.4

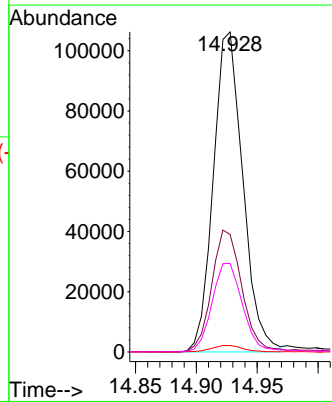
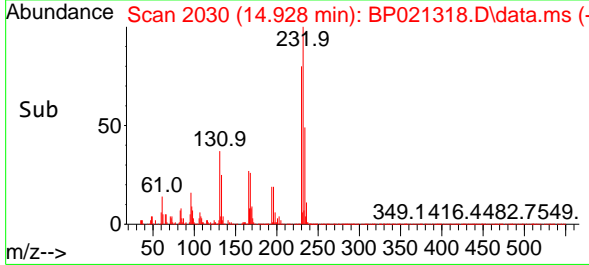
Manual Integrations
APPROVED
 Reviewed By :Yogesh Patel 08/03/2024
 Supervised By :mohammad ahmed 08/05/2024

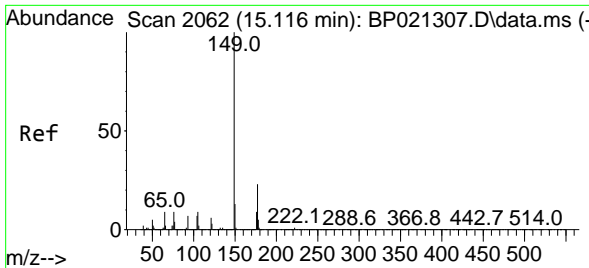


#58
 2,3,4,6-Tetrachlorophenol
 Concen: 24.614 ng/ul
 RT: 14.928 min Scan# 2030
 Delta R.T. -0.006 min
 Lab File: BP021318.D
 Acq: 02 Aug 2024 12:29



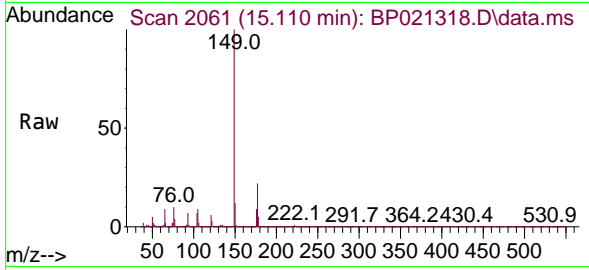
Tgt Ion:232 Resp: 179189
 Ion Ratio Lower Upper
 232 100
 131 36.7 34.4 51.6
 130 2.0 2.0 3.0
 166 27.6 24.4 36.6





#59
 Diethylphthalate
 Concen: 24.830 ng/uI
 RT: 15.110 min Scan# 2062
 Delta R.T. -0.011 min
 Lab File: BP021318.D
 Acq: 02 Aug 2024 12:29

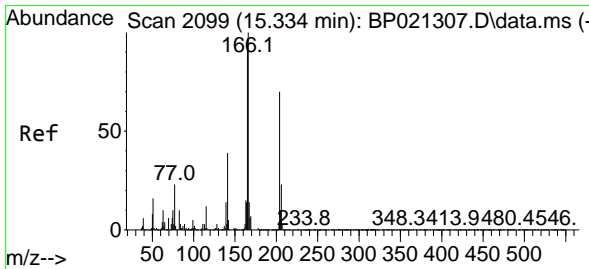
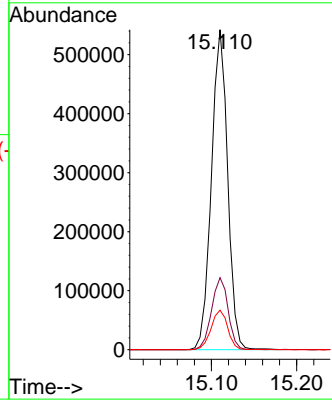
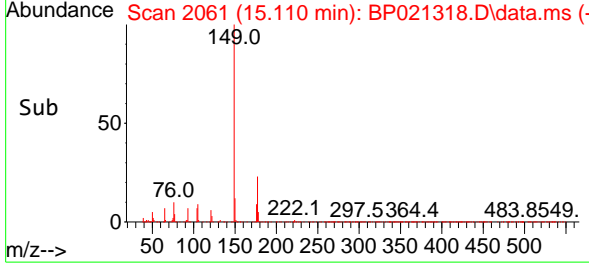
Instrument : BNA_P
 Client SampleId : SLCS173



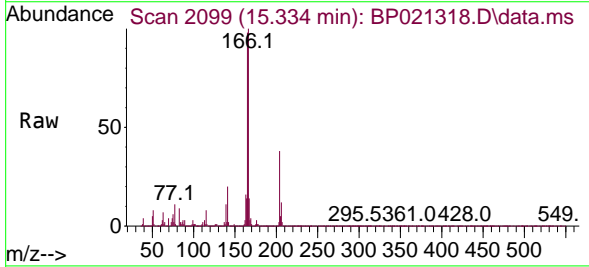
Tgt Ion:149 Resp: 71666
 Ion Ratio Lower Upper
 149 100
 177 22.5 17.7 26.5
 150 12.4 10.2 15.2

Manual Integrations
 APPROVED

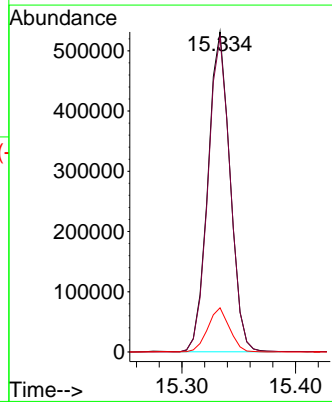
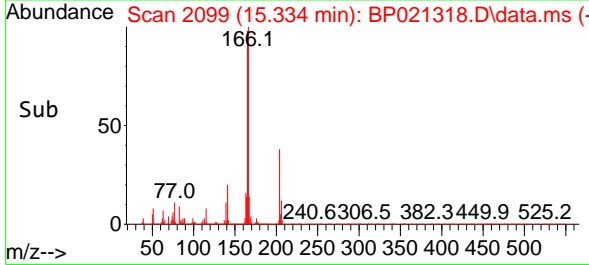
Reviewed By :Yogesh Patel 08/03/2024
 Supervised By :mohammad ahmed 08/05/2024

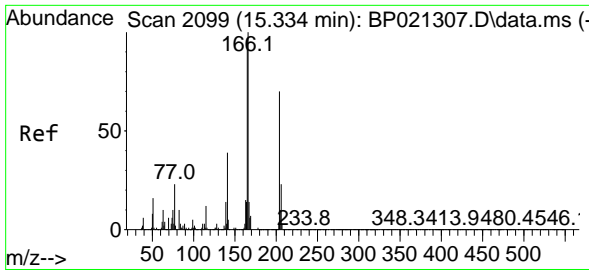


#61
 Fluorene
 Concen: 26.763 ng/uI
 RT: 15.334 min Scan# 2099
 Delta R.T. -0.011 min
 Lab File: BP021318.D
 Acq: 02 Aug 2024 12:29



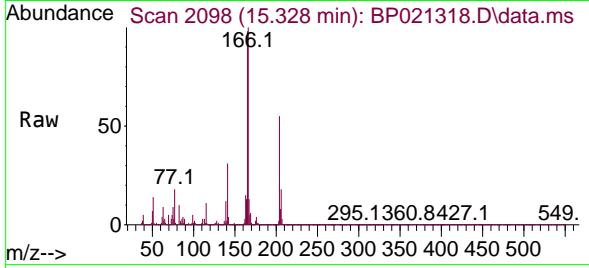
Tgt Ion:166 Resp: 718315
 Ion Ratio Lower Upper
 166 100
 165 98.3 78.1 117.1
 167 13.8 10.9 16.3





#62
 4-Chlorophenyl-phenylether
 Concen: 26.146 ng/ul
 RT: 15.328 min Scan# 2098
 Delta R.T. -0.006 min
 Lab File: BP021318.D
 Acq: 02 Aug 2024 12:29

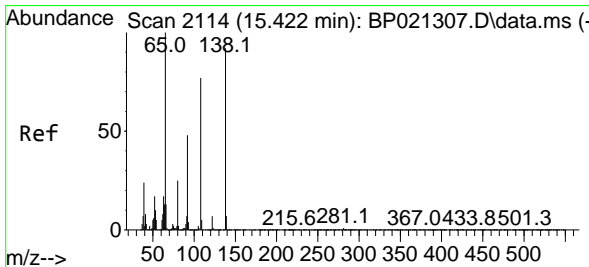
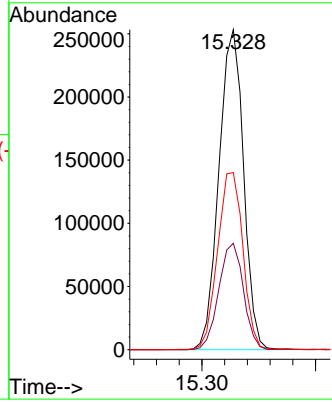
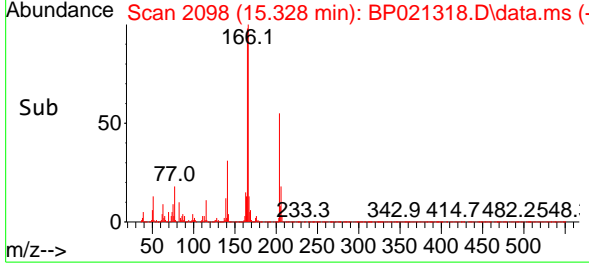
Instrument : BNA_P
 Client Sample Id : SLCS173



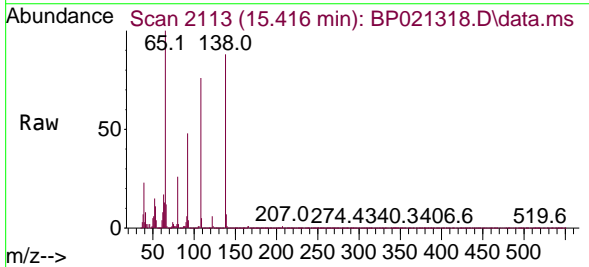
Tgt Ion: 204 Resp: 380784
 Ion Ratio Lower Upper
 204 100
 206 33.3 26.4 39.6
 141 55.4 48.5 72.7

Manual Integrations
 APPROVED

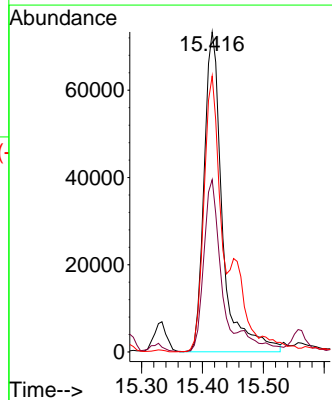
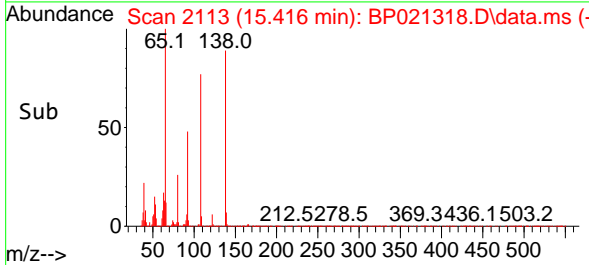
Reviewed By : Yogesh Patel 08/03/2024
 Supervised By : mohammad ahmed 08/05/2024

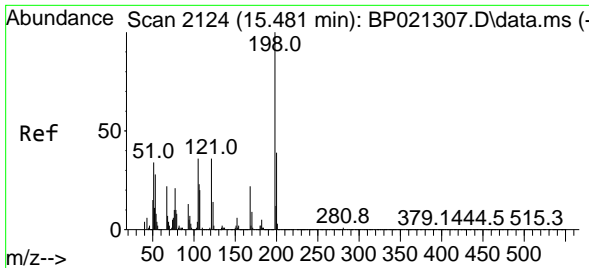


#63
 4-Nitroaniline
 Concen: 37.011 ng/ul
 RT: 15.416 min Scan# 2113
 Delta R.T. -0.011 min
 Lab File: BP021318.D
 Acq: 02 Aug 2024 12:29



Tgt Ion: 138 Resp: 154007
 Ion Ratio Lower Upper
 138 100
 92 53.8 40.9 61.3
 108 86.3 64.7 97.1





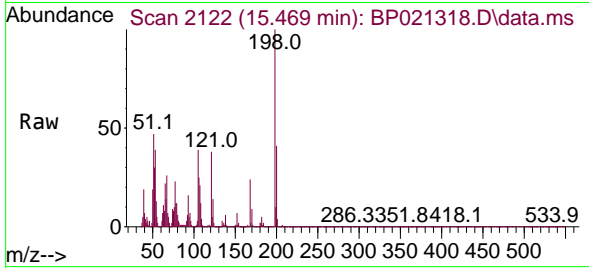
#66
 4,6-Dinitro-2-methylphenol
 Concen: 27.672 ng/ul
 RT: 15.469 min Scan# 2122
 Delta R.T. -0.011 min
 Lab File: BP021318.D
 Acq: 02 Aug 2024 12:29

Instrument :

BNA_P

ClientSampleId :

SLCS173



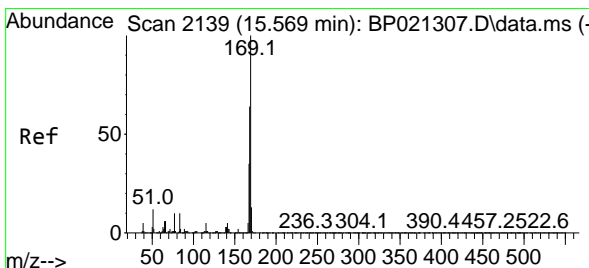
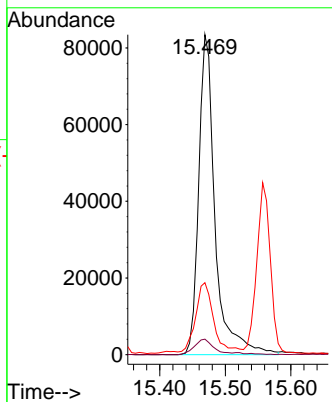
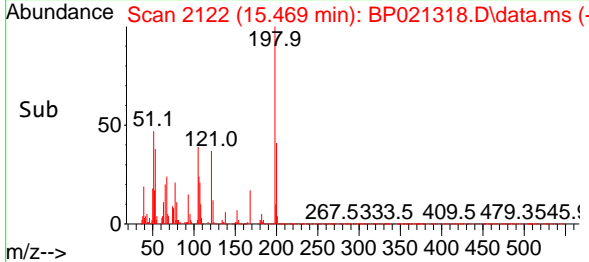
Tgt Ion:198 Resp: 144938
 Ion Ratio Lower Upper
 198 100
 182 4.8 3.8 5.6
 77 22.5 20.0 30.0

Manual Integrations

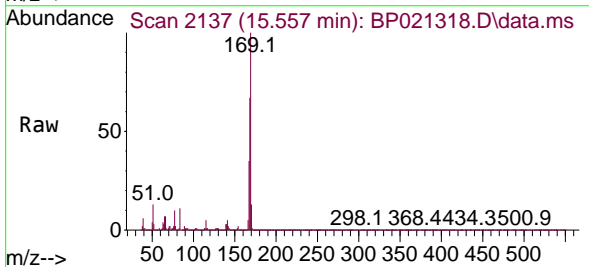
APPROVED

Reviewed By :Yogesh Patel 08/03/2024

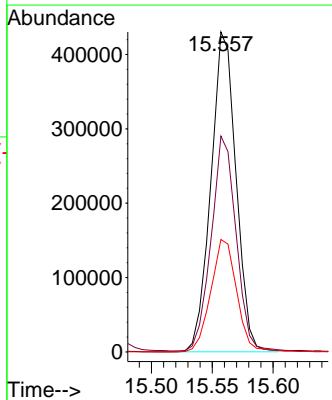
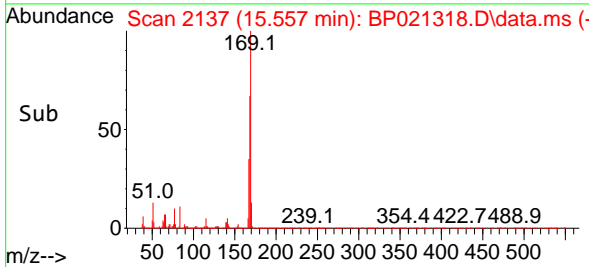
Supervised By :mohammad ahmed 08/05/2024

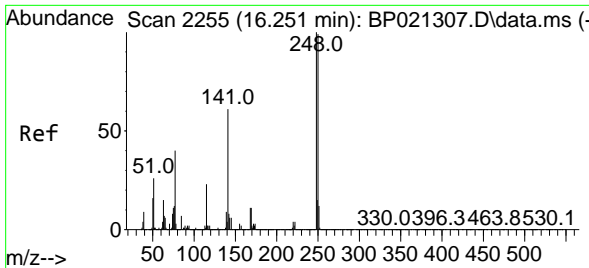


#67
 N-Nitrosodiphenylamine
 Concen: 26.007 ng/ul
 RT: 15.557 min Scan# 2137
 Delta R.T. -0.011 min
 Lab File: BP021318.D
 Acq: 02 Aug 2024 12:29



Tgt Ion:169 Resp: 618197
 Ion Ratio Lower Upper
 169 100
 168 67.4 53.4 80.2
 167 35.1 28.4 42.6





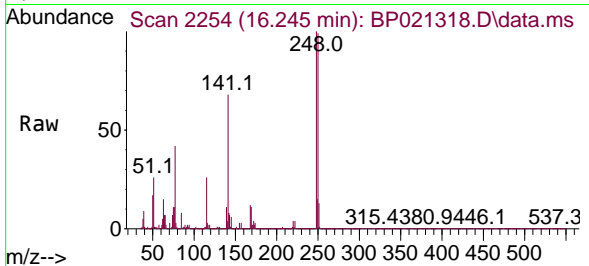
#68
 4-Bromophenyl-phenylether
 Concen: 26.704 ng/ul
 RT: 16.245 min Scan# 21
 Delta R.T. -0.017 min
 Lab File: BP021318.D
 Acq: 02 Aug 2024 12:29

Instrument :

BNA_P

ClientSampleId :

SLCS173



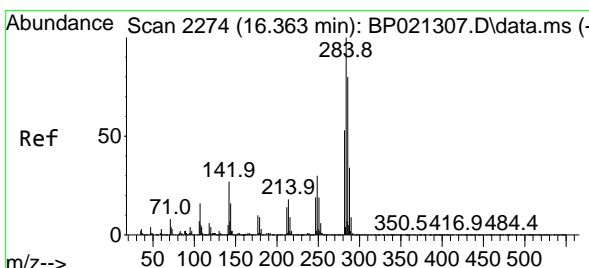
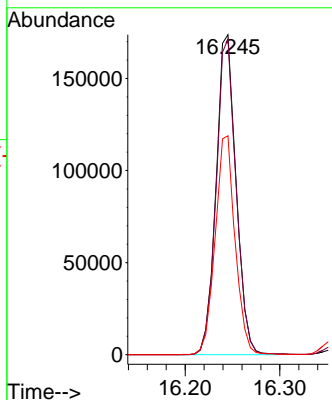
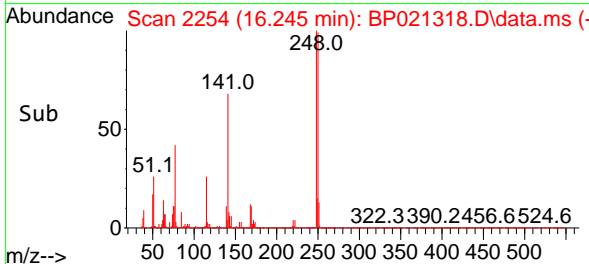
Tgt Ion:248 Resp: 25550
 Ion Ratio Lower Upper
 248 100
 250 98.6 79.3 118.9
 141 68.4 57.4 86.0

Manual Integrations

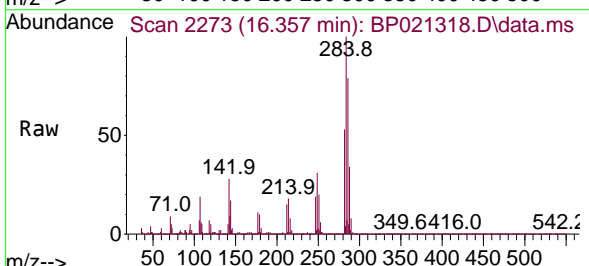
APPROVED

Reviewed By :Yogesh Patel 08/03/2024

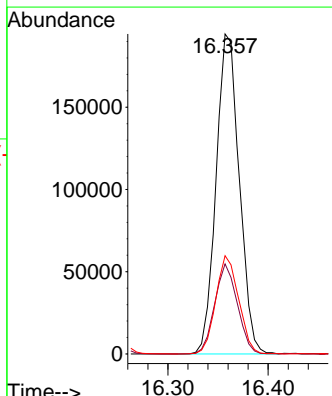
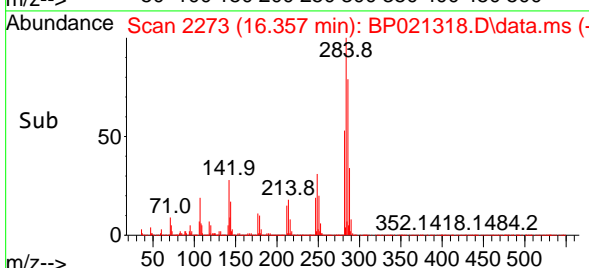
Supervised By :mohammad ahmed 08/05/2024

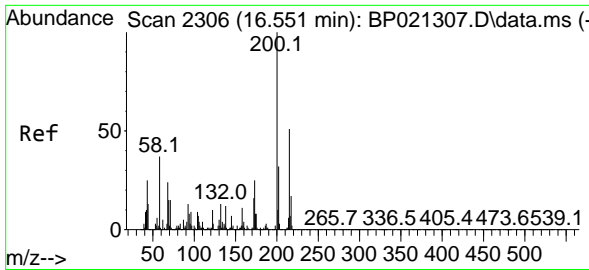


#69
 Hexachlorobenzene
 Concen: 28.444 ng/ul
 RT: 16.357 min Scan# 2273
 Delta R.T. -0.017 min
 Lab File: BP021318.D
 Acq: 02 Aug 2024 12:29



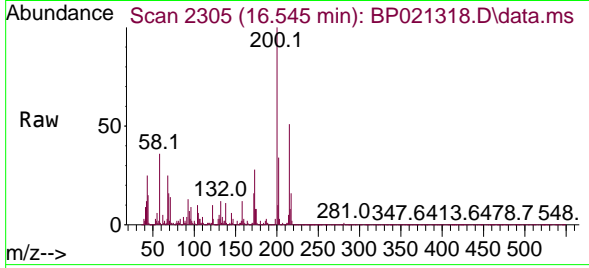
Tgt Ion:284 Resp: 312052
 Ion Ratio Lower Upper
 284 100
 142 28.2 25.8 38.8
 249 30.7 25.1 37.7





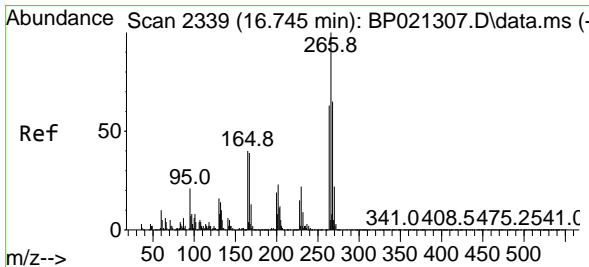
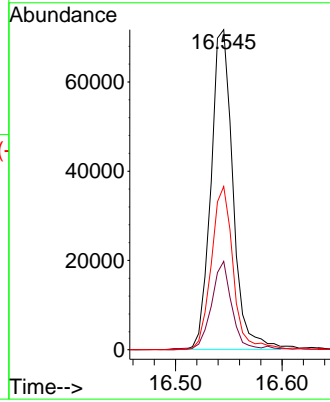
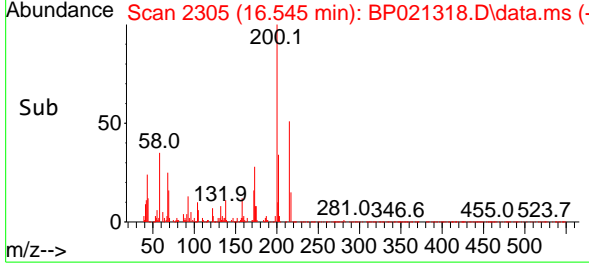
#70
 Atrazine
 Concen: 11.872 ng/ul
 RT: 16.545 min Scan# 21
 Delta R.T. -0.011 min
 Lab File: BP021318.D
 Acq: 02 Aug 2024 12:29

Instrument : BNA_P
 Client SampleId : SLCS173

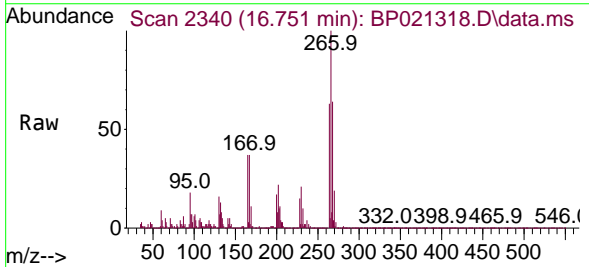


Tgt Ion: 200 Resp: 102849
 Ion Ratio Lower Upper
 200 100
 173 27.6 20.8 31.2
 215 51.0 38.7 58.1

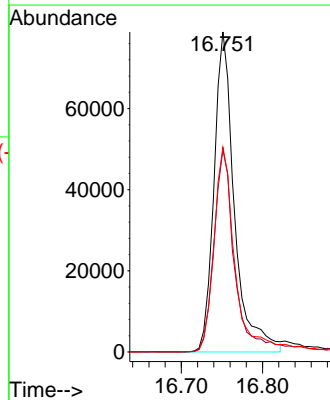
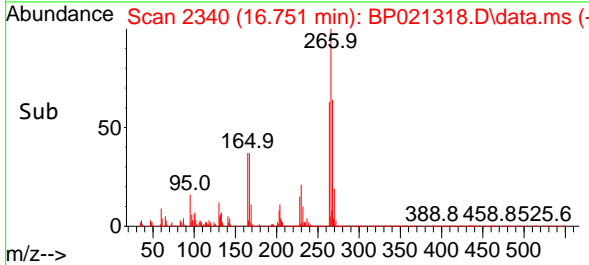
Manual Integrations
APPROVED
 Reviewed By :Yogesh Patel 08/03/2024
 Supervised By :mohammad ahmed 08/05/2024

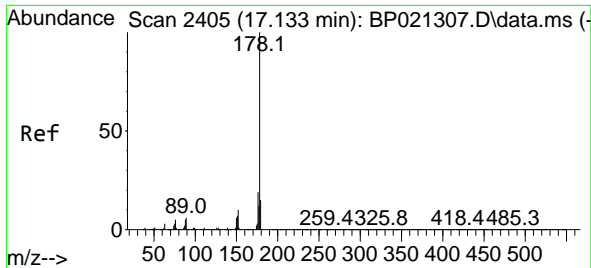


#71
 Pentachlorophenol
 Concen: 23.182 ng/ul
 RT: 16.751 min Scan# 2340
 Delta R.T. 0.000 min
 Lab File: BP021318.D
 Acq: 02 Aug 2024 12:29



Tgt Ion: 266 Resp: 138127
 Ion Ratio Lower Upper
 266 100
 264 63.2 52.3 78.5
 268 64.0 52.3 78.5





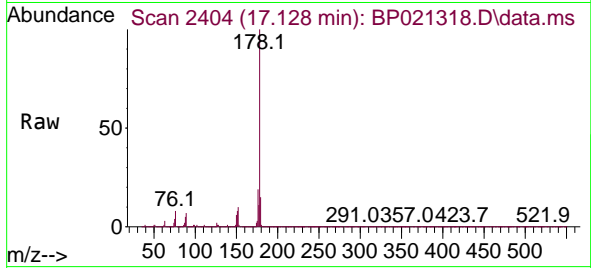
#72
 Phenanthrene
 Concen: 27.445 ng/uI
 RT: 17.128 min Scan# 2404
 Delta R.T. -0.006 min
 Lab File: BP021318.D
 Acq: 02 Aug 2024 12:29

Instrument :

BNA_P

ClientSampleId :

SLCS173



Tgt Ion:178 Resp: 116219

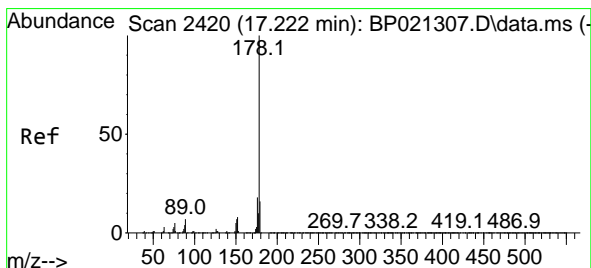
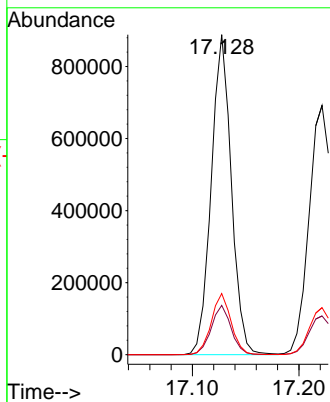
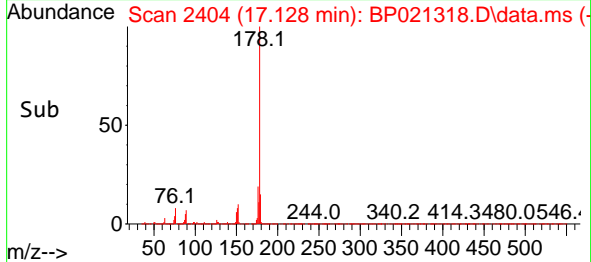
Ion	Ratio	Lower	Upper
178	100		
179	15.4	12.2	18.4
176	19.1	15.0	22.4

Manual Integrations

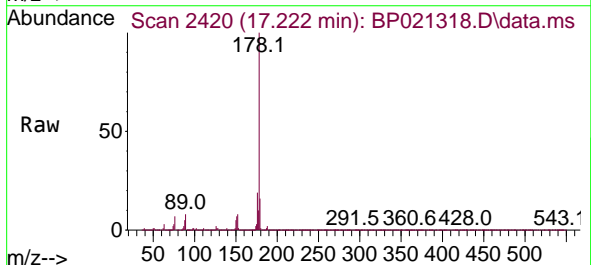
APPROVED

Reviewed By :Yogesh Patel 08/03/2024

Supervised By :mohammad ahmed 08/05/2024

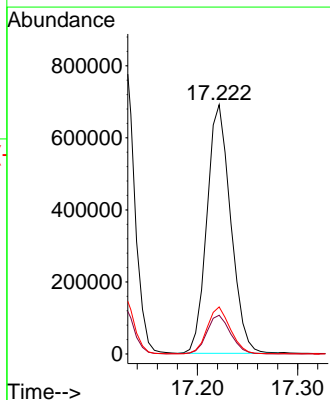
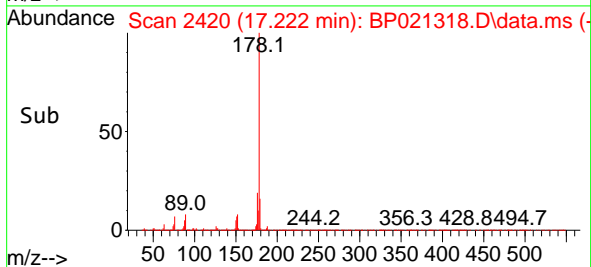


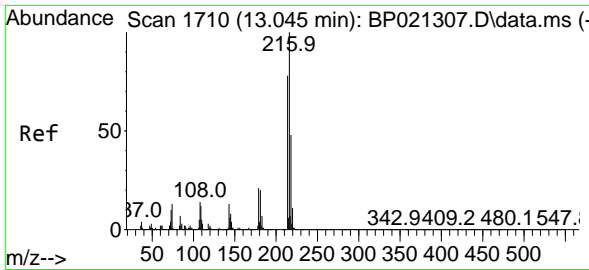
#74
 Anthracene
 Concen: 26.383 ng/uI
 RT: 17.222 min Scan# 2420
 Delta R.T. -0.011 min
 Lab File: BP021318.D
 Acq: 02 Aug 2024 12:29



Tgt Ion:178 Resp: 1138969

Ion	Ratio	Lower	Upper
178	100		
179	15.5	12.5	18.7
176	18.9	14.8	22.2





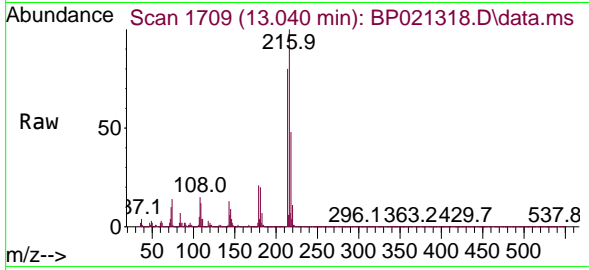
#75
 1,2,3,4-Tetrachlorobenzene
 Concen: 26.156 ng/uL
 RT: 13.040 min Scan# 1709
 Delta R.T. -0.017 min
 Lab File: BP021318.D
 Acq: 02 Aug 2024 12:29

Instrument :

BNA_P

Client Sample Id :

SLCS173



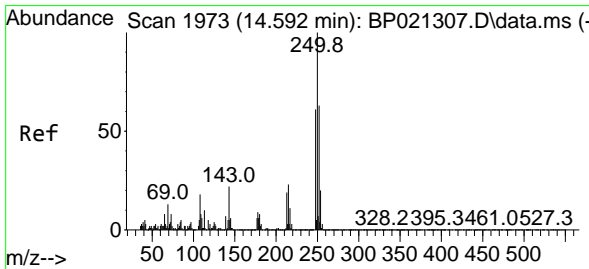
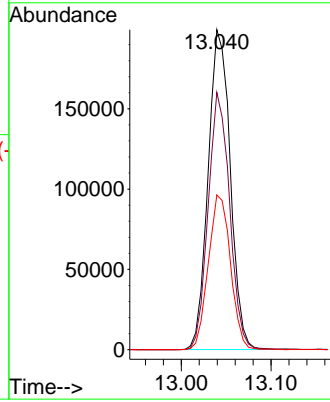
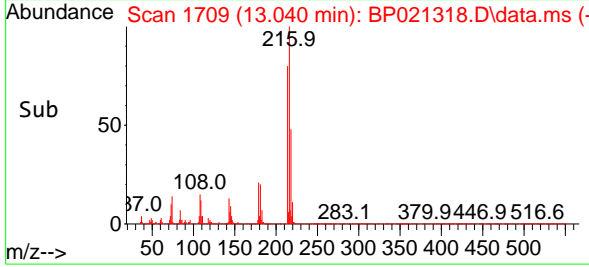
Tgt Ion: 216 Resp: 341739
 Ion Ratio Lower Upper
 216 100
 214 80.4 63.2 94.8
 218 48.3 38.2 57.4

Manual Integrations

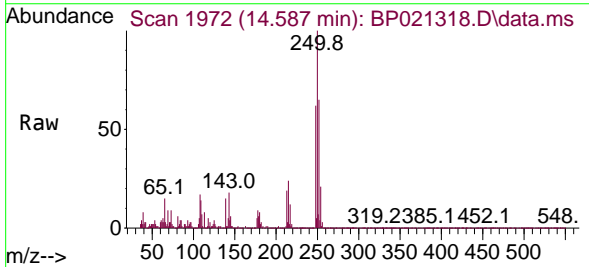
APPROVED

Reviewed By : Yogesh Patel 08/03/2024

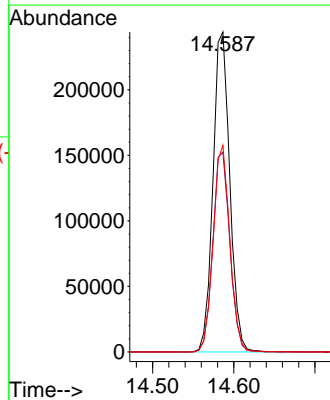
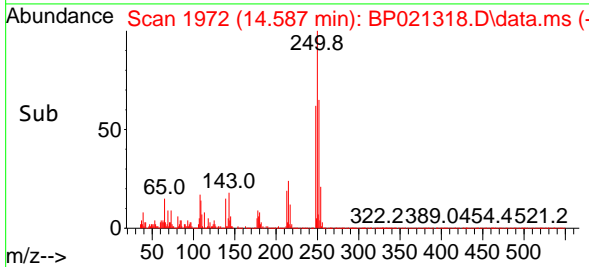
Supervised By : mohammad ahmed 08/05/2024

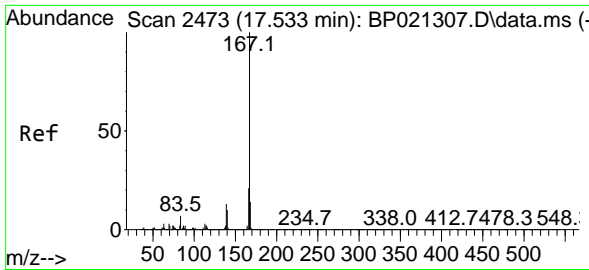


#76
 Pentachlorobenzene
 Concen: 26.976 ng/uL
 RT: 14.587 min Scan# 1972
 Delta R.T. -0.006 min
 Lab File: BP021318.D
 Acq: 02 Aug 2024 12:29



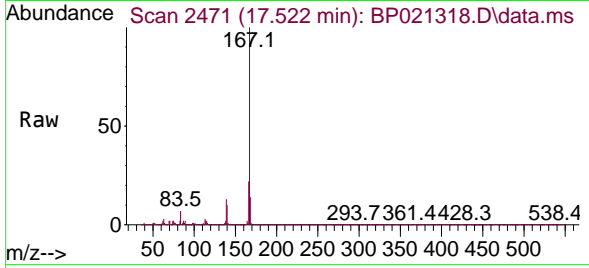
Tgt Ion: 250 Resp: 350218
 Ion Ratio Lower Upper
 250 100
 248 62.5 50.8 76.2
 252 64.6 51.6 77.4





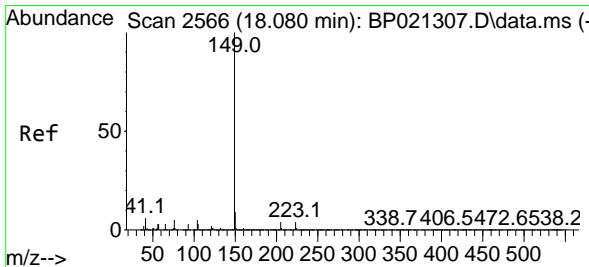
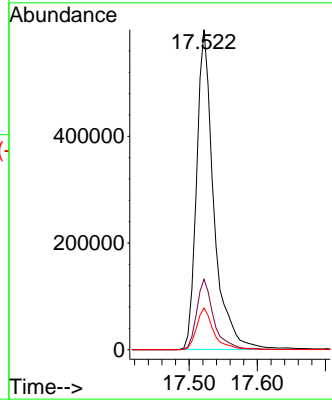
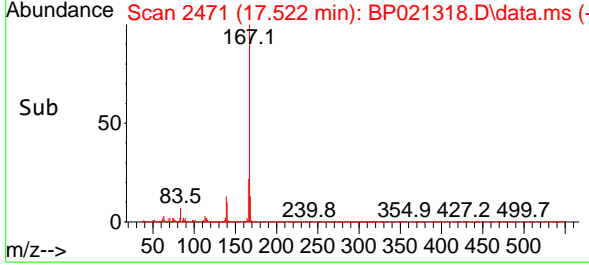
#77
 Carbazole
 Concen: 29.713 ng/uI
 RT: 17.522 min Scan# 2471
 Delta R.T. 0.000 min
 Lab File: BP021318.D
 Acq: 02 Aug 2024 12:29

Instrument :
 BNA_P
Client SampleId :
 SLCS173

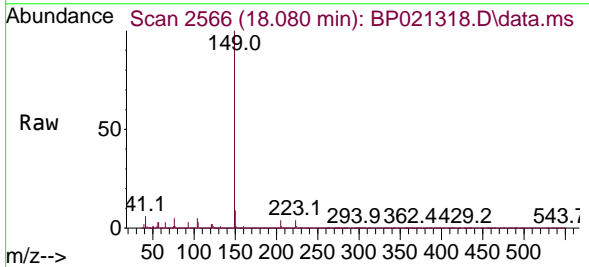


Tgt Ion:167 Resp: 104860
 Ion Ratio Lower Upper
 167 100
 166 22.0 17.3 25.9
 139 13.0 10.2 15.2

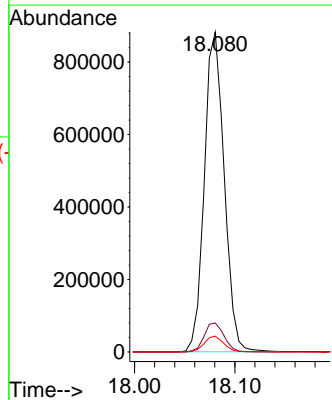
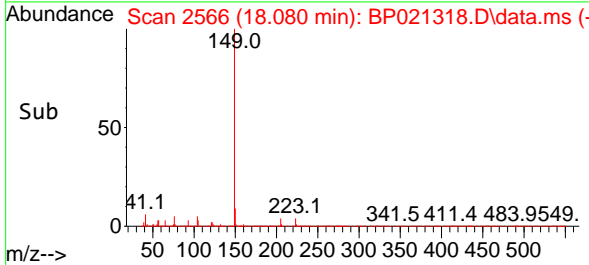
Manual Integrations
APPROVED
 Reviewed By :Yogesh Patel 08/03/2024
 Supervised By :mohammad ahmed 08/05/2024

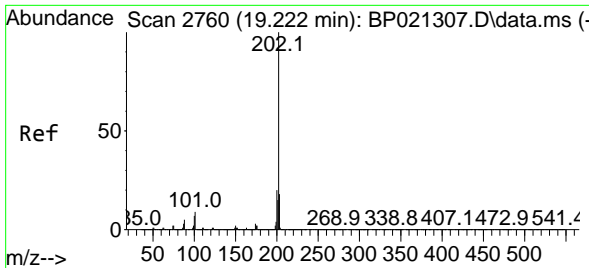


#78
 Di-n-butylphthalate
 Concen: 24.963 ng/uI
 RT: 18.080 min Scan# 2566
 Delta R.T. -0.017 min
 Lab File: BP021318.D
 Acq: 02 Aug 2024 12:29



Tgt Ion:149 Resp: 1215431
 Ion Ratio Lower Upper
 149 100
 150 9.1 7.4 11.0
 104 4.9 3.9 5.9





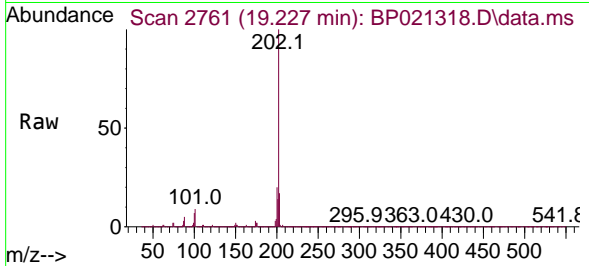
#80
 Fluoranthene
 Concen: 21.165 ng/u1
 RT: 19.227 min Scan# 21
 Delta R.T. -0.006 min
 Lab File: BP021318.D
 Acq: 02 Aug 2024 12:29

Instrument :

BNA_P

ClientSampleId :

SLCS173



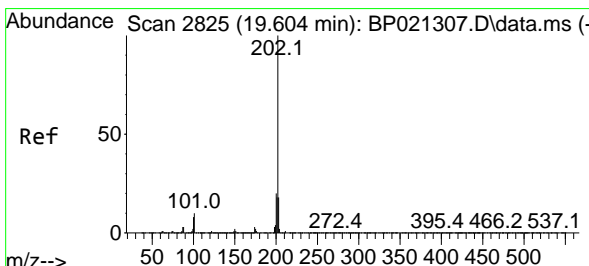
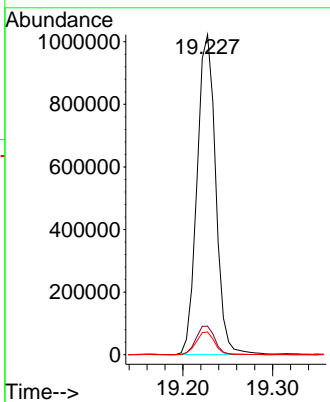
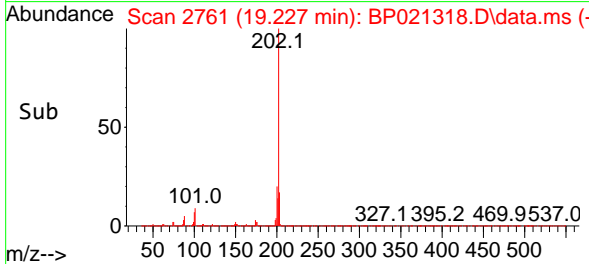
Tgt Ion:202 Resp: 1474630
 Ion Ratio Lower Upper
 202 100
 101 8.9 8.0 12.0
 100 7.1 6.1 9.1

Manual Integrations

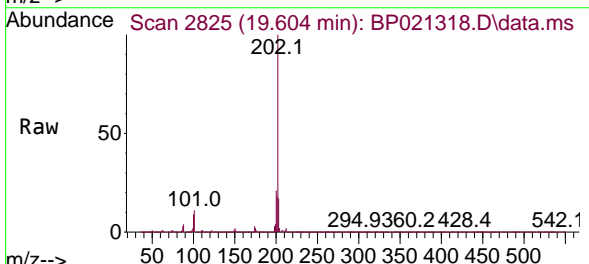
APPROVED

Reviewed By :Yogesh Patel 08/03/2024

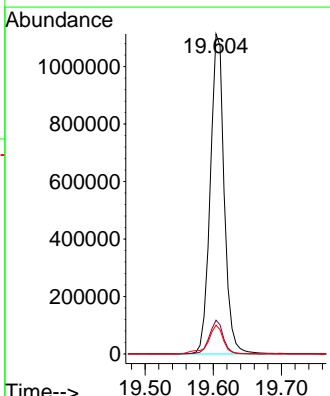
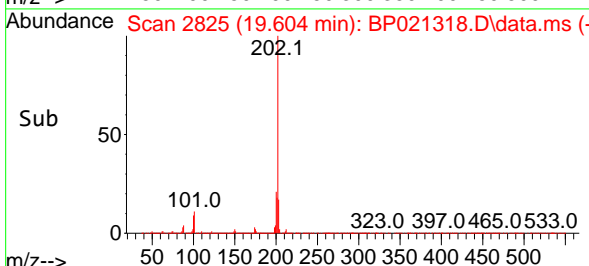
Supervised By :mohammad ahmed 08/05/2024

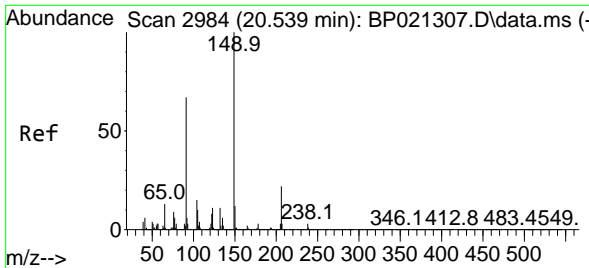


#82
 Pyrene
 Concen: 22.302 ng/u1
 RT: 19.604 min Scan# 2825
 Delta R.T. -0.006 min
 Lab File: BP021318.D
 Acq: 02 Aug 2024 12:29



Tgt Ion:202 Resp: 1581200
 Ion Ratio Lower Upper
 202 100
 101 10.5 9.4 14.2
 100 9.0 7.8 11.6





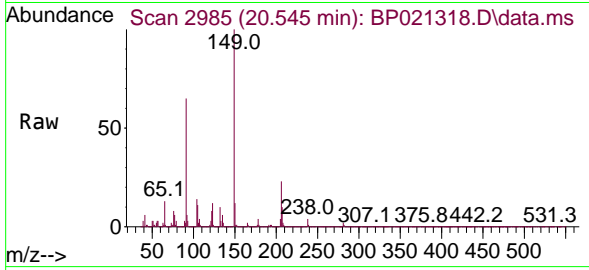
#83
 Butylbenzylphthalate
 Concen: 20.485 ng/u1
 RT: 20.545 min Scan# 2985
 Delta R.T. -0.006 min
 Lab File: BP021318.D
 Acq: 02 Aug 2024 12:29

Instrument :

BNA_P

ClientSampleId :

SLCS173



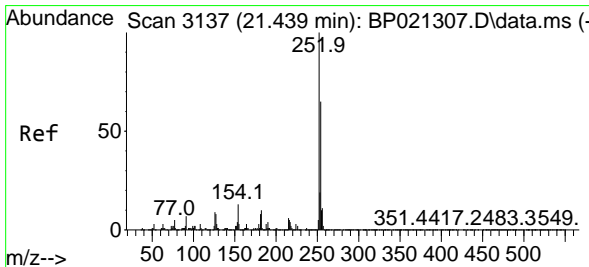
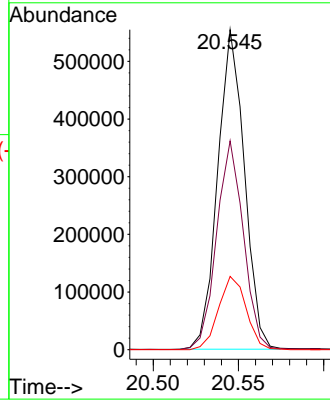
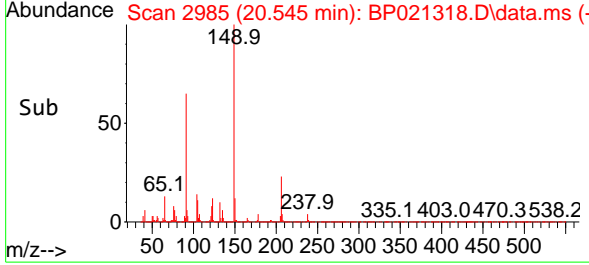
Tgt Ion:149 Resp: 605110
 Ion Ratio Lower Upper
 149 100
 91 65.3 54.1 81.1
 206 22.9 17.0 25.6

Manual Integrations

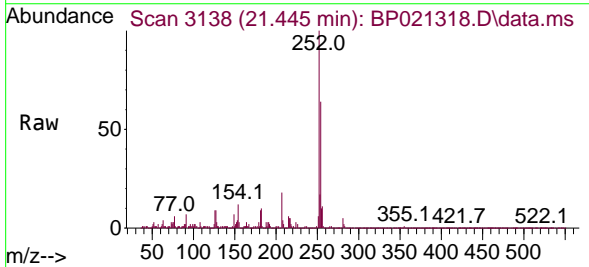
APPROVED

Reviewed By :Yogesh Patel 08/03/2024

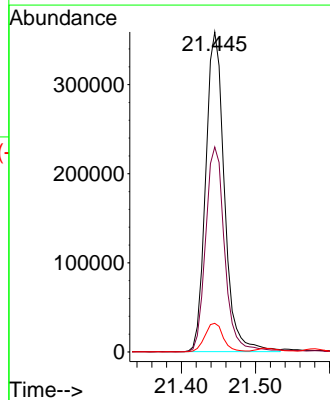
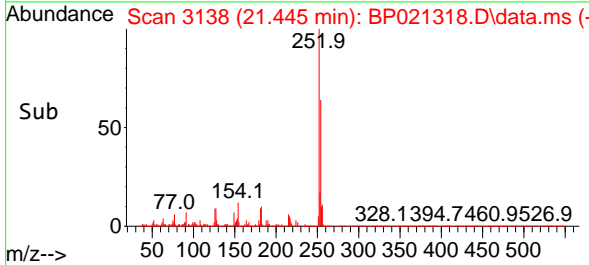
Supervised By :mohammad ahmed 08/05/2024

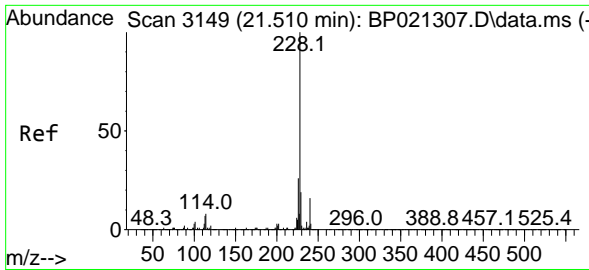


#84
 3,3'-Dichlorobenzidine
 Concen: 29.530 ng/u1
 RT: 21.445 min Scan# 3138
 Delta R.T. 0.006 min
 Lab File: BP021318.D
 Acq: 02 Aug 2024 12:29



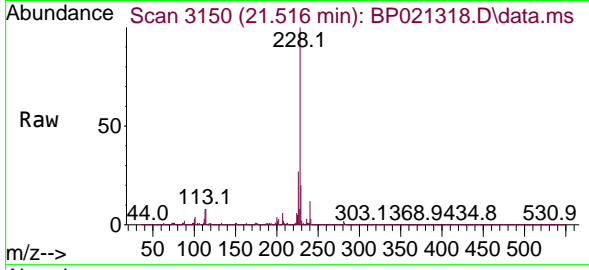
Tgt Ion:252 Resp: 629691
 Ion Ratio Lower Upper
 252 100
 254 64.1 51.5 77.3
 126 8.9 8.0 12.0





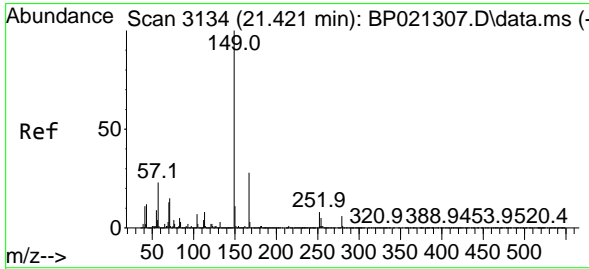
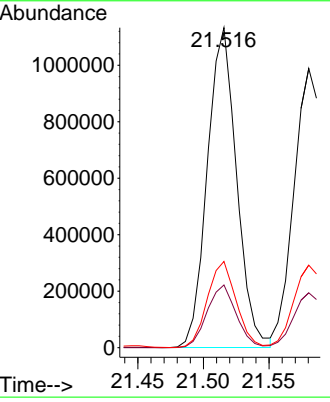
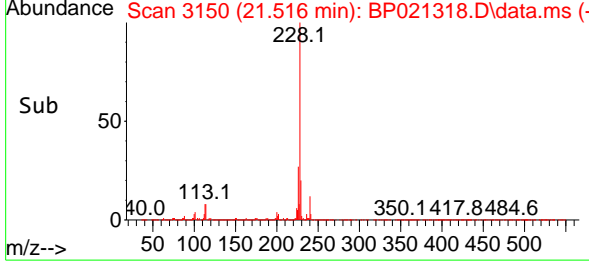
#85
 Benzo(a)anthracene
 Concen: 26.905 ng/uI
 RT: 21.516 min Scan# 3149
 Delta R.T. 0.006 min
 Lab File: BP021318.D
 Acq: 02 Aug 2024 12:29

Instrument : BNA_P
 ClientSampleId : SLCS173

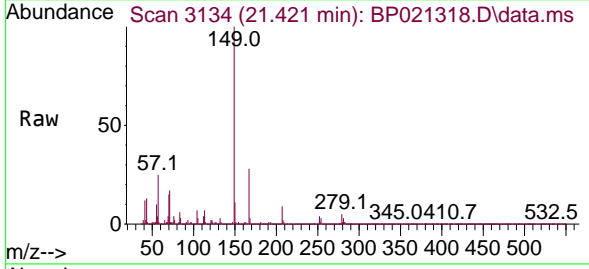


Tgt Ion:228 Resp: 175873
 Ion Ratio Lower Upper
 228 100
 229 19.6 15.5 23.3
 226 26.9 21.4 32.2

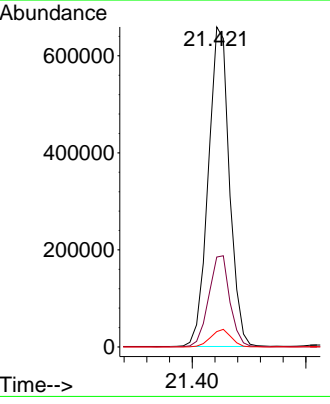
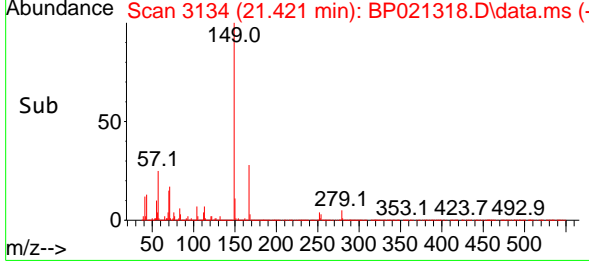
Manual Integrations
APPROVED
 Reviewed By :Yogesh Patel 08/03/2024
 Supervised By :mohammad ahmed 08/05/2024

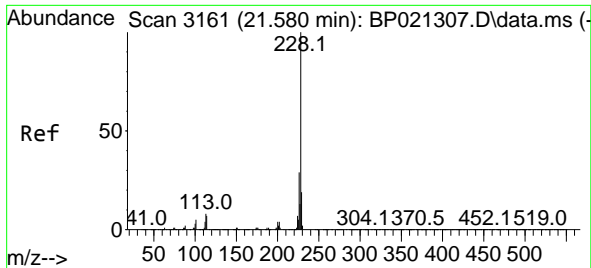


#86
 Bis(2-ethylhexyl)phthalate
 Concen: 20.007 ng/uI
 RT: 21.421 min Scan# 3134
 Delta R.T. 0.000 min
 Lab File: BP021318.D
 Acq: 02 Aug 2024 12:29



Tgt Ion:149 Resp: 850472
 Ion Ratio Lower Upper
 149 100
 167 28.1 22.1 33.1
 279 4.8 3.7 5.5





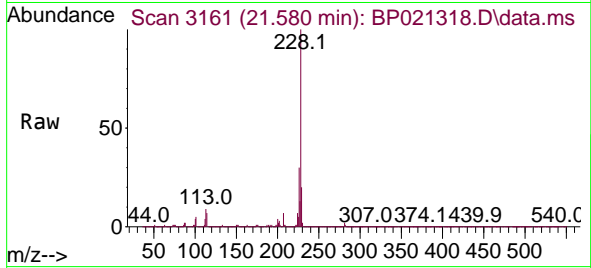
#87
 Chrysene
 Concen: 27.478 ng/u1
 RT: 21.580 min Scan# 3161
 Delta R.T. -0.006 min
 Lab File: BP021318.D
 Acq: 02 Aug 2024 12:29

Instrument :

BNA_P

ClientSampleId :

SLCS173



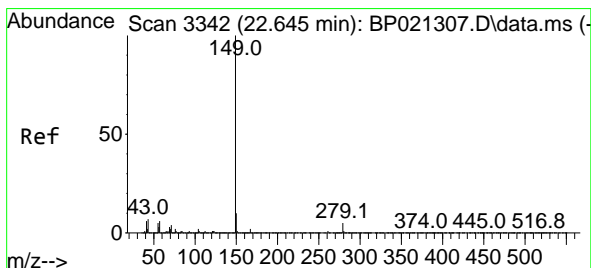
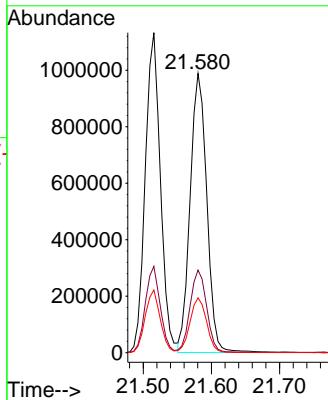
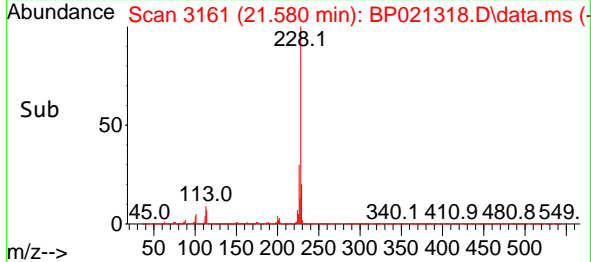
Tgt Ion:228 Resp: 1669080
 Ion Ratio Lower Upper
 228 100
 226 29.6 23.6 35.4
 229 19.6 15.5 23.3

Manual Integrations

APPROVED

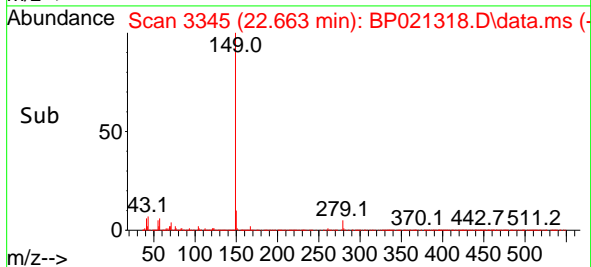
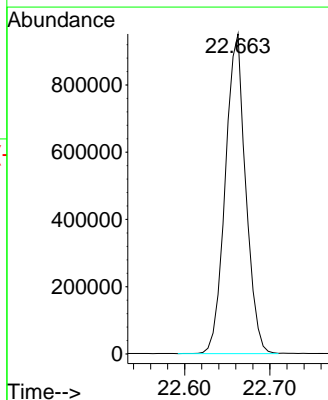
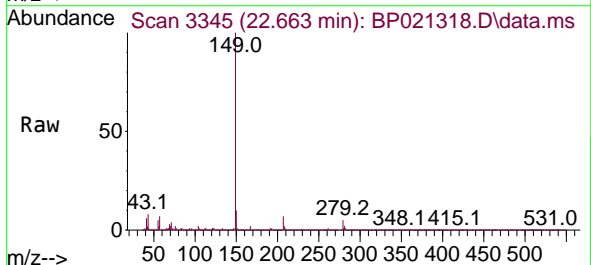
Reviewed By :Yogesh Patel 08/03/2024

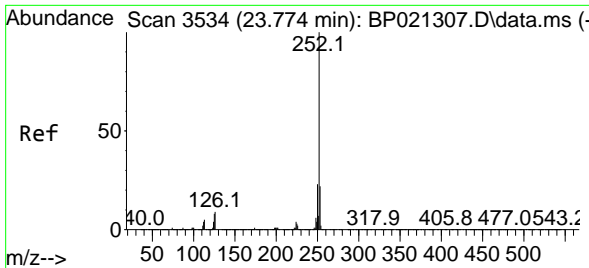
Supervised By :mohammad ahmed 08/05/2024



#89
 Di-n-octyl phthalate
 Concen: 19.763 ng/u1
 RT: 22.663 min Scan# 3345
 Delta R.T. -0.017 min
 Lab File: BP021318.D
 Acq: 02 Aug 2024 12:29

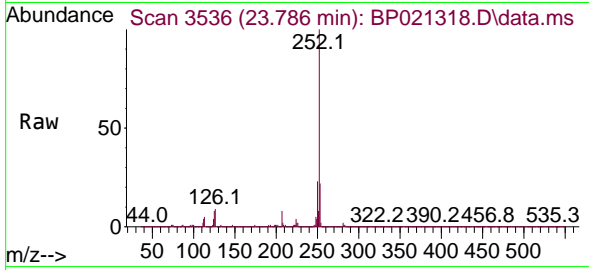
Tgt Ion:149 Resp: 1577437





#90
 Benzo(b)fluoranthene
 Concen: 27.709 ng/u1
 RT: 23.786 min Scan# 3534
 Delta R.T. 0.000 min
 Lab File: BP021318.D
 Acq: 02 Aug 2024 12:29

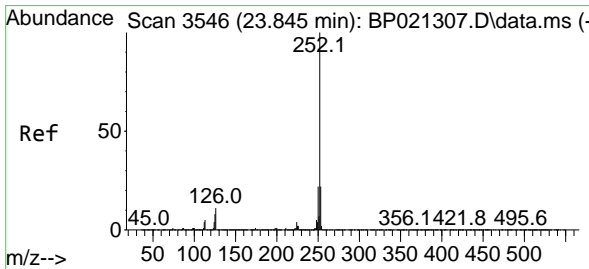
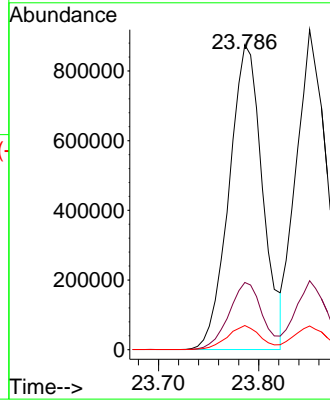
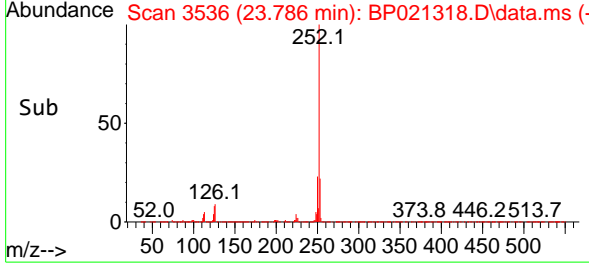
Instrument : BNA_P
 Client Sample Id : SLCS173



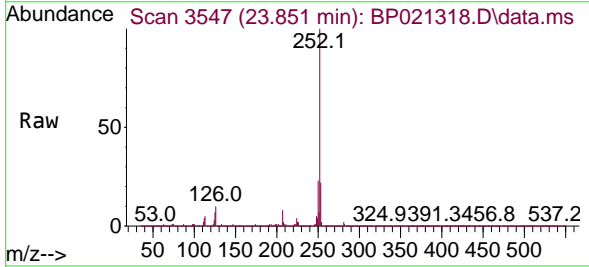
Tgt Ion: 252 Resp: 203173
 Ion Ratio Lower Upper
 252 100
 253 22.0 17.1 25.7
 125 7.9 7.0 10.4

Manual Integrations
APPROVED

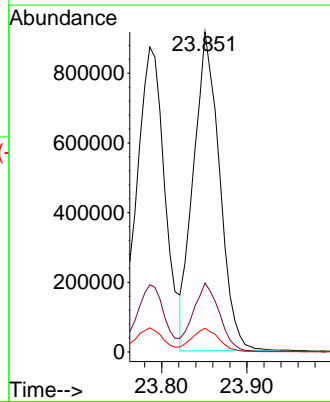
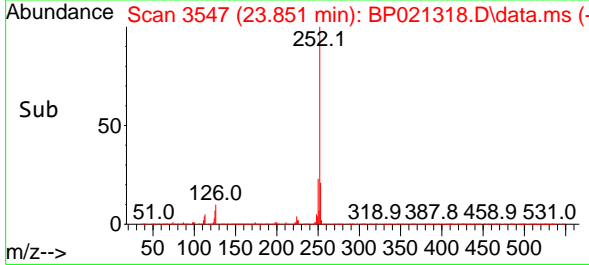
Reviewed By :Yogesh Patel 08/03/2024
 Supervised By :mohammad ahmed 08/05/2024

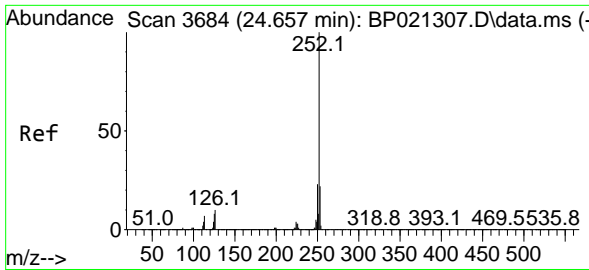


#91
 Benzo(k)fluoranthene
 Concen: 26.511 ng/u1
 RT: 23.851 min Scan# 3547
 Delta R.T. 0.000 min
 Lab File: BP021318.D
 Acq: 02 Aug 2024 12:29



Tgt Ion: 252 Resp: 1939908
 Ion Ratio Lower Upper
 252 100
 253 21.5 17.4 26.2
 125 7.4 7.4 11.0





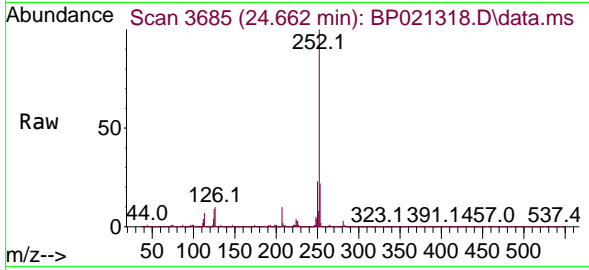
#93
 Benzo(a)pyrene
 Concen: 24.929 ng/u1
 RT: 24.662 min Scan# 3685
 Delta R.T. -0.017 min
 Lab File: BP021318.D
 Acq: 02 Aug 2024 12:29

Instrument :

BNA_P

Client SampleId :

SLCS173



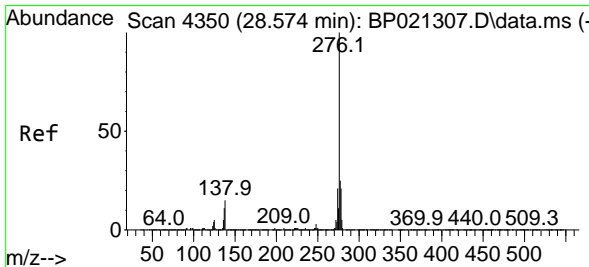
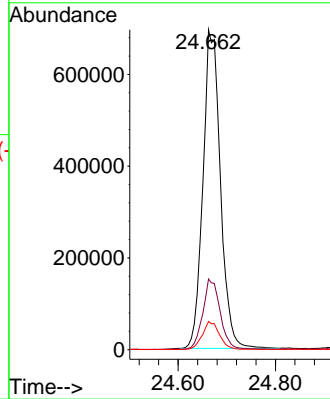
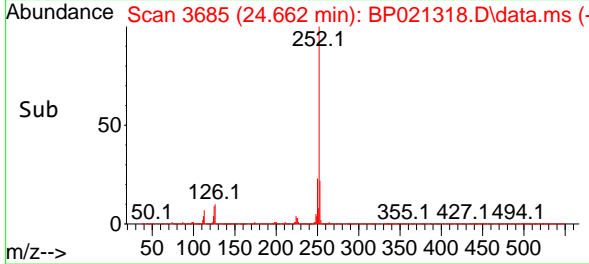
Tgt Ion: 252 Resp: 1727290
 Ion Ratio Lower Upper
 252 100
 253 22.1 17.4 26.0
 125 8.8 7.7 11.5

Manual Integrations

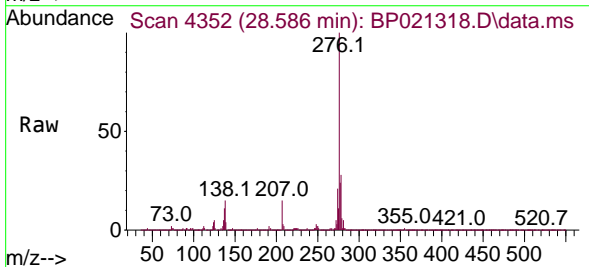
APPROVED

Reviewed By :Yogesh Patel 08/03/2024

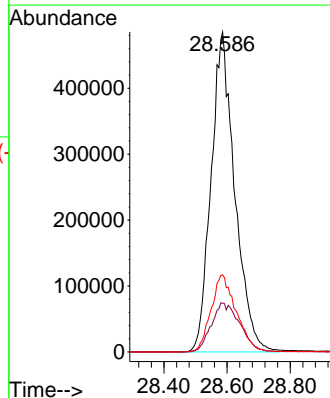
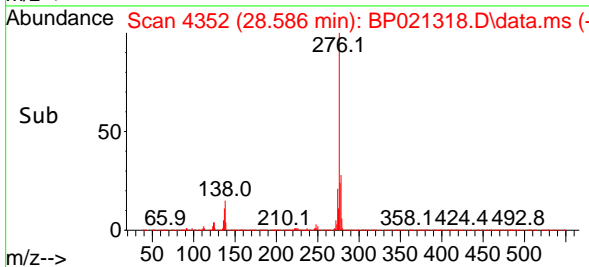
Supervised By :mohammad ahmed 08/05/2024

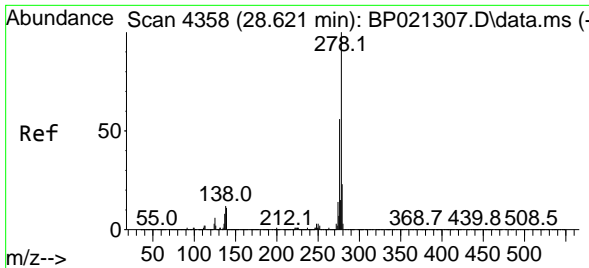


#94
 Indeno(1,2,3-cd)pyrene
 Concen: 28.363 ng/u1
 RT: 28.586 min Scan# 4352
 Delta R.T. -0.011 min
 Lab File: BP021318.D
 Acq: 02 Aug 2024 12:29



Tgt Ion: 276 Resp: 2532361
 Ion Ratio Lower Upper
 276 100
 138 15.3 14.3 21.5
 277 24.1 19.2 28.8





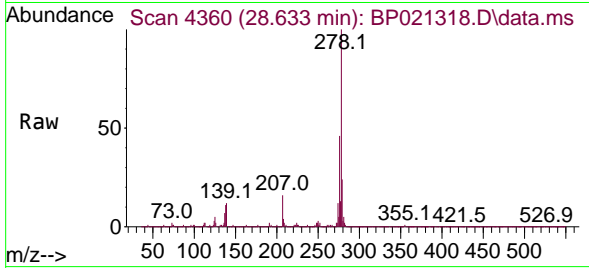
#95
 Dibenzo(a,h)anthracene
 Concen: 27.889 ng/ul
 RT: 28.633 min Scan# 41
 Delta R.T. -0.006 min
 Lab File: BP021318.D
 Acq: 02 Aug 2024 12:29

Instrument :

BNA_P

ClientSampleId :

SLCS173



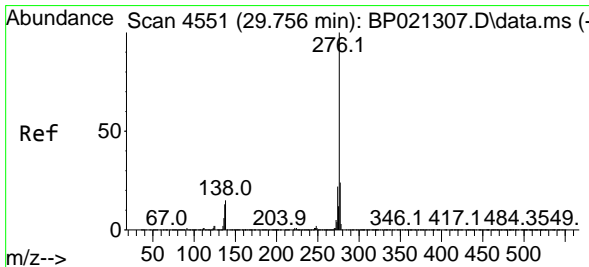
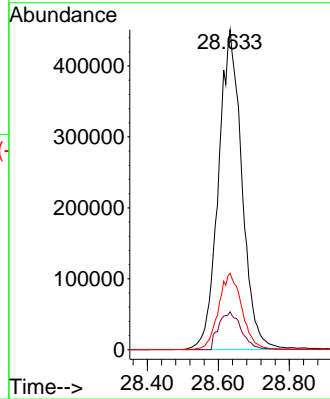
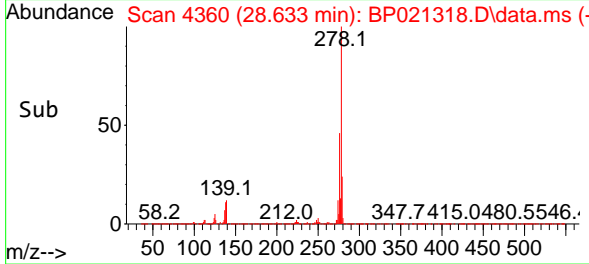
Tgt Ion:278 Resp: 206198
 Ion Ratio Lower Upper
 278 100
 139 11.8 10.9 16.3
 279 23.9 19.4 29.0

Manual Integrations

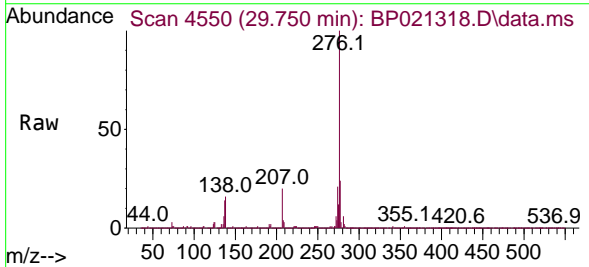
APPROVED

Reviewed By :Yogesh Patel 08/03/2024

Supervised By :mohammad ahmed 08/05/2024



#96
 Benzo(g,h,i)perylene
 Concen: 27.343 ng/ul m
 RT: 29.750 min Scan# 4550
 Delta R.T. -0.011 min
 Lab File: BP021318.D
 Acq: 02 Aug 2024 12:29



Tgt Ion:276 Resp: 1988251
 Ion Ratio Lower Upper
 276 100
 138 16.0 15.3 22.9
 277 24.0 18.2 27.2

