

Data Path : Z:\svoasrv\HPCHEM1\BNA_P\Data\BP080124\
 Data File : BP021325.D
 Acq On : 02 Aug 2024 17:50
 Operator : CG/JU
 Sample : P3265-08
 Misc :
 ALS Vial : 7 Sample Multiplier: 1

Instrument :
 BNA_P
 ClientSampleId :
 A4D41

Integration Parameters: LSCINT.P

Integrator: RTE
 Smoothing : OFF Filtering: 5
 Sampling : 1 Min Area: 0.1 % of largest Peak
 Start Thrs: 0.2 Max Peaks: 100
 Stop Thrs : 0 Peak Location: TOP

If leading or trailing edge < 100 prefer < Baseline drop else tangent >
 Peak separation: 5

Method : Z:\svoasrv\HPCHEM1\BNA_P\Methods\SFAM-EPA-BP071024.MA.M
 Title : SVOA CALIBRATION

Signal : TIC: BP021325.D\data.ms

peak #	R.T. min	first scan	max scan	last scan	PK TY	peak height	corr. area	corr. % max.	% of total
1	3.164	27	30	37	rVB	25089	36121	0.66%	0.062%
2	3.464	78	81	93	rVB	25184	55590	1.01%	0.096%
3	3.611	104	106	114	rBV	26612	50373	0.91%	0.087%
4	3.675	114	117	126	rVB5	14863	22865	0.41%	0.040%
5	3.875	147	151	157	rVB2	13725	21616	0.39%	0.037%
6	4.246	211	214	218	rBV6	3822	6909	0.13%	0.012%
7	4.281	218	220	229	rVB7	6664	12318	0.22%	0.021%
8	4.375	234	236	241	rBV6	4173	6745	0.12%	0.012%
9	4.428	242	245	253	rVB8	7568	13397	0.24%	0.023%
10	4.652	280	283	288	rVB6	5408	7407	0.13%	0.013%
11	4.770	299	303	312	rBV	30117	54821	0.99%	0.095%
12	5.652	449	453	458	rBV8	4321	7246	0.13%	0.013%
13	6.846	647	656	671	rBV	256280	665241	12.07%	1.151%
14	6.969	672	677	693	rVB	277547	494172	8.96%	0.855%
15	7.169	706	711	725	rBV	386299	683555	12.40%	1.183%
16	7.616	779	787	802	rBV	625116	1126919	20.44%	1.950%
17	8.122	867	873	876	rBV8	4783	10502	0.19%	0.018%
18	8.358	906	913	929	rBV2	333179	820173	14.88%	1.419%
19	8.787	976	986	1003	rBV	288746	643288	11.67%	1.113%
20	9.110	1037	1041	1045	rVB4	6882	8988	0.16%	0.016%
21	9.346	1075	1081	1090	rBV2	18578	40753	0.74%	0.071%
22	9.493	1098	1106	1129	rBV	234546	564848	10.25%	0.977%
23	9.810	1152	1160	1163	rBV9	3213	7606	0.14%	0.013%
24	10.058	1195	1202	1226	rBV	302741	894345	16.22%	1.547%
25	10.387	1250	1258	1272	rBV	932304	1634071	29.64%	2.827%
26	10.569	1280	1289	1308	rBV	148618	456988	8.29%	0.791%
27	10.969	1353	1357	1363	rVB9	4104	7088	0.13%	0.012%
28	11.163	1382	1390	1401	rBV2	40392	123058	2.23%	0.213%
29	11.540	1447	1454	1458	rBV10	4203	11517	0.21%	0.020%
30	11.987	1524	1530	1537	rVB6	8210	20328	0.37%	0.035%
31	12.063	1537	1543	1548	rBV5	8991	19540	0.35%	0.034%
32	12.281	1576	1580	1587	rVB4	6827	14879	0.27%	0.026%
33	12.593	1626	1633	1646	rVB4	6198	22591	0.41%	0.039%
34	12.857	1673	1678	1682	rBV8	7219	14149	0.26%	0.024%
35	12.910	1684	1687	1691	rVB5	4341	6748	0.12%	0.012%
36	13.093	1713	1718	1721	rVV7	4554	7953	0.14%	0.014%

Data Path : Z:\svoasrv\HPCHEM1\BNA_P\Data\BP080124\
 Data File : BP021325.D
 Acq On : 02 Aug 2024 17:50
 Operator : CG/JU
 Sample : P3265-08
 Misc :
 ALS Vial : 7 Sample Multiplier: 1

Instrument :
 BNA_P
 ClientSampleId :
 A4D41

Integration Parameters: LSCINT.P

Integrator: RTE
 Smoothing : OFF Filtering: 5
 Sampling : 1 Min Area: 0.1 % of largest Peak
 Start Thrs: 0.2 Max Peaks: 100
 Stop Thrs : 0 Peak Location: TOP

If leading or trailing edge < 100 prefer < Baseline drop else tangent >
 Peak separation: 5

Method : Z:\svoasrv\HPCHEM1\BNA_P\Methods\SFAM-EPA-BP071024.MA.M
 Title : SVOA CALIBRATION

37	13.416	1769	1773	1774	rBV4	5678	6543	0.12%	0.011%
38	13.434	1774	1776	1779	rVB4	5659	6399	0.12%	0.011%
39	13.557	1792	1797	1798	rVV5	9704	14384	0.26%	0.025%
40	13.575	1798	1800	1806	rVB5	11164	18226	0.33%	0.032%
41	13.634	1806	1810	1811	rBV4	8567	11320	0.21%	0.020%
42	13.675	1811	1817	1828	rVV	658366	1285995	23.33%	2.225%
43	13.757	1828	1831	1837	rVB6	15982	23909	0.43%	0.041%
44	13.816	1838	1841	1845	rBV3	6861	8723	0.16%	0.015%
45	13.957	1855	1865	1881	rBV	1016866	1717931	31.16%	2.972%
46	14.081	1881	1886	1891	rVB5	23178	39130	0.71%	0.068%
47	14.263	1910	1917	1923	rBV	1429105	2170448	39.37%	3.755%
48	14.328	1923	1928	1933	rVB	78538	140851	2.56%	0.244%
49	14.493	1946	1956	1965	rBV4	155290	400340	7.26%	0.693%
50	14.575	1967	1970	1971	rBV3	9593	9649	0.18%	0.017%
51	14.610	1971	1976	1984	rBV3	120165	338430	6.14%	0.585%
52	14.681	1985	1988	1991	rVV2	44976	80546	1.46%	0.139%
53	14.722	1991	1995	2000	rVB6	47535	79646	1.44%	0.138%
54	15.110	2058	2061	2067	rVB7	10483	13367	0.24%	0.023%
55	15.281	2084	2090	2096	rBV	1299520	2044069	37.08%	3.536%
56	15.334	2096	2099	2110	rVB2	79760	162317	2.94%	0.281%
57	15.463	2115	2121	2133	rBV	291789	561129	10.18%	0.971%
58	15.545	2133	2135	2140	rVB6	18517	25029	0.45%	0.043%
59	15.792	2174	2177	2184	rVB	22259	40858	0.74%	0.071%
60	15.863	2185	2189	2197	rBV8	29911	57290	1.04%	0.099%
61	16.004	2209	2213	2215	rBV3	20496	30964	0.56%	0.054%
62	16.375	2272	2276	2280	rVB3	22605	35681	0.65%	0.062%
63	16.751	2336	2340	2346	rVB2	36363	64112	1.16%	0.111%
64	16.816	2346	2351	2356	rBV4	44620	84042	1.52%	0.145%
65	16.898	2362	2365	2371	rVB	67521	98976	1.80%	0.171%
66	16.992	2378	2381	2388	rVB7	21328	34259	0.62%	0.059%
67	17.087	2391	2397	2400	rBV	1877376	2712272	49.20%	4.692%
68	17.128	2400	2404	2409	rVB	1238684	1760721	31.94%	3.046%
69	17.187	2409	2414	2419	rBV2	1334762	2236907	40.58%	3.870%
70	17.522	2467	2471	2478	rVB2	120226	183898	3.34%	0.318%
71	17.986	2546	2550	2551	rBV	157599	179583	3.26%	0.311%
72	18.016	2551	2555	2564	rVB2	502532	970378	17.60%	1.679%
73	18.134	2572	2575	2580	rVB	58225	80891	1.47%	0.140%
74	18.198	2580	2586	2590	rBV2	240380	492379	8.93%	0.852%
75	18.239	2590	2593	2599	rVB	117371	175173	3.18%	0.303%
76	18.298	2600	2603	2606	rBV3	51380	76864	1.39%	0.133%

Data Path : Z:\svoasrv\HPCHEM1\BNA_P\Data\BP080124\
 Data File : BP021325.D
 Acq On : 02 Aug 2024 17:50
 Operator : CG/JU
 Sample : P3265-08
 Misc :
 ALS Vial : 7 Sample Multiplier: 1

Instrument :
 BNA_P
 ClientSampleId :
 A4D41

Integration Parameters: LSCINT.P

Integrator: RTE
 Smoothing : OFF Filtering: 5
 Sampling : 1 Min Area: 0.1 % of largest Peak
 Start Thrs: 0.2 Max Peaks: 100
 Stop Thrs : 0 Peak Location: TOP

If leading or trailing edge < 100 prefer < Baseline drop else tangent >
 Peak separation: 5

Method : Z:\svoasrv\HPCHEM1\BNA_P\Methods\SFAM-EPA-BP071024.MA.M
 Title : SVOA CALIBRATION

77	18.516	2636	2640	2646	rVB	115921	170146	3.09%	0.294%
78	18.581	2647	2651	2656	rBV2	207436	356454	6.47%	0.617%
79	18.945	2710	2713	2718	rBV2	71958	126417	2.29%	0.219%
80	19.222	2755	2760	2766	rVB	2677079	3505102	63.58%	6.064%
81	19.345	2777	2781	2786	rBV5	217503	374286	6.79%	0.647%
82	19.569	2814	2819	2822	rBV	2485143	3738690	67.82%	6.468%
83	19.598	2822	2824	2830	rVB	1864975	2257672	40.96%	3.906%
84	19.945	2878	2883	2893	rVB2	145927	385876	7.00%	0.668%
85	20.122	2910	2913	2918	rVB3	409035	580257	10.53%	1.004%
86	20.233	2929	2932	2935	rVB	171445	213284	3.87%	0.369%
87	20.539	2981	2984	2988	rVB	425130	477641	8.66%	0.826%
88	21.104	3077	3080	3083	rBV	208917	251632	4.56%	0.435%
89	21.180	3088	3093	3104	rVB5	898001	1861619	33.77%	3.220%
90	21.422	3130	3134	3140	rBV	504353	647123	11.74%	1.119%
91	21.527	3145	3152	3157	rVV3	2301057	5512517	100.00%	9.536%
92	21.575	3157	3160	3165	rVB	1064331	1546113	28.05%	2.675%
93	23.780	3530	3535	3542	rBV	703164	1963534	35.62%	3.397%
94	24.604	3668	3675	3681	rBV	957250	2212893	40.14%	3.828%
95	24.816	3705	3711	3723	rVB	1176027	3448959	62.57%	5.967%
96	32.239	4968	4973	4975	rBV2	649374	1106802	20.08%	1.915%

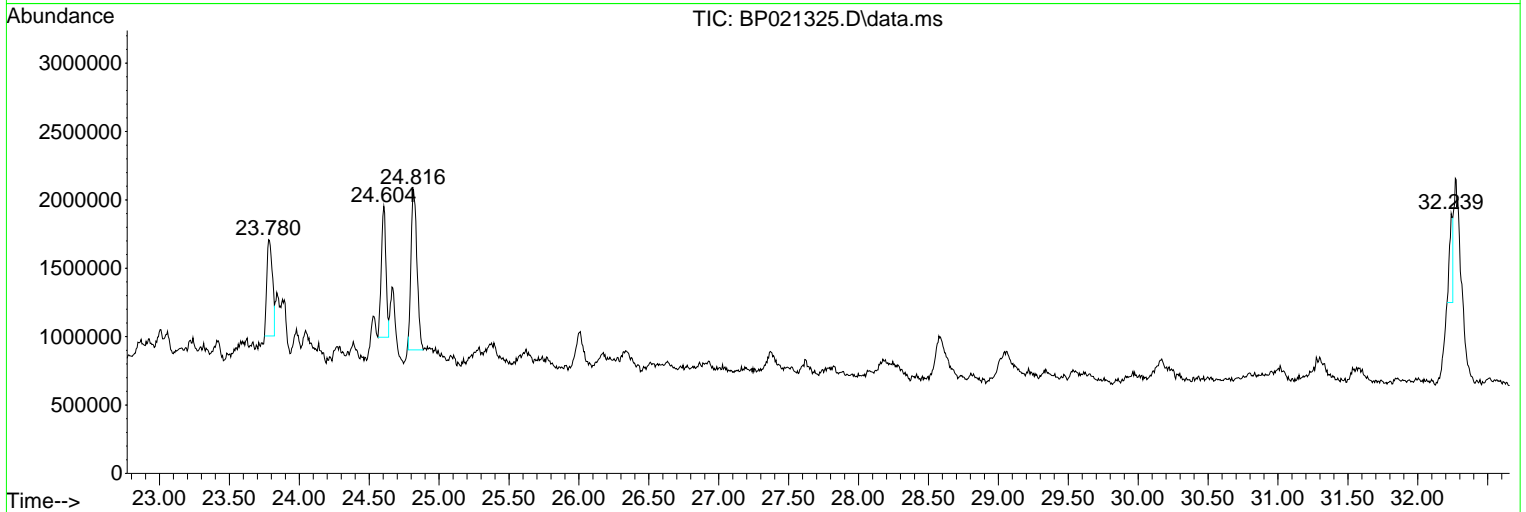
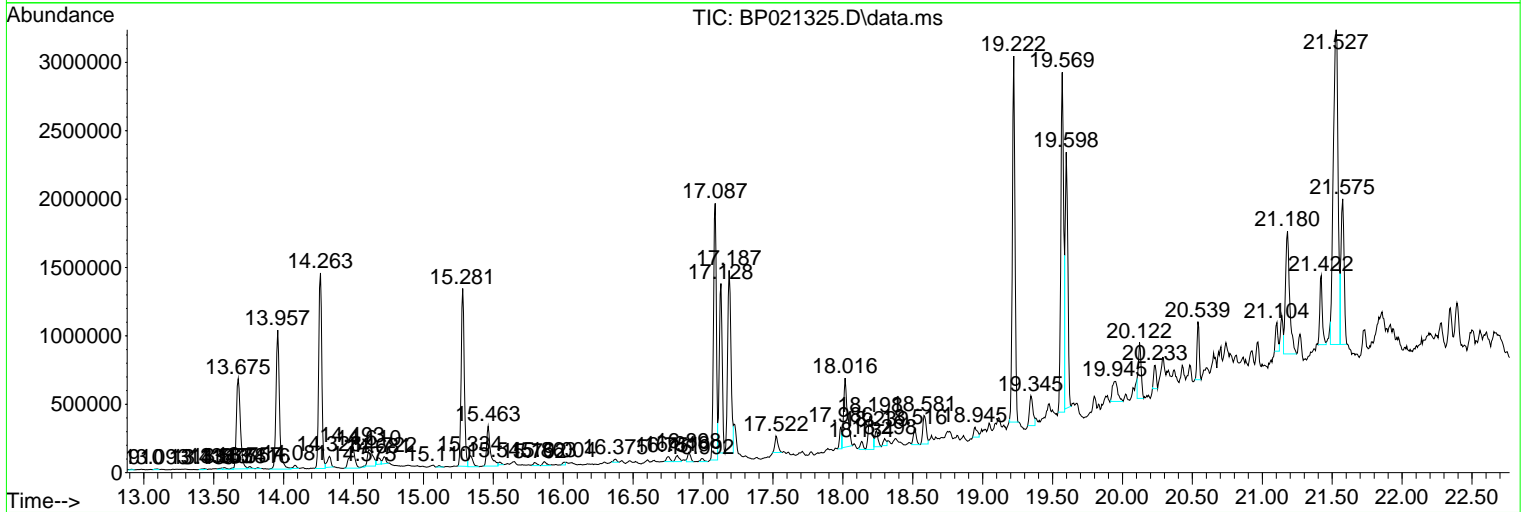
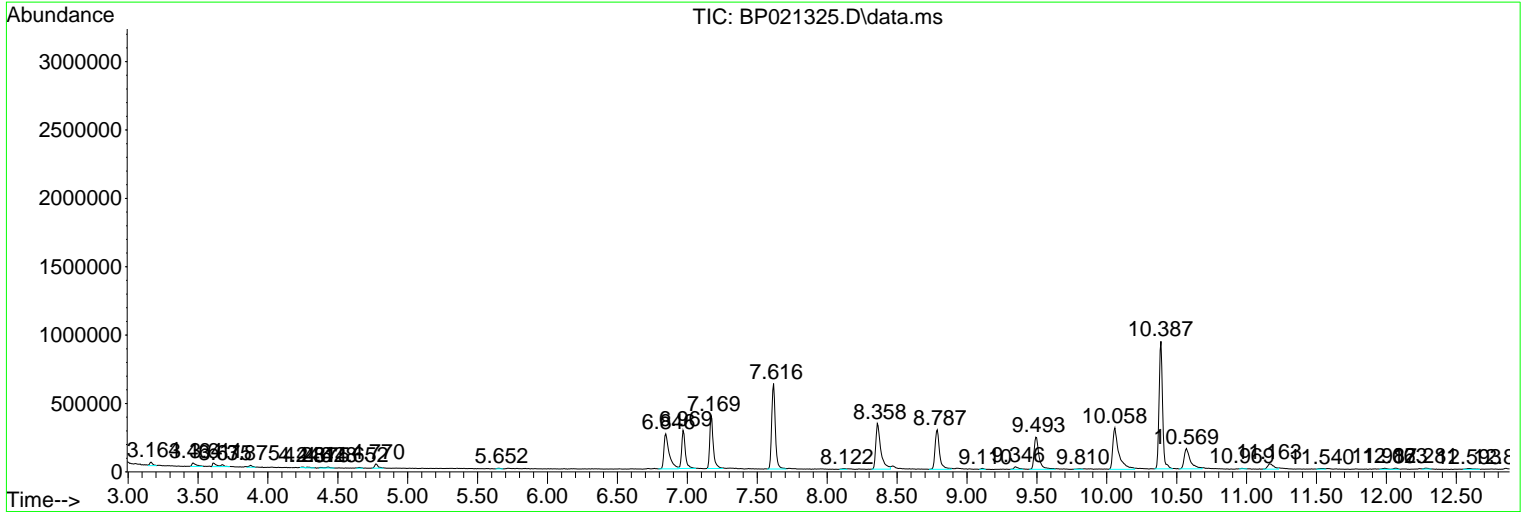
Sum of corrected areas: 57805354

Data Path : Z:\svoasrv\HPCHEM1\BNA_P\Data\BP080124\
 Data File : BP021325.D
 Acq On : 02 Aug 2024 17:50
 Operator : CG/JU
 Sample : P3265-08
 Misc :
 ALS Vial : 7 Sample Multiplier: 1

Instrument :
 BNA_P
 ClientSampleId :
 A4D41

Quant Method : Z:\svoasrv\HPCHEM1\BNA_P\Methods\SFAM-EPA-BP071024.MA.M
 Quant Title : SVOA CALIBRATION

TIC Library : C:\DATABASE\NIST20.L
 TIC Integration Parameters: LSCINT.P



Data Path : Z:\svoasrv\HPCHEM1\BNA_P\Data\BP080124\
 Data File : BP021325.D
 Acq On : 02 Aug 2024 17:50
 Operator : CG/JU
 Sample : P3265-08
 Misc :
 ALS Vial : 7 Sample Multiplier: 1

Instrument :
 BNA_P
 ClientSampleId :
 A4D41

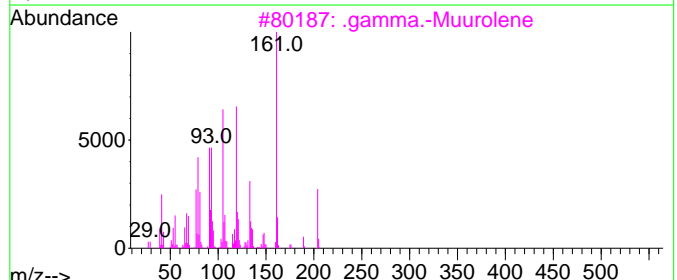
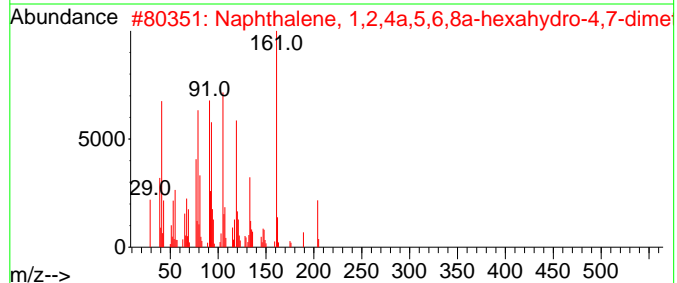
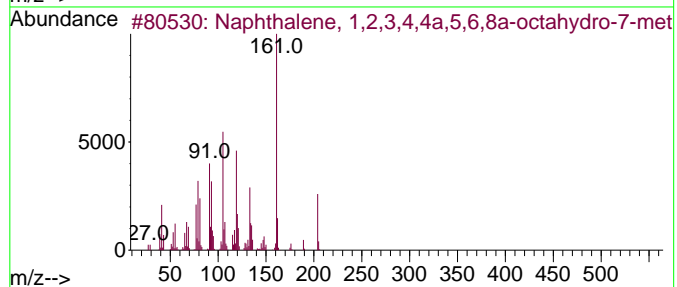
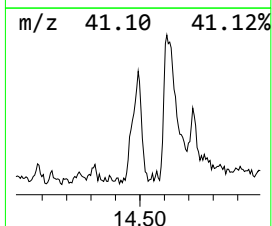
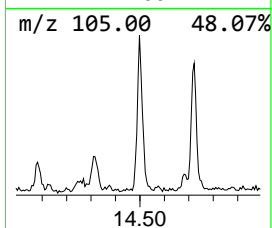
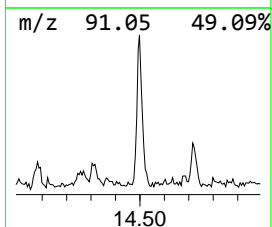
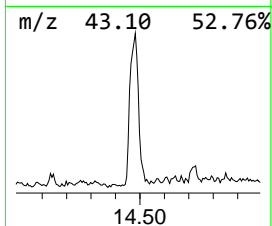
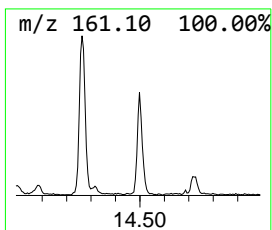
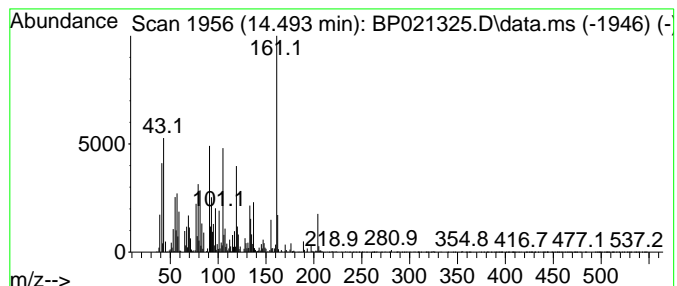
Quant Method : Z:\svoasrv\HPCHEM1\BNA_P\Methods\SFAM-EPA-BP071024.MA.M
 Quant Title : SVOA CALIBRATION

TIC Library : C:\DATABASE\NIST20.L
 TIC Integration Parameters: LSCINT.P

 Peak Number 1 Naphthalene, 1,2,3,4,4a,5,6... Concentration Rank 4

R.T.	EstConc	Area	Relative to ISTD	R.T.
14.493	3.69 ng/ul	400340	Acenaphthene-d10	14.263

Hit#	of	5	Tentative ID	MW	MolForm	CAS#	Qual
1			Naphthalene, 1,2,3,4,4a,5,6,8a-o...	204	C15H24	039029-41-9	96
2			Naphthalene, 1,2,4a,5,6,8a-hexah...	204	C15H24	000483-75-0	95
3			.gamma.-Muurolene	204	C15H24	030021-74-0	95
4			.gamma.-Muurolene	204	C15H24	030021-74-0	94
5			Bicyclo[4.4.0]dec-1-ene, 2-isopr...	204	C15H24	150320-52-8	91



Data Path : Z:\svoasrv\HPCHEM1\BNA_P\Data\BP080124\
 Data File : BP021325.D
 Acq On : 02 Aug 2024 17:50
 Operator : CG/JU
 Sample : P3265-08
 Misc :
 ALS Vial : 7 Sample Multiplier: 1

Instrument :
 BNA_P
 ClientSampleId :
 A4D41

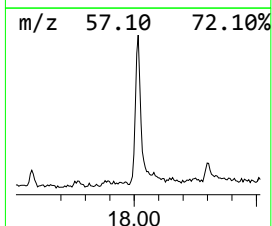
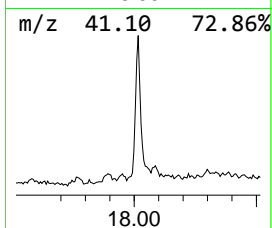
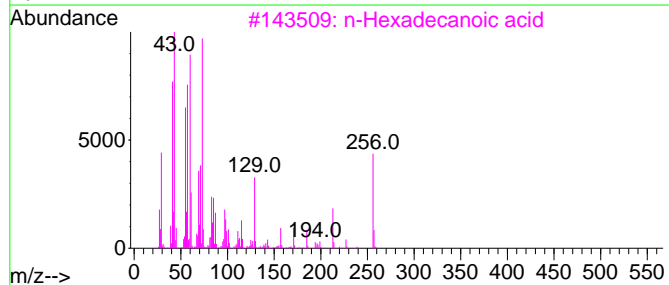
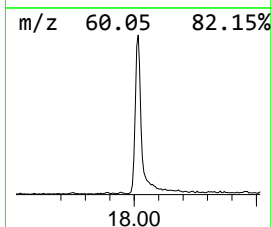
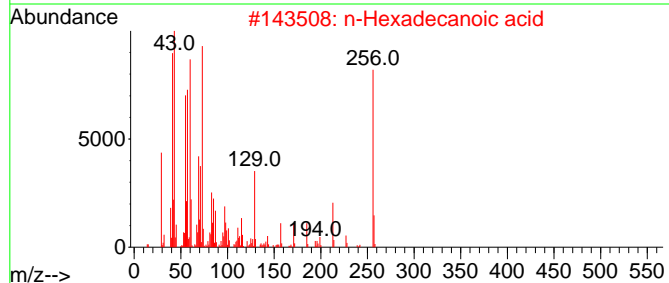
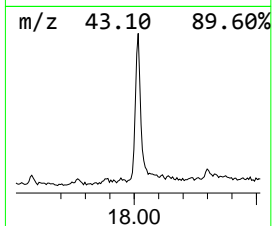
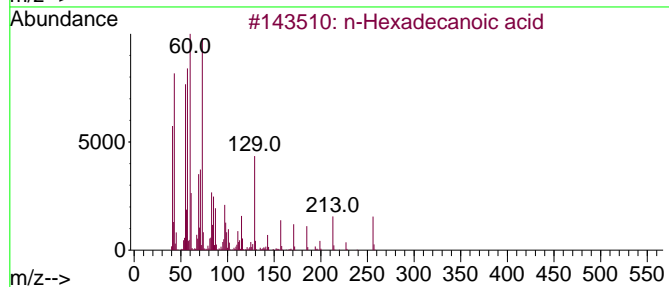
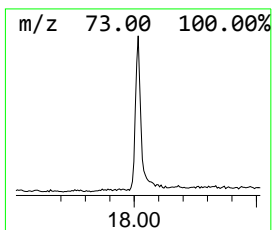
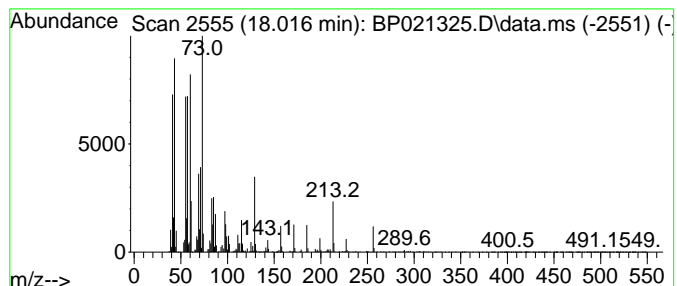
Quant Method : Z:\svoasrv\HPCHEM1\BNA_P\Methods\SFAM-EPA-BP071024.MA.M
 Quant Title : SVOA CALIBRATION

TIC Library : C:\DATABASE\NIST20.L
 TIC Integration Parameters: LSCINT.P

 Peak Number 2 n-Hexadecanoic acid Concentration Rank 1

R.T.	EstConc	Area	Relative to ISTD	R.T.
18.016	7.16 ng/ul	970378	Phenanthrene-d10	17.087

Hit#	of	5	Tentative ID	MW	MolForm	CAS#	Qual
1			n-Hexadecanoic acid	256	C16H32O2	000057-10-3	99
2			n-Hexadecanoic acid	256	C16H32O2	000057-10-3	98
3			n-Hexadecanoic acid	256	C16H32O2	000057-10-3	98
4			Tridecanoic acid	214	C13H26O2	000638-53-9	95
5			Tridecanoic acid	214	C13H26O2	000638-53-9	94



Data Path : Z:\svoasrv\HPCHEM1\BNA_P\Data\BP080124\
 Data File : BP021325.D
 Acq On : 02 Aug 2024 17:50
 Operator : CG/JU
 Sample : P3265-08
 Misc :
 ALS Vial : 7 Sample Multiplier: 1

Instrument :
 BNA_P
 ClientSampleId :
 A4D41

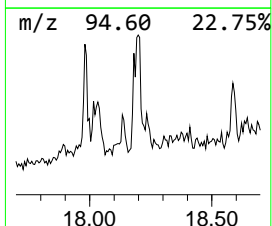
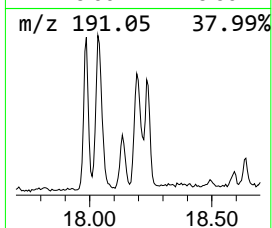
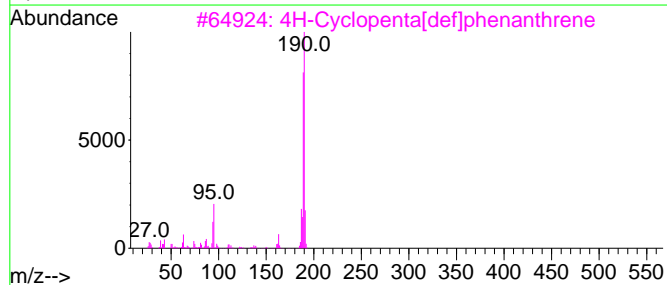
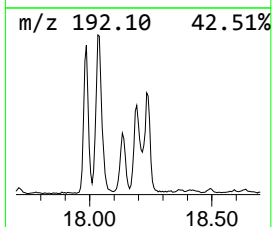
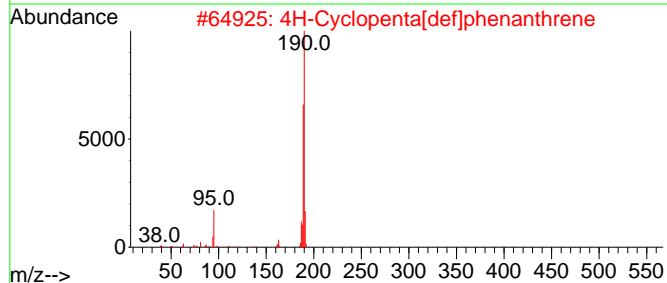
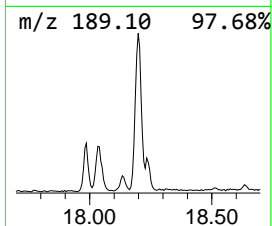
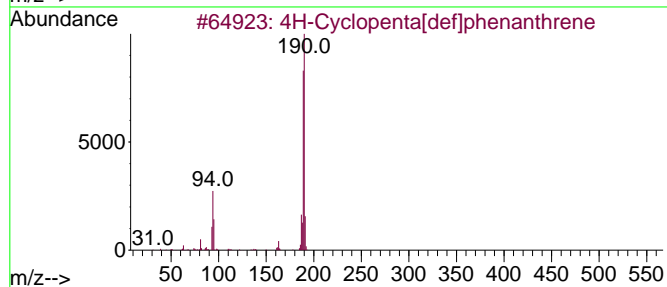
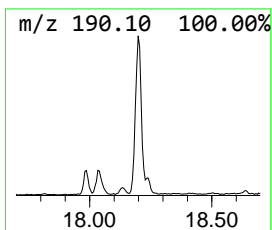
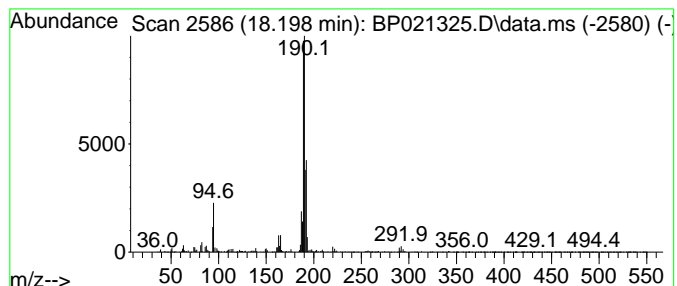
Quant Method : Z:\svoasrv\HPCHEM1\BNA_P\Methods\SFAM-EPA-BP071024.MA.M
 Quant Title : SVOA CALIBRATION

TIC Library : C:\DATABASE\NIST20.L
 TIC Integration Parameters: LSCINT.P

 Peak Number 3 4H-Cyclopenta[def]phenanthrene Concentration Rank 5

R.T.	EstConc	Area	Relative to ISTD	R.T.
18.198	3.63 ng/ul	492379	Phenanthrene-d10	17.087

Hit#	of	Tentative ID	MW	MolForm	CAS#	Qual
1	5	4H-Cyclopenta[def]phenanthrene	190	C15H10	000203-64-5	93
2		4H-Cyclopenta[def]phenanthrene	190	C15H10	000203-64-5	64
3		4H-Cyclopenta[def]phenanthrene	190	C15H10	000203-64-5	62
4		Thiophene-3-carboxaldehyde, 5-ch...	190	C5H4BClO3S	036155-87-0	53
5		6H-Cyclobuta[jk]phenanthrene	190	C15H10	083469-43-6	45



Data Path : Z:\svoasrv\HPCHEM1\BNA_P\Data\BP080124\
 Data File : BP021325.D
 Acq On : 02 Aug 2024 17:50
 Operator : CG/JU
 Sample : P3265-08
 Misc :
 ALS Vial : 7 Sample Multiplier: 1

Instrument :
 BNA_P
 ClientSampleId :
 A4D41

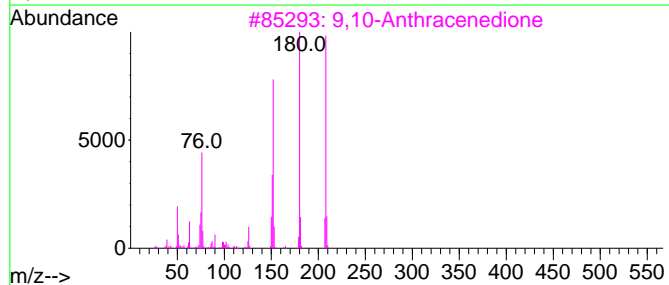
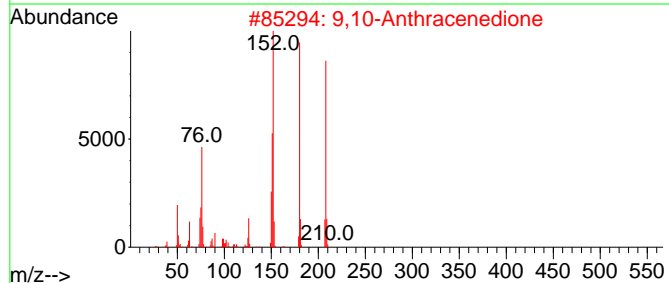
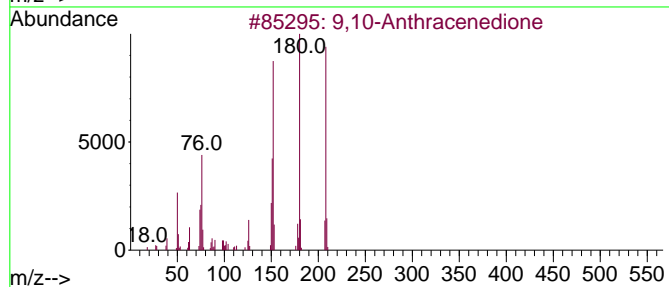
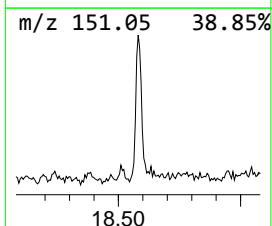
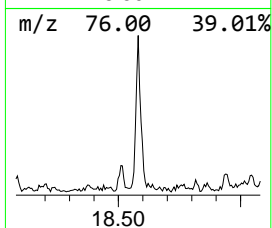
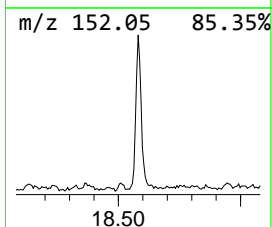
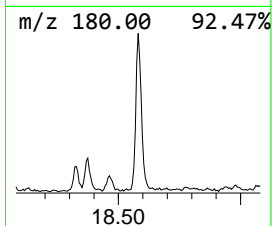
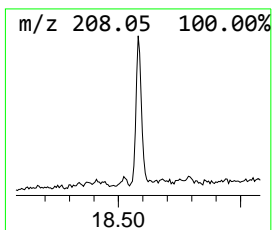
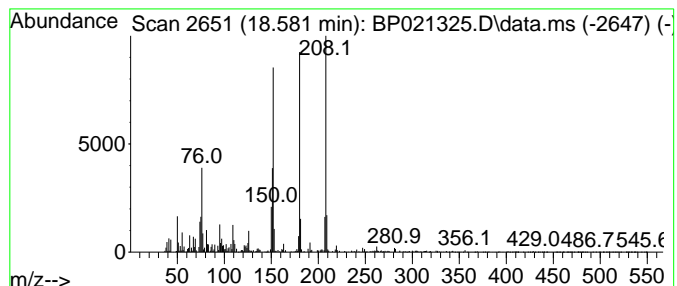
Quant Method : Z:\svoasrv\HPCHEM1\BNA_P\Methods\SFAM-EPA-BP071024.MA.M
 Quant Title : SVOA CALIBRATION

TIC Library : C:\DATABASE\NIST20.L
 TIC Integration Parameters: LSCINT.P

 Peak Number 4 9,10-Anthracenedione Concentration Rank 6

R.T.	EstConc	Area	Relative to ISTD	R.T.
18.581	2.63 ng/ul	356454	Phenanthrene-d10	17.087

Hit#	of	5	Tentative ID	MW	MolForm	CAS#	Qual
1			9,10-Anthracenedione	208	C14H8O2	000084-65-1	99
2			9,10-Anthracenedione	208	C14H8O2	000084-65-1	98
3			9,10-Anthracenedione	208	C14H8O2	000084-65-1	95
4			9,10-Anthracenedione	208	C14H8O2	000084-65-1	95
5			9H-Fluoren-9-one	180	C13H8O	000486-25-9	70



Data Path : Z:\svoasrv\HPCHEM1\BNA_P\Data\BP080124\
 Data File : BP021325.D
 Acq On : 02 Aug 2024 17:50
 Operator : CG/JU
 Sample : P3265-08
 Misc :
 ALS Vial : 7 Sample Multiplier: 1

Instrument :
 BNA_P
 ClientSampleId :
 A4D41

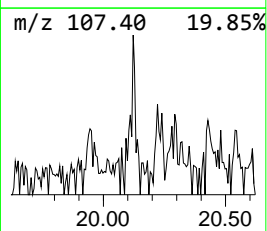
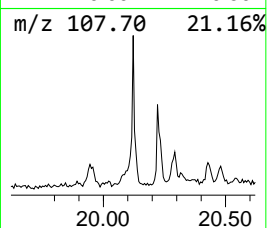
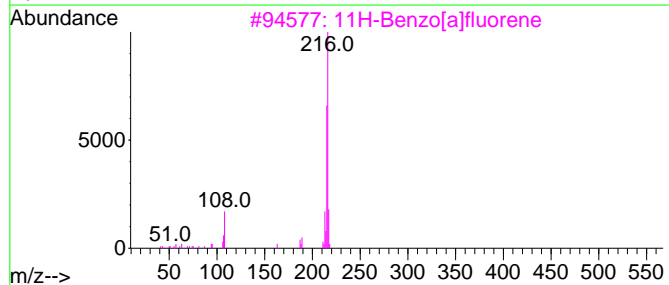
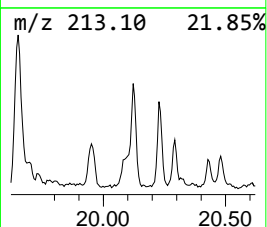
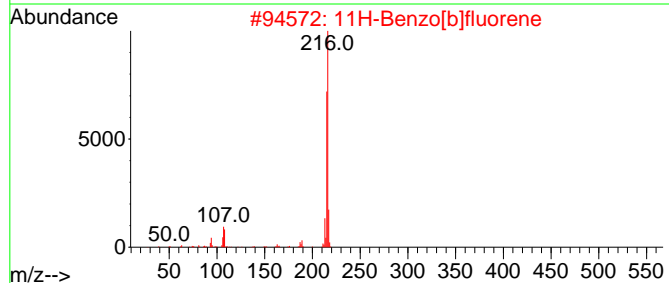
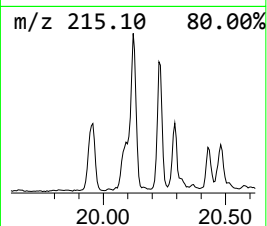
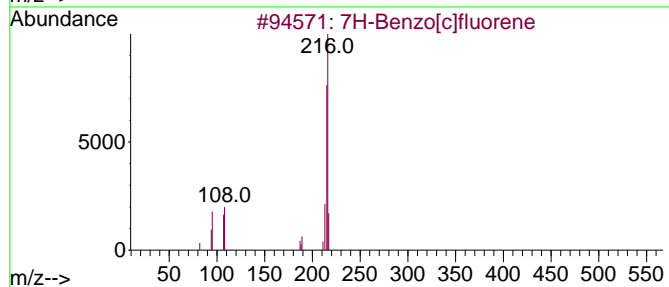
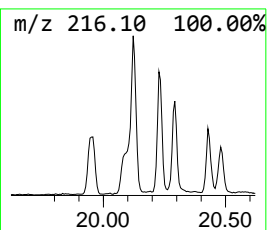
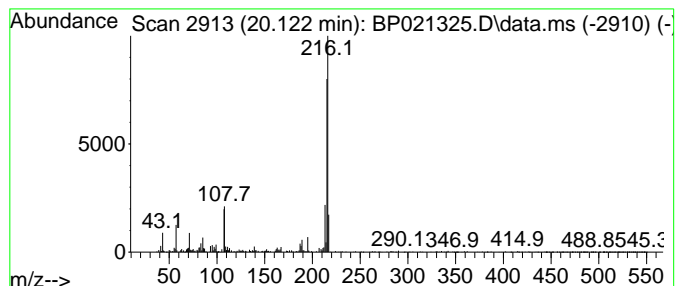
Quant Method : Z:\svoasrv\HPCHEM1\BNA_P\Methods\SFAM-EPA-BP071024.MA.M
 Quant Title : SVOA CALIBRATION

TIC Library : C:\DATABASE\NIST20.L
 TIC Integration Parameters: LSCINT.P

 Peak Number 5 7H-Benzo[c]fluorene Concentration Rank 7

R.T.	EstConc	Area	Relative to ISTD	R.T.
20.122	2.11 ng/ul	580257	Chrysene-d12	21.528

Hit#	of	5	Tentative ID	MW	MolForm	CAS#	Qual
1			7H-Benzo[c]fluorene	216	C17H12	000205-12-9	87
2			11H-Benzo[b]fluorene	216	C17H12	000243-17-4	81
3			11H-Benzo[a]fluorene	216	C17H12	000238-84-6	81
4			Pyrene, 1-methyl-	216	C17H12	002381-21-7	80
5			11H-Benzo[b]fluorene	216	C17H12	000243-17-4	74



Data Path : Z:\svoasrv\HPCHEM1\BNA_P\Data\BP080124\
 Data File : BP021325.D
 Acq On : 02 Aug 2024 17:50
 Operator : CG/JU
 Sample : P3265-08
 Misc :
 ALS Vial : 7 Sample Multiplier: 1

Instrument :
 BNA_P
 ClientSampleId :
 A4D41

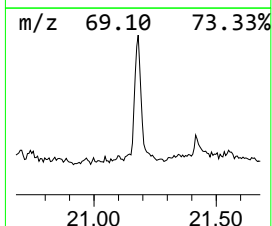
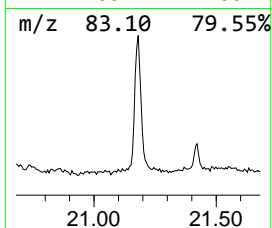
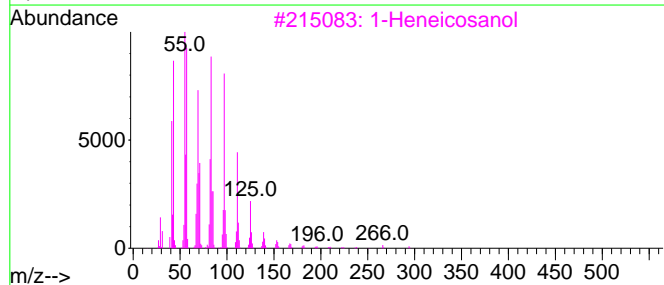
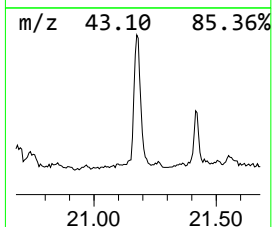
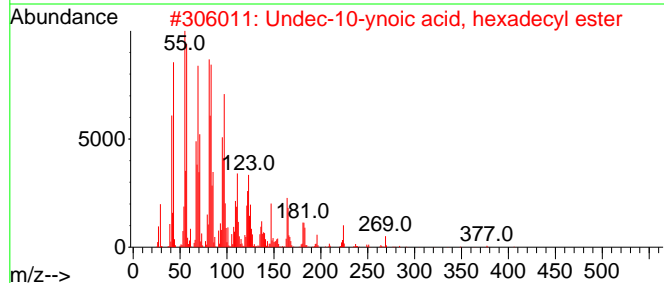
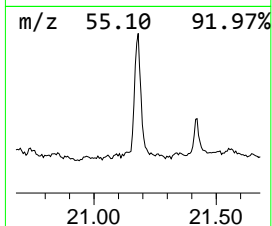
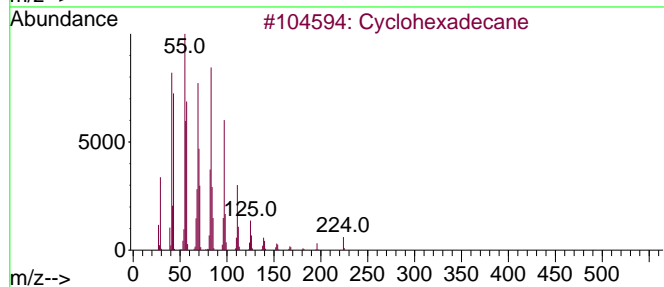
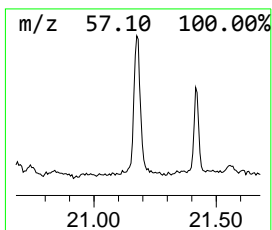
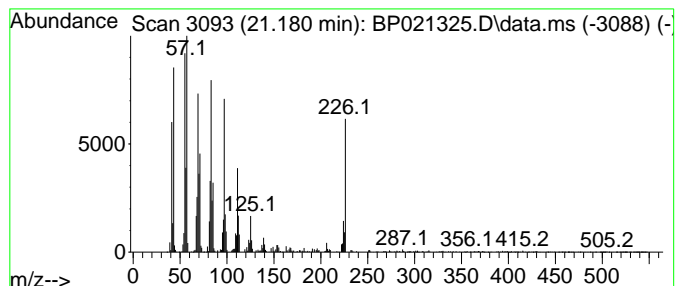
Quant Method : Z:\svoasrv\HPCHEM1\BNA_P\Methods\SFAM-EPA-BP071024.MA.M
 Quant Title : SVOA CALIBRATION

TIC Library : C:\DATABASE\NIST20.L
 TIC Integration Parameters: LSCINT.P

 Peak Number 6 (DEL) Alkane: Cyclic21.180 Concentration Rank 2

R.T.	EstConc	Area	Relative to ISTD	R.T.
21.180	6.75 ng/ul	1861620	Chrysene-d12	21.528

Hit#	of 5	Tentative ID	MW	MolForm	CAS#	Qual
1		Cyclohexadecane	224	C16H32	000295-65-8	94
2		Undec-10-ynoic acid, hexadecyl e...	406	C27H50O2	1000406-16-9	93
3		1-Heneicosanol	312	C21H44O	015594-90-8	93
4		Cyclooctacosane	392	C28H56	000297-24-5	92
5		1-Hexacosene	364	C26H52	018835-33-1	91



Data Path : Z:\svoasrv\HPCHEM1\BNA_P\Data\BP080124\
 Data File : BP021325.D
 Acq On : 02 Aug 2024 17:50
 Operator : CG/JU
 Sample : P3265-08
 Misc :
 ALS Vial : 7 Sample Multiplier: 1

Instrument :
 BNA_P
 ClientSampleId :
 A4D41

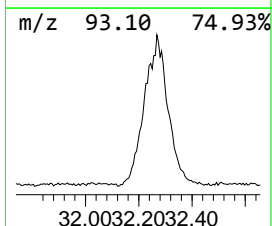
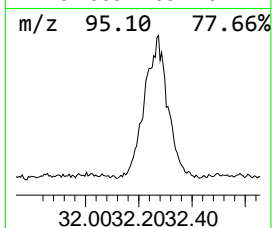
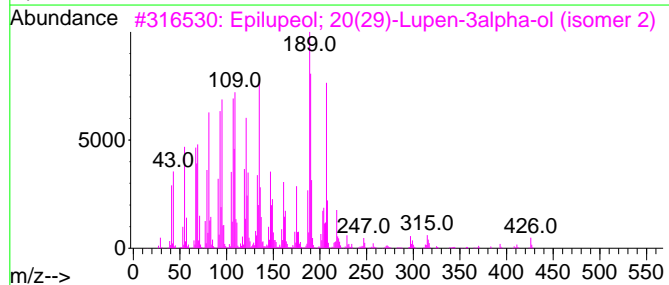
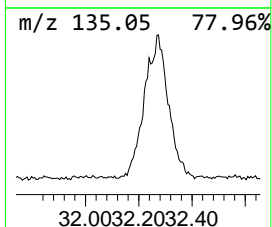
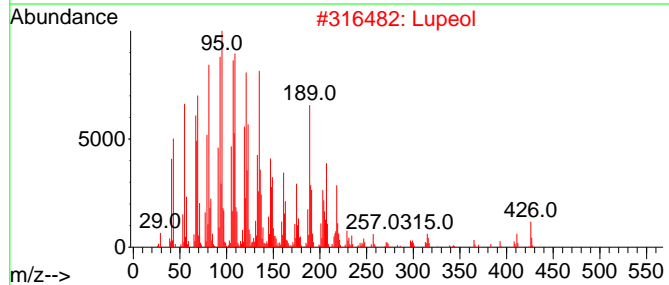
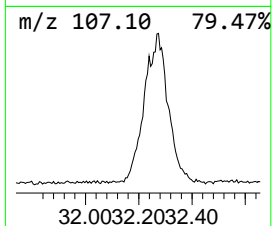
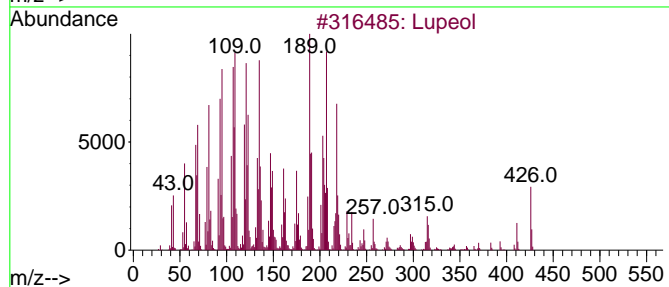
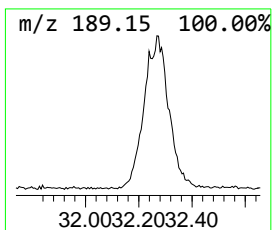
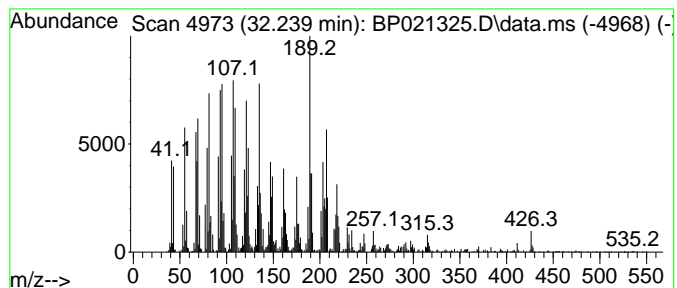
Quant Method : Z:\svoasrv\HPCHEM1\BNA_P\Methods\SFAM-EPA-BP071024.MA.M
 Quant Title : SVOA CALIBRATION

TIC Library : C:\DATABASE\NIST20.L
 TIC Integration Parameters: LSCINT.P

 Peak Number 7 Lupeol Concentration Rank 3

R.T.	EstConc	Area	Relative to ISTD	R.T.
32.239	6.42 ng/ul	1106800	Perylene-d12	24.816

Hit#	of	5	Tentative ID	MW	MolForm	CAS#	Qual
1			Lupeol	426	C30H50O	000545-47-1	96
2			Lupeol	426	C30H50O	000545-47-1	93
3			Epilupeol; 20(29)-Lupen-3alpha-o...	426	C30H50O	1000513-01-4	74
4			Hop-22(29)-en-3.beta.-ol	426	C30H50O	058801-23-3	53
5			Taraxasterol	426	C30H50O	001059-14-9	50



Data Path : Z:\svoasrv\HPCHEM1\BNA_P\Data\BP080124\
 Data File : BP021325.D
 Acq On : 02 Aug 2024 17:50
 Operator : CG/JU
 Sample : P3265-08
 Misc :
 ALS Vial : 7 Sample Multiplier: 1

Instrument :
 BNA_P
 ClientSampleId :
 A4D41

Quant Method : Z:\svoasrv\HPCHEM1\BNA_P\Methods\SFAM-EPA-BP071024.MA.M
 Quant Title : SVOA CALIBRATION

TIC Library : C:\DATABASE\NIST20.L
 TIC Integration Parameters: LSCINT.P

TIC Top Hit name	RT	EstConc	Units	Response	--Internal Standard--			
					#	RT	Resp	Conc
Naphthalene, 1,...	14.493	3.7	ng/ul	400340	3	14.263	2170450	20.0
n-Hexadecanoic ...	18.016	7.2	ng/ul	970378	4	17.087	2712270	20.0
4H-Cyclopenta[d...]	18.198	3.6	ng/ul	492379	4	17.087	2712270	20.0
9,10-Anthracene...	18.581	2.6	ng/ul	356454	4	17.087	2712270	20.0
7H-Benzo[c]fluo...	20.122	2.1	ng/ul	580257	5	21.528	5512520	20.0
(DEL) Alkane: C...	21.180	6.8	ng/ul	1861620	5	21.528	5512520	20.0
Lupeol	32.239	6.4	ng/ul	1106800	6	24.816	3448960	20.0