

Data Path : Z:\svoasrv\HPCHEM1\BNA\_P\Data\BP102022\  
 Data File : BP012222.D  
 Acq On : 20 Oct 2022 19:58  
 Operator : CG/JU  
 Sample : N4755-05  
 Misc :  
 ALS Vial : 16 Sample Multiplier: 1

Instrument :  
 BNA\_P  
 ClientSampleId :

Quant Time: Oct 20 23:25:46 2022  
 Quant Method : Z:\svoasrv\HPCHEM1\BNA\_P\Methods\SFAM-EPA-BP101922.M  
 Quant Title : SVOA CALIBRATION  
 QLast Update : Thu Oct 20 00:51:41 2022  
 Response via : Initial Calibration

Compound	R.T.	QIon	Response	Conc	Units	Dev(Min)
Internal Standards						
1) 1,4-Dichlorobenzene-d4	7.822	152	314462	20.000	ng/ul	0.00
20) Naphthalene-d8	10.628	136	1294128	20.000	ng/ul	0.00
38) Acenaphthene-d10	14.475	164	762539	20.000	ng/ul	0.00
64) Phenanthrene-d10	17.239	188	1563420	20.000	ng/ul	0.00
79) Chrysene-d12	21.339	240	1488341	20.000	ng/ul	0.00
88) Perylene-d12	23.751	264	1835929	20.000	ng/ul	0.01
System Monitoring Compounds						
3) 1,4-Dioxane-d8	3.258	96	46196	5.945	ng/uL	0.00
4) Pyridine-d5	3.681	84	354154	15.817	ng/ul	0.00
7) Phenol-d5	6.999	99	882183	32.495	ng/ul	0.00
9) Bis-(2-Chloroethyl)eth...	7.157	67	512951	31.155	ng/ul	0.00
11) 2-Chlorophenol-d4	7.357	132	705270	34.130	ng/ul	0.00
15) 4-Methylphenol-d8	8.540	113	592354	28.074	ng/ul	0.00
21) Nitrobenzene-d5	8.993	128	348974	36.430	ng/ul	0.00
24) 2-Nitrophenol-d4	9.716	143	397642	38.475	ng/ul	0.00
28) 2,4-Dichlorophenol-d3	10.251	165	710559	36.653	ng/ul	0.00
31) 4-Chloroaniline-d4	10.781	131	717524	26.050	ng/ul	0.00
46) Dimethylphthalate-d6	13.892	166	1930208	36.389	ng/ul	0.00
49) Acenaphthylene-d8	14.169	160	2222257	36.703	ng/ul	0.00
54) 4-Nitrophenol-d4	14.692	143	366395	36.870	ng/ul	0.00
60) Fluorene-d10	15.475	176	1667356	36.538	ng/ul	0.00
65) 4,6-Dinitro-2-methylph...	15.604	200	268109	30.145	ng/ul	0.00
73) Anthracene-d10	17.339	188	2515376	36.705	ng/ul	0.00
81) Pyrene-d10	19.580	212	2880301	33.990	ng/ul	0.00
92) Benzo(a)pyrene-d12	23.598	264	3309389	35.945	ng/ul	0.01
Target Compounds						
2) 1,4-Dioxane	3.293	88	100781	12.052	ng/uL	99
5) Pyridine	3.705	79	348258	15.824	ng/ul	95
6) Benzaldehyde	6.969	77	490651	38.452	ng/ul	96
8) Phenol	7.022	94	934531	32.904	ng/ul	97
10) Bis(2-Chloroethyl)ether	7.252	93	700764	30.569	ng/ul	98
12) 2-Chlorophenol	7.387	128	720966	32.336	ng/ul	99
13) 2-Methylphenol	8.275	108	583975	27.310	ng/ul	99
14) 2,2'-oxybis(1-Chloropr...	8.357	45	861126	28.248	ng/ul	99
16) Acetophenone	8.657	105	1091046	33.475	ng/ul	98
17) N-Nitroso-di-n-propyla...	8.640	70	500539	30.339	ng/ul	98
18) 4-Methylphenol	8.604	108	684400	29.390	ng/ul	97
19) Hexachloroethane	8.899	117	296157	33.627	ng/ul	100
22) Nitrobenzene	9.034	77	783156	33.555	ng/ul	98
23) Isophorone	9.563	82	1467048	32.749	ng/ul	100
25) 2-Nitrophenol	9.746	139	416231	35.447	ng/ul	98
26) 2,4-Dimethylphenol	9.810	107	253816	10.966	ng/ul	99
27) Bis(2-Chloroethoxy)met...	10.046	93	945954	32.257	ng/ul	99
29) 2,4-Dichlorophenol	10.281	162	700107	34.898	ng/ul	98
30) Naphthalene	10.681	128	2847593	41.142	ng/ul	100
32) 4-Chloroaniline	10.804	127	748804	26.339	ng/ul	99
33) Hexachlorobutadiene	10.957	225	444669	35.241	ng/ul	99
34) Caprolactam	11.604	113	217545	34.932	ng/ul	96
35) 4-Chloro-3-methylphenol	11.928	107	728514	33.635	ng/ul	100
36) 2-Methylnaphthalene	12.293	142	1784260	37.889	ng/ul	100

Data Path : Z:\svoasrv\HPCHEM1\BNA\_P\Data\BP102022\  
 Data File : BP012222.D  
 Acq On : 20 Oct 2022 19:58  
 Operator : CG/JU  
 Sample : N4755-05  
 Misc :  
 ALS Vial : 16 Sample Multiplier: 1

Instrument :  
 BNA\_P  
 ClientSampleId :

Quant Time: Oct 20 23:25:46 2022  
 Quant Method : Z:\svoasrv\HPCHEM1\BNA\_P\Methods\SFAM-EPA-BP101922.M  
 Quant Title : SVOA CALIBRATION  
 QLast Update : Thu Oct 20 00:51:41 2022  
 Response via : Initial Calibration

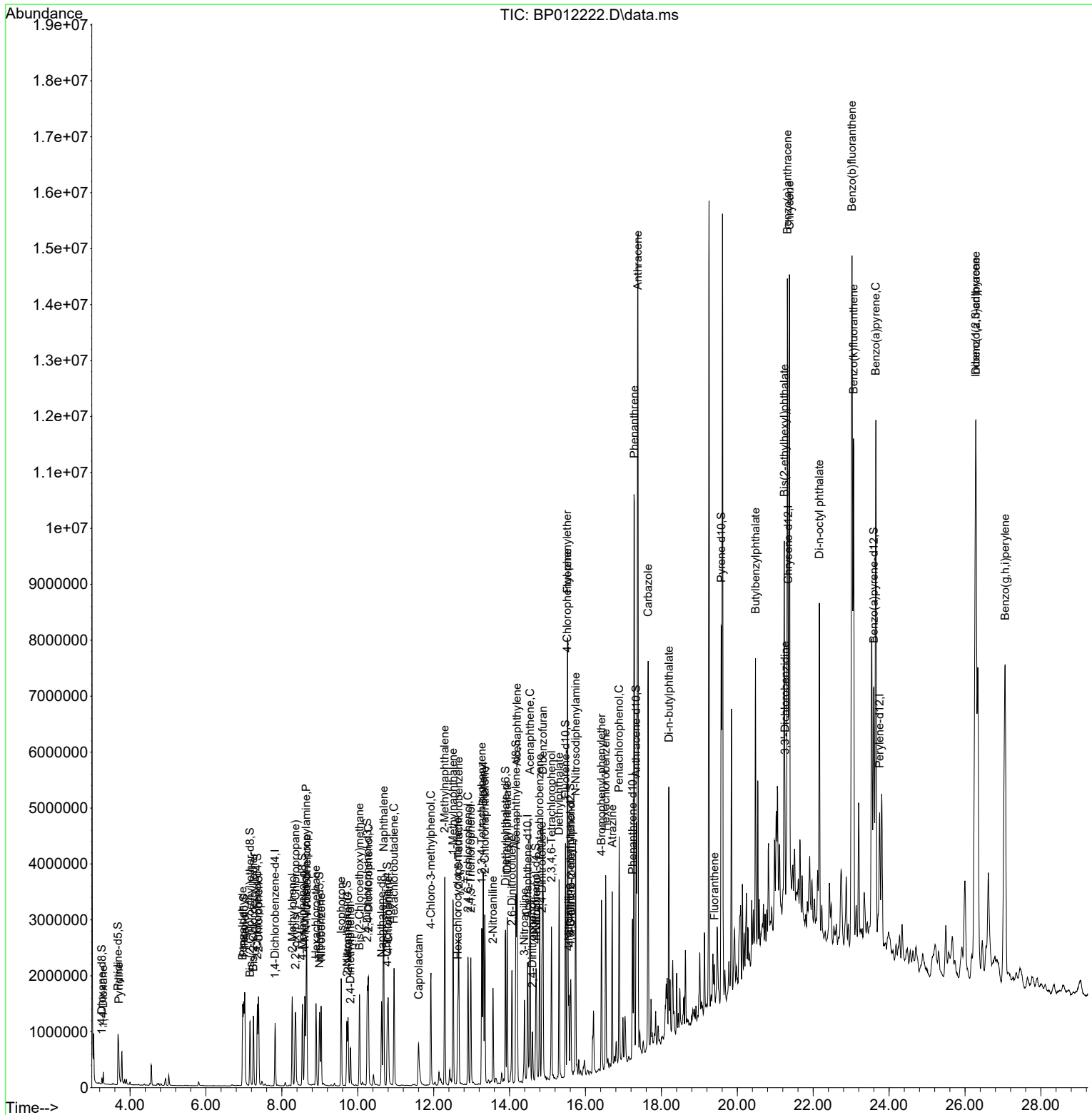
Compound	R.T.	QIon	Response	Conc	Units	Dev(Min)
37) 1-Methylnaphthalene	12.510	142	1597814	33.980	ng/ul	100
39) 1,2,4,5-Tetrachloroben...	12.663	216	838436	36.186	ng/ul	99
40) Hexachlorocyclopentadiene	12.634	237	377678	30.660	ng/ul	98
41) 2,4,6-Trichlorophenol	12.904	196	554740	37.098	ng/ul	99
42) 2,4,5-Trichlorophenol	12.981	196	606592	37.186	ng/ul	98
43) 1,1'-Biphenyl	13.304	154	2077236	36.627	ng/ul	99
44) 2-Chloronaphthalene	13.351	162	1576627	35.064	ng/ul	99
45) 2-Nitroaniline	13.563	65	458111	38.323	ng/ul	98
47) Dimethylphthalate	13.939	163	1929441	34.713	ng/ul	100
48) 2,6-Dinitrotoluene	14.063	165	419330	39.427	ng/ul	99
50) Acenaphthylene	14.198	152	3470765	51.447	ng/ul	100
51) 3-Nitroaniline	14.392	138	392149	34.931	ng/ul	95
52) Acenaphthene	14.539	153	1886777	39.547	ng/ul	99
53) 2,4-Dinitrophenol	14.604	184	198689	31.112	ng/ul	93
55) 4-Nitrophenol	14.710	109	288039	39.014	ng/ul	94
56) Dibenzofuran	14.875	168	2985009	45.703	ng/ul	97
57) 2,4-Dinitrotoluene	14.851	165	596066	39.270	ng/ul	97
58) 2,3,4,6-Tetrachlorophenol	15.104	232	535351	38.820	ng/ul	99
59) Diethylphthalate	15.304	149	1967704	36.019	ng/ul	99
61) Fluorene	15.528	166	2482027	47.966	ng/ul	100
62) 4-Chlorophenyl-phenyle...	15.522	204	881545	34.185	ng/ul	97
63) 4-Nitroaniline	15.563	138	430215	40.823	ng/ul	97
66) 4,6-Dinitro-2-methylph...	15.616	198	285028	30.528	ng/ul	95
67) N-Nitrosodiphenylamine	15.739	169	1595822	35.168	ng/ul	100
68) 4-Bromophenyl-phenylether	16.422	248	611938	36.968	ng/ul	98
69) Hexachlorobenzene	16.533	284	730511	37.438	ng/ul	98
70) Atrazine	16.704	200	575326	36.319	ng/ul	100
71) Pentachlorophenol	16.886	266	642404	54.543	ng/ul	98
72) Phenanthrene	17.286	178	6446166	76.715	ng/ul	100
74) Anthracene	17.380	178	10152637	122.117	ng/ul	98
75) 1,2,3,4-Tetrachloroben...	13.269	216	860501	36.885	ng/uL	98
76) Pentachlorobenzene	14.792	250	830108	33.780	ng/uL	99
77) Carbazole	17.651	167	4606404	62.780	ng/ul	99
78) Di-n-butylphthalate	18.198	149	3399954	38.627	ng/ul	100
80) Fluoranthene	19.398	202	285360	2.725	ng/ul	97
83) Butylbenzylphthalate	20.480	149	1603787	38.490	ng/ul	96
84) 3,3'-Dichlorobenzidine	21.257	252	693400	21.391	ng/ul	99
85) Benzo(a)anthracene	21.321	228	6344670	65.408	ng/ul	96
86) Bis(2-ethylhexyl)phtha...	21.239	149	2319992	39.741	ng/ul#	98
87) Chrysene	21.374	228	7222569	79.791	ng/ul	97
89) Di-n-octyl phthalate	22.163	149	4134810	32.562	ng/ul	100
90) Benzo(b)fluoranthene	23.021	252	11559277	94.474	ng/ul	96
91) Benzo(k)fluoranthene	23.063	252	6485293	53.773	ng/ul	97
93) Benzo(a)pyrene	23.651	252	7257537	69.365	ng/ul	95
94) Indeno(1,2,3-cd)pyrene	26.280	276	10230688	84.467	ng/ul	95
95) Dibenzo(a,h)anthracene	26.286	278	5299486	48.532	ng/ul	98
96) Benzo(g,h,i)perylene	27.056	276	8691193	76.423	ng/ul	96

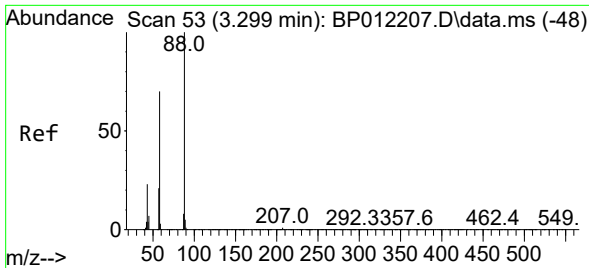
(#) = qualifier out of range (m) = manual integration (+) = signals summed

Data Path : Z:\svoasrv\HPCHEM1\BNA\_P\Data\BP102022\  
 Data File : BP012222.D  
 Acq On : 20 Oct 2022 19:58  
 Operator : CG/JU  
 Sample : N4755-05  
 Misc :  
 ALS Vial : 16 Sample Multiplier: 1

Instrument :  
 BNA\_P  
 ClientSampleId :

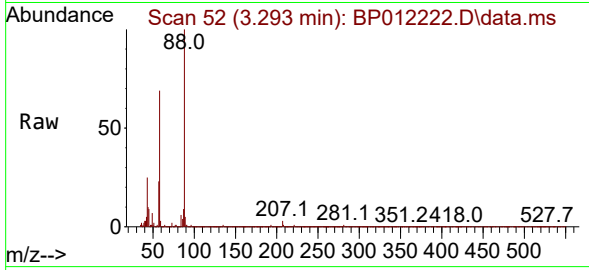
Quant Time: Oct 20 23:25:46 2022  
 Quant Method : Z:\svoasrv\HPCHEM1\BNA\_P\Methods\SFAM-EPA-BP101922.M  
 Quant Title : SVOA CALIBRATION  
 QLast Update : Thu Oct 20 00:51:41 2022  
 Response via : Initial Calibration



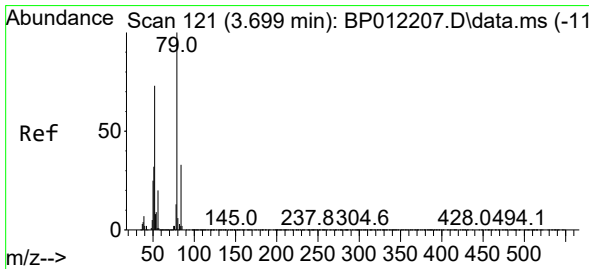
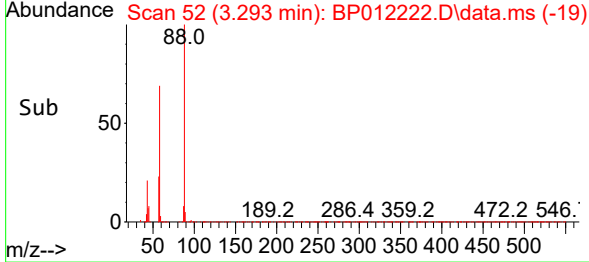
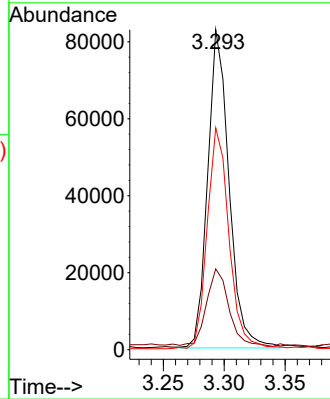


#2  
 1,4-Dioxane  
 Concen: 12.052 ng/uL  
 RT: 3.293 min Scan# 51  
 Delta R.T. -0.006 min  
 Lab File: BP012222.D  
 Acq: 20 Oct 2022 19:58

Instrument :  
 BNA\_P  
 ClientSampleId :

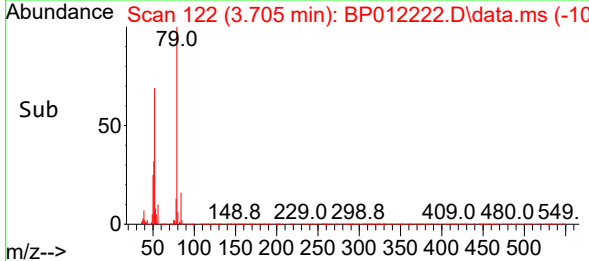
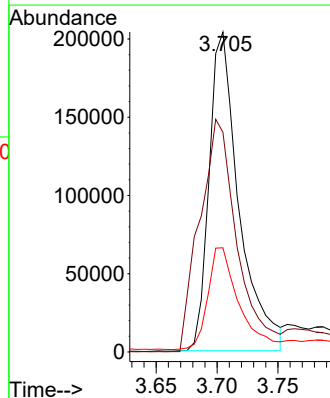
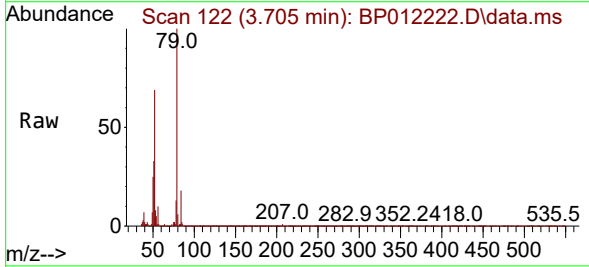


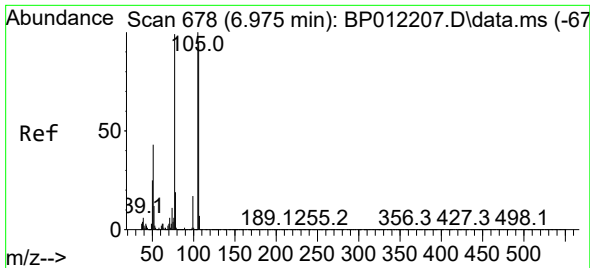
Tgt Ion: 88 Resp: 100781  
 Ion Ratio Lower Upper  
 88 100  
 43 25.3 20.6 30.8  
 58 69.3 56.1 84.1



#5  
 Pyridine  
 Concen: 15.824 ng/uL  
 RT: 3.705 min Scan# 122  
 Delta R.T. 0.006 min  
 Lab File: BP012222.D  
 Acq: 20 Oct 2022 19:58

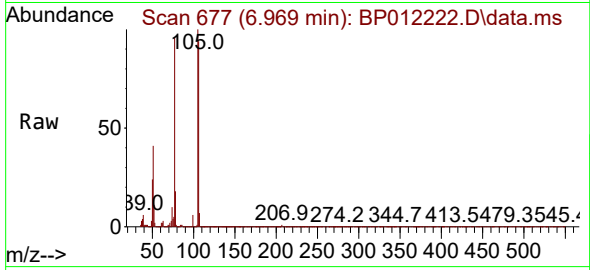
Tgt Ion: 79 Resp: 348258  
 Ion Ratio Lower Upper  
 79 100  
 52 68.7 59.4 89.2  
 51 32.6 26.5 39.7





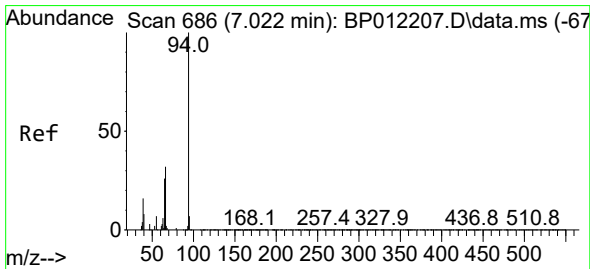
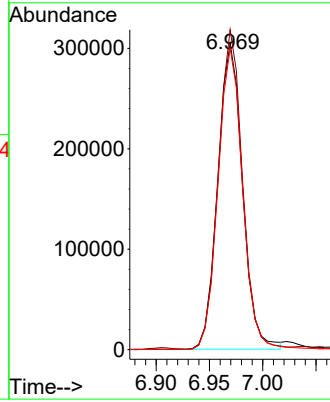
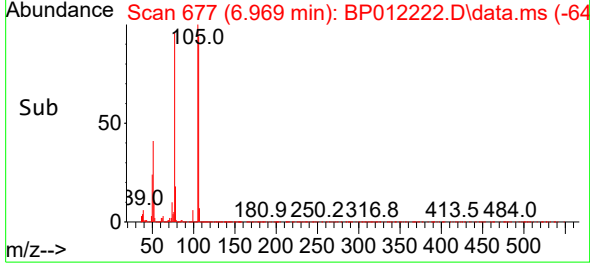
#6  
Benzaldehyde  
Concen: 38.452 ng/u1  
RT: 6.969 min Scan# 61  
Delta R.T. 0.000 min  
Lab File: BP012222.D  
Acq: 20 Oct 2022 19:58

Instrument :  
BNA\_P  
ClientSampleId :

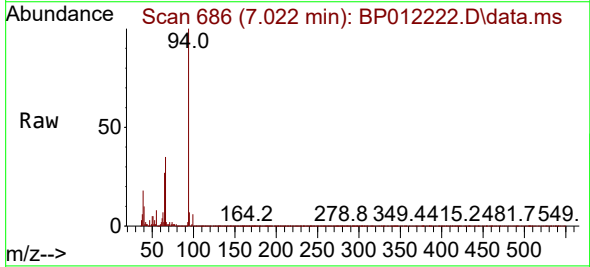


Tgt Ion: 77 Resp: 490651

Ion	Ratio	Lower	Upper
77	100		
105	104.5	79.0	118.6
106	98.4	76.4	114.6

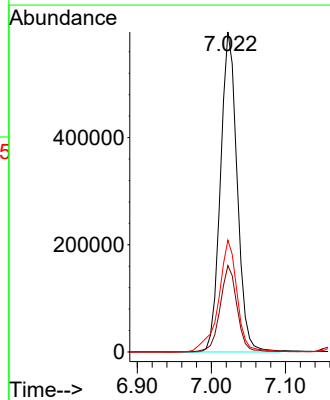
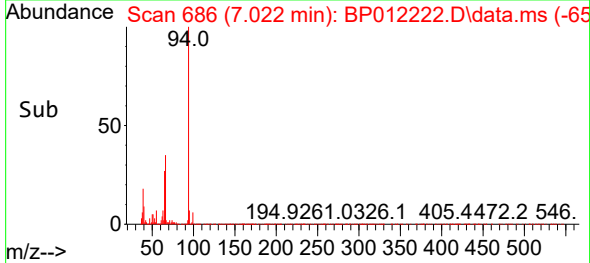


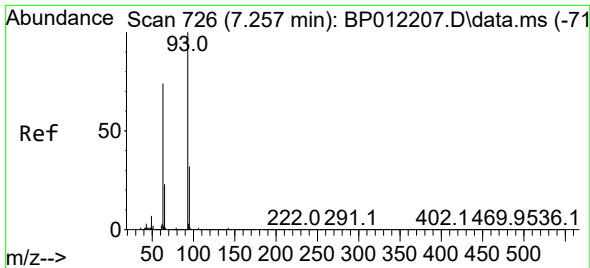
#8  
Phenol  
Concen: 32.904 ng/u1  
RT: 7.022 min Scan# 686  
Delta R.T. 0.000 min  
Lab File: BP012222.D  
Acq: 20 Oct 2022 19:58



Tgt Ion: 94 Resp: 934531

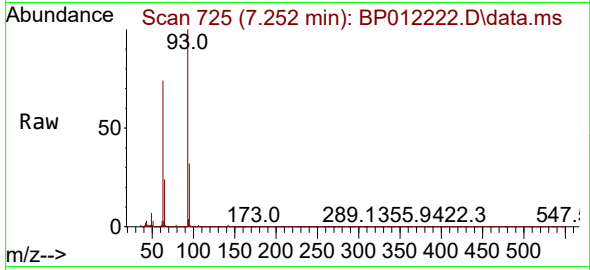
Ion	Ratio	Lower	Upper
94	100		
65	27.0	20.6	31.0
66	35.0	26.2	39.4





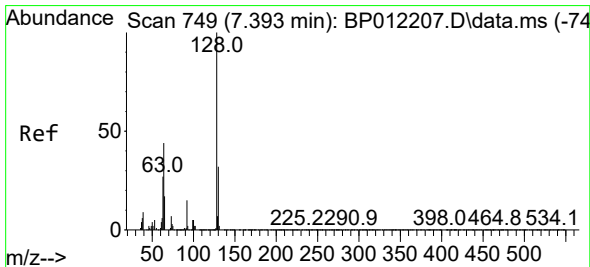
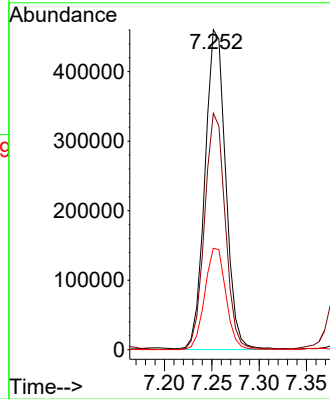
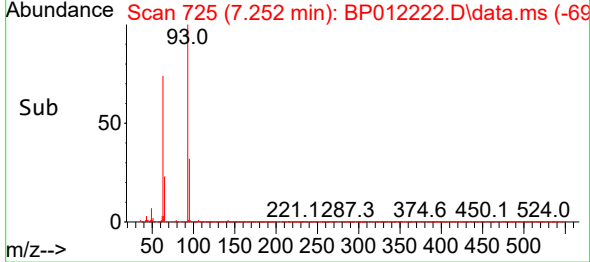
#10  
 Bis(2-Chloroethyl)ether  
 Concen: 30.569 ng/ul  
 RT: 7.252 min Scan# 71  
 Delta R.T. -0.006 min  
 Lab File: BP012222.D  
 Acq: 20 Oct 2022 19:58

Instrument :  
 BNA\_P  
 ClientSampleId :

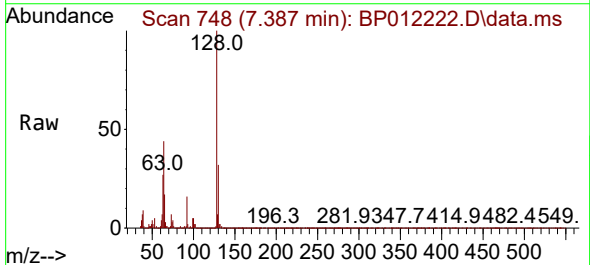


Tgt Ion: 93 Resp: 700764

Ion	Ratio	Lower	Upper
93	100		
63	73.8	60.2	90.2
95	31.7	26.1	39.1

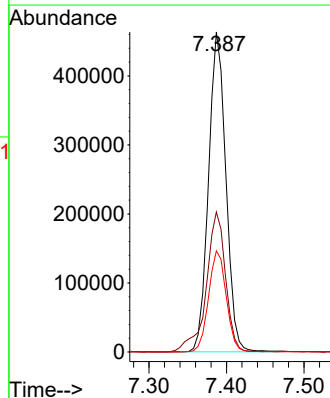
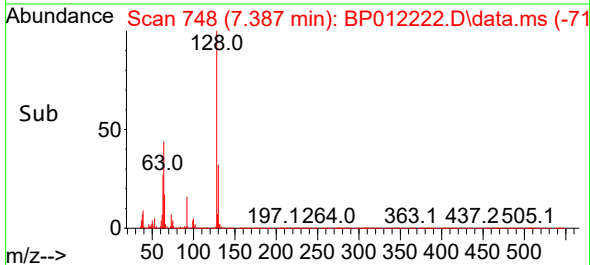


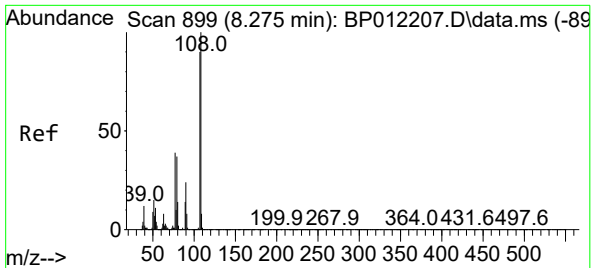
#12  
 2-Chlorophenol  
 Concen: 32.336 ng/ul  
 RT: 7.387 min Scan# 748  
 Delta R.T. -0.006 min  
 Lab File: BP012222.D  
 Acq: 20 Oct 2022 19:58



Tgt Ion: 128 Resp: 720966

Ion	Ratio	Lower	Upper
128	100		
64	43.7	35.4	53.2
130	31.6	26.1	39.1

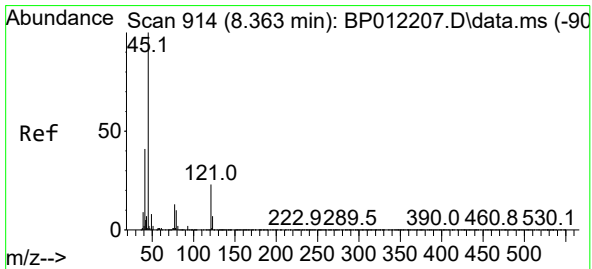
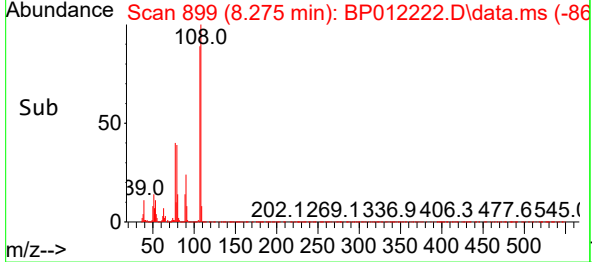
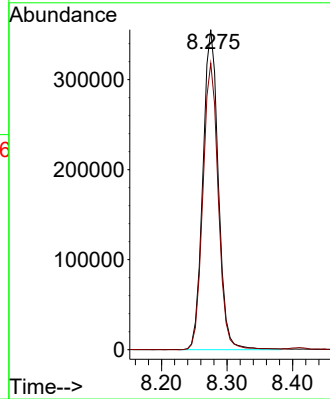
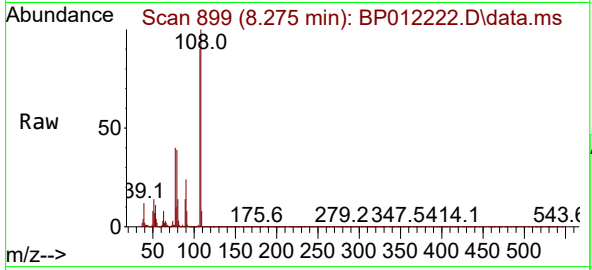




#13  
 2-Methylphenol  
 Concen: 27.310 ng/ul  
 RT: 8.275 min Scan# 899  
 Delta R.T. 0.000 min  
 Lab File: BP012222.D  
 Acq: 20 Oct 2022 19:58

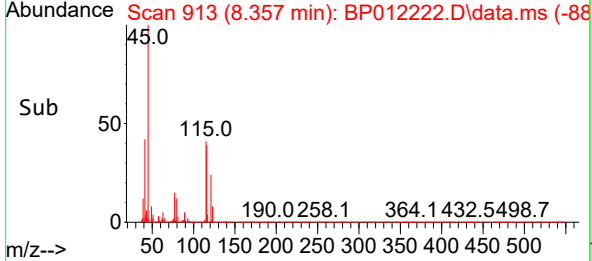
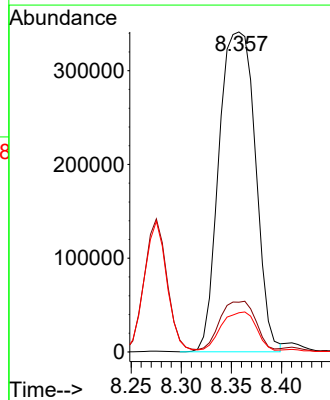
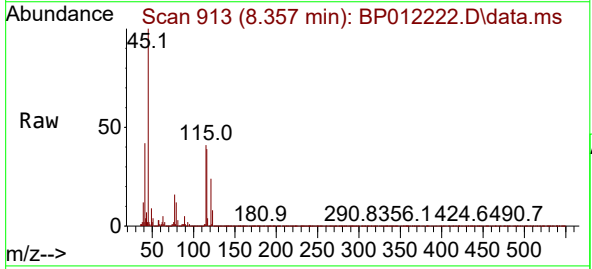
Instrument :  
 BNA\_P  
 ClientSampleId :

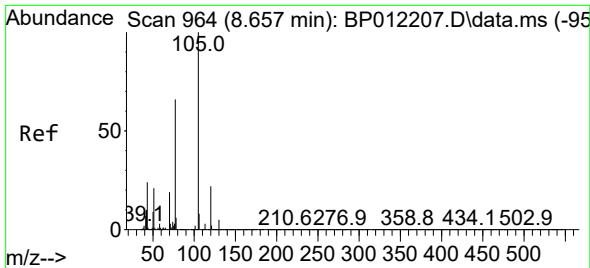
Tgt Ion:108 Resp: 583975  
 Ion Ratio Lower Upper  
 108 100  
 107 89.5 71.1 106.7



#14  
 2,2'-oxybis(1-Chloropropane)  
 Concen: 28.248 ng/ul  
 RT: 8.357 min Scan# 913  
 Delta R.T. -0.006 min  
 Lab File: BP012222.D  
 Acq: 20 Oct 2022 19:58

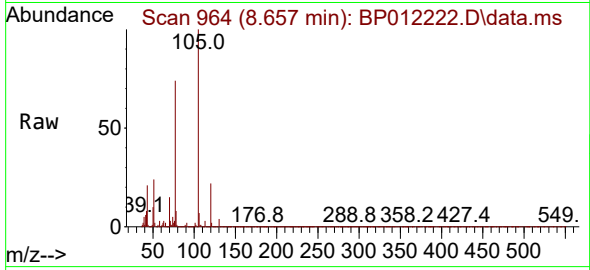
Tgt Ion: 45 Resp: 861126  
 Ion Ratio Lower Upper  
 45 100  
 77 15.6 12.1 18.1  
 79 12.2 9.3 13.9





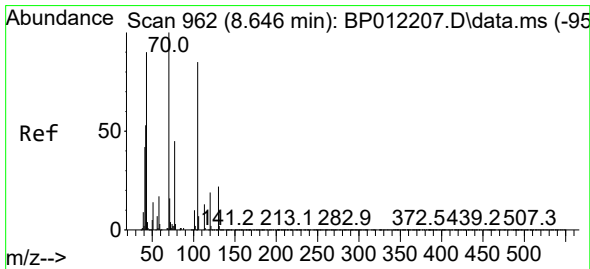
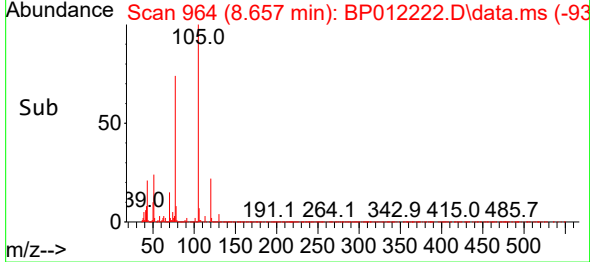
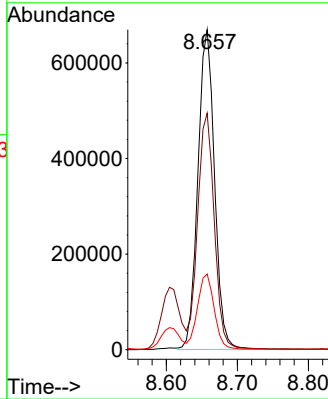
#16  
 Acetophenone  
 Concen: 33.475 ng/ul  
 RT: 8.657 min Scan# 90  
 Delta R.T. 0.000 min  
 Lab File: BP012222.D  
 Acq: 20 Oct 2022 19:58

Instrument :  
 BNA\_P  
 ClientSampleId :



Tgt Ion: 105 Resp: 1091046

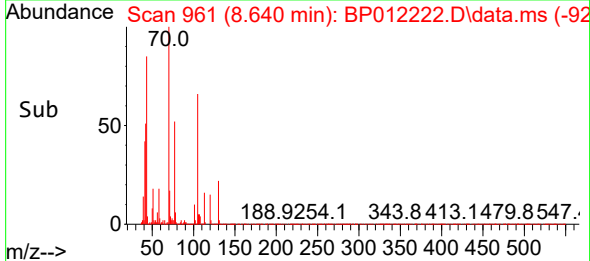
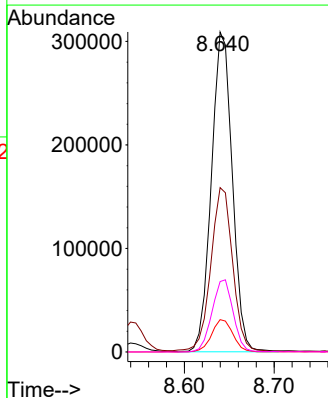
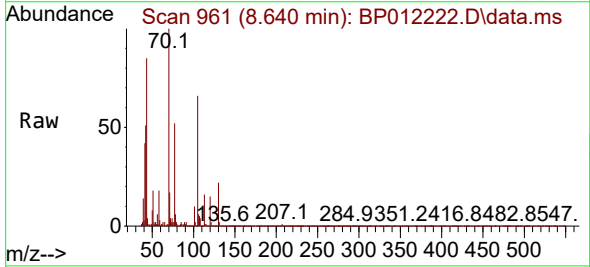
Ion	Ratio	Lower	Upper
105	100		
77	73.9	60.0	90.0
51	23.7	20.1	30.1



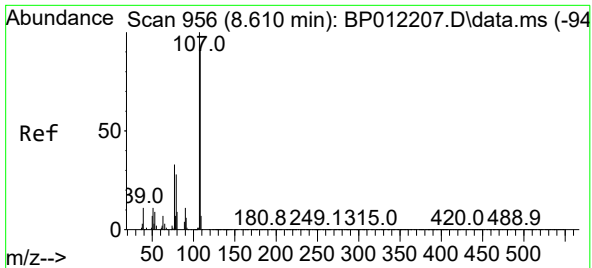
#17  
 N-Nitroso-di-n-propylamine  
 Concen: 30.339 ng/ul  
 RT: 8.640 min Scan# 961  
 Delta R.T. -0.006 min  
 Lab File: BP012222.D  
 Acq: 20 Oct 2022 19:58

Tgt Ion: 70 Resp: 500539

Ion	Ratio	Lower	Upper
70	100		
42	51.4	42.4	63.6
101	10.1	7.6	11.4
130	22.0	17.3	25.9



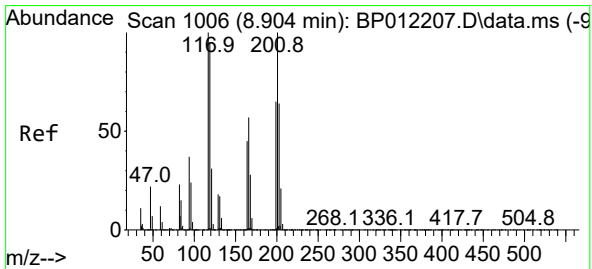
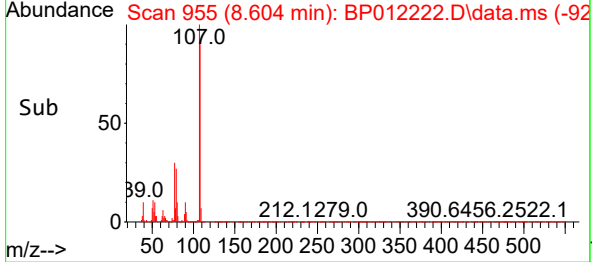
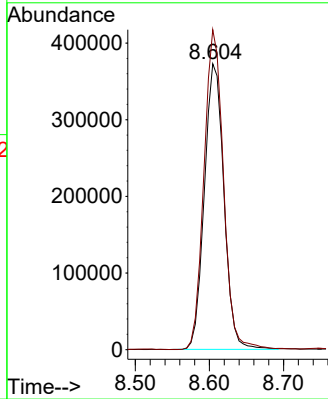
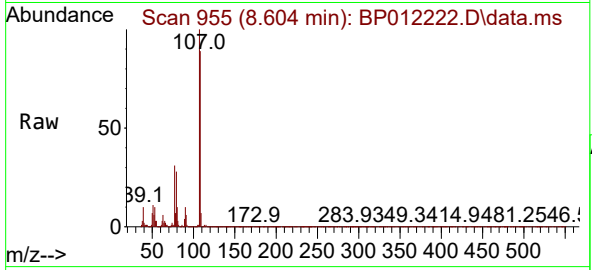




#18  
 4-Methylphenol  
 Concen: 29.390 ng/ul  
 RT: 8.604 min Scan# 91  
 Delta R.T. -0.006 min  
 Lab File: BP012222.D  
 Acq: 20 Oct 2022 19:58

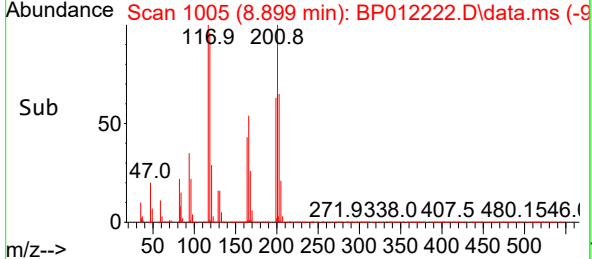
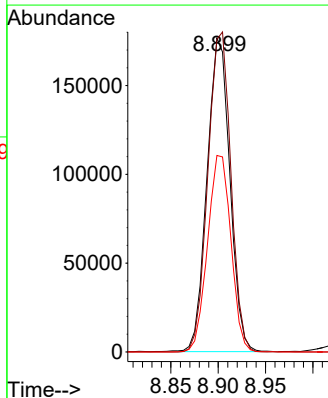
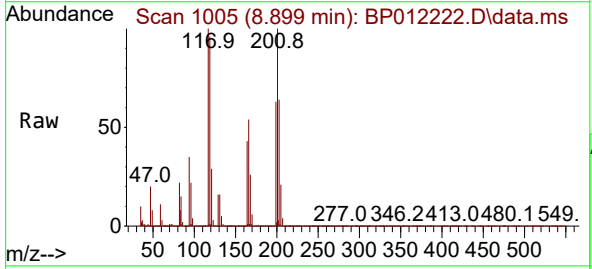
Instrument :  
 BNA\_P  
 ClientSampleId :

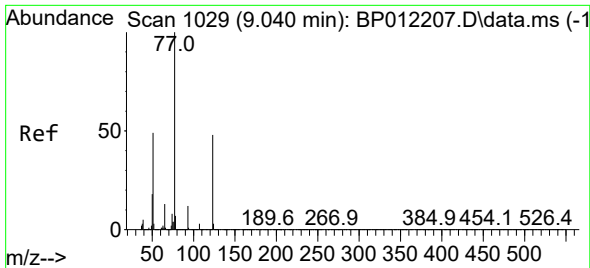
Tgt Ion:108 Resp: 684400  
 Ion Ratio Lower Upper  
 108 100  
 107 111.9 86.6 130.0



#19  
 Hexachloroethane  
 Concen: 33.627 ng/ul  
 RT: 8.899 min Scan# 1005  
 Delta R.T. -0.006 min  
 Lab File: BP012222.D  
 Acq: 20 Oct 2022 19:58

Tgt Ion:117 Resp: 296157  
 Ion Ratio Lower Upper  
 117 100  
 201 99.6 79.7 119.5  
 199 62.6 50.7 76.1



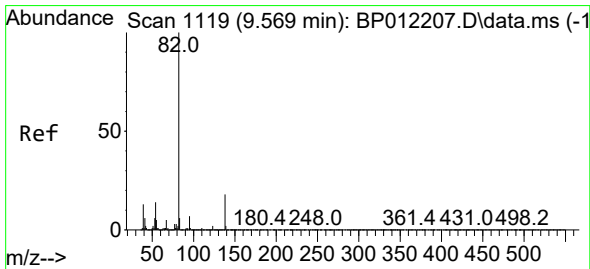
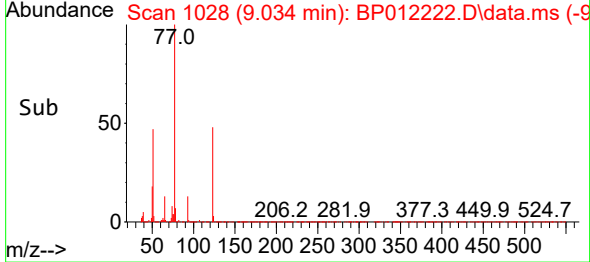
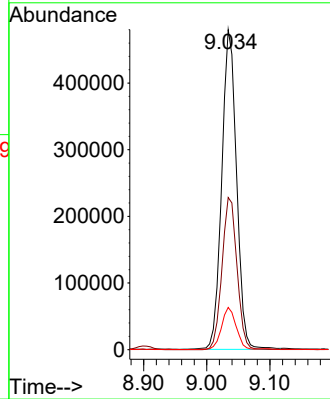
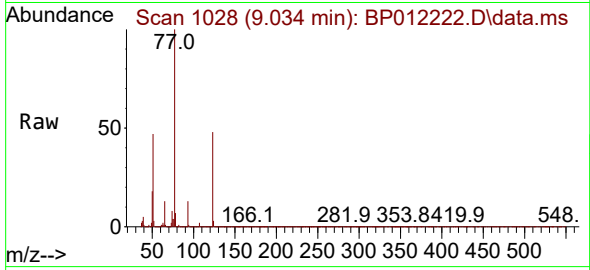


#22  
 Nitrobenzene  
 Concen: 33.555 ng/u1  
 RT: 9.034 min Scan# 1028  
 Delta R.T. -0.006 min  
 Lab File: BP012222.D  
 Acq: 20 Oct 2022 19:58

Instrument :  
 BNA\_P  
 ClientSampleId :

Tgt Ion: 77 Resp: 783156

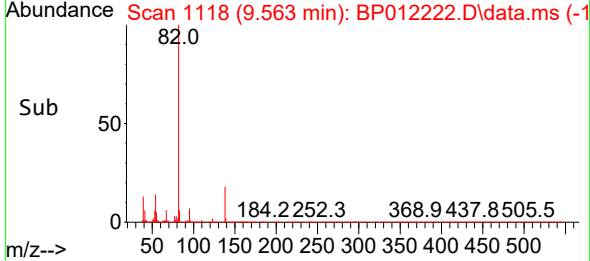
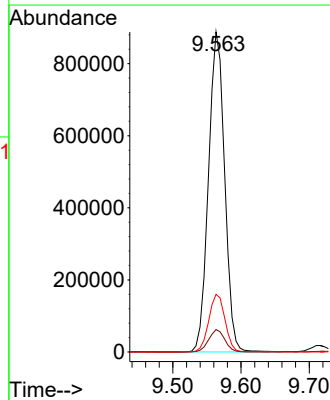
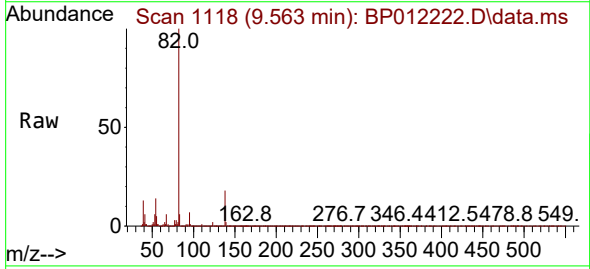
Ion	Ratio	Lower	Upper
77	100		
123	47.5	37.1	55.7
65	13.2	10.0	15.0

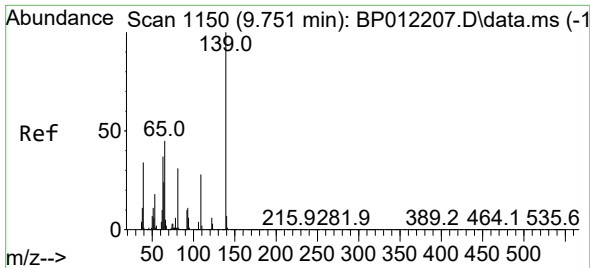


#23  
 Isophorone  
 Concen: 32.749 ng/u1  
 RT: 9.563 min Scan# 1118  
 Delta R.T. -0.006 min  
 Lab File: BP012222.D  
 Acq: 20 Oct 2022 19:58

Tgt Ion: 82 Resp: 1467048

Ion	Ratio	Lower	Upper
82	100		
95	7.0	5.4	8.0
138	18.0	14.5	21.7

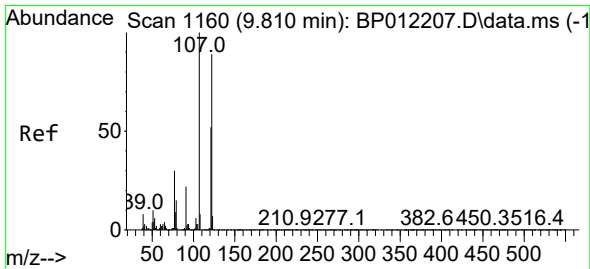
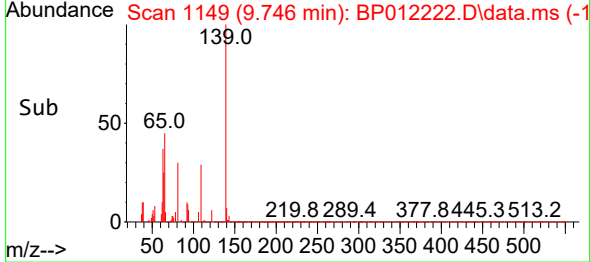
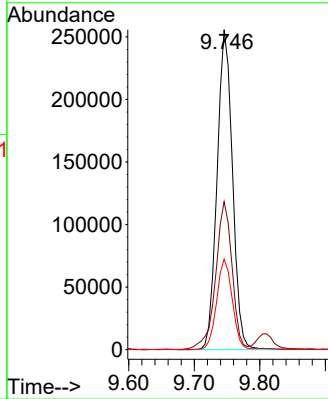
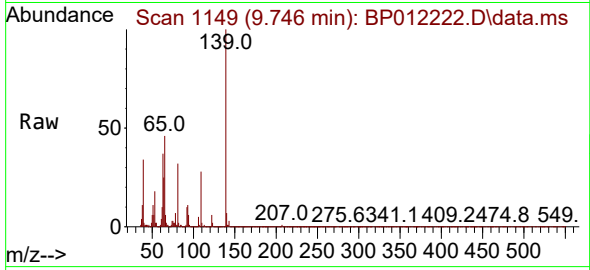




#25  
 2-Nitrophenol  
 Concen: 35.447 ng/ul  
 RT: 9.746 min Scan# 1149  
 Delta R.T. -0.006 min  
 Lab File: BP012222.D  
 Acq: 20 Oct 2022 19:58

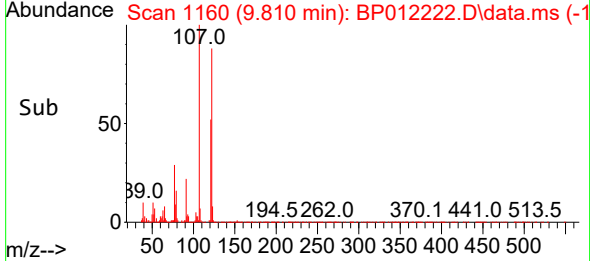
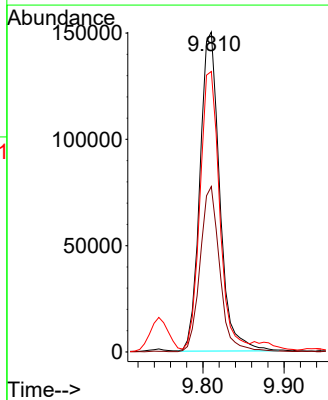
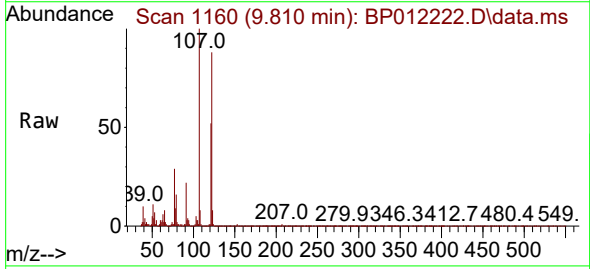
Instrument :  
 BNA\_P  
 ClientSampleId :

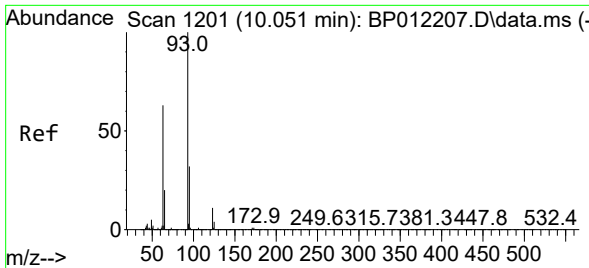
Tgt Ion	Resp	Lower	Upper
139	416231		
65	46.3	38.0	57.0
109	28.3	21.6	32.4



#26  
 2,4-Dimethylphenol  
 Concen: 10.966 ng/ul  
 RT: 9.810 min Scan# 1160  
 Delta R.T. 0.000 min  
 Lab File: BP012222.D  
 Acq: 20 Oct 2022 19:58

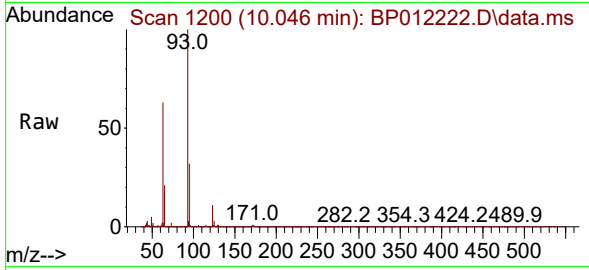
Tgt Ion	Resp	Lower	Upper
107	253816		
121	51.7	40.6	60.8
122	87.6	71.0	106.6





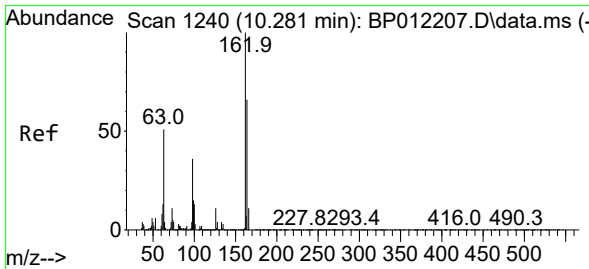
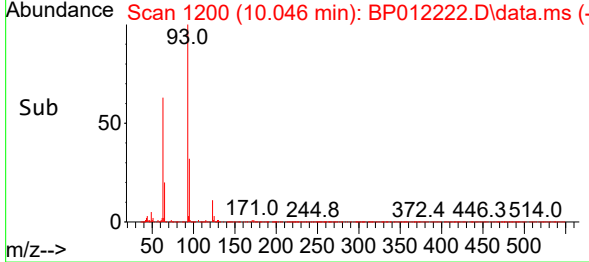
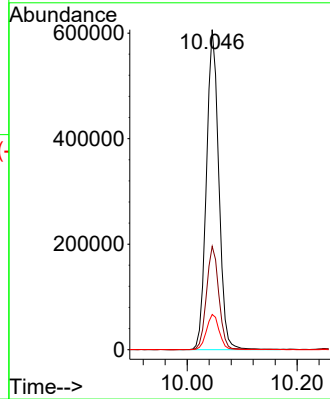
#27  
 Bis(2-Chloroethoxy)methane  
 Concen: 32.257 ng/ul  
 RT: 10.046 min Scan# 11  
 Delta R.T. -0.006 min  
 Lab File: BP012222.D  
 Acq: 20 Oct 2022 19:58

Instrument :  
 BNA\_P  
 ClientSampleId :



Tgt Ion: 93 Resp: 945954

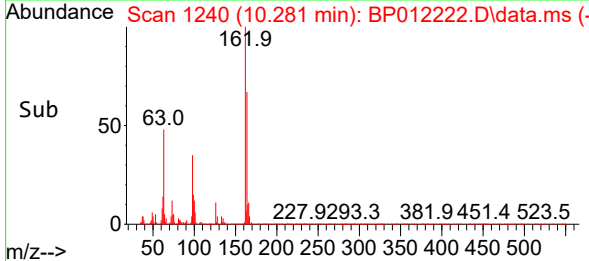
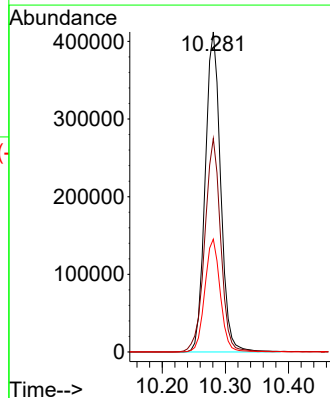
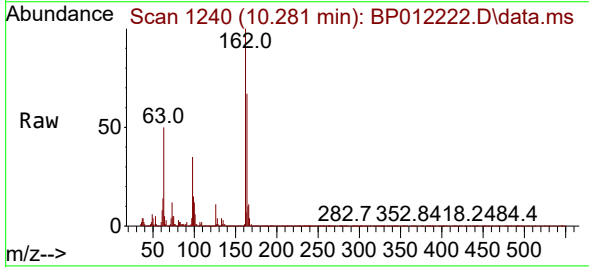
Ion	Ratio	Lower	Upper
93	100		
95	32.3	26.2	39.4
123	11.0	9.0	13.6

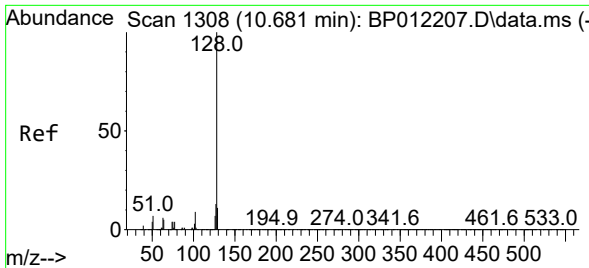


#29  
 2,4-Dichlorophenol  
 Concen: 34.898 ng/ul  
 RT: 10.281 min Scan# 1240  
 Delta R.T. 0.000 min  
 Lab File: BP012222.D  
 Acq: 20 Oct 2022 19:58

Tgt Ion: 162 Resp: 700107

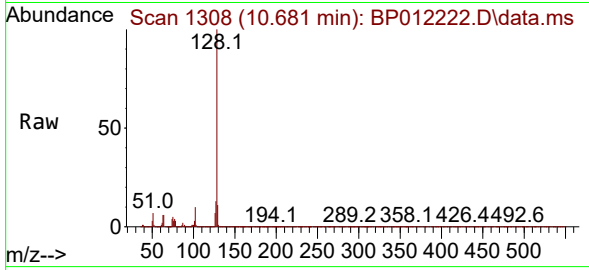
Ion	Ratio	Lower	Upper
162	100		
164	66.7	51.2	76.8
98	35.3	28.3	42.5



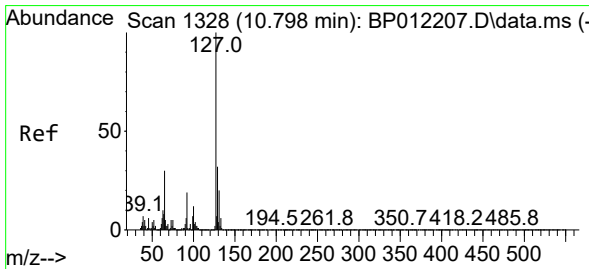
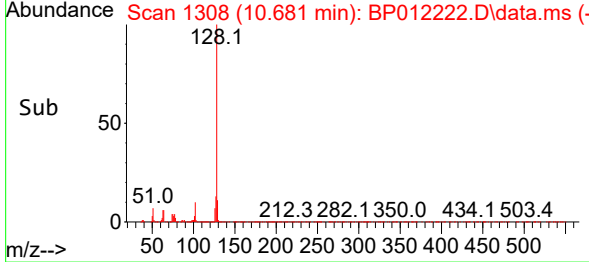
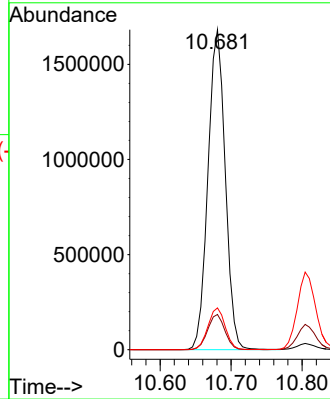


#30  
 Naphthalene  
 Concen: 41.142 ng/u1  
 RT: 10.681 min Scan# 1308  
 Delta R.T. 0.000 min  
 Lab File: BP012222.D  
 Acq: 20 Oct 2022 19:58

Instrument :  
 BNA\_P  
 ClientSampleId :

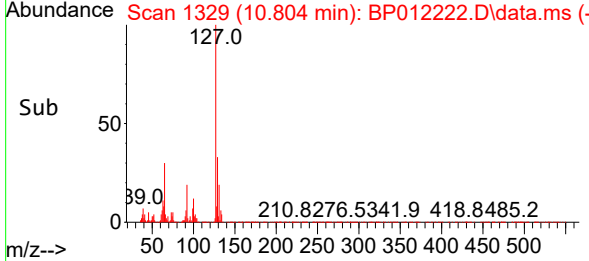
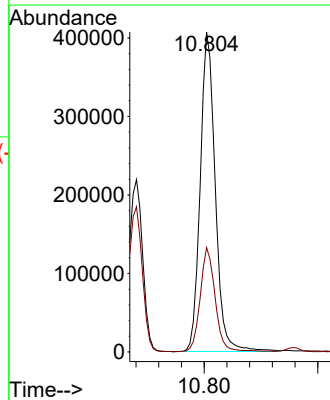
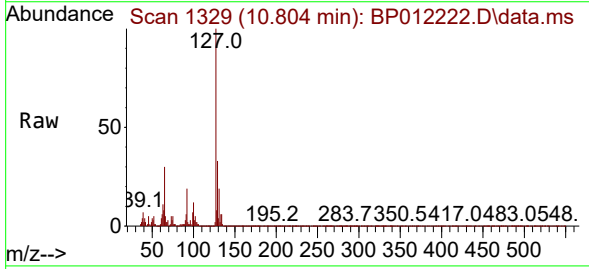


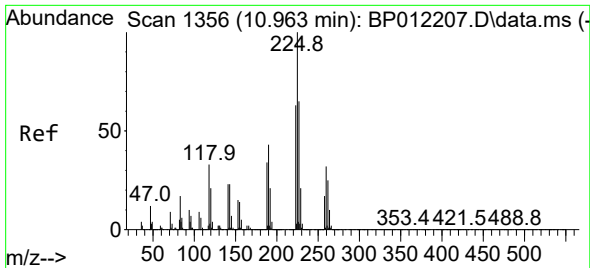
Tgt Ion:128 Resp: 2847593  
 Ion Ratio Lower Upper  
 128 100  
 129 11.0 8.8 13.2  
 127 13.1 10.2 15.4



#32  
 4-Chloroaniline  
 Concen: 26.339 ng/u1  
 RT: 10.804 min Scan# 1329  
 Delta R.T. 0.000 min  
 Lab File: BP012222.D  
 Acq: 20 Oct 2022 19:58

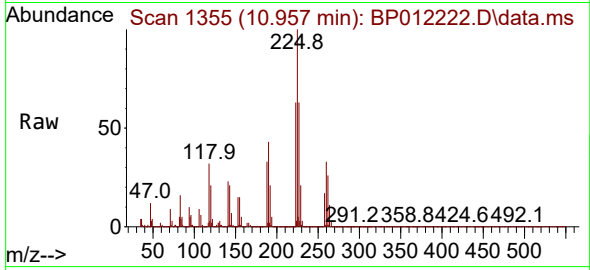
Tgt Ion:127 Resp: 748804  
 Ion Ratio Lower Upper  
 127 100  
 129 32.6 25.6 38.4



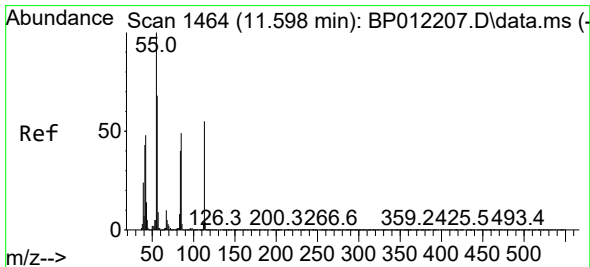
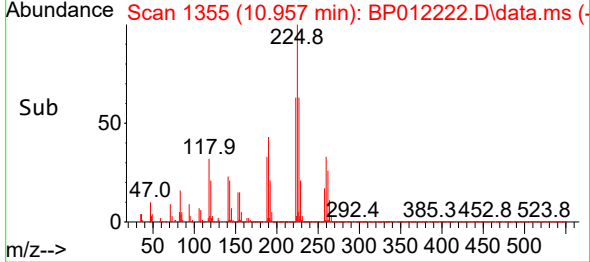
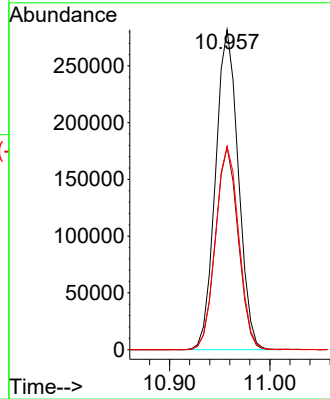


#33  
 Hexachlorobutadiene  
 Concen: 35.241 ng/uI  
 RT: 10.957 min Scan# 11  
 Delta R.T. -0.006 min  
 Lab File: BP012222.D  
 Acq: 20 Oct 2022 19:58

Instrument :  
 BNA\_P  
 ClientSampleId :

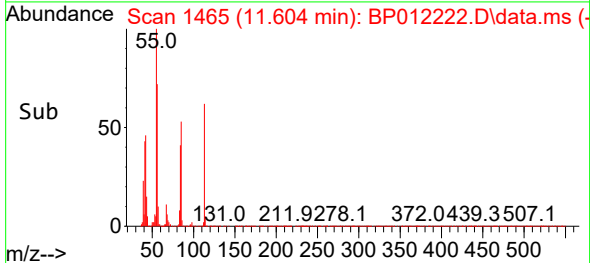
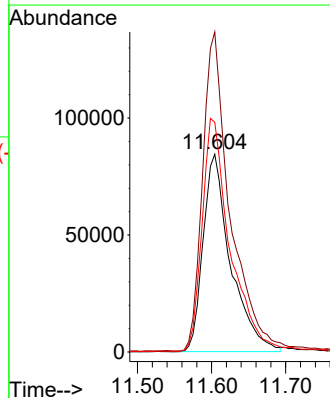
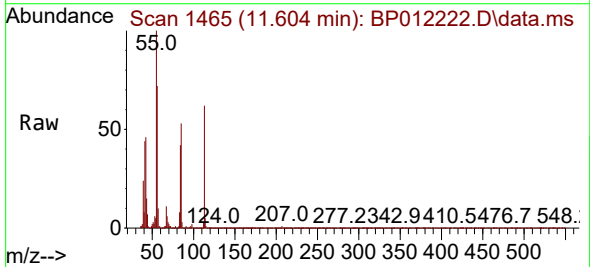


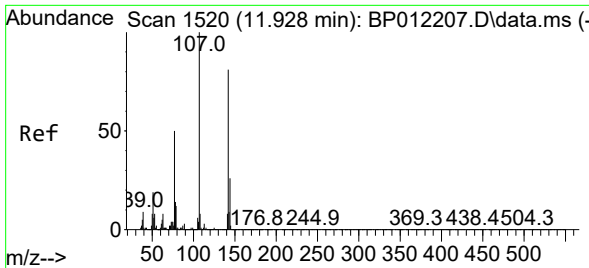
Tgt Ion: 225 Resp: 444669  
 Ion Ratio Lower Upper  
 225 100  
 223 63.3 50.2 75.4  
 227 63.5 51.9 77.9



#34  
 Caprolactam  
 Concen: 34.932 ng/uI  
 RT: 11.604 min Scan# 1465  
 Delta R.T. 0.006 min  
 Lab File: BP012222.D  
 Acq: 20 Oct 2022 19:58

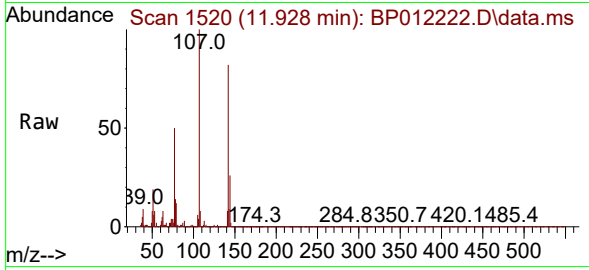
Tgt Ion: 113 Resp: 217545  
 Ion Ratio Lower Upper  
 113 100  
 55 161.8 133.7 200.5  
 56 116.1 95.4 143.2





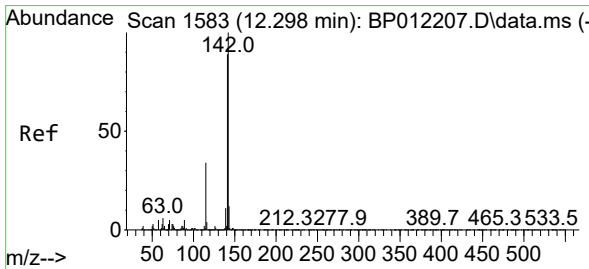
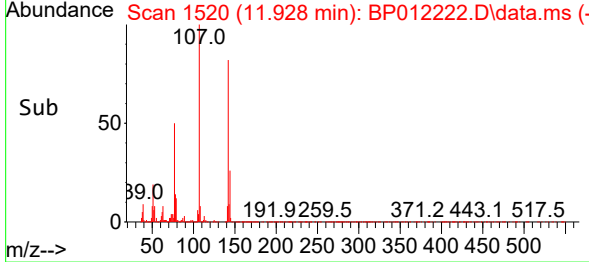
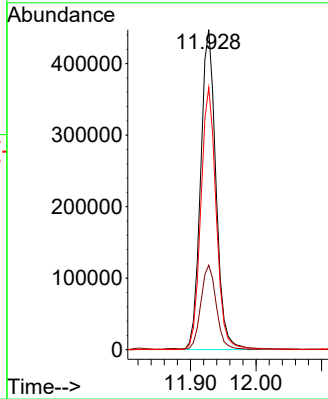
#35  
 4-Chloro-3-methylphenol  
 Concen: 33.635 ng/ul  
 RT: 11.928 min Scan# 11  
 Delta R.T. 0.000 min  
 Lab File: BP012222.D  
 Acq: 20 Oct 2022 19:58

Instrument :  
 BNA\_P  
 ClientSampleId :



Tgt Ion:107 Resp: 728514

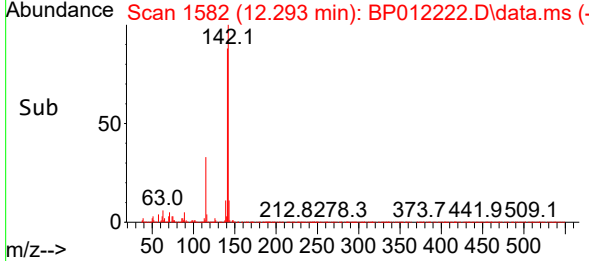
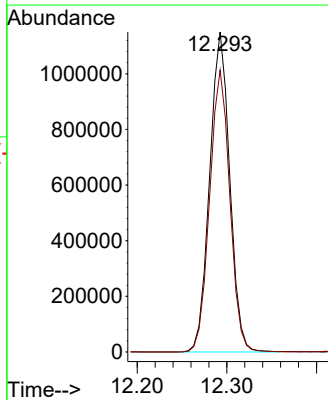
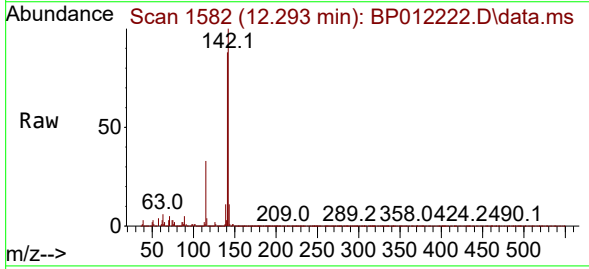
Ion	Ratio	Lower	Upper
107	100		
144	26.4	21.2	31.8
142	81.9	65.5	98.3

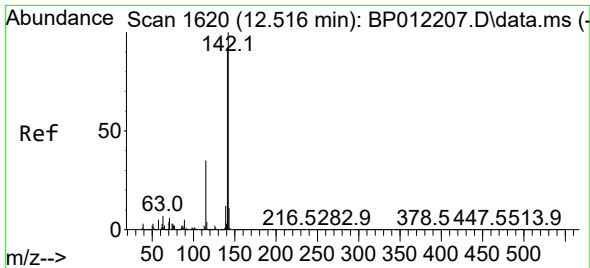


#36  
 2-Methylnaphthalene  
 Concen: 37.889 ng/ul  
 RT: 12.293 min Scan# 1582  
 Delta R.T. -0.006 min  
 Lab File: BP012222.D  
 Acq: 20 Oct 2022 19:58

Tgt Ion:142 Resp: 1784260

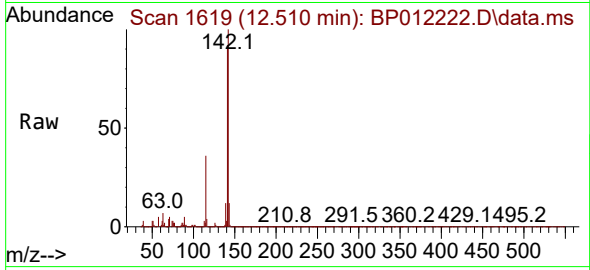
Ion	Ratio	Lower	Upper
142	100		
141	88.1	70.3	105.5



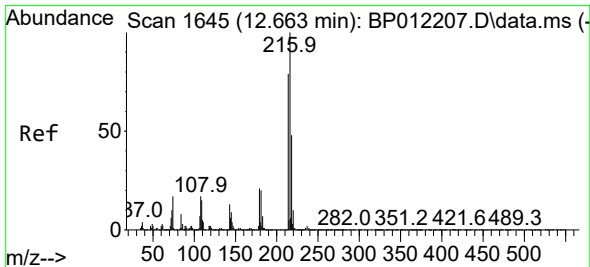
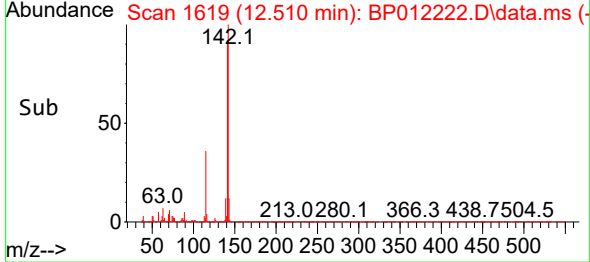
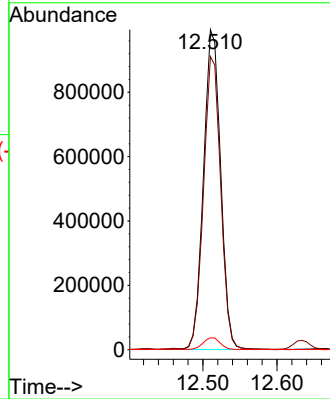


#37  
 1-Methylnaphthalene  
 Concen: 33.980 ng/ul  
 RT: 12.510 min Scan# 1619  
 Delta R.T. -0.006 min  
 Lab File: BP012222.D  
 Acq: 20 Oct 2022 19:58

Instrument :  
 BNA\_P  
 ClientSampleId :

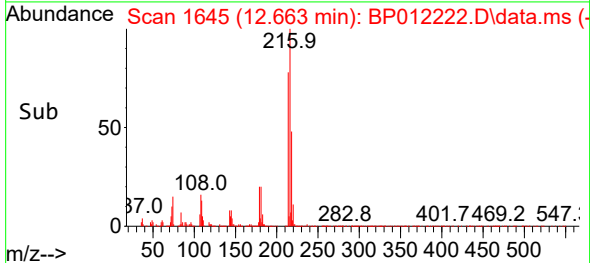
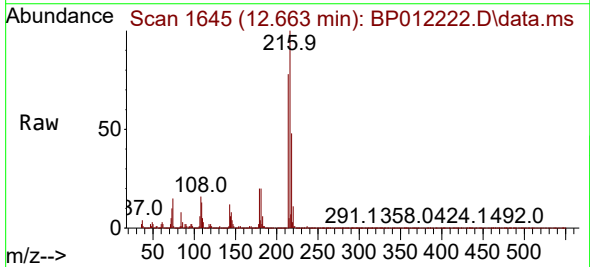
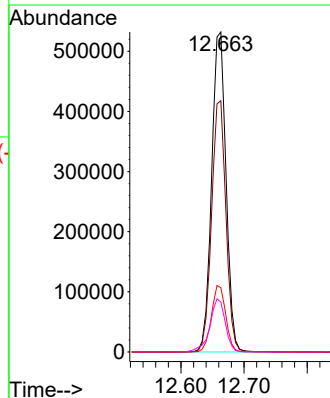


Tgt Ion:142 Resp: 1597814  
 Ion Ratio Lower Upper  
 142 100  
 141 91.6 73.4 110.0  
 116 3.7 3.0 4.4

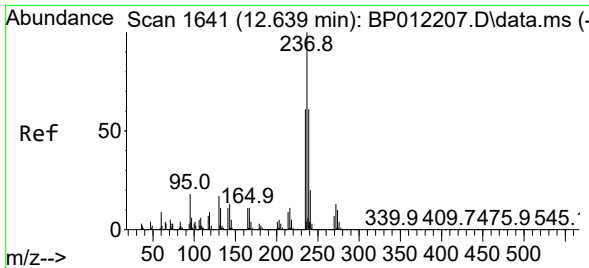


#39  
 1,2,4,5-Tetrachlorobenzene  
 Concen: 36.186 ng/ul  
 RT: 12.663 min Scan# 1645  
 Delta R.T. 0.000 min  
 Lab File: BP012222.D  
 Acq: 20 Oct 2022 19:58

Tgt Ion:216 Resp: 838436  
 Ion Ratio Lower Upper  
 216 100  
 214 78.5 62.5 93.7  
 179 20.1 16.5 24.7  
 108 15.6 13.4 20.0

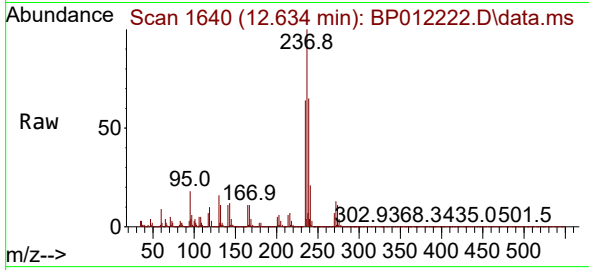




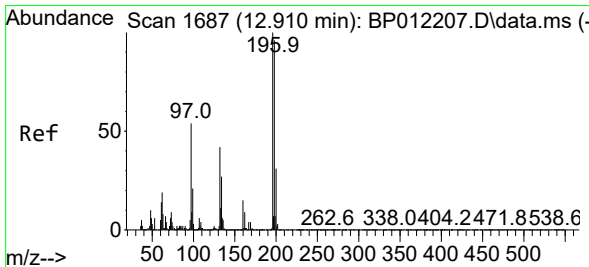
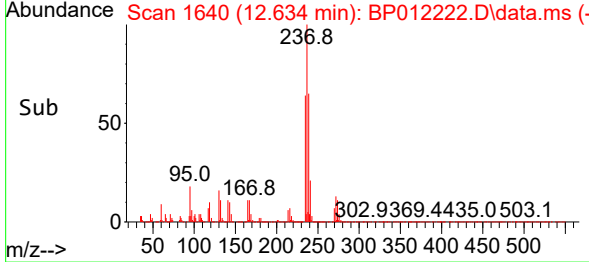
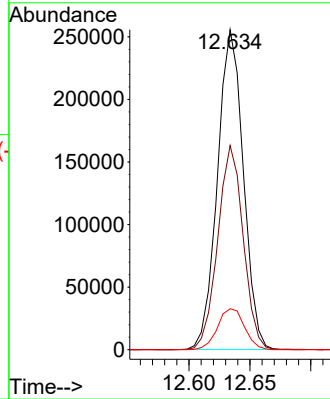


#40  
 Hexachlorocyclopentadiene  
 Concen: 30.660 ng/ul  
 RT: 12.634 min Scan# 1640  
 Delta R.T. -0.006 min  
 Lab File: BP012222.D  
 Acq: 20 Oct 2022 19:58

Instrument : BNA\_P  
 ClientSampleId :

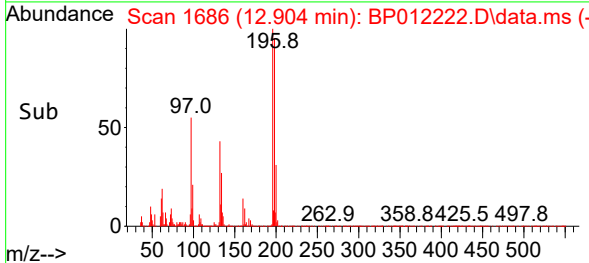
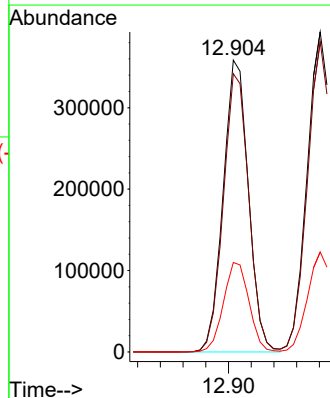
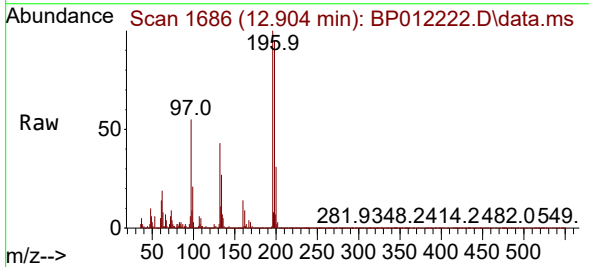


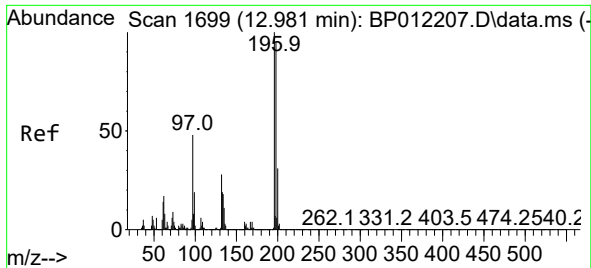
Tgt Ion:237 Resp: 377678  
 Ion Ratio Lower Upper  
 237 100  
 235 63.8 49.4 74.0  
 272 13.6 10.5 15.7



#41  
 2,4,6-Trichlorophenol  
 Concen: 37.098 ng/ul  
 RT: 12.904 min Scan# 1686  
 Delta R.T. -0.006 min  
 Lab File: BP012222.D  
 Acq: 20 Oct 2022 19:58

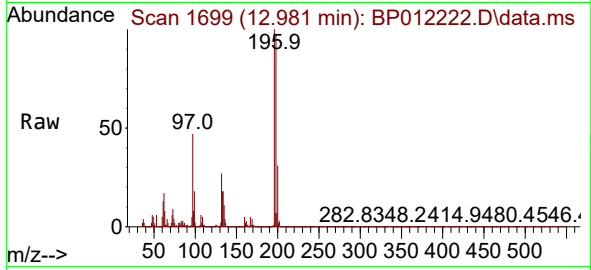
Tgt Ion:196 Resp: 554740  
 Ion Ratio Lower Upper  
 196 100  
 198 95.4 77.4 116.2  
 200 30.7 24.6 36.8



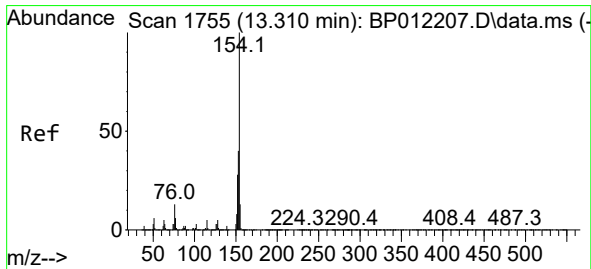
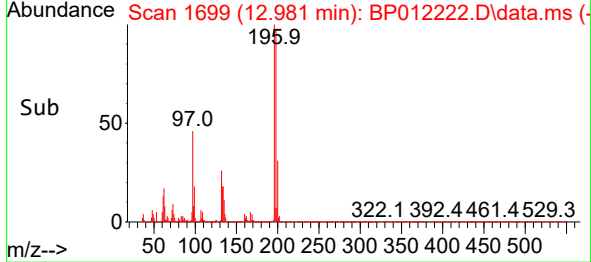
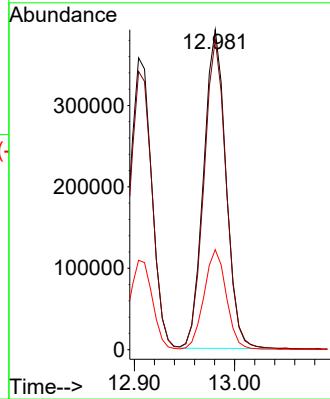


#42  
 2,4,5-Trichlorophenol  
 Concen: 37.186 ng/ul  
 RT: 12.981 min Scan# 1699  
 Delta R.T. 0.000 min  
 Lab File: BP012222.D  
 Acq: 20 Oct 2022 19:58

Instrument :  
 BNA\_P  
 ClientSampleId :

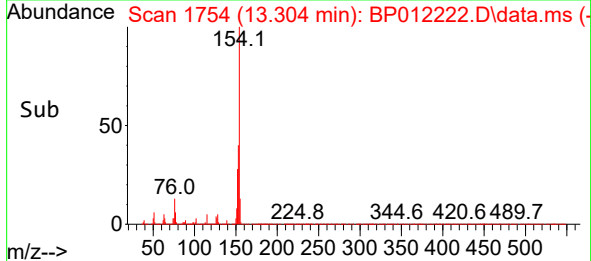
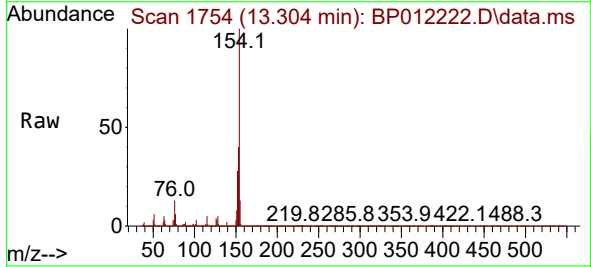
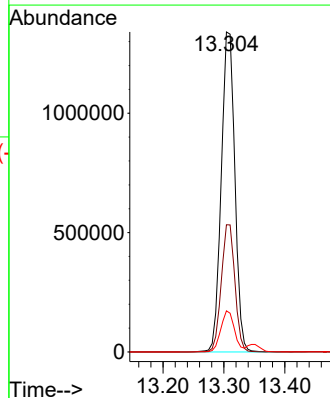


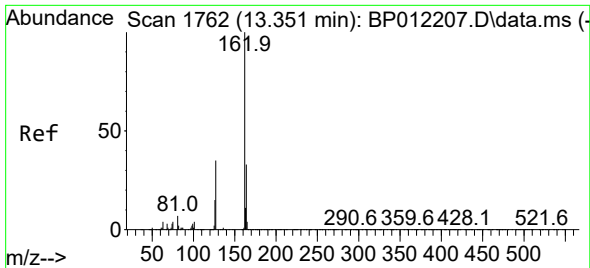
Tgt Ion:196 Resp: 606592  
 Ion Ratio Lower Upper  
 196 100  
 198 97.0 76.2 114.2  
 200 31.3 24.7 37.1



#43  
 1,1'-Biphenyl  
 Concen: 36.627 ng/ul  
 RT: 13.304 min Scan# 1754  
 Delta R.T. -0.006 min  
 Lab File: BP012222.D  
 Acq: 20 Oct 2022 19:58

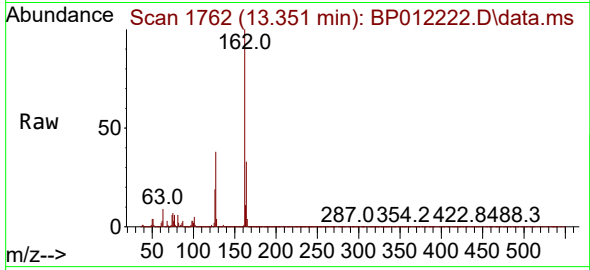
Tgt Ion:154 Resp: 2077236  
 Ion Ratio Lower Upper  
 154 100  
 153 39.7 31.5 47.3  
 76 12.8 11.0 16.4



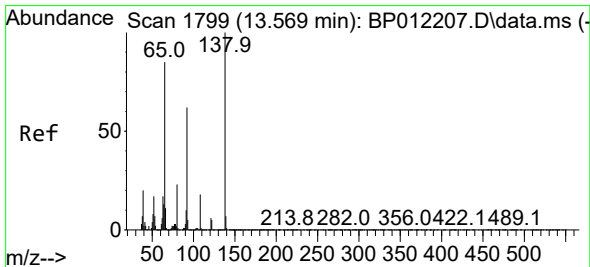
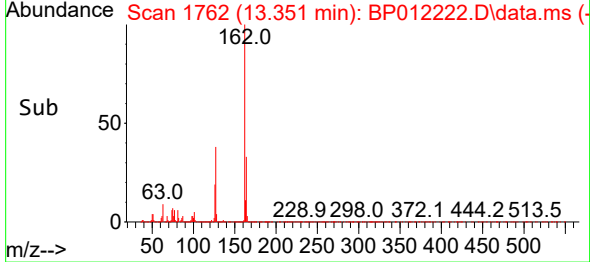
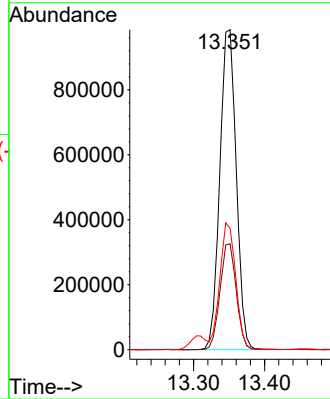


#44  
 2-Chloronaphthalene  
 Concen: 35.064 ng/ul  
 RT: 13.351 min Scan# 1762  
 Delta R.T. 0.000 min  
 Lab File: BP012222.D  
 Acq: 20 Oct 2022 19:58

Instrument :  
 BNA\_P  
 ClientSampleId :

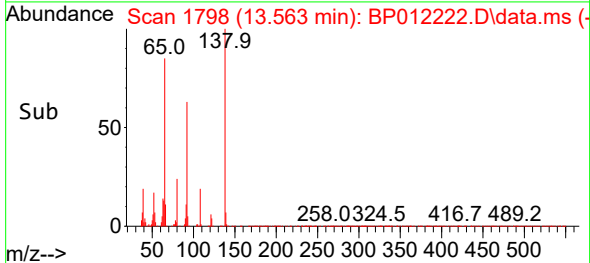
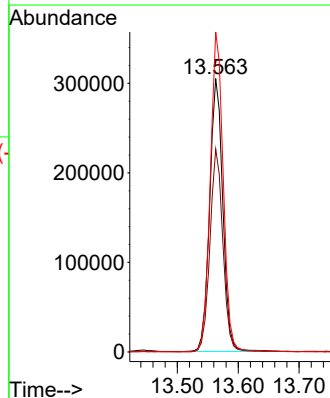
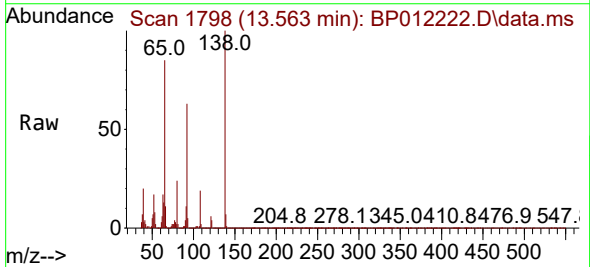


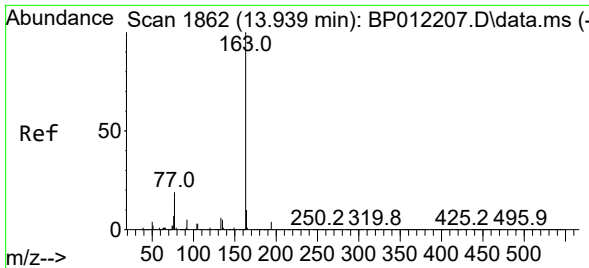
Tgt Ion:162 Resp: 1576627  
 Ion Ratio Lower Upper  
 162 100  
 164 33.1 26.1 39.1  
 127 37.9 30.8 46.2



#45  
 2-Nitroaniline  
 Concen: 38.323 ng/ul  
 RT: 13.563 min Scan# 1798  
 Delta R.T. -0.006 min  
 Lab File: BP012222.D  
 Acq: 20 Oct 2022 19:58

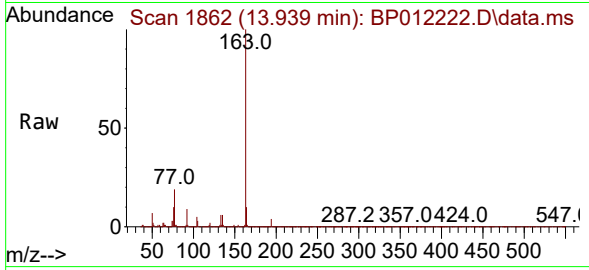
Tgt Ion: 65 Resp: 458111  
 Ion Ratio Lower Upper  
 65 100  
 92 74.2 57.5 86.3  
 138 117.0 92.5 138.7



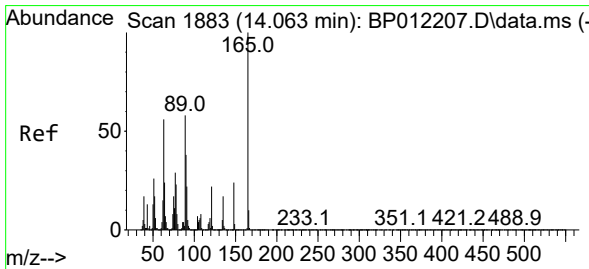
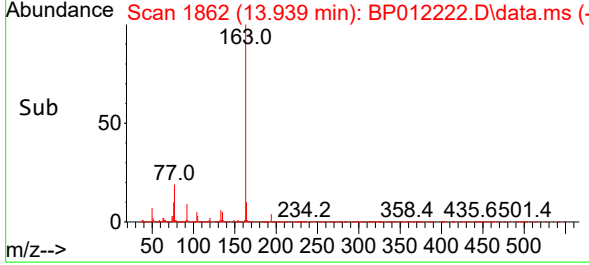
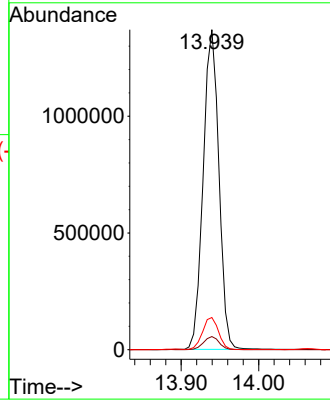


#47  
 Dimethylphthalate  
 Concen: 34.713 ng/ul  
 RT: 13.939 min Scan# 1862  
 Delta R.T. 0.000 min  
 Lab File: BP012222.D  
 Acq: 20 Oct 2022 19:58

Instrument :  
 BNA\_P  
 ClientSampleId :

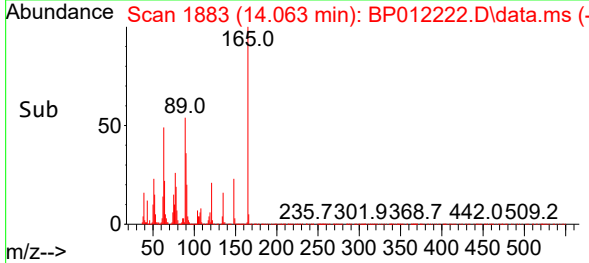
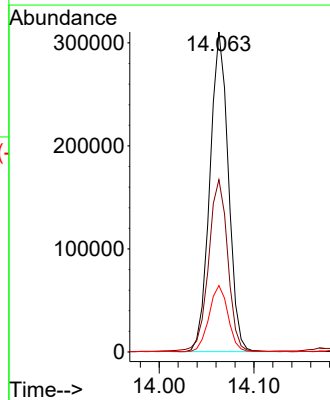
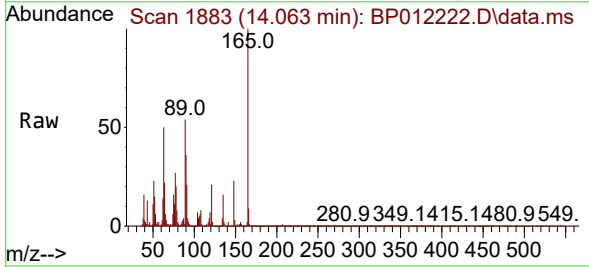


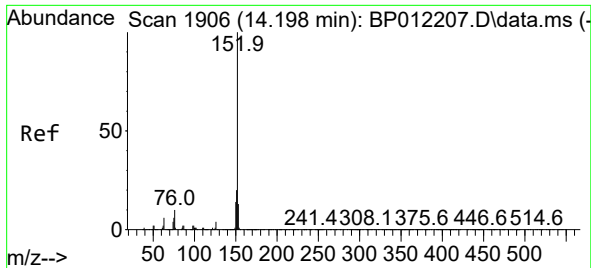
Tgt Ion:163 Resp: 1929441  
 Ion Ratio Lower Upper  
 163 100  
 194 4.1 3.0 4.6  
 164 10.1 8.1 12.1



#48  
 2,6-Dinitrotoluene  
 Concen: 39.427 ng/ul  
 RT: 14.063 min Scan# 1883  
 Delta R.T. 0.000 min  
 Lab File: BP012222.D  
 Acq: 20 Oct 2022 19:58

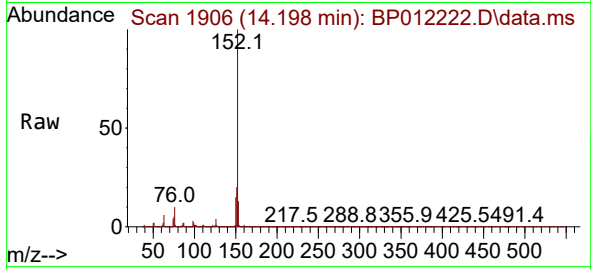
Tgt Ion:165 Resp: 419330  
 Ion Ratio Lower Upper  
 165 100  
 89 53.8 43.9 65.9  
 121 20.8 17.1 25.7



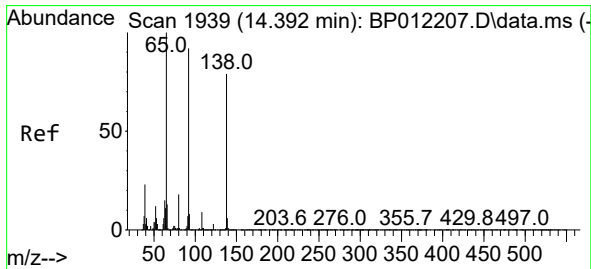
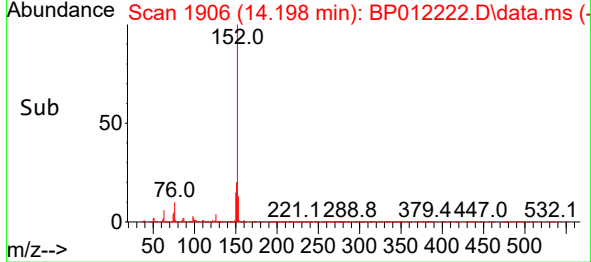
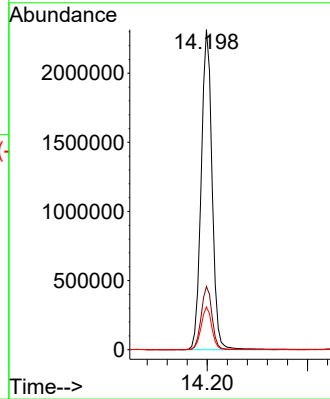


#50  
 Acenaphthylene  
 Concen: 51.447 ng/ul  
 RT: 14.198 min Scan# 1906  
 Delta R.T. 0.000 min  
 Lab File: BP012222.D  
 Acq: 20 Oct 2022 19:58

Instrument :  
 BNA\_P  
 ClientSampleId :

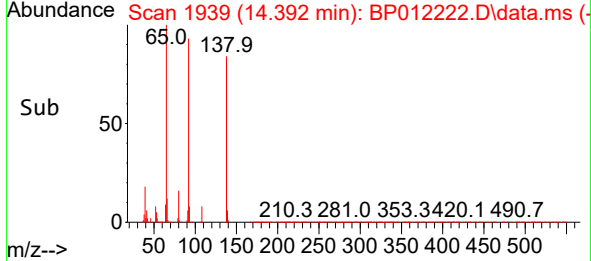
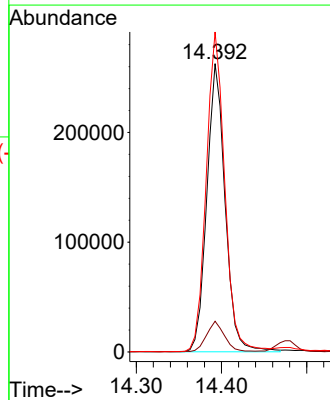
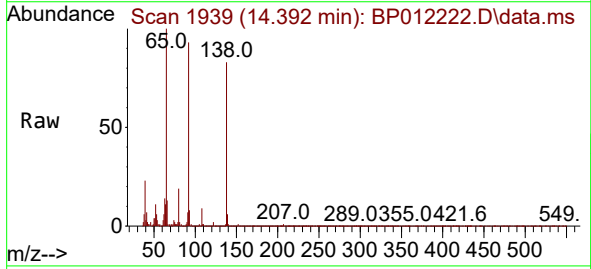


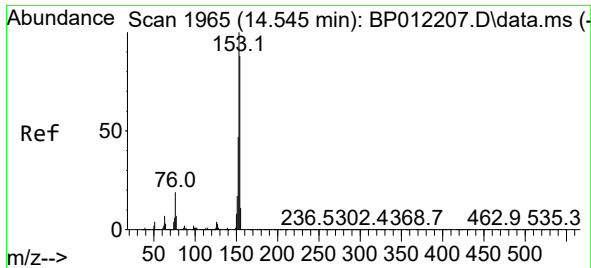
Tgt Ion:152 Resp: 3470765  
 Ion Ratio Lower Upper  
 152 100  
 151 19.8 15.8 23.8  
 153 13.4 10.6 16.0



#51  
 3-Nitroaniline  
 Concen: 34.931 ng/ul  
 RT: 14.392 min Scan# 1939  
 Delta R.T. 0.000 min  
 Lab File: BP012222.D  
 Acq: 20 Oct 2022 19:58

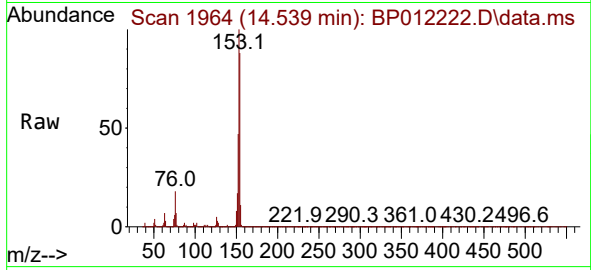
Tgt Ion:138 Resp: 392149  
 Ion Ratio Lower Upper  
 138 100  
 108 10.7 8.2 12.2  
 92 111.0 93.1 139.7



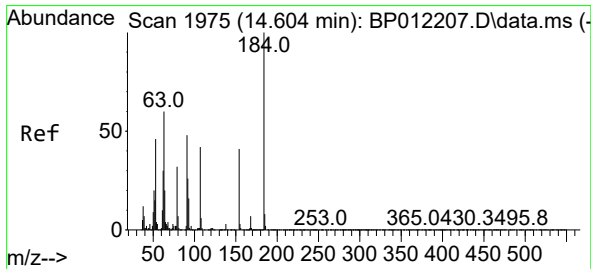
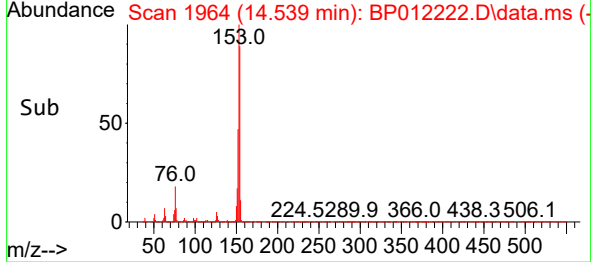
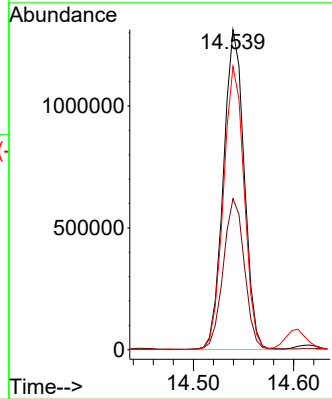


#52  
 Acenaphthene  
 Concen: 39.547 ng/uI  
 RT: 14.539 min Scan# 1964  
 Delta R.T. -0.006 min  
 Lab File: BP012222.D  
 Acq: 20 Oct 2022 19:58

Instrument : BNA\_P  
 ClientSampleId :

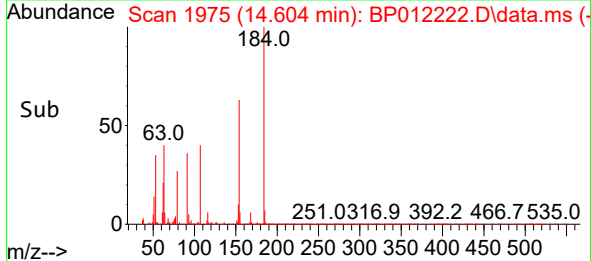
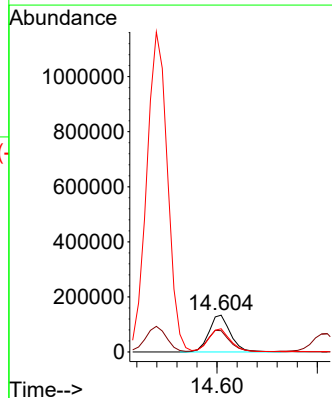
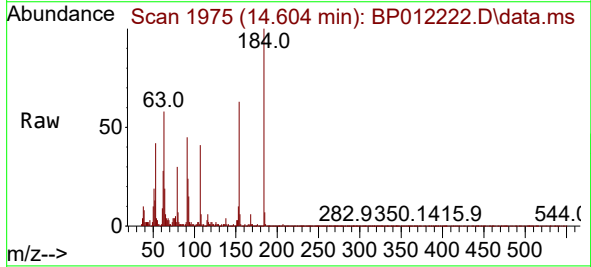


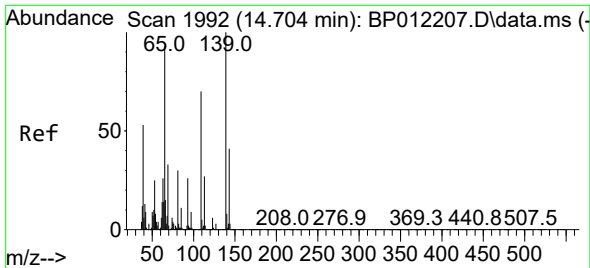
Tgt Ion:153 Resp: 1886777  
 Ion Ratio Lower Upper  
 153 100  
 152 47.2 38.1 57.1  
 154 88.5 71.4 107.2



#53  
 2,4-Dinitrophenol  
 Concen: 31.112 ng/uI  
 RT: 14.604 min Scan# 1975  
 Delta R.T. 0.000 min  
 Lab File: BP012222.D  
 Acq: 20 Oct 2022 19:58

Tgt Ion:184 Resp: 198689  
 Ion Ratio Lower Upper  
 184 100  
 63 57.9 51.1 76.7  
 154 63.0 47.2 70.8

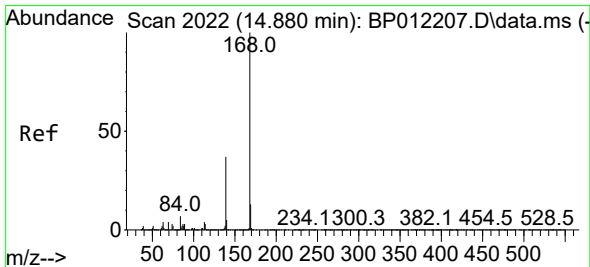
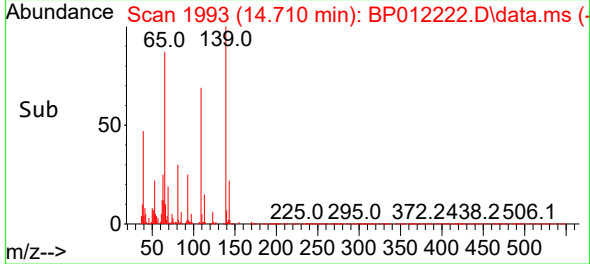
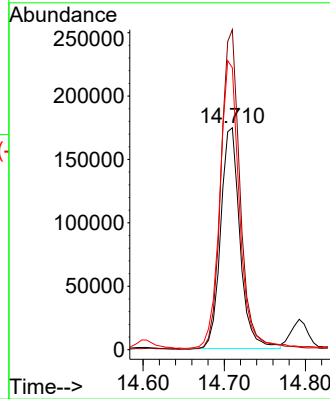
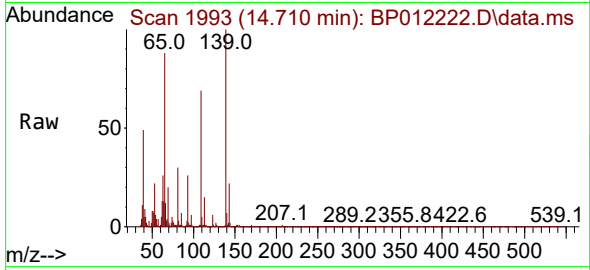




#55  
 4-Nitrophenol  
 Concen: 39.014 ng/ul  
 RT: 14.710 min Scan# 1992  
 Delta R.T. 0.006 min  
 Lab File: BP012222.D  
 Acq: 20 Oct 2022 19:58

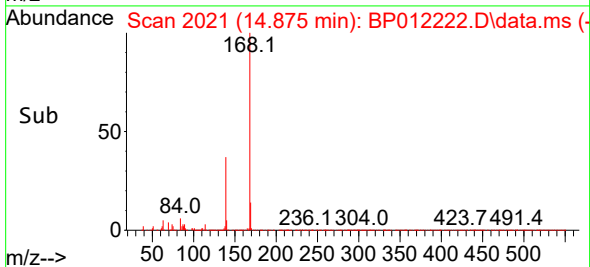
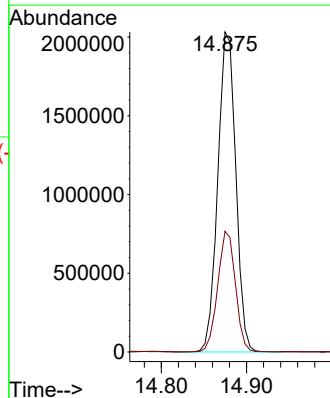
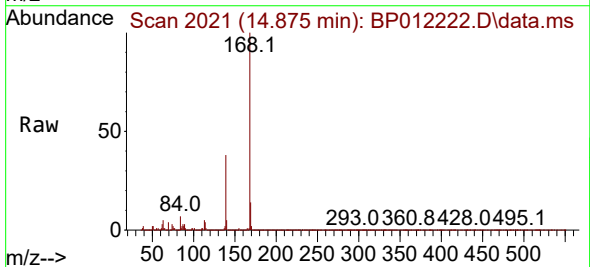
Instrument :  
 BNA\_P  
 ClientSampleId :

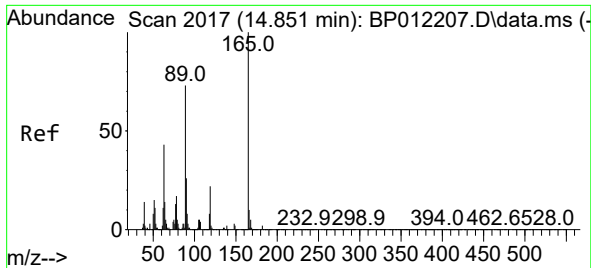
Tgt Ion:109 Resp: 288039  
 Ion Ratio Lower Upper  
 109 100  
 139 144.2 118.5 177.7  
 65 127.0 110.5 165.7



#56  
 Dibenzofuran  
 Concen: 45.703 ng/ul  
 RT: 14.875 min Scan# 2021  
 Delta R.T. -0.006 min  
 Lab File: BP012222.D  
 Acq: 20 Oct 2022 19:58

Tgt Ion:168 Resp: 2985009  
 Ion Ratio Lower Upper  
 168 100  
 139 37.7 29.0 43.4

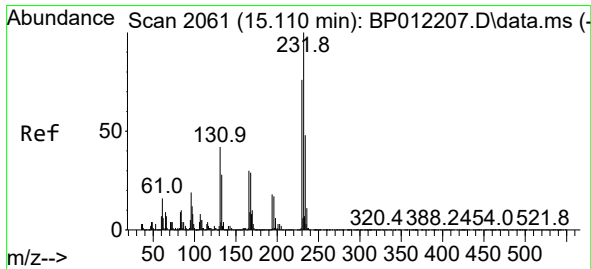
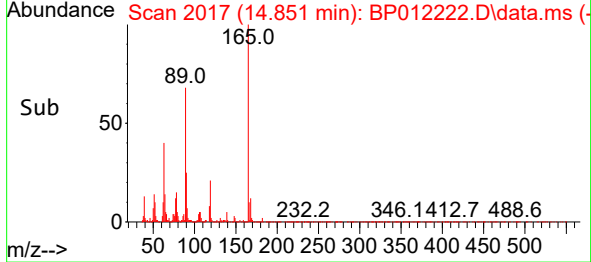
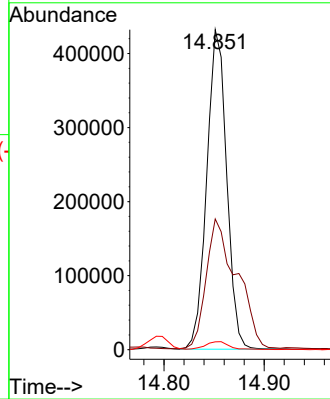
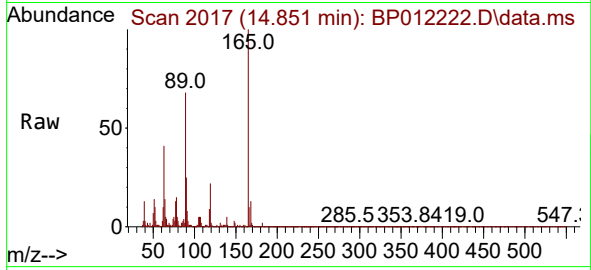




#57  
 2,4-Dinitrotoluene  
 Concen: 39.270 ng/ul  
 RT: 14.851 min Scan# 2017  
 Delta R.T. 0.000 min  
 Lab File: BP012222.D  
 Acq: 20 Oct 2022 19:58

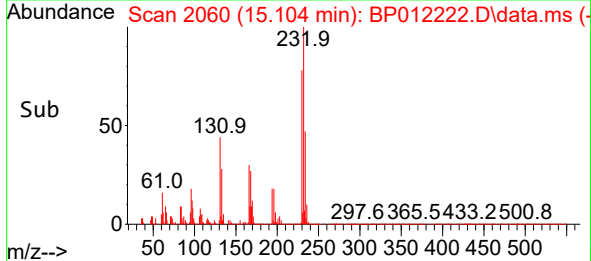
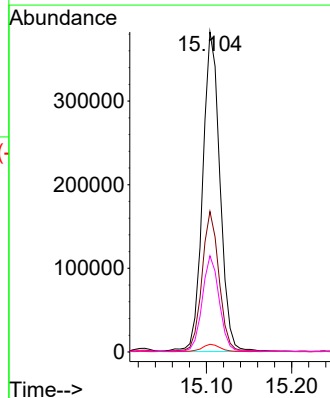
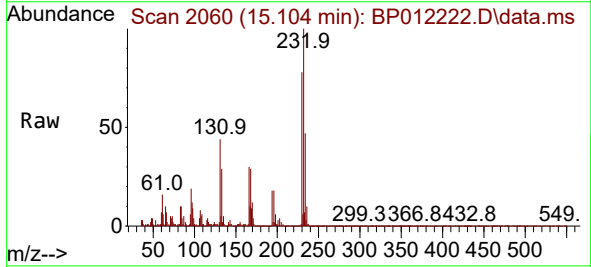
Instrument :  
 BNA\_P  
 ClientSampleId :

Tgt Ion	Resp	Lower	Upper
165	100		
63	40.9	34.1	51.1
182	2.5	2.1	3.1

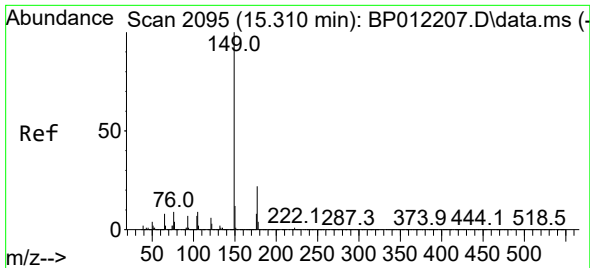


#58  
 2,3,4,6-Tetrachlorophenol  
 Concen: 38.820 ng/ul  
 RT: 15.104 min Scan# 2060  
 Delta R.T. -0.006 min  
 Lab File: BP012222.D  
 Acq: 20 Oct 2022 19:58

Tgt Ion	Resp	Lower	Upper
232	100		
131	43.9	35.0	52.4
130	2.4	1.8	2.8
166	30.0	23.5	35.3

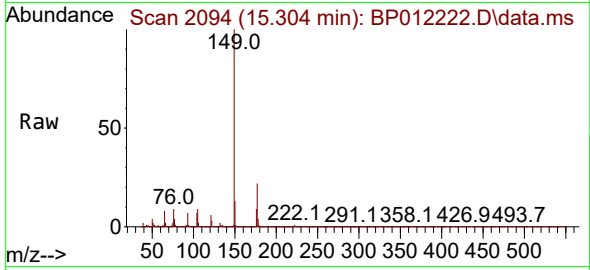




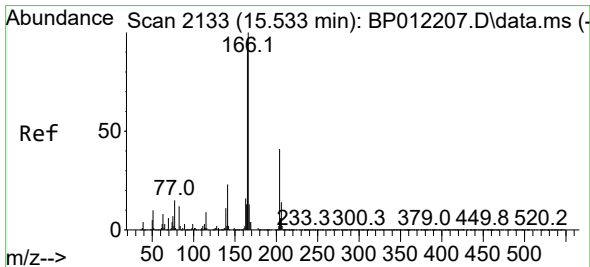
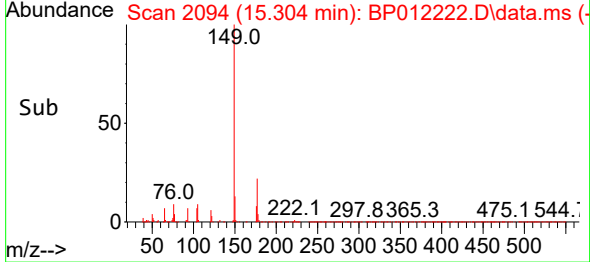
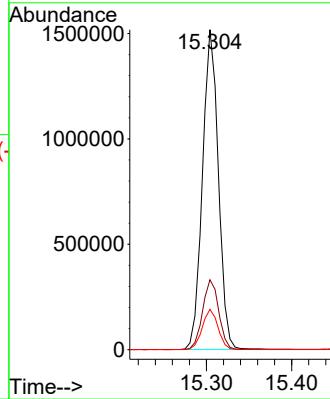


#59  
 Diethylphthalate  
 Concen: 36.019 ng/ul  
 RT: 15.304 min Scan# 2094  
 Delta R.T. -0.006 min  
 Lab File: BP012222.D  
 Acq: 20 Oct 2022 19:58

Instrument :  
 BNA\_P  
 ClientSampleId :

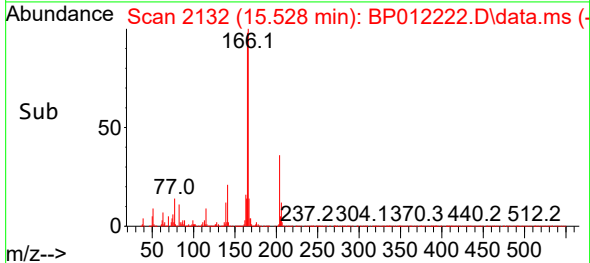
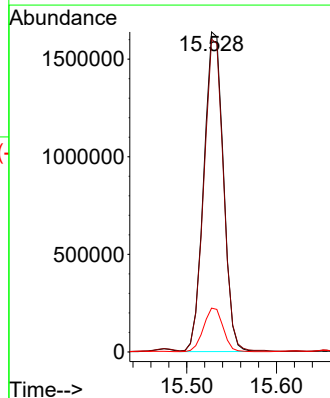
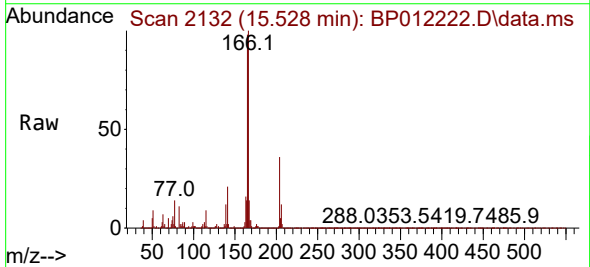


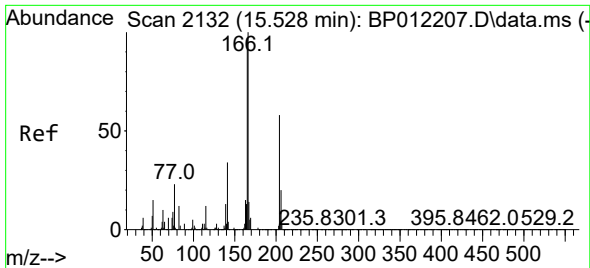
Tgt Ion:149 Resp: 1967704  
 Ion Ratio Lower Upper  
 149 100  
 177 21.9 17.9 26.9  
 150 12.6 10.1 15.1



#61  
 Fluorene  
 Concen: 47.966 ng/ul  
 RT: 15.528 min Scan# 2132  
 Delta R.T. -0.006 min  
 Lab File: BP012222.D  
 Acq: 20 Oct 2022 19:58

Tgt Ion:166 Resp: 2482027  
 Ion Ratio Lower Upper  
 166 100  
 165 97.7 78.0 117.0  
 167 13.7 10.7 16.1

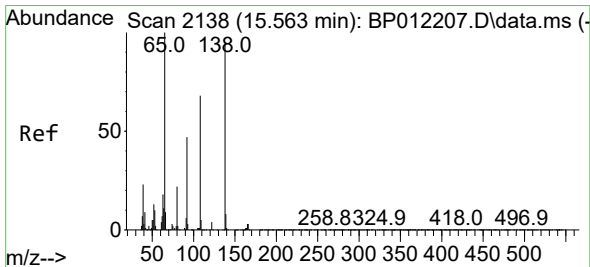
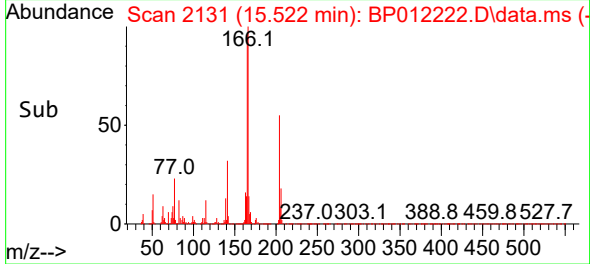
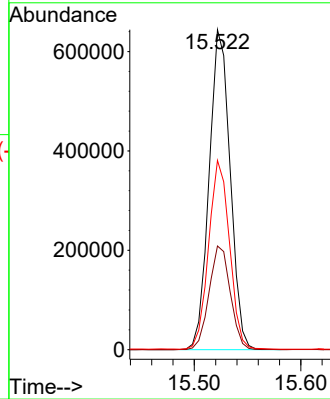
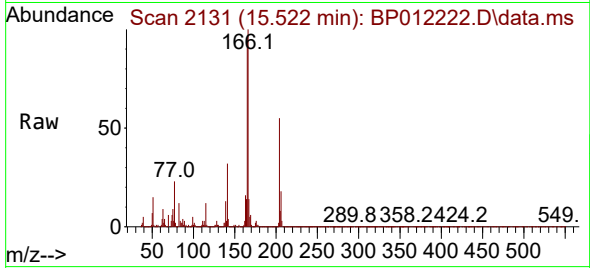




#62  
4-Chlorophenyl-phenylether  
Concen: 34.185 ng/ul  
RT: 15.522 min Scan# 2131  
Delta R.T. -0.006 min  
Lab File: BP012222.D  
Acq: 20 Oct 2022 19:58

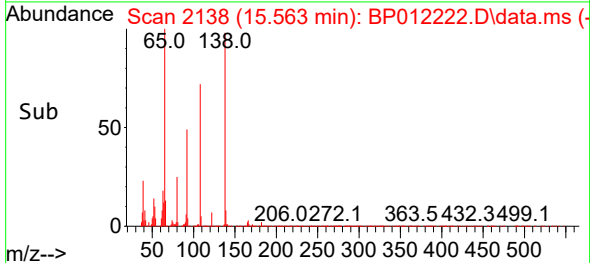
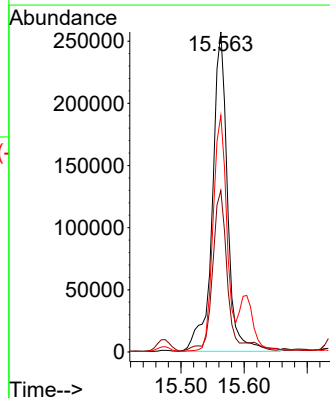
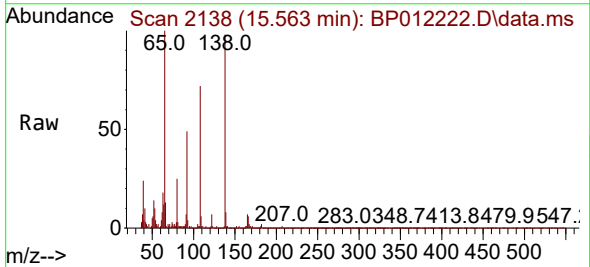
Instrument :  
BNA\_P  
ClientSampleId :

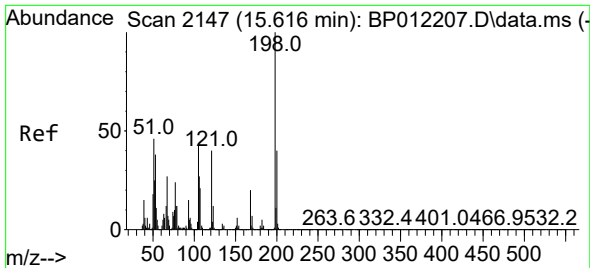
Tgt Ion:204 Resp: 881545  
Ion Ratio Lower Upper  
204 100  
206 32.4 26.6 39.8  
141 59.2 45.3 67.9



#63  
4-Nitroaniline  
Concen: 40.823 ng/ul  
RT: 15.563 min Scan# 2138  
Delta R.T. 0.000 min  
Lab File: BP012222.D  
Acq: 20 Oct 2022 19:58

Tgt Ion:138 Resp: 430215  
Ion Ratio Lower Upper  
138 100  
92 50.4 41.6 62.4  
108 73.9 57.0 85.6



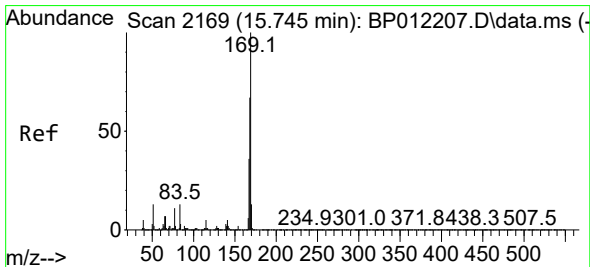
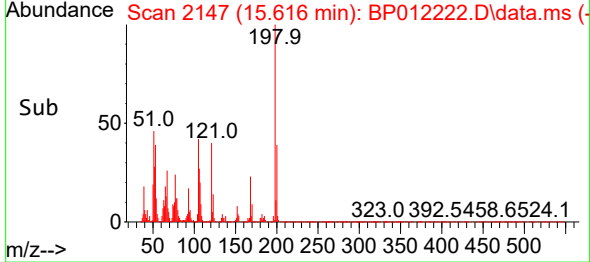
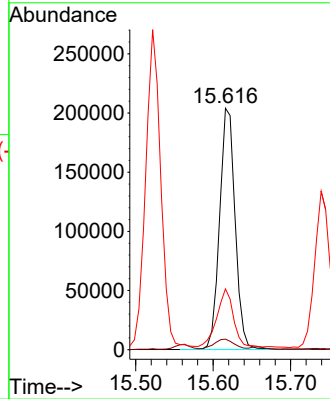
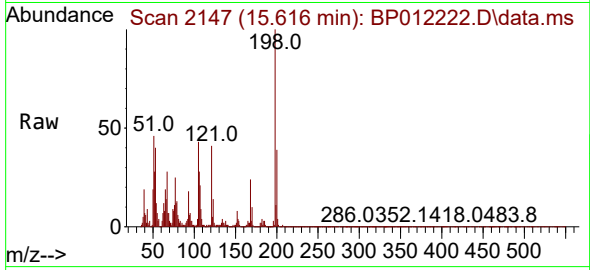


#66  
 4,6-Dinitro-2-methylphenol  
 Concen: 30.528 ng/ul  
 RT: 15.616 min Scan# 2147  
 Delta R.T. -0.006 min  
 Lab File: BP012222.D  
 Acq: 20 Oct 2022 19:58

Instrument :  
 BNA\_P  
 ClientSampleId :

Tgt Ion:198 Resp: 285028

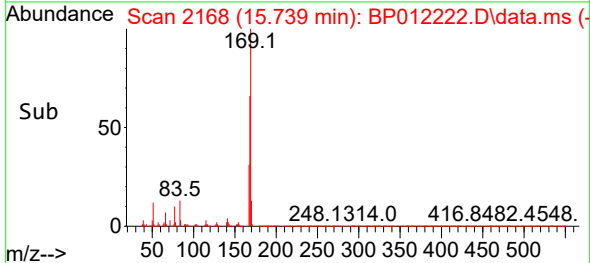
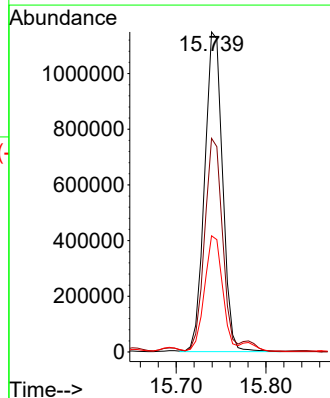
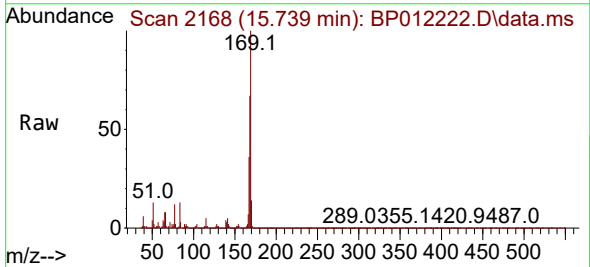
Ion	Ratio	Lower	Upper
198	100		
182	4.4	3.8	5.6
77	25.2	17.8	26.6

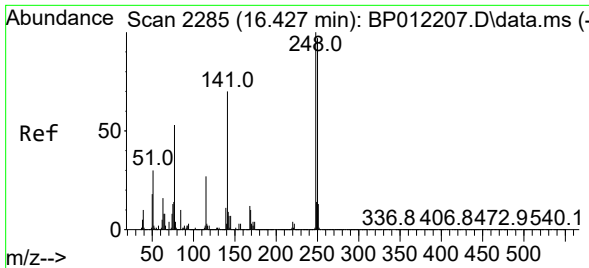


#67  
 N-Nitrosodiphenylamine  
 Concen: 35.168 ng/ul  
 RT: 15.739 min Scan# 2168  
 Delta R.T. -0.006 min  
 Lab File: BP012222.D  
 Acq: 20 Oct 2022 19:58

Tgt Ion:169 Resp: 1595822

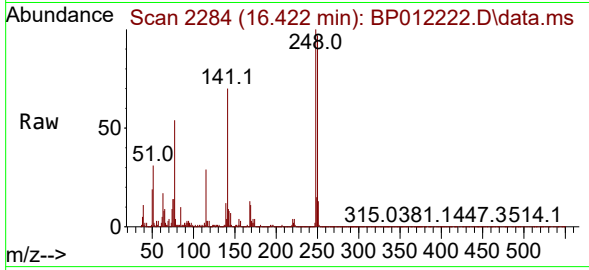
Ion	Ratio	Lower	Upper
169	100		
168	66.7	53.4	80.0
167	36.3	29.2	43.8



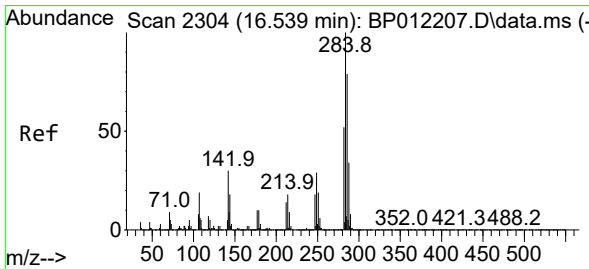
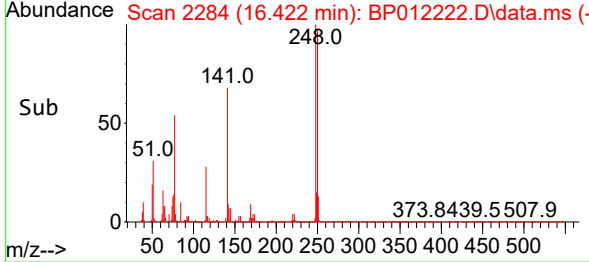
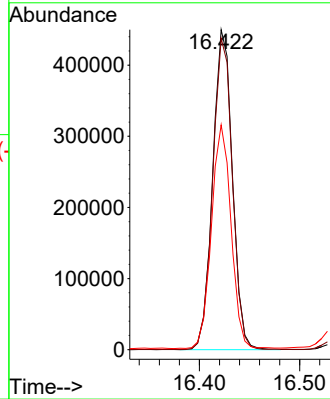


#68  
 4-Bromophenyl-phenylether  
 Concen: 36.968 ng/ul  
 RT: 16.422 min Scan# 21  
 Delta R.T. -0.006 min  
 Lab File: BP012222.D  
 Acq: 20 Oct 2022 19:58

Instrument :  
 BNA\_P  
 ClientSampleId :

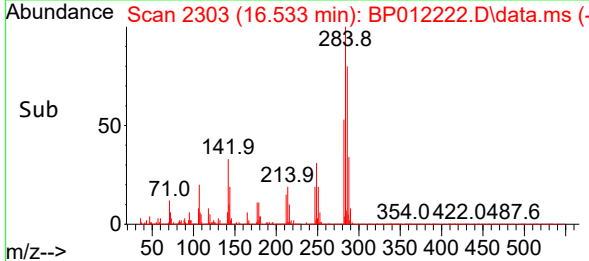
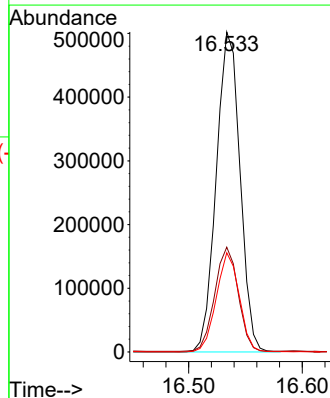
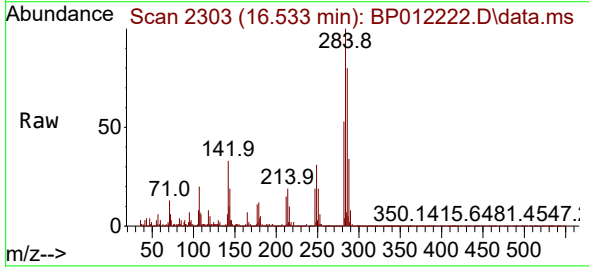


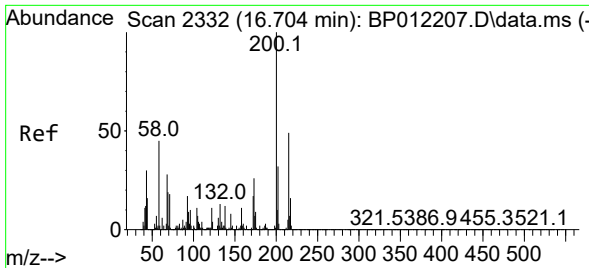
Tgt Ion:248 Resp: 611938  
 Ion Ratio Lower Upper  
 248 100  
 250 97.3 79.0 118.4  
 141 70.3 55.1 82.7



#69  
 Hexachlorobenzene  
 Concen: 37.438 ng/ul  
 RT: 16.533 min Scan# 2303  
 Delta R.T. -0.006 min  
 Lab File: BP012222.D  
 Acq: 20 Oct 2022 19:58

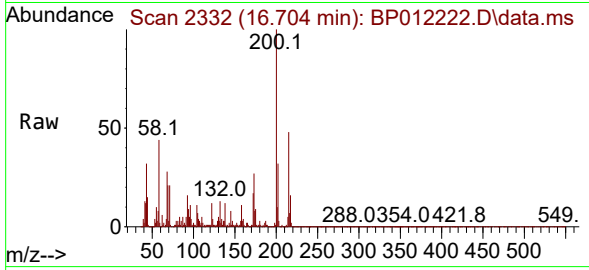
Tgt Ion:284 Resp: 730511  
 Ion Ratio Lower Upper  
 284 100  
 142 32.7 25.5 38.3  
 249 31.0 23.6 35.4



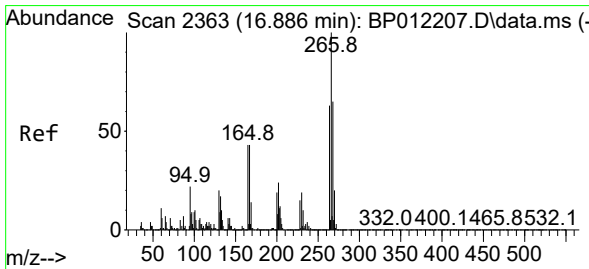
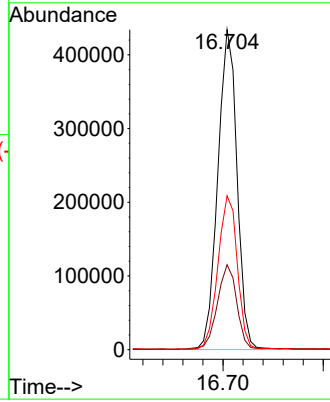
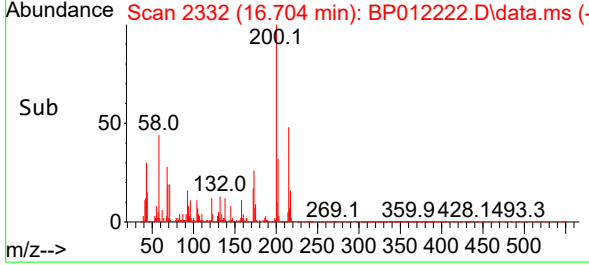


#70  
 Atrazine  
 Concen: 36.319 ng/ul  
 RT: 16.704 min Scan# 21  
 Delta R.T. 0.000 min  
 Lab File: BP012222.D  
 Acq: 20 Oct 2022 19:58

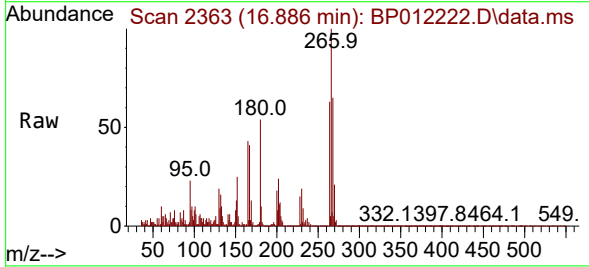
Instrument :  
 BNA\_P  
 ClientSampleId :



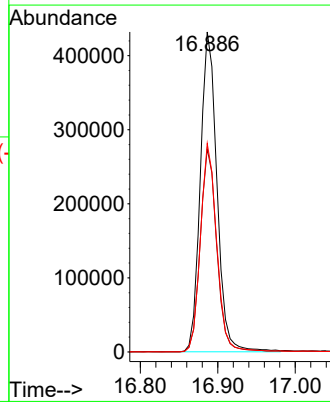
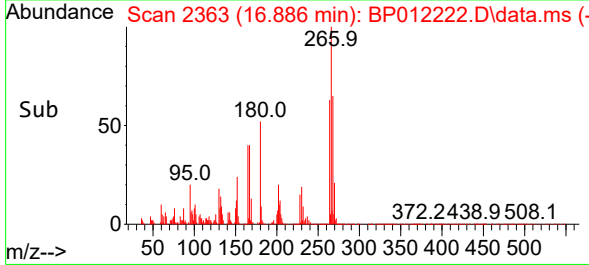
Tgt Ion:200 Resp: 575326  
 Ion Ratio Lower Upper  
 200 100  
 173 26.6 21.4 32.0  
 215 48.1 38.2 57.2

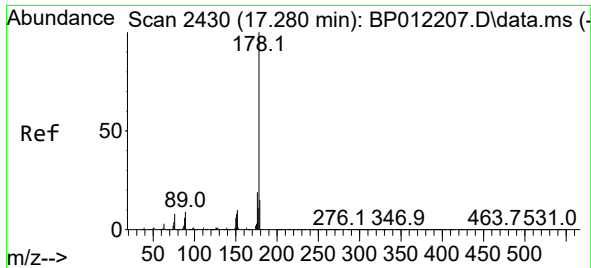


#71  
 Pentachlorophenol  
 Concen: 54.543 ng/ul  
 RT: 16.886 min Scan# 2363  
 Delta R.T. 0.000 min  
 Lab File: BP012222.D  
 Acq: 20 Oct 2022 19:58



Tgt Ion:266 Resp: 642404  
 Ion Ratio Lower Upper  
 266 100  
 264 63.5 50.1 75.1  
 268 65.2 50.6 76.0



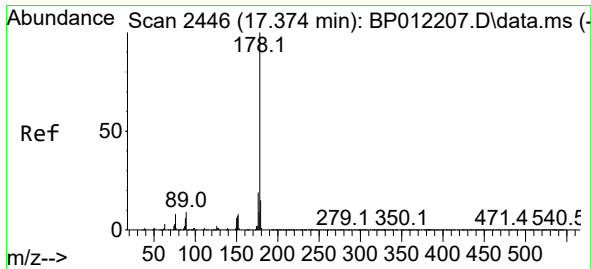
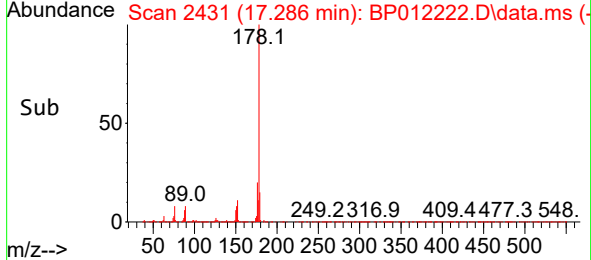
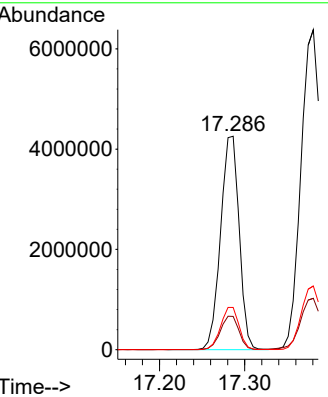
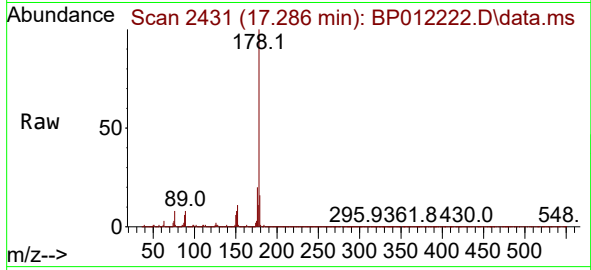


#72  
 Phenanthrene  
 Concen: 76.715 ng/u1  
 RT: 17.286 min Scan# 2430  
 Delta R.T. 0.006 min  
 Lab File: BP012222.D  
 Acq: 20 Oct 2022 19:58

Instrument : BNA\_P  
 ClientSampleId :

Tgt Ion:178 Resp: 6446166

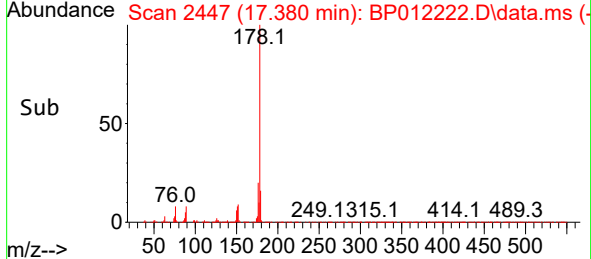
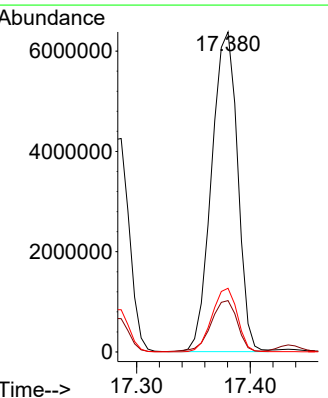
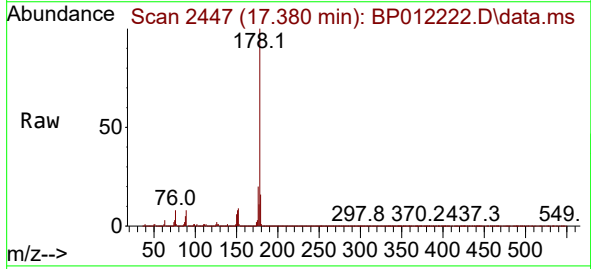
Ion	Ratio	Lower	Upper
178	100		
179	15.6	12.6	18.8
176	19.8	15.6	23.4

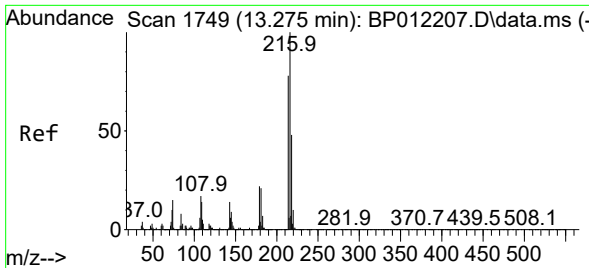


#74  
 Anthracene  
 Concen: 122.117 ng/u1  
 RT: 17.380 min Scan# 2447  
 Delta R.T. 0.006 min  
 Lab File: BP012222.D  
 Acq: 20 Oct 2022 19:58

Tgt Ion:178 Resp:10152637

Ion	Ratio	Lower	Upper
178	100		
179	16.1	12.3	18.5
176	19.9	15.0	22.4



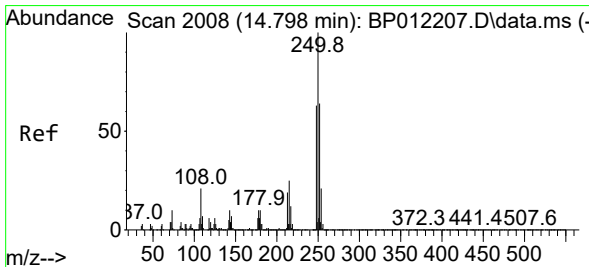
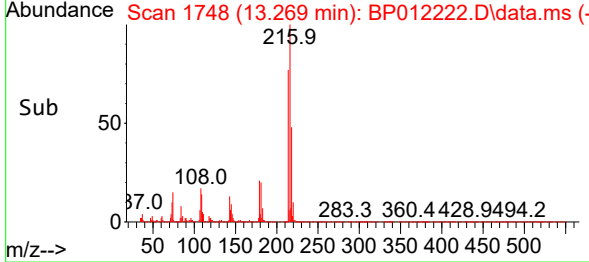
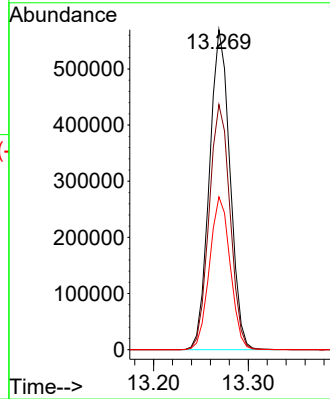
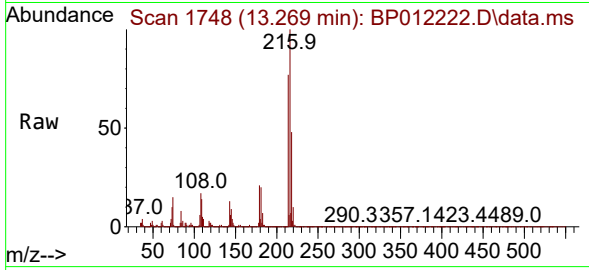


#75  
 1,2,3,4-Tetrachlorobenzene  
 Concen: 36.885 ng/uL  
 RT: 13.269 min Scan# 1748  
 Delta R.T. -0.006 min  
 Lab File: BP012222.D  
 Acq: 20 Oct 2022 19:58

Instrument :  
 BNA\_P  
 ClientSampleId :

Tgt Ion:216 Resp: 860501

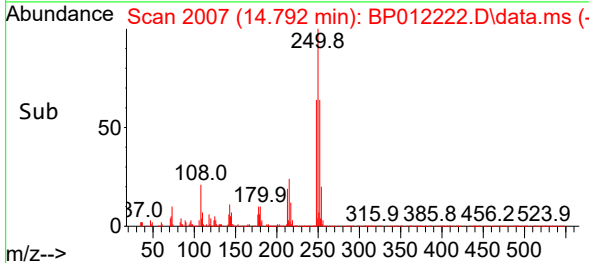
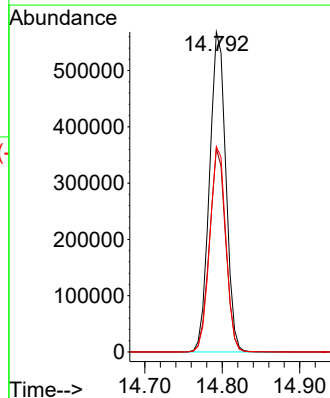
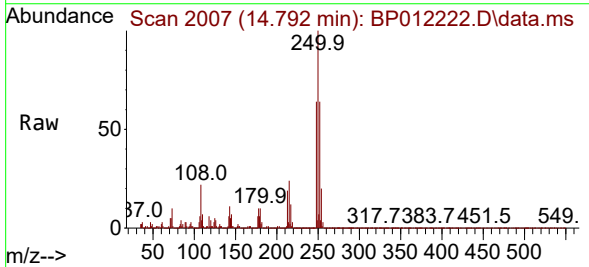
Ion	Ratio	Lower	Upper
216	100		
214	76.6	62.9	94.3
218	47.8	38.6	57.8

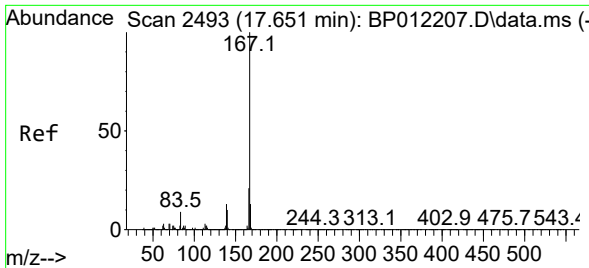


#76  
 Pentachlorobenzene  
 Concen: 33.780 ng/uL  
 RT: 14.792 min Scan# 2007  
 Delta R.T. -0.006 min  
 Lab File: BP012222.D  
 Acq: 20 Oct 2022 19:58

Tgt Ion:250 Resp: 830108

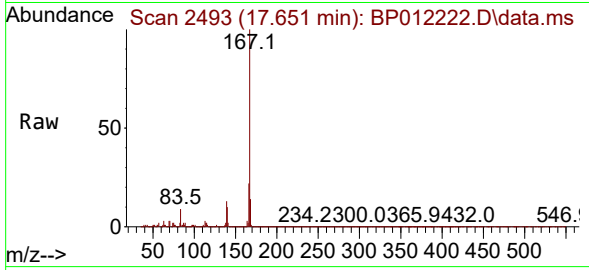
Ion	Ratio	Lower	Upper
250	100		
248	63.6	50.3	75.5
252	64.2	52.0	78.0



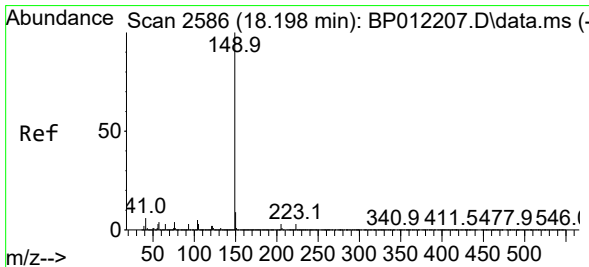
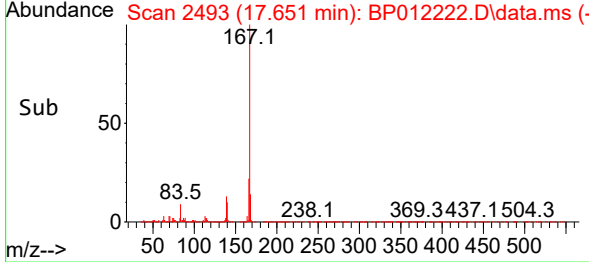
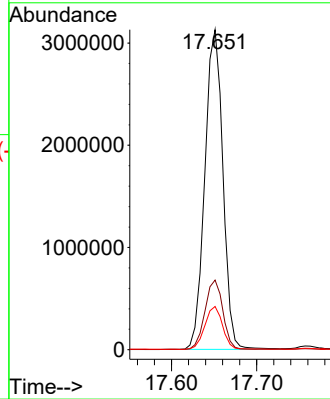


#77  
 Carbazole  
 Concen: 62.780 ng/ul  
 RT: 17.651 min Scan# 2493  
 Delta R.T. 0.000 min  
 Lab File: BP012222.D  
 Acq: 20 Oct 2022 19:58

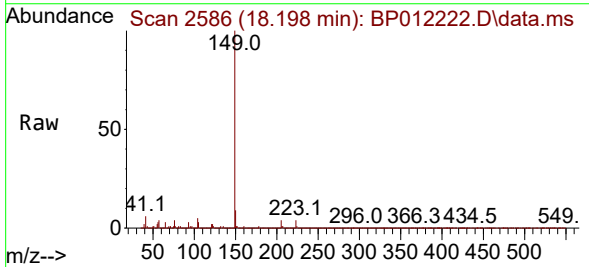
Instrument :  
 BNA\_P  
 ClientSampleId :



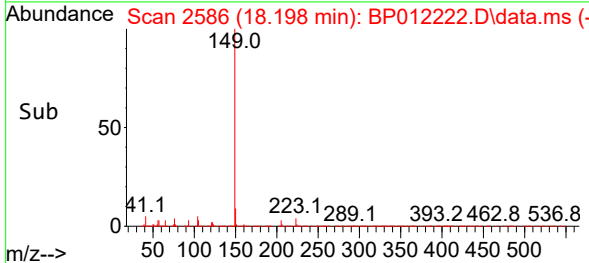
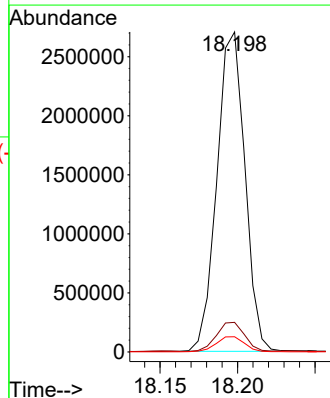
Tgt Ion:167 Resp: 4606404  
 Ion Ratio Lower Upper  
 167 100  
 166 21.8 17.3 25.9  
 139 13.5 10.2 15.4



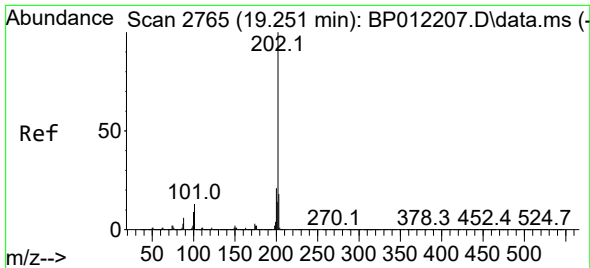
#78  
 Di-n-butylphthalate  
 Concen: 38.627 ng/ul  
 RT: 18.198 min Scan# 2586  
 Delta R.T. 0.000 min  
 Lab File: BP012222.D  
 Acq: 20 Oct 2022 19:58



Tgt Ion:149 Resp: 3399954  
 Ion Ratio Lower Upper  
 149 100  
 150 9.3 7.3 10.9  
 104 4.8 3.8 5.6

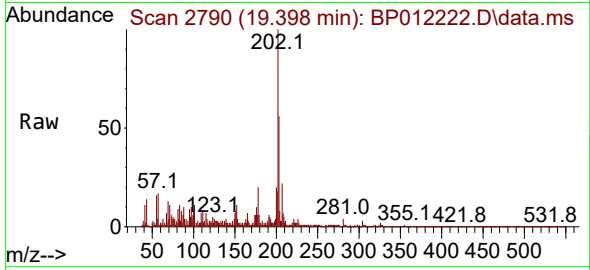




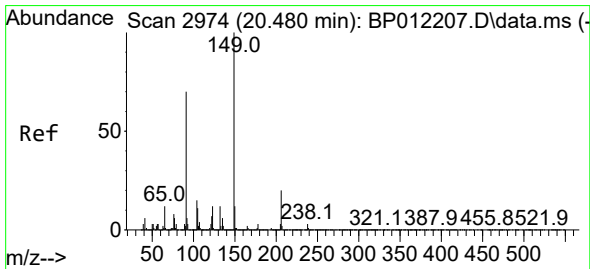
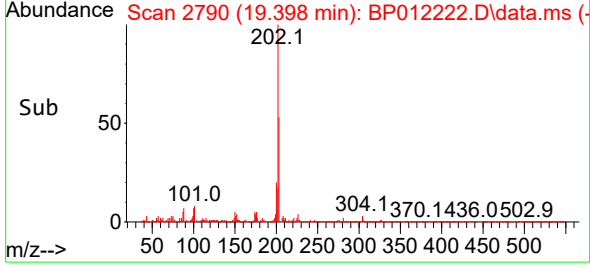
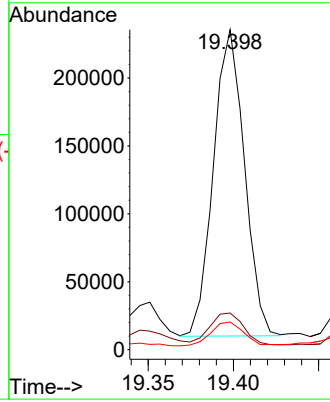


#80  
 Fluoranthene  
 Concen: 2.725 ng/u1  
 RT: 19.398 min Scan# 2790  
 Delta R.T. 0.147 min  
 Lab File: BP012222.D  
 Acq: 20 Oct 2022 19:58

Instrument :  
 BNA\_P  
 ClientSampleId :

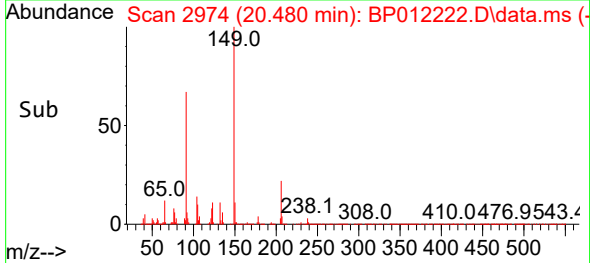
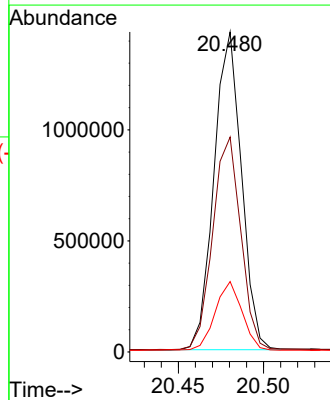
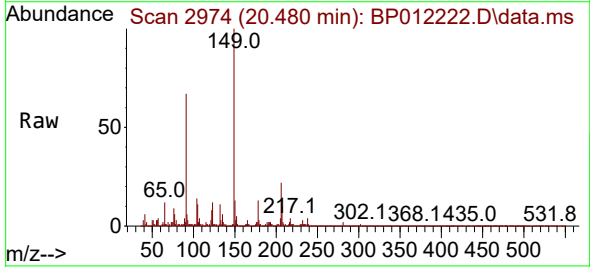


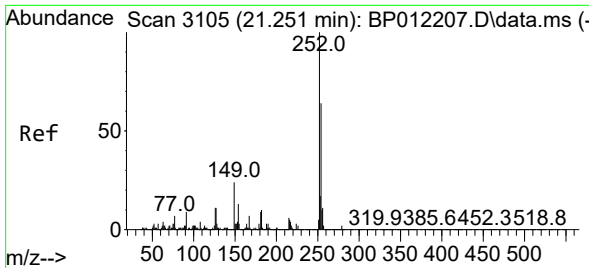
Tgt Ion:202 Resp: 285360  
 Ion Ratio Lower Upper  
 202 100  
 101 11.5 10.4 15.6  
 100 8.6 7.7 11.5



#83  
 Butylbenzylphthalate  
 Concen: 38.490 ng/u1  
 RT: 20.480 min Scan# 2974  
 Delta R.T. 0.000 min  
 Lab File: BP012222.D  
 Acq: 20 Oct 2022 19:58

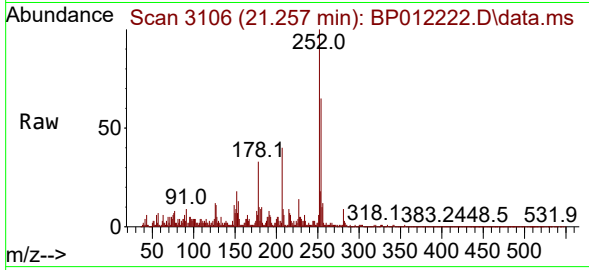
Tgt Ion:149 Resp: 1603787  
 Ion Ratio Lower Upper  
 149 100  
 91 67.1 56.1 84.1  
 206 22.0 16.1 24.1



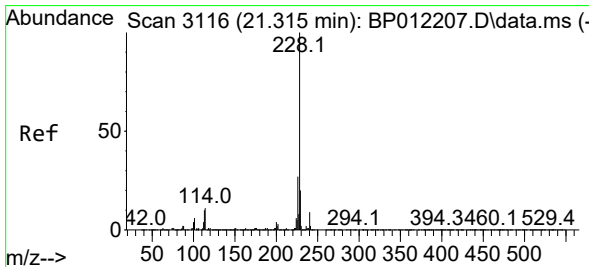
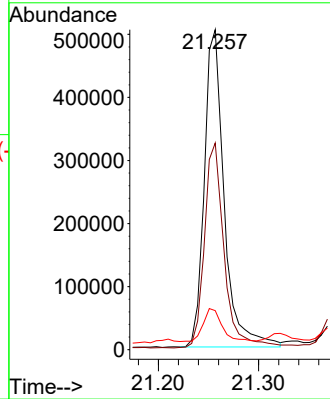
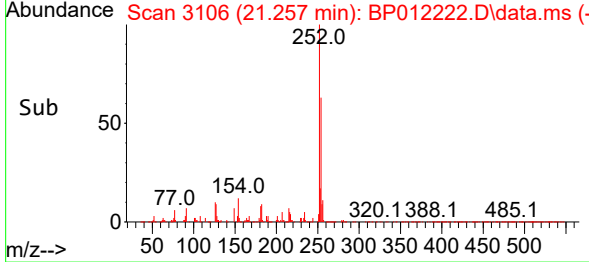


#84  
 3,3'-Dichlorobenzidine  
 Concen: 21.391 ng/ul  
 RT: 21.257 min Scan# 3106  
 Delta R.T. 0.006 min  
 Lab File: BP012222.D  
 Acq: 20 Oct 2022 19:58

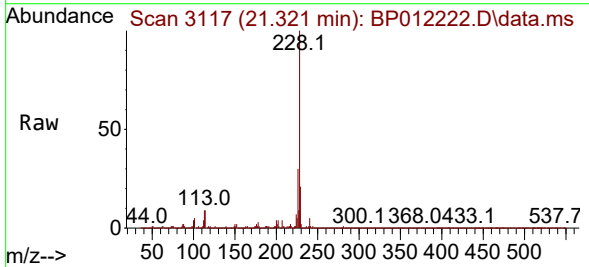
Instrument :  
 BNA\_P  
 ClientSampleId :



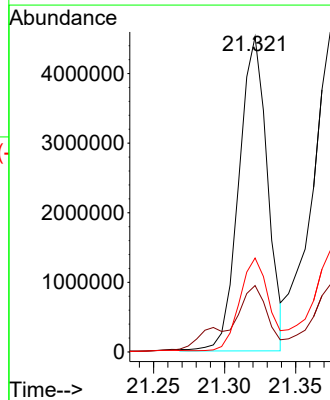
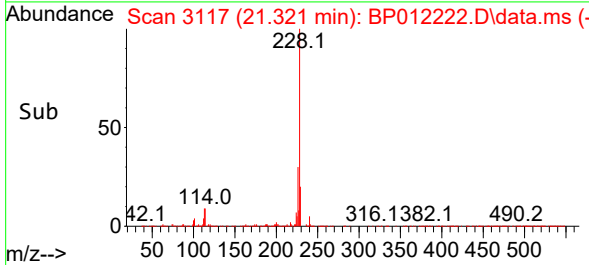
Tgt Ion:252 Resp: 693400  
 Ion Ratio Lower Upper  
 252 100  
 254 64.6 52.2 78.4  
 126 12.2 9.8 14.6

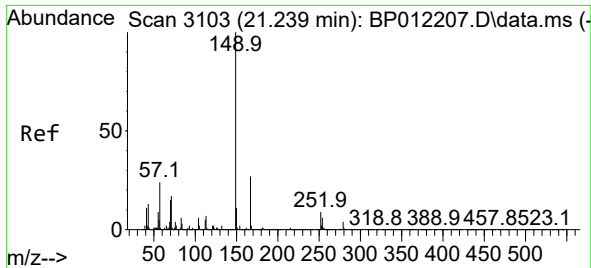


#85  
 Benzo(a)anthracene  
 Concen: 65.408 ng/ul  
 RT: 21.321 min Scan# 3117  
 Delta R.T. 0.006 min  
 Lab File: BP012222.D  
 Acq: 20 Oct 2022 19:58



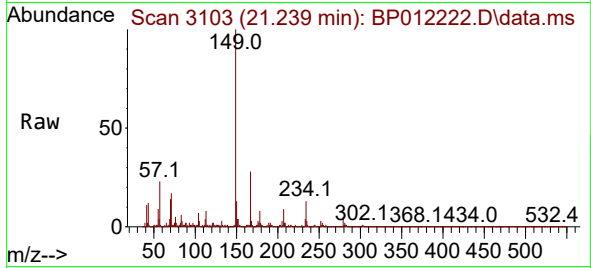
Tgt Ion:228 Resp: 6344670  
 Ion Ratio Lower Upper  
 228 100  
 229 21.1 16.1 24.1  
 226 29.8 21.9 32.9



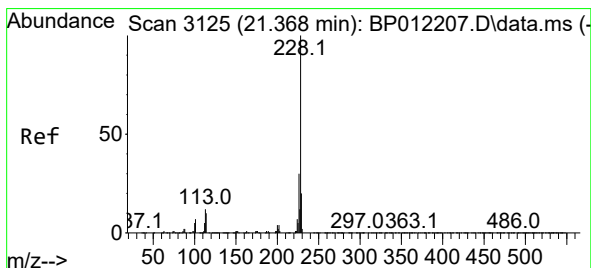
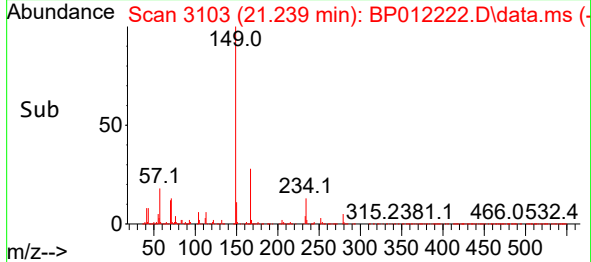
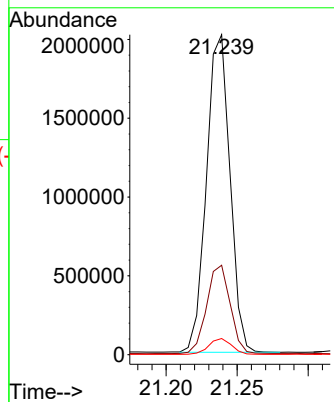


#86  
 Bis(2-ethylhexyl)phthalate  
 Concen: 39.741 ng/uI  
 RT: 21.239 min Scan# 3103  
 Delta R.T. 0.000 min  
 Lab File: BP012222.D  
 Acq: 20 Oct 2022 19:58

Instrument :  
 BNA\_P  
 ClientSampleId :

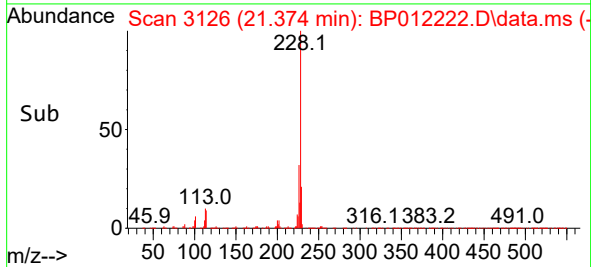
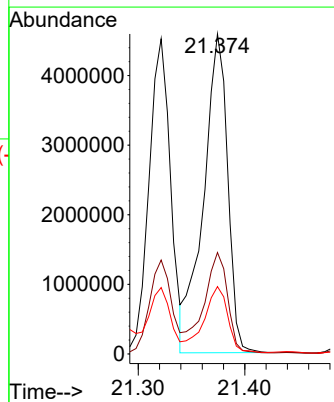
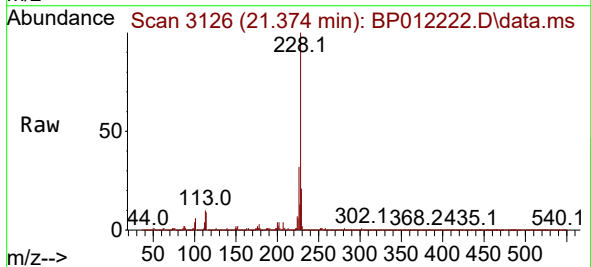


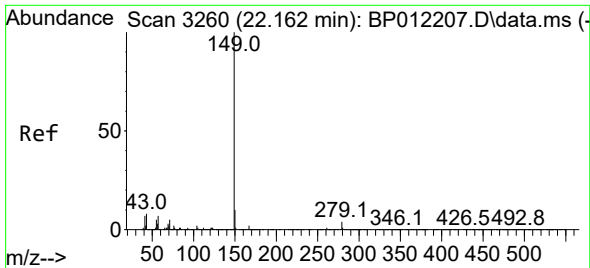
Tgt Ion:149 Resp: 2319992  
 Ion Ratio Lower Upper  
 149 100  
 167 28.0 21.6 32.4  
 279 5.1 3.4 5.0#



#87  
 Chrysene  
 Concen: 79.791 ng/uI  
 RT: 21.374 min Scan# 3126  
 Delta R.T. 0.006 min  
 Lab File: BP012222.D  
 Acq: 20 Oct 2022 19:58

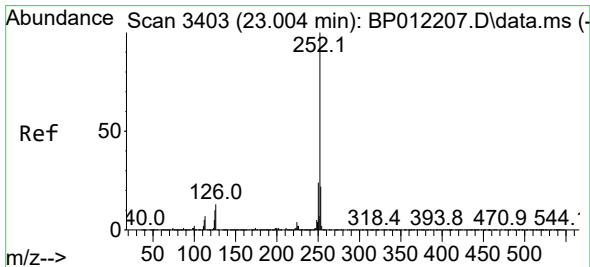
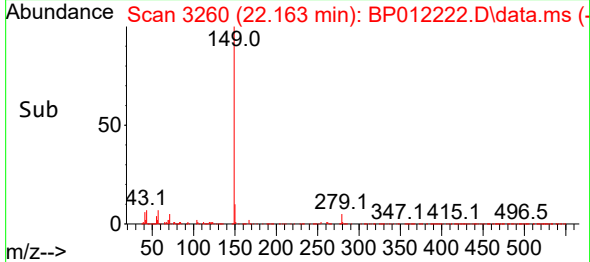
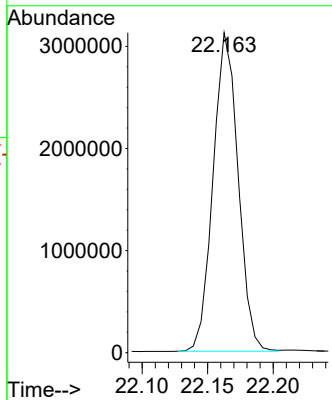
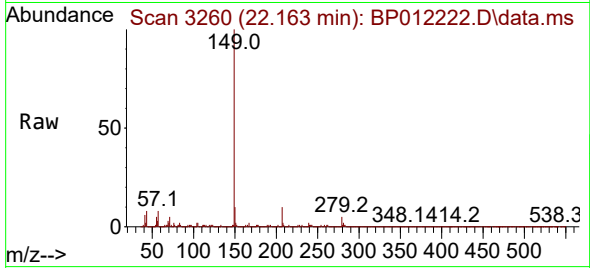
Tgt Ion:228 Resp: 7222569  
 Ion Ratio Lower Upper  
 228 100  
 226 31.7 24.2 36.4  
 229 21.0 15.8 23.8





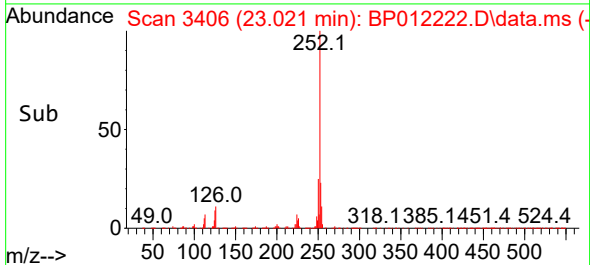
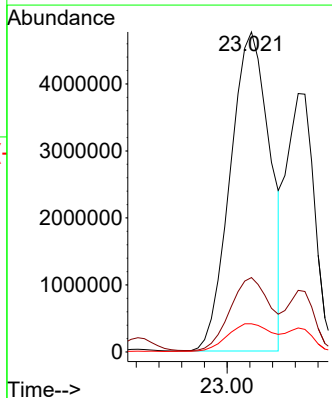
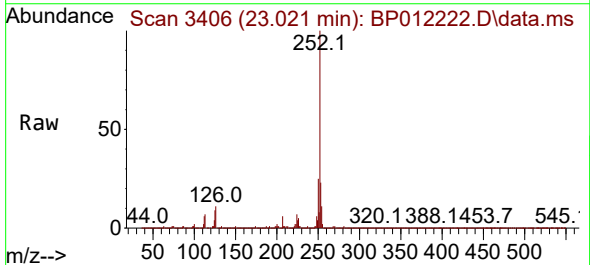
#89  
 Di-n-octyl phthalate  
 Concen: 32.562 ng/ul  
 RT: 22.163 min Scan# 31  
 Delta R.T. 0.000 min  
 Lab File: BP012222.D  
 Acq: 20 Oct 2022 19:58  
 Tgt Ion:149 Resp: 4134810

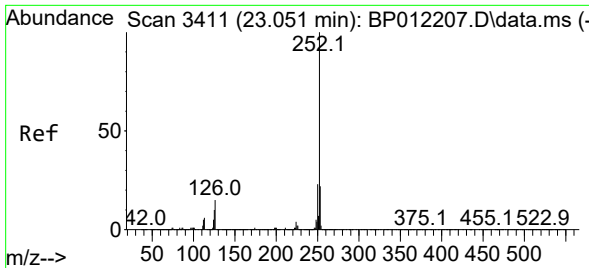
Instrument :  
 BNA\_P  
 ClientSampleId :



#90  
 Benzo(b)fluoranthene  
 Concen: 94.474 ng/ul  
 RT: 23.021 min Scan# 3406  
 Delta R.T. 0.018 min  
 Lab File: BP012222.D  
 Acq: 20 Oct 2022 19:58  
 Tgt Ion:252 Resp:11559277

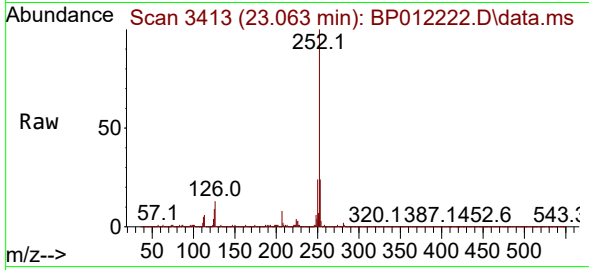
Ion	Ratio	Lower	Upper
252	100		
253	23.3	17.5	26.3
125	8.8	8.5	12.7



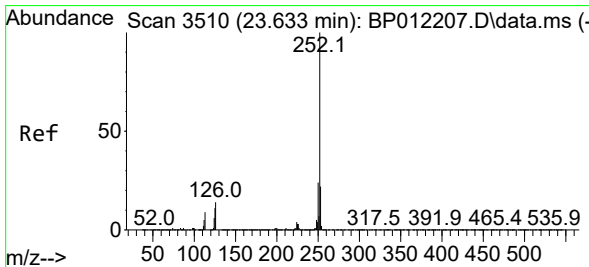
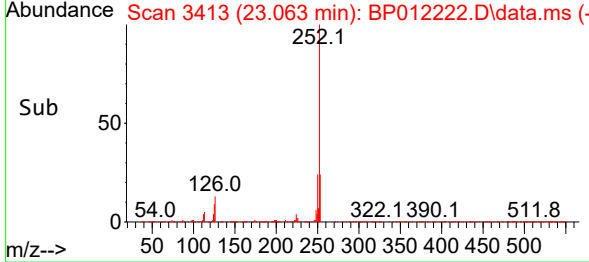
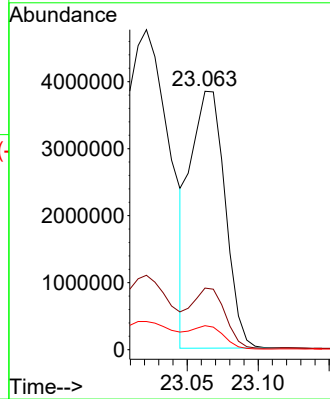


#91  
 Benzo(k)fluoranthene  
 Concen: 53.773 ng/u1  
 RT: 23.063 min Scan# 3411  
 Delta R.T. 0.012 min  
 Lab File: BP012222.D  
 Acq: 20 Oct 2022 19:58

Instrument :  
 BNA\_P  
 ClientSampleId :

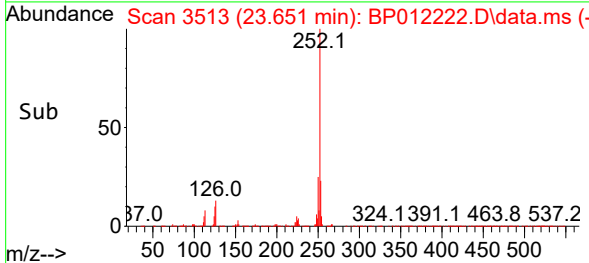
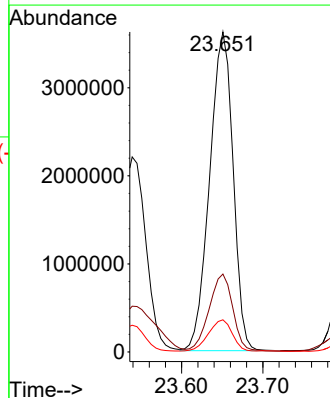
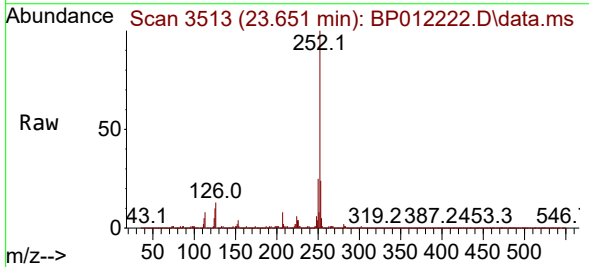


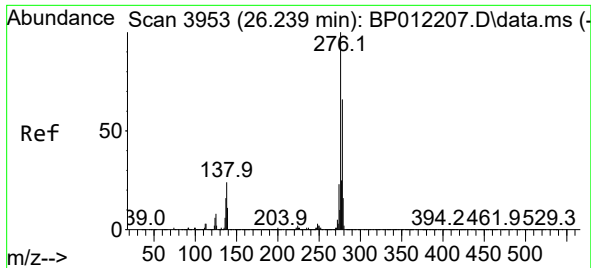
Tgt Ion:252 Resp: 6485293  
 Ion Ratio Lower Upper  
 252 100  
 253 23.8 17.9 26.9  
 125 9.3 8.6 13.0



#93  
 Benzo(a)pyrene  
 Concen: 69.365 ng/u1  
 RT: 23.651 min Scan# 3513  
 Delta R.T. 0.018 min  
 Lab File: BP012222.D  
 Acq: 20 Oct 2022 19:58

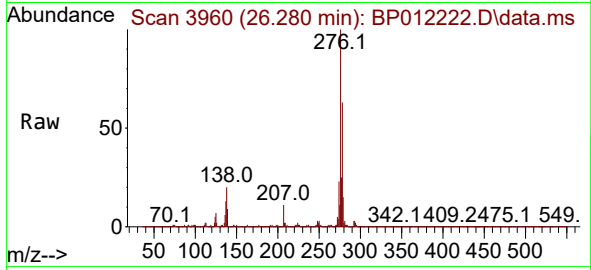
Tgt Ion:252 Resp: 7257537  
 Ion Ratio Lower Upper  
 252 100  
 253 24.3 17.8 26.6  
 125 10.1 9.7 14.5



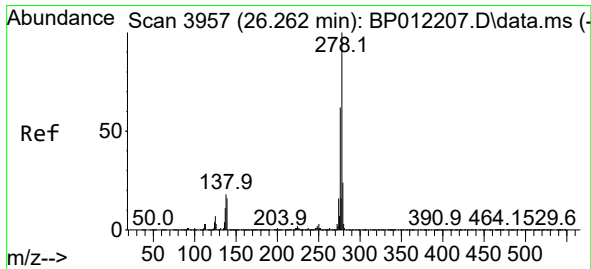
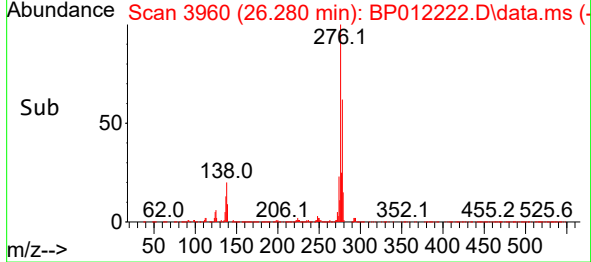
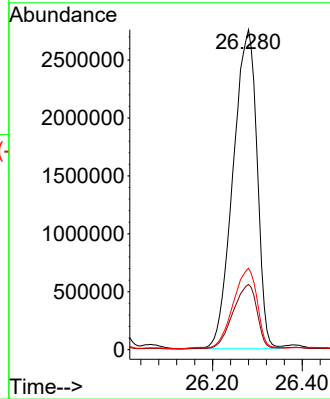


#94  
 Indeno(1,2,3-cd)pyrene  
 Concen: 84.467 ng/uI  
 RT: 26.280 min Scan# 3960  
 Delta R.T. 0.035 min  
 Lab File: BP012222.D  
 Acq: 20 Oct 2022 19:58

Instrument :  
 BNA\_P  
 ClientSampleId :

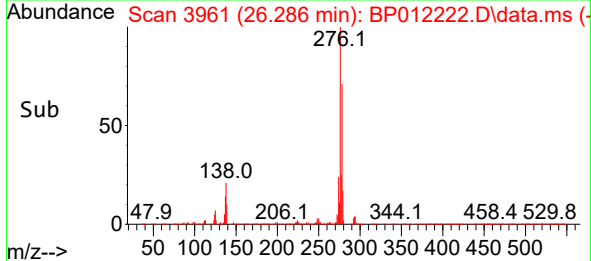
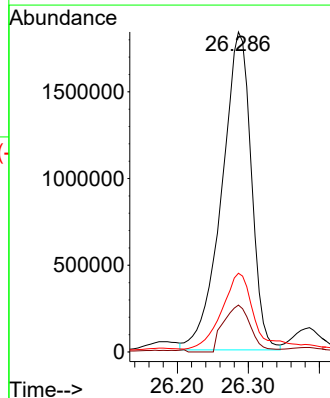
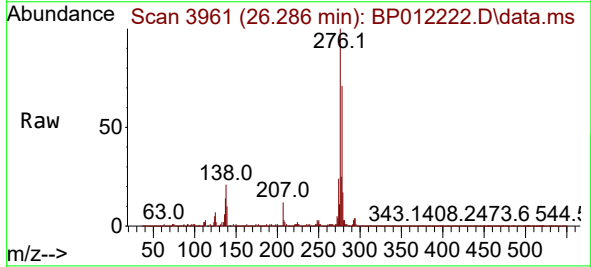


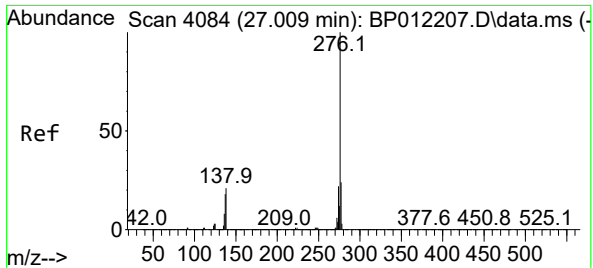
Tgt Ion:276 Resp:10230688  
 Ion Ratio Lower Upper  
 276 100  
 138 20.4 20.3 30.5  
 277 25.4 20.2 30.4



#95  
 Dibenzo(a,h)anthracene  
 Concen: 48.532 ng/uI  
 RT: 26.286 min Scan# 3961  
 Delta R.T. 0.024 min  
 Lab File: BP012222.D  
 Acq: 20 Oct 2022 19:58

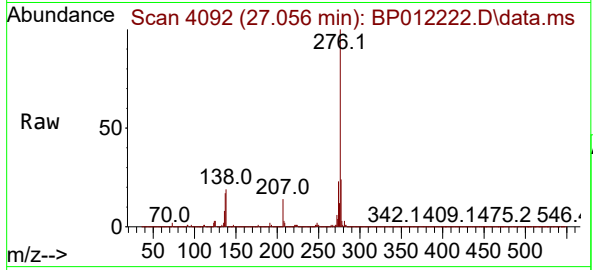
Tgt Ion:278 Resp: 5299486  
 Ion Ratio Lower Upper  
 278 100  
 139 14.7 12.9 19.3  
 279 24.6 19.0 28.4





#96  
 Benzo(g,h,i)perylene  
 Concen: 76.423 ng/ul  
 RT: 27.056 min Scan# 4092  
 Delta R.T. 0.047 min  
 Lab File: BP012222.D  
 Acq: 20 Oct 2022 19:58

Instrument :  
 BNA\_P  
 ClientSampleId :



Tgt Ion: 276 Resp: 8691193

Ion	Ratio	Lower	Upper
276	100		
138	19.5	17.9	26.9
277	24.2	18.9	28.3

