

Data Path : Z:\svoasrv\HPCHEM1\BNA_P\Data\BP102022\
 Data File : BP012241.D
 Acq On : 21 Oct 2022 12:39
 Operator : CG/JU
 Sample : N4755-06
 Misc :
 ALS Vial : 36 Sample Multiplier: 1

Instrument :
 BNA_P
 ClientSampleId :

Quant Time: Oct 21 22:31:01 2022
 Quant Method : Z:\svoasrv\HPCHEM1\BNA_P\Methods\SFAM-EPA-BP101922.M
 Quant Title : SVOA CALIBRATION
 QLast Update : Thu Oct 20 00:51:41 2022
 Response via : Initial Calibration

Compound	R.T.	QIon	Response	Conc	Units	Dev(Min)
Internal Standards						
1) 1,4-Dichlorobenzene-d4	7.822	152	350161	20.000	ng/ul	0.00
20) Naphthalene-d8	10.628	136	1471435	20.000	ng/ul	0.00
38) Acenaphthene-d10	14.475	164	818316	20.000	ng/ul	0.00
64) Phenanthrene-d10	17.234	188	1299819	20.000	ng/ul	0.00
79) Chrysene-d12	21.339	240	1066115	20.000	ng/ul	0.00
88) Perylene-d12	23.598	264	2044615	20.000	ng/ul	-0.14
System Monitoring Compounds						
3) 1,4-Dioxane-d8	3.258	96	39585	4.575	ng/uL	0.00
4) Pyridine-d5	3.681	84	270998	10.869	ng/ul	0.00
7) Phenol-d5	6.993	99	831465	27.505	ng/ul	0.00
9) Bis-(2-Chloroethyl)eth...	7.158	67	469675	25.619	ng/ul	0.00
11) 2-Chlorophenol-d4	7.352	132	652705	28.366	ng/ul	0.00
15) 4-Methylphenol-d8	8.534	113	588308	25.040	ng/ul	-0.01
21) Nitrobenzene-d5	8.993	128	315458	28.963	ng/ul	0.00
24) 2-Nitrophenol-d4	9.710	143	350903	29.861	ng/ul	0.00
28) 2,4-Dichlorophenol-d3	10.252	165	634087	28.767	ng/ul	0.00
31) 4-Chloroaniline-d4	10.775	131	458706	14.647	ng/ul	0.00
46) Dimethylphthalate-d6	13.887	166	1740483	30.576	ng/ul	0.00
49) Acenaphthylene-d8	14.163	160	1954457	30.080	ng/ul	-0.01
54) 4-Nitrophenol-d4	14.693	143	204712	19.196	ng/ul	0.00
60) Fluorene-d10	15.469	176	1404118	28.672	ng/ul	0.00
65) 4,6-Dinitro-2-methylph...	15.598	200	119424	16.150	ng/ul	0.00
73) Anthracene-d10	17.339	188	1792796	31.466	ng/ul	0.00
81) Pyrene-d10	19.581	212	1720029	28.337	ng/ul	0.00
92) Benzo(a)pyrene-d12	23.598	264	1981781	19.328	ng/ul	0.01
Target Compounds						
8) Phenol	7.016	94	48715	1.540	ng/ul#	88
16) Acetophenone	8.652	105	56473	1.556	ng/ul	98
30) Naphthalene	10.675	128	816425	10.374	ng/ul	100
36) 2-Methylnaphthalene	12.287	142	285605	5.334	ng/ul	100
37) 1-Methylnaphthalene	12.510	142	107376	2.008	ng/ul#	99
43) 1,1'-Biphenyl	13.304	154	122748	2.017	ng/ul	99
50) Acenaphthylene	14.198	152	1583341	21.870	ng/ul	100
52) Acenaphthene	14.540	153	544376	10.632	ng/ul	99
56) Dibenzofuran	14.875	168	920811	13.137	ng/ul	99
61) Fluorene	15.528	166	1014996	18.278	ng/ul	100
66) 4,6-Dinitro-2-methylph...	15.616	198	8308	1.070	ng/ul#	1
71) Pentachlorophenol	16.887	266	141774	14.478	ng/ul	99
72) Phenanthrene	17.281	178	5358922	76.709	ng/ul	100
74) Anthracene	17.381	178	16699306	241.595	ng/ul	93
77) Carbazole	17.645	167	2108131	34.558	ng/ul	99
80) Fluoranthene	19.398	202	313548	4.180	ng/ul	99
82) Pyrene	19.516	202	124016	1.616	ng/ul	96
85) Benzo(a)anthracene	21.322	228	7368000	106.040	ng/ul	95
86) Bis(2-ethylhexyl)phtha...	21.233	149	60064	1.436	ng/ul#	72
87) Chrysene	21.375	228	10303929	158.914	ng/ul	97
93) Benzo(a)pyrene	23.551	252	8748820	75.083	ng/ul	98
94) Indeno(1,2,3-cd)pyrene	26.063	276	145690	1.080	ng/ul#	89

Data Path : Z:\svoasrv\HPCHEM1\BNA_P\Data\BP102022\
Data File : BP012241.D
Acq On : 21 Oct 2022 12:39
Operator : CG/JU
Sample : N4755-06
Misc :
ALS Vial : 36 Sample Multiplier: 1

Instrument :
BNA_P
ClientSampleId :

Quant Time: Oct 21 22:31:01 2022
Quant Method : Z:\svoasrv\HPCHEM1\BNA_P\Methods\SFAM-EPA-BP101922.M
Quant Title : SVOA CALIBRATION
QLast Update : Thu Oct 20 00:51:41 2022
Response via : Initial Calibration

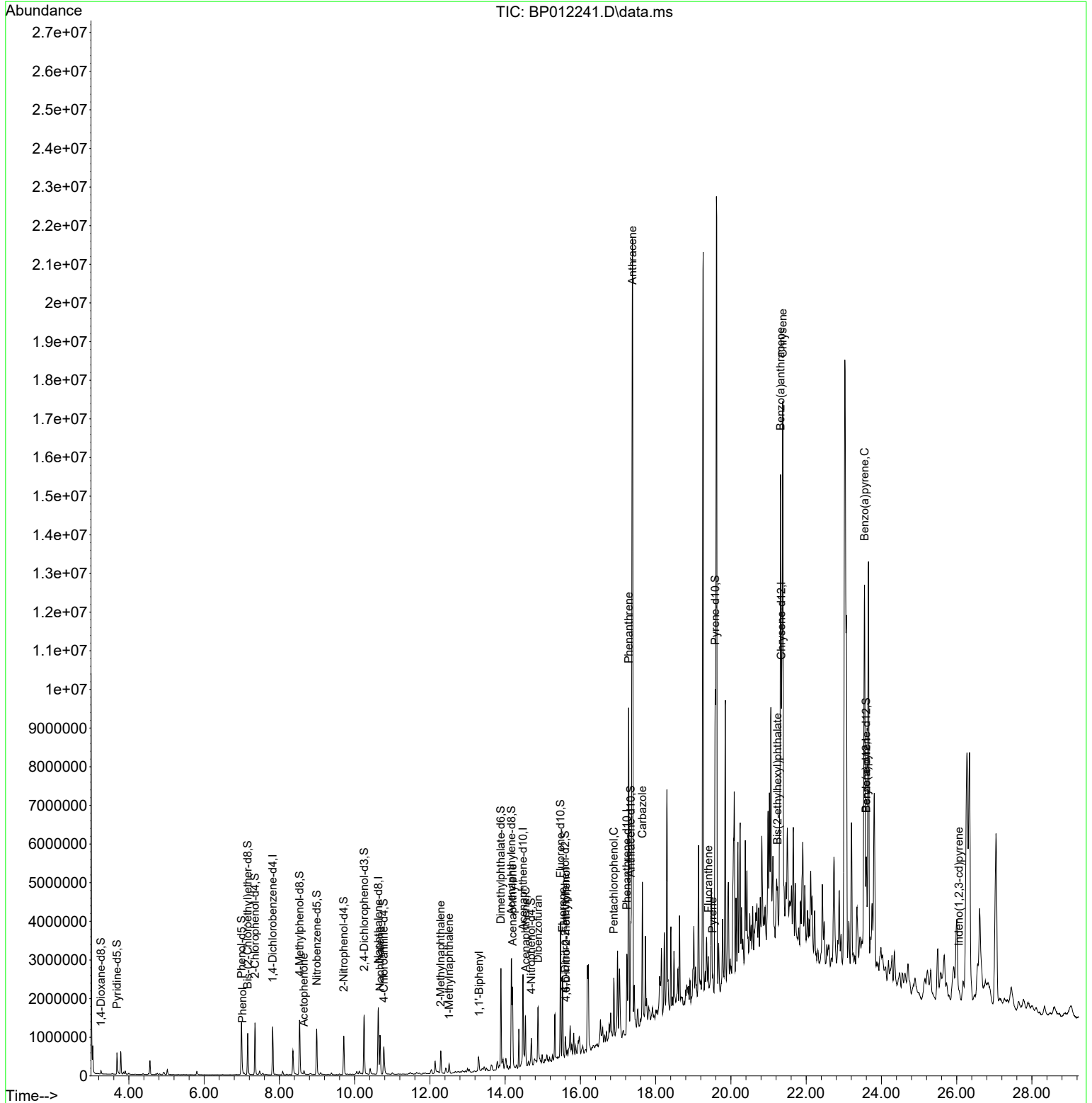
Compound	R.T.	QIon	Response	Conc	Units	Dev(Min)

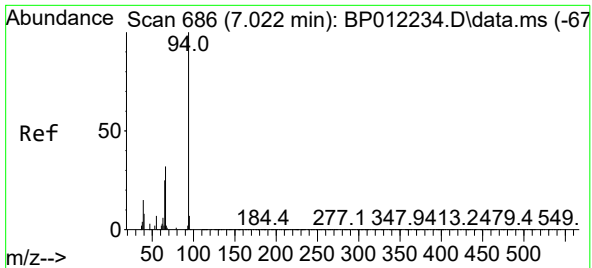
(#) = qualifier out of range (m) = manual integration (+) = signals summed						

Data Path : Z:\svoasrv\HPCHEM1\BNA_P\Data\BP102022\
 Data File : BP012241.D
 Acq On : 21 Oct 2022 12:39
 Operator : CG/JU
 Sample : N4755-06
 Misc :
 ALS Vial : 36 Sample Multiplier: 1

Instrument :
 BNA_P
 ClientSampleId :

Quant Time: Oct 21 22:31:01 2022
 Quant Method : Z:\svoasrv\HPCHEM1\BNA_P\Methods\SFAM-EPA-BP101922.M
 Quant Title : SVOA CALIBRATION
 QLast Update : Thu Oct 20 00:51:41 2022
 Response via : Initial Calibration

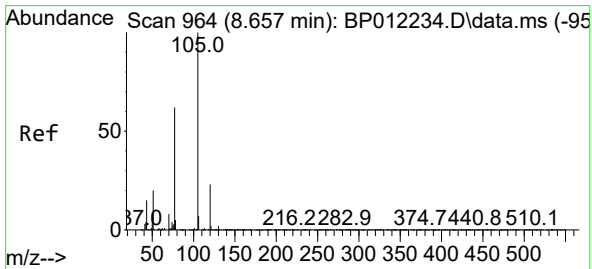
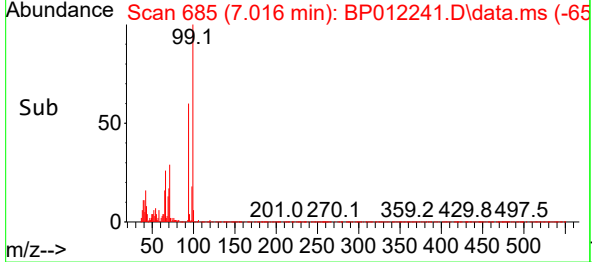
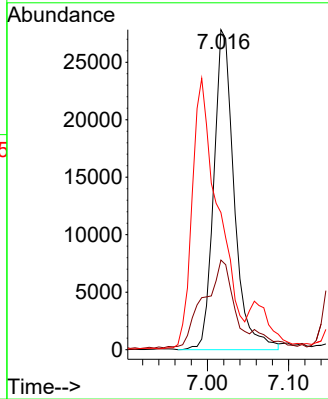
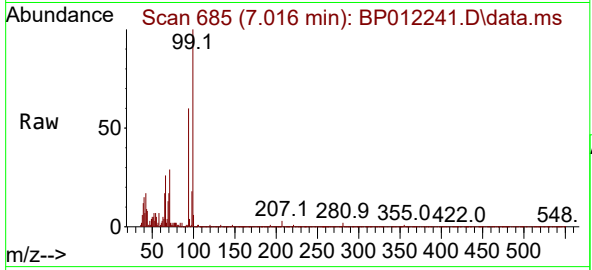




#8
 Phenol
 Concen: 1.540 ng/ul
 RT: 7.016 min Scan# 685
 Delta R.T. -0.006 min
 Lab File: BP012241.D
 Acq: 21 Oct 2022 12:39

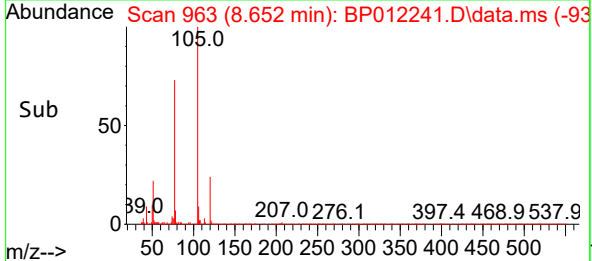
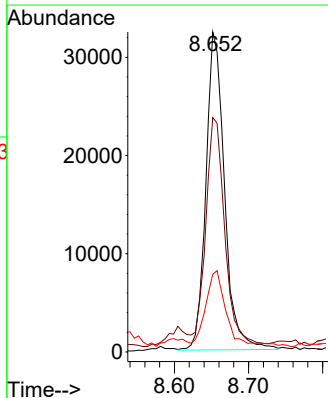
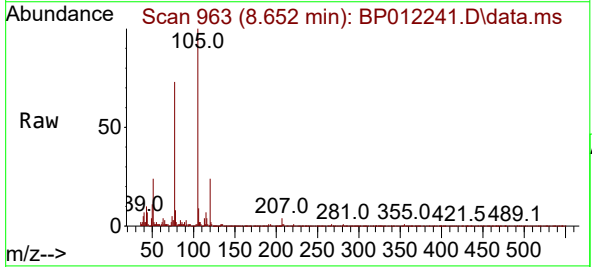
Instrument :
 BNA_P
 ClientSampleId :

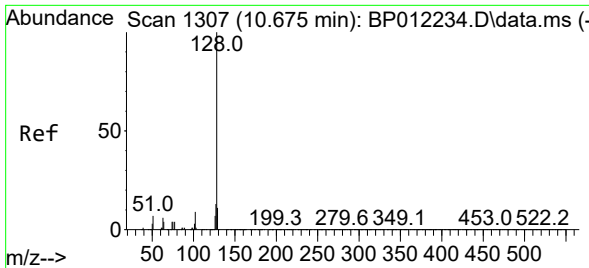
Tgt Ion	Resp	Lower	Upper
94	48715		
94	100		
65	28.0	20.6	31.0
66	42.9	26.2	39.4



#16
 Acetophenone
 Concen: 1.556 ng/ul
 RT: 8.652 min Scan# 963
 Delta R.T. -0.006 min
 Lab File: BP012241.D
 Acq: 21 Oct 2022 12:39

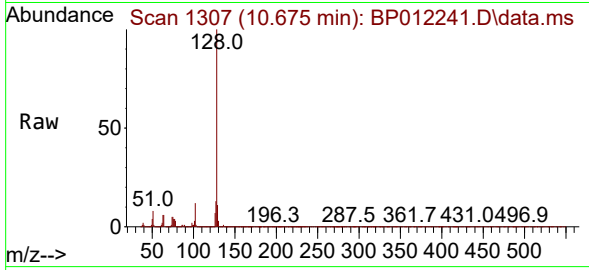
Tgt Ion	Resp	Lower	Upper
105	56473		
105	100		
77	73.3	60.0	90.0
51	24.3	20.1	30.1



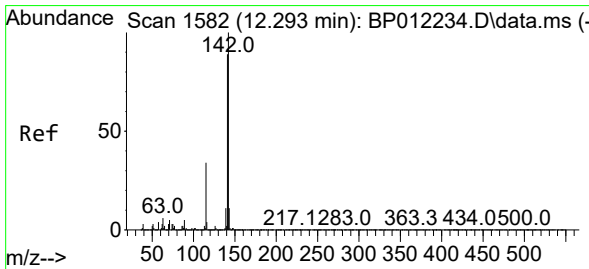
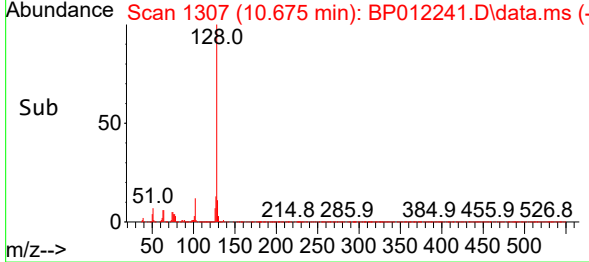
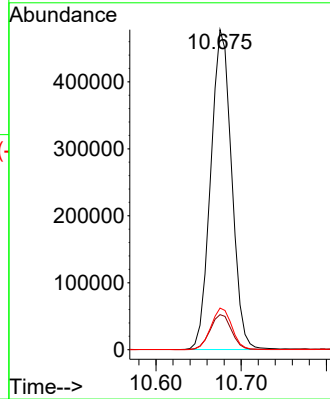


#30
 Naphthalene
 Concen: 10.374 ng/ul
 RT: 10.675 min Scan# 1111
 Delta R.T. -0.006 min
 Lab File: BP012241.D
 Acq: 21 Oct 2022 12:39

Instrument :
 BNA_P
 ClientSampleId :

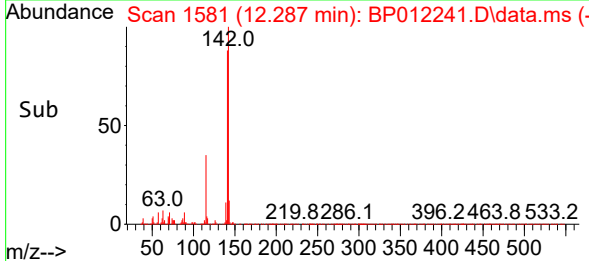
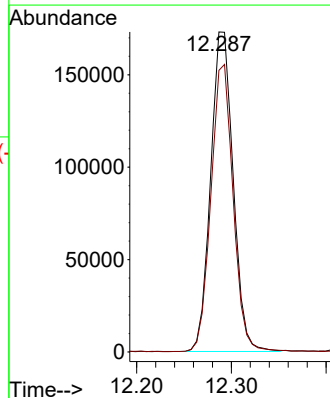
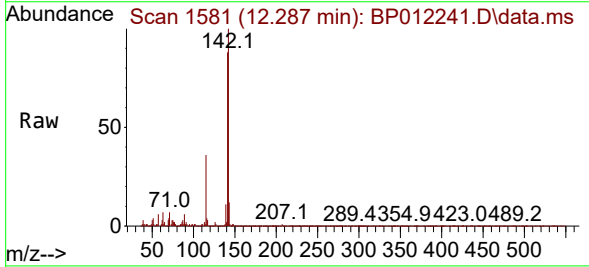


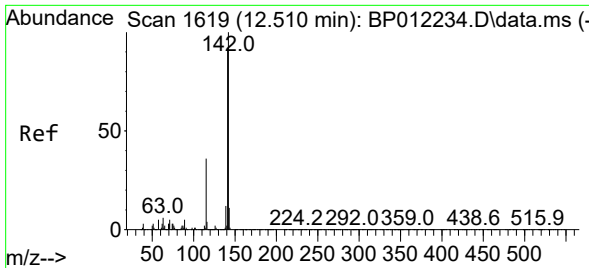
Tgt Ion:128 Resp: 816425
 Ion Ratio Lower Upper
 128 100
 129 11.0 8.8 13.2
 127 13.0 10.2 15.4



#36
 2-Methylnaphthalene
 Concen: 5.334 ng/ul
 RT: 12.287 min Scan# 1581
 Delta R.T. -0.012 min
 Lab File: BP012241.D
 Acq: 21 Oct 2022 12:39

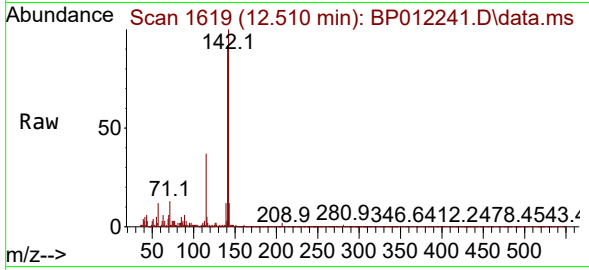
Tgt Ion:142 Resp: 285605
 Ion Ratio Lower Upper
 142 100
 141 88.0 70.3 105.5



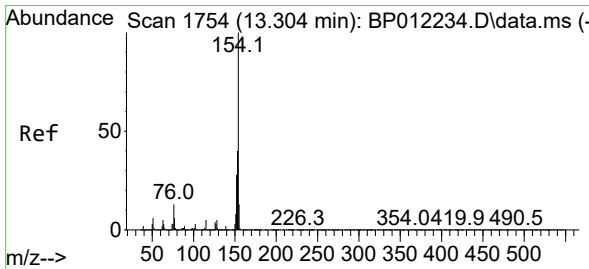
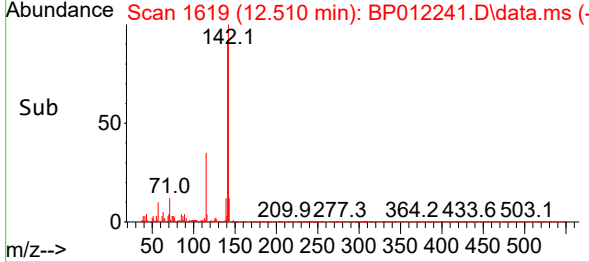
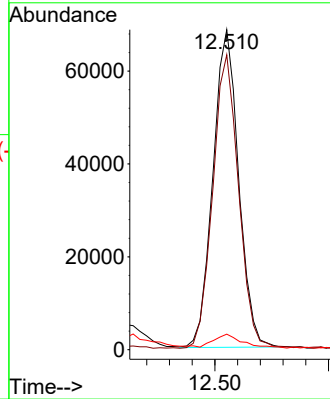


#37
 1-Methylnaphthalene
 Concen: 2.008 ng/ul
 RT: 12.510 min Scan# 1619
 Delta R.T. -0.006 min
 Lab File: BP012241.D
 Acq: 21 Oct 2022 12:39

Instrument : BNA_P
 ClientSampleId :

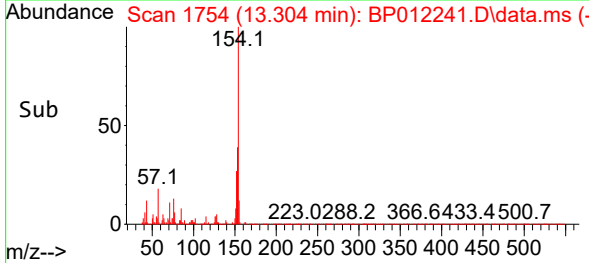
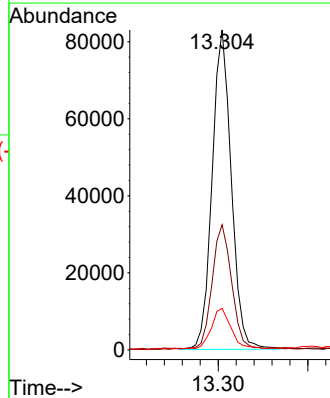
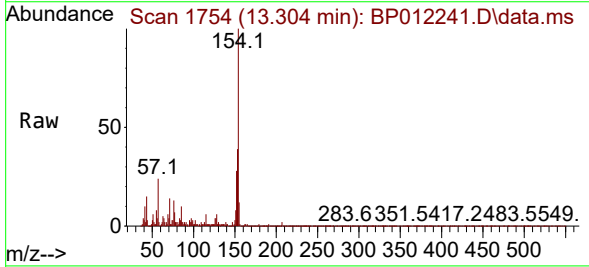


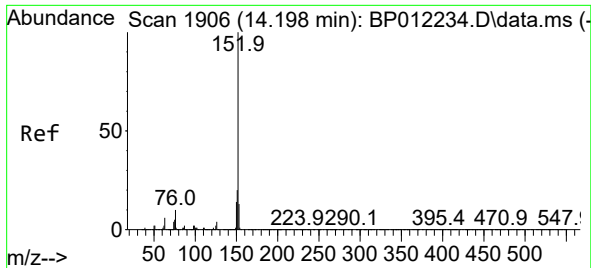
Tgt Ion:142 Resp: 107376
 Ion Ratio Lower Upper
 142 100
 141 92.1 73.4 110.0
 116 4.9 3.0 4.4#



#43
 1,1'-Biphenyl
 Concen: 2.017 ng/ul
 RT: 13.304 min Scan# 1754
 Delta R.T. -0.006 min
 Lab File: BP012241.D
 Acq: 21 Oct 2022 12:39

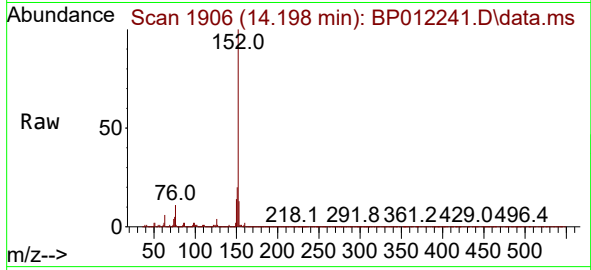
Tgt Ion:154 Resp: 122748
 Ion Ratio Lower Upper
 154 100
 153 39.2 31.5 47.3
 76 13.0 11.0 16.4



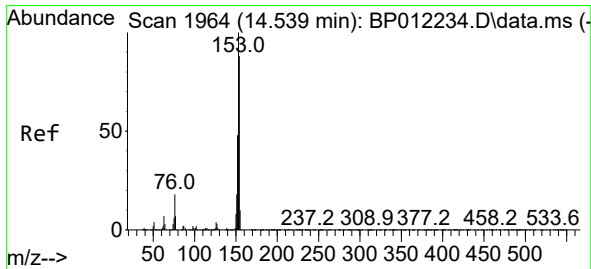
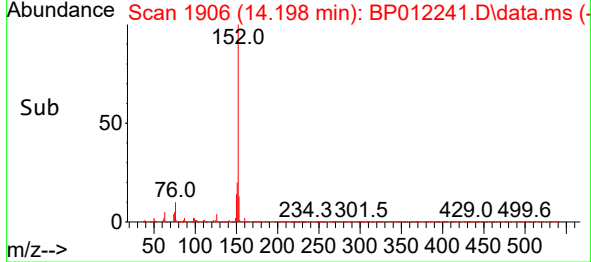
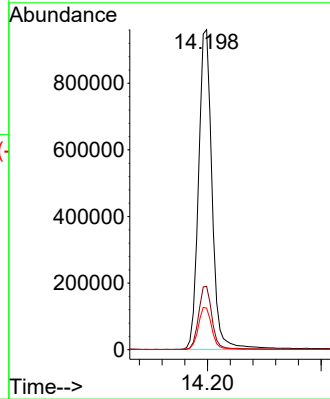


#50
 Acenaphthylene
 Concen: 21.870 ng/ul
 RT: 14.198 min Scan# 1906
 Delta R.T. 0.000 min
 Lab File: BP012241.D
 Acq: 21 Oct 2022 12:39

Instrument :
 BNA_P
 ClientSampleId :

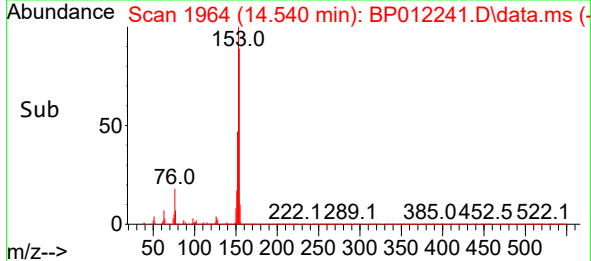
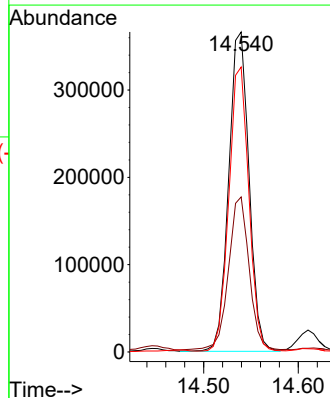
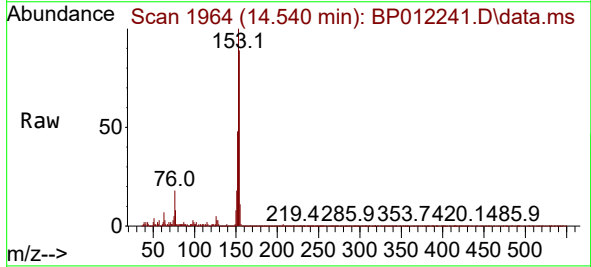


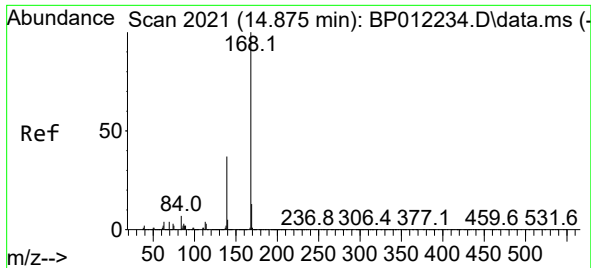
Tgt Ion:152 Resp: 1583341
 Ion Ratio Lower Upper
 152 100
 151 19.8 15.8 23.8
 153 13.0 10.6 16.0



#52
 Acenaphthene
 Concen: 10.632 ng/ul
 RT: 14.540 min Scan# 1964
 Delta R.T. -0.006 min
 Lab File: BP012241.D
 Acq: 21 Oct 2022 12:39

Tgt Ion:153 Resp: 544376
 Ion Ratio Lower Upper
 153 100
 152 48.4 38.1 57.1
 154 89.0 71.4 107.2

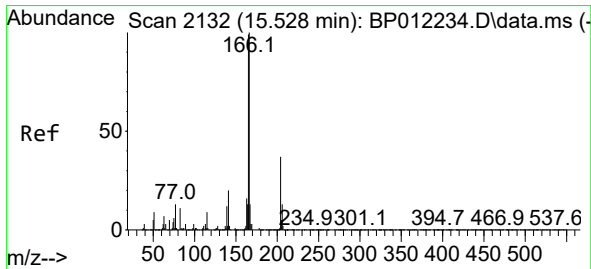
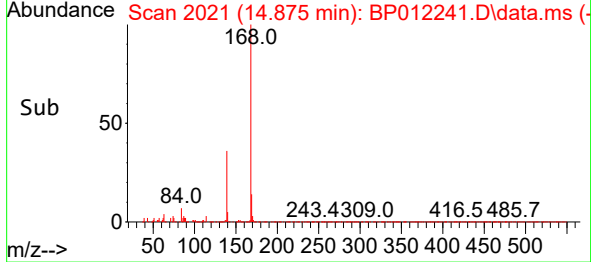
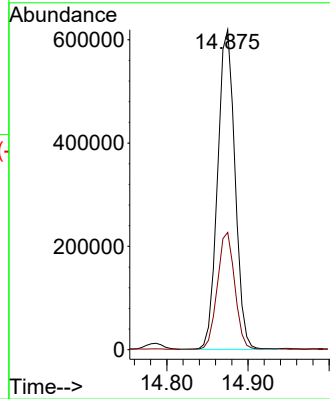
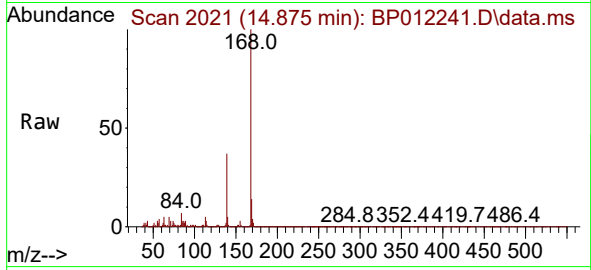




#56
 Dibenzofuran
 Concen: 13.137 ng/ul
 RT: 14.875 min Scan# 2021
 Delta R.T. -0.006 min
 Lab File: BP012241.D
 Acq: 21 Oct 2022 12:39

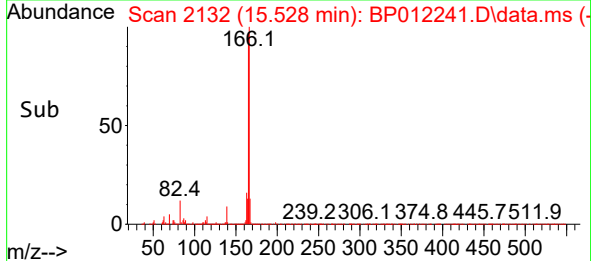
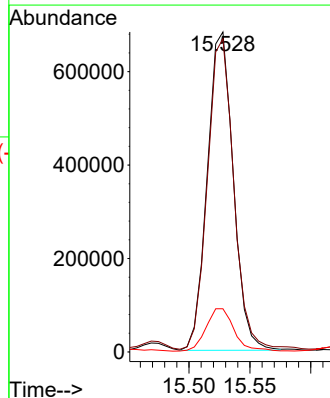
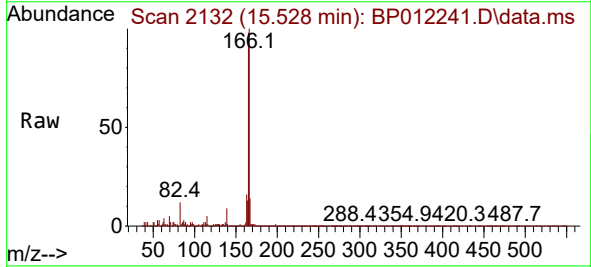
Instrument :
 BNA_P
 ClientSampleId :

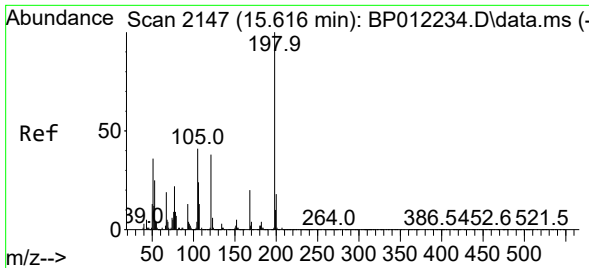
Tgt Ion:168 Resp: 920811
 Ion Ratio Lower Upper
 168 100
 139 36.7 29.0 43.4



#61
 Fluorene
 Concen: 18.278 ng/ul
 RT: 15.528 min Scan# 2132
 Delta R.T. -0.006 min
 Lab File: BP012241.D
 Acq: 21 Oct 2022 12:39

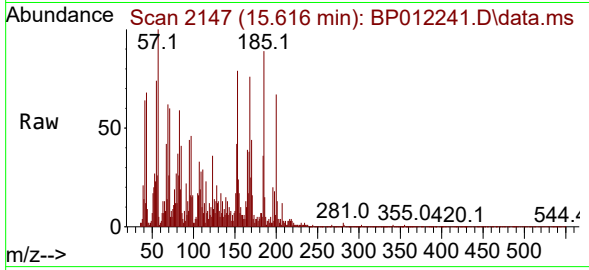
Tgt Ion:166 Resp: 1014996
 Ion Ratio Lower Upper
 166 100
 165 97.9 78.0 117.0
 167 13.5 10.7 16.1



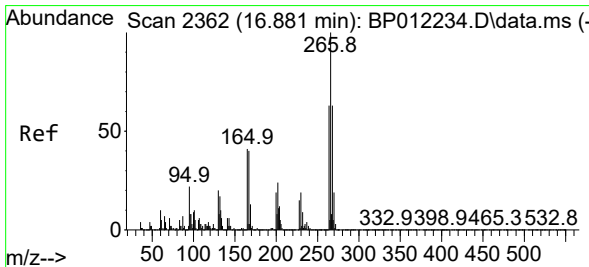
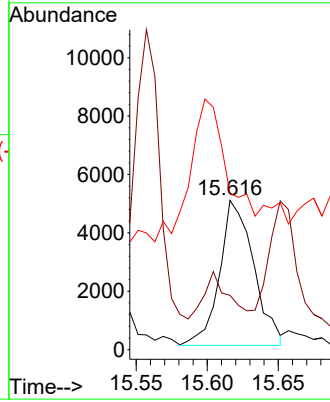
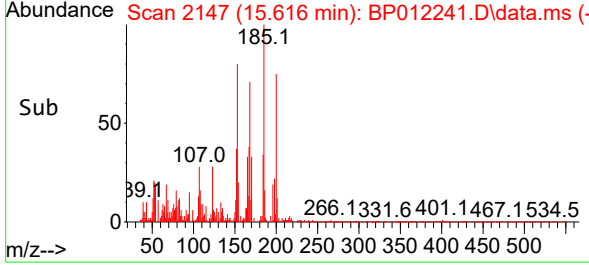


#66
 4,6-Dinitro-2-methylphenol
 Concen: 1.070 ng/ul
 RT: 15.616 min Scan# 2147
 Delta R.T. -0.006 min
 Lab File: BP012241.D
 Acq: 21 Oct 2022 12:39

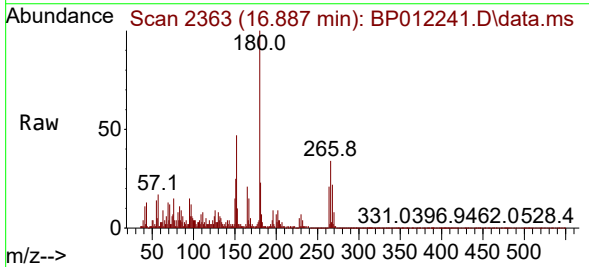
Instrument :
 BNA_P
 ClientSampleId :



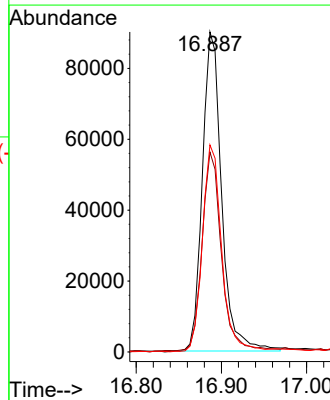
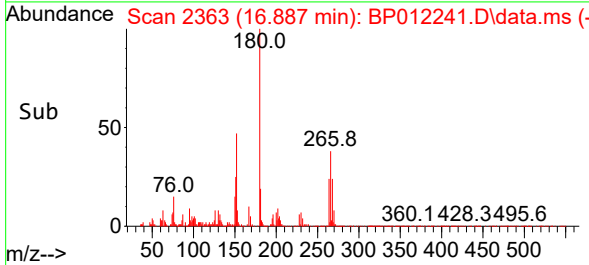
Tgt Ion:198 Resp: 8308
 Ion Ratio Lower Upper
 198 100
 182 36.4 3.8 5.6#
 77 104.7 17.8 26.6#

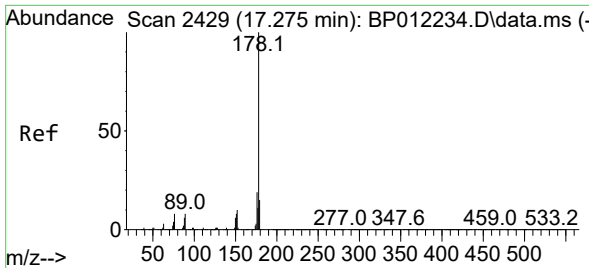


#71
 Pentachlorophenol
 Concen: 14.478 ng/ul
 RT: 16.887 min Scan# 2363
 Delta R.T. 0.000 min
 Lab File: BP012241.D
 Acq: 21 Oct 2022 12:39



Tgt Ion:266 Resp: 141774
 Ion Ratio Lower Upper
 266 100
 264 62.4 50.1 75.1
 268 64.7 50.6 76.0



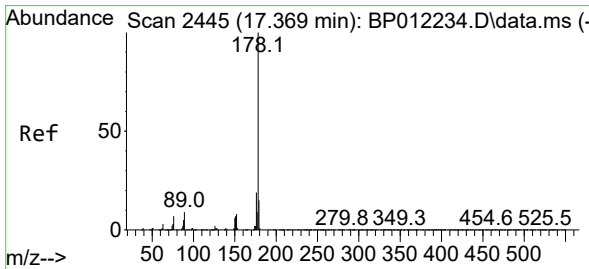
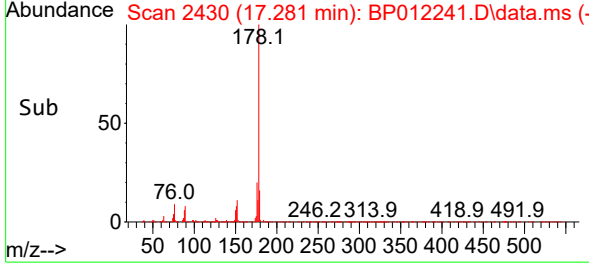
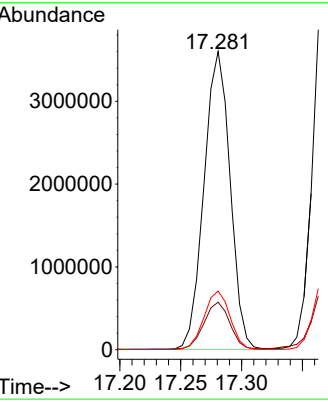
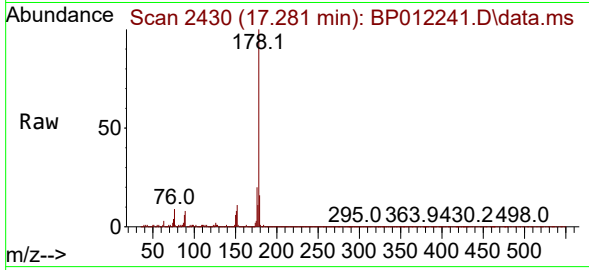


#72
 Phenanthrene
 Concen: 76.709 ng/uI
 RT: 17.281 min Scan# 2429
 Delta R.T. 0.000 min
 Lab File: BP012241.D
 Acq: 21 Oct 2022 12:39

Instrument :
 BNA_P
 ClientSampleId :

Tgt Ion:178 Resp: 5358922

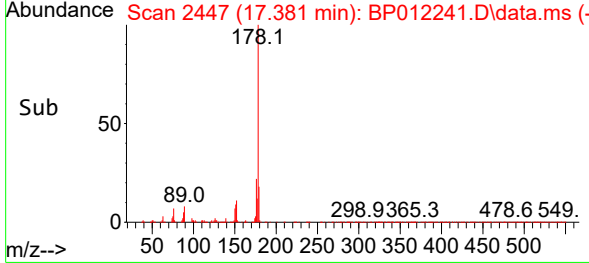
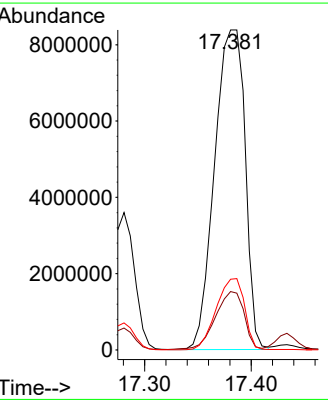
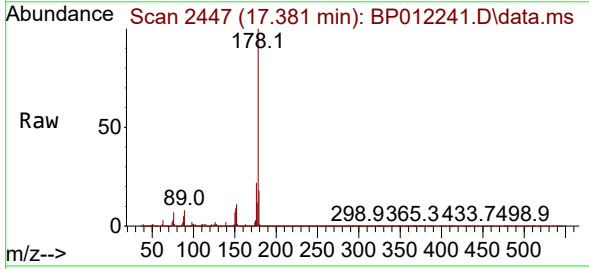
Ion	Ratio	Lower	Upper
178	100		
179	15.9	12.6	18.8
176	19.7	15.6	23.4

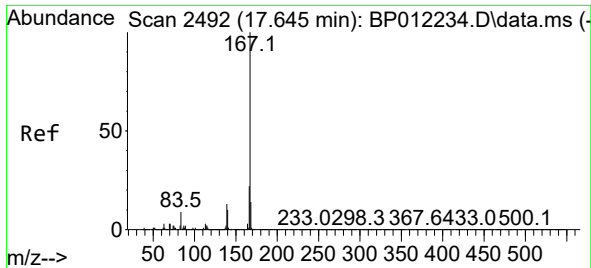


#74
 Anthracene
 Concen: 241.595 ng/uI
 RT: 17.381 min Scan# 2447
 Delta R.T. 0.006 min
 Lab File: BP012241.D
 Acq: 21 Oct 2022 12:39

Tgt Ion:178 Resp:16699306

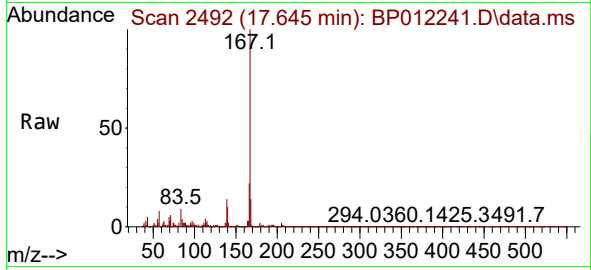
Ion	Ratio	Lower	Upper
178	100		
179	18.3	12.3	18.5
176	22.1	15.0	22.4



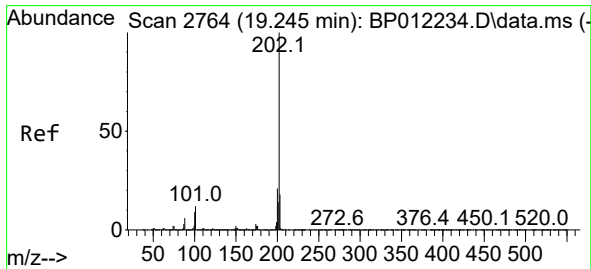
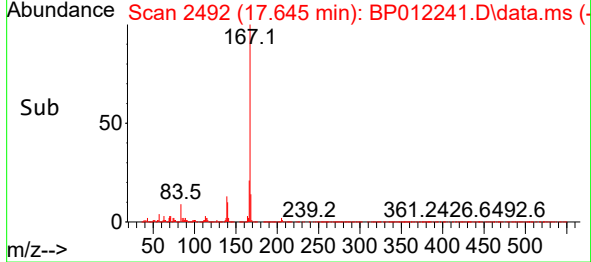
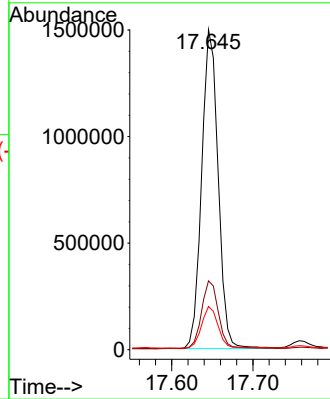


#77
 Carbazole
 Concen: 34.558 ng/uI
 RT: 17.645 min Scan# 2492
 Delta R.T. -0.006 min
 Lab File: BP012241.D
 Acq: 21 Oct 2022 12:39

Instrument :
 BNA_P
 ClientSampleId :

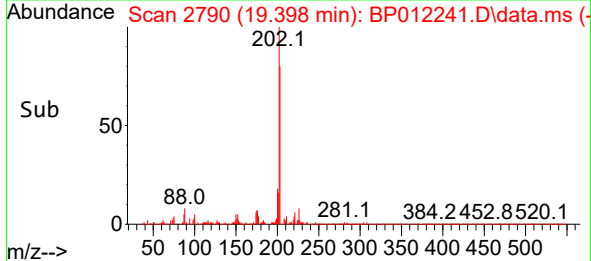
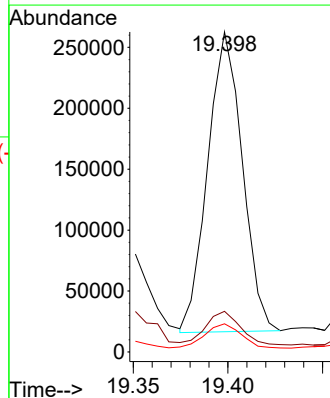
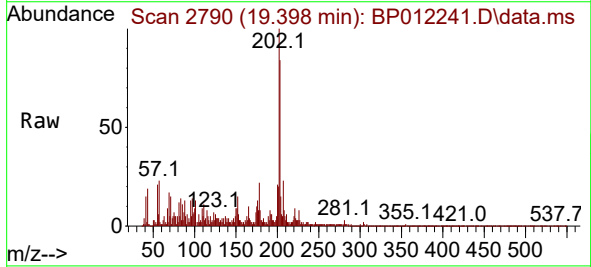


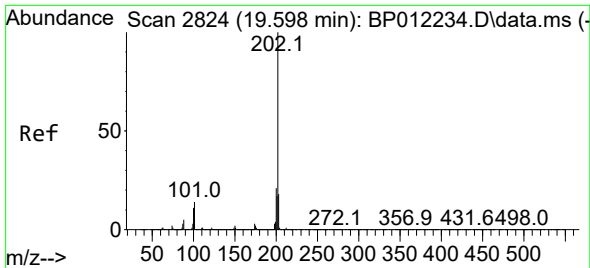
Tgt Ion:167 Resp: 2108131
 Ion Ratio Lower Upper
 167 100
 166 21.5 17.3 25.9
 139 13.5 10.2 15.4



#80
 Fluoranthene
 Concen: 4.180 ng/uI
 RT: 19.398 min Scan# 2790
 Delta R.T. 0.147 min
 Lab File: BP012241.D
 Acq: 21 Oct 2022 12:39

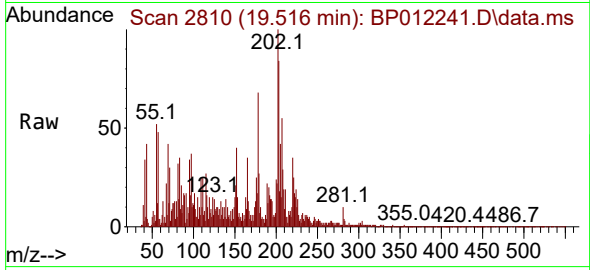
Tgt Ion:202 Resp: 313548
 Ion Ratio Lower Upper
 202 100
 101 12.7 10.4 15.6
 100 8.8 7.7 11.5



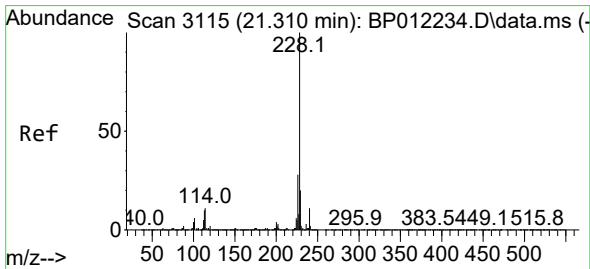
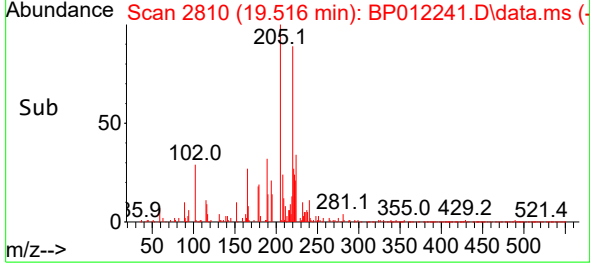
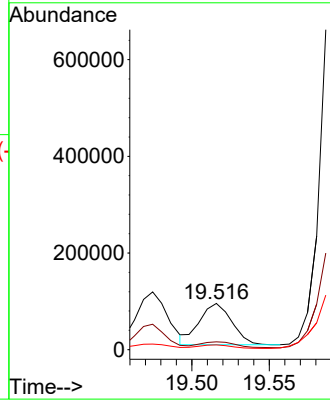


#82
 Pyrene
 Concen: 1.616 ng/ul
 RT: 19.516 min Scan# 21
 Delta R.T. -0.088 min
 Lab File: BP012241.D
 Acq: 21 Oct 2022 12:39

Instrument :
 BNA_P
 ClientSampleId :

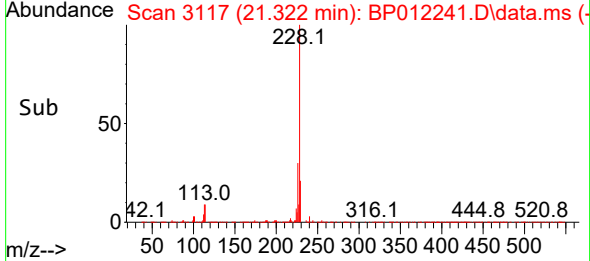
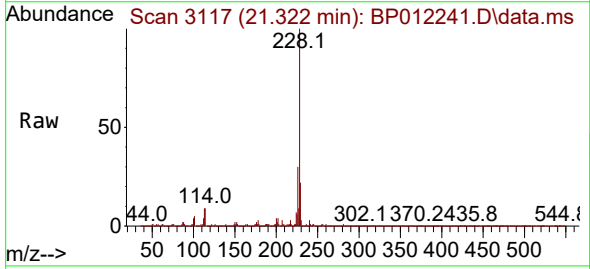
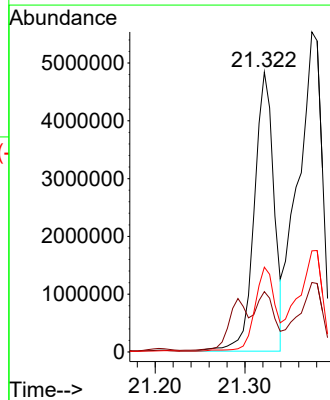


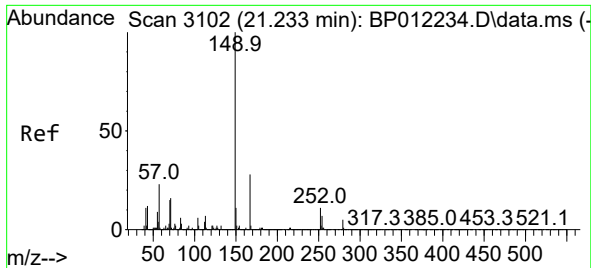
Tgt Ion:202 Resp: 124016
 Ion Ratio Lower Upper
 202 100
 101 16.9 12.3 18.5
 100 10.6 10.0 15.0



#85
 Benzo(a)anthracene
 Concen: 106.040 ng/ul
 RT: 21.322 min Scan# 3117
 Delta R.T. 0.006 min
 Lab File: BP012241.D
 Acq: 21 Oct 2022 12:39

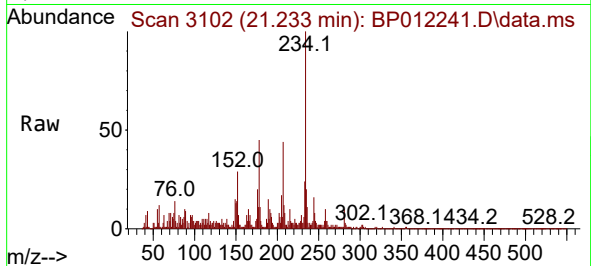
Tgt Ion:228 Resp: 7368000
 Ion Ratio Lower Upper
 228 100
 229 21.6 16.1 24.1
 226 30.3 21.9 32.9



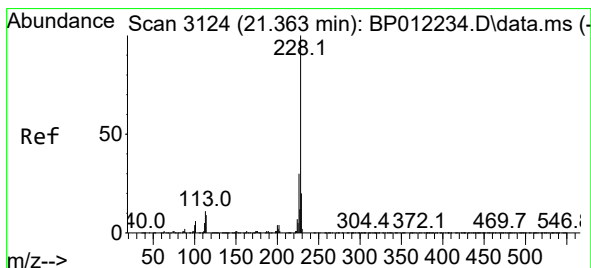
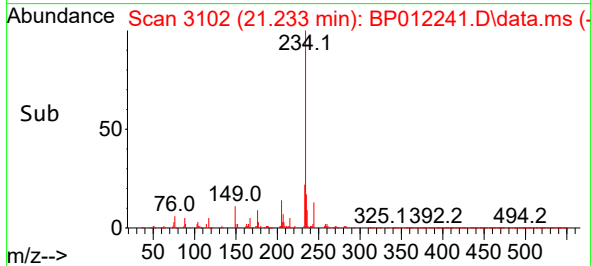
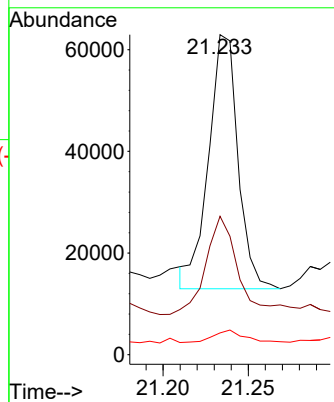


#86
 Bis(2-ethylhexyl)phthalate
 Concen: 1.436 ng/ul
 RT: 21.233 min Scan# 3102
 Delta R.T. -0.006 min
 Lab File: BP012241.D
 Acq: 21 Oct 2022 12:39

Instrument : BNA_P
 ClientSampleId :

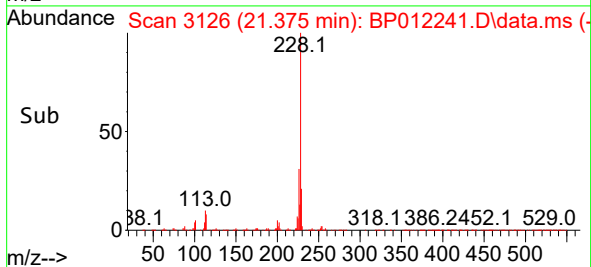
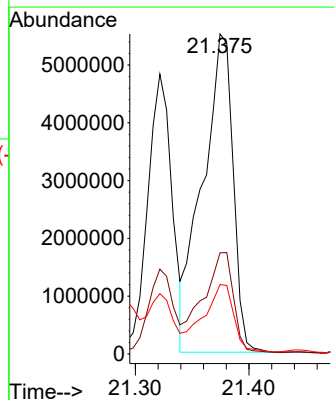
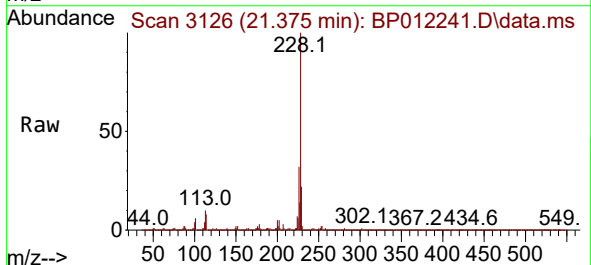


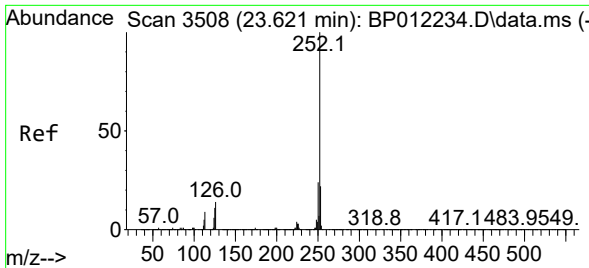
Tgt Ion:149 Resp: 60064
 Ion Ratio Lower Upper
 149 100
 167 43.2 21.6 32.4#
 279 6.8 3.4 5.0#



#87
 Chrysene
 Concen: 158.914 ng/ul
 RT: 21.375 min Scan# 3126
 Delta R.T. 0.006 min
 Lab File: BP012241.D
 Acq: 21 Oct 2022 12:39

Tgt Ion:228 Resp:10303929
 Ion Ratio Lower Upper
 228 100
 226 31.6 24.2 36.4
 229 21.7 15.8 23.8



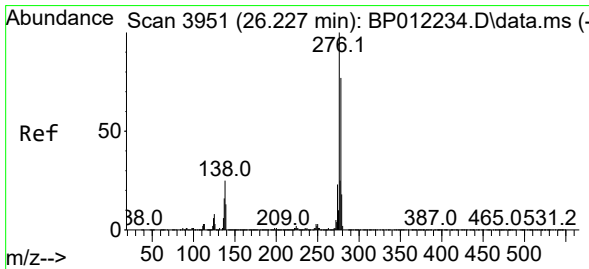
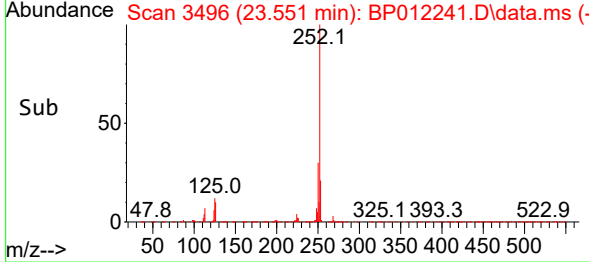
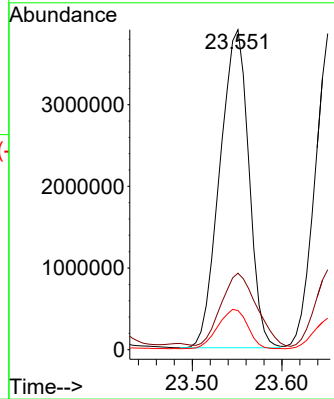
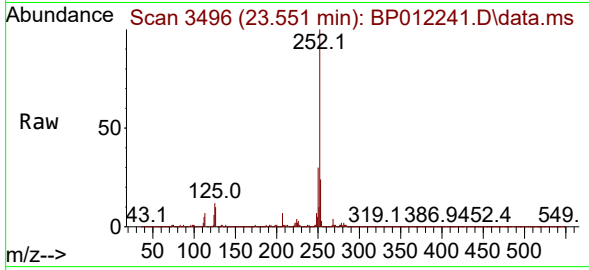


#93
 Benzo(a)pyrene
 Concen: 75.083 ng/uI
 RT: 23.551 min Scan# 3496
 Delta R.T. -0.082 min
 Lab File: BP012241.D
 Acq: 21 Oct 2022 12:39

Instrument : BNA_P
 ClientSampleId :

Tgt Ion:252 Resp: 8748820

Ion	Ratio	Lower	Upper
252	100		
253	23.9	17.8	26.6
125	12.3	9.7	14.5



#94
 Indeno(1,2,3-cd)pyrene
 Concen: 1.080 ng/uI
 RT: 26.063 min Scan# 3923
 Delta R.T. -0.182 min
 Lab File: BP012241.D
 Acq: 21 Oct 2022 12:39

Tgt Ion:276 Resp: 145690

Ion	Ratio	Lower	Upper
276	100		
138	26.1	20.3	30.5
277	35.7	20.2	30.4

