

Data Path : Z:\svoasrv\HPCHEM1\BNA_P\Data\BP102022\
 Data File : BP012247.D
 Acq On : 21 Oct 2022 16:05
 Operator : CG/JU
 Sample : N5064-04
 Misc :
 ALS Vial : 42 Sample Multiplier: 1

Instrument :
 BNA_P
 ClientSampleId :

Quant Time: Oct 21 22:33:02 2022
 Quant Method : Z:\svoasrv\HPCHEM1\BNA_P\Methods\SFAM-EPA-BP101922.M
 Quant Title : SVOA CALIBRATION
 QLast Update : Thu Oct 20 00:51:41 2022
 Response via : Initial Calibration

Compound	R.T.	QIon	Response	Conc	Units	Dev(Min)

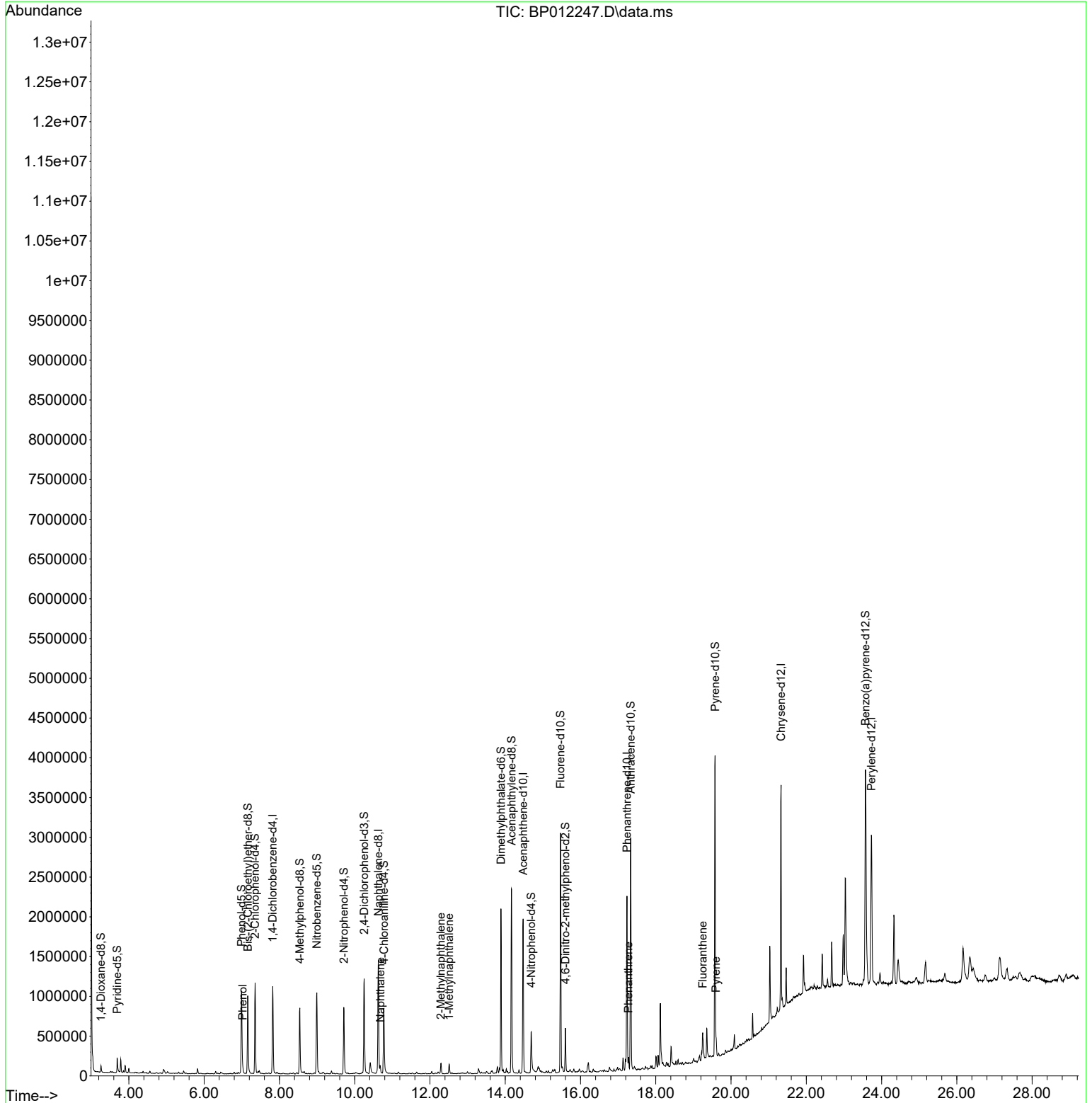
Internal Standards						
1) 1,4-Dichlorobenzene-d4	7.822	152	310081	20.000	ng/ul	0.00
20) Naphthalene-d8	10.628	136	1226838	20.000	ng/ul	0.00
38) Acenaphthene-d10	14.475	164	676908	20.000	ng/ul	0.00
64) Phenanthrene-d10	17.234	188	1289150	20.000	ng/ul	0.00
79) Chrysene-d12	21.327	240	1326484	20.000	ng/ul	0.00
88) Perylene-d12	23.727	264	1440008	20.000	ng/ul	-0.01
System Monitoring Compounds						
3) 1,4-Dioxane-d8	3.258	96	37709	4.922	ng/uL	0.00
4) Pyridine-d5	3.687	84	92013	4.168	ng/ul	0.00
7) Phenol-d5	6.993	99	641728	23.972	ng/ul	0.00
9) Bis-(2-Chloroethyl)eth...	7.158	67	432641	26.649	ng/ul	0.00
11) 2-Chlorophenol-d4	7.352	132	554845	27.230	ng/ul	0.00
15) 4-Methylphenol-d8	8.540	113	340766	16.379	ng/ul	0.00
21) Nitrobenzene-d5	8.993	128	276718	30.472	ng/ul	0.00
24) 2-Nitrophenol-d4	9.710	143	299393	30.557	ng/ul	0.00
28) 2,4-Dichlorophenol-d3	10.252	165	479080	26.068	ng/ul	0.00
31) 4-Chloroaniline-d4	10.775	131	518054	19.840	ng/ul	0.00
46) Dimethylphthalate-d6	13.887	166	1372149	29.141	ng/ul	0.00
49) Acenaphthylene-d8	14.169	160	1620420	30.149	ng/ul	0.00
54) 4-Nitrophenol-d4	14.693	143	175703	19.918	ng/ul	0.00
60) Fluorene-d10	15.469	176	1168368	28.842	ng/ul	0.00
65) 4,6-Dinitro-2-methylph...	15.598	200	125785	17.151	ng/ul	0.00
73) Anthracene-d10	17.334	188	1669264	29.541	ng/ul	0.00
81) Pyrene-d10	19.575	212	1977835	26.188	ng/ul	0.00
92) Benzo(a)pyrene-d12	23.574	264	2115574	29.296	ng/ul	-0.01
Target Compounds						
						Qvalue
8) Phenol	7.022	94	39984	1.428	ng/ul	95
30) Naphthalene	10.681	128	77061	1.174	ng/ul	99
36) 2-Methylnaphthalene	12.293	142	68901	1.543	ng/ul	98
37) 1-Methylnaphthalene	12.510	142	60223	1.351	ng/ul	95
72) Phenanthrene	17.275	178	88072	1.271	ng/ul	99
80) Fluoranthene	19.245	202	102934	1.103	ng/ul	99
82) Pyrene	19.598	202	97972	1.026	ng/ul	98

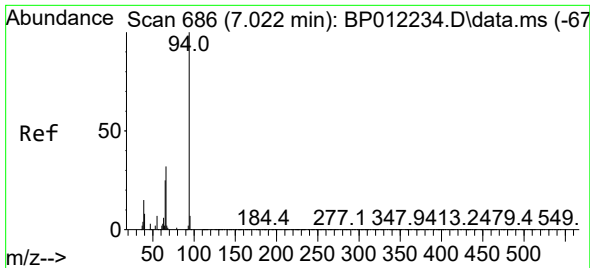
(#) = qualifier out of range (m) = manual integration (+) = signals summed

Data Path : Z:\svoasrv\HPCHEM1\BNA_P\Data\BP102022\
 Data File : BP012247.D
 Acq On : 21 Oct 2022 16:05
 Operator : CG/JU
 Sample : N5064-04
 Misc :
 ALS Vial : 42 Sample Multiplier: 1

Instrument :
 BNA_P
 ClientSampleId :

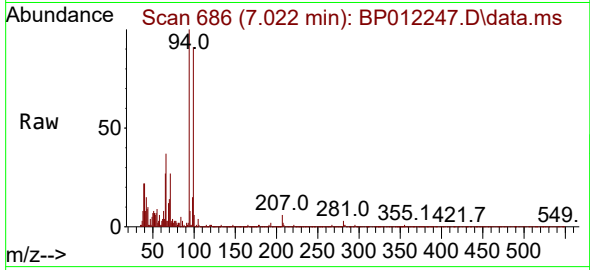
Quant Time: Oct 21 22:33:02 2022
 Quant Method : Z:\svoasrv\HPCHEM1\BNA_P\Methods\SFAM-EPA-BP101922.M
 Quant Title : SVOA CALIBRATION
 QLast Update : Thu Oct 20 00:51:41 2022
 Response via : Initial Calibration





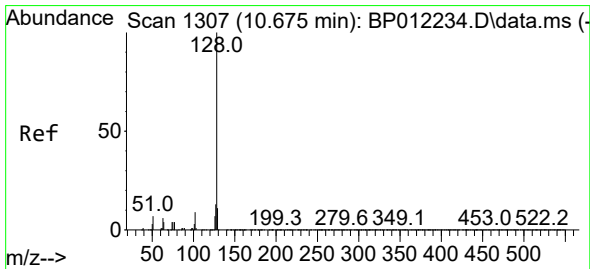
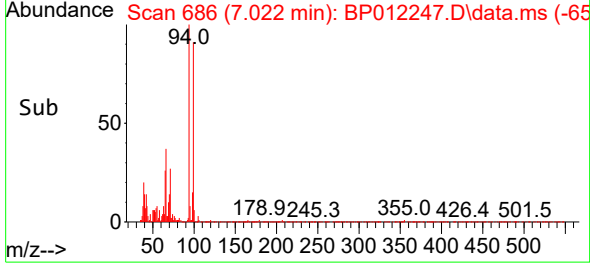
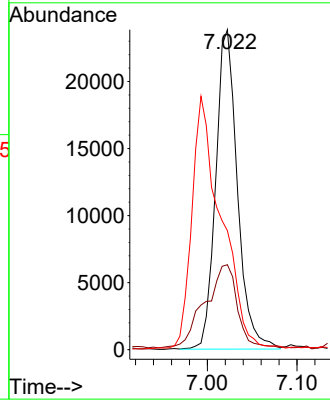
#8
 Phenol
 Concen: 1.428 ng/ul
 RT: 7.022 min Scan# 686
 Delta R.T. 0.000 min
 Lab File: BP012247.D
 Acq: 21 Oct 2022 16:05

Instrument :
 BNA_P
 ClientSampleId :

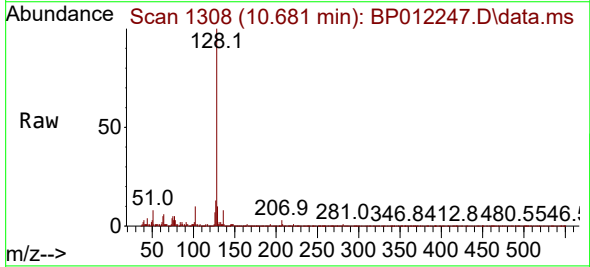


Tgt Ion: 94 Resp: 39984

Ion	Ratio	Lower	Upper
94	100		
65	26.5	20.6	31.0
66	37.2	26.2	39.4

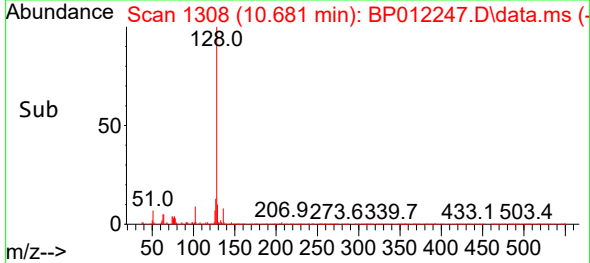
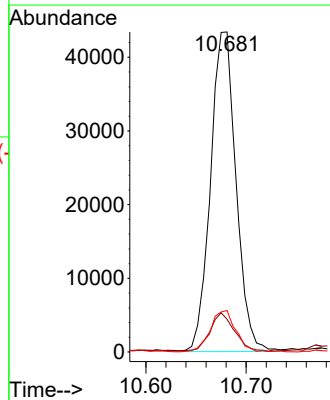


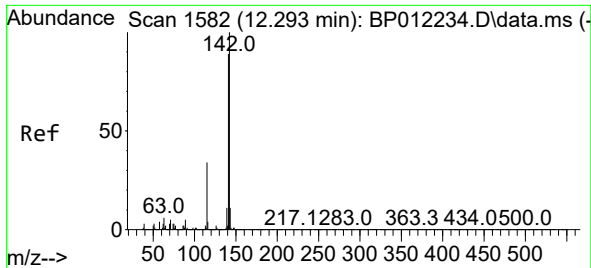
#30
 Naphthalene
 Concen: 1.174 ng/ul
 RT: 10.681 min Scan# 1308
 Delta R.T. 0.000 min
 Lab File: BP012247.D
 Acq: 21 Oct 2022 16:05



Tgt Ion: 128 Resp: 77061

Ion	Ratio	Lower	Upper
128	100		
129	10.2	8.8	13.2
127	12.9	10.2	15.4

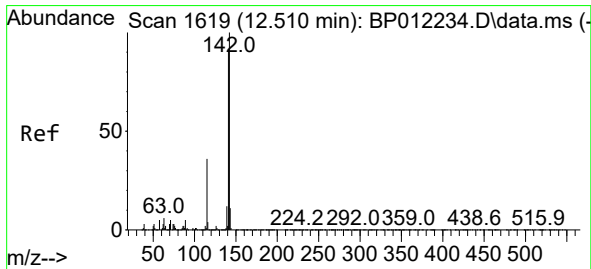
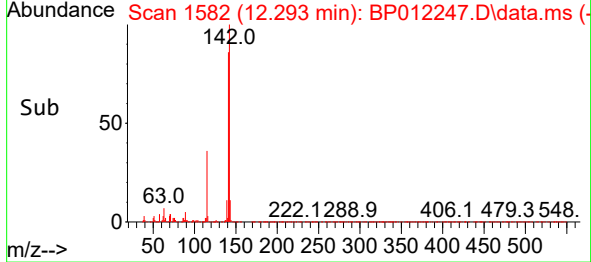
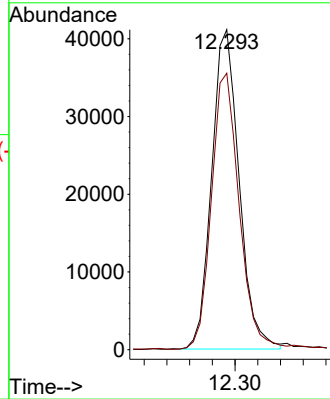
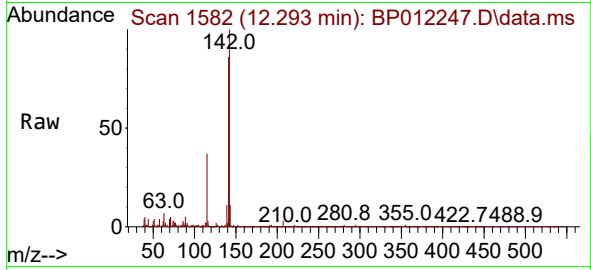




#36
 2-Methylnaphthalene
 Concen: 1.543 ng/ul
 RT: 12.293 min Scan# 1582
 Delta R.T. -0.006 min
 Lab File: BP012247.D
 Acq: 21 Oct 2022 16:05

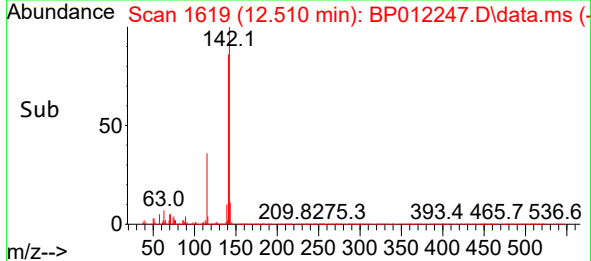
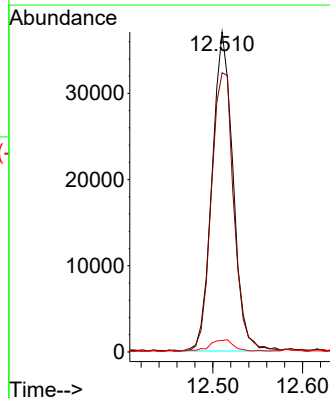
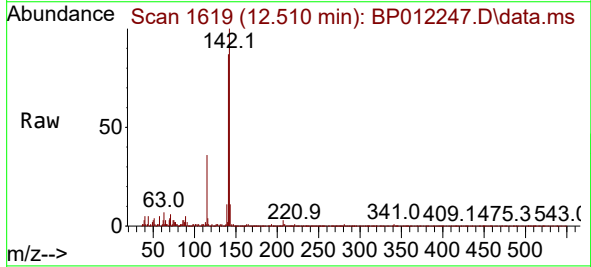
Instrument : BNA_P
 ClientSampleId :

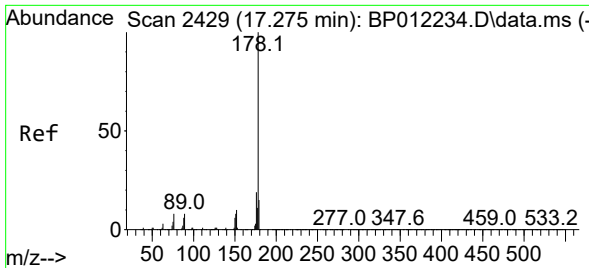
Tgt Ion:142 Resp: 68901
 Ion Ratio Lower Upper
 142 100
 141 86.4 70.3 105.5



#37
 1-Methylnaphthalene
 Concen: 1.351 ng/ul
 RT: 12.510 min Scan# 1619
 Delta R.T. -0.006 min
 Lab File: BP012247.D
 Acq: 21 Oct 2022 16:05

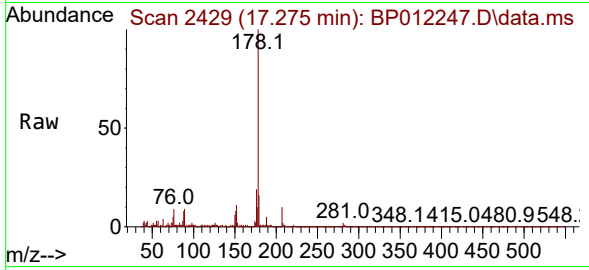
Tgt Ion:142 Resp: 60223
 Ion Ratio Lower Upper
 142 100
 141 87.2 73.4 110.0
 116 3.6 3.0 4.4





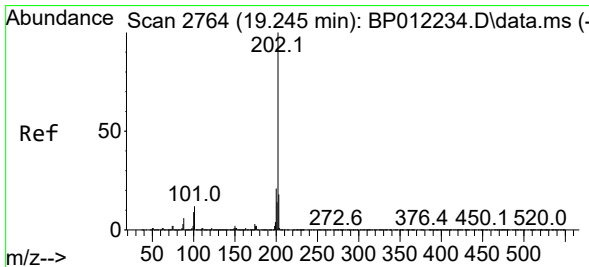
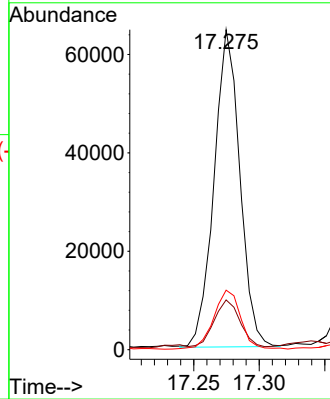
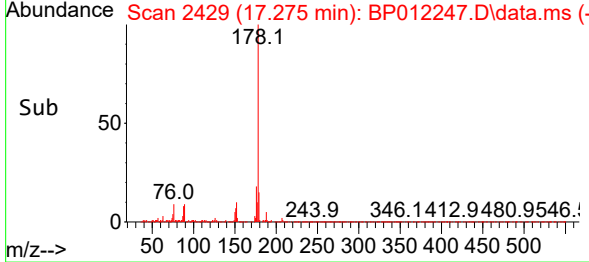
#72
 Phenanthrene
 Concen: 1.271 ng/u1
 RT: 17.275 min Scan# 2429
 Delta R.T. -0.006 min
 Lab File: BP012247.D
 Acq: 21 Oct 2022 16:05

Instrument :
 BNA_P
 ClientSampleId :

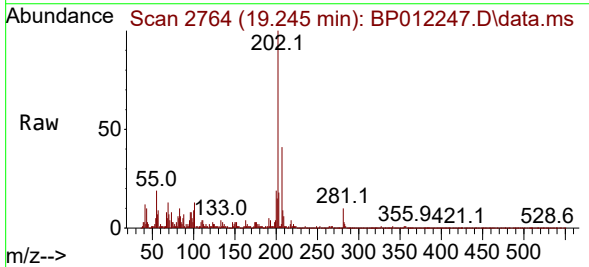


Tgt Ion:178 Resp: 88072

Ion	Ratio	Lower	Upper
178	100		
179	15.5	12.6	18.8
176	18.6	15.6	23.4

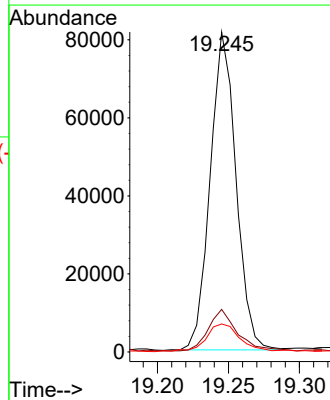
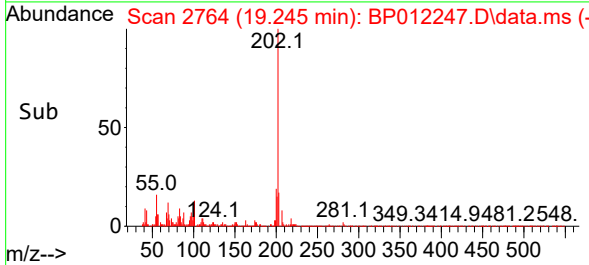


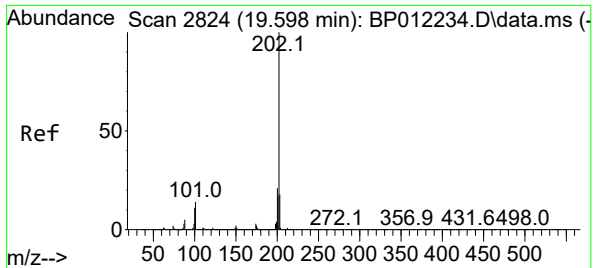
#80
 Fluoranthene
 Concen: 1.103 ng/u1
 RT: 19.245 min Scan# 2764
 Delta R.T. -0.006 min
 Lab File: BP012247.D
 Acq: 21 Oct 2022 16:05



Tgt Ion:202 Resp: 102934

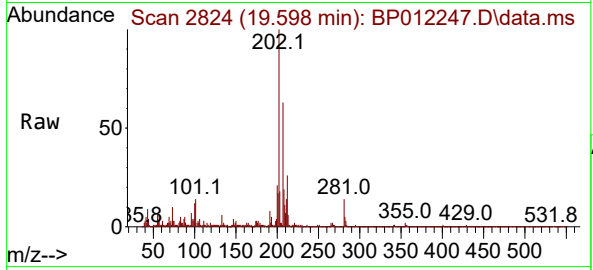
Ion	Ratio	Lower	Upper
202	100		
101	13.3	10.4	15.6
100	8.8	7.7	11.5





#82
 Pyrene
 Concen: 1.026 ng/ul
 RT: 19.598 min Scan# 21
 Delta R.T. -0.006 min
 Lab File: BP012247.D
 Acq: 21 Oct 2022 16:05

Instrument :
 BNA_P
 ClientSampleId :



Tgt Ion: 202 Resp: 97972

Ion	Ratio	Lower	Upper
202	100		
101	13.9	12.3	18.5
100	12.4	10.0	15.0

