

Data Path : Z:\svoasrv\HPCHEM1\BNA_P\Data\BP102022\
 Data File : BP012240.D
 Acq On : 21 Oct 2022 12:05
 Operator : CG/JU
 Sample : N4755-10
 Misc :
 ALS Vial : 35 Sample Multiplier: 1

Instrument :
 BNA_P
 ClientSampleId :
 DBWK6

Integration Parameters: LSCINT.P

Integrator: RTE
 Smoothing : OFF Filtering: 5
 Sampling : 1 Min Area: 0.1 % of largest Peak
 Start Thrs: 0.2 Max Peaks: 100
 Stop Thrs : 0 Peak Location: TOP

If leading or trailing edge < 100 prefer < Baseline drop else tangent >
 Peak separation: 5

Method : Z:\svoasrv\HPCHEM1\BNA_P\Methods\SFAM-EPA-BP101922.M
 Title : SVOA CALIBRATION

Signal : TIC: BP012240.D\data.ms

peak #	R.T. min	first scan	max scan	last scan	PK TY	peak height	corr. area	corr. % max.	% of total
1	3.040	7	9	25	rVB	553012	716156	4.63%	0.315%
2	3.258	43	46	55	rVB	71671	97196	0.63%	0.043%
3	3.687	116	119	131	rVV	384608	561872	3.63%	0.247%
4	3.781	131	135	144	rVB	481031	636061	4.11%	0.280%
5	3.905	151	156	160	rVB	76385	109019	0.70%	0.048%
6	4.558	263	267	277	rVB	292480	406661	2.63%	0.179%
7	5.022	339	346	355	rBV	102500	162571	1.05%	0.071%
8	5.805	475	479	490	rBV	50764	95294	0.62%	0.042%
9	6.993	674	681	692	rBV	1300314	2233317	14.44%	0.982%
10	7.158	703	709	723	rBV	1032011	1643439	10.63%	0.723%
11	7.352	736	742	753	rBV	1266460	2031760	13.14%	0.893%
12	7.822	814	822	831	rBV	1602082	2551811	16.50%	1.122%
13	8.363	904	914	929	rBV	288874	566158	3.66%	0.249%
14	8.540	936	944	953	rBV	1213017	2085786	13.49%	0.917%
15	8.657	959	964	973	rVB	90211	155402	1.00%	0.068%
16	8.993	1013	1021	1034	rBV	1167557	1967535	12.72%	0.865%
17	9.710	1136	1143	1156	rBV	960399	1636857	10.58%	0.720%
18	10.057	1190	1202	1209	rBV5	37095	103112	0.67%	0.045%
19	10.251	1228	1235	1254	rVB	1691355	2936269	18.99%	1.291%
20	10.416	1257	1263	1277	rBV	107967	243013	1.57%	0.107%
21	10.628	1290	1299	1304	rBV	2305188	3914881	25.31%	1.721%
22	10.675	1304	1307	1317	rVV	913881	1494280	9.66%	0.657%
23	10.775	1317	1324	1342	rVB	840039	1638523	10.59%	0.720%
24	12.028	1532	1537	1546	rVB4	52227	118343	0.77%	0.052%
25	12.140	1550	1556	1562	rBV	71193	147776	0.96%	0.065%
26	12.293	1575	1582	1597	rVB	405232	692026	4.47%	0.304%
27	12.428	1597	1605	1610	rBV4	75812	177112	1.15%	0.078%
28	12.516	1614	1620	1629	rVB2	188337	374930	2.42%	0.165%
29	13.304	1747	1754	1760	rVV2	147702	313085	2.02%	0.138%
30	13.645	1804	1812	1821	rBV3	76814	225362	1.46%	0.099%
31	13.792	1830	1837	1842	rBV	115799	268125	1.73%	0.118%
32	13.887	1848	1853	1859	rVV	3023729	4121236	26.65%	1.812%
33	14.022	1868	1876	1880	rBV4	78609	172192	1.11%	0.076%
34	14.169	1895	1901	1904	rBV2	3338531	5333411	34.49%	2.345%
35	14.363	1930	1934	1939	rBV	238088	302536	1.96%	0.133%
36	14.475	1946	1953	1960	rBV	3419647	5211025	33.69%	2.291%

Data Path : Z:\svoasrv\HPCHEM1\BNA_P\Data\BP102022\
 Data File : BP012240.D
 Acq On : 21 Oct 2022 12:05
 Operator : CG/JU
 Sample : N4755-10
 Misc :
 ALS Vial : 35 Sample Multiplier: 1

Instrument :
 BNA_P
 ClientSampleId :
 DBWK6

Integration Parameters: LSCINT.P

Integrator: RTE
 Smoothing : OFF Filtering: 5
 Sampling : 1 Min Area: 0.1 % of largest Peak
 Start Thrs: 0.2 Max Peaks: 100
 Stop Thrs : 0 Peak Location: TOP

If leading or trailing edge < 100 prefer < Baseline drop else tangent >
 Peak separation: 5

Method : Z:\svoasrv\HPCHEM1\BNA_P\Methods\SFAM-EPA-BP101922.M
 Title : SVOA CALIBRATION

37	14.539	1960	1964	1972	rVB	535255	816284	5.28%	0.359%
38	14.616	1973	1977	1983	rBV2	75325	108393	0.70%	0.048%
39	14.687	1983	1989	2001	rBV	970252	1774375	11.47%	0.780%
40	14.875	2016	2021	2032	rVB	789552	1314039	8.50%	0.578%
41	14.987	2036	2040	2044	rBV3	78913	112982	0.73%	0.050%
42	15.104	2057	2060	2065	rVB3	60225	93135	0.60%	0.041%
43	15.316	2092	2096	2101	rVV	407521	547626	3.54%	0.241%
44	15.469	2116	2122	2128	rBV	4585187	6653055	43.02%	2.925%
45	15.528	2128	2132	2139	rVB	422491	632359	4.09%	0.278%
46	15.598	2139	2144	2150	rBV	1099379	1538945	9.95%	0.677%
47	15.728	2161	2166	2171	rVB	290287	445114	2.88%	0.196%
48	15.822	2177	2182	2188	rBV	232981	350993	2.27%	0.154%
49	15.875	2188	2191	2197	rVB4	95974	145192	0.94%	0.064%
50	15.945	2199	2203	2204	rBV3	113616	143412	0.93%	0.063%
51	16.186	2239	2244	2245	rBV	1029195	1138292	7.36%	0.501%
52	16.210	2246	2248	2260	rVB	1168260	1550756	10.03%	0.682%
53	16.528	2299	2302	2306	rBV3	137914	197197	1.28%	0.087%
54	16.763	2339	2342	2345	rBV2	146528	197794	1.28%	0.087%
55	16.804	2346	2349	2356	rVB2	228191	360918	2.33%	0.159%
56	16.886	2358	2363	2369	rVV	1149358	1694210	10.95%	0.745%
57	16.986	2376	2380	2384	rVV	1077965	1285427	8.31%	0.565%
58	17.039	2384	2389	2400	rVB2	924142	1800630	11.64%	0.792%
59	17.233	2417	2422	2426	rBV	3962511	5836141	37.74%	2.566%
60	17.275	2426	2429	2434	rVV	3407481	4888589	31.61%	2.150%
61	17.333	2434	2439	2442	rVV	4834661	6936111	44.85%	3.050%
62	17.369	2442	2445	2450	rVB	3832399	5129874	33.17%	2.256%
63	17.428	2451	2455	2458	rBV2	270971	421832	2.73%	0.185%
64	17.645	2488	2492	2498	rVB	867380	1163798	7.53%	0.512%
65	17.728	2502	2506	2510	rBV	1330518	1583660	10.24%	0.696%
66	17.845	2524	2526	2530	rVB2	296784	313654	2.03%	0.138%
67	18.122	2570	2573	2576	rBV	409748	498432	3.22%	0.219%
68	18.227	2587	2591	2597	rBV	509096	762899	4.93%	0.335%
69	18.298	2598	2603	2607	rBV2	766826	1169393	7.56%	0.514%
70	18.398	2616	2620	2625	rBV	1422311	1804122	11.67%	0.793%
71	18.486	2632	2635	2643	rVB2	330618	486072	3.14%	0.214%
72	18.633	2656	2660	2665	rBV	745906	1019351	6.59%	0.448%
73	19.010	2721	2724	2729	rVB	1296545	1427336	9.23%	0.628%
74	19.133	2741	2745	2749	rBV	889892	1306316	8.45%	0.574%
75	19.251	2760	2765	2770	rVB	7243269	9714364	62.81%	4.272%
76	19.351	2778	2782	2787	rBV2	599765	1206702	7.80%	0.531%

Data Path : Z:\svoasrv\HPCHEM1\BNA_P\Data\BP102022\
 Data File : BP012240.D
 Acq On : 21 Oct 2022 12:05
 Operator : CG/JU
 Sample : N4755-10
 Misc :
 ALS Vial : 35 Sample Multiplier: 1

Instrument :
 BNA_P
 ClientSampleId :
 DBWK6

Integration Parameters: LSCINT.P

Integrator: RTE
 Smoothing : OFF Filtering: 5
 Sampling : 1 Min Area: 0.1 % of largest Peak
 Start Thrs: 0.2 Max Peaks: 100
 Stop Thrs : 0 Peak Location: TOP

If leading or trailing edge < 100 prefer < Baseline drop else tangent >
 Peak separation: 5

Method : Z:\svoasrv\HPCHEM1\BNA_P\Methods\SFAM-EPA-BP101922.M
 Title : SVOA CALIBRATION

77	19.469	2798	2802	2809	rVB2	1552547	2091683	13.52%	0.920%
78	19.574	2815	2820	2822	rBV2	6424328	8730588	56.45%	3.839%
79	19.604	2822	2825	2833	rVB	6428858	8604673	55.64%	3.784%
80	19.845	2861	2866	2872	rVB	4435152	5938719	38.40%	2.611%
81	20.063	2901	2903	2905	rBV2	418127	402502	2.60%	0.177%
82	20.133	2911	2915	2920	rBV	1468152	1923875	12.44%	0.846%
83	20.239	2927	2933	2936	rBV3	611178	1220425	7.89%	0.537%
84	20.280	2937	2940	2944	rVB2	545506	667883	4.32%	0.294%
85	20.380	2953	2957	2960	rBV2	593504	916683	5.93%	0.403%
86	20.574	2987	2990	2994	rBV	912923	997358	6.45%	0.439%
87	20.816	3028	3031	3037	rVB2	845037	1404658	9.08%	0.618%
88	21.327	3112	3118	3122	rBV2	3811432	8425579	54.48%	3.705%
89	21.369	3122	3125	3135	rVB	2638917	4081061	26.39%	1.794%
90	21.645	3169	3172	3178	rVB	860807	1305187	8.44%	0.574%
91	23.010	3396	3404	3409	rBV	6217021	15465456	100.00%	6.800%
92	23.192	3430	3435	3440	rBV	1350478	2282777	14.76%	1.004%
93	23.533	3487	3493	3497	rBV2	3076013	6265808	40.51%	2.755%
94	23.586	3498	3502	3506	rVV2	2547060	4992068	32.28%	2.195%
95	23.633	3506	3510	3517	rVB	3385661	6253614	40.44%	2.750%
96	23.739	3523	3528	3532	rBV2	1680309	3097705	20.03%	1.362%
97	23.792	3533	3537	3547	rVB2	1680631	3792912	24.53%	1.668%
98	26.239	3945	3953	3959	rBV2	2694625	8250471	53.35%	3.628%
99	26.315	3960	3966	3981	rVB2	3480484	9785259	63.27%	4.303%
100	27.015	4077	4085	4100	rVB	2048317	6510559	42.10%	2.863%

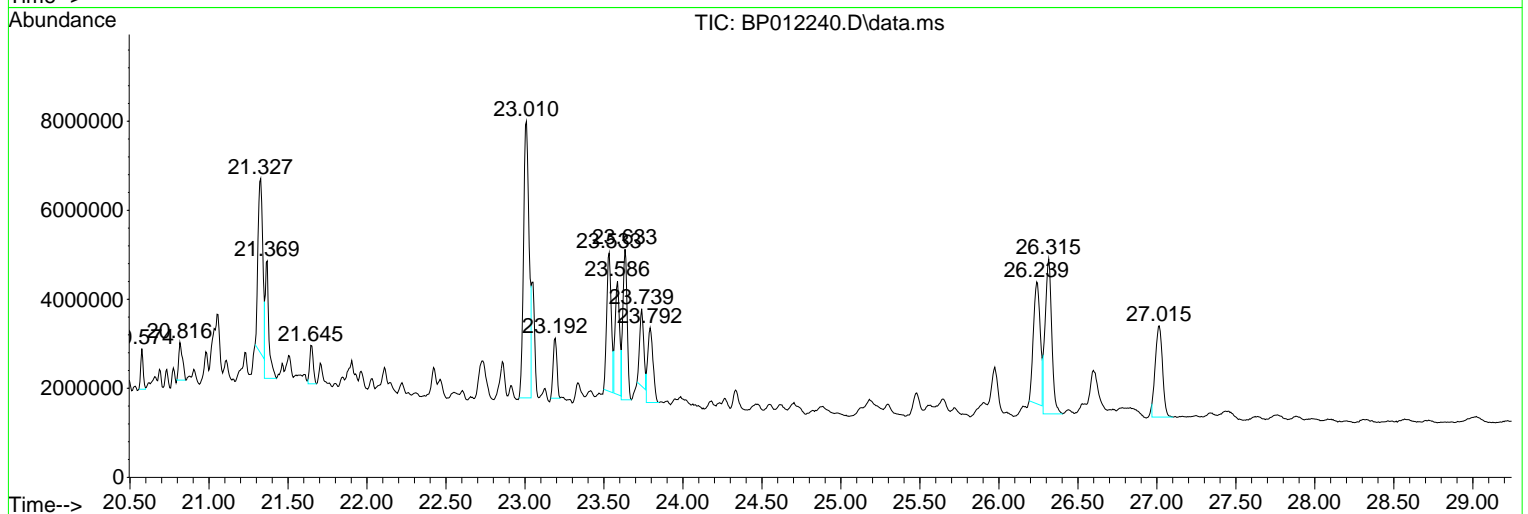
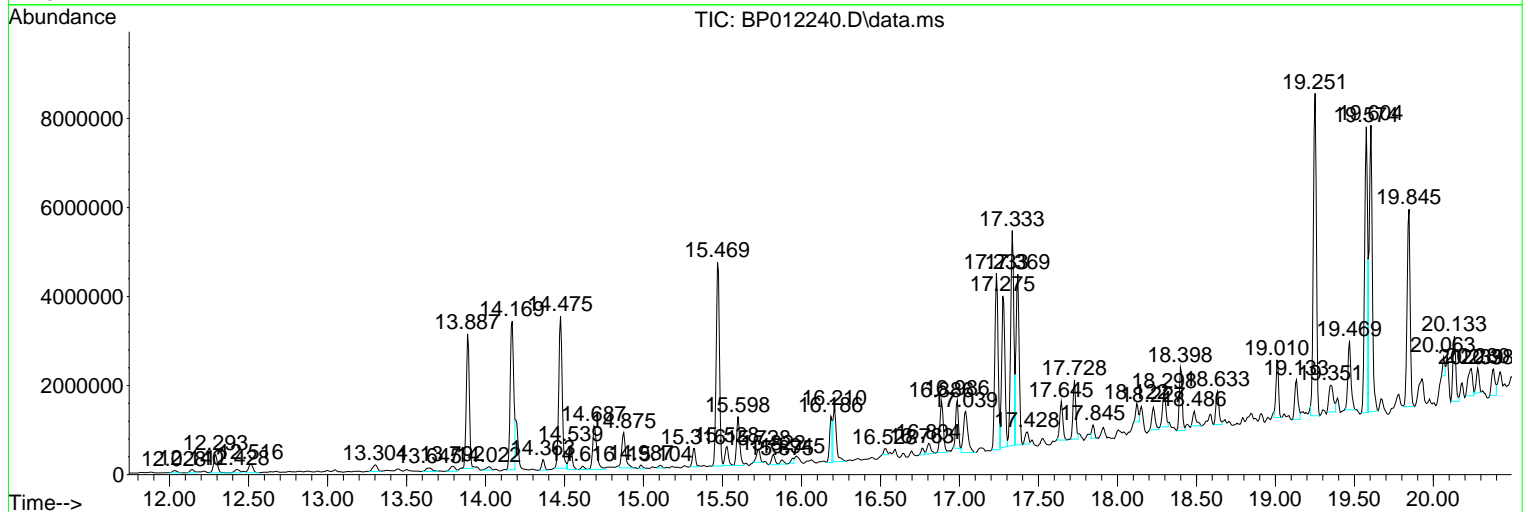
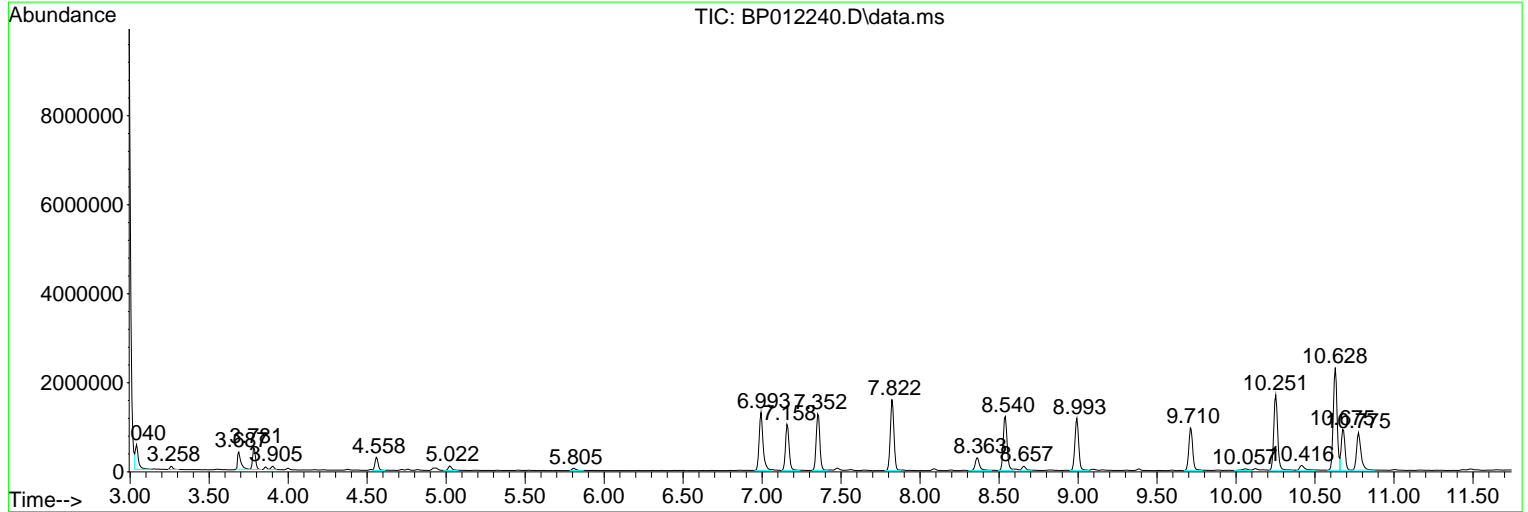
Sum of corrected areas: 227421409

Data Path : Z:\svoasrv\HPCHEM1\BNA_P\Data\BP102022\
 Data File : BP012240.D
 Acq On : 21 Oct 2022 12:05
 Operator : CG/JU
 Sample : N4755-10
 Misc :
 ALS Vial : 35 Sample Multiplier: 1

Instrument :
 BNA_P
ClientSampleId :
 DBWK6

Quant Method : Z:\svoasrv\HPCHEM1\BNA_P\Methods\SFAM-EPA-BP101922.M
 Quant Title : SVOA CALIBRATION

TIC Library : C:\DATABASE\NIST20.L
 TIC Integration Parameters: LSCINT.P



Data Path : Z:\svoasrv\HPCHEM1\BNA_P\Data\BP102022\
 Data File : BP012240.D
 Acq On : 21 Oct 2022 12:05
 Operator : CG/JU
 Sample : N4755-10
 Misc :
 ALS Vial : 35 Sample Multiplier: 1

Instrument :
 BNA_P
 ClientSampleId :
 DBWK6

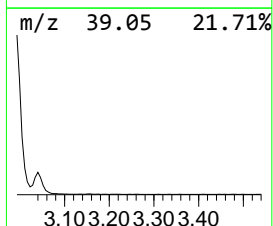
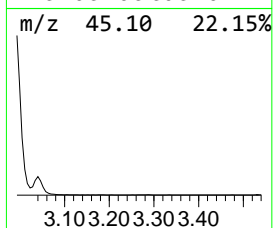
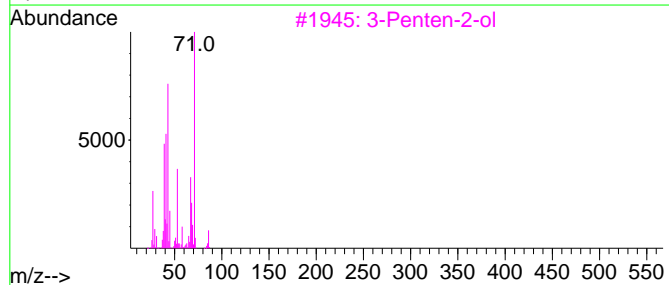
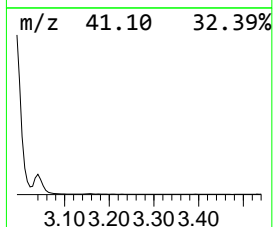
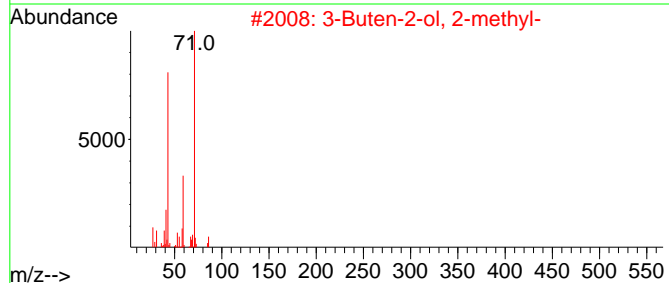
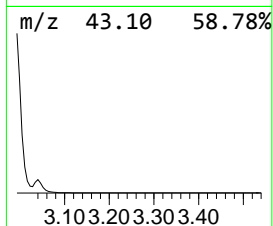
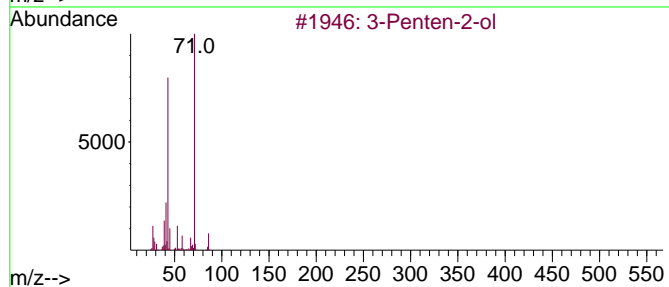
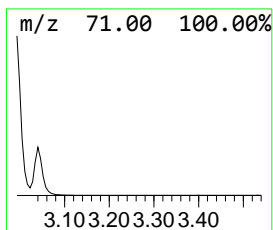
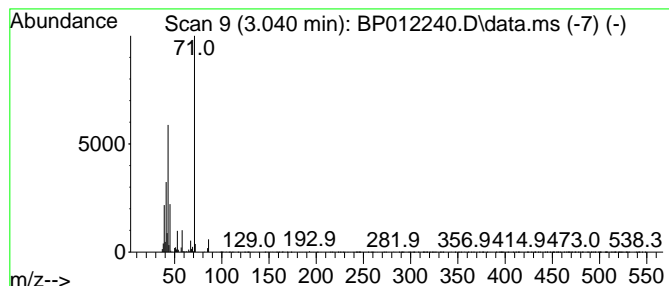
Quant Method : Z:\svoasrv\HPCHEM1\BNA_P\Methods\SFAM-EPA-BP101922.M
 Quant Title : SVOA CALIBRATION

TIC Library : C:\DATABASE\NIST20.L
 TIC Integration Parameters: LSCINT.P

 Peak Number 1 3-Penten-2-ol Concentration Rank 8

R.T.	EstConc	Area	Relative to ISTD	R.T.
3.040	5.61 ng/ul	716156	1,4-Dichlorobenzene-d4	7.822

Hit#	of 5	Tentative ID	MW	MolForm	CAS#	Qual
1		3-Penten-2-ol	86	C5H10O	001569-50-2	83
2		3-Buten-2-ol, 2-methyl-	86	C5H10O	000115-18-4	72
3		3-Penten-2-ol	86	C5H10O	001569-50-2	64
4		Furan, tetrahydro-2-(methoxymeth...	116	C6H12O2	019354-27-9	64
5		Furan, tetrahydro-2-(methoxymeth...	116	C6H12O2	019354-27-9	64



Data Path : Z:\svoasrv\HPCHEM1\BNA_P\Data\BP102022\
 Data File : BP012240.D
 Acq On : 21 Oct 2022 12:05
 Operator : CG/JU
 Sample : N4755-10
 Misc :
 ALS Vial : 35 Sample Multiplier: 1

Instrument :
 BNA_P
 ClientSampleId :
 DBWK6

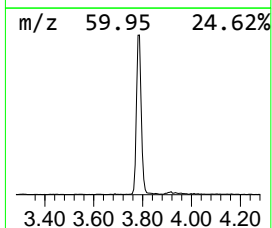
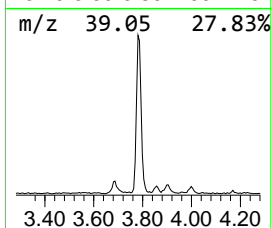
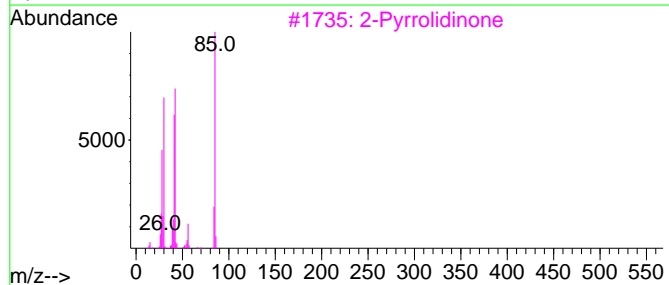
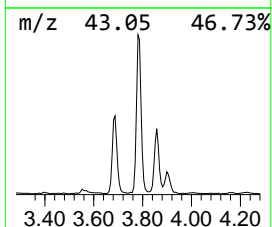
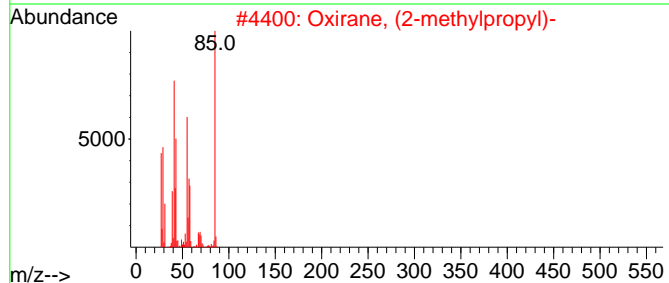
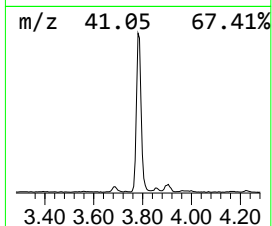
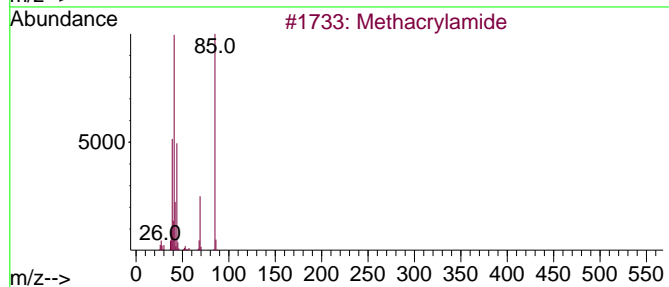
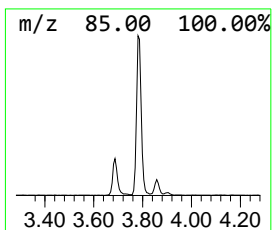
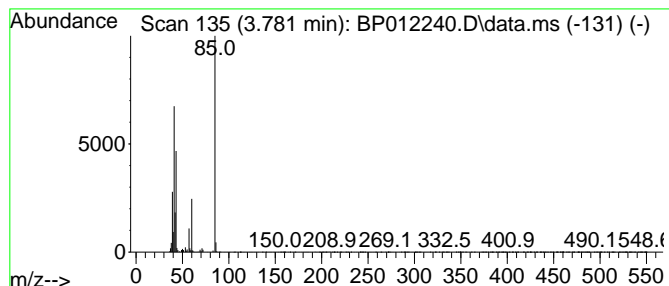
Quant Method : Z:\svoasrv\HPCHEM1\BNA_P\Methods\SFAM-EPA-BP101922.M
 Quant Title : SVOA CALIBRATION

TIC Library : C:\DATABASE\NIST20.L
 TIC Integration Parameters: LSCINT.P

 Peak Number 2 unknown-01 Concentration Rank 12

R.T.	EstConc	Area	Relative to ISTD	R.T.
3.781	4.99 ng/ul	636061	1,4-Dichlorobenzene-d4	7.822

Hit#	of	5	Tentative ID	MW	MolForm	CAS#	Qual
1			Methacrylamide	85	C4H7NO	000079-39-0	40
2			Oxirane, (2-methylpropyl)-	100	C6H12O	023850-78-4	36
3			2-Pyrrolidinone	85	C4H7NO	000616-45-5	28
4			2-Pyrrolidinone	85	C4H7NO	000616-45-5	9
5			2(3H)-Furanone, 5-ethylidihydro-	114	C6H10O2	000695-06-7	9



Data Path : Z:\svoasrv\HPCHEM1\BNA_P\Data\BP102022\
 Data File : BP012240.D
 Acq On : 21 Oct 2022 12:05
 Operator : CG/JU
 Sample : N4755-10
 Misc :
 ALS Vial : 35 Sample Multiplier: 1

Instrument :
 BNA_P
 ClientSampleId :
 DBWK6

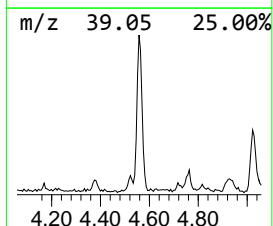
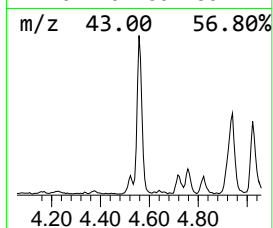
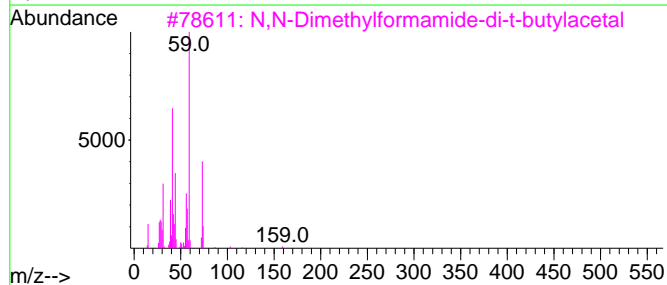
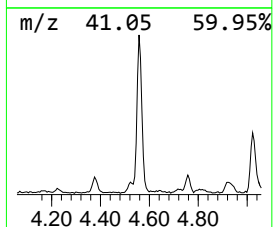
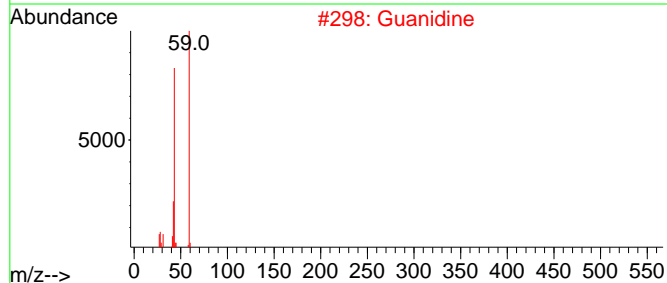
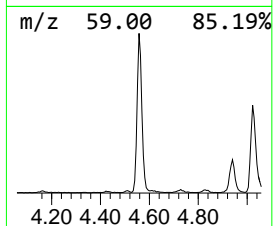
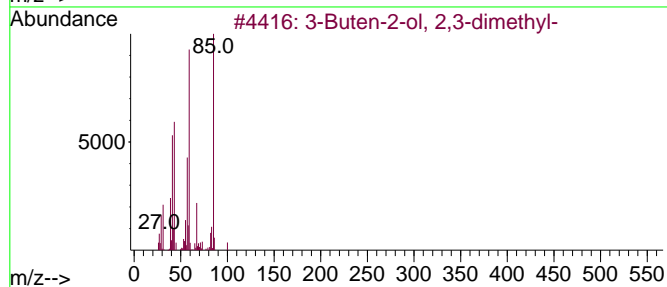
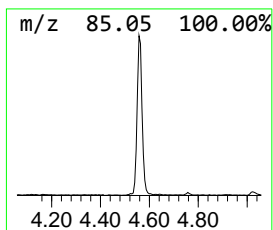
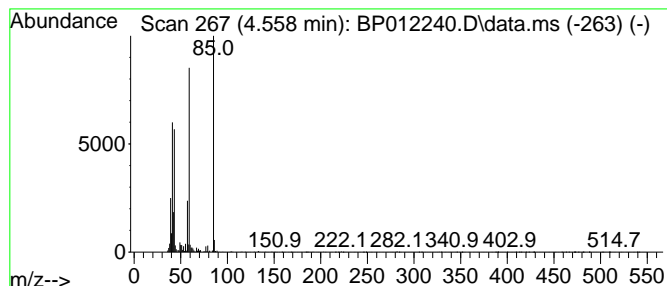
Quant Method : Z:\svoasrv\HPCHEM1\BNA_P\Methods\SFAM-EPA-BP101922.M
 Quant Title : SVOA CALIBRATION

TIC Library : C:\DATABASE\NIST0.L
 TIC Integration Parameters: LSCINT.P

 Peak Number 3 unknown-02 Concentration Rank 24

R.T.	EstConc	Area	Relative to ISTD	R.T.
4.558	3.19 ng/ul	406661	1,4-Dichlorobenzene-d4	7.822

Hit#	of	5	Tentative ID	MW	MolForm	CAS#	Qual
1			3-Buten-2-ol, 2,3-dimethyl-	100	C6H12O	010473-13-9	43
2			Guanidine	59	CH5N3	000113-00-8	43
3			N,N-Dimethylformamide-di-t-butyl...	203	C11H25NO2	036805-97-7	38
4			Oxirane, tetramethyl-	100	C6H12O	005076-20-0	35
5			2-Propanol, 1-methoxy-2-methyl-	104	C5H12O2	003587-64-2	35



Data Path : Z:\svoasrv\HPCHEM1\BNA_P\Data\BP102022\
 Data File : BP012240.D
 Acq On : 21 Oct 2022 12:05
 Operator : CG/JU
 Sample : N4755-10
 Misc :
 ALS Vial : 35 Sample Multiplier: 1

Instrument :
 BNA_P
 ClientSampleId :
 DBWK6

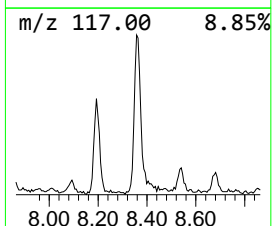
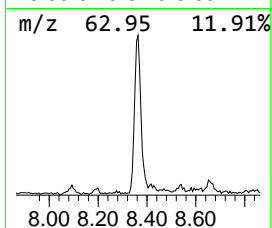
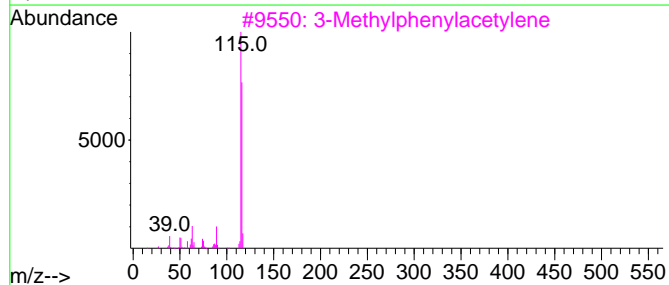
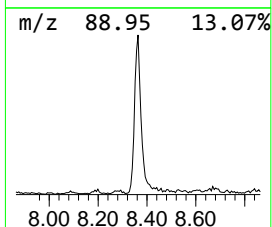
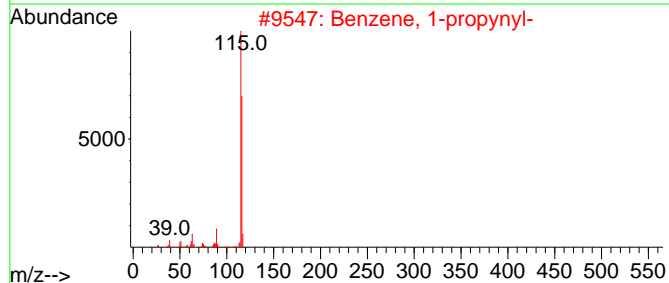
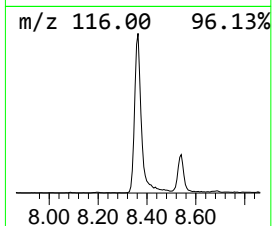
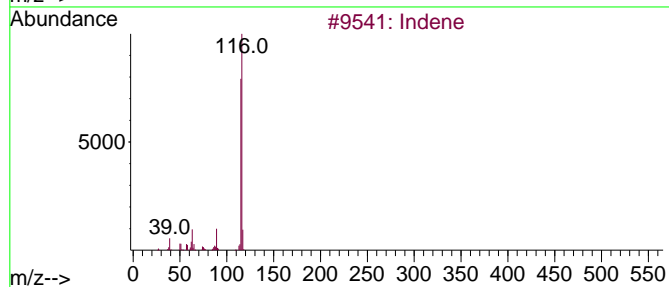
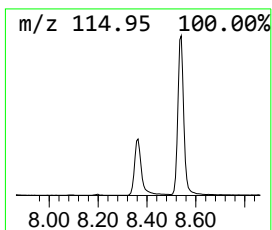
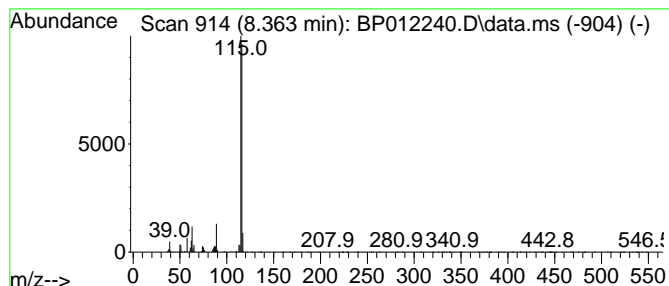
Quant Method : Z:\svoasrv\HPCHEM1\BNA_P\Methods\SFAM-EPA-BP101922.M
 Quant Title : SVOA CALIBRATION

TIC Library : C:\DATABASE\NIST0.L
 TIC Integration Parameters: LSCINT.P

 Peak Number 4 Indene Concentration Rank 17

R.T.	EstConc	Area	Relative to ISTD	R.T.
8.363	4.44 ng/ul	566158	1,4-Dichlorobenzene-d4	7.822

Hit#	of	5	Tentative ID	MW	MolForm	CAS#	Qual
1			Indene	116	C9H8	000095-13-6	97
2			Benzene, 1-propynyl-	116	C9H8	000673-32-5	94
3			3-Methylphenylacetylene	116	C9H8	000766-82-5	91
4			Benzene, 1-propynyl-	116	C9H8	000673-32-5	91
5			Benzene, 1-ethynyl-4-methyl-	116	C9H8	000766-97-2	90



Data Path : Z:\svoasrv\HPCHEM1\BNA_P\Data\BP102022\
 Data File : BP012240.D
 Acq On : 21 Oct 2022 12:05
 Operator : CG/JU
 Sample : N4755-10
 Misc :
 ALS Vial : 35 Sample Multiplier: 1

Instrument :
 BNA_P
 ClientSampleId :
 DBWK6

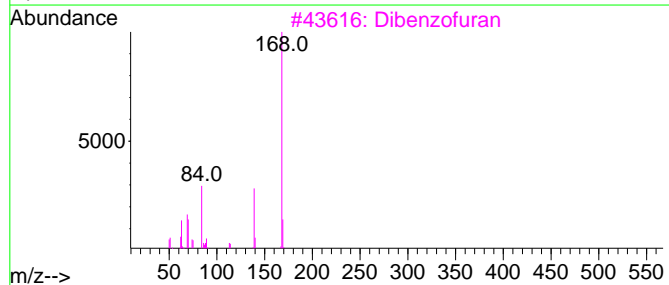
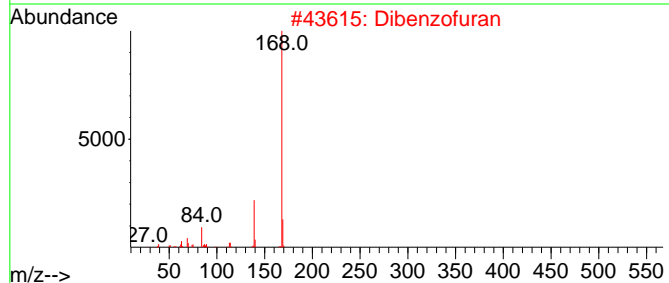
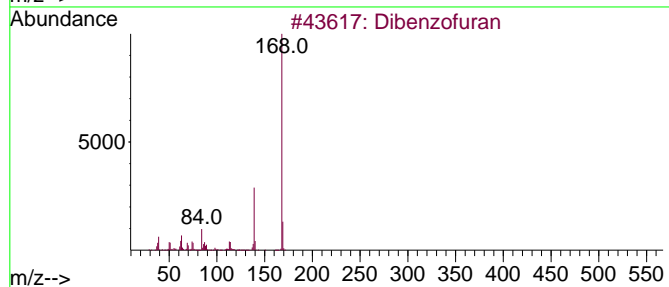
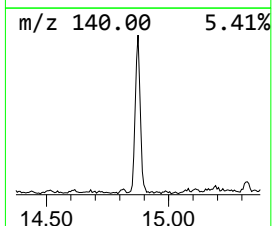
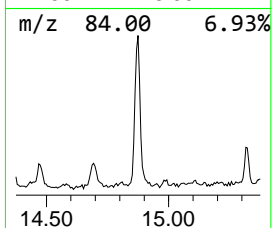
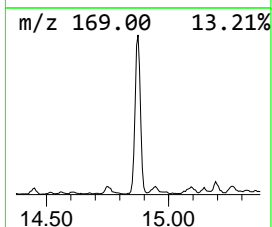
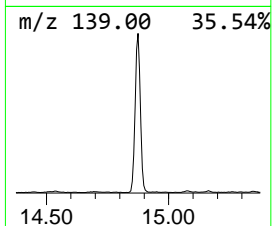
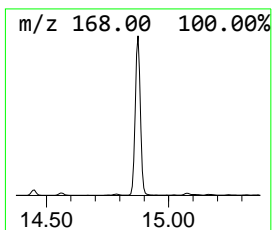
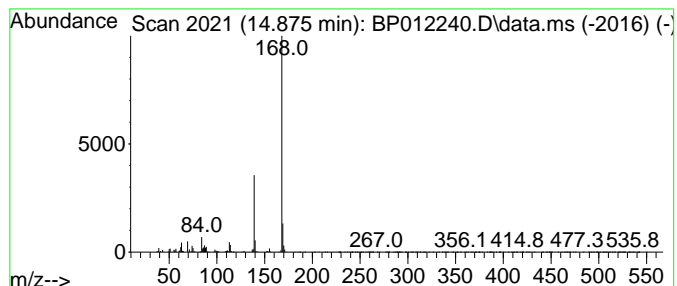
Quant Method : Z:\svoasrv\HPCHEM1\BNA_P\Methods\SFAM-EPA-BP101922.M
 Quant Title : SVOA CALIBRATION

TIC Library : C:\DATABASE\NIST20.L
 TIC Integration Parameters: LSCINT.P

 Peak Number 5 Dibenzofuran Concentration Rank 11

R.T.	EstConc	Area	Relative to ISTD	R.T.
14.875	5.04 ng/ul	1314040	Acenaphthene-d10	14.475

Hit#	of	5	Tentative ID	MW	MolForm	CAS#	Qual
1			Dibenzofuran	168	C12H8O	000132-64-9	91
2			Dibenzofuran	168	C12H8O	000132-64-9	87
3			Dibenzofuran	168	C12H8O	000132-64-9	86
4			Quinoline-4-carbonitrile, 2-methyl-	168	C11H8N2	1000317-19-2	64
5			1-Naphthalenecarbonitrile, 8-amino-	168	C11H8N2	038515-13-8	64



Data Path : Z:\svoasrv\HPCHEM1\BNA_P\Data\BP102022\
 Data File : BP012240.D
 Acq On : 21 Oct 2022 12:05
 Operator : CG/JU
 Sample : N4755-10
 Misc :
 ALS Vial : 35 Sample Multiplier: 1

Instrument :
 BNA_P
 ClientSampleId :
 DBWK6

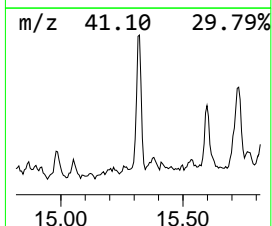
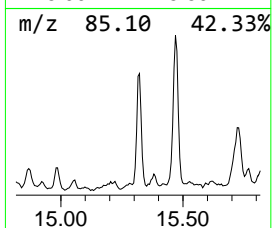
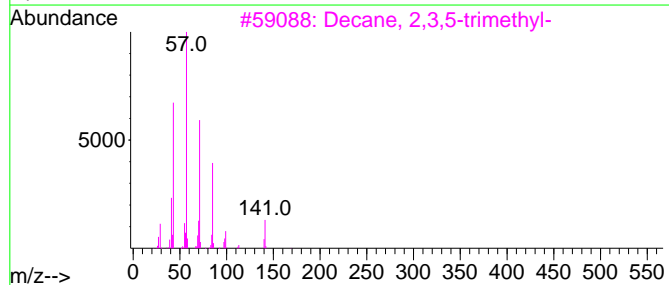
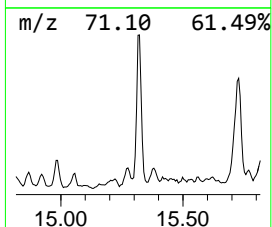
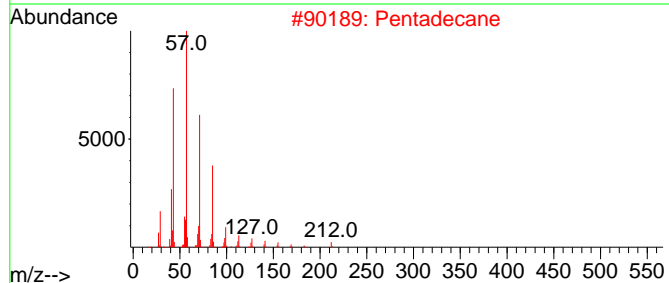
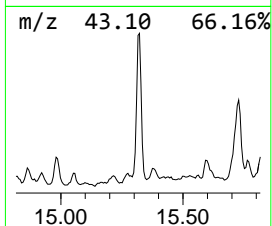
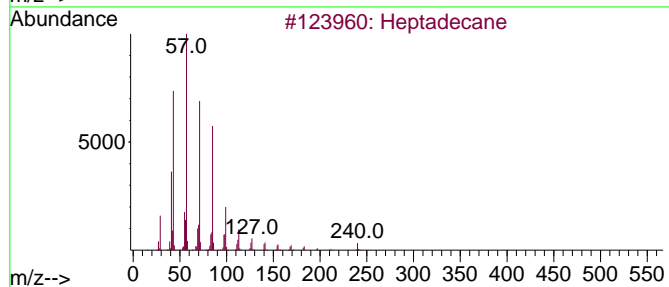
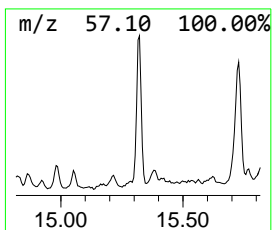
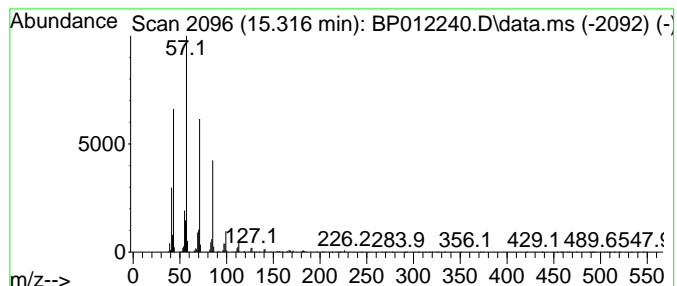
Quant Method : Z:\svoasrv\HPCHEM1\BNA_P\Methods\SFAM-EPA-BP101922.M
 Quant Title : SVOA CALIBRATION

TIC Library : C:\DATABASE\NIST20.L
 TIC Integration Parameters: LSCINT.P

 Peak Number 6 (DEL) Alkane: Straight-Chai... Concentration Rank 31

R.T.	EstConc	Area	Relative to ISTD	R.T.
15.316	2.10 ng/ul	547626	Acenaphthene-d10	14.475

Hit#	of 5	Tentative ID	MW	MolForm	CAS#	Qual
1		Heptadecane	240	C17H36	000629-78-7	90
2		Pentadecane	212	C15H32	000629-62-9	90
3		Decane, 2,3,5-trimethyl-	184	C13H28	062238-11-3	83
4		Nonane, 3,7-dimethyl-	156	C11H24	017302-32-8	83
5		Hexadecane	226	C16H34	000544-76-3	81



Data Path : Z:\svoasrv\HPCHEM1\BNA_P\Data\BP102022\
 Data File : BP012240.D
 Acq On : 21 Oct 2022 12:05
 Operator : CG/JU
 Sample : N4755-10
 Misc :
 ALS Vial : 35 Sample Multiplier: 1

Instrument :
 BNA_P
 ClientSampleId :
 DBWK6

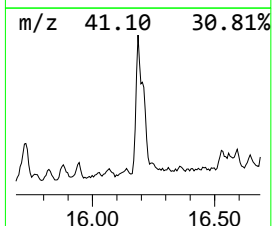
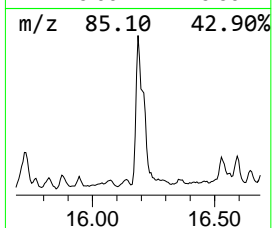
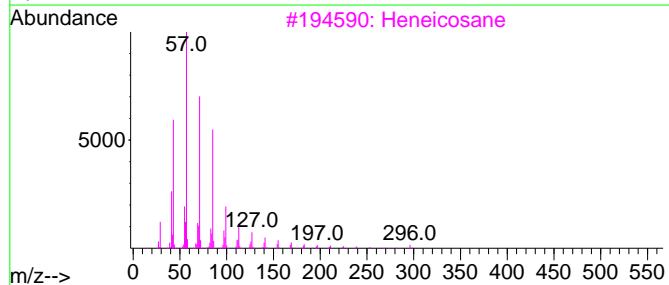
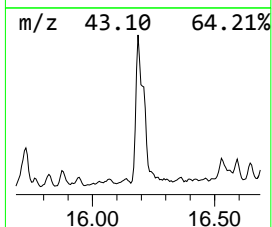
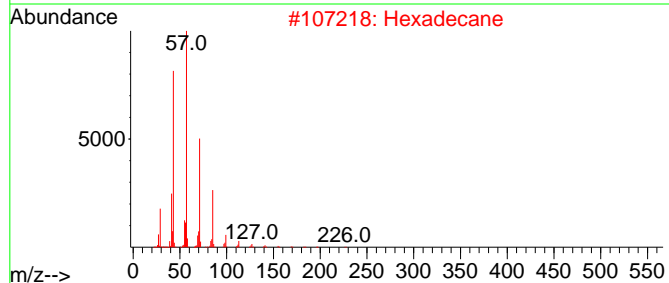
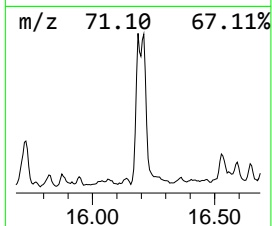
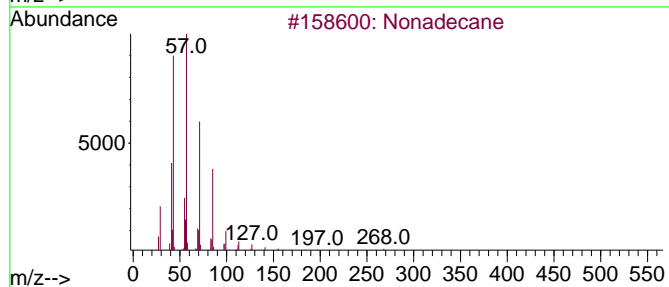
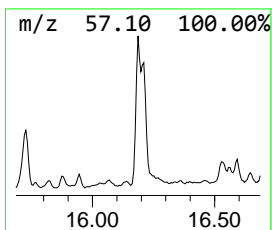
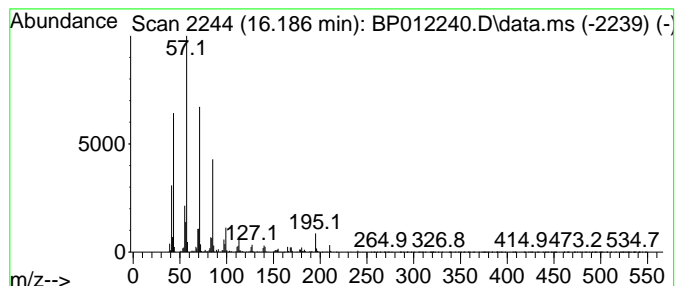
Quant Method : Z:\svoasrv\HPCHEM1\BNA_P\Methods\SFAM-EPA-BP101922.M
 Quant Title : SVOA CALIBRATION

TIC Library : C:\DATABASE\NIST20.L
 TIC Integration Parameters: LSCINT.P

 Peak Number 7 (DEL) Alkane: Straight-Chai... Concentration Rank 21

R.T.	EstConc	Area	Relative to ISTD	R.T.
16.186	3.90 ng/ul	1138290	Phenanthrene-d10	17.233

Hit#	of 5	Tentative ID	MW	MolForm	CAS#	Qual
1		Nonadecane	268	C19H40	000629-92-5	87
2		Hexadecane	226	C16H34	000544-76-3	86
3		Heneicosane	296	C21H44	000629-94-7	86
4		Heptacosane	380	C27H56	000593-49-7	86
5		Decane, 5-propyl-	184	C13H28	017312-62-8	81



Data Path : Z:\svoasrv\HPCHEM1\BNA_P\Data\BP102022\
 Data File : BP012240.D
 Acq On : 21 Oct 2022 12:05
 Operator : CG/JU
 Sample : N4755-10
 Misc :
 ALS Vial : 35 Sample Multiplier: 1

Instrument :
 BNA_P
 ClientSampleId :
 DBWK6

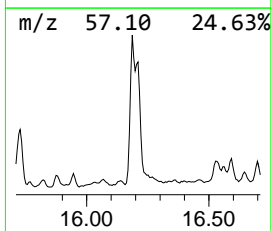
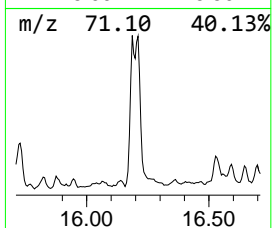
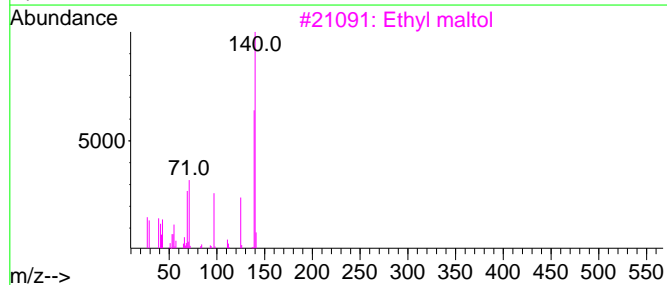
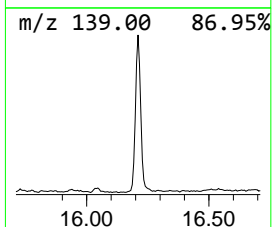
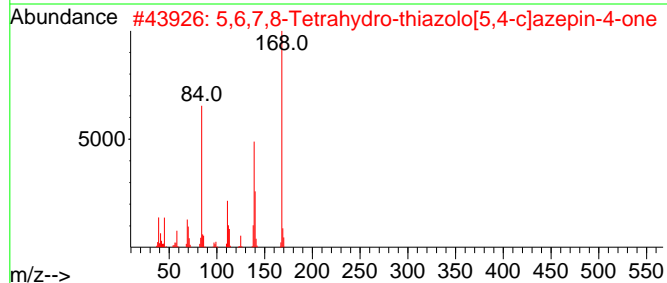
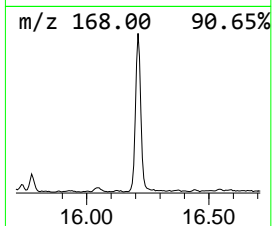
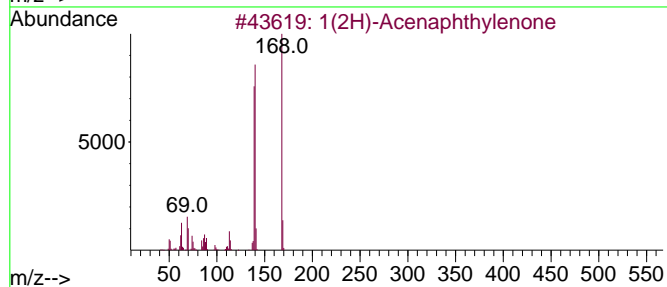
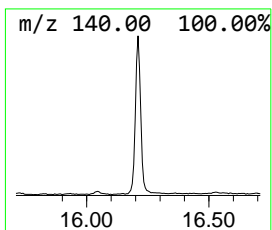
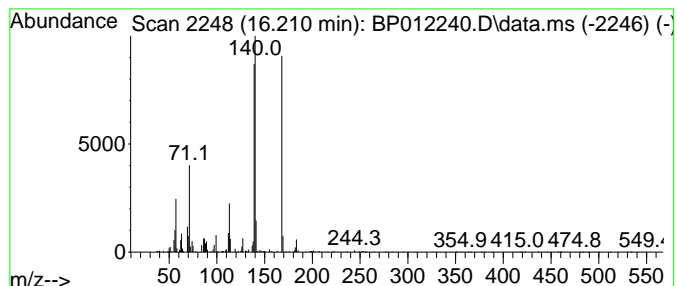
Quant Method : Z:\svoasrv\HPCHEM1\BNA_P\Methods\SFAM-EPA-BP101922.M
 Quant Title : SVOA CALIBRATION

TIC Library : C:\DATABASE\NIST20.L
 TIC Integration Parameters: LSCINT.P

 Peak Number 8 1(2H)-Acenaphthylenone Concentration Rank 10

R.T.	EstConc	Area	Relative to ISTD	R.T.
16.210	5.31 ng/ul	1550760	Phenanthrene-d10	17.233

Hit#	of	5	Tentative ID	MW	MolForm	CAS#	Qual
1			1(2H)-Acenaphthylenone	168	C12H8O	002235-15-6	90
2			5,6,7,8-Tetrahydro-thiazolo[5,4-...	168	C7H8N2OS	1000317-75-4	50
3			Ethyl maltol	140	C7H8O3	004940-11-8	50
4			1H-Inden-1-one, 4,7-difluoro-2,3...	168	C9H6F2O	130408-16-1	49
5			Cyclobuta[de]naphthalene	140	C11H8	024973-91-9	46



Data Path : Z:\svoasrv\HPCHEM1\BNA_P\Data\BP102022\
 Data File : BP012240.D
 Acq On : 21 Oct 2022 12:05
 Operator : CG/JU
 Sample : N4755-10
 Misc :
 ALS Vial : 35 Sample Multiplier: 1

Instrument :
 BNA_P
 ClientSampleId :
 DBWK6

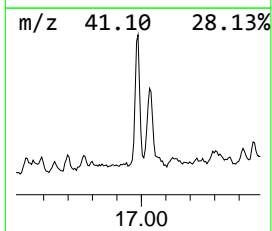
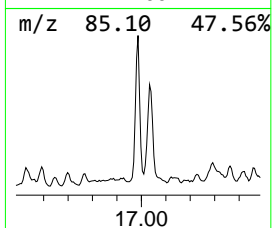
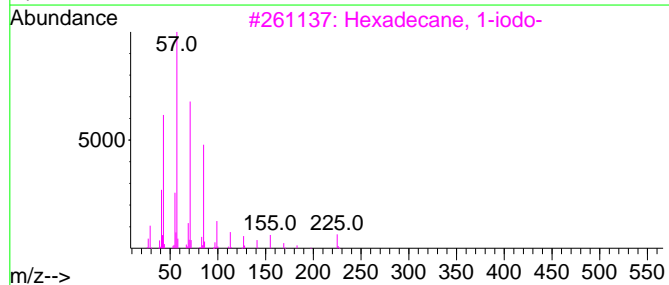
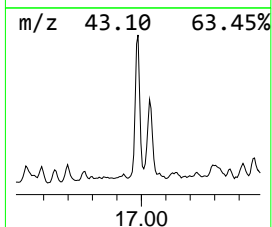
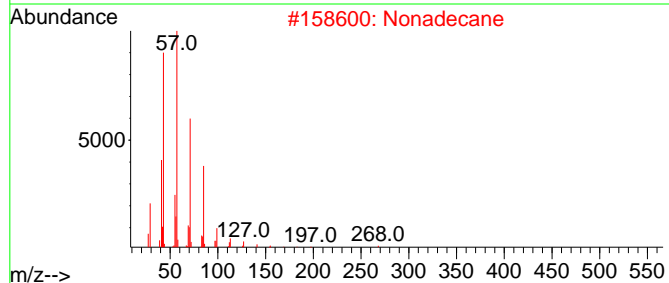
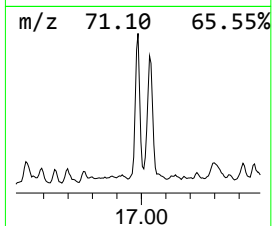
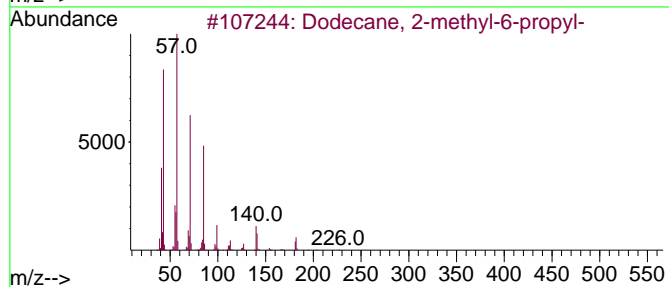
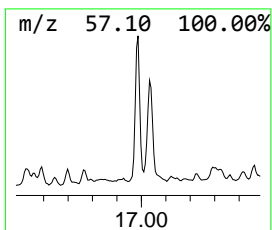
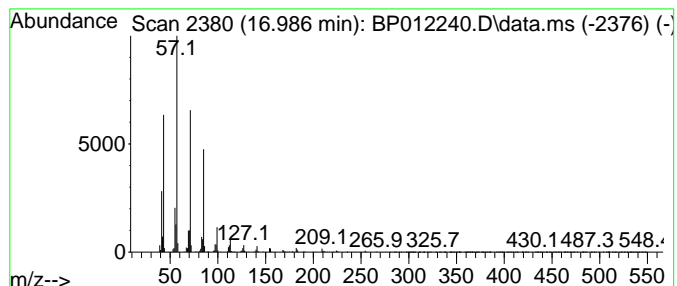
Quant Method : Z:\svoasrv\HPCHEM1\BNA_P\Methods\SFAM-EPA-BP101922.M
 Quant Title : SVOA CALIBRATION

TIC Library : C:\DATABASE\NIST20.L
 TIC Integration Parameters: LSCINT.P

 Peak Number 9 (DEL) Alkane: Straight-Chai... Concentration Rank 18

R.T.	EstConc	Area	Relative to ISTD	R.T.
16.986	4.41 ng/ul	1285430	Phenanthrene-d10	17.233

Hit#	of	5	Tentative ID	MW	MolForm	CAS#	Qual
1			Dodecane, 2-methyl-6-propyl-	226	C16H34	055045-08-4	91
2			Nonadecane	268	C19H40	000629-92-5	90
3			Hexadecane, 1-iodo-	352	C16H33I	000544-77-4	86
4			Tetradecane, 1-iodo-	324	C14H29I	019218-94-1	80
5			Octacosane	394	C28H58	000630-02-4	72



Data Path : Z:\svoasrv\HPCHEM1\BNA_P\Data\BP102022\
 Data File : BP012240.D
 Acq On : 21 Oct 2022 12:05
 Operator : CG/JU
 Sample : N4755-10
 Misc :
 ALS Vial : 35 Sample Multiplier: 1

Instrument :
 BNA_P
 ClientSampleId :
 DBWK6

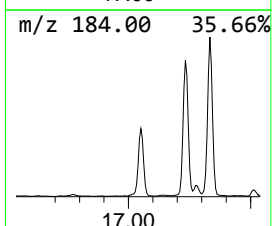
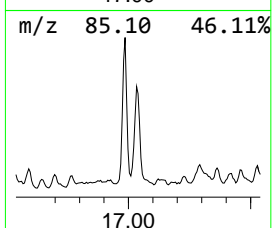
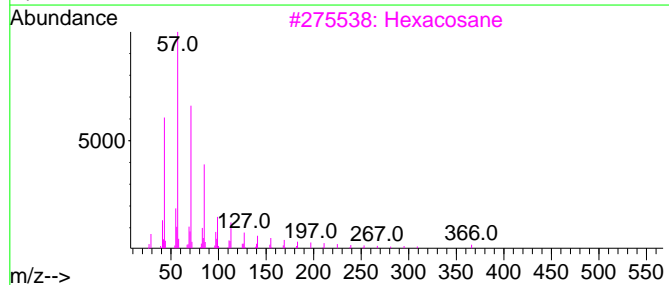
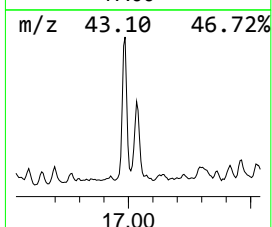
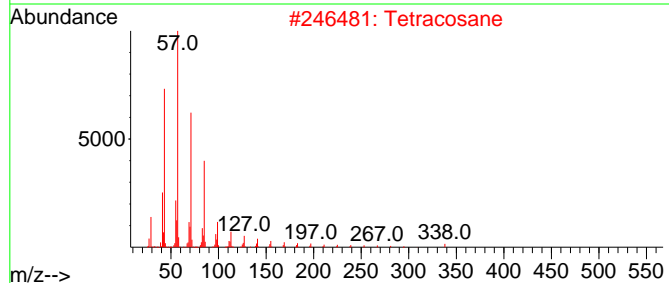
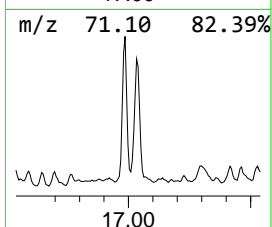
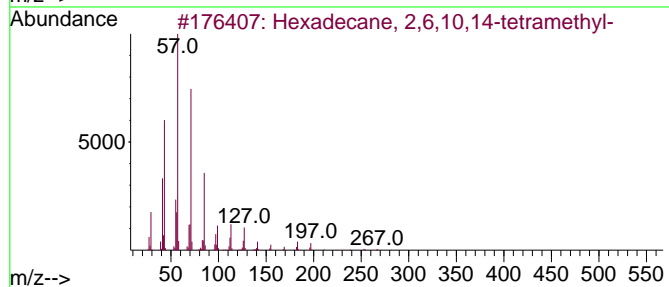
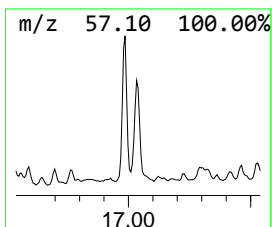
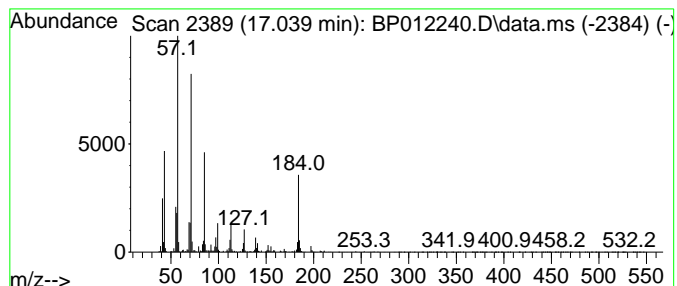
Quant Method : Z:\svoasrv\HPCHEM1\BNA_P\Methods\SFAM-EPA-BP101922.M
 Quant Title : SVOA CALIBRATION

TIC Library : C:\DATABASE\NIST20.L
 TIC Integration Parameters: LSCINT.P

 Peak Number 10 (DEL) Alkane: Straight-Chai... Concentration Rank 7

R.T.	EstConc	Area	Relative to ISTD	R.T.
17.039	6.17 ng/ul	1800630	Phenanthrene-d10	17.233

Hit#	of 5	Tentative ID	MW	MolForm	CAS#	Qual
1		Hexadecane, 2,6,10,14-tetramethyl-	282	C20H42	000638-36-8	87
2		Tetracosane	338	C24H50	000646-31-1	80
3		Hexacosane	366	C26H54	000630-01-3	80
4		Nonane, 3,7-dimethyl-	156	C11H24	017302-32-8	76
5		Hexadecane	226	C16H34	000544-76-3	74



Data Path : Z:\svoasrv\HPCHEM1\BNA_P\Data\BP102022\
 Data File : BP012240.D
 Acq On : 21 Oct 2022 12:05
 Operator : CG/JU
 Sample : N4755-10
 Misc :
 ALS Vial : 35 Sample Multiplier: 1

Instrument :
 BNA_P
 ClientSampleId :
 DBWK6

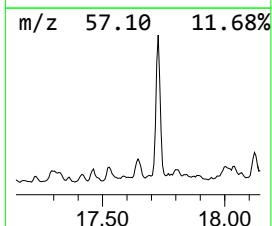
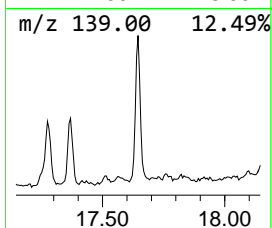
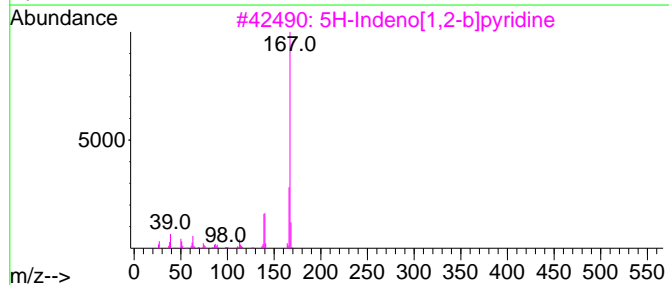
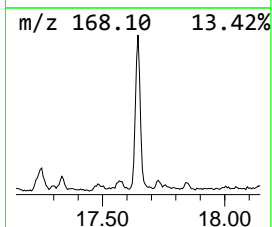
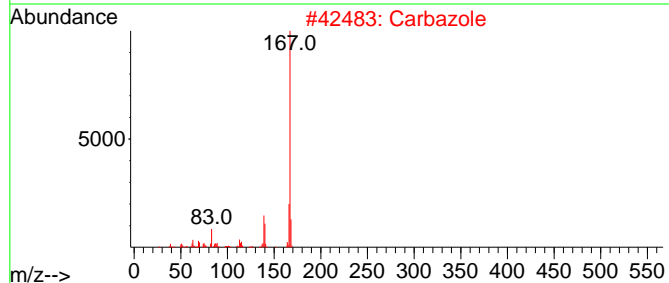
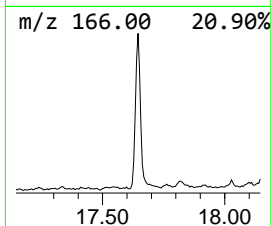
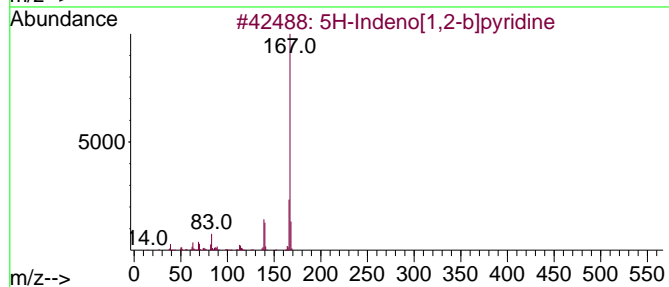
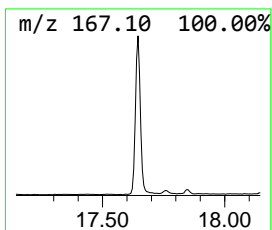
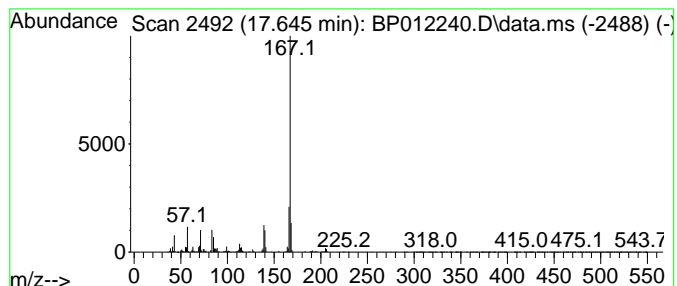
Quant Method : Z:\svoasrv\HPCHEM1\BNA_P\Methods\SFAM-EPA-BP101922.M
 Quant Title : SVOA CALIBRATION

TIC Library : C:\DATABASE\NIST20.L
 TIC Integration Parameters: LSCINT.P

 Peak Number 11 5H-Indeno[1,2-b]pyridine Concentration Rank 20

R.T.	EstConc	Area	Relative to ISTD	R.T.
17.645	3.99 ng/ul	1163800	Phenanthrene-d10	17.233

Hit#	of	5	Tentative ID	MW	MolForm	CAS#	Qual
1			5H-Indeno[1,2-b]pyridine	167	C12H9N	000244-99-5	95
2			Carbazole	167	C12H9N	000086-74-8	93
3			5H-Indeno[1,2-b]pyridine	167	C12H9N	000244-99-5	87
4			Carbazole	167	C12H9N	000086-74-8	87
5			9H-Carbazole-9-methanol	197	C13H11NO	002409-36-1	72



Data Path : Z:\svoasrv\HPCHEM1\BNA_P\Data\BP102022\
 Data File : BP012240.D
 Acq On : 21 Oct 2022 12:05
 Operator : CG/JU
 Sample : N4755-10
 Misc :
 ALS Vial : 35 Sample Multiplier: 1

Instrument :
 BNA_P
 ClientSampleId :
 DBWK6

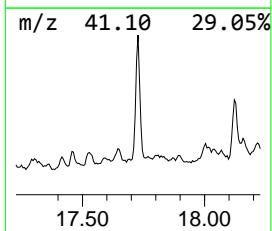
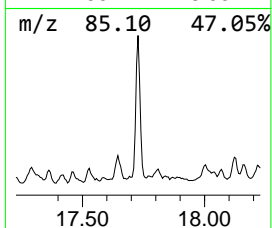
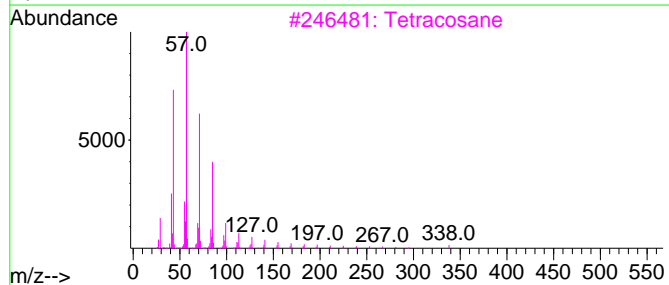
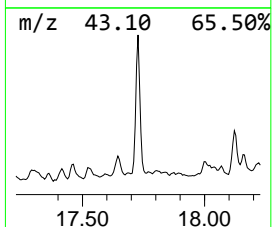
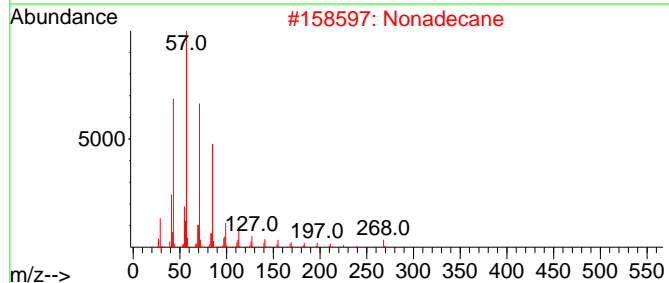
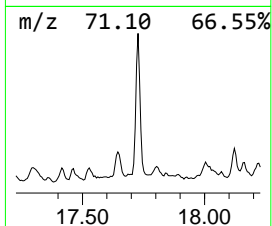
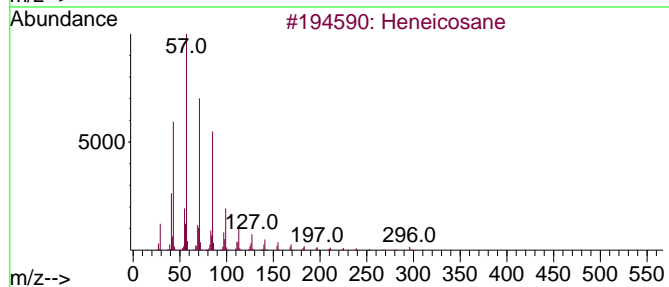
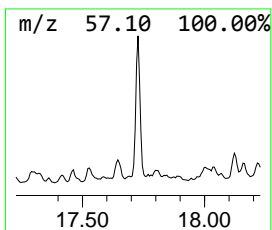
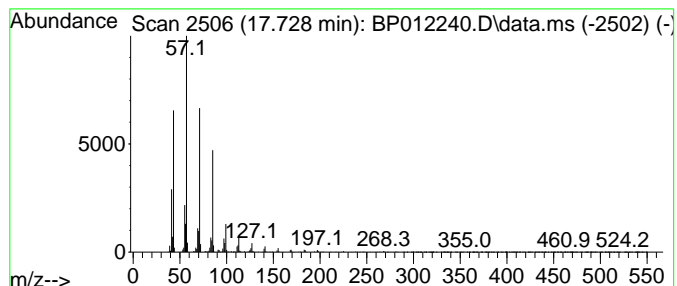
Quant Method : Z:\svoasrv\HPCHEM1\BNA_P\Methods\SFAM-EPA-BP101922.M
 Quant Title : SVOA CALIBRATION

TIC Library : C:\DATABASE\NIST20.L
 TIC Integration Parameters: LSCINT.P

 Peak Number 12 (DEL) Alkane: Straight-Chai... Concentration Rank 9

R.T.	EstConc	Area	Relative to ISTD	R.T.
17.727	5.43 ng/ul	1583660	Phenanthrene-d10	17.233

Hit#	of 5	Tentative ID	MW	MolForm	CAS#	Qual
1		Heneicosane	296	C21H44	000629-94-7	91
2		Nonadecane	268	C19H40	000629-92-5	91
3		Tetracosane	338	C24H50	000646-31-1	90
4		Decane, 1-iodo-	268	C10H21I	002050-77-3	87
5		Dodecane, 2-methyl-6-propyl-	226	C16H34	055045-08-4	86



Data Path : Z:\svoasrv\HPCHEM1\BNA_P\Data\BP102022\
 Data File : BP012240.D
 Acq On : 21 Oct 2022 12:05
 Operator : CG/JU
 Sample : N4755-10
 Misc :
 ALS Vial : 35 Sample Multiplier: 1

Instrument :
 BNA_P
 ClientSampleId :
 DBWK6

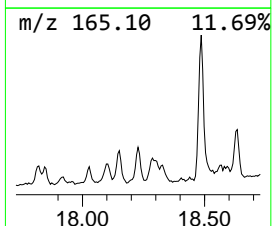
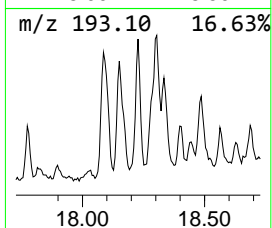
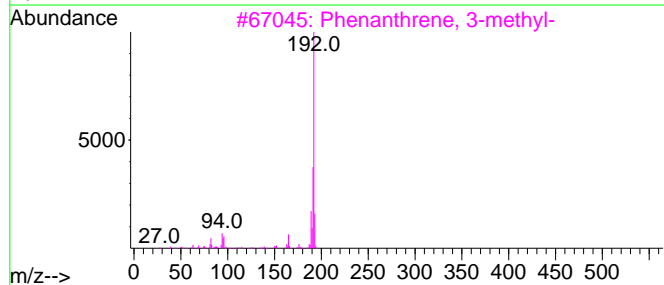
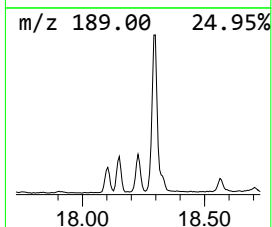
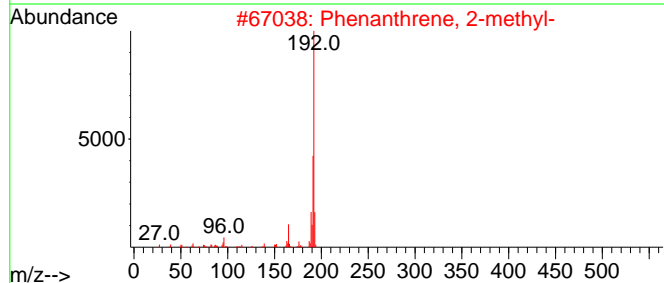
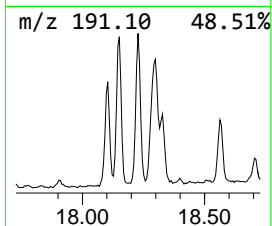
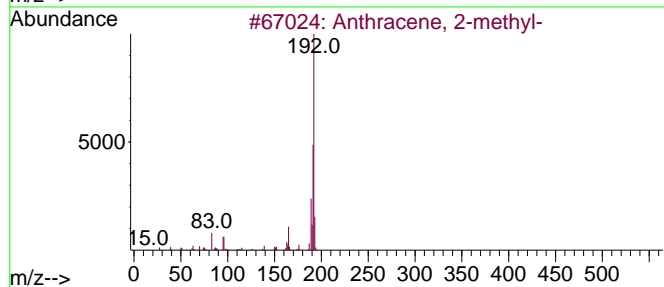
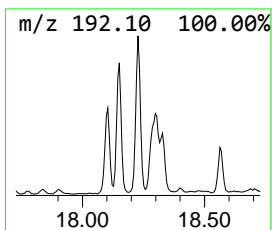
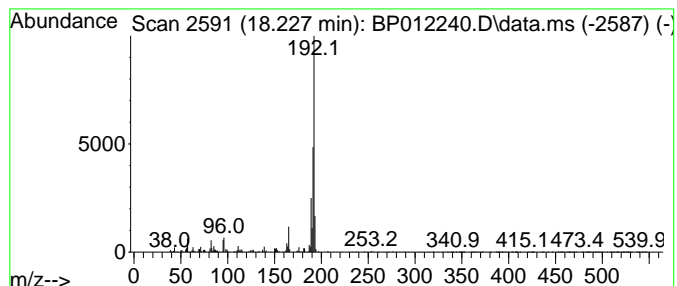
Quant Method : Z:\svoasrv\HPCHEM1\BNA_P\Methods\SFAM-EPA-BP101922.M
 Quant Title : SVOA CALIBRATION

TIC Library : C:\DATABASE\NIST0.L
 TIC Integration Parameters: LSCINT.P

 Peak Number 13 Anthracene, 2-methyl- Concentration Rank 28

R.T.	EstConc	Area	Relative to ISTD	R.T.
18.227	2.61 ng/ul	762899	Phenanthrene-d10	17.233

Hit#	of 5	Tentative ID	MW	MolForm	CAS#	Qual
1		Anthracene, 2-methyl-	192	C15H12	000613-12-7	97
2		Phenanthrene, 2-methyl-	192	C15H12	002531-84-2	97
3		Phenanthrene, 3-methyl-	192	C15H12	000832-71-3	96
4		Anthracene, 2-methyl-	192	C15H12	000613-12-7	95
5		Phenanthrene, 2-methyl-	192	C15H12	002531-84-2	95



Data Path : Z:\svoasrv\HPCHEM1\BNA_P\Data\BP102022\
 Data File : BP012240.D
 Acq On : 21 Oct 2022 12:05
 Operator : CG/JU
 Sample : N4755-10
 Misc :
 ALS Vial : 35 Sample Multiplier: 1

Instrument :
 BNA_P
 ClientSampleId :
 DBWK6

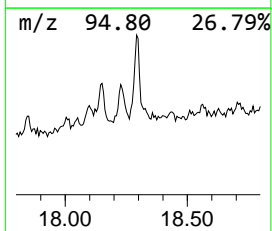
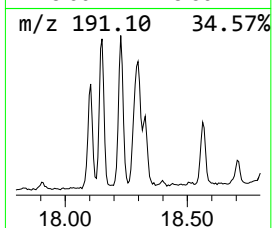
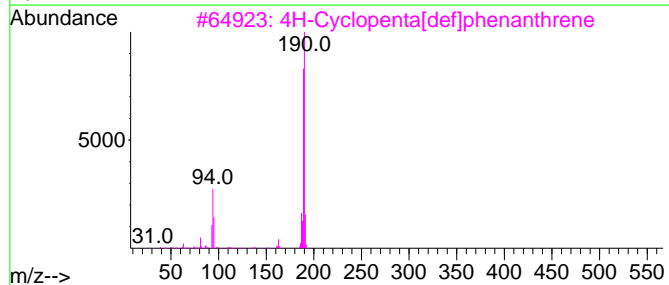
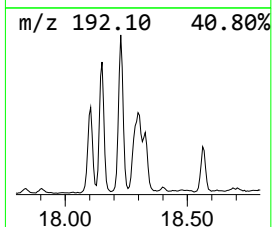
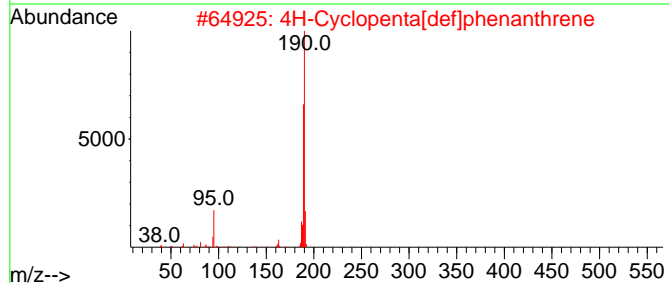
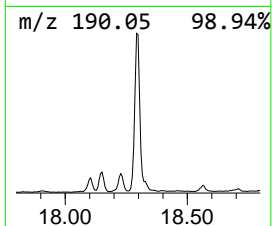
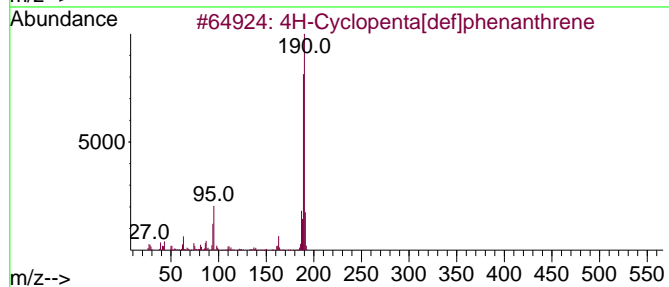
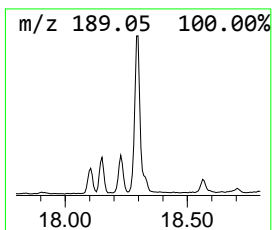
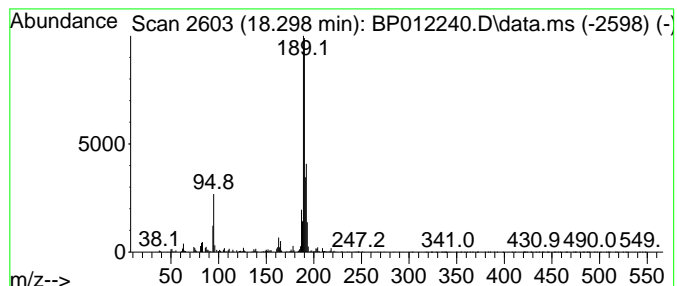
Quant Method : Z:\svoasrv\HPCHEM1\BNA_P\Methods\SFAM-EPA-BP101922.M
 Quant Title : SVOA CALIBRATION

TIC Library : C:\DATABASE\NIST20.L
 TIC Integration Parameters: LSCINT.P

 Peak Number 14 4H-Cyclopenta[def]phenanthrene Concentration Rank 19

R.T.	EstConc	Area	Relative to ISTD	R.T.
18.298	4.01 ng/ul	1169390	Phenanthrene-d10	17.233

Hit#	of 5	Tentative ID	MW	MolForm	CAS#	Qual
1		4H-Cyclopenta[def]phenanthrene	190	C15H10	000203-64-5	86
2		4H-Cyclopenta[def]phenanthrene	190	C15H10	000203-64-5	72
3		4H-Cyclopenta[def]phenanthrene	190	C15H10	000203-64-5	70
4		6H-Cyclobuta[jk]phenanthrene	190	C15H10	083469-43-6	53
5		Pyrazole-4-carboxaldehyde, 3-(4-...	190	C10H7FN2O	306936-57-2	47



Data Path : Z:\svoasrv\HPCHEM1\BNA_P\Data\BP102022\
 Data File : BP012240.D
 Acq On : 21 Oct 2022 12:05
 Operator : CG/JU
 Sample : N4755-10
 Misc :
 ALS Vial : 35 Sample Multiplier: 1

Instrument :
 BNA_P
 ClientSampleId :
 DBWK6

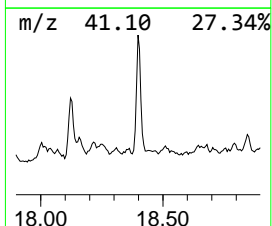
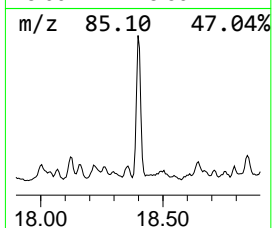
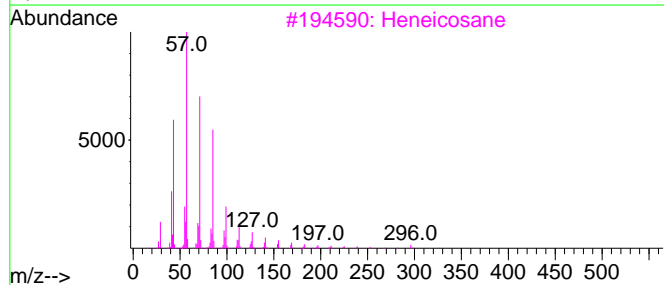
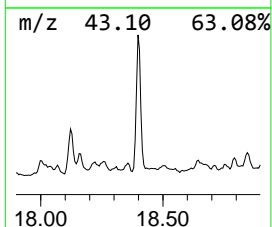
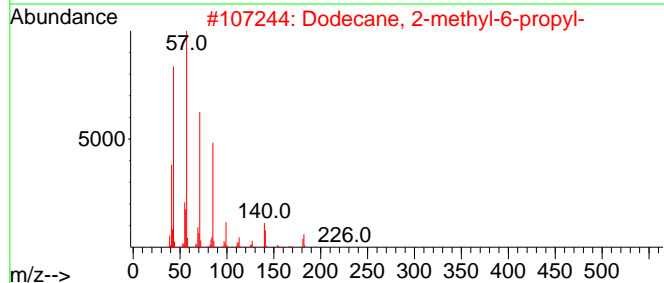
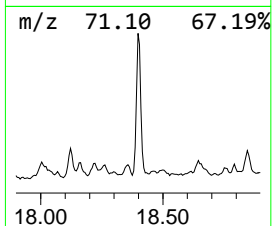
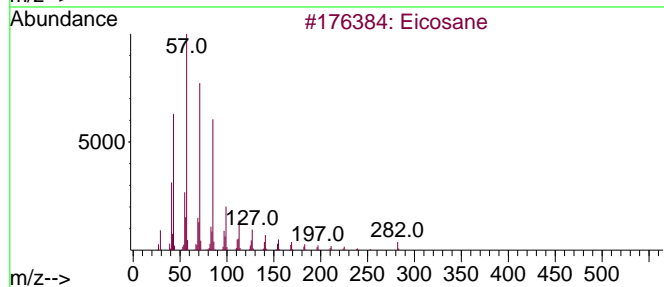
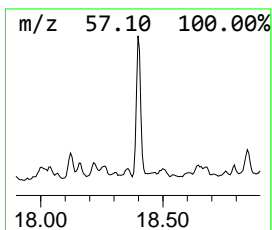
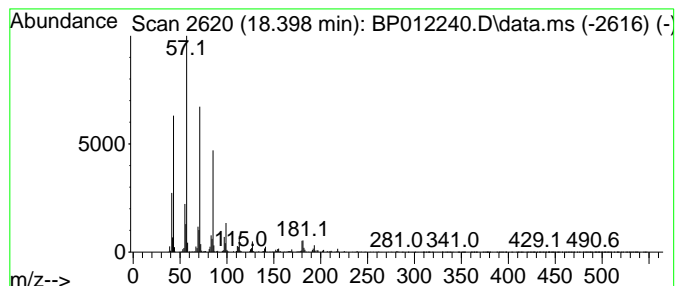
Quant Method : Z:\svoasrv\HPCHEM1\BNA_P\Methods\SFAM-EPA-BP101922.M
 Quant Title : SVOA CALIBRATION

TIC Library : C:\DATABASE\NIST20.L
 TIC Integration Parameters: LSCINT.P

 Peak Number 15 (DEL) Alkane: Straight-Chai... Concentration Rank 6

R.T.	EstConc	Area	Relative to ISTD	R.T.
18.398	6.18 ng/ul	1804120	Phenanthrene-d10	17.233

Hit#	of 5	Tentative ID	MW	MolForm	CAS#	Qual
1		Eicosane	282	C20H42	000112-95-8	95
2		Dodecane, 2-methyl-6-propyl-	226	C16H34	055045-08-4	90
3		Heneicosane	296	C21H44	000629-94-7	87
4		Tetracosane	338	C24H50	000646-31-1	87
5		Heptadecane	240	C17H36	000629-78-7	87



Data Path : Z:\svoasrv\HPCHEM1\BNA_P\Data\BP102022\
 Data File : BP012240.D
 Acq On : 21 Oct 2022 12:05
 Operator : CG/JU
 Sample : N4755-10
 Misc :
 ALS Vial : 35 Sample Multiplier: 1

Instrument :
 BNA_P
 ClientSampleId :
 DBWK6

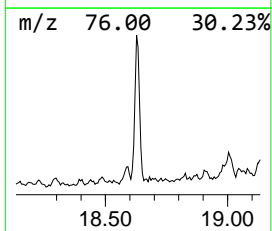
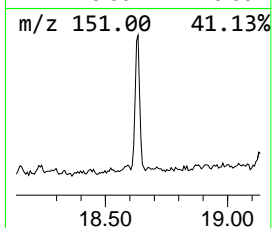
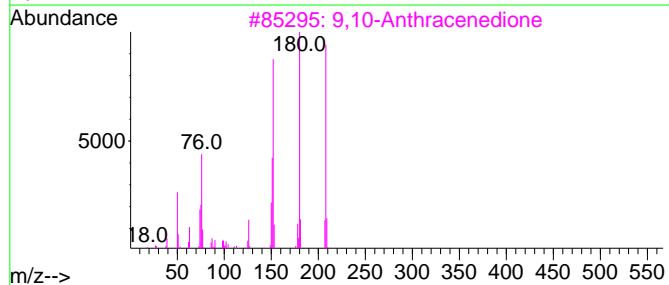
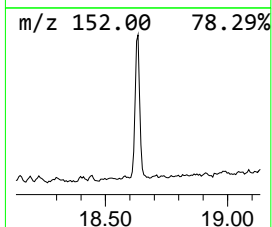
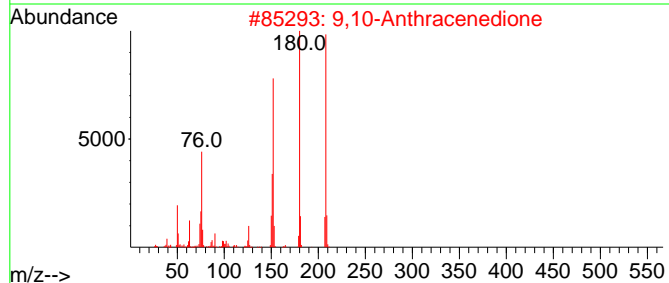
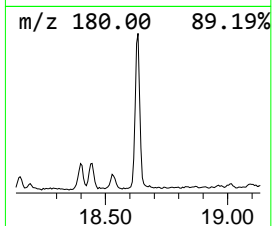
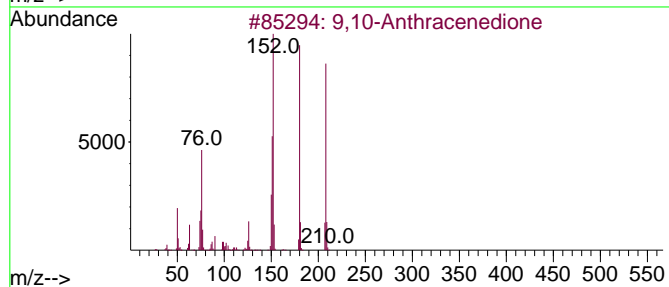
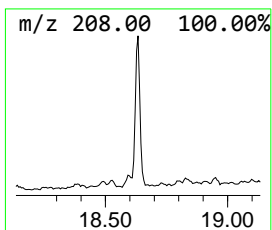
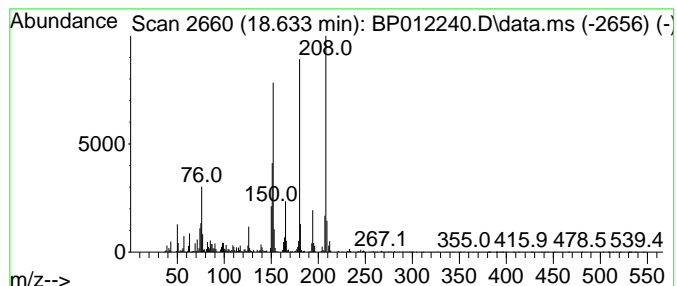
Quant Method : Z:\svoasrv\HPCHEM1\BNA_P\Methods\SFAM-EPA-BP101922.M
 Quant Title : SVOA CALIBRATION

TIC Library : C:\DATABASE\NIST20.L
 TIC Integration Parameters: LSCINT.P

 Peak Number 16 9,10-Anthracenedione Concentration Rank 22

R.T.	EstConc	Area	Relative to ISTD	R.T.
18.633	3.49 ng/ul	1019350	Phenanthrene-d10	17.233

Hit#	of 5	Tentative ID	MW	MolForm	CAS#	Qual
1		9,10-Anthracenedione	208	C14H8O2	000084-65-1	98
2		9,10-Anthracenedione	208	C14H8O2	000084-65-1	94
3		9,10-Anthracenedione	208	C14H8O2	000084-65-1	94
4		9,10-Anthracenedione	208	C14H8O2	000084-65-1	83
5		Benzo[c]cinoline	180	C12H8N2	000230-17-1	78



Data Path : Z:\svoasrv\HPCHEM1\BNA_P\Data\BP102022\
 Data File : BP012240.D
 Acq On : 21 Oct 2022 12:05
 Operator : CG/JU
 Sample : N4755-10
 Misc :
 ALS Vial : 35 Sample Multiplier: 1

Instrument :
 BNA_P
 ClientSampleId :
 DBWK6

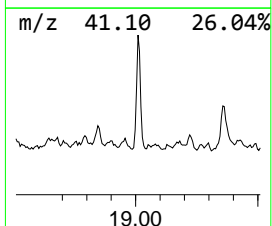
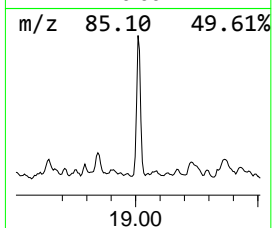
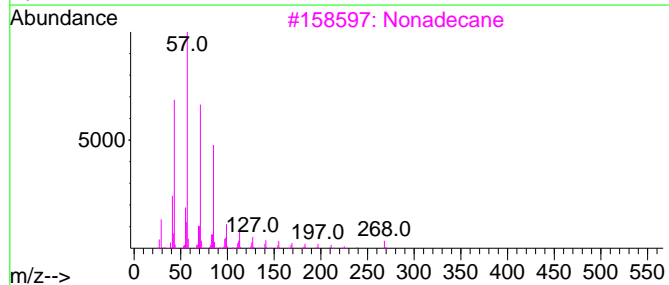
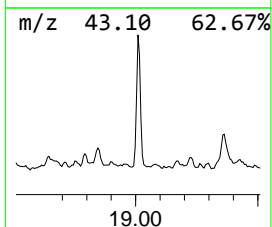
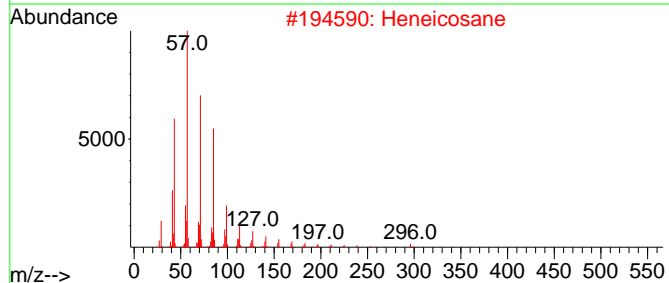
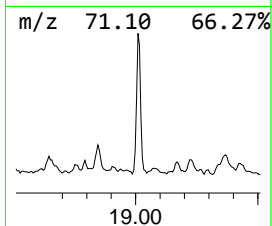
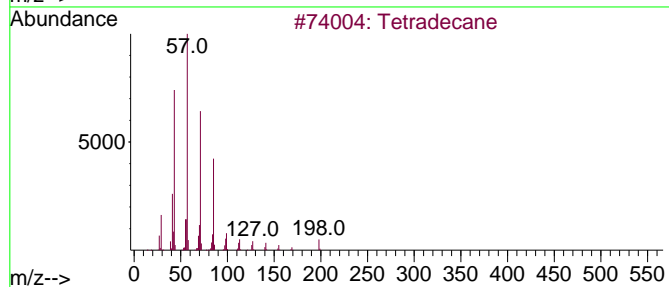
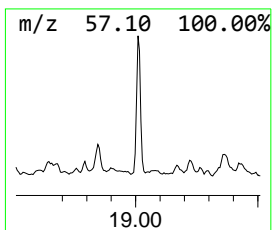
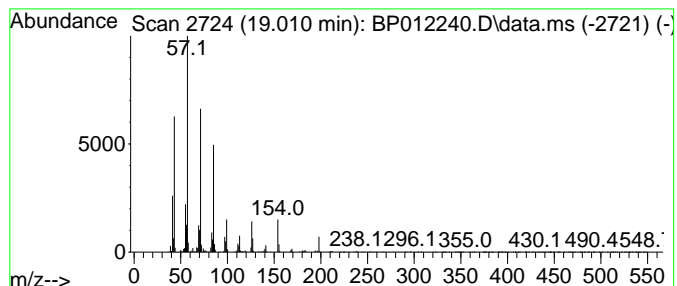
Quant Method : Z:\svoasrv\HPCHEM1\BNA_P\Methods\SFAM-EPA-BP101922.M
 Quant Title : SVOA CALIBRATION

TIC Library : C:\DATABASE\NIST20.L
 TIC Integration Parameters: LSCINT.P

 Peak Number 17 (DEL) Alkane: Straight-Chai... Concentration Rank 14

R.T.	EstConc	Area	Relative to ISTD	R.T.
19.010	4.89 ng/ul	1427340	Phenanthrene-d10	17.233

Hit#	of 5	Tentative ID	MW	MolForm	CAS#	Qual
1		Tetradecane	198	C14H30	000629-59-4	98
2		Heneicosane	296	C21H44	000629-94-7	97
3		Nonadecane	268	C19H40	000629-92-5	81
4		Heptadecane	240	C17H36	000629-78-7	80
5		Heptadecane, 8-methyl-	254	C18H38	013287-23-5	80



Data Path : Z:\svoasrv\HPCHEM1\BNA_P\Data\BP102022\
 Data File : BP012240.D
 Acq On : 21 Oct 2022 12:05
 Operator : CG/JU
 Sample : N4755-10
 Misc :
 ALS Vial : 35 Sample Multiplier: 1

Instrument :
 BNA_P
 ClientSampleId :
 DBWK6

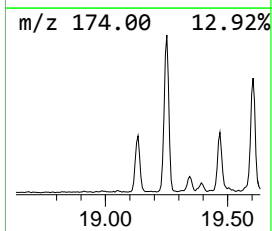
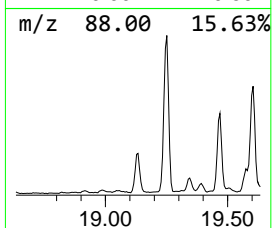
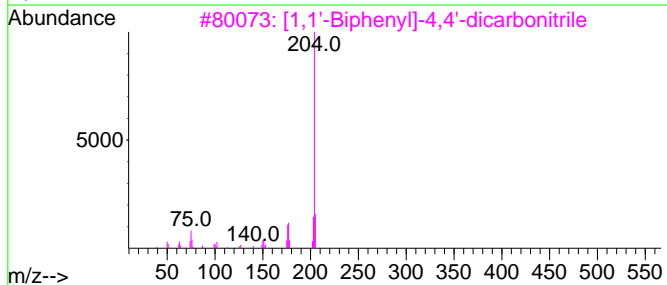
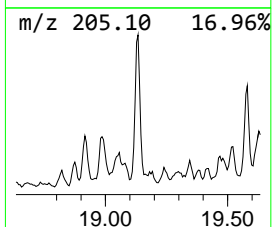
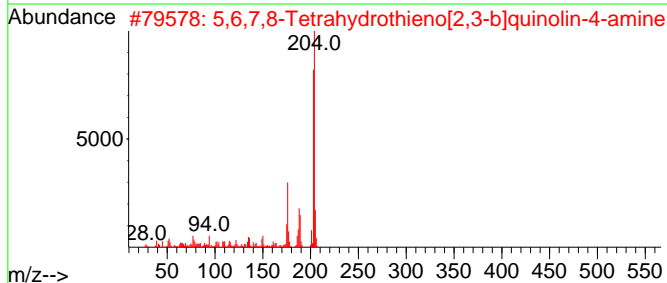
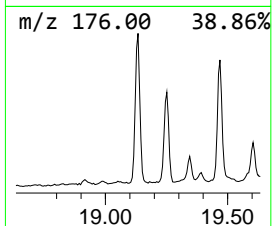
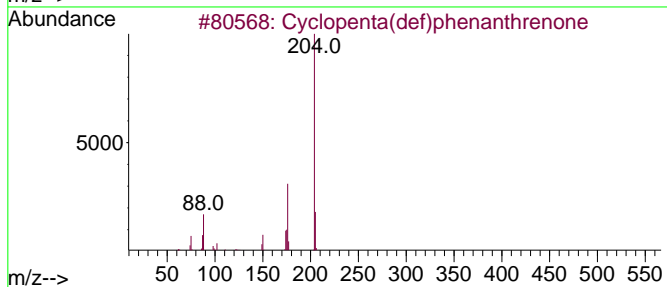
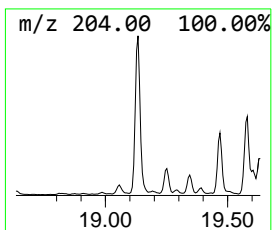
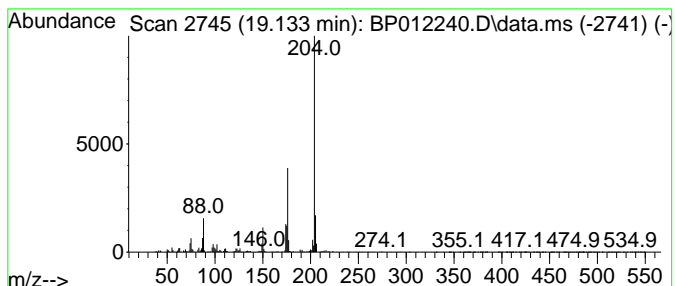
Quant Method : Z:\svoasrv\HPCHEM1\BNA_P\Methods\SFAM-EPA-BP101922.M
 Quant Title : SVOA CALIBRATION

TIC Library : C:\DATABASE\NIST20.L
 TIC Integration Parameters: LSCINT.P

 Peak Number 18 Cyclopenta(def)phenanthrene Concentration Rank 16

R.T.	EstConc	Area	Relative to ISTD	R.T.
19.133	4.48 ng/ul	1306320	Phenanthrene-d10	17.233

Hit#	of 5	Tentative ID	MW	MolForm	CAS#	Qual
1		Cyclopenta(def)phenanthrene	204	C15H8O	005737-13-3	97
2		5,6,7,8-Tetrahydrothieno[2,3-b]q...	204	C11H12N2S	122914-50-5	64
3		[1,1'-Biphenyl]-4,4'-dicarbonitrile	204	C14H8N2	001591-30-6	52
4		3,4-Biphenyldicarbonitrile	204	C14H8N2	004128-63-6	50
5		1,2,4,8-Tetramethylbicyclo[6.3.0]...	204	C15H24	137235-51-9	49



Data Path : Z:\svoasrv\HPCHEM1\BNA_P\Data\BP102022\
 Data File : BP012240.D
 Acq On : 21 Oct 2022 12:05
 Operator : CG/JU
 Sample : N4755-10
 Misc :
 ALS Vial : 35 Sample Multiplier: 1

Instrument :
 BNA_P
 ClientSampleId :
 DBWK6

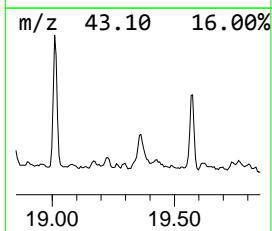
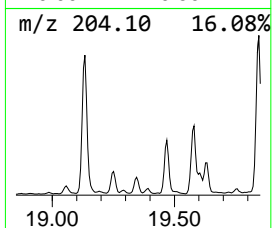
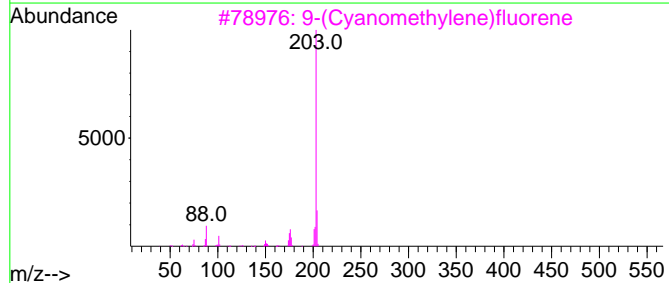
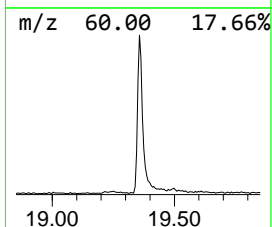
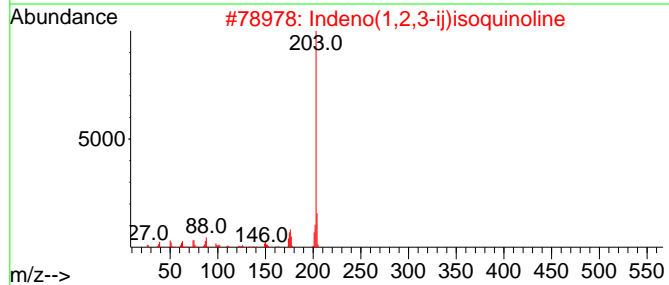
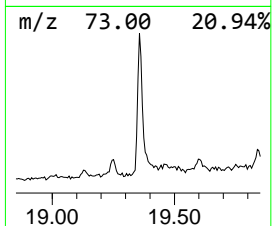
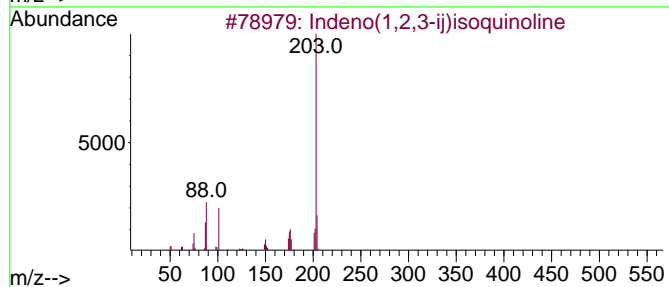
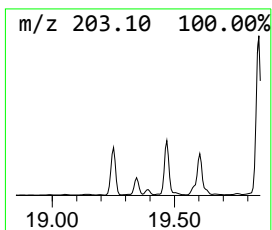
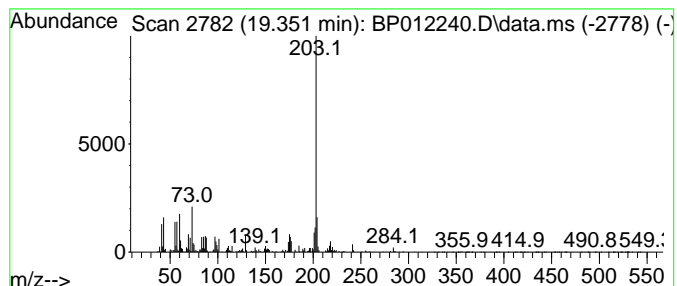
Quant Method : Z:\svoasrv\HPCHEM1\BNA_P\Methods\SFAM-EPA-BP101922.M
 Quant Title : SVOA CALIBRATION

TIC Library : C:\DATABASE\NIST20.L
 TIC Integration Parameters: LSCINT.P

 Peak Number 19 Indeno(1,2,3-ij)isoquinoline Concentration Rank 27

R.T.	EstConc	Area	Relative to ISTD	R.T.
19.351	2.86 ng/ul	1206700	Chrysene-d12	21.327

Hit#	of	5	Tentative ID	MW	MolForm	CAS#	Qual
1			Indeno(1,2,3-ij)isoquinoline	203	C15H9N	000206-56-4	91
2			Indeno(1,2,3-ij)isoquinoline	203	C15H9N	000206-56-4	91
3			9-(Cyanomethylene)fluorene	203	C15H9N	004425-74-5	91
4			9-Anthracenecarbonitrile	203	C15H9N	001210-12-4	83
5			9-Anthracenecarbonitrile	203	C15H9N	001210-12-4	83



Data Path : Z:\svoasrv\HPCHEM1\BNA_P\Data\BP102022\
 Data File : BP012240.D
 Acq On : 21 Oct 2022 12:05
 Operator : CG/JU
 Sample : N4755-10
 Misc :
 ALS Vial : 35 Sample Multiplier: 1

Instrument :
 BNA_P
 ClientSampleId :
 DBWK6

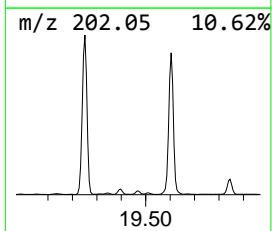
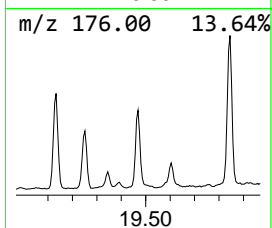
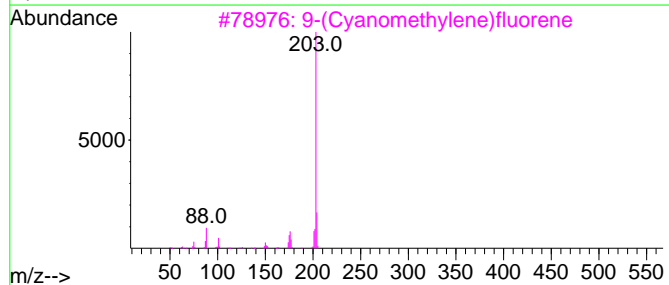
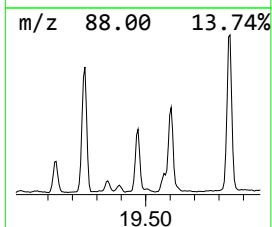
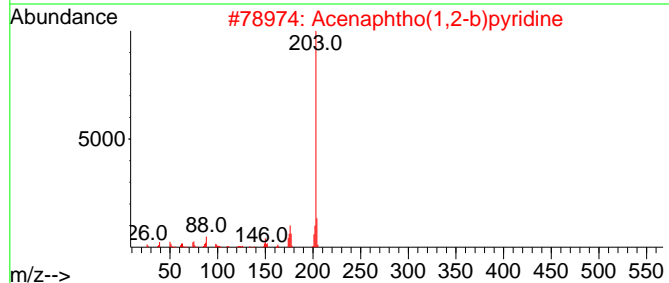
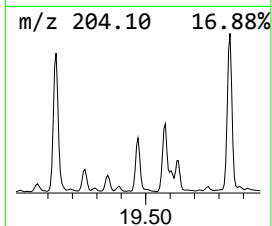
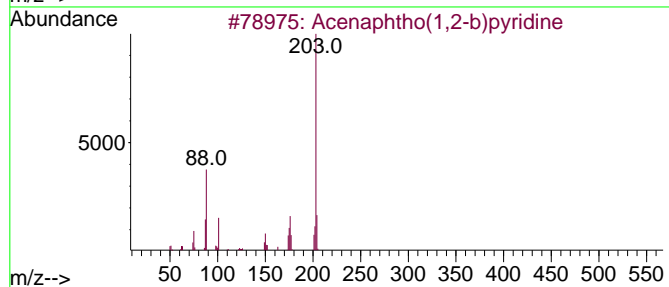
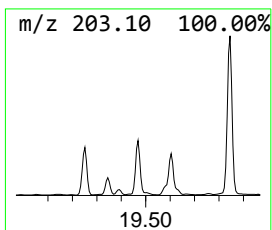
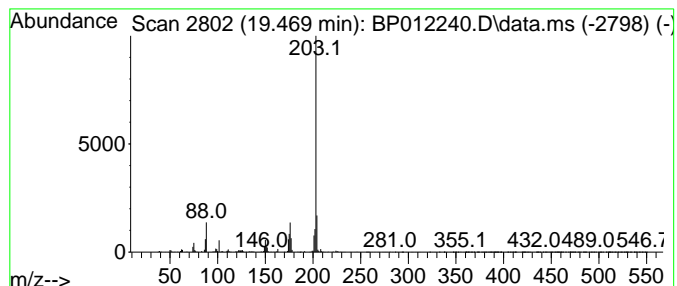
Quant Method : Z:\svoasrv\HPCHEM1\BNA_P\Methods\SFAM-EPA-BP101922.M
 Quant Title : SVOA CALIBRATION

TIC Library : C:\DATABASE\NIST20.L
 TIC Integration Parameters: LSCINT.P

 Peak Number 20 Acenaphtho(1,2-b)pyridine Concentration Rank 13

R.T.	EstConc	Area	Relative to ISTD	R.T.
19.469	4.97 ng/ul	2091680	Chrysene-d12	21.327

Hit#	of 5	Tentative ID	MW	MolForm	CAS#	Qual
1		Acenaphtho(1,2-b)pyridine	203	C15H9N	000206-49-5	97
2		Acenaphtho(1,2-b)pyridine	203	C15H9N	000206-49-5	96
3		9-(Cyanomethylene)fluorene	203	C15H9N	004425-74-5	95
4		Indeno(1,2,3-ij)isoquinoline	203	C15H9N	000206-56-4	94
5		Indeno(1,2,3-ij)isoquinoline	203	C15H9N	000206-56-4	94



Data Path : Z:\svoasrv\HPCHEM1\BNA_P\Data\BP102022\
 Data File : BP012240.D
 Acq On : 21 Oct 2022 12:05
 Operator : CG/JU
 Sample : N4755-10
 Misc :
 ALS Vial : 35 Sample Multiplier: 1

Instrument :
 BNA_P
 ClientSampleId :
 DBWK6

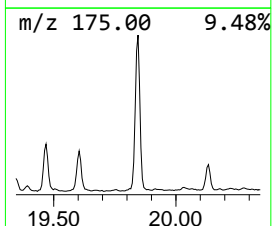
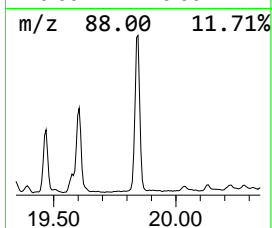
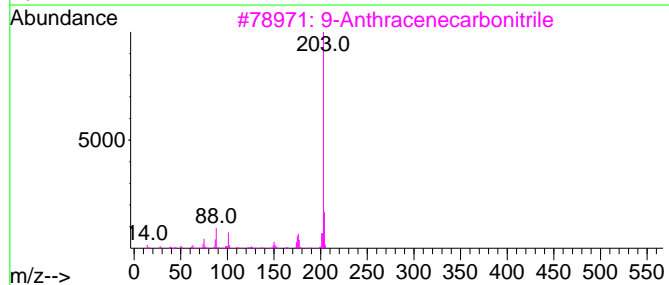
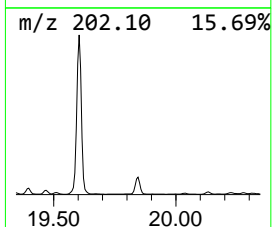
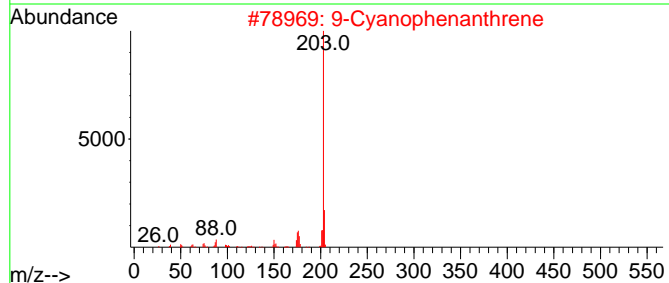
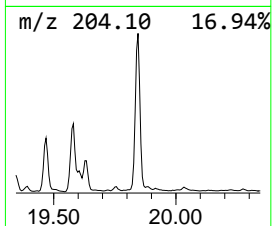
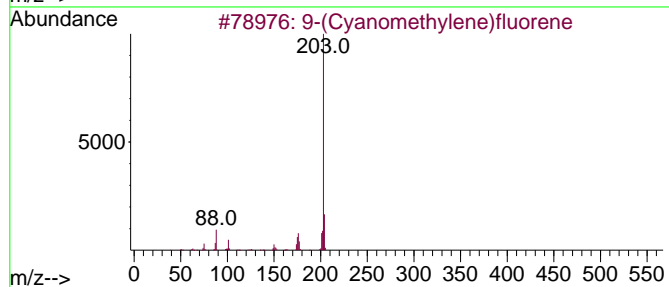
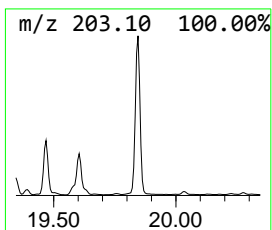
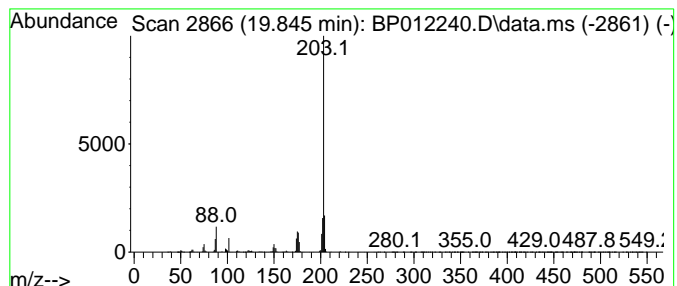
Quant Method : Z:\svoasrv\HPCHEM1\BNA_P\Methods\SFAM-EPA-BP101922.M
 Quant Title : SVOA CALIBRATION

TIC Library : C:\DATABASE\NIST20.L
 TIC Integration Parameters: LSCINT.P

 Peak Number 21 9-(Cyanomethylene)fluorene Concentration Rank 5

R.T.	EstConc	Area	Relative to ISTD	R.T.
19.845	14.10 ng/ul	5938720	Chrysene-d12	21.327

Hit#	of	5	Tentative ID	MW	MolForm	CAS#	Qual
1			9-(Cyanomethylene)fluorene	203	C15H9N	004425-74-5	97
2			9-Cyanophenanthrene	203	C15H9N	002510-55-6	97
3			9-Anthracenecarbonitrile	203	C15H9N	001210-12-4	97
4			Indeno(1,2,3-ij)isoquinoline	203	C15H9N	000206-56-4	96
5			Acenaphtho(1,2-b)pyridine	203	C15H9N	000206-49-5	95



Data Path : Z:\svoasrv\HPCHEM1\BNA_P\Data\BP102022\
 Data File : BP012240.D
 Acq On : 21 Oct 2022 12:05
 Operator : CG/JU
 Sample : N4755-10
 Misc :
 ALS Vial : 35 Sample Multiplier: 1

Instrument :
 BNA_P
 ClientSampleId :
 DBWK6

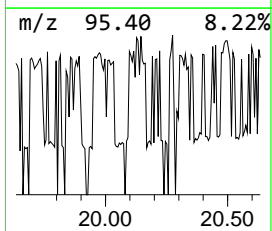
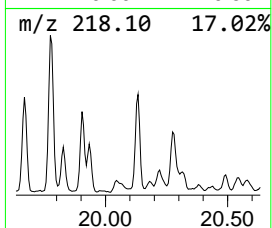
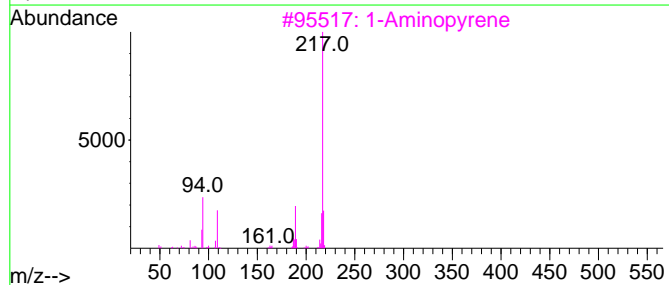
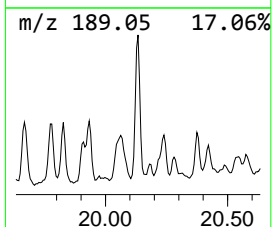
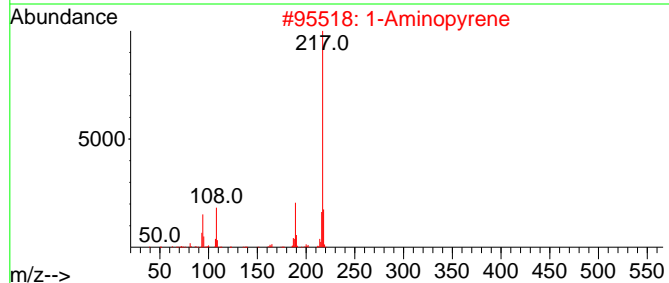
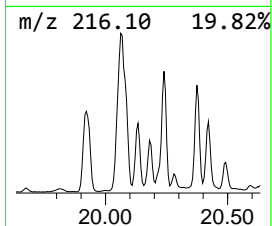
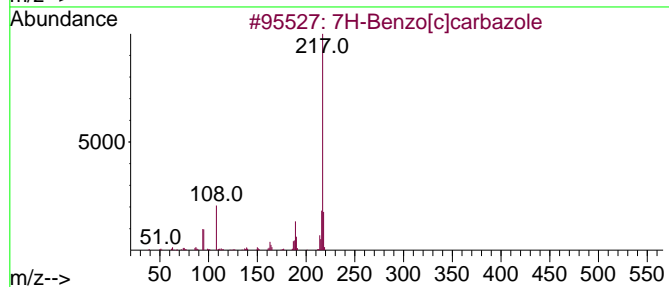
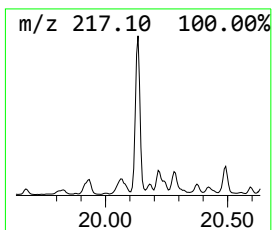
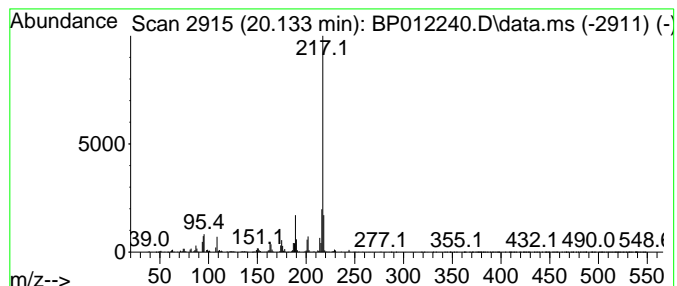
Quant Method : Z:\svoasrv\HPCHEM1\BNA_P\Methods\SFAM-EPA-BP101922.M
 Quant Title : SVOA CALIBRATION

TIC Library : C:\DATABASE\NIST20.L
 TIC Integration Parameters: LSCINT.P

 Peak Number 22 7H-Benzo[c]carbazole Concentration Rank 15

R.T.	EstConc	Area	Relative to ISTD	R.T.
20.133	4.57 ng/ul	1923880	Chrysene-d12	21.327

Hit#	of 5	Tentative ID	MW	MolForm	CAS#	Qual
1		7H-Benzo[c]carbazole	217	C16H11N	000205-25-4	93
2		1-Aminopyrene	217	C16H11N	001606-67-3	90
3		1-Aminopyrene	217	C16H11N	001606-67-3	90
4		1-Aminopyrene	217	C16H11N	001606-67-3	90
5		Benzo(b)carbazole	217	C16H11N	000243-28-7	90



Data Path : Z:\svoasrv\HPCHEM1\BNA_P\Data\BP102022\
 Data File : BP012240.D
 Acq On : 21 Oct 2022 12:05
 Operator : CG/JU
 Sample : N4755-10
 Misc :
 ALS Vial : 35 Sample Multiplier: 1

Instrument :
 BNA_P
 ClientSampleId :
 DBWK6

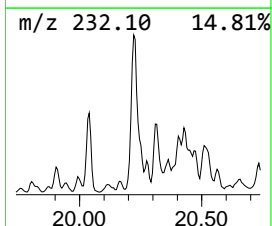
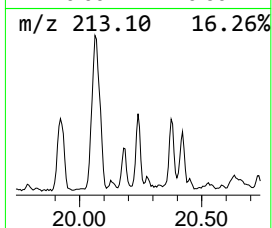
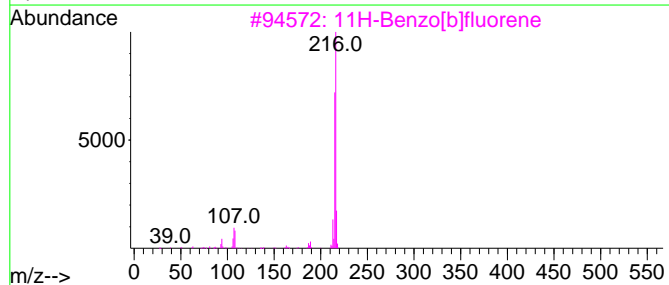
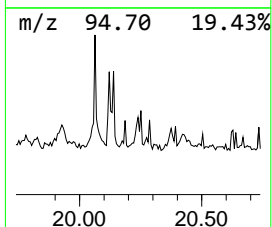
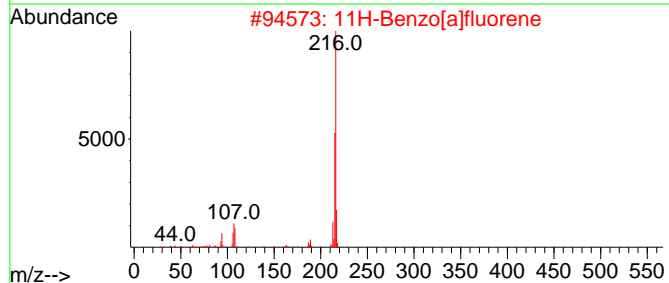
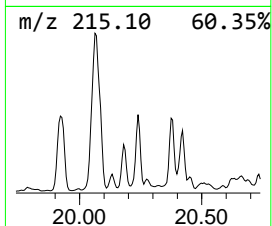
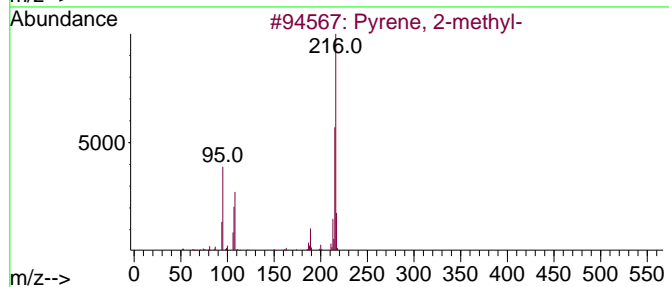
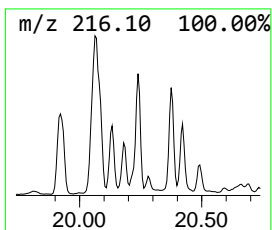
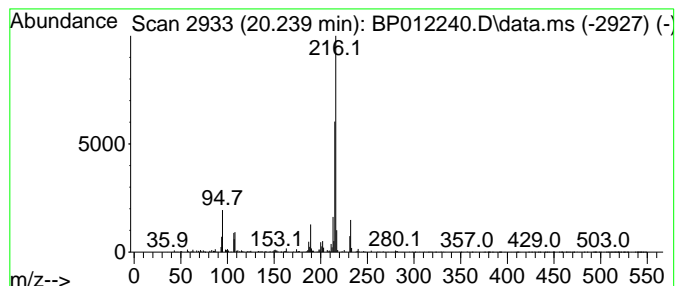
Quant Method : Z:\svoasrv\HPCHEM1\BNA_P\Methods\SFAM-EPA-BP101922.M
 Quant Title : SVOA CALIBRATION

TIC Library : C:\DATABASE\NIST20.L
 TIC Integration Parameters: LSCINT.P

 Peak Number 23 Pyrene, 2-methyl- Concentration Rank 26

R.T.	EstConc	Area	Relative to ISTD	R.T.
20.239	2.90 ng/ul	1220430	Chrysene-d12	21.327

Hit#	of 5	Tentative ID	MW	MolForm	CAS#	Qual
1		Pyrene, 2-methyl-	216	C17H12	003442-78-2	83
2		11H-Benzo[a]fluorene	216	C17H12	000238-84-6	81
3		11H-Benzo[b]fluorene	216	C17H12	000243-17-4	76
4		Pyrene, 2-methyl-	216	C17H12	003442-78-2	76
5		Fluoranthene, 2-methyl-	216	C17H12	033543-31-6	70



Data Path : Z:\svoasrv\HPCHEM1\BNA_P\Data\BP102022\
 Data File : BP012240.D
 Acq On : 21 Oct 2022 12:05
 Operator : CG/JU
 Sample : N4755-10
 Misc :
 ALS Vial : 35 Sample Multiplier: 1

Instrument :
 BNA_P
 ClientSampleId :
 DBWK6

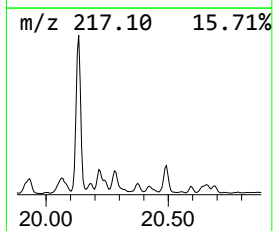
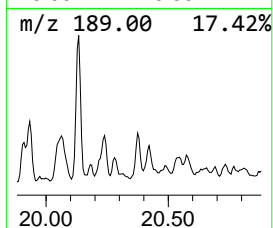
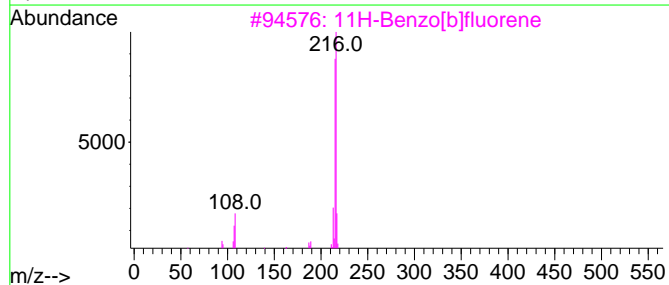
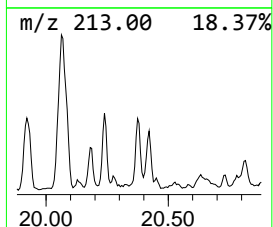
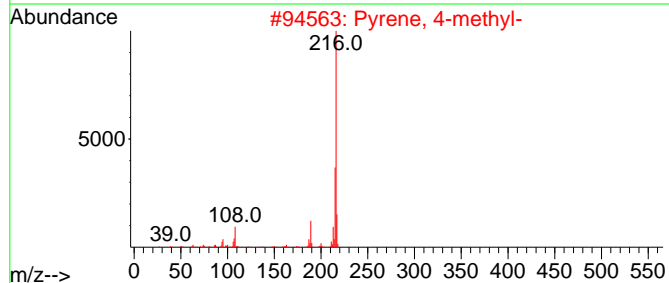
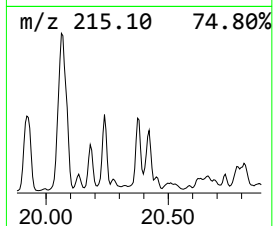
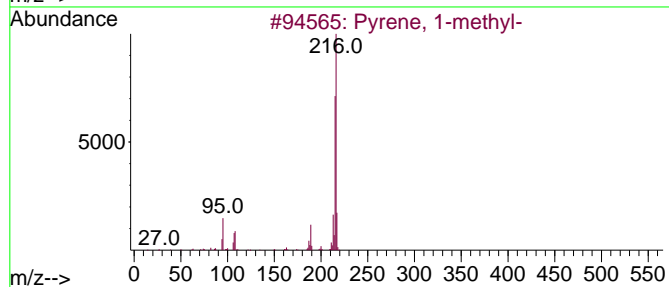
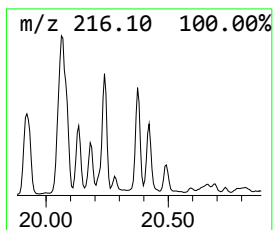
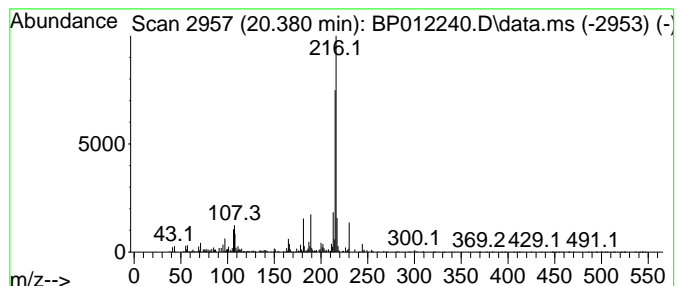
Quant Method : Z:\svoasrv\HPCHEM1\BNA_P\Methods\SFAM-EPA-BP101922.M
 Quant Title : SVOA CALIBRATION

TIC Library : C:\DATABASE\NIST20.L
 TIC Integration Parameters: LSCINT.P

 Peak Number 24 Pyrene, 1-methyl- Concentration Rank 30

R.T.	EstConc	Area	Relative to ISTD	R.T.
20.380	2.18 ng/ul	916683	Chrysene-d12	21.327

Hit#	of 5	Tentative ID	MW	MolForm	CAS#	Qual
1		Pyrene, 1-methyl-	216	C17H12	002381-21-7	91
2		Pyrene, 4-methyl-	216	C17H12	003353-12-6	91
3		11H-Benzo[b]fluorene	216	C17H12	000243-17-4	90
4		Fluoranthene, 2-methyl-	216	C17H12	033543-31-6	90
5		11H-Benzo[b]fluorene	216	C17H12	000243-17-4	87



Data Path : Z:\svoasrv\HPCHEM1\BNA_P\Data\BP102022\
 Data File : BP012240.D
 Acq On : 21 Oct 2022 12:05
 Operator : CG/JU
 Sample : N4755-10
 Misc :
 ALS Vial : 35 Sample Multiplier: 1

Instrument :
 BNA_P
 ClientSampleId :
 DBWK6

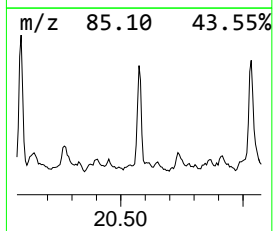
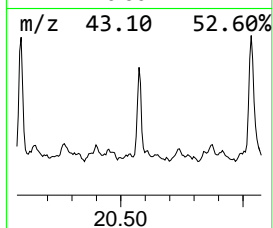
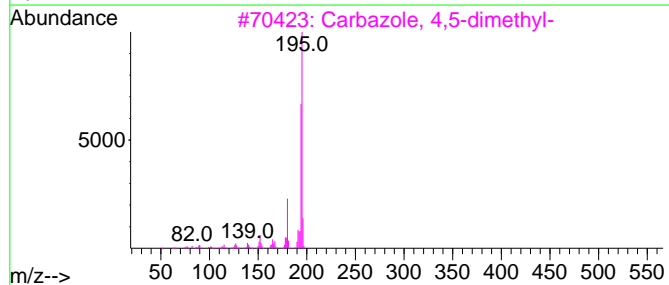
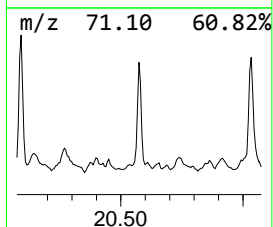
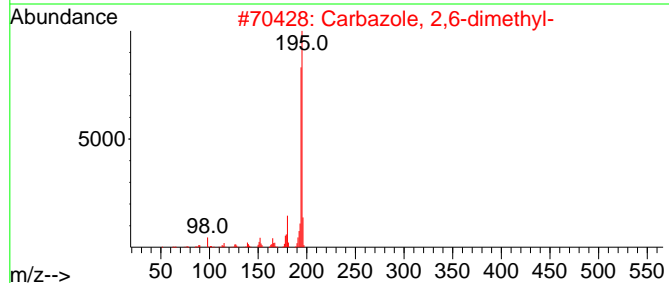
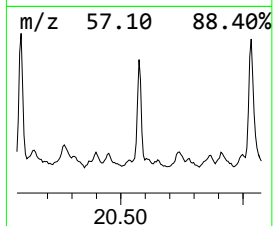
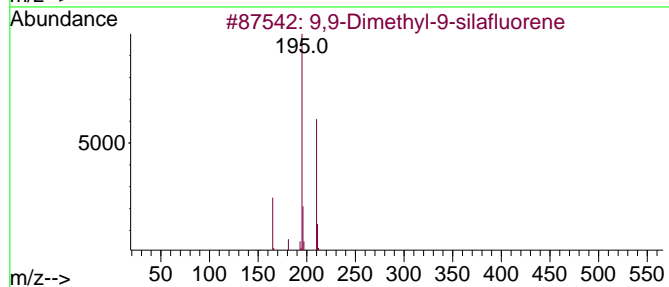
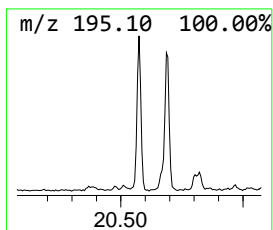
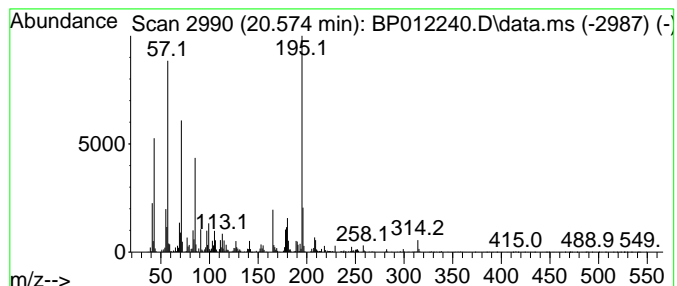
Quant Method : Z:\svoasrv\HPCHEM1\BNA_P\Methods\SFAM-EPA-BP101922.M
 Quant Title : SVOA CALIBRATION

TIC Library : C:\DATABASE\NIST20.L
 TIC Integration Parameters: LSCINT.P

 Peak Number 25 9,9-Dimethyl-9-silafluorene Concentration Rank 29

R.T.	EstConc	Area	Relative to ISTD	R.T.
20.574	2.37 ng/ul	997358	Chrysene-d12	21.327

Hit#	of 5	Tentative ID	MW	MolForm	CAS#	Qual
1		9,9-Dimethyl-9-silafluorene	210	C14H14Si	013688-68-1	59
2		Carbazole, 2,6-dimethyl-	195	C14H13N	078787-80-1	52
3		Carbazole, 4,5-dimethyl-	195	C14H13N	018992-66-0	47
4		Carbazole, 3,6-dimethyl-	195	C14H13N	005599-50-8	46
5		Carbazole, 1,6-dimethyl-	195	C14H13N	078787-77-6	46



Data Path : Z:\svoasrv\HPCHEM1\BNA_P\Data\BP102022\
 Data File : BP012240.D
 Acq On : 21 Oct 2022 12:05
 Operator : CG/JU
 Sample : N4755-10
 Misc :
 ALS Vial : 35 Sample Multiplier: 1

Instrument :
 BNA_P
 ClientSampleId :
 DBWK6

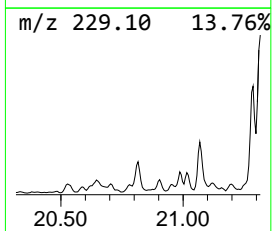
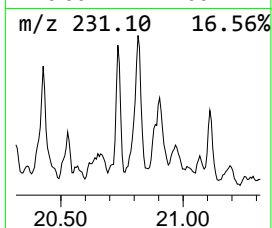
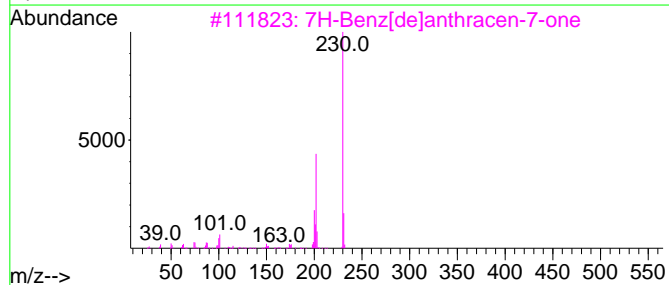
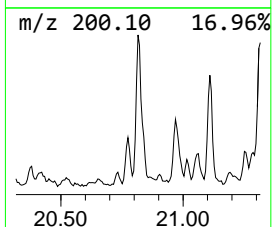
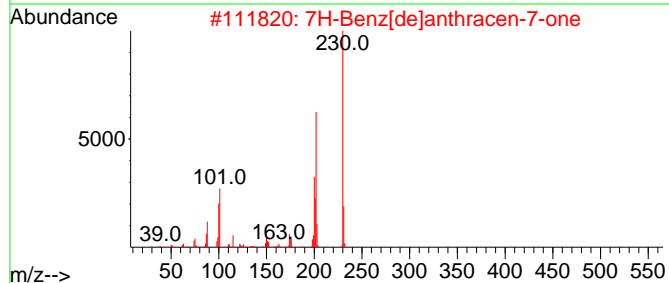
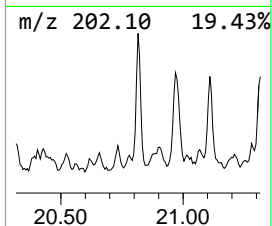
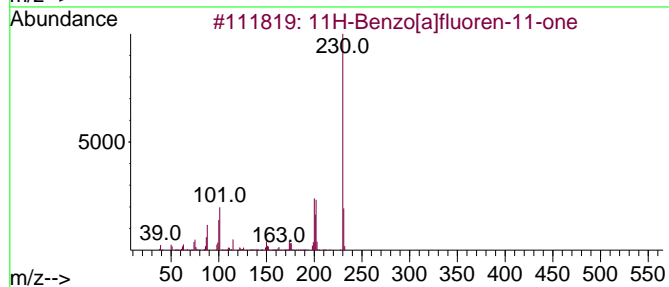
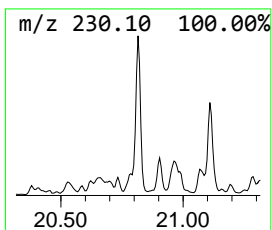
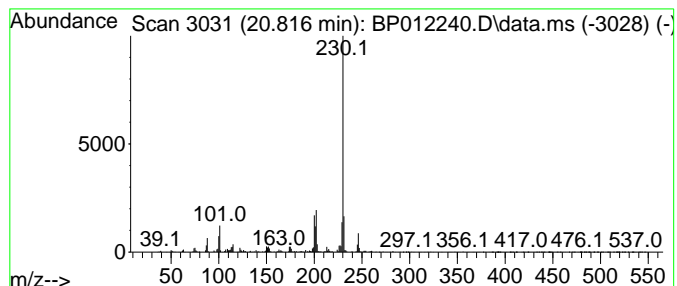
Quant Method : Z:\svoasrv\HPCHEM1\BNA_P\Methods\SFAM-EPA-BP101922.M
 Quant Title : SVOA CALIBRATION

TIC Library : C:\DATABASE\NIST0.L
 TIC Integration Parameters: LSCINT.P

 Peak Number 26 11H-Benzo[a]fluoren-11-one Concentration Rank 23

R.T.	EstConc	Area	Relative to ISTD	R.T.
20.816	3.33 ng/ul	1404660	Chrysene-d12	21.327

Hit#	of	5	Tentative ID	MW	MolForm	CAS#	Qual
1			11H-Benzo[a]fluoren-11-one	230	C17H10O	000479-79-8	91
2			7H-Benz[de]anthracen-7-one	230	C17H10O	000082-05-3	87
3			7H-Benz[de]anthracen-7-one	230	C17H10O	000082-05-3	70
4			7H-Benz[de]anthracen-7-one	230	C17H10O	000082-05-3	62
5			(E)-.alpha.,.alpha.'-Dicyanostil...	230	C16H10N2	002450-55-7	59



Data Path : Z:\svoasrv\HPCHEM1\BNA_P\Data\BP102022\
 Data File : BP012240.D
 Acq On : 21 Oct 2022 12:05
 Operator : CG/JU
 Sample : N4755-10
 Misc :
 ALS Vial : 35 Sample Multiplier: 1

Instrument :
 BNA_P
 ClientSampleId :
 DBWK6

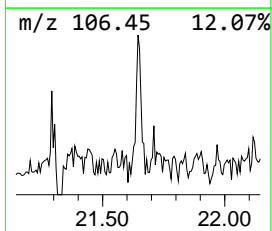
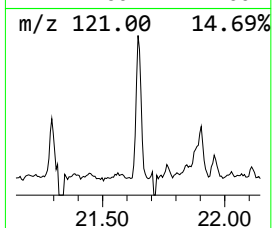
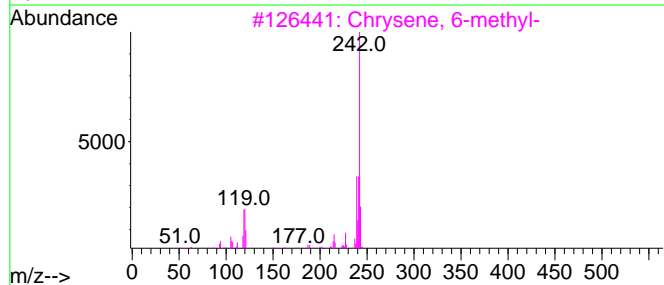
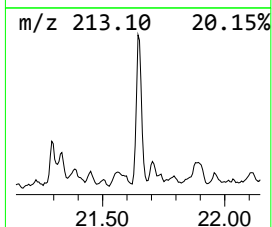
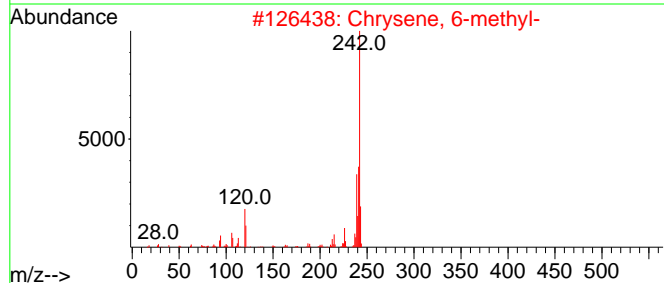
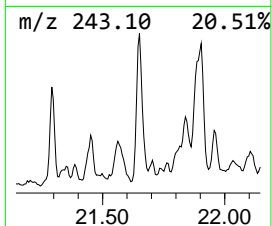
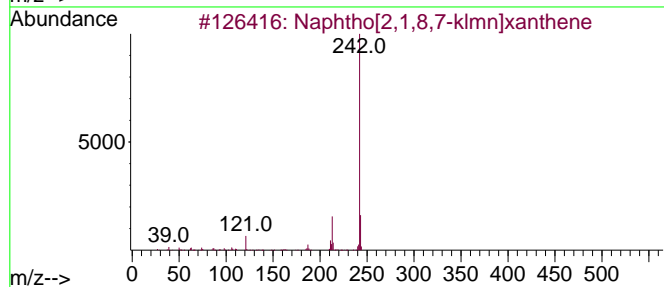
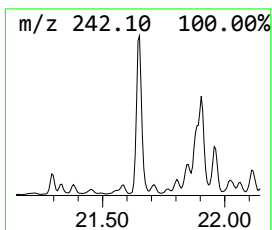
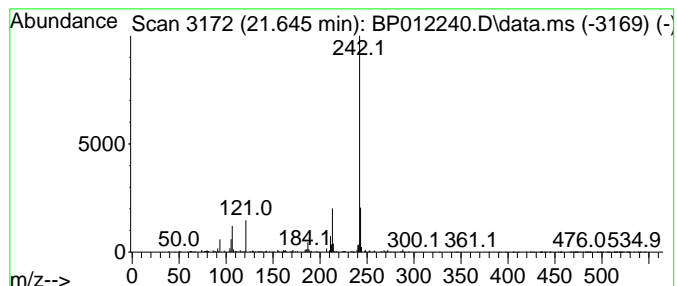
Quant Method : Z:\svoasrv\HPCHEM1\BNA_P\Methods\SFAM-EPA-BP101922.M
 Quant Title : SVOA CALIBRATION

TIC Library : C:\DATABASE\NIST20.L
 TIC Integration Parameters: LSCINT.P

 Peak Number 27 Naphtho[2,1,8,7-klmn]xanthene Concentration Rank 25

R.T.	EstConc	Area	Relative to ISTD	R.T.
21.645	3.10 ng/ul	1305190	Chrysene-d12	21.327

Hit#	of	5	Tentative ID	MW	MolForm	CAS#	Qual
1			Naphtho[2,1,8,7-klmn]xanthene	242	C18H10O	000191-37-7	94
2			Chrysene, 6-methyl-	242	C19H14	001705-85-7	64
3			Chrysene, 6-methyl-	242	C19H14	001705-85-7	64
4			4b,10b-Dihydro-4b,10b-methanochr...	242	C19H14	071949-03-6	64
5			4,4'-Dimethoxy-2,2'-dimethylbiph...	242	C16H18O2	046873-19-2	53



Data Path : Z:\svoasrv\HPCHEM1\BNA_P\Data\BP102022\
 Data File : BP012240.D
 Acq On : 21 Oct 2022 12:05
 Operator : CG/JU
 Sample : N4755-10
 Misc :
 ALS Vial : 35 Sample Multiplier: 1

Instrument :
 BNA_P
 ClientSampleId :
 DBWK6

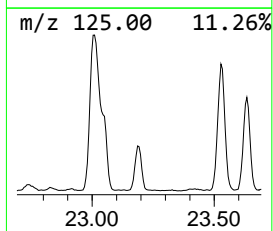
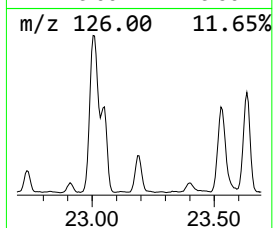
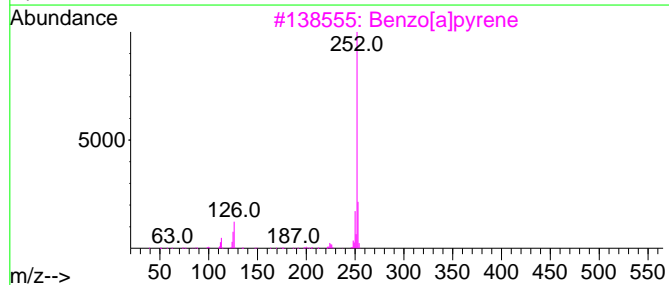
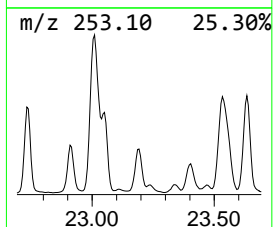
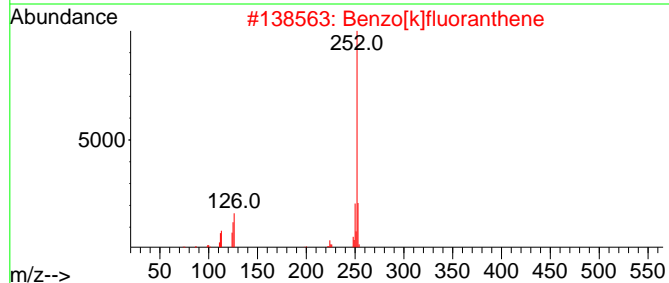
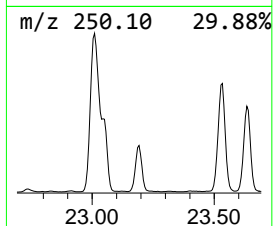
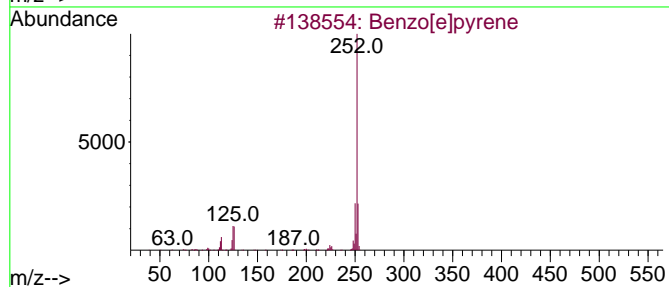
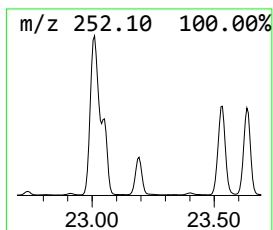
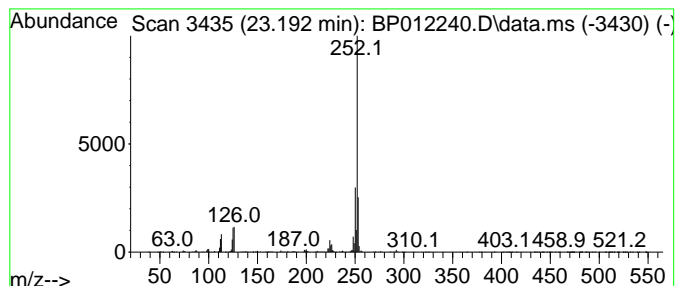
Quant Method : Z:\svoasrv\HPCHEM1\BNA_P\Methods\SFAM-EPA-BP101922.M
 Quant Title : SVOA CALIBRATION

TIC Library : C:\DATABASE\NIST20.L
 TIC Integration Parameters: LSCINT.P

 Peak Number 28 Benzo[e]pyrene Concentration Rank 4

R.T.	EstConc	Area	Relative to ISTD	R.T.
23.192	14.74 ng/ul	2282780	Perylene-d12	23.739

Hit#	of 5	Tentative ID	MW	MolForm	CAS#	Qual
1		Benzo[e]pyrene	252	C20H12	000192-97-2	98
2		Benzo[k]fluoranthene	252	C20H12	000207-08-9	97
3		Benzo[a]pyrene	252	C20H12	000050-32-8	95
4		Benzo[b]fluoranthene	252	C20H12	000205-99-2	93
5		Perylene	252	C20H12	000198-55-0	93



Data Path : Z:\svoasrv\HPCHEM1\BNA_P\Data\BP102022\
 Data File : BP012240.D
 Acq On : 21 Oct 2022 12:05
 Operator : CG/JU
 Sample : N4755-10
 Misc :
 ALS Vial : 35 Sample Multiplier: 1

Instrument :
 BNA_P
 ClientSampleId :
 DBWK6

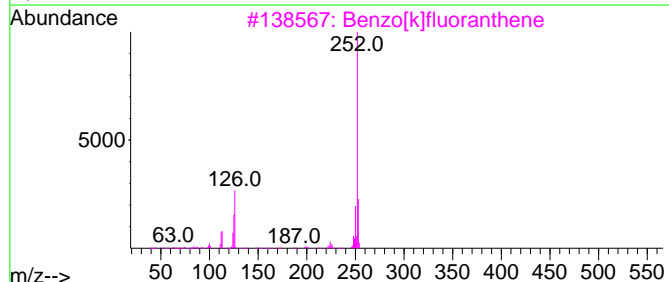
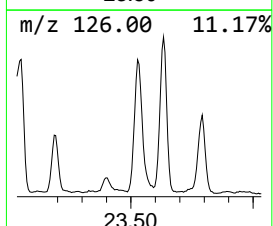
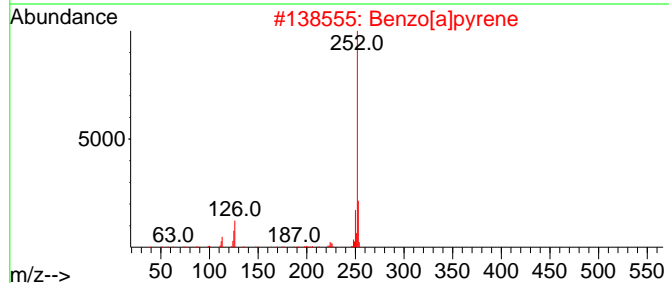
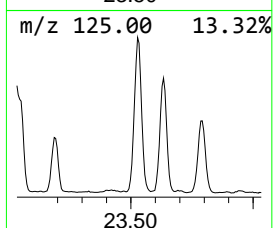
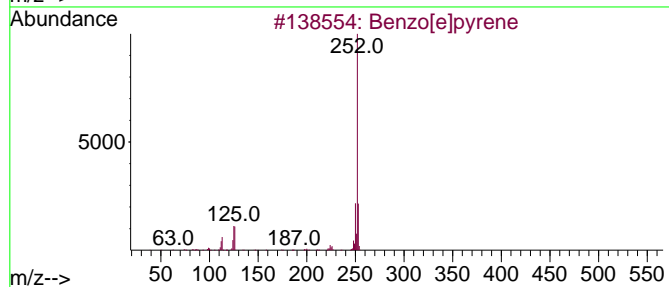
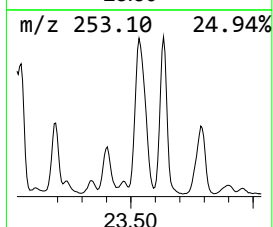
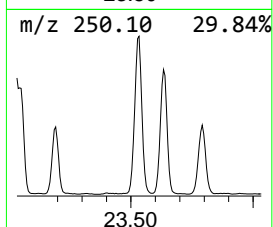
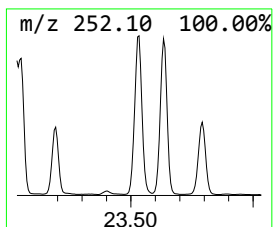
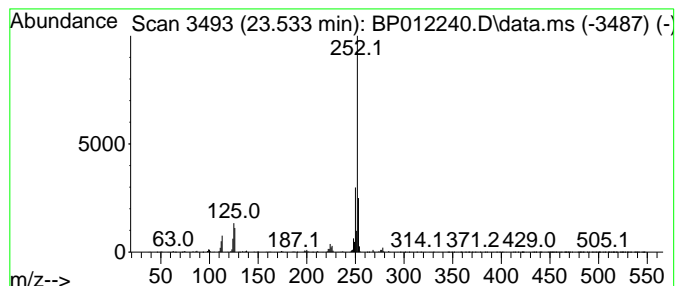
Quant Method : Z:\svoasrv\HPCHEM1\BNA_P\Methods\SFAM-EPA-BP101922.M
 Quant Title : SVOA CALIBRATION

TIC Library : C:\DATABASE\NIST20.L
 TIC Integration Parameters: LSCINT.P

 Peak Number 29 Perylene Concentration Rank 2

R.T.	EstConc	Area	Relative to ISTD	R.T.
23.533	40.45 ng/ul	6265810	Perylene-d12	23.739

Hit#	of 5	Tentative ID	MW	MolForm	CAS#	Qual
1		Benzo[e]pyrene	252	C20H12	000192-97-2	99
2		Benzo[a]pyrene	252	C20H12	000050-32-8	98
3		Benzo[k]fluoranthene	252	C20H12	000207-08-9	93
4		Perylene	252	C20H12	000198-55-0	93
5		Perylene	252	C20H12	000198-55-0	93



Data Path : Z:\svoasrv\HPCHEM1\BNA_P\Data\BP102022\
 Data File : BP012240.D
 Acq On : 21 Oct 2022 12:05
 Operator : CG/JU
 Sample : N4755-10
 Misc :
 ALS Vial : 35 Sample Multiplier: 1

Instrument :
 BNA_P
 ClientSampleId :
 DBWK6

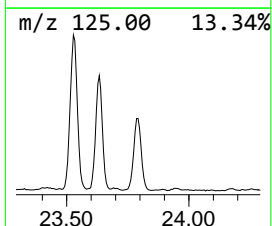
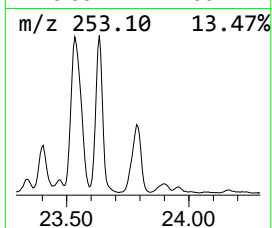
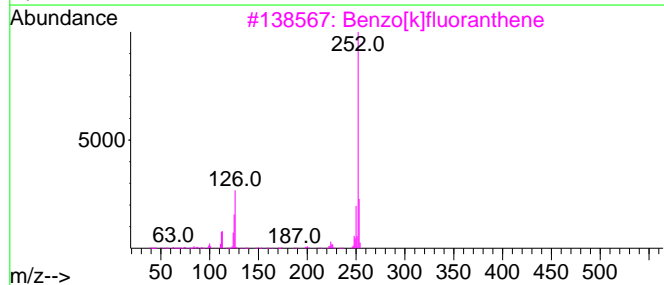
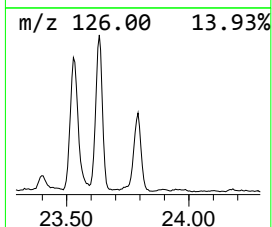
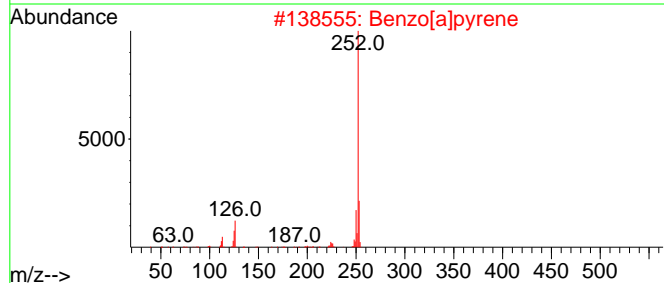
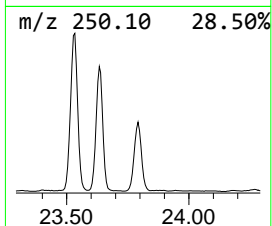
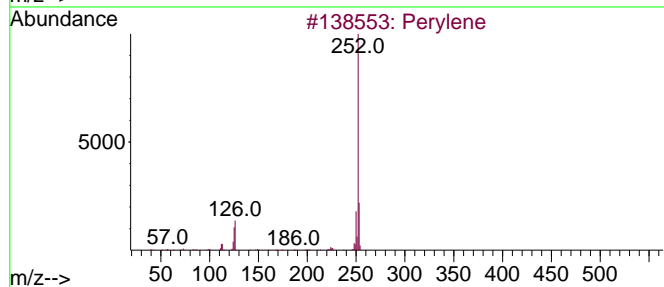
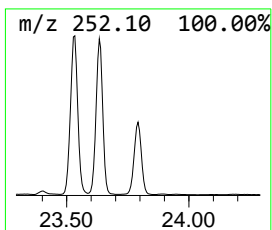
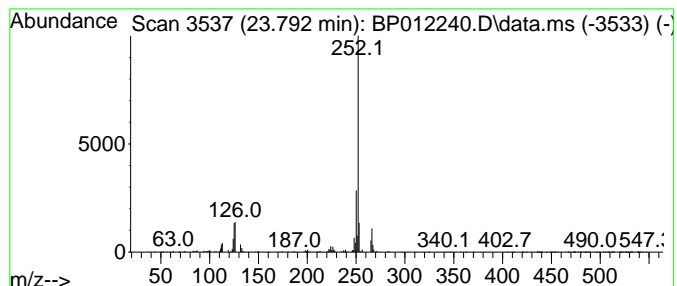
Quant Method : Z:\svoasrv\HPCHEM1\BNA_P\Methods\SFAM-EPA-BP101922.M
 Quant Title : SVOA CALIBRATION

TIC Library : C:\DATABASE\NIST20.L
 TIC Integration Parameters: LSCINT.P

 Peak Number 30 unknown-03 Concentration Rank 3

R.T.	EstConc	Area	Relative to ISTD	R.T.
23.792	24.49 ng/ul	3792910	Perylene-d12	23.739

Hit#	of 5	Tentative ID	MW	MolForm	CAS#	Qual
1		Perylene	252	C20H12	000198-55-0	86
2		Benzo[a]pyrene	252	C20H12	000050-32-8	86
3		Benzo[k]fluoranthene	252	C20H12	000207-08-9	83
4		Benzo[e]pyrene	252	C20H12	000192-97-2	83
5		Benzo[e]pyrene	252	C20H12	000192-97-2	70



Data Path : Z:\svoasrv\HPCHEM1\BNA_P\Data\BP102022\
 Data File : BP012240.D
 Acq On : 21 Oct 2022 12:05
 Operator : CG/JU
 Sample : N4755-10
 Misc :
 ALS Vial : 35 Sample Multiplier: 1

Instrument :
 BNA_P
 ClientSampleId :
 DBWK6

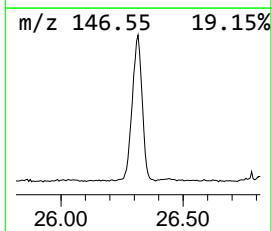
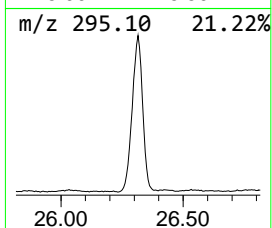
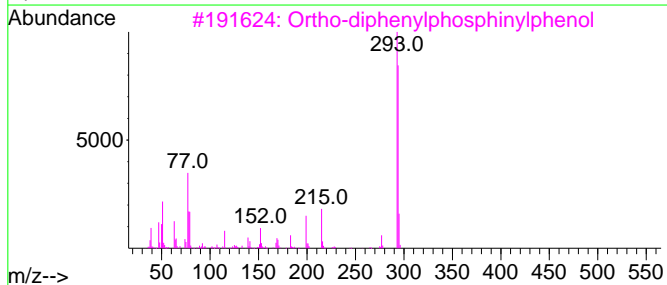
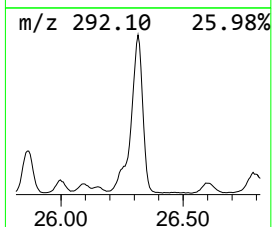
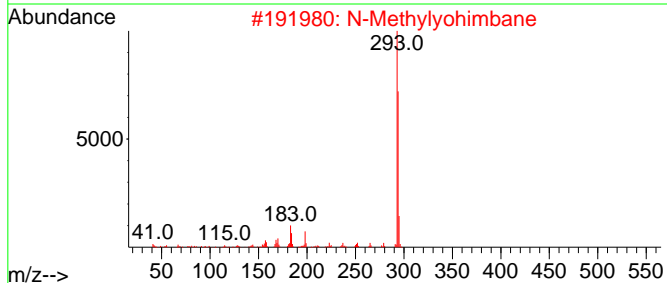
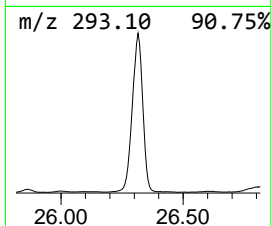
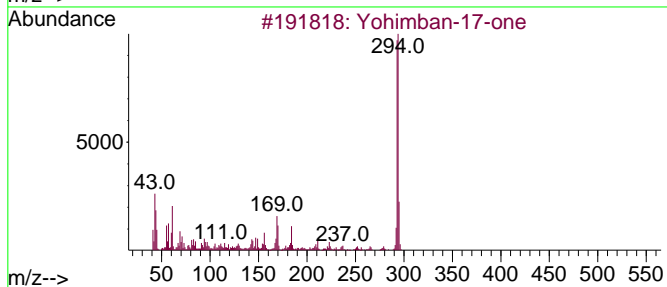
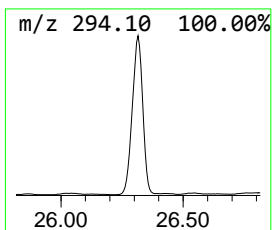
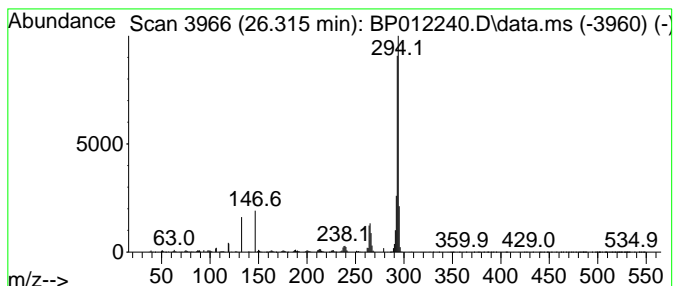
Quant Method : Z:\svoasrv\HPCHEM1\BNA_P\Methods\SFAM-EPA-BP101922.M
 Quant Title : SVOA CALIBRATION

TIC Library : C:\DATABASE\NIST20.L
 TIC Integration Parameters: LSCINT.P

 Peak Number 31 Yohimban-17-one Concentration Rank 1

R.T.	EstConc	Area	Relative to ISTD	R.T.
26.315	63.18 ng/ul	9785260	Perylene-d12	23.739

Hit#	of	5	Tentative ID	MW	MolForm	CAS#	Qual
1			Yohimban-17-one	294	C19H22N2O	000523-14-8	64
2			N-Methylyohimbane	294	C20H26N2	1000128-76-0	58
3			Ortho-diphenylphosphinylphenol	294	C18H15O2P	016522-52-4	53
4			Methyl 2-methyl-5-oxo-6-phenyl-1...	294	C17H14N2O3	1000409-65-7	42
5			Iron, bis[(1,2,3,3a,7a-.eta.)-4,...	294	C18H22Fe	001272-68-0	38



Data Path : Z:\svoasrv\HPCHEM1\BNA_P\Data\BP102022\
 Data File : BP012240.D
 Acq On : 21 Oct 2022 12:05
 Operator : CG/JU
 Sample : N4755-10
 Misc :
 ALS Vial : 35 Sample Multiplier: 1

Instrument :
 BNA_P
 ClientSampleId :
 DBWK6

Quant Method : Z:\svoasrv\HPCHEM1\BNA_P\Methods\SFAM-EPA-BP101922.M
 Quant Title : SVOA CALIBRATION

TIC Library : C:\DATABASE\NIST0.L
 TIC Integration Parameters: LSCINT.P

TIC Top Hit name	RT	EstConc	Units	Response	--Internal Standard--			
					#	RT	Resp	Conc
3-Penten-2-ol	3.040	5.6	ng/ul	716156	1	7.822	2551810	20.0
unknown-01	3.781	5.0	ng/ul	636061	1	7.822	2551810	20.0
unknown-02	4.558	3.2	ng/ul	406661	1	7.822	2551810	20.0
Indene	8.363	4.4	ng/ul	566158	1	7.822	2551810	20.0
Dibenzofuran	14.875	5.0	ng/ul	1314040	3	14.475	5211030	20.0
(DEL) Alkane: S...	15.316	2.1	ng/ul	547626	3	14.475	5211030	20.0
(DEL) Alkane: S...	16.186	3.9	ng/ul	1138290	4	17.233	5836140	20.0
1(2H)-Acenaphth...	16.210	5.3	ng/ul	1550760	4	17.233	5836140	20.0
(DEL) Alkane: S...	16.986	4.4	ng/ul	1285430	4	17.233	5836140	20.0
(DEL) Alkane: S...	17.039	6.2	ng/ul	1800630	4	17.233	5836140	20.0
5H-Indeno[1,2-b...	17.645	4.0	ng/ul	1163800	4	17.233	5836140	20.0
(DEL) Alkane: S...	17.727	5.4	ng/ul	1583660	4	17.233	5836140	20.0
Anthracene, 2-m...	18.227	2.6	ng/ul	762899	4	17.233	5836140	20.0
4H-Cyclopenta[d...	18.298	4.0	ng/ul	1169390	4	17.233	5836140	20.0
(DEL) Alkane: S...	18.398	6.2	ng/ul	1804120	4	17.233	5836140	20.0
9,10-Anthracene...	18.633	3.5	ng/ul	1019350	4	17.233	5836140	20.0
(DEL) Alkane: S...	19.010	4.9	ng/ul	1427340	4	17.233	5836140	20.0
Cyclopenta(def)...	19.133	4.5	ng/ul	1306320	4	17.233	5836140	20.0
Indeno(1,2,3-ij...	19.351	2.9	ng/ul	1206700	5	21.327	8425580	20.0
Acenaphtho(1,2-...	19.469	5.0	ng/ul	2091680	5	21.327	8425580	20.0
9-(Cyanomethyle...	19.845	14.1	ng/ul	5938720	5	21.327	8425580	20.0
7H-Benzo[c]carb...	20.133	4.6	ng/ul	1923880	5	21.327	8425580	20.0
Pyrene, 2-methyl-	20.239	2.9	ng/ul	1220430	5	21.327	8425580	20.0
Pyrene, 1-methyl-	20.380	2.2	ng/ul	916683	5	21.327	8425580	20.0
9,9-Dimethyl-9-...	20.574	2.4	ng/ul	997358	5	21.327	8425580	20.0
11H-Benzo[a]flu...	20.816	3.3	ng/ul	1404660	5	21.327	8425580	20.0
Naphtho[2,1,8,7...	21.645	3.1	ng/ul	1305190	5	21.327	8425580	20.0
Benzo[e]pyrene	23.192	14.7	ng/ul	2282780	6	23.739	3097710	20.0
Perylene	23.533	40.5	ng/ul	6265810	6	23.739	3097710	20.0
unknown-03	23.792	24.5	ng/ul	3792910	6	23.739	3097710	20.0
Yohimban-17-one	26.315	63.2	ng/ul	9785260	6	23.739	3097710	20.0