

Data Path : Z:\svoasrv\HPCHEM1\BNA\_P\Data\BP111324\  
 Data File : BP023091.D  
 Acq On : 13 Nov 2024 21:35  
 Operator : RC/JU  
 Sample : P4724-23  
 Misc :  
 ALS Vial : 11 Sample Multiplier: 1

Instrument :  
 BNA\_P  
 ClientSampleId :  
 BH9E2

Integration Parameters: LSCINT.P

Integrator: RTE  
 Smoothing : OFF Filtering: 5  
 Sampling : 1 Min Area: 0.1 % of largest Peak  
 Start Thrs: 0.2 Max Peaks: 100  
 Stop Thrs : 0 Peak Location: TOP

If leading or trailing edge < 100 prefer < Baseline drop else tangent >  
 Peak separation: 5

Method : Z:\svoasrv\HPCHEM1\BNA\_P\Methods\SFAM-EPA-BP110924.MA.M  
 Title : SVOA CALIBRATION

Signal : TIC: BP023091.D\data.ms

peak #	R.T. min	first scan	max scan	last scan	PK TY	peak height	corr. area	corr. % max.	% of total
1	3.140	22	26	32	rVB	14131	18940	0.89%	0.081%
2	3.552	92	96	112	rBV	141023	242312	11.35%	1.042%
3	3.858	145	148	152	rVB2	3900	4967	0.23%	0.021%
4	4.087	183	187	190	rBV6	3034	4199	0.20%	0.018%
5	5.634	445	450	455	rBV9	1501	2780	0.13%	0.012%
6	6.269	555	558	563	rBV7	1558	2626	0.12%	0.011%
7	6.787	640	646	664	rBV	190217	381080	17.84%	1.638%
8	6.928	664	670	685	rVV	163738	274813	12.87%	1.181%
9	7.128	697	704	714	rBV	225702	374248	17.52%	1.609%
10	7.581	774	781	790	rBV	317212	507222	23.75%	2.181%
11	8.293	895	902	919	rBV	256371	481466	22.54%	2.070%
12	8.411	920	922	928	rVB7	2128	2547	0.12%	0.011%
13	8.722	967	975	992	rBV	213622	390971	18.31%	1.681%
14	9.116	1037	1042	1047	rVB8	3515	6554	0.31%	0.028%
15	9.293	1068	1072	1077	rBV4	5790	10930	0.51%	0.047%
16	9.440	1089	1097	1112	rBV	187023	339819	15.91%	1.461%
17	9.975	1181	1188	1205	rBV	246085	551794	25.84%	2.372%
18	10.158	1215	1219	1226	rBV9	3176	8612	0.40%	0.037%
19	10.222	1229	1230	1235	rVB5	1901	2372	0.11%	0.010%
20	10.322	1240	1247	1256	rBV	413310	698399	32.70%	3.003%
21	10.481	1267	1274	1292	rBV	219067	476699	22.32%	2.049%
22	10.905	1343	1346	1352	rBV7	2303	4447	0.21%	0.019%
23	11.934	1515	1521	1525	rBV3	4454	7966	0.37%	0.034%
24	12.004	1530	1533	1538	rVB6	2143	3208	0.15%	0.014%
25	13.016	1701	1705	1710	rBV7	3446	4778	0.22%	0.021%
26	13.599	1795	1804	1816	rBV	508939	916092	42.89%	3.939%
27	13.881	1840	1852	1869	rBV	683969	1024109	47.95%	4.403%
28	14.098	1884	1889	1893	rBV7	2873	4217	0.20%	0.018%
29	14.198	1897	1906	1920	rBV	748966	1106535	51.81%	4.757%
30	14.475	1947	1953	1973	rBV	121802	370323	17.34%	1.592%
31	14.734	1994	1997	2000	rVB5	2051	2293	0.11%	0.010%
32	14.993	2036	2041	2042	rBV5	1723	2156	0.10%	0.009%
33	15.063	2051	2053	2056	rVB4	2362	2275	0.11%	0.010%
34	15.216	2073	2079	2095	rVB	1072493	1397785	65.45%	6.009%
35	15.351	2095	2102	2114	rBV	175767	311929	14.61%	1.341%
36	15.457	2118	2120	2127	rVB8	5117	8318	0.39%	0.036%

Data Path : Z:\svoasrv\HPCHEM1\BNA\_P\Data\BP111324\  
 Data File : BP023091.D  
 Acq On : 13 Nov 2024 21:35  
 Operator : RC/JU  
 Sample : P4724-23  
 Misc :  
 ALS Vial : 11 Sample Multiplier: 1

Instrument :  
 BNA\_P  
 ClientSampleId :  
 BH9E2

Integration Parameters: LSCINT.P

Integrator: RTE  
 Smoothing : OFF Filtering: 5  
 Sampling : 1 Min Area: 0.1 % of largest Peak  
 Start Thrs: 0.2 Max Peaks: 100  
 Stop Thrs : 0 Peak Location: TOP

If leading or trailing edge < 100 prefer < Baseline drop else tangent >  
 Peak separation: 5

Method : Z:\svoasrv\HPCHEM1\BNA\_P\Methods\SFAM-EPA-BP110924.MA.M  
 Title : SVOA CALIBRATION

37	15.587	2135	2142	2153	rBV	183341	258237	12.09%	1.110%
38	15.716	2162	2164	2172	rBV8	2006	3601	0.17%	0.015%
39	15.963	2200	2206	2211	rVB10	3484	7231	0.34%	0.031%
40	16.128	2227	2234	2237	rBV8	3870	9617	0.45%	0.041%
41	16.163	2237	2240	2245	rVB5	6826	9840	0.46%	0.042%
42	16.404	2277	2281	2287	rBV6	7387	10871	0.51%	0.047%
43	16.669	2324	2326	2330	rVB5	3676	4568	0.21%	0.020%
44	16.763	2339	2342	2343	rBV3	2638	2605	0.12%	0.011%
45	16.910	2358	2367	2373	rBV7	14934	28852	1.35%	0.124%
46	17.004	2373	2383	2388	rBV	1219094	1516768	71.02%	6.521%
47	17.098	2393	2399	2410	rVV	1160202	1578984	73.93%	6.788%
48	17.198	2414	2416	2419	rVV2	6446	8072	0.38%	0.035%
49	17.228	2419	2421	2428	rVB8	8881	15149	0.71%	0.065%
50	17.310	2431	2435	2438	rBV6	4762	6299	0.29%	0.027%
51	17.416	2448	2453	2454	rBV5	9486	12884	0.60%	0.055%
52	17.669	2493	2496	2498	rBV4	2652	3436	0.16%	0.015%
53	17.810	2515	2520	2526	rBV7	16640	34318	1.61%	0.148%
54	17.881	2527	2532	2537	rBV	74252	105647	4.95%	0.454%
55	17.939	2537	2542	2557	rVV	473136	735771	34.45%	3.163%
56	18.251	2589	2595	2601	rBV8	15460	33880	1.59%	0.146%
57	18.386	2614	2618	2623	rBV3	40958	54087	2.53%	0.233%
58	18.645	2658	2662	2664	rBV5	9083	11331	0.53%	0.049%
59	19.034	2724	2728	2734	rBV3	18936	29789	1.39%	0.128%
60	19.122	2739	2743	2744	rVV2	32162	40123	1.88%	0.172%
61	19.145	2744	2747	2758	rVB	75568	147214	6.89%	0.633%
62	19.281	2765	2770	2778	rBV	168821	239140	11.20%	1.028%
63	19.486	2799	2805	2816	rBV	1492874	2096473	98.16%	9.013%
64	21.110	3077	3081	3091	rBV5	82801	245415	11.49%	1.055%
65	21.428	3129	3135	3142	rBV2	1146312	1940192	90.84%	8.341%
66	24.421	3634	3644	3653	rBV	851918	2135748	100.00%	9.182%
67	24.633	3670	3680	3691	rBV	675106	1983841	92.89%	8.529%

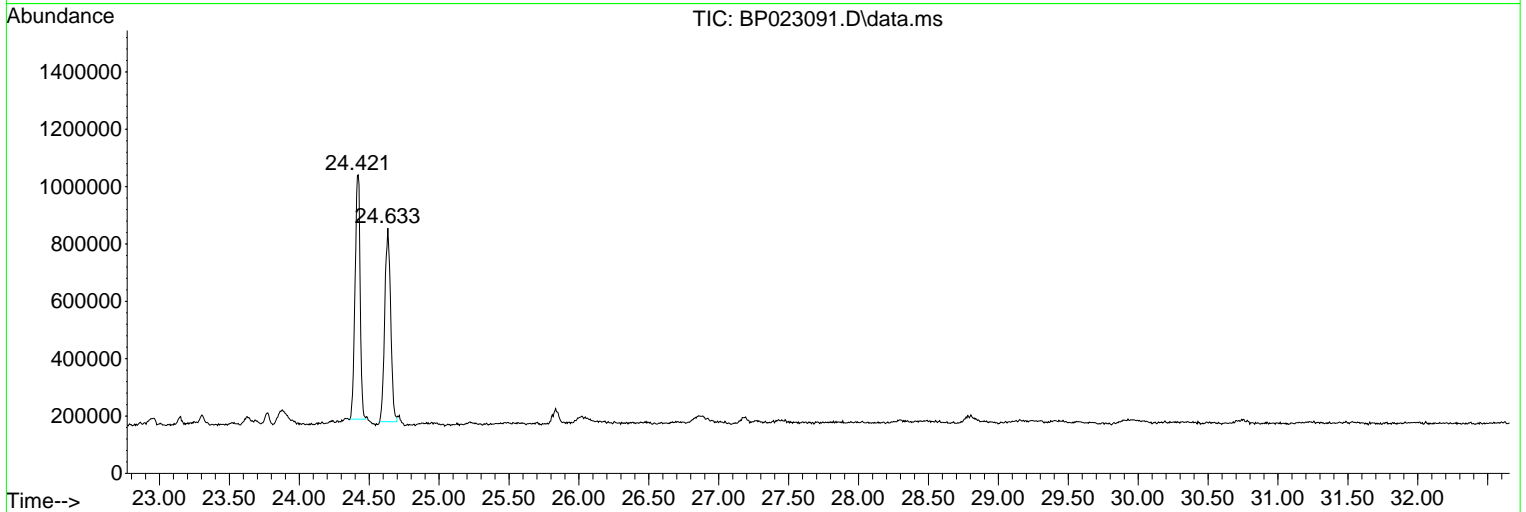
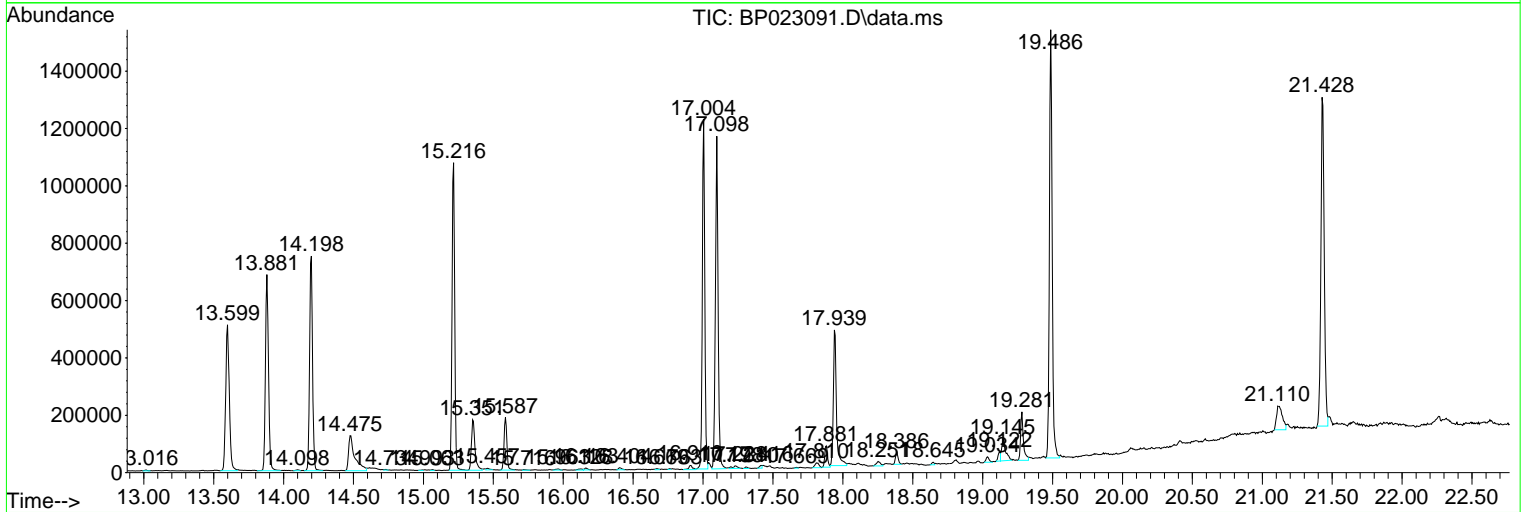
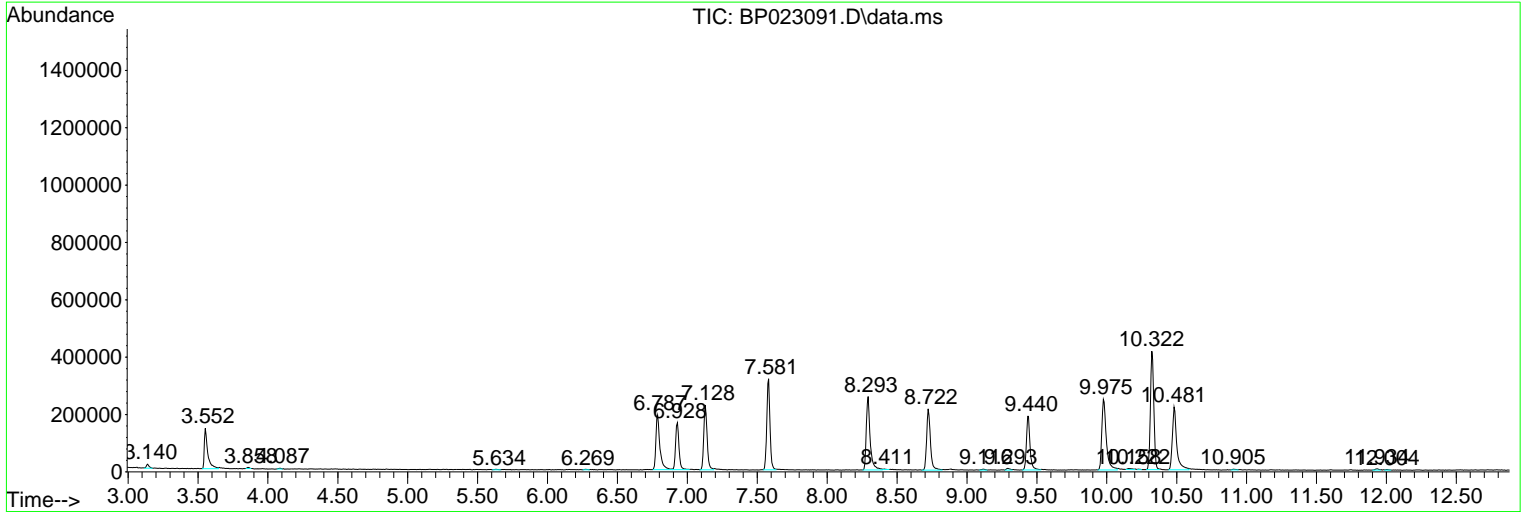
Sum of corrected areas: 23259764

Data Path : Z:\svoasrv\HPCHEM1\BNA\_P\Data\BP111324\  
 Data File : BP023091.D  
 Acq On : 13 Nov 2024 21:35  
 Operator : RC/JU  
 Sample : P4724-23  
 Misc :  
 ALS Vial : 11 Sample Multiplier: 1

**Instrument :**  
 BNA\_P  
**ClientSampleId :**  
 BH9E2

Quant Method : Z:\svoasrv\HPCHEM1\BNA\_P\Methods\SFAM-EPA-BP110924.MA.M  
 Quant Title : SVOA CALIBRATION

TIC Library : C:\DATABASE\NIST20.L  
 TIC Integration Parameters: LSCINT.P



Data Path : Z:\svoasrv\HPCHEM1\BNA\_P\Data\BP111324\  
 Data File : BP023091.D  
 Acq On : 13 Nov 2024 21:35  
 Operator : RC/JU  
 Sample : P4724-23  
 Misc :  
 ALS Vial : 11 Sample Multiplier: 1

Instrument :  
 BNA\_P  
 ClientSampleId :  
 BH9E2

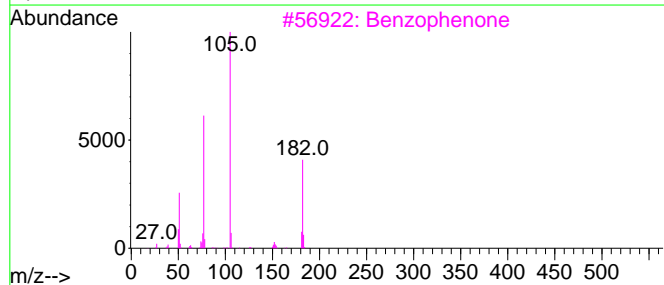
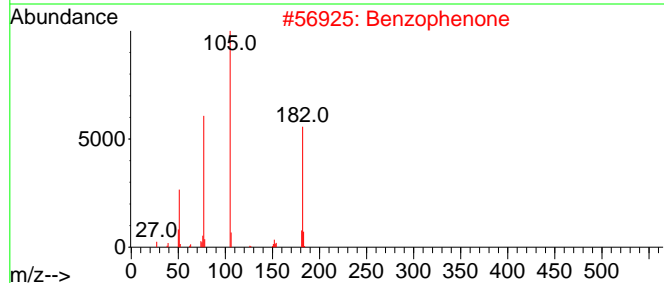
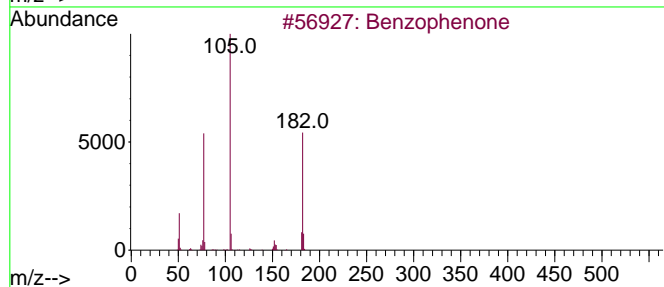
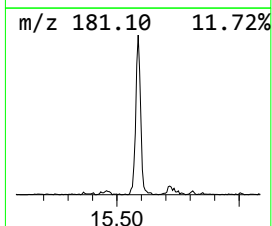
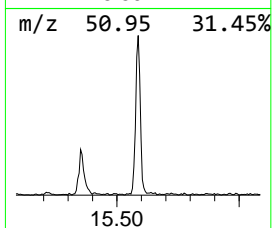
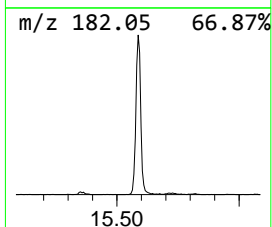
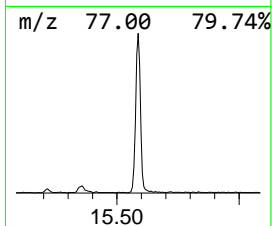
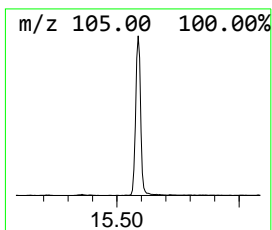
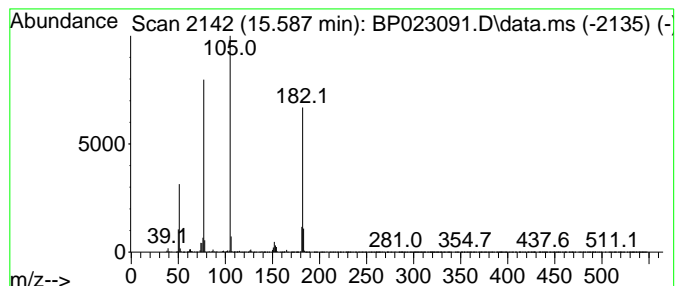
Quant Method : Z:\svoasrv\HPCHEM1\BNA\_P\Methods\SFAM-EPA-BP110924.MA.M  
 Quant Title : SVOA CALIBRATION

TIC Library : C:\DATABASE\NIST20.L  
 TIC Integration Parameters: LSCINT.P

\*\*\*\*\*  
 Peak Number 1 Benzophenone Concentration Rank 2

R.T.	EstConc	Area	Relative to ISTD	R.T.
15.587	4.67 ng/ul	258237	Acenaphthene-d10	14.198

Hit#	of 5	Tentative ID	MW	MolForm	CAS#	Qual
1		Benzophenone	182	C13H10O	000119-61-9	97
2		Benzophenone	182	C13H10O	000119-61-9	96
3		Benzophenone	182	C13H10O	000119-61-9	95
4		Benzophenone	182	C13H10O	000119-61-9	93
5		Benzophenone	182	C13H10O	000119-61-9	91



Data Path : Z:\svoasrv\HPCHEM1\BNA\_P\Data\BP111324\  
 Data File : BP023091.D  
 Acq On : 13 Nov 2024 21:35  
 Operator : RC/JU  
 Sample : P4724-23  
 Misc :  
 ALS Vial : 11 Sample Multiplier: 1

Instrument :  
 BNA\_P  
 ClientSampleId :  
 BH9E2

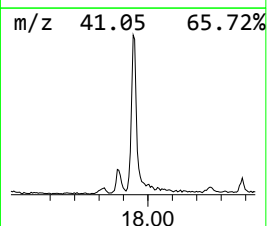
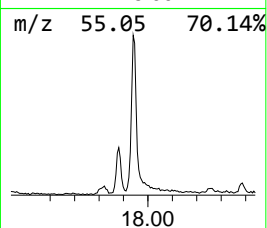
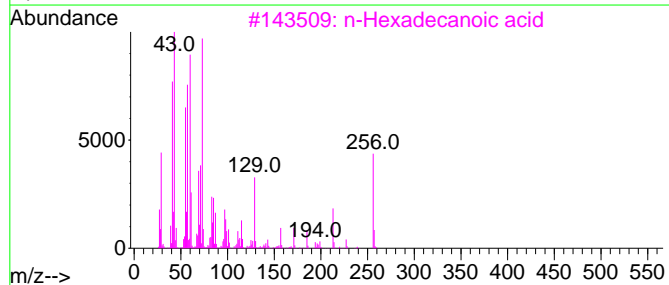
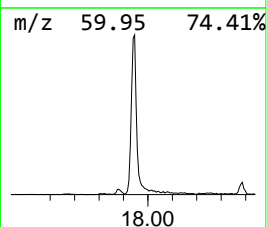
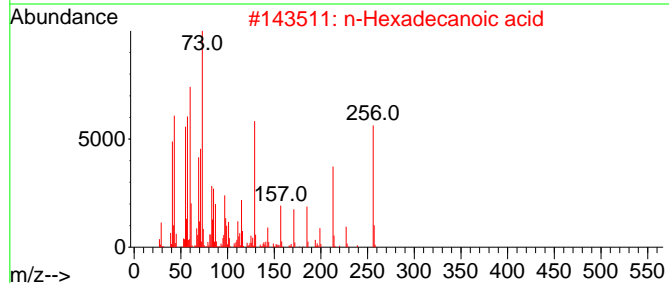
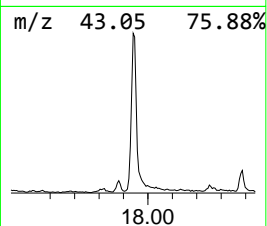
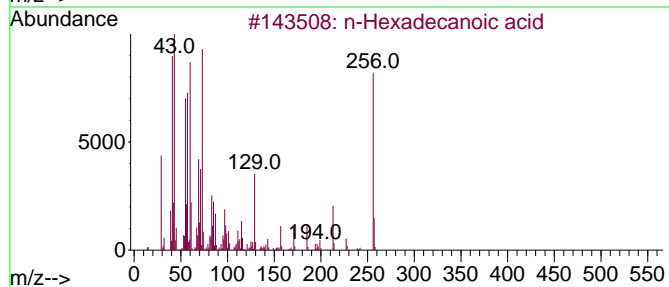
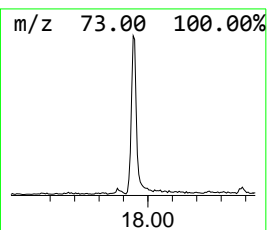
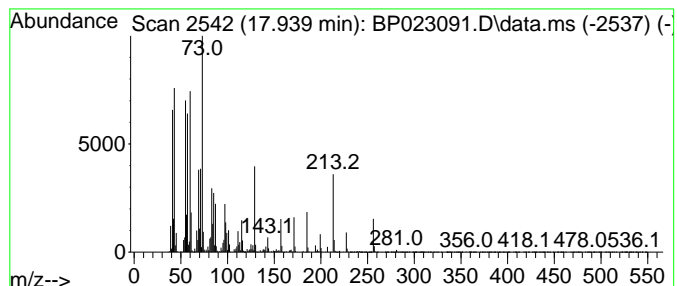
Quant Method : Z:\svoasrv\HPCHEM1\BNA\_P\Methods\SFAM-EPA-BP110924.MA.M  
 Quant Title : SVOA CALIBRATION

TIC Library : C:\DATABASE\NIST20.L  
 TIC Integration Parameters: LSCINT.P

\*\*\*\*\*  
 Peak Number 2 n-Hexadecanoic acid Concentration Rank 1

R.T.	EstConc	Area	Relative to ISTD	R.T.
17.939	9.70 ng/ul	735771	Phenanthrene-d10	17.004

Hit#	of	5	Tentative ID	MW	MolForm	CAS#	Qual
1			n-Hexadecanoic acid	256	C16H32O2	000057-10-3	99
2			n-Hexadecanoic acid	256	C16H32O2	000057-10-3	97
3			n-Hexadecanoic acid	256	C16H32O2	000057-10-3	97
4			n-Hexadecanoic acid	256	C16H32O2	000057-10-3	96
5			Tridecanoic acid	214	C13H26O2	000638-53-9	89



Data Path : Z:\svoasrv\HPCHEM1\BNA\_P\Data\BP111324\  
 Data File : BP023091.D  
 Acq On : 13 Nov 2024 21:35  
 Operator : RC/JU  
 Sample : P4724-23  
 Misc :  
 ALS Vial : 11 Sample Multiplier: 1

Instrument :  
 BNA\_P  
 ClientSampleId :  
 BH9E2

Quant Method : Z:\svoasrv\HPCHEM1\BNA\_P\Methods\SFAM-EPA-BP110924.MA.M  
 Quant Title : SVOA CALIBRATION

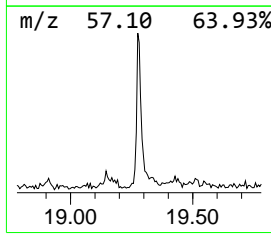
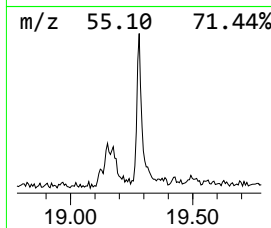
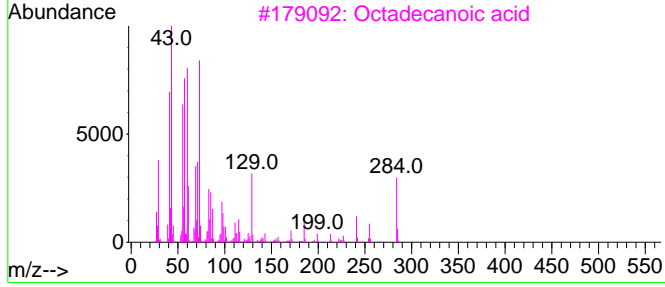
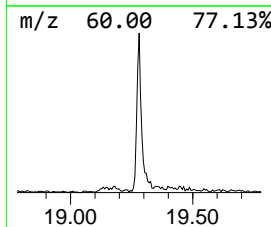
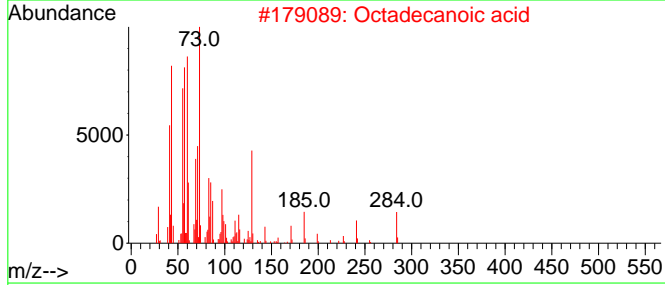
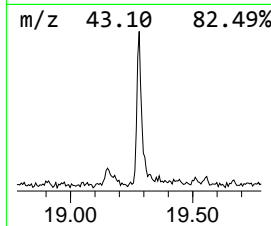
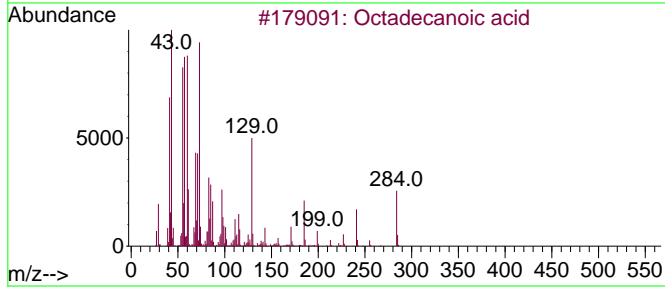
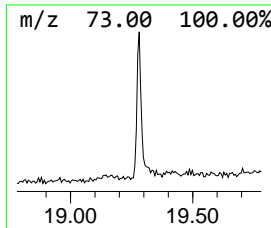
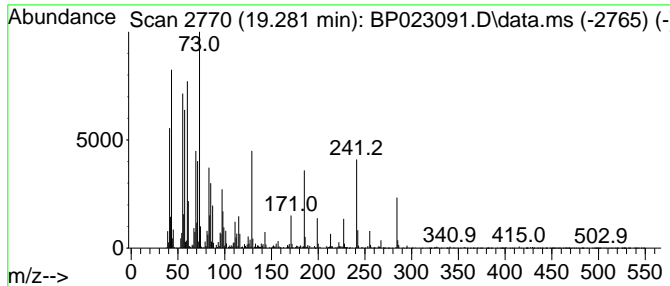
TIC Library : C:\DATABASE\NIST20.L  
 TIC Integration Parameters: LSCINT.P

\*\*\*\*\*  
 Peak Number 3 Octadecanoic acid Concentration Rank 4

R.T.	EstConc	Area	Relative to ISTD	R.T.
19.281	2.47 ng/ul	239140	Chrysene-d12	21.427

Hit#	of	Tentative ID	MW	MolForm	CAS#	Qual
1	5	Octadecanoic acid	284	C18H36O2	000057-11-4	99
2		Octadecanoic acid	284	C18H36O2	000057-11-4	98
3		Octadecanoic acid	284	C18H36O2	000057-11-4	94
4		Octadecanoic acid	284	C18H36O2	000057-11-4	91
5		n-Hexadecanoic acid	256	C16H32O2	000057-10-3	89



Data Path : Z:\svoasrv\HPCHEM1\BNA\_P\Data\BP111324\  
 Data File : BP023091.D  
 Acq On : 13 Nov 2024 21:35  
 Operator : RC/JU  
 Sample : P4724-23  
 Misc :  
 ALS Vial : 11 Sample Multiplier: 1

Instrument :  
 BNA\_P  
 ClientSampleId :  
 BH9E2

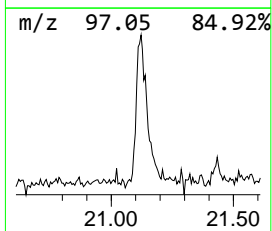
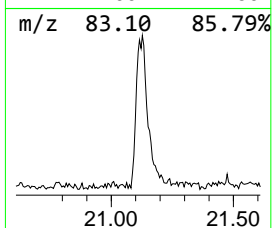
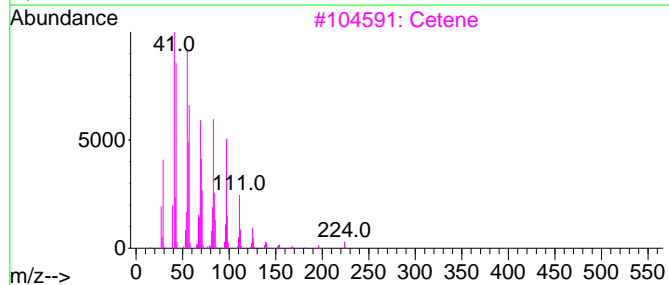
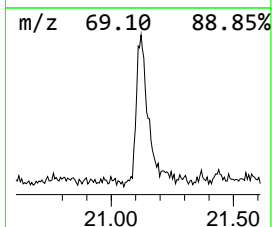
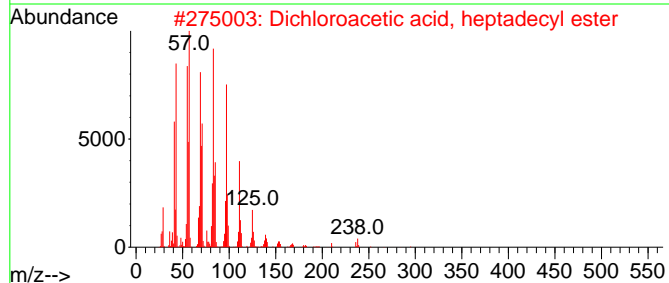
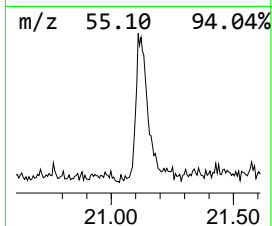
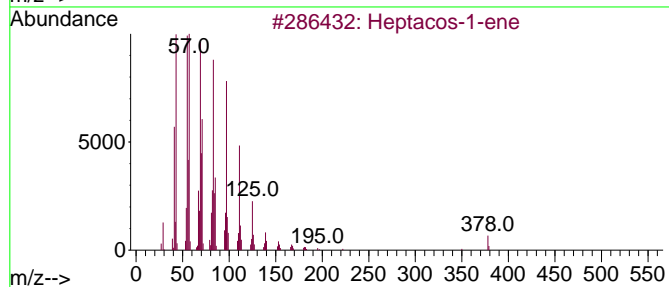
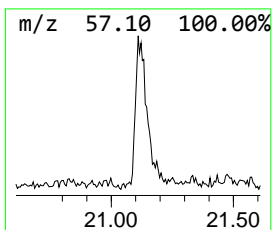
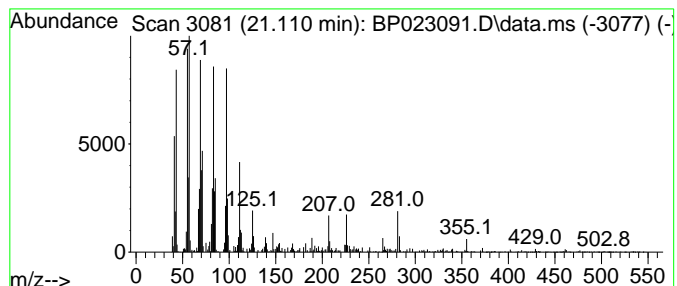
Quant Method : Z:\svoasrv\HPCHEM1\BNA\_P\Methods\SFAM-EPA-BP110924.MA.M  
 Quant Title : SVOA CALIBRATION

TIC Library : C:\DATABASE\NIST20.L  
 TIC Integration Parameters: LSCINT.P

\*\*\*\*\*  
 Peak Number 4 (DEL) Alkane: Straight-Chai... Concentration Rank 3

R.T.	EstConc	Area	Relative to ISTD	R.T.
21.110	2.53 ng/ul	245415	Chrysene-d12	21.427

Hit#	of 5	Tentative ID	MW	MolForm	CAS#	Qual
1		Heptacos-1-ene	378	C27H54	015306-27-1	95
2		Dichloroacetic acid, heptadecyl ...	366	C19H36Cl2O2	1000282-98-2	94
3		Cetene	224	C16H32	000629-73-2	93
4		1-Heneicosanol	312	C21H44O	015594-90-8	93
5		9,19-Cyclolanost-25-en-3-ol, 24-...	440	C31H52O	000511-61-5	91



Data Path : Z:\svoasrv\HPCHEM1\BNA\_P\Data\BP111324\  
Data File : BP023091.D  
Acq On : 13 Nov 2024 21:35  
Operator : RC/JU  
Sample : P4724-23  
Misc :  
ALS Vial : 11 Sample Multiplier: 1

Instrument :  
BNA\_P  
ClientSampleId :  
BH9E2

Quant Method : Z:\svoasrv\HPCHEM1\BNA\_P\Methods\SFAM-EPA-BP110924.MA.M  
Quant Title : SVOA CALIBRATION

TIC Library : C:\DATABASE\NIST20.L  
TIC Integration Parameters: LSCINT.P

TIC Top Hit name	RT	EstConc	Units	Response	--Internal Standard--			
					#	RT	Resp	Conc
Benzophenone	15.587	4.7	ng/u1	258237	3	14.198	1106540	20.0
n-Hexadecanoic ...	17.939	9.7	ng/u1	735771	4	17.004	1516770	20.0
Octadecanoic acid	19.281	2.5	ng/u1	239140	5	21.427	1940190	20.0
(DEL) Alkane: S...	21.110	2.5	ng/u1	245415	5	21.427	1940190	20.0