

Data Path : Z:\svoasrv\HPCHEM1\BNA_P\Data\BP112822\
 Data File : BP012825.D
 Acq On : 28 Nov 2022 19:56
 Operator : CG/JU
 Sample : PB149200BS
 Misc :
 ALS Vial : 18 Sample Multiplier: 1

Instrument :
 BNA_P
 ClientSampleId :
 SLCS200

Quant Time: Nov 28 22:43:38 2022
 Quant Method : Z:\svoasrv\HPCHEM1\BNA_P\Methods\SFAM-EPA-BP112522.M
 Quant Title : SVOA CALIBRATION
 QLast Update : Sun Nov 27 22:55:08 2022
 Response via : Initial Calibration

Compound	R.T.	QIon	Response	Conc	Units	Dev(Min)
Internal Standards						
1) 1,4-Dichlorobenzene-d4	8.016	152	639035	20.000	ng/ul	0.00
20) Naphthalene-d8	10.834	136	2917885	20.000	ng/ul	0.00
38) Acenaphthene-d10	14.651	164	1929126	20.000	ng/ul	0.00
64) Phenanthrene-d10	17.404	188	3978805	20.000	ng/ul	0.00
79) Chrysene-d12	21.492	240	3069346	20.000	ng/ul	0.00
88) Perylene-d12	24.004	264	2237298	20.000	ng/ul	0.00
System Monitoring Compounds						
3) 1,4-Dioxane-d8	3.399	96	81050	5.435	ng/uL	0.00
4) Pyridine-d5	3.822	84	1108572	24.840	ng/ul	0.00
7) Phenol-d5	7.163	99	1538792	29.304	ng/ul	0.00
9) Bis-(2-Chloroethyl)eth...	7.340	67	932559	28.821	ng/ul	0.00
11) 2-Chlorophenol-d4	7.546	132	1194754	29.859	ng/ul	0.00
15) 4-Methylphenol-d8	8.722	113	1241046	29.333	ng/ul	0.00
21) Nitrobenzene-d5	9.181	128	579965	32.474	ng/ul	0.00
24) 2-Nitrophenol-d4	9.910	143	646453	34.090	ng/ul	0.00
28) 2,4-Dichlorophenol-d3	10.445	165	1290151	29.159	ng/ul	0.00
31) 4-Chloroaniline-d4	10.963	131	1605377	26.496	ng/ul	0.00
46) Dimethylphthalate-d6	14.057	166	3831527	28.855	ng/ul	0.00
49) Acenaphthylene-d8	14.345	160	4452107	28.736	ng/ul	0.00
54) 4-Nitrophenol-d4	14.839	143	690036	29.148	ng/ul	0.00
60) Fluorene-d10	15.645	176	3366968	28.953	ng/ul	0.00
65) 4,6-Dinitro-2-methylph...	15.757	200	604570	31.792	ng/ul	0.00
73) Anthracene-d10	17.504	188	5085749	29.038	ng/ul	0.00
81) Pyrene-d10	19.733	212	5473973	30.693	ng/ul	0.00
92) Benzo(a)pyrene-d12	23.845	264	3337730	30.372	ng/ul	0.00
Target Compounds						
2) 1,4-Dioxane	3.434	88	162350	10.137	ng/uL	98
5) Pyridine	3.840	79	1124363	25.748	ng/ul	99
6) Benzaldehyde	7.151	77	835323	32.580	ng/ul	97
8) Phenol	7.193	94	1560275	28.337	ng/ul	99
10) Bis(2-Chloroethyl)ether	7.434	93	1244859	27.594	ng/ul	100
12) 2-Chlorophenol	7.575	128	1234489	28.363	ng/ul	100
13) 2-Methylphenol	8.451	108	1192946	27.876	ng/ul	98
14) 2,2'-oxybis(1-Chloropr...	8.546	45	1758309	27.021	ng/ul	99
16) Acetophenone	8.846	105	1912699	28.523	ng/ul	98
17) N-Nitroso-di-n-propyla...	8.834	70	942960	28.546	ng/ul	97
18) 4-Methylphenol	8.787	108	1322800	28.067	ng/ul	97
19) Hexachloroethane	9.104	117	466121	27.926	ng/ul	98
22) Nitrobenzene	9.228	77	1359153	29.017	ng/ul	99
23) Isophorone	9.757	82	2767474	26.801	ng/ul	98
25) 2-Nitrophenol	9.940	139	714336	31.383	ng/ul	96
26) 2,4-Dimethylphenol	9.992	107	1304334	25.788	ng/ul	99
27) Bis(2-Chloroethoxy)met...	10.234	93	1720844	27.182	ng/ul	99
29) 2,4-Dichlorophenol	10.475	162	1276067	27.840	ng/ul	99
30) Naphthalene	10.887	128	4097300	26.816	ng/ul	100
32) 4-Chloroaniline	10.987	127	1583277	25.444	ng/ul	99
33) Hexachlorobutadiene	11.169	225	818549	26.812	ng/ul	99
34) Caprolactam	11.769	113	237974	16.908	ng/ul	89
35) 4-Chloro-3-methylphenol	12.104	107	1320491	28.450	ng/ul	97
36) 2-Methylnaphthalene	12.486	142	2872249	27.299	ng/ul	99

Data Path : Z:\svoasrv\HPCHEM1\BNA_P\Data\BP112822\
 Data File : BP012825.D
 Acq On : 28 Nov 2022 19:56
 Operator : CG/JU
 Sample : PB149200BS
 Misc :
 ALS Vial : 18 Sample Multiplier: 1

Instrument :
 BNA_P
 ClientSampleId :
 SLCS200

Quant Time: Nov 28 22:43:38 2022
 Quant Method : Z:\svoasrv\HPCHEM1\BNA_P\Methods\SFAM-EPA-BP112522.M
 Quant Title : SVOA CALIBRATION
 QLast Update : Sun Nov 27 22:55:08 2022
 Response via : Initial Calibration

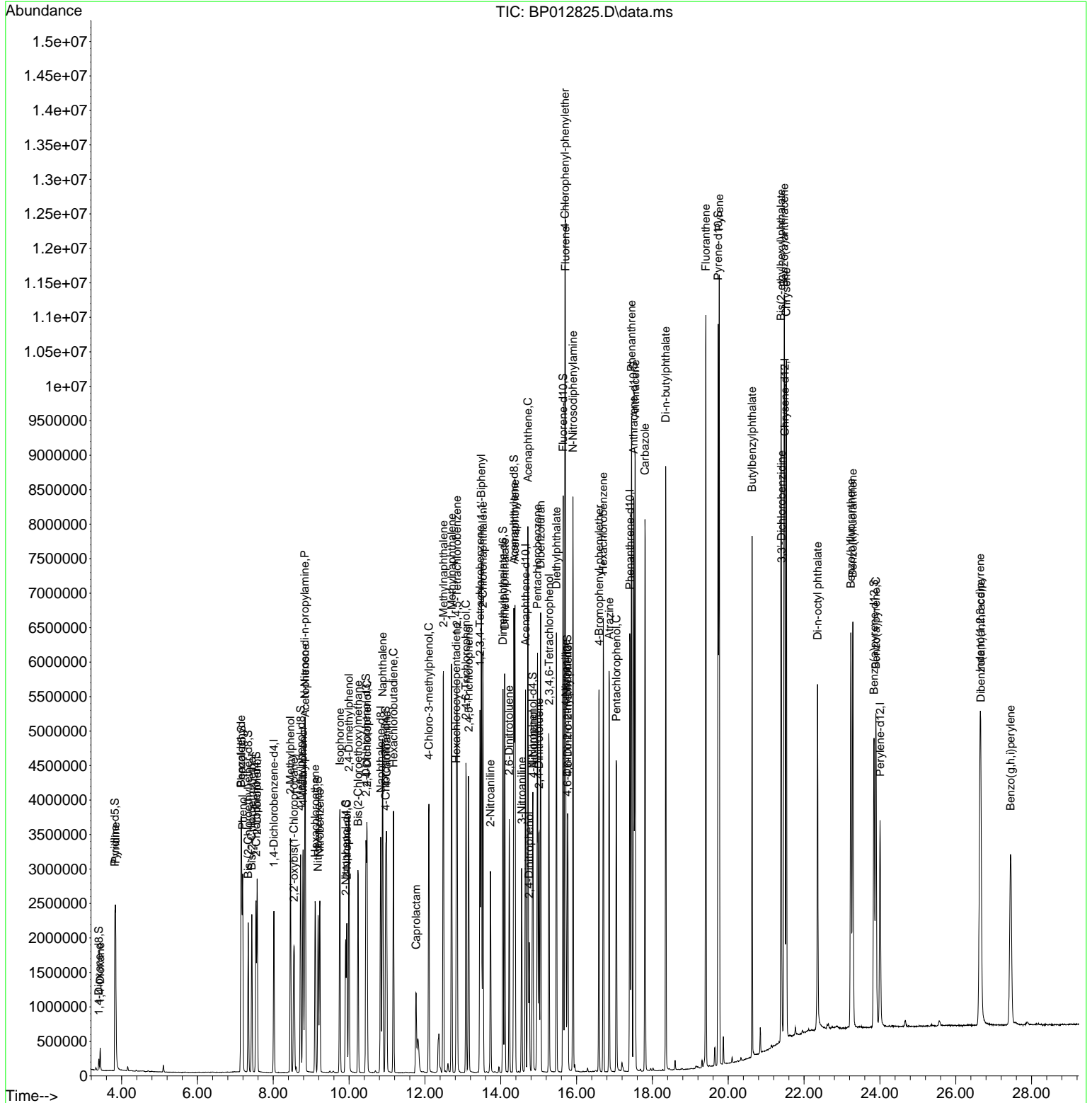
Compound	R.T.	QIon	Response	Conc	Units	Dev(Min)
37) 1-Methylnaphthalene	12.704	142	2867893	27.197	ng/ul	99
39) 1,2,4,5-Tetrachloroben...	12.845	216	1648042	26.790	ng/ul	99
40) Hexachlorocyclopentadiene	12.828	237	778550	26.266	ng/ul	99
41) 2,4,6-Trichlorophenol	13.081	196	1083534	28.150	ng/ul	99
42) 2,4,5-Trichlorophenol	13.151	196	1188093	28.713	ng/ul	98
43) 1,1'-Biphenyl	13.486	154	3825516	27.222	ng/ul	100
44) 2-Chloronaphthalene	13.528	162	3025283	26.909	ng/ul	100
45) 2-Nitroaniline	13.728	65	769328	34.975	ng/ul	96
47) Dimethylphthalate	14.104	163	3846050	27.631	ng/ul	99
48) 2,6-Dinitrotoluene	14.222	165	740735	34.005	ng/ul	99
50) Acenaphthylene	14.375	152	4668268	27.555	ng/ul	100
51) 3-Nitroaniline	14.551	138	725644	28.763	ng/ul	98
52) Acenaphthene	14.716	153	3239532	27.161	ng/ul	98
53) 2,4-Dinitrophenol	14.751	184	396531	28.328	ng/ul	98
55) 4-Nitrophenol	14.851	109	469753	27.312	ng/ul	96
56) Dibenzofuran	15.051	168	4521623	27.504	ng/ul	100
57) 2,4-Dinitrotoluene	15.010	165	1062033	33.038	ng/ul	97
58) 2,3,4,6-Tetrachlorophenol	15.275	232	1029755	28.874	ng/ul	97
59) Diethylphthalate	15.469	149	3735705	27.726	ng/ul	99
61) Fluorene	15.704	166	3651973	27.700	ng/ul	100
62) 4-Chlorophenyl-phenyle...	15.692	204	1898697	27.757	ng/ul	99
63) 4-Nitroaniline	15.716	138	709908	33.016	ng/ul	99
66) 4,6-Dinitro-2-methylph...	15.769	198	621549	30.450	ng/ul	98
67) N-Nitrosodiphenylamine	15.904	169	3182904	28.148	ng/ul	99
68) 4-Bromophenyl-phenylether	16.592	248	1155071	29.496	ng/ul	99
69) Hexachlorobenzene	16.704	284	1404312	28.136	ng/ul	100
70) Atrazine	16.863	200	1083060	27.916	ng/ul	100
71) Pentachlorophenol	17.051	266	835166	27.248	ng/ul	99
72) Phenanthrene	17.451	178	5830127	27.493	ng/ul	99
74) Anthracene	17.545	178	5803530	27.664	ng/ul	100
75) 1,2,3,4-Tetrachloroben...	13.451	216	1651838	26.854	ng/uL	99
76) Pentachlorobenzene	14.969	250	1612537	25.219	ng/uL	99
77) Carbazole	17.804	167	5171960	29.142	ng/ul	100
78) Di-n-butylphthalate	18.351	149	6037223	28.736	ng/ul	99
80) Fluoranthene	19.410	202	6496200	29.284	ng/ul	98
82) Pyrene	19.763	202	6599735	28.765	ng/ul	98
83) Butylbenzylphthalate	20.627	149	2061563	38.397	ng/ul	96
84) 3,3'-Dichlorobenzidine	21.404	252	1554173	27.573	ng/ul	99
85) Benzo(a)anthracene	21.474	228	5537427	26.084	ng/ul	100
86) Bis(2-ethylhexyl)phtha...	21.392	149	2737281	33.337	ng/ul	100
87) Chrysene	21.533	228	5196093	25.315	ng/ul	100
89) Di-n-octyl phthalate	22.357	149	3702419	28.979	ng/ul	100
90) Benzo(b)fluoranthene	23.233	252	4521273	27.290	ng/ul	99
91) Benzo(k)fluoranthene	23.286	252	4251702	25.710	ng/ul	99
93) Benzo(a)pyrene	23.892	252	3704528	27.192	ng/ul	100
94) Indeno(1,2,3-cd)pyrene	26.645	276	4069937	30.965	ng/ul	99
95) Dibenzo(a,h)anthracene	26.662	278	3588696	30.090	ng/ul	98
96) Benzo(g,h,i)perylene	27.445	276	3586532	31.724	ng/ul	99

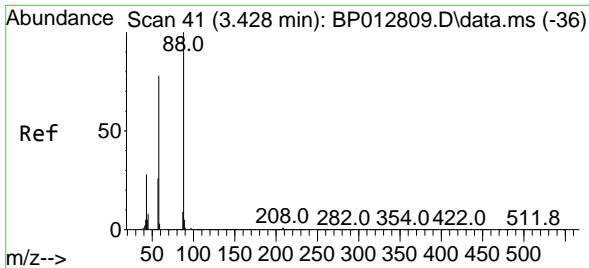
(#) = qualifier out of range (m) = manual integration (+) = signals summed

Data Path : Z:\svoasrv\HPCHEM1\BNA_P\Data\BP112822\
 Data File : BP012825.D
 Acq On : 28 Nov 2022 19:56
 Operator : CG/JU
 Sample : PB149200BS
 Misc :
 ALS Vial : 18 Sample Multiplier: 1

Instrument :
 BNA_P
 ClientSampleId :
 SLCS200

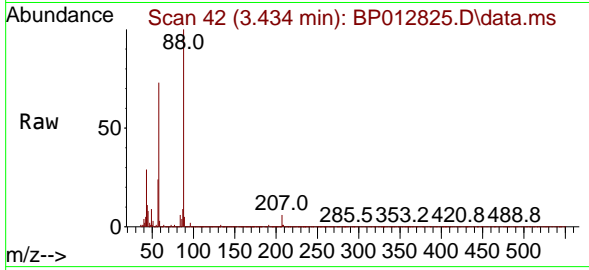
Quant Time: Nov 28 22:43:38 2022
 Quant Method : Z:\svoasrv\HPCHEM1\BNA_P\Methods\SFAM-EPA-BP112522.M
 Quant Title : SVOA CALIBRATION
 QLast Update : Sun Nov 27 22:55:08 2022
 Response via : Initial Calibration





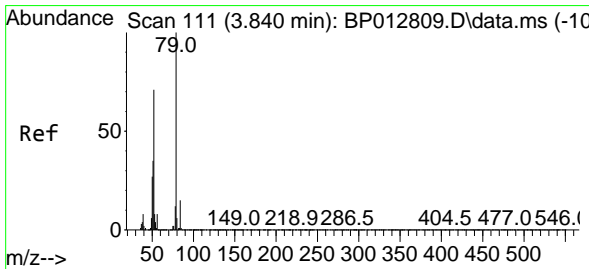
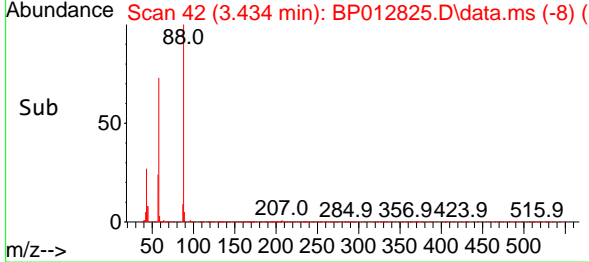
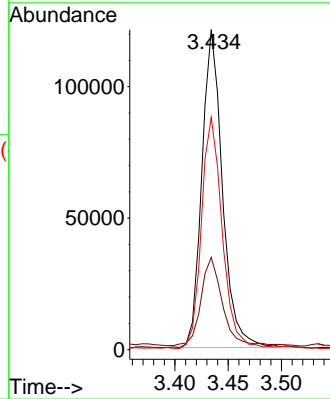
#2
 1,4-Dioxane
 Concen: 10.137 ng/uL
 RT: 3.434 min Scan# 41
 Delta R.T. -0.000 min
 Lab File: BP012825.D
 Acq: 28 Nov 2022 19:56

Instrument :
 BNA_P
 ClientSampleId :
 SLCS200



Tgt Ion: 88 Resp: 162350

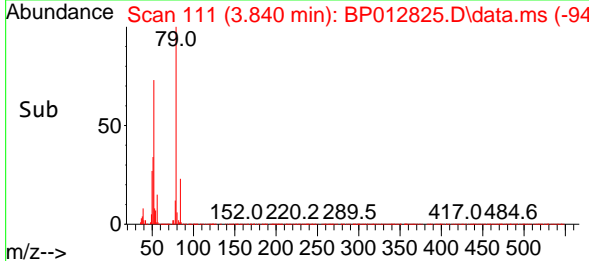
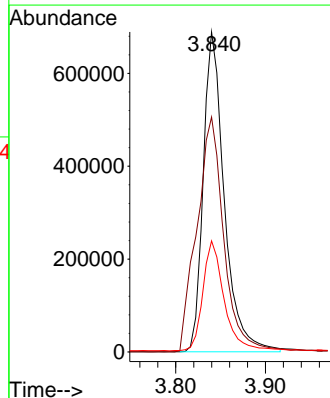
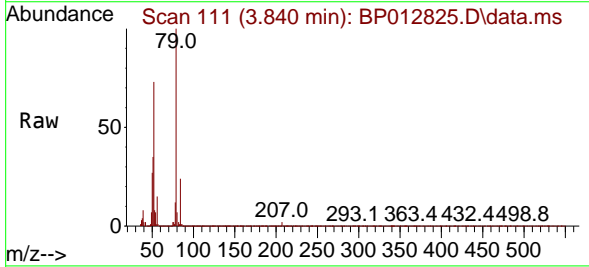
Ion	Ratio	Lower	Upper
88	100		
43	28.9	22.6	34.0
58	72.6	59.6	89.4

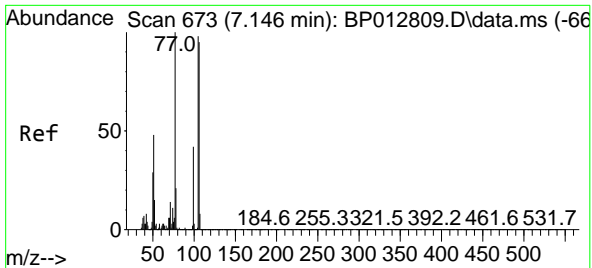


#5
 Pyridine
 Concen: 25.748 ng/uL
 RT: 3.840 min Scan# 111
 Delta R.T. -0.000 min
 Lab File: BP012825.D
 Acq: 28 Nov 2022 19:56

Tgt Ion: 79 Resp: 1124363

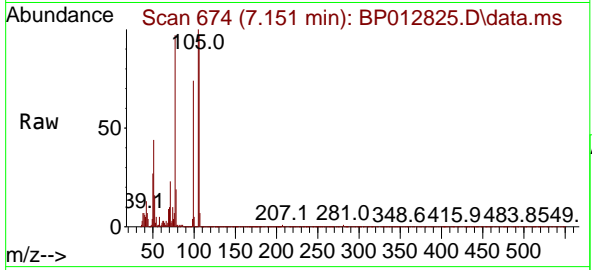
Ion	Ratio	Lower	Upper
79	100		
52	73.4	58.9	88.3
51	34.7	27.3	40.9



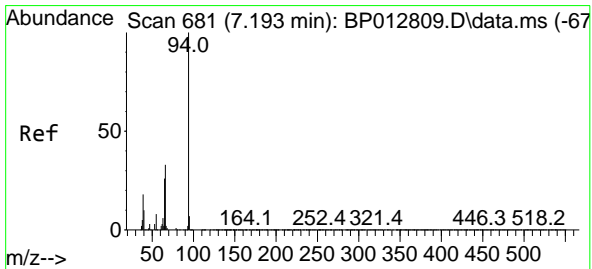
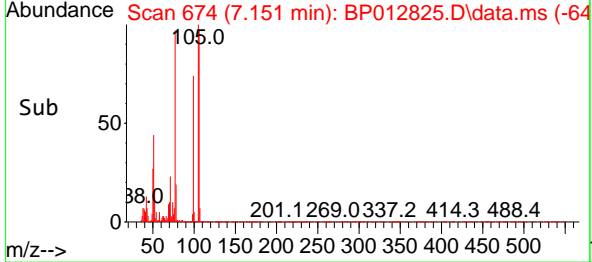
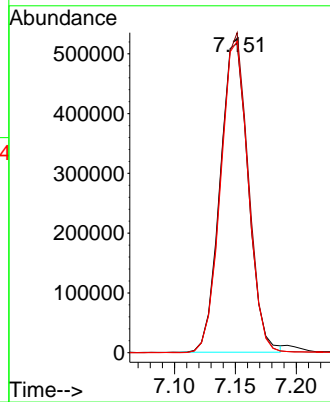


#6
Benzaldehyde
Concen: 32.580 ng/uI
RT: 7.151 min Scan# 61
Delta R.T. -0.000 min
Lab File: BP012825.D
Acq: 28 Nov 2022 19:56

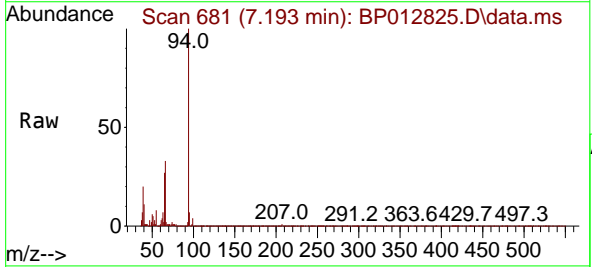
Instrument :
BNA_P
ClientSampleId :
SLCS200



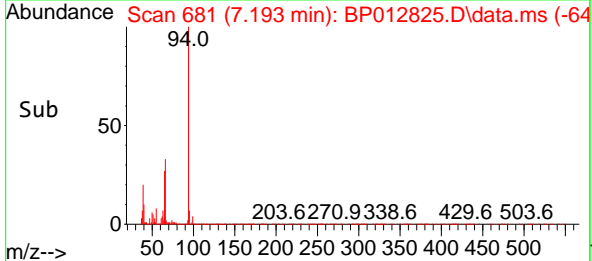
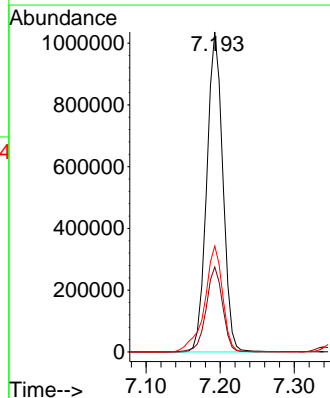
Tgt Ion: 77 Resp: 835323
Ion Ratio Lower Upper
77 100
105 103.5 81.4 122.2
106 100.7 77.4 116.0

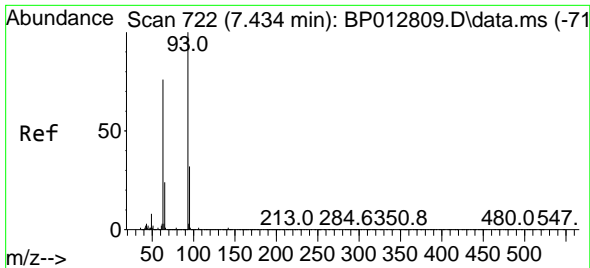


#8
Phenol
Concen: 28.337 ng/uI
RT: 7.193 min Scan# 681
Delta R.T. -0.000 min
Lab File: BP012825.D
Acq: 28 Nov 2022 19:56



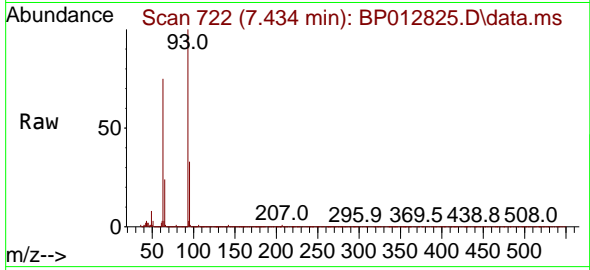
Tgt Ion: 94 Resp: 1560275
Ion Ratio Lower Upper
94 100
65 26.5 20.9 31.3
66 33.1 26.0 39.0





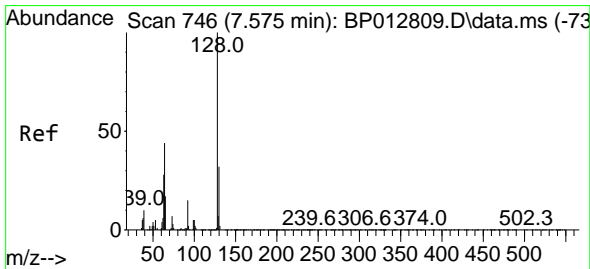
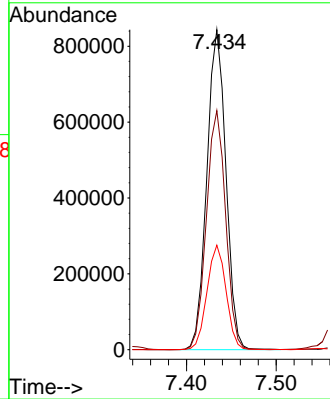
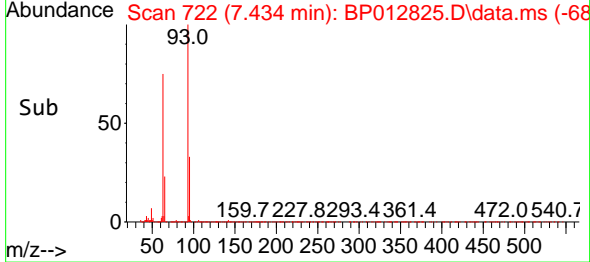
#10
 Bis(2-Chloroethyl)ether
 Concen: 27.594 ng/ul
 RT: 7.434 min Scan# 722
 Delta R.T. -0.000 min
 Lab File: BP012825.D
 Acq: 28 Nov 2022 19:56

Instrument :
 BNA_P
 ClientSampleId :
 SLCS200

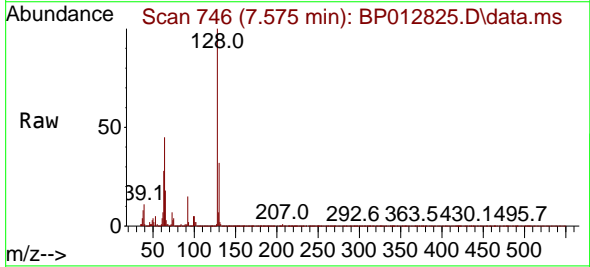


Tgt Ion: 93 Resp: 1244859

Ion	Ratio	Lower	Upper
93	100		
63	74.7	59.7	89.5
95	32.7	25.8	38.6

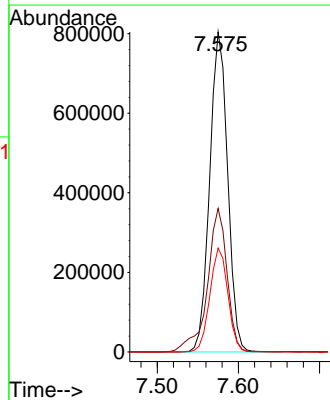
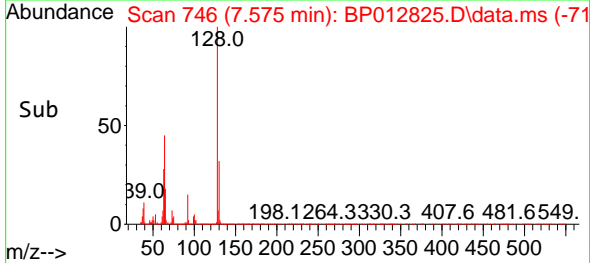


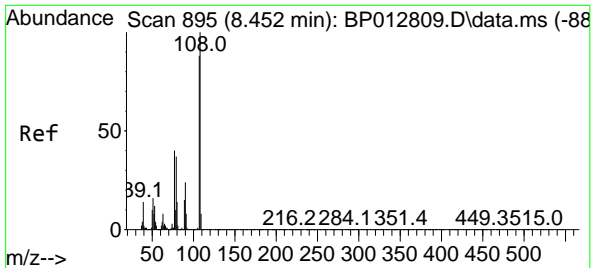
#12
 2-Chlorophenol
 Concen: 28.363 ng/ul
 RT: 7.575 min Scan# 746
 Delta R.T. -0.000 min
 Lab File: BP012825.D
 Acq: 28 Nov 2022 19:56



Tgt Ion: 128 Resp: 1234489

Ion	Ratio	Lower	Upper
128	100		
64	44.8	35.6	53.4
130	32.5	26.0	39.0

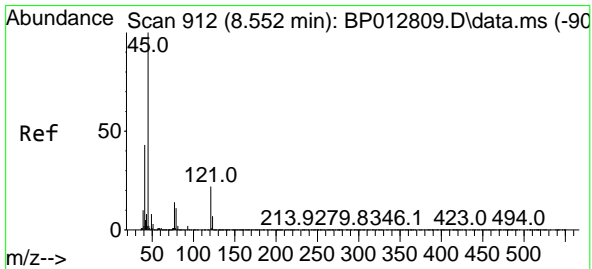
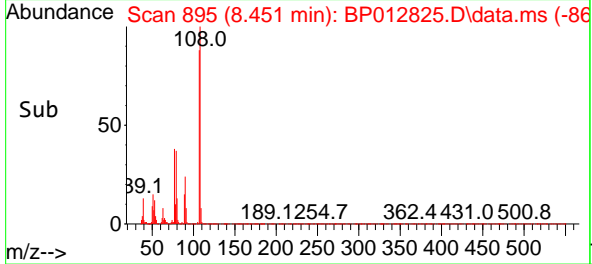
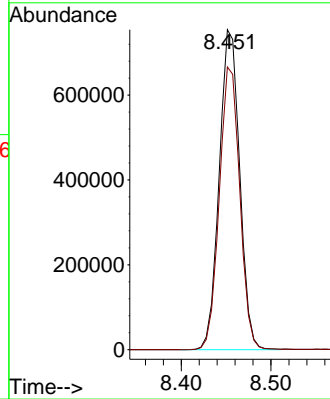
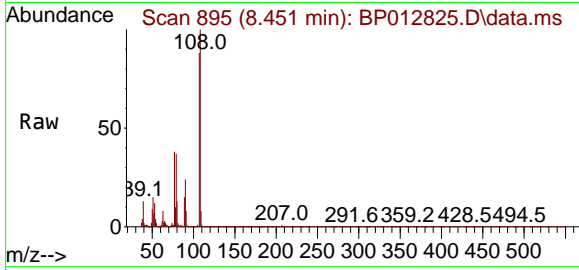




#13
 2-Methylphenol
 Concen: 27.876 ng/ul
 RT: 8.451 min Scan# 895
 Delta R.T. -0.006 min
 Lab File: BP012825.D
 Acq: 28 Nov 2022 19:56

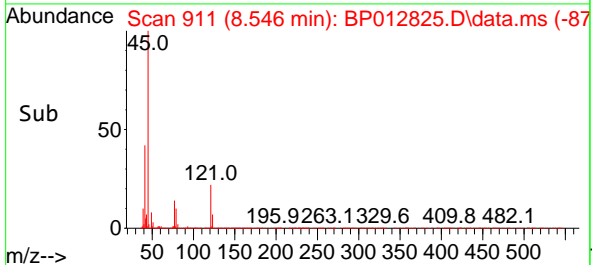
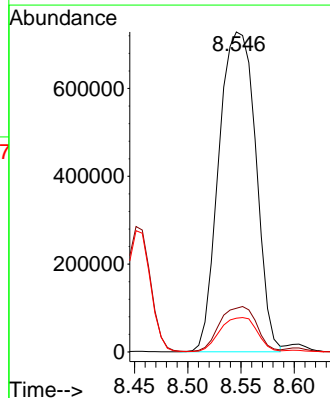
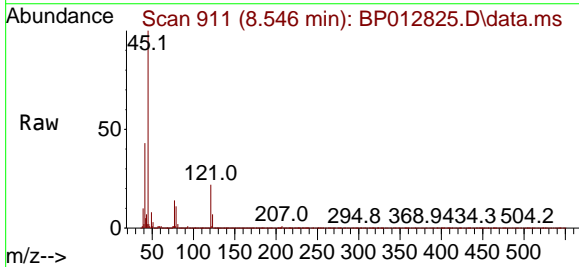
Instrument :
 BNA_P
 ClientSampleId :
 SLCS200

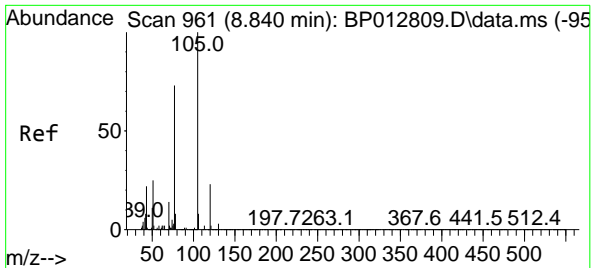
Tgt Ion: 108 Resp: 1192946
 Ion Ratio Lower Upper
 108 100
 107 88.4 69.3 103.9



#14
 2,2'-oxybis(1-Chloropropane)
 Concen: 27.021 ng/ul
 RT: 8.546 min Scan# 911
 Delta R.T. -0.000 min
 Lab File: BP012825.D
 Acq: 28 Nov 2022 19:56

Tgt Ion: 45 Resp: 1758309
 Ion Ratio Lower Upper
 45 100
 77 13.6 11.3 16.9
 79 10.5 8.6 12.8



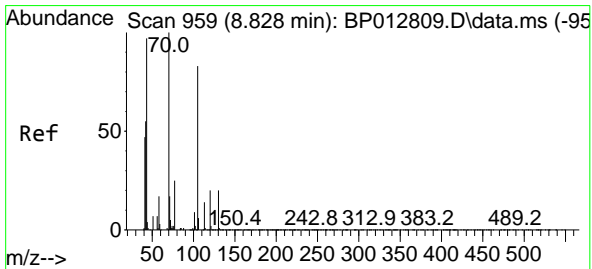
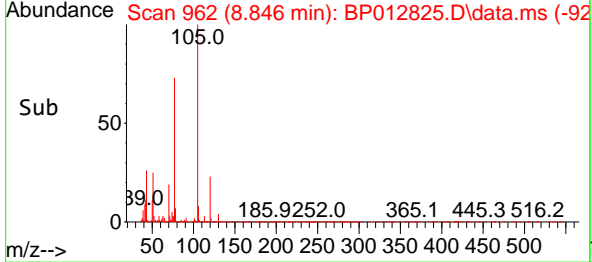
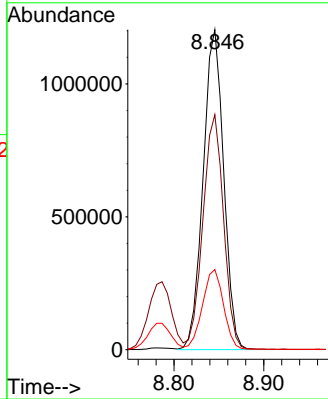
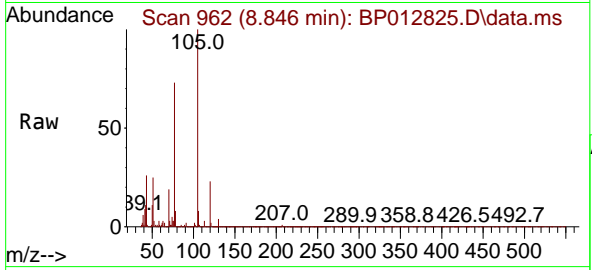


#16
 Acetophenone
 Concen: 28.523 ng/ul
 RT: 8.846 min Scan# 90
 Delta R.T. -0.000 min
 Lab File: BP012825.D
 Acq: 28 Nov 2022 19:56

Instrument :
 BNA_P
 ClientSampleId :
 SLCS200

Tgt Ion: 105 Resp: 1912699

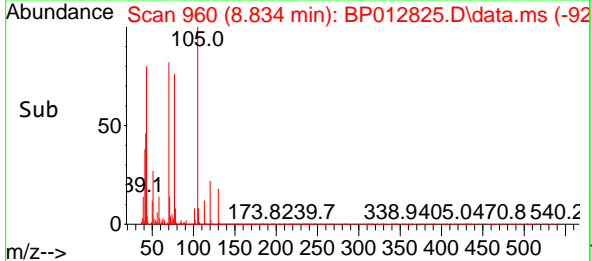
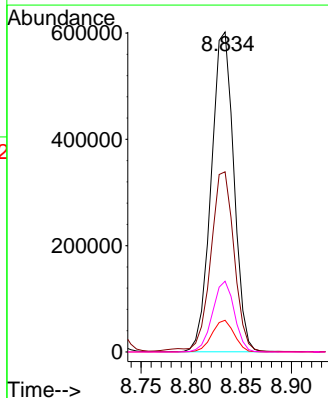
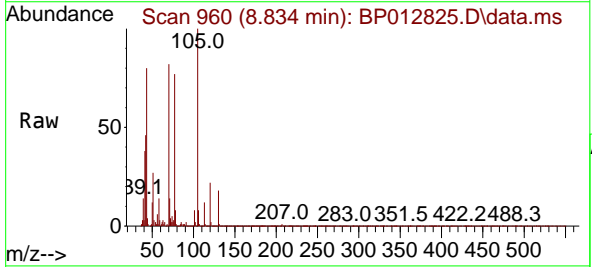
Ion	Ratio	Lower	Upper
105	100		
77	73.4	59.7	89.5
51	25.0	20.9	31.3

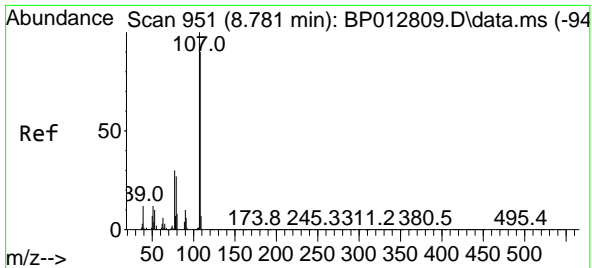


#17
 N-Nitroso-di-n-propylamine
 Concen: 28.546 ng/ul
 RT: 8.834 min Scan# 960
 Delta R.T. -0.000 min
 Lab File: BP012825.D
 Acq: 28 Nov 2022 19:56

Tgt Ion: 70 Resp: 942960

Ion	Ratio	Lower	Upper
70	100		
42	56.3	46.1	69.1
101	9.9	7.4	11.2
130	22.1	15.8	23.6

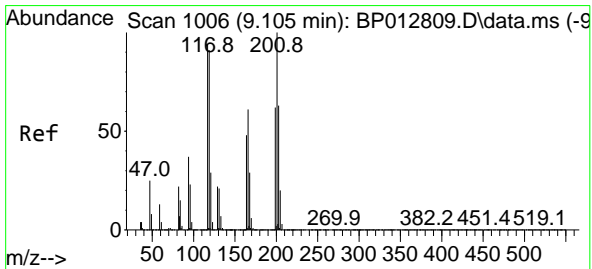
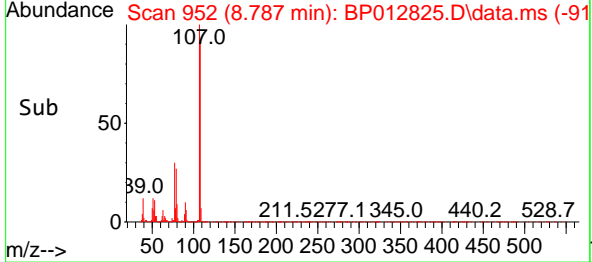
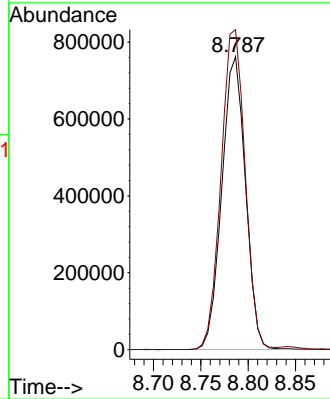
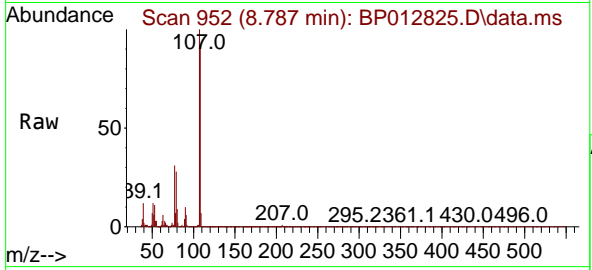




#18
 4-Methylphenol
 Concen: 28.067 ng/ul
 RT: 8.787 min Scan# 91
 Delta R.T. -0.000 min
 Lab File: BP012825.D
 Acq: 28 Nov 2022 19:56

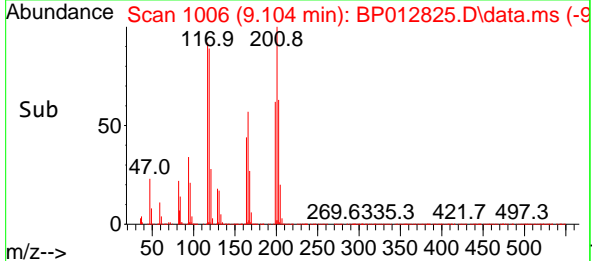
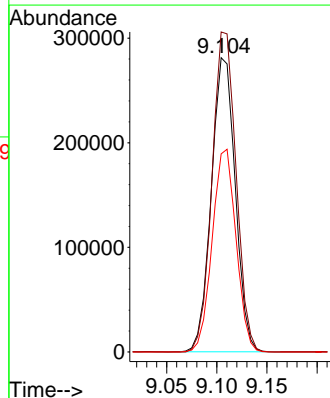
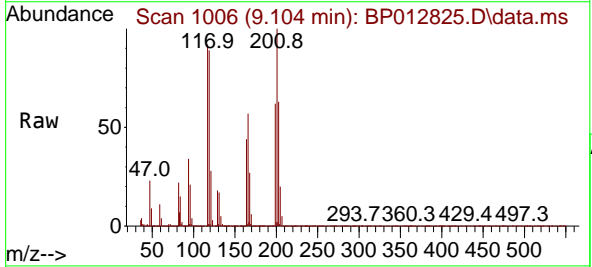
Instrument :
 BNA_P
 ClientSampleId :
 SLCS200

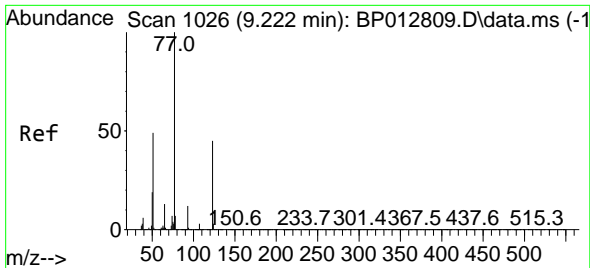
Tgt Ion:108 Resp: 1322800
 Ion Ratio Lower Upper
 108 100
 107 109.2 90.2 135.2



#19
 Hexachloroethane
 Concen: 27.926 ng/ul
 RT: 9.104 min Scan# 1006
 Delta R.T. -0.006 min
 Lab File: BP012825.D
 Acq: 28 Nov 2022 19:56

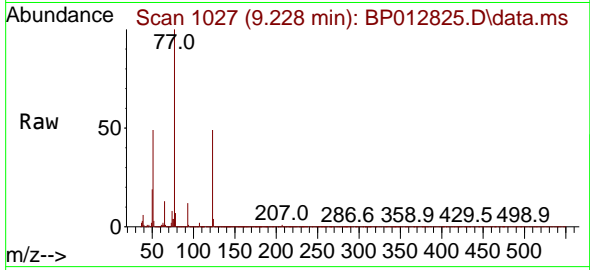
Tgt Ion:117 Resp: 466121
 Ion Ratio Lower Upper
 117 100
 201 108.8 85.7 128.5
 199 67.3 52.9 79.3



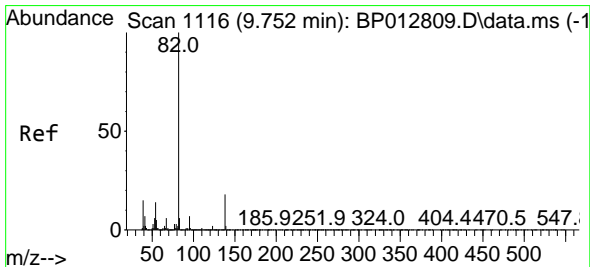
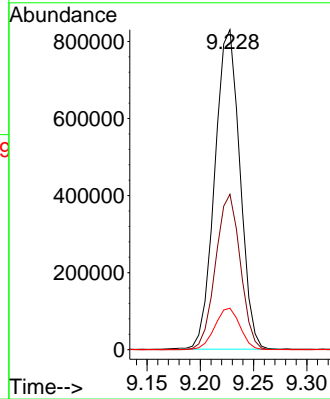
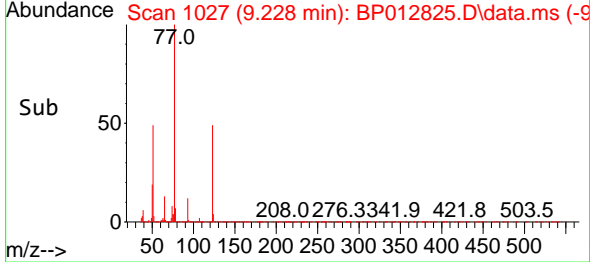


#22
 Nitrobenzene
 Concen: 29.017 ng/u1
 RT: 9.228 min Scan# 1026
 Delta R.T. -0.000 min
 Lab File: BP012825.D
 Acq: 28 Nov 2022 19:56

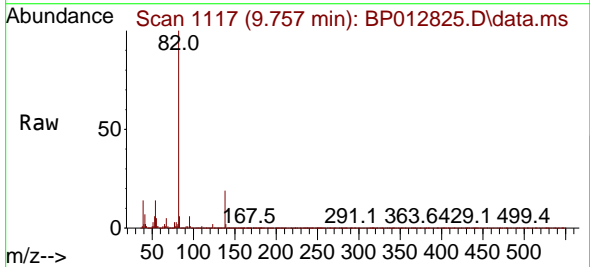
Instrument :
 BNA_P
 ClientSampleId :
 SLCS200



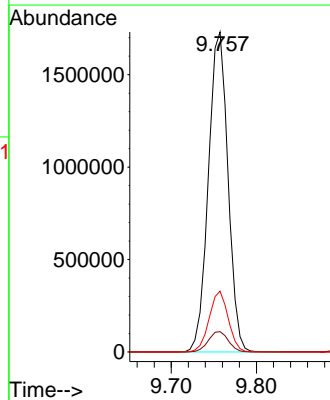
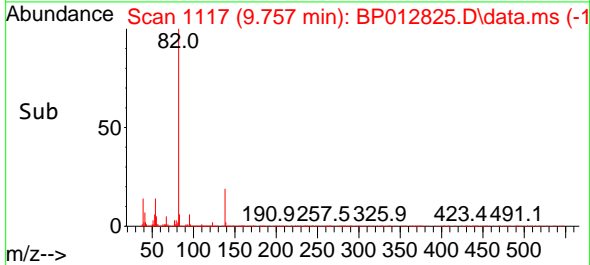
Tgt Ion: 77 Resp: 1359153
 Ion Ratio Lower Upper
 77 100
 123 48.5 38.2 57.2
 65 13.0 10.2 15.4

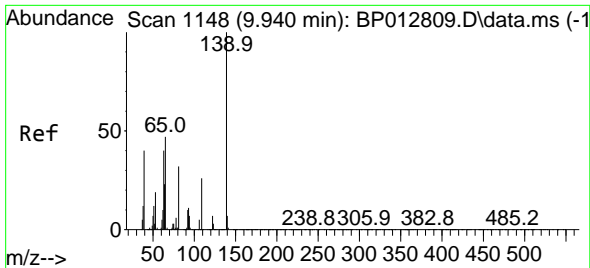


#23
 Isophorone
 Concen: 26.801 ng/u1
 RT: 9.757 min Scan# 1117
 Delta R.T. -0.000 min
 Lab File: BP012825.D
 Acq: 28 Nov 2022 19:56



Tgt Ion: 82 Resp: 2767474
 Ion Ratio Lower Upper
 82 100
 95 6.4 5.2 7.8
 138 19.0 14.5 21.7

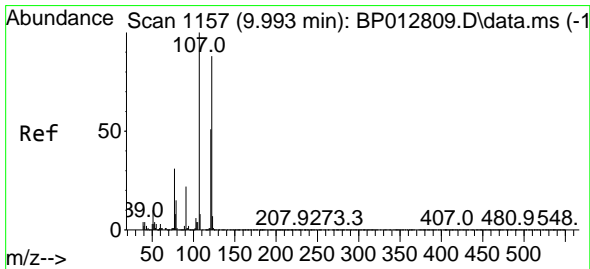
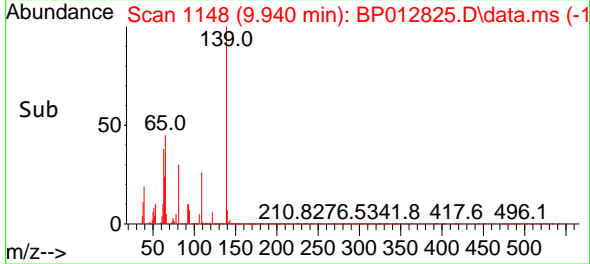
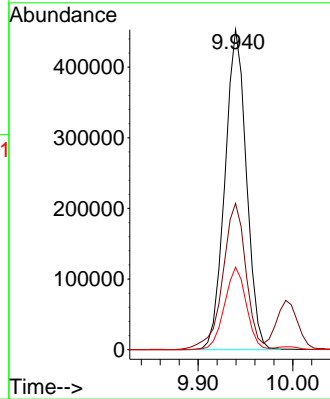
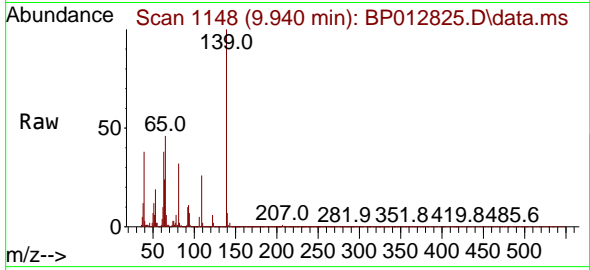




#25
 2-Nitrophenol
 Concen: 31.383 ng/ul
 RT: 9.940 min Scan# 1148
 Delta R.T. -0.000 min
 Lab File: BP012825.D
 Acq: 28 Nov 2022 19:56

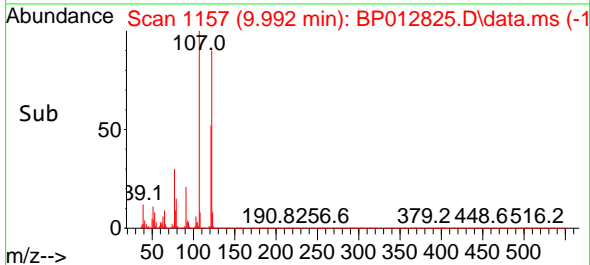
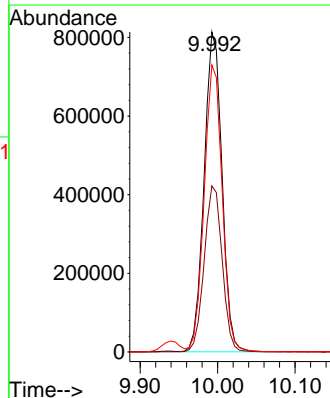
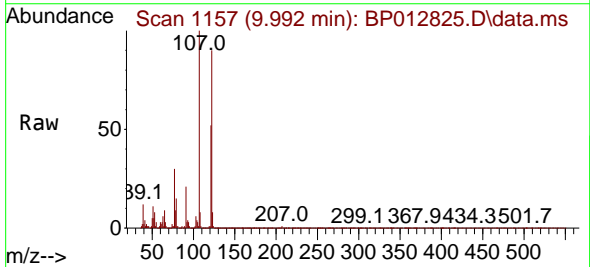
Instrument :
 BNA_P
 ClientSampleId :
 SLCS200

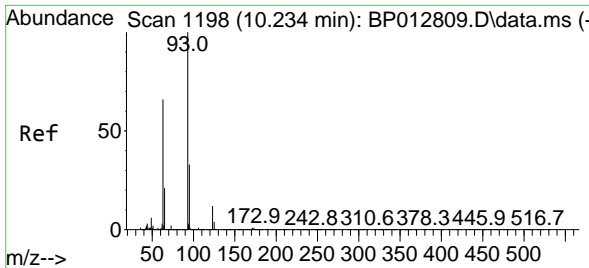
Tgt Ion:139 Resp: 714336
 Ion Ratio Lower Upper
 139 100
 65 45.7 39.5 59.3
 109 25.8 21.4 32.0



#26
 2,4-Dimethylphenol
 Concen: 25.788 ng/ul
 RT: 9.992 min Scan# 1157
 Delta R.T. -0.006 min
 Lab File: BP012825.D
 Acq: 28 Nov 2022 19:56

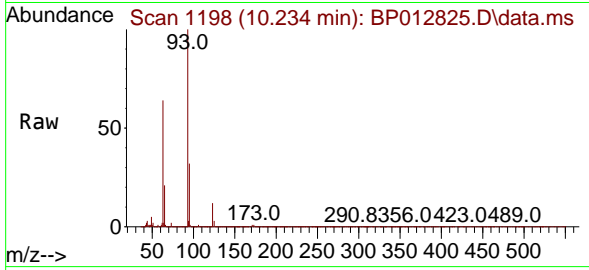
Tgt Ion:107 Resp: 1304334
 Ion Ratio Lower Upper
 107 100
 121 51.9 41.8 62.6
 122 89.7 72.3 108.5





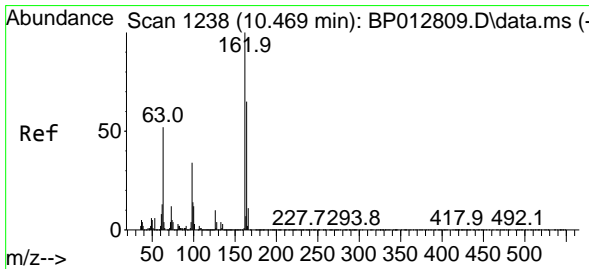
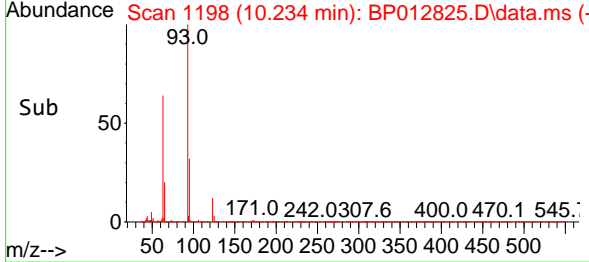
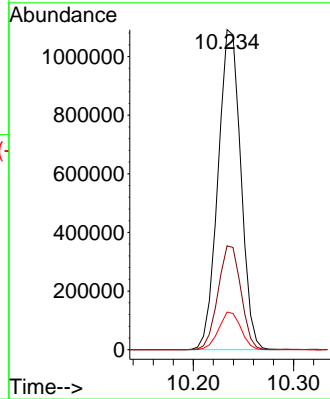
#27
 Bis(2-Chloroethoxy)methane
 Concen: 27.182 ng/ul
 RT: 10.234 min Scan# 1198
 Delta R.T. -0.006 min
 Lab File: BP012825.D
 Acq: 28 Nov 2022 19:56

Instrument :
 BNA_P
 ClientSampleId :
 SLCS200

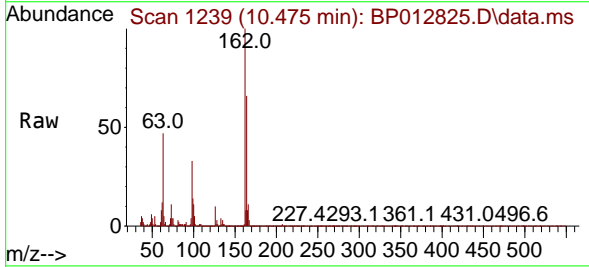


Tgt Ion: 93 Resp: 1720844

Ion	Ratio	Lower	Upper
93	100		
95	32.5	26.1	39.1
123	11.8	9.0	13.6

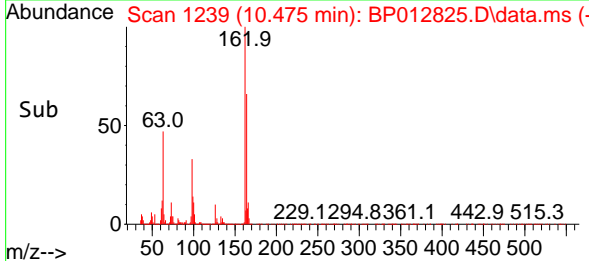
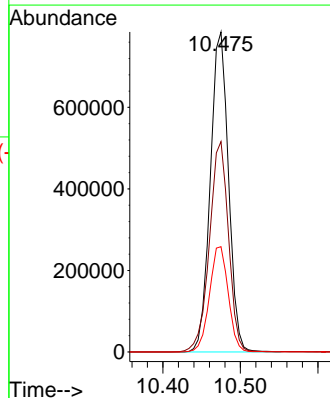


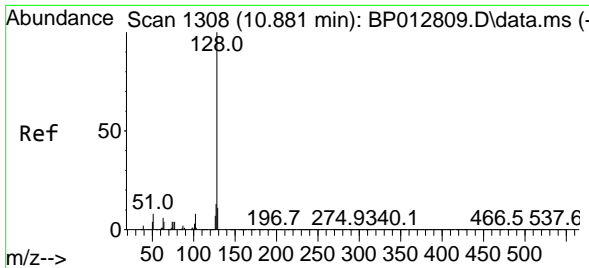
#29
 2,4-Dichlorophenol
 Concen: 27.840 ng/ul
 RT: 10.475 min Scan# 1239
 Delta R.T. -0.000 min
 Lab File: BP012825.D
 Acq: 28 Nov 2022 19:56



Tgt Ion: 162 Resp: 1276067

Ion	Ratio	Lower	Upper
162	100		
164	65.7	52.9	79.3
98	32.9	26.6	40.0

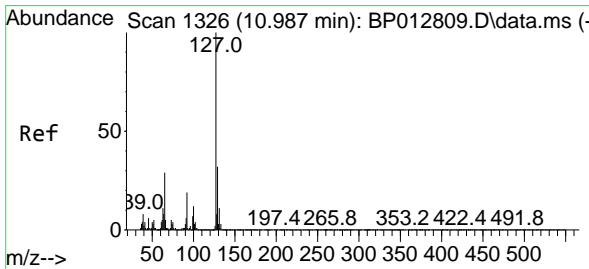
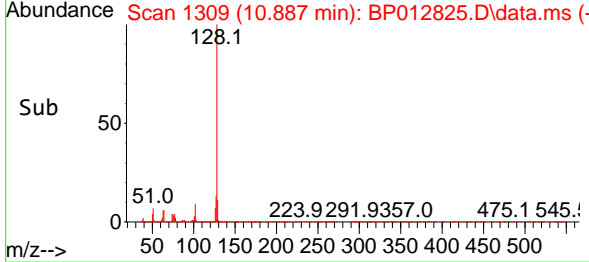
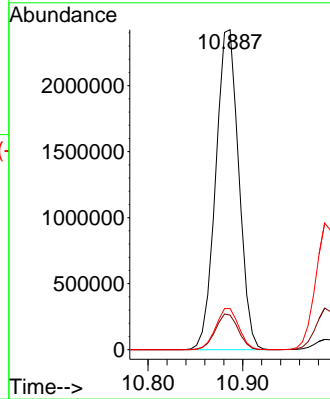
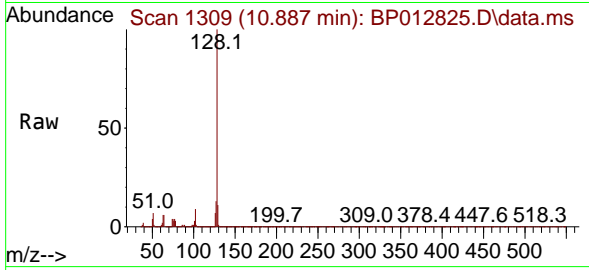




#30
 Naphthalene
 Concen: 26.816 ng/uI
 RT: 10.887 min Scan# 1309
 Delta R.T. -0.000 min
 Lab File: BP012825.D
 Acq: 28 Nov 2022 19:56

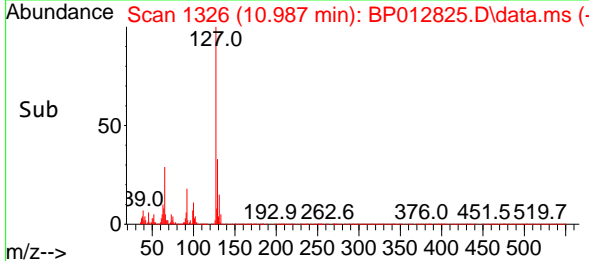
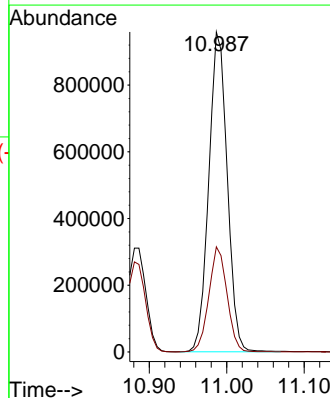
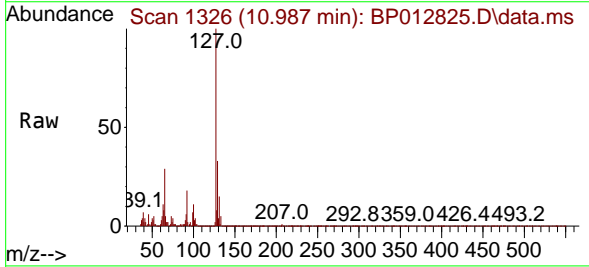
Instrument :
 BNA_P
 ClientSampleId :
 SLCS200

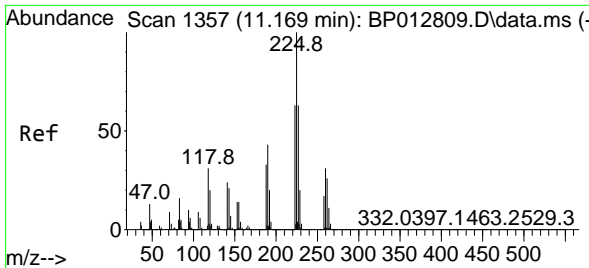
Tgt Ion:128 Resp: 4097300
 Ion Ratio Lower Upper
 128 100
 129 10.8 8.7 13.1
 127 12.8 10.4 15.6



#32
 4-Chloroaniline
 Concen: 25.444 ng/uI
 RT: 10.987 min Scan# 1326
 Delta R.T. -0.006 min
 Lab File: BP012825.D
 Acq: 28 Nov 2022 19:56

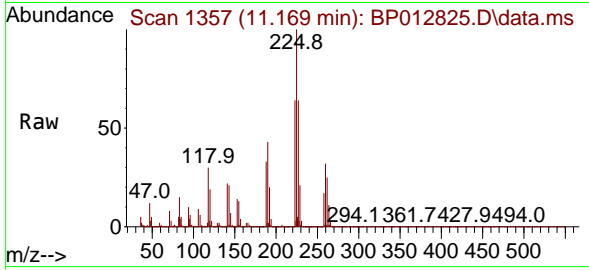
Tgt Ion:127 Resp: 1583277
 Ion Ratio Lower Upper
 127 100
 129 32.8 25.7 38.5



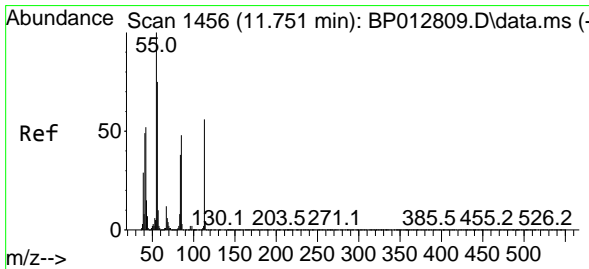
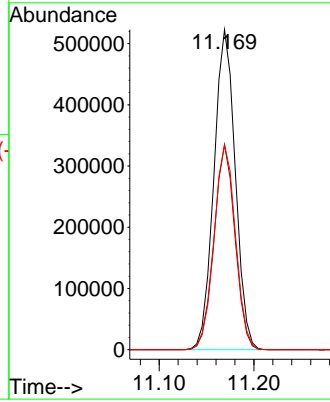
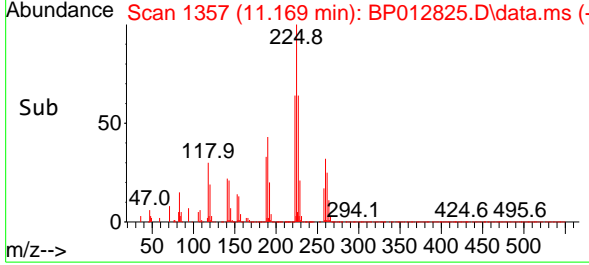


#33
 Hexachlorobutadiene
 Concen: 26.812 ng/ul
 RT: 11.169 min Scan# 11
 Delta R.T. -0.006 min
 Lab File: BP012825.D
 Acq: 28 Nov 2022 19:56

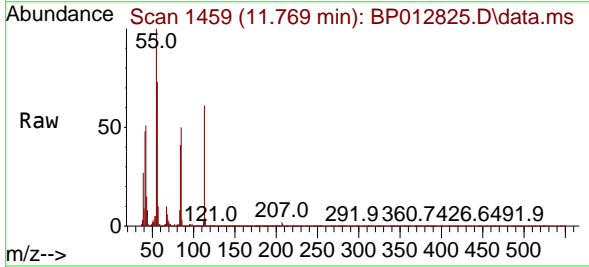
Instrument :
 BNA_P
 ClientSampleId :
 SLCS200



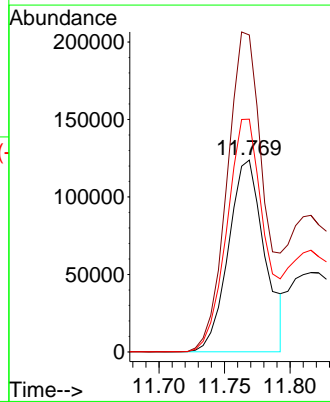
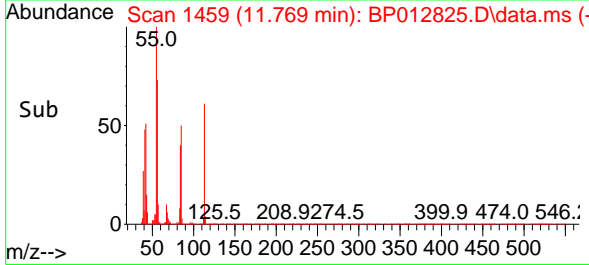
Tgt Ion:225 Resp: 818549
 Ion Ratio Lower Upper
 225 100
 223 64.0 49.6 74.4
 227 64.1 51.0 76.6

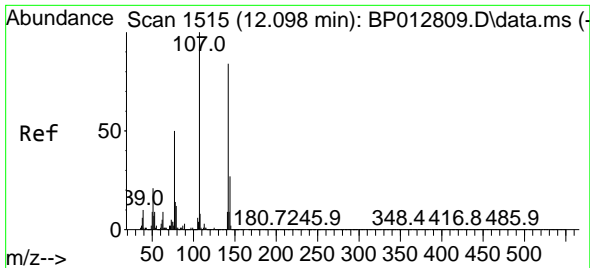


#34
 Caprolactam
 Concen: 16.908 ng/ul
 RT: 11.769 min Scan# 1459
 Delta R.T. 0.011 min
 Lab File: BP012825.D
 Acq: 28 Nov 2022 19:56



Tgt Ion:113 Resp: 237974
 Ion Ratio Lower Upper
 113 100
 55 165.2 145.9 218.9
 56 121.4 107.1 160.7



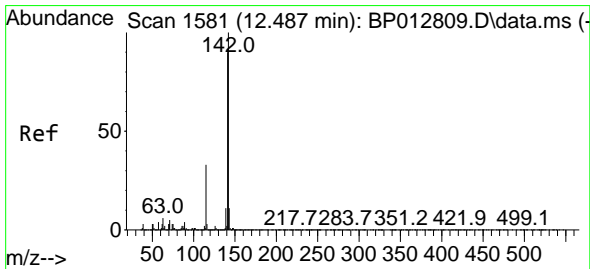
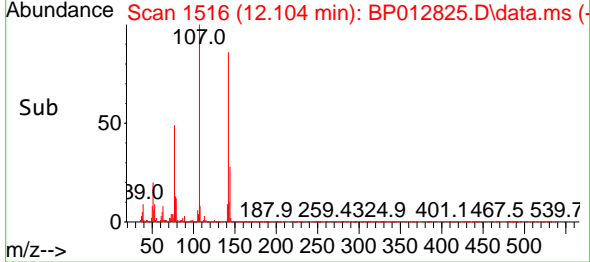
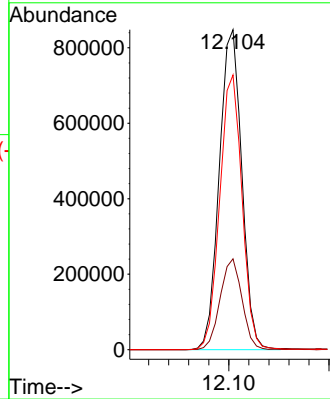
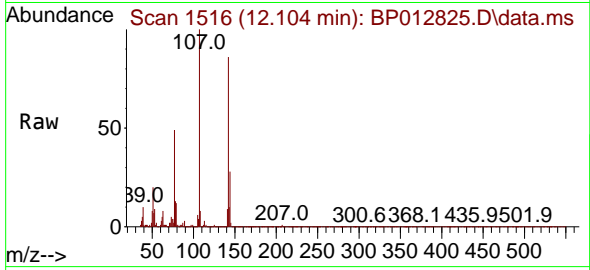


#35
 4-Chloro-3-methylphenol
 Concen: 28.450 ng/ul
 RT: 12.104 min Scan# 1516
 Delta R.T. -0.000 min
 Lab File: BP012825.D
 Acq: 28 Nov 2022 19:56

Instrument :
 BNA_P
 ClientSampleId :
 SLCS200

Tgt Ion:107 Resp: 1320491

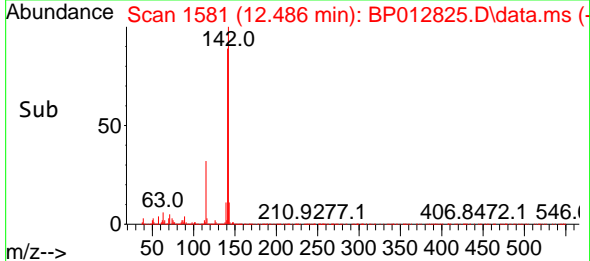
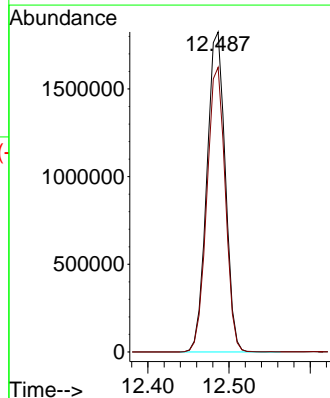
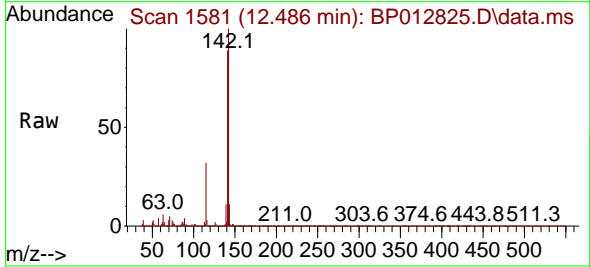
Ion	Ratio	Lower	Upper
107	100		
144	28.4	21.4	32.2
142	85.9	66.6	100.0

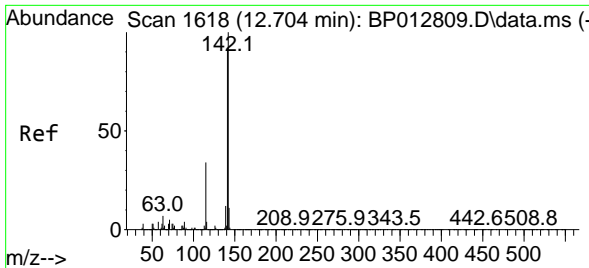


#36
 2-Methylnaphthalene
 Concen: 27.299 ng/ul
 RT: 12.486 min Scan# 1581
 Delta R.T. -0.000 min
 Lab File: BP012825.D
 Acq: 28 Nov 2022 19:56

Tgt Ion:142 Resp: 2872249

Ion	Ratio	Lower	Upper
142	100		
141	89.0	70.2	105.2



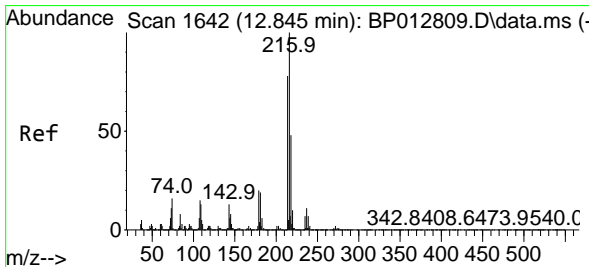
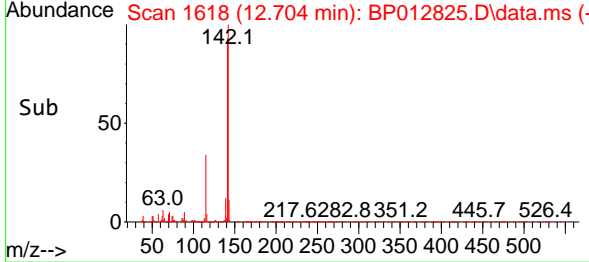
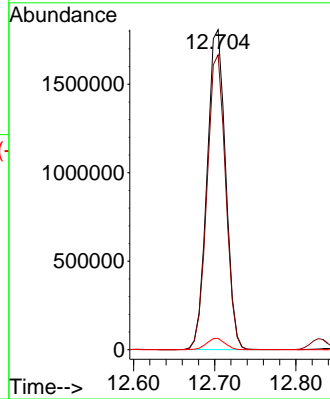
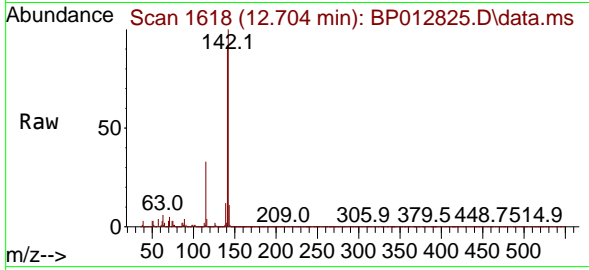


#37
 1-Methylnaphthalene
 Concen: 27.197 ng/ul
 RT: 12.704 min Scan# 1618
 Delta R.T. -0.000 min
 Lab File: BP012825.D
 Acq: 28 Nov 2022 19:56

Instrument : BNA_P
 ClientSampleId : SLCS200

Tgt Ion:142 Resp: 2867893

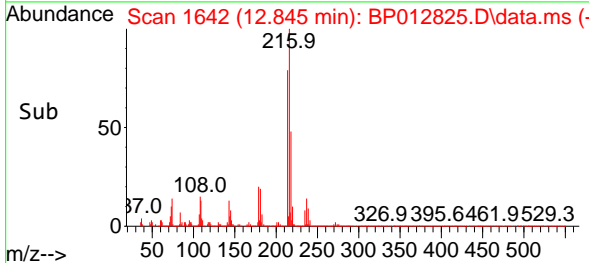
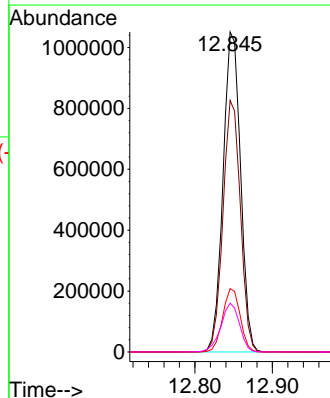
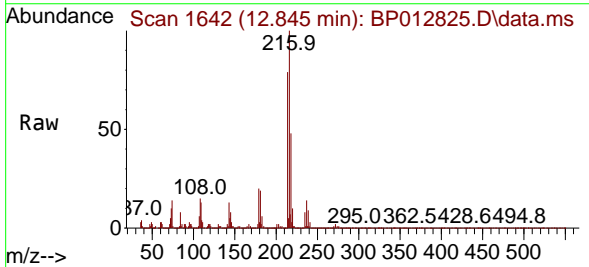
Ion	Ratio	Lower	Upper
142	100		
141	92.2	73.3	109.9
116	3.6	2.9	4.3

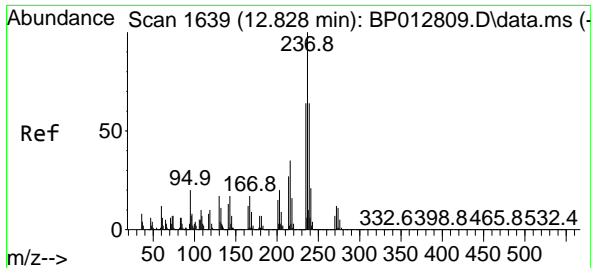


#39
 1,2,4,5-Tetrachlorobenzene
 Concen: 26.790 ng/ul
 RT: 12.845 min Scan# 1642
 Delta R.T. -0.006 min
 Lab File: BP012825.D
 Acq: 28 Nov 2022 19:56

Tgt Ion:216 Resp: 1648042

Ion	Ratio	Lower	Upper
216	100		
214	78.6	63.0	94.6
179	19.8	16.2	24.4
108	15.3	12.7	19.1



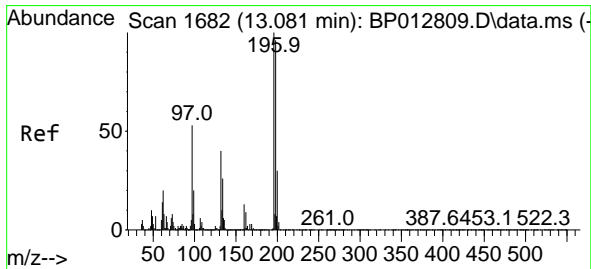
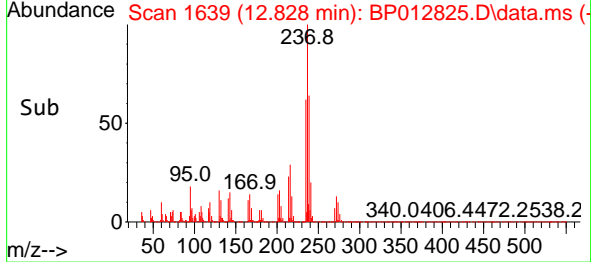
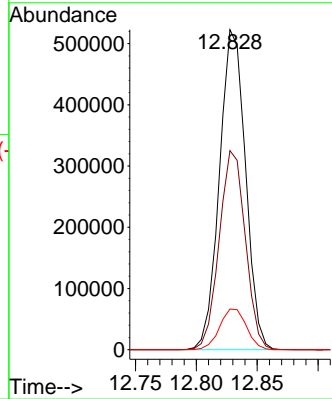
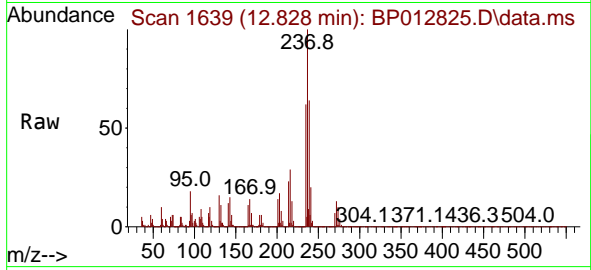


#40
 Hexachlorocyclopentadiene
 Concen: 26.266 ng/ul
 RT: 12.828 min Scan# 1639
 Delta R.T. -0.006 min
 Lab File: BP012825.D
 Acq: 28 Nov 2022 19:56

Instrument :
 BNA_P
 ClientSampleId :
 SLCS200

Tgt Ion:237 Resp: 778550

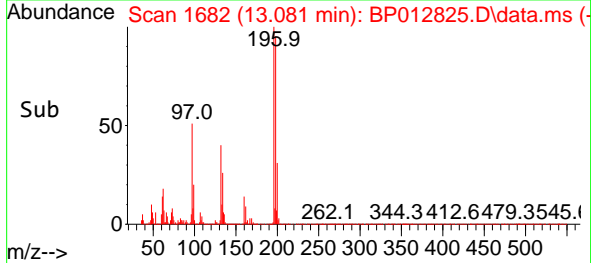
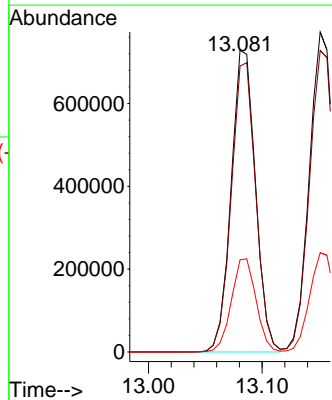
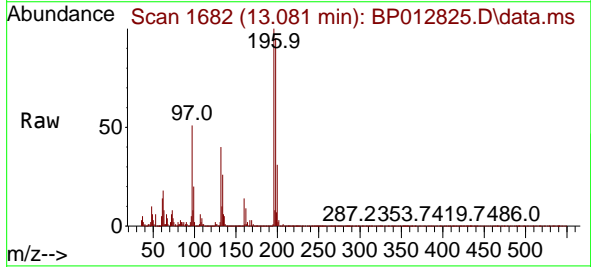
Ion	Ratio	Lower	Upper
237	100		
235	62.2	50.2	75.4
272	12.7	10.2	15.2

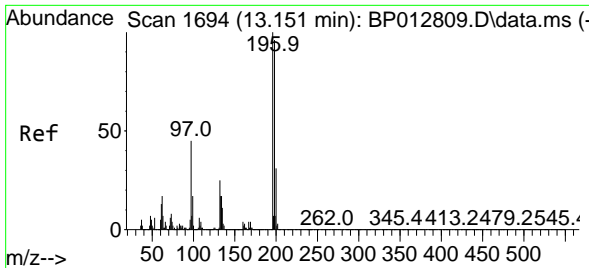


#41
 2,4,6-Trichlorophenol
 Concen: 28.150 ng/ul
 RT: 13.081 min Scan# 1682
 Delta R.T. -0.006 min
 Lab File: BP012825.D
 Acq: 28 Nov 2022 19:56

Tgt Ion:196 Resp: 1083534

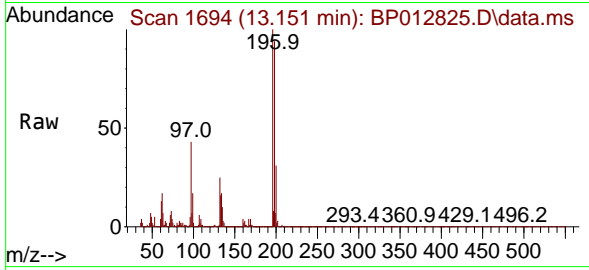
Ion	Ratio	Lower	Upper
196	100		
198	94.7	76.5	114.7
200	30.5	25.3	37.9



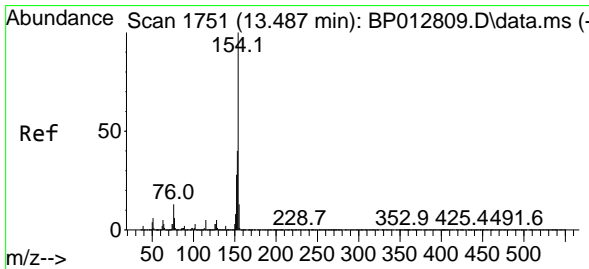
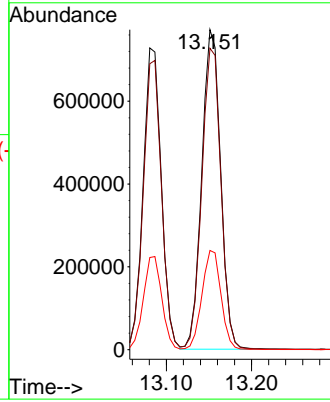
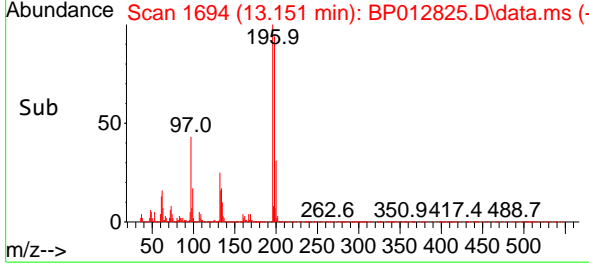


#42
 2,4,5-Trichlorophenol
 Concen: 28.713 ng/uI
 RT: 13.151 min Scan# 1694
 Delta R.T. -0.006 min
 Lab File: BP012825.D
 Acq: 28 Nov 2022 19:56

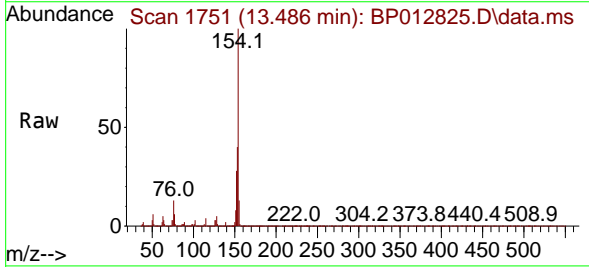
Instrument :
 BNA_P
 ClientSampleId :
 SLCS200



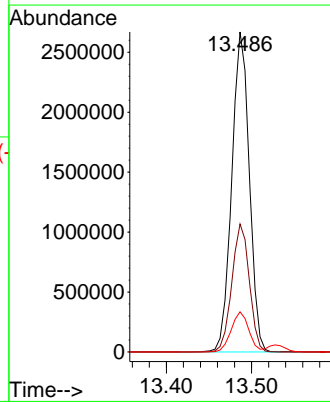
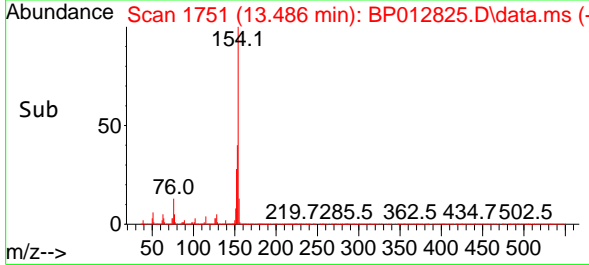
Tgt Ion:196 Resp: 1188093
 Ion Ratio Lower Upper
 196 100
 198 94.2 77.6 116.4
 200 31.0 24.2 36.4

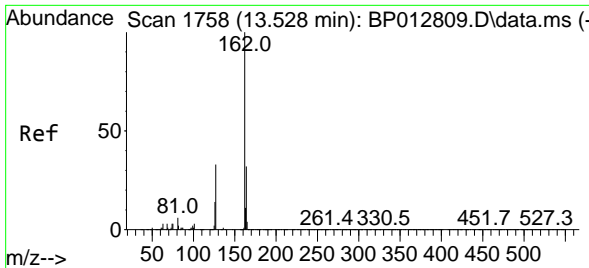


#43
 1,1'-Biphenyl
 Concen: 27.222 ng/uI
 RT: 13.486 min Scan# 1751
 Delta R.T. -0.006 min
 Lab File: BP012825.D
 Acq: 28 Nov 2022 19:56



Tgt Ion:154 Resp: 3825516
 Ion Ratio Lower Upper
 154 100
 153 40.0 32.0 48.0
 76 12.6 10.2 15.4



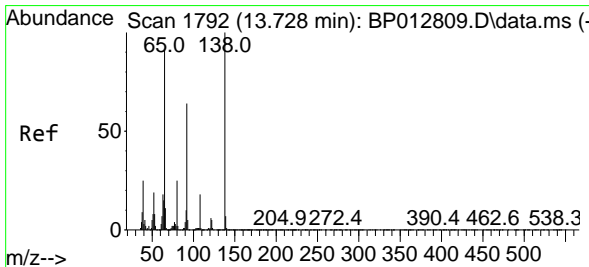
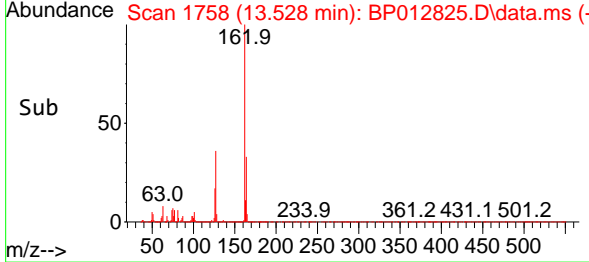
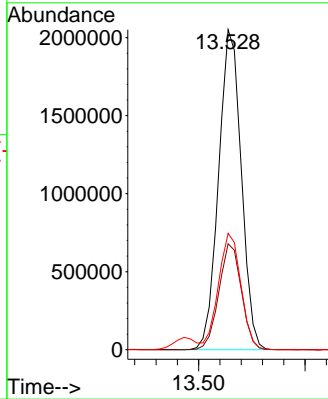
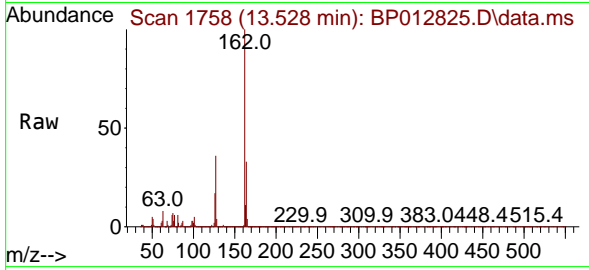


#44
 2-Chloronaphthalene
 Concen: 26.909 ng/uI
 RT: 13.528 min Scan# 1758
 Delta R.T. -0.006 min
 Lab File: BP012825.D
 Acq: 28 Nov 2022 19:56

Instrument :
 BNA_P
 ClientSampleId :
 SLCS200

Tgt Ion:162 Resp: 3025283

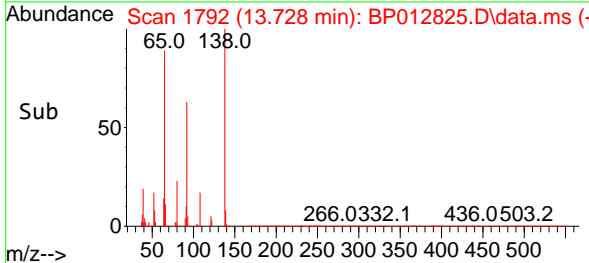
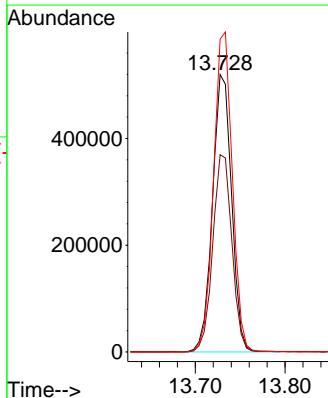
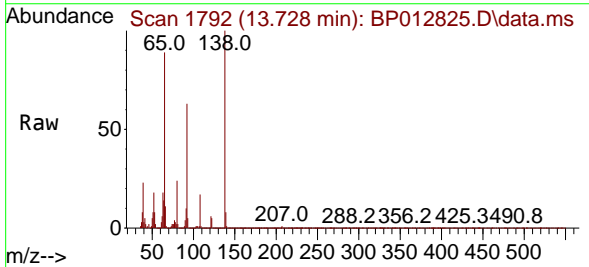
Ion	Ratio	Lower	Upper
162	100		
164	33.1	26.5	39.7
127	36.3	28.8	43.2

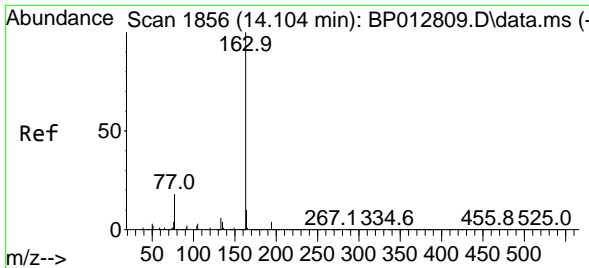


#45
 2-Nitroaniline
 Concen: 34.975 ng/uI
 RT: 13.728 min Scan# 1792
 Delta R.T. -0.006 min
 Lab File: BP012825.D
 Acq: 28 Nov 2022 19:56

Tgt Ion: 65 Resp: 769328

Ion	Ratio	Lower	Upper
65	100		
92	71.1	57.8	86.8
138	112.7	94.6	142.0



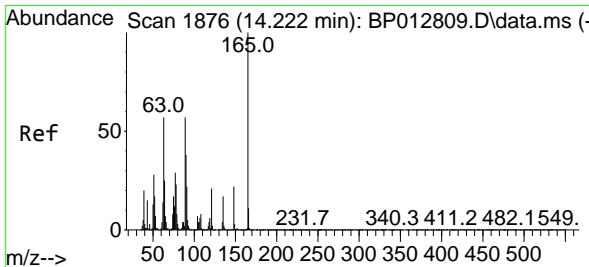
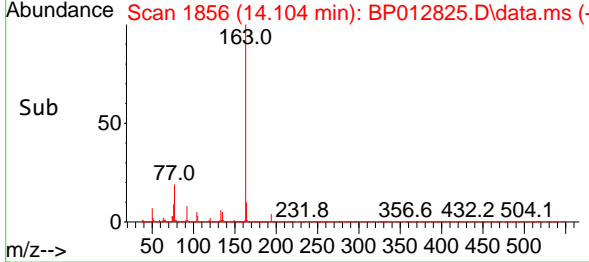
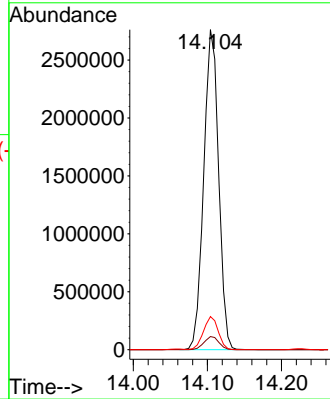
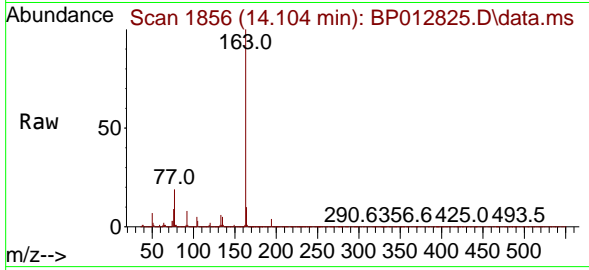


#47
 Dimethylphthalate
 Concen: 27.631 ng/ul
 RT: 14.104 min Scan# 1856
 Delta R.T. -0.006 min
 Lab File: BP012825.D
 Acq: 28 Nov 2022 19:56

Instrument : BNA_P
 ClientSampleId : SLCS200

Tgt Ion:163 Resp: 3846050

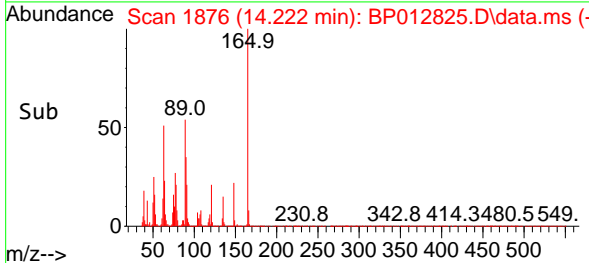
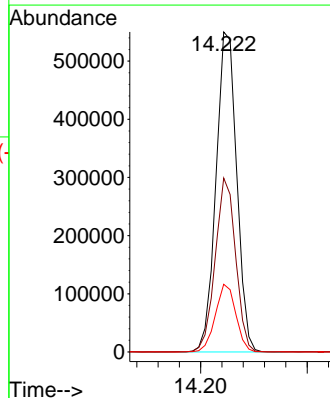
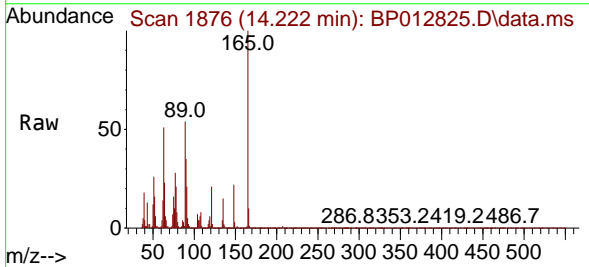
Ion	Ratio	Lower	Upper
163	100		
194	4.1	3.4	5.0
164	10.3	7.8	11.8

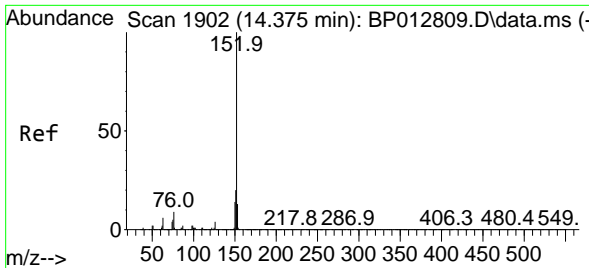


#48
 2,6-Dinitrotoluene
 Concen: 34.005 ng/ul
 RT: 14.222 min Scan# 1876
 Delta R.T. -0.006 min
 Lab File: BP012825.D
 Acq: 28 Nov 2022 19:56

Tgt Ion:165 Resp: 740735

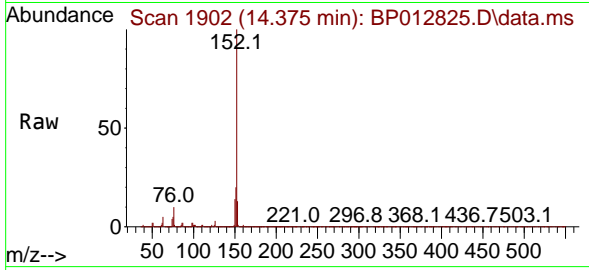
Ion	Ratio	Lower	Upper
165	100		
89	54.4	42.7	64.1
121	21.2	16.9	25.3



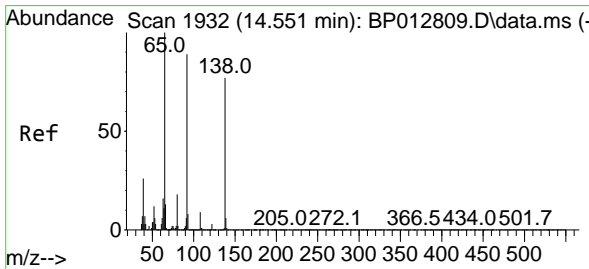
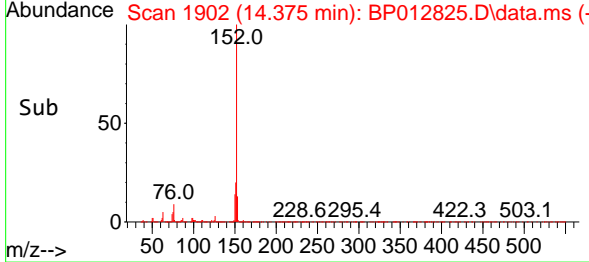
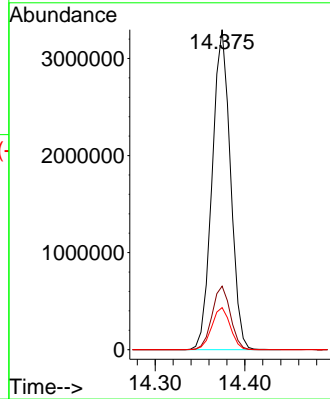


#50
 Acenaphthylene
 Concen: 27.555 ng/u1
 RT: 14.375 min Scan# 1902
 Delta R.T. -0.000 min
 Lab File: BP012825.D
 Acq: 28 Nov 2022 19:56

Instrument :
 BNA_P
 ClientSampleId :
 SLCS200

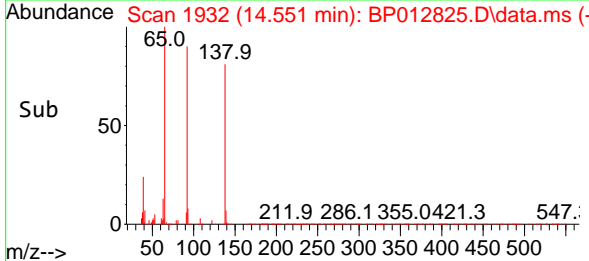
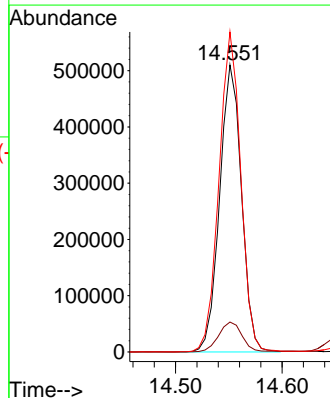
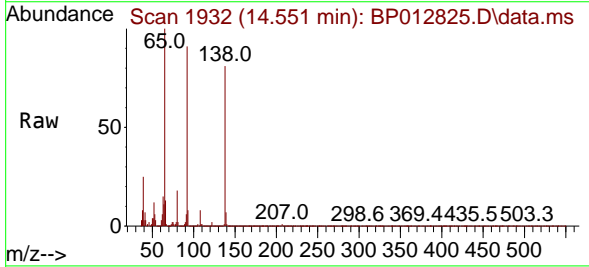


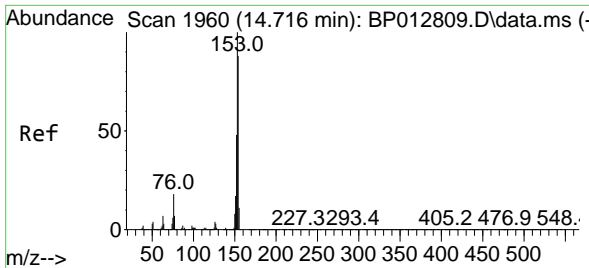
Tgt Ion:152 Resp: 4668268
 Ion Ratio Lower Upper
 152 100
 151 19.9 15.9 23.9
 153 13.2 10.7 16.1



#51
 3-Nitroaniline
 Concen: 28.763 ng/u1
 RT: 14.551 min Scan# 1932
 Delta R.T. -0.000 min
 Lab File: BP012825.D
 Acq: 28 Nov 2022 19:56

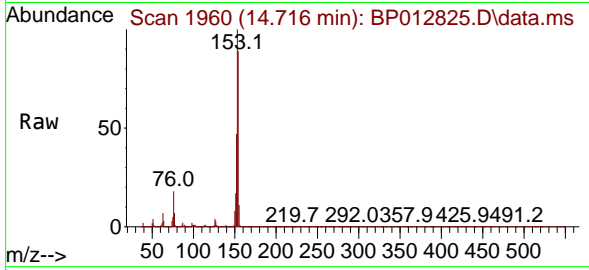
Tgt Ion:138 Resp: 725644
 Ion Ratio Lower Upper
 138 100
 108 10.4 9.9 14.9
 92 111.5 90.2 135.2



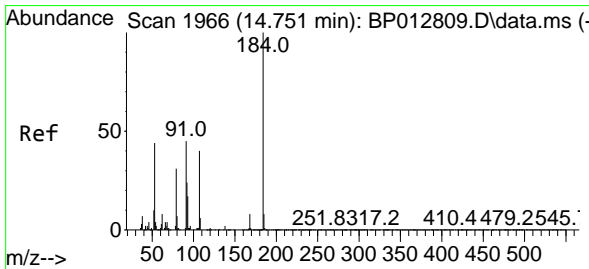
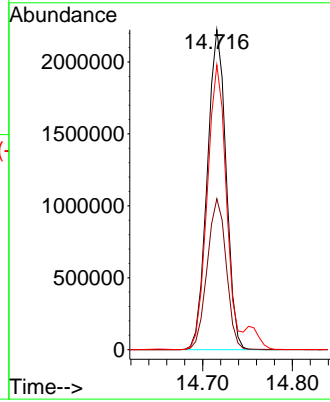
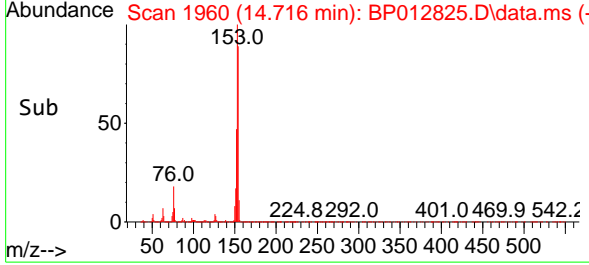


#52
 Acenaphthene
 Concen: 27.161 ng/uI
 RT: 14.716 min Scan# 1960
 Delta R.T. -0.000 min
 Lab File: BP012825.D
 Acq: 28 Nov 2022 19:56

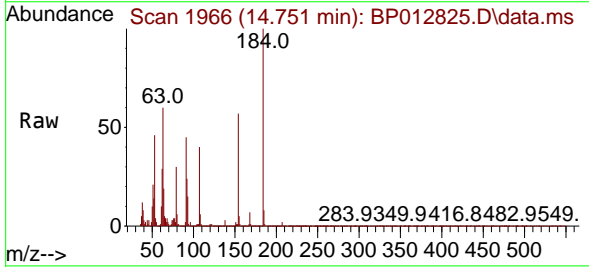
Instrument :
 BNA_P
 ClientSampleId :
 SLCS200



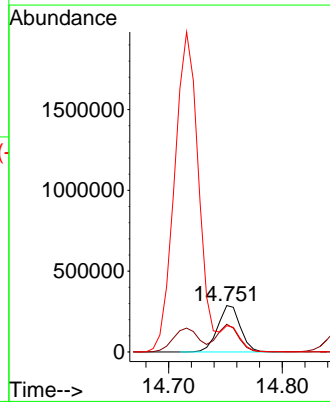
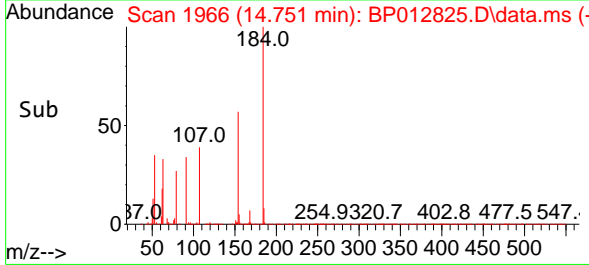
Tgt Ion:153 Resp: 3239532
 Ion Ratio Lower Upper
 153 100
 152 47.2 38.2 57.4
 154 89.0 69.8 104.6

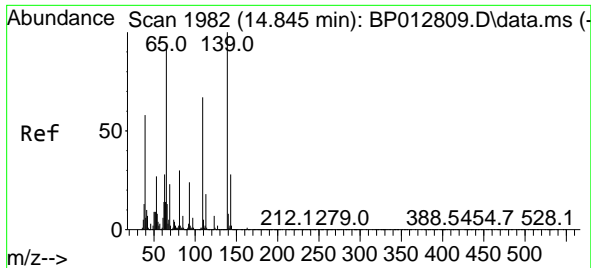


#53
 2,4-Dinitrophenol
 Concen: 28.328 ng/uI
 RT: 14.751 min Scan# 1966
 Delta R.T. -0.006 min
 Lab File: BP012825.D
 Acq: 28 Nov 2022 19:56



Tgt Ion:184 Resp: 396531
 Ion Ratio Lower Upper
 184 100
 63 59.6 48.1 72.1
 154 56.5 47.4 71.2

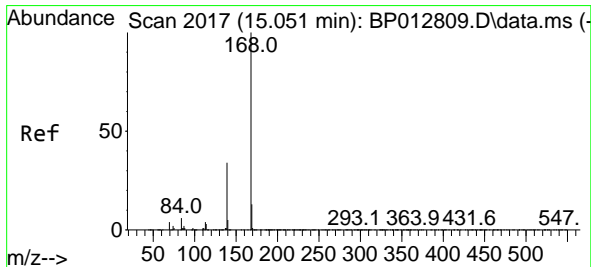
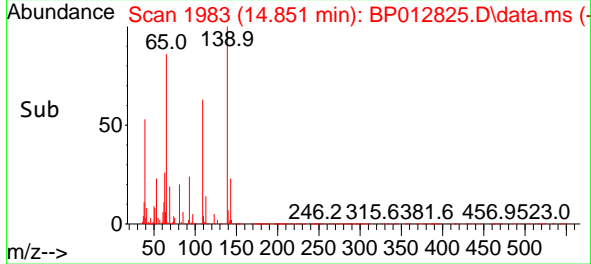
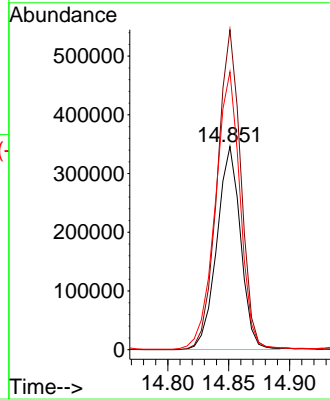
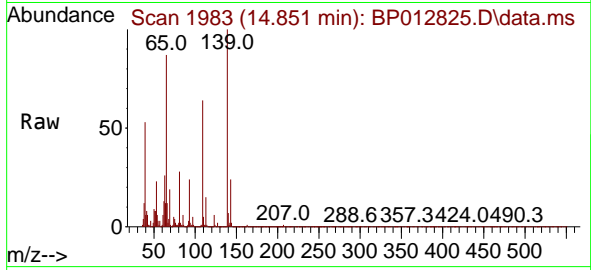




#55
 4-Nitrophenol
 Concen: 27.312 ng/uI
 RT: 14.851 min Scan# 1982
 Delta R.T. -0.000 min
 Lab File: BP012825.D
 Acq: 28 Nov 2022 19:56

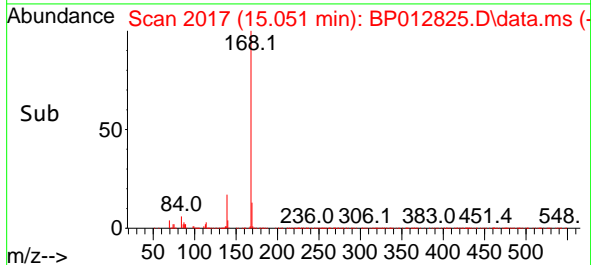
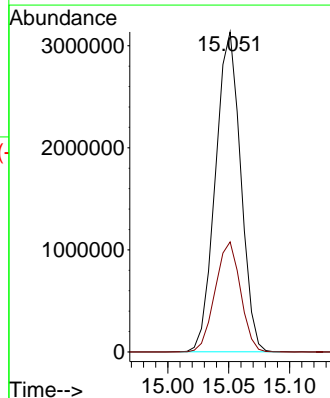
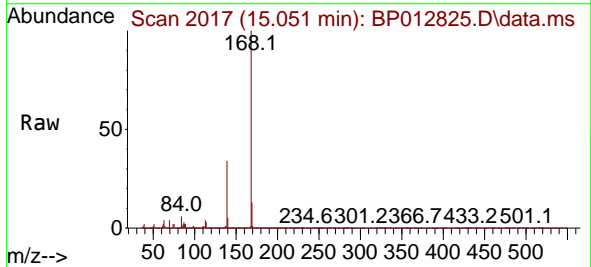
Instrument :
 BNA_P
 ClientSampleId :
 SLCS200

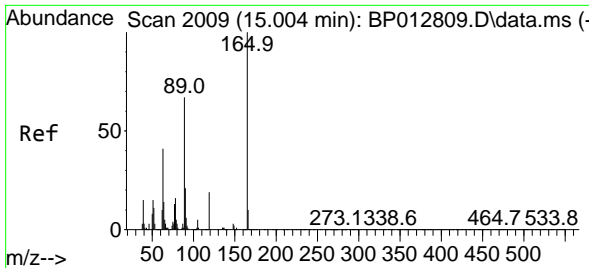
Tgt Ion:109 Resp: 469753
 Ion Ratio Lower Upper
 109 100
 139 157.4 119.2 178.8
 65 136.8 110.7 166.1



#56
 Dibenzofuran
 Concen: 27.504 ng/uI
 RT: 15.051 min Scan# 2017
 Delta R.T. -0.000 min
 Lab File: BP012825.D
 Acq: 28 Nov 2022 19:56

Tgt Ion:168 Resp: 4521623
 Ion Ratio Lower Upper
 168 100
 139 34.4 27.7 41.5



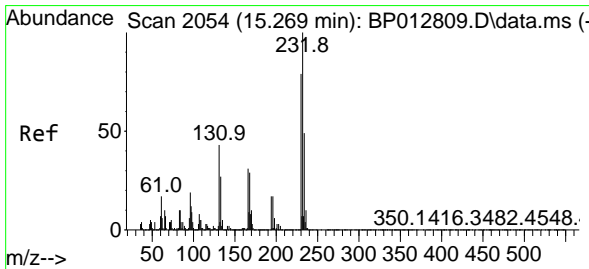
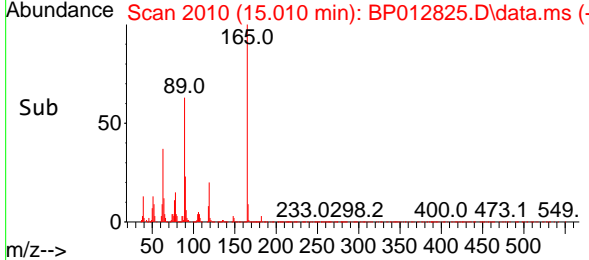
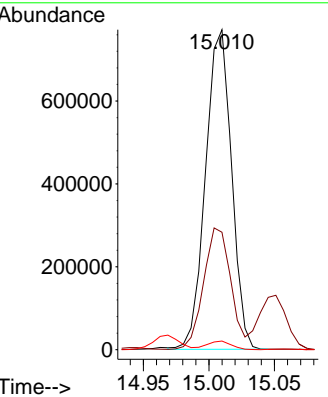
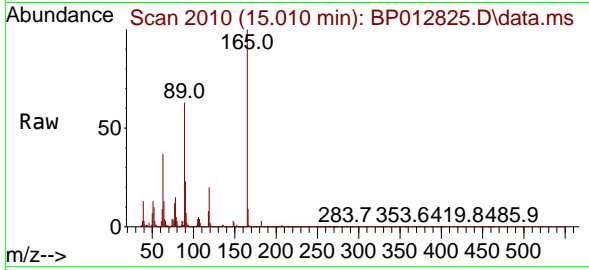


#57
 2,4-Dinitrotoluene
 Concen: 33.038 ng/ul
 RT: 15.010 min Scan# 2009
 Delta R.T. -0.000 min
 Lab File: BP012825.D
 Acq: 28 Nov 2022 19:56

Instrument :
 BNA_P
 ClientSampleId :
 SLCS200

Tgt Ion:165 Resp: 1062033

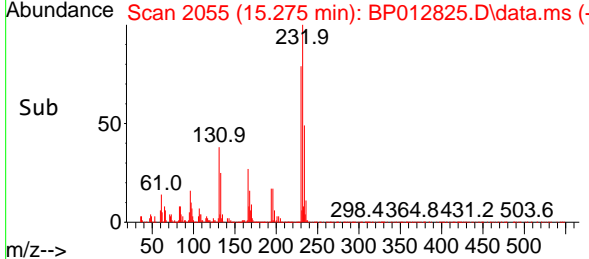
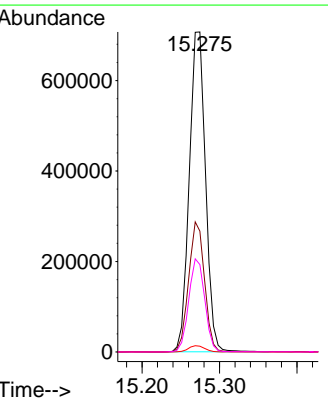
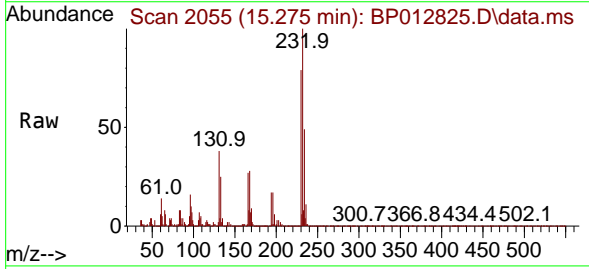
Ion	Ratio	Lower	Upper
165	100		
63	36.7	31.0	46.4
182	2.7	2.0	3.0

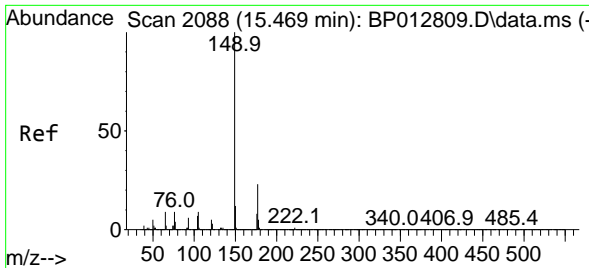


#58
 2,3,4,6-Tetrachlorophenol
 Concen: 28.874 ng/ul
 RT: 15.275 min Scan# 2055
 Delta R.T. -0.000 min
 Lab File: BP012825.D
 Acq: 28 Nov 2022 19:56

Tgt Ion:232 Resp: 1029755

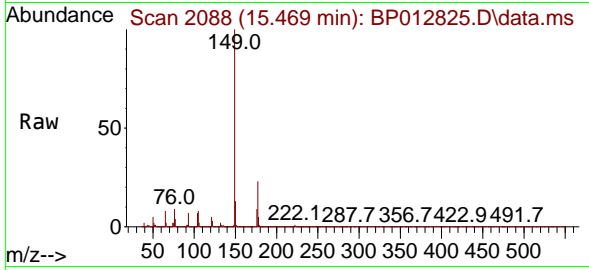
Ion	Ratio	Lower	Upper
232	100		
131	37.8	32.0	48.0
130	1.8	1.5	2.3
166	27.3	23.2	34.8



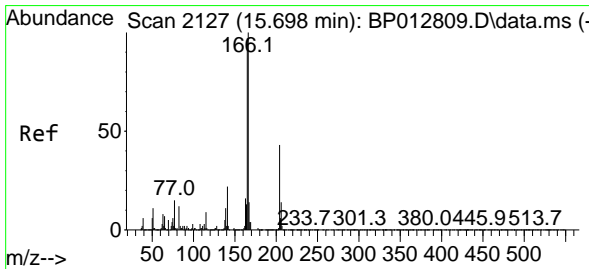
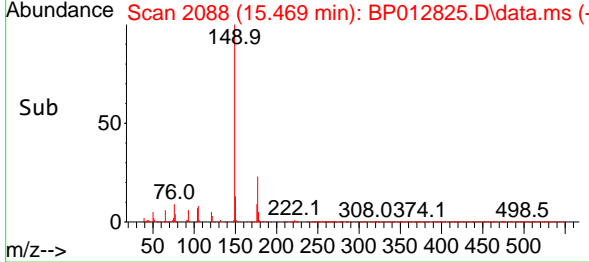
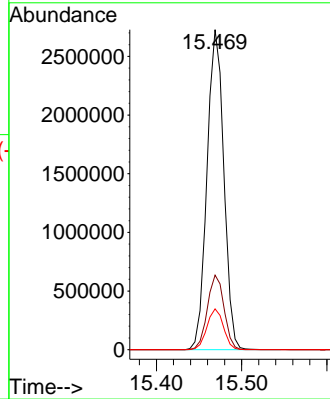


#59
 Diethylphthalate
 Concen: 27.726 ng/uI
 RT: 15.469 min Scan# 2088
 Delta R.T. -0.006 min
 Lab File: BP012825.D
 Acq: 28 Nov 2022 19:56

Instrument :
 BNA_P
 ClientSampleId :
 SLCS200

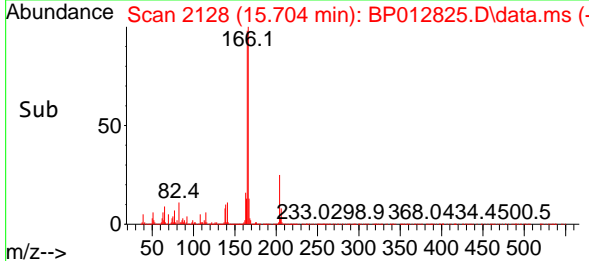
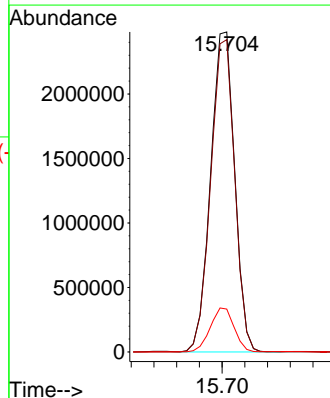
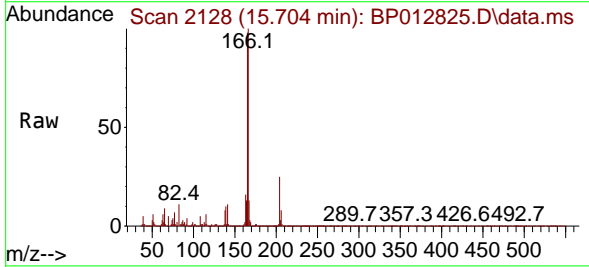


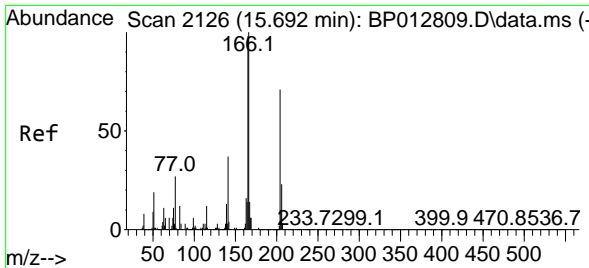
Tgt Ion:149 Resp: 3735705
 Ion Ratio Lower Upper
 149 100
 177 23.3 18.1 27.1
 150 12.8 9.8 14.8



#61
 Fluorene
 Concen: 27.700 ng/uI
 RT: 15.704 min Scan# 2128
 Delta R.T. -0.000 min
 Lab File: BP012825.D
 Acq: 28 Nov 2022 19:56

Tgt Ion:166 Resp: 3651973
 Ion Ratio Lower Upper
 166 100
 165 97.6 78.2 117.2
 167 13.4 10.9 16.3



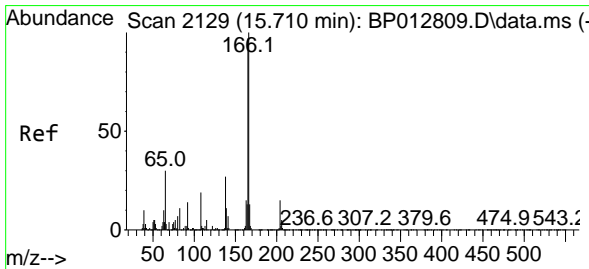
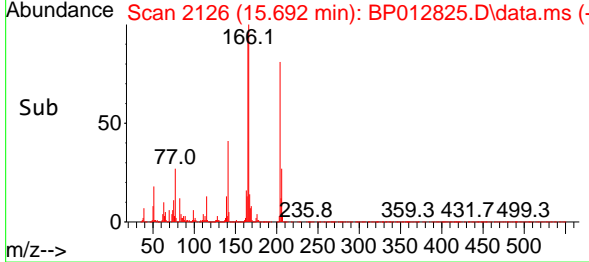
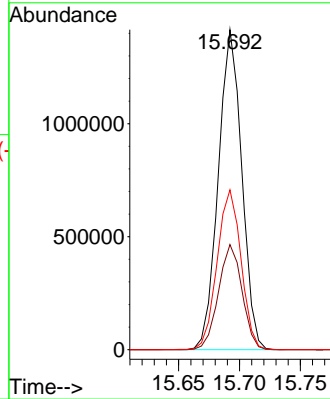
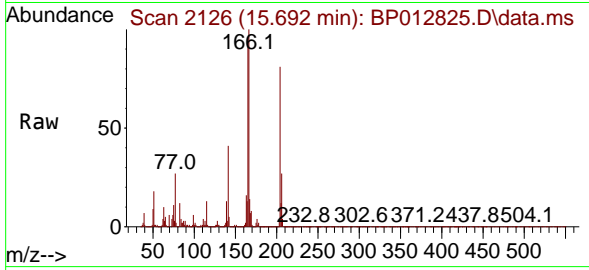


#62
 4-Chlorophenyl-phenylether
 Concen: 27.757 ng/ul
 RT: 15.692 min Scan# 2126
 Delta R.T. -0.006 min
 Lab File: BP012825.D
 Acq: 28 Nov 2022 19:56

Instrument : BNA_P
 ClientSampleId : SLCS200

Tgt Ion: 204 Resp: 1898697

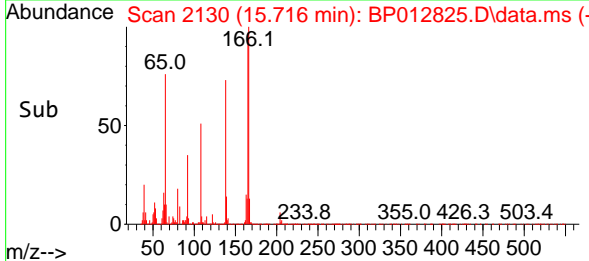
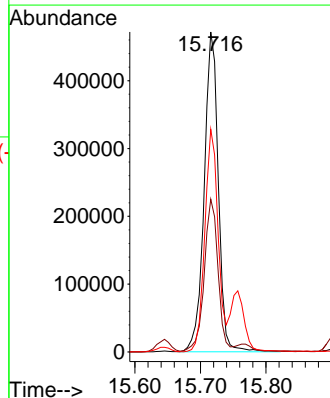
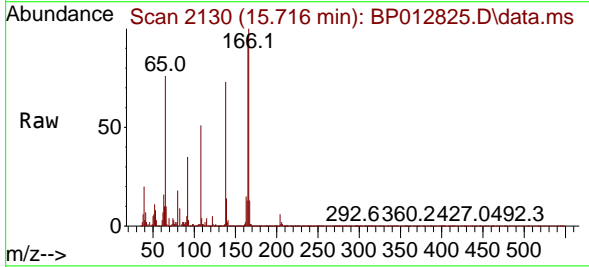
Ion	Ratio	Lower	Upper
204	100		
206	32.8	26.0	39.0
141	50.0	40.7	61.1

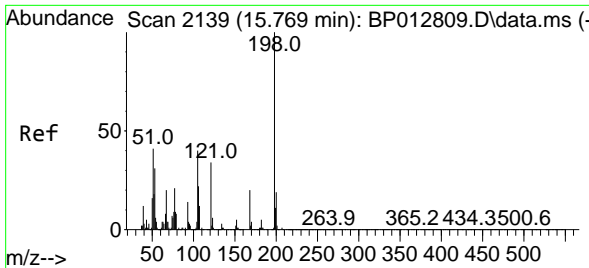


#63
 4-Nitroaniline
 Concen: 33.016 ng/ul
 RT: 15.716 min Scan# 2130
 Delta R.T. -0.000 min
 Lab File: BP012825.D
 Acq: 28 Nov 2022 19:56

Tgt Ion: 138 Resp: 709908

Ion	Ratio	Lower	Upper
138	100		
92	47.7	38.6	57.8
108	69.6	56.4	84.6

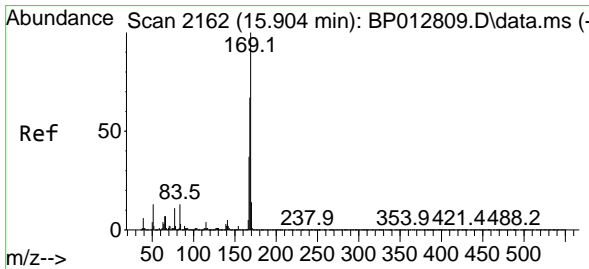
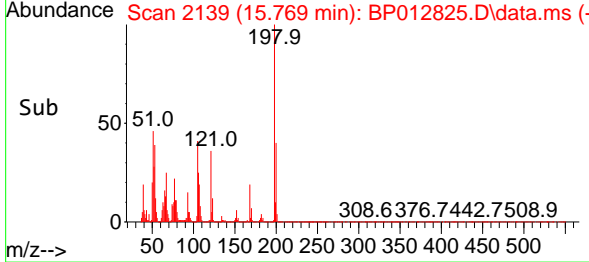
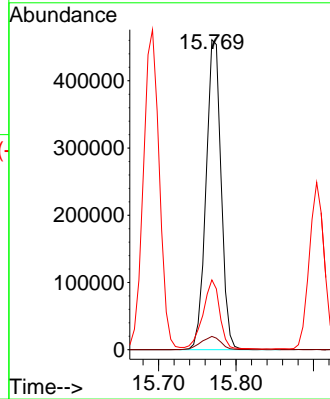
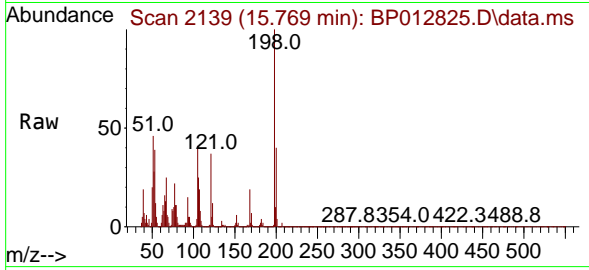




#66
 4,6-Dinitro-2-methylphenol
 Concen: 30.450 ng/ul
 RT: 15.769 min Scan# 2139
 Delta R.T. -0.006 min
 Lab File: BP012825.D
 Acq: 28 Nov 2022 19:56

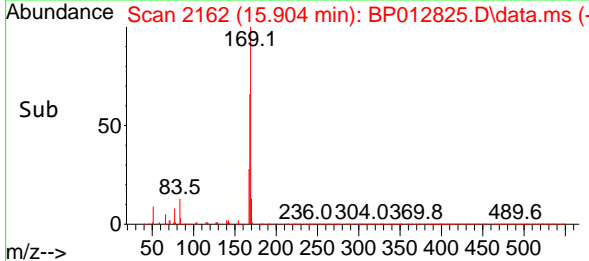
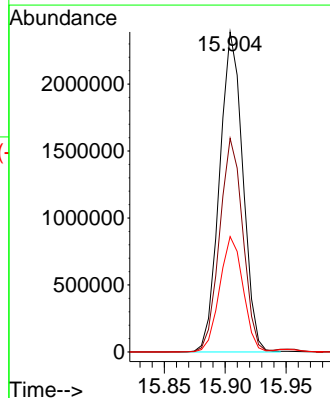
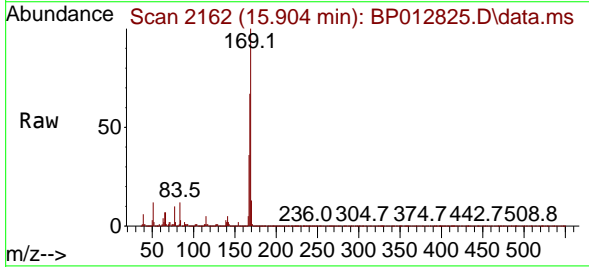
Instrument :
 BNA_P
 ClientSampleId :
 SLCS200

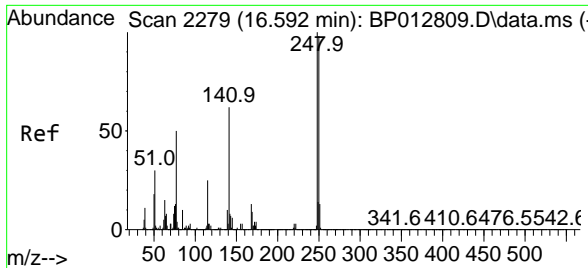
Tgt Ion	Resp	Lower	Upper
198	100		
182	4.3	4.1	6.1
77	22.5	18.9	28.3



#67
 N-Nitrosodiphenylamine
 Concen: 28.148 ng/ul
 RT: 15.904 min Scan# 2162
 Delta R.T. -0.006 min
 Lab File: BP012825.D
 Acq: 28 Nov 2022 19:56

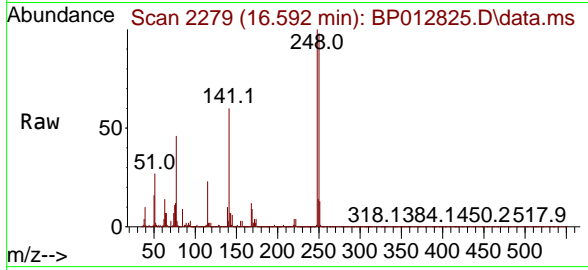
Tgt Ion	Resp	Lower	Upper
169	100		
168	66.7	53.2	79.8
167	36.1	29.6	44.4



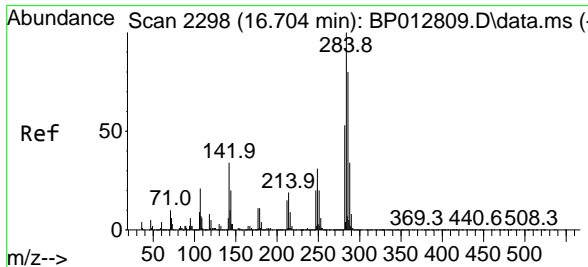
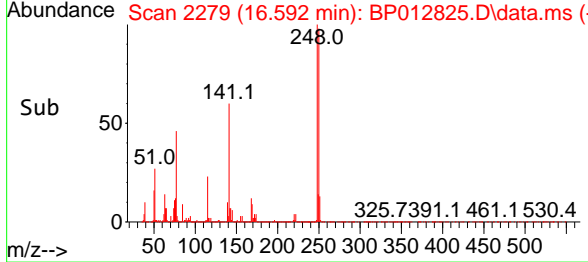
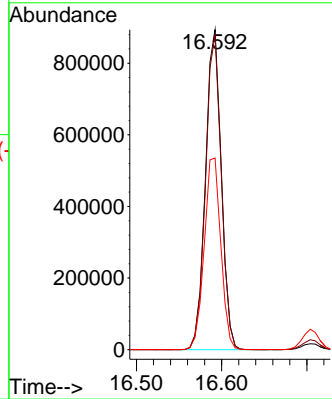


#68
 4-Bromophenyl-phenylether
 Concen: 29.496 ng/ul
 RT: 16.592 min Scan# 21
 Delta R.T. -0.000 min
 Lab File: BP012825.D
 Acq: 28 Nov 2022 19:56

Instrument :
 BNA_P
 ClientSampleId :
 SLCS200

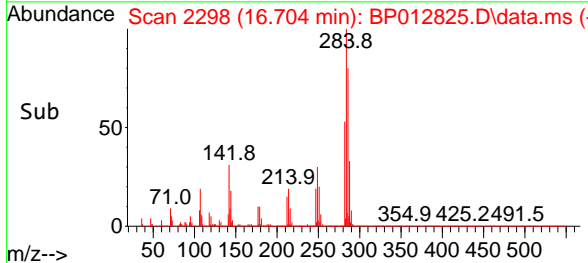
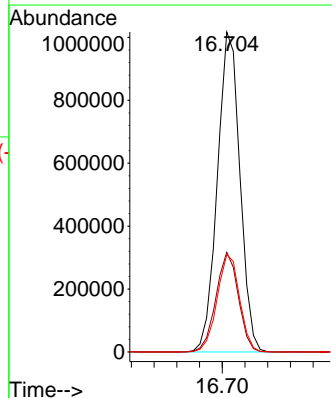
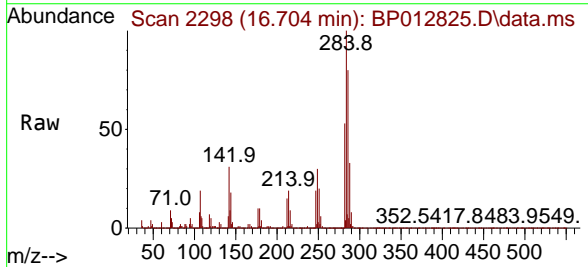


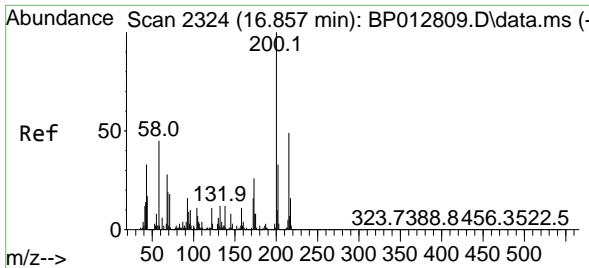
Tgt Ion:248 Resp: 1155071
 Ion Ratio Lower Upper
 248 100
 250 98.5 78.6 118.0
 141 59.9 48.7 73.1



#69
 Hexachlorobenzene
 Concen: 28.136 ng/ul
 RT: 16.704 min Scan# 2298
 Delta R.T. -0.006 min
 Lab File: BP012825.D
 Acq: 28 Nov 2022 19:56

Tgt Ion:284 Resp: 1404312
 Ion Ratio Lower Upper
 284 100
 142 31.1 25.0 37.6
 249 30.4 24.6 36.8



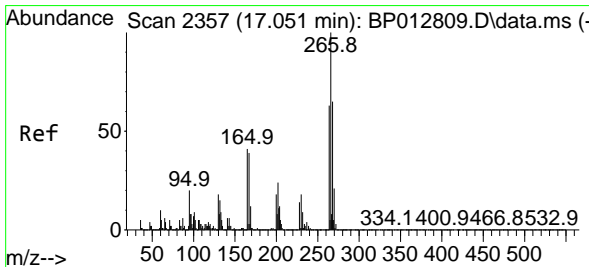
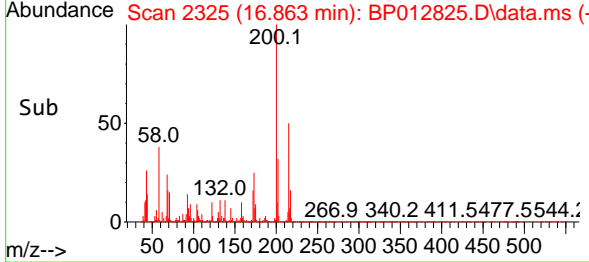
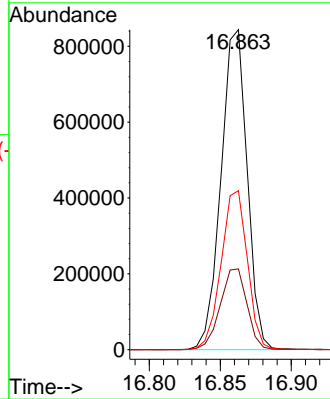
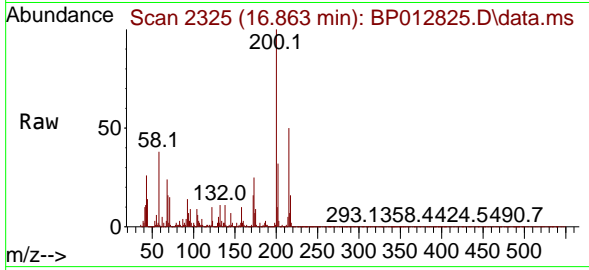


#70
 Atrazine
 Concen: 27.916 ng/ul
 RT: 16.863 min Scan# 21
 Delta R.T. -0.000 min
 Lab File: BP012825.D
 Acq: 28 Nov 2022 19:56

Instrument :
 BNA_P
 ClientSampleId :
 SLCS200

Tgt Ion:200 Resp: 1083060

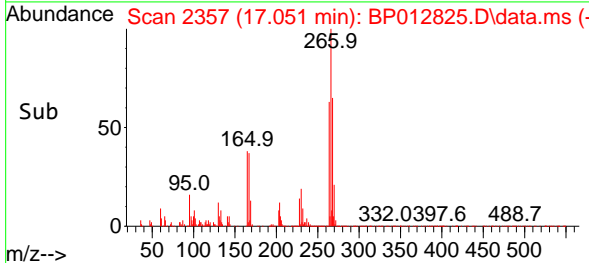
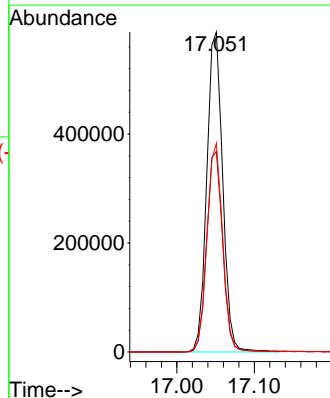
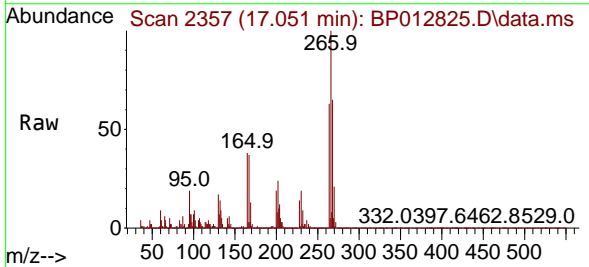
Ion	Ratio	Lower	Upper
200	100		
173	25.3	20.3	30.5
215	49.7	40.1	60.1

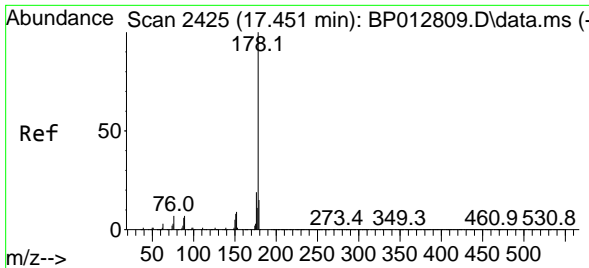


#71
 Pentachlorophenol
 Concen: 27.248 ng/ul
 RT: 17.051 min Scan# 2357
 Delta R.T. -0.000 min
 Lab File: BP012825.D
 Acq: 28 Nov 2022 19:56

Tgt Ion:266 Resp: 835166

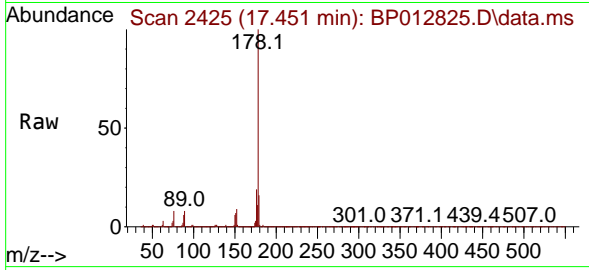
Ion	Ratio	Lower	Upper
266	100		
264	62.7	50.7	76.1
268	65.2	51.8	77.8



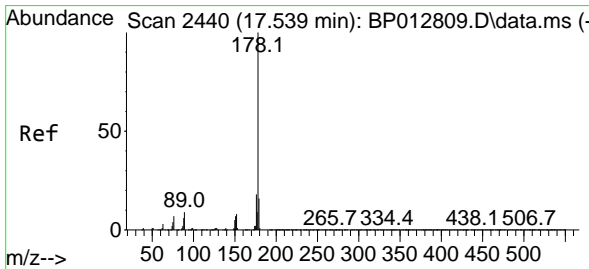
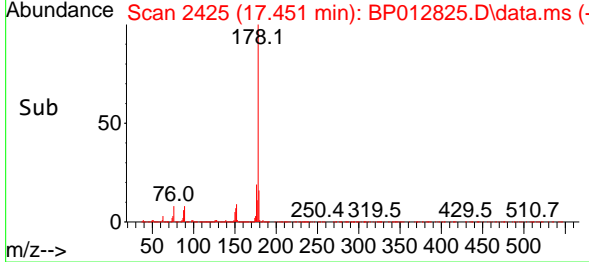
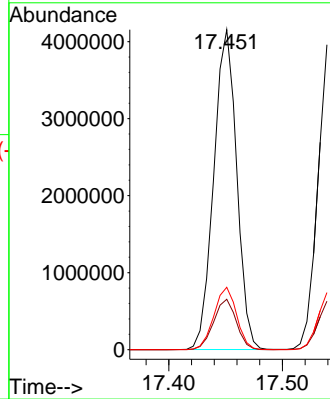


#72
 Phenanthrene
 Concen: 27.493 ng/uI
 RT: 17.451 min Scan# 2425
 Delta R.T. -0.000 min
 Lab File: BP012825.D
 Acq: 28 Nov 2022 19:56

Instrument :
 BNA_P
 ClientSampleId :
 SLCS200

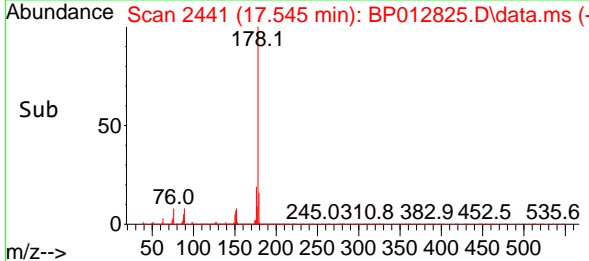
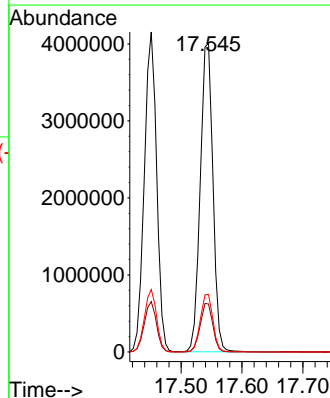
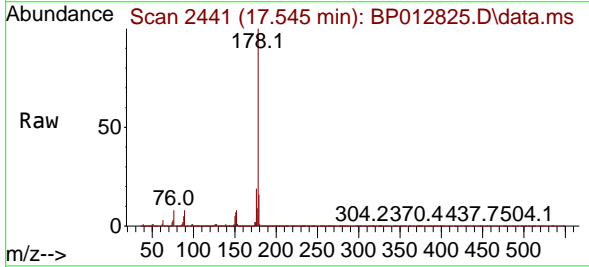


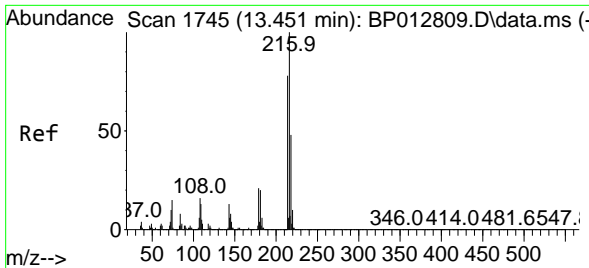
Tgt Ion:178 Resp: 5830127
 Ion Ratio Lower Upper
 178 100
 179 15.8 12.3 18.5
 176 19.5 15.4 23.0



#74
 Anthracene
 Concen: 27.664 ng/uI
 RT: 17.545 min Scan# 2441
 Delta R.T. -0.000 min
 Lab File: BP012825.D
 Acq: 28 Nov 2022 19:56

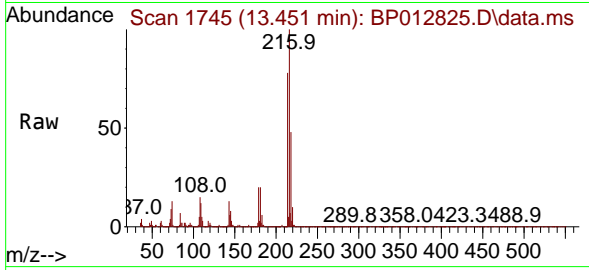
Tgt Ion:178 Resp: 5803530
 Ion Ratio Lower Upper
 178 100
 179 15.5 12.4 18.6
 176 18.7 14.8 22.2



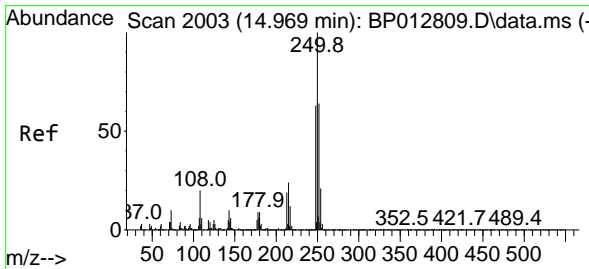
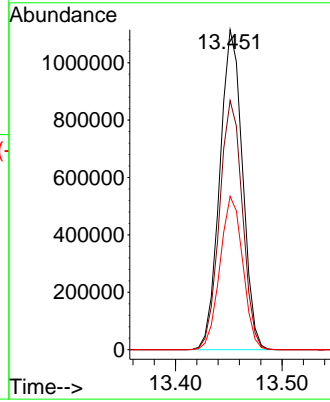
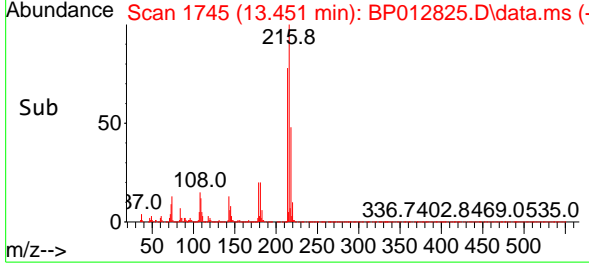


#75
 1,2,3,4-Tetrachlorobenzene
 Concen: 26.854 ng/uL
 RT: 13.451 min Scan# 1745
 Delta R.T. -0.006 min
 Lab File: BP012825.D
 Acq: 28 Nov 2022 19:56

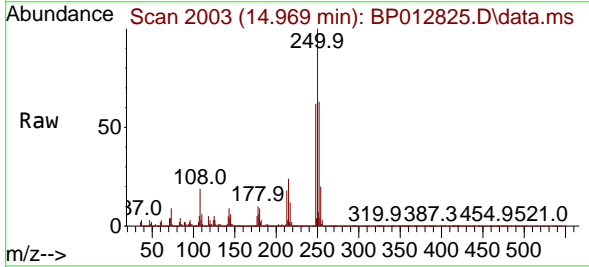
Instrument : BNA_P
 ClientSampleId : SLCS200



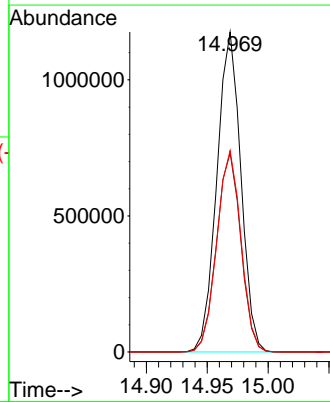
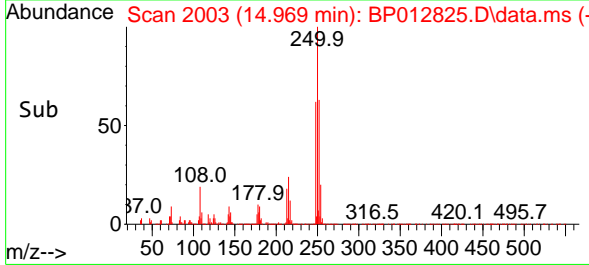
Tgt Ion:216 Resp: 1651838
 Ion Ratio Lower Upper
 216 100
 214 77.8 62.3 93.5
 218 47.9 39.1 58.7

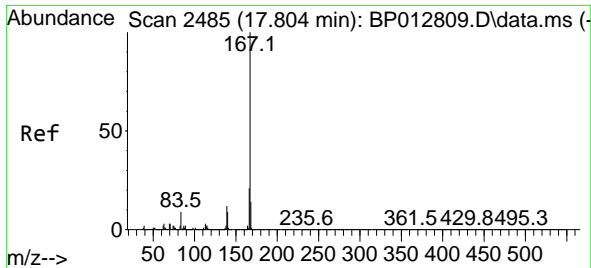


#76
 Pentachlorobenzene
 Concen: 25.219 ng/uL
 RT: 14.969 min Scan# 2003
 Delta R.T. -0.000 min
 Lab File: BP012825.D
 Acq: 28 Nov 2022 19:56



Tgt Ion:250 Resp: 1612537
 Ion Ratio Lower Upper
 250 100
 248 62.2 50.6 76.0
 252 62.9 50.5 75.7



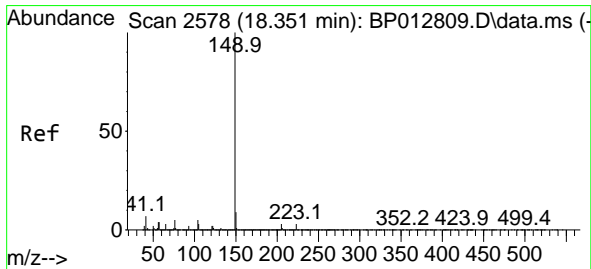
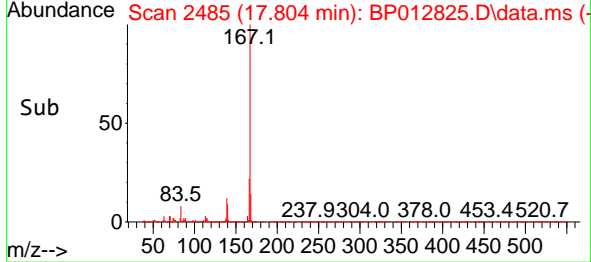
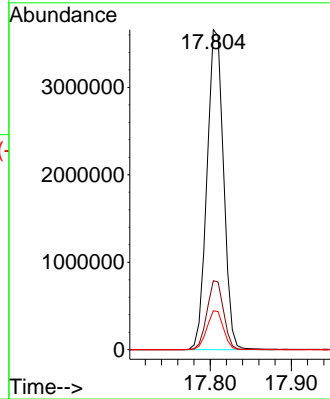
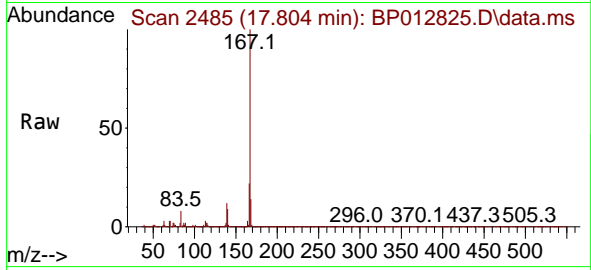


#77
 Carbazole
 Concen: 29.142 ng/uI
 RT: 17.804 min Scan# 2485
 Delta R.T. -0.006 min
 Lab File: BP012825.D
 Acq: 28 Nov 2022 19:56

Instrument :
 BNA_P
 ClientSampleId :
 SLCS200

Tgt Ion:167 Resp: 5171960

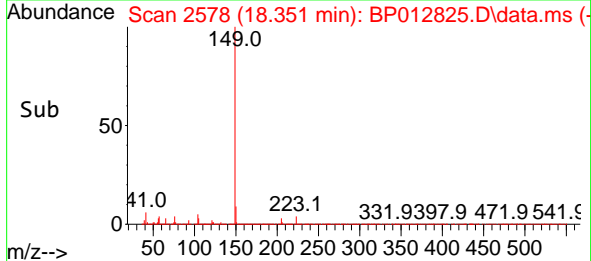
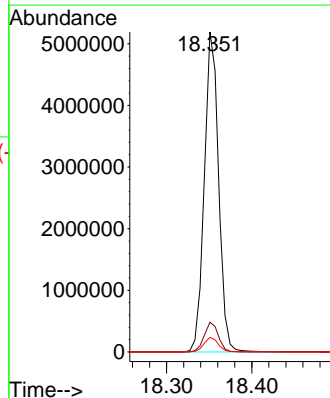
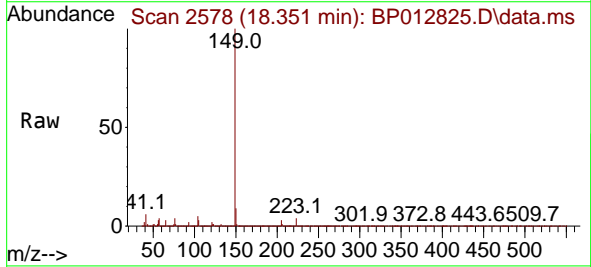
Ion	Ratio	Lower	Upper
167	100		
166	21.5	17.1	25.7
139	12.2	9.8	14.8

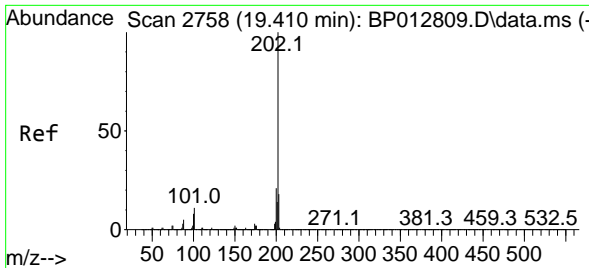


#78
 Di-n-butylphthalate
 Concen: 28.736 ng/uI
 RT: 18.351 min Scan# 2578
 Delta R.T. -0.006 min
 Lab File: BP012825.D
 Acq: 28 Nov 2022 19:56

Tgt Ion:149 Resp: 6037223

Ion	Ratio	Lower	Upper
149	100		
150	9.3	7.2	10.8
104	4.6	3.7	5.5



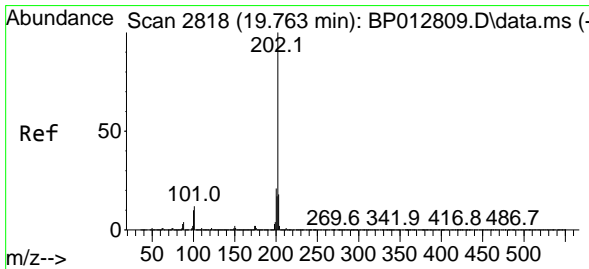
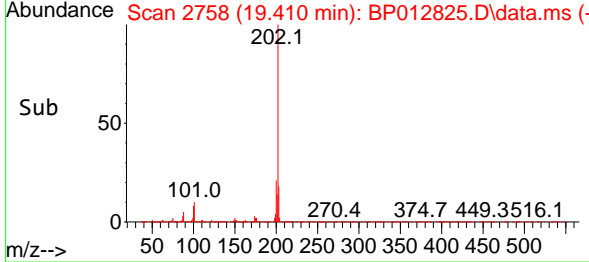
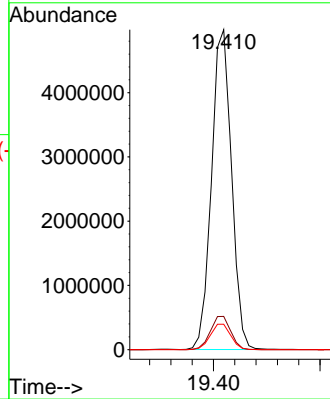
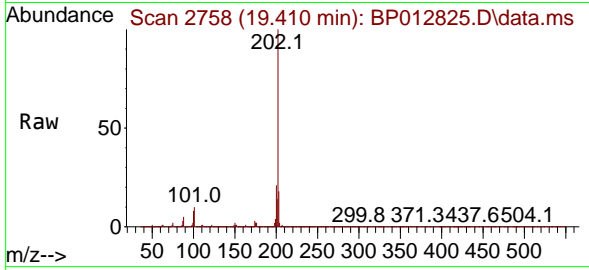


#80
 Fluoranthene
 Concen: 29.284 ng/u1
 RT: 19.410 min Scan# 2758
 Delta R.T. -0.000 min
 Lab File: BP012825.D
 Acq: 28 Nov 2022 19:56

Instrument :
 BNA_P
 ClientSampleId :
 SLCS200

Tgt Ion:202 Resp: 6496200

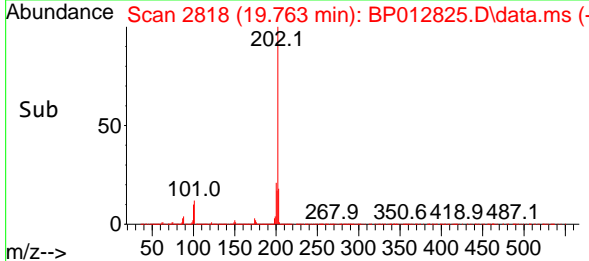
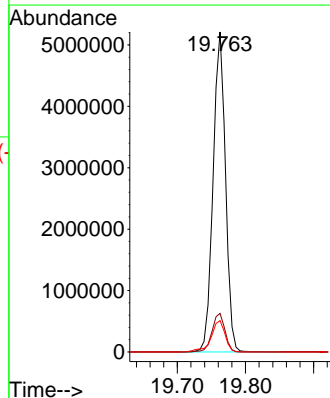
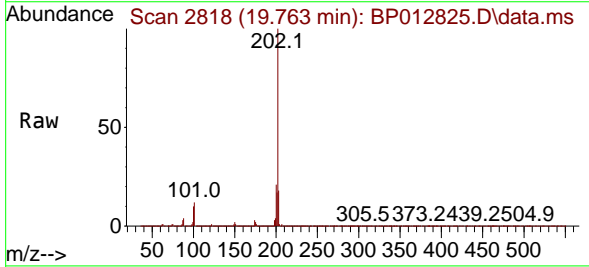
Ion	Ratio	Lower	Upper
202	100		
101	10.4	8.7	13.1
100	8.0	6.9	10.3

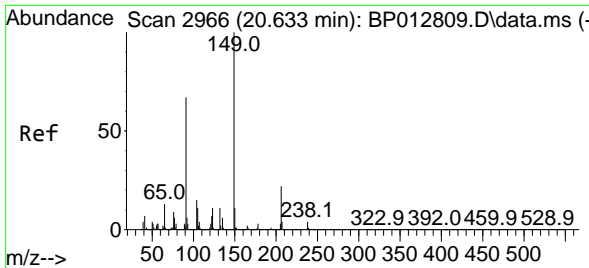


#82
 Pyrene
 Concen: 28.765 ng/u1
 RT: 19.763 min Scan# 2818
 Delta R.T. -0.000 min
 Lab File: BP012825.D
 Acq: 28 Nov 2022 19:56

Tgt Ion:202 Resp: 6599735

Ion	Ratio	Lower	Upper
202	100		
101	12.1	10.3	15.5
100	9.8	8.6	13.0



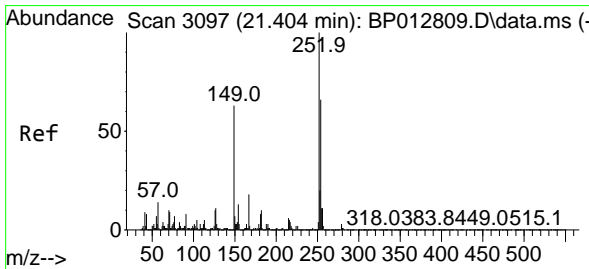
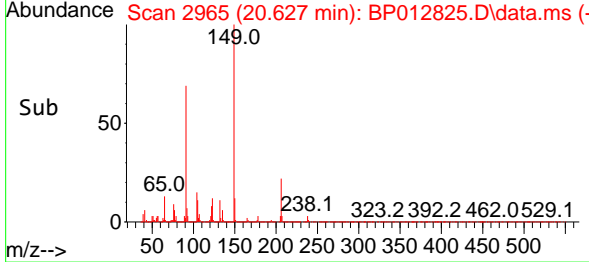
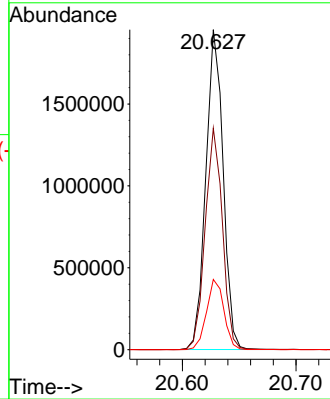
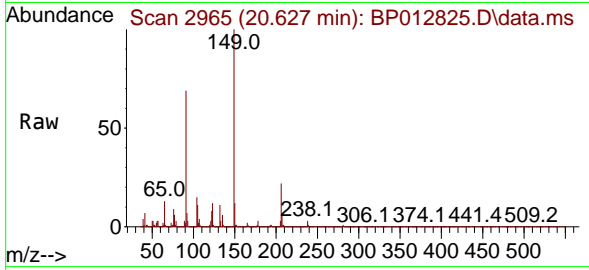


#83
 Butylbenzylphthalate
 Concen: 38.397 ng/ul
 RT: 20.627 min Scan# 2965
 Delta R.T. -0.006 min
 Lab File: BP012825.D
 Acq: 28 Nov 2022 19:56

Instrument : BNA_P
 Client Sample Id : SLCS200

Tgt Ion:149 Resp: 2061563

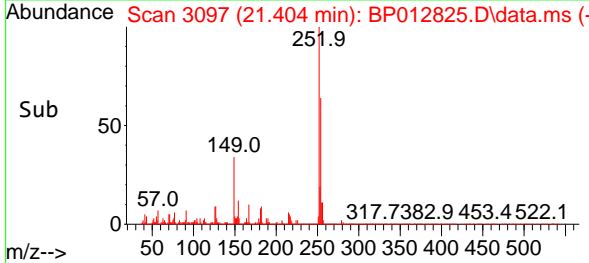
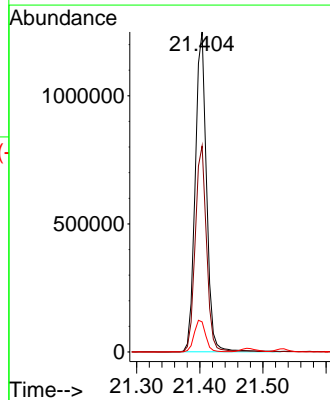
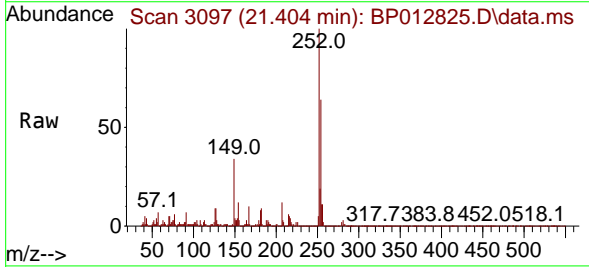
Ion	Ratio	Lower	Upper
149	100		
91	69.2	58.2	87.2
206	21.9	16.5	24.7

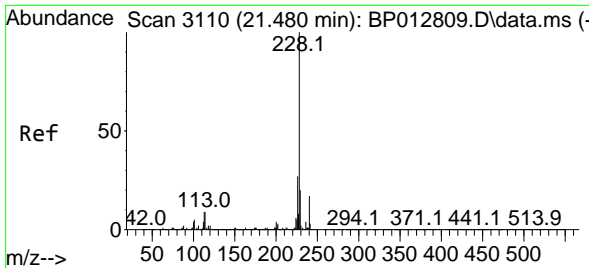


#84
 3,3'-Dichlorobenzidine
 Concen: 27.573 ng/ul
 RT: 21.404 min Scan# 3097
 Delta R.T. -0.000 min
 Lab File: BP012825.D
 Acq: 28 Nov 2022 19:56

Tgt Ion:252 Resp: 1554173

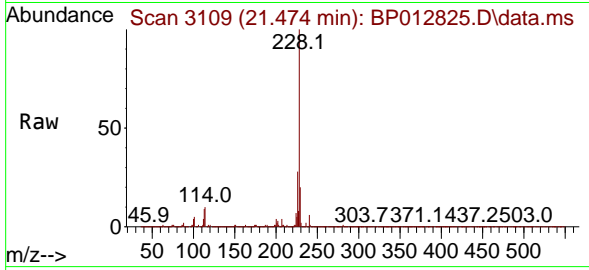
Ion	Ratio	Lower	Upper
252	100		
254	64.4	52.3	78.5
126	9.4	7.6	11.4



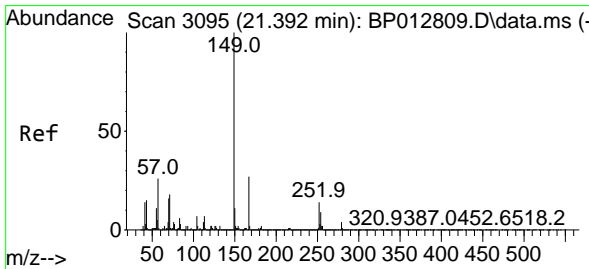
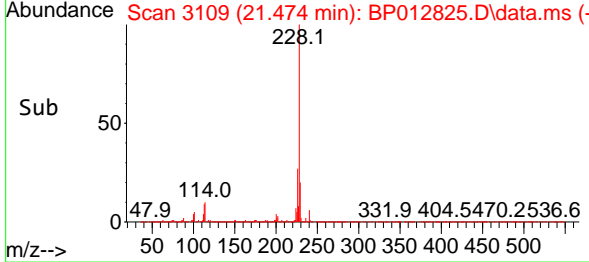
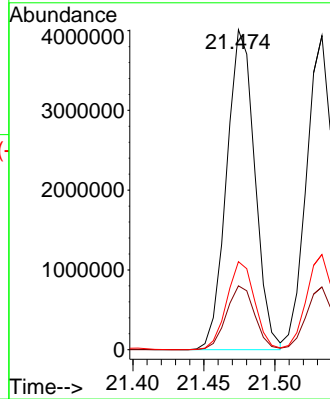


#85
 Benzo(a)anthracene
 Concen: 26.084 ng/uI
 RT: 21.474 min Scan# 3110
 Delta R.T. -0.006 min
 Lab File: BP012825.D
 Acq: 28 Nov 2022 19:56

Instrument :
 BNA_P
 ClientSampleId :
 SLCS200

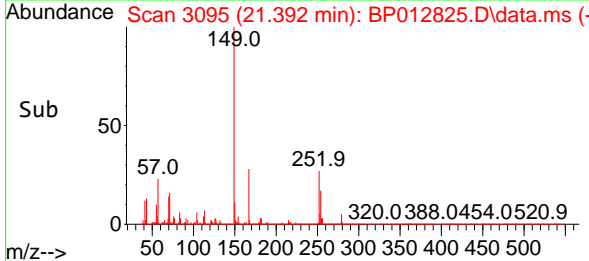
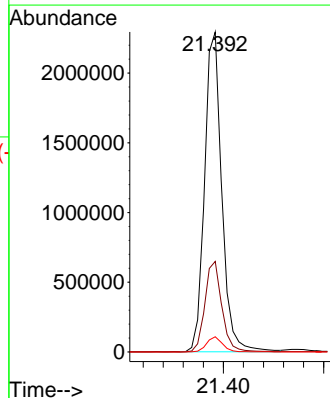
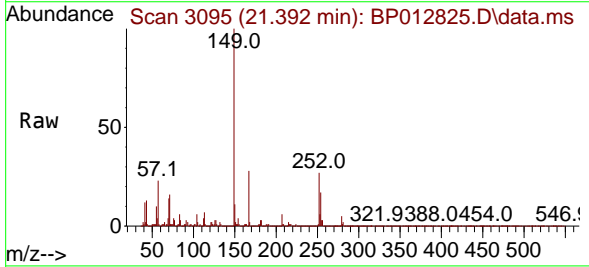


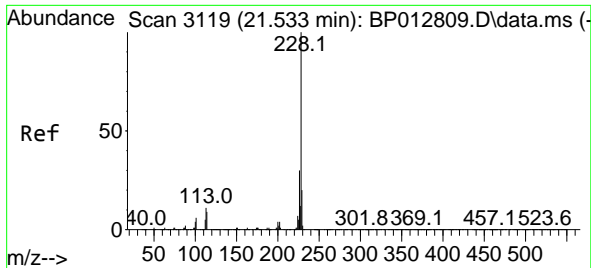
Tgt Ion:228 Resp: 5537427
 Ion Ratio Lower Upper
 228 100
 229 20.0 16.2 24.2
 226 27.5 22.2 33.2



#86
 Bis(2-ethylhexyl)phthalate
 Concen: 33.337 ng/uI
 RT: 21.392 min Scan# 3095
 Delta R.T. -0.006 min
 Lab File: BP012825.D
 Acq: 28 Nov 2022 19:56

Tgt Ion:149 Resp: 2737281
 Ion Ratio Lower Upper
 149 100
 167 28.3 22.7 34.1
 279 4.8 3.8 5.6



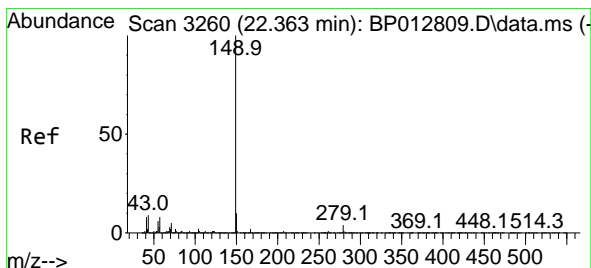
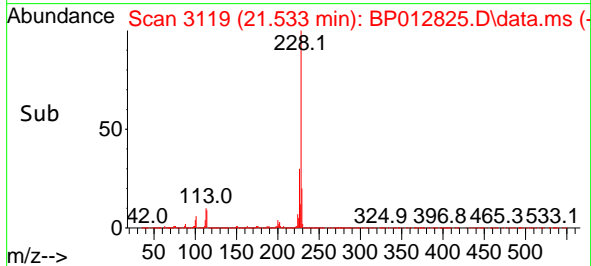
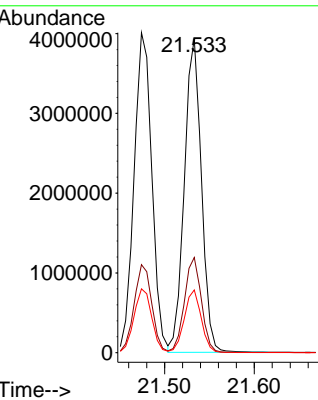
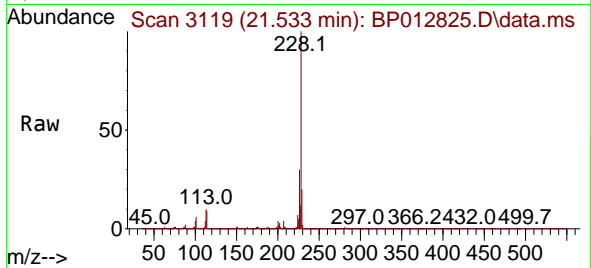


#87
 Chrysene
 Concen: 25.315 ng/ul
 RT: 21.533 min Scan# 3119
 Delta R.T. -0.000 min
 Lab File: BP012825.D
 Acq: 28 Nov 2022 19:56

Instrument : BNA_P
 Client SampleId : SLCS200

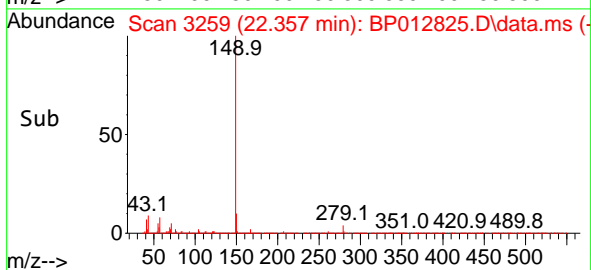
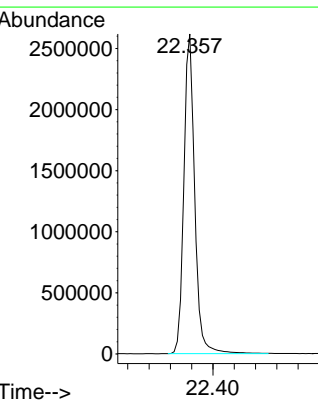
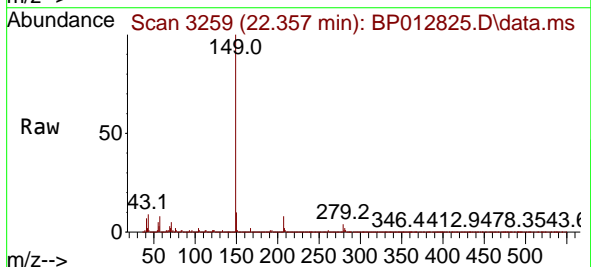
Tgt Ion: 228 Resp: 5196093

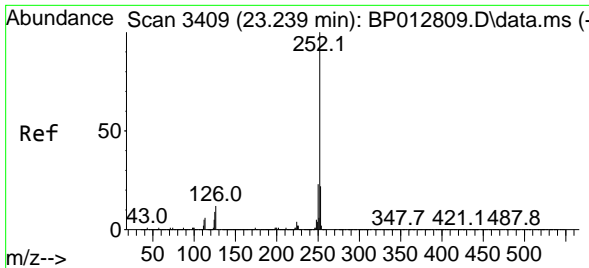
Ion	Ratio	Lower	Upper
228	100		
226	30.3	24.3	36.5
229	20.0	15.9	23.9



#89
 Di-n-octyl phthalate
 Concen: 28.979 ng/ul
 RT: 22.357 min Scan# 3259
 Delta R.T. -0.006 min
 Lab File: BP012825.D
 Acq: 28 Nov 2022 19:56

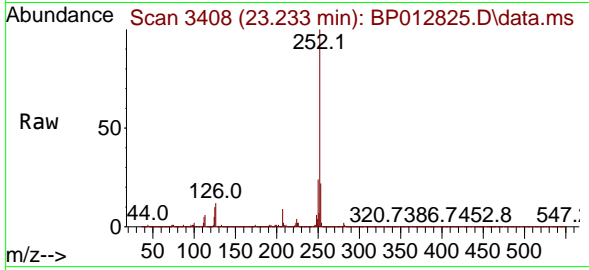
Tgt Ion: 149 Resp: 3702419



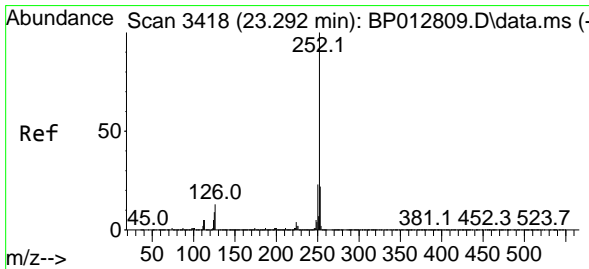
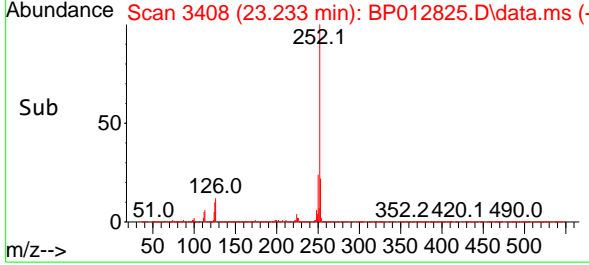
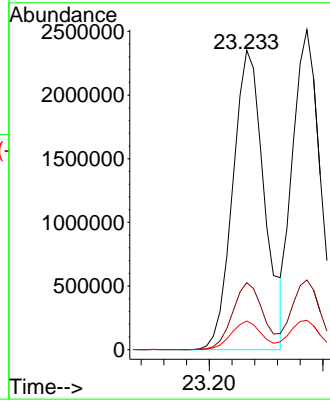


#90
 Benzo(b)fluoranthene
 Concen: 27.290 ng/ul
 RT: 23.233 min Scan# 3408
 Delta R.T. -0.006 min
 Lab File: BP012825.D
 Acq: 28 Nov 2022 19:56

Instrument :
 BNA_P
 ClientSampleId :
 SLCS200

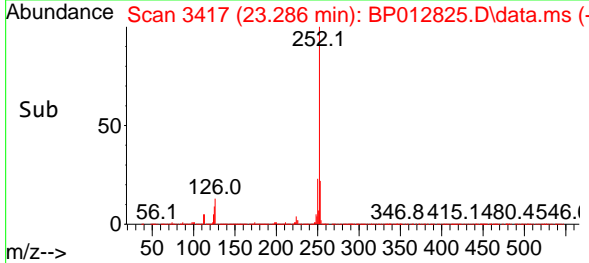
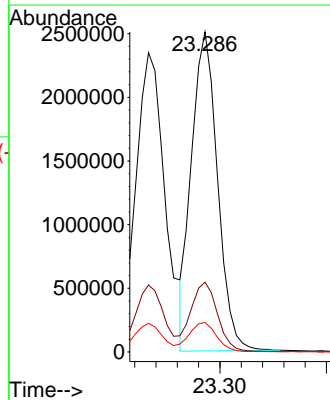
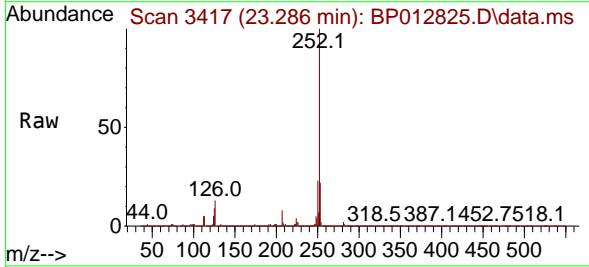


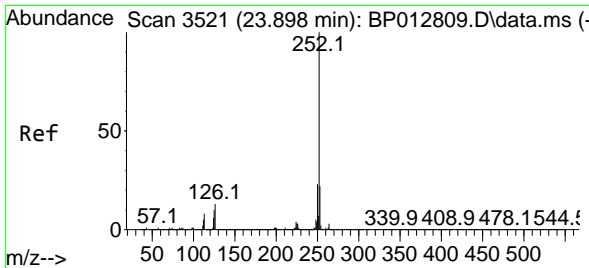
Tgt Ion:252 Resp: 4521273
 Ion Ratio Lower Upper
 252 100
 253 22.4 17.6 26.4
 125 9.6 7.4 11.2



#91
 Benzo(k)fluoranthene
 Concen: 25.710 ng/ul
 RT: 23.286 min Scan# 3417
 Delta R.T. -0.006 min
 Lab File: BP012825.D
 Acq: 28 Nov 2022 19:56

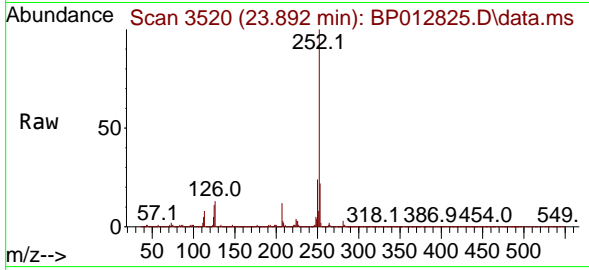
Tgt Ion:252 Resp: 4251702
 Ion Ratio Lower Upper
 252 100
 253 21.8 17.8 26.8
 125 9.2 7.8 11.8



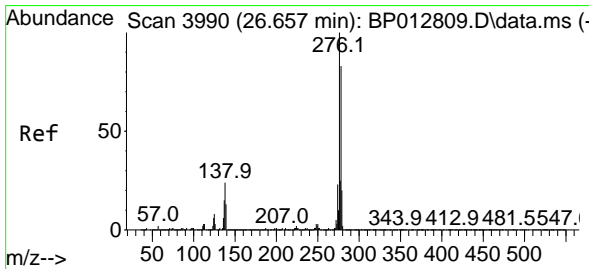
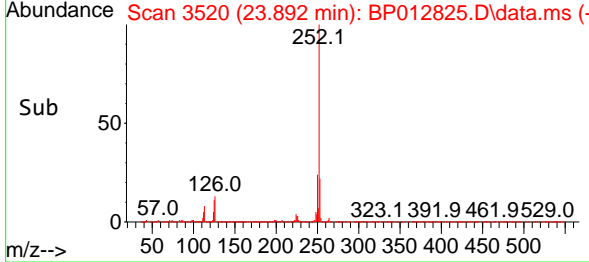
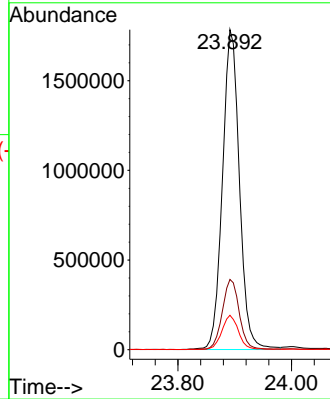


#93
 Benzo(a)pyrene
 Concen: 27.192 ng/u1
 RT: 23.892 min Scan# 31
 Delta R.T. -0.006 min
 Lab File: BP012825.D
 Acq: 28 Nov 2022 19:56

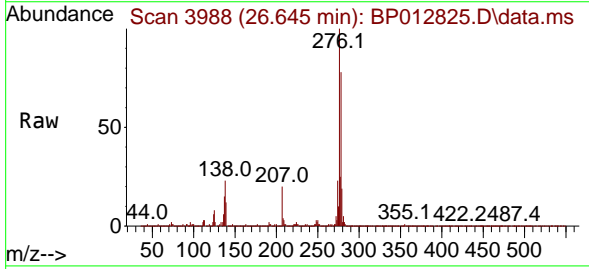
Instrument :
 BNA_P
 ClientSampleId :
 SLCS200



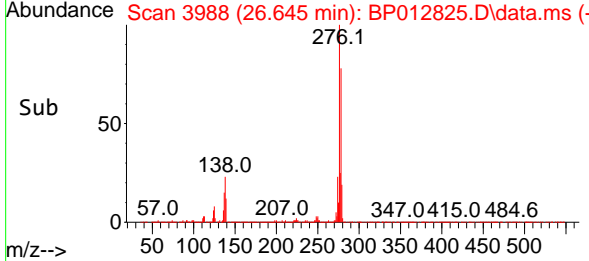
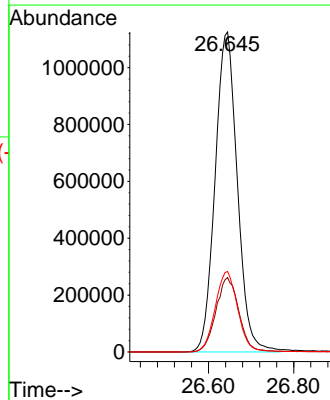
Tgt Ion:252 Resp: 3704528
 Ion Ratio Lower Upper
 252 100
 253 21.9 17.6 26.4
 125 10.7 8.5 12.7

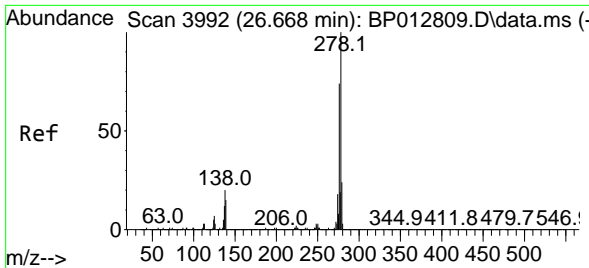


#94
 Indeno(1,2,3-cd)pyrene
 Concen: 30.965 ng/u1
 RT: 26.645 min Scan# 3988
 Delta R.T. -0.006 min
 Lab File: BP012825.D
 Acq: 28 Nov 2022 19:56



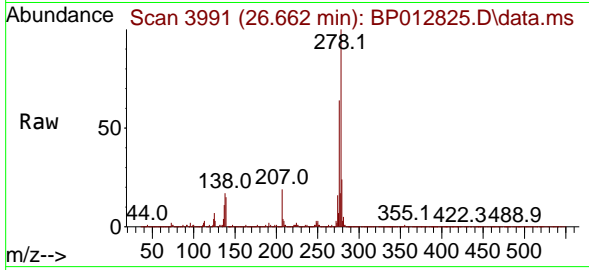
Tgt Ion:276 Resp: 4069937
 Ion Ratio Lower Upper
 276 100
 138 23.2 18.3 27.5
 277 25.2 19.8 29.8





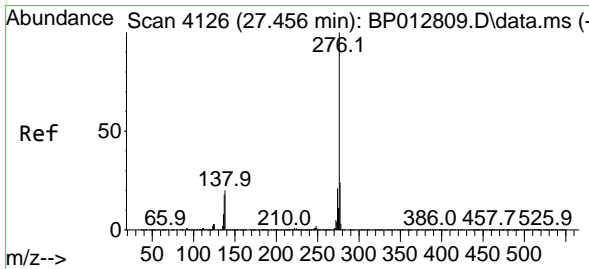
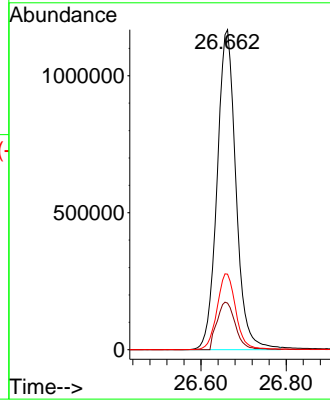
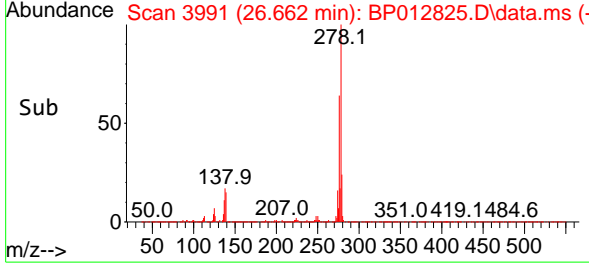
#95
 Dibenzo(a,h)anthracene
 Concen: 30.090 ng/ul
 RT: 26.662 min Scan# 3991
 Delta R.T. -0.012 min
 Lab File: BP012825.D
 Acq: 28 Nov 2022 19:56

Instrument : BNA_P
 ClientSampleId : SLCS200

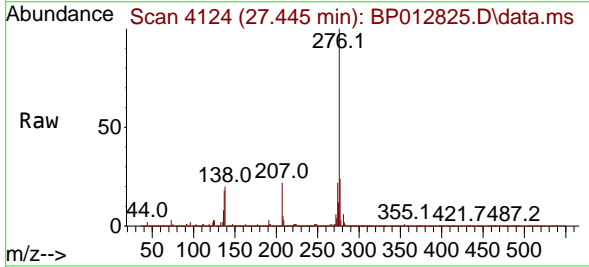


Tgt Ion: 278 Resp: 3588696

Ion	Ratio	Lower	Upper
278	100		
139	14.5	12.6	18.8
279	23.6	19.4	29.2



#96
 Benzo(g,h,i)perylene
 Concen: 31.724 ng/ul
 RT: 27.445 min Scan# 4124
 Delta R.T. -0.012 min
 Lab File: BP012825.D
 Acq: 28 Nov 2022 19:56



Tgt Ion: 276 Resp: 3586532

Ion	Ratio	Lower	Upper
276	100		
138	20.0	16.7	25.1
277	23.7	19.1	28.7

