

Data Path : Z:\svoasrv\HPCHEM1\BNA_P\Data\BP121624\
 Data File : BP023471.D
 Acq On : 17 Dec 2024 18:14
 Operator : RC/JU
 Sample : P5258-07
 Misc :
 ALS Vial : 45 Sample Multiplier: 1

Instrument :
 BNA_P
ClientSampleId :
 E28X1

Manual Integrations
APPROVED
 Reviewed By :Yogesh Patel 12/18/2024
 Supervised By :mohammad ahmed 12/19/2024

Quant Time: Dec 18 00:02:33 2024
 Quant Method : Z:\svoasrv\HPCHEM1\BNA_P\Methods\SFAM-EPA-BP112624.MA.M
 Quant Title : SVOA CALIBRATION
 QLast Update : Wed Dec 11 00:30:30 2024
 Response via : Initial Calibration

Compound	R.T.	QIon	Response	Conc	Units	Dev(Min)
Internal Standards						
1) 1,4-Dichlorobenzene-d4	7.528	152	265874	20.000	ng/ul	-0.01
20) Naphthalene-d8	10.275	136	1030712	20.000	ng/ul	# 0.00
38) Acenaphthene-d10	14.145	164	738472	20.000	ng/ul	0.00
64) Phenanthrene-d10	16.957	188	1557533	20.000	ng/ul	# 0.00
79) Chrysene-d12	21.380	240	1476532	20.000	ng/ul	# 0.00
88) Perylene-d12	24.556	264	1564131m	20.000	ng/ul	-0.02

System Monitoring Compounds						
3) 1,4-Dioxane-d8	3.099	96	20303	2.811	ng/uL	0.00
4) Pyridine-d5	3.528	84	58603	3.156	ng/ul	0.01
7) Phenol-d5	6.746	99	400052	19.177	ng/ul	0.00
9) Bis-(2-Chloroethyl)eth...	6.881	67	274130	20.828	ng/ul	-0.01
11) 2-Chlorophenol-d4	7.081	132	297738	19.338	ng/ul	0.00
15) 4-Methylphenol-d8	8.251	113	259195	15.395	ng/ul	0.00
21) Nitrobenzene-d5	8.675	128	146033	18.973	ng/ul	-0.01
24) 2-Nitrophenol-d4	9.387	143	173830	19.596	ng/ul	0.00
28) 2,4-Dichlorophenol-d3	9.934	165	322847	17.244	ng/ul	0.00
31) 4-Chloroaniline-d4	10.469	131	35519m	1.694	ng/ul	0.03
46) Dimethylphthalate-d6	13.557	166	1059341	18.479	ng/ul	0.00
49) Acenaphthylene-d8	13.839	160	1076720	17.806	ng/ul	0.00
54) 4-Nitrophenol-d4	14.457	143	123404m	17.566	ng/ul	0.05
60) Fluorene-d10	15.163	176	820857	16.279	ng/ul	0.00
65) 4,6-Dinitro-2-methylph...	15.328	200	94969	10.089	ng/ul	0.02
73) Anthracene-d10	17.051	188	1237871	17.414	ng/ul	0.00
81) Pyrene-d10	19.445	212	1311747	17.004	ng/ul	0.00
92) Benzo(a)pyrene-d12	24.339	264	825792	9.862	ng/ul	0.00

Target Compounds					Qvalue	
8) Phenol	6.781	94	50558m	2.328	ng/ul	
16) Acetophenone	8.351	105	165327	5.834	ng/ul	94
72) Phenanthrene	16.998	178	452560	5.620	ng/ul	98
74) Anthracene	17.092	178	104160m	1.294	ng/ul	
80) Fluoranthene	19.098	202	1015797	11.492	ng/ul#	92
82) Pyrene	19.480	202	690123	7.357	ng/ul#	94
85) Benzo(a)anthracene	21.362	228	450246	4.547	ng/ul	99
87) Chrysene	21.427	228	401678	4.233	ng/ul	98
90) Benzo(b)fluoranthene	23.562	252	528912	5.382	ng/ul#	97
91) Benzo(k)fluoranthene	23.621	252	192181	1.965	ng/ul#	95
93) Benzo(a)pyrene	24.409	252	227169	2.550	ng/ul#	96
94) Indeno(1,2,3-cd)pyrene	28.150	276	199110	1.739	ng/ul#	94

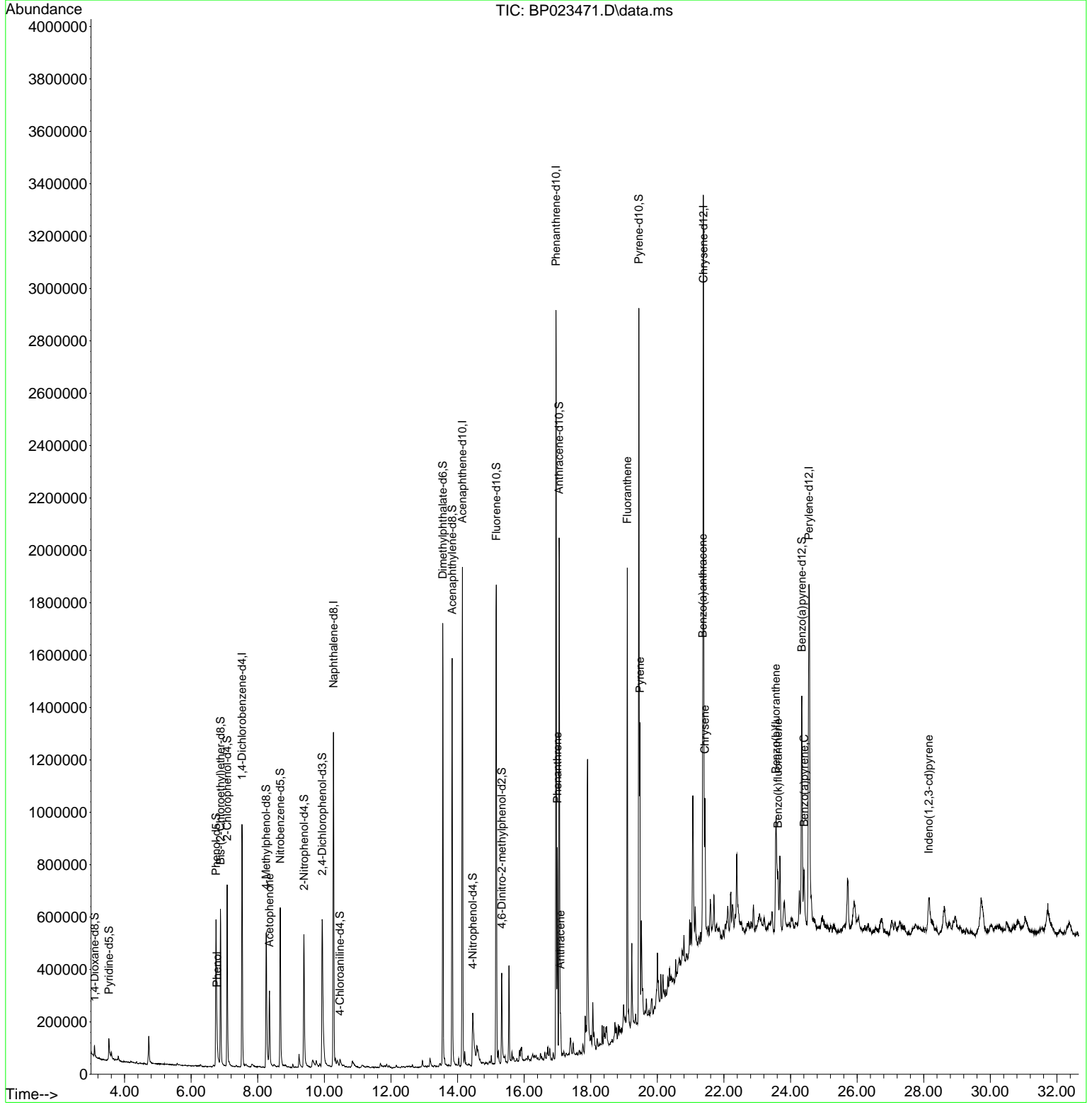
(#) = qualifier out of range (m) = manual integration (+) = signals summed

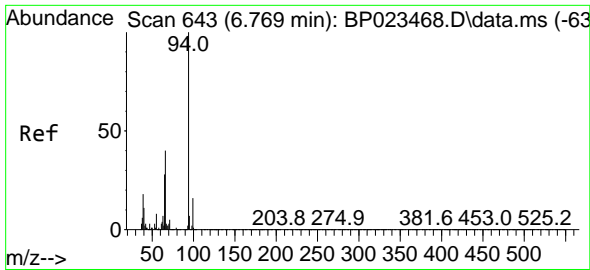
Data Path : Z:\svoasrv\HPCHEM1\BNA_P\Data\BP121624\
 Data File : BP023471.D
 Acq On : 17 Dec 2024 18:14
 Operator : RC/JU
 Sample : P5258-07
 Misc :
 ALS Vial : 45 Sample Multiplier: 1

Instrument :
 BNA_P
ClientSampleId :
 E28X1

Quant Time: Dec 18 00:02:33 2024
 Quant Method : Z:\svoasrv\HPCHEM1\BNA_P\Methods\SFAM-EPA-BP112624.MA.M
 Quant Title : SVOA CALIBRATION
 QLast Update : Wed Dec 11 00:30:30 2024
 Response via : Initial Calibration

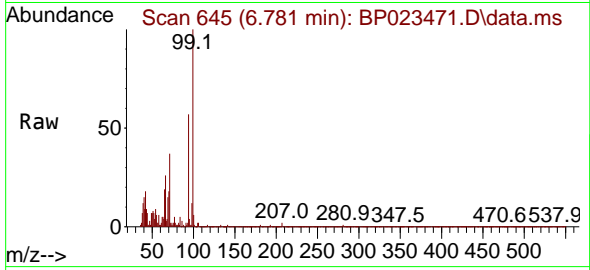
Manual Integrations
APPROVED
 Reviewed By :Yogesh Patel 12/18/2024
 Supervised By :mohammad ahmed 12/19/2024





#8
Phenol
Concen: 2.328 ng/u1 m
RT: 6.781 min Scan# 64
Delta R.T. 0.006 min
Lab File: BP023471.D
Acq: 17 Dec 2024 18:14

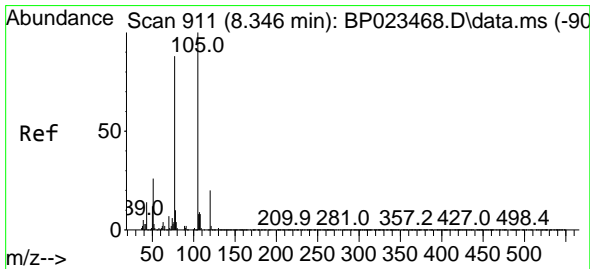
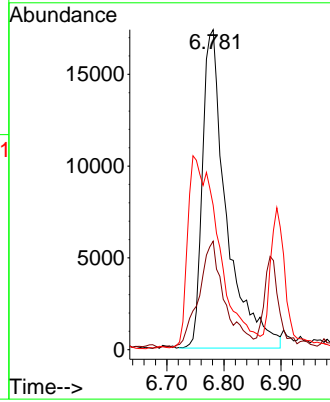
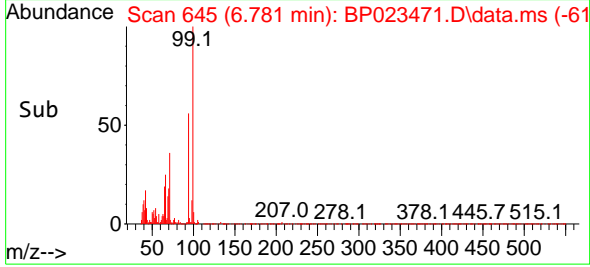
Instrument :
BNA_P
ClientSampleId :
E28X1



Tgt Ion: 94 Resp: 5055
Ion Ratio Lower Upper
94 100
65 33.9 28.0 42.0
66 45.1 42.0 63.0

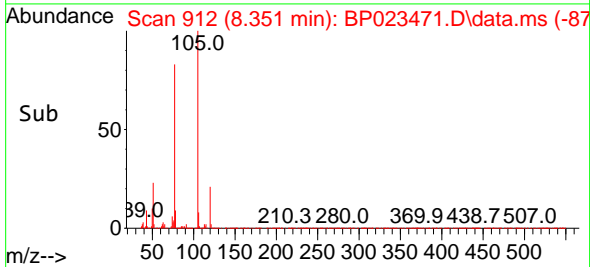
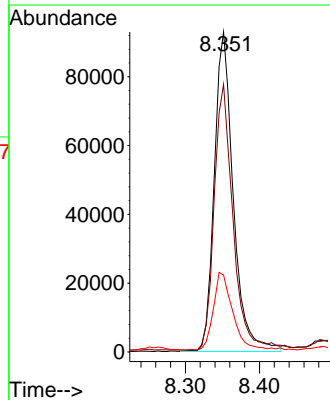
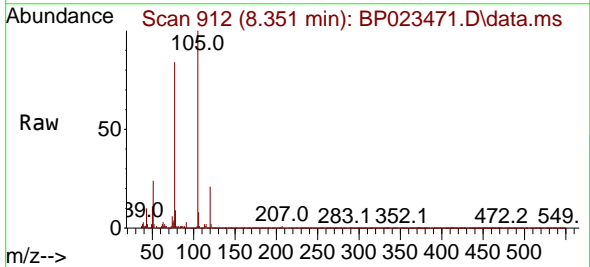
Manual Integrations
APPROVED

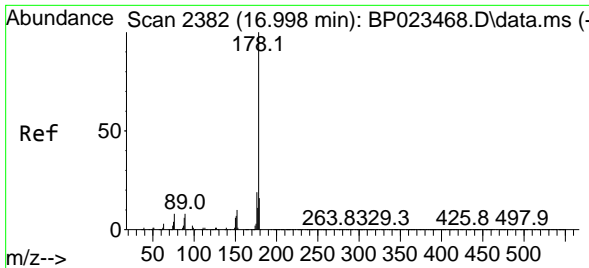
Reviewed By :Yogesh Patel 12/18/2024
Supervised By :mohammad ahmed 12/19/2024



#16
Acetophenone
Concen: 5.834 ng/u1
RT: 8.351 min Scan# 912
Delta R.T. -0.006 min
Lab File: BP023471.D
Acq: 17 Dec 2024 18:14

Tgt Ion:105 Resp: 165327
Ion Ratio Lower Upper
105 100
77 83.7 71.2 106.8
51 24.1 22.9 34.3





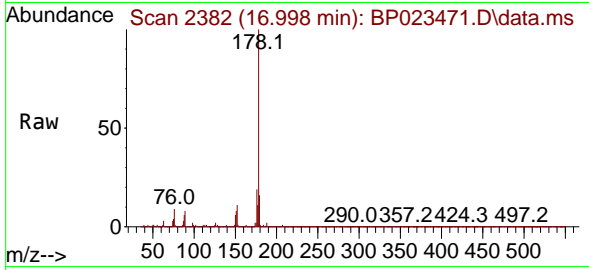
#72
 Phenanthrene
 Concen: 5.620 ng/u/l
 RT: 16.998 min Scan# 2382
 Delta R.T. -0.000 min
 Lab File: BP023471.D
 Acq: 17 Dec 2024 18:14

Instrument :

BNA_P

Client Sample Id :

E28X1



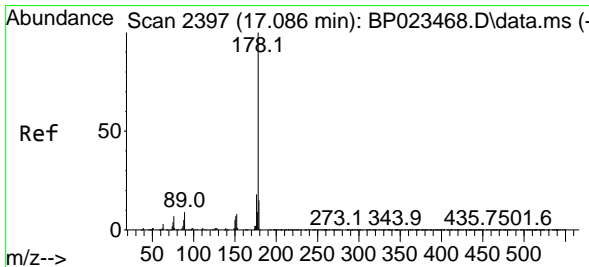
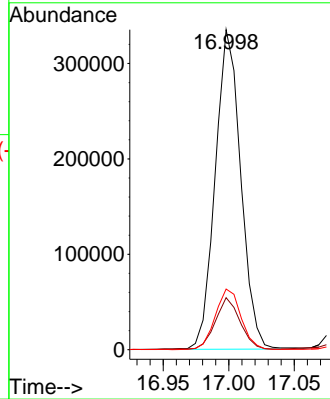
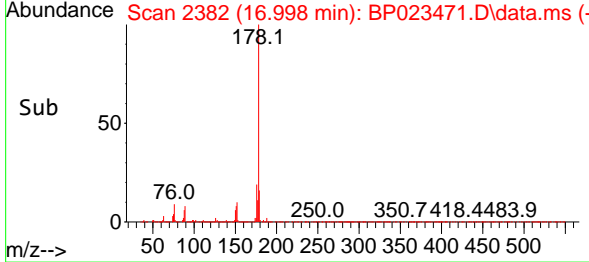
Tgt Ion:178 Resp: 452560
 Ion Ratio Lower Upper
 178 100
 179 16.2 12.1 18.1
 176 18.9 15.4 23.0

Manual Integrations

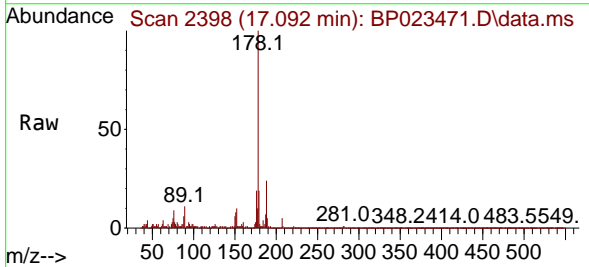
APPROVED

Reviewed By :Yogesh Patel 12/18/2024

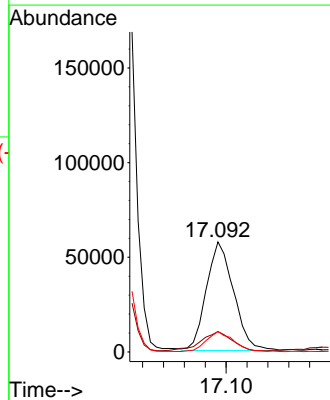
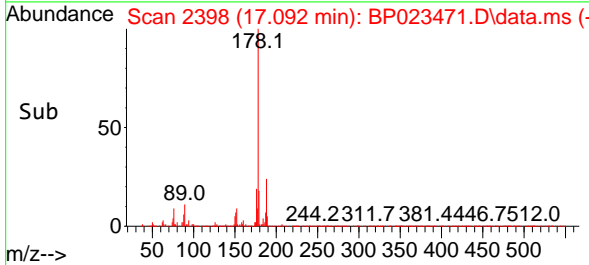
Supervised By :mohammad ahmed 12/19/2024

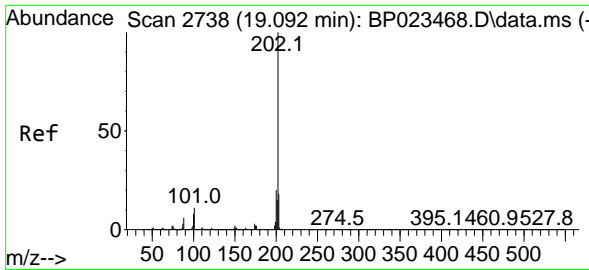


#74
 Anthracene
 Concen: 1.294 ng/u/l m
 RT: 17.092 min Scan# 2398
 Delta R.T. 0.006 min
 Lab File: BP023471.D
 Acq: 17 Dec 2024 18:14



Tgt Ion:178 Resp: 104160
 Ion Ratio Lower Upper
 178 100
 179 18.5 12.3 18.5#
 176 18.7 14.7 22.1





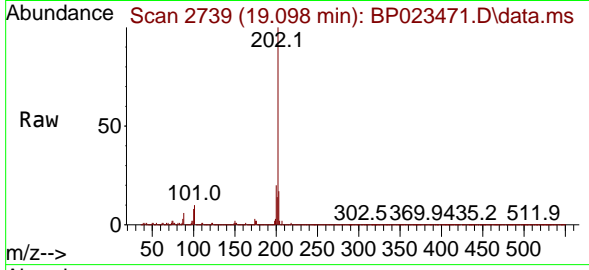
#80
 Fluoranthene
 Concen: 11.492 ng/uI
 RT: 19.098 min Scan# 2738
 Delta R.T. -0.000 min
 Lab File: BP023471.D
 Acq: 17 Dec 2024 18:14

Instrument :

BNA_P

Client SampleId :

E28X1



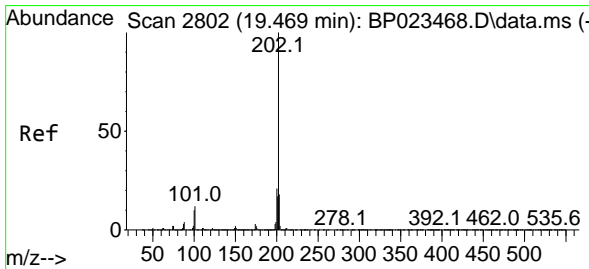
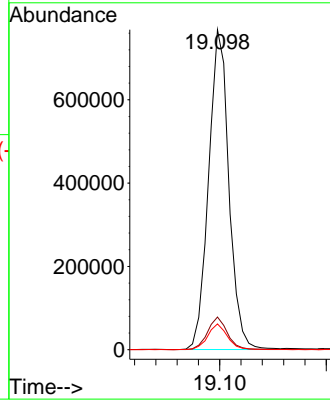
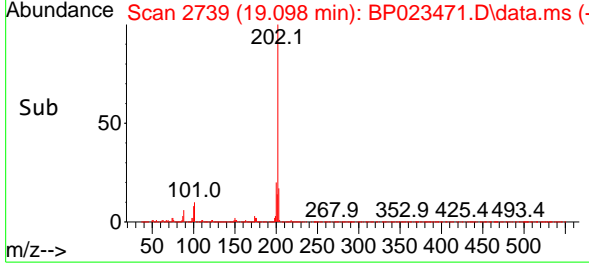
Tgt Ion: 202 Resp: 101579
 Ion Ratio Lower Upper
 202 100
 101 10.2 5.6 8.4#
 100 8.0 4.6 7.0#

Manual Integrations

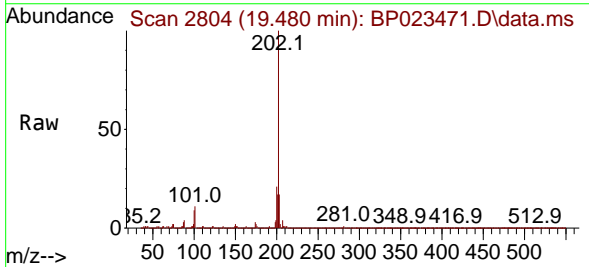
APPROVED

Reviewed By :Yogesh Patel 12/18/2024

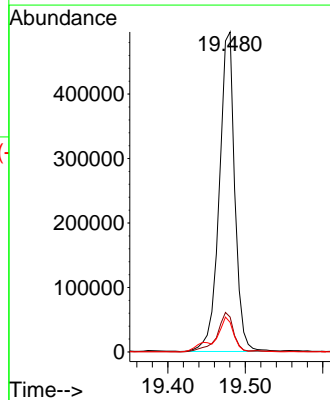
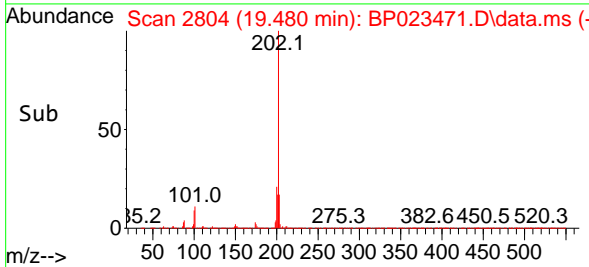
Supervised By :mohammad ahmed 12/19/2024

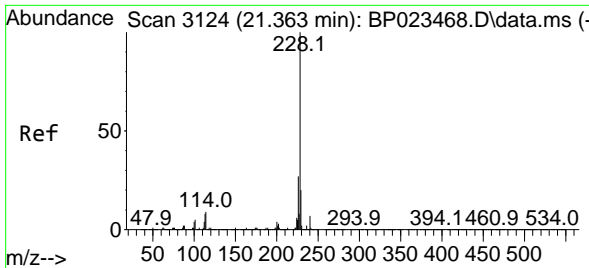


#82
 Pyrene
 Concen: 7.357 ng/uI
 RT: 19.480 min Scan# 2804
 Delta R.T. 0.006 min
 Lab File: BP023471.D
 Acq: 17 Dec 2024 18:14



Tgt Ion: 202 Resp: 690123
 Ion Ratio Lower Upper
 202 100
 101 10.9 6.7 10.1#
 100 9.3 5.8 8.8#





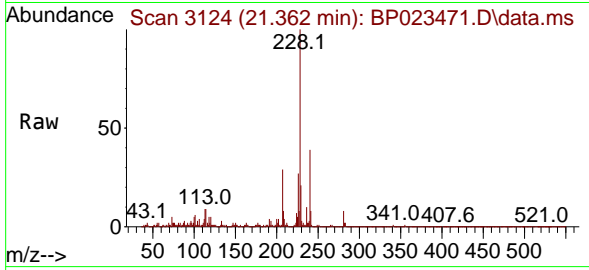
#85
 Benzo(a)anthracene
 Concen: 4.547 ng/u1
 RT: 21.362 min Scan# 3124
 Delta R.T. -0.006 min
 Lab File: BP023471.D
 Acq: 17 Dec 2024 18:14

Instrument :

BNA_P

Client SampleId :

E28X1



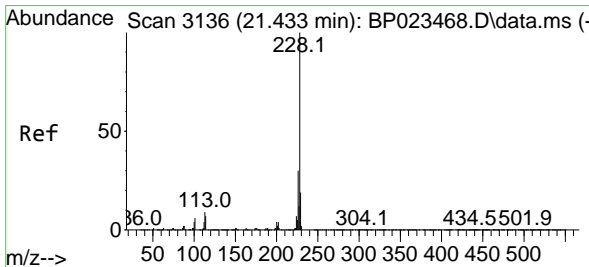
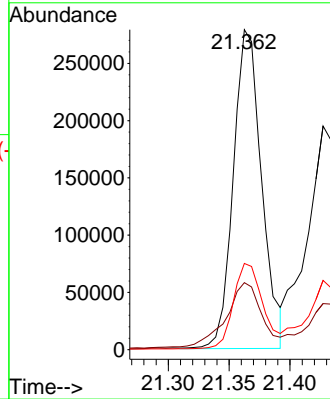
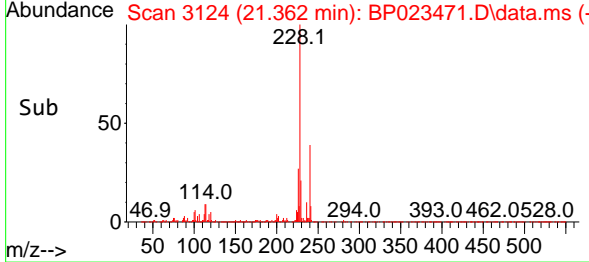
Tgt Ion:228 Resp: 450240
 Ion Ratio Lower Upper
 228 100
 229 21.0 15.7 23.5
 226 27.0 21.6 32.4

Manual Integrations

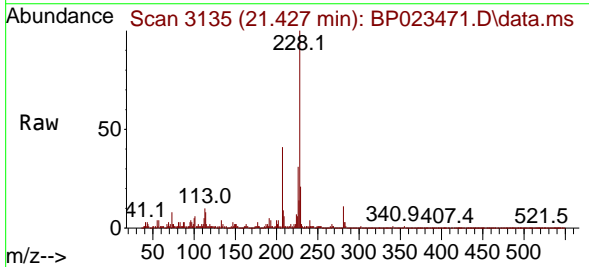
APPROVED

Reviewed By :Yogesh Patel 12/18/2024

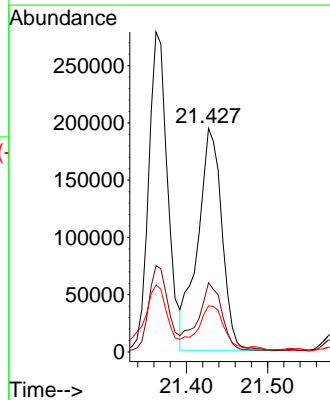
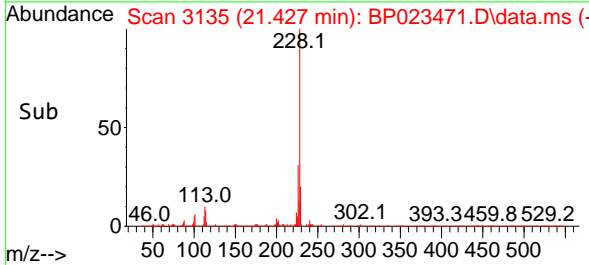
Supervised By :mohammad ahmed 12/19/2024

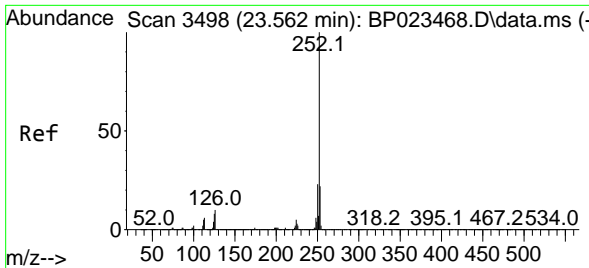


#87
 Chrysene
 Concen: 4.233 ng/u1
 RT: 21.427 min Scan# 3135
 Delta R.T. -0.012 min
 Lab File: BP023471.D
 Acq: 17 Dec 2024 18:14



Tgt Ion:228 Resp: 401678
 Ion Ratio Lower Upper
 228 100
 226 31.0 24.2 36.2
 229 20.6 15.6 23.4





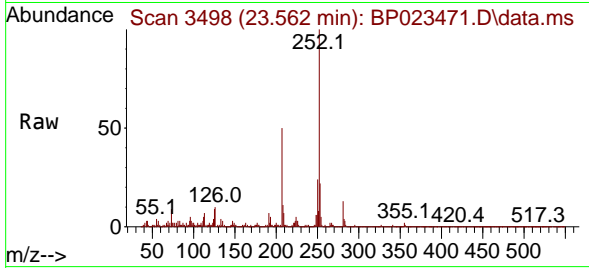
#90
 Benzo(b)fluoranthene
 Concen: 5.382 ng/ul
 RT: 23.562 min Scan# 3498
 Delta R.T. 0.006 min
 Lab File: BP023471.D
 Acq: 17 Dec 2024 18:14

Instrument :

BNA_P

Client SampleId :

E28X1



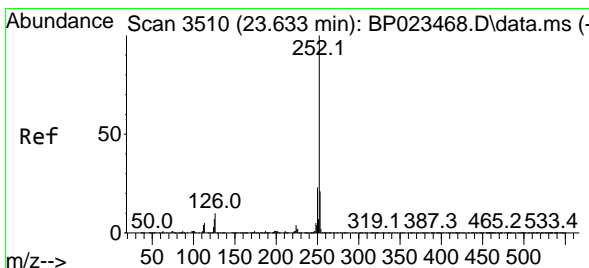
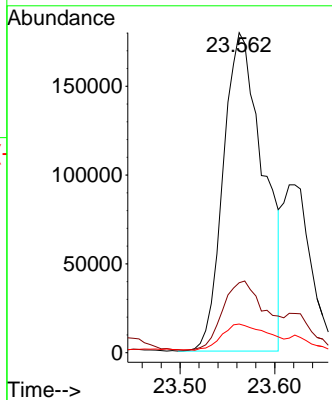
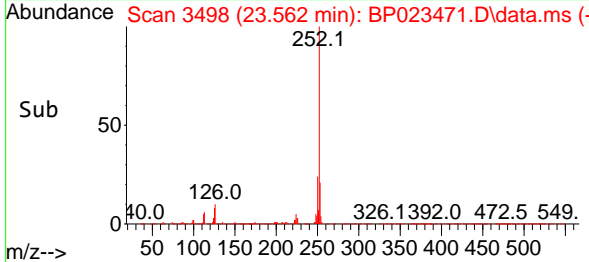
Tgt Ion:252 Resp: 52891
 Ion Ratio Lower Upper
 252 100
 253 21.8 17.3 25.9
 125 9.0 4.4 6.6

Manual Integrations

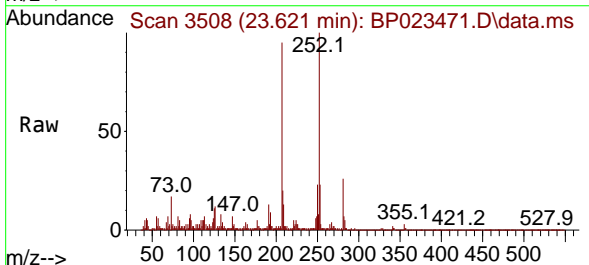
APPROVED

Reviewed By :Yogesh Patel 12/18/2024

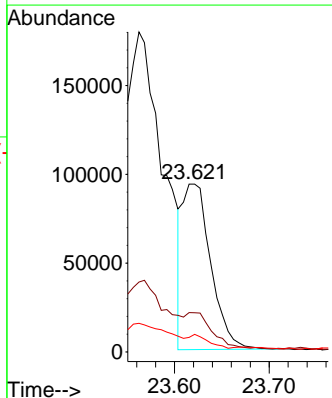
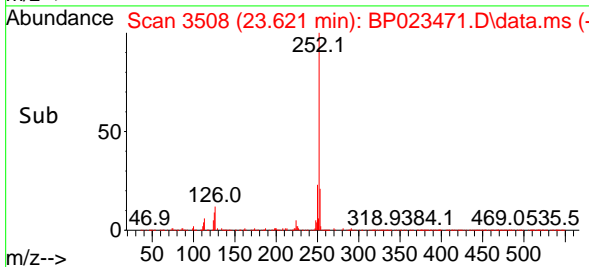
Supervised By :mohammad ahmed 12/19/2024

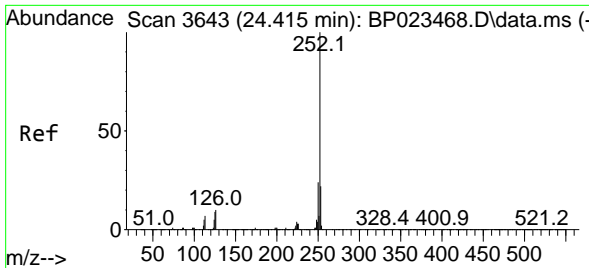


#91
 Benzo(k)fluoranthene
 Concen: 1.965 ng/ul
 RT: 23.621 min Scan# 3508
 Delta R.T. -0.000 min
 Lab File: BP023471.D
 Acq: 17 Dec 2024 18:14



Tgt Ion:252 Resp: 192181
 Ion Ratio Lower Upper
 252 100
 253 23.3 17.5 26.3
 125 10.5 4.3 6.5





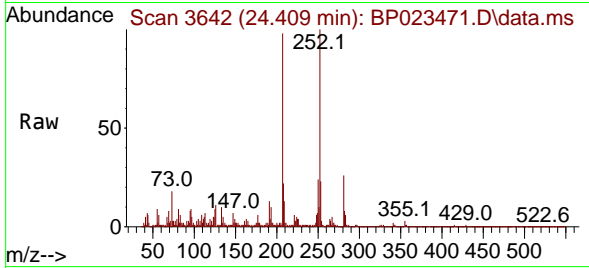
#93
 Benzo(a)pyrene
 Concen: 2.550 ng/u1
 RT: 24.409 min Scan# 30
 Delta R.T. -0.000 min
 Lab File: BP023471.D
 Acq: 17 Dec 2024 18:14

Instrument :

BNA_P

ClientSampleId :

E28X1



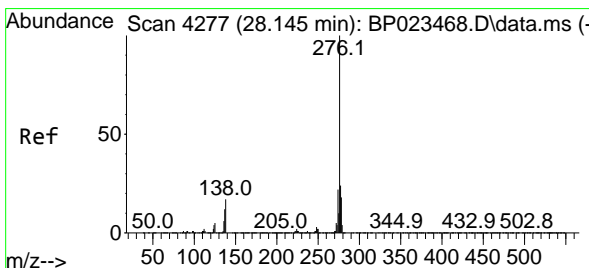
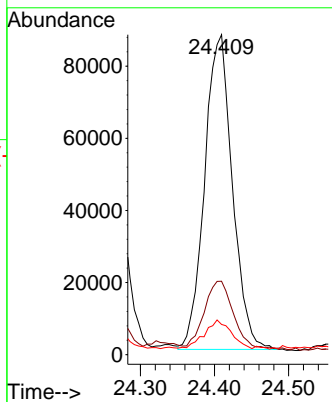
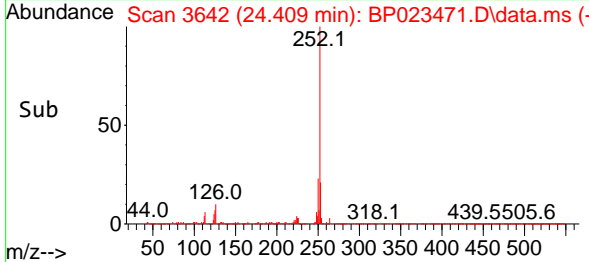
Tgt Ion:252 Resp: 227169
 Ion Ratio Lower Upper
 252 100
 253 23.0 17.4 26.0
 125 9.5 5.0 7.4

Manual Integrations

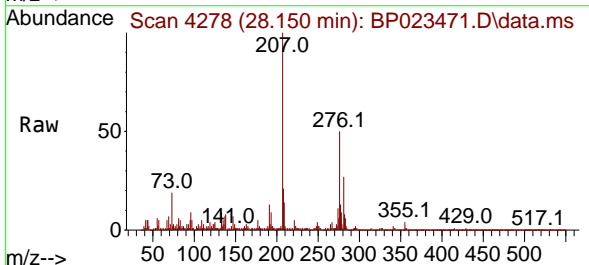
APPROVED

Reviewed By :Yogesh Patel 12/18/2024

Supervised By :mohammad ahmed 12/19/2024



#94
 Indeno(1,2,3-cd)pyrene
 Concen: 1.739 ng/u1
 RT: 28.150 min Scan# 4278
 Delta R.T. 0.006 min
 Lab File: BP023471.D
 Acq: 17 Dec 2024 18:14



Tgt Ion:276 Resp: 199110
 Ion Ratio Lower Upper
 276 100
 138 16.7 7.8 11.6#
 277 25.2 19.8 29.8

