

Data Path : Z:\svoasrv\HPCHEM1\BNA\_P\Data\BP121624\  
 Data File : BP023460.D  
 Acq On : 17 Dec 2024 10:00  
 Operator : RC/JU  
 Sample : PB165586BL  
 Misc :  
 ALS Vial : 34 Sample Multiplier: 1

Instrument :  
 BNA\_P  
 ClientSampleId :  
 SBLK586

Integration Parameters: LSCINT.P

Integrator: RTE  
 Smoothing : OFF Filtering: 5  
 Sampling : 1 Min Area: 0.1 % of largest Peak  
 Start Thrs: 0.2 Max Peaks: 100  
 Stop Thrs : 0 Peak Location: TOP

If leading or trailing edge < 100 prefer < Baseline drop else tangent >  
 Peak separation: 5

Method : Z:\svoasrv\HPCHEM1\BNA\_P\Methods\SFAM-EPA-BP112624.MA.M  
 Title : SVOA CALIBRATION

Signal : TIC: BP023460.D\data.ms

peak #	R.T. min	first scan	max scan	last scan	PK TY	peak height	corr. area	corr. % max.	% of total
1	3.093	14	18	26	rVB	36756	50408	1.42%	0.146%
2	3.511	85	89	105	rBV	318828	563079	15.90%	1.631%
3	3.822	136	142	145	rBV3	5290	8871	0.25%	0.026%
4	5.769	472	473	480	rBV7	1883	3559	0.10%	0.010%
5	6.746	633	639	657	rBV	377394	761785	21.51%	2.207%
6	6.881	657	662	675	rVB	337951	543821	15.36%	1.576%
7	7.081	690	696	714	rBV	477929	773429	21.84%	2.241%
8	7.528	766	772	790	rVB	472914	796363	22.49%	2.307%
9	8.252	888	895	911	rBV	487702	929936	26.26%	2.694%
10	8.675	960	967	985	rVV	413761	732248	20.68%	2.121%
11	9.387	1080	1088	1103	rBV	339303	651359	18.39%	1.887%
12	9.928	1174	1180	1203	rBV	438506	995116	28.10%	2.883%
13	10.275	1232	1239	1254	rBV	579204	1021304	28.84%	2.959%
14	10.434	1260	1266	1297	rBV	390085	854072	24.12%	2.474%
15	11.893	1507	1514	1518	rBV8	5723	12417	0.35%	0.036%
16	13.128	1718	1724	1729	rVB8	2376	4798	0.14%	0.014%
17	13.569	1792	1799	1811	rBV	903025	1527463	43.13%	4.425%
18	13.840	1837	1845	1858	rBV	1033407	1711629	48.33%	4.959%
19	14.139	1888	1896	1908	rBV	975510	1516373	42.82%	4.393%
20	14.445	1942	1948	1969	rBV	177783	635325	17.94%	1.841%
21	15.163	2062	2070	2083	rBV	1570696	2291277	64.70%	6.638%
22	15.328	2092	2098	2111	rBV	351739	674013	19.03%	1.953%
23	15.757	2165	2171	2173	rBV6	3065	4640	0.13%	0.013%
24	16.751	2335	2340	2345	rBV4	6173	12673	0.36%	0.037%
25	16.957	2368	2375	2386	rBV	1538687	2154593	60.84%	6.242%
26	17.063	2386	2393	2409	rVV2	1677231	2762919	78.02%	8.005%
27	17.645	2488	2492	2496	rVB7	5585	8636	0.24%	0.025%
28	17.892	2530	2534	2537	rBV6	14504	23212	0.66%	0.067%
29	18.992	2717	2721	2724	rVB3	26618	34528	0.98%	0.100%
30	19.063	2730	2733	2738	rVB2	24064	35146	0.99%	0.102%
31	19.233	2760	2762	2765	rBV4	10763	10544	0.30%	0.031%
32	19.439	2791	2797	2810	rBV	2434724	3347827	94.54%	9.699%
33	21.392	3123	3129	3139	rBV	1579055	2576659	72.76%	7.465%
34	24.339	3622	3630	3645	rVB2	1184939	3541229	100.00%	10.260%
35	24.568	3661	3669	3685	rVB	1000274	2944366	83.15%	8.531%

Data Path : Z:\svoasrv\HPCHEM1\BNA\_P\Data\BP121624\  
Data File : BP023460.D  
Acq On : 17 Dec 2024 10:00  
Operator : RC/JU  
Sample : PB165586BL  
Misc :  
ALS Vial : 34 Sample Multiplier: 1

Instrument :  
BNA\_P  
ClientSampleId :  
SBLK586

Integration Parameters: LSCINT.P  
Integrator: RTE  
Smoothing : OFF Filtering: 5  
Sampling : 1 Min Area: 0.1 % of largest Peak  
Start Thrs: 0.2 Max Peaks: 100  
Stop Thrs : 0 Peak Location: TOP

If leading or trailing edge < 100 prefer < Baseline drop else tangent >  
Peak separation: 5

Method : Z:\svoasrv\HPCHEM1\BNA\_P\Methods\SFAM-EPA-BP112624.MA.M  
Title : SVOA CALIBRATION

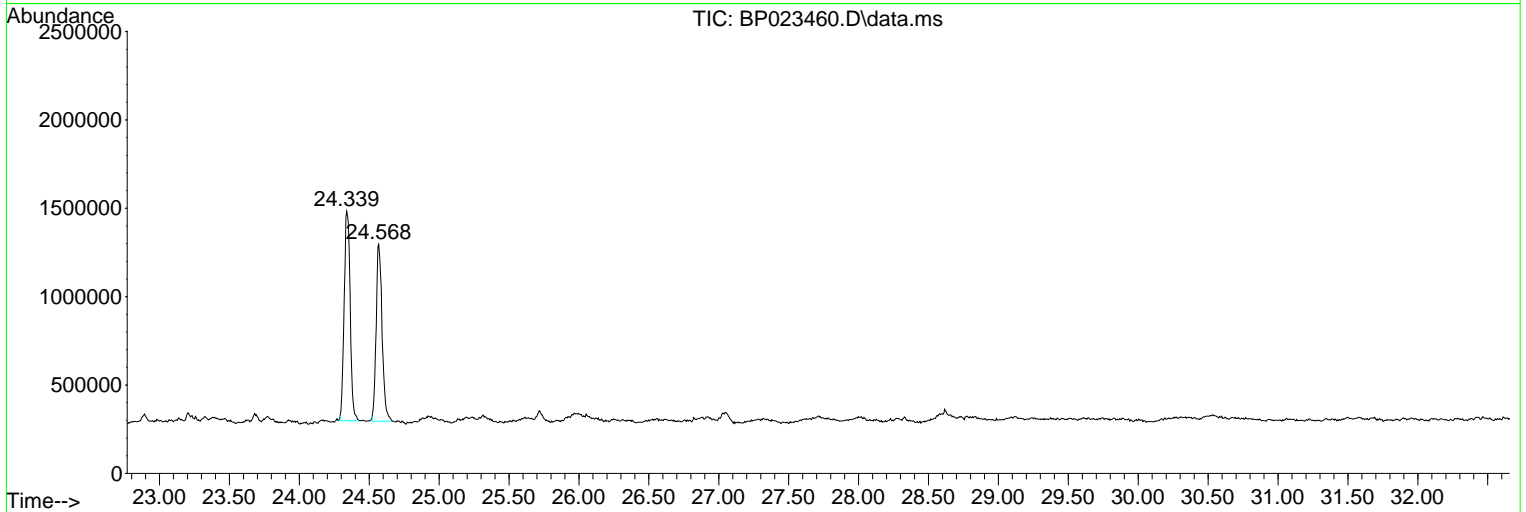
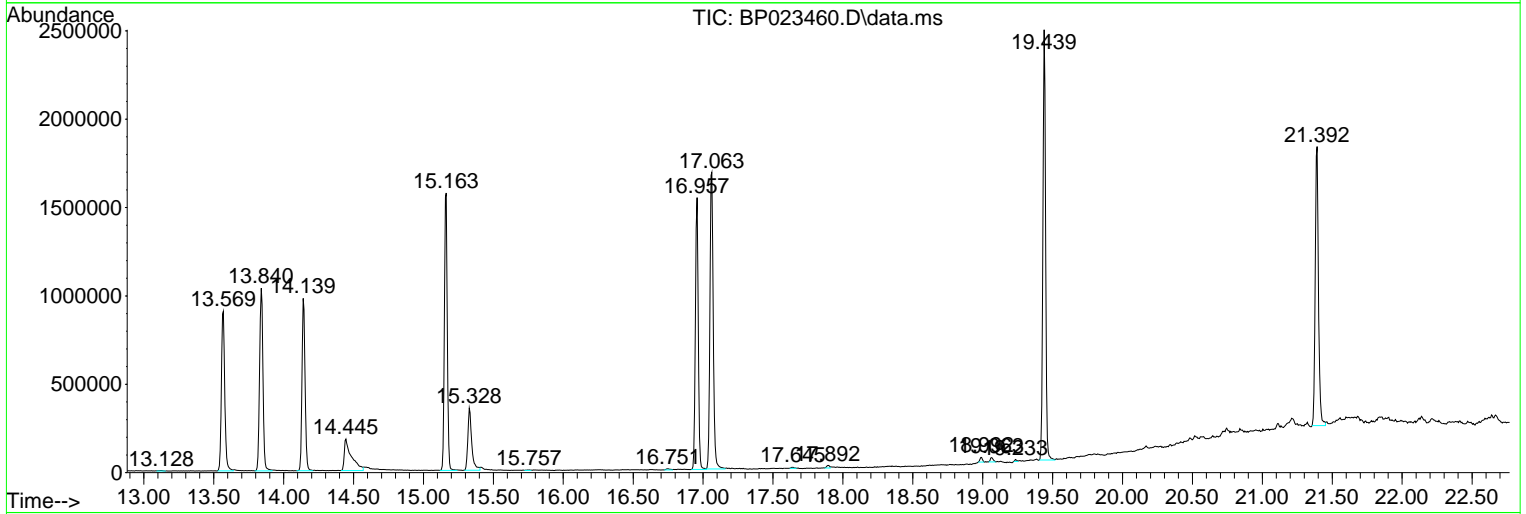
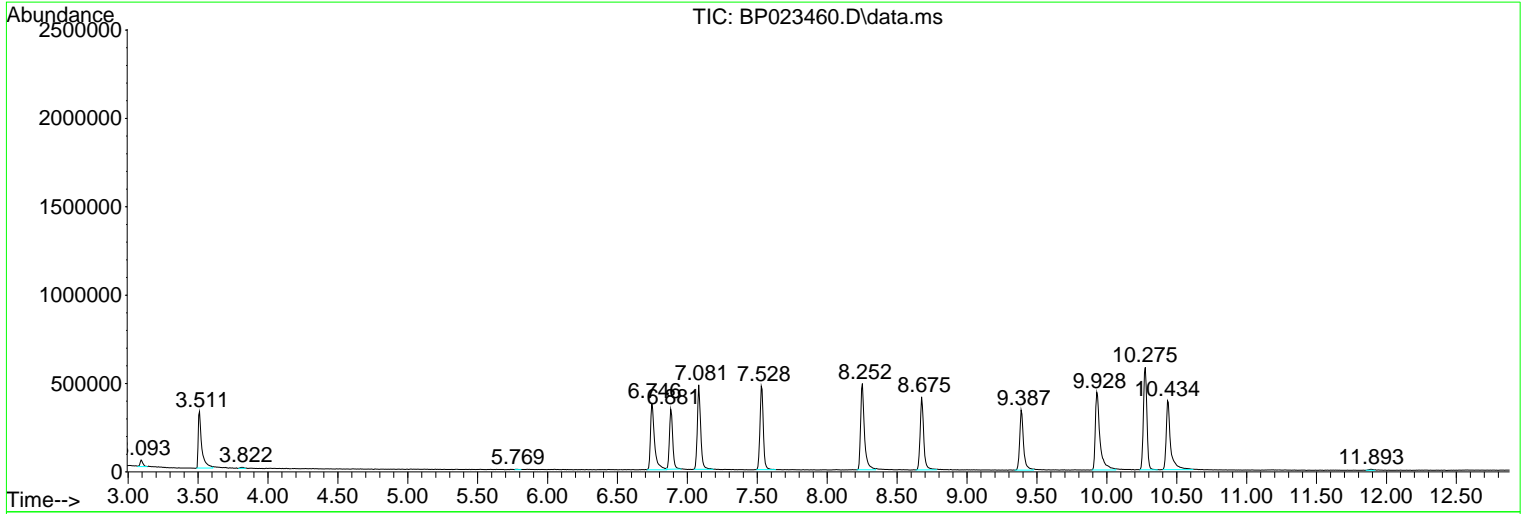
Sum of corrected areas: 34515617

Data Path : Z:\svoasrv\HPCHEM1\BNA\_P\Data\BP121624\  
 Data File : BP023460.D  
 Acq On : 17 Dec 2024 10:00  
 Operator : RC/JU  
 Sample : PB165586BL  
 Misc :  
 ALS Vial : 34 Sample Multiplier: 1

Instrument :  
 BNA\_P  
 ClientSampleId :  
 SBLK586

Quant Method : Z:\svoasrv\HPCHEM1\BNA\_P\Methods\SFAM-EPA-BP112624.MA.M  
 Quant Title : SVOA CALIBRATION

TIC Library : C:\DATABASE\NIST20.L  
 TIC Integration Parameters: LSCINT.P



Library Search Compound Report

Data Path : Z:\svoasrv\HPCHEM1\BNA\_P\Data\BP121624\  
Data File : BP023460.D  
Acq On : 17 Dec 2024 10:00  
Operator : RC/JU  
Sample : PB165586BL  
Misc :  
ALS Vial : 34 Sample Multiplier: 1

Instrument :  
BNA\_P  
ClientSampleId :  
SBLK586

Quant Method : Z:\svoasrv\HPCHEM1\BNA\_P\Methods\SFAM-EPA-BP112624.MA.M  
Quant Title : SVOA CALIBRATION

TIC Library : C:\DATABASE\NIST20.L  
TIC Integration Parameters: LSCINT.P

No Library Search Compounds Detected

\*\*\*\*\*

Data Path : Z:\svoasrv\HPCHEM1\BNA\_P\Data\BP121624\  
Data File : BP023460.D  
Acq On : 17 Dec 2024 10:00  
Operator : RC/JU  
Sample : PB165586BL  
Misc :  
ALS Vial : 34 Sample Multiplier: 1

Instrument :  
BNA\_P  
ClientSampleId :  
SBLK586

Quant Method : Z:\svoasrv\HPCHEM1\BNA\_P\Methods\SFAM-EPA-BP112624.MA.M  
Quant Title : SVOA CALIBRATION

TIC Library : C:\DATABASE\NIST0.L  
TIC Integration Parameters: LSCINT.P

TIC Top Hit name	RT	EstConc	Units	Response	#	RT	Resp	Conc
------------------	----	---------	-------	----------	---	----	------	------

---