

Data Path : Z:\SVOASRV\HPCHEM1\BNA P\DATA\BP121820\  
 Data File : BP004371.D  
 Acq On : 18 Dec 2020 23:06  
 Operator : CG/JU  
 Sample : L5128-08  
 Misc :  
 ALS Vial : 18 Sample Multiplier: 1

Instrument :  
 BNA\_P  
 ClientSampleId :  
 CB8D0

Quant Time: Dec 19 01:45:21 2020  
 Quant Method : Z:\SVOASRV\HPCHEM1\BNA\_P\METHODS\SOM-EPA-BP121820MA.M  
 Quant Title : SVOA CALIBRATION  
 QLast Update : Fri Dec 18 17:12:07 2020  
 Response via : Initial Calibration

Internal Standards	R.T.	QIon	Response	Conc	Units	Dev(Min)
1) 1,4-Dichlorobenzene-d4	7.82	152	267626	20.00	ng/ul	0.00
18) Naphthalene-d8	10.62	136	1133139	20.00	ng/ul	0.00
36) Acenaphthene-d10	14.47	164	712090	20.00	ng/ul	0.00
62) Phenanthrene-d10	17.23	188	1576442	20.00	ng/ul	0.00
78) Chrysene-d12	21.32	240	1660636	20.00	ng/ul	0.00
86) Perylene-d12	23.68	264	1785080	20.00	ng/ul	0.00

## System Monitoring Compounds

3) 1,4-Dioxane-d8	3.32	96	23484	3.65	ng/uL	0.00
5) Phenol-d5	6.99	99	80281	3.46	ng/ul	0.00
7) Bis-(2-Chloroethyl)ether-d	7.16	67	168212	12.91	ng/ul	0.00
9) 2-Chlorophenol-d4	7.36	132	215196	11.32	ng/ul	0.00
13) 4-Methylphenol-d8	8.53	113	148778	8.04	ng/ul	0.00
19) Nitrobenzene-d5	8.98	128	122773	12.52	ng/ul	0.00
22) 2-Nitrophenol-d4	9.70	143	139111	13.01	ng/ul	0.00
26) 2,4-Dichlorophenol-d3	10.24	165	273847	13.81	ng/ul	0.00
29) 4-Chloroaniline-d4	10.75	131	326685	14.53	ng/ul	0.00
44) Dimethylphthalate-d6	13.87	166	845692	14.84	ng/ul	0.00
47) Acenaphthylene-d8	14.16	160	1004462	14.19	ng/ul	0.00
52) 4-Nitrophenol-d4	14.67	143	25873	2.51	ng/ul	0.00
58) Fluorene-d10	15.47	176	674801	13.53	ng/ul	0.00
63) 4,6-Dinitro-2-methylphenol	15.59	200	72252	7.10	ng/ul	0.00
71) Anthracene-d10	17.33	188	1090940	14.01	ng/ul	0.00
79) Pyrene-d10	19.57	212	1280689	14.44	ng/ul	0.00
90) Benzo(a)pyrene-d12	23.53	264	1364573	13.88	ng/ul	0.00

## Target Compounds

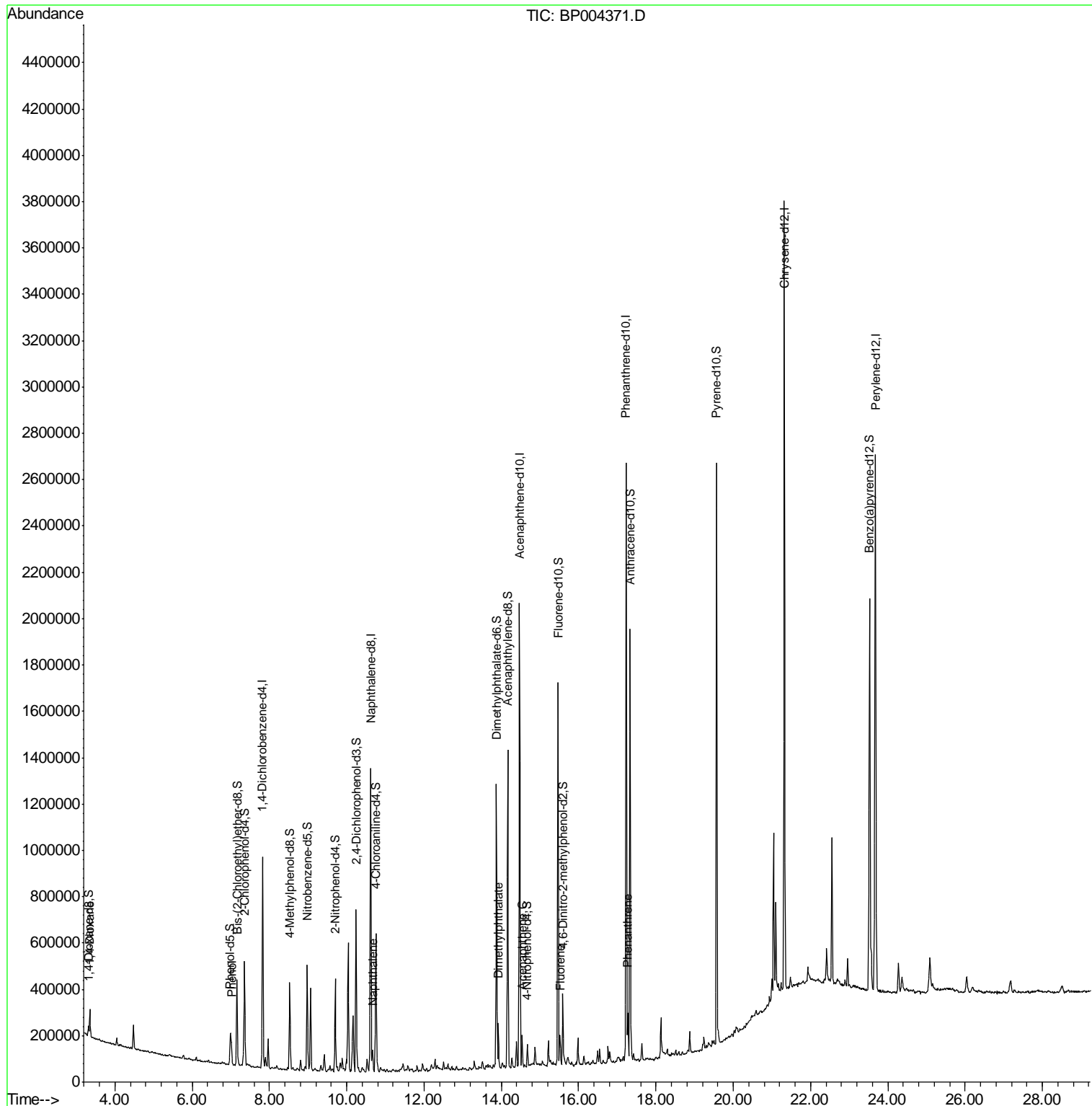
Target Compounds	R.T.	QIon	Response	Conc	Units	Ovalue
2) 1,4-Dioxane	3.35	88	66612	10.129	ng/uL	95
6) Phenol	7.02	94	55479	2.373	ng/ul	97
28) Naphthalene	10.67	128	70656	1.110	ng/ul	98
45) Dimethylphthalate	13.92	163	123948	2.171	ng/ul	98
50) Acenaphthene	14.53	153	56028	1.156	ng/ul	97
59) Fluorene	15.52	166	57615	1.042	ng/ul	98
70) Phenanthrene	17.27	178	129850	1.418	ng/ul	100

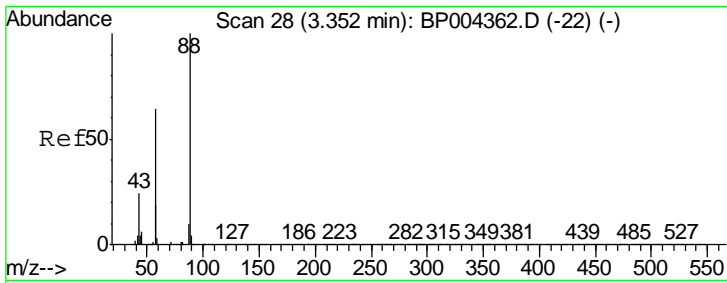
(#) = qualifier out of range (m) = manual integration (+) = signals summed

Data Path : Z:\SVOASRV\HPCHEM1\BNA P\DATA\BP121820\  
 Data File : BP004371.D  
 Acq On : 18 Dec 2020 23:06  
 Operator : CG/JU  
 Sample : L5128-08  
 Misc :  
 ALS Vial : 18 Sample Multiplier: 1

Instrument :  
 BNA\_P  
 ClientSampleId :  
 CB8D0

Quant Time: Dec 19 01:45:21 2020  
 Quant Method : Z:\SVOASRV\HPCHEM1\BNA\_P\METHODS\SOM-EPA-BP121820MA.M  
 Quant Title : SVOA CALIBRATION  
 QLast Update : Fri Dec 18 17:12:07 2020  
 Response via : Initial Calibration

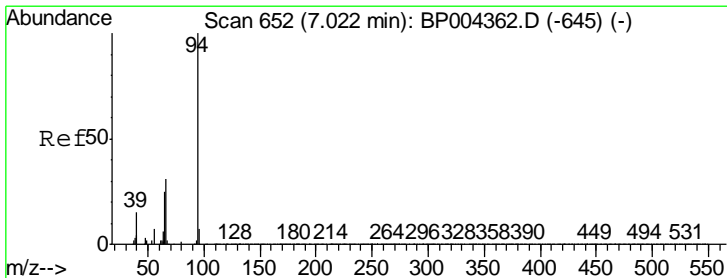
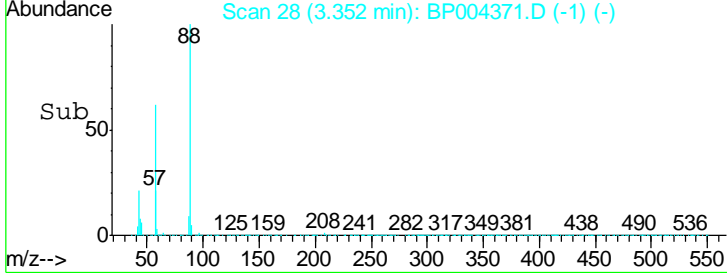
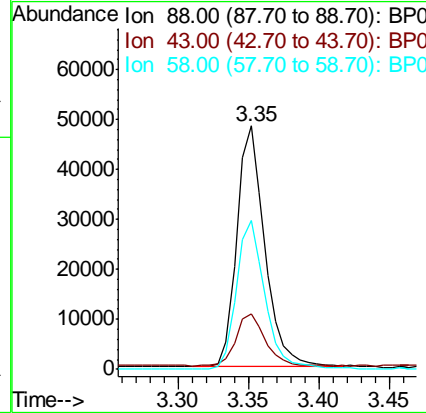
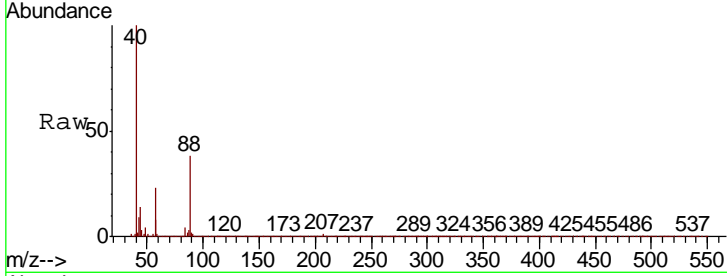




#2  
 1,4-Dioxane  
 Concen: 10.129 ng/uL  
 RT: 3.35 min Scan# 28  
 Delta R.T. -0.00 min  
 Lab File: BP004371.D  
 Acq: 18 Dec 2020 23:06

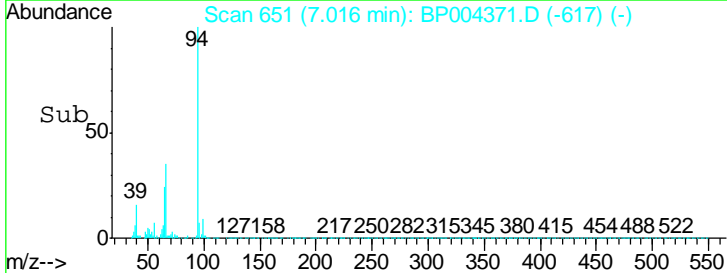
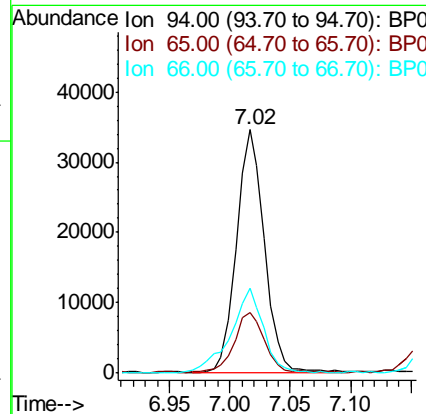
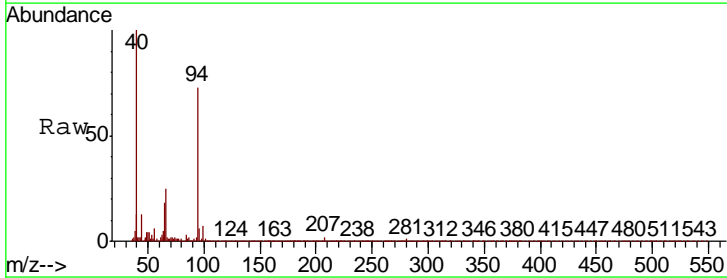
Instrument :  
 BNA\_P  
 ClientSampleID :  
 CB8D0

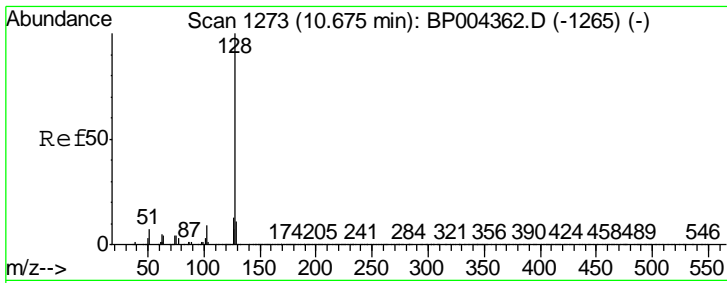
Tgt Ion	Resp	Lower	Upper
88	66612		
43	22.7	22.7	34.1
58	61.0	49.9	74.9



#6  
 Phenol  
 Concen: 2.373 ng/ul  
 RT: 7.02 min Scan# 651  
 Delta R.T. -0.00 min  
 Lab File: BP004371.D  
 Acq: 18 Dec 2020 23:06

Tgt Ion	Resp	Lower	Upper
94	55479		
65	24.7	20.3	30.5
66	34.8	26.2	39.2

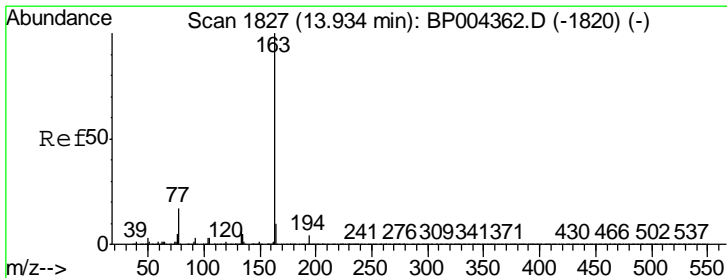
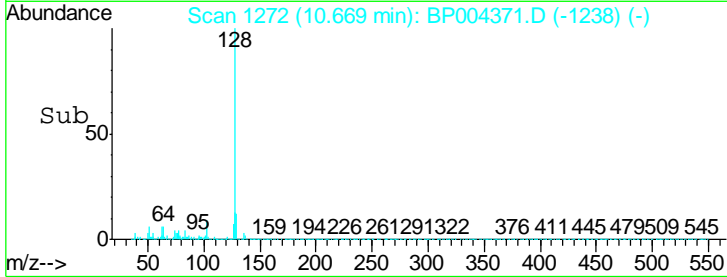
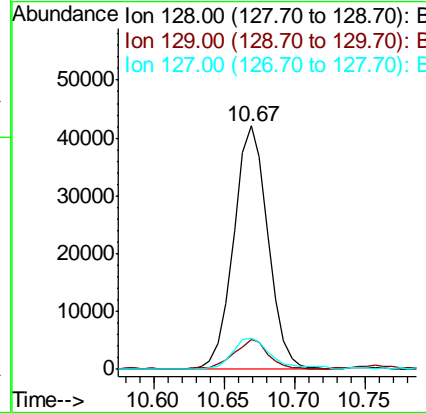
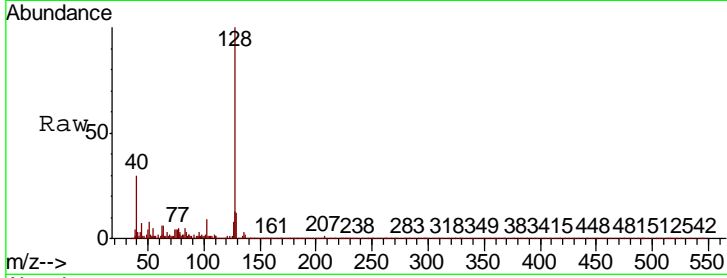




#28  
 Naphthalene  
 Concen: 1.110 ng/ul  
 RT: 10.67 min Scan# 1272  
 Delta R.T. -0.00 min  
 Lab File: BP004371.D  
 Acq: 18 Dec 2020 23:06

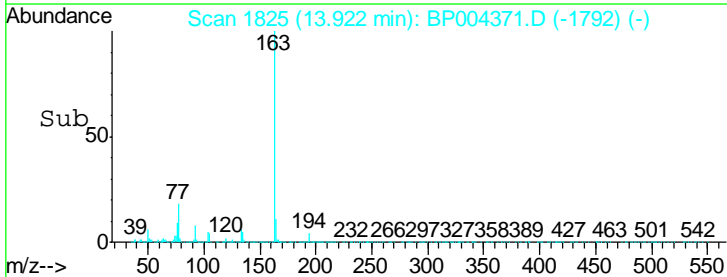
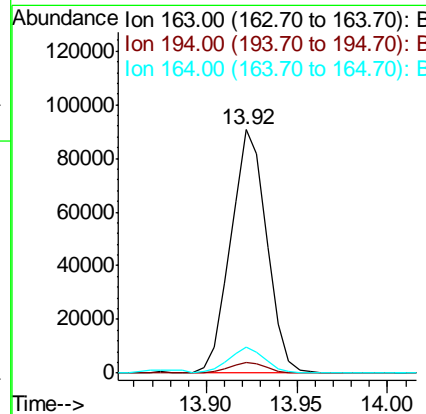
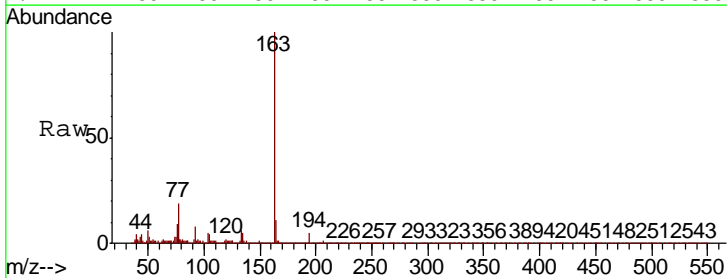
Instrument :  
 BNA\_P  
 ClientSampleID :  
 CB8D0

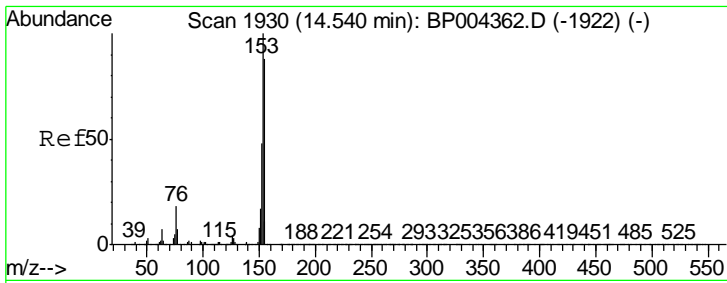
Tgt Ion	Resp	Lower	Upper
128	70656		
129	12.3	8.8	13.2
127	12.7	10.4	15.6



#45  
 Dimethylphthalate  
 Concen: 2.171 ng/ul  
 RT: 13.92 min Scan# 1825  
 Delta R.T. -0.01 min  
 Lab File: BP004371.D  
 Acq: 18 Dec 2020 23:06

Tgt Ion	Resp	Lower	Upper
163	123948		
194	4.5	3.5	5.3
164	10.9	7.8	11.8

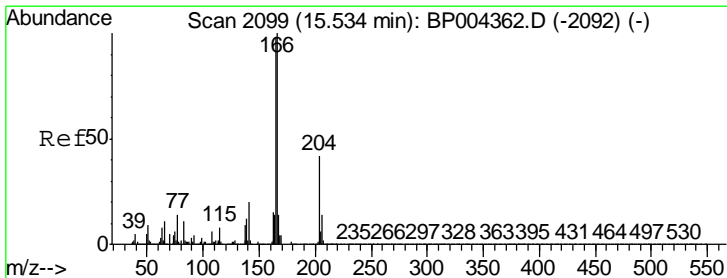
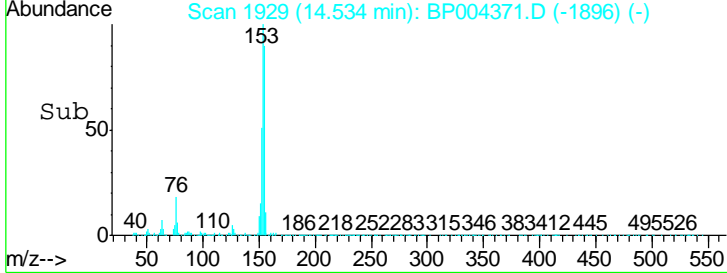
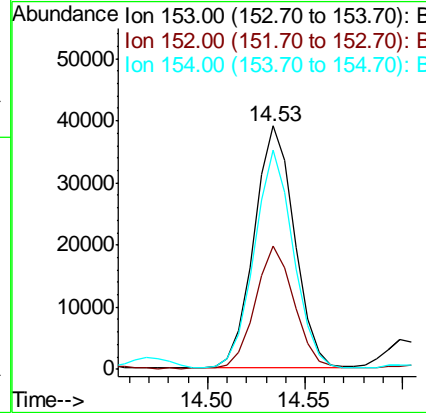
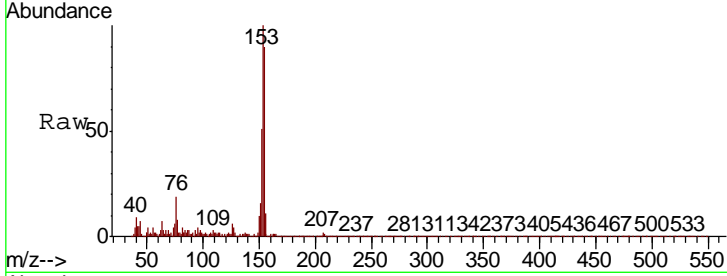




#50  
 Acenaphthene  
 Concen: 1.156 ng/ul  
 RT: 14.53 min Scan# 1929  
 Delta R.T. -0.01 min  
 Lab File: BP004371.D  
 Acq: 18 Dec 2020 23:06

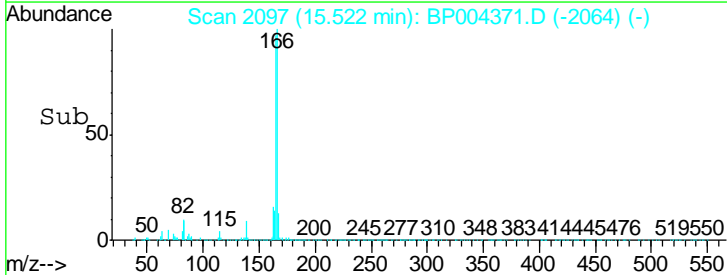
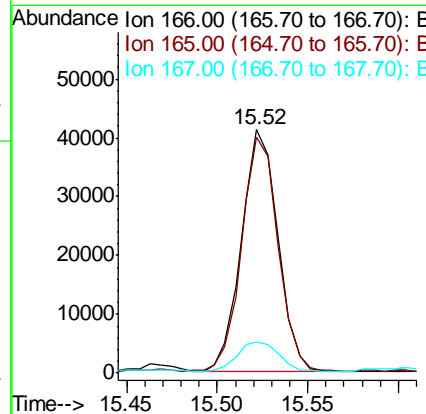
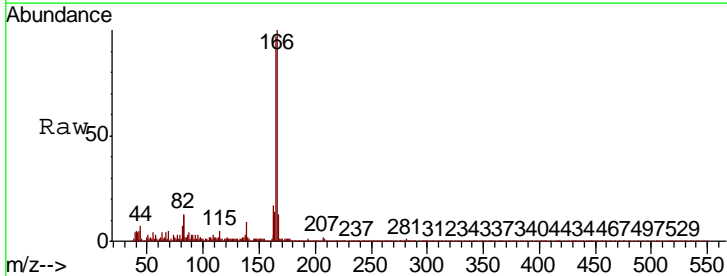
Instrument :  
 BNA\_P  
 ClientSampled :  
 CB8D0

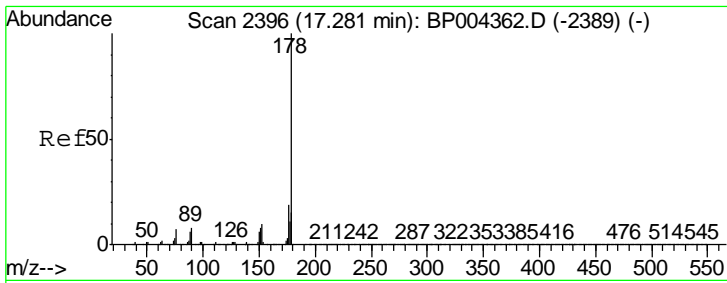
Tgt Ion	Resp	Lower	Upper
153	56028		
152	50.8	37.8	56.8
154	90.3	71.4	107.0



#59  
 Fluorene  
 Concen: 1.042 ng/ul  
 RT: 15.52 min Scan# 2097  
 Delta R.T. -0.01 min  
 Lab File: BP004371.D  
 Acq: 18 Dec 2020 23:06

Tgt Ion	Resp	Lower	Upper
166	57615		
165	97.1	79.2	118.8
167	13.0	10.8	16.2





#70  
 Phenanthrene  
 Concen: 1.418 ng/ul  
 RT: 17.27 min Scan# 2395  
 Delta R.T. -0.00 min  
 Lab File: BP004371.D  
 Acq: 18 Dec 2020 23:06

Instrument :  
 BNA\_P  
 ClientSampleID :  
 CB8D0

Tot Ion	178	Resp	129850
Ion	Ratio	Lower	Upper
178	100		
179	15.4	12.4	18.6
176	19.1	15.3	22.9

