

Data Path : Z:\SVOASRV\HPCHEM1\BNA P\DATA\BP121820\
 Data File : BP004386.D
 Acq On : 19 Dec 2020 10:33
 Operator : CG/JU
 Sample : L5128-04
 Misc :
 ALS Vial : 33 Sample Multiplier: 1

Instrument :
 BNA_P
 ClientSampleId :
 CB8C4

Quant Time: Dec 21 04:09:55 2020
 Quant Method : Z:\SVOASRV\HPCHEM1\BNA_P\METHODS\SOM-EPA-BP121820MA.M
 Quant Title : SVOA CALIBRATION
 QLast Update : Mon Dec 21 02:36:02 2020
 Response via : Initial Calibration

Internal Standards	R.T.	QIon	Response	Conc	Units	Dev(Min)
1) 1,4-Dichlorobenzene-d4	7.82	152	232757	20.00	ng/ul	0.00
18) Naphthalene-d8	10.62	136	993563	20.00	ng/ul	0.00
36) Acenaphthene-d10	14.47	164	634540	20.00	ng/ul	0.00
62) Phenanthrene-d10	17.23	188	1402999	20.00	ng/ul	0.00
78) Chrysene-d12	21.32	240	1459990	20.00	ng/ul	0.00
86) Perylene-d12	23.68	264	1535079	20.00	ng/ul	0.00

System Monitoring Compounds

3) 1,4-Dioxane-d8	3.32	96	21513	3.84	ng/uL	0.00
5) Phenol-d5	6.99	99	339237	16.79	ng/ul	0.00
7) Bis-(2-Chloroethyl)ether-d	7.15	67	240989	21.26	ng/ul	0.00
9) 2-Chlorophenol-d4	7.36	132	334574	20.24	ng/ul	0.00
13) 4-Methylphenol-d8	8.53	113	332269	20.65	ng/ul	0.00
19) Nitrobenzene-d5	8.98	128	167683	19.50	ng/ul	0.00
22) 2-Nitrophenol-d4	9.70	143	183890	19.61	ng/ul	0.00
26) 2,4-Dichlorophenol-d3	10.24	165	360309	20.72	ng/ul	0.00
29) 4-Chloroaniline-d4	10.75	131	481342	24.41	ng/ul	0.00
44) Dimethylphthalate-d6	13.87	166	1022848	20.14	ng/ul	0.00
47) Acenaphthylene-d8	14.16	160	1230434	19.50	ng/ul	0.00
52) 4-Nitrophenol-d4	14.67	143	131362	14.32	ng/ul	0.00
58) Fluorene-d10	15.47	176	823991	18.54	ng/ul	0.00
63) 4,6-Dinitro-2-methylphenol	15.59	200	132407	14.63	ng/ul	0.00
71) Anthracene-d10	17.33	188	1313378	18.95	ng/ul	0.00
79) Pyrene-d10	19.57	212	1510096	19.36	ng/ul	0.00
90) Benzo(a)pyrene-d12	23.53	264	1524193	18.03	ng/ul	0.00

Target Compounds

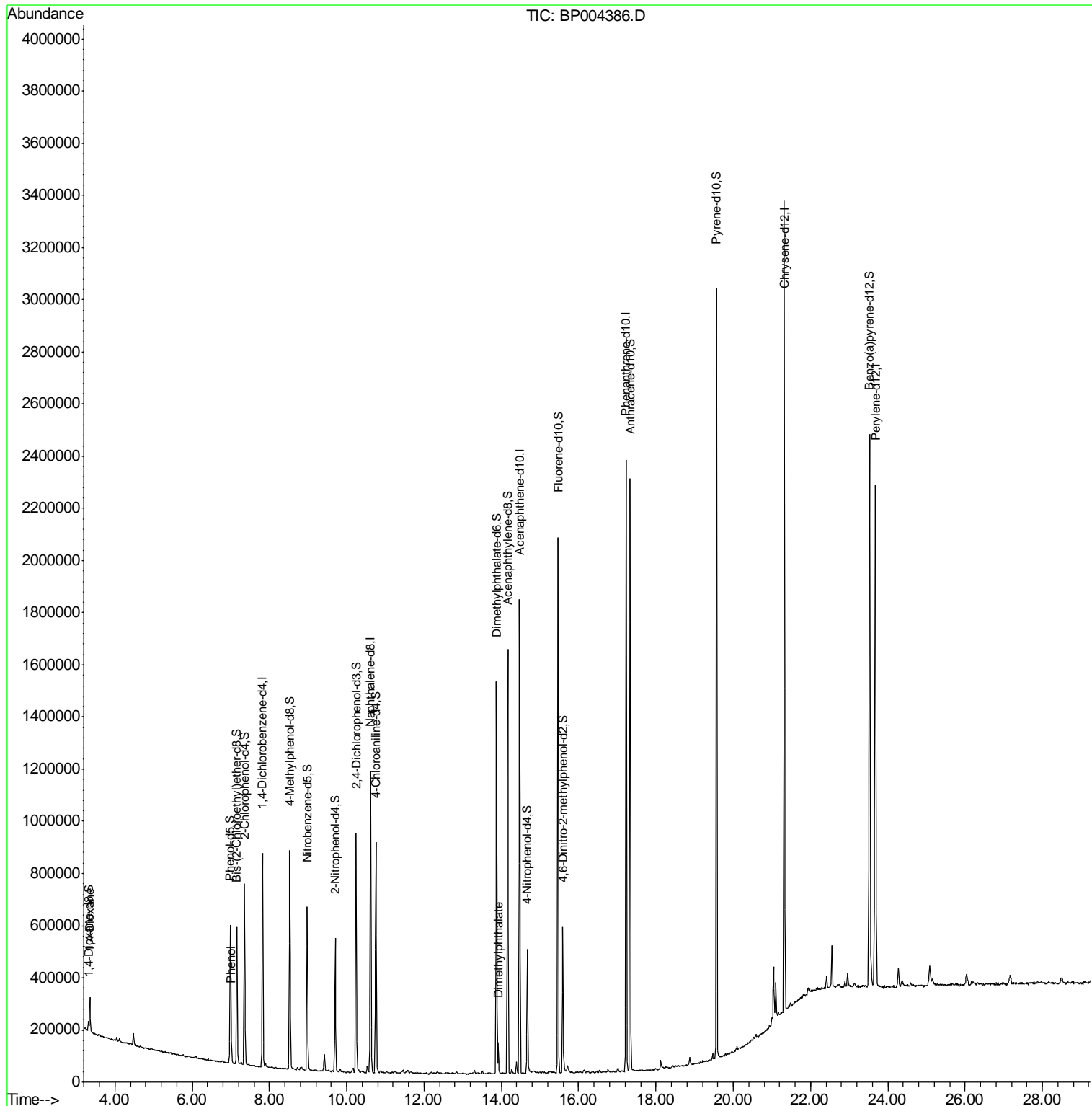
Target Compounds	R.T.	QIon	Response	Conc	Units	Ovalue
2) 1,4-Dioxane	3.35	88	75061	13.124	ng/uL	95
6) Phenol	7.02	94	35438	1.743	ng/ul	97
45) Dimethylphthalate	13.92	163	73751	1.449	ng/ul	98

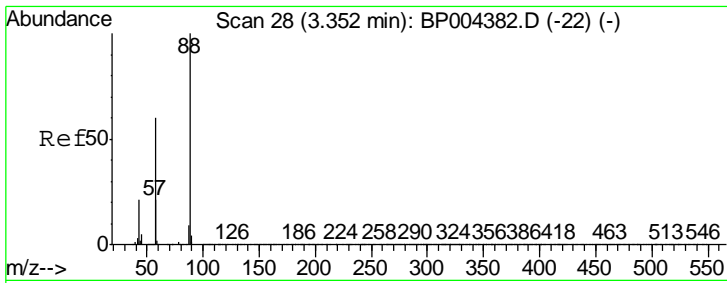
(#) = qualifier out of range (m) = manual integration (+) = signals summed

Data Path : Z:\SVOASRV\HPCHEM1\BNA P\DATA\BP121820\
 Data File : BP004386.D
 Acq On : 19 Dec 2020 10:33
 Operator : CG/JU
 Sample : L5128-04
 Misc :
 ALS Vial : 33 Sample Multiplier: 1

Instrument :
 BNA_P
 Client Sampled :
 CB8C4

Quant Time: Dec 21 04:09:55 2020
 Quant Method : Z:\SVOASRV\HPCHEM1\BNA_P\METHODS\SOM-EPA-BP121820MA.M
 Quant Title : SVOA CALIBRATION
 QLast Update : Mon Dec 21 02:36:02 2020
 Response via : Initial Calibration

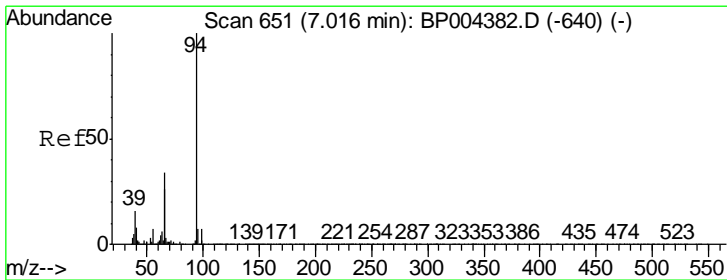
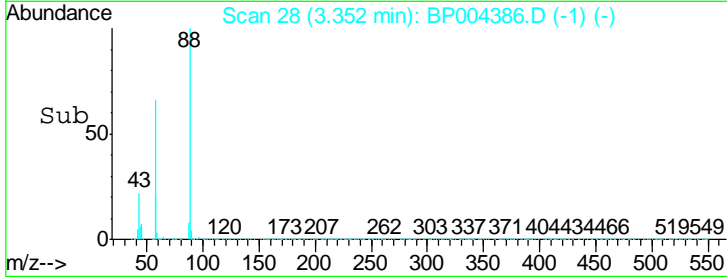
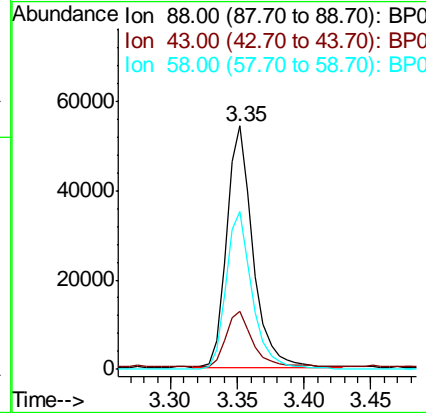
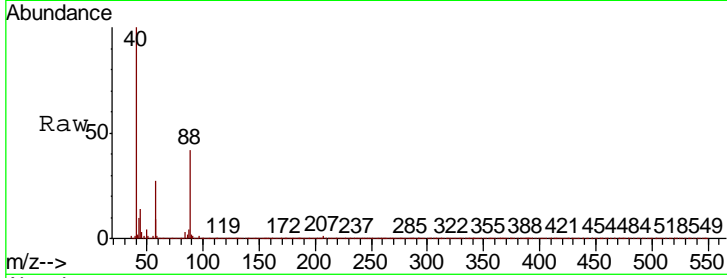




#2
 1,4-Dioxane
 Concen: 13.124 ng/uL
 RT: 3.35 min Scan# 28
 Delta R.T. -0.00 min
 Lab File: BP004386.D
 Acq: 19 Dec 2020 10:33

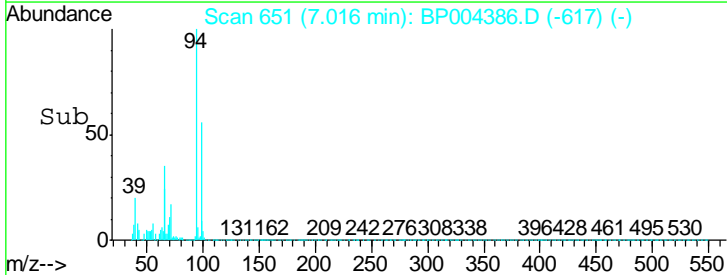
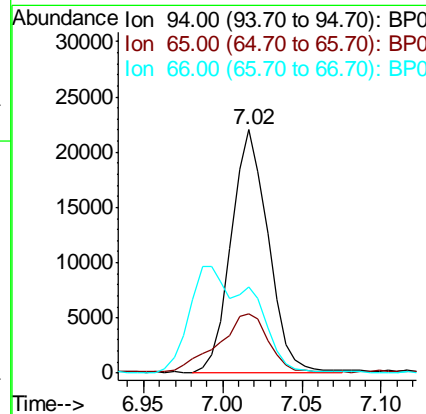
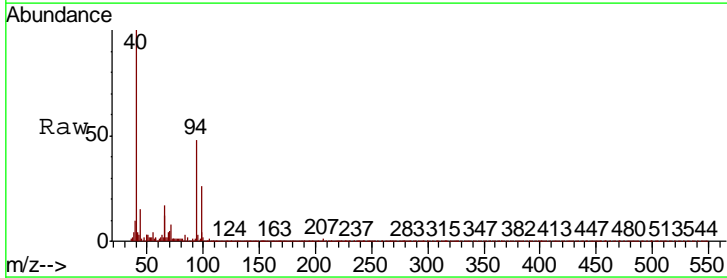
Instrument :
 BNA_P
 ClientSampleId :
 CB8C4

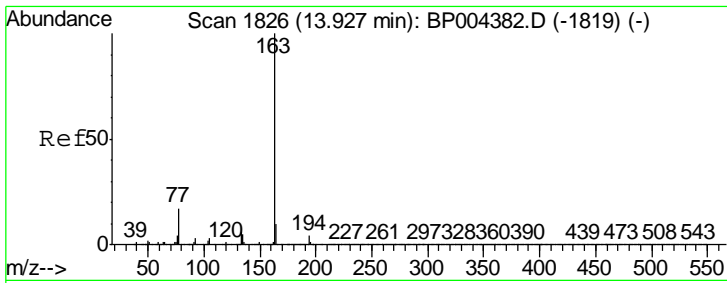
Tgt Ion	Resp	Lower	Upper
88	75061		
43	23.8	22.7	34.1
58	64.9	49.9	74.9



#6
 Phenol
 Concen: 1.743 ng/uL
 RT: 7.02 min Scan# 651
 Delta R.T. -0.00 min
 Lab File: BP004386.D
 Acq: 19 Dec 2020 10:33

Tgt Ion	Resp	Lower	Upper
94	35438		
65	24.4	20.3	30.5
66	35.2	26.2	39.2





#45
 Dimethylphthalate
 Concen: 1.449 ng/ul
 RT: 13.92 min Scan# 1825
 Delta R.T. -0.01 min
 Lab File: BP004386.D
 Acq: 19 Dec 2020 10:33

Instrument :
 BNA_P
 ClientSampleId :
 CB8C4

Tot Ion	163	194	164
Resp:	73751		
Ion Ratio	100	3.7	10.5
Lower		3.5	7.8
Upper		5.3	11.8

