

Data Path : Z:\svoasrv\HPCHEM1\BNA_P\Data\BP052125\
 Data File : BP024744.D
 Acq On : 21 May 2025 19:36
 Operator : RC/JU
 Sample : Q2071-20
 Misc :
 ALS Vial : 9 Sample Multiplier: 1

Instrument :
 BNA_P
 ClientSampleId :
 L2-WC-6

Quant Time: May 22 03:03:58 2025
 Quant Method : Z:\svoasrv\HPCHEM1\BNA_P\Methods\8270E-BP051325.M
 Quant Title : ASP BNA STANDARDS FOR 5 POINT CALIBRATION
 QLast Update : Tue May 13 16:21:39 2025
 Response via : Initial Calibration

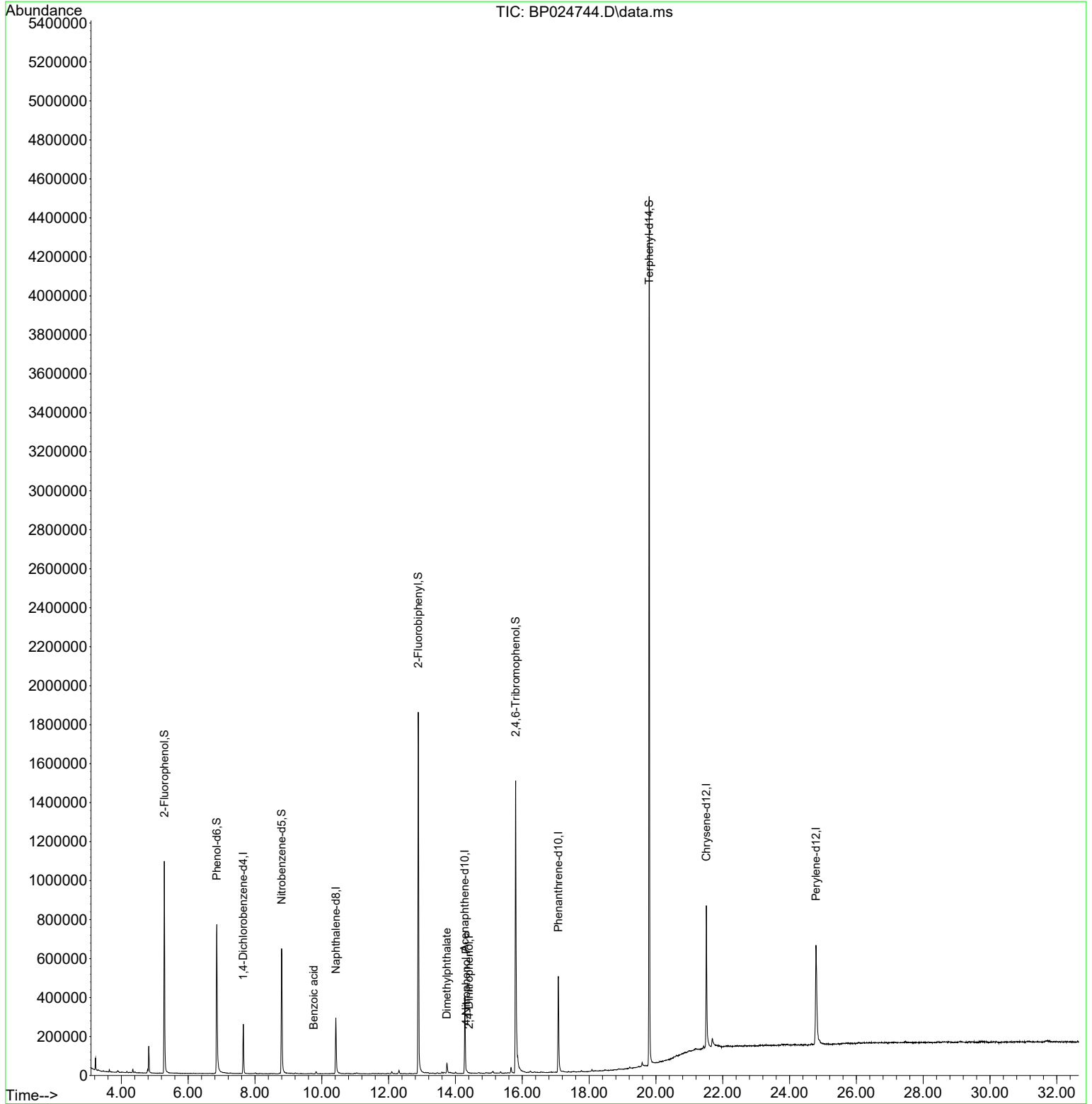
| Compound | R.T. | QIon | Response | Conc | Units | Dev(Min) |
|-----------------------------|--------|------|----------|---------|-------|----------|
| Internal Standards | | | | | | |
| 1) 1,4-Dichlorobenzene-d4 | 7.652 | 152 | 70843 | 20.000 | ng | -0.01 |
| 21) Naphthalene-d8 | 10.422 | 136 | 260534 | 20.000 | ng | -0.01 |
| 39) Acenaphthene-d10 | 14.281 | 164 | 167035 | 20.000 | ng | -0.02 |
| 64) Phenanthrene-d10 | 17.081 | 188 | 359114 | 20.000 | ng | -0.02 |
| 76) Chrysene-d12 | 21.510 | 240 | 470694 | 20.000 | ng | -0.01 |
| 86) Perylene-d12 | 24.792 | 264 | 593475 | 20.000 | ng | -0.01 |
| System Monitoring Compounds | | | | | | |
| 5) 2-Fluorophenol | 5.287 | 112 | 502381 | 121.290 | ng | 0.00 |
| 7) Phenol-d6 | 6.858 | 99 | 510107 | 96.496 | ng | 0.00 |
| 23) Nitrobenzene-d5 | 8.799 | 82 | 401300 | 77.826 | ng | -0.01 |
| 42) 2,4,6-Tribromophenol | 15.804 | 330 | 457053 | 161.404 | ng | 0.00 |
| 45) 2-Fluorobiphenyl | 12.887 | 172 | 1022977 | 80.236 | ng | -0.02 |
| 79) Terphenyl-d14 | 19.798 | 244 | 2312102 | 84.228 | ng | -0.01 |
| Target Compounds | | | | | | |
| 32) Benzoic acid | 9.758 | 122 | 63 | 7.488 | ng | # 47 |
| 50) Dimethylphthalate | 13.746 | 163 | 49792 | 3.911 | ng | 98 |
| 54) 2,4-Dinitrophenol | 14.404 | 184 | 16 | 6.410 | ng | # 38 |
| 56) 4-Nitrophenol | 14.322 | 139 | 45 | 4.252 | ng | 85 |

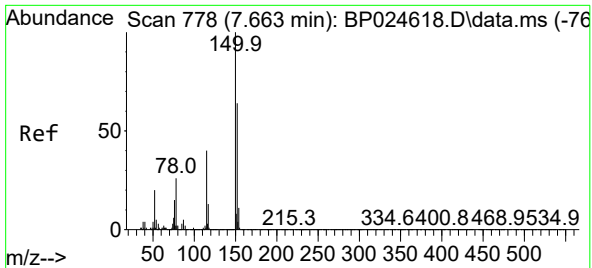
(#) = qualifier out of range (m) = manual integration (+) = signals summed

Data Path : Z:\svoasrv\HPCHEM1\BNA_P\Data\BP052125\
 Data File : BP024744.D
 Acq On : 21 May 2025 19:36
 Operator : RC/JU
 Sample : Q2071-20
 Misc :
 ALS Vial : 9 Sample Multiplier: 1

Instrument :
 BNA_P
 ClientSampleId :
 L2-WC-6

Quant Time: May 22 03:03:58 2025
 Quant Method : Z:\svoasrv\HPCHEM1\BNA_P\Methods\8270E-BP051325.M
 Quant Title : ASP BNA STANDARDS FOR 5 POINT CALIBRATION
 QLast Update : Tue May 13 16:21:39 2025
 Response via : Initial Calibration

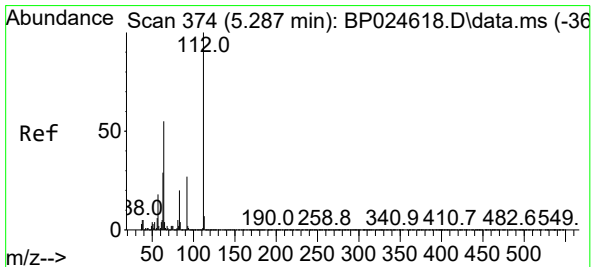
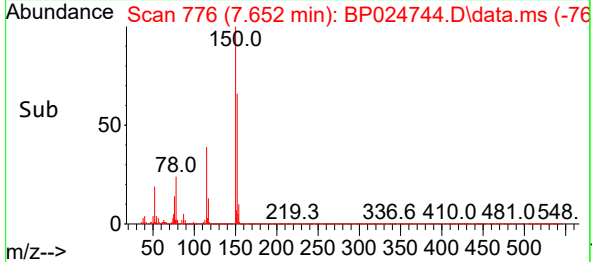
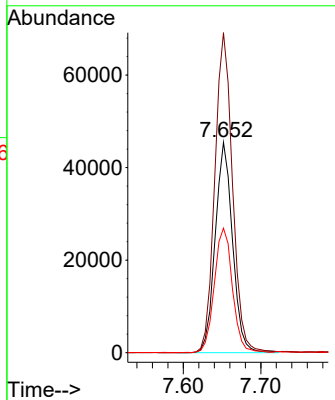
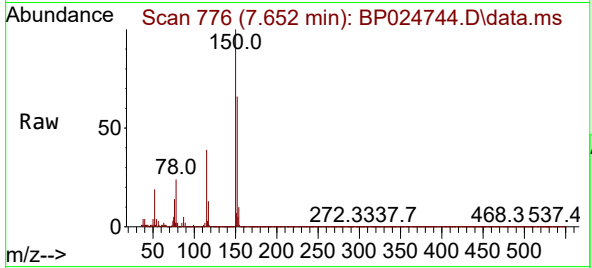




#1
 1,4-Dichlorobenzene-d4
 Concen: 20.000 ng
 RT: 7.652 min Scan# 776
 Delta R.T. -0.011 min
 Lab File: BP024744.D
 Acq: 21 May 2025 19:36

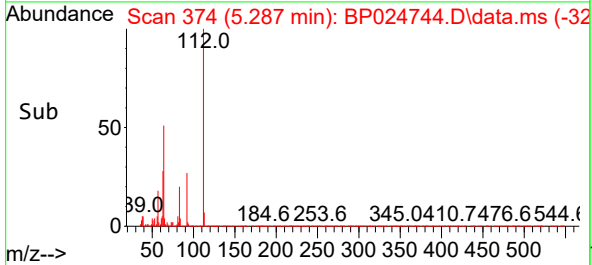
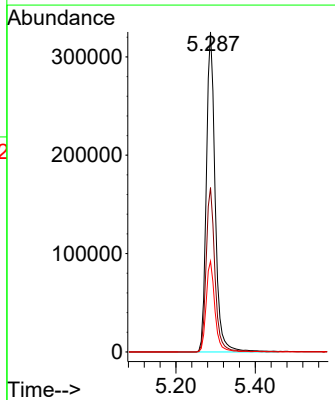
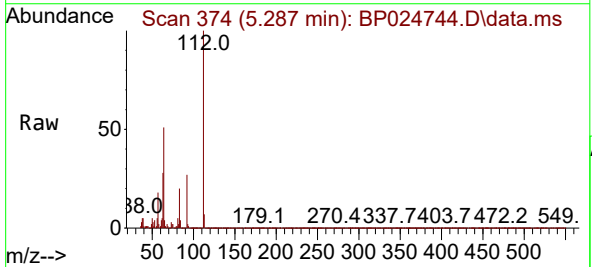
Instrument :
 BNA_P
 Client Sample Id :
 L2-WC-6

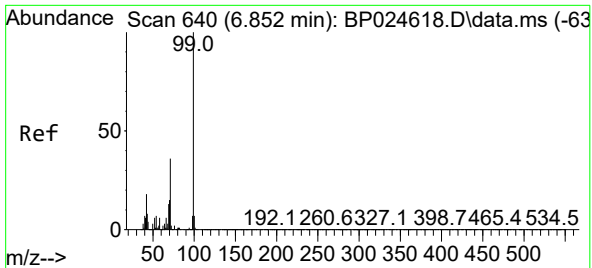
Tgt Ion:152 Resp: 70843
 Ion Ratio Lower Upper
 152 100
 150 152.0 125.9 188.9
 115 59.2 50.1 75.1



#5
 2-Fluorophenol
 Concen: 121.290 ng
 RT: 5.287 min Scan# 374
 Delta R.T. 0.000 min
 Lab File: BP024744.D
 Acq: 21 May 2025 19:36

Tgt Ion:112 Resp: 502381
 Ion Ratio Lower Upper
 112 100
 64 51.3 44.1 66.1
 63 28.4 23.5 35.3



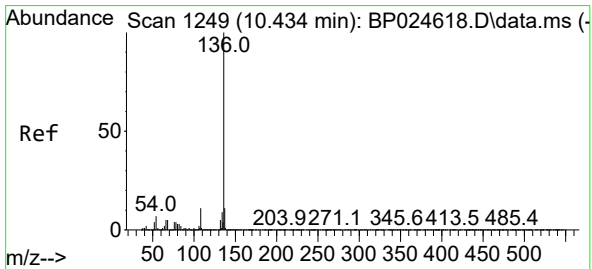
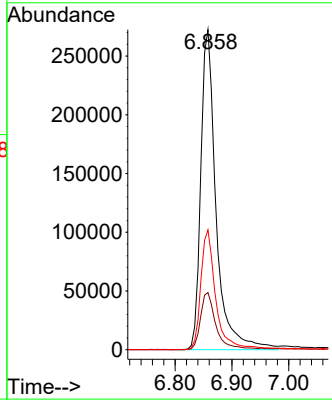
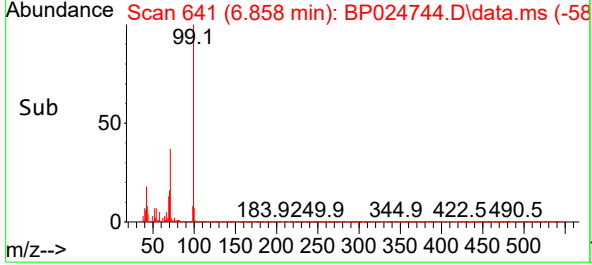
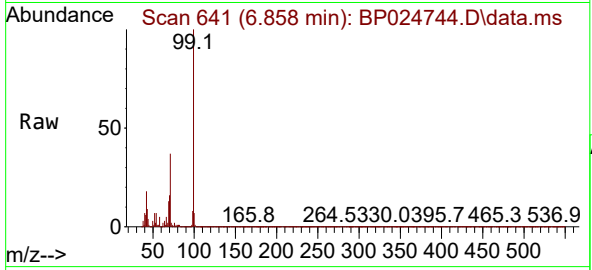


#7
 Phenol-d6
 Concen: 96.496 ng
 RT: 6.858 min Scan# 64
 Delta R.T. 0.006 min
 Lab File: BP024744.D
 Acq: 21 May 2025 19:36

Instrument : BNA_P
 ClientSampleId : L2-WC-6

Tgt Ion: 99 Resp: 510107

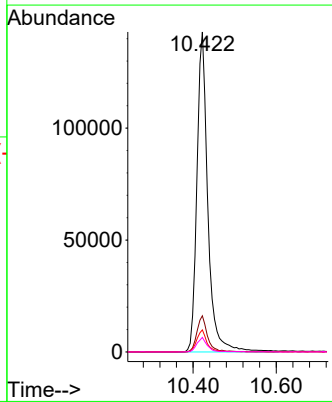
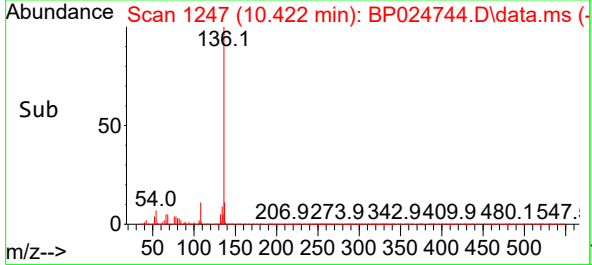
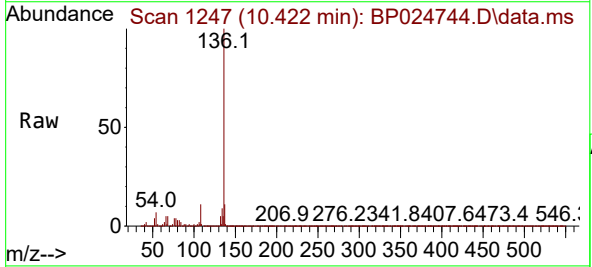
| Ion | Ratio | Lower | Upper |
|-----|-------|-------|-------|
| 99 | 100 | | |
| 42 | 17.9 | 14.4 | 21.6 |
| 71 | 37.5 | 29.2 | 43.8 |

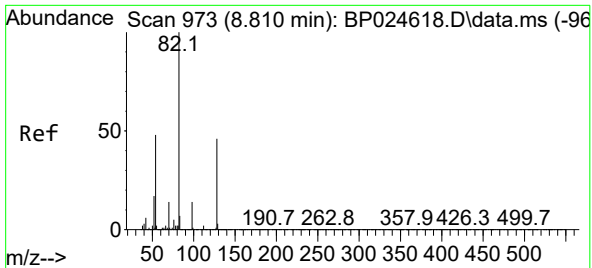


#21
 Naphthalene-d8
 Concen: 20.000 ng
 RT: 10.422 min Scan# 1247
 Delta R.T. -0.012 min
 Lab File: BP024744.D
 Acq: 21 May 2025 19:36

Tgt Ion: 136 Resp: 260534

| Ion | Ratio | Lower | Upper |
|-----|-------|-------|-------|
| 136 | 100 | | |
| 137 | 11.3 | 8.8 | 13.2 |
| 54 | 6.9 | 5.5 | 8.3 |
| 68 | 4.6 | 4.2 | 6.2 |



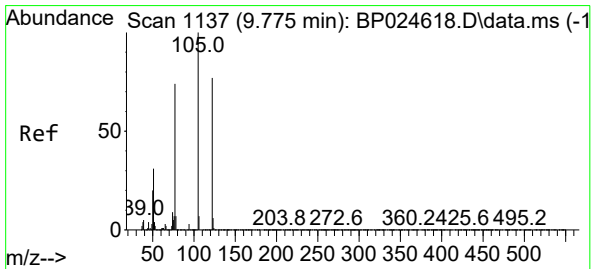
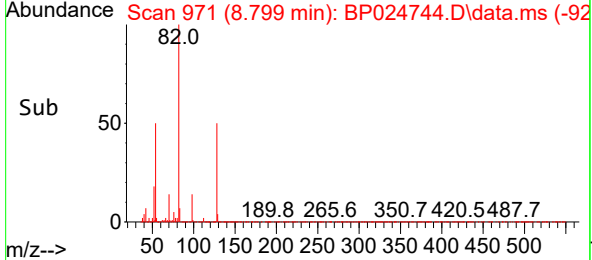
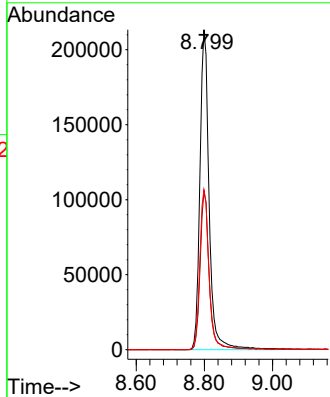
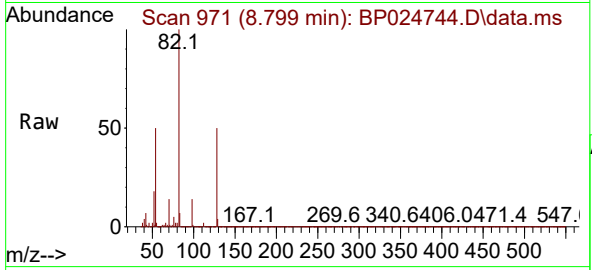


#23
 Nitrobenzene-d5
 Concen: 77.826 ng
 RT: 8.799 min Scan# 91
 Delta R.T. -0.012 min
 Lab File: BP024744.D
 Acq: 21 May 2025 19:36

Instrument : BNA_P
 Client Sample Id : L2-WC-6

Tgt Ion: 82 Resp: 401300

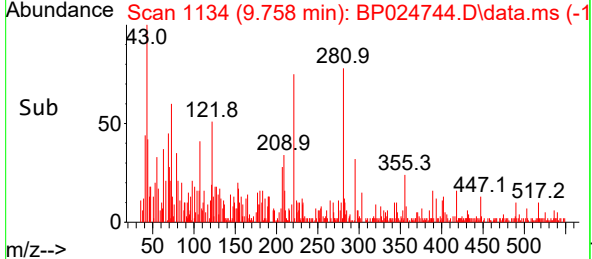
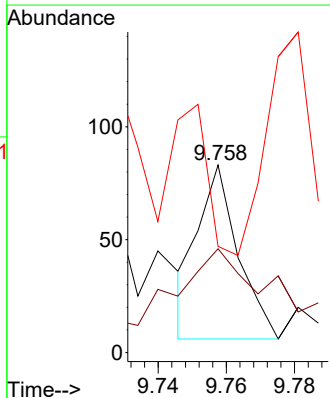
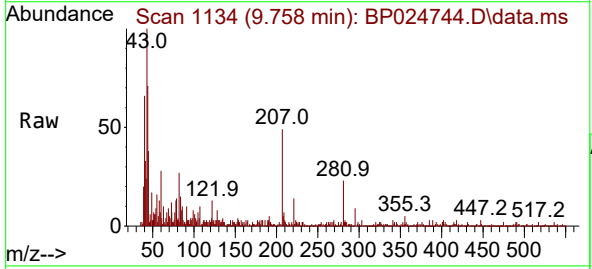
| Ion | Ratio | Lower | Upper |
|-----|-------|-------|-------|
| 82 | 100 | | |
| 128 | 49.5 | 37.0 | 55.4 |
| 54 | 50.0 | 38.7 | 58.1 |

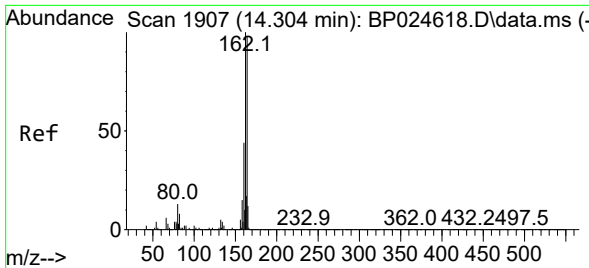


#32
 Benzoic acid
 Concen: 7.488 ng
 RT: 9.758 min Scan# 1134
 Delta R.T. -0.017 min
 Lab File: BP024744.D
 Acq: 21 May 2025 19:36

Tgt Ion: 122 Resp: 63

| Ion | Ratio | Lower | Upper |
|-----|-------|-------|--------|
| 122 | 100 | | |
| 105 | 55.4 | 106.9 | 146.9# |
| 77 | 56.6 | 75.1 | 115.1# |

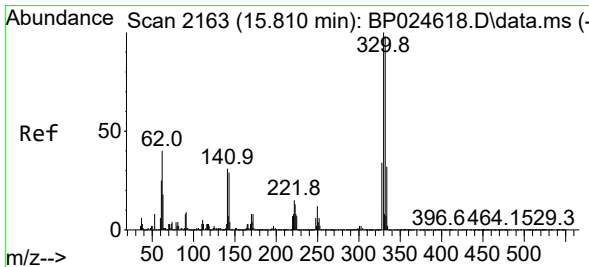
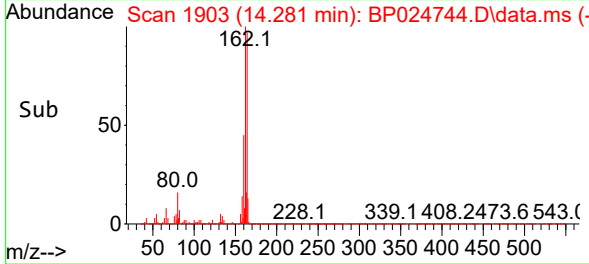
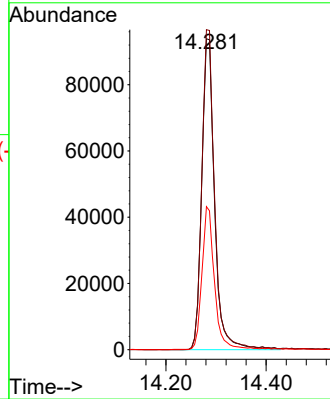
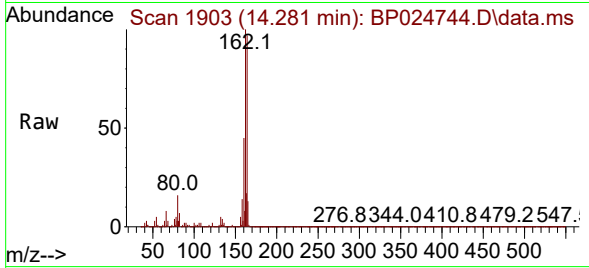




#39
Acenaphthene-d10
Concen: 20.000 ng
RT: 14.281 min Scan# 1903
Delta R.T. -0.023 min
Lab File: BP024744.D
Acq: 21 May 2025 19:36

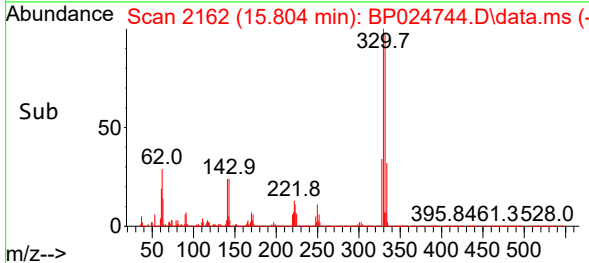
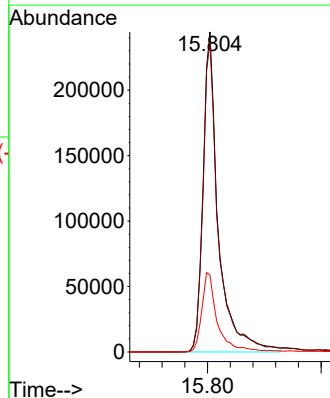
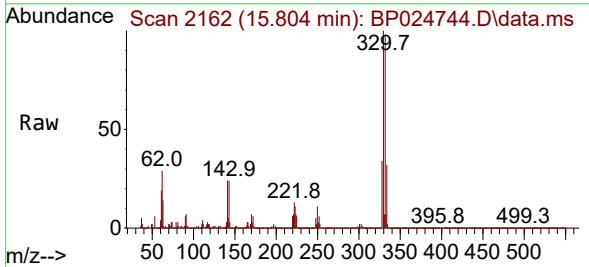
Instrument :
BNA_P
Client Sample Id :
L2-WC-6

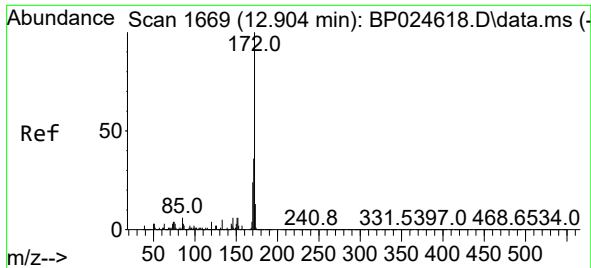
Tgt Ion:164 Resp: 167035
Ion Ratio Lower Upper
164 100
162 102.9 81.8 122.6
160 46.0 36.3 54.5



#42
2,4,6-Tribromophenol
Concen: 161.404 ng
RT: 15.804 min Scan# 2162
Delta R.T. -0.006 min
Lab File: BP024744.D
Acq: 21 May 2025 19:36

Tgt Ion:330 Resp: 457053
Ion Ratio Lower Upper
330 100
332 97.4 78.2 117.4
141 25.4 24.3 36.5



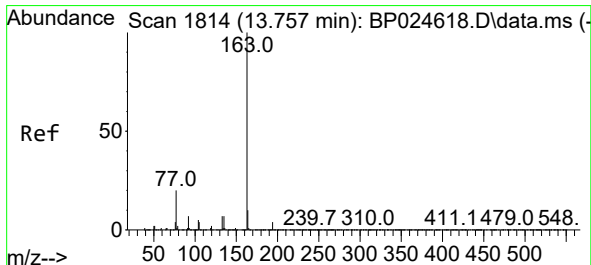
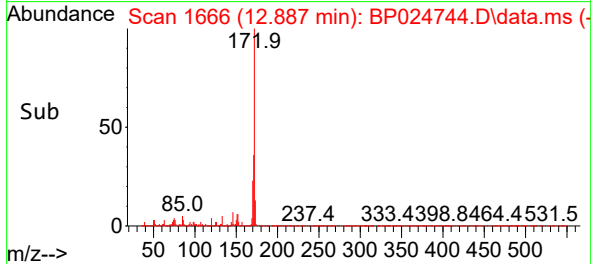
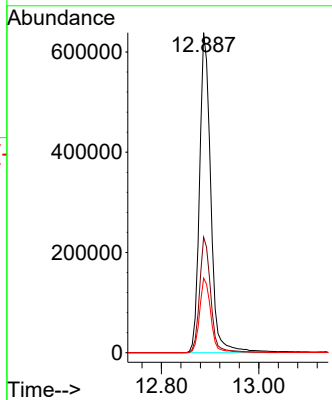
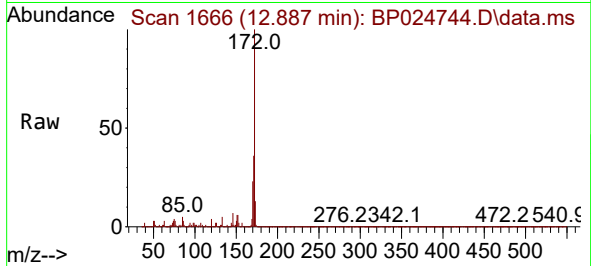


#45
 2-Fluorobiphenyl
 Concen: 80.236 ng
 RT: 12.887 min Scan# 10
 Delta R.T. -0.018 min
 Lab File: BP024744.D
 Acq: 21 May 2025 19:36

Instrument :
 BNA_P
 Client Sample Id :
 L2-WC-6

Tgt Ion: 172 Resp: 1022977

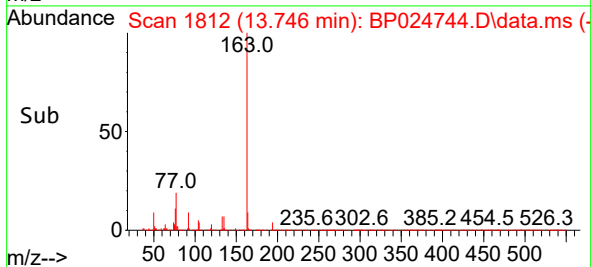
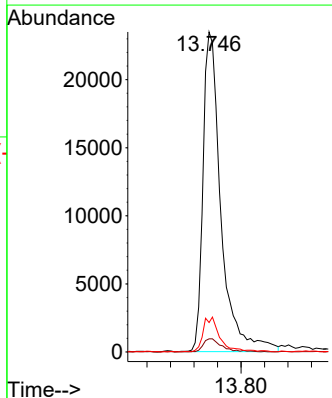
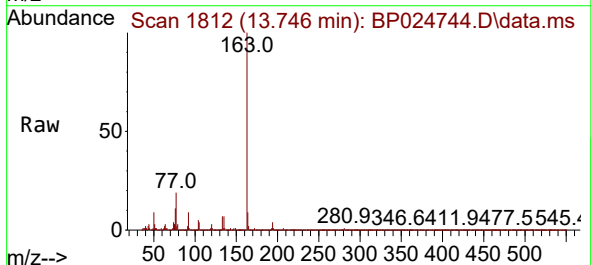
| Ion | Ratio | Lower | Upper |
|-----|-------|-------|-------|
| 172 | 100 | | |
| 171 | 36.1 | 28.8 | 43.2 |
| 170 | 23.3 | 18.8 | 28.2 |

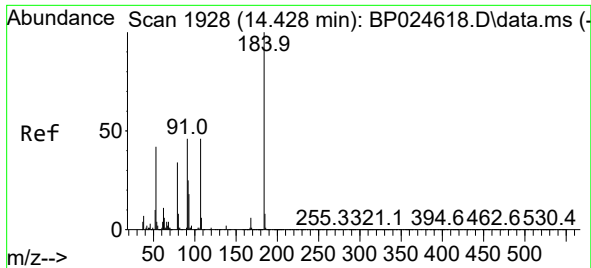


#50
 Dimethylphthalate
 Concen: 3.911 ng
 RT: 13.746 min Scan# 1812
 Delta R.T. -0.012 min
 Lab File: BP024744.D
 Acq: 21 May 2025 19:36

Tgt Ion: 163 Resp: 49792

| Ion | Ratio | Lower | Upper |
|-----|-------|-------|-------|
| 163 | 100 | | |
| 194 | 4.1 | 3.4 | 5.0 |
| 164 | 9.2 | 8.1 | 12.1 |

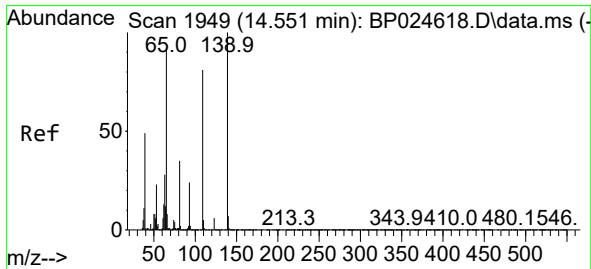
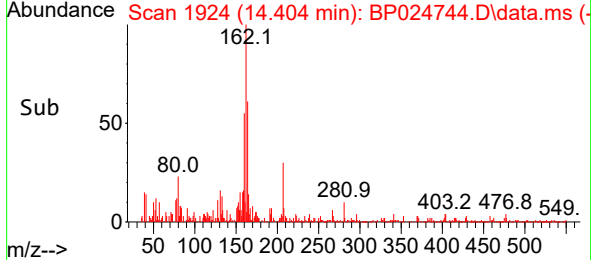
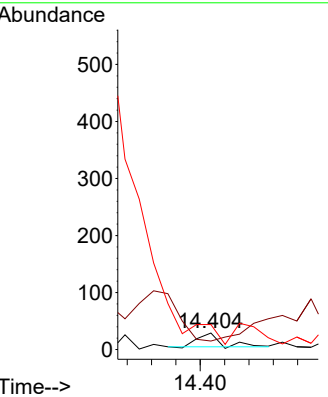
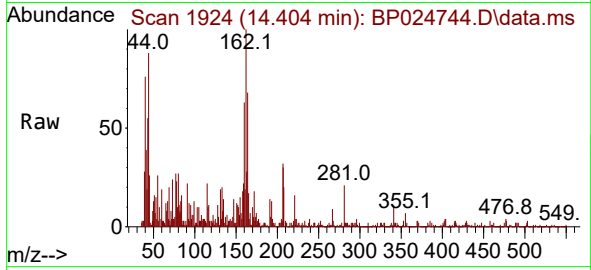




#54
 2,4-Dinitrophenol
 Concen: 6.410 ng
 RT: 14.404 min Scan# 1910
 Delta R.T. -0.024 min
 Lab File: BP024744.D
 Acq: 21 May 2025 19:36

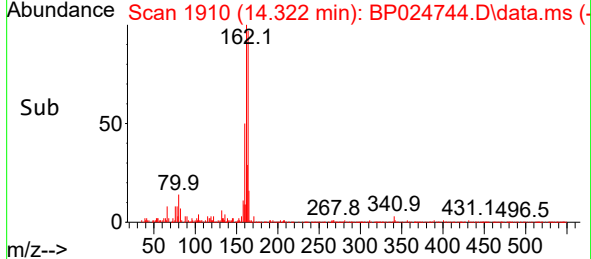
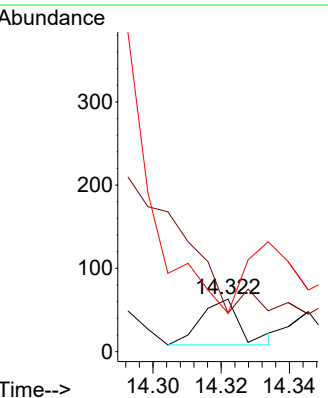
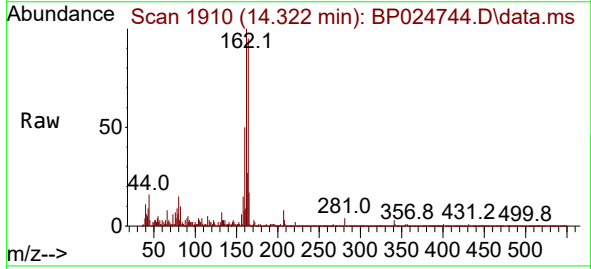
Instrument : BNA_P
 ClientSampleId : L2-WC-6

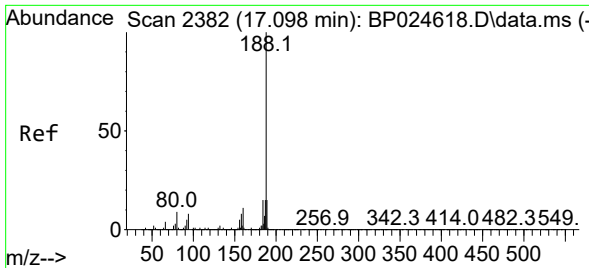
| Tgt Ion | Ratio | Lower | Upper |
|---------|-------|-------|-------|
| 184 | 100 | | |
| 63 | 51.7 | 51.3 | 76.9 |
| 154 | 151.7 | 53.5 | 80.3 |



#56
 4-Nitrophenol
 Concen: 4.252 ng
 RT: 14.322 min Scan# 1910
 Delta R.T. -0.229 min
 Lab File: BP024744.D
 Acq: 21 May 2025 19:36

| Tgt Ion | Ratio | Lower | Upper |
|---------|-------|-------|-------|
| 139 | 100 | | |
| 109 | 73.0 | 61.4 | 101.4 |
| 65 | 73.0 | 72.2 | 112.2 |



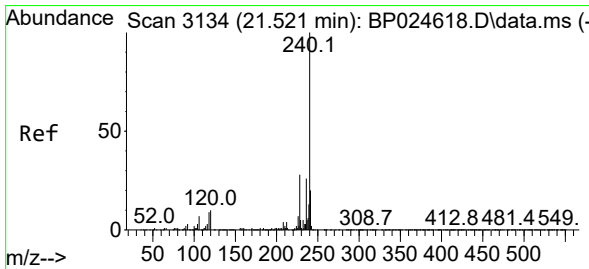
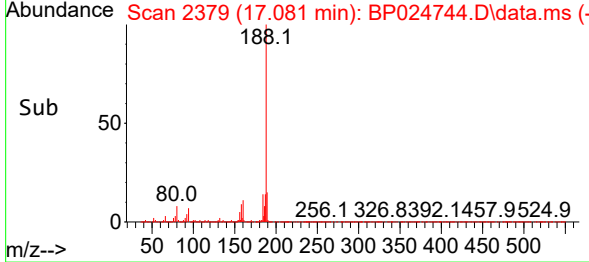
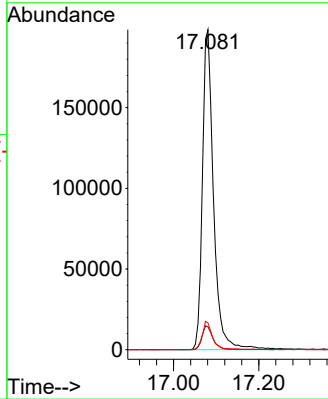
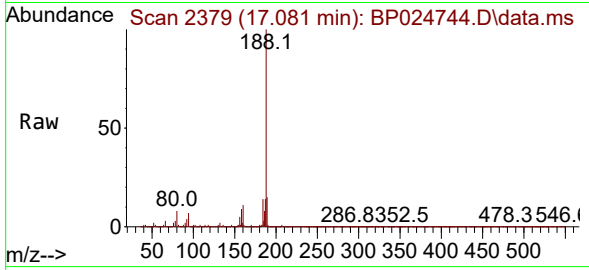


#64
 Phenanthrene-d10
 Concen: 20.000 ng
 RT: 17.081 min Scan# 21
 Delta R.T. -0.018 min
 Lab File: BP024744.D
 Acq: 21 May 2025 19:36

Instrument : BNA_P
 Client Sample Id : L2-WC-6

Tgt Ion:188 Resp: 359114

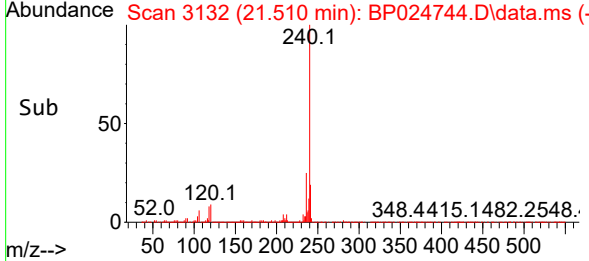
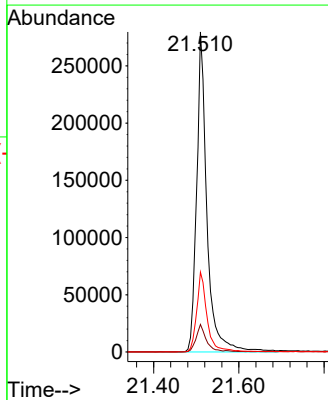
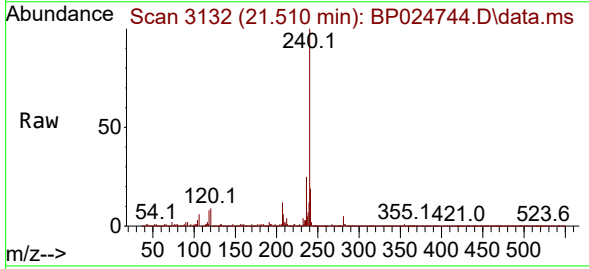
| Ion | Ratio | Lower | Upper |
|-----|-------|-------|-------|
| 188 | 100 | | |
| 94 | 7.1 | 6.5 | 9.7 |
| 80 | 8.4 | 7.3 | 10.9 |

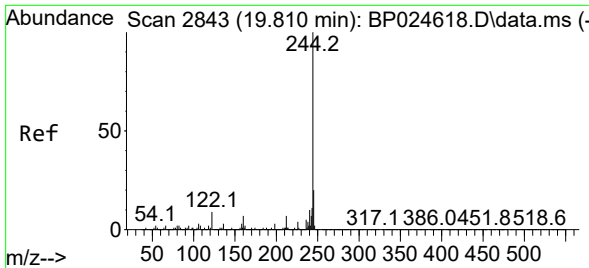


#76
 Chrysene-d12
 Concen: 20.000 ng
 RT: 21.510 min Scan# 3132
 Delta R.T. -0.012 min
 Lab File: BP024744.D
 Acq: 21 May 2025 19:36

Tgt Ion:240 Resp: 470694

| Ion | Ratio | Lower | Upper |
|-----|-------|-------|-------|
| 240 | 100 | | |
| 120 | 8.6 | 7.8 | 11.6 |
| 236 | 25.0 | 20.6 | 31.0 |



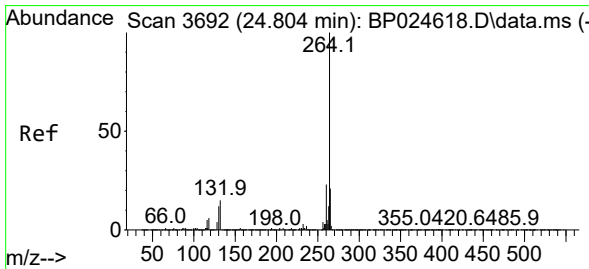
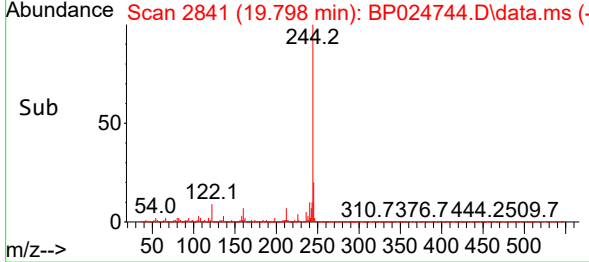
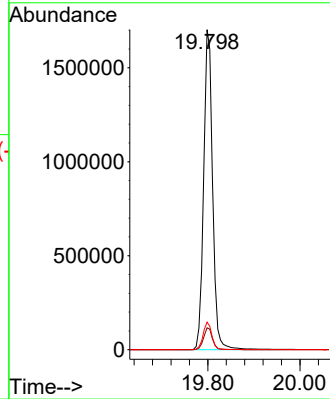
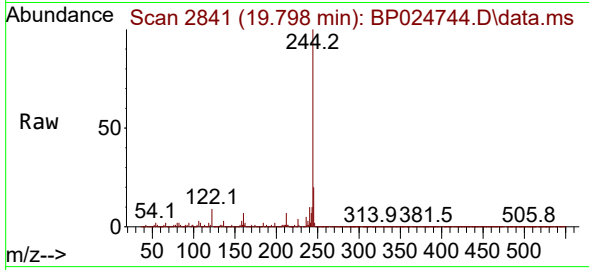


#79
 Terphenyl-d14
 Concen: 84.228 ng
 RT: 19.798 min Scan# 2841
 Delta R.T. -0.012 min
 Lab File: BP024744.D
 Acq: 21 May 2025 19:36

Instrument :
 BNA_P
 Client Sample Id :
 L2-WC-6

Tgt Ion:244 Resp: 2312102

| Ion | Ratio | Lower | Upper |
|-----|-------|-------|-------|
| 244 | 100 | | |
| 212 | 6.8 | 5.5 | 8.3 |
| 122 | 8.6 | 7.4 | 11.0 |



#86
 Perylene-d12
 Concen: 20.000 ng
 RT: 24.792 min Scan# 3690
 Delta R.T. -0.012 min
 Lab File: BP024744.D
 Acq: 21 May 2025 19:36

Tgt Ion:264 Resp: 593475

| Ion | Ratio | Lower | Upper |
|-----|-------|-------|-------|
| 264 | 100 | | |
| 260 | 23.5 | 18.7 | 28.1 |
| 265 | 22.6 | 17.0 | 25.6 |

