

Data Path : Z:\svoasrv\HPCHEM1\BNA\_P\Data\BP052125\  
 Data File : BP024747.D  
 Acq On : 21 May 2025 21:38  
 Operator : RC/JU  
 Sample : Q2075-07  
 Misc :  
 ALS Vial : 12 Sample Multiplier: 1

Instrument :  
 BNA\_P  
 ClientSampleId :  
 FB-05152025

Quant Time: May 22 03:04:51 2025  
 Quant Method : Z:\svoasrv\HPCHEM1\BNA\_P\Methods\8270E-BP051325.M  
 Quant Title : ASP BNA STANDARDS FOR 5 POINT CALIBRATION  
 QLast Update : Tue May 13 16:21:39 2025  
 Response via : Initial Calibration

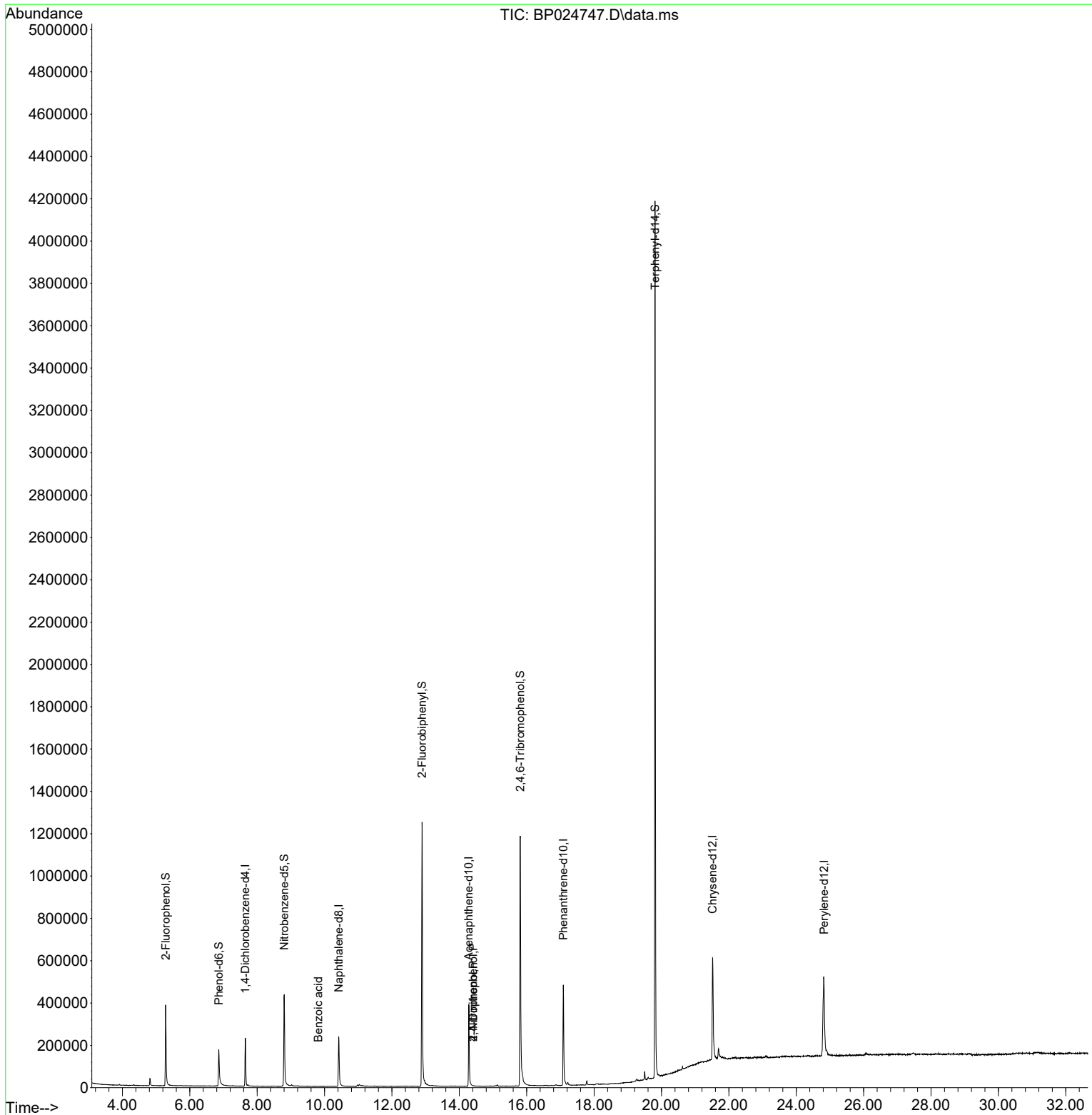
Compound	R.T.	QIon	Response	Conc	Units	Dev(Min)
Internal Standards						
1) 1,4-Dichlorobenzene-d4	7.652	152	62937	20.000	ng	-0.01
21) Naphthalene-d8	10.422	136	227304	20.000	ng	#-0.01
39) Acenaphthene-d10	14.281	164	151908	20.000	ng	-0.02
64) Phenanthrene-d10	17.086	188	322675	20.000	ng	-0.01
76) Chrysene-d12	21.516	240	405238	20.000	ng	0.00
86) Perylene-d12	24.821	264	487499	20.000	ng	0.02
System Monitoring Compounds						
5) 2-Fluorophenol	5.287	112	194969	52.985	ng	0.00
7) Phenol-d6	6.863	99	136508	29.067	ng	0.01
23) Nitrobenzene-d5	8.804	82	281886	62.659	ng	0.00
42) 2,4,6-Tribromophenol	15.810	330	356280	138.346	ng	0.00
45) 2-Fluorobiphenyl	12.892	172	766655	66.120	ng	-0.01
79) Terphenyl-d14	19.810	244	2080475	88.032	ng	0.00
Target Compounds						
32) Benzoic acid	9.816	122	11	7.472	ng	Qvalue 89
54) 2,4-Dinitrophenol	14.416	184	6	6.405	ng	# 8
56) 4-Nitrophenol	14.416	139	18	4.242	ng	87

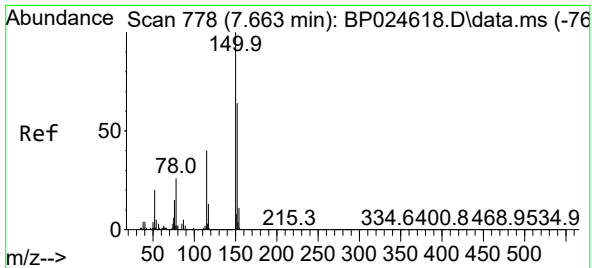
(#) = qualifier out of range (m) = manual integration (+) = signals summed

Data Path : Z:\svoasrv\HPCHEM1\BNA\_P\Data\BP052125\  
 Data File : BP024747.D  
 Acq On : 21 May 2025 21:38  
 Operator : RC/JU  
 Sample : Q2075-07  
 Misc :  
 ALS Vial : 12 Sample Multiplier: 1

Instrument :  
 BNA\_P  
 ClientSampleId :  
 FB-05152025

Quant Time: May 22 03:04:51 2025  
 Quant Method : Z:\svoasrv\HPCHEM1\BNA\_P\Methods\8270E-BP051325.M  
 Quant Title : ASP BNA STANDARDS FOR 5 POINT CALIBRATION  
 QLast Update : Tue May 13 16:21:39 2025  
 Response via : Initial Calibration



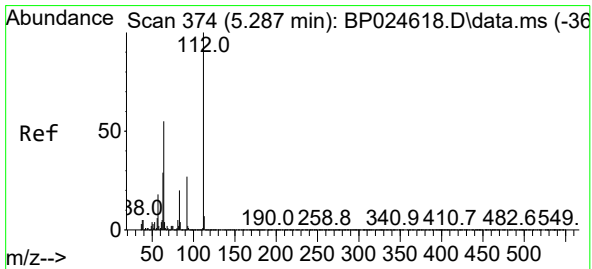
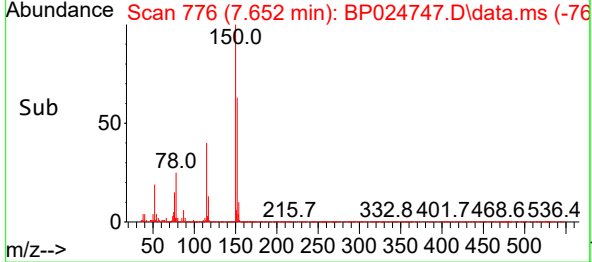
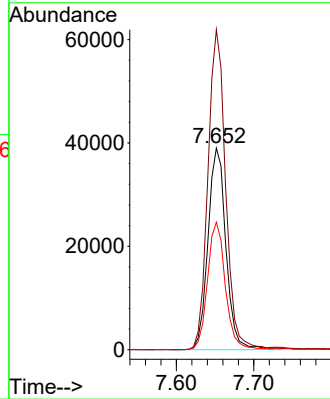
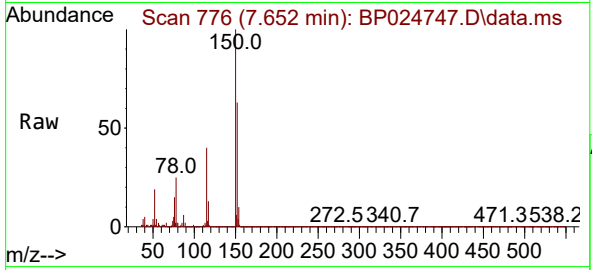


#1  
 1,4-Dichlorobenzene-d4  
 Concen: 20.000 ng  
 RT: 7.652 min Scan# 776  
 Delta R.T. -0.011 min  
 Lab File: BP024747.D  
 Acq: 21 May 2025 21:38

Instrument :  
 BNA\_P  
 ClientSampleId :  
 FB-05152025

Tgt Ion:152 Resp: 62937

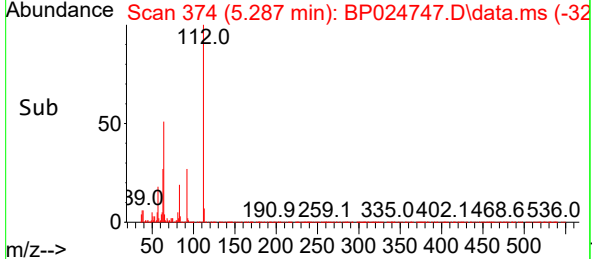
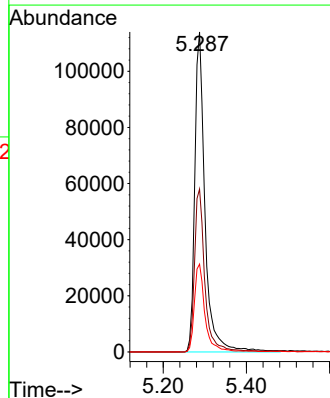
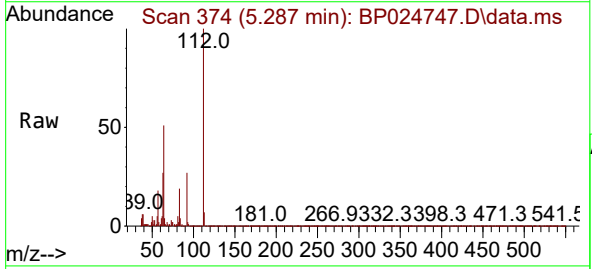
Ion	Ratio	Lower	Upper
152	100		
150	158.7	125.9	188.9
115	63.3	50.1	75.1

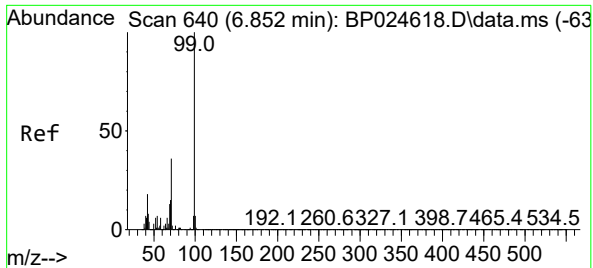


#5  
 2-Fluorophenol  
 Concen: 52.985 ng  
 RT: 5.287 min Scan# 374  
 Delta R.T. -0.000 min  
 Lab File: BP024747.D  
 Acq: 21 May 2025 21:38

Tgt Ion:112 Resp: 194969

Ion	Ratio	Lower	Upper
112	100		
64	50.9	44.1	66.1
63	27.5	23.5	35.3



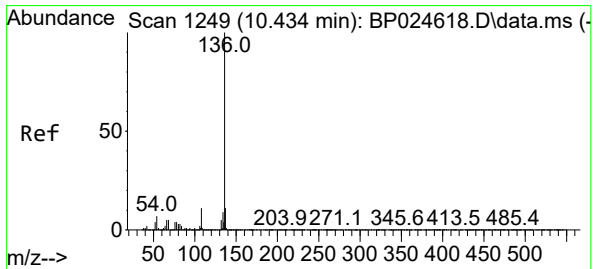
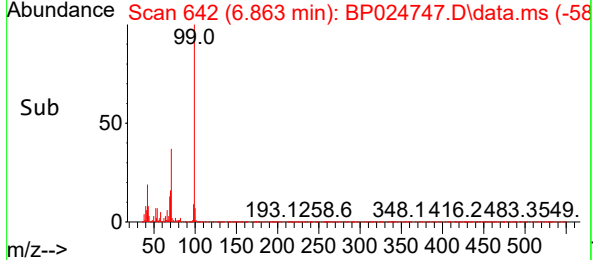
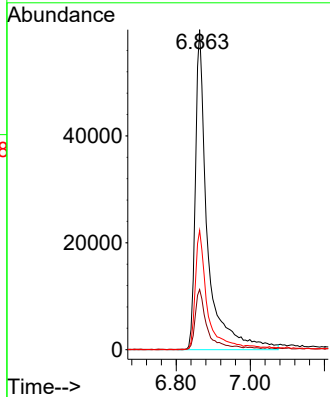
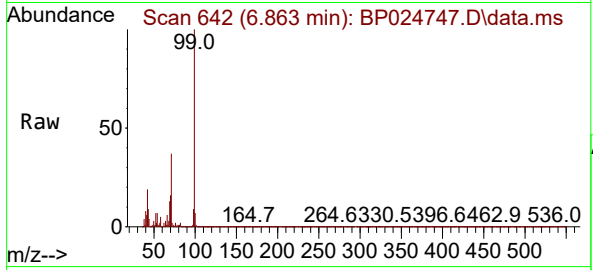


#7  
 Phenol-d6  
 Concen: 29.067 ng  
 RT: 6.863 min Scan# 64  
 Delta R.T. 0.012 min  
 Lab File: BP024747.D  
 Acq: 21 May 2025 21:38

Instrument : BNA\_P  
 ClientSampleId : FB-05152025

Tgt Ion: 99 Resp: 136508

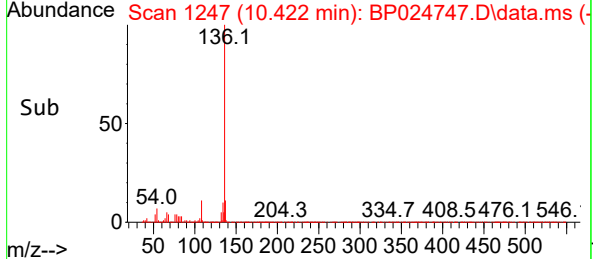
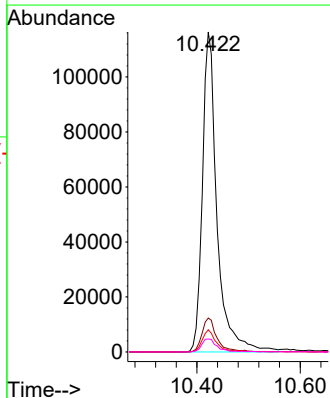
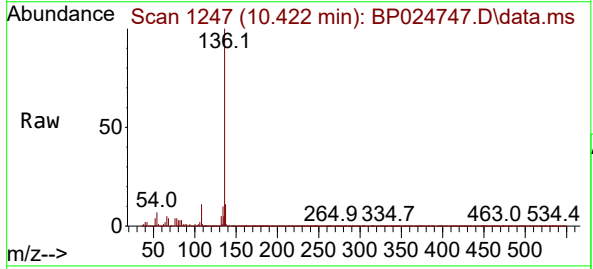
Ion	Ratio	Lower	Upper
99	100		
42	18.8	14.4	21.6
71	37.2	29.2	43.8

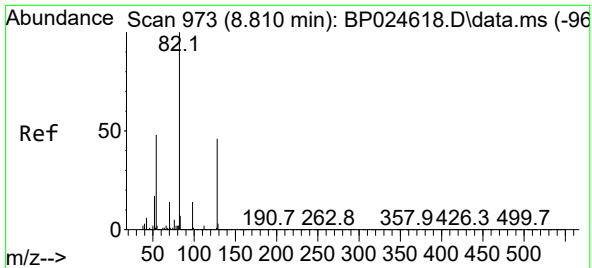


#21  
 Naphthalene-d8  
 Concen: 20.000 ng  
 RT: 10.422 min Scan# 1247  
 Delta R.T. -0.012 min  
 Lab File: BP024747.D  
 Acq: 21 May 2025 21:38

Tgt Ion: 136 Resp: 227304

Ion	Ratio	Lower	Upper
136	100		
137	10.6	8.8	13.2
54	6.9	5.5	8.3
68	4.0	4.2	6.2



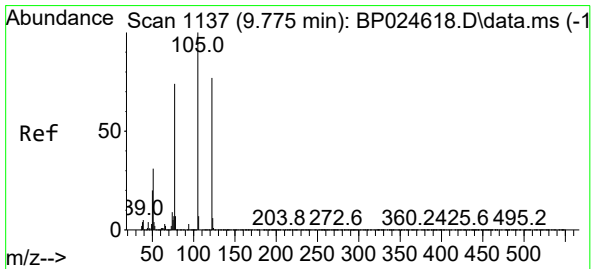
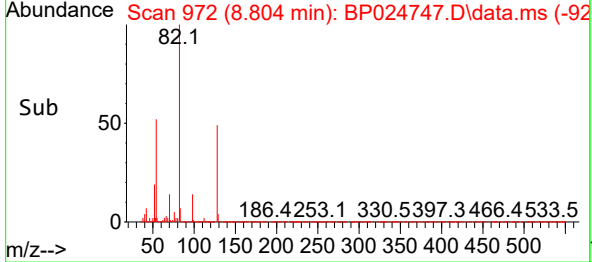
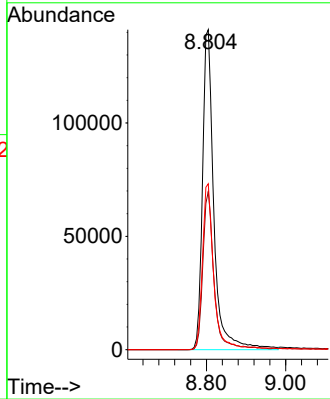
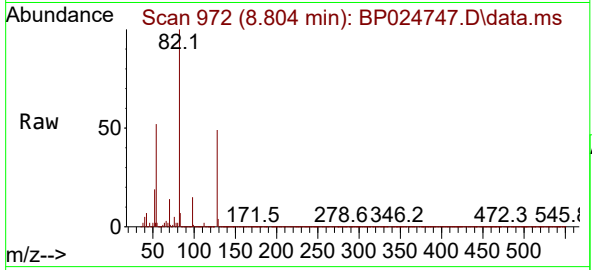


#23  
 Nitrobenzene-d5  
 Concen: 62.659 ng  
 RT: 8.804 min Scan# 91  
 Delta R.T. -0.006 min  
 Lab File: BP024747.D  
 Acq: 21 May 2025 21:38

Instrument :  
 BNA\_P  
 ClientSampleId :  
 FB-05152025

Tgt Ion: 82 Resp: 281886

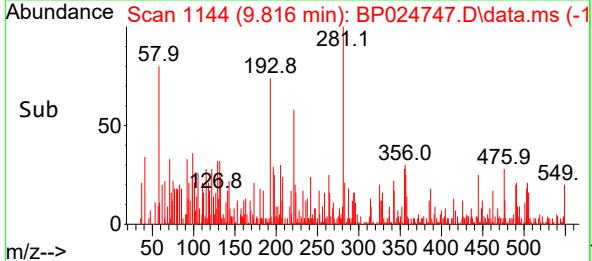
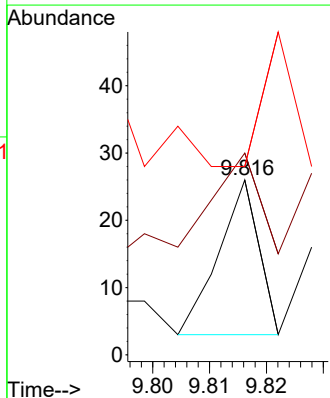
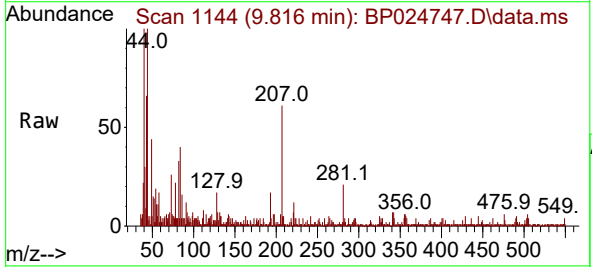
Ion	Ratio	Lower	Upper
82	100		
128	49.4	37.0	55.4
54	51.8	38.7	58.1

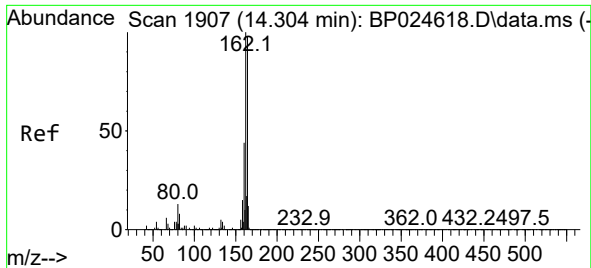


#32  
 Benzoic acid  
 Concen: 7.472 ng  
 RT: 9.816 min Scan# 1144  
 Delta R.T. 0.041 min  
 Lab File: BP024747.D  
 Acq: 21 May 2025 21:38

Tgt Ion: 122 Resp: 11

Ion	Ratio	Lower	Upper
122	100		
105	115.4	106.9	146.9
77	107.7	75.1	115.1

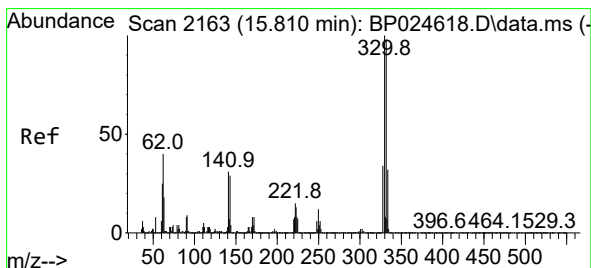
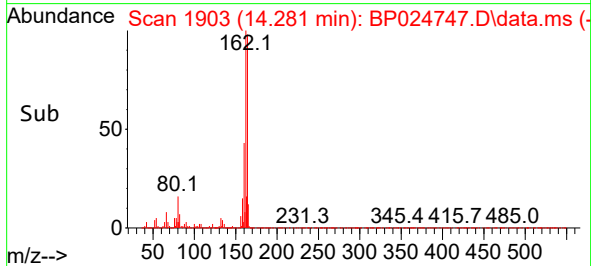
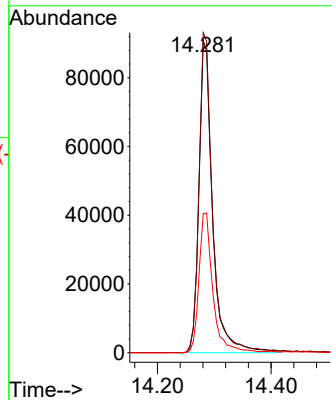
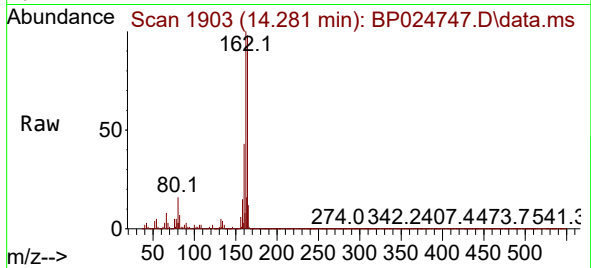




#39  
 Acenaphthene-d10  
 Concen: 20.000 ng  
 RT: 14.281 min Scan# 1907  
 Delta R.T. -0.024 min  
 Lab File: BP024747.D  
 Acq: 21 May 2025 21:38

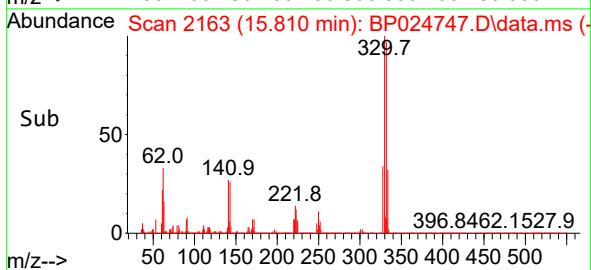
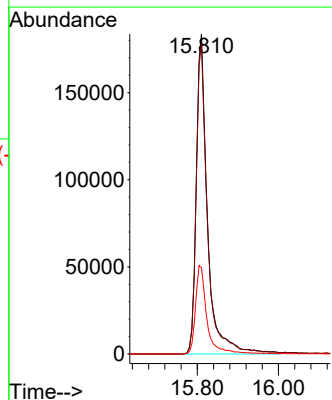
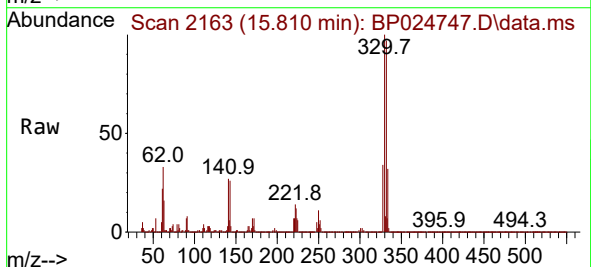
Instrument :  
 BNA\_P  
 ClientSampleId :  
 FB-05152025

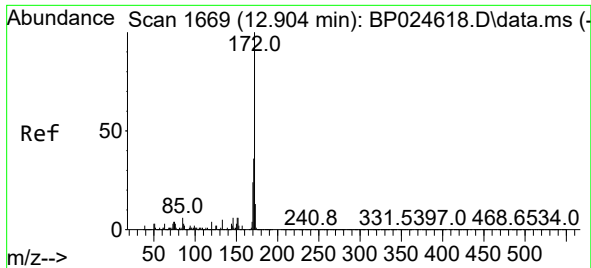
Tgt Ion:164 Resp: 151908  
 Ion Ratio Lower Upper  
 164 100  
 162 102.5 81.8 122.6  
 160 44.6 36.3 54.5



#42  
 2,4,6-Tribromophenol  
 Concen: 138.346 ng  
 RT: 15.810 min Scan# 2163  
 Delta R.T. -0.000 min  
 Lab File: BP024747.D  
 Acq: 21 May 2025 21:38

Tgt Ion:330 Resp: 356280  
 Ion Ratio Lower Upper  
 330 100  
 332 98.1 78.2 117.4  
 141 28.2 24.3 36.5

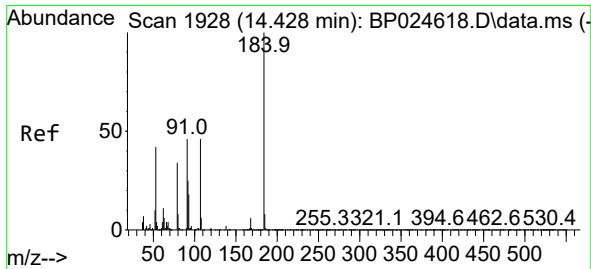
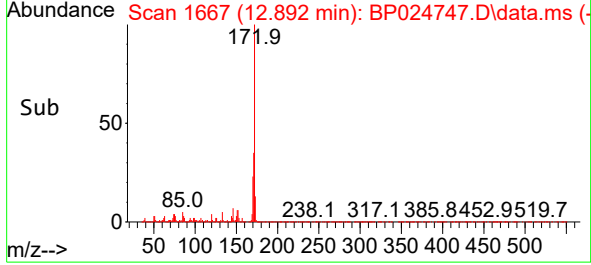
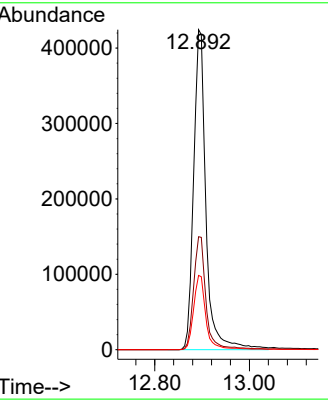
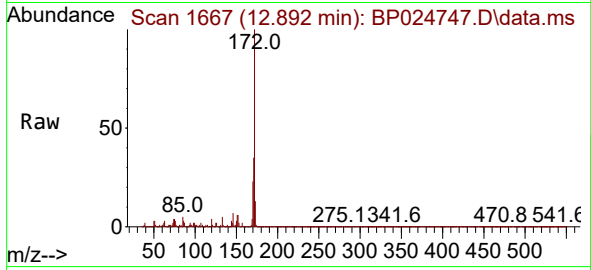




#45  
 2-Fluorobiphenyl  
 Concen: 66.120 ng  
 RT: 12.892 min Scan# 1667  
 Delta R.T. -0.012 min  
 Lab File: BP024747.D  
 Acq: 21 May 2025 21:38

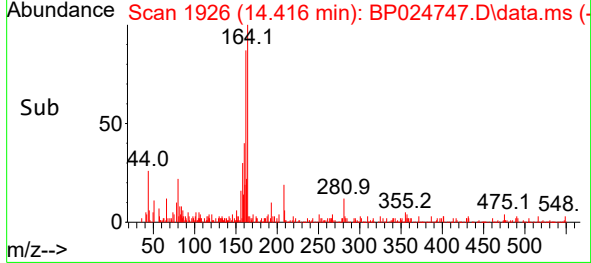
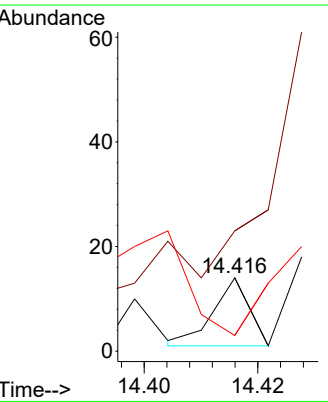
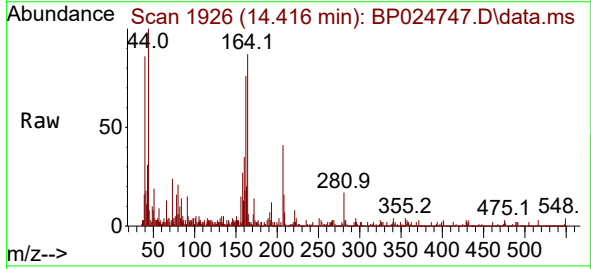
Instrument : BNA\_P  
 Client Sample Id : FB-05152025

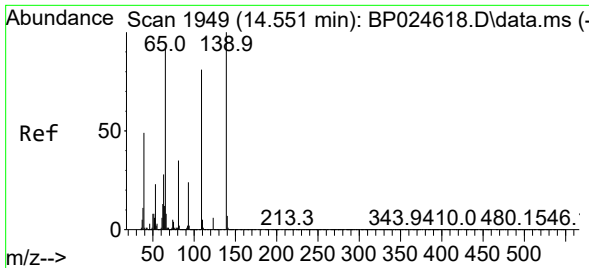
Tgt Ion	Resp	Lower	Upper
172	100		
171	35.3	28.8	43.2
170	23.2	18.8	28.2



#54  
 2,4-Dinitrophenol  
 Concen: 6.405 ng  
 RT: 14.416 min Scan# 1926  
 Delta R.T. -0.012 min  
 Lab File: BP024747.D  
 Acq: 21 May 2025 21:38

Tgt Ion	Resp	Lower	Upper
184	100		
63	164.3	51.3	76.9#
154	21.4	53.5	80.3#



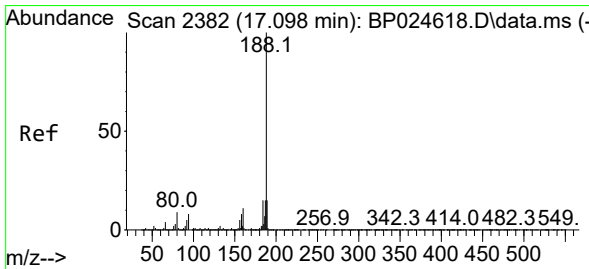
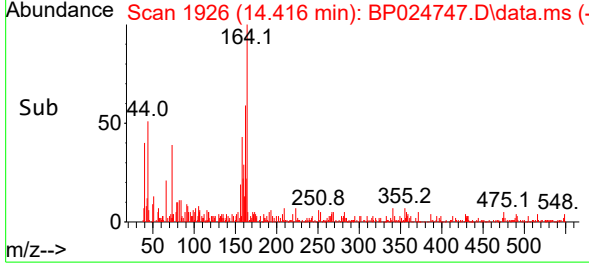
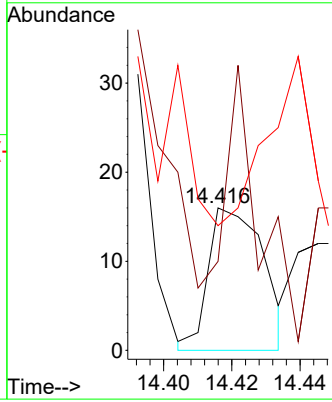
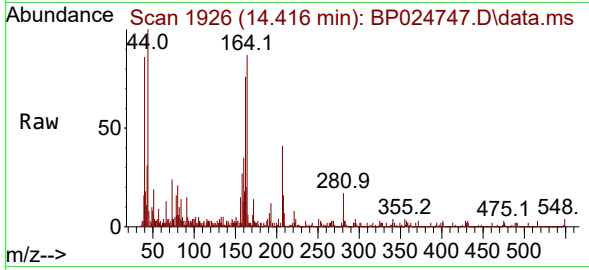


#56  
 4-Nitrophenol  
 Concen: 4.242 ng  
 RT: 14.416 min Scan# 1949  
 Delta R.T. -0.135 min  
 Lab File: BP024747.D  
 Acq: 21 May 2025 21:38

Instrument : BNA\_P  
 ClientSampleId : FB-05152025

Tgt Ion:139 Resp: 18

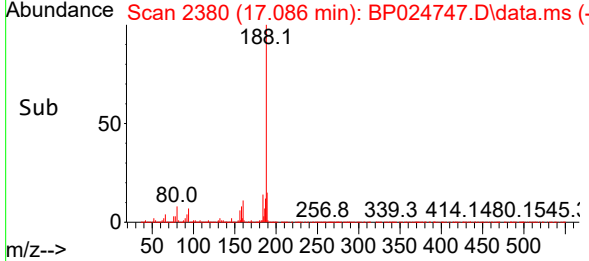
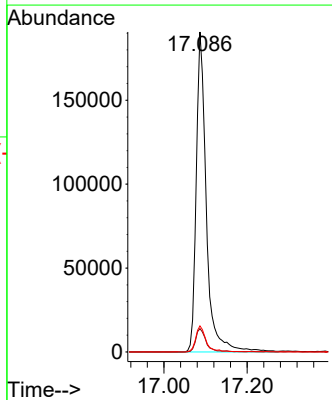
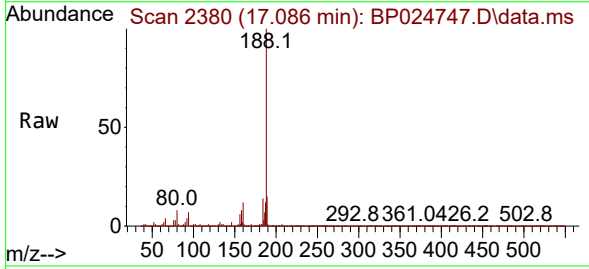
Ion	Ratio	Lower	Upper
139	100		
109	62.5	61.4	101.4
65	87.5	72.2	112.2



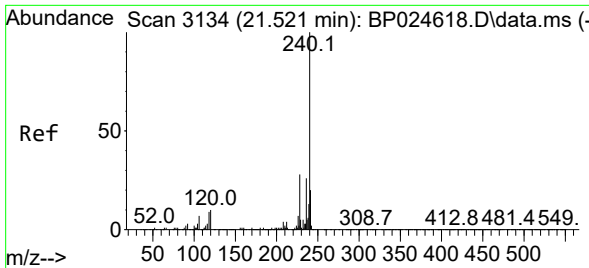
#64  
 Phenanthrene-d10  
 Concen: 20.000 ng  
 RT: 17.086 min Scan# 2380  
 Delta R.T. -0.012 min  
 Lab File: BP024747.D  
 Acq: 21 May 2025 21:38

Tgt Ion:188 Resp: 322675

Ion	Ratio	Lower	Upper
188	100		
94	7.3	6.5	9.7
80	8.1	7.3	10.9



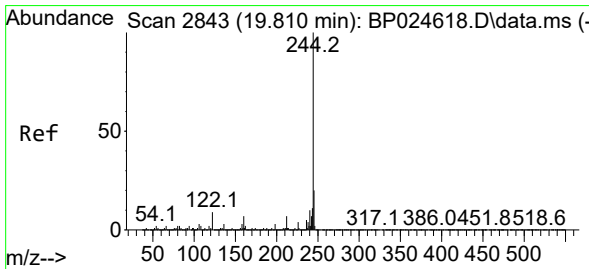
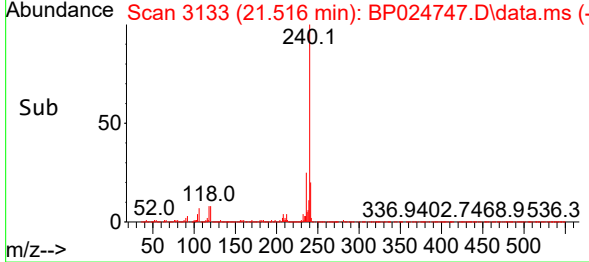
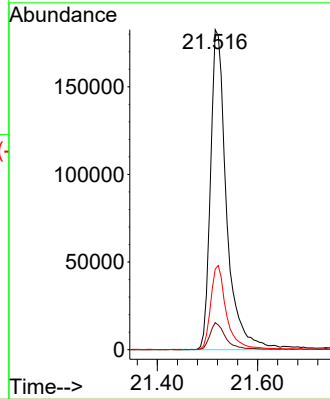
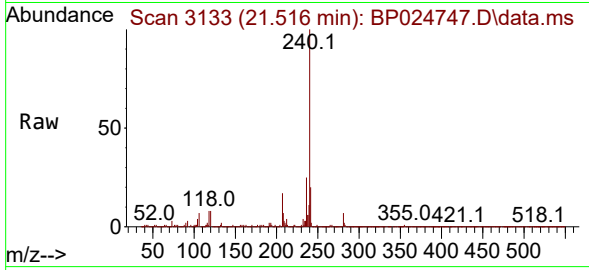




#76  
 Chrysene-d12  
 Concen: 20.000 ng  
 RT: 21.516 min Scan# 3133  
 Delta R.T. -0.006 min  
 Lab File: BP024747.D  
 Acq: 21 May 2025 21:38

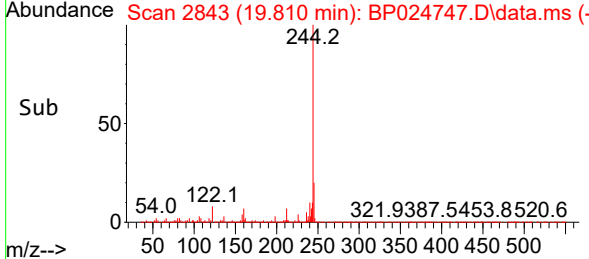
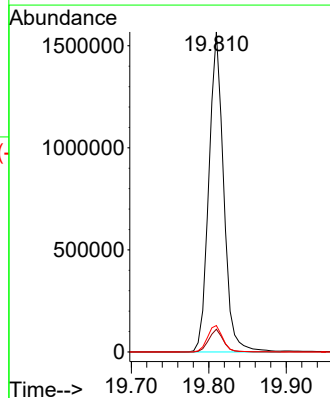
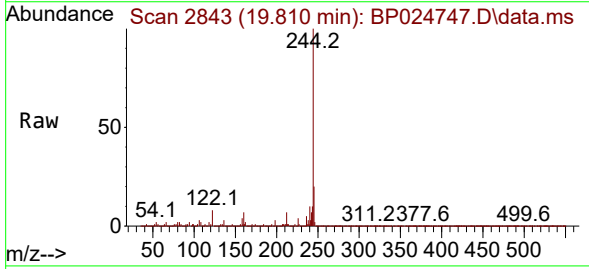
Instrument : BNA\_P  
 Client Sample Id : FB-05152025

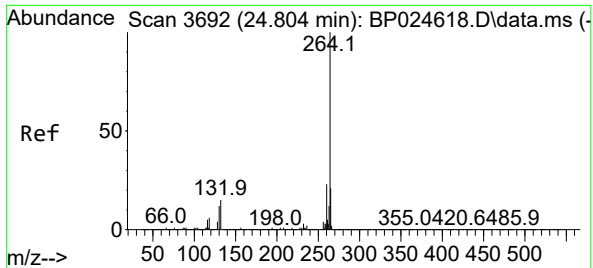
Tgt Ion	Resp	Lower	Upper
240	100		
120	8.4	7.8	11.6
236	25.2	20.6	31.0



#79  
 Terphenyl-d14  
 Concen: 88.032 ng  
 RT: 19.810 min Scan# 2843  
 Delta R.T. -0.000 min  
 Lab File: BP024747.D  
 Acq: 21 May 2025 21:38

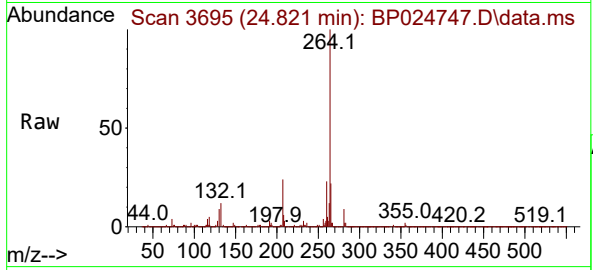
Tgt Ion	Resp	Lower	Upper
244	100		
212	7.1	5.5	8.3
122	8.3	7.4	11.0





#86  
 Perylene-d12  
 Concen: 20.000 ng  
 RT: 24.821 min Scan# 30  
 Delta R.T. 0.018 min  
 Lab File: BP024747.D  
 Acq: 21 May 2025 21:38

Instrument :  
 BNA\_P  
 ClientSampleId :  
 FB-05152025



Tgt Ion:264 Resp: 487499

Ion	Ratio	Lower	Upper
264	100		
260	22.9	18.7	28.1
265	21.7	17.0	25.6

