

Data Path : Z:\svoasrv\HPCHEM1\BNA\_P\Data\BP011224\  
 Data File : BP019349.D  
 Acq On : 13 Jan 2024 02:03  
 Operator : MA/JU  
 Sample : PB158382BS  
 Misc :  
 ALS Vial : 28 Sample Multiplier: 1

Instrument :  
 BNA\_P  
 ClientSampleId :  
 SLCS382

Manual Integrations  
 APPROVED

Reviewed By :Jagrut Upadhyay 01/15/2024  
 Supervised By :mohammad ahmed 01/16/2024

Quant Time: Jan 13 02:32:23 2024  
 Quant Method : Z:\svoasrv\HPCHEM1\BNA\_P\Methods\SFAM-EPA-BP010824.MA.M  
 Quant Title : SVOA CALIBRATION  
 QLast Update : Tue Jan 09 03:05:24 2024  
 Response via : Initial Calibration

Compound	R.T.	QIon	Response	Conc	Units	Dev(Min)	Qvalue
<b>Internal Standards</b>							
1) 1,4-Dichlorobenzene-d4	7.775	152	146936	20.000	ng/ul	-0.01	
20) Naphthalene-d8	10.575	136	596477	20.000	ng/ul	0.00	
38) Acenaphthene-d10	14.422	164	408212	20.000	ng/ul	0.00	
64) Phenanthrene-d10	17.180	188	1029449	20.000	ng/ul	0.00	
79) Chrysene-d12	21.286	240	1058827	20.000	ng/ul	0.00	
88) Perylene-d12	23.639	264	1079998	20.000	ng/ul	0.00	
<b>System Monitoring Compounds</b>							
3) 1,4-Dioxane-d8	3.216	96	21455	5.521	ng/uL	0.00	
4) Pyridine-d5	3.634	84	321011	28.569	ng/ul	0.00	
7) Phenol-d5	6.969	99	414601	29.522	ng/ul	0.00	
9) Bis-(2-Chloroethyl)eth...	7.122	67	249961	29.757	ng/ul	0.00	
11) 2-Chlorophenol-d4	7.310	132	296352	30.719	ng/ul	0.00	
15) 4-Methylphenol-d8	8.510	113	327924	29.433	ng/ul	0.00	
21) Nitrobenzene-d5	8.946	128	151063	30.103	ng/ul	0.00	
24) 2-Nitrophenol-d4	9.663	143	181256	31.087	ng/ul	0.00	
28) 2,4-Dichlorophenol-d3	10.204	165	365380	31.018	ng/ul	0.00	
31) 4-Chloroaniline-d4	10.728	131	408438	27.449	ng/ul	0.00	
46) Dimethylphthalate-d6	13.845	166	1076557	29.851	ng/ul	0.00	
49) Acenaphthylene-d8	14.116	160	1146338	29.652	ng/ul	0.00	
54) 4-Nitrophenol-d4	14.663	143	176550	31.880	ng/ul	0.00	
60) Fluorene-d10	15.422	176	919512	31.142	ng/ul	0.00	
65) 4,6-Dinitro-2-methylph...	15.563	200	232602	30.604	ng/ul	0.00	
73) Anthracene-d10	17.280	188	1508538	29.381	ng/ul	0.00	
81) Pyrene-d10	19.527	212	1961281	28.407	ng/ul	0.00	
92) Benzo(a)pyrene-d12	23.492	264	1856838	31.619	ng/ul	0.00	
<b>Target Compounds</b>							
2) 1,4-Dioxane	3.252	88	44026	10.938	ng/uL	98	
5) Pyridine	3.652	79	322315	28.237	ng/ul	93	
6) Benzaldehyde	6.928	77	235248	38.423	ng/ul	96	
8) Phenol	6.993	94	424057	29.972	ng/ul	98	
10) Bis(2-Chloroethyl)ether	7.210	93	336475	29.649	ng/ul	99	
12) 2-Chlorophenol	7.346	128	304467	30.535	ng/ul	98	
13) 2-Methylphenol	8.240	108	311773	29.379	ng/ul	97	
14) 2,2'-oxybis(1-Chloropr...	8.304	45	400344	29.647	ng/ul	100	
16) Acetophenone	8.610	105	528469	29.777	ng/ul	99	
17) N-Nitroso-di-n-propyla...	8.599	70	280895	30.377	ng/ul	98	
18) 4-Methylphenol	8.575	108	341049	30.188	ng/ul	94	
19) Hexachloroethane	8.846	117	135276	30.036	ng/ul	98	
22) Nitrobenzene	8.987	77	432254	30.791	ng/ul	99	
23) Isophorone	9.516	82	816896	30.017	ng/ul	99	
25) 2-Nitrophenol	9.699	139	187789	30.661	ng/ul	100	
26) 2,4-Dimethylphenol	9.769	107	366938	27.786	ng/ul	99	
27) Bis(2-Chloroethoxy)met...	9.998	93	463786	29.630	ng/ul	99	
29) 2,4-Dichlorophenol	10.234	162	352778	31.076	ng/ul	98	
30) Naphthalene	10.622	128	988248	29.403	ng/ul	100	
32) 4-Chloroaniline	10.751	127	363416	24.964	ng/ul	99	
33) Hexachlorobutadiene	10.898	225	291092	29.720	ng/ul	98	
34) Caprolactam	11.551	113	114555m	32.177	ng/ul		
35) 4-Chloro-3-methylphenol	11.887	107	391738	31.082	ng/ul	98	
36) 2-Methylnaphthalene	12.240	142	726084	29.690	ng/ul	100	

Data Path : Z:\svoasrv\HPCHEM1\BNA\_P\Data\BP011224\  
 Data File : BP019349.D  
 Acq On : 13 Jan 2024 02:03  
 Operator : MA/JU  
 Sample : PB158382BS  
 Misc :  
 ALS Vial : 28 Sample Multiplier: 1

**Instrument :**  
 BNA\_P  
**ClientSampleId :**  
 SLCS382

**Manual Integrations**  
**APPROVED**

Reviewed By :Jagrut Upadhyay 01/15/2024  
 Supervised By :mohammad ahmed 01/16/2024

Quant Time: Jan 13 02:32:23 2024  
 Quant Method : Z:\svoasrv\HPCHEM1\BNA\_P\Methods\SFAM-EPA-BP010824.MA.M  
 Quant Title : SVOA CALIBRATION  
 QLast Update : Tue Jan 09 03:05:24 2024  
 Response via : Initial Calibration

Compound	R.T.	QIon	Response	Conc	Units	Dev(Min)
37) 1-Methylnaphthalene	12.457	142	714736	29.871	ng/ul	99
39) 1,2,4,5-Tetrachloroben...	12.610	216	541937	30.636	ng/ul	98
40) Hexachlorocyclopentadiene	12.575	237	304019	26.777	ng/ul	98
41) 2,4,6-Trichlorophenol	12.857	196	345744	31.760	ng/ul	99
42) 2,4,5-Trichlorophenol	12.940	196	374022	32.060	ng/ul	99
43) 1,1'-Biphenyl	13.257	154	971561	28.811	ng/ul	99
44) 2-Chloronaphthalene	13.298	162	787708	28.884	ng/ul	99
45) 2-Nitroaniline	13.516	65	256643	32.809	ng/ul	98
47) Dimethylphthalate	13.892	163	1080114	30.135	ng/ul	100
48) 2,6-Dinitrotoluene	14.022	165	230809	32.565	ng/ul	95
50) Acenaphthylene	14.145	152	1248537	29.486	ng/ul	99
51) 3-Nitroaniline	14.351	138	196174	31.732	ng/ul	98
52) Acenaphthene	14.486	153	822979	29.663	ng/ul	98
53) 2,4-Dinitrophenol	14.563	184	147802	31.804	ng/ul	94
55) 4-Nitrophenol	14.681	109	193600	32.372	ng/ul	97
56) Dibenzofuran	14.822	168	1212928	30.536	ng/ul	99
57) 2,4-Dinitrotoluene	14.810	165	336236	33.811	ng/ul	95
58) 2,3,4,6-Tetrachlorophenol	15.057	232	337745	32.611	ng/ul	99
59) Diethylphthalate	15.257	149	1080563	32.216	ng/ul	99
61) Fluorene	15.475	166	1019196	31.326	ng/ul	99
62) 4-Chlorophenyl-phenyle...	15.469	204	605773	31.201	ng/ul	99
63) 4-Nitroaniline	15.522	138	190604	39.769	ng/ul	98
66) 4,6-Dinitro-2-methylph...	15.575	198	243429	30.219	ng/ul	99
67) N-Nitrosodiphenylamine	15.692	169	869453	28.650	ng/ul	99
68) 4-Bromophenyl-phenylether	16.369	248	408473	29.049	ng/ul	97
69) Hexachlorobenzene	16.481	284	480826	29.671	ng/ul	97
70) Atrazine	16.657	200	351067	26.539	ng/ul	98
71) Pentachlorophenol	16.833	266	302137	30.019	ng/ul	98
72) Phenanthrene	17.222	178	1732337	29.958	ng/ul	99
74) Anthracene	17.316	178	1740895	29.698	ng/ul	99
75) 1,2,3,4-Tetrachloroben...	13.216	216	517962	27.174	ng/uL	100
76) Pentachlorobenzene	14.739	250	523648	28.281	ng/uL	99
77) Carbazole	17.598	167	1498113	30.039	ng/ul	99
78) Di-n-butylphthalate	18.145	149	1856235	31.101	ng/ul	99
80) Fluoranthene	19.198	202	2274328	27.868	ng/ul	100
82) Pyrene	19.557	202	2320651	28.016	ng/ul	99
83) Butylbenzylphthalate	20.433	149	861294	30.308	ng/ul	97
84) 3,3'-Dichlorobenzidine	21.210	252	789056	32.821	ng/ul	100
85) Benzo(a)anthracene	21.269	228	2500010	30.331	ng/ul	99
86) Bis(2-ethylhexyl)phtha...	21.192	149	1255386	30.775	ng/ul	99
87) Chrysene	21.321	228	2250337	29.867	ng/ul	100
89) Di-n-octyl phthalate	22.104	149	2149229	29.156	ng/ul	100
90) Benzo(b)fluoranthene	22.921	252	2338440	30.299	ng/ul	100
91) Benzo(k)fluoranthene	22.974	252	2334414	31.178	ng/ul	99
93) Benzo(a)pyrene	23.539	252	2138155	30.830	ng/ul	99
94) Indeno(1,2,3-cd)pyrene	26.086	276	2388142	29.117	ng/ul	98
95) Dibenzo(a,h)anthracene	26.104	278	2000533	29.464	ng/ul	99
96) Benzo(g,h,i)perylene	26.839	276	1845927	28.024	ng/ul	98

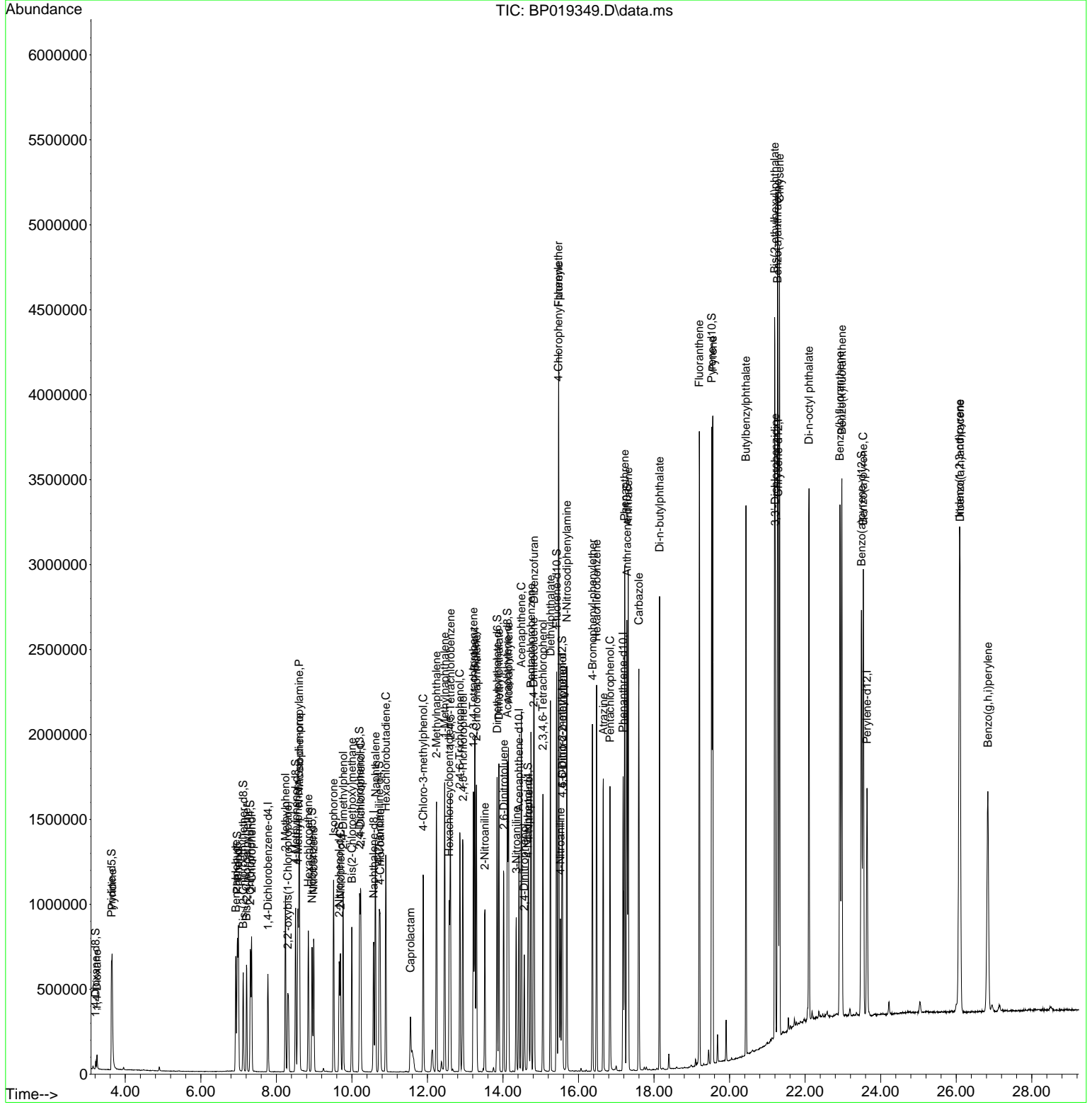
(#) = qualifier out of range (m) = manual integration (+) = signals summed

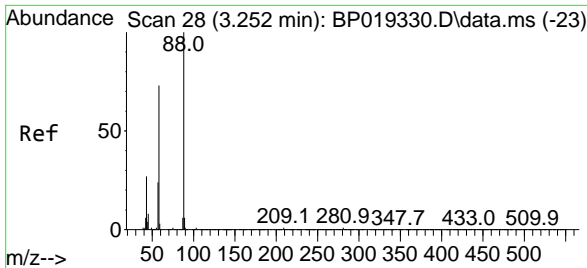
Data Path : Z:\svoasrv\HPCHEM1\BNA\_P\Data\BP011224\  
 Data File : BP019349.D  
 Acq On : 13 Jan 2024 02:03  
 Operator : MA/JU  
 Sample : PB158382BS  
 Misc :  
 ALS Vial : 28 Sample Multiplier: 1

Instrument :  
 BNA\_P  
 Client Sample Id :  
 SLCS382

Quant Time: Jan 13 02:32:23 2024  
 Quant Method : Z:\svoasrv\HPCHEM1\BNA\_P\Methods\SFAM-EPA-BP010824.MA.M  
 Quant Title : SVOA CALIBRATION  
 QLast Update : Tue Jan 09 03:05:24 2024  
 Response via : Initial Calibration

Manual Integrations  
**APPROVED**  
 Reviewed By :Jagrut Upadhyay 01/15/2024  
 Supervised By :mohammad ahmed 01/16/2024





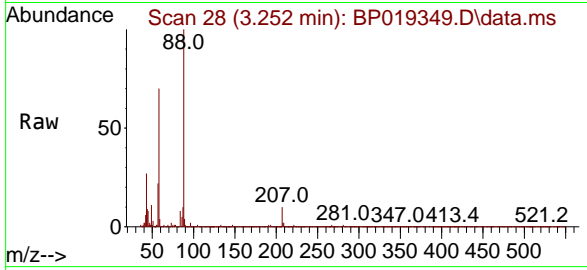
#2  
 1,4-Dioxane  
 Concen: 10.938 ng/uL  
 RT: 3.252 min Scan# 21  
 Delta R.T. -0.006 min  
 Lab File: BP019349.D  
 Acq: 13 Jan 2024 02:03

Instrument :

BNA\_P

Client SampleId :

SLCS382

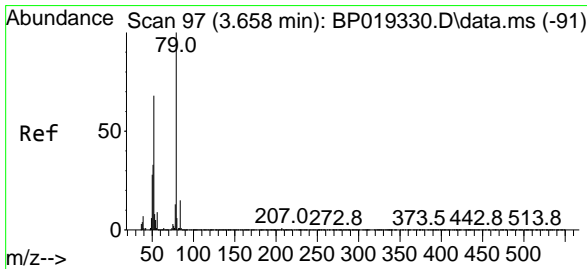
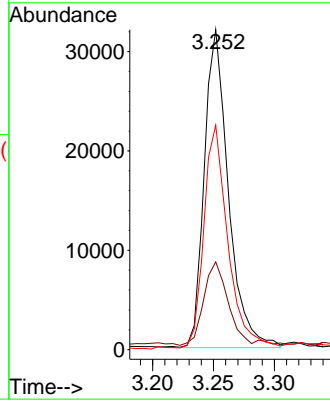
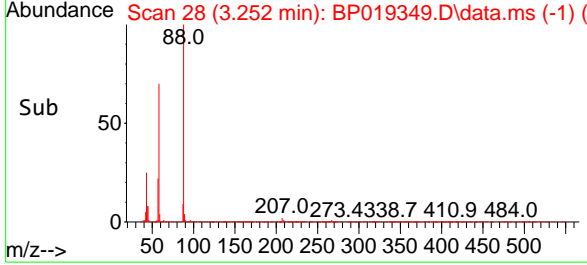


Tgt Ion: 88 Resp: 44020  
 Ion Ratio Lower Upper  
 88 100  
 43 27.4 22.0 33.0  
 58 70.2 54.6 82.0

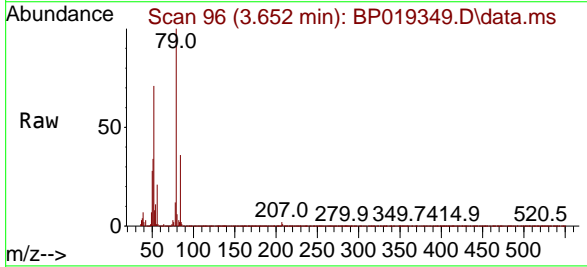
Manual Integrations

APPROVED

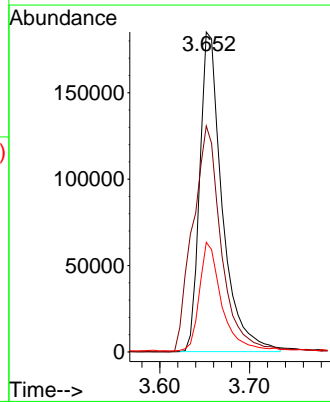
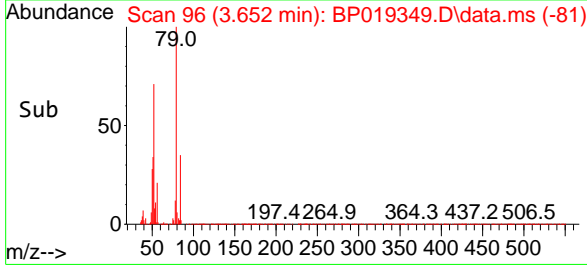
Reviewed By :Jagrut Upadhyay 01/15/2024  
 Supervised By :mohammad ahmed 01/16/2024

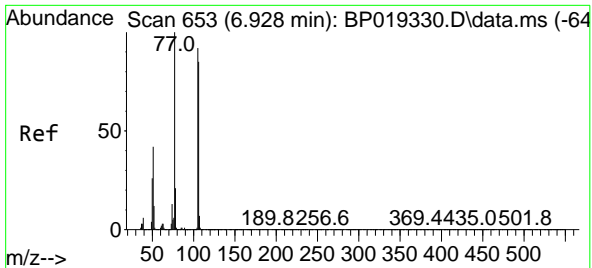


#5  
 Pyridine  
 Concen: 28.237 ng/uL  
 RT: 3.652 min Scan# 96  
 Delta R.T. -0.012 min  
 Lab File: BP019349.D  
 Acq: 13 Jan 2024 02:03



Tgt Ion: 79 Resp: 322315  
 Ion Ratio Lower Upper  
 79 100  
 52 70.7 50.7 76.1  
 51 34.2 26.8 40.2





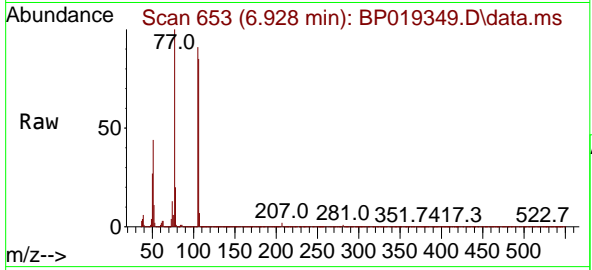
#6  
Benzaldehyde  
Concen: 38.423 ng/u1  
RT: 6.928 min Scan# 61  
Delta R.T. -0.006 min  
Lab File: BP019349.D  
Acq: 13 Jan 2024 02:03

Instrument :

BNA\_P

ClientSampleId :

SLCS382

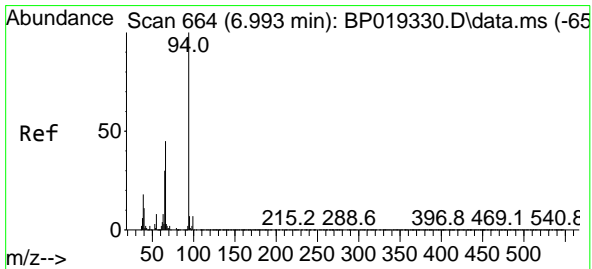
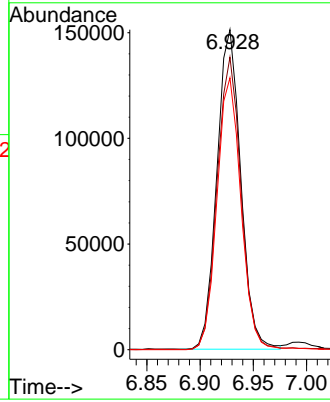
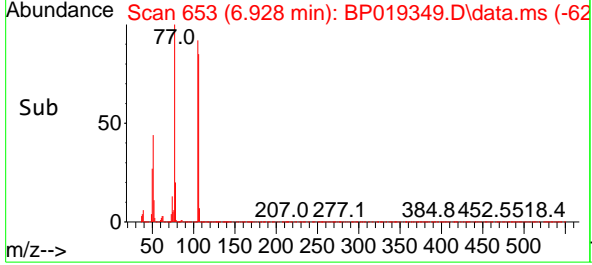


Tgt Ion: 77 Resp: 23524  
Ion Ratio Lower Upper  
77 100  
105 91.4 75.3 112.9  
106 85.0 71.5 107.3

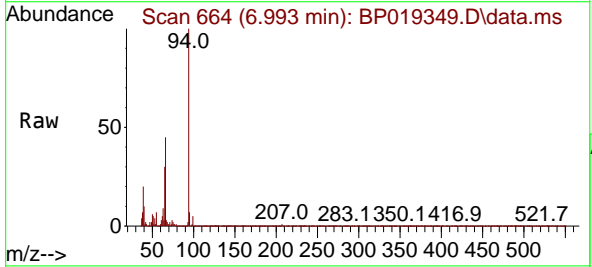
Manual Integrations

APPROVED

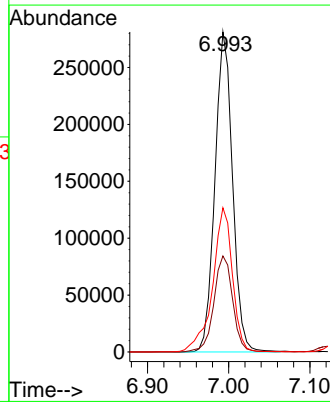
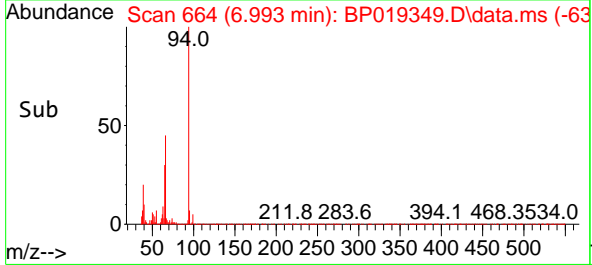
Reviewed By :Jagrut Upadhyay 01/15/2024  
Supervised By :mohammad ahmed 01/16/2024

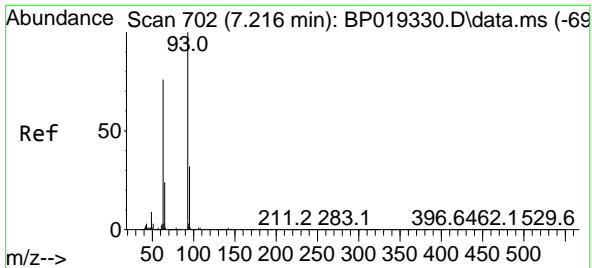


#8  
Phenol  
Concen: 29.972 ng/u1  
RT: 6.993 min Scan# 664  
Delta R.T. -0.006 min  
Lab File: BP019349.D  
Acq: 13 Jan 2024 02:03



Tgt Ion: 94 Resp: 424057  
Ion Ratio Lower Upper  
94 100  
65 30.0 25.3 37.9  
66 45.1 36.8 55.2





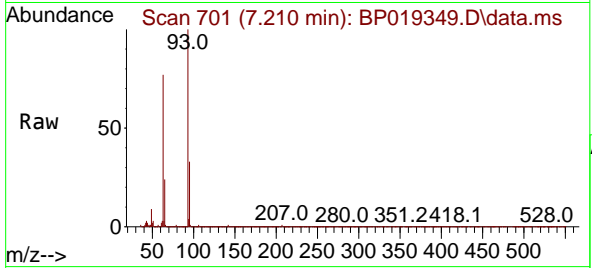
#10  
 Bis(2-Chloroethyl)ether  
 Concen: 29.649 ng/ul  
 RT: 7.210 min Scan# 701  
 Delta R.T. -0.006 min  
 Lab File: BP019349.D  
 Acq: 13 Jan 2024 02:03

Instrument :

BNA\_P

ClientSampleId :

SLCS382



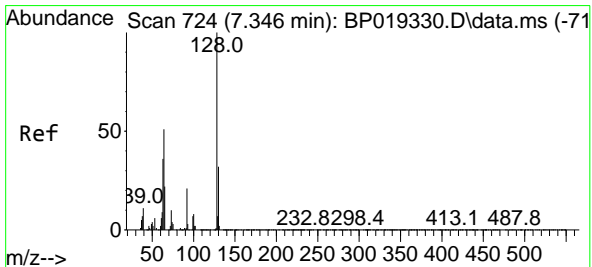
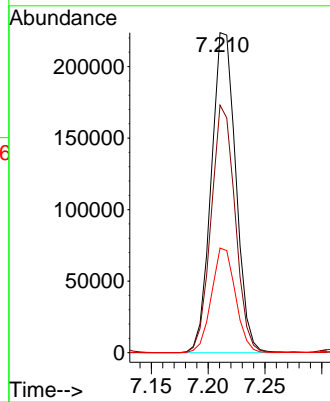
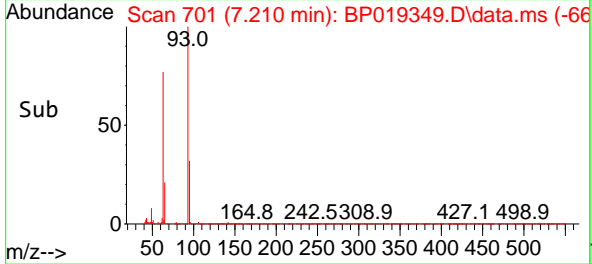
Tgt Ion: 93 Resp: 33647

Ion	Ratio	Lower	Upper
93	100		
63	77.4	60.7	91.1
95	32.7	26.2	39.2

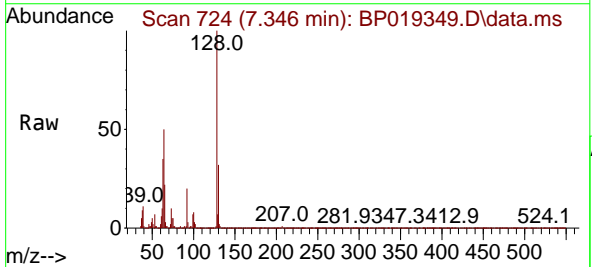
Manual Integrations

APPROVED

Reviewed By :Jagrut Upadhyay 01/15/2024  
 Supervised By :mohammad ahmed 01/16/2024

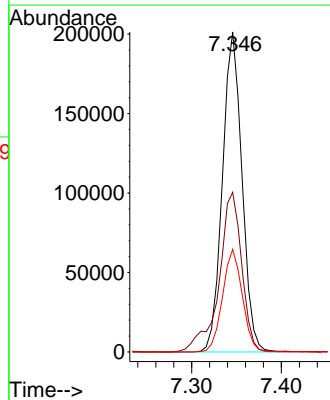
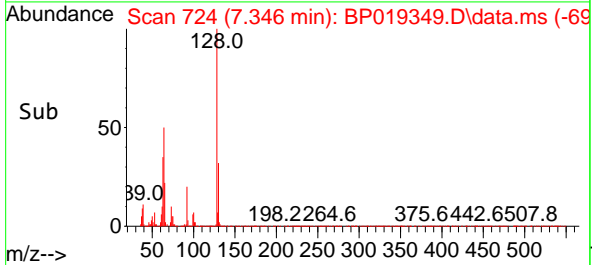


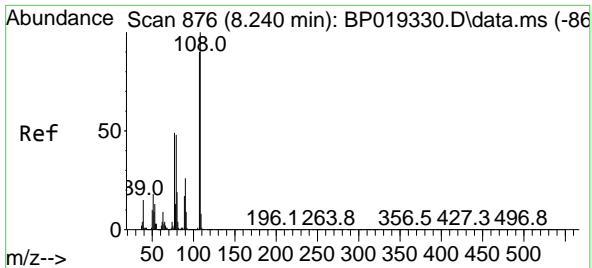
#12  
 2-Chlorophenol  
 Concen: 30.535 ng/ul  
 RT: 7.346 min Scan# 724  
 Delta R.T. -0.006 min  
 Lab File: BP019349.D  
 Acq: 13 Jan 2024 02:03



Tgt Ion:128 Resp: 304467

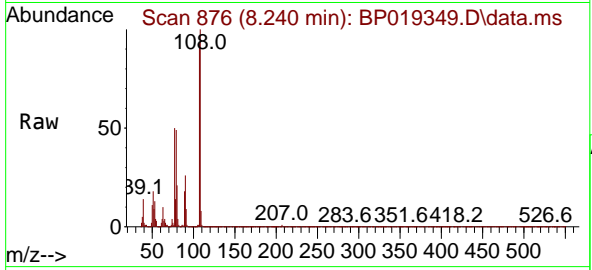
Ion	Ratio	Lower	Upper
128	100		
64	49.9	41.3	61.9
130	32.0	25.9	38.9





#13  
 2-Methylphenol  
 Concen: 29.379 ng/ul  
 RT: 8.240 min Scan# 81  
 Delta R.T. -0.006 min  
 Lab File: BP019349.D  
 Acq: 13 Jan 2024 02:03

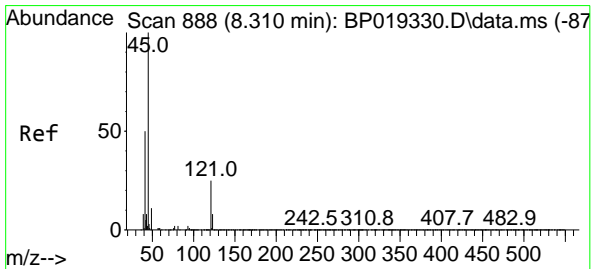
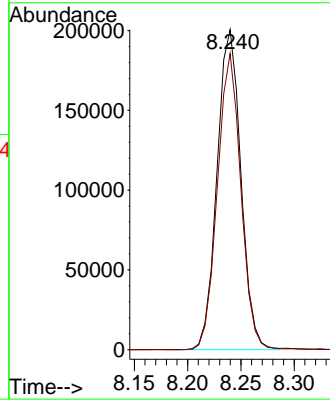
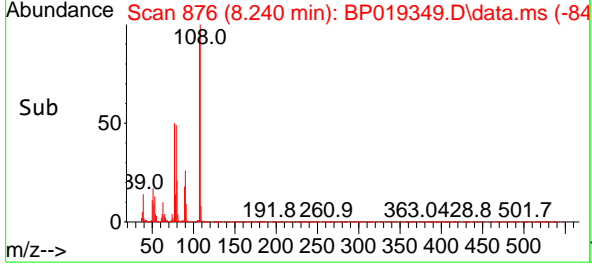
Instrument : BNA\_P  
 ClientSampleId : SLCS382



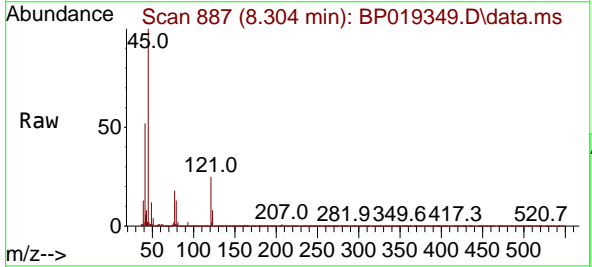
Tgt Ion: 108 Resp: 31177  
 Ion Ratio Lower Upper  
 108 100  
 107 92.5 71.9 107.9

Manual Integrations  
**APPROVED**

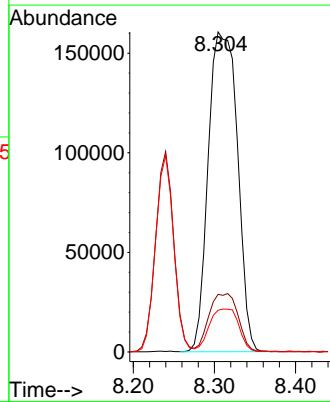
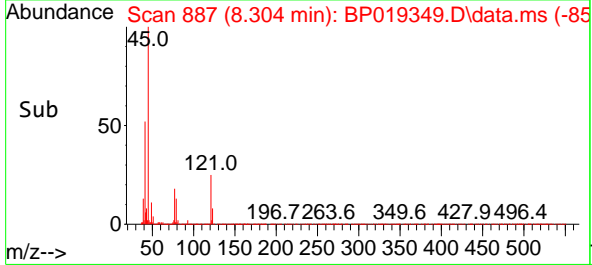
Reviewed By :Jagrut Upadhyay 01/15/2024  
 Supervised By :mohammad ahmed 01/16/2024



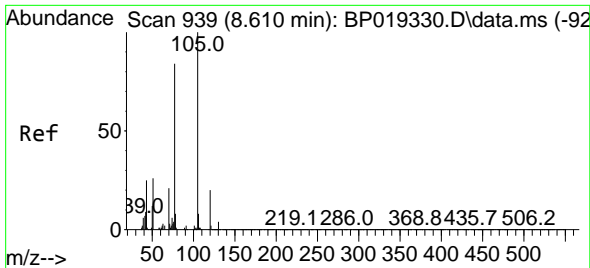
#14  
 2,2'-oxybis(1-Chloropropane)  
 Concen: 29.647 ng/ul  
 RT: 8.304 min Scan# 887  
 Delta R.T. -0.006 min  
 Lab File: BP019349.D  
 Acq: 13 Jan 2024 02:03



Tgt Ion: 45 Resp: 400344  
 Ion Ratio Lower Upper  
 45 100  
 77 18.0 14.2 21.4  
 79 13.0 10.5 15.7







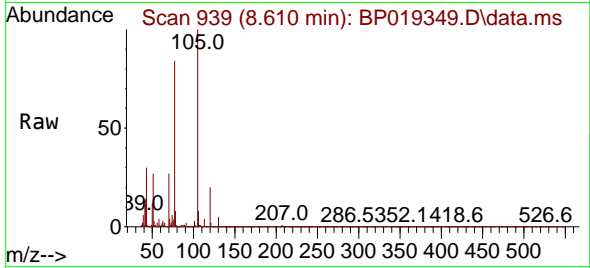
#16  
 Acetophenone  
 Concen: 29.777 ng/ul  
 RT: 8.610 min Scan# 91  
 Delta R.T. -0.006 min  
 Lab File: BP019349.D  
 Acq: 13 Jan 2024 02:03

Instrument :

BNA\_P

Client SampleId :

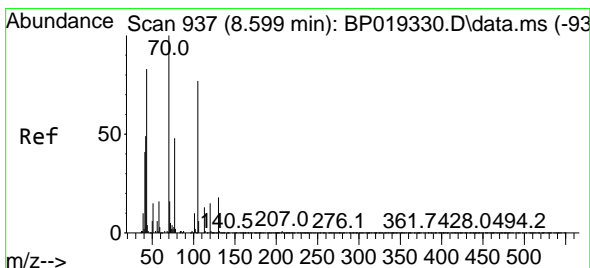
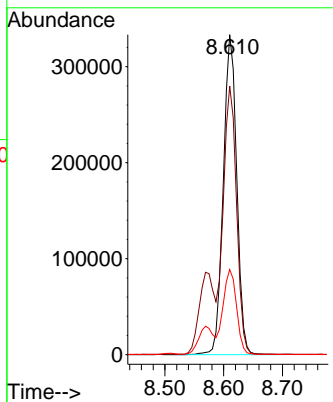
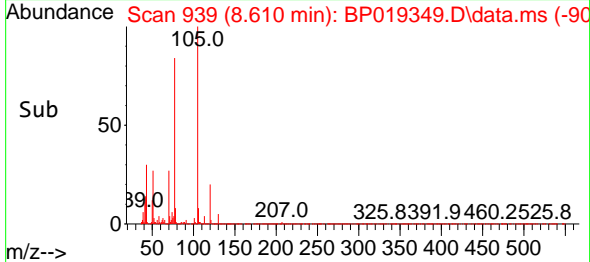
SLCS382



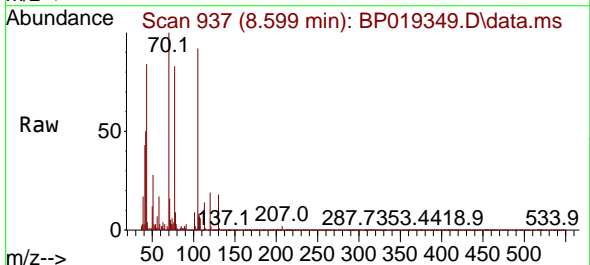
Tgt Ion: 105 Resp: 52846  
 Ion Ratio Lower Upper  
 105 100  
 77 84.0 66.1 99.1  
 51 26.6 20.9 31.3

Manual Integrations  
 APPROVED

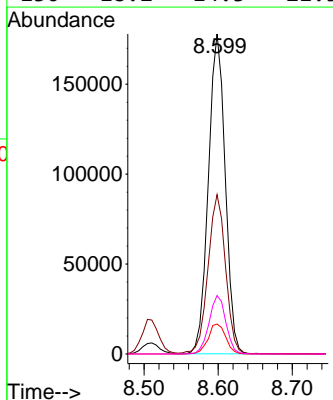
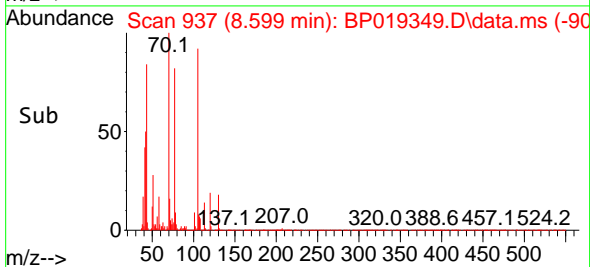
Reviewed By :Jagrut Upadhyay 01/15/2024  
 Supervised By :mohammad ahmed 01/16/2024



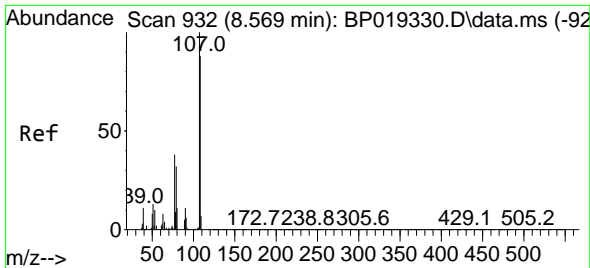
#17  
 N-Nitroso-di-n-propylamine  
 Concen: 30.377 ng/ul  
 RT: 8.599 min Scan# 937  
 Delta R.T. -0.000 min  
 Lab File: BP019349.D  
 Acq: 13 Jan 2024 02:03



Tgt Ion: 70 Resp: 280895  
 Ion Ratio Lower Upper  
 70 100  
 42 49.8 38.5 57.7  
 101 9.4 7.9 11.9  
 130 18.2 14.3 21.5







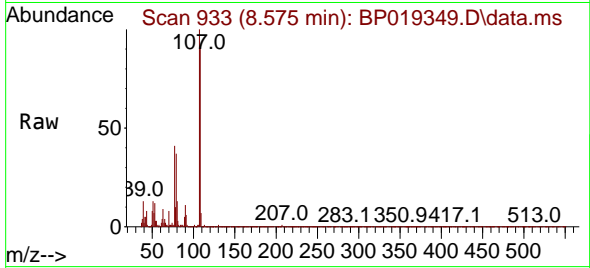
#18  
 4-Methylphenol  
 Concen: 30.188 ng/u1  
 RT: 8.575 min Scan# 911  
 Delta R.T. -0.000 min  
 Lab File: BP019349.D  
 Acq: 13 Jan 2024 02:03

Instrument :

BNA\_P

ClientSampleId :

SLCS382

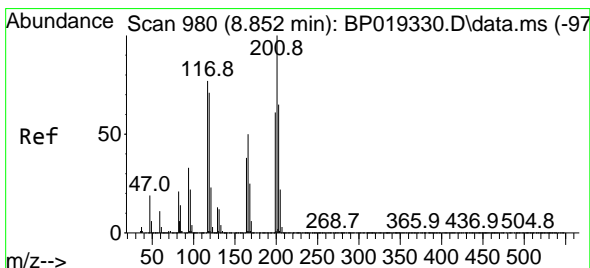
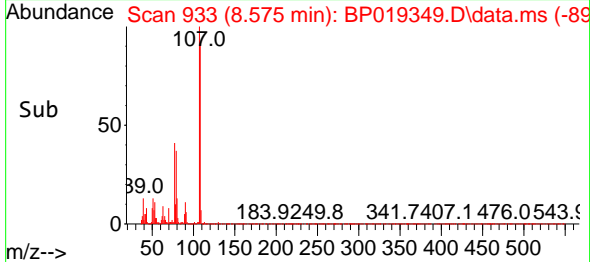
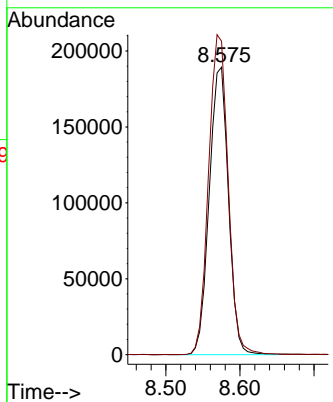


Tgt Ion:108 Resp: 341049  
 Ion Ratio Lower Upper  
 108 100  
 107 109.1 92.6 139.0

Manual Integrations

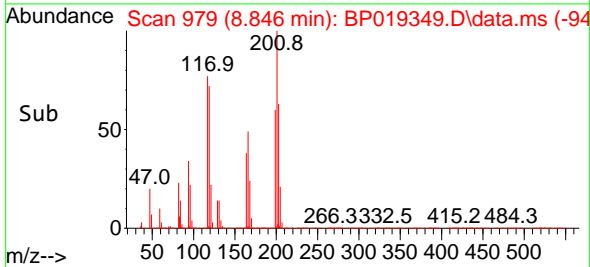
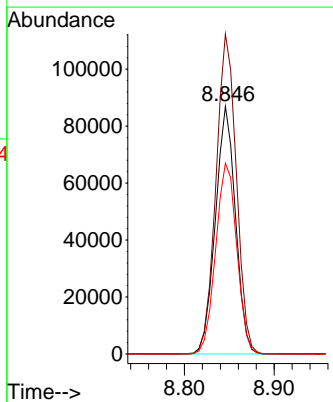
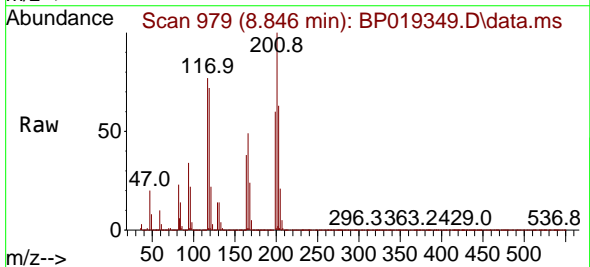
APPROVED

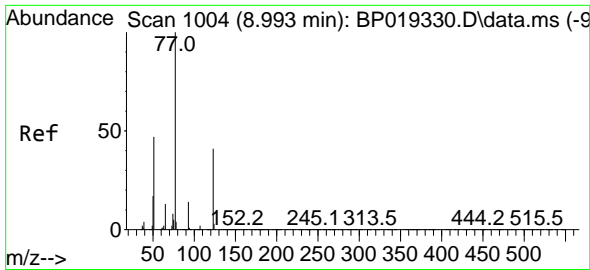
Reviewed By :Jagrut Upadhyay 01/15/2024  
 Supervised By :mohammad ahmed 01/16/2024



#19  
 Hexachloroethane  
 Concen: 30.036 ng/u1  
 RT: 8.846 min Scan# 979  
 Delta R.T. -0.006 min  
 Lab File: BP019349.D  
 Acq: 13 Jan 2024 02:03

Tgt Ion:117 Resp: 135276  
 Ion Ratio Lower Upper  
 117 100  
 201 129.2 101.8 152.6  
 199 77.0 62.6 93.8





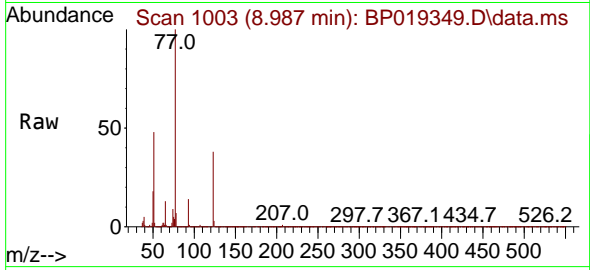
#22  
 Nitrobenzene  
 Concen: 30.791 ng/u1  
 RT: 8.987 min Scan# 1003  
 Delta R.T. -0.006 min  
 Lab File: BP019349.D  
 Acq: 13 Jan 2024 02:03

Instrument :

BNA\_P

Client SampleId :

SLCS382

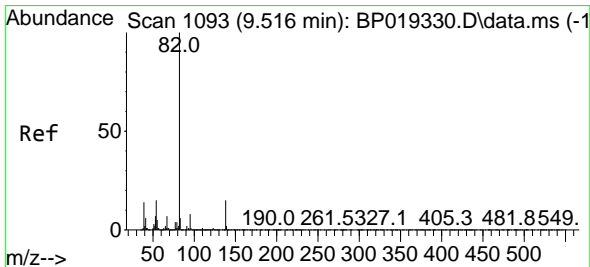
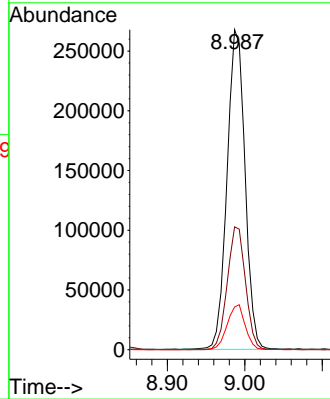
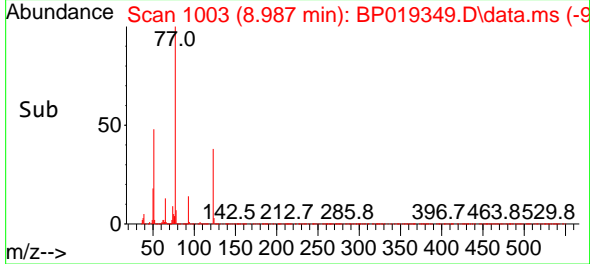


Tgt Ion: 77 Resp: 432254  
 Ion Ratio Lower Upper  
 77 100  
 123 38.4 30.0 45.0  
 65 13.3 10.5 15.7

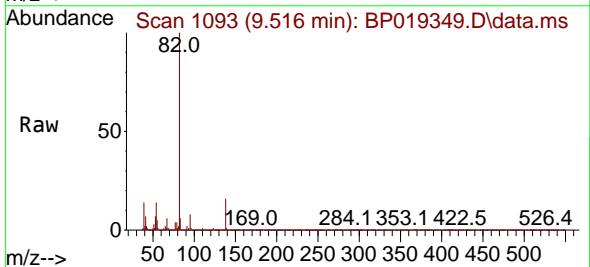
Manual Integrations

APPROVED

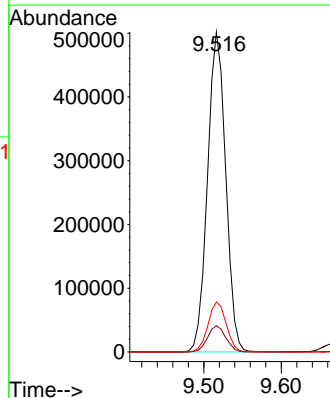
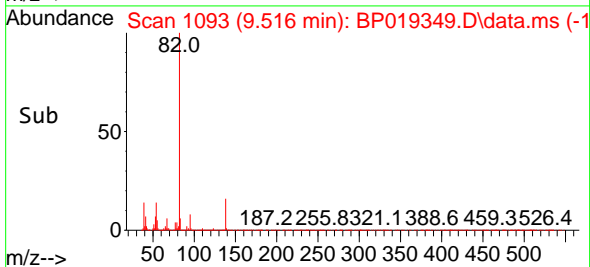
Reviewed By :Jagrut Upadhyay 01/15/2024  
 Supervised By :mohammad ahmed 01/16/2024

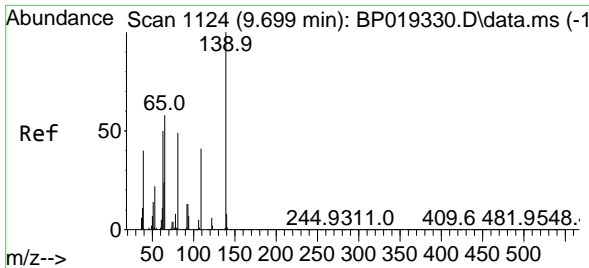


#23  
 Isophorone  
 Concen: 30.017 ng/u1  
 RT: 9.516 min Scan# 1093  
 Delta R.T. -0.006 min  
 Lab File: BP019349.D  
 Acq: 13 Jan 2024 02:03



Tgt Ion: 82 Resp: 816896  
 Ion Ratio Lower Upper  
 82 100  
 95 8.2 6.6 10.0  
 138 15.6 13.0 19.4





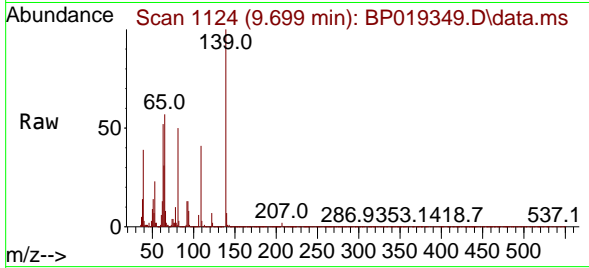
#25  
 2-Nitrophenol  
 Concen: 30.661 ng/ul  
 RT: 9.699 min Scan# 1124  
 Delta R.T. -0.006 min  
 Lab File: BP019349.D  
 Acq: 13 Jan 2024 02:03

Instrument :

BNA\_P

ClientSampleId :

SLCS382

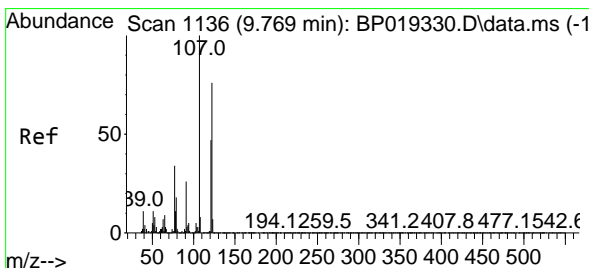
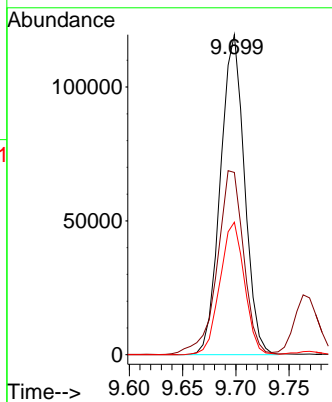
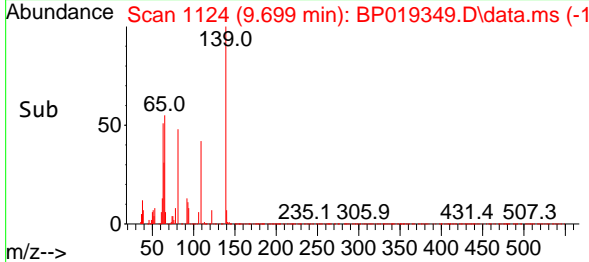


Tgt Ion:139 Resp: 187789  
 Ion Ratio Lower Upper  
 139 100  
 65 56.9 45.6 68.4  
 109 41.4 32.6 49.0

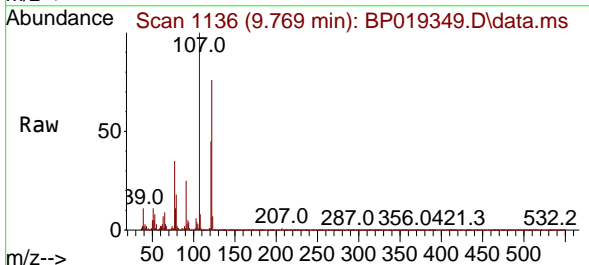
Manual Integrations

APPROVED

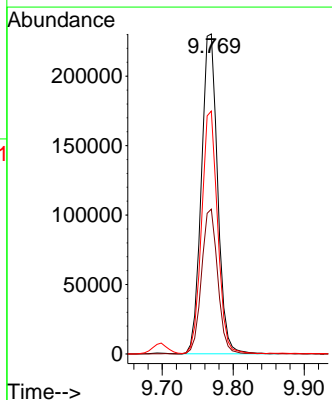
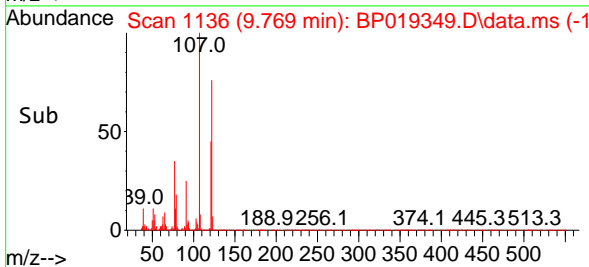
Reviewed By :Jagrut Upadhyay 01/15/2024  
 Supervised By :mohammad ahmed 01/16/2024

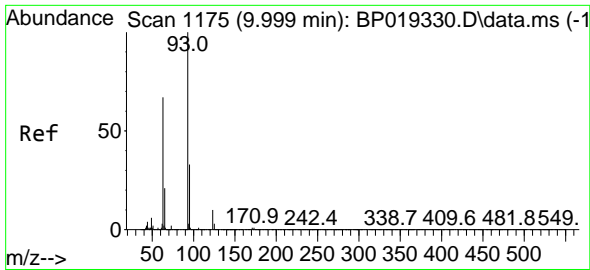


#26  
 2,4-Dimethylphenol  
 Concen: 27.786 ng/ul  
 RT: 9.769 min Scan# 1136  
 Delta R.T. -0.006 min  
 Lab File: BP019349.D  
 Acq: 13 Jan 2024 02:03



Tgt Ion:107 Resp: 366938  
 Ion Ratio Lower Upper  
 107 100  
 121 45.2 35.3 52.9  
 122 75.9 60.6 91.0





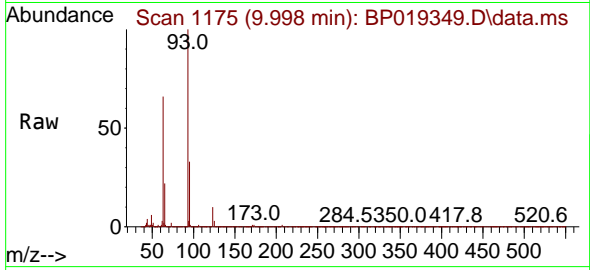
#27  
 Bis(2-Chloroethoxy)methane  
 Concen: 29.630 ng/ul  
 RT: 9.998 min Scan# 1175  
 Delta R.T. -0.006 min  
 Lab File: BP019349.D  
 Acq: 13 Jan 2024 02:03

Instrument :

BNA\_P

ClientSampleId :

SLCS382

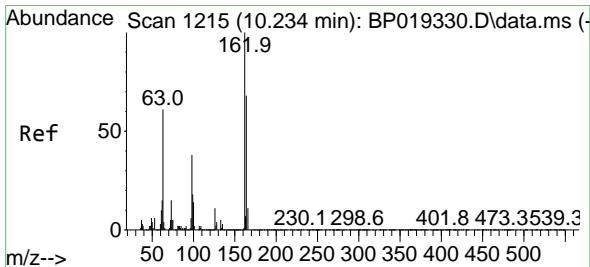
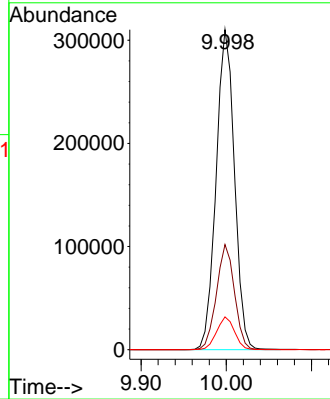
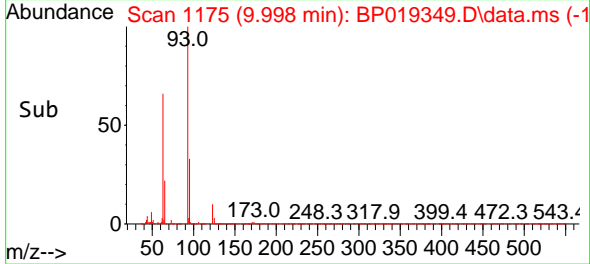


Tgt Ion: 93 Resp: 463780  
 Ion Ratio Lower Upper  
 93 100  
 95 32.9 25.9 38.9  
 123 10.3 7.9 11.9

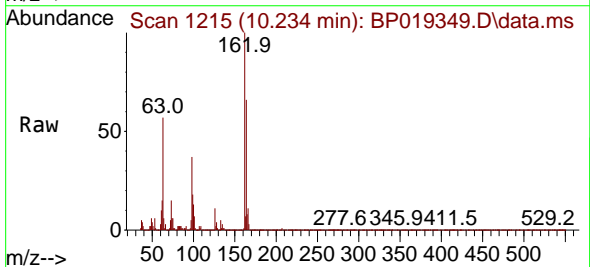
Manual Integrations

APPROVED

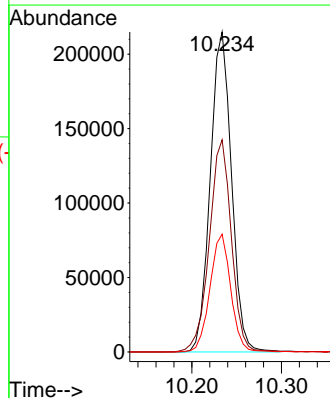
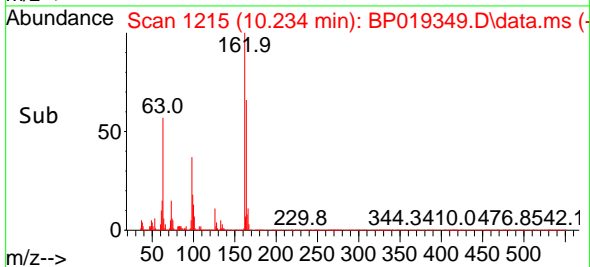
Reviewed By :Jagrut Upadhyay 01/15/2024  
 Supervised By :mohammad ahmed 01/16/2024

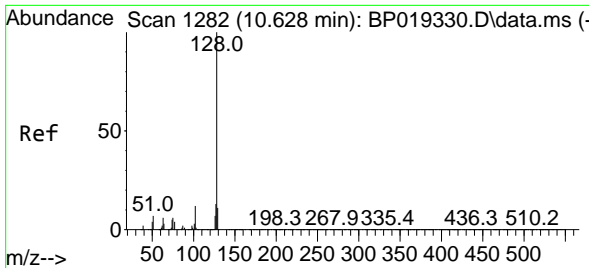


#29  
 2,4-Dichlorophenol  
 Concen: 31.076 ng/ul  
 RT: 10.234 min Scan# 1215  
 Delta R.T. -0.006 min  
 Lab File: BP019349.D  
 Acq: 13 Jan 2024 02:03



Tgt Ion:162 Resp: 352778  
 Ion Ratio Lower Upper  
 162 100  
 164 66.3 52.3 78.5  
 98 36.8 28.3 42.5





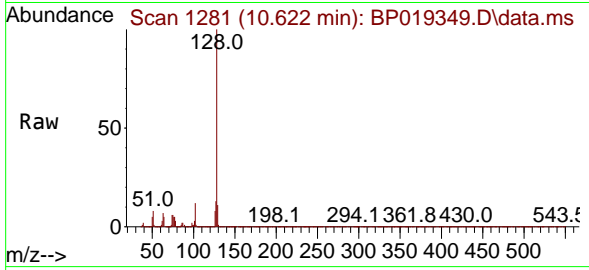
#30  
 Naphthalene  
 Concen: 29.403 ng/u1  
 RT: 10.622 min Scan# 1281  
 Delta R.T. -0.006 min  
 Lab File: BP019349.D  
 Acq: 13 Jan 2024 02:03

Instrument :

BNA\_P

Client SampleId :

SLCS382

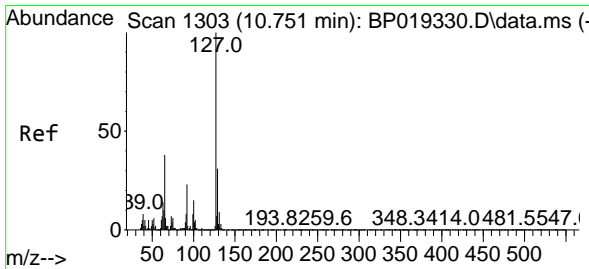
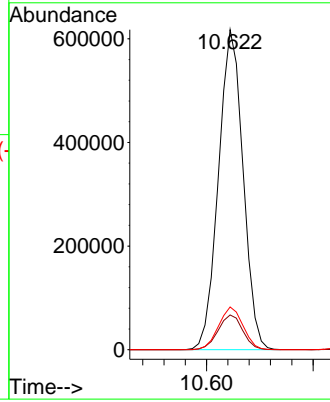
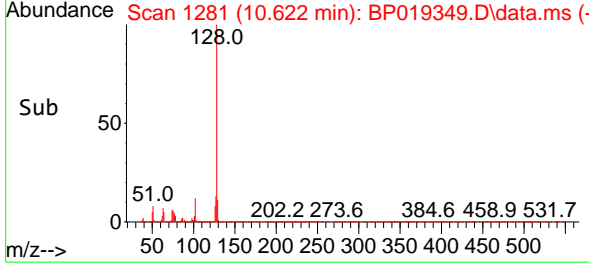


Tgt Ion:128 Resp: 98824  
 Ion Ratio Lower Upper  
 128 100  
 129 10.8 8.6 12.8  
 127 13.4 10.6 15.8

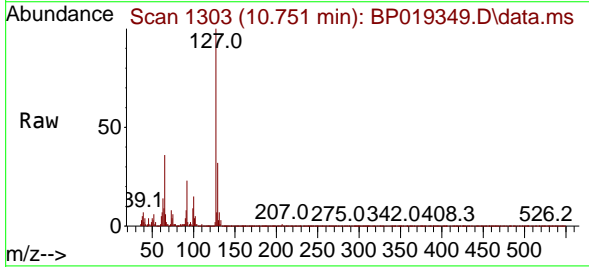
Manual Integrations

APPROVED

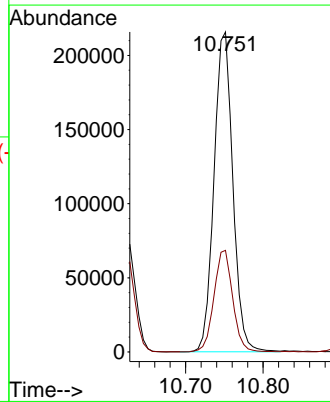
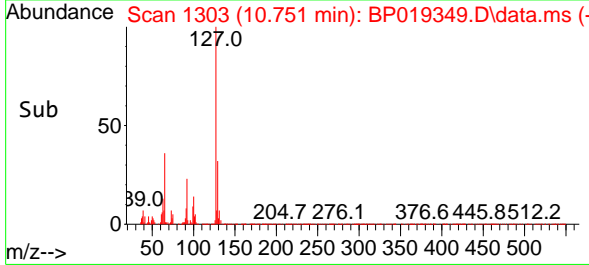
Reviewed By :Jagrut Upadhyay 01/15/2024  
 Supervised By :mohammad ahmed 01/16/2024

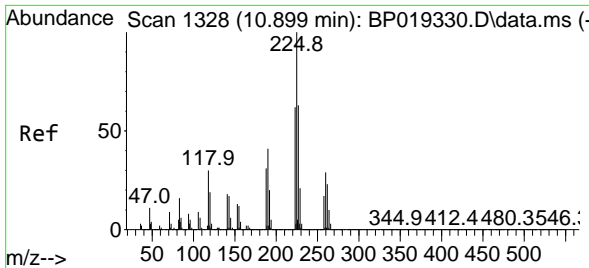


#32  
 4-Chloroaniline  
 Concen: 24.964 ng/u1  
 RT: 10.751 min Scan# 1303  
 Delta R.T. -0.006 min  
 Lab File: BP019349.D  
 Acq: 13 Jan 2024 02:03



Tgt Ion:127 Resp: 363416  
 Ion Ratio Lower Upper  
 127 100  
 129 31.8 25.8 38.8





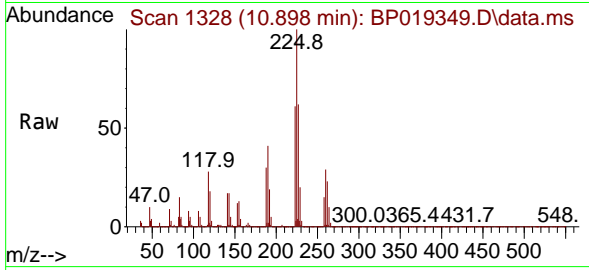
#33  
 Hexachlorobutadiene  
 Concen: 29.720 ng/u1  
 RT: 10.898 min Scan# 11  
 Delta R.T. -0.006 min  
 Lab File: BP019349.D  
 Acq: 13 Jan 2024 02:03

Instrument :

BNA\_P

ClientSampleId :

SLCS382

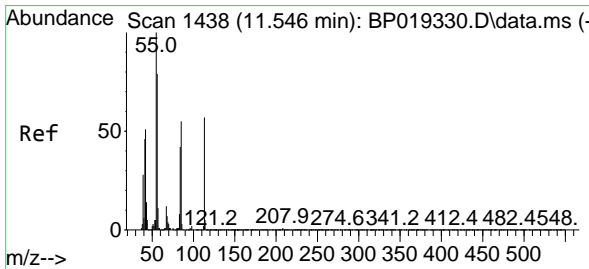
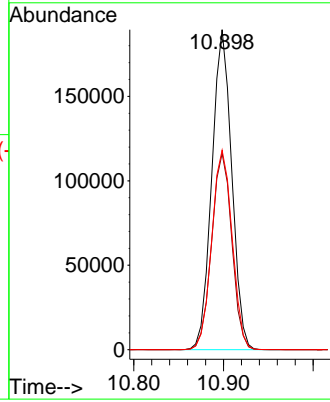
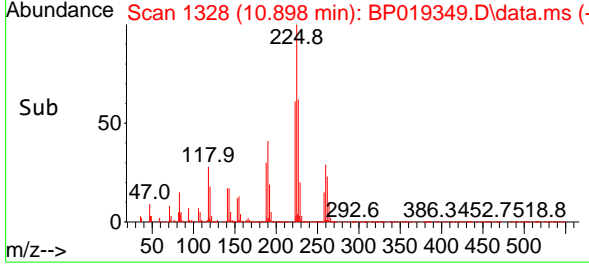


Tgt Ion:225 Resp: 291092  
 Ion Ratio Lower Upper  
 225 100  
 223 61.3 49.9 74.9  
 227 62.4 51.0 76.6

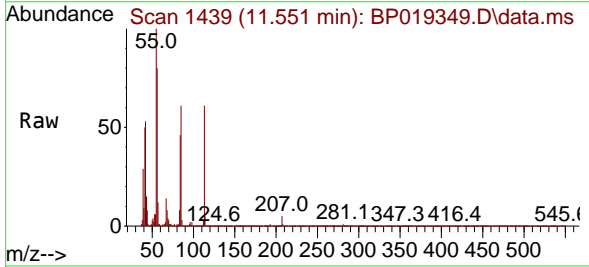
Manual Integrations

APPROVED

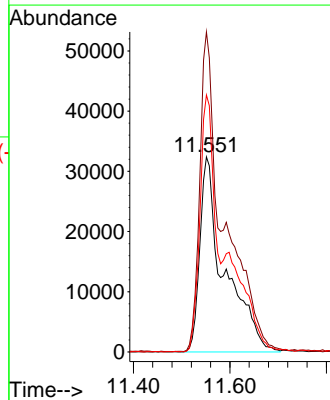
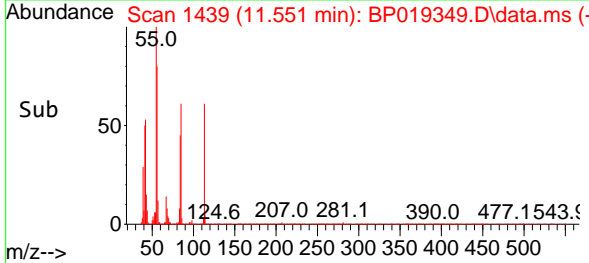
Reviewed By :Jagrut Upadhyay 01/15/2024  
 Supervised By :mohammad ahmed 01/16/2024

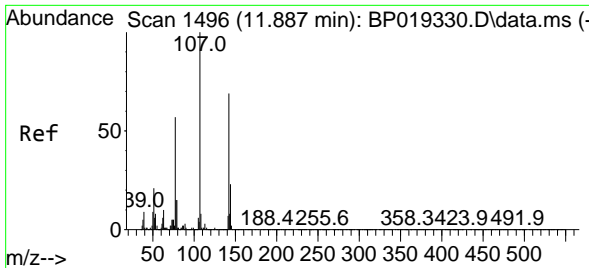


#34  
 Caprolactam  
 Concen: 32.177 ng/u1 m  
 RT: 11.551 min Scan# 1439  
 Delta R.T. 0.006 min  
 Lab File: BP019349.D  
 Acq: 13 Jan 2024 02:03



Tgt Ion:113 Resp: 114555  
 Ion Ratio Lower Upper  
 113 100  
 55 164.1 133.3 199.9  
 56 131.8 108.0 162.0





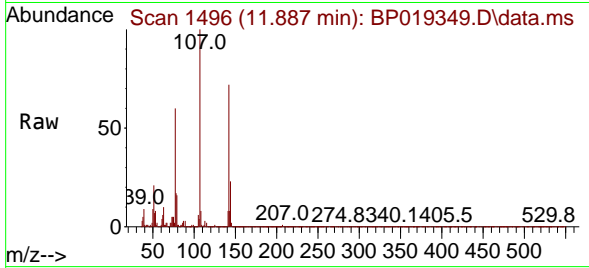
#35  
 4-Chloro-3-methylphenol  
 Concen: 31.082 ng/ul  
 RT: 11.887 min Scan# 1496  
 Delta R.T. -0.006 min  
 Lab File: BP019349.D  
 Acq: 13 Jan 2024 02:03

Instrument :

BNA\_P

ClientSampleId :

SLCS382

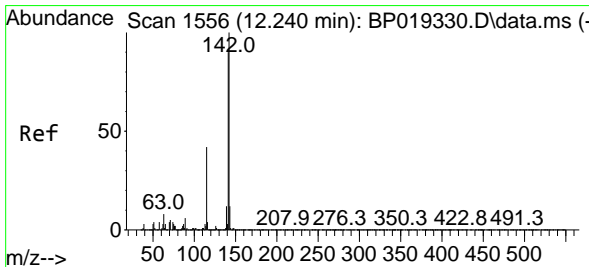
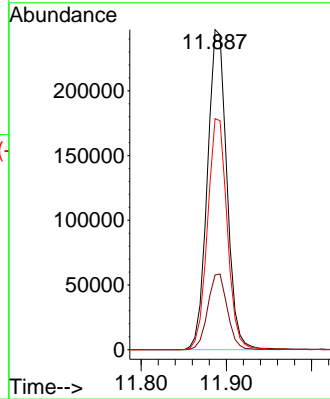
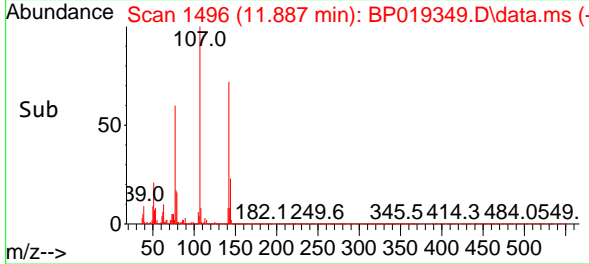


Tgt Ion:107 Resp: 391738  
 Ion Ratio Lower Upper  
 107 100  
 144 23.4 17.8 26.8  
 142 72.2 56.3 84.5

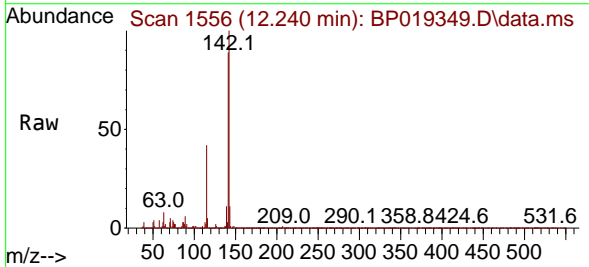
Manual Integrations

APPROVED

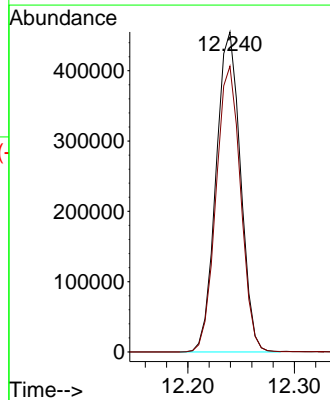
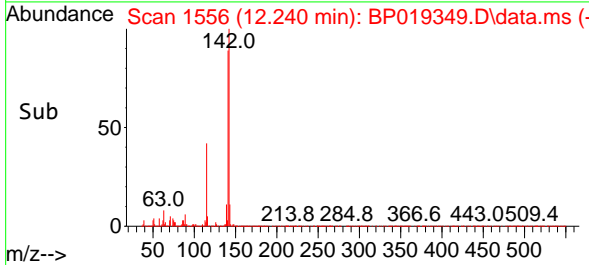
Reviewed By :Jagrut Upadhyay 01/15/2024  
 Supervised By :mohammad ahmed 01/16/2024



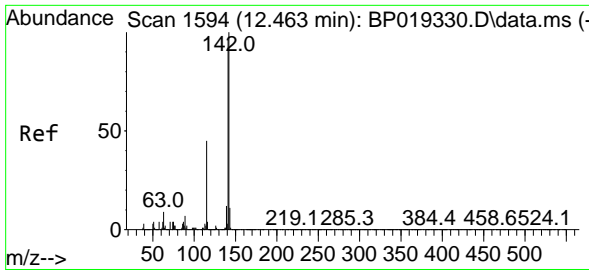
#36  
 2-Methylnaphthalene  
 Concen: 29.690 ng/ul  
 RT: 12.240 min Scan# 1556  
 Delta R.T. -0.006 min  
 Lab File: BP019349.D  
 Acq: 13 Jan 2024 02:03



Tgt Ion:142 Resp: 726084  
 Ion Ratio Lower Upper  
 142 100  
 141 89.3 71.1 106.7







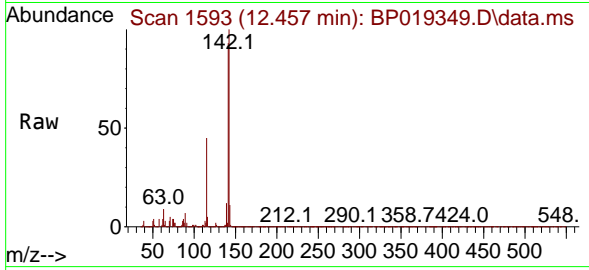
#37  
 1-Methylnaphthalene  
 Concen: 29.871 ng/ul  
 RT: 12.457 min Scan# 1593  
 Delta R.T. -0.006 min  
 Lab File: BP019349.D  
 Acq: 13 Jan 2024 02:03

Instrument :

BNA\_P

ClientSampleId :

SLCS382

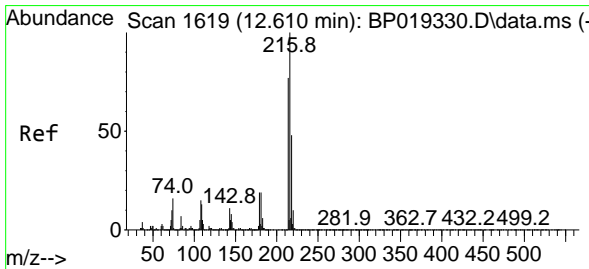
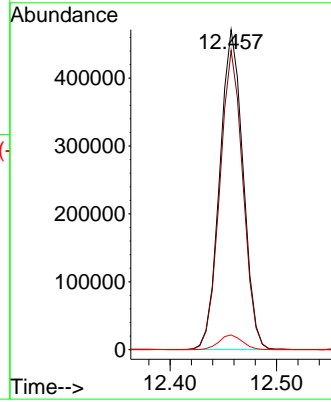
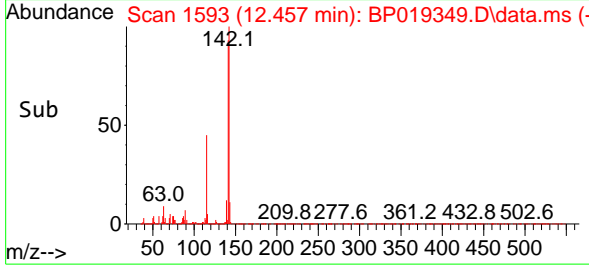


Tgt Ion:142 Resp: 714730  
 Ion Ratio Lower Upper  
 142 100  
 141 93.5 74.4 111.6  
 116 4.6 3.9 5.9

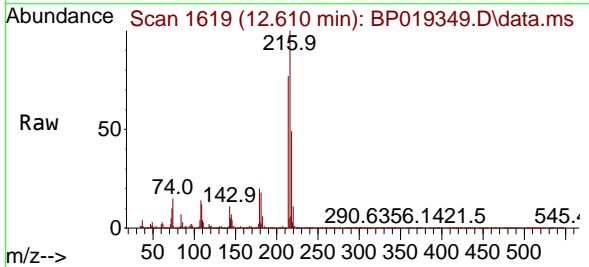
Manual Integrations

APPROVED

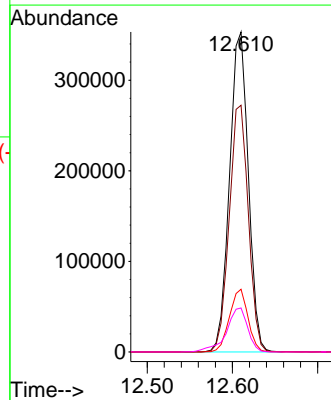
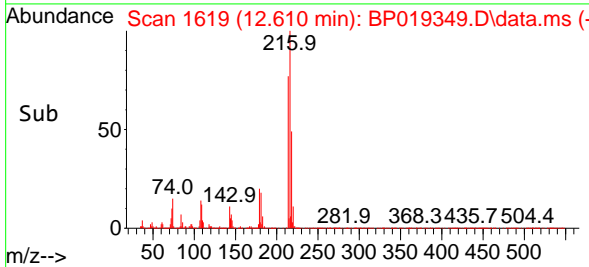
Reviewed By :Jagrut Upadhyay 01/15/2024  
 Supervised By :mohammad ahmed 01/16/2024

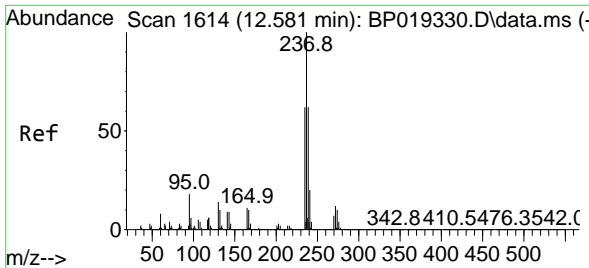


#39  
 1,2,4,5-Tetrachlorobenzene  
 Concen: 30.636 ng/ul  
 RT: 12.610 min Scan# 1619  
 Delta R.T. -0.006 min  
 Lab File: BP019349.D  
 Acq: 13 Jan 2024 02:03



Tgt Ion:216 Resp: 541937  
 Ion Ratio Lower Upper  
 216 100  
 214 77.1 63.6 95.4  
 179 19.6 15.1 22.7  
 108 13.8 11.3 16.9





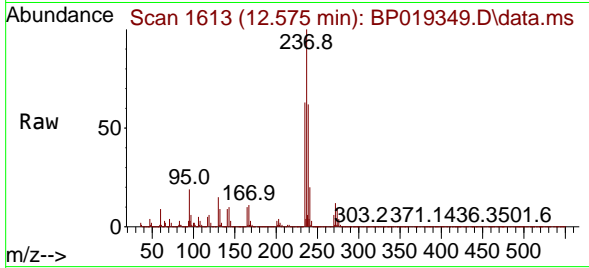
#40  
 Hexachlorocyclopentadiene  
 Concen: 26.777 ng/ul  
 RT: 12.575 min Scan# 1613  
 Delta R.T. -0.012 min  
 Lab File: BP019349.D  
 Acq: 13 Jan 2024 02:03

Instrument :

BNA\_P

Client Sample Id :

SLCS382

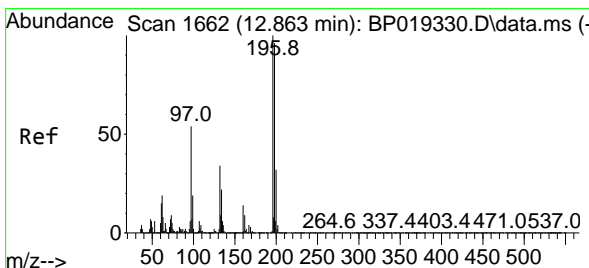
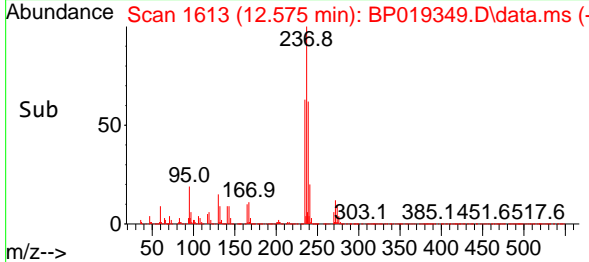
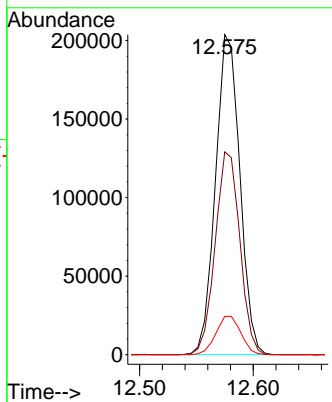


Tgt Ion: 237 Resp: 304019  
 Ion Ratio Lower Upper  
 237 100  
 235 63.4 50.0 75.0  
 272 12.0 11.4 17.2

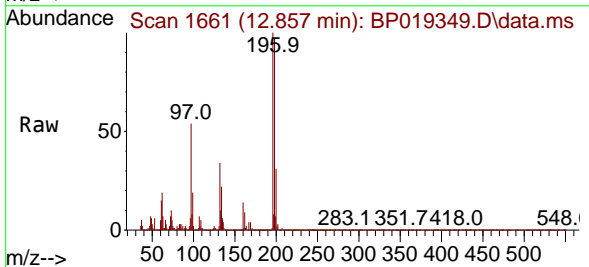
Manual Integrations

APPROVED

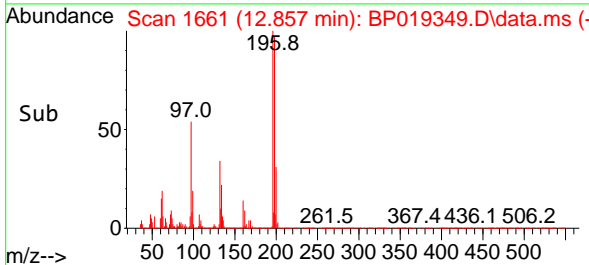
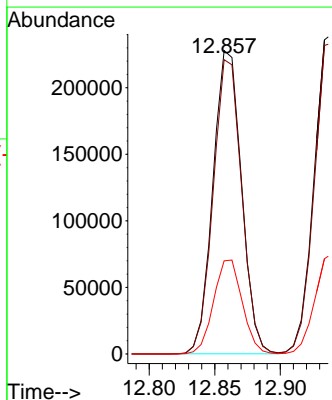
Reviewed By :Jagrut Upadhyay 01/15/2024  
 Supervised By :mohammad ahmed 01/16/2024

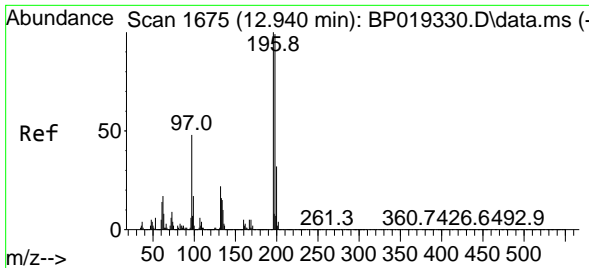


#41  
 2,4,6-Trichlorophenol  
 Concen: 31.760 ng/ul  
 RT: 12.857 min Scan# 1661  
 Delta R.T. -0.006 min  
 Lab File: BP019349.D  
 Acq: 13 Jan 2024 02:03



Tgt Ion: 196 Resp: 345744  
 Ion Ratio Lower Upper  
 196 100  
 198 97.0 78.2 117.2  
 200 30.7 24.6 36.8





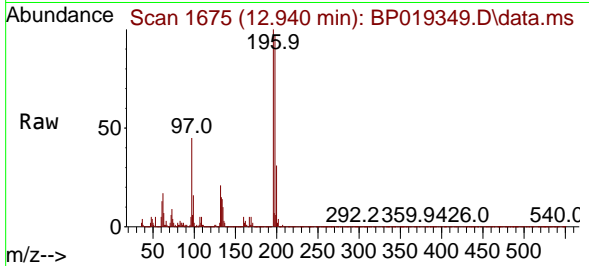
#42  
 2,4,5-Trichlorophenol  
 Concen: 32.060 ng/uI  
 RT: 12.940 min Scan# 1675  
 Delta R.T. -0.006 min  
 Lab File: BP019349.D  
 Acq: 13 Jan 2024 02:03

Instrument :

BNA\_P

ClientSampleId :

SLCS382

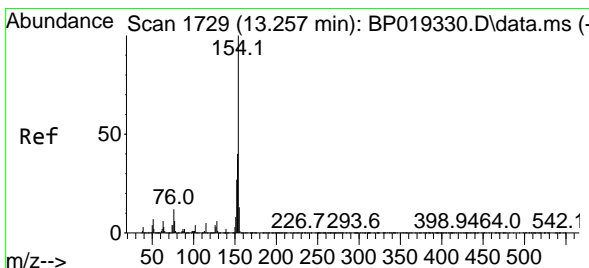
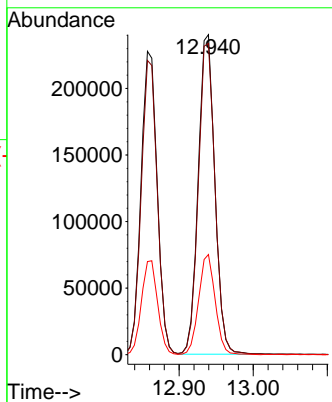
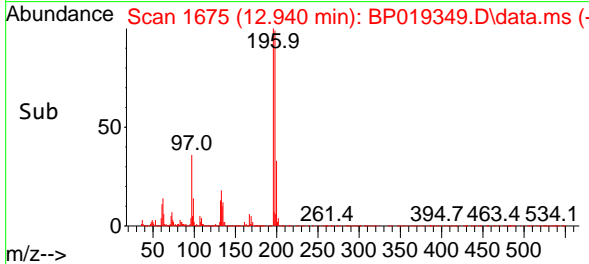


Tgt Ion:196 Resp: 37402  
 Ion Ratio Lower Upper  
 196 100  
 198 97.3 78.9 118.3  
 200 31.3 25.0 37.6

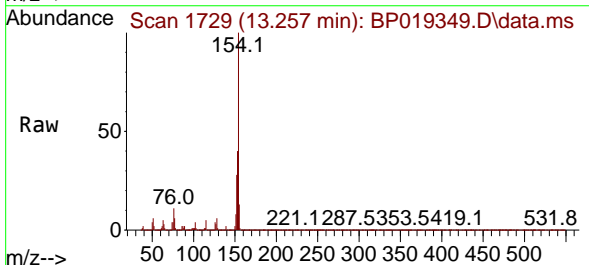
Manual Integrations

APPROVED

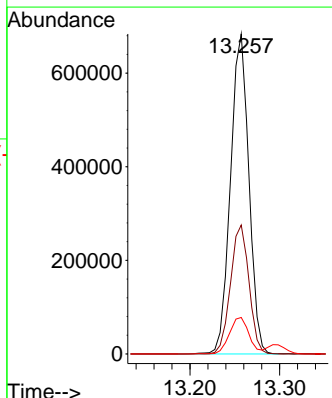
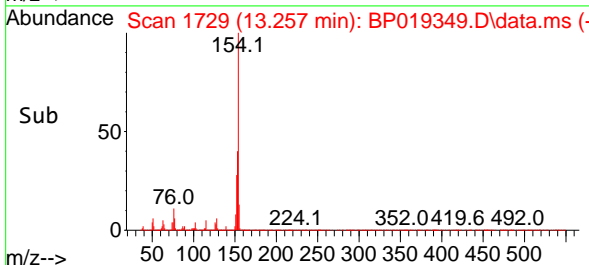
Reviewed By :Jagrut Upadhyay 01/15/2024  
 Supervised By :mohammad ahmed 01/16/2024

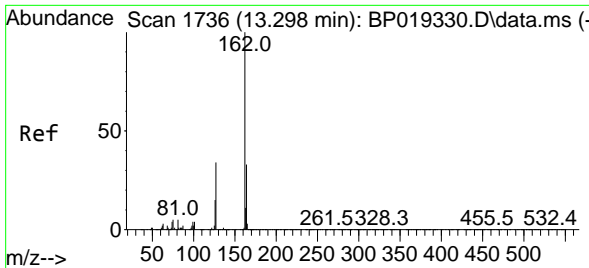


#43  
 1,1'-Biphenyl  
 Concen: 28.811 ng/uI  
 RT: 13.257 min Scan# 1729  
 Delta R.T. -0.006 min  
 Lab File: BP019349.D  
 Acq: 13 Jan 2024 02:03



Tgt Ion:154 Resp: 971561  
 Ion Ratio Lower Upper  
 154 100  
 153 40.3 32.6 48.8  
 76 11.4 9.3 13.9





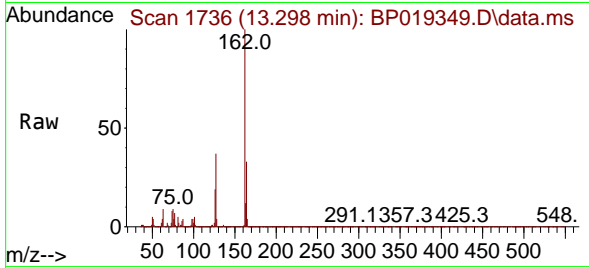
#44  
 2-Chloronaphthalene  
 Concen: 28.884 ng/u1  
 RT: 13.298 min Scan# 1736  
 Delta R.T. -0.006 min  
 Lab File: BP019349.D  
 Acq: 13 Jan 2024 02:03

Instrument :

BNA\_P

Client SampleId :

SLCS382

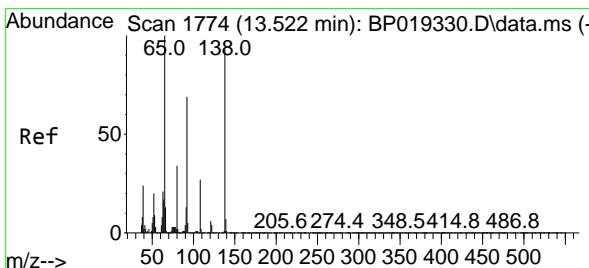
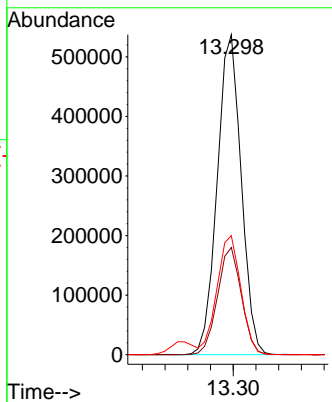
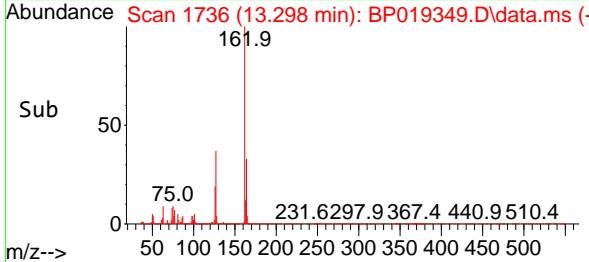


Tgt Ion:162 Resp: 787708  
 Ion Ratio Lower Upper  
 162 100  
 164 33.5 26.6 40.0  
 127 37.2 29.4 44.2

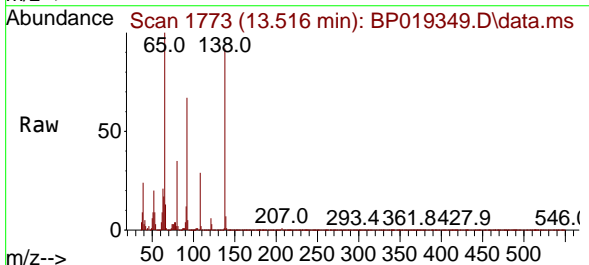
Manual Integrations

APPROVED

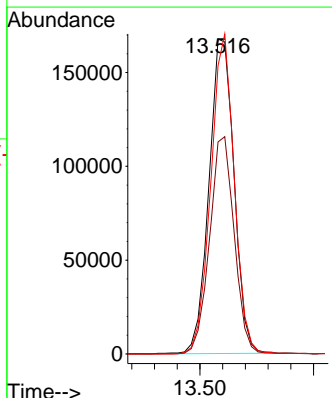
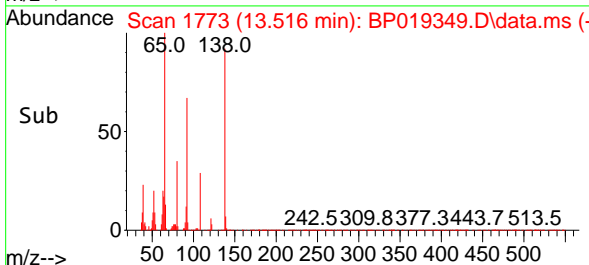
Reviewed By :Jagrut Upadhyay 01/15/2024  
 Supervised By :mohammad ahmed 01/16/2024

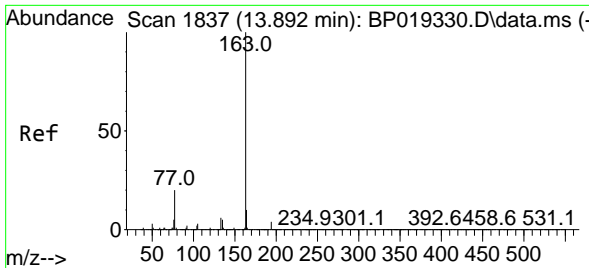


#45  
 2-Nitroaniline  
 Concen: 32.809 ng/u1  
 RT: 13.516 min Scan# 1773  
 Delta R.T. -0.006 min  
 Lab File: BP019349.D  
 Acq: 13 Jan 2024 02:03



Tgt Ion: 65 Resp: 256643  
 Ion Ratio Lower Upper  
 65 100  
 92 67.3 52.1 78.1  
 138 91.5 74.8 112.2





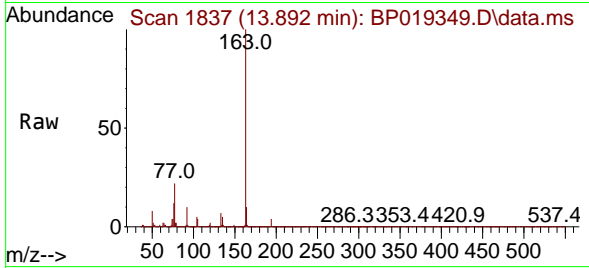
#47  
 Dimethylphthalate  
 Concen: 30.135 ng/ul  
 RT: 13.892 min Scan# 1837  
 Delta R.T. -0.000 min  
 Lab File: BP019349.D  
 Acq: 13 Jan 2024 02:03

Instrument :

BNA\_P

ClientSampleId :

SLCS382

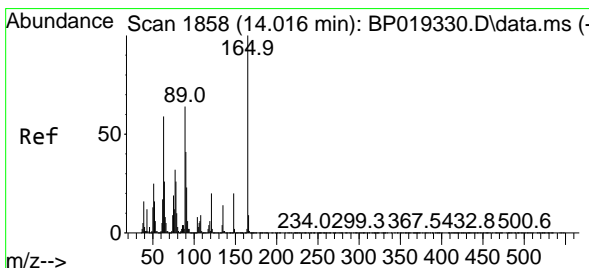
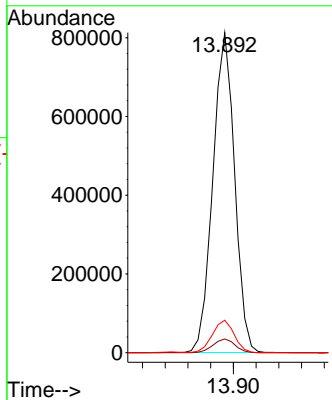
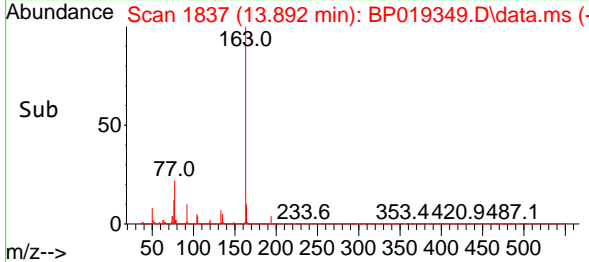


Tgt Ion:163 Resp: 1080114  
 Ion Ratio Lower Upper  
 163 100  
 194 4.3 3.4 5.2  
 164 10.2 8.1 12.1

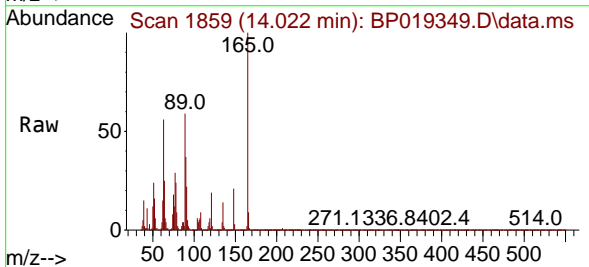
Manual Integrations

APPROVED

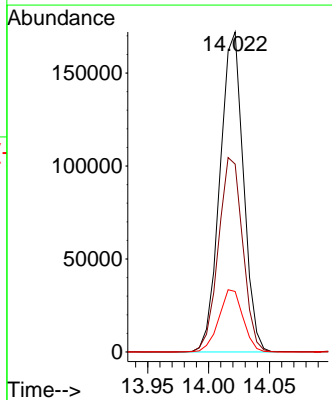
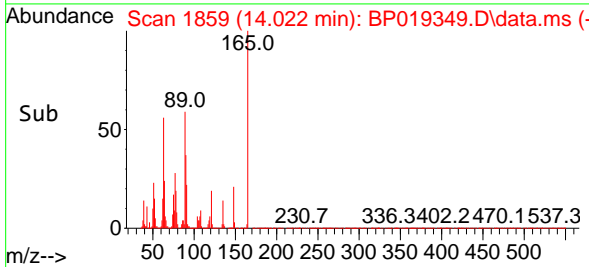
Reviewed By :Jagrut Upadhyay 01/15/2024  
 Supervised By :mohammad ahmed 01/16/2024

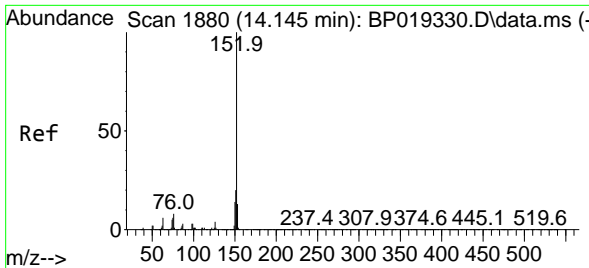


#48  
 2,6-Dinitrotoluene  
 Concen: 32.565 ng/ul  
 RT: 14.022 min Scan# 1859  
 Delta R.T. -0.000 min  
 Lab File: BP019349.D  
 Acq: 13 Jan 2024 02:03



Tgt Ion:165 Resp: 230809  
 Ion Ratio Lower Upper  
 165 100  
 89 58.7 49.9 74.9  
 121 18.9 16.5 24.7





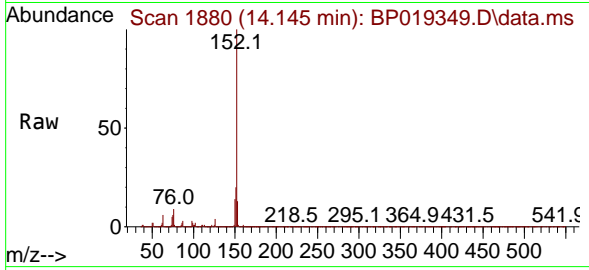
#50  
 Acenaphthylene  
 Concen: 29.486 ng/u1  
 RT: 14.145 min Scan# 1880  
 Delta R.T. -0.006 min  
 Lab File: BP019349.D  
 Acq: 13 Jan 2024 02:03

Instrument :

BNA\_P

ClientSampleId :

SLCS382

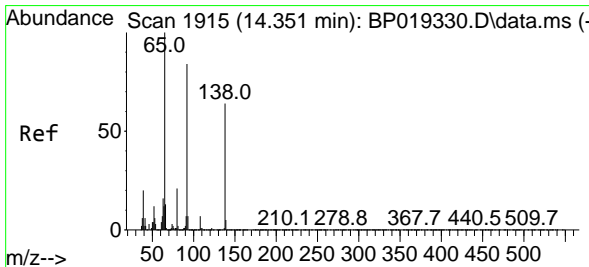
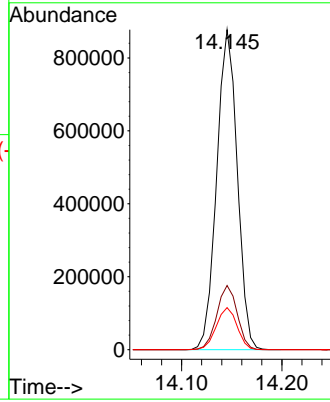
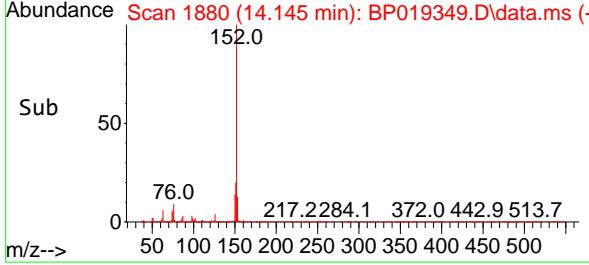


Tgt Ion:152 Resp: 124853  
 Ion Ratio Lower Upper  
 152 100  
 151 20.0 15.8 23.6  
 153 13.2 10.3 15.5

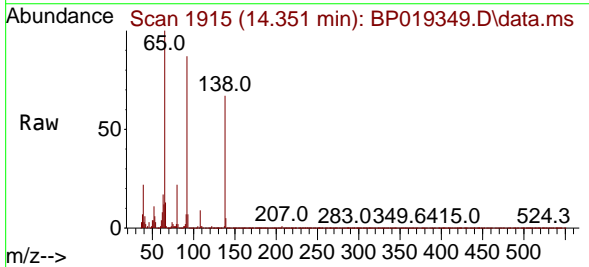
Manual Integrations

APPROVED

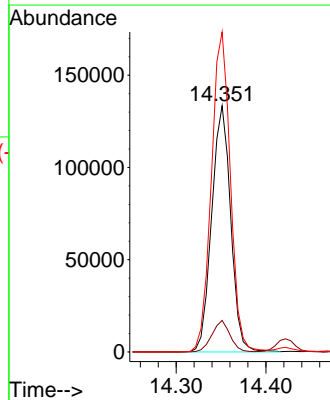
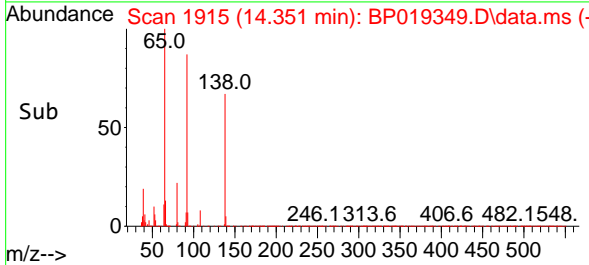
Reviewed By :Jagrut Upadhyay 01/15/2024  
 Supervised By :mohammad ahmed 01/16/2024

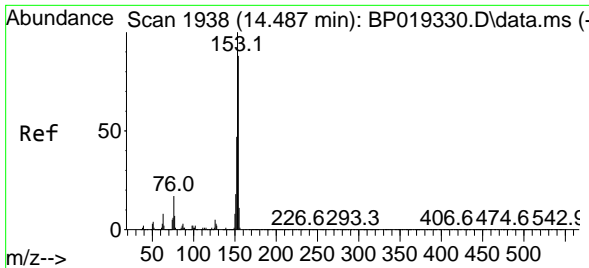


#51  
 3-Nitroaniline  
 Concen: 31.732 ng/u1  
 RT: 14.351 min Scan# 1915  
 Delta R.T. -0.000 min  
 Lab File: BP019349.D  
 Acq: 13 Jan 2024 02:03



Tgt Ion:138 Resp: 196174  
 Ion Ratio Lower Upper  
 138 100  
 108 12.8 10.6 15.8  
 92 129.9 105.8 158.6





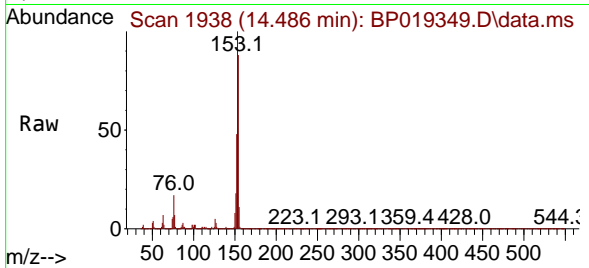
#52  
 Acenaphthene  
 Concen: 29.663 ng/u1  
 RT: 14.486 min Scan# 1938  
 Delta R.T. -0.006 min  
 Lab File: BP019349.D  
 Acq: 13 Jan 2024 02:03

Instrument :

BNA\_P

Client SampleId :

SLCS382

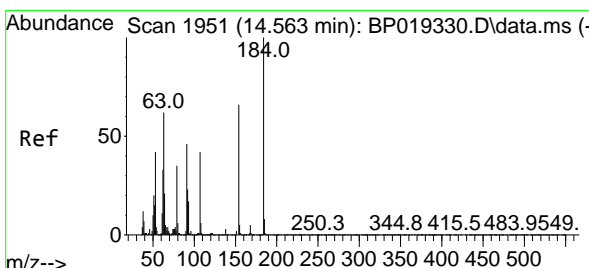
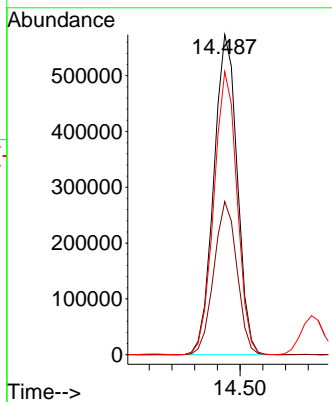
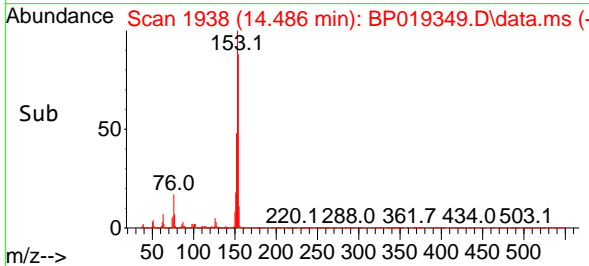


Tgt Ion:153 Resp: 822979  
 Ion Ratio Lower Upper  
 153 100  
 152 47.8 38.2 57.2  
 154 88.4 68.9 103.3

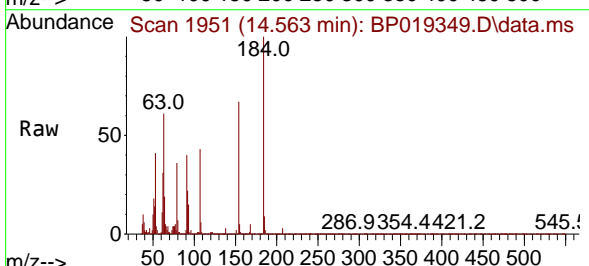
Manual Integrations

APPROVED

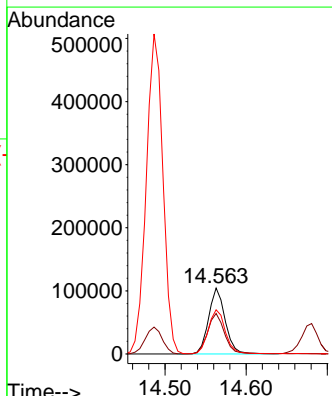
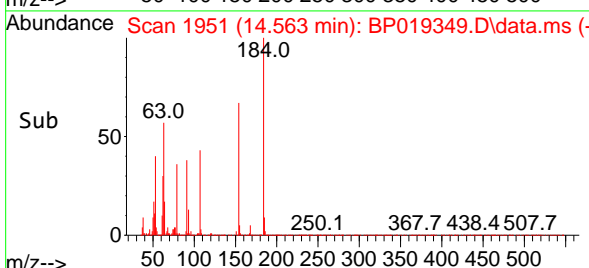
Reviewed By :Jagrut Upadhyay 01/15/2024  
 Supervised By :mohammad ahmed 01/16/2024



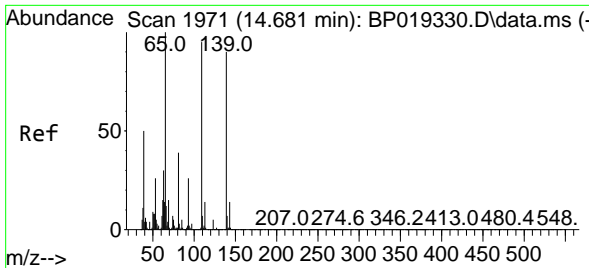
#53  
 2,4-Dinitrophenol  
 Concen: 31.804 ng/u1  
 RT: 14.563 min Scan# 1951  
 Delta R.T. -0.006 min  
 Lab File: BP019349.D  
 Acq: 13 Jan 2024 02:03



Tgt Ion:184 Resp: 147802  
 Ion Ratio Lower Upper  
 184 100  
 63 61.3 43.6 65.4  
 154 66.9 52.1 78.1







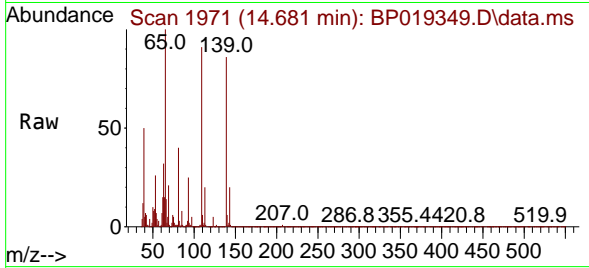
#55  
 4-Nitrophenol  
 Concen: 32.372 ng/u1  
 RT: 14.681 min Scan# 1971  
 Delta R.T. -0.000 min  
 Lab File: BP019349.D  
 Acq: 13 Jan 2024 02:03

Instrument :

BNA\_P

ClientSampleId :

SLCS382

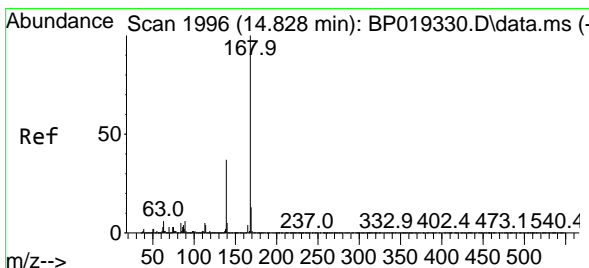
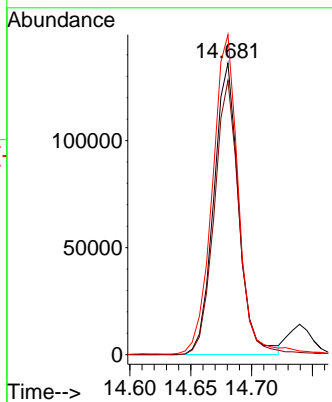
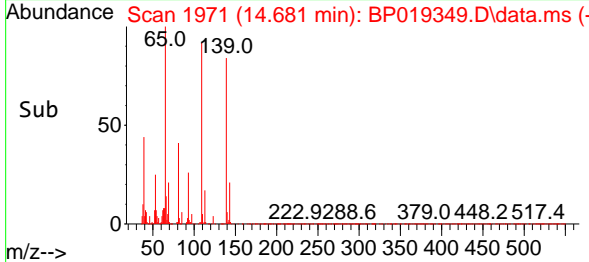


Tgt Ion:109 Resp: 193600  
 Ion Ratio Lower Upper  
 109 100  
 139 94.1 73.2 109.8  
 65 109.8 90.9 136.3

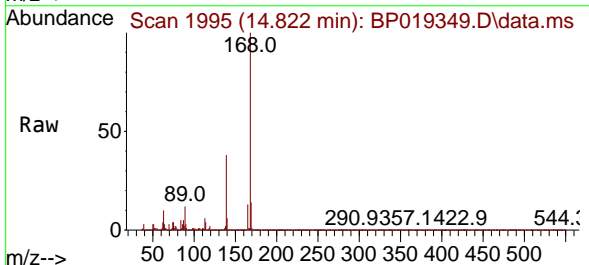
Manual Integrations

APPROVED

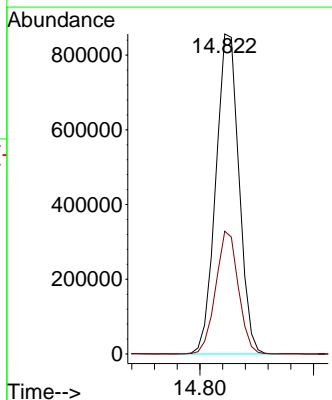
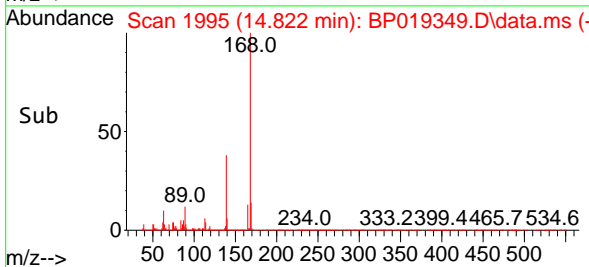
Reviewed By :Jagrut Upadhyay 01/15/2024  
 Supervised By :mohammad ahmed 01/16/2024

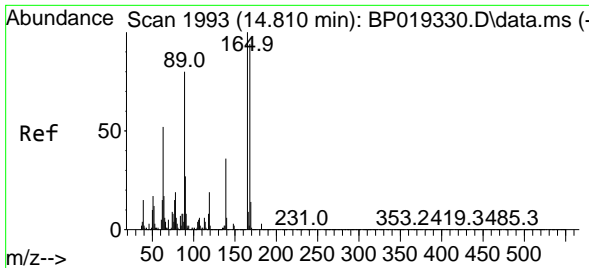


#56  
 Dibenzofuran  
 Concen: 30.536 ng/u1  
 RT: 14.822 min Scan# 1995  
 Delta R.T. -0.006 min  
 Lab File: BP019349.D  
 Acq: 13 Jan 2024 02:03



Tgt Ion:168 Resp: 1212928  
 Ion Ratio Lower Upper  
 168 100  
 139 38.4 30.3 45.5





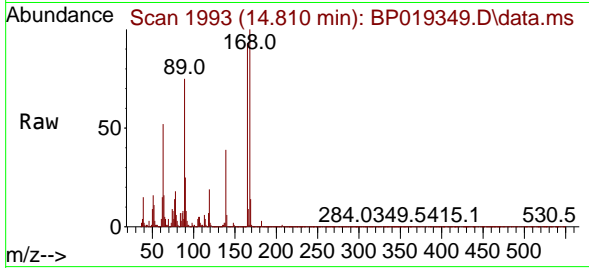
#57  
 2,4-Dinitrotoluene  
 Concen: 33.811 ng/ul  
 RT: 14.810 min Scan# 1993  
 Delta R.T. -0.006 min  
 Lab File: BP019349.D  
 Acq: 13 Jan 2024 02:03

Instrument :

BNA\_P

ClientSampleId :

SLCS382

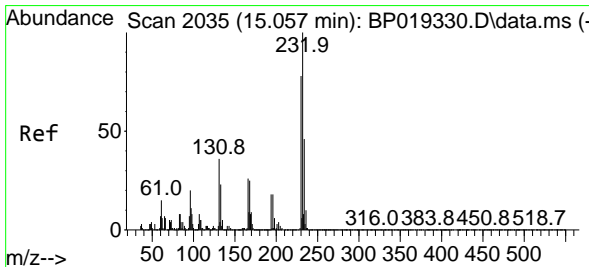
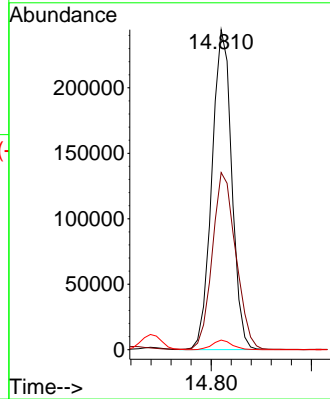
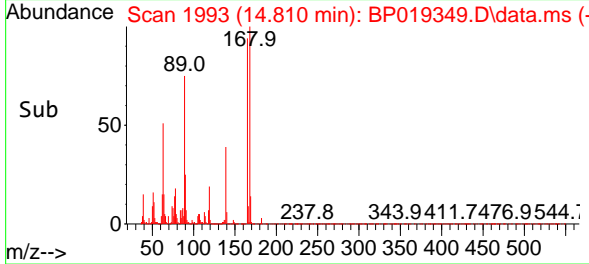


Tgt Ion:165 Resp: 336230  
 Ion Ratio Lower Upper  
 165 100  
 63 55.3 41.3 61.9  
 182 3.0 2.4 3.6

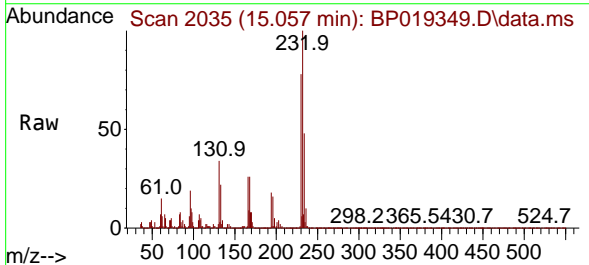
Manual Integrations

APPROVED

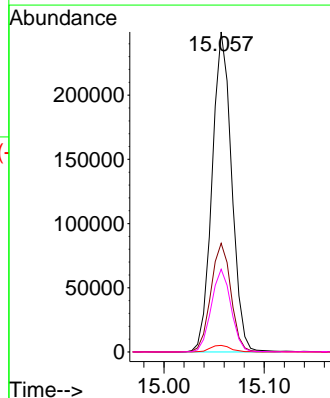
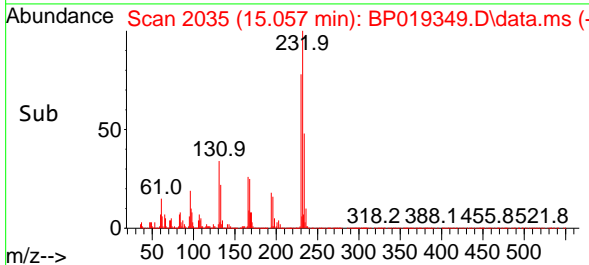
Reviewed By :Jagrut Upadhyay 01/15/2024  
 Supervised By :mohammad ahmed 01/16/2024

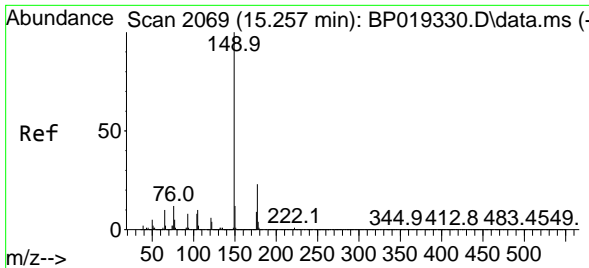


#58  
 2,3,4,6-Tetrachlorophenol  
 Concen: 32.611 ng/ul  
 RT: 15.057 min Scan# 2035  
 Delta R.T. -0.006 min  
 Lab File: BP019349.D  
 Acq: 13 Jan 2024 02:03



Tgt Ion:232 Resp: 337745  
 Ion Ratio Lower Upper  
 232 100  
 131 34.0 27.9 41.9  
 130 2.1 1.8 2.8  
 166 25.8 20.9 31.3





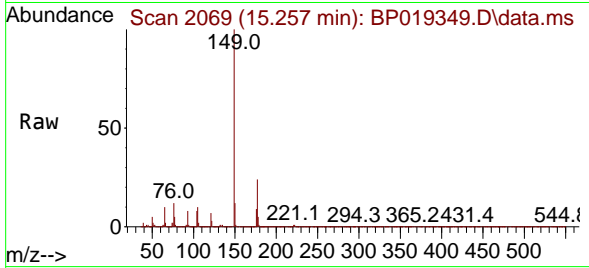
#59  
 Diethylphthalate  
 Concen: 32.216 ng/ul  
 RT: 15.257 min Scan# 2069  
 Delta R.T. -0.000 min  
 Lab File: BP019349.D  
 Acq: 13 Jan 2024 02:03

Instrument :

BNA\_P

ClientSampleId :

SLCS382

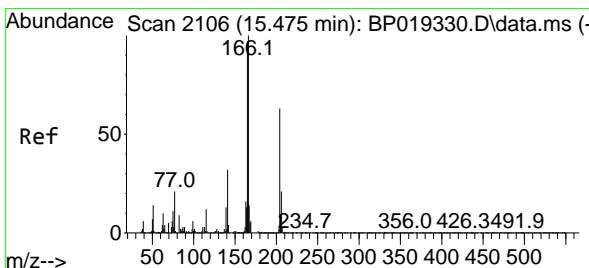
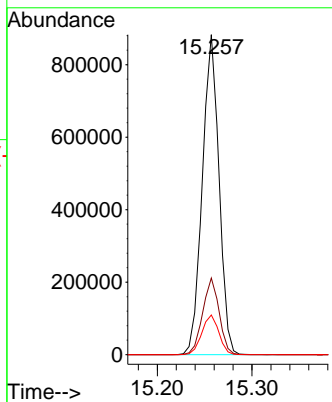
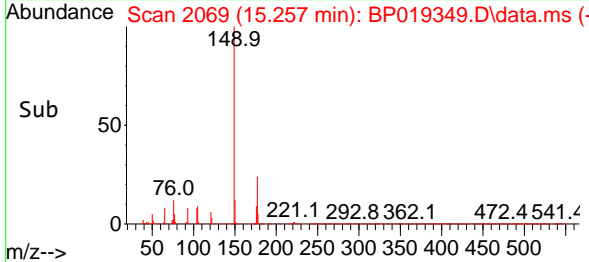


Tgt Ion:149 Resp: 108056  
 Ion Ratio Lower Upper  
 149 100  
 177 23.9 18.8 28.2  
 150 12.4 10.2 15.4

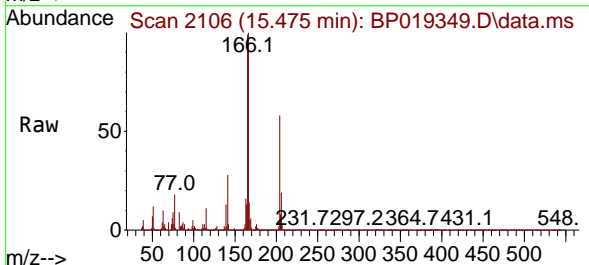
Manual Integrations

APPROVED

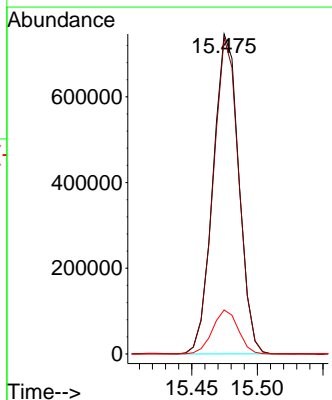
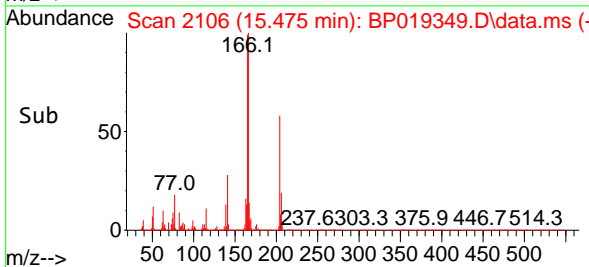
Reviewed By :Jagrut Upadhyay 01/15/2024  
 Supervised By :mohammad ahmed 01/16/2024

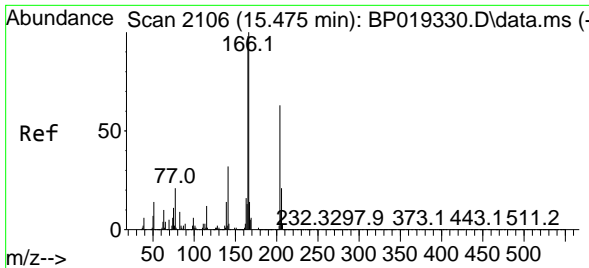


#61  
 Fluorene  
 Concen: 31.326 ng/ul  
 RT: 15.475 min Scan# 2106  
 Delta R.T. -0.006 min  
 Lab File: BP019349.D  
 Acq: 13 Jan 2024 02:03



Tgt Ion:166 Resp: 1019196  
 Ion Ratio Lower Upper  
 166 100  
 165 98.8 78.6 118.0  
 167 13.7 10.6 15.8





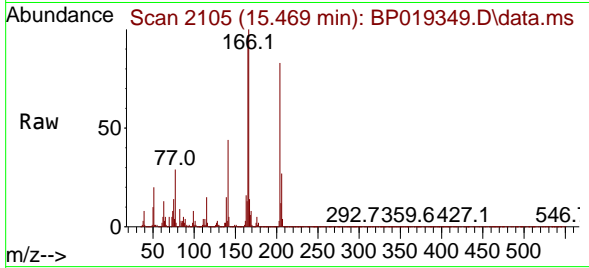
#62  
 4-Chlorophenyl-phenylether  
 Concen: 31.201 ng/ul  
 RT: 15.469 min Scan# 2105  
 Delta R.T. -0.006 min  
 Lab File: BP019349.D  
 Acq: 13 Jan 2024 02:03

Instrument :

BNA\_P

ClientSampleId :

SLCS382

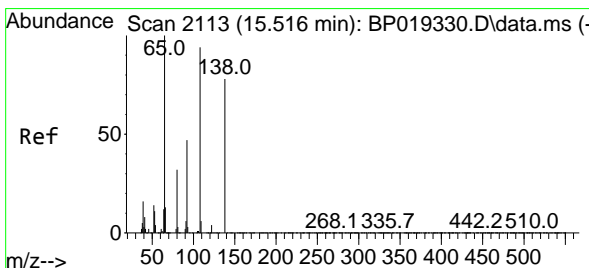
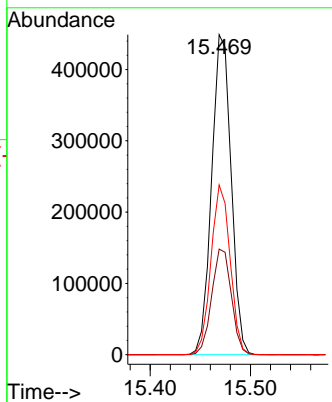
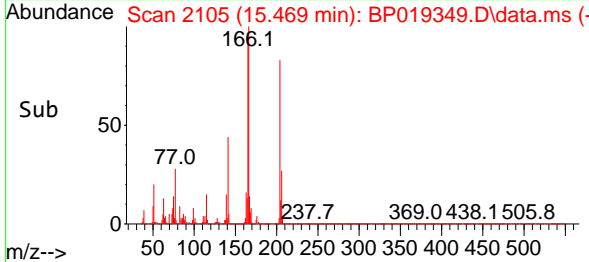


Tgt Ion:204 Resp: 60577  
 Ion Ratio Lower Upper  
 204 100  
 206 33.0 27.0 40.4  
 141 53.1 41.5 62.3

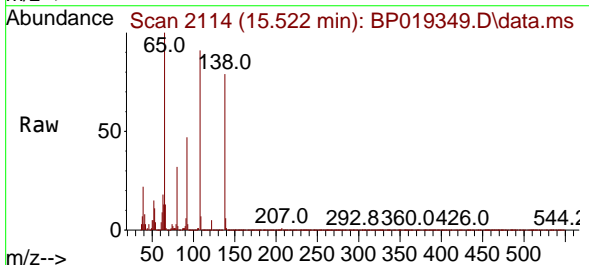
Manual Integrations

APPROVED

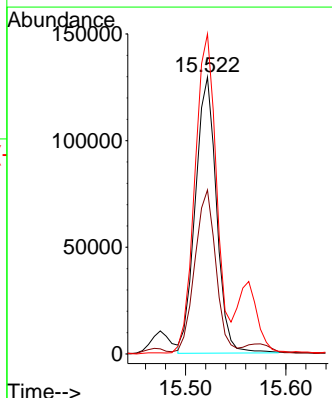
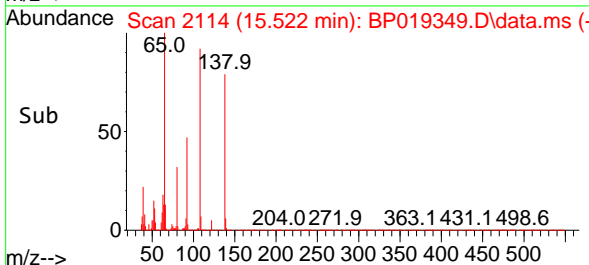
Reviewed By :Jagrut Upadhyay 01/15/2024  
 Supervised By :mohammad ahmed 01/16/2024

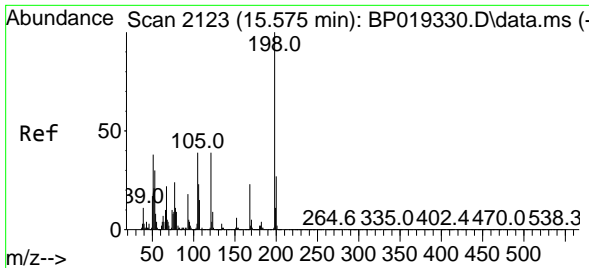


#63  
 4-Nitroaniline  
 Concen: 39.769 ng/ul  
 RT: 15.522 min Scan# 2114  
 Delta R.T. -0.000 min  
 Lab File: BP019349.D  
 Acq: 13 Jan 2024 02:03



Tgt Ion:138 Resp: 190604  
 Ion Ratio Lower Upper  
 138 100  
 92 59.3 48.9 73.3  
 108 115.6 90.4 135.6





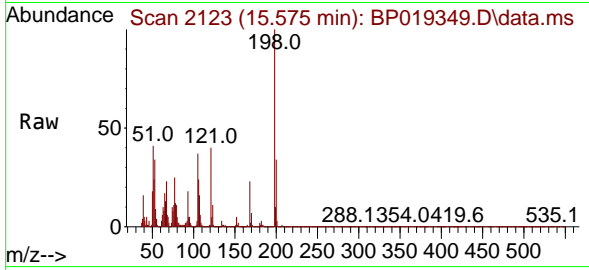
#66  
 4,6-Dinitro-2-methylphenol  
 Concen: 30.219 ng/ul  
 RT: 15.575 min Scan# 2123  
 Delta R.T. -0.000 min  
 Lab File: BP019349.D  
 Acq: 13 Jan 2024 02:03

Instrument :

BNA\_P

ClientSampleId :

SLCS382

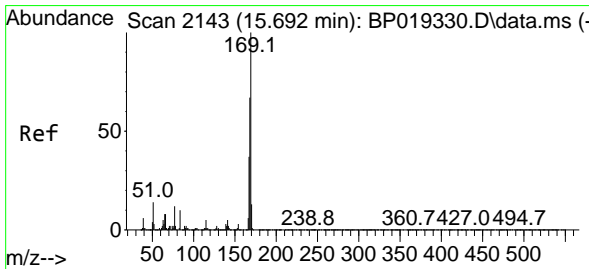
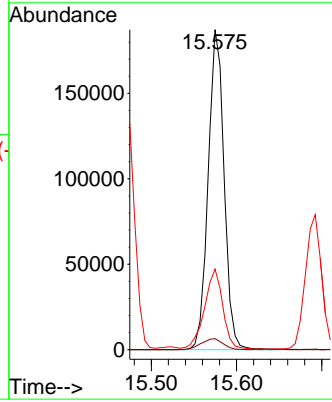
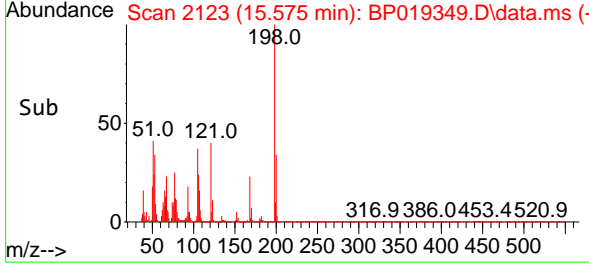


Tgt Ion:198 Resp: 243429  
 Ion Ratio Lower Upper  
 198 100  
 182 3.5 3.2 4.8  
 77 25.1 20.6 30.8

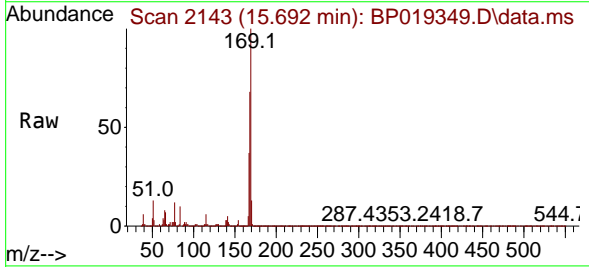
Manual Integrations

APPROVED

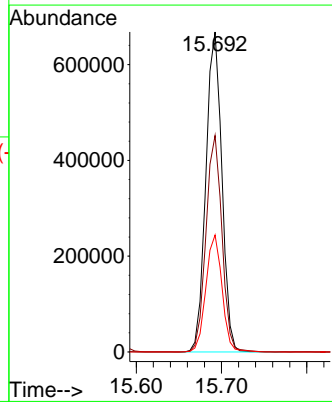
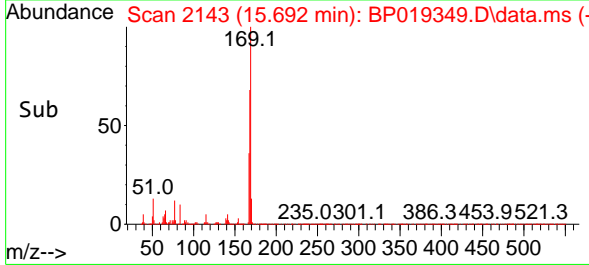
Reviewed By :Jagrut Upadhyay 01/15/2024  
 Supervised By :mohammad ahmed 01/16/2024

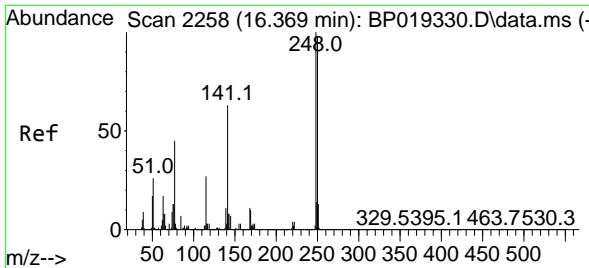


#67  
 N-Nitrosodiphenylamine  
 Concen: 28.650 ng/ul  
 RT: 15.692 min Scan# 2143  
 Delta R.T. -0.006 min  
 Lab File: BP019349.D  
 Acq: 13 Jan 2024 02:03



Tgt Ion:169 Resp: 869453  
 Ion Ratio Lower Upper  
 169 100  
 168 67.7 54.8 82.2  
 167 36.5 29.3 43.9





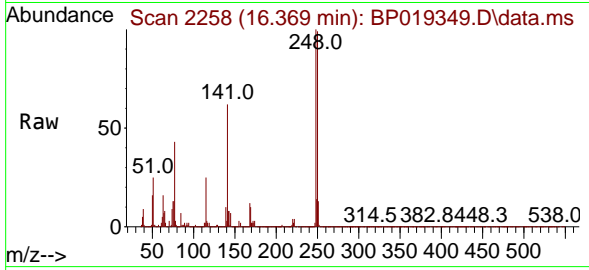
#68  
 4-Bromophenyl-phenylether  
 Concen: 29.049 ng/ul  
 RT: 16.369 min Scan# 21  
 Delta R.T. -0.006 min  
 Lab File: BP019349.D  
 Acq: 13 Jan 2024 02:03

Instrument :

BNA\_P

ClientSampleId :

SLCS382

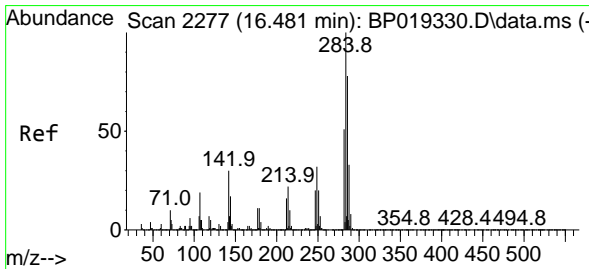
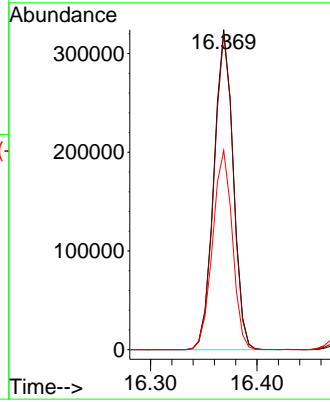
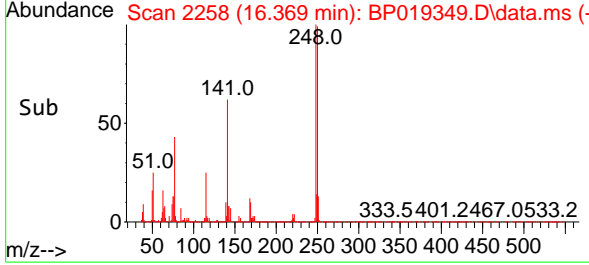


Tgt Ion:248 Resp: 40847  
 Ion Ratio Lower Upper  
 248 100  
 250 98.6 75.6 113.4  
 141 62.2 48.7 73.1

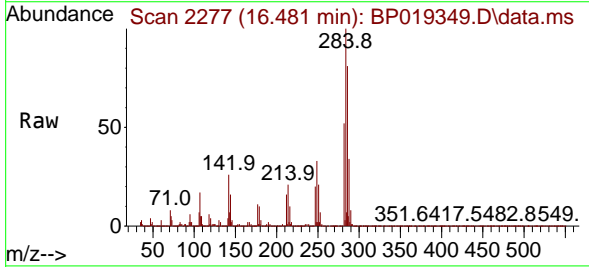
Manual Integrations

APPROVED

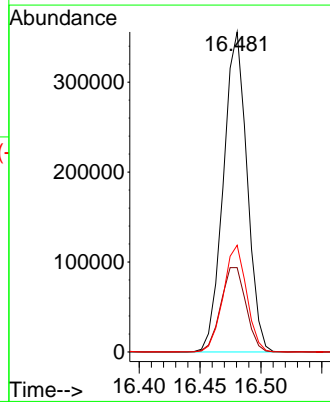
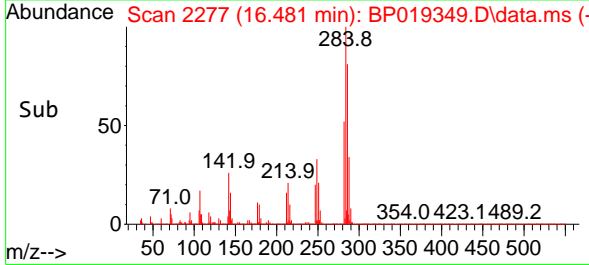
Reviewed By :Jagrut Upadhyay 01/15/2024  
 Supervised By :mohammad ahmed 01/16/2024

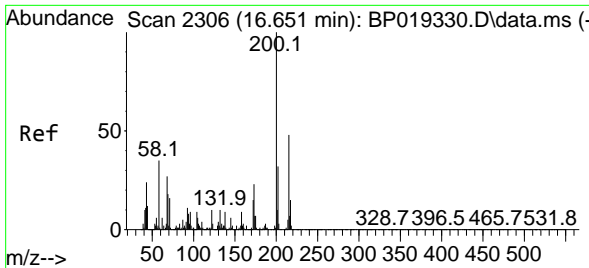


#69  
 Hexachlorobenzene  
 Concen: 29.671 ng/ul  
 RT: 16.481 min Scan# 2277  
 Delta R.T. -0.000 min  
 Lab File: BP019349.D  
 Acq: 13 Jan 2024 02:03



Tgt Ion:284 Resp: 480826  
 Ion Ratio Lower Upper  
 284 100  
 142 26.4 23.6 35.4  
 249 33.4 26.1 39.1





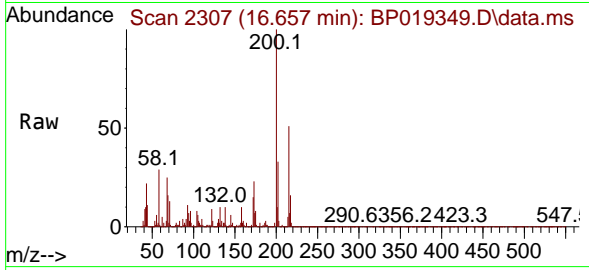
#70  
 Atrazine  
 Concen: 26.539 ng/u1  
 RT: 16.657 min Scan# 21  
 Delta R.T. -0.000 min  
 Lab File: BP019349.D  
 Acq: 13 Jan 2024 02:03

Instrument :

BNA\_P

ClientSampleId :

SLCS382

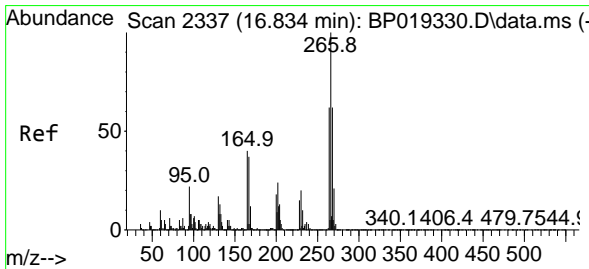
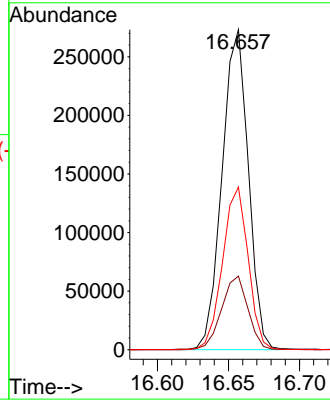
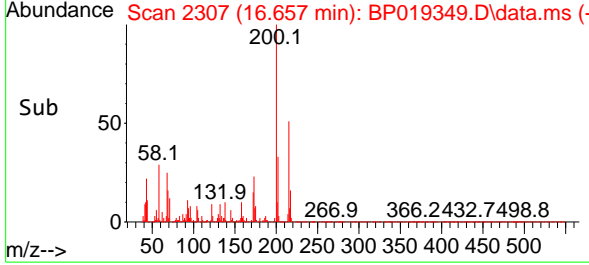


Tgt Ion:200 Resp: 35106  
 Ion Ratio Lower Upper  
 200 100  
 173 23.0 19.4 29.0  
 215 50.8 39.7 59.5

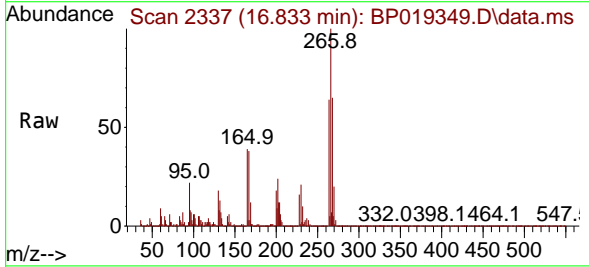
Manual Integrations

APPROVED

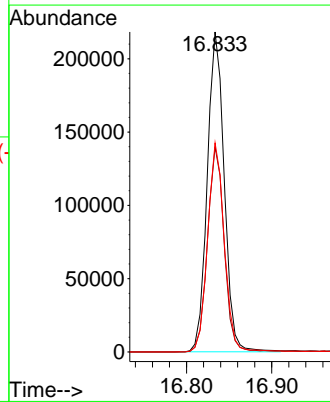
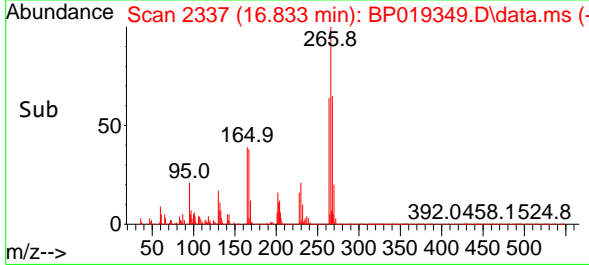
Reviewed By :Jagrut Upadhyay 01/15/2024  
 Supervised By :mohammad ahmed 01/16/2024



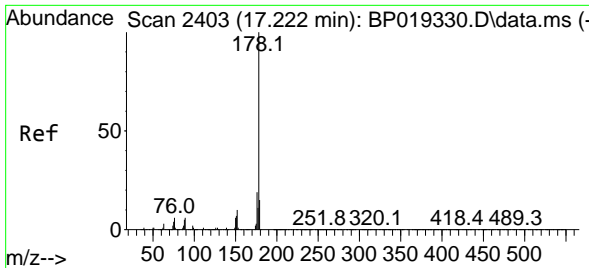
#71  
 Pentachlorophenol  
 Concen: 30.019 ng/u1  
 RT: 16.833 min Scan# 2337  
 Delta R.T. -0.006 min  
 Lab File: BP019349.D  
 Acq: 13 Jan 2024 02:03



Tgt Ion:266 Resp: 302137  
 Ion Ratio Lower Upper  
 266 100  
 264 64.0 49.4 74.2  
 268 65.4 51.6 77.4

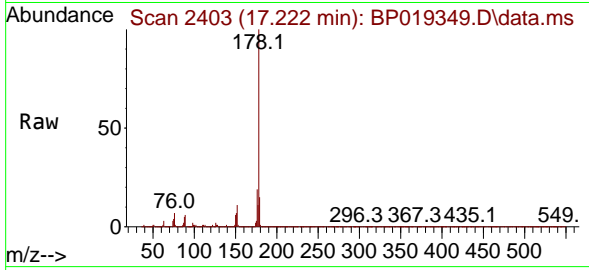






#72  
 Phenanthrene  
 Concen: 29.958 ng/u1  
 RT: 17.222 min Scan# 2403  
 Delta R.T. -0.006 min  
 Lab File: BP019349.D  
 Acq: 13 Jan 2024 02:03

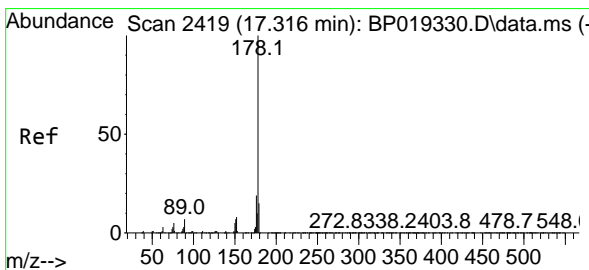
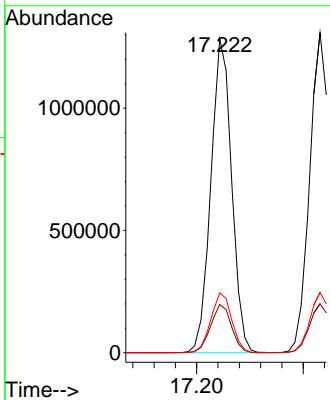
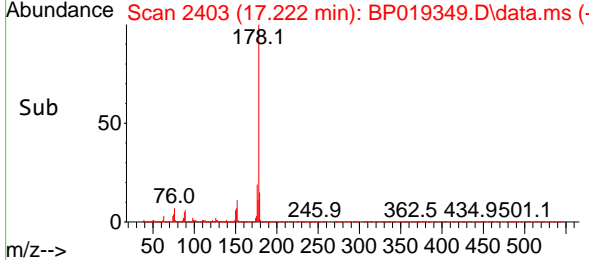
Instrument : BNA\_P  
 Client SampleId : SLCS382



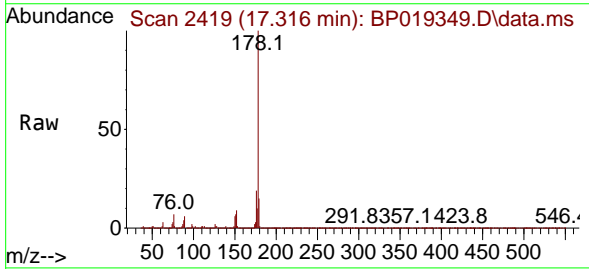
Tgt Ion:178 Resp: 173233

Ion	Ratio	Lower	Upper
178	100		
179	15.4	12.1	18.1
176	19.0	15.4	23.2

Manual Integrations  
**APPROVED**  
 Reviewed By :Jagrut Upadhyay 01/15/2024  
 Supervised By :mohammad ahmed 01/16/2024

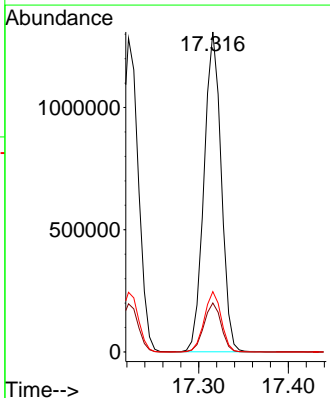
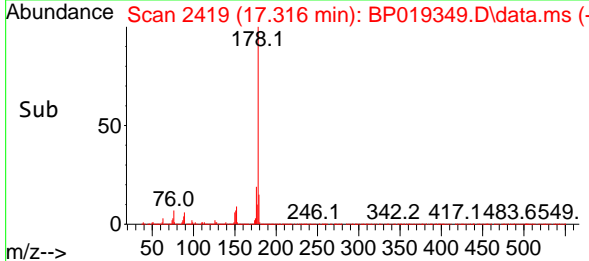


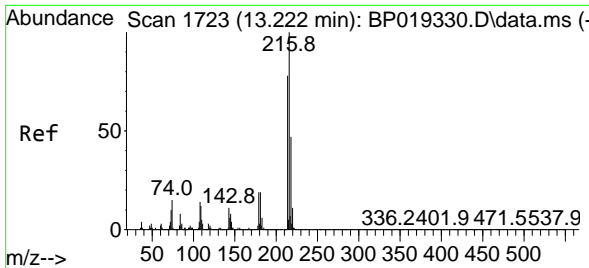
#74  
 Anthracene  
 Concen: 29.698 ng/u1  
 RT: 17.316 min Scan# 2419  
 Delta R.T. -0.000 min  
 Lab File: BP019349.D  
 Acq: 13 Jan 2024 02:03



Tgt Ion:178 Resp: 1740895

Ion	Ratio	Lower	Upper
178	100		
179	15.3	12.3	18.5
176	18.8	14.6	22.0





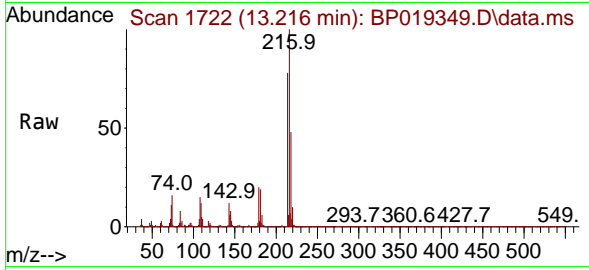
#75  
 1,2,3,4-Tetrachlorobenzene  
 Concen: 27.174 ng/uL  
 RT: 13.216 min Scan# 1722  
 Delta R.T. -0.006 min  
 Lab File: BP019349.D  
 Acq: 13 Jan 2024 02:03

Instrument :

BNA\_P

Client Sample Id :

SLCS382

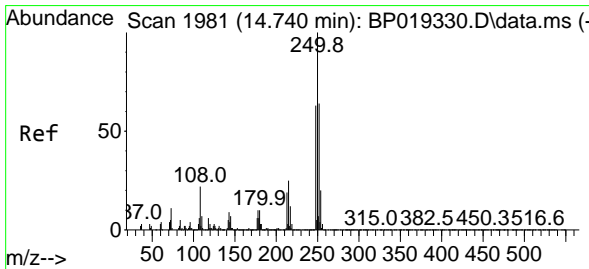
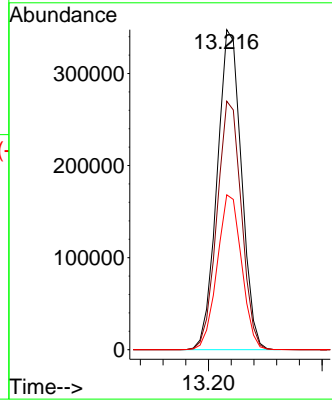
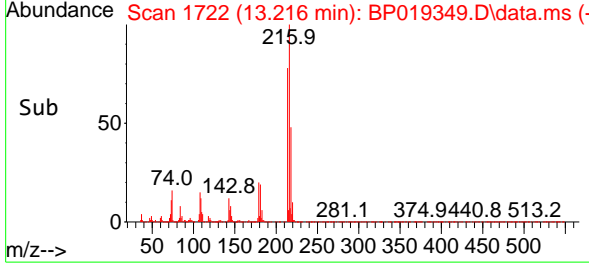


Tgt Ion:216 Resp: 51796  
 Ion Ratio Lower Upper  
 216 100  
 214 77.6 61.8 92.8  
 218 48.4 39.0 58.6

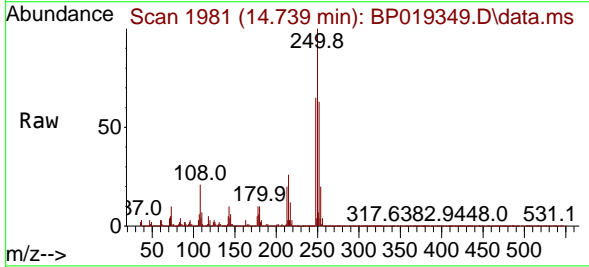
Manual Integrations

APPROVED

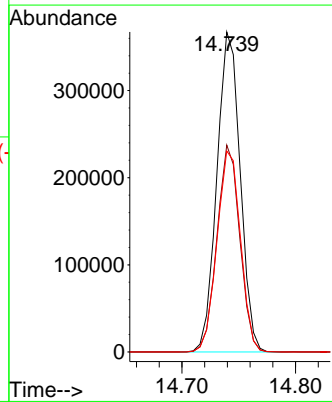
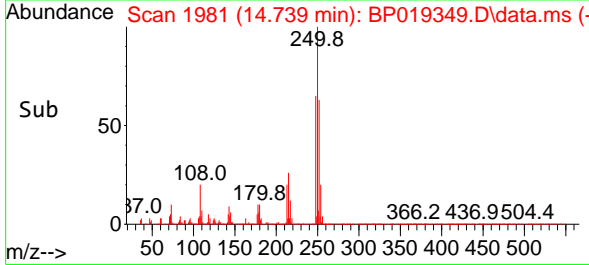
Reviewed By :Jagrut Upadhyay 01/15/2024  
 Supervised By :mohammad ahmed 01/16/2024

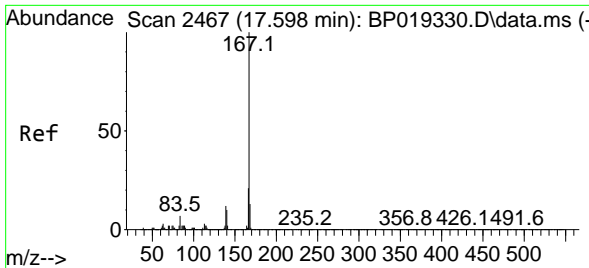


#76  
 Pentachlorobenzene  
 Concen: 28.281 ng/uL  
 RT: 14.739 min Scan# 1981  
 Delta R.T. -0.006 min  
 Lab File: BP019349.D  
 Acq: 13 Jan 2024 02:03



Tgt Ion:250 Resp: 523648  
 Ion Ratio Lower Upper  
 250 100  
 248 64.7 50.8 76.2  
 252 62.8 50.2 75.4





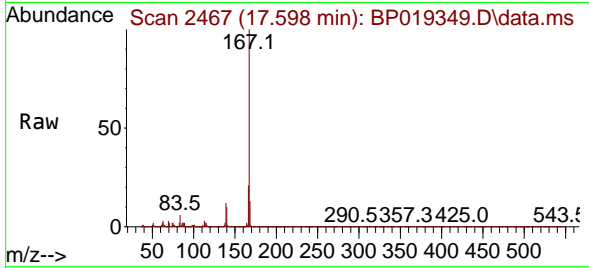
#77  
 Carbazole  
 Concen: 30.039 ng/uI  
 RT: 17.598 min Scan# 2467  
 Delta R.T. -0.000 min  
 Lab File: BP019349.D  
 Acq: 13 Jan 2024 02:03

Instrument :

BNA\_P

Client SampleId :

SLCS382

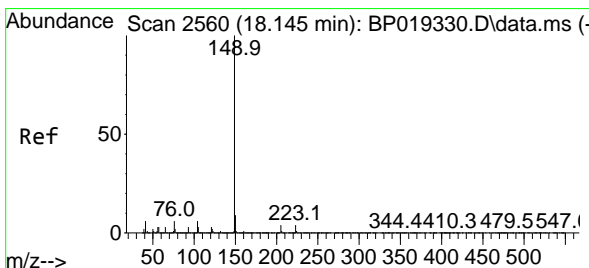
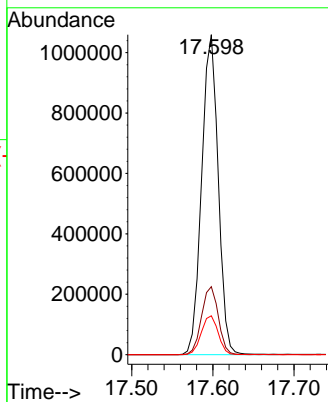
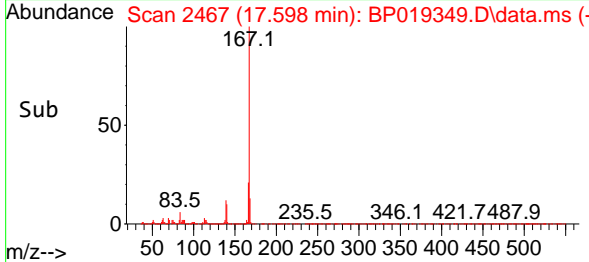


Tgt Ion:167 Resp: 149811  
 Ion Ratio Lower Upper  
 167 100  
 166 21.3 17.3 25.9  
 139 12.2 10.1 15.1

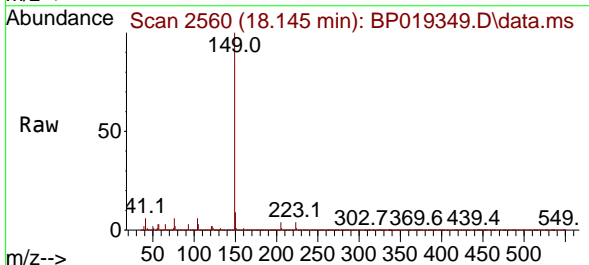
Manual Integrations

APPROVED

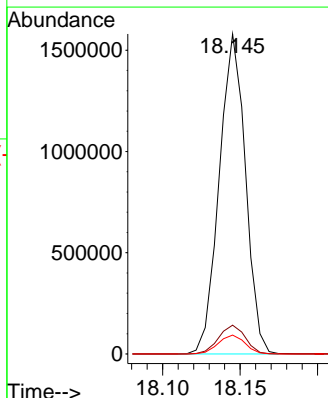
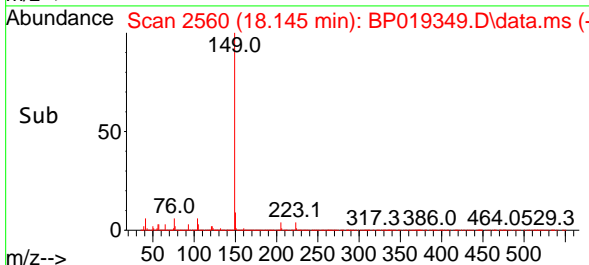
Reviewed By :Jagrut Upadhyay 01/15/2024  
 Supervised By :mohammad ahmed 01/16/2024

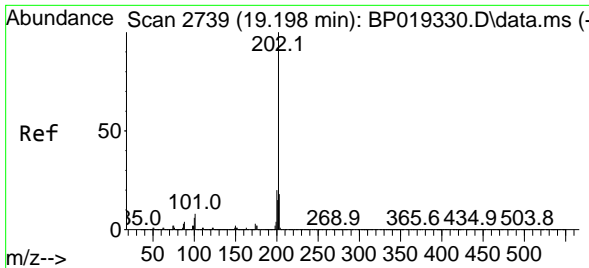


#78  
 Di-n-butylphthalate  
 Concen: 31.101 ng/uI  
 RT: 18.145 min Scan# 2560  
 Delta R.T. -0.006 min  
 Lab File: BP019349.D  
 Acq: 13 Jan 2024 02:03



Tgt Ion:149 Resp: 1856235  
 Ion Ratio Lower Upper  
 149 100  
 150 9.0 7.0 10.6  
 104 5.9 4.6 6.8





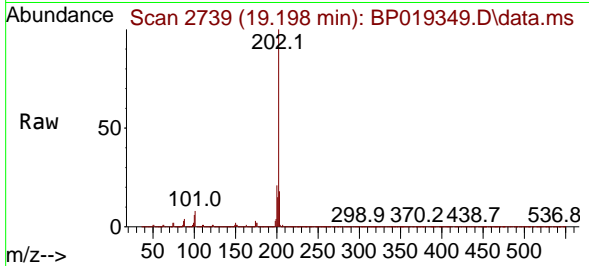
#80  
 Fluoranthene  
 Concen: 27.868 ng/u1  
 RT: 19.198 min Scan# 21  
 Delta R.T. -0.006 min  
 Lab File: BP019349.D  
 Acq: 13 Jan 2024 02:03

Instrument :

BNA\_P

ClientSampleId :

SLCS382

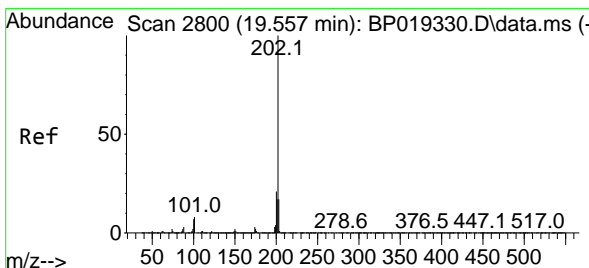
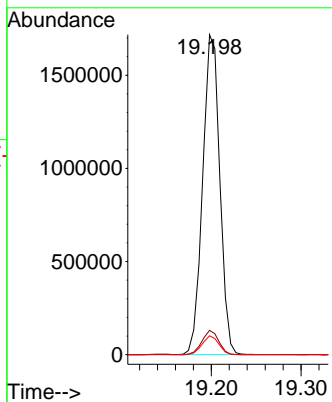
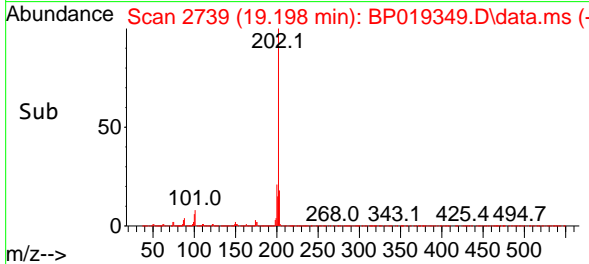


Tgt Ion:202 Resp: 2274328  
 Ion Ratio Lower Upper  
 202 100  
 101 7.6 5.9 8.9  
 100 5.9 4.6 7.0

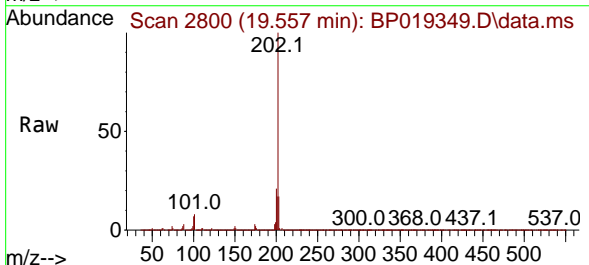
Manual Integrations

APPROVED

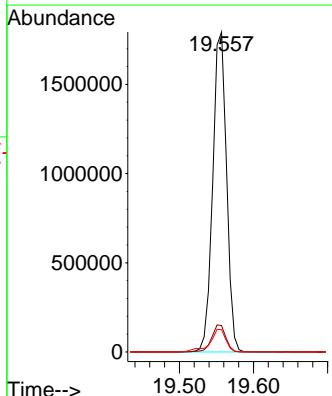
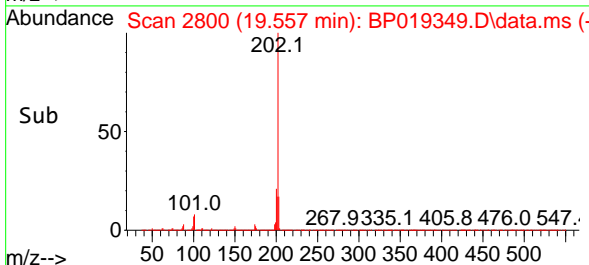
Reviewed By :Jagrut Upadhyay 01/15/2024  
 Supervised By :mohammad ahmed 01/16/2024

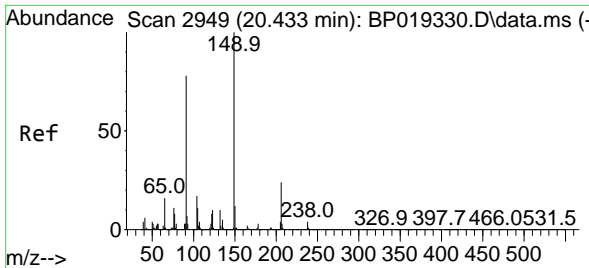


#82  
 Pyrene  
 Concen: 28.016 ng/u1  
 RT: 19.557 min Scan# 2800  
 Delta R.T. -0.000 min  
 Lab File: BP019349.D  
 Acq: 13 Jan 2024 02:03



Tgt Ion:202 Resp: 2320651  
 Ion Ratio Lower Upper  
 202 100  
 101 8.2 7.2 10.8  
 100 7.0 5.8 8.6





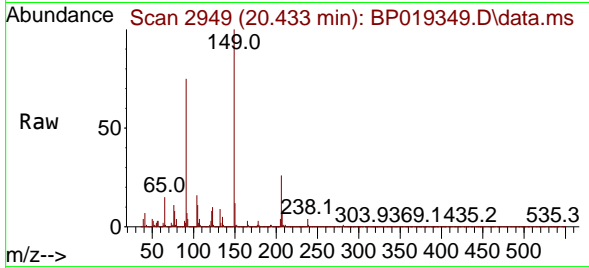
#83  
 Butylbenzylphthalate  
 Concen: 30.308 ng/ul  
 RT: 20.433 min Scan# 2949  
 Delta R.T. -0.000 min  
 Lab File: BP019349.D  
 Acq: 13 Jan 2024 02:03

Instrument :

BNA\_P

ClientSampleId :

SLCS382

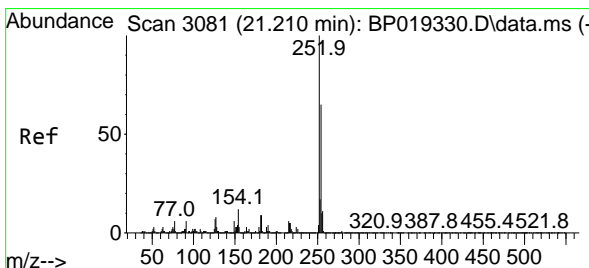
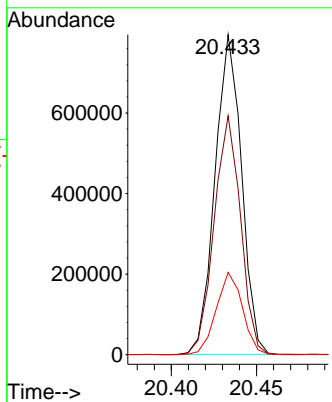
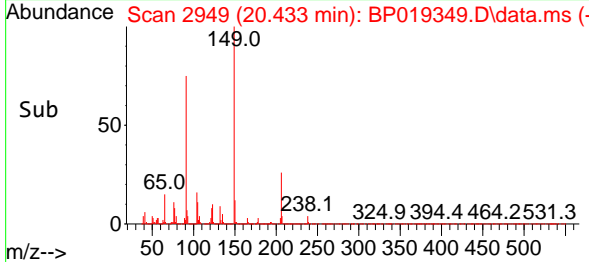


Tgt Ion:149 Resp: 861294  
 Ion Ratio Lower Upper  
 149 100  
 91 74.6 61.7 92.5  
 206 25.7 18.6 27.8

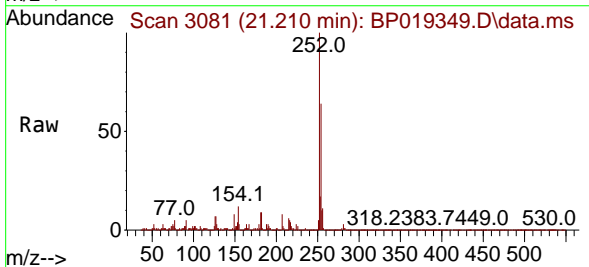
Manual Integrations

APPROVED

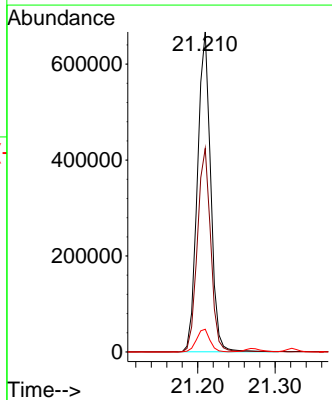
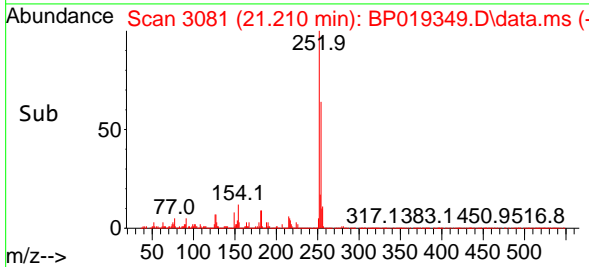
Reviewed By :Jagrut Upadhyay 01/15/2024  
 Supervised By :mohammad ahmed 01/16/2024

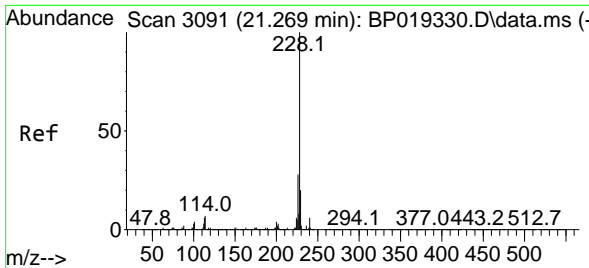


#84  
 3,3'-Dichlorobenzidine  
 Concen: 32.821 ng/ul  
 RT: 21.210 min Scan# 3081  
 Delta R.T. -0.000 min  
 Lab File: BP019349.D  
 Acq: 13 Jan 2024 02:03



Tgt Ion:252 Resp: 789056  
 Ion Ratio Lower Upper  
 252 100  
 254 63.6 50.6 76.0  
 126 7.1 6.0 9.0





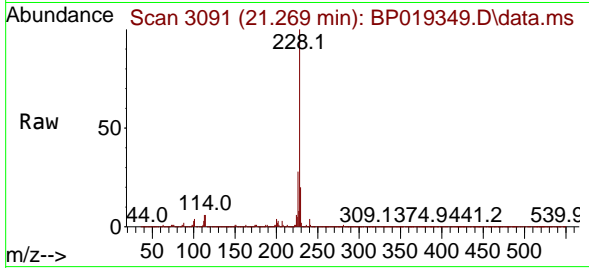
#85  
 Benzo(a)anthracene  
 Concen: 30.331 ng/uI  
 RT: 21.269 min Scan# 3078  
 Delta R.T. -0.000 min  
 Lab File: BP019349.D  
 Acq: 13 Jan 2024 02:03

Instrument :

BNA\_P

ClientSampleId :

SLCS382

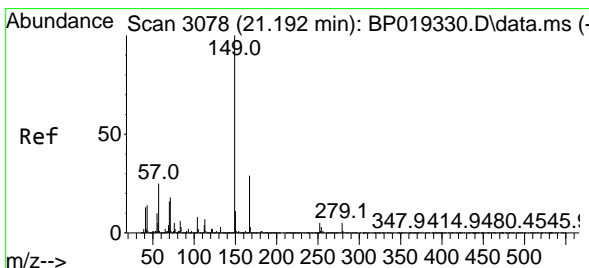
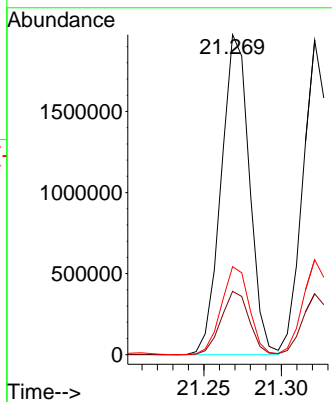
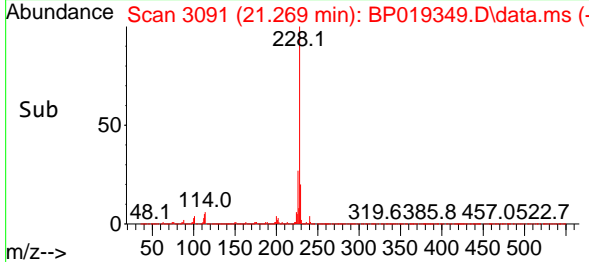


Tgt Ion:228 Resp: 2500010  
 Ion Ratio Lower Upper  
 228 100  
 229 19.8 15.8 23.6  
 226 27.5 21.6 32.4

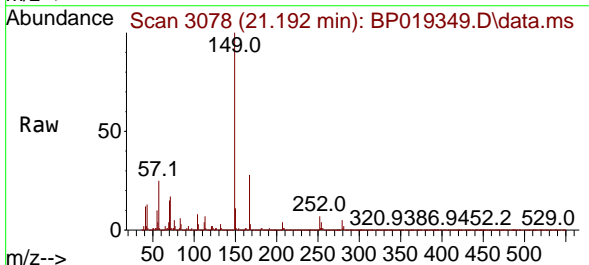
Manual Integrations

APPROVED

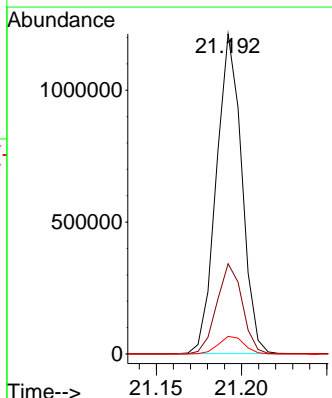
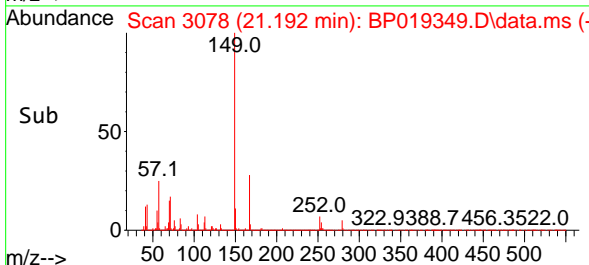
Reviewed By :Jagrut Upadhyay 01/15/2024  
 Supervised By :mohammad ahmed 01/16/2024

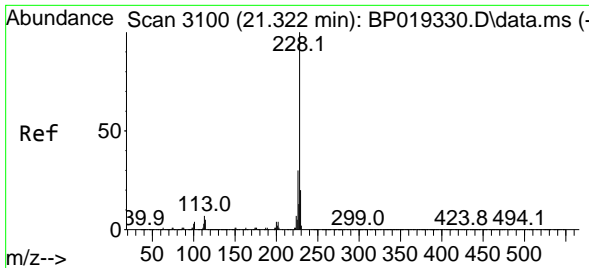


#86  
 Bis(2-ethylhexyl)phthalate  
 Concen: 30.775 ng/uI  
 RT: 21.192 min Scan# 3078  
 Delta R.T. -0.006 min  
 Lab File: BP019349.D  
 Acq: 13 Jan 2024 02:03



Tgt Ion:149 Resp: 1255386  
 Ion Ratio Lower Upper  
 149 100  
 167 28.2 22.9 34.3  
 279 5.5 4.6 7.0





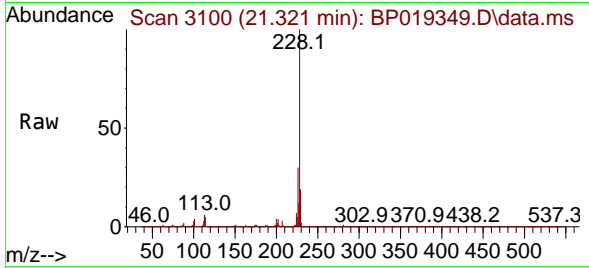
#87  
 Chrysene  
 Concen: 29.867 ng/u1  
 RT: 21.321 min Scan# 3100  
 Delta R.T. -0.000 min  
 Lab File: BP019349.D  
 Acq: 13 Jan 2024 02:03

Instrument :

BNA\_P

ClientSampleId :

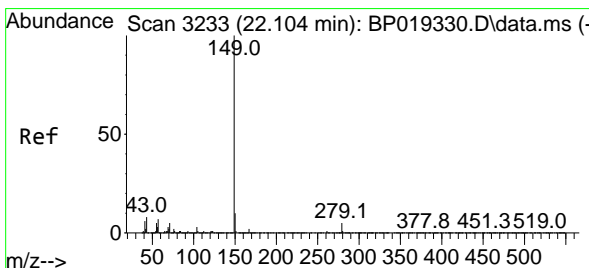
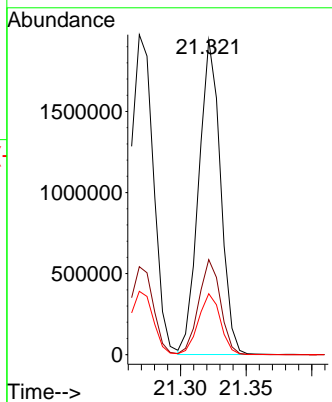
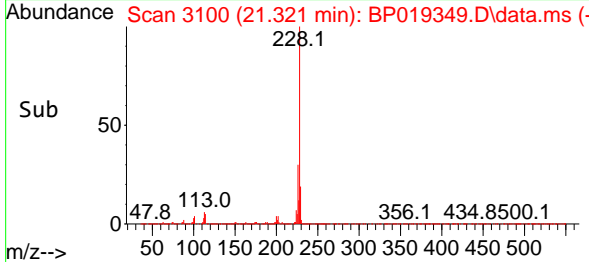
SLCS382



Tgt Ion:228 Resp: 225033  
 Ion Ratio Lower Upper  
 228 100  
 226 30.2 23.9 35.9  
 229 19.4 15.5 23.3

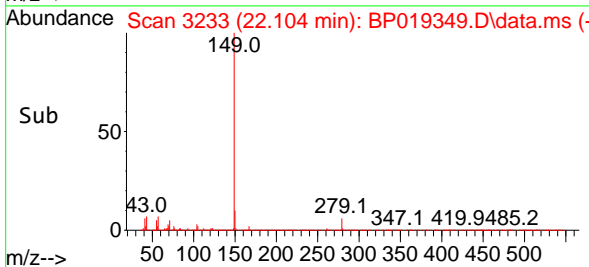
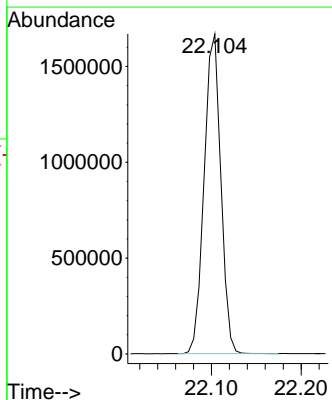
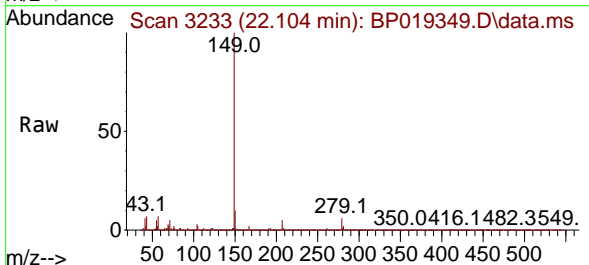
Manual Integrations  
 APPROVED

Reviewed By :Jagrut Upadhyay 01/15/2024  
 Supervised By :mohammad ahmed 01/16/2024

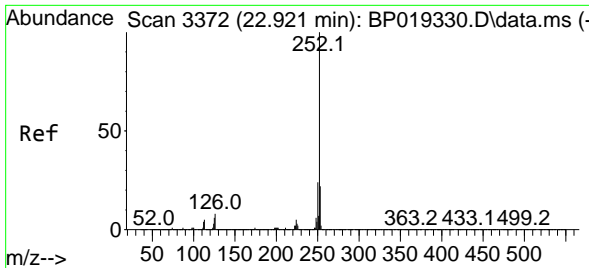


#89  
 Di-n-octyl phthalate  
 Concen: 29.156 ng/u1  
 RT: 22.104 min Scan# 3233  
 Delta R.T. -0.000 min  
 Lab File: BP019349.D  
 Acq: 13 Jan 2024 02:03

Tgt Ion:149 Resp: 2149229







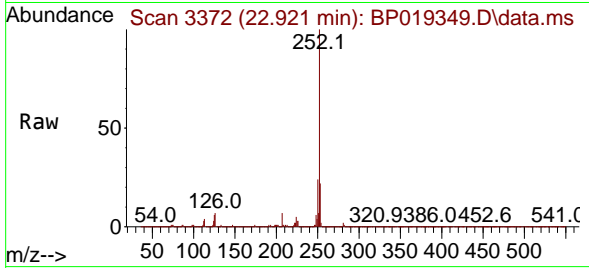
#90  
 Benzo(b)fluoranthene  
 Concen: 30.299 ng/u1  
 RT: 22.921 min Scan# 3372  
 Delta R.T. -0.000 min  
 Lab File: BP019349.D  
 Acq: 13 Jan 2024 02:03

Instrument :

BNA\_P

ClientSampleId :

SLCS382

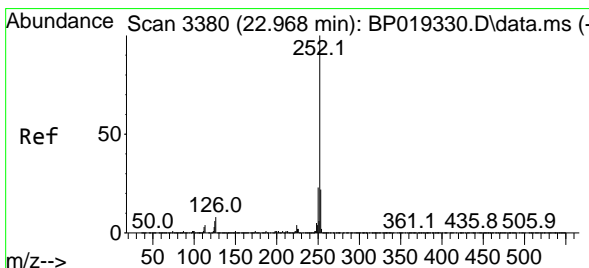
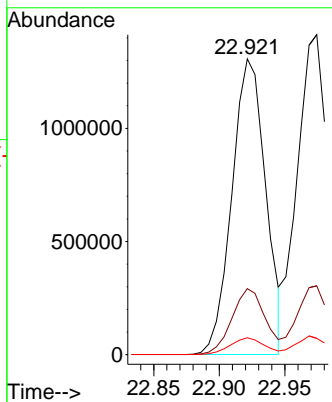
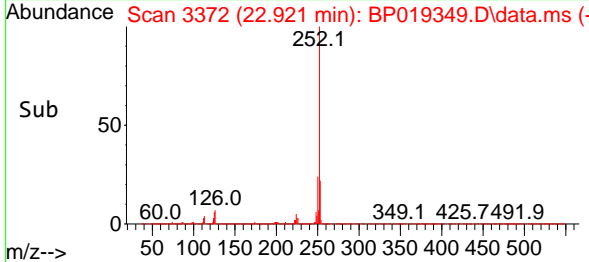


Tgt Ion:252 Resp: 2338440  
 Ion Ratio Lower Upper  
 252 100  
 253 22.3 17.8 26.8  
 125 5.7 4.9 7.3

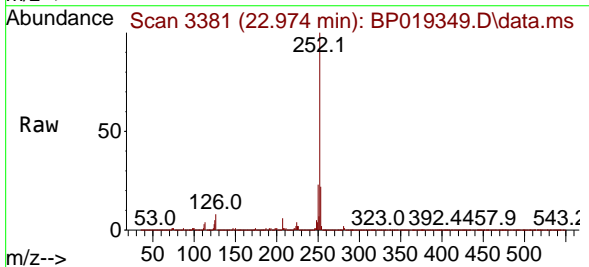
Manual Integrations

APPROVED

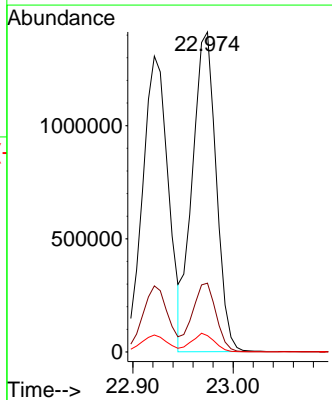
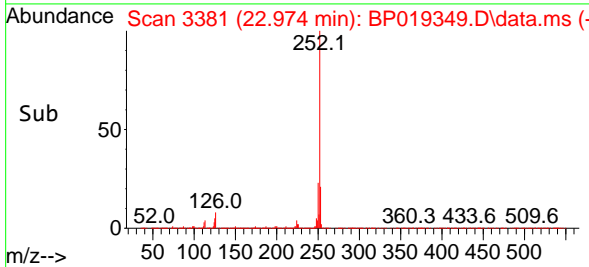
Reviewed By :Jagrut Upadhyay 01/15/2024  
 Supervised By :mohammad ahmed 01/16/2024

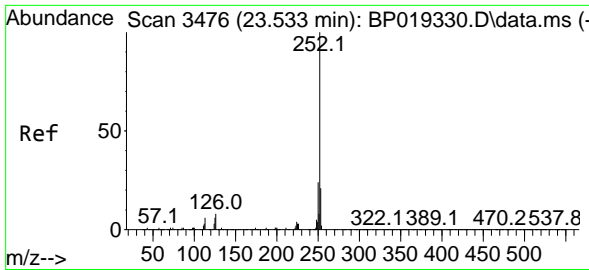


#91  
 Benzo(k)fluoranthene  
 Concen: 31.178 ng/u1  
 RT: 22.974 min Scan# 3381  
 Delta R.T. 0.006 min  
 Lab File: BP019349.D  
 Acq: 13 Jan 2024 02:03



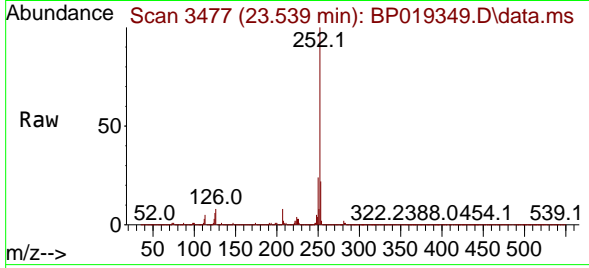
Tgt Ion:252 Resp: 2334414  
 Ion Ratio Lower Upper  
 252 100  
 253 21.5 17.3 25.9  
 125 5.1 4.8 7.2





#93  
 Benzo(a)pyrene  
 Concen: 30.830 ng/u1  
 RT: 23.539 min Scan# 3477  
 Delta R.T. -0.000 min  
 Lab File: BP019349.D  
 Acq: 13 Jan 2024 02:03

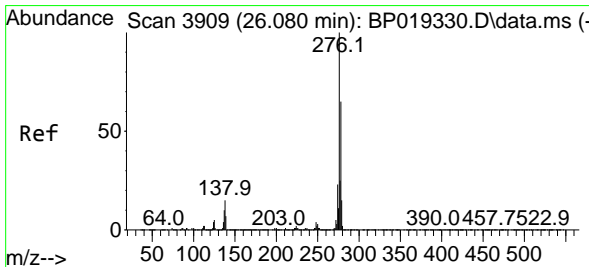
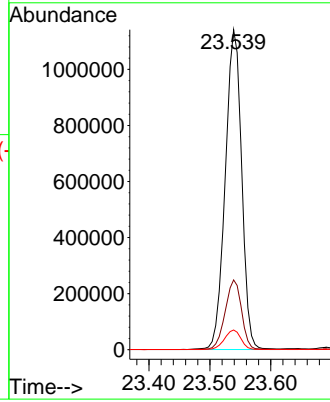
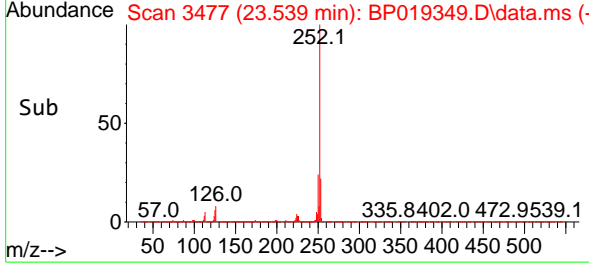
Instrument :  
 BNA\_P  
 ClientSampleId :  
 SLCS382



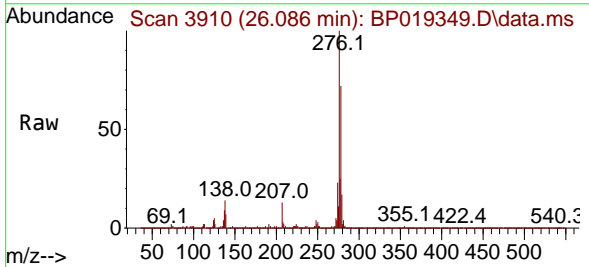
Tgt Ion:252 Resp: 213815  
 Ion Ratio Lower Upper  
 252 100  
 253 21.8 17.3 25.9  
 125 6.2 5.2 7.8

Manual Integrations  
 APPROVED

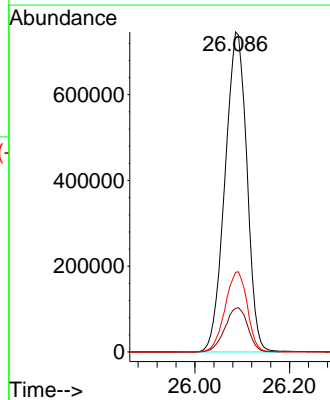
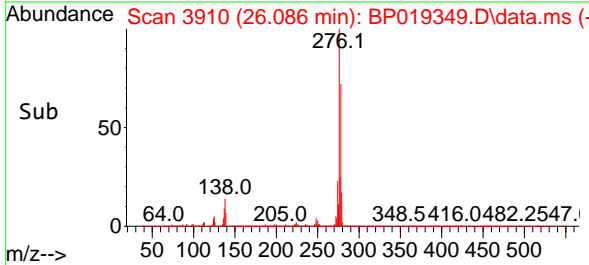
Reviewed By :Jagrut Upadhyay 01/15/2024  
 Supervised By :mohammad ahmed 01/16/2024

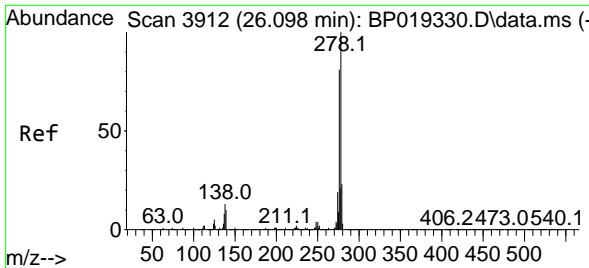


#94  
 Indeno(1,2,3-cd)pyrene  
 Concen: 29.117 ng/u1  
 RT: 26.086 min Scan# 3910  
 Delta R.T. -0.000 min  
 Lab File: BP019349.D  
 Acq: 13 Jan 2024 02:03



Tgt Ion:276 Resp: 2388142  
 Ion Ratio Lower Upper  
 276 100  
 138 13.6 12.2 18.4  
 277 24.9 19.9 29.9





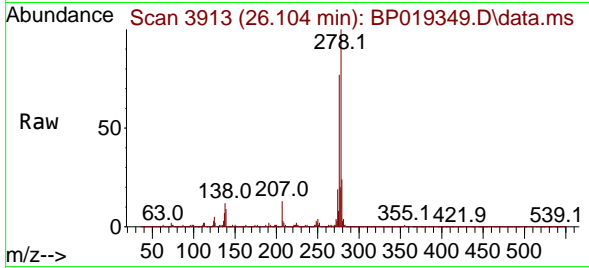
#95  
 Dibenzo(a,h)anthracene  
 Concen: 29.464 ng/ul  
 RT: 26.104 min Scan# 3913  
 Delta R.T. 0.006 min  
 Lab File: BP019349.D  
 Acq: 13 Jan 2024 02:03

Instrument :

BNA\_P

ClientSampleId :

SLCS382

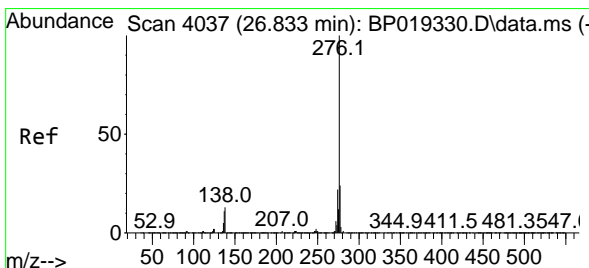
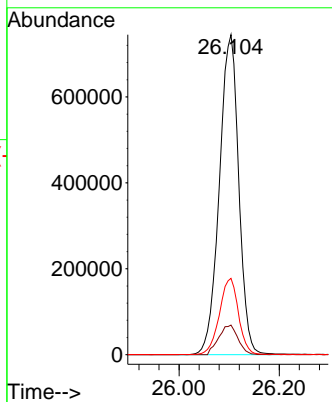
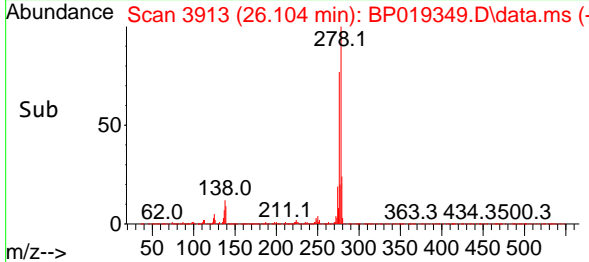


Tgt Ion:278 Resp: 200053  
 Ion Ratio Lower Upper  
 278 100  
 139 9.2 7.4 11.2  
 279 23.8 18.7 28.1

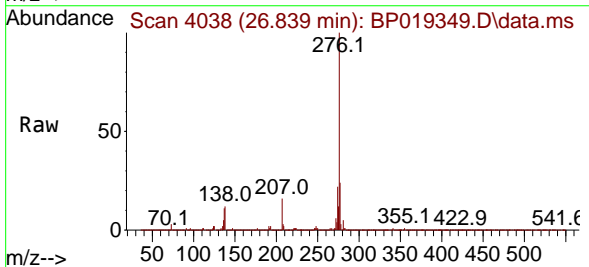
Manual Integrations

APPROVED

Reviewed By :Jagrut Upadhyay 01/15/2024  
 Supervised By :mohammad ahmed 01/16/2024



#96  
 Benzo(g,h,i)perylene  
 Concen: 28.024 ng/ul  
 RT: 26.839 min Scan# 4038  
 Delta R.T. 0.006 min  
 Lab File: BP019349.D  
 Acq: 13 Jan 2024 02:03



Tgt Ion:276 Resp: 1845927  
 Ion Ratio Lower Upper  
 276 100  
 138 12.3 10.7 16.1  
 277 23.6 19.2 28.8

