

Data Path : Z:\svoasrv\HPCHEM1\BNA_P\Data\BP011224\
 Data File : BP019360.D
 Acq On : 13 Jan 2024 08:51
 Operator : MA/JU
 Sample : P1130-03
 Misc :
 ALS Vial : 40 Sample Multiplier: 1

Instrument :
 BNA_P
 ClientSampleId :
 COAY5

Integration Parameters: LSCINT.P

Integrator: RTE
 Smoothing : OFF
 Sampling : 1
 Start Thrs : 0.2
 Stop Thrs : 0

Filtering: 5
 Min Area: 0.1 % of largest Peak
 Max Peaks: 100
 Peak Location: TOP

If leading or trailing edge < 100 prefer < Baseline drop else tangent >
 Peak separation: 5

Method : Z:\svoasrv\HPCHEM1\BNA_P\Methods\SFAM-EPA-BP010824.MA.M
 Title : SVOA CALIBRATION

Signal : TIC: BP019360.D\data.ms

peak #	R.T. min	first scan	max scan	last scan	PK TY	peak height	corr. area	corr. % max.	% of total
1	3.217	18	22	28	rBV	21483	29693	0.50%	0.068%
2	3.640	90	94	104	rBV	155820	250729	4.24%	0.573%
3	3.952	144	147	155	rVB3	6917	11201	0.19%	0.026%
4	6.963	653	659	669	rVB	112111	191411	3.24%	0.437%
5	7.116	678	685	698	rBV	488544	767997	12.98%	1.754%
6	7.311	711	718	730	rBV	455525	721263	12.19%	1.648%
7	7.775	788	797	806	rBV	428895	673249	11.38%	1.538%
8	8.505	913	921	934	rBV	360952	615616	10.41%	1.406%
9	8.940	987	995	1007	rBV	634809	1054361	17.82%	2.408%
10	9.334	1057	1062	1067	rVB8	4478	9382	0.16%	0.021%
11	9.663	1110	1118	1128	rBV	545852	890208	15.05%	2.033%
12	10.204	1203	1210	1226	rBV	731147	1290057	21.81%	2.947%
13	10.569	1262	1272	1283	rBV	600638	982402	16.61%	2.244%
14	10.722	1291	1298	1313	rBV	656251	1162622	19.65%	2.656%
15	12.175	1539	1545	1550	rBV3	11745	20076	0.34%	0.046%
16	13.051	1687	1694	1696	rBV6	3834	6227	0.11%	0.014%
17	13.240	1719	1726	1733	rBV6	3834	7071	0.12%	0.016%
18	13.322	1735	1740	1745	rVV4	10158	15710	0.27%	0.036%
19	13.398	1747	1753	1758	rBV6	4107	8108	0.14%	0.019%
20	13.840	1820	1828	1842	rBV	1767914	2458531	41.56%	5.616%
21	14.116	1867	1875	1886	rBV	1708360	2488756	42.07%	5.685%
22	14.422	1920	1927	1939	rBV	970732	1419106	23.99%	3.242%
23	14.669	1962	1969	1981	rBV2	96707	211589	3.58%	0.483%
24	15.263	2065	2070	2075	rVB8	3697	5957	0.10%	0.014%
25	15.416	2088	2096	2104	rBV	2411442	3436728	58.10%	7.850%
26	15.557	2113	2120	2133	rBV	948246	1354430	22.90%	3.094%
27	15.657	2133	2137	2144	rVB4	11296	21221	0.36%	0.048%
28	16.204	2226	2230	2234	rVB3	9505	14260	0.24%	0.033%
29	16.587	2291	2295	2302	rBV9	7066	14327	0.24%	0.033%
30	16.775	2321	2327	2333	rVB2	32456	50915	0.86%	0.116%
31	16.851	2336	2340	2344	rVB6	6051	9968	0.17%	0.023%
32	17.175	2388	2395	2404	rBV	1321778	1934881	32.71%	4.420%
33	17.281	2406	2413	2423	rVV2	2948824	4303759	72.76%	9.831%
34	17.575	2459	2463	2470	rBV7	8594	15658	0.26%	0.036%
35	17.945	2523	2526	2530	rBV6	8931	14727	0.25%	0.034%
36	18.069	2542	2547	2553	rBV	123007	174357	2.95%	0.398%

Data Path : Z:\svoasrv\HPCHEM1\BNA_P\Data\BP011224\
 Data File : BP019360.D
 Acq On : 13 Jan 2024 08:51
 Operator : MA/JU
 Sample : P1130-03
 Misc :
 ALS Vial : 40 Sample Multiplier: 1

Instrument :
 BNA_P
 ClientSampleId :
 C0AY5

Integration Parameters: LSCINT.P

Integrator: RTE
 Smoothing : OFF Filtering: 5
 Sampling : 1 Min Area: 0.1 % of largest Peak
 Start Thrs: 0.2 Max Peaks: 100
 Stop Thrs : 0 Peak Location: TOP

If leading or trailing edge < 100 prefer < Baseline drop else tangent >
 Peak separation: 5

Method : Z:\svoasrv\HPCHEM1\BNA_P\Methods\SFAM-EPA-BP010824.MA.M
 Title : SVOA CALIBRATION

37	18.481	2613	2617	2622	rBV	127016	153134	2.59%	0.350%
38	19.098	2718	2722	2726	rBV2	48786	61228	1.04%	0.140%
39	19.169	2730	2734	2741	rBV	43709	84371	1.43%	0.193%
40	19.310	2755	2758	2765	rBV3	57112	70688	1.20%	0.161%
41	19.522	2789	2794	2803	rVB	4241194	5644792	95.43%	12.894%
42	20.992	3041	3044	3051	rBV3	93229	132549	2.24%	0.303%
43	21.280	3088	3093	3103	rBV	1828076	2386356	40.34%	5.451%
44	22.498	3296	3300	3305	rVB	220965	301494	5.10%	0.689%
45	23.492	3461	3469	3482	rVB	3100323	5915148	100.00%	13.511%
46	23.639	3487	3494	3505	rVB	1229757	2392800	40.45%	5.466%

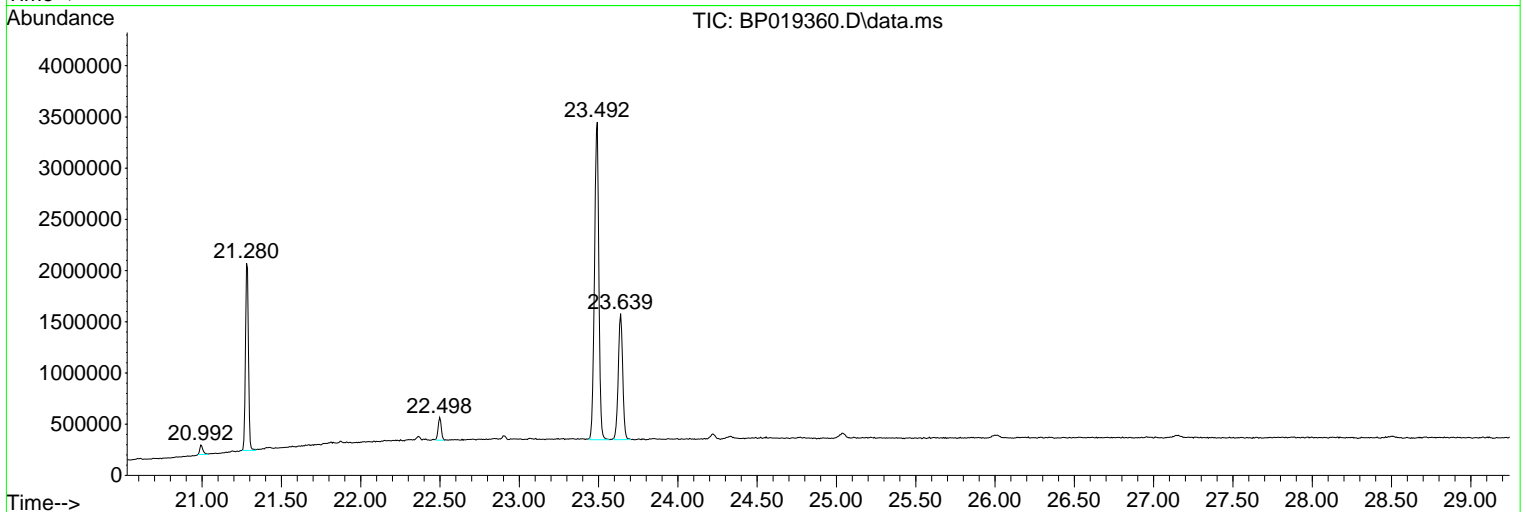
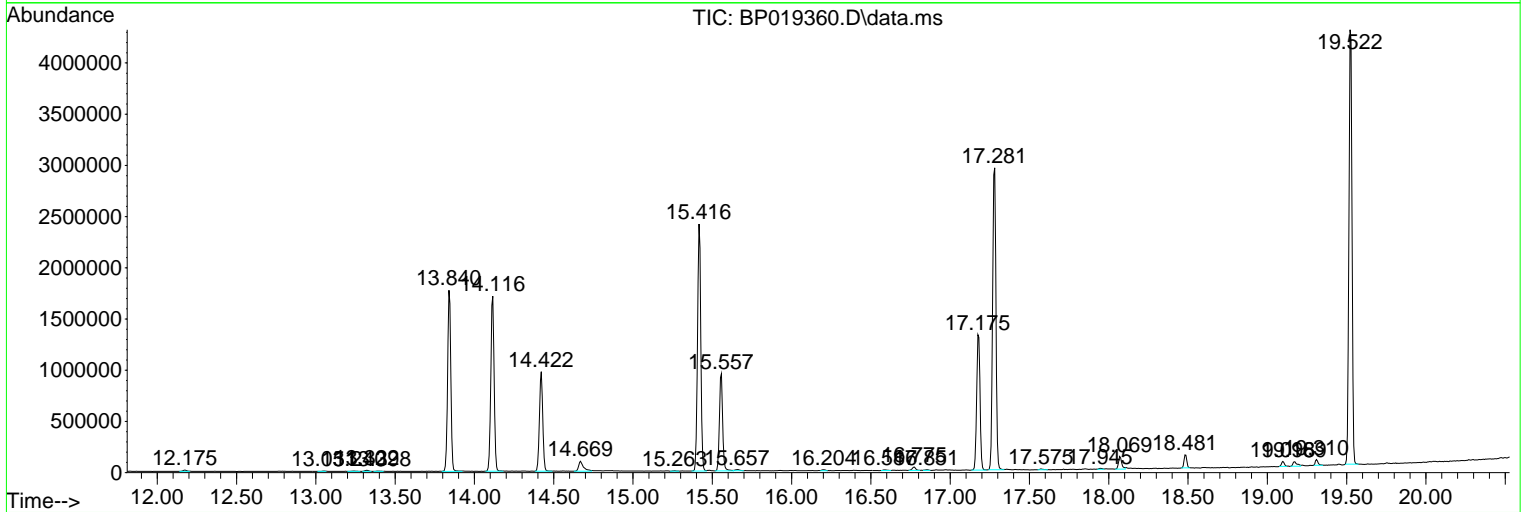
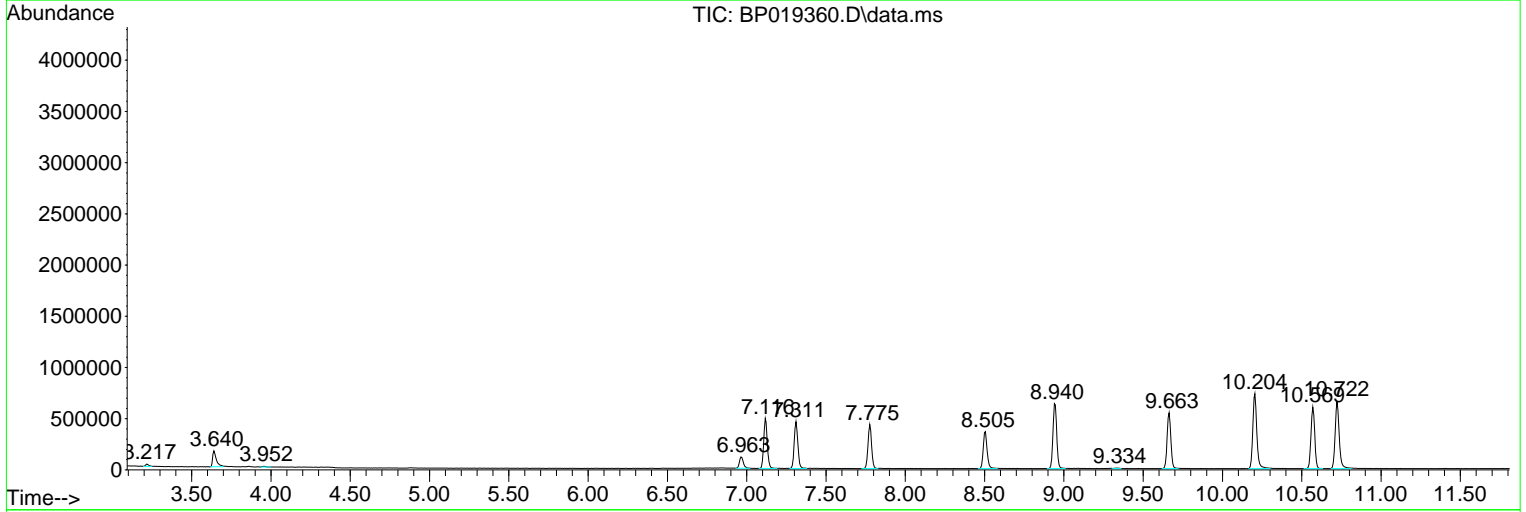
Sum of corrected areas: 43779113

Data Path : Z:\svoasrv\HPCHEM1\BNA_P\Data\BP011224\
 Data File : BP019360.D
 Acq On : 13 Jan 2024 08:51
 Operator : MA/JU
 Sample : P1130-03
 Misc :
 ALS Vial : 40 Sample Multiplier: 1

Instrument :
 BNA_P
 ClientSampleId :
 C0AY5

Quant Method : Z:\svoasrv\HPCHEM1\BNA_P\Methods\SFAM-EPA-BP010824.MA.M
 Quant Title : SVOA CALIBRATION

TIC Library : C:\DATABASE\NIST20.L
 TIC Integration Parameters: LSCINT.P



Data Path : Z:\svoasrv\HPCHEM1\BNA_P\Data\BP011224\
 Data File : BP019360.D
 Acq On : 13 Jan 2024 08:51
 Operator : MA/JU
 Sample : P1130-03
 Misc :
 ALS Vial : 40 Sample Multiplier: 1

Instrument :
 BNA_P
 ClientSampleId :
 C0AY5

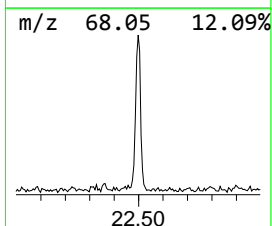
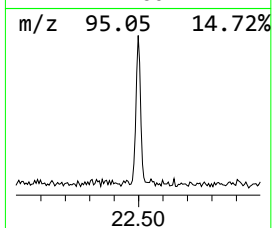
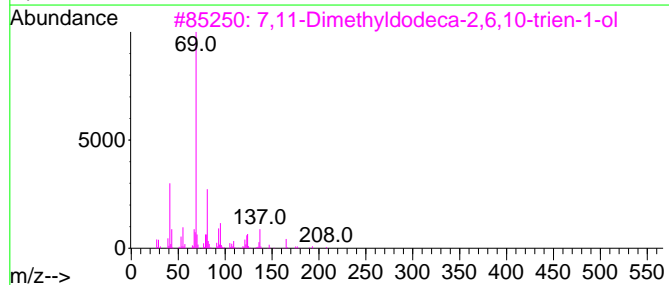
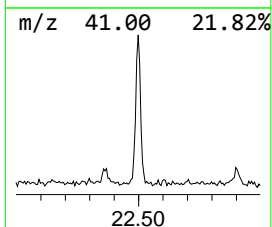
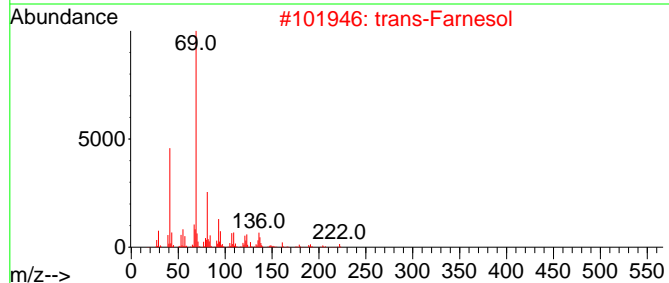
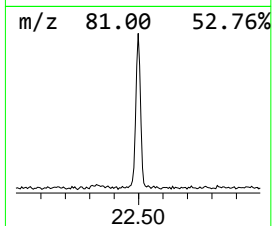
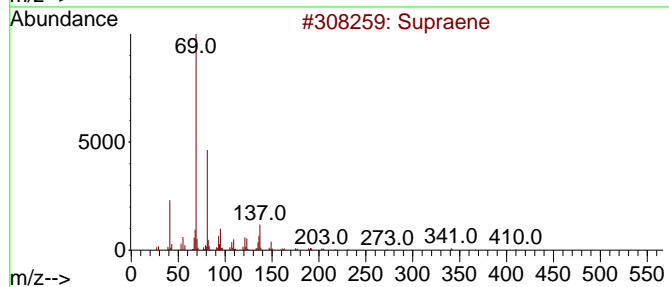
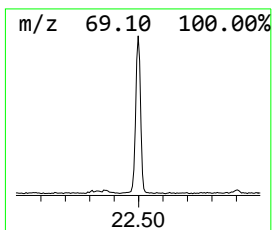
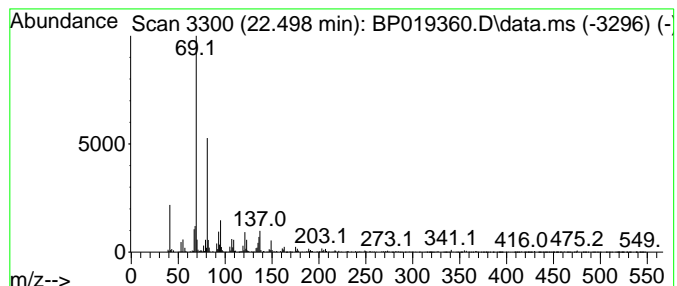
Quant Method : Z:\svoasrv\HPCHEM1\BNA_P\Methods\SFAM-EPA-BP010824.MA.M
 Quant Title : SVOA CALIBRATION

TIC Library : C:\DATABASE\NIST20.L
 TIC Integration Parameters: LSCINT.P

 Peak Number 1 Supraene Concentration Rank 1

R.T.	EstConc	Area	Relative to ISTD	R.T.
22.498	2.52 ng/ul	301494	Perylene-d12	23.639

Hit#	of	5	Tentative ID	MW	MolForm	CAS#	Qual
1			Supraene	410	C30H50	007683-64-9	90
2			trans-Farnesol	222	C15H26O	000106-28-5	72
3			7,11-Dimethyldodeca-2,6,10-trien...	208	C14H24O	125529-10-4	72
4			2,6-Octadiene, 2,6-dimethyl-	138	C10H18	002792-39-4	53
5			2,6-Octadiene, 4-methyl-	124	C9H16	074498-94-5	50



Data Path : Z:\svoasrv\HPCHEM1\BNA_P\Data\BP011224\
Data File : BP019360.D
Acq On : 13 Jan 2024 08:51
Operator : MA/JU
Sample : P1130-03
Misc :
ALS Vial : 40 Sample Multiplier: 1

Instrument :
BNA_P
ClientSampleId :
C0AY5

Quant Method : Z:\svoasrv\HPCHEM1\BNA_P\Methods\SFAM-EPA-BP010824.MA.M
Quant Title : SVOA CALIBRATION

TIC Library : C:\DATABASE\NIST20.L
TIC Integration Parameters: LSCINT.P

TIC Top Hit name	RT	EstConc	Units	Response	--Internal Standard--			
					#	RT	Resp	Conc
Supraene	22.498	2.5	ng/u1	301494	6	23.639	2392800	20.0