

Data Path : Z:\svoasrv\HPCHEM1\BNA_P\Data\BP011321\
 Data File : BP004541.D
 Acq On : 13 Jan 2021 17:13
 Operator : CG/JU
 Sample : M1068-03
 Misc :
 ALS Vial : 14 Sample Multiplier: 1

Instrument :
 BNA_P
 ClientSampleId :
 FK-GF-02-066-B

Integration Parameters: rteint.p
 Integrator: RTE
 Smoothing : ON
 Sampling : 1
 Start Thrs : 0.2
 Stop Thrs : 0
 Filtering: 5
 Min Area: 3 % of largest Peak
 Max Peaks: 100
 Peak Location: TOP

If leading or trailing edge < 100 prefer < Baseline drop else tangent >
 Peak separation: 5

Method : Z:\SVOASRV\HPCHEM1\BNA_P\METHODS\8270E-BP011221.M
 Title : ASP BNA STANDARDS FOR 5 POINT CALIBRATION

Signal : TIC: BP004541.D\data.ms

peak #	R.T. min	first scan	max scan	last scan	PK TY	peak height	corr. area	corr. % max.	% of total
1	5.405	370	377	397	rBV	2115650	3196805	37.13%	5.267%
2	6.987	636	646	667	rBV	1936211	3242843	37.66%	5.343%
3	7.811	779	786	795	rBV	778838	1228942	14.27%	2.025%
4	8.969	976	983	1000	rVB	1211781	2040981	23.70%	3.363%
5	10.605	1250	1261	1269	rBV	942910	1640228	19.05%	2.702%
6	13.075	1674	1681	1694	rBV	3343802	5112348	59.37%	8.423%
7	13.351	1723	1728	1738	rBV	57037	89436	1.04%	0.147%
8	13.910	1815	1823	1833	rBV	135202	215817	2.51%	0.356%
9	14.181	1864	1869	1876	rBV	74834	125550	1.46%	0.207%
10	14.463	1908	1917	1924	rBV	1493329	2263892	26.29%	3.730%
11	15.957	2165	2171	2192	rBV	3051294	4732180	54.96%	7.797%
12	17.222	2380	2386	2390	rBV	2012609	2885127	33.51%	4.754%
13	17.263	2390	2393	2401	rVV	617917	884891	10.28%	1.458%
14	17.357	2404	2409	2414	rVB	182051	276949	3.22%	0.456%
15	18.110	2530	2537	2539	rBV2	110726	236764	2.75%	0.390%
16	18.139	2539	2542	2547	rVB	126677	179966	2.09%	0.297%
17	18.281	2561	2566	2570	rBV2	163555	282807	3.28%	0.466%
18	18.581	2613	2617	2621	rBV2	70841	131400	1.53%	0.216%
19	18.851	2659	2663	2669	rVB	304812	379879	4.41%	0.626%
20	18.934	2674	2677	2681	rBV	77993	97894	1.14%	0.161%
21	18.981	2682	2685	2692	rBV2	56299	123184	1.43%	0.203%
22	19.122	2705	2709	2715	rBV4	63334	103921	1.21%	0.171%
23	19.239	2724	2729	2736	rBV	1820434	2299170	26.70%	3.788%
24	19.386	2750	2754	2757	rVB2	69098	93386	1.08%	0.154%
25	19.469	2764	2768	2772	rBV3	96402	145345	1.69%	0.239%
26	19.563	2780	2784	2785	rBV	279416	326730	3.79%	0.538%
27	19.592	2785	2789	2797	rVB	1495865	2081027	24.17%	3.429%
28	19.663	2798	2801	2808	rVB2	67892	96663	1.12%	0.159%
29	19.786	2816	2822	2827	rBV	6929379	8610916	100.00%	14.187%
30	19.922	2838	2845	2849	rBV3	102440	259822	3.02%	0.428%
31	20.075	2868	2871	2876	rVB	263139	362478	4.21%	0.597%
32	20.175	2884	2888	2891	rBV2	171843	223529	2.60%	0.368%
33	20.369	2918	2921	2924	rBV	95113	119871	1.39%	0.197%
34	20.657	2967	2970	2973	rBV	275159	318168	3.69%	0.524%
35	20.810	2993	2996	3002	rVB	132766	175280	2.04%	0.289%
36	21.028	3030	3033	3041	rVB4	359606	694458	8.06%	1.144%

Data Path : Z:\svoasrv\HPCHEM1\BNA_P\Data\BP011321\
Data File : BP004541.D
Acq On : 13 Jan 2021 17:13
Operator : CG/JU
Sample : M1068-03
Misc :
ALS Vial : 14 Sample Multiplier: 1

Instrument :
BNA_P
ClientSampleId :
FK-GF-02-066-B

Integration Parameters: rteint.p
Integrator: RTE
Smoothing : ON Filtering: 5
Sampling : 1 Min Area: 3 % of largest Peak
Start Thrs: 0.2 Max Peaks: 100
Stop Thrs : 0 Peak Location: TOP

If leading or trailing edge < 100 prefer < Baseline drop else tangent >
Peak separation: 5

Method : Z:\SVOASRV\HPCHEM1\BNA_P\METHODS\8270E-BP011221.M
Title : ASP BNA STANDARDS FOR 5 POINT CALIBRATION

37	21.092	3041	3044	3050	rVB2	348624	474017	5.50%	0.781%
38	21.316	3075	3082	3086	rBV2	3481814	5592539	64.95%	9.214%
39	21.351	3086	3088	3098	rVB	934934	1180994	13.72%	1.946%
40	22.963	3357	3362	3367	rBV	793390	1702452	19.77%	2.805%
41	23.469	3444	3448	3457	rVB	527008	975428	11.33%	1.607%
42	23.569	3460	3465	3472	rVB	865358	1645629	19.11%	2.711%
43	23.674	3476	3483	3489	rBV2	1890634	3844656	44.65%	6.334%

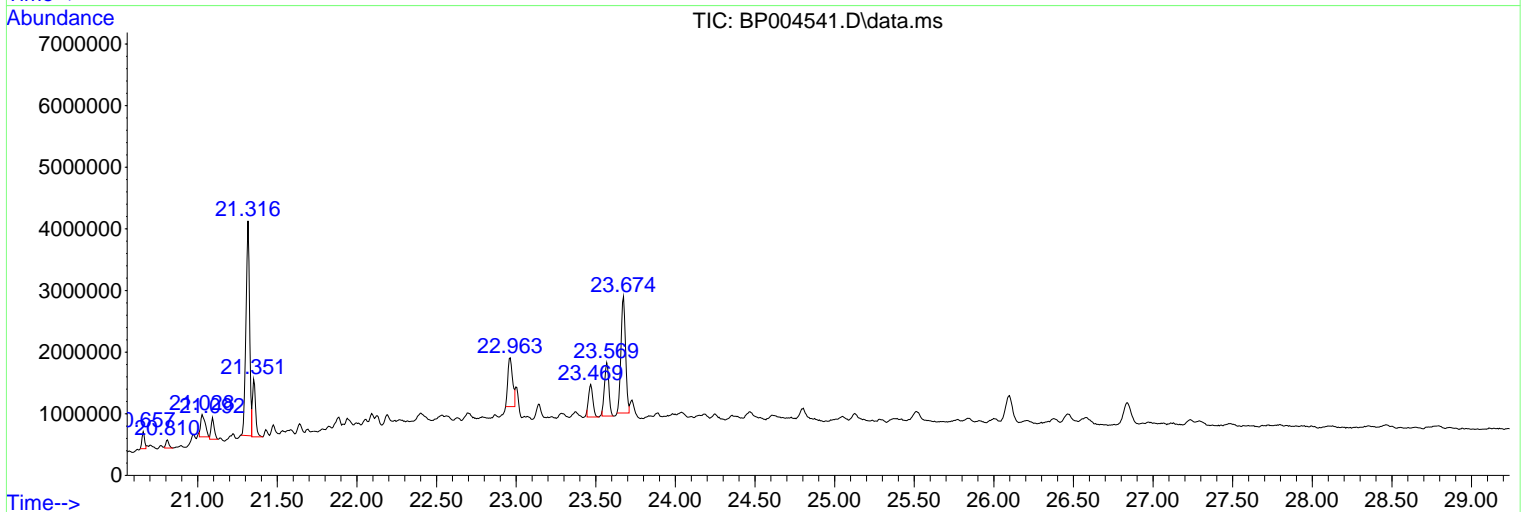
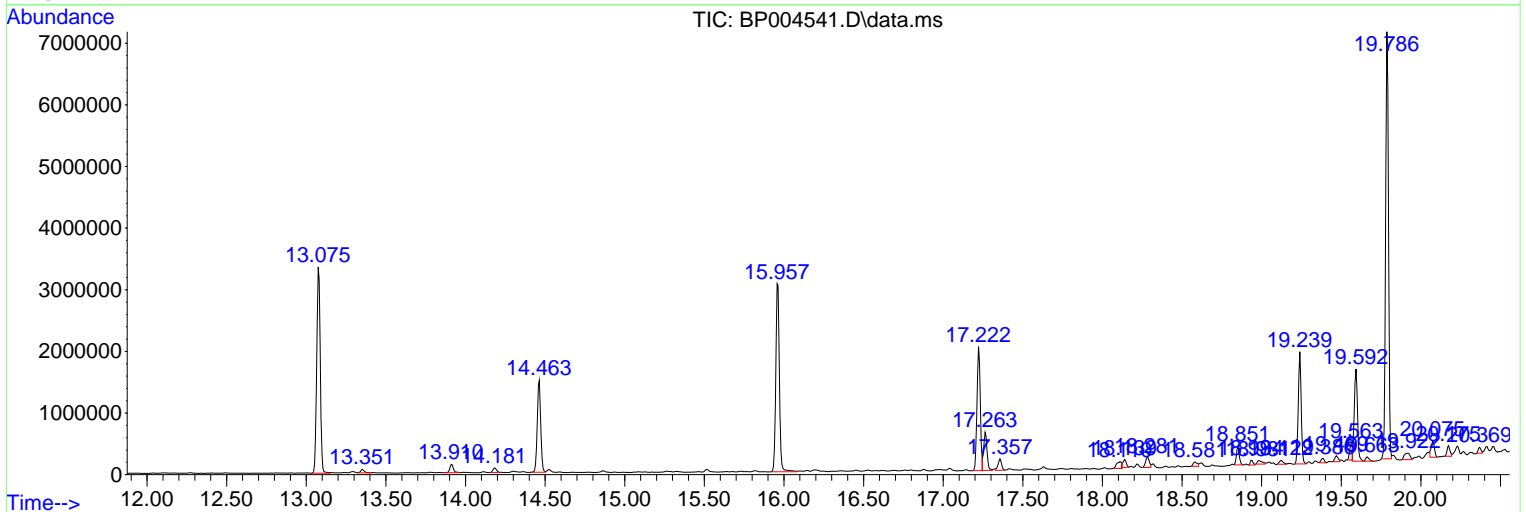
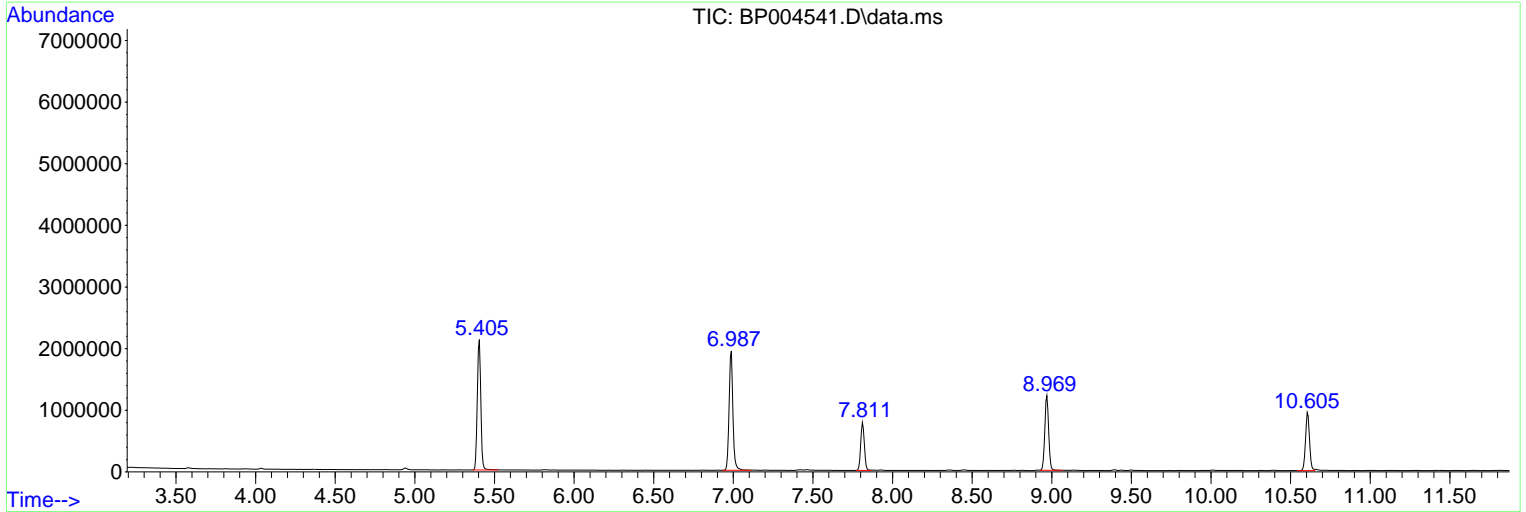
Sum of corrected areas: 60694362

Data Path : Z:\svoasrv\HPCHEM1\BNA_P\Data\BP011321\
 Data File : BP004541.D
 Acq On : 13 Jan 2021 17:13
 Operator : CG/JU
 Sample : M1068-03
 Misc :
 ALS Vial : 14 Sample Multiplier: 1

Instrument :
 BNA_P
 ClientSampleId :
 FK-GF-02-066-B

Quant Method : Z:\SVOASRV\HPCHEM1\BNA_P\METHODS\8270E-BP011221.M
 Quant Title : ASP BNA STANDARDS FOR 5 POINT CALIBRATION

TIC Library : C:\DATABASE\NIST11.L
 TIC Integration Parameters: LSCINT.P



Data Path : Z:\svoasrv\HPCHEM1\BNA_P\Data\BP011321\
 Data File : BP004541.D
 Acq On : 13 Jan 2021 17:13
 Operator : CG/JU
 Sample : M1068-03
 Misc :
 ALS Vial : 14 Sample Multiplier: 1

Instrument :
 BNA_P
 ClientSampleId :
 FK-GF-02-066-B

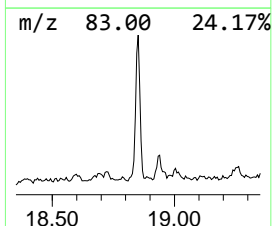
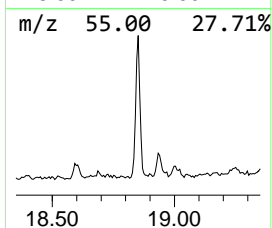
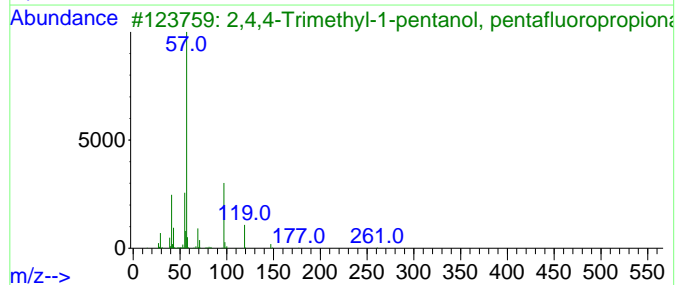
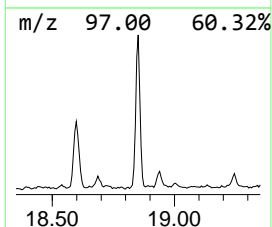
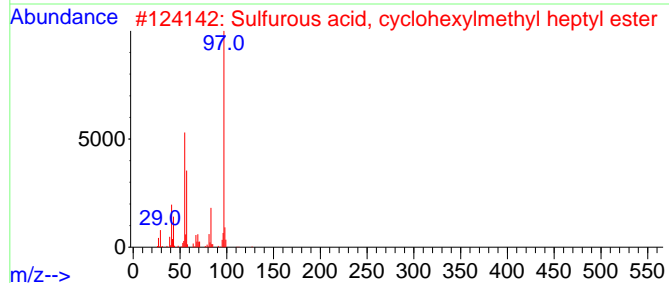
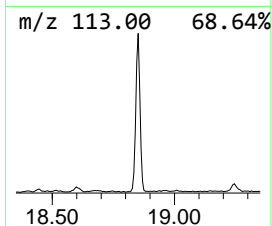
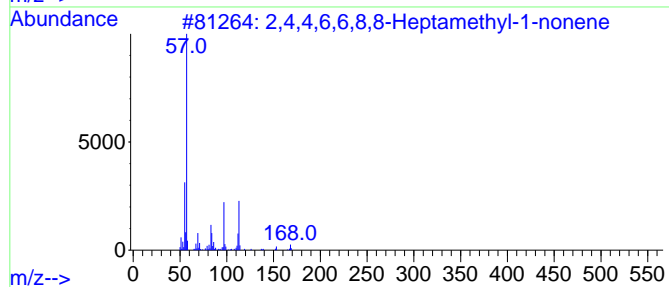
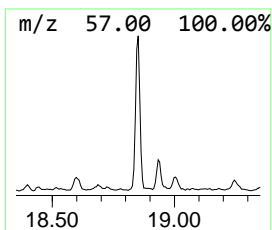
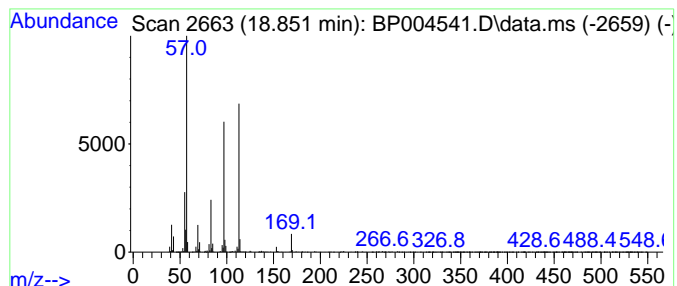
Quant Method : Z:\SVOASRV\HPCHEM1\BNA_P\METHODS\8270E-BP011221.M
 Quant Title : ASP BNA STANDARDS FOR 5 POINT CALIBRATION

TIC Library : C:\DATABASE\NIST11.L
 TIC Integration Parameters: LSCINT.P

 Peak Number 1 unknown18.85 Concentration Rank 2

R.T.	EstConc	Area	Relative to ISTD	R.T.
18.851	2.63 ng	379879	Phenanthrene-d10	17.222

Hit#	of 5	Tentative ID	MW	MolForm	CAS#	Qual
1		2,4,4,6,6,8,8-Heptamethyl-1-nonene	224	C16H32	015796-04-0	38
2		Sulfurous acid, cyclohexylmethyl...	276	C14H28O3S	1000309-21-7	38
3		2,4,4-Trimethyl-1-pentanol, pent...	276	C11H17F5O2	1000365-51-0	32
4		5-Nonanone, 2,2,8,8-tetramethyl-	198	C13H26O	005709-95-5	32
5		Cyclohexane, 1-ethyl-2-methyl-	126	C9H18	003728-54-9	27



Data Path : Z:\svoasrv\HPCHEM1\BNA_P\Data\BP011321\
 Data File : BP004541.D
 Acq On : 13 Jan 2021 17:13
 Operator : CG/JU
 Sample : M1068-03
 Misc :
 ALS Vial : 14 Sample Multiplier: 1

Instrument :
 BNA_P
 ClientSampleID :
 FK-GF-02-066-B

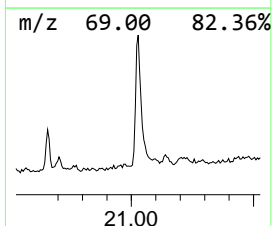
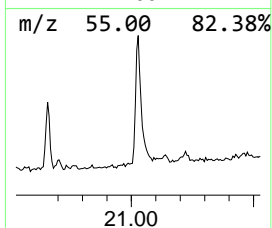
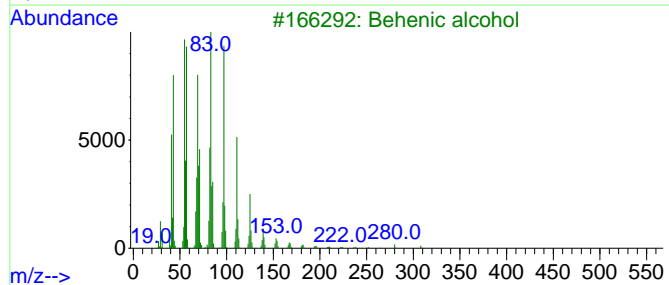
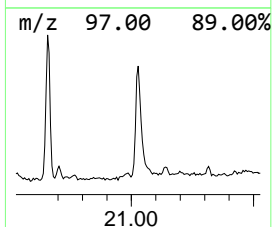
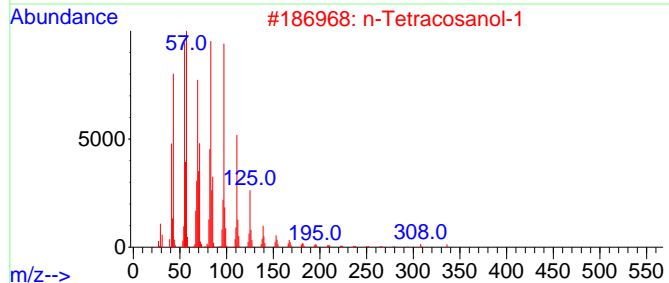
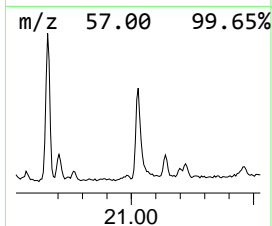
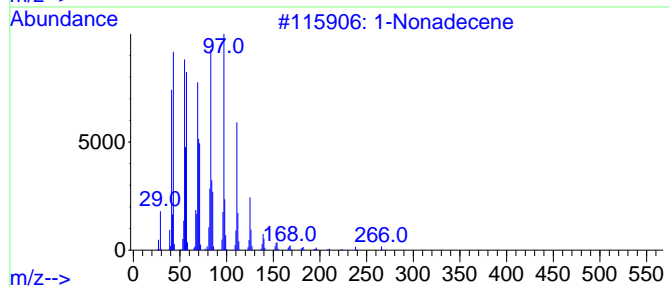
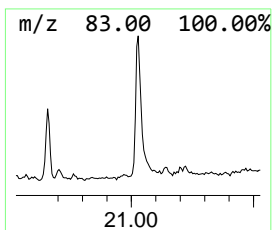
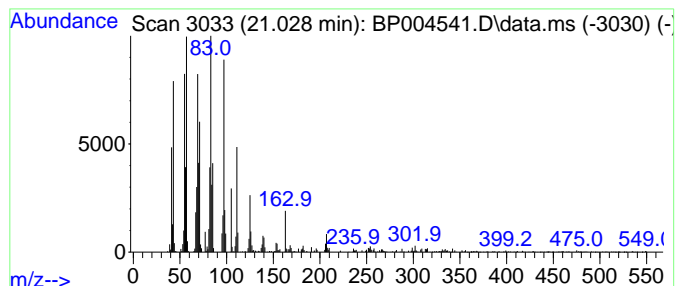
Quant Method : Z:\SVOASRV\HPCHEM1\BNA_P\METHODS\8270E-BP011221.M
 Quant Title : ASP BNA STANDARDS FOR 5 POINT CALIBRATION

TIC Library : C:\DATABASE\NIST11.L
 TIC Integration Parameters: LSCINT.P

 Peak Number 2 1-Nonadecene Concentration Rank 3

R.T.	EstConc	Area	Relative to ISTD	R.T.
21.028	2.48 ng	694458	Chrysene-d12	21.316

Hit#	of 5	Tentative ID	MW	MolForm	CAS#	Qual
1		1-Nonadecene	266	C19H38	018435-45-5	94
2		n-Tetracosanol-1	354	C24H50O	000506-51-4	93
3		Behenic alcohol	326	C22H46O	000661-19-8	93
4		Heptafluorobutyric acid, pentade...	424	C19H31F7O2	959261-23-5	93
5		Heptadecyl heptafluorobutyrate	452	C21H35F7O2	959085-66-6	91



Data Path : Z:\svoasrv\HPCHEM1\BNA_P\Data\BP011321\
 Data File : BP004541.D
 Acq On : 13 Jan 2021 17:13
 Operator : CG/JU
 Sample : M1068-03
 Misc :
 ALS Vial : 14 Sample Multiplier: 1

Instrument :
 BNA_P
 ClientSampleId :
 FK-GF-02-066-B

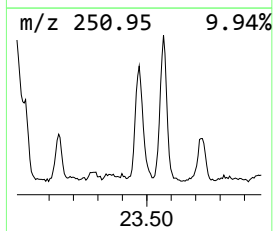
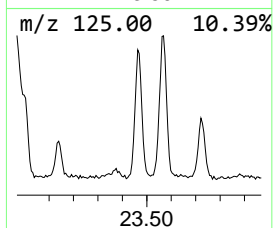
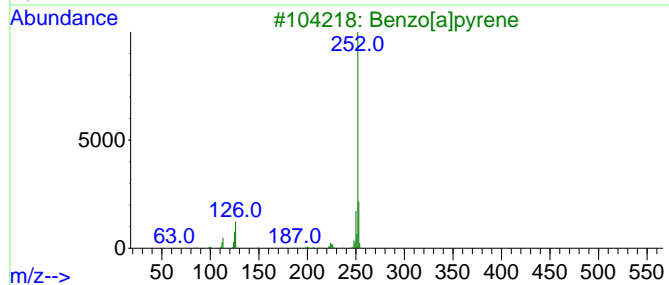
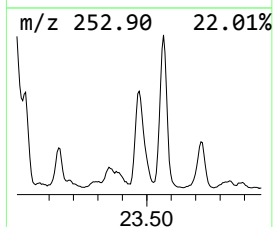
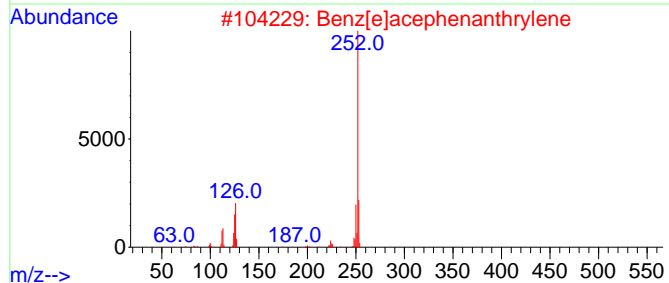
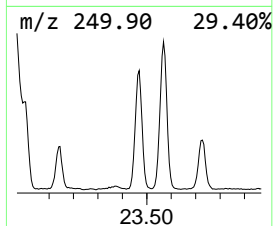
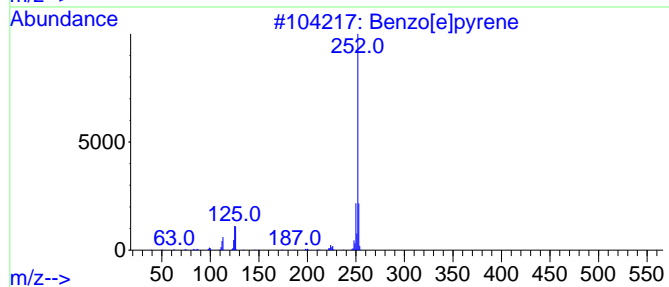
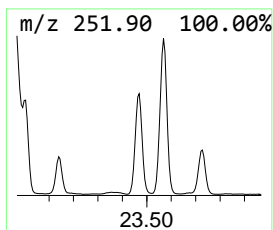
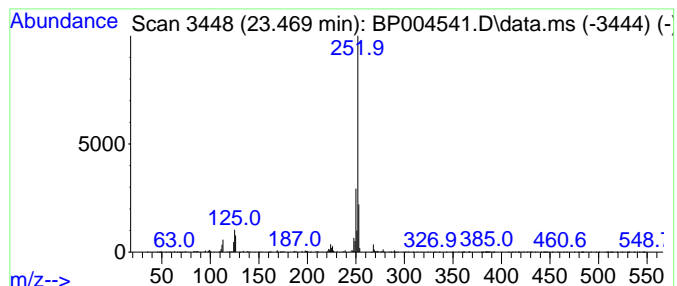
Quant Method : Z:\SVOASRV\HPCHEM1\BNA_P\METHODS\8270E-BP011221.M
 Quant Title : ASP BNA STANDARDS FOR 5 POINT CALIBRATION

TIC Library : C:\DATABASE\NIST11.L
 TIC Integration Parameters: LSCINT.P

 Peak Number 3 Benzo[e]pyrene Concentration Rank 1

R.T.	EstConc	Area	Relative to ISTD	R.T.
23.469	5.07 ng	975428	Perylene-d12	23.674

Hit#	of	Tentative ID	MW	MolForm	CAS#	Qual
1	5	Benzo[e]pyrene	252	C20H12	000192-97-2	97
2		Benz[e]acephenanthrylene	252	C20H12	000205-99-2	93
3		Benzo[a]pyrene	252	C20H12	000050-32-8	93
4		Perylene	252	C20H12	000198-55-0	81
5		Benzo[k]fluoranthene	252	C20H12	000207-08-9	72



Data Path : Z:\svoasrv\HPCHEM1\BNA_P\Data\BP011321\
Data File : BP004541.D
Acq On : 13 Jan 2021 17:13
Operator : CG/JU
Sample : M1068-03
Misc :
ALS Vial : 14 Sample Multiplier: 1

Instrument :
BNA_P
ClientSampleId :
FK-GF-02-066-B

Quant Method : Z:\SVOASRV\HPCHEM1\BNA_P\METHODS\8270E-BP011221.M
Quant Title : ASP BNA STANDARDS FOR 5 POINT CALIBRATION

TIC Library : C:\DATABASE\NIST11.L
TIC Integration Parameters: LSCINT.P

TIC Top Hit name	RT	EstConc	Units	Response	--Internal Standard--			
					#	RT	Resp	Conc
unknown18.85	18.851	2.6	ng	379879	4	17.222	2885130	20.0
1-Nonadecene	21.028	2.5	ng	694458	5	21.316	5592540	20.0
Benzo[e]pyrene	23.469	5.1	ng	975428	6	23.674	3844660	20.0