

Data Path : Z:\svoasrv\HPCHEM1\BNA_P\Data\BP012522\
 Data File : BP008916.D
 Acq On : 25 Jan 2022 19:56
 Operator : CG/JU
 Sample : N1245-07 2X
 Misc :
 ALS Vial : 17 Sample Multiplier: 1

Instrument :
 BNA_P
 ClientSampleId :
 SB-4(0.5-1)

Quant Time: Jan 26 01:59:22 2022
 Quant Method : Z:\svoasrv\HPCHEM1\BNA_P\Methods\8270E-BP011422.M
 Quant Title : ASP BNA STANDARDS FOR 5 POINT CALIBRATION
 QLast Update : Wed Jan 26 01:52:51 2022
 Response via : Initial Calibration

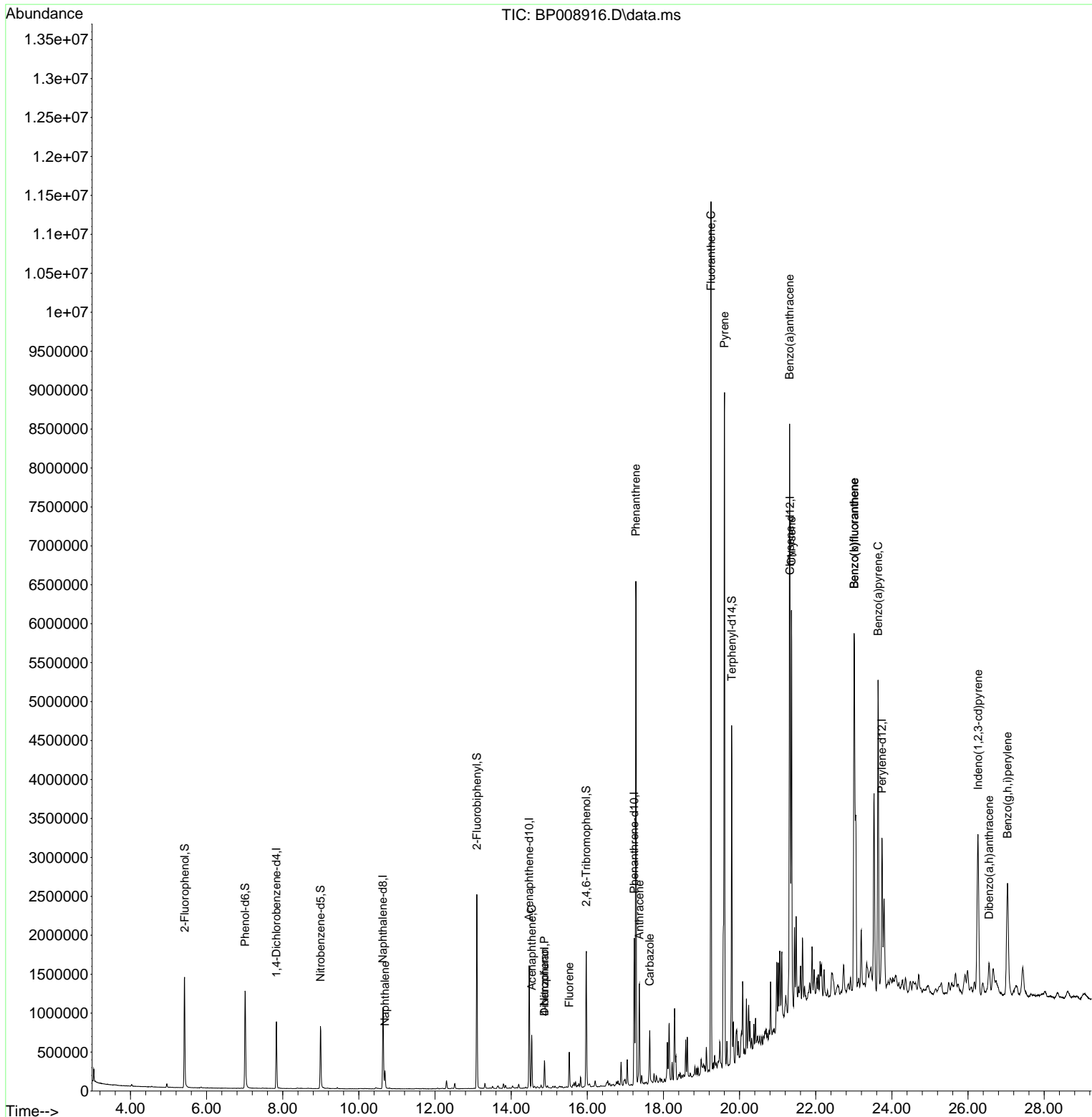
Compound	R.T.	QIon	Response	Conc	Units	Dev(Min)	
Internal Standards							
1) 1,4-Dichlorobenzene-d4	7.834	152	256306	20.000	ng	0.00	
21) Naphthalene-d8	10.634	136	934592	20.000	ng	0.00	
39) Acenaphthene-d10	14.475	164	569183	20.000	ng	0.00	
64) Phenanthrene-d10	17.233	188	1178200	20.000	ng	0.00	
76) Chrysene-d12	21.327	240	1316124	20.000	ng	0.00	
86) Perylene-d12	23.739	264	1419712	20.000	ng	-0.01	
System Monitoring Compounds							
5) 2-Fluorophenol	5.422	112	712184	42.969	ng	0.00	
7) Phenol-d6	7.010	99	850585	42.380	ng	-0.01	
23) Nitrobenzene-d5	8.993	82	525973	31.951	ng	0.00	
42) 2,4,6-Tribromophenol	15.975	330	364630	44.011	ng	0.00	
45) 2-Fluorobiphenyl	13.098	172	1341267	31.076	ng	0.00	
79) Terphenyl-d14	19.792	244	2016016	25.856	ng	-0.01	
Target Compounds							
31) Naphthalene	10.687	128	198600	3.912	ng		99
52) Acenaphthene	14.539	154	252655	7.896	ng		98
55) Dibenzofuran	14.875	168	241216	4.627	ng		98
56) 4-Nitrophenol	14.875	139	83511	13.153	ng	#	17
58) Fluorene	15.528	166	221757	5.385	ng		97
71) Phenanthrene	17.275	178	4165287	62.790	ng		99
72) Anthracene	17.369	178	877611	13.188	ng		99
73) Carbazole	17.639	167	445789	7.791	ng		99
75) Fluoranthene	19.251	202	6699392	90.815	ng		98
78) Pyrene	19.604	202	5576137	60.720	ng		99
81) Benzo(a)anthracene	21.316	228	3589535	40.540	ng		99
83) Chrysene	21.363	228	2798306	32.602	ng		98
87) Indeno(1,2,3-cd)pyrene	26.262	276	2186200	18.688	ng	#	94
88) Benzo(b)fluoranthene	23.010	252	4220891	44.519	ng		99
89) Benzo(k)fluoranthene	23.010	252	4220891	45.991	ng		99
90) Benzo(a)pyrene	23.639	252	3013902	32.933	ng		97
91) Dibenzo(a,h)anthracene	26.556	278	309597	3.112	ng		96
92) Benzo(g,h,i)perylene	27.039	276	2002069	20.613	ng		98

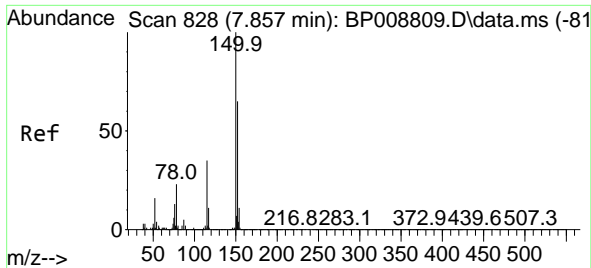
(#) = qualifier out of range (m) = manual integration (+) = signals summed

Data Path : Z:\svoasrv\HPCHEM1\BNA_P\Data\BP012522\
 Data File : BP008916.D
 Acq On : 25 Jan 2022 19:56
 Operator : CG/JU
 Sample : N1245-07 2X
 Misc :
 ALS Vial : 17 Sample Multiplier: 1

Instrument :
 BNA_P
 ClientSampleId :
 SB-4(0.5-1)

Quant Time: Jan 26 01:59:22 2022
 Quant Method : Z:\svoasrv\HPCHEM1\BNA_P\Methods\8270E-BP011422.M
 Quant Title : ASP BNA STANDARDS FOR 5 POINT CALIBRATION
 QLast Update : Wed Jan 26 01:52:51 2022
 Response via : Initial Calibration

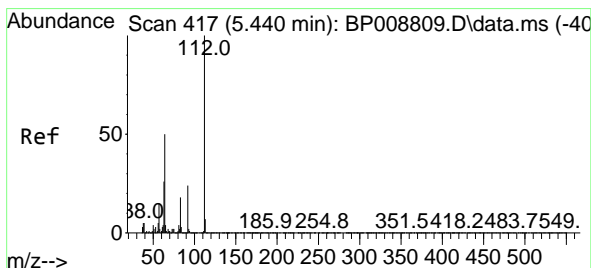
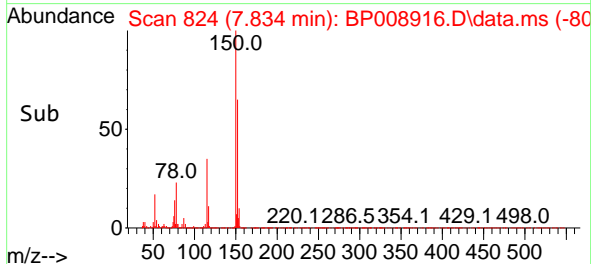
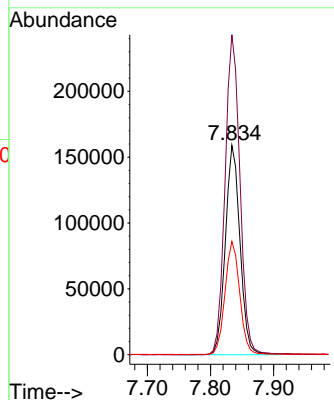
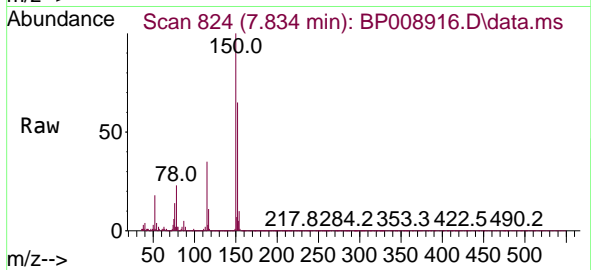




#1
 1,4-Dichlorobenzene-d4
 Concen: 20.000 ng
 RT: 7.834 min Scan# 81
 Delta R.T. -0.006 min
 Lab File: BP008916.D
 Acq: 25 Jan 2022 19:56

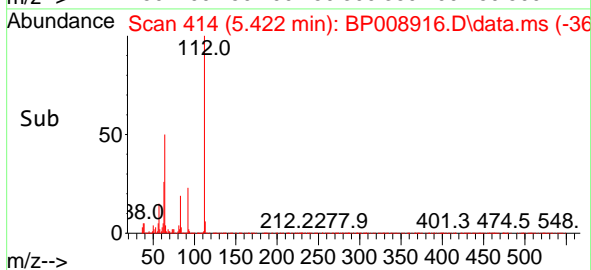
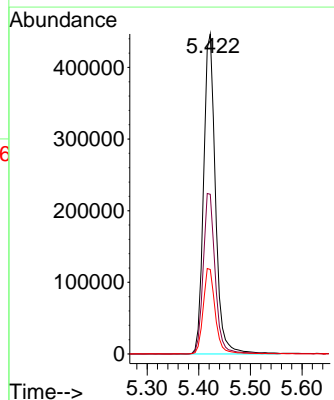
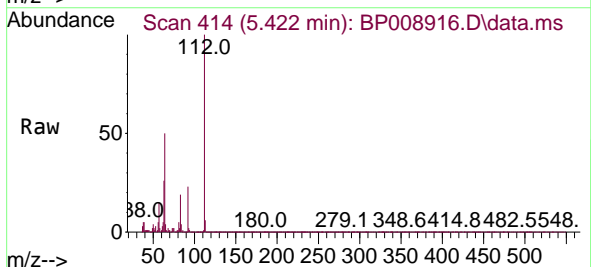
Instrument :
 BNA_P
 ClientSampleId :
 SB-4(0.5-1)

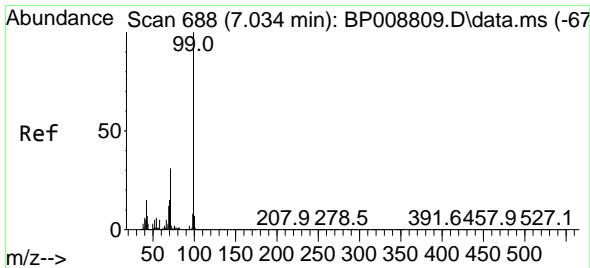
Tgt Ion:152 Resp: 256306
 Ion Ratio Lower Upper
 152 100
 150 152.9 127.0 190.6
 115 54.1 43.7 65.5



#5
 2-Fluorophenol
 Concen: 42.969 ng
 RT: 5.422 min Scan# 414
 Delta R.T. -0.006 min
 Lab File: BP008916.D
 Acq: 25 Jan 2022 19:56

Tgt Ion:112 Resp: 712184
 Ion Ratio Lower Upper
 112 100
 64 49.9 39.7 59.5
 63 26.4 20.0 30.0



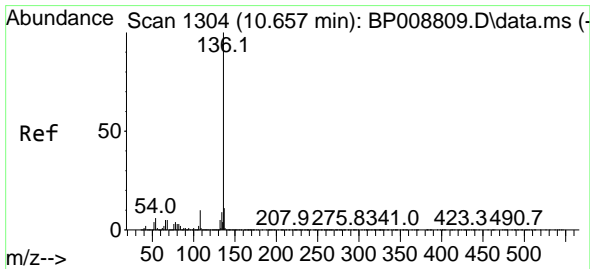
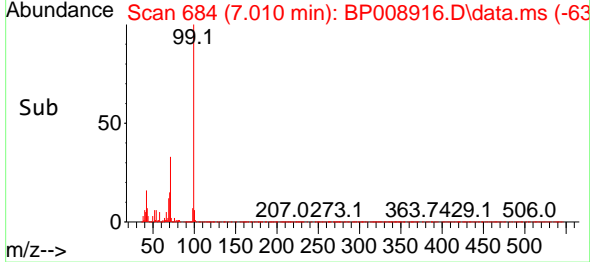
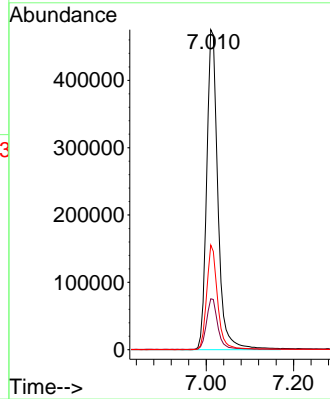
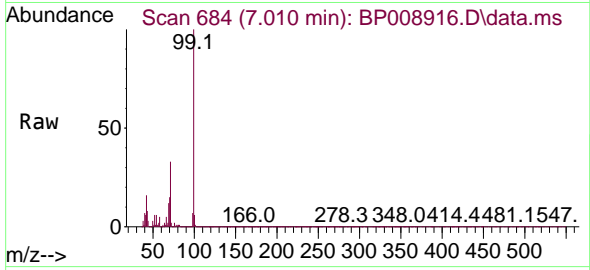


#7
 Phenol-d6
 Concen: 42.380 ng
 RT: 7.010 min Scan# 61
 Delta R.T. -0.012 min
 Lab File: BP008916.D
 Acq: 25 Jan 2022 19:56

Instrument :
 BNA_P
 ClientSampleId :
 SB-4(0.5-1)

Tgt Ion: 99 Resp: 850585

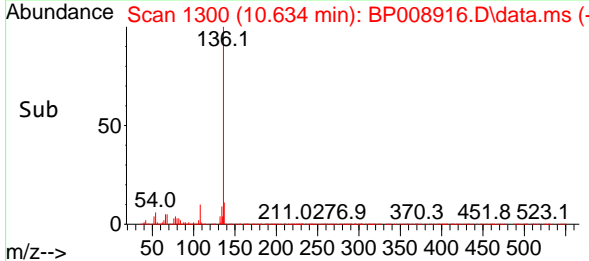
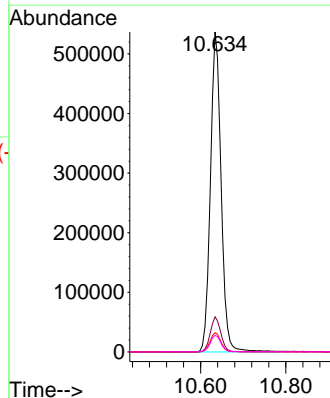
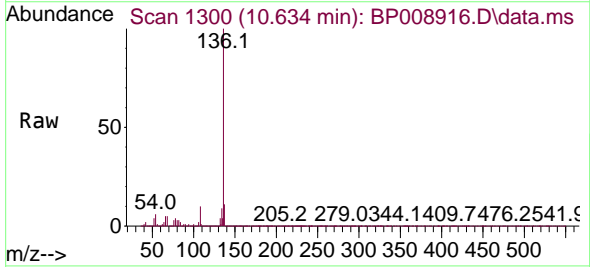
Ion	Ratio	Lower	Upper
99	100		
42	15.9	10.8	16.2
71	32.7	23.8	35.6

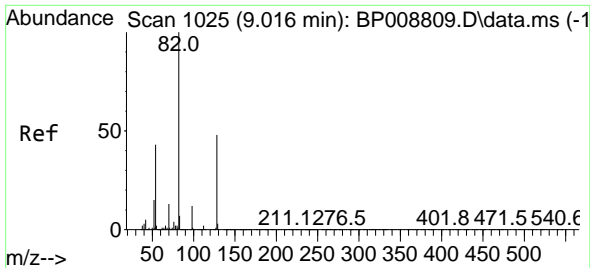


#21
 Naphthalene-d8
 Concen: 20.000 ng
 RT: 10.634 min Scan# 1300
 Delta R.T. -0.006 min
 Lab File: BP008916.D
 Acq: 25 Jan 2022 19:56

Tgt Ion: 136 Resp: 934592

Ion	Ratio	Lower	Upper
136	100		
137	11.0	9.0	13.4
54	6.0	4.9	7.3
68	5.2	4.3	6.5

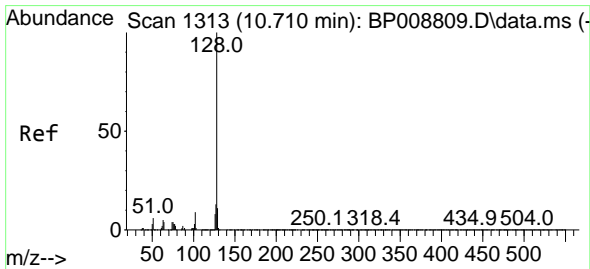
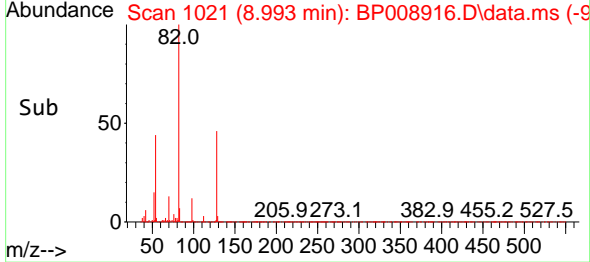
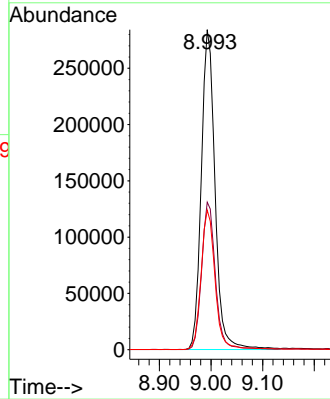
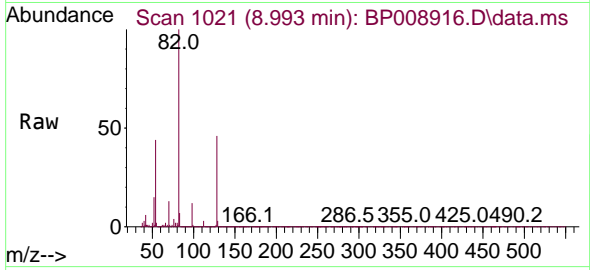




#23
 Nitrobenzene-d5
 Concen: 31.951 ng
 RT: 8.993 min Scan# 10
 Delta R.T. -0.006 min
 Lab File: BP008916.D
 Acq: 25 Jan 2022 19:56

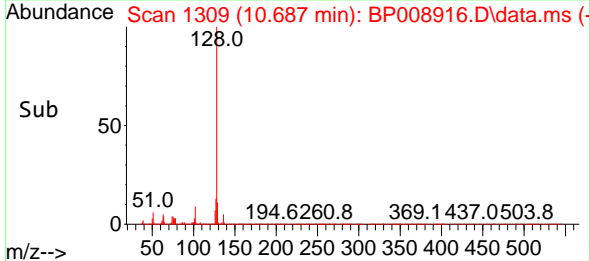
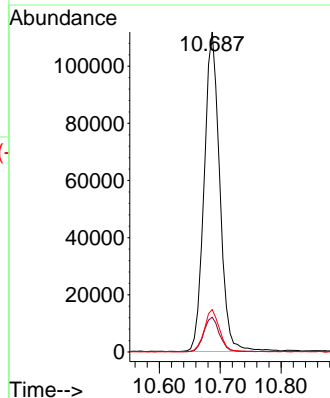
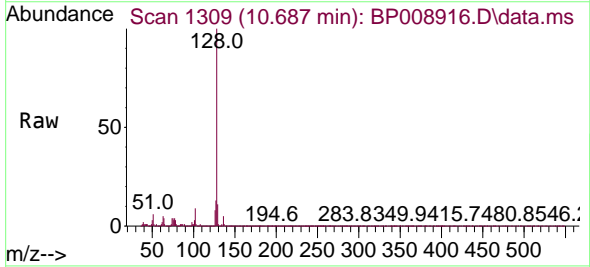
Instrument :
 BNA_P
 ClientSampleId :
 SB-4(0.5-1)

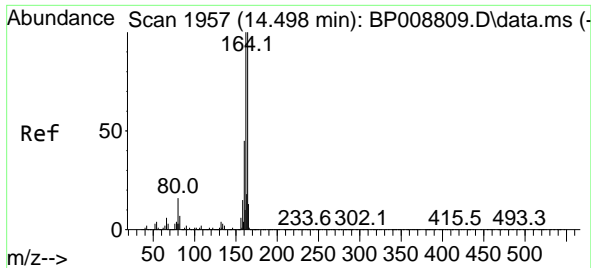
Tgt Ion	Resp	Lower	Upper
82	525973		
128	46.1	39.4	59.2
54	43.6	32.6	48.8



#31
 Naphthalene
 Concen: 3.912 ng
 RT: 10.687 min Scan# 1309
 Delta R.T. -0.006 min
 Lab File: BP008916.D
 Acq: 25 Jan 2022 19:56

Tgt Ion	Resp	Lower	Upper
128	198600		
129	10.9	8.8	13.2
127	13.2	10.4	15.6

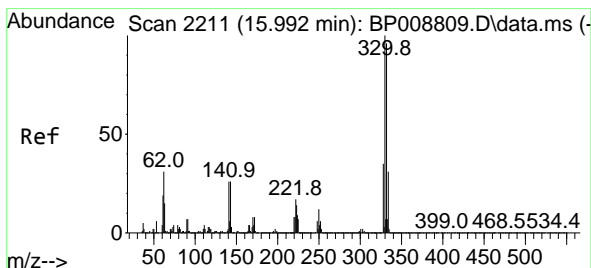
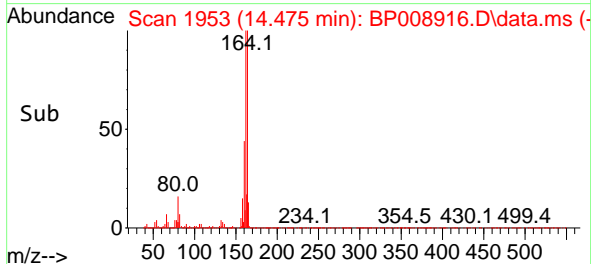
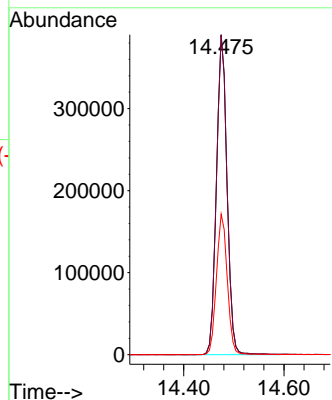
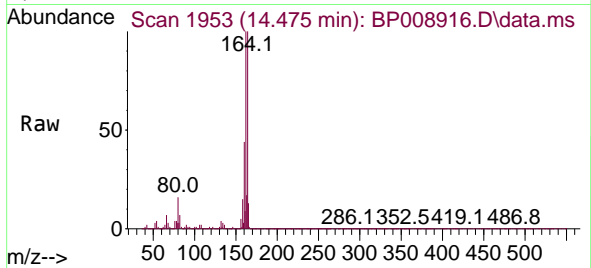




#39
 Acenaphthene-d10
 Concen: 20.000 ng
 RT: 14.475 min Scan# 11
 Delta R.T. -0.006 min
 Lab File: BP008916.D
 Acq: 25 Jan 2022 19:56

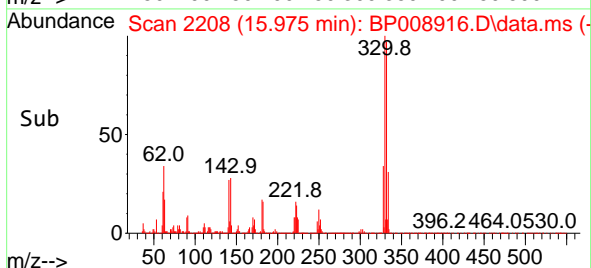
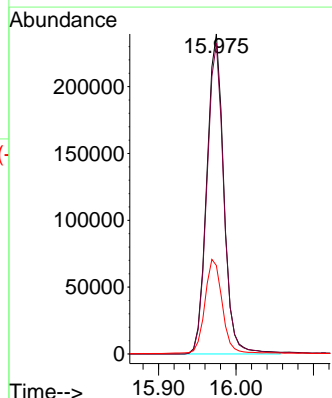
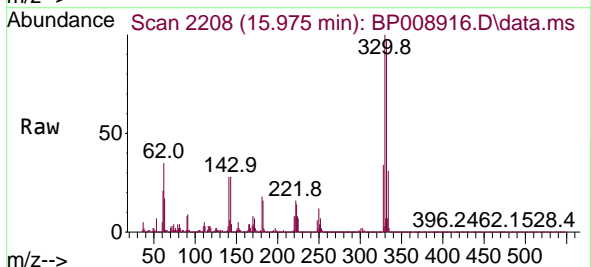
Instrument :
 BNA_P
 ClientSampleId :
 SB-4(0.5-1)

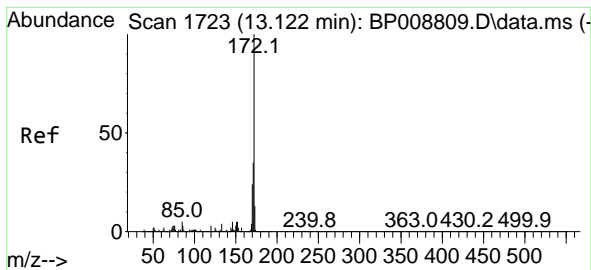
Tgt Ion:164 Resp: 569183
 Ion Ratio Lower Upper
 164 100
 162 99.8 79.9 119.9
 160 44.0 35.5 53.3



#42
 2,4,6-Tribromophenol
 Concen: 44.011 ng
 RT: 15.975 min Scan# 2208
 Delta R.T. -0.006 min
 Lab File: BP008916.D
 Acq: 25 Jan 2022 19:56

Tgt Ion:330 Resp: 364630
 Ion Ratio Lower Upper
 330 100
 332 97.5 77.0 115.4
 141 30.7 21.3 31.9



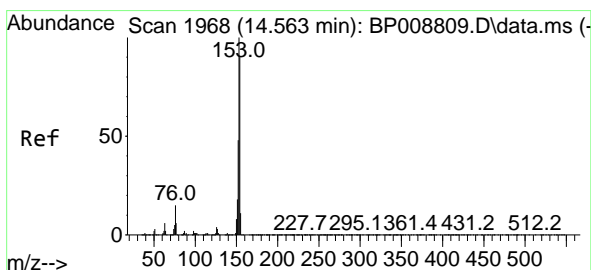
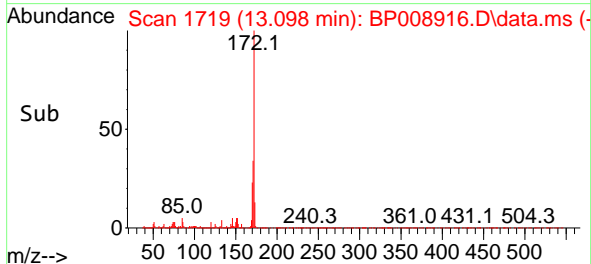
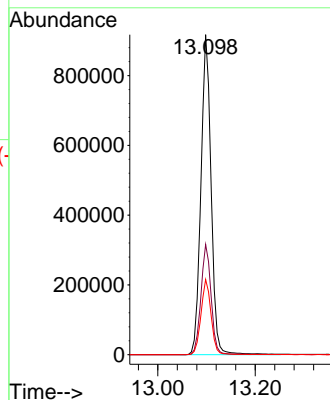
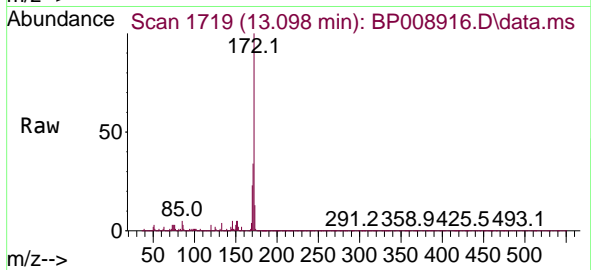


#45
 2-Fluorobiphenyl
 Concen: 31.076 ng
 RT: 13.098 min Scan# 1719
 Delta R.T. -0.006 min
 Lab File: BP008916.D
 Acq: 25 Jan 2022 19:56

Instrument :
 BNA_P
 ClientSampleId :
 SB-4(0.5-1)

Tgt Ion:172 Resp: 1341267

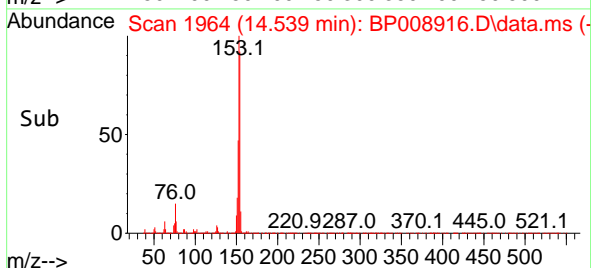
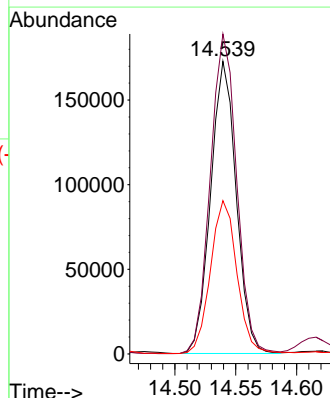
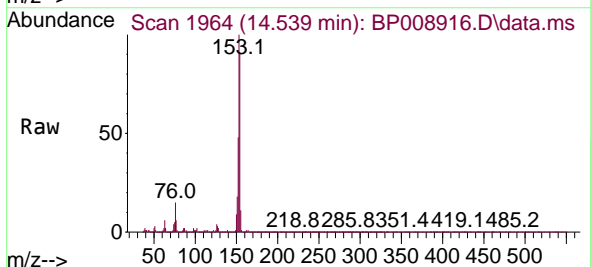
Ion	Ratio	Lower	Upper
172	100		
171	34.4	29.3	43.9
170	23.5	19.5	29.3

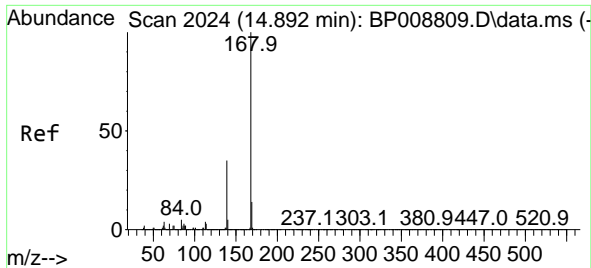


#52
 Acenaphthene
 Concen: 7.896 ng
 RT: 14.539 min Scan# 1964
 Delta R.T. -0.006 min
 Lab File: BP008916.D
 Acq: 25 Jan 2022 19:56

Tgt Ion:154 Resp: 252655

Ion	Ratio	Lower	Upper
154	100		
153	109.3	89.4	134.2
152	52.4	42.6	63.8

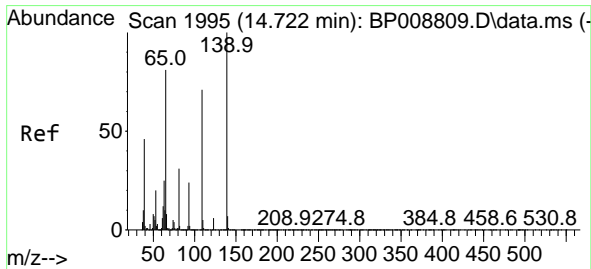
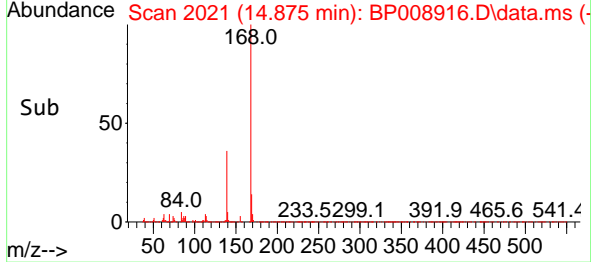
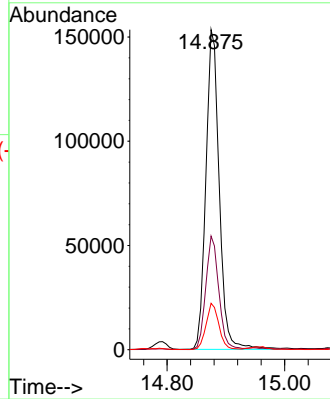
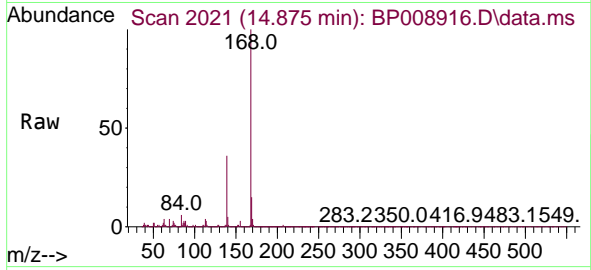




#55
 Dibenzofuran
 Concen: 4.627 ng
 RT: 14.875 min Scan# 2021
 Delta R.T. -0.006 min
 Lab File: BP008916.D
 Acq: 25 Jan 2022 19:56

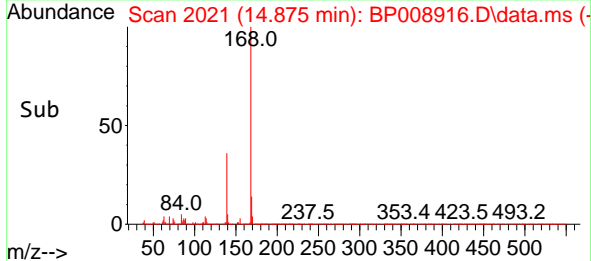
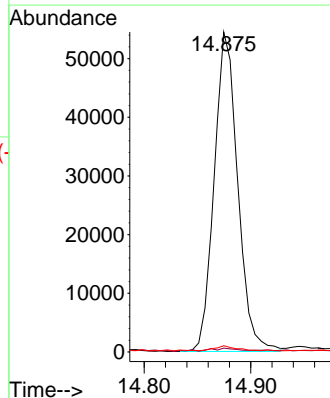
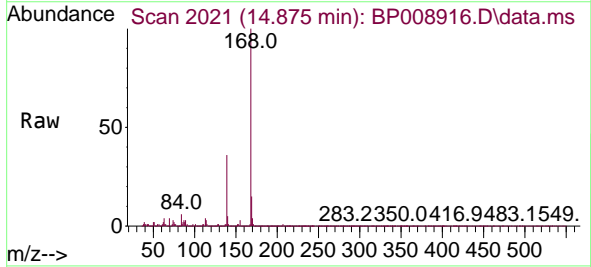
Instrument :
 BNA_P
 ClientSampleId :
 SB-4(0.5-1)

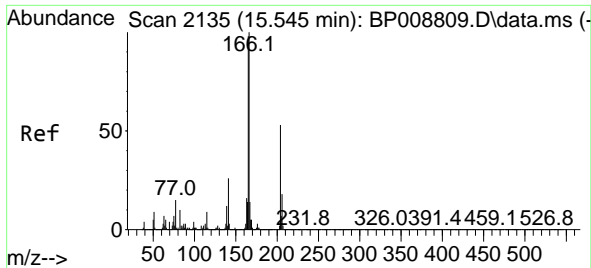
Tgt Ion	Resp	Lower	Upper
168	100		
139	35.5	27.4	41.0
169	14.5	10.9	16.3



#56
 4-Nitrophenol
 Concen: 13.153 ng
 RT: 14.875 min Scan# 2021
 Delta R.T. 0.159 min
 Lab File: BP008916.D
 Acq: 25 Jan 2022 19:56

Tgt Ion	Resp	Lower	Upper
139	100		
109	1.2	42.2	82.2#
65	2.0	57.3	97.3#

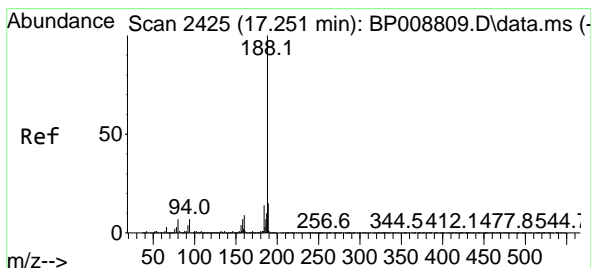
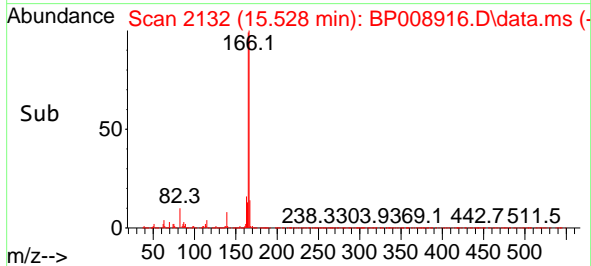
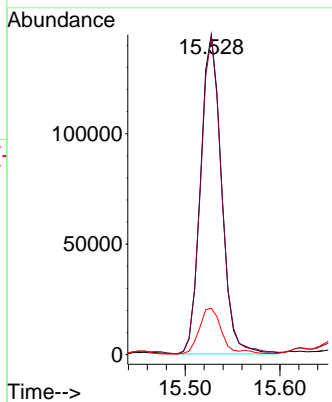
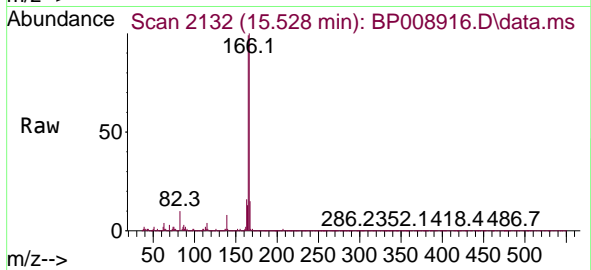




#58
 Fluorene
 Concen: 5.385 ng
 RT: 15.528 min Scan# 2132
 Delta R.T. -0.006 min
 Lab File: BP008916.D
 Acq: 25 Jan 2022 19:56

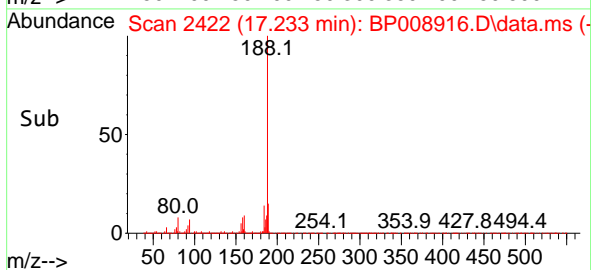
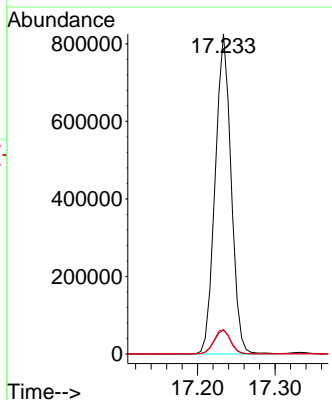
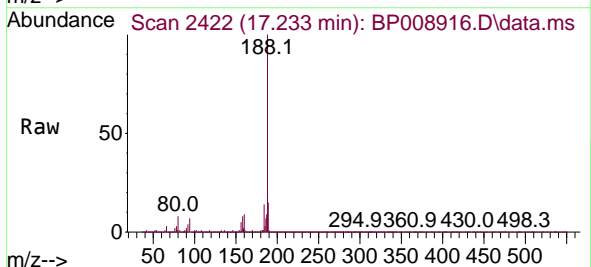
Instrument : BNA_P
 ClientSampleId : SB-4(0.5-1)

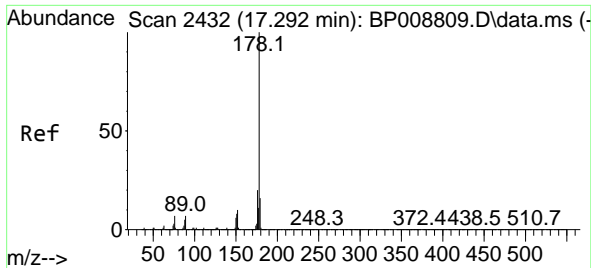
Tgt Ion	Resp	Lower	Upper
166	100		
165	99.4	77.2	115.8
167	14.5	11.2	16.8



#64
 Phenanthrene-d10
 Concen: 20.000 ng
 RT: 17.233 min Scan# 2422
 Delta R.T. -0.006 min
 Lab File: BP008916.D
 Acq: 25 Jan 2022 19:56

Tgt Ion	Resp	Lower	Upper
188	100		
94	7.4	6.8	10.2
80	7.6	7.2	10.8



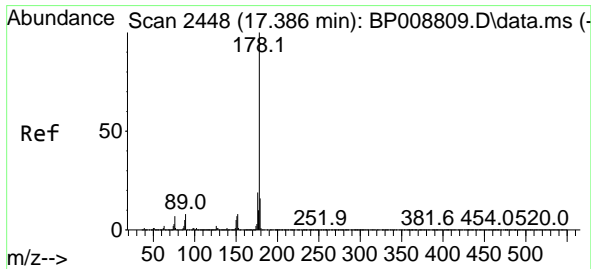
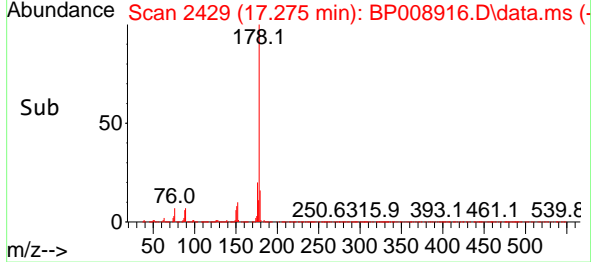
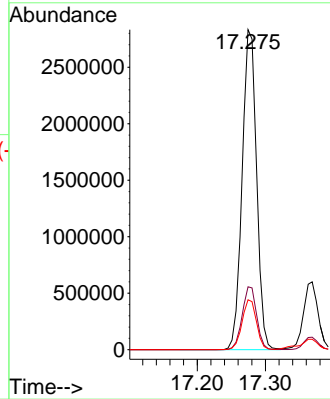
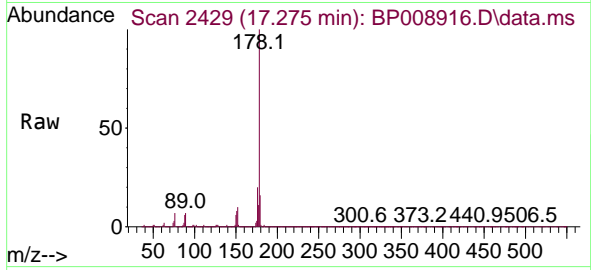


#71
 Phenanthrene
 Concen: 62.790 ng
 RT: 17.275 min Scan# 2429
 Delta R.T. -0.006 min
 Lab File: BP008916.D
 Acq: 25 Jan 2022 19:56

Instrument :
 BNA_P
 ClientSampleId :
 SB-4(0.5-1)

Tgt Ion:178 Resp: 4165287

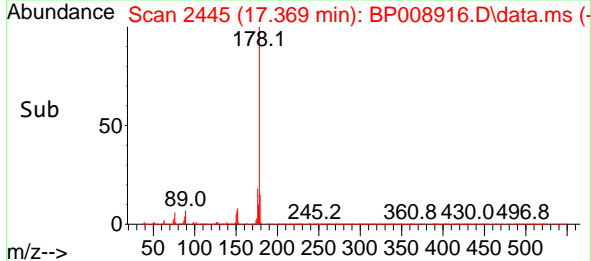
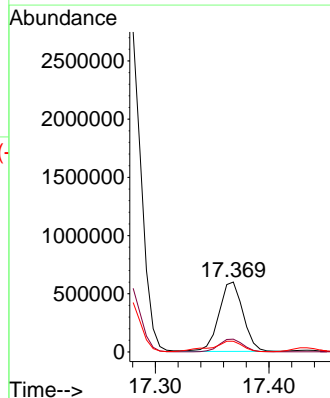
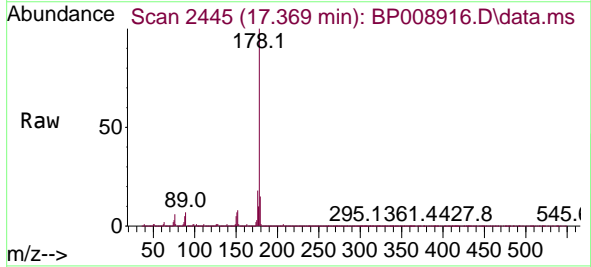
Ion	Ratio	Lower	Upper
178	100		
176	19.7	16.0	24.0
179	15.6	13.0	19.4

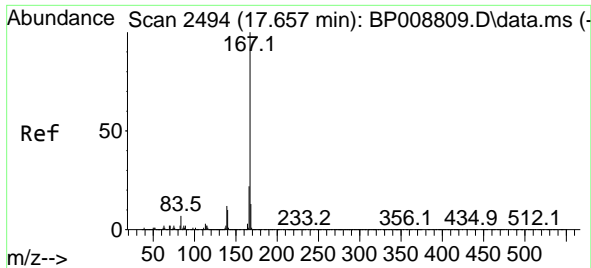


#72
 Anthracene
 Concen: 13.188 ng
 RT: 17.369 min Scan# 2445
 Delta R.T. -0.006 min
 Lab File: BP008916.D
 Acq: 25 Jan 2022 19:56

Tgt Ion:178 Resp: 877611

Ion	Ratio	Lower	Upper
178	100		
176	18.3	15.1	22.7
179	15.2	12.8	19.2

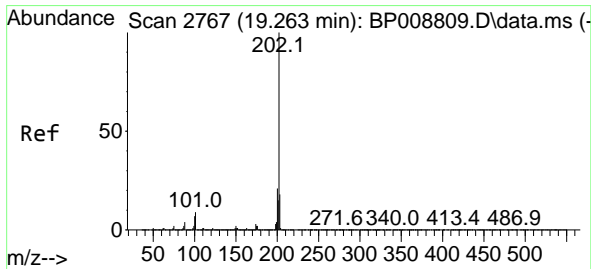
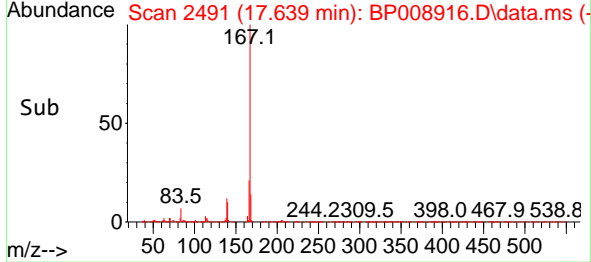
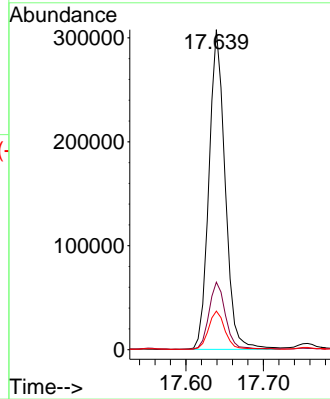
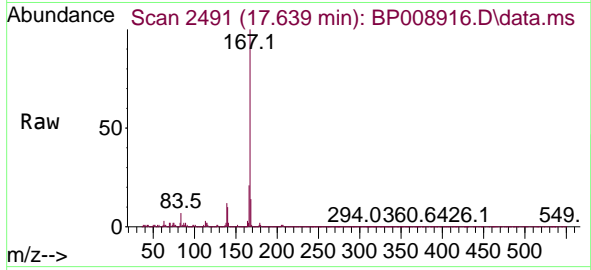




#73
 Carbazole
 Concen: 7.791 ng
 RT: 17.639 min Scan# 2491
 Delta R.T. -0.006 min
 Lab File: BP008916.D
 Acq: 25 Jan 2022 19:56

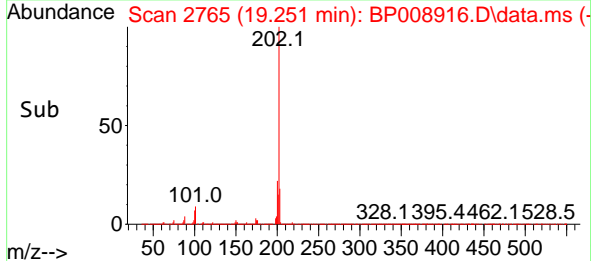
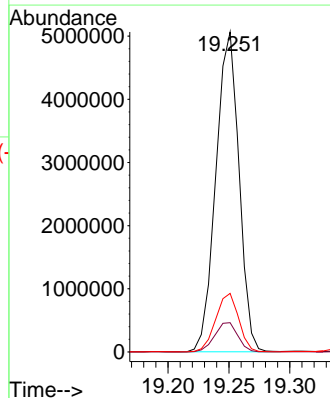
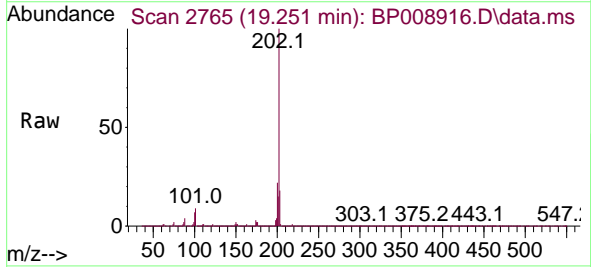
Instrument : BNA_P
 Client Sample Id : SB-4(0.5-1)

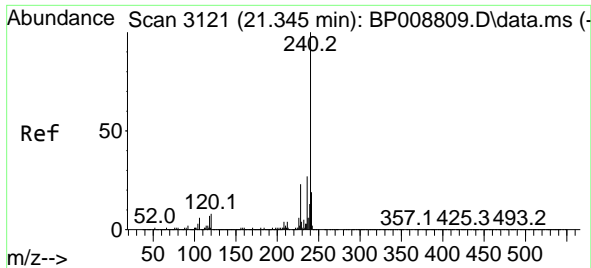
Tgt Ion	Resp	Lower	Upper
167	100		
166	21.1	17.7	26.5
139	12.1	9.8	14.6



#75
 Fluoranthene
 Concen: 90.815 ng
 RT: 19.251 min Scan# 2765
 Delta R.T. -0.000 min
 Lab File: BP008916.D
 Acq: 25 Jan 2022 19:56

Tgt Ion	Resp	Lower	Upper
202	100		
101	9.1	0.0	30.7
203	18.3	0.0	38.9



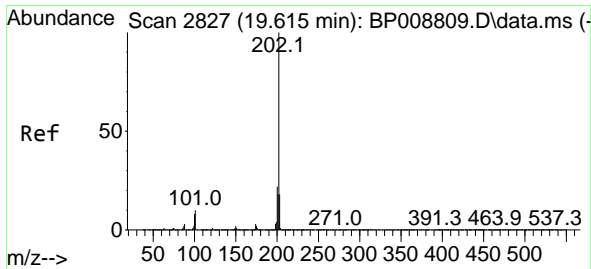
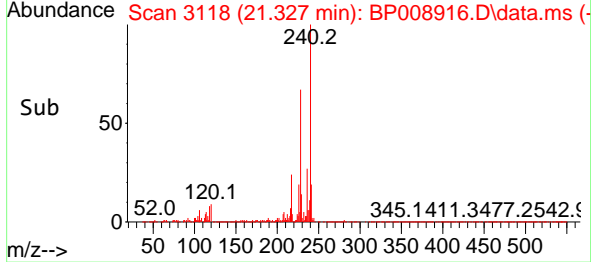
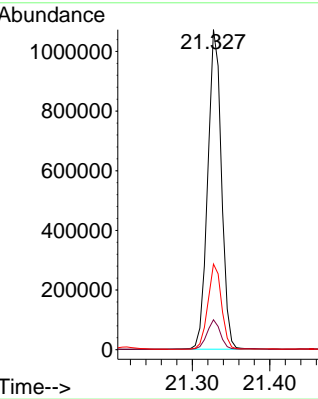
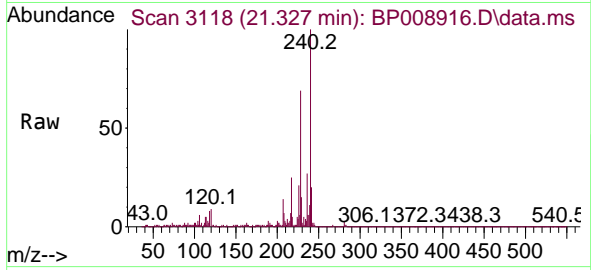


#76
 Chrysene-d12
 Concen: 20.000 ng
 RT: 21.327 min Scan# 3118
 Delta R.T. -0.006 min
 Lab File: BP008916.D
 Acq: 25 Jan 2022 19:56

Instrument :
 BNA_P
 ClientSampleId :
 SB-4(0.5-1)

Tgt Ion: 240 Resp: 1316124

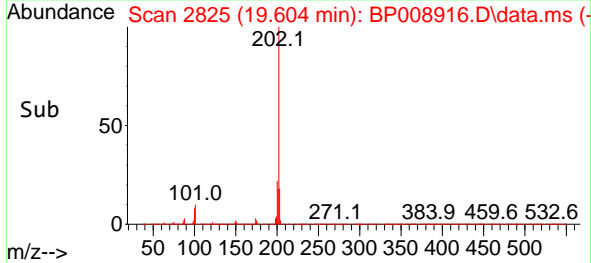
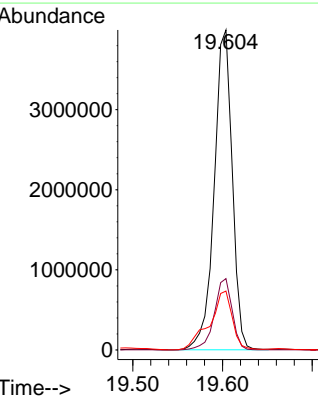
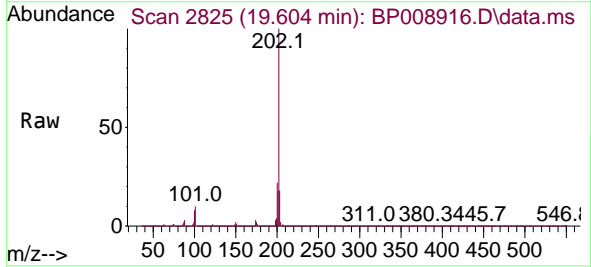
Ion	Ratio	Lower	Upper
240	100		
120	9.4	7.7	11.5
236	26.7	21.2	31.8

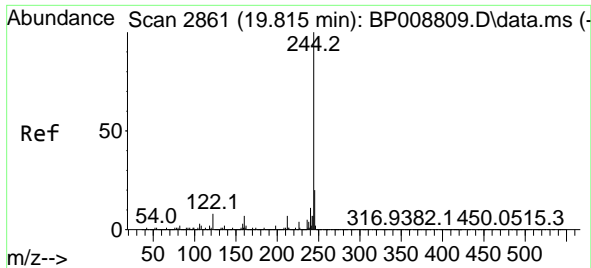


#78
 Pyrene
 Concen: 60.720 ng
 RT: 19.604 min Scan# 2825
 Delta R.T. -0.000 min
 Lab File: BP008916.D
 Acq: 25 Jan 2022 19:56

Tgt Ion: 202 Resp: 5576137

Ion	Ratio	Lower	Upper
202	100		
200	22.3	18.0	27.0
203	18.4	15.0	22.6



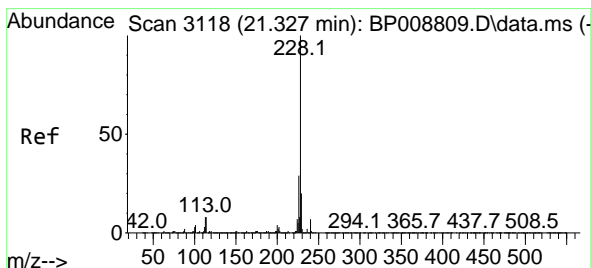
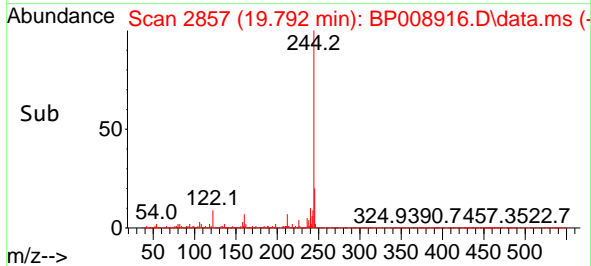
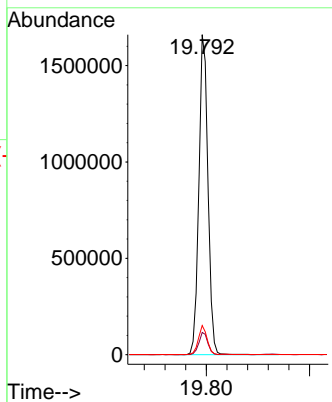
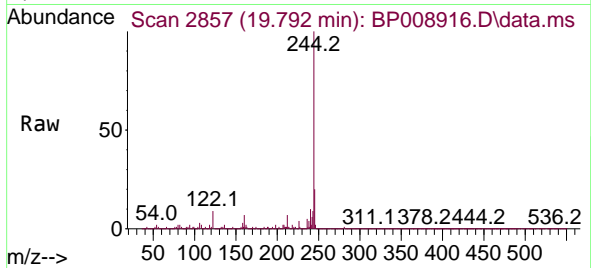


#79
 Terphenyl-d14
 Concen: 25.856 ng
 RT: 19.792 min Scan# 21
 Delta R.T. -0.012 min
 Lab File: BP008916.D
 Acq: 25 Jan 2022 19:56

Instrument :
 BNA_P
 ClientSampleId :
 SB-4(0.5-1)

Tgt Ion:244 Resp: 2016016

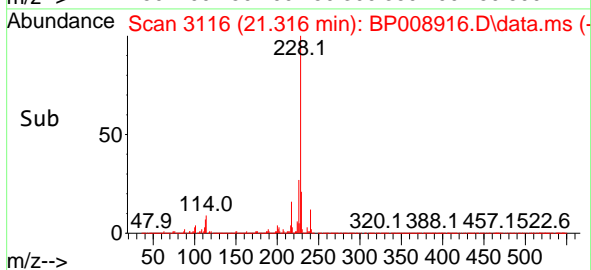
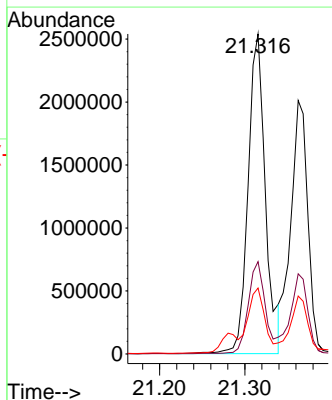
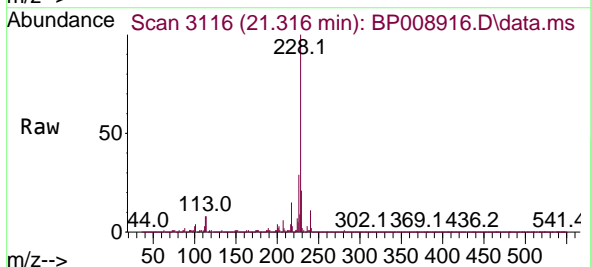
Ion	Ratio	Lower	Upper
244	100		
212	7.0	6.5	9.7
122	9.1	9.2	13.8

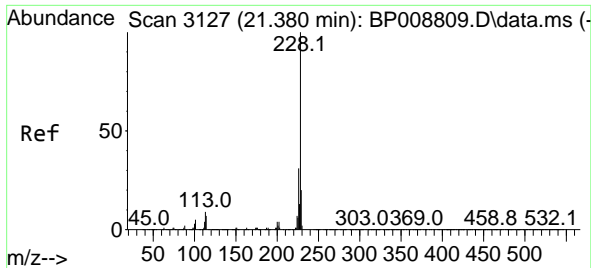


#81
 Benzo(a)anthracene
 Concen: 40.540 ng
 RT: 21.316 min Scan# 3116
 Delta R.T. -0.006 min
 Lab File: BP008916.D
 Acq: 25 Jan 2022 19:56

Tgt Ion:228 Resp: 3589535

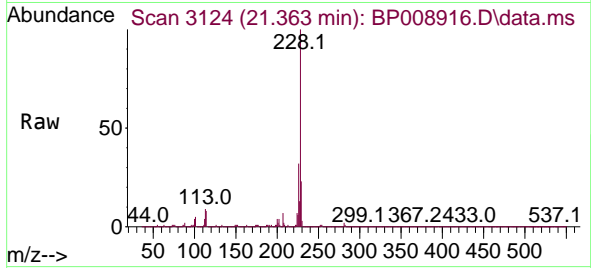
Ion	Ratio	Lower	Upper
228	100		
226	28.8	23.3	34.9
229	20.6	17.0	25.6



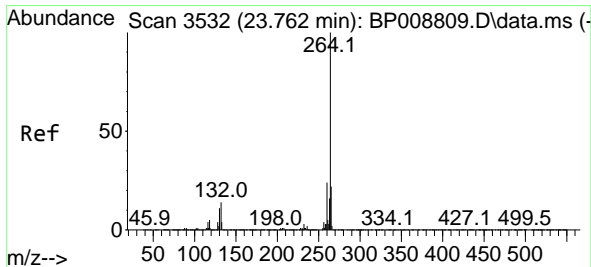
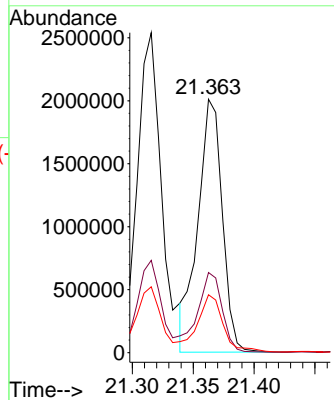
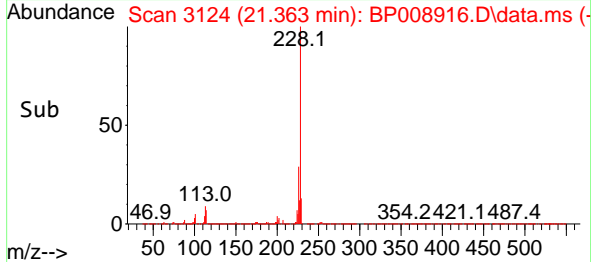


#83
 Chrysene
 Concen: 32.602 ng
 RT: 21.363 min Scan# 31
 Delta R.T. -0.006 min
 Lab File: BP008916.D
 Acq: 25 Jan 2022 19:56

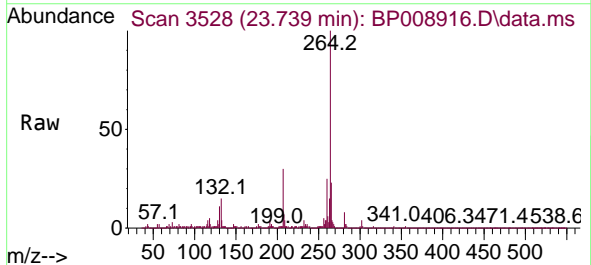
Instrument :
 BNA_P
 ClientSampleId :
 SB-4(0.5-1)



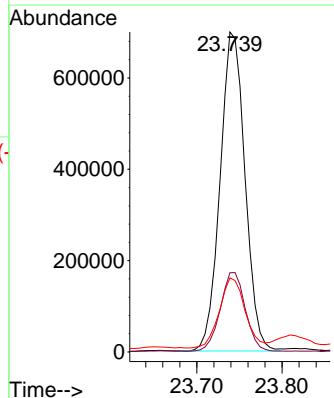
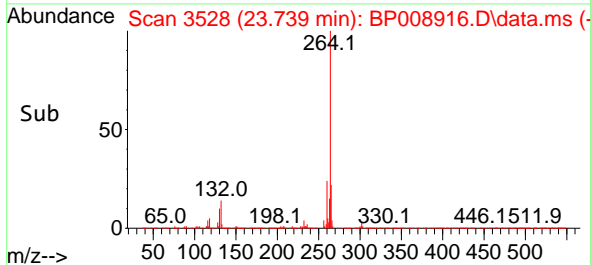
Tgt Ion:228 Resp: 2798306
 Ion Ratio Lower Upper
 228 100
 226 31.7 26.0 39.0
 229 22.8 16.9 25.3

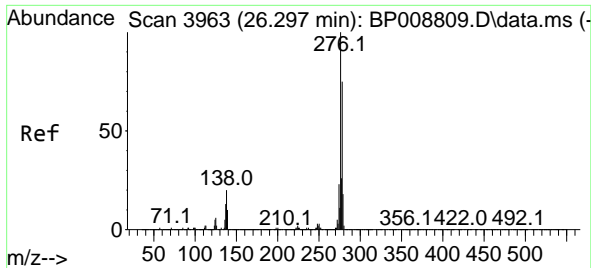


#86
 Perylene-d12
 Concen: 20.000 ng
 RT: 23.739 min Scan# 3528
 Delta R.T. -0.012 min
 Lab File: BP008916.D
 Acq: 25 Jan 2022 19:56



Tgt Ion:264 Resp: 1419712
 Ion Ratio Lower Upper
 264 100
 260 24.7 19.1 28.7
 265 23.2 17.1 25.7



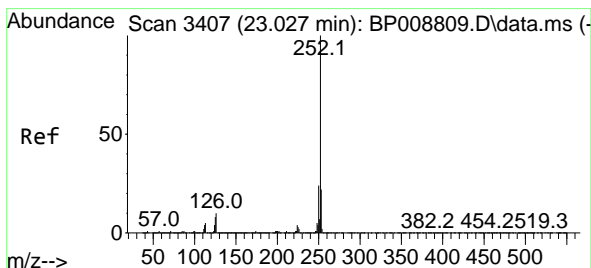
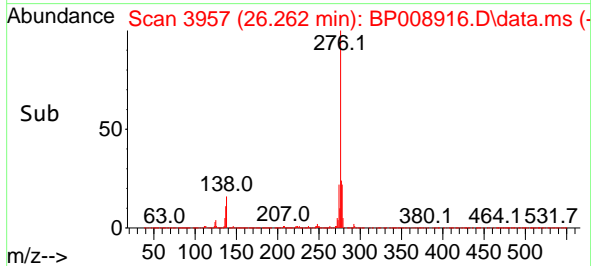
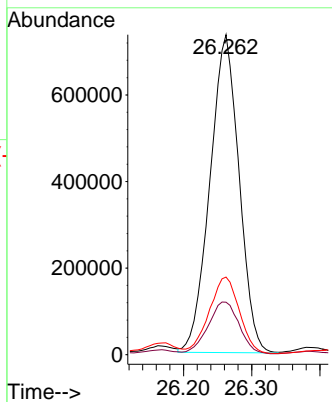
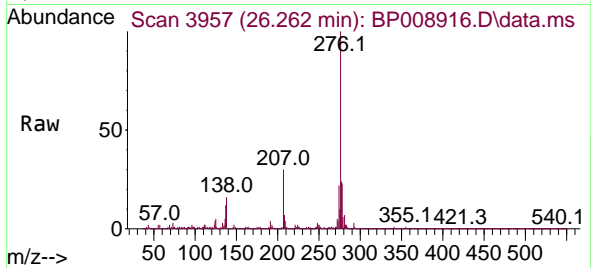


#87
 Indeno(1,2,3-cd)pyrene
 Concen: 18.688 ng
 RT: 26.262 min Scan# 3957
 Delta R.T. -0.018 min
 Lab File: BP008916.D
 Acq: 25 Jan 2022 19:56

Instrument :
 BNA_P
 ClientSampleId :
 SB-4(0.5-1)

Tgt Ion: 276 Resp: 2186200

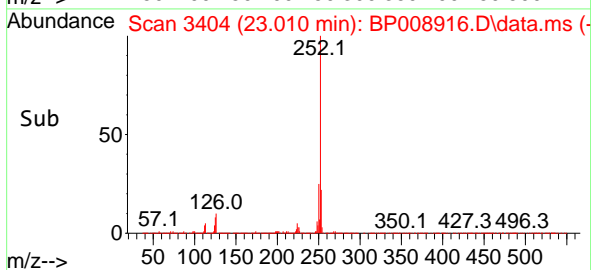
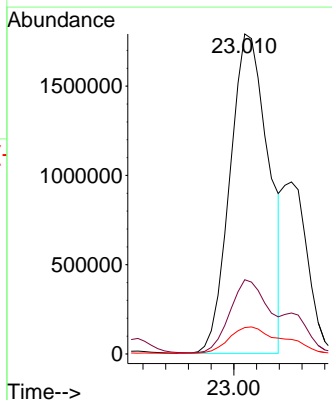
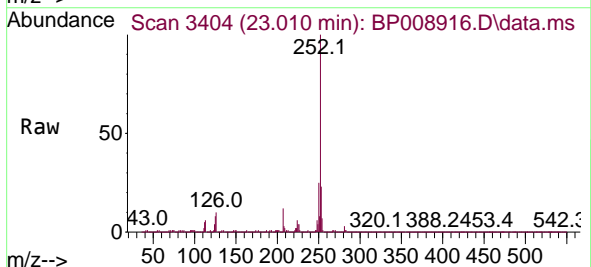
Ion	Ratio	Lower	Upper
276	100		
138	17.3	17.8	26.6#
277	24.7	20.4	30.6

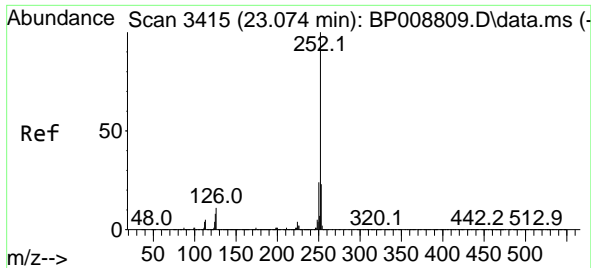


#88
 Benzo(b)fluoranthene
 Concen: 44.519 ng
 RT: 23.010 min Scan# 3404
 Delta R.T. -0.006 min
 Lab File: BP008916.D
 Acq: 25 Jan 2022 19:56

Tgt Ion: 252 Resp: 4220891

Ion	Ratio	Lower	Upper
252	100		
253	23.2	18.0	27.0
125	8.3	6.9	10.3



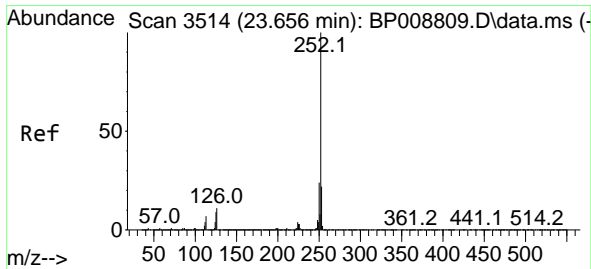
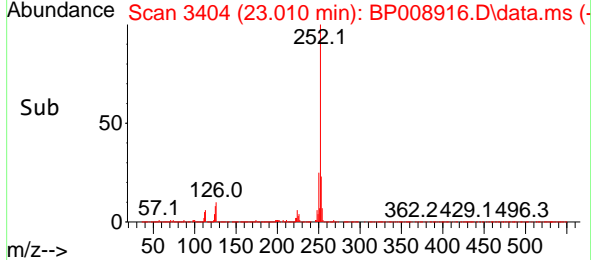
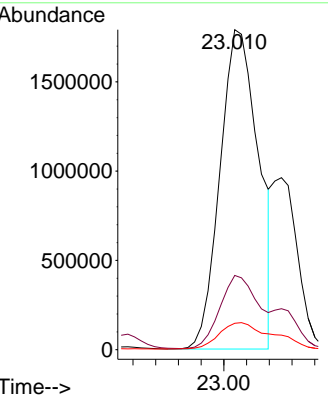
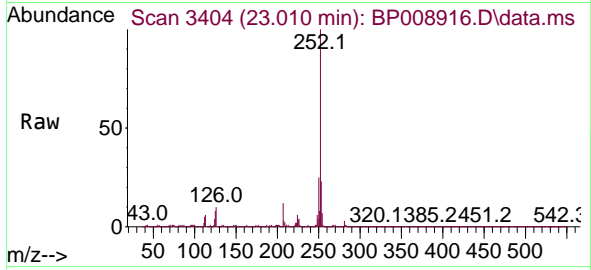


#89
 Benzo(k)fluoranthene
 Concen: 45.991 ng
 RT: 23.010 min Scan# 3415
 Delta R.T. -0.053 min
 Lab File: BP008916.D
 Acq: 25 Jan 2022 19:56

Instrument :
 BNA_P
 ClientSampleId :
 SB-4(0.5-1)

Tgt Ion:252 Resp: 4220891

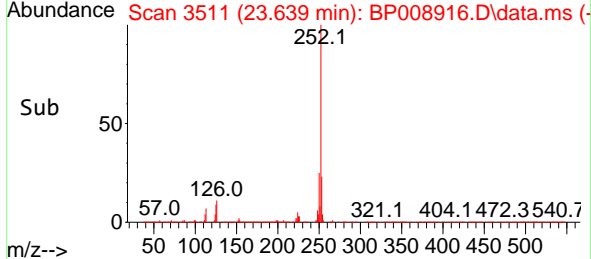
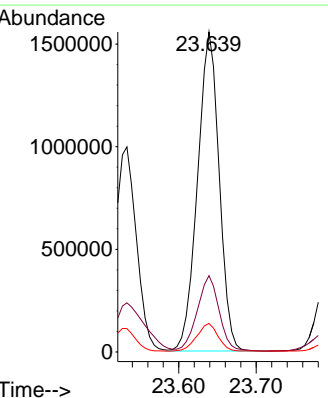
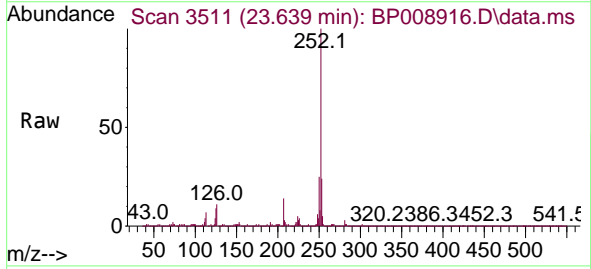
Ion	Ratio	Lower	Upper
252	100		
253	23.2	18.2	27.2
125	8.3	7.3	10.9

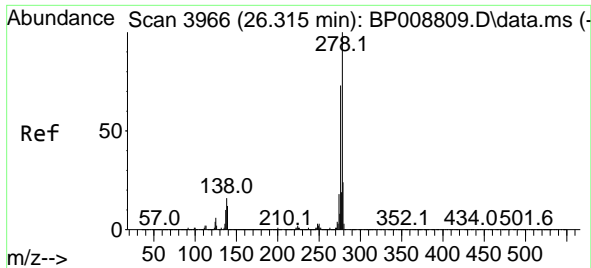


#90
 Benzo(a)pyrene
 Concen: 32.933 ng
 RT: 23.639 min Scan# 3511
 Delta R.T. -0.006 min
 Lab File: BP008916.D
 Acq: 25 Jan 2022 19:56

Tgt Ion:252 Resp: 3013902

Ion	Ratio	Lower	Upper
252	100		
253	23.8	17.8	26.8
125	8.9	7.8	11.6

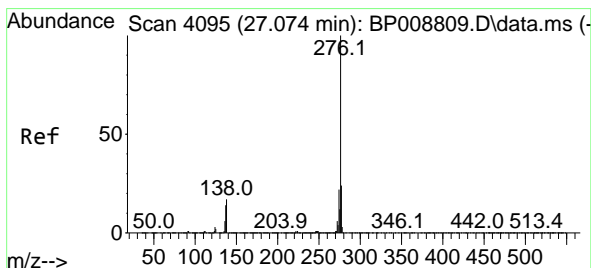
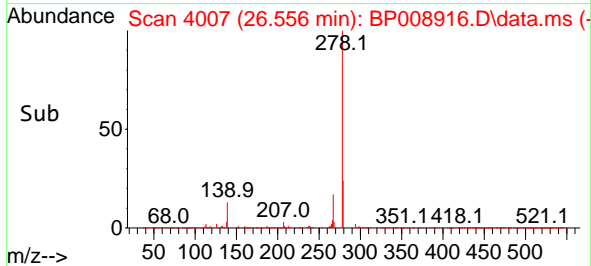
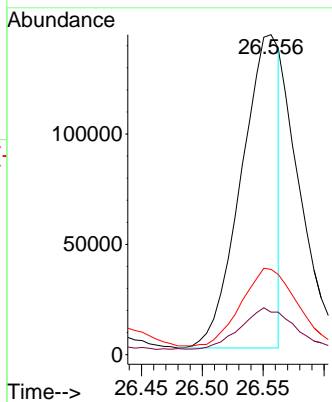
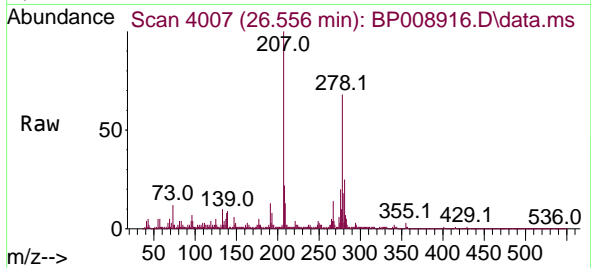




#91
 Dibenzo(a,h)anthracene
 Concen: 3.112 ng
 RT: 26.556 min Scan# 4007
 Delta R.T. 0.259 min
 Lab File: BP008916.D
 Acq: 25 Jan 2022 19:56

Instrument : BNA_P
 ClientSampleId : SB-4(0.5-1)

Tgt Ion	Resp	Lower	Upper
278	100		
139	13.3	11.5	17.3
279	26.6	19.1	28.7



#92
 Benzo(g,h,i)perylene
 Concen: 20.613 ng
 RT: 27.039 min Scan# 4089
 Delta R.T. -0.012 min
 Lab File: BP008916.D
 Acq: 25 Jan 2022 19:56

Tgt Ion	Resp	Lower	Upper
276	100		
277	24.7	19.2	28.8
138	17.8	15.0	22.4

