

Data Path : Z:\svoasrv\HPCHEM1\BNA\_P\Data\BP020922\  
 Data File : BP009073.D  
 Acq On : 09 Feb 2022 11:40  
 Operator : CG/JU  
 Sample : PB142499TB  
 Misc :  
 ALS Vial : 3 Sample Multiplier: 1

Instrument :  
 BNA\_P  
 ClientSampleId :  
 PB142499TB

Quant Time: Feb 09 12:26:03 2022  
 Quant Method : Z:\svoasrv\HPCHEM1\BNA\_P\Methods\8270E-BP020722.M  
 Quant Title : ASP BNA STANDARDS FOR 5 POINT CALIBRATION  
 QLast Update : Mon Feb 07 15:13:17 2022  
 Response via : Initial Calibration

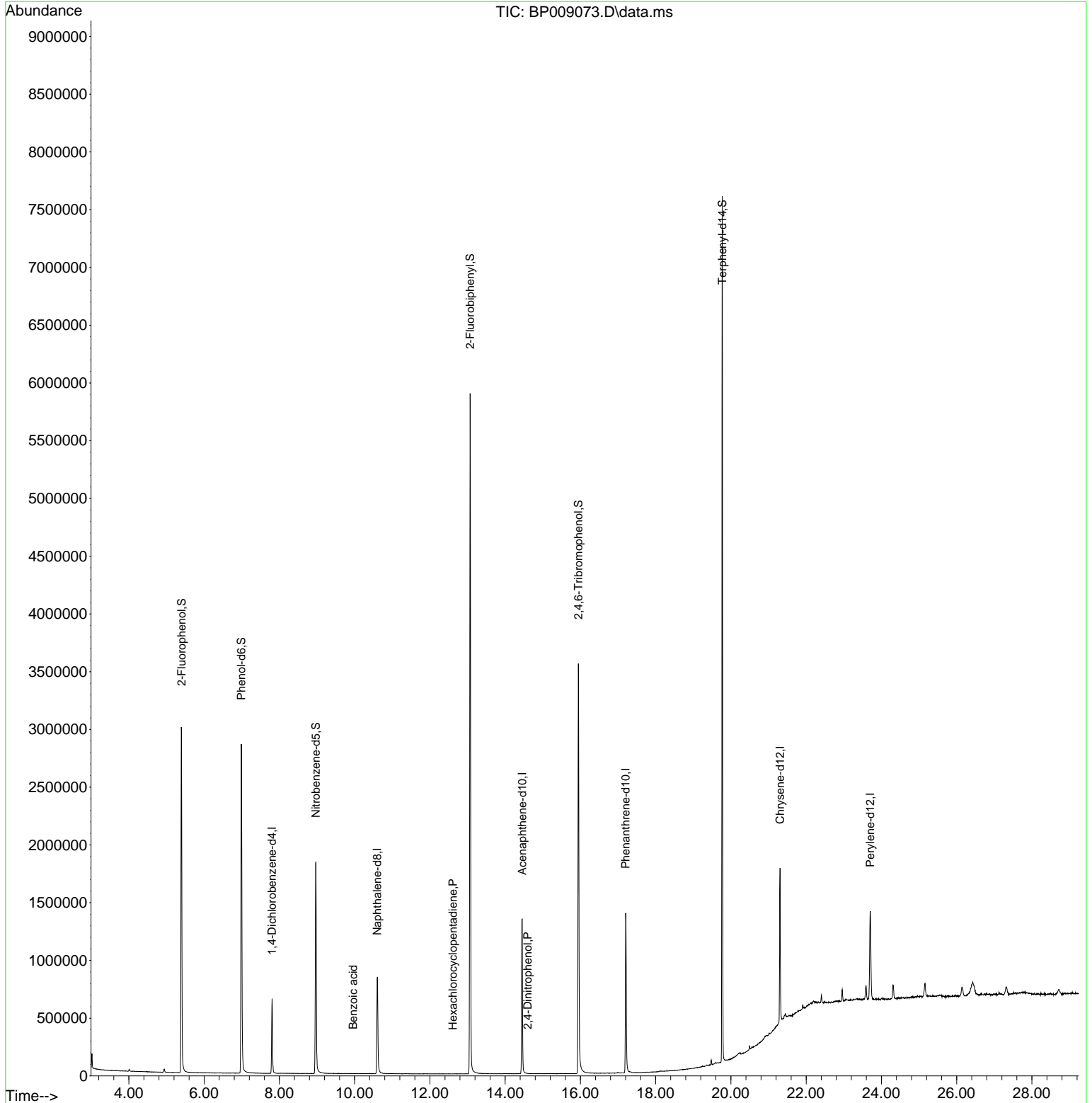
Compound	R.T.	QIon	Response	Conc	Units	Dev(Min)
Internal Standards						
1) 1,4-Dichlorobenzene-d4	7.805	152	197790	20.000	ng	0.00
21) Naphthalene-d8	10.599	136	851272	20.000	ng	0.00
39) Acenaphthene-d10	14.451	164	546388	20.000	ng	0.00
64) Phenanthrene-d10	17.204	188	974634	20.000	ng	0.00
76) Chrysene-d12	21.304	240	708130	20.000	ng	0.00
86) Perylene-d12	23.704	264	673458	20.000	ng	0.01
System Monitoring Compounds						
5) 2-Fluorophenol	5.399	112	1515262	136.657	ng	0.00
7) Phenol-d6	6.987	99	1880113	128.683	ng	0.00
23) Nitrobenzene-d5	8.969	82	1219210	80.768	ng	0.00
42) 2,4,6-Tribromophenol	15.945	330	874397	119.858	ng	0.00
45) 2-Fluorobiphenyl	13.069	172	3318991	85.035	ng	0.00
79) Terphenyl-d14	19.769	244	3612167	91.733	ng	0.00
Target Compounds						
32) Benzoic acid	9.957	122	36	2.693	ng	# 1
41) Hexachlorocyclopentadiene	12.610	237	24	8.659	ng	# 55
54) 2,4-Dinitrophenol	14.598	184	35	2.177	ng	# 1

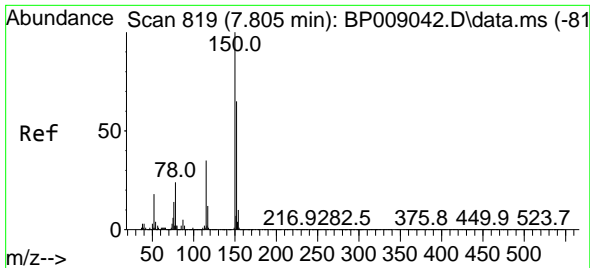
(#) = qualifier out of range (m) = manual integration (+) = signals summed

Data Path : Z:\svoasrv\HPCHEM1\BNA\_P\Data\BP020922\  
 Data File : BP009073.D  
 Acq On : 09 Feb 2022 11:40  
 Operator : CG/JU  
 Sample : PB142499TB  
 Misc :  
 ALS Vial : 3 Sample Multiplier: 1

Instrument :  
 BNA\_P  
 ClientSampleId :  
 PB142499TB

Quant Time: Feb 09 12:26:03 2022  
 Quant Method : Z:\svoasrv\HPCHEM1\BNA\_P\Methods\8270E-BP020722.M  
 Quant Title : ASP BNA STANDARDS FOR 5 POINT CALIBRATION  
 QLast Update : Mon Feb 07 15:13:17 2022  
 Response via : Initial Calibration

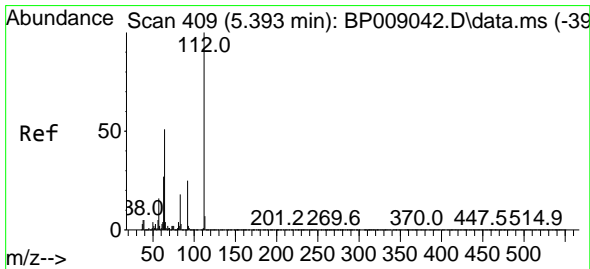
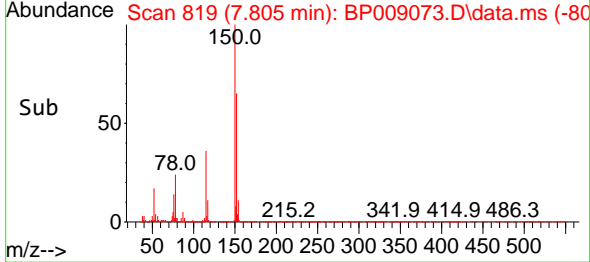
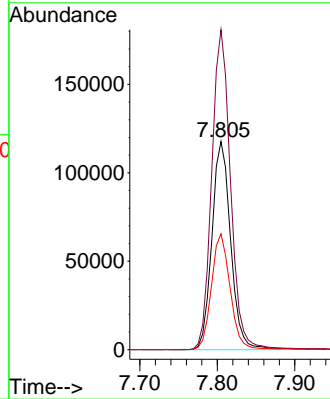
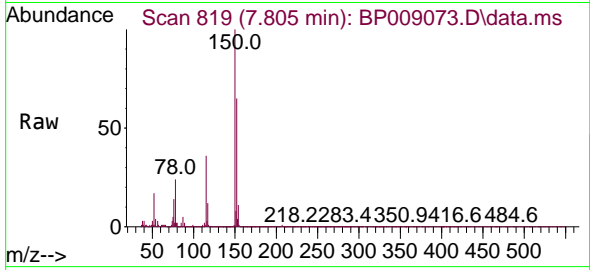




#1  
 1,4-Dichlorobenzene-d4  
 Concen: 20.000 ng  
 RT: 7.805 min Scan# 81  
 Delta R.T. -0.000 min  
 Lab File: BP009073.D  
 Acq: 09 Feb 2022 11:40

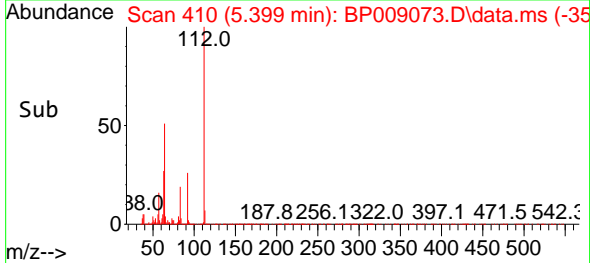
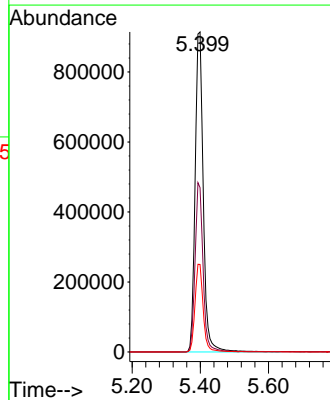
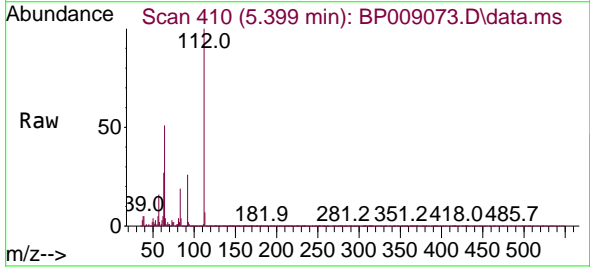
Instrument :  
 BNA\_P  
 ClientSampleId :  
 PB142499TB

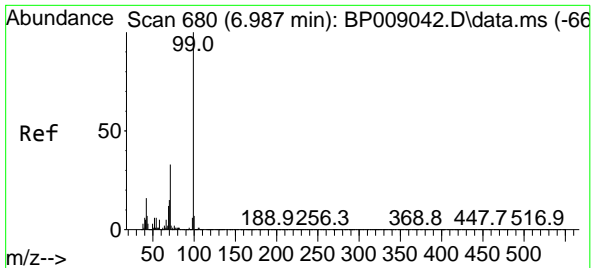
Tgt Ion:152 Resp: 197790  
 Ion Ratio Lower Upper  
 152 100  
 150 153.7 127.0 190.6  
 115 55.6 43.7 65.5



#5  
 2-Fluorophenol  
 Concen: 136.657 ng  
 RT: 5.399 min Scan# 410  
 Delta R.T. 0.006 min  
 Lab File: BP009073.D  
 Acq: 09 Feb 2022 11:40

Tgt Ion:112 Resp: 1515262  
 Ion Ratio Lower Upper  
 112 100  
 64 51.3 39.7 59.5  
 63 27.4 20.0 30.0



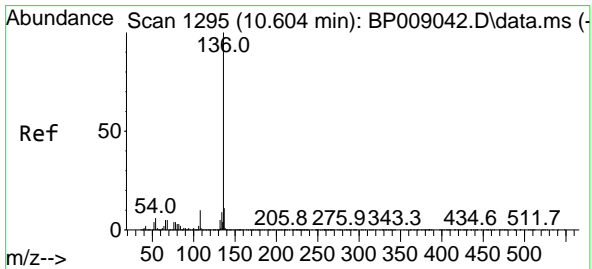
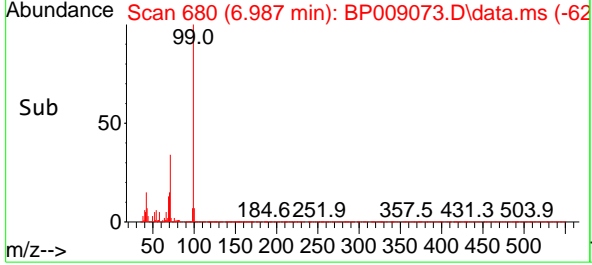
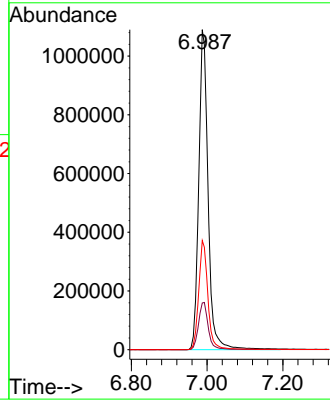
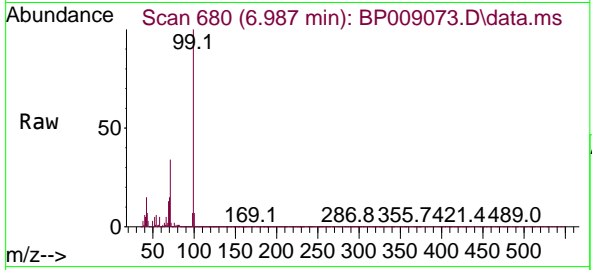


#7  
 Phenol-d6  
 Concen: 128.683 ng  
 RT: 6.987 min Scan# 61  
 Delta R.T. 0.000 min  
 Lab File: BP009073.D  
 Acq: 09 Feb 2022 11:40

Instrument :  
 BNA\_P  
 ClientSampleId :  
 PB142499TB

Tgt Ion: 99 Resp: 1880113

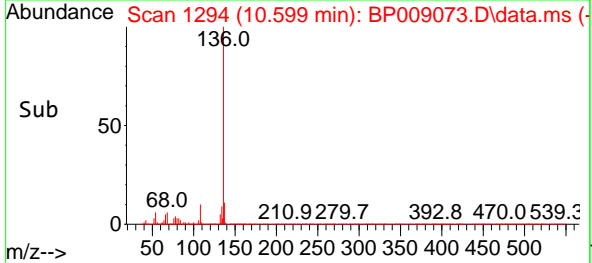
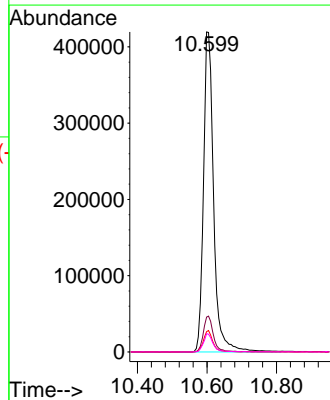
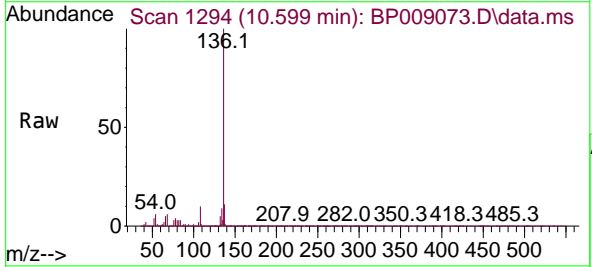
Ion	Ratio	Lower	Upper
99	100		
42	14.6	10.8	16.2
71	34.1	23.8	35.6

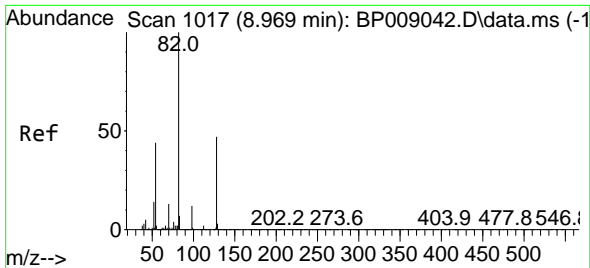


#21  
 Naphthalene-d8  
 Concen: 20.000 ng  
 RT: 10.599 min Scan# 1294  
 Delta R.T. -0.005 min  
 Lab File: BP009073.D  
 Acq: 09 Feb 2022 11:40

Tgt Ion: 136 Resp: 851272

Ion	Ratio	Lower	Upper
136	100		
137	10.9	9.0	13.4
54	6.4	4.9	7.3
68	5.7	4.3	6.5



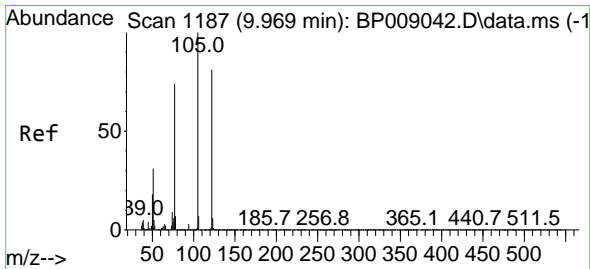
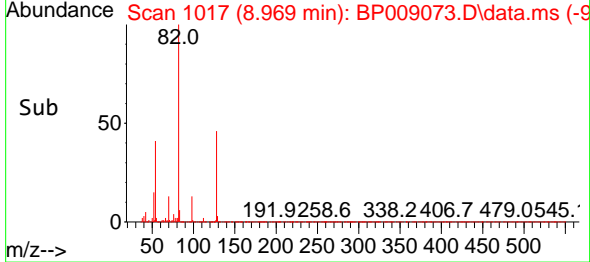
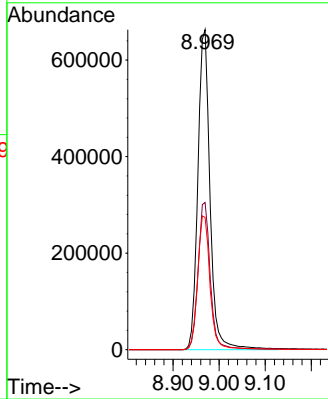
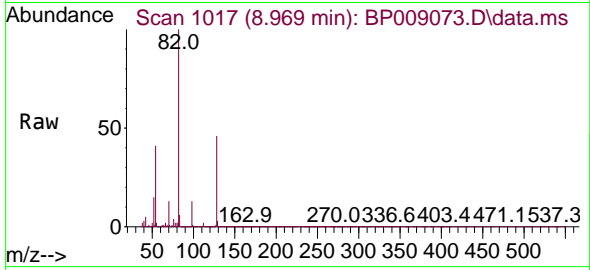


#23  
 Nitrobenzene-d5  
 Concen: 80.768 ng  
 RT: 8.969 min Scan# 1017  
 Delta R.T. 0.000 min  
 Lab File: BP009073.D  
 Acq: 09 Feb 2022 11:40

Instrument :  
 BNA\_P  
 ClientSampleId :  
 PB142499TB

Tgt Ion: 82 Resp: 1219210

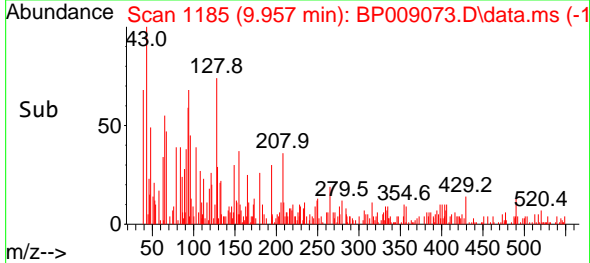
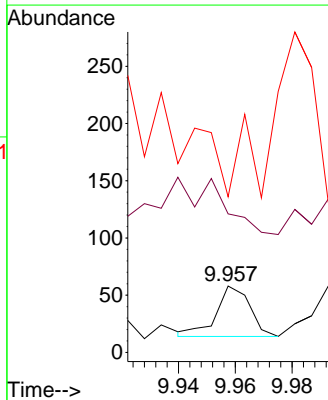
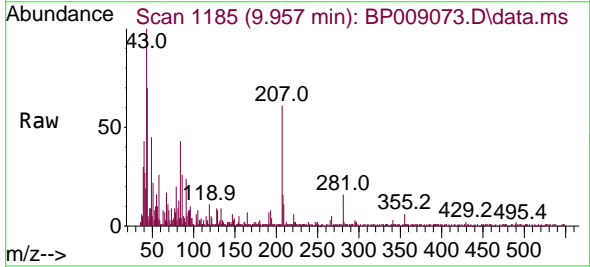
Ion	Ratio	Lower	Upper
82	100		
128	46.0	39.4	59.2
54	41.3	32.6	48.8

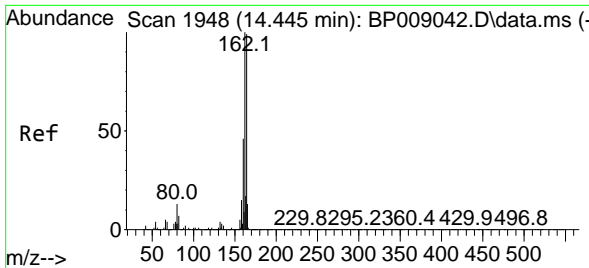


#32  
 Benzoic acid  
 Concen: 2.693 ng  
 RT: 9.957 min Scan# 1185  
 Delta R.T. -0.012 min  
 Lab File: BP009073.D  
 Acq: 09 Feb 2022 11:40

Tgt Ion: 122 Resp: 36

Ion	Ratio	Lower	Upper
122	100		
105	208.6	100.1	140.1#
77	234.5	65.5	105.5#

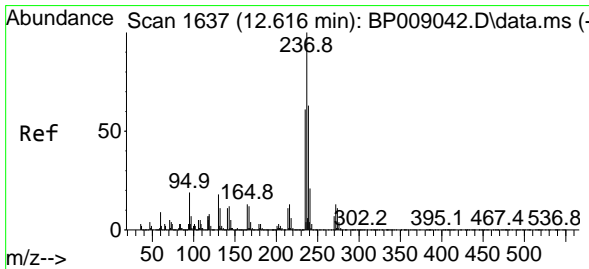
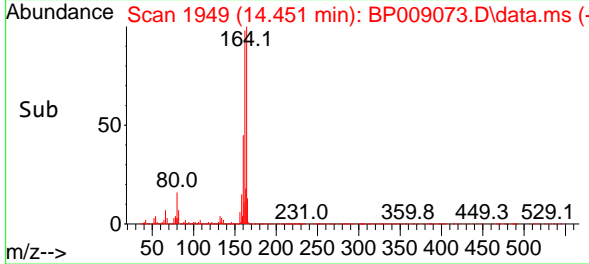
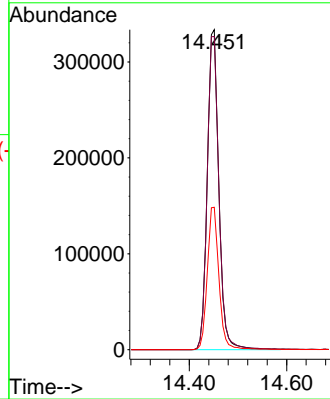
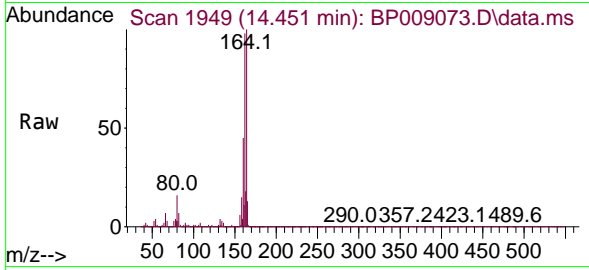




#39  
 Acenaphthene-d10  
 Concen: 20.000 ng  
 RT: 14.451 min Scan# 1948  
 Delta R.T. 0.006 min  
 Lab File: BP009073.D  
 Acq: 09 Feb 2022 11:40

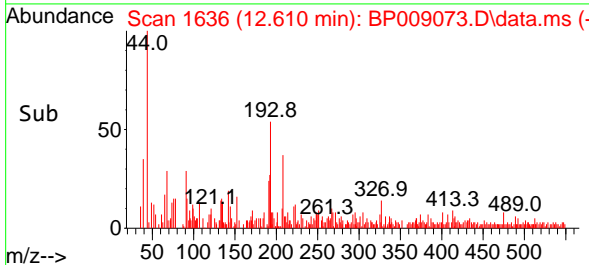
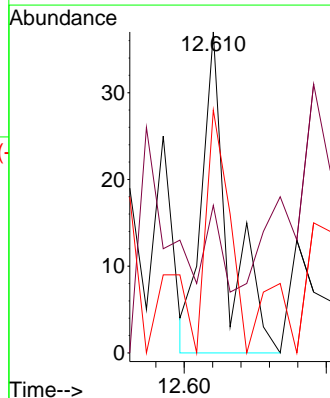
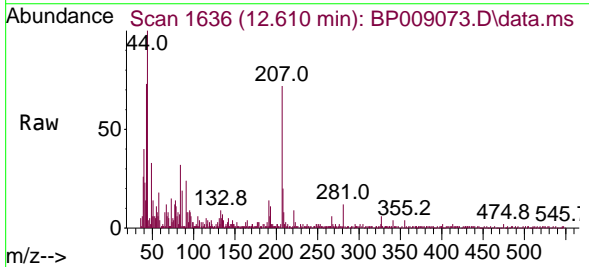
Instrument :  
 BNA\_P  
 ClientSampleId :  
 PB142499TB

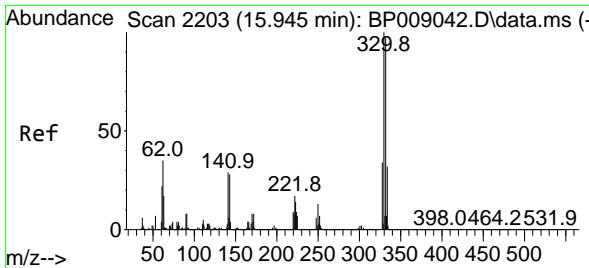
Tgt Ion:164 Resp: 546388  
 Ion Ratio Lower Upper  
 164 100  
 162 97.8 79.9 119.9  
 160 44.5 35.5 53.3



#41  
 Hexachlorocyclopentadiene  
 Concen: 8.659 ng  
 RT: 12.610 min Scan# 1636  
 Delta R.T. -0.006 min  
 Lab File: BP009073.D  
 Acq: 09 Feb 2022 11:40

Tgt Ion:237 Resp: 24  
 Ion Ratio Lower Upper  
 237 100  
 235 45.9 42.9 82.9  
 272 75.7 0.0 33.8#

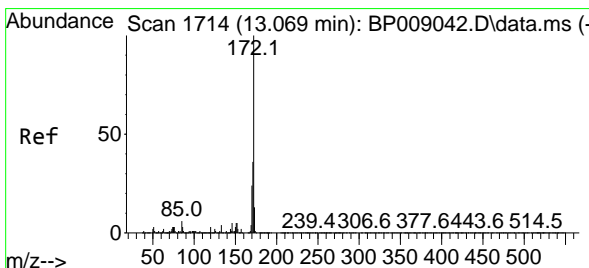
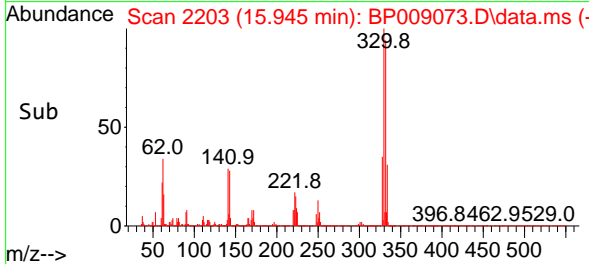
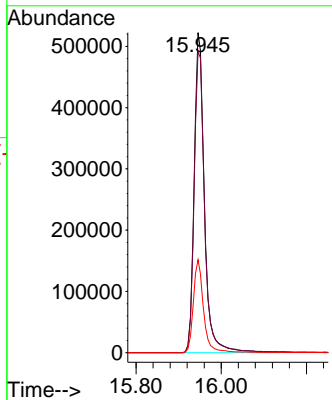
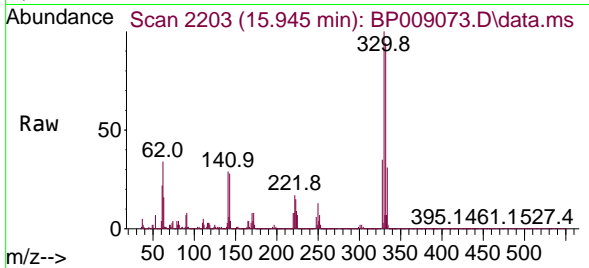




#42  
 2,4,6-Tribromophenol  
 Concen: 119.858 ng  
 RT: 15.945 min Scan# 21  
 Delta R.T. 0.000 min  
 Lab File: BP009073.D  
 Acq: 09 Feb 2022 11:40

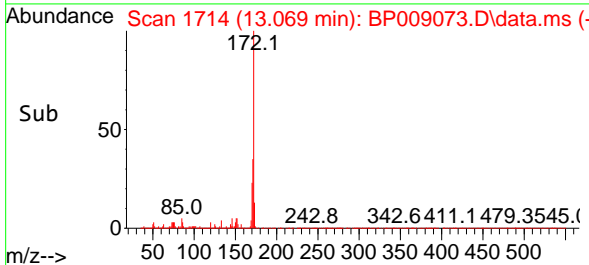
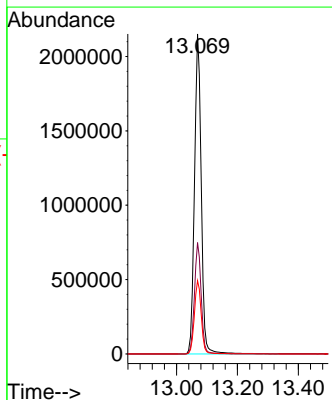
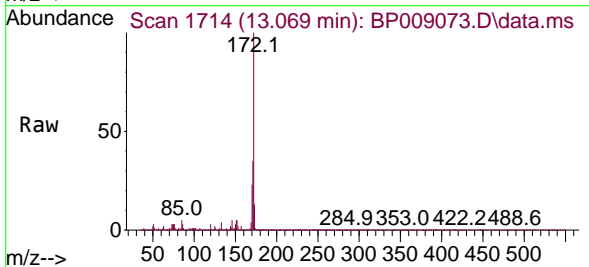
Instrument :  
 BNA\_P  
 ClientSampleId :  
 PB142499TB

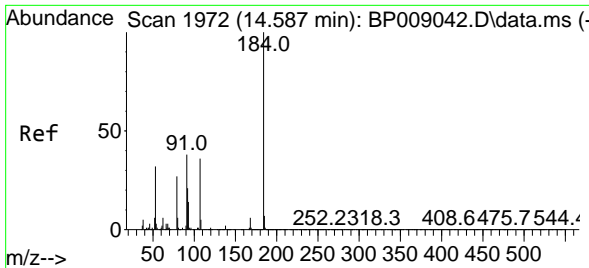
Tgt Ion:330 Resp: 874397  
 Ion Ratio Lower Upper  
 330 100  
 332 96.8 77.0 115.4  
 141 29.0 21.3 31.9



#45  
 2-Fluorobiphenyl  
 Concen: 85.035 ng  
 RT: 13.069 min Scan# 1714  
 Delta R.T. 0.000 min  
 Lab File: BP009073.D  
 Acq: 09 Feb 2022 11:40

Tgt Ion:172 Resp: 3318991  
 Ion Ratio Lower Upper  
 172 100  
 171 34.8 29.3 43.9  
 170 22.9 19.5 29.3



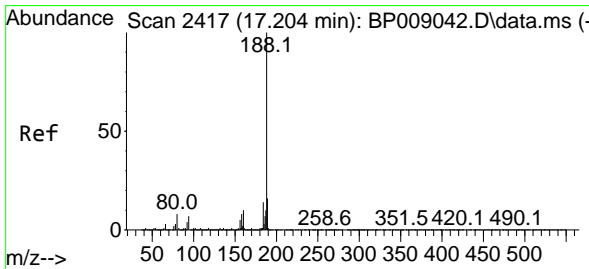
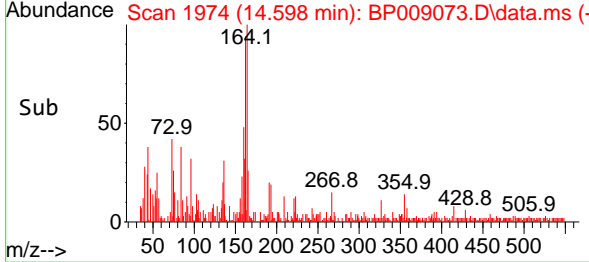
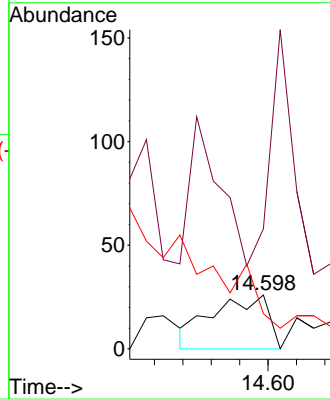
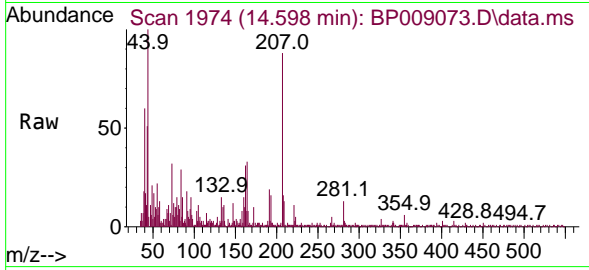


#54  
 2,4-Dinitrophenol  
 Concen: 2.177 ng  
 RT: 14.598 min Scan# 14598  
 Delta R.T. 0.011 min  
 Lab File: BP009073.D  
 Acq: 09 Feb 2022 11:40

Instrument :  
 BNA\_P  
 ClientSampleId :  
 PB142499TB

Tgt Ion:184 Resp: 35

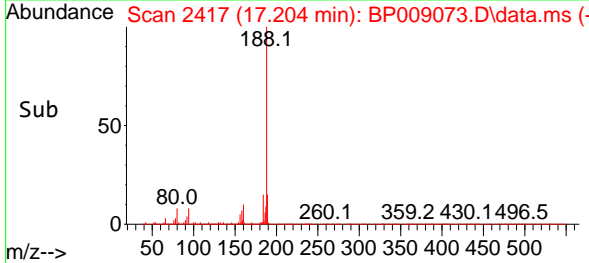
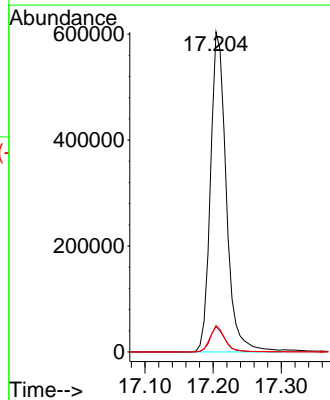
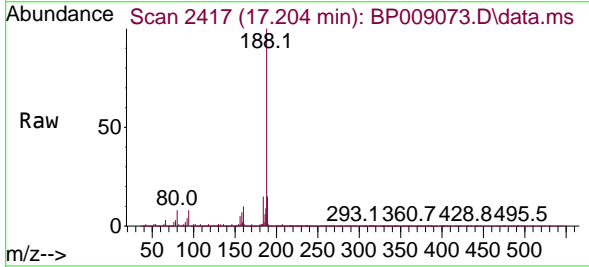
Ion	Ratio	Lower	Upper
184	100		
63	300.0	35.6	53.4#
154	146.2	43.4	65.0#



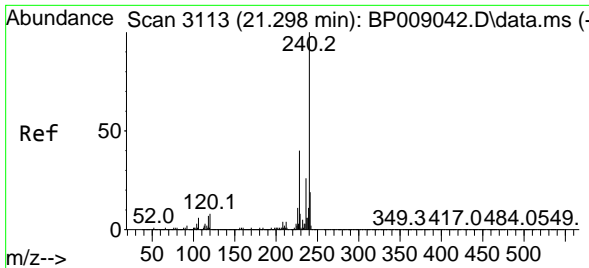
#64  
 Phenanthrene-d10  
 Concen: 20.000 ng  
 RT: 17.204 min Scan# 2417  
 Delta R.T. 0.000 min  
 Lab File: BP009073.D  
 Acq: 09 Feb 2022 11:40

Tgt Ion:188 Resp: 974634

Ion	Ratio	Lower	Upper
188	100		
94	8.0	6.8	10.2
80	8.2	7.2	10.8





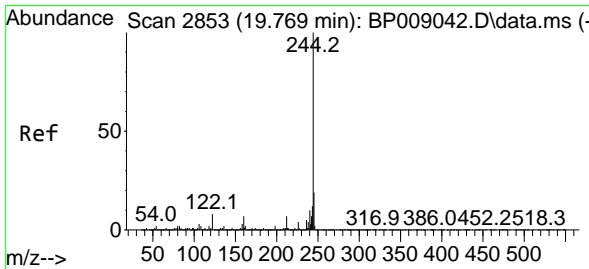
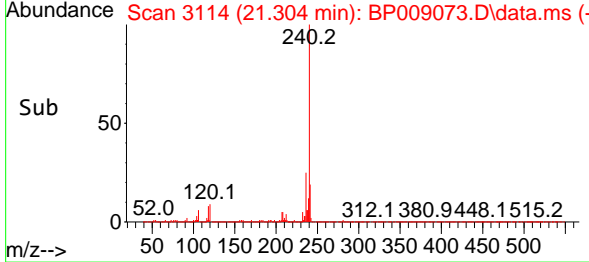
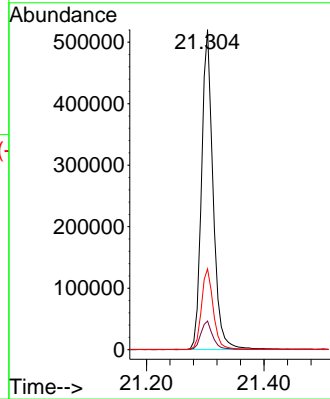
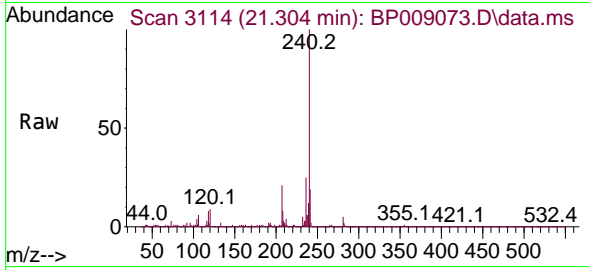


#76  
 Chrysene-d12  
 Concen: 20.000 ng  
 RT: 21.304 min Scan# 3114  
 Delta R.T. 0.006 min  
 Lab File: BP009073.D  
 Acq: 09 Feb 2022 11:40

Instrument :  
 BNA\_P  
 Client Sample Id :  
 PB142499TB

Tgt Ion: 240 Resp: 708130

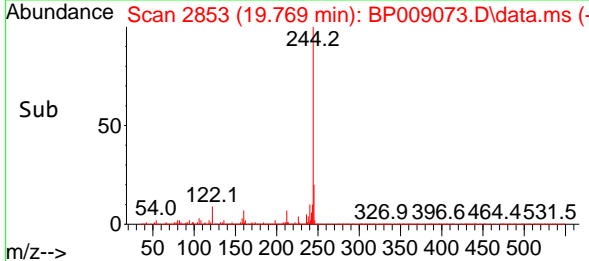
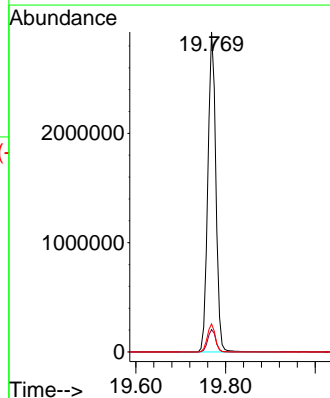
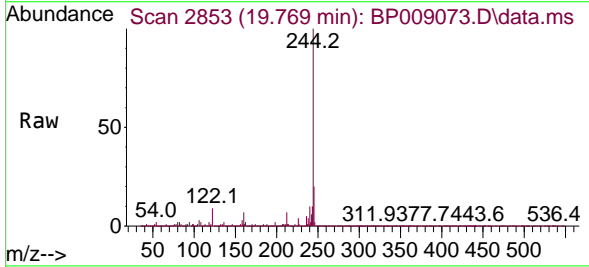
Ion	Ratio	Lower	Upper
240	100		
120	9.0	7.7	11.5
236	25.2	21.2	31.8

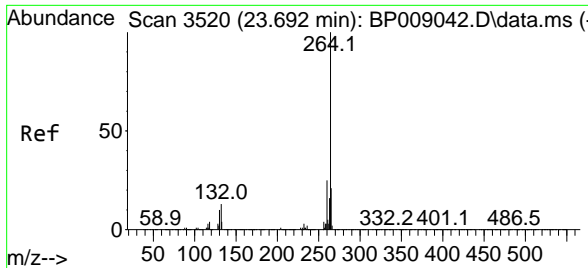


#79  
 Terphenyl-d14  
 Concen: 91.733 ng  
 RT: 19.769 min Scan# 2853  
 Delta R.T. 0.000 min  
 Lab File: BP009073.D  
 Acq: 09 Feb 2022 11:40

Tgt Ion: 244 Resp: 3612167

Ion	Ratio	Lower	Upper
244	100		
212	7.0	6.5	9.7
122	8.8	9.2	13.8





#86  
 Perylene-d12  
 Concen: 20.000 ng  
 RT: 23.704 min Scan# 31  
 Delta R.T. 0.012 min  
 Lab File: BP009073.D  
 Acq: 09 Feb 2022 11:40

Instrument :  
 BNA\_P  
 ClientSampleId :  
 PB142499TB

Tgt Ion:264 Resp: 673458

Ion	Ratio	Lower	Upper
264	100		
260	25.1	19.1	28.7
265	22.9	17.1	25.7

