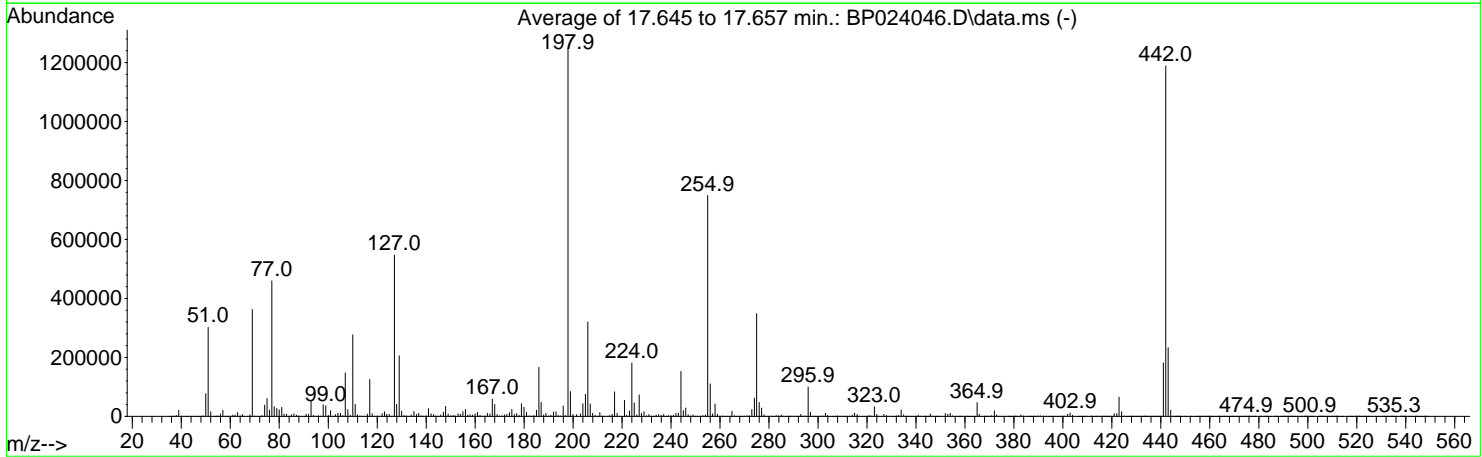
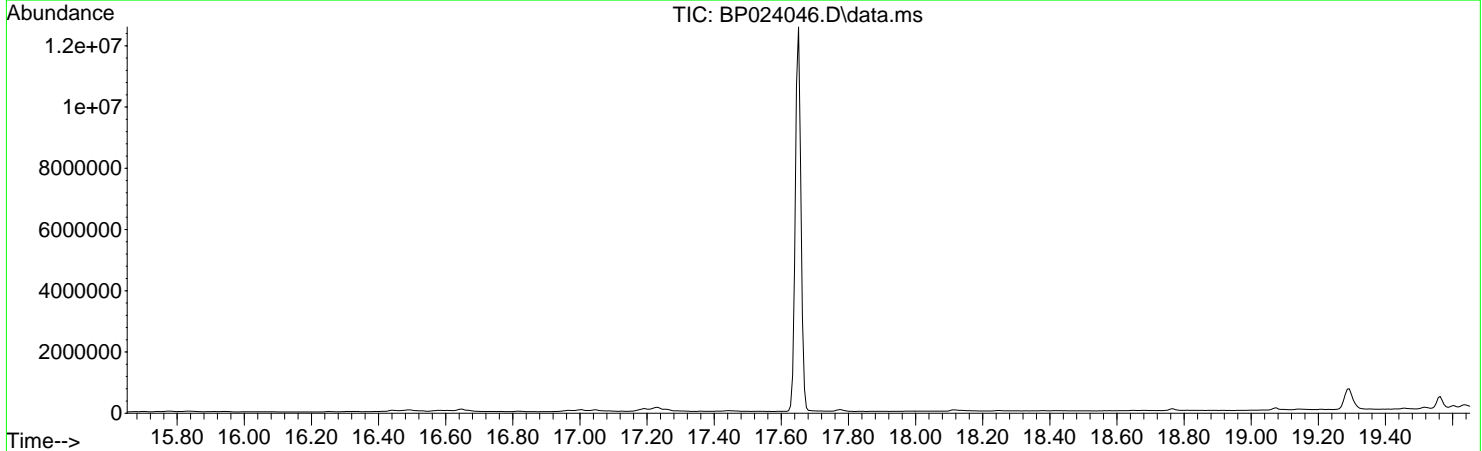


Data Path : Z:\svoasrv\HPCHEM1\BNA_P\Data\BP021225\
 Data File : BP024046.D
 Acq On : 12 Feb 2025 11:48
 Operator : RC/JU
 Sample : DFTPP614
 Misc :
 ALS Vial : 1 Sample Multiplier: 1

Instrument :
 BNA_P
 ClientSampleId :
 DFTPP614

Integration File: LSCINT.P

Method : Z:\svoasrv\HPCHEM1\BNA_P\Methods\SFAM-EPA-BP012925.MA.M
 Title : SVOA CALIBRATION
 Last Update : Thu Feb 13 12:56:03 2025



AutoFind: Scans 2475, 2476, 2477; Background Corrected with Scan 2469

Target Mass	Rel. to Mass	Lower Limit%	Upper Limit%	Rel. Abn%	Raw Abn	Result Pass/Fail
51	198	10	80	24.2	302205	PASS
68	69	0.00	2	1.6	5630	PASS
69	198	0.00	100	29.1	362582	PASS
70	69	0.00	2	0.5	1834	PASS
127	198	10	80	43.8	546897	PASS
197	198	0.00	2	0.3	3252	PASS
198	198	100	100	100.0	1247749	PASS
199	198	5	9	6.8	84396	PASS
275	198	10	60	27.9	348467	PASS
365	198	1	100	3.8	46808	PASS
441	198	0.01	100	14.6	181851	PASS
442	198	50	100	95.3	1188843	PASS
443	442	15	24	19.6	232924	PASS

m/z	Abundance
36.00	159.0
36.80	92.0
37.90	181.0
38.90	509.0
40.00	3325.0
41.00	636.0
42.00	192.0
43.00	400.0
44.00	4183.0
44.90	348.0
45.80	33.0
46.90	64.0
47.80	40.0
48.90	178.0
49.90	142.0
50.90	408.0
52.10	212.0
53.00	189.0
53.90	104.0
55.00	427.0
56.00	216.0
57.00	229.0
58.10	53.0
58.90	150.0
59.90	159.0
61.00	82.0
61.90	70.0
62.80	178.0
64.00	88.0
65.10	341.0
65.90	112.0
67.00	168.0
68.00	191.0
69.10	319.0
70.10	222.0
71.10	104.0
71.80	137.0
73.00	1978.0
74.00	304.0
75.00	332.0
75.70	80.0
76.10	105.0
76.90	866.0
77.90	681.0
79.00	273.0
79.90	53.0
81.10	269.0
81.90	186.0
82.80	239.0
83.70	296.0
84.90	140.0
85.90	190.0
87.20	139.0
87.80	140.0
88.90	367.0
90.10	131.0
91.00	941.0
91.90	297.0
92.80	212.0
93.90	55.0
94.90	211.0
96.00	612.0
96.80	215.0
97.90	72.0
99.10	46.0
99.50	16.0
100.10	9.0
100.80	111.0
102.00	192.0
102.90	286.0
103.90	379.0
105.00	975.0
106.00	210.0
106.80	139.0
108.10	89.0
109.20	189.0
110.10	61.0
111.00	101.0
111.70	27.0
112.30	23.0
113.00	142.0
114.10	22.0
115.00	550.0
115.90	261.0
116.80	421.0
117.90	287.0
118.90	360.0
120.00	192.0
120.90	75.0
122.10	56.0
122.90	52.0
123.90	99.0

Instrument :
BNA_P
ClientSampleId :
DFTPP614

125.00	189.0
125.70	38.0
126.10	66.0
127.00	154.0
127.90	341.0
128.90	311.0
129.90	193.0
130.90	176.0
131.90	140.0
133.00	804.0
133.90	220.0
135.00	336.0
136.00	77.0
136.80	85.0
138.10	91.0
138.90	230.0
140.00	133.0
140.90	191.0
141.90	159.0
143.00	168.0
143.90	255.0
145.00	298.0
145.90	123.0
147.00	693.0
147.90	97.0
148.90	214.0
150.00	98.0
151.00	106.0
151.90	106.0
153.00	178.0
153.90	92.0
154.90	168.0
156.10	78.0
157.00	133.0
158.10	40.0
159.00	69.0
159.80	30.0
160.00	30.0
160.90	158.0
162.10	111.0
162.90	167.0
164.10	78.0
164.90	182.0
166.00	345.0
167.00	1133.0
167.90	200.0
168.90	110.0
170.20	33.0
171.00	178.0
172.00	48.0
172.90	98.0
174.10	23.0
174.90	22.0
176.00	209.0
176.90	437.0
177.90	201.0
178.90	279.0
179.80	21.0
180.10	18.0
180.90	80.0
182.00	10.0
183.10	148.0
184.00	18.0
185.00	55.0
186.00	112.0
186.90	107.0
188.00	81.0
188.90	258.0
190.10	44.0
190.90	903.0
191.90	157.0
193.10	549.0
193.90	221.0
195.00	156.0
195.80	44.0
197.00	45.0
197.90	80.0
198.90	73.0
199.90	79.0
200.90	117.0
202.00	141.0
203.00	339.0
204.10	191.0
205.00	271.0
206.00	163.0
207.00	5893.0
207.90	1196.0
209.00	730.0
210.00	279.0
210.90	110.0
212.10	6.0
213.00	55.0
213.90	12.0
214.70	46.0
215.80	23.0
217.20	47.0

Instrument :
BNA_P
ClientSampleId :
DFTPP614

218.00	24.0
218.30	20.0
218.90	120.0
220.20	55.0
221.10	220.0
221.90	93.0
223.00	110.0
224.00	58.0
224.90	18.0
226.10	26.0
227.10	13.0
227.90	71.0
228.70	14.0
229.10	12.0
230.10	16.0
230.60	8.0
231.20	11.0
231.80	59.0
232.90	21.0
234.10	11.0
234.90	47.0
235.80	34.0
236.80	15.0
237.50	14.0
238.20	13.0
238.60	13.0
239.20	23.0
240.00	25.0
241.30	15.0
242.00	11.0
243.20	74.0
244.10	17.0
245.10	13.0
245.60	14.0
247.30	19.0
247.90	14.0
248.70	126.0
249.90	29.0
250.90	121.0
251.80	76.0
253.10	60.0
253.70	25.0
254.80	5.0
255.30	2.0
256.20	16.0
256.70	12.0
257.90	18.0
259.20	8.0
259.90	10.0
260.30	21.0
261.20	5.0
262.10	7.0
262.50	20.0
263.00	9.0
263.20	8.0
264.00	54.0
264.90	211.0
265.70	95.0
266.80	257.0
267.90	111.0
268.70	111.0
269.50	13.0
270.30	18.0
270.70	13.0
271.50	21.0
272.10	10.0
272.80	9.0
273.20	20.0
274.00	13.0
274.90	13.0
276.00	66.0
276.70	19.0
277.80	12.0
278.80	20.0
279.60	8.0
280.00	10.0
281.00	1768.0
281.90	584.0
282.80	303.0
284.00	98.0
285.10	21.0
286.30	26.0
287.40	3.0
288.60	16.0
289.80	1.0
290.70	11.0
291.30	3.0
291.80	1.0
293.00	14.0
294.60	54.0
296.00	22.0
296.90	19.0
297.60	15.0
298.10	10.0
298.90	17.0
299.70	3.0

Instrument :
BNA_P
ClientSampleId :
DFTPP614

300.40	1.0
301.00	10.0
302.50	21.0
303.20	10.0
303.90	14.0
304.60	3.0
305.00	2.0
305.50	1.0
307.00	12.0
308.60	18.0
309.40	2.0
309.90	2.0
310.80	12.0
311.30	6.0
312.90	16.0
313.60	2.0
314.30	7.0
315.70	7.0
316.40	1.0
316.90	2.0
317.60	5.0
318.30	3.0
318.80	2.0
320.10	13.0
320.90	1.0
321.50	1.0
322.40	11.0
323.00	2.0
323.60	9.0
325.20	63.0
325.90	3.0
327.10	68.0
327.70	24.0
329.00	20.0
329.60	3.0
330.00	5.0
330.90	2.0
331.50	2.0
332.80	4.0
333.80	1.0
334.90	9.0
335.50	4.0
336.40	3.0
337.60	2.0
338.20	2.0
339.10	14.0
339.60	15.0
341.10	133.0
341.70	66.0
343.00	75.0
343.60	4.0
344.60	6.0
345.30	1.0
345.90	18.0
346.50	1.0
347.10	8.0
347.60	5.0
348.20	4.0
348.70	2.0
349.60	1.0
350.50	6.0
351.20	1.0
352.10	6.0
352.70	3.0
353.30	11.0
354.90	238.0
355.90	176.0
357.10	85.0
357.60	10.0
358.30	2.0
359.30	3.0
359.80	23.0
360.50	4.0
361.10	1.0
361.50	3.0
362.90	4.0
363.80	4.0
364.50	4.0
365.20	2.0
365.70	2.0
366.60	8.0
367.80	5.0
368.90	9.0
369.30	4.0
370.00	12.0
371.00	13.0
371.60	4.0
372.90	2.0
374.10	3.0
375.20	14.0
375.70	19.0
376.20	1.0
376.80	16.0
377.60	5.0
379.10	2.0
380.00	5.0

Instrument :
BNA_P
ClientSampleId :
DFTPP614

380.60	2.0
381.40	2.0
382.10	3.0
382.80	8.0
385.00	16.0
386.00	1.0
386.70	11.0
387.60	9.0
388.40	4.0
388.90	13.0
390.20	11.0
390.70	2.0
391.30	1.0
391.80	3.0
392.30	1.0
393.60	12.0
394.40	4.0
394.90	3.0
396.40	2.0
397.50	3.0
398.90	6.0
399.60	10.0
400.70	30.0
402.00	19.0
402.90	22.0
403.80	7.0
404.40	9.0
405.20	8.0
406.20	1.0
406.90	12.0
408.00	1.0
408.80	5.0
410.20	21.0
411.10	2.0
411.90	2.0
412.60	5.0
413.10	7.0
414.70	107.0
415.80	24.0
416.80	13.0
417.60	24.0
418.70	2.0
419.30	4.0
420.10	3.0
420.50	2.0
421.20	3.0
422.30	11.0
422.90	3.0
423.40	3.0
424.50	9.0
425.90	4.0
427.10	1.0
427.50	3.0
428.10	1.0
428.90	58.0
429.80	12.0
430.70	18.0
431.50	17.0
432.30	1.0
432.80	14.0
433.40	1.0
434.00	1.0
434.50	2.0
435.60	3.0
436.60	12.0
437.80	19.0
438.60	2.0
439.20	2.0
440.50	12.0
441.10	16.0
441.60	16.0
443.10	15.0
444.50	19.0
445.00	18.0
446.10	2.0
446.90	5.0
448.50	10.0
449.10	15.0
449.80	2.0
450.20	2.0
450.50	2.0
451.50	6.0
452.10	0.0
452.70	4.0
453.10	2.0
453.90	2.0
454.50	3.0
455.40	1.0
456.00	6.0
456.40	11.0
457.40	1.0
457.70	2.0
458.90	3.0
459.80	7.0
460.80	19.0
461.50	6.0

Instrument :
BNA_P
ClientSampleId :
DFTPP614

462.70	21.0
463.90	15.0
464.50	1.0
465.30	3.0
466.20	2.0
467.00	2.0
467.30	2.0
468.40	2.0
469.40	1.0
470.10	7.0
470.80	5.0
471.70	11.0
472.60	1.0
473.30	2.0
473.70	1.0
474.30	1.0
474.80	13.0
476.00	13.0
476.50	16.0
477.20	9.0
478.10	10.0
479.50	3.0
480.50	1.0
481.10	2.0
481.70	1.0
482.40	4.0
483.30	1.0
484.20	6.0
485.30	1.0
485.90	1.0
486.60	1.0
487.50	1.0
487.80	2.0
488.40	1.0
489.00	9.0
489.60	0.0
490.60	2.0
491.10	4.0
492.10	3.0
493.30	1.0
493.80	2.0
494.50	0.0
495.00	7.0
496.10	5.0
496.70	9.0
498.20	3.0
499.40	1.0
500.30	3.0
501.10	3.0
501.80	1.0
502.70	6.0
503.30	8.0
503.80	20.0
504.40	2.0
505.00	1.0
506.10	2.0
506.60	1.0
507.30	18.0
507.90	2.0
509.20	4.0
509.80	2.0
511.10	2.0
512.00	1.0
512.90	3.0
513.40	13.0
514.00	3.0
514.50	17.0
515.30	10.0
515.80	2.0
516.30	1.0
517.10	3.0
517.70	2.0
518.30	1.0
519.00	10.0
519.70	0.0
520.60	4.0
521.80	18.0
522.30	16.0
522.90	1.0
523.90	14.0
524.60	1.0
525.60	5.0
525.90	6.0
526.80	3.0
527.80	3.0
528.10	2.0
529.00	1.0
529.90	3.0
531.00	0.0
531.50	1.0
532.00	4.0
532.60	1.0
533.00	1.0
533.50	2.0
535.00	47.0
536.60	14.0

Instrument :
BNA_P
ClientSampleId :
DFTPP614

537.10	12.0
538.10	2.0
538.80	1.0
539.70	2.0
540.70	16.0
541.70	2.0
542.50	3.0
543.10	2.0
543.90	2.0
544.80	3.0
545.80	3.0
546.60	2.0
547.20	4.0
548.30	1.0
548.90	14.0
549.40	9.0

Instrument :
BNA_P
ClientSampleId :
DFTPP614

m/z	Abundance
35.00	45.0
36.00	453.0
37.00	1672.0
38.00	4245.0
39.00	23904.0
40.00	4289.0
41.00	1224.0
41.90	189.0
43.00	741.0
44.00	4182.0
45.00	968.0
46.10	160.0
46.80	156.0
48.10	251.0
49.00	2649.0
50.00	89624.0
51.00	350336.0
52.00	18968.0
53.00	861.0
53.90	198.0
55.00	2500.0
56.00	9772.0
57.00	23768.0
58.00	1186.0
58.90	492.0
59.90	425.0
61.00	4576.0
62.00	6124.0
63.00	15575.0
64.00	2523.0
65.00	8621.0
66.00	741.0
67.00	887.0
68.00	6876.0
69.00	414464.0
70.00	2341.0
71.10	445.0
72.00	287.0
73.00	5092.0
74.00	42896.0
75.00	69608.0
76.00	24352.0
77.00	529216.0
78.00	37808.0
79.00	31088.0
80.00	25776.0
81.00	34904.0
82.00	9061.0
83.00	8854.0
83.90	1351.0
85.00	6010.0
86.00	9757.0
87.00	4546.0
88.00	2146.0
88.90	1165.0
89.90	286.0
91.00	8683.0
92.00	8860.0
93.00	58856.0
94.00	3784.0
95.00	1279.0
96.00	3491.0
96.90	1221.0
98.00	43552.0
99.00	40320.0
100.00	3383.0
101.00	21704.0
102.00	1377.0
103.00	6652.0
104.00	12311.0
105.00	12620.0
106.00	3844.0
107.00	163200.0
108.00	25376.0
109.00	4646.0
110.00	303616.0
111.00	46160.0
112.00	5769.0
112.90	1752.0
114.10	715.0
115.00	1395.0
116.00	8722.0
117.00	138432.0
118.00	10451.0
119.00	1820.0
120.00	2037.0
121.00	980.0
122.00	10259.0
123.00	18072.0
123.90	7683.0
125.00	6739.0
126.00	1441.0

Instrument :
BNA_P
ClientSampleId :
DFTPP614

127.00	599424.0
128.00	45232.0
129.00	224320.0
130.00	19936.0
131.00	3973.0
132.00	2279.0
133.00	1714.0
133.90	6366.0
135.00	18432.0
136.00	8048.0
137.00	11784.0
137.90	2121.0
138.80	1323.0
139.90	2710.0
141.00	28608.0
142.00	9233.0
143.00	7393.0
144.00	2003.0
145.00	1881.0
146.00	5204.0
147.00	16202.0
148.00	36512.0
149.00	9072.0
150.00	2183.0
151.10	3974.0
151.80	2499.0
153.00	9353.0
154.00	7620.0
155.00	17536.0
156.00	24840.0
157.00	4966.0
157.90	6139.0
159.00	4428.0
160.00	9495.0
161.00	14600.0
161.90	4426.0
162.90	1214.0
164.00	1701.0
165.00	11109.0
166.00	9686.0
167.00	62720.0
168.00	44472.0
169.00	6197.0
170.00	2036.0
170.90	2674.0
171.90	5325.0
173.00	7204.0
174.00	12490.0
175.00	25528.0
176.00	6170.0
177.00	11157.0
178.00	4247.0
178.90	45992.0
180.00	33096.0
181.00	14875.0
182.00	2778.0
182.90	1535.0
184.00	3478.0
185.00	20776.0
186.00	176640.0
187.00	50240.0
188.00	5702.0
188.90	11024.0
189.90	2114.0
190.90	5570.0
192.00	15950.0
193.00	17728.0
194.00	3466.0
194.90	2211.0
196.00	37160.0
196.80	5994.0
197.90	1308160.0
198.90	89864.0
200.00	7273.0
201.40	5700.0
203.00	8993.0
204.00	46640.0
205.00	78816.0
206.00	337408.0
207.00	50496.0
208.00	11882.0
209.00	4677.0
211.00	13100.0
213.00	908.0
214.10	425.0
215.00	3878.0
216.00	7117.0
216.90	85400.0
218.00	10744.0
219.10	1088.0
221.00	57056.0
221.80	13734.0
223.00	18672.0
224.00	186112.0
225.00	47896.0
226.00	5757.0

Instrument :
BNA_P
ClientSampleId :
DFTPP614

227.00	74376.0
228.00	10351.0
229.00	16228.0
230.00	2198.0
231.00	6616.0
232.10	1055.0
232.80	1270.0
233.90	4850.0
234.90	4942.0
236.00	3772.0
237.00	7574.0
238.00	1167.0
239.00	2877.0
239.90	2027.0
240.90	3974.0
242.00	10751.0
243.00	11255.0
244.00	154240.0
245.00	20424.0
246.00	28448.0
246.90	5281.0
247.90	1640.0
249.00	5893.0
250.00	1170.0
251.00	1172.0
252.00	1383.0
253.00	2816.0
254.00	4186.0
255.00	741824.0
256.00	113672.0
257.00	9882.0
258.00	42784.0
258.90	6667.0
259.90	1338.0
260.90	1518.0
261.90	207.0
262.90	378.0
264.00	1118.0
264.90	18136.0
266.00	2787.0
267.00	934.0
267.90	457.0
269.00	168.0
269.90	817.0
271.00	2229.0
271.90	1870.0
273.00	23240.0
274.00	59184.0
275.00	336256.0
276.00	47904.0
276.90	27912.0
278.00	5047.0
279.00	1179.0
280.00	142.0
281.00	2901.0
282.00	1473.0
283.00	3687.0
284.00	2297.0
285.00	5059.0
286.00	1092.0
287.00	156.0
287.90	472.0
288.90	1161.0
289.90	988.0
290.90	835.0
291.90	1036.0
293.00	6485.0
293.90	1613.0
294.90	1609.0
295.90	96720.0
297.00	13229.0
298.00	1000.0
299.00	327.0
300.10	137.0
300.90	1204.0
302.00	1699.0
303.00	9979.0
304.00	3303.0
305.00	408.0
305.80	201.0
306.80	130.0
307.90	1454.0
309.00	1010.0
310.00	1269.0
311.00	274.0
311.90	366.0
312.90	685.0
314.00	4475.0
314.90	9690.0
316.00	6266.0
317.00	1047.0
318.10	107.0
319.00	144.0
320.00	430.0
320.90	2683.0
321.90	1458.0

Instrument :
BNA_P
ClientSampleId :
DFTPP614

323.00	31120.0
324.00	5993.0
325.00	817.0
326.00	698.0
326.90	6041.0
328.00	2927.0
329.00	449.0
329.80	105.0
330.80	108.0
331.90	2270.0
333.00	2423.0
334.00	20120.0
335.00	4901.0
335.90	563.0
336.80	114.0
337.80	21.0
339.00	447.0
339.80	572.0
341.00	3437.0
341.90	1237.0
342.90	248.0
343.80	139.0
344.70	67.0
345.90	7168.0
347.00	1262.0
348.10	175.0
349.90	317.0
350.90	678.0
352.00	8814.0
353.00	6347.0
354.00	9763.0
355.00	2494.0
356.00	500.0
357.00	203.0
357.70	181.0
359.10	708.0
360.00	195.0
360.90	206.0
361.80	70.0
362.90	137.0
363.80	285.0
364.90	41352.0
365.90	6364.0
366.90	554.0
368.00	46.0
368.80	18.0
369.90	959.0
370.90	2211.0
372.00	15772.0
373.00	4065.0
374.00	535.0
375.10	20.0
375.90	14.0
377.00	283.0
378.00	152.0
378.70	39.0
379.30	7.0
380.00	11.0
380.50	21.0
381.80	79.0
383.00	4257.0
383.90	1442.0
385.00	477.0
385.80	34.0
386.60	22.0
387.30	14.0
388.10	17.0
388.80	141.0
389.90	1754.0
390.90	1302.0
392.00	1121.0
393.10	153.0
394.10	3.0
394.90	113.0
395.80	103.0
396.90	231.0
397.80	10.0
399.00	29.0
399.70	20.0
400.90	1096.0
402.00	5916.0
403.00	9246.0
403.90	2780.0
405.00	844.0
405.90	74.0
406.70	19.0
407.30	17.0
408.00	84.0
408.90	65.0
410.00	313.0
411.10	50.0
412.50	15.0
413.90	20.0
415.00	422.0
415.70	119.0
416.90	52.0

Instrument :
BNA_P
ClientSampleId :
DFTPP614

417.60	29.0
418.40	24.0
419.10	47.0
419.80	165.0
421.00	7114.0
422.00	7259.0
423.00	52168.0
424.00	13221.0
425.00	2005.0
426.00	113.0
427.20	14.0
428.00	15.0
429.10	174.0
430.10	97.0
431.20	49.0
432.10	9.0
432.70	5.0
433.20	8.0
433.80	8.0
434.70	15.0
435.30	10.0
436.40	20.0
437.80	223.0
438.80	336.0
439.50	153.0
441.00	139520.0
442.00	912320.0
443.00	183296.0
444.00	16936.0
445.00	953.0
446.20	12.0
446.90	4.0
447.80	3.0
449.20	1.0
450.00	3.0
451.50	8.0
452.80	8.0
454.10	1.0
454.70	1.0
455.50	0.0
456.10	2.0
456.60	17.0
457.80	43.0
458.50	5.0
459.20	14.0
459.70	15.0
460.20	5.0
460.90	23.0
461.70	1.0
462.10	1.0
462.60	2.0
463.20	2.0
463.90	8.0
465.30	1.0
465.90	2.0
467.30	7.0
468.60	4.0
469.40	2.0
470.60	4.0
471.20	2.0
471.90	16.0
472.60	9.0
473.70	20.0
474.90	63.0
475.60	6.0
476.20	19.0
476.80	14.0
477.90	4.0
478.70	16.0
479.70	1.0
480.70	1.0
481.20	2.0
481.90	1.0
482.60	4.0
483.00	3.0
484.10	3.0
484.80	3.0
485.40	1.0
485.90	1.0
486.40	7.0
487.70	18.0
488.70	5.0
489.90	25.0
490.70	1.0
491.50	15.0
492.60	5.0
493.40	5.0
494.00	13.0
494.60	2.0
495.60	4.0
496.10	5.0
496.80	3.0
497.60	1.0
498.20	2.0
498.50	1.0
499.10	2.0

Instrument :
BNA_P
ClientSampleId :
DFTPP614

499.60	6.0
500.10	3.0
500.90	20.0
501.60	1.0
502.10	2.0
502.80	11.0
503.40	15.0
504.30	12.0
505.20	8.0
505.60	13.0
506.30	9.0
506.60	10.0
507.50	7.0
508.10	6.0
509.50	2.0
509.90	2.0
510.50	1.0
511.40	2.0
511.70	2.0
513.30	9.0
513.90	2.0
514.60	3.0
515.20	1.0
516.00	21.0
517.30	0.0
518.20	3.0
519.30	2.0
520.50	19.0
521.40	0.0
521.80	1.0
522.40	4.0
523.50	2.0
523.90	3.0
524.50	7.0
525.00	8.0
527.00	2.0
527.90	1.0
528.70	10.0
529.40	1.0
530.30	2.0
530.80	5.0
531.80	3.0
532.20	1.0
532.70	1.0
533.30	0.0
534.10	4.0
534.70	18.0
535.30	9.0
536.60	3.0
537.70	11.0
538.30	1.0
539.00	10.0
539.60	18.0
540.50	1.0
541.10	4.0
541.60	2.0
542.60	1.0
543.70	2.0
544.40	6.0
544.90	1.0
545.80	4.0
546.60	10.0
547.40	2.0
547.90	2.0
548.70	2.0
549.40	17.0

Instrument :
BNA_P
ClientSampleId :
DFTPP614

m/z	Abundance
35.10	67.0
36.00	371.0
37.00	1766.0
38.00	4192.0
39.00	24352.0
40.00	4150.0
41.00	1228.0
41.90	302.0
43.00	776.0
44.00	4125.0
45.00	797.0
46.10	77.0
46.90	143.0
48.00	244.0
49.00	2572.0
50.00	90584.0
51.00	354112.0
52.00	18344.0
53.00	1127.0
53.90	195.0
55.00	2377.0
56.00	10024.0
57.00	24432.0
57.90	1095.0
59.10	529.0
60.00	438.0
61.00	5040.0
62.00	5769.0
63.00	15957.0
64.00	2945.0
65.00	7739.0
66.00	634.0
66.90	745.0
68.00	6704.0
69.00	430272.0
70.00	2549.0
70.90	496.0
72.00	273.0
73.00	5340.0
74.00	45184.0
75.00	73080.0
76.00	26024.0
77.00	545984.0
78.00	39736.0
79.00	31120.0
80.00	26280.0
81.00	35784.0
81.90	9542.0
83.00	8415.0
84.00	1154.0
85.00	6843.0
86.00	10394.0
87.00	4921.0
88.00	2365.0
88.90	1264.0
90.00	209.0
91.00	9016.0
92.00	9404.0
93.00	61672.0
94.00	3994.0
95.00	1328.0
96.00	3496.0
97.00	1499.0
98.00	48008.0
99.00	43856.0
100.00	3703.0
101.00	22352.0
102.00	1407.0
102.90	7321.0
104.00	13814.0
105.00	13667.0
106.00	4208.0
107.00	178944.0
108.00	27128.0
109.00	4879.0
110.00	339968.0
111.00	49032.0
111.90	6811.0
113.00	1731.0
114.20	676.0
114.90	1193.0
116.00	9395.0
117.00	148864.0
118.00	11824.0
119.00	1637.0
120.00	2377.0
120.90	984.0
121.90	12094.0
123.00	18704.0
124.00	8546.0
125.00	7909.0
126.00	1698.0

Instrument :
BNA_P
ClientSampleId :
DFTPP614

127.00	662656.0
128.00	50264.0
129.00	249344.0
130.00	21928.0
131.00	3871.0
132.00	2376.0
133.00	1702.0
134.00	7146.0
135.00	21568.0
136.00	7940.0
137.00	12032.0
138.00	2957.0
138.90	1462.0
140.00	3376.0
141.00	31536.0
142.00	10900.0
143.00	7671.0
144.00	2254.0
144.90	1864.0
146.00	6015.0
147.00	18088.0
148.00	40856.0
149.00	9585.0
150.00	2515.0
151.00	4298.0
151.70	2997.0
153.00	10597.0
154.00	8502.0
155.00	19392.0
156.00	29168.0
157.00	5381.0
157.90	5953.0
158.90	5150.0
160.00	11231.0
161.00	16424.0
162.00	4469.0
163.00	1531.0
164.00	2061.0
165.00	13599.0
166.00	10162.0
167.00	71416.0
168.00	47896.0
169.00	7349.0
170.00	2294.0
170.90	2808.0
172.00	5805.0
173.00	8382.0
174.00	15441.0
175.00	28536.0
176.00	8316.0
176.90	12686.0
177.90	4683.0
178.90	51160.0
180.00	38456.0
181.00	17160.0
182.00	2864.0
182.90	2071.0
184.00	4456.0
185.00	26048.0
186.00	199424.0
187.00	57584.0
188.00	5956.0
189.00	11996.0
190.00	1759.0
191.00	6906.0
192.00	17760.0
193.00	19280.0
194.00	4280.0
195.00	1784.0
196.00	41896.0
197.90	1507328.0
199.00	102296.0
200.00	7847.0
201.40	7412.0
203.00	10053.0
204.00	51168.0
205.00	90784.0
206.00	386240.0
207.00	57128.0
208.00	13329.0
209.00	5000.0
210.90	15117.0
211.80	3051.0
213.00	832.0
213.90	519.0
214.90	3707.0
216.00	8341.0
216.90	101552.0
218.00	12530.0
219.00	1427.0
221.00	65328.0
223.00	22312.0
224.00	218944.0
225.00	56096.0
226.00	5838.0
227.00	87256.0

Instrument :
BNA_P
ClientSampleId :
DFTPP614

228.00	12699.0
228.90	18896.0
229.90	2624.0
231.00	7759.0
232.00	1591.0
233.00	1761.0
233.90	5699.0
234.90	6930.0
236.00	4783.0
237.00	7744.0
238.00	1072.0
238.90	3566.0
240.00	2954.0
241.00	4995.0
242.00	11541.0
243.00	13394.0
244.00	185664.0
245.00	23344.0
246.00	33400.0
247.00	6288.0
247.90	1435.0
248.90	5859.0
250.00	1251.0
250.90	1231.0
251.90	1541.0
253.00	3690.0
254.00	5289.0
255.00	903936.0
256.00	131648.0
257.00	10381.0
258.00	48928.0
258.90	8600.0
259.90	1266.0
261.00	1839.0
262.00	323.0
263.00	491.0
264.00	1497.0
265.00	20408.0
265.90	3000.0
267.00	722.0
267.80	177.0
268.10	192.0
269.10	197.0
269.90	1138.0
271.00	2544.0
272.00	2395.0
273.00	29504.0
274.00	76336.0
275.00	420224.0
276.00	57128.0
277.00	33304.0
278.00	6462.0
278.90	1610.0
279.80	234.0
281.00	2641.0
282.00	1442.0
282.90	4318.0
284.00	2690.0
285.00	6063.0
286.00	1268.0
286.90	181.0
287.90	525.0
288.90	1565.0
289.90	1205.0
291.00	1076.0
292.00	1930.0
292.90	7459.0
293.90	2181.0
294.90	2268.0
296.00	118592.0
297.00	16960.0
298.00	1151.0
299.00	289.0
300.00	125.0
300.90	1744.0
302.00	1921.0
303.00	12471.0
304.00	3894.0
305.00	813.0
305.80	99.0
307.00	103.0
307.90	1801.0
308.90	1458.0
309.90	1712.0
310.80	267.0
311.90	396.0
312.90	1219.0
314.00	5675.0
314.90	12599.0
316.00	8142.0
316.90	1502.0
317.90	112.0
319.00	176.0
320.00	683.0
321.00	4041.0
322.00	1888.0

Instrument :
BNA_P
ClientSampleId :
DFTPP614

323.00	38648.0
324.00	7344.0
324.90	806.0
325.90	860.0
326.90	7904.0
327.90	4183.0
329.00	570.0
329.90	224.0
330.80	150.0
332.00	2978.0
333.00	3953.0
334.00	26424.0
335.00	6386.0
336.00	845.0
336.80	77.0
337.80	30.0
338.80	594.0
340.00	721.0
340.90	4747.0
342.00	1469.0
343.00	339.0
344.00	105.0
345.00	166.0
345.90	10079.0
347.00	1607.0
348.00	216.0
348.70	18.0
349.90	411.0
352.00	11995.0
353.00	8562.0
354.00	12703.0
355.00	2870.0
355.80	321.0
356.10	323.0
357.00	294.0
358.00	257.0
359.00	908.0
360.00	283.0
360.70	165.0
361.10	199.0
361.80	63.0
362.80	212.0
363.90	435.0
365.00	56808.0
365.90	8713.0
366.80	607.0
367.90	61.0
370.00	993.0
370.90	2887.0
372.00	22992.0
373.00	5852.0
373.90	646.0
374.80	52.0
375.20	11.0
375.90	3.0
377.00	796.0
377.70	167.0
378.80	74.0
379.80	8.0
380.70	22.0
381.70	99.0
382.90	6216.0
383.90	1579.0
384.80	483.0
386.10	74.0
387.00	13.0
388.00	19.0
388.70	154.0
389.90	3085.0
390.90	1898.0
392.00	1439.0
392.90	286.0
394.90	271.0
395.70	147.0
397.00	280.0
397.80	25.0
398.90	23.0
399.50	6.0
399.90	23.0
400.80	1095.0
401.90	8315.0
403.00	13847.0
404.00	4866.0
404.90	806.0
405.90	86.0
406.70	21.0
408.00	78.0
408.60	37.0
409.00	60.0
409.90	383.0
411.00	65.0
411.90	14.0
412.90	17.0
413.60	12.0
414.90	798.0
415.90	146.0

Instrument :
BNA_P
ClientSampleId :
DFTPP614

417.10	41.0
417.80	34.0
418.90	133.0
419.90	246.0
421.00	10921.0
422.00	10579.0
423.00	77448.0
424.00	18256.0
425.00	1942.0
426.00	190.0
426.60	45.0
427.80	22.0
428.60	71.0
429.20	74.0
429.80	57.0
430.50	12.0
431.30	28.0
432.20	15.0
432.90	13.0
433.10	14.0
434.10	13.0
435.30	21.0
436.00	25.0
436.90	21.0
438.00	304.0
439.00	286.0
440.00	513.0
441.00	215360.0
442.00	1399808.0
443.00	279040.0
444.00	25064.0
445.00	1660.0
445.90	37.0
447.10	3.0
447.60	10.0
448.70	2.0
450.10	11.0
450.70	4.0
451.90	10.0
452.40	3.0
453.20	4.0
454.00	18.0
454.70	2.0
455.40	15.0
456.20	3.0
456.80	9.0
457.80	69.0
459.10	9.0
459.80	21.0
460.60	8.0
461.20	12.0
462.20	12.0
462.60	8.0
463.70	3.0
464.40	5.0
465.50	1.0
466.20	2.0
466.90	1.0
467.40	1.0
467.90	3.0
469.10	3.0
469.50	3.0
470.40	1.0
471.00	8.0
472.00	8.0
472.40	14.0
473.40	8.0
474.40	17.0
475.00	62.0
475.90	22.0
476.80	2.0
477.40	3.0
478.50	12.0
480.60	10.0
482.00	2.0
482.50	2.0
483.30	16.0
484.20	1.0
484.70	1.0
485.30	1.0
486.30	1.0
486.70	3.0
487.20	2.0
488.70	18.0
489.40	7.0
490.10	13.0
491.00	23.0
492.30	1.0
492.70	16.0
493.70	2.0
494.60	2.0
495.60	14.0
496.20	2.0
496.70	1.0
497.40	7.0
499.30	2.0

Instrument :
BNA_P
ClientSampleId :
DFTPP614

500.80	5.0
501.90	2.0
502.50	3.0
503.30	8.0
504.30	14.0
505.00	1.0
505.80	3.0
507.40	2.0
507.90	2.0
508.70	1.0
509.20	2.0
510.30	2.0
510.90	7.0
511.90	2.0
512.40	1.0
513.60	3.0
515.10	2.0
515.70	2.0
516.50	3.0
517.00	8.0
517.70	2.0
518.30	2.0
519.60	8.0
520.10	10.0
520.90	13.0
521.60	2.0
522.80	17.0
523.30	2.0
523.70	2.0
524.30	2.0
524.80	2.0
526.10	6.0
527.40	5.0
528.50	11.0
529.40	3.0
529.90	5.0
530.70	3.0
531.10	4.0
531.60	1.0
532.30	3.0
533.30	2.0
533.80	2.0
535.20	15.0
536.60	13.0
537.30	8.0
537.90	16.0
538.50	22.0
539.00	1.0
539.90	2.0
541.00	1.0
541.60	19.0
542.30	6.0
543.60	6.0
544.10	1.0
545.00	4.0
545.60	1.0
546.40	3.0
547.40	3.0
548.00	3.0
548.80	18.0
549.00	19.0

Instrument :
BNA_P
ClientSampleId :
DFTPP614

m/z	Abundance
35.10	39.0
36.00	500.0
37.00	1035.0
38.00	2582.0
39.00	14579.0
40.00	4695.0
41.00	1068.0
42.10	239.0
43.10	739.0
44.00	4332.0
45.00	568.0
46.00	88.0
47.00	172.0
47.90	178.0
49.00	1454.0
50.00	52032.0
51.00	203392.0
52.00	10401.0
53.00	626.0
54.10	227.0
55.00	1669.0
56.00	5943.0
57.00	14683.0
57.90	699.0
59.00	283.0
59.90	230.0
61.00	3057.0
62.00	3349.0
63.00	8813.0
64.00	1048.0
65.00	4901.0
66.00	431.0
67.00	577.0
68.00	3884.0
69.00	243968.0
70.00	1279.0
71.00	426.0
72.00	266.0
73.00	4209.0
74.00	26384.0
75.00	40880.0
76.00	14261.0
77.00	307136.0
78.00	21872.0
79.00	19824.0
80.00	14621.0
81.00	21416.0
82.00	5284.0
83.00	5345.0
83.90	893.0
85.00	4194.0
86.00	6610.0
87.00	2867.0
87.90	1449.0
89.00	858.0
90.00	160.0
91.00	5784.0
92.00	5522.0
93.00	34984.0
94.00	2572.0
95.00	786.0
96.00	2228.0
97.00	1065.0
98.00	27528.0
99.00	24216.0
99.90	2043.0
101.00	12773.0
101.90	1006.0
103.00	4440.0
104.00	8205.0
104.90	7953.0
106.00	2469.0
107.00	99624.0
108.00	15784.0
109.00	2961.0
110.00	186944.0
111.00	28352.0
112.00	4036.0
113.00	1289.0
114.00	266.0
114.90	1134.0
116.00	5116.0
117.00	89152.0
118.00	6905.0
119.00	986.0
120.00	1235.0
120.90	740.0
121.90	6156.0
123.00	10206.0
124.00	4841.0
124.90	5022.0
126.00	1228.0

Instrument :
BNA_P
ClientSampleId :
DFTPP614

127.00	379072.0
128.00	29472.0
129.00	144064.0
130.00	11859.0
130.90	2490.0
132.00	1444.0
132.90	1253.0
133.90	3954.0
135.00	11989.0
136.00	4571.0
137.00	7405.0
137.90	1495.0
138.90	1100.0
139.90	1709.0
141.00	18792.0
142.00	6436.0
142.90	4469.0
144.00	1405.0
145.00	1309.0
146.00	3365.0
147.00	10679.0
148.00	23696.0
149.00	5796.0
150.00	1808.0
151.10	2558.0
151.90	1384.0
152.90	6260.0
154.00	4957.0
155.00	11973.0
156.00	16392.0
157.00	3390.0
158.00	3758.0
158.90	2936.0
160.00	6025.0
161.00	9745.0
162.00	2805.0
162.90	983.0
164.00	924.0
164.90	7204.0
166.00	6436.0
167.00	45072.0
168.00	29984.0
169.00	4244.0
170.00	1527.0
171.00	2280.0
172.00	3725.0
173.00	4846.0
174.00	9491.0
175.00	16400.0
176.00	4486.0
176.90	7386.0
177.90	2818.0
178.90	31792.0
180.00	21744.0
181.00	11065.0
182.00	1764.0
183.00	956.0
184.00	2808.0
185.00	15234.0
186.00	124032.0
187.00	34352.0
188.00	3334.0
189.00	7140.0
190.00	1357.0
191.00	4087.0
192.00	10726.0
193.00	12631.0
194.00	2878.0
194.90	1451.0
196.00	26392.0
196.80	3897.0
197.90	928000.0
198.90	61248.0
199.90	4679.0
201.40	4481.0
203.00	6395.0
204.00	31768.0
205.00	56256.0
206.00	238336.0
207.00	36768.0
208.00	8717.0
209.00	3527.0
210.20	4633.0
210.90	10233.0
211.80	2193.0
213.00	807.0
214.00	404.0
214.90	2732.0
216.00	5313.0
216.90	62240.0
217.90	8310.0
219.00	792.0
221.00	40448.0
223.00	15275.0
224.00	139648.0
225.00	33704.0

Instrument :
BNA_P
ClientSampleId :
DFTPP614

226.00	3785.0
227.00	56240.0
227.90	8180.0
228.90	12565.0
229.90	1434.0
230.90	5285.0
231.90	1066.0
232.80	907.0
233.90	4032.0
234.90	4333.0
236.00	2806.0
237.00	5093.0
237.80	764.0
239.00	2279.0
239.90	1339.0
240.90	3406.0
242.00	8254.0
243.00	8518.0
244.00	118128.0
245.00	14949.0
246.00	22584.0
246.90	4544.0
248.00	882.0
249.00	3776.0
250.00	972.0
250.90	1022.0
251.90	1139.0
253.00	1974.0
254.00	3127.0
255.00	601792.0
256.00	84976.0
257.00	6655.0
258.00	33304.0
258.90	5733.0
259.90	890.0
260.90	1078.0
261.80	195.0
262.90	386.0
263.90	756.0
265.00	13795.0
266.00	2051.0
266.90	857.0
267.90	296.0
268.90	305.0
269.90	891.0
271.00	1762.0
272.00	1724.0
273.00	19016.0
274.00	50080.0
275.00	288960.0
276.00	37456.0
277.00	23224.0
278.00	4179.0
278.90	986.0
280.00	76.0
281.00	2626.0
281.90	1246.0
283.00	2783.0
283.90	2026.0
285.00	4305.0
285.90	710.0
286.90	74.0
288.10	268.0
288.90	922.0
290.00	968.0
291.00	633.0
291.90	1116.0
293.00	5639.0
293.90	1321.0
295.10	1756.0
296.00	84728.0
296.90	12081.0
297.90	856.0
298.70	254.0
299.90	209.0
300.90	1228.0
302.00	1147.0
303.00	9104.0
304.00	2442.0
305.00	563.0
305.80	151.0
307.00	135.0
308.00	1525.0
308.90	760.0
310.00	995.0
310.90	406.0
311.80	411.0
312.90	690.0
313.90	4039.0
314.90	9768.0
315.90	5582.0
317.00	1152.0
317.90	132.0
318.90	152.0
319.90	273.0
321.00	2792.0

Instrument :
BNA_P
ClientSampleId :
DFTPP614

321.90	1333.0
323.00	28784.0
324.00	5541.0
324.90	611.0
325.90	738.0
326.90	5535.0
327.90	2944.0
329.00	524.0
329.70	149.0
330.80	58.0
332.00	1991.0
333.00	2843.0
334.00	19496.0
335.00	5125.0
336.10	450.0
336.80	19.0
337.60	55.0
339.00	446.0
340.00	434.0
341.00	3600.0
342.00	1069.0
342.90	202.0
343.60	72.0
343.90	62.0
345.00	202.0
345.90	7799.0
346.90	1389.0
348.10	144.0
349.00	23.0
349.90	286.0
351.00	427.0
352.00	9359.0
353.00	6685.0
354.00	9397.0
355.00	2233.0
355.90	331.0
357.00	311.0
357.70	212.0
358.10	197.0
359.00	651.0
360.00	109.0
360.90	169.0
363.00	121.0
363.70	181.0
364.90	42264.0
365.90	6072.0
366.90	451.0
367.70	48.0
368.50	3.0
369.10	78.0
370.00	994.0
371.00	2575.0
372.00	16912.0
373.00	4411.0
373.90	415.0
374.70	64.0
375.20	10.0
375.80	6.0
376.80	556.0
377.80	111.0
378.80	79.0
380.10	6.0
380.70	12.0
382.90	4849.0
383.90	1266.0
384.90	548.0
386.10	78.0
386.90	19.0
387.70	17.0
388.80	156.0
389.90	2376.0
390.90	1687.0
392.00	1307.0
393.10	250.0
395.00	171.0
395.80	117.0
396.90	249.0
397.90	60.0
399.20	12.0
399.90	20.0
400.90	889.0
402.00	7498.0
403.00	10875.0
404.00	4130.0
404.90	615.0
405.90	94.0
406.70	14.0
407.10	13.0
408.00	97.0
408.60	74.0
409.90	292.0
411.00	82.0
411.60	8.0
413.10	20.0
413.80	10.0
414.90	634.0

Instrument :
BNA_P
ClientSampleId :
DFTPP614

415.80	127.0
416.10	138.0
417.10	53.0
418.00	23.0
418.90	70.0
419.90	231.0
420.90	9651.0
422.00	9393.0
423.00	66672.0
424.00	15596.0
425.00	1485.0
426.00	176.0
426.60	37.0
427.60	9.0
428.10	12.0
429.00	135.0
430.00	68.0
430.90	13.0
431.60	13.0
432.20	7.0
433.00	2.0
433.90	16.0
434.70	12.0
435.50	4.0
436.20	18.0
436.80	18.0
437.90	158.0
438.90	228.0
441.00	190720.0
442.00	1254400.0
443.00	236480.0
444.00	20624.0
445.00	929.0
445.80	38.0
446.40	11.0
446.80	6.0
447.30	2.0
448.20	2.0
449.40	12.0
450.10	1.0
451.40	3.0
452.30	1.0
452.70	3.0
453.20	1.0
454.10	2.0
454.40	2.0
454.80	1.0
455.80	13.0
457.00	19.0
457.80	55.0
458.30	10.0
458.90	18.0
459.70	20.0
460.60	20.0
461.10	18.0
462.20	2.0
463.20	1.0
463.60	3.0
464.30	2.0
465.00	15.0
466.60	24.0
467.40	3.0
468.30	3.0
468.90	1.0
469.80	3.0
470.50	1.0
471.60	2.0
472.40	17.0
473.60	1.0
474.90	67.0
475.80	20.0
476.50	8.0
477.10	17.0
478.30	15.0
479.60	2.0
480.90	2.0
481.30	4.0
482.20	2.0
482.70	1.0
483.50	2.0
484.20	3.0
484.70	2.0
485.80	2.0
486.60	1.0
487.10	2.0
488.00	0.0
489.10	18.0
489.70	25.0
490.40	4.0
491.20	8.0
492.10	17.0
493.10	10.0
494.00	4.0
495.20	2.0
495.70	10.0
496.20	1.0

Instrument :
BNA_P
ClientSampleId :
DFTPP614

497.00	10.0
498.10	3.0
498.70	8.0
499.20	1.0
499.70	1.0
500.40	3.0
501.10	19.0
502.30	6.0
502.90	1.0
503.90	15.0
504.70	2.0
505.20	1.0
506.00	2.0
506.40	2.0
507.60	3.0
508.70	2.0
509.30	4.0
509.70	5.0
510.80	5.0
511.80	6.0
512.30	3.0
512.70	1.0
513.20	1.0
514.30	3.0
515.10	6.0
515.60	2.0
516.00	1.0
517.10	3.0
517.70	11.0
518.80	3.0
519.40	1.0
519.90	2.0
520.40	3.0
521.20	1.0
522.10	3.0
523.00	7.0
523.50	4.0
524.30	1.0
524.80	1.0
525.80	21.0
526.80	2.0
527.50	1.0
528.00	1.0
528.60	1.0
529.40	2.0
529.90	1.0
530.70	4.0
531.20	3.0
531.70	3.0
533.30	20.0
533.90	4.0
534.30	3.0
535.00	16.0
536.10	14.0
536.50	16.0
537.60	3.0
538.30	7.0
539.20	3.0
539.80	2.0
540.50	1.0
541.10	1.0
541.60	2.0
542.70	14.0
543.60	2.0
544.10	3.0
544.50	1.0
545.20	3.0
545.60	2.0
546.10	2.0
547.10	3.0
547.70	2.0
548.80	22.0
549.20	9.0

Instrument :
BNA_P
ClientSampleId :
DFTPP614