

Data Path : Z:\SVOASRV\HPCHEM1\BNA_P\DATA\BP021721\
 Data File : BP004793.D
 Acq On : 18 Feb 2021 03:00
 Operator : CG/JU
 Sample : M1379-15
 Misc :
 ALS Vial : 29 Sample Multiplier: 1

Instrument :
 BNA_P
 ClientSampleId :
 DBGZ5

Integration Parameters: LSCINT.P

Integrator: RTE
 Smoothing : OFF
 Sampling : 1
 Start Thrs: 0.2
 Stop Thrs : 0

Filtering: 5
 Min Area: 0.1 % of largest Peak
 Max Peaks: 100
 Peak Location: TOP

If leading or trailing edge < 100 prefer < Baseline drop else tangent >
 Peak separation: 5

Method : Z:\SVOASRV\HPCHEM1\BNA_P\METHODS\SOM-EPA-BP020821MA.M
 Title : SVOA CALIBRATION

Signal : TIC

peak #	R.T. min	first scan	max scan	last scan	PK TY	peak height	corr. area	corr. % max.	% of total
1	3.252	8	11	17	rVB	17169	20541	1.65%	0.128%
2	3.523	55	57	58	rBV2	1552	1434	0.12%	0.009%
3	3.981	130	135	142	rBV4	3851	7219	0.58%	0.045%
4	4.128	158	160	164	rVB5	1791	2053	0.17%	0.013%
5	4.181	164	169	173	rBV8	1352	2818	0.23%	0.018%
6	5.481	388	390	394	rBV5	1498	1916	0.15%	0.012%
7	6.046	480	486	488	rBV7	1034	1907	0.15%	0.012%
8	6.175	506	508	512	rVB5	1319	1602	0.13%	0.010%
9	6.434	551	552	557	rBV5	1291	1524	0.12%	0.010%
10	6.605	579	581	583	rBV3	1233	1401	0.11%	0.009%
11	6.687	592	595	598	rVB5	1015	1281	0.10%	0.008%
12	6.728	598	602	606	rBV6	849	1402	0.11%	0.009%
13	6.946	631	639	652	rBV	310120	546857	43.97%	3.418%
14	7.105	659	666	677	rVB	229254	362392	29.14%	2.265%
15	7.305	693	700	709	rBV	360695	555276	44.65%	3.471%
16	7.405	715	717	720	rVB4	2124	2030	0.16%	0.013%
17	7.558	738	743	744	rBV5	1517	1972	0.16%	0.012%
18	7.764	771	778	785	rVV	254455	399835	32.15%	2.499%
19	7.840	785	791	794	rVV7	1542	2594	0.21%	0.016%
20	8.269	861	864	869	rVB6	1100	1628	0.13%	0.010%
21	8.481	891	900	912	rBV	390186	640822	51.52%	4.006%
22	8.922	969	975	985	rBV	291207	486231	39.09%	3.040%
23	9.052	994	997	1000	rBV5	1176	1565	0.13%	0.010%
24	9.093	1000	1004	1011	rVB9	1653	3680	0.30%	0.023%
25	9.340	1041	1046	1054	rBV3	7068	13774	1.11%	0.086%
26	9.481	1066	1070	1074	rBV6	1073	1693	0.14%	0.011%
27	9.646	1090	1098	1106	rBV	273974	450251	36.20%	2.815%
28	10.187	1182	1190	1199	rBV	408441	670750	53.93%	4.193%
29	10.340	1213	1216	1219	rBV4	1194	1460	0.12%	0.009%
30	10.469	1235	1238	1241	rBV4	774	1392	0.11%	0.009%
31	10.557	1246	1253	1261	rVV	321943	534812	43.00%	3.343%
32	10.699	1270	1277	1293	rBV	326789	574637	46.20%	3.592%
33	10.863	1302	1305	1311	rVB7	1631	2784	0.22%	0.017%
34	11.569	1420	1425	1428	rVV8	1081	1392	0.11%	0.009%

Data Path : Z:\SVOASRV\HPCHEM1\BNA_P\DATA\BP021721\
 Data File : BP004793.D
 Acq On : 18 Feb 2021 03:00
 Operator : CG/JU
 Sample : M1379-15
 Misc :
 ALS Vial : 29 Sample Multiplier: 1

Instrument :
 BNA_P
 ClientSampleId :
 DBGZ5

Integration Parameters: LSCINT.P

Integrator: RTE
 Smoothing : OFF
 Sampling : 1
 Start Thrs: 0.2
 Stop Thrs : 0

Filtering: 5
 Min Area: 0.1 % of largest Peak
 Max Peaks: 100
 Peak Location: TOP

If leading or trailing edge < 100 prefer < Baseline drop else tangent >
 Peak separation: 5

Method : Z:\SVOASRV\HPCHEM1\BNA_P\METHODS\SOM-EPA-BP020821MA.M
 Title : SVOA CALIBRATION

35	11.757	1453	1457	1460	rBV6	916	1281	0.10%	0.008%
36	11.993	1493	1497	1500	rBV6	1447	1978	0.16%	0.012%
37	12.063	1503	1509	1514	rVV2	4567	8561	0.69%	0.054%
38	12.152	1518	1524	1529	rVV2	7698	12438	1.00%	0.078%
39	12.899	1648	1651	1653	rVB4	1384	1339	0.11%	0.008%
40	12.963	1656	1662	1665	rVB8	1463	2234	0.18%	0.014%
41	13.022	1665	1672	1679	rBV8	2284	4811	0.39%	0.030%
42	13.240	1704	1709	1716	rBV5	4612	7546	0.61%	0.047%
43	13.310	1716	1721	1727	rVV3	9532	15978	1.28%	0.100%
44	13.381	1727	1733	1734	rVV6	2028	3167	0.25%	0.020%
45	13.399	1734	1736	1740	rVB5	2052	2711	0.22%	0.017%
46	13.828	1802	1809	1813	rVV	605859	863073	69.39%	5.395%
47	13.869	1813	1816	1825	rVV	69897	96013	7.72%	0.600%
48	13.940	1825	1828	1834	rVB8	1574	2784	0.22%	0.017%
49	14.104	1844	1856	1866	rBV	731950	1088418	87.51%	6.804%
50	14.204	1871	1873	1877	rVB5	1667	1638	0.13%	0.010%
51	14.322	1887	1893	1897	rBV9	3547	5851	0.47%	0.037%
52	14.416	1901	1909	1916	rBV	448468	666041	53.55%	4.164%
53	14.634	1938	1946	1960	rBV	205634	357823	28.77%	2.237%
54	14.840	1976	1981	1985	rBV8	7560	11267	0.91%	0.070%
55	15.004	2005	2009	2012	rBV5	1837	2853	0.23%	0.018%
56	15.046	2014	2016	2017	rVV2	2832	2416	0.19%	0.015%
57	15.087	2021	2023	2025	rVB3	1718	1348	0.11%	0.008%
58	15.275	2052	2055	2060	rVB7	3228	4383	0.35%	0.027%
59	15.345	2065	2067	2071	rBV5	1080	1287	0.10%	0.008%
60	15.410	2071	2078	2088	rBV	897775	1225154	98.51%	7.659%
61	15.528	2091	2098	2108	rBV	248050	344543	27.70%	2.154%
62	15.651	2115	2119	2125	rVB2	10548	14702	1.18%	0.092%
63	15.745	2132	2135	2137	rBV4	1375	1709	0.14%	0.011%
64	15.822	2146	2148	2150	rBV3	1379	1364	0.11%	0.009%
65	15.981	2169	2175	2176	rBV6	2661	4433	0.36%	0.028%
66	16.093	2192	2194	2198	rVV5	3724	4282	0.34%	0.027%
67	16.145	2200	2203	2204	rBV3	1918	1953	0.16%	0.012%
68	16.198	2209	2212	2216	rVB6	5057	7014	0.56%	0.044%
69	16.287	2225	2227	2229	rVB3	2047	1338	0.11%	0.008%
70	16.404	2241	2247	2251	rVV4	8131	12562	1.01%	0.079%
71	16.575	2273	2276	2281	rVB6	5716	7729	0.62%	0.048%

Data Path : Z:\SVOASRV\HPCHEM1\BNA_P\DATA\BP021721\
 Data File : BP004793.D
 Acq On : 18 Feb 2021 03:00
 Operator : CG/JU
 Sample : M1379-15
 Misc :
 ALS Vial : 29 Sample Multiplier: 1

Instrument :
 BNA_P
 ClientSampleId :
 DBGZ5

Integration Parameters: LSCINT.P

Integrator: RTE
 Smoothing : OFF Filtering: 5
 Sampling : 1 Min Area: 0.1 % of largest Peak
 Start Thrs: 0.2 Max Peaks: 100
 Stop Thrs : 0 Peak Location: TOP

If leading or trailing edge < 100 prefer < Baseline drop else tangent >
 Peak separation: 5

Method : Z:\SVOASRV\HPCHEM1\BNA_P\METHODS\SOM-EPA-BP020821MA.M
 Title : SVOA CALIBRATION

72	16.934	2333	2337	2339	rBV5	3192	5258	0.42%	0.033%
73	17.075	2359	2361	2362	rBV2	2440	1865	0.15%	0.012%
74	17.169	2371	2377	2385	rBV	496742	686572	55.20%	4.292%
75	17.269	2387	2394	2400	rBV	873578	1208384	97.16%	7.554%
76	17.434	2420	2422	2423	rBV2	2556	1649	0.13%	0.010%
77	18.063	2525	2529	2535	rBV2	31699	51535	4.14%	0.322%
78	18.475	2597	2599	2602	rVB4	9017	8121	0.65%	0.051%
79	19.151	2710	2714	2718	rBV	14061	20599	1.66%	0.129%
80	19.504	2769	2774	2780	rBV	933949	1243734	100.00%	7.775%
81	20.963	3018	3022	3028	rBV2	121263	167126	13.44%	1.045%
82	21.251	3066	3071	3077	rBV	502585	626194	50.35%	3.914%
83	22.451	3272	3275	3279	rVB	75859	96328	7.75%	0.602%
84	23.410	3432	3438	3448	rVB	584652	1149481	92.42%	7.186%
85	23.557	3457	3463	3471	rVB2	328220	633202	50.91%	3.958%

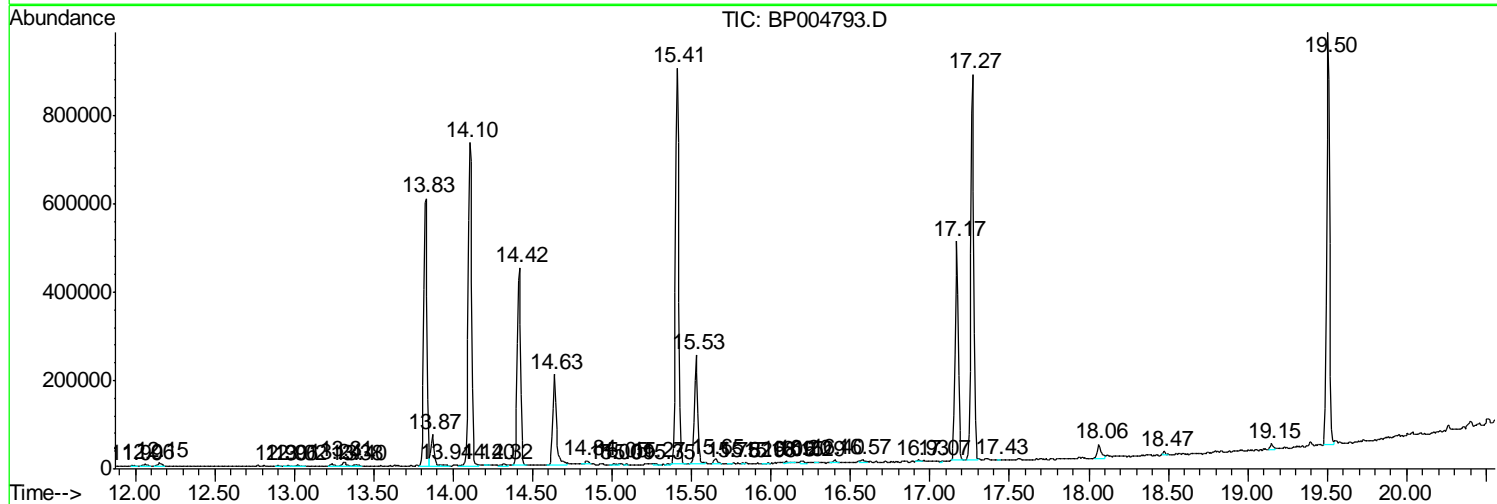
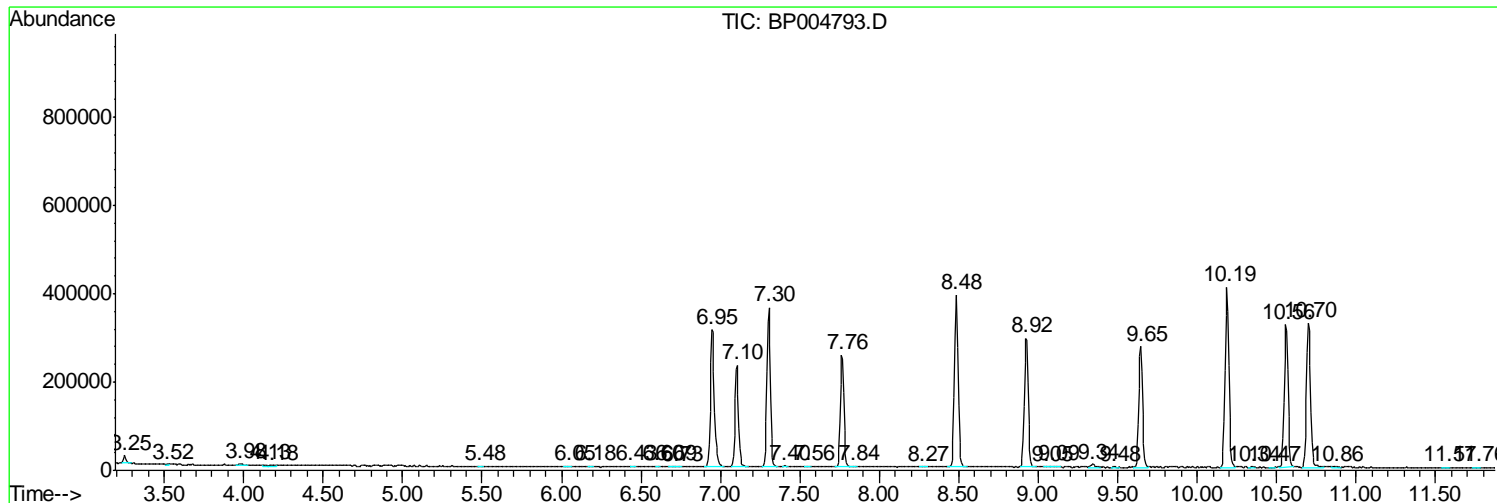
Sum of corrected areas: 15996995

Data Path : Z:\SVOASRV\HPCHEM1\BNA P\DATA\BP021721\
 Data File : BP004793.D
 Acq On : 18 Feb 2021 03:00
 Operator : CG/JU
 Sample : M1379-15
 Misc :
 ALS Vial : 29 Sample Multiplier: 1

Instrument :
 BNA_P
ClientSampled :
 DBGZ5

Quant Method : Z:\SVOASRV\HPCHEM1\BNA_P\METHODS\SOM-EPA-BP020821MA.M
 Quant Title : SVOA CALIBRATION

TIC Library : C:\DATABASE\NIST11.L
 TIC Integration Parameters: LSCINT.P



Data Path : Z:\SVOASRV\HPCHEM1\BNA P\DATA\BP021721\
 Data File : BP004793.D
 Acq On : 18 Feb 2021 03:00
 Operator : CG/JU
 Sample : M1379-15
 Misc :
 ALS Vial : 29 Sample Multiplier: 1

Instrument :
 BNA_P
 ClientSampleId :
 DBGZ5

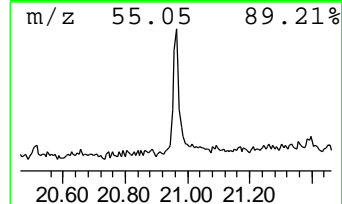
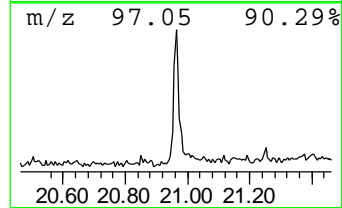
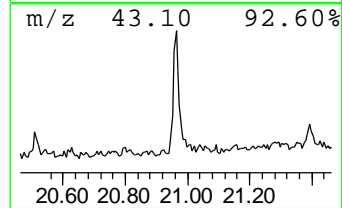
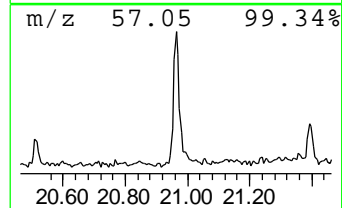
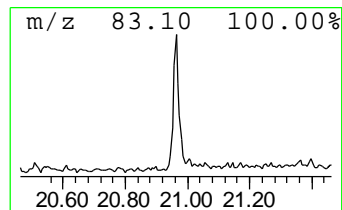
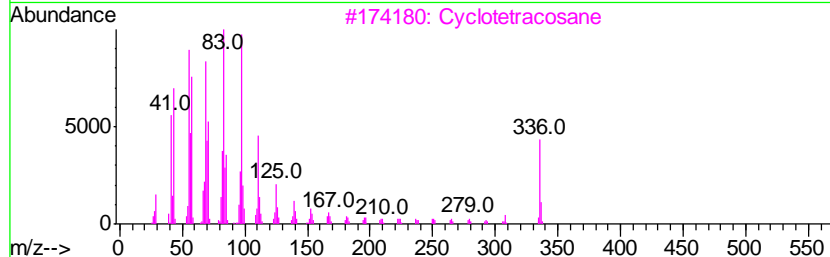
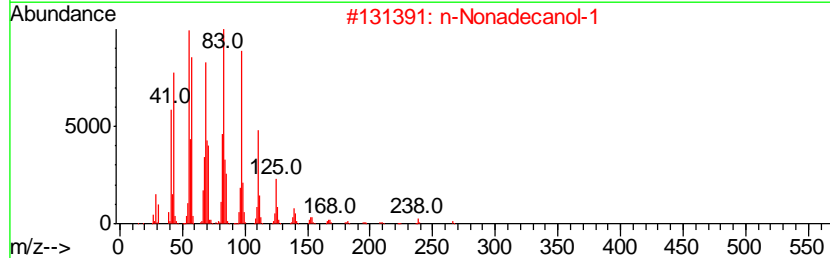
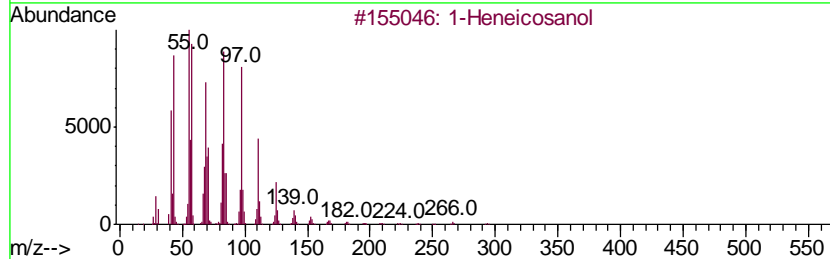
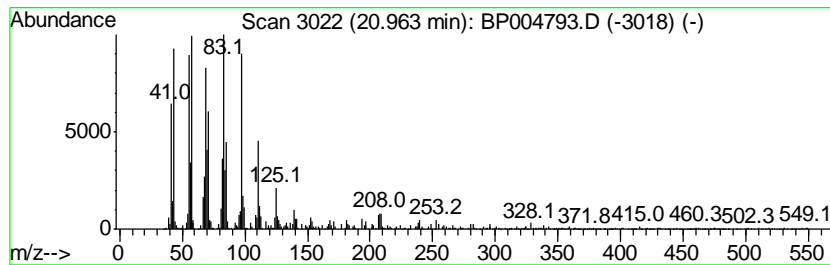
Quant Method : Z:\SVOASRV\HPCHEM1\BNA_P\METHODS\SOM-EPA-BP020821MA.M
 Quant Title : SVOA CALIBRATION

TIC Library : C:\DATABASE\NIST11.L
 TIC Integration Parameters: LSCINT.P

 Peak Number 1 1-Heneicosanol Concentration Rank 1

R.T.	EstConc	Area	Relative to ISTD	R.T.
20.96	5.34 ng/ul	167126	Chrysene-d12	21.25

Hit#	of	Tentative ID	MW	MolForm	CAS#	Qual
1	5	1-Heneicosanol	312	C21H44O	015594-90-8	93
2		n-Nonadecanol-1	284	C19H40O	001454-84-8	93
3		Cyclotetracosane	336	C24H48	000297-03-0	93
4		Behenic alcohol	326	C22H46O	000661-19-8	93
5		n-Tetracosanol-1	354	C24H50O	000506-51-4	91



Data Path : Z:\SVOASRV\HPCHEM1\BNA P\DATA\BP021721\
 Data File : BP004793.D
 Acq On : 18 Feb 2021 03:00
 Operator : CG/JU
 Sample : M1379-15
 Misc :
 ALS Vial : 29 Sample Multiplier: 1

Instrument :
 BNA_P
 ClientSampleId :
 DBGZ5

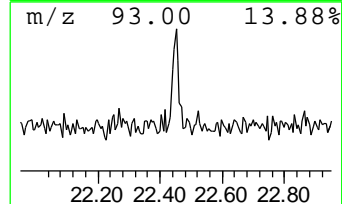
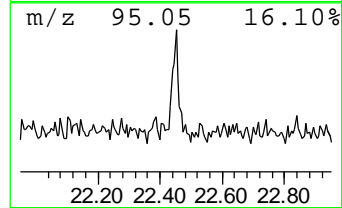
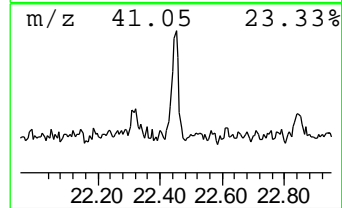
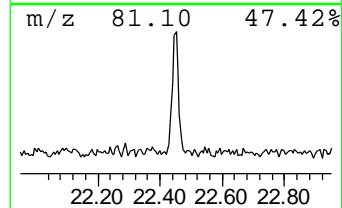
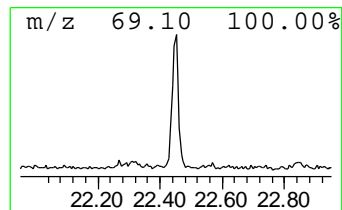
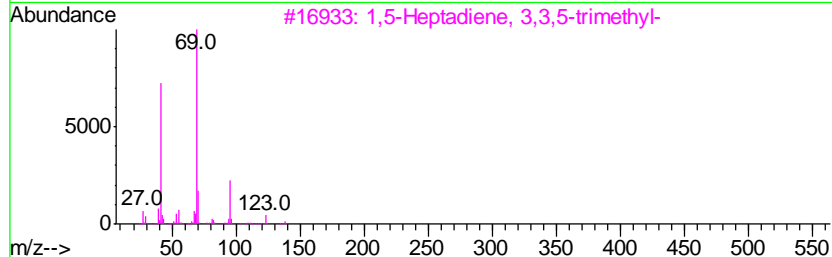
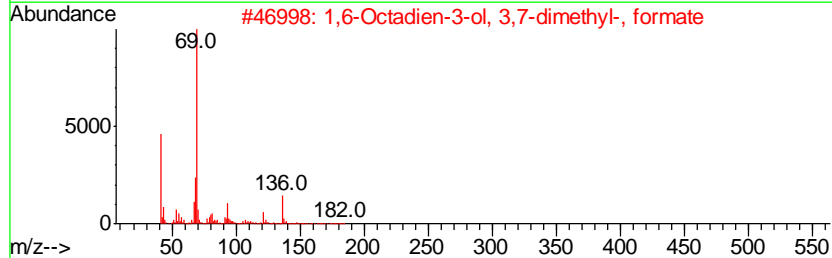
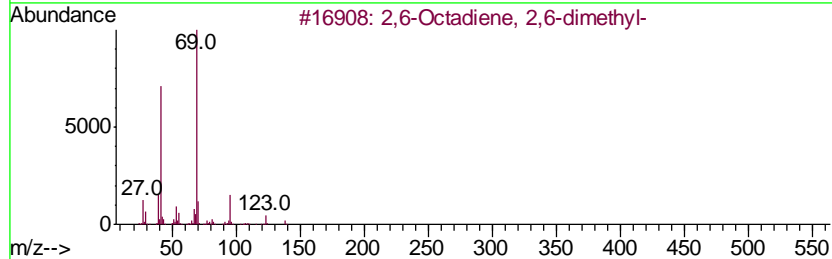
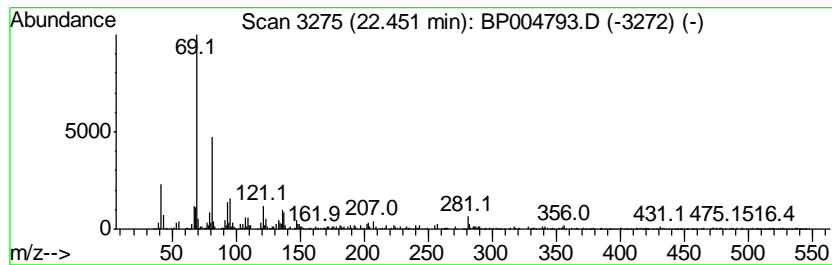
Quant Method : Z:\SVOASRV\HPCHEM1\BNA_P\METHODS\SOM-EPA-BP020821MA.M
 Quant Title : SVOA CALIBRATION

TIC Library : C:\DATABASE\NIST11.L
 TIC Integration Parameters: LSCINT.P

 Peak Number 2 2,6-Octadiene, 2,6-dimethyl- Concentration Rank 2

R.T.	EstConc	Area	Relative to ISTD	R.T.
22.45	3.04 ng/ul	96328	Perylene-d12	23.56

Hit#	of	Tentative ID	MW	MolForm	CAS#	Qual
1	5	2,6-Octadiene, 2,6-dimethyl-	138	C10H18	002792-39-4	64
2		1,6-Octadien-3-ol, 3,7-dimethyl-...	182	C11H18O2	000115-99-1	59
3		1,5-Heptadiene, 3,3,5-trimethyl-	138	C10H18	074630-29-8	59
4		trans-Farnesol	222	C15H26O	000106-28-5	59
5		Cyclopentane, bromo-	148	C5H9Br	000137-43-9	59



Data Path : Z:\SVOASRV\HPCHEM1\BNA_P\DATA\BP021721\
Data File : BP004793.D
Acq On : 18 Feb 2021 03:00
Operator : CG/JU
Sample : M1379-15
Misc :
ALS Vial : 29 Sample Multiplier: 1

Instrument :
BNA_P
ClientSampleId :
DBGZ5

Quant Method : Z:\SVOASRV\HPCHEM1\BNA_P\METHODS\SOM-EPA-BP020821MA.M
Quant Title : SVOA CALIBRATION

TIC Library : C:\DATABASE\NIST11.L
TIC Integration Parameters: LSCINT.P

TIC Top Hit name	RT	EstConc	Units	Response	--Internal Standard--			
					#	RT	Resp	Conc
1-Heneicosanol	20.96	5.3	ng/ul	167126	5	21.25	626194	20.0
2,6-Octadiene, 2,...	22.45	3.0	ng/ul	96328	6	23.56	633202	20.0