

Data Path : Z:\svoasrv\HPCHEM1\BNA_P\Data\BP021725\
 Data File : BP024073.D
 Acq On : 17 Feb 2025 14:12
 Operator : RC/JU
 Sample : SSTDICCC040
 Misc :
 ALS Vial : 6 Sample Multiplier: 1

Instrument :
 BNA_P
 ClientSampleId :
 SSTDICCC040

Quant Time: Feb 18 02:03:06 2025
 Quant Method : Z:\svoasrv\HPCHEM1\BNA_P\Methods\8270E-BP021725.M
 Quant Title : ASP BNA STANDARDS FOR 5 POINT CALIBRATION
 QLast Update : Tue Feb 18 01:47:18 2025
 Response via : Initial Calibration

Compound	R.T.	QIon	Response	Conc	Units	Dev(Min)	

Internal Standards							
1) 1,4-Dichlorobenzene-d4	7.763	152	398438	20.000	ng	0.00	
21) Naphthalene-d8	10.534	136	1506661	20.000	ng	0.00	
39) Acenaphthene-d10	14.393	164	817827	20.000	ng	0.00	
64) Phenanthrene-d10	17.186	188	1445543	20.000	ng	0.00	
76) Chrysene-d12	21.645	240	1488607	20.000	ng	0.00	
86) Perylene-d12	25.033	264	1494142	20.000	ng	0.00	
System Monitoring Compounds							
5) 2-Fluorophenol	5.375	112	2232229	87.418	ng	0.00	
7) Phenol-d6	6.946	99	2806332	85.509	ng	0.00	
23) Nitrobenzene-d5	8.910	82	2302539	85.259	ng	0.00	
42) 2,4,6-Tribromophenol	15.904	330	837277	83.582	ng	0.00	
45) 2-Fluorobiphenyl	13.004	172	5094954	87.094	ng	0.00	
79) Terphenyl-d14	19.916	244	6453934	85.790	ng	0.00	
Target Compounds							
							Qvalue
2) 1,4-Dioxane	3.317	88	424711	42.400	ng		100
3) Pyridine	3.711	79	1129810	43.337	ng		100
4) n-Nitrosodimethylamine	3.617	42	394345	42.688	ng		100
6) Aniline	7.099	93	1264446	42.070	ng		100
8) 2-Chlorophenol	7.334	128	1159071	42.885	ng		100
9) Benzaldehyde	6.911	77	614483	41.010	ng		100
10) Phenol	6.969	94	1381122	41.849	ng		100
11) bis(2-Chloroethyl)ether	7.187	93	1085320	41.754	ng		100
12) 1,3-Dichlorobenzene	7.652	146	1256714	42.326	ng		100
13) 1,4-Dichlorobenzene	7.799	146	1266997	42.195	ng		100
14) 1,2-Dichlorobenzene	8.111	146	1214013	42.128	ng		100
15) Benzyl Alcohol	7.999	79	851796	42.401	ng		100
16) 2,2'-oxybis(1-Chloropr...	8.287	45	1042976	41.334	ng		100
17) 2-Methylphenol	8.205	107	858367	42.681	ng		100
18) Hexachloroethane	8.834	117	452348	41.830	ng		100
19) n-Nitroso-di-n-propyla...	8.558	70	743995	42.162	ng		100
20) 3+4-Methylphenols	8.528	107	1156282	42.263	ng		100
22) Acetophenone	8.575	105	1618999	41.816	ng		100
24) Nitrobenzene	8.952	77	1138713	42.843	ng		100
25) Isophorone	9.475	82	1856740	42.042	ng		100
26) 2-Nitrophenol	9.657	139	539835	44.086	ng		100
27) 2,4-Dimethylphenol	9.722	122	684382	42.578	ng		100
28) bis(2-Chloroethoxy)met...	9.952	93	1325452	41.429	ng		100
29) 2,4-Dichlorophenol	10.193	162	950804	43.345	ng		100
30) 1,2,4-Trichlorobenzene	10.399	180	1062404	42.272	ng		100
31) Naphthalene	10.587	128	3407567	42.062	ng		100
32) Benzoic acid	9.857	122	614425	38.237	ng		100
33) 4-Chloroaniline	10.693	127	1199722	42.037	ng		100
34) Hexachlorobutadiene	10.869	225	622219	42.743	ng		100
35) Caprolactam	11.481	113	271425	38.044	ng		100
36) 4-Chloro-3-methylphenol	11.828	107	958524	42.506	ng		100
37) 2-Methylnaphthalene	12.199	142	2230252	41.420	ng		100
38) 1-Methylnaphthalene	12.416	142	2166108	41.352	ng		100
40) 1,2,4,5-Tetrachloroben...	12.569	216	1103960	43.933	ng		100
41) Hexachlorocyclopentadiene	12.551	237	428075	45.781	ng		100
43) 2,4,6-Trichlorophenol	12.810	196	691454	45.121	ng		100

Data Path : Z:\svoasrv\HPCHEM1\BNA_P\Data\BP021725\
 Data File : BP024073.D
 Acq On : 17 Feb 2025 14:12
 Operator : RC/JU
 Sample : SSTDICCC040
 Misc :
 ALS Vial : 6 Sample Multiplier: 1

Instrument :
 BNA_P
 ClientSampleId :
 SSTDICCC040

Quant Time: Feb 18 02:03:06 2025
 Quant Method : Z:\svoasrv\HPCHEM1\BNA_P\Methods\8270E-BP021725.M
 Quant Title : ASP BNA STANDARDS FOR 5 POINT CALIBRATION
 QLast Update : Tue Feb 18 01:47:18 2025
 Response via : Initial Calibration

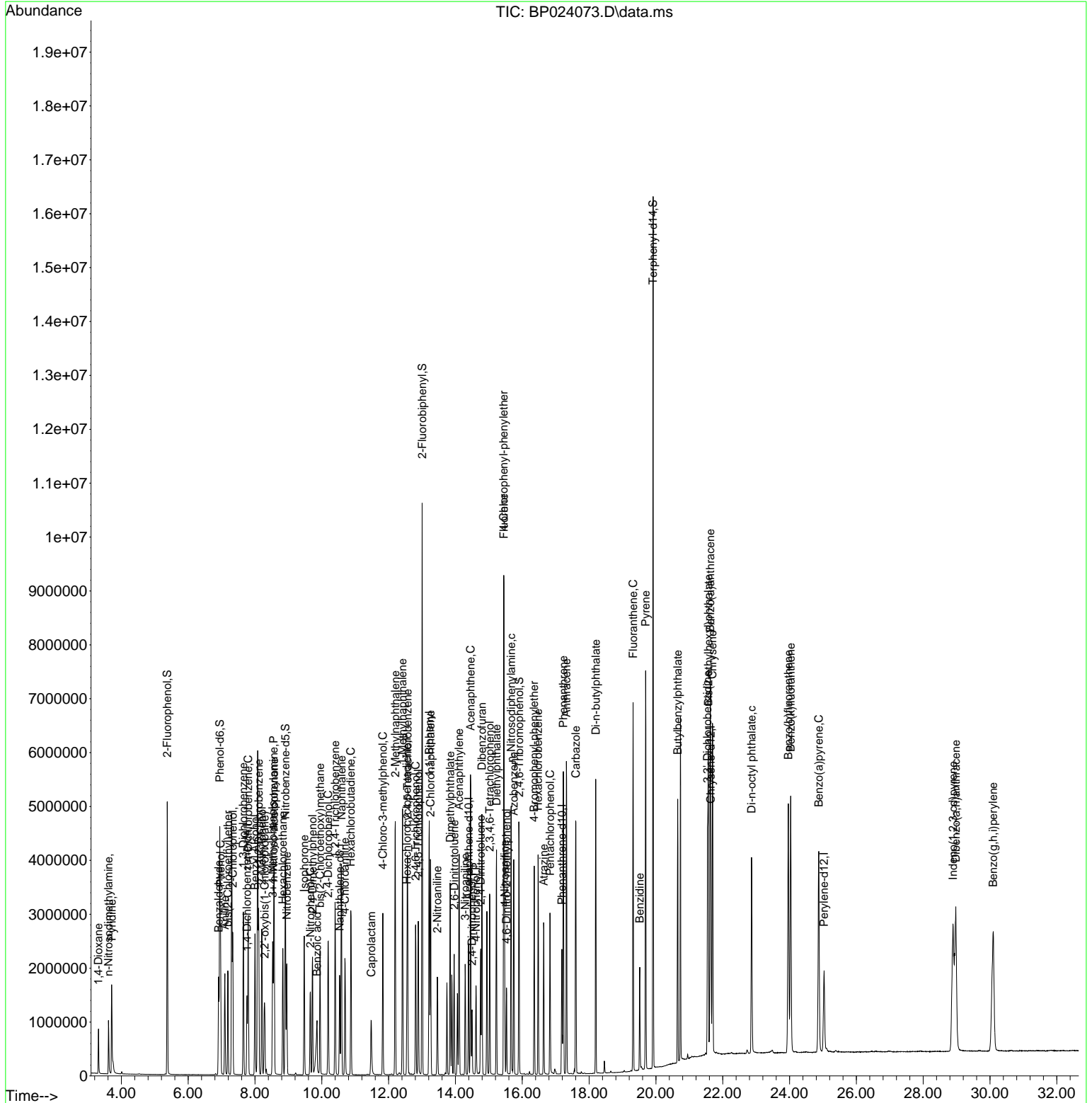
Compound	R.T.	QIon	Response	Conc	Units	Dev(Min)
44) 2,4,5-Trichlorophenol	12.887	196	740246	44.169	ng	100
46) 1,1'-Biphenyl	13.216	154	2666874	41.965	ng	100
47) 2-Chloronaphthalene	13.257	162	2044842	42.565	ng	100
48) 2-Nitroaniline	13.457	65	498538	43.931	ng	100
49) Acenaphthylene	14.110	152	3067503	43.339	ng	100
50) Dimethylphthalate	13.845	163	2364371	40.985	ng	100
51) 2,6-Dinitrotoluene	13.963	165	497472	42.333	ng	100
52) Acenaphthene	14.451	154	1900361	41.693	ng	100
53) 3-Nitroaniline	14.293	138	538142	42.915	ng	100
54) 2,4-Dinitrophenol	14.498	184	254928	37.484	ng	100
55) Dibenzofuran	14.793	168	3108290	41.979	ng	100
56) 4-Nitrophenol	14.616	139	452824	41.805	ng	100
57) 2,4-Dinitrotoluene	14.757	165	659343	43.192	ng	100
58) Fluorene	15.451	166	2446454	42.307	ng	100
59) 2,3,4,6-Tetrachlorophenol	15.028	232	614495	42.261	ng	100
60) Diethylphthalate	15.228	149	2347029	40.984	ng	100
61) 4-Chlorophenyl-phenyle...	15.445	204	1189636	41.796	ng	100
62) 4-Nitroaniline	15.475	138	577898	39.548	ng	100
63) Azobenzene	15.745	77	2268918	42.281	ng	100
65) 4,6-Dinitro-2-methylph...	15.528	198	353586	39.321	ng	100
66) n-Nitrosodiphenylamine	15.669	169	1947175	43.195	ng	100
67) 4-Bromophenyl-phenylether	16.357	248	690054	42.510	ng	100
68) Hexachlorobenzene	16.475	284	803320	42.057	ng	100
69) Atrazine	16.645	200	517038	44.693	ng	100
70) Pentachlorophenol	16.834	266	517773	41.737	ng	100
71) Phenanthrene	17.228	178	3433736	42.133	ng	100
72) Anthracene	17.322	178	3388185	43.383	ng	100
73) Carbazole	17.604	167	3208605	43.120	ng	100
74) Di-n-butylphthalate	18.198	149	3720458	42.850	ng	100
75) Fluoranthene	19.316	202	3855922	41.830	ng	100
77) Benzidine	19.516	184	1062729	58.586	ng	100
78) Pyrene	19.692	202	4085840	43.211	ng	100
80) Butylbenzylphthalate	20.651	149	1498674	41.362	ng	100
81) Benzo(a)anthracene	21.627	228	3910920	41.898	ng	100
82) 3,3'-Dichlorobenzidine	21.545	252	1291245	44.269	ng	100
83) Chrysene	21.692	228	3792933	42.140	ng	100
84) Bis(2-ethylhexyl)phtha...	21.569	149	2320794	42.238	ng	100
85) Di-n-octyl phthalate	22.863	149	3454162	39.330	ng	100
87) Indeno(1,2,3-cd)pyrene	28.892	276	4023537	37.835	ng	93
88) Benzo(b)fluoranthene	23.963	252	4074090	42.938	ng	100
89) Benzo(k)fluoranthene	24.033	252	3999830	43.310	ng	100
90) Benzo(a)pyrene	24.874	252	3517674	43.686	ng	100
91) Dibenzo(a,h)anthracene	28.974	278	3976417	44.491	ng	100
92) Benzo(g,h,i)perylene	30.098	276	4055870	44.721	ng	100

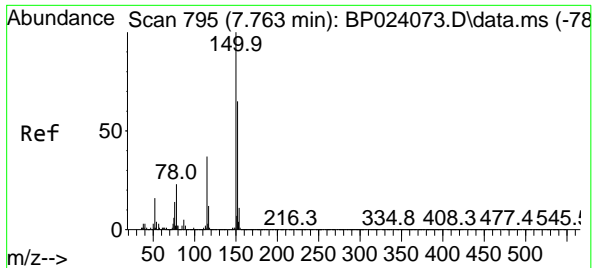
(#) = qualifier out of range (m) = manual integration (+) = signals summed

Data Path : Z:\svoasrv\HPCHEM1\BNA_P\Data\BP021725\
 Data File : BP024073.D
 Acq On : 17 Feb 2025 14:12
 Operator : RC/JU
 Sample : SSTDICCC040
 Misc :
 ALS Vial : 6 Sample Multiplier: 1

Instrument :
 BNA_P
 ClientSampleId :
 SSTDICCC040

Quant Time: Feb 18 02:03:06 2025
 Quant Method : Z:\svoasrv\HPCHEM1\BNA_P\Methods\8270E-BP021725.M
 Quant Title : ASP BNA STANDARDS FOR 5 POINT CALIBRATION
 QLast Update : Tue Feb 18 01:47:18 2025
 Response via : Initial Calibration

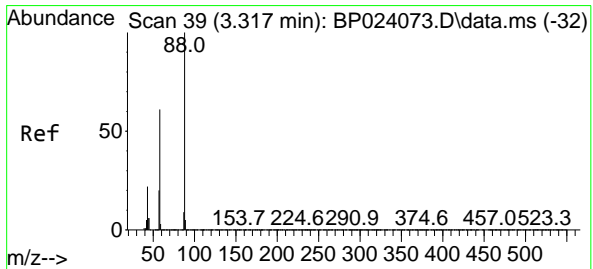
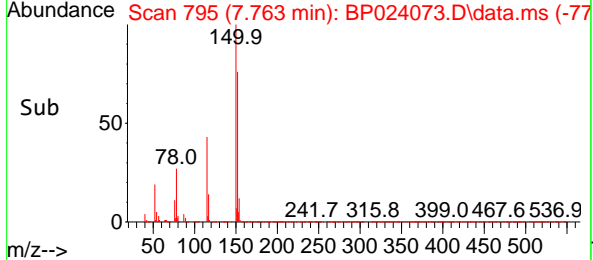
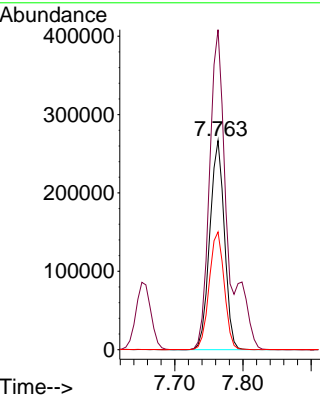
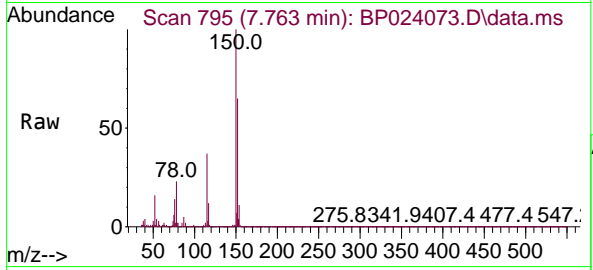




#1
 1,4-Dichlorobenzene-d4
 Concen: 20.000 ng
 RT: 7.763 min Scan# 795
 Delta R.T. 0.000 min
 Lab File: BP024073.D
 Acq: 17 Feb 2025 14:12

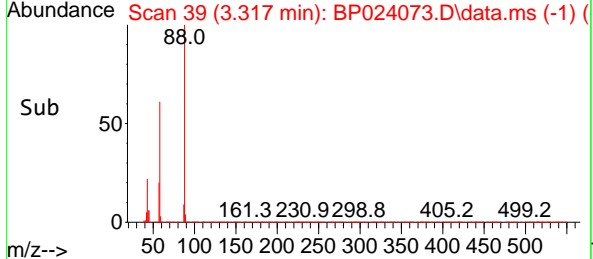
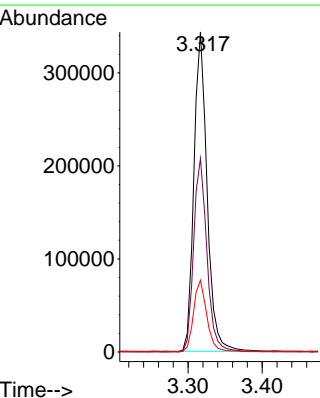
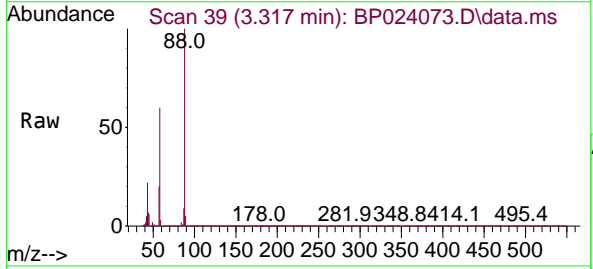
Instrument : BNA_P
 ClientSampleId : SSTDICCC040

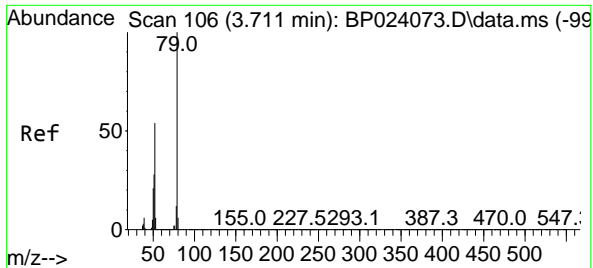
Tgt Ion	Resp	Lower	Upper
152	398438		
100	100		
150	153.0	122.4	183.6
115	56.3	45.0	67.6



#2
 1,4-Dioxane
 Concen: 42.400 ng
 RT: 3.317 min Scan# 39
 Delta R.T. 0.000 min
 Lab File: BP024073.D
 Acq: 17 Feb 2025 14:12

Tgt Ion	Resp	Lower	Upper
88	424711		
100	100		
58	61.4	49.1	73.7
43	22.5	18.0	27.0



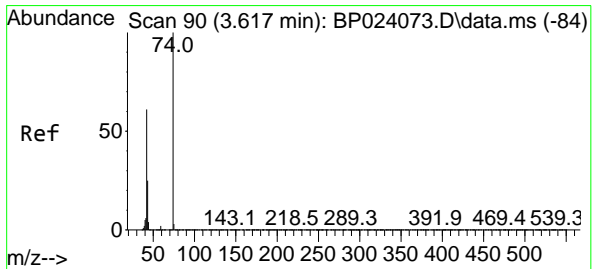
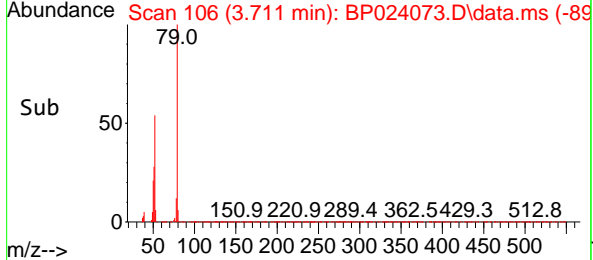
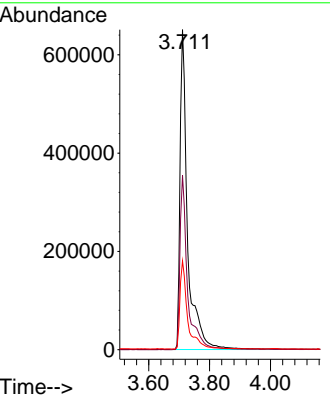
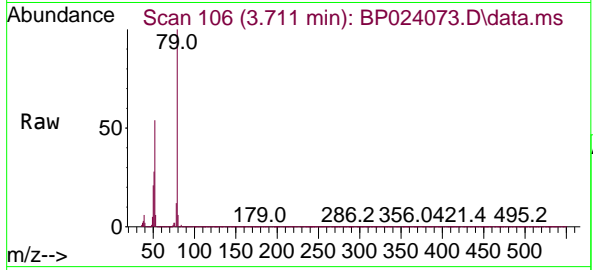


#3
 Pyridine
 Concen: 43.337 ng
 RT: 3.711 min Scan# 10
 Delta R.T. 0.000 min
 Lab File: BP024073.D
 Acq: 17 Feb 2025 14:12

Instrument : BNA_P
 ClientSampleId : SSTDICCC040

Tgt Ion: 79 Resp: 1129810

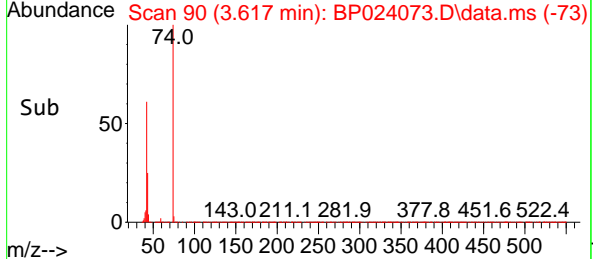
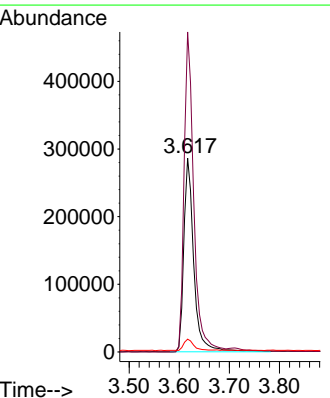
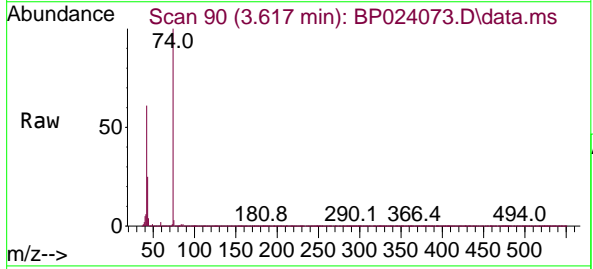
Ion	Ratio	Lower	Upper
79	100		
52	54.4	43.5	65.3
51	27.8	22.2	33.4

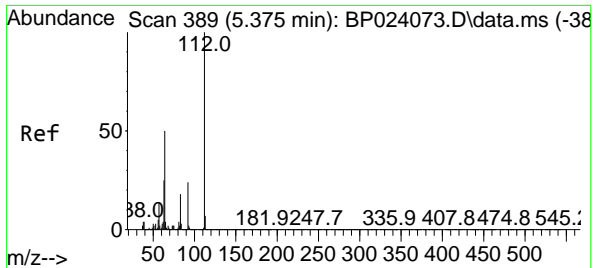


#4
 n-Nitrosodimethylamine
 Concen: 42.688 ng
 RT: 3.617 min Scan# 90
 Delta R.T. 0.000 min
 Lab File: BP024073.D
 Acq: 17 Feb 2025 14:12

Tgt Ion: 42 Resp: 394345

Ion	Ratio	Lower	Upper
42	100		
74	165.0	132.0	198.0
44	6.6	5.3	7.9





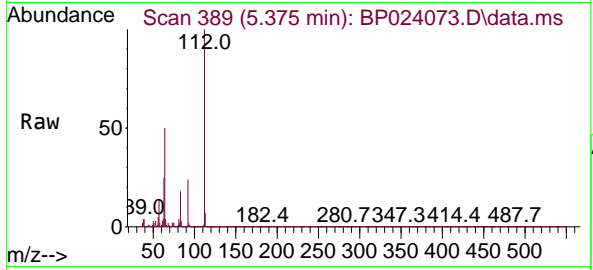
#5
 2-Fluorophenol
 Concen: 87.418 ng
 RT: 5.375 min Scan# 389
 Delta R.T. 0.000 min
 Lab File: BP024073.D
 Acq: 17 Feb 2025 14:12

Instrument :

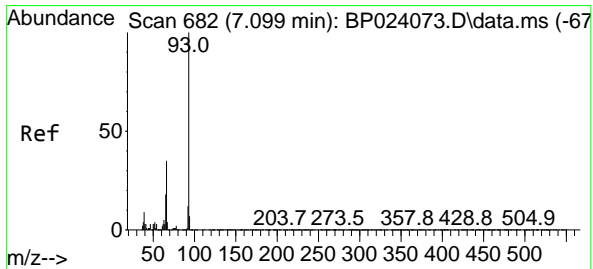
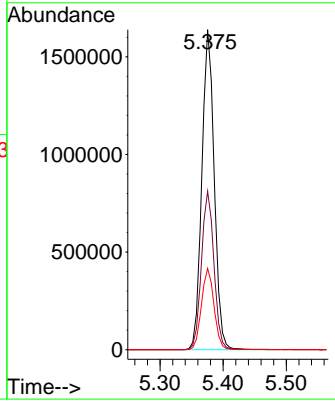
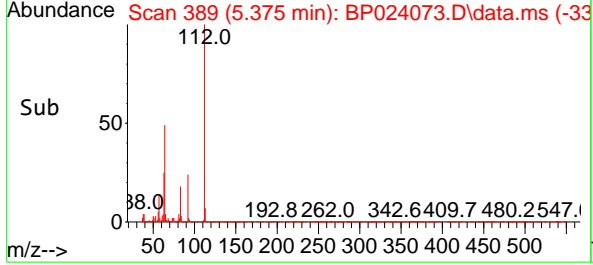
BNA_P

ClientSampleId :

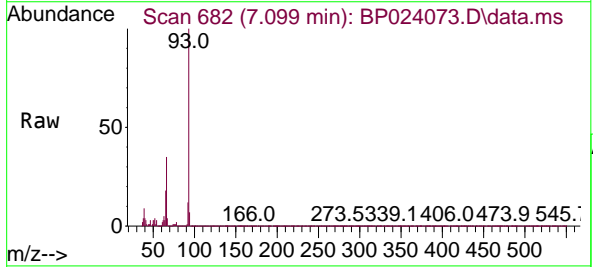
SSTDICCC040



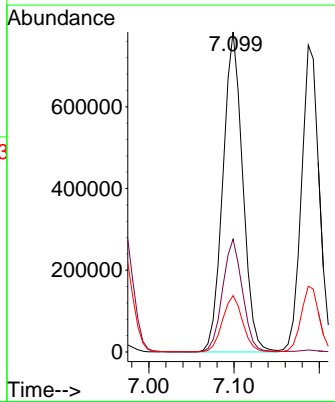
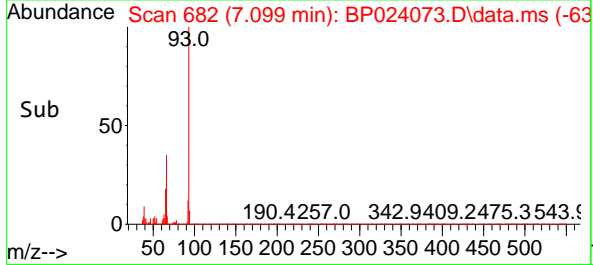
Tgt Ion: 112 Resp: 2232229
 Ion Ratio Lower Upper
 112 100
 64 49.5 39.6 59.4
 63 25.4 20.3 30.5

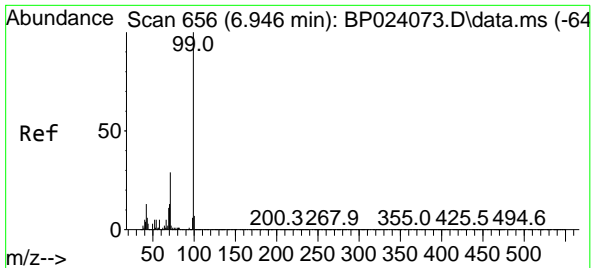


#6
 Aniline
 Concen: 42.070 ng
 RT: 7.099 min Scan# 682
 Delta R.T. 0.000 min
 Lab File: BP024073.D
 Acq: 17 Feb 2025 14:12



Tgt Ion: 93 Resp: 1264446
 Ion Ratio Lower Upper
 93 100
 66 35.3 28.2 42.4
 65 17.6 14.1 21.1





#7
 Phenol-d6
 Concen: 85.509 ng
 RT: 6.946 min Scan# 61
 Delta R.T. 0.000 min
 Lab File: BP024073.D
 Acq: 17 Feb 2025 14:12

Instrument :

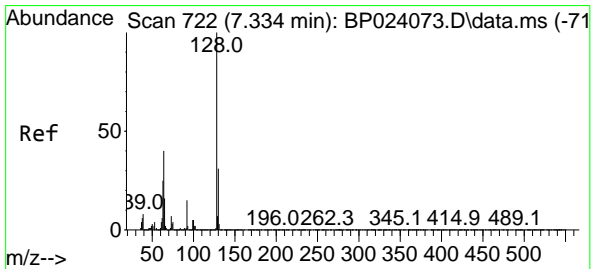
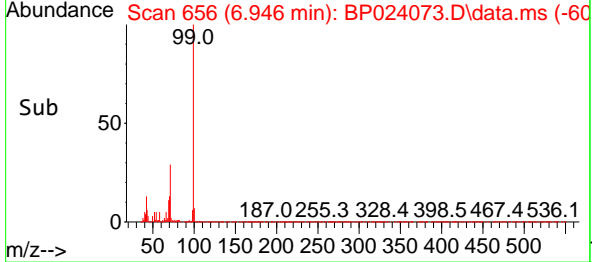
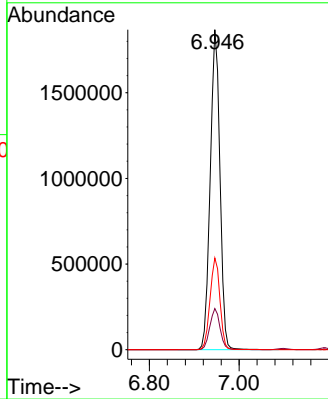
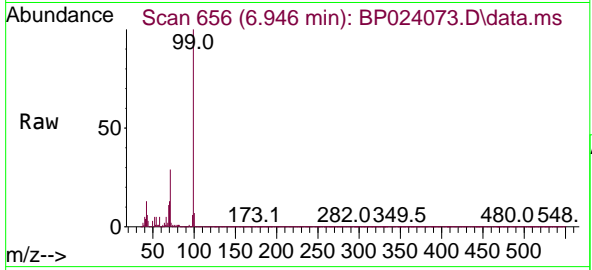
BNA_P

ClientSampleId :

SSTDICCC040

Tgt Ion: 99 Resp: 2806332

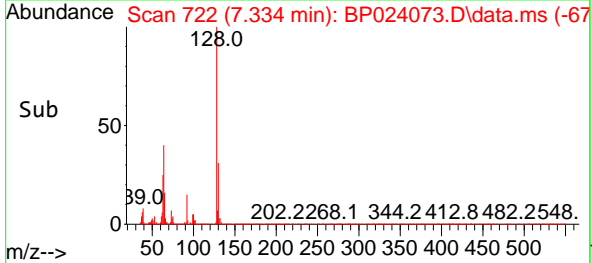
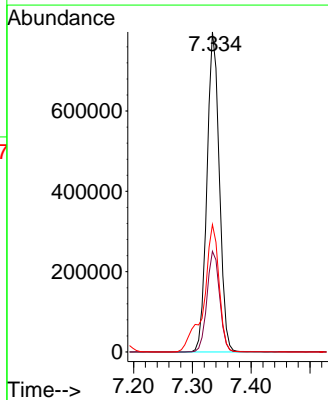
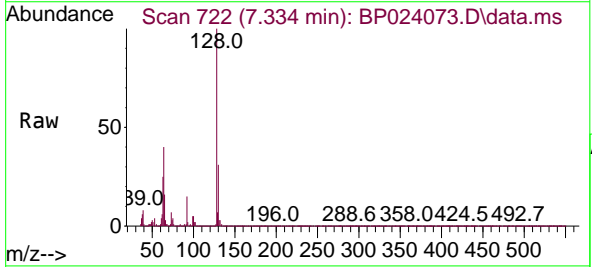
Ion	Ratio	Lower	Upper
99	100		
42	12.9	10.3	15.5
71	28.6	22.9	34.3

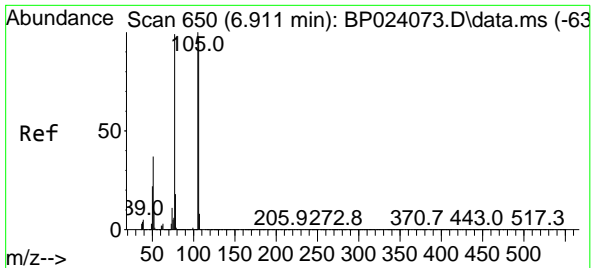


#8
 2-Chlorophenol
 Concen: 42.885 ng
 RT: 7.334 min Scan# 722
 Delta R.T. 0.000 min
 Lab File: BP024073.D
 Acq: 17 Feb 2025 14:12

Tgt Ion: 128 Resp: 1159071

Ion	Ratio	Lower	Upper
128	100		
130	31.5	11.5	51.5
64	39.8	19.8	59.8





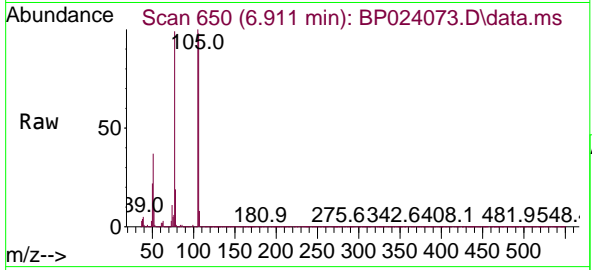
#9
Benzaldehyde
Concen: 41.010 ng
RT: 6.911 min Scan# 61
Delta R.T. 0.000 min
Lab File: BP024073.D
Acq: 17 Feb 2025 14:12

Instrument :

BNA_P

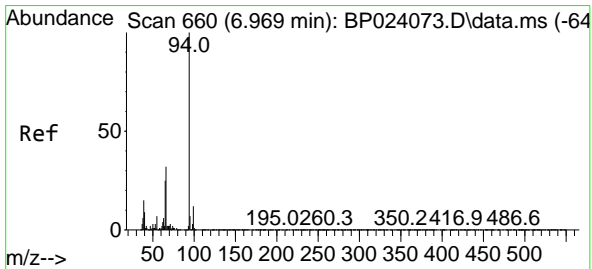
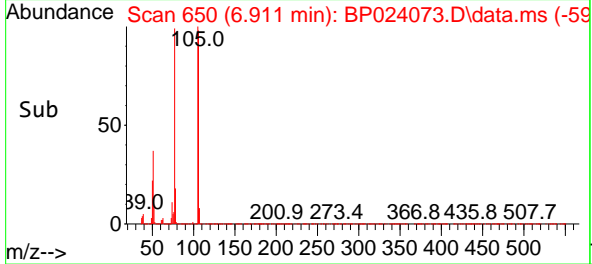
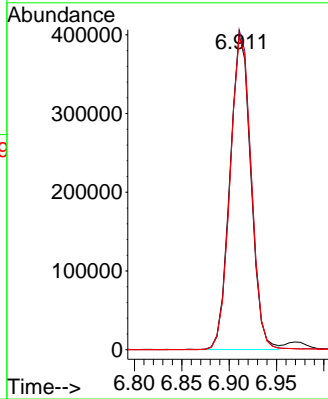
ClientSampleId :

SSTDICCC040

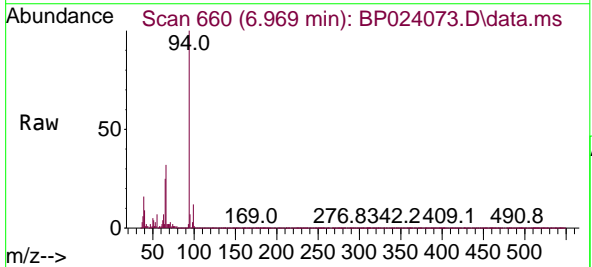


Tgt Ion: 77 Resp: 614483

Ion	Ratio	Lower	Upper
77	100		
105	101.4	81.4	121.4
106	99.0	79.0	119.0

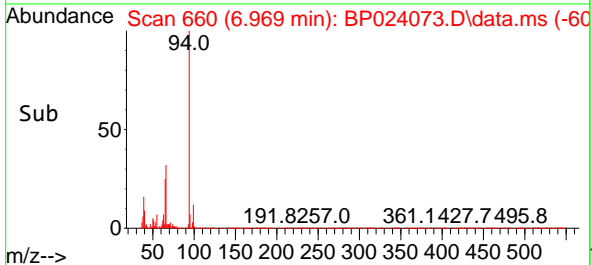
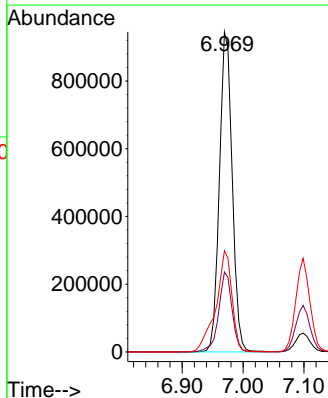


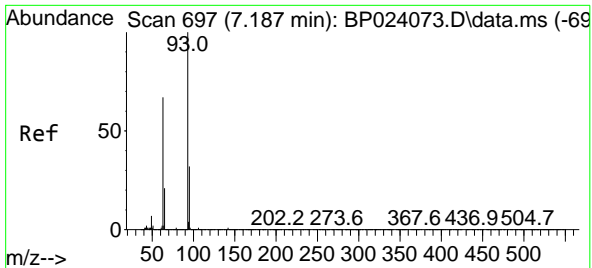
#10
Phenol
Concen: 41.849 ng
RT: 6.969 min Scan# 660
Delta R.T. 0.000 min
Lab File: BP024073.D
Acq: 17 Feb 2025 14:12



Tgt Ion: 94 Resp: 1381122

Ion	Ratio	Lower	Upper
94	100		
65	25.0	5.0	45.0
66	31.6	11.6	51.6



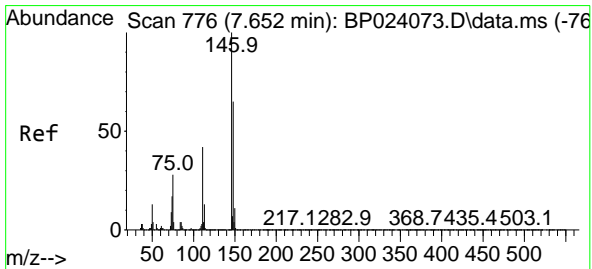
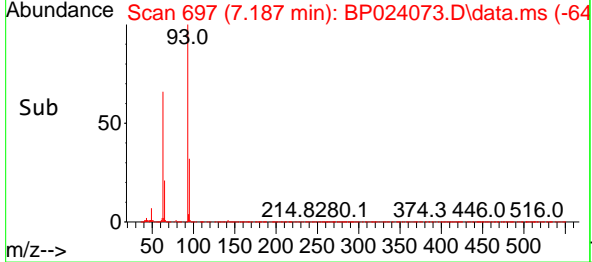
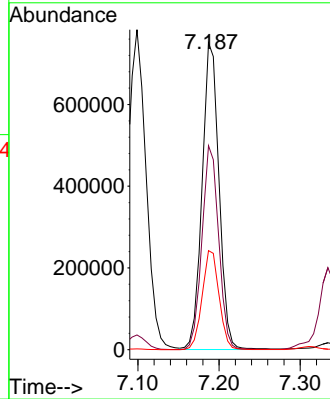
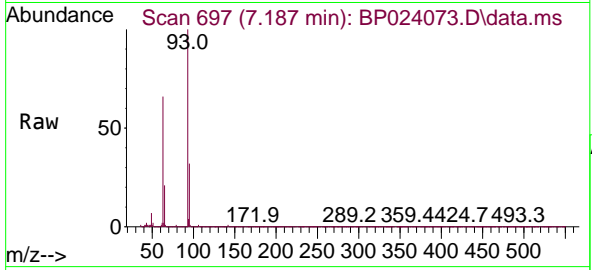


#11
 bis(2-Chloroethyl)ether
 Concen: 41.754 ng
 RT: 7.187 min Scan# 697
 Delta R.T. 0.000 min
 Lab File: BP024073.D
 Acq: 17 Feb 2025 14:12

Instrument :
 BNA_P
 ClientSampleId :
 SSTDICC040

Tgt Ion: 93 Resp: 1085320

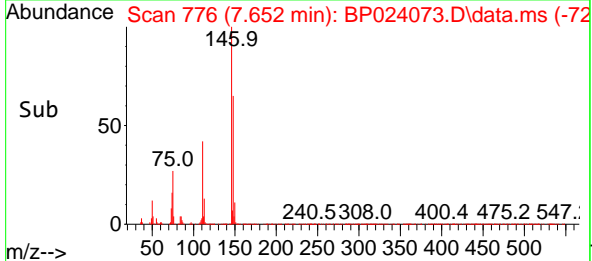
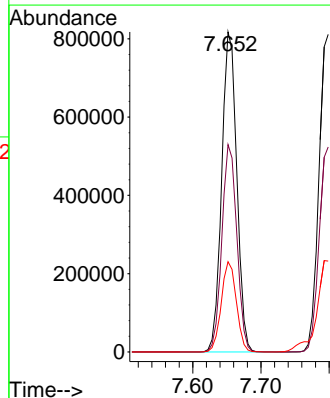
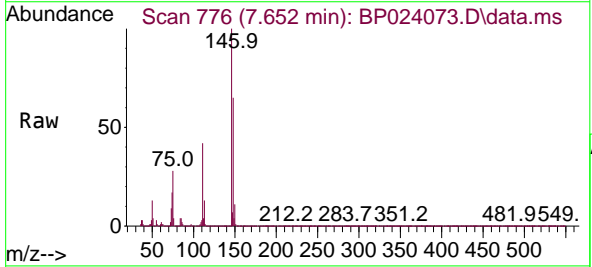
Ion	Ratio	Lower	Upper
93	100		
63	66.5	46.5	86.5
95	32.3	12.3	52.3

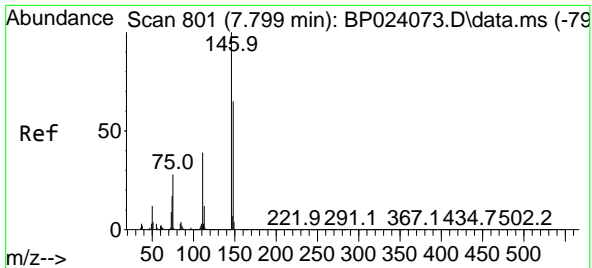


#12
 1,3-Dichlorobenzene
 Concen: 42.326 ng
 RT: 7.652 min Scan# 776
 Delta R.T. 0.000 min
 Lab File: BP024073.D
 Acq: 17 Feb 2025 14:12

Tgt Ion: 146 Resp: 1256714

Ion	Ratio	Lower	Upper
146	100		
148	64.8	51.8	77.8
75	28.2	22.6	33.8



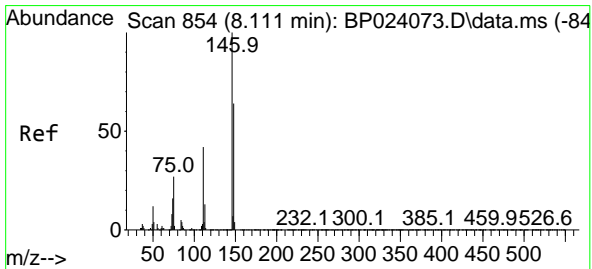
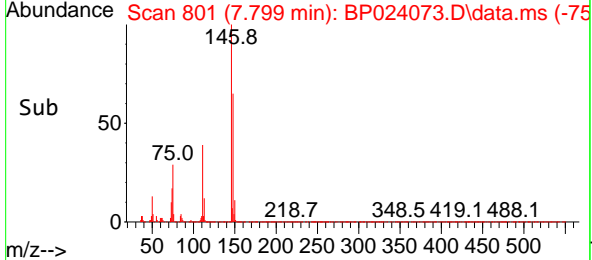
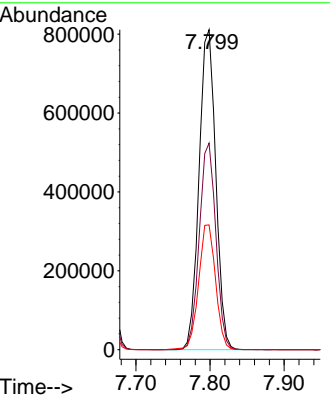
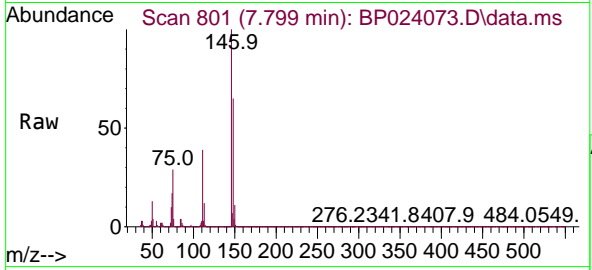


#13
 1,4-Dichlorobenzene
 Concen: 42.195 ng
 RT: 7.799 min Scan# 801
 Delta R.T. 0.000 min
 Lab File: BP024073.D
 Acq: 17 Feb 2025 14:12

Instrument : BNA_P
 ClientSampleId : SSTDICCC040

Tgt Ion:146 Resp: 1266997

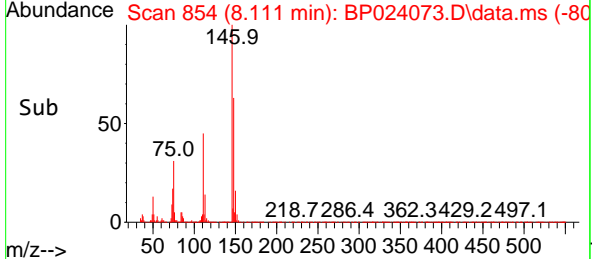
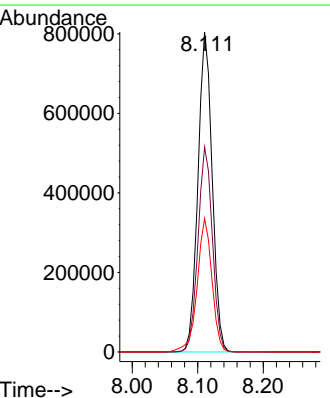
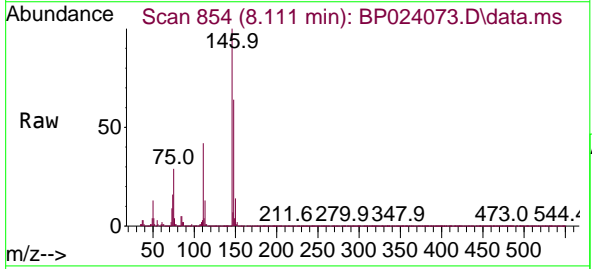
Ion	Ratio	Lower	Upper
146	100		
148	64.5	51.6	77.4
111	39.0	31.2	46.8

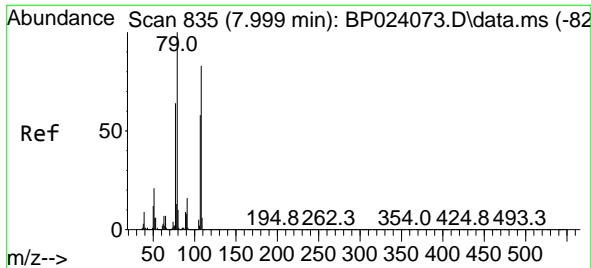


#14
 1,2-Dichlorobenzene
 Concen: 42.128 ng
 RT: 8.111 min Scan# 854
 Delta R.T. 0.000 min
 Lab File: BP024073.D
 Acq: 17 Feb 2025 14:12

Tgt Ion:146 Resp: 1214013

Ion	Ratio	Lower	Upper
146	100		
148	64.0	51.2	76.8
111	41.7	33.4	50.0

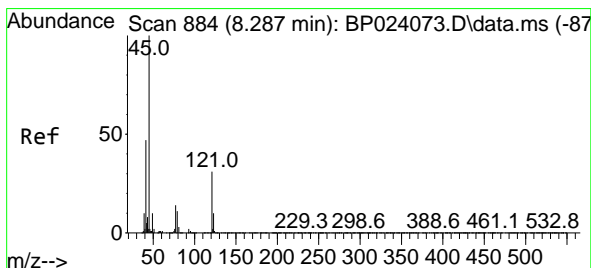
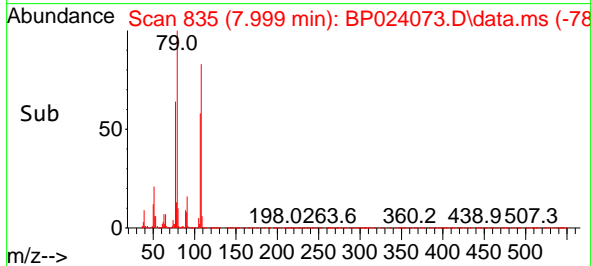
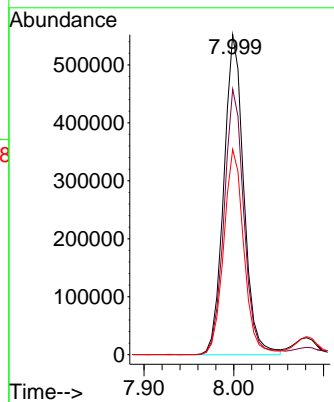
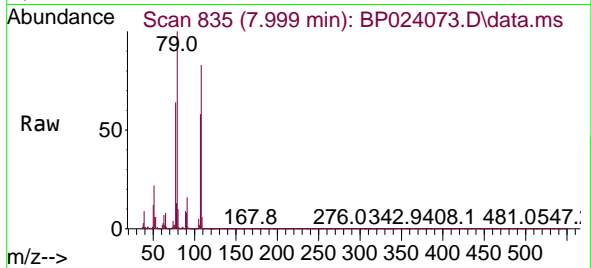




#15
 Benzyl Alcohol
 Concen: 42.401 ng
 RT: 7.999 min Scan# 81
 Delta R.T. 0.000 min
 Lab File: BP024073.D
 Acq: 17 Feb 2025 14:12

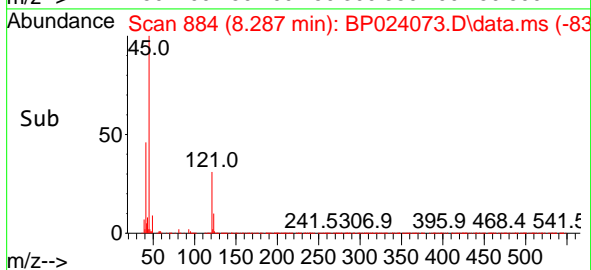
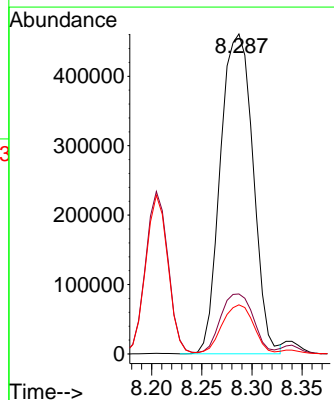
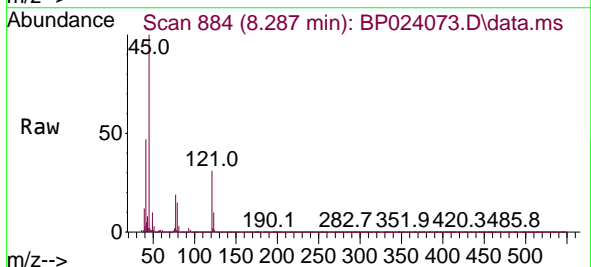
Instrument :
 BNA_P
 ClientSampleId :
 SSTDICCC040

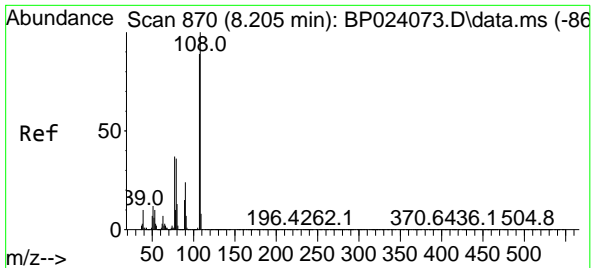
Tgt Ion: 79 Resp: 851796
 Ion Ratio Lower Upper
 79 100
 108 83.0 66.4 99.6
 77 64.1 51.3 76.9



#16
 2,2'-oxybis(1-Chloropropane)
 Concen: 41.334 ng
 RT: 8.287 min Scan# 884
 Delta R.T. 0.000 min
 Lab File: BP024073.D
 Acq: 17 Feb 2025 14:12

Tgt Ion: 45 Resp: 1042976
 Ion Ratio Lower Upper
 45 100
 77 18.8 0.0 38.8
 79 15.4 0.0 35.4

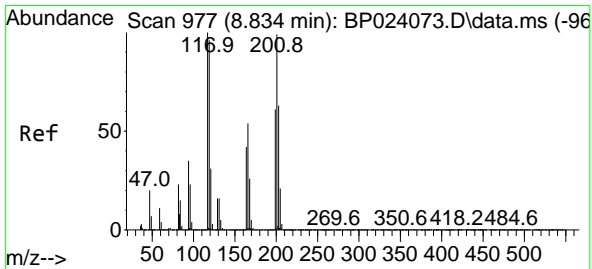
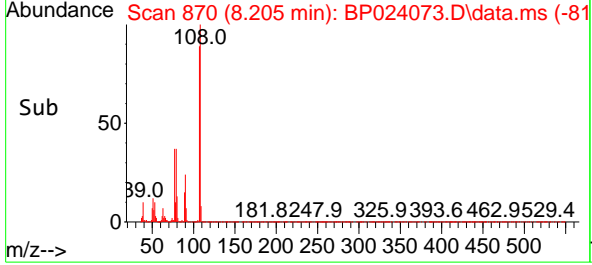
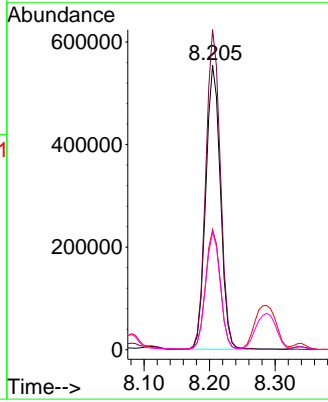
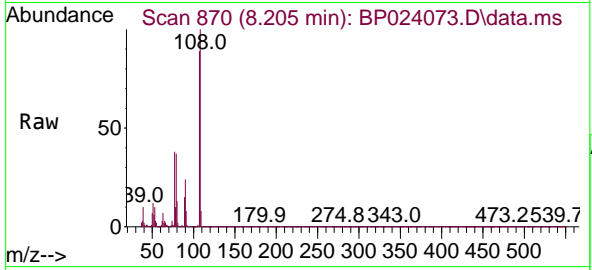




#17
 2-Methylphenol
 Concen: 42.681 ng
 RT: 8.205 min Scan# 81
 Delta R.T. 0.000 min
 Lab File: BP024073.D
 Acq: 17 Feb 2025 14:12

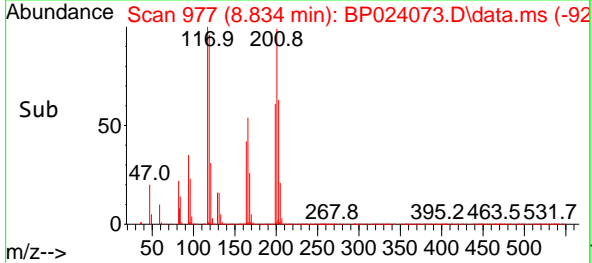
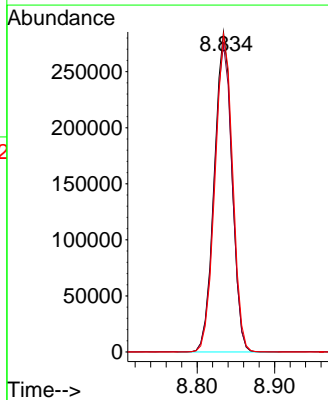
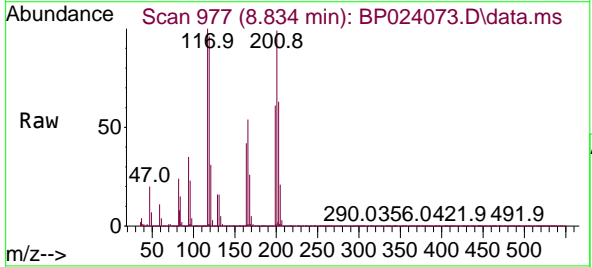
Instrument :
 BNA_P
 ClientSampleId :
 SSTDICC040

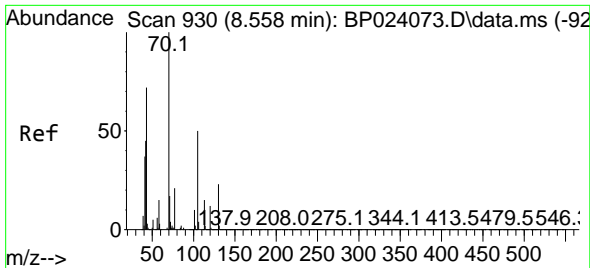
Tgt Ion	Resp	Lower	Upper
107	100		
108	112.5	90.0	135.0
77	42.2	33.8	50.6
79	41.2	33.0	49.4



#18
 Hexachloroethane
 Concen: 41.830 ng
 RT: 8.834 min Scan# 977
 Delta R.T. 0.000 min
 Lab File: BP024073.D
 Acq: 17 Feb 2025 14:12

Tgt Ion	Resp	Lower	Upper
117	100		
119	96.1	76.9	115.3
201	99.3	79.4	119.2



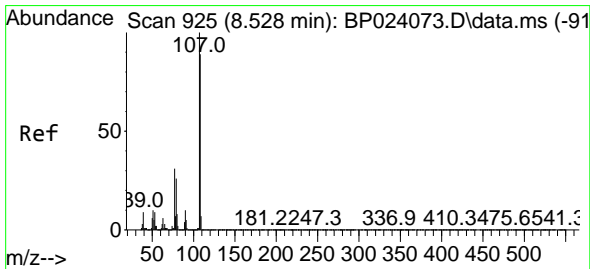
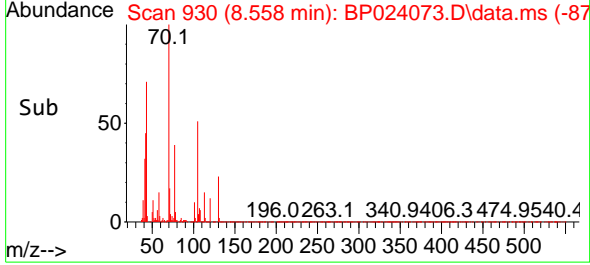
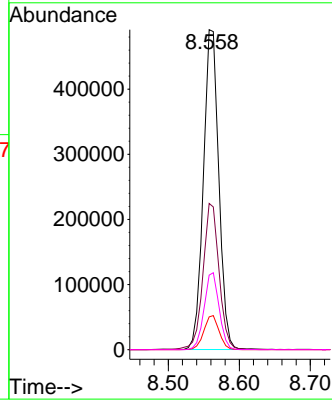
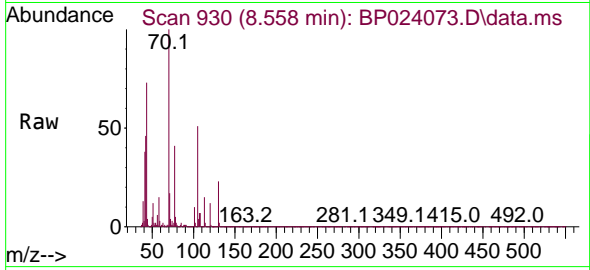


#19
 n-Nitroso-di-n-propylamine
 Concen: 42.162 ng
 RT: 8.558 min Scan# 911
 Delta R.T. 0.000 min
 Lab File: BP024073.D
 Acq: 17 Feb 2025 14:12

Instrument :
 BNA_P
 ClientSampleId :
 SSTDICC040

Tgt Ion: 70 Resp: 743995

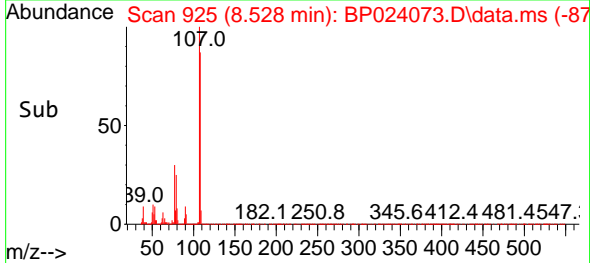
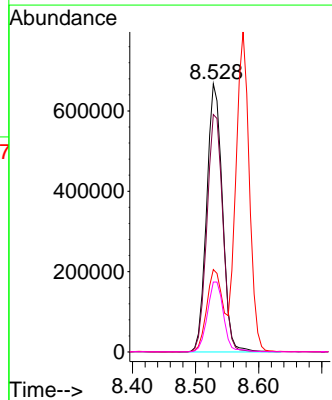
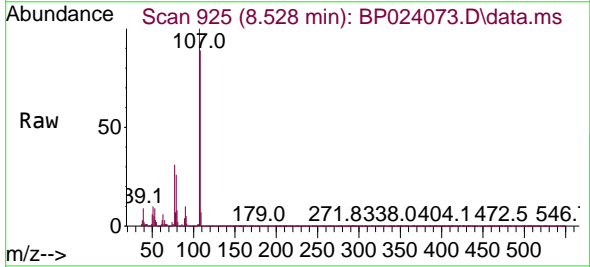
Ion	Ratio	Lower	Upper
70	100		
42	45.7	36.6	54.8
101	10.2	8.2	12.2
130	23.3	18.6	28.0

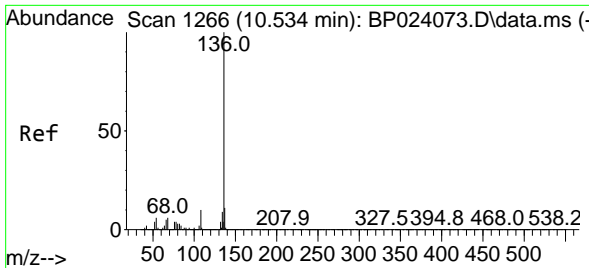


#20
 3+4-Methylphenols
 Concen: 42.263 ng
 RT: 8.528 min Scan# 925
 Delta R.T. 0.000 min
 Lab File: BP024073.D
 Acq: 17 Feb 2025 14:12

Tgt Ion: 107 Resp: 1156282

Ion	Ratio	Lower	Upper
107	100		
108	88.5	68.5	108.5
77	30.7	10.7	50.7
79	26.1	6.1	46.1



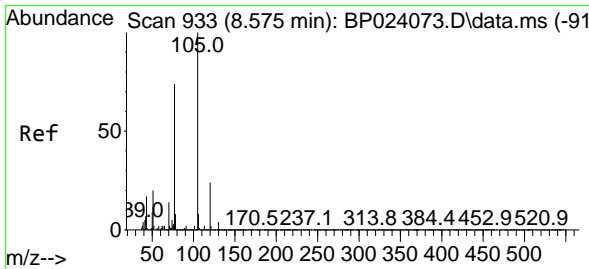
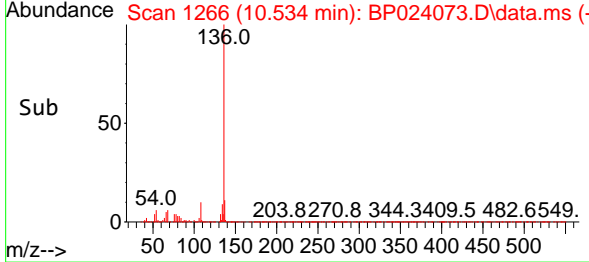
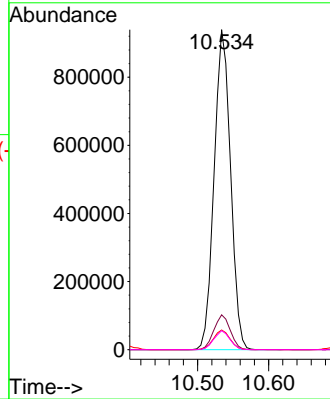
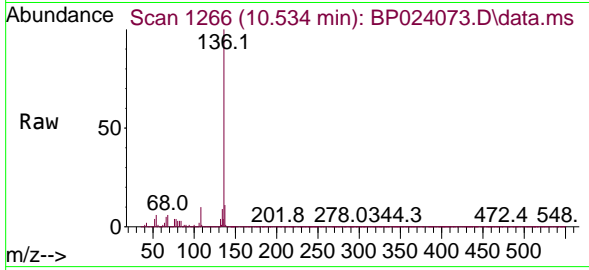


#21
 Naphthalene-d8
 Concen: 20.000 ng
 RT: 10.534 min Scan# 11
 Delta R.T. 0.000 min
 Lab File: BP024073.D
 Acq: 17 Feb 2025 14:12

Instrument :
 BNA_P
 ClientSampleId :
 SSTDICC040

Tgt Ion:136 Resp: 1506661

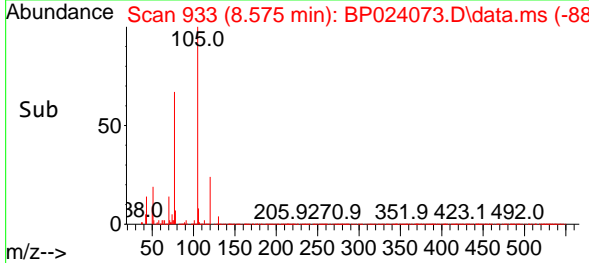
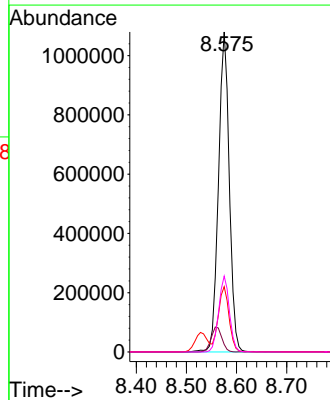
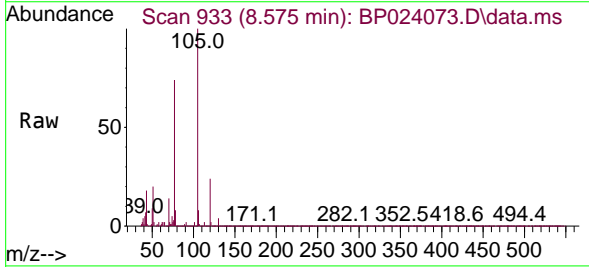
Ion	Ratio	Lower	Upper
136	100		
137	10.9	8.7	13.1
54	6.1	4.9	7.3
68	5.9	4.7	7.1

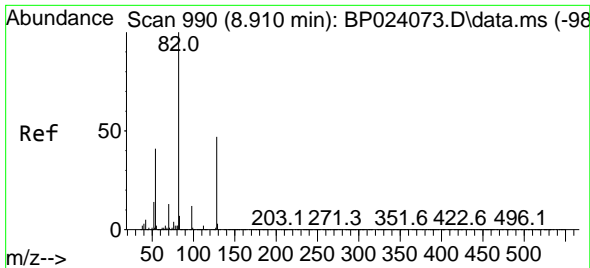


#22
 Acetophenone
 Concen: 41.816 ng
 RT: 8.575 min Scan# 933
 Delta R.T. 0.000 min
 Lab File: BP024073.D
 Acq: 17 Feb 2025 14:12

Tgt Ion:105 Resp: 1618999

Ion	Ratio	Lower	Upper
105	100		
71	2.4	1.9	2.9
51	20.4	16.3	24.5
120	23.7	19.0	28.4



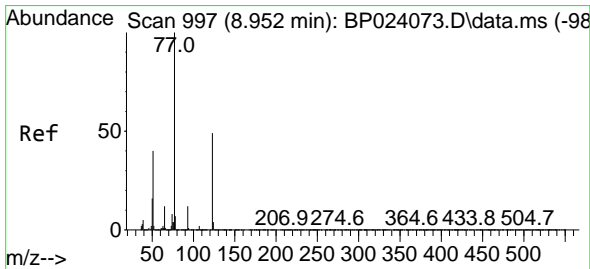
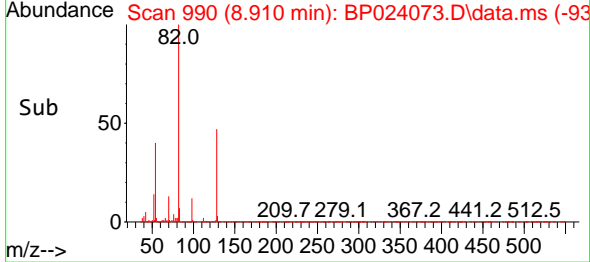
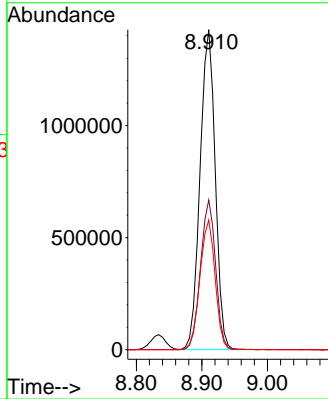
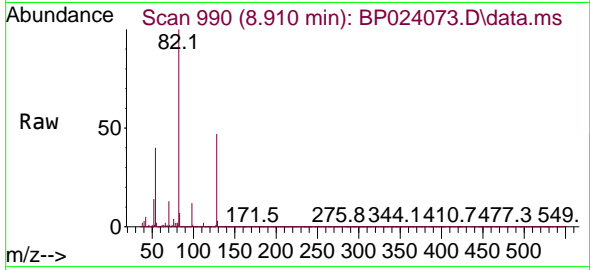


#23
 Nitrobenzene-d5
 Concen: 85.259 ng
 RT: 8.910 min Scan# 990
 Delta R.T. 0.000 min
 Lab File: BP024073.D
 Acq: 17 Feb 2025 14:12

Instrument :
 BNA_P
 ClientSampleId :
 SSTDICC040

Tgt Ion: 82 Resp: 2302539

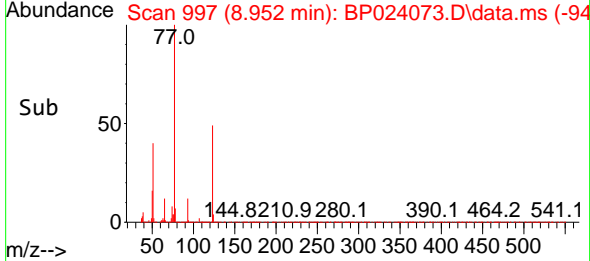
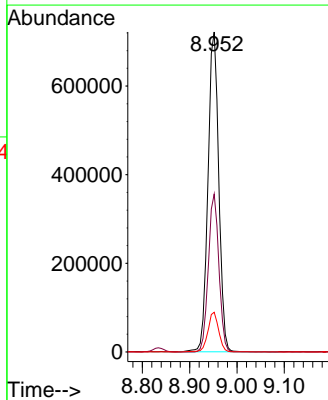
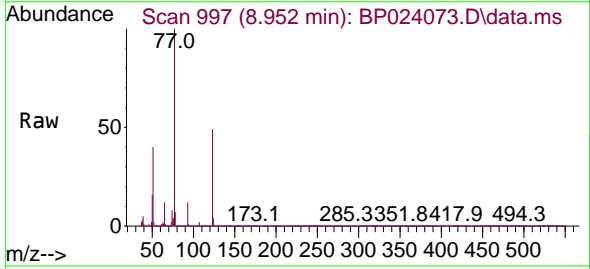
Ion	Ratio	Lower	Upper
82	100		
128	46.8	37.4	56.2
54	40.5	32.4	48.6

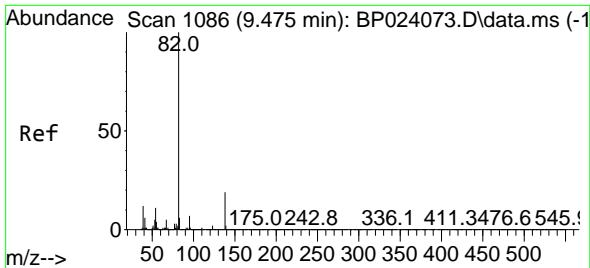


#24
 Nitrobenzene
 Concen: 42.843 ng
 RT: 8.952 min Scan# 997
 Delta R.T. 0.000 min
 Lab File: BP024073.D
 Acq: 17 Feb 2025 14:12

Tgt Ion: 77 Resp: 1138713

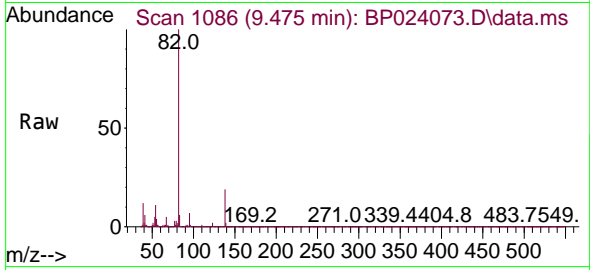
Ion	Ratio	Lower	Upper
77	100		
123	49.3	39.4	59.2
65	12.4	9.9	14.9





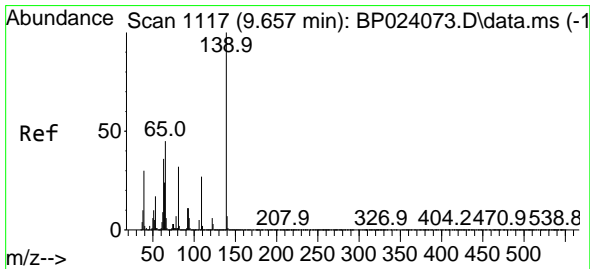
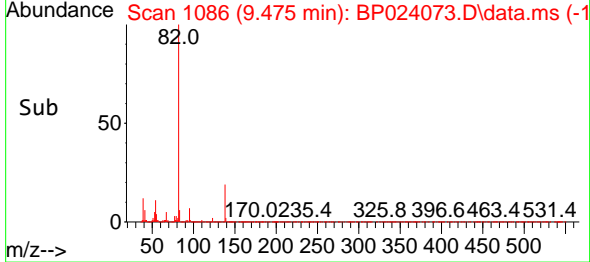
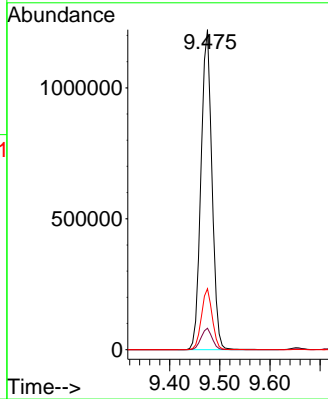
#25
 Isophorone
 Concen: 42.042 ng
 RT: 9.475 min Scan# 1086
 Delta R.T. 0.000 min
 Lab File: BP024073.D
 Acq: 17 Feb 2025 14:12

Instrument :
 BNA_P
 ClientSampleId :
 SSTDICC040



Tgt Ion: 82 Resp: 1856740

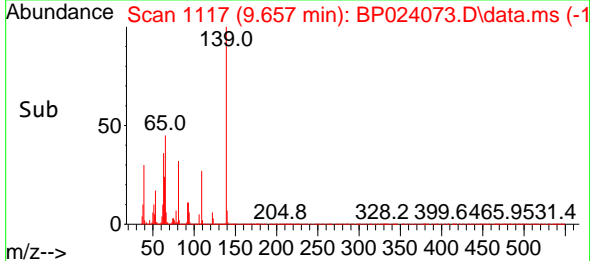
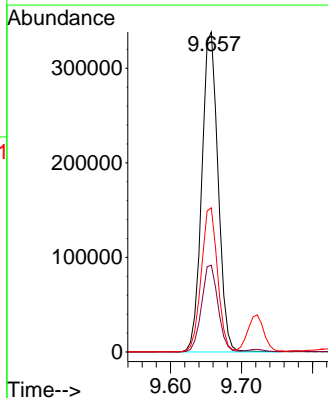
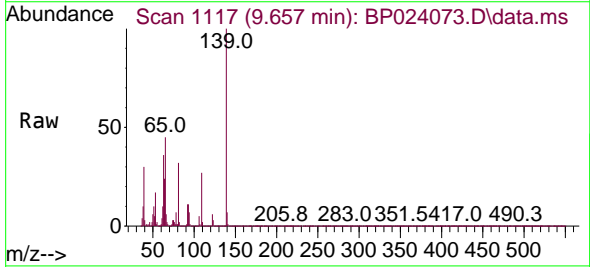
Ion	Ratio	Lower	Upper
82	100		
95	6.7	5.4	8.0
138	19.1	15.3	22.9

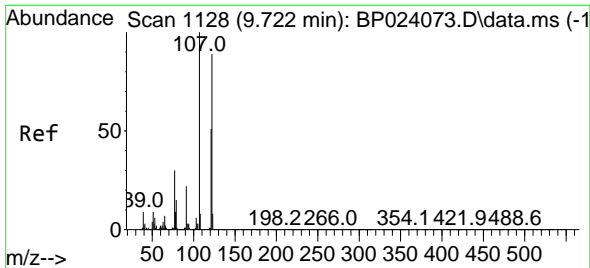


#26
 2-Nitrophenol
 Concen: 44.086 ng
 RT: 9.657 min Scan# 1117
 Delta R.T. 0.000 min
 Lab File: BP024073.D
 Acq: 17 Feb 2025 14:12

Tgt Ion: 139 Resp: 539835

Ion	Ratio	Lower	Upper
139	100		
109	27.1	21.7	32.5
65	45.1	36.1	54.1

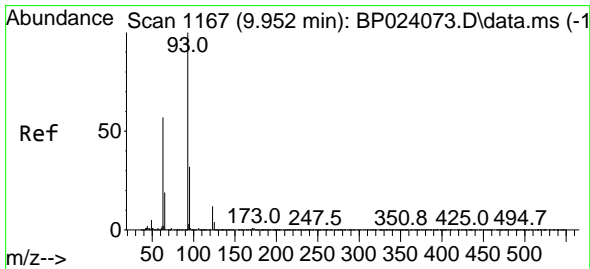
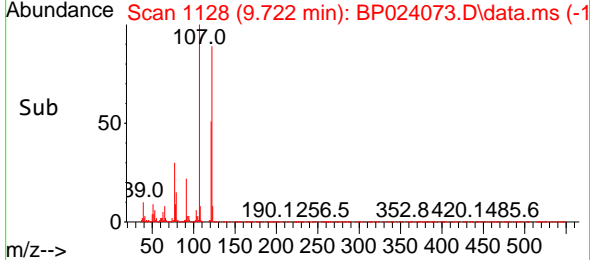
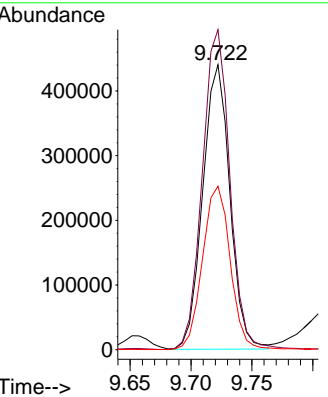
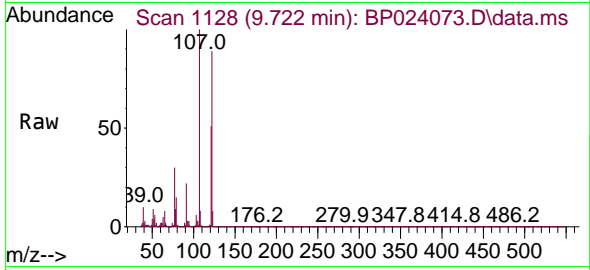




#27
 2,4-Dimethylphenol
 Concen: 42.578 ng
 RT: 9.722 min Scan# 1128
 Delta R.T. 0.000 min
 Lab File: BP024073.D
 Acq: 17 Feb 2025 14:12

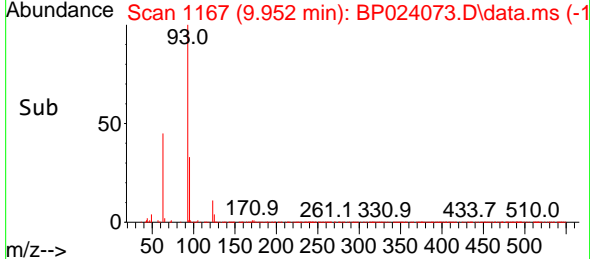
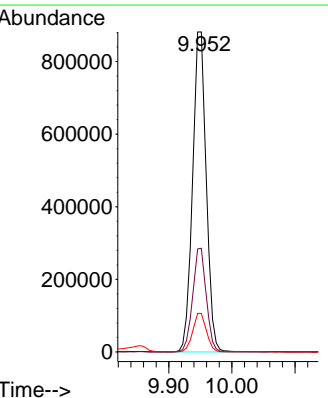
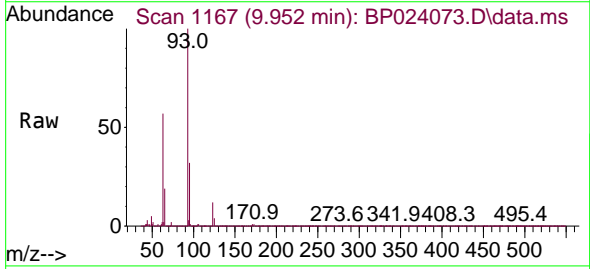
Instrument :
 BNA_P
 ClientSampleId :
 SSTDICC040

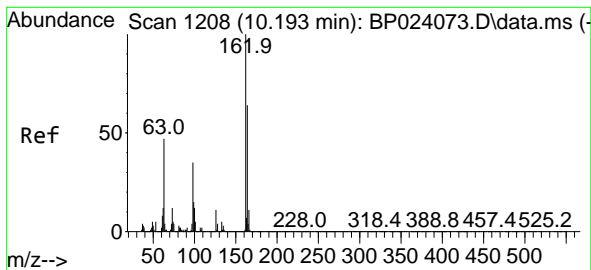
Tgt Ion	Resp	Lower	Upper
122	684382		
107	112.3	89.8	134.8
121	57.4	45.9	68.9



#28
 bis(2-Chloroethoxy)methane
 Concen: 41.429 ng
 RT: 9.952 min Scan# 1167
 Delta R.T. 0.000 min
 Lab File: BP024073.D
 Acq: 17 Feb 2025 14:12

Tgt Ion	Resp	Lower	Upper
93	1325452		
95	32.4	25.9	38.9
123	12.1	9.7	14.5

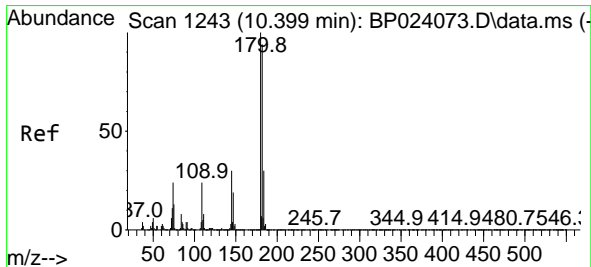
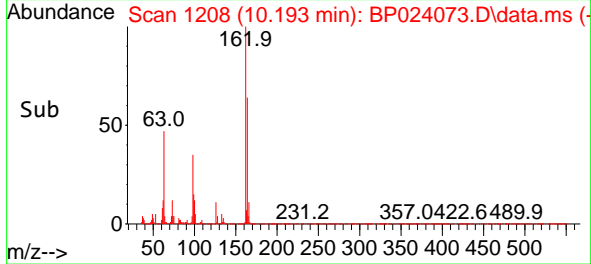
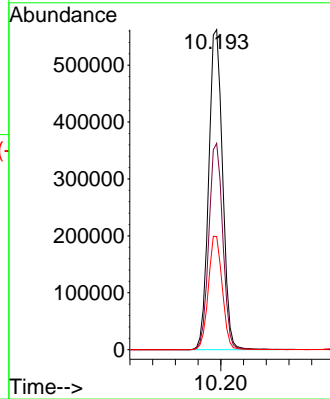
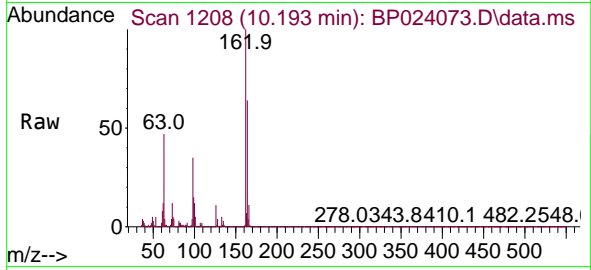




#29
 2,4-Dichlorophenol
 Concen: 43.345 ng
 RT: 10.193 min Scan# 11
 Delta R.T. 0.000 min
 Lab File: BP024073.D
 Acq: 17 Feb 2025 14:12

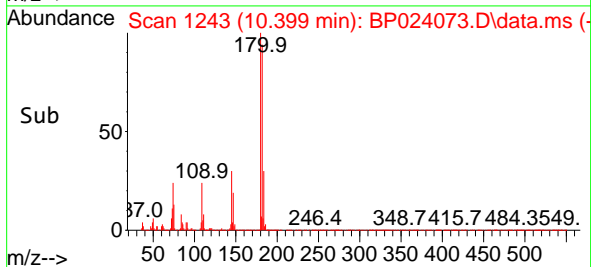
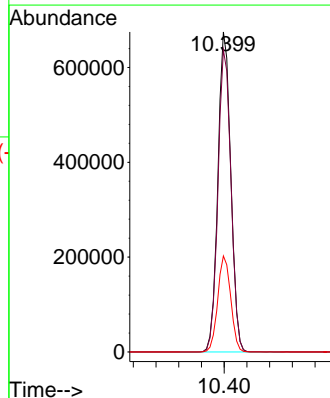
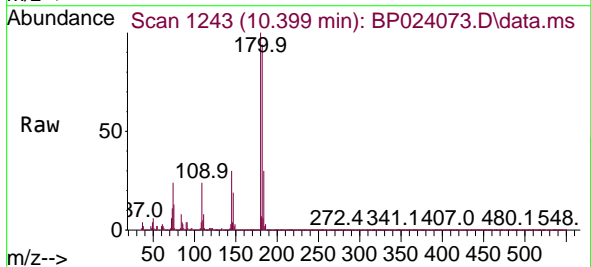
Instrument :
 BNA_P
 ClientSampleId :
 SSTDICC040

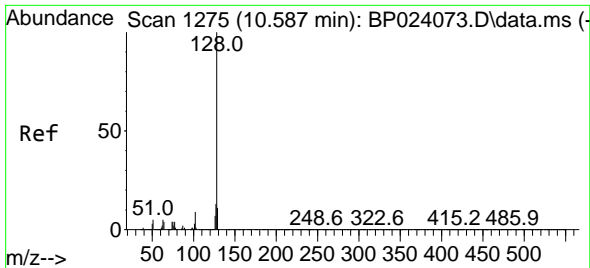
Tgt Ion	Ratio	Lower	Upper
162	100		
164	64.5	44.5	84.5
98	35.3	15.3	55.3



#30
 1,2,4-Trichlorobenzene
 Concen: 42.272 ng
 RT: 10.399 min Scan# 1243
 Delta R.T. 0.000 min
 Lab File: BP024073.D
 Acq: 17 Feb 2025 14:12

Tgt Ion	Ratio	Lower	Upper
180	100		
182	94.3	75.4	113.2
145	30.0	24.0	36.0



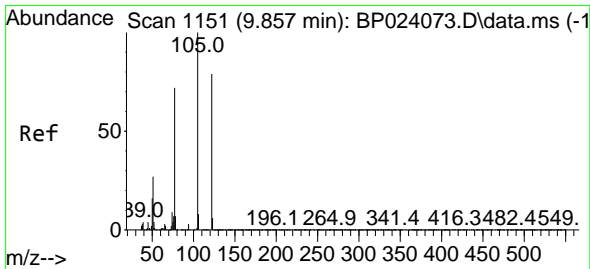
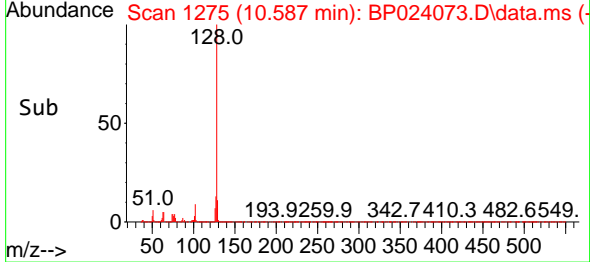
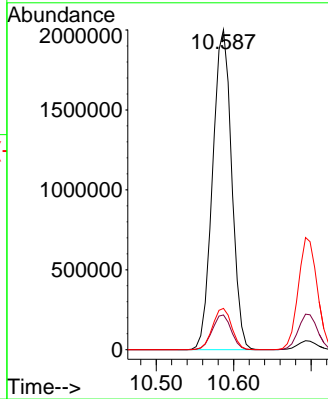
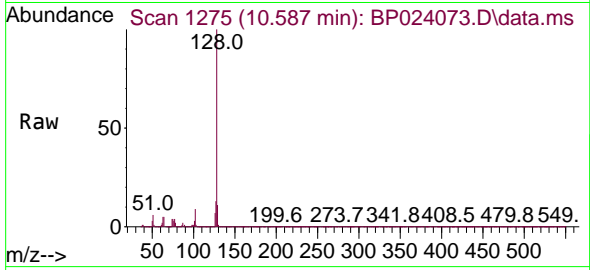


#31
 Naphthalene
 Concen: 42.062 ng
 RT: 10.587 min Scan# 111
 Delta R.T. 0.000 min
 Lab File: BP024073.D
 Acq: 17 Feb 2025 14:12

Instrument :
 BNA_P
 ClientSampleId :
 SSTDICCC040

Tgt Ion:128 Resp: 3407567

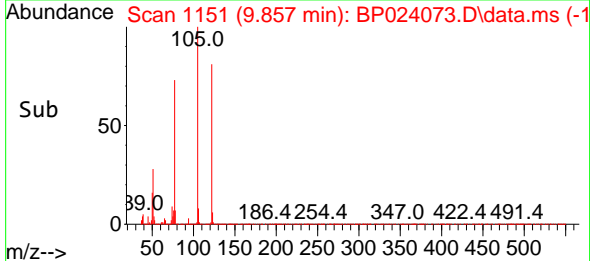
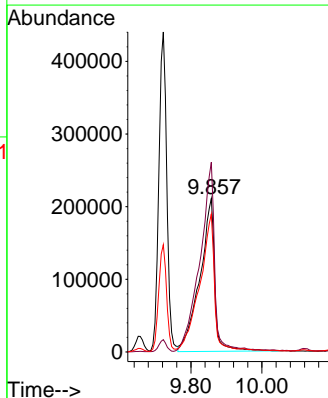
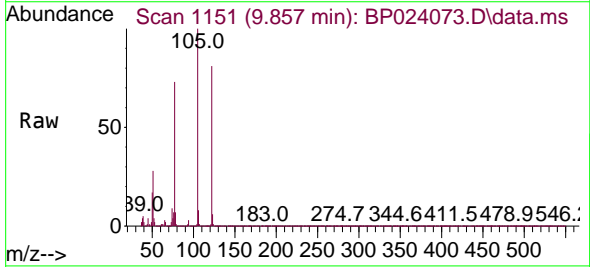
Ion	Ratio	Lower	Upper
128	100		
129	10.8	8.6	13.0
127	12.9	10.3	15.5

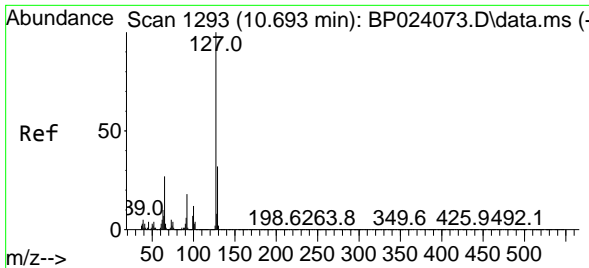


#32
 Benzoic acid
 Concen: 38.237 ng
 RT: 9.857 min Scan# 1151
 Delta R.T. 0.000 min
 Lab File: BP024073.D
 Acq: 17 Feb 2025 14:12

Tgt Ion:122 Resp: 614425

Ion	Ratio	Lower	Upper
122	100		
105	123.7	103.7	143.7
77	89.9	69.9	109.9



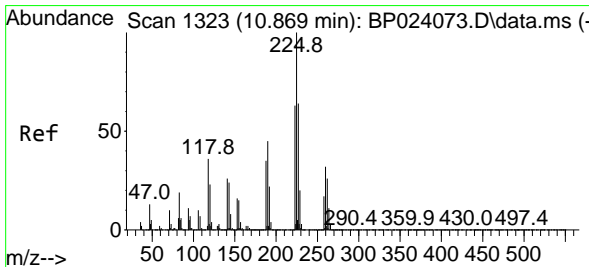
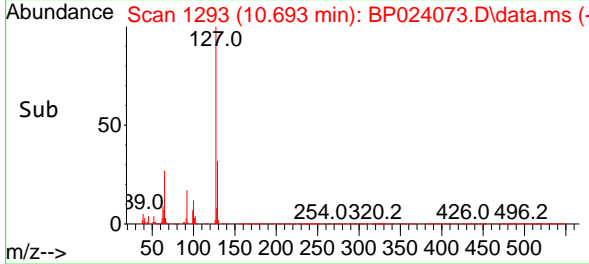
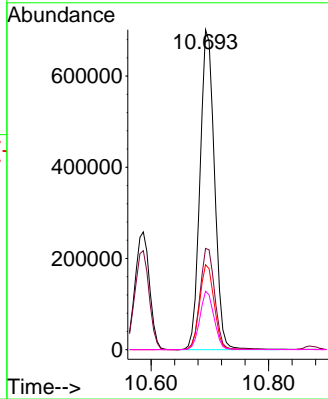
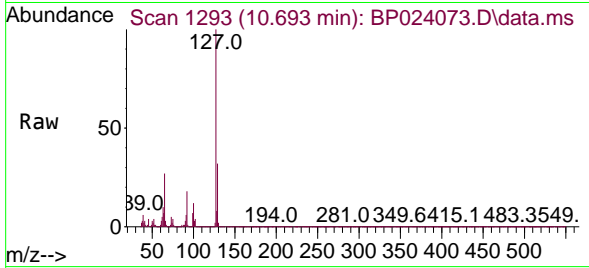


#33
 4-Chloroaniline
 Concen: 42.037 ng
 RT: 10.693 min Scan# 11
 Delta R.T. 0.000 min
 Lab File: BP024073.D
 Acq: 17 Feb 2025 14:12

Instrument :
 BNA_P
 ClientSampleId :
 SSTDICC040

Tgt Ion:127 Resp: 1199722

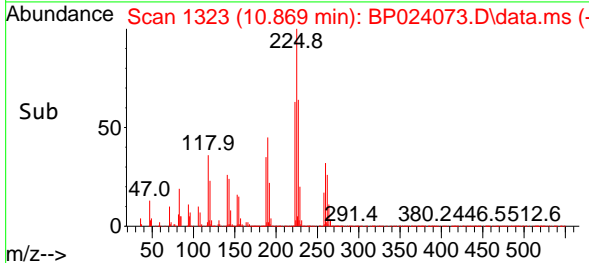
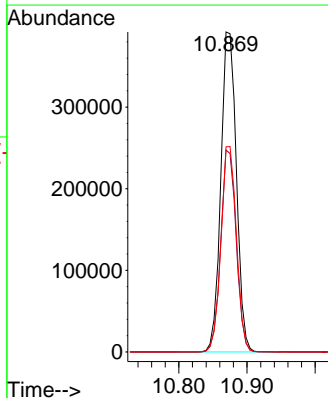
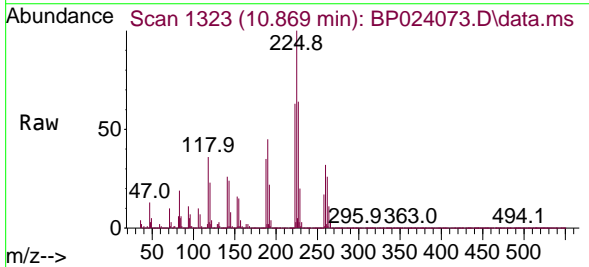
Ion	Ratio	Lower	Upper
127	100		
129	31.7	25.4	38.0
65	26.6	21.3	31.9
92	18.3	14.6	22.0

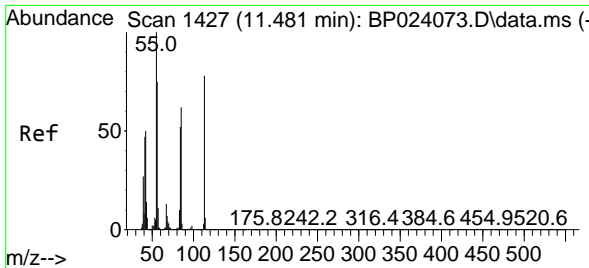


#34
 Hexachlorobutadiene
 Concen: 42.743 ng
 RT: 10.869 min Scan# 1323
 Delta R.T. 0.000 min
 Lab File: BP024073.D
 Acq: 17 Feb 2025 14:12

Tgt Ion:225 Resp: 622219

Ion	Ratio	Lower	Upper
225	100		
223	63.1	50.5	75.7
227	64.1	51.3	76.9



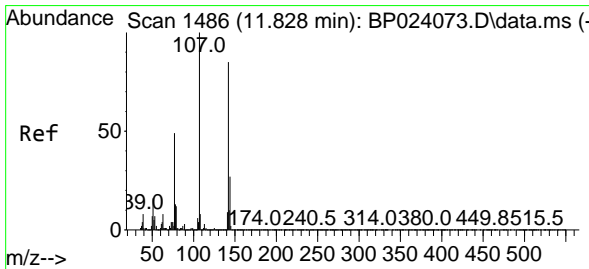
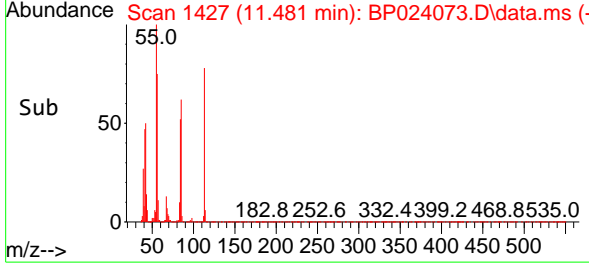
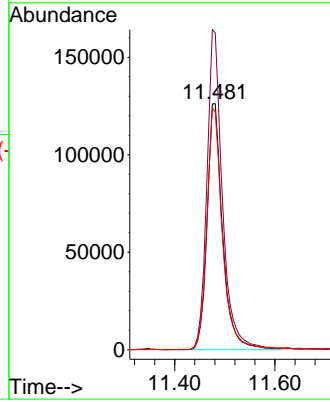
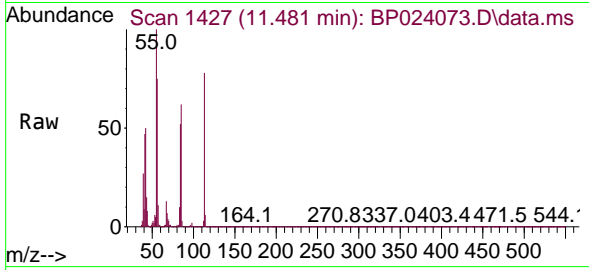


#35
 Caprolactam
 Concen: 38.044 ng
 RT: 11.481 min Scan# 1427
 Delta R.T. -0.000 min
 Lab File: BP024073.D
 Acq: 17 Feb 2025 14:12

Instrument :
 BNA_P
 ClientSampleId :
 SSTDICCC040

Tgt Ion:113 Resp: 271425

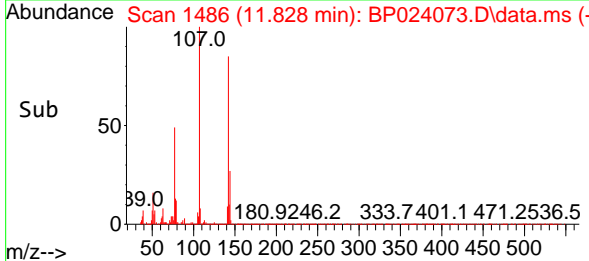
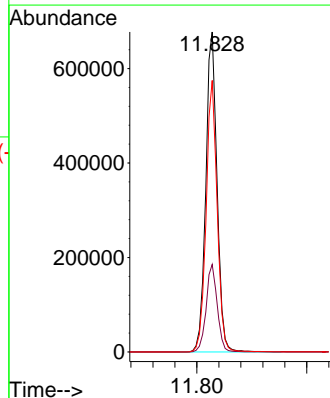
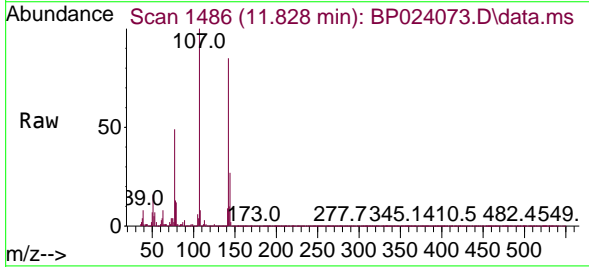
Ion	Ratio	Lower	Upper
113	100		
55	128.8	108.8	148.8
56	96.5	76.5	116.5

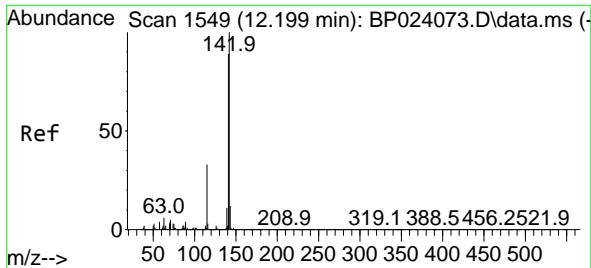


#36
 4-Chloro-3-methylphenol
 Concen: 42.506 ng
 RT: 11.828 min Scan# 1486
 Delta R.T. 0.000 min
 Lab File: BP024073.D
 Acq: 17 Feb 2025 14:12

Tgt Ion:107 Resp: 958524

Ion	Ratio	Lower	Upper
107	100		
144	27.3	21.8	32.8
142	84.8	67.8	101.8



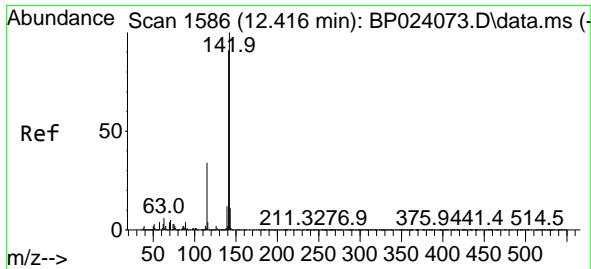
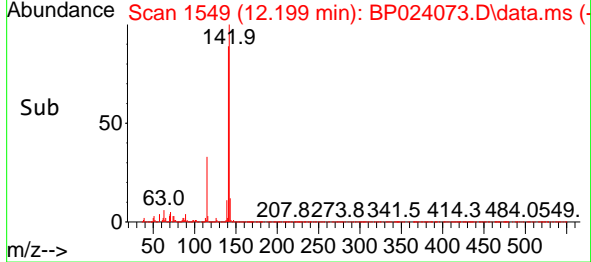
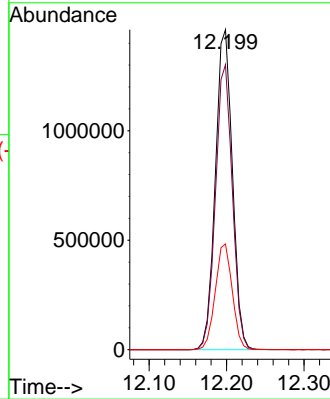
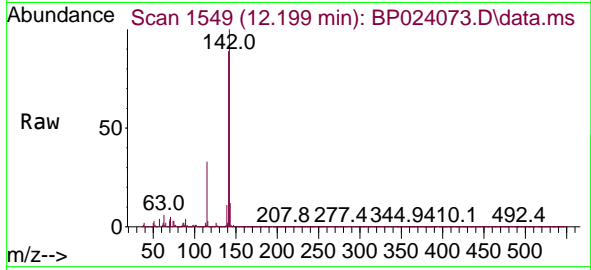


#37
 2-Methylnaphthalene
 Concen: 41.420 ng
 RT: 12.199 min Scan# 1549
 Delta R.T. 0.000 min
 Lab File: BP024073.D
 Acq: 17 Feb 2025 14:12

Instrument : BNA_P
 ClientSampleId : SSTDICCC040

Tgt Ion:142 Resp: 2230252

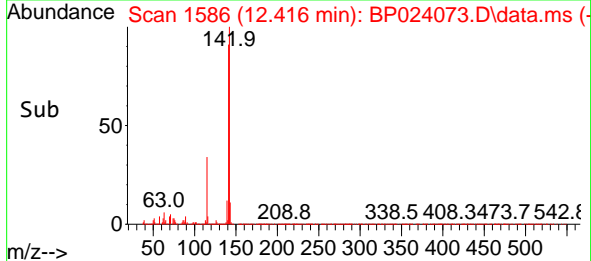
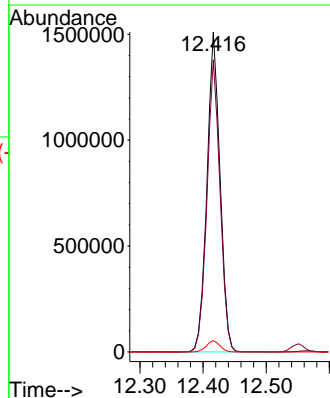
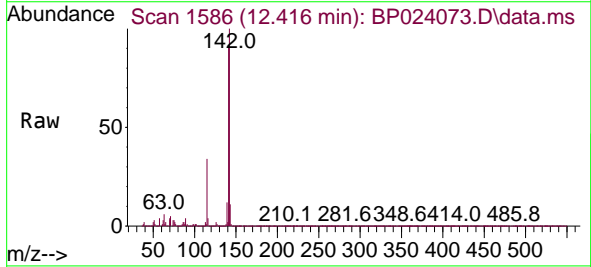
Ion	Ratio	Lower	Upper
142	100		
141	89.0	71.2	106.8
115	33.1	26.5	39.7

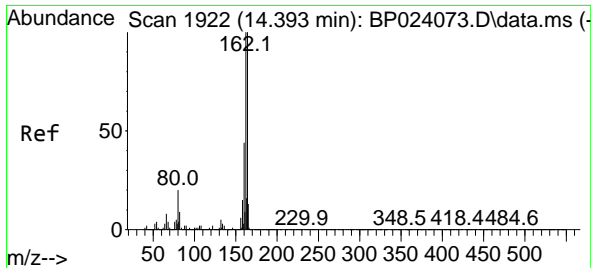


#38
 1-Methylnaphthalene
 Concen: 41.352 ng
 RT: 12.416 min Scan# 1586
 Delta R.T. 0.000 min
 Lab File: BP024073.D
 Acq: 17 Feb 2025 14:12

Tgt Ion:142 Resp: 2166108

Ion	Ratio	Lower	Upper
142	100		
141	91.3	73.0	109.6
116	3.5	2.8	4.2



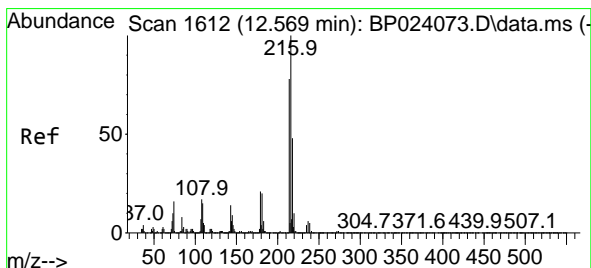
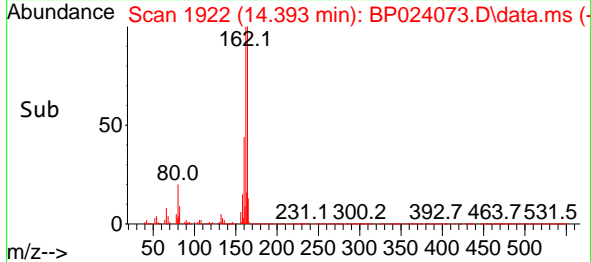
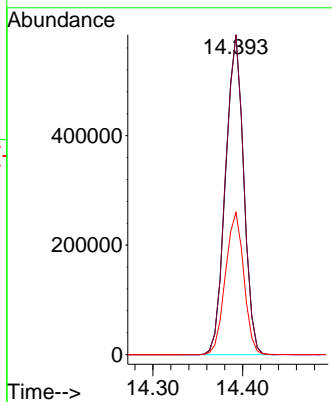
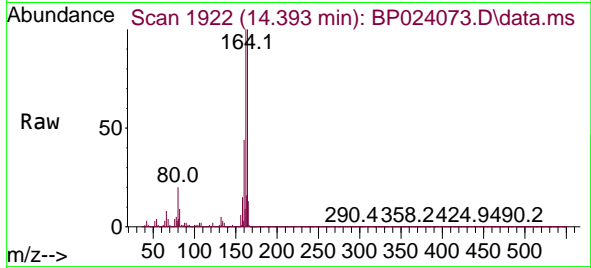


#39
 Acenaphthene-d10
 Concen: 20.000 ng
 RT: 14.393 min Scan# 1922
 Delta R.T. 0.000 min
 Lab File: BP024073.D
 Acq: 17 Feb 2025 14:12

Instrument : BNA_P
 Client Sample Id : SSTDICCC040

Tgt Ion:164 Resp: 817827

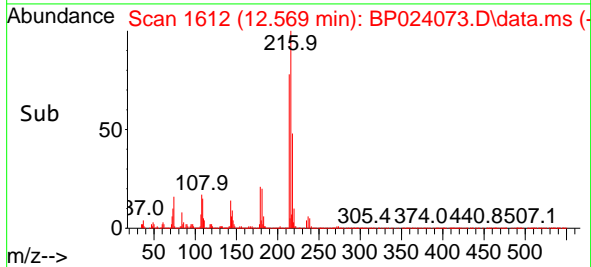
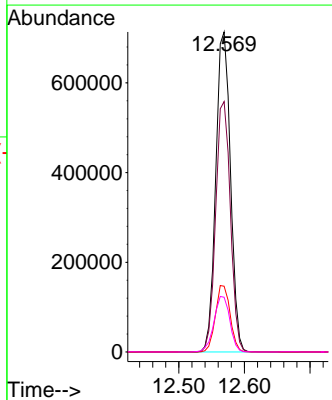
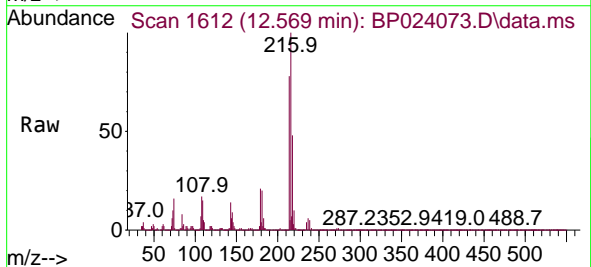
Ion	Ratio	Lower	Upper
164	100		
162	100.1	80.1	120.1
160	44.5	35.6	53.4

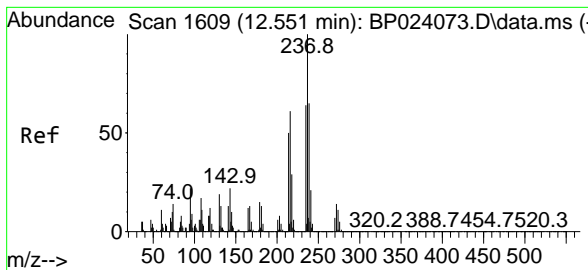


#40
 1,2,4,5-Tetrachlorobenzene
 Concen: 43.933 ng
 RT: 12.569 min Scan# 1612
 Delta R.T. 0.000 min
 Lab File: BP024073.D
 Acq: 17 Feb 2025 14:12

Tgt Ion:216 Resp: 1103960

Ion	Ratio	Lower	Upper
216	100		
214	78.4	62.7	94.1
179	20.8	16.6	25.0
108	18.8	15.0	22.6

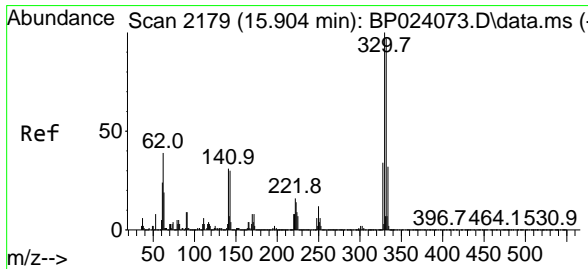
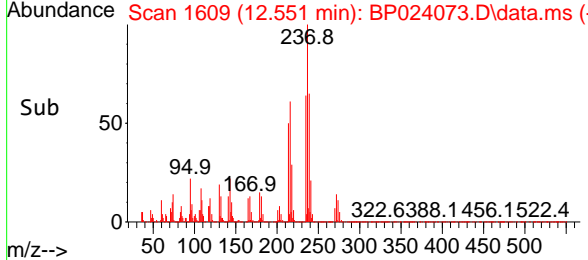
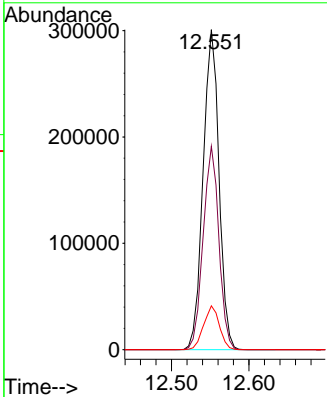
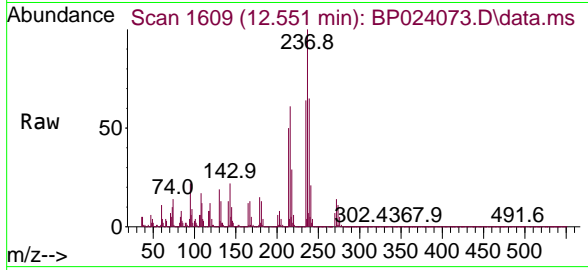




#41
 Hexachlorocyclopentadiene
 Concen: 45.781 ng
 RT: 12.551 min Scan# 1609
 Delta R.T. 0.000 min
 Lab File: BP024073.D
 Acq: 17 Feb 2025 14:12

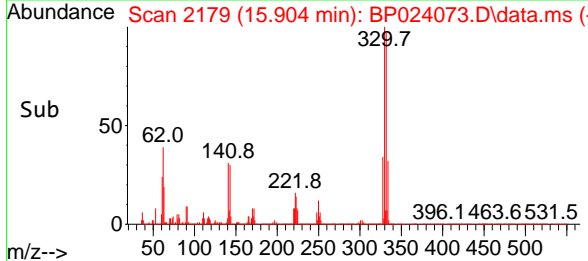
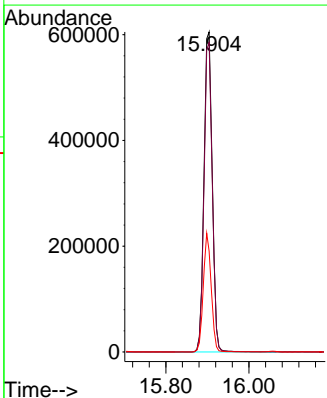
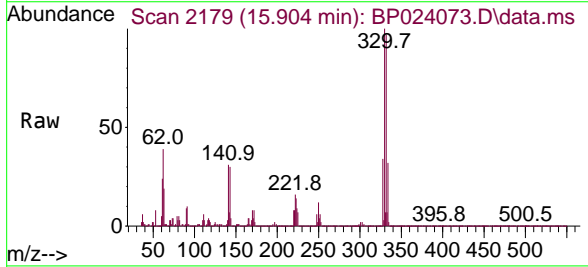
Instrument : BNA_P
 ClientSampleId : SSTDICCC040

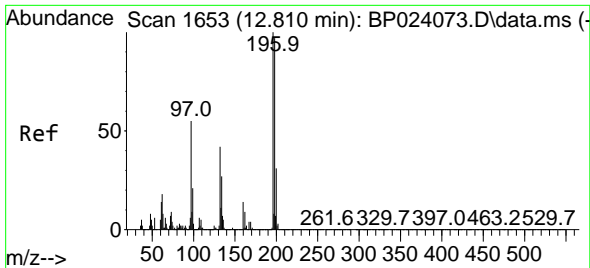
Tgt Ion	Resp	Lower	Upper
237	100		
235	63.5	43.5	83.5
272	13.7	0.0	33.7



#42
 2,4,6-Tribromophenol
 Concen: 83.582 ng
 RT: 15.904 min Scan# 2179
 Delta R.T. 0.000 min
 Lab File: BP024073.D
 Acq: 17 Feb 2025 14:12

Tgt Ion	Resp	Lower	Upper
330	100		
332	96.2	77.0	115.4
141	35.4	28.3	42.5





#43
 2,4,6-Trichlorophenol
 Concen: 45.121 ng
 RT: 12.810 min Scan# 1653
 Delta R.T. 0.000 min
 Lab File: BP024073.D
 Acq: 17 Feb 2025 14:12

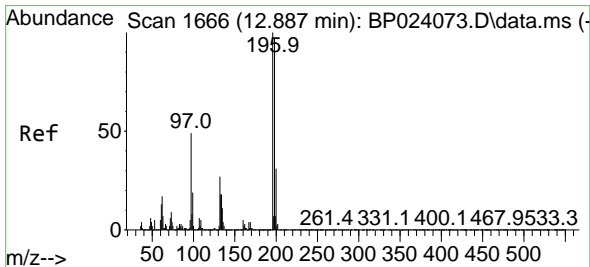
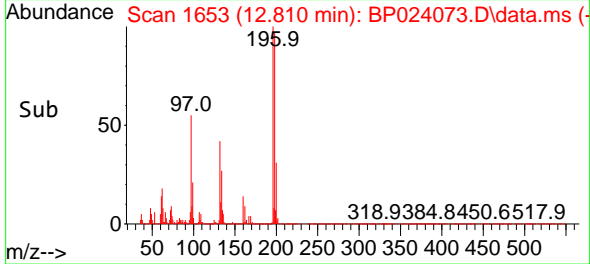
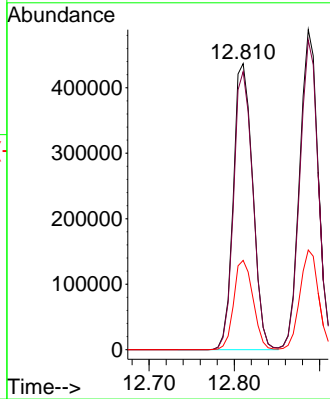
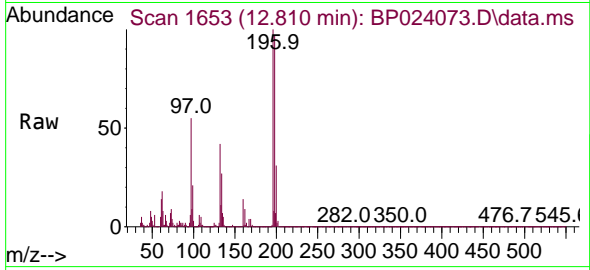
Instrument :

BNA_P

ClientSampleId :

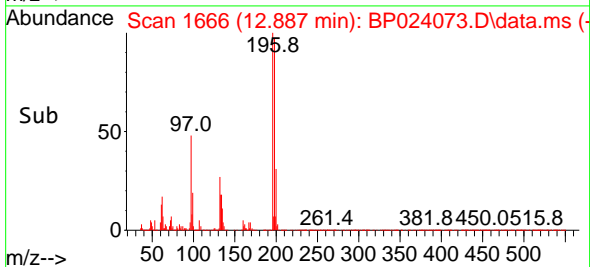
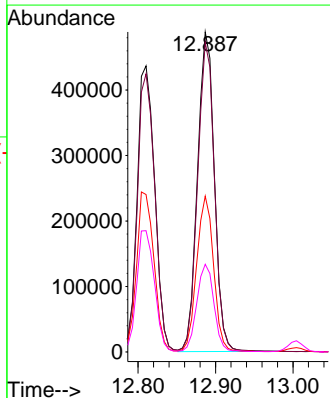
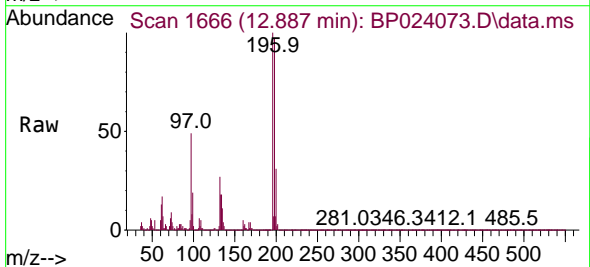
SSTDICCC040

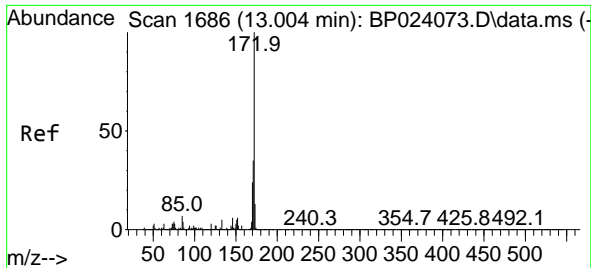
Tgt Ion	Resp	Lower	Upper
196	691454		
198	97.2	77.8	116.6
200	31.2	25.0	37.4



#44
 2,4,5-Trichlorophenol
 Concen: 44.169 ng
 RT: 12.887 min Scan# 1666
 Delta R.T. 0.000 min
 Lab File: BP024073.D
 Acq: 17 Feb 2025 14:12

Tgt Ion	Resp	Lower	Upper
196	740246		
198	96.8	77.4	116.2
97	48.7	39.0	58.4
132	27.4	21.9	32.9

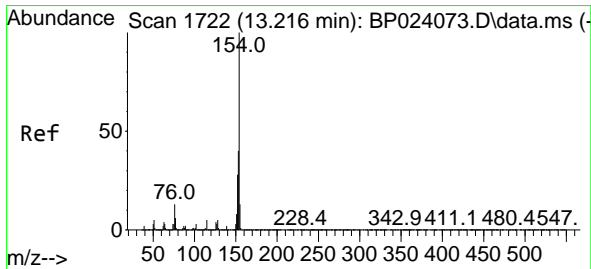
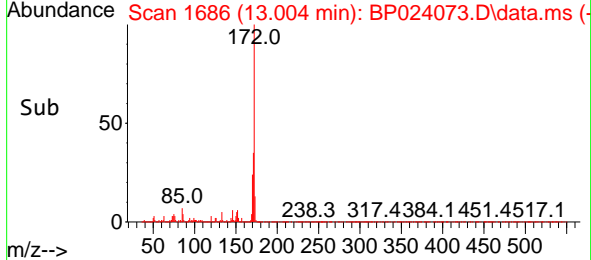
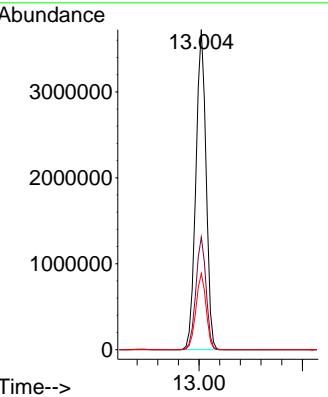
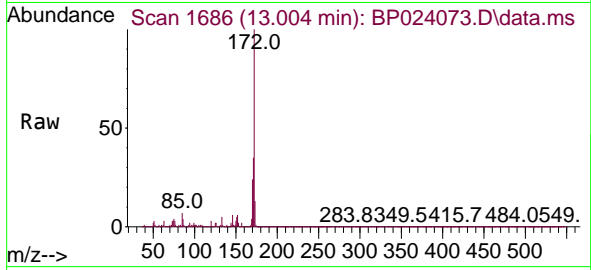




#45
 2-Fluorobiphenyl
 Concen: 87.094 ng
 RT: 13.004 min Scan# 1686
 Delta R.T. 0.000 min
 Lab File: BP024073.D
 Acq: 17 Feb 2025 14:12

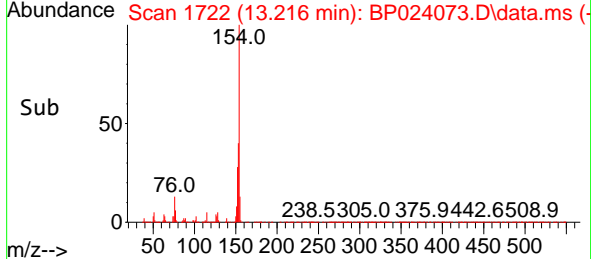
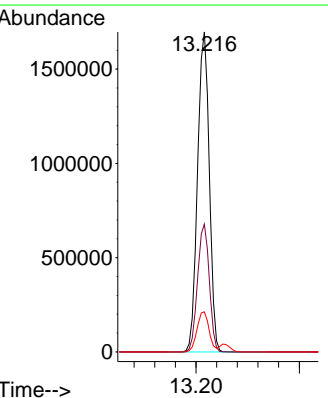
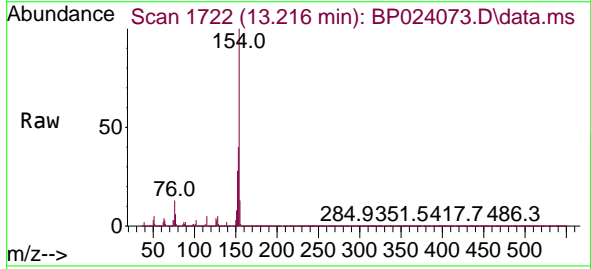
Instrument : BNA_P
 ClientSampleId : SSTDICCC040

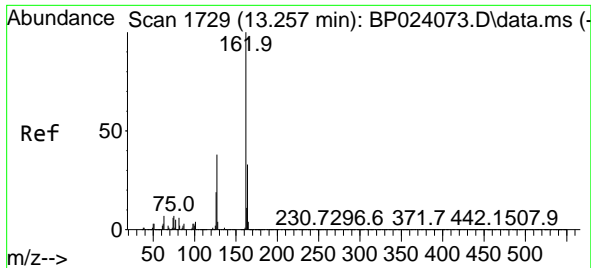
Tgt Ion	Resp	Lower	Upper
172	100		
171	35.2	28.2	42.2
170	23.8	19.0	28.6



#46
 1,1'-Biphenyl
 Concen: 41.965 ng
 RT: 13.216 min Scan# 1722
 Delta R.T. 0.000 min
 Lab File: BP024073.D
 Acq: 17 Feb 2025 14:12

Tgt Ion	Resp	Lower	Upper
154	100		
153	40.0	20.0	60.0
76	12.6	0.0	32.6



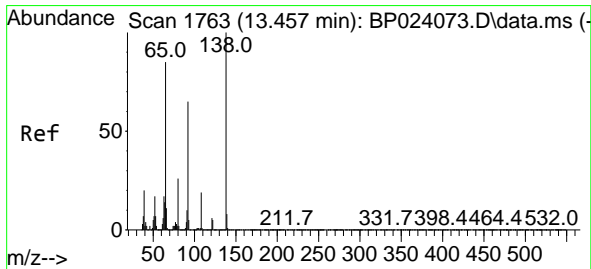
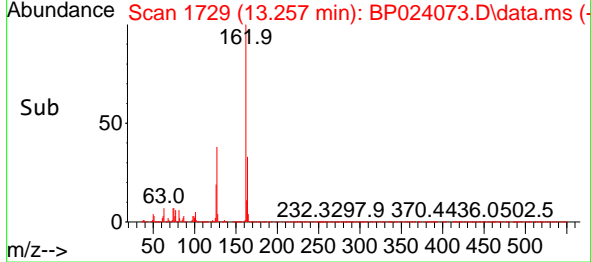
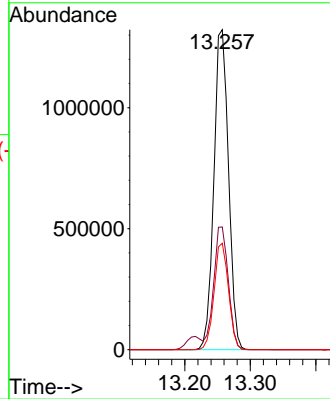
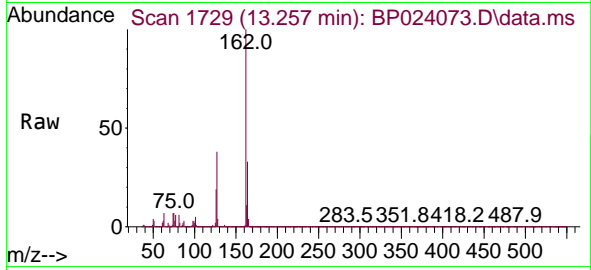


#47
 2-Chloronaphthalene
 Concen: 42.565 ng
 RT: 13.257 min Scan# 1729
 Delta R.T. 0.000 min
 Lab File: BP024073.D
 Acq: 17 Feb 2025 14:12

Instrument : BNA_P
 ClientSampleId : SSTDICCC040

Tgt Ion: 162 Resp: 2044842

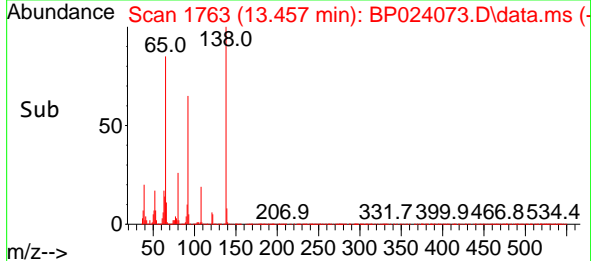
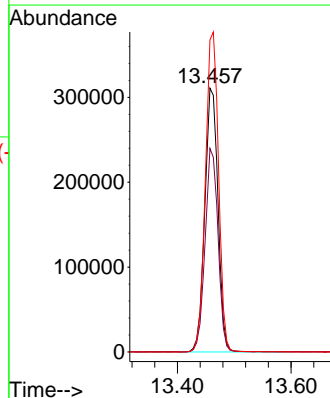
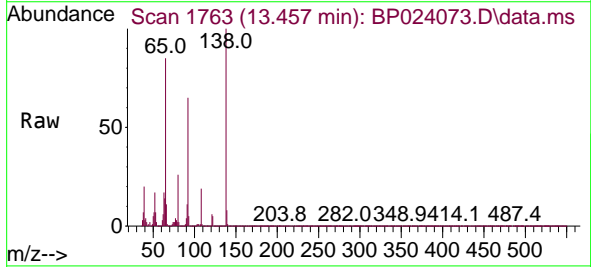
Ion	Ratio	Lower	Upper
162	100		
127	38.4	30.7	46.1
164	33.2	26.6	39.8

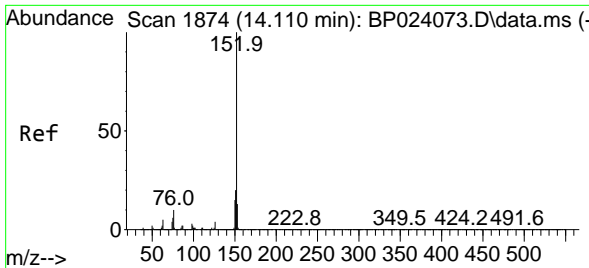


#48
 2-Nitroaniline
 Concen: 43.931 ng
 RT: 13.457 min Scan# 1763
 Delta R.T. 0.000 min
 Lab File: BP024073.D
 Acq: 17 Feb 2025 14:12

Tgt Ion: 65 Resp: 498538

Ion	Ratio	Lower	Upper
65	100		
92	77.1	61.7	92.5
138	118.3	94.6	142.0



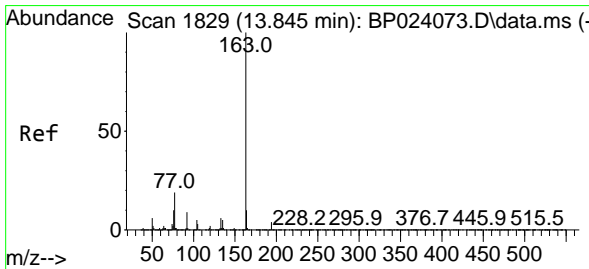
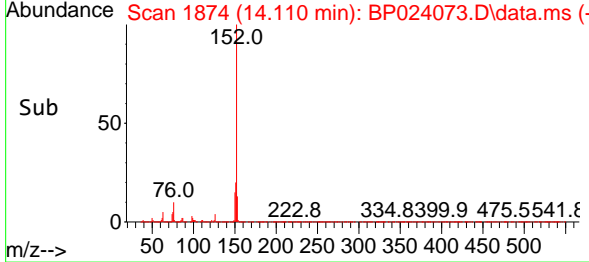
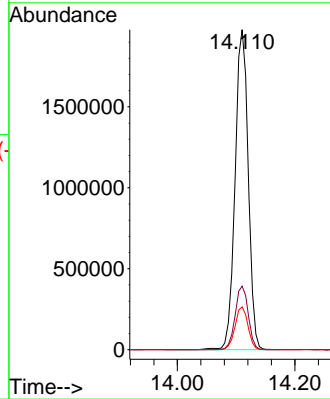
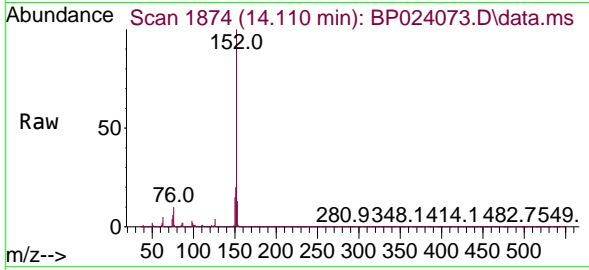


#49
 Acenaphthylene
 Concen: 43.339 ng
 RT: 14.110 min Scan# 1874
 Delta R.T. 0.000 min
 Lab File: BP024073.D
 Acq: 17 Feb 2025 14:12

Instrument : BNA_P
 Client Sample Id : SSTDICCC040

Tgt Ion:152 Resp: 3067503

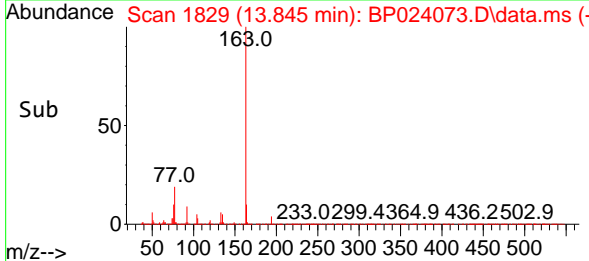
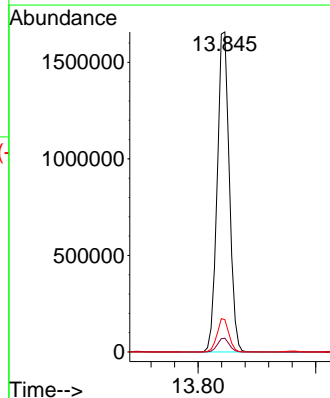
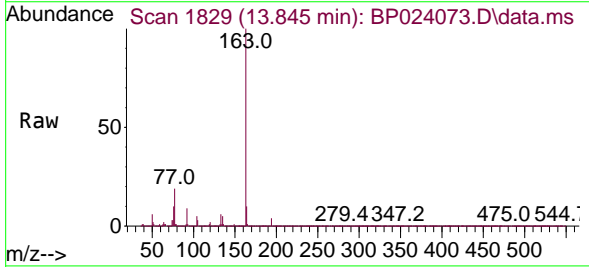
Ion	Ratio	Lower	Upper
152	100		
151	19.8	15.8	23.8
153	13.4	10.7	16.1

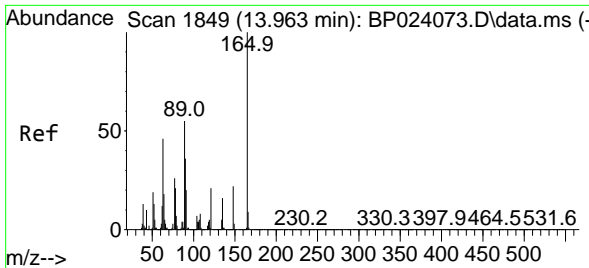


#50
 Dimethylphthalate
 Concen: 40.985 ng
 RT: 13.845 min Scan# 1829
 Delta R.T. 0.000 min
 Lab File: BP024073.D
 Acq: 17 Feb 2025 14:12

Tgt Ion:163 Resp: 2364371

Ion	Ratio	Lower	Upper
163	100		
194	4.3	3.4	5.2
164	10.1	8.1	12.1

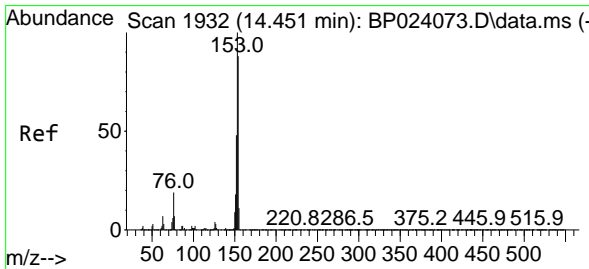
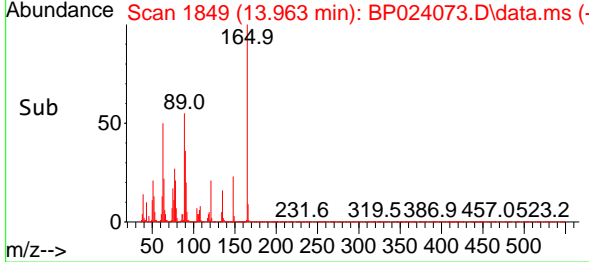
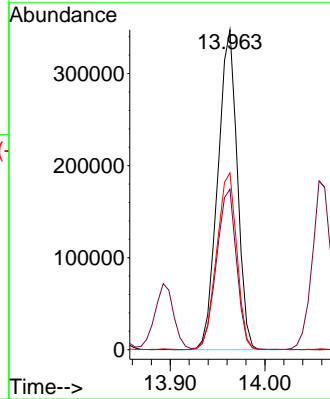
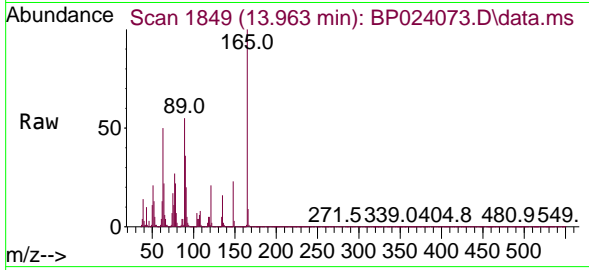




#51
 2,6-Dinitrotoluene
 Concen: 42.333 ng
 RT: 13.963 min Scan# 1111
 Delta R.T. 0.000 min
 Lab File: BP024073.D
 Acq: 17 Feb 2025 14:12

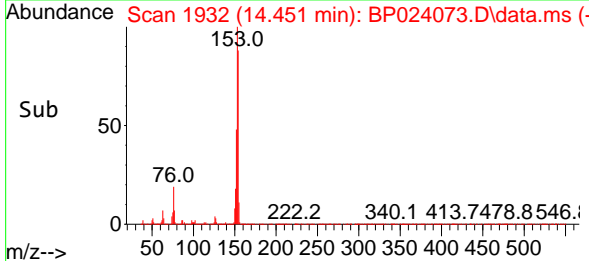
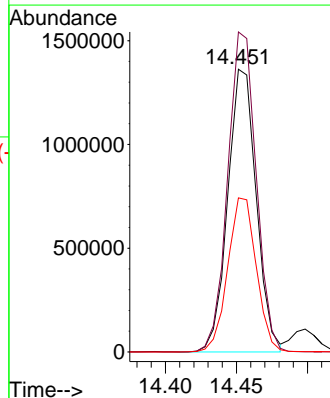
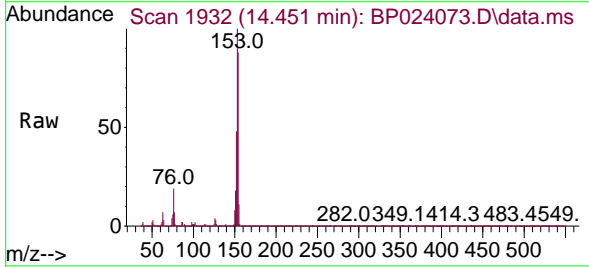
Instrument :
 BNA_P
 ClientSampleId :
 SSTDICC040

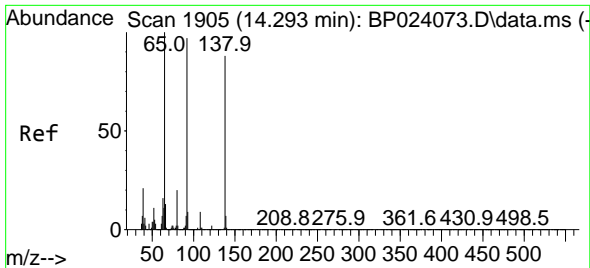
Tgt Ion	Resp	Ion Ratio	Lower	Upper
165	497472	100		
63		50.1	40.1	60.1
89		55.3	44.2	66.4



#52
 Acenaphthene
 Concen: 41.693 ng
 RT: 14.451 min Scan# 1932
 Delta R.T. 0.000 min
 Lab File: BP024073.D
 Acq: 17 Feb 2025 14:12

Tgt Ion	Resp	Ion Ratio	Lower	Upper
154	1900361	100		
153		113.2	90.6	135.8
152		54.5	43.6	65.4

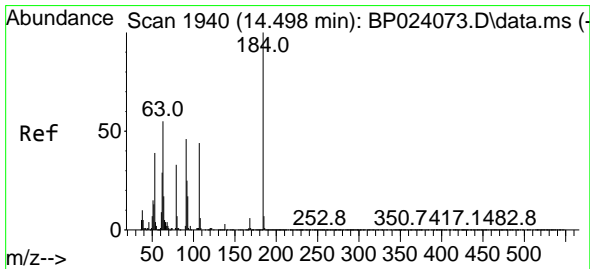
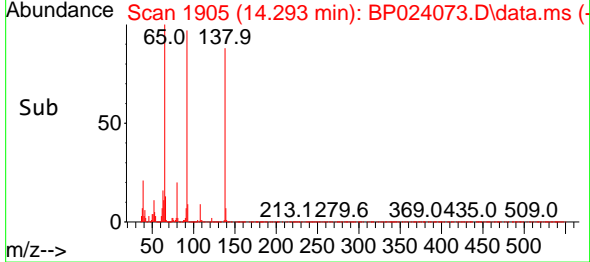
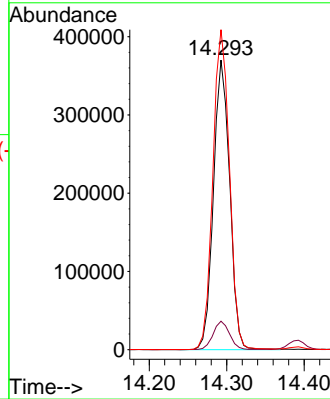
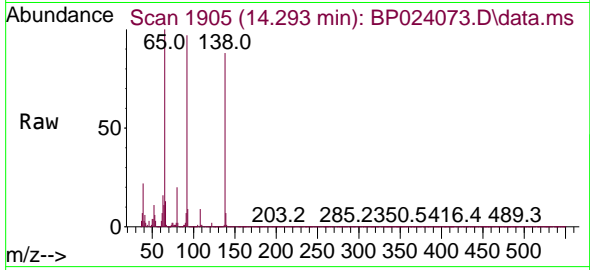




#53
 3-Nitroaniline
 Concen: 42.915 ng
 RT: 14.293 min Scan# 1905
 Delta R.T. 0.000 min
 Lab File: BP024073.D
 Acq: 17 Feb 2025 14:12

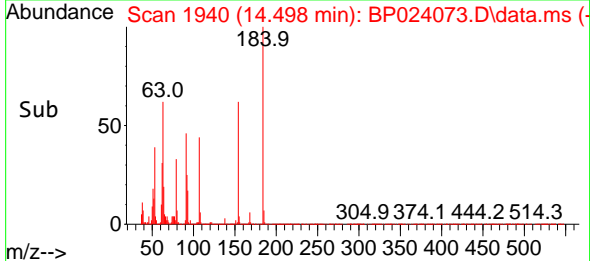
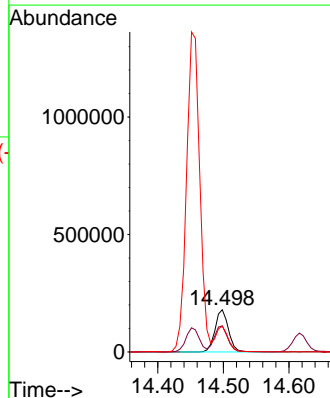
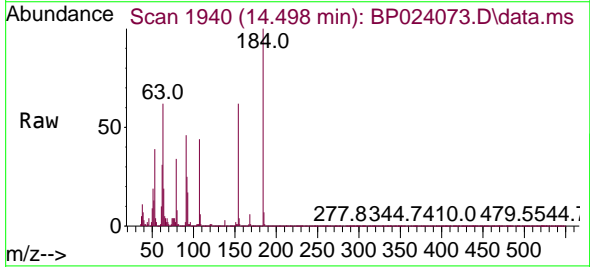
Instrument :
 BNA_P
 ClientSampleId :
 SSTDICC040

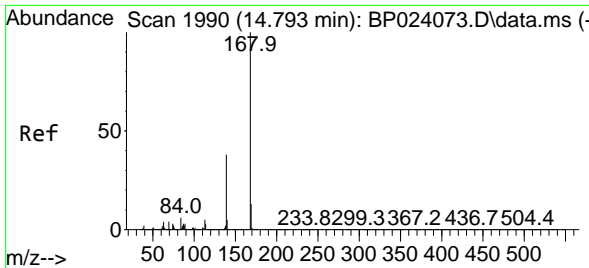
Tgt Ion:138 Resp: 538142
 Ion Ratio Lower Upper
 138 100
 108 9.8 7.8 11.8
 92 110.5 88.4 132.6



#54
 2,4-Dinitrophenol
 Concen: 37.484 ng
 RT: 14.498 min Scan# 1940
 Delta R.T. 0.000 min
 Lab File: BP024073.D
 Acq: 17 Feb 2025 14:12

Tgt Ion:184 Resp: 254928
 Ion Ratio Lower Upper
 184 100
 63 61.7 49.4 74.0
 154 61.5 49.2 73.8



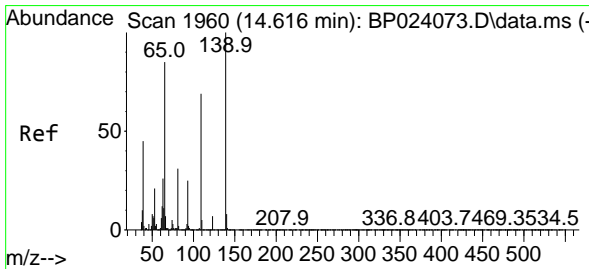
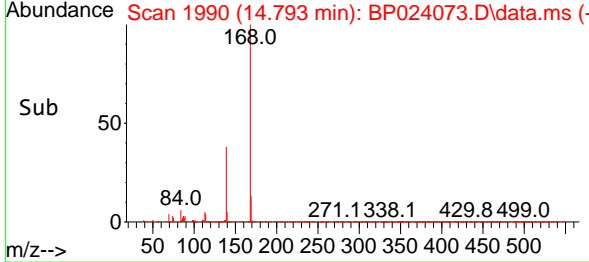
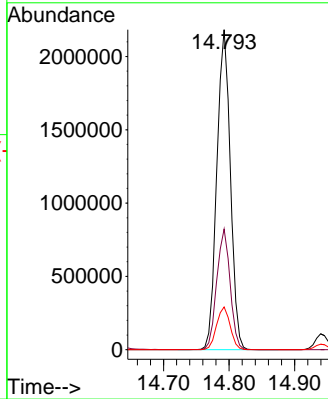
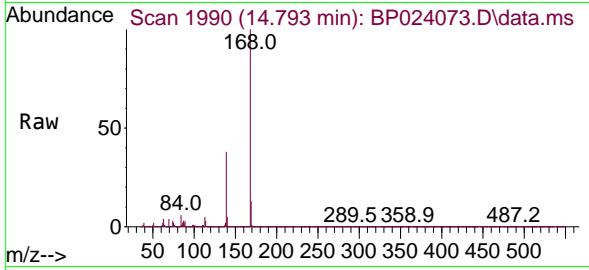


#55
 Dibenzofuran
 Concen: 41.979 ng
 RT: 14.793 min Scan# 1990
 Delta R.T. 0.000 min
 Lab File: BP024073.D
 Acq: 17 Feb 2025 14:12

Instrument : BNA_P
 ClientSampleId : SSTDICCC040

Tgt Ion:168 Resp: 3108290

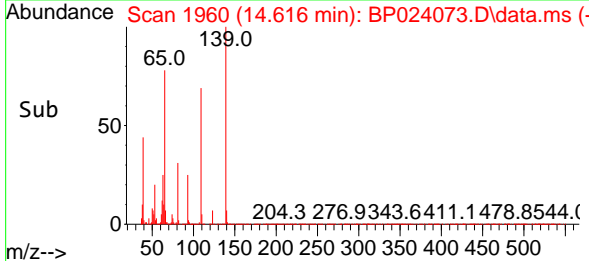
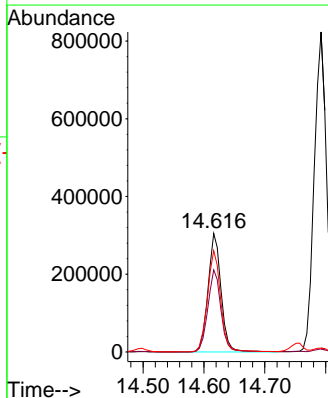
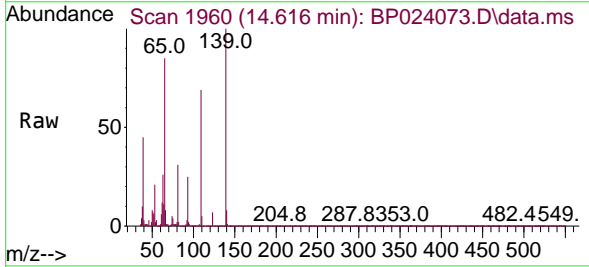
Ion	Ratio	Lower	Upper
168	100		
139	37.7	30.2	45.2
169	13.4	10.7	16.1

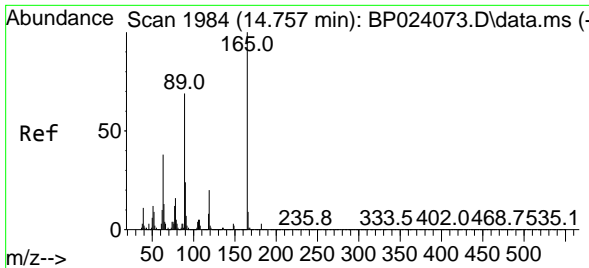


#56
 4-Nitrophenol
 Concen: 41.805 ng
 RT: 14.616 min Scan# 1960
 Delta R.T. 0.000 min
 Lab File: BP024073.D
 Acq: 17 Feb 2025 14:12

Tgt Ion:139 Resp: 452824

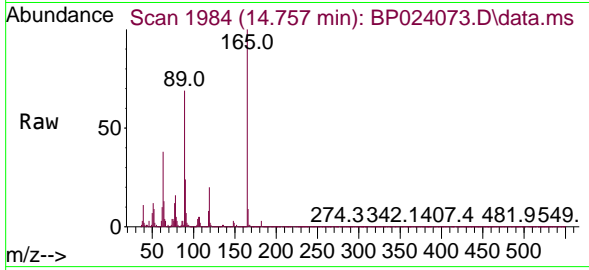
Ion	Ratio	Lower	Upper
139	100		
109	69.2	49.2	89.2
65	85.4	65.4	105.4





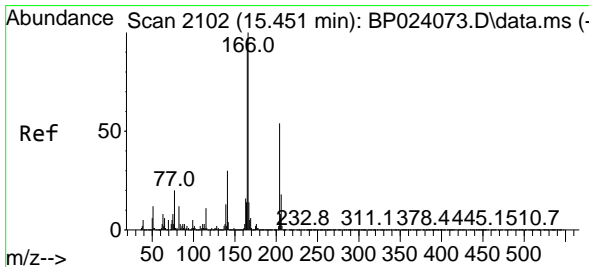
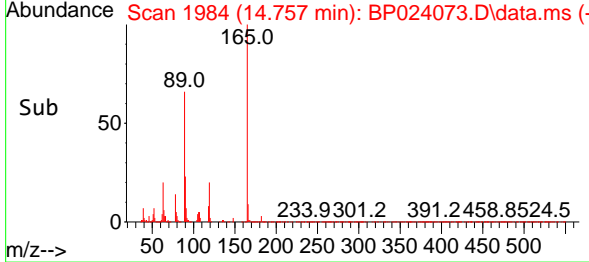
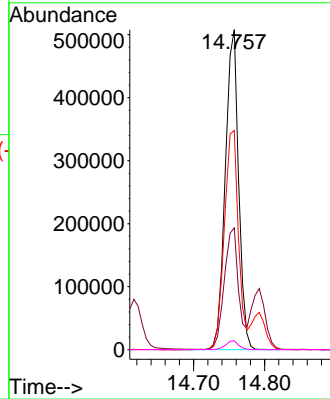
#57
 2,4-Dinitrotoluene
 Concen: 43.192 ng
 RT: 14.757 min Scan# 1984
 Delta R.T. 0.000 min
 Lab File: BP024073.D
 Acq: 17 Feb 2025 14:12

Instrument : BNA_P
 ClientSampleId : SSTDICC040



Tgt Ion:165 Resp: 659343

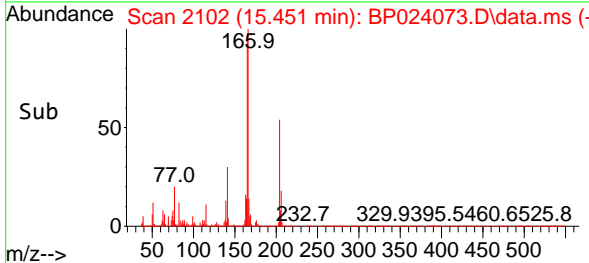
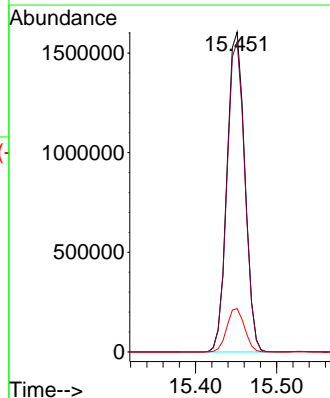
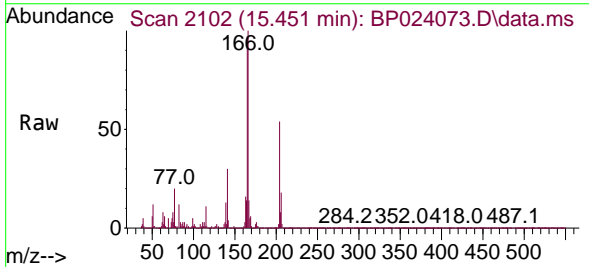
Ion	Ratio	Lower	Upper
165	100		
63	38.0	30.4	45.6
89	68.5	54.8	82.2
182	2.8	2.2	3.4

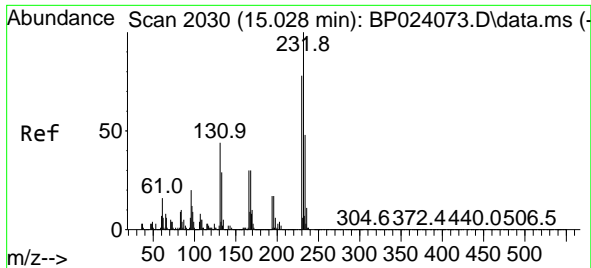


#58
 Fluorene
 Concen: 42.307 ng
 RT: 15.451 min Scan# 2102
 Delta R.T. 0.000 min
 Lab File: BP024073.D
 Acq: 17 Feb 2025 14:12

Tgt Ion:166 Resp: 2446454

Ion	Ratio	Lower	Upper
166	100		
165	96.9	77.5	116.3
167	13.6	10.9	16.3

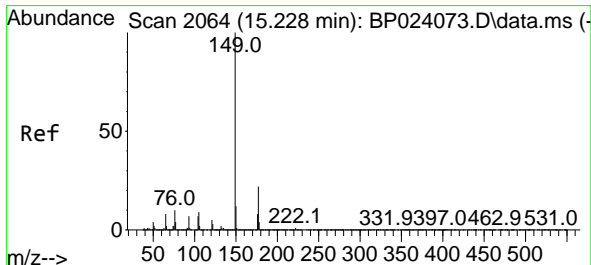
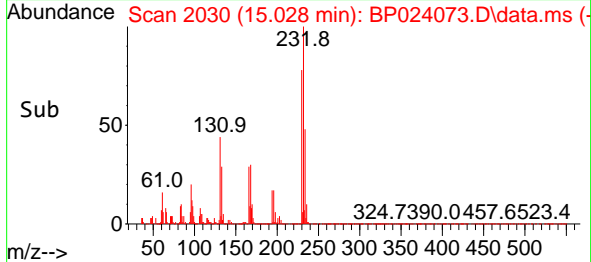
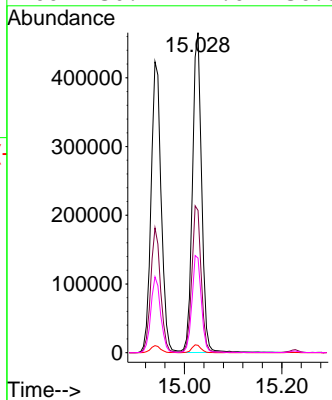
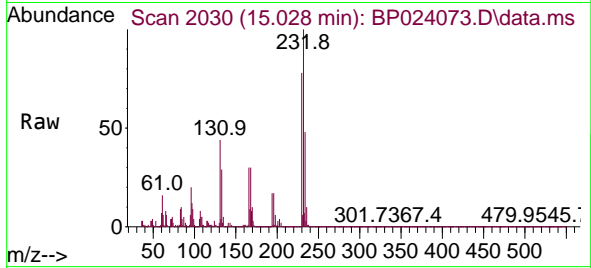




#59
 2,3,4,6-Tetrachlorophenol
 Concen: 42.261 ng
 RT: 15.028 min Scan# 2030
 Delta R.T. 0.000 min
 Lab File: BP024073.D
 Acq: 17 Feb 2025 14:12

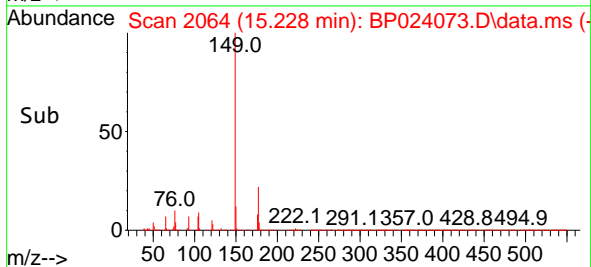
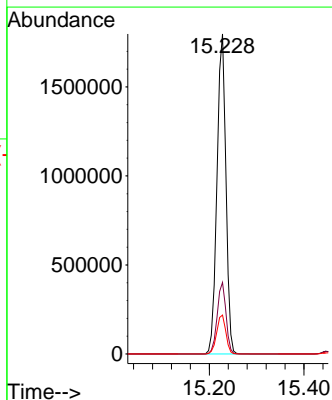
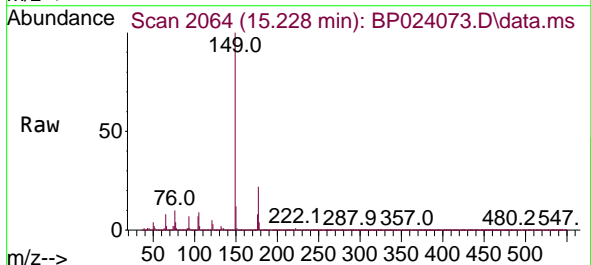
Instrument :
 BNA_P
 ClientSampleId :
 SSTDICC040

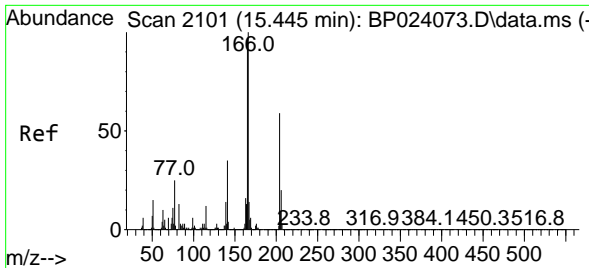
Tgt Ion	Resp	Lower	Upper
232	100		
131	46.6	37.3	55.9
130	2.4	1.9	2.9
166	30.7	24.6	36.8



#60
 Diethylphthalate
 Concen: 40.984 ng
 RT: 15.228 min Scan# 2064
 Delta R.T. 0.000 min
 Lab File: BP024073.D
 Acq: 17 Feb 2025 14:12

Tgt Ion	Resp	Lower	Upper
149	100		
177	22.4	17.9	26.9
150	12.2	9.8	14.6



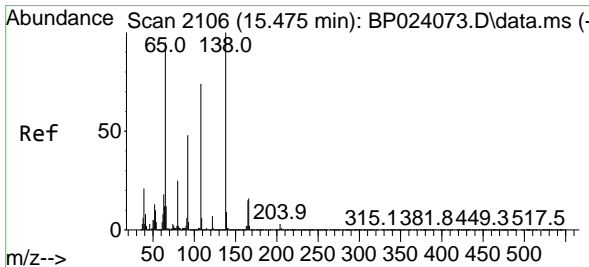
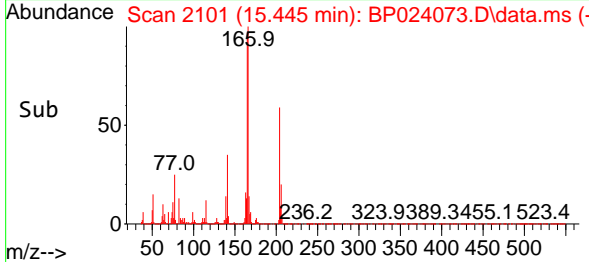
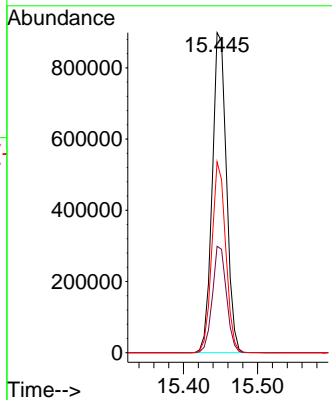
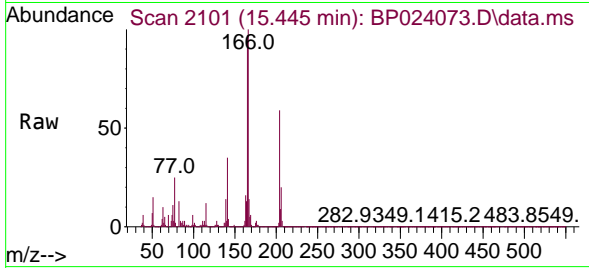


#61
 4-Chlorophenyl-phenylether
 Concen: 41.796 ng
 RT: 15.445 min Scan# 2101
 Delta R.T. 0.000 min
 Lab File: BP024073.D
 Acq: 17 Feb 2025 14:12

Instrument :
 BNA_P
 ClientSampleId :
 SSTDICCC040

Tgt Ion:204 Resp: 1189636

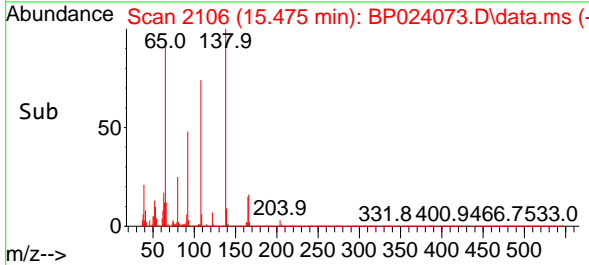
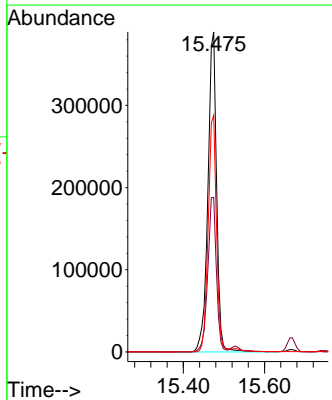
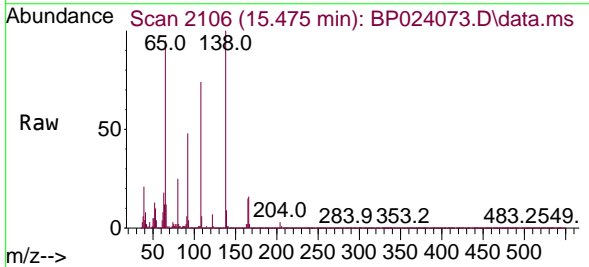
Ion	Ratio	Lower	Upper
204	100		
206	33.2	26.6	39.8
141	59.7	47.8	71.6

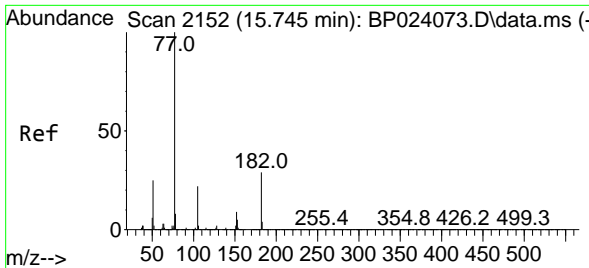


#62
 4-Nitroaniline
 Concen: 39.548 ng
 RT: 15.475 min Scan# 2106
 Delta R.T. -0.000 min
 Lab File: BP024073.D
 Acq: 17 Feb 2025 14:12

Tgt Ion:138 Resp: 577898

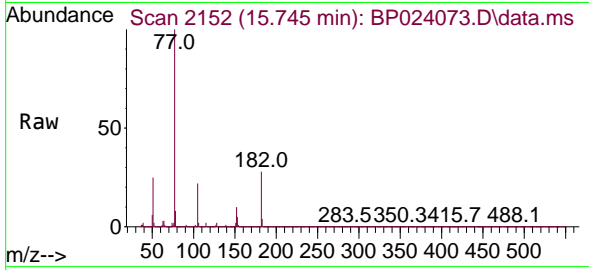
Ion	Ratio	Lower	Upper
138	100		
92	48.3	28.3	68.3
108	74.0	54.0	94.0





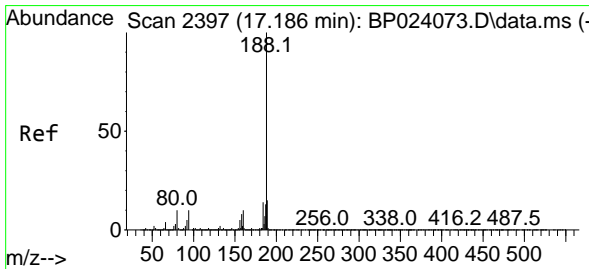
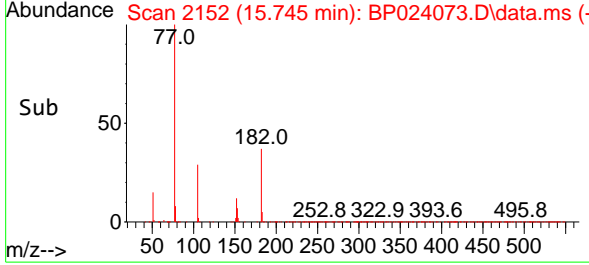
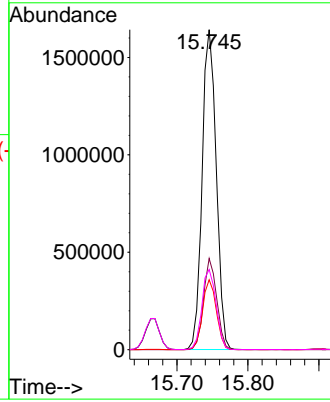
#63
 Azobenzene
 Concen: 42.281 ng
 RT: 15.745 min Scan# 2152
 Delta R.T. 0.000 min
 Lab File: BP024073.D
 Acq: 17 Feb 2025 14:12

Instrument : BNA_P
 ClientSampleId : SSTDICC040



Tgt Ion: 77 Resp: 2268918

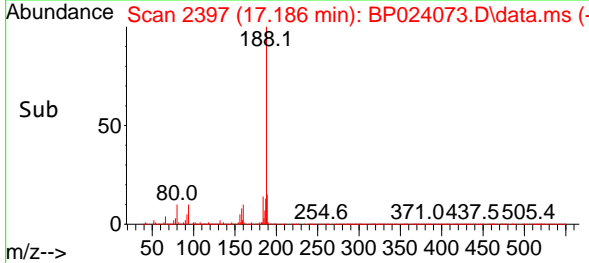
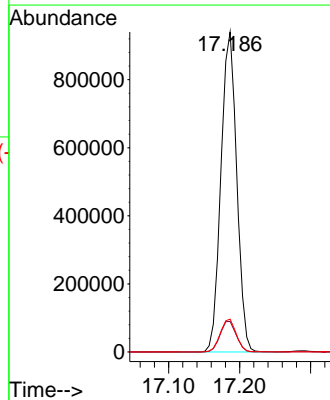
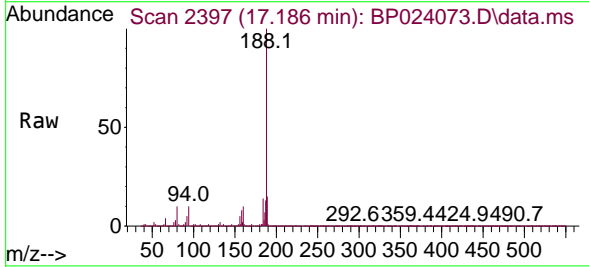
Ion	Ratio	Lower	Upper
77	100		
182	28.5	8.5	48.5
105	21.8	1.8	41.8
51	25.1	5.1	45.1

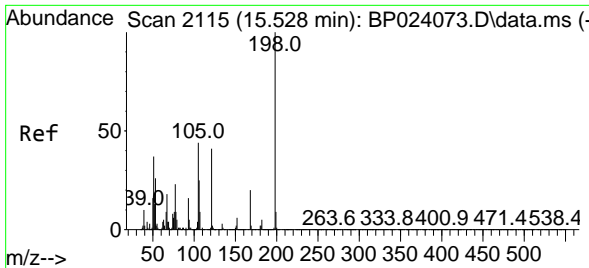


#64
 Phenanthrene-d10
 Concen: 20.000 ng
 RT: 17.186 min Scan# 2397
 Delta R.T. 0.000 min
 Lab File: BP024073.D
 Acq: 17 Feb 2025 14:12

Tgt Ion: 188 Resp: 1445543

Ion	Ratio	Lower	Upper
188	100		
94	9.5	7.6	11.4
80	10.2	8.2	12.2

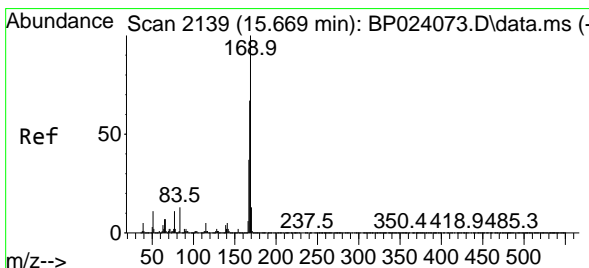
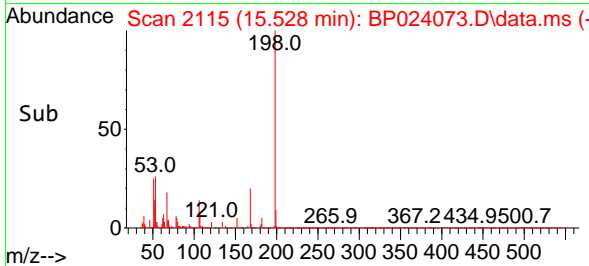
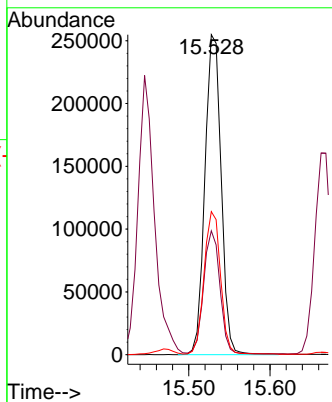
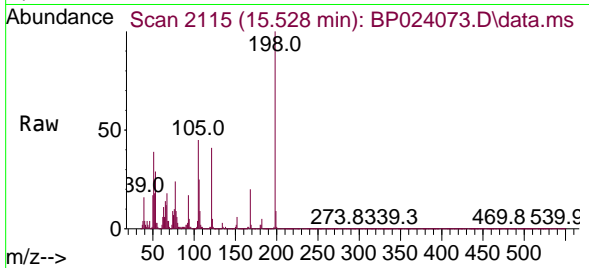




#65
 4,6-Dinitro-2-methylphenol
 Concen: 39.321 ng
 RT: 15.528 min Scan# 2115
 Delta R.T. -0.000 min
 Lab File: BP024073.D
 Acq: 17 Feb 2025 14:12

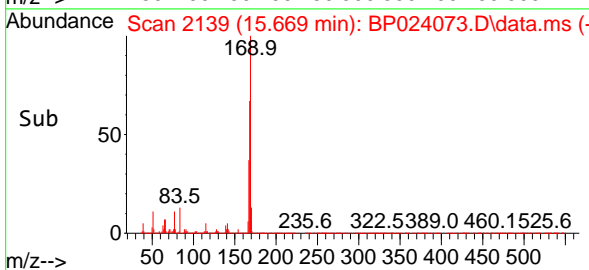
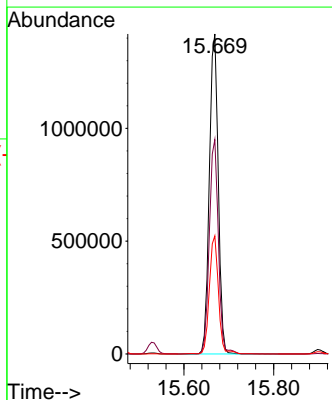
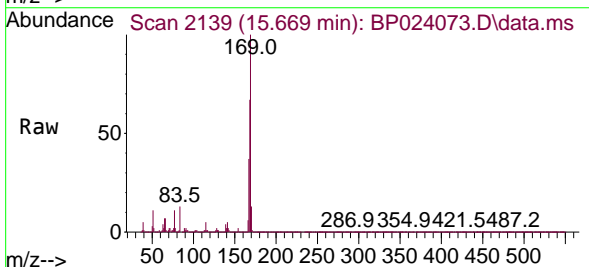
Instrument :
 BNA_P
 ClientSampleId :
 SSTDICCC040

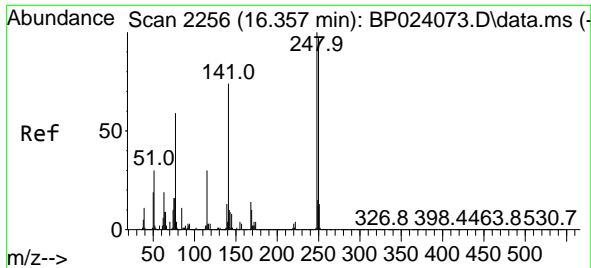
Tgt Ion	Resp	Lower	Upper
198	353586	100	100
51	38.7	18.7	58.7
105	44.7	24.7	64.7



#66
 n-Nitrosodiphenylamine
 Concen: 43.195 ng
 RT: 15.669 min Scan# 2139
 Delta R.T. 0.000 min
 Lab File: BP024073.D
 Acq: 17 Feb 2025 14:12

Tgt Ion	Resp	Lower	Upper
169	1947175	100	100
168	67.0	53.6	80.4
167	36.9	29.5	44.3

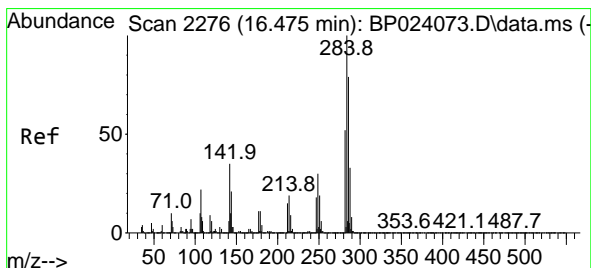
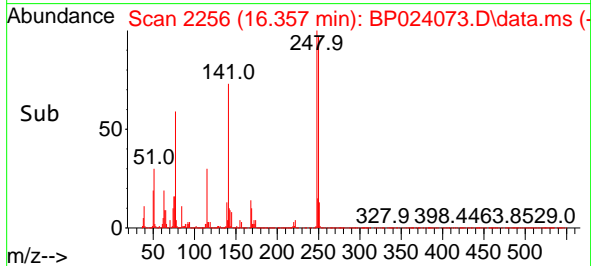
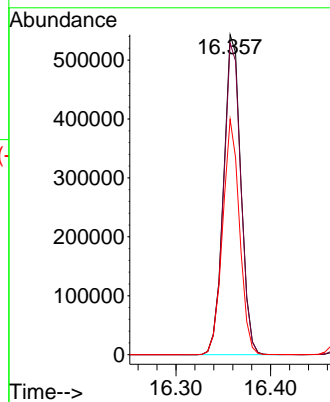
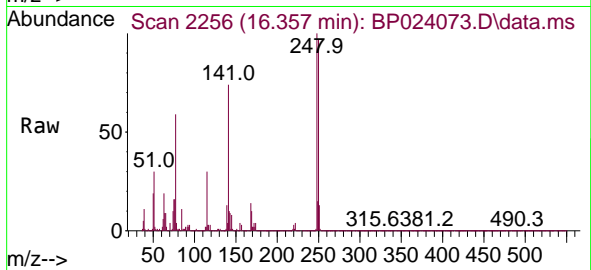




#67
 4-Bromophenyl-phenylether
 Concen: 42.510 ng
 RT: 16.357 min Scan# 2256
 Delta R.T. 0.000 min
 Lab File: BP024073.D
 Acq: 17 Feb 2025 14:12

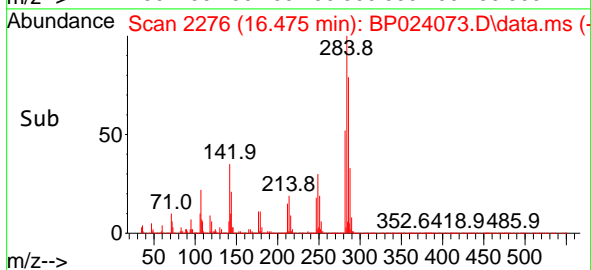
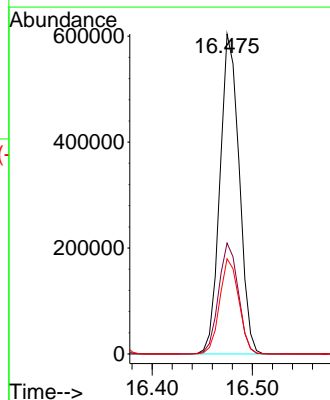
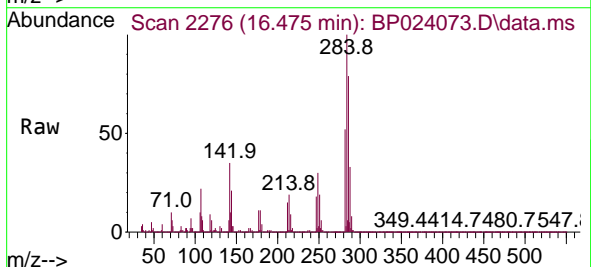
Instrument :
 BNA_P
 ClientSampleId :
 SSTDICC040

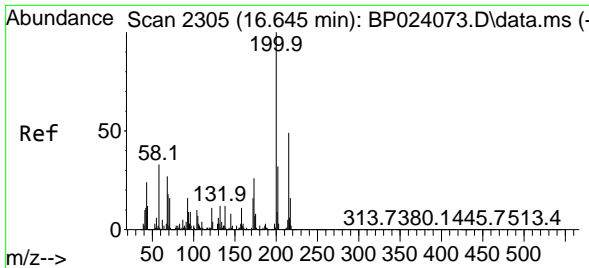
Tgt Ion	Resp	Lower	Upper
248	100		
250	97.4	77.9	116.9
141	73.5	58.8	88.2



#68
 Hexachlorobenzene
 Concen: 42.057 ng
 RT: 16.475 min Scan# 2276
 Delta R.T. 0.000 min
 Lab File: BP024073.D
 Acq: 17 Feb 2025 14:12

Tgt Ion	Resp	Lower	Upper
284	100		
142	34.6	27.7	41.5
249	29.7	23.8	35.6

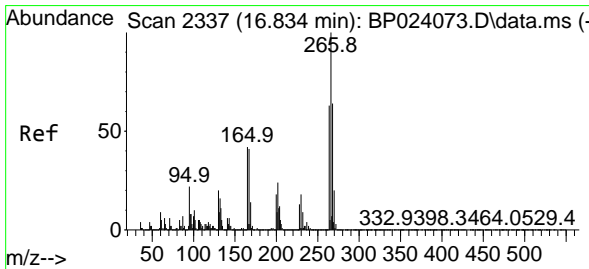
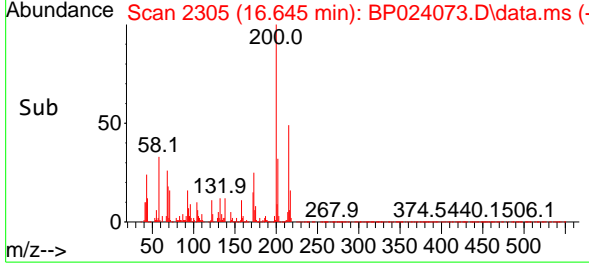
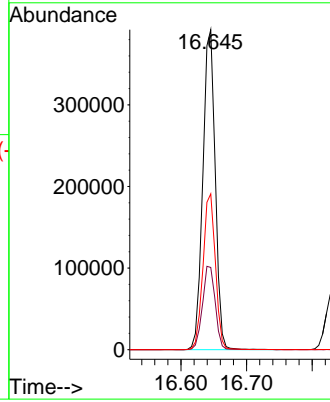
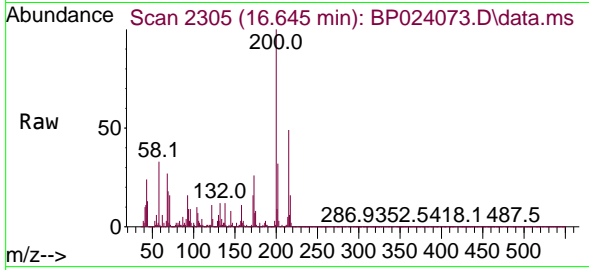




#69
 Atrazine
 Concen: 44.693 ng
 RT: 16.645 min Scan# 21
 Delta R.T. 0.000 min
 Lab File: BP024073.D
 Acq: 17 Feb 2025 14:12

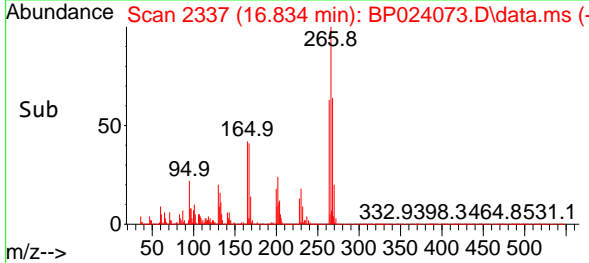
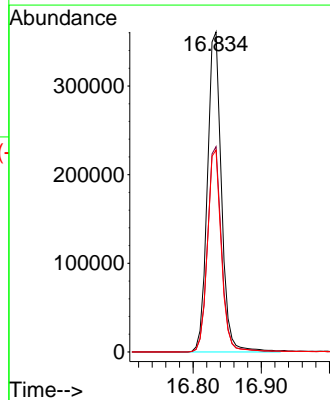
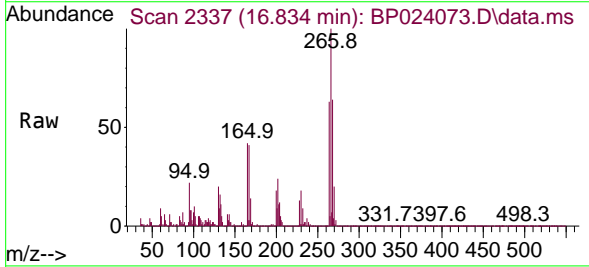
Instrument :
 BNA_P
 ClientSampleId :
 SSTDICCC040

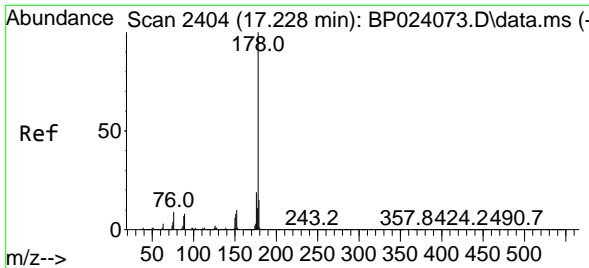
Tgt Ion	Resp	Lower	Upper
200	517038		
200	100		
173	25.7	5.7	45.7
215	48.7	28.7	68.7



#70
 Pentachlorophenol
 Concen: 41.737 ng
 RT: 16.834 min Scan# 2337
 Delta R.T. -0.000 min
 Lab File: BP024073.D
 Acq: 17 Feb 2025 14:12

Tgt Ion	Resp	Lower	Upper
266	517773		
266	100		
268	64.1	51.3	76.9
264	63.1	50.5	75.7



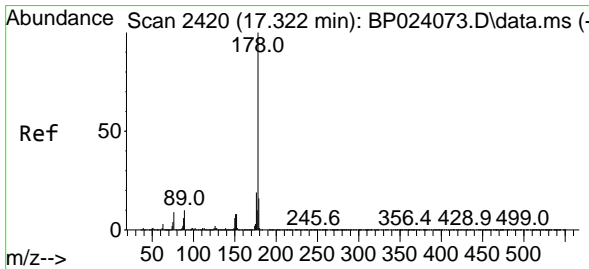
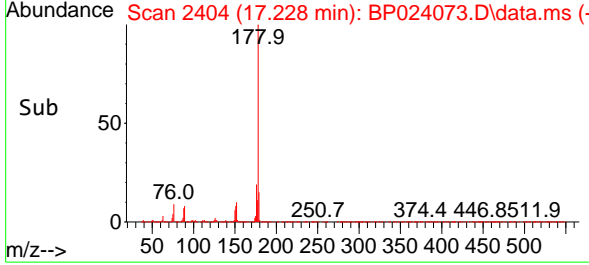
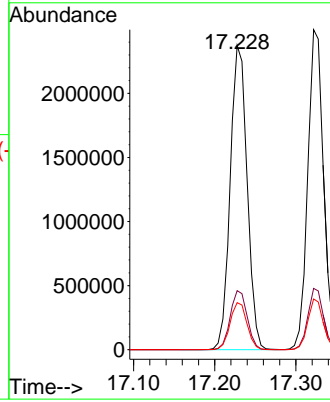
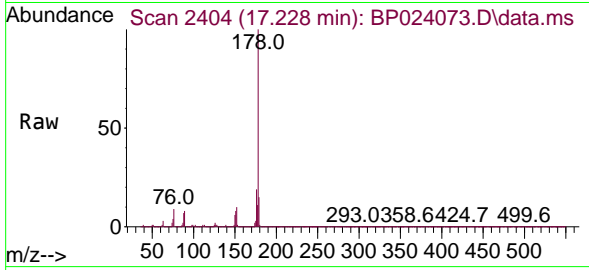


#71
 Phenanthrene
 Concen: 42.133 ng
 RT: 17.228 min Scan# 2404
 Delta R.T. 0.000 min
 Lab File: BP024073.D
 Acq: 17 Feb 2025 14:12

Instrument :
 BNA_P
 ClientSampleId :
 SSTDICC040

Tgt Ion:178 Resp: 3433736

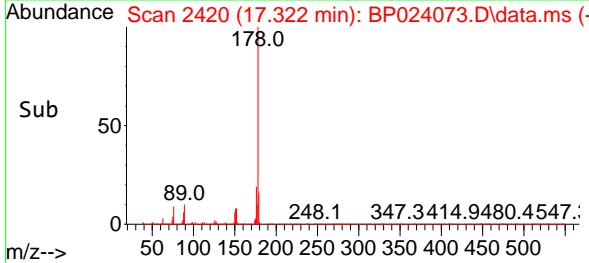
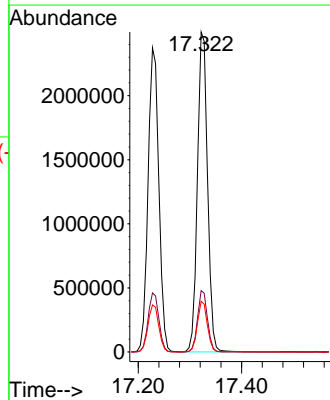
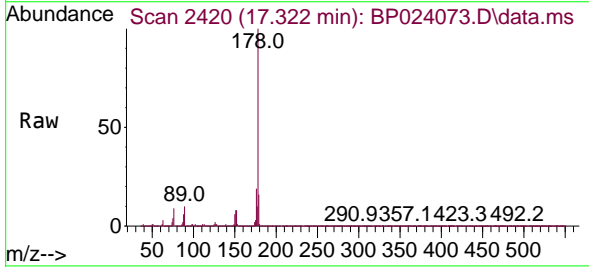
Ion	Ratio	Lower	Upper
178	100		
176	19.4	15.5	23.3
179	15.5	12.4	18.6

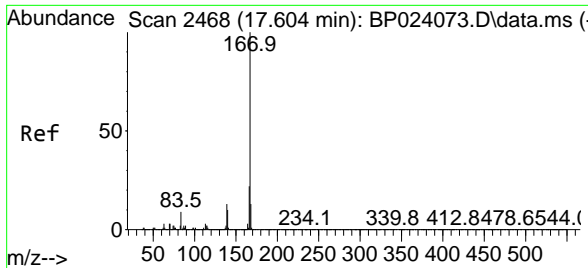


#72
 Anthracene
 Concen: 43.383 ng
 RT: 17.322 min Scan# 2420
 Delta R.T. 0.000 min
 Lab File: BP024073.D
 Acq: 17 Feb 2025 14:12

Tgt Ion:178 Resp: 3388185

Ion	Ratio	Lower	Upper
178	100		
176	19.2	15.4	23.0
179	15.8	12.6	19.0



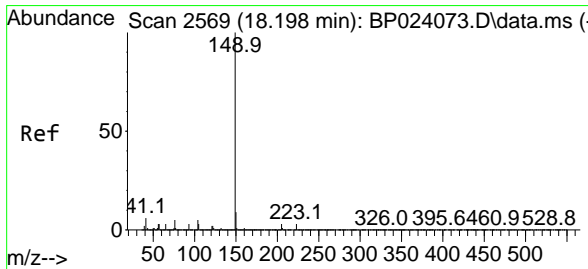
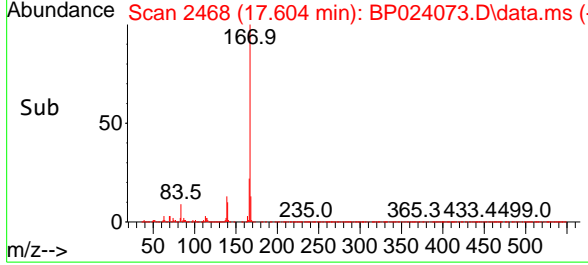
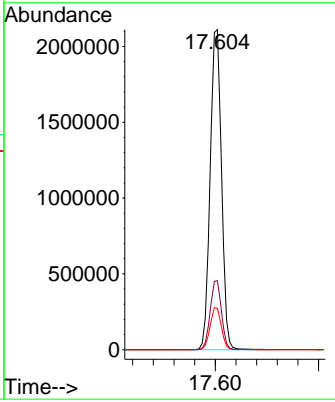
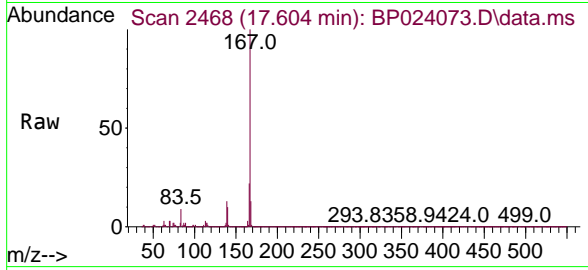


#73
 Carbazole
 Concen: 43.120 ng
 RT: 17.604 min Scan# 2468
 Delta R.T. 0.000 min
 Lab File: BP024073.D
 Acq: 17 Feb 2025 14:12

Instrument : BNA_P
 ClientSampleId : SSTDICCC040

Tgt Ion:167 Resp: 3208605

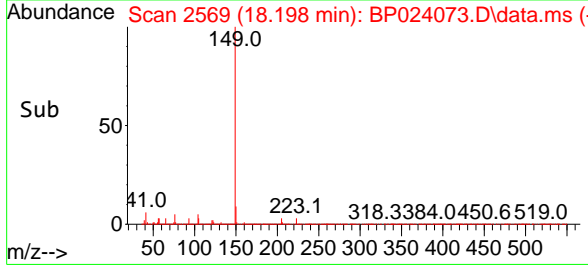
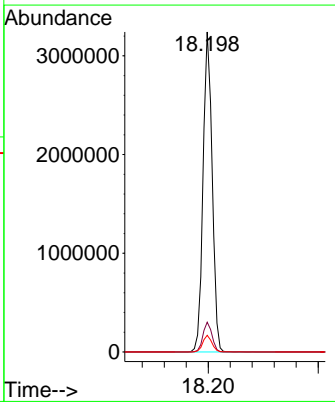
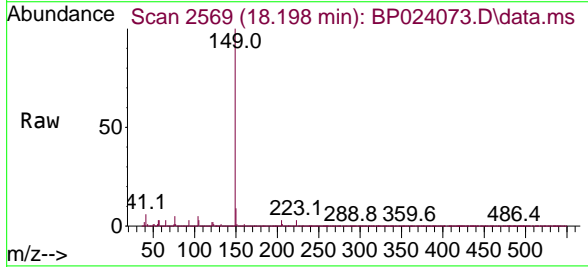
Ion	Ratio	Lower	Upper
167	100		
166	21.6	17.3	25.9
139	12.9	10.3	15.5

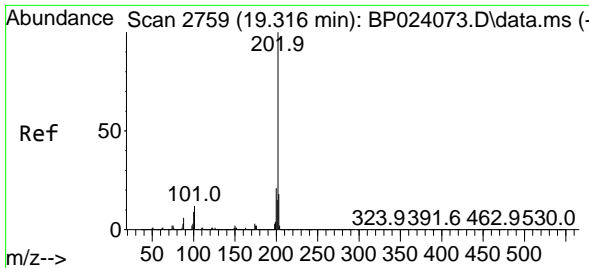


#74
 Di-n-butylphthalate
 Concen: 42.850 ng
 RT: 18.198 min Scan# 2569
 Delta R.T. 0.000 min
 Lab File: BP024073.D
 Acq: 17 Feb 2025 14:12

Tgt Ion:149 Resp: 3720458

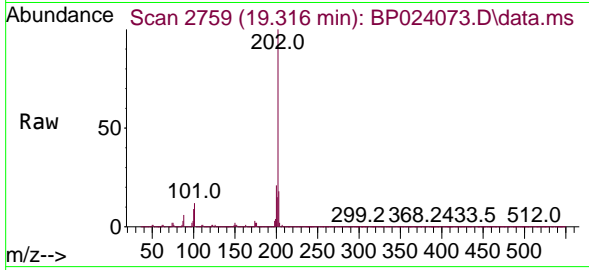
Ion	Ratio	Lower	Upper
149	100		
150	9.3	7.4	11.2
104	5.2	4.2	6.2





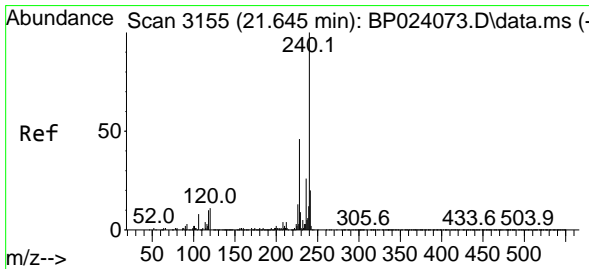
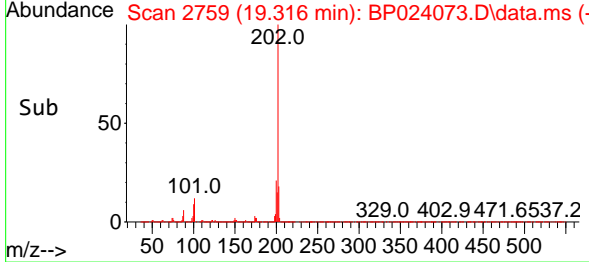
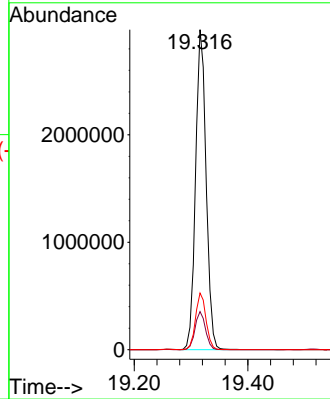
#75
 Fluoranthene
 Concen: 41.830 ng
 RT: 19.316 min Scan# 21
 Delta R.T. 0.000 min
 Lab File: BP024073.D
 Acq: 17 Feb 2025 14:12

Instrument :
 BNA_P
 ClientSampleId :
 SSTDICC040

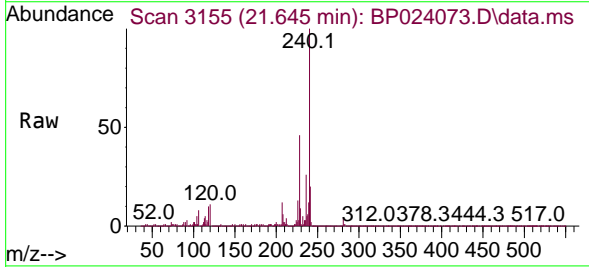


Tgt Ion: 202 Resp: 3855922

Ion	Ratio	Lower	Upper
202	100		
101	11.9	0.0	31.9
203	17.7	0.0	37.7

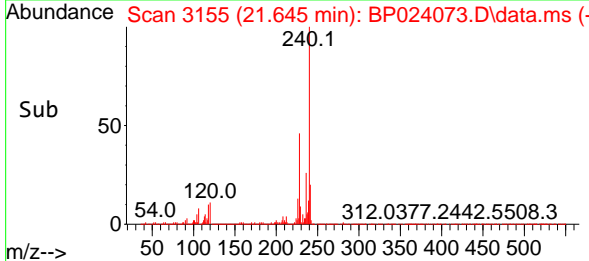
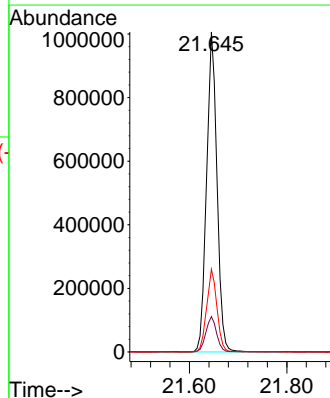


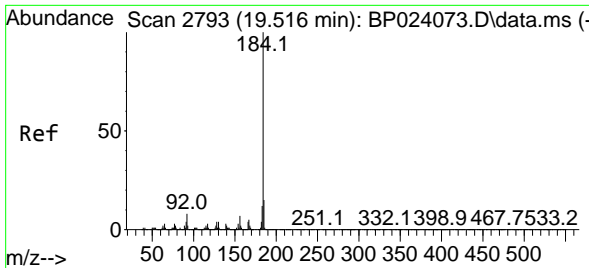
#76
 Chrysene-d12
 Concen: 20.000 ng
 RT: 21.645 min Scan# 3155
 Delta R.T. 0.000 min
 Lab File: BP024073.D
 Acq: 17 Feb 2025 14:12



Tgt Ion: 240 Resp: 1488607

Ion	Ratio	Lower	Upper
240	100		
120	11.1	8.9	13.3
236	25.9	20.7	31.1



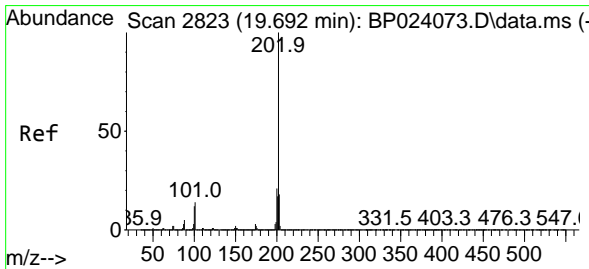
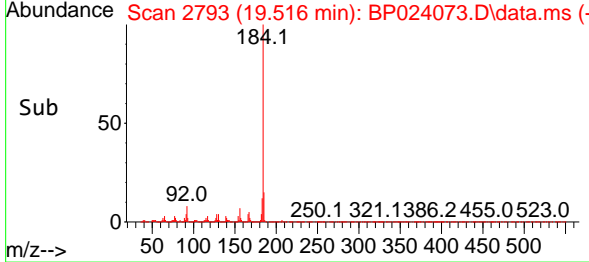
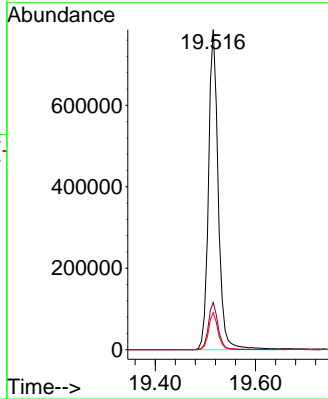
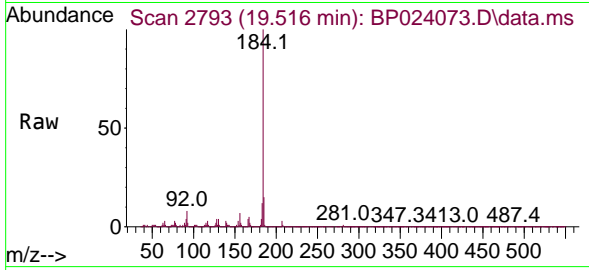


#77
 Benzidine
 Concen: 58.586 ng
 RT: 19.516 min Scan# 21
 Delta R.T. 0.000 min
 Lab File: BP024073.D
 Acq: 17 Feb 2025 14:12

Instrument : BNA_P
 ClientSampleId : SSTDICC040

Tgt Ion:184 Resp: 1062729

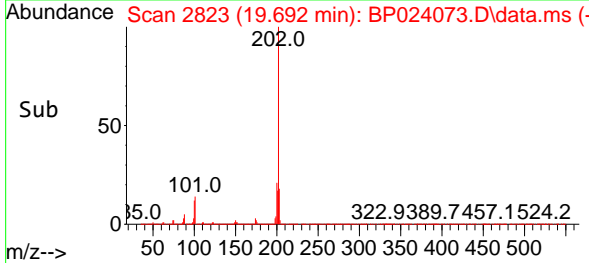
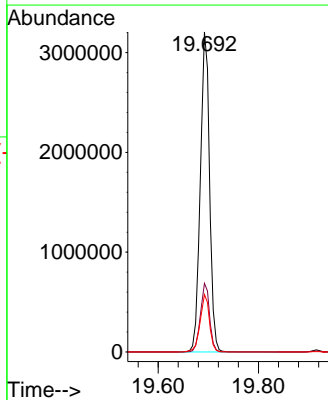
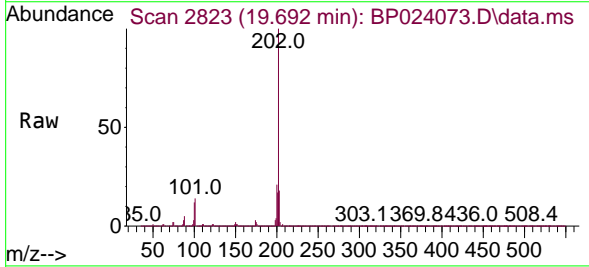
Ion	Ratio	Lower	Upper
184	100		
185	14.8	11.8	17.8
183	11.6	9.3	13.9

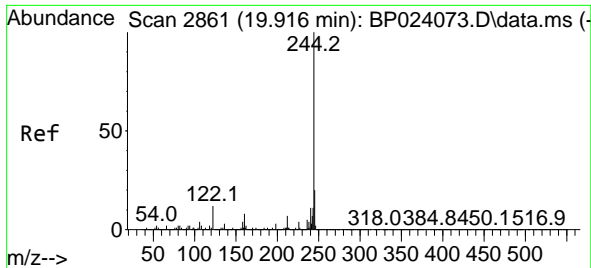


#78
 Pyrene
 Concen: 43.211 ng
 RT: 19.692 min Scan# 2823
 Delta R.T. 0.000 min
 Lab File: BP024073.D
 Acq: 17 Feb 2025 14:12

Tgt Ion:202 Resp: 4085840

Ion	Ratio	Lower	Upper
202	100		
200	21.5	17.2	25.8
203	18.0	14.4	21.6





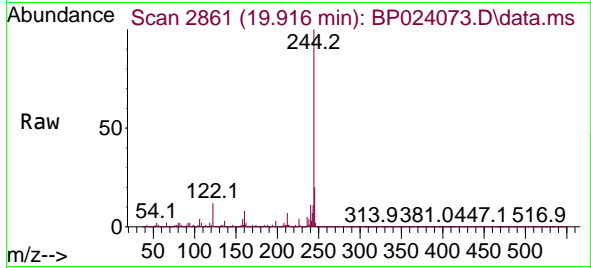
#79
 Terphenyl-d14
 Concen: 85.790 ng
 RT: 19.916 min Scan# 2861
 Delta R.T. 0.000 min
 Lab File: BP024073.D
 Acq: 17 Feb 2025 14:12

Instrument :

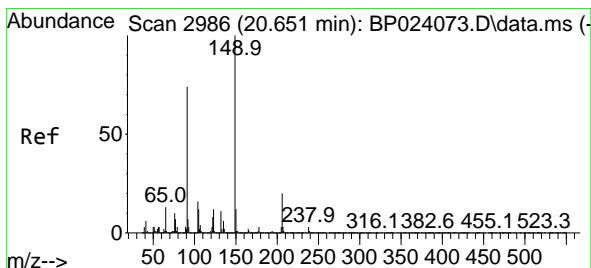
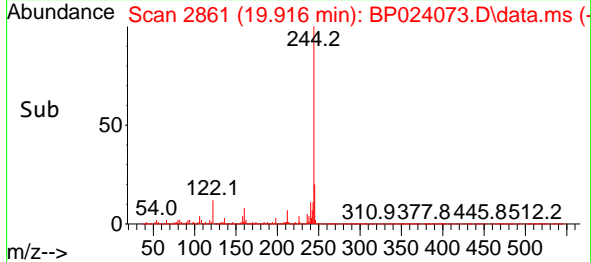
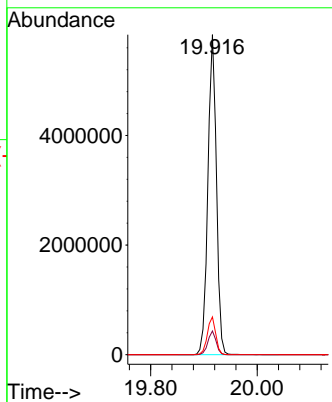
BNA_P

ClientSampleId :

SSTDICCC040

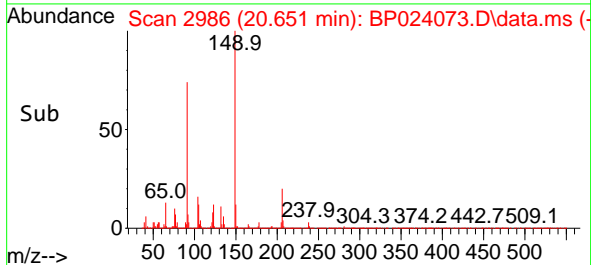
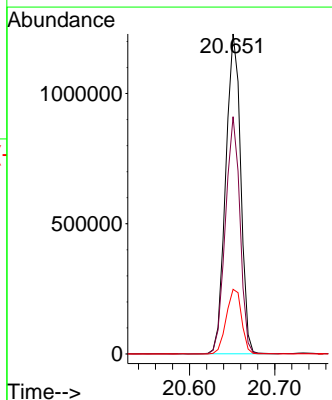
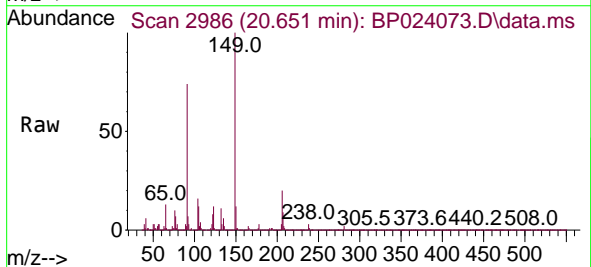


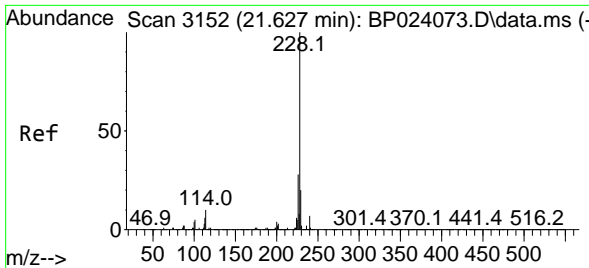
Tgt Ion:244 Resp: 6453934
 Ion Ratio Lower Upper
 244 100
 212 7.4 5.9 8.9
 122 11.8 9.4 14.2



#80
 Butylbenzylphthalate
 Concen: 41.362 ng
 RT: 20.651 min Scan# 2986
 Delta R.T. 0.000 min
 Lab File: BP024073.D
 Acq: 17 Feb 2025 14:12

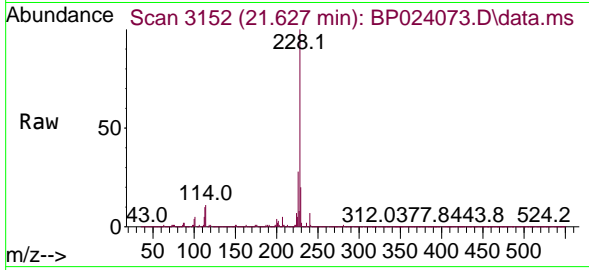
Tgt Ion:149 Resp: 1498674
 Ion Ratio Lower Upper
 149 100
 91 74.2 59.4 89.0
 206 20.2 16.2 24.2



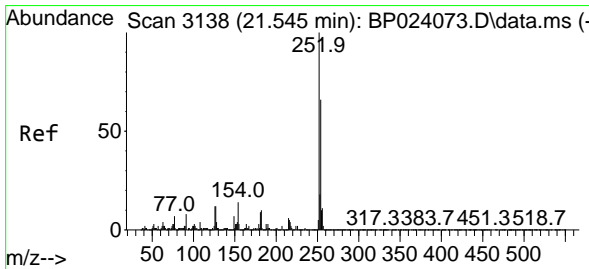
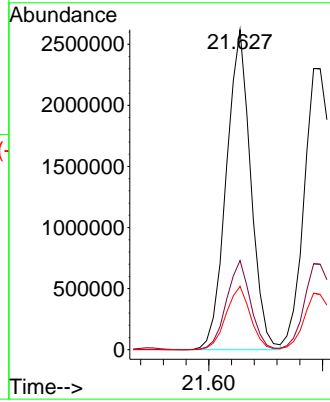
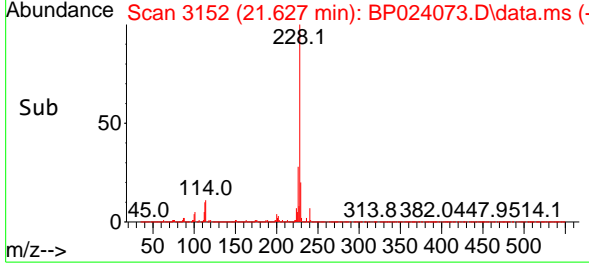


#81
 Benzo(a)anthracene
 Concen: 41.898 ng
 RT: 21.627 min Scan# 3152
 Delta R.T. 0.000 min
 Lab File: BP024073.D
 Acq: 17 Feb 2025 14:12

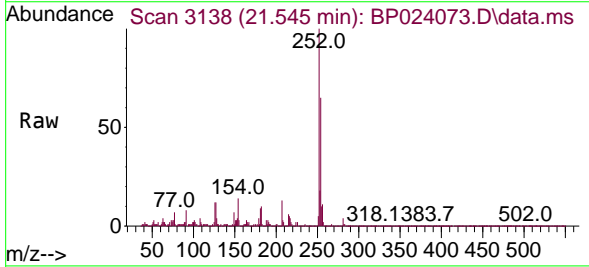
Instrument : BNA_P
 ClientSampleId : SSTDICCC040



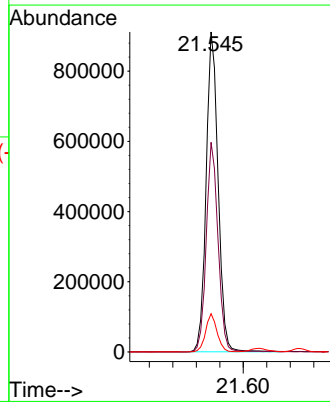
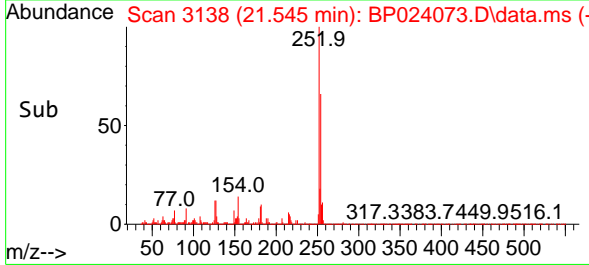
Tgt Ion:228 Resp: 3910920
 Ion Ratio Lower Upper
 228 100
 226 27.8 22.2 33.4
 229 19.8 15.8 23.8

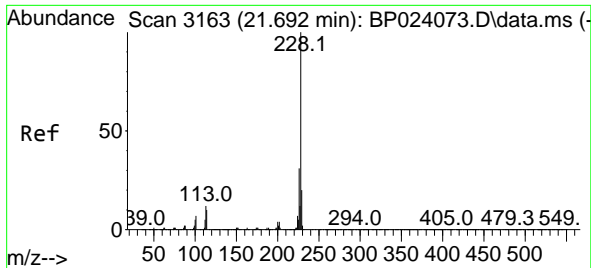


#82
 3,3'-Dichlorobenzidine
 Concen: 44.269 ng
 RT: 21.545 min Scan# 3138
 Delta R.T. 0.000 min
 Lab File: BP024073.D
 Acq: 17 Feb 2025 14:12



Tgt Ion:252 Resp: 1291245
 Ion Ratio Lower Upper
 252 100
 254 65.5 52.4 78.6
 126 12.0 9.6 14.4



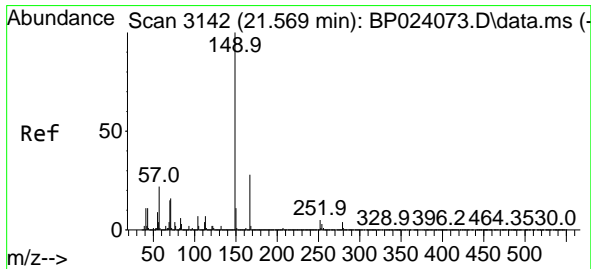
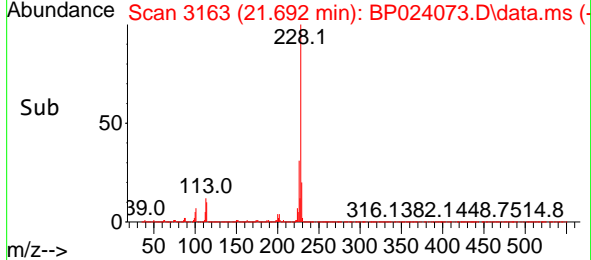
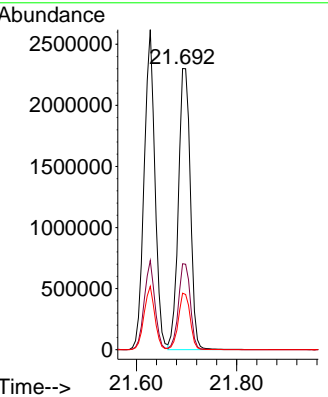
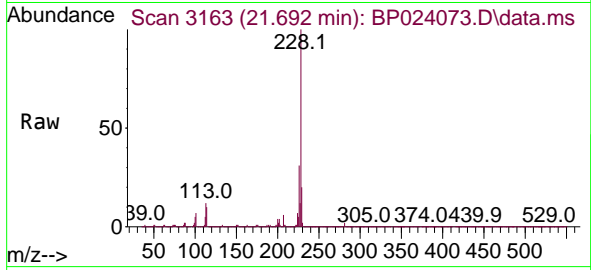


#83
 Chrysene
 Concen: 42.140 ng
 RT: 21.692 min Scan# 3163
 Delta R.T. 0.000 min
 Lab File: BP024073.D
 Acq: 17 Feb 2025 14:12

Instrument : BNA_P
 ClientSampleId : SSTDICCC040

Tgt Ion:228 Resp: 3792933

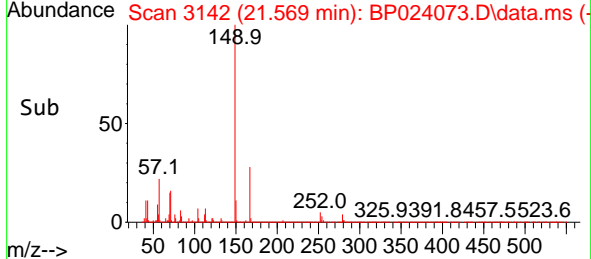
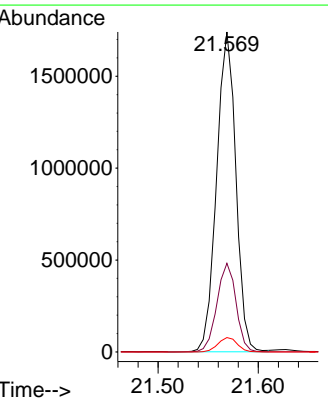
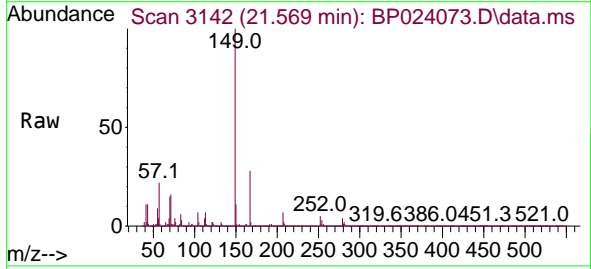
Ion	Ratio	Lower	Upper
228	100		
226	30.6	24.5	36.7
229	20.1	16.1	24.1

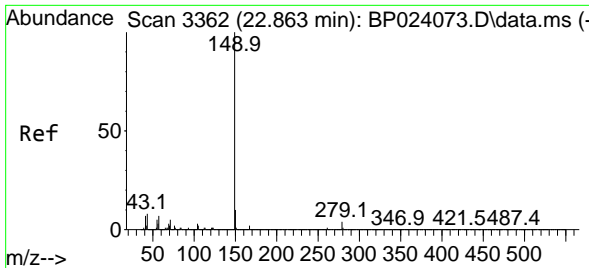


#84
 Bis(2-ethylhexyl)phthalate
 Concen: 42.238 ng
 RT: 21.569 min Scan# 3142
 Delta R.T. 0.000 min
 Lab File: BP024073.D
 Acq: 17 Feb 2025 14:12

Tgt Ion:149 Resp: 2320794

Ion	Ratio	Lower	Upper
149	100		
167	27.7	22.2	33.2
279	4.5	3.6	5.4



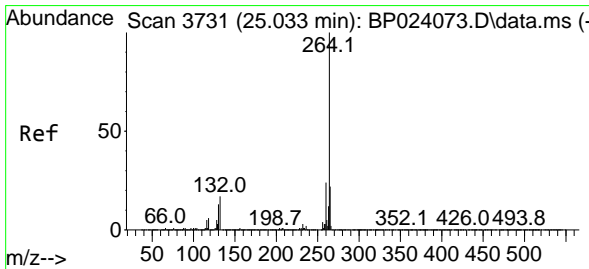
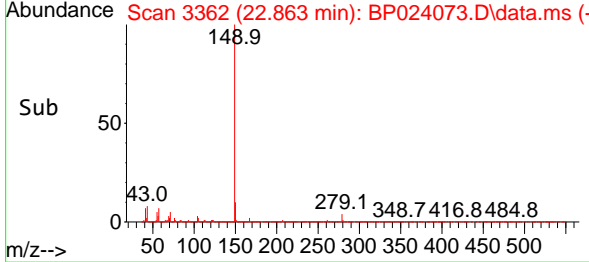
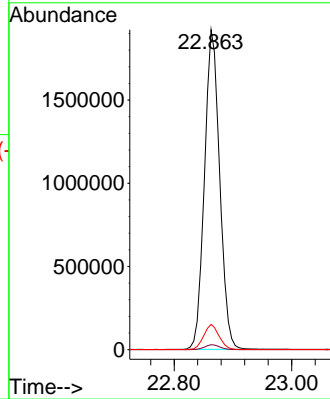
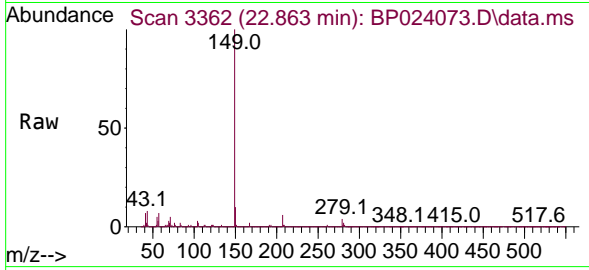


#85
 Di-n-octyl phthalate
 Concen: 39.330 ng
 RT: 22.863 min Scan# 31
 Delta R.T. -0.000 min
 Lab File: BP024073.D
 Acq: 17 Feb 2025 14:12

Instrument :
 BNA_P
 ClientSampleId :
 SSTDICC040

Tgt Ion:149 Resp: 3454162

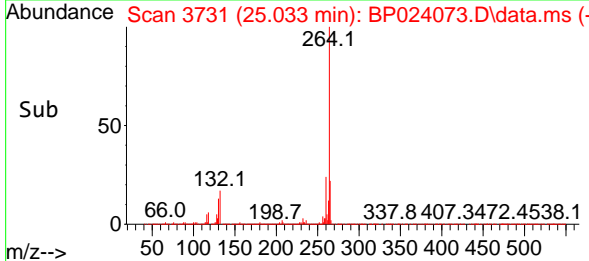
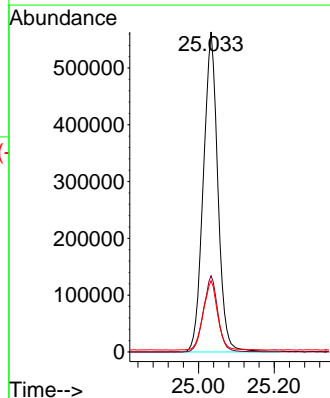
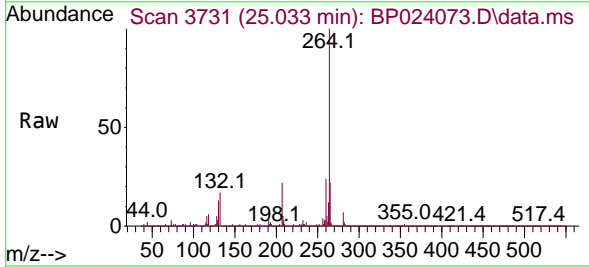
Ion	Ratio	Lower	Upper
149	100		
167	1.6	1.3	1.9
43	8.0	6.4	9.6

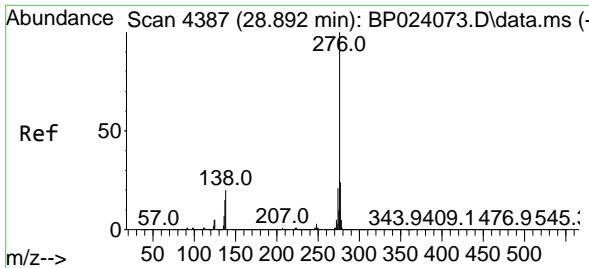


#86
 Perylene-d12
 Concen: 20.000 ng
 RT: 25.033 min Scan# 3731
 Delta R.T. 0.000 min
 Lab File: BP024073.D
 Acq: 17 Feb 2025 14:12

Tgt Ion:264 Resp: 1494142

Ion	Ratio	Lower	Upper
264	100		
260	23.8	19.0	28.6
265	22.3	17.8	26.8



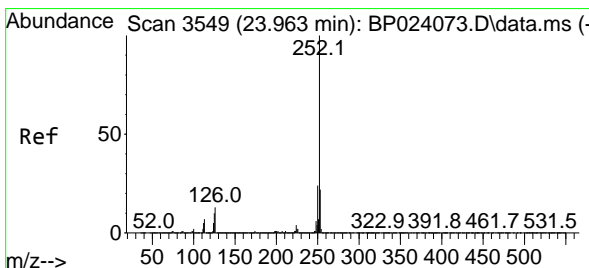
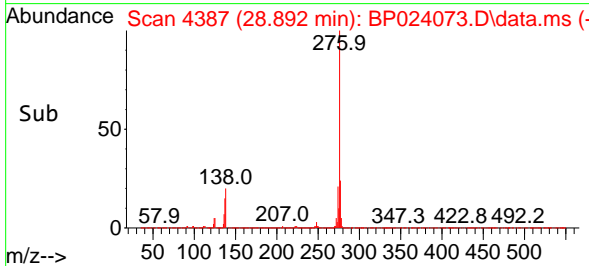
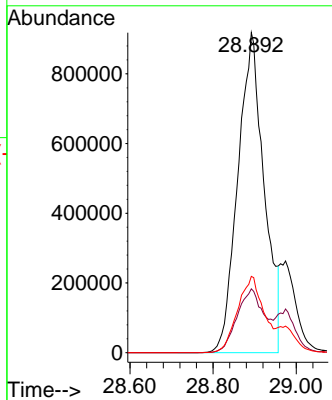
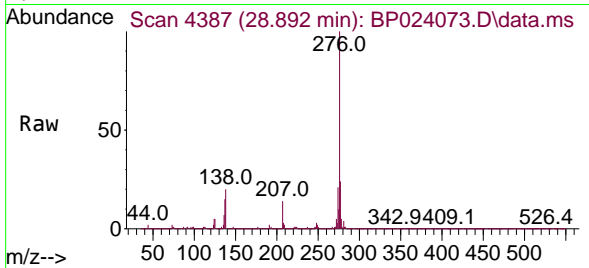


#87
 Indeno(1,2,3-cd)pyrene
 Concen: 37.835 ng
 RT: 28.892 min Scan# 41
 Delta R.T. 0.000 min
 Lab File: BP024073.D
 Acq: 17 Feb 2025 14:12

Instrument :
 BNA_P
 ClientSampleId :
 SSTDICC040

Tgt Ion: 276 Resp: 4023537

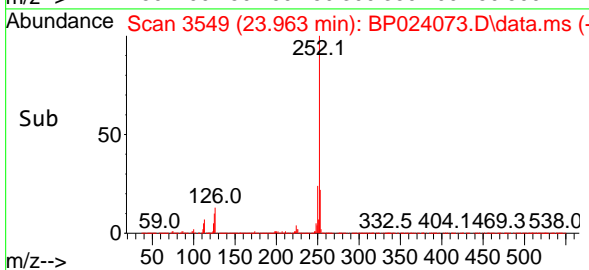
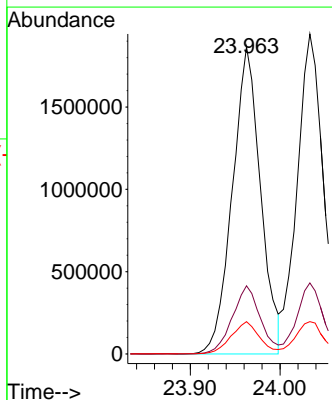
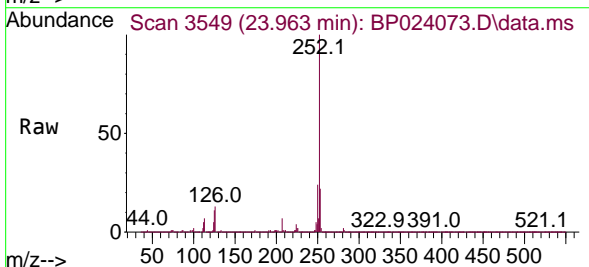
Ion	Ratio	Lower	Upper
276	100		
138	21.0	14.2	21.4
277	23.9	16.2	24.4

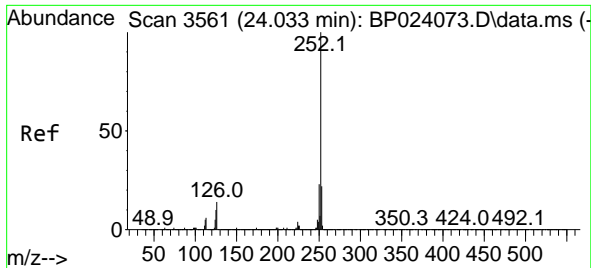


#88
 Benzo(b)fluoranthene
 Concen: 42.938 ng
 RT: 23.963 min Scan# 3549
 Delta R.T. 0.000 min
 Lab File: BP024073.D
 Acq: 17 Feb 2025 14:12

Tgt Ion: 252 Resp: 4074090

Ion	Ratio	Lower	Upper
252	100		
253	22.2	17.8	26.6
125	10.5	8.4	12.6





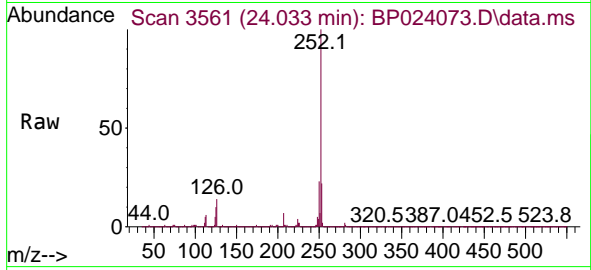
#89
 Benzo(k)fluoranthene
 Concen: 43.310 ng
 RT: 24.033 min Scan# 31
 Delta R.T. 0.000 min
 Lab File: BP024073.D
 Acq: 17 Feb 2025 14:12

Instrument :

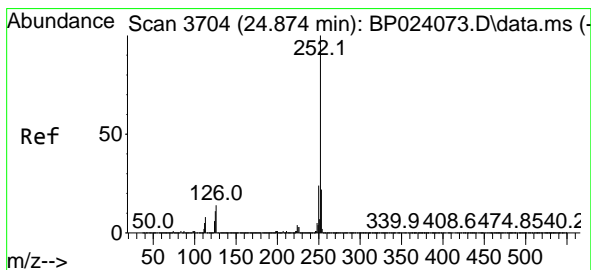
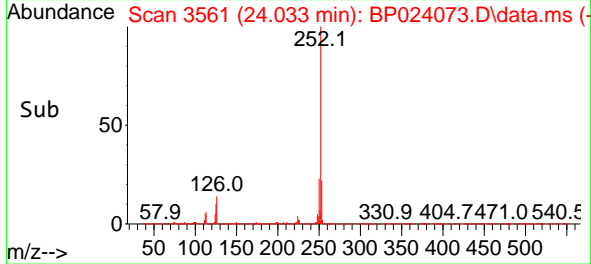
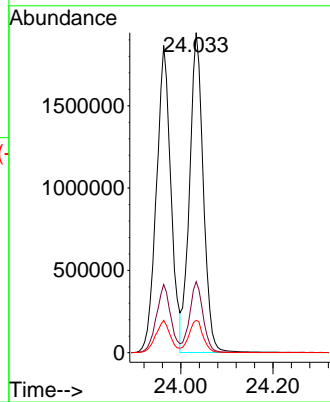
BNA_P

ClientSampleId :

SSTDICCC040

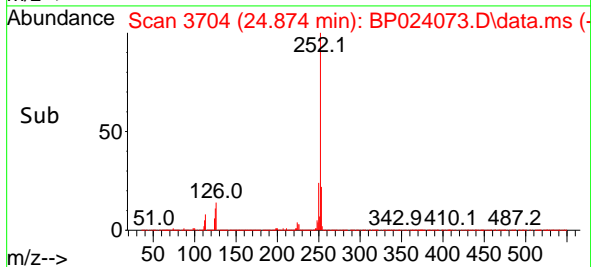
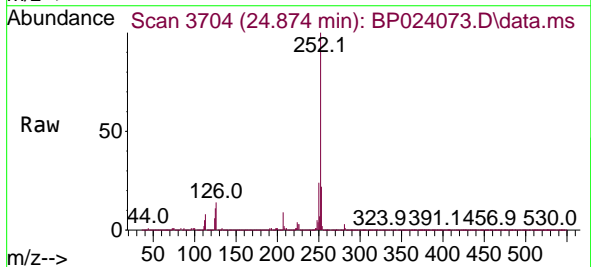
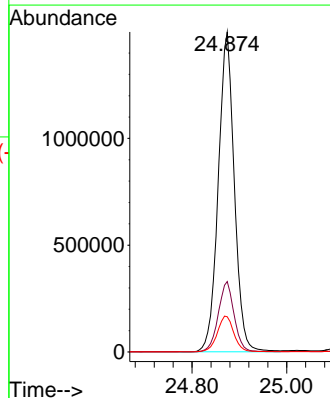


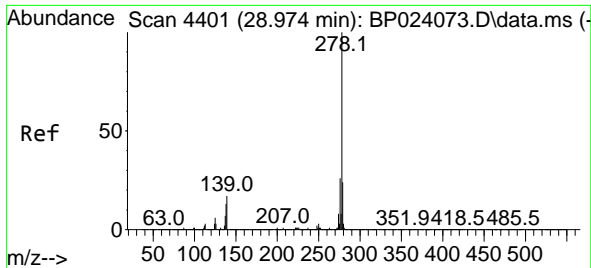
Tgt Ion:252 Resp: 3999830
 Ion Ratio Lower Upper
 252 100
 253 22.2 17.8 26.6
 125 10.1 8.1 12.1



#90
 Benzo(a)pyrene
 Concen: 43.686 ng
 RT: 24.874 min Scan# 3704
 Delta R.T. 0.000 min
 Lab File: BP024073.D
 Acq: 17 Feb 2025 14:12

Tgt Ion:252 Resp: 3517674
 Ion Ratio Lower Upper
 252 100
 253 22.0 17.6 26.4
 125 11.0 8.8 13.2



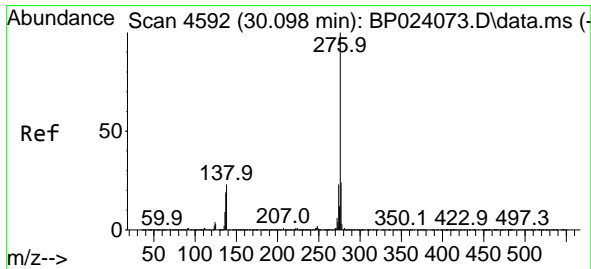
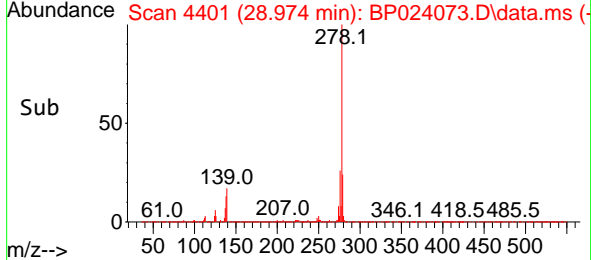
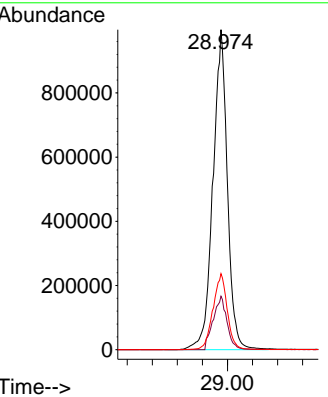
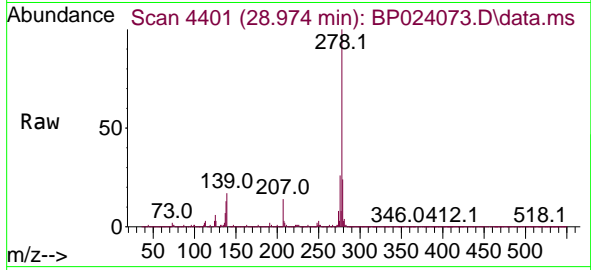


#91
 Dibenzo(a,h)anthracene
 Concen: 44.491 ng
 RT: 28.974 min Scan# 4401
 Delta R.T. 0.000 min
 Lab File: BP024073.D
 Acq: 17 Feb 2025 14:12

Instrument : BNA_P
 ClientSampleId : SSTDICCC040

Tgt Ion: 278 Resp: 3976417

Ion	Ratio	Lower	Upper
278	100		
139	16.7	13.4	20.0
279	23.7	19.0	28.4



#92
 Benzo(g,h,i)perylene
 Concen: 44.721 ng
 RT: 30.098 min Scan# 4592
 Delta R.T. 0.000 min
 Lab File: BP024073.D
 Acq: 17 Feb 2025 14:12

Tgt Ion: 276 Resp: 4055870

Ion	Ratio	Lower	Upper
276	100		
277	23.6	18.9	28.3
138	22.6	18.1	27.1

