

Data Path : Z:\SVOASRV\HPCHEM1\BNA\_P\DATA\BP022020\  
 Data File : BP001810.D  
 Acq On : 20 Feb 2020 19:33  
 Operator : CG/JU  
 Sample : L1418-18  
 Misc :  
 ALS Vial : 15 Sample Multiplier: 1

Instrument :  
 BNA\_P  
 ClientSampleId :  
 C5B20

Integration Parameters: LSCINT.P

Integrator: RTE  
 Smoothing : OFF Filtering: 5  
 Sampling : 1 Min Area: 0.1 % of largest Peak  
 Start Thrs: 0.2 Max Peaks: 100  
 Stop Thrs : 0 Peak Location: TOP

If leading or trailing edge < 100 prefer < Baseline drop else tangent >  
 Peak separation: 5

Method : Z:\SVOASRV\HPCHEM1\BNA\_P\METHODS\SOM-EPA-BP021820MA.M  
 Title : SVOA CALIBRATION

Signal : TIC

peak #	R.T. min	first scan	max scan	last scan	PK TY	peak height	corr. area	corr. % max.	% of total
1	2.934	4	8	23	rVB	2318209	3202448	49.15%	4.366%
2	3.181	47	50	60	rVB	40028	59146	0.91%	0.081%
3	3.693	133	137	144	rVB	34411	45108	0.69%	0.062%
4	3.822	156	159	165	rVB	18864	26648	0.41%	0.036%
5	3.911	170	174	178	rBV	15415	20534	0.32%	0.028%
6	4.405	255	258	263	rVB6	6635	9728	0.15%	0.013%
7	4.452	263	266	273	rVB4	11575	16586	0.25%	0.023%
8	4.805	321	326	334	rBV	69440	101676	1.56%	0.139%
9	6.175	555	559	568	rBV	10777	17678	0.27%	0.024%
10	6.834	664	671	686	rVB	689738	1135077	17.42%	1.548%
11	6.999	693	699	707	rBV	567077	886221	13.60%	1.208%
12	7.063	707	710	714	rVB2	10493	15808	0.24%	0.022%
13	7.193	724	732	741	rBV	760626	1189826	18.26%	1.622%
14	7.316	748	753	760	rBV7	11436	20482	0.31%	0.028%
15	7.657	804	811	820	rBV	1351715	2091591	32.10%	2.852%
16	8.040	870	876	881	rVB3	6897	13717	0.21%	0.019%
17	8.163	890	897	899	rBV5	6092	10574	0.16%	0.014%
18	8.363	924	931	943	rVV	727783	1171751	17.98%	1.598%
19	8.469	943	949	957	rVB	48867	80433	1.23%	0.110%
20	8.799	998	1005	1018	rBV	667730	1069506	16.41%	1.458%
21	9.293	1082	1089	1095	rVB	21593	35428	0.54%	0.048%
22	9.516	1115	1127	1136	rBV	509956	833289	12.79%	1.136%
23	10.051	1210	1218	1230	rBV	883922	1485002	22.79%	2.025%
24	10.428	1273	1282	1290	rBV	1795317	3039246	46.64%	4.144%
25	10.563	1297	1305	1318	rBV	758715	1282297	19.68%	1.748%
26	12.028	1547	1554	1561	rVB3	17543	31035	0.48%	0.042%
27	12.316	1599	1603	1610	rVB4	7896	13392	0.21%	0.018%
28	13.216	1749	1756	1768	rBV	813623	1261089	19.35%	1.719%
29	13.622	1821	1825	1829	rVV7	12584	20129	0.31%	0.027%
30	13.704	1833	1839	1844	rVV	1584092	2187343	33.57%	2.982%
31	13.751	1844	1847	1855	rVB	324634	416451	6.39%	0.568%
32	13.981	1878	1886	1897	rBV	1887951	2855609	43.82%	3.894%
33	14.292	1931	1939	1946	rBV	2847025	4132974	63.43%	5.635%
34	14.357	1946	1950	1953	rVV	11075	16647	0.26%	0.023%

Data Path : Z:\SVOASRV\HPCHEM1\BNA\_P\DATA\BP022020\  
 Data File : BP001810.D  
 Acq On : 20 Feb 2020 19:33  
 Operator : CG/JU  
 Sample : L1418-18  
 Misc :  
 ALS Vial : 15 Sample Multiplier: 1

Instrument :  
 BNA\_P  
 ClientSampleId :  
 C5B20

## Integration Parameters: LSCINT.P

Integrator: RTE  
 Smoothing : OFF  
 Sampling : 1  
 Start Thrs: 0.2  
 Stop Thrs : 0

Filtering: 5  
 Min Area: 0.1 % of largest Peak  
 Max Peaks: 100  
 Peak Location: TOP

If leading or trailing edge < 100 prefer < Baseline drop else tangent >  
 Peak separation: 5

Method : Z:\SVOASRV\HPCHEM1\BNA\_P\METHODS\SOM-EPA-BP021820MA.M  
 Title : SVOA CALIBRATION

35	14.487	1965	1972	1982	rBV	505934	765574	11.75%	1.044%
36	14.639	1994	1998	2004	rBV3	13672	22646	0.35%	0.031%
37	14.716	2004	2011	2018	rVV2	73081	117368	1.80%	0.160%
38	14.781	2018	2022	2026	rVB6	7181	11654	0.18%	0.016%
39	14.922	2041	2046	2053	rBV6	6066	13183	0.20%	0.018%
40	15.128	2077	2081	2085	rVV5	9277	14173	0.22%	0.019%
41	15.187	2089	2091	2095	rVB4	7754	9889	0.15%	0.013%
42	15.286	2101	2108	2115	rBV	2485003	3517663	53.98%	4.796%
43	15.345	2115	2118	2123	rVV3	19829	36526	0.56%	0.050%
44	15.404	2123	2128	2133	rVV	382254	552110	8.47%	0.753%
45	15.451	2133	2136	2143	rVV	75710	111935	1.72%	0.153%
46	15.528	2143	2149	2154	rVB2	24673	42090	0.65%	0.057%
47	15.792	2191	2194	2199	rVB7	5800	12250	0.19%	0.017%
48	15.869	2204	2207	2212	rVB7	6673	10545	0.16%	0.014%
49	16.022	2227	2233	2234	rBV6	6349	9772	0.15%	0.013%
50	16.081	2240	2243	2249	rVB6	13098	17780	0.27%	0.024%
51	16.404	2294	2298	2303	rVB8	9794	14193	0.22%	0.019%
52	16.598	2327	2331	2339	rVB3	34420	56427	0.87%	0.077%
53	16.698	2344	2348	2359	rVB4	33652	67886	1.04%	0.093%
54	16.786	2359	2363	2366	rBV4	7407	10978	0.17%	0.015%
55	16.828	2366	2370	2372	rBV	13932	18331	0.28%	0.025%
56	17.045	2400	2407	2411	rBV	3401063	4940850	75.82%	6.737%
57	17.081	2411	2413	2418	rVV	244205	327106	5.02%	0.446%
58	17.139	2418	2423	2434	rVB2	2564626	3677867	56.44%	5.015%
59	17.410	2465	2469	2470	rBV4	8244	11062	0.17%	0.015%
60	17.457	2472	2477	2483	rVV2	92485	138927	2.13%	0.189%
61	17.575	2494	2497	2502	rBV2	9923	15802	0.24%	0.022%
62	17.675	2511	2514	2518	rBV6	9617	12130	0.19%	0.017%
63	17.916	2551	2555	2559	rBV	63463	87890	1.35%	0.120%
64	17.963	2559	2563	2571	rVV	241969	365115	5.60%	0.498%
65	18.028	2571	2574	2581	rVV2	47211	98844	1.52%	0.135%
66	18.104	2581	2587	2591	rVV2	101405	193710	2.97%	0.264%
67	18.139	2591	2593	2601	rVB2	53477	71655	1.10%	0.098%
68	18.257	2609	2613	2618	rBV4	29940	45624	0.70%	0.062%
69	18.404	2632	2638	2641	rBV2	57052	111392	1.71%	0.152%
70	18.433	2641	2643	2646	rVB2	24591	27397	0.42%	0.037%
71	18.645	2677	2679	2683	rVB3	16423	19108	0.29%	0.026%

Data Path : Z:\SVOASRV\HPCHEM1\BNA\_P\DATA\BP022020\  
 Data File : BP001810.D  
 Acq On : 20 Feb 2020 19:33  
 Operator : CG/JU  
 Sample : L1418-18  
 Misc :  
 ALS Vial : 15 Sample Multiplier: 1

Instrument :  
 BNA\_P  
 ClientSampleId :  
 C5B20

## Integration Parameters: LSCINT.P

Integrator: RTE  
 Smoothing : OFF  
 Sampling : 1  
 Start Thrs: 0.2  
 Stop Thrs : 0

Filtering: 5  
 Min Area: 0.1 % of largest Peak  
 Max Peaks: 100  
 Peak Location: TOP

If leading or trailing edge < 100 prefer < Baseline drop else tangent >  
 Peak separation: 5

Method : Z:\SVOASRV\HPCHEM1\BNA\_P\METHODS\SOM-EPA-BP021820MA.M  
 Title : SVOA CALIBRATION

72	18.698	2685	2688	2691	rBV	20937	33424	0.51%	0.046%
73	18.804	2701	2706	2712	rBV3	132722	222549	3.42%	0.303%
74	18.875	2714	2718	2725	rVB4	56286	105303	1.62%	0.144%
75	18.939	2726	2729	2733	rBV2	37868	60462	0.93%	0.082%
76	19.063	2745	2750	2755	rVB	728956	937970	14.39%	1.279%
77	19.204	2771	2774	2779	rBV	65519	99908	1.53%	0.136%
78	19.386	2799	2805	2808	rBV	3748511	5005920	76.82%	6.825%
79	19.586	2837	2839	2842	rBV	25996	25127	0.39%	0.034%
80	19.869	2884	2887	2888	rBV2	38578	43882	0.67%	0.060%
81	19.898	2889	2892	2898	rVB2	113666	160272	2.46%	0.219%
82	19.998	2905	2909	2912	rBV	94982	119941	1.84%	0.164%
83	20.051	2916	2918	2922	rVB	80135	87844	1.35%	0.120%
84	20.186	2939	2941	2945	rVB	59397	59345	0.91%	0.081%
85	20.233	2946	2949	2953	rVV	51734	68844	1.06%	0.094%
86	20.827	3047	3050	3053	rBV	87397	97799	1.50%	0.133%
87	20.874	3054	3058	3064	rVV4	540035	817124	12.54%	1.114%
88	20.927	3064	3067	3076	rVB2	193026	271420	4.17%	0.370%
89	21.133	3095	3102	3106	rBV	4819820	6516223	100.00%	8.885%
90	21.169	3106	3108	3116	rVB	422012	480424	7.37%	0.655%
91	21.251	3119	3122	3125	rBV2	97793	125897	1.93%	0.172%
92	21.316	3131	3133	3138	rVB2	102452	115482	1.77%	0.157%
93	22.216	3283	3286	3294	rVB	219112	288670	4.43%	0.394%
94	22.339	3304	3307	3312	rVB	159486	211077	3.24%	0.288%
95	22.686	3361	3366	3369	rBV	322333	642964	9.87%	0.877%
96	22.721	3369	3372	3382	rVB	513348	829333	12.73%	1.131%
97	23.210	3448	3455	3460	rBV	2477111	4403912	67.58%	6.005%
98	23.292	3466	3469	3472	rBV	194856	301614	4.63%	0.411%
99	23.345	3472	3478	3494	rVB	3266840	6358437	97.58%	8.670%
100	23.951	3577	3581	3587	rVB	272528	478469	7.34%	0.652%

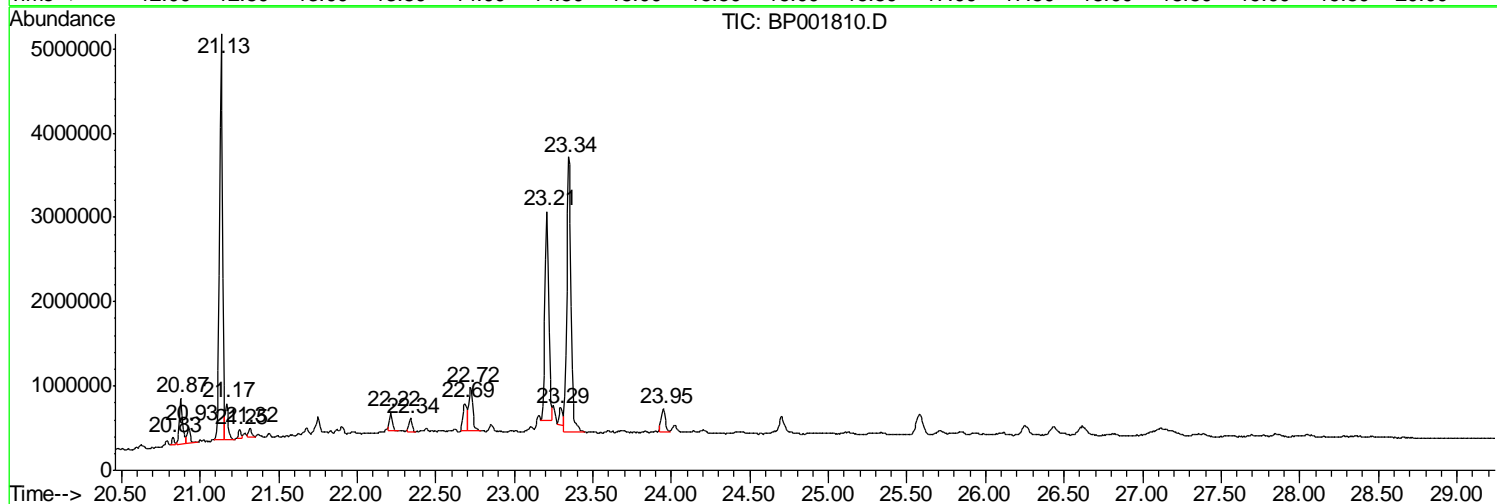
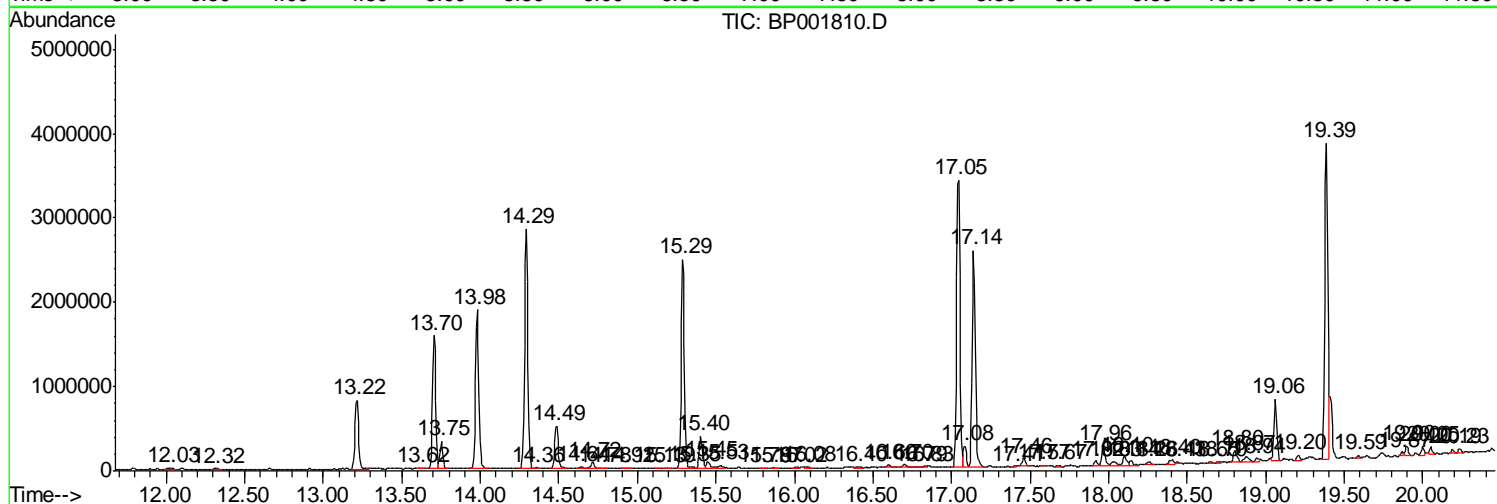
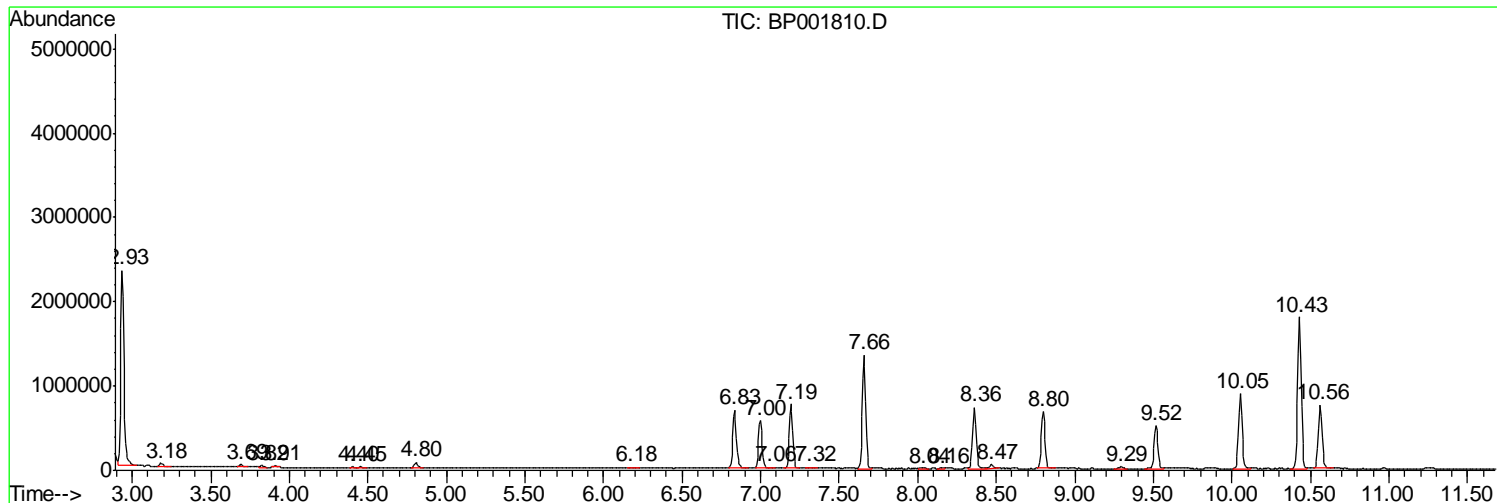
Sum of corrected areas: 73341557

Data Path : Z:\SVOASRV\HPCHEM1\BNA P\DATA\BP022020\  
 Data File : BP001810.D  
 Acq On : 20 Feb 2020 19:33  
 Operator : CG/JU  
 Sample : L1418-18  
 Misc :  
 ALS Vial : 15 Sample Multiplier: 1

Instrument :  
 BNA\_P  
 ClientSampleId :  
 C5B20

Quant Method : Z:\SVOASRV\HPCHEM1\BNA\_P\METHODS\SOM-EPA-BP021820MA.M  
 Quant Title : SVOA CALIBRATION

TIC Library : C:\DATABASE\NIST11.L  
 TIC Integration Parameters: LSCINT.P



Data Path : Z:\SVOASRV\HPCHEM1\BNA P\DATA\BP022020\  
 Data File : BP001810.D  
 Acq On : 20 Feb 2020 19:33  
 Operator : CG/JU  
 Sample : L1418-18  
 Misc :  
 ALS Vial : 15 Sample Multiplier: 1

Instrument :  
 BNA\_P  
 ClientSampleID :  
 C5B20

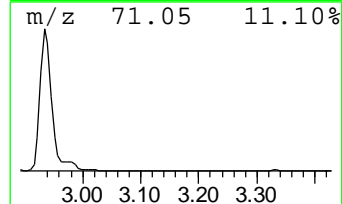
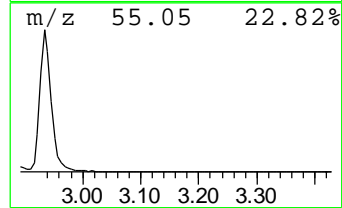
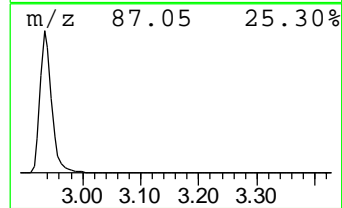
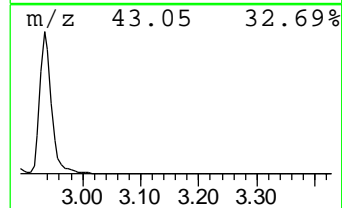
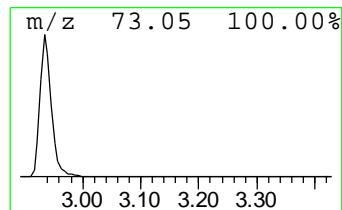
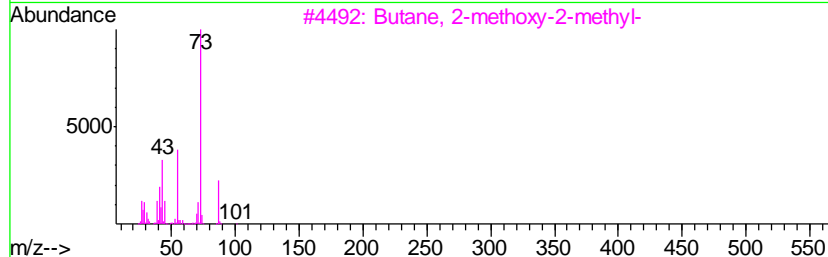
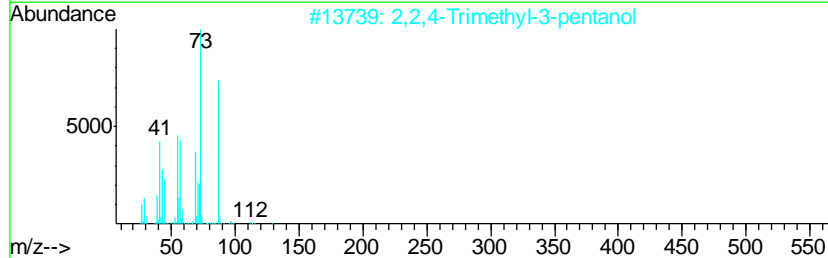
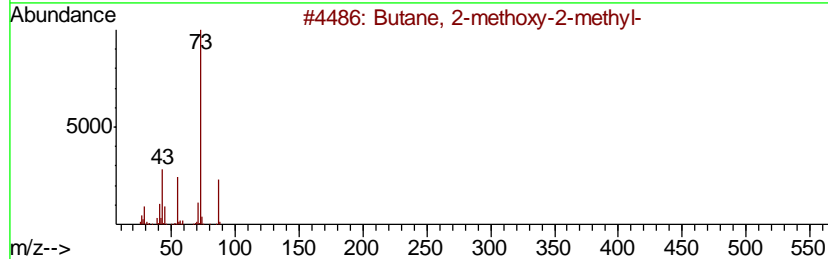
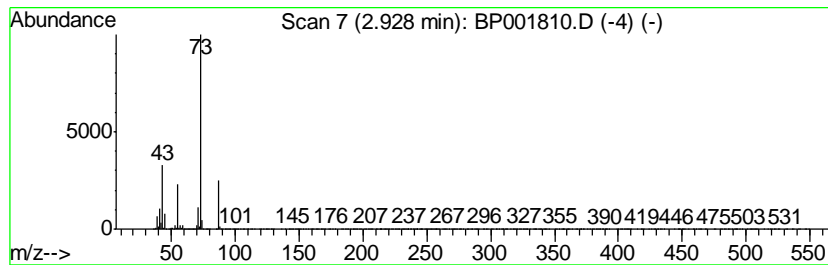
Quant Method : Z:\SVOASRV\HPCHEM1\BNA\_P\METHODS\SOM-EPA-BP021820MA.M  
 Quant Title : SVOA CALIBRATION

TIC Library : C:\DATABASE\NIST11.L  
 TIC Integration Parameters: LSCINT.P

\*\*\*\*\*  
 Peak Number 1 Butane, 2-methoxy-2-methyl- Concentration Rank 1

R.T.	EstConc	Area	Relative to ISTD	R.T.
2.93	30.62 ng/ul	3202450	1,4-Dichlorobenzene-d4	7.66

Hit#	of	Tentative ID	MW	MolForm	CAS#	Qual
1	5	Butane, 2-methoxy-2-methyl-	102	C6H14O	000994-05-8	78
2		2,2,4-Trimethyl-3-pentanol	130	C8H18O	005162-48-1	39
3		Butane, 2-methoxy-2-methyl-	102	C6H14O	000994-05-8	38
4		Pentane, 3-methoxy-	102	C6H14O	036839-67-5	23
5		Acetamide, N-ethyl-	87	C4H9NO	000625-50-3	9



Data Path : Z:\SVOASRV\HPCHEM1\BNA P\DATA\BP022020\  
 Data File : BP001810.D  
 Acq On : 20 Feb 2020 19:33  
 Operator : CG/JU  
 Sample : L1418-18  
 Misc :  
 ALS Vial : 15 Sample Multiplier: 1

Instrument :  
 BNA\_P  
 ClientSampleID :  
 C5B20

Quant Method : Z:\SVOASRV\HPCHEM1\BNA\_P\METHODS\SOM-EPA-BP021820MA.M  
 Quant Title : SVOA CALIBRATION

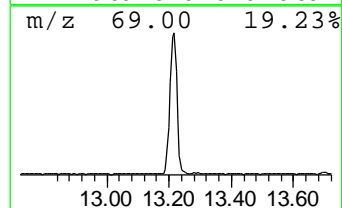
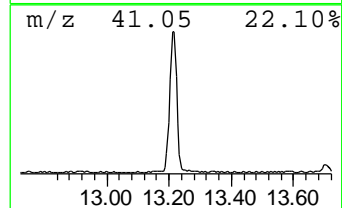
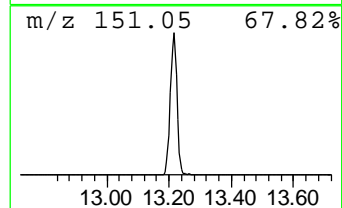
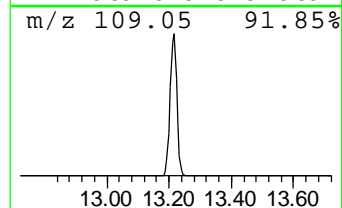
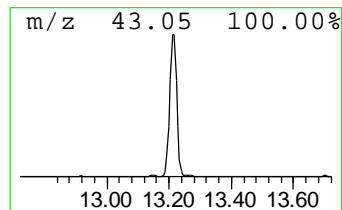
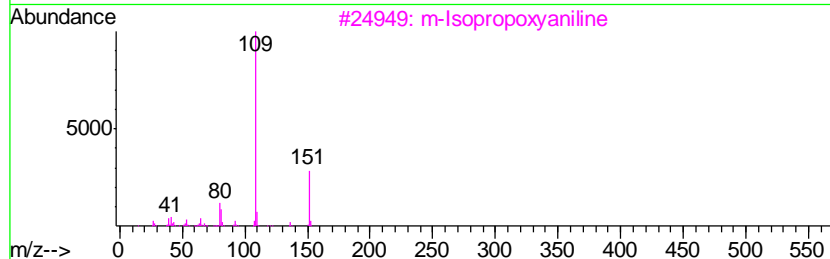
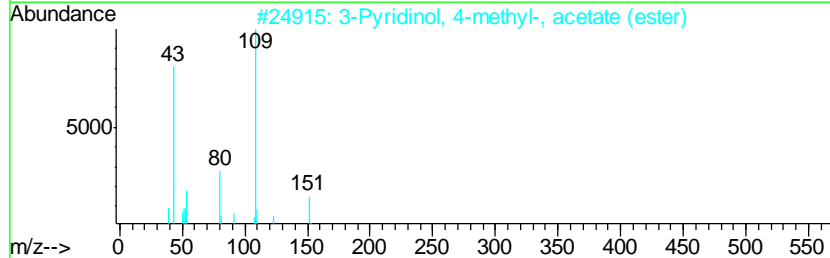
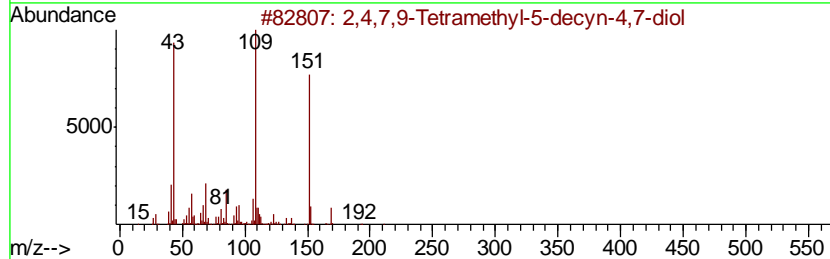
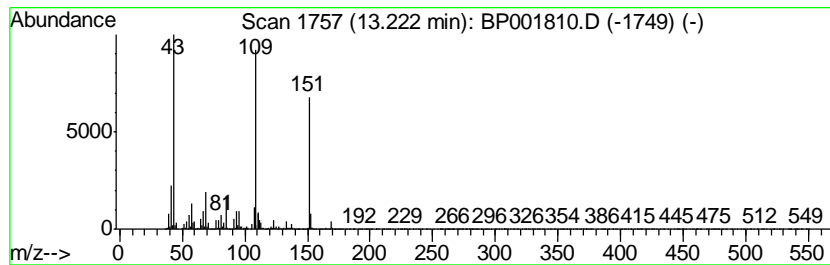
TIC Library : C:\DATABASE\NIST11.L  
 TIC Integration Parameters: LSCINT.P

\*\*\*\*\*  
 Peak Number 2 2,4,7,9-Tetramethyl-5-decyn... Concentration Rank 2

R.T.	EstConc	Area	Relative to ISTD	R.T.
13.22	6.10 ng/ul	1261090	Acenaphthene-d10	14.29

Hit#	of	Tentative ID	MW	MolForm	CAS#	Qual
1	5	2,4,7,9-Tetramethyl-5-decyn-4,7-...	226	C14H26O2	000126-86-3	91
2		3-Pyridinol, 4-methyl-, acetate ...	151	C8H9NO2	001006-96-8	53
3		m-Isopropoxvaniline	151	C9H13NO	041406-00-2	53
4		2-Propenal, 3-(2,2,6-trimethyl-7...	194	C12H18O2	055759-91-6	50
5		N-Cyclopropyl-p-fluorobenzylamine	165	C10H12FN	1000250-88-9	47



Data Path : Z:\SVOASRV\HPCHEM1\BNA P\DATA\BP022020\  
 Data File : BP001810.D  
 Acq On : 20 Feb 2020 19:33  
 Operator : CG/JU  
 Sample : L1418-18  
 Misc :  
 ALS Vial : 15 Sample Multiplier: 1

Instrument :  
 BNA\_P  
 ClientSampleID :  
 C5B20

Quant Method : Z:\SVOASRV\HPCHEM1\BNA\_P\METHODS\SOM-EPA-BP021820MA.M  
 Quant Title : SVOA CALIBRATION

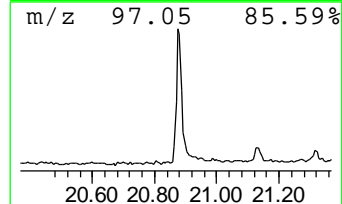
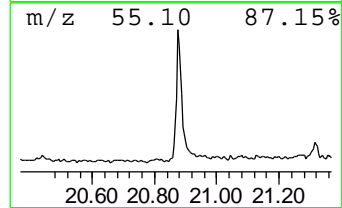
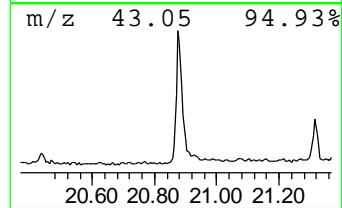
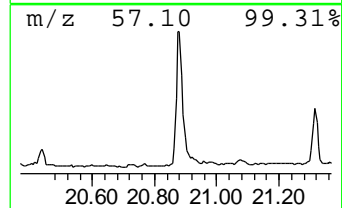
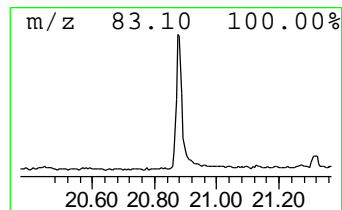
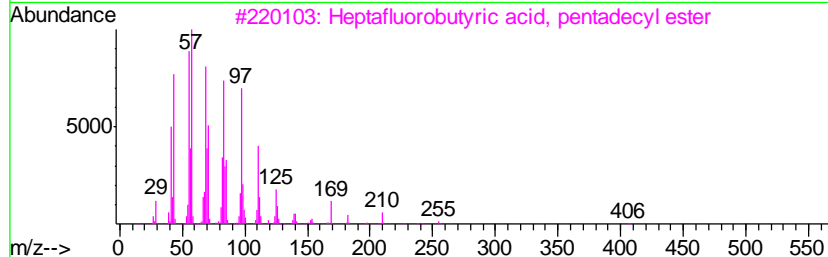
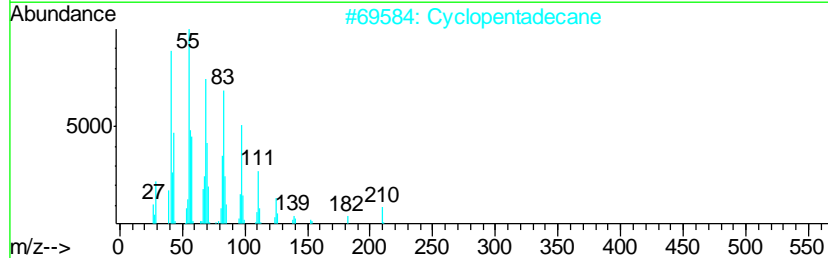
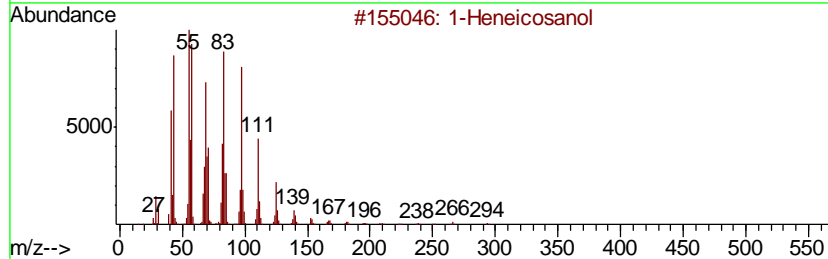
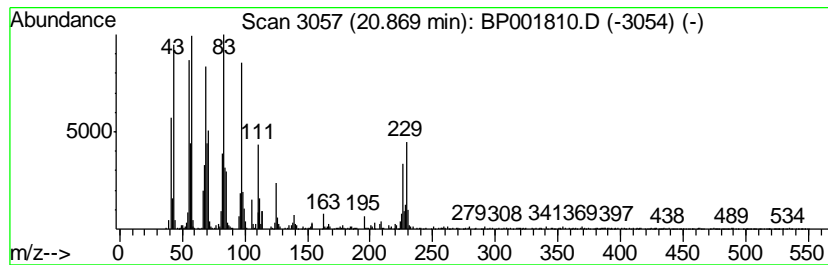
TIC Library : C:\DATABASE\NIST11.L  
 TIC Integration Parameters: LSCINT.P

\*\*\*\*\*  
 Peak Number 3 1-Heneicosanol Concentration Rank 3

R.T.	EstConc	Area	Relative to ISTD	R.T.
20.87	2.51 ng/ul	817124	Chrysene-d12	21.13

Hit#	of	Tentative ID	MW	MolForm	CAS#	Qual
1	5	1-Heneicosanol	312	C21H44O	015594-90-8	93
2		Cyclopentadecane	210	C15H30	000295-48-7	93
3		Heptafluorobutyric acid, pentade...	424	C19H31F7O2	959261-23-5	93
4		Trifluoroacetic acid, pentadecyl...	324	C17H31F3O2	959010-23-2	93
5		Dichloroacetic acid, heptadecyl ...	366	C19H36Cl2O2	1000282-98-2	93



Data Path : Z:\SVOASRV\HPCHEM1\BNA\_P\DATA\BP022020\  
Data File : BP001810.D  
Acq On : 20 Feb 2020 19:33  
Operator : CG/JU  
Sample : L1418-18  
Misc :  
ALS Vial : 15 Sample Multiplier: 1

Instrument :  
BNA\_P  
ClientSampleId :  
C5B20

Quant Method : Z:\SVOASRV\HPCHEM1\BNA\_P\METHODS\SOM-EPA-BP021820MA.M  
Quant Title : SVOA CALIBRATION

TIC Library : C:\DATABASE\NIST11.L  
TIC Integration Parameters: LSCINT.P

TIC Top Hit name	RT	EstConc	Units	Response	--Internal Standard--			
					#	RT	Resp	Conc
Butane, 2-methoxy...	2.93	30.6	ng/ul	3202450	1	7.66	2091590	20.0
2,4,7,9-Tetrameth...	13.22	6.1	ng/ul	1261090	3	14.29	4132970	20.0
1-Heneicosanol	20.87	2.5	ng/ul	817124	5	21.13	6516220	20.0