

Data Path : Z:\svoasrv\HPCHEM1\BNA_P\Data\BP022124\
 Data File : BP019812.D
 Acq On : 21 Feb 2024 17:28
 Operator : MA/JU
 Sample : P1537-04
 Misc :
 ALS Vial : 15 Sample Multiplier: 1

Instrument :
 BNA_P
 ClientSampleId :
 4

Quant Time: Feb 21 17:52:47 2024
 Quant Method : Z:\svoasrv\HPCHEM1\BNA_P\Methods\8270E-BP013124.M
 Quant Title : ASP BNA STANDARDS FOR 5 POINT CALIBRATION
 QLast Update : Mon Feb 19 23:35:42 2024
 Response via : Initial Calibration

Compound	R.T.	QIon	Response	Conc	Units	Dev(Min)

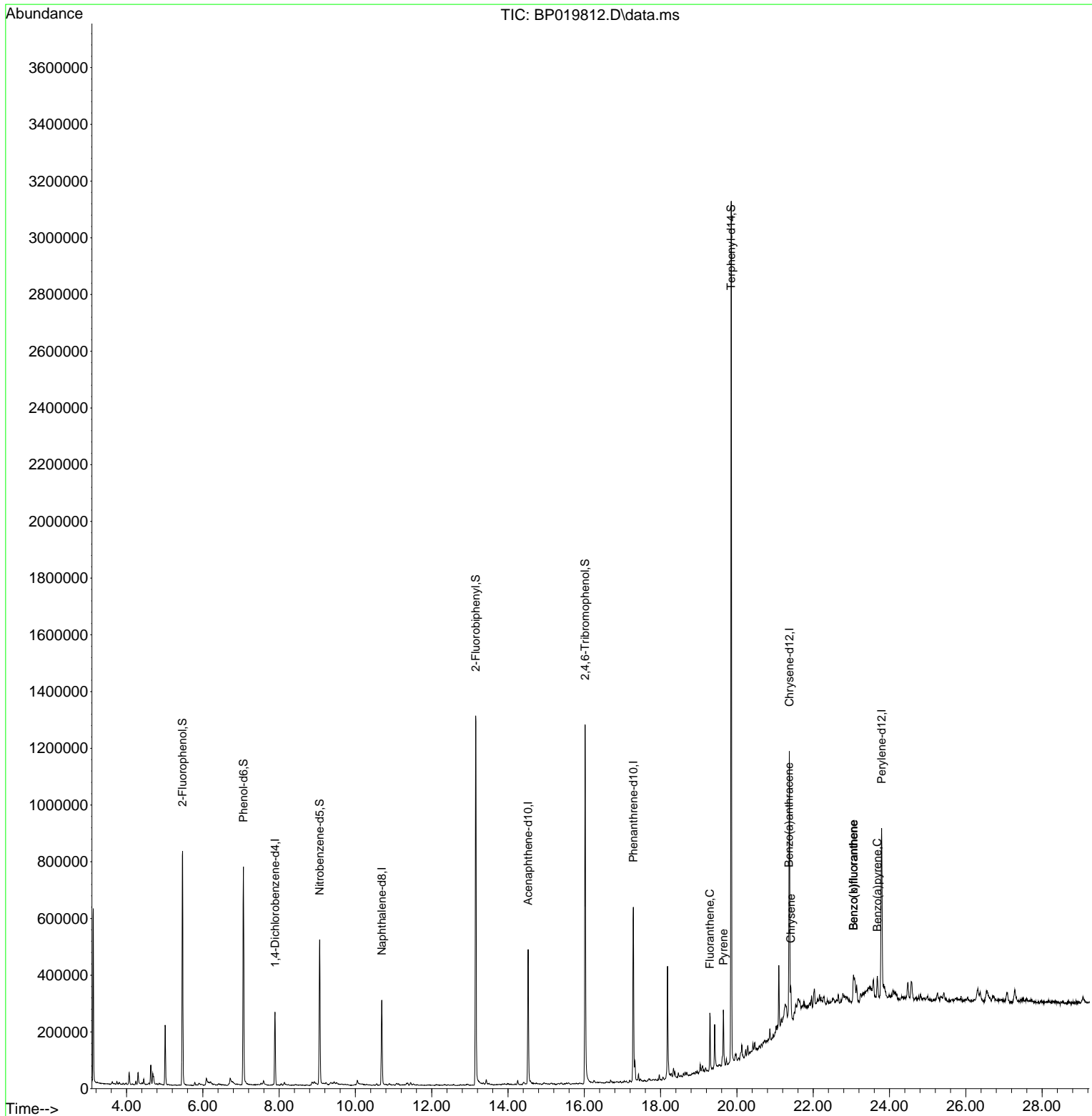
Internal Standards						
1) 1,4-Dichlorobenzene-d4	7.893	152	70928	20.000	ng	0.00
21) Naphthalene-d8	10.693	136	253173	20.000	ng	0.00
39) Acenaphthene-d10	14.528	164	174643	20.000	ng	-0.01
64) Phenanthrene-d10	17.287	188	424499	20.000	ng	0.00
76) Chrysene-d12	21.375	240	457732	20.000	ng	-0.02
86) Perylene-d12	23.792	264	522309	20.000	ng	-0.02
System Monitoring Compounds						
5) 2-Fluorophenol	5.470	112	344033	78.186	ng	0.00
7) Phenol-d6	7.064	99	429772	72.436	ng	0.00
23) Nitrobenzene-d5	9.063	82	309329	52.943	ng	0.00
42) 2,4,6-Tribromophenol	16.022	330	282372	110.738	ng	-0.01
45) 2-Fluorobiphenyl	13.152	172	738462	52.273	ng	-0.01
79) Terphenyl-d14	19.851	244	1530155	54.976	ng	-0.01
Target Compounds						
						Qvalue
75) Fluoranthene	19.292	202	117518	4.306	ng	99
78) Pyrene	19.645	202	120047	3.716	ng	99
81) Benzo(a)anthracene	21.363	228	82835	2.571	ng	92
83) Chrysene	21.416	228	71471	2.336	ng	97
88) Benzo(b)fluoranthene	23.057	252	101009	3.068	ng	# 95
89) Benzo(k)fluoranthene	23.057	252	101009	3.212	ng	# 94
90) Benzo(a)pyrene	23.680	252	72563	2.477	ng	95

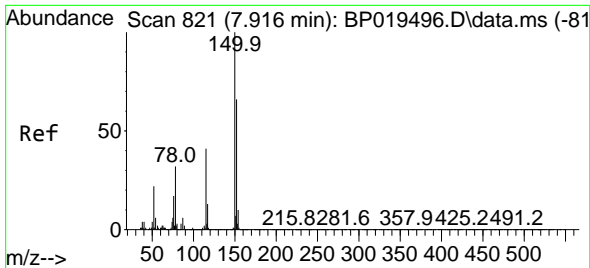
(#) = qualifier out of range (m) = manual integration (+) = signals summed

Data Path : Z:\svoasrv\HPCHEM1\BNA_P\Data\BP022124\
 Data File : BP019812.D
 Acq On : 21 Feb 2024 17:28
 Operator : MA/JU
 Sample : P1537-04
 Misc :
 ALS Vial : 15 Sample Multiplier: 1

Instrument :
 BNA_P
 ClientSampleId :
 4

Quant Time: Feb 21 17:52:47 2024
 Quant Method : Z:\svoasrv\HPCHEM1\BNA_P\Methods\8270E-BP013124.M
 Quant Title : ASP BNA STANDARDS FOR 5 POINT CALIBRATION
 QLast Update : Mon Feb 19 23:35:42 2024
 Response via : Initial Calibration

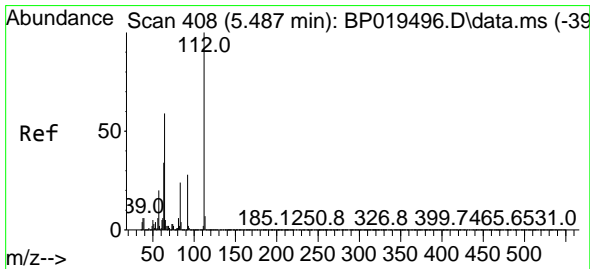
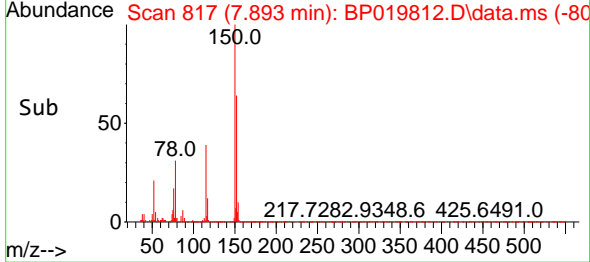
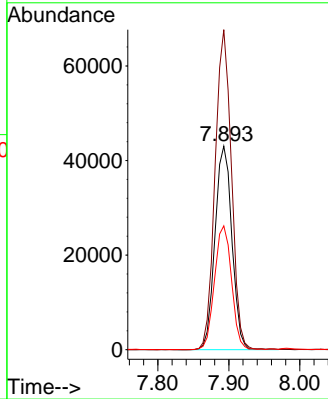
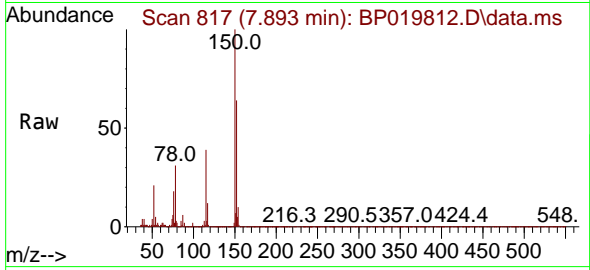




#1
 1,4-Dichlorobenzene-d4
 Concen: 20.000 ng
 RT: 7.893 min Scan# 81
 Delta R.T. -0.006 min
 Lab File: BP019812.D
 Acq: 21 Feb 2024 17:28

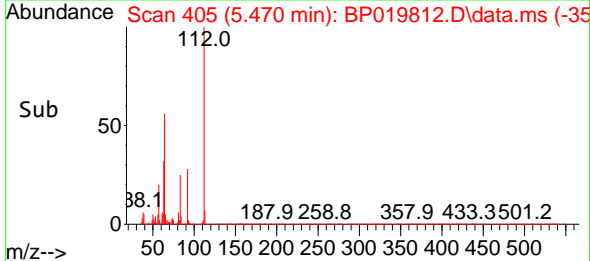
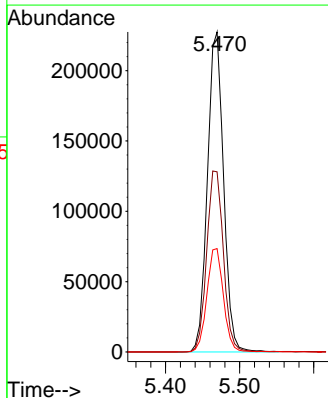
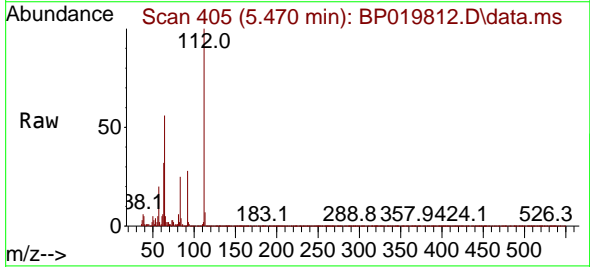
Instrument :
 BNA_P
 ClientSampleId :
 4

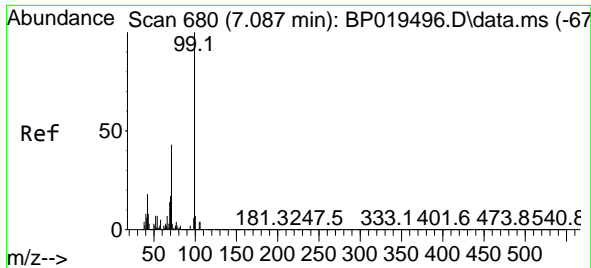
Tgt Ion	Resp	Lower	Upper
152	70928		
152	100		
150	157.3	121.8	182.8
115	60.8	49.9	74.9



#5
 2-Fluorophenol
 Concen: 78.186 ng
 RT: 5.470 min Scan# 405
 Delta R.T. -0.006 min
 Lab File: BP019812.D
 Acq: 21 Feb 2024 17:28

Tgt Ion	Resp	Lower	Upper
112	344033		
112	100		
64	56.3	47.4	71.0
63	32.3	27.0	40.6



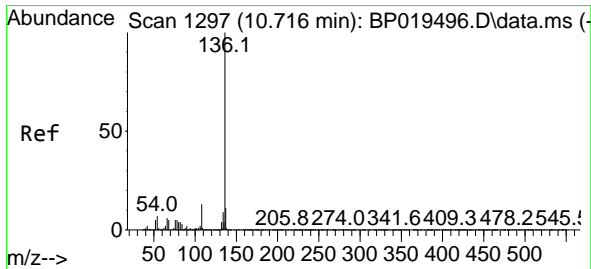
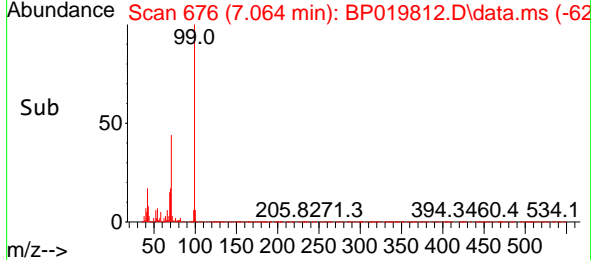
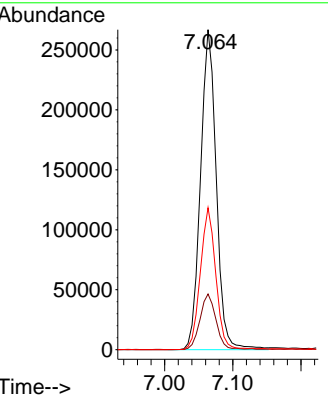
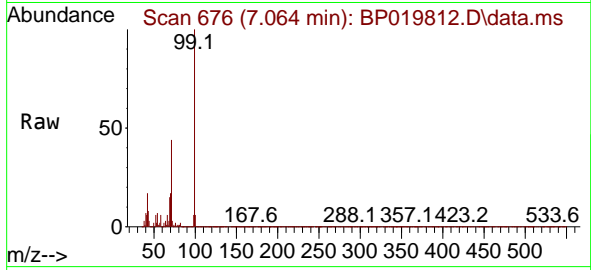


#7
 Phenol-d6
 Concen: 72.436 ng
 RT: 7.064 min Scan# 61
 Delta R.T. -0.006 min
 Lab File: BP019812.D
 Acq: 21 Feb 2024 17:28

Instrument :
 BNA_P
 ClientSampleId :
 4

Tgt Ion: 99 Resp: 429772

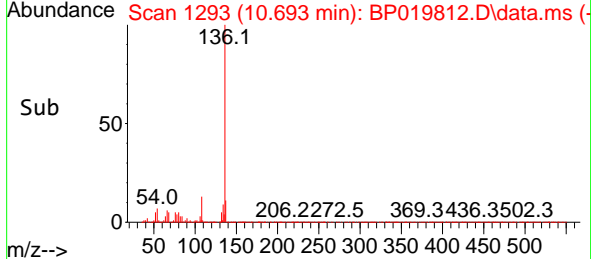
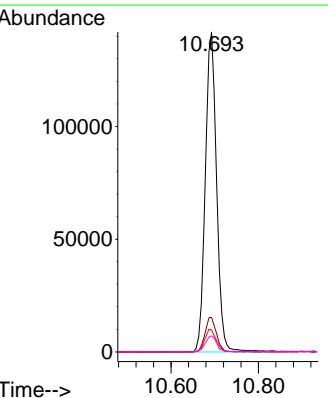
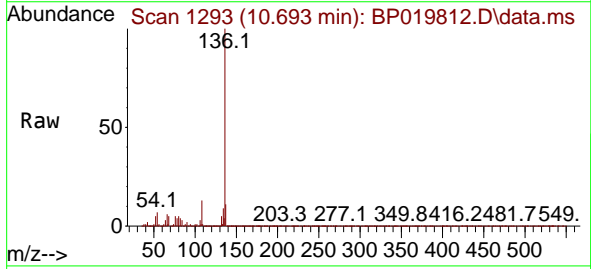
Ion	Ratio	Lower	Upper
99	100		
42	17.4	14.7	22.1
71	44.4	34.8	52.2

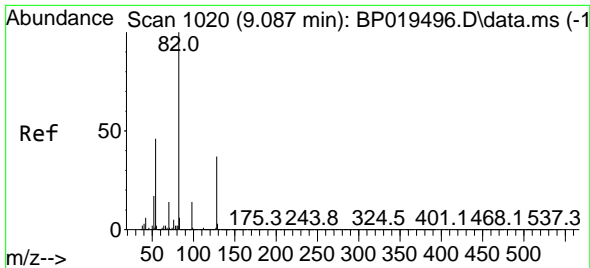


#21
 Naphthalene-d8
 Concen: 20.000 ng
 RT: 10.693 min Scan# 1293
 Delta R.T. -0.006 min
 Lab File: BP019812.D
 Acq: 21 Feb 2024 17:28

Tgt Ion: 136 Resp: 253173

Ion	Ratio	Lower	Upper
136	100		
137	10.8	8.8	13.2
54	6.9	5.3	7.9
68	5.0	4.1	6.1



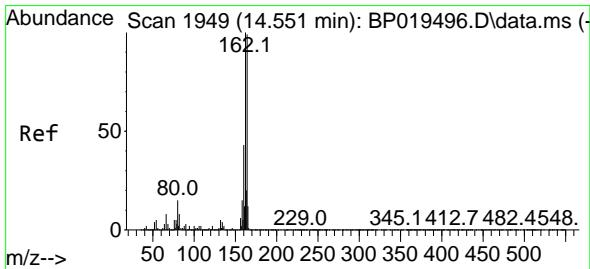
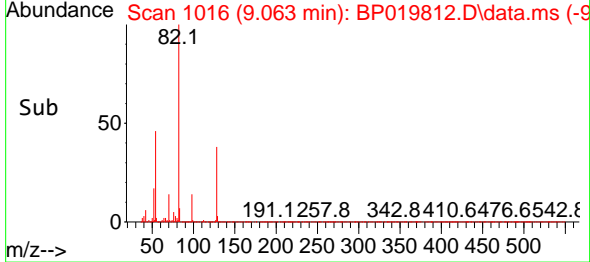
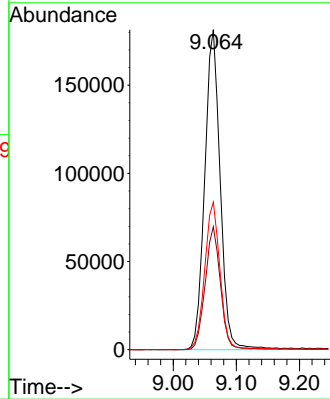
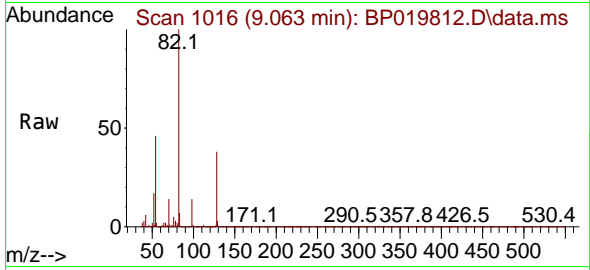


#23
 Nitrobenzene-d5
 Concen: 52.943 ng
 RT: 9.063 min Scan# 10
 Delta R.T. -0.006 min
 Lab File: BP019812.D
 Acq: 21 Feb 2024 17:28

Instrument :
 BNA_P
 ClientSampleId :
 4

Tgt Ion: 82 Resp: 309329

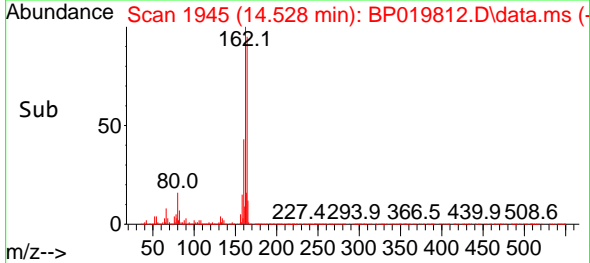
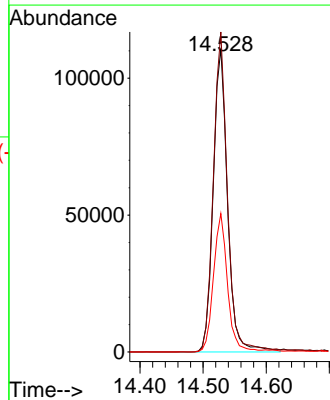
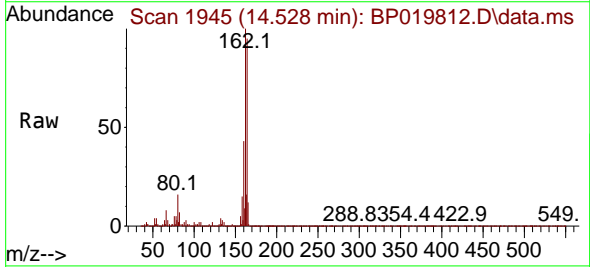
Ion	Ratio	Lower	Upper
82	100		
128	38.4	29.7	44.5
54	46.1	36.8	55.2

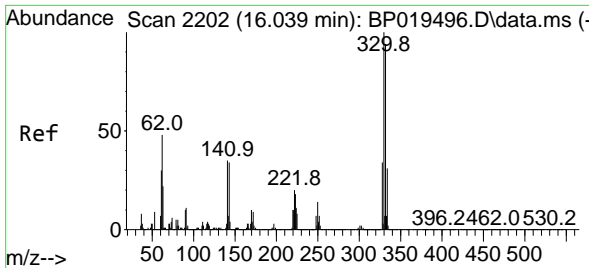


#39
 Acenaphthene-d10
 Concen: 20.000 ng
 RT: 14.528 min Scan# 1945
 Delta R.T. -0.012 min
 Lab File: BP019812.D
 Acq: 21 Feb 2024 17:28

Tgt Ion: 164 Resp: 174643

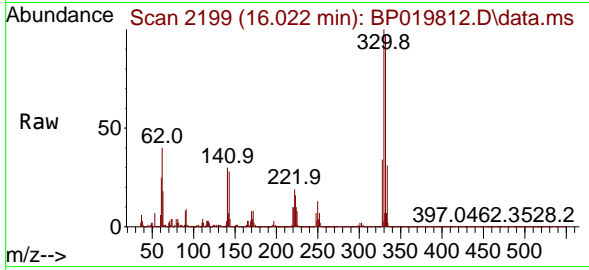
Ion	Ratio	Lower	Upper
164	100		
162	105.5	81.2	121.8
160	45.6	35.1	52.7



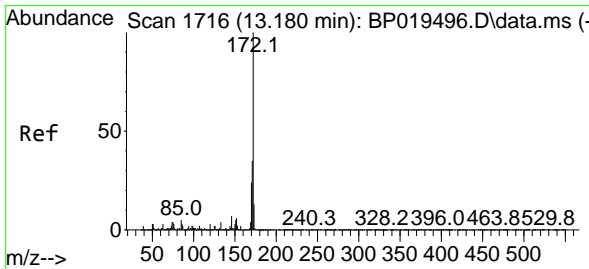
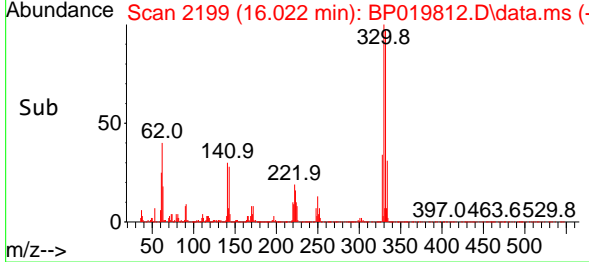
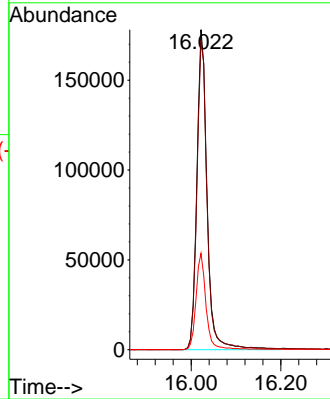


#42
 2,4,6-Tribromophenol
 Concen: 110.738 ng
 RT: 16.022 min Scan# 21
 Delta R.T. -0.012 min
 Lab File: BP019812.D
 Acq: 21 Feb 2024 17:28

Instrument :
 BNA_P
 ClientSampleId :
 4

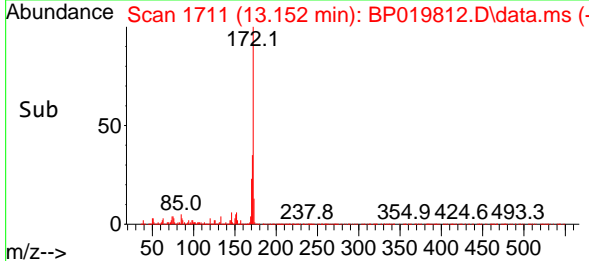
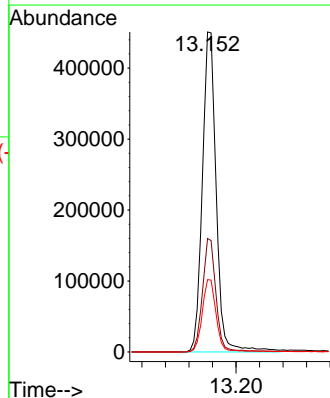
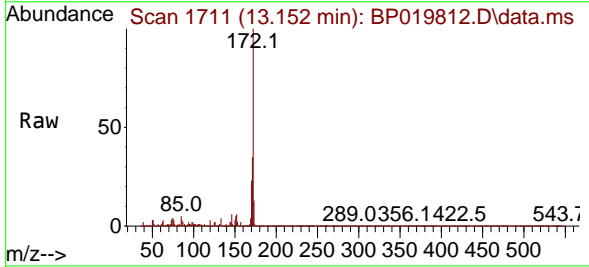


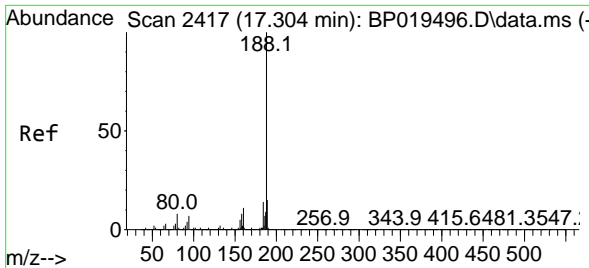
Tgt Ion:330 Resp: 282372
 Ion Ratio Lower Upper
 330 100
 332 96.6 77.2 115.8
 141 29.6 27.0 40.4



#45
 2-Fluorobiphenyl
 Concen: 52.273 ng
 RT: 13.152 min Scan# 1711
 Delta R.T. -0.012 min
 Lab File: BP019812.D
 Acq: 21 Feb 2024 17:28

Tgt Ion:172 Resp: 738462
 Ion Ratio Lower Upper
 172 100
 171 35.4 28.2 42.4
 170 22.6 18.9 28.3

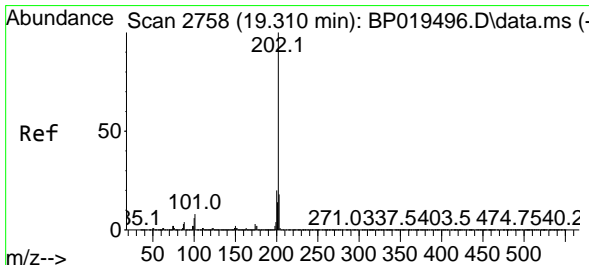
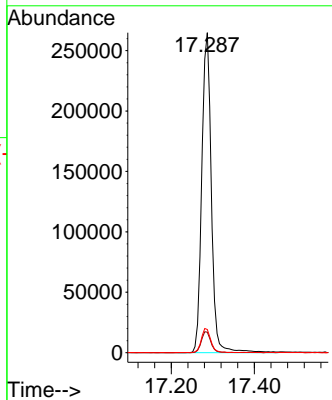
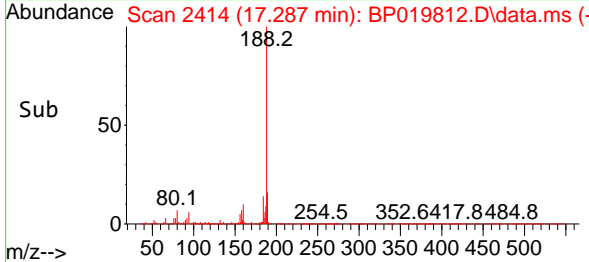
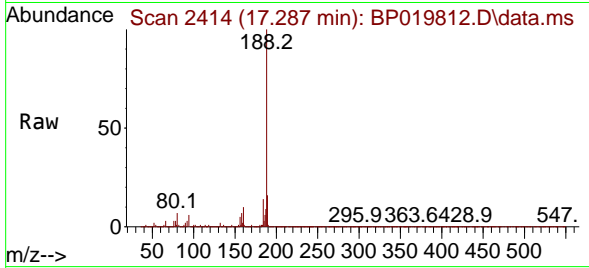




#64
 Phenanthrene-d10
 Concen: 20.000 ng
 RT: 17.287 min Scan# 24
 Delta R.T. -0.006 min
 Lab File: BP019812.D
 Acq: 21 Feb 2024 17:28

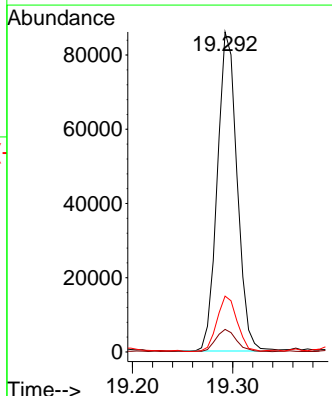
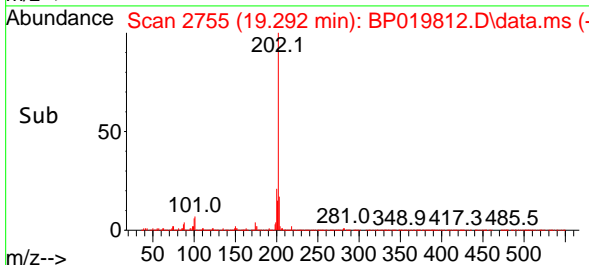
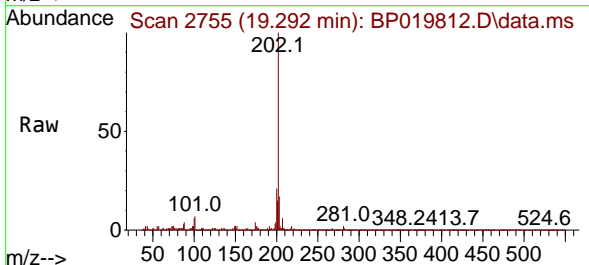
Instrument : BNA_P
 ClientSampleId : 4

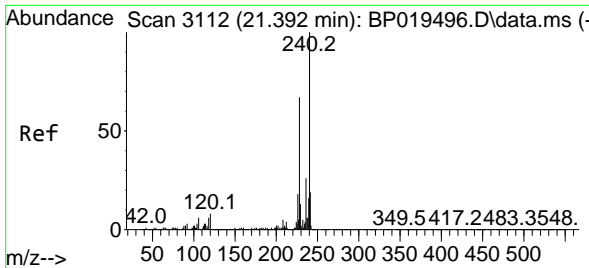
Tgt Ion	Resp	Lower	Upper
188	424499		
188	100		
94	6.4	5.4	8.2
80	7.2	6.3	9.5



#75
 Fluoranthene
 Concen: 4.306 ng
 RT: 19.292 min Scan# 2755
 Delta R.T. -0.012 min
 Lab File: BP019812.D
 Acq: 21 Feb 2024 17:28

Tgt Ion	Resp	Lower	Upper
202	117518		
202	100		
101	7.1	0.0	27.7
203	17.4	0.0	37.5

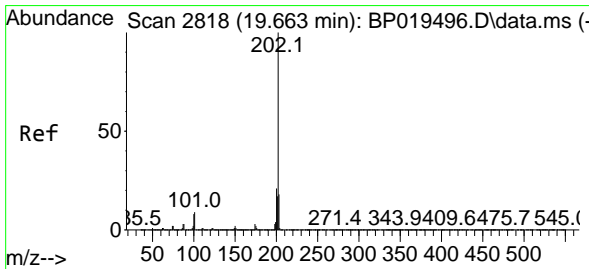
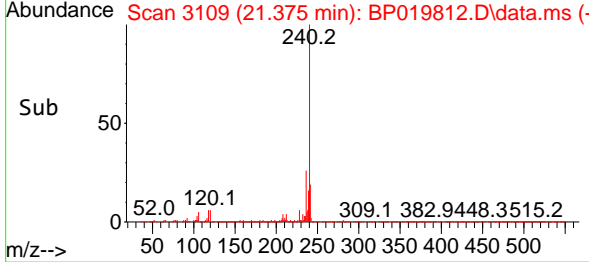
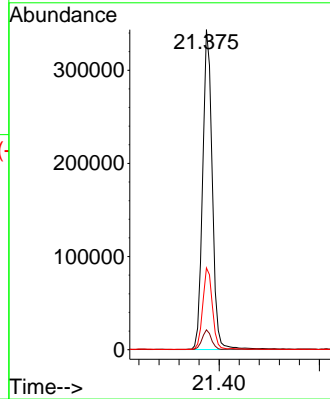
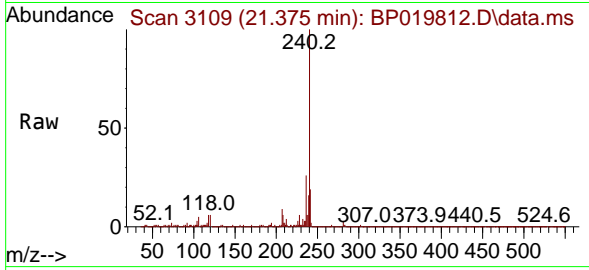




#76
 Chrysene-d12
 Concen: 20.000 ng
 RT: 21.375 min Scan# 3112
 Delta R.T. -0.017 min
 Lab File: BP019812.D
 Acq: 21 Feb 2024 17:28

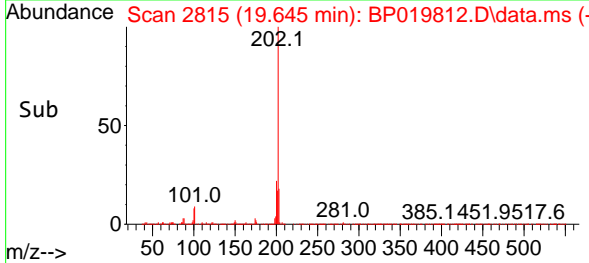
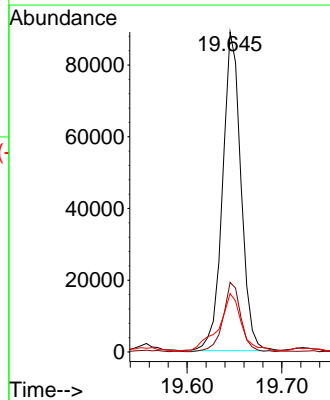
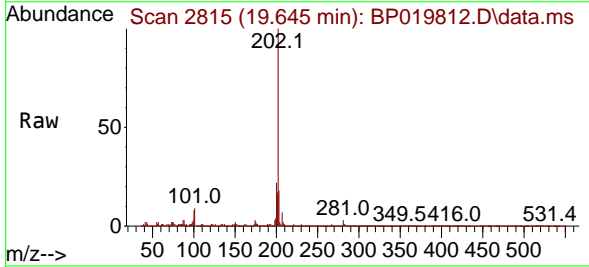
Instrument :
 BNA_P
 ClientSampled :
 4

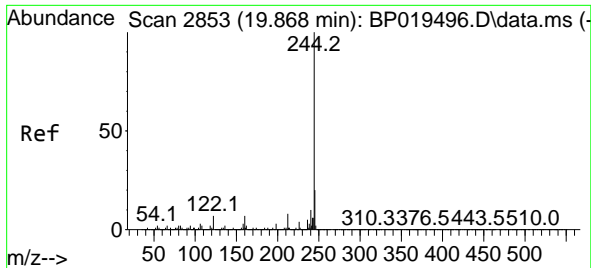
Tgt Ion:240 Resp: 457732
 Ion Ratio Lower Upper
 240 100
 120 6.2 6.1 9.1
 236 25.6 20.7 31.1



#78
 Pyrene
 Concen: 3.716 ng
 RT: 19.645 min Scan# 2815
 Delta R.T. -0.012 min
 Lab File: BP019812.D
 Acq: 21 Feb 2024 17:28

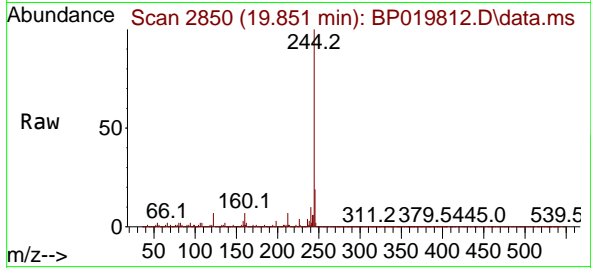
Tgt Ion:202 Resp: 120047
 Ion Ratio Lower Upper
 202 100
 200 21.8 16.9 25.3
 203 18.3 14.2 21.2



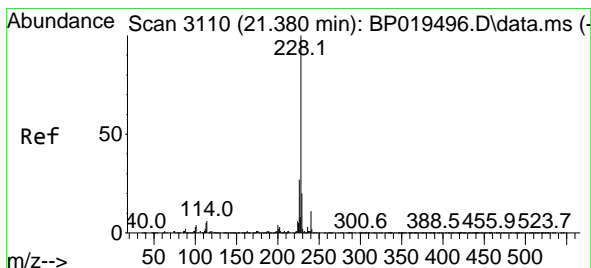
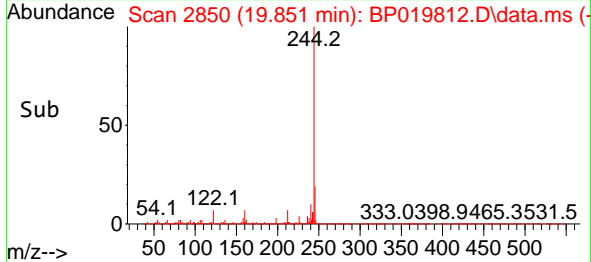
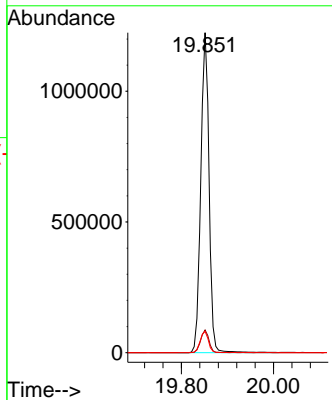


#79
 Terphenyl-d14
 Concen: 54.976 ng
 RT: 19.851 min Scan# 21
 Delta R.T. -0.012 min
 Lab File: BP019812.D
 Acq: 21 Feb 2024 17:28

Instrument :
 BNA_P
 ClientSampleId :

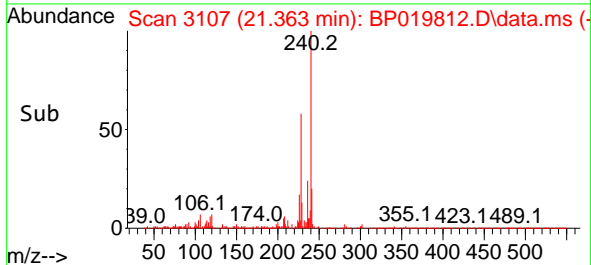
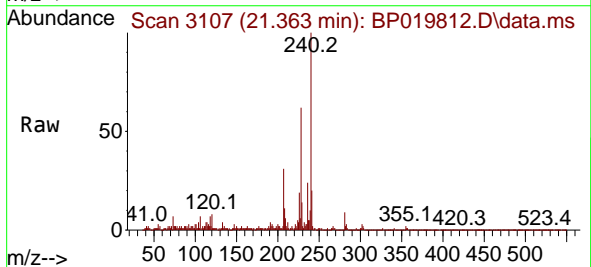
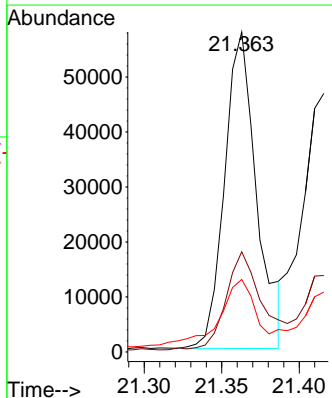


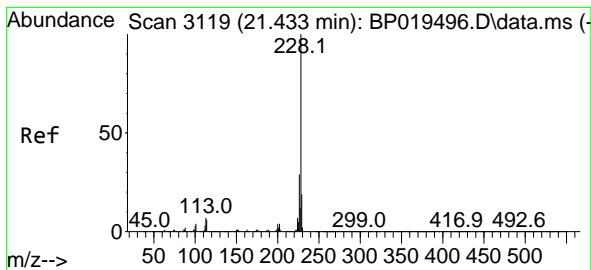
Tgt Ion:244 Resp: 1530155
 Ion Ratio Lower Upper
 244 100
 212 7.1 6.1 9.1
 122 6.7 5.9 8.9



#81
 Benzo(a)anthracene
 Concen: 2.571 ng
 RT: 21.363 min Scan# 3107
 Delta R.T. -0.012 min
 Lab File: BP019812.D
 Acq: 21 Feb 2024 17:28

Tgt Ion:228 Resp: 82835
 Ion Ratio Lower Upper
 228 100
 226 31.3 21.7 32.5
 229 22.6 15.6 23.4





#83

Chrysene

Concen: 2.336 ng

RT: 21.416 min Scan# 3116

Delta R.T. -0.012 min

Lab File: BP019812.D

Acq: 21 Feb 2024 17:28

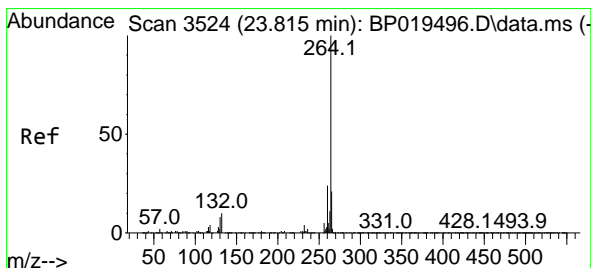
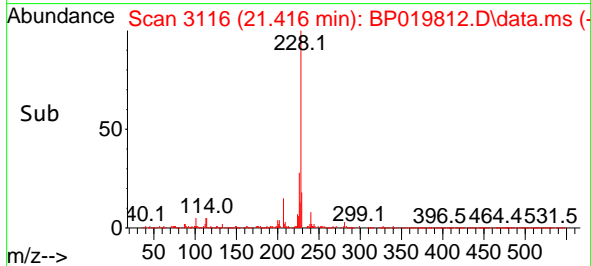
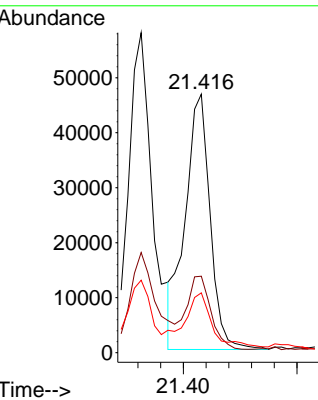
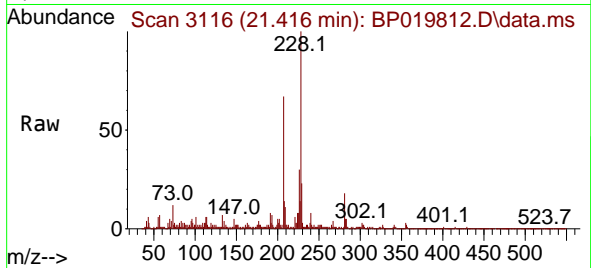
Instrument :

BNA_P

ClientSampleId :

4

Tgt Ion	Resp	Lower	Upper
228	71471		
226	29.6	23.4	35.2
229	23.1	15.6	23.4



#86

Perylene-d12

Concen: 20.000 ng

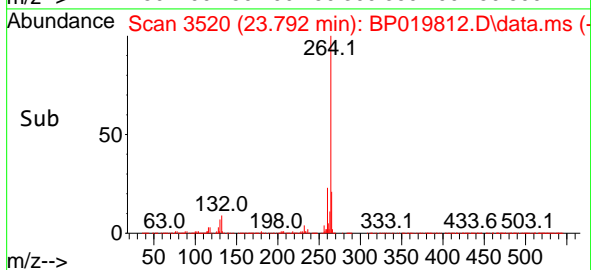
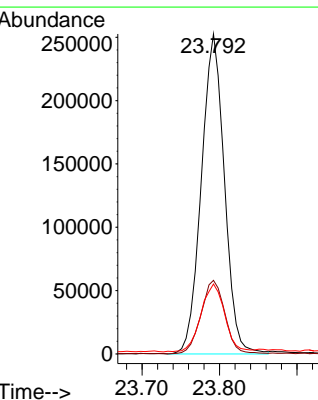
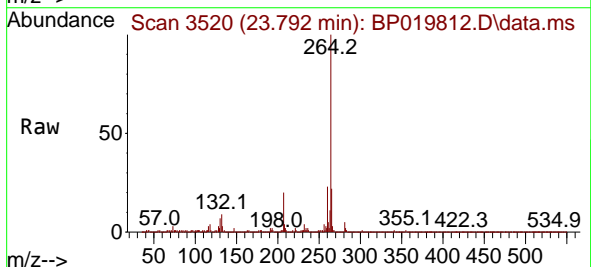
RT: 23.792 min Scan# 3520

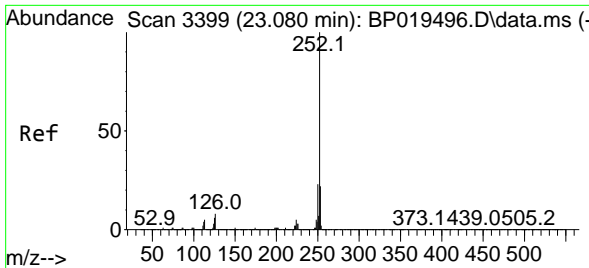
Delta R.T. -0.017 min

Lab File: BP019812.D

Acq: 21 Feb 2024 17:28

Tgt Ion	Resp	Lower	Upper
264	522309		
260	23.0	19.2	28.8
265	21.8	17.0	25.4



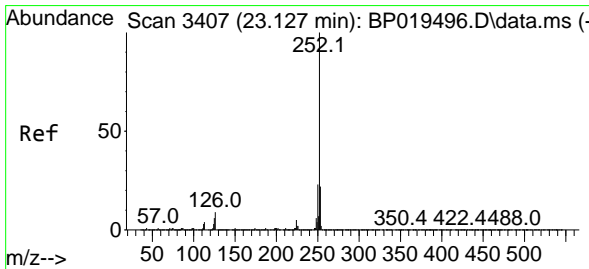
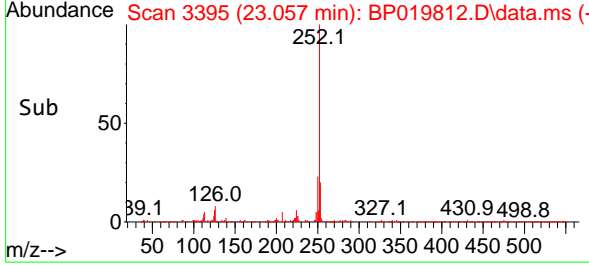
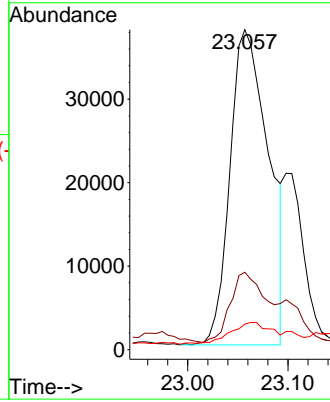
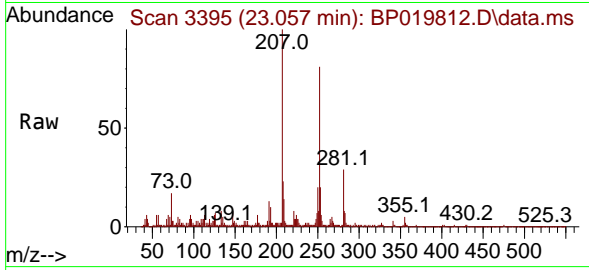


#88
 Benzo(b)fluoranthene
 Concen: 3.068 ng
 RT: 23.057 min Scan# 3395
 Delta R.T. -0.017 min
 Lab File: BP019812.D
 Acq: 21 Feb 2024 17:28

Instrument : BNA_P
 ClientSampleId : 4

Tgt Ion: 252 Resp: 101009

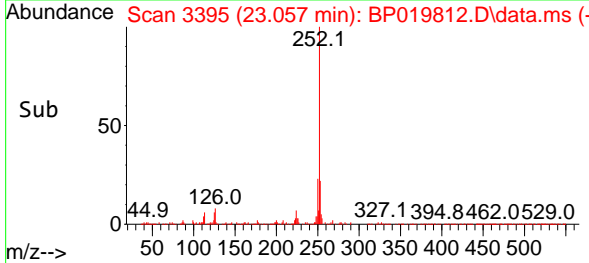
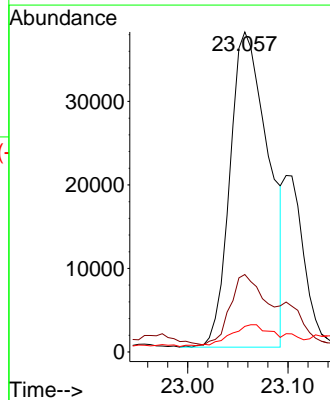
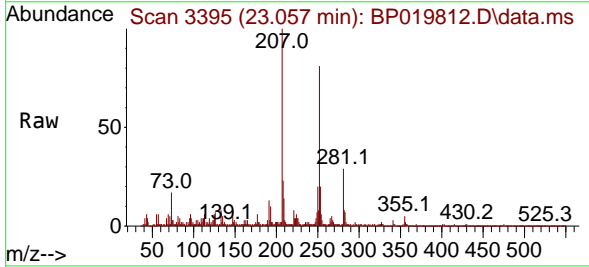
Ion	Ratio	Lower	Upper
252	100		
253	24.2	17.3	25.9
125	8.0	4.9	7.3

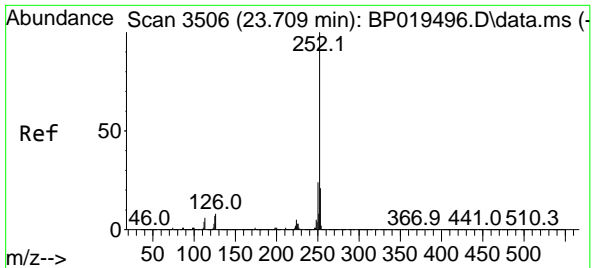


#89
 Benzo(k)fluoranthene
 Concen: 3.212 ng
 RT: 23.057 min Scan# 3395
 Delta R.T. -0.064 min
 Lab File: BP019812.D
 Acq: 21 Feb 2024 17:28

Tgt Ion: 252 Resp: 101009

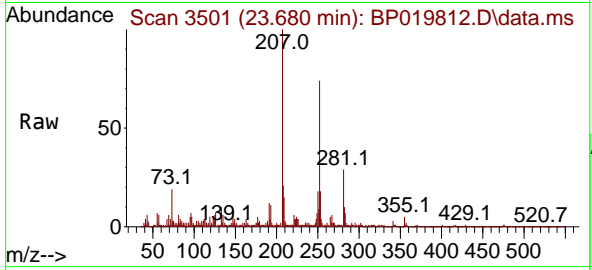
Ion	Ratio	Lower	Upper
252	100		
253	24.2	17.1	25.7
125	8.0	5.0	7.6





#90
 Benzo(a)pyrene
 Concen: 2.477 ng
 RT: 23.680 min Scan# 31
 Delta R.T. -0.023 min
 Lab File: BP019812.D
 Acq: 21 Feb 2024 17:28

Instrument :
 BNA_P
 ClientSampleId :
 4



Tgt Ion:252 Resp: 72563

Ion	Ratio	Lower	Upper
252	100		
253	24.6	17.1	25.7
125	7.6	5.6	8.4

