

Data Path : Z:\svoasrv\HPCHEM1\BNA_P\Data\BP022724\
 Data File : BP019905.D
 Acq On : 27 Feb 2024 19:58
 Operator : MA/JU
 Sample : P1545-01
 Misc :
 ALS Vial : 20 Sample Multiplier: 1

Instrument :
 BNA_P
 ClientSampleId :
 287

Quant Time: Feb 28 00:59:20 2024
 Quant Method : Z:\svoasrv\HPCHEM1\BNA_P\Methods\8270E-BP022624.M
 Quant Title : ASP BNA STANDARDS FOR 5 POINT CALIBRATION
 QLast Update : Tue Feb 27 02:05:05 2024
 Response via : Initial Calibration

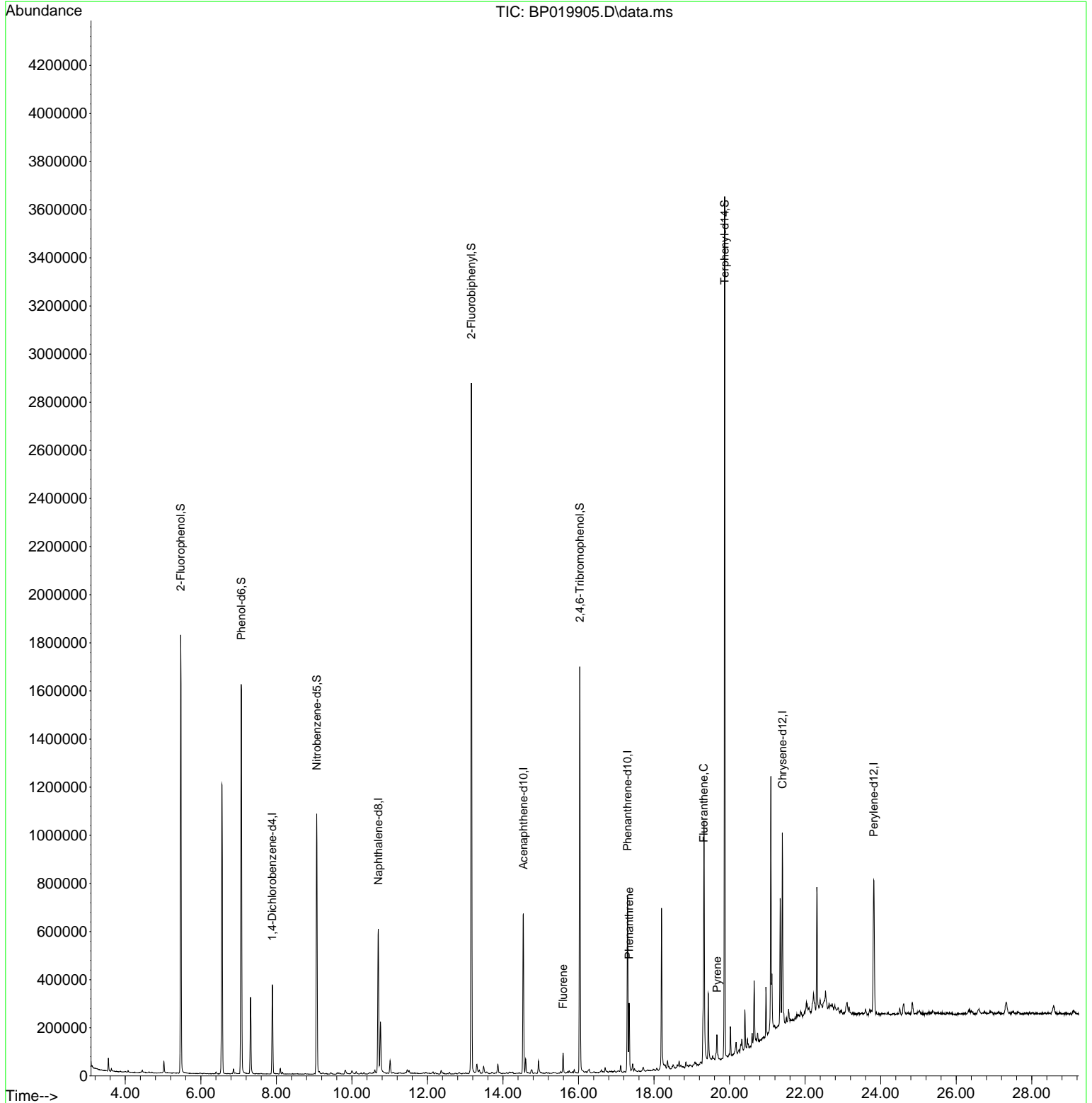
| Compound | R.T. | QIon | Response | Conc | Units | Dev(Min) | |
|-----------------------------|--------|------|----------|---------|-------|----------|--------|
| Internal Standards | | | | | | | |
| 1) 1,4-Dichlorobenzene-d4 | 7.893 | 152 | 100185 | 20.000 | ng | 0.00 | |
| 21) Naphthalene-d8 | 10.698 | 136 | 492755 | 20.000 | ng | 0.00 | |
| 39) Acenaphthene-d10 | 14.539 | 164 | 243964 | 20.000 | ng | 0.00 | |
| 64) Phenanthrene-d10 | 17.298 | 188 | 452226 | 20.000 | ng | 0.00 | |
| 76) Chrysene-d12 | 21.398 | 240 | 374642 | 20.000 | ng | -0.01 | |
| 86) Perylene-d12 | 23.821 | 264 | 507430 | 20.000 | ng | -0.01 | |
| System Monitoring Compounds | | | | | | | |
| 5) 2-Fluorophenol | 5.469 | 112 | 730680 | 119.710 | ng | 0.00 | |
| 7) Phenol-d6 | 7.069 | 99 | 917654 | 100.979 | ng | 0.00 | |
| 23) Nitrobenzene-d5 | 9.069 | 82 | 651357 | 53.366 | ng | 0.00 | |
| 42) 2,4,6-Tribromophenol | 16.033 | 330 | 359965 | 86.051 | ng | -0.01 | |
| 45) 2-Fluorobiphenyl | 13.163 | 172 | 1458112 | 80.752 | ng | 0.00 | |
| 79) Terphenyl-d14 | 19.868 | 244 | 1735294 | 73.005 | ng | -0.01 | |
| Target Compounds | | | | | | | |
| 58) Fluorene | 15.592 | 166 | 37652 | 2.062 | ng | 95 | Qvalue |
| 71) Phenanthrene | 17.339 | 178 | 173122 | 7.172 | ng | 97 | |
| 75) Fluoranthene | 19.316 | 202 | 104388 | 3.332 | ng | 96 | |
| 78) Pyrene | 19.668 | 202 | 65431 | 2.542 | ng | 99 | |

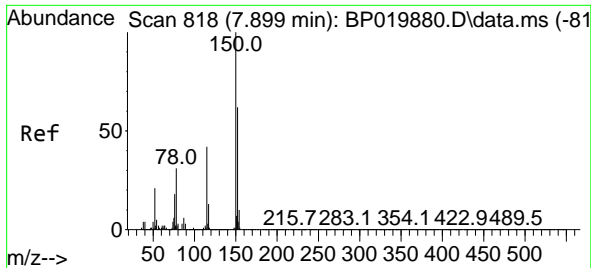
(#) = qualifier out of range (m) = manual integration (+) = signals summed

Data Path : Z:\svoasrv\HPCHEM1\BNA_P\Data\BP022724\
 Data File : BP019905.D
 Acq On : 27 Feb 2024 19:58
 Operator : MA/JU
 Sample : P1545-01
 Misc :
 ALS Vial : 20 Sample Multiplier: 1

Instrument :
 BNA_P
 ClientSampleId :
 287

Quant Time: Feb 28 00:59:20 2024
 Quant Method : Z:\svoasrv\HPCHEM1\BNA_P\Methods\8270E-BP022624.M
 Quant Title : ASP BNA STANDARDS FOR 5 POINT CALIBRATION
 QLast Update : Tue Feb 27 02:05:05 2024
 Response via : Initial Calibration

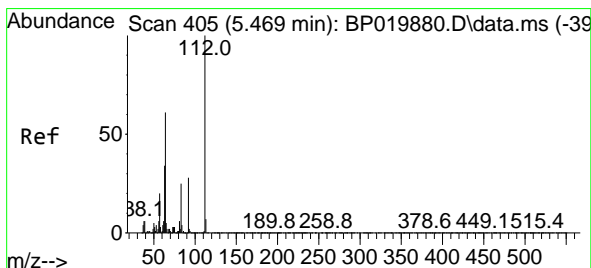
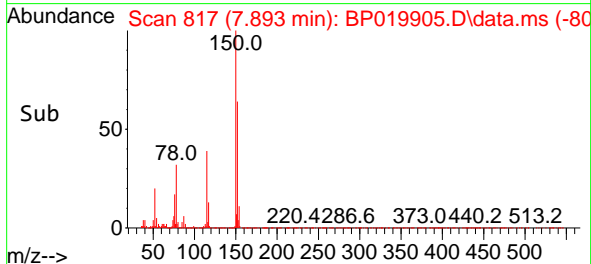
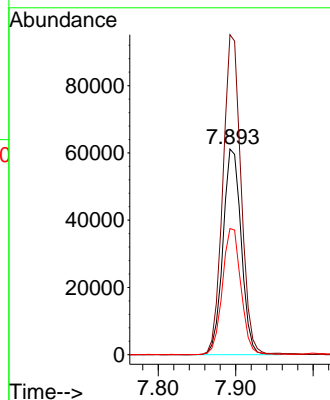
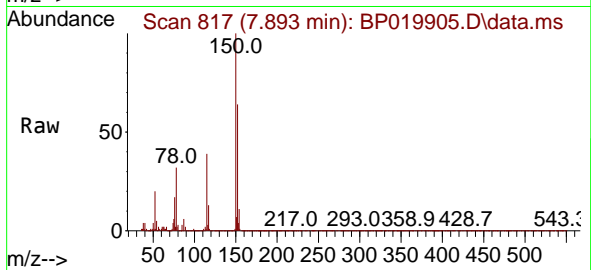




#1
 1,4-Dichlorobenzene-d4
 Concen: 20.000 ng
 RT: 7.893 min Scan# 81
 Delta R.T. -0.006 min
 Lab File: BP019905.D
 Acq: 27 Feb 2024 19:58

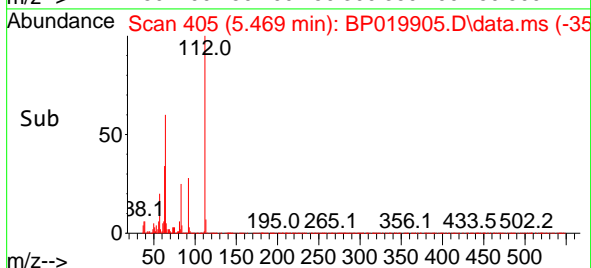
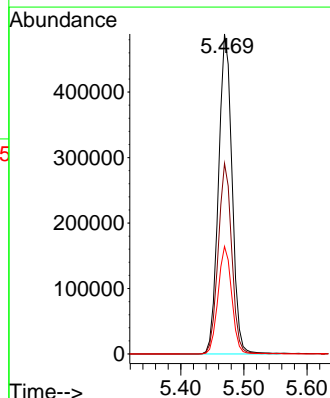
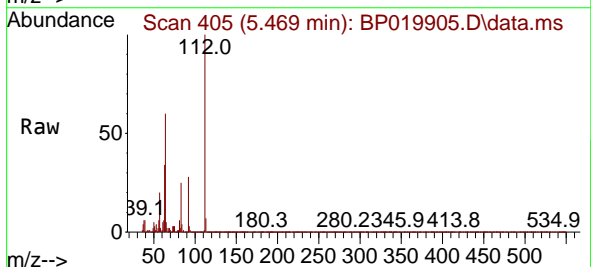
Instrument :
 BNA_P
 ClientSampleId :
 287

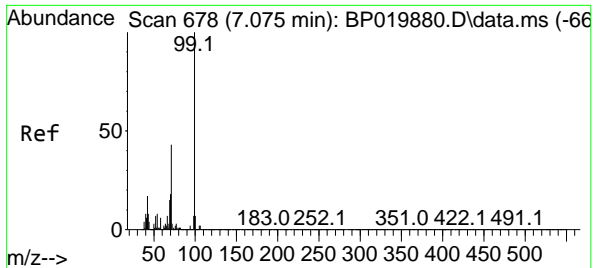
Tgt Ion:152 Resp: 100185
 Ion Ratio Lower Upper
 152 100
 150 155.6 128.6 192.8
 115 61.3 53.4 80.2



#5
 2-Fluorophenol
 Concen: 119.710 ng
 RT: 5.469 min Scan# 405
 Delta R.T. -0.000 min
 Lab File: BP019905.D
 Acq: 27 Feb 2024 19:58

Tgt Ion:112 Resp: 730680
 Ion Ratio Lower Upper
 112 100
 64 59.5 49.0 73.6
 63 33.6 27.6 41.4

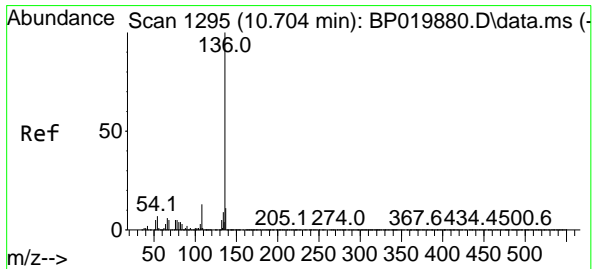
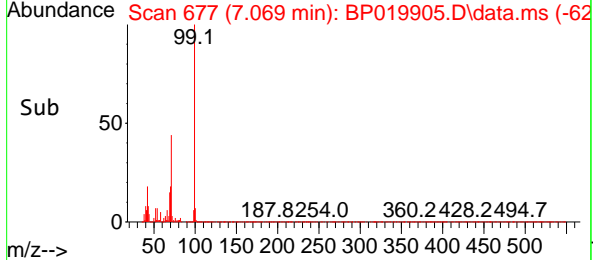
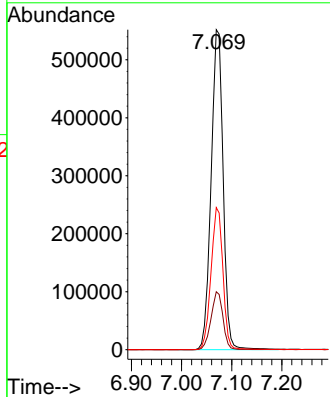
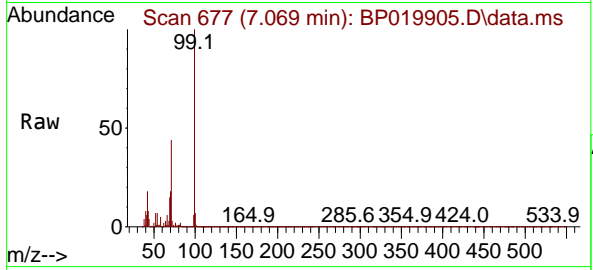




#7
 Phenol-d6
 Concen: 100.979 ng
 RT: 7.069 min Scan# 61
 Delta R.T. -0.006 min
 Lab File: BP019905.D
 Acq: 27 Feb 2024 19:58

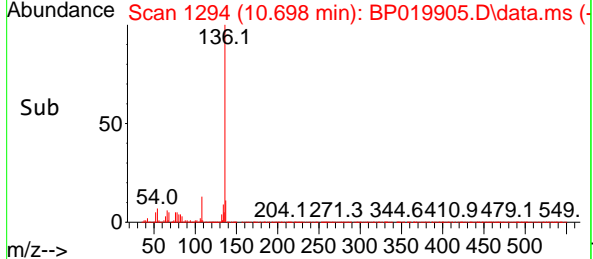
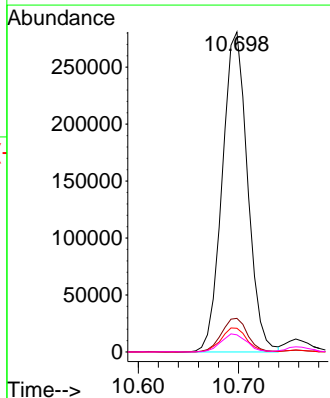
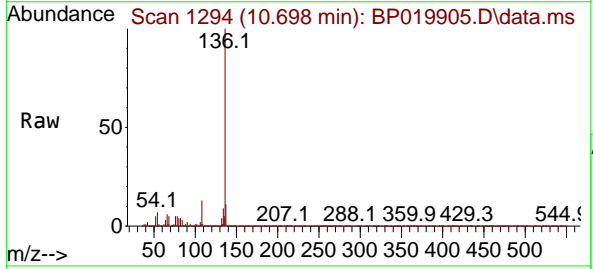
Instrument : BNA_P
 ClientSampleId : 287

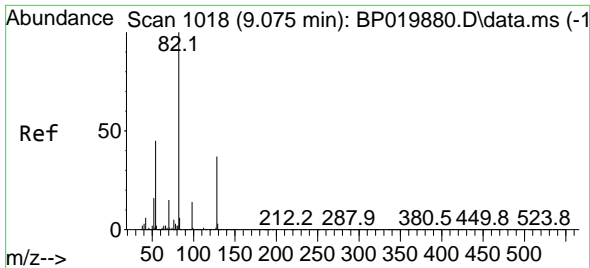
| Tgt Ion | Resp | Lower | Upper |
|---------|------|-------|-------|
| 99 | 100 | | |
| 42 | 18.1 | 13.8 | 20.8 |
| 71 | 44.4 | 34.5 | 51.7 |



#21
 Naphthalene-d8
 Concen: 20.000 ng
 RT: 10.698 min Scan# 1294
 Delta R.T. -0.006 min
 Lab File: BP019905.D
 Acq: 27 Feb 2024 19:58

| Tgt Ion | Resp | Lower | Upper |
|---------|------|-------|-------|
| 136 | 100 | | |
| 137 | 10.5 | 8.7 | 13.1 |
| 54 | 7.4 | 6.0 | 9.0 |
| 68 | 5.3 | 4.2 | 6.2 |



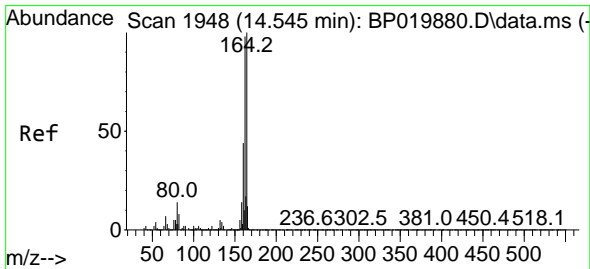
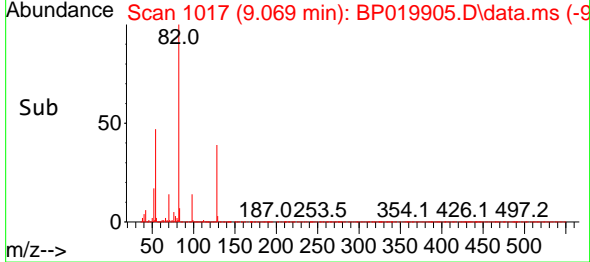
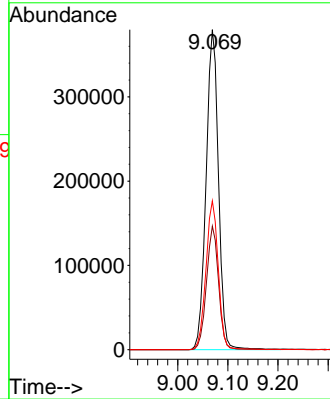
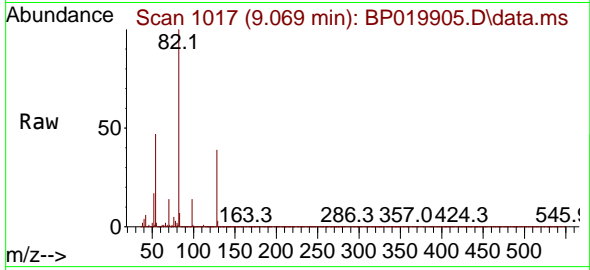


#23
 Nitrobenzene-d5
 Concen: 53.366 ng
 RT: 9.069 min Scan# 1018
 Delta R.T. -0.006 min
 Lab File: BP019905.D
 Acq: 27 Feb 2024 19:58

Instrument :
 BNA_P
 ClientSampleId :
 287

Tgt Ion: 82 Resp: 651357

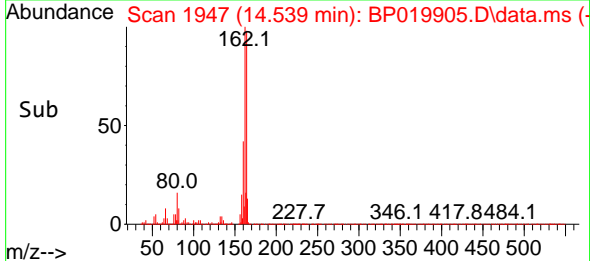
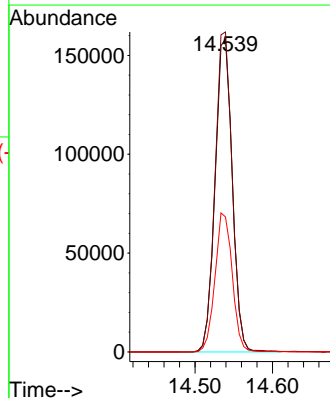
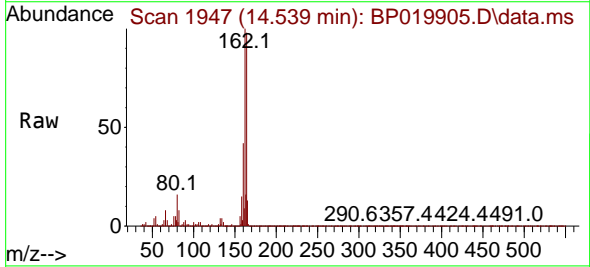
| Ion | Ratio | Lower | Upper |
|-----|-------|-------|-------|
| 82 | 100 | | |
| 128 | 38.6 | 29.6 | 44.4 |
| 54 | 46.5 | 36.3 | 54.5 |

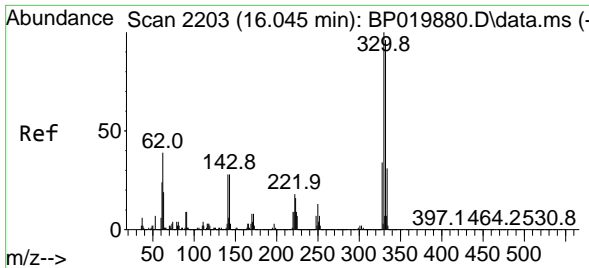


#39
 Acenaphthene-d10
 Concen: 20.000 ng
 RT: 14.539 min Scan# 1947
 Delta R.T. -0.006 min
 Lab File: BP019905.D
 Acq: 27 Feb 2024 19:58

Tgt Ion: 164 Resp: 243964

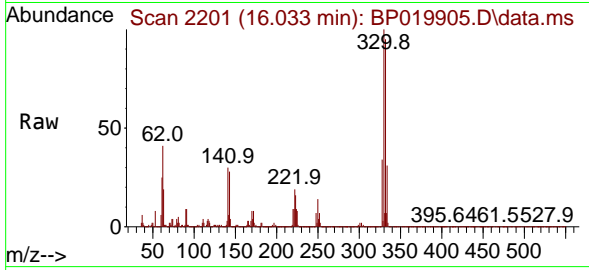
| Ion | Ratio | Lower | Upper |
|-----|-------|-------|-------|
| 164 | 100 | | |
| 162 | 102.2 | 78.1 | 117.1 |
| 160 | 43.1 | 35.3 | 52.9 |



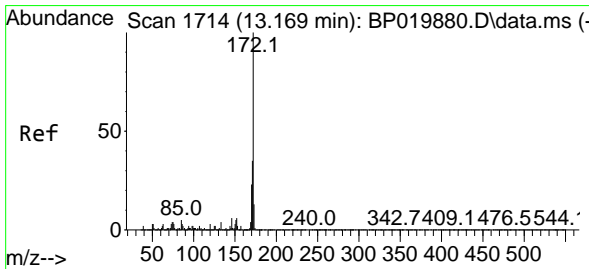
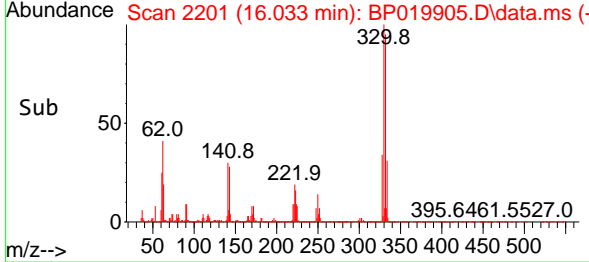
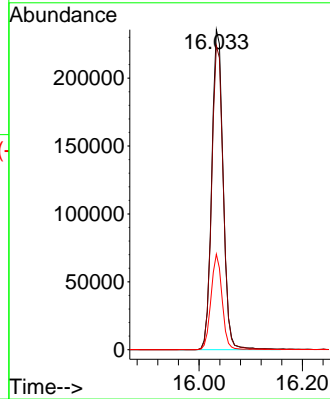


#42
 2,4,6-Tribromophenol
 Concen: 86.051 ng
 RT: 16.033 min Scan# 21
 Delta R.T. -0.012 min
 Lab File: BP019905.D
 Acq: 27 Feb 2024 19:58

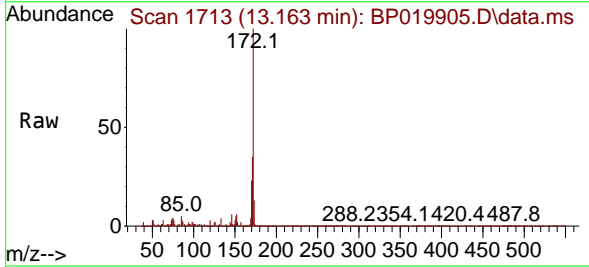
Instrument :
 BNA_P
 ClientSampleId :
 287



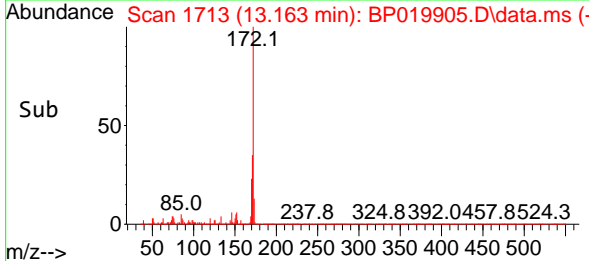
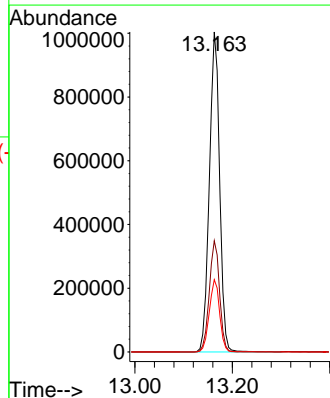
Tgt Ion:330 Resp: 359965
 Ion Ratio Lower Upper
 330 100
 332 96.7 77.4 116.2
 141 29.1 24.6 37.0

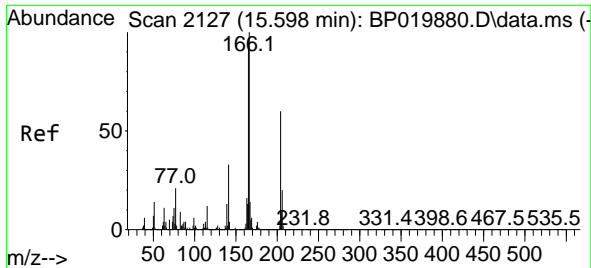


#45
 2-Fluorobiphenyl
 Concen: 80.752 ng
 RT: 13.163 min Scan# 1713
 Delta R.T. -0.006 min
 Lab File: BP019905.D
 Acq: 27 Feb 2024 19:58



Tgt Ion:172 Resp: 1458112
 Ion Ratio Lower Upper
 172 100
 171 34.7 27.8 41.6
 170 22.6 18.4 27.6

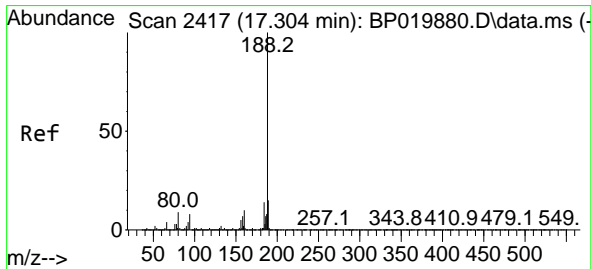
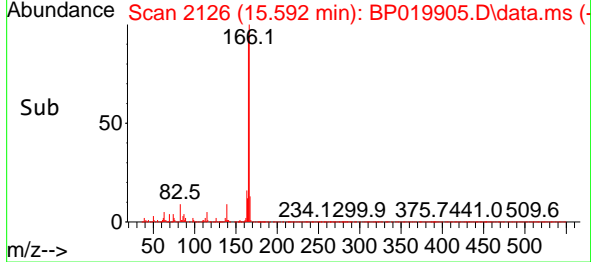
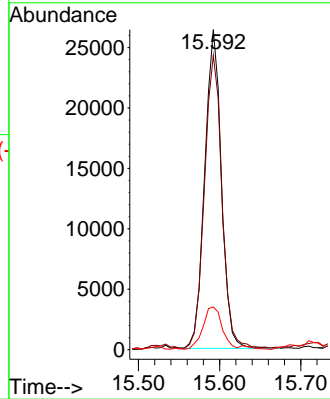
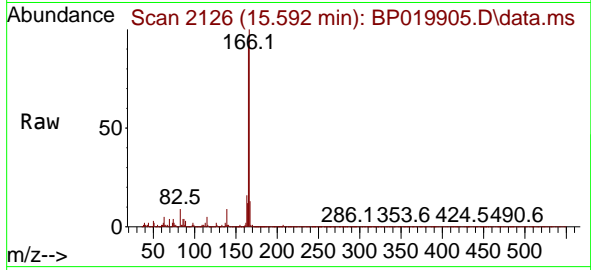




#58
 Fluorene
 Concen: 2.062 ng
 RT: 15.592 min Scan# 2127
 Delta R.T. -0.006 min
 Lab File: BP019905.D
 Acq: 27 Feb 2024 19:58

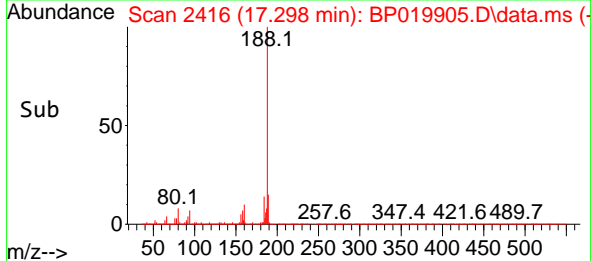
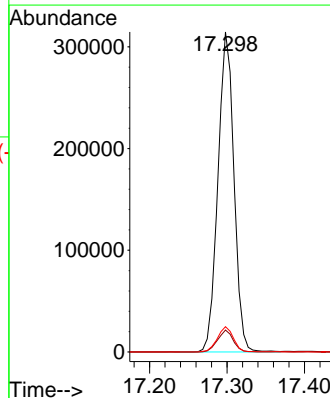
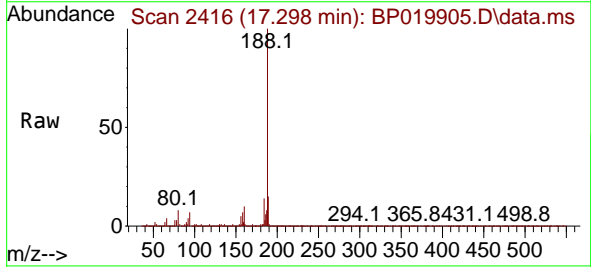
Instrument :
 BNA_P
 ClientSampleId :
 287

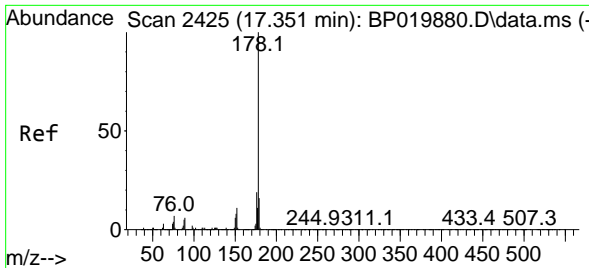
| Tgt Ion | Resp | Lower | Upper |
|---------|-------|-------|-------|
| 166 | 37652 | | |
| 165 | 91.9 | 77.8 | 116.6 |
| 167 | 13.3 | 10.8 | 16.2 |



#64
 Phenanthrene-d10
 Concen: 20.000 ng
 RT: 17.298 min Scan# 2416
 Delta R.T. -0.006 min
 Lab File: BP019905.D
 Acq: 27 Feb 2024 19:58

| Tgt Ion | Resp | Lower | Upper |
|---------|--------|-------|-------|
| 188 | 452226 | | |
| 94 | 6.8 | 6.2 | 9.4 |
| 80 | 7.9 | 7.0 | 10.4 |

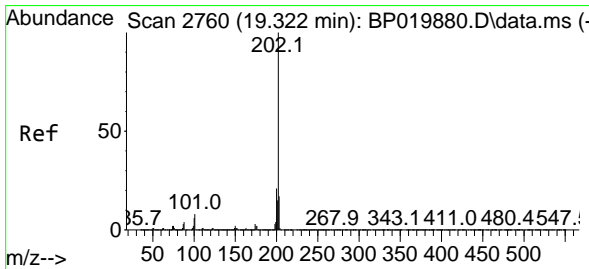
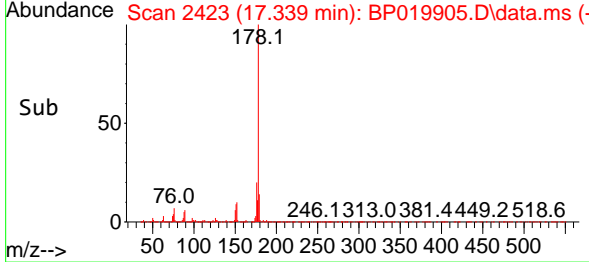
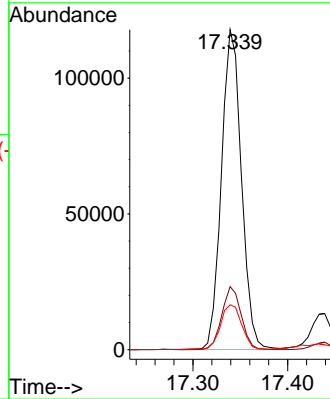
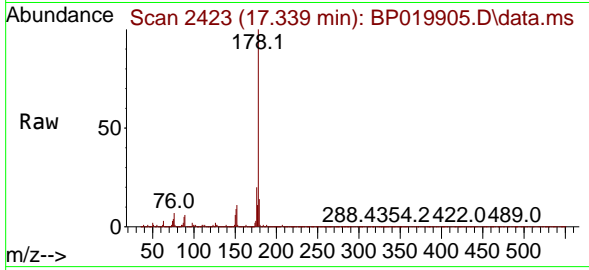




#71
 Phenanthrene
 Concen: 7.172 ng
 RT: 17.339 min Scan# 24
 Delta R.T. -0.012 min
 Lab File: BP019905.D
 Acq: 27 Feb 2024 19:58

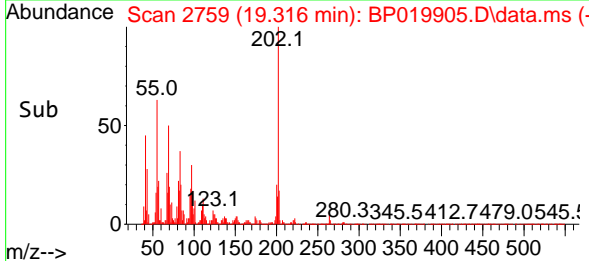
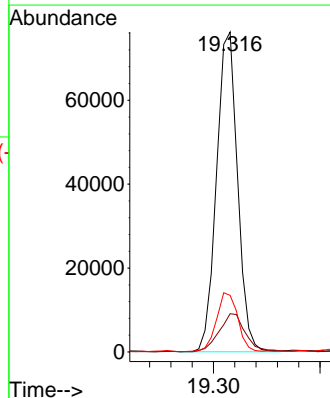
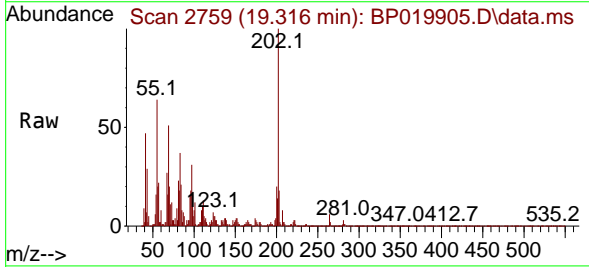
Instrument :
 BNA_P
 ClientSampleId :
 287

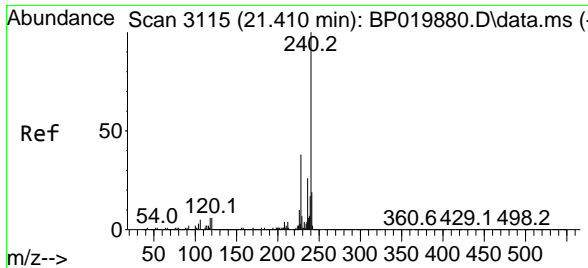
| Tgt Ion | Resp | Lower | Upper |
|---------|--------|-------|-------|
| 178 | 173122 | | |
| 176 | 19.7 | 15.2 | 22.8 |
| 179 | 14.0 | 12.5 | 18.7 |



#75
 Fluoranthene
 Concen: 3.332 ng
 RT: 19.316 min Scan# 2759
 Delta R.T. -0.006 min
 Lab File: BP019905.D
 Acq: 27 Feb 2024 19:58

| Tgt Ion | Resp | Lower | Upper |
|---------|--------|-------|-------|
| 202 | 104388 | | |
| 101 | 12.0 | 0.0 | 27.7 |
| 203 | 17.7 | 0.0 | 37.5 |



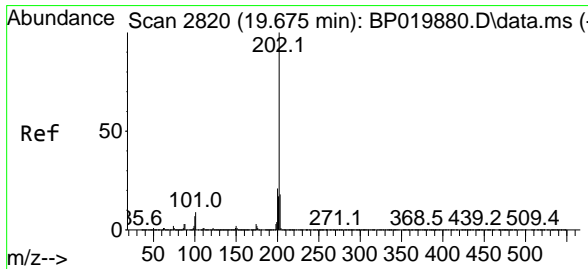
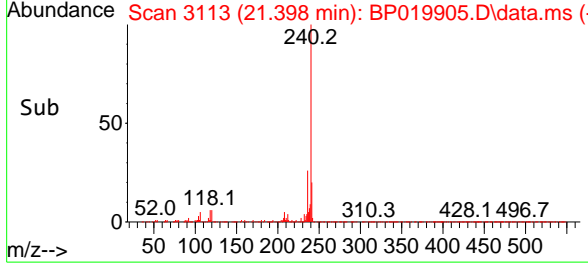
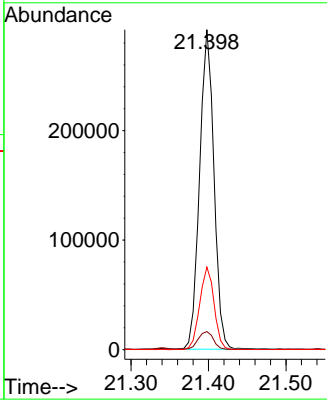
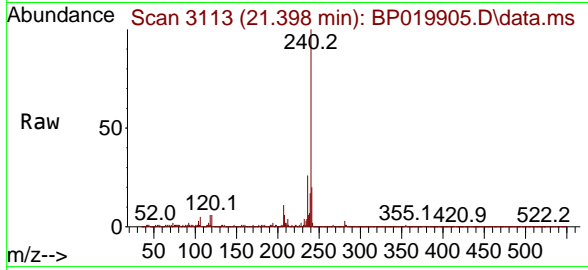


#76
 Chrysene-d12
 Concen: 20.000 ng
 RT: 21.398 min Scan# 3113
 Delta R.T. -0.012 min
 Lab File: BP019905.D
 Acq: 27 Feb 2024 19:58

Instrument : BNA_P
 ClientSampleId : 287

Tgt Ion:240 Resp: 374642

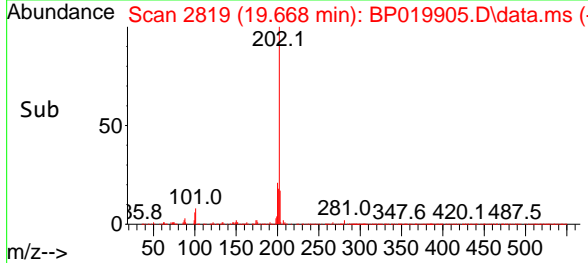
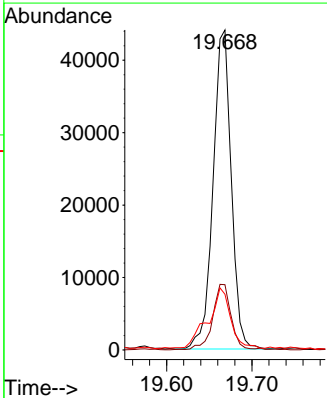
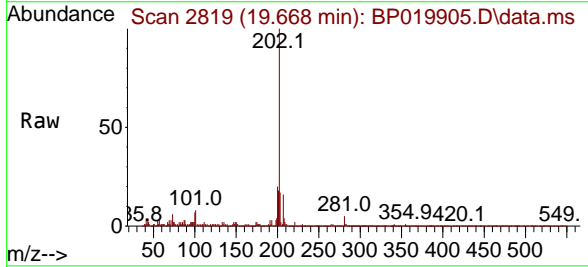
| Ion | Ratio | Lower | Upper |
|-----|-------|-------|-------|
| 240 | 100 | | |
| 120 | 5.6 | 5.1 | 7.7 |
| 236 | 25.8 | 20.5 | 30.7 |

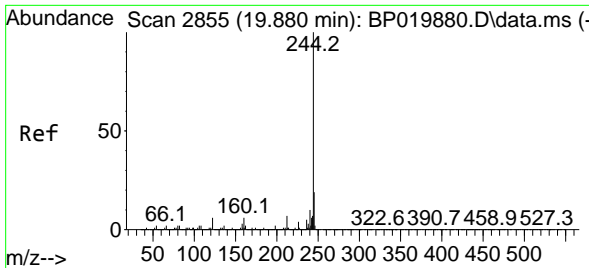


#78
 Pyrene
 Concen: 2.542 ng
 RT: 19.668 min Scan# 2819
 Delta R.T. -0.006 min
 Lab File: BP019905.D
 Acq: 27 Feb 2024 19:58

Tgt Ion:202 Resp: 65431

| Ion | Ratio | Lower | Upper |
|-----|-------|-------|-------|
| 202 | 100 | | |
| 200 | 20.4 | 16.7 | 25.1 |
| 203 | 17.4 | 14.2 | 21.2 |



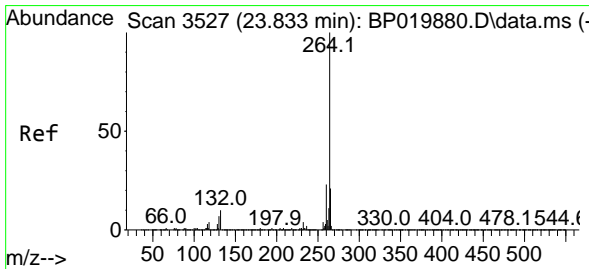
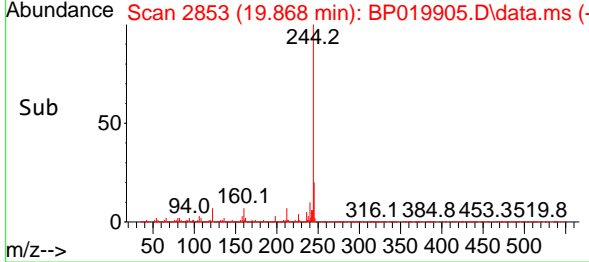
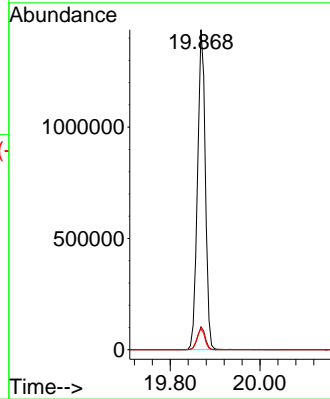
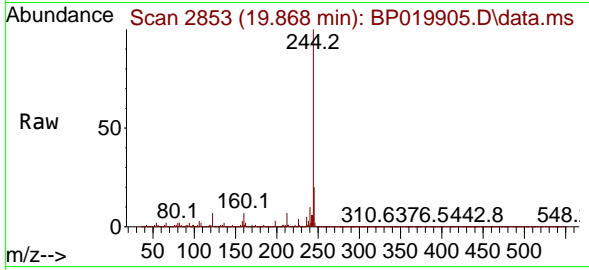


#79
 Terphenyl-d14
 Concen: 73.005 ng
 RT: 19.868 min Scan# 21
 Delta R.T. -0.012 min
 Lab File: BP019905.D
 Acq: 27 Feb 2024 19:58

Instrument :
 BNA_P
 ClientSampleId :
 287

Tgt Ion:244 Resp: 1735294

| Ion | Ratio | Lower | Upper |
|-----|-------|-------|-------|
| 244 | 100 | | |
| 212 | 7.1 | 5.8 | 8.8 |
| 122 | 6.6 | 5.0 | 7.6 |



#86
 Perylene-d12
 Concen: 20.000 ng
 RT: 23.821 min Scan# 3525
 Delta R.T. -0.012 min
 Lab File: BP019905.D
 Acq: 27 Feb 2024 19:58

Tgt Ion:264 Resp: 507430

| Ion | Ratio | Lower | Upper |
|-----|-------|-------|-------|
| 264 | 100 | | |
| 260 | 23.4 | 18.7 | 28.1 |
| 265 | 21.1 | 17.4 | 26.2 |

