

Data Path : Z:\svoasrv\HPCHEM1\BNA_P\Data\BP022924\
 Data File : BP019934.D
 Acq On : 29 Feb 2024 13:27
 Operator : MA/JU
 Sample : P1602-01DL 5X
 Misc :
 ALS Vial : 6 Sample Multiplier: 1

Instrument :
 BNA_P
 ClientSampleId :
 WC-1DL

Quant Time: Feb 29 13:56:18 2024
 Quant Method : Z:\svoasrv\HPCHEM1\BNA_P\Methods\8270E-BP022624.M
 Quant Title : ASP BNA STANDARDS FOR 5 POINT CALIBRATION
 QLast Update : Thu Feb 29 12:18:35 2024
 Response via : Initial Calibration

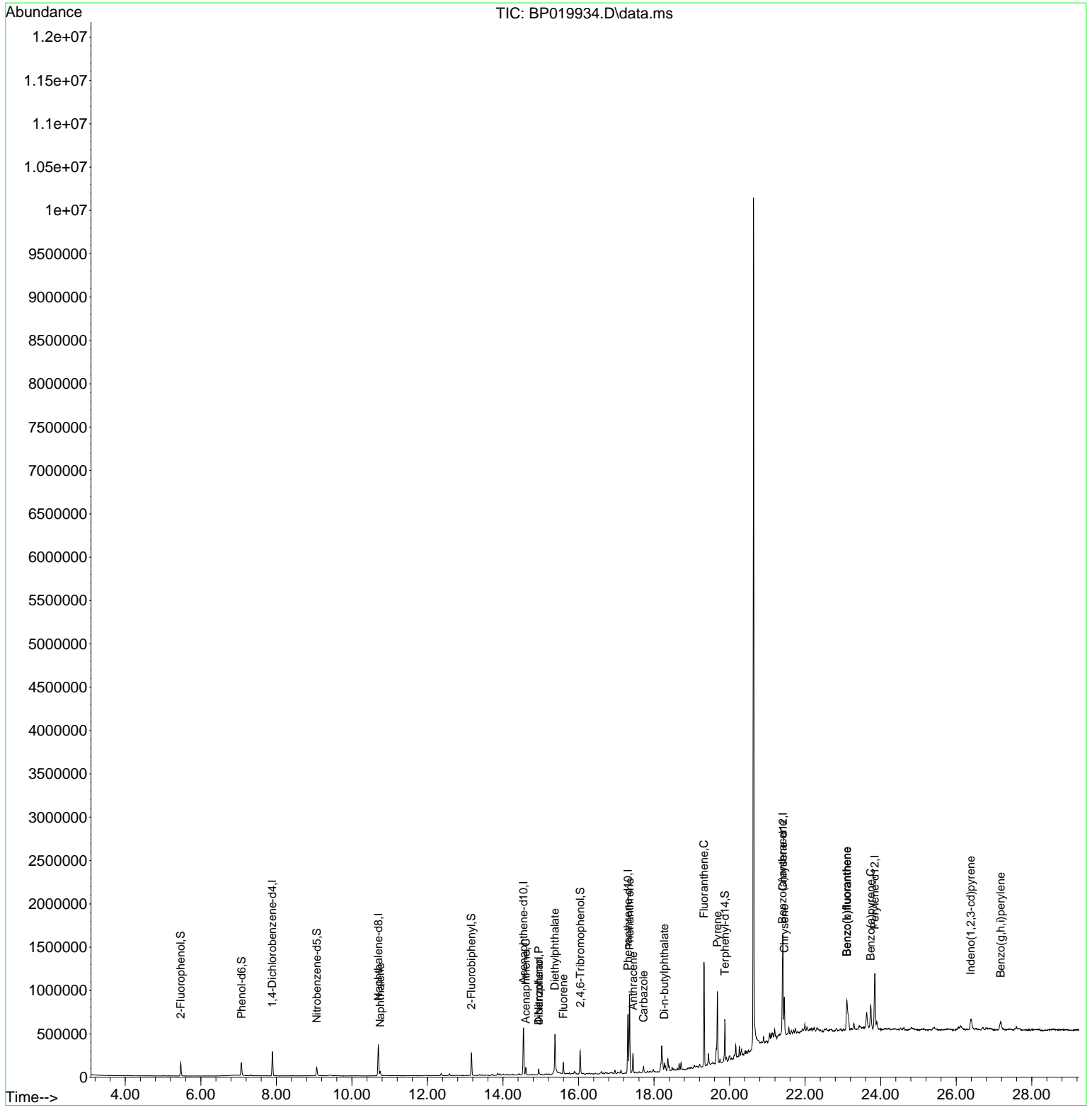
Compound	R.T.	QIon	Response	Conc	Units	Dev(Min)
Internal Standards						
1) 1,4-Dichlorobenzene-d4	7.893	152	77811	20.000	ng	-0.02
21) Naphthalene-d8	10.699	136	291086	20.000	ng	-0.02
39) Acenaphthene-d10	14.545	164	201621	20.000	ng	-0.01
64) Phenanthrene-d10	17.310	188	446100	20.000	ng	-0.01
76) Chrysene-d12	21.410	240	452481	20.000	ng	-0.02
86) Perylene-d12	23.845	264	560625	20.000	ng	-0.02
System Monitoring Compounds						
5) 2-Fluorophenol	5.469	112	67570	14.253	ng	-0.01
7) Phenol-d6	7.075	99	88611	12.555	ng	-0.01
23) Nitrobenzene-d5	9.069	82	62565	8.677	ng	-0.02
42) 2,4,6-Tribromophenol	16.045	330	50656	14.653	ng	-0.02
45) 2-Fluorobiphenyl	13.163	172	138976	9.313	ng	-0.02
79) Terphenyl-d14	19.875	244	240870	8.390	ng	-0.02
Target Compounds						
31) Naphthalene	10.752	128	37807	2.426	ng	97
52) Acenaphthene	14.604	154	30699	2.816	ng	96
55) Dibenzofuran	14.945	168	38070	2.046	ng	96
56) 4-Nitrophenol	14.945	139	15002	5.469	ng	# 1
58) Fluorene	15.598	166	54182	3.591	ng	# 96
60) Diethylphthalate	15.375	149	417391	25.669	ng	98
71) Phenanthrene	17.351	178	563300	23.657	ng	99
72) Anthracene	17.445	178	151086	6.216	ng	98
73) Carbazole	17.722	167	46538	2.162	ng	99
74) Di-n-butylphthalate	18.275	149	66094	2.455	ng	97
75) Fluoranthene	19.322	202	713843	23.100	ng	100
78) Pyrene	19.675	202	551415	17.737	ng	100
81) Benzo(a)anthracene	21.398	228	319539	9.949	ng	99
83) Chrysene	21.451	228	252699	8.396	ng	98
87) Indeno(1,2,3-cd)pyrene	26.386	276	154503	3.915	ng	97
88) Benzo(b)fluoranthene	23.104	252	340261	9.900	ng	# 99
89) Benzo(k)fluoranthene	23.104	252	340261	10.094	ng	# 98
90) Benzo(a)pyrene	23.733	252	248665	7.570	ng	97
92) Benzo(g,h,i)perylene	27.174	276	134128	4.188	ng	94

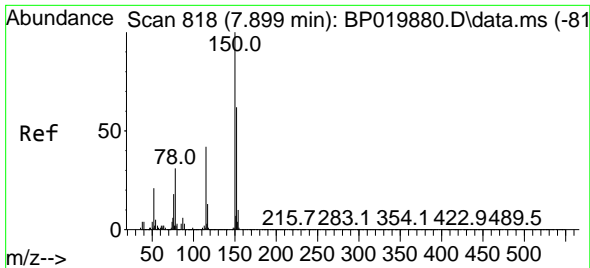
(#) = qualifier out of range (m) = manual integration (+) = signals summed

Data Path : Z:\svoasrv\HPCHEM1\BNA_P\Data\BP022924\
 Data File : BP019934.D
 Acq On : 29 Feb 2024 13:27
 Operator : MA/JU
 Sample : P1602-01DL 5X
 Misc :
 ALS Vial : 6 Sample Multiplier: 1

Instrument :
 BNA_P
ClientSampleId :
 WC-1DL

Quant Time: Feb 29 13:56:18 2024
 Quant Method : Z:\svoasrv\HPCHEM1\BNA_P\Methods\8270E-BP022624.M
 Quant Title : ASP BNA STANDARDS FOR 5 POINT CALIBRATION
 QLast Update : Thu Feb 29 12:18:35 2024
 Response via : Initial Calibration



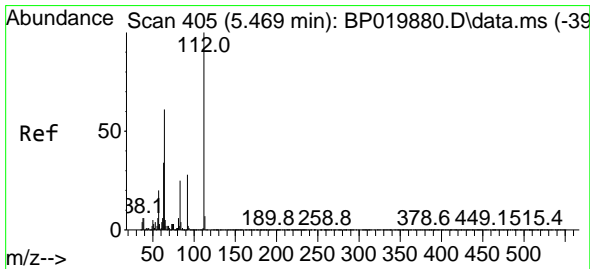
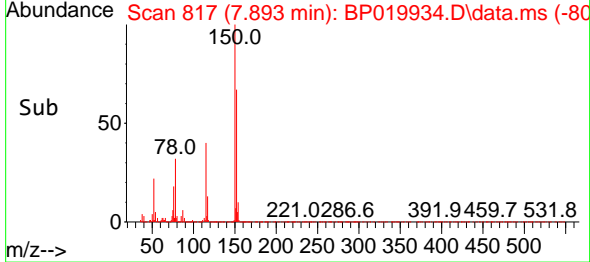
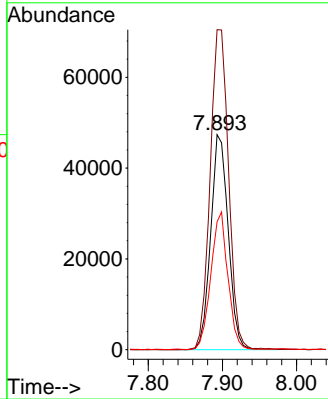
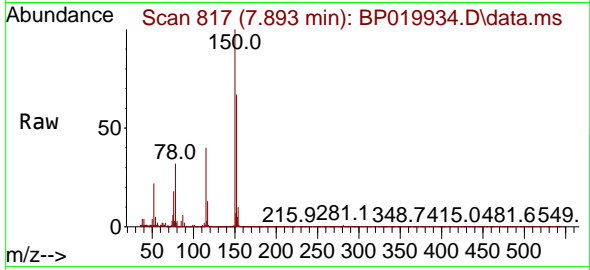


#1
 1,4-Dichlorobenzene-d4
 Concen: 20.000 ng
 RT: 7.893 min Scan# 81
 Delta R.T. -0.017 min
 Lab File: BP019934.D
 Acq: 29 Feb 2024 13:27

Instrument :
 BNA_P
 ClientSampleId :
 WC-1DL

Tgt Ion:152 Resp: 77811

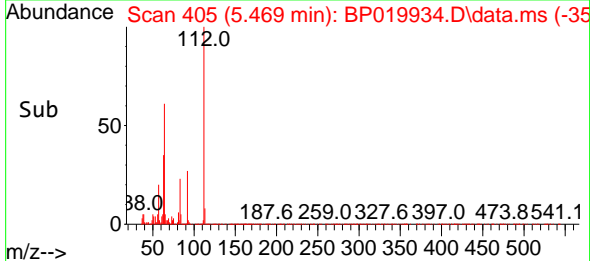
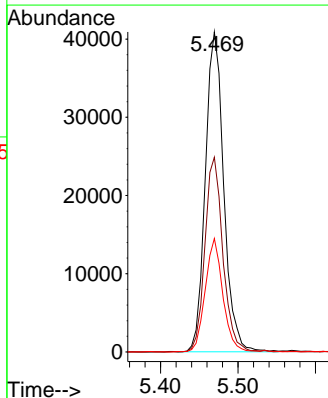
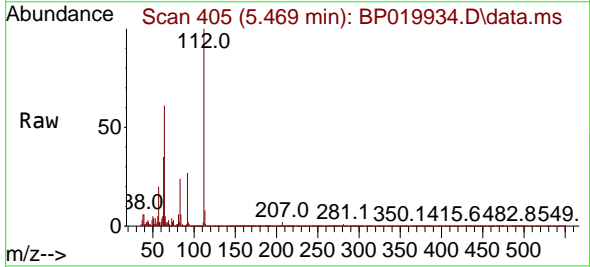
Ion	Ratio	Lower	Upper
152	100		
150	148.8	128.6	192.8
115	59.5	53.4	80.2

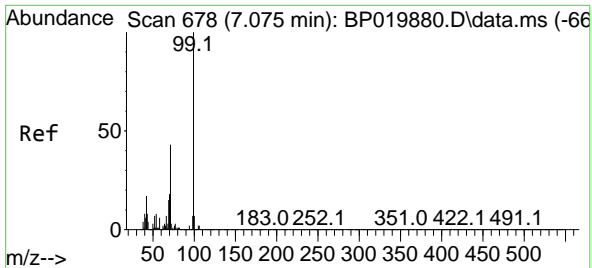


#5
 2-Fluorophenol
 Concen: 14.253 ng
 RT: 5.469 min Scan# 405
 Delta R.T. -0.012 min
 Lab File: BP019934.D
 Acq: 29 Feb 2024 13:27

Tgt Ion:112 Resp: 67570

Ion	Ratio	Lower	Upper
112	100		
64	60.9	49.0	73.6
63	35.5	27.6	41.4

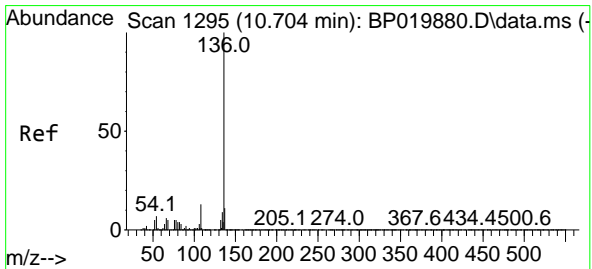
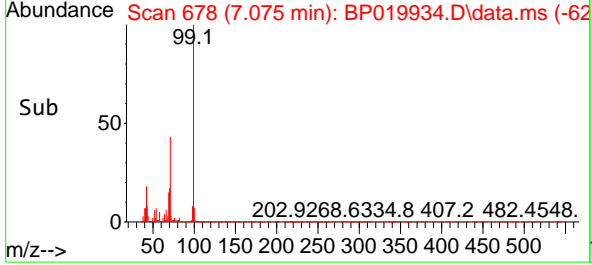
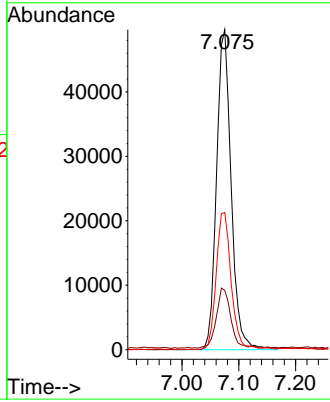
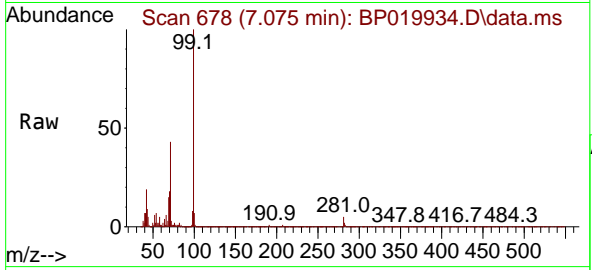




#7
 Phenol-d6
 Concen: 12.555 ng
 RT: 7.075 min Scan# 61
 Delta R.T. -0.012 min
 Lab File: BP019934.D
 Acq: 29 Feb 2024 13:27

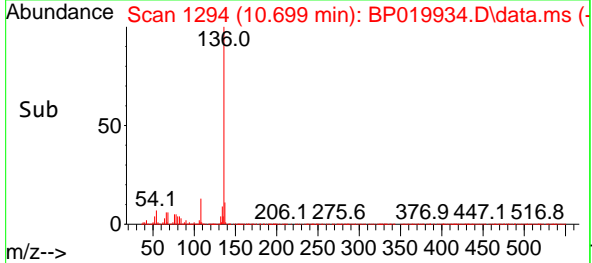
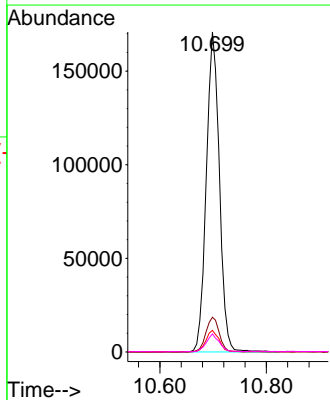
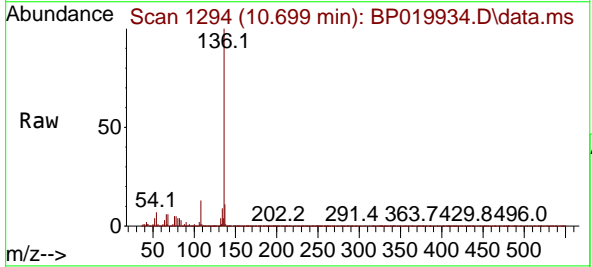
Instrument : BNA_P
 ClientSampleId : WC-1DL

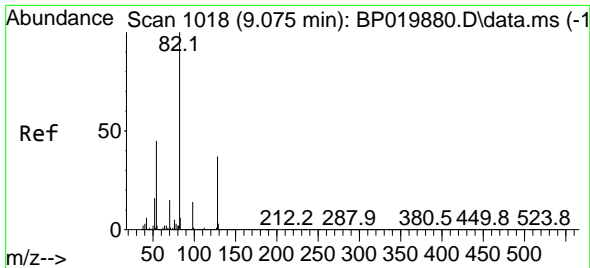
Tgt Ion	Resp	Lower	Upper
99	88611		
42	18.5	13.8	20.8
71	42.9	34.5	51.7



#21
 Naphthalene-d8
 Concen: 20.000 ng
 RT: 10.699 min Scan# 1294
 Delta R.T. -0.018 min
 Lab File: BP019934.D
 Acq: 29 Feb 2024 13:27

Tgt Ion	Resp	Lower	Upper
136	291086		
137	10.9	8.7	13.1
54	6.8	6.0	9.0
68	5.7	4.2	6.2

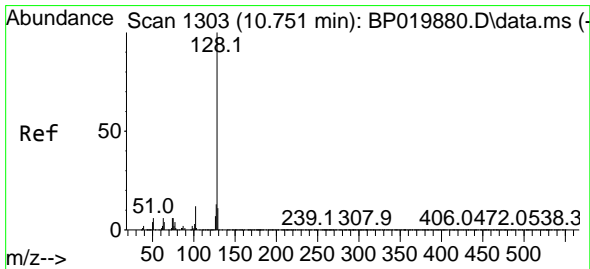
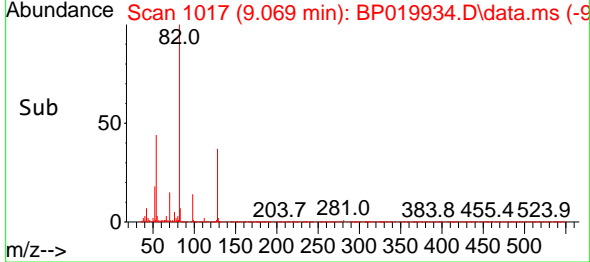
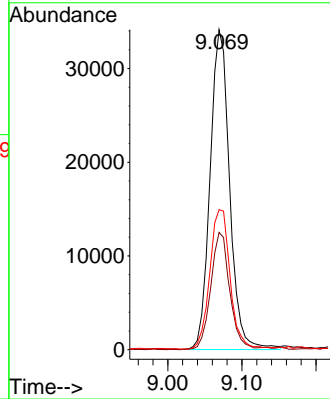
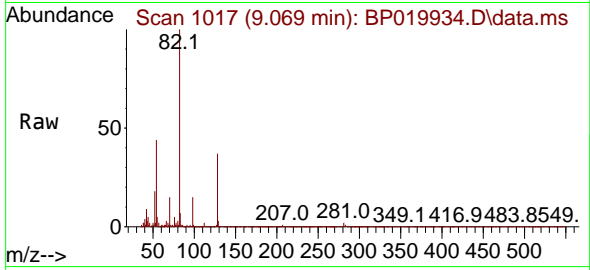




#23
 Nitrobenzene-d5
 Concen: 8.677 ng
 RT: 9.069 min Scan# 1018
 Delta R.T. -0.018 min
 Lab File: BP019934.D
 Acq: 29 Feb 2024 13:27

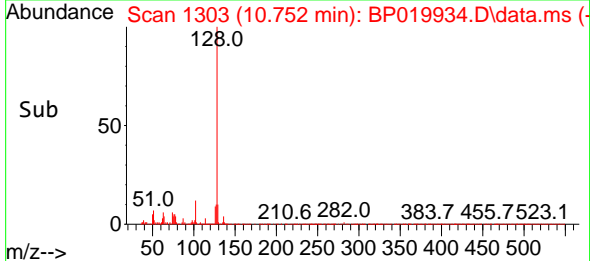
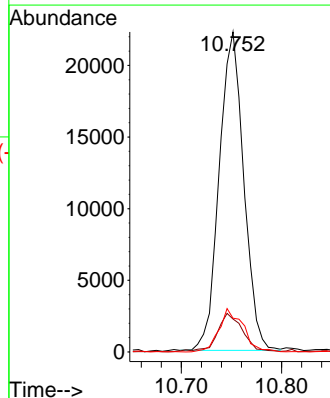
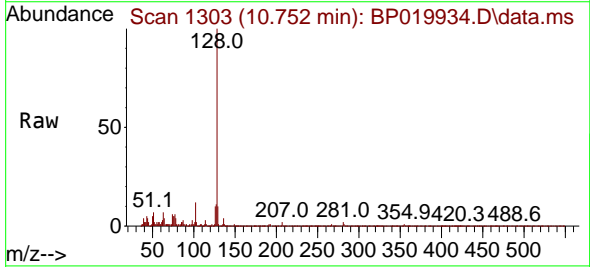
Instrument : BNA_P
 Client SampleID : WC-1DL

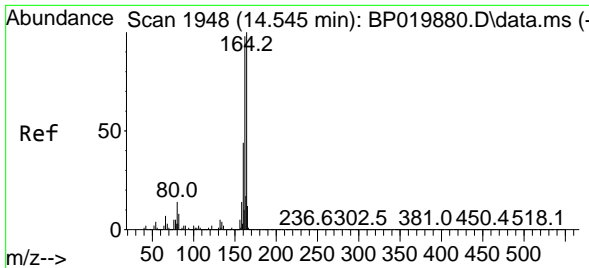
Tgt Ion	Resp	Lower	Upper
82	62565	100	
128	36.7	29.6	44.4
54	43.7	36.3	54.5



#31
 Naphthalene
 Concen: 2.426 ng
 RT: 10.752 min Scan# 1303
 Delta R.T. -0.018 min
 Lab File: BP019934.D
 Acq: 29 Feb 2024 13:27

Tgt Ion	Resp	Lower	Upper
128	37807	100	
129	10.3	8.6	12.8
127	10.6	10.2	15.2



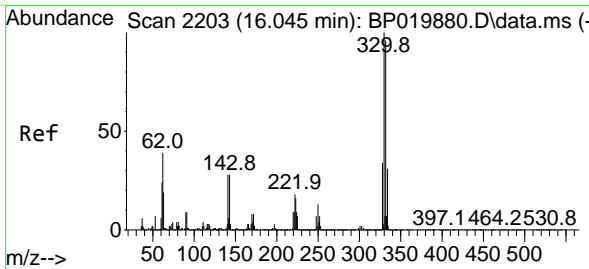
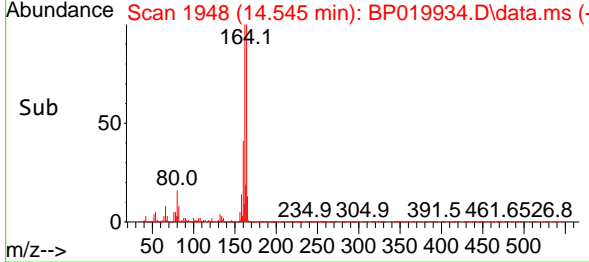
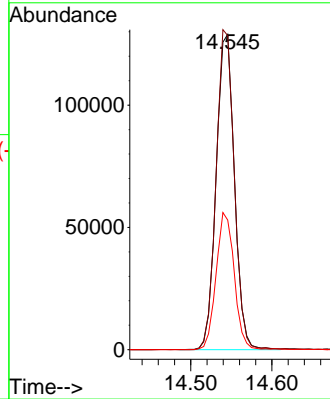
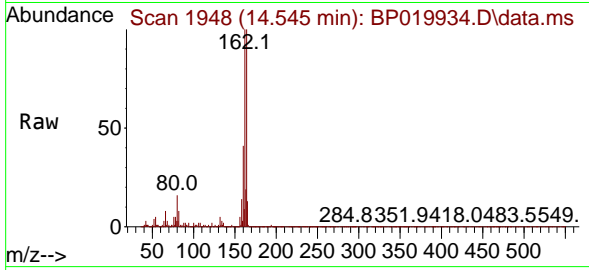


#39
Acenaphthene-d10
Concen: 20.000 ng
RT: 14.545 min Scan# 1948
Delta R.T. -0.012 min
Lab File: BP019934.D
Acq: 29 Feb 2024 13:27

Instrument :
BNA_P
ClientSampleId :
WC-1DL

Tgt Ion:164 Resp: 201621

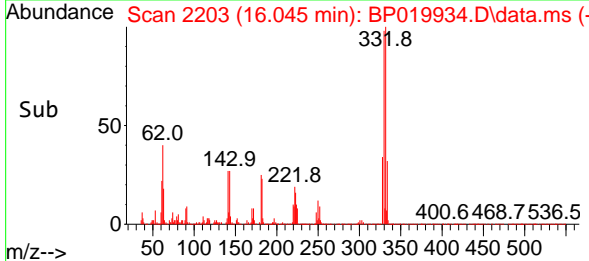
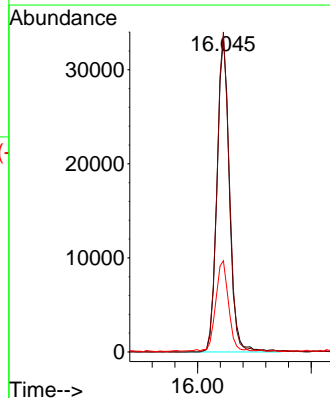
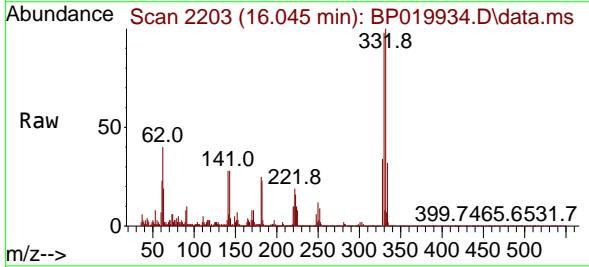
Ion	Ratio	Lower	Upper
164	100		
162	99.6	78.1	117.1
160	41.1	35.3	52.9

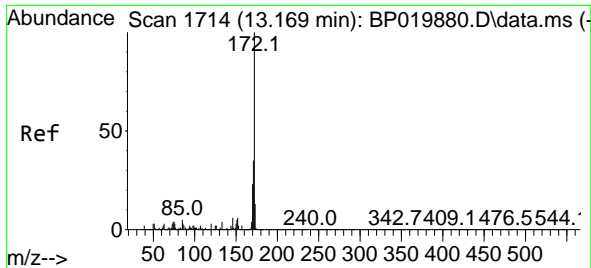


#42
2,4,6-Tribromophenol
Concen: 14.653 ng
RT: 16.045 min Scan# 2203
Delta R.T. -0.018 min
Lab File: BP019934.D
Acq: 29 Feb 2024 13:27

Tgt Ion:330 Resp: 50656

Ion	Ratio	Lower	Upper
330	100		
332	100.6	77.4	116.2
141	29.3	24.6	37.0



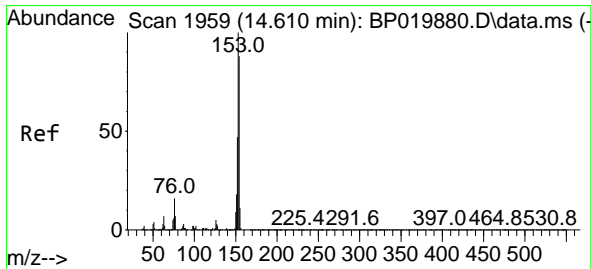
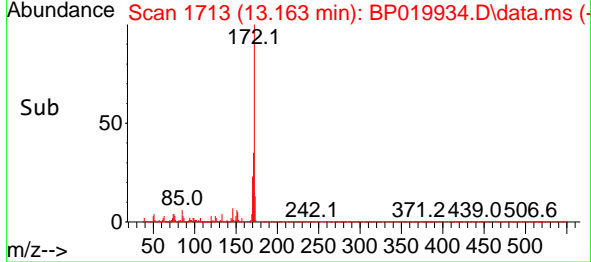
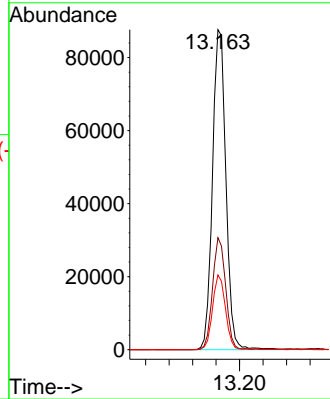
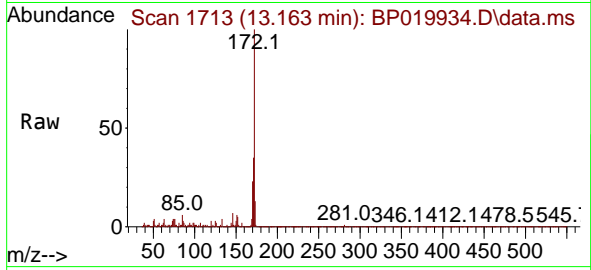


#45
 2-Fluorobiphenyl
 Concen: 9.313 ng
 RT: 13.163 min Scan# 11
 Delta R.T. -0.018 min
 Lab File: BP019934.D
 Acq: 29 Feb 2024 13:27

Instrument :
 BNA_P
 ClientSampleId :
 WC-1DL

Tgt Ion:172 Resp: 138976

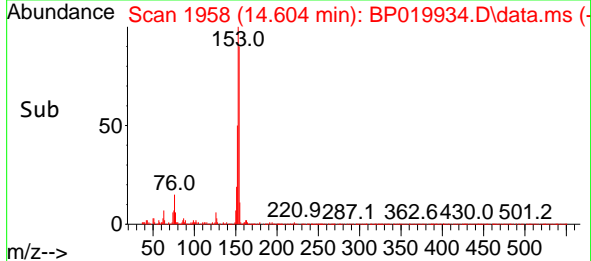
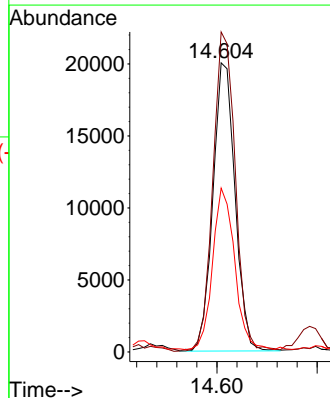
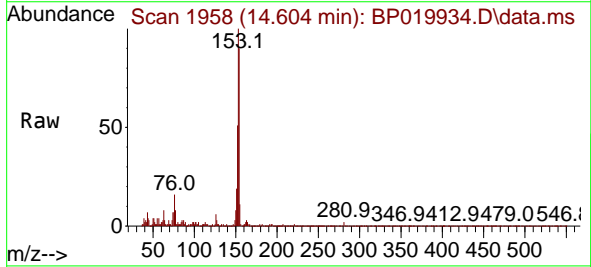
Ion	Ratio	Lower	Upper
172	100		
171	35.0	27.8	41.6
170	23.4	18.4	27.6

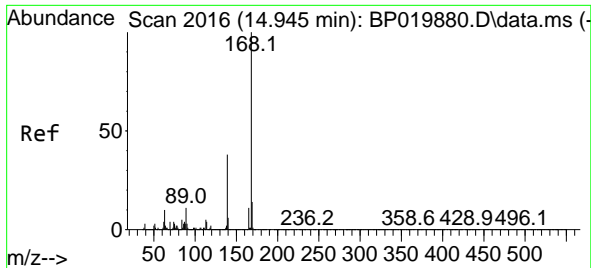


#52
 Acenaphthene
 Concen: 2.816 ng
 RT: 14.604 min Scan# 1958
 Delta R.T. -0.018 min
 Lab File: BP019934.D
 Acq: 29 Feb 2024 13:27

Tgt Ion:154 Resp: 30699

Ion	Ratio	Lower	Upper
154	100		
153	110.7	90.9	136.3
152	56.6	42.3	63.5

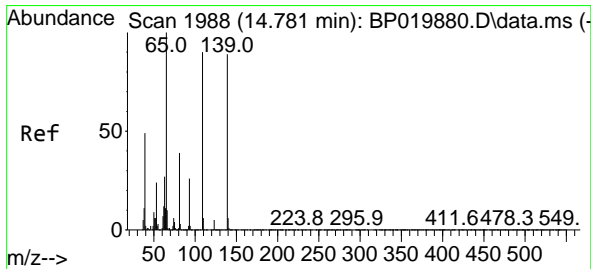
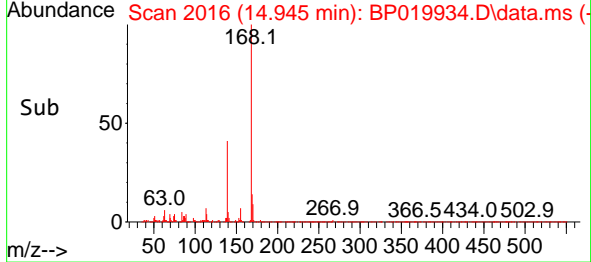
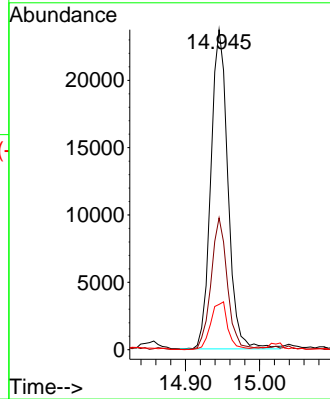
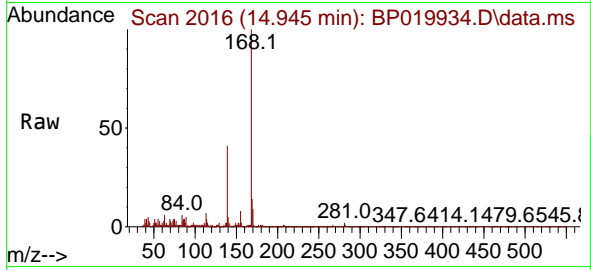




#55
 Dibenzofuran
 Concen: 2.046 ng
 RT: 14.945 min Scan# 2016
 Delta R.T. -0.018 min
 Lab File: BP019934.D
 Acq: 29 Feb 2024 13:27

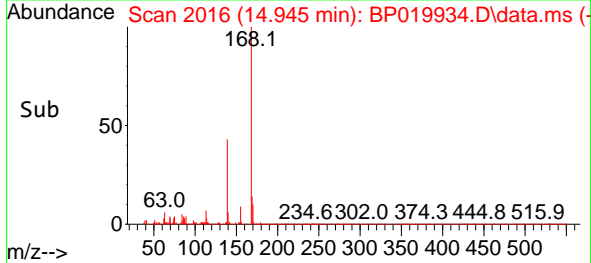
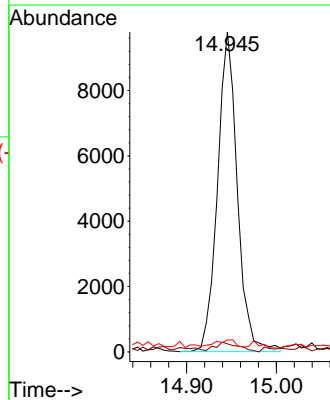
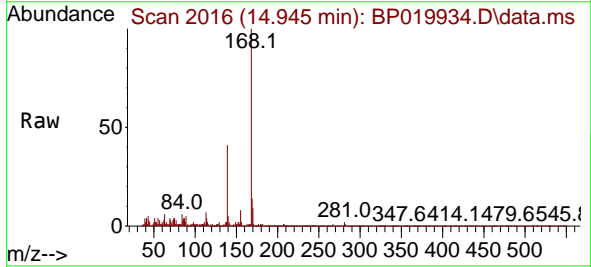
Instrument :
 BNA_P
 ClientSampleId :
 WC-1DL

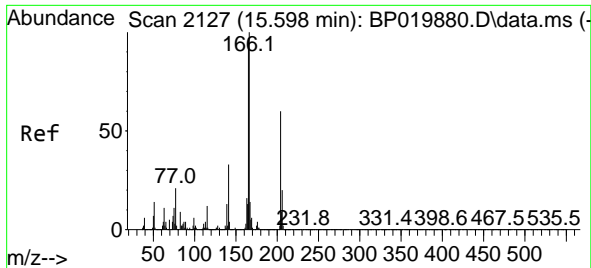
Tgt Ion	Resp	Lower	Upper
168	100		
139	41.2	30.6	45.8
169	14.1	10.9	16.3



#56
 4-Nitrophenol
 Concen: 5.469 ng
 RT: 14.945 min Scan# 2016
 Delta R.T. 0.135 min
 Lab File: BP019934.D
 Acq: 29 Feb 2024 13:27

Tgt Ion	Resp	Lower	Upper
139	100		
109	2.6	81.3	121.3#
65	3.7	93.5	133.5#

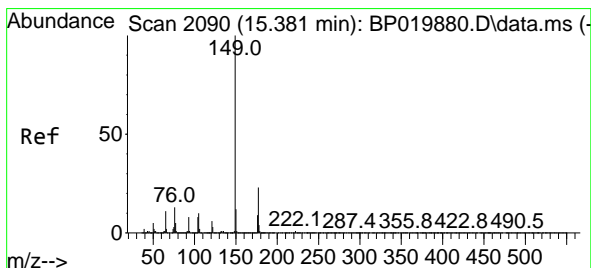
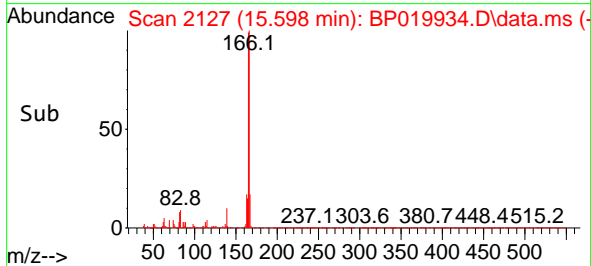
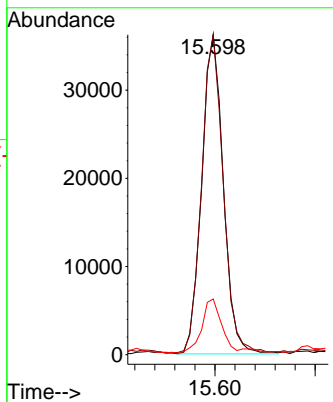
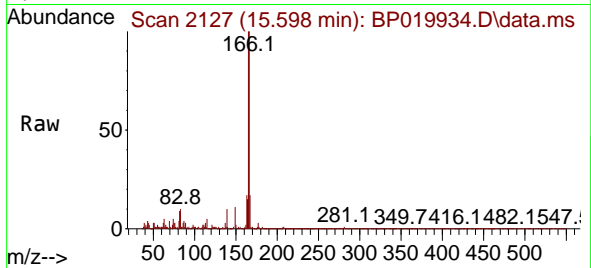




#58
 Fluorene
 Concen: 3.591 ng
 RT: 15.598 min Scan# 2127
 Delta R.T. -0.018 min
 Lab File: BP019934.D
 Acq: 29 Feb 2024 13:27

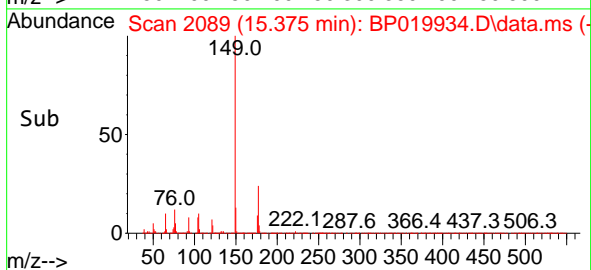
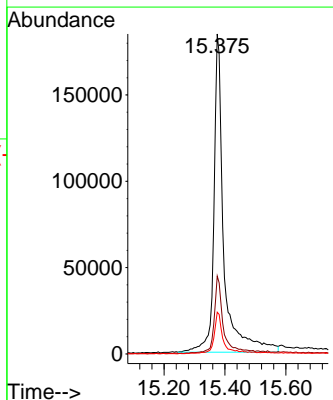
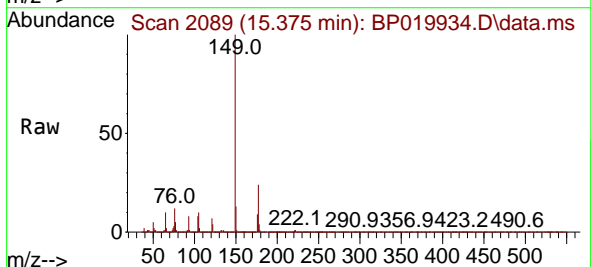
Instrument :
 BNA_P
 ClientSampleId :
 WC-1DL

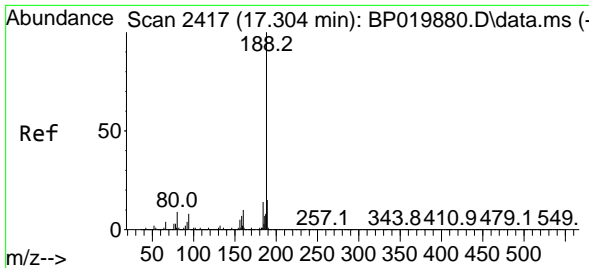
Tgt Ion	Resp	Lower	Upper
166	54182		
165	100.0	77.8	116.6
167	17.4	10.8	16.2



#60
 Diethylphthalate
 Concen: 25.669 ng
 RT: 15.375 min Scan# 2089
 Delta R.T. -0.018 min
 Lab File: BP019934.D
 Acq: 29 Feb 2024 13:27

Tgt Ion	Resp	Lower	Upper
149	417391		
177	24.4	18.4	27.6
150	13.1	9.9	14.9



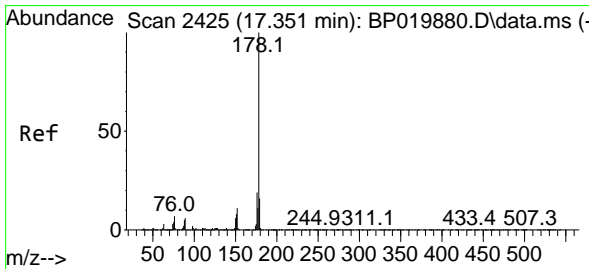
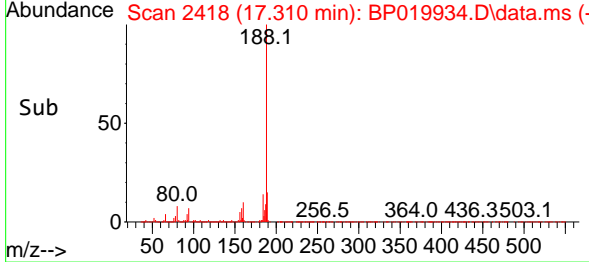
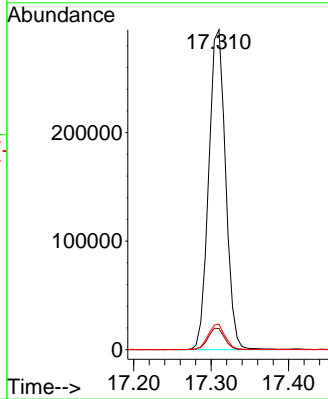
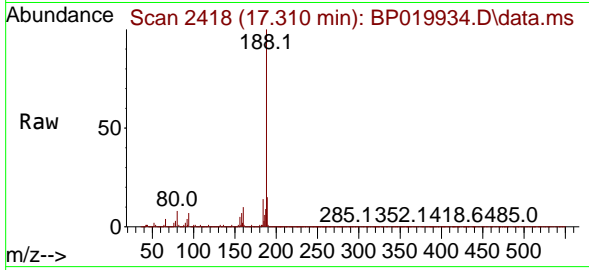


#64
 Phenanthrene-d10
 Concen: 20.000 ng
 RT: 17.310 min Scan# 2418
 Delta R.T. -0.012 min
 Lab File: BP019934.D
 Acq: 29 Feb 2024 13:27

Instrument :
 BNA_P
 ClientSampleId :
 WC-1DL

Tgt Ion:188 Resp: 446100

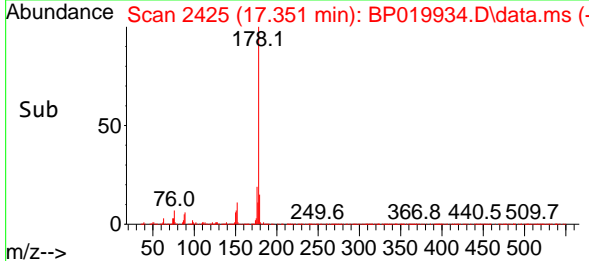
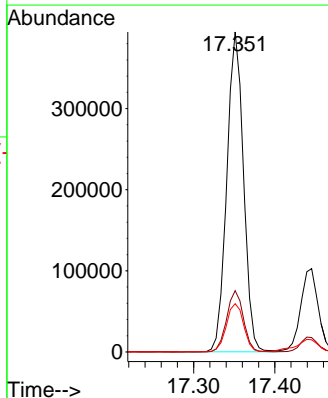
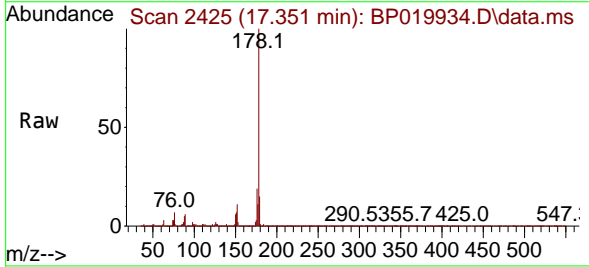
Ion	Ratio	Lower	Upper
188	100		
94	6.6	6.2	9.4
80	8.0	7.0	10.4

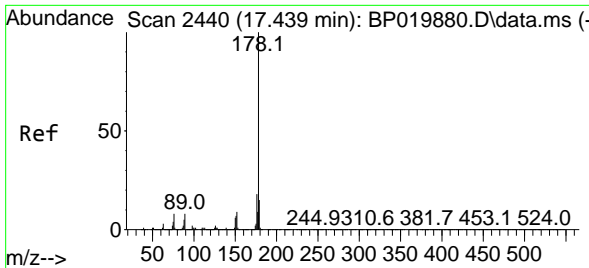


#71
 Phenanthrene
 Concen: 23.657 ng
 RT: 17.351 min Scan# 2425
 Delta R.T. -0.018 min
 Lab File: BP019934.D
 Acq: 29 Feb 2024 13:27

Tgt Ion:178 Resp: 563300

Ion	Ratio	Lower	Upper
178	100		
176	19.2	15.2	22.8
179	15.1	12.5	18.7



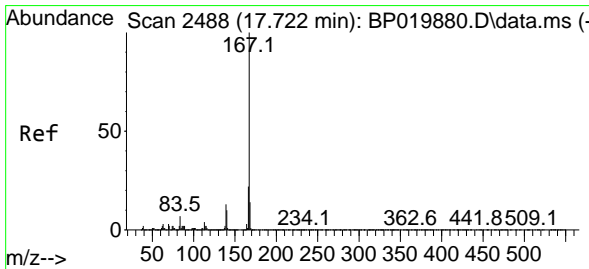
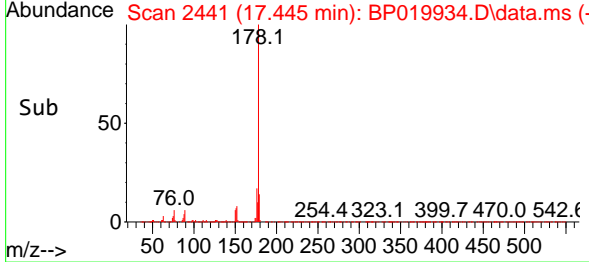
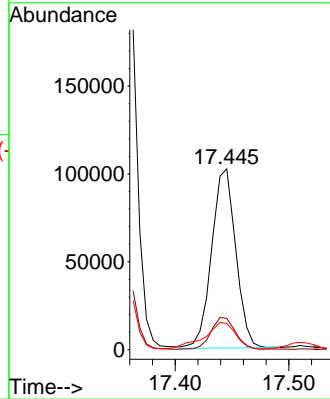
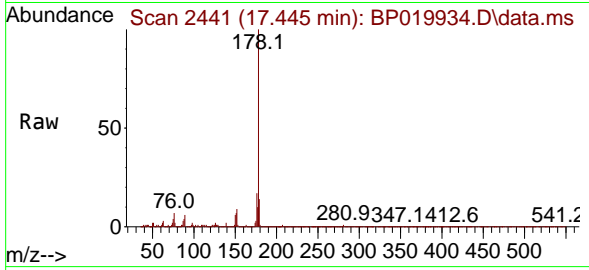


#72
 Anthracene
 Concen: 6.216 ng
 RT: 17.445 min Scan# 2441
 Delta R.T. -0.012 min
 Lab File: BP019934.D
 Acq: 29 Feb 2024 13:27

Instrument :
 BNA_P
 ClientSampleId :
 WC-1DL

Tgt Ion:178 Resp: 151086

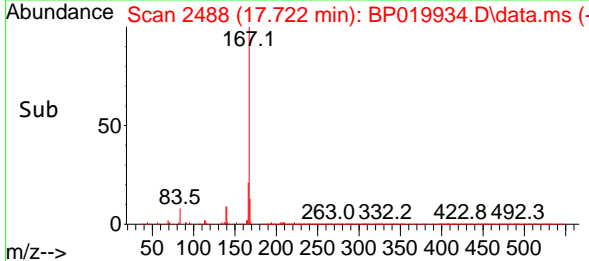
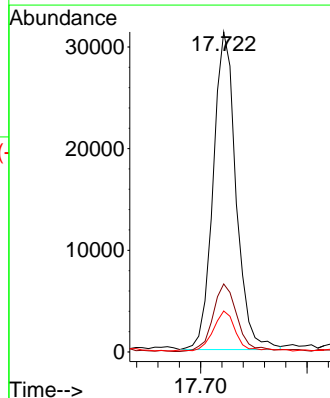
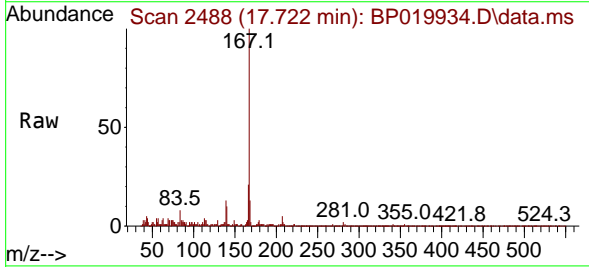
Ion	Ratio	Lower	Upper
178	100		
176	17.3	14.7	22.1
179	14.5	12.2	18.4

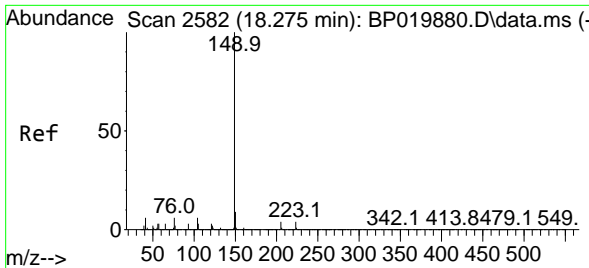


#73
 Carbazole
 Concen: 2.162 ng
 RT: 17.722 min Scan# 2488
 Delta R.T. -0.018 min
 Lab File: BP019934.D
 Acq: 29 Feb 2024 13:27

Tgt Ion:167 Resp: 46538

Ion	Ratio	Lower	Upper
167	100		
166	21.2	17.3	25.9
139	12.8	10.5	15.7

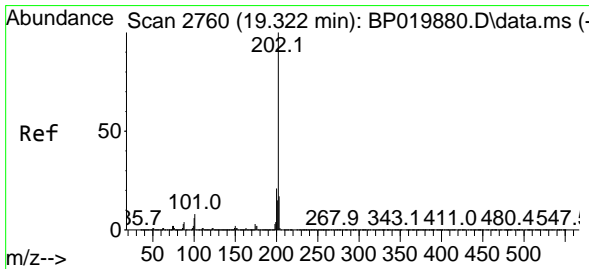
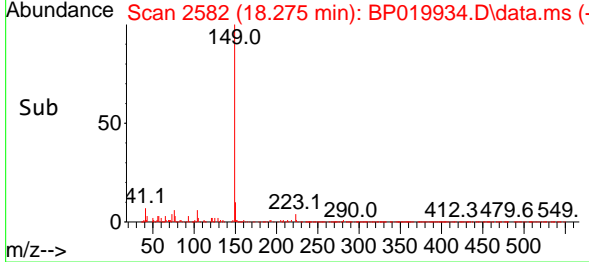
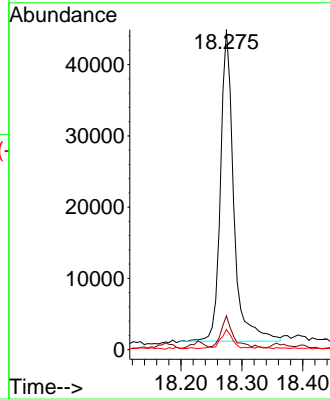
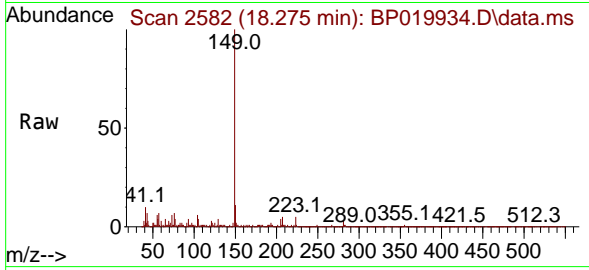




#74
 Di-n-butylphthalate
 Concen: 2.455 ng
 RT: 18.275 min Scan# 2582
 Delta R.T. -0.012 min
 Lab File: BP019934.D
 Acq: 29 Feb 2024 13:27

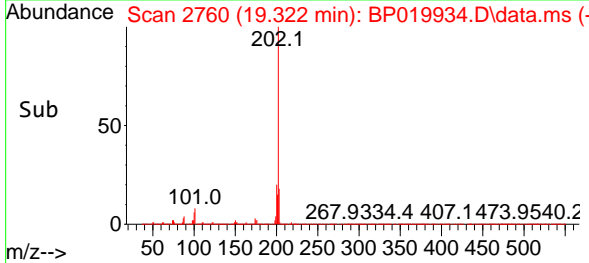
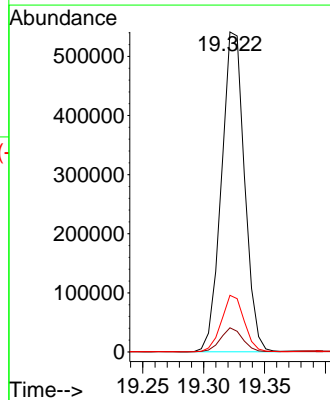
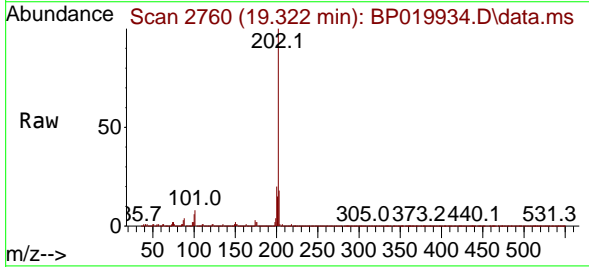
Instrument :
 BNA_P
 ClientSampleId :
 WC-1DL

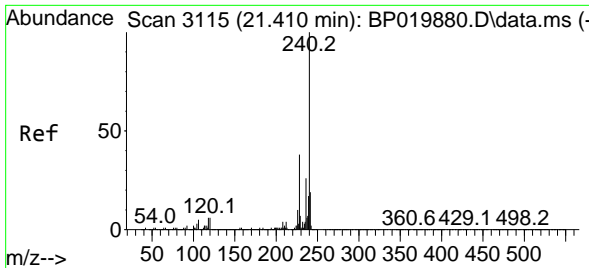
Tgt Ion	Resp	Lower	Upper
149	100		
150	10.6	7.3	10.9
104	6.3	4.6	7.0



#75
 Fluoranthene
 Concen: 23.100 ng
 RT: 19.322 min Scan# 2760
 Delta R.T. -0.018 min
 Lab File: BP019934.D
 Acq: 29 Feb 2024 13:27

Tgt Ion	Resp	Lower	Upper
202	100		
101	7.6	0.0	27.7
203	17.7	0.0	37.5



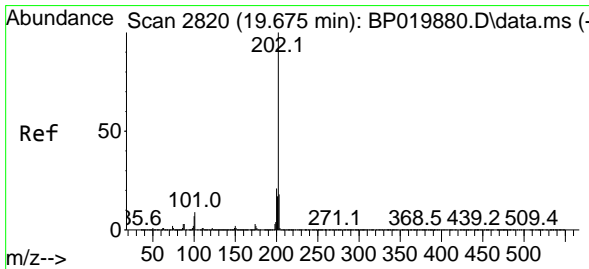
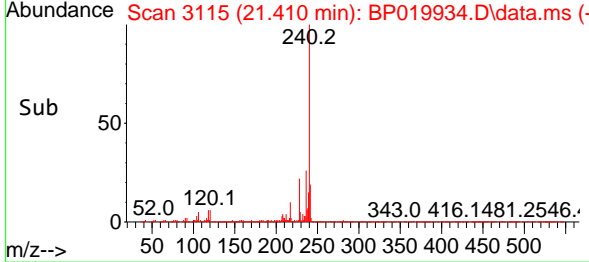
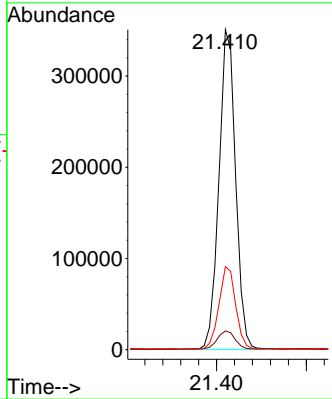
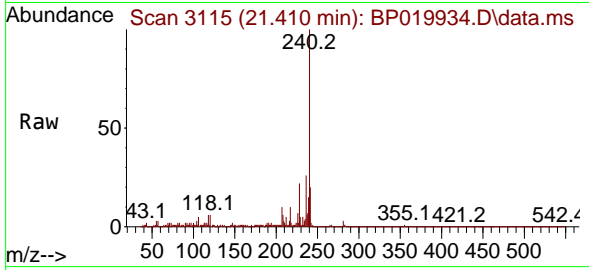


#76
 Chrysene-d12
 Concen: 20.000 ng
 RT: 21.410 min Scan# 3115
 Delta R.T. -0.018 min
 Lab File: BP019934.D
 Acq: 29 Feb 2024 13:27

Instrument : BNA_P
 Client Sample Id : WC-1DL

Tgt Ion: 240 Resp: 452481

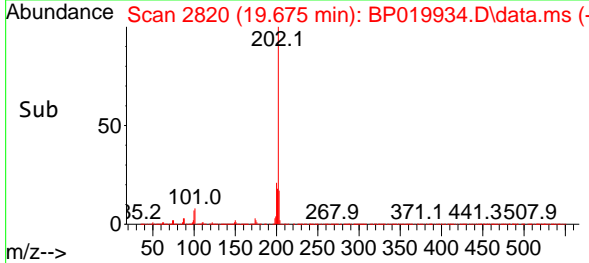
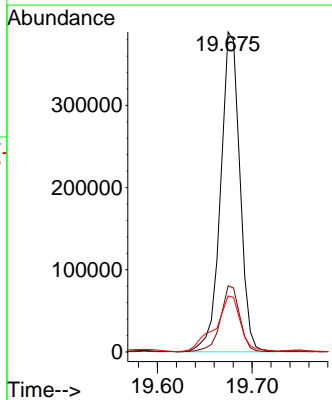
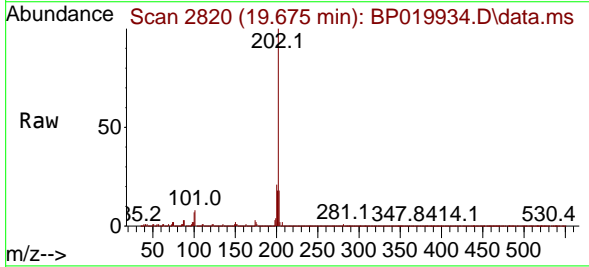
Ion	Ratio	Lower	Upper
240	100		
120	5.8	5.1	7.7
236	26.0	20.5	30.7

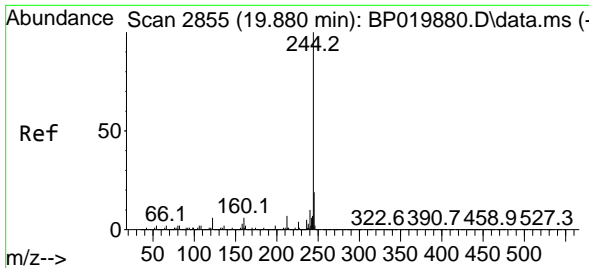


#78
 Pyrene
 Concen: 17.737 ng
 RT: 19.675 min Scan# 2820
 Delta R.T. -0.018 min
 Lab File: BP019934.D
 Acq: 29 Feb 2024 13:27

Tgt Ion: 202 Resp: 551415

Ion	Ratio	Lower	Upper
202	100		
200	20.7	16.7	25.1
203	17.5	14.2	21.2

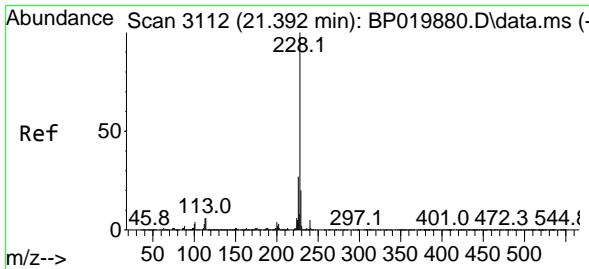
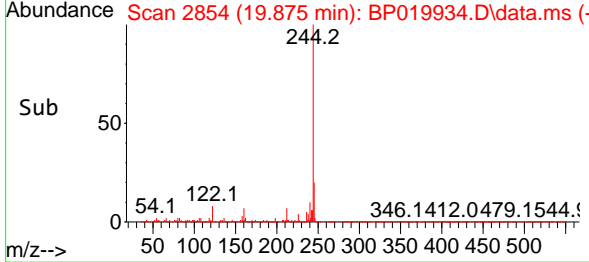
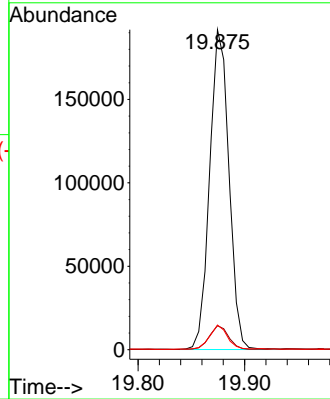
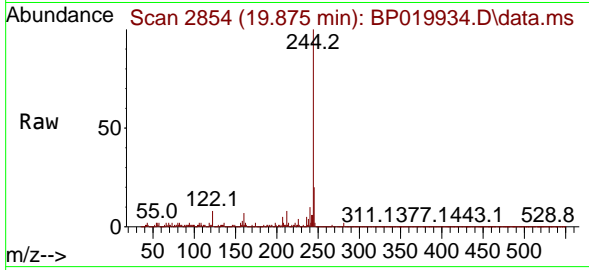




#79
 Terphenyl-d14
 Concen: 8.390 ng
 RT: 19.875 min Scan# 21
 Delta R.T. -0.018 min
 Lab File: BP019934.D
 Acq: 29 Feb 2024 13:27

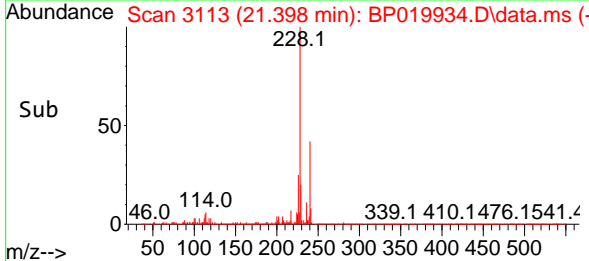
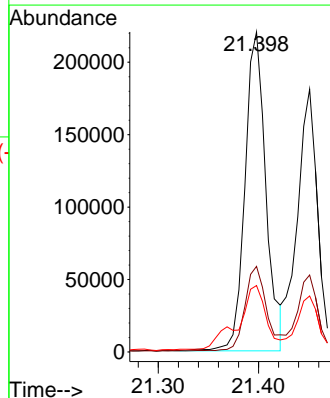
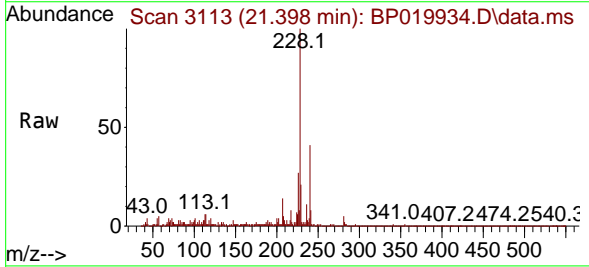
Instrument :
 BNA_P
 Client Sample Id :
 WC-1DL

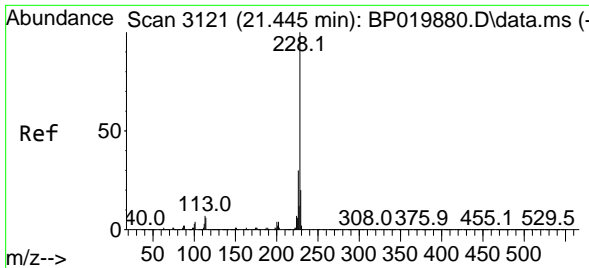
Tgt Ion	Resp	Lower	Upper
244	100		
212	7.5	5.8	8.8
122	7.7	5.0	7.6



#81
 Benzo(a)anthracene
 Concen: 9.949 ng
 RT: 21.398 min Scan# 3113
 Delta R.T. -0.012 min
 Lab File: BP019934.D
 Acq: 29 Feb 2024 13:27

Tgt Ion	Resp	Lower	Upper
228	100		
226	26.8	21.5	32.3
229	20.7	15.6	23.4

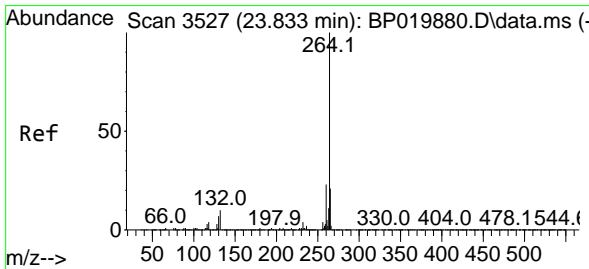
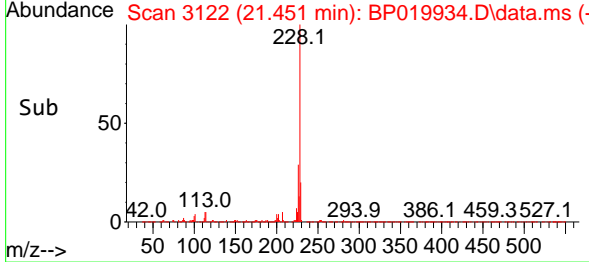
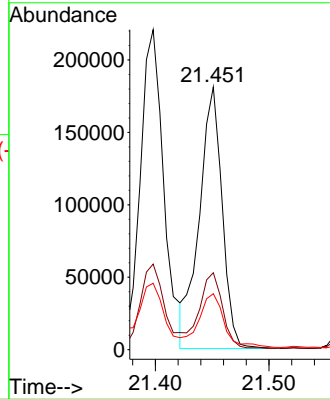
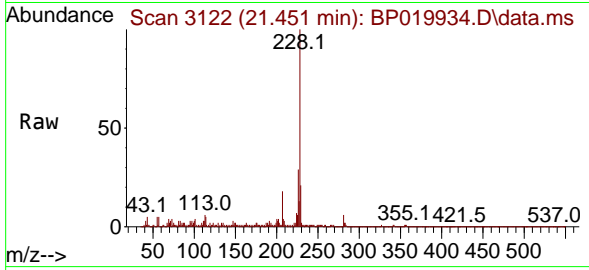




#83
 Chrysene
 Concen: 8.396 ng
 RT: 21.451 min Scan# 3121
 Delta R.T. -0.018 min
 Lab File: BP019934.D
 Acq: 29 Feb 2024 13:27

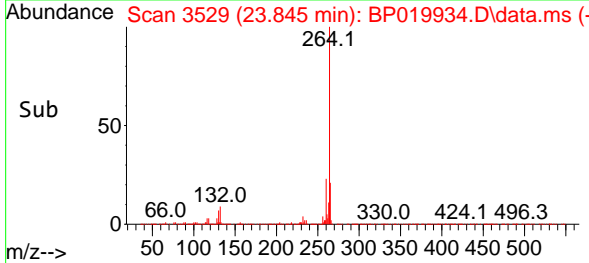
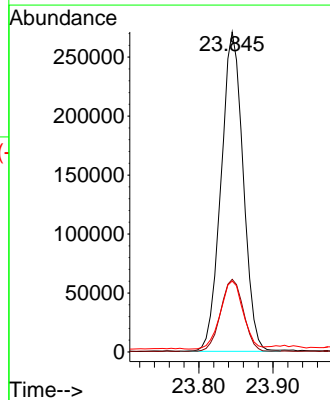
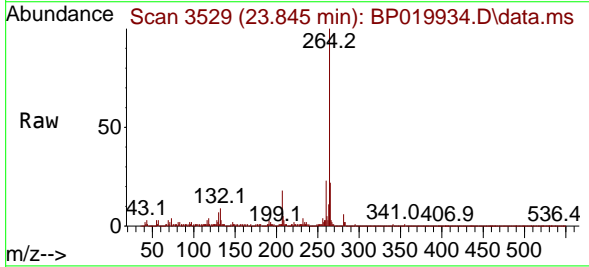
Instrument : BNA_P
 Client Sample Id : WC-1DL

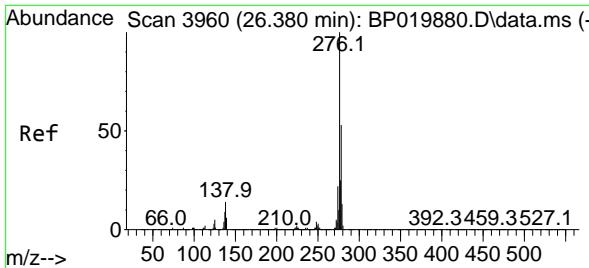
Tgt Ion	Resp	Lower	Upper
228	252699		
226	29.3	23.9	35.9
229	21.3	15.7	23.5



#86
 Perylene-d12
 Concen: 20.000 ng
 RT: 23.845 min Scan# 3529
 Delta R.T. -0.023 min
 Lab File: BP019934.D
 Acq: 29 Feb 2024 13:27

Tgt Ion	Resp	Lower	Upper
264	560625		
260	22.7	18.7	28.1
265	22.2	17.4	26.2



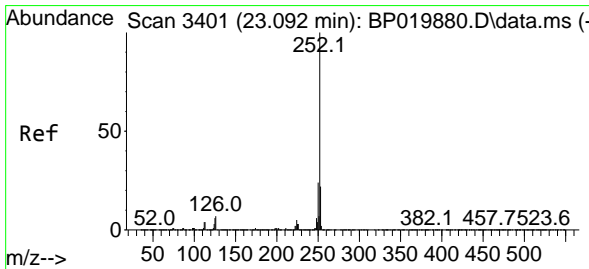
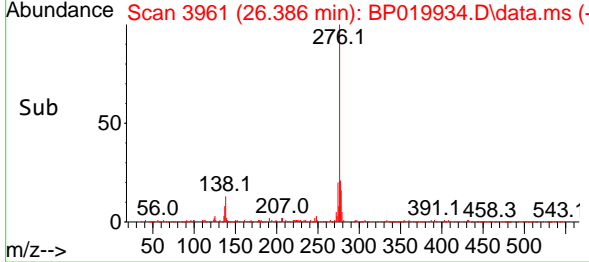
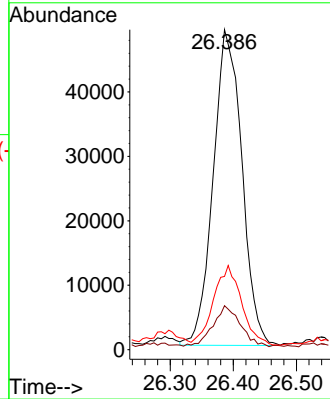
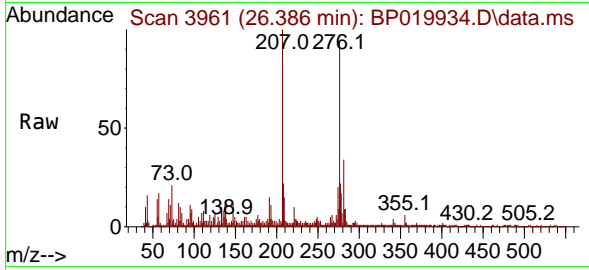


#87
 Indeno(1,2,3-cd)pyrene
 Concen: 3.915 ng
 RT: 26.386 min Scan# 3961
 Delta R.T. -0.059 min
 Lab File: BP019934.D
 Acq: 29 Feb 2024 13:27

Instrument :
 BNA_P
 Client Sample Id :
 WC-1DL

Tgt Ion: 276 Resp: 154503

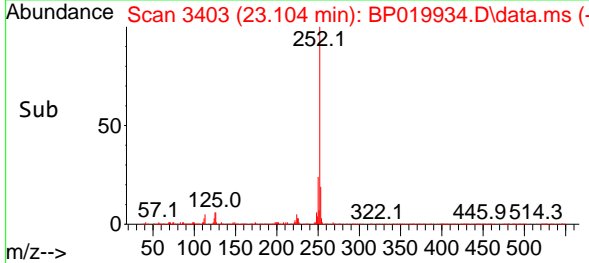
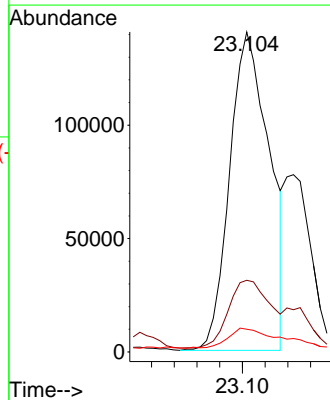
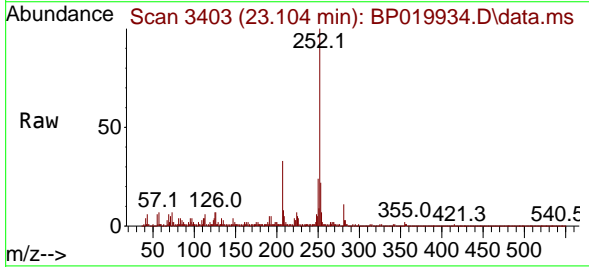
Ion	Ratio	Lower	Upper
276	100		
138	12.5	11.7	17.5
277	24.7	20.2	30.4

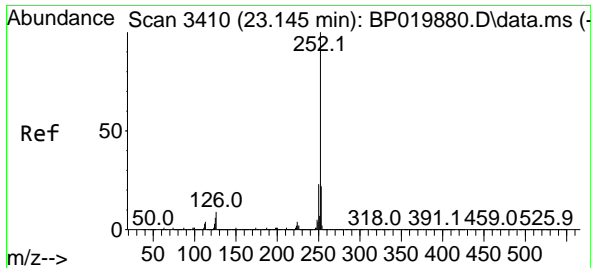


#88
 Benzo(b)fluoranthene
 Concen: 9.900 ng
 RT: 23.104 min Scan# 3403
 Delta R.T. -0.018 min
 Lab File: BP019934.D
 Acq: 29 Feb 2024 13:27

Tgt Ion: 252 Resp: 340261

Ion	Ratio	Lower	Upper
252	100		
253	22.4	17.6	26.4
125	7.1	4.6	7.0

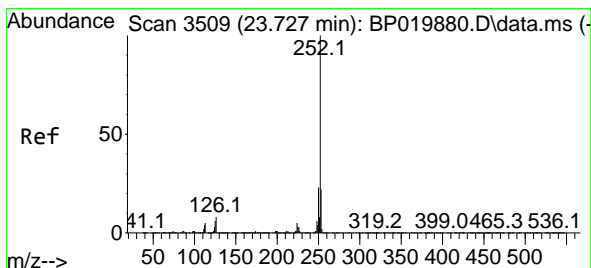
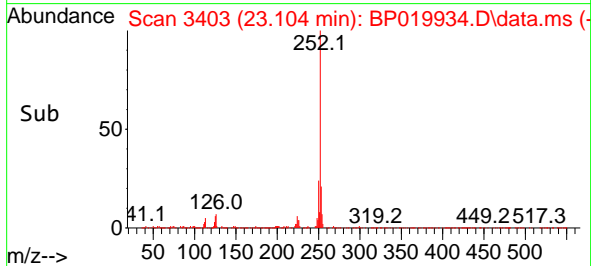
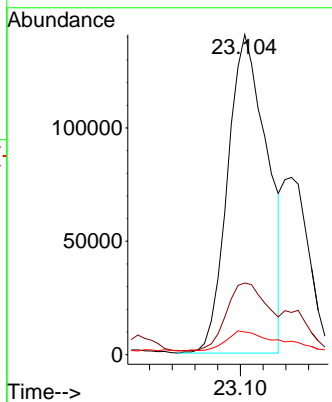
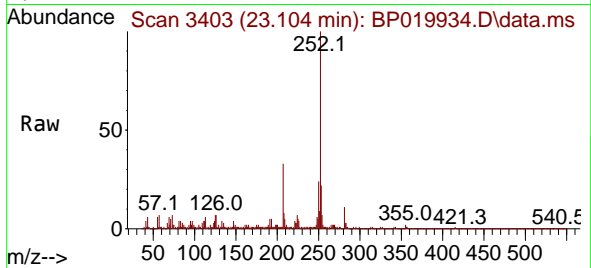




#89
 Benzo(k)fluoranthene
 Concen: 10.094 ng
 RT: 23.104 min Scan# 3410
 Delta R.T. -0.071 min
 Lab File: BP019934.D
 Acq: 29 Feb 2024 13:27

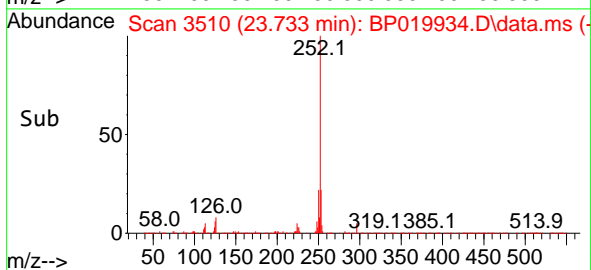
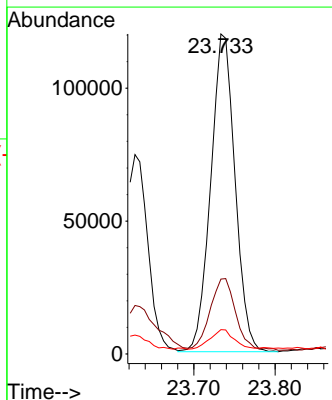
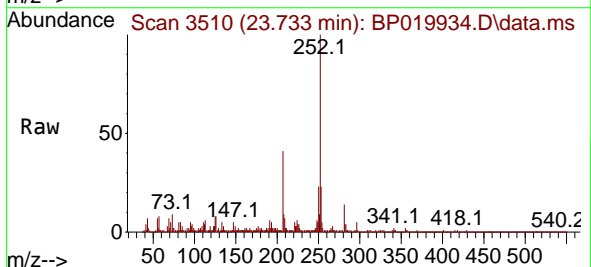
Instrument :
 BNA_P
 ClientSampleId :
 WC-1DL

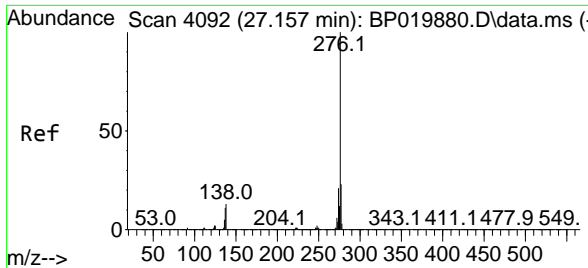
Tgt Ion	Resp	Lower	Upper
252	100		
253	22.4	17.3	25.9
125	7.1	4.6	6.8



#90
 Benzo(a)pyrene
 Concen: 7.570 ng
 RT: 23.733 min Scan# 3510
 Delta R.T. -0.029 min
 Lab File: BP019934.D
 Acq: 29 Feb 2024 13:27

Tgt Ion	Resp	Lower	Upper
252	100		
253	23.4	17.5	26.3
125	7.6	5.2	7.8





#92
 Benzo(g,h,i)perylene
 Concen: 4.188 ng
 RT: 27.174 min Scan# 4095
 Delta R.T. -0.053 min
 Lab File: BP019934.D
 Acq: 29 Feb 2024 13:27

Instrument : BNA_P
 ClientSampleId : WC-1DL

Tgt Ion: 276 Resp: 134128

Ion	Ratio	Lower	Upper
276	100		
277	26.5	18.5	27.7
138	14.9	10.2	15.2

