

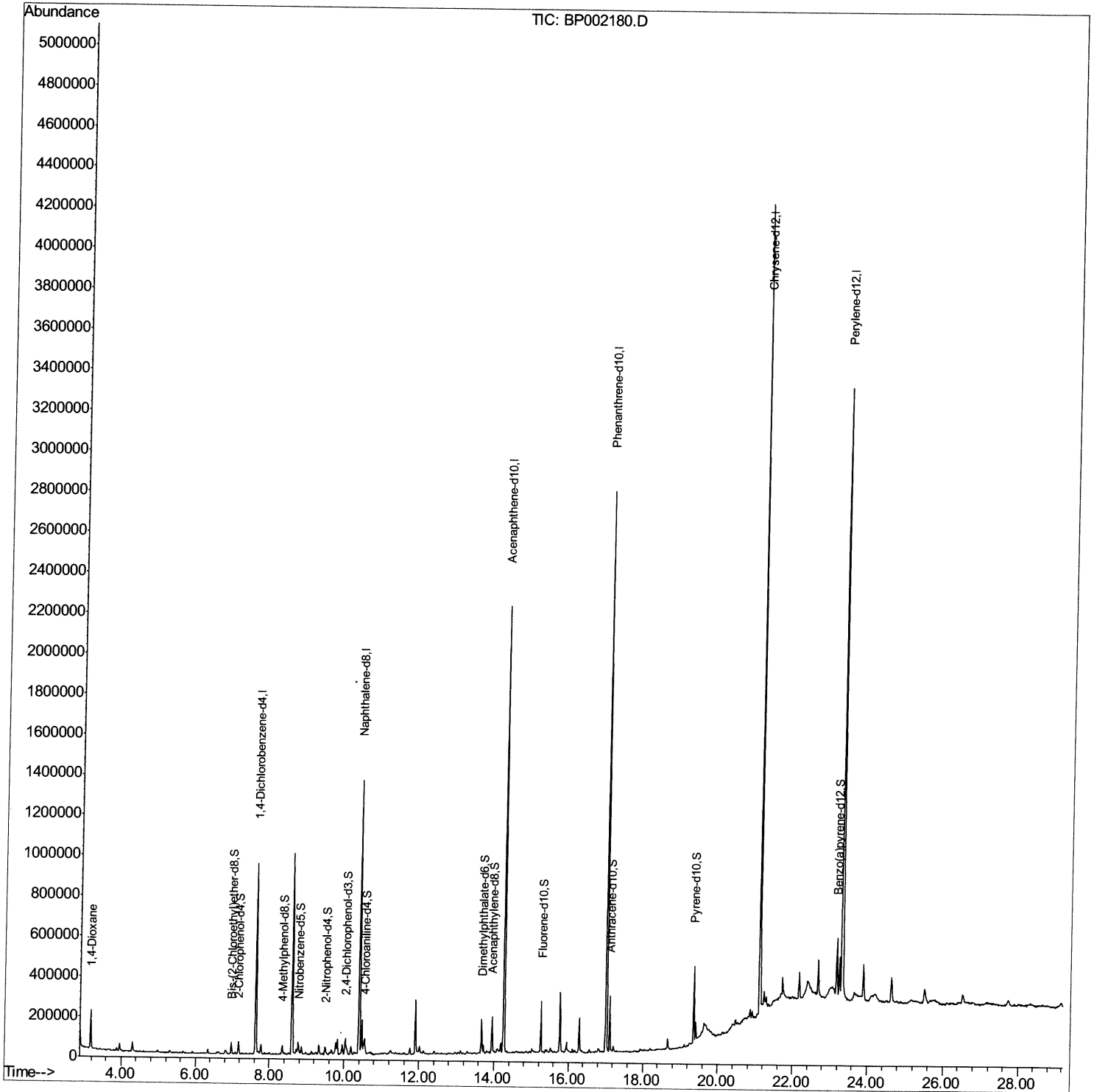
Quantitation Report (QT Reviewed)

Data Path : Z:\svoasrv\HPCHEM1\BNA P\Data\BP031220\
Data File : BP002180.D
Acq On : 12 Mar 2020 13:05
Operator : CG/JU
Sample : L1843-06DL 10X
Misc :
ALS Vial : 6 Sample Multiplier: 1

Instrument :
BNA_P
Client Sampled :
CB5T1DL

Manual Integrations
APPROVED
mohammad
3/13/2020 8:57:05 AM

Quant Time: Mar 12 13:59:10 2020
Quant Method : Z:\SVOASRV\HPCHEM1\BNA_P\METHODS\SOM-EPA-BP022720MA.M
Quant Title : SVOA CALIBRATION
QLast Update : Thu Mar 12 13:49:07 2020
Response via : Initial Calibration



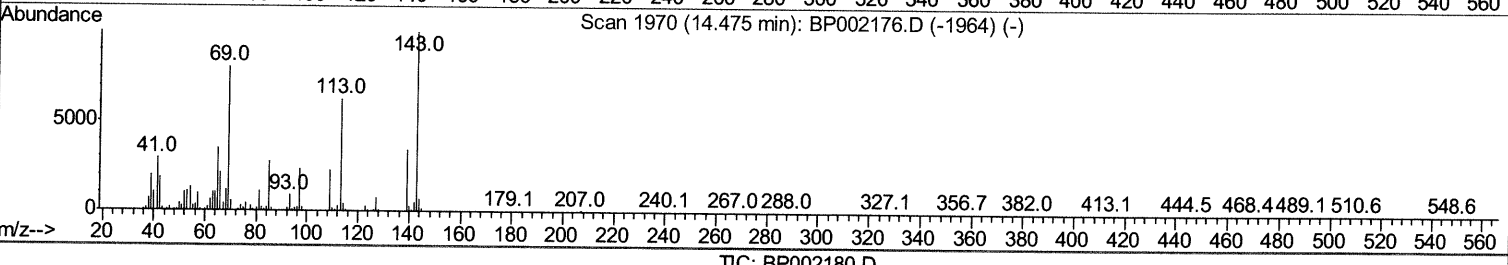
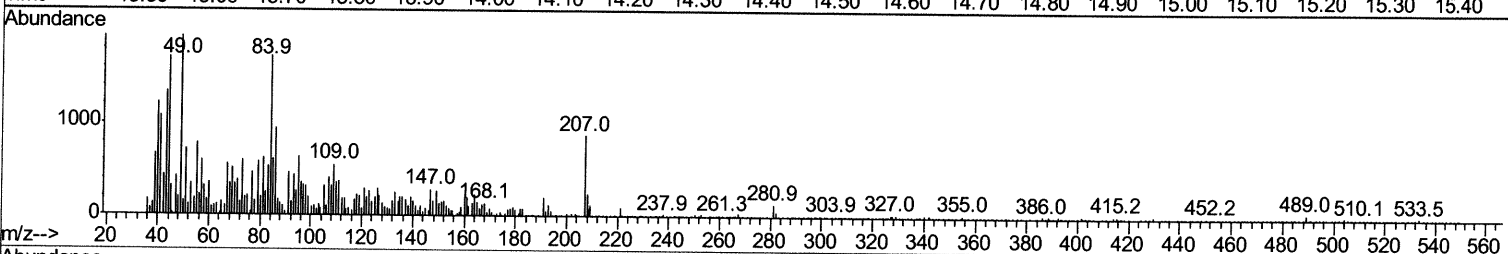
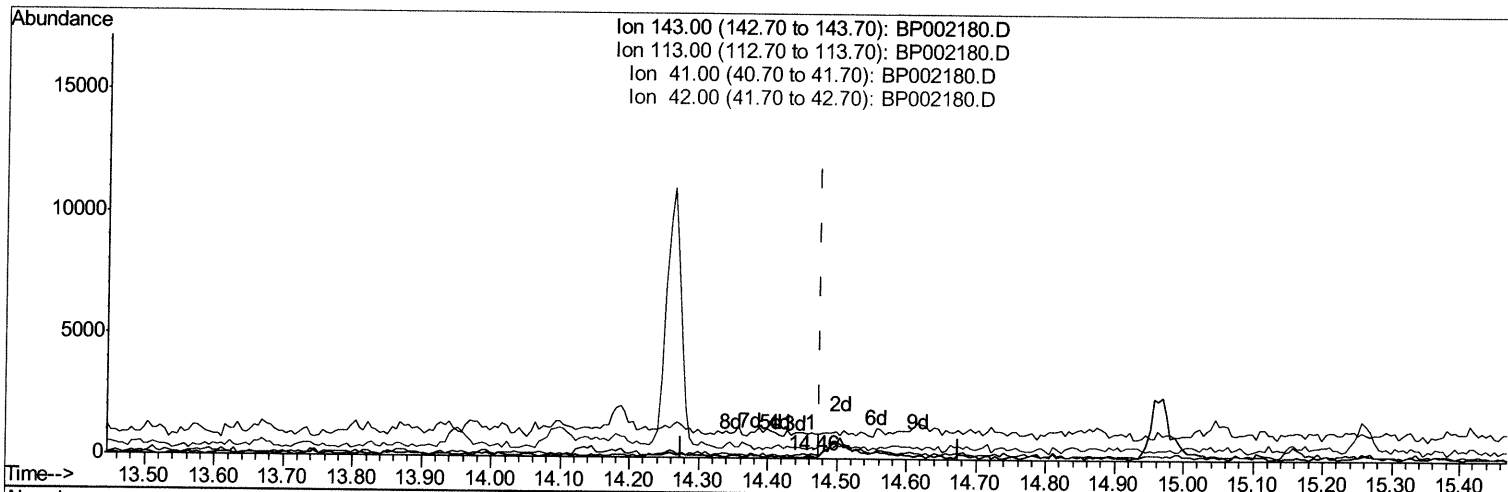
Quantitation Report (Qedit)

Data Path : Z:\svoasrv\HPCHEM1\BNA P\Data\BP031220\
 Data File : BP002180.D
 Acq On : 12 Mar 2020 13:05
 Operator : CG/JU
 Sample : L1843-06DL 10X
 Misc :
 ALS Vial : 6 Sample Multiplier: 1

Instrument :
 BNA_P
Client Sampled :
 CB5T1DL

Manual Integrations
APPROVED
 mohammad
 3/13/2020 8:57:05 AM

Quant Time: Mar 12 13:58:23 2020
 Quant Method : Z:\SVOASRV\HPCHEM1\BNA_P\METHODS\SOM-EPA-BP022720MA.M
 Quant Title : SVOA CALIBRATION
 QLast Update : Thu Mar 12 13:49:07 2020
 Response via : Initial Calibration



TIC: BP002180.D

(52) 4-Nitrophenol-d4 (S)
 14.463min (-0.012) 0.00ng/ul
 response 48

Ion	Exp%	Act%
143.00	100	100
113.00	65.90	180.19#
41.00	29.10	1009.43#
42.00	20.10	412.26#

Quantitation Report (Qedit)

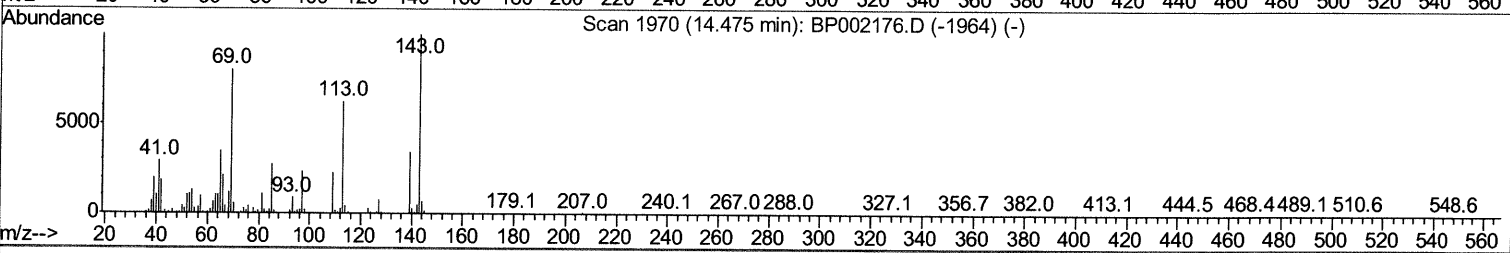
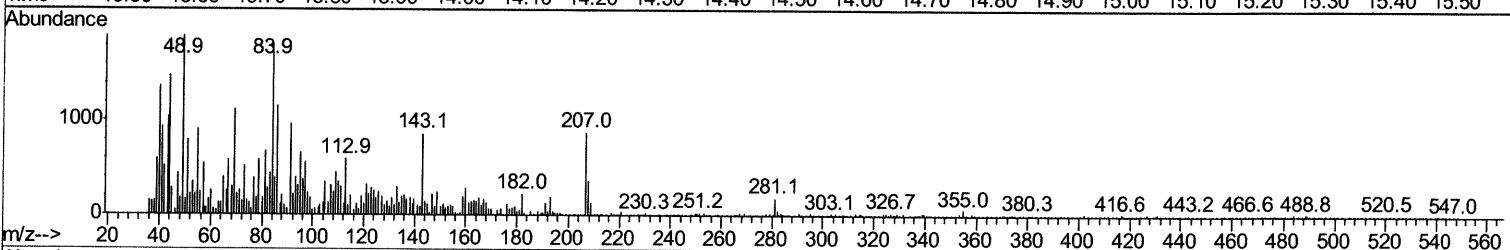
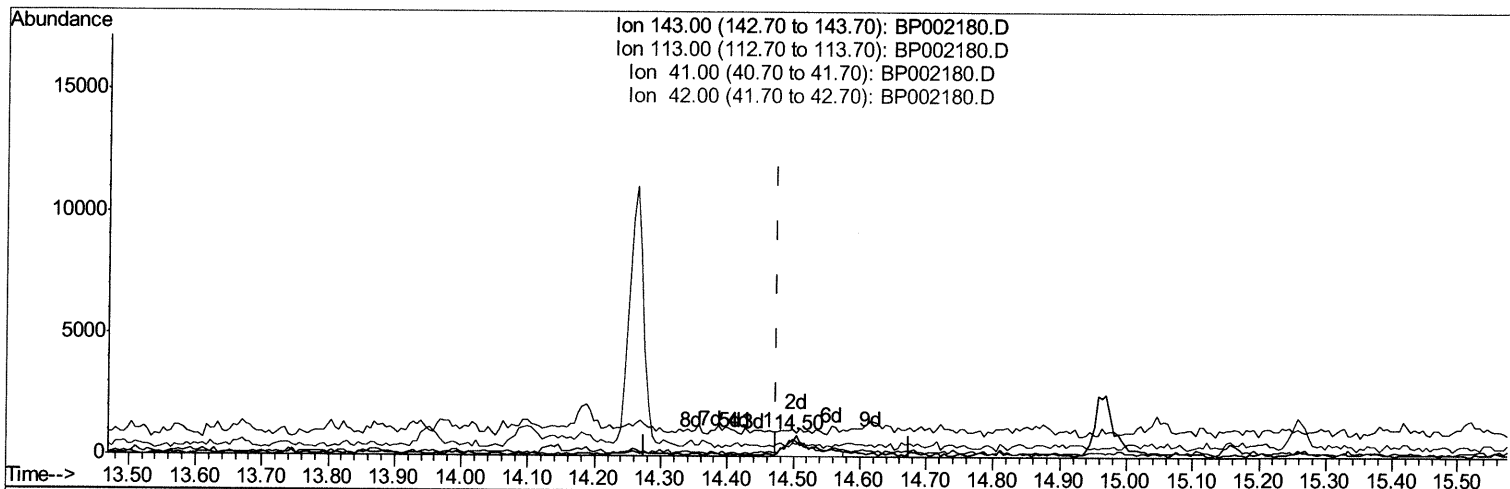
Data Path : Z:\svoasrv\HPCHEM1\BNA P\Data\BP031220\
 Data File : BP002180.D
 Acq On : 12 Mar 2020 13:05
 Operator : CG/JU
 Sample : L1843-06DL 10X
 Misc :
 ALS Vial : 6 Sample Multiplier: 1

Instrument :
 BNA_P
 Client Sampled :
 CB5T1DL

Manual Integrations
 APPROVED

mohammad
 3/13/2020 8:57:05 AM

Quant Time: Mar 12 13:58:23 2020
 Quant Method : Z:\SVOASRV\HPCHEM1\BNA_P\METHODS\SOM-EPA-BP022720MA.M
 Quant Title : SVOA CALIBRATION
 QLast Update : Thu Mar 12 13:49:07 2020
 Response via : Initial Calibration



TC: BP002180.D

(52) 4-Nitrophenol-d4 (S)

14.504min (+0.030) 0.21ng/ul m *JU 02/13/20*

response 2369

Ion	Exp%	Act%
143.00	100	100
113.00	65.90	69.61
41.00	29.10	109.40#
42.00	20.10	60.56#

Data Path : Z:\svoasrv\HPCHEM1\BNA P\Data\BP031220\
 Data File : BP002180.D
 Acq On : 12 Mar 2020 13:05
 Operator : CG/JU
 Sample : L1843-06DL 10X
 Misc :
 ALS Vial : 6 Sample Multiplier: 1

Instrument :
 BNA_P
Client Sampled :
 CB5T1DL

Manual Integrations
APPROVED
 mohammad
 3/13/2020 8:57:05 AM

Quant Time: Mar 12 13:59:10 2020
 Quant Method : Z:\SVOASRV\HPCHEM1\BNA_P\METHODS\SOM-EPA-BP022720MA.M
 Quant Title : SVOA CALIBRATION
 QLast Update : Thu Mar 12 13:49:07 2020
 Response via : Initial Calibration

Internal Standards	R.T.	QIon	Response	Conc	Units	Dev(Min)
1) 1,4-Dichlorobenzene-d4	7.63	152	279132	20.00	ng/ul	0.00
18) Naphthalene-d8	10.40	136	1171886	20.00	ng/ul	0.00
36) Acenaphthene-d10	14.26	164	765771	20.00	ng/ul	0.00
62) Phenanthrene-d10	17.02	188	1689654	20.00	ng/ul	0.00
78) Chrysene-d12	21.11	240	1786247	20.00	ng/ul	0.00
86) Perylene-d12	23.32	264	2150935	20.00	ng/ul	0.00

System Monitoring Compounds

3) 1,4-Dioxane-d8	3.15	96	899	0.14	ng/uL	0.00
5) Phenol-d5	6.82	99	11229	0.53	ng/ul	0.00
7) Bis-(2-Chloroethyl)ether-d	6.97	67	25847	2.29	ng/ul	0.00
9) 2-Chlorophenol-d4	7.16	132	31472	1.71	ng/ul	0.00
13) 4-Methylphenol-d8	8.34	113	19587	1.12	ng/ul	0.00
19) Nitrobenzene-d5	8.77	128	15370	1.71	ng/ul	0.00
22) 2-Nitrophenol-d4	9.49	143	14741	1.46	ng/ul	0.00
26) 2,4-Dichlorophenol-d3	10.03	165	32909	1.69	ng/ul	0.00
29) 4-Chloroaniline-d4	10.54	131	45886	2.15	ng/ul	0.00
44) Dimethylphthalate-d6	13.67	166	119365	2.06	ng/ul	0.00
47) Acenaphthylene-d8	13.95	160	130396	1.88	ng/ul	0.00
52) 4-Nitrophenol-d4	14.50	143	2369m>	0.21	ng/ul >	0.03 Ju 03/14/20
58) Fluorene-d10	15.26	176	107289	2.14	ng/ul	0.00
63) 4,6-Dinitro-2-methylphenol	15.39	200	4110	0.44	ng/ul	0.00
71) Anthracene-d10	17.12	188	165044	2.17	ng/ul	0.00
79) Pyrene-d10	19.36	212	193674	2.07	ng/ul	0.00
90) Benzo(a)pyrene-d12	23.17	264	218107	1.98	ng/ul	-0.01

Target Compounds

2) 1,4-Dioxane	3.18	88	98888	14.283	ng/uL#	Ovalue 94
----------------	------	----	-------	--------	--------	-----------

(#) = qualifier out of range (m) = manual integration (+) = signals summed