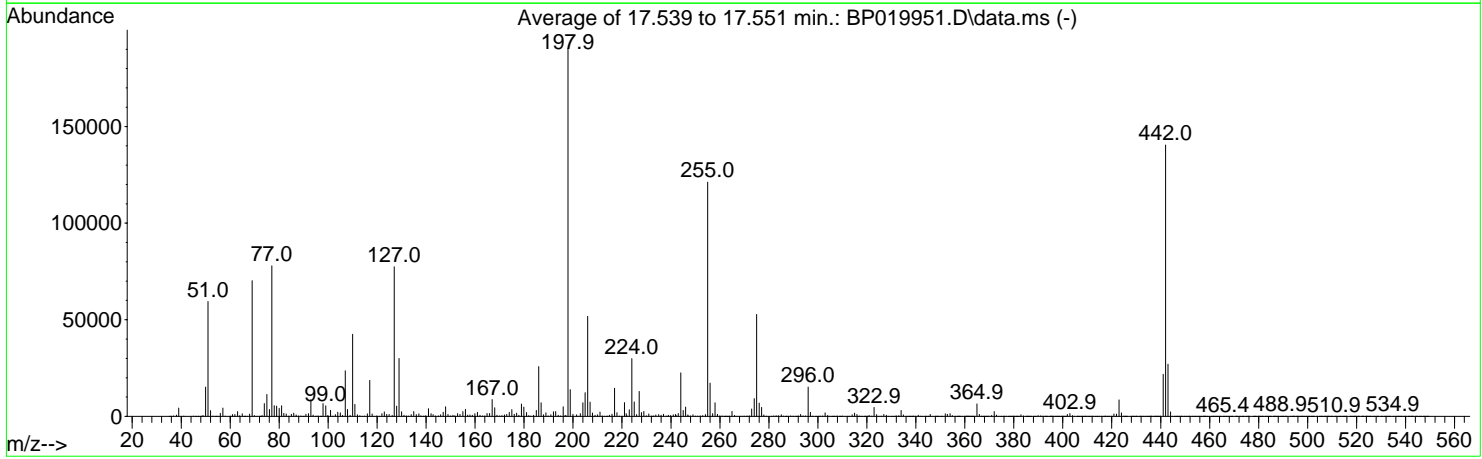
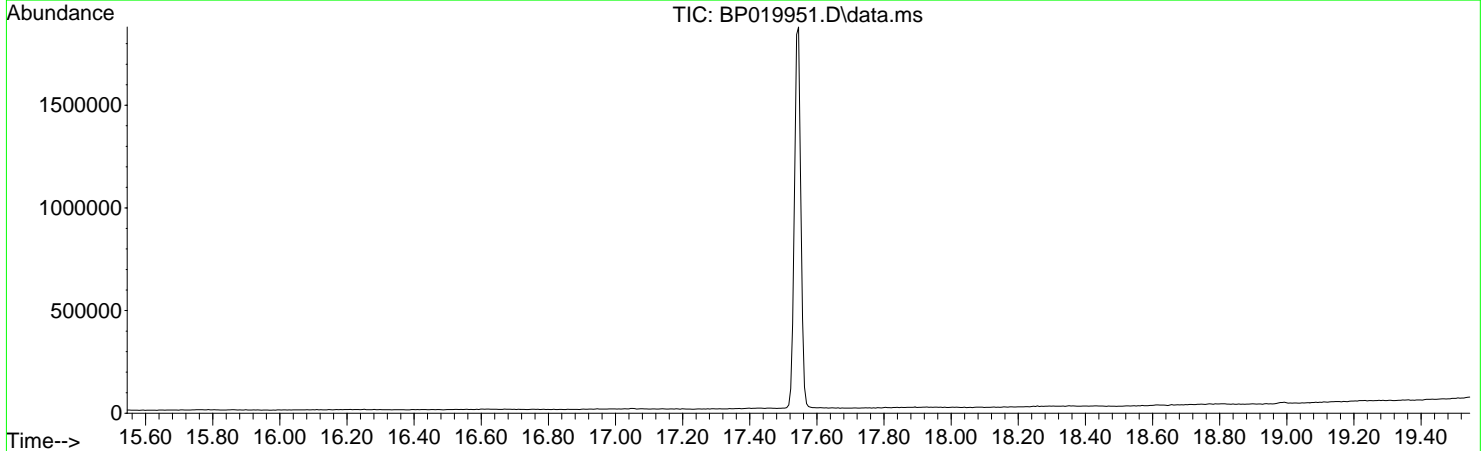


Data Path : Z:\svoasrv\HPCHEM1\BNA\_P\Data\BP032224\  
 Data File : BP019951.D  
 Acq On : 22 Mar 2024 10:02  
 Operator : MA/JU  
 Sample : DFTPP708  
 Misc :  
 ALS Vial : 1 Sample Multiplier: 1

**Instrument :**  
 BNA\_P  
**ClientSampleId :**  
 DFTPP708

Integration File: LSCINT.P

Method : Z:\svoasrv\HPCHEM1\BNA\_P\Methods\SFAM-EPA-BP032224.MA.M  
 Title : SVOA CALIBRATION  
 Last Update : Mon Mar 25 10:46:59 2024



AutoFind: Scans 2457, 2458, 2459; Background Corrected with Scan 2449

Target Mass	Rel. to Mass	Lower Limit%	Upper Limit%	Rel. Abn%	Raw Abn	Result Pass/Fail
51	198	10	80	31.3	59502	PASS
68	69	0.00	2	1.6	1132	PASS
69	198	0.00	100	36.9	70241	PASS
70	69	0.00	2	0.6	398	PASS
127	198	10	80	40.7	77431	PASS
197	198	0.00	2	0.3	541	PASS
198	198	100	100	100.0	190389	PASS
199	198	5	9	7.3	13845	PASS
275	198	10	60	27.7	52718	PASS
365	198	1	100	3.4	6479	PASS
441	198	0.01	100	11.4	21768	PASS
442	198	50	100	73.8	140440	PASS
443	442	15	24	19.2	26989	PASS

m/z	Abundance
36.20	18.0
36.90	22.0
37.60	10.0
38.10	12.0
39.10	171.0
40.00	998.0
41.10	317.0
42.00	172.0
42.90	320.0
44.00	3963.0
44.90	90.0
47.00	86.0
48.00	44.0
48.90	260.0
49.90	18.0
50.90	215.0
52.00	75.0
53.00	78.0
53.70	27.0
55.10	374.0
56.00	75.0
57.10	171.0
57.90	19.0
59.00	97.0
59.70	11.0
60.40	8.0
61.10	11.0
61.80	14.0
62.70	12.0
63.30	19.0
63.90	46.0
65.00	41.0
65.70	28.0
66.10	15.0
67.10	115.0
68.00	65.0
68.90	74.0
69.90	60.0
71.00	75.0
71.70	10.0
73.00	847.0
73.90	138.0
74.80	183.0
76.10	30.0
77.00	205.0
78.10	104.0
78.80	132.0
80.00	24.0
81.00	179.0
82.10	58.0
82.90	35.0
83.90	231.0
85.00	69.0
85.80	173.0
87.00	38.0
87.70	15.0
87.90	14.0
88.60	14.0
89.10	18.0
89.80	15.0
91.00	170.0
92.00	26.0
92.90	122.0
93.90	13.0
94.80	104.0
95.80	316.0
97.00	112.0
97.90	31.0
99.30	18.0
99.90	11.0
101.10	17.0
101.50	14.0
102.40	0.0
103.00	150.0
103.70	10.0
105.00	114.0
105.80	5.0
107.10	25.0
107.80	35.0
108.90	18.0
109.30	31.0
110.90	50.0
112.30	9.0
113.10	13.0
113.90	5.0
114.90	57.0
116.00	14.0
116.90	16.0
117.20	11.0
118.10	42.0
118.80	194.0
119.90	7.0

Instrument :  
BNA\_P  
ClientSampleId :  
DFTPP708

121.00	70.0
121.80	8.0
122.90	54.0
124.40	10.0
124.90	49.0
126.60	4.0
127.00	4.0
127.60	17.0
128.20	12.0
128.90	100.0
130.20	33.0
131.00	20.0
131.70	6.0
132.80	167.0
133.80	3.0
134.90	265.0
136.00	84.0
137.10	87.0
138.00	15.0
138.80	6.0
138.90	6.0
139.90	1.0
141.10	12.0
141.70	3.0
142.20	13.0
142.80	15.0
143.70	13.0
145.00	42.0
145.70	11.0
147.00	301.0
148.00	53.0
148.60	22.0
149.10	46.0
149.90	22.0
151.00	17.0
151.70	24.0
152.90	24.0
153.80	23.0
154.40	6.0
155.00	11.0
156.20	13.0
157.90	5.0
158.90	23.0
159.80	10.0
160.50	1.0
161.20	14.0
162.10	21.0
162.80	91.0
164.00	18.0
164.90	155.0
165.80	18.0
166.40	9.0
167.00	6.0
167.70	13.0
169.00	7.0
170.20	15.0
171.10	4.0
171.70	13.0
172.20	6.0
172.90	11.0
174.20	7.0
174.70	5.0
175.60	9.0
176.20	3.0
176.90	75.0
177.50	11.0
178.20	17.0
178.60	21.0
179.10	66.0
179.80	7.0
180.20	6.0
181.20	7.0
181.60	5.0
182.70	4.0
183.10	9.0
184.10	17.0
185.00	20.0
186.20	11.0
186.70	10.0
187.20	17.0
187.80	15.0
188.90	20.0
189.60	16.0
190.90	328.0
192.00	58.0
192.90	356.0
193.90	41.0
194.50	15.0
195.20	56.0
195.70	14.0
196.80	17.0
197.80	11.0
198.80	5.0
200.40	10.0
201.30	0.0
202.10	26.0

Instrument :  
BNA\_P  
ClientSampleId :  
DFTPP708

203.00	26.0
203.80	6.0
204.20	10.0
204.90	44.0
205.50	10.0
207.10	2083.0
207.90	542.0
209.00	421.0
210.20	63.0
211.00	73.0
211.80	2.0
212.40	1.0
213.10	13.0
215.10	11.0
215.90	19.0
216.80	13.0
218.00	3.0
219.00	56.0
220.10	10.0
221.10	322.0
222.00	53.0
222.80	27.0
223.30	12.0
224.10	13.0
224.90	22.0
225.60	6.0
227.30	6.0
228.10	16.0
228.90	14.0
229.50	9.0
230.00	7.0
230.40	4.0
230.90	4.0
232.00	8.0
233.80	20.0
234.40	0.0
235.10	7.0
235.80	0.0
236.80	10.0
237.70	15.0
238.30	4.0
238.90	6.0
239.80	14.0
240.70	7.0
241.20	14.0
241.80	7.0
243.20	20.0
245.00	8.0
245.90	4.0
246.30	4.0
247.00	4.0
247.60	4.0
248.10	9.0
248.60	19.0
249.10	52.0
251.00	15.0
251.60	15.0
252.20	10.0
252.70	18.0
252.90	15.0
254.20	23.0
255.10	12.0
255.70	3.0
257.20	14.0
258.00	0.0
258.90	9.0
259.80	3.0
260.30	6.0
260.90	19.0
261.80	5.0
263.10	4.0
263.60	8.0
264.80	143.0
267.10	121.0
268.00	33.0
268.60	13.0
269.20	16.0
270.90	17.0
271.30	15.0
272.40	2.0
273.10	13.0
273.60	4.0
274.40	5.0
275.20	23.0
276.00	6.0
276.70	0.0
278.00	18.0
278.80	19.0
279.20	14.0
279.90	14.0
281.10	641.0
281.80	86.0
282.80	183.0
283.20	186.0
283.90	49.0
284.80	6.0

Instrument :  
BNA\_P  
ClientSampleId :  
DFTPP708

285.40	8.0
286.20	11.0
287.10	6.0
287.70	10.0
288.50	4.0
288.90	3.0
290.30	9.0
290.60	15.0
291.50	5.0
293.00	9.0
293.50	2.0
294.60	4.0
295.20	28.0
296.00	26.0
297.10	14.0
298.10	4.0
299.60	5.0
300.40	2.0
301.10	14.0
302.80	5.0
303.20	2.0
304.00	17.0
305.90	3.0
307.00	10.0
307.50	5.0
308.70	13.0
310.60	4.0
312.20	21.0
312.80	1.0
313.90	3.0
314.40	9.0
315.40	10.0
317.00	21.0
318.30	18.0
320.20	5.0
321.70	7.0
322.80	14.0
323.70	10.0
324.10	9.0
324.50	10.0
325.20	17.0
326.00	12.0
326.70	44.0
327.70	17.0
328.30	17.0
328.80	11.0
329.60	8.0
330.00	9.0
330.90	13.0
331.70	11.0
333.00	9.0
334.10	16.0
335.40	15.0
335.90	4.0
337.40	5.0
338.10	8.0
338.80	5.0
339.20	4.0
341.00	87.0
341.70	39.0
343.10	51.0
343.70	6.0
344.70	8.0
345.40	3.0
346.90	4.0
347.50	1.0
348.40	4.0
350.00	10.0
351.50	4.0
352.90	10.0
354.30	13.0
355.00	104.0
355.90	27.0
357.10	27.0
357.90	6.0
359.30	3.0
360.90	5.0
362.70	4.0
364.20	4.0
364.80	1.0
365.60	5.0
367.20	6.0
369.00	4.0
370.30	4.0
371.30	5.0
372.30	8.0
373.90	24.0
375.20	5.0
376.50	3.0
376.90	4.0
378.50	5.0
380.40	10.0
381.30	5.0
383.00	6.0
384.80	7.0
386.10	5.0

**Instrument :**  
BNA\_P  
**ClientSampleId :**  
DFTPP708

387.10	6.0
387.70	3.0
389.30	11.0
390.20	8.0
391.00	4.0
392.50	6.0
394.00	5.0
395.70	5.0
397.20	5.0
398.80	5.0
399.60	1.0
400.40	16.0
400.80	13.0
401.90	12.0
402.60	0.0
403.40	4.0
404.30	12.0
405.20	4.0
406.60	4.0
408.20	5.0
409.70	5.0
410.80	1.0
411.50	5.0
412.80	5.0
413.90	0.0
414.40	5.0
415.00	13.0
416.10	22.0
417.60	6.0
418.20	1.0
419.20	4.0
419.40	4.0
420.90	5.0
422.40	7.0
423.10	0.0
424.00	5.0
425.40	6.0
426.50	8.0
427.00	6.0
429.00	8.0
430.30	3.0
431.00	8.0
432.10	14.0
432.80	1.0
433.30	6.0
434.10	2.0
434.90	5.0
435.70	0.0
436.60	4.0
437.40	0.0
438.20	6.0
439.50	4.0
441.30	5.0
442.10	0.0
442.70	4.0
443.60	1.0
444.40	6.0
446.00	6.0
447.90	8.0
449.00	6.0
450.00	1.0
450.60	6.0
452.30	5.0
453.80	5.0
455.40	6.0
456.90	5.0
458.00	1.0
458.60	5.0
459.50	2.0
460.00	3.0
461.00	14.0
461.80	19.0
463.20	4.0
464.90	6.0
466.40	5.0
467.90	3.0
468.20	3.0
469.50	6.0
470.10	3.0
471.20	5.0
472.70	4.0
473.50	1.0
474.00	3.0
474.40	4.0
475.00	16.0
476.20	16.0
477.30	13.0
479.00	4.0
479.70	1.0
480.80	7.0
482.00	5.0
483.80	4.0
485.20	4.0
485.50	4.0
486.30	1.0
487.00	5.0

Instrument :  
BNA\_P  
ClientSampleId :  
DFTPP708

488.80	20.0
489.30	6.0
490.10	4.0
491.60	5.0
492.10	15.0
493.20	5.0
494.70	7.0
496.40	5.0
497.80	4.0
499.50	5.0
500.10	1.0
501.10	4.0
501.70	1.0
502.90	6.0
503.60	6.0
504.20	12.0
505.00	5.0
505.70	4.0
506.10	2.0
507.50	6.0
508.90	4.0
509.80	1.0
510.40	12.0
512.00	5.0
513.70	6.0
515.20	5.0
516.10	2.0
516.90	4.0
518.40	8.0
520.00	4.0
520.80	1.0
521.50	5.0
523.10	5.0
524.60	15.0
525.60	1.0
526.20	6.0
527.80	4.0
528.50	0.0
529.20	21.0
530.20	0.0
531.00	5.0
531.90	0.0
532.60	3.0
534.10	4.0
535.40	14.0
536.10	8.0
537.30	5.0
538.10	0.0
538.90	3.0
540.30	6.0
541.90	6.0
543.60	4.0
545.20	6.0
546.70	6.0
548.10	5.0
549.50	6.0

**Instrument :**  
BNA\_P  
**ClientSampleId :**  
DFTPP708

m/z	Abundance
35.10	14.0
35.90	90.0
37.00	273.0
38.00	714.0
39.00	5590.0
40.00	1131.0
41.10	485.0
42.10	50.0
43.20	140.0
44.00	3445.0
45.00	303.0
45.80	17.0
47.00	171.0
48.00	110.0
48.90	725.0
50.00	19528.0
51.00	74448.0
52.00	4015.0
53.00	190.0
53.80	50.0
55.00	512.0
56.00	1964.0
57.00	5355.0
58.00	265.0
59.00	76.0
59.90	36.0
61.00	1045.0
62.00	1383.0
63.00	3030.0
63.90	425.0
65.00	1585.0
65.80	162.0
67.10	188.0
68.00	1417.0
69.00	87648.0
70.00	672.0
71.00	137.0
72.30	63.0
73.00	1606.0
74.00	8320.0
75.00	12761.0
76.10	4385.0
77.00	95088.0
78.00	7292.0
79.00	6435.0
80.00	4930.0
81.00	6780.0
81.90	1947.0
82.90	1643.0
84.10	480.0
85.00	1449.0
86.00	2172.0
87.00	1202.0
87.90	255.0
89.00	260.0
89.80	28.0
90.90	1557.0
92.00	1878.0
93.00	10593.0
93.90	880.0
94.90	388.0
96.00	695.0
96.80	269.0
98.00	7346.0
99.00	6552.0
99.90	666.0
101.00	3701.0
102.00	188.0
103.00	1336.0
104.00	2508.0
105.00	2234.0
106.00	616.0
107.00	28488.0
108.00	4532.0
109.00	764.0
110.00	51336.0
111.00	7439.0
112.00	1009.0
113.00	462.0
114.90	170.0
116.00	1582.0
117.00	21592.0
118.00	1580.0
119.00	224.0
119.90	288.0
121.00	179.0
122.00	1517.0
123.00	3126.0
123.90	1172.0
124.90	1080.0
126.10	607.0
127.00	91440.0

Instrument :  
BNA\_P  
ClientSampleId :  
DFTPP708



128.00	6500.0
129.00	36112.0
130.00	2843.0
131.00	606.0
132.00	278.0
132.90	479.0
134.00	1086.0
135.00	3157.0
136.00	1079.0
137.00	1678.0
138.00	325.0
138.80	232.0
140.00	371.0
141.00	4729.0
142.00	1779.0
143.00	963.0
143.90	277.0
145.10	243.0
146.00	941.0
147.00	2867.0
148.00	5798.0
149.00	1325.0
149.90	314.0
151.10	833.0
151.80	496.0
153.00	1769.0
153.90	1127.0
155.00	3068.0
156.00	4044.0
157.00	621.0
158.00	1029.0
159.00	805.0
159.90	1719.0
161.00	2483.0
162.00	684.0
163.00	271.0
164.00	334.0
165.00	1893.0
166.00	1881.0
167.00	10332.0
168.00	5601.0
168.90	575.0
170.00	380.0
170.90	379.0
172.00	969.0
172.90	1031.0
174.00	2628.0
175.00	4035.0
176.00	1138.0
177.00	2017.0
177.80	673.0
178.90	7519.0
180.00	5357.0
181.00	2745.0
182.00	640.0
182.90	198.0
183.90	937.0
185.00	3319.0
186.00	29136.0
187.00	8321.0
188.00	877.0
189.00	2070.0
189.90	334.0
191.00	1365.0
192.00	2955.0
193.00	3598.0
194.00	576.0
194.90	413.0
196.00	6042.0
196.90	1195.0
198.00	218112.0
199.00	16512.0
200.00	1219.0
201.50	988.0
203.00	1527.0
204.00	8322.0
205.00	13685.0
206.00	59256.0
207.00	10151.0
208.00	2244.0
209.00	1111.0
210.10	1052.0
211.00	2750.0
212.90	143.0
214.00	91.0
215.00	617.0
216.00	1566.0
217.00	16440.0
217.90	2100.0
218.90	218.0
221.00	8756.0
221.80	2247.0
223.00	3762.0
224.00	33672.0
225.10	8767.0
226.00	1066.0

**Instrument :**  
BNA\_P  
**ClientSampleId :**  
DFTPP708

227.00	14262.0
228.00	2209.0
228.90	3157.0
229.90	421.0
231.00	1566.0
231.90	275.0
233.00	254.0
233.90	915.0
235.00	1095.0
235.90	739.0
237.00	974.0
238.00	242.0
239.00	619.0
239.90	419.0
241.00	947.0
241.90	1816.0
243.00	1599.0
244.00	25224.0
245.00	3654.0
246.00	5518.0
246.90	1219.0
247.90	313.0
248.90	831.0
250.00	229.0
251.00	201.0
252.00	194.0
253.10	460.0
254.00	1055.0
255.00	133696.0
256.00	18936.0
257.00	1653.0
258.00	7638.0
259.00	1125.0
260.00	262.0
261.00	241.0
261.80	57.0
263.10	40.0
263.90	254.0
265.00	3034.0
265.90	486.0
267.00	113.0
268.00	57.0
269.00	95.0
269.90	132.0
270.90	405.0
271.90	382.0
273.00	4114.0
274.00	9673.0
275.00	57392.0
276.00	7654.0
277.00	4826.0
278.00	767.0
279.10	269.0
279.90	0.0
281.00	514.0
282.00	322.0
282.90	694.0
284.00	371.0
285.00	708.0
285.90	259.0
286.80	17.0
288.00	70.0
289.00	191.0
290.00	105.0
290.80	136.0
292.00	330.0
292.90	1001.0
294.00	167.0
295.00	481.0
296.00	15919.0
296.90	2352.0
297.90	213.0
299.10	17.0
300.10	23.0
300.90	249.0
301.90	243.0
303.00	1941.0
304.00	669.0
304.90	114.0
305.70	22.0
306.70	14.0
307.80	211.0
308.80	116.0
309.80	221.0
311.00	69.0
312.00	82.0
313.00	111.0
314.10	992.0
315.00	1544.0
315.90	1171.0
317.00	109.0
318.10	15.0
319.00	33.0
320.00	64.0
321.00	478.0
322.10	138.0

Instrument :  
BNA\_P  
ClientSampleId :  
DFTPP708

323.00	4644.0
324.00	1088.0
325.00	143.0
325.90	160.0
327.00	1110.0
328.00	750.0
328.90	85.0
329.90	19.0
330.90	5.0
332.00	268.0
333.20	484.0
334.00	3421.0
334.90	684.0
336.10	110.0
337.20	11.0
337.90	4.0
338.80	90.0
339.90	108.0
341.00	656.0
341.80	292.0
342.60	101.0
343.60	8.0
344.20	11.0
345.90	1297.0
346.80	114.0
347.90	37.0
348.80	10.0
349.10	15.0
350.20	46.0
351.00	113.0
352.00	1114.0
353.00	1246.0
354.00	1490.0
354.90	520.0
356.00	55.0
357.10	16.0
357.90	21.0
359.00	72.0
360.30	2.0
360.90	71.0
361.40	1.0
362.30	8.0
362.90	11.0
365.00	6307.0
366.00	1054.0
367.00	174.0
367.50	16.0
368.00	9.0
368.50	12.0
368.90	12.0
369.90	165.0
371.00	460.0
372.00	2356.0
373.00	506.0
373.90	106.0
375.20	14.0
376.30	2.0
377.00	126.0
377.90	17.0
379.20	0.0
379.80	6.0
380.80	8.0
381.80	14.0
383.00	759.0
384.00	285.0
385.10	45.0
386.10	11.0
386.80	12.0
387.70	4.0
388.70	38.0
389.90	343.0
390.90	213.0
392.00	211.0
392.80	21.0
393.90	5.0
394.60	7.0
395.30	16.0
396.90	46.0
397.40	2.0
398.80	4.0
400.80	181.0
401.90	1040.0
403.00	1434.0
404.00	405.0
404.90	68.0
405.80	8.0
406.90	19.0
407.70	7.0
408.10	5.0
409.20	13.0
410.00	57.0
411.00	8.0
413.00	15.0
415.10	128.0
416.10	13.0
417.10	2.0

Instrument :  
BNA\_P  
ClientSampleId :  
DFTPP708

417.50	3.0
418.20	8.0
419.00	4.0
419.80	3.0
421.00	1381.0
421.90	1103.0
423.00	8355.0
423.90	1802.0
425.20	87.0
426.00	15.0
427.00	6.0
428.00	21.0
428.50	2.0
429.10	48.0
429.80	15.0
430.30	4.0
431.30	3.0
431.80	6.0
433.10	4.0
434.30	12.0
435.10	7.0
436.20	14.0
437.20	9.0
438.10	21.0
438.60	18.0
439.60	45.0
441.00	20280.0
442.00	134464.0
443.00	24984.0
444.00	2260.0
444.90	97.0
445.90	6.0
447.40	7.0
448.30	0.0
449.10	4.0
450.70	3.0
452.10	5.0
453.90	4.0
455.30	4.0
456.80	4.0
458.20	7.0
458.40	7.0
459.00	14.0
460.10	5.0
460.80	31.0
461.60	5.0
462.30	14.0
463.20	5.0
464.80	4.0
465.40	0.0
466.40	4.0
468.00	6.0
469.40	5.0
471.00	6.0
471.70	0.0
472.70	5.0
473.50	0.0
474.20	4.0
475.50	1.0
475.80	2.0
477.20	15.0
477.90	1.0
478.80	5.0
480.50	15.0
482.10	4.0
482.80	0.0
483.50	3.0
484.20	8.0
485.20	5.0
486.70	5.0
488.70	8.0
489.40	3.0
489.90	14.0
491.40	4.0
492.90	3.0
494.40	4.0
494.80	2.0
496.20	4.0
497.70	16.0
499.30	4.0
500.70	4.0
502.30	4.0
502.80	2.0
504.10	5.0
505.70	5.0
507.20	6.0
507.60	2.0
508.30	2.0
508.90	3.0
510.50	20.0
511.20	0.0
512.00	6.0
513.50	4.0
515.10	5.0
515.80	1.0
516.70	4.0

Instrument :  
BNA\_P  
ClientSampleId :  
DFTPP708

518.10	3.0
519.00	28.0
519.80	4.0
520.70	0.0
521.40	5.0
522.30	6.0
523.00	4.0
524.30	7.0
524.60	5.0
525.50	1.0
526.50	12.0
527.60	7.0
528.10	1.0
529.30	5.0
530.00	0.0
531.00	4.0
531.80	0.0
532.40	6.0
533.90	5.0
534.70	7.0
535.40	10.0
535.90	1.0
537.10	15.0
537.80	8.0
538.70	4.0
540.30	5.0
542.00	9.0
543.40	5.0
544.50	1.0
545.00	4.0
546.50	4.0
547.20	14.0
548.30	4.0
549.00	18.0

**Instrument :**  
BNA\_P  
**ClientSampleId :**  
DFTPP708

m/z	Abundance
35.10	2.0
35.90	192.0
36.90	416.0
38.10	780.0
39.00	5201.0
40.00	1017.0
41.00	378.0
42.10	66.0
43.00	267.0
44.00	3274.0
44.90	299.0
45.90	45.0
47.10	64.0
48.10	60.0
48.90	945.0
50.00	16984.0
51.00	68776.0
52.00	3210.0
53.00	237.0
54.00	20.0
55.00	538.0
56.00	1897.0
57.00	5052.0
58.00	238.0
59.00	80.0
59.70	26.0
61.00	923.0
62.00	1112.0
63.00	2924.0
63.90	378.0
64.90	1535.0
66.00	100.0
67.00	141.0
67.90	1426.0
69.00	79536.0
70.00	355.0
71.00	163.0
71.90	77.0
73.00	1423.0
74.00	7528.0
75.00	13779.0
76.00	4356.0
77.00	89952.0
78.00	6153.0
79.00	6822.0
80.00	4825.0
81.00	6470.0
81.90	2133.0
83.00	1260.0
83.90	358.0
85.00	1200.0
86.00	2132.0
86.90	796.0
88.00	367.0
88.90	285.0
89.90	32.0
91.00	1506.0
92.00	1615.0
93.00	9650.0
94.00	703.0
94.90	295.0
96.00	609.0
97.00	212.0
98.00	8198.0
99.00	6168.0
100.00	560.0
101.00	3593.0
101.90	206.0
102.90	1148.0
103.90	2351.0
104.90	2248.0
105.90	644.0
107.00	27352.0
108.00	3847.0
109.00	741.0
110.00	48400.0
111.00	7354.0
111.90	864.0
112.90	304.0
113.90	121.0
114.90	174.0
116.00	1634.0
117.00	21896.0
118.00	1282.0
118.90	335.0
119.90	305.0
120.90	118.0
122.00	1621.0
123.00	2354.0
123.90	1169.0
124.90	1104.0
126.20	511.0

**Instrument :**  
BNA\_P  
**ClientSampleId :**  
DFTPP708

127.00	89920.0
128.00	6223.0
129.00	34464.0
130.00	2869.0
131.00	592.0
132.00	315.0
132.90	355.0
134.00	1138.0
135.00	3263.0
136.00	1179.0
137.10	1759.0
137.70	386.0
139.00	228.0
139.80	435.0
141.00	4541.0
142.00	1614.0
142.90	1160.0
143.80	510.0
145.00	465.0
145.90	892.0
147.00	2837.0
148.00	5447.0
148.90	1177.0
149.80	276.0
150.10	276.0
151.00	708.0
151.70	334.0
152.90	1790.0
153.90	1190.0
155.00	2743.0
156.10	4806.0
157.00	861.0
157.90	869.0
158.90	607.0
160.00	1648.0
161.00	2255.0
161.90	755.0
163.10	207.0
163.90	254.0
164.90	1851.0
166.00	1890.0
167.00	10517.0
168.00	4492.0
169.00	727.0
170.00	327.0
171.00	453.0
172.00	852.0
173.00	1405.0
174.00	2380.0
175.00	3793.0
176.00	1097.0
177.00	2027.0
177.90	732.0
179.00	7607.0
180.00	5387.0
181.00	1979.0
182.00	505.0
182.90	229.0
183.90	590.0
185.00	3786.0
186.00	30008.0
187.00	8112.0
188.00	1020.0
189.00	1947.0
189.90	223.0
191.00	1306.0
192.00	2779.0
193.00	2943.0
194.10	792.0
194.90	392.0
196.00	5733.0
197.10	1180.0
198.00	220352.0
198.90	16319.0
200.00	1308.0
201.40	1020.0
202.10	299.0
203.00	1595.0
204.00	8197.0
205.00	14269.0
206.00	59976.0
207.00	10428.0
208.00	2748.0
209.10	891.0
210.10	896.0
211.00	2672.0
211.90	429.0
212.90	118.0
213.90	65.0
214.90	725.0
216.00	1122.0
217.00	16832.0
218.00	2329.0
219.00	247.0
220.00	332.0
221.00	8582.0

Instrument :  
BNA\_P  
ClientSampleId :  
DFTPP708

221.70	2040.0
223.00	4251.0
224.00	34928.0
225.00	8524.0
226.00	1172.0
227.00	15388.0
227.90	2277.0
229.00	3007.0
229.90	411.0
231.00	1508.0
231.90	193.0
232.90	243.0
233.90	1003.0
235.00	1103.0
236.00	652.0
237.00	1457.0
238.10	167.0
238.90	682.0
239.90	518.0
240.90	970.0
242.10	1356.0
243.00	1575.0
244.00	26384.0
245.00	3238.0
246.00	5687.0
246.90	1013.0
247.90	233.0
249.00	1064.0
249.90	291.0
250.90	290.0
251.90	355.0
253.00	561.0
254.10	971.0
255.00	142848.0
256.00	20536.0
257.00	1667.0
258.00	8561.0
259.00	1192.0
260.00	287.0
261.00	190.0
262.00	47.0
262.60	10.0
263.10	45.0
263.90	205.0
265.00	3099.0
266.00	646.0
267.00	253.0
267.90	92.0
269.10	94.0
269.90	189.0
271.10	290.0
272.10	391.0
272.90	4634.0
274.00	10847.0
275.00	62416.0
276.00	8367.0
277.00	5504.0
277.90	916.0
279.00	126.0
279.70	12.0
281.10	901.0
282.00	330.0
282.90	671.0
283.90	377.0
285.00	1174.0
286.00	217.0
287.00	15.0
288.10	67.0
289.00	243.0
289.90	348.0
290.80	105.0
292.00	346.0
293.00	1313.0
294.00	302.0
295.00	337.0
296.00	18032.0
297.00	2393.0
298.00	208.0
299.80	14.0
301.00	261.0
302.00	270.0
303.00	2046.0
304.00	576.0
304.90	171.0
305.70	10.0
306.30	5.0
306.60	5.0
308.00	254.0
308.90	167.0
310.00	295.0
311.10	73.0
312.00	37.0
312.90	167.0
314.00	870.0
314.90	2310.0
315.90	992.0

Instrument :  
BNA\_P  
ClientSampleId :  
DFTPP708



317.10	329.0
317.80	11.0
318.80	8.0
320.00	38.0
320.90	652.0
322.00	239.0
323.00	5515.0
324.00	963.0
325.00	146.0
325.90	218.0
326.90	1042.0
328.10	536.0
328.90	64.0
329.90	5.0
330.70	7.0
332.00	439.0
332.90	476.0
334.00	3567.0
334.90	724.0
336.00	144.0
336.80	7.0
337.30	14.0
337.70	5.0
339.10	151.0
339.90	139.0
341.00	874.0
342.00	211.0
342.70	53.0
344.10	15.0
345.10	78.0
345.90	950.0
346.90	161.0
347.90	48.0
349.00	20.0
350.20	64.0
351.00	75.0
352.10	1618.0
352.90	1309.0
354.00	1619.0
354.90	675.0
356.10	45.0
356.80	20.0
357.30	22.0
357.80	20.0
358.90	130.0
359.80	19.0
361.00	52.0
361.50	4.0
362.20	4.0
362.80	2.0
363.20	4.0
365.00	7500.0
365.90	817.0
366.80	35.0
367.40	1.0
367.90	7.0
369.10	9.0
369.80	188.0
370.90	651.0
372.00	2855.0
373.00	902.0
373.90	85.0
375.10	1.0
375.70	24.0
377.00	83.0
377.70	10.0
378.80	5.0
379.40	1.0
380.20	4.0
380.90	25.0
381.80	4.0
383.00	822.0
383.80	263.0
385.10	47.0
386.30	29.0
386.90	9.0
388.00	21.0
389.10	27.0
389.90	442.0
390.90	347.0
391.90	192.0
392.70	32.0
394.90	22.0
395.70	12.0
396.10	12.0
396.90	56.0
397.50	7.0
398.80	3.0
399.30	3.0
400.10	10.0
400.90	213.0
402.00	1074.0
402.90	1765.0
404.00	499.0
404.80	82.0
406.10	6.0

**Instrument :**  
BNA\_P  
**ClientSampleId :**  
DFTPP708

407.00	5.0
408.00	19.0
408.80	11.0
410.00	60.0
411.00	3.0
411.80	4.0
412.50	0.0
413.30	5.0
414.90	180.0
416.10	7.0
416.60	5.0
417.20	5.0
418.10	5.0
419.80	13.0
420.90	1170.0
422.00	1308.0
423.00	9497.0
424.00	1838.0
424.90	316.0
426.00	20.0
427.00	7.0
427.80	29.0
429.00	12.0
429.80	17.0
430.80	12.0
431.50	0.0
432.10	14.0
432.60	13.0
433.20	3.0
433.90	6.0
435.50	17.0
436.10	12.0
436.80	8.0
438.10	37.0
439.00	8.0
439.90	147.0
441.00	24592.0
442.00	158784.0
443.00	31624.0
444.00	2894.0
444.80	208.0
445.60	2.0
445.90	3.0
446.50	4.0
447.70	13.0
448.20	14.0
449.50	6.0
450.60	10.0
451.20	3.0
451.90	0.0
452.70	5.0
454.20	6.0
455.70	5.0
457.30	5.0
457.80	1.0
459.00	6.0
460.60	15.0
461.10	4.0
462.00	8.0
462.90	5.0
463.60	5.0
465.40	5.0
466.70	6.0
467.80	0.0
468.50	4.0
470.20	4.0
470.70	10.0
471.20	15.0
472.20	1.0
473.20	4.0
474.00	0.0
474.80	25.0
475.90	11.0
476.30	17.0
477.80	9.0
478.30	6.0
479.60	4.0
481.10	6.0
482.60	7.0
483.30	5.0
484.10	3.0
485.90	6.0
487.30	5.0
488.90	18.0
489.60	1.0
490.00	1.0
490.70	8.0
492.20	6.0
493.70	5.0
495.30	5.0
496.70	5.0
497.30	1.0
498.40	13.0
500.00	5.0
500.60	0.0
501.50	5.0

Instrument :  
BNA\_P  
ClientSampleId :  
DFTPP708

502.90	6.0
503.70	15.0
504.70	4.0
505.80	9.0
506.30	4.0
507.10	1.0
507.80	4.0
509.40	5.0
510.90	6.0
512.60	4.0
513.20	4.0
514.10	5.0
514.90	0.0
515.60	5.0
517.30	4.0
518.70	4.0
520.40	6.0
521.40	1.0
522.00	5.0
523.50	5.0
525.00	5.0
526.60	5.0
528.20	6.0
529.90	5.0
531.30	4.0
532.30	1.0
533.00	4.0
534.00	1.0
534.80	22.0
536.10	6.0
536.90	1.0
537.90	15.0
539.20	6.0
540.00	1.0
541.00	4.0
542.50	4.0
543.10	0.0
544.00	4.0
545.50	4.0
547.20	5.0
547.80	1.0
548.60	5.0
549.10	12.0

**Instrument :**  
BNA\_P  
**ClientSampleId :**  
DFTPP708

m/z	Abundance
35.20	3.0
35.90	95.0
37.00	211.0
38.00	416.0
39.00	2704.0
40.00	820.0
41.00	578.0
42.00	82.0
43.00	174.0
44.00	3982.0
45.00	314.0
45.80	55.0
46.80	102.0
48.00	49.0
49.00	588.0
50.00	8924.0
51.00	35928.0
52.00	1938.0
52.90	286.0
53.70	6.0
55.00	317.0
55.90	1129.0
57.00	2950.0
58.00	191.0
58.90	109.0
59.90	27.0
60.90	721.0
62.10	554.0
63.00	1597.0
64.00	259.0
65.00	1120.0
66.00	79.0
66.90	201.0
67.90	748.0
69.00	43760.0
69.90	348.0
70.90	78.0
72.00	70.0
72.90	828.0
74.00	4552.0
75.00	7589.0
76.00	2043.0
77.00	49360.0
78.00	3626.0
79.00	3076.0
80.00	2713.0
81.00	3610.0
81.90	909.0
83.00	870.0
83.90	244.0
84.90	835.0
86.00	1146.0
87.00	344.0
87.90	193.0
88.80	171.0
89.90	30.0
90.90	808.0
92.00	907.0
93.00	5932.0
94.00	428.0
95.20	239.0
96.00	420.0
97.00	240.0
98.00	4450.0
99.00	3624.0
99.90	367.0
101.00	2141.0
101.90	130.0
102.90	634.0
103.90	1551.0
105.00	1337.0
106.00	360.0
107.00	15029.0
108.00	2526.0
109.00	388.0
110.00	27784.0
111.00	4067.0
112.00	542.0
112.90	194.0
114.00	71.0
114.90	256.0
115.90	912.0
117.00	12554.0
117.90	984.0
118.90	228.0
119.90	200.0
120.90	61.0
122.00	1138.0
123.00	1735.0
124.00	671.0
125.00	1025.0
126.10	293.0

Instrument :  
BNA\_P  
ClientSampleId :  
DFTPP708

127.00	50944.0
128.00	3125.0
129.00	19784.0
130.00	1594.0
131.00	499.0
131.80	197.0
133.00	255.0
134.00	534.0
135.00	1913.0
136.00	863.0
137.00	853.0
138.10	250.0
139.20	146.0
139.90	288.0
141.00	2741.0
142.00	900.0
142.90	674.0
143.90	130.0
145.00	269.0
145.90	601.0
147.00	1684.0
148.00	3873.0
149.00	679.0
149.90	128.0
151.10	338.0
152.00	295.0
153.00	801.0
154.00	641.0
155.00	1816.0
156.00	2147.0
157.00	517.0
157.90	464.0
159.00	465.0
159.90	1004.0
161.00	1478.0
162.10	449.0
163.00	173.0
164.00	207.0
165.00	1293.0
165.90	722.0
167.00	5164.0
168.00	3309.0
168.90	483.0
169.90	195.0
171.00	312.0
171.90	485.0
172.90	657.0
174.00	1185.0
175.00	2514.0
176.00	1005.0
176.90	1176.0
178.00	428.0
179.00	4340.0
180.00	3672.0
181.00	1326.0
181.80	203.0
182.80	157.0
184.00	319.0
185.00	2173.0
186.00	18056.0
187.00	4863.0
188.00	557.0
189.00	1611.0
189.80	191.0
191.00	867.0
192.00	1597.0
193.00	2071.0
194.00	472.0
196.00	3266.0
196.80	479.0
198.00	132736.0
198.90	8719.0
199.90	697.0
201.50	511.0
203.00	1116.0
204.00	4707.0
205.00	8875.0
206.00	36184.0
207.00	7836.0
208.00	1843.0
209.00	942.0
210.00	767.0
210.90	1518.0
212.10	152.0
212.90	63.0
213.70	20.0
214.80	421.0
216.00	811.0
217.00	10491.0
218.00	1358.0
219.00	125.0
221.00	5066.0
222.00	1144.0
223.00	2278.0
224.00	21256.0
225.00	5088.0

**Instrument :**  
BNA\_P  
**ClientSampleId :**  
DFTPP708

225.90	640.0
227.00	9207.0
228.00	1478.0
229.00	1659.0
230.00	203.0
231.10	737.0
232.10	141.0
233.00	175.0
233.90	399.0
235.00	535.0
236.00	404.0
237.00	727.0
237.90	76.0
238.90	473.0
239.90	283.0
240.90	531.0
241.90	1143.0
243.00	1315.0
244.00	16115.0
245.10	2286.0
245.90	3196.0
247.10	879.0
248.00	218.0
248.90	688.0
250.00	75.0
251.00	150.0
252.00	206.0
253.00	351.0
254.10	750.0
255.00	87176.0
256.00	12175.0
257.00	979.0
258.00	4893.0
259.00	874.0
260.00	159.0
260.90	285.0
261.80	10.0
263.00	24.0
263.80	90.0
264.90	2007.0
265.90	279.0
267.00	177.0
267.90	54.0
269.10	90.0
269.90	160.0
271.10	178.0
272.00	342.0
273.00	2830.0
274.00	7005.0
275.00	38416.0
276.00	4568.0
277.00	3686.0
277.90	511.0
278.90	178.0
279.80	18.0
281.10	761.0
282.00	270.0
283.00	699.0
283.90	298.0
285.10	688.0
286.00	103.0
287.00	43.0
288.10	93.0
288.90	240.0
289.90	108.0
291.10	88.0
292.10	176.0
293.00	629.0
293.90	215.0
296.00	11544.0
297.00	1541.0
298.10	67.0
299.00	48.0
300.00	22.0
300.90	178.0
302.00	175.0
303.00	1424.0
303.90	333.0
304.90	79.0
305.70	11.0
306.90	19.0
307.90	185.0
309.10	95.0
310.00	213.0
311.10	17.0
312.00	20.0
313.10	89.0
314.00	775.0
314.90	1060.0
316.00	906.0
316.70	90.0
317.00	93.0
317.90	18.0
319.20	13.0
320.00	42.0
321.00	494.0

**Instrument :**  
BNA\_P  
**ClientSampleId :**  
DFTPP708

321.90	167.0
323.00	3761.0
324.00	706.0
325.00	71.0
325.80	55.0
327.00	733.0
327.90	353.0
329.00	43.0
329.90	12.0
330.90	40.0
331.80	361.0
333.00	201.0
334.00	2300.0
334.90	788.0
336.10	54.0
336.70	3.0
338.50	11.0
339.00	96.0
340.00	75.0
341.00	485.0
342.00	157.0
342.70	58.0
343.70	15.0
344.90	18.0
345.80	810.0
347.00	94.0
348.10	18.0
349.20	14.0
349.90	10.0
350.20	11.0
351.00	115.0
352.00	1135.0
353.00	758.0
354.00	1251.0
355.00	357.0
356.10	9.0
356.90	29.0
357.50	10.0
358.00	13.0
358.90	109.0
359.90	12.0
360.60	16.0
361.20	8.0
361.80	11.0
362.40	16.0
363.20	9.0
363.70	16.0
365.00	5632.0
365.90	1072.0
366.70	52.0
367.20	17.0
368.00	7.0
368.60	12.0
369.90	96.0
370.90	404.0
372.00	2329.0
372.90	566.0
374.00	36.0
374.70	5.0
376.00	3.0
376.80	26.0
378.20	5.0
379.30	3.0
380.10	2.0
381.20	28.0
382.90	873.0
384.00	248.0
384.70	9.0
385.30	12.0
385.80	17.0
386.90	12.0
387.30	5.0
388.00	10.0
388.80	17.0
389.90	373.0
390.80	173.0
391.20	165.0
391.90	175.0
393.00	17.0
393.60	5.0
394.70	19.0
395.50	14.0
396.00	15.0
396.90	7.0
398.00	25.0
398.50	26.0
399.20	6.0
399.70	6.0
401.10	117.0
401.90	1039.0
403.00	1360.0
403.80	319.0
404.80	118.0
406.20	4.0
406.70	22.0
407.50	14.0

Instrument :  
BNA\_P  
ClientSampleId :  
DFTPP708

408.00	19.0
409.20	16.0
409.90	88.0
410.50	4.0
410.80	3.0
412.20	6.0
413.10	0.0
414.00	4.0
415.00	91.0
415.70	2.0
416.70	17.0
417.30	6.0
418.10	7.0
418.70	6.0
419.80	13.0
420.90	1159.0
422.00	1039.0
423.00	7710.0
424.00	1763.0
425.00	159.0
425.60	11.0
426.70	11.0
428.00	5.0
428.90	13.0
430.00	16.0
431.20	13.0
432.10	4.0
432.50	6.0
433.10	10.0
433.50	8.0
434.30	4.0
435.10	13.0
435.90	20.0
436.30	19.0
437.60	16.0
438.80	19.0
439.40	23.0
441.00	20432.0
442.00	128072.0
443.00	24360.0
444.00	1923.0
444.80	70.0
446.30	7.0
446.80	10.0
448.40	4.0
449.30	2.0
450.30	5.0
451.60	12.0
452.70	0.0
453.50	5.0
455.00	3.0
456.50	7.0
457.50	13.0
458.10	4.0
458.80	8.0
459.70	3.0
460.60	13.0
461.30	5.0
461.80	19.0
462.80	4.0
464.30	5.0
464.90	2.0
465.90	5.0
467.60	5.0
468.50	1.0
469.10	4.0
470.60	5.0
472.20	4.0
473.70	7.0
474.80	30.0
475.60	9.0
477.00	13.0
478.60	4.0
479.30	0.0
480.00	6.0
481.50	5.0
482.20	1.0
483.30	5.0
484.80	3.0
486.30	5.0
487.90	4.0
488.90	20.0
489.50	6.0
491.10	5.0
492.70	5.0
494.10	6.0
495.80	5.0
497.40	4.0
499.20	4.0
500.50	5.0
501.30	7.0
502.00	4.0
503.00	7.0
503.60	5.0
505.30	5.0
506.70	5.0

**Instrument :**  
BNA\_P  
**ClientSampleId :**  
DFTPP708



507.50	1.0
508.50	5.0
509.80	4.0
510.40	9.0
511.50	4.0
513.20	5.0
514.70	3.0
515.30	1.0
516.30	6.0
517.90	5.0
519.00	3.0
519.40	3.0
519.80	4.0
520.80	5.0
522.60	5.0
523.90	3.0
524.40	3.0
525.50	4.0
527.20	4.0
528.70	4.0
530.40	5.0
531.90	5.0
532.50	7.0
533.50	6.0
534.90	19.0
535.90	16.0
536.80	10.0
538.20	5.0
539.80	4.0
541.40	4.0
542.20	1.0
542.80	3.0
544.50	6.0
546.20	4.0
547.80	4.0
549.30	5.0

**Instrument :**  
BNA\_P  
**ClientSampleId :**  
DFTPP708