

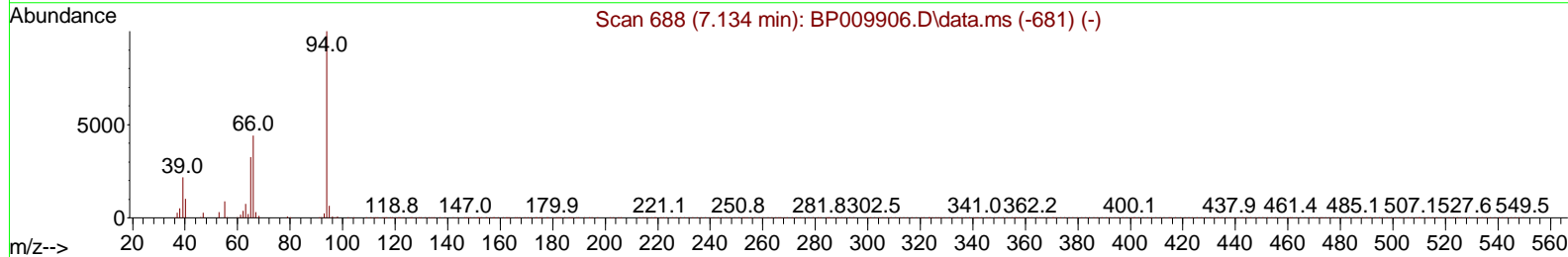
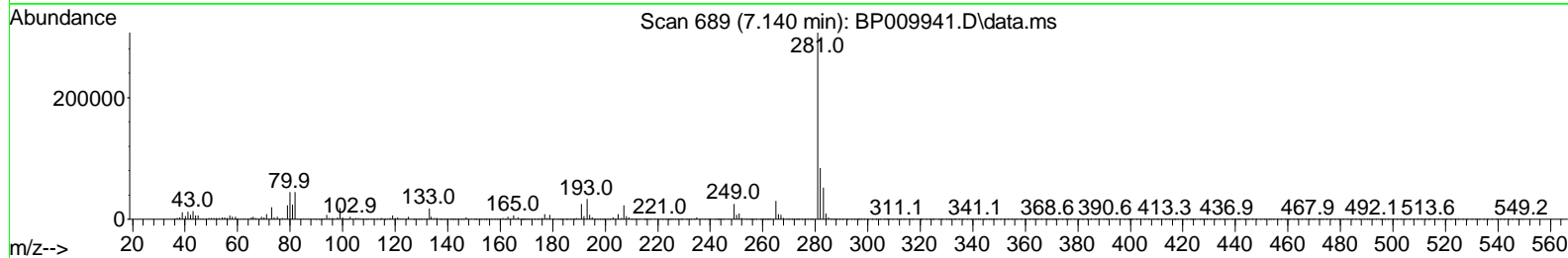
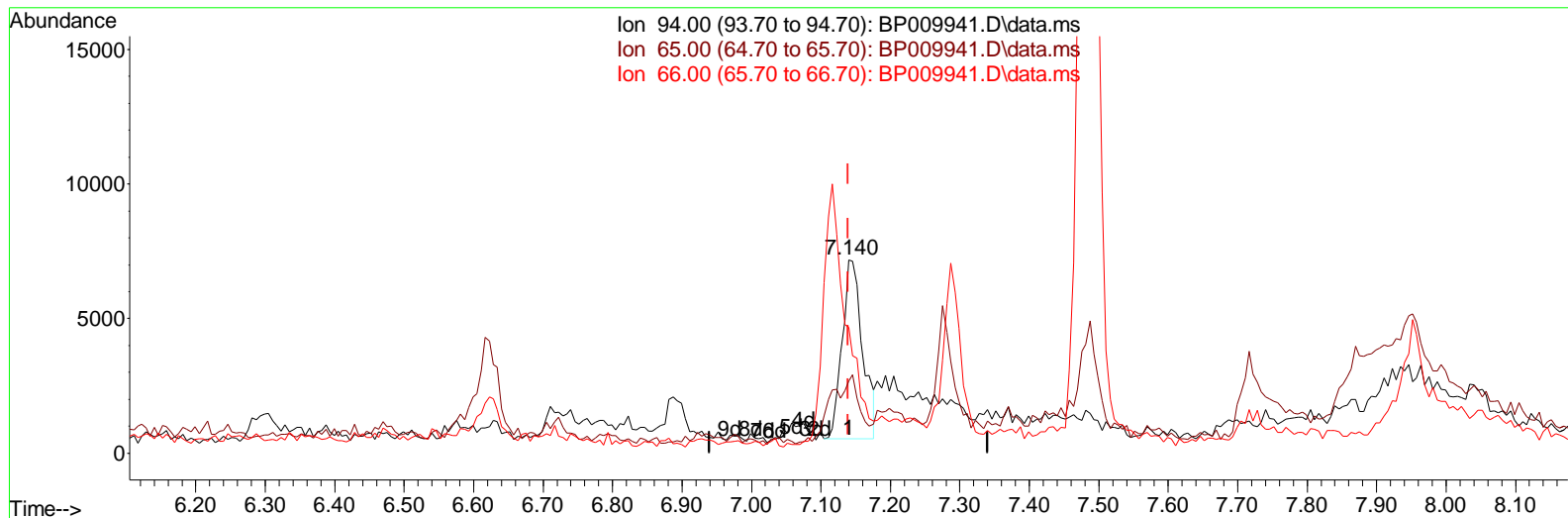
Data Path : Z:\svoasrv\HPCHEM1\BNA_P\Data\BP041822\
 Data File : BP009941.D
 Acq On : 19 Apr 2022 06:10
 Operator : CG/JU
 Sample : N2358-03RE
 Misc :
 ALS Vial : 37 Sample Multiplier: 1

Instrument :
 BNA_P
 ClientSampleId :
 ETNS3RE

Manual Integrations APPROVED

Quant Time: Apr 19 09:21:40 2022
 Quant Method : Z:\svoasrv\HPCHEM1\BNA_P\Methods\SFAM-EPA-BP040722.M
 Quant Title : SVOA CALIBRATION
 QLast Update : Mon Apr 18 00:59:30 2022
 Response via : Initial Calibration

Reviewed By :Jagrut Upadhyay 04/19/2022
 Supervised By :Yogesh Patel 04/22/2022



TIC: BP009941.D\data.ms

(8) Phenol

7.140min (+ 0.000) 0.78 ng/ul

response 13716

Ion	Exp%	Act%
94.00	100.00	100.00
65.00	23.80	37.29#
66.00	43.20	65.25#
0.00	0.00	0.00

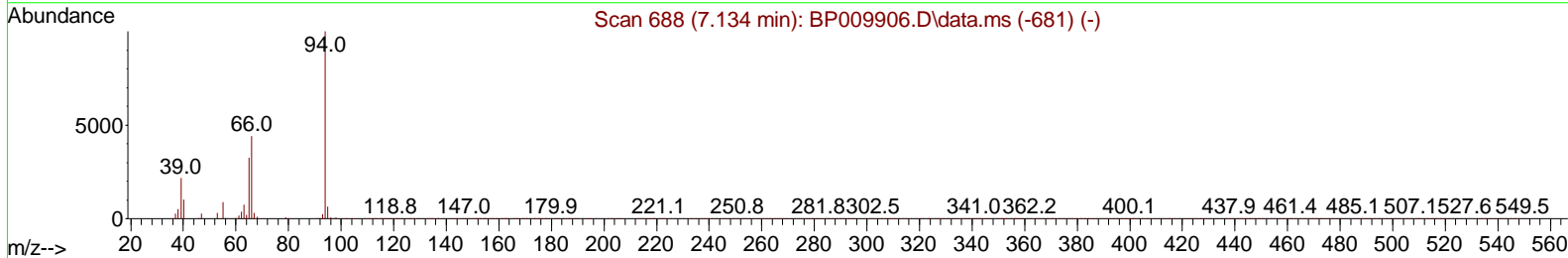
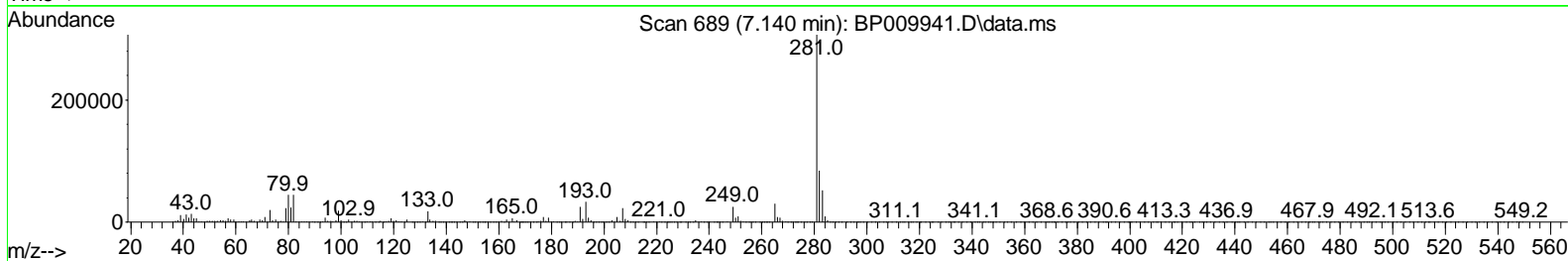
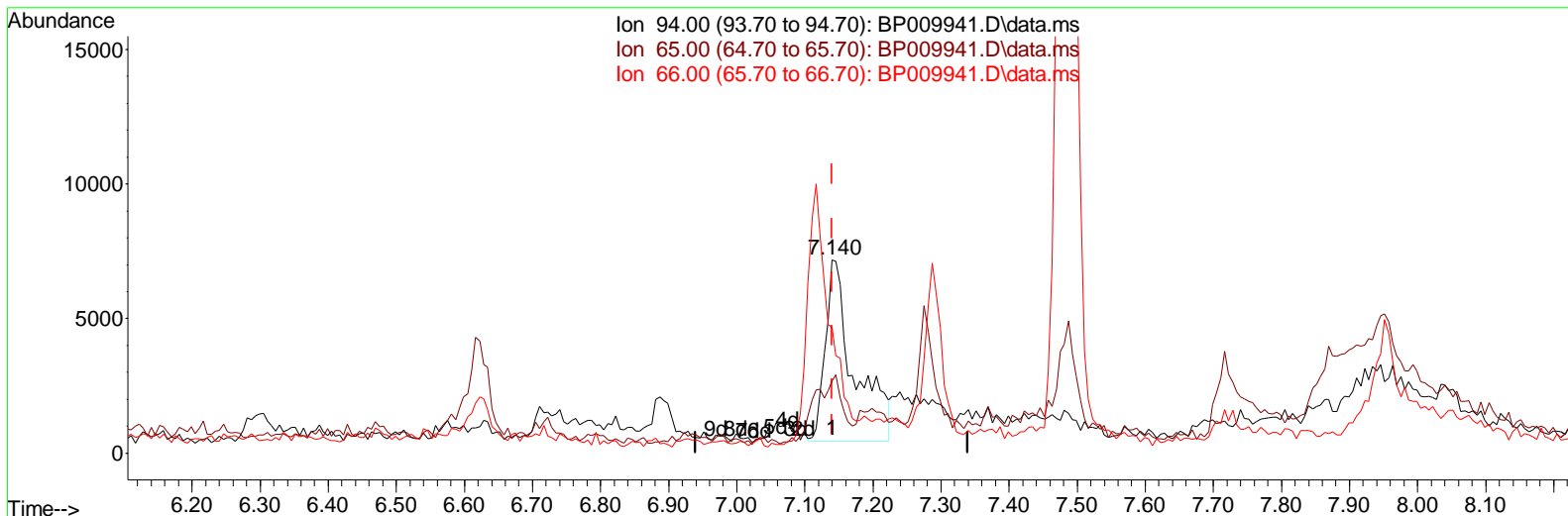
Data Path : Z:\svoasrv\HPCHEM1\BNA_P\Data\BP041822\
 Data File : BP009941.D
 Acq On : 19 Apr 2022 06:10
 Operator : CG/JU
 Sample : N2358-03RE
 Misc :
 ALS Vial : 37 Sample Multiplier: 1

Instrument :
 BNA_P
ClientSampleId :
 ETNS3RE

Manual IntegrationsAPPROVED

Quant Time: Apr 19 07:15:32 2022
 Quant Method : Z:\svoasrv\HPCHEM1\BNA_P\Methods\SFAM-EPA-BP040722.M
 Quant Title : SVOA CALIBRATION
 QLast Update : Mon Apr 18 00:59:30 2022
 Response via : Initial Calibration

Reviewed By :Jagrut Upadhyay 04/19/2022
 Supervised By :Yogesh Patel 04/22/2022



TIC: BP009941.D\data.ms

(8) Phenol

7.140min (+ 0.000) 1.13 ng/ul m

response 19829

Ion	Exp%	Act%
94.00	100.00	100.00
65.00	23.80	37.29#
66.00	43.20	65.25#
0.00	0.00	0.00

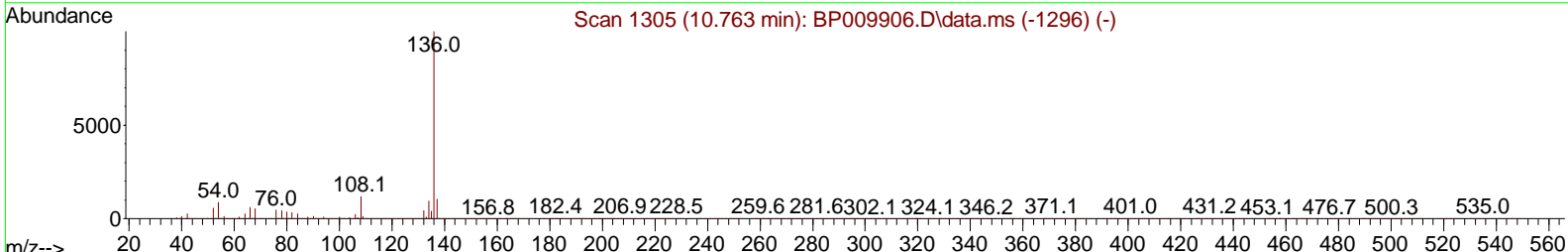
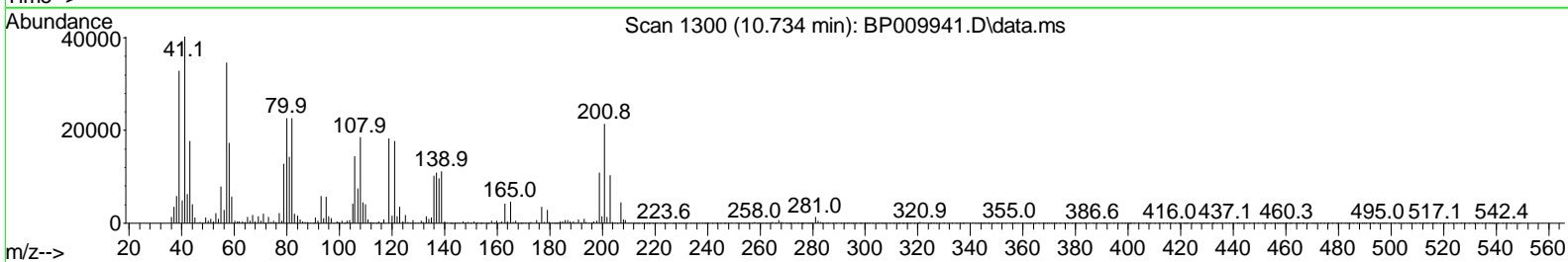
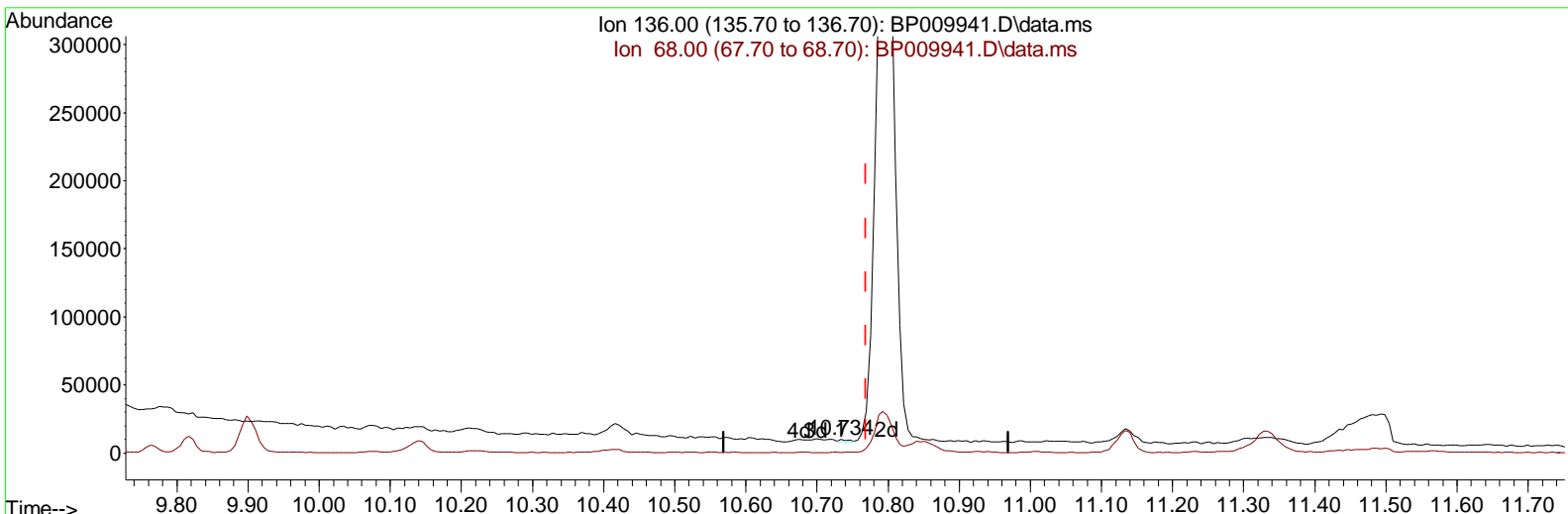
Data Path : Z:\svoasrv\HPCHEM1\BNA_P\Data\BP041822\
 Data File : BP009941.D
 Acq On : 19 Apr 2022 06:10
 Operator : CG/JU
 Sample : N2358-03RE
 Misc :
 ALS Vial : 37 Sample Multiplier: 1

Instrument :
 BNA_P
 ClientSampleId :
 ETNS3RE

Manual Integrations APPROVED

Quant Time: Apr 19 09:21:40 2022
 Quant Method : Z:\svoasrv\HPCHEM1\BNA_P\Methods\SFAM-EPA-BP040722.M
 Quant Title : SVOA CALIBRATION
 QLast Update : Mon Apr 18 00:59:30 2022
 Response via : Initial Calibration

Reviewed By : Jagrut Upadhyay 04/19/2022
 Supervised By : Yogesh Patel 04/22/2022



TIC: BP009941.D\data.ms

(20) Naphthalene-d8 (I)

10.734min (-0.035) 20.00 ng/ul

response 1718

Ion	Exp%	Act%
136.00	100.00	100.00
68.00	5.10	4.46
0.00	0.00	0.00
0.00	0.00	0.00

Data Path : Z:\svoasrv\HPCHEM1\BNA_P\Data\BP041822\
 Data File : BP009941.D
 Acq On : 19 Apr 2022 06:10
 Operator : CG/JU
 Sample : N2358-03RE
 Misc :
 ALS Vial : 37 Sample Multiplier: 1

Instrument :

BNA_P

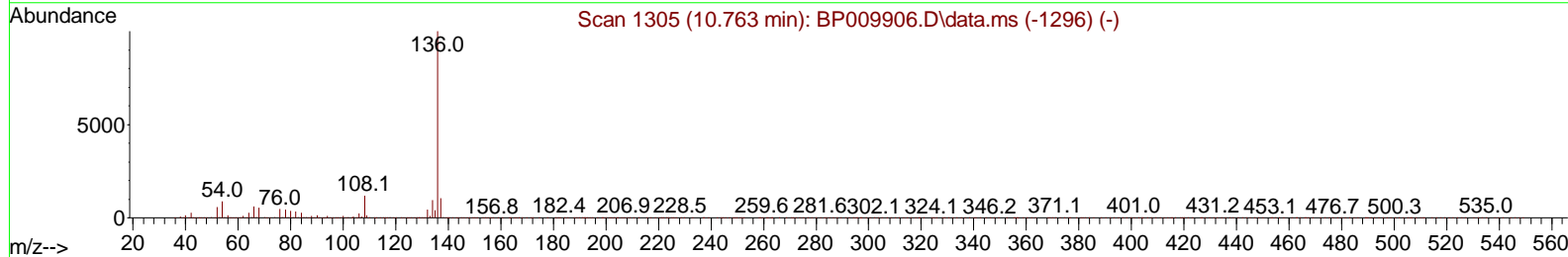
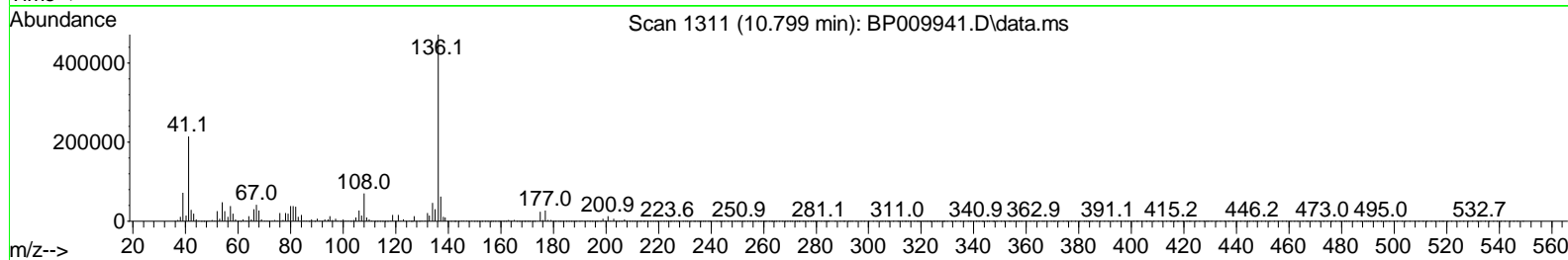
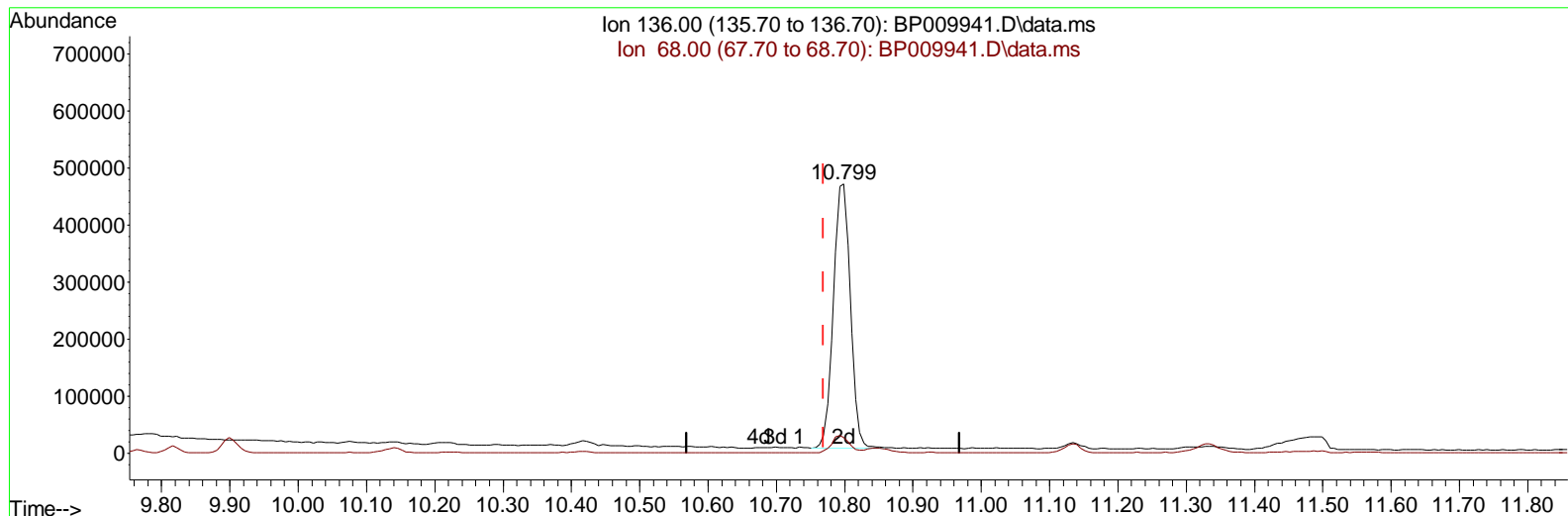
ClientSampleId :

ETNS3RE

Manual IntegrationsAPPROVED

Reviewed By :Jagrut Upadhyay 04/19/2022
 Supervised By :Yogesh Patel 04/22/2022

Quant Time: Apr 19 07:15:32 2022
 Quant Method : Z:\svoasrv\HPCHEM1\BNA_P\Methods\SFAM-EPA-BP040722.M
 Quant Title : SVOA CALIBRATION
 QLast Update : Mon Apr 18 00:59:30 2022
 Response via : Initial Calibration



TIC: BP009941.D\data.ms

(20) Naphthalene-d8 (I)

10.799min (+ 0.030) 20.00 ng/ul m

response 794570

Ion	Exp%	Act%
136.00	100.00	100.00
68.00	5.10	5.87
0.00	0.00	0.00
0.00	0.00	0.00

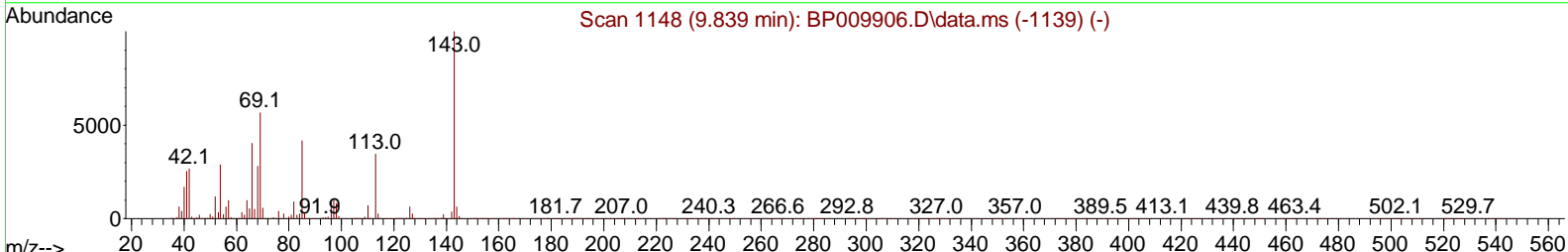
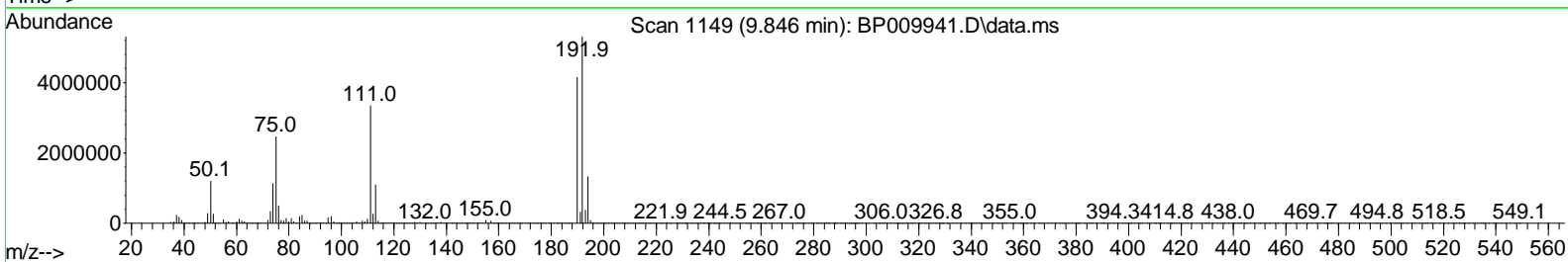
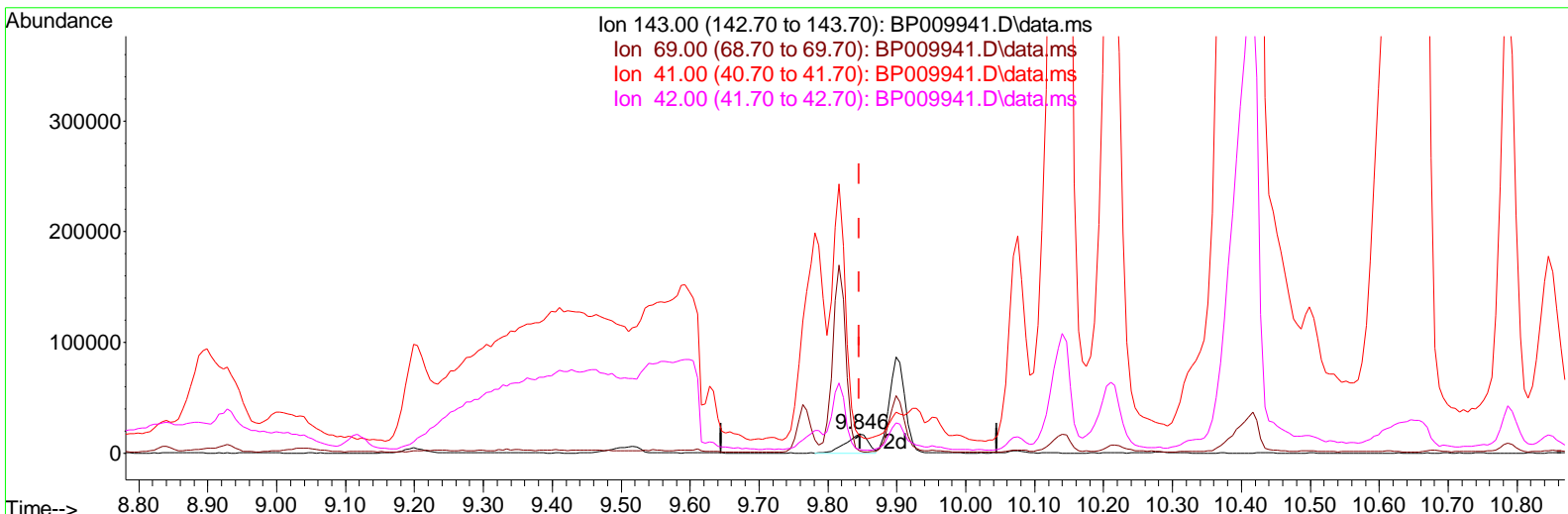
Data Path : Z:\svoasrv\HPCHEM1\BNA_P\Data\BP041822\
 Data File : BP009941.D
 Acq On : 19 Apr 2022 06:10
 Operator : CG/JU
 Sample : N2358-03RE
 Misc :
 ALS Vial : 37 Sample Multiplier: 1

Instrument :
 BNA_P
 ClientSampleId :
 ETNS3RE

Manual Integrations APPROVED

Quant Time: Apr 19 09:21:40 2022
 Quant Method : Z:\svoasrv\HPCHEM1\BNA_P\Methods\SFAM-EPA-BP040722.M
 Quant Title : SVOA CALIBRATION
 QLast Update : Mon Apr 18 00:59:30 2022
 Response via : Initial Calibration

Reviewed By : Jagrut Upadhyay 04/19/2022
 Supervised By : Yogesh Patel 04/22/2022



TIC: BP009941.D\data.ms

(24) 2-Nitrophenol-d4 (S)

9.846min (+ 0.000) 2805.63 ng/u1

response	38108
Ion	Exp% Act%
143.00	100.00 100.00
69.00	47.10 11.09#
41.00	16.70 91.16#
42.00	20.70 19.86

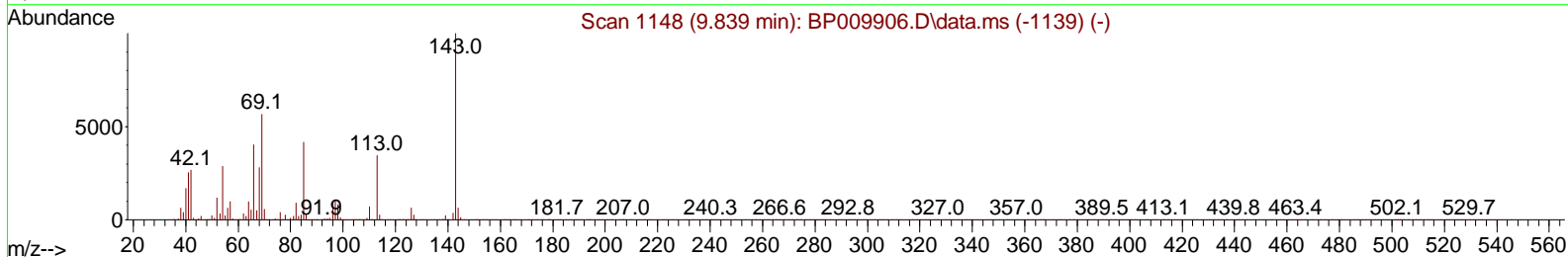
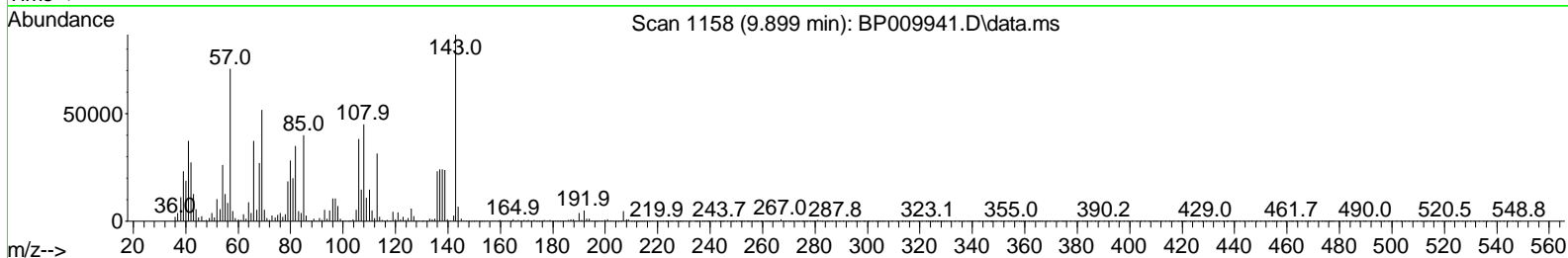
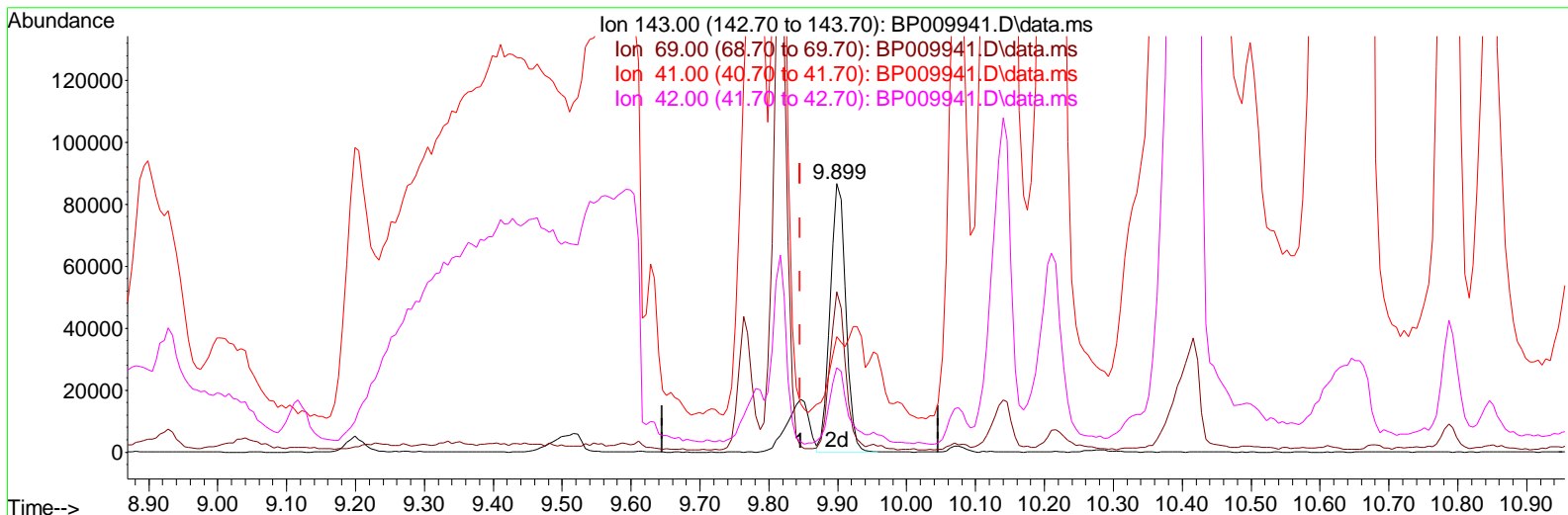
Data Path : Z:\svoasrv\HPCHEM1\BNA_P\Data\BP041822\
 Data File : BP009941.D
 Acq On : 19 Apr 2022 06:10
 Operator : CG/JU
 Sample : N2358-03RE
 Misc :
 ALS Vial : 37 Sample Multiplier: 1

Instrument :
 BNA_P
 ClientSampleId :
 ETNS3RE

Manual Integrations APPROVED

Quant Time: Apr 19 07:15:32 2022
 Quant Method : Z:\svoasrv\HPCHEM1\BNA_P\Methods\SFAM-EPA-BP040722.M
 Quant Title : SVOA CALIBRATION
 QLast Update : Mon Apr 18 00:59:30 2022
 Response via : Initial Calibration

Reviewed By :Jagrut Upadhyay 04/19/2022
 Supervised By :Yogesh Patel 04/22/2022



TIC: BP009941.D\data.ms

(24) 2-Nitrophenol-d4 (S)

9.899min (+ 0.053) 21.85 ng/ul m

response 137258

Ion	Exp%	Act%
143.00	100.00	100.00
69.00	47.10	59.71#
41.00	16.70	42.96#
42.00	20.70	31.39#

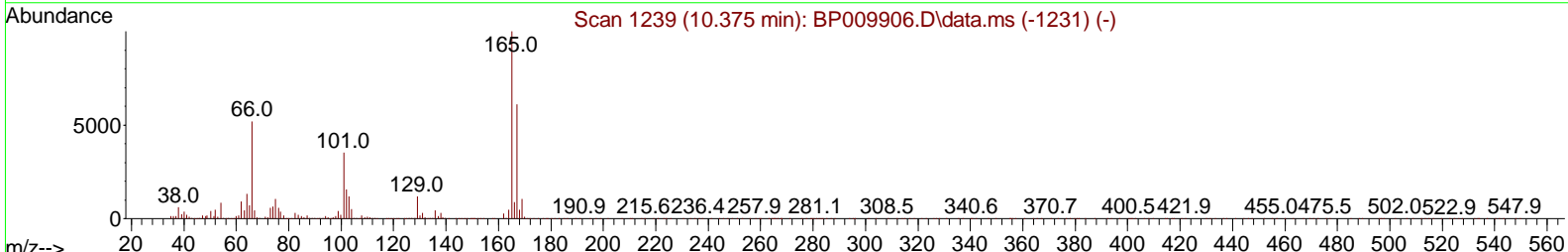
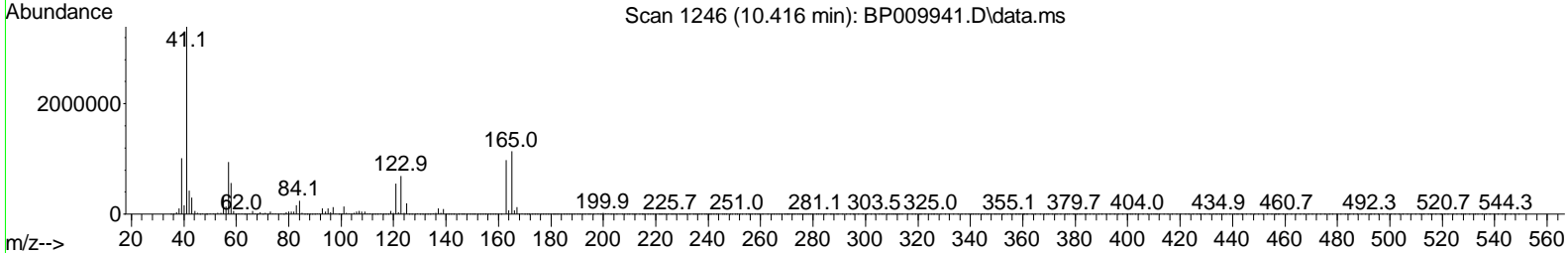
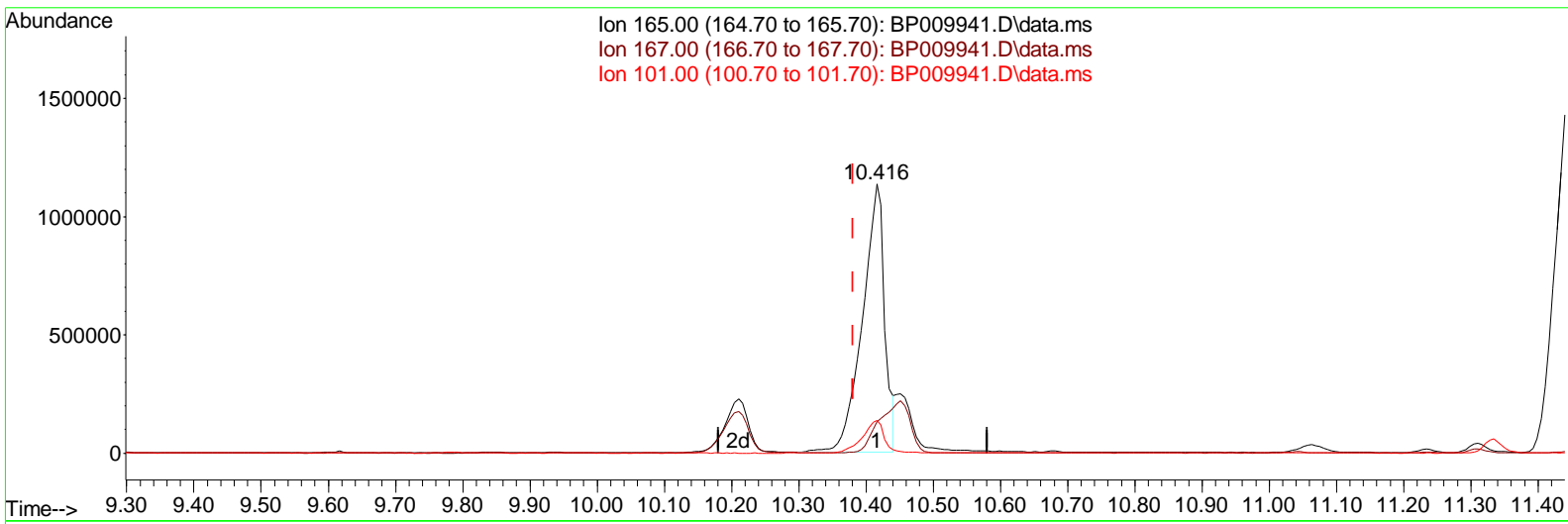
Data Path : Z:\svoasrv\HPCHEM1\BNA_P\Data\BP041822\
 Data File : BP009941.D
 Acq On : 19 Apr 2022 06:10
 Operator : CG/JU
 Sample : N2358-03RE
 Misc :
 ALS Vial : 37 Sample Multiplier: 1

Instrument :
 BNA_P
 ClientSampleId :
 ETNS3RE

Manual Integrations APPROVED

Reviewed By : Jagrut Upadhyay 04/19/2022
 Supervised By : Yogesh Patel 04/22/2022

Quant Time: Apr 19 09:21:40 2022
 Quant Method : Z:\svoasrv\HPCHEM1\BNA_P\Methods\SFAM-EPA-BP040722.M
 Quant Title : SVOA CALIBRATION
 QLast Update : Mon Apr 18 00:59:30 2022
 Response via : Initial Calibration



TIC: BP009941.D\data.ms

(28) 2,4-Dichlorophenol-d3 (S)

10.416min (+ 0.035) 91639.72 ng/ul

response 2604637

Ion	Exp%	Act%
165.00	100.00	100.00
167.00	57.70	11.63#
101.00	49.80	12.22#
0.00	0.00	0.00

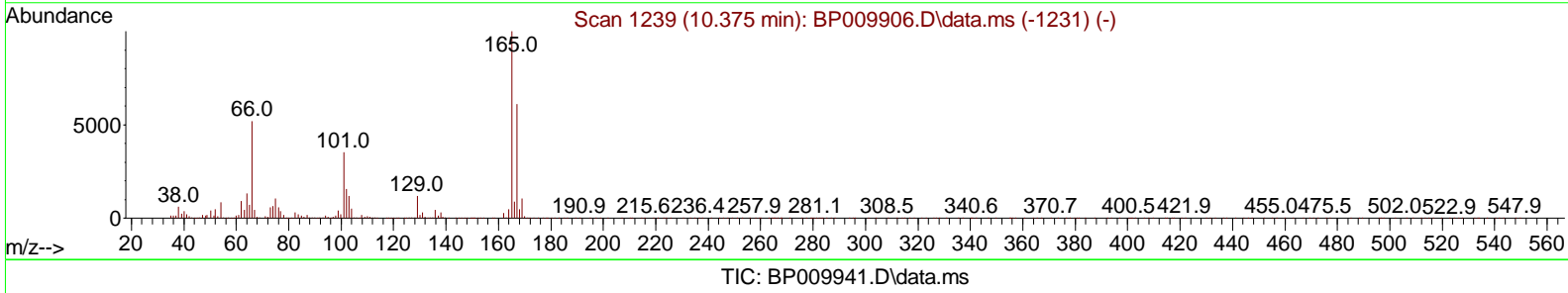
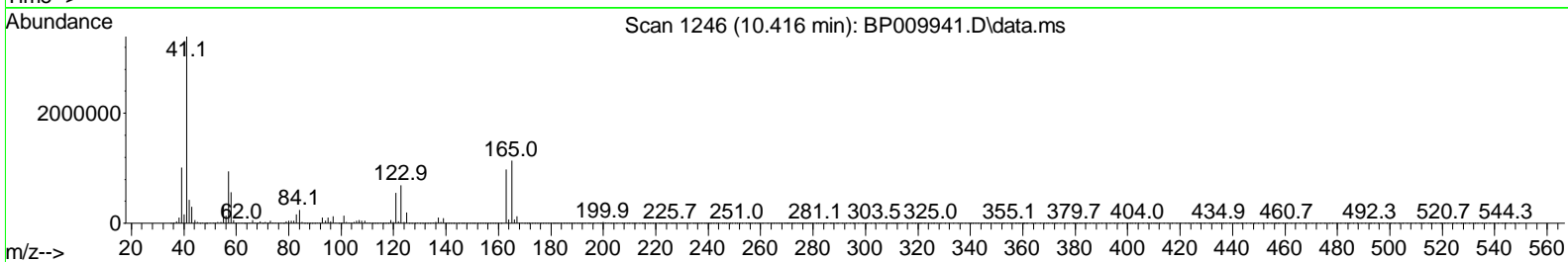
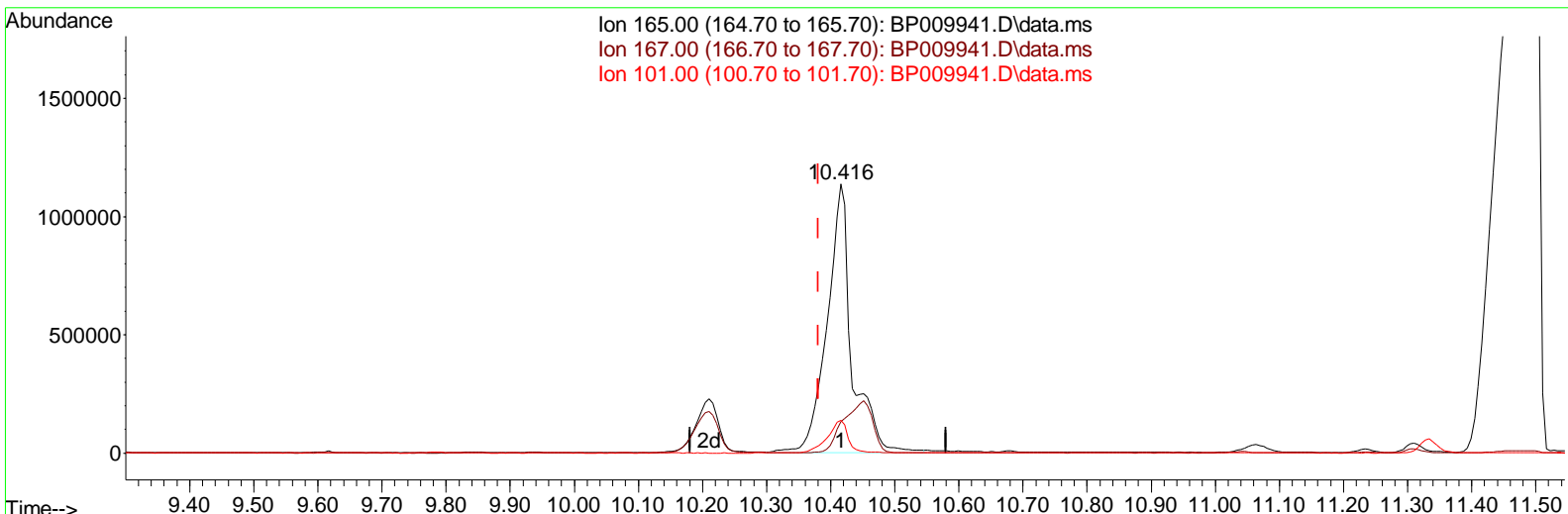
Data Path : Z:\svoasrv\HPCHEM1\BNA_P\Data\BP041822\
 Data File : BP009941.D
 Acq On : 19 Apr 2022 06:10
 Operator : CG/JU
 Sample : N2358-03RE
 Misc :
 ALS Vial : 37 Sample Multiplier: 1

Instrument :
 BNA_P
 ClientSampleId :
 ETNS3RE

Manual Integrations APPROVED

Reviewed By : Jagrut Upadhyay 04/19/2022
 Supervised By : Yogesh Patel 04/22/2022

Quant Time: Apr 19 07:15:32 2022
 Quant Method : Z:\svoasrv\HPCHEM1\BNA_P\Methods\SFAM-EPA-BP040722.M
 Quant Title : SVOA CALIBRATION
 QLast Update : Mon Apr 18 00:59:30 2022
 Response via : Initial Calibration



(28) 2,4-Dichlorophenol-d3 (S)

10.416min (+ 0.035) 235.96 ng/ul m

response 3101716

Ion	Exp%	Act%
165.00	100.00	100.00
167.00	57.70	11.63#
101.00	49.80	12.22#
0.00	0.00	0.00

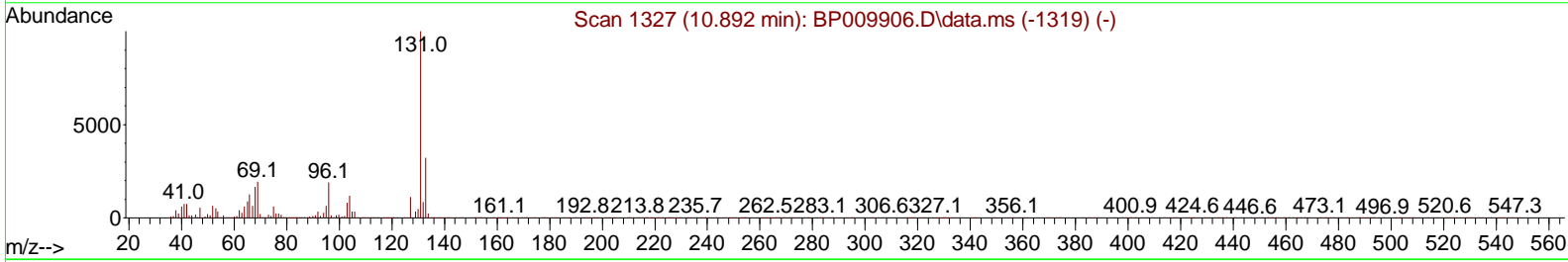
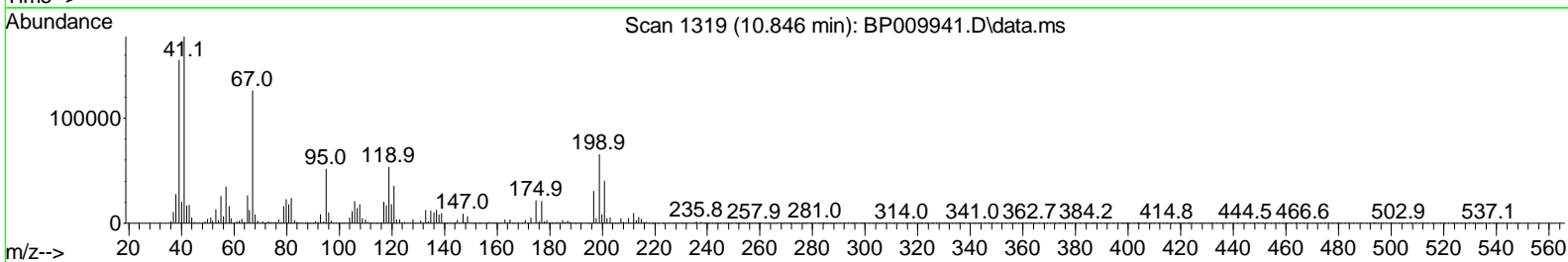
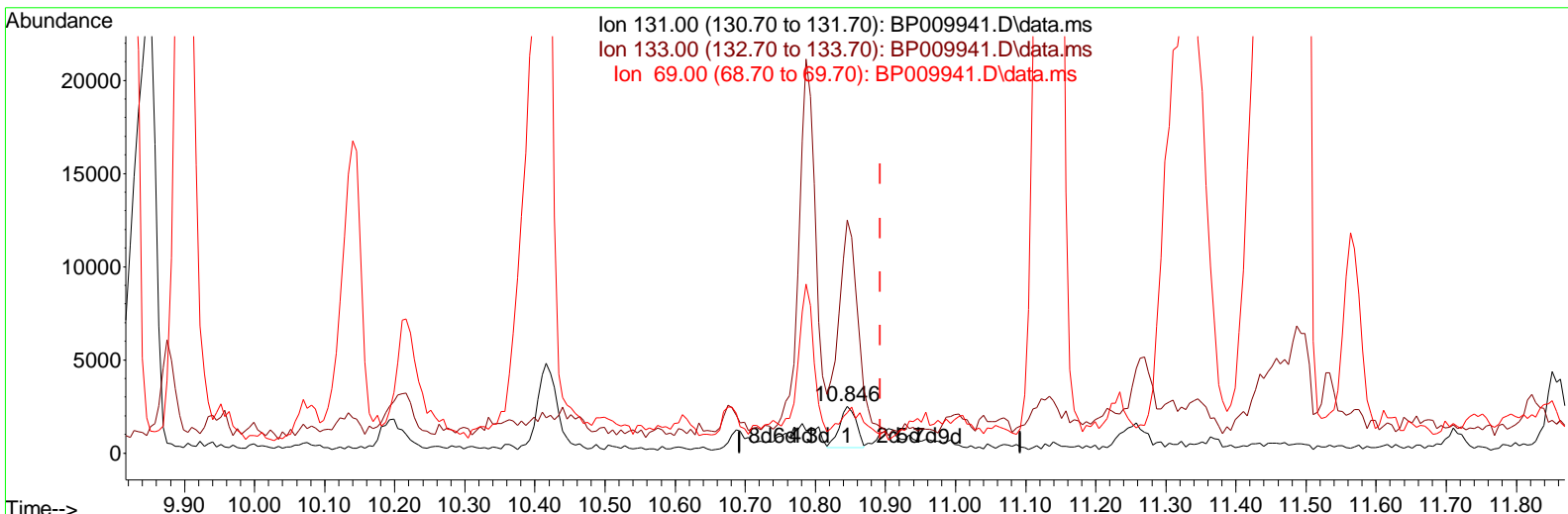
Data Path : Z:\svoasrv\HPCHEM1\BNA_P\Data\BP041822\
 Data File : BP009941.D
 Acq On : 19 Apr 2022 06:10
 Operator : CG/JU
 Sample : N2358-03RE
 Misc :
 ALS Vial : 37 Sample Multiplier: 1

Instrument :
 BNA_P
ClientSampleId :
 ETNS3RE

Manual IntegrationsAPPROVED

Reviewed By :Jagrut Upadhyay 04/19/2022
 Supervised By :Yogesh Patel 04/22/2022

Quant Time: Apr 19 09:21:40 2022
 Quant Method : Z:\svoasrv\HPCHEM1\BNA_P\Methods\SFAM-EPA-BP040722.M
 Quant Title : SVOA CALIBRATION
 QLast Update : Mon Apr 18 00:59:30 2022
 Response via : Initial Calibration



TIC: BP009941.D\data.ms

(31) 4-Chloroaniline-d4 (S)

10.846min (-0.047) 90.95 ng/ul

response 3682

Ion	Exp%	Act%
131.00	100.00	100.00
133.00	29.20	498.68#
69.00	26.10	86.55#
0.00	0.00	0.00

Data Path : Z:\svoasrv\HPCHEM1\BNA_P\Data\BP041822\
 Data File : BP009941.D
 Acq On : 19 Apr 2022 06:10
 Operator : CG/JU
 Sample : N2358-03RE
 Misc :
 ALS Vial : 37 Sample Multiplier: 1

Instrument :

BNA_P

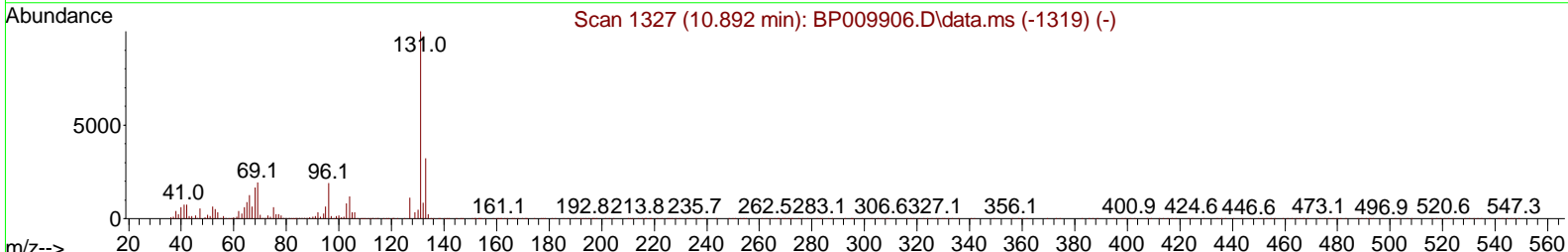
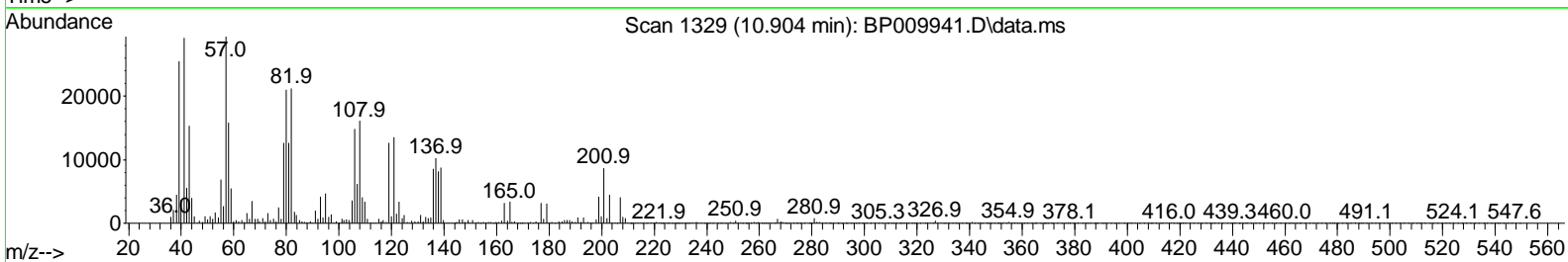
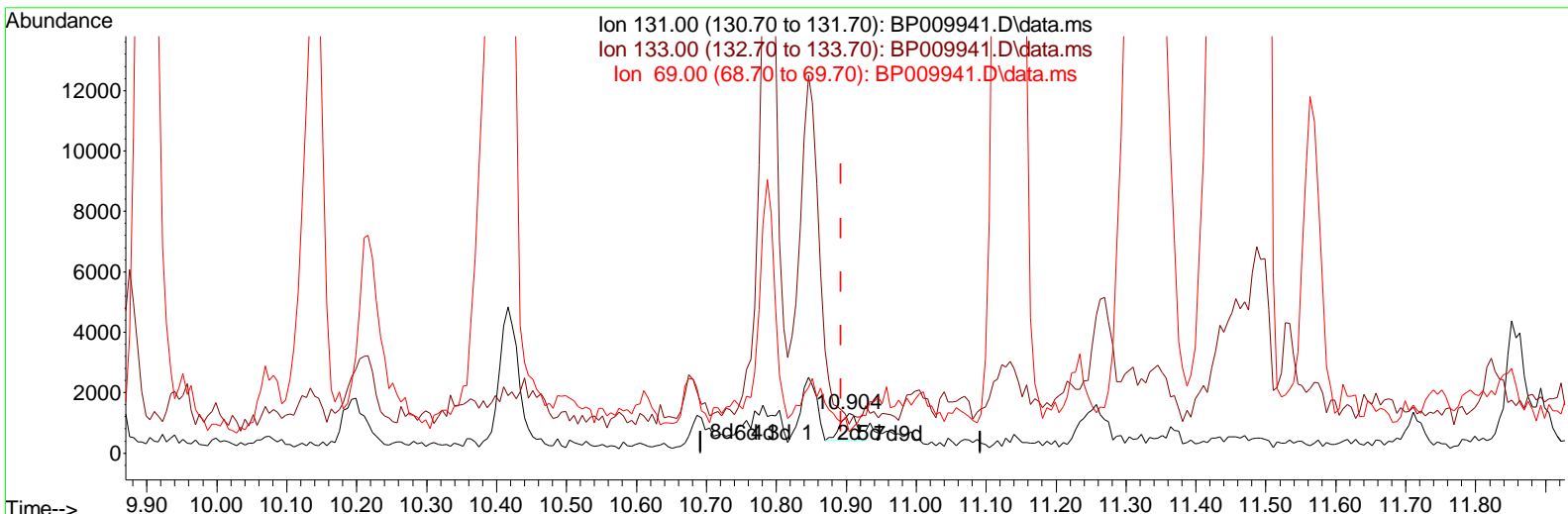
ClientSampleId :

ETNS3RE

Manual IntegrationsAPPROVED

Reviewed By :Jagrut Upadhyay 04/19/2022
 Supervised By :Yogesh Patel 04/22/2022

Quant Time: Apr 19 07:15:32 2022
 Quant Method : Z:\svoasrv\HPCHEM1\BNA_P\Methods\SFAM-EPA-BP040722.M
 Quant Title : SVOA CALIBRATION
 QLast Update : Mon Apr 18 00:59:30 2022
 Response via : Initial Calibration



TIC: BP009941.D\data.ms

(31) 4-Chloroaniline-d4 (S)

10.904min (+ 0.012) 0.09 ng/ul m

response 1691

Ion	Exp%	Act%
131.00	100.00	100.00
133.00	29.20	72.73#
69.00	26.10	52.93#
0.00	0.00	0.00

Data Path : Z:\svoasrv\HPCHEM1\BNA_P\Data\BP041822\
 Data File : BP009941.D
 Acq On : 19 Apr 2022 06:10
 Operator : CG/JU
 Sample : N2358-03RE
 Misc :
 ALS Vial : 37 Sample Multiplier: 1

Instrument :
 BNA_P
ClientSampleId :
 ETNS3RE

Manual IntegrationsAPPROVED

Reviewed By :Jagrut Upadhyay 04/19/2022
 Supervised By :Yogesh Patel 04/22/2022

Quant Time: Apr 19 07:15:32 2022
 Quant Method : Z:\svoasrv\HPCHEM1\BNA_P\Methods\SFAM-EPA-BP040722.M
 Quant Title : SVOA CALIBRATION
 QLast Update : Mon Apr 18 00:59:30 2022
 Response via : Initial Calibration

Compound	R.T.	QI on	Response	Conc	Units	Dev(Min)
Internal Standards						
1) 1,4-Dichlorobenzene-d4	7.952	152	198970	20.000	ng/ul	0.00
20) Naphthalene-d8	10.799	136	794570m	20.000	ng/ul	0.03
38) Acenaphthene-d10	14.598	164	417112	20.000	ng/ul	0.00
64) Phenanthrene-d10	17.363	188	773616	20.000	ng/ul	# 0.02
79) Chrysene-d12	21.439	240	526566	20.000	ng/ul	# 0.02
88) Perylene-d12	23.898	264	237	20.000	ng/ul	# 0.01
System Monitoring Compounds						
3) 1,4-Dioxane-d8	3.387	96	11382	2.553	ng/uL	0.00
4) Pyridine-d5	0.000	84	0d	0.000	ng/ul	
7) Phenol-d5	7.116	99	275182	15.753	ng/ul	0.00
9) Bis-(2-Chloroethyl)eth...	7.281	67	190053	18.275	ng/ul	0.00
11) 2-Chlorophenol-d4	7.487	132	239189	18.153	ng/ul	0.00
15) 4-Methylphenol-d8	8.663	113	195607	13.414	ng/ul	0.00
21) Nitrobenzene-d5	9.116	128	126867	22.141	ng/ul	0.00
24) 2-Nitrophenol-d4	9.899	143	137258m	21.850	ng/ul	0.05
28) 2,4-Dichlorophenol-d3	10.416	165	3101716m	235.955	ng/ul	0.04
31) 4-Chloroaniline-d4	10.904	131	1691m	0.090	ng/ul	0.01
46) Dimethylphthalate-d6	14.016	166	682076	20.817	ng/ul	0.02
49) Acenaphthylene-d8	14.298	160	463966	11.953	ng/ul	0.01
54) 4-Nitrophenol-d4	14.781	143	84214	14.173	ng/ul	0.01
60) Fluorene-d10	15.587	176	566008	20.535	ng/ul	0.00
65) 4,6-Dinitro-2-methylph...	15.692	200	80144	17.488	ng/ul	0.00
73) Anthracene-d10	17.457	188	604635	16.324	ng/ul	0.02
81) Pyrene-d10	19.680	212	608307	21.152	ng/ul	0.01
92) Benzo(a)pyrene-d12	23.716	264	1420	115.053	ng/ul	-0.01
Target Compounds						
8) Phenol	7.140	94	19829m	1.134	ng/ul	
16) Acetophenone	8.781	105	24766	1.078	ng/ul #	92
43) 1,1'-Bi-phenyl	13.434	154	103035	3.386	ng/ul #	89

(#) = qualifier out of range (m) = manual integration (+) = signals summed

Data Path : Z:\svoasrv\HPCHEM1\BNA_P\Data\BP041822\
 Data File : BP009941.D
 Acq On : 19 Apr 2022 06:10
 Operator : CG/JU
 Sample : N2358-03RE
 Misc :
 ALS Vial : 37 Sample Multiplier: 1

Instrument :
 BNA_P
 ClientSampleId :
 ETNS3RE

Manual Integrations APPROVED

Reviewed By : Jagrut Upadhyay 04/19/2022
 Supervised By : Yogesh Patel 04/22/2022

Quant Time: Apr 19 07:15:32 2022
 Quant Method : Z:\svoasrv\HPCHEM1\BNA_P\Methods\SFAM-EPA-BP040722.M
 Quant Title : SVOA CALIBRATION
 QLast Update : Mon Apr 18 00:59:30 2022
 Response via : Initial Calibration

