

Data Path : Z:\svoasrv\HPCHEM1\BNA_P\Data\BP050125\
 Data File : BP024489.D
 Acq On : 01 May 2025 12:44
 Operator : RC/JU
 Sample : Q1913-01
 Misc :
 ALS Vial : 5 Sample Multiplier: 1

Instrument :
 BNA_P
 ClientSampleId :
 WC-12-S-202504

Quant Time: May 01 13:18:18 2025
 Quant Method : Z:\svoasrv\HPCHEM1\BNA_P\Methods\8270E-BP041425.M
 Quant Title : ASP BNA STANDARDS FOR 5 POINT CALIBRATION
 QLast Update : Fri Apr 18 12:04:48 2025
 Response via : Initial Calibration

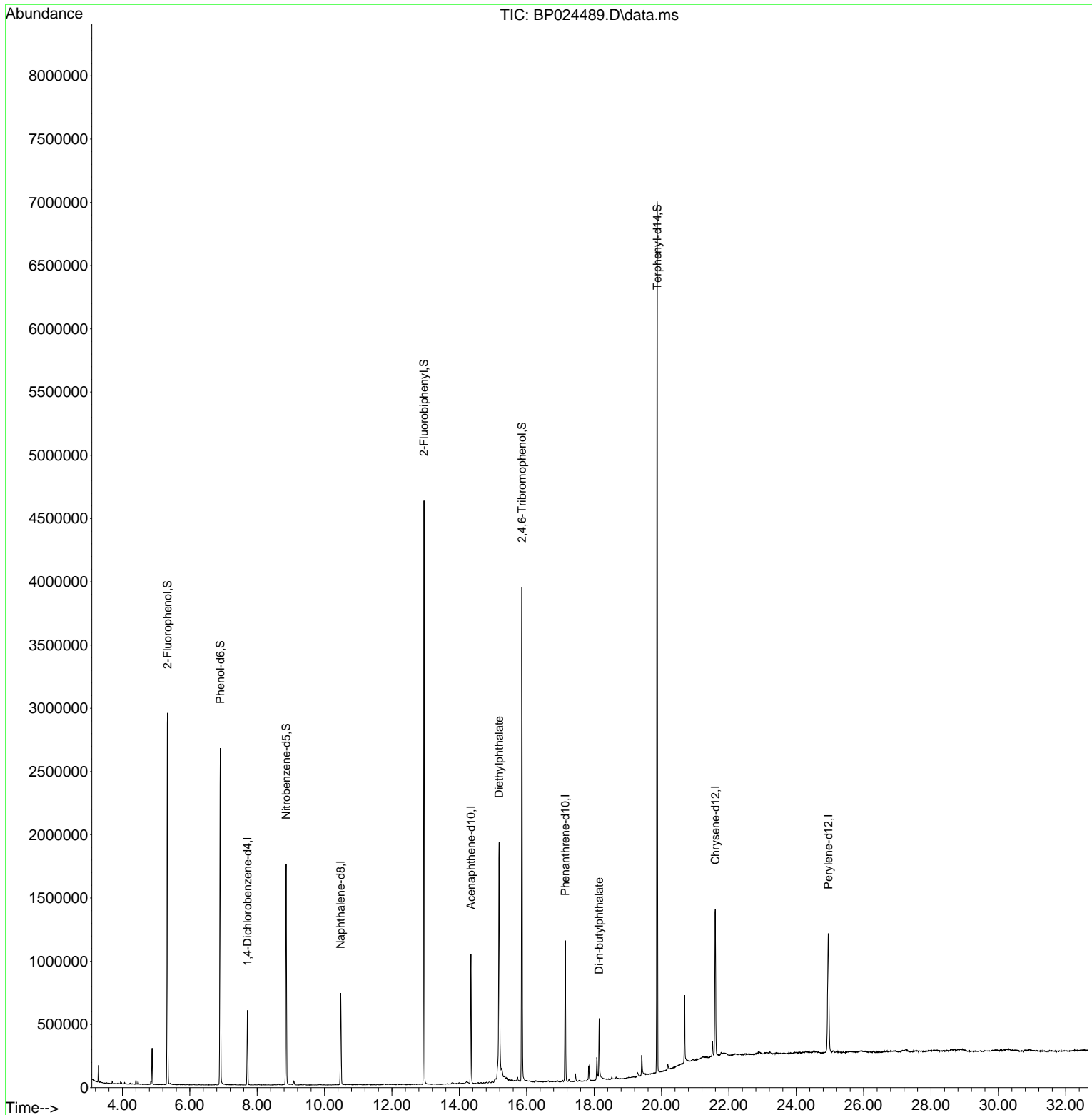
Compound	R.T.	QIon	Response	Conc	Units	Dev(Min)
Internal Standards						
1) 1,4-Dichlorobenzene-d4	7.711	152	159742	20.000	ng	-0.01
21) Naphthalene-d8	10.481	136	610644	20.000	ng	-0.02
39) Acenaphthene-d10	14.345	164	349744	20.000	ng	0.00
64) Phenanthrene-d10	17.145	188	678455	20.000	ng	0.00
76) Chrysene-d12	21.598	240	788921	20.000	ng	# 0.00
86) Perylene-d12	24.951	264	990879	20.000	ng	0.02
System Monitoring Compounds						
5) 2-Fluorophenol	5.340	112	1291596	133.690	ng	0.00
7) Phenol-d6	6.905	99	1535408	116.066	ng	0.00
23) Nitrobenzene-d5	8.863	82	984156	91.899	ng	0.00
42) 2,4,6-Tribromophenol	15.857	330	819083	169.271	ng	0.00
45) 2-Fluorobiphenyl	12.951	172	2218551	97.124	ng	-0.01
79) Terphenyl-d14	19.875	244	3576818	91.385	ng	0.00
Target Compounds						
60) Diethylphthalate	15.181	149	1626815	62.068	ng	100
74) Di-n-butylphthalate	18.151	149	418630	9.641	ng	99

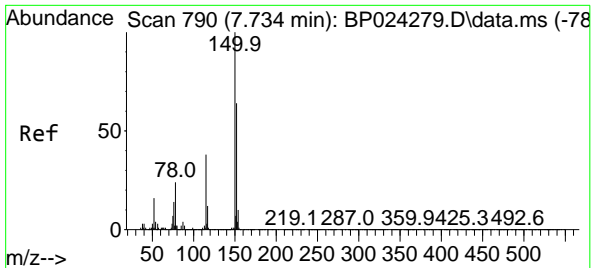
(#) = qualifier out of range (m) = manual integration (+) = signals summed

Data Path : Z:\svoasrv\HPCHEM1\BNA_P\Data\BP050125\
 Data File : BP024489.D
 Acq On : 01 May 2025 12:44
 Operator : RC/JU
 Sample : Q1913-01
 Misc :
 ALS Vial : 5 Sample Multiplier: 1

Instrument :
 BNA_P
 ClientSampleId :
 WC-12-S-202504

Quant Time: May 01 13:18:18 2025
 Quant Method : Z:\svoasrv\HPCHEM1\BNA_P\Methods\8270E-BP041425.M
 Quant Title : ASP BNA STANDARDS FOR 5 POINT CALIBRATION
 QLast Update : Fri Apr 18 12:04:48 2025
 Response via : Initial Calibration

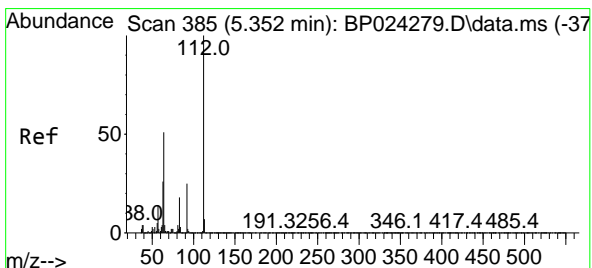
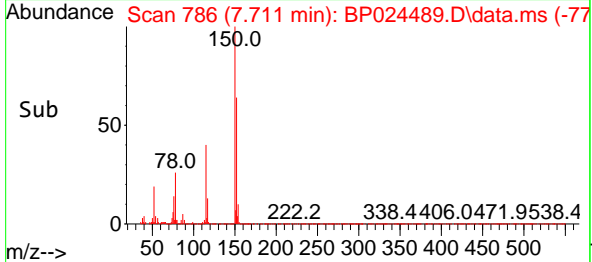
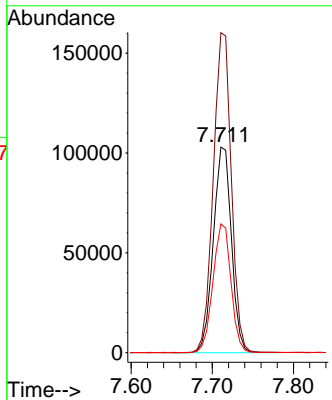
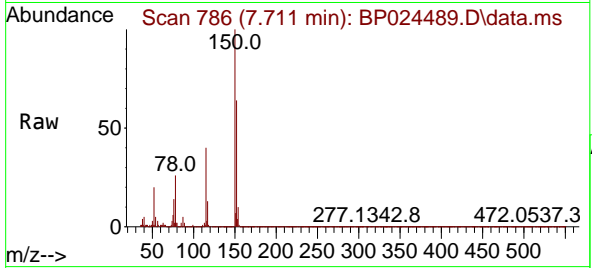




#1
 1,4-Dichlorobenzene-d4
 Concen: 20.000 ng
 RT: 7.711 min Scan# 790
 Delta R.T. -0.011 min
 Lab File: BP024489.D
 Acq: 01 May 2025 12:44

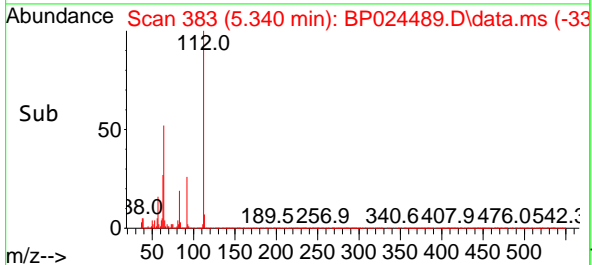
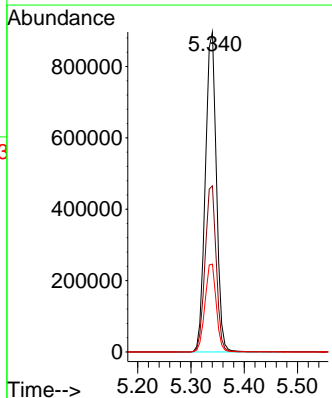
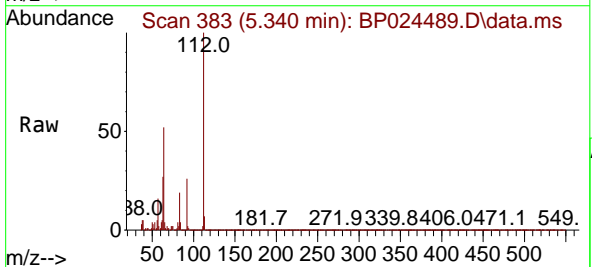
Instrument :
 BNA_P
 ClientSampleId :
 WC-12-S-202504

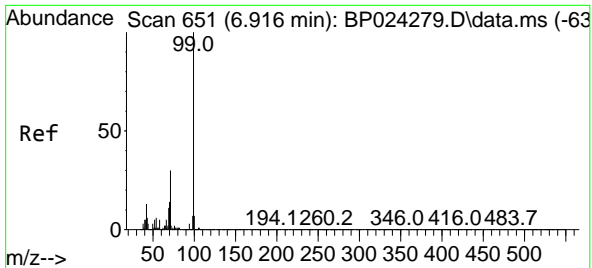
Tgt Ion:152 Resp: 159742
 Ion Ratio Lower Upper
 152 100
 150 155.7 124.9 187.3
 115 62.7 47.7 71.5



#5
 2-Fluorophenol
 Concen: 133.690 ng
 RT: 5.340 min Scan# 383
 Delta R.T. -0.006 min
 Lab File: BP024489.D
 Acq: 01 May 2025 12:44

Tgt Ion:112 Resp: 1291596
 Ion Ratio Lower Upper
 112 100
 64 51.9 41.1 61.7
 63 27.4 20.6 30.8



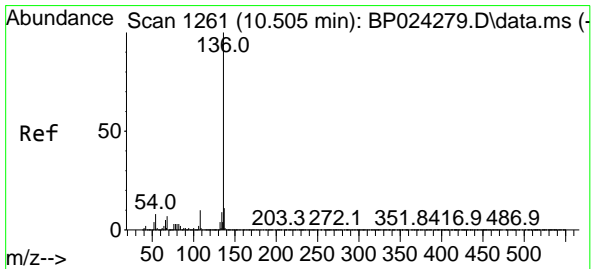
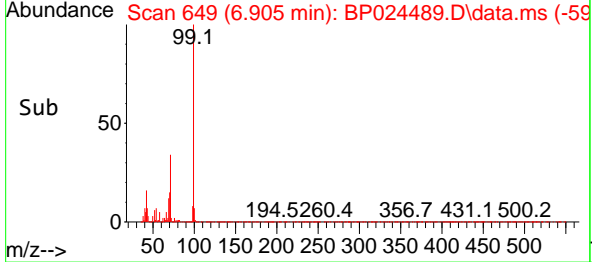
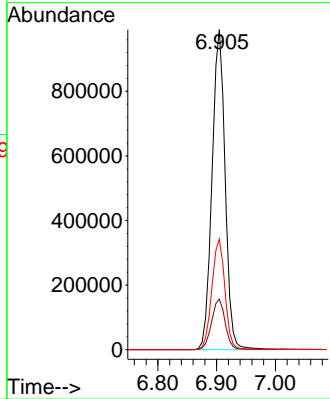
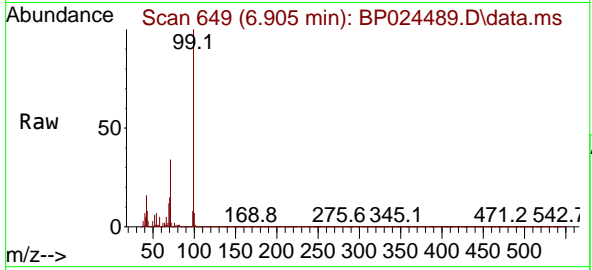


#7
 Phenol-d6
 Concen: 116.066 ng
 RT: 6.905 min Scan# 649
 Delta R.T. -0.006 min
 Lab File: BP024489.D
 Acq: 01 May 2025 12:44

Instrument : BNA_P
 ClientSampleId : WC-12-S-202504

Tgt Ion: 99 Resp: 1535408

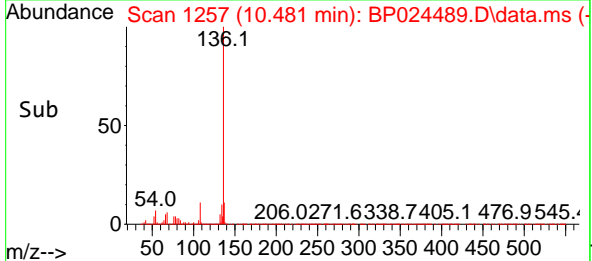
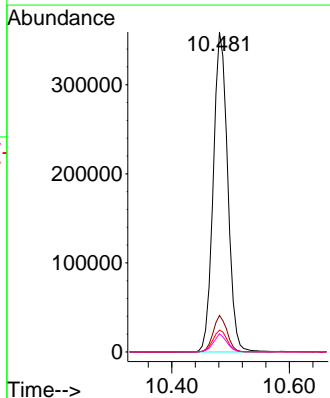
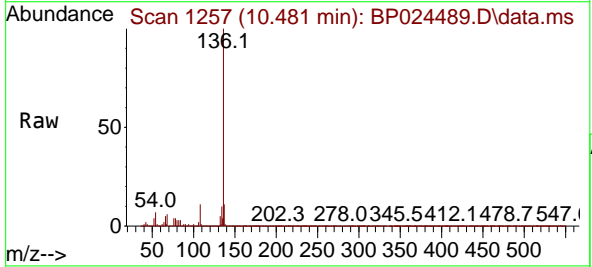
Ion	Ratio	Lower	Upper
99	100		
42	15.8	10.6	16.0
71	34.5	23.7	35.5

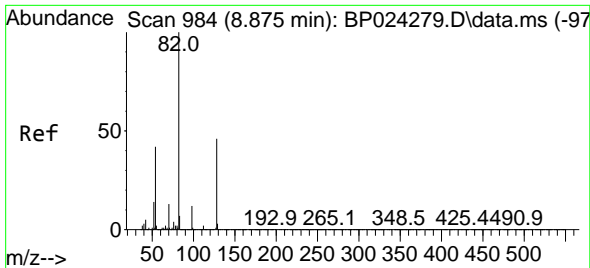


#21
 Naphthalene-d8
 Concen: 20.000 ng
 RT: 10.481 min Scan# 1257
 Delta R.T. -0.018 min
 Lab File: BP024489.D
 Acq: 01 May 2025 12:44

Tgt Ion: 136 Resp: 610644

Ion	Ratio	Lower	Upper
136	100		
137	11.4	9.2	13.8
54	6.8	6.0	9.0
68	5.7	5.5	8.3



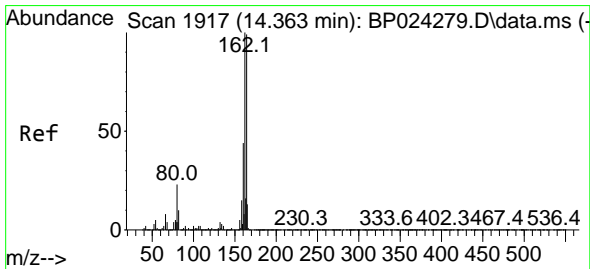
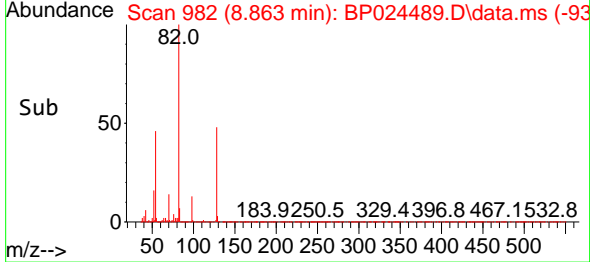
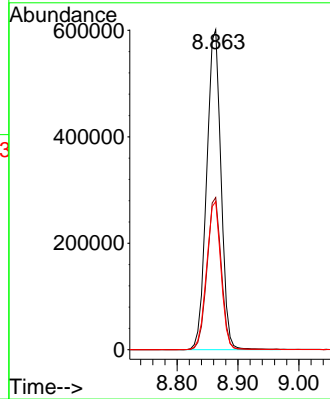
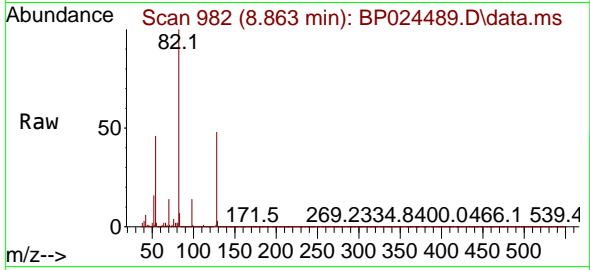


#23
 Nitrobenzene-d5
 Concen: 91.899 ng
 RT: 8.863 min Scan# 91
 Delta R.T. -0.006 min
 Lab File: BP024489.D
 Acq: 01 May 2025 12:44

Instrument :
 BNA_P
 ClientSampleId :
 WC-12-S-202504

Tgt Ion: 82 Resp: 984156

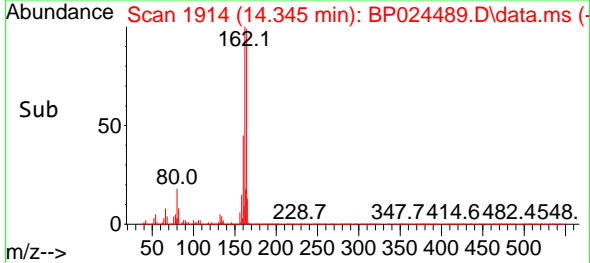
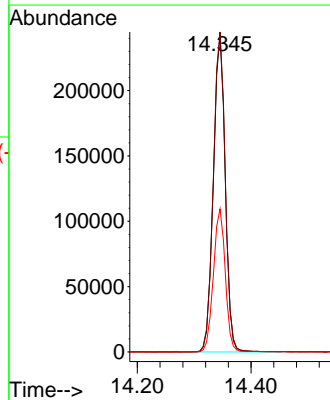
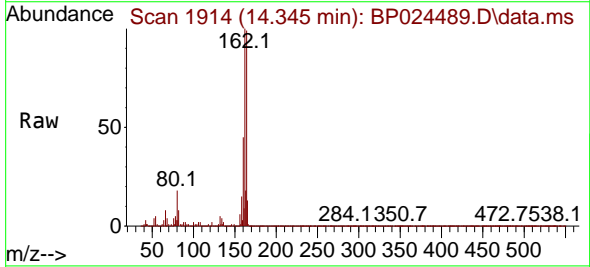
Ion	Ratio	Lower	Upper
82	100		
128	47.6	36.5	54.7
54	46.3	33.4	50.2

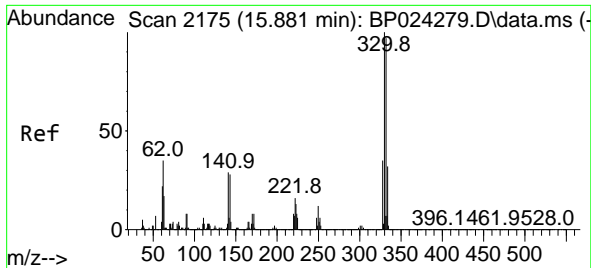


#39
 Acenaphthene-d10
 Concen: 20.000 ng
 RT: 14.345 min Scan# 1914
 Delta R.T. -0.006 min
 Lab File: BP024489.D
 Acq: 01 May 2025 12:44

Tgt Ion: 164 Resp: 349744

Ion	Ratio	Lower	Upper
164	100		
162	100.9	80.6	120.8
160	45.1	35.3	52.9

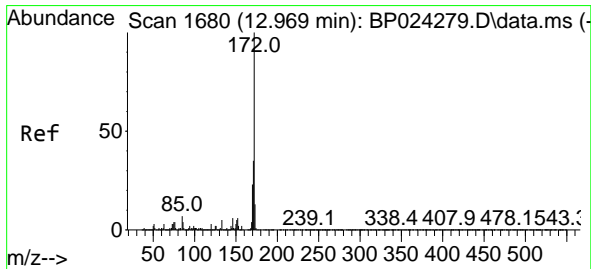
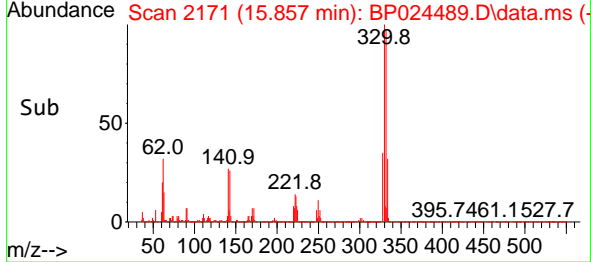
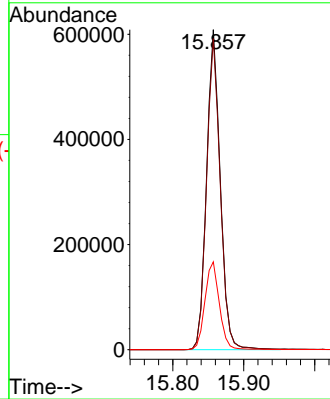
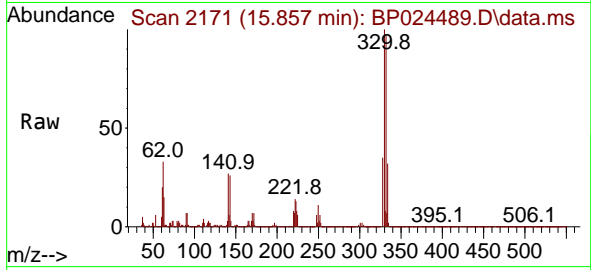




#42
 2,4,6-Tribromophenol
 Concen: 169.271 ng
 RT: 15.857 min Scan# 2171
 Delta R.T. -0.006 min
 Lab File: BP024489.D
 Acq: 01 May 2025 12:44

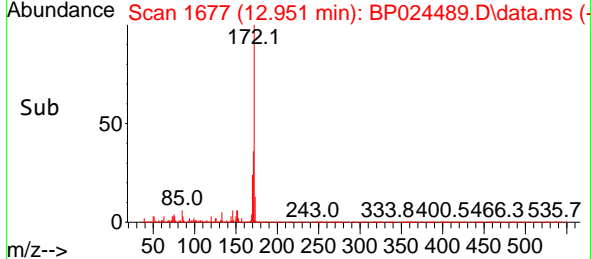
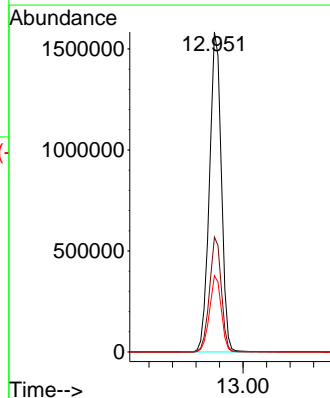
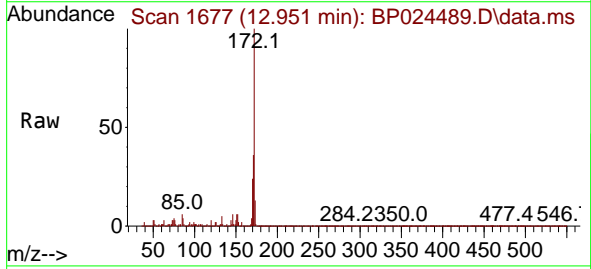
Instrument :
 BNA_P
 ClientSampleId :
 WC-12-S-202504

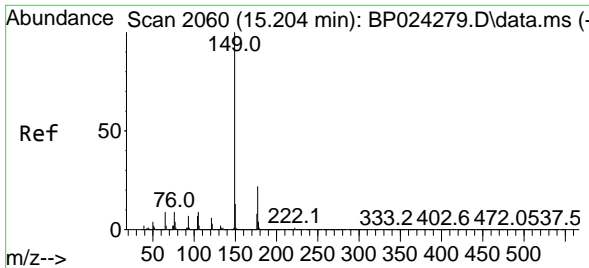
Tgt Ion	Resp	Lower	Upper
330	819083		
330	100		
332	97.5	77.1	115.7
141	28.9	24.7	37.1



#45
 2-Fluorobiphenyl
 Concen: 97.124 ng
 RT: 12.951 min Scan# 1677
 Delta R.T. -0.012 min
 Lab File: BP024489.D
 Acq: 01 May 2025 12:44

Tgt Ion	Resp	Lower	Upper
172	2218551		
172	100		
171	35.9	28.2	42.2
170	23.8	18.6	27.8



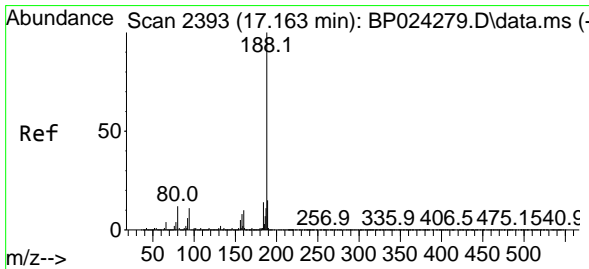
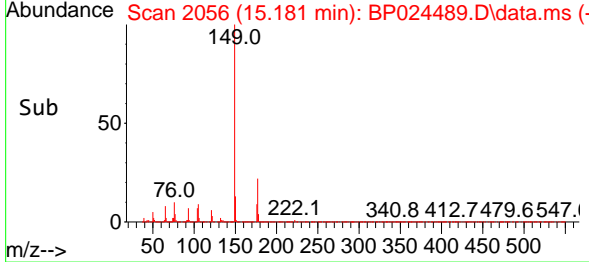
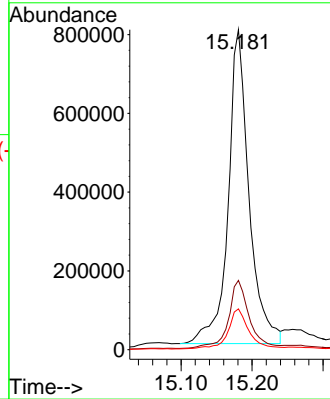
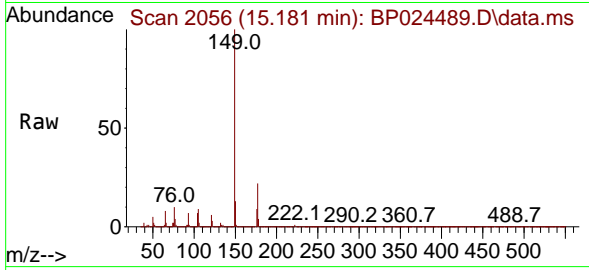


#60
 Diethylphthalate
 Concen: 62.068 ng
 RT: 15.181 min Scan# 2060
 Delta R.T. -0.012 min
 Lab File: BP024489.D
 Acq: 01 May 2025 12:44

Instrument :
 BNA_P
 ClientSampleId :
 WC-12-S-202504

Tgt Ion:149 Resp: 1626815

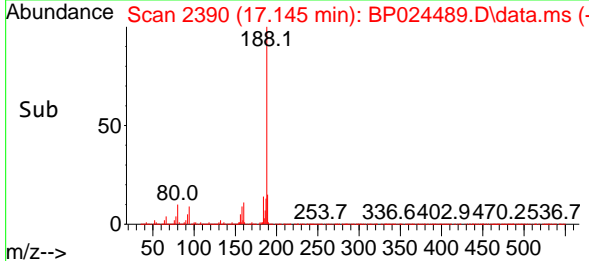
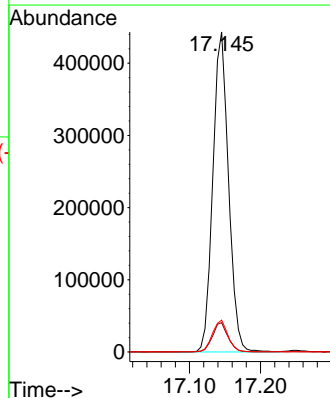
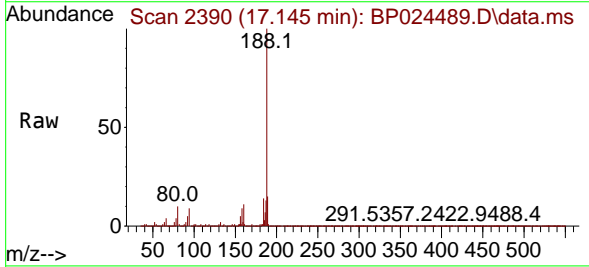
Ion	Ratio	Lower	Upper
149	100		
177	21.7	17.4	26.2
150	12.8	10.1	15.1

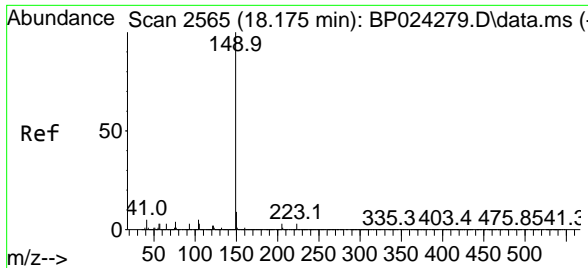


#64
 Phenanthrene-d10
 Concen: 20.000 ng
 RT: 17.145 min Scan# 2390
 Delta R.T. 0.000 min
 Lab File: BP024489.D
 Acq: 01 May 2025 12:44

Tgt Ion:188 Resp: 678455

Ion	Ratio	Lower	Upper
188	100		
94	9.2	8.6	13.0
80	10.0	9.8	14.6



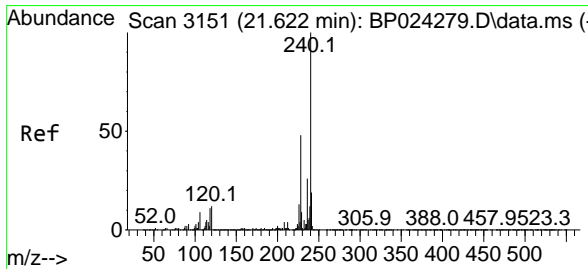
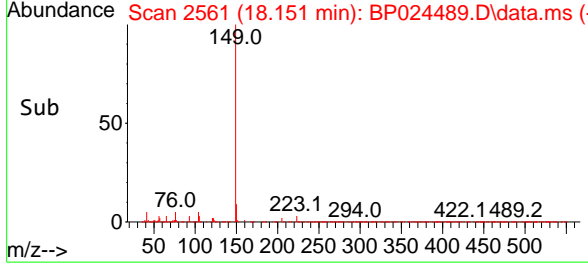
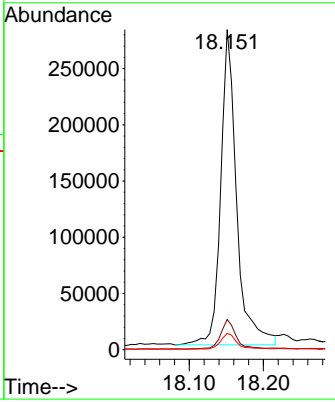
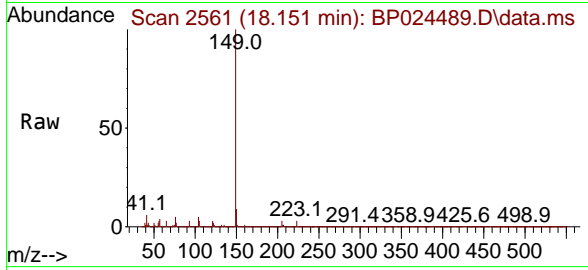


#74
 Di-n-butylphthalate
 Concen: 9.641 ng
 RT: 18.151 min Scan# 21
 Delta R.T. -0.006 min
 Lab File: BP024489.D
 Acq: 01 May 2025 12:44

Instrument : BNA_P
 ClientSampleId : WC-12-S-202504

Tgt Ion:149 Resp: 418630

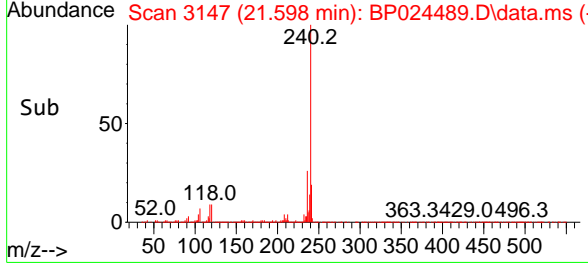
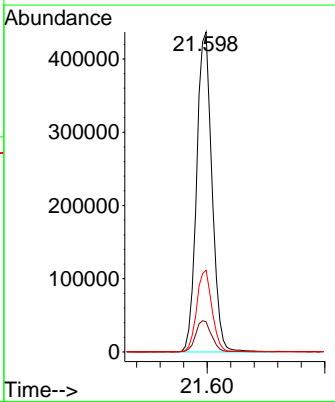
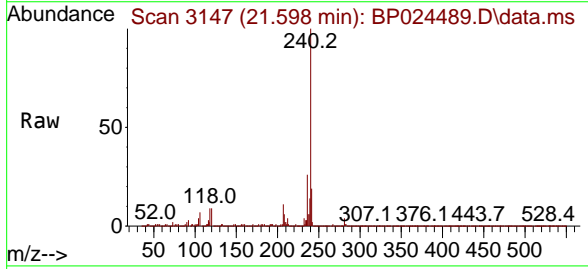
Ion	Ratio	Lower	Upper
149	100		
150	9.5	7.4	11.2
104	5.1	3.9	5.9

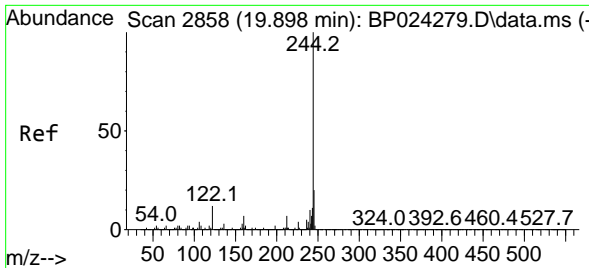


#76
 Chrysene-d12
 Concen: 20.000 ng
 RT: 21.598 min Scan# 3147
 Delta R.T. 0.006 min
 Lab File: BP024489.D
 Acq: 01 May 2025 12:44

Tgt Ion:240 Resp: 788921

Ion	Ratio	Lower	Upper
240	100		
120	9.4	9.8	14.8#
236	25.5	20.9	31.3



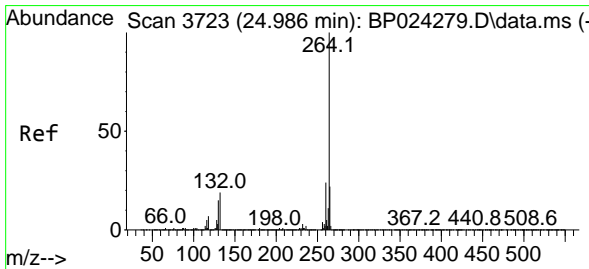
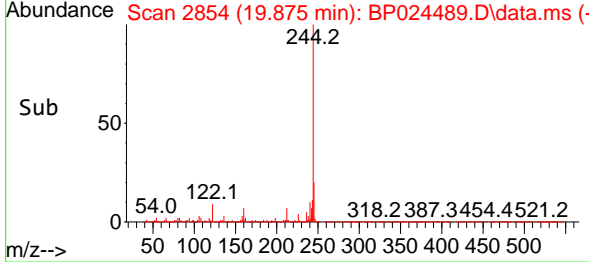
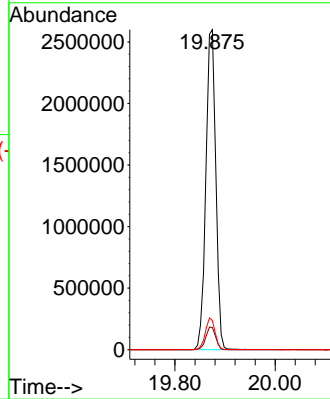
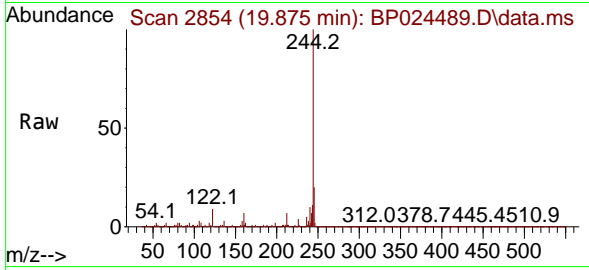


#79
 Terphenyl-d14
 Concen: 91.385 ng
 RT: 19.875 min Scan# 21
 Delta R.T. 0.000 min
 Lab File: BP024489.D
 Acq: 01 May 2025 12:44

Instrument : BNA_P
 ClientSampleId : WC-12-S-202504

Tgt Ion: 244 Resp: 3576818

Ion	Ratio	Lower	Upper
244	100		
212	7.0	5.6	8.4
122	9.1	9.4	14.0



#86
 Perylene-d12
 Concen: 20.000 ng
 RT: 24.951 min Scan# 3717
 Delta R.T. 0.018 min
 Lab File: BP024489.D
 Acq: 01 May 2025 12:44

Tgt Ion: 264 Resp: 990879

Ion	Ratio	Lower	Upper
264	100		
260	23.6	18.9	28.3
265	21.7	17.8	26.6

