

Data Path : Z:\svoasrv\HPCHEM1\BNA_P\Data\BP050225\
 Data File : BP024509.D
 Acq On : 02 May 2025 14:56
 Operator : RC/JU
 Sample : Q1916-01MSD
 Misc :
 ALS Vial : 7 Sample Multiplier: 1

Instrument :
 BNA_P
 ClientSampleId :
 WC-12MSD

Quant Time: May 02 15:58:55 2025
 Quant Method : Z:\svoasrv\HPCHEM1\BNA_P\Methods\8270E-BP041425.M
 Quant Title : ASP BNA STANDARDS FOR 5 POINT CALIBRATION
 QLast Update : Fri Apr 18 12:04:48 2025
 Response via : Initial Calibration

Compound	R.T.	QIon	Response	Conc	Units	Dev(Min)	
Internal Standards							
1) 1,4-Dichlorobenzene-d4	7.710	152	134371	20.000	ng	-0.01	
21) Naphthalene-d8	10.481	136	560731	20.000	ng	#-0.02	
39) Acenaphthene-d10	14.339	164	356159	20.000	ng	-0.01	
64) Phenanthrene-d10	17.145	188	743045	20.000	ng	0.00	
76) Chrysene-d12	21.598	240	825568	20.000	ng	0.00	
86) Perylene-d12	24.951	264	972467	20.000	ng	0.02	
System Monitoring Compounds							
5) 2-Fluorophenol	5.328	112	636465	78.318	ng	-0.02	
7) Phenol-d6	6.899	99	888676	79.862	ng	-0.01	
23) Nitrobenzene-d5	8.857	82	472356	48.034	ng	-0.01	
42) 2,4,6-Tribromophenol	15.863	330	506458	102.779	ng	0.00	
45) 2-Fluorobiphenyl	12.951	172	1053010	45.268	ng	-0.01	
79) Terphenyl-d14	19.880	244	2312282	56.455	ng	0.00	
Target Compounds							
2) 1,4-Dioxane	3.275	88	123971	36.065	ng	#	95
3) Pyridine	3.669	79	324879	35.792	ng		94
4) n-Nitrosodimethylamine	3.575	42	141150	46.856	ng	#	75
6) Aniline	7.046	93	272076	27.362	ng		97
8) 2-Chlorophenol	7.281	128	427041	47.065	ng		99
9) Benzaldehyde	6.863	77	182907	33.229	ng		96
10) Phenol	6.922	94	508675	45.569	ng		91
11) bis(2-Chloroethyl)ether	7.140	93	356058	39.589	ng		99
12) 1,3-Dichlorobenzene	7.599	146	429327	43.952	ng		99
13) 1,4-Dichlorobenzene	7.746	146	436461	44.038	ng		99
14) 1,2-Dichlorobenzene	8.057	146	420751	43.965	ng		98
15) Benzyl Alcohol	7.952	79	357799	49.720	ng		97
16) 2,2'-oxybis(1-Chloropr...	8.222	45	402239	41.376	ng		100
17) 2-Methylphenol	8.157	107	350646	48.558	ng		98
18) Hexachloroethane	8.775	117	160673	44.859	ng		95
19) n-Nitroso-di-n-propyla...	8.504	70	280183	40.699	ng		95
20) 3+4-Methylphenols	8.481	107	477143	47.620	ng		98
22) Acetophenone	8.522	105	596302	42.966	ng		97
24) Nitrobenzene	8.899	77	424326	43.619	ng		98
25) Isophorone	9.422	82	804515	45.198	ng		97
26) 2-Nitrophenol	9.604	139	235139	49.392	ng		95
27) 2,4-Dimethylphenol	9.669	122	387464	64.819	ng		98
28) bis(2-Chloroethoxy)met...	9.899	93	490825	40.819	ng		99
29) 2,4-Dichlorophenol	10.140	162	399772	49.049	ng		99
30) 1,2,4-Trichlorobenzene	10.346	180	399208	45.715	ng		99
31) Naphthalene	10.534	128	1251667	42.376	ng		99
32) Benzoic acid	9.828	122	314650	45.174	ng		97
33) 4-Chloroaniline	10.651	127	167324	16.086	ng		99
34) Hexachlorobutadiene	10.816	225	250745	48.864	ng		97
35) Caprolactam	11.440	113	142897	47.516	ng		97
36) 4-Chloro-3-methylphenol	11.787	107	461801	48.644	ng		100
37) 2-Methylnaphthalene	12.145	142	809672	39.526	ng		98
38) 1-Methylnaphthalene	12.369	142	849406	42.386	ng		98
40) 1,2,4,5-Tetrachloroben...	12.516	216	463402	47.313	ng		99
41) Hexachlorocyclopentadiene	12.498	237	561850	162.196	ng		98
43) 2,4,6-Trichlorophenol	12.769	196	336610	51.692	ng		97

Data Path : Z:\svoasrv\HPCHEM1\BNA_P\Data\BP050225\
 Data File : BP024509.D
 Acq On : 02 May 2025 14:56
 Operator : RC/JU
 Sample : Q1916-01MSD
 Misc :
 ALS Vial : 7 Sample Multiplier: 1

Instrument :
 BNA_P
 ClientSampleId :
 WC-12MSD

Quant Time: May 02 15:58:55 2025
 Quant Method : Z:\svoasrv\HPCHEM1\BNA_P\Methods\8270E-BP041425.M
 Quant Title : ASP BNA STANDARDS FOR 5 POINT CALIBRATION
 QLast Update : Fri Apr 18 12:04:48 2025
 Response via : Initial Calibration

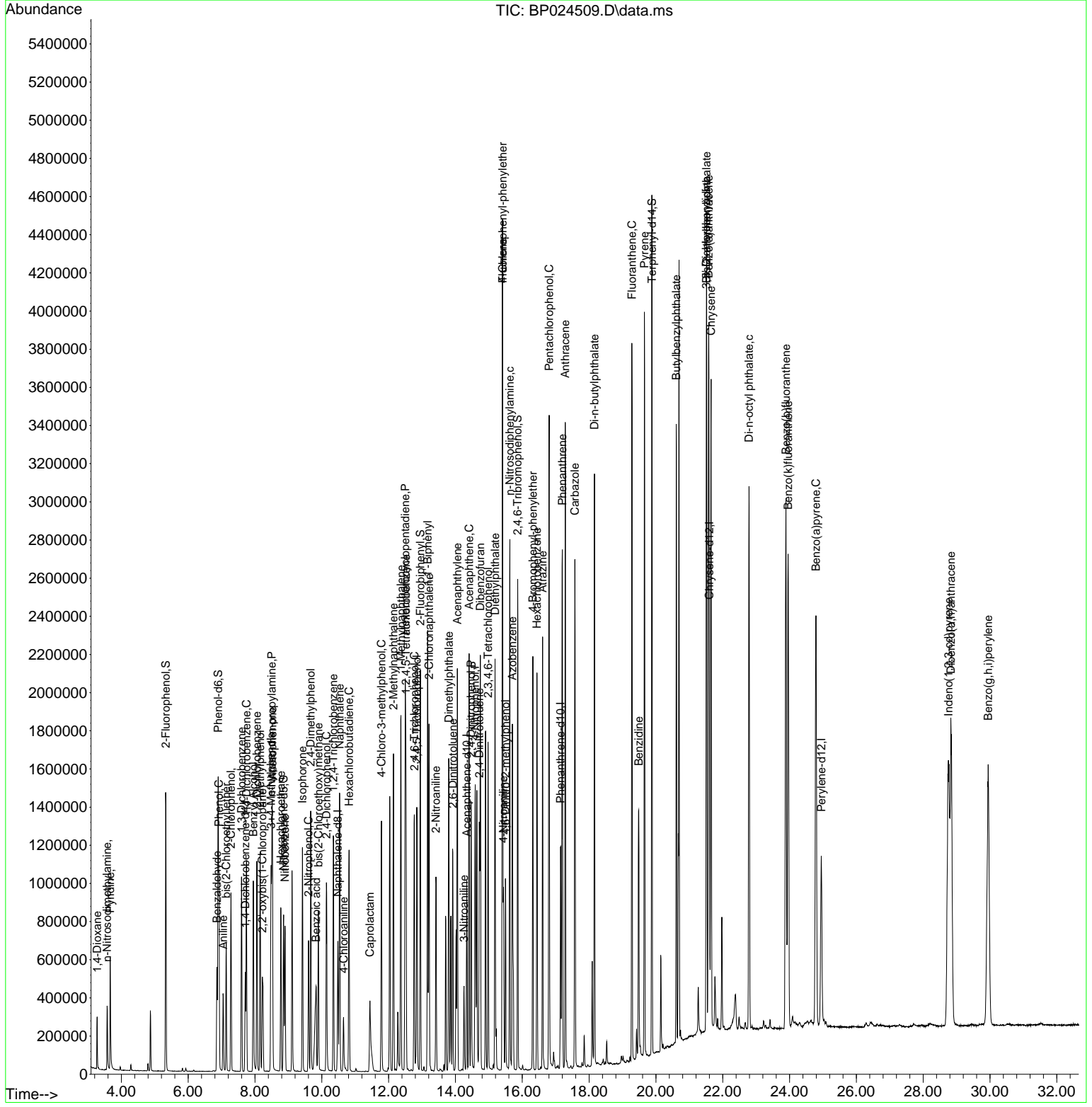
Compound	R.T.	QIon	Response	Conc	Units	Dev(Min)
44) 2,4,5-Trichlorophenol	12.845	196	369577	51.252	ng	99
46) 1,1'-Biphenyl	13.169	154	1162676	44.412	ng	98
47) 2-Chloronaphthalene	13.210	162	897224	45.856	ng	98
48) 2-Nitroaniline	13.416	65	280833	51.168	ng	98
49) Acenaphthylene	14.057	152	1478834	48.005	ng	99
50) Dimethylphthalate	13.804	163	1201945	46.406	ng	100
51) 2,6-Dinitrotoluene	13.922	165	263396	47.891	ng	94
52) Acenaphthene	14.410	154	840852	43.055	ng	98
53) 3-Nitroaniline	14.257	138	114751	19.851	ng	99
54) 2,4-Dinitrophenol	14.469	184	338338	104.435	ng	90
55) Dibenzofuran	14.745	168	1351042	42.322	ng	97
56) 4-Nitrophenol	14.592	139	511547	102.466	ng	92
57) 2,4-Dinitrotoluene	14.716	165	385128	51.333	ng	99
58) Fluorene	15.410	166	1134163	45.894	ng	100
59) 2,3,4,6-Tetrachlorophenol	14.975	232	333515	50.147	ng	99
60) Diethylphthalate	15.186	149	1245961	46.681	ng	100
61) 4-Chlorophenyl-phenyle...	15.410	204	558820	46.567	ng	98
62) 4-Nitroaniline	15.439	138	284033	46.416	ng	88
63) Azobenzene	15.704	77	1176345	47.951	ng	96
65) 4,6-Dinitro-2-methylph...	15.498	198	222382	47.471	ng	95
66) n-Nitrosodiphenylamine	15.628	169	1002140	45.186	ng	99
67) 4-Bromophenyl-phenylether	16.316	248	387242	47.652	ng	98
68) Hexachlorobenzene	16.439	284	478526	49.554	ng	98
69) Atrazine	16.610	200	385671	68.277	ng	98
70) Pentachlorophenol	16.804	266	685997	101.830	ng	100
71) Phenanthrene	17.198	178	1830537	45.159	ng	99
72) Anthracene	17.286	178	1881270	48.154	ng	99
73) Carbazole	17.575	167	1792412	46.956	ng	99
74) Di-n-butylphthalate	18.163	149	2288511	48.121	ng	100
75) Fluoranthene	19.280	202	2232564	46.309	ng	97
77) Benzidine	19.486	184	965153	92.229	ng	99
78) Pyrene	19.657	202	2308010	43.991	ng	99
80) Butylbenzylphthalate	20.610	149	1093013	48.638	ng	98
81) Benzo(a)anthracene	21.580	228	2362610	46.042	ng	100
82) 3,3'-Dichlorobenzidine	21.510	252	491219	27.274	ng	99
83) Chrysene	21.651	228	2205230	44.857	ng	99
84) Bis(2-ethylhexyl)phtha...	21.516	149	1649135	50.059	ng	99
85) Di-n-octyl phthalate	22.786	149	2755675	51.453	ng	100
87) Indeno(1,2,3-cd)pyrene	28.756	276	2767053	40.986	ng	99
88) Benzo(b)fluoranthene	23.892	252	2555813	43.846	ng	# 97
89) Benzo(k)fluoranthene	23.957	252	2521861	44.789	ng	# 97
90) Benzo(a)pyrene	24.792	252	2441014	48.547	ng	97
91) Dibenzo(a,h)anthracene	28.827	278	2694966	48.092	ng	97
92) Benzo(g,h,i)perylene	29.945	276	2628147	46.077	ng	# 94

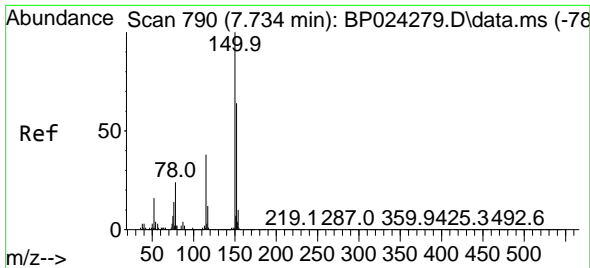
(#) = qualifier out of range (m) = manual integration (+) = signals summed

Data Path : Z:\svoasrv\HPCHEM1\BNA_P\Data\BP050225\
 Data File : BP024509.D
 Acq On : 02 May 2025 14:56
 Operator : RC/JU
 Sample : Q1916-01MSD
 Misc :
 ALS Vial : 7 Sample Multiplier: 1

Instrument :
 BNA_P
 ClientSampleId :
 WC-12MSD

Quant Time: May 02 15:58:55 2025
 Quant Method : Z:\svoasrv\HPCHEM1\BNA_P\Methods\8270E-BP041425.M
 Quant Title : ASP BNA STANDARDS FOR 5 POINT CALIBRATION
 QLast Update : Fri Apr 18 12:04:48 2025
 Response via : Initial Calibration

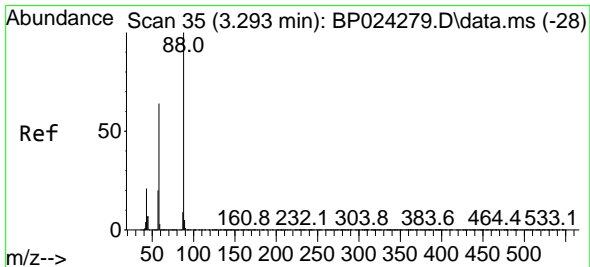
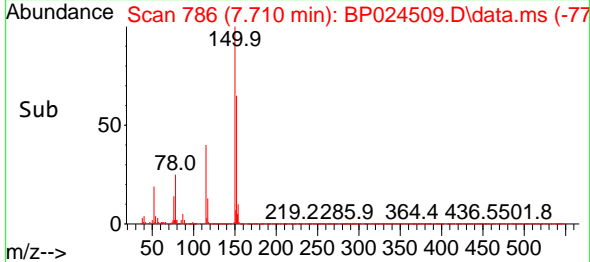
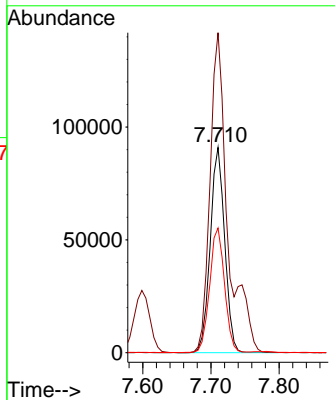
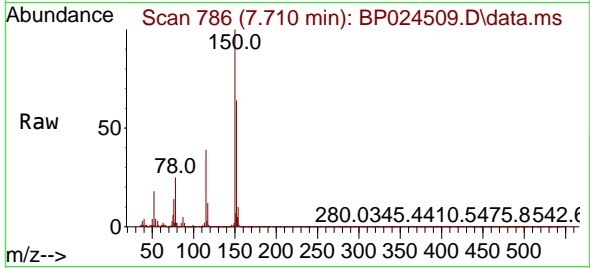




#1
 1,4-Dichlorobenzene-d4
 Concen: 20.000 ng
 RT: 7.710 min Scan# 71
 Delta R.T. -0.012 min
 Lab File: BP024509.D
 Acq: 02 May 2025 14:56

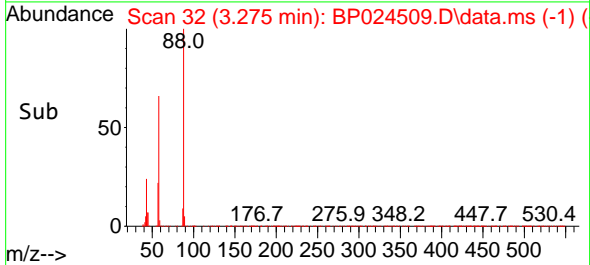
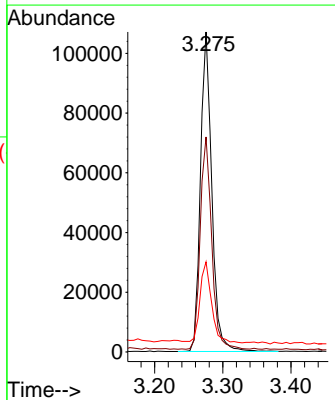
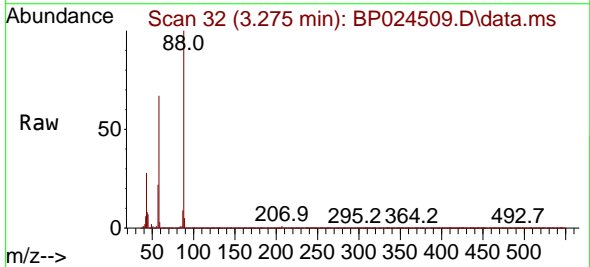
Instrument :
 BNA_P
 Client Sample Id :
 WC-12MSD

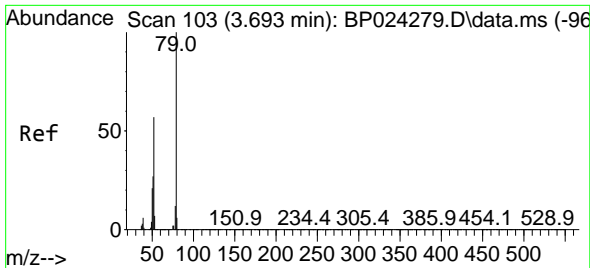
Tgt Ion	Resp	Lower	Upper
152	134371		
100			
150	155.9	124.9	187.3
115	60.7	47.7	71.5



#2
 1,4-Dioxane
 Concen: 36.065 ng
 RT: 3.275 min Scan# 32
 Delta R.T. -0.012 min
 Lab File: BP024509.D
 Acq: 02 May 2025 14:56

Tgt Ion	Resp	Lower	Upper
88	123971		
100			
58	66.9	51.4	77.2
43	25.8	17.1	25.7

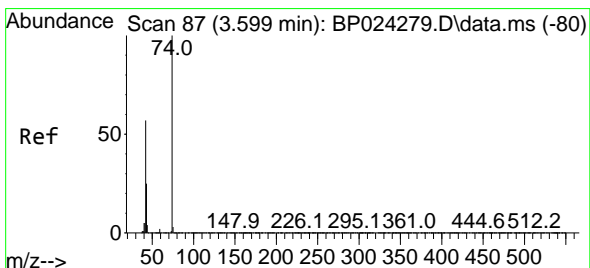
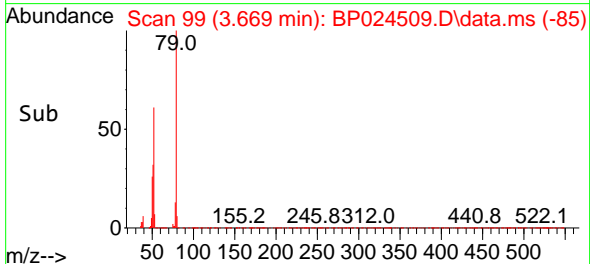
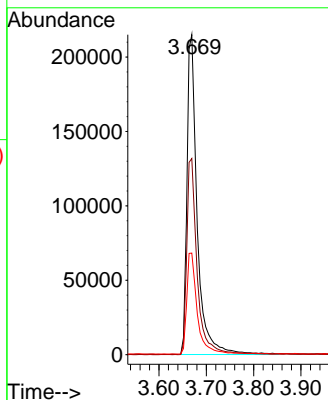
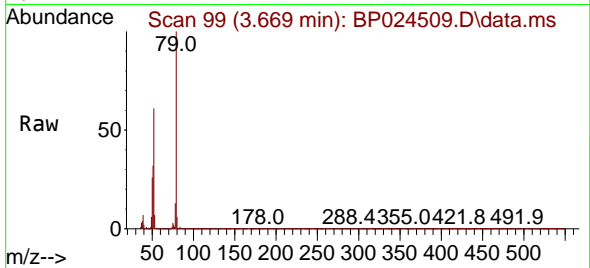




#3
 Pyridine
 Concen: 35.792 ng
 RT: 3.669 min Scan# 91
 Delta R.T. -0.018 min
 Lab File: BP024509.D
 Acq: 02 May 2025 14:56

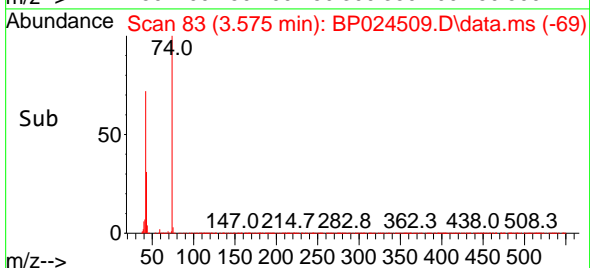
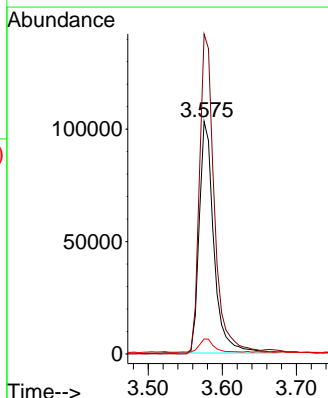
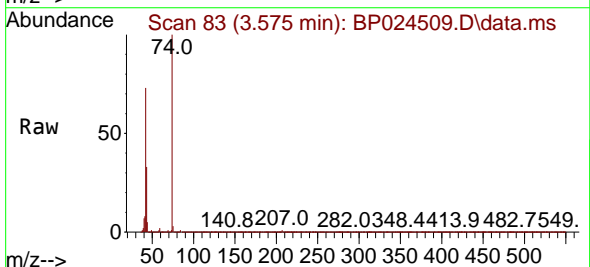
Instrument :
 BNA_P
 ClientSampleId :
 WC-12MSD

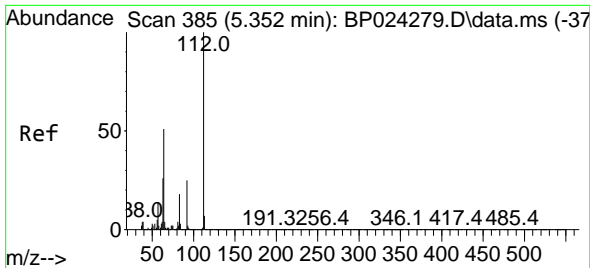
Tgt Ion: 79 Resp: 324879
 Ion Ratio Lower Upper
 79 100
 52 61.3 45.4 68.2
 51 31.8 22.6 33.8



#4
 n-Nitrosodimethylamine
 Concen: 46.856 ng
 RT: 3.575 min Scan# 83
 Delta R.T. -0.018 min
 Lab File: BP024509.D
 Acq: 02 May 2025 14:56

Tgt Ion: 42 Resp: 141150
 Ion Ratio Lower Upper
 42 100
 74 137.6 139.5 209.3#
 44 6.5 5.8 8.8

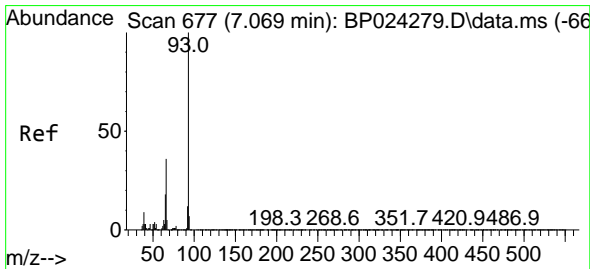
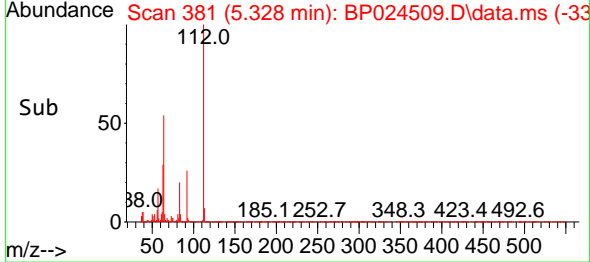
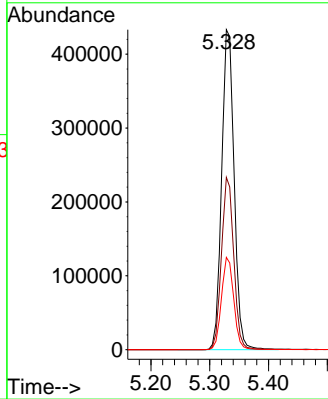
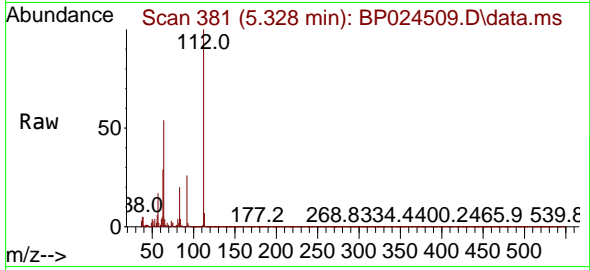




#5
 2-Fluorophenol
 Concen: 78.318 ng
 RT: 5.328 min Scan# 381
 Delta R.T. -0.018 min
 Lab File: BP024509.D
 Acq: 02 May 2025 14:56

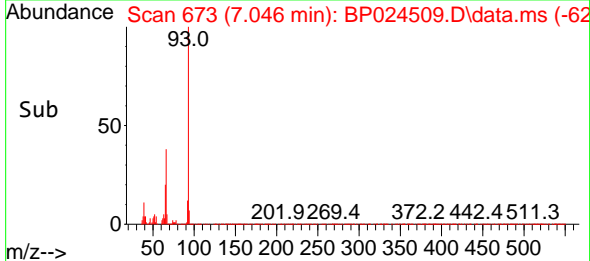
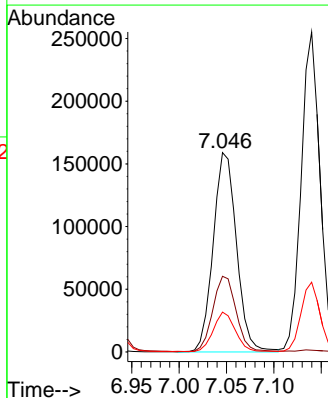
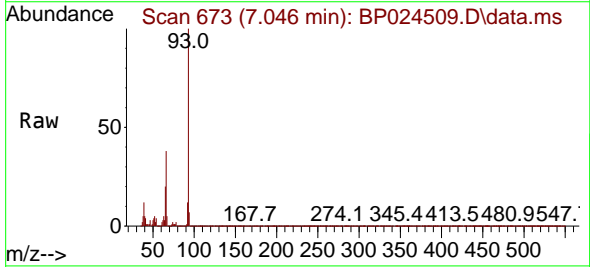
Instrument :
 BNA_P
 ClientSampleId :
 WC-12MSD

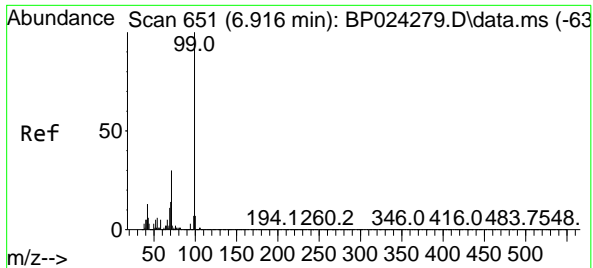
Tgt Ion:112 Resp: 636465
 Ion Ratio Lower Upper
 112 100
 64 53.9 41.1 61.7
 63 28.9 20.6 30.8



#6
 Aniline
 Concen: 27.362 ng
 RT: 7.046 min Scan# 673
 Delta R.T. -0.018 min
 Lab File: BP024509.D
 Acq: 02 May 2025 14:56

Tgt Ion: 93 Resp: 272076
 Ion Ratio Lower Upper
 93 100
 66 38.0 29.1 43.7
 65 20.0 14.7 22.1



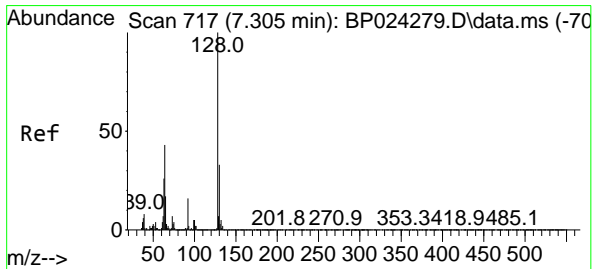
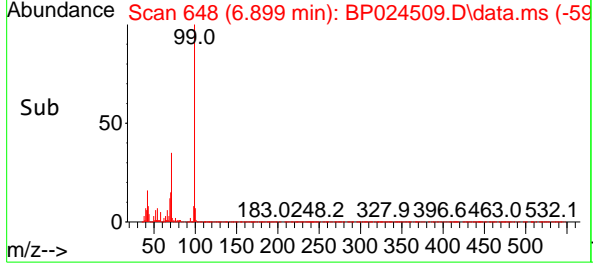
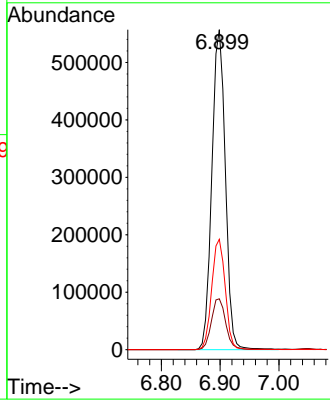
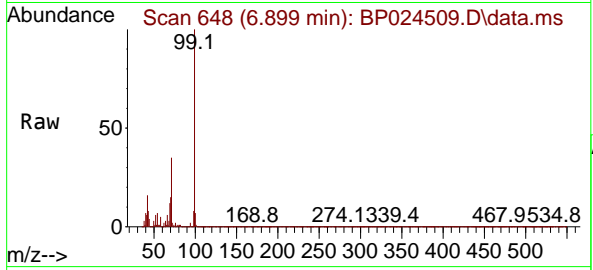


#7
 Phenol-d6
 Concen: 79.862 ng
 RT: 6.899 min Scan# 64
 Delta R.T. -0.012 min
 Lab File: BP024509.D
 Acq: 02 May 2025 14:56

Instrument : BNA_P
 ClientSampleId : WC-12MSD

Tgt Ion: 99 Resp: 888676

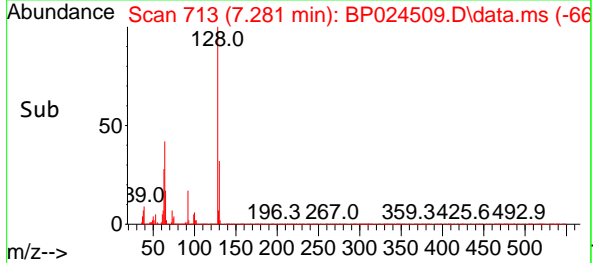
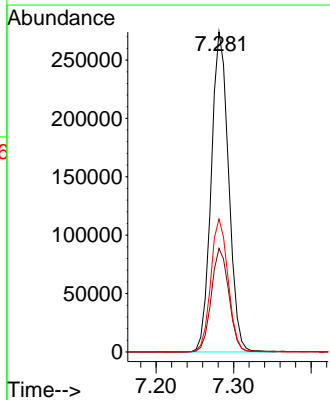
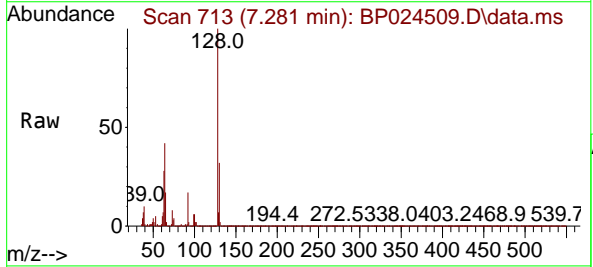
Ion	Ratio	Lower	Upper
99	100		
42	15.9	10.6	16.0
71	34.5	23.7	35.5

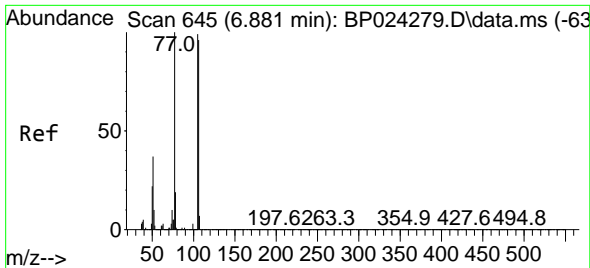


#8
 2-Chlorophenol
 Concen: 47.065 ng
 RT: 7.281 min Scan# 713
 Delta R.T. -0.018 min
 Lab File: BP024509.D
 Acq: 02 May 2025 14:56

Tgt Ion: 128 Resp: 427041

Ion	Ratio	Lower	Upper
128	100		
130	32.3	12.9	52.9
64	41.6	22.7	62.7



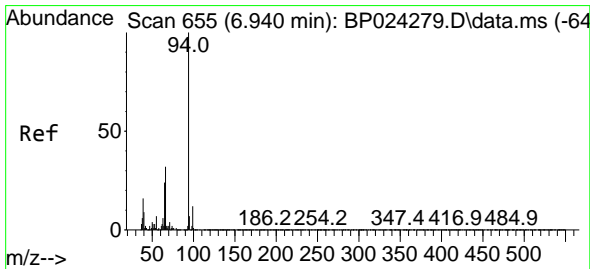
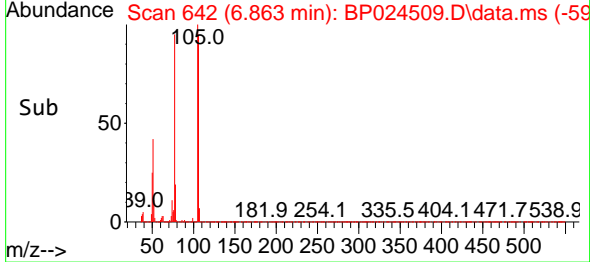
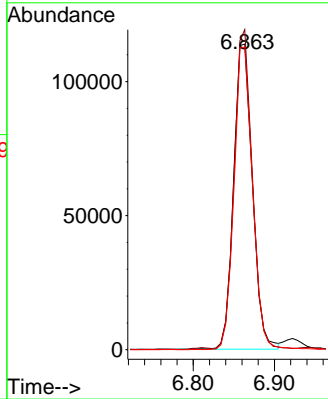
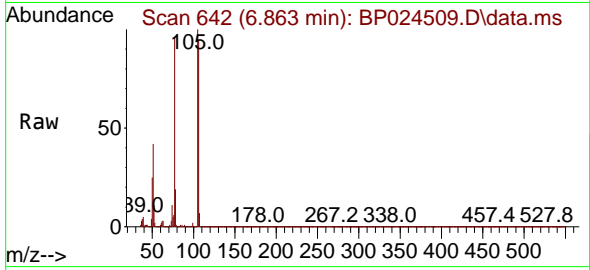


#9
 Benzaldehyde
 Concen: 33.229 ng
 RT: 6.863 min Scan# 64
 Delta R.T. -0.018 min
 Lab File: BP024509.D
 Acq: 02 May 2025 14:56

Instrument : BNA_P
 ClientSampleId : WC-12MSD

Tgt Ion: 77 Resp: 182907

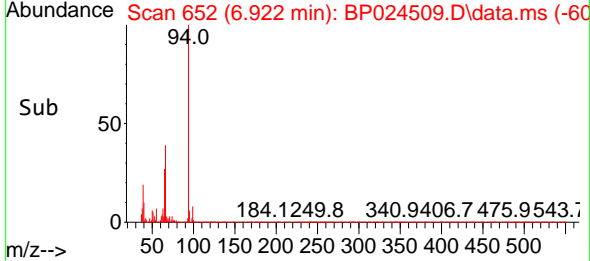
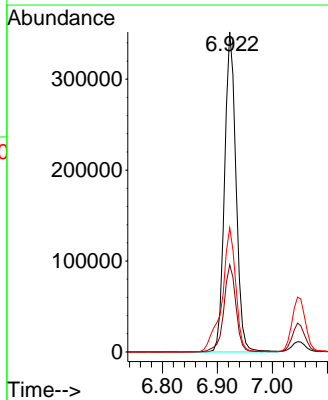
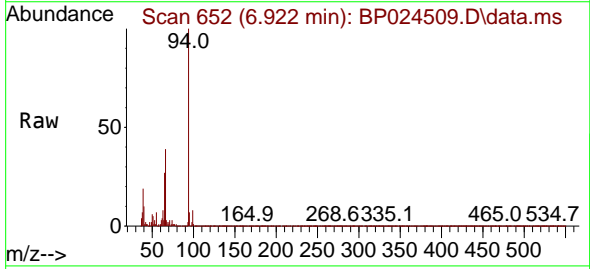
Ion	Ratio	Lower	Upper
77	100		
105	104.7	79.2	119.2
106	99.0	76.2	116.2

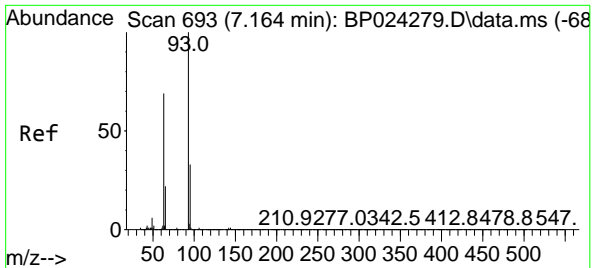


#10
 Phenol
 Concen: 45.569 ng
 RT: 6.922 min Scan# 652
 Delta R.T. -0.018 min
 Lab File: BP024509.D
 Acq: 02 May 2025 14:56

Tgt Ion: 94 Resp: 508675

Ion	Ratio	Lower	Upper
94	100		
65	27.2	4.5	44.5
66	38.8	12.4	52.4



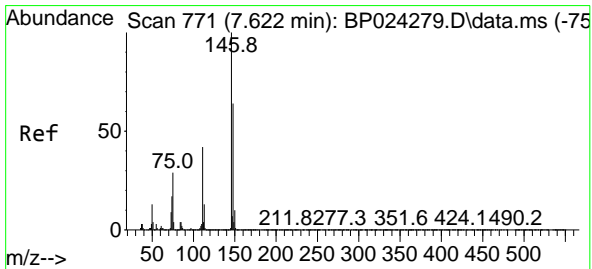
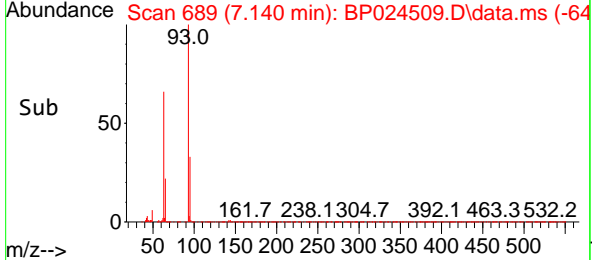
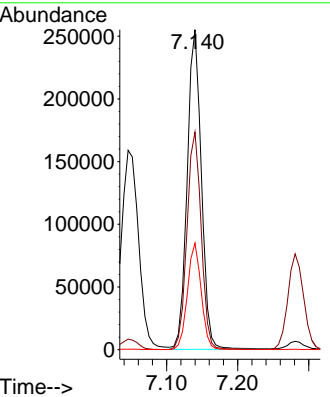
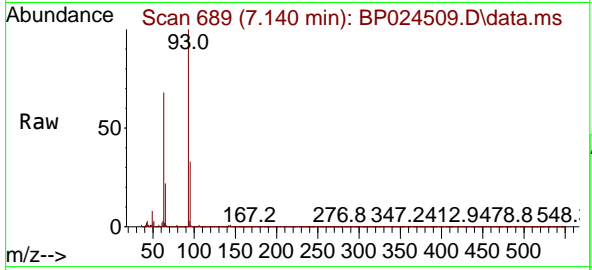


#11
 bis(2-Chloroethyl)ether
 Concen: 39.589 ng
 RT: 7.140 min Scan# 61
 Delta R.T. -0.018 min
 Lab File: BP024509.D
 Acq: 02 May 2025 14:56

Instrument : BNA_P
 ClientSampleId : WC-12MSD

Tgt Ion: 93 Resp: 356058

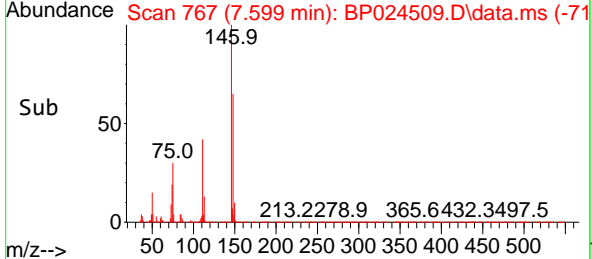
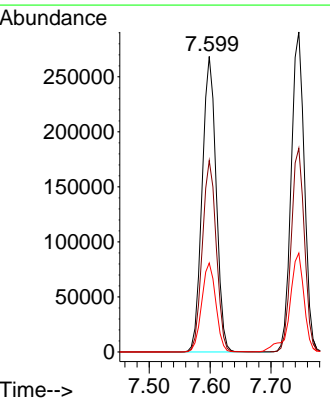
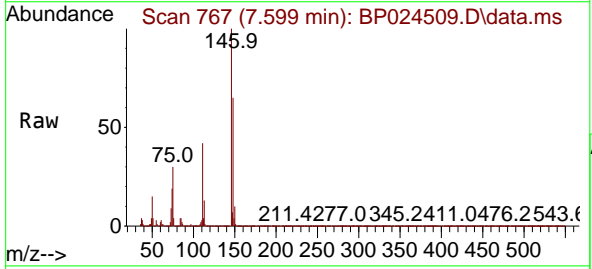
Ion	Ratio	Lower	Upper
93	100		
63	68.0	48.6	88.6
95	33.3	12.3	52.3

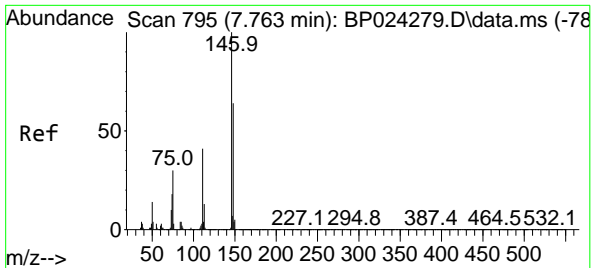


#12
 1,3-Dichlorobenzene
 Concen: 43.952 ng
 RT: 7.599 min Scan# 767
 Delta R.T. -0.018 min
 Lab File: BP024509.D
 Acq: 02 May 2025 14:56

Tgt Ion: 146 Resp: 429327

Ion	Ratio	Lower	Upper
146	100		
148	64.8	51.4	77.0
75	30.1	22.9	34.3

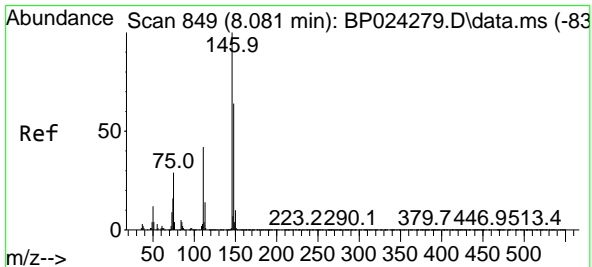
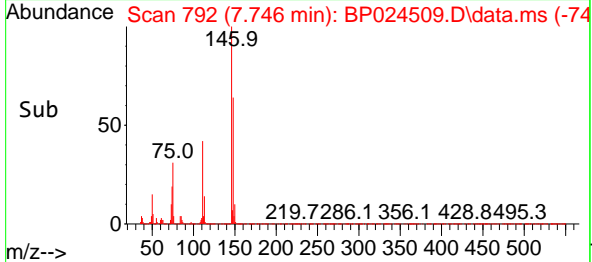
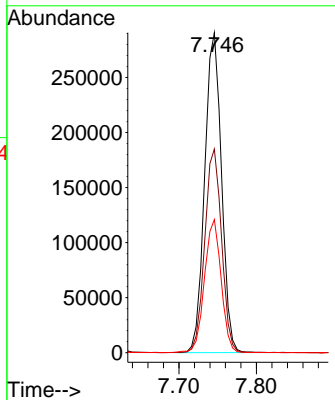
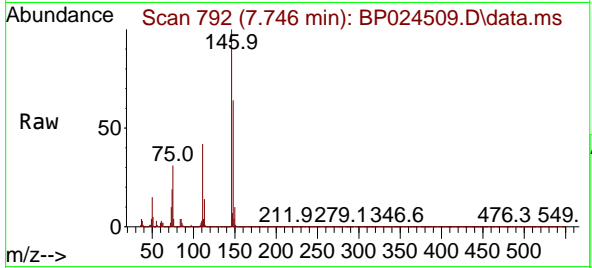




#13
 1,4-Dichlorobenzene
 Concen: 44.038 ng
 RT: 7.746 min Scan# 791
 Delta R.T. -0.012 min
 Lab File: BP024509.D
 Acq: 02 May 2025 14:56

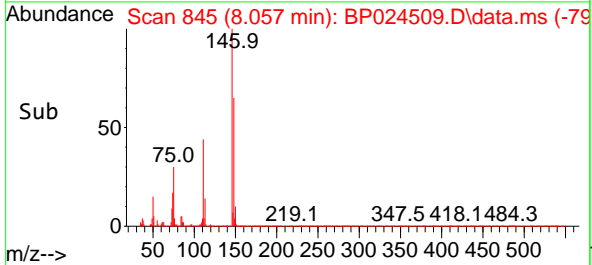
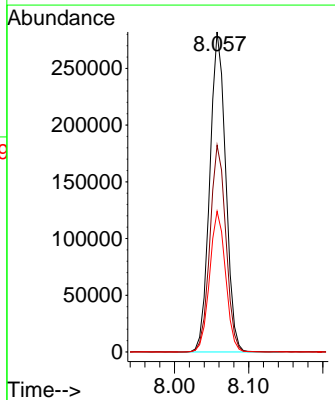
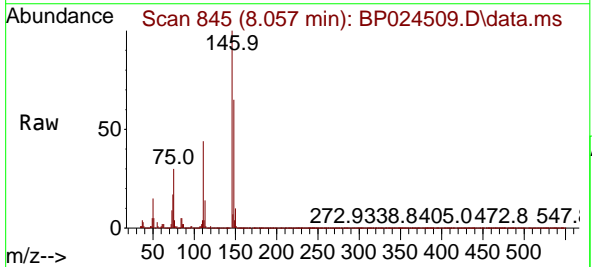
Instrument :
 BNA_P
 ClientSampleId :
 WC-12MSD

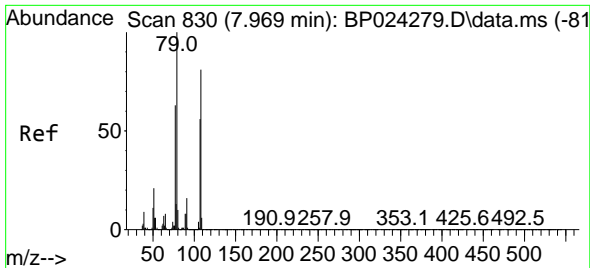
Tgt Ion	Resp	Lower	Upper
146	436461		
146	100		
148	63.6	51.1	76.7
111	41.6	32.6	48.8



#14
 1,2-Dichlorobenzene
 Concen: 43.965 ng
 RT: 8.057 min Scan# 845
 Delta R.T. -0.018 min
 Lab File: BP024509.D
 Acq: 02 May 2025 14:56

Tgt Ion	Resp	Lower	Upper
146	420751		
146	100		
148	64.6	51.0	76.4
111	43.9	33.8	50.8

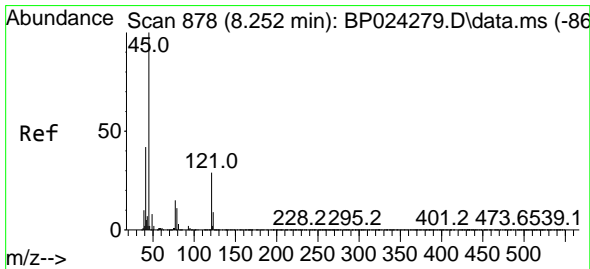
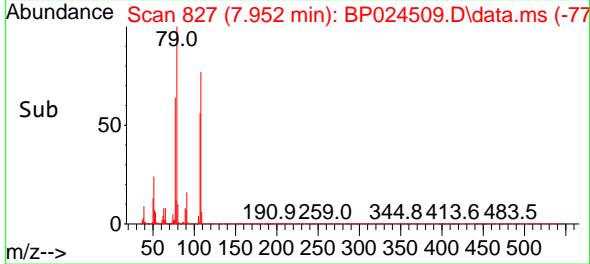
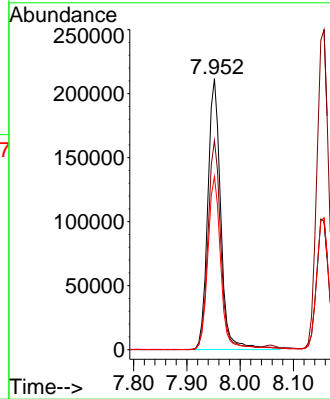
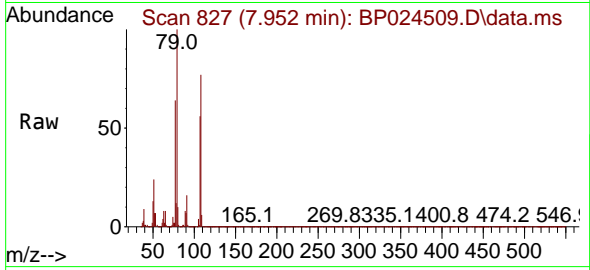




#15
 Benzyl Alcohol
 Concen: 49.720 ng
 RT: 7.952 min Scan# 81
 Delta R.T. -0.012 min
 Lab File: BP024509.D
 Acq: 02 May 2025 14:56

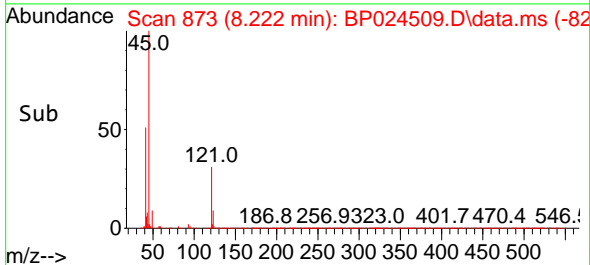
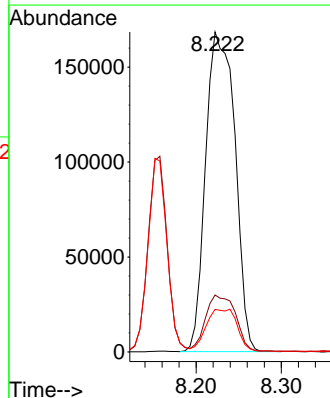
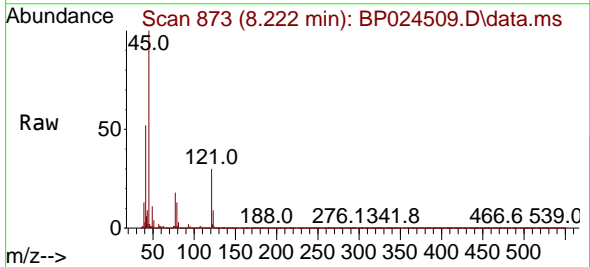
Instrument :
 BNA_P
 Client Sample Id :
 WC-12MSD

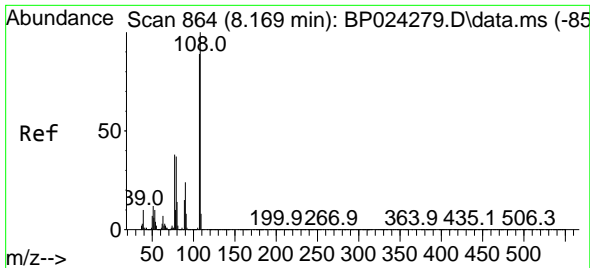
Tgt Ion: 79 Resp: 357799
 Ion Ratio Lower Upper
 79 100
 108 77.2 65.1 97.7
 77 63.9 50.7 76.1



#16
 2,2'-oxybis(1-Chloropropane)
 Concen: 41.376 ng
 RT: 8.222 min Scan# 873
 Delta R.T. -0.024 min
 Lab File: BP024509.D
 Acq: 02 May 2025 14:56

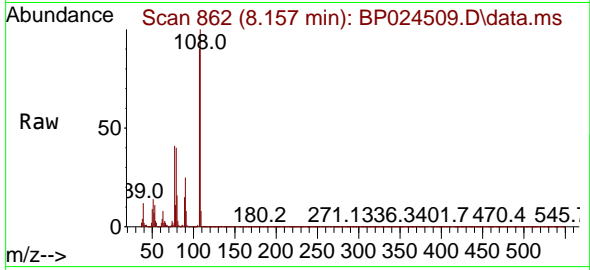
Tgt Ion: 45 Resp: 402239
 Ion Ratio Lower Upper
 45 100
 77 17.8 0.0 37.7
 79 13.3 0.0 33.5





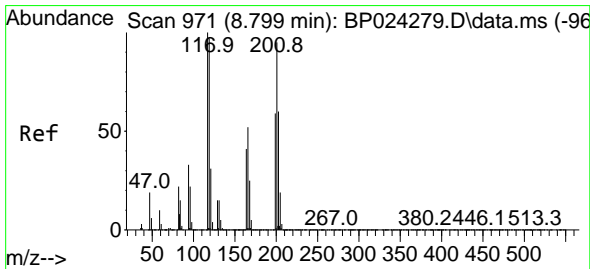
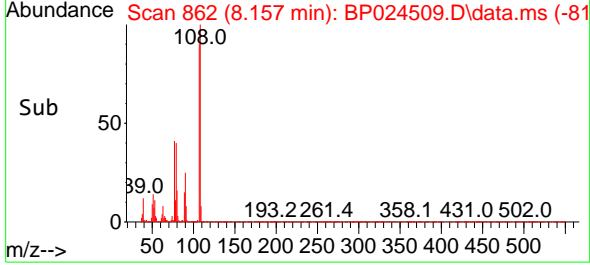
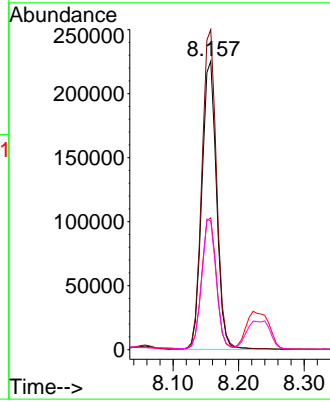
#17
 2-Methylphenol
 Concen: 48.558 ng
 RT: 8.157 min Scan# 80
 Delta R.T. -0.012 min
 Lab File: BP024509.D
 Acq: 02 May 2025 14:56

Instrument :
 BNA_P
 ClientSampleId :
 WC-12MSD

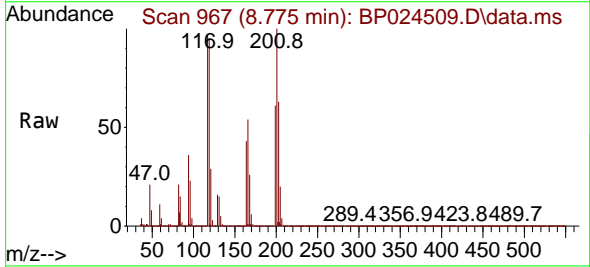


Tgt Ion:107 Resp: 350646

Ion	Ratio	Lower	Upper
107	100		
108	110.9	89.8	134.6
77	45.7	34.2	51.4
79	44.6	33.8	50.8

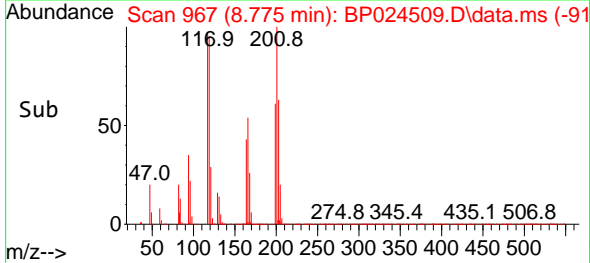
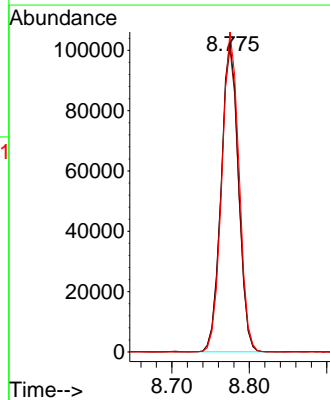


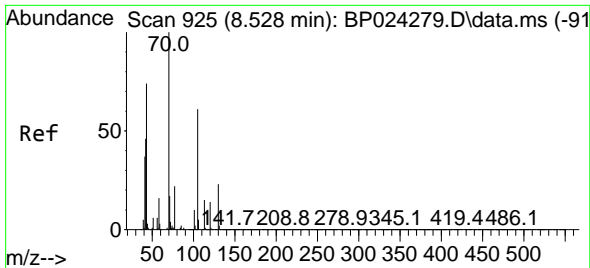
#18
 Hexachloroethane
 Concen: 44.859 ng
 RT: 8.775 min Scan# 967
 Delta R.T. -0.018 min
 Lab File: BP024509.D
 Acq: 02 May 2025 14:56



Tgt Ion:117 Resp: 160673

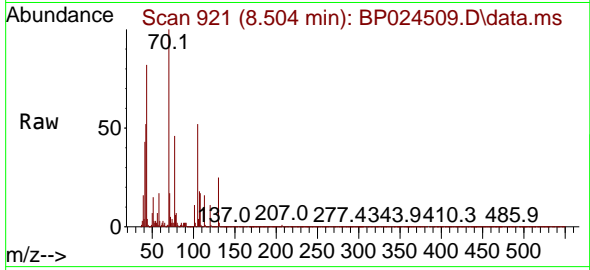
Ion	Ratio	Lower	Upper
117	100		
119	97.9	77.8	116.6
201	103.2	75.9	113.9





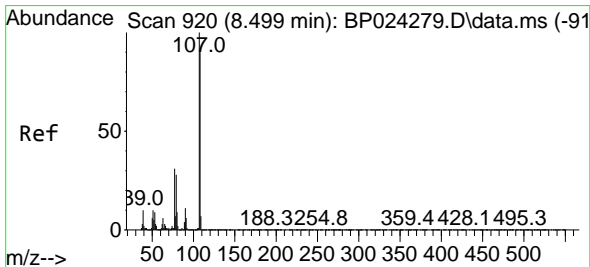
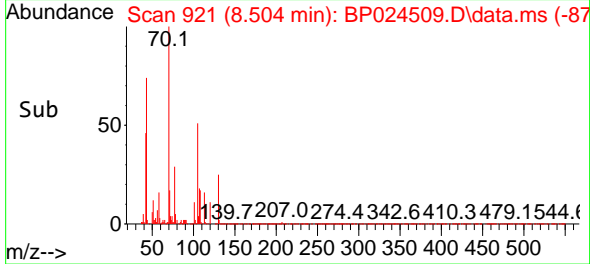
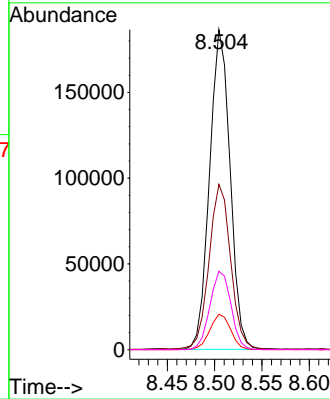
#19
 n-Nitroso-di-n-propylamine
 Concen: 40.699 ng
 RT: 8.504 min Scan# 917
 Delta R.T. -0.018 min
 Lab File: BP024509.D
 Acq: 02 May 2025 14:56

Instrument :
 BNA_P
 ClientSampleId :
 WC-12MSD

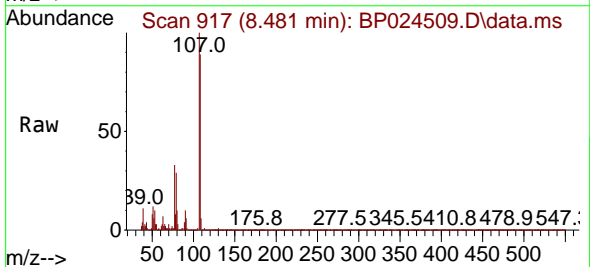


Tgt Ion: 70 Resp: 280183

Ion	Ratio	Lower	Upper
70	100		
42	51.7	37.3	55.9
101	11.1	8.2	12.4
130	24.5	18.6	28.0

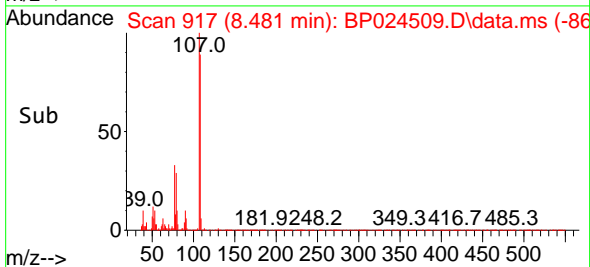
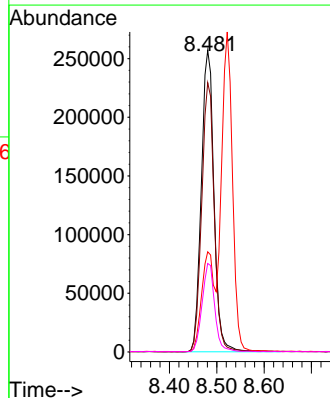


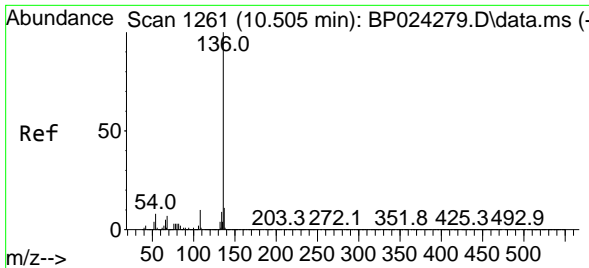
#20
 3+4-Methylphenols
 Concen: 47.620 ng
 RT: 8.481 min Scan# 917
 Delta R.T. -0.012 min
 Lab File: BP024509.D
 Acq: 02 May 2025 14:56



Tgt Ion: 107 Resp: 477143

Ion	Ratio	Lower	Upper
107	100		
108	89.3	69.8	109.8
77	33.2	11.5	51.5
79	29.3	7.8	47.8

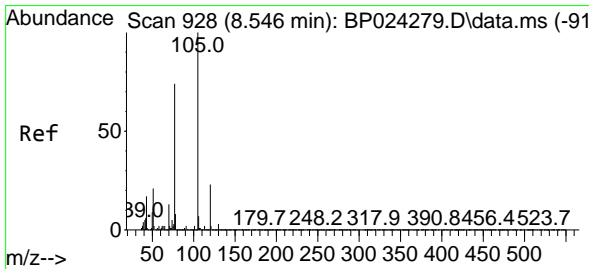
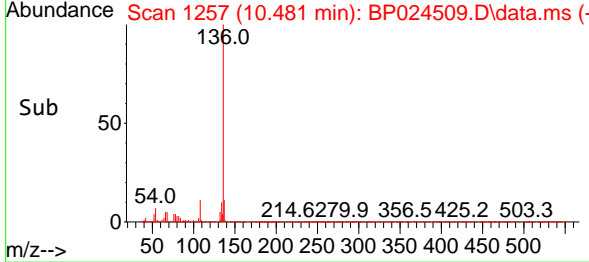
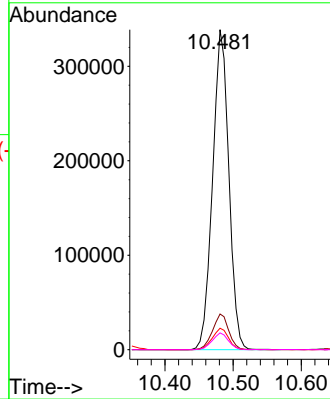
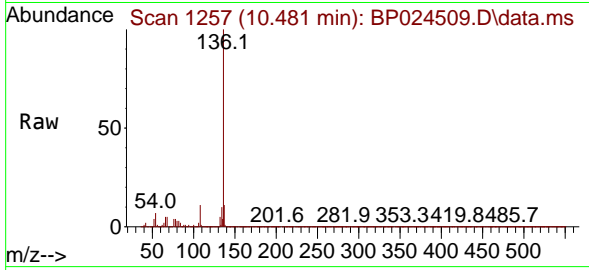




#21
 Naphthalene-d8
 Concen: 20.000 ng
 RT: 10.481 min Scan# 11
 Delta R.T. -0.018 min
 Lab File: BP024509.D
 Acq: 02 May 2025 14:56

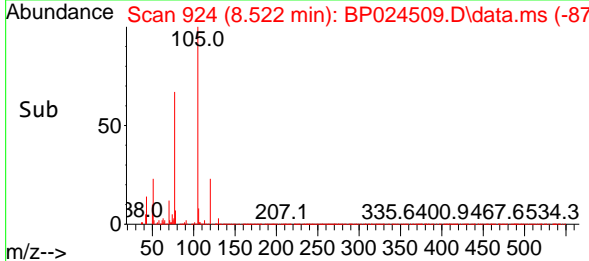
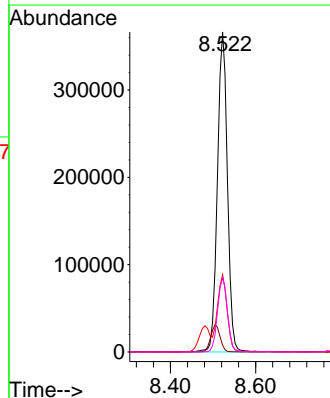
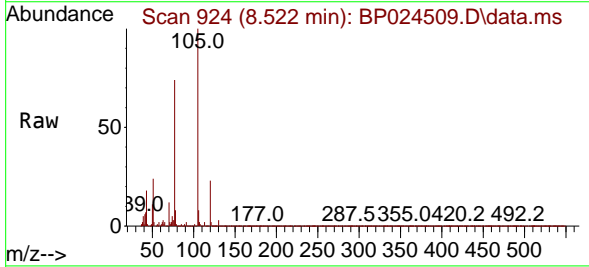
Instrument :
 BNA_P
 Client Sample Id :
 WC-12MSD

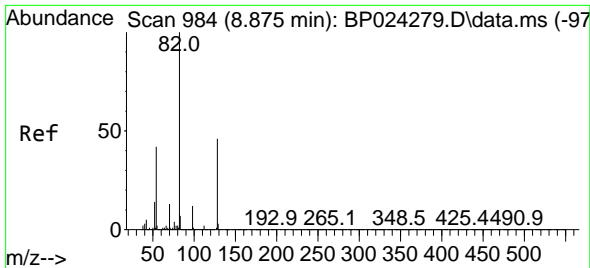
Tgt Ion	Resp	Lower	Upper
136	100		
137	11.1	9.2	13.8
54	6.7	6.0	9.0
68	5.2	5.5	8.3



#22
 Acetophenone
 Concen: 42.966 ng
 RT: 8.522 min Scan# 924
 Delta R.T. -0.018 min
 Lab File: BP024509.D
 Acq: 02 May 2025 14:56

Tgt Ion	Resp	Lower	Upper
105	100		
71	2.1	1.7	2.5
51	24.2	16.9	25.3
120	23.2	18.6	28.0

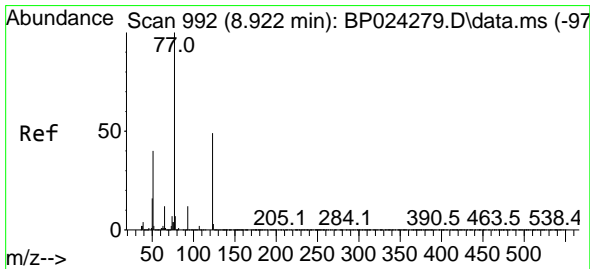
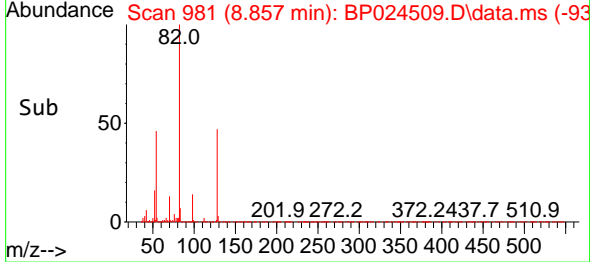
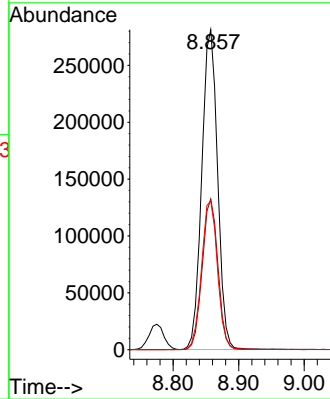
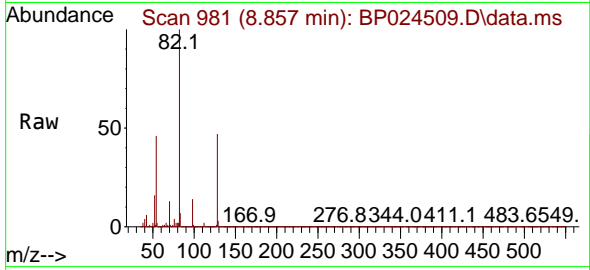




#23
 Nitrobenzene-d5
 Concen: 48.034 ng
 RT: 8.857 min Scan# 981
 Delta R.T. -0.012 min
 Lab File: BP024509.D
 Acq: 02 May 2025 14:56

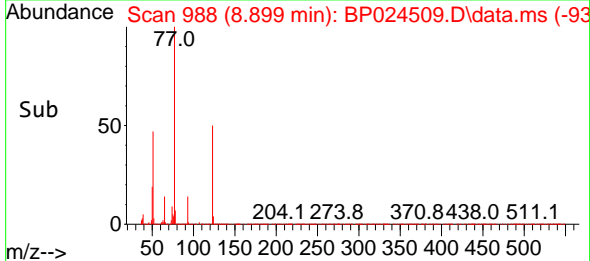
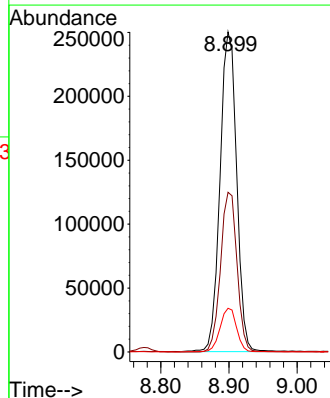
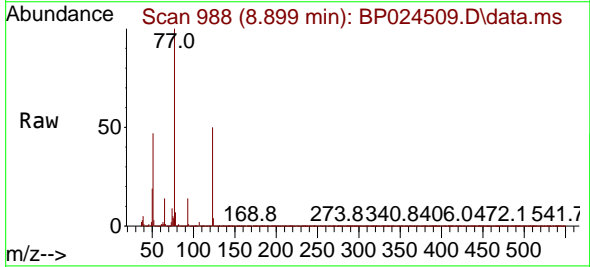
Instrument :
 BNA_P
 ClientSampleId :
 WC-12MSD

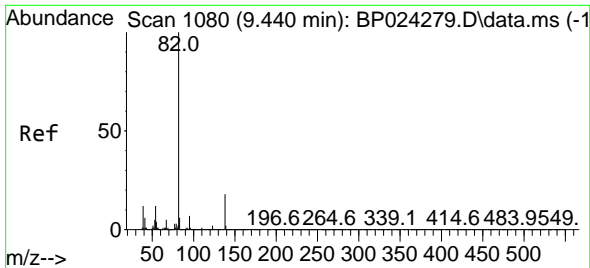
Tgt Ion: 82 Resp: 472356
 Ion Ratio Lower Upper
 82 100
 128 47.1 36.5 54.7
 54 46.4 33.4 50.2



#24
 Nitrobenzene
 Concen: 43.619 ng
 RT: 8.899 min Scan# 988
 Delta R.T. -0.012 min
 Lab File: BP024509.D
 Acq: 02 May 2025 14:56

Tgt Ion: 77 Resp: 424326
 Ion Ratio Lower Upper
 77 100
 123 49.9 39.2 58.8
 65 13.6 9.8 14.6



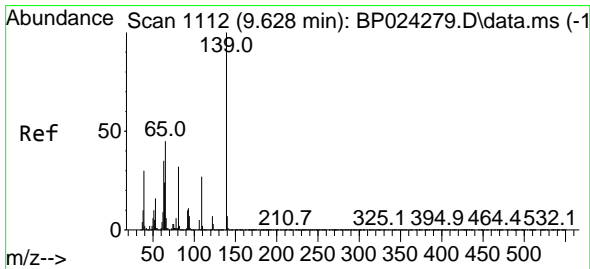
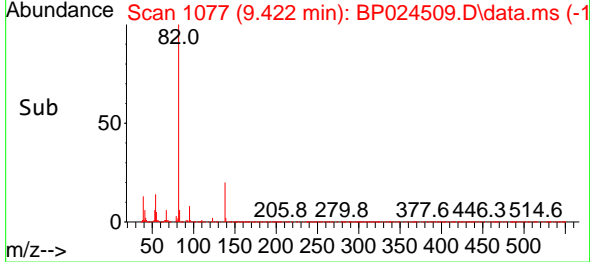
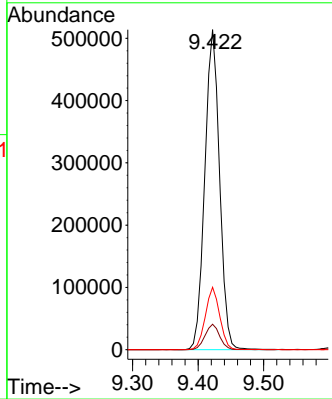
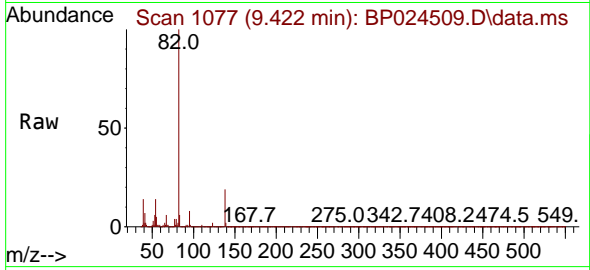


#25
 Isophorone
 Concen: 45.198 ng
 RT: 9.422 min Scan# 1108
 Delta R.T. -0.006 min
 Lab File: BP024509.D
 Acq: 02 May 2025 14:56

Instrument : BNA_P
 Client Sample Id : WC-12MSD

Tgt Ion: 82 Resp: 804515

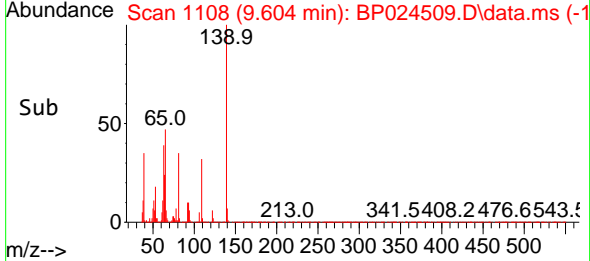
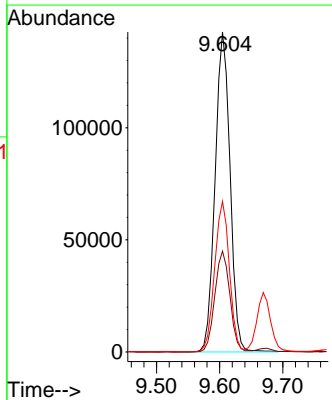
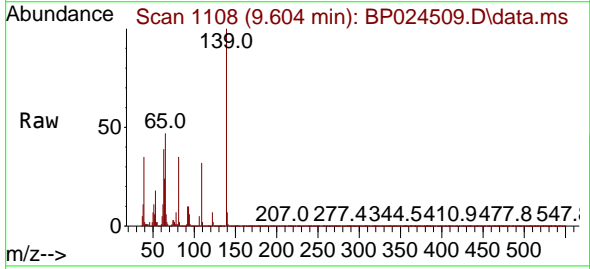
Ion	Ratio	Lower	Upper
82	100		
95	7.9	5.4	8.2
138	19.5	14.4	21.6

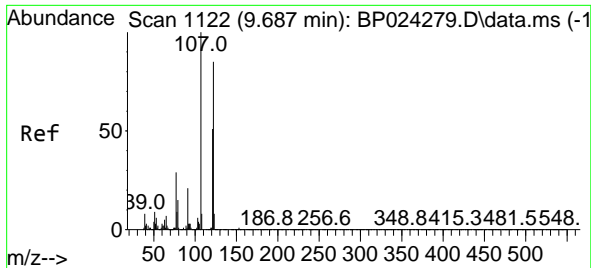


#26
 2-Nitrophenol
 Concen: 49.392 ng
 RT: 9.604 min Scan# 1108
 Delta R.T. -0.012 min
 Lab File: BP024509.D
 Acq: 02 May 2025 14:56

Tgt Ion: 139 Resp: 235139

Ion	Ratio	Lower	Upper
139	100		
109	31.5	21.8	32.6
65	47.1	36.2	54.2

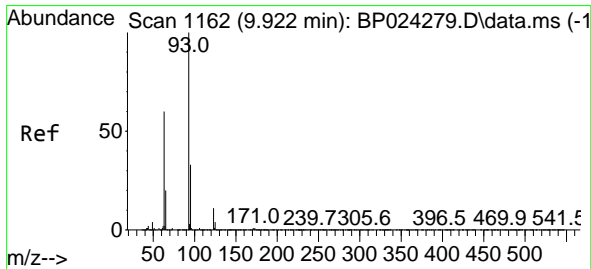
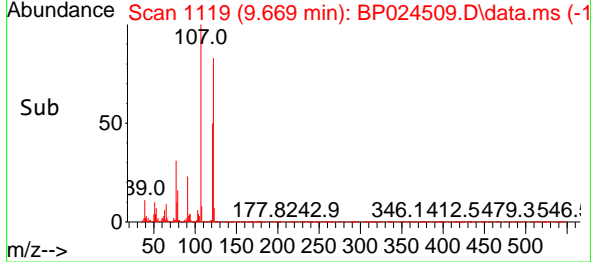
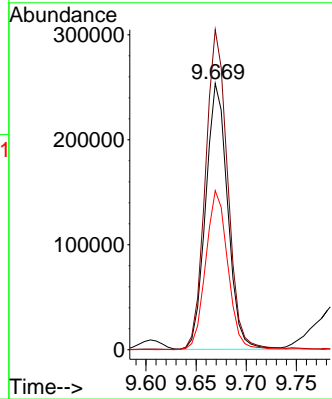
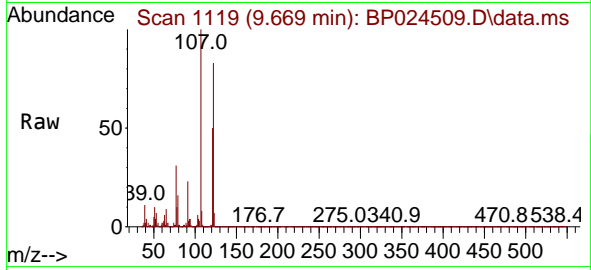




#27
 2,4-Dimethylphenol
 Concen: 64.819 ng
 RT: 9.669 min Scan# 1119
 Delta R.T. -0.012 min
 Lab File: BP024509.D
 Acq: 02 May 2025 14:56

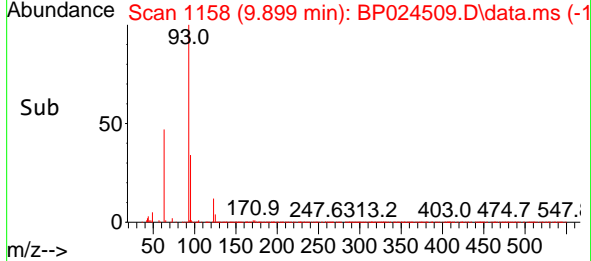
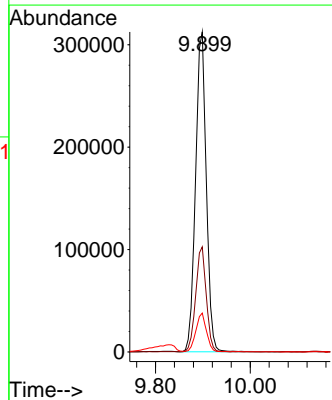
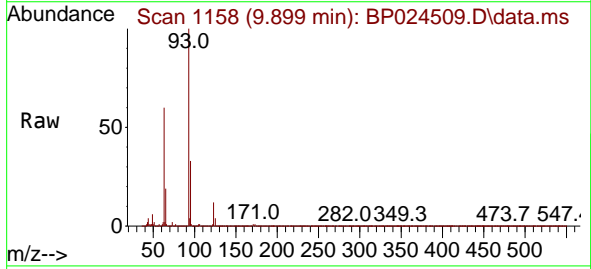
Instrument : BNA_P
 ClientSampleId : WC-12MSD

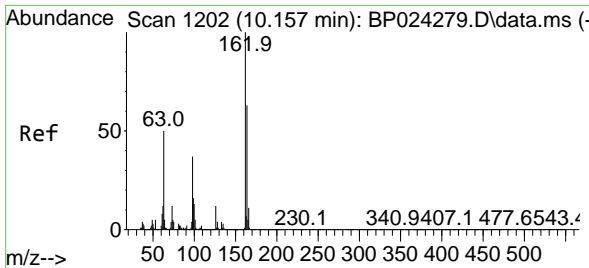
Tgt Ion	Resp	Lower	Upper
122	387464		
107	120.2	93.7	140.5
121	59.8	48.2	72.2



#28
 bis(2-Chloroethoxy)methane
 Concen: 40.819 ng
 RT: 9.899 min Scan# 1158
 Delta R.T. -0.012 min
 Lab File: BP024509.D
 Acq: 02 May 2025 14:56

Tgt Ion	Resp	Lower	Upper
93	490825		
95	32.9	26.0	39.0
123	12.2	9.1	13.7



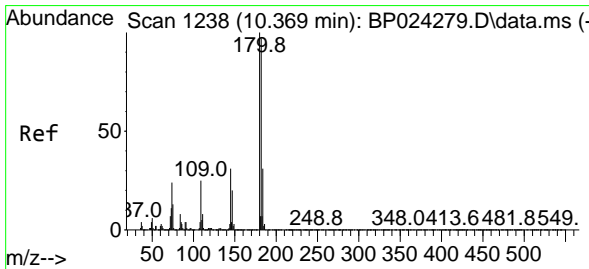
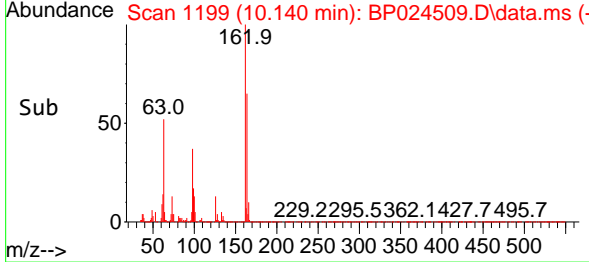
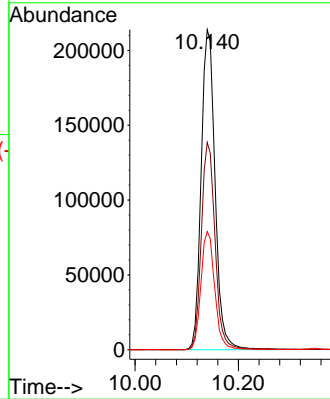
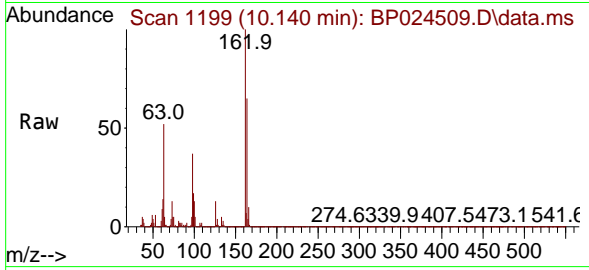


#29
 2,4-Dichlorophenol
 Concen: 49.049 ng
 RT: 10.140 min Scan# 1199
 Delta R.T. -0.012 min
 Lab File: BP024509.D
 Acq: 02 May 2025 14:56

Instrument :
 BNA_P
 ClientSampleId :
 WC-12MSD

Tgt Ion:162 Resp: 399772

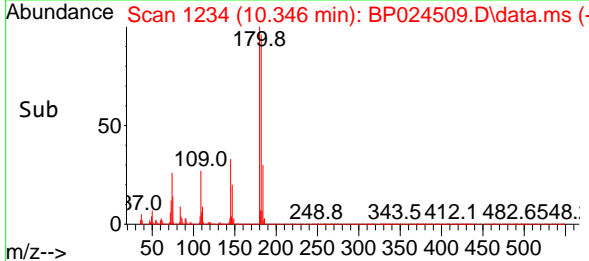
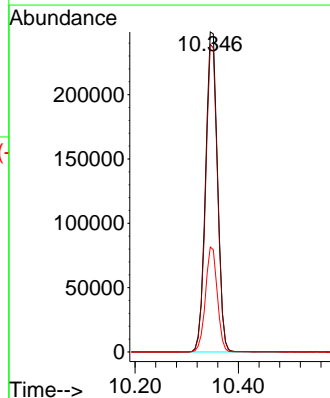
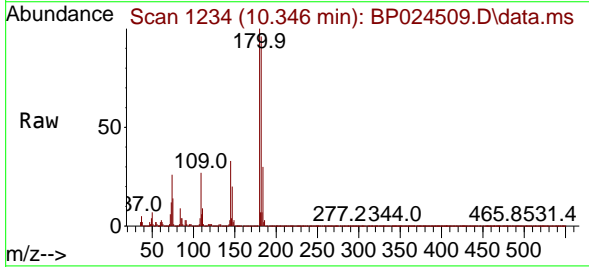
Ion	Ratio	Lower	Upper
162	100		
164	64.8	43.3	83.3
98	36.9	16.6	56.6

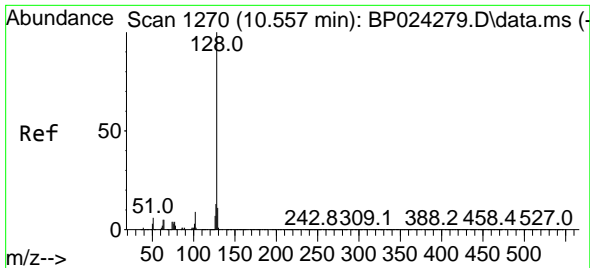


#30
 1,2,4-Trichlorobenzene
 Concen: 45.715 ng
 RT: 10.346 min Scan# 1234
 Delta R.T. -0.018 min
 Lab File: BP024509.D
 Acq: 02 May 2025 14:56

Tgt Ion:180 Resp: 399208

Ion	Ratio	Lower	Upper
180	100		
182	96.1	77.3	115.9
145	32.8	25.1	37.7



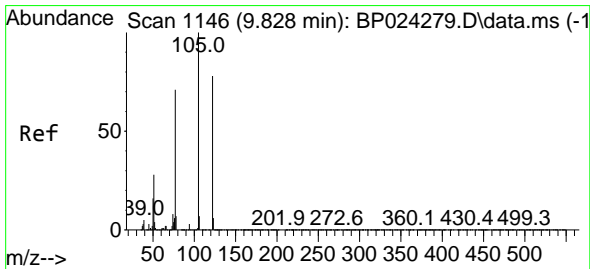
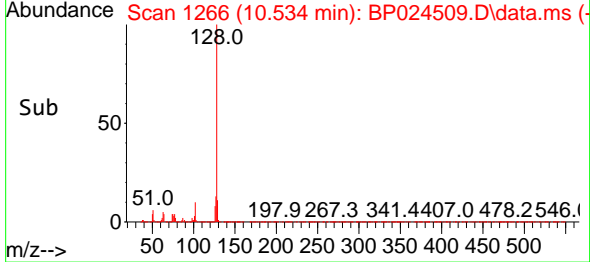
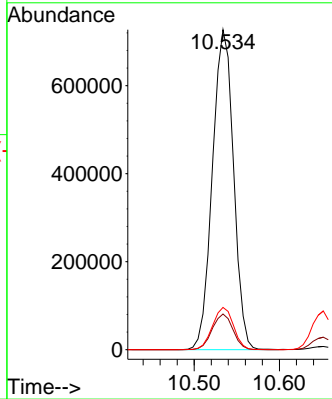
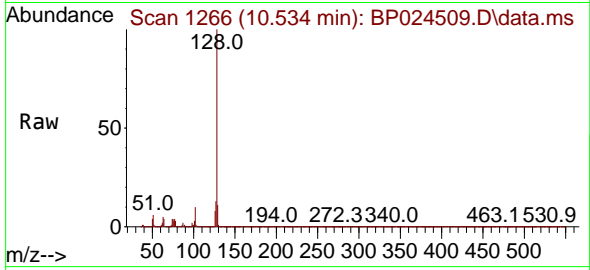


#31
 Naphthalene
 Concen: 42.376 ng
 RT: 10.534 min Scan# 1126
 Delta R.T. -0.012 min
 Lab File: BP024509.D
 Acq: 02 May 2025 14:56

Instrument : BNA_P
 ClientSampleId : WC-12MSD

Tgt Ion:128 Resp: 1251667

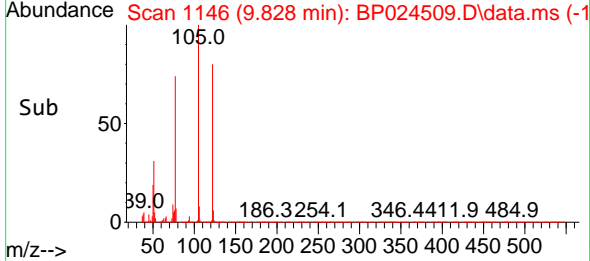
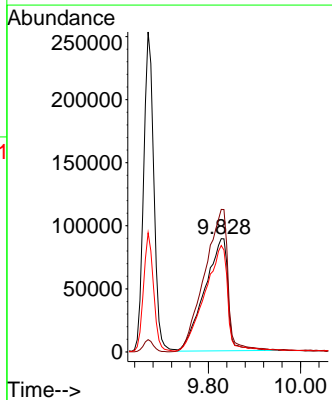
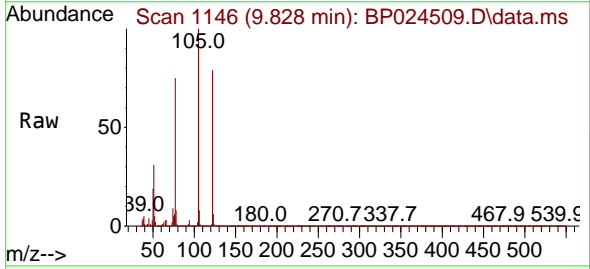
Ion	Ratio	Lower	Upper
128	100		
129	11.2	8.6	13.0
127	13.2	10.3	15.5

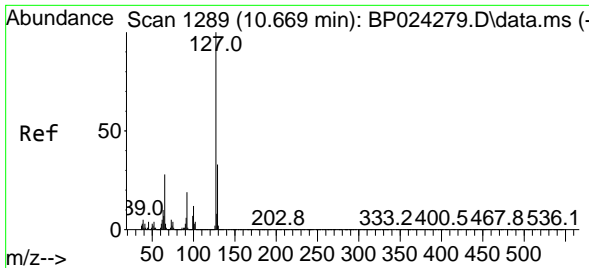


#32
 Benzoic acid
 Concen: 45.174 ng
 RT: 9.828 min Scan# 1146
 Delta R.T. 0.006 min
 Lab File: BP024509.D
 Acq: 02 May 2025 14:56

Tgt Ion:122 Resp: 314650

Ion	Ratio	Lower	Upper
122	100		
105	125.8	104.8	144.8
77	93.9	69.2	109.2



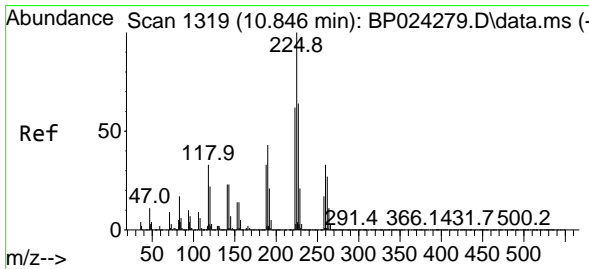
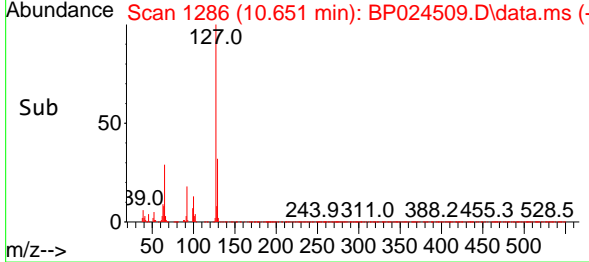
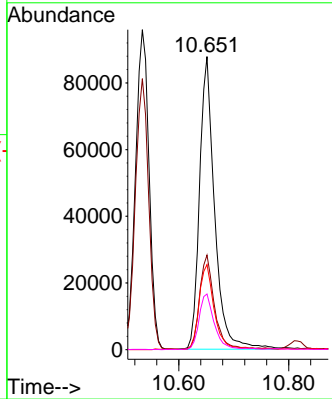
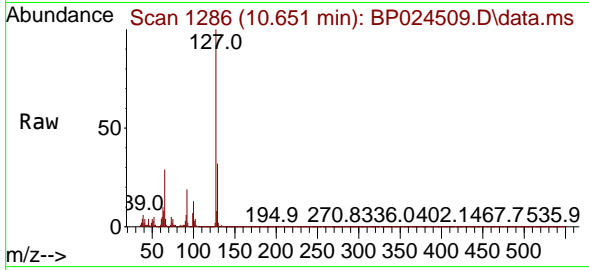


#33
 4-Chloroaniline
 Concen: 16.086 ng
 RT: 10.651 min Scan# 11
 Delta R.T. -0.012 min
 Lab File: BP024509.D
 Acq: 02 May 2025 14:56

Instrument : BNA_P
 Client Sample Id : WC-12MSD

Tgt Ion: 127 Resp: 167324

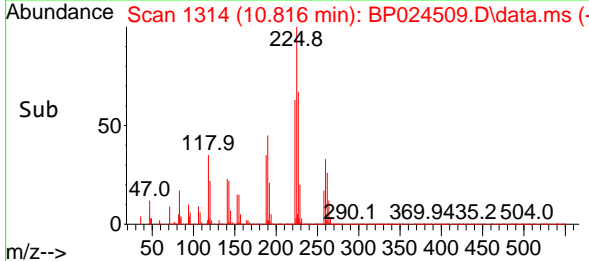
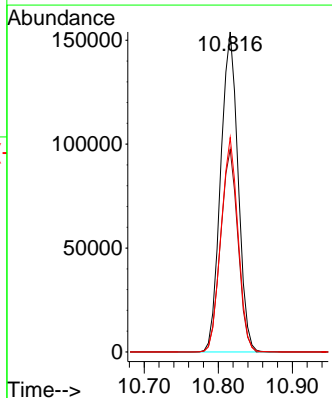
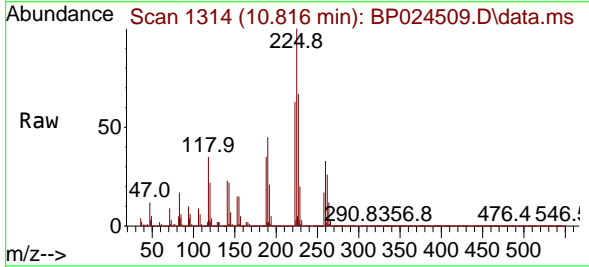
Ion	Ratio	Lower	Upper
127	100		
129	32.3	26.1	39.1
65	29.0	22.1	33.1
92	19.0	15.0	22.4

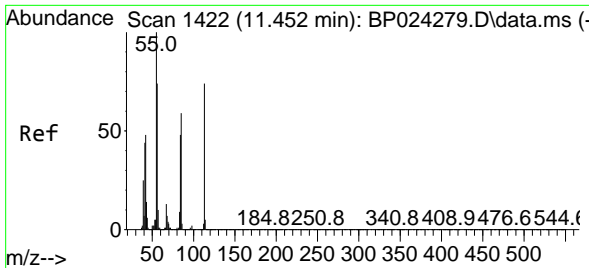


#34
 Hexachlorobutadiene
 Concen: 48.864 ng
 RT: 10.816 min Scan# 1314
 Delta R.T. -0.012 min
 Lab File: BP024509.D
 Acq: 02 May 2025 14:56

Tgt Ion: 225 Resp: 250745

Ion	Ratio	Lower	Upper
225	100		
223	63.3	49.5	74.3
227	67.0	50.9	76.3

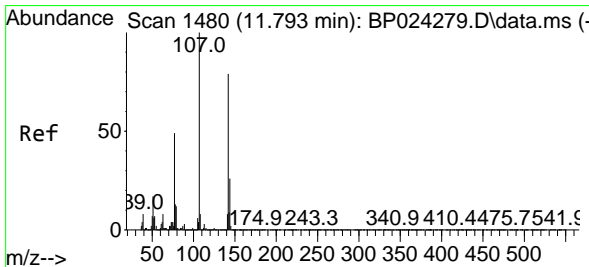
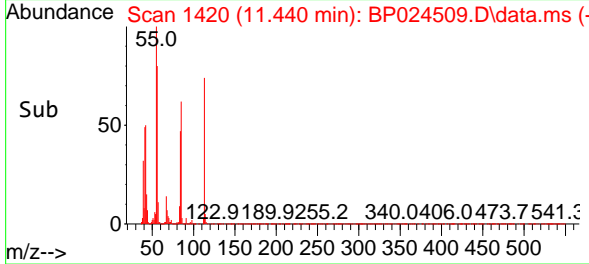
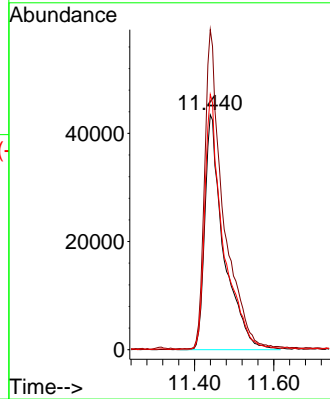
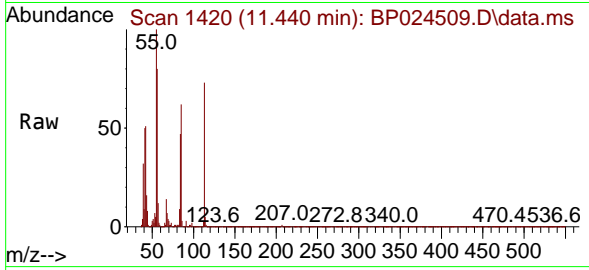




#35
 Caprolactam
 Concen: 47.516 ng
 RT: 11.440 min Scan# 1422
 Delta R.T. -0.006 min
 Lab File: BP024509.D
 Acq: 02 May 2025 14:56

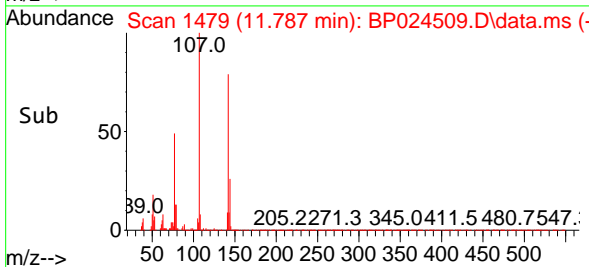
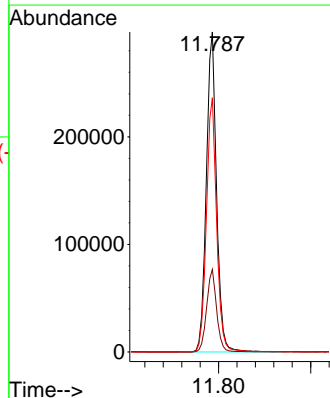
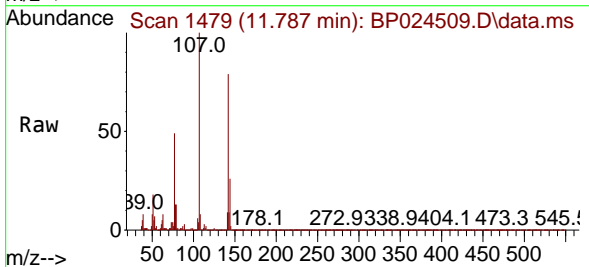
Instrument :
 BNA_P
 ClientSampleId :
 WC-12MSD

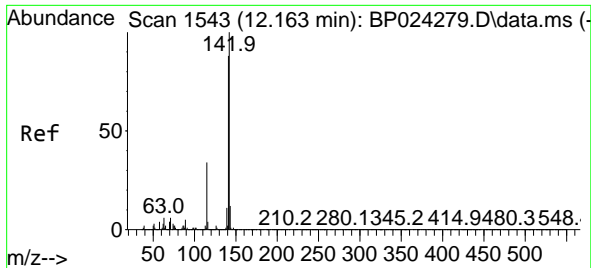
Tgt Ion:113 Resp: 142897
 Ion Ratio Lower Upper
 113 100
 55 136.2 115.9 155.9
 56 108.7 81.1 121.1



#36
 4-Chloro-3-methylphenol
 Concen: 48.644 ng
 RT: 11.787 min Scan# 1479
 Delta R.T. -0.006 min
 Lab File: BP024509.D
 Acq: 02 May 2025 14:56

Tgt Ion:107 Resp: 461801
 Ion Ratio Lower Upper
 107 100
 144 25.8 20.5 30.7
 142 79.4 63.4 95.2



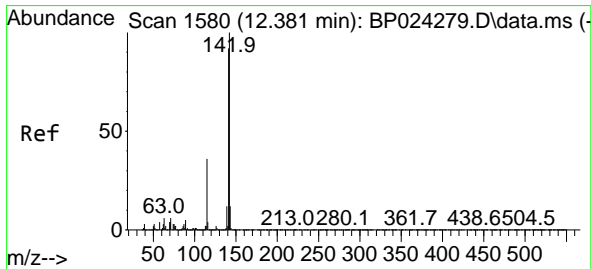
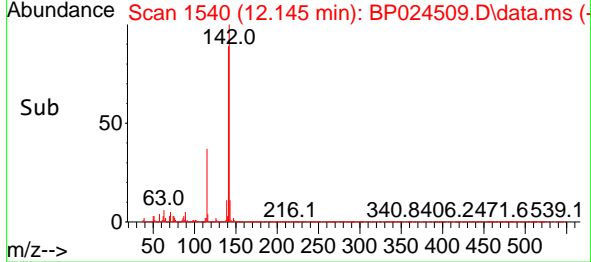
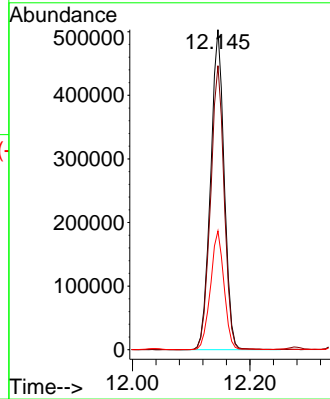
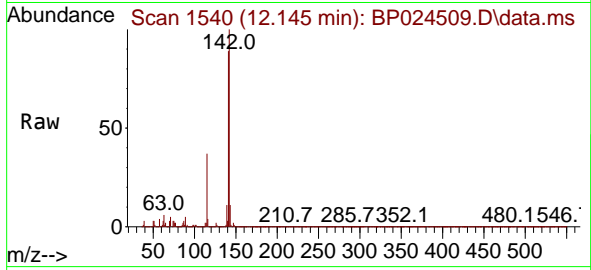


#37
 2-Methylnaphthalene
 Concen: 39.526 ng
 RT: 12.145 min Scan# 1543
 Delta R.T. -0.012 min
 Lab File: BP024509.D
 Acq: 02 May 2025 14:56

Instrument :
 BNA_P
 ClientSampleId :
 WC-12MSD

Tgt Ion:142 Resp: 809672

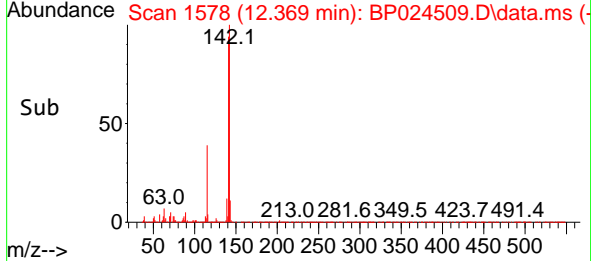
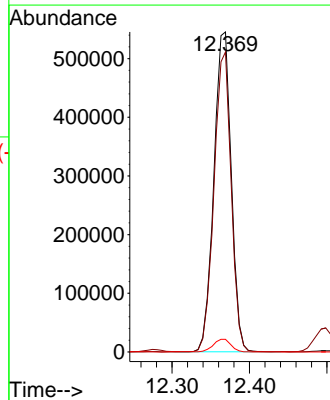
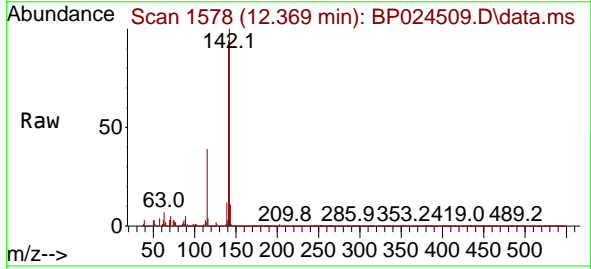
Ion	Ratio	Lower	Upper
142	100		
141	88.7	70.3	105.5
115	37.1	26.9	40.3

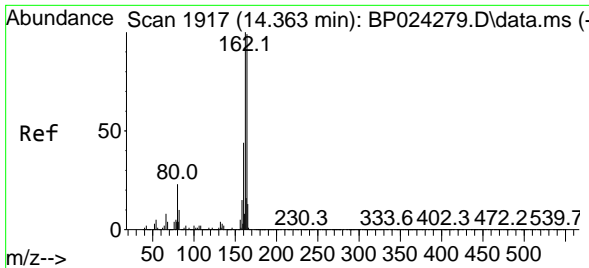


#38
 1-Methylnaphthalene
 Concen: 42.386 ng
 RT: 12.369 min Scan# 1578
 Delta R.T. -0.006 min
 Lab File: BP024509.D
 Acq: 02 May 2025 14:56

Tgt Ion:142 Resp: 849406

Ion	Ratio	Lower	Upper
142	100		
141	93.7	73.6	110.4
116	3.9	3.0	4.6



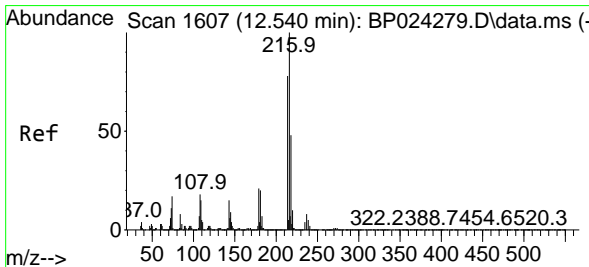
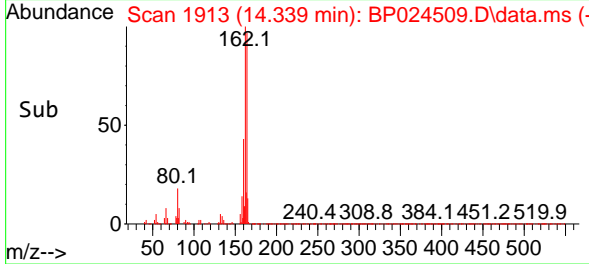
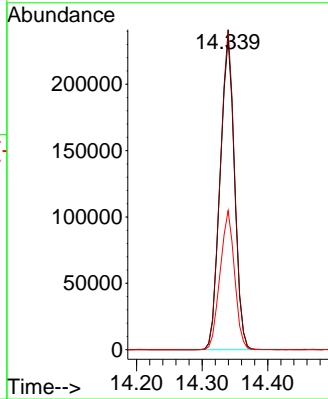
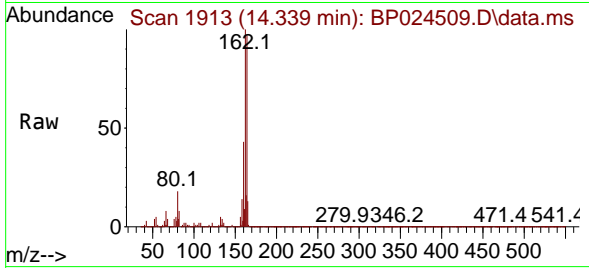


#39
 Acenaphthene-d10
 Concen: 20.000 ng
 RT: 14.339 min Scan# 1913
 Delta R.T. -0.012 min
 Lab File: BP024509.D
 Acq: 02 May 2025 14:56

Instrument : BNA_P
 Client Sample Id : WC-12MSD

Tgt Ion:164 Resp: 356159

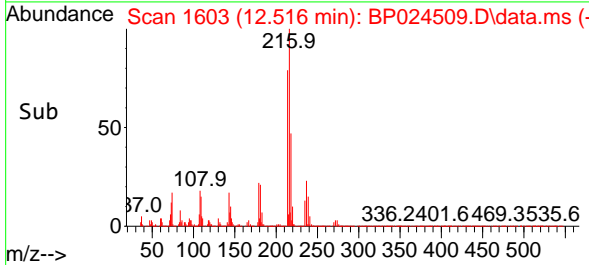
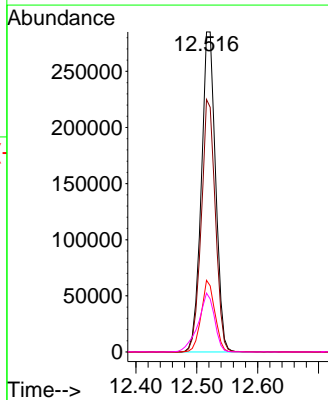
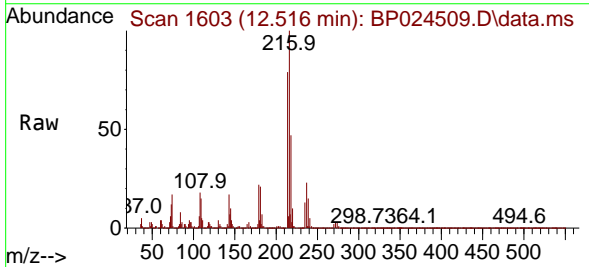
Ion	Ratio	Lower	Upper
164	100		
162	103.0	80.6	120.8
160	44.7	35.3	52.9

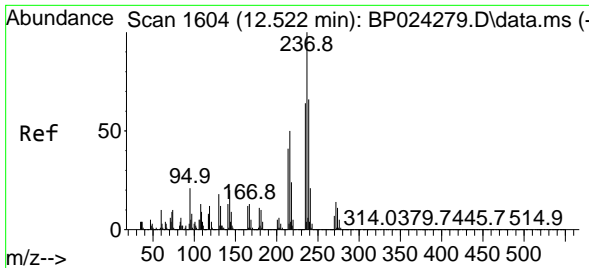


#40
 1,2,4,5-Tetrachlorobenzene
 Concen: 47.313 ng
 RT: 12.516 min Scan# 1603
 Delta R.T. -0.012 min
 Lab File: BP024509.D
 Acq: 02 May 2025 14:56

Tgt Ion:216 Resp: 463402

Ion	Ratio	Lower	Upper
216	100		
214	77.7	62.6	93.8
179	21.5	17.2	25.8
108	21.1	15.0	22.6

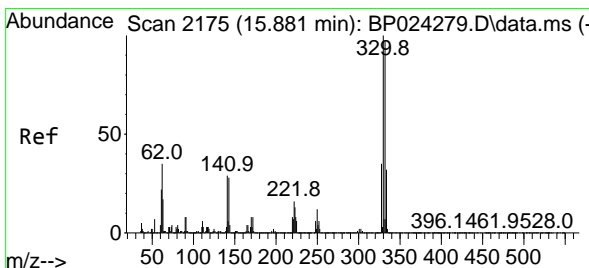
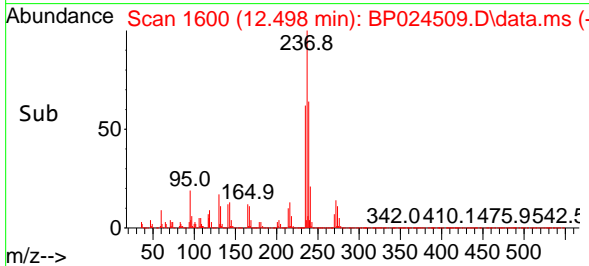
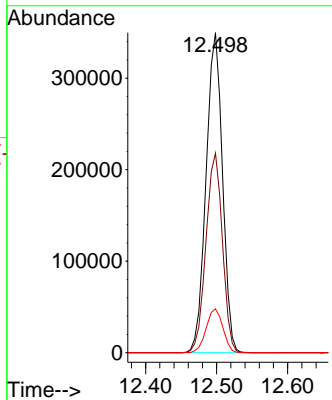
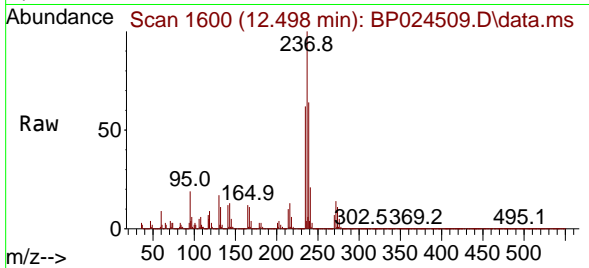




#41
 Hexachlorocyclopentadiene
 Concen: 162.196 ng
 RT: 12.498 min Scan# 10
 Delta R.T. -0.012 min
 Lab File: BP024509.D
 Acq: 02 May 2025 14:56

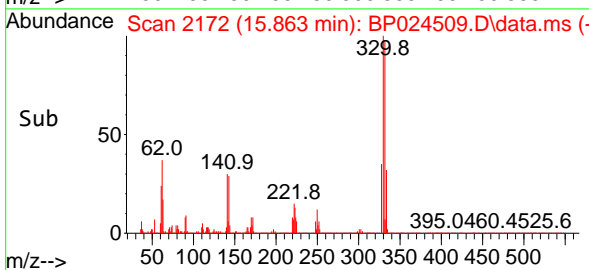
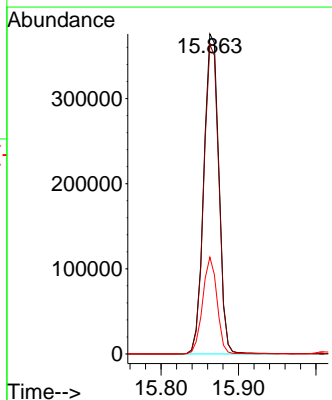
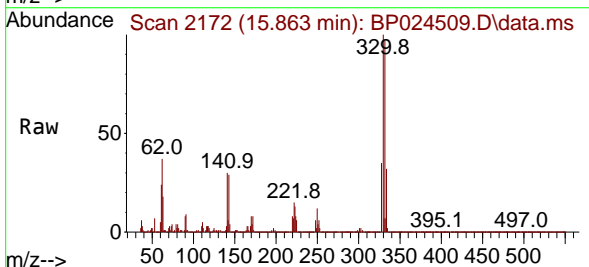
Instrument :
 BNA_P
 ClientSampleId :
 WC-12MSD

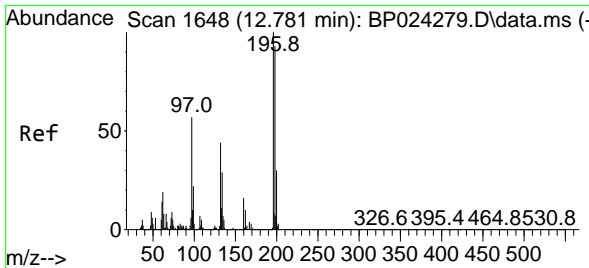
Tgt Ion	Resp	Lower	Upper
237	100		
235	62.3	43.9	83.9
272	13.7	0.0	33.6



#42
 2,4,6-Tribromophenol
 Concen: 102.779 ng
 RT: 15.863 min Scan# 2172
 Delta R.T. 0.000 min
 Lab File: BP024509.D
 Acq: 02 May 2025 14:56

Tgt Ion	Resp	Lower	Upper
330	100		
332	96.7	77.1	115.7
141	28.9	24.7	37.1



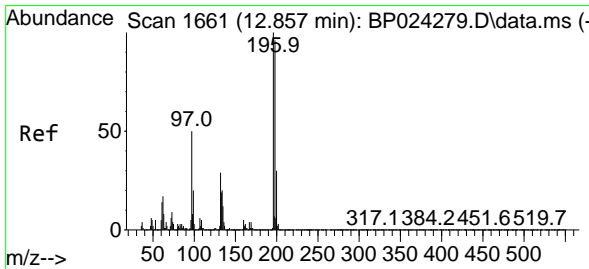
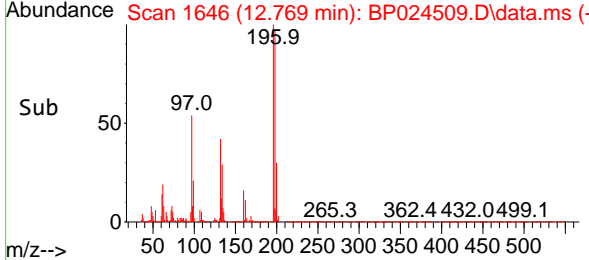
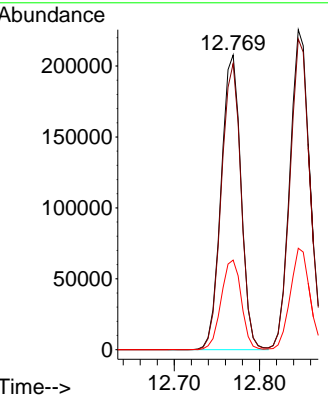
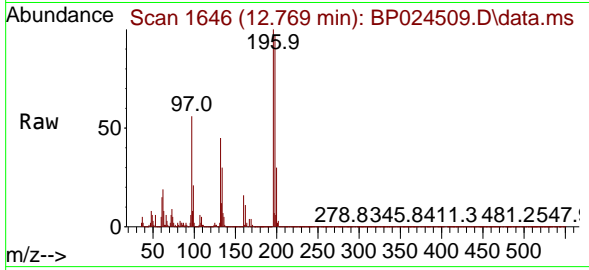


#43
 2,4,6-Trichlorophenol
 Concen: 51.692 ng
 RT: 12.769 min Scan# 1646
 Delta R.T. -0.006 min
 Lab File: BP024509.D
 Acq: 02 May 2025 14:56

Instrument :
 BNA_P
 ClientSampleId :
 WC-12MSD

Tgt Ion:196 Resp: 336610

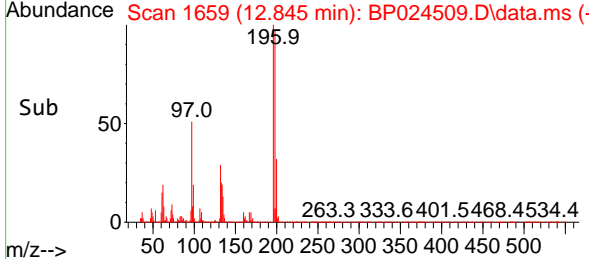
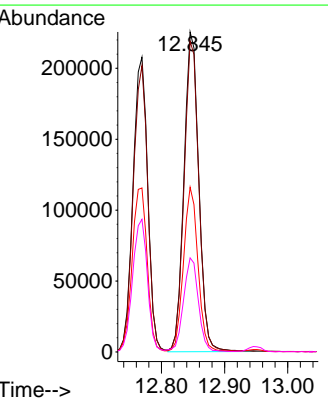
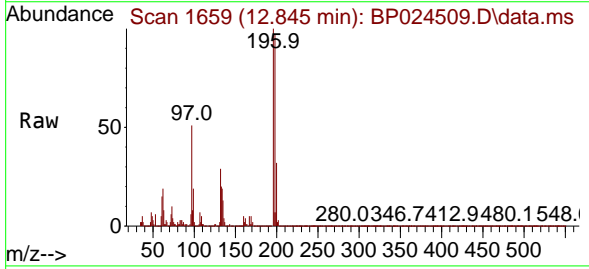
Ion	Ratio	Lower	Upper
196	100		
198	97.1	74.3	111.5
200	30.4	24.0	36.0

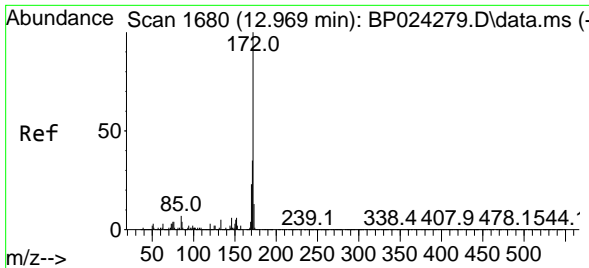


#44
 2,4,5-Trichlorophenol
 Concen: 51.252 ng
 RT: 12.845 min Scan# 1659
 Delta R.T. -0.012 min
 Lab File: BP024509.D
 Acq: 02 May 2025 14:56

Tgt Ion:196 Resp: 369577

Ion	Ratio	Lower	Upper
196	100		
198	97.1	77.3	115.9
97	51.4	40.4	60.6
132	29.4	23.4	35.0



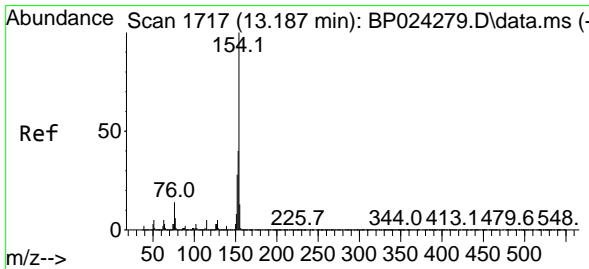
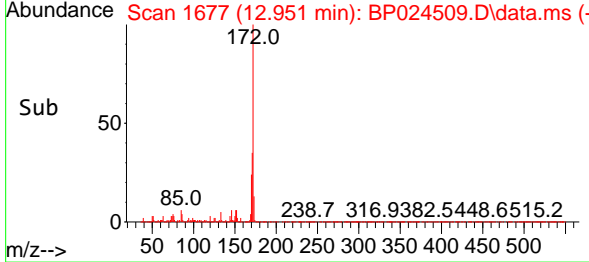
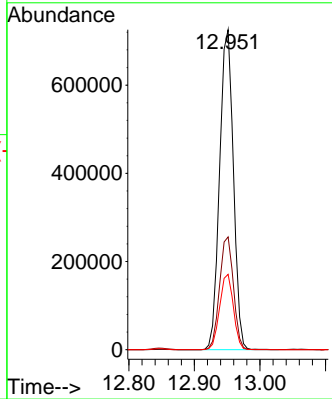
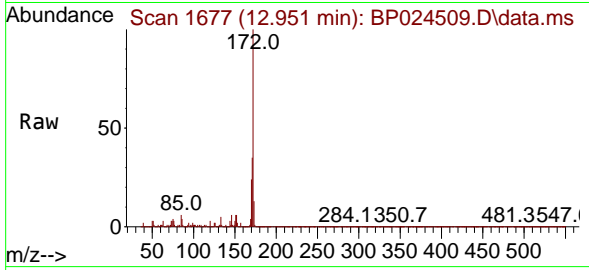


#45
 2-Fluorobiphenyl
 Concen: 45.268 ng
 RT: 12.951 min Scan# 10
 Delta R.T. -0.012 min
 Lab File: BP024509.D
 Acq: 02 May 2025 14:56

Instrument : BNA_P
 Client Sample Id : WC-12MSD

Tgt Ion: 172 Resp: 1053010

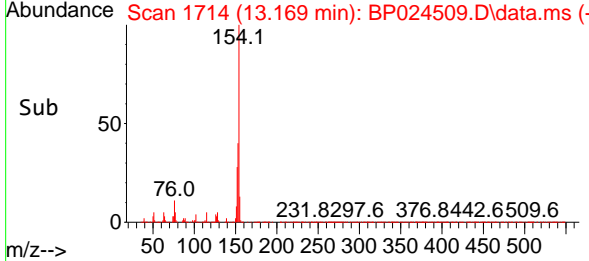
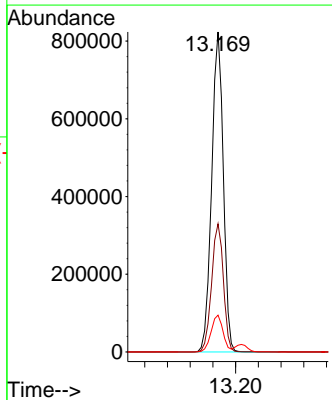
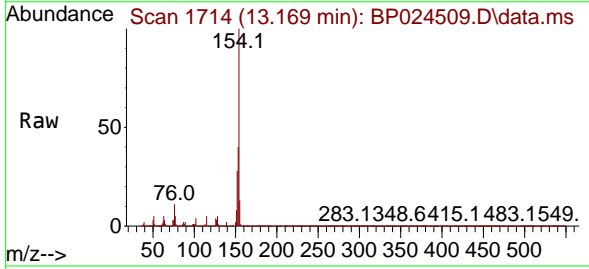
Ion	Ratio	Lower	Upper
172	100		
171	35.3	28.2	42.2
170	23.6	18.6	27.8

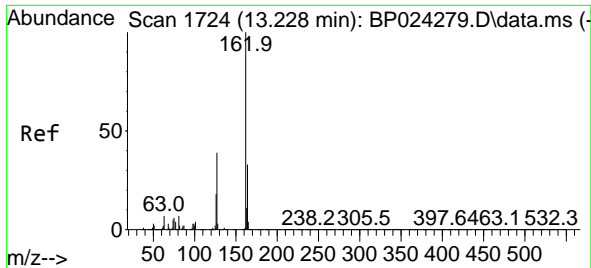


#46
 1,1'-Biphenyl
 Concen: 44.412 ng
 RT: 13.169 min Scan# 1714
 Delta R.T. -0.006 min
 Lab File: BP024509.D
 Acq: 02 May 2025 14:56

Tgt Ion: 154 Resp: 1162676

Ion	Ratio	Lower	Upper
154	100		
153	40.1	20.3	60.3
76	11.5	0.0	33.5

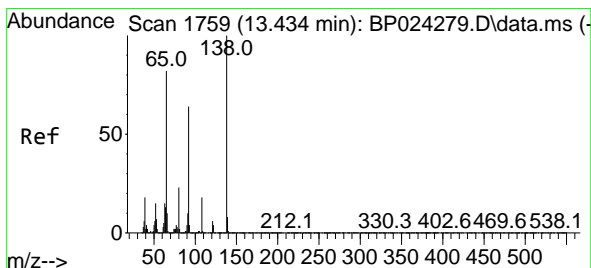
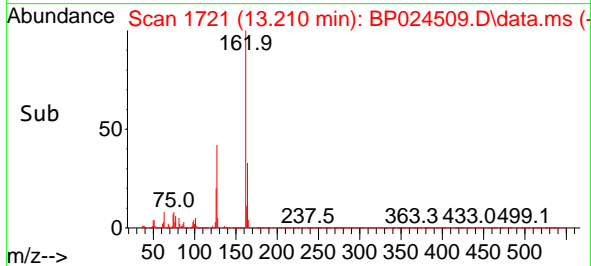
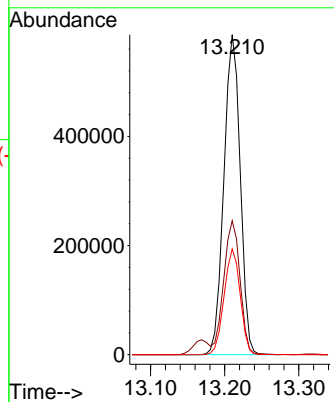
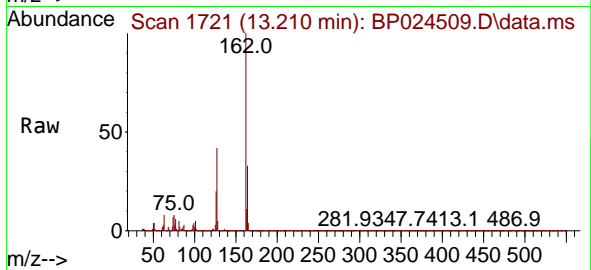




#47
 2-Chloronaphthalene
 Concen: 45.856 ng
 RT: 13.210 min Scan# 1721
 Delta R.T. -0.006 min
 Lab File: BP024509.D
 Acq: 02 May 2025 14:56

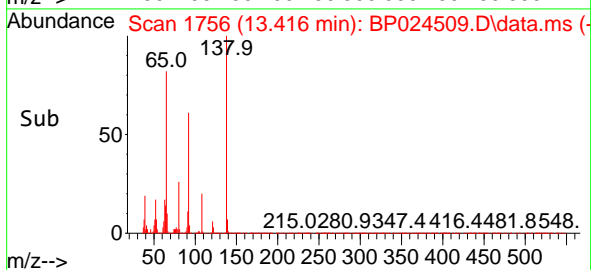
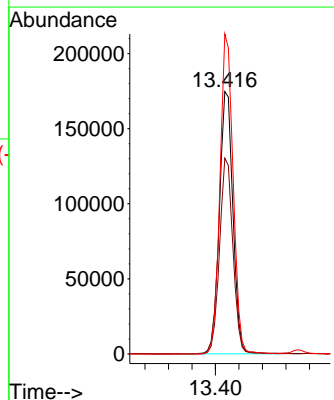
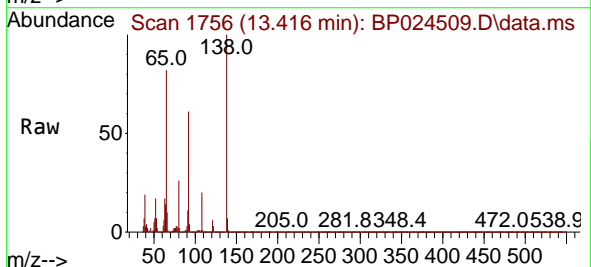
Instrument :
 BNA_P
 Client Sample Id :
 WC-12MSD

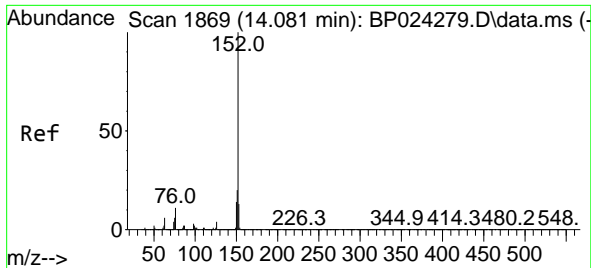
Tgt Ion	Resp	Lower	Upper
162	100		
127	41.8	31.9	47.9
164	33.0	26.2	39.4



#48
 2-Nitroaniline
 Concen: 51.168 ng
 RT: 13.416 min Scan# 1756
 Delta R.T. -0.006 min
 Lab File: BP024509.D
 Acq: 02 May 2025 14:56

Tgt Ion	Resp	Lower	Upper
65	100		
92	74.6	62.3	93.5
138	122.0	97.2	145.8



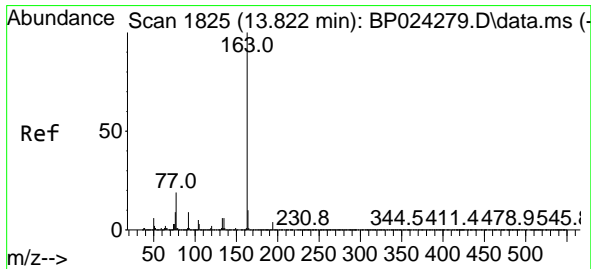
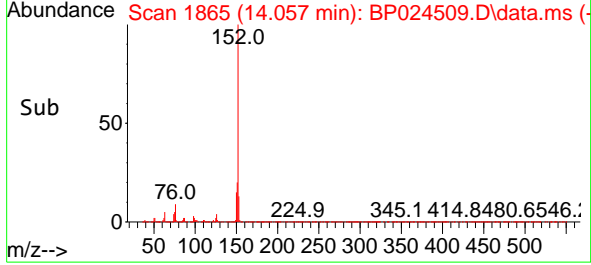
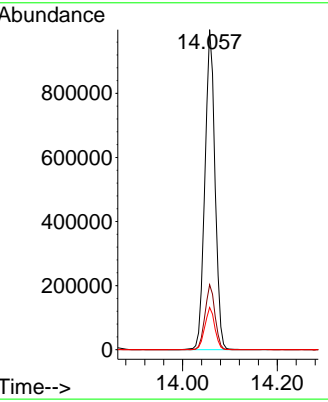
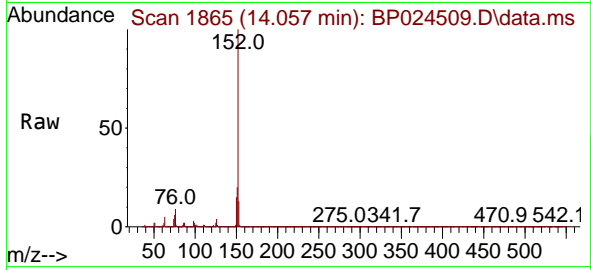


#49
 Acenaphthylene
 Concen: 48.005 ng
 RT: 14.057 min Scan# 1865
 Delta R.T. -0.012 min
 Lab File: BP024509.D
 Acq: 02 May 2025 14:56

Instrument : BNA_P
 ClientSampleId : WC-12MSD

Tgt Ion:152 Resp: 1478834

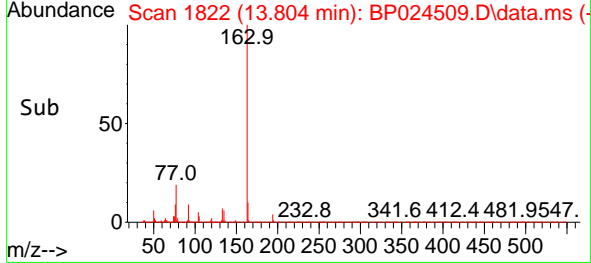
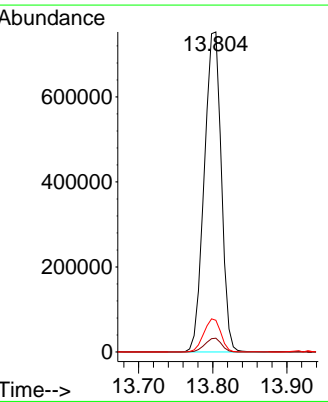
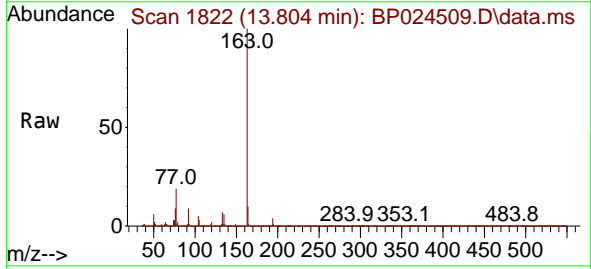
Ion	Ratio	Lower	Upper
152	100		
151	20.3	15.9	23.9
153	13.2	10.6	15.8

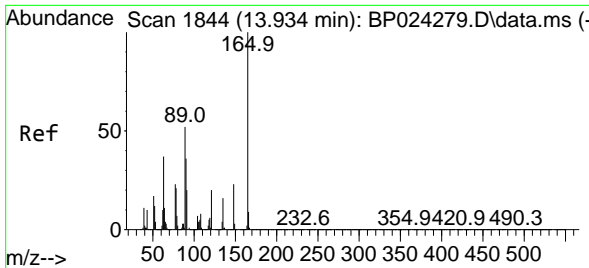


#50
 Dimethylphthalate
 Concen: 46.406 ng
 RT: 13.804 min Scan# 1822
 Delta R.T. -0.006 min
 Lab File: BP024509.D
 Acq: 02 May 2025 14:56

Tgt Ion:163 Resp: 1201945

Ion	Ratio	Lower	Upper
163	100		
194	4.3	3.5	5.3
164	9.9	8.0	12.0

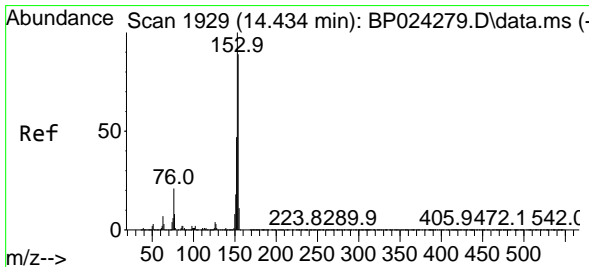
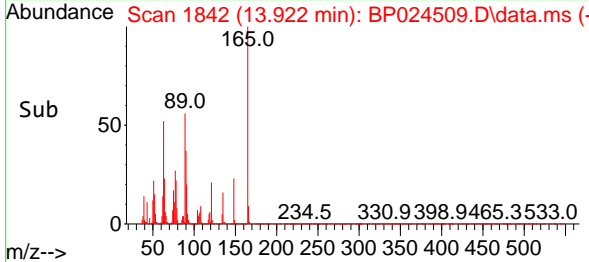
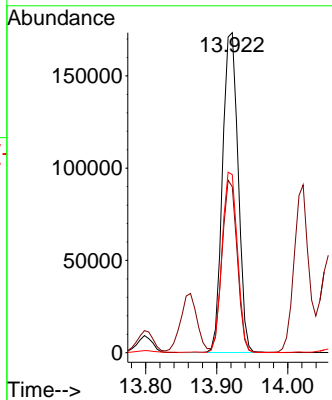
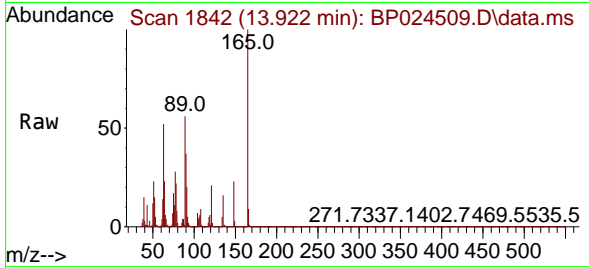




#51
 2,6-Dinitrotoluene
 Concen: 47.891 ng
 RT: 13.922 min Scan# 1842
 Delta R.T. -0.006 min
 Lab File: BP024509.D
 Acq: 02 May 2025 14:56

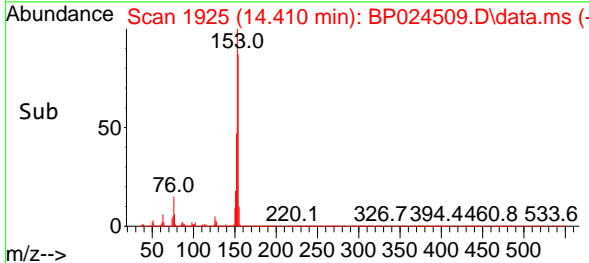
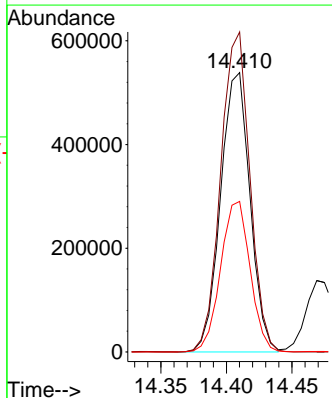
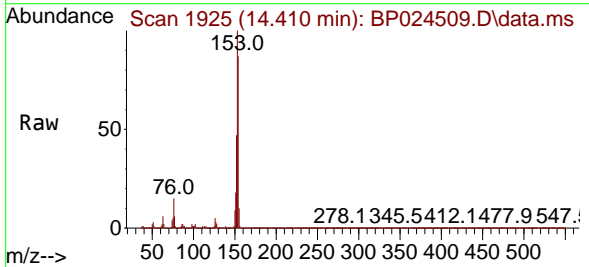
Instrument :
 BNA_P
 Client Sample Id :
 WC-12MSD

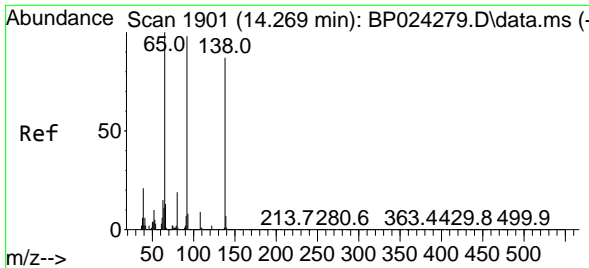
Tgt Ion	Resp	Lower	Upper
165	100		
63	51.8	38.0	57.0
89	55.6	41.7	62.5



#52
 Acenaphthene
 Concen: 43.055 ng
 RT: 14.410 min Scan# 1925
 Delta R.T. -0.012 min
 Lab File: BP024509.D
 Acq: 02 May 2025 14:56

Tgt Ion	Resp	Lower	Upper
154	100		
153	114.5	89.8	134.6
152	53.9	42.6	63.8



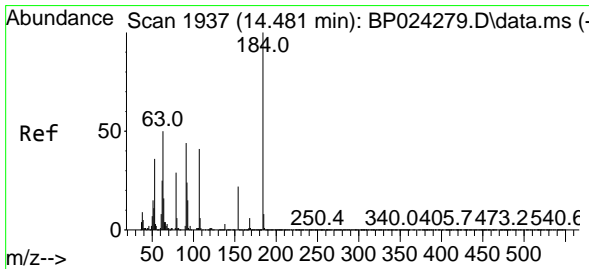
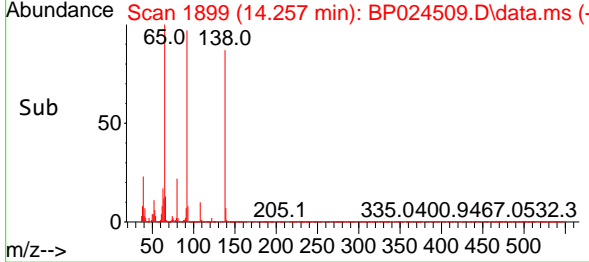
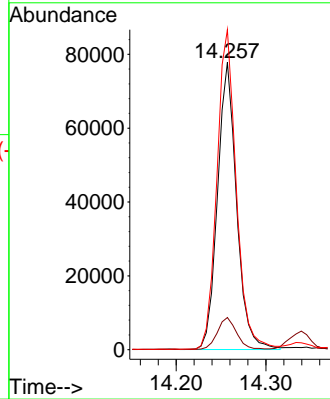
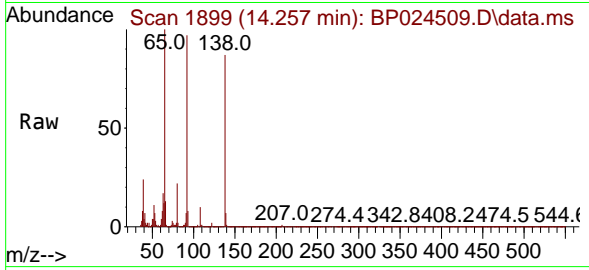


#53
 3-Nitroaniline
 Concen: 19.851 ng
 RT: 14.257 min Scan# 1899
 Delta R.T. -0.006 min
 Lab File: BP024509.D
 Acq: 02 May 2025 14:56

Instrument :
 BNA_P
 ClientSampleId :
 WC-12MSD

Tgt Ion:138 Resp: 114751

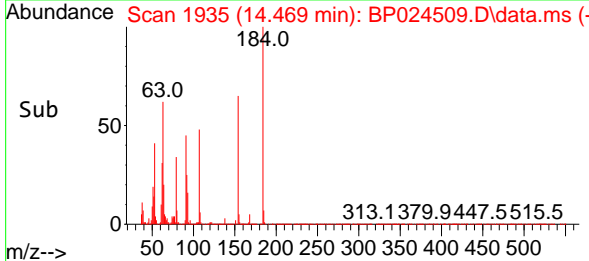
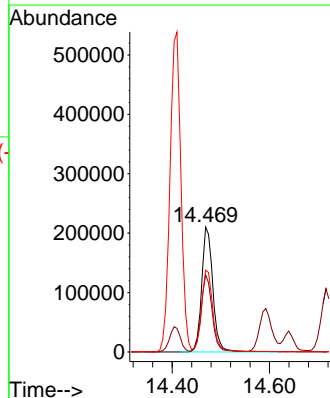
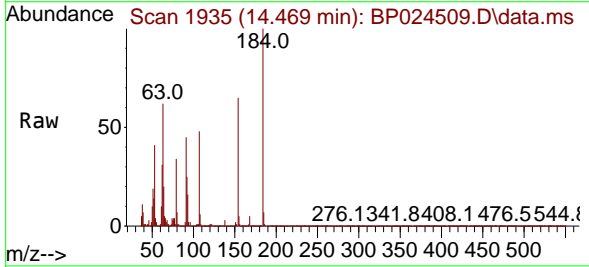
Ion	Ratio	Lower	Upper
138	100		
108	11.2	8.3	12.5
92	111.4	89.8	134.8

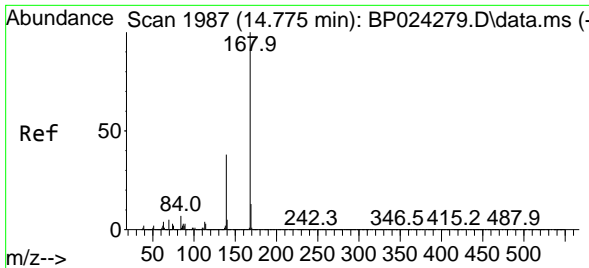


#54
 2,4-Dinitrophenol
 Concen: 104.435 ng
 RT: 14.469 min Scan# 1935
 Delta R.T. 0.000 min
 Lab File: BP024509.D
 Acq: 02 May 2025 14:56

Tgt Ion:184 Resp: 338338

Ion	Ratio	Lower	Upper
184	100		
63	61.7	42.6	64.0
154	65.4	47.2	70.8



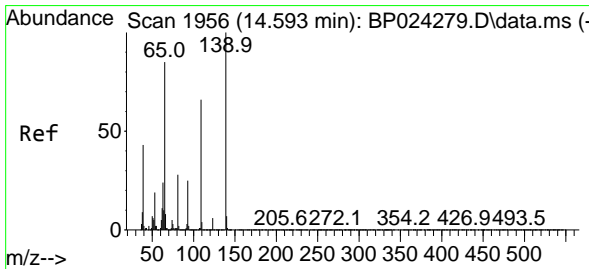
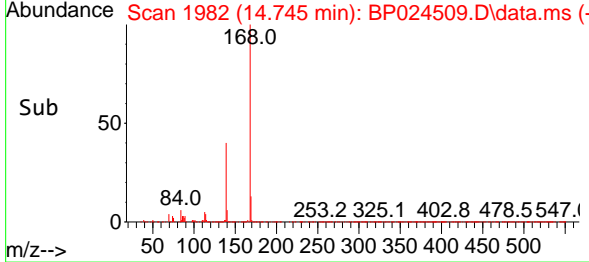
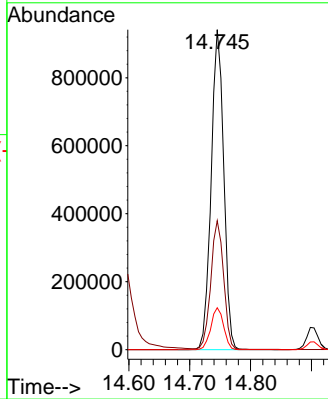
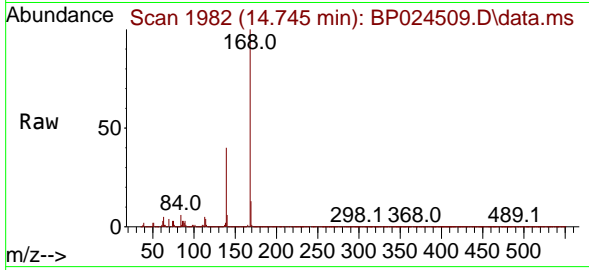


#55
 Dibenzofuran
 Concen: 42.322 ng
 RT: 14.745 min Scan# 1982
 Delta R.T. -0.012 min
 Lab File: BP024509.D
 Acq: 02 May 2025 14:56

Instrument :
 BNA_P
 ClientSampleId :
 WC-12MSD

Tgt Ion:168 Resp: 1351042

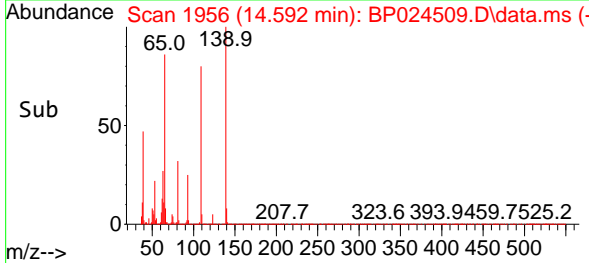
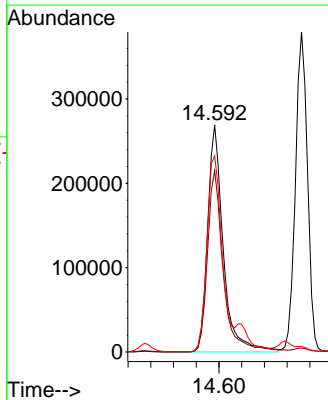
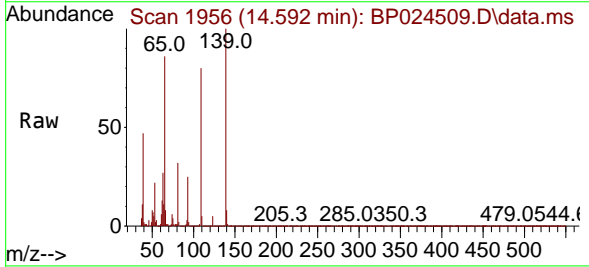
Ion	Ratio	Lower	Upper
168	100		
139	40.3	30.3	45.5
169	13.1	10.6	16.0

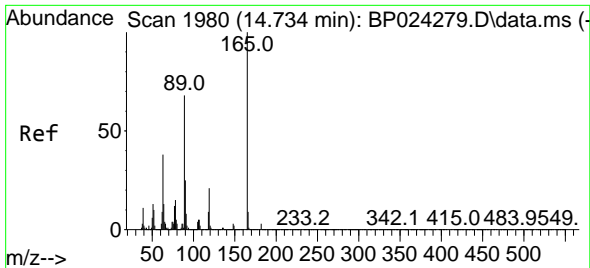


#56
 4-Nitrophenol
 Concen: 102.466 ng
 RT: 14.592 min Scan# 1956
 Delta R.T. 0.000 min
 Lab File: BP024509.D
 Acq: 02 May 2025 14:56

Tgt Ion:139 Resp: 511547

Ion	Ratio	Lower	Upper
139	100		
109	79.9	46.1	86.1
65	86.4	65.0	105.0



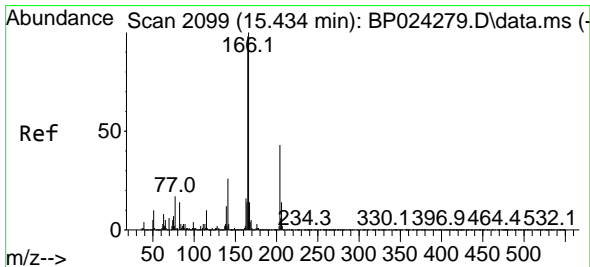
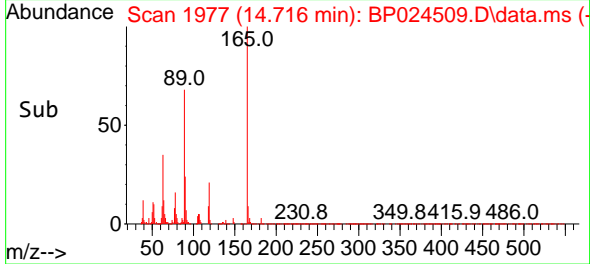
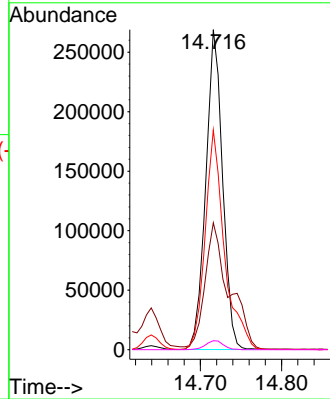
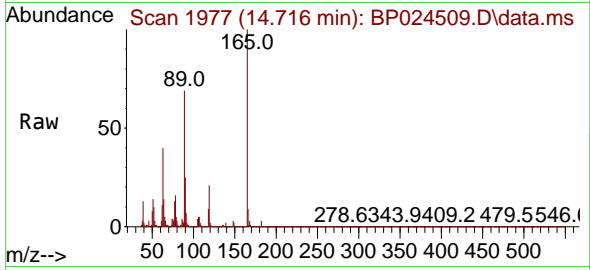


#57
 2,4-Dinitrotoluene
 Concen: 51.333 ng
 RT: 14.716 min Scan# 1980
 Delta R.T. -0.006 min
 Lab File: BP024509.D
 Acq: 02 May 2025 14:56

Instrument :
 BNA_P
 ClientSampleId :
 WC-12MSD

Tgt Ion:165 Resp: 385128

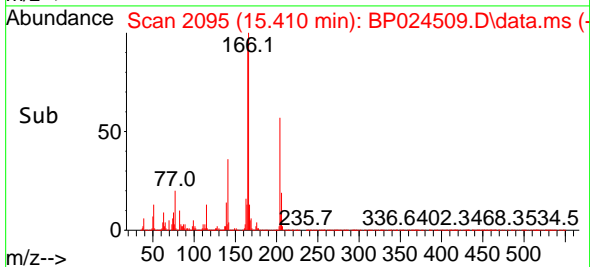
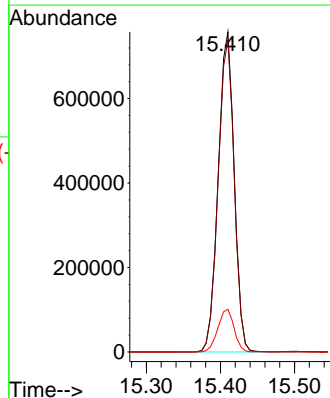
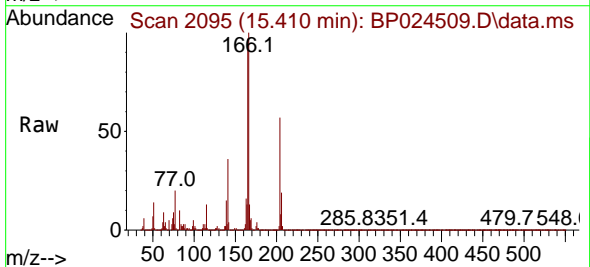
Ion	Ratio	Lower	Upper
165	100		
63	39.6	30.4	45.6
89	68.6	54.6	82.0
182	2.8	2.2	3.2

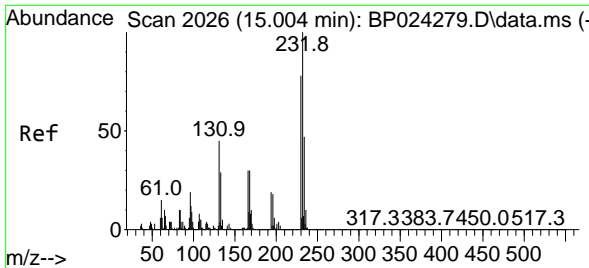


#58
 Fluorene
 Concen: 45.894 ng
 RT: 15.410 min Scan# 2095
 Delta R.T. -0.006 min
 Lab File: BP024509.D
 Acq: 02 May 2025 14:56

Tgt Ion:166 Resp: 1134163

Ion	Ratio	Lower	Upper
166	100		
165	97.5	78.1	117.1
167	13.3	10.9	16.3



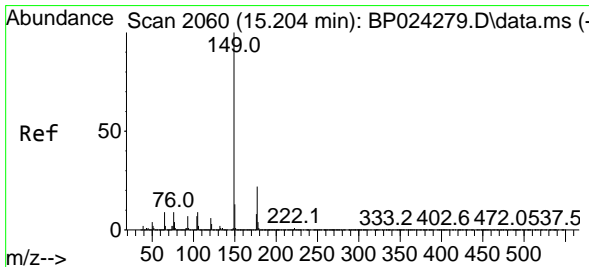
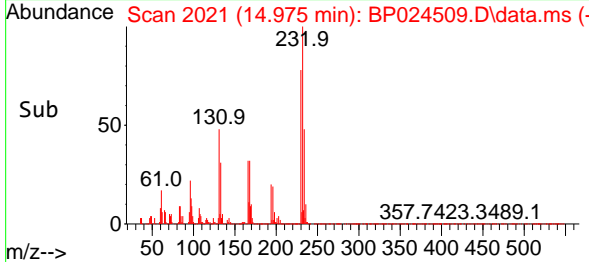
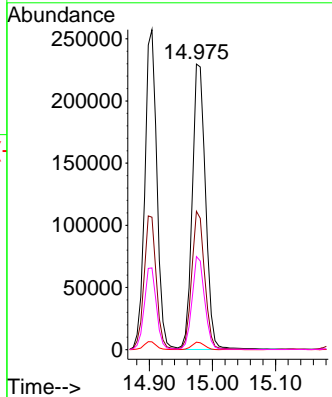
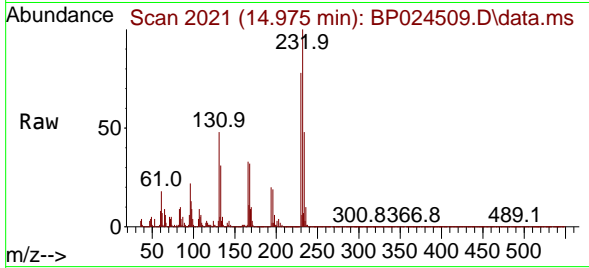


#59
 2,3,4,6-Tetrachlorophenol
 Concen: 50.147 ng
 RT: 14.975 min Scan# 20
 Delta R.T. -0.018 min
 Lab File: BP024509.D
 Acq: 02 May 2025 14:56

Instrument :
 BNA_P
 ClientSampleId :
 WC-12MSD

Tgt Ion:232 Resp: 333515

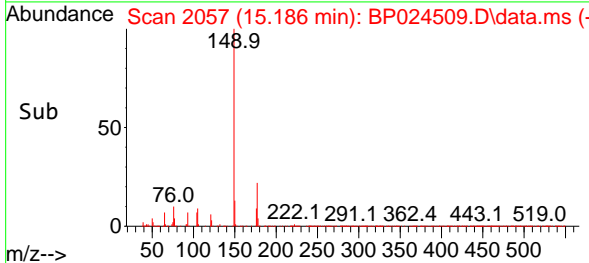
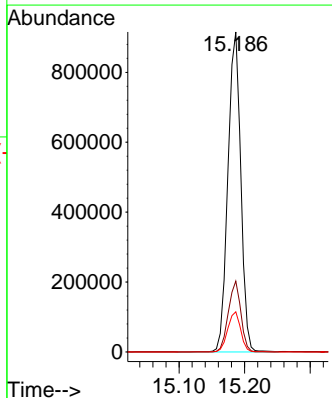
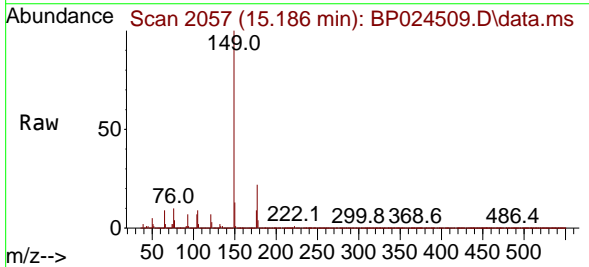
Ion	Ratio	Lower	Upper
232	100		
131	46.8	36.8	55.2
130	2.5	1.9	2.9
166	31.3	25.0	37.6

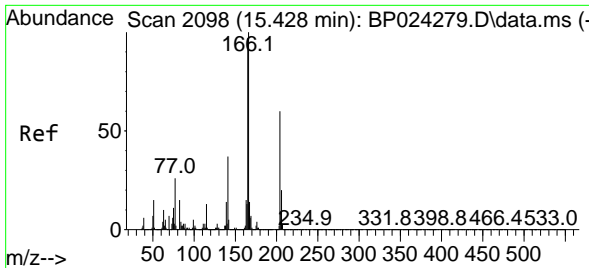


#60
 Diethylphthalate
 Concen: 46.681 ng
 RT: 15.186 min Scan# 2057
 Delta R.T. -0.006 min
 Lab File: BP024509.D
 Acq: 02 May 2025 14:56

Tgt Ion:149 Resp: 1245961

Ion	Ratio	Lower	Upper
149	100		
177	22.1	17.4	26.2
150	12.6	10.1	15.1

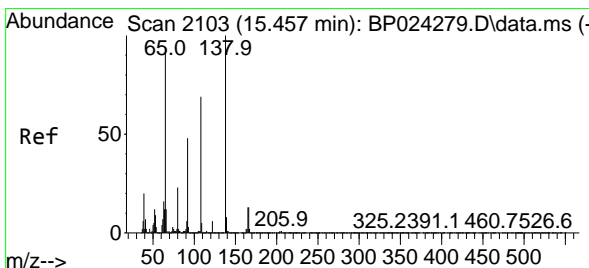
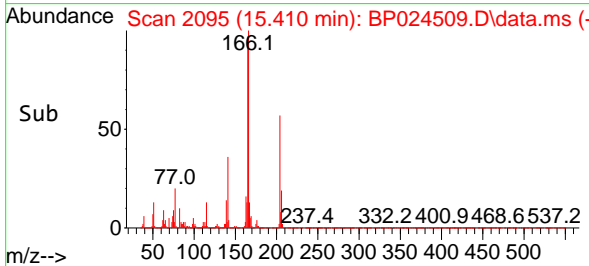
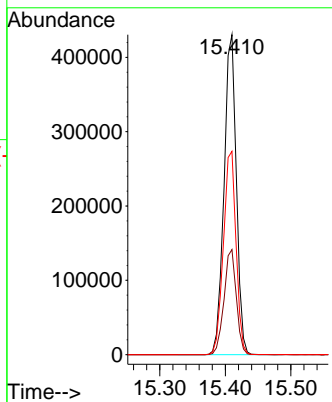
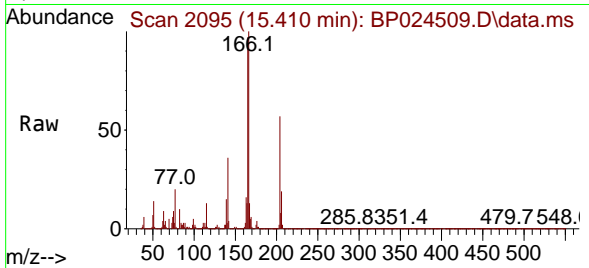




#61
 4-Chlorophenyl-phenylether
 Concen: 46.567 ng
 RT: 15.410 min Scan# 2095
 Delta R.T. 0.000 min
 Lab File: BP024509.D
 Acq: 02 May 2025 14:56

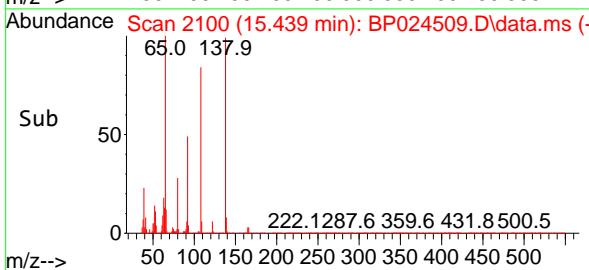
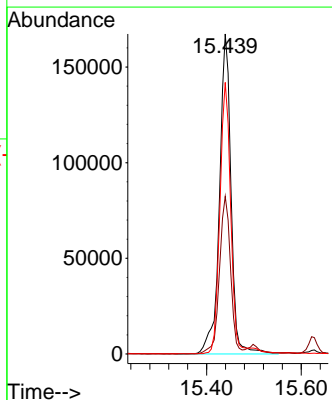
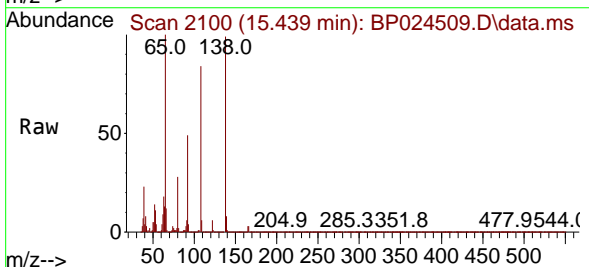
Instrument :
 BNA_P
 ClientSampleId :
 WC-12MSD

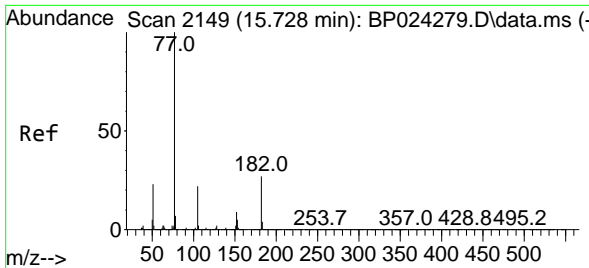
Tgt Ion	Resp	Lower	Upper
204	100		
206	32.9	26.5	39.7
141	63.5	49.4	74.0



#62
 4-Nitroaniline
 Concen: 46.416 ng
 RT: 15.439 min Scan# 2100
 Delta R.T. 0.000 min
 Lab File: BP024509.D
 Acq: 02 May 2025 14:56

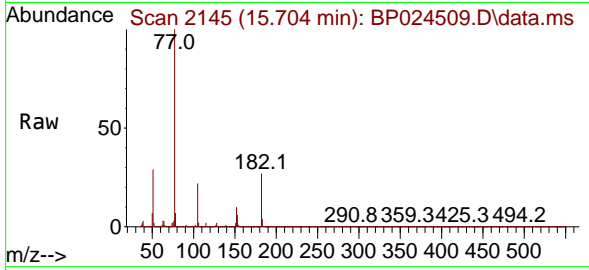
Tgt Ion	Resp	Lower	Upper
138	100		
92	49.3	27.8	67.8
108	84.9	48.9	88.9





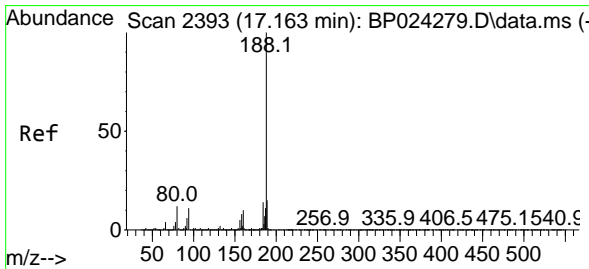
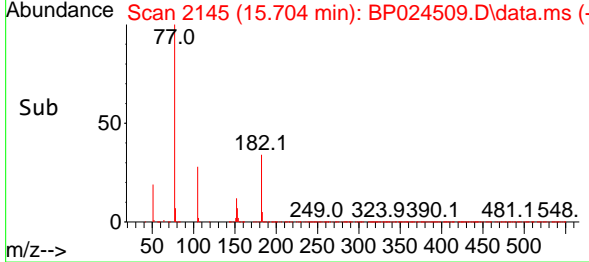
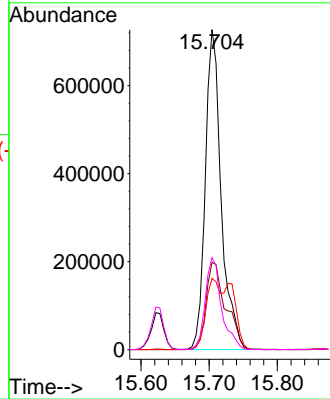
#63
 Azobenzene
 Concen: 47.951 ng
 RT: 15.704 min Scan# 2145
 Delta R.T. -0.006 min
 Lab File: BP024509.D
 Acq: 02 May 2025 14:56

Instrument : BNA_P
 Client SampleId : WC-12MSD



Tgt Ion: 77 Resp: 1176345

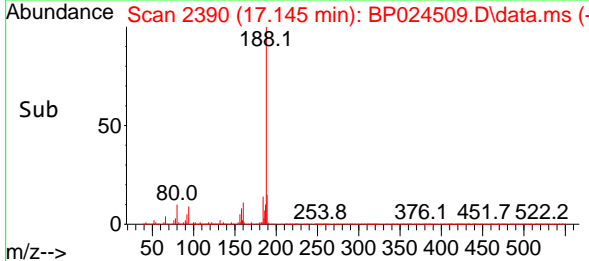
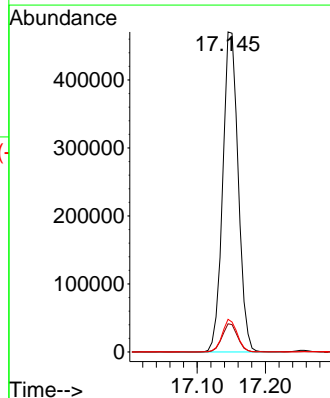
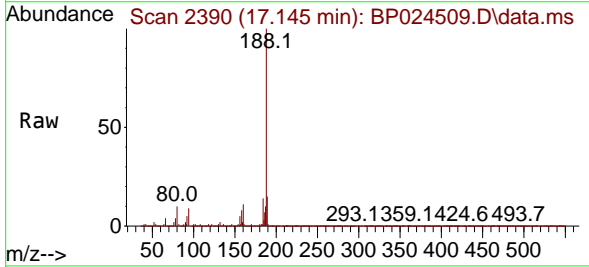
Ion	Ratio	Lower	Upper
77	100		
182	27.3	7.3	47.3
105	22.2	2.3	42.3
51	28.8	3.4	43.4

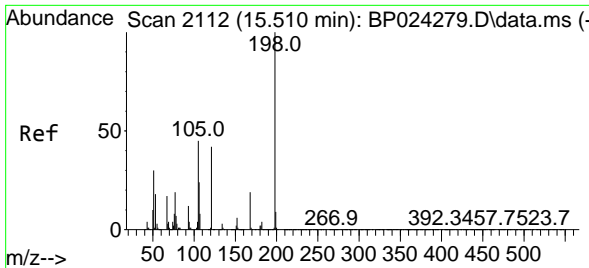


#64
 Phenanthrene-d10
 Concen: 20.000 ng
 RT: 17.145 min Scan# 2390
 Delta R.T. 0.000 min
 Lab File: BP024509.D
 Acq: 02 May 2025 14:56

Tgt Ion: 188 Resp: 743045

Ion	Ratio	Lower	Upper
188	100		
94	8.8	8.6	13.0
80	10.2	9.8	14.6



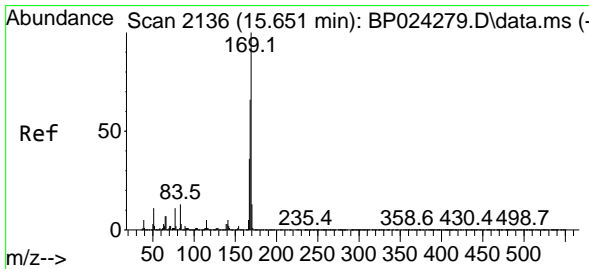
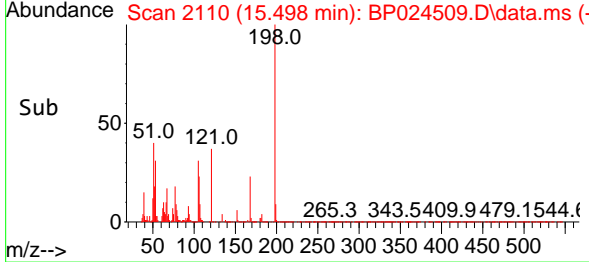
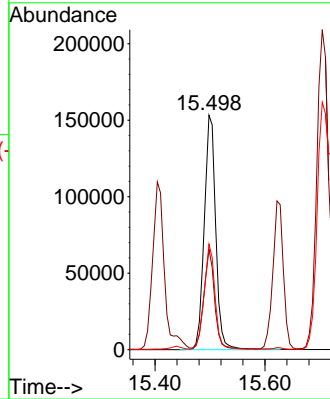
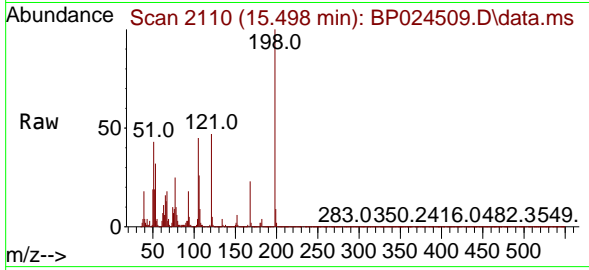


#65
 4,6-Dinitro-2-methylphenol
 Concen: 47.471 ng
 RT: 15.498 min Scan# 2110
 Delta R.T. 0.000 min
 Lab File: BP024509.D
 Acq: 02 May 2025 14:56

Instrument :
 BNA_P
 ClientSampleId :
 WC-12MSD

Tgt Ion:198 Resp: 222382

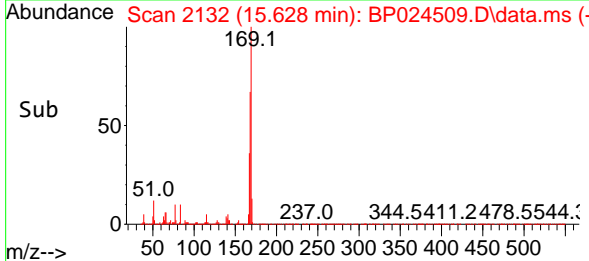
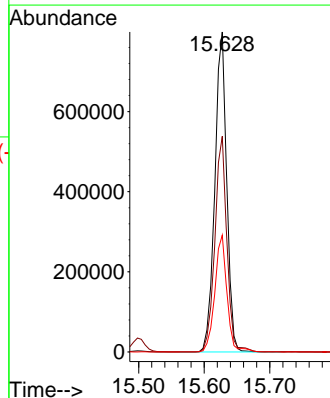
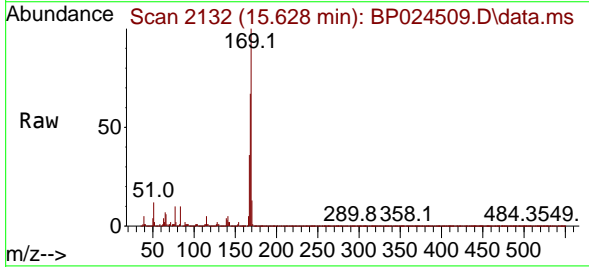
Ion	Ratio	Lower	Upper
198	100		
51	42.8	18.4	58.4
105	45.0	26.5	66.5

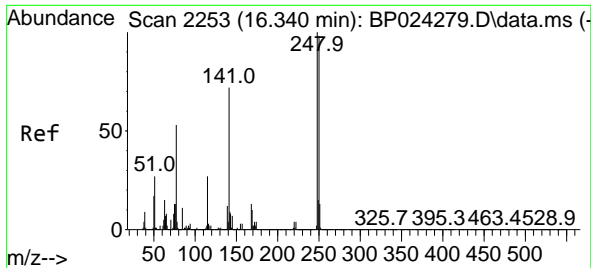


#66
 n-Nitrosodiphenylamine
 Concen: 45.186 ng
 RT: 15.628 min Scan# 2132
 Delta R.T. 0.000 min
 Lab File: BP024509.D
 Acq: 02 May 2025 14:56

Tgt Ion:169 Resp: 1002140

Ion	Ratio	Lower	Upper
169	100		
168	67.4	53.0	79.4
167	36.5	28.9	43.3

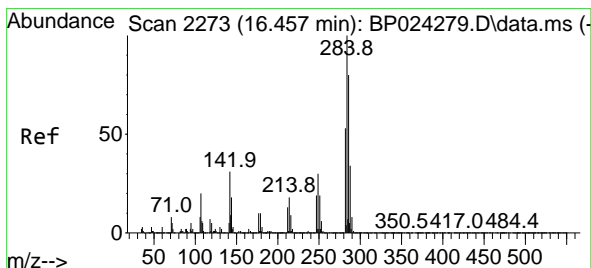
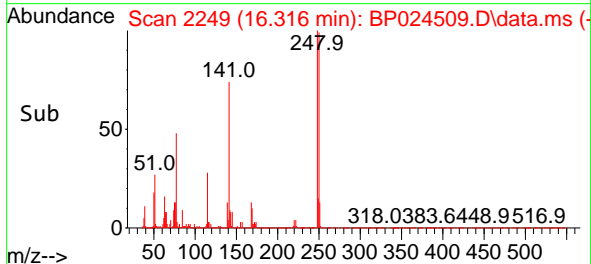
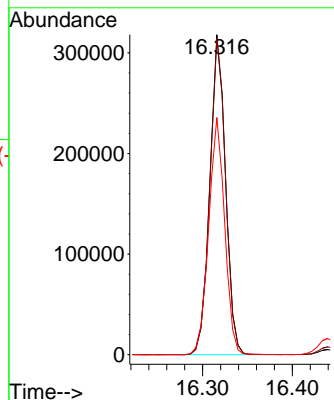
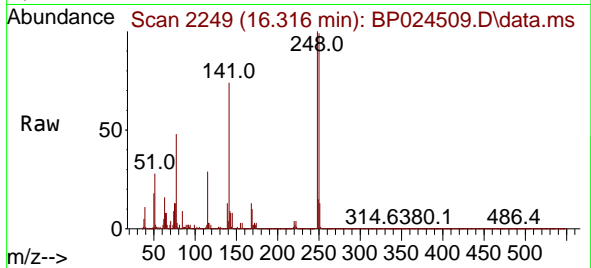




#67
 4-Bromophenyl-phenylether
 Concen: 47.652 ng
 RT: 16.316 min Scan# 21
 Delta R.T. -0.006 min
 Lab File: BP024509.D
 Acq: 02 May 2025 14:56

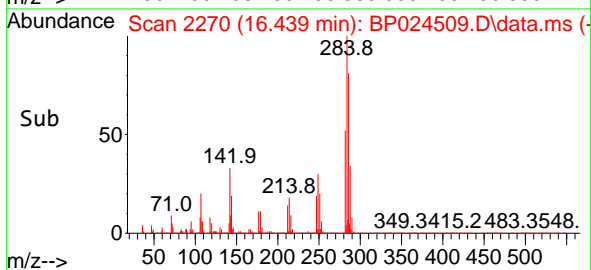
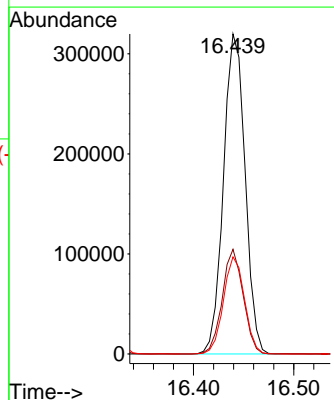
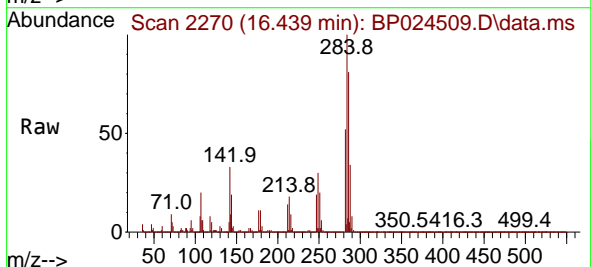
Instrument :
 BNA_P
 ClientSampleId :
 WC-12MSD

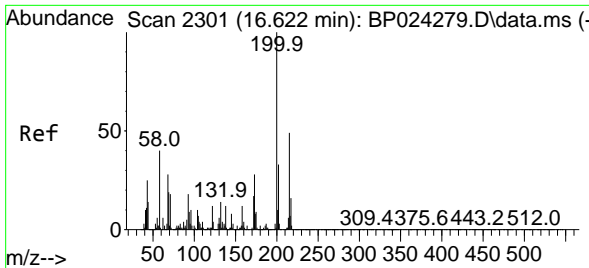
Tgt Ion:248 Resp: 387242
 Ion Ratio Lower Upper
 248 100
 250 98.9 78.2 117.4
 141 74.1 57.7 86.5



#68
 Hexachlorobenzene
 Concen: 49.554 ng
 RT: 16.439 min Scan# 2270
 Delta R.T. -0.000 min
 Lab File: BP024509.D
 Acq: 02 May 2025 14:56

Tgt Ion:284 Resp: 478526
 Ion Ratio Lower Upper
 284 100
 142 32.7 24.6 37.0
 249 30.3 23.8 35.6

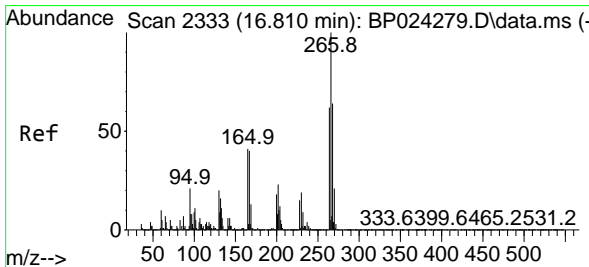
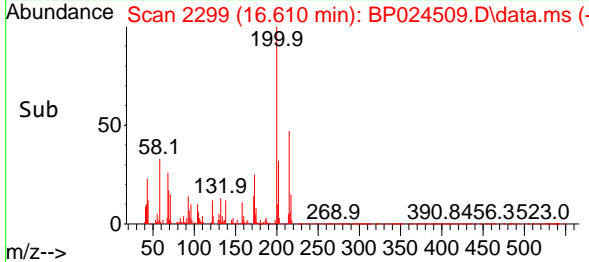
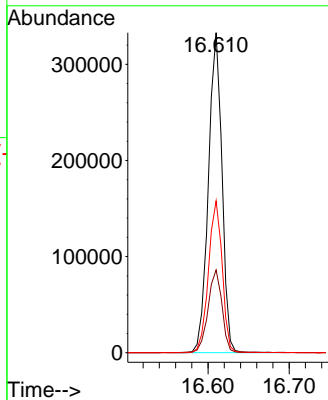
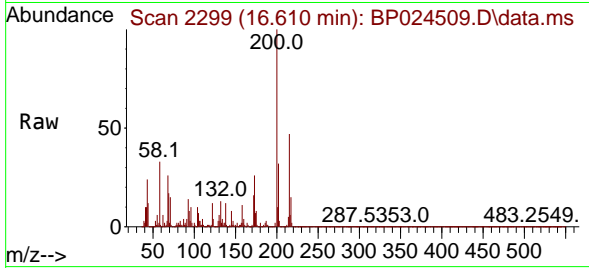




#69
 Atrazine
 Concen: 68.277 ng
 RT: 16.610 min Scan# 21
 Delta R.T. 0.000 min
 Lab File: BP024509.D
 Acq: 02 May 2025 14:56

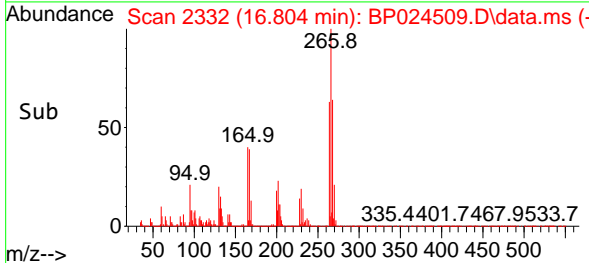
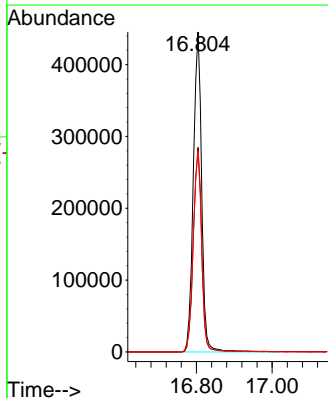
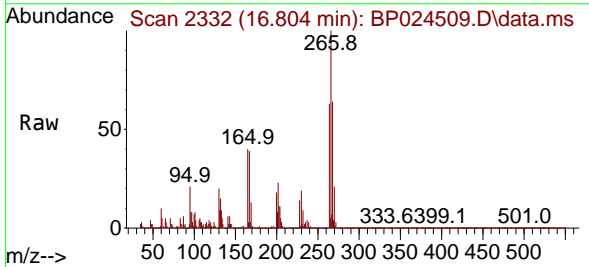
Instrument :
 BNA_P
 ClientSampleId :
 WC-12MSD

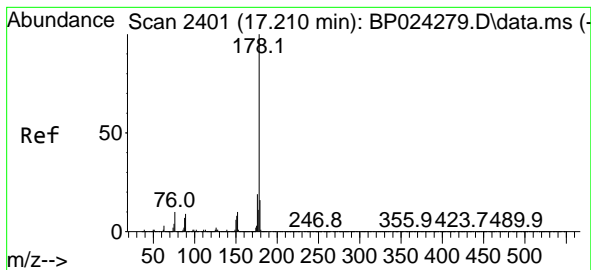
Tgt Ion:200 Resp: 385671
 Ion Ratio Lower Upper
 200 100
 173 25.8 7.5 47.5
 215 47.4 28.8 68.8



#70
 Pentachlorophenol
 Concen: 101.830 ng
 RT: 16.804 min Scan# 2332
 Delta R.T. 0.006 min
 Lab File: BP024509.D
 Acq: 02 May 2025 14:56

Tgt Ion:266 Resp: 685997
 Ion Ratio Lower Upper
 266 100
 268 63.9 51.0 76.6
 264 62.7 49.8 74.6



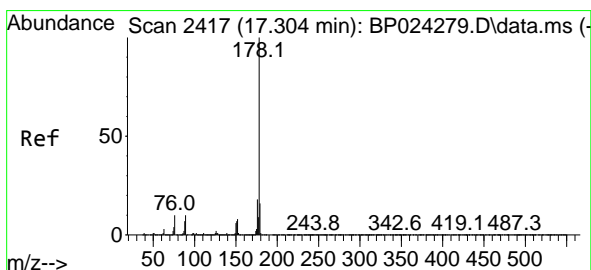
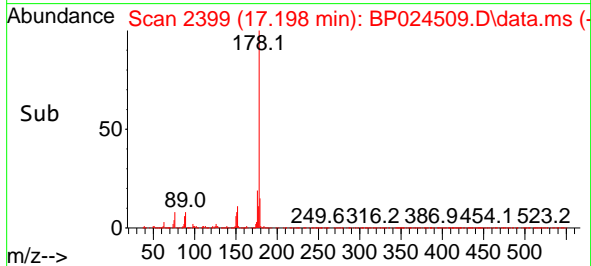
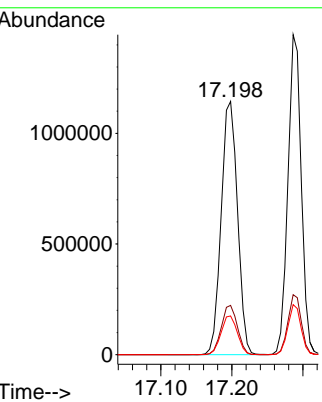
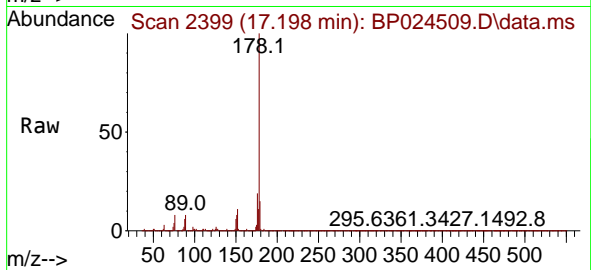


#71
 Phenanthrene
 Concen: 45.159 ng
 RT: 17.198 min Scan# 211
 Delta R.T. 0.006 min
 Lab File: BP024509.D
 Acq: 02 May 2025 14:56

Instrument :
 BNA_P
 ClientSampleId :
 WC-12MSD

Tgt Ion:178 Resp: 1830537

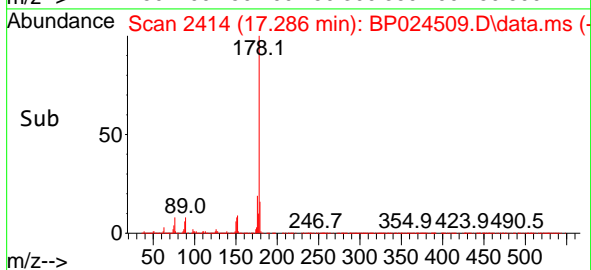
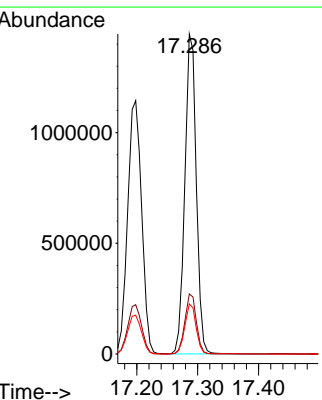
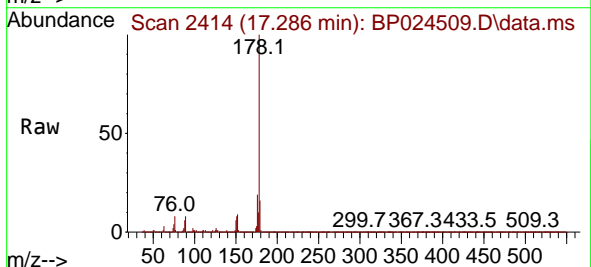
Ion	Ratio	Lower	Upper
178	100		
176	19.5	15.4	23.0
179	15.3	12.5	18.7

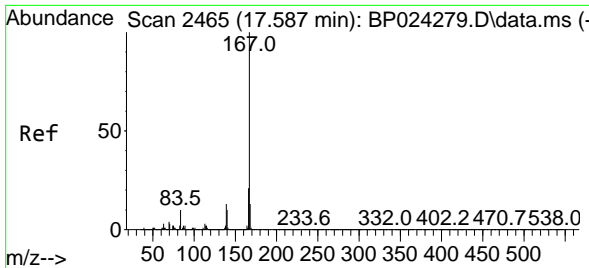


#72
 Anthracene
 Concen: 48.154 ng
 RT: 17.286 min Scan# 2414
 Delta R.T. 0.000 min
 Lab File: BP024509.D
 Acq: 02 May 2025 14:56

Tgt Ion:178 Resp: 1881270

Ion	Ratio	Lower	Upper
178	100		
176	18.7	14.7	22.1
179	15.7	12.4	18.6



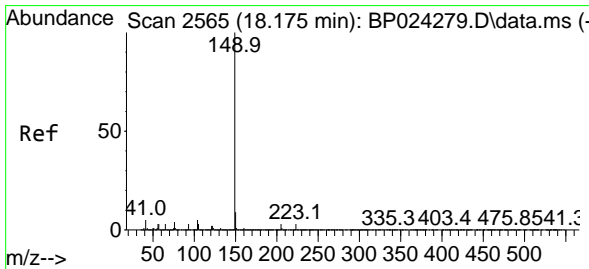
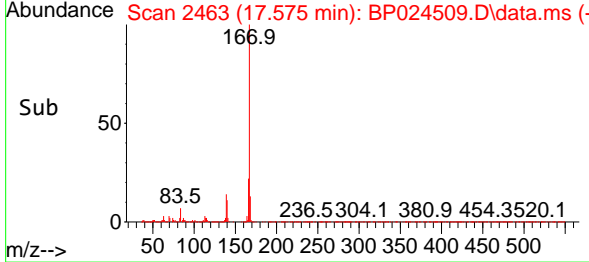
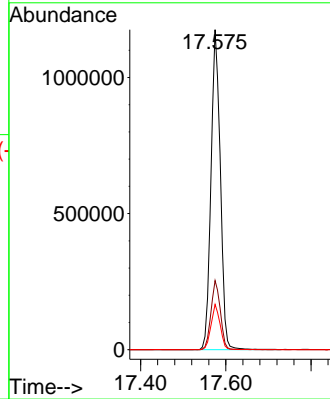
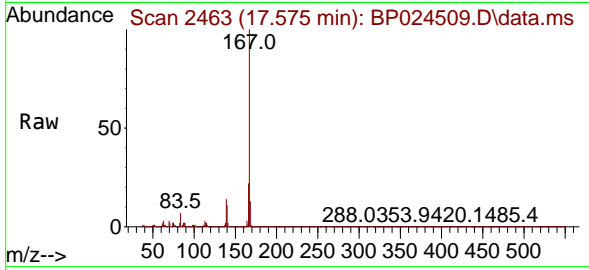


#73
 Carbazole
 Concen: 46.956 ng
 RT: 17.575 min Scan# 2463
 Delta R.T. 0.006 min
 Lab File: BP024509.D
 Acq: 02 May 2025 14:56

Instrument :
 BNA_P
 ClientSampleId :
 WC-12MSD

Tgt Ion:167 Resp: 1792412

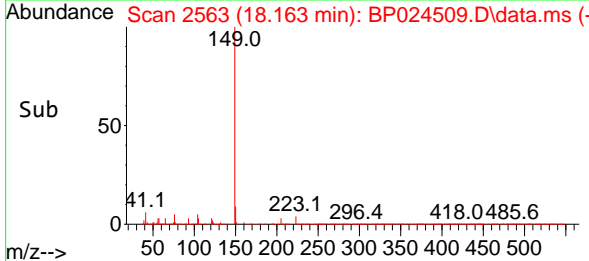
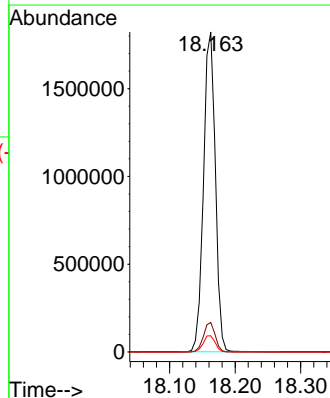
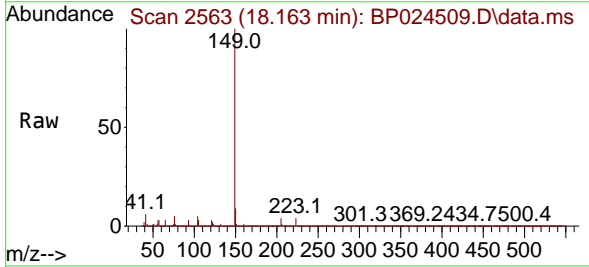
Ion	Ratio	Lower	Upper
167	100		
166	21.6	17.1	25.7
139	14.2	10.6	16.0

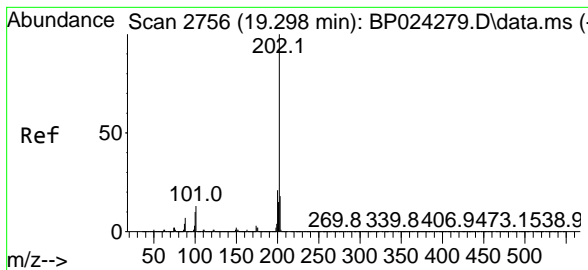


#74
 Di-n-butylphthalate
 Concen: 48.121 ng
 RT: 18.163 min Scan# 2563
 Delta R.T. 0.006 min
 Lab File: BP024509.D
 Acq: 02 May 2025 14:56

Tgt Ion:149 Resp: 2288511

Ion	Ratio	Lower	Upper
149	100		
150	9.2	7.4	11.2
104	5.1	3.9	5.9



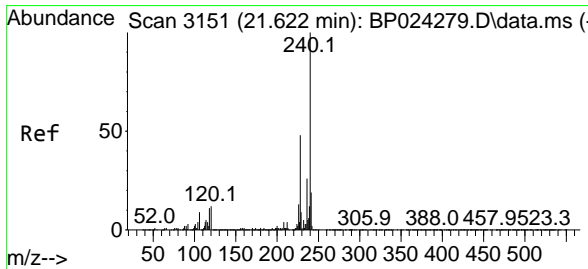
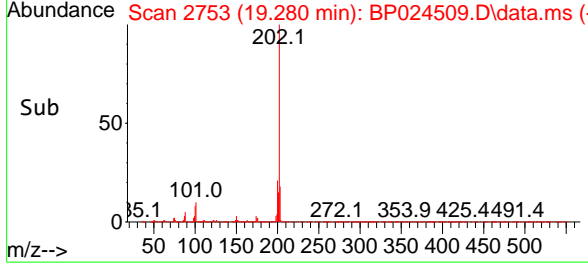
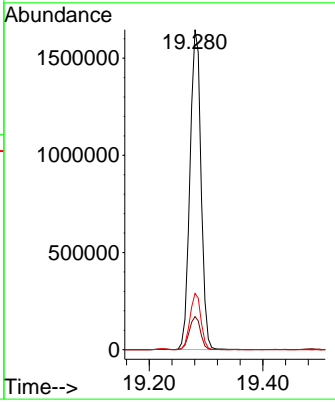
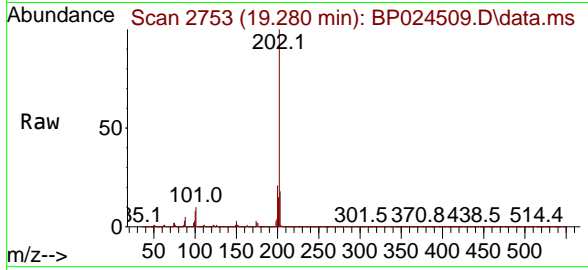


#75
 Fluoranthene
 Concen: 46.309 ng
 RT: 19.280 min Scan# 21
 Delta R.T. 0.000 min
 Lab File: BP024509.D
 Acq: 02 May 2025 14:56

Instrument :
 BNA_P
 ClientSampleId :
 WC-12MSD

Tgt Ion: 202 Resp: 2232564

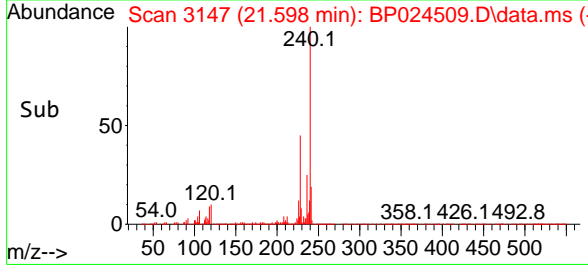
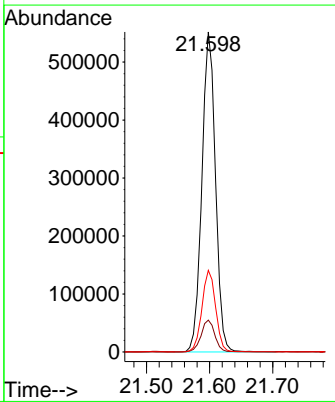
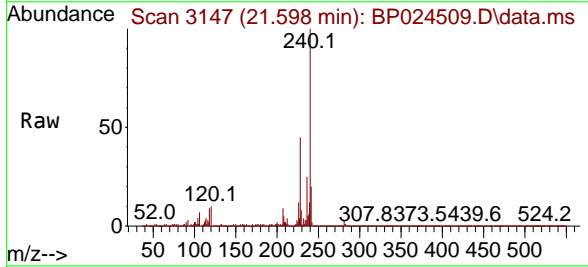
Ion	Ratio	Lower	Upper
202	100		
101	10.4	0.0	33.2
203	17.6	0.0	37.7

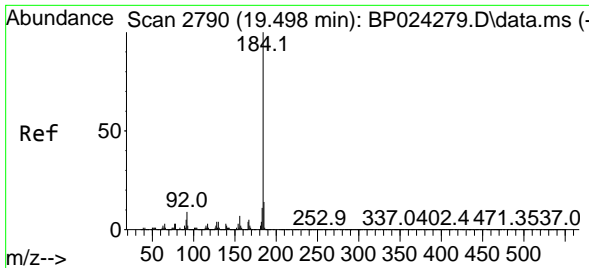


#76
 Chrysene-d12
 Concen: 20.000 ng
 RT: 21.598 min Scan# 3147
 Delta R.T. 0.006 min
 Lab File: BP024509.D
 Acq: 02 May 2025 14:56

Tgt Ion: 240 Resp: 825568

Ion	Ratio	Lower	Upper
240	100		
120	10.0	9.8	14.8
236	25.5	20.9	31.3

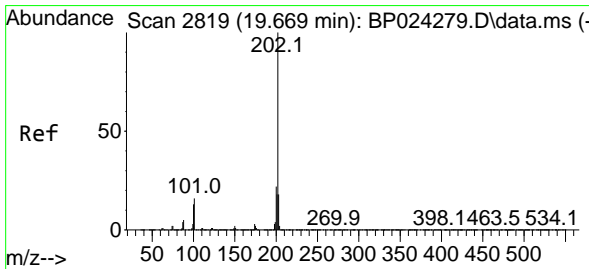
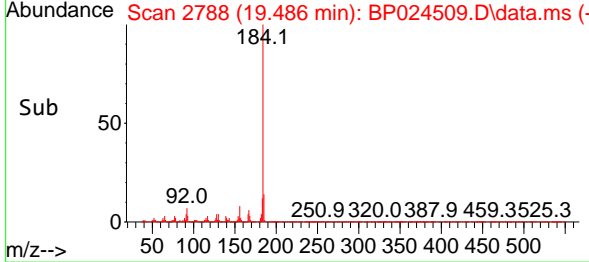
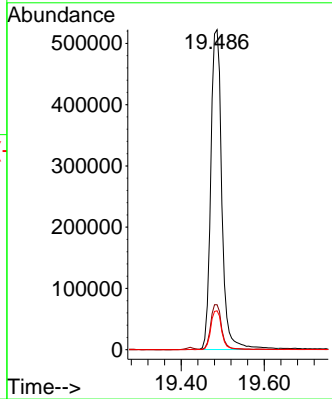
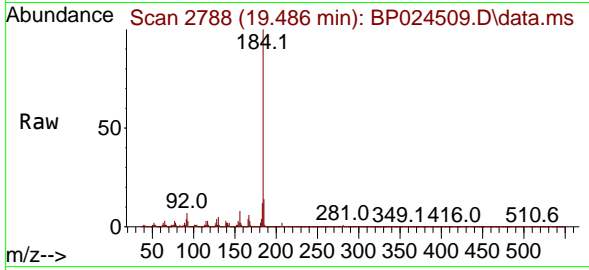




#77
 Benzidine
 Concen: 92.229 ng
 RT: 19.486 min Scan# 21
 Delta R.T. 0.006 min
 Lab File: BP024509.D
 Acq: 02 May 2025 14:56

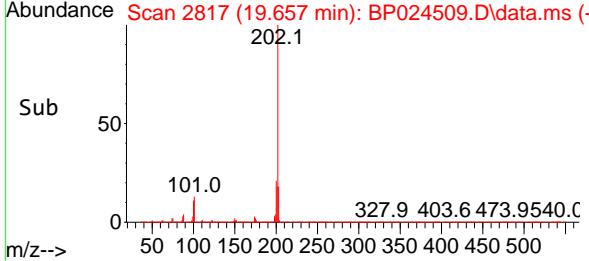
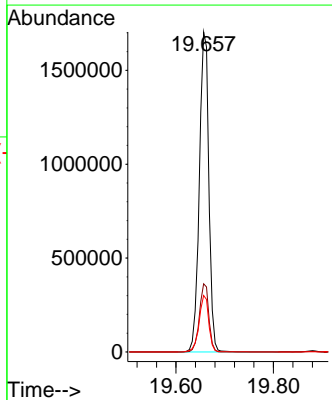
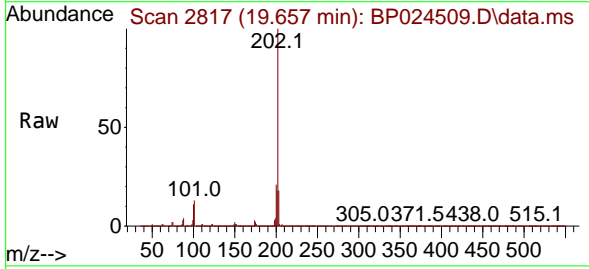
Instrument : BNA_P
 Client Sample Id : WC-12MSD

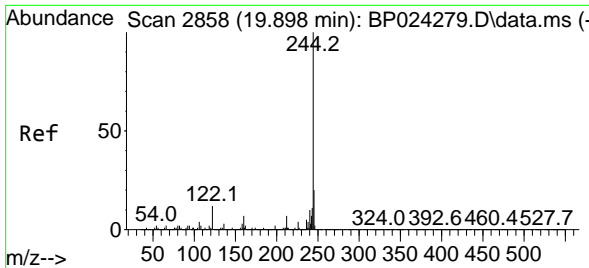
Tgt Ion	Resp	Ion Ratio	Lower	Upper
184	965153	100		
185	14.1	11.6	11.6	17.4
183	12.2	9.2	9.2	13.8



#78
 Pyrene
 Concen: 43.991 ng
 RT: 19.657 min Scan# 2817
 Delta R.T. 0.006 min
 Lab File: BP024509.D
 Acq: 02 May 2025 14:56

Tgt Ion	Resp	Ion Ratio	Lower	Upper
202	2308010	100		
200	21.3	17.2	17.2	25.8
203	17.6	14.4	14.4	21.6

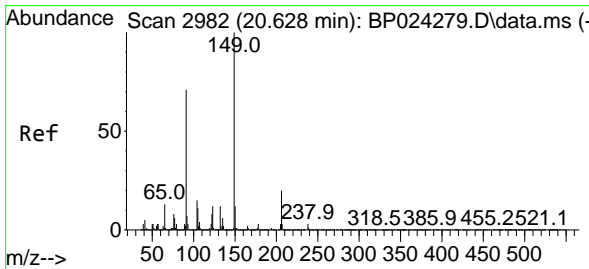
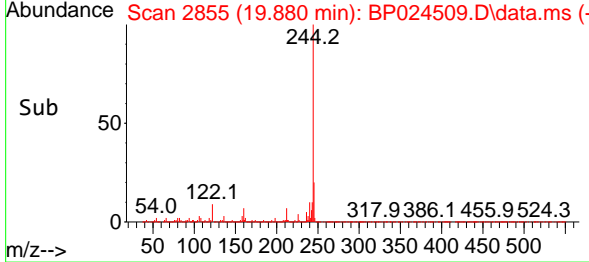
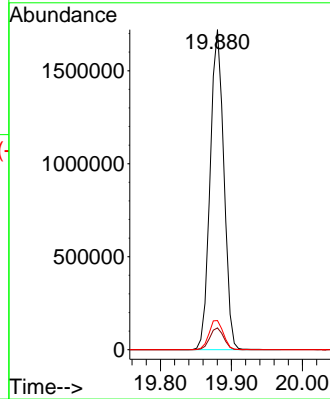
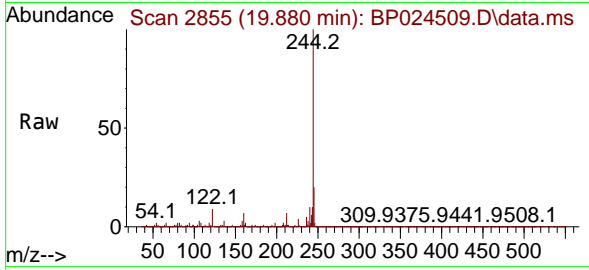




#79
 Terphenyl-d14
 Concen: 56.455 ng
 RT: 19.880 min Scan# 21
 Delta R.T. 0.006 min
 Lab File: BP024509.D
 Acq: 02 May 2025 14:56

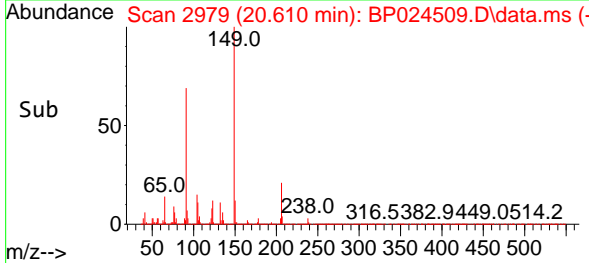
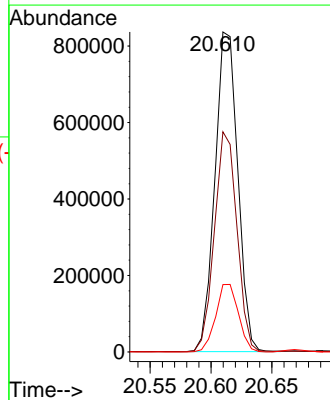
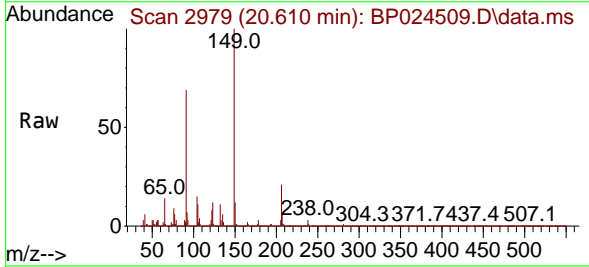
Instrument :
 BNA_P
 ClientSampleId :
 WC-12MSD

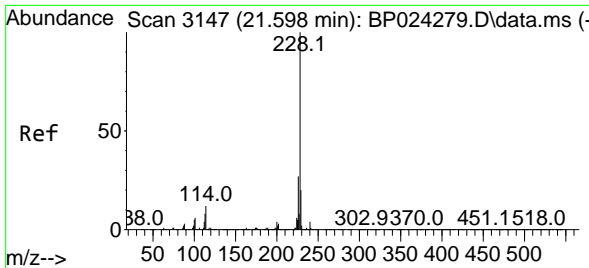
Tgt Ion:244 Resp: 2312282
 Ion Ratio Lower Upper
 244 100
 212 6.8 5.6 8.4
 122 9.1 9.4 14.0#



#80
 Butylbenzylphthalate
 Concen: 48.638 ng
 RT: 20.610 min Scan# 2979
 Delta R.T. 0.006 min
 Lab File: BP024509.D
 Acq: 02 May 2025 14:56

Tgt Ion:149 Resp: 1093013
 Ion Ratio Lower Upper
 149 100
 91 68.8 56.4 84.6
 206 21.1 16.3 24.5



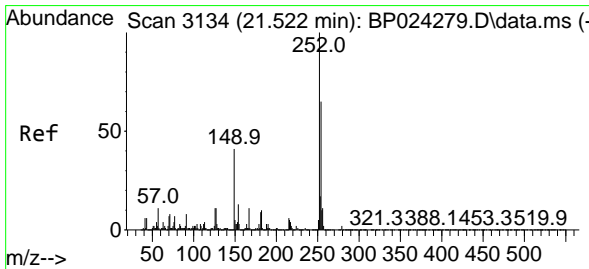
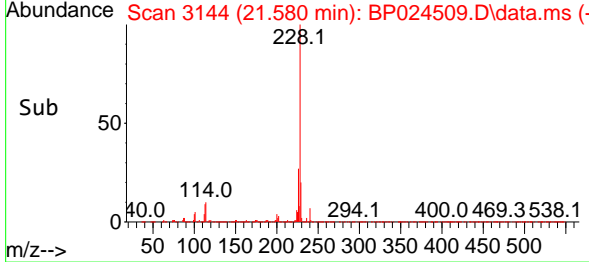
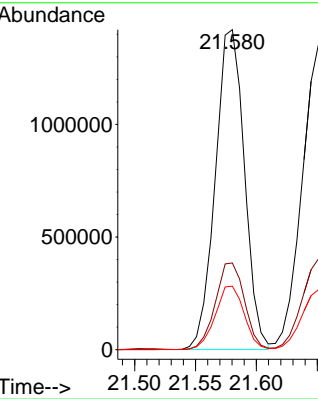
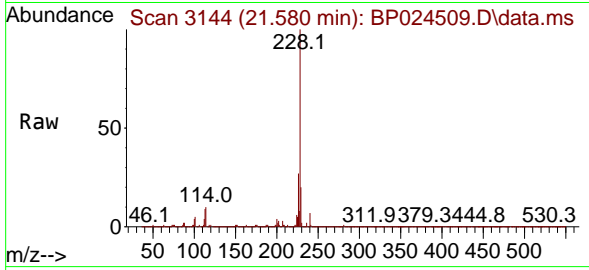


#81
 Benzo(a)anthracene
 Concen: 46.042 ng
 RT: 21.580 min Scan# 3147
 Delta R.T. 0.012 min
 Lab File: BP024509.D
 Acq: 02 May 2025 14:56

Instrument : BNA_P
 ClientSampleId : WC-12MSD

Tgt Ion:228 Resp: 2362610

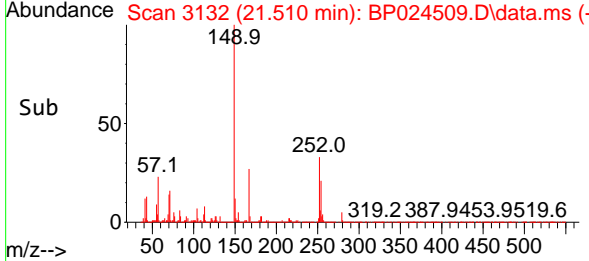
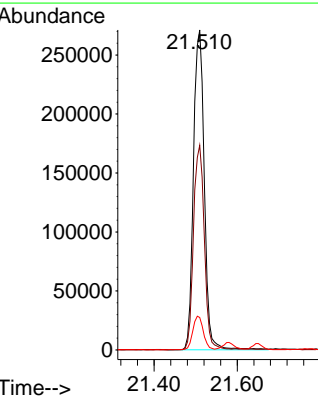
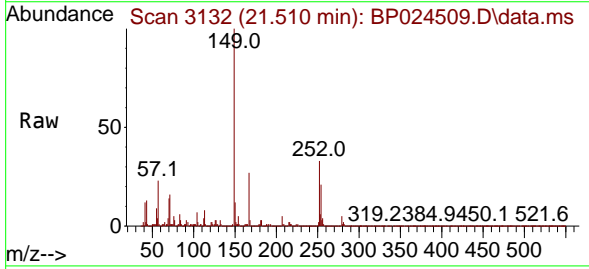
Ion	Ratio	Lower	Upper
228	100		
226	27.1	21.8	32.8
229	19.8	15.9	23.9

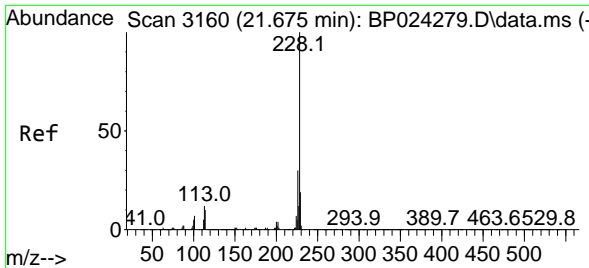


#82
 3,3'-Dichlorobenzidine
 Concen: 27.274 ng
 RT: 21.510 min Scan# 3132
 Delta R.T. 0.018 min
 Lab File: BP024509.D
 Acq: 02 May 2025 14:56

Tgt Ion:252 Resp: 491219

Ion	Ratio	Lower	Upper
252	100		
254	63.9	51.7	77.5
126	10.2	8.8	13.2



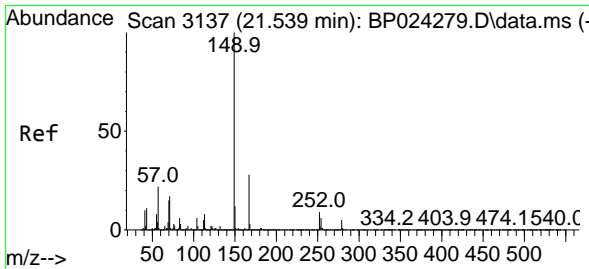
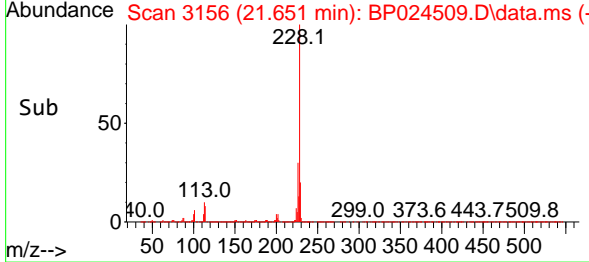
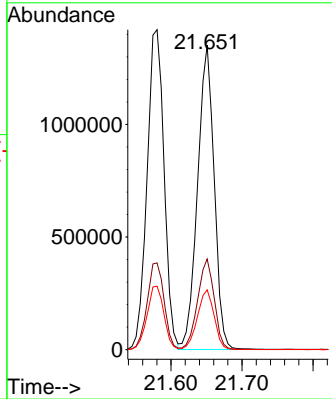
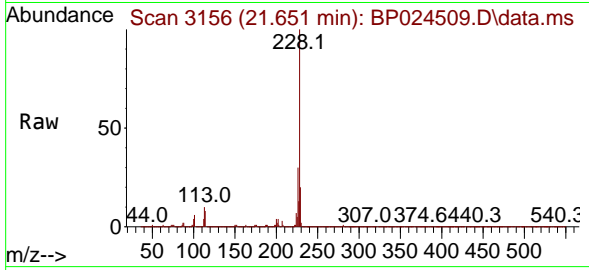


#83
 Chrysene
 Concen: 44.857 ng
 RT: 21.651 min Scan# 3160
 Delta R.T. 0.012 min
 Lab File: BP024509.D
 Acq: 02 May 2025 14:56

Instrument : BNA_P
 Client SampleId : WC-12MSD

Tgt Ion: 228 Resp: 2205230

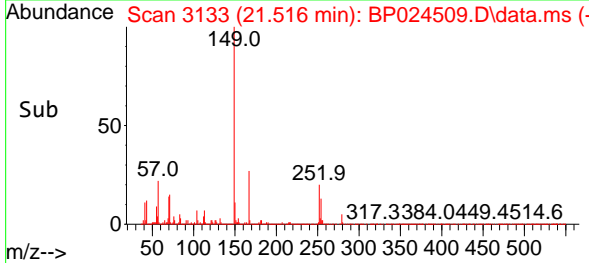
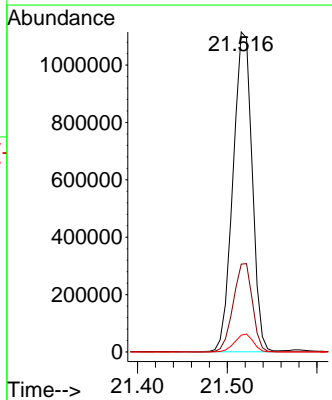
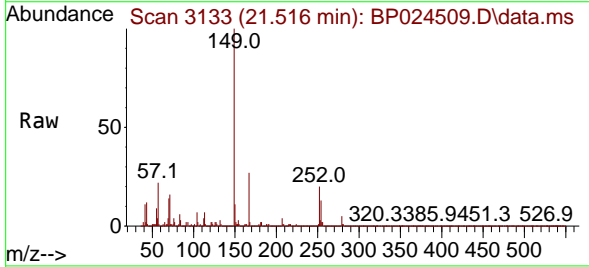
Ion	Ratio	Lower	Upper
228	100		
226	29.8	24.2	36.2
229	19.7	15.6	23.4

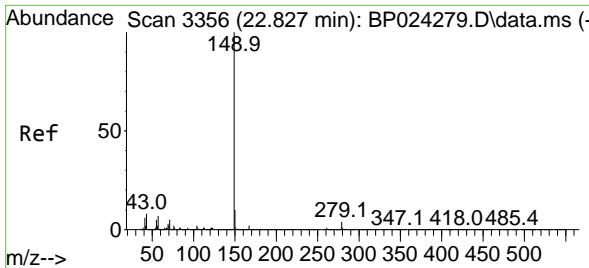


#84
 Bis(2-ethylhexyl)phthalate
 Concen: 50.059 ng
 RT: 21.516 min Scan# 3133
 Delta R.T. 0.006 min
 Lab File: BP024509.D
 Acq: 02 May 2025 14:56

Tgt Ion: 149 Resp: 1649135

Ion	Ratio	Lower	Upper
149	100		
167	27.5	22.4	33.6
279	5.2	4.0	6.0



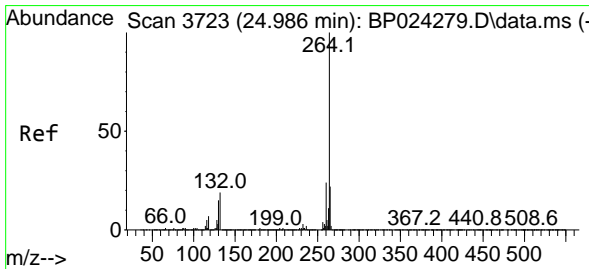
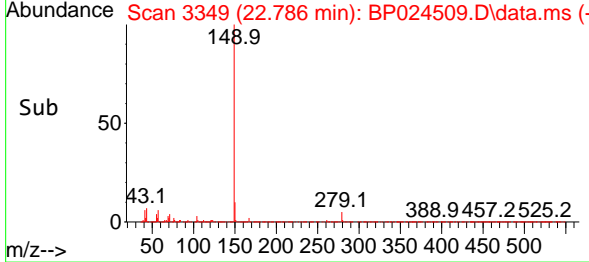
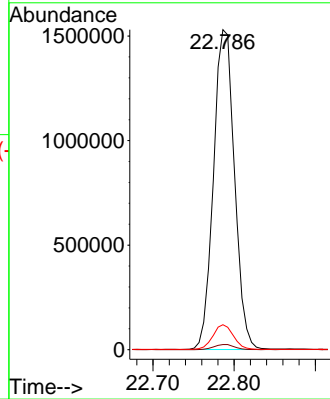
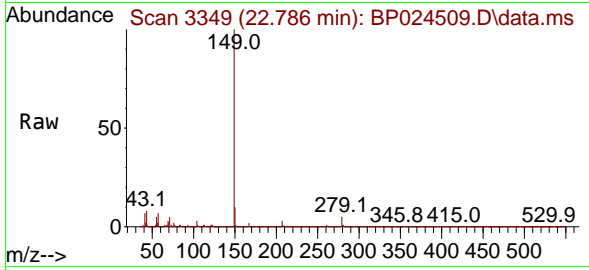


#85
 Di-n-octyl phthalate
 Concen: 51.453 ng
 RT: 22.786 min Scan# 311
 Delta R.T. 0.000 min
 Lab File: BP024509.D
 Acq: 02 May 2025 14:56

Instrument :
 BNA_P
 Client Sample Id :
 WC-12MSD

Tgt Ion:149 Resp: 2755675

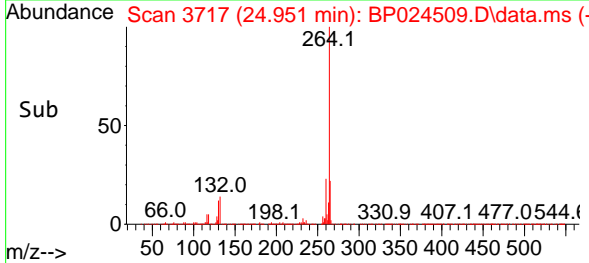
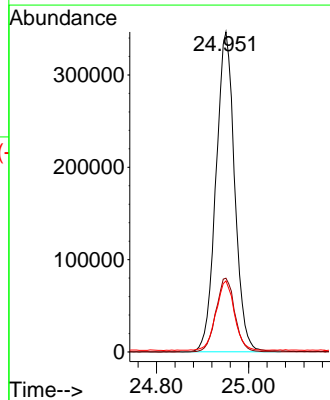
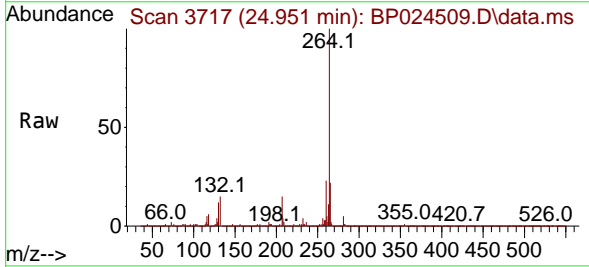
Ion	Ratio	Lower	Upper
149	100		
167	1.6	1.2	1.8
43	7.5	6.0	9.0

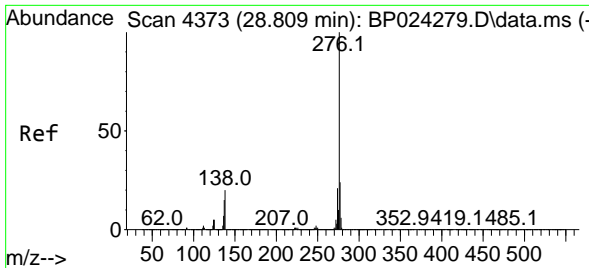


#86
 Perylene-d12
 Concen: 20.000 ng
 RT: 24.951 min Scan# 3717
 Delta R.T. 0.018 min
 Lab File: BP024509.D
 Acq: 02 May 2025 14:56

Tgt Ion:264 Resp: 972467

Ion	Ratio	Lower	Upper
264	100		
260	23.0	18.9	28.3
265	22.2	17.8	26.6



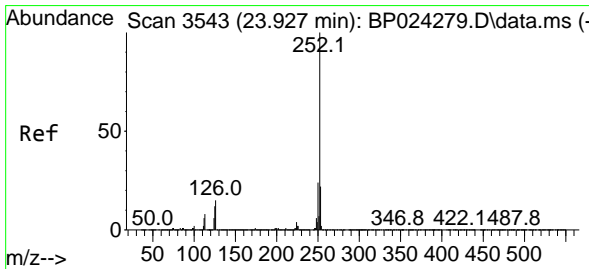
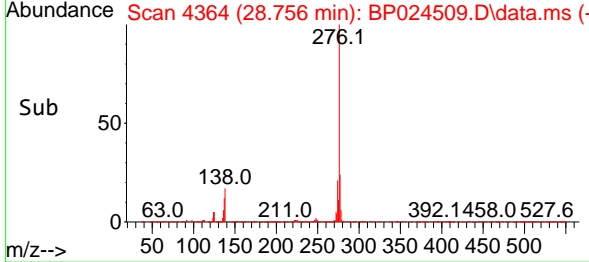
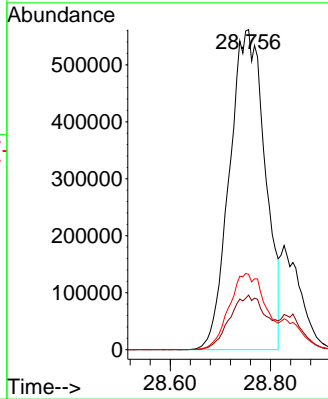
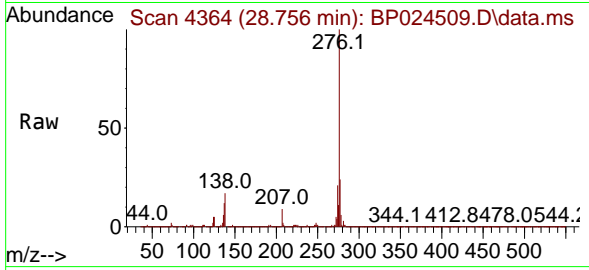


#87
 Indeno(1,2,3-cd)pyrene
 Concen: 40.986 ng
 RT: 28.756 min Scan# 41
 Delta R.T. 0.018 min
 Lab File: BP024509.D
 Acq: 02 May 2025 14:56

Instrument :
 BNA_P
 ClientSampleId :
 WC-12MSD

Tgt Ion: 276 Resp: 2767053

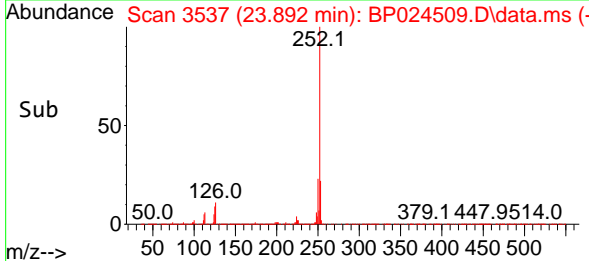
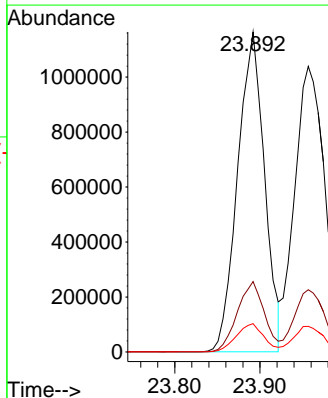
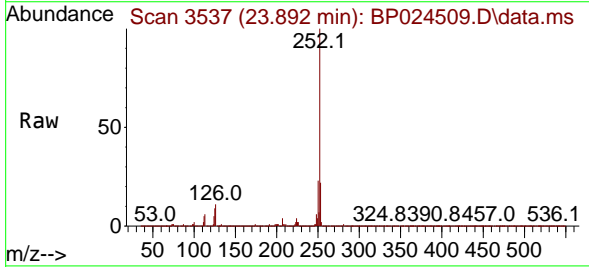
Ion	Ratio	Lower	Upper
276	100		
138	18.1	14.5	21.7
277	24.3	20.2	30.2

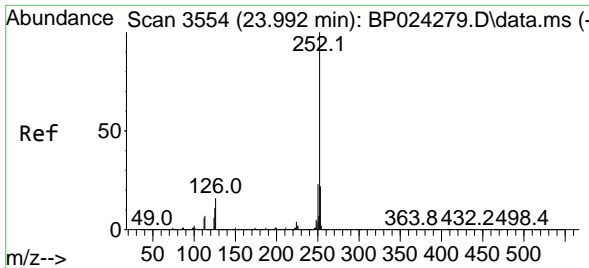


#88
 Benzo(b)fluoranthene
 Concen: 43.846 ng
 RT: 23.892 min Scan# 3537
 Delta R.T. 0.006 min
 Lab File: BP024509.D
 Acq: 02 May 2025 14:56

Tgt Ion: 252 Resp: 2555813

Ion	Ratio	Lower	Upper
252	100		
253	22.0	17.7	26.5
125	8.8	9.4	14.0

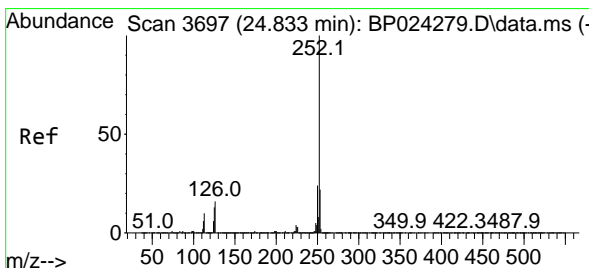
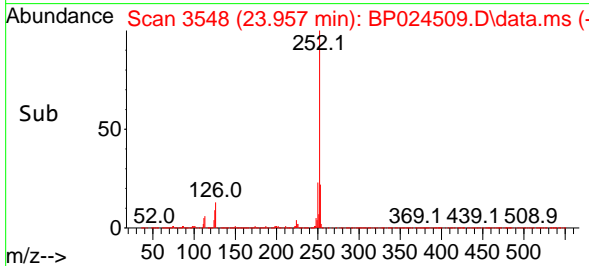
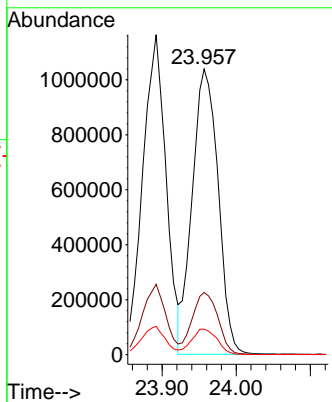
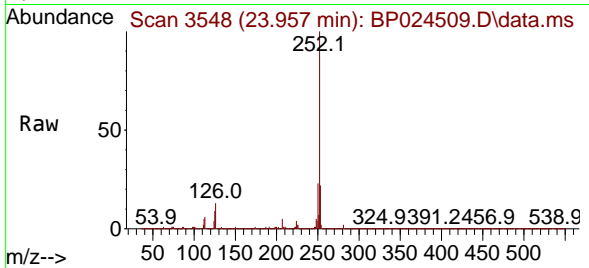




#89
 Benzo(k)fluoranthene
 Concen: 44.789 ng
 RT: 23.957 min Scan# 31
 Delta R.T. 0.000 min
 Lab File: BP024509.D
 Acq: 02 May 2025 14:56

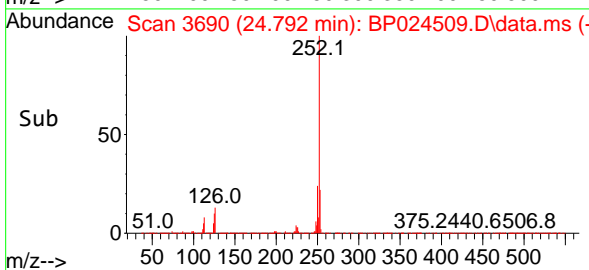
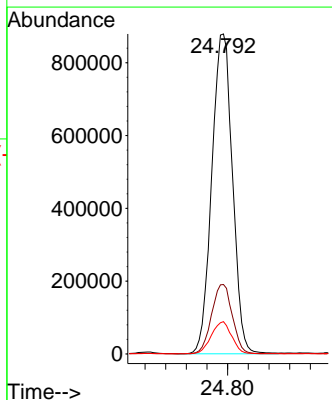
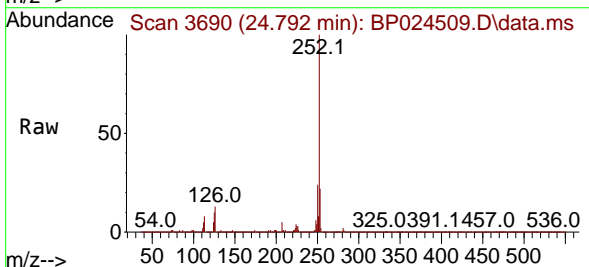
Instrument :
 BNA_P
 ClientSampleId :
 WC-12MSD

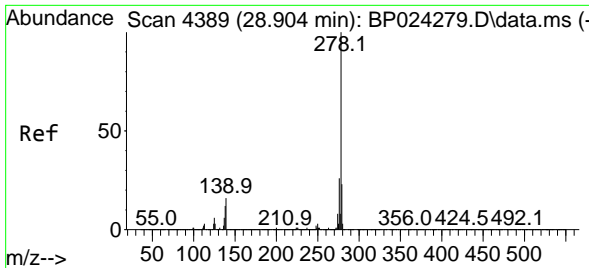
Tgt Ion:252 Resp: 2521861
 Ion Ratio Lower Upper
 252 100
 253 21.8 17.7 26.5
 125 9.0 9.1 13.7#



#90
 Benzo(a)pyrene
 Concen: 48.547 ng
 RT: 24.792 min Scan# 3690
 Delta R.T. 0.012 min
 Lab File: BP024509.D
 Acq: 02 May 2025 14:56

Tgt Ion:252 Resp: 2441014
 Ion Ratio Lower Upper
 252 100
 253 21.7 17.6 26.4
 125 10.1 10.1 15.1



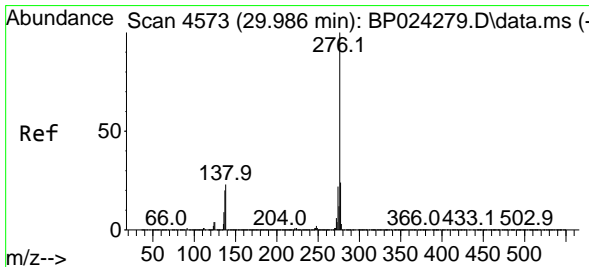
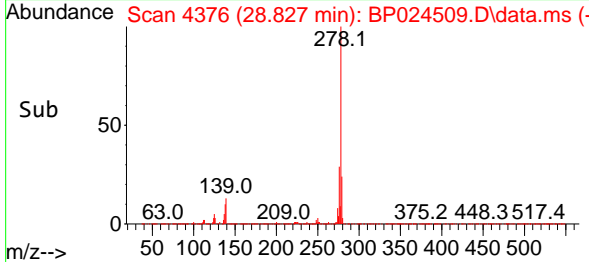
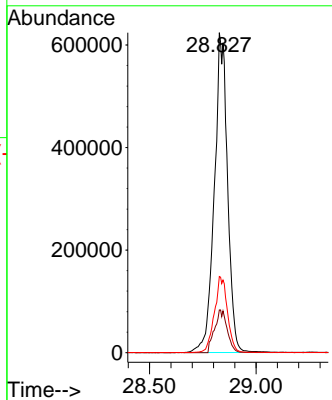
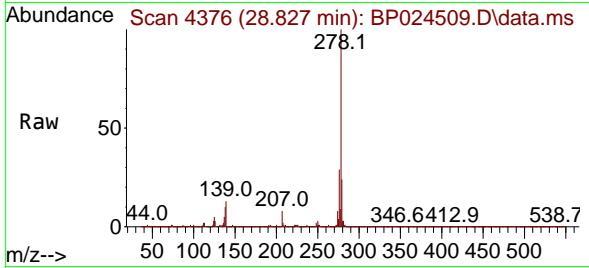


#91
 Dibenzo(a,h)anthracene
 Concen: 48.092 ng
 RT: 28.827 min Scan# 41
 Delta R.T. 0.024 min
 Lab File: BP024509.D
 Acq: 02 May 2025 14:56

Instrument :
 BNA_P
 ClientSampleId :
 WC-12MSD

Tgt Ion: 278 Resp: 2694966

Ion	Ratio	Lower	Upper
278	100		
139	13.4	12.6	19.0
279	23.8	18.5	27.7



#92
 Benzo(g,h,i)perylene
 Concen: 46.077 ng
 RT: 29.945 min Scan# 4566
 Delta R.T. 0.047 min
 Lab File: BP024509.D
 Acq: 02 May 2025 14:56

Tgt Ion: 276 Resp: 2628147

Ion	Ratio	Lower	Upper
276	100		
277	23.5	18.9	28.3
138	17.2	18.7	28.1#

