

Data Path : Z:\svoasrv\HPCHEM1\BNA\_P\Data\BP050925\  
 Data File : BP024600.D  
 Acq On : 09 May 2025 21:12  
 Operator : RC/JU  
 Sample : Q1983-06  
 Misc :  
 ALS Vial : 17 Sample Multiplier: 1

Instrument :  
 BNA\_P  
 ClientSampleId :  
 OR-636-COMP-01

Quant Time: May 09 22:48:26 2025  
 Quant Method : Z:\svoasrv\HPCHEM1\BNA\_P\Methods\8270E-BP041425.M  
 Quant Title : ASP BNA STANDARDS FOR 5 POINT CALIBRATION  
 QLast Update : Fri May 09 12:07:46 2025  
 Response via : Initial Calibration

Compound	R.T.	QIon	Response	Conc	Units	Dev(Min)
Internal Standards						
1) 1,4-Dichlorobenzene-d4	7.699	152	128759	20.000	ng	0.00
21) Naphthalene-d8	10.475	136	484838	20.000	ng	# 0.00
39) Acenaphthene-d10	14.328	164	283455	20.000	ng	0.00
64) Phenanthrene-d10	17.128	188	595705	20.000	ng	# 0.00
76) Chrysene-d12	21.563	240	783141	20.000	ng	0.00
86) Perylene-d12	24.874	264	943477	20.000	ng	-0.01
System Monitoring Compounds						
5) 2-Fluorophenol	5.328	112	891805	114.521	ng	0.00
7) Phenol-d6	6.893	99	979677	91.877	ng	0.00
23) Nitrobenzene-d5	8.852	82	720856	84.779	ng	0.00
42) 2,4,6-Tribromophenol	15.851	330	616546	157.212	ng	0.00
45) 2-Fluorobiphenyl	12.940	172	1591612	85.973	ng	0.00
79) Terphenyl-d14	19.851	244	3381826	87.041	ng	0.00

Target Compounds Qvalue

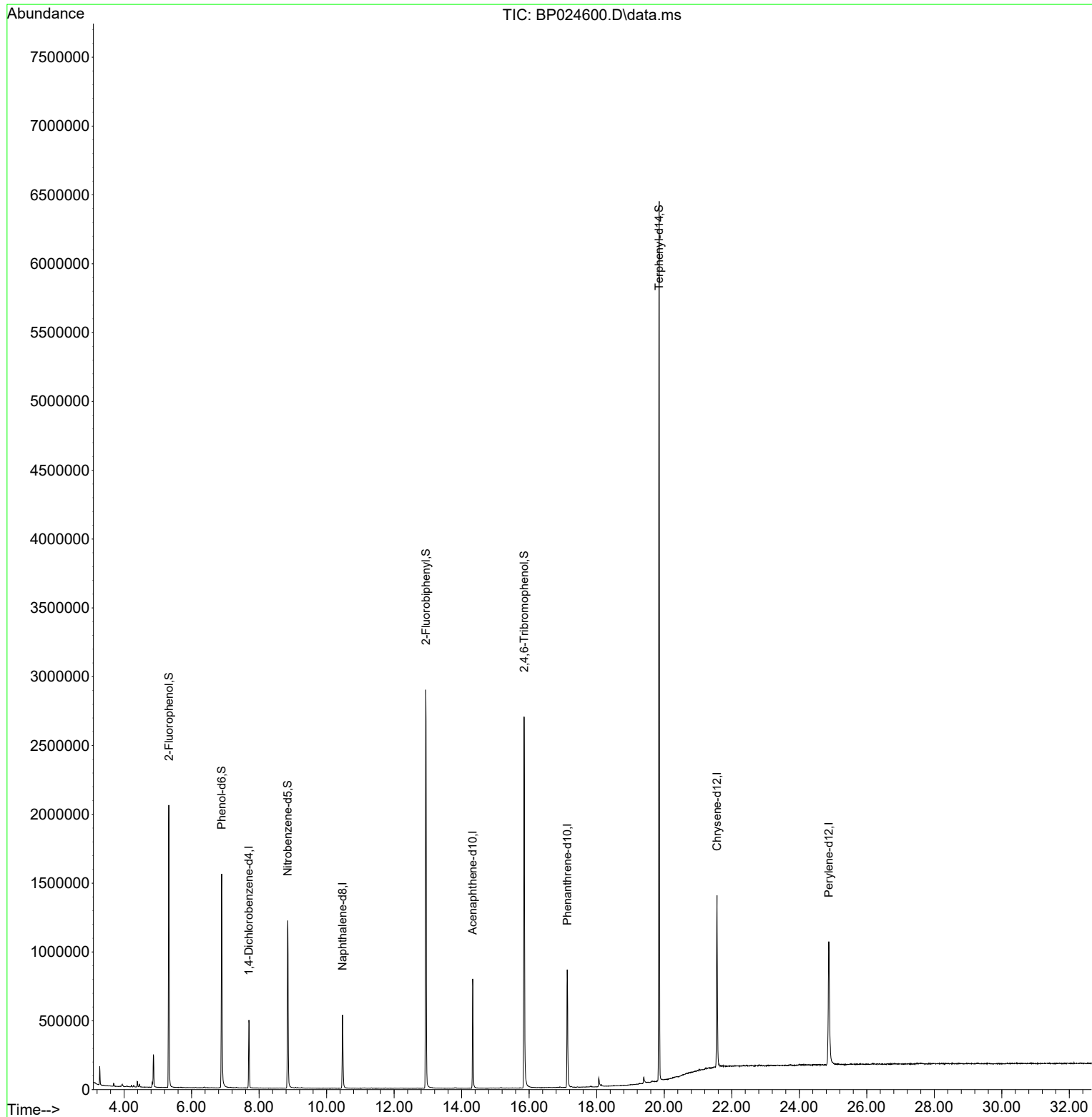
---

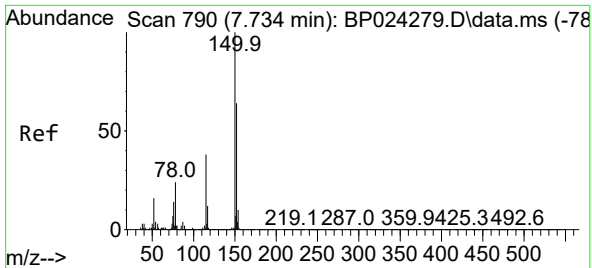
(#) = qualifier out of range (m) = manual integration (+) = signals summed

Data Path : Z:\svoasrv\HPCHEM1\BNA\_P\Data\BP050925\  
Data File : BP024600.D  
Acq On : 09 May 2025 21:12  
Operator : RC/JU  
Sample : Q1983-06  
Misc :  
ALS Vial : 17 Sample Multiplier: 1

Instrument :  
BNA\_P  
ClientSampleId :  
OR-636-COMP-01

Quant Time: May 09 22:48:26 2025  
Quant Method : Z:\svoasrv\HPCHEM1\BNA\_P\Methods\8270E-BP041425.M  
Quant Title : ASP BNA STANDARDS FOR 5 POINT CALIBRATION  
QLast Update : Fri May 09 12:07:46 2025  
Response via : Initial Calibration



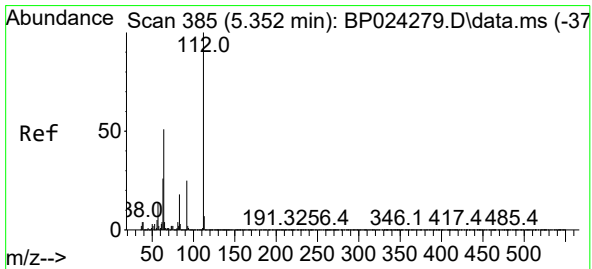
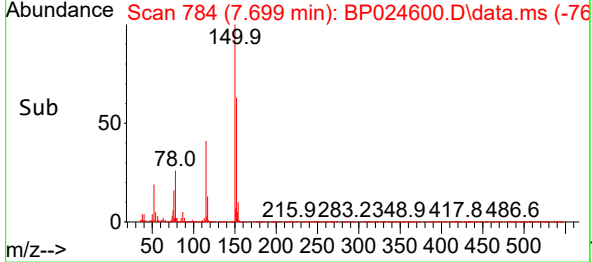
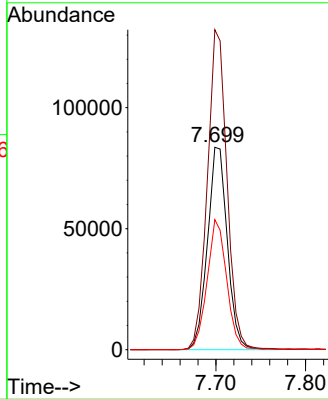
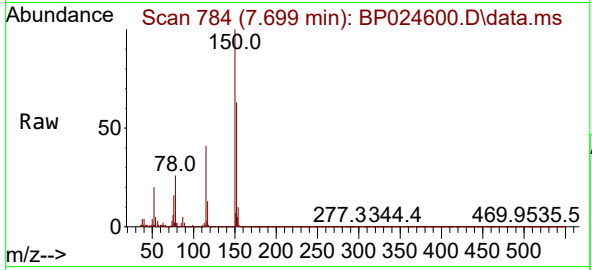


#1  
 1,4-Dichlorobenzene-d4  
 Concen: 20.000 ng  
 RT: 7.699 min Scan# 71  
 Delta R.T. 0.001 min  
 Lab File: BP024600.D  
 Acq: 09 May 2025 21:12

Instrument : BNA\_P  
 ClientSampleId : OR-636-COMP-01

Tgt Ion:152 Resp: 128759

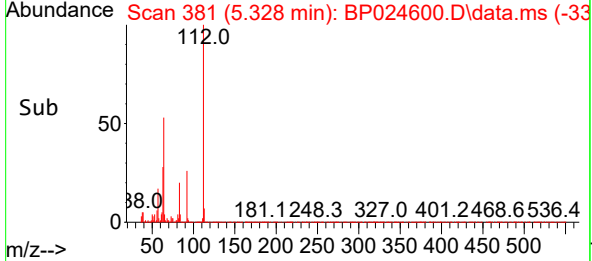
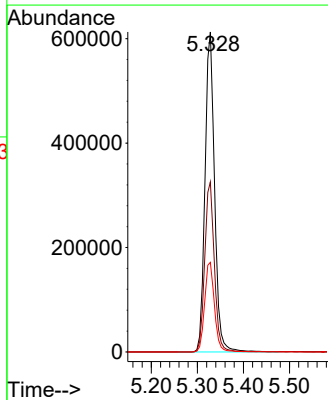
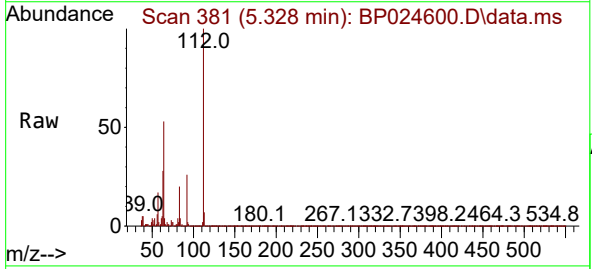
Ion	Ratio	Lower	Upper
152	100		
150	158.1	124.9	187.3
115	64.3	47.7	71.5

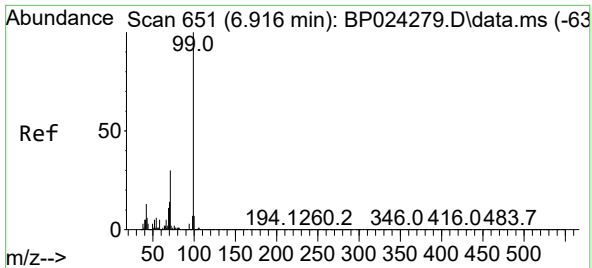


#5  
 2-Fluorophenol  
 Concen: 114.521 ng  
 RT: 5.328 min Scan# 381  
 Delta R.T. 0.000 min  
 Lab File: BP024600.D  
 Acq: 09 May 2025 21:12

Tgt Ion:112 Resp: 891805

Ion	Ratio	Lower	Upper
112	100		
64	53.2	41.1	61.7
63	28.0	20.6	30.8



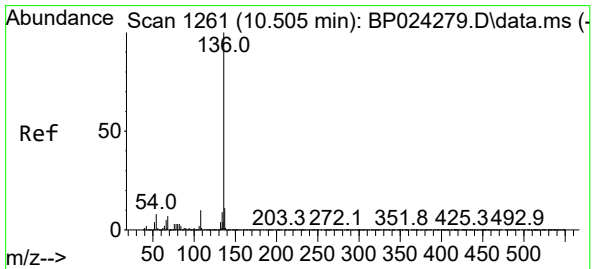
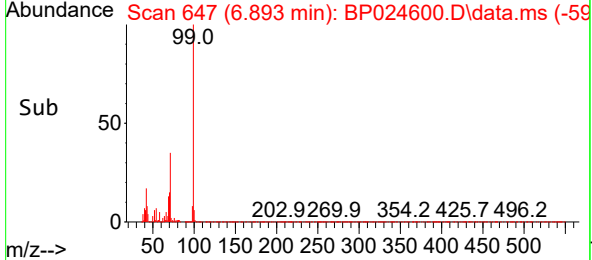
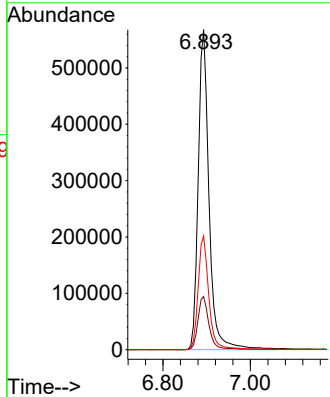
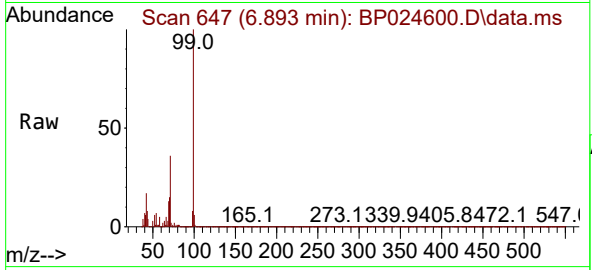


#7  
 Phenol-d6  
 Concen: 91.877 ng  
 RT: 6.893 min Scan# 647  
 Delta R.T. 0.000 min  
 Lab File: BP024600.D  
 Acq: 09 May 2025 21:12

Instrument : BNA\_P  
 ClientSampleId : OR-636-COMP-01

Tgt Ion: 99 Resp: 979677

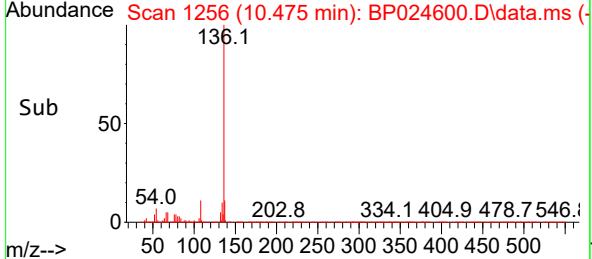
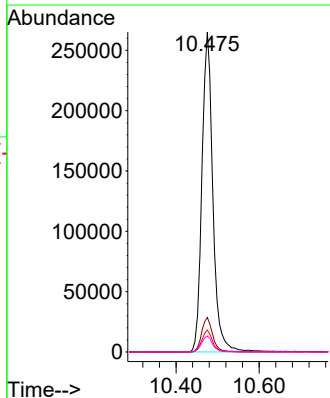
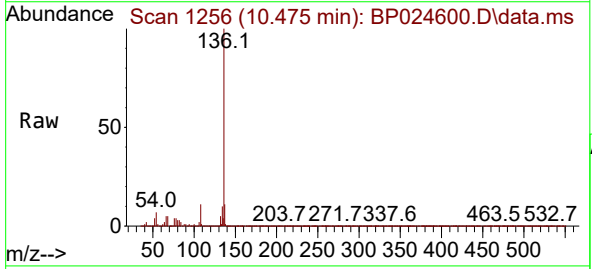
Ion	Ratio	Lower	Upper
99	100		
42	16.6	10.6	16.0#
71	35.5	23.7	35.5

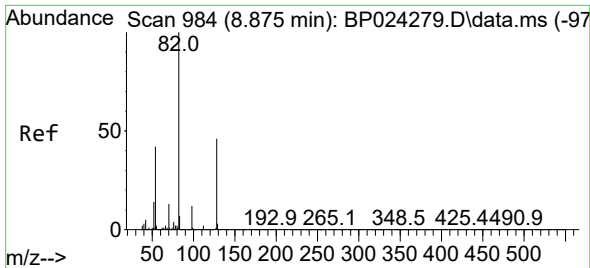


#21  
 Naphthalene-d8  
 Concen: 20.000 ng  
 RT: 10.475 min Scan# 1256  
 Delta R.T. 0.006 min  
 Lab File: BP024600.D  
 Acq: 09 May 2025 21:12

Tgt Ion: 136 Resp: 484838

Ion	Ratio	Lower	Upper
136	100		
137	10.8	9.2	13.8
54	6.9	6.0	9.0
68	5.0	5.5	8.3#



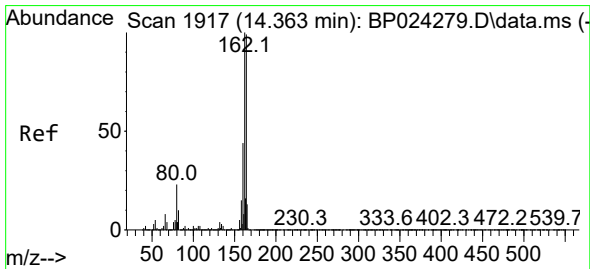
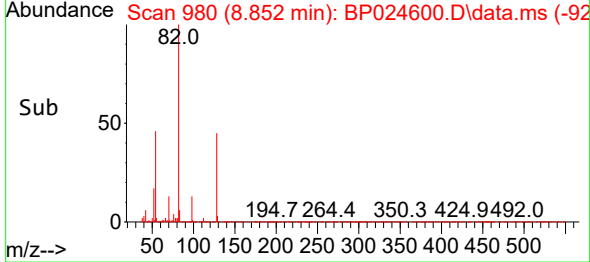
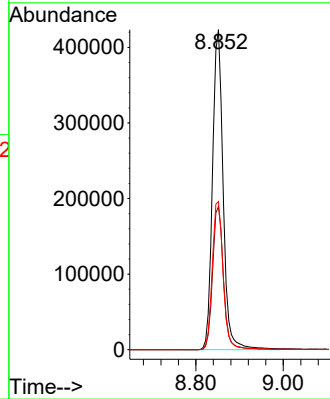
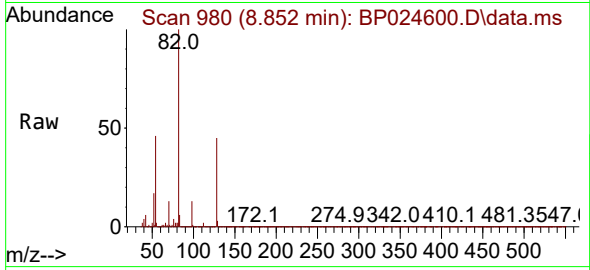


#23  
 Nitrobenzene-d5  
 Concen: 84.779 ng  
 RT: 8.852 min Scan# 91  
 Delta R.T. 0.006 min  
 Lab File: BP024600.D  
 Acq: 09 May 2025 21:12

Instrument :  
 BNA\_P  
 ClientSampleId :  
 OR-636-COMP-01

Tgt Ion: 82 Resp: 720856

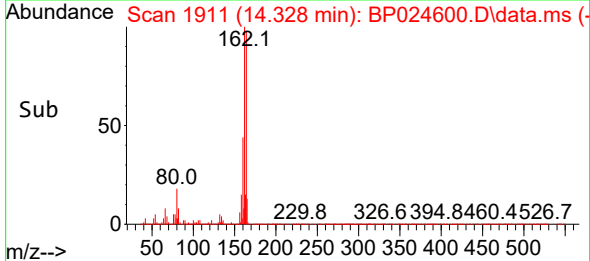
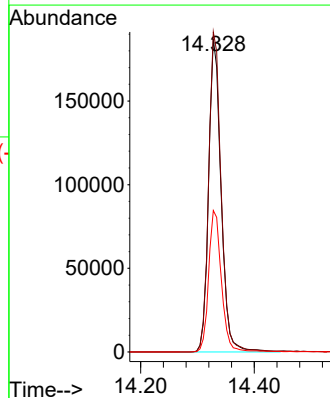
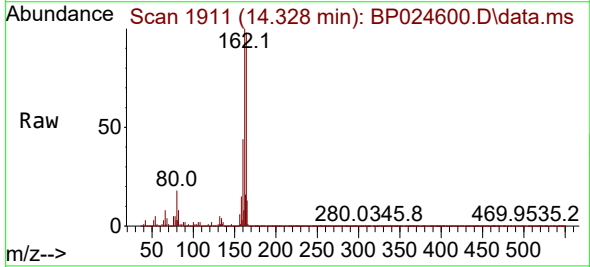
Ion	Ratio	Lower	Upper
82	100		
128	44.7	36.5	54.7
54	46.3	33.4	50.2

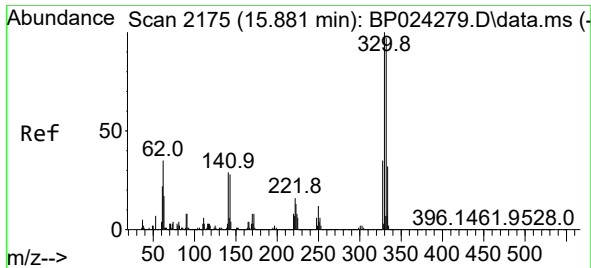


#39  
 Acenaphthene-d10  
 Concen: 20.000 ng  
 RT: 14.328 min Scan# 1911  
 Delta R.T. -0.005 min  
 Lab File: BP024600.D  
 Acq: 09 May 2025 21:12

Tgt Ion: 164 Resp: 283455

Ion	Ratio	Lower	Upper
164	100		
162	102.2	80.6	120.8
160	45.2	35.3	52.9

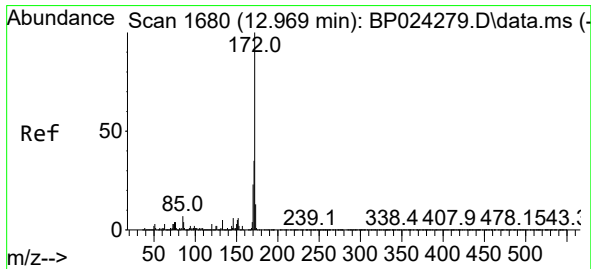
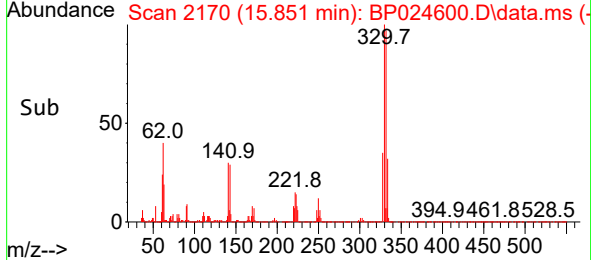
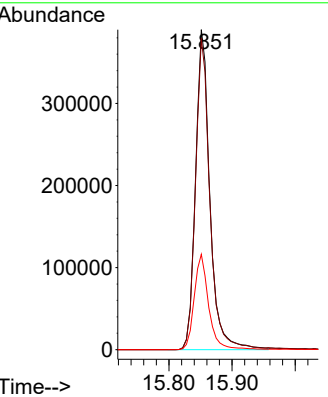
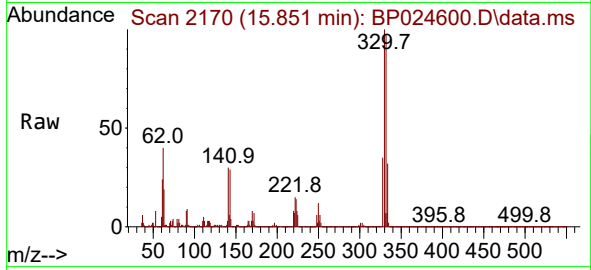




#42  
 2,4,6-Tribromophenol  
 Concen: 157.212 ng  
 RT: 15.851 min Scan# 2170  
 Delta R.T. 0.006 min  
 Lab File: BP024600.D  
 Acq: 09 May 2025 21:12

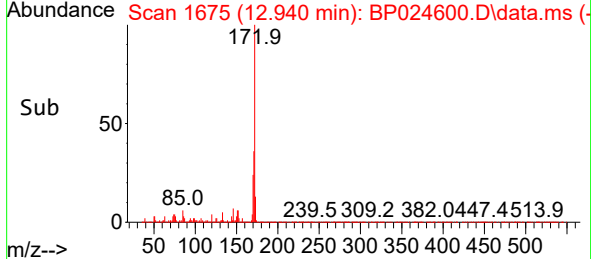
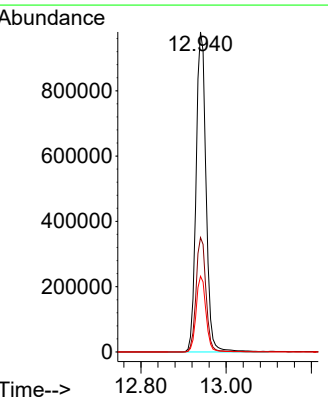
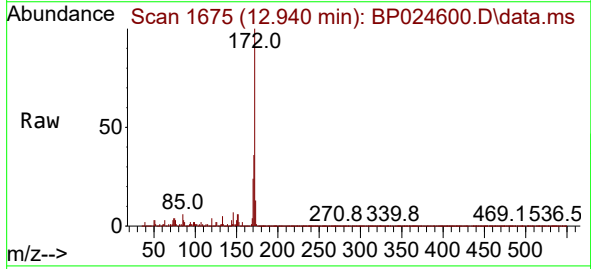
Instrument :  
 BNA\_P  
 ClientSampleId :  
 OR-636-COMP-01

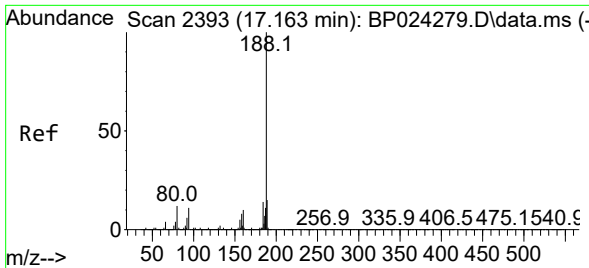
Tgt Ion	Resp	Lower	Upper
330	100		
332	97.2	77.1	115.7
141	30.3	24.7	37.1



#45  
 2-Fluorobiphenyl  
 Concen: 85.973 ng  
 RT: 12.940 min Scan# 1675  
 Delta R.T. 0.000 min  
 Lab File: BP024600.D  
 Acq: 09 May 2025 21:12

Tgt Ion	Resp	Lower	Upper
172	100		
171	35.7	28.2	42.2
170	23.7	18.6	27.8

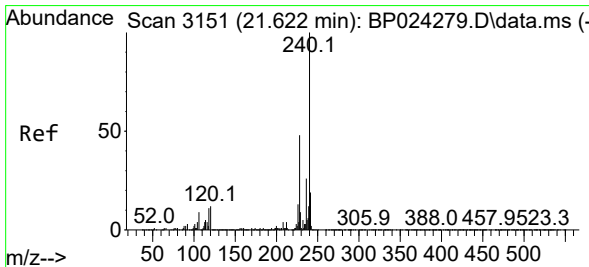
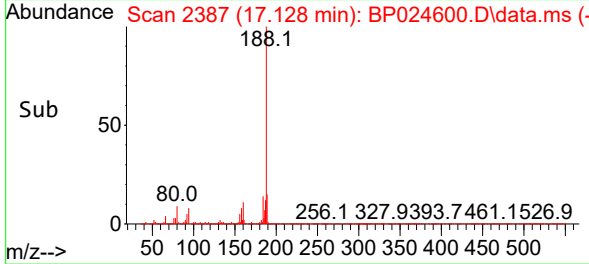
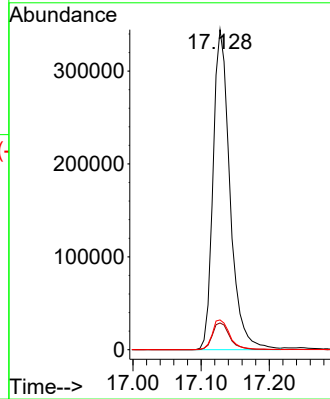
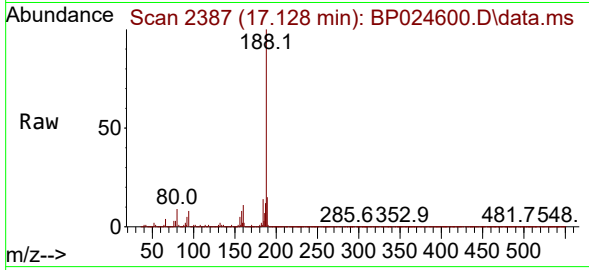




#64  
 Phenanthrene-d10  
 Concen: 20.000 ng  
 RT: 17.128 min Scan# 21  
 Delta R.T. 0.000 min  
 Lab File: BP024600.D  
 Acq: 09 May 2025 21:12

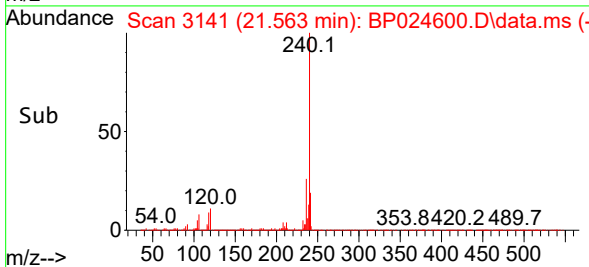
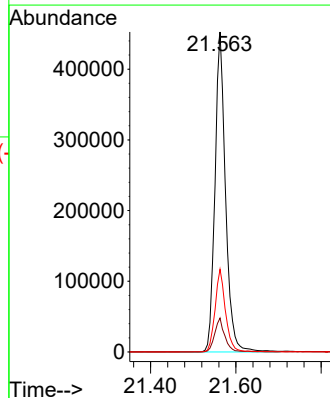
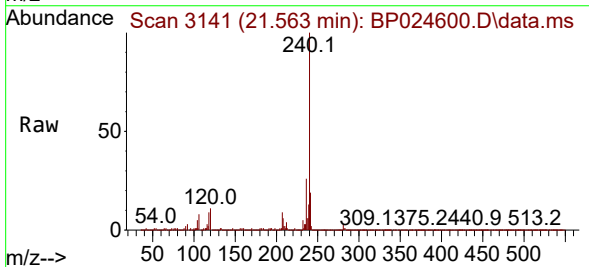
Instrument :  
 BNA\_P  
 ClientSampleId :  
 OR-636-COMP-01

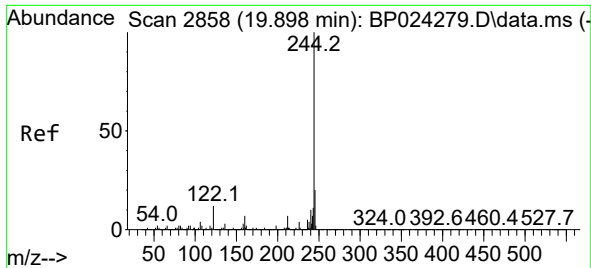
Tgt Ion:188 Resp: 595705  
 Ion Ratio Lower Upper  
 188 100  
 94 8.4 8.6 13.0#  
 80 9.3 9.8 14.6#



#76  
 Chrysene-d12  
 Concen: 20.000 ng  
 RT: 21.563 min Scan# 3141  
 Delta R.T. -0.005 min  
 Lab File: BP024600.D  
 Acq: 09 May 2025 21:12

Tgt Ion:240 Resp: 783141  
 Ion Ratio Lower Upper  
 240 100  
 120 10.6 9.8 14.8  
 236 25.9 20.9 31.3



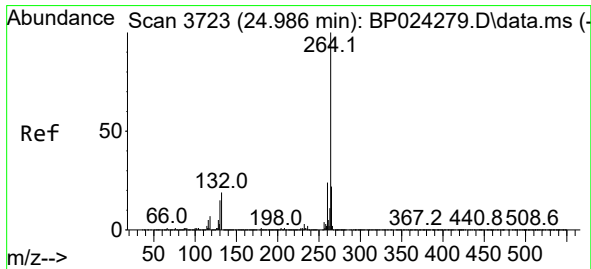
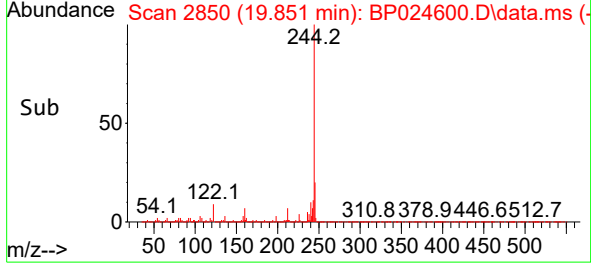
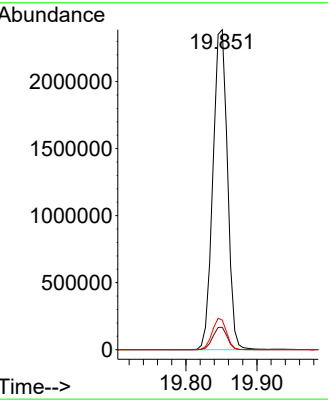
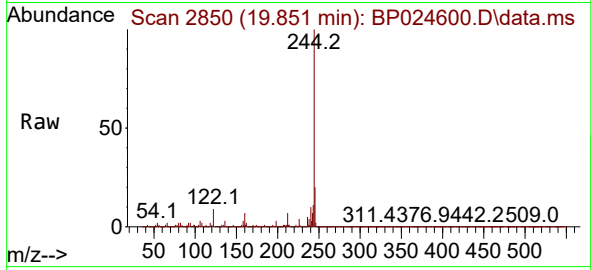


#79  
 Terphenyl-d14  
 Concen: 87.041 ng  
 RT: 19.851 min Scan# 21  
 Delta R.T. 0.000 min  
 Lab File: BP024600.D  
 Acq: 09 May 2025 21:12

Instrument : BNA\_P  
 Client Sample Id : OR-636-COMP-01

Tgt Ion: 244 Resp: 3381826

Ion	Ratio	Lower	Upper
244	100		
212	7.0	5.6	8.4
122	9.2	9.4	14.0



#86  
 Perylene-d12  
 Concen: 20.000 ng  
 RT: 24.874 min Scan# 3704  
 Delta R.T. -0.011 min  
 Lab File: BP024600.D  
 Acq: 09 May 2025 21:12

Tgt Ion: 264 Resp: 943477

Ion	Ratio	Lower	Upper
264	100		
260	23.8	18.9	28.3
265	22.4	17.8	26.6

