

Data Path : Z:\svoasrv\HPCHEM1\BNA_P\Data\BP051021\
 Data File : BP005475.D
 Acq On : 10 May 2021 18:52
 Operator : CG/JU
 Sample : M2309-01
 Misc :
 ALS Vial : 15 Sample Multiplier: 1

Instrument :
 BNA_P
 ClientSampleId :
 MH-TP1

Manual Integrations
 APPROVED

mohammad
 5/11/2021 2:31:51 PM

Quant Time: May 11 04:21:57 2021
 Quant Method : Z:\svoasrv\HPCHEM1\BNA_P\Methods\8270E-BP050521.M
 Quant Title : ASP BNA STANDARDS FOR 5 POINT CALIBRATION
 QLast Update : Fri May 07 12:37:06 2021
 Response via : Initial Calibration

Compound	R.T.	QIon	Response	Conc	Units	Dev(Min)	
Internal Standards							
1) 1,4-Dichlorobenzene-d4	7.705	152	11086	20.00	ng	0.00	
21) Naphthalene-d8	10.493	136	31231	20.00	ng	#-0.01	
39) Acenaphthene-d10	14.345	164	20958	20.00	ng	-0.01	
64) Phenanthrene-d10	17.104	188	50666	20.00	ng	# 0.00	
76) Chrysene-d12	21.198	240	86313	20.00	ng	# 0.00	
86) Perylene-d12	23.510	264	120972	20.00	ng	-0.01	
System Monitoring Compounds							
5) 2-Fluorophenol	5.299	112	66409	114.96	ng	0.00	
7) Phenol-d6	6.899	99	67222	93.32	ng	0.00	
23) Nitrobenzene-d5	8.869	82	57331	72.25	ng	-0.01	
42) 2,4,6-Tribromophenol	15.845	330	53511	89.97	ng	-0.01	
45) 2-Fluorobiphenyl	12.969	172	116147	62.51	ng	-0.01	
79) Terphenyl-d14	19.669	244	241107	47.44	ng	-0.01	
Target Compounds							
50) Dimethylphthalate	13.816	163	10829	5.99	ng	#	93
75) Fluoranthene	19.122	202	15374	3.88	ng		91
78) Pyrene	19.475	202	15025	3.07	ng		98
81) Benzo(a)anthracene	21.180	228	15582	2.79	ng		95
83) Chrysene	21.233	228	15436m	2.85	ng		
88) Benzo(b)fluoranthene	22.810	252	27321	3.39	ng	#	96
90) Benzo(a)pyrene	23.404	252	21005	2.84	ng	#	90

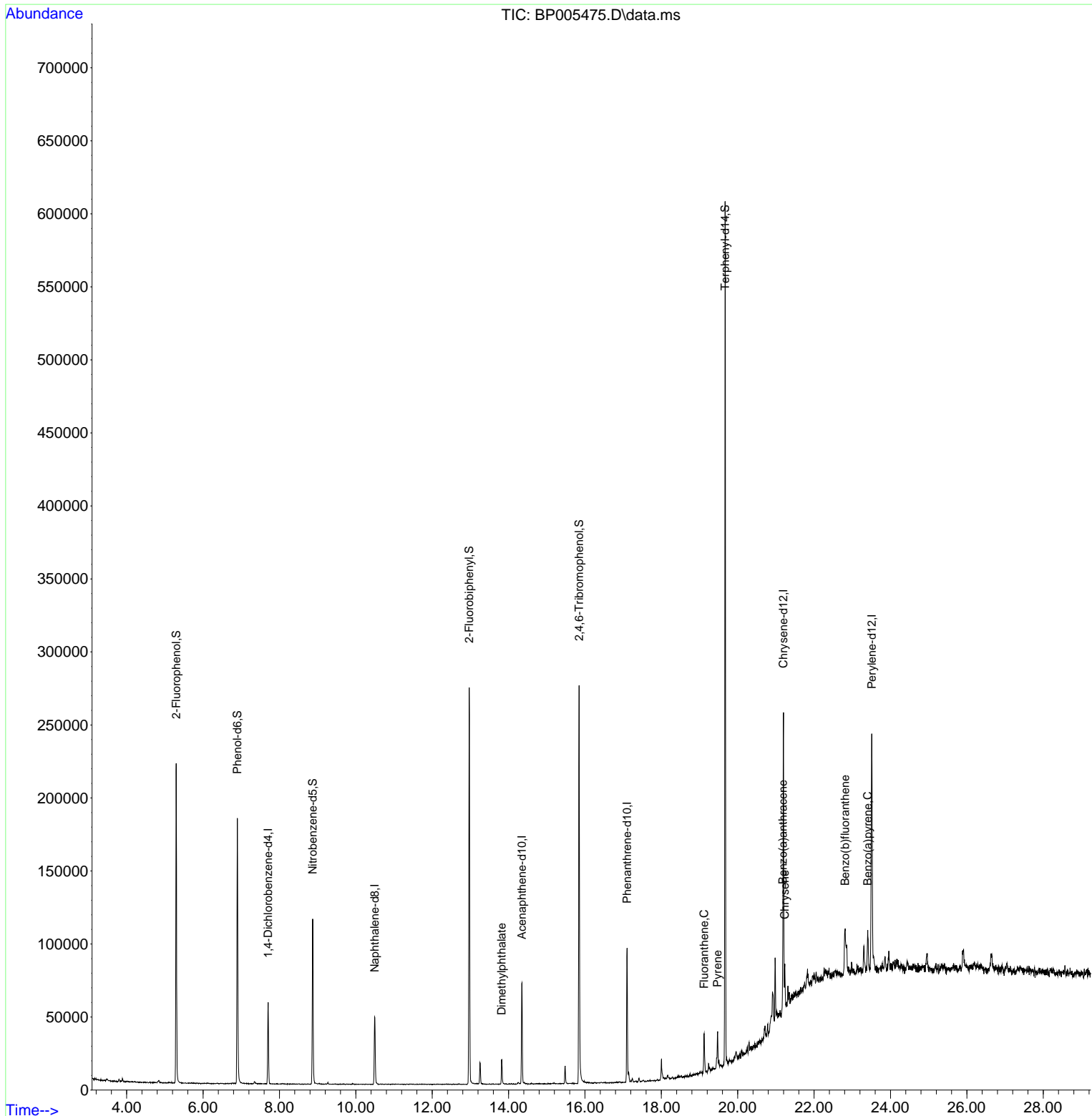
(#) = qualifier out of range (m) = manual integration (+) = signals summed

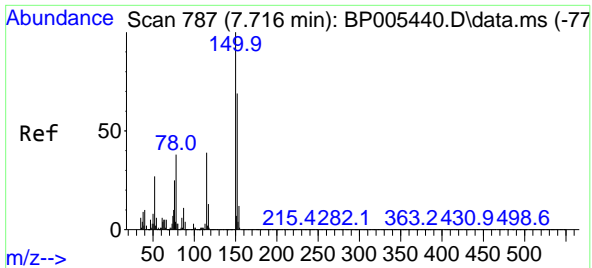
Data Path : Z:\svoasrv\HPCHEM1\BNA_P\Data\BP051021\
 Data File : BP005475.D
 Acq On : 10 May 2021 18:52
 Operator : CG/JU
 Sample : M2309-01
 Misc :
 ALS Vial : 15 Sample Multiplier: 1

Instrument :
 BNA_P
 ClientSampleId :
 MH-TP1

Manual Integrations
APPROVED
 mohammad
 5/11/2021 2:31:51 PM

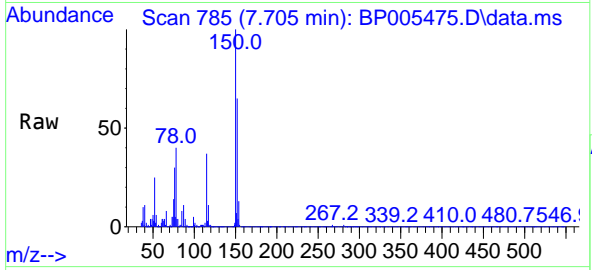
Quant Time: May 11 04:21:57 2021
 Quant Method : Z:\svoasrv\HPCHEM1\BNA_P\Methods\8270E-BP050521.M
 Quant Title : ASP BNA STANDARDS FOR 5 POINT CALIBRATION
 QLast Update : Fri May 07 12:37:06 2021
 Response via : Initial Calibration





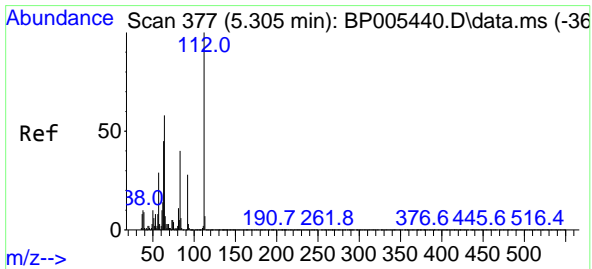
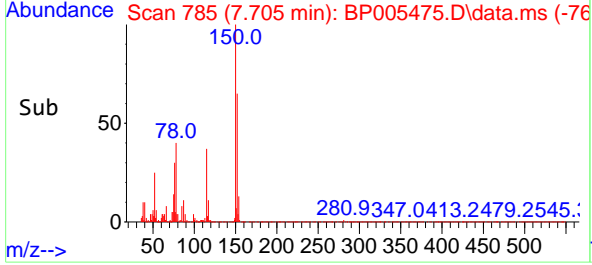
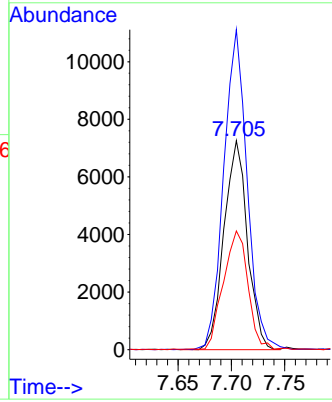
#1
 1,4-Dichlorobenzene-d4
 Concen: 20.00 ng
 RT: 7.705 min Scan# 785
 Delta R.T. -0.006 min
 Lab File: BP005475.D
 Acq: 10 May 2021 18:52

Instrument :
 BNA_P
 ClientSampled :
 MH-TP1

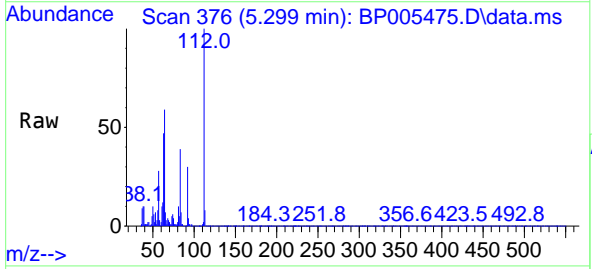


Tgt Ion:152 Resp: 11086
 Ion Ratio Lower Upper
 152 100
 150 153.2 119.8 179.8
 115 56.8 49.0 73.4

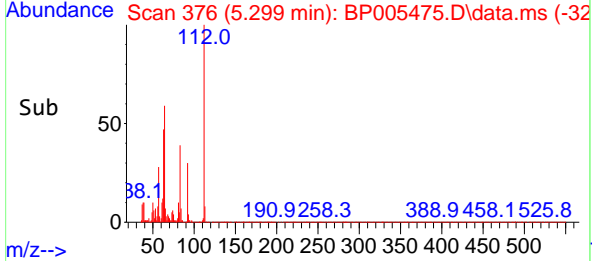
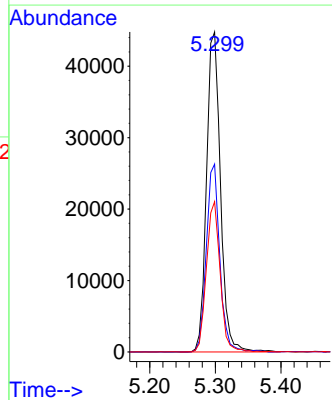
Manual Integrations
 APPROVED
 mohammad
 5/11/2021 2:31:51 PM

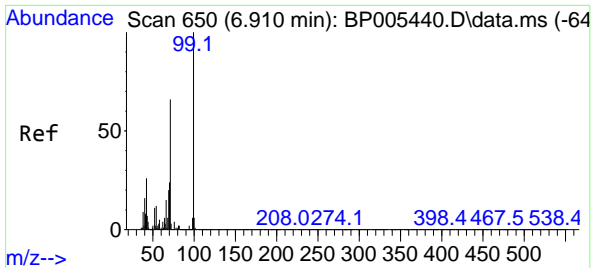


#5
 2-Fluorophenol
 Concen: 114.96 ng
 RT: 5.299 min Scan# 376
 Delta R.T. -0.000 min
 Lab File: BP005475.D
 Acq: 10 May 2021 18:52



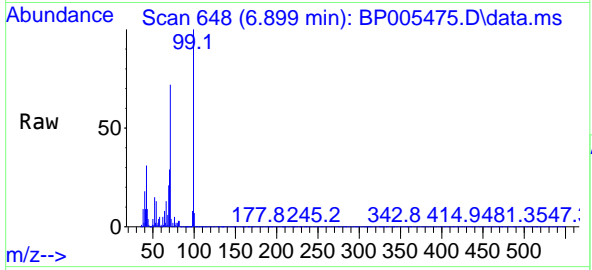
Tgt Ion:112 Resp: 66409
 Ion Ratio Lower Upper
 112 100
 64 58.7 33.6 50.4#
 63 47.0 18.6 27.8#





#7
Phenol-d6
Concen: 93.32 ng
RT: 6.899 min Scan# 648
Delta R.T. -0.000 min
Lab File: BP005475.D
Acq: 10 May 2021 18:52

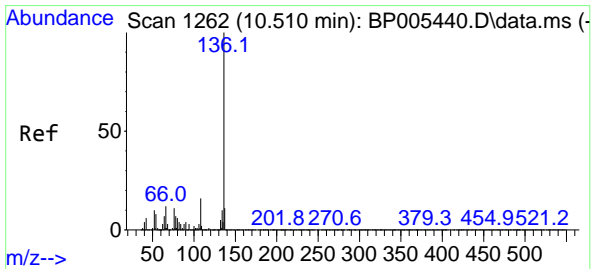
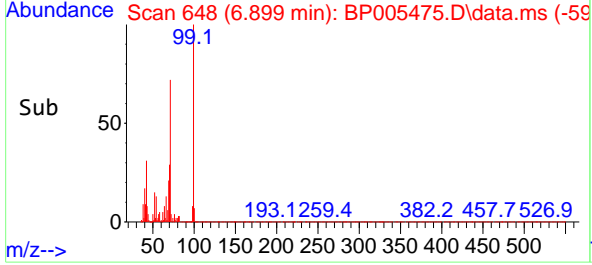
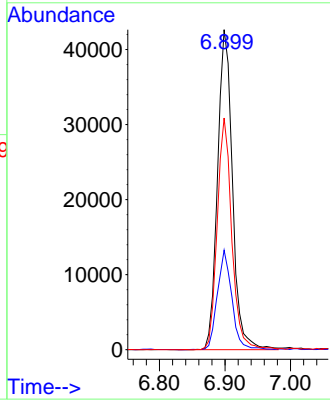
Instrument :
BNA_P
ClientSampled :
MH-TP1



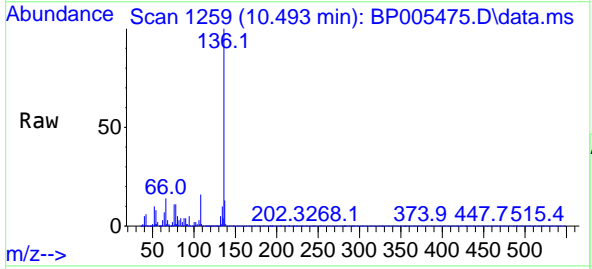
Tgt Ion: 99 Resp: 67222

Ion	Ratio	Lower	Upper
99	100		
42	31.1	12.9	19.3#
71	72.4	26.7	40.1#

Manual Integrations
APPROVED
mohammad
5/11/2021 2:31:51 PM

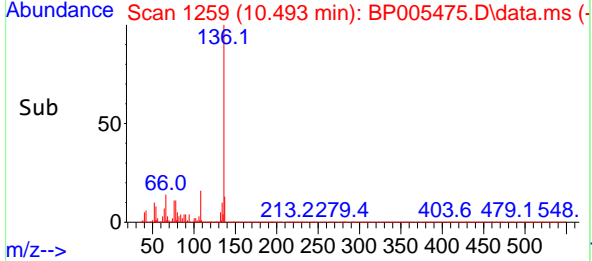
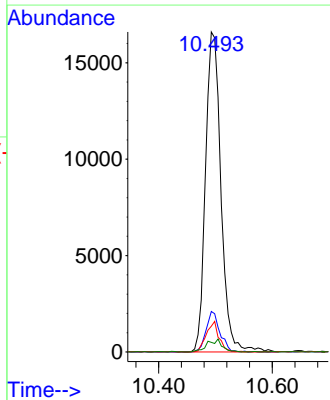


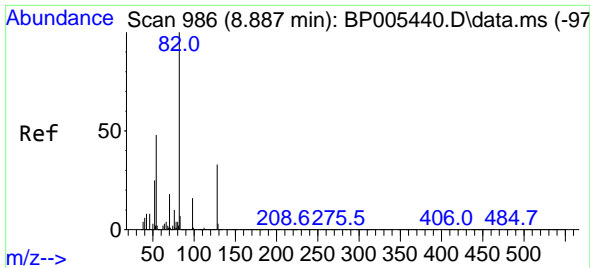
#21
Naphthalene-d8
Concen: 20.00 ng
RT: 10.493 min Scan# 1259
Delta R.T. -0.012 min
Lab File: BP005475.D
Acq: 10 May 2021 18:52



Tgt Ion: 136 Resp: 31231

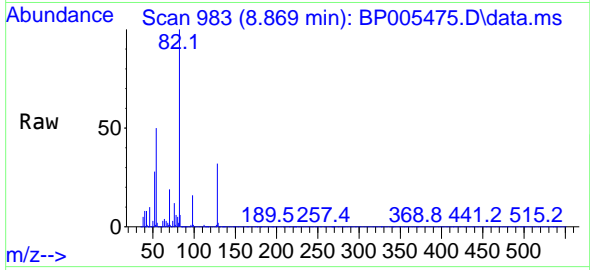
Ion	Ratio	Lower	Upper
136	100		
137	12.7	8.9	13.3
54	8.0	5.0	7.4#
68	3.0	3.7	5.5#





#23
 Nitrobenzene-d5
 Concen: 72.25 ng
 RT: 8.869 min Scan# 983
 Delta R.T. -0.012 min
 Lab File: BP005475.D
 Acq: 10 May 2021 18:52

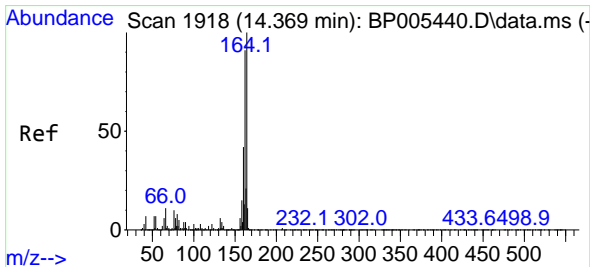
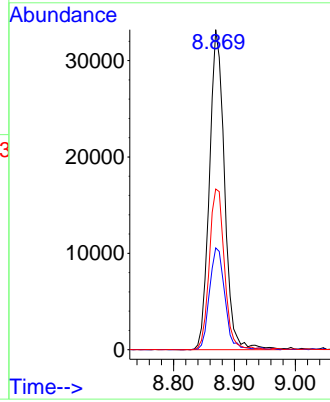
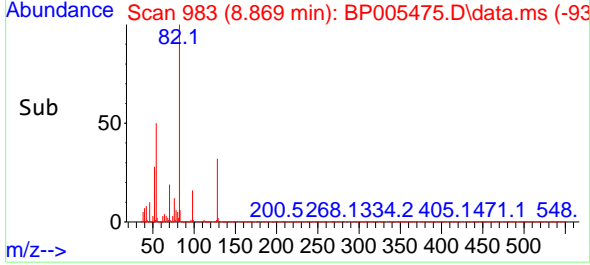
Instrument :
 BNA_P
 ClientSampled :
 MH-TP1



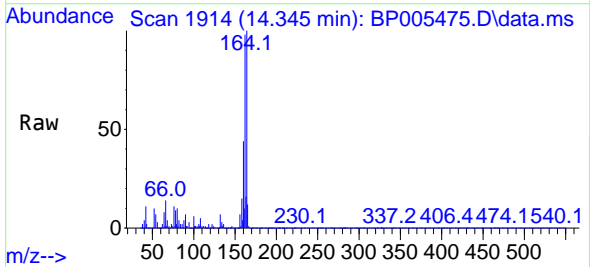
Tgt Ion: 82 Resp: 57331
 Ion Ratio Lower Upper
 82 100
 128 31.8 30.5 45.7
 54 50.2 33.9 50.9

Manual Integrations
 APPROVED

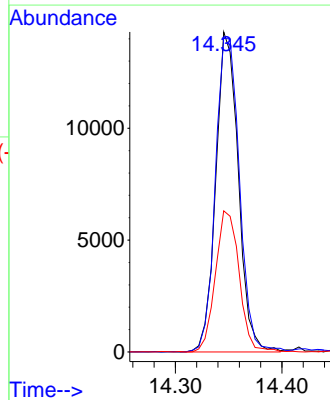
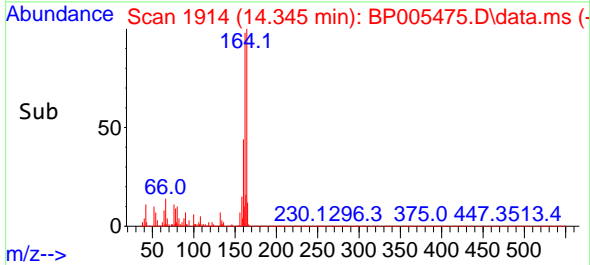
mohammad
 5/11/2021 2:31:51 PM

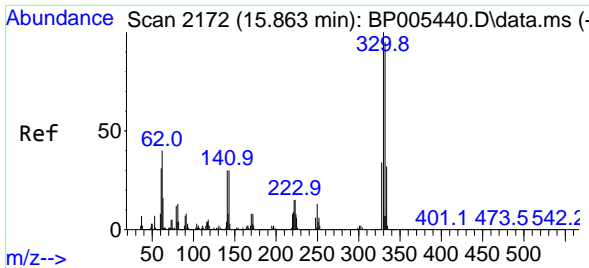


#39
 Acenaphthene-d10
 Concen: 20.00 ng
 RT: 14.345 min Scan# 1914
 Delta R.T. -0.012 min
 Lab File: BP005475.D
 Acq: 10 May 2021 18:52



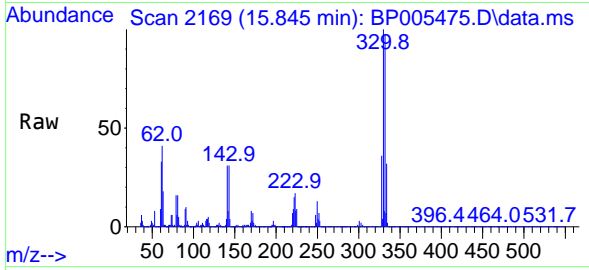
Tgt Ion: 164 Resp: 20958
 Ion Ratio Lower Upper
 164 100
 162 98.0 73.5 110.3
 160 44.1 40.6 61.0





#42
 2,4,6-Tribromophenol
 Concen: 89.97 ng
 RT: 15.845 min Scan# 2169
 Delta R.T. -0.012 min
 Lab File: BP005475.D
 Acq: 10 May 2021 18:52

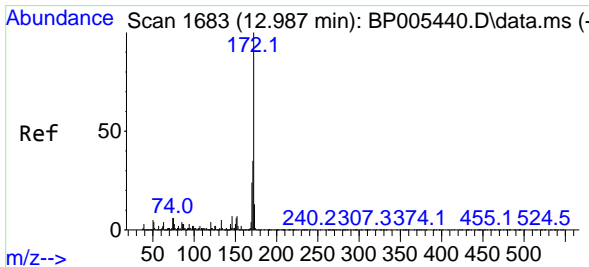
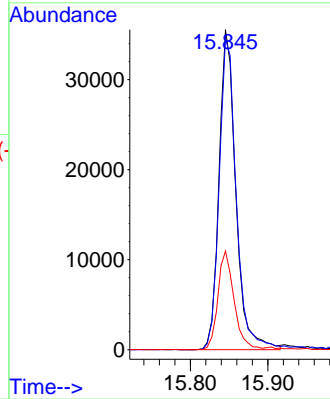
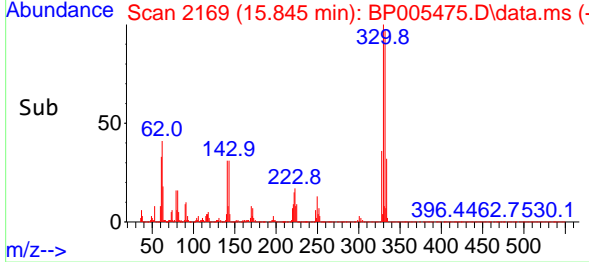
Instrument :
 BNA_P
 ClientSampled :
 MH-TP1



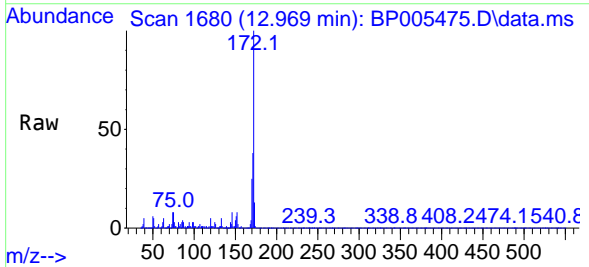
Tgt Ion:330 Resp: 53511
 Ion Ratio Lower Upper
 330 100
 332 100.1 76.3 114.5
 141 29.6 22.8 34.2

Manual Integrations
 APPROVED

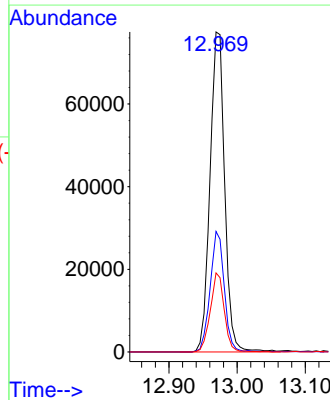
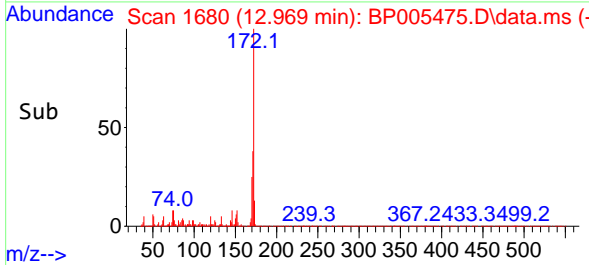
mohammad
 5/11/2021 2:31:51 PM

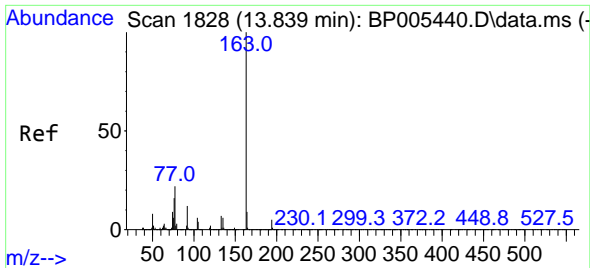


#45
 2-Fluorobiphenyl
 Concen: 62.51 ng
 RT: 12.969 min Scan# 1680
 Delta R.T. -0.012 min
 Lab File: BP005475.D
 Acq: 10 May 2021 18:52



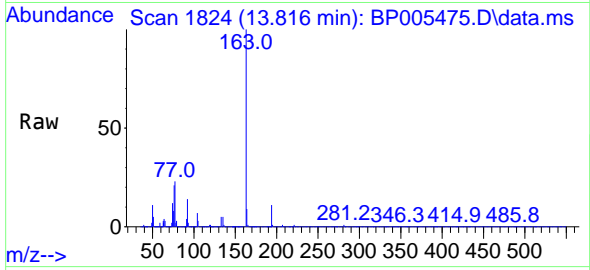
Tgt Ion:172 Resp: 116147
 Ion Ratio Lower Upper
 172 100
 171 37.7 28.1 42.1
 170 24.7 19.6 29.4





#50
 Dimethylphthalate
 Concen: 5.99 ng
 RT: 13.816 min Scan# 1824
 Delta R.T. -0.012 min
 Lab File: BP005475.D
 Acq: 10 May 2021 18:52

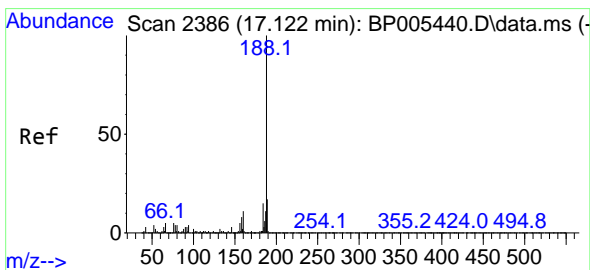
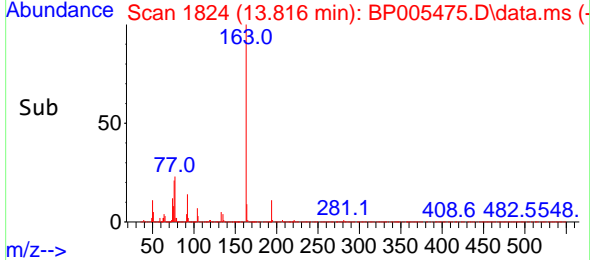
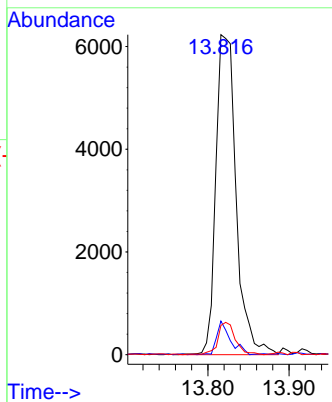
Instrument :
 BNA_P
ClientSampled :
 MH-TP1



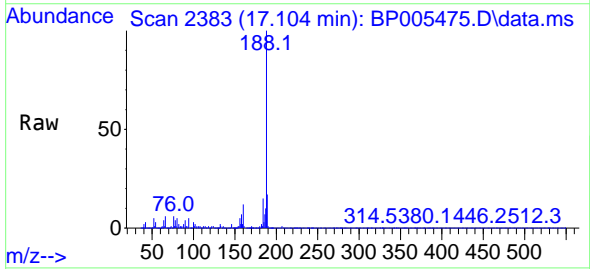
Tgt Ion:163 Resp: 10829

Ion	Ratio	Lower	Upper
163	100		
194	10.5	3.9	5.9#
164	9.2	8.1	12.1

Manual Integrations
APPROVED
 mohammad
 5/11/2021 2:31:51 PM

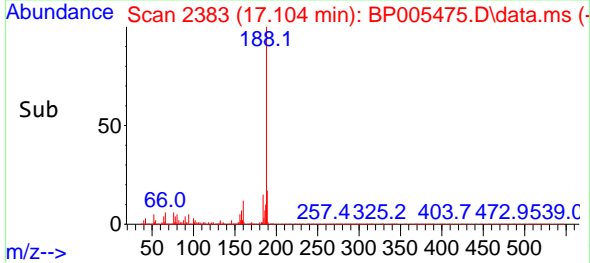
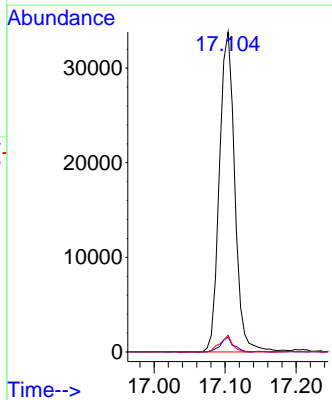


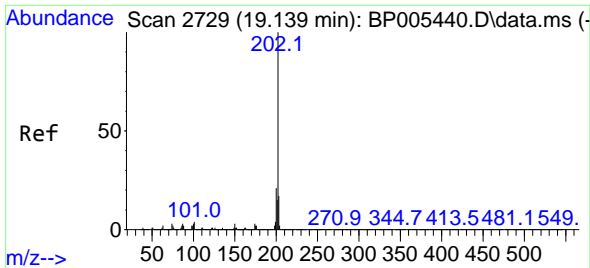
#64
 Phenanthrene-d10
 Concen: 20.00 ng
 RT: 17.104 min Scan# 2383
 Delta R.T. -0.006 min
 Lab File: BP005475.D
 Acq: 10 May 2021 18:52



Tgt Ion:188 Resp: 50666

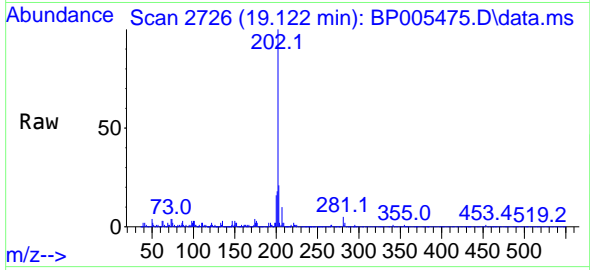
Ion	Ratio	Lower	Upper
188	100		
94	4.6	5.0	7.6#
80	5.2	5.9	8.9#





#75
 Fluoranthene
 Concen: 3.88 ng
 RT: 19.122 min Scan# 2726
 Delta R.T. -0.006 min
 Lab File: BP005475.D
 Acq: 10 May 2021 18:52

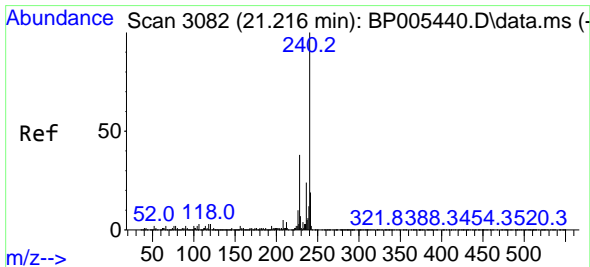
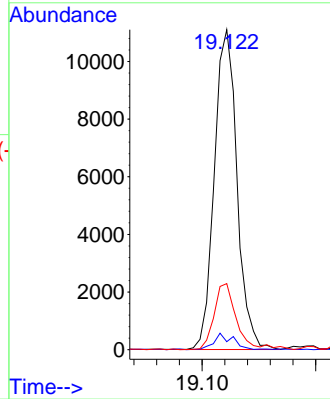
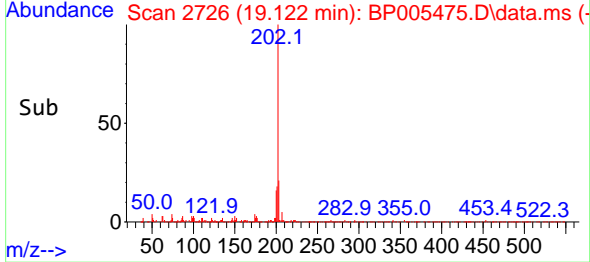
Instrument :
 BNA_P
 ClientSampled :
 MH-TP1



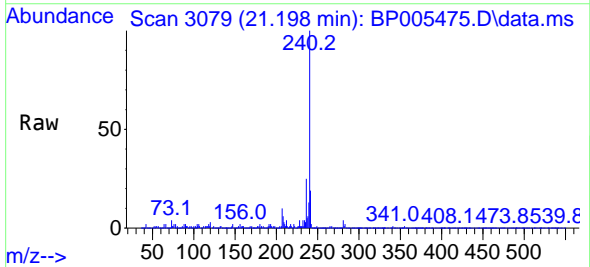
Tgt Ion:202 Resp: 15374
 Ion Ratio Lower Upper
 202 100
 101 2.5 0.0 26.1
 203 20.7 0.0 37.2

Manual Integrations
 APPROVED

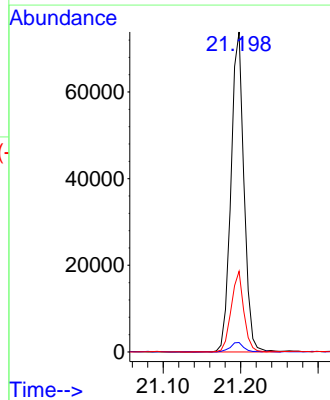
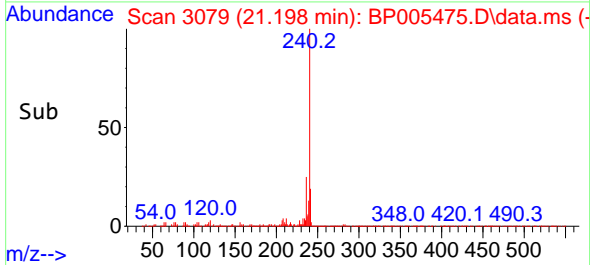
mohammad
 5/11/2021 2:31:51 PM

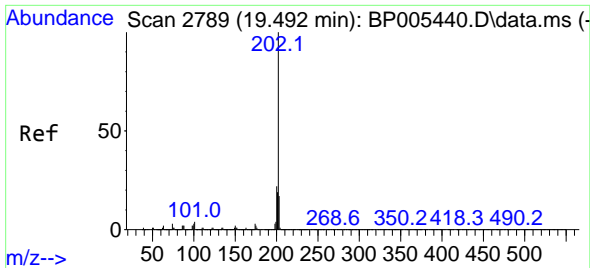


#76
 Chrysene-d12
 Concen: 20.00 ng
 RT: 21.198 min Scan# 3079
 Delta R.T. -0.006 min
 Lab File: BP005475.D
 Acq: 10 May 2021 18:52



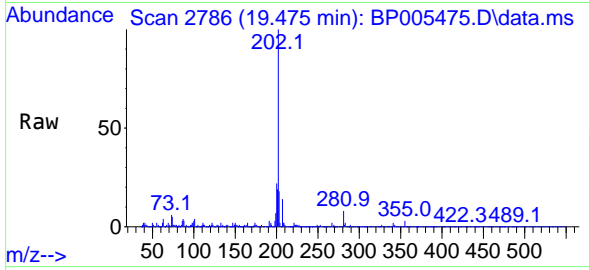
Tgt Ion:240 Resp: 86313
 Ion Ratio Lower Upper
 240 100
 120 2.9 4.2 6.2#
 236 25.2 20.2 30.2





#78
 Pyrene
 Concen: 3.07 ng
 RT: 19.475 min Scan# 2786
 Delta R.T. -0.006 min
 Lab File: BP005475.D
 Acq: 10 May 2021 18:52

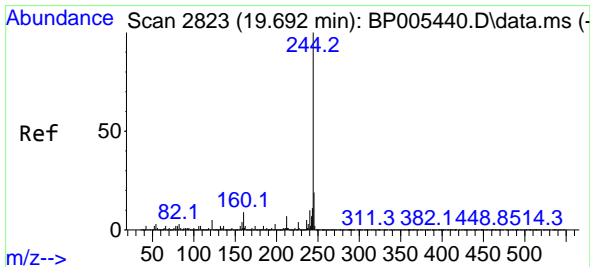
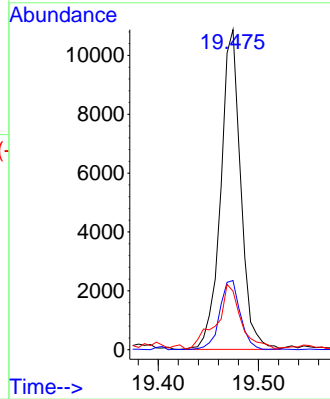
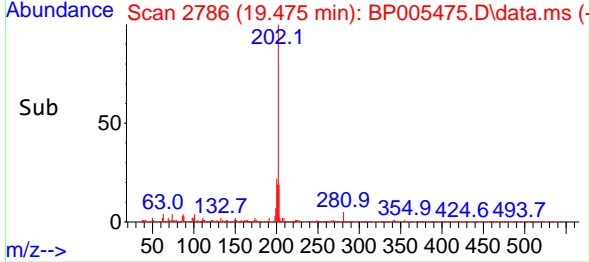
Instrument :
 BNA_P
 ClientSampled :
 MH-TP1



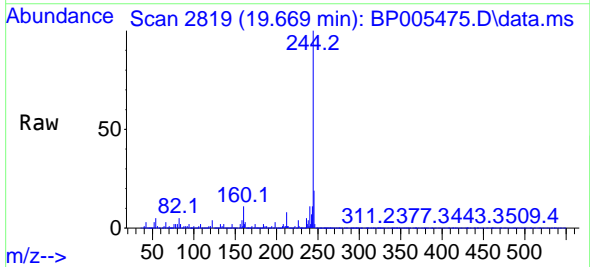
Tgt Ion:202 Resp: 15025
 Ion Ratio Lower Upper
 202 100
 200 21.6 16.9 25.3
 203 18.3 13.8 20.6

Manual Integrations
 APPROVED

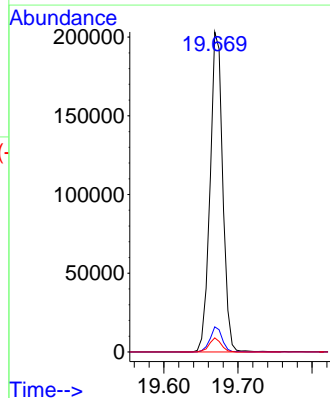
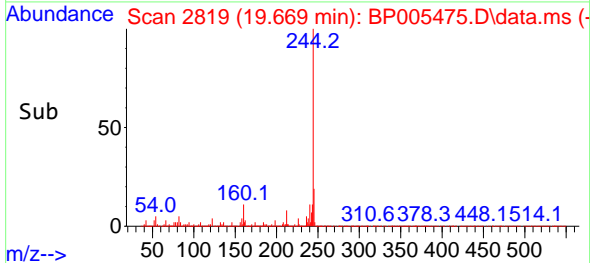
mohammad
 5/11/2021 2:31:51 PM

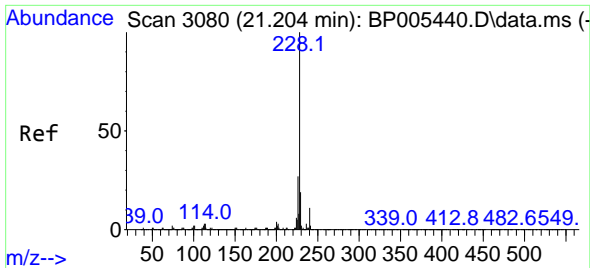


#79
 Terphenyl-d14
 Concen: 47.44 ng
 RT: 19.669 min Scan# 2819
 Delta R.T. -0.012 min
 Lab File: BP005475.D
 Acq: 10 May 2021 18:52



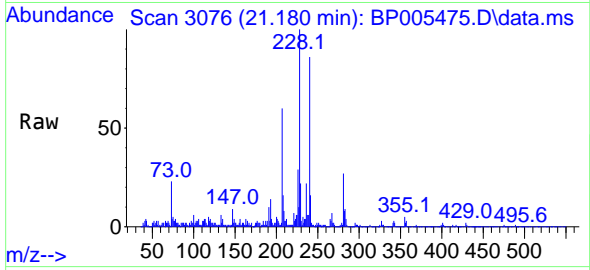
Tgt Ion:244 Resp: 241107
 Ion Ratio Lower Upper
 244 100
 212 7.9 5.8 8.6
 122 4.4 5.2 7.8#





#81
 Benzo(a)anthracene
 Concen: 2.79 ng
 RT: 21.180 min Scan# 3076
 Delta R.T. -0.012 min
 Lab File: BP005475.D
 Acq: 10 May 2021 18:52

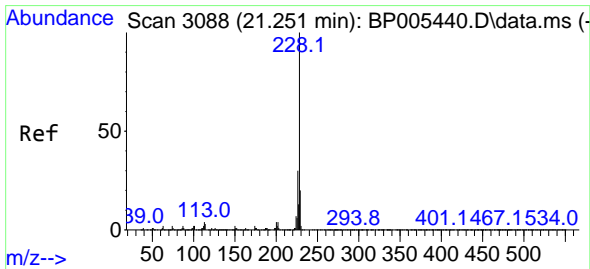
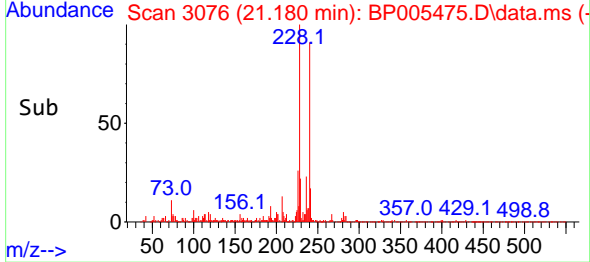
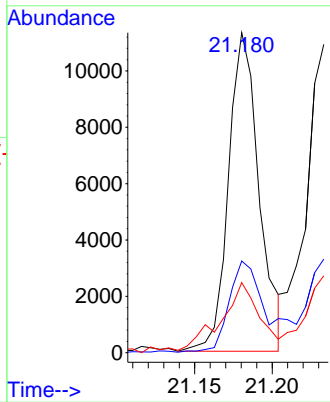
Instrument :
 BNA_P
 ClientSampled :
 MH-TP1



Tgt Ion: 228 Resp: 15582

Ion	Ratio	Lower	Upper
228	100		
226	28.6	21.2	31.8
229	21.9	15.6	23.4

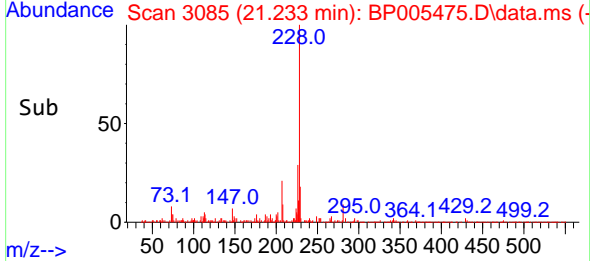
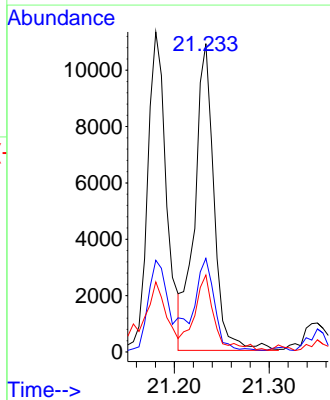
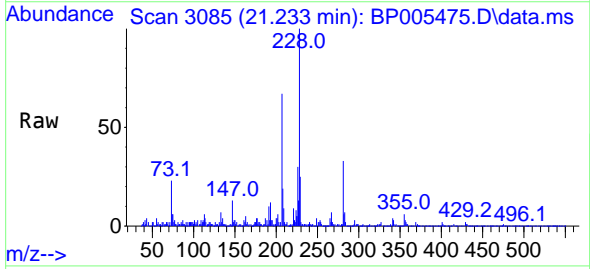
Manual Integrations
APPROVED
 mohammad
 5/11/2021 2:31:51 PM

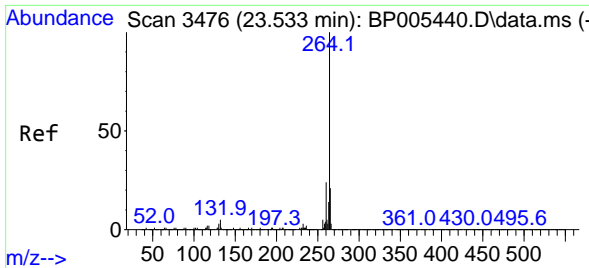


#83
 Chrysene
 Concen: 2.85 ng m
 RT: 21.233 min Scan# 3085
 Delta R.T. -0.012 min
 Lab File: BP005475.D
 Acq: 10 May 2021 18:52

Tgt Ion: 228 Resp: 15436

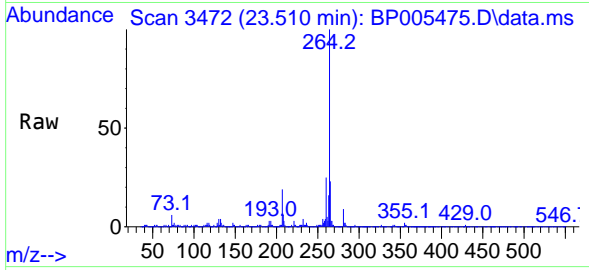
Ion	Ratio	Lower	Upper
228	100		
226	30.4	24.8	37.2
229	24.9	15.4	23.0#





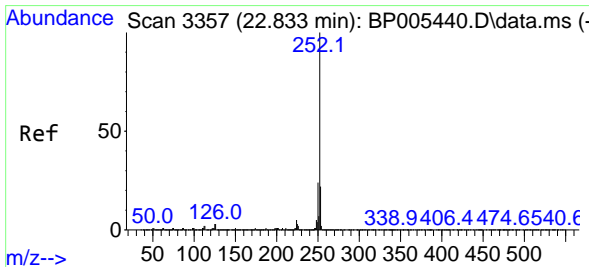
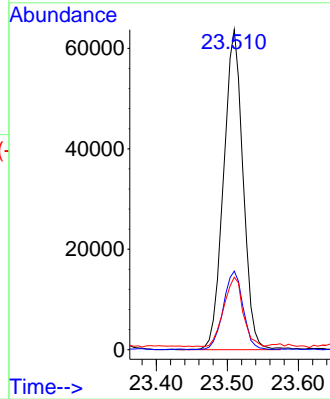
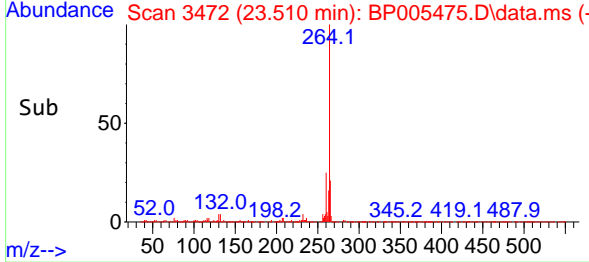
#86
 Perylene-d12
 Concen: 20.00 ng
 RT: 23.510 min Scan# 3472
 Delta R.T. -0.012 min
 Lab File: BP005475.D
 Acq: 10 May 2021 18:52

Instrument :
 BNA_P
 ClientSampled :
 MH-TP1

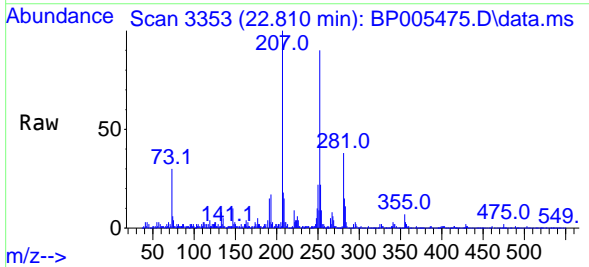


Tgt Ion:264 Resp: 120972
 Ion Ratio Lower Upper
 264 100
 260 24.6 20.6 30.8
 265 22.7 19.0 28.6

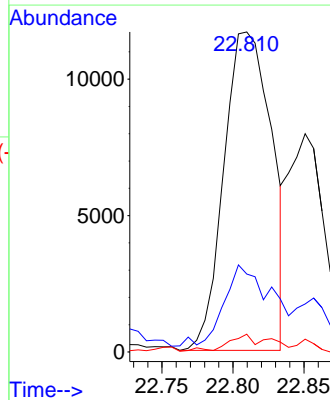
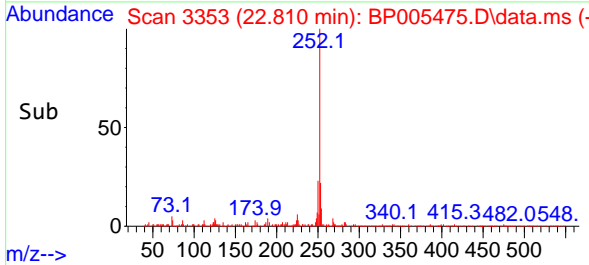
Manual Integrations
 APPROVED
 mohammad
 5/11/2021 2:31:51 PM

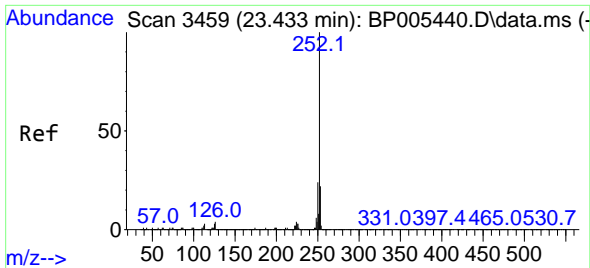


#88
 Benzo(b)fluoranthene
 Concen: 3.39 ng
 RT: 22.810 min Scan# 3353
 Delta R.T. -0.006 min
 Lab File: BP005475.D
 Acq: 10 May 2021 18:52



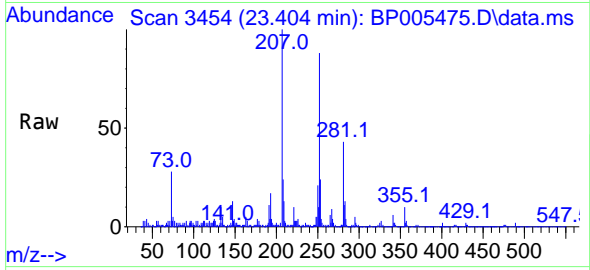
Tgt Ion:252 Resp: 27321
 Ion Ratio Lower Upper
 252 100
 253 24.4 18.2 27.2
 125 5.6 3.4 5.0#





#90
 Benzo(a)pyrene
 Concen: 2.84 ng
 RT: 23.404 min Scan# 3454
 Delta R.T. -0.018 min
 Lab File: BP005475.D
 Acq: 10 May 2021 18:52

Instrument :
 BNA_P
ClientSampled :
 MH-TP1



Tgt Ion: 252 Resp: 21005

Ion	Ratio	Lower	Upper
252	100		
253	27.1	17.1	25.7#
125	4.0	3.8	5.6

Manual Integrations
APPROVED
 mohammad
 5/11/2021 2:31:51 PM

