

Data Path : Z:\svoasrv\HPCHEM1\BNA_P\Data\BP051122\
 Data File : BP010331.D
 Acq On : 12 May 2022 19:42
 Operator : CG/JU
 Sample : N2746-04
 Misc :
 ALS Vial : 55 Sample Multiplier: 1

Instrument :
 BNA_P
 ClientSampleId :
 DBSL0

Integration Parameters: LSCINT.P

Integrator: RTE
 Smoothing : OFF Filtering: 5
 Sampling : 1 Min Area: 0.1 % of largest Peak
 Start Thrs: 0.2 Max Peaks: 100
 Stop Thrs : 0 Peak Location: TOP

If leading or trailing edge < 100 prefer < Baseline drop else tangent >
 Peak separation: 5

Method : Z:\svoasrv\HPCHEM1\BNA_P\Methods\SFAM-EPA-BP051022.M
 Title : SVOA CALIBRATION

Signal : TIC: BP010331.D\data.ms

| peak # | R.T. min | first scan | max scan | last scan | PK TY | peak height | corr. area | corr. % max. | % of total |
|--------|----------|------------|----------|-----------|-------|-------------|------------|--------------|------------|
| 1 | 7.069 | 668 | 677 | 691 | rBV | 415634 | 754637 | 3.32% | 0.376% |
| 2 | 7.234 | 698 | 705 | 713 | rBV | 313788 | 526804 | 2.32% | 0.263% |
| 3 | 7.434 | 733 | 739 | 752 | rVB | 417447 | 682595 | 3.01% | 0.341% |
| 4 | 7.905 | 810 | 819 | 828 | rBV | 582915 | 969866 | 4.27% | 0.484% |
| 5 | 8.611 | 931 | 939 | 947 | rBV | 526560 | 880837 | 3.88% | 0.439% |
| 6 | 9.063 | 1009 | 1016 | 1031 | rVB | 416368 | 737776 | 3.25% | 0.368% |
| 7 | 9.787 | 1131 | 1139 | 1152 | rBV | 340923 | 601654 | 2.65% | 0.300% |
| 8 | 10.328 | 1217 | 1231 | 1244 | rBV | 514403 | 917250 | 4.04% | 0.458% |
| 9 | 10.705 | 1284 | 1295 | 1300 | rBV | 859272 | 1463838 | 6.45% | 0.730% |
| 10 | 10.752 | 1300 | 1303 | 1311 | rVV | 203267 | 338342 | 1.49% | 0.169% |
| 11 | 10.840 | 1311 | 1318 | 1342 | rVB | 342457 | 720274 | 3.17% | 0.359% |
| 12 | 12.581 | 1604 | 1614 | 1625 | rVB | 216952 | 365561 | 1.61% | 0.182% |
| 13 | 13.716 | 1796 | 1807 | 1814 | rBV2 | 143219 | 399179 | 1.76% | 0.199% |
| 14 | 13.857 | 1825 | 1831 | 1836 | rBV | 348628 | 603075 | 2.66% | 0.301% |
| 15 | 13.910 | 1836 | 1840 | 1841 | rVV | 190321 | 236049 | 1.04% | 0.118% |
| 16 | 13.940 | 1841 | 1845 | 1851 | rVV | 1059377 | 1563792 | 6.89% | 0.780% |
| 17 | 14.093 | 1864 | 1871 | 1874 | rBV | 192073 | 297209 | 1.31% | 0.148% |
| 18 | 14.228 | 1887 | 1894 | 1897 | rVV | 1091882 | 1824337 | 8.03% | 0.910% |
| 19 | 14.257 | 1897 | 1899 | 1911 | rVB | 634716 | 757675 | 3.34% | 0.378% |
| 20 | 14.534 | 1936 | 1946 | 1951 | rBV | 1407834 | 2165174 | 9.53% | 1.080% |
| 21 | 14.598 | 1951 | 1957 | 1965 | rVV | 1499760 | 2284178 | 10.06% | 1.139% |
| 22 | 14.734 | 1974 | 1980 | 1990 | rBV2 | 401093 | 808290 | 3.56% | 0.403% |
| 23 | 14.934 | 2004 | 2014 | 2021 | rVB | 785930 | 1251691 | 5.51% | 0.624% |
| 24 | 15.010 | 2022 | 2027 | 2032 | rVB | 172173 | 247365 | 1.09% | 0.123% |
| 25 | 15.151 | 2043 | 2051 | 2056 | rBV3 | 166050 | 360493 | 1.59% | 0.180% |
| 26 | 15.204 | 2056 | 2060 | 2068 | rVB | 168318 | 243481 | 1.07% | 0.121% |
| 27 | 15.528 | 2105 | 2115 | 2119 | rBV | 1659285 | 2357046 | 10.38% | 1.176% |
| 28 | 15.581 | 2119 | 2124 | 2132 | rVV | 1970502 | 2900326 | 12.77% | 1.447% |
| 29 | 15.651 | 2132 | 2136 | 2142 | rVV3 | 239037 | 380847 | 1.68% | 0.190% |
| 30 | 15.881 | 2169 | 2175 | 2185 | rVB | 470919 | 771801 | 3.40% | 0.385% |
| 31 | 16.022 | 2190 | 2199 | 2208 | rVV2 | 493969 | 1244039 | 5.48% | 0.621% |
| 32 | 16.116 | 2208 | 2215 | 2223 | rVB3 | 122507 | 247450 | 1.09% | 0.123% |
| 33 | 16.263 | 2234 | 2240 | 2252 | rVB2 | 154284 | 383485 | 1.69% | 0.191% |
| 34 | 16.587 | 2288 | 2295 | 2300 | rBV2 | 459494 | 863546 | 3.80% | 0.431% |
| 35 | 16.639 | 2300 | 2304 | 2309 | rVB2 | 237738 | 345679 | 1.52% | 0.172% |
| 36 | 16.739 | 2316 | 2321 | 2326 | rVB | 249103 | 401954 | 1.77% | 0.201% |

Data Path : Z:\svoasrv\HPCHEM1\BNA_P\Data\BP051122\
 Data File : BP010331.D
 Acq On : 12 May 2022 19:42
 Operator : CG/JU
 Sample : N2746-04
 Misc :
 ALS Vial : 55 Sample Multiplier: 1

Instrument :
 BNA_P
 ClientSampleId :
 DBSL0

Integration Parameters: LSCINT.P

Integrator: RTE
 Smoothing : OFF Filtering: 5
 Sampling : 1 Min Area: 0.1 % of largest Peak
 Start Thrs: 0.2 Max Peaks: 100
 Stop Thrs : 0 Peak Location: TOP

If leading or trailing edge < 100 prefer < Baseline drop else tangent >
 Peak separation: 5

Method : Z:\svoasrv\HPCHEM1\BNA_P\Methods\SFAM-EPA-BP051022.M
 Title : SVOA CALIBRATION

| | | | | | | | | | |
|----|--------|------|------|------|------|----------|----------|---------|---------|
| 37 | 16.822 | 2327 | 2335 | 2338 | rBV3 | 250395 | 487304 | 2.15% | 0.243% |
| 38 | 17.016 | 2363 | 2368 | 2375 | rVV2 | 257534 | 527313 | 2.32% | 0.263% |
| 39 | 17.104 | 2378 | 2383 | 2393 | rVB | 661857 | 1113248 | 4.90% | 0.555% |
| 40 | 17.287 | 2408 | 2414 | 2417 | rBV | 1585233 | 2493354 | 10.98% | 1.244% |
| 41 | 17.339 | 2417 | 2423 | 2427 | rVV | 15135301 | 22712662 | 100.00% | 11.331% |
| 42 | 17.387 | 2427 | 2431 | 2434 | rVV2 | 1743080 | 2751944 | 12.12% | 1.373% |
| 43 | 17.422 | 2434 | 2437 | 2442 | rVV | 4707749 | 6048449 | 26.63% | 3.017% |
| 44 | 17.475 | 2442 | 2446 | 2452 | rVV2 | 254213 | 468149 | 2.06% | 0.234% |
| 45 | 17.686 | 2472 | 2482 | 2487 | rBV | 419965 | 778311 | 3.43% | 0.388% |
| 46 | 17.804 | 2498 | 2502 | 2506 | rVB | 247582 | 305686 | 1.35% | 0.152% |
| 47 | 18.151 | 2552 | 2561 | 2565 | rBV | 1269682 | 1954826 | 8.61% | 0.975% |
| 48 | 18.198 | 2565 | 2569 | 2577 | rVV | 1715826 | 2390537 | 10.53% | 1.193% |
| 49 | 18.275 | 2577 | 2582 | 2587 | rVV | 874420 | 1253908 | 5.52% | 0.626% |
| 50 | 18.345 | 2587 | 2594 | 2597 | rVV2 | 2571365 | 4347463 | 19.14% | 2.169% |
| 51 | 18.375 | 2597 | 2599 | 2605 | rVB | 946589 | 1104638 | 4.86% | 0.551% |
| 52 | 18.634 | 2638 | 2643 | 2647 | rVV | 1199863 | 1482826 | 6.53% | 0.740% |
| 53 | 18.957 | 2695 | 2698 | 2702 | rVB | 199795 | 242872 | 1.07% | 0.121% |
| 54 | 19.033 | 2706 | 2711 | 2717 | rBV2 | 532106 | 1069495 | 4.71% | 0.534% |
| 55 | 19.104 | 2718 | 2723 | 2725 | rVV2 | 443471 | 817056 | 3.60% | 0.408% |
| 56 | 19.128 | 2725 | 2727 | 2731 | rVV | 353562 | 444456 | 1.96% | 0.222% |
| 57 | 19.175 | 2731 | 2735 | 2743 | rVB5 | 255739 | 683808 | 3.01% | 0.341% |
| 58 | 19.304 | 2749 | 2757 | 2762 | rBV | 15138873 | 22332005 | 98.32% | 11.141% |
| 59 | 19.392 | 2768 | 2772 | 2775 | rVB | 316307 | 406001 | 1.79% | 0.203% |
| 60 | 19.439 | 2775 | 2780 | 2784 | rBV | 1926864 | 2516397 | 11.08% | 1.255% |
| 61 | 19.528 | 2790 | 2795 | 2798 | rBV2 | 249936 | 407964 | 1.80% | 0.204% |
| 62 | 19.616 | 2805 | 2810 | 2812 | rBV2 | 3548330 | 4958512 | 21.83% | 2.474% |
| 63 | 19.651 | 2812 | 2816 | 2823 | rVV | 11878208 | 16621004 | 73.18% | 8.292% |
| 64 | 19.716 | 2823 | 2827 | 2834 | rVB2 | 554387 | 854489 | 3.76% | 0.426% |
| 65 | 19.816 | 2839 | 2844 | 2850 | rVV | 679441 | 960846 | 4.23% | 0.479% |
| 66 | 19.880 | 2850 | 2855 | 2861 | rVB | 363673 | 541439 | 2.38% | 0.270% |
| 67 | 19.957 | 2863 | 2868 | 2875 | rBV3 | 657646 | 1577448 | 6.95% | 0.787% |
| 68 | 20.128 | 2886 | 2897 | 2902 | rVB | 1985899 | 3744737 | 16.49% | 1.868% |
| 69 | 20.222 | 2909 | 2913 | 2917 | rBV | 1903802 | 2432122 | 10.71% | 1.213% |
| 70 | 20.280 | 2917 | 2923 | 2927 | rVB2 | 846790 | 1409200 | 6.20% | 0.703% |
| 71 | 20.357 | 2933 | 2936 | 2942 | rBV3 | 183966 | 358781 | 1.58% | 0.179% |
| 72 | 20.416 | 2942 | 2946 | 2949 | rVV | 513406 | 654655 | 2.88% | 0.327% |
| 73 | 20.463 | 2949 | 2954 | 2963 | rVB2 | 629228 | 1074246 | 4.73% | 0.536% |
| 74 | 20.704 | 2991 | 2995 | 2997 | rBV2 | 206664 | 281430 | 1.24% | 0.140% |
| 75 | 20.816 | 3010 | 3014 | 3018 | rBV2 | 304837 | 530232 | 2.33% | 0.265% |
| 76 | 20.863 | 3019 | 3022 | 3027 | rVB3 | 275398 | 443440 | 1.95% | 0.221% |

Data Path : Z:\svoasrv\HPCHEM1\BNA_P\Data\BP051122\
 Data File : BP010331.D
 Acq On : 12 May 2022 19:42
 Operator : CG/JU
 Sample : N2746-04
 Misc :
 ALS Vial : 55 Sample Multiplier: 1

Instrument :
 BNA_P
 ClientSampleId :
 DBSL0

Integration Parameters: LSCINT.P

Integrator: RTE
 Smoothing : OFF Filtering: 5
 Sampling : 1 Min Area: 0.1 % of largest Peak
 Start Thrs: 0.2 Max Peaks: 100
 Stop Thrs : 0 Peak Location: TOP

If leading or trailing edge < 100 prefer < Baseline drop else tangent >
 Peak separation: 5

Method : Z:\svoasrv\HPCHEM1\BNA_P\Methods\SFAM-EPA-BP051022.M
 Title : SVOA CALIBRATION

| | | | | | | | | | |
|-----|--------|------|------|------|------|---------|----------|--------|--------|
| 77 | 21.022 | 3045 | 3049 | 3051 | rBV | 345070 | 428062 | 1.88% | 0.214% |
| 78 | 21.057 | 3051 | 3055 | 3057 | rVV | 862166 | 1129164 | 4.97% | 0.563% |
| 79 | 21.098 | 3059 | 3062 | 3067 | rVB2 | 886500 | 1315524 | 5.79% | 0.656% |
| 80 | 21.357 | 3097 | 3106 | 3111 | rBV2 | 7024134 | 13018021 | 57.32% | 6.494% |
| 81 | 21.404 | 3111 | 3114 | 3124 | rVB | 4790770 | 6849765 | 30.16% | 3.417% |
| 82 | 21.527 | 3131 | 3135 | 3140 | rBV | 793237 | 1185916 | 5.22% | 0.592% |
| 83 | 21.580 | 3140 | 3144 | 3149 | rVV | 688903 | 903549 | 3.98% | 0.451% |
| 84 | 21.692 | 3159 | 3163 | 3169 | rBV2 | 335906 | 609209 | 2.68% | 0.304% |
| 85 | 21.951 | 3201 | 3207 | 3210 | rBV | 628899 | 1055944 | 4.65% | 0.527% |
| 86 | 22.004 | 3213 | 3216 | 3222 | rVB | 430160 | 633391 | 2.79% | 0.316% |
| 87 | 22.075 | 3225 | 3228 | 3231 | rVV2 | 230966 | 310593 | 1.37% | 0.155% |
| 88 | 22.116 | 3231 | 3235 | 3239 | rVV3 | 379761 | 621627 | 2.74% | 0.310% |
| 89 | 22.163 | 3239 | 3243 | 3245 | rVV | 472679 | 719250 | 3.17% | 0.359% |
| 90 | 22.198 | 3246 | 3249 | 3255 | rVV2 | 545134 | 840453 | 3.70% | 0.419% |
| 91 | 22.269 | 3258 | 3261 | 3271 | rVB3 | 294540 | 515459 | 2.27% | 0.257% |
| 92 | 22.486 | 3294 | 3298 | 3301 | rBV5 | 251853 | 377124 | 1.66% | 0.188% |
| 93 | 22.786 | 3345 | 3349 | 3360 | rVB | 237388 | 507251 | 2.23% | 0.253% |
| 94 | 23.063 | 3388 | 3396 | 3401 | rBV | 3105500 | 8187504 | 36.05% | 4.084% |
| 95 | 23.245 | 3422 | 3427 | 3435 | rVB | 738056 | 1309106 | 5.76% | 0.653% |
| 96 | 23.586 | 3479 | 3485 | 3489 | rBV | 748891 | 1533088 | 6.75% | 0.765% |
| 97 | 23.639 | 3490 | 3494 | 3498 | rVV2 | 762844 | 1545221 | 6.80% | 0.771% |
| 98 | 23.692 | 3498 | 3503 | 3511 | rVB | 2244136 | 4232298 | 18.63% | 2.111% |
| 99 | 23.798 | 3515 | 3521 | 3527 | rBV2 | 1053287 | 1999787 | 8.80% | 0.998% |
| 100 | 26.327 | 3942 | 3951 | 3964 | rVB2 | 948122 | 3147521 | 13.86% | 1.570% |

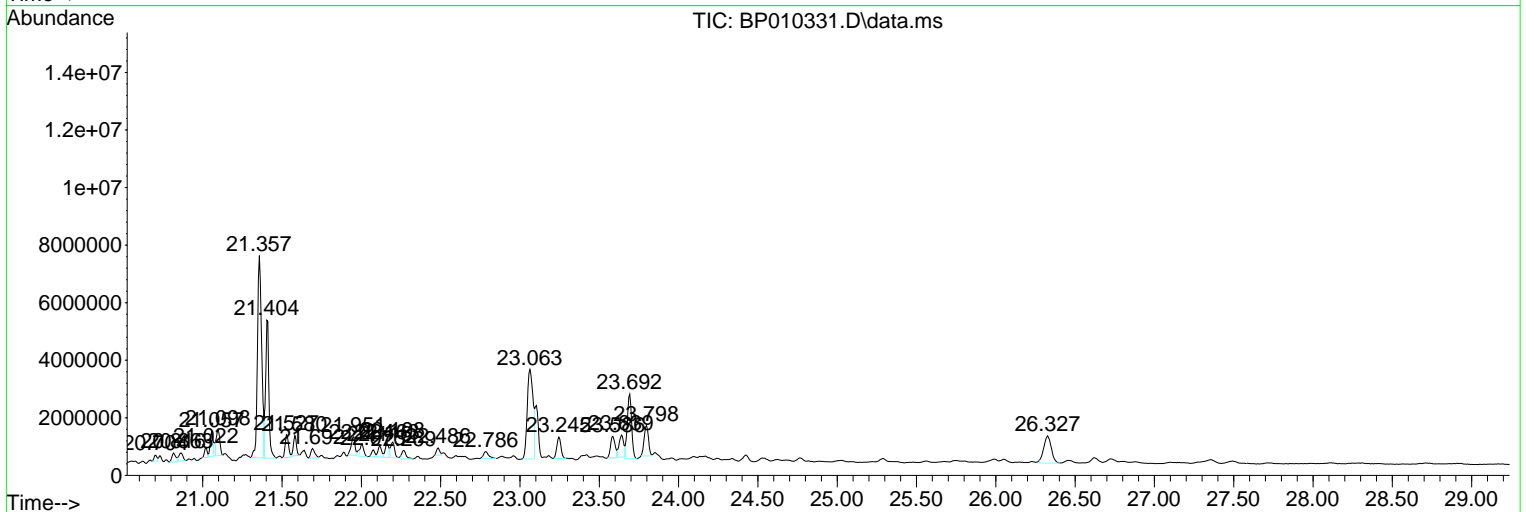
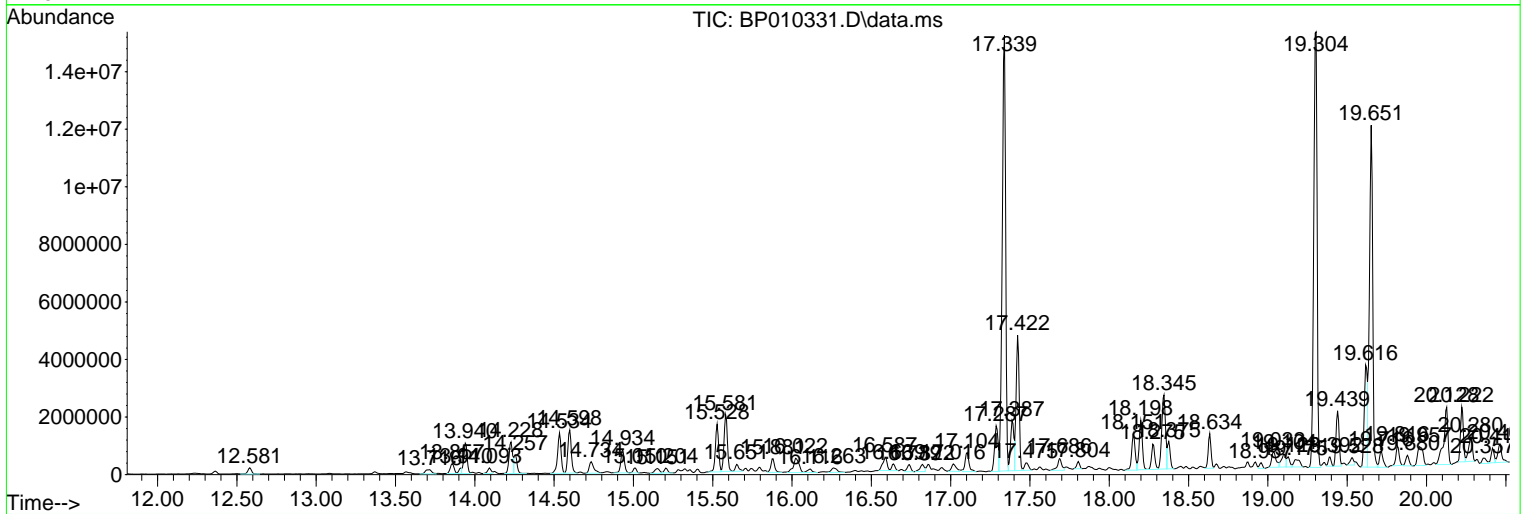
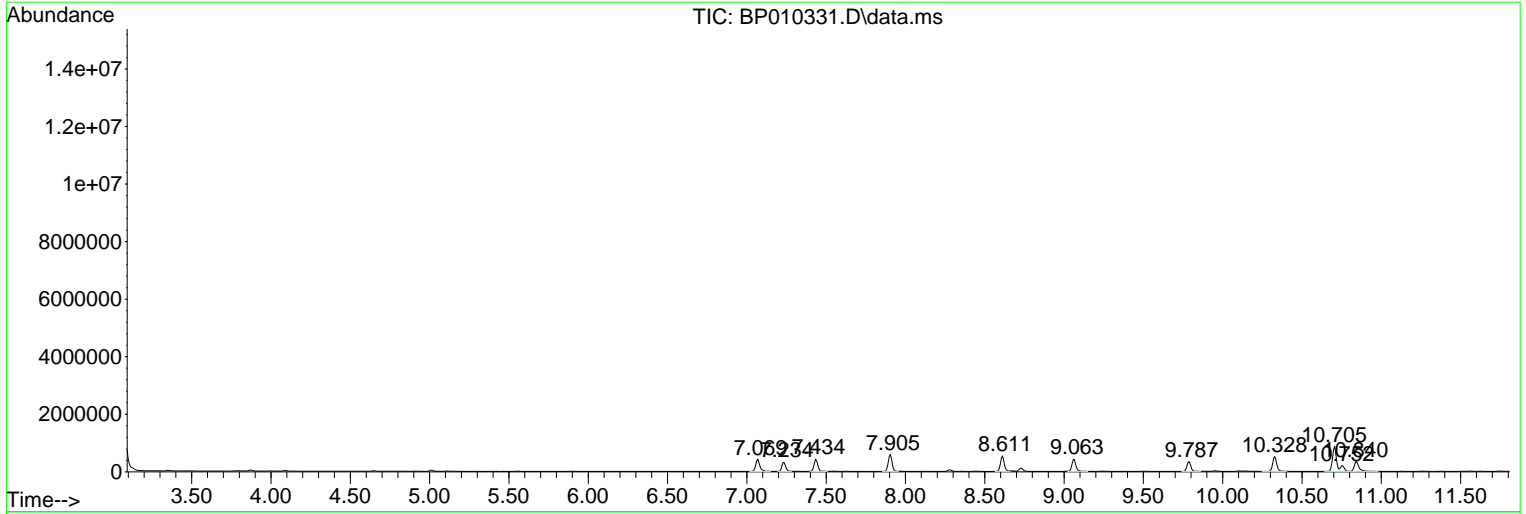
Sum of corrected areas: 200455675

Data Path : Z:\svoasrv\HPCHEM1\BNA_P\Data\BP051122\
 Data File : BP010331.D
 Acq On : 12 May 2022 19:42
 Operator : CG/JU
 Sample : N2746-04
 Misc :
 ALS Vial : 55 Sample Multiplier: 1

Instrument :
 BNA_P
ClientSampleId :
 DBSL0

Quant Method : Z:\svoasrv\HPCHEM1\BNA_P\Methods\SFAM-EPA-BP051022.M
 Quant Title : SVOA CALIBRATION

TIC Library : C:\DATABASE\NIST20.L
 TIC Integration Parameters: LSCINT.P



Data Path : Z:\svoasrv\HPCHEM1\BNA_P\Data\BP051122\
 Data File : BP010331.D
 Acq On : 12 May 2022 19:42
 Operator : CG/JU
 Sample : N2746-04
 Misc :
 ALS Vial : 55 Sample Multiplier: 1

Instrument :
 BNA_P
 ClientSampleId :
 DBSL0

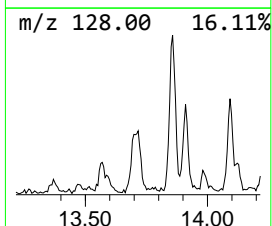
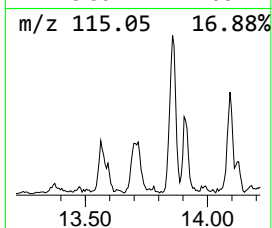
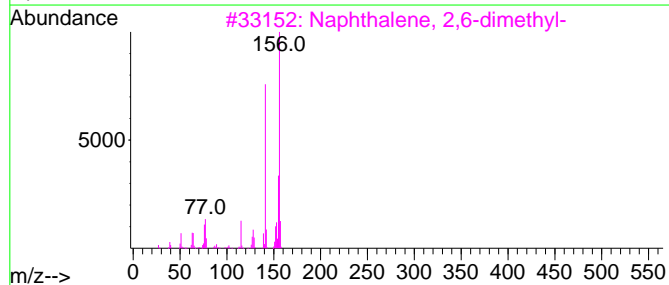
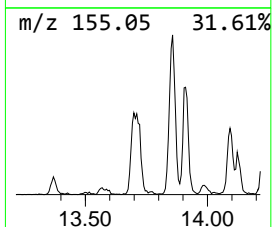
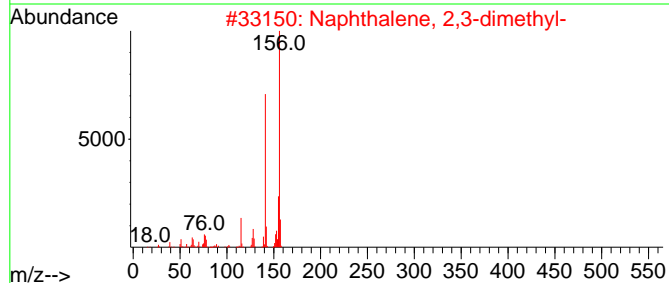
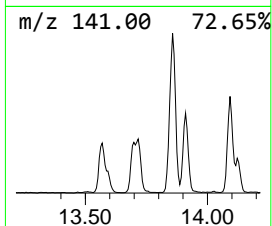
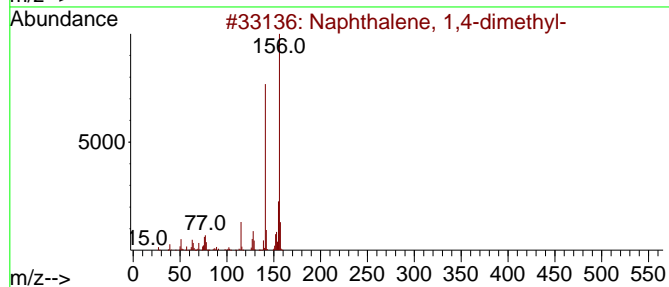
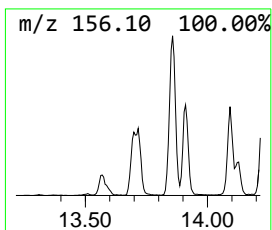
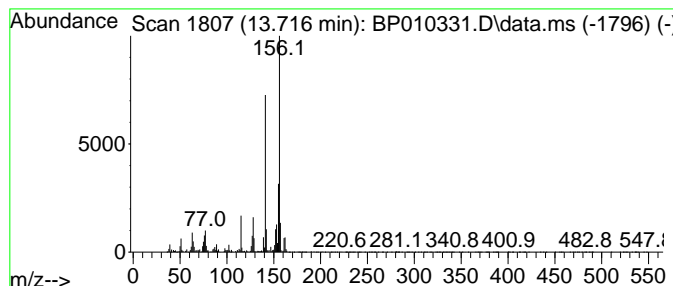
Quant Method : Z:\svoasrv\HPCHEM1\BNA_P\Methods\SFAM-EPA-BP051022.M
 Quant Title : SVOA CALIBRATION

TIC Library : C:\DATABASE\NIST20.L
 TIC Integration Parameters: LSCINT.P

 Peak Number 1 Naphthalene, 1,4-dimethyl- Concentration Rank 24

| R.T. | EstConc | Area | Relative to ISTD | R.T. |
|--------|------------|--------|------------------|--------|
| 13.716 | 3.69 ng/ul | 399179 | Acenaphthene-d10 | 14.534 |

| Hit# | of 5 | Tentative ID | MW | MolForm | CAS# | Qual |
|------|------|----------------------------|-----|---------|-------------|------|
| 1 | | Naphthalene, 1,4-dimethyl- | 156 | C12H12 | 000571-58-4 | 97 |
| 2 | | Naphthalene, 2,3-dimethyl- | 156 | C12H12 | 000581-40-8 | 97 |
| 3 | | Naphthalene, 2,6-dimethyl- | 156 | C12H12 | 000581-42-0 | 96 |
| 4 | | Naphthalene, 1,3-dimethyl- | 156 | C12H12 | 000575-41-7 | 96 |
| 5 | | Naphthalene, 1,7-dimethyl- | 156 | C12H12 | 000575-37-1 | 96 |



Data Path : Z:\svoasrv\HPCHEM1\BNA_P\Data\BP051122\
 Data File : BP010331.D
 Acq On : 12 May 2022 19:42
 Operator : CG/JU
 Sample : N2746-04
 Misc :
 ALS Vial : 55 Sample Multiplier: 1

Instrument :
 BNA_P
 ClientSampleId :
 DBSL0

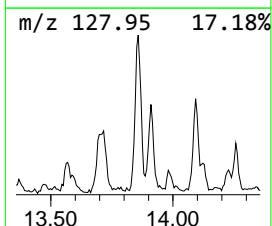
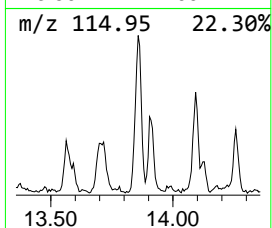
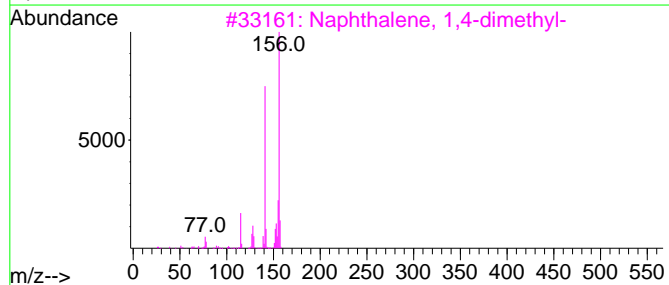
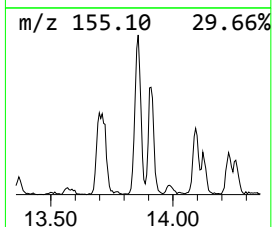
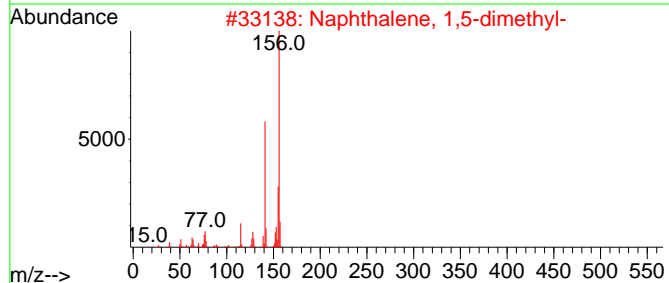
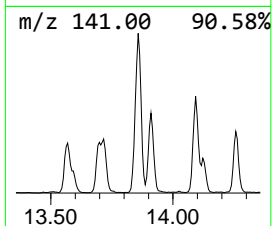
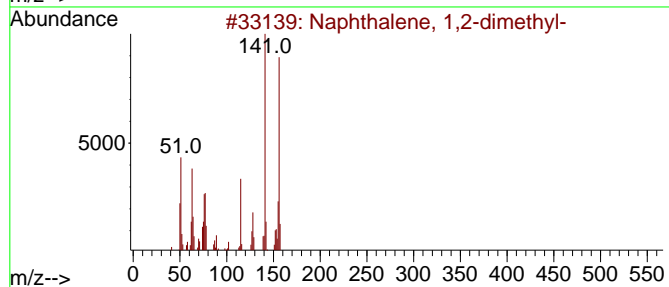
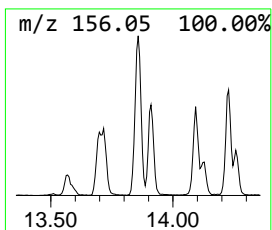
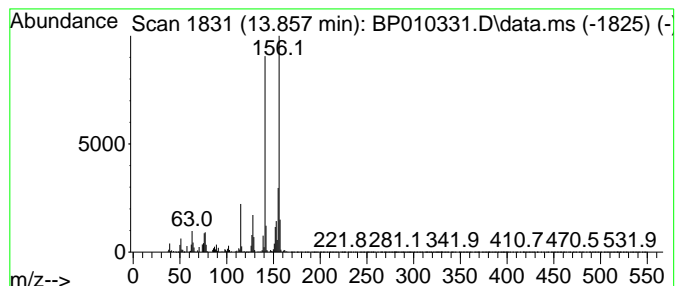
Quant Method : Z:\svoasrv\HPCHEM1\BNA_P\Methods\SFAM-EPA-BP051022.M
 Quant Title : SVOA CALIBRATION

TIC Library : C:\DATABASE\NIST20.L
 TIC Integration Parameters: LSCINT.P

 Peak Number 2 Naphthalene, 1,2-dimethyl- Concentration Rank 16

| R.T. | EstConc | Area | Relative to ISTD | R.T. |
|--------|------------|--------|------------------|--------|
| 13.857 | 5.57 ng/ul | 603075 | Acenaphthene-d10 | 14.534 |

| Hit# | of | 5 | Tentative ID | MW | MolForm | CAS# | Qual |
|------|----|---|----------------------------|-----|---------|-------------|------|
| 1 | | | Naphthalene, 1,2-dimethyl- | 156 | C12H12 | 000573-98-8 | 97 |
| 2 | | | Naphthalene, 1,5-dimethyl- | 156 | C12H12 | 000571-61-9 | 97 |
| 3 | | | Naphthalene, 1,4-dimethyl- | 156 | C12H12 | 000571-58-4 | 96 |
| 4 | | | Naphthalene, 2,3-dimethyl- | 156 | C12H12 | 000581-40-8 | 96 |
| 5 | | | Naphthalene, 1,3-dimethyl- | 156 | C12H12 | 000575-41-7 | 96 |



Data Path : Z:\svoasrv\HPCHEM1\BNA_P\Data\BP051122\
 Data File : BP010331.D
 Acq On : 12 May 2022 19:42
 Operator : CG/JU
 Sample : N2746-04
 Misc :
 ALS Vial : 55 Sample Multiplier: 1

Instrument :
 BNA_P
 ClientSampleId :
 DBSL0

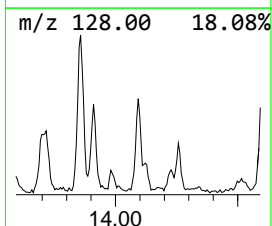
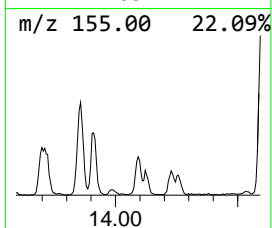
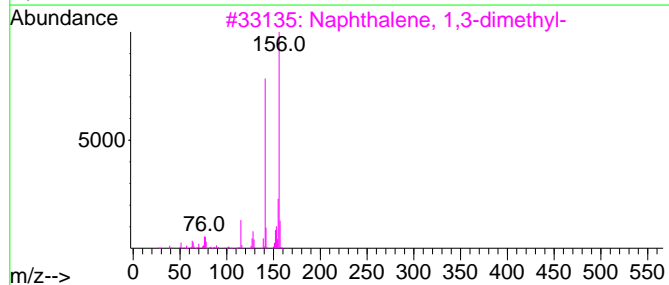
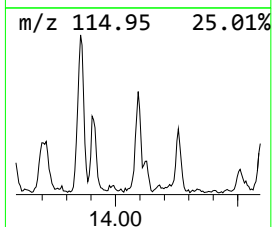
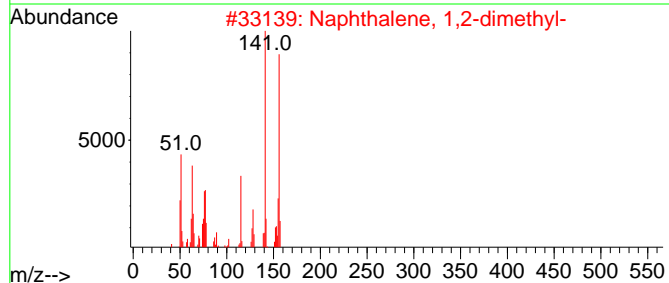
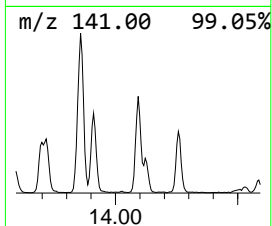
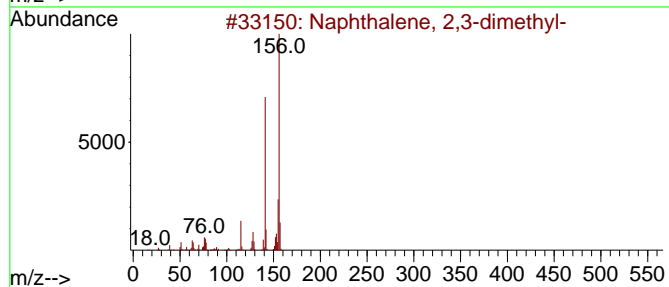
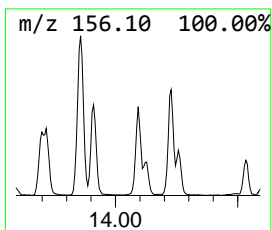
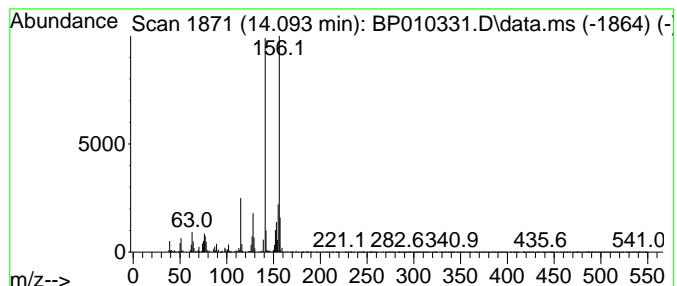
Quant Method : Z:\svoasrv\HPCHEM1\BNA_P\Methods\SFAM-EPA-BP051022.M
 Quant Title : SVOA CALIBRATION

TIC Library : C:\DATABASE\NIST20.L
 TIC Integration Parameters: LSCINT.P

 Peak Number 3 Naphthalene, 2,3-dimethyl- Concentration Rank 30

| R.T. | EstConc | Area | Relative to ISTD | R.T. |
|--------|------------|--------|------------------|--------|
| 14.093 | 2.75 ng/ul | 297209 | Acenaphthene-d10 | 14.534 |

| Hit# | of | 5 | Tentative ID | MW | MolForm | CAS# | Qual |
|------|----|---|----------------------------|-----|---------|-------------|------|
| 1 | | | Naphthalene, 2,3-dimethyl- | 156 | C12H12 | 000581-40-8 | 97 |
| 2 | | | Naphthalene, 1,2-dimethyl- | 156 | C12H12 | 000573-98-8 | 95 |
| 3 | | | Naphthalene, 1,3-dimethyl- | 156 | C12H12 | 000575-41-7 | 95 |
| 4 | | | Naphthalene, 1,4-dimethyl- | 156 | C12H12 | 000571-58-4 | 95 |
| 5 | | | Naphthalene, 1,4-dimethyl- | 156 | C12H12 | 000571-58-4 | 94 |



Data Path : Z:\svoasrv\HPCHEM1\BNA_P\Data\BP051122\
 Data File : BP010331.D
 Acq On : 12 May 2022 19:42
 Operator : CG/JU
 Sample : N2746-04
 Misc :
 ALS Vial : 55 Sample Multiplier: 1

Instrument :
 BNA_P
 ClientSampleId :
 DBSL0

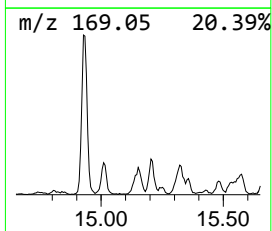
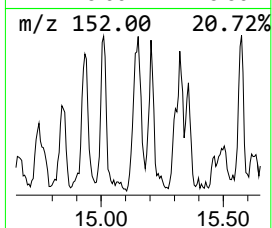
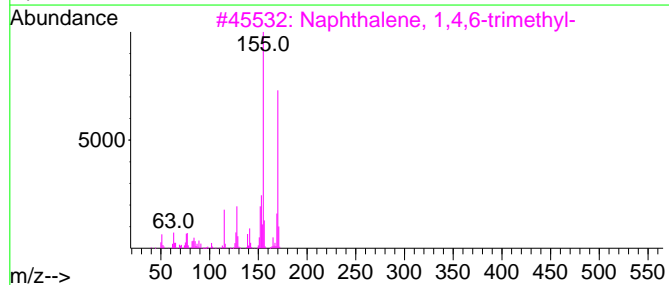
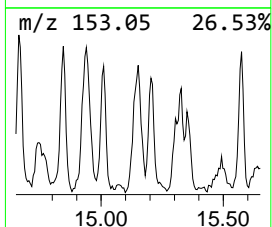
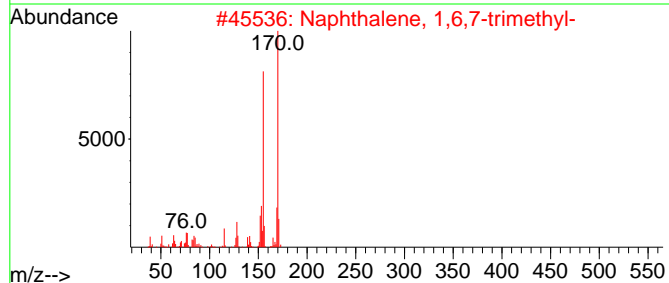
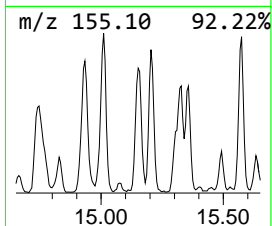
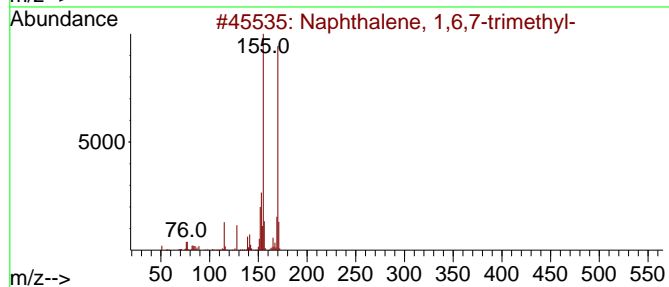
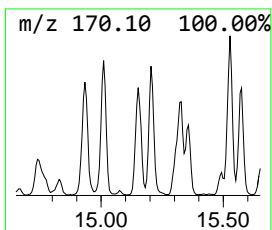
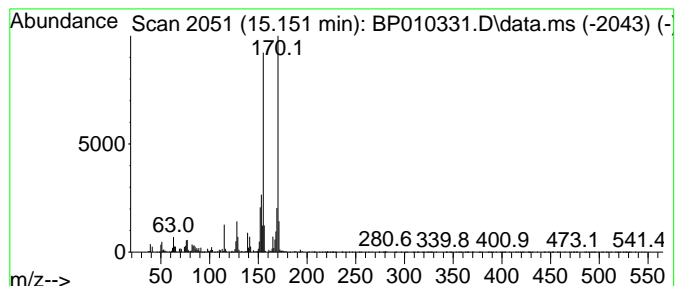
Quant Method : Z:\svoasrv\HPCHEM1\BNA_P\Methods\SFAM-EPA-BP051022.M
 Quant Title : SVOA CALIBRATION

TIC Library : C:\DATABASE\NIST20.L
 TIC Integration Parameters: LSCINT.P

 Peak Number 5 Naphthalene, 1,6,7-trimethyl- Concentration Rank 26

| R.T. | EstConc | Area | Relative to ISTD | R.T. |
|--------|------------|--------|------------------|--------|
| 15.151 | 3.33 ng/ul | 360493 | Acenaphthene-d10 | 14.534 |

| Hit# | of | 5 | Tentative ID | MW | MolForm | CAS# | Qual |
|------|----|---|-------------------------------|-----|---------|-------------|------|
| 1 | | | Naphthalene, 1,6,7-trimethyl- | 170 | C13H14 | 002245-38-7 | 98 |
| 2 | | | Naphthalene, 1,6,7-trimethyl- | 170 | C13H14 | 002245-38-7 | 97 |
| 3 | | | Naphthalene, 1,4,6-trimethyl- | 170 | C13H14 | 002131-42-2 | 96 |
| 4 | | | Naphthalene, 1,4,5-trimethyl- | 170 | C13H14 | 002131-41-1 | 96 |
| 5 | | | Naphthalene, 2,3,6-trimethyl- | 170 | C13H14 | 000829-26-5 | 95 |



Data Path : Z:\svoasrv\HPCHEM1\BNA_P\Data\BP051122\
 Data File : BP010331.D
 Acq On : 12 May 2022 19:42
 Operator : CG/JU
 Sample : N2746-04
 Misc :
 ALS Vial : 55 Sample Multiplier: 1

Instrument :
 BNA_P
 ClientSampleId :
 DBSL0

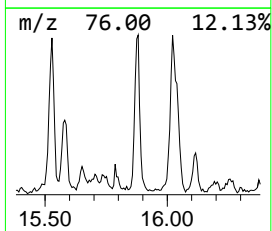
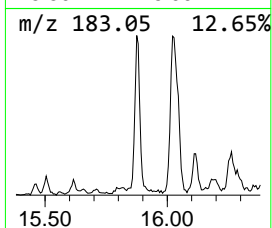
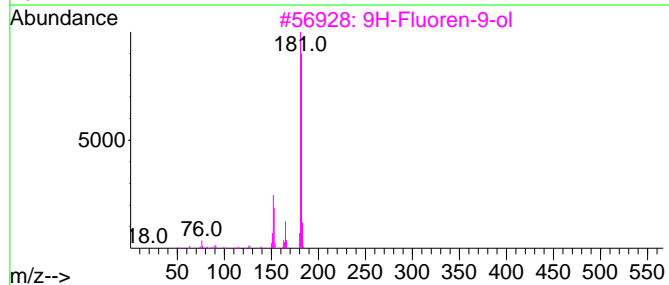
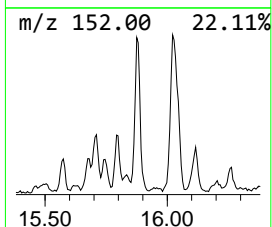
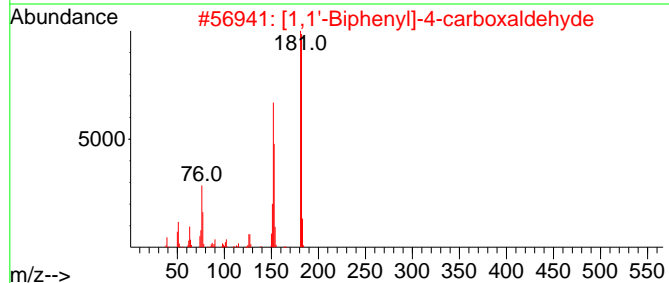
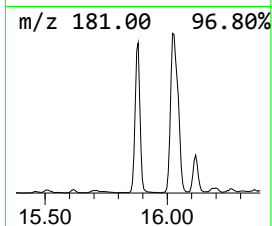
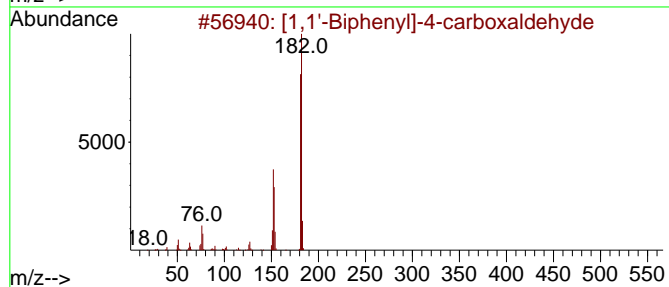
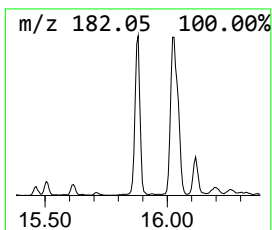
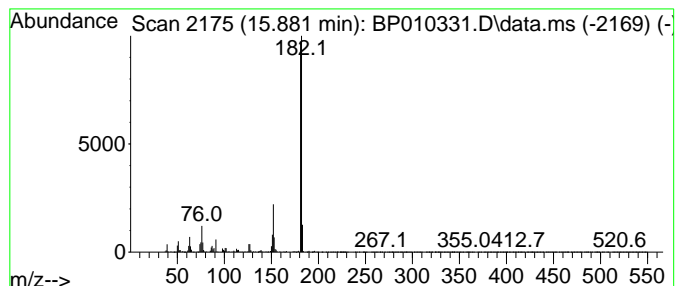
Quant Method : Z:\svoasrv\HPCHEM1\BNA_P\Methods\SFAM-EPA-BP051022.M
 Quant Title : SVOA CALIBRATION

TIC Library : C:\DATABASE\NIST20.L
 TIC Integration Parameters: LSCINT.P

 Peak Number 7 [1,1'-Biphenyl]-4-carboxald... Concentration Rank 12

| R.T. | EstConc | Area | Relative to ISTD | R.T. |
|--------|------------|--------|------------------|--------|
| 15.881 | 7.13 ng/ul | 771801 | Acenaphthene-d10 | 14.534 |

| Hit# | of 5 | Tentative ID | MW | MolForm | CAS# | Qual |
|------|------|-------------------------------------|-----|---------|-------------|------|
| 1 | | [1,1'-Biphenyl]-4-carboxaldehyde | 182 | C13H10O | 003218-36-8 | 87 |
| 2 | | [1,1'-Biphenyl]-4-carboxaldehyde | 182 | C13H10O | 003218-36-8 | 83 |
| 3 | | 9H-Fluoren-9-ol | 182 | C13H10O | 001689-64-1 | 78 |
| 4 | | 2,4,6-Cycloheptatrien-1-one, 2-p... | 182 | C13H10O | 014562-09-5 | 78 |
| 5 | | 9H-Fluoren-9-ol | 182 | C13H10O | 001689-64-1 | 72 |



Data Path : Z:\svoasrv\HPCHEM1\BNA_P\Data\BP051122\
 Data File : BP010331.D
 Acq On : 12 May 2022 19:42
 Operator : CG/JU
 Sample : N2746-04
 Misc :
 ALS Vial : 55 Sample Multiplier: 1

Instrument :
 BNA_P
 ClientSampleId :
 DBSL0

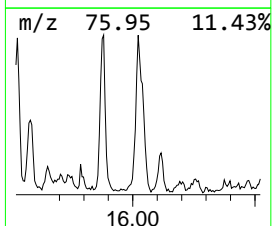
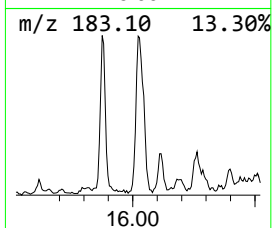
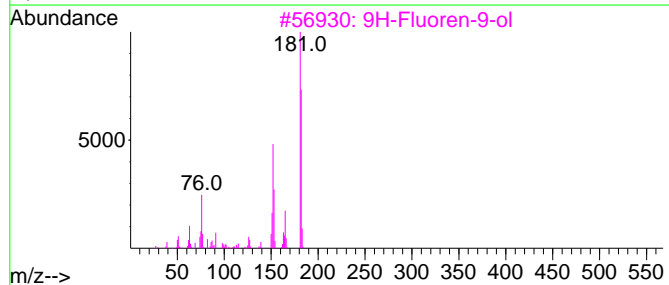
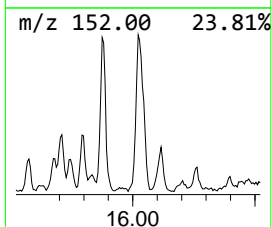
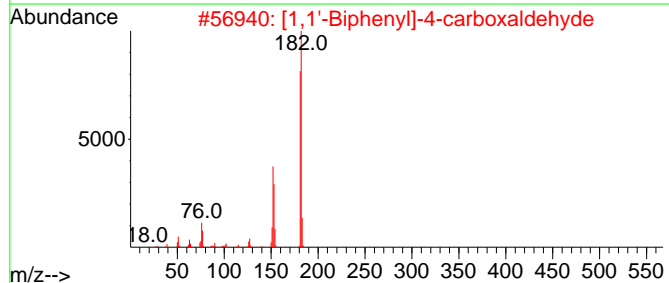
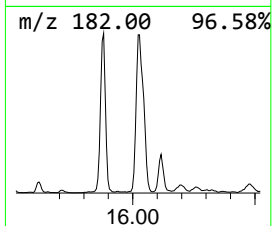
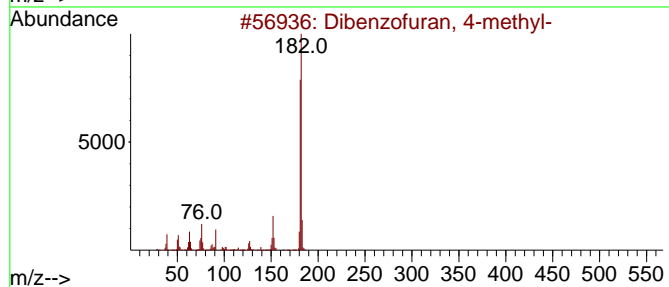
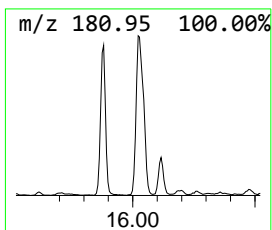
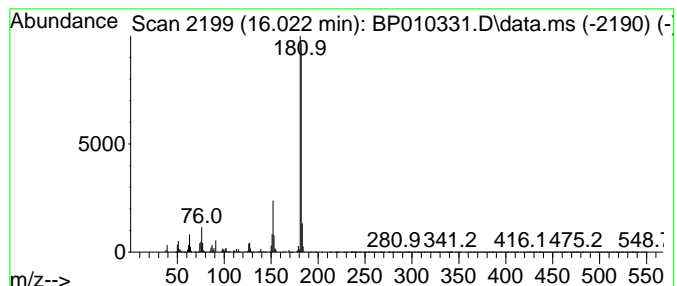
Quant Method : Z:\svoasrv\HPCHEM1\BNA_P\Methods\SFAM-EPA-BP051022.M
 Quant Title : SVOA CALIBRATION

TIC Library : C:\DATABASE\NIST20.L
 TIC Integration Parameters: LSCINT.P

 Peak Number 8 Dibenzofuran, 4-methyl- Concentration Rank 8

| R.T. | EstConc | Area | Relative to ISTD | R.T. |
|--------|------------|---------|------------------|--------|
| 16.022 | 9.98 ng/ul | 1244040 | Phenanthrene-d10 | 17.287 |

| Hit# | of 5 | Tentative ID | MW | MolForm | CAS# | Qual |
|------|------|----------------------------------|-----|---------|-------------|------|
| 1 | | Dibenzofuran, 4-methyl- | 182 | C13H10O | 007320-53-8 | 93 |
| 2 | | [1,1'-Biphenyl]-4-carboxaldehyde | 182 | C13H10O | 003218-36-8 | 87 |
| 3 | | 9H-Fluoren-9-ol | 182 | C13H10O | 001689-64-1 | 86 |
| 4 | | 9H-Fluoren-9-ol | 182 | C13H10O | 001689-64-1 | 83 |
| 5 | | 9H-Fluoren-3-ol | 182 | C13H10O | 006344-67-8 | 81 |



Data Path : Z:\svoasrv\HPCHEM1\BNA_P\Data\BP051122\
 Data File : BP010331.D
 Acq On : 12 May 2022 19:42
 Operator : CG/JU
 Sample : N2746-04
 Misc :
 ALS Vial : 55 Sample Multiplier: 1

Instrument :
 BNA_P
 ClientSampleId :
 DBSL0

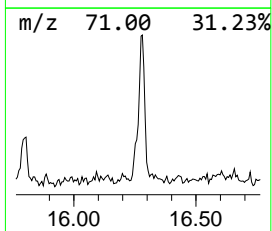
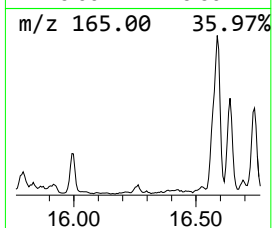
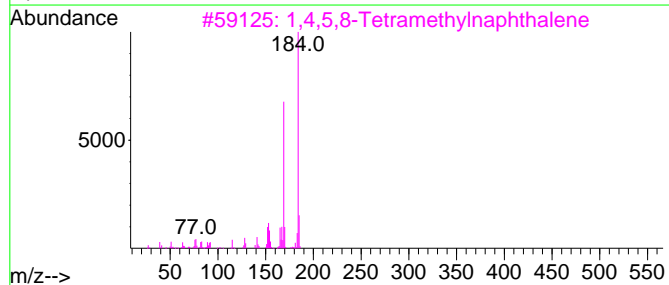
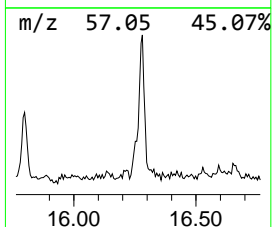
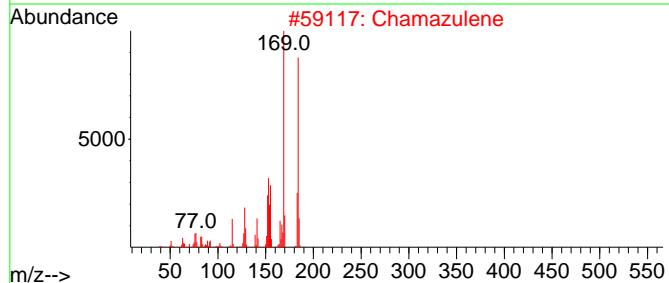
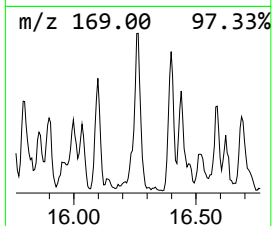
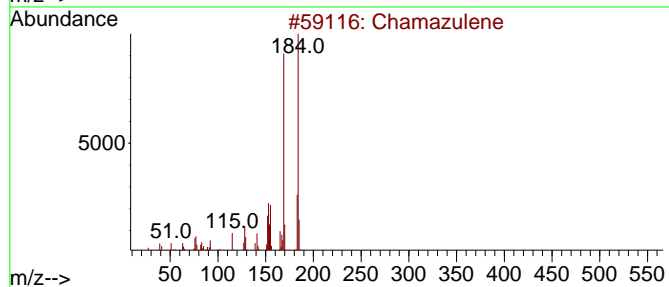
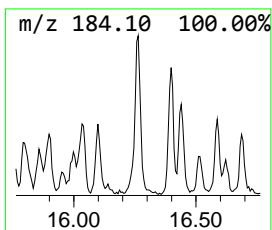
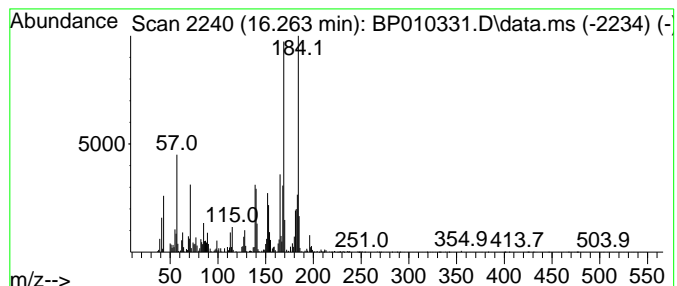
Quant Method : Z:\svoasrv\HPCHEM1\BNA_P\Methods\SFAM-EPA-BP051022.M
 Quant Title : SVOA CALIBRATION

TIC Library : C:\DATABASE\NIST0.L
 TIC Integration Parameters: LSCINT.P

 Peak Number 9 Chamazulene Concentration Rank 28

| R.T. | EstConc | Area | Relative to ISTD | R.T. |
|--------|------------|--------|------------------|--------|
| 16.263 | 3.08 ng/ul | 383485 | Phenanthrene-d10 | 17.287 |

| Hit# | of | 5 | Tentative ID | MW | MolForm | CAS# | Qual |
|------|----|---|-----------------------------------|-----|---------|--------------|------|
| 1 | | | Chamazulene | 184 | C14H16 | 000529-05-5 | 76 |
| 2 | | | Chamazulene | 184 | C14H16 | 000529-05-5 | 76 |
| 3 | | | 1,4,5,8-Tetramethylnaphthalene | 184 | C14H16 | 002717-39-7 | 62 |
| 4 | | | Naphthalene, 1,2,3,4-tetramethyl- | 184 | C14H16 | 003031-15-0 | 60 |
| 5 | | | 1,6-Dimethyl- 3-ethylnaphthalene | 184 | C14H16 | 1000383-71-8 | 58 |



Data Path : Z:\svoasrv\HPCHEM1\BNA_P\Data\BP051122\
 Data File : BP010331.D
 Acq On : 12 May 2022 19:42
 Operator : CG/JU
 Sample : N2746-04
 Misc :
 ALS Vial : 55 Sample Multiplier: 1

Instrument :
 BNA_P
 ClientSampleId :
 DBSL0

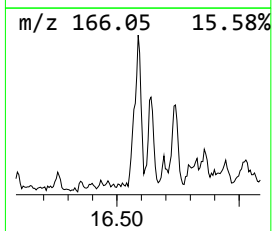
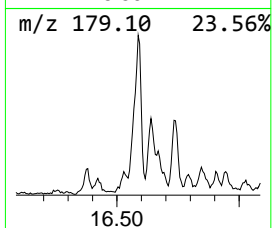
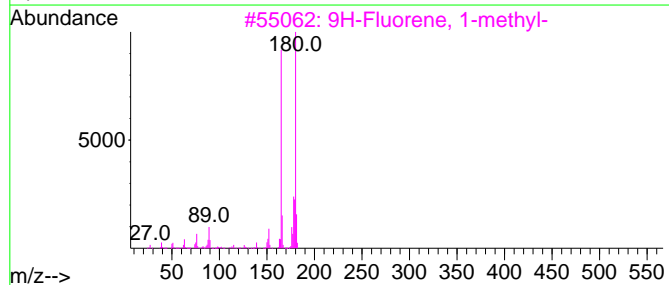
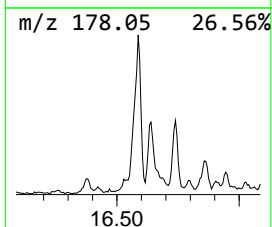
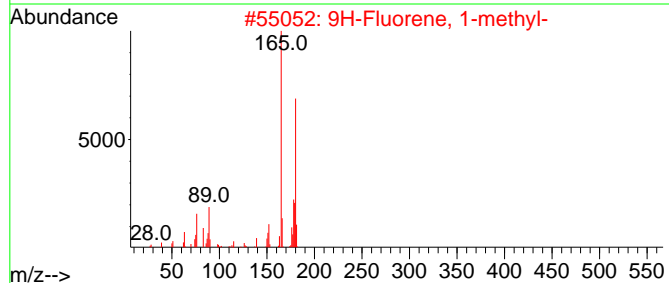
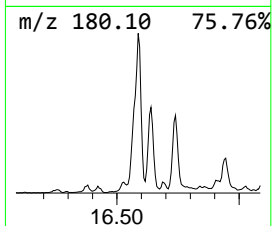
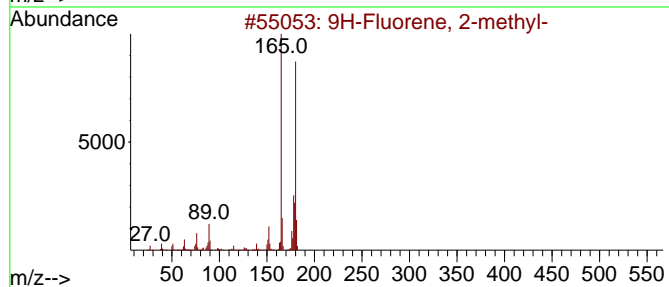
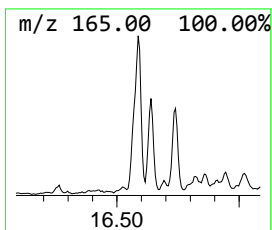
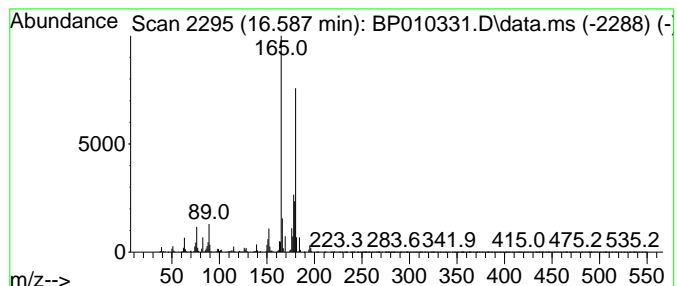
Quant Method : Z:\svoasrv\HPCHEM1\BNA_P\Methods\SFAM-EPA-BP051022.M
 Quant Title : SVOA CALIBRATION

TIC Library : C:\DATABASE\NIST20.L
 TIC Integration Parameters: LSCINT.P

 Peak Number 10 9H-Fluorene, 2-methyl- Concentration Rank 13

| R.T. | EstConc | Area | Relative to ISTD | R.T. |
|--------|------------|--------|------------------|--------|
| 16.587 | 6.93 ng/ul | 863546 | Phenanthrene-d10 | 17.287 |

| Hit# | of 5 | Tentative ID | MW | MolForm | CAS# | Qual |
|------|------|------------------------|-----|---------|-------------|------|
| 1 | | 9H-Fluorene, 2-methyl- | 180 | C14H12 | 001430-97-3 | 93 |
| 2 | | 9H-Fluorene, 1-methyl- | 180 | C14H12 | 001730-37-6 | 91 |
| 3 | | 9H-Fluorene, 1-methyl- | 180 | C14H12 | 001730-37-6 | 91 |
| 4 | | 9H-Fluorene, 3-methyl- | 180 | C14H12 | 002523-39-9 | 90 |
| 5 | | 9H-Fluorene, 1-methyl- | 180 | C14H12 | 001730-37-6 | 87 |



Data Path : Z:\svoasrv\HPCHEM1\BNA_P\Data\BP051122\
 Data File : BP010331.D
 Acq On : 12 May 2022 19:42
 Operator : CG/JU
 Sample : N2746-04
 Misc :
 ALS Vial : 55 Sample Multiplier: 1

Instrument :
 BNA_P
 ClientSampleId :
 DBSL0

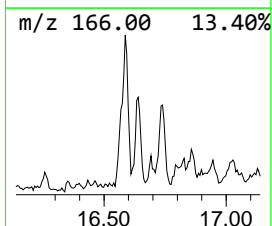
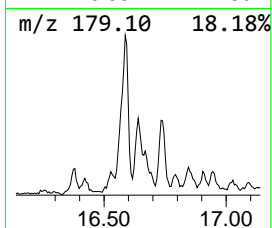
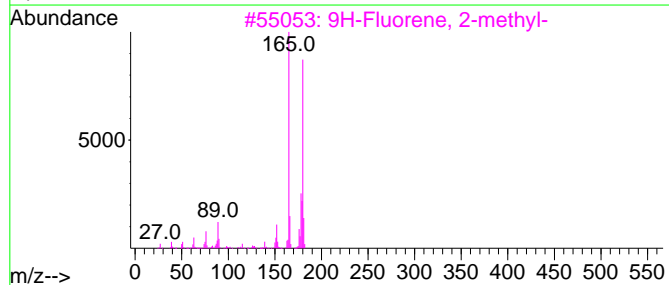
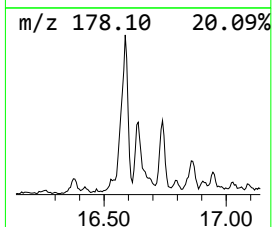
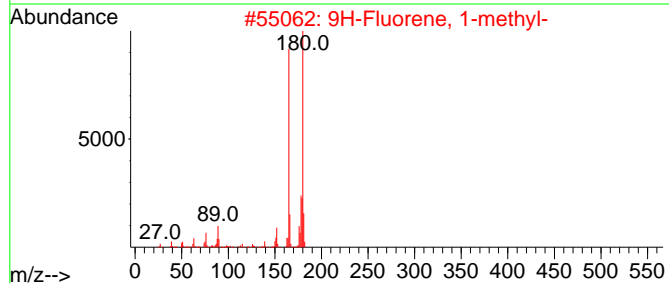
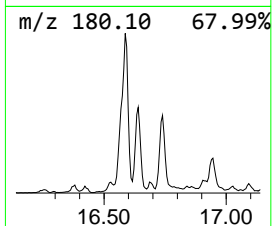
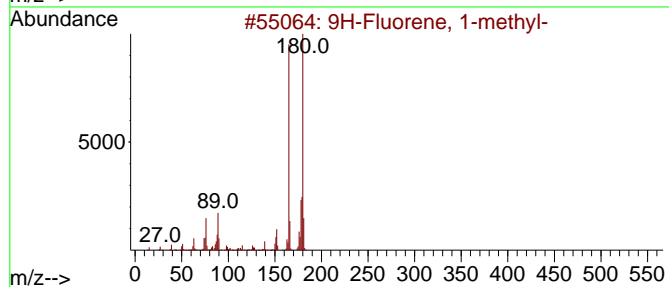
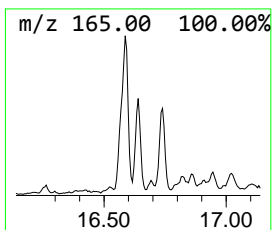
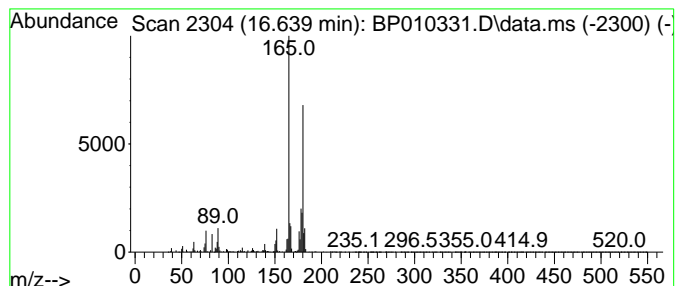
Quant Method : Z:\svoasrv\HPCHEM1\BNA_P\Methods\SFAM-EPA-BP051022.M
 Quant Title : SVOA CALIBRATION

TIC Library : C:\DATABASE\NIST20.L
 TIC Integration Parameters: LSCINT.P

 Peak Number 11 9H-Fluorene, 1-methyl- Concentration Rank 29

| R.T. | EstConc | Area | Relative to ISTD | R.T. |
|--------|------------|--------|------------------|--------|
| 16.640 | 2.77 ng/ul | 345679 | Phenanthrene-d10 | 17.287 |

| Hit# | of | 5 | Tentative ID | MW | MolForm | CAS# | Qual |
|------|----|---|------------------------|-----|---------|-------------|------|
| 1 | | | 9H-Fluorene, 1-methyl- | 180 | C14H12 | 001730-37-6 | 89 |
| 2 | | | 9H-Fluorene, 1-methyl- | 180 | C14H12 | 001730-37-6 | 89 |
| 3 | | | 9H-Fluorene, 2-methyl- | 180 | C14H12 | 001430-97-3 | 89 |
| 4 | | | 9H-Fluorene, 9-methyl- | 180 | C14H12 | 002523-37-7 | 89 |
| 5 | | | 9H-Fluorene, 9-methyl- | 180 | C14H12 | 002523-37-7 | 86 |



Data Path : Z:\svoasrv\HPCHEM1\BNA_P\Data\BP051122\
 Data File : BP010331.D
 Acq On : 12 May 2022 19:42
 Operator : CG/JU
 Sample : N2746-04
 Misc :
 ALS Vial : 55 Sample Multiplier: 1

Instrument :
 BNA_P
 ClientSampleId :
 DBSL0

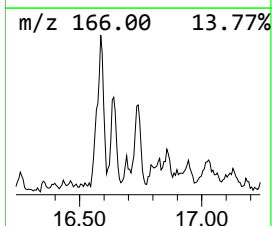
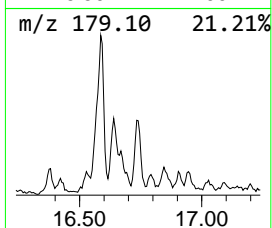
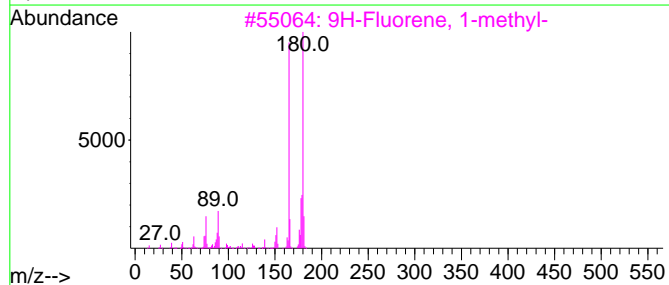
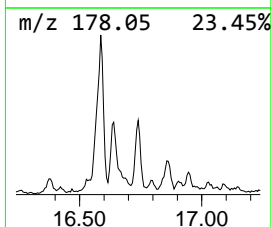
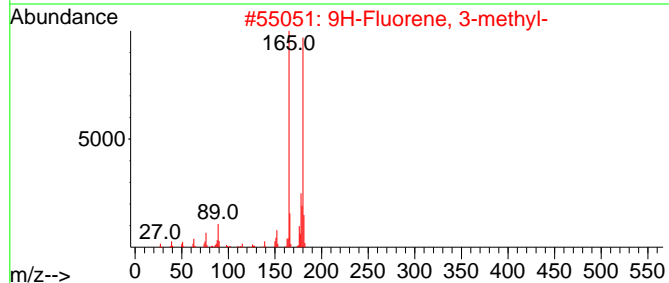
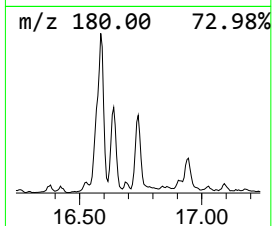
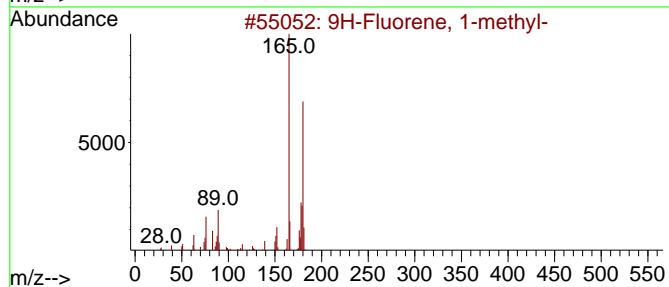
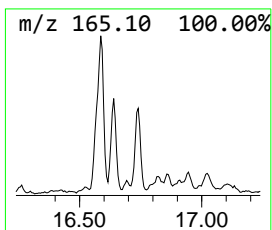
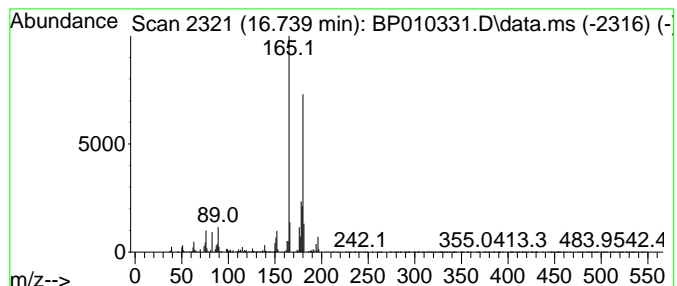
Quant Method : Z:\svoasrv\HPCHEM1\BNA_P\Methods\SFAM-EPA-BP051022.M
 Quant Title : SVOA CALIBRATION

TIC Library : C:\DATABASE\NIST20.L
 TIC Integration Parameters: LSCINT.P

 Peak Number 12 9H-Fluorene, 3-methyl- Concentration Rank 27

| R.T. | EstConc | Area | Relative to ISTD | R.T. |
|--------|------------|--------|------------------|--------|
| 16.740 | 3.22 ng/ul | 401954 | Phenanthrene-d10 | 17.287 |

| Hit# | of | 5 | Tentative ID | MW | MolForm | CAS# | Qual |
|------|----|---|------------------------|-----|---------|-------------|------|
| 1 | | | 9H-Fluorene, 1-methyl- | 180 | C14H12 | 001730-37-6 | 96 |
| 2 | | | 9H-Fluorene, 3-methyl- | 180 | C14H12 | 002523-39-9 | 96 |
| 3 | | | 9H-Fluorene, 1-methyl- | 180 | C14H12 | 001730-37-6 | 90 |
| 4 | | | 9H-Fluorene, 4-methyl- | 180 | C14H12 | 001556-99-6 | 90 |
| 5 | | | 9H-Fluorene, 1-methyl- | 180 | C14H12 | 001730-37-6 | 90 |



Data Path : Z:\svoasrv\HPCHEM1\BNA_P\Data\BP051122\
 Data File : BP010331.D
 Acq On : 12 May 2022 19:42
 Operator : CG/JU
 Sample : N2746-04
 Misc :
 ALS Vial : 55 Sample Multiplier: 1

Instrument :
 BNA_P
 ClientSampleId :
 DBSL0

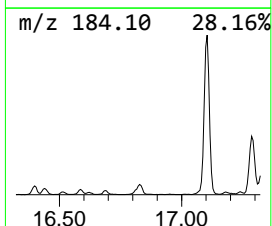
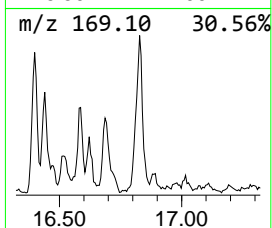
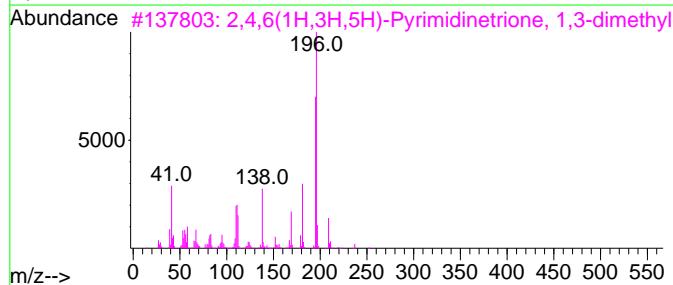
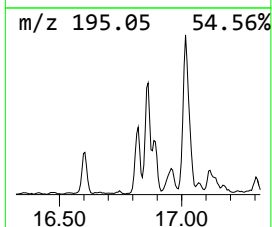
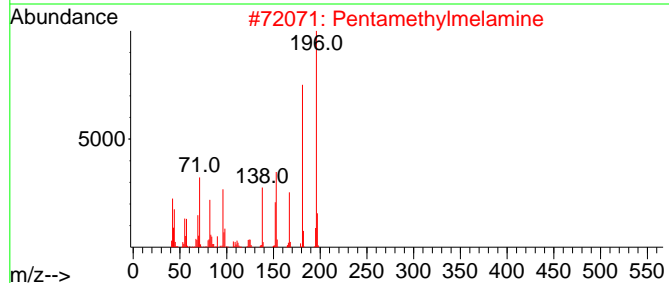
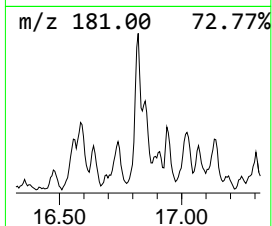
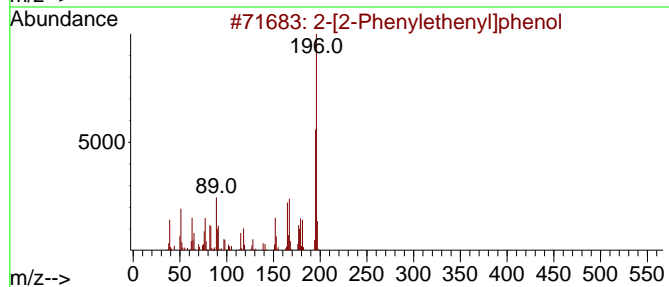
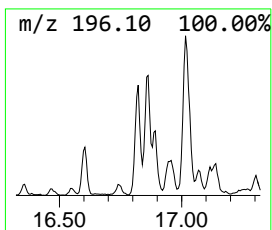
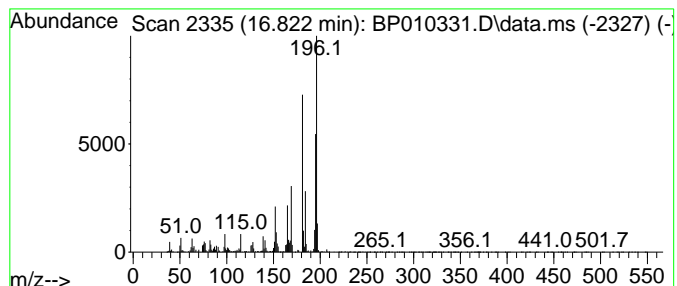
Quant Method : Z:\svoasrv\HPCHEM1\BNA_P\Methods\SFAM-EPA-BP051022.M
 Quant Title : SVOA CALIBRATION

TIC Library : C:\DATABASE\NIST20.L
 TIC Integration Parameters: LSCINT.P

 Peak Number 13 2-[2-Phenylethenyl]phenol Concentration Rank 20

| R.T. | EstConc | Area | Relative to ISTD | R.T. |
|--------|------------|--------|------------------|--------|
| 16.822 | 3.91 ng/ul | 487304 | Phenanthrene-d10 | 17.287 |

| Hit# | of 5 | Tentative ID | MW | MolForm | CAS# | Qual |
|------|------|-------------------------------------|-----|------------|-------------|------|
| 1 | | 2-[2-Phenylethenyl]phenol | 196 | C14H12O | 042224-48-6 | 52 |
| 2 | | Pentamethylmelamine | 196 | C8H16N6 | 035832-09-8 | 49 |
| 3 | | 2,4,6(1H,3H,5H)-Pyrimidinetrione... | 252 | C13H20N2O3 | 055045-04-0 | 47 |
| 4 | | 2,2-Dimethyl-1-acenaphthenone | 196 | C14H12O | 018086-43-6 | 46 |
| 5 | | 9H-Fluorene-2,7-diamine | 196 | C13H12N2 | 000525-64-4 | 43 |



Data Path : Z:\svoasrv\HPCHEM1\BNA_P\Data\BP051122\
 Data File : BP010331.D
 Acq On : 12 May 2022 19:42
 Operator : CG/JU
 Sample : N2746-04
 Misc :
 ALS Vial : 55 Sample Multiplier: 1

Instrument :
 BNA_P
 ClientSampleId :
 DBSL0

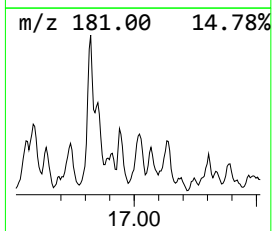
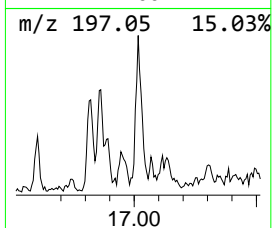
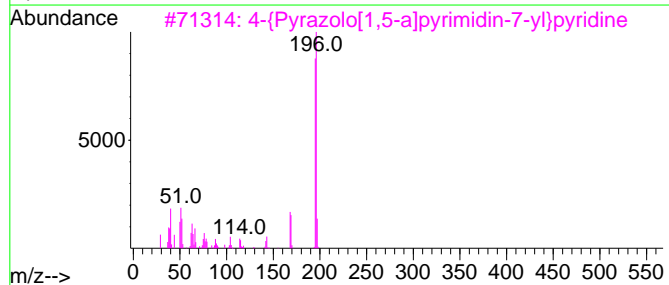
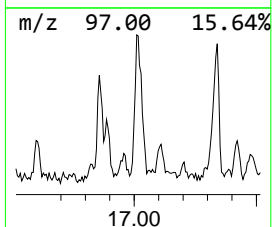
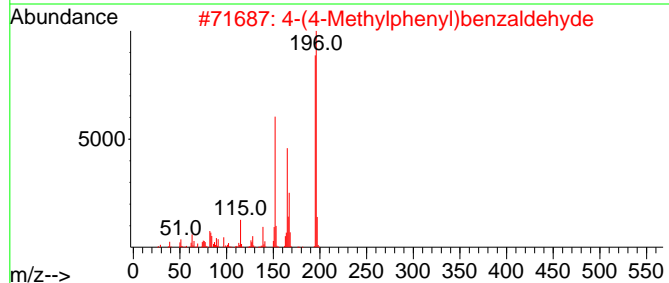
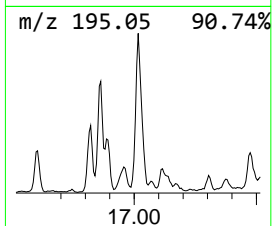
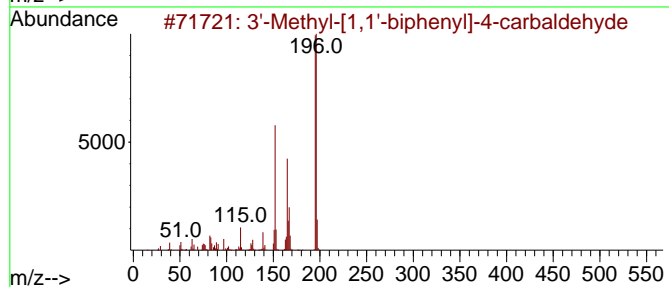
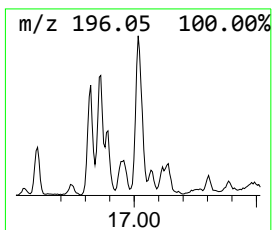
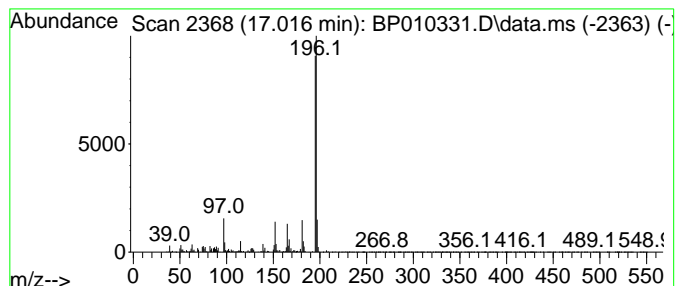
Quant Method : Z:\svoasrv\HPCHEM1\BNA_P\Methods\SFAM-EPA-BP051022.M
 Quant Title : SVOA CALIBRATION

TIC Library : C:\DATABASE\NIST20.L
 TIC Integration Parameters: LSCINT.P

 Peak Number 14 3'-Methyl-[1,1'-biphenyl]-4... Concentration Rank 19

| R.T. | EstConc | Area | Relative to ISTD | R.T. |
|--------|------------|--------|------------------|--------|
| 17.016 | 4.23 ng/ul | 527313 | Phenanthrene-d10 | 17.287 |

| Hit# | of 5 | Tentative ID | MW | MolForm | CAS# | Qual |
|------|------|--------------------------------------|-----|----------|--------------|------|
| 1 | | 3'-Methyl-[1,1'-biphenyl]-4-carb... | 196 | C14H12O | 400744-83-4 | 90 |
| 2 | | 4-(4-Methylphenyl)benzaldehyde | 196 | C14H12O | 036393-42-7 | 87 |
| 3 | | 4-{Pyrazolo[1,5-a]pyrimidin-7-yl...} | 196 | C11H8N4 | 1000443-78-9 | 59 |
| 4 | | 2,4,6-Trimethoxybenzaldehyde | 196 | C10H12O4 | 000830-79-5 | 53 |
| 5 | | 5,7-Dimethylpyrimido-[3,4-a]-indole | 196 | C13H12N2 | 038349-21-2 | 53 |



Data Path : Z:\svoasrv\HPCHEM1\BNA_P\Data\BP051122\
 Data File : BP010331.D
 Acq On : 12 May 2022 19:42
 Operator : CG/JU
 Sample : N2746-04
 Misc :
 ALS Vial : 55 Sample Multiplier: 1

Instrument :
 BNA_P
 ClientSampleId :
 DBSL0

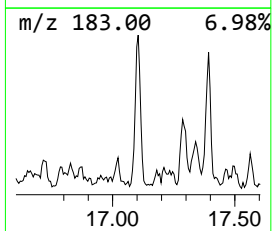
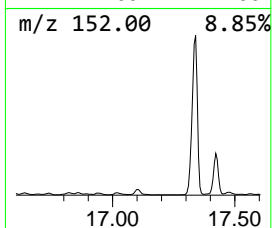
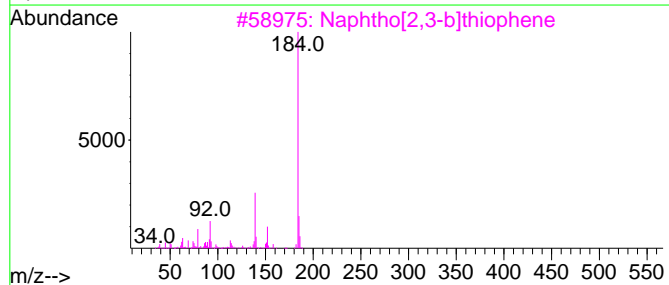
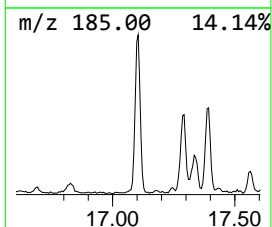
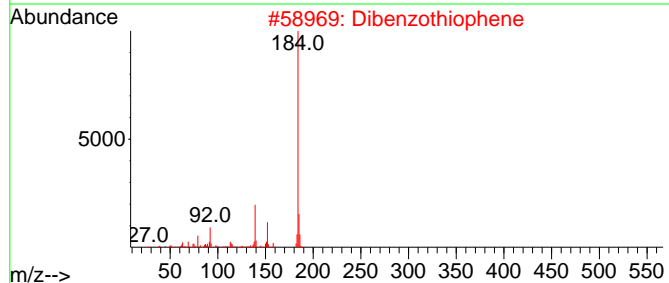
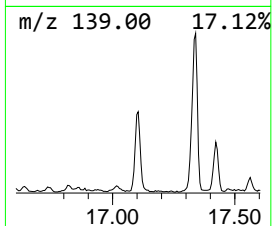
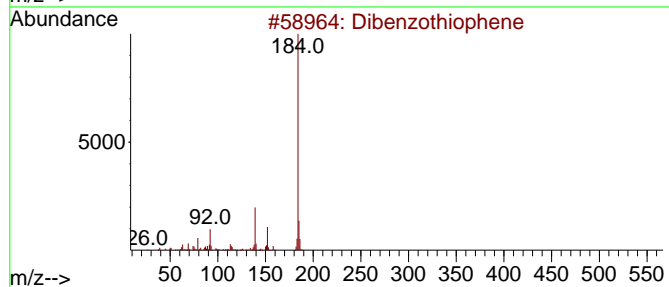
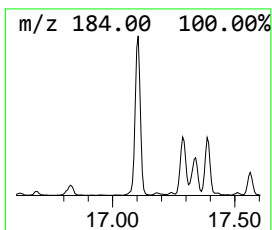
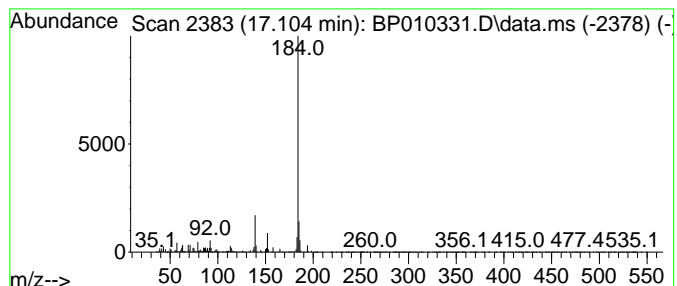
Quant Method : Z:\svoasrv\HPCHEM1\BNA_P\Methods\SFAM-EPA-BP051022.M
 Quant Title : SVOA CALIBRATION

TIC Library : C:\DATABASE\NIST20.L
 TIC Integration Parameters: LSCINT.P

 Peak Number 15 Dibenzothiophene Concentration Rank 9

| R.T. | EstConc | Area | Relative to ISTD | R.T. |
|--------|------------|---------|------------------|--------|
| 17.104 | 8.93 ng/ul | 1113250 | Phenanthrene-d10 | 17.287 |

| Hit# | of | 5 | Tentative ID | MW | MolForm | CAS# | Qual |
|------|----|---|-------------------------|-----|---------|-------------|------|
| 1 | | | Dibenzothiophene | 184 | C12H8S | 000132-65-0 | 95 |
| 2 | | | Dibenzothiophene | 184 | C12H8S | 000132-65-0 | 95 |
| 3 | | | Naphtho[2,3-b]thiophene | 184 | C12H8S | 000268-77-9 | 95 |
| 4 | | | Naphtho[2,1-b]thiophene | 184 | C12H8S | 000233-02-3 | 95 |
| 5 | | | Dibenzothiophene | 184 | C12H8S | 000132-65-0 | 95 |



Data Path : Z:\svoasrv\HPCHEM1\BNA_P\Data\BP051122\
 Data File : BP010331.D
 Acq On : 12 May 2022 19:42
 Operator : CG/JU
 Sample : N2746-04
 Misc :
 ALS Vial : 55 Sample Multiplier: 1

Instrument :
 BNA_P
 ClientSampleId :
 DBSL0

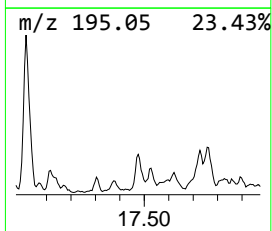
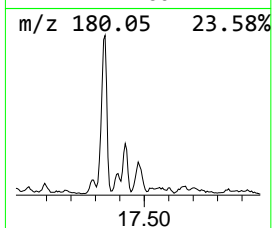
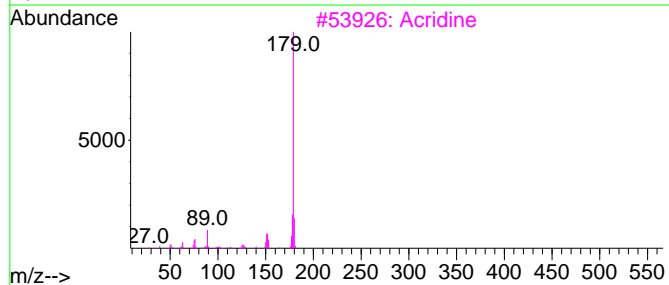
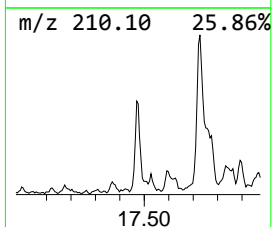
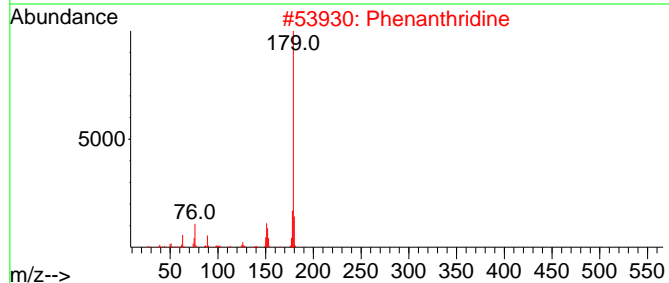
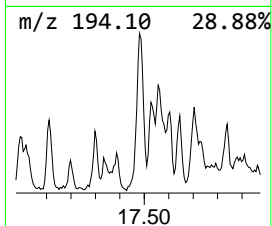
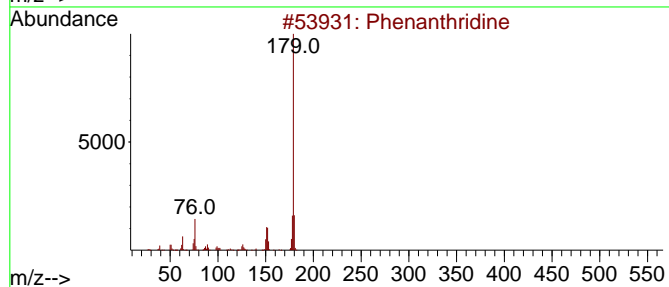
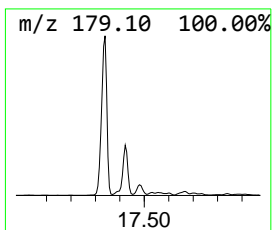
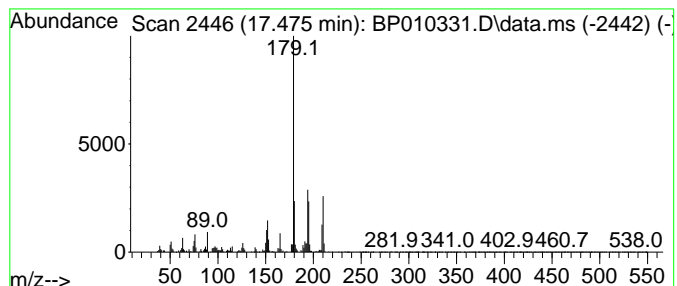
Quant Method : Z:\svoasrv\HPCHEM1\BNA_P\Methods\SFAM-EPA-BP051022.M
 Quant Title : SVOA CALIBRATION

TIC Library : C:\DATABASE\NIST20.L
 TIC Integration Parameters: LSCINT.P

 Peak Number 16 Phenanthridine Concentration Rank 22

| R.T. | EstConc | Area | Relative to ISTD | R.T. |
|--------|------------|--------|------------------|--------|
| 17.475 | 3.76 ng/ul | 468149 | Phenanthrene-d10 | 17.287 |

| Hit# | of 5 | Tentative ID | MW | MolForm | CAS# | Qual |
|------|------|-------------------|-----|---------|-------------|------|
| 1 | | Phenanthridine | 179 | C13H9N | 000229-87-8 | 55 |
| 2 | | Phenanthridine | 179 | C13H9N | 000229-87-8 | 55 |
| 3 | | Acridine | 179 | C13H9N | 000260-94-6 | 55 |
| 4 | | Acridine | 179 | C13H9N | 000260-94-6 | 55 |
| 5 | | Benzo[f]quinoline | 179 | C13H9N | 000085-02-9 | 55 |



Data Path : Z:\svoasrv\HPCHEM1\BNA_P\Data\BP051122\
 Data File : BP010331.D
 Acq On : 12 May 2022 19:42
 Operator : CG/JU
 Sample : N2746-04
 Misc :
 ALS Vial : 55 Sample Multiplier: 1

Instrument :
 BNA_P
 ClientSampleId :
 DBSL0

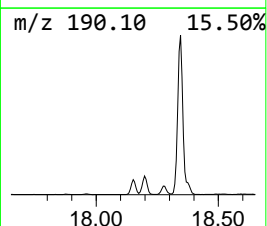
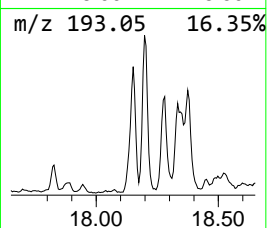
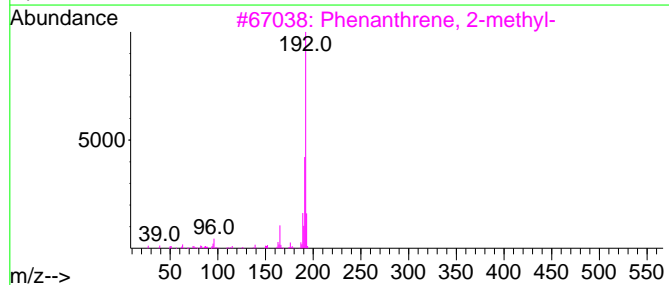
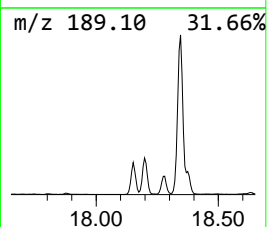
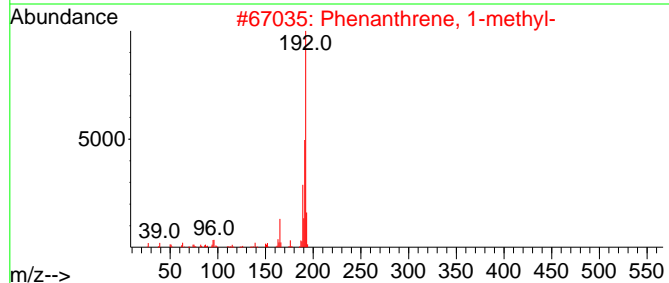
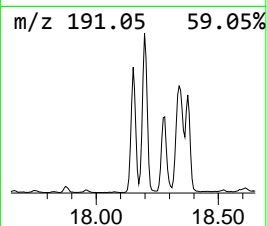
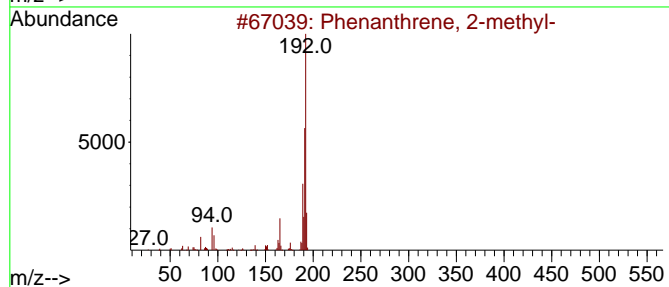
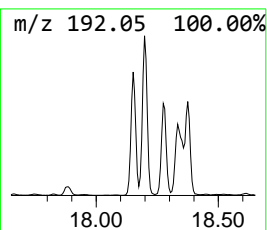
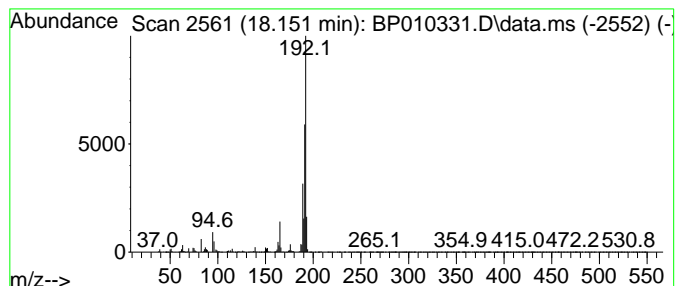
Quant Method : Z:\svoasrv\HPCHEM1\BNA_P\Methods\SFAM-EPA-BP051022.M
 Quant Title : SVOA CALIBRATION

TIC Library : C:\DATABASE\NIST20.L
 TIC Integration Parameters: LSCINT.P

 Peak Number 18 Phenanthrene, 2-methyl- Concentration Rank 3

| R.T. | EstConc | Area | Relative to ISTD | R.T. |
|--------|-------------|---------|------------------|--------|
| 18.151 | 15.68 ng/ul | 1954830 | Phenanthrene-d10 | 17.287 |

| Hit# | of 5 | Tentative ID | MW | MolForm | CAS# | Qual |
|------|------|-------------------------------------|-----|---------|-------------|------|
| 1 | | Phenanthrene, 2-methyl- | 192 | C15H12 | 002531-84-2 | 98 |
| 2 | | Phenanthrene, 1-methyl- | 192 | C15H12 | 000832-69-9 | 97 |
| 3 | | Phenanthrene, 2-methyl- | 192 | C15H12 | 002531-84-2 | 97 |
| 4 | | 1H-Cyclopropa[1]phenanthrene,1a,... | 192 | C15H12 | 000949-41-7 | 96 |
| 5 | | Anthracene, 1-methyl- | 192 | C15H12 | 000610-48-0 | 95 |



Data Path : Z:\svoasrv\HPCHEM1\BNA_P\Data\BP051122\
 Data File : BP010331.D
 Acq On : 12 May 2022 19:42
 Operator : CG/JU
 Sample : N2746-04
 Misc :
 ALS Vial : 55 Sample Multiplier: 1

Instrument :
 BNA_P
 ClientSampleId :
 DBSL0

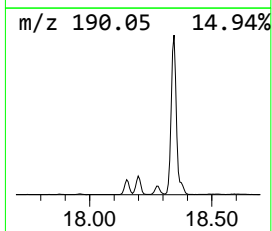
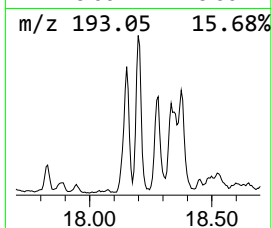
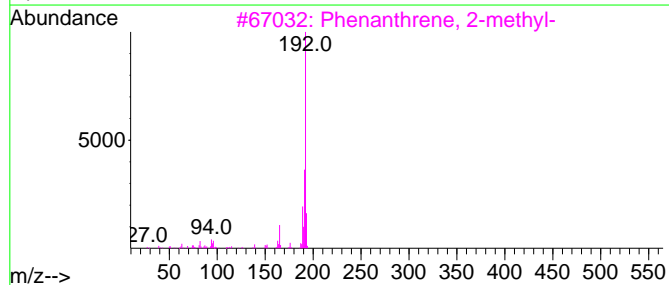
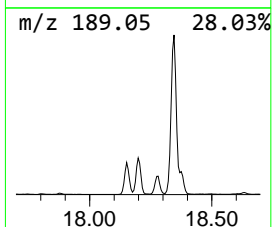
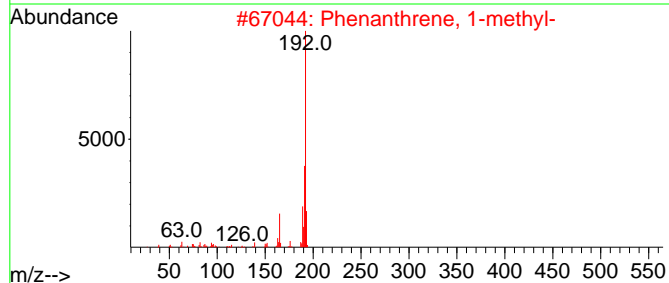
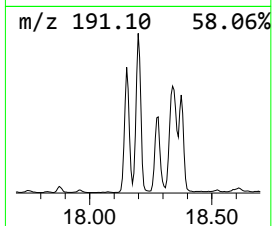
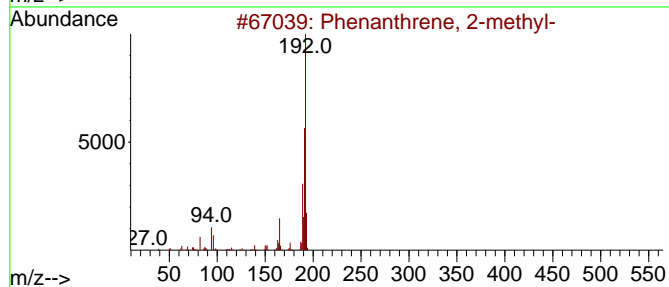
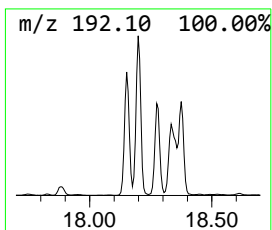
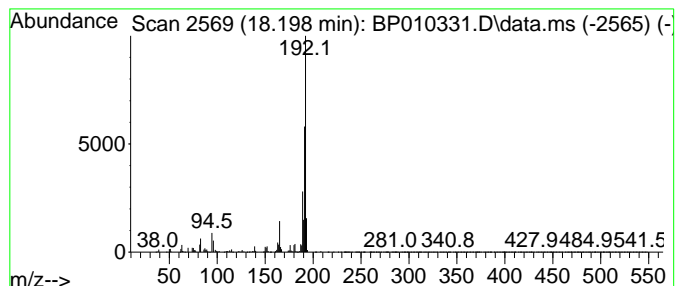
Quant Method : Z:\svoasrv\HPCHEM1\BNA_P\Methods\SFAM-EPA-BP051022.M
 Quant Title : SVOA CALIBRATION

TIC Library : C:\DATABASE\NIST20.L
 TIC Integration Parameters: LSCINT.P

 Peak Number 19 Phenanthrene, 1-methyl- Concentration Rank 2

| R.T. | EstConc | Area | Relative to ISTD | R.T. |
|--------|-------------|---------|------------------|--------|
| 18.198 | 19.18 ng/ul | 2390540 | Phenanthrene-d10 | 17.287 |

| Hit# | of 5 | Tentative ID | MW | MolForm | CAS# | Qual |
|------|------|-------------------------|-----|---------|-------------|------|
| 1 | | Phenanthrene, 2-methyl- | 192 | C15H12 | 002531-84-2 | 98 |
| 2 | | Phenanthrene, 1-methyl- | 192 | C15H12 | 000832-69-9 | 95 |
| 3 | | Phenanthrene, 2-methyl- | 192 | C15H12 | 002531-84-2 | 95 |
| 4 | | Anthracene, 2-methyl- | 192 | C15H12 | 000613-12-7 | 95 |
| 5 | | Anthracene, 2-methyl- | 192 | C15H12 | 000613-12-7 | 95 |



Data Path : Z:\svoasrv\HPCHEM1\BNA_P\Data\BP051122\
 Data File : BP010331.D
 Acq On : 12 May 2022 19:42
 Operator : CG/JU
 Sample : N2746-04
 Misc :
 ALS Vial : 55 Sample Multiplier: 1

Instrument :
 BNA_P
 ClientSampleId :
 DBSL0

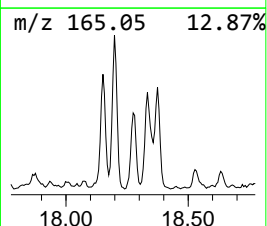
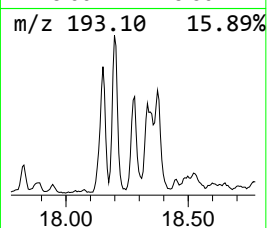
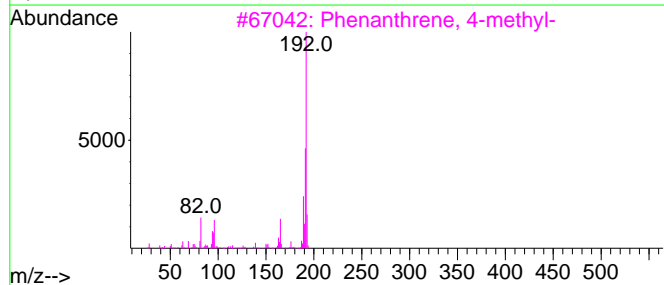
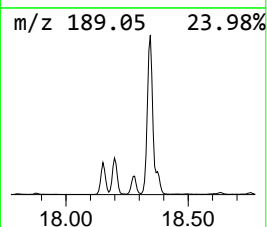
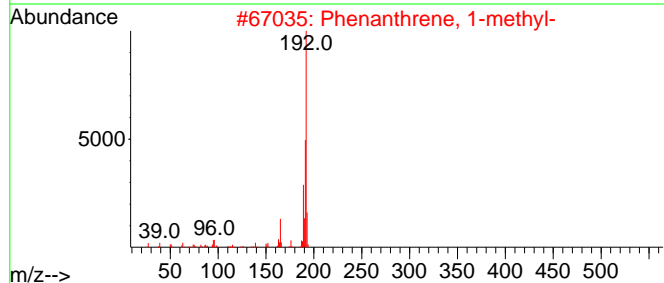
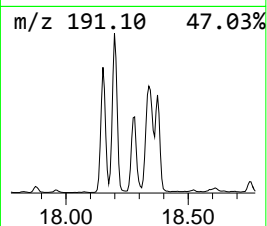
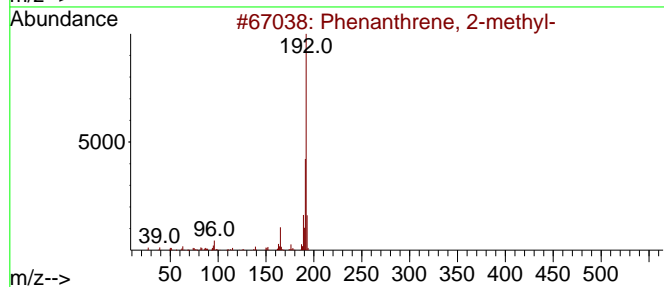
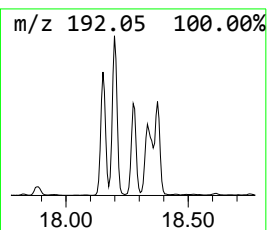
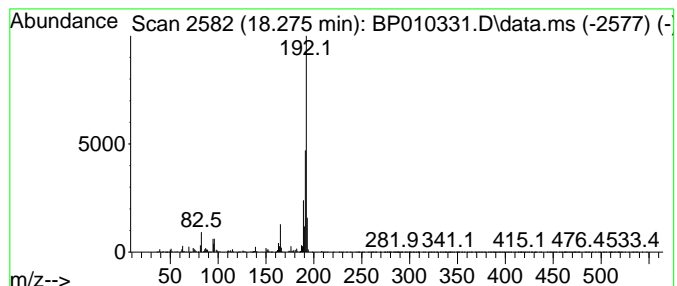
Quant Method : Z:\svoasrv\HPCHEM1\BNA_P\Methods\SFAM-EPA-BP051022.M
 Quant Title : SVOA CALIBRATION

TIC Library : C:\DATABASE\NIST20.L
 TIC Integration Parameters: LSCINT.P

 Peak Number 20 Phenanthrene, 4-methyl- Concentration Rank 7

| R.T. | EstConc | Area | Relative to ISTD | R.T. |
|--------|-------------|---------|------------------|--------|
| 18.275 | 10.06 ng/ul | 1253910 | Phenanthrene-d10 | 17.287 |

| Hit# | of 5 | Tentative ID | MW | MolForm | CAS# | Qual |
|------|------|-------------------------|-----|---------|-------------|------|
| 1 | | Phenanthrene, 2-methyl- | 192 | C15H12 | 002531-84-2 | 97 |
| 2 | | Phenanthrene, 1-methyl- | 192 | C15H12 | 000832-69-9 | 96 |
| 3 | | Phenanthrene, 4-methyl- | 192 | C15H12 | 000832-64-4 | 95 |
| 4 | | Anthracene, 9-methyl- | 192 | C15H12 | 000779-02-2 | 95 |
| 5 | | Phenanthrene, 3-methyl- | 192 | C15H12 | 000832-71-3 | 95 |



Data Path : Z:\svoasrv\HPCHEM1\BNA_P\Data\BP051122\
 Data File : BP010331.D
 Acq On : 12 May 2022 19:42
 Operator : CG/JU
 Sample : N2746-04
 Misc :
 ALS Vial : 55 Sample Multiplier: 1

Instrument :
 BNA_P
 ClientSampleId :
 DBSL0

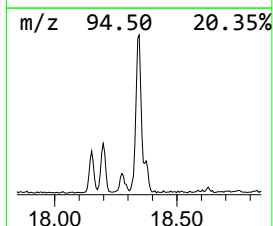
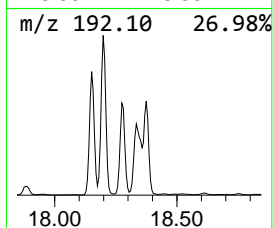
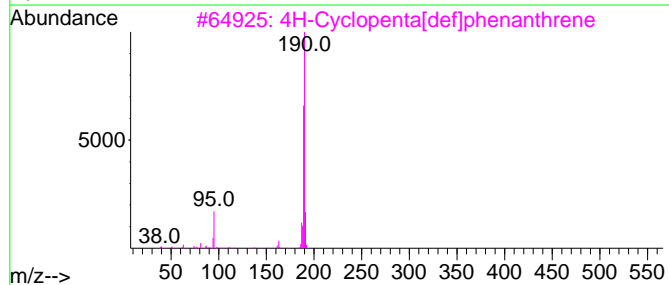
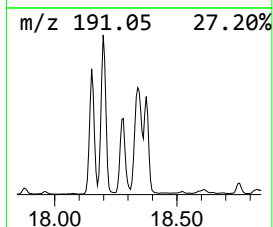
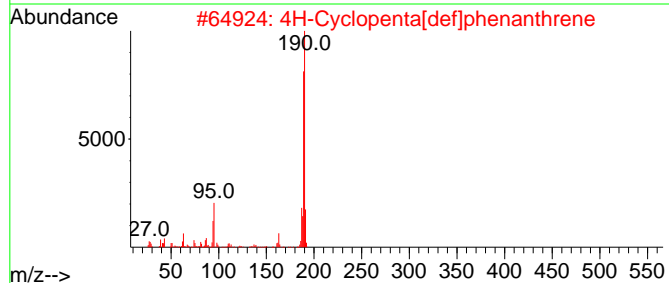
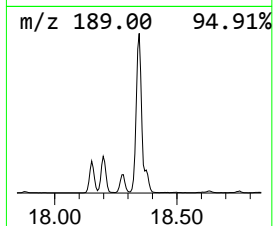
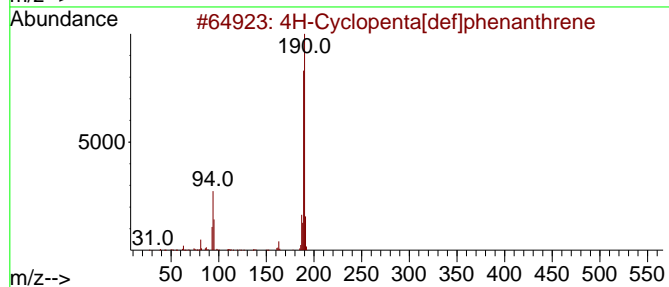
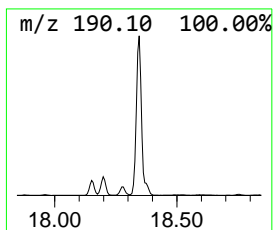
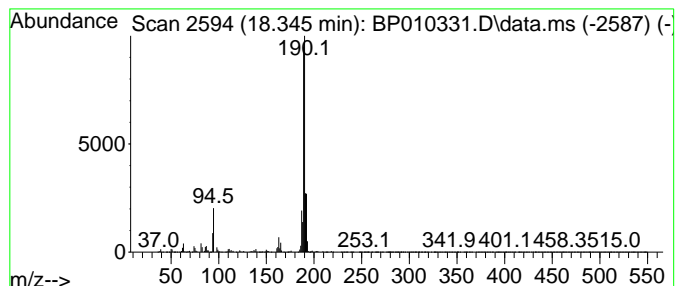
Quant Method : Z:\svoasrv\HPCHEM1\BNA_P\Methods\SFAM-EPA-BP051022.M
 Quant Title : SVOA CALIBRATION

TIC Library : C:\DATABASE\NIST20.L
 TIC Integration Parameters: LSCINT.P

 Peak Number 21 4H-Cyclopenta[def]phenanthrene Concentration Rank 1

| R.T. | EstConc | Area | Relative to ISTD | R.T. |
|--------|-------------|---------|------------------|--------|
| 18.345 | 34.87 ng/ul | 4347460 | Phenanthrene-d10 | 17.287 |

| Hit# | of | 5 | Tentative ID | MW | MolForm | CAS# | Qual |
|------|----|---|-------------------------------------|-----|----------|-------------|------|
| 1 | | | 4H-Cyclopenta[def]phenanthrene | 190 | C15H10 | 000203-64-5 | 93 |
| 2 | | | 4H-Cyclopenta[def]phenanthrene | 190 | C15H10 | 000203-64-5 | 70 |
| 3 | | | 4H-Cyclopenta[def]phenanthrene | 190 | C15H10 | 000203-64-5 | 64 |
| 4 | | | Methyl diselenide | 190 | C2H6Se2 | 007101-31-7 | 55 |
| 5 | | | 2,3,5,6-Tetramethylterephthalald... | 190 | C12H14O2 | 007072-01-7 | 50 |



Data Path : Z:\svoasrv\HPCHEM1\BNA_P\Data\BP051122\
 Data File : BP010331.D
 Acq On : 12 May 2022 19:42
 Operator : CG/JU
 Sample : N2746-04
 Misc :
 ALS Vial : 55 Sample Multiplier: 1

Instrument :
 BNA_P
 ClientSampleId :
 DBSL0

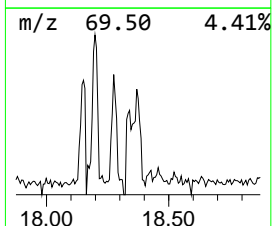
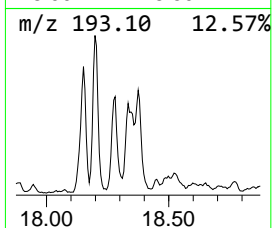
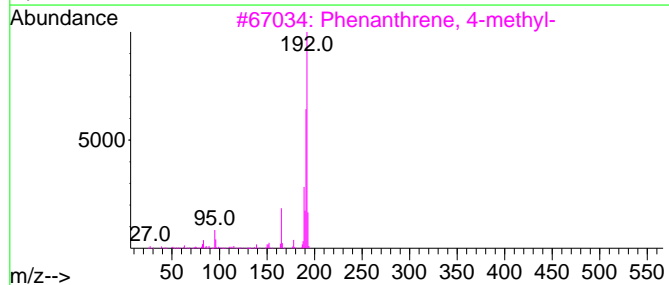
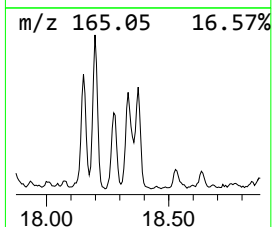
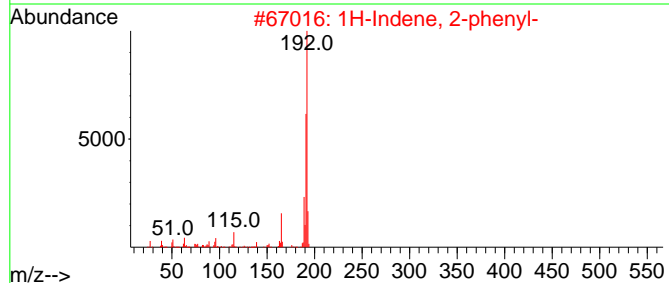
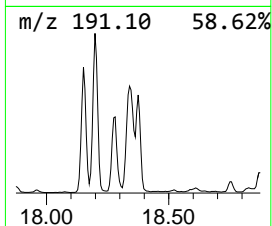
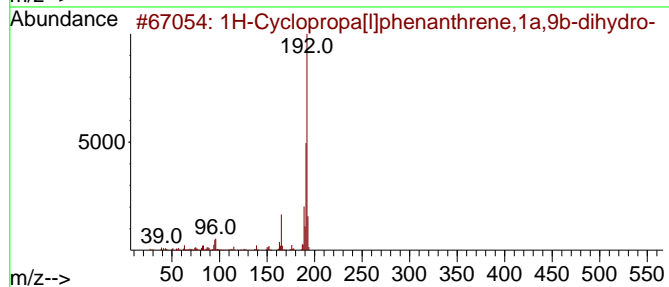
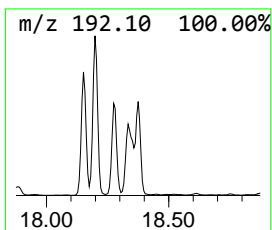
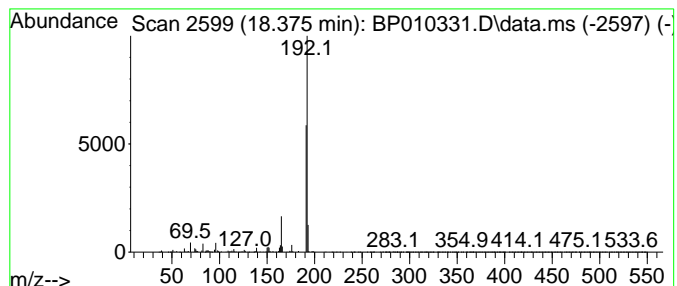
Quant Method : Z:\svoasrv\HPCHEM1\BNA_P\Methods\SFAM-EPA-BP051022.M
 Quant Title : SVOA CALIBRATION

TIC Library : C:\DATABASE\NIST20.L
 TIC Integration Parameters: LSCINT.P

 Peak Number 22 1H-Cyclopropa[1]phenanthren... Concentration Rank 10

| R.T. | EstConc | Area | Relative to ISTD | R.T. |
|--------|------------|---------|------------------|--------|
| 18.375 | 8.86 ng/ul | 1104640 | Phenanthrene-d10 | 17.287 |

| Hit# | of | 5 | Tentative ID | MW | MolForm | CAS# | Qual |
|------|----|---|-------------------------------------|-----|---------|-------------|------|
| 1 | | | 1H-Cyclopropa[1]phenanthrene,1a,... | 192 | C15H12 | 000949-41-7 | 91 |
| 2 | | | 1H-Indene, 2-phenyl- | 192 | C15H12 | 004505-48-0 | 91 |
| 3 | | | Phenanthrene, 4-methyl- | 192 | C15H12 | 000832-64-4 | 91 |
| 4 | | | Anthracene, 1-methyl- | 192 | C15H12 | 000610-48-0 | 91 |
| 5 | | | Anthracene, 1-methyl- | 192 | C15H12 | 000610-48-0 | 91 |



Data Path : Z:\svoasrv\HPCHEM1\BNA_P\Data\BP051122\
 Data File : BP010331.D
 Acq On : 12 May 2022 19:42
 Operator : CG/JU
 Sample : N2746-04
 Misc :
 ALS Vial : 55 Sample Multiplier: 1

Instrument :
 BNA_P
 ClientSampleId :
 DBSL0

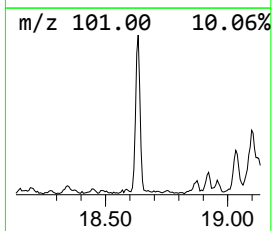
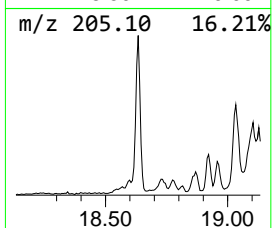
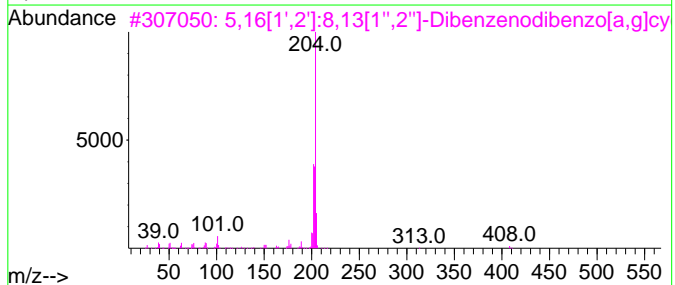
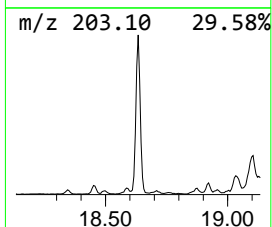
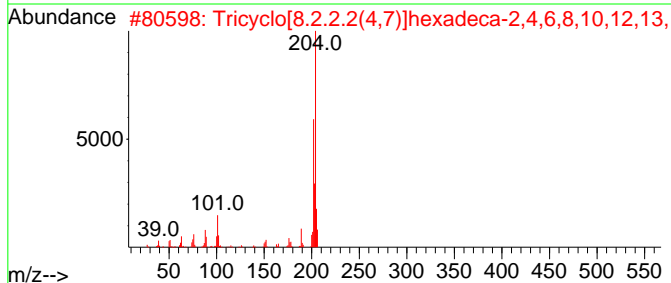
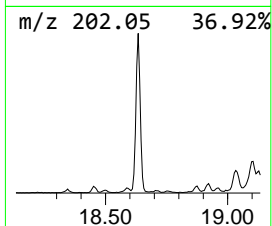
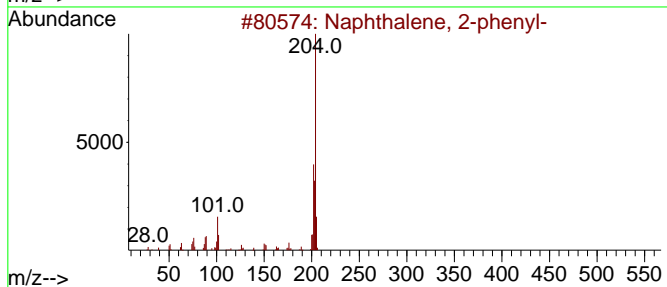
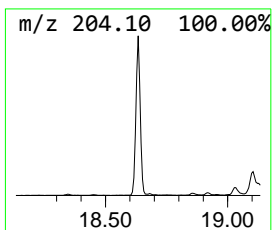
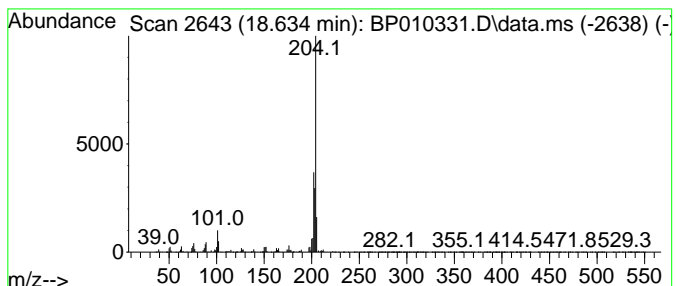
Quant Method : Z:\svoasrv\HPCHEM1\BNA_P\Methods\SFAM-EPA-BP051022.M
 Quant Title : SVOA CALIBRATION

TIC Library : C:\DATABASE\NIST20.L
 TIC Integration Parameters: LSCINT.P

 Peak Number 23 Naphthalene, 2-phenyl- Concentration Rank 6

| R.T. | EstConc | Area | Relative to ISTD | R.T. |
|--------|-------------|---------|------------------|--------|
| 18.634 | 11.89 ng/ul | 1482830 | Phenanthrene-d10 | 17.287 |

| Hit# | of 5 | Tentative ID | MW | MolForm | CAS# | Qual |
|------|------|-------------------------------------|-----|---------|-------------|------|
| 1 | | Naphthalene, 2-phenyl- | 204 | C16H12 | 000612-94-2 | 93 |
| 2 | | Tricyclo[8.2.2.2(4,7)]hexadeca-2... | 204 | C16H12 | 006572-60-7 | 87 |
| 3 | | 5,16[1',2']:8,13[1'',2'']-Dibenz... | 408 | C32H24 | 005672-97-9 | 87 |
| 4 | | Naphthalene, 2-phenyl- | 204 | C16H12 | 000612-94-2 | 81 |
| 5 | | Naphthalene, 2-phenyl- | 204 | C16H12 | 000612-94-2 | 81 |



Data Path : Z:\svoasrv\HPCHEM1\BNA_P\Data\BP051122\
 Data File : BP010331.D
 Acq On : 12 May 2022 19:42
 Operator : CG/JU
 Sample : N2746-04
 Misc :
 ALS Vial : 55 Sample Multiplier: 1

Instrument :
 BNA_P
 ClientSampleId :
 DBSL0

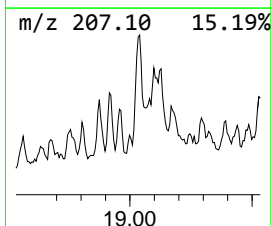
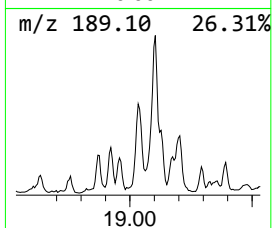
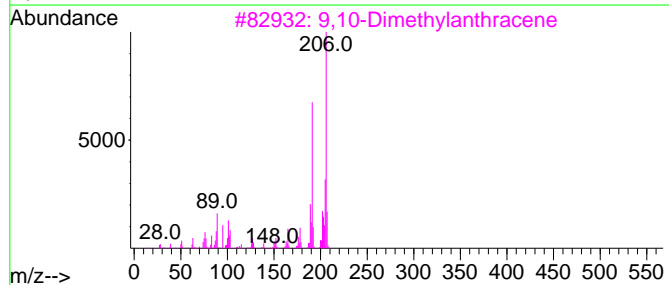
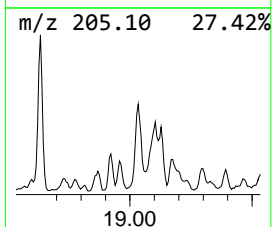
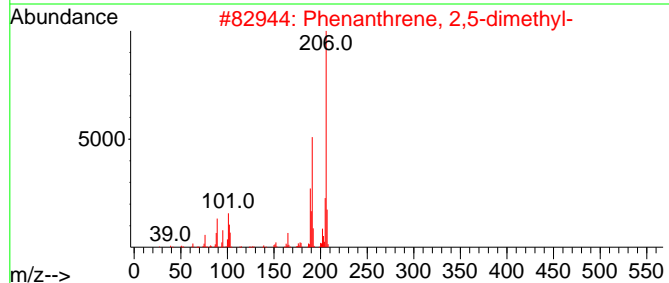
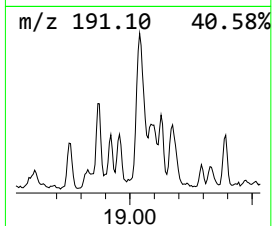
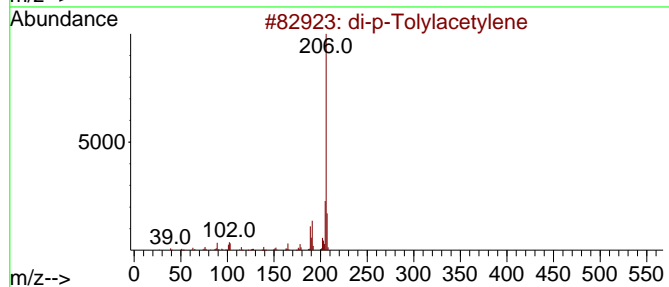
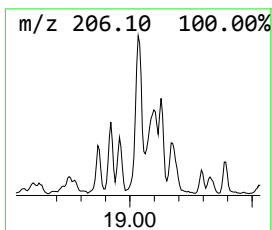
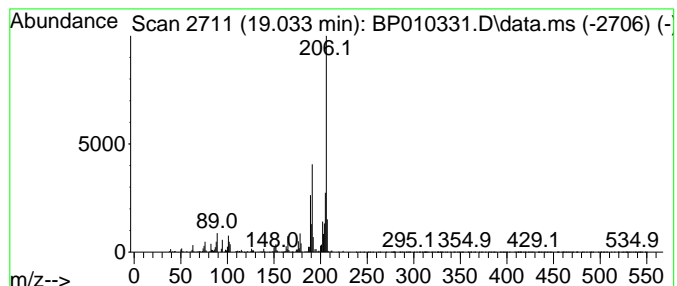
Quant Method : Z:\svoasrv\HPCHEM1\BNA_P\Methods\SFAM-EPA-BP051022.M
 Quant Title : SVOA CALIBRATION

TIC Library : C:\DATABASE\NIST20.L
 TIC Integration Parameters: LSCINT.P

 Peak Number 24 di-p-Tolylacetylene Concentration Rank 11

| R.T. | EstConc | Area | Relative to ISTD | R.T. |
|--------|------------|---------|------------------|--------|
| 19.034 | 8.58 ng/ul | 1069500 | Phenanthrene-d10 | 17.287 |

| Hit# | of 5 | Tentative ID | MW | MolForm | CAS# | Qual |
|------|------|-----------------------------|-----|---------|-------------|------|
| 1 | | di-p-Tolylacetylene | 206 | C16H14 | 002789-88-0 | 94 |
| 2 | | Phenanthrene, 2,5-dimethyl- | 206 | C16H14 | 003674-66-6 | 93 |
| 3 | | 9,10-Dimethylantracene | 206 | C16H14 | 000781-43-1 | 91 |
| 4 | | Phenanthrene, 3,6-dimethyl- | 206 | C16H14 | 001576-67-6 | 91 |
| 5 | | Anthracene, 1,4-dimethyl- | 206 | C16H14 | 000781-92-0 | 90 |



Data Path : Z:\svoasrv\HPCHEM1\BNA_P\Data\BP051122\
 Data File : BP010331.D
 Acq On : 12 May 2022 19:42
 Operator : CG/JU
 Sample : N2746-04
 Misc :
 ALS Vial : 55 Sample Multiplier: 1

Instrument :
 BNA_P
 ClientSampleId :
 DBSL0

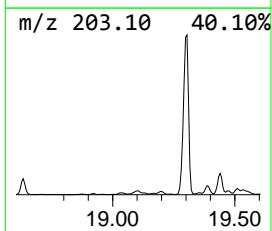
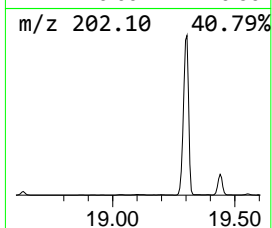
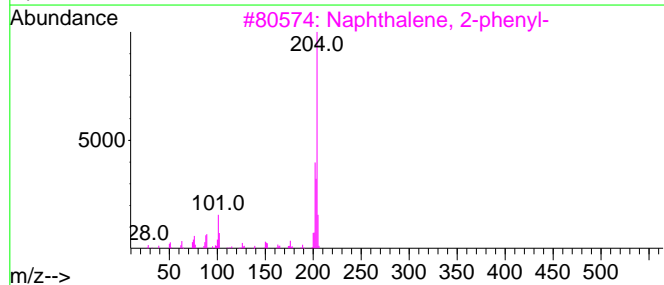
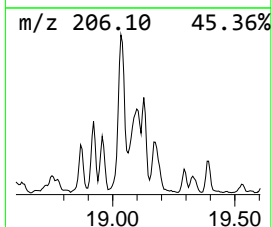
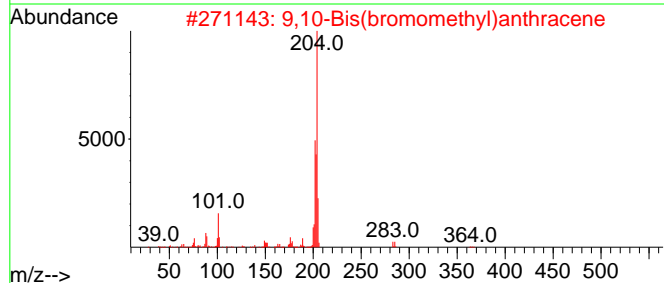
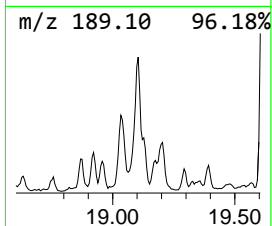
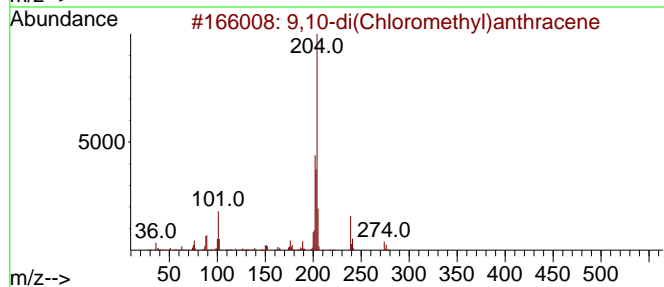
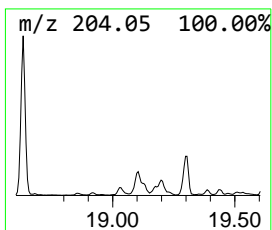
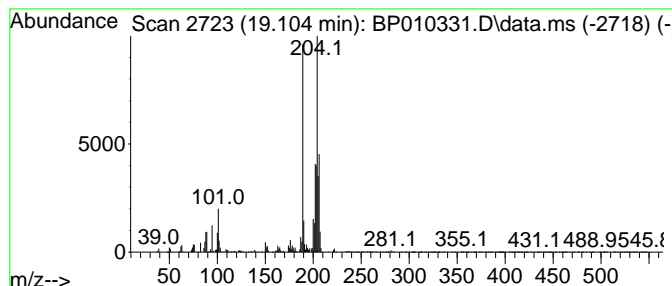
Quant Method : Z:\svoasrv\HPCHEM1\BNA_P\Methods\SFAM-EPA-BP051022.M
 Quant Title : SVOA CALIBRATION

TIC Library : C:\DATABASE\NIST20.L
 TIC Integration Parameters: LSCINT.P

 Peak Number 25 unknown-01 Concentration Rank 14

| R.T. | EstConc | Area | Relative to ISTD | R.T. |
|--------|------------|--------|------------------|--------|
| 19.104 | 6.55 ng/ul | 817056 | Phenanthrene-d10 | 17.287 |

| Hit# | of 5 | Tentative ID | MW | MolForm | CAS# | Qual |
|------|------|-------------------------------------|-----|------------|--------------|------|
| 1 | | 9,10-di(Chloromethyl)anthracene | 274 | C16H12Cl2 | 010387-13-0 | 49 |
| 2 | | 9,10-Bis(bromomethyl)anthracene | 362 | C16H12Br2 | 034373-96-1 | 46 |
| 3 | | Naphthalene, 2-phenyl- | 204 | C16H12 | 000612-94-2 | 46 |
| 4 | | Tricyclo[8.2.2.2(4,7)]hexadeca-2... | 204 | C16H12 | 006572-60-7 | 45 |
| 5 | | 1H-Indol-6-ylamine, TMS derivative | 204 | C11H16N2Si | 1000484-86-1 | 43 |



Data Path : Z:\svoasrv\HPCHEM1\BNA_P\Data\BP051122\
 Data File : BP010331.D
 Acq On : 12 May 2022 19:42
 Operator : CG/JU
 Sample : N2746-04
 Misc :
 ALS Vial : 55 Sample Multiplier: 1

Instrument :
 BNA_P
 ClientSampleId :
 DBSL0

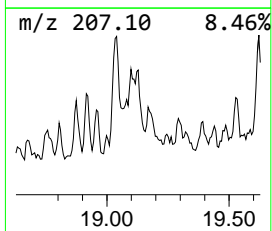
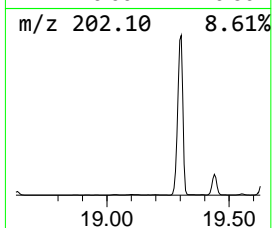
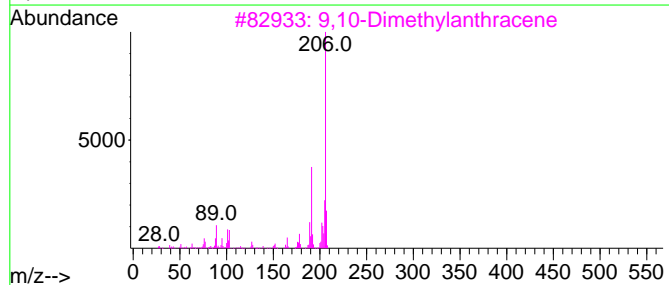
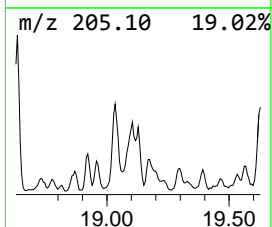
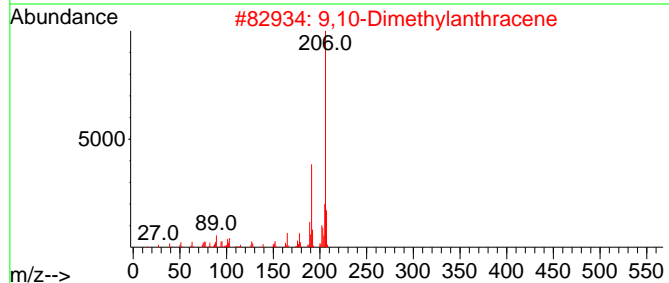
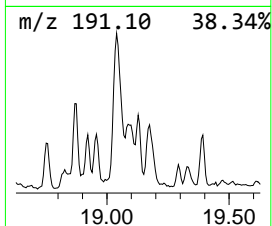
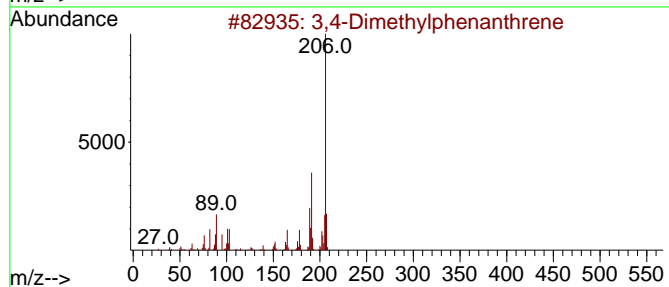
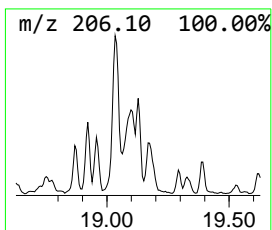
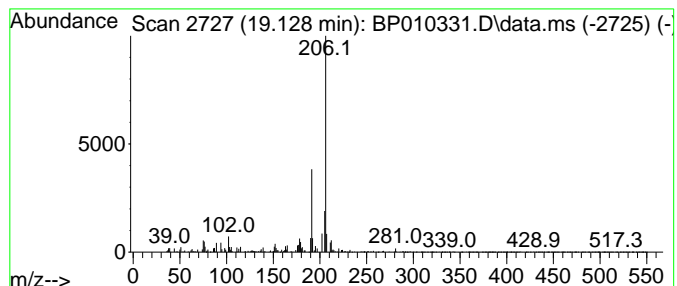
Quant Method : Z:\svoasrv\HPCHEM1\BNA_P\Methods\SFAM-EPA-BP051022.M
 Quant Title : SVOA CALIBRATION

TIC Library : C:\DATABASE\NIST20.L
 TIC Integration Parameters: LSCINT.P

 Peak Number 26 3,4-Dimethylphenanthrene Concentration Rank 25

| R.T. | EstConc | Area | Relative to ISTD | R.T. |
|--------|------------|--------|------------------|--------|
| 19.128 | 3.57 ng/ul | 444456 | Phenanthrene-d10 | 17.287 |

| Hit# | of 5 | Tentative ID | MW | MolForm | CAS# | Qual |
|------|------|-----------------------------|-----|---------|--------------|------|
| 1 | | 3,4-Dimethylphenanthrene | 206 | C16H14 | 1000452-24-5 | 72 |
| 2 | | 9,10-Dimethylantracene | 206 | C16H14 | 000781-43-1 | 72 |
| 3 | | 9,10-Dimethylantracene | 206 | C16H14 | 000781-43-1 | 72 |
| 4 | | 1-Methyl-3-phenyl-1H-indene | 206 | C16H14 | 022360-62-9 | 72 |
| 5 | | Anthracene, 2-ethyl- | 206 | C16H14 | 052251-71-5 | 72 |



Data Path : Z:\svoasrv\HPCHEM1\BNA_P\Data\BP051122\
 Data File : BP010331.D
 Acq On : 12 May 2022 19:42
 Operator : CG/JU
 Sample : N2746-04
 Misc :
 ALS Vial : 55 Sample Multiplier: 1

Instrument :
 BNA_P
 ClientSampleId :
 DBSL0

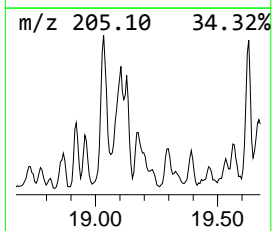
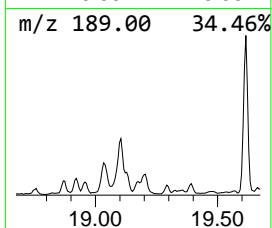
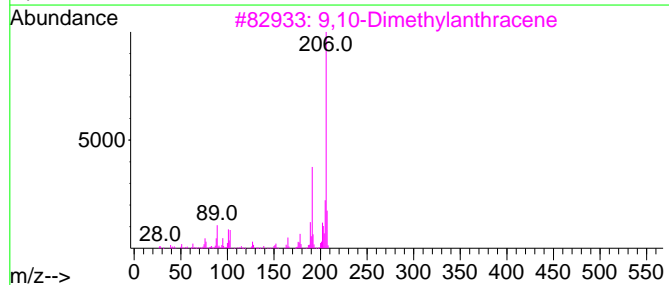
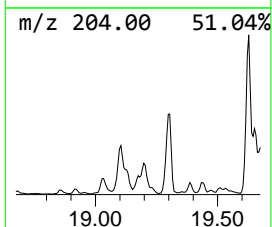
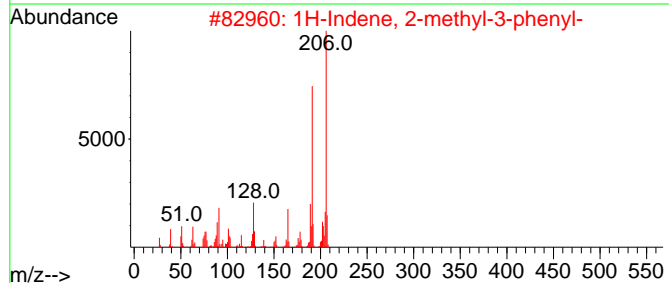
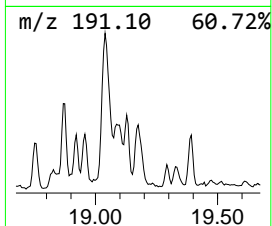
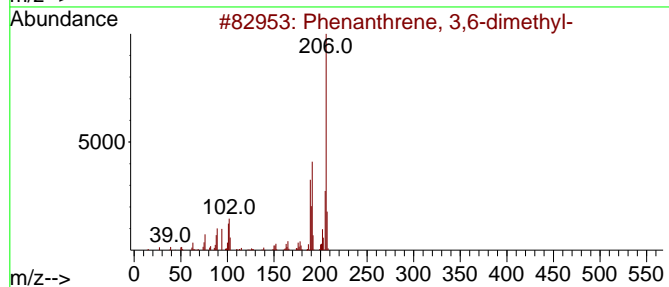
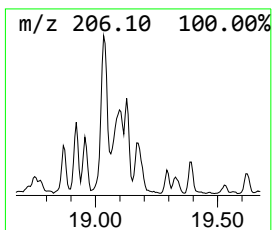
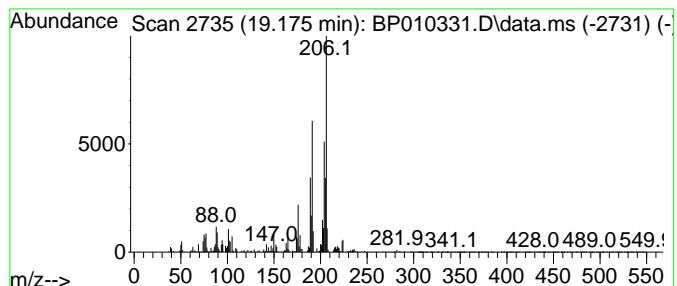
Quant Method : Z:\svoasrv\HPCHEM1\BNA_P\Methods\SFAM-EPA-BP051022.M
 Quant Title : SVOA CALIBRATION

TIC Library : C:\DATABASE\NIST20.L
 TIC Integration Parameters: LSCINT.P

 Peak Number 27 Phenanthrene, 3,6-dimethyl- Concentration Rank 17

| R.T. | EstConc | Area | Relative to ISTD | R.T. |
|--------|------------|--------|------------------|--------|
| 19.175 | 5.49 ng/ul | 683808 | Phenanthrene-d10 | 17.287 |

| Hit# | of | 5 | Tentative ID | MW | MolForm | CAS# | Qual |
|------|----|---|-----------------------------------|-----|---------|--------------|------|
| 1 | | | Phenanthrene, 3,6-dimethyl- | 206 | C16H14 | 001576-67-6 | 70 |
| 2 | | | 1H-Indene, 2-methyl-3-phenyl- | 206 | C16H14 | 035099-60-6 | 70 |
| 3 | | | 9,10-Dimethylanthracene | 206 | C16H14 | 000781-43-1 | 64 |
| 4 | | | 3,4-Dimethylphenanthrene | 206 | C16H14 | 1000452-24-5 | 58 |
| 5 | | | 1,3-Diphenyl-3-methylcyclopropene | 206 | C16H14 | 086544-79-8 | 58 |



Data Path : Z:\svoasrv\HPCHEM1\BNA_P\Data\BP051122\
 Data File : BP010331.D
 Acq On : 12 May 2022 19:42
 Operator : CG/JU
 Sample : N2746-04
 Misc :
 ALS Vial : 55 Sample Multiplier: 1

Instrument :
 BNA_P
 ClientSampleId :
 DBSL0

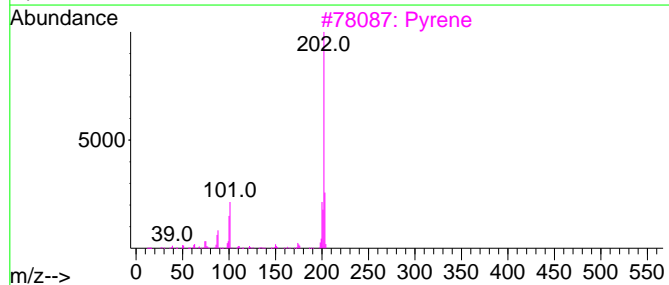
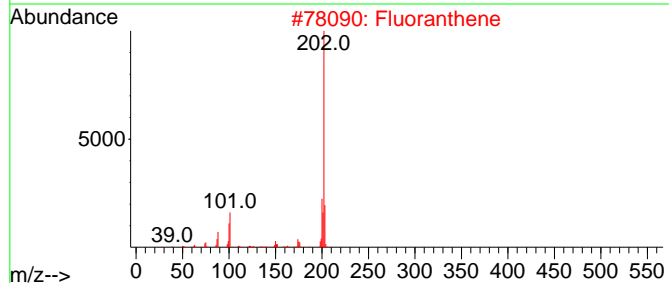
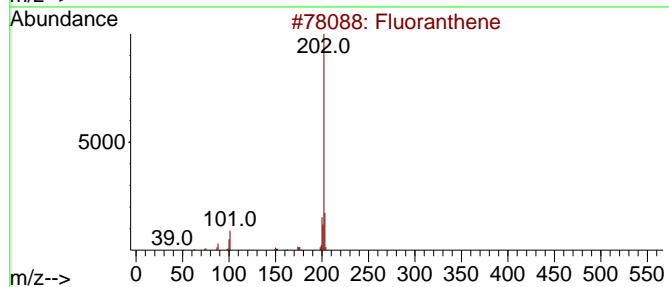
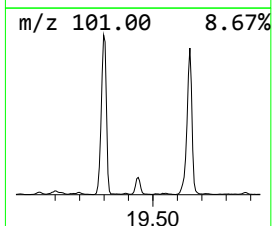
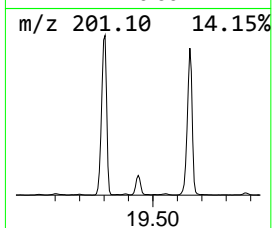
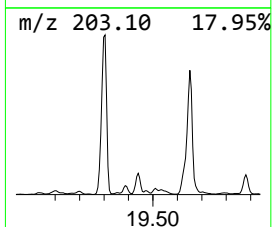
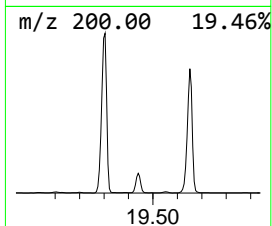
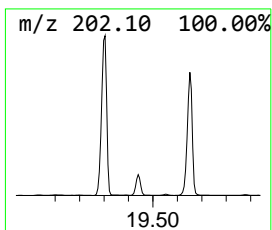
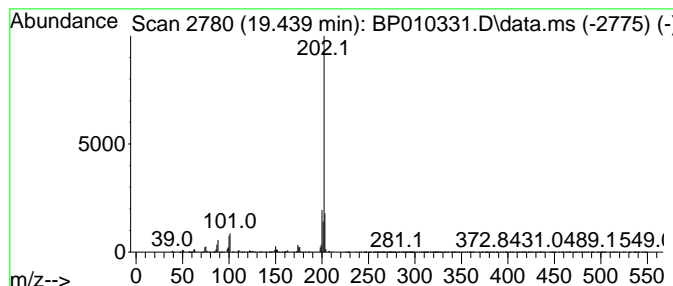
Quant Method : Z:\svoasrv\HPCHEM1\BNA_P\Methods\SFAM-EPA-BP051022.M
 Quant Title : SVOA CALIBRATION

TIC Library : C:\DATABASE\NIST20.L
 TIC Integration Parameters: LSCINT.P

 Peak Number 28 unknown-02 Concentration Rank 21

| R.T. | EstConc | Area | Relative to ISTD | R.T. |
|--------|------------|---------|------------------|--------|
| 19.439 | 3.87 ng/ul | 2516400 | Chrysene-d12 | 21.369 |

| Hit# | of 5 | Tentative ID | MW | MolForm | CAS# | Qual |
|------|------|--------------|-----|---------|-------------|------|
| 1 | | Fluoranthene | 202 | C16H10 | 000206-44-0 | 95 |
| 2 | | Fluoranthene | 202 | C16H10 | 000206-44-0 | 95 |
| 3 | | Pyrene | 202 | C16H10 | 000129-00-0 | 91 |
| 4 | | Pyrene | 202 | C16H10 | 000129-00-0 | 89 |
| 5 | | Pyrene | 202 | C16H10 | 000129-00-0 | 89 |



Data Path : Z:\svoasrv\HPCHEM1\BNA_P\Data\BP051122\
 Data File : BP010331.D
 Acq On : 12 May 2022 19:42
 Operator : CG/JU
 Sample : N2746-04
 Misc :
 ALS Vial : 55 Sample Multiplier: 1

Instrument :
 BNA_P
 ClientSampleId :
 DBSL0

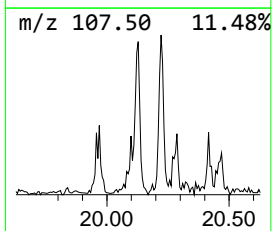
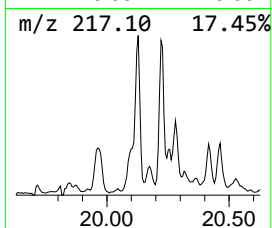
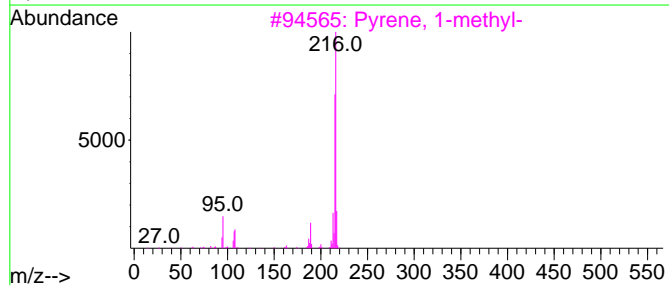
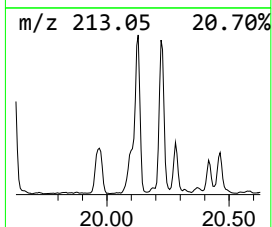
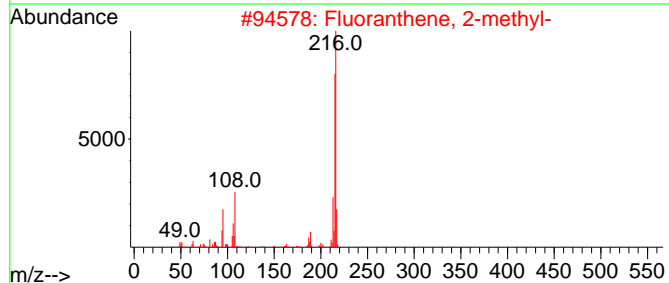
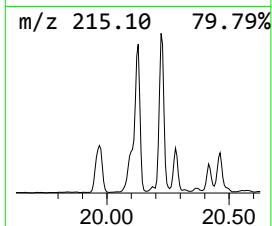
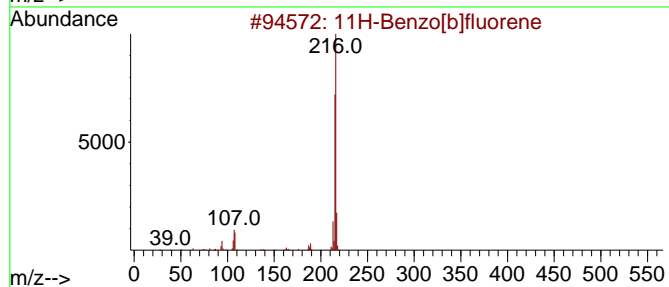
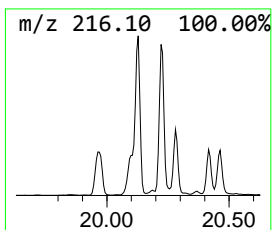
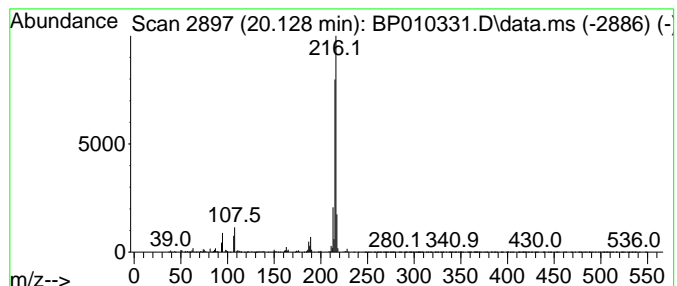
Quant Method : Z:\svoasrv\HPCHEM1\BNA_P\Methods\SFAM-EPA-BP051022.M
 Quant Title : SVOA CALIBRATION

TIC Library : C:\DATABASE\NIST20.L
 TIC Integration Parameters: LSCINT.P

 Peak Number 30 11H-Benzo[b]fluorene Concentration Rank 15

| R.T. | EstConc | Area | Relative to ISTD | R.T. |
|--------|------------|---------|------------------|--------|
| 20.128 | 5.75 ng/ul | 3744740 | Chrysene-d12 | 21.369 |

| Hit# | of 5 | Tentative ID | MW | MolForm | CAS# | Qual |
|------|------|-------------------------|-----|---------|-------------|------|
| 1 | | 11H-Benzo[b]fluorene | 216 | C17H12 | 000243-17-4 | 95 |
| 2 | | Fluoranthene, 2-methyl- | 216 | C17H12 | 033543-31-6 | 94 |
| 3 | | Pyrene, 1-methyl- | 216 | C17H12 | 002381-21-7 | 94 |
| 4 | | 11H-Benzo[b]fluorene | 216 | C17H12 | 000243-17-4 | 93 |
| 5 | | 11H-Benzo[a]fluorene | 216 | C17H12 | 000238-84-6 | 93 |



Data Path : Z:\svoasrv\HPCHEM1\BNA_P\Data\BP051122\
 Data File : BP010331.D
 Acq On : 12 May 2022 19:42
 Operator : CG/JU
 Sample : N2746-04
 Misc :
 ALS Vial : 55 Sample Multiplier: 1

Instrument :
 BNA_P
 ClientSampleId :
 DBSL0

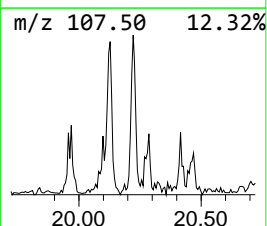
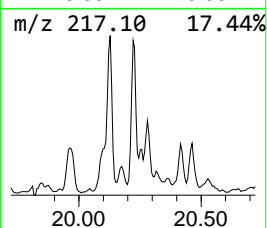
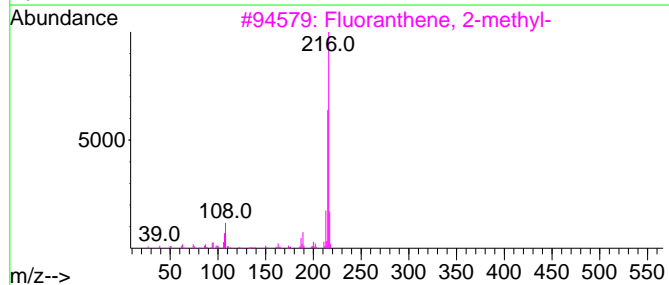
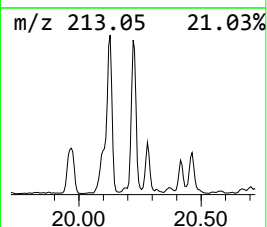
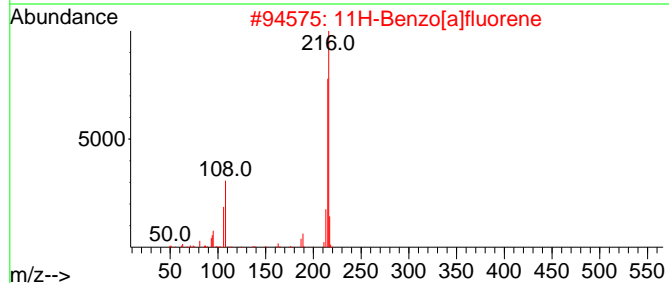
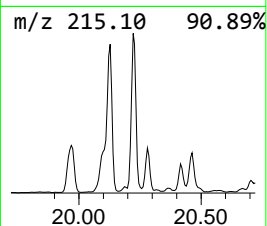
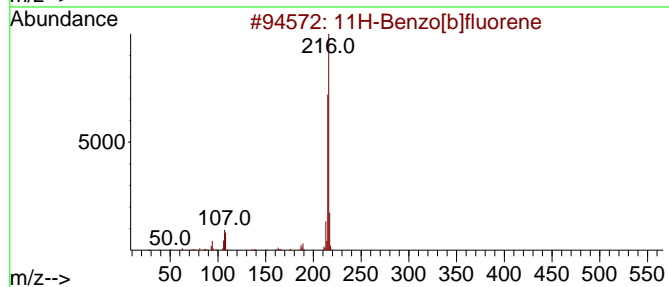
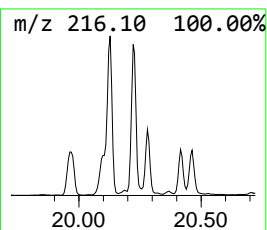
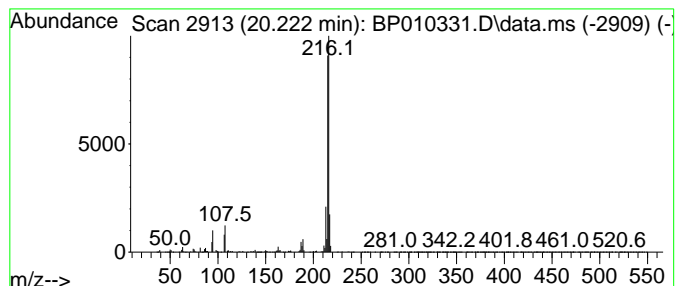
Quant Method : Z:\svoasrv\HPCHEM1\BNA_P\Methods\SFAM-EPA-BP051022.M
 Quant Title : SVOA CALIBRATION

TIC Library : C:\DATABASE\NIST20.L
 TIC Integration Parameters: LSCINT.P

 Peak Number 31 11H-Benzo[a]fluorene Concentration Rank 23

| R.T. | EstConc | Area | Relative to ISTD | R.T. |
|--------|------------|---------|------------------|--------|
| 20.222 | 3.74 ng/ul | 2432120 | Chrysene-d12 | 21.369 |

| Hit# | of | 5 | Tentative ID | MW | MolForm | CAS# | Qual |
|------|----|---|-------------------------|-----|---------|-------------|------|
| 1 | | | 11H-Benzo[b]fluorene | 216 | C17H12 | 000243-17-4 | 96 |
| 2 | | | 11H-Benzo[a]fluorene | 216 | C17H12 | 000238-84-6 | 94 |
| 3 | | | Fluoranthene, 2-methyl- | 216 | C17H12 | 033543-31-6 | 91 |
| 4 | | | 11H-Benzo[a]fluorene | 216 | C17H12 | 000238-84-6 | 91 |
| 5 | | | 11H-Benzo[b]fluorene | 216 | C17H12 | 000243-17-4 | 91 |



Data Path : Z:\svoasrv\HPCHEM1\BNA_P\Data\BP051122\
 Data File : BP010331.D
 Acq On : 12 May 2022 19:42
 Operator : CG/JU
 Sample : N2746-04
 Misc :
 ALS Vial : 55 Sample Multiplier: 1

Instrument :
 BNA_P
 ClientSampleId :
 DBSL0

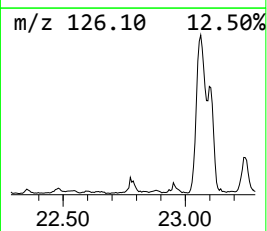
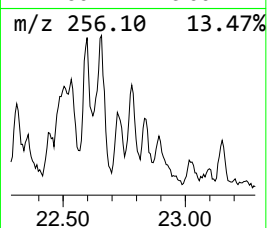
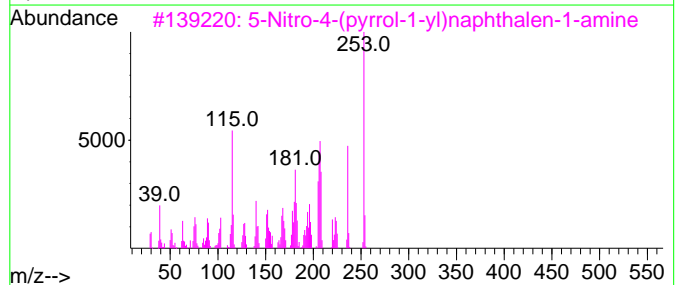
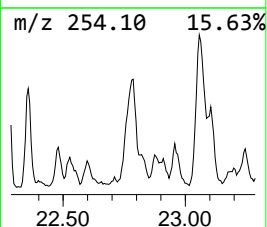
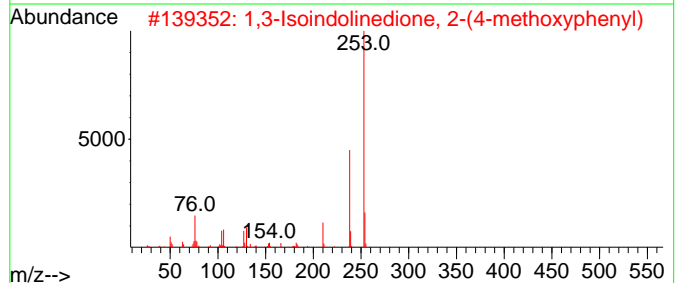
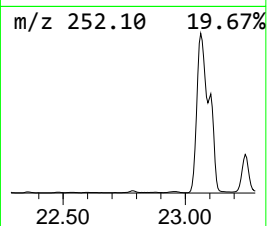
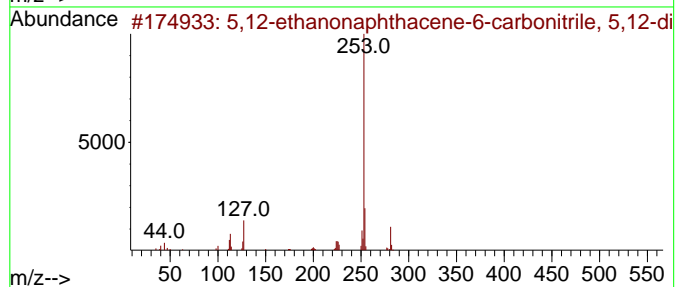
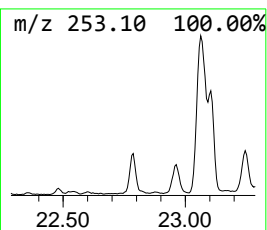
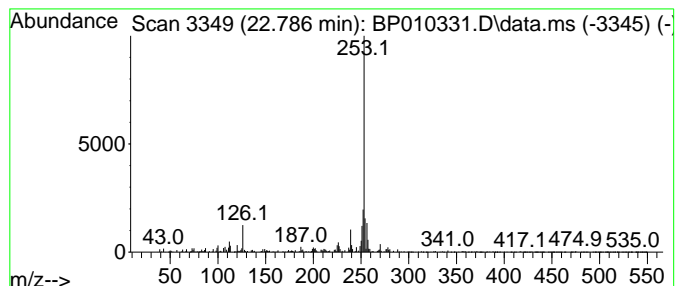
Quant Method : Z:\svoasrv\HPCHEM1\BNA_P\Methods\SFAM-EPA-BP051022.M
 Quant Title : SVOA CALIBRATION

TIC Library : C:\DATABASE\NIST20.L
 TIC Integration Parameters: LSCINT.P

 Peak Number 34 5,12-ethanonaphthacene-6-ca... Concentration Rank 18

| R.T. | EstConc | Area | Relative to ISTD | R.T. |
|--------|------------|--------|------------------|--------|
| 22.786 | 5.07 ng/ul | 507251 | Perylene-d12 | 23.798 |

| Hit# | of | 5 | Tentative ID | MW | MolForm | CAS# | Qual |
|------|----|---|-------------------------------------|-----|------------|--------------|------|
| 1 | | | 5,12-ethanonaphthacene-6-carboni... | 281 | C21H15N | 1000397-19-0 | 50 |
| 2 | | | 1,3-Isoindolinedione, 2-(4-metho... | 253 | C15H11N03 | 002142-04-3 | 47 |
| 3 | | | 5-Nitro-4-(pyrrol-1-yl)naphthale... | 253 | C14H11N3O2 | 1000443-35-3 | 43 |
| 4 | | | Benzaldehyde, 4-((4-(dimethylami... | 253 | C15H15N3O | 039208-00-9 | 43 |
| 5 | | | N-(4-Phenyl-1,3-thiazol-2-yl)-2-... | 253 | C14H11N3S | 1000485-04-5 | 40 |



Data Path : Z:\svoasrv\HPCHEM1\BNA_P\Data\BP051122\
 Data File : BP010331.D
 Acq On : 12 May 2022 19:42
 Operator : CG/JU
 Sample : N2746-04
 Misc :
 ALS Vial : 55 Sample Multiplier: 1

Instrument :
 BNA_P
 ClientSampleId :
 DBSL0

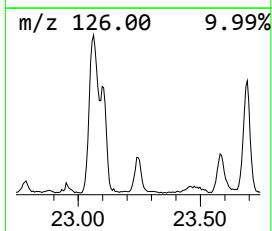
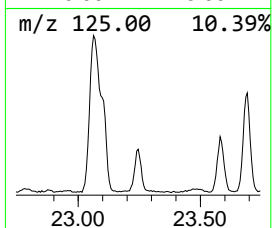
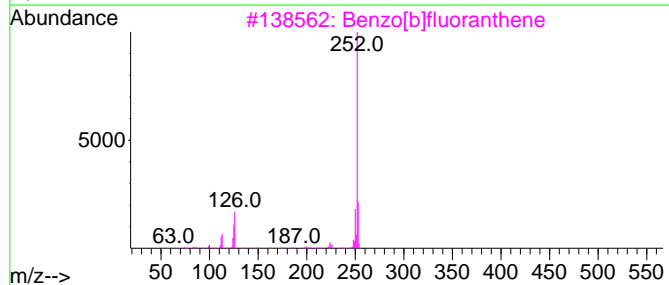
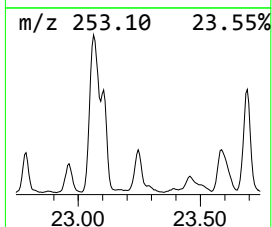
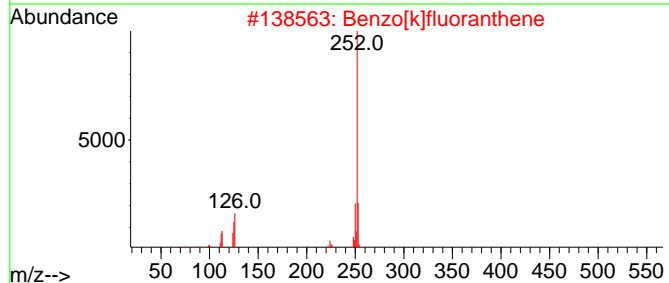
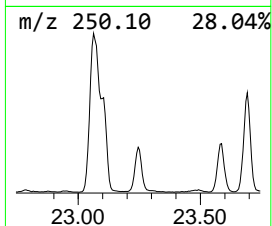
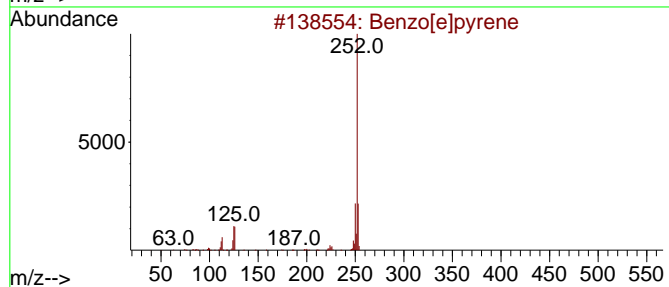
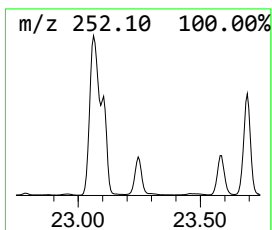
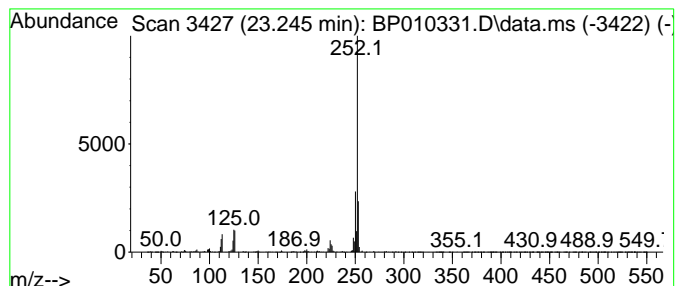
Quant Method : Z:\svoasrv\HPCHEM1\BNA_P\Methods\SFAM-EPA-BP051022.M
 Quant Title : SVOA CALIBRATION

TIC Library : C:\DATABASE\NIST20.L
 TIC Integration Parameters: LSCINT.P

 Peak Number 35 Benzo[e]pyrene Concentration Rank 5

| R.T. | EstConc | Area | Relative to ISTD | R.T. |
|--------|-------------|---------|------------------|--------|
| 23.245 | 13.09 ng/ul | 1309110 | Perylene-d12 | 23.798 |

| Hit# | of 5 | Tentative ID | MW | MolForm | CAS# | Qual |
|------|------|----------------------|-----|---------|-------------|------|
| 1 | | Benzo[e]pyrene | 252 | C20H12 | 000192-97-2 | 98 |
| 2 | | Benzo[k]fluoranthene | 252 | C20H12 | 000207-08-9 | 96 |
| 3 | | Benzo[b]fluoranthene | 252 | C20H12 | 000205-99-2 | 94 |
| 4 | | Benzo[a]pyrene | 252 | C20H12 | 000050-32-8 | 93 |
| 5 | | Benzo[a]pyrene | 252 | C20H12 | 000050-32-8 | 90 |



Data Path : Z:\svoasrv\HPCHEM1\BNA_P\Data\BP051122\
 Data File : BP010331.D
 Acq On : 12 May 2022 19:42
 Operator : CG/JU
 Sample : N2746-04
 Misc :
 ALS Vial : 55 Sample Multiplier: 1

Instrument :
 BNA_P
 ClientSampleId :
 DBSL0

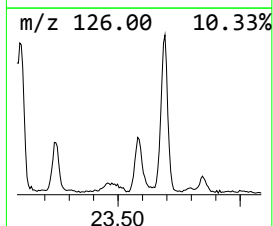
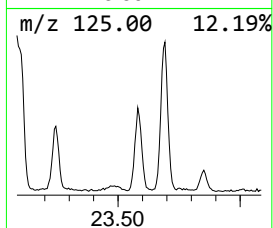
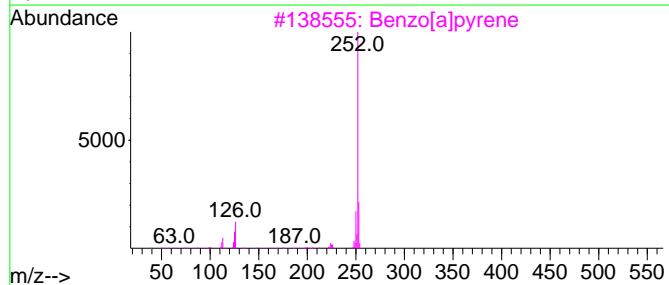
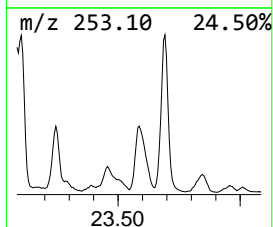
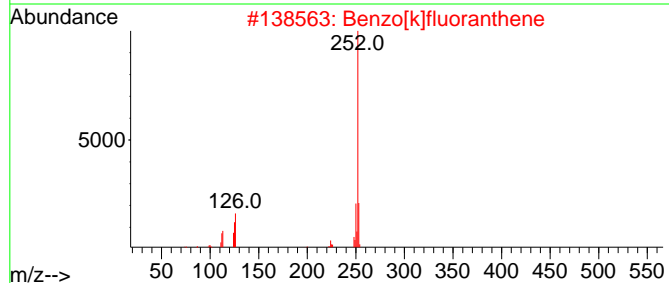
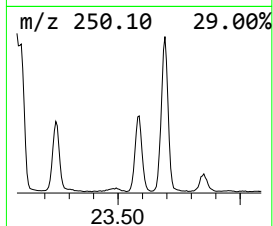
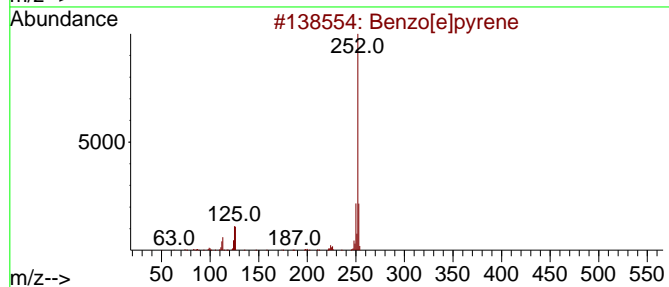
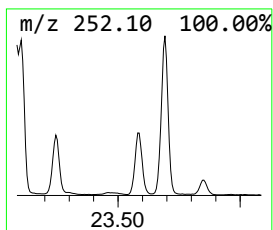
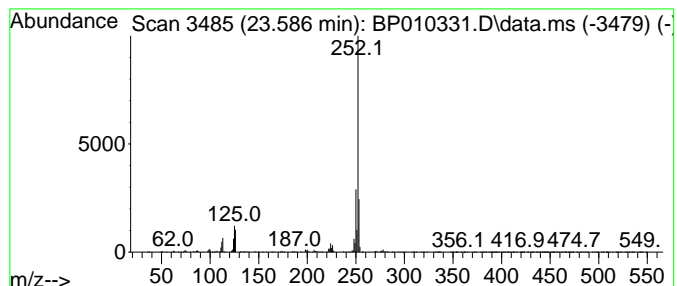
Quant Method : Z:\svoasrv\HPCHEM1\BNA_P\Methods\SFAM-EPA-BP051022.M
 Quant Title : SVOA CALIBRATION

TIC Library : C:\DATABASE\NIST20.L
 TIC Integration Parameters: LSCINT.P

 Peak Number 36 unknown-03 Concentration Rank 4

| R.T. | EstConc | Area | Relative to ISTD | R.T. |
|--------|-------------|---------|------------------|--------|
| 23.586 | 15.33 ng/ul | 1533090 | Perylene-d12 | 23.798 |

| Hit# | of 5 | Tentative ID | MW | MolForm | CAS# | Qual |
|------|------|----------------------|-----|---------|-------------|------|
| 1 | | Benzo[e]pyrene | 252 | C20H12 | 000192-97-2 | 99 |
| 2 | | Benzo[k]fluoranthene | 252 | C20H12 | 000207-08-9 | 97 |
| 3 | | Benzo[a]pyrene | 252 | C20H12 | 000050-32-8 | 96 |
| 4 | | Benzo[k]fluoranthene | 252 | C20H12 | 000207-08-9 | 95 |
| 5 | | Benzo[b]fluoranthene | 252 | C20H12 | 000205-99-2 | 95 |



Data Path : Z:\svoasrv\HPCHEM1\BNA_P\Data\BP051122\
 Data File : BP010331.D
 Acq On : 12 May 2022 19:42
 Operator : CG/JU
 Sample : N2746-04
 Misc :
 ALS Vial : 55 Sample Multiplier: 1

Instrument :
 BNA_P
 ClientSampleId :
 DBSL0

Quant Method : Z:\svoasrv\HPCHEM1\BNA_P\Methods\SFAM-EPA-BP051022.M
 Quant Title : SVOA CALIBRATION

TIC Library : C:\DATABASE\NIST0.L
 TIC Integration Parameters: LSCINT.P

| TIC Top Hit name | RT | EstConc | Units | Response | --Internal Standard-- | | | |
|--------------------|--------|---------|-------|----------|-----------------------|--------|----------|------|
| | | | | | # | RT | Resp | Conc |
| Naphthalene, 1,... | 13.716 | 3.7 | ng/ul | 399179 | 3 | 14.534 | 2165170 | 20.0 |
| Naphthalene, 1,... | 13.857 | 5.6 | ng/ul | 603075 | 3 | 14.534 | 2165170 | 20.0 |
| Naphthalene, 2,... | 14.093 | 2.8 | ng/ul | 297209 | 3 | 14.534 | 2165170 | 20.0 |
| Naphthalene, 1,... | 15.151 | 3.3 | ng/ul | 360493 | 3 | 14.534 | 2165170 | 20.0 |
| [1,1'-Biphenyl]... | 15.881 | 7.1 | ng/ul | 771801 | 3 | 14.534 | 2165170 | 20.0 |
| Dibenzofuran, 4... | 16.022 | 10.0 | ng/ul | 1244040 | 4 | 17.287 | 2493350 | 20.0 |
| Chamazulene | 16.263 | 3.1 | ng/ul | 383485 | 4 | 17.287 | 2493350 | 20.0 |
| 9H-Fluorene, 2-... | 16.587 | 6.9 | ng/ul | 863546 | 4 | 17.287 | 2493350 | 20.0 |
| 9H-Fluorene, 1-... | 16.640 | 2.8 | ng/ul | 345679 | 4 | 17.287 | 2493350 | 20.0 |
| 9H-Fluorene, 3-... | 16.740 | 3.2 | ng/ul | 401954 | 4 | 17.287 | 2493350 | 20.0 |
| 2-[2-Phenylethe... | 16.822 | 3.9 | ng/ul | 487304 | 4 | 17.287 | 2493350 | 20.0 |
| 3'-Methyl-[1,1'... | 17.016 | 4.2 | ng/ul | 527313 | 4 | 17.287 | 2493350 | 20.0 |
| Dibenzothiophene | 17.104 | 8.9 | ng/ul | 1113250 | 4 | 17.287 | 2493350 | 20.0 |
| Phenanthridine | 17.475 | 3.8 | ng/ul | 468149 | 4 | 17.287 | 2493350 | 20.0 |
| Phenanthrene, 2... | 18.151 | 15.7 | ng/ul | 1954830 | 4 | 17.287 | 2493350 | 20.0 |
| Phenanthrene, 1... | 18.198 | 19.2 | ng/ul | 2390540 | 4 | 17.287 | 2493350 | 20.0 |
| Phenanthrene, 4... | 18.275 | 10.1 | ng/ul | 1253910 | 4 | 17.287 | 2493350 | 20.0 |
| 4H-Cyclopenta[d... | 18.345 | 34.9 | ng/ul | 4347460 | 4 | 17.287 | 2493350 | 20.0 |
| 1H-Cyclopropa[1... | 18.375 | 8.9 | ng/ul | 1104640 | 4 | 17.287 | 2493350 | 20.0 |
| Naphthalene, 2-... | 18.634 | 11.9 | ng/ul | 1482830 | 4 | 17.287 | 2493350 | 20.0 |
| di-p-Tolylacety... | 19.034 | 8.6 | ng/ul | 1069500 | 4 | 17.287 | 2493350 | 20.0 |
| unknown-01 | 19.104 | 6.5 | ng/ul | 817056 | 4 | 17.287 | 2493350 | 20.0 |
| 3,4-Dimethylphe... | 19.128 | 3.6 | ng/ul | 444456 | 4 | 17.287 | 2493350 | 20.0 |
| Phenanthrene, 3... | 19.175 | 5.5 | ng/ul | 683808 | 4 | 17.287 | 2493350 | 20.0 |
| unknown-02 | 19.439 | 3.9 | ng/ul | 2516400 | 5 | 21.369 | 13018000 | 20.0 |
| 11H-Benzo[b]flu... | 20.128 | 5.8 | ng/ul | 3744740 | 5 | 21.369 | 13018000 | 20.0 |
| 11H-Benzo[a]flu... | 20.222 | 3.7 | ng/ul | 2432120 | 5 | 21.369 | 13018000 | 20.0 |
| 5,12-ethanonaph... | 22.786 | 5.1 | ng/ul | 507251 | 6 | 23.798 | 1999790 | 20.0 |
| Benzo[e]pyrene | 23.245 | 13.1 | ng/ul | 1309110 | 6 | 23.798 | 1999790 | 20.0 |
| unknown-03 | 23.586 | 15.3 | ng/ul | 1533090 | 6 | 23.798 | 1999790 | 20.0 |